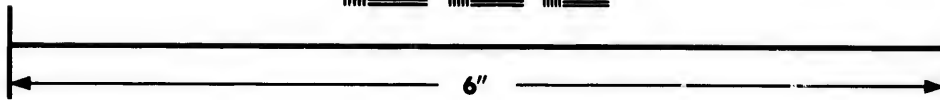
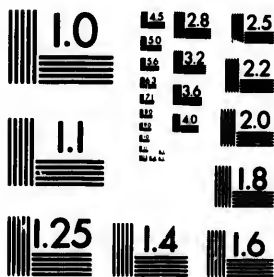


**IMAGE EVALUATION  
TEST TARGET (MT-3)**



**Photographic  
Sciences  
Corporation**

23 WEST MAIN STREET  
WEBSTER, N.Y. 14580  
(716) 872-4503

15  
16  
18  
19  
20  
22  
25

**CIHM/ICMH  
Microfiche  
Series.**

**CIHM/ICMH  
Collection de  
microfiches.**



**Canadian Institute for Historical Microreproductions / Institut canadien de microreproductions historiques**

10  
11

**© 1982**

Technical and Bibliographic Notes/Notes techniques et bibliographiques

The Institute has attempted to obtain the best original copy available for filming. Features of this copy which may be bibliographically unique, which may alter any of the images in the reproduction, or which may significantly change the usual method of filming, are checked below.

L'Institut a microfilmé le meilleur exemplaire qu'il lui a été possible de se procurer. Les détails de cet exemplaire qui sont peut-être uniques du point de vue bibliographique, qui peuvent modifier une image reproduite, ou qui peuvent exiger une modification dans la méthode normale de filmage sont indiqués ci-dessous.

- Coloured covers/  
Couverture de couleur
- Covers damaged/  
Couverture endommagée
- Covers restored and/or laminated/  
Couverture restaurée et/ou pelliculée
- Cover title missing/  
Le titre de couverture manque
- Coloured maps/  
Cartes géographiques en couleur
- Coloured ink (i.e. other than blue or black)/  
Encre de couleur (i.e. autre que bleue ou noire)
- Coloured plates and/or illustrations/  
Planches et/ou illustrations en couleur
- Bound with other material/  
Relié avec d'autres documents
- Tight binding may cause shadows or distortion  
along interior margin/  
La reliure serrée peut causer de l'ombre ou de la  
distortion le long de la marge intérieure
- Blank leaves added during restoration may  
appear within the text. Whenever possible, these  
have been omitted from filming/  
Il se peut que certaines pages blanches ajoutées  
lors d'une restauration apparaissent dans le texte,  
mais, lorsque cela était possible, ces pages n'ont  
pas été filmées.
- Additional comments:/  
Commentaires supplémentaires:

- Coloured pages/  
Pages de couleur
- Pages damaged/  
Pages endommagées
- Pages restored and/or laminated/  
Pages restaurées et/ou pelliculées
- Pages discoloured, stained or foxed/  
Pages décolorées, tachetées ou piquées
- Pages detached/  
Pages détachées
- Showthrough/  
Transparence
- Quality of print varies/  
Qualité inégale de l'impression
- Includes supplementary material/  
Comprend du matériel supplémentaire
- Only edition available/  
Seule édition disponible
- Pages wholly or partially obscured by errata  
slips, tissues, etc., have been refilmed to  
ensure the best possible image/  
Les pages totalement ou partiellement  
obscurcies par un feuillet d'errata, une pelure,  
etc., ont été filmées à nouveau de façon à  
obtenir la meilleure image possible.

This item is filmed at the reduction ratio checked below/  
Ce document est filmé au taux de réduction indiqué ci-dessous.

10X	14X	18X	22X	26X	30X
<input type="checkbox"/>	<input type="checkbox"/>	<input checked="" type="checkbox"/>	<input type="checkbox"/>	<input type="checkbox"/>	<input type="checkbox"/>
12X	16X	20X	24X	28X	32X

The copy to the g

The image possible of the c filming

Original beginning the last sion, or other o first pa sion, an or illust

The last shall co TINUED which

Maps, p differen entirely beginni right an require method

The copy filmed here has been reproduced thanks to the generosity of:

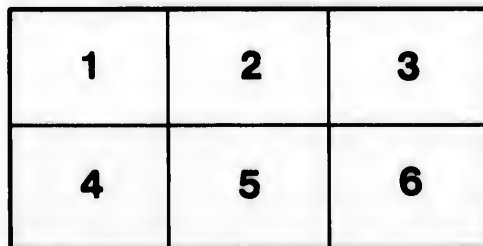
Library of the Public  
Archives of Canada

The images appearing here are the best quality possible considering the condition and legibility of the original copy and in keeping with the filming contract specifications.

Original copies in printed paper covers are filmed beginning with the front cover and ending on the last page with a printed or illustrated impression, or the back cover when appropriate. All other original copies are filmed beginning on the first page with a printed or illustrated impression, and ending on the last page with a printed or illustrated impression.

The last recorded frame on each microfiche shall contain the symbol  $\rightarrow$  (meaning "CONTINUED"), or the symbol  $\nabla$  (meaning "END"), whichever applies.

Maps, plates, charts, etc., may be filmed at different reduction ratios. Those too large to be entirely included in one exposure are filmed beginning in the upper left hand corner, left to right and top to bottom, as many frames as required. The following diagrams illustrate the method:



L'exemplaire filmé fut reproduit grâce à la générosité de:

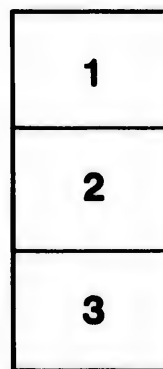
La bibliothèque des Archives  
publiques du Canada

Les images suivantes ont été reproduites avec le plus grand soin, compte tenu de la condition et de la netteté de l'exemplaire filmé, et en conformité avec les conditions du contrat de filmage.

Les exemplaires originaux dont la couverture en papier est imprimée sont filmés en commençant par le premier plat et en terminant soit par la dernière page qui comporte une empreinte d'impression ou d'illustration, soit par le second plat, selon le cas. Tous les autres exemplaires originaux sont filmés en commençant par la première page qui comporte une empreinte d'impression ou d'illustration et en terminant par la dernière page qui comporte une telle empreinte.

Un des symboles suivants apparaîtra sur la dernière image de chaque microfiche, selon le cas: le symbole  $\rightarrow$  signifie "A SUIVRE", le symbole  $\nabla$  signifie "FIN".

Les cartes, planches, tableaux, etc., peuvent être filmés à des taux de réduction différents. Lorsque le document est trop grand pour être reproduit en un seul cliché, il est filmé à partir de l'angle supérieur gauche, de gauche à droite, et de haut en bas, en prenant le nombre d'images nécessaire. Les diagrammes suivants illustrent la méthode.



ails  
du  
difler  
une  
page

trata  
o  
pelure,  
à

No. 18

**A**

AND TH

An E  
Seq

PRINTE

At his

No. 18.]

THE

[No. 18.

MERCHANTS' & FARMERS'  
**ALMANACK,**

FOR THE YEAR OF OUR LORD

**1856,**

BEING BISSEXTILE, OR LEAP YEAR,

AND THE NINETEENTH YEAR OF THE REIGN OF HER MOST GRACIOUS  
MAJESTY

**QUEEN VICTORIA.**

Containing—in addition to the usual Information—

*An Equation of Time Table, a Table for calculating  
Seamen's Wages, a Weather Table, and a variety  
of interesting Reading Matter.*



**SAINT JOHN, N. B.**

PRINTED AT THE BRUNSWICK PRESS, AND SOLD, WHOLESALE  
AND RETAIL, BY

**WILLIAM L. AVERY,**

*At his Store, Prince William Street; and to be had of the Prin-  
cipal Booksellers throughout the Province.*

INDEX.

Army, Staff of	page 40	Fish Market Dues,	page 10
Army, Officers serving in	ib.	Fredericton, Corporation of	32
Auctioneers,	24	Grammar School,	26
Baptist Ministers in N. B.,	43-44	Hackney Coach Fares,	10
Baptist Education Society,	45	Hand Carmen and Porters,	ib.
Banks,	46	Harbour Master's Fees,	9
Bell Buoy,	7	House of Assembly,	37
Board of Health,	24	Holidays at Public Offices,	4
Calendar Pages,	11 to 22	Heart Work,	59
Chamber of Commerce,	28	How to Milk a Kicking Cow,	52
City of Saint John,	24	Joint Stock Companies,	28
County of Saint John,	29	King's College,	45
“ of York,	32	Latitude, Longitude, &c.,	7
“ of King's,	33	Legislative Council,	37
“ of Carleton,	34	Light Houses,	5
“ of Charlotte,	ib.	Lunatic Asylum,	46
“ of Westmorland,	35	Marine Hospital,	ib.
“ of Gloucester,	ib.	Market Tolls,	10
“ of Queen's,	ib.	Mechanics' Institute,	27
“ of Sunbury,	ib.	Morning and Evening Stars,	4
“ of Kent,	ib.	Miscellaneous Extracts, 53 to	59
“ of Northumberland,	36	Officers of the Crown,	38
“ of Restigouche,	ib.	Parish of Portland,	30
“ of Albert,	ib.	Police Department,	26
“ of Victoria,	ib.	Post Office,	39
Courts,	38, 39	Penitentiary,	46
Custom House,	40	Presbyterian Church,	42
Church of England,	41	Provincial Board Education,	45
Catholics, Roman	43	Provincial Militia, (Staff)	48
Church of Scotland,	42	Rates of Pilotage, &c.,	8
Congregational Church,	44	Rates of Wharfage, &c.,	9
Consuls and Agents,	47	Rates of Carleton Steam Ferry,	9
Counsellors and Attornies,	47	Rates of Cartage,	23
Com. Sewerage and Water,	24	Revenue, Provincial	40
Cultivation of Corn,	50	Ref. Presbyterian Church,	44
Cure of Horses, &c.	ib.	Roads and Distances,	ib.
Cultivating Fruit,	ib.	Signals,	7
Decomposition of Soils,	50	Societies, Public	26, 27, 28
Disciples of Christ,	44	Table, Seamen's Wages	59
Diocesan Church Society,	ib.	Tolls on Suspension Bridge,	10
Equation of Time,	3	Time for going through the	10
Eclipses,	3	Falls,	10
Electricity	59	The Heart and the Sword,	59
Executive Council,	37	The Use of Leavens,	51
Emigrant Department,	47	To Keep Bugs from Vines,	ib.
Falls Time of going through	10	Weather Table,	60
Fire Department,	26	Weighting Machines,	16
Fire Wards,	ib.	Westeyan Missionaries,	43
Free Ch. Ep. Church,	44	Woodlands,	50

ge, 10  
32  
26  
10  
ib.  
9  
37  
4  
59  
w, 52  
28  
15  
7  
37  
5  
46  
ib.  
10  
27  
rs, 4  
3 to 59  
38  
30  
26  
39  
46  
42  
on, 45  
48  
8  
9  
Ferry, 9  
23  
40  
44  
7  
27, 28  
59  
lge, 10  
the  
10  
d, 59  
51  
es, ib.  
60  
16  
43  
50



month  
year

JAN  
M.

DATE	
1	33
2	4
3	43
4	5
5	52
6	55
7	62
8	64
9	71
10	73
11	8
12	82
13	84
14	91
15	93
16	95
17	101
18	103
19	105
20	111
21	112
22	114
23	12
24	121
25	123
26	124
27	125
28	131
29	132
30	133
31	134

NOTE  
When t

- This y
- I.—T
- Eclips
- Middl
- Digit
- III.—
- IV.—T
- Eclips
- Middl
- Digit

# EQUATION OF TIME FOR 1856,

*For the Meridian of Greenwich.*

DAY.	JANY.		FEBY.		MARCH.		APRIL.		MAY.		JUNE.		JULY.		AUG.		SEPT.		OCTO.		NOV.		DEC.	
	☉	♁	☉	♁	☉	♁	☉	♁	☉	♁	☉	♁	☉	♁	☉	♁	☉	♁	☉	♁	☉	♁	☉	♁
	M.	S.	M.	S.	M.	S.	M.	S.	M.	S.	M.	S.	M.	S.	M.	S.	M.	S.	M.	S.	M.	S.	M.	S.
1	3	36	13	50	12	31	3	51	3	5	2	25	3	31	6	0	14	10	25	16	16	10	36	
2	4	4	13	58	12	19	3	33	3	12	2	19	3	42	5	56	0	33	10	44	16	17	10	13
3	4	33	14	5	12	6	3	16	3	15	2	9	3	55	5	52	0	52	11	3	16	17	9	49
4	5	0	14	11	11	53	2	55	3	2	1	59	4	4	5	47	1	12	11	21	16	16	9	24
5	5	28	14	17	11	39	2	40	3	31	1	49	4	1	5	41	1	31	11	38	16	14	8	59
6	5	55	14	22	11	25	2	23	3	3	1	38	4	2	5	35	1	51	11	56	16	11	8	34
7	6	21	14	26	11	11	2	6	3	39	1	27	4	35	5	28	2	11	12	13	16	8	8	8
8	6	47	14	29	10	56	1	49	3	43	1	16	4	44	5	20	2	32	12	30	16	4	7	42
9	7	13	14	31	10	40	1	32	3	41	1	4	4	53	5	12	2	52	12	46	15	58	7	15
10	7	38	14	33	10	25	1	15	3	44	0	53	5	25	3	3	13	13	2	15	52	6	47	
11	8	2	14	33	10	9	0	59	3	51	0	41	5	10	4	54	3	34	13	17	15	46	6	20
12	8	26	14	33	9	52	0	43	3	52	0	29	5	17	4	44	3	55	13	32	15	38	5	52
13	8	49	14	32	9	36	0	27	3	53	0	16	5	25	4	34	4	16	13	46	15	30	5	23
14	9	11	14	31	9	19	0	12	3	54	0	4	5	31	4	23	4	37	14	0	15	20	4	55
15	9	33	14	28	9	2	0	3	3	54	0	3	5	38	4	11	4	58	14	13	15	10	4	26
16	9	54	14	25	8	44	0	15	3	53	0	21	5	43	3	59	5	19	14	26	14	59	3	56
17	10	15	14	21	8	26	0	32	3	52	0	34	5	48	3	46	5	41	14	38	14	47	3	27
18	10	34	14	16	8	9	0	46	3	50	0	47	5	53	3	33	5	2	14	49	14	34	2	57
19	10	53	14	11	7	51	0	59	3	47	1	0	5	57	3	20	5	23	15	0	14	21	2	27
20	11	12	14	5	7	32	1	13	3	45	1	13	6	1	3	6	44	15	10	14	6	1	57	
21	11	29	13	58	7	14	1	25	3	41	1	26	6	4	2	51	7	5	15	20	13	51	1	27
22	11	46	13	51	6	56	1	38	3	37	1	39	6	6	2	36	7	26	15	29	13	35	0	57
23	12	2	13	43	6	37	1	49	3	32	1	52	6	8	2	21	7	46	15	37	13	16	0	27
24	12	17	13	35	6	19	2	1	3	27	2	4	6	10	2	5	8	7	15	44	13	0	0	3
25	12	31	13	25	6	0	2	11	3	22	2	17	6	11	1	49	3	27	15	51	12	42	0	33
26	12	45	13	16	5	42	2	23	3	15	2	30	6	11	1	33	5	45	15	57	12	22	1	3
27	12	58	13	5	5	23	2	31	3	9	2	42	6	11	1	16	9	8	16	2	12	2	1	33
28	13	10	12	55	5	5	2	41	3	2	2	55	6	10	0	58	9	27	16	6	11	42	2	2
29	13	21	12	43	4	46	2	49	2	54	3	7	6	8	0	41	9	47	16	10	11	26	2	32
30	13	31			4	28	2	57	2	46	3	19	6	6	0	23	10	6	16	13	11	58	3	1
31	13	41			4	10	2	35			3	6	4	0	51			16	15				3	29

NOTE.—When the Sun is slow, Equation to be added to Apparent Time.  
When the Sun is fast, Equation to be subtracted from Apparent Time.

## ECLIPSES OF 1856.

This year there will be two eclipses of the Sun, and two of the Moon, as follows:  
I.—There will be a *total eclipse of the Sun*, April 4th, invisible here.

II.—There will be a *partial eclipse of the Moon*, April 20th, visible as follows:  
Eclipse begins, 3h. 10m. P.M. mean time } End of eclipse, 6h. 16m.  
Middle of Eclipse, 4h. 42m. } at St. John } Duration, 3h. 24m.  
Digits eclipsed 8 $\frac{1}{2}$ , on the Northern limb.

III.—There will be an *annular eclipse of the Sun*, September 28th, invisible here.

IV.—There will be a *partial eclipse of the Moon*, October 13th, visible as follows:  
Eclipse begins, 4h. 57m. P.M. mean time } End of Eclipse, 5h. 3m.  
Middle of eclipse, 6h. 30m. } at Saint John, } Duration, 3h. 20m.  
Digits eclipsed, 11 $\frac{1}{2}$ -10, on the Southern limb.

## MORNING AND EVENING STARS OF 1856.

The Planet *Venus* (♀) will be *Morning Star* till July 20th; then *Evening Star* to the end of the year.—*Mars* (♂) will be *Morning Star* till April 2d; then *Evening Star* to the end of the year. *Jupiter* (♃) will be *Evening Star* till March 5th; then *Morning Star* till Sept. 26th; then *Evening Star* to the end of the year. *Saturn* (♄) will be *Evening Star* till June 24th; then *Morning Star* to the end of the year.

### Chronological Cycles of 1856.

Domin. Letter, F E.	Epact, 23	Roman Indiction, 14
Golden Number, } or Lunar Cycle, }	Solar Cycle, 17	Julian Period, 6569
	Hegira, 1272--3	Jewish yr. A. M. 5616--7

### Names and Characters of the Planets

☉ The Sun.	♿ Mercury.	♁ Vesta.	♃ Jupiter.
⊕ The Earth.	♀ Venus.	♃ Juno.	♄ Saturn.
☾ } ☽ } The Moon.	♂ Mars.	♁ Pallas.	♃ Herschel, or Uranus.
		♁ Ceres.	

### Names and Characters of the Aspects and Nodes.

♄ Conjunction.	♁ Ascending Node.	♁ Sup. Superior.
□ Quadrature, 90°.	♁ Descending Node.	N. North. S. South.
♁ Opposition, 180°.	♁ Inf. Inferiour.	E. East. W. West.

### Names and Characters of the Signs of the Zodiac.

♈ Aries, head.	♌ Leo, heart.	♐ Sagittarius, thighs.
♉ Taurus, neck	♍ Virgo, belly.	♑ Capricornus, knees.
♊ Gemini, arms.	♎ Libra, reins.	♒ Aquarius, legs.
♋ Cancer, breast.	♏ Scorpio, secrets.	♓ Pisces, feet.

### Moveable Festivals of the Church in 1856.

Septuagesima Sunday, Jan. 20	Rogation Sunday,	April 27
Sexagesima Sunday, " 27	Ascension Day, Holy,	} May 1
Quinquagesima Sunday, Feb. 3	Thursday,	
Ash Wed. Lent beg. " 6	White Sun. or Pentecost,	May 11
Good Friday, March 21	Trinity Sunday,	" 18
Easter Sunday, " 23	Advent Sunday,	Nov 30

### Holidays at the Public Offices.

January 1, New Year's Day,	Nov. 30, Saint Andrew,
March 17, Saint Patrick,	Dec. 25, Christmas Day,
April 23, Saint George,	" 26, } Christmas Holidays,
May 24, Queen's Birth Day,	" 27, }
June 20, Queen's Accession,	Ash Wednesday,
June 24, Saint John,	Good Friday,
June 28, Queen's Coronation,	Easter Monday,
Sept. 20, Michaelmas,	Easter Tuesday,

then  
ning  
year.  
ning  
year.  
ning

14  
6569  
16-7

el, or  
is.

outh.  
West.

ghs.  
nees.

ril 27

lay 1

uy 11

18

v 30

days,

[Faint, illegible text, possibly bleed-through from the reverse side of the page]

**Roan**  
**Fundy.**  
Hon. V  
and Jo  
Isaac  
Bay of  
longing

**Cape**  
Bay of  
white I  
be seen  
very d  
breaks,  
from th  
some d  
therefo

**Brien**  
tuated  
thereof

**Digh**  
placed  
ward:  
fore el

**Gann**  
approa  
tend fr  
tauce o  
eonds  
painted

**Bearing**  
This L

From t  
From t

From

From t

To the

From t

**Norn**  
Ledges  
always  
House  
six mile  
Bull.  
near the

## LIGHT HOUSES.

*Board of Commissioners for the several Light Houses in the Bay of Fundy.*—Robert W Crookshank, John Ward, Isaac Woodward, Hon. W. F. W. Owen, John Wilson, Lieut. Charles Hare, R. N. and John James Robinson, R. N., Esquires.

Isaac Woodward, Esquire, Surveyor of those Light Houses in the Bay of Fundy belonging to New Brunswick, and also of those belonging to Nova Scotia which are partly supported by this Province.

*Cape Sable Seal Island Light.*—The first Light in approaching the Bay of Fundy, is on the South Point of the Seal Island. This is a plain white Light, elevated about 80 feet above high water mark, and may be seen in approaching the Island from any point of the compass. A very dangerous rock, under water, but upon which the sea always breaks, called *Blonde Rock*, lies about  $3\frac{1}{2}$  miles S. by W. by compass, from the Light House. Between this rock and the Island, there are some dangers—the ground is rocky throughout, and large vessels, therefore, ought not to attempt passing between them.

*Brier Island Light.*—In advancing up the Bay, the next Light is situated on Brier Island, about half a mile N. E. from the N. W. point thereof. A plain white light

*Digby Gut Light.*—The next light on the coast of Nova Scotia is placed on the west side of Digby Gut—from Brier Island North Eastward. The coast is very bold and not indented; the Light is therefore chiefly intended as a guide into Digby Basin—A white Light.

*Gannet Rock Light.*—This Light is intended to warn vessels of their approach to a very dangerous range of shoals and ledges, which extend from the Old Proprietor to the Seal Islands off Machias, a distance of about twenty miles. It is a flash light—white—twenty seconds dark and forty light in each minute. The Light House is painted in stripes, vertical, black and white

*Bearings and Distance by Compass from the Gannet Rock Light House.*  
This Light bears from the Light house on Brier Island, N. N. W.  $\frac{3}{4}$  W. 22 miles.

From the Gannet Rock to the Old Proprietor E.  $\frac{1}{4}$  S. distance 7 miles.  
From the Gannet Rock to the Black Rock, off White Head Island, N. E.  $\frac{1}{4}$  E. 7 miles.

From the Gannet Rock to the South West Head of Grand Manan, N. N. W.  $6\frac{1}{2}$  miles.

From the Gannet Rock to the Northernmost of the Murr Ledges, N. W.  $\frac{1}{4}$  N.  $2\frac{1}{2}$  miles.

To the Southernmost of ditto, called Saint Mary's Ledge, W S. W. 2 miles.

From the Gannet Rock to Machias Seal Island. W and by N  $\frac{1}{4}$  N. 12 miles.

*NOTE.*—Between the Northernmost and Southernmost of the Murr Ledges, there is a range of dangerous rocks and shoals, many of them always above water, and which extends Westward from the Light House about four miles; from this range, farther Westward, about six miles from the Gannet Light, lies a dangerous breaker called the Bull. This may be avoided by keeping three remarkable headlands near the S. W. end of Grand Manan, open.

From Brier Island Light to the Old Proprietor, N. and by W.  $\frac{1}{4}$  W. 18 $\frac{1}{2}$  miles

The Blonde Rock from the Southernmost point of the Cape Sable Seal Islands S. and by W.  $3\frac{1}{2}$  miles distant.

**Machias Seal Island Lights.**—There are two fixed *white* lights upon the Machias Seal Islands, elevated about forty-five feet above high water, and bear from each other E. S. E. and W. N. W. distant about 200 feet, by which circumstance of two Light Houses at the same station, they will be immediately distinguished from all other lights upon the coast, (British or American) Both the Buildings are painted white. The following are the bearings from them, viz:

- To the Southernmost Murr Ledge, (St. Mary's) E. S. E. easterly.
- " Gannet Rock Light E. by S.  $\frac{1}{4}$  S 13 miles.
- " Southern Head of Grand Manan, E. by N.  $\frac{1}{2}$  N.
- " Northern Head of Grand Manan, N. E.  $\frac{1}{4}$  E.
- " N. E. Rock, distant 2 miles. N. E. by N.
- " Little River Head, N. by W.
- " Libby Island Light House, (American,) N. W. by W.

Vessels standing to the Northward, between these Lights and the Gannet Rock, should tack or haul off the moment they bring these Lights in one, as they will not then be more than three fourths of a mile from the Murr Ledges, if more than five miles to the East of the lights.

[It is recommended that the Ship's Compasses should be well compared and adjusted (particularly in new ships), before they leave Partridge Island, as serious errors have frequently occurred from want of attention on this point; and as the variation in the Bay of Fundy is seventeen degrees Westerly, or (1 $\frac{1}{2}$  points) it will be found by the latest published Admiralty Charts, that the course from Partridge Island down the Bay (South Channel) between the Old Proprietor and N. W. Ledge, is S. W.  $\frac{1}{4}$  S., but the course to be steered must depend on the direction of the wind on leaving Partridge Island.]

**Head Harbour Light.**—Next in order after passing Grand Manan and the plain white Light, (American) on West Quoddy Point, is Head Harbour Light. This is placed on the North East extremity of Campo Bello, and is a guide to vessels entering the main Channel to West Isles, Moose Island, and the inner Bay of Passamaquoddy; it enables vessels also at all times to enter Head Harbour—it is a fixed *white* light. The building is painted White, with a red cross on it.

**Point Le Preau Lights.**—Upon this projecting head land two lights are placed, one above the other, in the same house, and distant 28 feet—Both lights can be seen from every point of the compass, where they may be useful—both are fixed and *white*. The Light House is painted red and white, in stripes of five feet broad each, horizontally.

**Partridge Island Light.**—This light at the entrance of the River and Harbour of Saint John, having been established upwards of forty years, requires no particular notice, further than that it is a fixed *white* light, and that the Light House is red and white, in vertical stripes.

**Beacon Light.**—Within Partridge Island, and upon a Spit or bar which extends about half a mile S. S. E. off Sand Point, and which dries at two-thirds ebb, stands the Beacon Tower. Upon this Tower a light is established, which is eminently useful to the coasting trade of Saint John, and to all other vessels having pilots on board, as it enables them to enter the harbour at all hours of the night. A fixed *white* light. The House is white and black, in stripes vertically.

W.  
ble  
non  
igh  
ont  
me  
hts  
are  
rly.

the  
ese  
of a  
the

and  
s se  
and  
nis)  
from  
and  
e di-

man  
is  
y of  
l to  
; it  
xed  
t.

ghts  
t 28

ere  
e is  
ally  
and  
orty  
chite  
es.

bar  
hich  
wer  
rude  
en-  
ixed



Qu  
Head,  
be see  
House  
Cap  
land, n  
The H  
West  
the W  
Eastpo  
Cap  
entran  
It ex  
quarter  
white,

Lati  
lowing  
Brunsw

Partridg  
Beacon,  
Head H  
Point Le  
Gannet I  
Machias  
Saint An  
Quaco,  
Cape En

An I  
on the  
Buoy of  
land Li

Cape  
Cape  
Partr  
Shel  
Mah  
Cape  
Cape  
The I  
The Be

*Display*

One l  
One l  
Two  
Two  
A Per  
A dit  
A dit  
A dit

**Quaco.**—A revolving white light is placed on a small rock off Quaco Head, showing twice full and twice dark in a minute. This light can be seen from any quartèr where a vessel can approach. The Light House is painted white and red in horizontal stripes.

**Cape Enrage Light.**—On the point of that name, in Westmorland, nearly opposite Apple River Harbour, N. S. A plain white light. The House is painted white, and is about 120 feet above tide mark.

**West Quoddy Light.**—This is an American Light, and is placed on the West side of the entrance into the Saint Croix by Lubec and Eastport.

**Cape Forchu Light.**—On Cape Forchu, on the western side of the entrance to Yarmouth (Nova-Scotia), in lat. 43, 39, N. long, 66, S. W. It exhibits a plain revolving light—visible one minute and a quarter, and invisible half a minute. The building is painted white, and is elevated 135 feet above the level of the sea.

Latitude, Longitude, and Variation of the Compass, at the following Light Stations in the Bay of Fundy, belonging to New Brunswick;

	Lat.	Long.	Var.
Partridge Island, . . . . .	45 14 20 N.	65 3 50 W.	16 30 W.
Beacon, . . . . .	45 15 00 "	65 3 36 "	16 30 "
Head Harbour, . . . . .	44 57 40 "	65 53 55 "	16 20 "
Point LePreat, . . . . .	45 3 50 "	66 27 4 "	16 30 "
Gannet Rock, . . . . .	44 30 40 "	66 42 50 "	16 30 "
Machias Seal Islands, . . . . .	44 30 3 "	67 6 19 "	16 20 "
Saint Andrews, . . . . .	45 4 10 "	67 4 00 "	16 20 "
Quaco, . . . . .	45 19 33 "	65 31 55 "	16 30 "
Cape Enrage, . . . . .	45 33 00 "	64 46 40 "	16 50 "

An Iron Bell Buoy (painted red) was laid down off this Harbour on the 28th September, 1852, similar in all respects to the Bell Buoy of the Port of Liverpool, G. B. It bears from Partridge Island Light House S. S. W. by compass  $1\frac{1}{2}$  miles.

	Bearings.	Distance, miles.
Cape Spencer, . . . . .	S. 59 E. or S. E. by E. $\frac{1}{2}$ E.	—
Cape Mispeck, . . . . .	S. 62 E. or S. E. by E. $\frac{1}{2}$ E.	3.8
Partridge Island Light House, . . . . .	N. 21 E. or N. N. E.	1.5
Sheldon's Point, . . . . .	N. 49 W. or N. W. $\frac{1}{2}$ W.	1.8
Mahogany Island, South East point, . . . . .	N. 76 W. or W. by N. $\frac{1}{2}$ N.	2.1
Cape Negro (Negro Head), . . . . .	S. 81 W. or W. $\frac{1}{2}$ S.	4.4
Cape Split (Split Rock, Musquash), . . . . .	S. 78 W. or W. by S.	—

The Buoy is anchored in  $7\frac{1}{2}$  fathoms, low water, spring tides. The Bell is 19 feet above the water.

### SIGNALS.

Displayed at Partridge Island, on the approach of Vessels to the Harbour of Saint John.

- One ball close, for one square-rigged Vessel, ditto
- One ball half hoisted for two ditto
- Two Balls close, for three Vessels
- Two Balls separated, for four ditto
- A Pendant of any colour, for five ditto
- A ditto under a Ball, for six ditto
- A ditto over a Ball half hoisted, for seven ditto
- A ditto under two Balls close, for eight ditto

A ditto between two Balls separate, for nine ditto  
 A Flag of any colour, for ten or more ditto  
 The above are displayed at the East or West yard arm, according to the direction in which the Vessels are at first observed; and as soon as their m<sup>ts</sup> can be distinguished, descriptive Colours will be hoisted at the mast head, in the following order:  
 A Union Jack for a Flag Ship, with or without a squadron.  
 " with a Red Pendant over, for a two-decker  
 " with a Blue Pendant over, for a Frigate  
 " with a white ditto, for a small armed vessel  
 A blue Pendant for a Merchant Ship  
 A red ditto, for a Merchant Brig  
 A white and blue ditto, for a Foreign Vessel  
 A white ditto, [without a ball.] for a Topsail Schooner or Sloop.  
 A blue Flag pierced white, for a steamboat from Saint Andrews or Eastport.  
 A Red Flag pierced white, for a Steamboat from Digby  
 A Red Flag with a white square, for a Steamboat from Boston  
 A Ball at the mast head, Vessel is on Shore or in distress

### RATES OF PILOTAGE,

*Established by a Law or Ordinance of the Common Council of the City of Saint John—passed 3d August, 1848.*

Five Shillings per foot, for bringing any Ship or Vessel into the Harbour of Saint John, and mooring her into a safe place or berth, or securing her alongside of one of the Wharves; and Five Shillings per foot for removing and taking any Ship or Vessel out of the Harbour.

In cases where Pilots shall be detained on board of Vessels, under and by Virtue of the Quarantine or Health Laws of the Province, they shall be entitled to demand and receive from Masters of such Vessels, the sum of Ten Shillings per day, for every day of such detention, in addition to the allowance aforesaid.

Coasting Vessels, going from one part of the Bay of Fundy to another, British Steam Boats, or British Vessels drawing under six feet of water, are not compelled to take pilots; when employed, they are to be paid according to the rate above mentioned.

For removing Vessels from any mooring ground to any Wharf, or from one Wharf to another Wharf, and seeing them properly moored or secured, the following rates: For Vessels not exceeding One Hundred Tons, Seven Shillings and Sixpence; for Vessels over One Hundred and not exceeding Two Hundred Tons, Ten Shillings; for Vessels over Two Hundred and not exceeding Three Hundred Tons, Fifteen Shillings; and for all Vessels over Three Hundred Tons, the sum of Twenty Shillings.

*First Distance.*—From Partridge Island to Musquash Cove Head, bearing North West, Five Shillings per foot.

*Second Distance.*—From Musquash Head to Point LePreaux, bearing North West, Six Shillings and Threepence per foot.

*Third Distance.*—From Point LePreaux to North Head of Grand Manan, bearing North West—or North Chunnel, bearing South East, Seven Shillings and Sixpence per foot.

Fourth  
 North C  
 or Bri  
 pence p  
 Fifth  
 Shilling

On V  
 and un  
 150 ton  
 300 ton  
 wards,  
 at Saint  
 within t  
 of Cape  
 Nova S  
 over 30  
 over 75

RATE  
 City of  
 sel, or v  
 day; ab  
 2s.; ab  
 above 8  
 100, and  
 150, and  
 200, and  
 and un  
 under 3  
 der 340  
 380, 9s  
 11s 3d;  
 addition

RATE  
 All D  
 and oth  
 Scows,  
 the foll  
 Every W

The ab  
 six days  
 cording  
 having  
 and 1s.

RAT  
 JOHN  
 3d; Ox

*Fourth Distance.*—From the North Head of Grand Manan—or North Channel as aforesaid—to Machias Sea Island, bearing South, or Brier Island bearing South South East, Eight Shillings and Ninepence per foot.

*Fifth Distance.*—Any where outside the aforesaid distance, Ten Shillings per foot.

### HARBOUR MASTER'S FEES.

On Vessels of 3 Tons and under 50, 2s. 6d.; Vessels of 50 Tons and under 75, 3s. 9d.; 75 and under 100 tons, 5s.; 100 and under 150 tons, 6s. 3d.; 150 and under 200 tons, 7s. 6d.; 200 and under 300 tons, 10s.; 300 and under 400 tons, 12s. 6d.; 400 tons and upwards, 15s.; Decked Vessels, under 100 tons, owned and registered at Saint John, and all British Vessels under that tonnage trading within the Bay of Fundy, or arriving from Ports to the Northward of Cape Cod, or the Westward of Cape Canso, or from any Port in Nova Scotia, to pay annually as follows: Under 30 tons, 3s. 9d.; over 30 and under 50 tons, 5s.; over 50 and under 75 tons, 6s.; over 75 and under 80 tons, 10s.

*RATES OF WHARFAGE, established by Act 5 Vict. cap. 49, in the City of Saint John and Parish of Portland.*—For every decked vessel, or wood boat, of the burthen of 40 tons and under 1s. 6d. per day; above 40 tons, and under 50, 1s. 9d.; above 50, and under 60, 2s.; above 60, and under 70, 2s. 3d.; above 70, and under 80, 2s. 6d.; above 80, and under 90, 2s. 9d.; above 90, and under 100, 3s.; above 100, and under 120, 3s. 6d.; above 120, and under 150, 4s.; above 150, and under 180, 4s. 6d.; above 180, and under 200, 5s.; above 200, and under 220, 5s. 6d.; above 220, and under 240, 6s.; above 240, and under 260, 6s. 6d.; above 260 and under 280, 7s.; above 280, and under 300, 7s. 6d.; above 300, and under 320, 8s.; above 320, and under 340, 8s. 6d.; above 340, and under 360, 9s.; above 360, and under 380, 9s. 6d.; above 380, and under 400, 10s.; above 400, and under 450, 11s. 3d.; above 450, and under 500, 12s. 6d.; and 1s. 3d. for every additional 50 tons.

### RATES OF SLIPPAGE AT THE CORPORATION SLIPS.

All Decked Vessels, same rates as for Wharfage; Wood Boats, and other Boats, or undecked Vessels, having standing Masts, and all Scows, and not lying at the wharves on either side of Slips, to pay the following rates:

Every Woodboat of sufficient burthen to carry 10 Cords of Wood, or under,	1s. 6d.
ditto ditto upwards of 10 Cords, and not more than 15,	2s. 6d.
ditto ditto upwards of 15 Cords, and not more than 20,	3s. 9d.
ditto ditto upwards of 20 Cords,	5s.

The above to be paid each trip, and if any such Vessel remains over six days, an additional duty to be paid of from 2s. 6d. to 5s. daily, according to the burthen. Other Boats and Vessels without decks, and having fixed or standing masts, and all Scows, to pay 1s. 6d. each trip and 1s. 6d. additional per day, if suffered to remain over three days.

**RATES OF FERRIAGE ACROSS THE HARBOUR OF ST. JOHN.**—Foot passenger, 2d.; Child under twelve years, 1d.; Horse, 3d.; Ox, or other large animal, 3d.; Elephant or Camel, 1s. 3d.; and

gle Waggon, not loaded, 2d; single waggon, with horse and one man, 6d.; single waggon, with horse, load and man, 7d.; double waggon, not loaded, 7d.; double waggon, with horses and man, 1d.; double waggon, with horses, load and man, 1s. 3d.; barrel, 1d.; bag, containing two bushels, 1d.; firkin, keg, or box of the same size, 1d.; cask of lime, 2d.; pipe, hogshead, or puncheon, whether in waggon, cart, sled, or other vehicle or not, except containing molasses, vinegar, rice, or sugar 9d.; every cwt. of iron, steel, or copper, whether in waggon, cart, or other vehicle or not, 1d.--Carts, sleds, drays and carriages, same as waggons.

**RATE OF TOLLS FOR CROSSING THE SAINT JOHN SUSPENSION BRIDGE.**—For every foot passenger, (excepting children under five years of age,) 1d.; horse, mare, gelding, mule, ass, ox, cow, or other large animal, 3d. each; elephant or camel, 1s. 3d.; carriage, sleigh, waggon, cart, sled or other vehicle, drawn by one horse or beast of draught with one person, with or without a load, 6d.; horse or beast of draught, more than one, with a carriage or other vehicle, 3d. each; sheep, calf, hog, or goat, 1-2.

**RATES AT THE PUBLIC WEIGHING MACHINES**—Every load not exceeding One Thousand Pounds Weight, One Shilling; and One Penny for every additional Hundred Weight; payable, half by the seller, and half by the purchaser.

**HACKNEY COACH FARES.**—For conveying one passenger from any public stand to any part of the City, or from any one part of the City to any other part thereof, 1s.; and for every passenger exceeding one, 6d. additional; and if any driver of any Carriage or other vehicle, shall be detained at any place by any passenger, or shall make any agreement for carrying any passengers by the hour, he shall be entitled to ask, and receive the following rates, viz:—For any time not exceeding half an hour, 1s. 3d.; and in that proportion for every half hour that such Carriage, or other vehicle shall be detained or employed. Provided always, that in case any driver shall be required to cross the Ferry to Carleton, he shall, in addition to the foregoing fares, be entitled to demand and receive the ferrage for himself, his carriage and horses, both going and returning.

**PUBLIC PORTERS AND HAND CART MEN**—For loading, carrying, and hauling any goods, or any other article on any Hand Cart, from the Market Slip in King's and Queen's Wards, or from any other place within the limits of the first district, to any other place within the said several Five districts, the rates of prices are as follow:—For the first district 3d.; second district 3½d.; third district 4d.; fourth district 4½d.; fifth district 5d.

**MARKET TOLLS.**—Beef, per quarter, 2d.; Calf, Sheep, Hog, Goat, Lamb, Kid, or Sheep 2d.; Tub, Pail or Jar of Butter, 1½d.; Firkin, 3d.; every 10 lbs. of Roll Butter, 1d.; Cheese, ½d.; load of Potatoes under 15 bushels, 3d.; ditto over 15 bushels, 6d.; load of Oysters in shell or tub, 6d.; Turkey, Goose, or dozen of Pidgeons, ½d.; pair of Ducks, Fowls or Partridges, ½d.; bag of Flour, Meal, Oats, Peas, or Beans, ½d.; Ham or Shoulder, ½d.; Eggs, per 10 dozen, ½d.; and all other articles in like proportion.

**FISH MARKET DUES.**—For every Salmon, 1½d., Codfish, Pollock, Bass, or Shad, each ½d.; Haddock, not exceeding 20 lbs. 1d.; exceeding 20 lbs., and for every 20 lbs., 1d.; every Lobster, ½d.; dozen of Haddock, 1½d.; every 100 of Gaspercaux, Alewives, Herrings, or other small fish, 1½d.

**TIME FOR GOING THROUGH THE FALLS**—(near Saint John.)—The Falls are level or still water at about three and a half hours on the flood, and about two and a half on the ebb, so that they are passable four times in twenty four hours, and about ten or fifteen minutes each time. No other rule can be given, as much depends on the floods in the River Saint John; and the time of high water or full sea, which is often hastened by high winds; and in proportion to the height of them.

ny  
n.  
e  
n-  
of  
d.  
or  
n.  
s,  
  
ON  
of  
der  
th-  
or  
  
ne  
nal  
  
lie  
art  
ny  
ny  
the  
ny  
nif  
ro-  
to  
nd  
ng.  
  
nd  
Slip  
the  
ates  
ird  
  
A  
nb.  
of  
ver  
n of  
uts,  
all  
  
er  
for  
of  
  
vel  
nd a  
bout  
nde  
ven,  
sem.

15<sup>th</sup> Jan 9. Sarah's Birth Day  
9 years of age

D.	M.	W.	N.
1	Tu		N
2	W.		G
3	Th		C
4	Fri		S
5	Sat		o
6	SU		E
7	Mo		A
8	Tu		B
9	W.		F
10	Th		C
11	Fri		S
12	Sat		o
13	SU		E
14	Mo		G
15	Tu		S
16	W.		S
17	Th		F
18	Fri		C
19	Sat		C
20	SU		S
21	Mo		T
22	Tu		E
23	W.		L
24	Th		C
25	Fri		H
26	Sat		E
27	SU		S
28	Mo		F
29	Tu		S
30	W.		C
31	Th		C

A year ago! a year ago!  
 How chequer'd is that lapse of time,  
 Though brief its space;—what grief and woe,  
 What steps towards the verge of crime,—  
 What changes may the spirit know  
 In twelve short months—a year ago.  
 A year ago—that Parent tree,  
 In green old age its branches spread,  
 And circling arms to shelter me,  
 Now number'd with the silent dead;  
 And shrouded is that head of snow,  
 Where wisdom dwelt—a year ago.

- ☉ New Moon 7th day, 6h. 38m. evening. W.
- ☽ First Quarter 14th day, 11h. 3m. morning. E.
- ☾ Full Moon 21st day, 10h. 50m. evening. S.
- ☽ Last Quarter 30th day, 3h. 55m. morning. S.

D. M.	D. W.	CALENDAR, &c.	☉ Ri. & Sets		☽ dc. S.		☽ R & S		☽ Pa.	High water h. m.
			h. m.	h. m.	d. m.	d. m.	h. m.	h. m.		
1	Tu	New Year's Day,	7 38	4 30	23 3	0 52	rein	5 12		
2	W.	General Wolfe born, 1727	7 38	4 30	22 57	1 58	secr.	6 15		
3	Th	Cicero born, 107, B. C.	7 38	4 31	22 52	3 16	secr.	7 26		
4	Fri	♂ in aph. ♀ con. ☉.	7 38	7 32	22 46	4 18	thi	8 41		
5	Sat	♀ ri. 4 1 mor. ♂ 11 44. ev	7 38	4 33	22 40	5 31	thi	9 35		
6	SU	Epiphany, Cold.	7 38	4 34	22 33	6 42	thi	10 24		
7	Mo	Allan Ramsay died, 1758.	7 38	4 35	22 25	sets.	kne	11 10		
8	Tu	Battle of N. Orleans, 1815.	7 37	4 36	22 18	5 17	kne	11 59		
9	W.	French invade Holland, 1795	7 37	4 38	22 10	6 39	legs	ev. 41		
10	Th	☉ per ♀ con. ☉.	7 37	4 39	22 1	8 02	legs	1 18		
11	Fri	♀ ri. 4 10 morn. Fair	7 37	4 40	21 52	0 23	feet	2 10		
12	Sat	♂ gr. h. l. S.	7 36	4 41	21 42	10 40	feet	2 46		
13	SU	1st Sunday after Epiphany	7 36	4 42	21 33	11 56	head	3 35		
14	Mo	Great Fire in St John, 1837	7 35	4 43	21 22	morn	head	4 27		
15	Tu	Sir P. Warwick died, 1685	7 35	4 45	21 11	1 12	nee	5 40.		
16	W.	Sir John Moore kill'd, 1809	7 34	4 46	21 0	2 27	nee	6 59		
17	Th	Franklin born, 1706.	7 34	4 47	20 49	3 41	arm.	8 20		
18	Fri	Cinco de Mayo, 1812.	7 33	4 48	20 37	4 53	arm	9 20		
19	Sat	☉ hi. N. ♀ con. ☉.	7 33	4 50	20 25	5 58	hres	10 10		
20	SU	Septuagesima Sunday,	7 32	4 51	20 12	6 54	brea	10 51		
21	Mo	Treaty of Paris, 1783	7 31	4 52	19 59	rises.	hres	11 30		
22	Tu	Byron born, 1788.	7 30	4 54	19 45	5 49	h'art	11 59		
23	W.	Duke of Kent died, 1820	7 30	4 55	19 32	6 26	h'art	morn		
24	Th	C. J. Fox, born, 1749	7 29	4 56	19 17	7 33	bely	0 38		
25	Fri	♂st ♀ so. 9 14 ev.	7 28	4 58	19 3	8 35	bely	1 10		
26	Sat	Edward Gibbon died, 1794	7 27	4 59	18 48	9 35	bely	1 43		
27	SU	Sexagesima Sunday	7 26	5 0	18 36	10 39	rein	2 10		
28	Mo	Peter the Great died, 1725	7 25	5 2	18 17	11 43	rein	2 48		
29	Tu	Swedenborg born, 1689	7 24	5 3	18 1	morn	secr.	3 25		
30	W.	Chas. beheaded, 1649	7 23	5 4	17 45	0 49	secr.	4 12		
31	Th	Osceola died, 1813	7 22	5 6	17 32	1 57	secr.	5 16		



The wintry wind blows chill and drear,  
 And fast the snow is falling—  
 Not one pale star shines forth to cheer  
 The Watchman's weary calling.  
 Still paces he his lonely beat,  
 Now up and down the gloomy street  
 With stiffening limbs and aching feet,  
 His night song hoarsely bawling  
 "What of the night! Ho! Watchmen tell?"  
 "Past ten o'clock, and all is well!"  
 Locked in sweet slumber's welcome chain,  
 The weary world is resting,  
 Nor dreams of him whose faithful heart  
 The wintry storm is breasting.

- New Moon, 6th day, 5h. 56m. morning. E.  
 ○ First Quarter 12th day, 9h. 32m. evening. S. W.  
 ● Full Moon 20th day, 5h. 1m. evening. E.  
 ○ Last Quarter 28th day, 9h. 2m. evening. N. E.

D. M.	D. W.	CALENDAR, &c.	☉		☽		☿		♃		High water h. m.
			Ri. h. m.	Sets h. m.	dc. d.	S. m.	R&S h. m.	Fla.			
1	Fri	Great Fire at Quebec, 1754	7 21 5	7 17 12	3 9		thig	6 40			
2	Sat	Candlemas Day.	7 20 5	9 16 55	4 20		thig	7 59			
3	SU	Quinquagesima Sunday.	7 19 5	10 16 37	5 26		kne	9 45			
4	Mo	♄ in Per. ♀ ri. 4 51 mor	7 17 5	12 16 20	6 24		kne	10 11			
5	Tu	Hilary Term begins.	7 16 5	13 16 2	7 11		legs	10 59			
6	W.	Ash Wednesday.	7 15 5	14 15 43	sets.		legs	11 48			
7	Th	Crabbe died, 1832	7 14 5	16 15 25	6 59		feet	ev. 22			
8	Fri	♄ ri. 10 22 ev. Snow	7 12 5	17 15 6	8 20		feet	0 59			
9	Sat	Bishop Hooper burnt, 1555	7 11 5	18 14 47	9 41		head	1 41			
10	SU	1st Sunday in Lent.	7 10 5	20 14 28	10 58		head	2 17			
11	Mo	Descartes died, 1650.	7 8 5	21 14 8	morn		nek	3 10			
12	Tu	Ali. an. 3 21 mor. Cold	7 7 5	23 13 48	0 16		nek	3 59			
13	W.	Massacre of Glencoe, 1691.	7 6 5	24 13 28	1 32		arm	5 10			
14	Th	Valentine's Day	7 4 5	25 13 8	2 45		arm	6 38			
15	Fri	National debt com'd, 1500	7 3 5	27 12 48	3 53		arm	7 57			
16	Sat	Hilary Term ends.	7 1 5	28 12 27	4 51		bres	8 59			
17	SU	2d Sunday in Lent.	7 0 5	30 12 6	5 39		bres	9 53			
18	Mo	Site of Fred'n fixed, 1785.	6 58 5	31 11 45	6 17		h'art	10 35			
19	Tu	Nisi Prius Sittings.	6 57 5	32 11 24	6 46		h'art	11 14			
20	W.	Great Snow storm, 1717.	6 55 5	34 11 2	rises.		h'art	11 42			
21	Th	James I. assassinated, 1437	6 53 5	35 10 41	6 25		bely	morn			
22	Fri	Washington born, 1732	6 52 5	36 10 19	7 28		bely	0 11			
23	Sat	Sir J. Reynolds died, 1792.	6 50 5	38 9 57	8 31		rein	0 41			
24	SU	3d Sunday in Lent.	6 49 5	39 9 35	9 33		rein	1 10			
25	Mo	Ali. so. 2 30 mor.	6 47 5	40 9 13	10 38		rein	1 39			
26	Tu	Sunbury Circuit.	6 45 5	42 8 51	11 44		seer	2 13			
27	W.	Dr. Arbuthnot died, 1735	6 44 5	43 8 28	morn		seer	2 50			
28	Th	Princeton's gun burst, 1544	6 42 5	44 8 6	0 53		thig	3 37			
29	Fri	☉ low. S. ♄ st.	6 40 5	46 7 43	2 3		thig	4 41			

igh  
ater  
m.

40  
59  
15  
11  
59  
48  
22  
59  
41  
17  
10  
59  
10  
38  
57  
59  
53  
35  
14  
42  
orn  
11  
41  
10  
39  
13  
50  
37  
41

17<sup>th</sup> March.  
Henry's Birth Day  
19 years of age

24<sup>th</sup> March  
Edwards's Birth Day  
15 years of age.

D.	M.	W.	G.
1	Sat	S	
2	SU	4	
3	Mo	T	
4	Tu	Q	
5	W.	C	
6	Th	⊕	
7	Fri	⊙	
8	Sat	C	
9	SU	5	
10	Mo	B	
11	Tu	7	
12	W.	A	
13	Th	b	
14	Fri	B	
15	Sat	D	
16	SU	P	
17	Mo	S	
18	Tu	A	
19	W.	⊙	
20	Th	S	
21	Fri	G	
22	Sat	J	
23	SU	E	
24	Mo	Q	
25	Tu	T	
26	W.	W	
27	Th	W	
28	Fri	S	
29	Sat	S	
30	SU	I	
31	Mo	R	

The day is dark, and cloud and gloom  
 Are sadly shadowed through my room;  
 The music of the gentle rain  
 Has changed its patter on the pane,  
 For shriller shrieks and wilder song,  
 As swept by borean winds along;  
 But still the sun is shining high  
 Above the melancholy sky.  
 The angry clouds are floating low  
 The trees are swaying to and fro;  
 A deeper gloom, a deeper shade  
 Is on the meadow, hill, and glade.

- ☾ New Moon 6th day, 4h. 0m. evening. S. W.
- ☽ First Quarter 13th day, 9h. 57m. morning. N. E.
- Full Moon 21st day, 11h. 25m. morning. N.
- ☾ Last Quarter 29th day, 9h. 52m. morning. S. W.

D. M.	D. W.	CALENDAR, &c.	☾ Ri. & Sets		☽	☽	☽	High water h. m.
			h. m.	h. m.	d. m.	R & S h. m.	☽ P. A.	
1	Sat	St. David,	6 39	5 47	7 20	3 10	kne	6 11
2	SU	4th Sunday in Lent.	6 37	5 48	6 57	4 11	kne	7 40
3	Mo	T. Ottway born, 1651	6 35	5 50	6 34	5 1	kne	8 59
4	Tu	Queen's Circuit.	6 35	5 51	6 11	5 41	legs	9 54
5	W.	Cerregio died, 1534	6 32	5 52	5 48	6 13	legs	10 48
6	Th	☽ per. ☽ ☽ ☽.	6 30	5 54	5 25	sets.	feet	11 16
7	Fri	☽ ri. 5 7 mor. Fair	6 28	5 55	5 1	7 12	feet	11 59
8	Sat	Cholera in Paris, 1832	6 26	5 56	4 38	8 34	h'ad	ev. 36
9	SU	5th Sunday in Lent.	6 25	5 57	4 15	9 55	h'ad	1 15
10	Mo	Botany Bay discov'd, 1787	6 23	5 59	3 51	11 15	nec	1 59
11	Tu	7 <sup>th</sup> con. ☽.	6 21	6 0	3 28	morn	nec	2 41
12	W.	Ali. so. 1 27 ev. Rain.	6 19	6 1	3 4	0 33	arm.	3 36
13	Th	☽ ☽ ☽ & ☽ ☽.	6 17	6 3	2 40	1 44	arm	4 51
14	Fri	Bishop Berkley born, 1684	6 16	6 4	2 17	2 47	bres	6 13
15	Sat	Day br. 4 35.	6 14	6 5	1 53	3 38	bres	7 39
16	SU	Palm Sunday.	6 12	6 6	1 29	4 20	h'art	8 43
17	Mo	St. Patrick's Day.	6 10	6 7	1 6	4 51	h'art	9 30
18	Tu	Am Stamp Act rep'd, 1766	6 8	6 9	0 42	5 16	h'art	10 12
19	W.	☽ in Ap. Mars ri. 7 30 ev.	6 6	6 10	S 18	5 38	bely	10 45
20	Th	Sir I. Newton died, 1727	6 5	6 11	N. 5	5 56	bely	11 12
21	Fri	Good Friday.	6 3	6 12	0 29	rises.	rein	11 39
22	Sat	Jon Edwards died, 1750	6 1	6 14	0 53	7 26	rein	morn
23	SU	Easter Sunday.	5 59	6 15	1 16	8 29	rein	0 15
24	Mo	Queen Elizabeth died, 1603	5 57	6 16	1 40	9 36	secr	0 38
25	Tu	Treaty of Amien, 1802.	5 55	6 17	2 3	10 43	secr.	1 12
26	W.	Winthrop died, 1649	5 53	6 19	2 27	11 53	thigs	1 45
27	Th	War declared against Rus-	5 52	6 20	2 50	morn	thigs	2 25
28	Fri	sia, 1854.	5 50	6 21	3 14	0 59	thigs	3 16
29	Sat	Soult born, 1765.	5 48	6 22	3 37	2 2	kne	4 20
30	SU	1st Sunday after Easter.	5 46	6 23	4 0	2 54	kire	5 47
31	Mo	Beethoven died, 1827.	5 44	6 25		3 37	legs	7 21

How pleasant is the opening year ;  
 The clouds of Winter melt away ;  
 The flowers of beauty reappear ;  
 The songster carols from the spray ;  
 Lengthens the more refulgent day,  
 And bluer grows the arching sky ;  
 All things around us seem to say—  
 " Christian, direct thy thoughts on high."  
 In darkness through the dreary length  
 Of Winter slept both bud and bloom ;  
 But Nature now puts on her strength,  
 And starts renewed as from the tomb.

- ☉ New Moon 5th day, 1h. 14m. morning. N.  
 ☽ First Quarter 12th day, 6h. 13m. morning. W.  
 ☾ Full Moon 20th day 4h. 34m. morning. S. W.  
 ☽ Last Quarter 27th day. 6h. 47m. evening. N.

D.	D. W.	CALENDAR, &c.	☉		☽	☾	☽	High water
			Ri. & Sets	dc. N.	R & S	Pla		
			h. m.	h. m.	d. m.	h. m.		h. m.
1	Tu	All Fool's Day.	5 42	6 26	4 47	4 11	legs	8 39
2	W	Mirabeau died, 1791. <i>Cool</i>	5 41	6 27	5 10	4 39	feet	9 32
3	Th	☿ & ♀ ☽ ☽, ☿ ri. 4, 56 m.	5 39	6 28	5 33	5 3	feet	10 21
4	Fri	☽ per. ☿ so. 11, 51 ev.	5 37	6 30	5 56	5 26	head	10 59
5	Sat	Stow died, 1605.	5 35	6 31	6 18	sets.	head	11 35
6	SU	2d Sunday after Easter.	5 33	6 32	6 41	8 47	hec	ev. 13
7	Mo	7 *s con. ☽. ☽ con. ☽.	5 32	6 33	7 4	10 9	hec	0 57
8	Tu	Easter term begins.	5 30	6 34	7 26	11 27	arm	1 35
9	W	♀ con. ☿. ♀ con. ☽.	5 28	6 36	7 48	morn	arm	2 23
10	Th	Battle of Toulouse, 1814.	5 26	6 37	8 16	0 36	bres	3 19
11	Fri	Ali. so. 11, 25 ev. <i>Fair</i>	5 25	6 38	8 32	1 33	bres	4 21
12	Sat	America discovered, 1492.	5 23	6 39	8 54	2 18	bres	5 37
13	SU	3d Sunday after Easter,	5 21	6 40	9 16	2 53	h'art	6 58
14	Mo	13 Handel died, 1759.	5 19	6 42	9 38	3 21	h'art	7 59
15	Tu	Shakspeare born, 1564	5 18	6 43	9 59	3 43	bely	8 51
16	W	Buffon died, 1788.	5 16	6 44	10 20	4 3	bely	9 34
17	Th	Sir W. Jones died, 1794.	5 14	6 45	10 41	4 26	bely	10 9
18	Fri	☿ con. ☽. Mars so. 10, 37 ev.	5 13	6 47	11 2	4 36	rein	10 38
19	Sat	Easter term ends.	5 11	6 48	11 23	4 52	rein	11 10
20	SU	4th Sunday after Easter.	5 9	6 49	11 43	rises.	sec	11 42
21	Mo	Heber born, 1783.	5 8	6 50	12 4	8 35	sec	morn
22	Tu	Charlotte Circuit.	5 6	6 51	12 24	9 44	sec	0 12
23	W	St. George's Day.	5 5	6 53	12 44	10 52	thig	0 49
24	Th	O. Cromwell born, 1599.	5 3	6 54	13 4	11 56	thig.	1 29
25	Fri	Princess Alice born, 1843.	5 1	6 55	13 23	morn	knes	2 14
26	Sat	Ali. so. 10, 26 ev.	5 0	6 56	13 42	0 51	knes	3 12
27	SU	5th Sunday after Easter.	4 58	6 57	14 1	1 38	legs	4 9
28	Mo	Baron Denon died, 1825.	4 57	6 59	14 20	2 12	legs	5 27
29	Tu	Gr. dearth in N. E. 1789.	4 55	7 0	14 39	2 41	feet	6 51
30	W	Montgomery, poet, c. 1854.	4 54	7 1	14 57	3 5	feet	8 11

High  
water  
a. m.

8 39  
9 32  
10 21  
11 59  
12 35  
1 13  
2 57  
3 35  
4 23  
5 19  
6 21  
7 37  
8 58  
9 59  
10 51  
11 34  
12 9  
1 38  
2 10  
3 42  
morn  
4 12  
5 49  
6 29  
7 14  
8 12  
9 9  
10 27  
11 51  
12 11

Friday

23. - Spanish Eggs.  $\frac{49}{13}$

23. Duck Eggs - 15

23. Large Hen. 15.

26. Blk. Hen. Cow stable 13.

19<sup>th</sup> Hope.

Hope.

✓ 19<sup>th</sup>. Plant 4 Potatoes in Garden

✓ 20. Garden. Clean up yard &  
Pruning Trees. - Rain

✓ 21<sup>st</sup>. William haulg. Manure  
for Hope in the afternoon &  
he to exchange work.

✓ 22. - In Garden part of Day

✓ 23. Garden &c. - Whole Day

D. M.	D. W.	
1	Th	2
2	Fri	3
3	Sat	4
4	SU	5
5	Mo	6
6	Tu	7
7	W.	8
8	Th	9
9	Fri	10
10	Sat	11
11	SU	12
12	Mo	13
13	Tu	14
14	W.	15
15	Th	16
16	Fri	17
17	Sat	18
18	SU	19
19	Mo	20
20	Tu	21
21	W.	22
22	Th	23
23	Fri	24
24	Sat	25
25	SU	26
26	Mo	27
27	Tu	28
28	W.	29
29	Th	30
30	Fri	31
31	Sat	

Behold an emblem of thy doom,  
 O man!—a star hath shown to save—  
 And morning yet shall re-illumine  
 The midnight darkness of the grave!  
 Yet ponder well, how then shall break  
 The dawn of second life on thee—  
 Shalt thou to hope—to bliss awake?  
 Or vainly strive God's wrath to flee;  
 Then shall pass forth the dread decree,  
 That makes or weal or woe thine own;  
 Up, and to work! Eternity  
 Must reap the harvest, Time hath sown.

- ☉ New Moon 4th day, 10h. 3m. morning. S. E.
- ☽ First Quarter 11th day, 4h. 6m. evening. S. E.
- ☾ Full Moon 19th day, 7h. 17m. evening. S. E.
- ☽ Last Quarter 26th day, 0h. 54m. morning. E.

D.	M.	D. W.	CALENDAR, &c.	☉ Ri. & Sets		☽ dc. N.	☽ R & S		☽ Pla.	High water
				h. m.	h. m.	d. m.	h. m.	h. m.		
1	Th	2	con. ☉. 2 <sup>d</sup> ri. 3, 23 mor.	4 52	7 2	15 15	3 27	head	9 5	
2	Fri	3	Princess Charlotte m. 1816.	4 51	7 3	15 33	3 48	head	9 56	
3	Sat	4	Jamaica discovered, 1491.	4 50	7 5	15 51	4 11	nec	10 35	
4	SU	5	6th Sunday after Easter	4 48	7 6	16 8	sets.	nec	11 17	
5	Mo	6	7 *s con ☉. Mer. con. ☉.	4 47	7 7	16 26	9 0	arm.	11 55	
6	Tu	7	5 Napoleon died, 1821.	4 45	7 8	16 42	10 16	arm.	ev. 38	
7	W.	8	Ali so. 9, 43 ev. <i>Cloudy.</i>	4 44	7 9	16 59	11 20	arm.	1 25	
8	Th	9	Bishop Porteus born, 1731	4 43	7 10	17 15	morn	bres	2 10	
9	Fri	10	Clocks introduced, 1633.	4 42	7 12	17 31	0 12	bres	2 56	
10	Sat	11	Dr. Young died, 1829.	4 40	7 13	17 47	0 53	h'art	3 54	
11	SU	12	7th Sunday after Easter	4 39	7 14	18 2	1 23	h'art	4 51	
12	Mo	13	8 so. 10, 8 ev.	4 38	7 15	18 17	1 48	bely	5 57	
13	Tu	14	Saint John Circuit.	4 37	7 16	18 32	2 8	bely	6 59	
14	W.	15	Grattan died, 1820.	4 36	7 17	18 46	2 26	bely	7 58	
15	Th	16	Cuvier died, 1814	4 34	7 18	19 0	2 42	rein	8 47	
16	Fri	17	Mrs. Hemans died, 1835	4 33	7 19	19 14	2 59	rein	9 31	
17	Sat	18	Talleyrand died, 1838.	4 32	7 21	19 28	3 16	sec.	10 10	
18	SU	19	Trinity Sunday.	4 31	7 22	19 41	3 36	sec.	10 42	
19	Mo	20	18 Landing of the Loyalist	4 30	7 23	19 54	rises	secr.	11 20	
20	Tu	21	at St. John, 1783.	4 29	7 24	20 6	8 42	thi.	11 59	
21	W.	22	Alex. Pope born, 1688	5 29	7 25	20 18	9 49	thi	morn	
22	Th	23	☉ to S. Mars so. 8, 10 ev.	1 28	7 26	20 30	10 47	kne	0 38	
23	Fri	24	Battle of Ramillies, 1706	1 27	7 27	20 42	11 36	knc	1 23	
24	Sat	25	Queen Victoria born, 1819	1 26	7 28	20 53	morn	legs.	2 5	
25	SU	26	1st Sunday after Trinity.	1 25	7 29	21 3	0 13	legs.	2 56	
26	Mo	27	Corpus Christi. <i>Rain</i>	4 24	7 30	21 14	0 44	legs.	3 52	
27	Tu	28	Wm. Pitt born, 1752	4 24	7 31	21 24	1 9	feet	4 58	
28	W.	29	Ali so. 8 21 ev.	4 23	7 32	21 34	1 31	feet	6 10	
29	Th	30	Charles II. restored, 1660	4 22	7 32	21 43	1 51	head	7 27	
30	Fri	31	Sir J. Muckintosh, d. 1832	4 22	7 33	21 52	2 13	head	8 34	
31	Sa		Wm. Baxter died 1723.	4 21	7 34		2 36	nec	9 29	



Summer again with her fragrance and bloom,  
 Sunshine and music, soft light and perfume—  
 Wreaths of rich roses upon her glad brow :  
 Radiant and joyous one what bringest thou.  
 Silver, thy foot upon the green hills,  
 Murmuring music floats over the rills ;  
 Gladsome and gay at thy presence is earth—  
 Thy presence all music and gladness and mirth.  
 Pass in thy beauty and brightness and mirth,  
 Gay peerless Summer, along the green earth—  
 Scatter thy treasures of leaf and bright flower :  
 Thou hast a charm for sorrow's dark hour.

- New Moon 2d day, 7h. 0m. evening. W.
- ☾ First Quarter 10th day, 9h. 11m. morning. N. E.
- Full Moon 18th day, 7h. 13m. morning. W.
- ☽ Last Quarter 25th day, 5h. 38m. morning. S.

D. N.	D. W.	CALENDAR. &c.	☾		☽		☽		☽		High water	
			Ri. h. m.	Sets h. m.	dc. d.	N. m.	R&S h. m.	Pl. h. m.	h. m.	h. m.		
1	SU	2d Sunday after Trinity.	4 21	7 35	22	8	3	4	nec	10	16	
2	Mo	Riots in London, 1780	4 20	7 36	22	16	sets.	arm.	10	59		
3	Tu	Wm. Harvey died, 1657.	4 20	7 36	22	23	9	2	arm.	11	46	
4	W.	George III. born, 1778.	4 19	7 37	22	30	10	1	bres	ev.	27	
5	Th	Adam Smith, born, 1723.	4 19	7 38	22	37	10	47	bres	1	10	
6	Fri	Mamelon and White Towers	4 19	7 39	22	43	11	22	h art	1	50	
7	Sat	captured, 1855.	4 18	7 39	22	49	11	49	h art	2	30	
8	SU	3d Sunday after Trinity.	4 18	7 40	22	54	morn	h art	3	12		
9	Mo	Cassini born, 1635. Fair.	4 18	7 41	22	59	0	11	bely	3	58	
10	Tu	Trinity term begins.	4 17	7 41	23	4	0	29	bely	4	51	
11	W.	☽ ap. 2 <sup>d</sup> ri. 0.54 mor.	4 17	7 42	23	8	0	47	rein	5	48	
12	Th	Ali. so. 7.22 mor.	4 17	7 42	23	12	1	3	rein	6	56	
13	Fri	Lord Hastings behead. 1483.	4 17	7 43	23	15	1	20	rein	7	53	
14	Sat	Magna Charter signed, 1215	4 17	7 43	23	18	1	39	secr	8	46	
15	SU	4th Sunday after Trinity.	4 17	7 44	23	21	2	1	secr	9	37	
16	Mo	Duke of Brunswick k. 1814	4 17	7 44	23	23	2	28	leg	10	19	
17	Tu	Mer. con. h. Wind.	4 17	7 44	23	25	3	2	thig	11	1	
18	W.	Battle of Waterloo, 1815.	4 17	7 45	23	26	rises.	kne	11	42		
19	Th	Pascal born, 1623. Cloudy.	4 17	7 45	23	27	9	31	kne	morn		
20	Fri	Queen's Accession, 1837.	4 17	7 45	23	27	10	13	kne	0	29	
21	Sat	Trinity term ends,	4 18	7 45	23	27	10	47	legs	1	12	
22	SU	5th Sunday after Trinity.	4 18	7 45	23	27	11	14	legs	1	55	
23	Mo	Akenside died, 1770.	4 18	7 46	23	26	11	36	feet	2	46	
24	Tu	Nisi Prius Sittings	4 18	7 46	23	25	11	57	feet	3	29	
25	W.	George IV. died, 1830.	4 19	7 46	23	23	morn	head	4	20		
26	Th	Ali. so. 6.27 mor.	4 19	7 46	23	21	0	18	head	5	31	
27	Fri	Dr. Dodd, executed, 1787.	4 20	7 46	23	19	0	39	nec	6	46	
28	Sat	Queen Victoria crowned.	4 20	7 46	23	16	1	4	nec	7	59	
29	SU	6th Sunday after Trinity.	4 20	7 46	23	15	1	34	arm.	9	10	
30	Mo	Wm. Roscoe died, 1831.	4 21	7 46	23	9	2	13	arm.	10	8	

The fragrant rose that blooms beside the wall,  
 By zephyrs swayed, is wafted to and fro;  
 Along the path the varying shadows fall,  
 Now dancing swiftly—moving now more slow,  
 Soft, fleecy clouds that glide athwart the sun  
 Float o'er green fields, and waters deep and clear;  
 Their shadows, oftentimes sombre, dark and dun,  
 Scud o'er the landscape as impelled by fear.  
 Sweet shadows play upon a beauteous face,  
 Expression giving to each feature fair;  
 Imparting unto all bewitching grace,  
 As they with rosy light alternate there.

- New Moon 2d day, 4h. 51m. morning. E.
- First Quarter 10th day, 2h. 43m. morning. N. W.
- Full Moon 17th day, 4h. 51m. evening. E.
- Last Quarter 24th day, 10h. 22m. morning. S. W.
- New Moon 31st day, 4h. 29m. evening. W.

High  
water  
m.

0 16  
0 59  
1 46  
1 27  
1 50  
2 30  
3 12  
3 56  
4 51  
5 48  
6 56  
7 53  
8 46  
9 37  
10 19  
11 1  
12 42  
morn  
0 29  
1 12  
1 55  
2 46  
3 29  
4 20  
5 31  
6 46  
7 59  
9 10  
0 8

D. M.	D. W.	CALENDAR, &c.	☾ Ri. & Sets		☽ dc. N		☾ R & S		☾ Pl & S	High water h. m.
			h. m.	h. m.	d. m.	d. m.	h. m.	h. m.		
1	Tu	♂ ☉. ♀ ☽. Warm.	4 22	7 45	23 5	3 0	bres	10 48		
2	W.	Sir R. Peel died, 1850.	4 22	7 45	23 1	sets.	bres	11 35		
3	Th	☽ ri. 11,29 evening.	4 23	7 45	23 56	9 20	bres	ev. 12		
4	Fri	American Independ. 1776.	4 23	7 45	22 51	9 50	h'art	0 52		
5	Sat	Sheridan died, 1817.	4 24	7 44	22 45	10 13	h'art	1 27		
6	SU	7th Sunday after Trinity.	4 25	7 44	22 39	10 33	bely	1 56		
7	Mo	John Huss burnt, 1415.	4 25	7 44	22 33	10 51	bely	2 32		
8	Tu	King's Circuit.	4 26	7 43	22 26	11 8	bely	3 10		
9	W.	Alioth so. 5,37 mor.	4 27	7 43	22 19	11 24	rein	3 52		
10	Th	☉ ☽. ☽ con. ☉ Showers	4 27	7 42	22 11	11 42	rein	4 42		
11	Fri	Alex. Hamilton died, 1804.	4 28	7 42	22 3	morn	secr.	5 48		
12	Sat	Erasmus died, 1536.	4 29	7 41	21 55	0 2	secr.	6 59		
13	SU	8th Sunday after Trinity.	4 30	7 40	21 46	0 27	secr.	8 11		
14	Mo	Mrs. Siddons born, 1755	4 31	7 40	21 37	0 57	thi	9 13		
15	Tu	Albert Circuit.	4 32	7 39	21 27	1 38	thi	10 5		
16	W.	☉ lo. S. ☽ ri. 3,5 mor.	4 33	7 38	21 18	2 32	kue	10 59		
17	Th	Adam Smith, died, 1790.	4 34	7 38	21 7	rises.	kne	11 37		
18	Fri	☽ con. ☽. ☽ ri. 10,32, ev.	4 34	7 37	20 57	8 46	legs	morn.		
19	Sat	Saturn, ri. 2,55 morn	4 35	7 36	20 46	9 16	legs	0 18		
20	SU	9th Sunday after Trinity.	4 36	7 35	20 35	9 40	feet	0 58		
21	Mo	Lord Russell behea. 1683.	4 37	7 34	20 23	10 2	feet	1 34		
22	Tu	Westmorland Circuit.	4 38	7 33	20 11	10 23	head	2 16		
23	W.	Gibraltar taken 1705	4 39	7 32	19 59	10 44	head	3 1		
24	Th	Mars so. 5,26 ev. Thunder.	4 40	7 31	19 46	11 8	nec	3 51		
25	Fri	Ali. so. 4, 34 mornain g	4 41	7 30	19 33	11 36	nec	4 57		
26	Sat	Colridge died, 1834.	4 42	7 29	19 20	morn	arm.	6 19		
27	SU	10th Sunday after Trinity	4 43	7 28	19 6	0 11	arm.	7 42		
28	Mo	Lord Durham died, 1840.	4 45	7 27	18 52	0 55	arm	8 58		
29	Tu	Kent Circuit.	4 46	7 26	18 38	1 49	bres	9 43		
30	W.	Wm. Penn died, 1718.	4 47	7 25	18 24	2 52	bres	10 40		
31	Th	☽ con. ☉. ☽ so. 7,39 ev.	4 48	7 24		sets.	h'art	11 20		

This morning stood the verdant spears,  
 All wet with diamond dew—the tears  
 By night serenely shed;  
 This evening, like an army slain,  
 They cumber the pacific plain  
 With their fast fading dead.  
 In idle mood I love to pass  
 The ruins of the crowded grass,  
 Or listlessly to lie,  
 Inhaling the delicious scents  
 Crushed from these downcast verdurous tents,  
 Beneath a sunset sky.

- ☉ First Quarter 8th day, 7h. 45m. evening. S. W.  
 ● Full Moon 16th day, 1h. 15m. morning. S.  
 ☾ Last Quarter 22d day, 4h. 29m. evening. E.  
 ● New Moon 30th day, 6h. 34m. morning. E.

D. M.	D. W.	CALENDAR, &c.	Ri. h.	Sets h. m.	dc. N. d. m.	R & S h. m.	☉ P. h.	High water h. m.
1	Fri	21 ri 9.38 even. Fair.	4 49	7 22	17 54	8 16	hart	11 55
2	Sat	7 *s 11.6 evening.	4 50	7 21	17 38	8 37	bely	ev 25
3	SU	11th Sunday after Trinity.	4 51	7 20	17 23	8 55	bely	0 59
4	Mo	Admiral Duncan died, 1804.	4 52	7 19	17 7	9 12	bely	1 23
5	Tu	Govrns Conspiracy, 1600	4 53	7 17	16 50	9 29	rein	1 56
6	W.	Prince Alfred born, 1841.	4 55	7 16	16 34	9 45	rein	2 30
7	Th	Queen Caroline died, 1821.	4 56	7 15	16 17	10 4	secr.	3 11
8	Fri	Geo. Canning died, 1827.	4 57	7 13	16 0	10 26	secr.	3 54
9	Sa	Al so. 3.36 morn. Cloudy	4 58	7 12	15 43	10 54	secr.	4 51
10	SU	12th Sunday after Trinity.	4 59	7 10	15 25	11 31	chi.	6 13
11	Mo	Bombut. of Sweaborg, 1855.	5 07	9 15	7	morn	hi	7 48
12	Tu	George IV. born, 1762	5 17	7 14	49	0 16	kne	8 59
13	W.	Queen Adelaide bor, 1792.	5 27	6 14	31	1 13	sne	9 47
14	Th	Printing invented, 1437	5 47	4 14	12	2 27	egs.	10 37
15	Fri	Napoleon born, 1769	5 57	3 13	54	3 47	legs.	11 23
16	Sat	Battle of Tchernav, 1855.	5 67	3 13	35	rises	feet	11 59
17	SU	13th Sunday after Trinity.	5 17	0 13	15	8 4	feet	morn
18	Mo	St. Helem discovered, 1592.	5 8	58	12 56	8 20	feet	0 25
19	Tu	De Kalb died, 1780.	5 9	56	12 36	8 42	head	1 13
20	W.	Battle of Miami, 1794.	5 11	55	12 17	9 11	head	1 56
21	Th	Chamisso died, 1839.	5 12	53	11 57	9 37	nec	2 35
22	Fri	Bat. of Bosworth Field, 1465	5 13	51	11 36	10 16	nec	3 25
23	Sa	Al so. 2.40 do. Rain	5 14	50	11 16	10 52	arm.	4 34
24	SU	14th Sunday after Trinity.	5 15	48	10 55	11 42	arm.	5 58
25	Mo	Adam Clarke, died, 1832.	5 16	46	10 35	morn	bres	7 28
26	Tu	Restigouche Circuit.	5 17	45	10 14	0 43	bres	8 45
27	W.	New York City taken, 1664	5 19	43	9 53	1 50	hart	9 38
28	Th	Goetho horn, 1749	5 20	41	9 34	2 59	hart	10 20
29	Fri	John Locke born, 1632	5 21	39	9 16	4 8	hart	10 54
30	Sa	7 *s ri. 9.17 evening	5 22	38	8 49	sets.	bely	11 27
31	SU	15th Sunday after Trinity	5 23	36		7 18	bely	11 56

Lift your eyes, the fields are white,  
 Harvest days are drawing nigh;  
 Every farmer's heart grows light,  
 Spare the rust and spare the fly.  
 Now the waving grain appears,  
 In its golden mantle clad;  
 How we ought to bless the years—  
 Plenty makes the poorest glad.  
 See, the harvest day has come;  
 See, the grind-stones all a-turn;  
 Men of nerve are earning "some"—  
 Money makes the pocket burn.

- First Quarter 7th day, 11h. 18m morning. F.
- Full Moon 14th day 9h. 29m. morning. N. W.
- Last Quarter 21st day, 1h. 9m. morning. E.
- New Moon 28th day, 11h. 9m. evening. N.

D.	D. W.	CALENDAR, &c.	Ri. & Sets h.m. h.m.	dc. N. d. m.	R & S h. m.	☉ Pia.	High water h. m.
1	Mo	Copenhagen taken, 1807.	5 24 6 34	8 5	7 34	rein	0v. 24
2	Tu	Gloucester Circuit.	5 26 6 32	7 43	7 51	rein	0 54
3	W.	♂ so 4.20 even. <i>Bright</i>	5 27 6 31	7 21	8 9	rein	1 24
4	Th	Manchester riots. 1830	5 28 6 29	6 59	8 29	sec	1 59
5	Fri	Malta, taken. 1800.	5 29 6 27	6 37	8 54	sec	2 31
6	Sat	Lafayette born, 1757.	5 30 6 25	6 14	9 25	thig	3 19
7	SU	16th Sunday after Trinity	5 31 6 23	5 52	10 6	thig.	4 24
8	Mo	Sebastopol taken, 1855.	5 33 6 21	5 29	10 57	thig	5 37
9	Tu	Northumberland Circuit.	5 34 6 20	5 6	morn	knees	7 13
10	W.	♂ ri. 11.51 evening.	5 35 6 18	4 44	0 3	knee	8 29
11	Th	♀ in Aph. ♄ ri. 6.55 even.	5 36 6 16	4 21	1 18	legs	9 32
12	Fri	Sir W. Dugdall born, 1605	5 37 6 14	3 58	2 38	legs	10 21
13	Sat	Wellington died 14th, 1852	5 38 6 12	3 35	4 2	feet	11 2
14	SU	17th Sunday after Trinity.	5 39 6 10	3 12	rises.	feet	11 36
15	Mo	Day br 4.0. ☉ per. & in ♀	5 41 6 9	2 49	6 50	head	morn
16	Tu	Moscow burnt, 1812	5 42 6 7	2 26	7 12	head	0 18
17	W.	Mars se. even. <i>Warm</i>	5 43 6 5	2 2	7 38	nec	0 51
18	Th	♂ so. 0.58. ♃ con. ☉	5 44 6 3	1 39	8 9	nec	1 35
19	Fri	Battle of Poitiers, 1356	5 45 6 1	1 16	8 48	arm	2 23
20	Sat	Battle of Alma, 1854.	5 46 5 59	0 52	9 31	arm	3 14
21	SU	18th Sunday after Trinity.	5 48 5 57	0 29	10 35	bree	4 19
22	Mo	Princess Augusta died, 1840	5 49 5 55	N. 6	11 40	bree	5 43
23	Tu	Sam. Butler died, 1680.	5 50 5 54	S. 18	morn	h'art	7 12
24	W	Victoria Circuit.	5 51 5 52	0 41	0 50	h'art	8 24
25	Th	Belg. beat Dutch. 1830.	5 52 5 50	1 5	1 59	h'ar	9 16
26	Fri	Collingwood born, 1743.	5 53 5 48	1 28	3 6	only	9 57
27	Sat	Nelson born 1758.	5 55 5 46	1 51	4 10	bely	10 29
28	SU	19th Sunday after Trinity.	5 56 5 44	2 15	sets.	rein	10 57
29	Mo	Marshal St. Arnaud died.	5 57 5 42	2 38	5 57	rein	11 28
30	Tu	Curleton Circuit.	5 58 5 41	3 2	6 15	rein	11 56

Hear the clatter of the rifle  
 On the wide, old cradle-scythe;  
 Sturdy farmers never trifle—  
 How the grain begins to writhe!  
 See the raker follows close,  
 Binding up the golden sheaf;  
 Turns the corner, *takes a dose*,  
 Says it gives a "GREAT RELIEF!"  
 Now the cart is loaded down—  
 How it groans beneath the weight!  
 Hurry up! the heavens frown—  
 To the garner drive it straight.

- ☉ First Quarter 7th day, 0h. 58m. morning. W.
- ☾ Full Moon 13th day, 6h. 20m. evening. W.
- ☉ Last Quarter 20th day, 1h. 27m. evening. W.
- ☾ New Moon 28th day, 5h. 15m. evening. W.

D.	M.	G.	W.	CALENDAR, &c.	☉		☾	☉	☉	Pia.	High water h. m.
					Ri. & Sets h. m. h. m.	dc. S. d. m.	R&S h. m.				
1	W.			St. John, a free port, 1811.	5 59	5 39	3 25	6 34	secr.	ev.	23
2	Th			All Souls. <i>Windy.</i>	6 1	5 37	3 48	6 57	secr.	0	57
3	Fri			Robt. Barclay died 1690.	6 2	5 35	4 11	7 25	thigs	2	10
4	Sat			Heber died, 1833.	6 3	5 33	4 35	8 1	thigs	2	10
5	SU			20th Sunday after Trinity.	6 4	5 32	4 58	8 48	thigs	2	56
6	Mo			☉ lo. S. <i>Signs of Rain.</i>	6 6	5 30	5 21	9 46	kne	3	58
7	Tu			Zimmerman died, 1795.	6 7	5 28	5 44	10 56	kne	5	14
8	W.			9 Benj. West born, 1738.	6 8	5 26	6 7	morn	legs	6	43
9	Th			1st Bom. of Sebastopol '54.	6 9	5 24	6 30	0 12	legs	7	59
10	Fri			Ali. so. 11, 28 evening.	6 10	5 23	6 52	1 32	feet	9	3
11	Sat			Battle of Mayne 1795.	6 12	5 21	7 15	2 52	feet	9	54
12	SU			21st Sunday after Trinity.	6 13	5 19	7 37	4 10	h'ad	10	36
13	Mo			☉ per. & ☽ & eclip. vis	6 14	5 17	8 0	rises.	h'ad	11	16
14	Tu			<i>Michaelmas term begins.</i>	6 16	5 16	8 22	5 36	nec	11	55
15	W.			Cavaignac born, 1802.	6 17	5 14	8 45	6 5	nec	morn	
16	Th			7 * con. ☉. ☽ con. ☉.	6 18	5 12	9 7	6 41	arm.	0	37
17	Fri			2d Bom. of Sebastopol, '54.	6 19	5 11	9 29	7 28	arm.	1	22
18	Sat			☉ hi. N. 21 so. 10, 15 ev.	6 21	5 9	9 50	8 24	bres	2	13
19	SU			22d Sunday after Trinity.	6 22	5 7	10 12	9 30	bres	3	2
20	Mo			Lima des. by Earthq. 1687.	6 23	5 6	10 34	10 39	bres	4	4
21	Tu			Battle of Trafalgar, 1805	6 24	5 4	10 55	11 49	h'art	5	19
22	W.			Mrs Ann Judson died, 1826	6 26	5 3	11 16	morn	h'art	6	30
23	Th			Ali. so. 10, 37 evening	6 27	5 1	11 37	0 57	bely	7	39
24	Fri			25 Bat. of Balaclava, 1854.	6 28	4 59	11 58	2 2	bely	8	34
25	Sat			<i>Michaelmas term ends.</i>	6 30	4 58	12 19	3 6	bely	9	18
26	SU			23d Sunday after Trinity	6 31	4 56	12 39	4 8	rein	9	51
27	Mo			☉ con ☉. 21 so. 9, 36 ev	6 32	4 55	13 0	5 11	rein	10	25
28	Tu			St Simon and St Jude	6 34	4 53	13 20	sets.	secr.	10	54
29	W.			Rawleigh beheaded, 1618.	6 35	4 52	13 40	5 2	secr.	11	26
30	Th			Crutwight died, 1823.	6 36	4 51	14 0	5 30	secr.	11	59
31	Fri			All Hallow Eve.	6 38	4 49		6 2	thigs	ev.	37

8  
 10  
 15  
 16  
 17  
 18  
 20  
 32  
 ✓ 7  
 ✓ 8  
 ✓ 15  
 ✓ 16  
 ✓ 17  
 22  
 24  
 28  
 30  
 31



R. Hope

✓ 1<sup>st</sup> Nov: R. Hope in Garden

✓ b. wood with Coal

✓ 17 Clean. Cellar

*[Faint, illegible handwriting]*

D.	M.	W.
1	Sa	
2	Su	
3	Mo	
4	Tu	
5	We	
6	Th	
7	Fr	
8	Sa	
9	Su	
10	Mo	
11	Tu	
12	We	
13	Th	
14	Fr	
15	Sa	
16	Su	
17	Mo	
18	Tu	
19	We	
20	Th	
21	Fr	
22	Sa	
23	Su	
24	Mo	
25	Tu	
26	We	
27	Th	
28	Fr	
29	Sa	
30	Su	

Now the threshing day has come—  
 Boiled the pork and baked the beans ;  
 Hark ! the thrasher, how it hums,  
 Closing up the harvest scenes.  
 See, the yellow straw is stacked !  
 See, the farmer's bins are full !  
 See the merchant's head is racked  
 How he'll on him make a pull !  
 Now he flatters, fawns, and bows,  
 With his eyes upon the wheat ;  
 Talks of horses, hogs, and cows—  
 Eye him sharp, he's bound to cheat !

- First Quarter 5th day, 0h. 43m. evening. E.
- Full Moon 12th day, 4h. 19m. morning. W.
- Last Quarter 19th day, 5h. 55m. morning. S.
- New Moon 27th day, 1h 22m. morning. S.

D. M.	D. W.	CALENDAR. &c.	Ri. & Sets		dc. S.	R & S	☉	High
			n.m.	h.m.	d. m.	h. m.	Pla	h. m.
1	Sat	☉ lo. S. ♀ so. 9, 15 ev.	6 39	4 45	3 25	6 45	thig	1 16
2	SU	24th Sunday after Trinity.	6 40	4 46	3 48	7 39	kne	1 55
3	Mo	Sir John Leslie died, 1832	6 42	4 45	4 11	8 43	kne	2 46
4	Tu	Saint John Circuit.	6 43	4 44	4 35	9 56	legs	3 40
5	W.	Gunpowder Plot.	6 45	4 42	4 58	11 12	legs	4 44
6	Th	5 Battle of Inkerman.	6 46	4 41	5 21	morn	legs	6 10
7	Fri	hri. 13, 13 even. Fair.	6 47	4 40	5 44	0 29	feet	7 21
8	Sat	♃ ☉ Jupiter so. 8, 46 ev.	6 49	4 39	6 7	1 48	feet	8 30
9	SU	25th Sunday after Trinity.	6 50	4 38	6 30	3 7	head	9 21
10	Mo	Martin Luther born, 1483.	6 51	4 36	6 52	4 28	head	10 11
11	Tu	Saint Martin, Snow.	6 53	4 35	7 15	5 52	uec	10 56
12	W.	7 *s cou. ☉. Hæcon. ☉	6 54	4 34	7 37	rises.	uec	11 38
13	Th	St Augustine born, 354.	6 55	4 35	8 0	5 15	arm.	morn
14	Fri	Ter. Storm in Black Sea '54	6 57	4 32	8 22	6 7	arm.	0 21
15	Sat	Lord Chatham born, 1708.	6 58	4 31	8 45	7 11	bres	1 12
16	SU	26th Sunday after Trinity.	6 59	4 30	9 7	8 22	bres	1 55
17	Mo	Qu. Elizb. accession, 1550.	7 1	4 29	9 29	9 34	h'art	2 46
18	Tu	Ali. so. 8, 54 even.	7 2	4 28	9 50	10 44	h'art	3 36
19	W.	20 Hawke's victory, 1759	7 3	4 28	10 12	11 52	bely	4 29
20	Th	C. of G. Hops doubled 1497	7 5	4 27	10 34	morn	bely	5 34
21	Fri	Princes Royal born, 1840	7 6	4 26	10 55	0 56	bely	6 37
22	Sat	Hayti Massacre, 1791	7 7	4 25	11 16	1 59	rein	7 35
23	SU	27th Sunday after Trinity	7 8	4 25	11 37	3 2	rein	8 26
24	Mo	Gen. Taylor born, 1784	7 10	4 24	11 58	4 5	seer	9 11
25	Tu	Lord Stair died, 1572. Cold.	7 11	4 23	12 19	5 10	seer	9 51
26	W.	Great Storm of 1783.	7 12	4 23	12 39	6 16	seer	10 28
27	Th	Bishop Lowth born, 1710	7 13	4 22	13 0	sets.	thig	11 10
28	Fri	☉ lo. S. ♀ ☽ Wind	7 15	4 22	13 20	4 43	thig	11 43
29	Sat	O. Goldsmith born, 1731	7 16	4 21	13 40	5 34	kne	ev. 23
30	SU	Advent Sunday.	7 17	4 21	14 0	6 37	kne	1 10



The silvery snow! the silvery snow!  
 Like a glory it falls on the fields below;  
 And the trees with their diamond branches appear,  
 Like the fairy growth of some magical sphere;  
 While soft as music, and wild and white,  
 It glitters and floats in the pale moonlight,  
 And spangles the rivers and founts as they flow!  
 Oh! who has not loved the bright beautiful snow.  
 The silver snow and the crinkling frost:  
 How merry we go when the earth seems lost;  
 Like spirits that rise from the dust of Time,  
 To live in a purer and holier clime.

- ☉ First Quarter 4th day 10h. 47m. evening. S. W.
- Full Moon 11th day. 3h. 34m. evening. N. E.
- ☾ Last Quarter 19th day, 2h. 4m. morning. S. E.
- ☾ New Moon, 27th day. 4h. 6m. morning. E.

D. M.	D. W.	CALENDAR, &c.	Ri. h.	Sets m.	dc. d.	S. m.	R & S	Plu.	High water h. m.
1	Mo	Emp. Alexander med 1825	7 18	4 21	21	56	7 47	kue	1 40
2	Tu	Queen Dowager Adelaide	7 19	4 20	22	4	9 1	legs	2 31
3	W	died. 1849	7 20	4 20	22	12	10 17	legs	3 16
4	Th	Richilien died, 1642. <i>Cold.</i>	7 21	4 20	22	20	11 32	feet	4 11
5	Fri	Bible trans. into Eng. 1611	7 22	4 20	22	28	morn	feet	5 19
6	Sat	☿ ☽ Jap. so. 6.56 ev.	7 23	4 19	22	35	0 48	head	6 35
7	SU	2d Sunday in Advent.	7 24	4 19	22	42	2 5	head	7 52
8	Mo	Hugh Jenkins died, 1670.	7 25	4 19	22	48	3 24	nek	8 55
9	Tu	Bonap's Milan decree, 1807	7 26	4 19	22	54	4 47	nek	9 51
10	W	7* <sup>s</sup> . con. ☽	7 27	4 19	22	59	6 11	arm	10 43
11	Th	John Gay died, 1732.	7 28	4 19	22	4	rises	arm	11 28
12	Fri	Cromwell. Protector. 1653	7 29	4 19	23	8	4 50	bres	morn
13	Sat	☽ con ☽. ☽ ri 5.11 ev.	7 30	4 20	23	12	5 59	bres	0 11
14	SU	3d Sunday in Advent.	7 30	4 20	23	16	7 12	h'art	0 55
15	Mo	Isaac Walton died. 1683.	7 31	4 20	23	19	8 26	h'art	1 35
16	Tu	Fire in New York. 1835.	7 32	4 20	23	22	9 36	h'art	2 14
17	W	Bolivar died, 1830.	7 33	4 21	23	24	10 43	bely	2 55
18	Tu	Victory at Toulon. 1793	7 33	4 21	23	25	11 48	bely	3 37
19	Fri	Jesuits ban. fr Eng. 1594	7 34	4 21	23	26	morn	rein	4 25
20	Sat	☿ ☽ Jupiter ri. 5.12 ev.	7 34	4 22	23	27	0 50	rein	5 24
21	SU	4th Sunday in Advent.	7 35	4 22	23	27	1 53	rein	6 25
22	Mo	Jupiter so. 5.57 ev.	7 35	4 23	23	27	2 57	seer	7 30
23	Tu	Francis Nicole burn, 1683.	7 36	4 23	23	26	4 3	seer	8 31
24	W	Children hang up Stockings	7 36	4 24	23	25	5 11	thig	9 19
25	Th	Christmas Day.	7 37	4 25	23	23	6 18	thig	10 10
26	Fri	Saint Stephen. <i>Frosty</i>	7 37	4 25	23	21	7 22	thig	10 51
27	Sat	☽ con ☽. ☽ so 7.42 ev.	7 37	4 26	23	19	sets.	kne	11 35
28	SU	1st Sunday after Christmas	7 38	4 27	23	16	5 36	kne	ev.10
29	Mo	Becket killed, 1170.	7 38	4 27	23	12	6 51	legs	0 52
30	Tu	Sotheby died, 1833.	7 38	4 29	23	8	8 7	legs	1 31
31	W	Fire at Saint Thomas, 1831	7 38	4 29	23	8	9 22	feet	2 10

16<sup>th</sup> Dec

18<sup>th</sup> Dec

16<sup>th</sup> Dec

1855  
1298  
58

16<sup>th</sup> Dec. R. Hope haul of Hay.

18<sup>th</sup> - William to <sup>see</sup> ~~own~~ <sup>own</sup> ~~to~~ <sup>to</sup> feed  
H. Edwards and Hope in the  
afternoon to feed cows.

16<sup>th</sup> Dec<sup>r</sup>

For a  
For a  
For a  
toes, or  
ing, ex  
For a  
the doc  
For a  
10 cwt,  
For a  
10 cwt.  
For a  
Fish, o  
and ste  
For a  
Treena  
Goods,  
tioned,  
crate o  
a hors  
or quan  
tainin  
Turpen  
Quant  
load of  
For a  
Mola-se  
or a loa  
For C  
coll, pe  
For f  
For f  
For f  
For f  
half a

The  
south  
the w  
of Pr  
buildi  
the M  
King

Sec  
north  
pies v  
jine o

Th  
ont o  
Sidu

For  
beyo  
mart

For  
beyo

## Rates of Cartage in Saint John.

ARTICLES AND WEIGHT.	DISTRICTS.									
	1st.		2d.		3d.		4th.		5th.	
	s.	d.	s.	d.	s.	d.	s.	d.	s.	d.
For a load of Wood, (Quarter of a Cord,) - - - - -	7	3	9	10	1	0	1	1	1	1
For a load of Coals, (Half a Chaldron,) - - - - -	1	3	1	4	6	1	7	1	9	9
For a load containing 15 bushels of Grain, Salt, Potatoes, or any other articles measured at loading or unloading, except Coals, - - - - -	10	1	1	1	1	1	1	3	1	4
For a pipe of Wine, Gin, or Brandy, and housing within the door of the first floor, - - - - -	3	0	3	1	3	3	3	4	3	6
For a puncheon of Rum, or a tierce of Sugar, from 7 to 10 cwt., and housing, - - - - -	1	6	1	7	1	9	1	10	2	0
For a puncheon of Molasses, a hogshend of Sugar of 10 cwt. or upwards, or a hogshend of Tobacco, & housing, - - - - -	2	0	2	1	2	3	2	4	2	6
For a hogshend or puncheon of Cider, or a load of Dried Fish, of 15 cwt. or a common load of household Goods, and storing, - - - - -	1	3	1	4	1	6	1	7	1	9
For a load of Stinglew, Hoop Poles, Heading, Staves, Treennails, Smoked Fish in boxes, Salmon in kits, Dry Goods, or a load of any other articles not herein mentioned, or a hogshend of Lime, or a hog-head or crate of Earthenware, or two tierces of Earthenware, a hogshend of Dried Fish, two tierces of Coffee, or quantity in bags not exceeding 12 cwt. or a load containing 6 bbls. Flour, or 5 barrels Sugar, Fish, Beef, Pork, Turpentine, or Cider, or half a ton of Iron, or the same Quantity of Cordage, in coil not exceeding 4 cwt. or a load of any articles not herein mentioned, - - - - -	0	9	10	1	0	1	1	1	1	3
For a 64-gallon cask of Wine, Rum, Gin, Brandy, Molasses, or Porter, or for a load of Sand, Gravel or Stones, or a load of 4 barrels of any Spirituous Liquor or molasses, - - - - -	1	0	1	1	1	3	1	4	1	6
For Cables and Cordage, in coils above a cwt. or if to coil, per ton, or if for Hay loose, per ton, - - - - -	5	0	5	3	5	6	5	9	6	0
For Hay, screwed, per ton, - - - - -	2	6	2	8	1	0	3	0	3	2
For Bricks, per thousand, - - - - -	4	0	4	3	1	6	4	9	5	0
For Lumber, per thousand feet, - - - - -	3	0	3	3	3	6	3	9	4	0
For the carriage of any article or articles not exceeding half a load, - - - - -	6	7	1	9	10	1	1	0	0	0

*The First District* to comprise all that part of the City between the south line of Pond street and north line of Duke street, which lies to the westward of the East line of Mill street, Dock street, and that part of Prince William street situated between the north line of the brick building formerly belonging to William Tyng Peters (northward of the Market square), and the north line of Duke street, and including King street, to the westward of the west line of Germain street.

*Second District* to comprise all that part of the City between the north line of Union street and south line of Saint James' street, which lies without or beyond the First District, to the westward of the east line of Charlotte street.

*Third District* to comprise all that part of the City, which lies without or beyond the Second District, to the westward of the east line of Sidney street.

*Fourth District* to comprise all that part of the City lying without or beyond the Third District, to the westward of the East line of Carwarthen street.

*Fifth District* to comprise all that part of the City lying without or beyond the Fourth District.

Board of Health for the City of Saint John, and Parish of Portland.—Wm. Bayard M. D., (Chairman,) George V. Nowlin, J. D. Lewin, John McLanehlin, and James Flewelling, Esquires. Mr. James Porter, Clerk.

COMMISSIONERS OF SEWERAGE AND WATER SUPPLY.—John Sears, (Chairman,) John M. Walker, and John Owens. Superintendent of Works: Gilbert Murdock.

## CITY OF SAINT JOHN.

WILLIAM O. SMITH, Esquire, Mayor.

HONORABLE ROBERT L. HAZEN, Recorder.

### Aldermen.

Joseph Fairweather,  
Stephen K. Foster,  
Isaac Woodward,  
Thomas M'Avity,  
William King,  
Joseph Beatteay,  
W. H. A. Keans,

Esquires.

### Councillors.

Mr. Charles A. Everitt,  
Mr. George V. Nowlin,  
Mr. John Wilson, Jr.,  
Mr. B. Coxetter,  
Mr. James Colwell,  
Mr. Charles Ketohum,  
Mr. Joseph Meroer,

### Wards.

King's.  
Queen's.  
Duke's.  
Sydney.  
Guy's.  
Brook's.  
Wellington.

Thomas Merritt, Esquire, Treasurer or Chamberlain.

W. R. M. Burtis, Esquire, Common Clerk.

James R. Ruel, Esquire, Deputy Common Clerk.

Simeon L. Lugin, Land Agent. Thomas Coram, Land Agent, Carleton.

George Stockford, High Constable; George Stockford, W. H. Herrington, P. Duffy, and Charles Pidgeon, Marshals; George Stockford, Bernard Murray, Charles Pidgeon, and W. Herrington, Constables.

Edw. Bennison, Deputy Clerk of the Market, King's Square; W. M'Bay, do. do., Market Square; John Doherty, do. do. of the Fish Market, Duke Street.

J. Boyd, M. D., G. J. Harding, M. D., R. P. Smith, M. D., and Henry Jarvis, M. D., Visiting Physicians.

John V. Thurgar, Thomas Hanford, W. D. W. Hubbard, George A. Lockhart, Wm. Garnett, Cudrip & Snider, Licensed Auctioneers.

William D. Faulke, Thomas M. Smith, Isaac Woodward, James U. Thomas, George Thomas, J. W. M. Irish, Charles M'Lauchlan, William Leavitt, Zebedee Ring, Augustus Quick, William Dudnee, Gilbert T. Ray, John D. Purdy, John Brown, and Michael M'Carty, Port Wardens.

Thomas Reed, Port or Harbour Master.

John Murray, Harbour Inspector.

SAINT JOHN PILOT'S FRIENDLY ASSOCIATION.—John Reed, George Thomas, John Mills, Daniel Hatfield, Alexander Mills, James Reed, John Spears, James P. Thomas, T. Vaughan, John Scott, D. M'Dougal, William Dougan, Michael Garrity, Patrick Trainer, Richard Cline, George Mulherrin, W. Donoghue, William Hatfield, E. J. Fletcher, George Thring, Walter Walsh, William Lahey, Henry Thomas, Daniel Mulherring, Samuel Rutherford, James Quin. Agent to Pilot's Association Mr. W. Woods

Alexander Reed, Light House Keeper at Partridge Island; James Lane, ditto at the Beacon.

William Wright, William O. Smith, and Stephen Garow, Commissioners to settle disputes relative to Dockage and Wharfage.

Allan M'Lean, Shipping Master.

R. C. Minnette, City Surveyor.

John Sears, Edmund Kaye, Francis Jordan, and Isaac Olive,  
Assessors of Taxes.

James Gerow, Junior, Collector of Taxes on the Eastern side of  
the Harbour; Charles Pidgeon, on the Western side.

Paul Daley, Collector of Wharfage and Slippage at the Market  
Slip; Edward Allison, Collector of Slippage at Union Street;  
J. Fairweather, ditto at North Slip; W. Finn, Collector of Wharf-  
age at the Breakwater; B. Peel, Collector of Slippage at Sheffield  
Slip; Peter Besnard, Collector of Wharfage and Slippage at Rod-  
ney Wharf; Michael M'Guirk, Collector of Anchorage; A. Boyne,  
Collector of Slippage at Main and Charlotte Slips; A. C. O. Tren-  
towsky, ditto at Germain and Sidney Slips; J. Dunham, ditto at  
Market Slip, Guy's Ward; J. Dunham, ditto at Ludlow Slip;  
W. C. Dunham, ditto at ——— Slip; J. Beateay, ditto Market  
Slip, Brook's Ward; G. B. Beateay, ditto at ——— Slip.

George W. Gerow, Weigh Master at North Slip; Richard  
M'Cullough, ditto at Union Street; Joseph Dunham, ditto at  
Carleton.

William H. A. Keans, Superintendent of Flour Inspectors, and  
Superintendent of Weighers of Coals and Measurers of Salt.

Nathaniel Clinton, John Humbert, and John Berryman, Inspec-  
tors of Flour.

James Stewart, Gauger of Liquors.

Samuel Gillespie, James Peacock, and Andrew G. Lordly,  
Gaugers and Searchers of Oil.

Jacob Wilson, William M'Auley, Francis Wilson, R. Riley,  
James Cullinan, William J. Lockhart, John M'Gorty, and Wil-  
liam Thomson, Weighers of Coals. J. Wilson, William M'Auley,  
J. Cullinan and William Thomson, Measurers of Salt,

James Peacock, and Thomas Miles, Inspectors of Lathwood,  
Staves, Hoop Poles, &c.

S. Gillespie, Andrew Hamm, T. Miles, Andrew G. Lordly,  
Thomas T. Whelpley, John Dunham, William Colwell, and Wil-  
liam Thomson, Inspectors of Pickled Fish. Samuel Gillespie,  
J. Peacock, A. G. Lordly, T. Miles, Thomas T. Whelpley, and  
William Thomson Cullers of Dried Fish.

John Robinson, Inspector of Cordwood and Bark at the Market  
Slip; John Paul, ditto at Lower Cove; G. W. Gerow, at North Slip.

Alexander M'Kelvey, Superintendent of Carts and Drays.

B. F. Maybee, Superintendent of Coaches and Lumber Waggons.

H. Dunlop, Superintendent of Hand Carts.

Robert M'Kelvey, Pound Keeper on the Eastern Side of the  
Harbour; Evan Evans, Pound Keeper at Carleton.

Thomas M'Avity, Superintendent of Partridge Island and the  
Quarantine Station.

Thomas M. Smith and H. P. Sturdee, Esquires, Commissioners  
of Wrecks and Shipwrecked Goods for the City and County of  
Saint John.

Sambel Jordan, John Leach, David M. Whiting, George Cassie, Thomas Fairweather, Edward D. Gore, James H. Fairweather, William Shives, George W. G. Fairweather, Charles F. Fairweather, Charles E. Harding, George H. Robertson, Nelson A. Cogle, Nathaniel Adams, Alexander M'Harg, William Grady, John Dowling, C. N. Perkins, Francis G. Jordan, Jarvis Wilson, Oliver B. Cogle, J. M. Cogle, D. M'Callum, Charles Ketchum, Henry Colwell, Matthew Holstead, Vernon Hanson, Thomas S. Underhill, Charles Robertson, S. S. Littlehale, W. S. Harding, Alexander Boyne, Samuel Jones, James H. Bartlett, George Worden, George Dixon, James M'Loon, S. S. Blizzard, Howard Dixon, and R. C. Frost, Surveyors of Lumber.

### FIRE DEPARTMENT.

THOMAS M. SMITH, *Chief Engineer.*

*Engine Company No. 1.*—James Postmore, *Engineer*; B. Coxetter, *Foreman*; Richard Calvert, *Assistant Foreman.*

*Engine Company No. 2.*—Lorenzo F. Laugan, *Engineer*; Robert Collins, *Foreman*; G. Anderson, *Assistant Foreman.*

*Engine Company No. 3.*—Daniel J. Leavitt, *Engineer*; Alexander M'Naughten, *Foreman*; Robert Burnes, *Assistant Foreman.*

*Engine Company No. 4.*—James T. O'Connor, *Engineer*; J. M'Donough, *Foreman*; ———, *Assistant Foreman.*

*Engine Company No. 5.*—Richard Whiteside, Junior, *Engineer*; G. S. Deforest, *Foreman*; David Thompson, *Assistant Foreman.*

*Engine Company No. 6.*—Thomas P. Marter, *Engineer*; W. F. Bunting, *Foreman*; Fred. Leavitt, *Assistant Foreman.*

*Carlton Engine Company No. 7.*—Martin H. Peters, *Engineer*; Thos. Thompson, Junior, *Foreman*; Jos. S. Whetmore, *Assistant Foreman.*

*Carlton Engine Company No. 8.*—John Munroe, *Engineer*; George Lane, *Foreman*; G. Stackhouse, *Assistant Foreman.*

*Fire Police.*—W. O. Smith, *Captain*; Geo. W. Smith, *Lieutenant*; James Gerow, *Treasurer*; W. H. A. Keans, *Secretary.*

*Hook and Ladder Company.*—Joseph Mercer, *Captain.*

His Worship the Mayor, Joseph Fairweather, Thomas Coram, Bartholomew Coxetter, W. H. A. Keans, George A. Lockhart, George V. Navlin, C. Johnston, William Hagerty, Thomas M'Avity, Alex. Balloch, Josiah Wetmore, J. C. Littlehale, J. Bentley, Joseph O. Dunham, James A. Harding, James Thompson, Gustavus R. Jarvis, John M. Walker, C. D. Everitt, James Gerow, W. A. Robertson, James Kedey, William Mackay, Charles J. Melick, B. Boyd Klunear, William C. Dunham, William O. Smith, J. M. Walker, Joseph Cotam, William King, Thomas Hanford, Joseph Mercer, and J. M. Robinson, *Firewards.*

### POLICE DEPARTMENT.

John Johnston, *Esquire*, *Police Magistrate*; George A. Lockhart, and W. O. Smith, *Esquires*, *Sitting Magistrates.*

Benjamin J. Peters, *Esquire*, *Clerk.*

Mr. George Scoullar, *Captain of the Police Force.*

**PUBLIC GRAMMAR SCHOOL IN THE CITY OF SAINT JOHN.**—The Reverend the Rector of Saint John, *President*; Hon. William Black, the Mayor, the Recorder, the Hon. Judge Parker, Robert F. Hazen, William Wright, John H. Gray, *Esquires*, and the Rev. William Donald, A. M., *Directors*; John H. Gray, *Esquire*, *Treasurer and Clerk*; James Paterson, L.L. D., *Principal*; Mr. Blanchard, *Second Master.*

**SAINT JOHN DISTRICT COMMITTEE OF THE SOCIETY FOR PROMOTING CHRISTIAN KNOWLEDGE.**—Reverend the Rector of Saint John, *President*; ———, *Esquire*, *Vice President*; Deverley Robinson, *Esquire*, *Secretary and Treasurer.* Books sold at John Klunear's, Prince William Street.

S.  
G.  
R.  
n,  
Ri  
ore-  
en,  
ore-  
rest,  
man;  
amp-  
ane,  
Ge-  
mew  
John-  
J. C.  
pson,  
Ko-  
near,  
William  
W. O.  
and the  
order,  
y. Es-  
quire,  
chard,  
ISTIAN  
asurer.



SAINT JOSEPH  
Joseph W.  
Correspondent  
Junior, Rev.  
Shiver, Genl.  
Lawrence,  
Directors.  
at 8 o'clock

SAINT JOSEPH  
dent; John

SAINT JOSEPH  
SOCIETY.—

Rev. John  
D. Robinson

—, G.  
Botsford and

Esquires, J.

SAINT JOSEPH  
bluson, Esq.

Committee  
Librarian.

SAINT JOSEPH  
Wright, Esq.

R. Ruel, T.

SAINT JOSEPH  
der Jardine

Cruikshank  
Committee

SAINT JOSEPH  
strong, Esq.

Hutchinson

ORPHAN  
erty, Vice

SAINT JOSEPH  
Parker, Pat.

F. Huzen, J.

Dewar, Jan

Trafton, T.

ander Mart

M. H. Perle

ording Se

New Br

Hon. Will

Robinson,  
Secretaries

near, John

John Arm

M'Laughlin  
C. M'Intosh  
with the N  
Portland—  
Committee

LADIES'  
White, M

cretary an

SAINT JOSEPH  
John Hur

A. Lockh

son, Vice

and R-co

E. E. Loo

J. Akerle

GRAND

W. G. P.

G. T. R

New B

S. L. Thi

**SAINT JOHN MECHANICS' INSTITUTE.**—James Paterson, LL. D., President; Joseph W. Lawrence, and Robert Foulis, Vice Presidents; James R. Ruel, Corresponding Secretary; William L. Avery, Treasurer; William Hutchinson, Junior, Recording Secretary, and Secretary to the Board of Directors; Robert Shives, George W. Smith, John J. Munroe, J. G. Melick, G. Flemming, G. H. Lawrence, Isaac Woodward, J. Allan, W. F. Smith, and Charles C. Macdonald, Directors. The Museum is open on Monday, Wednesday and Friday evenings, at 8 o'clock.

**SAINT JOHN RELIGIOUS TRACT SOCIETY.**—Rev. William Donald, A. M., President; John Kinnear, Esquire, Secretary.

**SAINT JOHN, N. B. ASSOCIATION IN AID OF COLONIAL CHURCH AND SCHOOL SOCIETY.**—Beversley Robinson, Esquire, President; Reverend Dr. I. W. D. Gray, Rev. John Armstrong, M. A., and the Hon. Robt Parker, Vice Presidents; G. D. Robinson, Esquire, Secretary; L. H. DeVeber, Esquire, Treasurer;

George Taylor, James R. Ruel, Thomas W. Daniel, Esquires, and Dr Botsford and Dr. Bayard, Committee; John V. Thurgar and John M. Robinson, Esquires, Auditors.

**SAINT JOHN SOCIETY LIBRARY.**—John Boyd, M. D., President; George D. Robinson, Esquire, Vice President; Isaac Woodward, and John Kinnear, Esquires, Committee; James R. Ruel, Esquire, Secretary and Treasurer; ———, Librarian. Library open from 3 to 4 o'clock, daily.

**SAINT GEORGE'S SOCIETY.**—I. H. T. Manners Sutton, Patron; Hon. William Wright, Esquire, President; William Ellman, Esquire, Vice President; James R. Ruel, Treasurer; Henry William Frith, Secretary.

**SAINT ANDREW'S SOCIETY.**—Adam Jack, Esquire, President; Alexander Jardine, Esquire, Vice President; William Thomson, Treasurer; Robert Cruikshank, Secretary; W. W. Emslie, Andrew Scott, and Robert Thomson, Committee of Obedience.

**SAINT PATRICK'S SOCIETY.**—Gen. Carville, Esquire, President; Robert Armstrong, Esquire, Vice President; John A. Morrison, Esq., Treasurer; William Hutchinson, Esquire, Secretary.

**ORPHAN BENEVOLENT SOCIETY.**—Jas. Gallagher, Esq. President; John Dougherty, Vice President; P. McCourt, Treasurer; John Cunningham, Secretary.

**SAINT JOHN AGRICULTURAL AND HORTICULTURAL SOCIETY.**—The Hon. Judge Parker, Patron; the Hon. Judge Ritchie, President; Robert Bowes, and Robert F. Huzen, Vice Presidents; James Brown, Henry Blakslee, Chas. Drury, Peter Dewar, James Dunn, Wm. Hawks, Archibald Menzies, Geo. P. Peters, Thomas Traffon, T. Davidson, R. Jardine, Hon. J. H. Gray, Guty Crookshank, Alexander Martin, and Alenzo A. Darrow, Directors; John Duncan, Esq. Treasurer; M. H. Perley, Esquire, Corresponding Secretary; D. B. Stevens, Esquire, Recording Secretary.

**NEW BRUNSWICK AUXILIARY BIBLE SOCIETY.**—Hon. Judge Parker, President; Hon. William B. Kinnear, and Hon. Neville Parker, Vice Presidents; John M. Robinson, Esquire, Treasurer; James Paterson, LL. D., and Hon. S. L. Tilley, Secretaries; L. H. DeVeber Esquire; Depository Samuel Huyghue, John Kinnear, John Wishart, Samuel Bayard, M. D., Nathan S. Demill, Gilbert T. Ray, John Armstrong, George A. Lockhart, W. J. Starr, Edward Sears, Daniel J. McLaughlin, Jas. Reed, L. B. Botsford, M. D., Chas. A. Hart, Wm. Girvan, J. C. McIntosh, Joseph Robinson, B. J. Underhill, R. Keddy and T. B. Barker, with the Ministers who are Members of the Society. Committee. Committee for Portland—John Duncan, James Flewelling, Moses Tuck, and D. V. Roberts. Committee for Charlton—Robert Salter, Isaac Clarke, and Dr. Waddell.

**LADIES' BENEVOLENT SOCIETY.**—Mrs. Ward Chipman, Patroness; Mrs. Jas. White, Mrs. E. Stevens, and Miss Deblois, Committee; Miss L. Kinnear, Secretary and Treasurer.

**SAINT JOHN TOTAL ABSTINENCE SOCIETY.**—N. S. Demill, Esquire, President; John Humbert, W. R. M. Burtis, Joseph Fairweather, W. H. A. Keans, George A. Lockhart, Esquires, G. P. Sancton, L. H. Waterhouse, John Frazer, R. Robertson, Vice Presidents; J. B. Marshall, Treasurer; Jas. Gerow, Jr., Corresponding and Recording Secretary; W. Hewett, Zebedee Ring, J. Ansley, J. F. Mursters, E. E. Lockhart, Thos. McHenry, T. C. Humbert, G. Smiler, G. A. Everitt, John J. Akerley, J. W. Lawrence, and C. D. Everitt, Executive Committee.

**GRAND DIVISION OF THE ORDER OF THE SONS OF TEMPERANCE.**—H. E. Sealey, W. G. P.; Jas. Olive, G. W. A.; W. H. A. Keans, G. Scribe; C. D. Everitt, G. T.; Rev. C. P. Bliss, G. Chaplain; J. S. Connor, G. C.; J. Whitmore, G. S.

**NEW BRUNSWICK TEMPERANCE CONVENTION.**—N. S. DeMill, President; Hon. S. L. Tilley, Vice President; W. H. A. Keans, Secretary; R. Salter, Treasurer.

**SAINT JOHN ROMAN CATHOLIC TOTAL ABSTINENCE RELIEF SOCIETY.**—Rev. E. J. Dumphy, President; W. H. A. Keans, Esquire, Vice President.

**CHAMBER OF COMMERCE**—Hon. John Robertson, President; Robert Reed, Esq. Vice President; Edw. Dolby, Esq. Secretary and Treasurer; Frederick A. Wiggins, Joseph A. Crane, William Thomson, Joel Reading, George Sutherland, John W. Cudlip, Wm. Wright, J. A. Morrison, Thomas Vaughan, and George Thomas, Esquires, Councillors; R. Jardine, Isaac Woodward, Chas. McLaughlan, Edw. Allison, John Duncan, J. M. Walker, Esqs., Board of Arbitration.

**SAINT JOHN GAS LIGHT COMPANY**—Capital Forty Thousand Pounds.—Robert Jardine, Esquire, President; John Duncan, William Parks, W. G. Lawton, John M. Walker, George Carvill, W. Smith, Daniel J. McLaughlan, and William Jack, Esquires, Directors; Robert Britain, Secretary and Treasurer; ———, Esquire, Solicitor; G. Peebles, Manager.

**EUROPEAN AND NORTH AMERICAN RAILWAY COMPANY.**—Capital £1,500,000.—D. J. McLaughlan, R. Jardine, E. Allison, George Botsford, R. Reed, G. Thomas, S. Barker, Esquires, Honorables S. L. Tilley, John Robertson, A. J. Smith, J. M. Johnson, and Hon. W. H. Steves, Directors; R. Jardine, President; G. P. Sancton, and J. W. Cudlip, Auditors, ———, Esquire, Solicitor; Hon. R. L. Hazen, Counsel.

**FREDERICTON GAS COMPANY.**—Capital Five Thousand Pounds.—S. Barker, Esquire, President; John Simpson, F. W. Hatheway, J. Wilkinson, and John Davis, Directors; William M'Beath, Secretary and Treasurer; John M'Innis, Manager.

**RURAL CEMETERY COMPANY.**—Directors—LeBaron Botsford, M. D., George P. Peters, M. D., Charles Drury, Beverly Robinson, James Pettingell, John M. Walker, William Parks, Wm. G. Lawton, Solomon Hersey, William Jack, and William Wright, Esquires; LeBaron Botsford, Esquire, President; Edward B. Peters, Esquire, Secretary and Treasurer; ———, Landscape Gardener; John Adams, Superintendent.

**SOUTH BAY BOOM COMPANY.**—Alexander M'L. Seely, President; Hon. John Robertson, John Wishart, F. Wiggins, G. Young, and F. Ferguson, Directors; Thomas M'Mackin, Secretary, Superintendent and Treasurer.

**ELECTRIC TELEGRAPH COMPANY.**—R. Jardine, Esquire, President; D. B. Stevens, Secretary and Superintendent; R. Jardine, Edward Allison, J. Duncan, R. Reed, Esquires, Saint John, and George E. Morton, Esq., of Halifax, Directors.

**ST. JOHN AND FREDERICTON ELECTRIC TELEGRAPH COMPANY.**—George Botsford, Esquire, President; S. Barker, W. H. Robinson, S. W. Babbitt, and R. Jardine, Esquires, Directors, D. B. Stevens, Superintendent.

**SAINT JOHN HOTEL COMPANY.**—William Wright, Esquire, President; Directors—John Wishart, George V. Nowlin, Robert Jardine, and Charles Hazen, Esquires; Secretary—Edward Dolby; Managers—William and Joseph Scammell.

**NEW BRUNSWICK MARINE ASSURANCE COMPANY.**—In St. John.—Capital Fifty Thousand Pounds, with power to increase to One Hundred Thousand Pounds. John Ward, Esquire, President; John Wishart, John Ward, John V. Thurgar, G. Carvill, D. J. McLaughlan, William Parks E. Sears, G. W. Worrall, and Joseph Fairweather, Esquires, Directors; Adam Jack, Esquire, Secretary.

**GLOBE ASSURANCE COMPANY.**—In St. John.—Wm. Leavitt, Esquire, President; George L. Lovett, Thomas Vaughan, Robert Robertson, Charles Merritt, and John Duncan, Directors; I. L. Bedell, Esquire, Secretary.

**The Mutual Insurance Company.**—In St. John.—Joseph Fairweather, Esquire, President; John D. Purdy, Hon. S. L. Tilley, Joseph W. Lawrence, and S. K. Foster, Directors; Isaac Woodward, Esquire, Secretary; J. M. Robinson, Esquire, Solicitor.

**Saint John Suspension Bridge Company.**—J. D. Lewin, Esquire, President; Joseph Fairweather, L. B. Botsford, M. D., and John Waddell, M. D., Esquires, Directors; J. F. Masters, Secretary and Treasurer.

**YORK AND CARLETON MINING COMPANY.**—James Harris, President; James Smith, Thomas Allan, John Owens, Henry Vaughan, James R. Topper, Allan M'Lean, James Harris, Thomas Vaughan, and James T. Smith, Directors; Jas. Smith, Treasurer; Thomas Vaughan, Secretary.

**SAINT JOHN FIRE INSURANCE COMPANY.**—A. M'L. Fealy, President; Joseph A. Crane, Joel Reading, John T. Stanton, H. Vaughan, and L. J. Almon, Esquires, Directors. J. D. Lewin, Esquire, Secretary.

—Rev.

I. Eq.  
Wig-  
rland,  
George  
Sauch-  
on.

Robert  
John  
Jack,

000.—

Tho-  
Smith,  
G. P.  
on. R.

arker,  
John  
Innis,

orge P.  
hn M.  
t, and  
ard B.  
dener;

. John  
ectors;

D. B.  
Dun-  
taifax,

e Bots-  
and R.

ectors  
n, Es-  
mmell.

l Fifty  
ounds.  
urgar,  
nd Jo-

identf;  
t, and

quire,  
and S.  
ninson,

ident;  
quires,

James  
Allan  
; Jas.

Joseph  
on, Es-

**CIT**

The M  
The M  
Isaac W  
teay, and  
the Qoru

Honors  
George A  
shank, R  
Robertson  
Brown, J  
James G  
H. De Ve  
A. Lockh  
John Ha  
derson, F  
Francis F  
than S. I  
Francis R  
Otty Cro

Charles  
William  
William  
Isaac L  
James  
W. B.  
W. CH

John J  
Supreme

Hon V

Peter Str  
H. Perle

Boyd, W  
W. Pete

Edward  
Jarvis, J

William  
Boyd K

ker, Jun  
Watters.

Henry V  
W. Stoc

R. Thom  
Benjami

ander B  
son, Jun

missioner  
Gehan  
Commis

## CITY AND COUNTY OF SAINT JOHN.

The Mayor and Recorder, Justices of the Mayor's Court.

The Mayor, the Recorder, Joseph Fairweather, William O. Smith, Isaac Woodward, Thomas M'Avity, William King, Joseph Beatsey, and W. H. A. Keans, Esquires, Justices of the Peace and of the Qorum.

Honorable Charles Simonds, Gehardus C. Carman, John Jordan, George Anderson, James Moran, Henry Gilbert Robert W. Crookshank, Robert Payne, Archibald Menzies, Charles Ward, Hon. John Robertson, William H. Street, Daniel Leavitt, John Gillis, James Brown, John Kerr, William Leavitt, William Olive, Samuel Strange, James Gallagher, Jacob Allen, John Wishart, Robert Keltie, Leveret H. De Veber, William Hawks, Moses Vernon, Walker Tisdale, Geo. A. Lockhart, William Parks, William O. Smith, Alexander Lockhart, John Haws, Thos. Allan, Hugh Sharkey, James Travis, George Henderson, Henry G. Simonds, Joseph Fairweather, Robert Douglas, Francis Ferguson, F. A. Wiggins, Peter Besnard James Olive, Nathan S. Demill, George Carvill, John Humbert, Stephen K. Foster, Francis Ruddick, John F. Goddard, William Doherty, and Thomas Otty Crookshank, Esquires, Justices of the Peace.

Charles Johnston, Esq., High Sheriff.

William B. Kinnear, Esquire, Clerk of the Peace

William Bayard, Esquire, M. D., Coroner.

Isaac L. Bedell, Esquire, County Treasurer.

James R. Ruel, Esq., Auditor of County Accounts.

W. B. Kinnear, Esquire, Surrogate.

W. Chipman Drury, Esquire, Register of Deeds and Wills.

John Johnston, Esquire, Commissioner for taking Bail in the Supreme and Mayor's Court.

Hon. Wm. Boyd Kinnear, Robert Fraser Hazen, Wm Wright, Peter Stubbs, Horatio Nelson H. Lugin, John M. Robinson, Moses H. Perley, Hon. Robert L. Hazen, John Johnston, James William Boyd, William Jack, Duncan Robertson, John H. Gray, Jas. W. Peters, Robertson Bayard, ———, Wm. R. M. Burtis, Edward B. Peters, Charles Duff, James A. Harding, Gustavus R. Jarvis, James J. Kaye, Andrew R. Wetmore, George F. Rouse, William M. Howe, Charles Doherty, Humphrey T. Gilbert, B. Boyd Kinnear, John G. Campbell, Charles A. Harrt, Robert Parker, Junior, Nelson De Veber, Richard Sands Armstrong, Charles Watters, George Blach, Ward Chipman Drury, W. H. Hatheway, Henry W. Frith, William Hutchinson, Benjamin L. Peters, Chas. W. Stockton, George G. Gilbert, Junior, John Simonds, Samuel R. Thomson, Edward Jack, Frederick C. Frith, Robert B. Street, Benjamin G. Gray, Lewis J. Almon, Charles W. Weldon, Alexander Ballentine, Hurd Peters, William P. Dole, Beverley Robinson, Junr., T. T. Hanford and W. H. Tuck, Esquires, Commissioners for taking Affidavits in the Supreme Court.

Gehardus C. Carman, John Jordan and James Moran, Esquires, Commissioners for Solemnizing Marriage.

William P. Dole, Esquire, Inspector of Schools.  
John Sears, George Blitch, and S. P. Wetmore, Esquires, Trustees of Schools, City of Saint John.

Rev. James Quinn, James Gallagher, Esquire, and William Carville, Commissioners for the Management of the Free School at Saint John, unconnected with the Madras Board.

Moses H. Perley, and Dr. William Bayard, Esquires, Commissioners of Indian Reserves, under Act 7 Vic. c. 45.

Charles Drury and Bradford Gilbert, Commissioners of Sewers.

Isaac Woodward, and Charles W. Wardlaw Esquires, Commissioners for the Bay of Fundy and River Saint John, under the Act 13 Vict, c. 26, relating to Steamboats.

Gehardus C. Carman, John Kerr, James Moran, James Gallagher, and William O. Smith, Esquires, Commissioners of the Alms House, Work House and Infirmary. Fenwick Arnold, Esq., M. D., Physician. William Cunningham, Keeper.

*Surveyors of Lumber in the County.*—Ezekiel Jordan, John Morrison, John Henneberry, David Tapley, Clayton Scott, William D. Shaw, Joseph Ball, George C. Dunham, William Cunard, William Allingham, Stephen E. Stephens, Gilbert Jordan Francis McCafferty, John Kearney, George A. Deforest, Moses E. Cowan, Jos. J. Wetmore, Daniel Brannahan, James E. Vincent, Peter J. Cogle, Gilbert Mayes, Zechariah B. Roberts, John M. Campbell, Charles P. Baker, David B. Vincent, George Niles, Francis Gallagher, William Lynch, Charles E. Fowler, Edward E. Estey, John K. Pendleton, Abraham J. Estabrooks, John Taylor, Edwin Kierstead, Michael Owens, Charles Eagles, Joseph D. Mahor, Henry Colwell, Bernard R. Gidney, Joseph F. Lingley, Frederick E. Danville, William Wilmot, S. Reynolds, J. R. Pidgeon, and C. N. Brown.

*Terms of the General Sessions and Common Pleas.*—Third Tuesday in March, and first Tuesday in June, September and December

## PARISH OF PORTLAND.

Robert Payne, Esquire, Police Magistrate; Henry G. Simonds, and James Travis, Esquires, Sitting Magistrates; John Duncan, Moses Tuck, and George E. Snider, Esquires, Commissioners of Police.

David Tapley, jr., J. G. Tobin, and William R. M. Burtis, Trustees of Schools James Flewelling, Joseph Ruddick, and James L. Woodworth, Assessors of Taxes.

Charles Wilson, Collector of Taxes.  
D. Fritch, Jacob Pidgeon, George Cameron, David Odell, and Thos. Lipssett, Constables.

Daniel Odell, John Logan, Maurice Delaney, and Thos. Lipssett, Hog Reeves.  
Thomas Morrison, Jacob Pidgeon, and Michael Mahany, Fence Viewers.

Charles Wilson, and Daniel M. Fritch, Pound Keepers.  
Richard Pidgeon, Michael Mahany, and John Walsh, Surveyors of Roads.  
John S. Jarvis, Surveyor of Dams.

George W. Roberts, and Thomas Cunard, Boon Masters.

James Kenna, Senter of Leather.

Barnes Travis, Inspector of Butter.

Alexander Sime, Surveyor of Grindstones.

Daniel N. Fritch, Clerk of the Market.

Charles Wilson, Town Clerk.

Rev. J.  
Robert  
John J.  
Arthur  
Hanna, J.  
Robert  
Bean, J.  
M'Kee, J.  
B. Kirb  
D. Conn  
Holston  
Henry  
J. Robert  
and T. G.  
Jas. R.  
John I.  
Geo. An  
Bowes,  
ton, J. C.  
son, J. C.  
J. Doug  
M'Nain  
Hutly, J.  
C. Ham  
R. S. A.  
James  
Robert

Barna  
G. C.  
J. T.  
Archib  
J. Do  
and Ch  
James  
James  
Fence  
M. B.  
James  
C. L.  
an, W.  
G. C.  
Griams  
Richard  
Thomp  
John

Phil  
John  
Tho  
J. M  
Tho  
Jam  
Jam  
Tho  
Vald  
J. W  
Brow:  
Millie  
Porter  
T. Ke  
W. M

## PARISH OF SIMONDS

Rev. J. Dishroon, Rev. J. Lawson, and Rev. J. Barron, Trustees of Schools.

Robert Power, R. S. Armstrong, and J. Davidson, Assessors of Taxes.

John Johnston, Collector of Taxes.

Arthur Heny, Neil Quin, R. Moore, R. Moore, Bloomsbury, S. Wethers, W. Hanna, J. Wade, T. McDermott, J. McGowan, and W. M'Geoch, Constables.

Robert Bowes, Thomas Garnett, James Anthony, Claudius Hamilton, Wm. Bean, J. Colgan, C. M. Whooten, Wm. Beatty, Henry Sloan, John Moore, James M'Kee, and James Bryden, Fence Viewers.

B. Kirkpatrick, W. Slack, John Smith, S. Wethers, Benj. Smith, R. M'Kenzie, D. Connolly, T. McDermott, Wm. M'Namara, J. Charlton, Pat. Miles, Samuel Holstead, Thos. Burns, and Henry Osborne, Hog Reeves.

Henry Graham, George Doherty, Philip Furlong, John Johnston, J. M'Kee, J. Robertson, H. Warmack, Neil Quinn, P. Brown, T. Russell, R. M'Lean, and T. Garnet, Pound Keepers.

Jas. Robertson, John Wallace, and J. M'Avity, Commissioners of Highways.

John Parks, J. Lawlor, P. Furlong, J. Armstrong, Andrew Moore, J. Brown, Geo. Anthony, William Bean, John M'Elwean, R. Carr, T. Dewar, Thomas Bowes, Sen., Joseph Bowes, G. D. Jordan, J. Bryden, Thos. Garnett, J. Charlton, J. Davidson, H. S., C. M. Whooten, A. McGowan, James Bowes, E. Gibson, J. Clarke, D. Gallagher, Thomas Bowes, Jr., A. M'Lean, W. Cunningham, J. Douglas, J. Dolan, Arthur Henry, Jacob Arthur, W. Evans, D. Hunter, M. M'Namee, J. Cain, Charles Riley, T. Davidson, J. Fudge, E. Murphy, Wm. Hutly, John Lugh, Wm. Dixou, Pat. Shven, Sen., Jas. Collier, Jr., Geo. Snider, C. Hamilton, Jas. Marshal, Jas. Bryden, Jr., A. A. Darrow, Wm. Mackin, and R. S. Armstrong, Surveyors of Highways.

James Stackhouse, Surveyor of Dams.

Robert Bowes, Town Clerk and Clerk of the Market.

## PARISH OF LANCASTER.

Barnabas Tilton, and J. D. Lewin, Trustees of Schools.

G. C. Carman, A. Menzies, and John Tiner, Assessors of Taxes.

J. T. Lord, and John Kilbreath, Collector of Taxes.

Archibald Menzies, G. C. Carman, and Henry Kourke, Surveyors of Dams.

J. Downey, John Dunnam, Anthony Thompson, John Cassidy, Robert Fair, and Charles H. Deforest, Constables.

James Gault, Thos. M'Crum, W. Beaslion, and T. Ready, Hog Reeves.

James Heavey, Robert Robertson, Samuel Cunningham, and Joseph Boggs, Fence Viewers.

M. Balcom, W. Clarke, T. Kilbreath, R. Robertson, J. Boggs, Pound Keepers.

James Gault, John Macklanin, and Joseph Bogs, Commissioners of Highways.

C. Lord, Daniel Morris, Bartlett Lingley, J. Harding, J. Clarke, Barney Gowen, W. Boggs, Henry Baird, Henry Kilbreath, J. Tiner, R. Bradley, J. Kearns, G. C. Carman, James Wain, Senr., Robert Thompson, J. M'Williams, John Grians, Senr., George S. Baker, Andre Cushing, John A. Cooper, T. M'ackin, Richard Avery, John Kean, B. M'Laughlan, T. M'Crum, H. Belmore, Anthony Thompson, and James Hammet, Surveyors of Highways.

John Tiner, Town Clerk

## PARISH OF SAINT MARTINS.

Philip Mosher, James Moran, Jun., and Abel Washburn, Trustees of Schools.

John Brown, Henry Whitney, and David Bradshaw, Assessors of Taxes.

Thomas H. Black, Collector of Taxes.

J. M. Brown, Wm. Davidson, Eli Angevine, and A. Delong, Constables.

Thomas Lewis, and Henry Brittain, Pound Keeper.

James Ross, and James O'Donnell, Hog Reeves.

James Swin, Wm. M'Affee, and Edward Crown, Fence Viewers.

Thomas H. Black, Town Clerk. Renben Bradshaw, Clerk of the Market.

Valentine Harding, P. Mosher, and Edw. Brown, Commissioners of Roads.

J. Walton, R. B. Patterson, W. Fraser, J. Melvin, I. Mosher, D. Brown, E. Brown, C. Quigley, J. H. Brown, M. M'Dade, Jas. Love, sen., H. Sande, A. Millican, J. Curry, M. Dougherty, W. Henry, J. Hanrahan, Wm. Anderson, A. Porter, J. M. Bradshaw, Nelson Smith, J. H. Moran, Arthur Foster, T. Ellis, T. Kenn, Robt. M'Cutcheon, Dennis Burk, John M'Kay, F. Porter, Hugh Ryan, W. M'Affee, David Floyd, Sen., J. M'Intire, and W. Black, Surveyors of Roads.



# COUNTY OF YORK.

## CORPORATION OF FREDERICTON.

William H. Needham, Esquire, Mayor

<i>Wellington Ward.</i>	<i>St. Ann's.</i>	<i>Carleton.</i>	<i>Queen's.</i>	<i>King's.</i>
A. M'Cauleland,	John Richards	A. Mitchell,	Francis M'Manus	And. Kitchie,
Geo. W. Turner,	Wm. Segee,	John Davis.	William Grieves,	Alex. Block.
Geo. N. Segee, Esquire, City Clerk. Thos. R. Robertson, City Treasurer.				
Henry J. Thorn, Esquire, City Auditor. Andrew Blair, Esquire, City Surveyor.				
S. Fleming, Surveyor of Streets and Highways; Thos. Dowling, Wharfinger.				
Charles Brannen, City Marshal. Philip Schlyer, Collector of Dog Tax.				
Assessors.—Thomas L. Simmons, <i>Wellington Ward</i> ; H. J. Thorn, <i>St. Ann's Ward</i> ; A. d. Clark, <i>Carleton Ward</i> ; Robert Gowan, <i>Queen's Ward</i> ; John Fleming, <i>King's Ward</i> .—Jas. M'Alpine, Commissioner of the Alms House.				
FIRE DEPARTMENT.—Wm. D Hartt, Esquire, Chief Engineer; B. Wolhaupter, Charles Brannen, Martin Mackay, James Hale, James H. Broderick, Samuel D. M'Pherson, G. M. Odell, Henry Rutter, T. L. Simmons, Robert Chestnut, M. Colter and J. Myshral, Firewards.				

Hon. John Simcoe Saunders, John Allen, John Robinson, George Minchin, William H. Odell, James A. MacLanchlan, John Simpson. William D. Hartt, and The Mayor, *ex officio*, Esquires, Justices of the Inferior Court of Common Pleas.

Hon. John S. Saunders, John Allen, John Robinson, George Minchin, William H. Odell, James A. MacLanchlan, John Simpson, Wm. D. Hartt, Thomas Jones, William Davidson, Patrick Campbell, Jas. Miles, Ross Currie, Adam D. Allan, George Garden, L. B. Rainsford, Solomon Parent, David B. Shelton, George Cheyne, William J. Bedell, Thomas Gill, Richard Hayne, George Clements, Jas. Taylor, Allan M'Lein, Thomas Pickard, Thomas R. Robertson, Asa Coy, Isaac Kilburn, Lewis D. Wigan, Edward Simonds, Joseph Gaynor, Frederick W. Hatheway, Charles M'Pherson, Geo. Morehouse, George L. Hatheway, Ira Ingraham, Spafford J. Barker, Beverley A. Robinson, Benjamin Yerxa, Benjamin Goodspeed, James Fairlie, Israel Smith, Wm. C. Joslin, Enoch Dow, John C. Grant, Edward Pidgeon, J. M'Donald, Andrew Calder, Samuel Fox, Joseph Pickard, John T. Smith, Thomas Murray, James S. Beek, Thomas L. Simmons, Jas. McLaggan, Thomas C. Atherton (*of the Quorum*), and William R. Bustin, Esquires, Justices of the the Peace.

Benjamin Wolhaupter, Esquire, High Sheriff; Charles Brannen, Deputy Sheriff.

George J. Dibblee, Esquire, Keeper of the Rolls, and Clerk of the Peace, and of the Inferior Court of Common Pleas.

George F. H. Minchin, Esquire, Surrogate.

Francis A. H. Stratton, Esquire, Register of Probates.

Joseph Beek, Esquire, Register of Deeds and Wills.

Jas. B. Toldervey, Henry Fisher, Jr., Henry Jones, Geo. Morehouse, Judan Hammond, and John M'Gibbon, Esquires, Coroners.

Mark Needham, Esquire, County Treasurer.

Hon. John S. Saunders, Commissioner for taking Bail in the Supreme Court.

Hon. John A. Street, Daniel Ludlow Robinson, William End, George J. Dibblee, Hon. Charles Fisher, George F. H. Minchin, William H. Odell, Edward A. Clowes, George Botsford, Francis A. H. Stratton, John C. Allen, George N. Segee, James P. Wetmore,

James F.  
Friel, H.  
ward B.  
Commissione  
James  
James A.  
Mark  
rall, Tho  
Licensed  
Alms  
Esquires  
Keeper.  
John  
Terms  
Act 13 V  
onal T  
second

Freder  
N. Park  
surer; L  
siter, Li

Freder  
Charles  
Esquire,  
burn, Es

Freder  
dent; U  
Treasur

Flora  
J. E. W  
L. A. V  
stitute  
Esquire

Thos  
Vail, E  
Thos  
A. C. I  
nnel F  
John E  
more,  
Freeze  
Elias S  
erson  
Perkin  
James  
quires,  
Le  
Mr.

James Fraser Berton, Edward H. Wilmot, Edward W. Miller, B. C. Friel, Henry B. Robinson, William W. Street, John J. Fraser, Edward B. Fisher, John L. Marsh, jr., Jas. Taylor, jr., Esquires, Commissioners for taking Affidavits in the Supreme Court.

James A. Maclauchlan, John Allen, John Robinson, J. Harrison, and James A. Miles, Esquires, Commissioners for Solemnizing Marriage.

Mark Needham, Henry Fisher, Samuel A. Akerley, Joseph Mysh-rall, Thomas R. Barker, Edward P. Gordon and George S. Winter, Licensed Auctioneers:

*Alms House and Work House*—Thomas Murray, John Pickard, Jr. Esquires, and Rev. Wm. Jaffrey, Commissioners; John Fleming, Keeper.

John Davidson, Esquire, Inspector of Schools.

*Terms of the General Sessions and Common Pleas, established by the Act 13 Vict. c. 47*—Second Tuesday in January and June. *Addi-tional Terms of the Common Pleas.*—Third Tuesday in March, and second Tuesday in October.

*Fredericton Library.* J. E. Woolforde, Esquire, President; Hon. N. Parker, Vice President; R. Gowar, Esquire, Secretary and Treas-urer; Dr. Robb, and E. H. Wilmot, Esquire, Committee; G. Ros-siter, Librarian. Terms, 10s annually.

*Fredericton Society of Saint Andrew.*—Dr. J. Robb, President; Charles M'Pherson, Esquire, 1st Vice President; Robert Fulton, Esquire, 2d ditto; John F. Taylor, Esquire, Treasurer, Robert Thor-burn, Esquire, Secretary; Rev. John M. Brooke, D. D., Chaplain.

*Fredericton Society of Saint Patrick.*— — — — —, Presi-dent; Hon. Lemuel A. Wilmot, Vice President; Samuel Fleming, Treasurer; T. O'Connor, Secretary.

*Floral and Horticultural Society of New Brunswick, at Fredericton.*— J. E. Woolforde, Esquire, President; Hon. Neville Parker, and Hon. L. A. Wilmot, Vice Presidents; who, with Mr. S. Flemming, con-stitute the Committee of Management and Decision. — — — — —, Esquire, Secretary and Treasurer.

## KING'S COUNTY.

Thomas Beet, Justus S. Wetmore, Henry A. Scovil, and John C. Vail, Esquires, Justices of the Inferiour Court of Common Pleas.

Thomas Beet, Justus S. Wetmore, Henry A. Scovil, John C. Vail, A. C. Evanson, John Barberie, Ebenezer Smith, Isaac Huviland, Samuel Foster, John Wightman, John Brittain, James Brittain, Hon. John H. Ryan, Charles W. Stockton, John C. Price, Elias S. Wetmore, John Hagarty, Thomas C. Sharp, Robert M'Cully, William Freeze, jr., Samuel Hallett, Craven Longstroth, Matthew M'Leod, Elias S. Freeze, Duncan M. Campbell, Isaac A. Dodge, Samuel Hen-derson, Weeden Fowler, John L. Wilmot, James Lake, Elijah A. Perkins, William Pyewell, Walter B. Scovil, Charles C. Stewart, James Fairweather, (*of the Quorum.*) and James W. Nowlan, Es-quires, Justices of the Peace.

Le Baron Drury, Esquire, High Sheriff.

Mr. John Crookshank, Deputy Sheriff.

Edward Betts Smith, Esquire, Keeper of the Rolls, and Clerk of the Peace and Inferior Court of Common Pleas.

Edward B. Smith, Esquire, Surrogate.

Judge of Probates.

Thomas C. Sharp, Registrar of Deeds and Wills.

Isaac Haviland, Sylvester Z. Earle, A. C. Evanson, James Wetmore, Adine Paddock, Jr., and Obadiah Purdy, Esq., Coroners.

John C. Vail, A. C. Evanson, Samuel Hallett, Charles W. Stockton, Hon. John H. Ryan, and John C. Price, Esquires, Commissioners for taking Bail and Affidavits in the Supreme Court.

E. B. Smith, Esquire, Issuer of Marriage Licenses.

Henry A. Scovil, and John C. Vail, Esquires, Commissioners for Solemnizing Marriage.

Edward B. Smith, Esquire, Receiver of Crown Debts, under Act 7 Victoria, c. 36.

Simon Baxter, E. S. Freeze, D. Sheck, William H. Whitto, Elijah A. Perkins, Samuel Freeze, LeBaron Drury, James Lake, Gilbert Titus, Gilford Congle, Benjamin Sproul, Abraham Johnson, Jr., Wm. Keith, Simon P. Fryers, James E. Fryers, Isaac Pearson, Hiram Edgett, Jeremiah D. Mabec, Joseph D. Baxter, Joseph Belyea, Thos. G. Barnes, W. M. Teakles and Samuel Gosline Auctioneers.

E. B. Smith, Esquire, Rev. William E. Scovil, and Rev. William W. Walker, Trustees of Grammar School.

Albert T. D. McElman, Inspector of Schools.

David Pickett, County Treasurer.

*Terms of the General Sessions and Common Pleas.*—First Tuesday in March and Third Tuesday in October. *Additional Terms of the Common Pleas.*—First Tuesday in May and January.

The Probate Court for King's County, is held at the Court House, on the first Tuesday in every month, except the month of March, and for that month on the Monday next before the first Tuesday.

#### COUNTY OF CARLETON.

John F. W. Winslow, Esquire, High Sheriff.

A. K. S. Wetmore, Esquire, Keeper of the Rolls and Clerk of the Peace.

Lewis P. Fisher, Esquire, Surrogate.

A. K. S. Wetmore, Esquire, Register of Probates.

Augustus Bedell, Esquire, Register of Deeds and Wills.

Edwin J. Jacob, Inspector of Schools.

A. K. S. Wetmore and John Dibblee, Commissioners under the Absconding Debtor's Act.

*Terms of the General Sessions and Common Pleas.*—First Tuesday in January, and fourth Tuesday in June. *Additional Terms of the Common Pleas.*—First Tuesday in March and October.

#### COUNTY OF CHARLOTTE.

Thomas Jones, Esquire, High Sheriff.

Wellington Hatch, Clerk of the Peace and Keeper of the Rolls.

Honorable Harris Hatch, Surrogate.

George D. Street, Esquire, Register.

Harris W. Hatch, Esquire, Register of Deeds and Wills.

Patrick Clinch, Esquire, Inspector of Schools.

Charles R. Hatheway and Samuel H. Whitlock, Commissioners under the Absconding Debtor's Act.

*Terms*  
day in A  
the Comm

Blair B  
Edward  
the Rolls  
Honor  
Thoma  
Willia  
Thoma  
*Terms*  
in June  
First Tue

Henry  
Theop  
of the Ro  
Henry  
Robert  
Henry  
James  
*Terms*  
in Januar  
mon Plea

J. War  
T. R.  
N. H.  
Henry  
Henry  
T. Rob  
James  
T. Mu  
*Terms*  
in Januar  
Tuesday

John F  
Geo. J  
Willia  
Nathu  
Nathu  
Georg  
*Terms*  
in Januar  
Common

Joseph  
J. W.

*Terms of the General Sessions and Common Pleas*—Second Tuesday in April and third Tuesday in September. *Additional Terms of the Common Pleas*—Second Tuesday in July and December.

COUNTY OF WESTMORLAND.

Blair Botsford, Esquire, High Sheriff.  
Edward B. Chandler, Esquire, Clerk of the Peace and Keeper of the Rolls.

Honorable Edward B. Chandler, Surrogate.

Thomas S. Sayre, Esquire, Register.

William Backhouse, Esquire, Register of Deeds and Wills.

Thomas S. Sayre, Esquire, Inspector of Schools.

*Terms of the General Sessions and Common Pleas*.—Third Tuesday in June and November. *Additional Terms of the Common Pleas*.—First Tuesday in April and second Tuesday in September.

COUNTY OF GLOUCESTER.

Henry W. Baldwin, Esquire, High Sheriff.

Theophilus DesBrisay, Esquire, Clerk of the Peace and Keeper of the Rolls.

Henry William Baldwin, Esquire, Surrogate.

Robert Gordon, Esquire, Register.

Henry William Baldwin, Esquire, Register of Deeds and Wills.

James Smith, Inspector of Schools.

*Terms of the General Sessions and Common Pleas*.—First Tuesday in January and first Tuesday in July. *Additional Terms of the Common Pleas*.—First Tuesday in April and last Tuesday in October.

QUEEN'S COUNTY.

J. Warren Travis, Esquire, High Sheriff.

T. R. Wetmore, Esq., Clerk of the Peace and Keeper of the Rolls.

N. H. DeVeber, Esquire, Surrogate.

Henry S. Peters, Esquire, Register.

Henry S. Peters, Esquire, Register of Wills and Deeds.

T. Robert Wetmore, Esquire, Inspector of Schools.

James Ingledew, Commissioners for taking Ball and Affidavits.

T. Murray and I. C. Burpe, Commissioners for taking Affidavits.

*Terms of the General Sessions and Common Pleas*.—Fourth Tuesday in January and June. *Additional Terms of the Common Pleas*.—Fourth Tuesday in April and October.

COUNTY OF SUNBURY.

John Hazen, Esquire, High Sheriff.

Geo. J. Bliss, Esquire, Clerk of the Peace and Keeper of the Rolls.

William J. Gilbert, Esquire, Surrogate

Nathaniel Hubbard, Esquire, Register.

Nathaniel Hubbard, Esquire, Register of Deeds and Wills

George T. Taylor, Inspector of Schools.

*Terms of the General Sessions and Common Pleas*.—Second Tuesday in January, and Third Tuesday in June. *Additional Terms of the Common Pleas*.—Third Tuesday in March and October.

COUNTY OF KENT.

Joseph Wetmore, Esquire, High Sheriff.

J. W. Weldon, Esq., Clerk of the Peace and Keeper of the Rolls.

William Chandler, Esquire, Surrogate.  
 John Wesley Weldon, Esquire, Register.  
 George Fagan, Esquire, Register of Deeds and Wills.  
 Lawrence McLaren, Esquire, M. D., Coroner.  
 Henry Dwyer, Esquire, Inspector of Schools.  
 Wm G Sutherland, Commissioner for taking Bail and Affidavits  
*Terms of the General Sessions and Common Pleas.*—Second Tuesday  
 in January, and Fourth Tuesday in June. *Additional Terms of the  
 Common Pleas.*—Last Tuesday in April and September.

COUNTY OF NORTHUMBERLAND.

James Mitchell, Esquire, High Sheriff.  
 Edward Williston, Esquire, Clerk of the Peace and Keeper of the  
 Rolls.  
 William Wilkinson, Esquire, Surrogate.  
 George Kerr, Esquire, Register.  
 Allan A. Davidson, Esquire, Register of Deeds and Wills.  
 James B. Johnston, Esquire, Inspector of Schools.  
*Terms of the General Sessions and Common Pleas.*—Second Tuesday  
 in January and July. *Additional Terms of the Common Pleas.*—First  
 Tuesday in May and October.

COUNTY OF RESTIGOUCHE.

John L. Barberie, Esquire, High Sheriff.  
 And. Barberie, Esquire, Clerk of the Peace and Keeper of the Rolls.  
 Chipman Botsford, Esquire, Surrogate.  
 Andrew Barberie, Esquire, Register.  
 Andrew Barberie, Esquire, Register of Deeds and Wills.  
 George B. Cowper, Inspector of Schools.  
 Dugald Stewart and Archibald Ramsay, Commissioners under the  
 Absconding Debtor's Act.  
*Terms of the General Sessions and Common Pleas.*—First Tuesday in  
 January, and Second Tuesday in July *Additional Terms of the Com-  
 mon Pleas.*—Second Tuesday in October and April.

COUNTY OF ALBERT.

Thomas Gilbert, Esquire, High Sheriff.  
 Samuel G. Morse, Esquire, Keeper of the Rolls, and Clerk of the  
 Peace and Inferior Court of Common Pleas.  
 M. B. Palmer, Esquire, Surrogate.  
 Samuel G. Morse, Esquire, Register.  
 George Calhoun, Esquire, Register of Deeds and Wills.  
 Albert Steeves, Esquire, Inspector of Schools.  
*Terms of the General Sessions and Common Pleas.*—Fourth Tuesday  
 in June, and Second Tuesday in November. *Additional Terms of  
 the Common Pleas.*—Second Tuesday in March and September.

COUNTY OF VICTORIA.

Francis E. Beckwith, Esquire, High Sheriff.  
 William T. Wilson, Esquire, Clerk of the Peace and of the  
 Common Pleas, and Register of Deeds and Wills.  
 William M. Macnaughtan, Esquire, Surrogate.  
 A. W. Raymond, Esquire, Register.  
 J. C. Pinguet, Inspector of Schools.  
 John Emerson, Francis Tibbets and Wm. Clifford, Coroners.

Terms  
 in Januar  
 mon Plea  
 October.

PR

His Exce  
 Lieu  
 vince  
 G. M. Cu  
 Lieutenan

EXECU  
 Hon Sa  
 Johnson,

LEGISL  
 Hon. Joh  
 B. Chaff  
 liam B. K  
 George M  
 Hon. Geo  
 Hon. Wi  
 Hon. W  
 Robert G  
 and Hou.

County  
 James Pe  
 Count  
 F. Godda  
 Count  
 Smith, Ar  
 County  
 Boyd, Esq  
 King's  
 Purdy, Es  
 Queen'  
 County  
 County  
 quires.

Count  
 County  
 County  
 Esquires.  
 County  
 Esq

*Terms of the General Sessions and Common Pleas.—Second Tuesday in January and First Tuesday in July. Additional Terms of the Common Pleas—Second Tuesday in March and Second Tuesday in October.*

## PROVINCE OF NEW BRUNSWICK.

His Excellency Hon. JOHN HENRY THOMAS MANNERS SUTTON,  
Lieutenant Governor and Commander in Chief of the Pro-  
vince of New Brunswick, &c. &c. &c.

G. M. Campbell, Esquire, Private Secretary to the Lieutenant Go-  
vernor.

Lieutenant Colonel Richard Hayne, and Lieutenant Colonel  
Charles Drury, Provincial Aids-de-camp.

EXECUTIVE COUNCIL.—Hon. Charles Fisher, Hon. James Brown,  
Hon. Samuel E. Tilley, Hon. William H. Steeves, Hon. John M.  
Johnson, and Hon. Albert J. Smith.

LEGISLATIVE COUNCIL.—The Honorable William Black, President;  
Hon. John Simcoe Saunders, Hon. Amos E. Balford, Hon. Edward  
B. Chandler, Hon. John Robertson, Hon. Harry Hatch, Hon. Wil-  
liam B. Kinneer, Rear Admiral Hon. William F. W. Owea, Hon.  
George Macpherson, Hon. Thomas H. Peters, Hon. Robert L. Hazen,  
Hon. George Hill, Hon. Charles Harrison, Hon. James Davidson,  
Hon. William H. Odell, Hon. James Cotton, Hon. D. Wark,  
Hon. W. H. Steves, Hon. J. H. Mann, Hon. William Hamilton, Hon.  
Robert Gordon, Hon. William Todd, Hon. Alexander McL. Seelye  
and Hon. Francis Rice.

### HOUSE OF ASSEMBLY.

County of York.—Hon. Charles Fisher, Charles Macpherson,  
James Taylor, and George L. Hatheway, Esquires.

County of Saint John.—Robert D. Wilnot, John H. Gray, John  
F. Goddard and Richard S. Armstrong, Esquires.

County of Westmorland.—Daniel Huntington, Hon. Albert J.  
Smith, Amund Landry, and James Steadman, Esquires.

County of Charlotte.—Arthur H. Gilmer, John M'Adam, James  
Boyd, Esquires, and Hon. James Brown.

King's County.—Matthew M'Leod, George Ryan, and Henry W.  
Purdy, Esquires.

Queen's County.—Samuel H. Gilbert, and John Ferris, Esquires  
County of Sunbury.—George Hayward, and Ebenezer Hunt, Esqs.

County of Carleton.—Charles Council, and Richard English, Es-  
quires.

County of Northumberland.—Hon. John M. Johnson, John Am-  
brose Street, George Kerr, and Richard Sutton, Esquires.

County of Kent.—Robert B. Carter and Francis M'Phelim, Esquires.

County of Gloucester.—William End, and Patrick M'Naughton,  
Esquires.

County of Restigouche.—John Montgomery, and Chipman Bots-  
ford, Esquires.

4  
4  
4

40  
44  
40  
41  
31  
21  
21  
21  
45  
21  
21  
21

✓ 2  
2  
x 2

County of Albert.—~~Edward Stevens~~ and Abner R. M'Clelan, Esquires.

County of Victoria.—James Tibbets, and Chas., Watters Esquires.

City of Saint John—James A. Harding and ~~Hon. Samuel L. Tilley~~, Esquires.

OFFICERS OF THE CROWN.—Hon. ~~Charles Fisher~~, Attorney General; Hon. John M. Johnson, Solicitor General; William Wright, Esq., Advocate General; Hon. ~~Samuel L. Tilley~~, Provincial Secretary; Hon. James Brown, Surveyor General; Hon. Thomas C. Lee, Receiver General; John R. Partelow, Esquire, Auditor General; John A. Street, Esquire, Hon. William B. Kinnear, Hon. E. B. Chandler, Hon. Robert L. Hazen, John W. Weldon, James W. Chandler, John H. Gray, and George Kerr, Esquires, Queen's Counsel.

CLERK OF THE EXECUTIVE COUNCIL ~~John C. Allen~~, Esquire.

OFFICERS OF THE LEGISLATIVE COUNCIL—George Botsford, Esquire, Clerk; John Gregory, Esquire, Clerk Assistant; B. R. Jonett, Esquire, Sergeant at Arms, and Usher of the Black Rod; Reverend George Coster, A. M., Chaplain.

OFFICERS OF THE HOUSE OF ASSEMBLY—Chas P. Wetmore, Esq. Clerk; George, J. Bliss, Esquire, Clerk Assistant; George Garden, Esquire, Sergeant at Arms; Rev William Q. Ketchum, Chaplain.

BOARD OF WORKS.—Hon. William H. Stevens, (Chief Commissioner,) Hon. James Brown, and Hon. S. L. Tilley.

SUPREME COURT OF JUDICATURE.—Chief Justice, Hon. James Carter, 8th January, 1851; Justices, Hon. Neville Parker; Hon. Robert Parker, October 1834; Hon. Lemuel Allen Wilnot, 8th January, 1851; Hon. William J. Ritchie, 17th August, 1855; Andrew Barberie, Esquire, Clerk of the Crown; William Garman, Esquire, Clerk of the Pleas; Hon. John Simcoe Saunders, Clerk of the Circuits, and Clerk of the Crown on the Circuits. TERMS: *Hilary*—First Tuesday in February: *Easter*—Second Tuesday in April: *Trinity*—Second Tuesday in June: *Michaelmas*—Second Tuesday in October. *Nisi Prius sittings in the County of York*—Third Tuesday in February and fourth Tuesday in June.

John C. Allen, Esquire, Reporter of the Decisions in the Supreme Court.

The Court of Chancery was abolished, and the Master of the Rolls appointed a Judge of the Supreme Court, by Act of Assembly 17 Vict. c. 67. All causes heretofore cognizable by the Court of Chancery are to be determined in the "Equity side of the Supreme Court."

CIRCUIT COURTS, by Act 17 Vict. c. 19.—*Saint John*: Second Tuesday in May and first Tuesday in November; *Sunbury*: Last Tuesday in January; *Queens*: First Tuesday in March; *Charlotte*: Fourth Tuesday in April, and the Tuesday after the Fourth Tuesday in October; *Kings*: Second Tuesday in July; *Albert*: Third Tuesday in July; *Westmorland*: Fourth Tuesday in July; *Kent*: Tuesday after Fourth Tuesday in July; *Restigouche*: Last Tuesday in August; *Gloucester*: First Tuesday in September; *Northumberland*: Second Tuesday in September; *Carleton*: Last Tuesday in September; *Victoria*: Wednesday before the last Tuesday in September.

1  
2  
3  
4  
5  
6  
7  
8  
9  
10  
11  
12  
13  
14  
15  
16  
17  
18  
19  
20  
21  
22  
23  
24  
25  
26  
27  
28  
29  
30

COURT  
TRATION  
John is h  
Judge; r  
held at t

COURT  
causes r  
Lieutena  
Presiden  
bers; Jo  
second  
October.

COURT  
Judge an  
neral; J  
Humber

COURT  
ces on th  
other Ju  
Council  
Public T  
tains, a  
time bei  
Esquire,

T  
pointed  
or one o  
rally, be

John I  
First Cl  
Frink, T  
ditto; F  
First Le  
Masters  
nell, Esq  
David A  
George;  
Shediac  
Bend of  
Edw. W.  
Esquire,  
H. Caru  
Samuel  
sex Vale  
Esquire,  
veridge,  
Hallett.  
frey, Do

**COURTS FOR THE PROBATE OF WILLS AND GRANTING ADMINISTRATIONS.**—The Probate Court for the City and County of Saint John is held every Monday, at three o'clock, at the Chambers of the Judge; and the like Court in the other Counties of the Province is held at the times specially appointed by the respective Judges.

**COURT OF GOVERNOR AND COUNCIL,** for hearing and determining causes relating to Marriage and Divorce.—His Excellency the Lieutenant Governor, President; Honorable Neville Parker, Vice President; the Hon. Her Majesty's Executive Council, Members; John C. Allen, Esquire, Registrar and Clerk; *Terms*: The second Tuesday in February, and third Tuesdays in June and October.

**COURT OF VICE ADMIRALTY.**—Honorable Robert L. Hazen, Judge and Commissary; William Wright, Esquire, Advocate General; John M. Robinson, Esquire, Register and Scribe; John Humbert, Esquire, Marshal.

**COURT for the Trial and Punishment of Piracy and other Offences on the High Seas**—The Governor; The Chief Justice, and other Judges of the Supreme Court, the Members of the Executive Council; Judge of the Vice Admiralty; The Public Secretary; Public Treasurer; Commander in Chief, Flag Officers, and Captains, and Commanders of Ships of War on this Station for the time being; \_\_\_\_\_, Registrar and Scribe \_\_\_\_\_, Esquire, Marshal.

☞ The Court sits at any place within the Province to be appointed by any three of the members, the Governor, Chief Justice, or one of the Judges of the Supreme Court, or Judge of the Admiralty, being one.

### POST OFFICE DEPARTMENT.

John Howe, Esquire, Post Master General; William D. French, First Clerk; Valentine B. Hutchinson, Second ditto; Henry C. Frink, Third ditto; Isaac K. Leavitt, Fourth ditto; T. B. Allen, Fifth ditto; F. H. Fowler, Sixth ditto; L. Langrill, Messenger; John Leitch, First Letter Carrier, James Leitch, Second ditto, Saint John; *Post Masters*: Andrew S. Phair, Esquire, Fredericton; William F. Bonnell, Esquire, Gagetown; Geo. F. Campbell, Esquire, Saint Andrews; David A. Rose, Esquire, Saint Stephen; John Wallace, Esquire, Saint George; Christopher Milner, Esquire, Sackville; E. J. Smith, Esq., Shediac; G. Pitfield, Esquire, Salisbury; Joseph Crandall, Esquire, Bend of Petitcodiac; James Caie, Esquire, Chatham (Miramichi); Edw. W. Williston, Esquire, Newcastle (Miramichi); John J. Gifford, Esquire, Richibucto; Geo. B. Cowper, Esquire, Dalhousie; Thomas H. Carman, Esquire, Bathurst; James Grover, Esquire, Woodstock; Samuel Foster, Esquire, Kingston; Hugh M'Monagle, Esquire, Sussex Vale; A. W. Raymond, Esquire, Grand Falls; John T. Hodgson, Esquire, Edmundston; J. H. Black, Esquire, Saint Martins; B. Beveridge, Esquire, Andover; F. N. Stevens, Harvey (Albert); Henry Hallett, Hampton Ferry; James Bowes, Milltown; Charles B. Godfrey, Dorchester; James S. Morse, Campbelltown; John R. M'Pher



son, Oromocto: Albert Robinson, Upper Mills; Richard E. Steves Hillsborough; B. Gallagher, Carapobello; Stephen Gooden, Bay Verte; Joseph Lakeman, Grand Manan; James Hamilton, Sheffield; Weeden Fowler, Upham Vale, and Two Hundred and Three Sub or Way Offices.

### HER MAJESTY'S CUSTOMS.

PORT OF SAINT ANDREWS.—Controller of Customs and Navigation Laws, William Whiteside, Esquire; Clerk and Searcher, T. Garby.

SAINT STEPHEN.—Controller of Customs and Navigation Laws, Robert Watson, Esquire.

SACKVILLE.—Controller of Customs and Navigation Laws, J. C. Black, Esquire.

CAMPBELLO.—Controller of Customs and Navigation Laws, Thomas Moses, Esquire.

RICHIBUCTO.—Controller of Customs and Navigation Laws, Hon. John Wesley Weldon.

DORCHESTER.—Controller of Customs and Navigation Laws, Wm. Carter, Esquire.

BUCTOUCHE.—Controller of Customs and Navigation Laws, Peter M'Phelin, Esquire.

HILSBOROUGH.—Controller of Customs and Navigation Laws, William Wallace, Esquire.

DALHOUSIE.—Controller of Customs and Navigation Laws Dugald Stewart, Esquire.

BATHURST.—Controller of Customs and Navigation Laws, William Napier, Esquire.

SHEDIAC.—Controller of Customs and Navigation Laws, Hon. Daniel Hanington, Esquire.

MONCTON.—Controller of Customs and Navigation Laws, Amasa Weldon, Junior, Esquire.

CARAQUET.—Controller of Customs and Navigation Laws, James Blackhall, Esquire.

SHIPPEGAN.—Controller of Customs and Navigation Laws, P. J. N. Dumaresq, Esquire.

HARVEY.—Controller of Customs and Navigation Laws, James Brewster, Esquire.

BATHURST.—Controller of Customs and Navigation Laws, Joseph Read, Esquire.

FREDERICTON.—Controller of Customs and Navigation Laws, James Taylor, Esquire.

### PROVINCIAL REVENUE.

SAINT JOHN.—Beverley Robinson, Esquire, Province Treasurer; George D. Robinson, Warehouse Keeper; Henry Whiteside, Collecting Clerk; Charles C. J. Briscoe, James T. Hanford, John Suddall, and George Mathew, Clerks; Richard M. Longmaid, Stephen E. Gerow, and Xenophon Jonett, Waiters and Searchers; William Bowyer, Tide Surveyor; T. P. Marier, W. J. B. Marier, John Brown, Wm. Dudge, and John Cobley, Warehouse Lockers; George D. Robinson, Isaac Woodward, and James T. Hanford, Appraisers of Dutiable Articles.

SAINT ANDREWS.—David W. Jack, Deputy Treasurer; James H. Whitlock, Waiter and Searcher; James W. Street, Appraiser of Durable Articles.

SAINT STEPHENS.—Robert Watson, Deputy Treasurer; Duncan Stewart, Waiter and Searcher.

SAINT GEORGE.—Abraham J. Wetmore, Deputy Treasurer.

CAMPO BELLO.—Thomas Moses, Deputy Treasurer.

FREDERICTON.—T. R. Robertson, Deputy Treasurer.

WOODSTOCK.—Henry E. Dibblee, Deputy Treasurer.

GRAND FALLS.—Francis E. Winslow, Deputy Treasurer.

CHATHAM.—J. T. Williston, Deputy Treasurer; James E. Carmichael, Landing Surveyor; Martin Cranney, Waiter, Searcher and Locker.

NEWCASTLE.—W. A. Black, Deputy Treasurer; John Fraser, Waiter, Searcher and Locker.

DALHOUSIE.—Dugald Stewart, Deputy Treasurer; Charles Lloyd, and A. Ramsay, Waiters, Searchers, and Lockers.

BATHURST.—Joseph Read, Deputy Treasurer; William Napier, Waiter, Searcher, and Locker.

SHIPPEGAN.—Perry J. N. Dumaresq, Deputy Treasurer.

CARAQUET.—Jas. Blackhall, Deputy Treasurer.

RICHIBUCTO.—Hon. J. W. Welton, Deputy Treasurer; George Pagan, Waiter, Searcher, and Locker.

BUCTOUCHE.—Peter M'Phelim, Deputy Treasurer.

SHEDIAC.—Daniel Hanington, Deputy Treasurer.

BAY VERTE.—Edward Wood, Deputy Treasurer.

SACKVILLE.—Deputy Treasurer.

DORCHESTER.—William Carter, Deputy Treasurer.

HILLSBOROUGH.—William Wallace, Deputy Treasurer.

MONCTON.—Amasa Weldon, Deputy Treasurer.

HARVEY.—James Brewster, Deputy Treasurer.

## ECCLESIASTICAL.

### THE UNITED CHURCH OF ENGLAND AND IRELAND

BISHOP—The Right Rev. JOHN, Lord Bishop of Fredericton—*Fredericton.*

ARCHDEACON—The Ven. GEORGE COSTER, Rector of Fredericton—*Rural Dean*  
CLERGY.

Alley, Rev. Jerome, D. D., Rector of Hoyer, Rev. W. N., Rector of Moncton.

Saint Andrews—*Rural Dean.* Carey, Rev. George T., Rector of Grand

Armstrong, Rev. John, Minister of St. Manan,

James Church, Saint John. Coster, Rev. Fred., Rector of Carleton.

Armstrong, Rev. Wm., Assistant Minister at Saint James. Coster, Rev. N. A., Rector of Gagetown

—*Rural Dean.*

Armstrong, Rev. G. M., Minister of St. John's, Parish of St. Mark. Coster, Rev. Charles G., Assistant Minister at Fredericton.

Bacon, Rev. Samuel, Rector of Chatham — *Rural Dean.* De Veber, Rev. William H., Missionary at Uppham.

Bartholomew, Rev. Joseph, Missionary at Petersville & Douglas Valley. De Wolfe, Rev. Thomas N., Missionary at Sackville.

Bedell, Rev. G., Rector of Lancaster. Disbrow, Rev. James W., Rector of Simonds.

Black, Rev. John, Rector of Kingsclear. Disbrow, Rev. N., Rector of Bathurst.

Bliss, Rev. Charles P., Missionary at Springfield. Elwell, Rev. J., Missionary at Prince Wm.

Bliss, Rev. Donald, Rector of Westmorland. Gray, Rev. I. William D., D. D., Rector of Saint John.

Hanford, Rev. S. Jones, Missionary at Andover.	Scovill, Rev. William Elias, Rector of Kingston.
Harrison, Rev. W., Rector of Portland— <i>Rural Dean</i> .	Scovill, Rev. William, Saint John.
Hartin, Rev. Thomas, Missionary at Canterbury.	Stewart, Rev. Alex., Garrison Chaplain—Saint John.
Hudson, Rev. James, Visiting Missionary, Miramichi.	Street, Rev. S. D. Lee, Rector of Woodstock.
Jacob, Rev. Edwin, B. D., Principal of King's College, Fredericton.	Street, Rev. T. W. Curate of Saint Stephens.
Jaffrey, Rev. William N., Missionary at Saint Mary's.	Stuart, Rev. Alex. V. Rector of Douglas.
Jarvis, Rev. George S., D. D., Rector of Shediac— <i>Rural Dean</i> .	Tippett, Rev. William H., Rector of Queensbury— <i>Rural Dean</i> .
Ketchum, Rev. William Q., Curate of Fredericton.	Thomson, Rev. Skelington, LL. D. Rector of St. Stephens.
Lee, Rev. Charles, Minister of Saint Paul's Church, Portland.	Thomson, Rev. Samuel, Retired Missionary, St. George's.
M'Ghee, Rev. Thos., Rector of Sussex.	Thomson, Rev. John S., Rector of Saint David's.
M'Givern, Rev. John, Rector of Saint George's.	Warnesford, Rev. E. A. Rector of Norton.
Milner, Rev. Christopher, Rector of Westfield.	Walker, Rev. William W., Rector of Hampton.
Neales, Rev. James, Rector of Richibucto.	Weeks, Rev. A. W., Curate of Cocaigne.
Nichols, Rev. H. B. Curate of Woodstock.	Wetmore, Rev. David I., Missionary at Welford.
Palmer, Rev. R. Drake, Missionary at Harvey.	Williams, Rev. J. S., Missionary at Campbellville.
Podmore, Rev. R., Assistant Minister in the Cathedral, Fredericton.	Wiggins, Rev. Abraham V., D. D., Rector of Mauder-ville.
	Wood, Rev. Abraham, Rector of Waterborough.

SYNOD OF NEW BRUNSWICK IN CONNECTION WITH THE CHURCH OF SCOTLAND.—Rev. John M. Brocke, D. D., Moderator; Rev. Wm. Henderson, A. M.; Clerk, P. T. 1. *Presbytery of Saint John*.—Rev. Wm. Donald, A. M., Clerk. Fredericton, Rev. John M. Brocke, D. D.; Nashwaak and Stanley, *vacant*: Richmond and Woodstock, Rev. Joan Hunter; St. Andrews and St. Patrick, Rev. John Ross; City of Saint John, Rev. Wm. Donald, A. M.; Missionary, Rev. Peter Keay. 2. *Presbytery of Miramichi*.—Rev. Wm. Henderson, A. M., Clerk. Bathurst, Rev. James Murray; Boiestown and Burnt Church, *vacant*; Campbelltown and Flatlands, Rev. James Steven; Chatham, Rev. Wm. Stewart; Dalhousie, Rev. Alexander Forbes, A. M.; Glenelg, *vacant*: Moncton, do.: Newcastle, Douglastown and Red Bank, Rev. William Henderson, A. M.; Missionary, Rev. Robert Stevenson.

FREE PRESBYTERIAN CHURCH OF SCOTLAND.—SYNOD OF THE PRESBYTERIAN CHURCH OF NEW BRUNSWICK: Rev. James Bennet, Moderator of Synod; Rev. W. Elder, Clerk pro tem *Presbytery of Saint John*.—Rev. Jas. Bennet, Moderator; Rev. W. Ferris, A. M., Clerk. City of Saint John: St. David's Church, Rev. William Ferris, A. M.; Saint John Presbyterian Church, Rev. Jas. Bonnet; Carleton, Rev. Jas. Baird; Hammond River, Salt Springs, Hampton Ferry and Londonderry, Rev. A. Donald; Springfield, Rev. Lewis Jack. *Presbytery of Saint Stephen's*.—St. Stephen's, Rev. W. Elder; Saint James, Rev. John Turnbull; Bellisle, Rev. Mr. Millen; Boesbec, *vacant*. *Presbytery of York*.—Prince William, Rev. Chas. G. Glass, A. M.; Harvey Settlement, Rev. Mr. Smith; Richmond, Rev. Thos. Johnston; Salmon River, Rev. Hector McKay. *Presbytery of Miramichi*.—New Mills, Dalhousie, &c., Rev. Angus McMaster; Richibucto, Rev. James Law, A. M.; Moncton, *vacant*; Synod's Missionaries, Rev. James Cairns, A. M., M. D. and Rev. W. Aloes.

**ROMAN CATHOLIC CLERGYMEN—IN THE DIOCESE OF NEW BRUNSWICK**

The Right Rev. Thomas Louis Connolly, D. D., Bishop of St. John, N. B., The Very Rev. John Sweeney, Revs. James Vereker, J. Quinn, and Mr. Farrell, City of Saint John; Revs. James M'Devitt, John Murphy, and Mr. Doyle, Fredericton; Rev. James Quinn, Saint Stephens; Rev. Andrew Barron, Saint Andrews; Rev. Luke O'Brien, Sussex Vale; Rev. F. X. Lafrance, Dorchester; Revs. J. Mooney, and Anthony Gosselin, Shediac; Rev. J. Babinneau, Buctouche; Rev. Hugh M'Guirk, Richibucto; Rev. Richard Vereker, Chatham; Rev. Michael Egan, Nelson (Miramichi); Rev. F. Gauvreau, Tracadie; The Very Rev. J. M. Paquet, Carraquet; Rev. Joseph Pelletier, Bathurst; Rev. Thomas Connelly, Woodstock; Rev. A. Langevin, Madawaska; Rev. M. Meloy, Saint Bruno (Madawaska); Rev. Henry Donne, Saint Lucy (Madawaska); Rev. E. J. Dunphy, Carleton.

**STATIONS.**—*The Names of the Ministers who compose the Wesleyan Methodist Conference of Eastern British America, and their Stations, are, we understand, as follows:—*Rev. John Beechman, D. D., President; Rev. Matthew Richey, D. D., Co-Delegate; Rev. William Temple, Secretary 1st, HALIFAX DISTRICT. Rev. Thomas H. Davis, Chairman; Rev. Roland Morton, Financial Secretary. 2d, THE SAINT JOHN DISTRICT.—Rev. Richard Knight, Chairman; Rev. Edmund Botterell, Financial Secretary. Saint John, South, Revs. J. G. Hennigar, W. T. Cardy, Charles Stewart; Saint John, North, Rev. William Smithson; Saint John, West, Rev. Richard Knight, Rev. John Allison, Superintendery; Saint Andrew's, Rev. A. M'Nutt; Saint Stephen's and Saint David's, Revs. J. V. Jost and Chas. Gaskin; Milltown, Rev. Edmund Botterell; Sussex Vale, Rev. John Prince; Greenwich, Rev. D. Currie; Upham, Rev. G. B. Pagan. 3d, THE CHARLOTTE TOWN DISTRICT.—Rev. John M'Murray, Chairman; Rev. William M'Carty, Financial Secretary. 4th, THE FREDERICTON DISTRICT.—Rev. Charles Churchill, Chairman; Rev. Geo. Johnston, Financial Secretary. Fredericton, Revs. C. Churchill, and G. Johnson; Woodstock, Revs. William Allen and William Alcorn; Andover, to be supplied; Nashwaak, Rev. R. Tweedy; Burton, Rev. George S. Milligan, A. M.; Miramichi, Rev. J. Snowball; Bathurst, Rev. R. A. Temple; Dalhousie, Rev. James Tweedy. 5th, THE SACKVILLE DISTRICT.—Rev. E. Evans, Chairman; Rev. James Taylor, Financial Secretary. Sackville, Rev. William Temple. Mount Allison Institution, Principal, Rev. Humphrey Pickard, A. M.; Governor and Chaplain Rev. E. Evans, D. D. Point de Bute, Rev. William Smith; Moncton, Rev. James Taylor; Hopewell, Rev. Richard Weddall; Richibucto, Rev. Thomas B. Smith; Amherst, Rev. Richard Smith; Parrsborough, Rev. James Buckley. 6th, THE ANNAPOLIS DISTRICT.—Rev. Michael Pickles, Chairman; Rev. Frederick Smallwood, Financial Secretary. 7th, THE NEWFOUNDLAND DISTRICT. Rev. Thomas Anguin, Chairman; Rev. Samuel W. Sprague, Financial Secretary.

**BAPTIST MINISTERS IN NEW BRUNSWICK**

**WESTERN ASSOCIATION**—James Tezer, Ludlow; William Harris, Tobique; Thomas Magee, Saint James; Thomas W. Saunders, Prince William; Samuel Robinson, I. E. Bill, Edward N. Harris, William Burton, John Francis, George Seely, Saint John; A. D. Thompson, Saint Andrews; James Walker, Saint George; John Magee, Nashwaak; Charles Sparden, Fredericton; James H.

Tupper, Keswick; William L. Hopkins, Pennfield; William D. Fitch Salmon River; E. H. Emerson, Maugerville; Benjamin Coy, Canning; George F. Miles, Saint George; Gideon Estabrooks, Simonds; Thomas Todd, Woodstock; Ebenezer Webb, New Jerusalem; Edmund M'Innis, Grand Manan. *Licensed to Preach*—William Gremley, Isalah Wallace, Richard Wells, Thomas Lockey, W. G. Hoben, James Goudroop, A. H. Munro, James White.

**EASTERN ASSOCIATION.**—Joseph Crandal, James McFee, Salisbury; James Blakney, Gondola Point; James Wallace, Coverdale; David Crandal, Wellington Jackson, Peter Spragg, James Tremble, Springfield; William Sears, Patrick Duffy, John H. Hughes, Hillsboro; Samuel Bancroft, Alexander Mutch, Norton; T. H. Porter, Wickham; J. C. Skinner, Cambridge; Chas. Thorn, Johnson; Joshua Bunting, Saint John; James A. Smith, Saint Martins; D. McPhail, Buctouche; L. H. Marshall, Nathaniel Cleveland, William Pulcifer, Harvey; W. A. Coleman, Sackville; Elias Kierstead, Studholm; James Newcomb, Moncton; E. F. Foshay, Hopewell; D. V. Crandal, Elgin; George Burns, Upham; James Herritt, Merritt Keith, Butternt Ridge; John Rowe, Point de Bute; Titus Stone, Sussex. *Licensed to Preach.*—John Sears, James L. Reed, Richard G. Barton, William L. Prince, Hezekiah Harris.

**REFORMED PRESBYTERIAN CHURCH OF IRELAND.**—Rev. Alexander M'Leod Stavely, Saint John; Rev. James Reid Lawson, South Stream and Black River

**CONGREGATIONAL CHURCHES.**—Saint John, Rev. Chas. Mackay; Sheffield, and Grand Lake, Rev. Thomas Lightbody; Cardigan, Rev. Mr. McCallum; Milltown, *vacant*; Keswick Ridge, Rev. George Stirling.

**DISCIPLES OF CHRIST, OR CHRISTIANS.**—Saint John, \_\_\_\_\_; West Isles, James B. Barnaby.

**FREE CHRISTIAN BAPTIST CHURCH**—Robert Colpitts, Norton; Samuel Hartt, and Ezekiel Sipril, Wakefield; Charles M'Mullin, Charles E. Bell, and George W. Orser, Brighton; Edward Wayman, Studholm; William E. Pennington, Jacksontown; Alexander Tylor, Campobello; Joseph Noble, Carleton; Benjamin Merritt, Humpstead; Ezekiel M'Leod, St. John; John Perry, Johnston; Robert French, Kingston; Jacob Gunter, Fredericton; Elijah Sisson, Carleton County; John Wallace, Moncton.

**DIOCESAN CHURCH SOCIETY OF NEW BRUNSWICK.**

Patron, His Excellency the Lieutenant Governor; President, The Right Rev. John, Lord Bishop of Fredericton; Vice Presidents, The Venerable and Rev. George Coster, Archdeacon; the Honorables Chief Justice Carter, Mr. Justice Neville Parker, Mr. Justice Parker, Mr. Justice Street, William Black, Daniel Hannington, S. I. Tilley, Charles Fisher, Edward B. Chandler, Robert L. Hazen, W. F. W. Owen, R. N., John S. Saunders, A. E. Botsford, Thomas H. Peters, Charles Simonds, and Frederick A. Wiggins, Esquire. Treasurer,

William J. Bedell, Esquire. Secretary. Rev. William Q. Ketchum. Auditors. W. H. Scovil, and George D. Robinson, Esquires. Loan Committee, Frederick A. Wiggins, William Wright, and Rev. William Jack, Esquires. Secretary to the Executive Committee, William Q. Ketchum.

*Provincial Board of Education, under the Act 15 Vict. c. 40.*—The Lieutenant Governor or Administrator of the Government for the time being, the Executive Council, and the Chief Superintendent of Schools.

#### UNIVERSITY OF KING'S COLLEGE—FREDERICTON.

Patron, the Queen; Visitor on Her Majesty's behalf, the Lieutenant Governor. Chancellor, the Chief Justice. President, the Lord Bishop. Council—the Chancellor. President, Master of the Rolls, Speaker of the Assembly, Secretary of the Province, Attorney General, Honorable William Black, LL. D., Honorable James Carter, Honorable John Montgomery, Honorable George Stillman Hill, Honorable Amos E. Botsford, Honorable William B. Kinnear, Honorable Robert Leonard Hazen, Honorable Judge Wilnot, and Dr. J. Toldervy. Convocation—the Chancellor, President, Professors, and all persons admitted Masters of Arts, or to any Degree in Divinity, Law or Medicine.

COLLEGE: Principal—The Rev. Edwin Jacob, D. D.; Professors—Classical Literature, History, Moral Philosophy and Divinity—Rev. Dr. Jacob; Mathematics and Natural Philosophy—William Bryden Jack, A. M.; Chemistry and Natural History—James Robb, M. D.; Modern Languages. M. D'Avray.

COLLEGIATE SCHOOL.—Head Master, George Roberts, Esquire; Classical and Mathematical Masters, George Roberts, and Charles Coster, A. M.; French Master, the Professor of Modern Languages in King's College; English and Writing Master, ———

Register, Charles Fisher, Esquire, A. B.; Librarian, ———

MADRAS SCHOOL.—*The Governor and Trustees of the Madras School, in New Brunswick:*—The Lieutenant Governor; the Lord Bishop of the Diocese; the Members of Her Majesty's Council; the Judge of the Admiralty; the Speaker of the House of Assembly; the Mayor and Recorder of Saint John; the Rector and Churchwardens of Trinity Church, Saint John; together with the Rev. William Donald, Frederick A. Wiggins, W. Wright, Walker Tisdale, Esquires, and Rev. A. Scovil.

Rev. A. Stewart, Clerk and Treasurer.

#### NEW BRUNSWICK BAPTIST EDUCATION SOCIETY.

Elder Joseph Crandall, President; Elder Samuel Robinson, and Honorable William B. Kinnear, Vice Presidents; Solomon Hersey, Esquire, Treasurer; Elder I. E. Bill, and Asa Coy, Esquires, Secretaries; Elder Charles Spurden, Principal; Mrs. A. H. Munro, Assistant Teacher. Elders Charles Spurden, Messrs. S. W. Babbit, Wm. S. Estey, William Sewell, and Thomas Stewart, Managing Committee.

## BANKS.

*Bank of New Brunswick St. John.* Capital, £100,000. President, Thomas F. Millidge; Esquire; Directors: John Boyd, M. D., L. H. DeVeber, Joseph A. Cruie, John D. Lewen, Thomas E. Millidge, I. L. Bedell, Benj. Smith, William Wright, and Frederick A. Wiggins, Esquires. Cashier, Richard Whiteside, Esquire; Solicitor, John M. Robinson, Esquire.

*Commercial Bank of New Brunswick, St. John.* Incorporated by Royal Charter. Capital £150,000, with power to increase to £300,000. President, William Parks, Esquire; Directors: Mark Dole, John Duncan, Stephen Gerow, Hon. Robert L. Haze, William Jack, George L. Lovett, Charles Merritt, D. J. M'Laughlin, William Parks, A. McL. Seely, John Wishart, Solomon Hersey, and James Vernon, Esquires. Cashier, George P. Sancton, Esquire; Solicitor, Hon. Robert L. Hazen.

*Commercial Branch Bank, Newcastle, Miramichi.* Committee of Management: Richard Hutchinson, Esquire, Cashier, Thos. C. Allen, Esq.

*Commercial Bank Agency at Woodstock.* Agent, Richard English, Esquire; Cashier, James Grover, Esquire.

*Central Bank of New Brunswick.* Capital, £35,000, with power to increase to £50,000. President, George Botsford, Esquire; Cashier, Samuel W. Babbit, Esquire; Solicitor, George J. Dibblee, Esquire.

*Central Bank Agency, at Woodstock.* Agent, James Robertson, Esq.

*Charlotte County Bank.* Capital £15,000. President, Hon. Harris Hatch; Cashier, C. W. Wardlaw, Esquire.

*Saint Stephen's Bank.* Capital, £25,000. President, William Todd, Esquire; Cashier, David Upton, Esquire.

*Westmorland Bank of New Brunswick,* President O. Jones, Esquire; Cashier, J. Johnston, Esquire.

*Bank of British North America.* (Established in London.) Capital £1,000,000 sterling, with power to increase the capital. Manager of the Branch at Saint John, ———, Esquire, Accountant, Thomas Christian, Esquire. Local Directors at Saint John: Hon. John Robertson, and J. V. Thurgut, Esquires. Standing Counsel, John A. Street, Esquire. Solicitor and Notary, ———.

## MARINE HOSPITAL.

*For the Relief of Sick and Disabled Seamen, (in Saint John.)*

John Ward, Robert W. Crookshank, John Wishart, W. D. Faulke, and Adam Jack, Esquires, Commissioners; Chas. Wurd, Esquire, Secretary; The Bank of New Brunswick, Treasurer; John Boyd, M. D., Physician and Surgeon.

PROVINCIAL LUNATIC ASYLUM.—[At Saint John.] John Ward, William Olive, Esquires, Hon. L. A. Wilmot, John Simpson, Robert F. Hazeu, Peter Besnard, John Duncan, and John R. Partelow, Esquires, Commissioners; Chas. Ward, Esquire Secretary; Rev. Wm. Scovil, Chaplain; J. Waddell, M. D., Superintendent; R. Graham, Supervisor, Book and Store Keeper.

PROVINCIAL PENITENTIARY.—[At Saint John.] Commissioners, John Ward, Chairman, Hon. Robert L. Hazen; Chas. C. Stewart.

John Owens, John V. Thurgar, William H. Scovil, John M. Robinson, and John Doherty, Esquires; S. D. Berton, Sec'y. and Treas.

#### EMIGRANT DEPARTMENT.

St. JOHN—Moses H. Perley, Esquire, Her Majesty's Emigration Officer; Thos. M'Avity, Esq. Assistant do. James Boyd, Esquire, Acting Emigration Officer at Saint Andrews. The Deputy Treasurers at the other Ports of the Province act as Emigration Officers.

#### CONSULS AND AGENTS.

Israel D. Andrews, Esq., United States Consul General for the British Colonies; Collins Whittaker, Esquire, United States Consul at the Port of Saint John and dependencies; *United States Consular Agents*—Thomas Jones Esquire, Saint Andrews; Francis Hibbard, St. George; James Porter, St. Stephens; William J. Frazer, Esquire, Miramichi; Charles S. Theal, Esquire, Shediac; Andrew Barbarie, Esquire, Dalhousie.

Edward Allison, Esquire, Portuguese Consul General for New Brunswick,

A. C. O. Trentowsky, Esquire, Prussian Consul in New Brunswick.

#### COUNSELLORS AND ATTORNIES PRACTISING IN THE PROVINCE.

*Fredericton*.—Hon. Charles Fisher, (*Attorney General*), Hon. John A. Street, Daniel L. Robinson, Wm. End, George J. Dibblee, William Hazen Needham, George F. H. Minchin, E. A. Clowes, George Botsford, Francis A. H. Straton, John C. Allen, George N. Segee, James P. Wetmore, James F. Berton, Edward H. Wilmot, Edward W. Miller, Bernard C. Friel, Henry B. Robinson, William W. Street, John S. Fraser, Edward B. Fisher, John L. Marsh, Jr., and James Taylor, Jr., Esquires.

*Saint John*.—Hon. William B. Kinnear, Robert F. Hazen, William Wright, Peter Stubs, Horatio Nelson H. Lugin, John M. Robinson, Moses H. Perley, Hon. Robert L. Hazen, John Johnson, James W. Boyd, Wm. Jack, Duncan Robertson, David S. Kerr, John H. Gray, James W. Peters, Robertson Bayard, Wm. R. M. Burtis, Edw. B. Peters, Chas. Duff, Jas. A. Harding, Gustavus R. Jarvis, James J. Kaye, Andrew R. Wetmore, George F. Rouse, William M. Howe, Chas. Doherty, Humphrey T. Gilbert, B. Boyd Kinnear, John G. Campbell, Charles A. Hart, Robert Parker, Junior, Nelson DeVeber, Richard Sands Armstrong, Charles Waters, George Blatch, Ward Chipman Drury, W. H. Hatheway, Henry W. Frith, Wm. Hutchinson, Benjamin L. Peters, Charles W. Stockton, George G. Gilbert, Junior, John Simonds, Samuel R. Thomson, Frederick C. Frith, Robert B. Street, Benjamin G. Gray, Lewis J. Almon, Charles W. Weldon, Alexander Bullentine, Hurd Peers, William P. Dole, Boverley Robinson, Junior, Thomas T. Hanford, and W. H. Turk, Esquires.

*Saint Andrews*.—Hon. Harris Hatch, Samuel H. Whitlock, Jas. W. Chandler, Richard M. Andrews, George Dixon Street, Wellington Hatch and Alexander Thompson Paul, Esqrs.

*Miramichi*.—Hon. John M. Johnson, (*Solicitor General*), Thomas H. Peters, George Kerr, Edward Williston, Allan A. Davidson.



Samuel Thomson, Peter Mitchell, Junior, William Wilkinson, and James Fraser, Esquires.

*Dorchester*.—Hon. Edward B. Chandler (*Queen's Counsel*), T. S. Sayre, Robert K. Gilbert, A. L. Palmer, Hon. Albert J. Smith, Chas. J. Sayre, and Joseph L. Moore.

*Sackville*.—Christopher Milner, Junior.

*Bend of Petitcodiac*.—Bliss Botsford, Jas. Steadman, and Edw. B. Chandler, Junior, Esquires.

*Bay Verte*.—Thomas C. Chapman, Esquire.

*Hopewell*.—Samuel G. Morse, Martin B. Palmer, and Thomas B. Moore, Esquires.

*Bathurst*.—T. DesBrisay, and D. G. Maclauchlan, Esquires.

*Dalhousie*.—Andrew Barberie, and Charles Simonds, Jr. Esqrs.

*Campbellton*.—Chipman Botsford, and Jas. S. Morse, Esquires.

*St. Stephens*.—George Stillman Hill, Stephen R. Hitchings, T. B. Abbott, George Thomson, James G. Stevens, George S. Grimmer, and George Frederick Hill, Esquires.

*Rickabucto*.—Hon. John W. Weldon, William Chandler, James A. James, Robert Hutchinson, and Thomas W. Bliss, Esquires.

*Saint George*.—Samuel G. Andrews, William B. Chandler, and Wellington Cameron, Esquires.

*Gagetown*.—T. R. Wetmore, Henry S. Peters, and Samuel H. Gilbert, Esquires.

*Kingston*.—Edward B. Smith, Esquire.

*Hampton*.—George Otty, and Norval Hullett, Esquires.

*Canning (Queen's County)*.—James R. Curry, Esquire.

*Sussex Vale*.—Theophilus D. McElmen, Esquire.

*Woodstock*.—A. K. Smedes Wetmore, A. Nelson Garden, David Lewis Dibblee, Lewis Peter Fisher, George Connell, Edwin J. Jacob, A. M., and John C. Winslow, Esquires.

*Grand Falls*.—Wm. T. Wilnot, Andrew W. Rainsford, and W. M. Maclauchlan, Esquires.

*Oromocto*.—George J. Bliss, Esquire.

*Burton*.—William J. Gilbert, Esquire.

## PROVINCIAL MILITIA.

### STAFF.

His Excellency Hon. JOHN HENRY THOMAS MANNERS SUTTON,  
Commander in Chief.

Lieutenant Colonel R. Hayne (N. B. Regiment of Artillery), Adjutant  
General—20th May, 1851.

Lieut. Colonel John Allen, Quarter Master General—4th May, 1830.

Lieutenant Colonel Charles Drury, Deputy Quarter Master General,  
18th June, 1847.

Lieutenant Colonel Hayne (N. B. Regiment of Artillery), Provincial  
Aid-de-Camp—11th April, 1848.

Lieutenant Colonel Charles Drury (Saint John City Light Infantry),  
Provincial Aid-de-Camp—11th April, 1848.

Major the Honorable Lemuel Allen Wilnot, Judge Advocate General—6th August, 1834.

Ma  
C  
Lie  
G  
Com  
deric  
Lien  
drew  
Ch  
Stew  
Co  
Dep  
missa  
R. H  
Ora  
nance  
Clerk  
man;  
Bar  
rack  
Wool  
geant.  
Roya  
Comm  
of Wo  
Doar  
E. T. B  
Esquire  
OFF  
Roya  
76th  
mandan  
76th  
mandan  
Actou.  
76th R

## STAFF OF THE ARMY.

SERVING IN THE PROVINCE OF NEW BRUNSWICK, UNDER  
Major General His Excellency Sir John Gaspard LeMARCHANT,  
Commanding Her Majesty's Troops in Nova Scotia, New Brun-  
swick, Prince Edward Island, and their Dependencies.

Lieutenant Colonel Lloyd, 76th Regiment, Commanding Her Ma-  
jesty's Troops in New Brunswick.

*Garrisons.*—Saint John, Lieut. Col. R. C. Lloyd, 76th Regiment,  
Commandant; Town Major, Lieut. Jones, (H. P. 97th Regt.), Fre-  
dericton, Lieut. Col. G. F. C. Scott, 76th Regiment, Commandant;  
Lieut. G. Wedderburne, 76th Regiment, Town Adjutant; Saint An-  
drews, \_\_\_\_\_, Commandant

*Chaplains.*—Fredericton, Rev. Mr. Coster; St. John, Rev. A.  
Stewart; Saint Andrews, Rev. Jerome Alley, D. D.

*Commissariat Department.*—Saint John, H. W. W. Plant, Esq.,  
Deputy Assistant Commissary General; U. C. Poultney, Com-  
missariat Issuer; Henry Marshall, Office Keeper, Fredericton,  
\_\_\_\_\_ Turnbull, Commissariat Clerk; \_\_\_\_\_ Smith, Treasury Clerk;  
R. Hudson, Commissariat Issuer.

*Ordnance Department.*—Frederick C. Frith, Esquire, Deputy Ord-  
nance Storekeeper; Lieut. Samuel Huyghue (H. P. 60th Regt.), First  
Clerk; Robert Pickthall, Second Clerk; James Emison, Storehouse-  
man; Fred. Harrison, Armourer; William Smith, Office Keeper.

*Barrack Department.*—Saint John, George Priestley, Esquire, Bar-  
rack Master; James Sage, Barrack Sergeant; Fredericton, John E.  
Woolfords, Esquire, Barrack Master; John Edwards, Barrack Ser-  
geant. Saint Andrews, A. White, Barrack Sergeant.

*Royal Engineer Department.*—Saint John, Lieut. Col. E. T. Ford,  
Commanding; Edward Lloyd, Clerk; \_\_\_\_\_, Overseer  
of Works. Fredericton, James Coughlan, Clerk of Works.

*Board of Respective Officers.*—Saint John (O. D.)—Lieut. Colonel  
E. T. Ford, R. E., Lieutenant Smart, R. A., and Frederick C. Frith,  
Esquire, Deputy Ordnance Storekeeper.

---

### OFFICERS OF CORPS SERVING IN THE PROVINCE.

*Royal Artillery.* Saint John, Lieutenant Smart, Commanding.

76th Regiment, Fredericton, Lieut. Col. George F. C. Scott, Com-  
manding; Lieut. G. Wedderburn, Ensign G. H. Best.

76th Regiment, Saint John, Lieut. Colonel R. C. Lloyd, Com-  
mandant; Captain T. W. Cator; Ensigns J. Vincent, and E. W. F.  
Acton.

76th Regiment, Saint Andrews, \_\_\_\_\_, Commandant.

## AGRICULTURAL.

**CULTIVATION OF CORN.**—I shall learn to be more explicit in my inquiries hereafter. The method of planting corn, pursued here, is this: The ground after being plowed and harrowed, is marked into four feet squares by two men crossing the field, lengthwise, and then at right angles to that, with a long pole to which are attached four heavy ox-chains, four feet apart. Men then proceed with hoes and hole it where these lines cross each other. They are followed by a load of manure, which is thrown by the handful into each hole; boys then drop five kernels of corn in each hill, which is then covered by the hoes of those who follow them. This method is so slow that last season the corn on one side of a 19 acre lot was up and ready to plow when they had finished planting the other side.

**DECOMPOSITION OF SOILS.**—Query. Do green crops when buried in the soil, undergo such a fermentation (*acetous?*) as to decompose certain portions of the soil, and thereby render them available for the food of crops?

In my native country (England,) a poor man once had all the mould of his garden carried off for the purpose of manuring poorer land, and had nothing left in it but the strong clay subsoil. He tried an experiment, which was to thoroughly dig through his garden every week to the depth of about fifteen inches, during several weeks. He afterwards sowed his garden seeds without manure, and never had a finer crop.

Again—near to where I lived was a small tract of country, about the poorest that I ever saw; the subsoil was sparry, pebbles and sand of the same nature. This was used to a considerable extent for macadamizing roads, garden walks, &c. It was reckoned to be no better than poison to be laid on fertile lands, yet a person having carried some to a considerable distance to lay a garden walk on a soil of a very different nature, soft slate mixed with clay, obtained the finest grass where the gravel was laid that he ever had on his farm.

**SOUND ADVICE.**—A word in the ear of the young farmer, especially on sandy soil. Keep as much stock of cattle, sheep, hogs, and poultry, as you can, and convert as much as possible of the crops into animal substance—save all the manure and offal, feed the land with it, and you will soon find that the more stock you keep the more you may keep.

**THERE** are few things in which farmers in general exhibit such gross waste and want of forethought, as in their treatment of their woodlands. Dependent as the great majority must always be for fuel; diminishing rapidly as they must be in our climate annually; a large proportion timbered with trees that do not readily shoot up, and will not grow again without some protection; we still see the noble trees of our original forests as carelessly and uselessly felled as though they were not the growth of centuries. Have you not some vacant spot in your orchard, or garden, some unplanted

road side, some place in your yard where a few trees might be planted to advantage? Look around and see if there is not room for some, or perhaps many, of the kinds useful for timber, or their fruit, or ornamental purposes. You may have attended to this matter last spring, but the chances are that you will on examination, find room for more trees. If so, November is a very good time to supply the deficiency; not so good, perhaps, as the spring would have been, but too good to be allowed to pass without improvement. Trees may be transplanted at any time after the growth of the season is over, with perfect safety, and they may be removed at any time if the fine roots are undisturbed, and during removal retain their hold on the earth.

**TO KEEP BUGS FROM VINES.**—Take the feathers from a hen's wing, and dip them in spirits of turpentine, and stick one or two in a hill, and after every shower they will want to be dipped over again.

**CARE OF HORSES, &c.**—Is not the practice of going to supper and leaving a team meanwhile in the field, without any refreshment, both cruel and injurious? Should a horse or ox ever be worked more than five hours at a stretch? Does not colic very frequently take place from long fasting and the greedy stuffing which is apt to follow it? Has not the death of some animals been owing to long fasting and its usual concomitants?

**THE USE OF LEAVES.**—The office and utility of leaves are becoming better understood by cultivators than formerly; yet we find a good many still adhering to the old belief that the sun's rays, directly shining on forming fruit, are what perfect it, independently of other influences.

On this subject, theory and practice have been invariably found in perfect accordance with each other. The principles of physiology teach us that the sap of a tree, when it passes in at the roots, remains nearly unchanged in its upward progress through stem and branches, until it reaches the LEAVES, where, being spread out in those thin organs, to light and air, it undergoes a complete change, and thus becomes suited to the formation of new wood and new fruit. Strip a rapidly growing tree of its leaves at midsummer, and from that moment the supply of new wood ceases, and it will grow no more till new leaves are formed; and if it have young fruit, the growth and maturity of the latter will cease in the same way. A few years since, a Yellow Gage plum tree lost all its foliage from leaf blight, when the plums were not fully grown, and while yet destitute of flavor. The fruit remained stationary and unaltered, until, in a few weeks, a second crop of leaves came out. They then swelled to full size, received their crimson dots, and assumed their honied sweetness of flavour.

**CULTIVATING FRUIT.**—Why is not fruit cultivated more extensively? If a person will take this question, and in travelling through the country, put it to every man he meets, he will receive a different answer from almost every one. Some will say they have

not room, time or means; others, that they are too old to receive any benefit from it, or that the market for fruit will soon be glutted, and with a wise look they will tell you "that *they* don't mean to get *their* fingers burnt in *that* way." All these various answers serve only as mere shadows, to screen men's indolence and utter thoughtlessness upon this subject; for were they to give it a candid investigation they would be ashamed to utter them.

It is a fact that cannot be denied, that the cultivation of fruit is one of the most profitable, sure, healthy, and noble employments in which mankind can engage. It is profitable, because its returns are large, when compared with most other agricultural pursuits, considering the land occupied and the labor employed; and the profits are sure, because the demand increases faster than the supply. It is healthy, because it gives exercise to the muscles and mind, without over-taxing either, and because good ripe fruit is the healthiest food human beings can eat. It is noble, because it is the employment, the first employment, ordained by God for man, and therefore the most congenial to his nature.

But let us look at the subject in a practical light for a moment. There are thousands of farms that are well adapted to the raising of fruit, and many of them have been cultivated by two or three generations, without there ever having been one dollar expended or one day's work employed for the improvement of fruit; and the wild grape vine that grows by the side of the brook or river, or climbs to some tree or stone pile and covers their unsightliness with its beautiful verdure, is only tolerated because it is out of the way. The berry bushes that spring up here and there in out-of-the-way places, are hunted and destroyed as if they were so many wolves. Even the apple tree that springs up by chance in the field, is trimmed to mere poles, *to prevent its shading the ground*. Indeed I have seen large orchards trimmed to mere poles, with a little tuft of twigs on the end, perhaps twenty feet from the ground, for this avowed purpose. This is all the result of ignorance. Be assured these men do not read the COUNTRY GENTLEMAN—in fact they seldom read anything. Many people because they are not posted up in all the details of fruit-raising, think that the whole subject is entirely beyond their comprehension. Now this is a mistake; and any man that knows enough to raise a good crop of corn, can raise good fruit; in fact the most that is wanted, is to know enough to follow or imitate nature.

Plant trees or shrubs as nearly as possible as they grew; give them good rich soil, and keep down the weeds, and depend upon it they will grow.

**How to MILK A KICKING Cow.**—It is merely to place the patient in a stall with a beam over head, and fixing a running noose over her horns, throw the end of the rope over the beam, and pull away, so as to raise her head pretty high in the air, but not so as to lift her legs from the ground; in this position she will not only be disabled from kicking, but will give down her milk without the least hesitation.

## MISCELLANEOUS.

**MATTERS IN THE MOON.**—What a curious almanack these good people in the moon would have! There, days are as long as years, and day and year are equal to our months, twenty-nine days, twelve hours and forty-five minutes. The seasons differ but very little from each other. On the equator there reigns eternal summer, for the sun is ever in the zenith; the poles are buried in eternal winter. The days are of equal length throughout the year, all days equally light, all nights equally dark. The absence of an atmosphere deprives the moon of the sweet charms of a twilight, and glaring day would follow gloomy night with the rapidity of lightning, if the slow rising and setting of the sun did not slightly break the suddenness of the transition. Human eyes, however, could not bear the fierce contrasts of light and shadow; they would long in vain for the soft intervals between the two extremes, the other colors, which beautify our world with their joyous variety and soft harmony. The sky there is not blue, but even in daytime black, and by the side of the dazzling sun the stars claim their place and light in the heavens. Near the poles the mountain tops shine in unbroken splendour year after year, but the valleys know neither day or night, scantily lighted as they ever are by the faint glimmer reflected from the surrounding walls.

The side of the moon which is turned from us, has a night of nearly fifteen days; the stars only, and planets, shine on its ever dark sky. The side we see, on the contrary, knows no night; the earth lights it up with never ceasing earth shine, a light fourteen times stronger than that which we receive from the moon. We recognize our own light, lent to our friend, in the faint, grayish glimmer of that portion of the moon which before and after the new moon receives no light from the sun, but only from the earth, and reflects it back again upon us. Mornings in fall show it more brilliant than evenings in spring, because in autumn the continents of the earth with their stronger light illumine the moon, while in spring she only receives a fainter light from our oceans. Our orb appears to the Man in the Moon as changeable as his home to us, and he might speak of the first or last quarter of the earth, of new earth and full earth. The whole heaven moves before him once in 29 days around its axis; the sun and stars rise and set regularly once in the long day; but the vast orb of our earth is nearly immovable. All around is in slow, unceasing motion; the mild face of the earth alone, a gorgeous moon of immense magnitude, never sets nor rises, but remains ever fixed in the zenith. It there appears sixteen times larger than the moon to us, and daily exhibits its vast panorama of oceans, continents and islands. Bright lights and dark shadows are seen in, ever varied change, as land or water, clearings or forests appear, new with every cloud or fog, and different at different season. The Man in the Moon has thus not only his watch and his almanack daily before him in the ever-changing face of the earth, but he may, for all that we know, have maps of our globe which many a geographer would envy on account of their fullness and accuracy. Long before Columbus discovered America, and Cook New Holland, our

lunar neighbour knew most correctly the form and the outlines of the new continents. There was no new world for him, and there is none left. He could tell us the secrets of the interior of Africa, and reveal to us the fearful mysteries of the Polar Seas. But how he on his side must marvel at our vast fields of snow, our volcanoes and, tropical storms and tempests—he who knows neither fire, nor snow, nor clouds! What strange fables he may have invented to explain the shadows of our clouds as they chase each other over sea and land, and hide from him in an instant the sunlit landscape! And stranger still, on the side of the moon which is turned from the earth, he knows nothing at all about us, unless news reach him from the happier side. Or he may undertake—the great event in his life—a long and painful journey to the bright half of the globe, to stare at the wondrously brilliant earth star with its unread mysteries and marvellous changes of flitting lights and shadows. Who knows what earnest prayers may rise from the moon, full of thanks for the floods of light and heat we pour upon them, or of ardent wishes that their souls might hereafter be allowed to dwell in the bright homes of the beautiful earth star.

ADVICE FROM AN "OLD INHABITANT."—1. Patronise your own traders and mechanics. This is doing as you would be done by; and is building up the town you live in.

2. Pay your debts; so that others can pay theirs.
3. Quarrel with no man; and then no man will quarrel with you.
4. Do not steal your preaching; a man was once struck blind, you know, for stealing fire from heaven.
5. Send your children constantly to school; and look in now and then yourself to see what they are doing there.
6. Keep all neat and clean about your dwellings; for cleanliness, you know, is the handmaid of health, and a distant cousin of wealth.
7. Avoid scandal; for this is a pest to any community.
8. Be liberal in respect to every laudable public enterprise; for the good book says, "the liberal soul shall be made fat."
9. Empty your liquor bottles; for you have already "forked over" quite enough for them.
10. Visit the sick, the widow and the fatherless; for that is one part of that religion which is "pure and undefiled."
11. Keep your children from a night; for the evening air is bad for them, and finally,
12. Feed your *mind* as well as your body; for that, you know, must go into the scales at last.

N. B. These are not the twelve rules of President Jefferson; but they are much better than his, for there is more of the gospel in them. Please read them over again.

THE MORE you have to do, in a given time, the more time you will have left. Time is like an India-rubber bag—the more you crowd into it, the more it will hold.

**THE SECRET OF GOOD WRITING.**—The grand secret of good writing seems to be in this very simple maxim: Be sure you have an idea before you attempt to express it. If you clearly comprehend in your own mind what you wish to communicate, nature and reason, together with a little practice, will most certainly teach you how to say it in an appropriate manner.

A single idea is fully sufficient for one mind to manage at one time, And it may be added that if the idea is of much importance, it would be the most dignified by being honored with a private carriage.

Divide and conquer is as valuable a rule in literary as in military tactics. The more extensive the theme which the writer proposes to himself to discuss, the less, usually, he has to say upon it. Some subjects can be mastered with ease only by descending from generals to particulars, and treating of the subjects in their individual parts.

There is nothing more popular, especially with young writers, than brilliancy of style. This manner of writing is certainly excellent in its proper place, but there are many topics which do not require this quality, and many are much injured by it. The language of every dissertation should be that which is best calculated to express the thoughts in the happiest manner.

As the ray of the sun will not enkindle a blaze unless brought to a focus, so the thoughts of the writer will not set the hearts of his readers on fire, unless all are made to converge to a single point.

Some writers seem unable to express themselves in a cool rational manner on any subject. With them every virtue is God-like, every fault villainy, every breeze a tempest, every molehill a mountain. They appear to think their manner of writing is sublimity; but their judicious readers (if they have any such) call it tragedy and absurdity.

The design of language gives expression to thought—that style of writing, therefore, must necessarily be the best which most perfectly conveys to the reader's mind what the writer intended he should understand.—*Gathe.*

**AMUSING MISCONCEPTION.**—Home, the author of *Douglas*, one day entertained at lunch the *Lady Randolph* of his play, the celebrated *Mrs. Siddons*. She was asked at table what beverage she would take, and replied, "A little porter." Ringing the bell—"Bring a little porter for *Mrs. Siddons*," said the reverend dramatist to his servant. The servant returned in a few minutes, bringing in from the street the least of the Gaelic porters he could find on the stand. *Mrs. Siddons* was convulsed with laughter—just as *Faulkner*, of the *Durham Circuit*, was, when, between two acts, running about the stage after he had been slain as *Holla*, he roared to the property man, "Where's the bier?" and a little urchin answered, "Here, sir!" thrusting in his face "a gill of ale," which he had been intrusted to take behind the scenes from the *Green Dragon*.



**WASTE—WASTE—WASTE.**—What is there a man cannot waste? and that, too, without a single instance of lavish profligacy; but solely by those minute, scarcely perceptible squanderings, which, like the constant dropping of water upon the rock, wear away that which seems most likely to endure. He may waste his health by little indulgences of pernicious habits—by constant irregularities, slight in themselves, and their effects in single instances scarcely perceptible, but which, as violations of the laws of his being, will work gradual, but certain inroads upon the strongest constitution, until the energies decay, the fountains of life are dried up, and premature old age sinks like a crown of thorns upon the head of early manhood. He may waste fortune in early squanderings—time and talents on trifles, or in listlessness and idleness. How many a giant has been frittered away in pursuit of the benefitting objects of low ambition! How often do we see powers perishing for lack of thought—shrivelling into insignificance for want of intelligence to feed upon, which use might have polished to the highest brilliancy, and exercise would have made equal to achieving the noblest purposes! How many scatter, in idleness, or indifference to their value, the little minute particles of time, till golden hours, and days and years are wasted, the treasures of life all scattered, and death finds nothing but a poor naked and useless thing at the last.

**ANECDOTES OF LORD NORTH.**—This good humoured minister was always ready with a joke, and always appreciated one, even though it was at his expense. One night he rose to deprecate the too great readiness to give and take offence which prevailed in the house. "One member, for example," said he, "called me 'that thing called a minister.' Now to be sure (patting his portly sides) I am a thing; when, therefore, the gentleman called me a 'thing' he said what was true, and I could not be angry with him. But when he added, 'that thing called a minister,' he called me the thing which of all others he himself most wishes to be; and, therefore, I took it for a compliment." A prosing old sailor, well known for his lengthy orations, began to speak on an admiralty question. Lord North said to one of his supporters, "Now — will give us a history of all the naval battles, from that of Salamis to that of last year. I shall take a nap; wake me when he gets near our own time. After an hour's infliction the friend nudged Lord North. My lord, my lord, wake up—he has got to the battle of Van Tromp." "Oh dear," said the sleepy minister, "you've waked me a *hundred years too soon!*" On his last night in office his antagonists had collected for a grand battle: Lord North rose in his place and declared the Administration at an end. Of course the house adjourned immediately. It was an awful wet night, and in those days cabs were not; the members, expecting a long debate, had ordered their carriage at 1 or 2 o'clock in the morning; and Lord North, as he passed through the baffled and imprisoned crowd of his opponents to his own chariot, bowed to the right and left, saying, with a smile, "Adieu, gentlemen; you see it is an excellent thing to be in the secret."

Con  
nister  
sons.  
hundr  
three  
self, w  
among  
kill m

A N  
last ni  
de turk  
key, d  
got so  
turkey

A C  
me?"  
replied  
posed t

CONV  
vince a

WHIT  
asked a  
boat an  
b'long t  
in the c  
know wh

PATIE  
practise  
in his s  
by his r  
Ma, said  
heaven,  
Why, g  
Well, ju  
say, W  
go to he

FLINT  
drinkin  
joined t  
wiser th  
ing: W  
once?  
English  
before y  
me, sir,  
your be  
color?  
Welshm  
much m

**CONSCIENTIOUS.**—A congregation raised the salary of their minister from \$300 to \$400. The good man objected, for three reasons. First, said he, you cannot afford to give more than three hundred; secondly, because my preaching is not worth more than three hundred; thirdly, because I have to collect the salary myself, which heretofore has been the hardest part of my labours among you, and had I to collect an additional hundred it would kill me.

**A NICE QUESTION.**—*Sam*—You'll get it for hooking dat turkey last night. *Mas'r* knows it. *Pompey*—I did'n't hook it. War'nt de turkey *mas'r's*? Well. Ain't I *mas'r's*? Well, I eat de turkey, did'nt I? Well. Ain't de turkey part o' me? *Mas'r* ain't got so much turkey, but ain't he got more nigger? I tell you de turkey only changed places.

**A CANDID LAWYER.**—"Do you think I will get justice done me?" said a culprit to his counsel. "I don't think you will," replied the other, "for I see two men on the jury who are opposed to hanging.

CONVINCE a wise man of his error, and he will thank you; convince a fool and he will insult you.

**WHITE MAN VERY UNSARTIN.**—Boy, who do you belong to? asked a gentleman the other day as he stepped on board of a steamboat and saw a darkey listlessly leaning on the guards. I did b'long to Massa William, Sir, when I came aboard, but he's been in the cabin playing poker wid de captain 'bove an hour; *I don't know who I belong to now.*

**PATIENCE.**—A parson who could better preach of patience than practise it, was always irritated when he found his grandchildren in his study. One day one of those little children was standing by his mother's side, and she was speaking to him of heaven. Ma, said he, I don't want to go to heaven. Don't want to go to heaven, my son! No, ma, I'm sure I don't. Why not, my son? Why, grandpa will be there, won't he? Why, yes, I hope he will. Well, just as soon as he sees us, he will come scolding along, and say, *Whew, whew! what are these boys here for?* I don't want to go to heaven, if grandpa is going to be there.

**FLINT AND CHESTER.**—Several merry farmers of Chester were drinking at an inn, in Chester, when a Welshman from Flintshire joined them. One of the Cheshire fraternity, supposing himself wiser than ordinary, commenced teasing the poor Welshman, saying: Why are you Welsh folk allowed to speak *twice*, and *we* only *once*? O, quoth the Welshman, the reason is quite plain—you Englishmen are such *blockheads* that you must be spoken to *twice* before you will understand. The Welshman proceeded, permit me, sir, now to ask you one question. What is the reason that your beard is *white*, when your *hair* has preserved its original color? The sage acknowledged his ignorance. Well, said the Welshman, the reason is, that your *chinbone* has been *exercised much more than your brains.*

LAY by a good store of patience, but be sure and put it where you can find it.

REPROOF.—I can't find bread for my family, said a lazy fellow in company. Nor I, replied an industrious miller—I am obliged to work for it.

PUNCH'S DUST CART.—Some persons take more trouble in looking for pins than they would for stars.

There are two bores in Society—the man who knows too much, and the man who knows too little.

An Annuity too long Deferred maketh the heart sick.

Travelling, now-a-days, consists of living on railways, and sleeping at hotels.

The oddest Husbandry we know is when a man in clover marries a woman in weeds.

Remorse is the tight boot that pinches the sole.

The bread of Repentance we eat is in many instances made of the wild oats we sow in our youth.

CHURNING.—In churning butter, if small granules of butter appear which do not "gather," throw in a lump of butter, and it will form a nucleus, and the butter will "come."

TO REMOVE RUST FROM KNIVES, &c.—Cover the knives with sweet oil well rubbed on, and after two days, take a lump of fresh lime, and rub till all the rust disappears. It forms a sort of soap with the oil, which carries off all the rust.

GLOSS ON LINEN.—To restore the gloss commonly observed on newly purchased collars and shirt bosoms, add a spoonful of gum-arabic water to a pint of the starch as usually made for this purpose. Two-ounces of clear gum-arabic may be dissolved in a pint of water, and after standing over night, may be racked off, and kept in a bottle ready for use.

AN INGENIOUS INVENTION.—An inventive genius, desirous of promoting the domestic rearing of hens, has invented a contrivance to keep them from scratching up the garden. It is a small instrument, somewhat resembling a very long spur, attached to the hind part of a hen's leg. The instrument is so arranged, that when the hen is about to scratch the earth, the spur catches in the ground before her foot has fairly descended, and obliges her to bring her foot down quietly and harmlessly a little in front of the place which she aimed at. The hen thereupon tries the other foot, with a like result. She keeps on trying, and before she is aware of it, the machine has *walked her right out of the garden!* This will be just the thing when the "hen fever" returns.

TO PREVENT BOTS IN HORSES.—A person of much experience in veterinary science is never troubled with this disease in his horses. His simple practice during the fall months is, to keep a greasy cloth in the stable, and once a week rub with it such parts of the animal as may have been attacked by the nit-fly. Grease destroys and prevents the eggs from hatching.

GOLDEN FLEECE,

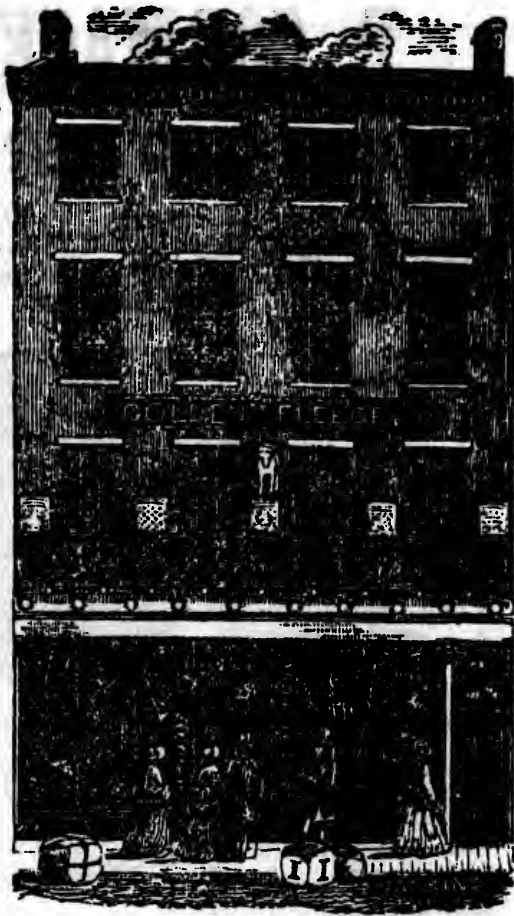
THE C  
and wel

ever im

G. & I.  
Departm  
rangeme  
every ma  
with all  
time be

where  
ellow  
bliged  
look-  
much,  
s, and  
r mar-  
ade of  
ter ap-  
and it  
s with  
of fresh  
of soap  
ved on  
f gum-  
is pur-  
a pint  
ff, and  
ous of  
ontriv-  
small  
hed to  
ed, that  
hes in  
es her  
front of  
e other  
she is  
arden!  
ence in  
horses,  
greasy  
of the  
ee de-

**GOLDEN FLEECE,**  
**PRINCE WILLIAM STREET,**



**SAINT JOHN, NEW BRUNSWICK.**

**T**HE Proprietors of the above Establishment invite the Citizens and the Public generally, to visit their large and well furnished Departments, where they will find exhibited the most extensive Stock of

**DRY GOODS,**

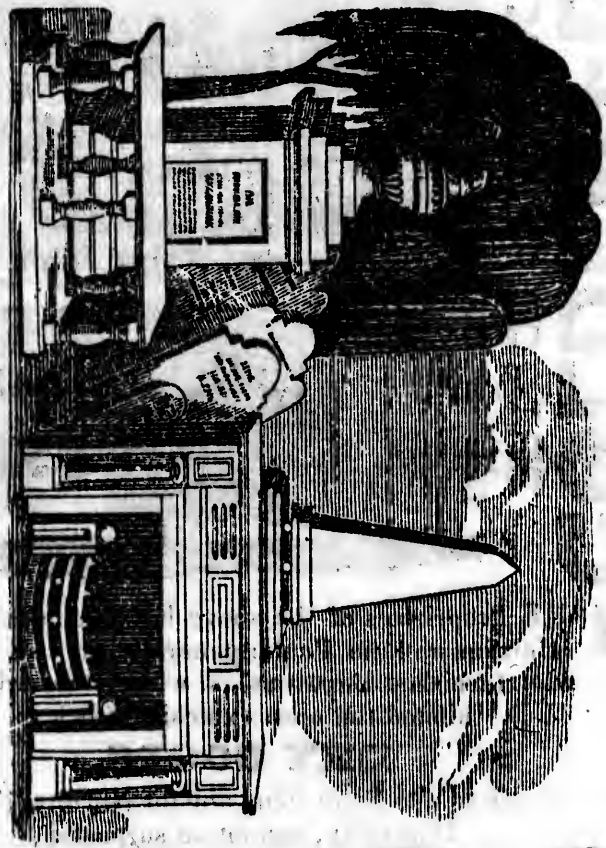
ever imported into Saint John, and for Novelty, Fashion and Durability, cannot be surpassed,

G. & I. would beg to add that in order to keep their several Departments always properly assorted, they have made arrangements in the British and other Markets, to be supplied *every month* with such Goods as may be required, and also with all the **NEW MATERIALS**, which may from time to time be produced.

**GILCHRIST & INCHES.**

# P. CORMACK, STONE CUTTER, & C.

MARBLE MONUMENTS of all kinds, in MARBLE, GRANITE and FREESTONE,  
 CHIMNEY PIECES and STONE CUTTING generally executed on  
 REASONABLE TERMS.



NEAR THE VALLEY CHURCH,  
 ST. JOHN, N. B.

& C.



RCH,

