

Historic, archived document

Do not assume content reflects current scientific knowledge, policies, or practices.

62.37 = 345 =

TOWNSEND'S 20TH CENTURY CATALOGUE



STRAWBERRIES
And How To Grow Them

E. W. Townsend & Sons
SALISBURY, MD.

THE PRINCIPLES of THIS BUSINESS

Are The Same Yesterday, Today & Tomorrow

WE are trying to conduct this business along absolutely fair lines, for two reasons: First--Because we believe in the principles of fairness. Second--Because it pays in dollars and cents. In the beginning we discovered that we must have the confidence of our customers or the business would not succeed. There was no way of meeting all of our customers face to face, of establishing confidence by personal contact, so the simple plan was adopted of gaining confidence by conducting our business so fairly that confidence would come to us by our acts. It was a fortunate policy, and we have stood by it for more than twenty-two years.

That we do hold the full confidence of our customers will be seen by the amount of un-solicited testimonials which we are reproducing from all sections of the country. These facts speak louder than any thing we could say.

We are but human, we have made mistakes. It would be impossible to run any business as large as this without making mistakes; but we have never made an error that we were not willing to correct. We again thank our customers who have stood by us from the very small beginning, and who have recommended us to their friends. To these we attribute a good share of our success.

MORE THAN 1000 FERTILE ACRES

Devoted to The Growing of Small Fruit Plants

A quarter of a century of square dealing, and growing the best plants that it is possible to grow in one of the most favored spot on earth has placed the Townsend Nursery in lead of all other small fruit plant concerns. More than 1000 fertile acres devoted to the growing of small fruit plants. Our satisfied customers are numbered by the thousands in nearly every strawberry section. Townsends' plants are known everywhere as the standard of quality.

PLANT CROP SHORT

Not in many years has the crop of small fruits plants been so short as this time. We have succeeded in growing the best quality plants this year that we have ever offered you, but we have less than one half the quantity. Notwithstanding this we have kept our prices down to the very lowest notch possible, and when the extra quality is considered we believe that we are offering you this time the best bargains we have ever done. Another word--the two new introductions in strawberries that we are offering for the first time, are in our honest opinion two of the best if not the very best varieties that was ever offered, namely: "The Prince" and "Lord Salisbury." Don't fail to try both of these, and don't fail to place your order early.

Thanking every one for the kind co-operation and wishing you a prosperous year.

I am, sincerely yours,

E. W. TOWNSEND, Pres. & Mgr.

Let Us Take A Little Trip Together Through This Book

And View The Grand Varieties Just As We Would
Do Were It Possible For Every One Of Our Good
Customers To Visit Our Plant Farms During The
Fruiting Season.

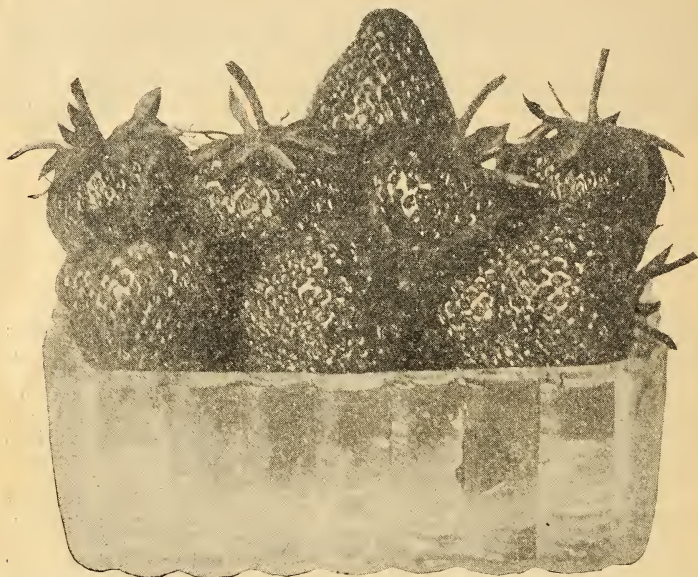
ALSO LET US STOP once in-a-while along the way and read the very kind letters that our good customers send us in appreciation of our services and our high grade plants.

First I want to tell you how the season has been with us. In many respects 1924 has not been the best for all crops. A cold, wet spring delayed planting which necessarily has caused a reduction in the acreage of spring set crops. We learn that this was the general condition over the larger part of the United States.

We harvested the largest crop of strawberries last spring that we ever did and received a fair price for them. Making the strawberry crop again our very best money crop.

As to our present crop of plants. When I tell you that we have the Best crop of plants that we have ever produced, I mean this in Quality and not Quantity. We have about 65 per cent of a crop of strawberry plants. Our acreage cut 25 per cent as stated above owing to the very late season. This cut in acreage gave us more time to spend on what we did plant. From the time our plants were set out until the present time which is October 1st, they have never stopped growing, and never needed for cultivation or plant food. Our plants are just thinly set in the beds, and finer, healthier plants will never be grown than our present stock. Despite this small crop in quantity we are holding our prices almost in line with last season when we made you the lowest prices we had been able to do in many years. This year we offer you considerable more in value for every dollar sent to us than we have ever been able to do before.

As we take up the different varieties in which we are listing, it is naturally supposed that I want to talk about my own favorites first. Most of them are also the choice of the great majority of my customers. Just a few we are introducing for the first time, but are well known to us and are each one sent out on our broad Guarantee that they prove on your own grounds as represented or your money back. We realize that there is no variety that does the best in all sections. If they did there would be much fewer varieties on our list. Many of the old time ones are carried just in order to please our customers in some sections where they have proved over a long time to be better than all others tried. I have always insisted on the trial plot of strawberries for every market gardener, and commercial grower. As it is in this way by testing out all the new creations in a small way that we are able to keep up with the procession in our line of industry. It will always pay you well for the small investment you make.



This is "THE NEW PRINCE". The leader of all extra early strawberries, large in size, great in quality. One of the greatest money makers.

~~X~~ "THE PRINCE"

The First variety of strawberries we come to is our New Creation "THE PRINCE." The prince has had six years of trial on our grounds and in twenty different states. I firmly believe that in the Prince, we have found the berry that is in the greatest need in the Strawberry world today.

The Prince will be found the Very Earliest berry to ripen in all sections and in all soils. Because it not only blooms early, but the Frost resistant habit of the bloom insures practically every early bloom that is made. Something more than any other Extra Early variety has ever had.

The Prince will be found to equal any other extra early berry in Size, Firmness, Quality, and Productiveness. Also in hardiness and strong growth of the plant on all soils. The color is a rich blood red thru to the center. No core or green tips. Berries average a uniform size throughout the season, which is a moderately short one compared with such varieties as the Premier. The Prince will be sure to take first place during the first two weeks of the Strawberry season, when it will give room for such good varieties as the Premier, and Lord Salisbury, which will be next in order on our list. In every section where an extra early good market variety is wanted I cheerfully recommend the Prince as a berry to fill that need. This applies to North, South, East and West.



A Basket of LORD SALISBURY Strawberries. The above photo was taken seven days after the berries were picked. One of the most promising varieties ever introduced.

LORD SALISBURY

Was originated in the corporate limits of the city of Salisbury, by which it derives its name. Lord Salisbury has been tested for two years and has probably attracted more attention than any other new variety ever introduced in this section. Everyone who has had the pleasure of seeing it in fruit has had nothing but the highest praise. Every Fruit Buyer who has seen it at the station has admired it for its brightness in color, uniform size, and firmness. Others who have seen it growing admire it for its wonderful productiveness, as well as its firmness, uniform size and the extra eating quality of which it has but few equals. The plant growth is ideal, making strong healthy medium large plants that hold the loads of the fruit well off the ground. The berries are of a round shape, every one seems to have been formed in the same mold, and which simply lay in piles around each plant. The writer has kept close tab on this variety since it was originated and was awarded the honor of being its Introducer by the Originator who happened to be one of our old time friends, Mr. J. H. Parsons, of this city.

An Unusual Test for Firmness.

During the season of 1924 an unusual test was given this variety for firmness. A quart of Lord Salisbury strawberries was placed in a refrigerator on Saturday afternoon. It remained in the Refrigerator until the following Wednesday. When it was taken out and set on a table in the air in which place it remained until



THE PREMIER (or Howard 17)

One of the Longest Season Varieties. The Greatest Money Maker and Probably the Most Popular of all Varieties.

Saturday following when it was taken to a photographer and the photograph made which appears on page 3. The appearance of the fruit had not changed enough during this most severe test so that any one could have told it from a freshly picked quart of berries. Any one knowing the effect of ice on strawberries in a refrigerator will marvel that this variety could stand such a test and show no decay.

We most heartily recommend Lord Salisbury to every one of our customers, for either Home use, Local market, Market gardeners, and Commercial Growers, on our Guarantee to be in every way as represented here. Season follows that of the Prince, being nearly as early as the Premier, which is the next on our list.

PREMIER

The Premier needs no introduction I am proud to say. For more than five years Premier has been considered in nearly all sections to be the greatest money maker on the list, and today holds the same record in its season, which is Medium Early, and continues over a long very long period. With the possible exception of the far South, Premier stands Supreme in Size, Productiveness, Hardiness and Quality. Six years ago the writer began to speak in high praise of this variety and offered it to every customer with



FORD, Like Its Namesake Has Become A UNIVERSAL VARIETY.
Never Fails To Please.

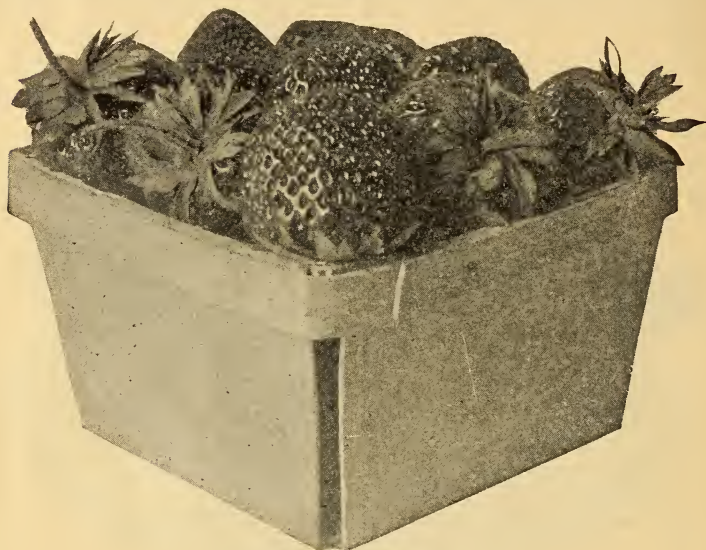
our Usual Guarantee on new varieties that it must be as we described it or we would refund all money invested in it. Never a cent was asked to be returned, and we sold nearly ten thousand orders in a single season of Premier plants. One very unfortunate thing happened in the introduction of this grand variety, and that was it came to be known under two names. That of Premier, and of Howard 17. But this however, did not keep it from going forward at a most rapid pace, and today it is known best by its first Name which was Premier.

Premier is a berry come to stay, and today is more largely planted than any other variety in the large strawberry sections except the South. I wish that I could show you our beautiful field of Premier plants that we have grown for you this time. Every one on new soil where strawberries were never grown before, and every plant will show the Townsend Quality which has been bred into it thru our system of up-breeding our stock.

† THE FORD

The Ford is a Townsend Introduction, and one in which we are proud of, having the honor to be the introducers. Ford has more than made good in every claim that we have ever made for it. It is a universal medium late strawberry. One in which we have seldom had a complaint notwithstanding that it has been planted in every State in the Union.

Ford begins to ripen ten days after Premier starts. Practically same in quality. It is hardy in plant growth, suitable for all soils and climates. Is one of the very best in eating quality as well as in appearance, firmness and productiveness. We have to increase



TOWNSEND'S BIG LATE (Imp.)

Is the leading standard late variety in most sections of the country. Leads all others in Quality.

our acreage in Ford plants every year or return hundreds of orders late in season. This year we have more than 3,000,000 Ford plants on our new soil. We hope to be able to fill every order sent to us. In ordering your Ford plants remember that there is another variety out under this name. Get your plants from Townsend's Nursery and you will get the Genuine Ford, which is the real Packard as one of our customers wrote. Next in order is the Ford's Mate—Townsend's Big Late.

TOWNSEND BIG LATE (Imp)

Big Late was Originated and Introduced by the Townsend Nursery (has been sold under many different names, which shows its popularity,) ten years ago. We introduced Big Late as the one best quality berry for every use and purpose. Big Late stands out today unchallenged as the Aristocrat of the late standard varieties. Big Late is a distinct variety, has imperfect bloom. The plants are strong and hardy, and is more upright in growth than any other variety we have grown. Fruit hangs from its strong upright plants like cherries. Berries are round top shaped just like every one was from a mould. Berries are bright shiny, showing a slick varnish gloss. No flavor was ever added to a strawberry more satisfying than in Big Late. In firmness it is all that can be asked for. In production it is great, and if there is a better one I have not seen it. Plant it with FORD first choice, or any good late (per) variety.



CRAWFORD No. 25. One of the largest and most productive varieties on our list.

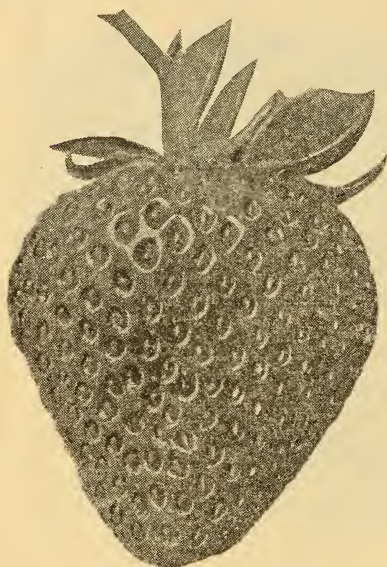
CRAWFORD 25 (Imp)

We introduced Crawford 25 the past season as being a most wonderful prolific extra large late berry. I do not believe any berry will produce more quarts of extra large fancy berries than Crawford 25. It is a strong hardy grower on most soils. Especially adapted for commercial purposes. For eight years we have grown this variety, securing this seedling from our old Friend, Matthew Crawford, of the State of Ohio. Last year we shipped it in small quantities to nearly every state, and feel sure that we shall receive good reports from it the coming season. Crawford 25 will be found extra hardy in bloom, and a sure yearly cropper. The season extends later than any variety we grow except Mascot. Last Season our price was \$5.00 per 100 plants. This year we have a fine large stock and the price is greatly reduced and in the reach of every one who is looking for a good extra late fancy variety.

Next we meet Mrs. Parker.

MRS. PARKER (Imp)

Mrs. Parker is another variety sent to us for testing from one of our old Ohio friends, Mr. M. Cassel. We have grown a small stock of plants and are offering it to those who are interested in a medium season variety of the large fancy type. Mrs. Parker will produce for you a large crop of extra fancy berries, of fine texture and quality. Good for home use and nearby markets. We find it of the Bubach type. But insist that it is a big improvement over our old Friend Bubach. Don't fail to try it at our very reasonable price.



DELICIOUS

Delicious in quality and a strong hardy grower

Ravena, N. Y.

Gents:—Have just received the last lot of plants. I want to thank you for your prompt attention, fine plants and generous count.

(Signed) Mrs. G. B. G.

Gents:—I received the plants you sent me in fine shape. Have 99 per cent stand and they are growing nice. You have received several orders from my neighbors who I have recommended you to.

(Signed) W. R. C.

Dear Sirs:—I am writing to say that I have never bought or grown such plants as the Premier, Ford and Dr. Burrill you sent to me. A pleased customer.

Fred Hallacker, Ohio.

Kissimmee, Fla.

E. W. T. & Sons.

Gents:—I enclose herewith check for \$60.00 in payment of the 15,000 Missionary ordered by wire. The plants that we are receiving from you are certainly high class plants, and I am looking forward to great results from them.

Some plants ordered from your Neighbor not nearly so good. They came heated and we lost most of them. Very truly yours.

F. A. N.

PEARL (Imp)

We purchased the Pearl from a Michigan grower who catalogued it as Perfect flowering. We find it to be imperfect in bloom, but in every other respect it more than lives up to the description. It is extra late, extra large in size. Good quality, firm, and sweet. A strong grower on all soils, and dapted to most climates. Not recommended to extreme south. We recommend that you plant some good late perfect flowering variety with Pearl, as it surely is Pistillate. You will find our price reasonable and we surely recommend it for trial.

DELICIOUS

Delicious is another Michigan introduction. A medium late variety. This is another variety that is becoming more and more popular in many sections. Delicious is very productive of medium to large dark colored berries of the Dunlap type. A strong rank plant maker on every soil. Fruit seems to be firmer than Dunlap. Other ways it is same quality. It is an ideal berry for Northern customers and Northern markets, and commands a good price. Delicious has been widely advertised at very high prices. We have them in quantities so we can offer them at very reasonable prices and guarantee our stock to be the very highest in quality. Following Delicious in season.

We have the Prize.

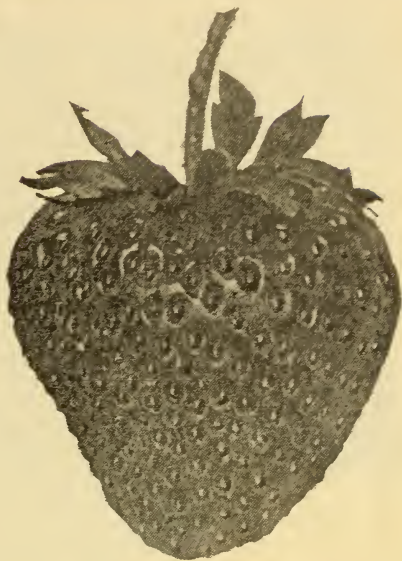
DO YOUR NEIGHBOR A KINDNESS

Townsend's Catalog, while never as large as some growers send out, is read every season and then filed for future reference by the leading berry growers of the world. It is in demand by the leading horticultural societies. The agricultural experiment stations apply for two copies at least every year. It is intended that this book shall contain nothing but facts, and to meet the need of every berry grower. Your neighbors would appreciate a copy if they are not already receiving same. It might be the means of starting them on the road to success, as it certainly has many a poor fellow. If you will send the names of your neighbors to me I will do the rest. A little deed of kindness, be it ever so little, has helped many a man to reach the goal. I thank you for your order, also the names of your friends.

Pittsford, Vt.

Dear Sirs:—Plants arrived yesterday in good condition. Thanks for fine plants and prompt attention.

(Signed) W. T. D.



MARVEL

A marvel in beauty and productiveness.

THE PRIZE (Imp)

The Prize was originated by the Kellogg Co., of Michigan, of whom we received our stock. We have found it to be an extra good late berry, and has pleased a great many of our customers. Though not nearly as much as Big Late. We recommend Prize be planted with Lupton Late, and think most growers will be pleased. Chesapeake or Ford will make good mates also. Recommended for Market purpose or where quality is not the main thing wanted. We have a fine stock of true to name Prize plants grown on light soil at reasonable prices.

Now we reach the Marvel, another Michigan favorite.

MARVEL

The Marvel is another Kellogg introduction, that is gaining in favor in many sections. It is truly a most wonderful productive variety if given proper restrictions. The fruit will be of good size and good quality, very firm and sweet. Will grow anywhere, and make a fine bed of plants even under neglect. We recommend narrow matted rows for best results. We have a fine stock of Townsends' new ground plants at reasonable prices. In passing Marvel, we come to another Northern Favorite—the COLLINS.



TOWNSEND'S MISSIONARY—The Leading Southern Commercial Variety.

THE COLLINS

"The King of Canners," introduced in 1915 by C. E. Whitten & Son. As a canner, Collins leads them all. Collins is of the Dunlap type, both in plants and fruit. It is firmer in texture, which makes it ideal for canning purpose. Fruits in abundance on any soil. Color dark red, firm and sweet. Size about equal to Dunlap. Some of our Southern customers are well pleased with Collins. Especially for home market and home use. In all canning sections it is planted largely.

TOWNSENDS MISSIONARY

The Missionary was introduced by the Townsend Nursery 1908. Our stock of plants was received from Norfolk County, Va. We sold one order the first season to a Mr. Harp, of Kathleen, Fla. The following season we sold more than 100 orders in that State. In 1908 we sold more than One Million plants in that state. And from 1906 until 1924 we have sold all together more than 75,000,000 Missionary plants to the Florida Growers. Missionary took the place of such varieties as Lady Thompson, Excelsior, Mitchells Early, and etc., and put Florida on the map as a Strawberry State. The Missionary is an early variety, especially adapted to the Southern States, but does well in all sections. It is moderately productive, large size, and very firm. A strong hardy grower. Since 1915 we have bred up our strain of Missionary plants to be nearly twice as productive as when they were first introduced. We grow every year a very large plot of select Missionary plants for those willing to pay the extra price and get the large select plants, which are the same as used in all our breeding fields for propagating the Millions of Townsends Missionary plants. We are always headquarters for the Missionary. Price of select plants \$2.00 per 1000 over the price charged for regular stock in list price.



COLLINS—KING OF THE CANNERS

And a leading commercial variety. See description page 10.

KLONDYKE

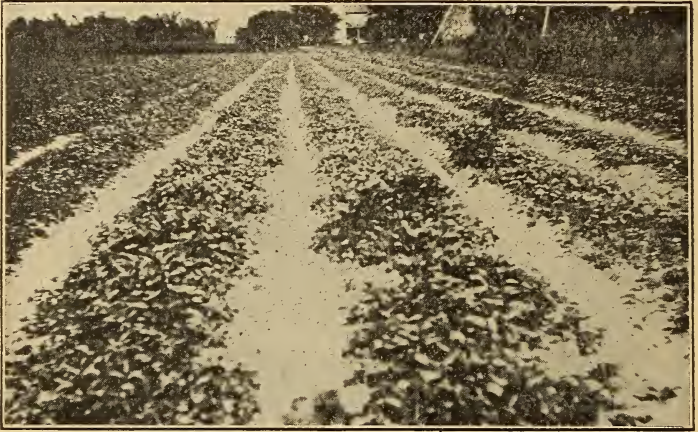
The Klondyke is more largely planted in some southern states than any other variety, and when Townsends Select Klondyke plants are used, it is still one of the most profitable berries for southern states, as it nearly always commands top market prices. Season a little later than Missionary. Fruit medium in size, dark red, firm and good quality.

HORSEY

The Horsey is a good extra early commercial variety, size large, fruit firm and good quality. Very productive. We recommend it for all purposes, and in all sections.

CORSICAN

The Corsican or New York, Uncle Jim, Ryckman, and etc. is a medium to late variety. Extra large size, especially adapted for home garden or local market. Very strong grower and seems to do well on most any soil. We have tried out all the above named varieties and found them all to be the same. So if you have one you do not need the others.



Townsend's Plants Growing in Conn. by Mr. Ralph B. Hill.

EARLY JERSEY GIANT

A perfect flowering variety that ripens medium early. Fruit large bright red firm and sweet, a strong hardy plant grower and very productive. Very popular with Jersey growers.

BUNS SPECIAL

A perfect flowering variety, fruit medium to large, bright shiny red very firm and good quality. A good strong plant maker. Fruited with us first time last season and we were very much pleased. We have a fine stock of plants direct from the originators.

DR. BURRILL

Perfect flowering, is said to be a scientific cross between Dunlap and Crescent by Dr. Reasoner, the Originator. We secured our plants from the Introducers, several years ago, and it was so much like Dunlap we could not see any difference. Some of our Customers claim there is a difference. So we sent and got another stock of Dr. Burrill plants, thinking there might have been some error in filling our order. We still cannot see any difference, but any of our customers wanting the Dr. Burrill in preference to the Dunlap, we have them in separate plots. Dr. Burrill or Dr. Dunlap, which ever you prefer to call it is a great money maker for the average grower in the Northern half of the country, and every home garden should have them for home use, as there is none better. We grow every year several millions of this variety on our rich new ground soil, and can supply you with any quantity of either Dr. Burrill or Dunlap at the right price. Season early to midseason. Fruit dark red to center, beautiful green calyx, moderately firm, and very productive.



The photo above shows Townsend's plants growing in the garden of Mr. and Mrs. Sanford Kinder, Carlyle, Ill.

HAVERLAND (Imp)

Season early to midseason, a very strong grower. Fruit medium to large, quality ordinary. Always can be depended upon to produce a good crop when set by the side of Dunlap.

ST. MARTIN (Per)

We fruited St. Martin last year for the first time and rather like it as a medium berry. Produced very fine berries on our farms of the Marshall type. Moderately productive, and a good grower.

WARFIELD (Imp)

This is one of the old favorite canning varieties. Season medium, a strong hardy sure cropper, fruit dark red to center and very firm. Size medium to large. Will pay big profits when grown with Dunlap.

SAMPLE (Imp)

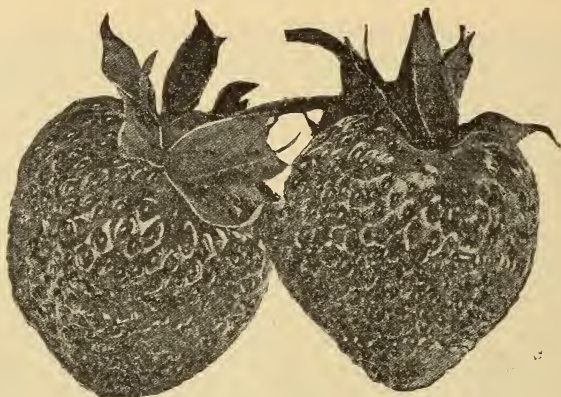
This is an old standard variety that ripens late in season. Fruit large, moderately firm, quality ordinary. A good strong grower, and very prolific.

FENDALL (Imp)

Fendall is a very late imperfect variety. A good strong hardy grower, and very popular in some sections. Can be depended upon to produce a good crop every year. Fruit extra large fancy, quality ordinary.

BRANDYWINE (Per)

Season late, a good reliable market variety. Fruit large, very firm, and good quality, and very productive.



BIG JOE—(Joe Johnson)

One of the biggest money makers on the list. Extra large and firm, exceedingly productive and good quality. Season medium to late. Don't fail to plant it.

✓ **WARDYKE (Imp)**

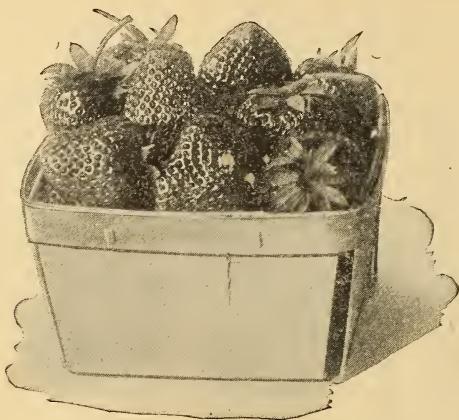
Wardyke was introduced by us the past season after fruiting it several years, we decided it should be put on the market. It was a scientific cross between Warfield and Klondyke. Does not make as many plants as the parents. Wherever a medium size berry like Klondyke is wanted for market purposes, we recommend Wardyke as one to fill the bill. We have grown it several years with the Klondyke in our fruiting fields, planting four rows Wardyke and two rows Klondyke. The fruit can not be told apart. The Warfield rows would yield at least double the amount of fruit, and often much more. Our Southern customers should each one give this variety a good trial. Will do well in the far south and on all soils.

AROMA (Per)

This is an old time favorite, and still popular with lots of growers and Associations in the Southwest. We find that such varieties as Ford, Big Joe, Lupton, Big Late, and etc., make us more money per acre, but Aroma is a good reliable variety on most soils.

BIG JOE (Per)

Is a medium to late large fancy berry. A strong hardy grower on all soils. Big Joe is one of the very first extra large berries to ripen following the early varieties. For this reason it is always profitable as it brings the highest market prices. We know of no variety that will produce more fruit per acre than Big Joe if the Frost does not get part of the blossoms. It is very easily killed by late frost. We have known years when Big Joe produced 20,000 quarts per acre. We seldom can grow enough Big Joe plants to fill our orders. This shows its popularity. This year we have an extra large supply of extra large new ground plants, the kind that will please. Prices reasonable.



PRES HARDING

Extra large, very late. Fine in quality, extra productive, good everywhere.

JUDITH

Delues Judith is a perfect flowering variety midseason. Strong plant maker and very productive of large firm good quality fruit, which will be sure to please you. Was originated in New York State and has very long pedigree, which we have not space to quote here. We do recommend it for trial to those wanting a fancy berry.

GLEN MARY (Per)

This is a midseason to late variety which has been on the market a long time. A strong hardy grower, fruit large and ordinary quality. Has been a favorite in N. J., Pa., and N. Y. state for years. Very productive and considered a reliable market variety in those sections.

PARSONS BEAUTY (Per)

Originated in Wicomico County, Md., several years ago, and has been used more for canning purposes than commercial. Fruit large and a heavy producer, but lacking shipping quality. One of the very prettiest plants growing.

PRESIDENT HARDING

We consider President Harding one of the best late berries of recent introduction. It is wonderful productive of large size good quality fruit. Is a deep blood red to center, has no core or green tips. We sold every plant last season except a very small lot reserved for our own planting, and only a small stock of plants this time to sell in 100 lots.



LUPTON—A leading late commercial variety for all sections. See page 19.

NIC OHMER (Per)

Medium late, most popular in the Western States. Size medium to large, firm and extra good quality.

HUNTERDON (Imp)

This variety was originated in New Jersey, is a big producer of extra large firm fruit, and a good strong grower. Some of our customers state they receive 2c to 4c per quart more for Hunterdon than any other variety in its season. We had a very fine crop of berries last year and were well pleased.

PAUL JONES (Imp)

This is a medium season variety, very productive, and a sure cropper; has never missed a crop in the several years we have been growing them. Fruit medium to large, bright red and firm. Recommended for commercial use.



BUSHEL BASKET—Extra large, firm and sweet.

BUSHEL BASKET (Per)

This variety hails from New York State. Is a very large showy berry, extra large plants and very productive. Recommended for local market. Size medium to large, and too irregular in shape for a good commercial variety, although it is firm enough to ship well. Has a very slender long neck, leaving the Calyx when fully ripe.

CHESAPEAKE (Per)

Chesapeake is about as well known at this time as any late berry on the market, and needs no description. It is one of our highest quality berries for either home use or market. Is a very profitable variety when the soil suits it. Does not make very many plants on ordinary soil. Needs good rich garden soil that does not dry out quickly. Many of our customers never fail to buy Chesapeake of us and always grow a good size crop of plants and seldom have very many left. This season we have an exceptionally fine stock on new land and price is low for this variety.



SENATOR DUNLAP—"The Old Reliable". Millions of high grade plants at reasonable prices.

GANDY (Per)

One of the old late sorts which is well known on all markets as one of the best commercial sorts. Not very productive, but a good strong plant maker on its favorite soil which is low springy soil. Fine for home canning and preserving.

LUPTON (Per)

Also known as Lupton Late. This is a favorite in a great many sections, and is fast gaining in favor here in this state. Hearty grower of large strong plants, and extra large beautiful formed berries, which color all over. One of the finest berries on the list. Will produce a good paying crop on just ordinary soil. We recommend it as a commercial variety in place of Aroma or Gandy, as we believe it will make you more money.

MASCOT (Per)

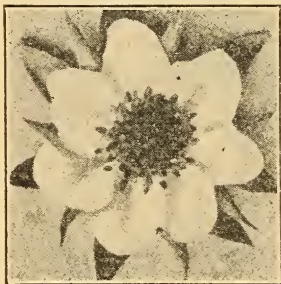
A mascot is usually a runt or a freak of some description; but this is certainly not the case with the Mascot strawberry, for it is almost in a class by itself when it comes to size and beauty. Season very late, and never fails to produce a crop of the largest size good colored and good quality fruit. No berry later on our list, or any that we know of.

WM. BELT (Per)

The Belt is known in a great many sections as the berry of quality in which many varieties are compared with as to quality. We consider it an ideal berry for home use owing to its extra good quality. It is also very productive and a good money maker as a Commercial crop.

WORLDS WONDER (Per)

For many years Worlds Wonder has gone unchallenged as the largest berry in the world. Eight years to be exact. We offered \$10 in gold for a plant that would produce as large a berry as the Worlds Wonder. We have never had to pay. Berries often measures six and seven inches around, and we have received letters stating much larger than this, and have seen seven berries fill a quart cup piling full. It is not only extra large in size but wonderful productive. Plants large and hold these extra large berries well off the ground. Berries bright red, firm and sweet. It is entirely too large for commercial purpose, unless one has a trade for such fruit.



The cut above shows a Perfect or bisexual strawberry blossom.

Southington, Conn., May 12, 1924.

Plants all received in fine order. Never lost a plant out of the 4000. Your plants are all you claim for them. And even more. I am always willing to recommend Townsends plants as the BEST. Thanking you for prompt attention to all my orders.

(Signed) J. Lutz.

So. Lancaster, Pa. May 14, 1924.

Plants arrived OK. Am well pleased with them. Can you ship me 5000 more on receipt of order.

(Signed) C. S. Mumm.

Sanborntown, N. H., May 6, 1924.

Plants all arrived yesterday all fine and Dandy. Many thanks.

(Signed) Fred E. Clow.

Venice, O., May 8th, 1924.

Received my plants in good order. Never saw finer and never received such good measure. When I need more will order from you.

(Signed) T. Watteraux.

Richmond, Va., May 8th, 1924.

I received both lots strawberry plants in fine shape and they are fine plants.

(Signed) W. A. Clark.

Gastonbury, Conn., May 9th, 1924.

Strawberry plants came O.K. and I thank you for the promptness in delivery and extra fine plants

(Signed) F. Bantele.



The cut above shows an Imperfect or pistillate strawberry blossom.

NUMBER OF PLANTS REQUIRED TO SET AN ACRE AT A GIVEN DISTANCE APART.

Rows 24 inches apart	plants 12 inch in row	20,000
Rows 30 inches apart	plants 12 inch in row	17,000
Rows 36 inches apart	plants 12 inch in row	14,000
Rows 42 inches apart	plants 12 inch in row	12,000
Rows 36 inches apart	plants 18 inch in row	9,500
Rows 42 inches apart	plants 18 inch in row	8,000
Rows 48 inches apart	plants 18 inch in row	7,000
Rows 48 inches apart	plants 24 inch in row	6,000
Rows 48 inches apart	plants 18 inch in row	5,000
Rows 24 inches apart	plants 24 inch in row	11,000
Rows 30 inches apart	plants 30 inch in row	7,000

For hill culture rows should be either 24 inches, or 30 inches or 36 inches and plants set 12 inch in the row.

For matted row system rows should be either 42 inches or 48 inches and plants set 18 inch to 24 inch in row.

PARCEL POST RATES ON STRAWBERRY PLANTS

Zone 1 and 2—Figure	8c per 100 plants.
Zone 3—Figure	10c per 100 plants.
Zone 4—Figure	15c per 100 plants.
Zone 5—Figure	20c per 100 plants.
Zone 6—Figure	25c per 100 plants.
Zone 7—Figure	30c per 100 plants.
Zone 8—Figure	35c per 100 plants.

This table has been very carefully prepared and after filling hundreds of thousands of orders, and we believe it to be as correct as it is possible to get it. Plants do not all weigh the same when packed for shipment and no table could prove correct. We do not try to adjust small differences in postage. This rate will apply to all orders received to go by parcel post prepaid, and when not sufficient postage is remitted as per table above we will send plants C. O. D. postage, and return whatever amount you have sent us for postage.

3c will insure your order up to \$ 5.00.

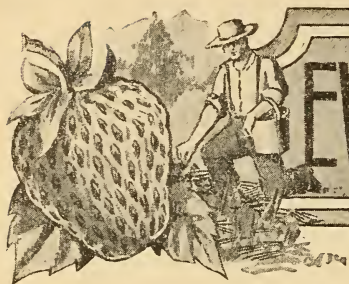
5c will insure your order up to \$10.00.

We use light ventilated crates and patented mailing cartons in shipping parcel post.

More Praise For The Dr. Burrill

MR. GEO. WELCH, of Ind., writes he made a profit of \$1,815.00 per acre from Dr. Burrill on very poor soil.

MR. JOHN H. PALTZ, of Mass., says Dr. Burrill was my best berry the past season, netting me more than \$2,100.00 off three quarters of an acre.



EVERBEARING S

THE BIG QUICK

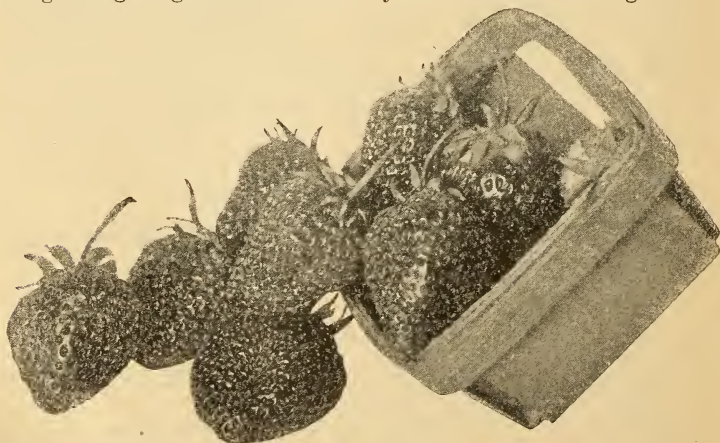
"THE WORLDS CHAMPION"

Everbearing Strawberry

Champion—Is fast becoming the leader in everbearing strawberries because of its large crops of fine delicious berries that ripen from early summer until December, not in spasms, but in large quantities every week for five months the first year plants are set. Berries are of the same extra quality as Progressive, but a great deal larger and much more productive. We have sent it out north, south, east and west, and nothing but good reports have come back.

Mrs. Parker, of New York State writes:- August 25th, have picked 500 quarts of fine berries from the 1000 Worlds Champion plants sent to us last April, and have hardly commenced as they are hanging with blooms, green and ripe berries, never saw anything like it before, getting 25c per pint basket all we can get.

Mr. Franklin, of Pennsylvania, writes:- August 15th. We have been growing Progressive for several years and have made big mon-



WORLDS CHAMPION EVERBEARING STRAWBERRY

STRAWBERRIES



HONEY CROP—Fruits First Year Plants Are Set.

ey growing them for our local market. But last spring taking your advice I set out Champion, and am glad that I did for I am getting now three times as many berries from my Champion plants as I am from Progressive and Perfection, and the size makes them sell for 5c per quart more. I expect to plant an acre next spring.

Mrs. Emery at Pine Hurst, N. C., writes:- From the 200 Champion plants I am gathering fifteen quarts of berries every week which supplies my table for three days each week, and every one that eats them is delighted.

PROGRESSIVE (Per)

Everbearing Strawberry

Progressive—Is the best known everbearing strawberry because it was the first worth while strawberry to be introduced that produced berries in quantities during the summer and fall months.

Progressive will be planted largely for years to come. Many growers think it good enough and will not try any others. It will be years before enough Worlds Champion and Lucky Strike can be grown in sufficient quantities to supply the demand and lots of growers will have to be content with Progressive which in most cases will give good satisfaction. In fact if there had never been any better, we would all have been perfectly satisfied.

We have received letters from our customers where more than \$1,000.00 clear profits had been made from a single acre of Progressive berries in the same year plants were set. This should satisfy any one as to profit. But Champion comes along and nets over \$2,000.00 and that is better and we all, or most of us want Champion.

A few hundred Progressive plants in the garden have made many happy hearts in the American children and housewives of America. Let us not fail to plant plenty of this God's best fruit for them every year. It costs but little and pays big.

JEWELL (Everbearing Strawberry)

This is a new introduction; fruited here first time this year. It is of the Progressive type. Sold only in small lots, 12, 25, 50 and 100 plants.



EVERBEARING STRAWBERRIES



THE BIG QUICK MONEY CROP—Fruits First Year Plants Are Set.

"THE WORLDS CHAMPION"

Everbearing Strawberry

Champion—Is fast becoming the leader in everbearing strawberries because of its large crops of fine delicious berries that ripen from early summer until December, not in spasms, but in large quantities every week for five months the first year plants are set. Berries are of the same extra quality as Progressive, but a great deal larger and much more productive. We have sent it out north, south, east and west, and nothing but good reports have come back.

Mrs. Parker, of New York State writes:- August 25th, have picked 500 quarts of fine berries from the 1000 Worlds Champion plants sent to us last April, and have hardly commenced as they are hanging with blooms, green and ripe berries, never saw anything like it before, getting 25c per pint basket all we can get.

Mr. Franklin, of Pennsylvania, writes:- August 15th. We have been growing Progressive for several years and have made big mon-

ey growing them for our local market. But last spring taking your advice I set out Champion, and am glad that I did for I am getting now three times as many berries from my Champion plants as I am from Progressive and Perfection, and the size makes them sell for 5c per quart more. I expect to plant an acre next spring.

Mrs. Emery at Pine Hurst, N. C., writes:- From the 200 Champion plants I am gathering fifteen quarts of berries every week which supplies my table for three days each week, and every one that eats them is delighted.

PROGRESSIVE (Per)

Everbearing Strawberry

Progressive—Is the best known everbearing strawberry because it was the first worth while strawberry to be introduced that produced berries in quantities during the summer and fall months.

Progressive will be planted largely for years to come. Many growers think it good enough and will not try any others. It will be years before enough Worlds Champion and Lucky Strike can be grown in sufficient quantities to supply the demand and lots of growers will have to be content with Progressive which in most cases will give good satisfaction. In fact if there had never been any better, we would all have been perfectly satisfied.

We have received letters from our customers where more than \$1,000.00 clear profits had been made from a single acre of Progressive berries in the same year plants were set. This should satisfy any one as to profit. But Champion comes along and nets over \$2,000.00 and that is better and we all, or most of us want Champion.

A few hundred Progressive plants in the garden have made many happy hearts in the American children and housewives of America. Let us not fail to plant plenty of this God's best fruit for them every year. It costs but little and pays big.

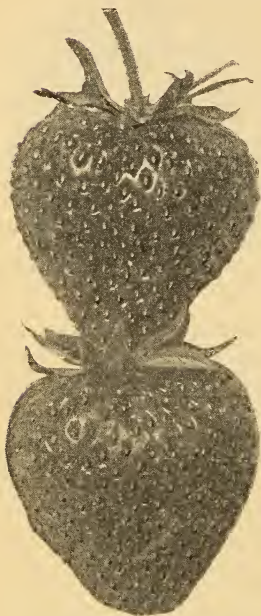
JEWELL (Everbearing Strawberry)

This is a new introduction; fruited here first time this year. It is of the Progressive type. Sold only in small lots, 12, 25, 50 and 100 plants.



WORLDS CHAMPION EVERBEARING STRAWBERRY

LUCKY STRIKE Everbearing Strawberries



THE LUCKY STRIKE

The Aristocrat of all the Everbearing Strawberries.

Lucky Strike—Is the Aristocrat of all the everbearing strawberries. It is not the only good one, not the only money maker, and not the only one to be grown; but it is absolutely the Aristocrat of them all. Anyone looking for the best berry ever tasted by the tongue, should not overlook the Lucky Strike Everbearer. It is a fairly hard plant grower, seems to do well on all soils, and in all climates, as we have received reports from nearly all states and everyone speaks of it in the highest praise.

No one can correctly describe Lucky Strike, it must be seen and tasted to appreciate all its good qualities. We are very sorry that we again have only a very small stock of plants and must price them high; but we assure you they are worth the price. Get half a dozen, the price will be \$5.00 and try to grow every plant you can from the half dozen plants, reset as soon as you have any new rooted plants, and in a few years you can have a large garden all to Lucky Strike. Nothing will please you more or prove more Profitable. Not over 100 plants sold any customer. The Genuine Lucky Strike can be had only from us. Take no chances as there has been fraudulent dealers selling so called Lucky Strike plants

for years. We bought from several who were offering them only to find in every case some poor worthless variety, not worthy of a name. We even sold one Nurseryman a small lot of plants, and give him an order in a few years for all the plants he had to offer of this variety. We failed to get a single Lucky Strike plant from him, notwithstanding, we paid 50c each for them back, as we thought we were getting what we sold. Take no chances with such Dealers.

We absolutely guarantee our Lucky Strike plants to be the original as sent out by us several years ago; and Originated and Introduced by the Townsend Nursery. Place order early, for when our small stock is sold we will have to return your money.

Lucky Strike is as easy to grow as common varieties. Pinch off blossoms until July 1st, and then let them fruit. Their habit is to begin fruiting early in the summer and continue until hard freezing sets in. Not a few berries, but the berries lay in piles around the plants, both on the mother plant and the new runner plants as soon as they are rooted. Fruit large to extra large, firm and sweet. In fact the best flavored berry ever grown except none. This is what every one says that has tasted them. Firm enough to ship by express to distant market in good order.

LUCKY BOY (Per)

Lucky Boy—still holds the record as being the Biggest, sweetest, and Most Productive of the everbearing strawberries in some Northern Sections of the Country, in other sections it is a failure.

Lucky Boy is adapted to Hill Culture in any Climate as it does not produce much fruit on new runner plants first year. For several years it was a winner on our berry farms and produced more fruit than any other berry either fall crop or spring crop, but for the last two seasons it has failed to produce heavy in the summer and fall first year. But we are still getting the very best reports from many of our customers and every year finds us sold out on this variety.

PERFECTION (Everbearing Strawberry)

We have fruited Perfection several times. Fruit is large, but poor quality. Plants are very large and lay flat on the ground.

POSTAL GREETINGS

Plenty Proof That Townsends' Satisfy Their Customers

Limestone, Maine, May 7th, 1924.

Received the plants which I ordered from you and they arrived in the most excellent condition. I wish to thank you for the extra ones you sent.
(Signed) A. Jasper Willey.

Bordenham, Maine, May 12, 1924.

Received the plants all in fine shape. Am more than satisfied.
(Signed) E. S. Blodgett.

Gallatin, Tenn., May 29, 1924.

Plants from your nursery beat everything in this section. Michigan plants not in it with yours. Never had any real strawberries until we bought your plants.
(Signed) R. A. Collins.

W. Bloomfield, Mass., May 22, 1924.

Plants arrived OK, and I am very much pleased with them, and the prompt delivery meant very much to us. Every plant growing fine.
(Signed) Mrs. M. T. Rice.

Beatytown, N. J., May 5, 1924.

Received both lots of plants and have them all set out, only two dead in the whole lot. They are surely fine plants, and I am well pleased. When I want more plants will know where to get them. Thanking you for prompt shipment and the attention you give your customers.
(Signed) Amos G. Sanders.

Medina, N. Y., May 5, 1924.

Plants came in fine order and are certainly fine plants.

Jerry Burt.

Gardner, Maine, May 2, 1924.

Received the plants OK and am well pleased. The Garden collection bought of you a year ago brought me over \$100 besides all I wished for myself.

Mrs. Levi Foster

New Freedom, Pa., 1924.

Plants reached me in fine order and please let me thank you for the ones you sent as a present. Every plant living fine.

Mrs. J. S. Freeland

Californ, N. J., May 2, 1924.

Plants delivered May 1st all in good order.

Mrs. C. D. Gulick.

Manchester, N. H., April 30, 1924.

Plants arrived and all set out and all extra fine plants. Many thanks for your prompt delivery.

Jno. A. Davis

Amity, Pa., April 28, 1924.

Plants arrived in good shape, have them all out. Think they are finest I ever saw. Will give you a large order in 1925.

J. Alexander

CULTURAL DIRECTIONS

Strawberries will thrive in almost any soil that is not too dry or water-soaked, and no crop will respond more quickly to good cultivation than the Strawberry. Strawberries require a great deal of manure, especially at fruiting time.

PREPARING THE SOIL.—Strawberries should follow some truck crop if possible. We do not recommend planting strawberries after an old sod has been turned under, too many grubs are likely to destroy the plants. All sod land should be plowed at least a year in advance and sowed to some vine crop and manured the fall or winter before planting to strawberries, and then thoroughly worked up in the spring, where it is possible; land that has been manured a year in advance makes the best strawberries. We do not recommend heavy application of manure immediately before planting, and under no circumstances do we recommend the use of commercial fertilizer directly, under the plants when set. The fertilizer is likely to cause the plants to die as soon as the sun gets hot. If fertilizer is to be used, broadcast on the land, thoroughly work in the land a few weeks before setting plants. The finer the condition of the soil at planting time the better for the crop. If land is hard and cloddy, better roll, also if very loose sandy, it is best to roll, as this rolling holds the moisture that is so much needed at this time.

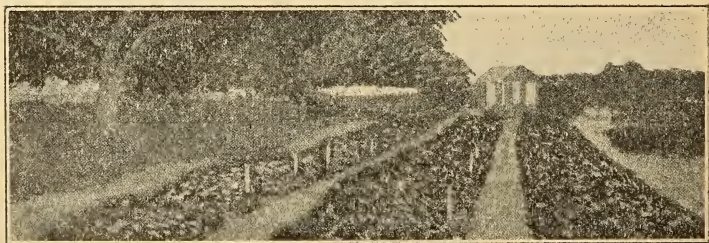
TIME TO PLANT.—The fall from November 1st to March 30th in the South plants may be set any time. In the Middle States, March and first half of April. In the North, as early in the Spring as the ground can be worked, the sooner the better. Northern customers should always order their plants shipped at least two weeks before they expect to set them out. The plants

should be heeled in a V-shape trench after they have been unpacked and untied, bunches opened and roots dipped in water. Cover with a board to shade the plants and they will keep several weeks and be in fine condition to plant when the proper day arrives. We ship most orders to the far North during the last half of April. But some of our wisest customers order plants shipped during August and September. We have as good plants at this time as any one in the business, but we cannot recommend the planting at this time, and do not see where the gain is in August planting in the North. Ever-bearing plants set in April will fruit just as quick as the August and September plants, and much less trouble and expense.

SETTING PLANTS AND MARKING OUT THE ROWS.

After ground is in perfect condition mark rows out with any kind of light marker, that will not make too much of a sink in the ground.

IF HILL SYSTEM.—Mark rows 30 inches apart one way and fifteen inches the other and set plants in the check with a spade or trowel, being sure to get roots down straight and fan shaped, firming ground around plants hand with the hand or foot. Some customers write us they water the plants when setting them. Don't Do That! Nothing could be more injurious to the strawberry plant. Under this system, all runner plants are kept cut off and only the plant you set is allowed to grow. Plants grown this way grow to be very large and usually meet the 15-inch way, and produce more quarts of berries per acre than the latter named system. It is easy to grow one quart of berries per plant under this system. Fruit will average twice as large and sell for more



A COMMERCIAL TRIAL BED. Every strawberry grower should have a trial plot, and test out in a small way all the new varieties. This is the way we find the BEST for our own soil.

CULTURAL DIRECTIONS

(Continued)

money in the markets. We recommend the hill system, as so many of our customers have reported such large yields from their fields.

SINGLE HEDGE ROWS.—Mark rows thirty inches one way, and set plants twenty inches apart and allow each plant to make about two to four plants. Some very fine berries can be grown this way.

DOUBLE HEDGE ROWS.—For double hedge rows, mark rows thirty-six inches one way, two rows of plants are set zig zag fashion, and each plant is allowed to make only a few plants. The object of the double hedge row is to get more fruit to the acre than by the single hedge row. The center of the bed is kept open so as to give the plants air and sun. This is one of the intensive systems and requires much more work than the other ways, and should not be practiced on a large scale.

THE NARROW MATTED ROW.—Mark rows forty inches apart one way, set plants eighteen to twenty-four inches apart and allow to grow until row is as wide as desired and then keep down

by cutting runners off the balance of the season. Usually ten inches is the desired width. This is probably the most common system of growing berries in the large commercial growing sections, where fancy fruit is not the particular object. Too many plants should never be allowed to mat in the bed as their growth is only at the expense of the former plants and when such crowding is allowed small berries and small yields may be expected. One acre grown in the proper way is worth at least two grown the wrong way. It takes a strong robust plant to make a productive plant. It must have plenty of room and moisture, if the roots are crowded moisture will be lacking. If one is not particular about neither quality or quantity, strawberries will generally grow with as little attention as any other crop. But we always contend that anything that is worth growing is worth growing right, and advise our customers to get all there is in it by using the proper methods. The large crops are produced when grown in hills and cultivated each way, one way with horse, if in commercial lots, and the narrow way with hoe or wheel hoe. If for garden purposes, plants may be set 12 x 24 inches and worked with wheel hoe and give the largest yield.



The above cut shows the Townsend way to handle plants when they are received and you are not ready to set plants for several days. Plants nicely heeled in can be kept for weeks.

CULTURAL DIRECTIONS

(Continued)

MATING VARIETIES. This paragraph should be especially noted by all.

Strawberry plants are divided into two sexes, male and female, or perfect and imperfect blossoms as the varieties are listed in our books. The perfect flowering sorts will produce as well without the imperfect flowering sorts, but should you plant all imperfect sorts, you would have indeed a very poor crop, if any crop at all. Most catalogue writers recommend planting perfect varieties of the same season, with the imperfect sorts, same rows of each, or two rows of perfect flowering to three or four imperfect and so on across the field or garden.

For best results we have found that where the most is to be gotten from an imperfect variety (and indeed they are our very best producers when properly mated), is to set an imperfect variety between two different perfect varieties. On one side should be a perfect variety that opens blooms a few days in advance of the imperfect sort and on the other side a perfect sort that will continue to bloom until after the blooming of the imperfect sort. When a trio of this sort is set, you are sure of getting fertilization for all blooms of the imperfect sorts, hence the larger crop to be expected and more uniform shape berries. Let us illustrate. Commence by setting two rows of Dr. Burrill, four rows of Kellogg Prize, and two rows of Chesapeake, and continue across the patch in this manner. If other cultural methods are followed success is sure with the above varieties. We shall at all times be pleased to make the selections of the perfect sorts when imperfect varieties are wanted, for main crop.

REMOVING BLOSSOMS (Very Important).

All strawberry plants whether standard or everbearing begin to blossom very soon after being set in the Spring, and these blossoms should be removed as soon as they are all open by cutting off the fruit stems with a sharp knife or shears. Nothing weakens a plant more than letting the fruit ripen on it when it is young.

It requires but a few hours to remove the blossoms from an acre and that will mean your success in growing a strong, healthy crop of plants that will prove fruitful the following crop.

Most of the everbearing sorts require the removing of blossoms about twice during the first season before berries should be allowed to ripen. Aside from this fact everbearing strawberries are given the same care and cultivation as other standard varieties.

CULTIVATING AND HOEING

The Cultivators should start soon after plants are set and given often and shallow cultivation the entire growing season. Always remember the shallow cultivation, nothing is more injurious to a plant than deep cultivation. The light, shallow cultivation keeps a dust much around the plants which is so essential in dry weather, and the roots should never be disturbed by the hoe or cultivator.

AS TO SPRAYING.—This is left entirely to our customers. They can get better advice from their State Colleges than we can give; every locality has its own individual troubles with insects. (We are thankful that we have no plant insects on the Eastern Shore of Maryland). Neither do we have to mulch our plants in winter in order to save them from freezing. But in the very cold sections of the country where mulch is necessary, we recommend straw manure if possible, if not convenient, any kind of straw. Marsh grass, shredded corn stalks, may be used and removed in the early spring before new growth starts. This mulch should be raked off and left between the rows as a protector to the coming fruit crop. As to the length of time a strawberry bed should be allowed to stand depends on the care given to it. We have reports that beds have been kept up for six years and given bumper crops, sometimes producing more fruit the third and fourth year than the first season. Keeping up old patches requires a great deal of work, more so than renewing with a new bed at least every two years. Old beds are given practically the same care as new beds in first year. The ground must be kept constantly cultivated and all the weeds kept out.

Bone meal is about the only safe fertilizer to use when applied directly under the plants at time of setting—from 600 to 1,000 pounds per acre. This is a splendid fertilizer to start them off the first year.

A second application of fertilizer may be used during September, broadcasting all over the ground, brushing the fertilizer from the leaves of the plants as soon as applied. 200 pounds Dried Blood, 200 pounds Potash, 1,600 pounds Acid Phosphate, to the ton. Apply 1,000 pounds per acre. Or, 200 pounds of Potash may be applied to a ton of bone meal, and applied at the rate of 1,000 pounds per acre. We do not recommend any application of fertilizer on the plants in the Spring as it usually starts too much growth at the expense of the fruit.

We shall be pleased to answer any other questions pertaining to the growing of strawberries not given in these cultural directions.

OUR SERVICE DEPARTMENT

We do not consider the deal closed when we accept your money and ship you your order of plants. We are here to guide you in giving advice and in helping you in every way possible in growing and marketing the crop. More than one-half of the time of the writer is spent in correspondence with his customers in advising them in the different problems in growing their crops and in making selections.

In this booklet we are trying to give all the advice possible as to selecting varieties, manuring, plowing, setting plants and caring for them from start to finish—in order to avoid so much unnecessary correspondence as possible during the coming very busy season. But any advice not given here will be cheerfully given for the asking.

WE COULD GROW JUST STRAWBERRY PLANTS.

Just such plants as are grown and advertised by the average plant man. But would we grow ourselves.

We think not. We have seen the coming and the going of a great many plant growers since we started in the business.

We would not be content to grow just Strawberry Plants.

Our one aim is to grow only the very best plants that it is possible to grow. And to make every Townsend customer a leader in his section as a successful strawberry grower.

For this reason it is to the interest of every berry grower, large or small, to select Townsend as his or her Nurseryman to supply the plants for this year's crop. Mistakes and failures are fatal at this time, we must not take chances and buy something called plants just because they happen to be a little cheaper or a little nearer home. Our packing is perfect. No matter where situated plants should reach you in time, at the proper season—our prices are as cheap as the best plants can be grown and delivered to you.

Once a Townsend Customer—always a Townsend Customer—WHY?

The first thought with us when we get a new customer is to try to please him better than he was ever pleased before. We begin by serving him with better plants than he was ever accustomed to. We give him prompter service than he is used to. We never allow a customer to make a mistake in getting the wrong varieties if we can help it. We are never too busy to sit down and write our customer

a letter advising him about his order. We try to give every customer a little more than he expects (note what some of them say when writing us). We do not treat a customer in the above manner just when he is new but we try to give him better service every time he comes back.

WHEN THE ORDER IS RECEIVED

When an order is received, first it is handed to our manager. He reads the order and letter over (if accompanied by letter), fifty per cent of the orders sent to us is left to the Manager's own way to fill, as he thinks best. Twenty-five per cent of the orders state: if the varieties ordered are not suited for my section, please substitute something better. The Manager at once takes his pencil and crosses out any variety not suited; or if left entirely to him to make selections, makes out the order with our very best varieties for the particular section, adding a few more plants than the customer expected or paid for. The order goes at once to the Packing House, where it is booked for shipment on a certain day. The foreman there instructs the bookkeeper to add a few extras. Next the packer gets the order in hand to fill. He gives instructions for digging the order and preparing same for shipment. When plants are counted (after giving two or three plants over to each bundle) the packer finds he has a few bundles over, he places them in the shipment also, as he says no use to leave them over, we will make him feel good when the box is opened. So it goes; every one who has a crack at the order tries to do a little more than he is required to do in order to make the customer happy.

We have no favorites. Every customer is extended the same treatment whether the order is a dollar or a five hundred dollar order. In short we could not ask any one of our customers to give us more for our money than we give them, if our positions were reversed.

A TOWNSEND EVER-BEARING GARDEN PAYS

January 5th, 1922.

Our Townsend Ever-Bearing Garden ordered last Spring done fine, had all the berries we could use and sold some to the neighbors.

(Signed) W. J. Roberts, Conn.

Fred Gold, Pa.
December 27, 1921.

Plants I have bought of you have always been fine and am well pleased with your service. Never saw better plants than Ford and Big Lake.

(Signed) A. C. Waterman.

Nothing But Good Reports From Townsends' High Grade Plants

Townsend's Plants Good for 15 Years

Alafia, Florida.

E. W. Townsend & Sons

Gents:—For more than fifteen years I have been buying your plants in a small way every year. Getting them in February to set out to make plants from for my winter crop. I have never got a mixed plant in this time. And have never failed to get plants on time, and they always grew well and satisfactory in every way. I travel all over this part of Florida that is the strawberry section, and I find that your name is well spoken of wherever I go. With very best wishes to you and the sons. I am yours very truly,

Geo. E. Boesick.

Glad to Recommend Townsends' Plants

I am writing about the Plants you sent me last Spring. Never saw as fine plants in my life, and nearly every one grew. Am well pleased and glad to recommend Townsends' Plants as A No. 1. (Signed) James D. Law, Ohio.

Townsend's Plants 100 Per Cent Better

Council Bluffs, Iowa.

Gentlemen:—It certainly gives me pleasure to report the results with your plants again this summer. I bought 2000 Premier plants from you which cost me \$17.00 (delivered). I bought same amount from a Michigan nursery that cost me \$24.00 delivered. I stated to you when plants arrived that your plants beat the others 100 per cent. in looks.

Now after fruiting them both you win just as much in fruit as in plants. I picked twice as many berries from your 2000 plants as from the 2000 I got from Michigan. I do not think that I ever lost a plant from yours. Every plant was a large, strong, well-rooted plant. The others were nothing but culls compared with Townsends'. You can bet I am stung my last time.

F. B. C.

R. R. 1, Bridgeport, Pa.

I received the strawberry plants all right. I thank you very much for your promptness and fine plants.

J. P.

Morgan Field, Ky.

Dear Sir—I received the 2,250 strawberry plants all O. K. and they are as fine plants as I could ask. Practically every one are living and growing nicely.

I am yours,

L. T. B.

Fine Plants and Fine Count

Powfret Center, Conn.

Gents:—Just received the strawberry plants. They came in fine condition—as fresh as if they had just been dug—and a generous count. I am very much pleased with them. I thank you for the fine service and generous count.

Sincerely,

J. W. A.

Townsend's Plants 75 Per Cent Better Than Michigan Plants

Clifton Springs, N. Y.

Gentlemen:—I want to say that I have been buying strawberry plants for 18 years and this is the first square deal I have ever got. Sorry I did not know of you people sooner. Your plants are 75 per cent better than any plants I ever got from Michigan. In fact they are all better—there is no comparison. Don't fail to send Catalogue every year and you will surely get my orders.

(Signed) E. H.

St. Louis, Mo.

Dear Sir—Can you ship me some more plants this fall? Those I bought from you last spring are doing nicely. Have plenty of berries.

T. H. W.

Indiana.

Dear Sir—I want some more plants this fall. The Mascot are the best standard berries ever seen here. They are some berries. Send some of your catalogues this spring for my neighbors. Townsends' plants are the only plants for me.

LAURENCE DINKLE.

Corthanton, Pa.

Dear Sir—The 150 Progressive received in fine shape. Fine plants. Do not expect to lose a one. Every plant is growing fine. I wish to thank you for your square deal.

CHAS. BRADSHAW.

Another Pleased Customer

Grafton, Pa.

Gentlemen:—Your plants arrived here in excellent condition. They were planted at once, and in two or three days seemed to have grown that many inches. I am well pleased and you may refer to me at any time.

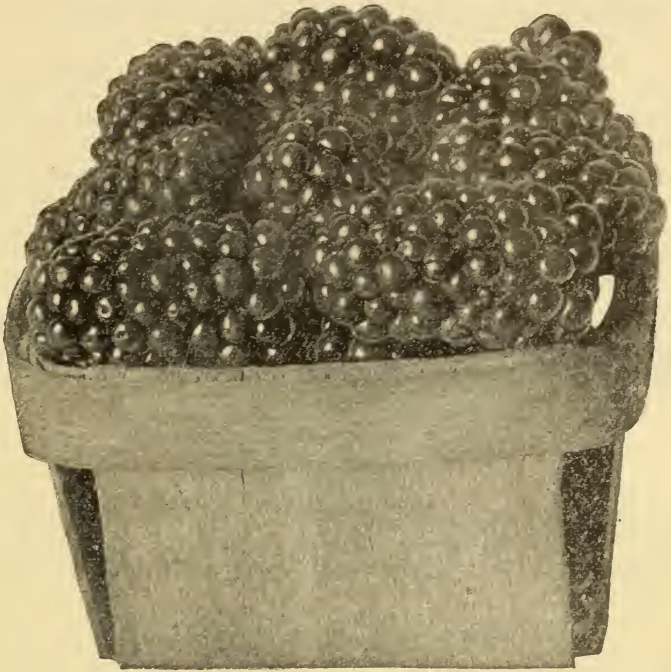
(Signed) W. M. H.

Fine Plants and Good Count

Laurens, N. Y.

Gents:—Strawberry plants received on the 8th, and were in lovely condition. They were certainly fine plants. I thank you for your prompt service and fine plants. A pleased customer.

Mrs. A. M.



AUS-LU

Best for home use and Commercial.

DEWBERRIES (or Blackberries)

For several years we have been giving much attention to the growing of Dewberries (blackberries). We have now in our Nurseries more than 25 new varieties not yet introduced. We believe that the blackberry is the coming small fruit crop in many sections of the country.

AUS-LU (Dewberry)

This is a cross between the Austin and Lucretia, has the habits of both these well-known varieties. Resembling the Austin more in plant growth. Size of fruit larger than Austin and is considered as firm as the Lucretia. Season very earliest to ripen with the Blackberry family. We feel sure that this variety will soon become a standard dewberry with the large growers. Quality—delicious, mild and sweet, with very few seeds. Fully as productive as Austin.

PAN-AMERICAN

We introduced this variety last year getting our stock of plants from a New Jersey grower, who claims that it came from South America. We have received great reports from this berry. One of our customers who looked them over this summer while in fruit pronounced them the greatest thing yet in the Blackberry world. It is a rank grower, particularly hardy and productive, and should be grown in rows at least ten feet wide and plants set six to eight feet apart. A single hill will produce from forty to fifty quarts of berries when the plants get fully grown. Fruit is medium to extra large, firm and good quality. Resembling Black Diamond in both fruit and foliage. Though the leaves show it to be a distinct variety from Black Diamond, season of ripening during July and August in the Middle Atlantic States.

AUSTIN (Dewberry)

This variety is more largely grown on the Eastern Shore of Maryland and Delaware than any other variety. Season is very early. It produces its full crop in a very short time and is considered three times as valuable as the Lucretia. Size of fruit is large to extra large, flavor mild and sweet.

LUCRETIA (Dewberry)

This has been the standard dewberry in all parts of the country. But since the newer varieties, Lucretia has taken a back seat, excepting in the South, where it is planted mainly for its shipping quality. Season of ripening about ten days later than Austin or Aus-Lu.

DELICIOUS (Dewberry)

The Delicious is a new dewberry, which we are introducing for the first time. It was sent to us from the South by one of our customers who had grown it for several years. He claimed it to be the only blackberry grown in that section that would stand long-distant shipping. It was found growing wild several years ago, taken up and given cultivation; it soon showed to be superior to all other varieties, not excepting Austin and Lucretia which were being grown in that section in a large way. It ripens a little later than Austin, fruit large size and firm, quality delicious. Is a hardy grower, and seems to stand the Spring frost better than most varieties. Don't fail to give this one a trial. Plants limited this year.

NO GARDEN COMPLETE WITHOUT A BED OF EVERBEARING STRAWBERRIES

RASPBERRIES



GOLD DOLLAR YELLOW RASPBERRY
The Greatest Raspberry on Earth.

X GOLD DOLLAR (Yellow Raspberry)

We offered Gold Dollar Raspberry for the first time in 1922, and again say that we are proud to be able to offer to our customers such a valuable variety as the Gold Dollar.

We are only sorry that we have not more plants to offer you this time. We can only sell a few hundred plants again this season. We describe it as follows: Season earlier than any other raspberry, color that of a new gold dollar, size as large as Cuthbert. Productiveness is more productive than any other raspberry grown by us.

Habit of growth makes growth similar to the Black Cap varieties. New plants are made by tipping the runners same as with the Black Caps. Last but not least it is considered by all who have tasted the fruit to be far superior in quality to any other raspberry, and has an entirely distinct flavor from all others. It has a delicious flavor all its own. Gold Dollar will be sold only to parties signing the five-year agreement.

CUTHBERTS (Red Raspberry)

One of the old standard sorts (not everbearing).

ST. REGIS (Everbearing)

We consider this the best red raspberry on the market; it not only produces a big crop of the finest fruit in the early Summer, but continues to fruit all Summer and Fall on the new canes as fast as they mature.



THE NEW KATHERINE—EVERBEARING RED RASPBERRY
Great Producer, High in Quality.

“THE KATHRINE”

RED EVERBEARING RASPBERRY Sweet Delicate Flavor.

The Newest and Best of the ever bearing red raspberries. This is probably a seedling of the St. Regis, as it resembles that variety very much. But seems to produce considerable more fruit during the summer and fall. Should be planted on very rich Garden soil, and cut back in early spring to six inches above the ground.

Two dozen plants will furnish a large family plenty Raspberries to eat. We recommend that our customers give it a trial for home use as it is the best red Raspberry that we have ever grown. To show our faith we are planting five acres of it this year for fruit. Prices reasonable for a new variety with such merits. 25c each; \$2.50 per Doz.; \$4.50 per 25; \$12.00 per 100; \$25.00 per 250; \$75.00 per 1000.

HONEY SWEET (Black Raspberry)

This is about the same in every way as the Plum, Farmer though it is claimed by some to be much better.



Showing a large block of Hardy Grape Vines, Raspberry and Dewberry plants.

ERSKINE PARK (Everbearing Raspberry)

This one produces berries all Summer and late in the Fall. Fruit larger than St. Regis but not so much fruit in the Summer and Fall months; quality fine.

PLUM FARMER (Black Cap Raspberry)

We consider this one of the standard black raspberries to tie to.

CUMBERLAND RASPBERRY (Black)

This is an old standard, and very prolific and good quality.

Delaware, N. J., April 28, 1924.

Plants arrived at Vail Saturday, all in good order and let me thank you for such prompt service, and the very good packing. You handled my order in such shape that you will certainly get my next order. Please believe that I appreciate such service and your square deal business methods.

W. S. Perry.

Lahaska, Pa., April 29, 1924.

Plants came today. Finest bunch I ever received from anyone. Would not give one bundle of yours for four of the kind of plants got from another Maryland grower yesterday.

L. A. Heller

Keystone, W. Va., May 8, 1924.

Received plants all in good shape. Many thanks,

Mrs. R. M. Hickok.

Mystic, Conn., May 6, 1924.

Received plants in good order; fine plants; everyone good, have them all set out.

(Signed) W. A. Phillips.

Framingham, Mass., May 3, 1924.

Strawberry plants came safely. Thank you for such fine plants. Enclosed find money you paid on postage for me.

Jas. A. Bartlett.

OUR SELECT LIST OF HARDY PRODUCTIVE GRAPE VINES

The Eastern Shore of Maryland has been for many years taking the lead in producing extra strong healthy grape vines. Our climate is ideal for grape growing, the season is long and the mild winters does not effect the wood causing a big percentage to die after being set out as is the case with more Northern grown stock.

We have selected a list of varieties not surpassed by other growers. These vines are grown on our own nursery farms fully matured before being dug for shipment. Every grape order is filled with fresh dug vines. We never store grape vines as in the case with the Northern nursery. When you buy Our Stock you buy the best that it is

possible to grow and our Guarantee that every vine that fails to grow will be replaced free of charge.



The Grape Useful and Easy to Grow

The grape is one of the most healthy fruits grown, and one of the most highly esteemed, for its many uses. It can be and should be grown by every one who has a garden, yard, fence or walk. It can be bound to a stake, tied to a trellis, trained over an arbor, or extended until it covers a large tree; and still it yields its graceful bunches of large fruit. The grape as a usual thing is hardy and productive and begins to fruit the second year—not later than the third. Surely no one can afford to allow their family to be deprived of fine delicious grapes when they are so easy and cheaply grown. 25c to 50c buys a sure grow vine that in a few years will produce all a single family can use. Half a dozen vines will produce enough for the family and lots to sell the neighbors or make gallons of juice which is considered the worlds most healthy drink. **PLAN TO PLANT A GRAPE VINE THIS SPRING. BETTER PLANT A DOZEN IF YOU HAVE THE ROOM.**

CONCORD

Three-year-old bearing age. We have carried over and transplanted for two years a large block of Concord just to supply our customers with the large bearing-size vines that they have been asking for for some time. These vines set out in April, or sooner, will produce an abundance of fine grapes this year. We consider Concord the best grape in the world. We have paid \$5.00 a piece for new varieties only to discard them in a few years. Stick to the old reliable CONCORD.

Concord is the standard blue grape of this country. It is hardy everywhere and seldom fails to produce a wonderful paying crop. We have a very large acreage planted to Concord vines and you will be pleased with our stock and also our prices.

HUBBARD BLACK GRAPE

Hubbard—the famous black grape is offered by us this season for the first time. This is without exception the finest and richest black grape on the market, bunches very large and compact, a strong hardy grower. Fruit sells for about double the price on the market as other standard sorts. The Hubbard was awarded the Wilder silver medal by the American Pomological Association, in competition with California's best varieties. Don't fail to try Hubbard—a sure grower and sure to please.

NIAGARA (White)

Niagara—this is the most popular white grape in existence. Fruit large and very productive. A good grower ripens same season as Concord, quality good, valuable in every way either for home use or market.

WORDEN, (Blue)

Worden—Ripens a few days earlier than Concord. Fruit large, of good quality, thin skin, very productive, hardy grower on any soil, and growing in popularity every year.

CRYSTAL WHITE

Crystal White Grape—The color is a greenish white, has very few seeds. The crystal like appearance makes transparent so much that you can distinctly see an object thru the grape. In quality it is mild, sweet and very juicy, berry as large as the Concord and two weeks earlier than Niagara. Those wishing the earliest grape of quality will make no mistake in growing Crystal White. Price of one year old XX high grade plants 50c each.

AGAWAM (Red)

Agawam—Deep red large bunches, with rich aromatic flavor, ripens later than Concord.

DELAWARE (Red)

Delaware—This has been the standard red grape in many grape growing sections for years, is one of the most dependable sorts.

CATAWBA (Red)

Catawba—One of the best known and widely grown of the red varieties. It is a leading grape in juice making territories, strong grower and very productive, a very good keeper.

CACO

The New Red Grape Without A Fault.

Caco—A variety of exceptional merit and one that should be in every collection. It combines more good qualities than any variety introduced in many years. The Caco is perfectly hardy in all parts of the country, it has been pronounced by the best growers in America to be equal in quality to any variety grown. It is the most beautiful of the hardy grapes. The bunches are large well shouldered, color wine red with abundant bloom. Season very early.

More Praise For Townsends' Plants

Fine Count and Fine Plants

Winchester, Va.

Gents:—Plants came in fine shape and there was a very liberal count which was not necessary with such plants as you always send out. With very best wishes.

(Signed) Mrs. C. B. P.

Mynard, Nebr.

E. W. T., Dear Sir—Last spring after receiving a shipment of plants from another nursery in an adjoining state, and which was quite a disappointment on account of the feeble condition of the plants, I ordered some Progressive from you. I made no mention to you of having ordered plants from any other source so as to give you no advantage in any way. You shipped the plants but wrote me that it was too late in the season, and that you could not guarantee them to grow. The plants arrived in good condition. I set them out, gave them the same treatment I was giving the others and am glad to tell you that more than seventy-five per cent are thriving in good shape. Of the others received, not half are alive, and none seem to have any vitality. I hesitated at first about sending my order so far, but now see my mistake. I owe you many thanks for prompt shipment and felt that I ought to tell you of the pleasure your plants are affording me.

Very truly yours,

J. H. P., Supt.

Plants Fine and All Grew

The Plants I purchased from you last year all grew nice, fine big plants, the only plants lost was due to cut worms. will order about 3000 more next spring.

(Signed) A. H. Henck, Penn.

Recommended Us to His Neighbors

Plants ordered from you last year have done fine, many of my neighbors have wanted to buy some plants from me; have referred them all to you. A pleased customer.

(Signed) Harry P. Hanna, Penn.

From Old New Hampshire

Gents:—Please do not fail to send Catalogue to me this Spring; plants bought last year did fine; was very much pleased; were all fine plants and I recommended them to my neighbors.

(Signed) James A. Kendrick,
From Old N. H.

Miamisburg, O.

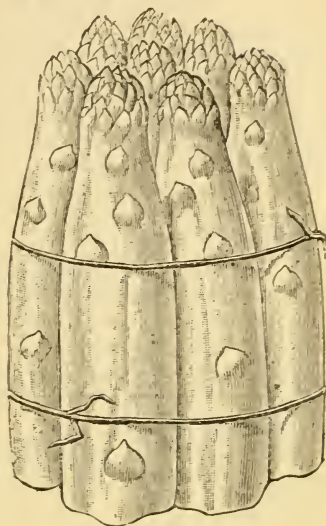
Gents:—I feel it my duty to write you a letter in reference to the nice order of plants you sent to me in March. I never saw as fine plants before, and out of the lot don't think that I have lost a plant. This breaks the record for this district, as other growers who bought elsewhere have lost a great many.

(Signed) F. H. Always a pleased customer.

ASPARAGUS

One, Two and Three Year Old Roots

Asparagus is considered the most profitable vegetable crop grown either for home use of market purpose. It is one of the very first to appear in the spring, and never a crop failure, a few cold days may delay the crop a few days but as soon as the sun warms up the crop is on and from early spring until mid-summer there is a supply every day. Plant in light loose soil if possible, well enriched, if soil is heavy it is best to plow under a heavy supply of well rotted manure before planting. Plant in rows four feet wide and crowns two feet apart. Large two and three year old roots will produce a good supply the second year and a bed will last for twenty years if taken care of.



Washington—This is a new strain on the market and is proving better than some of the older strains, though the culture given a bed of Asparagus means more than the variety. Rich soil kept rich and well cultivated means a good crop every year no matter what variety used, and the best varieties will not produce the best Asparagus unless given good attention. Washington Asparagus, when given good culture is extra large and tender and a heavy yielder.

Giant Argenteuil, Palmetto Conovers Colossal and Barrs Mammoth—Are all standard varieties, and all good when given proper attention. The above varieties can be had in one, two and three year old No. 1 roots.

CALIFORNIA PRIVET

	10	30	300
	to	to	to
	29	299	1000
6 to 8 inches, well branched	\$.06	\$.05	\$.04
8 to 12 inches, well branched07	.06	.05
12 to 18 inches, well branched12	.10	.08

This stock is extra well branched and heavy rooted. Sent parcel post prepaid at 3c per plant extra. 500 lots up, should be sent by Express or Freight. We pay all charges for boxing and packing.

Townsend's 20th Century Catalogue and Bargain Pages

In getting out our 1925 Catalog, it has been our aim to make it just as modest as possible. We have shown no overdrawn high colored pictures, which are getting to be so common in the ordinary Catalogues. What pictures we do show are from actual Photos, greatly reduced in size. Our descriptions are short and to the point, and just as nearly correct as we can write them. **TRUTH IS Our Motto in Advertising.**

On this page you will find some very exceptional bargains.

GARDEN NO. 1.

Consists of the following high grade strawberry plants. New varieties, very earliest to latest in season.

50 Crawford No. 25	50 Prince
50 Lord Salisbury	50 Chesapeake

Special delivered price only \$4.00

GARDEN NO. 2.

Consists of the following high grade strawberry plants. Suitable for any ordinary home garden from early in season until late in the fall.

50 Prince	50 Dr. Burrill
50 Premier	50 Worlds Champion

Special delivered price only \$3.75.

GARDEN NO. 3.

Market Garden Selection from early to late. All Fancy Varieties.

250 Prince	250 Ford
250 Premier	250 Big Late
250 Big Joe	250 Lucky Boy E. B.
250 Prize	250 Worlds Champion E. B.

Total 2000 plants, all choice varieties. Special delivered price only \$16.00. This in an exceptional Bargain.

GARDEN NO. 4.

Our Northern Commercial Garden; enough for one acre. Choice High Grade Plants very earliest to latest.

1000 Dr. Burrill	1000 Crawford 25
1000 Marvel	1000 Chesapeake
1000 Prize (Kelloggs)	1000 Premier
1000 Gandy	1000 Big Wonder

Special price, customer to pay transportation, only \$45.00. This is a big saving, and varieties that will most surely please you.

Mixed Small Fruit Collections for Home Use and Market.**GARDEN NO. 5.**

(A saving of \$5.50 and postage.)

- 20 Grape Vines selected, Concord, Niagara, Delaware,—bearing age
 20 Katherine Red Raspberry plants—Bearing age.
 20 Aus-Lu Black Raspberry Trans. plants—Bearing age.

This collection would cost regular Catalog price, \$17.50.

Special prepaid Bargain offer only \$12.50

GARDEN NO. 6.

Special saving on choice grape vines of \$5.00 and postage.

- 5 Caco Grape, bearing size. (the great red grape).
 5 Hubbard Grape, (the new Blue Beauty.) Bearing size.
 5 Crystal White. New Perfect white grape. Bearing size.
 5 Moores Early. The old popular Black Grape. Bearing size.

These twenty grape would cost regular price of 75c each \$15.00.

Sent postpaid for only \$10.00. Every vine should fruit this year.

SPECIAL STRAWBERRY COLLECTION NO. 7.

The Three varieties in this collection are not offered anywhere else in this book, and can only be had in this collection, at our 1-2 the price others are charging for same varieties.

- 50 Bliss Standard Early, supreme in quality, originated N. Y. Exp. Sta.
 50 Beacon Standard Early, supreme in quality, originated N. Y. Exp. Sta.
 50 Boquet Standard, extra large, an extra producer, originated N. Y. Exp. Sta.

Others ask \$10.00 for this collection of 150 plants.

Our Special prepaid price as long as they last only \$5.00.

Special Trial Bed Collection for Commercial Growers.

Only \$5.00

It is only by testing new varieties on our own soil that we can ever know when we have the best Money Makers. To enable our customers to have an inexpensive testing plot we are offering our very newest varieties in small quantities at reduced prices.

25 plants each of the following varieties, postpaid for only \$5.00.

- 25 Prince, 25 Lord Salisbury, 25 Crawford, 25 War Dyke, 25 Prize, 25 De Lues Judith, 25 World's Wonder, 25 Townsends Big Late, 25 Bun Special, 25 Ford, 25 Premier, 25 Marvel, 25 Delicious, 25 Collins.

Some of these varieties listed above will no doubt be just the berry that you will want to tie too. You can't afford to pass this extraordinary offer.

Townsend's Price List

—OF—

BLACKBERRIES, DEWBERRIES, RASPBERRIES, CURRANTS, ASPARAGUS, ETC.

DEWBERRIES

	Each	12	25	100	250	1000
Aus-Lu	\$.25	\$2.50	\$4.50	\$12.00	\$25.00	\$75.00
Delicious25	2.50	4.50	12.00	25.00	75.00
Pan - American25	2.50	4.50	12.00	25.00	75.00
Austin10	.75	1.00	2.50	4.00	15.00
Lucretia10	.75	1.00	2.50	4.00	15.00
Texas Everbearing25	2.50	4.50
Snow White B.B.25	2.50	4.50
Crystal White25	2.50	4.50

RASPBERRIES

Gold Dollar	\$1.00					
St Regis (red)	\$.15	\$1.00	\$1.50	\$5.00	\$10.00	\$40.00
Cuthbert (red)15	1.00	1.50	5.00	10.50
Erskine Park (red)15	1.00	1.50	5.00	10.00
Kathrine (red)25	2.50	4.50	12.00	25.00	75.00
Early King (red)15	1.00	1.50	5.00	10.00
Plum Farmer (black)15	1.00	1.50	5.00	10.00
Cumberland (black)15	1.00	1.50	5.00	10.00
Honey Sweet (black)15	1.00	1.50	5.00	10.00
Royal Purple15	1.00	1.50	5.00	10.00

ASPARAGUS

Washington Strain (1 yr. old)	\$3.00	\$ 7.50	\$20.00
Giant Argenteuil (1 yr. old)	1.50	2.50	9.00
Palmetto Conovers (1 yr. old)	1.50	2.50	9.00
Barrs Mammoth (1 yr. old)	1.50	2.50	9.00
Washington (2 yr. old)	4.00	10.00	25.00
Standard Varieties (2 yr. old)	2.00	3.00	12.50
Standard (3 yr. old)	3.00	7.50	20.00

GRAPES

	Each	10	25	100	250	1000
Caco (1 yr. old)	\$.50	\$4.00	\$7.50	\$20.00	\$40.00	\$125.00
Caco (2 yrs. old)75	6.00	12.50	35.00	75.00	250.00
Concord (1 yr. old)10	1.00	1.75	7.00	15.00	40.00
Concord (2 yrs. old)20	1.75	3.50	11.00	25.00	60.00
Niagara (1 yr. old)20	1.75	3.50	11.00	25.00	90.00
Niagara (2 yrs. old)30	2.50	5.00	17.00	40.00	125.00
Worden Blue (1 yr. old) ..	.20	1.75	3.50	11.00	25.00	90.00

GRAPES—(Continued)

Worden (2 yrs. old)30	2.50	5.00	17.00	40.00
Crystal White Grape (1 yr.) .50	4.00	7.50	20.00	40.00	125.00	
Crystal White (2 yrs. old) .65	5.00	10.00	30.00	
Delaware (red) 1 yr. old . . .20	1.75	3.50	11.00	25.00	90.00	
Delaware (red) 2 yrs. old . . .30	2.50	5.00	17.00	40.00	125.00	
Agawam (red) 1 yr. old20	1.75	3.50	11.00	25.00	90.00	
Agawam (red) 2 yrs. old . . .30	2.50	5.00	17.00	40.00	125.00	
Catawba (red) 1 yr. old . . .20	1.75	3.50	11.00	25.00	90.00	
Catawba 2 yrs. old30	2.50	5.00	17.00	40.00	125.00	
Hubbard (black) 1 yr. old . . .50	4.00	7.50	25.00	40.00	125.00	
Hubbard 2 yrs. old65	5.00	10.00	30.00	
Hubbard, 3 yrs. old75	6.50	15.00	60.00	bearing size		
Clinton (4 yrs. old75	6.50	15.00	60.00	bearing size		
Concord, 4 yrs. old75	6.50	15.00	40.00	bearing size		
Moore's Early, 4 yrs. old . . .75	6.50	15.00	60.00	bearing size		

50 at 100 rate; 500 at 1000 rate.

PARCEL POST RATES on Dewberry, Raspberry, Asparagus, Grape Vines, Currants, etc., every ten plants same as 100 strawberry plants. For instance, 10 Grape Vines in the 3rd zone will be 15c and so on. Over 100 cane plants will go cheaper by Express, and often we are compelled to ship that way owing to the size of package.

SPECIAL PRICES QUOTED TO MARKET GARDENERS ON LOTS OVER 1000, and we will quote prepaid prices on lots of 1000 and up. Please do not ask for special prices on lots under 1000 as we have made our price list as low as we possibly can grow our high grade stock for at this time. We guarantee safe delivery and high grade true to name plants.

Plant City Growers Association

Plant City, Fla., March 14, 1924.

E. W. Townsend & Sons.
Salisbury, Md.

Gentlemen:

The season for ordering plants is about over here and we wish to express to you our appreciation for your promptness in filling all the orders we sent you and the splendid grade of plants received. We have had but one complaint out of all the orders sent and you have adjusted that more than satisfactory. We have been ordering your plants for the past six years and we never hesitate to recommend your plants and do not accept orders for any others. Again thanking you we remain,

Yours very truly,
Plant City Growers Association,
R. M. Anderson, Sec-Treas.

1925 - PRICE LIST - 1925

OF TOWNSENDS' HIGH-GRADE

STRAWBERRY PLANTS

Extra Early and Early	1000	De Lues Judith (per)	10.00
PRINCE (per)	12.50	Glen Mary (per)	6.00
PREMIER (per)	6.00	Gibson (per)	5.00
Improved Klondyke	6.00	Hunterdon (per)	7.00
Select Missionary	7.00	Marvel (per)	6.00
Early Jersey Giant (per)	7.00	New York (per)	7.00
Horsey (per)	8.00	Nic Ohmer (per)	7.00
Howard 17 (per)	6.00	Parsons Beauty (per)	5.00
Missionary (per)	5.00	Parker (imp)	7.00
Early to Midseason		Paul Jones (imp)	6.00
Bun Special (per)	6.00	Pres. Harding (per)	12.50
Collins (per)	6.00	Pearl (imp)	7.00
Delicious (per)	6.00	Late to Very Late		
Dr. Burrill (per)	5.00	Big Late (imp)	6.00
Haverland (imp)	7.00	Bushel Basket (per)	12.50
Klondyke (per)	5.00	Chesapeake (per)	7.00
Lord Salisbury (imp)	12.50	Crawford 25 (imp)	12.50
Senator Dunlap (per)	4.00	Ford (per)	6.00
St. Martin (per)	7.00	Fendall (imp)	7.00
Eaton (per)	7.00	Gandy (per)	5.00
War-Dyke (imp)	12.50	Lupton Late (per)	6.00
Warfield (imp)	5.00	Mascot (per) Very Late..		7.00
Medium to Late		Prize (imp) Kellogs.....		7.00
Aroma (per)	6.00	Sample (imp)	6.00
Big Joe (per)	5.00	Wm. Belt (per)	6.00
Big Wonder (per)	5.00	Worlds Wonder (per)	...	12.50
Brandywine (per)	7.00	Everbearing		
Cooper (per)	10.00	Worlds Champion (per)...		12.50
		Progressive (per)	10.00

TOWNSEND'S EVERBEARING VARIETIES

	12	25	50	100	
Lucky Strike	\$5.00	\$10.00	\$17.50	\$35.00
Lucky Boy	2.00	3.00	5.00	7.50
Perfection	1.00	2.00	2.50	3.50
Jewell	2.00	3.00	5.00	7.50

PRICES ON LESS THAN 1000 PLANTS

	\$4.00	\$5.00	\$6.00	\$7.00	\$10.00	\$12.50	
25 plants30	.45	.50	.60	.75	1.00
50 plants50	.65	.75	.90	1.00	1.65
75 plants60	.80	.95	1.10	1.50	2.20
100 plants75	.95	1.10	1.25	1.75	2.50
150 plants	1.00	1.10	1.30	1.75	2.00	3.25
200 plants	1.25	1.35	1.60	2.00	2.25	3.75
250 plants	1.35	1.60	1.95	2.40	2.75	4.50
300 plants	1.50	1.85	2.20	2.75	3.25	5.25
350 plants	1.65	2.05	2.45	3.00	3.50	5.60
400 plants	1.75	2.25	2.70	3.15	4.00	5.90
450 plants	1.90	2.35	2.85	3.35	4.50	6.00
500 plants	2.00	2.50	3.00	3.50	5.00	6.25
1000 plants	4.00	5.00	6.00	7.00	10.00	12.50

Instructions to Purchasers

Order Early. It is never wise to put off ordering your plants and seed until you are ready to plant them. Many of our customers order as soon as the catalog is received. They are the lucky ones.

How To Remit. By Money Order, Registered Letter, Bank Draft, Checks from our old customers. LIBERTY BONDS ACCEPTED at 5 per cent. above par. We allow you \$52.50 for a \$50.00 Bond. \$105.00 for \$100.00 Bond, in exchange for plants. Be sure to register your Bond when mailing it to us.

Time of Shipment. We commence to ship plants in October and continue all winter and spring until May 15th. We do not advise summer and early fall planting of strawberry plants. If our customers insist on plants during September we will ship them at their risk at double the catalog price. We advise January, February and March planting for California, Texas and the South; April is the best for the balance of the country.

Eastern Grown Plants. It is a known fact that we grow here on the Eastern Shore of Maryland the hardiest nursery stock grown in the country. More than half of the strawberries grown in the North are grown from Maryland plants. There are two advantages in using our plants. 1st--You get the hardiest plants possible to grow. 2nd--You can get our plants shipped to you when you need them to set out and do not have to wait on a Northern Nursery for plants until it is too late in season. We advise our Northern friends to have plants shipped out two weeks before they are to be set, so as to have plants on hand when it is convenient to set them.

On Receipt of Plants. On arrival keep plants from Sun and Wind, if not ready to set the plants at once it is best to open box and dip roots in water, repack or trench them in a V-shaped trench, packing soil around the roots and cover with straw, keep sprinkled.

Twenty-Five to Bundle. We tie all plants 25 to a bundle; we do not sell less than 25 plants unless it is a new variety for testing.

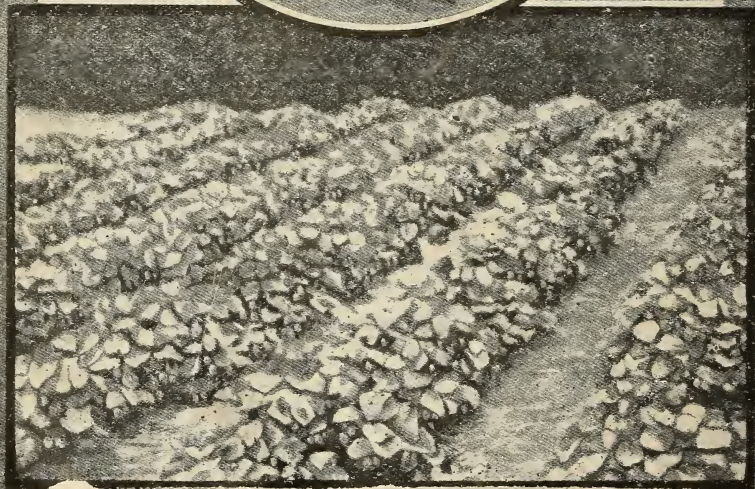
Our Packing the Best. We use light ventilated crates and patented cartons for Parcel Post and Express shipments, using plenty of damp moss. We make no charge for packages.

At Purchaser's Risk. All plants shipped after May 1st is at purchaser's risk.

True-to-Name. While we use every means to have our plants true-to-name (and we believe that we come as near doing this as anyone in the business), we will not be responsible for any sum greater than the cost of the stock should any prove otherwise than as represented.

Guarantee. That we deliver to the transportation Co. in good order any orders entrusted to our care; having them sign two copies of receipt, one of which will be mailed you day shipment is made. As we have no further control over shipment after it leaves our hands, our responsibility ceases on delivery in good order to the Carriers. Any claims for damages for delays should be made at point of delivery. If plants are delayed in transit, always examine at Office, and if found damaged by the delay, refuse same and notify us at once. Or if you accept the plants have the Agent make notation on your Express bill of the condition. Unless you do this you cannot make collection of claim.

C. O. D. We do not make C. O. D. shipments unless at least 25 per cent. of order is in cash. We do not pay transportation charges on any C. O. D. shipments and do not recommend shipments made this way.



TOWNSENDS' EVERBEARING STRAWBERRY GARDEN

25 Lucky Strike, catalogue price.....	\$10.00
25 Lucky Boy, catalogue price.....	2.50
100 Worlds Champion, catalogue price.....	2.50
	<hr/>
	\$15.00

Special Prepaid Price Only.....\$10.00