

GENERAL HARDWARE.

Ritchie Hardware Co. Buggies, Wagons, Farming Implements
Stoves, Paints, Oils, Varnishes. Engine and Boiler Fittings.

THE BELL & HARRIS Furniture Company.

Furniture and Undertaking.

Embalming a Specialty.

Store phone 12, Res phone 90

No. 3 S. Union.

CONCORD DIRECTORY

Yorke & Wadsworth Co.

DEALERS IN

**Hardware, Agricultural impli-
ments, Buggies, Wagons,
Doors, Sash, Blinds, Heat-
ing and Cook stoves.**

Phone 30.

7-9 S. Union.

THE LIBRARY OF THE
UNIVERSITY OF
NORTH CAROLINA



THE COLLECTION OF
NORTH CAROLINIANA

C971.13

C74i

1902

Houston,

TIST.

son's Drug Store.
nion Street.

12, m. 1.00, to 5.00 m. p.

Res. Phone, 11.

BUGGIES

Everything in the Vehicle line

UP-TO-DATE. BEST MAKES.

Absolute Guarantee.

Prices the lowest.

WAGONS.

The J. I. NISSON, Wagons.

The only Wedge Spoke on the
Market.

Round or Square Hounds.

P. M. Morris & Son.

General Hardware.

Agricultural Implements.

Best Line in town.

Olney Disc Plows, none to compare with it.

MULES.

HOME RAISED

Qualities' known and Guar-
anteed. For sale at any
time of the year.

COOK STOVES.

The best Medium Priced.
Notwithstanding this, endor-
sed by the Ladies of
Concord.

Fetzer's Drug Store

CONCORD, N.C.

Fresh Goods.

Polite and accurate Service in every Particular. Attention to the Compounding of Physicians Prescriptions.

2 SOUTH UNION ST.

PHONE. 22.

J. C. Blume, President.

Concord Fo

MANU

**Shafting, Ha
Mills, Gearir**

Light and Heavy Castings

ESTABLISHED 1887

WH

Coal

**Hard or So
stoves, st
purposes**

You can get suit
ordering from **K**

FOR USE ONLY IN
THE NORTH CAROLINA COLLECTION

THIS ITEM MAY NOT BE COPIED
ON THE SELF-SERVICE COPIER

DIRECTORY

OF

CONCORD

North Carolina.

COMPRISING THE NAMES AND OCCUPATIONS OF ALL CITIZENS
OVER EIGHTEEN YEARS OF AGE, WITH STREET
AND NUMBER. ALSO A BUSINESS
AND MISCELLANEOUS DIRECTORY
ALPHABETICALLY ARRANGED



VOLUME I.

1902.

Price, \$3.00.



Published By
THE INTERSTATE DIRECTORY CO.,
Charlotte, N. C.



LET US FIGGER on your New Furniture. You will find that they can save you DIMES and DOLLARS on everything you need to furnish the "Home Beautiful"

Dressers and Odd Pieces.

Bucks Stoves and Ranges.

CRAVEN BROTHERS.

Furniture

AND

FUNERAL DIRECTORS.

Floor Covering, Stoves and general House Furnishings.

29 South Union Street.

Phone. 9.

J. T. POUNDS

DEALER IN

Finished and Dressed Lumber.
Planing Mill

MANUFACTURER OF 

**Furniture, Tables, Screens,
Cotton Harrow, Lawn Swings,
and Seats and Curtain Poles.**

63 W. Corbin St.

INDEX.

BOARD OF EDUCATION	8
BOARD OF HEALTH.....	7
BUSINESS DIRECTORY	120
CHURCHES.....	12
CITY OFFICIALS.....	7
COUNTY OFFICIALS.....	9
DIRECTORY OF WHITEPEOPLE	23
DIRECTORY OF COLORED PEOPLE.....	103
FIRE DEPARTMENT	7
MISCELLANEOUS DIRECTORY.....	7
POSTOFFICE.....	11
PREFACE.....	5
SCHOOLS.....	8
SOCIETIES.....	14
STATE OFFICIALS.....	10
STREET DIRECTORY	17
TRAVLERS' GUIDE.....	133

If You **Hot and Tired** Come to my Up-to-
are **date Soda Fountain**
Rest, Drink and be Satisfied. **D. D. Johnson, Druggsit.**

The Miltonian
\$2.00 Per. Day and worth it.
The New Hotel. Free Buss, Electric
Lights, High-class in every respect.
R. W. Bigger, Prop.

Beware of
Directory
BORROWS.

John C. Smith.
45-47 S. Union.

FANCY and STAPLE
Groceries.

PUBLISHERS ANNOUNCEMENT.

We take pleasure in presenting our first edition of the Directory of this City to the public for 1902.

The latest authentic information of the the commercial and residential interests' of this city will be found embodied in this volume. Absolute accuracy and completeness has been the prime effort and in presenting this edition we take pride in assuming it will gain a large share of approbation.‡

In connection with this subject the publishers wish to call the attention of the business men to the necessity of giving support to their City Directory, so that the same may be in proportion to the large expense incurred in publishing it. This will not necessitate an extra expenditure providing the business men abstain from squandering their money in so-called "advertising fakes" such as Hotel Registers, Calenders and schemes without circulation.

The recent action of a Business Mens' Association in a Southern City relative to advertising in newspapers is commendable:

If a newspaper is read, has a circulation is a benefit to a city to have it published, advertise in it.

If a Directory is used, has a circulation, is a benefit to a City to have it published, Advertise in it and your money will be well invested.

If an oily fakir presents a bonanza for a small amount of money and you have the money to spare, feed it to the current of the swiftly flowing river, and you will not have erected a guide board to future fakirs on which is written, "Here is a soft one."

A great English Promotor upon his return from a business trip to the United States, was asked what work of progression would recommend the investment of capital in a city of the South? He replied, "By their directories shall ye know them. The cities of thrift, of energy, of advancement, of rapid and prosperous growth, have dlrectories accurate and attractive, well patronized by their business and professional men. Nonprogressive cities do not demand them, do not get them; this is a never-failing pulse wherein you can measure the life within."

We not use directory companies' usual method to,compute the population, but make an actual count.

Respectfully,

INTERSTATE DIRECTORY CO.



G. T. Crowell

Proprietor,

Fenix Roller Mills.

Roller Process Flour.

Manufacturer of _____

High Grade Flour, Corn Meal, Mill Feed Etc.

Highest price paid for all kinds of Grain.

171, West Corbin, St.

Phone, 40.





Whitman's Candies

Always fresh at
our Store.

CONCORD DRUG STORE, 1 N. UNION, ST.

MISCELLANEOUS

7

DIRECTORY.

MISCELLANEOUS DIRECTORY.

POPULATION.

Counted by Canvass.....	7422
Colored People.....	1260
Number of Families.....	1871
Number of Houses.....	1856

CITY OFFICIALS.

- Mayor—M B Stickley
- Clerk & Treasurer—Dr W C Houston
- Attorney—Montgomery & Crowell
- City Engineer & Sanitary Officer—Quint E Smith
- Chief of Police—Jas F Harris
- Tax Collector—Thos W Smith

ALDERMEN

- First Ward—C D Robbins, J B Caldwell
- Second Ward—D F Cannon, H M Barrow
- Third Ward—Geo W Brown, Chas F Ritchie
- Fourth Ward—W L Bell, G T Crowell

BOARD OF WATER COMMISSIONERS

- Chairman—M B Stickley
- Clk & Treasurer—G W Brown
- Commissioners—W R Odell, J W Cannon, M L Brown,
M H Caldwell
- Supt of Water Works—E McNish

FIRE DEPARTMENT.

- Chief—John L Miller
- First asst—John W Propst

HOSE COMPANIES.

- Concord Hose & Reel Co—L C Biles foreman
- Hook & Ladder Co (colored) Jas Boger foreman

Gibson Drug Store
 We would appreciate your trade.
 Largest Stocks,
 Lowest Prices
 Bicycle Delivery.

Best line of **Cigars Smoking & Chewing Tobacco**
IN TOWN. CONCORD DRUG STORE

Headache Cure, stops headache, made and sold by
D. D. JOHNSON Druggist.

MISCELLANEOUS

8

DIRECTORY

SCHOOLS.

SCHOOL BOARD.

Chairman—D B Coltrane

Clerk & Treasurer— W C Houston

Members— J B Sherrill First Ward, D B Coltrane Second Ward John A Cline Third Ward, D P Dayvault Fourth Ward, M H Caldwell and B E Harris at large

Superintendent—Prof C S Coler

Teachers—Central Building, Laura Leslie, Ora Hoover, Pauline Means, Rosa Phifer, Addie Stricker, Lena Leslie, Vistula Guffy, Mary L Harris

Forest Hill—Mrs C E Misenheimer, Lidie Smith, Mabel Means

Cannonville—Hattie Weddington, Lizzie Kincaid, Addie White

Colored—Rev F T Logan, Mrs A M Stitt, Nina Ury, Abbie Greeley, Fannie Thompson

Scotia Seminary (Colored)

Average yearly attendance 300

President—Rev D J Satterfield D D

Principal—Mary C Bell

Teachers—Mary E Chapman, Ada G Battle, Adelaide S Hatfield, Mary E Wampler, Hattie E Bomar, Olinda A Meeker, Maude C Williams, Mrs M E Fister, Sarah Satterfield. Mary L Barnes, Clara F Glover, Grace L Anderson, Mary L McCouattia, AnnaO Percival, Charlotte E Percival.

Hackney Bros. Call and inspect our exhibit of Fixtures.
RELIABLE PLUMBERS 2 West 5th St. Bell Phone 312.

The Gem Resturant. Meals at all hours.
 45-47 S. Union St. Game in season.
 John C. Smith prop.

G. G. Richmond & Co.
Insurance Agency.

Established 1882.

ALL KINDS of INSURANCE.

Surety Bonds Furnished.

Phone. 184. 15 W. Depot St,

CONCORD ICE & FUEL CO
COMPANY.

M. J. Freeman, Proprietor.

Office opposite St Cloud Hotel

HOUSE PHONE 18.

OFFICE PHONE.

Most Delicious **Soda Drinks** at our Fountain
Concord Drug Store. 1 N. Union.

MISCELLANEOUS

9

DIRECTORY.

COUNTY OFFICIALS.

Resident Judge Superior Court 12th Judicial District W A
Hoke

Clk Superior Court—John M Cook

Treasurer—C W Swink

Register of Deeds—W Reece Johnson

Sheriff—J Lawson Peck

Coronor—Adolphus E Lentz

Surveyor—John H Long

Standard Keeper—C WEarnhardt

Supt County Home—J T Sapp

Supt of Schools—Chas E Boger

Attorney—L T Hartsell

Physician—Dr Robt S Young

COMMISSIONERS

Chairman—M M Gillon

Clk of Board—W Reece Johnson

Members—Paul F Stallings, Robt F Cline

SANITARY COMMITEE

Composed of the Commissioners

Physicians—Dr J S Lafferty, Dr C H Barnhardt

County supt of Health—Dr R S Young

BOARD OF EDUCATION.

Chairman—Jas P Cook

Members—D J Little, W F Smith

Toilet Soaps

all kinds at
all prices. Agent for "High Art Soap"
the best 3 for 25c. made.
CIBSON DRUG STORE, 1 South Union St.

Prescriptions Carefully Compounded
at all Hours. CONCORD DRUG STORE.

Take Johnson's **Red Liver Pills**

For Headache, Biliousness, Dizziness, Constipation, Torpid Liver.

D. D. Johnson. 14 S. Union

HACKNEY BROS. Bell phone 312. 2 West 5th st.
 Bath tubs, Closets, Lavatories, Sinks etc.

MISCELLANEOUS

10

DIRECTORY.

STATE OFFICIALS.

Governor—Chas B Aycock
 Lieutenant Governor—Wilfred D Turner
 Secretary to Governor—P M Pearsall
 Secretary of State—J Bryan Grimes
 Chief Clerk to Secretary—Geo Norwood
 Treasurer—Benj R Lacy
 Chief Clerk Treasurer's Dept—W F Moody
 Clerk for Institutions—John P Arrington
 Auditor—Benj F Dixon
 Chief Clerk to Auditor—H T Hudson
 Pension Clerk—Wm H Bain
 Attorney General—Robt D Gilmer
 Superintendent Public Instruction—Thomas F Toon
 Adjutant General—B S Royster
 Librarian—M O Sherrell
 Quartermaster-General and Chief of Ordinance—Col F A Macon
 Superintendent Public Buildings—C C Cherry
 Standard Keeper—A L Moore
 Comm'r of Labor and Printing—Henry B Varner
 Geologist—J A Holmes *
 Ch'm Board of Charities—Charles Duffy
 Insurance Commissioner—Jas R Young

John C. Smith.
45-47 S. Union.

FANCY and STAPLE
Groceries.

IN MADE TO MEASURE CLOTHING
 H. L. PARKS & CO. GUARANTEE A FIT.

MISCELLANEOUS

11

DIRECTORY.

POST OFFICE.

Postmaster—G L Patterson
 General delivery clerk—Gertrude Blume
 Money order clerk—Bessie Stricker

Office Hours :

Open from 8 a m to 6 p m and 7.30 to 8.30 p m
 Money order department open 8 a m to 4 p m

Mails Arrive :

From the North 8.49, 9.10, a m, 9.10 p m, night mail
 distributed next morning
 From the South 10.41 a m 7.02 8.38 p m

Mails Close :

(45 minutes before train departs)
 For the North 10 a m 6 and 8 p m
 For the South 8 a m 8 p m

STAR ROUTES

Concord for Klutz via Rimer and Govern, Depart 2 p m,
 arrive 1 p m Tuesdays, Thursdays, & Saturdays
 Concord to Springsville, Manila, Tulin, Erskine, Mill Hill
 Depart 6 a m arrive 6 p m Tuesdays, Thursdays,
 and Saturdays
 Concord to Kindley, Depart 12.30 p m arrive 10 a m
 Tuesdays, Thursdays, and Saturdays
 Concord to Mt Pleasant. Depart 1 p m arrive 9.30 a m daily
 Concord to Georgeville via Bost's Mills depart 1.30 p m
 arrive 11 a m Tuesdays, Thursdays and Saturdays
 Concord to Flows, Furrs, and Garmond, Depart 6 a m ar-
 rive 6 p m Mondays, Wednesdays and and Saturdays

Meet at the **THE FOUNTAIN, Gibson Drug Store.**
 We serve Delicious Drinks Summer and Winter **GIBSON DRUG STORE**

FOR COUGHS, COLDS, HOARSENESS AND ALL AFFECTIONS OF THROAT AND LUNGS TAKE

Johnson's compound syrup of white pine

D. D. Johnson Druggist.

14 S. Union.

STOP AT **The Miltonian.** only first-Class Hotel in the City.

Best \$2.00 a day house in Concord.

No. 2 West 5th St. Bell
Phone 312.

Write Hackney Bros.
When you want **PLUMBING.**

MISCELLANEOUS

12

DIRECTORY.

CHURCHES.

FIRST PRESBYTERIAN—

Sunday services 11 a m 7.00 p m

Sunday school 3.09 a m

Prayer meeting Wednesday 7.00 p m

Rev Geo H Cornelson Jr pastor

CENTRAL METHODIST—

Sunday services 11 a m 7.00 p m

Sunday school 3.00 p m

Prayer Meeting Wednesday 7.00 p m

Rev J A B Fry pastor

SECOND BAPTIST—

Sunday services 11 a m 7.00 p m

Sunday school 9.30 a m

Prayer meeting Wednesday 7.00 p m

Rev W T Talbert pastor

FIRST BAPTIST—

Sunday services 11 a m 7.00

Sunday school 9.30 a m

Prayer meeting Saturday 7.30 p m

Rev J E Smith pastor

ST JAMES LUTHERAN—

Sunday services 11 a m 7.00 p m

Sunday school 3.00

Prayer meeting Wednesday 7.00 p m

Rev W H Hiller pastor

ALL SAINTS EPISCOPAL—

Sunday services 11 a m 7.00 p m

Sunday school 9.00 a m

Prayer meeting Wednesday 5.00 p m

Rev J C Davis rector

H. L. PARKS & CO. Sells the Best Grade of **SHOES.**

We Lead! Others Follow.

Whitman's Candies

Always fresh at
our Store.

CONCORD DRUG STORE, 1 N. UNION, ST.

MISCELLANEOUS

13

DIRECTORY.

McKINNON PRESBYTERIAN—

Sunday services 11 a m 7.00 p m

Sunday school 9.30 p m

Prayer meeting Thursday 7.30 p m

Rev W A Gillon pastor

ST ANDREW'S LUTHERAN—

Services First Sunday of each month 11 a m

Second & Fourth Sunday of each month 7 p

m Third Sunday of each month 3.30 p m

Sunday school every Sunday 9.30 a m

Prayer meeting Wednesday 7.30 p m

FOREST HILL METHODIST—

Sunday services 11 a m 7.00 p m

Sunday school 9.30 a m

Prayer meeting Wednesday 7.00 p m

Rev J N Huggins pastor

EPWORTH METHODIST—

Sunday services 11 a m 7.00 p m

Sunday school 9.30 a m

Prayer meeting Wednesday 7.00 p m

Rev J H Barnhardt pastor

TRINITY REFORMED—

Sunday services 11 a m 7.00 p m

Sunday school 10 a m

Prayer meeting Wednesday 7.00 p m

Rev W H McNairy pastor

CANNONVILLE PRESBYTERIAN—

Sunday services 11 a m 7.00 p m

Sunday school 9.30 a m

Prayer meeting Wednesday 7.30 p m

COLORED

Zion Hill M E—Rev T B McCain pastor

Price Memorial Temple M E—Rev D G Howie pastor

The Miltonian
\$2.00 Per. Day and worth it.
The New Hotel. Free Buss, Electric
Lights, High-class in every respect.
R. W. Bigger, Prop.

Best line of Cigars Smoking & Chewing Tobacco

IN TOWN.

CONCORD DRUG STORE.

Headache Cure, stops headache, made and sold by
D. D. JOHNSON Druggist.

Hackney Bros. Call and inspect our exhibit of Fixtures.
RELIABLE PLUMBERS Bell Phone 312.
 2 West 5th St.

- Mt Mariah M E—
- Mission M E—
- Rising Mt Zion Baptist—Rev M Slade pastor
- Allison Grove Baptist—
- Silver Hill Baptist—
- Westminister Presbyterian—Rev F T Logan pastor

SOCIETIES.

- A F & A M—Stokes Lodge No 23 communications first Monday evening before each full moon
- I O O F—Cold Water Lodge No 62 meets every Thursday night
- Jr O U A M—Cannonville Council No 25 meets every Monday night
- Jr O U A M—Forest Hill Council No 49 meets every Tuesday night
- Knights of Pythais—Concord Lodge No 51 meets every Friday night
- K of H Concord Lodge No 396 meets second & Fourth Friday nights of each month
- I O of H North State Conclave No 419 meets first & fourth Tuesday nights of each month
- W of W Elm Camp No 16 meets first Tuesday night of each month
- Royal Arcanum Cabarrus Council No 1205 meets first & Third Tuesday nights of each month
- I O of R M—Seminole Tribe No 20 meets every Saturday night

The Gem Resturant. Meals at all hours.
 Game in season.
 45-47 S. Union St. John C. Smith prop.

H. L. PARKS & CO.
DEPARTMENT STORE
 4 AND 6 S. UNION ST.

MISCELLANEOUS

15

DIRECTORY.

Miscellaneous Organizations.

NEW SOUTH CLUB

President--H L Parks

Secretary--E H Brown

Treasurer--Whit B Sloop

Board of Governors--J F Goodman, C L White,
 Frank Brown, Ed Moss

Cabarrus County Building & Loan Association

President--W R Odell

Vice-President--W C Houston

Secretary & Treasurer--J M Hendrix

Directors--W H Lilly, W C Houston, G T Crowell,
 H M Barrow, D D Johnson

Cabarrus Blackboys Militia--Co L 1st Regiment N C

State Guards Capt Quint E Smith, 1st Leut Joel Hill

Concord Coronet Band--R L Keesler director, H M Barrow mgr.

Forest Hill Coronet Band

Concord Perpetual Building & Loan Association--Officers

President--Dr R S Young

Vice-President--Dr W H Lilly

Second Vice-President--J W Cannon

Secretary & Treasurer--H I Woodhouse

Attorney--W M Smith

Directors--P B Fetzer, N F Yorke, W J Hill, J L Hart-
 sell, D D Johnson, M L Brown, C W Swink, W C Hou-
 ston, B E Harris.

The Sorosis Club--President Mrs Brevard Harris, Vice-
 President Mrs J P Cook, Secretary Miss Lucy Lore.

The Virginia Dare Club--President Mrs W D Pemberton,
 Vice-President Mrs R A Brown Secy Mrs W R Harris

The Beethoven Musical Club--President Mrs J P Cook
 Vice-President Miss Lucy Lore Secretary Miss Emma
 Phifer

Send us
 Your
Prescriptions to fill
GIBSON DRUG STORE.
 Only Registered Druggists
 fill Prescriptions at our
 store.

Buy Your **DRUGS** and **MEDICINES.**
 From **D. D. JOHNSON, The DRUGGIST.**

The Miltonian Only First Class Hotel in
Concord.

THIS HOTEL IS MODERN ALL APPOINTMENTS

Hackney Bros.
PLUMBERS AND GAS FITTERS.
Charlotte N. C. Bell Phone, 312

MISCELLANEOUS 16 DIRECTORY.

The Julia Magruder Book Club—President Mrs D B Coltrane Vice-President Mrs W R Odell Secretary Mrs R E Gibson Treasurer Mrs Chas Harris

The Christian Reid Club—President Miss Mary E Dodson Vice-President Mrs D G Caldwell Secretary Miss Lizzie Young

The Thursday Study Club—President Mrs M A Brown Vice-President Mrs D L Bost Secretary Miss Nettie Allen

BANKS

CONCORD NATIONAL BANK

CAPITAL	- - - - -	\$50,000.00
Surplus	- - - - -	\$25,000.00
Undivided Profits	- - - - -	\$6,000.00

President—J M Odell

Vice-President—W H Lilly

Cashier—D B Coltrane

Asst Cashier—L D Coltrane

Directors—J M Odell, W R Odell, D B Coltrane, J P Allison, J S Harris, Elam King, W H Lilly.

2 N Union

CABARRUS SAVINGS BANK

CAPITAL	- - - - -	\$50,000.00
- - - - -	Capital Paid in	\$25,000.00
Surplus	- - - - -	\$12,500.00
Undivided Profits	- - - - -	\$13,500.00

President—D F Cannon

Vice-President—Martin Boger

Cashier—H I Woodhouse

Directors—Robt S Young, J C Wadsworth, J W Cannon, L J Foil, C W Swink, J P Efirid, T C Ingram, J M Morrow.

23 S Union

For Up-to-date **Gentlemens Furnishings**
SEE H. L. PARKS & CO. 4-6 S. Union.



I. M. Alexander

MERCHANT TAILOR.

Practical Tailoring and Altering

Cleaning and Repairing on short notice.

OVER 10 SOUTH. UNION.

M. J. CORL.

**Livery Feed and Sale
Stable**

17-19-21 W. Depot. Phone 3.

Quint E. Smith.

Surveying & Engineering.

Information regarding City
gladly given.

58 S. UNION.



IN MADE TO MEASURE CLOTHING
H. L. PARKS & CO. GUARANTEE A FIT.

MISCELLANEOUS

17

DIRECTORY.

STREET DIRECTORY.

The houses are numbered East and West from Union St
and North and South from Depot St.

Ash St—First st rear Odell Cotton Mill

Allison St—Near Gibson Cotton Mill

Aycock St—Last st East crosses St Charles

Academy St—Fourth North of Depot, West from
Union

Barrow St—East from 190 n Union

Bays St—First North of Depot, West from Valley

Beech St—First West of Spring, North from Mill

Barbrick St—First South of Depot, West from Union

Bell Av—First West of Union, Depot to Corbin

Bleachery St—West of Duval, North of Cannon's
Mill

Blume St—Last st South, West from Union

Broad St—Southwest from Spring & Chestnut

Buck St—First West of Duval, North from Bleachery

Buffalo St—East & West of Union, adjoins Odell Cot-
ton Mill

Cabarrus St—Third North of Cannon Cotton Mill,
crosses Kerr

Caldwell St—First North of Academy, West from
Union

Cedar St—First North of Mill, West from Beech

Cherry St—Last st, rear of Odell Cotton Mill

Chestnut St—First st South of Corbin, West from
Union

Church St—First East of Union, North from Corbin

Coleman's Alley—Adjoins Cabarrus Roller Mill, East
end Depot st

Meet me
at
The Fountain, Gibson Drug Store.
We serve Delicious Drinks Summer and Winter
GIBSON DRUG STORE

STOP AT The Miltonian. only first-Class
Hotel in the City.

Best \$2.00 a day house in Concord.

Take Johnson's **Red Liver Pills** For Headache, Biliousness, Dizziness, Constipation, Torpid Liver.

D. D. Johnson. 14 S. Union

HACKNEY BROS. Bell phone 312. Bath tubs, Closets, Lavatories, Sinks etc. 2 West 5th st.

MISCELLANEOUS 18 DIRECTORY.

- Corbin St**—First st South of Court House, East and West of Union
- Crowell St**—Third st West of Union, North and South of Depot
- Depot St**—Principal st East and West
- Dorland's Alley**— First West of Crowell, South from Depot
- Duval St**— North from Cedar, First East of Cannon's Mill
- Elizabeth St**—First North of McGill West of Railroad
- Elm St**—Third North of Cannon Mill, West from Kerr
- Fenix St**—First West of Crowell, South from Corbin
- Georgia Av**—Second West of Union, North and South from Depot
- Gibson St**—Near Gibson Cotton Mill
- Gold St**—Seventh West of Union, North & South from Depot
- Grove St**—First North of Depot, West from Union
- Guy St**—First North of Depot, west from Crowell
- Harris St**—Near Gibson Cotton Mill
- Houston St**—Second East of Church, North from Pearl
- Isabell St**—Second North of Cannon Mill, West and East from Kerr
- James St**—First South of Buffalo, West from Spring
- Kerr St**—Fifth West of Union, North from Depot
- Lincoln—St** Third West of Union, South from Chestnut
- Loucust St**—First West of Odell Cotton Mill, North from Buffalo
- Loan St**—First North of Depot, East from Church
- Lower's Row**—Off Young st, near Georgia av
- Maple st**—First West of Crowell, South of Young

Prescriptions Carefully Compounded,
 BY D. D. JOHNSON, DRUGGIST, 14 s. Union st.

Most **Soda Drinks** at our
 Delicious Fountain
 Concord Drug Store. 1 N. Union.

MSICELLANEOUS

19

DIRECTORY.

- Marsh st**—Fourth North of Depot, East & West from Union
- Magnolia st**—Fourth st rear of Odell Cotton Mill
- McCree's Row**—South Crowell, between Depot and Corbin
- McGill St**—Northwest from Buffalo near North end of Spring
- Meadow St**—Second North of Depot, East from Church
- Means St**—First South of Depot, East from Union
- Mill st**—Second North of Depot West from Union
- Misenheimer Av**—Near Gibson Mill
- Mount Pleasant Rd**—Southeast from Corbin & Chnrch
- Mulberry St**—Third st rear of Odell Cotton Mill
- Pearl St**—Third North of Depot, E from Church
- Peachtree St**—Second st rear of Odell Cotton Mill
- Pine St**—Sixth st West of Union, North from Depo t
- Plum St**—Fourth rear of Odell Cotton
- Poplar st**—Fourth st West of Union, South from Chestnut
- Pounds st**—Second st West of Union, South from Corbin
- Powder st**—Ninth st West of Union, North & South from Depot
- Prince st**—First South of Chestnut, West from Poplar
- Reed st**—Last st East, North from Depot
- Railroad st**—Opposite Gibson Cotton Mill, Adjoins Railroad
- Ring st**—Second South of Corbin, West from Spring
- Robbins st**—First East of Cabarrus Cotton Mill South from Corbin
- Scott st**—Adjoins Southern Depot

Toilet Soaps

all kinds at
 all prices.
 Agent for "High Art Soap"
 the best 3 for 25c. made.
 GIBSON DRUG STORE, 1 South Union St.

Prescriptions Carefully Compounded
 at all Hours. CONCORD DRUG STORE.

If You are Hot and Tired Come to my Up-to-date Soda Fountain Rest, Drink and be Satisfied. **D. D. Johnson, Druggsit.**

The Miltonian
 \$2.00 Per. Day and worth it.
 The New Hotel. Free Buss, Electric Lights, High-class in every respect.
 R. W. Bigger, Prop.

MISCELLANEOUS 20 DIRECTORY.

- Simpson st**—Second East of Church, North from Meadow
- Smith st**—Near Gibson Cotton Mill
- Spring st**—First West of Union, North & South from Depot & Corbin
- St Charles st**—First North of Buffalo, East of Church
- St George st**—East from East end Pearl st
- St Mary's st**—West from Church, First rear of Odell Cotton Mill
- Swink st**—First North of Depot, West from Powder
- Tournament st**—Second West of Union, South from Chestnut
- Tribune st**—First South of Chestnut, West from Union
- Union st**—Principal Business Street
- Valley st**—Seventh West of Union, North and South from Depot
- White st**—First West of Spring, North of Depot
- Young st**—First South of Corbin, West from Spring
- Vance st**—First East of Church, North from Meadow

John C. Smith. FANCY and STAPLE Groceries.
 45-47 S. Union.



The Concord Favorite
THE EVENING TRIBUNE.

For News the People of Concord read the Tribune. For there they get fresh.

Advertisers can reach more People in Concord six days in the week, through the Tribune than any other Paper on Earth.

Our Circulation is far ahead of any other in Concord.

Facts talk! Compare circulation

Our Job Department
is in charge of an experienced
workman.

53 S. Union St.





Concord Steam LAUNDRY And Dye Works.

Collars and Cuffs a Specialty
Bundles for Travelling Men
delivered same day.

R. E. RIDENHOUR, PROP.

93. Corbin Phone, 2.

Lace Curtains given careful attention.

All Goods promptly Delivered to all parts of the City

A. VIOLA Tonsorial Artist

17 W. DEPOT

For all up-to-date work in Barber line,
you can be convinced by making one call.

**Hair Cutting - Shaving,
Shampooing - Singing.**

Ladies Shampooing & Singing in my parlor or at home.

Whitman's Candies

Always fresh at our Store.

CONCORD DRUG STORE,

1 N. UNION, ST.

WHITE

23

DIRECTORY.

CONCORD DIRECTORY

1902.

ABBREVIATIONS.

Agent	agt	Employee	emp
Block	blk	Foreman	fore
Boards	bds	Home	h
Bookkeeper	bkkpr	Insurance	ins
Carpenter	carp	Laborer	lab
Clerk	clk	Manufacturer	mfr
Corner	cor	Street	st
Domestic	dom	Widow	wid

- Adams Daisy 128 Mill
- Robt mill hand bds 128 Mill
- Adry Geo candy mfr 9 n Union
- Aldridge Algie mill hand 229 Mill
- Alexander Bertie dressmkr 29 Loan
- Blanch 82 Mill
- C B mill hand 82 Mill
- Mrs D L wid 29 Loan
- Esther 82 Mill
- Miss E O fact hand 160 Vance
- Mrs F E wid 82 Mill
- Fink 54 Duval
- Green F mill hand bds 67 n Crowell
- Hattie drssmkr 29 Loan
- Ira mill hand bds 67 n Crowell
- Jas T mill hand 190 n Spring

Gibson Drug Store
 We would appreciate your trade.
 Largest Stock,
 Lowest Prices
 Bicycle Delivery.

Best line of Cigars Smoking & Chewing Tobacco
 IN TOWN. CONCORD DRUG STORE

Headache Cure, stops headache, made and
 sold by
D. D. JOHNSON Druggist.

Hackney Bros. Call and inspect our exhibit of Fixtures.
RELIABLE PLUMBERS 2 West 5th St. Bell Phone 312.

WHITE

24

DIRECTORY

- Alexander John M tailor over 10 s Union h 101 w Corbin
- Mattie fact hand 160 Vance
- Minnie R bds 67 n Crowell
- Nannie L millinery 16 s Union h 101 w Corbin
- S M fact hand 136 Vance
- Thomas R mill hand 67 n Crowell
- Wm C mill hand 290 w Depot
- Allen Jas M 49 e Depot
- John R mining expert 21 n Union
- John W mill hand 197 n Church
- Minnie student 84 w Depot
- Rannie carp bds 22 Pearl
- S E wid 84 w Depot
- Wm A weaver 21 Fenix
- Geo W fore dept cott mill 292 McGill
- Allison J P & Co gen merchandise 71 s Union
- John P (J P Allison & Co) h 115 n Union
- Allman Eli J farmer 45 Bays
- Mrs H F wid 271 Corbin
- George mill hand 189 Young
- R G mill hand nr furn fact
- Walter mill hand 271 w Corbin
- Alfred B F mill hand 21 Academy
- Alman Adam mill hand 53 Pine
- Almon Thos mill hand 225 Young
- Alsobrook Thos mill hand 36 Duval
- Amick Brown L mill hand 300 McGill
- Anderson Grace L music teacher Scotia seminary
- Anthony Wm D painter 64 Grove
- Archy L M physician 10 n Union h 54 n Union
- Archibald F A 177 n Union
- Kate 177 n Union
- Nannie tel optr 177 n Union

The Gem Resturant. Meals at all hours.
 Game in season.
 45-47 S. Union St. **John C. Smith prop.**



THE MILTONIAN

(Formerly The Morris)

Opposite The Court House.

ELECTRIC LIGHTS.

FREE BUSS.

This Hotel has been rebuilt and ever appliance of a modern Hotel has been put in at a cost of \$3.000. A number of rooms has been added, and four model Bath rooms with Porcelain Tubs.

It is newly Furnished throughout and no expense has been spared to make this house a model one.

The Management is thoroughly alive to the interests and comfort of the Travelling Public and Patrons will receive better service and attention than has ever been accorded them in Concord.

Rates, \$2.00, per. day.

R. W. BIGGER Prop.

Phone, 200.



**IN MADE TO MEASURE CLOTHING
H. L. PARKS & CO. GUARANTEE A FIT.**

WHITE

25

DIRECTORY.

Archibald Nevin A clk 177 n Union
 — Wm R clk 177 n Union
 Asburn Henry mill hand 32 Railroad
 Atkinson G E mill hand 291 w Corbin
 Atwell Clark mill hand 109 Plum
 Atwell Smith R mill hand 286 McGill
 Austin Jas C mill hand 49 Pine
 — John mill hand bds 14 Mulberry

Baily Victor 27 w Academy
 — Wm mill hand bds 27 Academy
 Baker Ed mill hand bds 92 Mill
 — G Wm mill hand 30 Maple
 — Martha wid 255 w Corbin
 — N Ed carp 173 Mill
 Baldwin Bettie wid 12 1st
 — Jennie mill hand 161 Mill
 Ballard Alice mill hand 29 Harris
 — Badge mill hand 29 St Mary
 — Carrie mill hand 185 Kerr
 — Elex mill hand 29 St Mary
 — Geo mill hand 29 St Mary
 — Kate 185 Kerr
 — Nicholas M mill hand bds 190 n Union
 — Robt mill hand 7 Mulberry
 Bangle Bessie mill hand 40 Academy
 Barbee Alice mill hand 219 Mill
 — Calvin mill hand 84 Near Gibson mill out corp
 — Jas C mill hand 75 n Crowell
 — John A 75 n Crowell
 — John 85 near Gibson mill out corp
 — Martin C 98 Cedar

Meet
 at the
The Fountain, Gibson Drug Store.
 We serve Delicious Drinks Summer and Winter
 GIBSON DRUG STORE

FOR COUGHS, COLDS, HOARSENESS AND ALL AFFECTIONS OF THROAT AND LUNGS TAKE

Johnson's compound syrup of white pine

D. D. Johnson Druggist.

14 S. Union

STOP AT The Miltonian. only first-Class Hotel in the City.

Best \$2.00 a day house in Concord.

No. 2 West 5th St. Bell
Phone 312.

Write Hackney Bros.

When you want PLUMBING.

WHITE 26 DIRECTORY.

Barfoot Jack mill hand bds 44 Pine
 — Lillie 20 Pine
 Barnes Mary L teacher Scotia Seminary
 Barnhardt Alice mill hand 196 n Church
 — Chas furn fact Harris nr furn fact
 — Eugene C mgr Cannon Mfg Co 48 n Union
 — F E wid 46 n Valley
 — Geo mill hand bds 47 Cabarrus
 — G Thos bakery 46 n Valley
 — Ida bds 32 w Corbin
 — Ila photo finisher w Corbin
 — Jacob mill hand 14 n Valley
 — J Fred fact hand 46 n Valley
 — J H Minister 14 Bays
 — Jos M mill hand 222 Young
 — Laura clk 57 n Valley
 — Mary A wid bds 165 n Spring
 — Minnie mill hand bds 14 St Charles
 — Wm D mill hand bds 14 St Charles
 Barrett Mary E wid 114 Vance
 Barrier Mrs A L wid 236 w Corbin
 — D Frank mgr lumber yd 224 s Union
 — J D prop The Standard 105 s Union
 — Lawson 45 Cherry
 — Mrs Minnie wid 31 w Corbin
 — Wade A bkkpr oil mill 105 s Union
 Barringer Paul mill hand 48 Cabarrus
 — Mrs M A wid 31 Loan
 — Watt blacksmith 186 n Spring
 Barrow Herbert M head bkkpr Odell Mfg Co 190 n Union
 — J Dan mill hand 14 Buck
 Bass Willis P 52 n Crowell
 — Jas carp 304 McGill

H. L. PARKS & CO. Sells the Best Grade of SHOES.
 We Lead! Others Follow.

Most Delicious **Soda Drinks** at our Fountain
 Concord Drug Store. 1 N. Union.

WHITE

27

DIRECTORY.

- Bates F J supt furn fact Harris nr furn fact
 Baucom Chas mill hand bds 21 Locust
 — Gilbert mill hand 28 Ash
 — O 28 Ash
 — Sarah mill hand bds 9 Locust
 — Wm E mill hand 9 Locust
 Baxter Anna mill hand 96 St Charles
 — Laura wid 96 St Charles
 — Mary mill hand 96 St Charles
 Beacham Jasper mill hand 29 Harris
 Bean John mill hand 84 Caldwell
 Beatty Frank E clk 140 s Spring
 — Harold E clk 140 s Spring
 — Holly mess boy 140 s Spring
 — John F 140 s Spring
 — Paul mess boy W U Tel Co 140 s Spring
 Beaver Alice wid 35 Guy
 — Calvin mill hand 36 w Buffalo
 — Wm N 83 nr Gibson
 — Lonnie mill hand 83 near Gibson
 Beck Daniel mill hand 68 St Charles
 — Fannie 68 St Charles
 — Fred R meat market 51 s Union h 139 s Union
 — Henry 13 Mulberry
 — James H mill hand 68 St Charles
 — L mill hand bds 23 Pearl
 Beeman James M mill hand 27 Kerr
 Bell & Harris Furniture Co (W L-W R) furniture house
 furnishing goods undertaking 3 s Union
 — Mary C principal Scotia Seminary
 — W L (Bell & Harris Furn Co) h 33 Bell av
 Bencini Sadie 143 s Union
 Bennett Henry mill hand 87 James

Toilet Soaps

all kinds at
 all prices. Agent for "High Art Soap"
 the best 3 for 25c. made.
 GIBSON DRUG STORE, 1 South Union St.

Prescriptions Carefully Compounded
 at all Hours. CONCORD DRUG STORE.

Take Johnson's **Red Liver Pills**

For Headache, Biliousness, Dizziness, Constipation, Torpid Liver.

D. D. Johnson. 14 S. Union

HACKNEY BROS. Bell phone 312. 2 West 5th st. Bath tubs, Closets, Lavatories, Sinks etc.

WHITE 28 DIRECTORY.

- Bennett Henry mill hand bds 109 Cedar
- Benson J R mill hand 38 w Buffalo
- Robt P foremann Concord Times bds 30 e Corbin
- Thos mill hand 55 Cherry
- Bently H C well driller rms 58 w Depot
- Berryhill John engr bds 67 Mill
- Betts Paul ins agt 14 s Union bds 91 w Depot
- Bigger Jos L clk bds 500 s Union
- R W prop Concord Hotel 68-70 s Union
- Biggs A H mill hand 20 s Gold
- Biles Luther C night watchman 23 w Depot
- J P baker 57 Loan
- Billings Chas mill hand 232 w Corbin
- Mrs S C wid 232 w Corbin
- Wm mill hand 232 w Corbin
- Bingham W S ship clk 80 n Georgia
- Bird Archie mill hand 283 w Depot
- Black Eliza wid 103 n Union
- Lewis E fact hand 41 Simpson
- Robt K with C & F Co 111 n Spring
- Wm J clk 281 mill
- Blackman Lou 31 Harris
- Blackwelder Albert H mill hand bds 65 w Buffalo
- A J grocer 135 s Spring h 130 s Union
- Augustus P miller 126 s Spring
- Chas H mill hand 32 Beech
- Foster retired 270 McGill
- Clay A mchst 218 w Depot
- Columbus 36 Beech
- David M lab 154 w Buffalo
- Edw P carp 46 n Crowell
- Estelle 130 s Union
- Frank dyer 64 Meadow

John C. Smith. FANCY and STAPLE Groceries. 45-47 S. Union.



Carolina Heating and Plumbing COMPANY.

**Expert Sanitary and
Heating Engineers**

Our Display of Fixtures is the Finest
to be Seen in Charlotte.

T. C. Toomey, Manager

Plumbing Inspector for the City of Charlotte,
from 1898 to 1901.

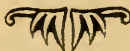
Estimates Given Promptly.

Office and Salesroom

20 West Trade Street.

Shop and Warehouse

8 North Church Street.





H. L. PARKS & CO.
DEPARTMENT STORE
 4 AND 6 S. UNION ST.

WHITE

29

DIRECTORY.

- Blackwelder Geo A mill hand 189 Young
 — Georgia mill hand bds 33 Pearl
 — Hampton mill hand 139 Cedar
 — Barry mill hand 154 w Buffalo
 — Henderson mill hand 30 Duval
 — Horace mill hand 27 s Gold
 — Horace 1m over 64 s Union
 — Ida mill hand bds 178 Young
 — J A C gen store 205 w Depot h 276 w Depot
 — Jacob mill hand 27 Maple
 — Jane mill hand 154 w Buffalo
 — Jas carp 27 Allison
 — John Mill hand bds 33 Pearl
 — Julius A carp 17 Locust
 — L O mill hand 154 w Buffalo
 — Levi mill hand 88 Caldwell
 — Lewis mill hand 133 s Union
 — Luther mill hand 189 Young
 — M A mill hand 36 Beech
 — M J wid 30 Duval
 — Mrs M J wid 23 Mt Pleasant
 — M L sewing machine agt 133 s Union
 — Nannie mill hand 154 w Buffalo
 — Parke J mill hand 5 Misenheimer av
 — Pearl mill hand bds 187 Cedar
 — Pink mill hand 27 Bleachery
 — Rosa mill hand 53 n Powder
 — R Victor carp 109 s Union
 — Mrs S E wid 14 Vance
 — Wilder mill hand 30 Duval
 — Wm A mill hand 154 w Buffalo
 Blalock Benj F mail carrier 60 St Mary
 — Dossie mill hand 60 St Mary

Send us
 Your
Prescriptions to fill
GIBSON DRUG STORE.
 Only Registered Druggists
 fill Prescriptions at our
 store.

Buy Your **DRUGS** and **MEDICINES.**
 From **D. D. JOHNSON, The DRUGGIST.**

The Miltonian Only First Class Hotel in
Concord.

THIS HOTEL IS MODERN ALL APPOINTMENTS

Hackney Bros.
PLUMBERS AND GAS FITTERS.
Charlotte N. C. Bell Phone, 312

WHITE

30

DIRECTORY.

- Blalock Lawrence fact hand 136 Vance
— Wm mill hand 149 Mill
Blume Mrs E E wid 45 w Corbin
— Gertrude clk P O 160 s Union
— Gus mill hand 160 s Union
— Ida 45 w Corbin
— John T 42 Bleachery
— J W retired 121 s Union
— M L & J C prop Concord Foundry & Machine Works
45 w Corbin
— Theo mill hand 42 Bleachery
— Wm H retired 121 s Union
— Wm H tannery 160 s Union
Blythe Jeff carp bds 237 w Depot
Boger John L policeman 97 n Church
— Martin 122 n Union
Bolen James mill hand bds 22 Pearl
Boles Wm retired 30 Harris
Boshamer W G clk 20 Mill
Bost Adolphus E carp 56 w Marsh
— Anthony G farmer 52 E Depot
— A J rm over 67 s Union
— Bulah 50 e Depot
— Dan W mill hand 38 Misenheimer av
— D J & Co groceries 9 Allison
— Erma mill hand bds 195 n Spring
— Herbert E clk 50 e Depot
— J D clk bds St Cloud Hotel
— John farmer 122 n Union
— Lee livery 292 McGill
— D Luther (Dove & Bost) 122 s Union
— May mill hand 131 Cedar
— William H yard mgr 16 Ash

For
Up-to-date Gentlemens Furnishings
SEE H. L. PARKS & CO. 4-6 S. Union.

Whitman's Candies

Always fresh at
our Store.

CONCORD DRUG STORE, 1 N. UNION, ST.

WHITE

31

DIRECTORY.

- Bost Wren hostler 292 McGill
Bostian Albert mill hand 52 Pearl
— Alex 28 Academy
— Baxter emp furn fact 215 w Depot
— D J dry goods notions china 26 s Union h 146 s Union
— Elizabeth student 46 n Spring
— Lizzie mill hand 28 w Buffalo
Bowman Marion mill hand 368 McGill
Boyd Carrie 137 n Union
— Elma 137 n Union
— Frank clk 137 n Union
— Leonard clk 137 n Union
— Lewis clk 137 n Union
— Lottie 137 n Union
— Mrs W C wid 137 n Union
Boykin Mrs A R 34 Mill
Bracehn Glenn 20 Loan
— Margaret wid 20 Loan
— Mary milliner 11 n Union h 20 Loan
Bradley F W minister 203 n Church
— James lab 25 Meadow
— Saml mill hand bds 58 Isabella
Brantly Thos M mill hand 50 Cherry
Braswell Jas T mill hand 56 Mulberry
— John fact hand 152 Vance
Brewer Benj mill hand 77 w Buffalo
— Edw H mill hand 13 Harris
Brooks Elizabeth wid 169 Young
— Frances mill hand 56 Magnolia
— Jas mill hand 169 Young
Broome Jas mill hand 167 Mill
Brower E B wid 158 n Union
— R A bkkpr 40 w Marsh

The Miltonian
The New Hotel. Free Buss, Electric
Lights, High-class in every respect.
\$2.00 Per. Day and worth it.
R. W. Bigger, Prop.

Best
line of **Cigars Smoking & Chewing Tobacco**

IN TOWN.

CONCORD DRUG STORE.

Headache Cure, stops headache, made and sold by
D. D. JOHNSON Druggist.

Hackney Bros. Call and inspect our exhibit of Fixtures.
RELIABLE PLUMBERS Bell Phone 312.
 2 West 5th St.

WHITE

32

DIRECTORY.

- Brown A Luther fore dept mill 83 n Union
- A M (M L Brown & Bro) h 83 n Union
- Chas mill hand 33 St Charles
- Earl bkkpr 140 s Union
- G Frank clk 143 s Union
- Geo mill hand 22 Pearl
- Geo W leather dlr & tannery 5 Means h 143 s Union
- Grace 173 s Union
- Jas F 33 St Charles
- Jas L student 83 n Union
- J L painter 63 s Church
- Jas N justice 168 n Union
- Jennie 168 n Union
- John D L mill hand 26 Plum
- John mill hand 6 Elizabeth
- Julia 242 w Depot
- Lawrence mill hand 33 St Charles
- Lawson U engr mill 236 w Depot
- Leonard 173 s Union
- Lonny mill hand 41 Academy
- Louis 173 s Union
- Maggie 143 s Union
- Martha wid 41 Academy
- M L & Bro livery feed & sale stable 15-17 e Depot
- M L (M L Brown & Bro) h 140 s Union
- R A brick mfr 173 s Union
- Reece mill hand 73 Cabarrus
- R M wid 221 n Church
- Robt farmer 58 Pine
- Vallie 168 n Union
- Vardry 140 s Union
- Wm 7 Magnolia
- Bruett John F mill hand 50 Bleachery

The Gem Resturant.

Meals at all hours.
 Game in season.

45-47 S. Union St.

John C. Smith prop.

M. L. BROWN & BRO.

Livery Feed and Sale Stable.



Proprietor Concord Transfer

Outfits of all kinds furnished promptly at a reasonable cost.

15 E. Depot.

D. F. Cannon President.
Martin Boger Vice-President.

H. I. Woodhouse Cashier.
C. W. Swink Teller.

Cabarrus Savings Bank.

Capital \$50,000

Surplus \$12,500 Undivided profits \$13,500

Branch at Albermarle N. C.

General Banking Business Transacted

Interest paid on time deposits in our savings department.

Accounts Solicited.

IN MADE TO MEASURE CLOTHING
H. L. PARKS & CO. GUARANTEE A FIT.

WHITE

33

DIRECTORY.

- Brumley Danl P mill hand 131 Mill
 — Eliza 47 e Depot
 — Mrs Eliza house kpr St Cloud Hotel
 — Frank local editor Tribune h 47 e Depot
 — Mrs John R wid 60 s Spring
 — Ozney T carp bds 60 s Spring
 Bruton Atlas T mill hand 78 Vance
 — Baxter 10 Misenheimer av
 Bryant Mary mill hand bds 115 n Georgia av
 Buchanan D M wid 56 w Corbin
 — M L mgr Concord oil mill h 56 w Corbin
 Buck Lynn W supt cott mill 88 n Georgia av
 — Moses P mill hand 14 Misenheimer av
 Buffalo Yarn Mill w end Buffalo
 Bulla John M bricklayer 309 McGill
 Bullard Ed mill hand 54 Kerr
 Bulliboy Albert mill hand 13 Locust
 Bumgardner Chas mill hand 22 Pearl
 Bundy Regina mill hand 56 Meadow
 — Shuble Harris nr McGill
 — S O mill hand 73 James
 Bunn J F Vet Surg 312 n Church h 94 St Charles
 — Justice mill hand 94 St Charles
 — Lilla mill hand 94 St Charles
 Burgess G T mill hand 22 Pearl
 Burkett Annie milliner 75 w Depot
 Burkhead Mrs A D wid 71 w Depot
 Burleyson Frances mill hand 88 James
 — L N Physician 110 w Depot
 Burns Lonnie mill hand 53 n Powder
 Burnsides E R mill hand bds 237 n Union
 Burrage Geo W emp oil mill 67 Peachtree
 — Luther emp furn fact 94 Meadow

Meet
 at the
The Fountain, Gibson Drug Store.
 We serve Delicious Drinks Summer and Winter
 GIBSON DRUG STORE

FOR COUGHS, COLDS, HOARSENESS AND ALL AFFECTIONS OF THROAT AND LUNGS TAKE

Johnson's compound syrup of white pine

D. D. Johnson Druggist.

14 S. Union

Buy your Drugs and Medicines

From

D. D. Johnson Druggist.

14 S. Main

No. 2 West 5th St. Bell
Phone 312.

Write Hackney Bros.

When you want **PLUMBING.**

WHITE

34

DIRECTORY.

Burrage Jas M street overseer 102 Meadow

Burris Bunnie mill hand 20 Magnolia

— David H barber 296 n Church

— Jas F mill hand 20 Magnolia

— John mill hand bds 39 Bleachery

— Jolly mill hand 70 Isabella

— Lee mill hand 20 Magnolia

— T Poplin barber 319 Church

— Mary bds 237 n Union

— R mill hand bds 226 Mill

Burroughs Avon mill hand 53 Houston

— Davidson farmer 53 Houston

— Rosa 139 s Union

— Wm A mill hand 53 Houston

Bynum Fannie wid bds 40 w Marsh

Byrd Robt F mill hand 33 St Mary

Cabarrus Bldg & Loan Asst office Concord National Bank

— Cotton Mill w end Corbin

— Roller Mills e end Depot

— Saving Bank 23 s Union

Caddell Asa B mill hand 12 s Gold

Cagle Eunis J 56 Peachtree

— Geo mill hand 35 Mulberry

— Wm A mill hand 24 Duval

Caknup Danl W mill hand 165 Young

— Jas P mill hand 165 Young

Caldwell Clinton C clk 36 Bell av

— David 77 Mill

— Denson A Contr & Bldr 66 n Spring

— Dexter mill hand bds 65 w Buffalo

— D G physician 1 n Union h 128 n Union

H. L. PARKS & CO. Sells the Best Grade
of SHOES.

We Lead! Others Follow.

Most **Soda Drinks** at our
 Delicious Fountain
 Concord Drug Store. I N. Union.

WHITE

35

DIRECTORY.

- Caldwell Gertrude 21 n Spring
 — Howard clk 36 Bell av
 — Jane wid 88 n Spring
 — John B agt Standard Oil Co & mail carrier 21 n Spring
 — J Mack emp lumber yd 91 Mill
 — Maggie 158 Vance
 — M H atty 70 s Union h 349 s Union
 — Wm A electrician 60 n Spring
 — Ruth 72 n Spring
 Callaway Geo F mill hand 24 Bleachery
 — Walter clk bds 143 s Union
 — Lonnie mill hand 79 w Buffalo
 Canada Edward mill hand 236 n Depot
 Cannon Cotton Mill w end Mill
 — Fetzer Co gen mchdse 11-13-15 s Union
 — Archie 106 n Union
 — D T pres Savings Bank h 106 n Union
 — J W mfr 63 n Union
 — John mill hand bds 279 w Corbin
 — Jos F mfr 63 n Union
 — Margaret L 63 n Union
 — Nannie 106 n Union
 — Rastus mill hand 53 Kerr
 Canup Adam C mill hand 9 s Gold
 — N W hand mill near Buffalo
 Caraway Richard C mill hand 51 n Crowell
 Carolina Bottling Wks 73 Mill
 Carpenter Carrie 157 w Buffalo
 — Chas clk 91 w Depot
 — Jessie mill hand 33 Bays
 — Jessie D mill hand 15 St Charles
 — Martin mill hand 157 w Buffalo
 — Wm mill hand 157 w Buffalo

Toilet soaps

all kinds at
 all prices. Agent for "High Art Soap",
 the best 3 for 25c. made.
 GIBSON DRUG STORE, 1 South Union St.

Prescriptions Carefully Compounded
 at all Hours. CONCORD DRUG STORE.

Take
Johnson's **Red Liver Pills**

For Headache, Bil-
ousness, Dizziness,
Constipation, Torpid
Liver.

D. D. Johnson. 14 S. Union

HACKNEY BROS. Bell phone Bath tubs, Closets, Lavatories,
312. Sinks etc.
2 West 5th st.

WHITE

36

DIRECTORY.

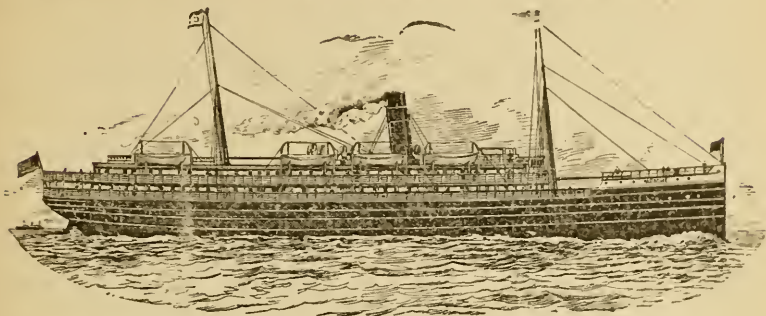
- Carroll Frank C lab 78 w Corbin
 — Fred mill hand 78 w Corbin
 — Fred mill hand bds 229 w Depot
 Carson T P P ticket agt So Ry bds 91 w Depot
 Carswell Elam mill hand 283 w Depot
 Carter Chas clk 55 Cabarrus
 — Chas restaurant 73 nr Gibson mill out corp
 — Ida mill hand 32 w Buffalo
 — Jacob E mill hand 19 Caldwell
 — Levi mill hand 50 Bleachery
 — Luther J mill hand 186 Young
 — John C mill hand 24 Maple
 — Mary mill hand 84 Vance
 — Saml lab 63 w Buffalo
 Cartner Mrs M A house kpr 87 Mill
 Cashion M J mill hand 300 w Depot
 Casper John carp bds 11 s Gold
 Castor D B clk 42 w Corbin
 — M E retired 66 w Depot
 — Sallie 66 w Depot
 Caston Barnwell mill hand 169 Young
 — Wesley C 33 e Depot
 Cauble Adam mill hand bds 283 w Corbin
 Caudle Mattie A 45 Simpson
 — W T 45 Simpson
 Chafer Jas mill hand 56 Houston
 Chamblee Homer M cashr So R R bds 91 w Depot
 Chamblers Ed mill hand bds 58 Isabella
 Chapman Mary F teacher Scotia Seminary
 — M E Teacher 106 w Corbin
 — Truman Plumber 106 w Corbin
 Chaney Geo L mill hand 51 Reed
 — John W mill hand 53 Duval

John C. Smith.

45-47 S. Union.

FANCY and STAPLE
Groceries.

THE CLYDE STEAMSHIP CO.



PASSENGER AND FREIGHT SERVICE

BETWEEN

New York, Charleston, S. C., and Jacksonville, Fla.



FAST MODERN STEAMSHIPS AND EXCELLENT SERVICE.
THREE SAILINGS A WEEK AND OFTENER FROM
PIER 45, NORTH RIVER, NEW YORK, AFFORDING RAIL
CONNECTIONS TO ALL SOUTHERN POINTS.

WILMINGTON LINE SERVICE.

(Freight only)

BETWEEN

Providence, R. I., New York,
Wilmington, N. C., & Georgetown, S. C.

SOUTHBOUND

From Providence, Thursdays.

From Pier 45, N. R., New York,
Saturdays, 3 P. M.

NORTHBOUND

From Georgetown, S. C., Thursdays.

From Wilmington, N. C., Saturdays.

From New York, Wednesdays.

ST. JOHNS RIVER SERVICE.

BETWEEN

Jacksonville, Palatka,
Sanford and Intermediate Points on the

ST. JOHNS RIVER

STEAMERS

Leave Jacksonville as per Monthly schedule
and Florida papers.

THE CLYDE NEW ENGLAND AND SOUTHERN LINES

Direct Semi-Weekly Freight and Passenger Service between Boston, Mass.,
Providence, R. I., Charleston, S. C., Brunswick, Ga., and Jacksonville, Fla.

THEO. G. EGER, G. M.

Wm. P. CLYDE & CO., Gen'l Agents,

19 State Street

NEW YORK CITY

H. L. PARKS & CO.
DEPARTMENT STORE
 4 AND 6 S. UNION ST.

WHITE

37

DIRECTORY.

Caney Justin mill hand 51 Reed
 — Thos mill hand 53 Duval
 — Wm M shoemaker 53 Duval
 Christy Pink mill hand 31 Magnolia
 Chryty James S fact hand 58 Railroad
 Clapp Edw mill hand 34 Academy
 — Nancy wid 34 Academy
 Clardy C C mill hand bds 237 w Depot
 Clark John mill hand 11 Elizabeth
 — Jas W mill hand 15 n Gold
 — Lee mill hand 187 Cedar
 — Odell mill hand 15 s Gold
 — Wm E mill hand 32 Railroad
 Clayton Arthur mill hand 11 Buck
 — Jas F mill hand 47 Duval
 — John mill hand 37 Caldwell
 — John A lab 129 Vance
 — Jos W 11 Buck
 — Maggie mill hand bds 280 McGill
 Cleaver Ed L mill hand 1 Magnolia
 — A B mill hand 1 Magnolia
 Cleavers Club & Mfg Co (Incorp) Union & Corbin
 — Emma mill hand 70 St Mary
 — Geo mill hand 70 St Mary
 — Sarah wid 70 St Mary
 Cline Archie mill hand 44 St George
 — C C mill hand bds 14 St Charles
 — Columbus mill hand 178 Young
 — Connie teacher 30 e Corbin
 — C P 191 n Church
 — Fester mill hand 191 n Church
 — Geo mill hand 37 Cherry
 — John A bds 22 Pearl

Send us
 Your
Prescriptions to fill
GIBSON DRUG STORE.
 Only Registered Druggists
 fill Prescriptions at our
 store.

Buy Your **DRUGS** and **MEDICINES.**
 From **D. D. JOHNSON, The DRUGGIST.**

The Miltonian Only First Class Hotel in
Concord.

THIS HOTEL IS MODERN ALL APPOINTMENTS

Hackney Bros.
PLUMBERS AND GAS FITTERS.
Charlotte N. C. Bell Phone, 312

WHITE

38

DIRECTORY.

- Cline John A with Cannon & Fetzer Co h 30 e Corbin
 — Mrs 44 St George
 — Ollie student 30 e Cline
 — Ralph student 30 e Corbin
 — Sandy mill hand 32 Pine
 — W N & Bro groceries 308 n Church h n Church
 — Wm driver 42 Duval
 — Wm grocer 180 n Church
 Clonts Henry D mill hand 48 Pearl
 Clontz J E grocer Harris
 Cobbe John S harness mkr 66 s Spring
 Coble C M mill hand 286 w Depot
 — Minnie 212 n Church
 — Robt F head weaver Odell Mfg Co 228 n Church
 Cochran Chris mill hand 181 Cedar
 — J C P mill hand n end Kerr
 — John R J mill hand 198 Mill
 — Lucy mill hand 67 Vance
 — Margaret 39 n Valley
 — Neornia mill hand 198 Mill
 — Ray mill hand 161 Mill
 — Wm G mill hand 73 James
 Cohen Annie 19 St Charles
 — Ella mill hand 19 St Charles
 — Newton 19 St Charles
 Coker Eugene S mill hand 166 Young
 — S C wid 166 Young
 Cole Alma 129 n Spring
 — Jane Wid 13 Guy
 — Mrs L P 129 n Spring
 — Mayfield 129 n Spring
 Coles Fletcher emp lumber yd bds 1 Magnolia
 — Silas mill hand bds 1 Magnolia

For
Up-to-date Gentlemens Furnishings
SEE H. L. PARKS & CO. 4-6 S. Union.

Whitman's Candies

Always fresh at
our Store.

CONCORD DRUG STORE, 1 N. UNION, ST.

WHITE

39

DIRECTORY.

- Coleman Martin mill hand 291 w Depot
— Wm A 291 w Depot
Coler C S supt of schools 15 n Spring
Coley Jas M dairy 39 Pine
— John mill hand 150 Mill
— John mill hand 283 w Corbin
— Mrs Nan wid 283 w Corbin
— Wm mill hand 283 w Corbin
Collett A J lab 39 n Powder
— Hattie mill hand 39 n Powder
— John W jeweler 10 s Union h 59 e Marsh
— Joseph mill hand 39 n Powder
Collins Benj M bkkpr 117 s Spring
— Levi mill hand 16 Harris
Coltrane D B cashier Concord Natl Bank h 84 n Union
— L D asst cashier Concord Natl Bank & mgr Concord
Telph Co h 170 s Union
Concord Drug Co (Incorp) E R Montgomery Pres S W
Williams Sec & Treas 1 n Union
— Bakery confectionery & restaurant C W Hopkins & Co
prop 17 Union
— Granite & Marble Works 11 Means
— Foundry & Machine Works 79 w Corbin
— Hotel 68-70 s Union (The Miltonian)
— Mattress Mfg Co 323 n Church
— Oil Mill (branch Sou Oil Co) 121 w Buffalo
— National Bank cor Union & Depot
— Perpetual Mutual Bldg & Loan Assc 21 s Union
— Pressing Club 1 n Union basmt
— Telephone Co 5 e Depot
— Steam Laundry & Dye Works R E Redenhour prop 93
Corbin cor Bell av

Gibson Drug Store
We would appreciate your trade.

Largest Stock,
Lowest Prices

Bicycle Delivery.

Best
line of Cigars Smoking & Chewing Tobacco

IN TOWN.

CONCORD DRUG STORE.

**Headache Cure, stops headache, made and sold by
D. D. JOHNSON Druggist.**

Hackney Bros. Call and inspect our exhibit of Fixtures.
RELIABLE PLUMBERS Bell Phone 312.
2 West 5th St.

WHITE

40

DIRECTORY.

- Concord Times (The Weekly) J B Sherrill edt & prop book
& job office 43 s Union
- Cook Allig mill hand 55 Houston
- Alley lab 46 s Georgia
- Alex mill hand 75 Peachtree
- Baxter H meat market 21 w Depot h n Spring
- Bessie fact hand 14 Simpson
- C Pink mill hand 63 St Mary
- Caleb M blacksmith 55 e Depot
- Chas A clk h 90 s Spring
- Edw C clk bds 102 e Depot
- Effie mill hand 67 Peachtree
- Engle 8 South
- Fannie mill hand 67 Peachtree
- Frank lab 65 Houston
- Geo mill hand 23 St Charles
- Herbert mill hand 74 Vance
- Jas R confectionery 19 s Union
- Jennie mill hand 55 e Depot
- John C mill hand 276 n Church
- John M clk Superior Court 17 w Corbin
- J P trav salesman 17 w Corbin
- J R grocer 118 w Depot
- Julie Bell mill hand 23 St Charles
- J Wallace 310 McGill
- Lavenia fact hand 14 Simpson
- Lillie mill hand 55 e Depot
- Luther fact hand 168 Vance
- Maggie 8 Smith
- Mary B mill hand 102 e Depot
- Pleas G feed dealer 14 Simpson
- Richard lab 210 McGill
- Sarah wid 67 Peachtree

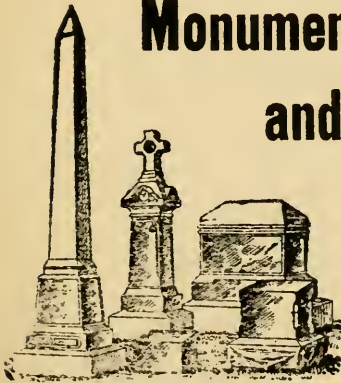
The Gem Resturant. Meals at all hours.
Game in season.
45-47 S. Union St. John C. Smith prop.



CONCORD MARBLE and GRANITE WORKS.

Frieze & Utley proprs.

**Monuments, Headstones,
and Tablets.**



Granite curbing, and
all kinds of ceme-
tery work.

**All work executed in first class
style and finish, call and see
our work, or write for prices
and designs.**

11 MEANS ST.

CONCORD N. C.



IN MADE TO MEASURE CLOTHING
 H. L. PARKS & CO. GUARANTEE A FIT.

WHITE

41

DIRECTORY.

- Cook Sylvester R mill hand 308 McGill
 — Thos C carp 40 St George
 — Wilma V fact hand 14 Simpson
 — Wm butcher 102 e Depot
 — Worth mill hand 65 Houston
 Cordell James D fact hand 114
 Corl Buford 81 w Depot
 — Geo mill hand bds 76 Caldwell
 — Marshal J livery feed & sale stable 19 w Depot h 81
 w Depot
 Cooper Minnie 19 Bays
 Cornelson G H Minister 1st Pres 97 w Depot
 Correll Archie L mill hand bds 308 McGill
 — Coram E clk 117 s Union
 — Edw F painter & paper hanger 280 s Union
 — Jackson carp Gibson nr furn fact
 — Noah P cabinet mkr 25 s Church h 21 s Church
 — Phillip A retired 31 Mt Pleasant
 — John express driver 31 Mt Pleasant
 — Wm C jeweler & optician 5 s Union h 117 s Union
 Corzine D M grocer 211 w Depot
 — Floyd mill hand 168 n Union
 — Wm M dray 169 n Union
 Cosby John A mill hand 201 Mill
 — Minnie mill hand 201 Mill
 Cowan John M mill hand bds 33 Pearl
 Cox Carl fact hand bds 258 n Church
 — Ferman fact hand 15 n Gold
 — Jos W lab 57 w Buffalo
 — Wm A fact hand 32 Harris
 — W R clk 127 s Union
 Coyer Geo fact hand 110 Cedar
 Cranford Wm M fact hand 126 Cedar

Meet me
 at the
The Fountain, Gibson Drug Store.
 We serve Delicious Drinks Summer and Winter
 GIBSON DRUG STORE

STOP AT The Miltonian. only first-Class Hotel in the City.
 Best \$2.00 a day house in Concord.

Buy your Drugs and Medicines

From

D. D. Johnson Druggist.

14 S. Main

Bell
No. 2 West 5th St.
Phone 312.

Write Hackney Bros.

When you want **PLUMBING.**

WHITE

42

DIRECTORY.

- Crahshaw Chas fact hand 138 Cedar
Cranfield Buford fact hand 19 Houston
Craven Bros (John M-Chas A) furniture & undertaking 29
s Union
— Ada music teacher 51 w Depot
— Burrell fact hand 145 Mill
— Claude fact hand 145 Mill
— John M (Craven Bros) h 123 n Union
— K L coal & wood dealer 41 w Depot h 51 w Depot
— Robt P 145 Mill
Craver Wm fact hand 160 Young
Creech Hannah wid 50 n Valley
— John A mill hand 114 Mill
Cress Baxter fact hand 240 w Buffalo
— Jos T miller 78 e Depot
— John fact hand 11 s Gold
— John R fact hand 240 w Buffalo
— Phillip A 11 s Gold
— Robt fact hand near Buffalo mill
— Wm fact hand 53 n Powder
Creswell John C fact hand 20 Cherry
Crook Thos weaver 169 Young
Crooks Frank lab 63 Vance
— Mata 63 Vance
— Robt F repair shop 63 Vance
Cross J M printer bds 144 n Spring
Crouch Chas fact hand 92 Caldwell
— Eugene fact hand 92 Caldwell
— Henry 92 Caldwell
Crouder Sallie wid 1 Plum
Crowell Giles T prop Fenix flour mill h 163 w Corbin
— Jas L (Montgomery & Crowell) attys h 59 Mill
— Jas T fact hand 15 Elizabeth

H. L. PARKS & CO. Sells the Best Grade
of SHOES.

We Lead! Others Follow.

Most Delicious **Soda Drinks** at our Fountain
 Concord Drug Store. 1 N. Union.

WHITE

43

DIRECTORY.

Crowell Jennie 185 Mill
 — John fact hand 181 Cedar
 — Murray 280 McGill
 — Wash G lab 280 McGill
 — Walter fact hand 41 Academy
 — Wm machinist 185 Mill
 Cruse G H fact hand 20 n Church
 — John R 43 s Church
 — Wm M fact hand bds 179 Mill
 Curlee L J fact hand 42 Simpson

Dalton W S pharmacist h 124 w Depot
 Dancy LeRoy carp 28 Elizabeth
 — Scott fact hand 70 Railroad
 — Wm lab 64 near Gibson mill
 Davidson Martha fact hand bds 150 w Buffalo
 Davis Burt fact hand 53 Pine
 — Jas fact hand 33 Pine
 — John E fact hand 32 n Crowell
 — Lewis P fact hand 38 w Corbin
 — Lizzie fact hand 192 n Church
 — Luke L fact hand 32 n Crowell
 — S U clk n end Kerr
 Day Victoria cook 272 n Union
 Dayvault A S 24 Mill
 — Chas A 49 Kerr
 — D P & Bros gen merchandise 31-33 s Union
 — D P h 119 w Corbin
 — Elizabeth fact hand 49 Kerr
 — Georgia fact hand 49 Kerr
 — J F h 186 s Union
 — J F & Bros meat market 41 s Union

Toilet Soaps

all kinds at
 all prices.
 GIBSON DRUG STORE, 1 South Union St.
 Agent for "High Art Soap"
 the best 3 for 25c. made.

Prescriptions Carefully Compounded
 at all Hours. CONCORD DRUG STORE.

Take Johnson's **Red Liver Pills**

For Headache, Biliousness, Dizziness, Constipation, Torpid Liver.

D. D. Johnson. 14 S. Union

The Miltonian
 The New Hotel. Free Buss, Electric Lights, High-class in every respect.
 R. W. Bigger, Prop.
 \$2.00 Per. Day and worth it.

WHITE

44

DIRECTORY.

- Dayvault Sarah fact hand 49 Kerr
- Wm A h 182 s Union
- Deal C P emp furn fact 86 n Georgia
- Eli P emp furn fact 86 n Georgia
- Deas Hugh lab 18 Allison
- Dees John 65 n Powder
- Deaton Mrs M A wid 33 e Depot
- N T clk 51 e Depot
- Sarah bds 237 n Union
- Dellinger F B fact hand 21 n Powder
- Demarcus A A clk 18 St Charles
- Eugene fact hand 18 St Charles
- Dennis Ida wid 67 Vance
- Maggie fact hand 71 Ash
- Mathew contr Gibson st near furn fact
- Nelson 71 Ash
- Dent Jas O lab 17 McGill
- John fact hand 276 McGill
- John fact hand bds 202 w Depot
- Denny Everett G fact hand bds 93 St Charles
- Samuel A fact hand bds 93 St Charles
- Dezerne Julia wid 31 Maple
- Dick R Lacy clk 147 n Union
- Diggs Wm fact hand 30 St George
- Dix Hughie fact hand 7 Elm
- Doby Lee fact hand 13 Mulberry
- L Adolph fact hand 14 Magnolia
- Dodson Mary teacher 49 n Georgia
- Dollar Carl fact hand bds 83 James
- Donaldson L C fact hand 215 Young
- Dorton Agustus clk 252 w Depot
- Chas fact hand 297 w Depot
- Cyrus M fact hand 50 Pine

John C. Smith.

45-47 S. Union.

FANCY and STAPLE
Groceries.

H. L. PARKS & CO.
DEPARTMENT STORE
 4 AND 6 S. UNION ST.

WHITE

45

DIRECTORY.

- Dorton Mary C wid 280 w Depot
 — N A fact hand 50 Pine
 Dove & Bost (Jacob-D L) grocers & china 24 s Union
 — M A fact hand 52 Meadow
 — Robt L 23 w Corbin
 Drake Geo W fact hand 17 Meisenheimer
 Driskill John W barber 202 w Depot
 Driver Jas fact hand 47 Magnolia
 — John W fact hand 69 n Powder
 Dry Chas (Dry & Miller) h 288 s Union
 — Claude B contr & bldr 110 e Depot
 — Carrie 110 e Depot
 — D M 257 n Union
 — Emma fact hand 110 e Depot
 — Geo W fact hand 197 s Spring
 — Jas fact hand 282 w Corbin
 — John carp 115 Cedar
 — John fact hand 65 near Gibson mill outside corp
 — Jonas fact hand bds 229 w Depot
 — L C fact hand 257 n Union
 — & Miller (C A-J L) boots & shoes sewing machines 21
 s Union
 — Price carp 110 e Depot
 — Wm fact hand 56 Caldwell
 Dunn Alfred clk 11 s Valley
 Dusenbery G 20 w Depot
 Dusenbery M C 6 Union
- Eagle Bessie fact hand 59 n Powder
 — Jemima fact hand 59 n Powder
 — Lee fact hand 59 n Powder
 — Margaret fact hand 59 n Powder

Send us
 Your
Prescriptions to fill
GIBSON DRUG STORE.
 Only Registered Druggists
 fill Prescriptions at our
 store.

Buy Your **DRUGS** and **MEDICINES.**
 From **D. D. JOHNSON, The DRUGGIST.**

The Miltonian Only First Class Hotel in
Concord.

THIS HOTEL IS MODERN ALL APPOINTMENTS

Hackney Bros.
PLUMBERS AND GAS FITTERS.
Charlotte N. C. Bell Phone, 312

WHITE

46

DIRECTORY.

Early John M fact hand 11 Meadow
 — Robt fact hand 20 Simpson
 Earnhardt C W blacksmith 20 s Church h 39 Mt Pleasant
 — Braxton fact hand 22 Academy
 — Edw fact hand 19 Mulberry
 — Jas mill hand 23 Mulberry
 — Jiles L fact hand 23 Mulberry
 — Peter C lab 22 Academy
 — Richard D fact hand 12 Guy
 — Wm R fact hand 22 Harris
 Eddleman Henry fact hand bds 216 Young
 Edwards Augusta wid 29 Harris
 — E W fact hand 58 n Valley
 — Ellen fact hand 108 McGill
 — Frank fact hand 77 w Buffalo
 — Frances fact hand 214 Mill
 — Geo W 214 Mill
 — Horace fact hand 77 w Buffalo
 — Jos A fact hand 214 Mill
 — Lee fact hand 77 w Buffalo
 — Lilly fact hand 108 McGill
 Edward Mark fact hand 55 Plum
 Efrid L F carp 21 Duval
 — H L fact hand 21 Duval
 Einstein Sol upholsterer 72 s Union
 Eller Laura wid 55 Cherry
 Elliott Al fact hand 17 Swink
 — Chas fact hand 54 Duval
 — Hurley fact hand 59 Simpson
 — Mollie wid rear school house n Spring
 — Wm fact hand 59 Simpson
 Ellis John fact hand 13 Guy
 Elyelet A fact hand bds 279 w Corbin

For
Up-to-date **Gentlemens Furnishings**
SEE H. L. PARKS & CO. 4-6 S. Union.

Whitman's Candies

Always fresh at
our Store.

CONCORD DRUG STORE, 1 N. UNION, ST

WHITE

47

DIRECTORY.

Emery Frank L supt Odell Co 244 n Union
Epps Julia M wid 224 n Spring
— Wm fact hand bds 240 w Buffalo
Ervin Jas R 30 n Spring
— Mollie wid 47 Ash
— Nancy bds 224 n Spring
— Sam'l J comm merchant 15 w Depot h 191 n Union
— S V teacher 191 n Union
— Thos fact hand 197 n Union
Eudy David fact hand bds 202 Young
— J fact hand bds 202 Young
— Louie fact hand 32 Cherry
— Travis fact hand bds 65 w Buffalo
Eury Geo E fact hand bds 53 Houston
— Mattie wid 33 Bleachery
— Millard fact hand 33 Bleachery
Faggart A M trav sales 76 Mill
— Mrs M C wid 18 Harris
— Pinky mill hand 18 Harris
— Thomas C mill hand 17 Guy
— Vol R mill hand 17 Kerr
Faibe John mill hand 169 Young
Farris Howell C mill hand 76 Ash
Faulkner Wm H mill hand 210 Young
Fenix Flour Mills 171 w Corbin
Ferrell Rufus mill hand 51 w Buffalo
Festperman C A mill hand 236 w Buffalo
Fetzer Bernard student 49 n Georgia av
— N D prop Fetzers Drug Store drugs crockery etc 2 s
Union h 98 Grove
— Morrison student 49 n Georgia
— Pendleton B (Cannon & Fetzer Co) 49 n Georgia
Fife Paul P I pres Cleavers Club Mfg Co

Gibson Drug Store
We would appreciate your trade.

Largest Stock,
Lowest Prices

Bicycle
Delivery.

Best
line of Cigars Smoking & Chewing Tobacco

IN TOWN.

CONCORD DRUG STORE.

Headache Cure, stops headache, made and
 sold by
D. D. JOHNSON Druggist.

Hackney Bros. Call and inspect our exhibit of Fixtures.
RELIABLE PLUMBERS Bell Phone 312.
 2 West 5th St.

WHITE 48 DIRECTORY.

- Filmer Wm mill hand 193 Mill
- Fink Annie 63 Pine
- Anna L mill hand 43 e Depot
- Arthur mill hand 19 Pine
- Dr D M retired 43 e Depot
- Edw mill hand 20 Maple
- Fletcher W student 261 n Union
- H C 18 Bleachery
- L mill hand bds 44 Pine
- Jas mill hand bds 76 Caldwell
- Jas C ship clk Odell Mfg Co 261 n Union
- Mrs J W housekeeper 64 n Union
- Marvin mill hand 63 Pine
- Victor mill hand 63 Pine
- Walter C tel opr 261 n Union
- Zeb mill hand 51 Cherry
- Fisher Carrie 68 nr Gibson Mill outside corp
- Chas mill hand bds 34 Harris
- Claude M 91 n Union
- Geo L livery 304 Church h 260 n Union
- Geo E clk 8 Mt Pleasant rd
- Grace M clk 91 n Union
- Jason H mill hand 38 St Mary
- Jessie C apprentice 8 Mt Pleasant rd
- J Deberry clk bds 30 e Corbin
- John mill hand 125 Cedar
- Josiah clk 53 n Union
- Mrs J E wid 14 n Valley
- Julius tel opr 91 n Union
- Mrs Laura P wid 53 n Union
- Martha 19 n Valley
- Mary wid 68 nr Gibson mill outside corp
- Nellie 53 n Union

The Gem Resturant. Meals at all hours.
 Game in season.
 45-47 S. Union St. John C. Smith prop.



O. V. Foust.

Leading

PHOTOGRAPHER and ARTIST

Over 62 S. Union.

Opposite Court House.

ALL STYLES OF PHOTOGRAPHS.

All styles of **PORTRAITS**. in Oil, Carbonette,
Pastels, Colour Pastels, Water Colours
and Crayons.

From Life size to a Porcelain **MINATURE**.

Best class of High Grade Frames in the City.

Ametuer work finished for the trade.

Commercial work for the trade.

All Work Guaranteed.

Prices Moderate.

O. V. Foust

Concord N. C.



IN MADE TO MEASURE CLOTHING
H. L. PARKS & CO. GUARANTEE A FIT.

WHITE

49

DIRECTORY.

- Fisher Nora B 8 Mt Pleasant rd
 — Ollie B clk 8 Mt Pleasant rd
 — Sadie clk 53 n Union
 — S C mill hand 38 St Mary
 — Thos mill hand 150 Mill
 Fister Mrs M E teacher Scotia Seminary
 Fite Wm D 128 Mill
 Fletcher John mill hand 15 n Gold
 Foil Alice 41 s Church
 — Cecil Painter 47 s Church
 — Chas H lab 41 s Church
 — Mrs E S wid 41 s Church
 — Jas W grocer 65 s Union h 55 e Depot
 — John M bkkpr h n Union
 — Jas W grocer 65 s Union h 55 e Depot
 — Mary 41 s Church
 — Wm A grocer 20 s Union h 60 Spring
 Forrest Chas mill hand 39 St Charles
 — Eli A mill hand 39 St Charles
 Foster Chas mill hand 17 Swink
 — Mary wid 17 Swink
 Foust O V photographer over 62 s Union h 160 n Church
 Fowler J A mill hand bds 22 Fenix
 Fowlkes John L mill hand 23 Pine
 — David mill hand 23 Pine
 Frame Allen 56 Caldwell
 Frazier Claude mill hand 15 n Gold
 Freeland Mrs S J wid 28 Caldwell
 Freeman A Blanche 106 s Union
 — Freeman M J prop Concord Ice & Fuel Co office opp
 St Cloud Hotel h 106 s Union
 — M J wid bds 189 n Church
 — Wm mill hand 218 n Church

Meet me
 at the
The Fountain, Gibson Drug Store.
 We serve Delicious Drinks Summer and Winter
 GIBSON DRUG STORE

STOP AT The Miltonian. only first-Class Hotel in the City.
 Best \$2.00 a day house in Concord.

Buy your Drugs and Medicines

From

D. D. Johnson Druggist.

14 S. Union

Write Hackney Bros.
When you want PLUMBING.
No. 2 West 5th St.
Bell Phone 312.

WHITE	50	DIRECTORY.
Freeze Chas mill hand	29 n Valley	
— John D mill hand	43 McGill	
Freize Albert D (Freize & Utley)	36 n Crowell	
— Clarence mill hand	36 n Crowell	
— Ed W clk h	35 n Spring	
— Isaac retired	58 n Valley	
— Jones mill hand	38 Pine	
— Lula	36 n Crowell	
— Scott drug clk	36 n Crowell	
— William retired	7 St Marys	
— Lillie mill hand	67 St Mary	
— John mill hand	23 n Valley	
— & Utley (A D-H T) props Concord	Marble Works	11
Means		
Fry Ad mill hand	32 Ash	
— Jas mill hand	56 Plum	
— J A B minister	24 n Union	
— Wm mill hand	55 Plum	
Funderburk Chas mill hand	33 Pine	
— Jas R mill hand	33 Pine	
Funderburg Julius mill hand	25 Cherry	
Furr Daniel	359 n Church	
— D M gen merchandise	314 n Church	
— Dortha mill hand	bd s 8 Cherry	
— Eli mill hand	55 n Crowell	
— C A mill hand	90 Buffalo	
— H C mill hand	bd s 39 Bleachery	
— J A teacher	63 Simpson	
— Jas M mill hand	75 n Crowell	
— J W gen store	223-221 w Depot h	19 s Valley
— Martin carp	18 Fenix	
— Martin M mill hand	91 Cedar	
— Paul mill hand	131 Cedar	

Prescriptions Carefully Compounded,
BY D. D. JOHNSON, DRUGGIST, 14 s. Union st.

Most **Soda Drinks** at our
 Delicious **Fountain**
 Concord Drug Store. 1 N. Union.

WHITE

51

DIRECTORY.

Furr P W 226 Mill

— Robt D butcher meat market 500 s Union

— Sandy mill hand 44 Magnolia

Gadd Minnie bds 246 n Spring

Gaddy Robt L fact hand 71 Vance

Gaeber Harvey H 92 n Georgia

Gainey Bessie bkkpr bds 37 n Union

Gale John W clk 20 St Charles

Garmon A M fact hand 29 Meisenheimer av

— John fact hand bds 13 Meisenheimer av

— Lornia wid 29 Meisenheimer av

Garrett Chas fact hand 214 Mill

— John J clk 190 n Union

Gasa A L 55 Magnolia

— Louis A fact hand 55 Magnolia

Gaskell S M peddler 64 St Mary

Gaskey Jesse lab 103 Cedar

— Josh fact hand 153 Cedar

Geaskey Ada fact hand 15 Buck

— Geo W fact hand 15 Buck

Gibbons West fact hand bds 51 Cabarrus

Gibson Cotton Mill Northwest part of City

— Drug store(Incorp) 1 s Main

— Elizabeth C 43 n Union

— Emily Magruder 72 n Union

— Mrs Jas C wid 43 n Union

— Jennie student 43 n Union

— Katharine 37 n Union

— & Morrison (R E-D B) dry goods notions & shoes 22 s
 Union

— Richard P bkkpr 43 n Union

Toilet Soaps

all kinds at
 all prices. Agent for "High Art Soap"
 the best 3 for 25c. made.
 GIBSON DRUG STORE, 1 South Union St.

Prescriptions Carefully Compounded
 at all Hours. **CONCORD DRUG STORE.**

Take Johnson's **Red Liver Pills**

For Headache, Biliousness, Dizziness, Constipation, Torpid Liver.

D. D. Johnson. 14 S. Union

The Miltonian
 The New Hotel. Free Buss, Electric Lights, High-class in every respect.
 R. W. Bigger, Prop.
 \$2.00 Per. Day and worth it.

WHITE

52

DIRECTORY.

- Gibson Robt E secy & treas Gibson Mfg Co h 72 n Union
 — Mrs S E wid 37 n Union
 — Wm W shoemkr over 15 s Union h 11 Vance
 — Wm H asst Teller Saving Bank 43 n Union
 Gillon Clara teacher 41 Bell av
 — Luther M 41 Bell av
 — Michael M 41 Bell av
 — W A minister 268 n Church
 Glover Clara F teacher Scotia Seminary
 Godwin Ellis 32 n Crowell
 Goldston E T 236 n Church
 — Mrs H E wid 236 n Church
 Goodman A J fact hand Gibson st
 — A L fact hand 59 n Powder
 — Albert fact hand 8 Plum
 — Henry 73 Mill
 — Jas A fact hand 19 Cherry
 — J F secy & treas Gibson Drug Co prop Carolina bottling wks h 73 Mill
 — John soda mfr 73 Mill
 — John A fact hand 25 St Mary
 — John C fact hand 8 Plum
 — Mrs H M wid 73 Mill
 — Wm fact hand 8 Plum
 — Wm C lab 106 e Depot
 — Wm F drayman 31 n Spring
 Goodnight E G wid 48 Duval
 — Emma wid 24 St Charles
 — Geo A fact hand 58 Cabarrus
 — Jas fact hand 48 Duval
 — J W fact hand bds 18 Isabella
 Goodson Mrs C J wid 48 w Depot
 — John F bkkpr 44 w Depot

John C. Smith.

45-47 S. Union.

FANCY and STAPLE
Groceries.

H. L. PARKS & CO.
DEPARTMENT STORE
 4 AND 6 S. UNION ST.

WHITE

53

DIRECTORY.

- Gordon L Z supt Life Ins Co of Va over 8 s Union h 159
 n Spring
 Gorman Julia wid 27 Duval
 Goasett Mrs Joe bds 202 w Corbin
 — Palmer fact hand 202 w Corbin
 — Richard lab 39 Bays
 — Thos M fact hand 202 w Corbin
 Gourley Sarah A wid 64 e Depot
 Graham Bedford D clk 22 n Spring
 — Ed R lab 252 n Spring
 — Geo fact hand 194 Young
 — John W fact hand 70 Railroad
 Grant Robt T overseer weaver 208 n Union
 Gray Frank blacksmith 73 White
 — Georgia fact hand 21 n Gold
 — Ada fact hand 21 n Gold
 — Ethel fact hand n Gold
 — Wm A loom fixer 21 n Gold
 Green Chas fact hand 76 Caldwell
 — Ernest fact hand bds 226 Mill
 — Ernest fact hand 56 Guy
 — Geo fact hand 259 Corbin
 — Geo resturant 176 Kerr
 — Jane wid 47 Cabarrus
 — Jas P fact hand 33 Pine
 — Jas fact hand bds 226 Mill
 Greosch Wm J barber rooms 5 w Depot
 Griffin Braxton C clk bds 115 Georgia
 — B L vet surgeon 15 e Depot h 223 s Union
 — Chas C fact hand 223 s Union
 — Craven D 211 s Union
 — J C fore Dept mill 33 Guy
 — Jas F carp 115 n Georgia av

Send us
 Your
Prescriptions to fill
GIBSON DRUG STORE.
 Only Registered Druggists
 fill Prescriptions at our
 store.

H. L. PARKS & CO. Sells the Best Grade
 of SHOES.

We Lead! Others Follow.

The Miltonian Only First Class Hotel in
Concord.

THIS HOTEL IS MODERN ALL APPOINTMENTS

HACKNEY BROS. Bell phone 312.
2 West 5th st.
Bath tubs, Closets, Lavatories,
Sinks etc.

WHITE

54

DIRECTORY.

- Griffin Jas H fact hand 35 Caldwell
 — Jessie H fact hand 22 s Valley
 — Marvin D 211 s Union
 — Robt H clk 211 s Union
 — Sarah wid 35 Caldwell
 Gridale Jas W fact hand 254 n Union
 Groff Jacob W fact hand 55 Mulberry
 — John barber 287 McGill
 Gunnell Wm H fact hand 26 Bays
 Gurley Henry fact hand 26 Railroad
 — Jacob K shoe shop over 14 s Union h 22 Misenheimer
 — Jacob T fact hand 279 w Corbin
 — John fact hand 37 Peachtree
 — Matilda fact hand 1 Mulberry
 — Mary wid 1 Mulberry
 Guy John 1 Plum
- Hagler John mill hand 161 Kerr
 Hall Jas R mill hand 173 Cedar
 — Edw H trav salsmn 38 n Spring
 — H L mill hand bds 221 n Church
 — Jerry clk 38 n Spring
 — Orah mill hand 248 n Union
 — Saml mill hand 24 Caldwell
 Hamby J A dyer 232 n Church
 Hamilton Bud 177 Cedar
 — Emery mill hand bds 58 Pine
 — Gross mill hand bds 237 n Union
 — Jas J 17 Bell av
 — Jas W clk 103 n Union
 — Lee mill hand 164 Vance
 — Melissa mill hand 164 Vance

For
Up-to-date **Gentlemens Furnishings**
SEE H. L. PARKS & CO. 4-6 S. Union.

Whitman's Candies

Always fresh at
our Store.

CONCORD DRUG STORE, 1 N. UNION, ST.

WHITE

55

DIRECTORY.

Hamilton S A wid 103 n Union
Hammer S B mill hand bds 92 McGill
Hany Jos mill hand 64 Simpson
Hannie John M mill hand 3 McGill
Hardy Jos E mill hand 56 Guy
— Sam mill hand bds 44 Pine
Harr Oscar mill hand 63 Pine
Hargett Wm mill hand 105 Plum
Harkey A D teacher 165 n Spring
— Addie L mill hand 165 n Spring
— D M 19 Maple
— John A 165 n Spring
— Victor mill hand bds nr furn fact
Harper Chas N loom fixer 140 Vance
Harrington C W mill hand 4 Ash
— Jacob W mill hand 22 Locust
— Jas R mill hand 29 Mulberry
— Dr J W 51 St Marys
Hartsell A M ins & broker 5 w Depot
Harris A W emp furn fact 5 Harris St nr furn fact
— B E bkkpr 127 n Union
— Chas J (Yorke & Wadsworth Co) 21 n Union
— Clara art school 80 Grove
— Cicero L mill hand 33 Simpson
— Cicero mill hand 254 n Union
— David carp 412 s Union
— G R printer 233 w Depot
— Mrs Jane E wid 98 w Corbin
— Jas F chief of police 233 w Depot
— Mahles emp foundry bds 143 s Union
— Mary Lewis teacher 80 Grove
— R N rms 64 n Union
— Rose telph optr 80 Grove

Gibson Drug Store
We would appreciate your trade.

Largest Stock,
Lowest Prices

Bicycle Delivery.

Best
line of **Cigars Smoking & Chewing Tobacco**

IN TOWN.

CONCORD DRUG STORE.

FOR COUGHS, COLDS, HOARSENESS AND ALL AFFECTIONS OF THROAT AND LUNGS TAKE

Johnson's compound syrup of white pine

D. D. Johnson Druggist.

14 S. Union

WHITE

56

DIRECTORY.

Hackney Bros.
RELIABLE PLUMBERS
 Call and inspect our exhibit of Fixtures.
 Bell Phone 312.
 2 West 5th St.

- Harris R S clk h 80 Grove
- Samuel 90 Cedar
- Sarah 80 Grove
- Shelby H clk 98 w Corbin
- W E clk 253 n Church
- W R (Bell & Harris Furniture Co) h 158 n Union
- Harrison Benj farmer 85 w Buffalo
- Carrie mill hand 83 w Buffalo
- John mill hand 83 w Buffalo
- Hartsell A F trav sales bds 66 w Depot
- Fannie mill hand bds 22 Isabella
- Gip C mill hand 182 Young
- Jacob grocer 126 McGill
- J L with C & F Co 135 n Spring
- Jonas W mill hand 26 Isabella
- L T atty over 62 s Union h 30 n Spring
- Milton B bkkpr bds 30 e Corbin
- Harvell Mary mill hand bds 231 Mill
- Harvey Robt S loom fiver 154 Vance
- Harwell Thos O mill hand 211 n Spring
- Hatchett John D bkkpr 35 n Spring
- Hatfield Adelaide S teacher Scotia Seminary
- Hatcock A J 79 James
- E M barber 69 n Spring
- Fonsey mill hand 15 St Charles
- Franklin S life ins agt 119 Vance
- I A physician 119 Vance
- Jas I mill hand 119 Vance
- J J 79 James
- Mary C mill hand 115 Vance
- Mary near Buffalo mill
- Mary mill hand 69 James
- Maggie mill hand 119 Vance

The Gem Resturant.

Meals at all hours.
Game in season.

45-47 S. Union St.

John C. Smith prop.

The Standard.

DEVOTED TO THE MORAL, INTELLECTUAL,
PHYSICAL and FINANCIAL UPBUILDING OF ITS
READERS and PATRONS.

DUTY ITS END, SERVICE ITS JOY. SUAVITY
FOR HARMONY, FIRMNESS IN DEFENCE OF THE
RIGHT.

Weekly, \$1.00 a Year.

ESTABLISHED 1888.

Daily, \$4.00 a Year.

ESTABLISHED 1890.



Job Work Solicited and Satisfaction Guaranteed.



.....Advertising Rates Made Known on Application.....

The Standard.

J. D. BARRIER, EDITOR AND PROPRIETOR.

IN MADE TO MEASURE CLOTHING
H. L. PARKS & CO. GUARANTEE A FIT.

WHITE

57

DIRECTORY.

- Hathcock N C mill hand 69 James
 — Sarah mill hand 119 Vance
 — Rufus 115 Vance
 — Walter carp 81 Mill
 Hatley Florence mill hand 71 Cabarrus
 — Jennie mill hand 71 Cabarrus
 — L Richard mill hand 202 Young
 — Tilman H mill hand 39 Bleachery
 Hattley Addie mill hand 33 Bays
 — Minnie mill hand bds 33 Bays
 Hawkins Adolph mill hand 3 Elm
 — F A 3 Elm
 Hawthorne Thos fore Bleachery Cotton mill 22 n Georgia
 Hayes Jas mill hand 177 Cedar
 Hearne Thos mill hand 287 w Corbin
 Heglar Victor C mill hand 12 Elm
 Heigler Eula mill hand bds 24 St Charles
 Heileg Louis bill clk Sou R R bds 91 w Depot
 Helderman Abel R mill hand 104 McGill
 — Rachael wid 104 McGill
 Hellard Maggie mill hand bds 253 n Union
 Helms A J blacksmith 21 e Depot h 55 Reed
 — Geo W mill hand 34 Caldwell
 — H H mill hand near Buffalo mill
 — M A mill hand 17 Harris
 — M mill hand 64 Railroad
 — Walter mill hand 64 Railroad
 — Wm mill hand 34 Caldwell
 Hemphill Lizzie stenog bds 191 n Union
 Henderson Mrs M M wid bds St Cloud Hotel
 Hendrix Edgar E 66 w Corbin
 — Harry M emp laundry 66 w Corbin
 — John M bkkpr 66 w Corbin

Meet me
 at
The Fountain, Gibson Drug Store.
 We serve Delicious Drinks Summer and Winter
GIBSON DRUG STORE

STOP AT The Miltonian. only first-Class Hotel in the City.
 Best \$2.00 a day house in Concord.

Buy your Drugs and Medicines

From

D. D. Johnson Druggist.

14 S. Union

Write Hackney Bros.
 When you want PLUMBING.
 No. 2 West 5th St. Bell
 Phone 312.

WHITE

58

DIRECTORY.

- Hendrix Mary R teacher 66 w Corbin
- Henry Elmer mill hand 363 n Church
- Rock mill hand 363 n Church
- Will H mill hand 363 n Church
- Herring Hardy C dentist over 5 s Union h 58 w Depot
- Hess Wm F mill hand 219 Mill
- Hethcock D L blacksmith shop e Depot h 39 e Depot
- Hethcox C H 158 Vance
- O L mill hand 158 Vance
- Hill Dave mill hand 11 Robbins
- E F mill hand 20 Elizabeth rear
- Geo bricklayer 20 Elizabeth
- Geo mill hand bds 237 n Union
- Mrs H B wid 11 s Church
- Jos prop Concord Pressing Club h 116 n Union
- John S mill hand 38 e Depot
- Josie bkkpr 135 n Spring
- M C wid 135 n Spring
- Safrit resturant 44 s Union
- Wm J hardware tinner & harness 40 s Union h 116 n Union
- Hiller W H minister rms 11 w Corbin
- Hines Chas mill hand bds 179 Mill
- Hinley Alex mill hand 22 Harris
- Hinshaw Flora mill hand 212 n Church
- Hinson Belle mill hand 221 n Church
- Ella mill hand 221 n Church
- Eli R mill oand 21 Harris
- Frances mill hand 51 Magnolia
- John R mill hand 44 Ash
- J F fireman oil mill 30 Misenheimer
- Layton wid 53 n Powder
- Lummie mill hand 23 Caldwell

Prescriptions Carefully Compounded,
 BY D. D. JOHNSON, DRUGGIST, 14 s. Union st.

Most **Soda Drinks** at our
 Delicious **Concord Drug Store.** Fountain
 1 N. Union.

WHITE

59

DIRECTORY.

- Hinson Phrona mill hand 221 n Church
 — Thos mill hand 51 Magnolia
 — Wm mill hand 51 Magnolia
 — Wm H mill hand 38 Magnolia
 Hodson Ida bkkpr 109 McGill
 Hoke S H mill hand bds 29 Misenheimer
 Holbrooks Elijah mill hand 49 n Valley
 — Filmore lab bds 60 s Spring
 — Jennie 23 Bays
 — Lillie mill hand 49 n Valley
 — Samuel mill hand 131 Mill
 — Victor mill hand 49 n Valley
 Holden Mrs T A wid 48 e Depot
 Holland Wm A furn repair 48 Georgia
 Holshouser Chrisenburg clk 134 s Spring
 — Wm J mill hand 17 McGill
 Holt Eugene mill hand 19 Robbins
 Holzhouser J H A gen store 206 Mill h 169 n Spring
 Honbargar C W mill hand 18 Isabella
 Honbarger Nora mill hand 18 Isabella
 Honeycutt Andrew 43 Plum
 — Adam E grocer 84 Vance
 — Columbus mill hand 75 n Crowell
 — C carp 15 Robbins
 — David E fore cott mill 43 Mt Pleasant rd
 — Eli M clk 58 Mill
 — Hubbard plumber 11 Pine
 — John mill hand 28 Pine
 — John A mill hand 88 James
 — John A carp 2 Railroad
 — John P mill hand 57 Pine
 — Joel harness maker 82 e Depot
 — Julius C shoemaker 57 Pine

Toilet Soaps

all kinds at
 all prices.
 Agent for "High Art Soap"
 the best 3 for 25c. made.
 GIBSON DRUG STORE, 1 South Union St.

Prescriptions Carefully Compounded
 at all Hours. **CONCORD DRUG STORE.**

If You Hot and Tired Come to my Up-to-
 are date Soda Fountain
 Rest, Drink and be Satisfied. **D. D. Johnson, Druggsit.**

The Miltonian
 The New Hotel. Free Buss, Electric
 Lights, High-class in every respect.
 R. W. Bigger, Prop.
 \$2.00 Per. Day and worth it.

WHITE

60

DIRECTORY.

- Honeycutt LaFayette mill hand 15 s Valley
 — L P 37 Caldwell
 — Martha wid 163 Cedar
 — Miles C 75 Vance
 — Nancy wid 82 e Depot
 — Noah mill hand 75 n Crowell
 — Pearson mill hand 57 Pine
 — Sallie mill hand bds 9 s Gold
 — Thos J driver 23 Mt Pleasant rd
 — Vilas 43 Plum
 — Walter P 75 Vance
 — Webster 43 Plum
 — Wm fireman bds nr furn fact
 Honeysucker George mill hand 26 Mulberry
 — Rufus mill hand 26 Mulberry
 Hoover Annie teacher 31 Mill
 — Aubrey clk 31 Mill
 — D R trav slsmn 31 Mill
 — Ora teacher 31 Mill
 Hopkins Annie wid 28 Swink
 — Adam mill hand 271 w Corbin
 — C W prop Concord Bakery & Restaurant 15 n Main h
 57 Loan
 — Mrs E A wid 57 Loan
 — John mill hand bds 38 Peachtree
 — James clk 57 Loan
 — Mary wid 59 St Marys
 — Thos clk hotel 57 Loan
 — Walter 57 Loan
 Hornbuckle Ann wid 209 w Depot
 — Lula mill hand 27 Academy
 — Jas P mill hand 17 Vance
 — John E mill hand 27 Academy

John C. Smith.

45-47 S. Union.

FANCY and STAPLE

Groceries.

H. L. PARKS & CO.
DEPARTMENT STORE
 4 AND 6 S. UNION ST.

WHITE

61

DIRECTORY.

Horton Thos D 76 n Crowell
 — Maston C mill hand 41 Duval
 Houston W C Dentist over 16 s Union h 14 n Spring
 Howard Daniel emp furn fact 218 n Church
 — Hettie mill hand 31 Kerr
 — Jas W mill hand 8 Ash
 — John P mill hand 42 Duval
 — P C retired 35 Duval
 Howe Belle mill hand 70 n Crowell
 Howell Archie mill hand 79 nr Gibson Mill
 — E H mill hand nr Buffalo Mill
 — Edw 42 Bleachery
 — Hampton 66 Isabella
 — John T mill hand 248 n Union
 — Leander mill hand 40 Academy
 — Martha 21 Swink
 — Wm F mill hand 142 Mill
 — Z V mill hand 202 Mill
 Hubbard Milton mill hand bds 18 Swink
 — Melton mill hand 23 Caldwell
 Hudson Jennie clk 252 w Depot
 — Jennie mill hand 71 Cabarrus
 — Sarah wid 71 Cabarrus
 — Wm F carp 59 Peachtree
 Hufman John mill hand bds 58 Isabella
 Huggins J N Minister 25 w Buffalo
 Hughes J S mill hand bds 22 Fenix
 Hunsucker Frank mill hand bds 18 Swink
 — J R mill hand 136 w Buffalo
 — Lloyd mill hand 18 Swink
 — Saml mill hand 18 Swink
 Hunter Henry S mill hand 44 Mulbery
 — Wm S furn repair bds 48 St George

Send us
 Your
Prescriptions to fill
GIBSON DRUG STORE.
 Only Registered Druggists
 fill Prescriptions at our
 store.

H. L. PARKS & CO. Sells the Best Grade
 of SHOES.
 We Lead! Others Follow.

The Miltonian Only First Class Hotel in
Concord.

THIS HOTEL IS MODERN ALL APPOINTMENTS

Hackney Bros.
PLUMBERS AND GAS FITTERS.
Charlotte N. C. Bell Phone, 312

WHITE

62

DIRECTORY.

Hurley J F business mgr Tribune h 88 e Spring
Hurlocker Sandy mill hand nr furn fact

Imes Martha mill hand 68 St Charles

Isenhour C A mill hand 87 Mill

— Geo W 60 e Depot

— Jane bds 147 n Union

— Mary wid 34 Harris

— Mrs Nealy wid 92 Vance

— Wm E 60 e Depot

Ivy Pattie mill hand 27 St Charles

— Thos P mill hand 27 St Charles

Jackson Jos F barber rms 5 w Depot

— U L mill hand bds 65 w Buffalo

James Mrs Anna C 153 w Buffalo

— Daisy mill hand 153 w Buffalo

— Hubert mill hand 197 n Church

Jeans Clifford 25 Harris

Johns David mill hand bds 22 Fenix

Johnson Mrs A H wid 244 n Union

— Mrs Bettie wid 36 n Spring

— D D drugs 14 s Union h 75 n Union

— Mrs E A wid 36 Cedar

— Jas upholsterer 72 s Union

— Jas A mill hand 7 Magnolia

— Jessie mill hand 11 s Church

— John W mill hand 21 Fenix

— Karl T clk 144 n Spring

— Lillie fact hand 71 Ash

— Lillie fact hand 83 Vance

For
Up-to-date **Gentlemens Furnishings**
SEE H. L. PARKS & CO. 4-6 S. Union.

Whitman's Candies

Always fresh at
our Store.

CONCORD DRUG STORE, 1 N. UNION, ST.

WHITE

63

DIRECTORY.

- Johnson Lillie fact hand 36 Cedar
- Louis H fact hand 83 Vance
- Luther hostler 244 n Union
- Maggie bds 19 Robbins
- Mary 244 n Union
- Robt W fact hand 123 n Spring
- R L fact hand bds 232 w Corbin
- Thos fact hand 83 Vance
- Wm R Register of Deeds 100 n Church
- Johnston R F grocer 257 w Depot h 255 w Depot
- R Wm police 144 n Spring
- Joiner Flora fact hand 104 Cedar
- W A painter 33 Harris
- Jones Arthur fact hand 144 w Buffalo
- E J pharmacist h 151 s Union
- James F fact hand 144 w Buffalo
- John fact hand bds 45 w Buffalo
- Minnie fact hand 144 w Buffalo
- W A fact hand 16 Elizabeth
- Josey Sarah wid 132 Cedar
- Junker Ida fact hand 137 Mill
- Wm repair shop 137 Mill

- Kearns Julian L fact hand 57 n Crowell
- Kees Adam N fact hand 44 Cherry
- Kelly J H fact hand 79 Caldwell
- Thos C fact hand 79 Caldwell
- Kellum Frank fact hand 214 Mill
- Kendall John P fact hand bds 198 Mill
- Kenette Jas A fore dept Odells fact 64 Grove
- Kerr Ed W lab 9 Misenheimer av
- Kestler Geo E clk h 123 s Spring

Gibson Drug Store
 We would appreciate your trade.
 Largest Stock,
 Lowest Prices
 Bicycle Delivery.

Best line of **Cigars Smoking & Chewing Tobacco**
IN TOWN. CONCORD DRUG STORE.

FOR COUGHS, COLDS, HOARSENESS AND ALL AFFECTIONS OF THROAT AND LUNGS TAKE

Johnson's compound syrup of white pine

D. D. Johnson Druggist.

14 S. Union

WHITE

64

DIRECTORY.

Hackney Bros. Call and inspect our exhibit of Fixtures.
RELIABLE PLUMBERS 2 West 5th St. Bell Phone 312.

- Ketner Lawson fact hand 71 Academy
- Mrs Susan wid 229 w Corbin
- Killough Nettie cook 57 Grove
- Kime Annie 192 n Church
- Jane wid 192 n Church
- John fact hand 192 n Church
- Sallie bds 42 w Corbin
- Kimmers Irma bkkpr 207 n Union
- John A clk 207 n Union
- Kimray Walter S fact hand 30 McGill
- Kincaid Elizabeth teacher bds 119 w Corbin
- King Elam capitalist 118 s Union
- Horace J clk 73 w Corbin
- Lelia 49 n Georgia
- Levi M fact hand 13 Misenheimer
- Mary 118 s Union
- Matilda 236 n Union
- Morrison med student 118 s Union
- Parks med student 118 s Union
- Robt F clk 257 n Church
- Kinlay Mrs M A wid 19 Buck
- Kinney Carrie cook 271 n Union
- Kenworthy Levi fact hand bds 279 w Corbin
- Kirby Chas E fact hand bds 69 n Crowell
- Kirk Thos fact hand bds 8 Pine
- Thos fact hand bds 279 w Corbin
- Wm M fact hand 123 Vance
- Kirkman Hanna E mill hand 2 Magnolia
- Hugh fact hand bds 2 Magnolia
- Kiser Martin L fact hand 145 Cedar
- Wm H fact hand 51 Cabarrus
- Kizziah Floyd confet 317 n Church
- Fred fact hand 254 n Union

The Gem Resturant.

45-47 S. Union St.

Meals at all hours.
Game in season.

John C. Smith prop.

The Beginning of Trouble



YOU ARE "fixing up trouble" for yourself when you dally with the print shop that does any old sort of printing. Proper, particular, pretty printing, such as we do, will make life in your office a veritable honeymoon.

"Get hitched" to our printing, and it will be always "for better" — never "for worse."

Times STEAM
PRINTING HOUSE

CONCORD, NORTH CAROLINA

1



2

IN MADE TO MEASURE CLOTHING
 H. L. PARKS & CO. GUARANTEE A FIT.

WHITE

65

DIRECTORY.

Kizziah Mrs Jas H wid 254 n Union
 — Jennie fact hand 24 Duval
 — Mollie fact hand 254 n Union
 — Pollie wid 19 Meadow
 Kline Edw clk 156 s Union
 Kluttz Alfred 236 w Depot
 — Chas fact hand 236 w Depot
 — Della fact hand 236 w Depot
 — J H fact hand 216 Young
 — Minnie fact hand 236 w Depot
 — S L butcher 108 n Church
 — Thos fact hand 85 Cedar
 — Walter fact hand 108 n Church
 Kimbrow Chas fact hand n end of Kerr
 Kimminger Wm fact hand bds 179 Mill
 Krider R M fact hand bds 202 w Depot
 Kuhn Thos carp nr furn fact

Lady Edgar delivery clk So R R bds 91 w Depot
 Lafferty Gertrude 91 w Depot
 — J S physician over 14 s Union h 91 w Depot
 — Robt teacher 91 w Depot
 Lamb Benj fact hand bds 237 n Union
 — Carl fact hand bds 17 Guy
 Lanker Benj fact hand 69 w Buffalo
 — Rufus fact hand 69 w Buffalo
 Laughlin Hugh W fact hand 10 n Valley
 — John L Vice Pres Cleavers Club & Mfg Co 59 e Depot
 — Thos J fact hand 10 n Valley
 Lawings W L blacksmith 23 Means h 37 s Church
 Leadbetter Dunk fact hand 231 n Spring
 Leathco W M fact hand 273 Mill

Meet me
 at
The Fountain, Gibson Drug Store.
 We serve Delicious Drinks Summer and Winter
 GIBSON DRUG STORE

STOP AT The Miltonian. only first-Class Hotel in the City.

Best \$2.00 a day house in Concord.

Take Johnson's Red Liver Pills

For Headache, Biliousness, Dizziness, Constipation, Torpid Liver.

D. D. Johnson. 14 S. Union

HACKNEY BROS. Bell phone 312. 2 West 5th st.
Bath tubs, Closets, Lavatories, Sinks etc.

WHITE	66	DIRECTORY.
Leazar Bella	53	Kerr
Ledwell Harvey	fact hand	beds 237 n Union
Lee Fitzhugh	fact hand	beds 33 Pearl
Leigh E F	fact hand	156 Young
Lemley S B	fact hand	38 Mulberry
Lemmens	fact hand	nr Buffalo Mill
Lentz A E	clk	63 Grove
— Cora	63	Grove
— Jay D Prin	High School	148 n Union
— Jacob C	fact hand	201 Young
— Katie	Student	147 n Union
— Lucas	fact hand	189 n Church
— Mamie	63	Grove
— R P shoemaker	315 n Church	h 189 n Church
— Thos	fact hand	beds 44 Ash
Leslie Bettie	92	w Depot
— E C	wid	92 w Depot
— Fanny	bkkpr	92 w Depot
— Laura	teacher	92 w Depot
— Lena	teachea	92 w Depot
Lewis Katherine	beds	44 Cherr
Life Ins Co of Va	L Z Gordan	Supt over 14 s Union
Lilly Wm H	physician	Vice Pres Concord Natl Bank 30 n Depot h 28 w Depot
— Wm	fact hand	70 Meadow
Lingle Daisy	Reporter	Standard beds 55 e Depot
Linker Alice	fact hand	127 Mill
— Laura	fact hand	127 Mill
— Mark	clk	91 w Depot
— Martin L	fact hand	246 n Spring
— Mose	127	Mill
— Wm A	fact hand	127 Mill
— Wilkes T	fact hand	40 Academy

Prescriptions Carefully Compounded,
BY D. D. JOHNSON, DRUGGIST, 14 s. Union st.

Most **Soda Drinks** at our
 Delicious **Fountain**
 Concord Drug Store. 1 N. Union.

WHITE

67

DIRECTORY.

- Lipe Ada fact hand 94 St Charles
 — Geo N 94 St Charles
 — Howell fact hand bds 202 Young
 — L E general repairer & grocer 49 s Union h 70 e Depot
 Lippard Carrie B 16 Mt Pleasant rd
 — Frances 46 n Spring
 — J Crooks fact hand 46 n Spring
 — J C meat market restaurant & grocer & prop Cabarrus
 Roller Mill 30 s Union h 46 n Spring
 — Rufus T (Lippard & Barrier) 16 Mt Pleasant rd
 — Yarn Mill (Incorp) office 43 s Union e Depot & Reed
 — & Barrier (J C-R T & Mrs M E) gen merchandise 10 s
 Union
 Litaker Daniel fact hand 98 Academy
 — Jas H fact hand 27 Bays
 — Daniel V 260 s Union
 — R C printer 260 s Union
 — Thos barber 181 n Church
 Litten O B fact hand 64 Peachtree
 Little Brantley fact hand 51 Isabella
 — Craven fact hand 85 w Buffalo
 — Emma fact hand 51 Isabella
 — Jacob W lab 150 w Buffalo
 — John fact hand 91 James
 — Mary wid 51 Isabella
 — Wesley 116 Cedar
 — Williamson 85 w Buffalo
 Littleton Jas T foundry 35 Academy
 — Wm fact hand bds 30 McGill
 Loman Jas M machinist 86 Mt Pleasant rd
 Lomax Henry fact hand 60 n Powder
 — John N fact hand 60 n Powder
 — Walter fact hand 60 n Powder

Toilet Soaps

all kinds at
 all prices.
 Agent for "High Art Soap"
 the best 3 for 25c. made.
 GIBSON DRUG STORE, 1 South Union St.

Prescriptions Carefully Compounded
 at all Hours. **CONCORD DRUG STORE.**

If You are Hot and Tired Rest, Drink and be Satisfied. Come to my Up-to-date Soda Fountain D. D. Johnson, Druggsit.

The Miltonian
 The New Hotel. Free Buss, Electric Lights, High-class in every respect.
 R. W. Bigger, Prop.
 \$2.00 Per. Day and worth it.

WHITE	68	DIRECTORY.
Long Lilly fact hand 2 Simpson		
— Miss M J 14 Vance		
— Sarah 83 e Depot		
— Wm M carp 20 Simpson		
Lore Geo M clk 105 w Depot		
— Lucky music teacher 105 w Depot		
— Mary B 105 w Depot		
Louder Sarah wid 56 Magnolia		
Love R H fact hand 291 w Corbin		
Lowder D A livery 35 Harris		
— Danl S carp 79 Cedar		
— Henry 19 Magnolia		
— Jos 19 Magnolia		
— J E fact hand 58 n Crowell		
— Mary fact hand 94 w Buffalo		
— Nancy wid 19 Magnolia		
— Robt fact hand 15 St Charles		
— Robt fact hand 20 Plum		
— Wm 19 Magnolia		
Lowe Lucius fact hand 31 Cherry		
Luck Samuel fact hand 254 n Union		
Ludrick Samuel 19 Pine		
Ludwig John H fact hand 117 Plum		
— Mattie fact hand 159 w Buffalo		
— Sallie fact hand 159 w Buffalo		
Lyerly Crawford fact hand 113 Plum		
— John W fact hand 54 Isabella		
— Mary wid 54 Isabella		
Lyles Eli J fact hand 2 Plum		
— R A fact hand 245 n Church		
Lytle Arthur fact hand 273 Mill		
— Chas T fact hand 47 Isabella		

John C. Smith. FANCY and STAPLE Groceries.
 45-47 S. Union.

H. L. PARKS & CO. DEPARTMENT STORE

4 AND 6 S. UNION ST.

WHITE

69

DIRECTORY.

Mabery Jacob fact hand 21 Bleachery
 — J M^r 146 Vance
 — Joan fact hand 146 Vance
 — Mary E fact hand 146 Vance
 — Rebecca C mill hand 146 Vance
 — Richard D fact hand 137 Vance
 — Wm P fact hand 14 Vance
 Mabry Filmore 48 Cabarrus
 — G M fact hand 71 Isabella
 — Henry fact hand 23 s Gold
 — J Marshal 34 e Depot
 Madison Gordan fact hand 263 w Corbin
 Mahan Jas P 185 Young
 Mann Dr E fact hand 21 Locust
 Maners Cicero fact hand 45 Guy
 — Jas R fact hand 45 Guy
 Marable D T Ins agt 18 Tribune
 March A H retired bds 91 n Union
 Marsh M L drugs 8 s Union h 46 n Georgia av
 Martin Ellis Mrs wid 162 w Corbin
 — John fact hand 26 Cherry
 — Lee fact hand 19 n Gold
 — Maggie H fact hand 275 w Corbin
 — P M fact hand 275 w Corbin
 Maness Columbus C fact hand 211 n Spring
 Maulden Abe fact hand 237 n Spring
 — Chas fact hand 237 n Spring
 — Henry C fact hand 8 Mulberry
 — Samuel fact hand 237 n Spring
 May Thos fact hand 145 Vance
 Mays Alex fact hand 51 Isabella
 Maxwell F L grocer 190 Young
 McBride Mrs Mary B 211 s Union

Send us
 Your
Prescriptions to fill
GIBSON DRUG STORE.
 Only Registered Druggists
 fill
 Prescriptions at our
 store.

H. L. PARKS & CO. Sells the Best Grade
 of SHOES.

We Lead! Others Follow.

The Miltonian Only First Class Hotel in
Concord.

THIS HOTEL IS MODERN ALL APPOINTMENTS

Hackney Bros.
PLUMBERS AND GAS FITTERS.
Charlotte N. C. Bell Phone, 312

WHITE

70

DIRECTORY.

- McBride Wm G fact hand 83 Buffalo
 McCachren R B fact hand 29 n Valley
 McCall Katie wid 83 James
 — Lawrence fact hand 207 Young
 — Mrs M J wid 207 Young
 McClellan Cassie wid 283 w Depot
 — John W mgr for J C Lippard 30 s Union h 102 e Depot
 — T H 81 n Spring
 — Sidney H fact hand 283 w Depot
 McCloud Lewis fact hand bds 96 Mill
 McClure Vander mill hand 35 Mulberry
 McCollum Arthur Gibson st near Gibson Mill
 — Jas M mill hand Gibson
 — Walter mill hand Gibson st near Gibson Mill
 McConnell Ernest clk h 72 Mill
 — Fred 72 Mill
 — Jane T wid 72 Mill
 — Julia 72 Mill
 — Ross L mgr W U Tel Co h 66 w Depot
 McCommons D W mill hand 139 w Buffalo
 — Jos mill hand 139 w Buffalo
 — Lillie mill hand 139 w Buffalo
 — Nora mill hand 139 w Buffalo
 — Robt mill hand 139 w Buffalo
 McCully H C mill hand 157 Kerr
 McDade Henry mill hand 153 Kerr
 — Eliza wid 153 Kerr
 — Laura mill hand 153 Kerr
 McDaniel Annie mill hand bds 14 St Charles
 — John H lab 56 Houston
 McDonald A J 124 Mill
 — Chas 382 n Church
 — Clay 1 Plum

For
Up-to-date **Gentlemens Furnishings**
SEE H. L. PARKS & CO. 4-6 S. Union.

Whitman's Candies

Always fresh at
our Store.

CONCORD DRUG STORE, 1 N. UNION, ST.

WHITE

71

DIRECTORY.

McDonald C D mill hand 199 w Corbin
— David M mill hand 124 Mill
— Mary 382 n Church
— Wm mill hand 80 Caldwell
McDowell John C trav salesman 37 n Union
McEachern Jas A lineman 153 n Spring
McFarland Chas mill hand 191 Cedar
McGee John mill hand 210 Mill
McGraw J Frank clk 23 e Corbin
McGuirt John carp bds 109 McGill
McInish John mill hand 88 McGill
McInnis Annie mill hand 25 Fenix
McInnis Clebe mill hand 155 Young
— Jas R mill hand 25 Fenix
— John mattress mfr h 175 n Church
— Lillie mill hand 25 Fenix
— Nora 175 n Church
— Wm R mill hand 25 Fenix
McKay Walter H mill hand bds 26 Bays
McKinney F B livery 21 Means h 24 Tribune
McLester J D 79 Vance
— Martha C wid 78 Vance
— Onie 79 Vance
McMoore M B mill hand 54 St Mary
McNamar H retired 63 S Church
McNairy minister 48 s Church
McNish Elmer supt elec plant 67 Mill
— Frank mill hand 67 Mill
McQuage Dan H engr 278 McGill
McSwain R D mill hand 249 w Corbin
— Wm mill hand 196 n Church
McTire F C mill hand 16 s Gold
Meachem Thos mill hand bds 7 McGill

Gibson Drug Store
We would appreciate your trade.

Largest Stock,
Lowest Prices

Bicycle Delivery.

Best
line of Cigars Smoking & Chewing Tobacco

IN TOWN.

CONCORD DRUG STORE.

Headache Cure, stops headache, made and sold by
D. D. JOHNSON Druggist.

WHITE

72

DIRECTORY.

Hackney Bros. Call and inspect our exhibit of Fixtures.
RELIABLE PLUMBERS 2 West 5th St. Bell Phone 312.

- Means Brandon 136 n Union
- Bell teacher 136 n Union
- Esther mill hand 17 Vance
- Frank 136 n Union
- Gaston teacher 136 n Union
- Geo W 241 s Union
- J A (Ritchie Hardware Co) h Charlotte N C
- J L mill hand 17 Vance.
- Kate 136 n Union
- Mabel teacher 241 s Union
- Mary mill hand 17 Vance
- Martha wid 292 n Church
- Paul B atty 84 s Union
- Pauline teacher 136 n Union
- Sallie 17 Vance
- Thos mill hand 282 n Church
- Victor A 241 s Union
- W G atty over 41 s Union h 136 n Union
- Medlin Brice mill hand bds 53 Duval
- Meeks Olinda A teacher Scotia Seminary
- Mehaffey Hattie 55 s Church
- J Ira clk h 55 s Church
- Mrs M E wid 55 s Church
- Melton A D carp 312 n Church
- John A grocer 207 w Depot h 253 w Depot
- Menins Edw mill hand 18 Misenheimer av
- Merrin Alfred mill hand bds 57 w Buffalo
- John W mill hand bds 57 w Buffalo
- Miller Alex mill hand 45 St Mary
- B A mill hand 249 w Depot
- Baxter mill hand bds 237 Young
- B N H mill hand 91 Buffalo rear
- Clifford S mill eand 133 Vance

The Gem Resturant. Meals at all hours.
 Game in season.
 45-47 S. Union St. John C. Smith prop.

Fetzer's Drug Store

CONCORD, N.C.

Fresh Goods.

Polite and accurate Service in every Particular. Attention to the Compounding of Physicians Prescriptions.

2 SOUTH UNION ST.

PHONE. 22.

J. C. Blume, President.

M. L. Blume, Secy. and Treas.

Concord Foundry & Machine WORKS.

MANUFACTURERS OF

**Shafting, Hangers, Pulleys, Saw
Mills, Gearing, Engines Boilers.**

Light and Heavy Castings made.

General Machine Work.

ESTABLISHED 1887.

79 W. CORBIN, ST.

WHEN YOU NEED

Coal & Wood

**Hard or Soft Coal, for grates,
stoves, steaming or smithing
purposes and Wood in any
Length,**

You can get suited in quality and price by
ordering from **K. L. Craven,** 41 W. Depot
Phone. 74.

**IN MADE TO MEASURE CLOTHING
H. L. PARKS & CO. GUARANTEE A FIT.**

WHITE

73

DIRECTORY.

- Miller Crit F C emp furn fact 52 Railroad
 — Dora mill hand 221 Young
 — Geo mill hand bds 24 s Gold
 — Horace engineer 236 s Union
 — Ira S 230 s Union
 — John mill hand 133 Vance
 — John B mill hand 56 St Mary
 — John M (Dry & Miller) 134 s Spring
 — John F mill hand 221 Young
 — John M shoemkr 45 St Mary
 — Lewis mill hand bds 202 Young
 — Minnie mill hand 221 Young
 — R O S mgr lumber yard 230 s Union
 — Seph mill hand 24 Ash
 — Thos mill hand 72 Peachtree
 Millis Horace mill hand 37 Magnolia
 Mills Carrie 96 Vance
 — Frank clk 96 Vance
 — Geo mill hand 236 n Chnrch
 — Janie mill hand 74 w Buffalo
 — Jennie wid 79 w Buffalo
 — Marshall mill hand 96 Vance
 — Octave mill hand 70 Vance
 — Sallie wid 96 Vance
 Millwood Boyd M mill hand bds 2 Mulberry
 Miltonian Hotel The (formerly the Morris) R W Bigger
 prop 68-70 s Union
 Mincy Alonzo mill hand bds 279 w Corbin
 Mingus Esten mill hand bds 14 Plum
 — Gertrude tel optr 91 w Depot
 Mins Jas mill hand bds 24 n Valley
 Messmer Frank 24 Elizabeth
 Mitchell Wm mill hand bds 115 n Georgia

Meet me
 at
The Fountain, Gibson Drug Store.
 We serve Delicious Drinks Summer and Winter
 GIBSON DRUG STORE

STOP AT The Miltonian. only first-Class Hotel in the City.

Best \$2.00 a day house in Concord.

Take
Johnson's **Red Liver Pills**

For Headache, Bil-
iousness, Dizziness,
Constipation, Torpid
Liver.

D. D. Johnson. 14 S. Union

HACKNEY BROS. Bell phone 312. 2 West 5th st.
Bath tubs, Closets, Lavatories,
Sinks etc.

WHITE

74

DIRECTORY.

- Misenheimer Edw brick mason 109 McGill
 — Jos mill hand 51 Peachtree
 — Mrs E C wid 82 n Spring
 — Manley L farmer 82 n Spring
 — Pink M bkkpr 39 n Spring
 — Mrs S E wid 24 Mill
 Moody C P mill hand bds 57 Duval
 — Mrs J J wid 15 1st st
 — Noly mill hand 15 1st
 Montgomery & Crowell attys office Court house
 — C Richmond secy & treas Concord Drug Co 148 n Union
 — Geo G printer 148 n Union
 — Lucy 148 n Union
 — Mary Lizzie 28 w Depot
 — Wm J (Montgomery & Crowell) 148 n Union
 — W J jr 148 n Union
 Moore Benj 75 Cabarrus
 — Daniel W 56 St Mary
 — E M car inspctr 91 w Depot
 — J M 120 Mill
 — John mill hand bds 24 n Valley
 — J W carp 15 e Corbin
 — L D fore dept mill 224 n Union
 — Milton mill hand bds 237 w Depot
 — Nealie mill hand bds 65 w Buffalo
 — S J 7 Plum
 — Thos mill hand bds 24 n Valley
 — Thos M mill hand 253 n Union
 — Walter B emp oil mill 159 w Buffalo
 — Wm L mill hand 120 Mill
 — Wm mill hand 84 Cedar
 Moose Chas 90 Meadow
 Morgan Annie mill hand 36 Ash

Prescriptions Carefully Compounded,
 BY D. D. JOHNSON, DRUGGIST, 14 s. Union st.

Most **Soda Drinks** at our
 Delicious **Concord Drug Store.** Fountain
 1 N. Union.

WHITE

75

DIR ECTORY.

- Morgan Annie mill hand bds 23 Pearl
 — A W mill hand 33 St Mary
 — Carrie mill hand 33 St Mary
 — Dan'l mill hand 215 Young
 — Daniel mill hand bds 287 w Corbin
 — Edna C 36 Ash
 — Florence 92 Vance
 — Eugene clk 24 Caldwell
 — Jacob carp 24 Caldwell
 — Jas F carp 92 Vance
 — Jos mill hand 22 Fenix
 — Sallie mill hand bds 198 Mill
 — Wm B mill hand 33 St Mary
 Morris Columbus mill hand 38 Ash
 — Hotel (name changed to the Miltonian) 68-70 s Union
 — Jas mill hand 40 Railroad
 — John mill hand 57 n Valley
 — Laura J wid 33 Simpson
 — Manley mill hand 64 Houston
 — Marshall 145 Vance
 — Nannie mill hand 33 Simpson
 — Marshall mill hand 64 Houston
 — Oscar F weaver 30 Simpson
 — P M & Son hardware agricultural impliments carriages
 & harness 62 s Union
 — P M h 3 miles West of City
 — Rubin mill hand 40 Railroad
 — Rufus G mill hand 46 Simpson
 — Wm D mill hand 64 Houston
 — Z A (P M Morris & Son) h 87 s Union
 Morrison D B (Lippard & Morrison) h 48 w Depot
 — Edw L clk 41 Bell av
 — Kate 48 w Depot

Toilet Soaps

all kinds at
 all prices.
 Agent for "High Art Soap"
 the best 3 for 25c. made.
 GIBSON DRUG STORE, 1 South Union St.

Prescriptions Carefully Compounded
 at all Hours. **CONCORD DRUG STORE.**

If You are Hot and Tired Rest, Drink and be Satisfied. Come to my Up-to-date Soda Fountain D. D. Johnson, Druggsit.

Bell No. 2 West 5th St. Phone 312.

Write Hackney Bros.

When you want PLUMBING.

WHITE

76

DIRECTORY.

- Morrison M S drug clk 14 s Union
 — Stuart clk 48 w Depot
 Morton Chal mill hand bds 26 Bays
 — Henry mill hand 52 Caldwell
 — I P mill hand 215 Young
 — Jos mill hand near Buffalo mill
 — Jos mill hand 33 Pine
 — Renis mill hand bds 287 w Corbin
 Moses Clarence mill hand bds 22 Fenix
 Moser Gus mill hand 193 Mill
 Moss Edw A jeweler bds 37 n Union
 Motley A mill hand bds 115 n Georgia
 — M E wid 25 Harris
 Mull Samuel H P shoemkr h n Union
 Mullis Calvin mill hand 46 Bays
 — John mill hand 37 Kerr
 — Julius C mill hand 18 Swink
 Mund Frank B butcher 25 Loan
 — Frank E painter 25 Load
 — Rosa stenog 25 Loan
 Murf Arthur mill hand 17 Swink
 — Daniel mill hand 17 Swink
 Murph John mill hand bds 57 Duval
 — W Henry carp 15 n Powder
 Murpley John bds 37 Kerr
 Murphy Cora mill hand 215 Mill
 — Jas mill hand 215 Mill
 — J A mill hand 215 Mill
 Murr David A drayman 227 n Spring
 — Florence 204 n Union
 — Geo mill hand 227 n Spring
 — Geo L clk 63 e Depot
 — Mrs Geo wid 63 e Depot

John C. Smith.

45-47 S. Union.

FANCY and STAPLE Groceries.



THE MILTONIAN

(Formerly The Morris)

Opposite The Court House.

ELECTRIC LIGHTS.

FREE BUSS.

This Hotel has been rebuilt and ever appliance of a modern Hotel has been put in at a cost of \$3,000. A number of rooms has been added, and four model Bath rooms with Porcelean Tubs.

It is newly Furnished throughout and no expense has been spared to make this house a model one.

The Management is thoroughly alive to the interests and comfort of the Travelling Public and Patrons will recieve better service and attention than has ever been accorded them in Concord.

Rates, \$2.00, per. day.

R. W. BIGGER Prop.

Phone, 200.



FOR COUGHS, COLDS, HOARSENESS AND ALL AFFECTIONS OF THROAT AND LUNGS TAKE

Johnson's compound syrup of white pine

D. D. Johnson Druggist.

14 S. Union

WHITE

77

DIRECTORY.

Murr Samuel shoemkr 204 n Union

— Wm A mill hand 28 n Gold

— Wm R mill hand 68 Ash

Nash Berry clk 227 Kerr

— L C grocer 72 Isabella h 227 Kerr

Neagle Walter well driller bds 65 w Buffalo

Neal A W grocer Harris st near furn fact

— Andrew mill hand near Gibson mill

Nelson Sarah wid 40 n Crowell

Nesbitt John mill hand bds 226 Mill

Newsom Geo mill hand 19 Buck

New South Club 35 s Union

Nicholson Elizabeth clk 53 Mill

— Jennie 53 Mill

— Kate clk 53 Mill

— Sue stenog 53 Mill

Niggles Walter bds 179 Mill

Oates Mitchell mill hand bds 216 Young

O'Brien H fore card room bds St Cloud Hotel

Odell Fred C student 271 n Union

— John M pres Odell Mfg Co & pres Concord Nat'l Bank
272 n Union

— Lansing mill hand 30 Reed

— J C fore dept mill 30 Reed

— Mfg Co (Cotton & Yarn Mills) n end Union

— Mfg Co General Store n end Union

— Wm R secy & treas Odell mfg co 271 n Union

Osborne Mrs Elizabeth wid 31 Harris

Send us
Your
Prescriptions to fill
GIBSON DRUG STORE.
Only Registered Druggists
fill
Prescriptions at our
store.

For
Up-to-date **Gentlemens Furnishings**
SEE H. L. PARKS & CO. 4-6 S. Union.

Buy Your DRUGS and MEDICINES.

From D. D. JOHNSON, The DRUGGIST.

Hackney Bros. PLUMBERS AND GAS FITTERS.
Charlotte N. C. Bell Phone, 312

WHITE

78

DIRECTORY.

- Overcash John mill hand 8 Magnolia
— J S 8 Magnolia
— Margaret wid 20 Railroad
— Ola mill hand bds 9 s Gold
— Sarah J wid bds 24 St Charles
- Pangle Leon emp oil mill 96 Caldwell
Parish W Lock lab 229 w Depot
Parker Andrew mill hand 18 Misenheimer av
— Jesse N carp 22 Pearl
— Wm S mill hand 138 w Mill
Parks H L & Co department store 4-6 s Union
— H B (H L Parks & Co) 117 w Depot
— H L (H L Parks & Co) 117 w Depot
— Eula 117 w Depot
Parler Jas mill hand 220 Mill
Parnell Ed teamster 193 Kerr
— Mrs John wid 11 s Valley
— Wm C blacksmith 32 s Church h 92 n Church
— Zeb mill hand 11 s Valley
Partlow Sam'l L lab 229 Young
— Virdie mill hand 229 Young
Patterson Addie 15 Mt Pleasant
— Geo L wholesale & retail grocer and Postmaster 36-38
s Union
— Jennie mill hand 23 Pearl
— John K ins agt over 43 s Union h 29 e Corbin
— John R painter 15 Mt Pleasant
— John W mill hand 23 Pearl
— Mrs Nettie L wid 229 w Corbin
— Robt H fore oil mill 2 Vance
Paul Mrs Sallie wid 20 Caldwell

Carolina Plumbing & Heating Co ^{20 W. TRADE}
^{CHARLOTTE.}
^{N. C.}
EXPERT SANITARY & HEATING ENGINEERS.

Whitman's Candies

Always fresh at
our Store.

CONCORD DRUG STORE, 1 N. UNION, ST.

WHITE

79

DIRECTORY.

- Paul Wm mill hand 20 Caldwell
- Peck C Hoke deputy sheriff 59 s Church
- J L sheriff 19 Mt Pleasant rd
- Peeler Luther mill hand bds 14 Plum
- Pemberton W D (Smoot & Pemberton) physicians h 164 n Union
- Pennington Howard mill hand 147 w Buffalo
- N C mill hand 25 Plum
- Penninger H Wm 14 St Charles
- Travis R 25 Plum
- Wm A lab 147 w Buffalo
- Penley Robt mill hand 283 w Corbin
- Peoples Alfred 30 St George
- Perdue Dora mill hand 23 Caldwell
- V L mill hand bds 22 Fenix
- Perkins Chas H machinist 145 Vance
- John M retired 145 Vance
- M L mill hand 237 Young
- Sam'l mattress mkr bds 175 n Church
- Person Eugene bkkpr bds Harris st near McGill
- Petrea Dora mill hand 206 n Church
- Delmar mill hand bds 165 n Spring
- Dexter mill hand 86 n Georgia
- E M wid 19 n Crowell
- Geo W carp 206 n Church
- Hawley mill hand 193 Mill
- Madie mill hand 206 n Church
- Maggie mill hand 19 n Crowell
- Peteat Chas mill hand 10 Elizabeth
- Pharr Ella clk 27 Mill
- Mamie milliner bds 42 Bell av
- Sam E W retired 27 Mill
- Phifer Emma 103 n Georgia

Gibson Drug Store
 We would appreciate your trade.
 Largest Stock,
 Lowest Prices
 Bicycle Delivery.

Best line of Cigars Smoking & Chewing Tobacco
IN TOWN. CONCORD DRUG STORE

Headache Cure, stops headache, made and sold by
D. D. JOHNSON Druggist.

Hackney Bros. Call and inspect our exhibit of Fixtures.
RELIABLE PLUMBERS 2 West 5th St. Bell Phone 312.

WHITE 80 DIRECTORY.

- Phifer Rosa teacher 103 n Georgia
- Mrs R A wid 103 n Georgia
- Phillips Chas mill hand bds 282 n Church
- Mrs L E wid 229 w Corbin
- N M mill 111 n George
- Rufus J mill hand 47 Mt Pleasant rd
- Tersy cook 37 Meadow
- Phyler Walter mill hand 92 Vance
- Pierce Minnie mill hand 145 Vance
- Pitts Caleb A justice 19 Means h 43 w Depot
- Edna stenog 43 w Depot
- Howard student 43 w Depot
- May nurse 43 w Depot
- Pless Mary R wid 237 w Depot
- Plott Alonzo mill hand 52 Guy
- Chalmer mill hand 105 w Corbin
- Pauline milliner 105 w Corbin
- Wm mill hand 52 Guy
- Plyler Andrew mill hand 160 Vance
- Chas V mill hand 65 w Buffalo
- Mrs F R wid 65 w Buffalo
- Mamie mill hand 65 w Buffalo
- Poag Edw mill hand 222 w Depot
- Jas mill hand 214 Mill
- Poplin Hettie mill hand 55 Ash
- I H barber 296 n Church
- Jas F mill hand 55 Ash
- T A mill hand 95 James
- Popplin Nannie wid 19 Bays
- Pearl mill hand bds 27 Bays
- Porter Davis B carp 42 Bell
- W A printer 59 Peachtree
- Postal Tel & Cable Co P O bldg

The Gem Resturant. Meals at all hours.
 Game in season.
 45-47 S. Union St. John C. Smith prop.

**IN MADE TO MEASURE CLOTHING
H. L. PARKS & CO. GUARANTEE A FIT.**

WHITE

81

DIRECTORY.

- Poteet Howard emp furn fact bds 147 w Buffalo
 Pounds Arthur B lab 259 s Union
 — Connie 265 s Union
 — Flossie cashr store 265 s Union
 — John T lumber planing mill & furniture mfr 63 w Cor-
 bin h 265 s Union
 Prater Edw mill hand 31 Aycock
 Presnell Mary wid 19 Robbins
 Price B F (C J William & Co) h Simpson st
 — Edw mill hand 278 w Corbin
 — Jess mill hand 278 w Corbin
 — R H mill hand 278 w Corbin
 — Walter mill hand bds 16 Pine
 — Walter mill hand bds 24 n Valley
 Proffit Jos P mill hand 19 Harris
 Propst A H contr & bldr 5 w Depot h 64 n Union
 — Halley mill hand 195 n Spring
 — Hugh M machinist 64 n Union
 — John A mill hand 186 n Church
 — John W cotton weigher 29 e Depot
 — Maud mill hand 195 n Spring
 — Wm F A carp 18 Academy
 — Worth T engr 195 n Spring
 Pruett Eva 85 e Depot
 — Paul 35 e Depot
 Puryear Henry S atty rms 43 n Union
- Quantz Mrs C J wid 27 Mt Pleasant rd
 — Theo 27 Mt Pleasant rd
 — Lena wid 133 s Union
 Query Bulah 11 n Gold
 — Caldwell mill hand 11 n Gold

Meet me at **The Fountain, Gibson Drug Store.**
 We serve Delicious Drinks Summer and Winter GIBSON DRUG STORE

STOP AT The Miltonian. only first-Class Hotel in the City.

Best \$2.00 a day house in Concord.

Take
Johnson's **Red Liver Pills**

For Headache, Biliousness, Dizziness, Constipation, Torpid Liver.

D. D. Johnson. 14 S. Union

HACKNEY BROS. Bell phone 312. 2 West 5th st.
Bath tubs, Closets, Lavatories, Sinks etc.

WHITE

82

DIRECTORY.

- Query J P bkkpr 96 n Spring
 — Lloyd 11 n Gold
 — Mrs M C dressmkr 99 s Union
- Ragan John mill hand 59 w Depot
 — Justin H printer 59 w Depot
- Rainey Maggie 85 e Depot
- Rary Barney mill hand 14 Plum
 — John mill hand 14 Plum
- Raymer Clarissa 246 n Church
 — Harvey C machinist 254 n Church
 — Margaret 246 n Church
 — Mary 246 n Church
- Readling Sarah A 7 Houston
- Reed Mrs Joel wid 18 n Union
 — Jos 18 n Union
 — Junkin 18 n Union
 — Richard 18 n Union
- Reid Geneva mill hand 47 Ash
- Reinhart Wm mill hand n end Kerr
- Revel Bardin mill hand 208 n Union
- Rich Eliza E mill hand 27 n Powder
 — Samuel A mill hand 14 s Valley
- Richardson Mrs H E wid 283 w Depot
 — J M. mill hand 19 Maple
- Richmond G G & Co ins & real estate 15 w Depot
 — G G (G G Richmond & Co) 167 s Union
 — G H (J P Allison & Co) h 167 s Union
 — Janie 167 s Union
 — L M (J P Allison & Co) h 167 s Union
 — Willie 167 s Union
- Riddle Clyde mill hand bds 258 n Church

Prescriptions Carefully Compounded,
 BY D. D. JOHNSON, DRUGGIST, 14 s. Union st.

Most **Soda Drinks** at our
 Delicious Fountain
 Concord Drug Store. 1 N. Union.

WHITE

83

DIRECTORY.

- Ridenour Brun erclk 88 Vance
 — Dewery R mill hand 88 Vance
 Ridenhour Chas mill hand 237 n Church
 — Geo A mill hand 45 Bleachery
 — Herbert mill hand 33 e Depot
 — Henderson C teacher 23 Mt Pleasant rd
 — Jas mill hand 45 Bleachery
 — Minnie 43 Mt Pleasant rd
 — Roxanna wid 33 e Depot
 — R E prop Concord Steam Laundry & Dye Works h 11
 w Corbin
 — Thos H clk bds 23 Mt Pleasant rd
 Rimer Jones L mill hand 211 Young
 — Lucy 55 e Depot
 — Robt blacksmith bds 63 e Depot
 Ritchie Chas F mgr Ritchie Hardware Co 1 Mt Pleasant rd
 — Mrs D M wid 157 s Union
 — Florence mill hand 79 Vance
 — Flossie mill hand 79 Vance
 — Hardware Co gen hardware Chas F Ritchie mgr 28 s
 Union
 — John mill hand 249 w Corbin
 — John mill hand 27 Cabarrus
 — Lulu 27 Cabarrus
 — Ritchie Mumford F clk 157 s Union
 — Walter C mill hand 129 s Vance
 — Walter P clk 157 s Union
 — Wm J 27 Caldwell
 Ritz Henry G confectioner 34 s Union h 39 e Depot
 Roach Robt mill hand 60 w Marsh
 Robbins Chas D grocer 242 w Depot
 — Elwood mill hand 224 n Church
 — Frank B mill hand 224 n Church

Toilet Soaps

all kinds at
 all prices.
 GIBSON DRUG STORE, 1 South Union St.
 Agent for "High Art Soap"
 the best 3 for 25c. made.

Prescriptions Carefully Compounded
 at all Hours. CONCORD DRUG STORE.

Buy your Drugs and Medicines

From

D. D. Johnson Druggist.

14 S. Union

The Miltonian
\$2.00 Per. Day and worth it.
The New Hotel. Free Buss, Electric
Lights, High-class in every respect.
R. W. Bigger, Prop.

WHITE

84

DIRECTORY.

- Robbins Frances wid 224 n Church
- Julia mill hand 224 n Church
- Wm L mill hand 224 n Church
- Roberts Chas T mill hand 60 Ash
- Jas mill hand 32 Plum
- J Baxter mill hand 14 Cherry
- Mattie mill hand 60 Ash
- Robinson Caleb A jailor 51 s Church
- Robinson John C mill hand 50 St Mary
- J B mill hand Gibson cor Smith
- Robinson J F mill hand bds 198 Young
- J L mill hand Gibson cor Smith
- Thos J mill hand 14 Mulberry
- Will C mill hand bds 20 Ash
- Rogers B F trav salesman 34 Mill
- Chas L mill hand 23 n Valley
- Della E mill hand 23 n Valley
- F O physician 34 Mill
- Henry mill hand 12 Guy
- Hines 156 Vance
- Jas L mill hand 156 Vance
- Ira mill hand bds 65 w Buffalo
- L O mill hand n end of Kerr
- Luther mill hand 12 Guy
- Pink mill hand 53 w Buffalo
- Robt mill hand 53 w Buffalo
- Sam mill hand bds 57 Buffalo
- Wm mill hand 53;w Buffalo
- Rose A J Supt Gibson Mill 6 Misenheimer av
- Ross David mill hand bds 258 n Church
- John M 262 n Church
- Wm J carp 292 n Church
- Rowe Henderson mill hand 23 Bays

John C. Smith.

45-47 S. Union.

FANCY and STAPLE

Groceries.

Carolina Plumbing & Heating Co ^{20 W. TRADE}
^{CHARLOTTE.}
^{N. C.}
EXPERT SANITARY & HEATING ENGINEERS.

WHITE

85

DIRECTORY.

- Pearl mill hand 23 Bays
- Sarah cook 39 n Spring
- Rummage C W fireman 132 Mill
- Rush Rev Z minister 122 s Union
- Russell Chas lab 281 w Depot rear
- Edw clk 258 n Church
- Ella mill hand 50 Magnolia
- Fannie 258 n Church
- Mrs H wid 18 n Church
- Harris mill hand 185 n Church
- Russell Mrs H L wid 81 Mill
- Jas A engineer 258 n Church
- Jacob mill hand 10 Locust
- O C carp 62 Vance
- Mary wid 20 Elizabeth
- Minnie mill hand Depot rear
- Rutledge John H bkkpr bds 83 n Union
- John mill hand bds 279 w Corbin

- Safrit C R fact hand 212 w Depot
- D M secy & treas Cleavers Club & Mfg Co h 212 w Depot
- Mrs Mary wid 212 w Depot
- W B mill hand 212 w Depot
- Sanders Albert mill hand 159 Young
- E M section fore 10 s Valley
- John F mill hand 229 Mill
- Mary A wid 137 Cedar
- Sankins Jacob mill bds 283 w Corbin
- Sapp Mrs Elizabeth wid 64 e Depot
- Sallie wid 80 Vance

Send us
 Your
Prescriptions to fill
GIBSON DRUG STORE.
 Only Registered Druggists
 fill
 Prescriptions at our
 store.

For
 Up-to-date **Gentlemens Furnishings**
SEE H. L. PARKS & CO. 4-6 S. Union.

Buy Your DRUGS and MEDICINES.

From D. D. JOHNSON, The DRUGGIST.

Hackney Bros.
PLUMBERS AND GAS FITTERS.
Charlotte N. C. Bell Phone, 312

WHITE 86 DIRECTORY.

- Sappenfield A L grocer 27 s Uninn h 16 n Spring
- Chas M clk 21 e Corbin
- R C clk 16 n Spring
- R A clk 21 e Corbin
- Sallie 21 e Corbin
- Satterfield Rev D J President Scotia Seminary
- Sarah teacher Scotia Seminary
- Savage Clyde fact hand 70 St Mary
- Saunders Burta student bds 237 n Union
- Scarboro Jos mill hand 23 Harris
- Samuel fact hand 28 e Buffalo
- Wm W fact hand 20 Ash
- Scarborough Anna 11 s Gold
- Wm mill hand 41 Mulberry
- Scarborough Allison fact hand 12 Pine
- Scott Ida fact hand bds 33 Pearl
- Martin L lab 292 s Spring cor Tribune
- M J wid 151 n Union
- Richard S lab 292 s Spring cor Tribune
- Z E photographer over 8 s Union h 27 w Corbin
- Seaford Lawson 7 Elm
- Robt L fact hand 18 s Valley
- Seamone O C fact hand 52 Cabarrus
- Sears C R 179 Mill
- D A fact hand 142 Mill
- Jane fact hand bds 10 n Valley
- Neil fact hand 30 Guy
- Seckler Jas fact hand 85 w Buffalo
- Seaford Peter L blacksmith 82 n Church
- Sehorn Chas A fact hand 97 Cedar
- Semoan Chas fact hand 39 McGill
- Seymour Arthur L fact hand 26 Harris
- Gus fact hand 26 Harris

Carolina Plumbing & Heating Co 20 W. TRADE
EXPERT SANITARY & HEATING ENGINEERS. CHARLOTTE.
N. C.

Whitman's Candies

Always fresh at
our Store.

CONCORD DRUG STORE, 1 N. UNION, ST.

WHITE

87

DIRECTORY.

- Seymour Harvey fact hand 26 Harris
Shank Chas fact hand 55 Houston
Sharp Angeline wid 51 Peachtree
— Geo fact hand 51 Peachtree
— Frances fact hand 52 Peachtree
— John A fact hand 45 w Buffalo
Shelton Kate fact hand 26 Pearl
— Levi fact hand 220 Mill
— Mrs M L wid 26 Pearl
— Wm fact hand 26 Pearl
Sherrell Edw D clk 92 Mill
— Gip fact hand 92 Mill
— Hiram A fact hand 2 Mulberry
— John B editor & pub Concord Times h 41 n Spring
— J I fact hand 87 Mill
— J O watchman 96 Mill
— M O retired 92 Mill
— T H fact hand 87 Mill
Shinn Albert R fact hand 217 n Church
— Daniel L 27 McGill
— Grove C fact hand 53 Ash
— Junius W fact hand 112 n Crowell
— Lonnie fact hand 53 Ash
— Thos fact hand 52 Ash
— Wm L fact hand 272 w Corbin
— Wm fact hand 85 w Buffalo
Shepard Wm fact hand bds 35 Guy
Shoaf Mack fact hand 28 Caldwell
Shoe H B fact hand 8 near Gibson Mill
— Hubbard fact hand 8 near Gibson Mill
— Thos fact hand 85 near Gibson Mill
Shoos Wm fact hand 13 Mulberry
— Chas fact hand 197 Young

Gibson Drug Store
We would appreciate your trade.
Largest Stock,
Lowest Prices
Bicycle Delivery.

Best
line of **Cigars Smoking & Chewing Tobacco**
IN TOWN.

CONCORD DRUG STORE

Headache Cure, stops headache, made and sold by
D. D. JOHNSON Druggist.

WHITE

88

DIRECTORY.

Hackney Bros. Call and inspect our exhibit of Fixtures.
RELIABLE PLUMBERS 2 West 5th St. Bell Phone 312.

- Shoee Jennie bds 85 Buffalo
- John fact hand 197 Young
- Lucy fact hand bds 60 w Mary
- Shores Louis W fact hand 64 St Marsh
- Shuping Smith A fact hand 31 w Corbin
- Sides Adolph fact hand 23 Caldwell
- Beadie wid 23 Caldwell
- Catharina 165 Kerr
- Chas A fact hand 19 n Valley
- Chas W fact hand 148 Vance
- Daniel resturant & grocer 202 w Depot h 15 Pine
- Ebin fact hand 15 n Valley
- Ed fact hand 47 Duval
- Fannie fact hand 47 Duval
- Isabell fact hand 152 Young
- Jacob fact hand 11 s Valley
- Jas fact hand 146 Mill
- John A fact 165 Kerr
- John B fact hand 162 Vance
- John W 19 Pine
- Levi fact hand 23 Caldwell
- Martha fact hand 15 n Valley
- Mathew H fact hand 19 Pine
- P J barber & shoemkr 198 w Depot h 126 Cedar
- Tice fact hand 55 Isabella
- Matilda wid 152 Young
- Tilman A fact hand 29 Guy
- W C fact hand 23 Kerr
- Wesley brick mason 15 n Valley
- Sills Jos emp furn fact bds 50 n Valley
- Sikes Jas M 61 Duval
- John W fact hand 33 n Powder
- Simms Richard fact hand 283 w Corbin

The Gem Resturant. Meals at all hours.
 Game in season.
 45-47 S. Union St. John C. Smith prop.

IN MADE TO MEASURE CLOTHING
H. L. PARKS & CO. GUARANTEE A FIT.

WHITE

89

DIRECTORY.

- Simpson Anna fact hand 39 Ash
 — Jas M teacher 84 Vance
 — Jacob minister 26 Simpson
 — Momford fact hand 26 Simpson
 — Maude fact hand 132 Vance
 — Nathan lab 39 Ash
 — P A fact hand 132 Vance
 — Robt mill hand 39 Ash
 Sims J A revenue collector 36 s Union
 Skidmore Wm A fact hand 22 Buck
 Skinner Wm H tinner 61 s Union h 67 e Depot
 — Jennie R seamstress 67 e Depot
 Slater Richard teacher bds 22 e Corbin
 Sloan John fact hand 83 James
 — S Eugene bkkpr 151 s Union
 — Sallie fact hand 83 James
 Sloop C Lee fact hand 28 w Buffalo
 — Edw fact hand 28 Harris
 — Jos G fact hand 75 Peachtree
 — Mamie 157 n Union
 — Mrs Sam'l wid 157 n Union
 — Victor emp furn fact 157 n Union
 — Whit 157 n Union
 — Wm fact hand 20 Mulberry
 Slough John E emp furn fact 274 McGill
 Smith Carl fact hand 19 Pine
 — Cornelius fact hand 225 Mill
 — Ducter fact hand 30 St George
 — Eliza B teacher 31 w Marsh
 — Fanny 225 Mill
 — F L pres Gibson Drug Store bds 37 n Union
 — Frank P fact hand 53 Aycock
 — Frank fact hand bds 279 w Corbin

Meet me
 at
The Fountain, Gibson Drug Store.
 We serve Delicious Drinks Summer and Winter
 GIBSON DRUG STORE

H. L. PARKS & CO. Sells the Best Grade
 of SHOES.
 We Lead! Others Follow.

If You are Hot and Tired Come to my Up-to-date Soda Fountain Rest, Drink and be Satisfied. D. D. Johnson, Druggist.

Bell No. 2 West 5th St. Phone 312.

Write Hackney Bros.

When you want PLUMBING.

WHITE 90 DIRECTORY.

- Smith Herbert supt Coleman mill
- Jas fact hand 44 St Mary
- Jas L fact hand 18 St George
- Jas M carp 263 w Corbin
- Jennie bkkpr 38 n Union
- John C 48 e Depot
- John H fact hand 511 n Church
- John P minister 22 e Corbin
- John C prop Gem Restanrant & grocer 45-47 s Union h 48 e Depot
- Jos E minister 53 Grove
- Lizzie fact hand 39 St Mary
- Minnie fact hand bds 44 Ash
- Mary fact hand 225 Mill
- May 53 Aycock
- Milton fact hand 23 Maple
- Quint E City engr & surveyor 58 s Union h 38 n Union
- Robt 27 St Charles
- Thos fact hand 39 St Mary
- Thos W (G G Richmond & Co) tax collector h 31 w Marsh
- Thos W jr 31 w Marsh
- Wm fact hand bds 20 Magnolia
- Wm fact hand bds 8 Elm
- Wm A mine optr 56 s Union h 38 n Union
- W H emp furn fact 180 n Spring
- Wm M atty 56 s Union h 122 w Corbin
- W Z fact hand 8 Railroad
- Sossoman Christian 167 Mill
- Cora fact hand 167 Mill
- Jas fact hand 214 Mill
- Jos fact hand 167 Mill
- Louis M fact hand 104 Cedar

FOR COUGHS, COLDS, HOARSENESS AND ALL AFFECTIONS OF THROAT AND LUNGS TAKE

Johnson's compound syrup of white pine

D. D. Johnson Druggist.

14 S. Union

Most Delicious **Soda Drinks** at our Fountain
 Concord Drug Store. I N. Union.

WHITE

91

DIRECTORY.

- Sossoman Minnie fact hand 167 Mill
 — Reddie fact hand bds 125 Cedar
 Southern Express Co 31 s Union
 Spears Dovy wid 35 w Buffalo
 — Johanna 35 w Buffalo
 — Manless fact hand 35 w Buffalo
 — Wm fact hand 38 Cherry
 Speers Lillie fact hand Harris st near furn fact
 — S H Harris st near furn fact
 Speight Sion 328 n Church
 Springer Jas W carp 122 Plum
 — John F fact hand 122 Plum
 Stafford Robt 13 Mulberry
 Staines Gilmer L fact hand 55 St Mary
 Stamper Ernest fact hand bds 65 w Buffalo
 — G A fact hand 82 w Buffalo
 — Geo W 65 w Buffalo
 — H M lab 86 w Buffalo
 — J C lab 32 Meadow
 — Jos H 23 McGill
 Standard The (daily & weekly) J D Barrier prop 66 s
 Union
 Starnes Jeff D fact hand 36 Bleachery
 Starns A Mack fact hand 8 Elm
 — F L grocer cor Allison & McGill h 7 Allison
 Steel Lizzie fact hand bds 69 n Powder
 Steele S S fact hand 19 s Gold
 — W H fact hand 121 Plum
 Stegall Carrie fact hand bds 109 Cedar
 — Ellis M lab 14 Isabella
 — Hozy fact hand 109 Cedar
 — Mrs S F wid 117 w Depot
 Steward Jos fact hand Smith st

Toilet Soaps

all kinds at
 all prices.
 Agent for "High Art Soap"
 the best 3 for 25c. made.
 GIBSON DRUG STORE, 1 South Union St.

Prescriptions Carefully Compounded
 at all Hours. CONCORD DRUG STORE.

Buy your Drugs and Medicines

From

D. D. Johnson Druggist.

14 S. Union

The Miltonian
\$2.00 Per. Day and worth it.
The New Hotel. Free Buss, Electric
Lights, High-class in every respect.
R. W. Bigger, Prop.

WHITE

92

DIRECTORY.

- Stewart M Ben fact hand 10 St George
- Stickley M B mayor 102 w Depot
- Still Allen emp furn fact bds 147 w Buffalo
- B L fact hand 244 w Buffalo
- Wm H fact hand cor Carr & Marsh
- Stiller Daniel shoemkr 32 w Buffalo
- Stirewalt Chas fact hand 111 n Crowell
- J F fact hand 209 Mill
- Stone Annie 93 St Charles
- Mrs S H wid 93 St Charles
- Samuel lab 14 Houston
- Wm A grocer 306 n Union h 8 Vance
- Stonestreet Calvin C clk 24 s Gold
- Stoker Carrie 18 Guy
- Jas D 18 Guy
- Story Judan wid 13 Plum
- Marshall fact hand 13 Plum
- Thos fact hand 13 Plum
- Stoudemire P & E E furniture 69 s Union
- P h 17 Tribune
- Stowe Mary J wid 58 Isabella
- Stratford C E fact hand 247 n Union
- Stricker Addie teacher 53 w Corbin
- A D fact hand 138 Cedar
- Bessie clk P O 53 w Corbin
- Ivy 53 w Corbin
- Louise R student 53 w Corbin
- Mary 53 w Corbin
- Stuart G F fact hand 240 n Church
- Lou 89 n Georgia
- M M wid 89 n Georgia
- Rose 29 n Georgia
- W W clk 98 w Corbin

John C. Smith.

45-47 S. Union.

FANCY and STAPLE

Groceries.

H. L. PARKS & CO.
DEPARTMENT STORE
 4 AND 6 S. UNION ST.

WHITE

93

DIRECTORY.

- W Morrison clk 89 n Georgia
- Smart Chas fact hand 24 n Valley
- M A wid 24 n Valley
- Smoot & Pemberton (J Edward-Wm D) physicians 11 w Depot
- J Edward (Smoot & Pemberton) h 57 Grove
- Suther Chas A fact hand 112 n Crowell
- Chas M supt Cabarrus mill 153 w Corbin
- Cora 159 Young
- Edw A fact hand 40 n Valley
- John P 174 n Church
- Margaret wid 196 n Church
- Marvin 174 n Church
- M D shoemkr 11 St Charles h 56 e Marsh
- Mrs M A wid 191 Cedar
- Sarah 71 w Buffalo
- Thos A 168 n Church
- Victor fact hand 156 n Church
- Wm A fact hand 60 e Marsh
- Swaringen Edw D carp 124 Vance
- H B fact hand 38 Peachtree
- Lou 38 Peachtree
- John H clk 48 Peachtree
- Marshall fact hand 48 Peachtree
- Mattie 48 Peachtree
- Mandy fact hand 38 Peachtree
- M H fact hand bds 58 Railroad
- Swearngan Wm R coal dealer 282 w Depot
- Arthur exp messenger 282 w Depot
- Swink Fred mgr store 109 n Georgia
- Geo R shoemkr 19 s Union h 11
- Harry F painter 11 s Church
- Sykes V D grocer 18 s Union h 98 n Union
- St Cloud Barber shop 8 n Mill

Send us
 Your
Prescriptions to fill
GIBSON DRUG STORE.
 Only Registered Druggists
 fill
 Prescriptions at our
 store.

For
 Up-to-date **Gentlemens Furnishings**
SEE H. L. PARKS & CO. 4-6 S. Union.

Buy Your DRUGS and MEDICINES.

From D. D. JOHNSON, The DRUGGIST.

Hackney Bros.
PLUMBERS AND GAS FITTERS.
Charlotte N. C. Bell Phone, 312

WHITE

94

DIRECTORY.

- Talbert H M R 64 Marsh
— Jane mill hand 64 w Marsh
— Robt mill hand 57 Duval
Talbert Adam mill hand 109 Cedar
— Boyce student 15 Kerr
— Levi clk 15 Kerr
Tarlton John I fireman 161 Kerr
Taylor Harry A (Taylor Roller Cover Co) bds 6 n Union
— Lucy mill hand 196 n Church
— Mamie mill hand bds 47 Duval
Teal Cicil A carp 49 e Depot
— Mrs E J wid 49 e Depot
Teeter Hampton mill hand 143 w Buffalo
Thomas C A wid 296 n Church
— Jas mill hand 31 Kerr
Thompson Bertha mill hand 256 w Depot
— Bud mill hand 15 n Gold
— Cora mill hand 110 Mill
— Demp H mill hand 17 St George
— Floyd mill hand 110 Mill
— Frances wid 149 Mill
— James mill hand 23 Guy
— Ida mill hand 27 Pearl
— Jas C carp 256 w Depot
— Jas H mill hand 27 Pearl
— John mill hand 70 n Crowell
— John mill hand bds 44 Ash
— John mill hand 256 w Depot
— Junius M mill hand 69 Reed
— Lola mill hand 27 Pearl
— Noah mill hand bds 53 Duval
— Pink mill hand 256 w Depot
— Robt mill hand 149 Mill

Carolina Plumbing & Heating Co 20 W. TRADE
CHARLOTTE.
N. C.

EXPERT SANITARY & HEATING ENGINEERS.

Whitman's Candies

Always fresh at
our Store.

CONCORD DRUG STORE, 1 N. UNION, ST.

WHITE

95

DIRECTORY.

- Thompson Tilden C mill hand 24 Guy
— Thos mill hand 63 Ash
— Wm mill hand 149 Mill
— Wm P lab 38 Plum
— Wm R 110 Mill
— W M & Co grocer hay & feed 64 s Union
Thornberg Monroe 197 Cedar
Thornburg Luther mill hand 39 n Valley
— Samuel L mill hand 39 n Valley
Thredgill Norman mill hand 11 Pine
Trammel Fred piano agt 218 n Church
Trembley Chas M mill hand 173 Young
Trexler Jacob 34 Misenheimer av
Tribune The Daily & Simi-Weekly 53 s Union
Troutman John sewing machine agt 227 n Church
— Mrs L C wid 161 Mill
— Lonie mill hand 43 Peachtree
— Minnie mill hand bds 35 Guy
— Rufus mill hand 43 Peachtree
— Rufur R mill hand bds 59 Peachtree
— Wiley carp 203 n Spring
Troy Cyrus T fore Gdell Co store 182 n Union
— Maggie dress maker bds 180 w Depot
Trull Nannie mill hand 22 Isabella
— Frank M mill hand 22 Isabella
Tucker Daniel W sewing machine agt 129 s Spring
— Fred mill hand 51 Reed
— Henry P mill hand 286 McGill
— Henry W clk 16 Pine
— John mill hand 52 Pearl
— Maggie mill hand 291 w Depot
— Matthew mill hand 52 Pearl
— Samuel mill hand 59 Simpson

Gibson Drug Store
We would appreciate your trade.
Largest Stock,
Lowest Prices
Bicycle Delivery.

Best
line of **Cigars Smoking & Chewing Tobacco**
IN TOWN. CONCORD DRUG STORE

Headache Cure, stops headache, made and
 sold by
D. D. JOHNSON Druggist.

WHITE

96

DIRECTORY.

Hackney Bros. Call and inspect our exhibit of Fixtures.
RELIABLE PLUMBERS 2 West 5th St. Bell Phone 312.

- Turner Jos mill hand 254 n Union
 — Lonnie mill hand 19 Pine
 — R M section master S R R 32 w Corbin
 Tysinger Carl 25 Harris
- Udy Paul mill hand 13 Mulberry
 Upchurch Geo clk 128 Vance
 — Lucy mill hand 136 Vance
 — Mattie mill hand 136 Vance
 — O H clk 136 Vance
- Upright Mose mill hand 88 Ash
 — Julia wid 27 Harris
 — Wm A mill hand 27 Harris
- Ury Maggie wid 36 Duval
 Utley Henry T (Concord Marble Co) 212 n Church
 — Jane wid 67 Vance
 — Lucy B mill hand 287 w Depot
 — Wm F blacksmith 287 w Depot
- Vanderburg Francis 233 Young
 — Henry mill hand 233 Young
 — Lizzie mill hand 233 Young
- Van Pelt Etta mill hand 13 Magnolia
 — Jos emp R R 13 Magnolia
- Viola A barber 17 w Depot 32 Loan
- Waddell & Cline (I H-J H) grocer dry goods meat market
 300-2 n Church
 — I H grocer 310 n Church h 19 Pearl
 — Jas mill hand 15 n Gold
 — Thos mill hand bds 283 w Corbin

The Gem Resturant. Meals at all hours.
 Game in season.
 45-47 S. Union St. John C. Smith prop.

IN MADE TO MEASURE CLOTHING
H. L. PARKS & CO. GUARANTEE A FIT.

WHITE

97

DIRECTORY.

- Wade Mary wid 412 s Union
 — Walter mill hand 38 Reed
 Wadsworth John C Pres Yorke & Wadsworth Co 100 n
 Union
 Waford Lindsay mill hand 206 Young
 Wagoner E C wid 180 w Depot
 — Chas B 180 w Depot
 — Senie mill hand 7 Elm
 Wallace John O 77 White
 — L A wid 21 n Spring
 Waller Thos farmer 28 Academy
 Walker D M Grocer 7-9 McGill
 — J M mill hand 52 w Buffalo
 — L A wid 294 w Depot
 — Minnie mill hand 7-9 McGill
 Walter Addie wid 33 Pearl
 — A E farmer 152 Vance
 — Alexander F mill hand 198 Young
 — Bettie 47 e Depot
 — C F grocer 40 Isabella h 47 e Depot
 — Del mill hand 56 Meadow
 — Della B mill hand 222 w Corbin
 — Fannie bds 65 Houston
 — Ella 252 w Depot
 — Jacob W carp 28 Harris
 — J A mill hand 16 St Charles
 — John I mill hand 56 meadow
 — Joseph A mill hand 222 w Corbin
 — Mrs L J wid 222 w Corbin
 — M C grocer 252 w Depot
 — Jas grocer 310 n Church
 — Martin C mill hand 18 Valley
 — M C grocer 252 w Depot

Meet me
 at
The Fountain, Gibson Drug Store.
 We serve Delicious Drinks Summer and Winter
GIBSON DRUG STORE

H. L. PARKS & CO. Sells the Best Grade
 of SHOES.

We Lead! Others Follow.

STOP AT The Miltonian. only first-Class Hotel in the City.

Best \$2.00 a day house in Concord.

Write Hackney Bros.
 No. 2 West 5th St. Bell
 Phone 312.

When you want PLUMBING.

WHITE	98	DIRECTORY.
Walter Pink lab	152	Vance
— Riley mill hand	52	w Marsh
— Tilden	47	e Depot
— Wiley mill hand	56	Meadow
— Zeb C mill hand	222	w Corbin
— Zeb mill hand	18	s Valley
Walthall R L carp	27	Mill
Wampler Mary E teacher	Scotia Seminary	
Watkins Calvin H mill hand	120	Vance
— Grace student	120	Vance
Watson Alvin B	38	n Union
— Atha	38	n Union
— Cassie	38	n Union
— Cleveland mill hand	70	St Mary
— Jas T mill hand	55	Cherry
— Julia mill hand	279	w Corbin
— Sallie wid	47	Ash
Watts W W mill hand	bd	46 Railroad
Weaver Chas mill hand	51	Buffalo
— Lillie mill hand	51	w Buffalo
— Tobias lab	51	w Buffalo
Weddington Ella mill hand	23	Pine
— Mrs Elizabeth wid	116	n Union
— Frank mill hand	166	s Union
— Hattie teacher	123	w Corbin
— John clk	123	w Corbin
— Luther clk	123	w Corbin
— Wm M carp	123	w Corbin
Weir Henry M machine agt	69	Grove
Welch John H grocer	236	n Spring h 240 n Spring
— Julia milliner	234	n Spring
Wellman Wm W mill hand	14	Railroad
Welsh Benj mill hand	bd	58 Isbella

FOR COUGHS, COLDS, HOARSENESS AND ALL AFFECTIONS OF THROAT AND LUNGS TAKE

Johnson's compound syrup of white pine

D. D. Johnson Druggist.

14 S. Union

Most **Soda Drinks** at our
 Delicious Fountain
 Concord Drug Store. I N. Union.

WHITE

99

DIRECTORY

- Wensil Henry A lab 13 Cherry
- Wentz Jas P mill hand 11 Elm
- Western Union Tel Co 17 n Union
- Wheeler R S Supt Bleachery 66 Mill
- John near furn fact
- Whitaker John W mill hand 52 St George
- White Addie teacher 62 Mill
- Anna 28 Bell av
- Chas mill hand bds 150 Mill
- Chalmer L clk clk 28 Bell av
- C R hardware & glass 67 s Union h 74 w Depot
- Caleb R mill hand 64 n Crowell
- E F gen merchandise 12 s Union h 95 n Georgia av
- J R retired 74 w Depot
- Lena 62 Mill
- Louise clk 62 Mill
- May 62 Mill
- Mrs N G wid 33 Bell av
- R H bkkpr 74 w Depot
- Elida 74 w Depot
- Thos J gen ins over 15 w Depot h 28 Bell av
- Tinsley N clk 28 Bell av
- Walter P clk bds 28 Bell av
- Wm W mattress mfr h 251 n Church
- Whitley Mrs A I wid 177 n Spring
- Carrie mill hand 177 n Spring
- Green A blacksmith 46 Houston
- E W mill hand near Buffalo Mill
- Henry J mill hand 47 Mulberry
- John mill hand 157 w Buffalo
- John P mill hand 177 n Spring
- Jas W well driver bds 58 w Depot
- Whitlock Wm E mill hand 32 Magnolia

Toilet soaps

all kinds at
 all prices.
 Agent for "High Art Soap"
 the best 3 for 25c. made.
 CIBSON DRUG STORE, 1 South Union St.

If You **Hot and Tired** Come to my Up-to-
 are date Soda Fountain
 Rest, Drink and be Satisfied. **D. D. Johnson, Druggist.**

Prescriptions Carefully Compounded,
 BY D. D. JOHNSON, DRUGGIST, 14 s. Union st.

The Miltonian
 The New Hotel. Free Buss, Electric
 Lights, High-class in every respect.
 R. W. Bigger, Prop.
 \$2.00 Per. Day and worth it.

WHITE

100

DIRECTORY.

- Whittington D Virgil 25 Magnolia
 — Cora mill hand 25 Magnolia
 — James F mill hand 26 Magnolia
 — Jessie mill hand 36 Bleachery
 — John A mill hand 46 Railroad
 — John F mill hand 46 Railroad
 — Maggie wid 27 n Powder
 — Wm M 25 Magnolia
 Widenhouse C W grocer 260 n Spring
 — Daniel M grocer 231 n Spring
 — & Son groceries 256 n Spring
 — Victor 231 N Spring
 Wiley Jas A mill hand 195 Kerr
 Wilhelm Mrs W 114 n Georgia
 Wilkerson Jas W blacksmith 24 s Church h 111 n Church
 — Wm A & Co gen store 322-4-6 n Church
 — Wm A h 228 n Church
 Wilkinson Daisy mill hand 193 Mill
 — Hester 224 n Union
 — Newton carp 193 Mill
 — Robt blacksmith 193 Union
 Willard Marshal bds 173 Mill
 Willeford Hinton E clk 98 s Union
 — Mrs J B wid 56 e Depot
 — J C jeweler Postoffice bldg h 98 s Union
 — Lizzie clk 98 s Union
 — Mamie mill hand 56 e Depot
 — Wm fact hand 56 e Depot
 Williams C J & Co groceries 43 Pearl
 — Carl J (C J Williams & Co) 14 St George
 — Frank fact hand bds 199 w Corbin
 — Geo fact hand 79 Caldwell
 — H fact hand 34 Reed

John C. Smith.

45-47 S. Union.

FANCY and STAPLE

Groceries.

H. L. PARKS & CO.
DEPARTMENT STORE
 4 AND 6 S. UNION ST.

WHITE

101

DIRECTORY.

- Williams Jos fact hand 255 w Corbin
 — Mack fact hand 46 n Valley
 — Mathew fact hand bds 19 Robbins
 — Maud C teacher Scotia Seminary
 — P D fact hand 20 Bays
 — S W pres Concord Drug Co h 75 w Depot
 — Sidney F fact hand 38 Meadow
 Williamson Phillip fact hand bds 39 Bleachery
 Willis Jane 219 w Depot
 Wilson Jas fact hand bds n end Kerr
 — Geo fact hand 67 near Gibson mill
 — Geo M fact hand 31 McGill
 Winders Chas fact hand 24 Simpson
 Winecoff Andrew J farmer 111 Mt Pleasant rd
 — Frank fact hand bds 5 Misenheimer av
 — Geo 37 Meadow
 — Henry M clk 50 w Corbin
 — H M 37 Meadow
 — Mrs Hettie wid 106 s Union
 — John 20 Pine
 — Mary E wid 138 Cedar
 — Michael clk bds 63 e Depot
 — Mollie fact hand bds 78 w Buffalo
 — Sadie J wid 44 Pine
 Wingate W Coleman clk 16 n Church
 Wise Edmond fact hand bds 29 Guy
 — Geo fact hand 29 Guy
 — Winsie fact hand 14 Ash
 Wiseman Wm 17 Locust
 Wood G R fact hand bds 179 Mill
 Wood John R fact hand 91 St Charles
 — Wm B fact hand 91 St Charles
 — W A fact hand 237 n Union

Send us
 Your
Prescriptions to fill
GIBSON DRUG STORE.
 Only Registered Druggists
 fill Prescriptions at our
 store.

For **Gentlemens Furnishings**
 Up-to-date
SEE H. L. PARKS & CO. 4-6 S. Union.

Buy Your DRUGS and MEDICINES.

From D. D. JOHNSON, The DRUGGIST.

Hackney Bros.
PLUMBERS AND GAS FITTERS.
 Charlotte N. C. Bell Phone, 312

WHITE

102

DIRECTORY.

- Woodhouse Mrs E J wid 71 w Depot
 — H I Cashier Cabarrus Savings Bank 29 n Georgia
 Wren Mattie wid 25 Harris
 Wright Chas fact hand 129 Vance
 — Mrs Emma dressmkr 121 s Union
 — John E fact hand 19 Simpson
 — Newton engr 138 Cedar
- Yates N Y watchman 24 Harris
 — Thad Y fact hand 40 n Crowell
 — Turner fact hand bds 22 Buck
 — Wm fact hand 12 Harris
- Yearty John fact hand 25 Harris
- Yorke A J trav sales 25 Bell av
 — Furniture Co (Incorp) mfrs of chamber suits side
 boards Cheffioners doors sash etc office & factory
 north part of City Gibson st
 — Tillie fact hand 76 Meadow
 — N F secy & treas Yorke & Wadsworth Co h 109 n
 Union
 — Robt fact hand 76 Meadow
 — & Wadsworth Co (Incorp) hardware agricultural impli-
 ments carriages & paints 7-9 s Union
 — Wm D fact hand 76 Meadow
- Young A B farmer 65 w Depot
 — Annie C 217 n Union
 — Fanny 65 w Depot
 — Jas R bkkpr 217 n Union
 — John M tel optr 112 n Spring
 — Lizzie 65 w Depot
 — Myrtle 217 n Union
 — R L fact hand 217 n Union
 — Robt S physician 7 w Depot h 29 n Union
- Zinnaman Wm lab Harris st

Carolina Plumbing & Heating Co ^{20 W. TRADE}
EXPERT SANITARY & HEATING ENGINEERS. <sub>CHARLOTTE.
N. C.</sub>

Whitman's Candies

Always fresh at
our Store.

CONCORD DRUG STORE, 1 N. UNION, ST.

COLORED

103

DIRECTORY.

DIRECTORY OF COLORED PEOPLE.

- Alexander Dirk 28 Lincoln
- Harriett 122 Broad
- Harriett 27 s Georgia
- Hiram lab 194 w Corbin
- John 25 Dorland alley
- John 62 Ring
- Julius carp 87 n Spring
- Laura 8 e Corbin
- Lou cook 4 McCree
- Maggie 81 White
- Marshall engr 221 n Spring
- Sallie rear 16 e Corbin
- Walter 15 Prince
- Wash 33 Poplar
- Allen Benj lab 18 Coleman row
- Allison Lizzie 208 n Union
- Anderson David 84 Coleman row
- J W resturant 72 s Union
- Archibald Walter lab 6 McCree

- Barnhardt Adam 28 Coleman row
- Mary 14 Lincoln
- Richard 105 n Church
- Wm 10 Lincoln

Gibson Drug Store
 We would appreciate your trade.
 Largest Stock,
 Lowest Prices
 Bicycle Delivery.

Best line of Cigars Smoking & Chewing Tobacco IN TOWN. CONCORD DRUG STORE

Take Johnson's Red Liver Pills

For Headache, Biliousness, Dizziness, Constipation, Torpid Liver.

D. D. Johnson. 14 S. Union

HACKNEY BROS. Bell phone 312. 2 West 5th st. Bath tubs, Closets, Lavatories, Sinks etc.

COLORED 104 DIRECTORY.

- Barringer Ellen 25 n Gold
- Florence 86 e Depot
- Luther 86 e Depot
- Lex hostler 168 n Union
- Samuel 28 Grove
- Bates Engima 272 n Union
- Battle Ada G teacher Scotia Seminary
- Baxter Esther 34 Pounds
- Bell Robt 89 s Spring
- Wm H 11 Tournament
- Berryhill Geo 67 n Church
- Black John 84 Broad
- Sam lab 109 Broad
- Blackman Benj painter 376 s Union
- Blackwelder Emeline 33 n Gold
- Josie cook 85 n Spring
- Blair Chas B 8 Poplar
- Zeakle lab 81 Broad
- Boger Jacob painter 79 Tournament
- Jeff 111 Tournament
- Jessie lab rear of 211 s Union
- Julius emp R R 9 McCree row
- Lizzie opp Scotia Seminary
- Luke hackman 2 McCree row
- Mark 129 Chestnut
- Mack 60 Chestnut
- Richard grocer 130 w Depot h 57 Dorland alley
- Samuel 150 Broad
- Sam blacksmith 37 Tournament
- Scott barber 23 s Georgia
- Wm 50 s Georgia
- Bomar Hattie E teacher Scotia Seminary
- Bost Maggie 8 McCree row

The Gem Resturant.

45-47 S. Union St.

Meals at all hours.
Game in season.

John C. Smith prop.

IN MADE TO MEASURE CLOTHING
H. L. PARKS & CO. GUARANTEE A FIT.

COLORED

105

DIRECTORY.

Bost Clista 21 Pounds
 — Cinda rear 27 Mt Pleasant
 — Eugene lab 22 Coleman row
 — Jas fact hand 119 s Georgia
 — John 190 n Spring rear
 — Letha 21 Pounds
 — Lum lab 58 Ring
 — Leah 15 n Church
 — Victoria 15 n Church
 — Marshall lab 14 Broad
 — Mary 68 n Church
 — Moss driver 85 Young
 Boyd Edw 173 w Depot
 Branic Chas 2 Lincoln
 Brown Abram rear 27 Mt Pleasant rd
 — Elizabeth 36 Broad
 — Alfonzo 36 Broad
 — Elihu lab 36 Broad
 — John waiter 25 Tournament
 — Nancy 78 s Georgia
 Brunner Jos 126 Chestnut
 Burch Coley 37 Poplar

Cagle Geo lab 73 Broad
 Caldwell Chas H carp 42 s Georgia
 — Jas emp oil mill 29 Young
 — Jerry 115 s George
 — Martha bds 109 Broad
 — Richard lab opp Scotia Seminary
 — Robt 92 Broad
 — Sallie wid 25 s, Caldwell
 — Sallie teacher 115 s Georgia

Meet me
 at
The Fountain, Gibson Drug Store.
 We serve Delicious Drinks Summer and Winter
GIBSON DRUG STORE

H. L. PARKS & CO. Sells the Best Grade
 of SHOES.
 We Lead! Others Follow.

Headache Cure, stops headache, made and
 sold by
D. D. JOHNSON Druggist.

No. 2 West 5th St. Bell
 Phone 312.

Write Hackney Bros.

When you want **PLUMBING.**

COLORED 106 DIRECTORY.

- Wm mill hand 2 Cedar
- Cannady Alex servant 29 s Crowell
- Canaday Eli 29 s Crowell
- Cannon Albert 204 w Corbin
- Elam rear 31 s Church
- Mary 115 s Georgia
- Wm 81 e Depot
- Carmon Daniel 6 e Corbin
- Carr C cook 203 w Depot
- Caruth Mary 77 w Marsh
- Cauble Jas 90 w Marsh
- Chambers Luther rear 27 Mt Pleasant rd
- Christian Fanny 112 Broad
- Eliza cook opp Scotia Seminary
- Tyne 94 w Marsh
- Cloud Samuel emp furn fact 3 McCree row
- Coffee Jas 90 Chestnut
- John 64 Lincoln
- Colbert Frank lab 1 Lower row
- Cole Mollie 60 Young
- Coleman W C grocer 46 s Union h 2 s Church
- Jane 2 s Church
- Mfg Co cotton mills 46 s Union
- Coltrane Robt 90 Broad
- Conner Walter lab Chestnut
- Cornelius Silvia wid 21 Poplar
- John fact hand 21 Poplar
- Clarence 21 Poplar
- Correll Wm mason 41 Broad
- Council Allen lab 23 Broad
- Cowns Robt 35 Pounds
- Crawford Jas E 29 n Gold
- R E lab 37 Chestnut.

STOP AT The Miltonian. only first-Class
 Hotel in the City.
 Best \$2.00 a day house in Concord.

Most **Soda Drinks** at our
 Delicious **Concord Drug Store.** Fountain
 1 N. Union.

COLORED

107

DIRECTORY.

Toilet Soaps

all kinds at
 all prices.

Agent for "High Art Soap"
 the best 3 for 25c. made.
 GIBSON DRUG STORE, 1 South Union St.

- Crump Lee 6 e Corbin
 — Zim 63 Young
 Cruse Jane 61 n Church
 Culp Eva 94 s Spring
 — Ephriam 10 e Corbin
 — Gus emp oil mill end of Lincoln st
 — Jas 11 Lower's Row
 Currence Josephine 129 Chestnut
 Cureton Walter 194 w Corbin
 Davis Julia washwoman 67 Tournament
 Davison Alex 31 Prince
 Dixon Mary cook 170 w Corbin
 Dobson Sandy mason 54 Ring
 Douglas Fred lab 89 Young
 Douglass Mary 5 Lower's Row
- Edwards Mollie 55 s Crowell
 Ellis Angelina rear 27 Mt Pleasant
 — Chas fireman 71 Young
 — Chas fireman Odell Mfg Co 181 n Spring
 — Benj lab 183 n Spring
 — Jacob 9 Lower's Row
 — Jas 27 Elm
 — Samuel 27 Elm
 — Prudy 24 Broad
 — Milton mill hand 21 Elm
 — Warren rear of 103 n Union
 Epps Rose cook 190 n Union
 Evans Della 68 n Church
 Ezell W F fireman Odell Mfg Co 187 n Spring

If You **Hot and Tired** Come to my Up-to-
 are **date Soda Fountain**
 Rest, Drink and be Satisfied. **D. D. Johnson, Druggsit.**

Prescriptions Carefully Compounded
at all Hours. **CONCORD DRUG STORE.**

The Miltonian
\$2.00 Per. Day and worth it.
The New Hotel. Free Buss, Electric
Lights, High-class in every respect.
R. W. Bigger, Prop.

COLORED

108

DIRECTORY.

Faggett Geo hostler 14 Coleman's Row

— Mosell 26 Blume

Farney Daniel 91 Tournament

Fifer Robt lab 32 Broad

Fisher Adolph lab 30 Coleman's row

Fitzgerald Ernest opp Scotia Seminary

Ford Geo emp foundry 28 Ring

— Howard barber over 30 s Union

— Milas 37 Young

Foot Emery lab 8 s Crowell

Freeman A lab 101 Tournament

— Chas barber alley off Broad

— Jas lab 167 s Georgia

Gainey Isam alley off Broad

— Wm porter alley off Broad

Garner Linda 84 s Georgia

Garrett John lab 161 s Georgia

Gathey Alice cook rear of 211 s Union

Gibson Ephraim lab 81 White

— Joe lab 22 s Crowell

— Ed lab 22 s Crowell

— Jeff end of Ring

— Thos 150 Broad

— Wm lab bds 204 w Corbin

— Wm lab 68 Lincoln

Gilmore Clint 61 Academy

— Sandy 114 Broad

Githen Sarah 32 Broad

Glen Dollie cook bds 58 w Academy

Goodman Wm 98 Broad

— Robt 64 Broad

John C. Smith.

45-47 S. Union.

FANCY and STAPLE

Groceries.

H. L. PARKS & CO.
DEPARTMENT STORE
 4 AND 6 S. UNION ST.

COLORED

109

DIRECTORY.

Gordan Jacob teacher 67 Broad
 Graham Daniel lab 18 Broad
 — Edw porter 18 Broad
 Greely Charlotte washwoman 31 Dorland alley
 Green Adam 24 Prince
 — Geo mill hand 100 Chestnut
 — Jos 35 Broad
 — Sarah J 286 s Union

Hackett Jerry 97 s Georgia
 Hagan Hattie 25 Blume
 Hall Britton emp oil mill 13 Lower row
 Harrington John 87 Broad
 Harris Ada cook 149 s Georgia av
 — Alex lab 35 Dorland alley
 — Chalmer 122 Broad
 — Chas lab 171 w Depot
 — Emily 43 Pounds
 — Elam marble worker 19 Poplar
 — Geo lab 51 Young
 — Hope 42 e Depot
 — Henry lab 115 Broad
 — Hope Grocer 79 e Depot
 — John hostler 163 s Spring
 — Nathaniel lab Dorland alley
 — Robt 115 Tournament
 — Sam 72 Broad
 — Wm lab 16 e Corbin rear
 Harvey Kate 150 Broad
 Hearne Florence 170 s Union
 — Jeanie nurse 59 Mill
 — Jordan 40 Lincoln

Send us
 Your
Prescriptions to fill
GIBSON DRUG STORE.
 Only Registered Druggists
 fill Prescriptions at our
 store.

For
 Up-to-date Gentlemens Furnishings
SEE H. L. PARKS & CO. 4-6 S. Union.

Buy Your DRUGS and MEDICINES.

From D. D. JOHNSON, The DRUGGIST.

Hackney Bros.
PLUMBERS AND GAS FITTERS.
Charlotte N. C. Bell Phone, 312

COLORED

110

DIRECTORY.

Henderson John end of Swink
— Jas plasterer 44 s Crowell
— Mrs Wid 41 Chesnut
Holmes Lizzie 132 w Depot
Hollbrook lab 28 Broad
— Geo porter 41 Ring
Hooker Mary w Depot
House James 80 White
Houston Mary wid 10 w Depot
— John lab 101 Broad
Houré Chas M 165 w Depot rear
— M R 165 w Depot rear

Ingram Robt Baker 160 w Corbin
Isenhour Nettie 10 McCree row
— Richard 251 w Depot rear

Johnson Chas lab 22 Ring
— Dora E stenographer 46 s Union
— Grace D supt Dept Scotia Seminary
— J J 54 King
— Jeaneatte 80 Broad
— Jos cook 61 Young
Jones Frank 21 Dorland alley
— Harriett 10 McCree row
— John lab 71 Tournament

Kelly Andy 6 Cedar
King Scott 123 Broad
Kirk Mary Cook 18 Academy
Kirkley Wm end of Swink

Carolina Plumbing & Heating Co ^{20 W. TRADE}
^{CHARLOTTE.}
^{N. C.}
EXPERT SANITARY & HEATING ENGINEERS.

Whitman's Candies

Always fresh at
our Store.

CONCORD DRUG STORE, 1 N. UNION, ST.

COLORED

111

DIRECTORY.

Kizer Mack lab 171 s Spring
Koontz Jesse carp 117 Chestnut
Krone Allen waiter St Cloud Hotel

Lane Sadie cook 40 w Marsh
Leach Lawson 14 Cedar
Leary J S atty 46 s Union
Lee Polly wid 37 s Crowell
Lewis Robt lab 81 e Depot
Lilly Robt lab 27 Broad
— Tinsley 28 w Depot
— Wm 17 Beech
Linn Jane 85 Young
Lipsford I J D teacher near Coleman Mill
Litker Jas 25 s Crowell
Litaker Walter Cook 77 Broad
Little Lee 26 Lincoln
— Caleb janitor 31 Pounds
— Wm 33 Poplar
Logan Frank T prin col school 11 s Georgia
Lock Jas porter 12 Prince
Long Geo 120 Broad
— Harriet 32 Young
— Lillie 26 Blume
Lord A D physician 12 e Corbin h 122 Chestnut
Louder Mary 54 s Georgia
Loyd Mary 191 n Spring
Luther Jane Alley off Broad
— Wm Cook alley off Broad
Lynn Cora 29 s Georgia
— Wm 29 s Georgia
— Hannah 164 s Spring

Gibson Drug Store
We would appreciate your trade.

Largest Stock,
Lowest Prices

Bicycle Delivery.

Best
line of **Cigars Smoking & Chewing Tobacco**
IN TOWN. **CONCORD DRUG STORE**

Take Johnson's **Red Liver Pills** For Headache, Biliousness, Dizziness, Constipation, Torpid Liver.

D. D. Johnson. 14 S. Union

HACKNEY BROS. Bell phone 312, 312, Lavatories, Closets, Bath tubs, Sinks etc.
2 West 5th st.

COLORED

112

DIRECTORY.

- Chas lab 164 s Spring
- Lonnie lab 164 s Spring
- Carrie cook 164 s Spring
- Lytle Laura 25 Dorland alley

- Martin Alex 12 McCree row
- Fannie 32 Ring
- Sallie 31 Coleman row
- Marsh Burton lab 162 s Spring
- Moore lab 162 s Spring
- Carl hostler 120 n Union
- Mason Caesar opp Scotia Seminary
- Massie John minister 29 Beech
- Mathan Amanda 75 e Depot
- McCain T B minister 19 w Depot
- McCarter A J lab 31 Broad
- Taylor 104 Broad
- McConattria Mary L teacher Scotia Seminary
- McConnahey Lizzie 49 Dorland alley
- McCorder Minnie cook St Cloud
- McCree John lab 59 Broad
- Robt clk 40 s Crowell
- Robt store 42 s Crowell
- McKenzie Frank 7 McCree row
- Mc Knight Henry 94 s Spring
- McMoore Bell 26 Young restaurant
- McIntire Ednond waiter 12 Tournament
- McNeally Amos 43 Dorland alley
- Melchor Henry 64 Broad
- Miller Bettie 27 Beech
- Jiles shoemaker 14 Lincoln

The Gem Resturant.

45-47 S. Union St.

Meals at all hours.
Game in season.

John C. Smith prop.

**IN MADE TO MEASURE CLOTHING
H. L. PARKS & CO. GUARANTEE A FIT.**

COLORED

113

DIRECTORY.

- Lucy 165 w Depot rear
- Mary 165 w Depot rear
- Marsh hostler 15 e Depot
- Paul 36 Young
- Pleasant end of Lincoln
- Randolph lab 53 Tournament
- Mitchell Mariah 171 s Spring
- Montgomery Hamme 71 Young
- Hattie 32 Coleman
- Mattie 114 n Church
- Moore Ellen wid 77 w Marsh
- Henry mill hand 23 Cedar
- McMoore Bell restaurant 48 s Union
- Wilson rear of 31 s Church
- Mary 78 n Church
- Morgan Annie 171 w Depot rear
- John mill hand rear 27 Mt Pleasht rd
- Morrison Maggie end of Ring
- Wm porter 39 Young
- Moss Henry painter 104 Chestnut
- Laura 79 Young
- Georgia 79 Young
- P W 60 Broad
- Sarah 62 s Crowell
- Motley Wilson 11 Prince
- Ella 11 Prince
- Murphy Geo S 48 Lincoln
- Geo lab 34 Lincoln
- Thos 113 Chestnut

- Nickerson Abe 62 Broad

- Overton Eva Cook 48 s Crowell

Meet me **The Fountain, Gibson Drug Store.**
 at
 We serve Delicious Drinks Summer and Winter GIBSON DRUG STORE

H. L. PARKS & CO. Sells the Best Grade
 of SHOES.
 We Lead! Others Follow.

FOR COUGHS, COLDS, HOARSENESS AND ALL AFFECTIONS OF THROAT AND LUNGS TAKE

Johnson's compound syrup of white pine

D. D. Johnson Druggist.

14 S. Union

Bell
No. 2 West 5th St.
Phone 312.

Write Hackney Bros.

When you want **PLUMBING.**

COLORED 114 DIRECTORY.

- Palmer Robt 24 Lincoln
- Rosella 22 Ring
- Parker David lab 22 Broad
- Lee lab 37 Ring
- Parks John emp New South Club 41 Ring
- Pink lab 6 Broad
- Tirzah 25 Young
- Partee Amos lab 32 s Crowell
- Frances Depot opp Scotia Seminary
- Johanna 40 e Depot
- Pea Carrie 6 e Corbin
- David lab 45 Tournament
- David minister bds 170 w Corbin
- Pearson Charlotte 33 Young
- Kate dom 25 Bell av
- Peay Daniel 39 Broad
- Penry Mary supt dept Scotia Seminary
- Percival Anna O teacher Scotia Seminary
- Charlotte E teacher Scotia Seminary
- Peterson Mack lab 97 Broad
- Pharoah John porter 32 Prince
- Pharr John 66 Young
- Martin lab 24 Broad
- Patsy 10 Broad
- Sidney lab 34 Lincoln
- Thos engr 66 Young
- Vicie 22 Broad
- Phifer Alfred 39 Pounds
- Amzi 61 Young
- Henry lab 47 Pounds
- Tutsey 47 Pounds
- John 41 Coleman row
- Martha 14 Cedar

STOP AT The Miltonian. only first-Class Hotel in the City.

Best \$2.00 a day house in Concord.

Most **Soda Drinks** at our
 Delicious **Concord Drug Store.** Fountain
 I N. Union.

COLORED

115

DIRECTORY.

Phillips Eliza 108 Broad
 Pless J J 28 Prince
 Plunkett Maggie 14 Coleman row
 — Wm lab bds 97 Broad
 Pinkston Alice 2 s Church
 Pounds Eliza 21 Beech
 Propst Graham 107 e Depot
 — Jas 5 Poplar

Rascoe Daniel 114 Chestnut
 Rankin Jas lab 20 Broad
 — Margaret 111 Young
 Reed Alice 29 n Gold
 Reynolds Mary 88 Chestnut
 Reid Carrie nurse 122 s Union
 — J H resturant 50 s Union
 — W H barber 59 s Union
 Rhyne Sallie cook bds 68 w Academy
 Roan Wm lab 165 s Spring
 — J R resturant 59 s Union
 Roary Geo lab 292 s Union
 Robison Chas miner end of Ring st
 Robinson Daniel farmer 74 s Georgia
 — Mollie 130 Chestnut
 — Robt 16 Prince
 — Si 41 s Crowell
 — Samuel 118 Chestnut
 Rogers Ruf lab 487 s Union
 — Wm 28 Pounds
 Ross Maggie 149 s Georgia
 — Wm lab 6 e Corbin
 Rush Thos restaurant 42 s Union
 Russell Wm lab 6 e Corbin
 Rutherford Y J near Coleman mill

Toilet Soaps

all kinds at
 all prices. Agent for "High Art Soap"
 the best 3 for 25c. made.
 GIBSON DRUG STORE, 1 South Union St.

Prescriptions Carefully Compounded
 at all Hours. CONCORD DRUG STORE.

Prescriptions Carefully Compounded,

BY D. D. JOHNSON, DRUGGIST, 14 s. Union st.

The Miltonian
 The New Hotel. Free Buss, Electric
 Lights, High-class in every respect.
 R. W. Bigger, Prop.
 \$2.00 Per. Day and worth it.

COLORED

116

DIRECTORY.

Scales Chas mill hand 14 Cedar
 Scott Eli 85 Coleman row
 — Mary cook 244 n Union
 Shankle Dock bds 48 s Crowell
 Shinn Amanda 46 e Depot
 — Adam mill hand 89 Young
 — Henry 105 s Georgia
 — Jacob lab 41 Broad
 Shinpark Eva 7 Prince
 Shoomen Alex lab 91 Coleman row
 Shouse Marion 54 Ring
 Simelton Sallie 49 Tournament
 Slade W R minister 31 Poplar
 Smart Gertie 35 Poplar
 — LeRoy 35 Poplar
 Smith Jos W grocer 165 w Depot h 167 w Depot
 — Wright blacksmith 24 Ring
 Smoot Jas 88 s Georgia
 — Jos butcher 165 w Depot rear
 Spears Geo 130 Broad
 — Maggie 114 n Church
 — Thos lab 10 Broad
 Spaulding H W grocer 24 Tournament h 41 Tournament
 Spencer Jas 24 Ring
 — John 3 Lower's row
 Springs Violet cook 32 w Corbin
 Steel Henry lab 37 Chestnut
 — Mack lab 173 s Spring
 Stephens Lev lab near Coleman mill
 Stewart Lee lab rear 211 s Union
 Stitt Alice wid 20 Prince
 — Wm 41 s Crowell
 Stockton L F 67 Young

John C. Smith.

45-47 S. Union.

FANCY and STAPLE
Groceries.

H. L. PARKS & CO.
DEPARTMENT STORE
 4 AND 6 S. UNION ST.

COLORED

117

DIRECTORY.

Sutton Harvey painter 122 Chestnut
 Suther Wm 30 Young

Taylor Wm lab 48 s Georgia
 Thompson Fanny teacher 62 s Crowell
 Torrence Wm 1 McCree row
 Turner John 18 Lincoln

Ury Anna cook 20 Prince
 — Andy lab 78 Coleman row
 — Nina teacher 78 Coleman row
 — Frank lab 78 Coleman row
 — C L shoemkr 41 w Depot h 117 Chestnut
 — David 107 Chestnut
 — Fayette mill hand 159 s Spring
 — John lab 159 s Spring
 — Nelson lab 24 Lincoln
 — Samuel 7 Eower's row

Wade Chas mill hand 171 w Depot rear
 Wallace Jacob 205 n Spring
 — John emp oil mill 15 Lower row
 — Nancy cook 34 Mill
 — Robt lab 58 Academy
 — Wm lab 68 w Academy
 Watson Henry 21 Beech
 Watt Mary cook 42 n Union
 White Andrew 79 Tournament
 — Andrew lab 88 s Georgia
 — Eliza 56 s Crowell
 — Ellen 22 Pounds
 — John mason 88 s Georgia

Send us
 Your
Prescriptions to fill
GIBSON DRUG STORE.
 Only Registered Druggists
 fill Prescriptions at our
 store.

For
 Up-to-date **Gentlemens Furnishings**
SEE H. L. PARKS & CO. 4-6 S. Union.

Buy Your DRUGS and MEDICINES.

From D. D. JOHNSON, The DRUGGIST.

Hackney Bros.
PLUMBERS AND GAS FITTERS.
Charlotte N. C. Bell Phone, 312

COLORED

118

DIRECTORY.

- Lillie cook St Cloud Hotel
- Mariah 111 Young
- Sallie wid 8 Cedar
- Mack janitor 8 Cedar
- Frank driver 8 Cedar
- Wesley 114 Broad
- Whitley Lee lab rear 211 s Union
- Widenhouse Zeb lab 18 s Crowell
- Wilson Wm 86 e Depot
- Winecoff Frank lab 35 Broad
- Peter 71 e Depot

- Young Chas emp furn fact 5 McCree row
- Roxie 12 Tournament
- Viola cook 12 Tournament

SILVER HILL.

- Alexander Caroline Cook Silverhill
- Chas lab Silverhill
- Emeline cook Silverhill
- L lab Silverhill
- Rosa Silverhill

- Boger Columbus lab Silverhill
- Bradshaw Fannie cook Silverhill
- Brown Wm lab Silverhill

- Carrigan Frank lab Silverhill
- Odell lab Silverhill
- Cromer Bess Silverhill

- Ervin Ben farmer Silverhill

- Foster Nancy cook Silverhill

Carolina Plumbing & Heating Co ^{20 W. TRADE}
^{CHARLOTTE.}
^{N. C.}
EXPERT SANITARY & HEATING ENGINEERS.

Whitman's Candies

Always fresh at
our Store.

CONCORD DRUG STORE, 1 N. UNION, ST.

COLORED

119

DIRECTORY.

- Guin John W lab Silverhill
- Hileig Mack lab Silverhill
- Ivy Simon lab Silverhill
- Lawing Ed W grocer Silverhill
 - Jim lab Silverhill
- Lucky Martha washwoman Silverhill
- McClure Joe lab Silverhill
- Miller Geo lab Silverhill
 - Margaret cook Silverhill
 - Susan Silverhill
- Morris D lab Silverhill
- Neisler J A grocer Silverhill
- Partee Geo T railroad Silverhill
- Patterson Henry lab Silverhill
 - Mary Silverhill
- Reed Jack lab Silverhill
 - Mike carp Silverhill
 - Wm barber Silverhill
- Stafford Frank Silverhill
- Taylor Robt lab Silverhill
- Teal West Silverhill
- Thomason Sam lab Silverhill
- Thompson Sarah Silverhill
- White Hana Silverhill
- West Ellen cook Silveshill
- Whitmore Tom R R Silverhill

Gibson Drug Store
 We would appreciate your trade.
 Largest Stock,
 Lowest Prices
 Bicycle Delivery.

Best line of Cigars Smoking & Chewing Tobacco IN TOWN. CONCORD DRUG STORE

Take Johnson's **Red Liver Pills**

For Headache, Biliousness, Dizziness, Constipation, Torpid Liver.

D. D. Johnson. 14 S. Union

HACKNEY BROS. Bell phone 312. 2 West 5th st. Bath tubs, Closets, Lavatories, Sinks etc.

BUSINESS... ...DIRECTORY.

(Names in **Black type** are inserted under a special contract.)

AGRICULTURAL IMPLEMENTS.

(See Hardware)

ATTORNEYS AND COUNSELLORS

- Caldwell M H** 70 s Union tel 73-b
Hartsell L T over 62 s Union
Means W G over 41 s Union
Montgomery & Crowel office Court House tel 96
Smith Wm M 56 s Union tel 26
 Leary J S (col) 46 Union
 Puryear H S 39 n Union

BAKERS.

- Concord Bakery** C W Hopkins & Co 17 n Union tel 122

BANKS

CONCORD NATIONAL BANK

CAPITAL	-	-	-	-	-	\$50,000.00
Surplus	-	-	-	-	-	\$25,000.00
Undivided Profits	-	-	-	-	-	\$6,000.00

- President—J M Odell
 Vice-President—W H Lilly
 Cashier—D B Coltrane
 Asst Cashier—L D Coltrane

Directors—J M Odell, W R Odell, D B Coltrane, J P Allison, J S Harris, Elam King, W H Lilly.
 2 N Union

The Gem Resturant.

Meals at all hours.
Game in season.

45-47 S. Union St.

John C. Smith prop.



Asmond L. Harringer.
PRINTING, ENGRAVING, EMBOSsing.
Charlotte, N.C.

**IN MADE TO MEASURE CLOTHING
H. L. PARKS & CO. GUARANTEE A FIT.**

BUSINESS

121

DIRECTORY

CABARRUS SAVINGS BANK

CAPITAL	- - - - -	\$50,000.00
	- - - - -	Capital Paid in \$25,000.00
Surplus	- - - - -	\$12,500.00
Undivided Profits	- - - - -	\$13,500.00

President—D F Cannon

Vice-President—Martin Boger

Cashier—H I Woodhouse

Directors—Robt S Young, J C Wadsworth, J W Cannon,
L J Foil, C W Swink, J P Efrd, T C Ingram, J M
Morrow.

23 S Union

BARBERS

Viola A 117 w Depot (see opp page 23)

Hotel Barber shop 8 n Union

Ford Howard (col) 30 s Union

Reid W H Co 59 s Union

Driskill John W 202 w Depot

Burris & Poplin 319 n Church

Sides P J 198 w Depot

BICYCLES AND REPAIRS.

Lipe L E 49 s Union

BLACKSMITHS.

Helms A J 21 e Depot

Lawings M L 23 Means

Hethcock D L e Depot

Earnhardt C W 20 s Church

Wilkerson Jas W 20 s Church

Parnell Wm C 32 s Church

Meet me at **The Fountain, Gibson Drug Store.**
 We serve Delicious Drinks Summer and Winter GIBSON DRUG STORE

H. L. PARKS & CO. Sells the Best Grade
of SHOES.

We Lead! Others Follow.

Headache Cure, stops headache, made and
 sold by
D. D. JOHNSON Druggist.

Write Hackney Bros.
 When you want **PLUMBING.**
 No. 2 West 5th St. Bell
 Phone 312.

BUSINESS 122 DIRECTORY

BOTTLING WORKS

Carolina Bottling Works 73 Mill tel 166

BOOTS AND SHOES

Dry & Miller 15 s Union tel 75

Parks H L & Co 4-6 s Union tel 116 (see margins)

White Ed F 14 s Union tel 6

Allison J P 71 s Union tel 67

Dayvault D P & Bro Cannon & Fetzer

Gibson & Morrison

BOOKS AND STATIONERY

White E F 12 s Union tel 6

CARPETS

(See Dry Goods and Furniture)

CARRIAGE & WAGON DEALERS

Morris P M & Son 62 s Union tel 63 (see inside cover)

Yorke & Wadsworth Do (Incorp) 7-9 s Union tel 30 (see front cover)

McKinney F B

CLOTHING AND FURNISHINGS

Parks H L & Co 6 s Union tel 116 (see margins)

White E F 12 s Union tel 6

Cannon & Fetzer

COTTON MILLS

Odell Mfg Co n end Union tel 24

Buffalo Mills Kerr & Buffalo

Lippard's Yarn Mill e Depot & Reed office 41 s Union tel 136

STOP AT The Miltonian. only first-Class Hotel in the City.
 Best \$2.00 a day house in Concord.

Most Delicious **Soda Drinks** at our Fountain
 Concord Drug Store. I N. Union.

BUSINESS

123

DIRECTORY

Cannon Mfg Co
 Cabarrus Cotton Mills
 Bala Cotton Mills
 Gibson Mfg Co
 Coleman Mfg Co

CIGAR DEALERS
 (See Drugs Grocers, Hotels)

COAL & WOOD

Craven K L 41 w Depot tel 74 (see page 1)
 Blackwelder J A C 206 w Depot tel 68

Commision Merchants

Erwin Sam'l J 15 w Depot tel 184

CONFECTIONERS

Foil Wm A 20 s Union tel 141
 Dove & Bost 24 s Union tel 21
 Cook Jas R Ritz H G

CONTRACTORS AND BUILDERS

Propst A H 5 w Depot
 Dry C B 110 e Depot tel 155
 Caldwell D A

CHINA AND CROCKERY

Dove & Bost 24 s Union tel 21
 Bostian D J 26 s Union tel 101

Civil Engineers

Smith Quint E 58 s Union

COTTON SEED OIL MILL

Concord Oil Mill 121 w Buffalo tel 135

Toilet Soaps

all kinds at
 all prices.
 GIBSON DRUG STORE, 1 South Union St.
 Agent for "High Art Soap"
 the best 3 for 25c. made.

Prescriptions Carefully Compounded
 at all Hours. CONCORD DRUG STORE.

Prescriptions Carefully Compounded,
BY D. D. JOHNSON, DRUGGIST, 14 s. Union st.

The Miltonian
 The New Hotel. Free Buss, Electric
 Lights, High-class in every respect.
 R. W. Bigger, Prop.
 \$2.00 Per. Day and worth it.

BUSINESS

124

DIRECTORY

DENTISTS

Houston W C over 16 s Union tel 60 (see inside cover)

Herring H C over 5 s Union

DEPARTMENT STORES

Parks H L & Co 4-6 s Union tel 116 (see margins)

DIRECTORY PUBLISHERS.

[Trade Lists Furnished]

Interstate Directory Co, The, Charlotte N C

DRUGGISTS.

Concord Drug Co 1 n Union tel 37 (see margins)

Fetzer's Drug Store 2 s Union tel 22 (see page 1)

Gibson Drug Store (Incorp) 1 s Union tel 114 (see side margins)

Johnson D D 14 s Union tel 95 (see top margins)

Marsh M L

DRY GOODS.

Parks H L & Co 4-6 s Union tel 116 (see margins)

Bostian D J (the Racket store) 26 s Union tel 101

Blackwelder J A C 206 w Depot tel 68

Furr J W

Walters M C

Cannon & Fetzer

Gibson & Morrison

Foundry & Machine Shops

Concord Foundry & Machine Works 79 w Corbin tel 145 (see page 1)

FLOUR MILLS

Fenix Flour Mills (G T Crowell prop) 171 w Corbin tel 40

Cabarrus Roller Mills e end Depot

John C. Smith.

FANCY and STAPLE

45-47 S. Union.

Groceries.

H. L. PARKS & CO.
DEPARTMENT STORE
4 AND 6 S. UNION ST.

BUSINESS

125

DIRECTORY

FURNITURE

- Bell Harris Furniture Co** 3 s Union tel 12 (see front cover)
Craven Bros 29 s Union tel 9 (see page 3)
Stoudemire P & E E

FURNITURE MFRS

- Yorke Furniture Co** northwest part of City

GENERAL STORES

- Allison J P & Co** 71 s Union tel 67
Furr D M 314 n Church
Lippard's & Barrier 10 s Union tel 56
Odell Mfg Co 27 e Buffalo tel 46
Wilkerson Wm A & Co 322-4-6 n Church tel 164
White E F 12 s Union tel 6
Holshouser J H A Dayvault D P & Bros
Cannon & Fetzer Co Blackwelder J A C

GROCERS-Wholesale

- Patterson G W** 36-38 s Union tel 27

GROCERS-Retail

- Cline W N & Bro** 308 n Church
Dayvault W A 204 w Depot (C Robbins mgr)
Dove & Bost 24 s Union tel 21
Foil Wm A 20 s Union tel 141
Foil J W 65 s Union tel 181
Furr J W 221 w Depot tel 115
Lippard J C 30 s Union
Odell Mfg & Co 27 e Buffalo tel 46
Patterson G W 36-38 s Union tel 27
Sappenfield C R 198 w Depot
Sappenfield A L 27 s Union tel 28
Sikes V D 18 s Union tel 110

Send us
Your
Prescriptions to fill
GIBSON DRUG STORE.
Only Registered Druggists
fill Prescriptions at our
store.

For
Up-to-date **Gentlemens Furnishings**
SEE H. L. PARKS & CO. 4-6 S. Union.

Buy Your DRUGS and MEDICINES.

From D. D. JOHNSON, The DRUGGIST.

Hackney Bros. PLUMBERS AND GAS FITTERS. Charlotte N. C. Bell Phone, 312

BUSINESS

126

DIRECTORY

Smith John C 45-47 s Union tel 87 (see bottom margin)

Stone Wm A 306 n Church

Thompson W M & Co 64 s Union tel 162

Walters M C 247-49 w Depot

Waddell & Cline 300-2 n Church

Walters Jas 312 n Church

Williams C J & Co 43 Pearl tel 177-a

Walker D M 7 McGill

White E F 12 s Union tel 6

Harris H (col)

Lipe L E

Cannon & Fetzer

Coleman W C (col)

Maxwell F L

Johnston R F

Waddell I H

Melton J A

Boger R (col)

Smith J W

Sides D

Welch J H

Bost D J & Co

Starns F L

Widenhouse & Son

Neal A W

Clontz J E

HARDWARE.

Ritchie Hardware Co 28 s Union tel 117 (see front cover)

Morris P M & Son 62 s Union tel 63 (see inside cover)

Yorke & Wadsworth Co (Incorp) 7-9 s Union tel 30 (see front cover)

Hill Wm J 40 s Union tel 134

White C R

HARNESS

Morris P M & Son 62 s Union tel 63 (see inside cover)

Hill Wm J 40 s Union tel 134

Carolina Plumbing & Heating Co ^{20 W. TRADE} **CHARLOTTE.**
^{N. C.}
EXPERT SANITARY & HEATING ENGINEERS.

Whitman's Candies

Always fresh at
our Store.

CONCORD DRUG STORE, 1 N. UNION, ST.

BUSINESS

127

DIRECTORY

HOTELS

The Miltonian 68-70 s Union tel 200 R W Bigger
(see side lines & opposite page 24)
St Cloud

House Furnishing Goods
(See Furniture)

Ice Manufacturers

Concord Ice & Fuel Co opp St Cloud Hotel res tel
18 office tel (see opp page 8)

INSURANCE

Richmond G G & Co 15 w Depot tel 184 (see op-
posite page 8)

White Thos J over 15 w Depot

Life Ins Co of Va Over 8 s Union L Z Gordon supt
Hartsell A M Patterson John K

JEWELERS

Correll Wm C 5 s Union

Willeford J C

Collett John W

LAUNDRIES

Concord Steam Laundry & Dye Works 93 w
Corbin tel 2 (see opp page 23)

LIVERIES

Brown M L & Bros 15-15 e Depot tel 76 (see page
32a)

Corl M J 19 w Depot tel 3

Fisher Geo L 304 n Church tel 169

McKinney F B

Lowder D A

Gibson Drug Store
We would appreciate your trade.

Largest Stock,
Lowest Prices

Bicycle Delivery.

Best
line of Cigars Smoking & Chewing Tobacco

IN TOWN.

CONCORD DRUG STORE

Take
Johnson's **Red Liver Pills**

For Headache, Bil-
iousness, Dizziness,
Constipation, Torpid
Liver.

D. D. Johnson. 14 S. Union

HACKNEY BROS. Bell: phone 312. Bath tubs, Closets, Lavatories,
Sinks etc.

2 West 5th st.

BUSINESS

128

DIRECTORY

LUMBER

Yorke & Wadsworth Co office north part city tel
177
Pounds J T 63 w Corbin
Dry C B 120 e Depot tel 155

MAILING AND ADDRESSING

Boyd's Dispatch 16 Beekman st New York N Y
Trow Directory Co 21-27 University st New
York N Y

MARBLE & GRANITE WORKS

Concord Granite & Matble Works 11 Means
(see opp page 40)

MEAT MARKETS.

Dayvault J F & Bros 41 s Union tel 85
Lippard J C 30 s Union
Furr J W 221 w Depot tel
Cook B H Beck Fred

MERCHANT TAILORS

Alexander John M over 10 s Union
Concord Pressing Club Wissell I

MENS' FURNISHINGS

(See Clothiers)

MILLINERY

Parks H L & Co 4-6 s Union tel 116 (see top margin)
Alexander Miss Nannie L 16 s Union
Bracken Mary Welch Julia
Bracken Mary Welch Julia

The Gem Resturant.

45-47 S. Union St.

Meals at all hours.
Game in season.

John C. Smith prop.

**IN MADE TO MEASURE CLOTHING
H. L. PARKS & CO. GUARANTEE A FIT.**

BUSINESS

129

DIRECTORY

MANUFACTORIES

Cleavers Club & Mfg Co cor Union & Corbin tel
143
Concord Mattress Mfr Co

Newspapers

Codcord Times (issued Thursdays) 48 s Union tel 78
(see adv opp page 64)
Standard The (daily & weekly) 66 s Union tel 71
(see adv opp page 56)
Tribune The (daily & semi-weekly) 52 s Union tel 144
(see page 21)

OIL DEALERS

Caldwell J B agt Standard Oil Co 21 n Spring tel 146

OPTICIANS

Cornell Wm C 5 s Union

PAINTS, OILS & GLASS
(See Hardware)

Yorke & Wadsworth Co 7-9 s Union tel 30 (see
front cover)
Ritchie Hardware Co 28 s Union tel 117 (see
front cover)

PAINTERS AND DECORATORS

Anthony Wm D 64 Grove

PHOTOGRAPHERS

Foust O V over 62 s Union (see opp page 48)
Scott Z E

H. L. PARKS & CO. Sells the Best Grade
of SHOES.
We Lead! Others Follow.

Meet me at **The Fountain, Gibson Drug Store.**
We serve Delicious Drinks Summer and Winter GIBSON DRUG STORE

Prescriptions Carefully Compounded.

BY D. D. JOHNSON, DRUGGIST, 14 s. Union st.

The Miltonian
\$2.00 Per. Day and worth it.
The New Hotel. Free Buss, Electric
Lights, High-class in every respect.
R. W. Bigger, Prop.

BUSINESS

130

DIRECTORY

PHYSICIANS

- Archey L M** 10 n Union tel 20
Caldwell D G 1 n Union res tel 19
Burleyson L N 118 w Depot tel 118
Lilly Wm H 30 w Depot tel 35
Smoot & Pemberton 11 w Depot tel 88
Young R S 7 w Depot tel 82
Lafferty J S Lord A D (col)

PLANING MILLS

(See Lumber)

- Yorke & Wadsworth Co** office north part of city
tel 171
Pounds J T 63 w Depot
Dry C B 110 e Depot tel 155

PLUMBERS & GAS FITTERS

- Hackney Bros** 2 w 5th st Charlotte N C Bell tel 312
(see side margin)
Carolina Plumbing & Heating Co 22 w Trade
st Charlotte N C tel 309 (see margin)
Miller H T 15 s College st Charlotte N C Bell tel 144
(see page 21)

Printers-Job

(See Newspapers)

REAL ESTATE

- Richmond G G & Co** 15 w Depot tel 184 (see adv)

RESTAURANTS

- Concord Bakery** 17 n Union tel 122
Gem Restaurant (J C Smith prop) 45-47 s Union

John C. Smith.

45-47 S. Union.

FANCY and STAPLE
Groceries.

H. L. PARKS & CO.
DEPARTMENT STORE
 4 AND 6 S. UNION ST.

BUSINESS

131

DIECRATORY

Melton John

Sides Daniel

Hill & Safrit

Lippard J C

Anderson J W (col)

Roan J R (col)

McMoore Bell (col)

Sash Door and Blind Mfrs

Yorke Furniture Co office n part of City tel 177

SEWING MACHINE AGENTS

Dry & Miller 15 s Unoin tel 75

Blackwelder M L

SHOEMAKERS

Brown Geo W 5 Means

Gibson W W

Swink Geo R

May C L

Ury C L (col)

Lentz R P

Sides J P

Gurley J K

STOVES

(See Hardware)

TEL AND TELPH CO'S

Concord Telph Co (local) 5 e Depot

Western Union Tel Co 17 n Union tel 139

Bell Telp Co

Postal Tel Co

TANNERS

Brown Geo W 5 Means

TINNERS

Hill Wm J 40 s Union tel 134

Skinner W H 61 s Union

Send us
 Your
Prescriptions to fill
GIBSON DRUG STORE.
 Only Registered Druggists
 fill
 Prescriptions at our
 store.

For
 Up-to-date **Gentlemens Furnishings**
SEE H. L. PARKS & CO. 4-6 S. Union.

Take
Johnson's **Red Liver Pills**

For Headache, Biliousness, Dizziness, Constipation, Torpid Liver.

D. D. Johnson. 14 S. Union

HACKNEY BROS. Bell phone 312.
2 West 5th st.
Bath tubs, Closets, Sinks etc.
Lavatories.

BUSINESS

132

DIRECTORY

UNDERTAKERS

Bell Harris Furniture Co 3 s Union tel 12 (see front cover)

Craven Bros 23 s Union tel 9 (see page 3)

VET SURGEON

Griffin B L 15 e Depot tel 76

Bunn J F

Beware of
**Directory
Borrowers.**

The Gem Resturant.

45-47 S. Union St.

Meals at all hours.
Game in season.

John C. Smith prop.



Travelers' Guide



— 1803 —

...GET READY...

FOR THE

ST. LOUIS

CENTENNIAL.

OPENS MAY 1ST, 1903.

—


The greatest of all Expositions ever held in this or European countries. A celebration to commemorate the Louisiana Purchase. The features will excel those of the Columbian Exposition at Chicago in 1893.

—

All Railroads Lead to St. Louis.

— 1903 —

YOU SHOULD VISIT THE

**South Carolina,
Interstate
and West Indian
Exposition** 

To Be Held at

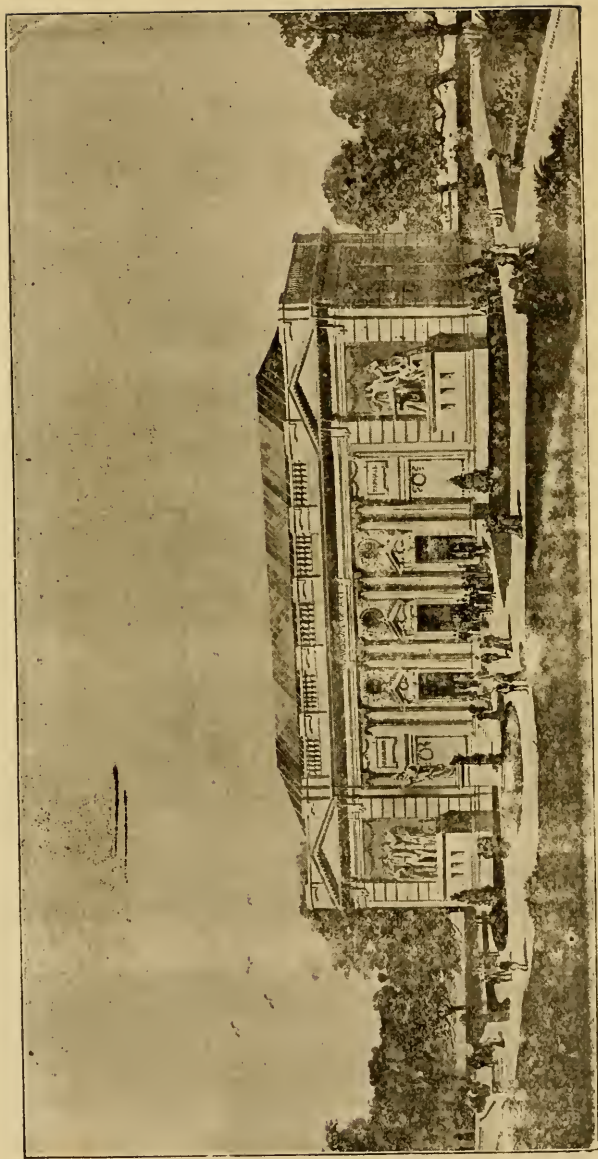
CHARLESTON, SOUTH CAROLINA,

DEC. 1, 1901, TO JUNE 1, 1902.

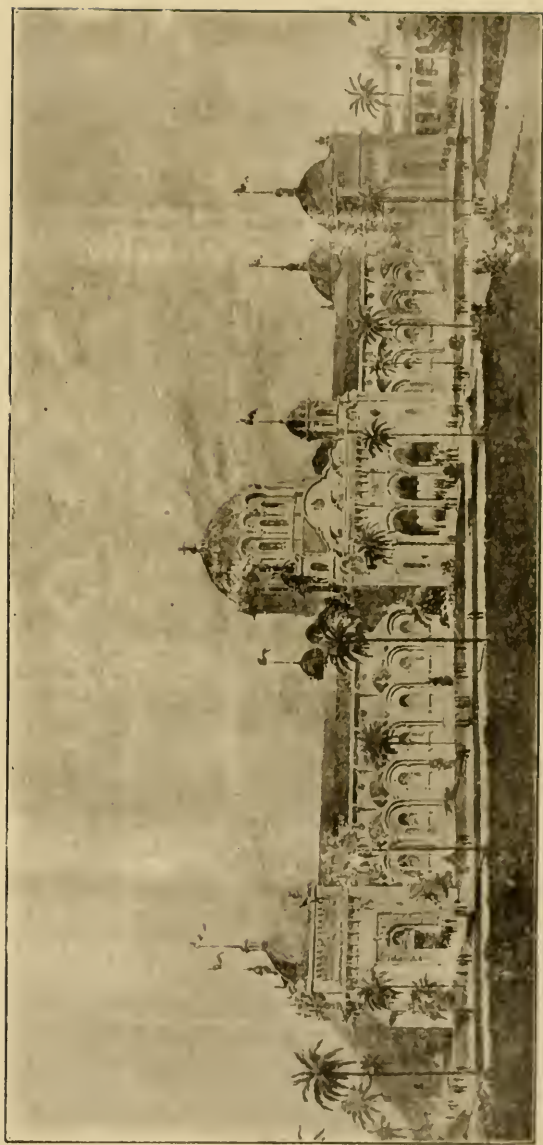
It Will Far Surpass any Exposition Ever Held in the South. A Revelation to Northern Visitors of the Southern and West Indian Countries. A Delightful Winter Vacation. Learn How Our Southern Neighbors Live; See Their Industries and Manufactures.

Greatest of Industrial Expositions

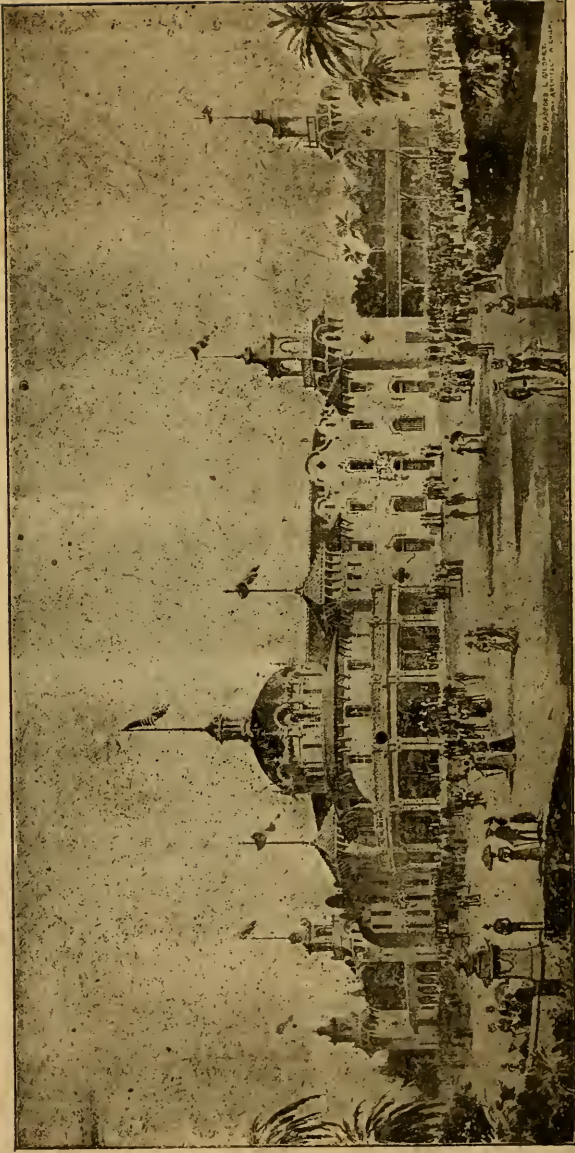
Very Low Rates by Land or Water.



Art Palace, S. C., I. & W. I. Exposition.



Palace of Agriculture, S. C., I. & W. I. Exposition.



Administration Building, S. C., I. & W. I. Exposition.



**Carolina Heating and Plumbing
COMPANY.**

**Expert Sanitary and
Heating Engineers**

Our Display of Fixtures is the Finest
to be Seen in Charlotte.

T. C. Toomey, Manager

Plumbing Inspector for the City of Charlotte,
from 1898 to 1901.

Estimates Given Promptly.

Office and Salesroom

20 West Trade Street.

Shop and Warehouse

8 North Church Street.



**H. T. MILLER
SANITARY
PLUMBING**

**STEAM and HOT WATER
HEATING**

Estimates Promptly Furnished.

We erected the Plumbing in
our new graded schools, the
Presbyterian College and the
Piedmont Office Building.

**Bell Phone 122a. 15 S. College
CHARLOTTE, N. C.**