

**ORNAMENTAL DESIGNS.**

**1861.**

Thomas Plate Rect  
Ctventry 1860

The  
Mary Ann Beinecke  
Decorative Art  
Collection

STERLING  
AND FRANCINE  
CLARK  
ART INSTITUTE  
LIBRARY



8501

Pr



W 1530  
1865



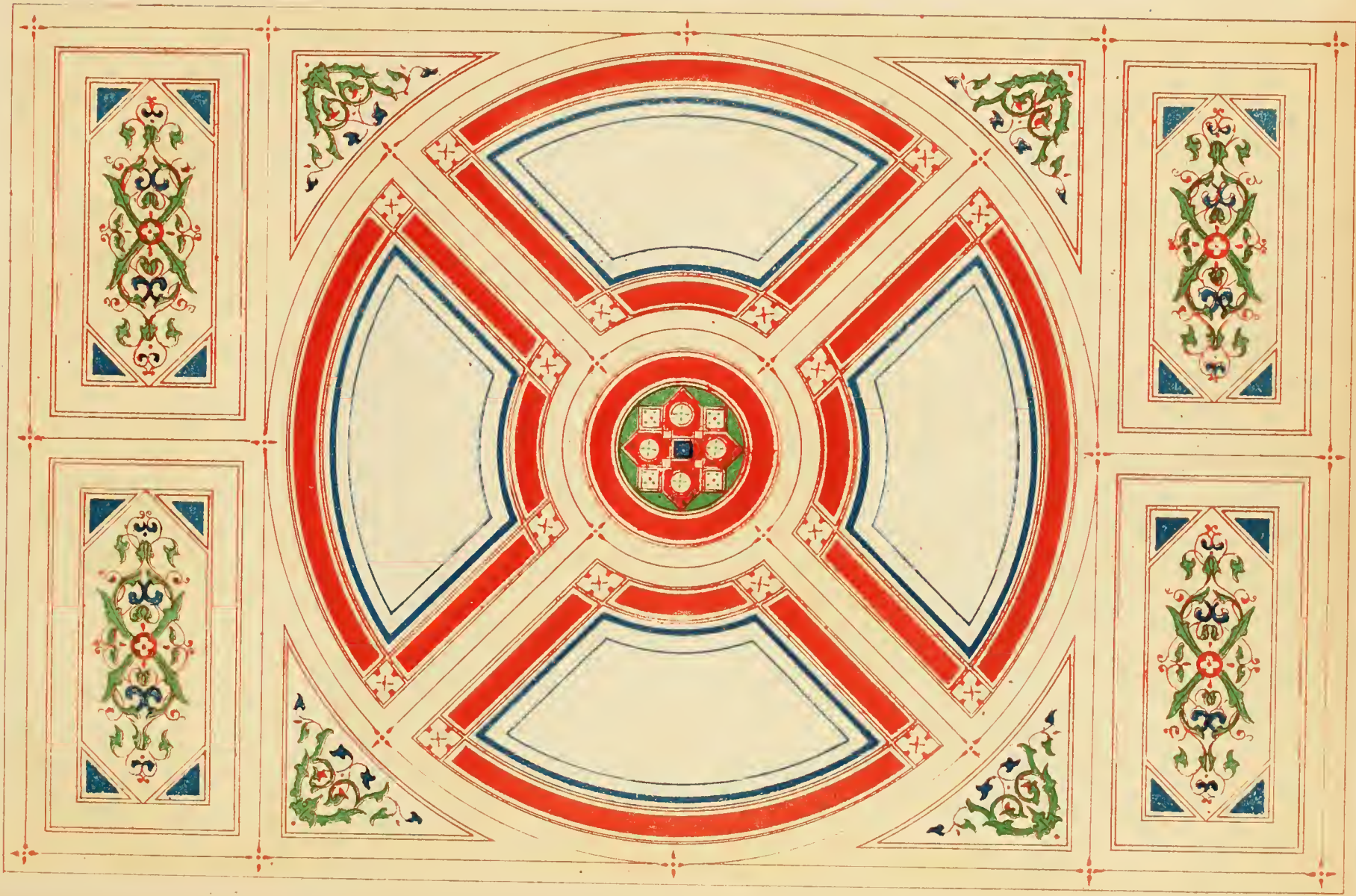
Digitized by the Internet Archive  
in 2012 with funding from  
Federally funded with LSTA funds through the Massachusetts Board of Library Commissioners

<http://archive.org/details/ornamentaldesign00mois>















































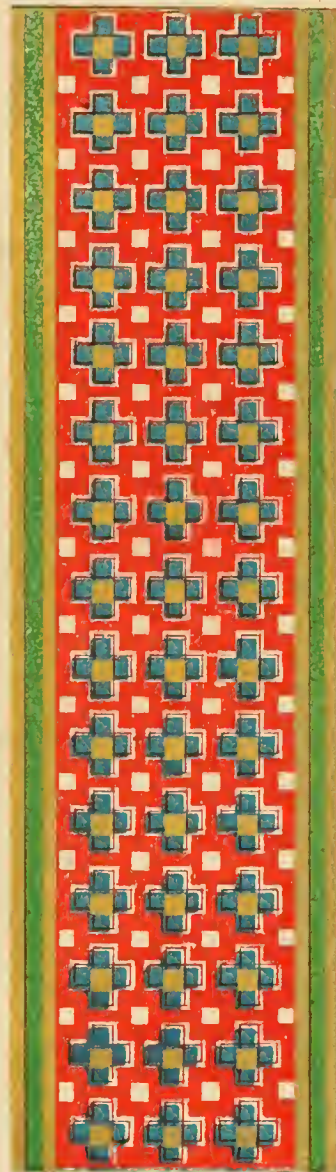
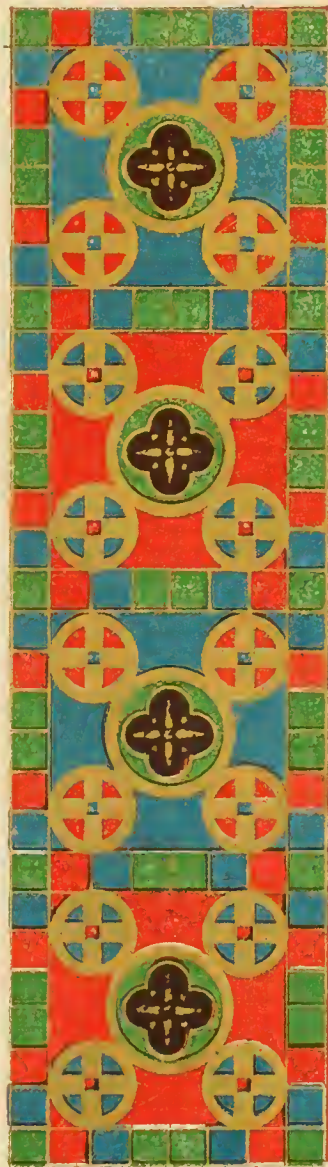
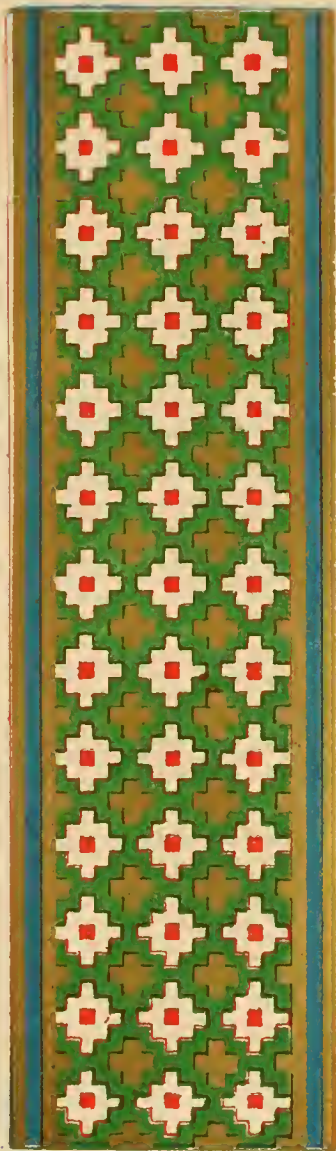














































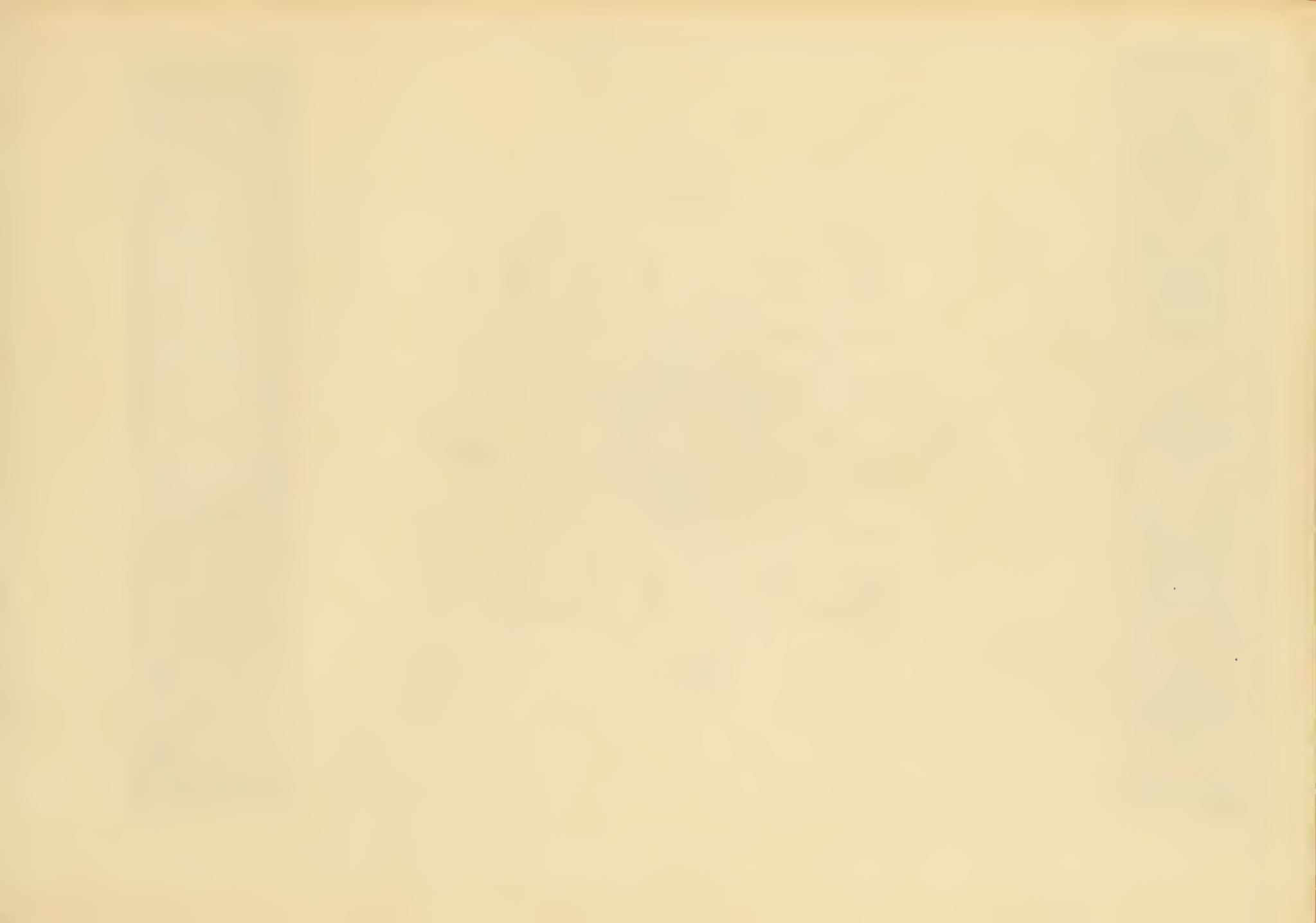






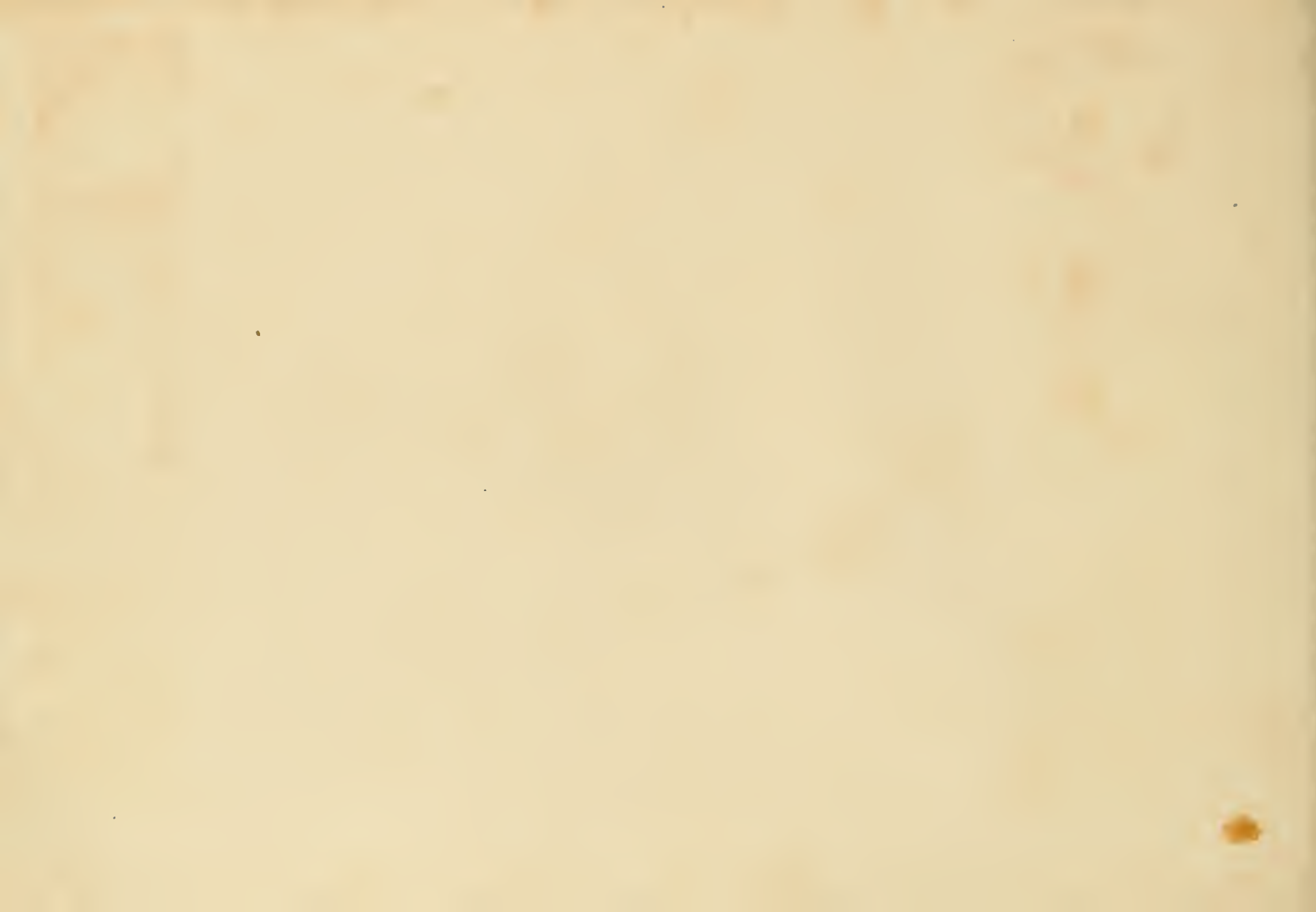




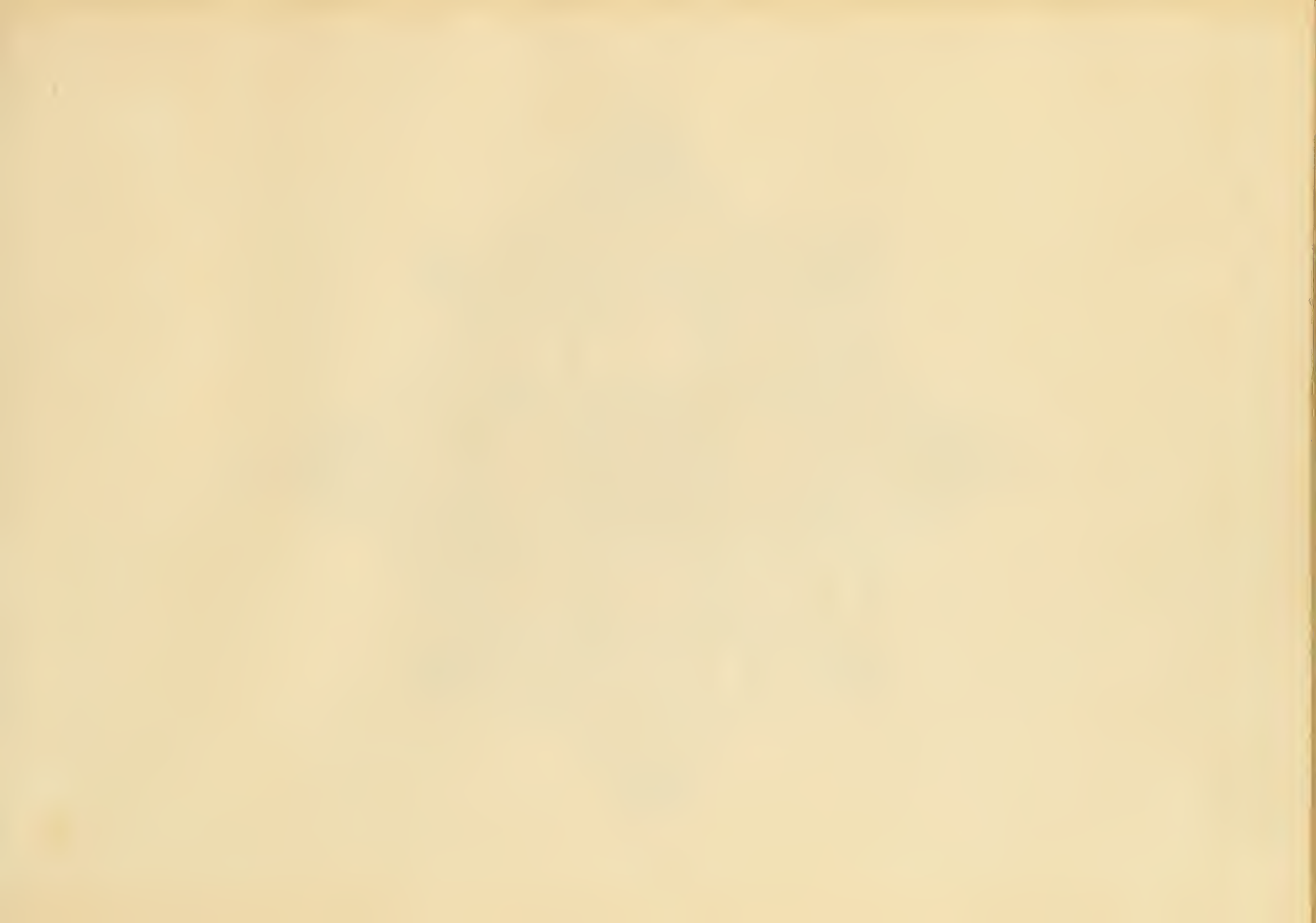








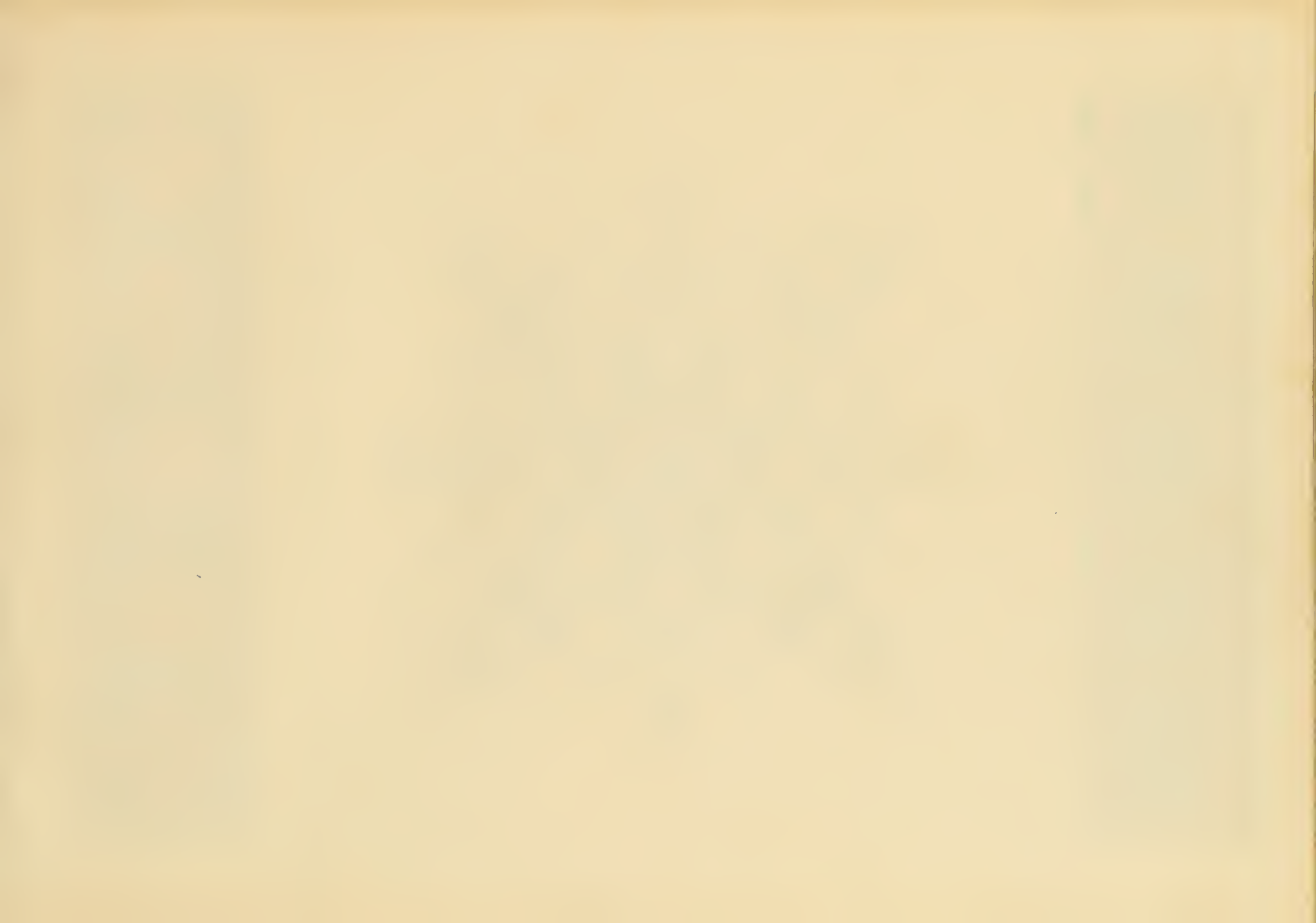






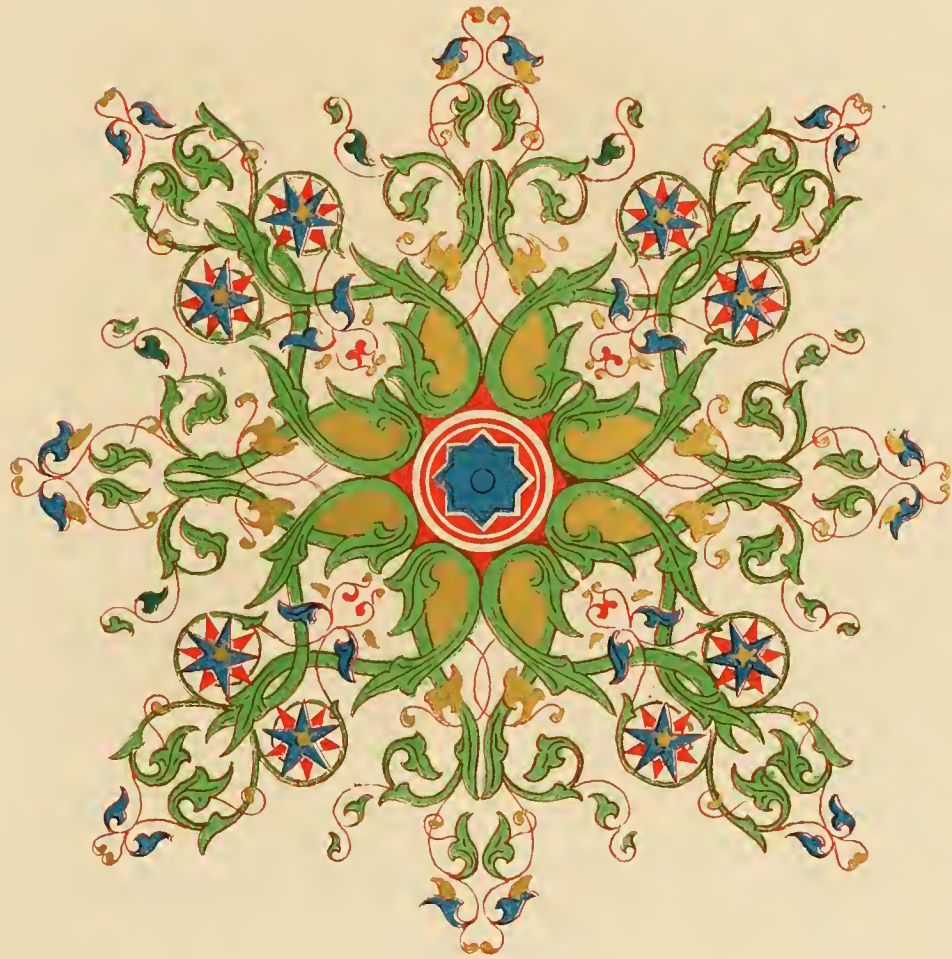




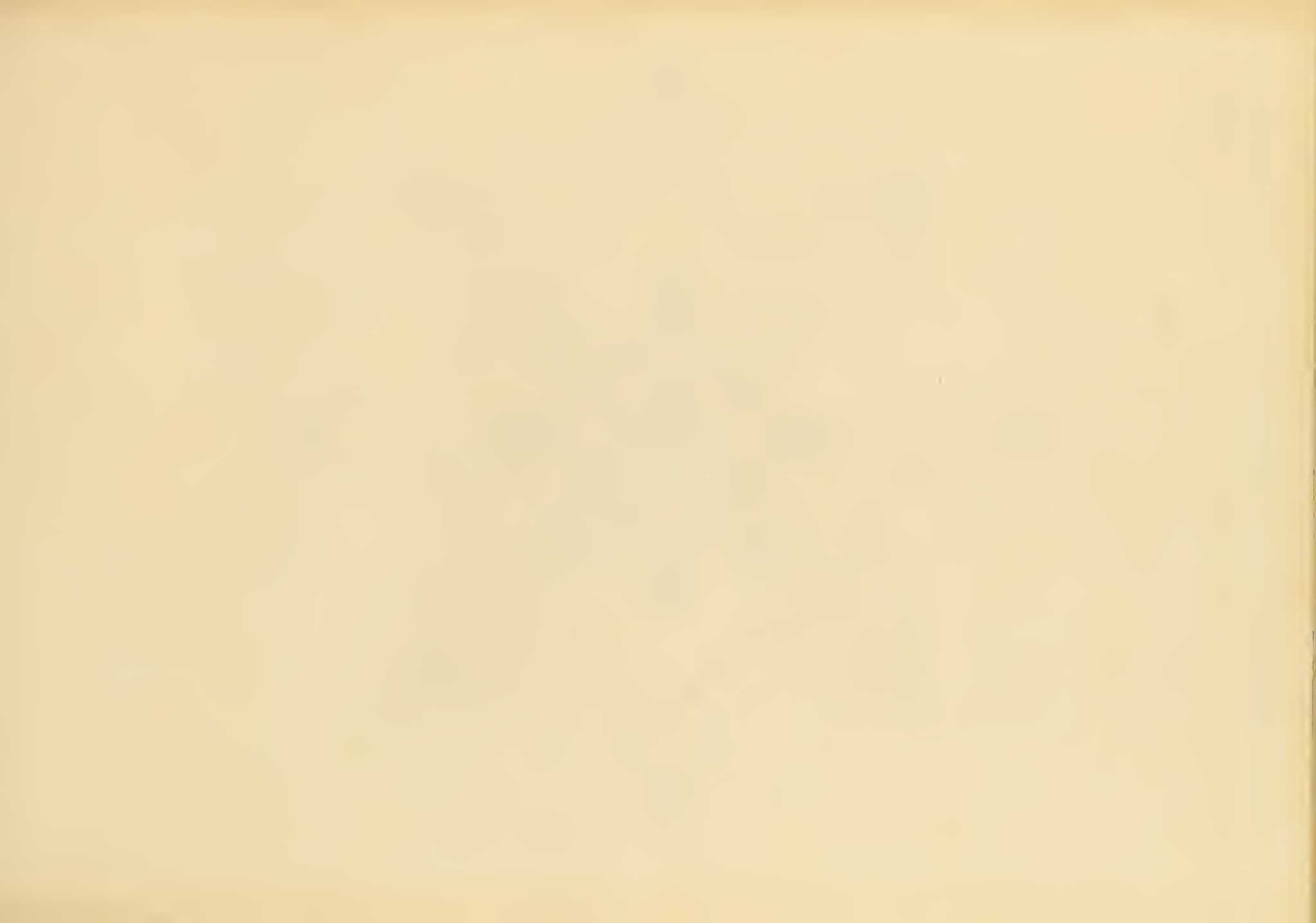














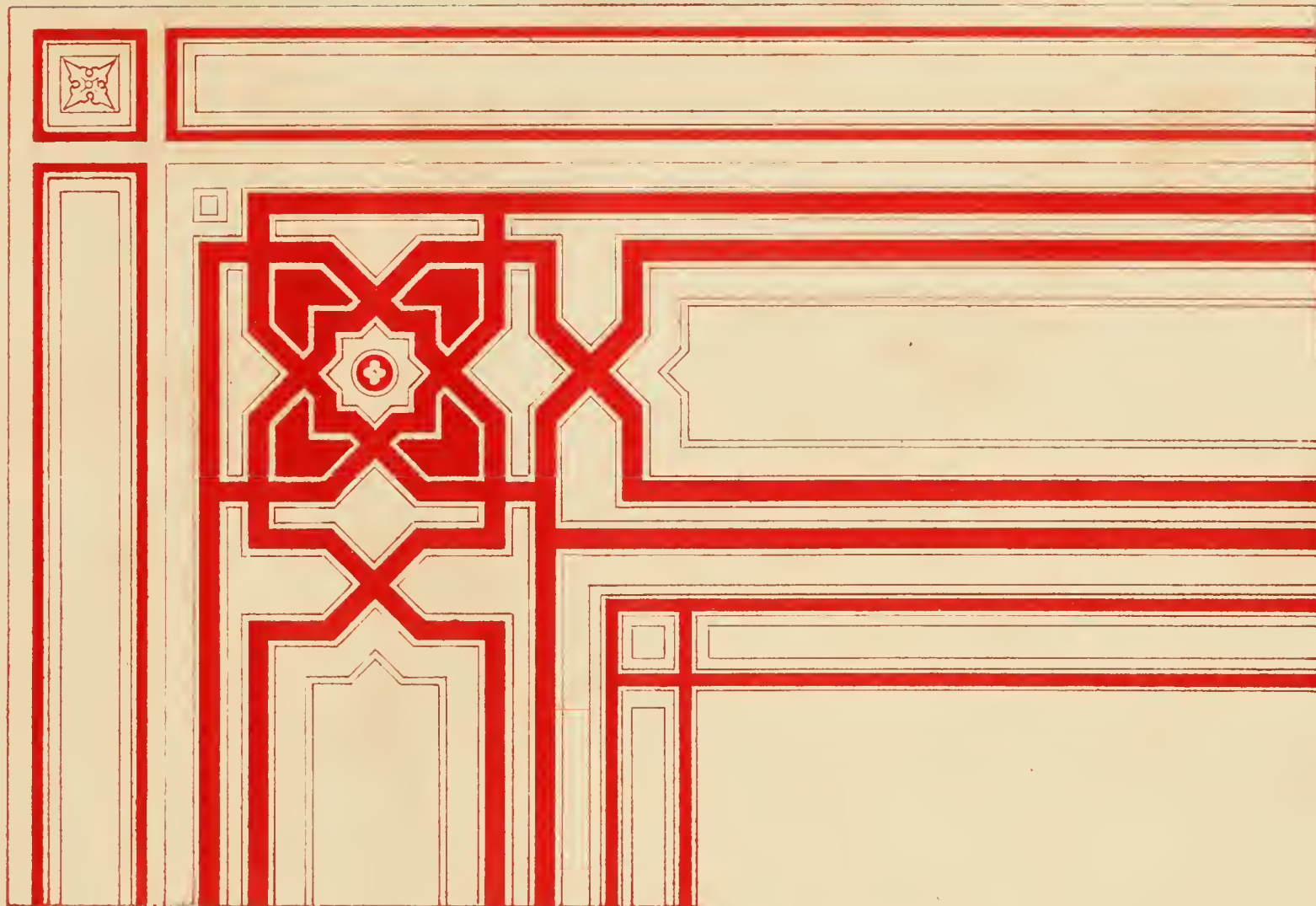










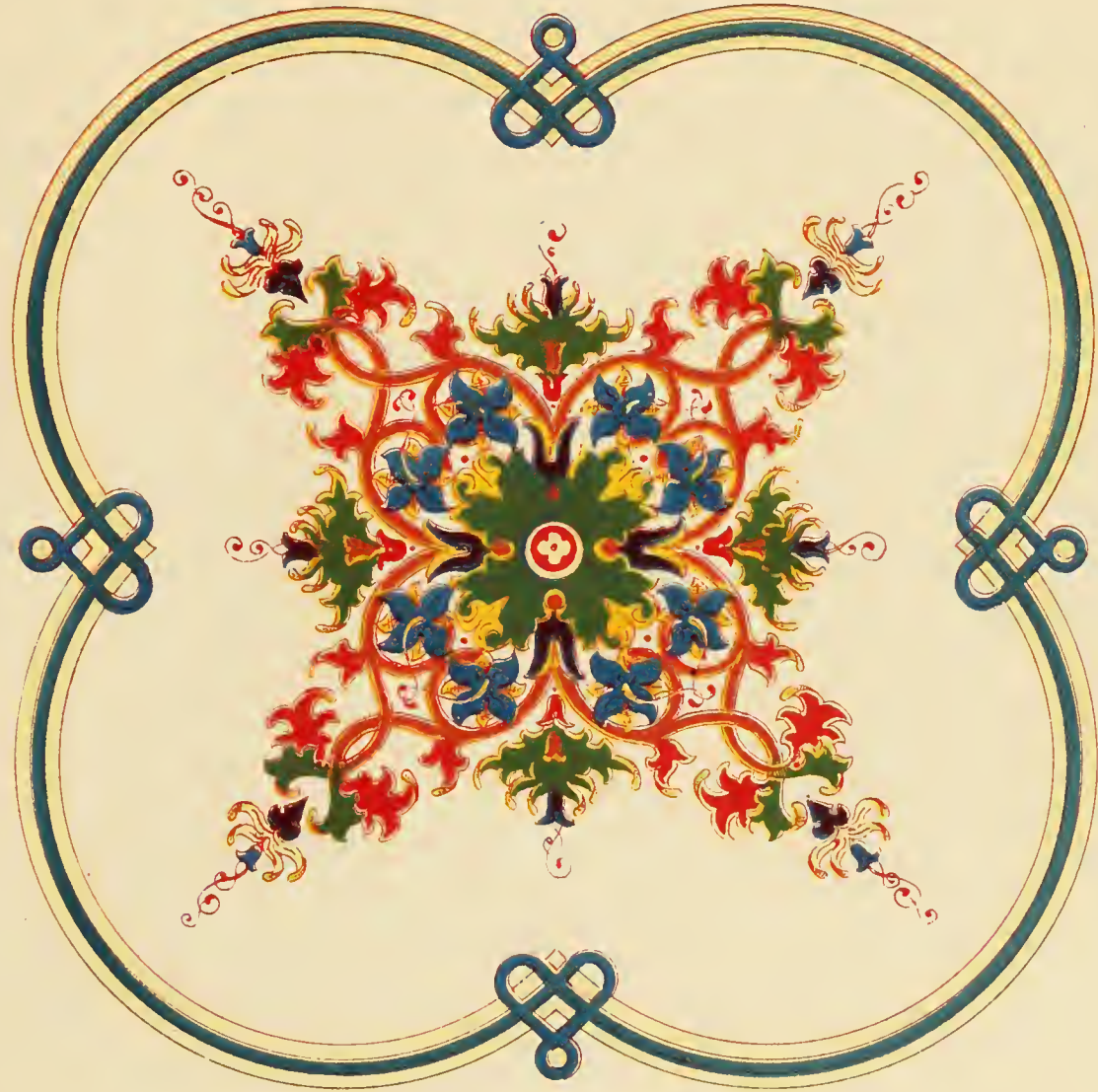




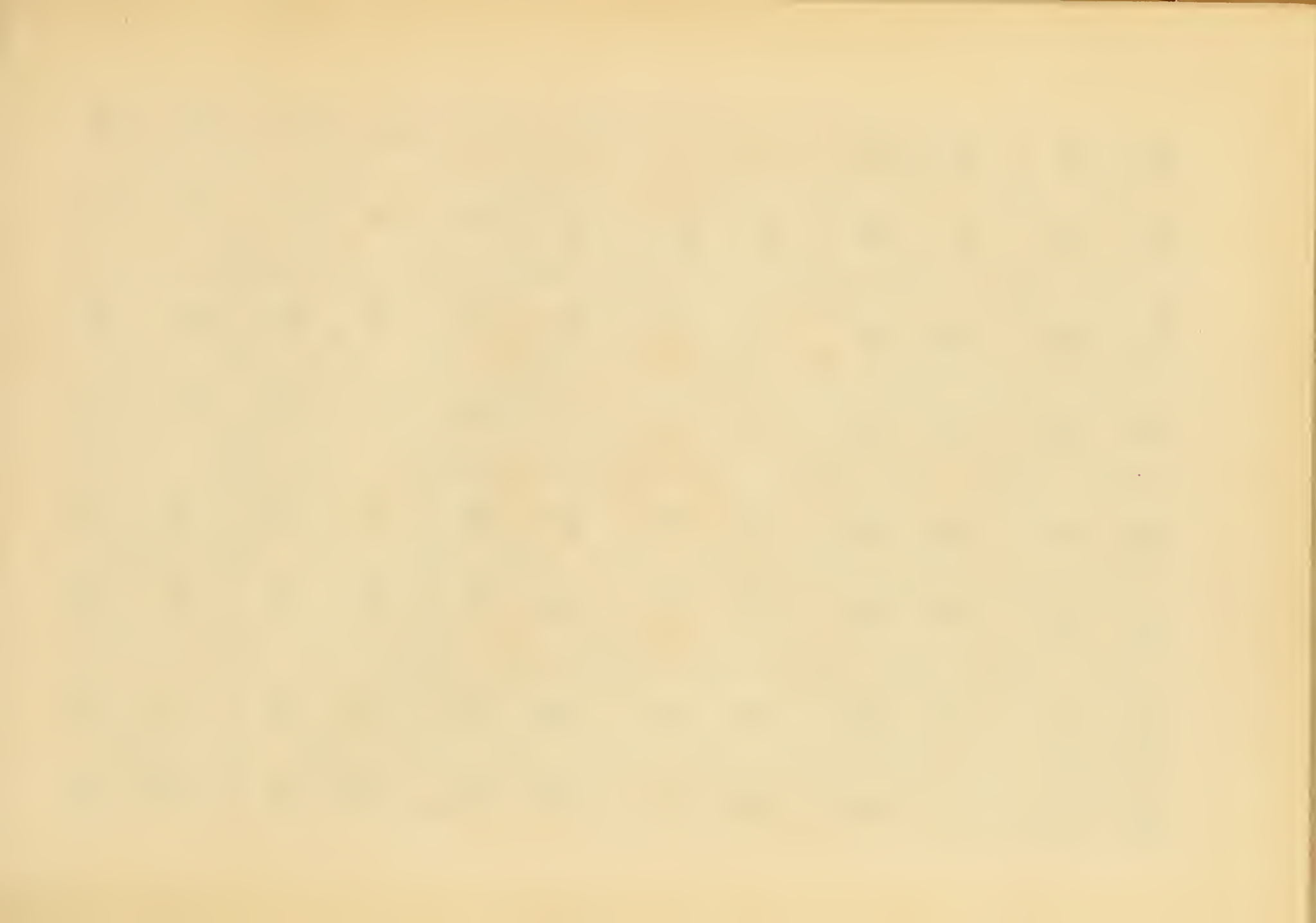


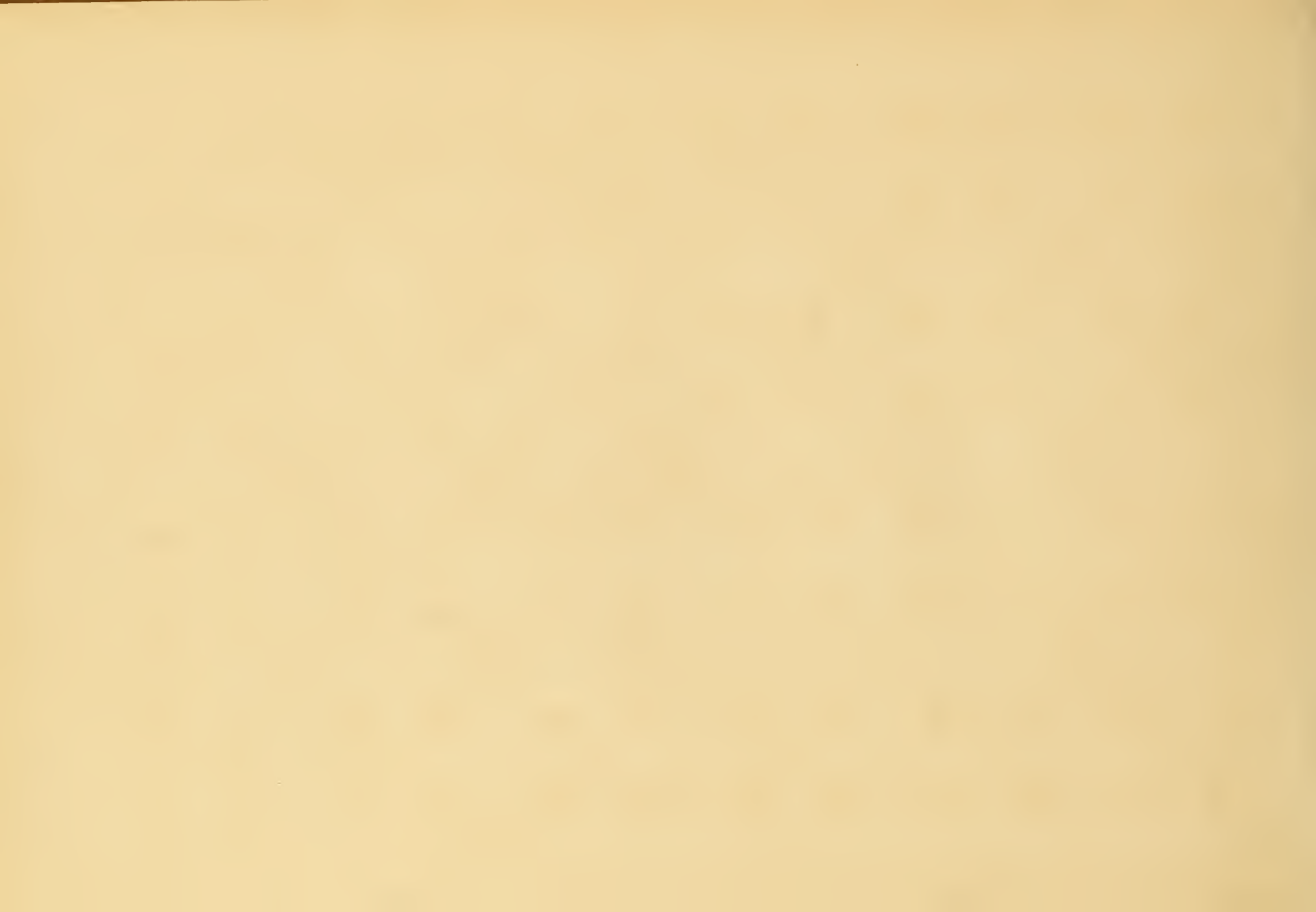




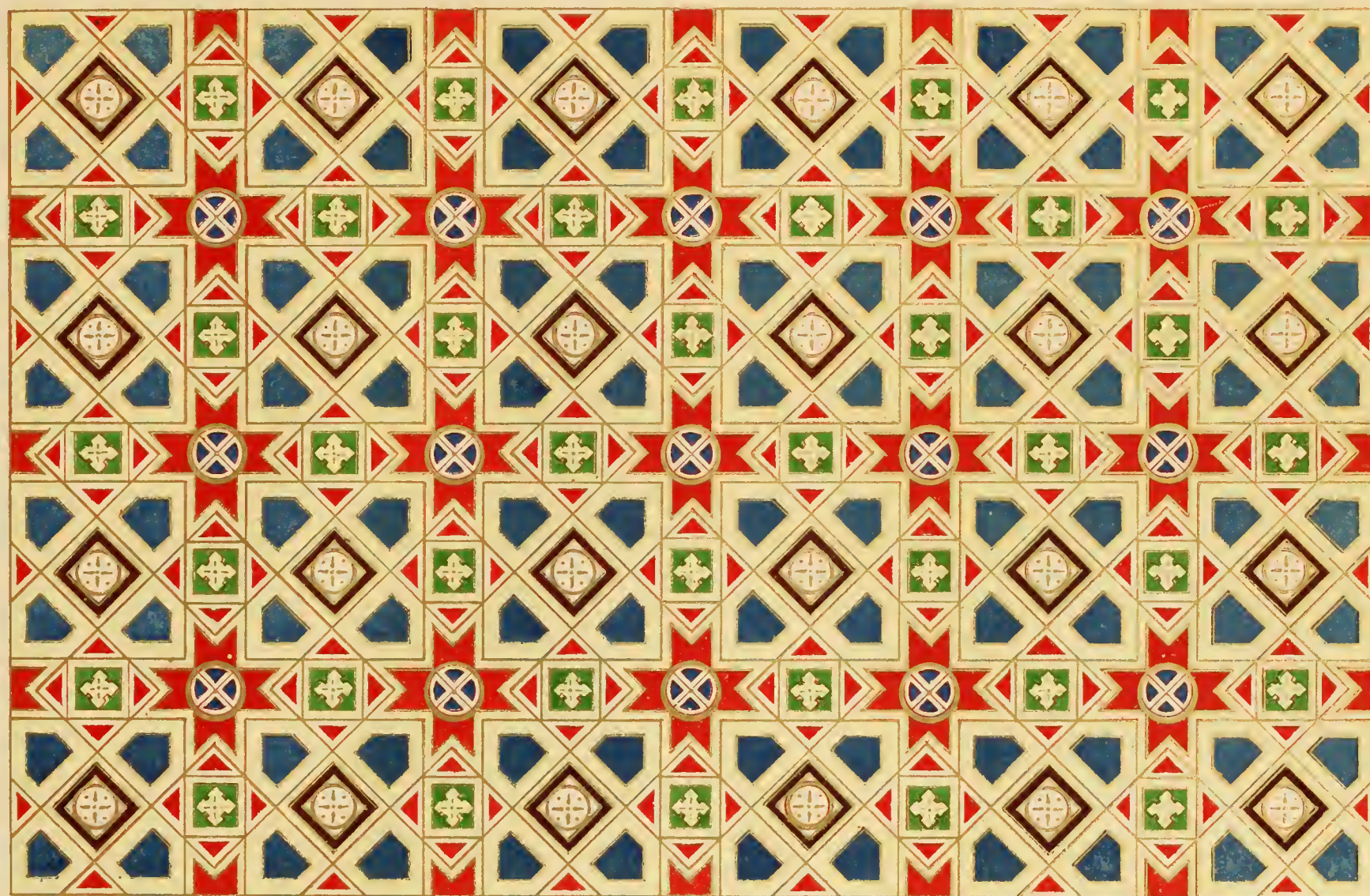










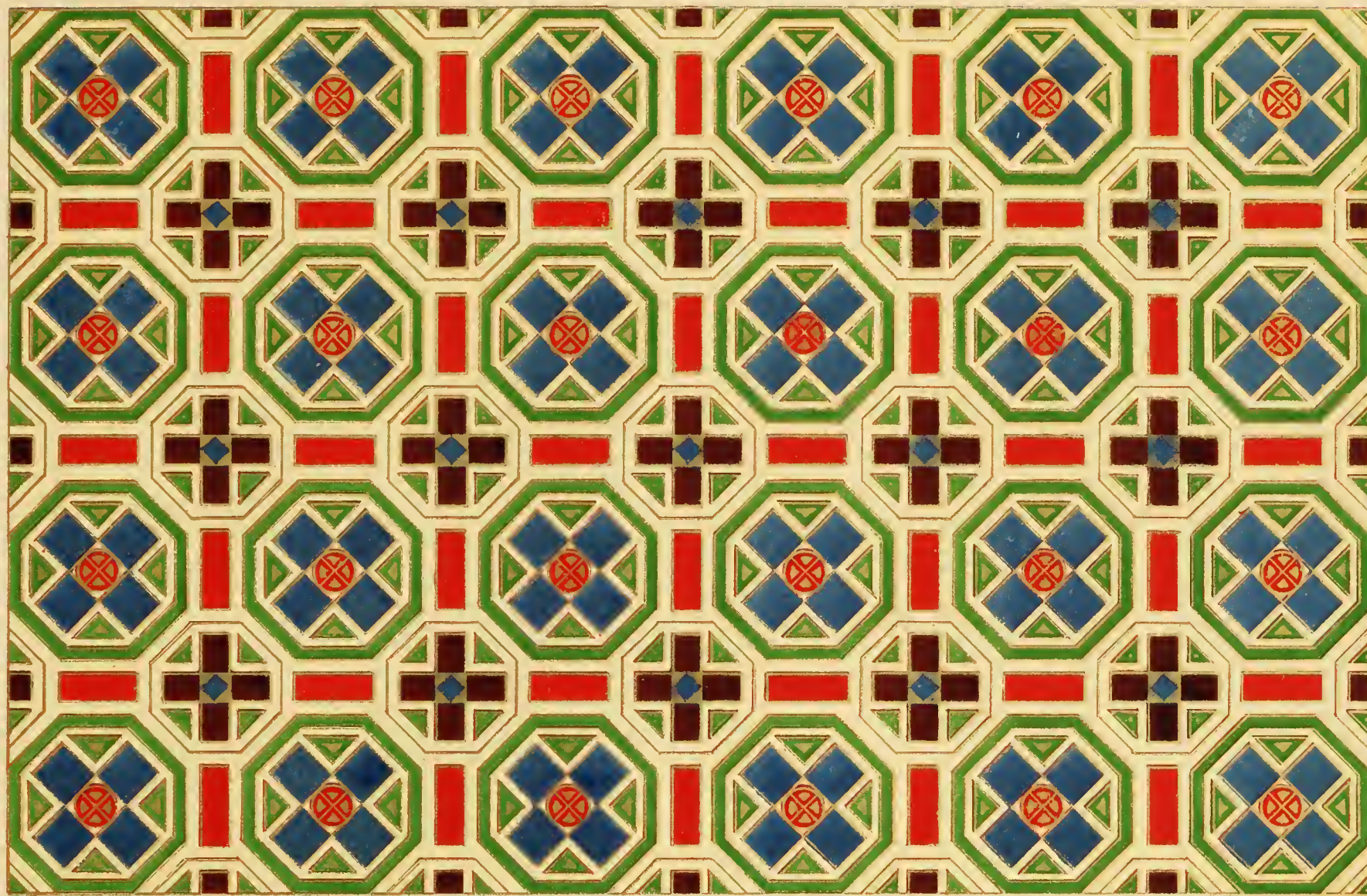










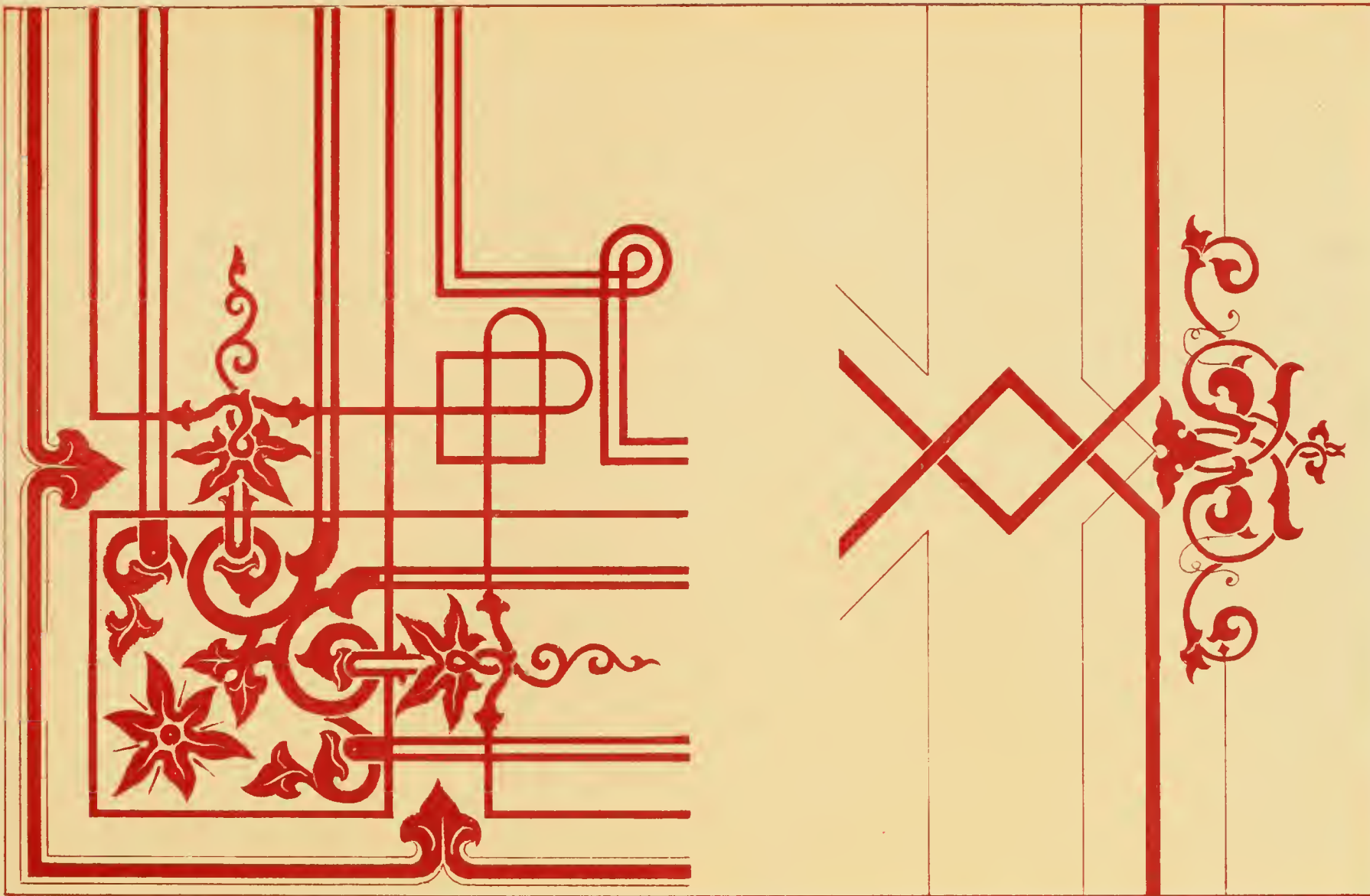






































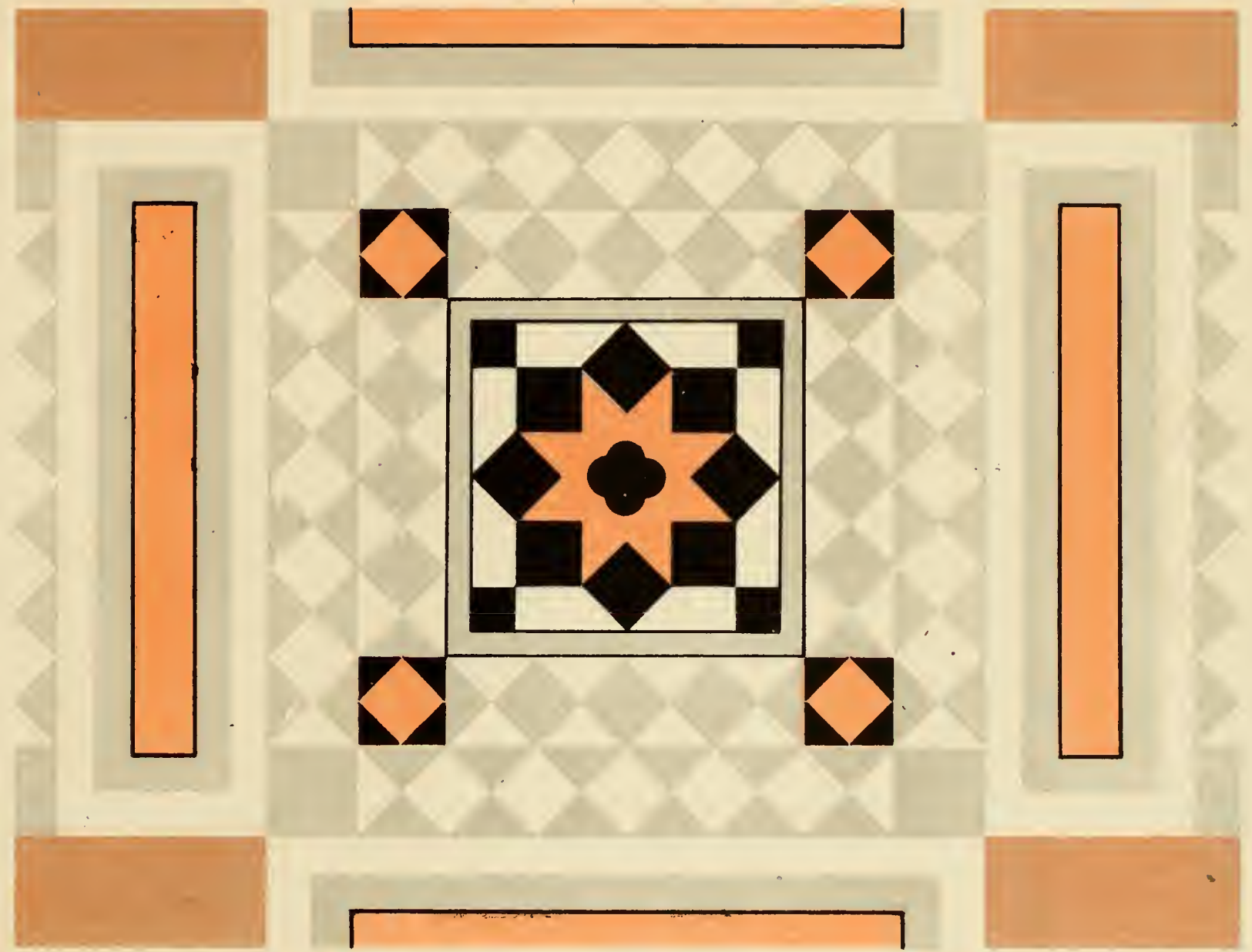


















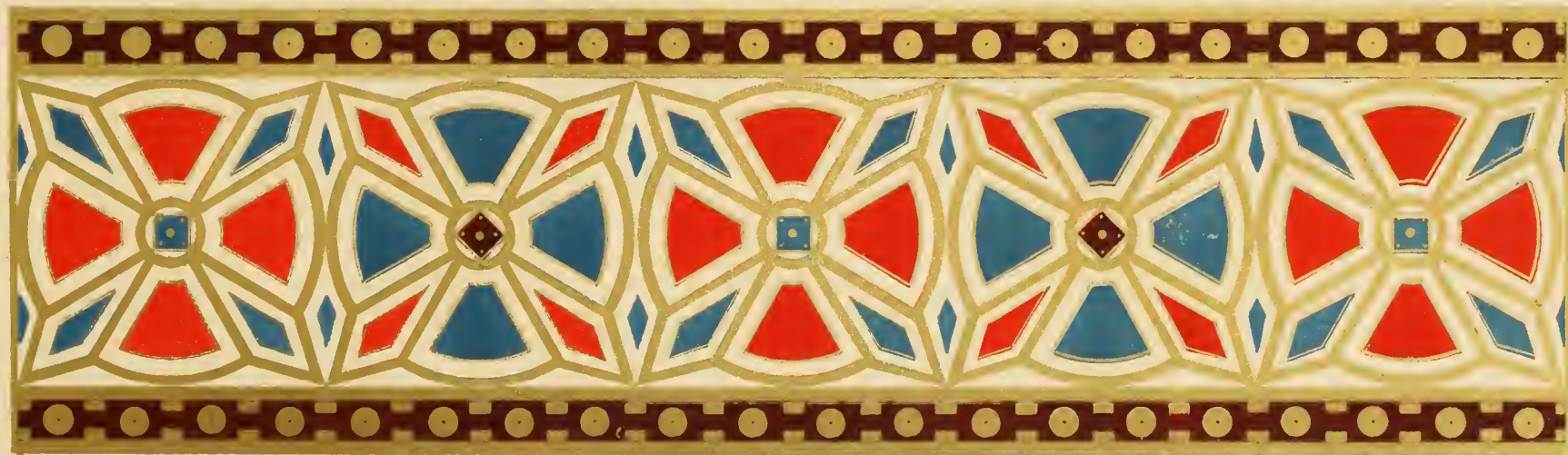










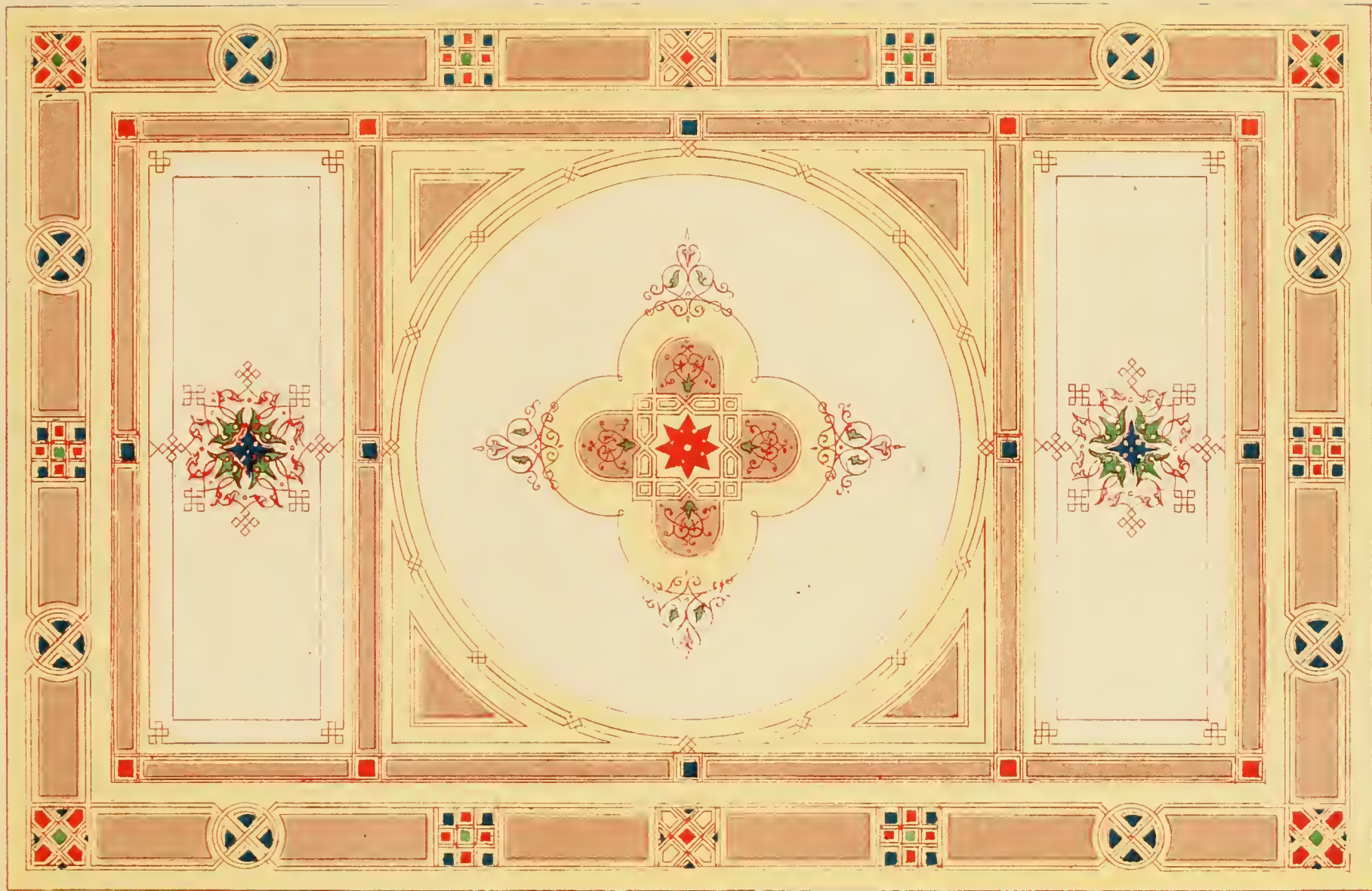








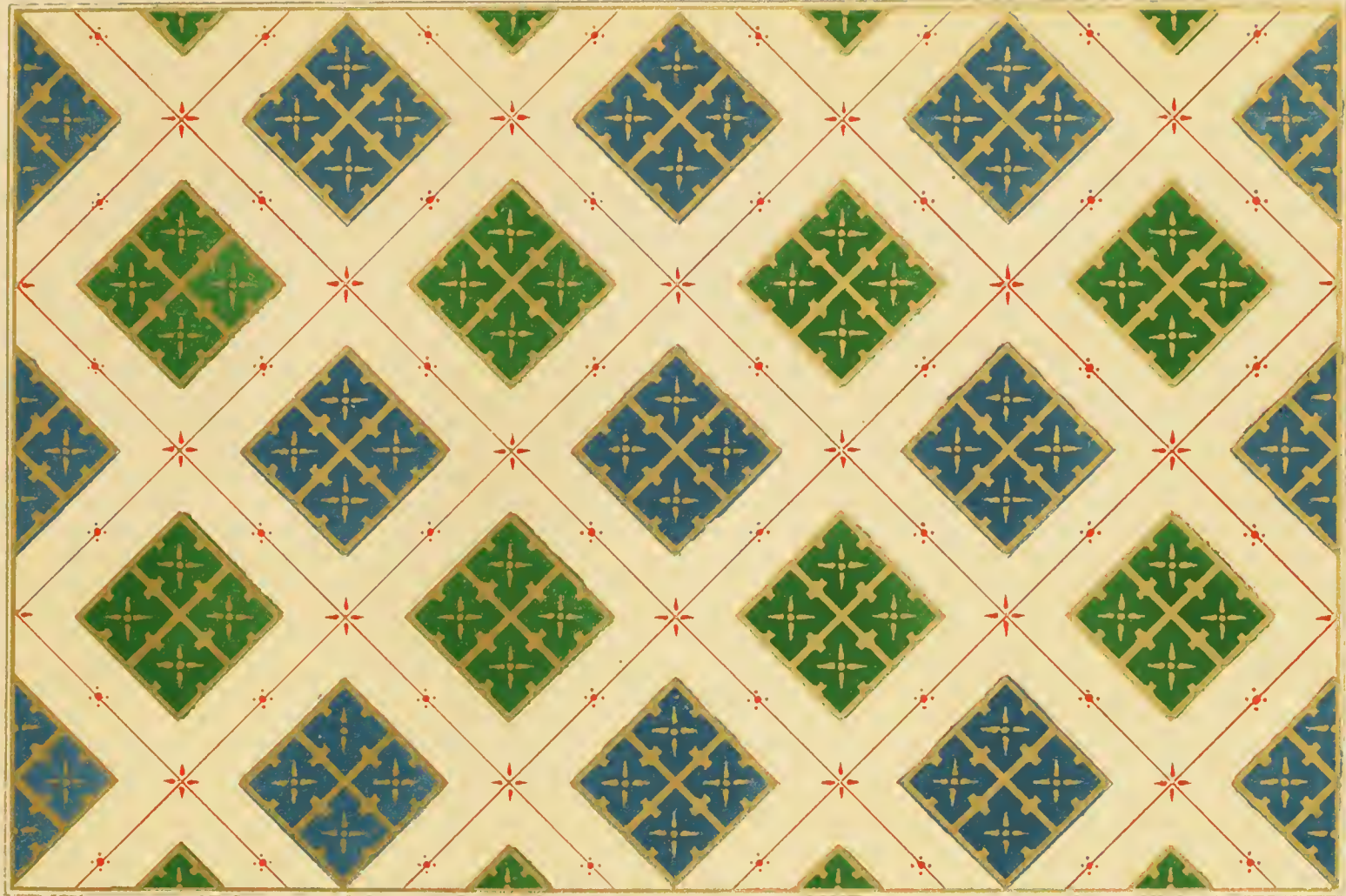












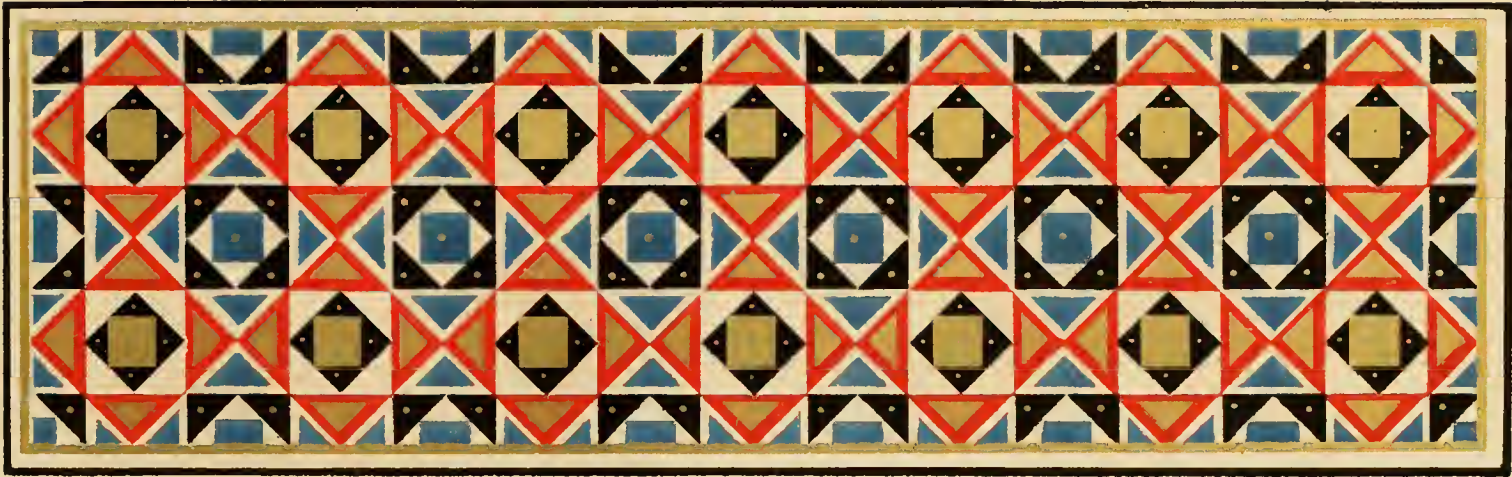










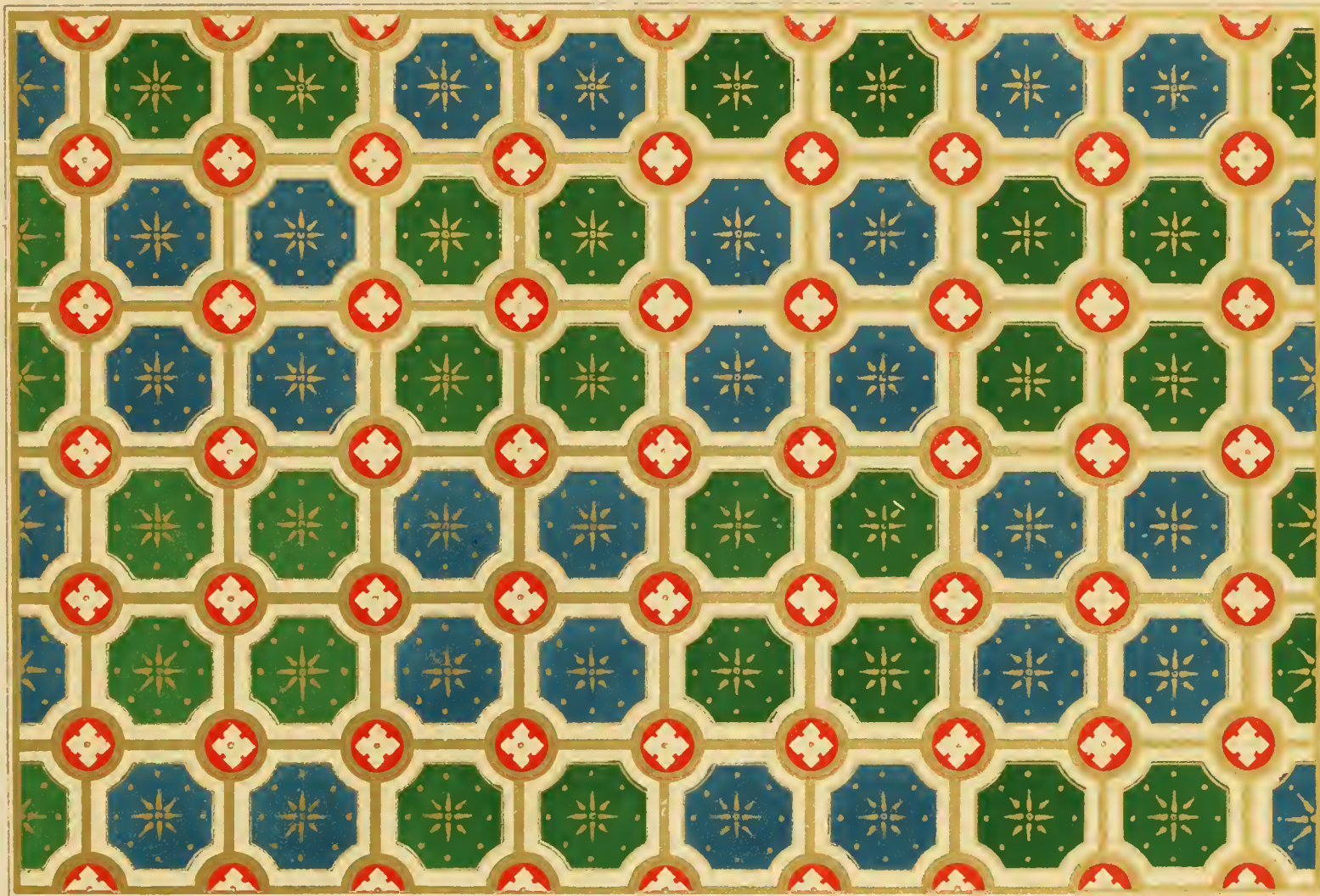






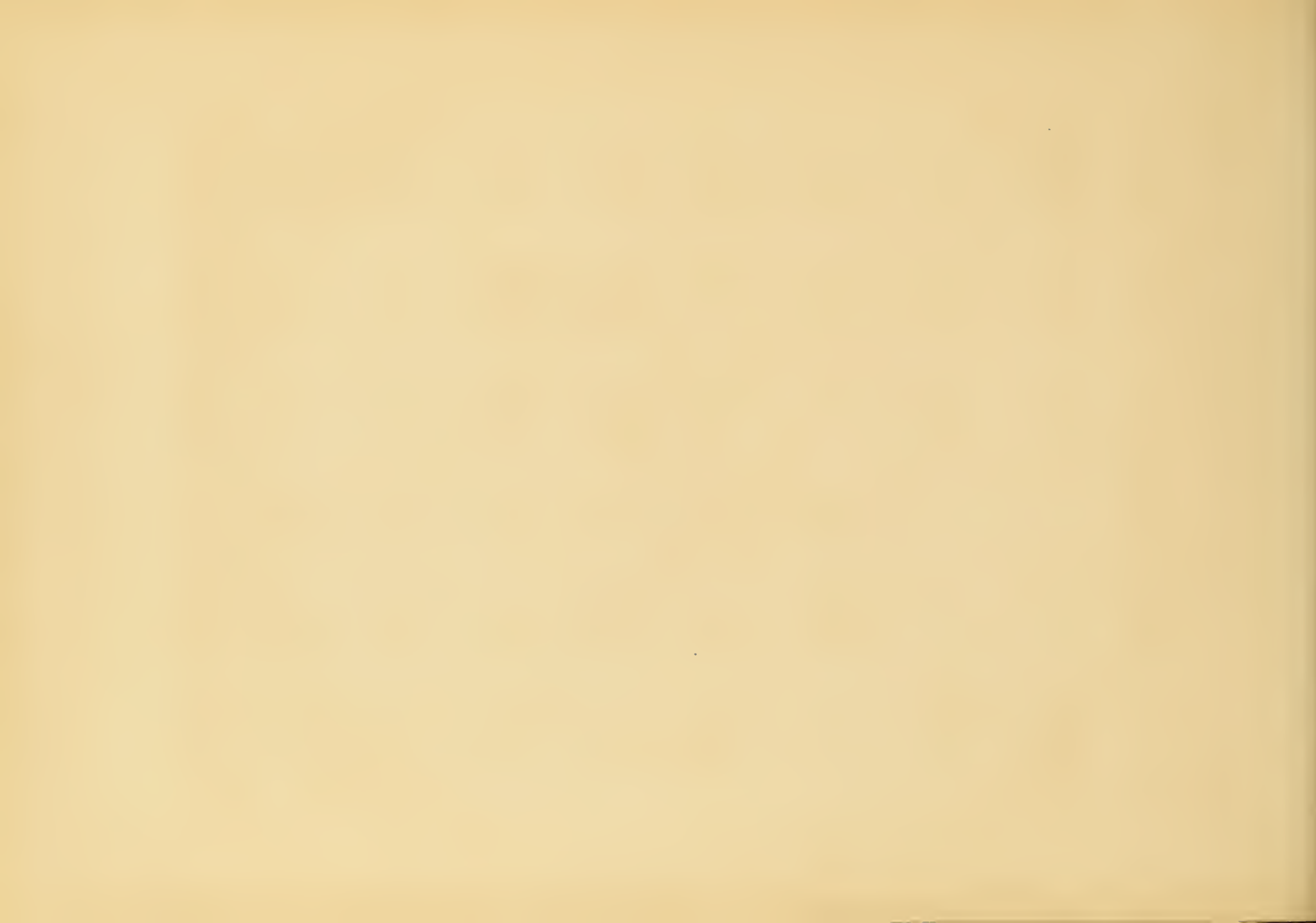


















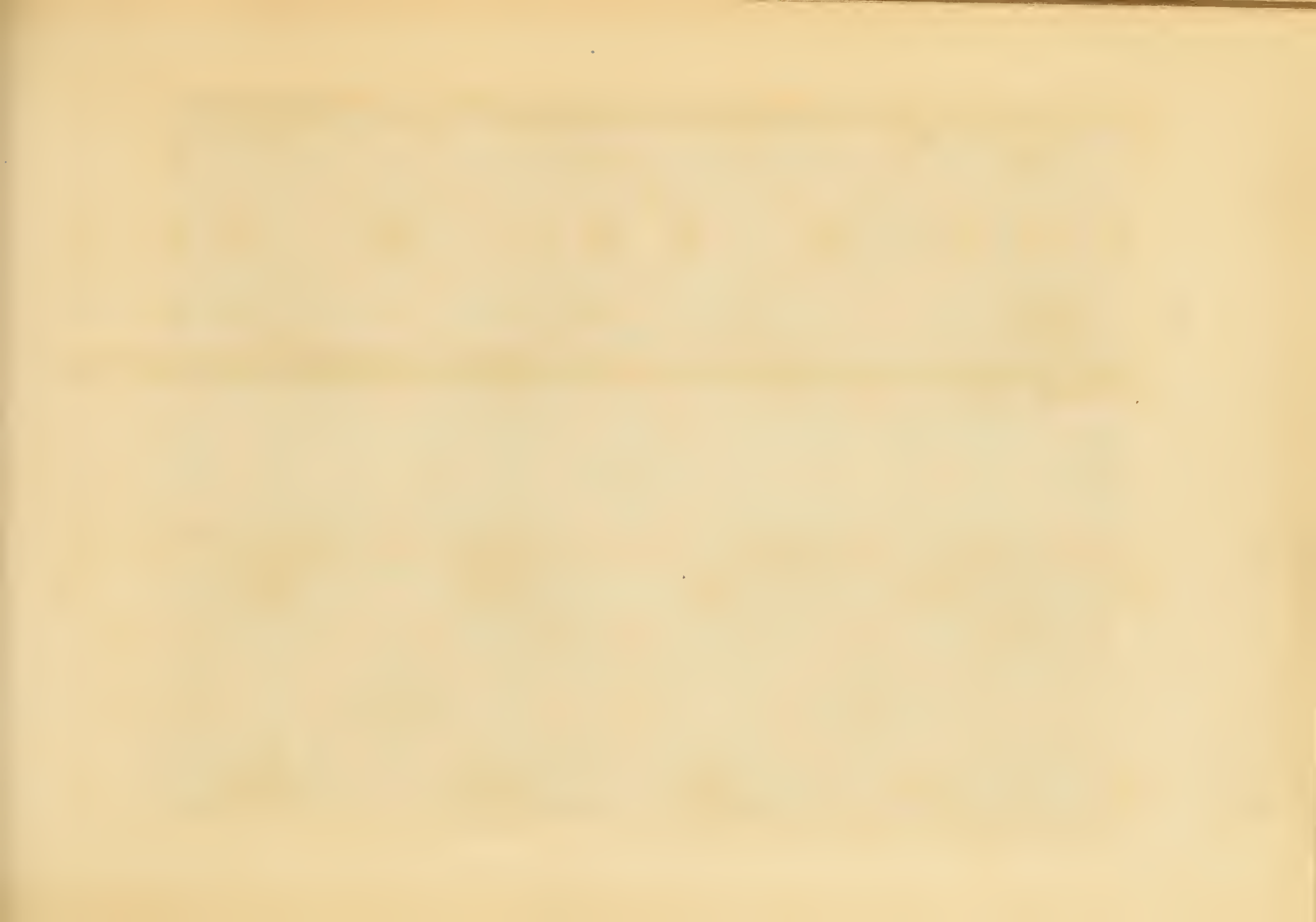






















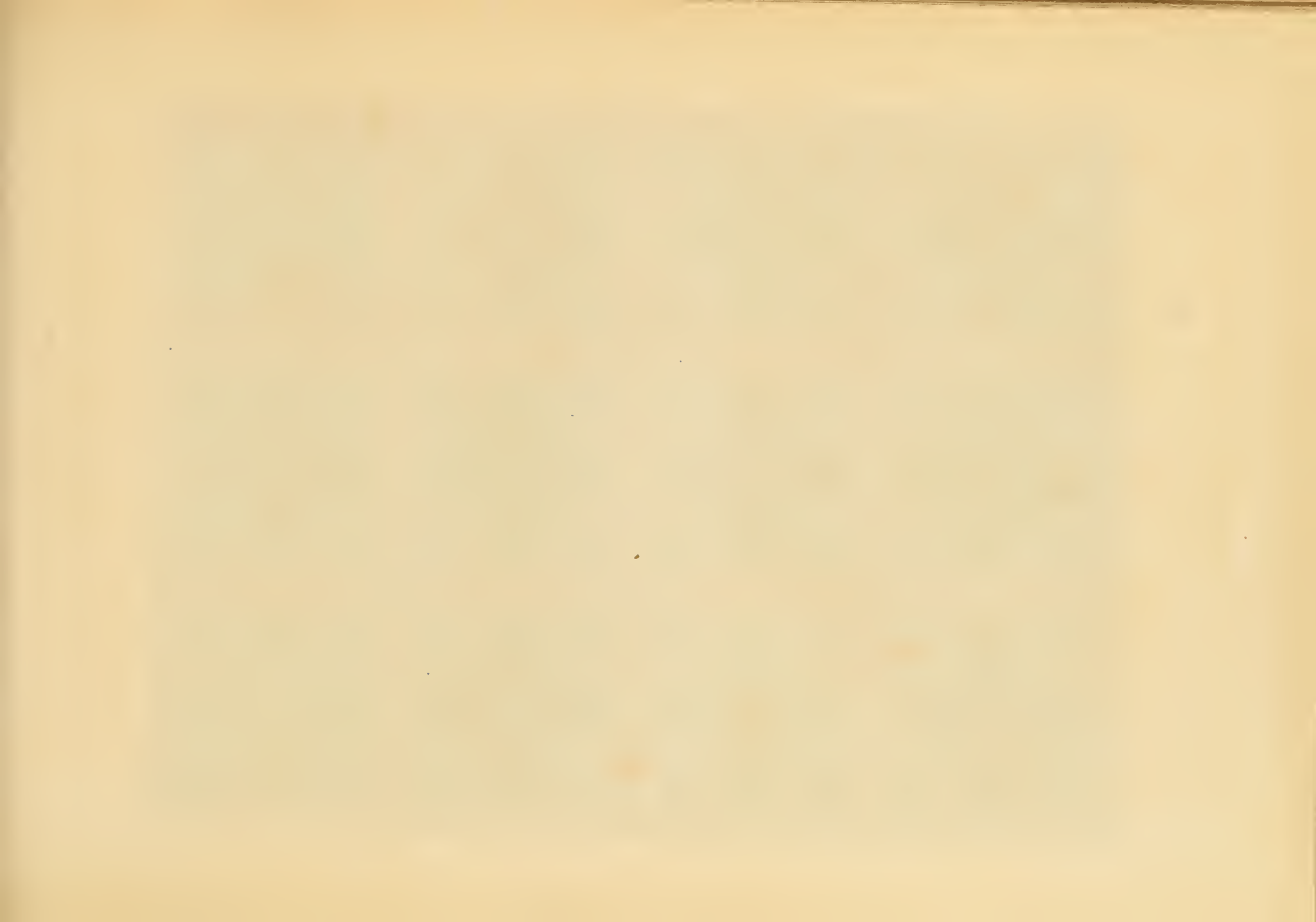














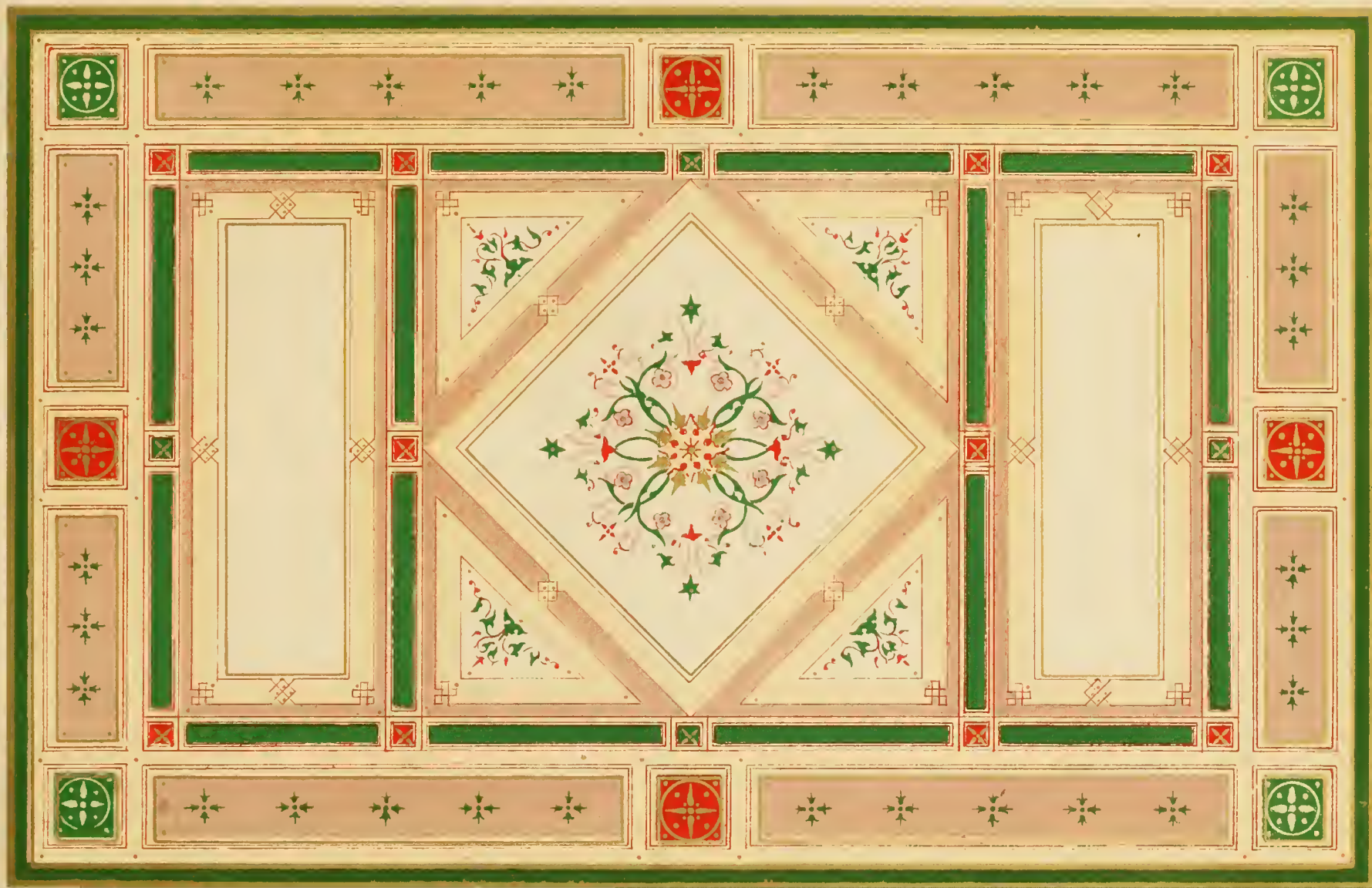










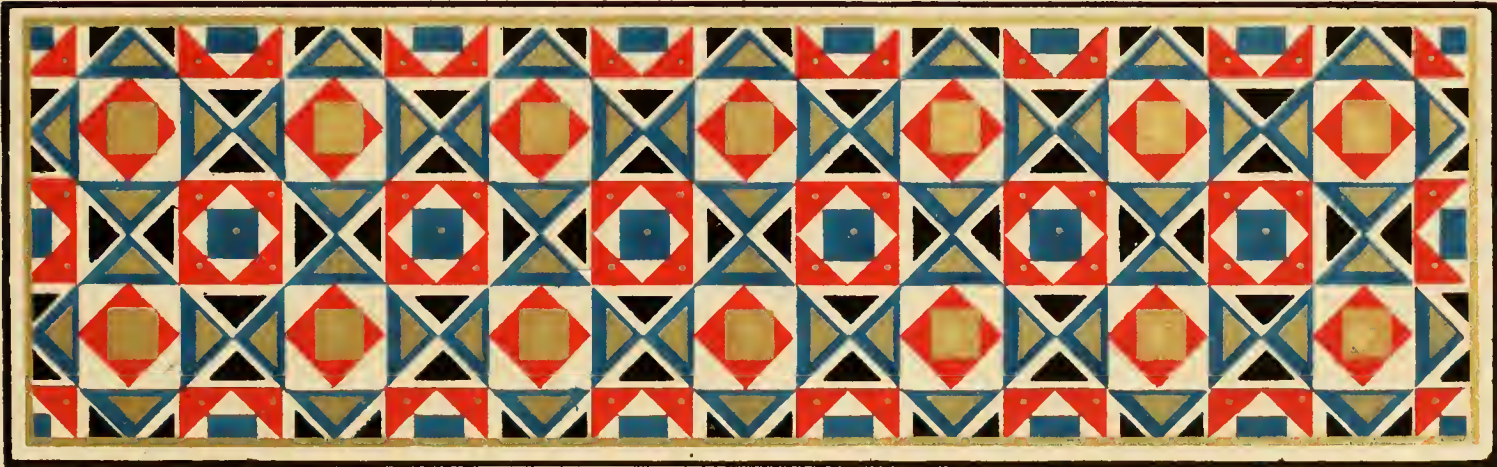
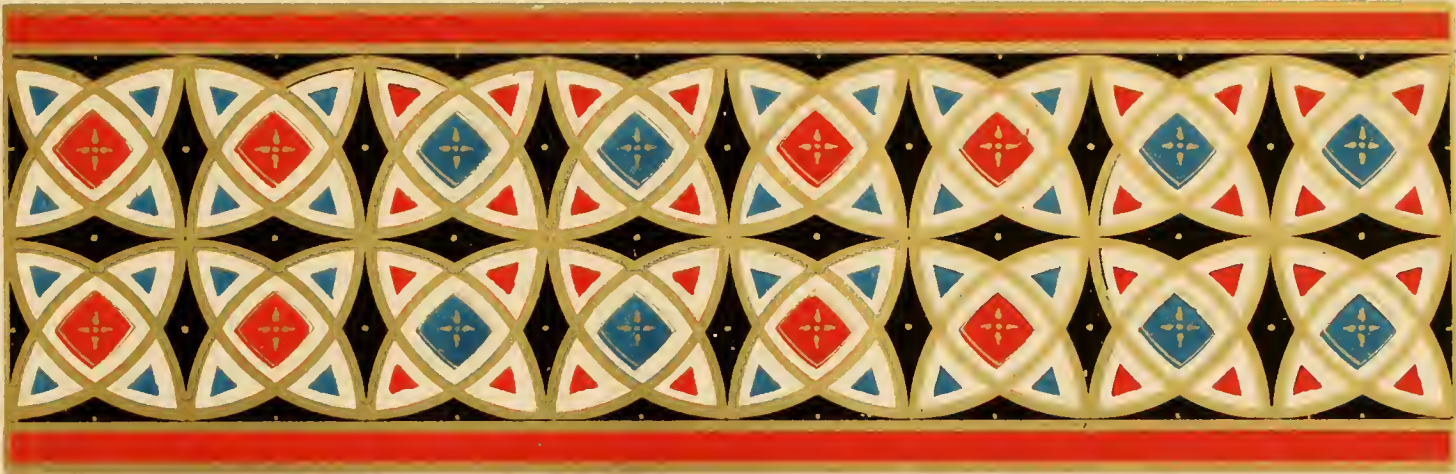














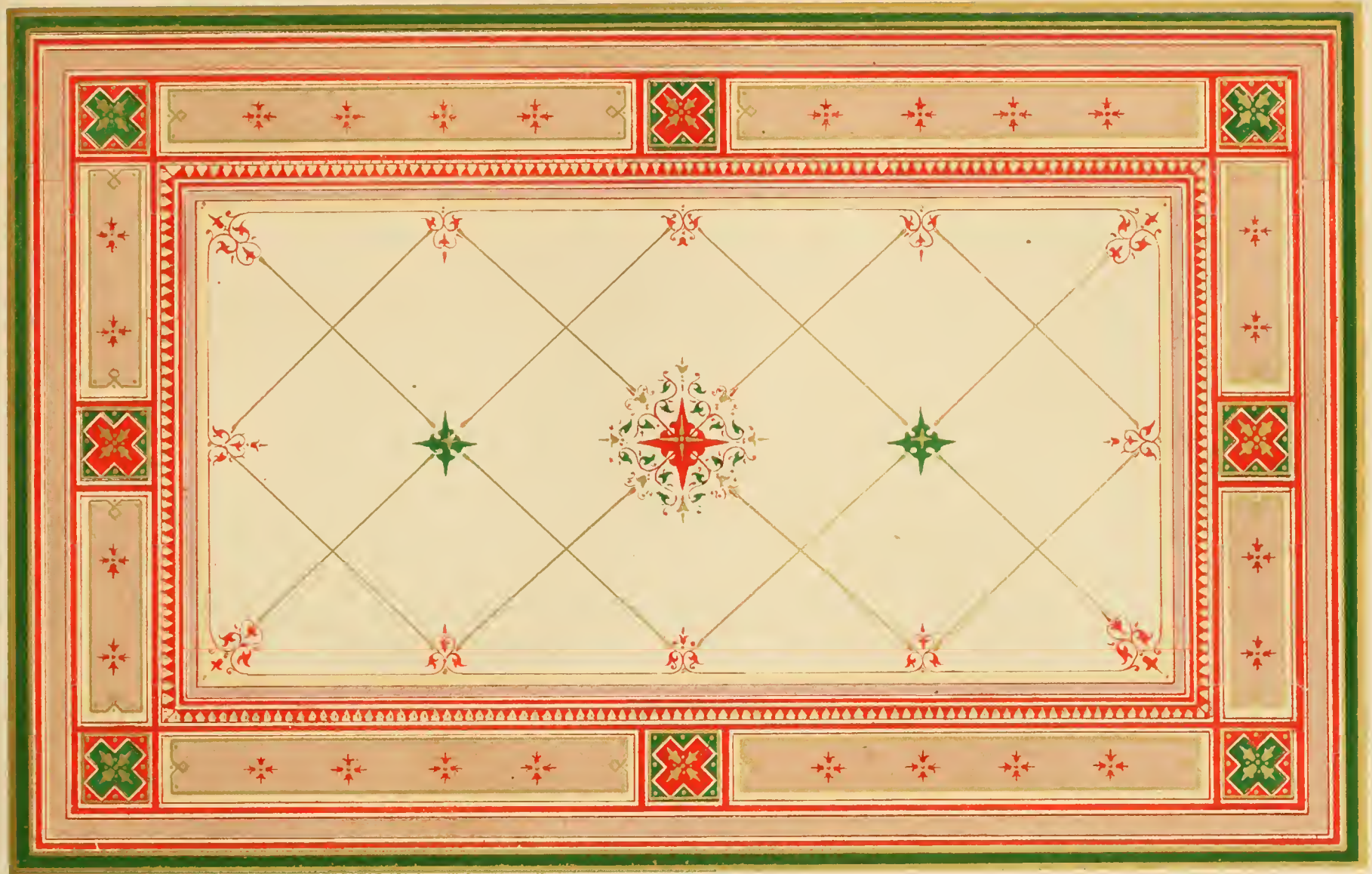




















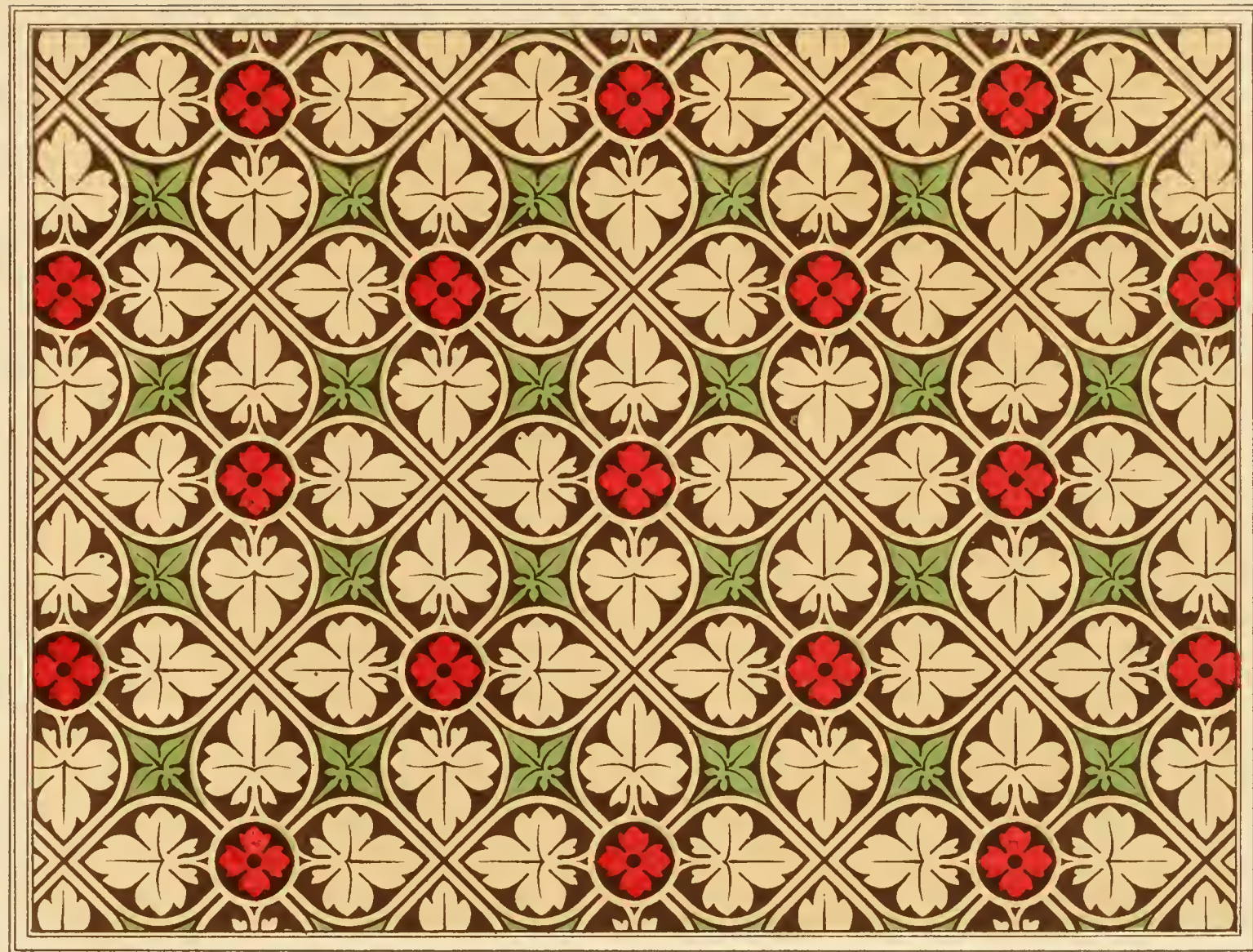










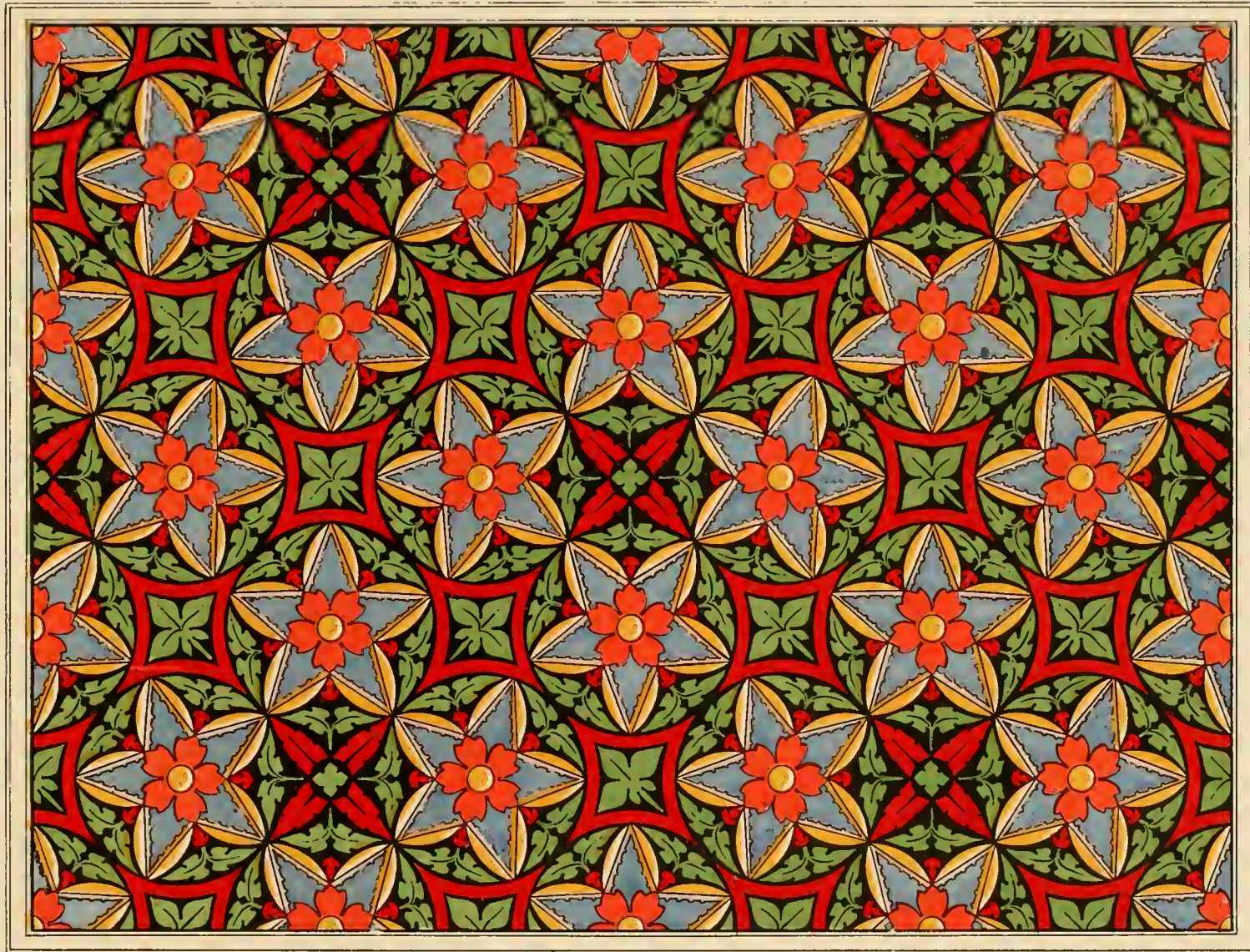












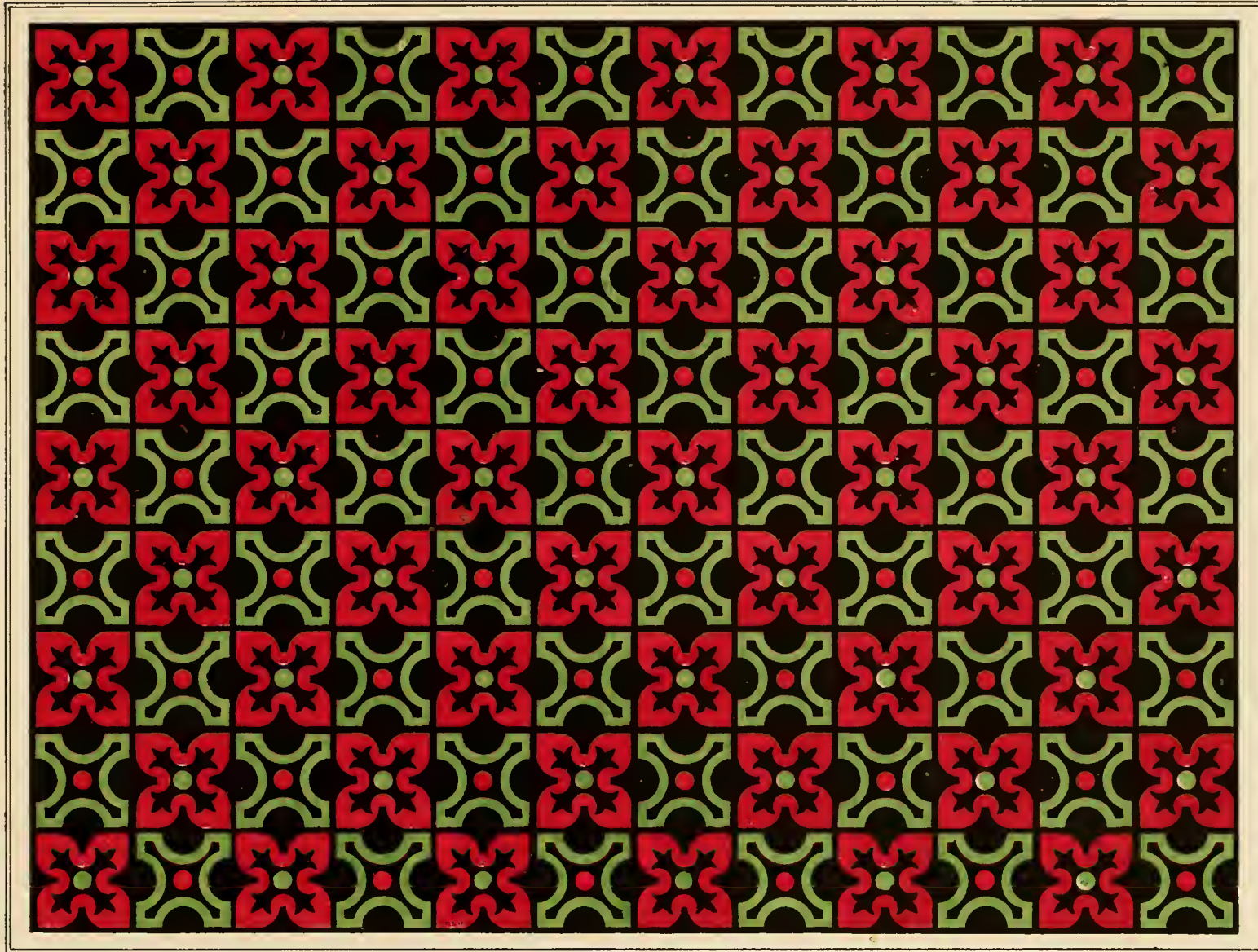
Lith. v. Fr. Moises.











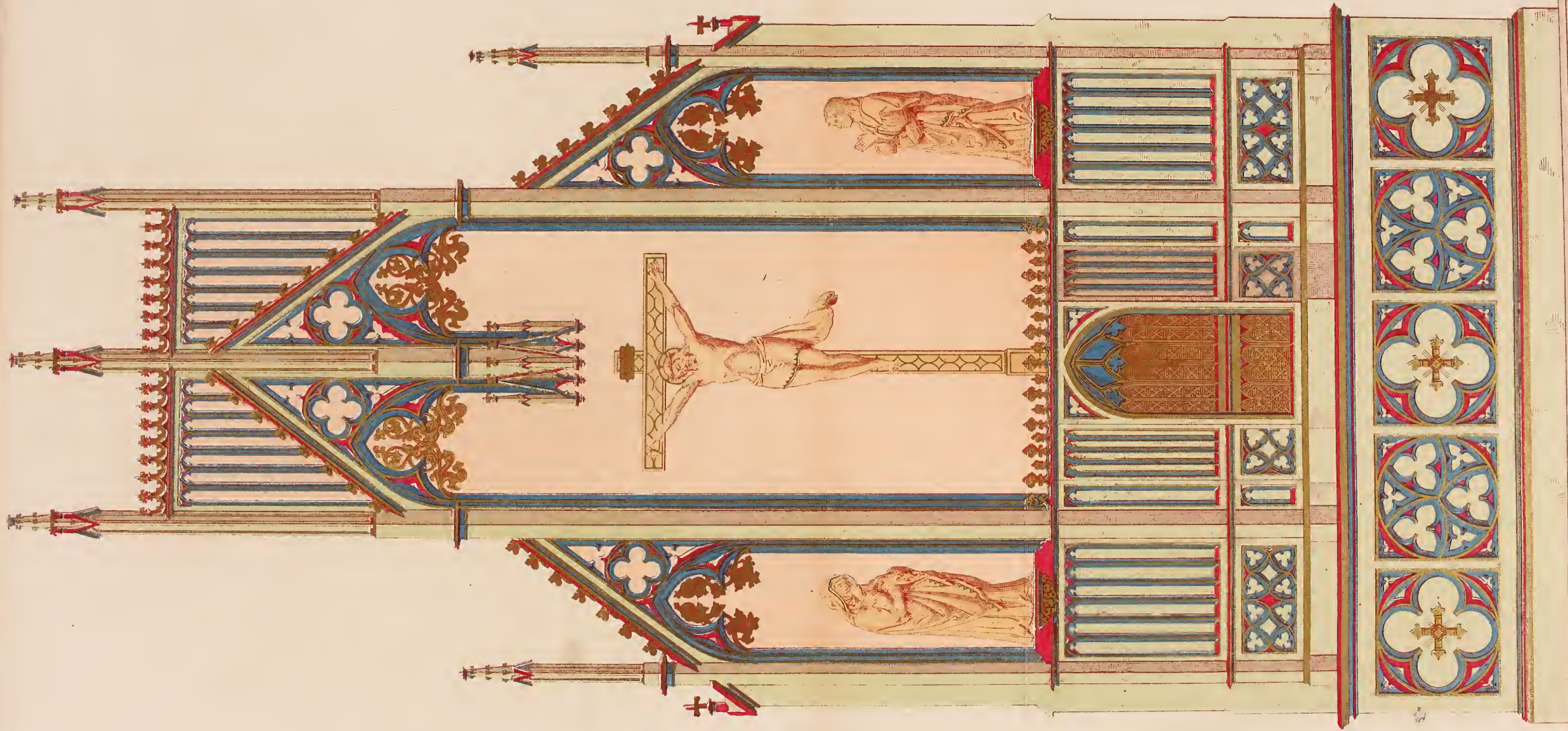
Lith. v. Fr. Moises.





















Lith. v. Fr. Moises

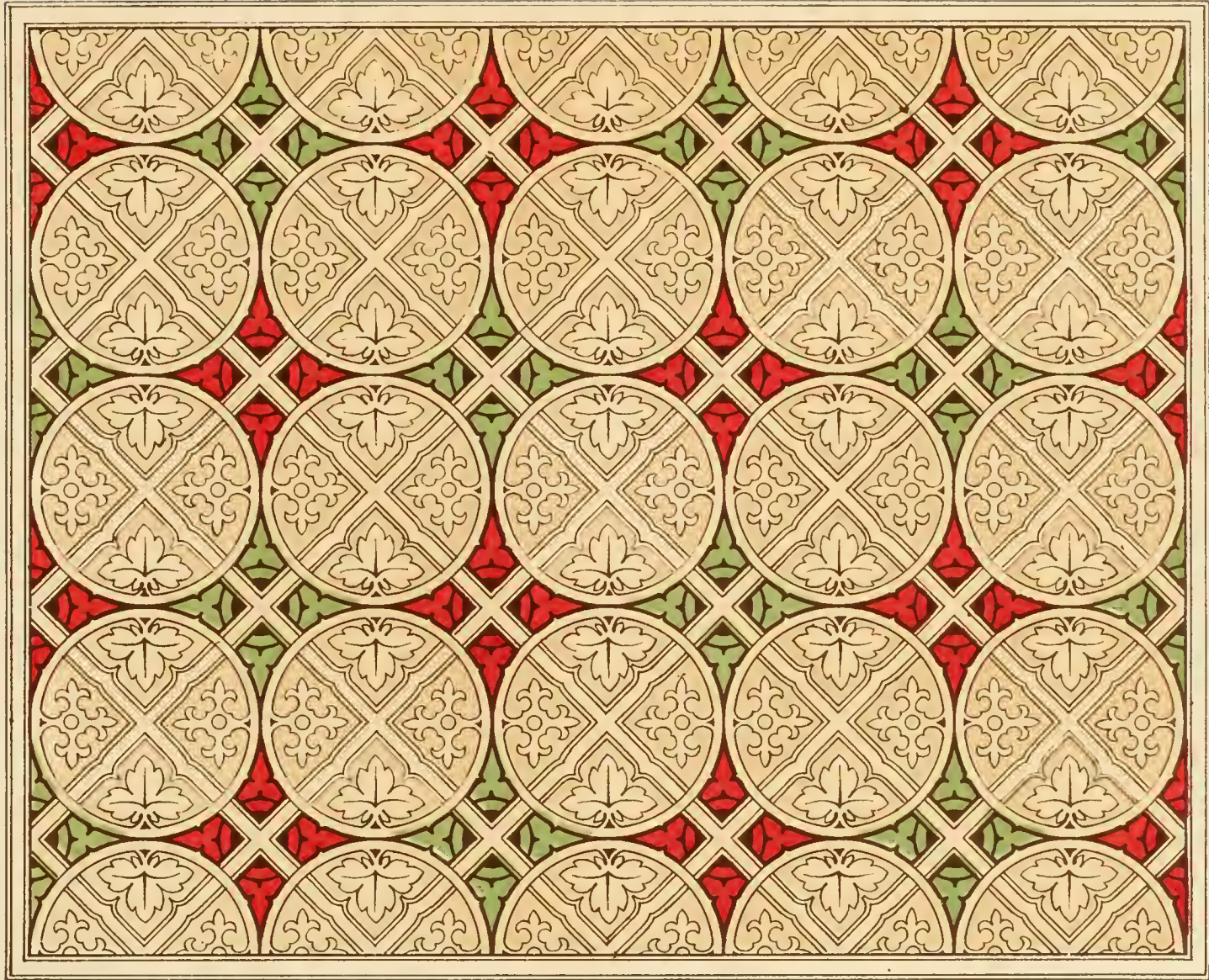










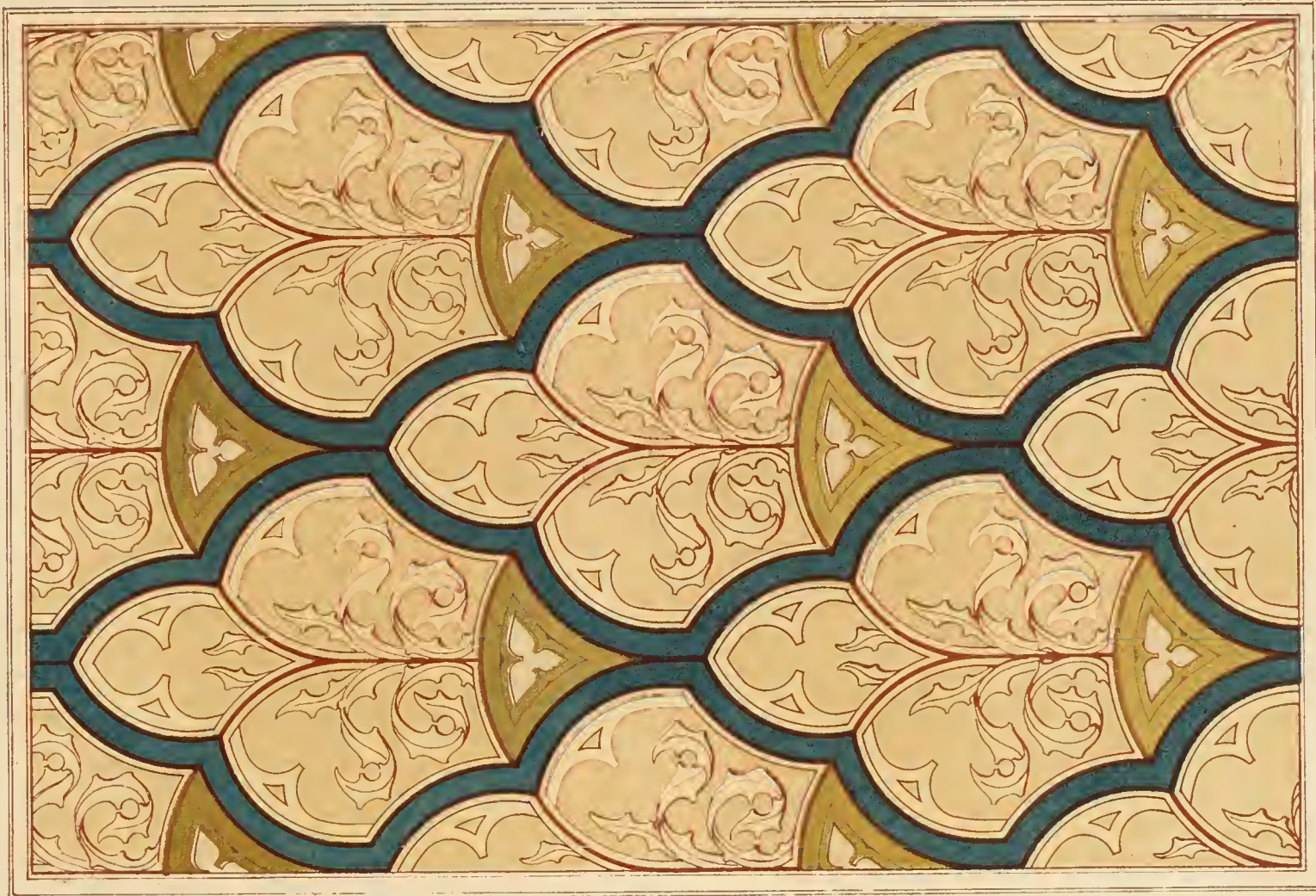










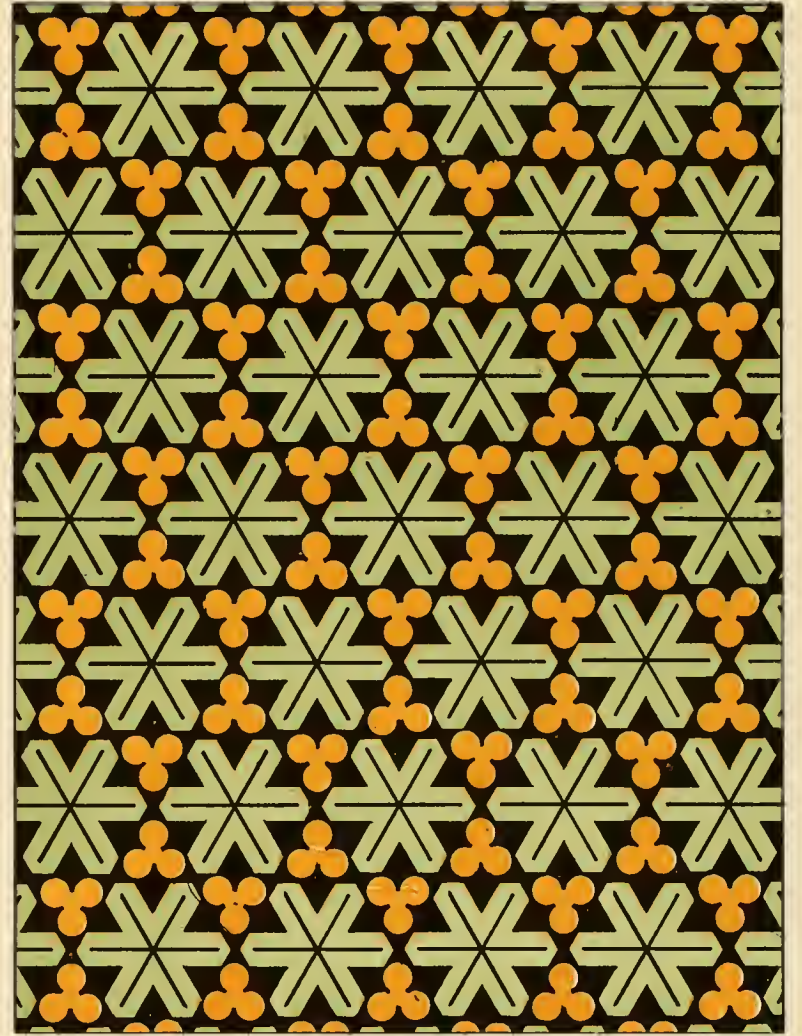
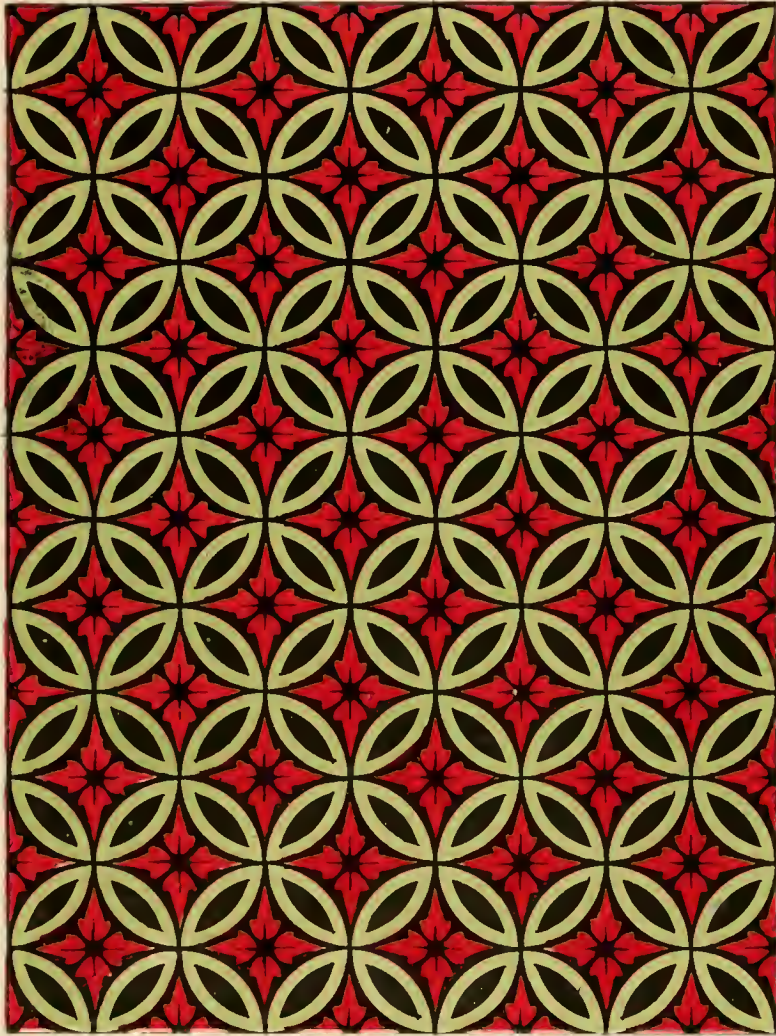






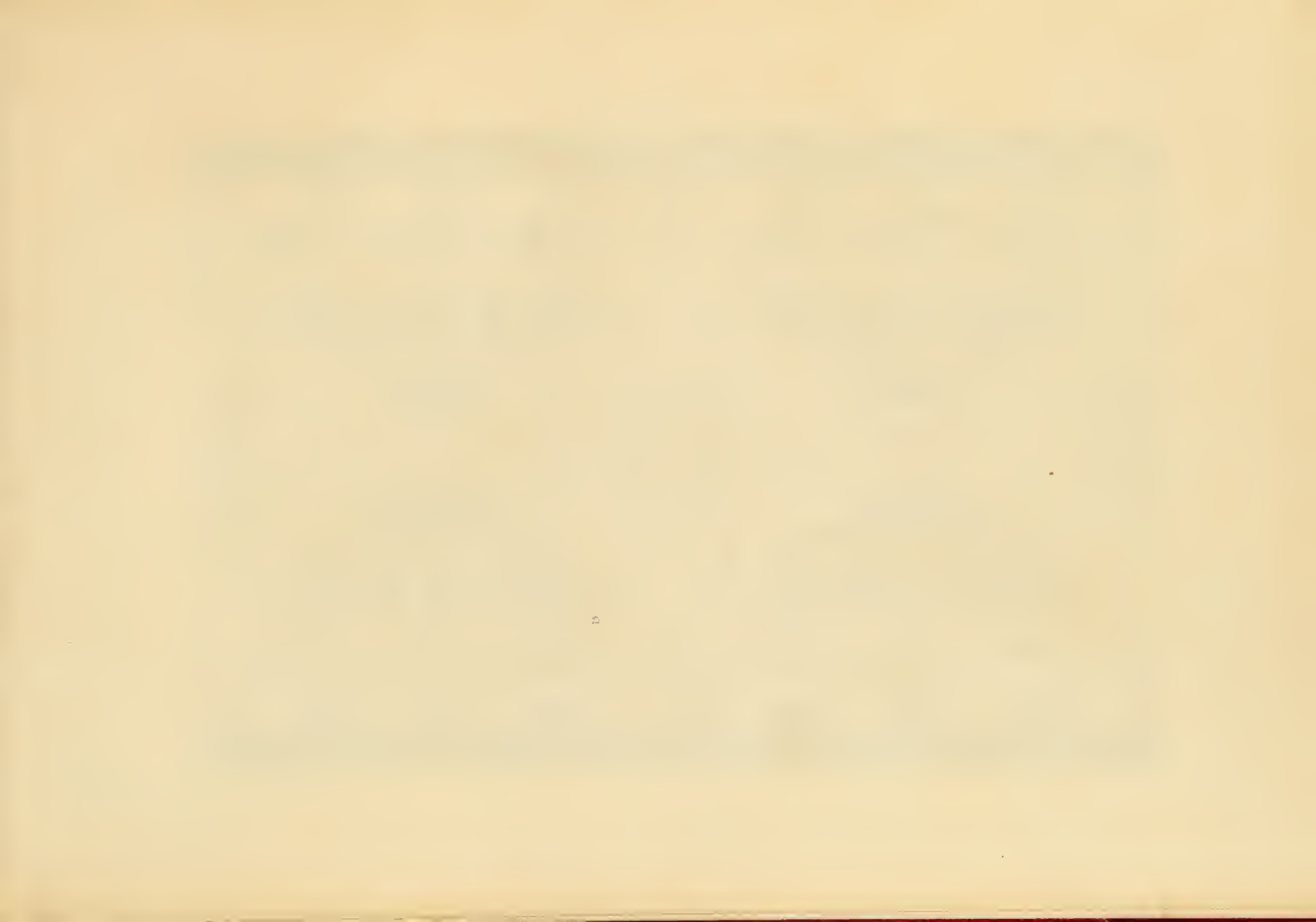
















*Zith v Fr Moises.*













STERLING & FRANCINE CLARK ART INSTITUTE  
NK1530 .M65  
Moises, Fr/Ornamental designs



3 1962 00072 7952



