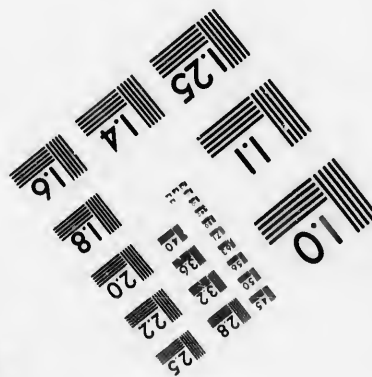
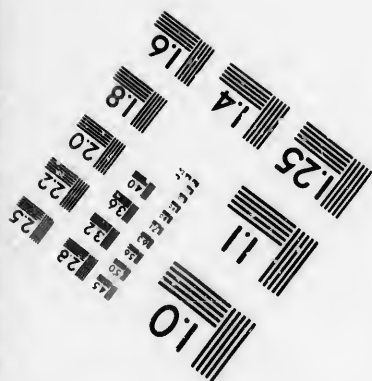
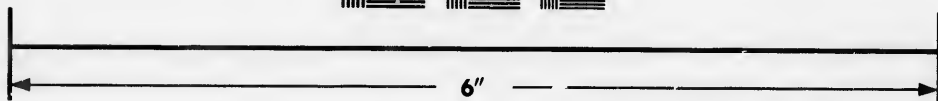
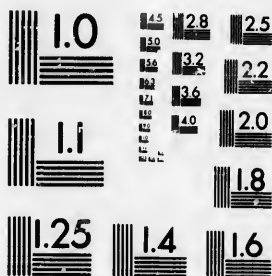


**IMAGE EVALUATION  
TEST TARGET (MT-3)**



**Photographic  
Sciences  
Corporation**

23 WEST MAIN STREET  
WEBSTER, N.Y. 14580  
(716) 872-4503

15  
16  
18  
20  
22  
25  
28  
32  
36  
40  
45  
50  
55  
60  
65  
70  
75  
80  
85  
90  
95  
100

**CIHM/ICMH  
Microfiche  
Series.**

**CIHM/ICMH  
Collection de  
microfiches.**



**Canadian Institute for Historical Microreproductions / Institut canadien de microreproductions historiques**

11  
12  
13  
14  
15  
16  
17  
18  
19  
20  
21  
22  
23  
24  
25  
26  
27  
28  
29  
30  
31  
32  
33  
34  
35  
36  
37  
38  
39  
40  
41  
42  
43  
44  
45  
46  
47  
48  
49  
50  
51  
52  
53  
54  
55  
56  
57  
58  
59  
60  
61  
62  
63  
64  
65  
66  
67  
68  
69  
70  
71  
72  
73  
74  
75  
76  
77  
78  
79  
80  
81  
82  
83  
84  
85  
86  
87  
88  
89  
90  
91  
92  
93  
94  
95  
96  
97  
98  
99  
100

**© 1986**

Technical and Bibliographic Notes/Notes techniques et bibliographiques

The Institute has attempted to obtain the best original copy available for filming. Features of this copy which may be bibliographically unique, which may alter any of the images in the reproduction, or which may significantly change the usual method of filming, are checked below.

L'Institut a microfilmé le meilleur exemplaire qu'il lui a été possible de se procurer. Les détails de cet exemplaire qui sont peut-être uniques du point de vue bibliographique, qui peuvent modifier une image reproduite, ou qui peuvent exiger une modification dans la méthode normale de filmage sont indiqués ci-dessous.

- Coloured covers/  
Couverture de couleur
- Covers damaged/  
Couverture endommagée
- Covers restored and/or laminated/  
Couverture restaurée et/ou pelliculée
- Cover title missing/  
Le titre de couverture manque
- Coloured maps/  
Cartes géographiques en couleur
- Coloured ink (i.e. other than blue or black)/  
Encre de couleur (i.e. autre que bleue ou noire)
- Coloured plates and/or illustrations/  
Planches et/ou illustrations en couleur
- Bound with other material/  
Relié avec d'autres documents
- Tight binding may cause shadows or distortion  
along interior margin/  
La reliure serrée peut causer de l'ombre ou de la  
distorsion le long de la marge intérieure
- Blank leaves added during restoration may  
appear within the text. Whenever possible, these  
have been omitted from filming/  
Il se peut que certaines pages blanches ajoutées  
lors d'une restauration apparaissent dans le texte,  
mais, lorsque cela était possible, ces pages n'ont  
pas été filmées.
- Additional comments: / [Printed ephemera] 1 sheet (verso blank)  
Commentaires supplémentaires:

- Coloured pages/  
Pages de couleur
- Pages damaged/  
Pages endommagées
- Pages restored and/or laminated/  
Pages restaurées et/ou pelliculées
- Pages discoloured, stained or foxed/  
Pages décolorées, tachetées ou piquées
- Pages detached/  
Pages détachées
- Showthrough/  
Transparence
- Quality of print varies/  
Qualité inégale de l'impression
- Includes supplementary material/  
Comprend du matériel supplémentaire
- Only edition available/  
Seule édition disponible
- Pages wholly or partially obscured by errata  
slips, tissues, etc., have been refilmed to  
ensure the best possible image/  
Les pages totalement ou partiellement  
obscurcies par un feuillet d'errata, une pelure,  
etc., ont été filmées à nouveau de façon à  
obtenir la meilleure image possible.

This item is filmed at the reduction ratio checked below/  
Ce document est filmé au taux de réduction indiqué ci-dessous.

10X	12X	14X	16X	18X	20X	22X	24X	26X	28X	30X	32X
<input type="checkbox"/>	<input type="checkbox"/>	<input type="checkbox"/>	<input type="checkbox"/>	<input type="checkbox"/>	<input type="checkbox"/>	<input type="checkbox"/>	<input checked="" type="checkbox"/>	<input type="checkbox"/>	<input type="checkbox"/>	<input type="checkbox"/>	<input type="checkbox"/>

The copy filmed here has been reproduced thanks to the generosity of:

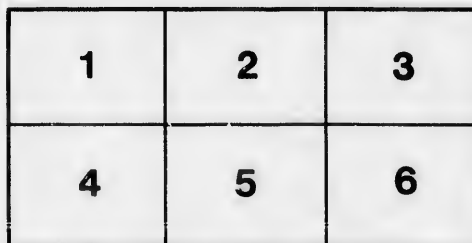
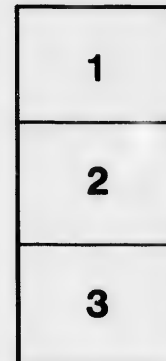
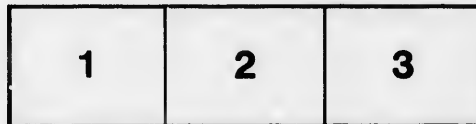
Douglas Library  
Queen's University

The images appearing here are the best quality possible considering the condition and legibility of the original copy and in keeping with the filming contract specifications.

Original copies in printed paper covers are filmed beginning with the front cover and ending on the last page with a printed or illustrated impression, or the back cover when appropriate. All other original copies are filmed beginning on the first page with a printed or illustrated impression, and ending on the last page with a printed or illustrated impression.

The last recorded frame on each microfiche shall contain the symbol  $\rightarrow$  (meaning "CONTINUED"), or the symbol  $\nabla$  (meaning "END"), whichever applies.

Maps, plates, charts, etc., may be filmed at different reduction ratios. Those too large to be entirely included in one exposure are filmed beginning in the upper left hand corner, left to right and top to bottom, as many frames as required. The following diagrams illustrate the method:



L'exemplaire filmé fut reproduit grâce à la générosité de:

Douglas Library  
Queen's University

Les images suivantes ont été reproduites avec le plus grand soin, compte tenu de la condition et de la netteté de l'exemplaire filmé, et en conformité avec les conditions du contrat de filmage.

Les exemplaires originaux dont la couverture en papier est imprimée sont filmés en commençant par le premier plat et en terminant soit par la dernière page qui comporte une empreinte d'impression ou d'illustration, soit par le second plat, selon le cas. Tous les autres exemplaires originaux sont filmés en commençant par la première page qui comporte une empreinte d'impression ou d'illustration et en terminant par la dernière page qui comporte une telle empreinte.

Un des symboles suivants apparaîtra sur la dernière image de chaque microfiche, selon le cas: le symbole  $\rightarrow$  signifie "A SUIVRE", le symbole  $\nabla$  signifie "FIN".

Les cartes, planches, tableaux, etc., peuvent être filmés à des taux de réduction différents. Lorsque le document est trop grand pour être reproduit en un seul cliché, il est filmé à partir de l'angle supérieur gauche, de gauche à droite, et de haut en bas, en prenant le nombre d'images nécessaire. Les diagrammes suivants illustrent la méthode.

rrata  
o

belure,  
n à

32X

600

## To the Electors of the County of Grenville.

### GENTLEMEN!

It is now known that a general Election will shortly take place, as the Proclamation dissolving the House of Assembly and calling a new one appeared in the last Official Gazette. Under these circumstances, I can no longer delay to present myself as a Candidate for the honor of Representing you in the next Provincial Parliament, though I did hope some other person professing the same views would have been brought forward.

Upon the important question of Responsible Government, which seems chiefly to engross the public mind, I think the demands of the late Executive Council unconstitutional and cannot be supported by precedent; and if granted, will render the Governor a mere automaton in the administration of public affairs, and will deprive Her Majesty of all authority of influence in the Country, in fact, it would virtually abrogate our Constitution, and ultimately, if not immediately, sever it from the Parent State; on the other hand, I concur entirely in the view taken of it by His Excellency the Governor General, which he briefly defines in the followings words, viz. *"that the Government should be administered according to the well understood wishes and interests of the people; that the resolutions of September 1841 should be faithfully adhered to; that it should be competent to the Council to offer advice, on all occasions, whether as to patronage or otherwise; and that the Governor should receive it with the attention due to his constitutional advisers, & consult with them in all cases of adequate importance; that there should be a cordial co-operation and sympathy between him and them; that the Council should be responsible to the Provincial Parliament and the people, & that when the acts of the Governor are such as they do not choose to be responsible for, they should be at liberty to resign, then I entirely agree with you, and see no impracticability in carrying on Responsible Government in a Colony on that footing, provided that the respective parties engaged in the undertaking be guided by moderation, honest purpose, common sense and equitable minds devoid of party spirit."*

These, Gentlemen, are the principles of the Governor General which I find are fully and unreservedly sustained by Her Majesty's Government in England, and the Imperial Parliament, in which politicians of all parties approved of the Governor's conduct on this important question. If in the administration of the Government of the Province, His Excellency carries out these principles, then Gentlemen, if I am returned to represent the County of Grenville, I shall give his Government my full and unequivocal support, but not otherwise. For if we desire to continue as an appendage of the British Crown and enjoy its protection, as is so universally professed, what more can we want, than the liberal concessions here made, by which the people of this Country will hereafter be enabled to exercise their just influence in the administration of the Government, and ensure the enactment of good and wholesome laws, provided that they use the right of selecting proper persons to represent them with judgment, and a desire to perpetuate such blessings, uninfluenced by sectional feeling or party spirit.

To party government I am a decided opponent. I desire to see the benefit of good Government extended to all classes of

the people without distinction of origin or creed; and to secure such an administration of it, if elected your representative, I shall devote my whole energy, supporting the rights of the Crown on the one hand, and guarding the liberties of the people both civil and religious on the other, when any attempt shall be made to invade them.

I will direct my whole attention during the sitting of Parliament to the public benefit, and will not desert my post when my services might be most required to defend your interests.

I will oppose every measure calculated to curtail the rights of the people, or to oppress them by unjust taxation; let it emanate from what source it may; the measures or intrigues of party shall receive no support or countenance from me.

With respect to the public measures of the late Council, I do not approve of the removal of the seat of Government to Montreal, by which a great injury has been inflicted on the prosperity of Upper Canada, and entailing on the Province an addition of some £80,000 or £100,000 to our already too burthensome debt, for public buildings at Montreal; or of the bill for altering the representation of this section of the Province in Provincial Parliament by which it was reduced from 42 to 37 members, while Lower Canada remained untouched, thereby giving her a preponderance of 8 members in the Legislature; or of the bill to increase the local taxation in the several Districts of Upper Canada, by which money, house-hold furniture and every description of personal property, the hard earnings of the Farmer, Mechanic, Artizan and labourer, were to be taxed, while Lower Canada was to go free, and be allowed, as heretofore, to put her hands into the public chest to build her Goals, Court-Houses, pay the expenses of the administration of Justice and of all other local matters, for which the inhabitants of Upper Canada have to submit to local taxation; or of the Common School Bill of which you have had practical experience; and to carry it into operation, I am told the District will have to pay in Taxes this year nearly £2000 independent of the Government appropriation; or of the bill abolishing District Councils and establishing County and Township Councils with much additional machinery and increased expenses, which the people will have to pay; or of the Customs bill, by which numerous unnecessary offices were created merely as a source of patronage for party purposes, regardless of the enormous expense attending the execution of the law, which would also have to be paid by the people.

These, Gentlemen, are some of the leading measures introduced by the late Council into Parliament during the last Session, and if elected your representative, I should offer every opposition in my power to prevent their becoming the law of the land, unless under material modifications and also made application to Lower Canada; for I feel that it is most oppressive to Upper Canada to have heavy assessment laws to defray the expenses of her local affairs while Lower Canada is permitted to pass untaxed for similar purposes.

I shall meet you at the Hustings, on the day of Election, where I will explain my views more fully and will then feel thankful to all those who approve of my principles for their support and confidence which I will not betray.

I have the honor to be  
Gentlemen,

Your most obedient servant,  
HAMILTON D. JESSUP.  
Prescott, 30th Sept. 1844.

