

F  
89

PS7











A  
SOUVENIR  
OF  
PROVIDENCE

Copyright, 1888, by A. WITTMANN, 58 and 60 Reade Street, New York.

1547

T

S

F 89

~~P 957~~

P 957



## DESCRIPTIVE.

THE City of Providence was settled in 1636 by a colony of refugees under ROGER WILLIAMS, who were driven from Massachusetts by the religious persecution of the Puritans—not, as has sometimes been stated, of the Pilgrims, who were not Puritans but “Separatists” and have been successfully defended against the charge of religious intolerance. Providence is situated at the head of navigation on an arm of Narragansett Bay, known as the Providence river, 35 miles from the ocean and 43 miles from Boston. It lies on both sides of the river, which is crossed by two bridges one of which is 143 feet wide, and extends above the bridges into a beautiful Cove, the shore of which is laid out as a Park. North of the city the Woonasquatucket and Moshassuck rivers meet and empty into the Providence. To the east the shores rise abruptly 200 feet, falling away beyond to the Seekonk river; while to the west the land rises gradually to a height of 75 feet—the elevations affording attractive sites for dwelling houses which cover the slopes and beautify them with architectural and landscape features.

Incorporated as a town in 1649 and as a city in 1832, the city has grown steadily to the second place among New England cities in wealth, population and importance. The population now is 120,000. Providence is noted for its extensive manufactures and its public institutions. Its water-front affords facilities for commerce and the streams on the banks of which it rests give ample water-power. It is the center of a large manufacturing district, with which it has an extensive trade in cloths, chemicals, dye-stuffs, etc., and nearly 1000 large concerns turn out a great variety of manufactures valued at millions of dollars annually. A principal industry is the manufacture of jewelry and gold and silverware; others are cotton, woolen, iron, bleaching and calendering. Among the iron manufactures are steam engines and boilers, hinges, screws, locomotives, fire-arms, castings, etc. During colonial times Providence had a share of foreign commerce, but the traffic now is mostly coastwise, and cotton, flour, grain and coal are largely dealt in. Steamboat lines connect with New York, Philadelphia, Baltimore, Norfolk, Charleston and other ports, and numerous railroads pass

through Providence or terminate there. Among these are the Boston & Providence; Hartford, Providence & Fishkill; Providence and Springfield; Stonington & Providence; Providence & Worcester; Providence, Warren and Bristol; and Newport & Fall River. A spacious central Station accommodates them all. New terminal facilities are contemplated, involving the building of a new central station North of the present one and the probable utilization of the present area of the Cove for railroading and other business purposes.

The extensive business interests have resulted in great wealth among the residents. The city is notable for its handsome private residences, not only, but also for the number and importance of its splendidly housed public, charitable and educational institutions. Chief among the latter is Brown University, founded in 1764 as a Baptist college, but free from religious tests, its name being changed in 1804 from Rhode Island College to Brown University, in honor of its benefactor, NICHOLAS BROWN. Among its presidents were JAMES MANNING, JONATHAN MAXCY, FRANCOIS WAYLAND and BARNAS SEARS. A college supported by the Friends, endowed by OBADIAH BROWN, several Roman Catholic institutions and an excellent public school system are among the other educational advantages. Other features in the city are Prospect Terrace, Roger Williams Park, the Hope Reservoir, numerous public squares and monuments. The eminences in and about the city afford picturesque and striking views of a great, beautiful, busy home of an industrious and cultured community. Attention was early turned to health, its preservation and statistics, the conformation and advantages of the site facilitating sanitary measures and resulting in exceptionally healthy conditions. The newspapers of Providence are ably managed, and some of them have a national influence. The dailies are the *Evening Bulletin*, *Evening Telegram*, *Journal* and *Star*.

Easily accessible from the city are many points of interest on Narragansett Bay and elsewhere, among them being Field's Point, Squantum, Ocean Cottage, Silver Spring, Riverside, Pawtuxet, Bullock's Point, Nayatt Point, Warren, Rocky Point, Oakland Beach, Buttonwood Beach, East Greenwich, Wickford and Watch Hill. At all these are abundant accommodations for pleasure parties, including good bathing and fishing, and founded on the rock of the "Rhode Island clam-bake."



CITY HALL

UNION DEPOT

BURNING STATE

EXCHANGE PLACE





BURNSIDE STATUE.





VIEW FROM RHODE ISLAND HOSPITAL

PROVIDENCE RIVER.







HOTEL DORRANCE.

CITY HALL.

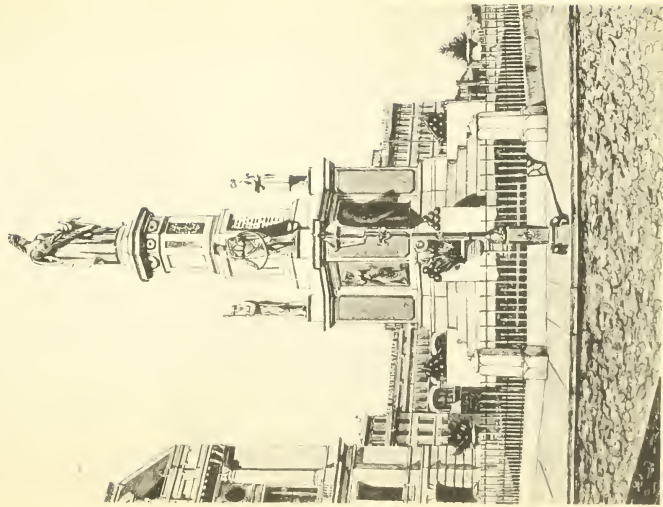




CONRAD BUILDING

WESTMINSTER STREET.





SOLDIERS' AND SAILORS' MONUMENT.





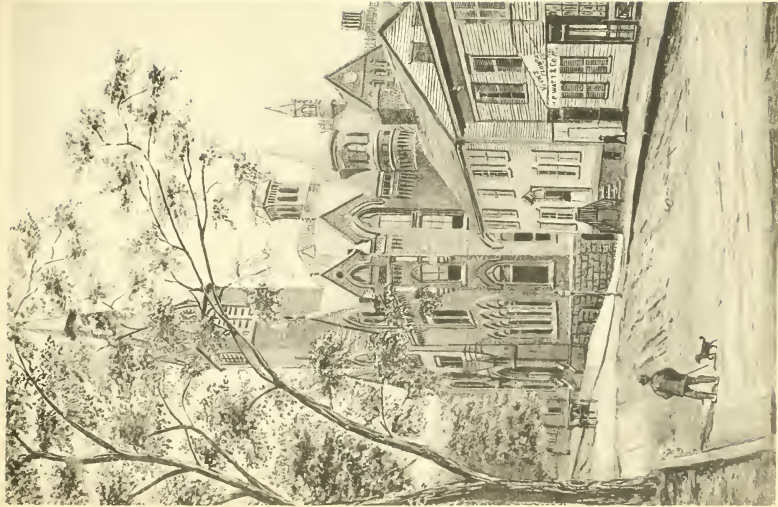
Y. M. C. ASSOC'N BUILDING.  
[In Course of Erection.]



MASONIC BUILDING







COURT HOUSE





MARKET SQUARE.

BOARD OF TRADE





TURKS HEAD.





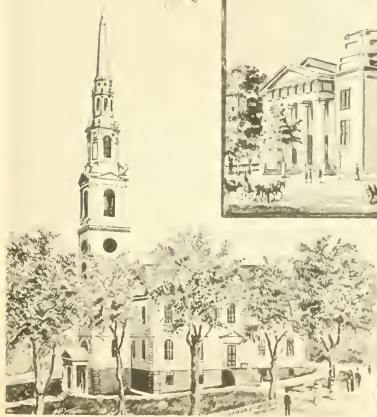




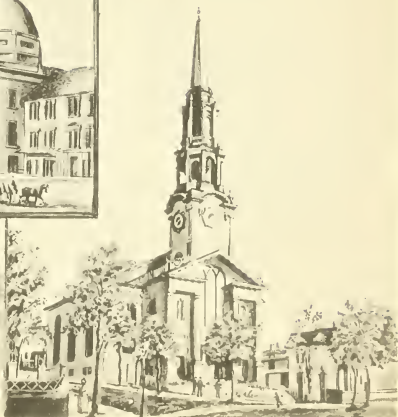


BROAD STREET AND NARRAGANSETT HOTEL.





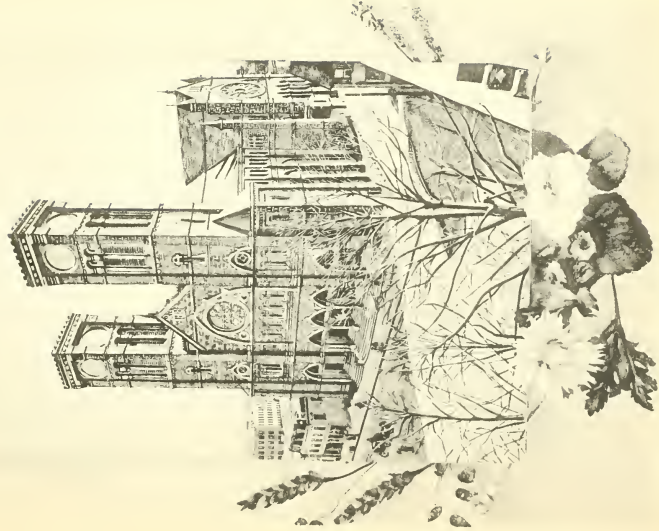
FIRST BAPTIST CHURCH.



ROUND TOP CHURCH.

DR. HALL'S CHURCH.





CATHEDRAL OF ST. PETER AND ST PAUL











SAWYER MEMORIAL WARD.

BUTLER HOSPITAL FOR THE INSANE





TYPICAL PROVIDENCE RESIDENCES OF 60 YEARS AGO





ROGER WILLIAMS MONUMENT AND PARK





BROWN UNIVERSITY.







PROVIDENCE, SEEN FROM BROWN UNIVERSITY

P D 3 6.









DOBBS BROTHERS  
LIBRARY BINDING CO., INC  
ST. AUGUSTINE, FLA

SEP '68

LIBRARY OF CONGRESS



0 014 110 262 A 