

710
65
24-3
210

**ANNUAL
WATER COLOR
AND
MINIATURE
EXHIBITIONS
CATALOGUE**



**The Pennsylvania Academy
of the Fine Arts
1919**

J. E. Caldwell & Co.

Chestnut and Juniper Streets
PHILADELPHIA

Goldsmiths
Silversmiths
Jewelers

AN UNIQUE STOCK THAT SATISFIES THE
MOST DISCRIMINATING TASTE

PROMPT AND CAREFUL ATTENTION TO
PURCHASES BY MAIL



Digitized by the Internet Archive
in 2016

<https://archive.org/details/catalogueofannua1919phil>



THE DANA WATER COLOR MEDAL

THE PENNSYLVANIA
ACADEMY OF THE FINE ARTS
FOUNDED 1805

THE PHILADELPHIA WATER COLOR CLUB
THE PENNSYLVANIA SOCIETY
OF MINIATURE PAINTERS

CATALOGUE OF THE SEVENTEENTH
ANNUAL PHILADELPHIA WATER
COLOR EXHIBITION, AND THE
EIGHTEENTH ANNUAL EXHI-
BITION OF MINIATURES

NOVEMBER 9 TO DECEMBER 14, 1919

SECOND EDITION

PHILADELPHIA
1919

MANAGEMENT OF THE PENNSYLVANIA
ACADEMY OF THE FINE ARTS

PRESIDENT,
JOHN FREDERICK LEWIS.

VICE-PRESIDENT,
CLEMENT B. NEWBOLD.

DIRECTORS,
THEOPHILUS P. CHANDLER, T. DEWITT CUYLER,
GEORGE H. MCFADDEN, ARTHUR H. LEA,
CLEMENT B. NEWBOLD, CHARLEMAGNE TOWER,
EDWARD T. STOTESBURY, JOSEPH E. WIDENER,
ALFRED C. HARRISON, JOHN HOWARD MCFADDEN,
CLARENCE C. ZANTZINGER, ELI KIRK PRICE,

FRANK H. CAVEN.

TREASURER,
GEORGE H. MCFADDEN.

SECRETARY,
JOHN ANDREW MYERS.

CURATOR OF PAINTINGS,
GILBERT S. PARKER.

CURATOR OF SCHOOLS,
ELEANOR B. BARKER

CHESTER SPRINGS SUMMER SCHOOL,
D. ROY MILLER, RESIDENT MANAGER.

COMMITTEE ON EXHIBITIONS,
CLEMENT B. NEWBOLD, CHAIRMAN.
GEORGE H. MCFADDEN, ALFRED C. HARRISON,
EDWARD T. STOTESBURY, JOHN HOWARD MCFADDEN,
JOSEPH E. WIDENER.

Officers and Members of the
Philadelphia Water Color Club
1919

710
PRESIDENT,
GEORGE WALTER DAWSON.

SECRETARY,
THORNTON OAKLEY.

VICE-PRESIDENT,
BLANCHE DILLAYE.

TREASURER,
J. FRANK COPELAND.

EXECUTIVE COMMITTEE

THE OFFICERS AND

ANNA WHELAN BETTS,
JOHN J. DULL,

JESSIE WILLCOX SMITH,
M. W. ZIMMERMAN.

Honorary Members

✓ CECILIA BEAUX,
✓ FLORENCE ESTE,
✓ JOHN MCLURE HAMILTON,
JOHN S. SARGENT.

✓ ALEXANDER HARRISON,
✓ MAXFIELD PARRISH,
✓ JOSEPH PENNELL,

Honorary Associate Members

EDWARD HORNOR COATES,
MRS. CHARLES E. DANA.

JOHN FREDRICK LEWIS,

Members

ret.
✓ ELENORE PLAISTED ABBOTT,
✓ ELLEN WETHERALD AARENS,
W. J. AYLWARD,
ETHEL FRANKLIN BETTS BAINS,
PAULA HIMMELSBACH BALANO,
ANNA WHELAN BETTS,
SUSAN H. BRADLEY,
HUGH H. BRECKENRIDGE,
CHARLOTTE HARDING BROWN,
EDWIN S. CLYMER,
MARY RUSSELL FERREL COLTON,
LUCY S. CONANT,
COLIN CAMPBELL COOPER,
EMMA LAMPERT COOPER,
J. FRANK COPELAND,
ALICE CUSHMAN,
GEORGE WALTER DAWSON,
HELENA DAY,
BLANCHE DILLAYE,
JOHN J. DULL,
ELIZABETH SHIPPEN GREEN ELLIOTT,
HERBERT E. EVERETT,
W. W. GILCHRIST, JR.,
BLANCHE GREER,
GEORGE M. HARDING,
ALFRED HAYWARD,
W. A. HOFSTETTER,

ELIZABETH H. INGHAM,
LAURA D. S. LADD,
JOHN WESLEY LITTLE,
DODGE MACKNIGHT,
CLARA N. MADEIRA,
DAVID B. MILNE,
FREDERIC NUNN,
THORNTON OAKLEY,
VIOLET OAKLEY,
~~AMY OTIS,~~
MARGARET PATTERSON,
KATHERINE PATTON,
HERBERT PULLINGER,
MARGARET REDMOND,
ALEXANDER ROBINSON,
ALICE SCILLE,
SARAH C. SEARS,
JESSIE WILLCOX SMITH,
F. WALTER TAYLOR,
FRED WAGNER,
H. DEVITT WELSH,
FRANK REED WHITESIDE,
ELEANOR PALMER WILLIAMS,
ALBERT PAUL WILLIS,
LOUISE WOOD-WRIGHT,
N. C. WYETH,
M. W. ZIMMERMAN.

abroa
abroa

Associate Member

CHARLES M. LEA.

THE PHILADELPHIA WATER COLOR CLUB

Jury of Selection

ARTHUR B. CARLES
CHARLES DEMUTH
JOHN J. DULL

WILLIAM F. GRAY
F. WALTER TAYLOR
M. W. ZIMMERMAN

Hanging Committee

F. WALTER TAYLOR

M. W. ZIMMERMAN

Officers and Members of the Pennsylvania Society of Miniature Painters

PRESIDENT,

EMILY DRAYTON TAYLOR.

VICE-PRESIDENT,

HARRY L. JOHNSON.

SECRETARY,

A. MARGARETTA ARCHAMBAULT.

TREASURER,

REBECCA BURD PEALE PATTERSON.

EXECUTIVE COMMITTEE,

BERTA CAREW, *Chairman*.

ELLEN WETHERALD AHRENS, AMY OTIS, EVELYN PURDIE
SARAH YOCUM MCFADDEN BOYLE, MARY H. TANNAHILL.

MEMBERS,

ELLEN WETHERALD AHRENS,	LYDIA EASTWICK LONGACRE,
A. MARGARETTA ARCHAMBAULT	JEAN WILLIAMS LUCAS,
MARTHA WHEELER BAXTER,	AMY OTIS,
EULABEE DIX BECKER,	REBECCA BURD PEALE PATTERSON
ALICE BECKINGTON,	BERTHA E. PERRIE,
JOHANNA M. BOERICKE,	EVELYN PURDIE.
MARY W. BONSALE,	HESLOPE PUREFOY,
SARAH YOCUM MCFADDEN BOYLE,	HÉLOISE GUILLOU [^] REDFIELD
ELLA SHEPARD BUSH,	EDNA A. ROBESON
BERTA CAREW,	CARLOTA SAINT-GAUDENS,
BERTHA COOLIDGE,	EDITH SAWYER,
SALLY CROSS,	CLARE SHEPARD SHISLER,
HELEN WINSLOW DURKEE,	EDNA F. HUESTIS SIMPSON,
LUCIA FAIRCHILD FULLER,	LUCY MAY STANTON,
ALEXANDRINA ROBERTSON HARRIS,	MARIE JUDSON STREAN,
MARGARET FOOTE HAWLEY,	MARY H. TANNAHILL,
SARA HAZZARD	EMILY DRAYTON TAYLOR,
LAURA COOMBS HILLS,	ELIZABETH F. WASHINGTON,
ANNE HURLBURT JACKSON,	MABEL R. WELCH,
HARRY L. JOHNSON,	ALICE RUSHMORE WELLS
HELEN V. LEWIS,	ALTA E. WILMOT.

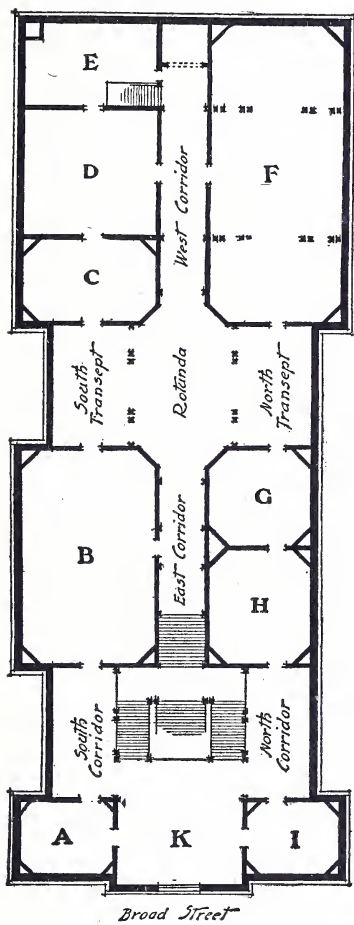
THE PENNSYLVANIA SOCIETY
OF MINIATURE PAINTERS

Jury of Selection

ALEXANDRINA ROBERTSON HARRIS REBECCA B. PEALE PATTERSON
JEAN WILLIAMS LUCAS EDNA HEUSTIS SIMPSON
FRANK WALTER TAYLOR

Hanging Committee

JOHANNA M. BOERICKE SARAH Y. MCF. BOYLE
MARY W. BONSALL BERTA CAREW



PLAN OF THE ACADEMY GALLERIES



THE LITTLE HOUSE WITH FOUR CHIMNEYS. BY M. W. ZIMMERMAN



OLD LADIES : BREST, FRANCE. BY WILMOT E. HEITLAND



THE PALACE OF HORTICULTURE: SAN FRANCISCO, 1915. BY COLIN CAMPBELL COOPER



MORNING ON THE BEACH. BY ALICE SCHILLE



THE THREE-YEAR-OLD. BY HILDA BELCHER



OSPREY. BY CARROLL S. TYSON, JR.



THE STATION : PHILADELPHIA. BY JOSEPH PENNELL



BLOWN BLOSSOMS. BY PHILIP L. HALE



THE PIER. BY JANE PETERSON

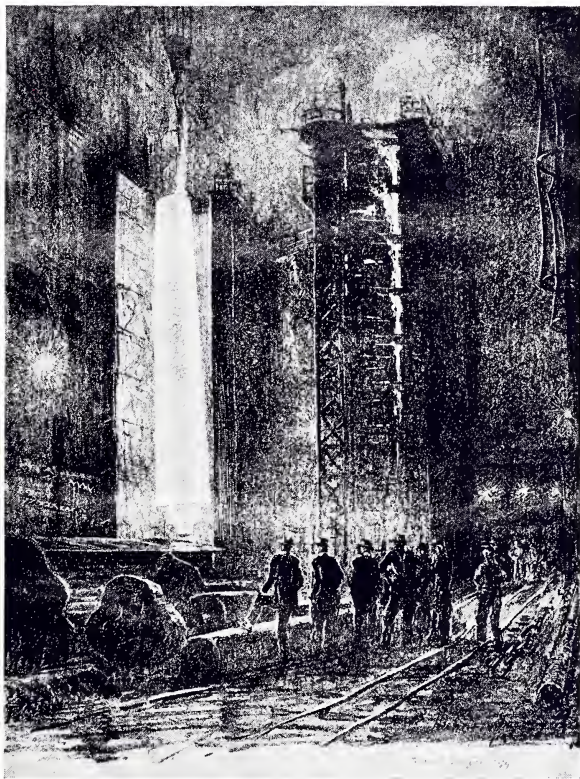
JANE PETERSON



MIGRATIVE COOT. BY FRANK W. BENSON



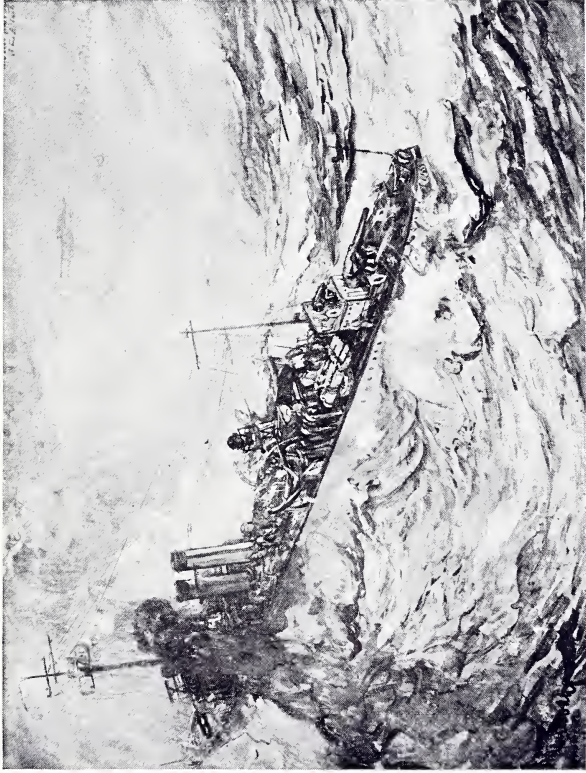
PORTRAIT: JOHN BRAUN, ESQ. BY F. WALTER TAYLOR



TEMPERING A BIG GUN TUBE. BY HERBERT PULLINGER



EVENING: MONTEREY. BY PAUL DOUGHERTY



DESTROYER PATROL, BY LIEUT.-COM. HENRY REUTERDAHL, U.S.N.R.F.



A HELPING HAND. BY JESSIE WILLCOX SMITH



THE ALLEY. BY CATHARINE WHARTON MORRIS



PORTRAIT. BY BENEDICT ANTON OSNIS



FLOWERS. BY CHARLES DEMUTH



MILKING TIME. BY MILDRED B. MILLER



PORTRAIT: GEORGE O'NEILL, ESQ. BY CARL ERICKSON



ROCKPORT QUARRY SERIES, NO. 2. BY CHILDE HASSAM



THE PATROL, BY CHARLES H. WOODBURY



GIRL WITH FUR CAP. BY EDITH W. YAFFEE

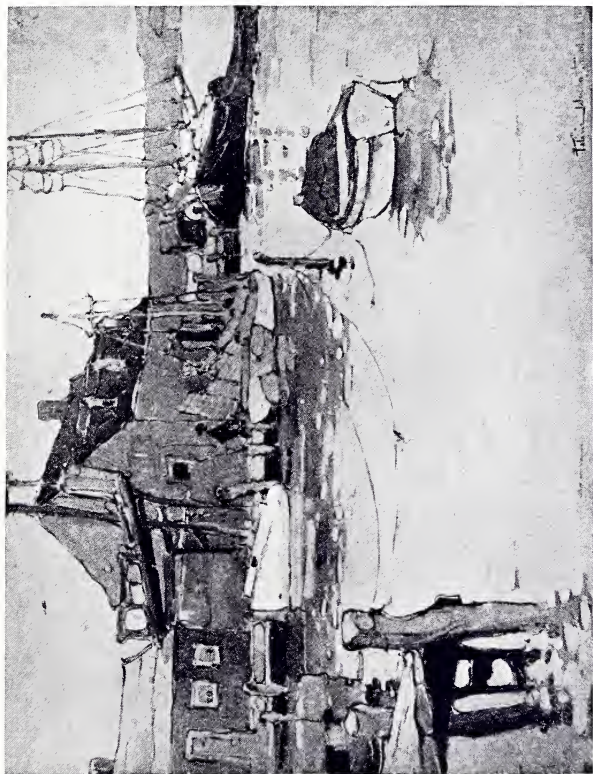


Courtesy of the Century Co.

BUILDING AN AEROPLANE. BY THORNTON OAKLEY



THE SISTERS. BY MARY CASSATT.



OLD WHARVES. BY FELICIE WALDO HOWELL



ARGONNE FIGHTING. BY GEORGE HARDING



PORTRAIT : THEODORE ROOSEVELT. BY CARLOTTA SAINT-GAUDENS



BLACK CURLS AND LACE. BY ALEXANDRINA ROBERTSON HARRIS



PORTRAIT: MURIEL MORRIS. BY EMILY DRAYTON TAYLOR



PORTRAIT: ELIZABETH RUTTER. BY LAURA COOMBS HILLS



DRUCILLA. BY MABEL R. WELCH



PORTRAIT: KATHARINE. BY SARA HAZZARD



PORTRAIT: MISS CLARA CLARK. BY A. MARGARETTA ARCHAMBAULT



A WOMAN OF BRITTANY. BY BERTA CAREW

CATALOGUE OF THE
EIGHTEENTH ANNUAL EXHIBI-
TION OF MINIATURES.

GALLERY I.

A. MARGARETTA ARCHAMBAULT.

1 Portrait: Mrs. John Lindsay Craige.

JULIE KAHLE.

2 Dutch Cap.

BEATRICE MILLIKEN BURT.

3 Portrait: Mrs. B.

EDNA HUESTIS SIMPSON.

4 Portrait: G. P. C.

SALLY CROSS.

5 Woodstock: Spring.

A. MARGARETTA ARCHAMBAULT.

6 Portrait: Albert Bayard Dod, Jr.

7 Portrait: Miss Clara Clark.

MARTHA WHEELER BAXTER.

8 Portrait: Brother.

MINIATURES.

A. MARGARETTA ARCHAMBAULT.

9 Portrait: Mrs. Ralph T. Hanson.

EVA SPRINGER.

10 Old French Lady.

MARY PAGE BROWN.

11 Portrait: Bobbie.

JULIE KAHLE.

12 Girl with White Furs.

MARGARET FOOTE HAWLEY.

13 Portrait: Miss Helen Dudgeon.

HARRY L. JOHNSON.

14 The Barnegat Shpals.

MABEL R. WELCH.

15 Drucilla.

ALTA E. WILMOT.

16 Portrait: Mrs. Orlando Williamson.

LORAIN WEBSTER STARR.

17 The Patriarch.

BERNICE P. ANDREWS FERNOW.

18 Portrait: Ethel Constance Fernow.

JANE MUMFORD PEARSON.

19 Portrait: Mrs. Alexander Gordon.

MINIATURES.

KATHARINE MCINTIRE.

20 Portrait.

21 Portrait: Mrs. C.

LUCY M. STANTON.

22 Portrait: Lieut. Wm. L. Stanton, 304th Engineers, A. E. F.

EDITH SAWYER.

23 Portrait: Miss Ruth Griffiths.

ALICE PREBLE TUCKER DE HAAS.

24 Portrait: Miss Marjorie Schuyler.

ALTA E. WILMOT.

25 Portrait: Miss Mabel Bedoe.

LORAIN WEBSTER STARR.

26 Perdita.

ELSIE MOTZ LOWDON.

27 Violet and Amber.

EMILY DRAYTON TAYLOR.

28 Portrait: Gifford A. Cochran, Jr.

29 Portrait: Betty Donner.

30 Portrait: Miss Nancy E. Grier.

31 Study.

MARY W. BONSALE.

32 Portrait: Billy.

EMILY DRAYTON TAYLOR.

33 Portrait: Mrs. Reginald Shippen Huidekoper.

34 Portrait: Muriel Morris.

MINIATURES.

EDITH SAWYER.

35 A Lady.

MARTHA WHEELER BAXTER.

36 A Naval Lieutenant.

EDNA AMELIA ROBESON.

37 Portrait: Virginia.

CLARE SHEPARD SHISLER.

38 Portrait: Mrs. Cunningham.

MARGARET FOOTE HAWLEY.

39 Portrait: Edward Foote.

LUCY M. STANTON.

40 Portrait: Miss Bettie Beebe.

MARJORIE S. COLLINS.

41 Youth.

ADRIANNA TUTTLE.

42 Portrait: Eleanore Tompkins.

MARIAN DUNLAP HARPER.

43 Portrait: Master Edward.

MARY PAGE BROWN.

44 Portrait: Mrs. Louis Rodman Page.

EVA L. CARMAN.

45 Portrait: Young Lady.

MINIATURES.

ANNIE HURLBURT JACKSON.

46 Portrait: British Officer.

GERTRUDE L. PEW.

47 Portrait: Thomas Platt, Naval Aviator.

CLARE SHEPARD SHISLER.

48 The Golden Girl.

HARRY L. JOHNSON.

49 Nude Figure.

BERTHA COOLIDGE.

50 Portrait of a Canteener.

AMY OTIS.

51 Portrait: Mrs. Samuel J. Brun.

W. SHERMAN POTTS.

52 Eirene.

LUCY M. STANTON.

53 Portrait: Uncle George.

EVELYN PURDIE.

54 Fruit.

EDITH WRIGHT HOWES.

55 Portrait.

EVELYN PURDIE.

56 Portrait: Miss W.

MINIATURES.

ELSIE MOTZ LOWDON.

57 Nude with Goldfish.

CLARE SHEPARD SHISLER.

58 Portrait.

BEATRICE MILLIKEN BURT.

59 Elliot.

SALLY CROSS.

60 Fenway Court.

MABEL BEATRICE SMITH.

61 Portrait: Betty.

ALICE E. LUDOVICI.

62 Portrait: Susan Hyde.

AMY OTIS.

63 Portrait: Miss Margaret Gray.

BERTHA E. PERRIE.

64 Portrait: Mrs. Bagley.

PAMELA VINTON BROWN.

65 Portrait: Madame M.

HELEN TODD HAMMOND.

66 Portrait of a Child.

ELLA SHEPARD BUSH.

67 Michal in Paracelsus.

MINIATURES.

ALEXANDRINA ROBERTSON HARRIS.

68 Portrait: Lieut. Lawson Robertson.

ALICE CARTER FORESMAN.

69 Hyacinth.

HELEN BODINE.

70 Portrait: Major General Leonard Wood.

CAROLINE KING PHILLIPS.

71 Portrait: Major R. H. Vose.

FLORENCE GREENE HUEY.

72 Portrait: Norah Kathleen.

MARJORIE S. COLLINS.

73 Portrait: Miss Josephine Gloninger.

74 Portrait: Anzle and Louise.

ELIZABETH FISHER WASHINGTON.

75 Portrait: Miss Jean Kaye Chandler.

ALICE CARTER FORESMAN.

76 A Portrait.

ELIZABETH A. MCG. KNOWLES.

77 Case of Two Miniatures.

EDITH SAWYER.

78 Portrait: Mrs. J. E. Twichell.

STELLA LEWIS MARKS.

79 Self-Portrait, 1919.

MINIATURES.

LAURA COOMBS HILLS.

80 Portrait: Elizabeth Rutter.

CARLOTA SAINT-GAUDENS.

81 Portrait: Carlota Saint-Gaudens.

MABEL R. WELCH.

82 Portrait: Betty.

CARLOTA SAINT-GAUDENS.

83 Portrait: Theodore Roosevelt.

SARA HAZZARD.

84 Portrait: Betty.

CARLOTA SAINT-GAUDENS.

85 Portrait: Homer Saint-Gaudens.

BERTA CAREW.

86 A Woman of Brittany.

STELLA LEWIS MARKS.

87 Portrait: Peggy.

ELIZABETH A. MCG. KNOWLES.

88 Case of Three Miniatures.

ANNA LYNCH.

89 Portrait: Miss Gould.

ALICE PREBLE TUCKER DE HAAS.

90 Portrait: Miss Edith Carpenter.

MINIATURES.

BRENETTA HERRMAN CRAWFORD.

91 Portrait: Brig. Gen'l William T. Nicholson.

BERNICE P. A. FERNOW.

92 Portrait: Agnes Harrison Lincoln.

EDNA HUESTIS SIMPSON.

93 Portrait: Edna and Frances Stiles.

JANE MUMFORD PEARSON.

94 Portrait: H. G. Pearson, Esq.

MARGARET FOOTE HAWLEY.

95 Portrait: Mrs. Eugene Crockett.

ANNIE HURLBURT JACKSON.

96 Portrait: Charles Pickering Bowditch.

EVA L. CARMAN.

97 Portrait: Miss Alba de Anchoriz.

GERTRUDE L. PEW.

98 Portrait: Alicia Dupont.

SARAH Y. MCF. BOYLE.

99 Portrait: Lieut. Walter Cotterill.

ALEXANDRINA ROBERTSON HARRIS.

100 Black Curls and Lace.

SARA HAZZARD.

101 Portrait: Katharine.

MINIATURES.

MABEL R. WELCH.

102 Portrait: Mrs. R. M. W.

ALEXANDRINA ROBERTSON HARRIS

103 Meditation.

SALLY CROSS.

104 Portrait: Mrs. MacPherson.

SELMA M. D. MOELLER.

105 A Little Singer.

ROSINA C. BOARDMAN.

106 Surgical Dressings.

ANNIE HURLBURT JACKSON.

107 Girl in Green Hat.

SARAH Y. MCF. BOYLE.

108 A Bunch of Asters.

ANN MARTIN.

109 Portrait: Mary Lee.

SELMA M. D. MOELLER.

110 Portrait: John Pattee.

ROSINA C. BOARDMAN.

111 A Daughter of Syria.

BERTHA COOLIDGE.

112 Profile.

CATALOGUE OF THE
SEVENTEENTH ANNUAL EXHIBITION OF WATER COLORS.

NORTH CORRIDOR.

FLORENCE WHITING.

125 Dahlias (Water Color).

JAMES VERRIER.

126 Neptune's Advance (Water Color).

THORNTON OAKLEY.

127 Building a Battleship (Water Color and Charcoal).

128 Building an Aeroplane (Water Color and Charcoal).

ALICE SCHILLE.

129 The Old Fountain (Water Color).

130 Noon on the Beach (Water Color).

131 Distant Hills (Water Color).

132 The Pueblo (Water Color).

133 Morning on the Beach (Water Color).

FRANÇOIS VERHEYDEN.

134 Concord in October (Water Color).

SARAH C. SEARS.

135 The Last of Summer (Water Color).

WATER COLORS, ETC.

FRANÇOIS VERHEYDEN.

136 Cabbé: Roguebrune, France (Water Color).

137 Concord: Punkatattet Hill (Water Color).

SARAH C. SEARS.

138 Gladioli (Water Color).

FRANÇOIS VERHEYDEN.

139 After a Shower (Water Color).

SARAH C. SEARS.

140 Zinnias (Water Color).

FRANÇOIS VERHEYDEN.

141 Sunshine in the Autumn Mist (Water Color).

142 Landscape (Water Color).

SARAH C. SEARS.

143 Autumn Fruit (Water Color).

FRANÇOIS VERHEYDEN.

144 Cloud Effect (Water Color).

145 St. Ives: Cornwall (Water Color).

WALTER VAN DEN HENGEL.

146 Landscape (Water Color).

FRANCES LEUSCH.

147 Lumber Yard: Dumont (Pastel).

WALTER VAN DEN HENGEL.

148 Reflections (Water Color).

WATER COLORS, ETC.

FRANCES LEUSCH.

149 Ardsley Stone Quarry, No. 3 (Pastel).

WALTER VAN DEN HENGEL.

150 Little Falls (Water Color).

FRANCES LEUSCH.

151 Ardsley Stone Quarry, No. 1 (Pastel).

THORNTON OAKLEY.

152 Building Locomotives (Charcoal and
Water Color).

153 Building Locomotives (Water Color and
Charcoal).

SARAH C. SEARS.

154 Marigolds and a Persian Jar (Water
Color).

GALLERY H.

JOHN WRIGHT.

- 155 The Ramparts (Etching).
- 156 Cope Castle (Etching).
- 157 Bazzetto: Venice in Wartime (Etching).

ALLEN LEWIS.

- 158 Pennsylvania Station (Dry Point).

WILFRED JONES.

- 159 Derelict (Illustration, Litho-crayon).

HENRY M. HOYT.

- 160 Seines and Dories (Etching).

E. HORTER.

- 161 Brooklyn Bridge (Pencil).

H. DEVITT WELSH.

- 162 Portrait: Robert Hare (Etching).
- 163 The Carnival (Etching).

ALLEN LEWIS.

- 164 Aunt Jessica (Dry Point).

H. DEVITT WELSH.

- 165 Whistler's Yellow Buskin (Etching).
- 166 Memories (Etching).
- 167 The Antique Shop (Etching).
- 168 A Winter Night (Etching).

ALLEN LEWIS.

169 Ball Balancer (Dry Point).

E. HORTER.

170 Excavation for Equitable (Etching).

H. DEVITT WELSH.

171 The Lock: John Constable (Etching).

JAMES H. FINCKEN.

172 Old Mill: Fort Washington (Etching).

WILFRED JONES.

173 Stampede (Litho-crayon).

JAMES H. FINCKEN.

174 Observatory Hill (Etching).

JOSEPH PENNELL.

Authorized by the United States Railroad Administration

175 Horseshoe Curve (Etching).

176 The Station and the Hotel: New York
(Etching).

177 Bridges: St. Louis (Etching).

178 The Cock: Grand Central (Etching).

179 Approach to Grand Central (Etching).

180 Staten Island, No. 2 (Etching).

181 Flag Staff: Washington (Etching).

182 Rail Scape (Etching).

183 The Station: Philadelphia (Etching).

184 Back from Atlantic City, Philadelphia,
Monday Morning (Etching).

185 The Trains That Come : Broad Street
(Etching).

186 Concourse: Washington (Etching).

- 187 Portico: Pittsburgh (Etching).
- 188 Ferry: Jersey City (Etching).
- 189 Down to the Tracks: P. R. R., New York
(Etching).
- 190 Bridge Scape: Chicago (Etching).
- 191 Terminal: Weehawken (Etching).
- 192 Riverside Station: Pittsburgh (Etching).
- 193 Staten Island (Etching).
- 194 Eads Bridge: St. Louis (Etching).
- 195 Art and Science: Chicago (Etching).
- 196 Washington: The Station from the
Capitol (Etching).
- 197 Falls Station: Niagara (Etching).
- 198 Concourse: Grand Central (Etching).

E. HORTER.

- 199 Antique Shop: Nantucket (Etching).
- 200 Fifth Avenue and Twenty-fourth Street
(Pencil).
- 201 Naples: Tenements (Etching).
- 202 Chinatown (Pencil).
- 203 Antique Shop: New York (Etching).
- 204 East Side Tenement (Pencil).
- 205 Building the Equitable (Etching).
- 206 Building the Grand Central (Pencil).
- 207 The Viaduct (Etching).
- 208 The Municipal Building (Pencil).
- 209 The Tombs Prison (Etching).
- 210 Greenwich Village (Pencil).
- 211 Negro Tenement (Etching).
- 212 Cathedral Dome (Etching).
- 213 Old Blue Anchor (Pencil).

WATER COLORS, ETC.

ALBERT STERNER.

214 Olivia (Lithograph).

MAURICE SIEGLER.

215 Self Portrait (Pencil).

ALBERT STERNER.

216 The Entombment (Lithograph).

EDITH W. YAFFEE.

217 Girl with Fur Cap (Crayon).

S. J. WOOLF.

218 Wounded (Charcoal).

JOHN MCLURE HAMILTON.

219 Drawing (Pastel).

ALBERT STERNER.

220 Mother of Men (Drawing, Charcoal).

EDITH W. YAFFEE.

221 Portrait (Crayon).

ALBERT STERNER.

222 1860 (Lithograph).

A. ZORN.

223 The Old Woman (Etching).

ALICE KENT STODDARD.

224 Camp at Gièvres (Charcoal).

RICHARD L. MARWEDE.

225 The White Spire (Crayon).

ALICE KENT STODDARD.

- 226 Soisson (Charcoal).
- 227 Crosses (Charcoal).
- 228 Canteen: Palais de Glace, Paris (Charcoal).
- 229 Chow Line at Palais de Glace: Paris.

RICHARD L. MARWEDE.

- 230 Long Beach (Crayon).

ARTHUR B. DAVIES.

- 231 Head of a Girl.

EDITH W. YAFFEE.

- 232 Crayon Study (Red Crayon).

ARTHUR B. DAVIES.

- 233 Woman Running (Etching).
- 234 Reclining Figure (Etching).
- 235 Three Women in Landscape (Etching).
- 236 Man and Woman Embracing (Etching).
- 237 Three Women (Oval Plate) (Etching).
- 238 Leda (Etching).
- 239 Portrait (Arms Up) (Etching).
- 240 Group of Ten Men in Action (Etching).
- 241 Nude Seated Figure (Large) (Etching).
- 242 Figure Group (Women) (Etching).
- 243 Three Women (Round Plate) (Etching).
- 244 Struggle (in Art) (Etching).
- 245 Group of Nude Men, One Seated (Etching).
- 246 Mirror (Etching).
- 247 Portrait: J. (Etching).
- 248 Group of Five Men: Active (Etching).

WATER COLORS, ETC.

- 249 Ishlamish Group (Etching).
- 250 Bathing Woman and Servant.
- 251 Two Women Standing.
- 252 Summer.
- 253 Two Women in Landscape.
- 254 Portrait (Small).

EDITH W. YAFFEE.

- 255 Portrait: Mrs. R. (Red Crayon).

ALICE KENT STODDARD.

- 256 Near the Chemin des Dames (Charcoal).

RICHARD L. MARWEDE.

- 257 Men Fishing (Crayon).

ALICE KENT STODDARD.

- 258 Town Hall: Arras (Lithographic Crayon).
- 259 Belleau Woods (Charcoal).
- 260 Every Day: Bourges (Charcoal).
- 261 Montfaucon (Charcoal).

RICHARD L. MARWEDE.

- 262 The Orchard (Crayon).

HERBERT PULLINGER.

- 263 Pouring (Lithograph).
- 264 New York Shipyard: Camden (Etching).
- 265 The Press Plant (Lithograph).
- 266 Machining (Lithograph).
- 267 Tempering a Big Gun Tube (Lithograph).
- 268 Hog Island (Etching).
- 269 Forging a Sixteen-inch Shell (Lithograph).

GALLERY G.

JOHN MARIN.

- 270 Looking Seaward (Water Color).
- 271 Water Color, No. 6.

ADA GILMORE.

- 272 The Grave Yard (Wood-block Print).
- 273 A Back Street (Wood-block Print).

JOHN FRAZIER.

- 274 Fishing Boats (Water Color).

W. ZORACH.

- 275 White Birches, No. 2 (Water Color).

JOHN FRAZIER.

- 276 The Blue Boat (Water Color).

W. ZORACH.

- 277 The Village (Water Color).
- 278 Landscape (Water Color).

JOHN FRAZIER.

- 279 The Seiners (Water Color).

W. ZORACH.

- 280 White Birches (Water Color).

WATER COLORS, ETC.

ADA GILMORE.

281 The Church in the Dunes (Wood-block
Print).

282 The Octagon House (Wood-block Print).

PAUL DOUGHERTY.

283 Mullion Cove (Pastel).

EMMASITA R. CORSON.

284 Bathers, No. 1 (Monotype).

PAUL DOUGHERTY.

285 Upland Sky (Pastel).

EMMASITA R. CORSON.

286 Bathers, No. 3 (Monotype).

PAUL DOUGHERTY.

287 Evening: Monterey (Water Color).

288 Sevil: Corea (Water Color).

289 At the Base of the Cliff (Water Color).

290 The Inlet (Water Color).

291 Point Lobos (Water Color).

292 Carmel Bay (Water Color).

293 Church Farm (Pastel).

EMMASITA R. CORSON.

294 Childhood (Monotype).

PAUL DOUGHERTY.

295 Lake in the Hills (Pastel).

WATER COLORS, ETC.

EMMASITA R. CORSON.

296 Bathers, No. 4 (Monotype).

GUIDA B. MAXWELL.

297 Early Morning: Phoenixville (Pastel).

298 A Stream: Chester Springs (Pastel).

299 Across the Hills: Chester Springs (Pastel).

EMMASITA R. CORSON.

300 Frolic (Monotype).

GUIDA B. MAXWELL.

301 Sunset Glow: Chester Springs (Pastel).

EMMASITA R. CORSON.

302 Bathers, No. 2 (Monotype).

GUIDA B. MAXWELL.

303 Cannandale Lodge: Malvern (Pastel).

JANE S. LIGGET.

304 The Boats (Tempera).

JOHN MARIN.

305 Small Point: Maine (Water Color).

GEORGE BELLOWS.

306 The Well Querado (Water Color).

CHARLES DEMUTH.

307 Flowers (Water Color).

OWEN MERTON.

308 Picking Peas (Water Color).

CHARLES DEMUTH.

309 Flowers (Water Color).

310 Flowers (Water Color).

311 Flowers (Water Color).

312 Flowers (Water Color).

OWEN MERTON.

313 The Hillside (Water Color).

HAYLEY LEVER.

314 Budleigh Salterton: Devon, England
(Water Color).

315 Devonshire Hills: River Exe, England
(Water Color, Pure).

316 St. Ives Harbor: Cornwall (Water Color).

ABRAHAM WALKOWITZ.

317 The Beach.

318 Pastoral.

HAYLEY LEVER.

319 Five-Master: Gloucester, Mass. (Water
Color on Prepared Ground).

WILLIAM J. GLACKENS.

320 Children Skipping Rope (Pastel).

HAYLEY LEVER.

321 Fishermen's Houses: St. Ives (Water
Color).

CHILDE HASSAM.

- 322 Rockport Quarry Series or "Set" (Water Color).

RENÉ CLARKE.

- 323 Pattern from the Palisades (Water Color).

CHILDE HASSAM.

- 324 Rockport Quarry Set (Water Color).

MAURICE B. PRENDERGAST.

- 325 The Village (Water Color).

CHILDE HASSAM.

- 326 Rockport Quarry (Series) "Set" (Water Color).

RENÉ CLARKE.

- 327 Cedar, Pine and Oak (Water Color).

CHILDE HASSAM.

- 328 Rockport Quarry, Series or "Set" (Water Color).

MAURICE B. PRENDERGAST.

- 329 Bathing Beach (Water Color).

CHILDE HASSAM.

- 330 Rockport Quarry, Series or "Set," No. 2 (Water Color).

RENÉ CLARKE.

- 331 A Spuyten Duyvil Design (Water Color).

JOHN MARIN.

- 332 Water Color, No. 4.
- 333 The Mountains (Water Color).
- 334 Water Color, No. 1.
- 335 Water Color, No. 3.
- 336 Water Color, No. 2.
- 337 Trees (Water Color).
- 338 Water Color, No. 5.

BIRGER SANDZEN.

- 339 Old Pines (Water Color).

VIOLET OAKLEY.

- 340 Côte d'Azur: Nice (Water Color).

WALTER COLE.

- 341 Passing Clouds (Water Color).

VIOLET OAKLEY.

- 342 Pillar of Hercules at Sunrise (Water Color).

BIRGER SANDZEN.

- 343 Willow on the Rio Grande (Water Color).

VIOLET OAKLEY.

- 344 Heaven and Hell: Genoa (Water Color).

NORTH TRANSEPT.

CARROLL S. TYSON, JR.

- 345 American Goldfinch (Water Color).
- 346 Lincoln's Finch (Water Color).
- 347 Blue Jays (Water Color).
- 348 Cedar Wax Wing (Water Color).
- 349 Golden Crowned Kinglet (Water Color).
- 350 Pigeon Hawks: Females (Water Color).
- 351 Bobolink (Water Color).
- 352 Purple Finch (Water Color).
- 353 Marsh Hawk (Water Color).
- 354 Great Black-Backed Gull (Water Color).
- 355 Northern Pileated Woodpeckers (Water Color).
- 356 Common Cormorant (Water Color).
- 357 Belted Kingfishers (Water Color).
- 358 Hairy Woodpeckers (Water Color).
- 359 Yellow Legs (Water Color).
- 360 Great Blue Heron (Water Color).
- 361 Maryland Yellow-Throat (Water Color).
- 362 Black Cap Titmouse (Water Color).
- 363 Osprey (Water Color).
- 364 White-Throat Sparrow (Water Color).
- 365 King Bird (Water Color).
- 366 Leach's Petrel (Water Color).
- 367 Turnstone (Water Color).
- 368 Golden - Winged Woodpecker (Water Color).

WATER COLORS, ETC.

- 369 Crow (Water Color).
- 370 Richardson's Owl (Water Color).
- 371 American Red Start (Water Color).
- 372 Broad-Winged Hawk (Water Color).
- 373 Linnets (Water Color).
- 374 Pectoral Sandpipers (Water Color).
- 375 Sanderlings (Water Color).

GALLERY F.

ROBERT HENRI.

- 376 The Reader's Tree (Pastel).
- 377 The Dancer (Water Color).
- 378 Laird (Pastel).
- 379 The Hawaiian Girl (Charcoal).
- 380 Los Burros (Charcoal).
- 381 The Artists in the Woods (Pastel).
- 382 Study (Water Color).

OTIS PHILBRICK.

- 383 Bed Time (Red Chalk).

ROBERT HENRI.

- 384 La Loma: Santa Fé (Pastel).

PAUL DOUGHERTY.

- 385 At the Source (Monotype).

ROBERT HENRI.

- 386 Sketch of a Girl and the Gossips (Charcoal).
- 387 The Reader in the Forest (Pastel).
- 388 Drawing: Half-Draped Figure Touched with Color.

ROY BROWN.

- 389 The Barges (Water Color).

J. M. GUISLAIN.

- 390 Bathers (Water Color).

WATER COLORS, ETC.

ARTHUR BEAUMONT.

391 Storm Clearing: Nova Scotia (Water Color).

392 A Cave: Nova Scotia (Water Color).

ROY BROWN.

393 Grey Fronts (Water Color).

J. M. GUISLAIN.

394 Bathers (Water Color).

ALFRED HAYWARD.

395 Looking Down on the Pools (Water Color).

396 The Torrent (Water Color).

MILDRED B. MILLER.

397 The White Door (Water Color).

ALFRED HAYWARD.

398 Morning (Water Color).

MILDRED B. MILLER.

399 Docked (Water Color).

ALFRED HAYWARD.

400 After Heavy Rain (Water Color).

MILDRED B. MILLER.

401 October (Water Color).

402 The Returned Transport (Olio Water Color).

WATER COLORS, ETC.

ALFRED HAYWARD.

403 Angry Water (Water Color).

MILDRED B. MILLER.

404 Near the Mills (Water Color).

ALFRED HAYWARD.

405 Sunlight and Calm (Water Color).

FRANK BRANGWYN.

406 The Tow-rope (Etching).

407 Canadians Entering Cambrai (Lithograph).

408 Arras (Lithograph).

409 The Church of St. Martin: Ypres (Lithograph).

410 The Butcher's Shop (Etching).

411 Abbey: St. Leonard (Etching).

412 The Boatmen (Etching)

413 Cambrai (Lithograph).

414 Dixmude (Lithograph).

415 Vimy (Lithograph).

416 The Tanpit (Lithograph).

JULES GUERIN.

417 The Temple of Olympia: Athens (Water Color).

W. LESTER STEVENS.

418 Silver Sheen (Opaque Water Color).

ALEXANDER ROBINSON.

419 The Mockers: A Persian Romance (Water Color).

WATER COLORS, ETC.

ELIZA D. GARDINER.

420 Cloud Land (Water Color).

ALEXANDER ROBINSON.

421 Daughter of the Calip (Design in Rose
and Gold) (Water Color).

EDMUND S. CAMPBELL.

422 A Fountain of the Alhambra (Water
Color).

JANE PETERSON.

423 The Pier (Water Color).

ALEXANDER ROBINSON.

424 Arab Girls (Water Color).

425 Hadi Ben Hassam of Bagdad (Water
Color).

EDMUND S. CAMPBELL.

426 The Gorge of Rondu: Spain (Water
Color).

ALEXANDER ROBINSON.

427 The Incredulous Mulatto: Damascus Tale
(Water Color).

FRANK REED WHITESIDE.

428 Break of Day (Pastel).

JULES GUERIN.

429 Entrance to the Seraglio: Constantinople
(Water Color).

WATER COLORS, ETC.

JOHN WESLEY LITTLE.

430 A Passing Shower (Water Color).

MARY NICHOLENA MACCORD.

431 A Hilly Street (Water Color).

CATHARINE WHARTON MORRIS.

432 Newport's Oldest (Gouache).

433 Looking For'ard (Gouache).

COLIN CAMPBELL COOPER.

434 The Valley Near Reading, Pa. (Water Color).

MARY MICHOLENA MACCORD.

435 Street Stairs: Gloucester (Water Color).

EDMUND S. CAMPBELL.

436 Shacks of Gloucester (Water Color).

COLIN CAMPBELL COOPER.

437 Colonial House: Westport, Conn. (Water Color).

EUGEN NEUHAUS.

438 Low Tide: Carmel, California (Water Tempera).

MARY CASSATT.

439 Mother and Child (Pastel).

440 The Sisters (Pastel).

441 Mother and Child (Pastel).

WATER COLORS, ETC.

EDWARD DUFNER.

442 Summer Time (Water Color).

HORATIO WALKER.

443 Swine and Swineherd (Water Color).

LIEUT.-COM. HENRY REUTERDAHL, U.S.N.R.F.

444 Destroyer Patrol (Water Color).

ALEXANDER ROBINSON.

445 Pottery Vendors (Water Color).

LIEUT.-COM. HENRY REUTERDAHL, U.S.N.R.F.

446 Lisbon: Waiting for the NC-4 (Water Color).

447 The NC-4 (Water Color).

448 Ponta Delgada, The Azores (Water Color).

COLIN CAMPBELL COOPER.

449 The Palace of Horticulture: San Francisco, 1915 (Water Color).

HILDA BELCHER.

450 The Three-Year-Old (Water Color).

C. S. KAELIN.

451 In the Inner Harbor (Pastel).

CHARLES H. WOODBURY.

452 Wave Crest (Water Color).

WATER COLORS, ETC.

C. S. KAELIN.

453 Silvery Light (Pastel).

HILDA BELCHER.

454 Comfort (Water Color).

C. S. KAELIN.

455 Foggy Morning: Rockport (Pastel).

HAROLD C. DUNBAR.

456 Celestial Rays (Water Color).

BIRGE HARRISON, N.A.

457 The Red Barn (Pastel).

CHARLES H. WOODBURY.

458 At Sea (Water Color).

C. S. KAELIN.

459 Rocky Brook in Winter (Pastel).

CHARLES H. WOODBURY.

460 Spindrift (Water Color).

C. S. KAELIN.

461 The Blue Sea (Pastel).

CHARLES H. WOODBURY.

462 The Patrol (Water Color).

C. S. KAELIN.

463 Very Early Spring Time (Pastel).

WATER COLORS, ETC.

F. WALTER TAYLOR.

- 464 The Kensico Dam (Charcoal).
- 465 The Hudson River Dock (Charcoal).
- 466 Thames Bridge (Charcoal).
- 467 America, Give All You Have to Give
(Lithograph).
- 468 Building the Docks (Charcoal).
- 469 The New Hell Gate Bridge (Charcoal).

FRANK W. BENSON.

- 470 Snow Geese (Water Color).
- 471 The Sanctuary (Water Color).
- 472 Black Ducks (Water Color).
- 473 Migrative Coot (Water Color).
- 474 Eiders (Water Color).
- 475 Egrets (Water Color).

CHARLES BASING.

- 476 Atlantic Coast (Water Color).

ALICE WILLITS DONALDSON.

- 477 The First Snow (Tempera).

CHARLES BASING.

- 478 Atlantic Coast (Water Color).

FELICIE WALDO HOWELL.

- 479 After a Rain (Water Color).

CHARLES BASING.

- 480 Atlantic Coast (Water Color).

WATER COLORS, ETC.

FELICIE WALDO HOWELL.

- 481 N. Y. Public Library (Water Color).
482 Old Wharves (Water Color).

CHARLES BASING.

- 483 Atlantic Coast (Water Color).

FELICIE WALDO HOWELL.

- 484 When Our Fleet Was in the Hudson
(Water Color).

CHARLES BASING.

- 485 Atlantic Coast (Water Color).

ALICE WILLITS DONALDSON.

- 486 Snow and Afterglow (Tempera).

M. W. ZIMMERMAN.

- 487 The Little House with Four Chimneys
(Water Color).

ALICE WILLITS DONALDSON.

- 488 Peace (Tempera).

M. W. ZIMMERMAN.

- 489 Cabin No. 21 (Water Color).

CATHARINE WHARTON MORRIS.

- 490 Miss Maud's Apple Tree (Gouache).

WATER COLORS, ETC.

M. W. ZIMMERMAN.

- 491 Evening Among the Birches (Water
Color).

ALICE WILLITS DONALDSON.

- 492 Home by Moonlight (Tempera).

VAN DEARING PERRINE.

- 493 Reflection (Pastel).

BARNET M. FELDMAN.

- 494 Pastel.

VAN DEARING PERRINE.

- 495 White Chalk Drawing.
496 Landscape (Pastel).
497 Children at Play (Pastel).

BARUCH M. FELDMAN.

- 498 Pastel.

VAN DEARING PERRINE.

- 499 White Chalk Drawing.

BARUCH M. FELDMAN.

- 500 Pastel.

VAN DEARING PERRINE.

- 501 Children (Pastel).

ROTUNDA AND WEST CORRIDOR.

LUCY W. HURRY.

502 The Turkey Gobbler (Water Color).

JULES GUERIN.

503 Nazareth (Water Color Sketch).

504 The Temple of Sunium: Greece (Water
Color).

EDMOND WEILL.

505 The Quarry (Water Color).

JULES GUERIN.

506 The Encore (Tempera).

LUCY W. HURRY.

507 Two Young Dancers (Water Color).

JULES GUERIN.

508 Marina: Italy (Water Color).

LUCY W. HURRY.

509 The Bird Cage (Water Color).

JULES GUERIN.

510 A Masque in Damascus (Water Color
Sketch).

511 Nazareth (Water Color Sketch).

512 The Women's Mosque: Brussa (Water
Color).

JESSIE WILLCOX SMITH.

- 513 Unknown Depths (Water Color).
- 514 Wide Awake (Water Color).
- 515 Back to the Farm (Water Color).

VIOLET OAKLEY.

- 516 Episodes in the Life of John Woolman
—Study for Predella of Mural Decoration—“The Slave Ship Ransomed.”

EDITH EMERSON.

- 517 Color Study, No. 2: Roosevelt Window.
Story of Elijah (Water Color).

VIOLET OAKLEY.

- 518 Dante and Beatrice: Detail for Stained-Glass Window (Water Color).
- 519 Christ Descending into Hell: Study for Predella of Mural Decoration: “The Slave Ship Ransomed” (Water Color).
- 520 Study for Mural Decoration: The Slave Ship Ransomed. (In the Senate Chamber, State Capitol of Pennsylvania.) (Water Color.)
- 521 Episodes in the Life of John Woolman: Study for Predella of Mural Decoration, “The Slave Ship Ransomed” (Water Color).

EDITH EMERSON.

- 522 Color Study, No. 1: Roosevelt Window, Story of Elijah (Water Color).

WATER COLORS, ETC.

JESSIE WILLCOX SMITH.

523 Autumn Leaves (Water Color).

524 A Helping Hand (Water Color).

CLIFTON WHEELER.

525 Young Sycamore (Water Color).

JOHN WESLEY LITTLE.

526 Through the Mist (Water Color).

VAN DEARING PERRINE.

527 White Chalk Drawing.

ANNE FRY SMITH.

528 Near the Mill (Pastel).

PHILIP L. HALE.

529 Flowers (Pastel).

FRANK CARSON.

530 Low Tide (Water Color).

GEORGE HARDING.

531 Argonne Fighting (Oil).

PHILIP L. HALE.

532 Flowers in Moonlight (Pastel).

ALBERT STERNER.

533 Nude (Red Chalk).

FRANK LESSHAFFT.

534 Rocky Mountain Lake: Colorado (Water
Color).

WATER COLORS, ETC.

PHILIP L. HALE.

535 Blown Blossoms (Pastel).

EMMA LAMPERT COOPER.

536 In Holland (Water Color).

PHILIP L. HALE.

537 Dorothy (Pastel).

ALBERT V. GREENE.

538 The Road (Tempera).

WILLIAM J. EASTMAN.

539 The Mantle of Winter (Water Color).

H. DEVITT WELSH.

540 Study No. 4 (Chalk).

541 Study No. 7 (Chalk).

MAURICE MOLARSKY.

542 Refugees (Charcoal).

H. DEVITT WELSH.

543 Study No. 1 (Chalk).

KENNETH G. HOW.

544 Park Avenue: New York (Water Color).

H. DEVITT WELSH.

545 The End of Day (Chalk).

WILLIAM J. EASTMAN.

546 The Grey of Winter (Water Color).

WATER COLORS, ETC.

H. DEVITT WELSH.

547 Study No. 3 (Chalk).

KENNETH G. HOW.

548 The Old Grist-Mill (Water Color).

WILLIAM J. EASTMAN.

549 Winter Decoration (Water Color).

H. DEVITT WELSH.

550 Study No. 5 (Chalk).

551 Study No. 2 (Chalk).

MILDRED B. MILLER.

552 The Barn Yard (Water Color).

EMMASITA R. CORSON.

553 Spirit of the Desert (Monotype).

EVA BROOK DONLY.

554 The Sleeping Woman: Mexico (Transparent Water Color).

ELIZABETH FISHER WASHINGTON.

555 Old Houses on Darby Creek (Pastel).

FREDERIC NUNN.

556 Surf Fishermen (Water Color).

ALEXANDER PORTNOFF.

557 Early in Fall (Pastel).

WATER COLORS, ETC.

LIEUT.-COM. HENRY REUTERDAHL, U.S.N.R.F.

558 American Admiralty House: The Azores
(Water Color).

CATHARINE WHARTON MORRIS.

559 The Alley (Gouache).

GWENDOLYN NATHANS.

560 Water Color Drawing.

ELIZABETH FISHER WASHINGTON.

561 Early Spring (Pastel).

FREDERIC NUNN.

562 Windy Day (Water Color).

MILDRED B. MILLER.

563 The Celebration (Water Color).

564 Milking Time (Water Color).

565 Ships (Water Color).

JOHN HELD, JR.

566 During the Norther: Isle de Cochinas,
Honduras (Water Color).

W. A. HOFSTETTER.

567 Landscape (Pastel).

RICHARD F. LAHEY.

568 Off the Coast (Water Color).

EUGÈNE CASTELLO.

569 Mamoudié Mosque: Cairo (Water Color).

WATER COLORS, ETC.

JOHN HELD, JR.

570 Sentinel Pines: Raquette Lake (Water Color).

SYLVAN G. GOESLE.

571 At Copps Hill Ground (Water Color).

EDWARD HOWARD SUYDAM.

572 Covered Bridge: Addingham (Water Color).

J. FRANK COPELAND.

573 Chester Springs (Water Color).

SYLVAN G. GOESLE.

574 Castle Island (Water Color).

JOHN HELD, JR.

575 Browns Tract Inlet: Raquette Lake (Water Color).

ELIZABETH FISHER WASHINGTON.

576 The Blue Boat: Gloucester, Mass. (Pastel).

SARAH C. SEARS.

577 The Fruit of the Vine (Water Color).

ARTHUR J. ELDER.

578 Down-Town (Monotype).

SYLVAN G. GOESLE.

579 New England Coast (Water Color).

WATER COLORS, ETC.

EDWARD HOWARD SUYDAM.

580 Darby Creek (Water Color Sketch).

JOHN HELD, JR.

581 Silver Twilight: Raquette Lake (Water Color).

SYLVAN G. GOESLE.

582 Old Salem: Polish Quarters (Water Color).

W. A. HOFSTETTER.

583 Fall (Pastel).

AUSTIN W. LORD.

584 Evening (Pastel).

HELEN REED WHITNEY.

585 Clearing Weather (Pastel).

ALBERT STERNER.

586 The Violincellist (Charcoal Drawing).

AGNES TAIT.

587 Nocturne (Pen and Ink).

THORNTON OAKLEY.

588 Hog Island: The Wet Basin: Twilight (Lithograph).

589 Hog Island: The Wet Basin. A Squall of Rain (Lithograph).

590 Hog Island: Launch of the "Quistconck" (Lithograph).

WATER COLORS, ETC.

- 591 Hog Island: Workmen, Scaffoldings and Derricks (Lithograph).
- 592 Hog Island: The Wet Basin (Lithograph).
- 593 Hog Island: Offerings to the Gods (Lithograph).
- 594 Hog Island: Riveter (Lithograph).
- 595 Hog Island: The Wet Basin, Hulls Afloat (Lithograph).
- 596 Hog Island: Between the Ways (Lithograph).
- 597 The Traymore (Lithograph).

BIRGER SANDZEN.

- 598 The Sentinel (Lithograph).
- 599 In the Heart of the Wilderness (Wood Engraving).

EDITH LIESEE REMINGTON.

- 600 Monotype.
- 601 Pastel.
- 602 Drawing.
- 603 Drawing.
- 604 Monotype.
- 605 Drawing.
- 606 Monotype.

SAMUEL DAVIS OTIS.

- 607 Olympiad, No. 4 (Water Color Decoration).
- 608 Cyrano (Water Color Decoration).
- 609 Olympiad, No. 3 (Water Color Decoration).

WATER COLORS, ETC.

- 610 D'Anunzios Francesca (Water Color Decoration).
611 Salome (Pen and Ink).
612 Olympiad, No. 2 (Water Color Decoration).
613 Roxanne (Water Color Decoration).
614 Olympiad, No. 1 (Water Color Decoration).

BIRGER SANDZEN.

- 615 Horses in a Hilly Pasture (Lithograph).
616 Ornunga Old Church: Sweden (Lithograph).

F. WALTER TAYLOR.

- 617 Portrait: George Arliss (Charcoal).

DOROTHY HUNTER BROWN.

- 618 Anne (Water Color).

JEANNETTE SCOTT.

- 619 Portrait: Constance W. (Charcoal).

F. WALTER TAYLOR.

- 620 Portrait: Colonel Hughes (Charcoal).

MARIE LOUISE THATER.

- 621 A Head (Brown Crayon).

OTIS PHILBRICK.

- 622 Sleepy Head (Charcoal).

WATER COLORS, ETC.

F. WALTER TAYLOR.

623 Portrait (Charcoal).

OTEEY WILLIAMS.

624 Drawing (Charcoal).

ALBERT STERNER.

625 Portrait: Mrs. Henry Walther (Drawing
in Three Chalks).

JOSEPH SACKS.

626 Drawing (Charcoal).

F. WALTER TAYLOR.

627 Portrait: John Braun, Esq. (Charcoal).

BENEDICT ANTON OSNIS.

628 Portrait (Charcoal).

629 Portrait (Charcoal).

MAURICE SIEGLER.

630 Hazel (Pencil).

MARGARET PATTERSON.

631 Pergola: Milton Lockwood's Garden.

CLARA N. MADEIRA.

632 Toas Pueblo (Water Color).

MARGARET PATTERSON.

633 Flat Top Mountain: Blue Ridge, N. C.
(Water Color).

WATER COLORS, ETC.

CLARA N. MADEIRA.

634 Eucalyptus Trees (Water Color).

MARGARET PATTERSON.

635 The Gap: Blue Ridge Mountains, N. C.
(Water Color).

636 Hunter's Guide Mountain: Blue Ridge,
N. C. (Water Color).

VIOLET OAKLEY.

637 Evening: Harbor of Genoa.

MARGARET PATTERSON.

638 Pine and Poplar: North Carolina (Water
Color).

WALTER COLE.

639 Cathedral Ledge (Water Color).

MARGARET PATTERSON.

640 Pergola: Milton Lockwood's Garden.

ALICE SCHILLE.

641 Robert Louis Stevenson House (Water
Color).

HELEN REED WHITNEY.

642 Summer Afternoon (Pastel).

ANNE WHELAN BETTS.

643 Easter (Oil).

WATER COLORS, ETC.

PHILIP R. WHITNEY.

644 Home Port (Pastel).

FRED WAGNER.

645 The Red Barn (Water Color).

ANNE FRY SMITH.

646 Independence Hall (Pastel).

HENNING RYDEN.

647 Windy Day (Water Color).

DEE BEEBE.

648 Across the Channel (Water Color).

EMMA LAMPERT COOPER.

649 Where the Bombs Fell: Verona (Water
Color).

PHILIP R. WHITNEY.

650 Fisherman's Shop (Pastel).

FRED WAGNER.

651 The Bridge: Winter (Water Color).

ANNE FRY SMITH.

652 Smith's Barn (Pastel).

MARGERY AUSTEN RYERSON.

653 Columbus Day (Water Color).

WATER COLORS, ETC.

BLANCHE LAZZELL.

654 Four Boats (Wood-block Print, Water Color).

MINNA MCLEOD BECK.

655 Still Life, No. 1 (Chalk).

BLANCHE LAZZELL.

656 My Studio (Wood-block Print, Water Color).

FLORENCE WHITING.

657 Decoration (Tempera).

MARGERY AUSTEN RYERSON.

658 Columbus Circle (Water Color).

659 Fifth Avenue in War Time (Water Color).

BLANCHE LAZZELL.

660 Two Boats (Wood-block Print, Water Color).

KATHLEEN MASON.

661 Still Life (Water Color).

WALTER COLE.

662 Christmas Cove: Maine (Water Color).

JOHN HELD, JR.

663 Copra Huts: Isle de Cochinas (Water Color).

WATER COLORS, ETC.

LENORA HOSEMAN.

664 Camac Street in the Victory Loan.

WALTER COLE.

665 Beacon Hill: Boston (Water Color).

LIEUT.-COM. HENRY REUTERDAHL, U.S.N.R.F.

666 Lisbon: The Finish of the Navy Trans-Atlantic Flight (Water Color).

667 The Convoy.

WALTER COLE.

668 Gloucester, Mass. (Water Color).

W. ZORACH.

669 Trees.

H. E. SCHNAKENBERG.

670 Old Houses: Autun (Water Color).

WILMOT E. HEITLAND.

671 Old Ladies: Brest, France (Water Color).

BEATRICE DOANE CRAIG.

672 Parade Street: Yarmouth, N. S. (Water Color).

KATHARINE PATTON.

673 Pine Woods (Water Color).

WILMOT E. HEITLAND.

674 Nocturne (Water Color).

WATER COLORS, ETC.

FLORENCE WHITING.

675 Decoration.

EDITH STURTEVANT.

676 Decoration (Tempera).

WILMOT E. HEITLAND.

677 Children: Brest (Water Color).

INEZ LIVINGSTON DELANY.

678 Moraz o' the Glens (Water Color).

HILDA BELCHER.

679 Aunt Harriet's China (Water Color).

CARL ERICKSON.

680 Portrait: Geo. O'Neill, Esq. (Line and Color).

ABRAHAM RATTNER.

681 Night on Mars: Decoration Design (Tempera).

MARY KREMELBERG.

682 Spring (Pastel).

CLARA STROUD.

683 Their Home (Water Color).

FLORENCE WHITING.

684 Drawing.

WATER COLORS, ETC.

ABRAHAM RATTNER.

685 Night on Mars: Decoration Design (Tempera).

686 Night on Mars: Decoration Design (Tempera).

CARL ERICKSON.

687 Portrait: Mme. Eva Gautier (Line and Color).

ABRAHAM RATTNER.

688 Night on Mars: Decoration Design (Tempera).

MARY KREMELBERG.

689 The Pink Ballet Girl (Pastel).

CLARA STROUD.

690 In the Catskill Mountains (Water Color).

H. E. SCHNAKENBERG.

691 Washerwomen: Brest (Ink and Pencil).

TOD LINDENMUTH.

692 The Boat Builders (Wood-block Print).

CARL BUERGERNISS.

693 Virginia Hills (India Ink).

H. E. SCHNAKENBERG.

694 Landscape (Ink).

WATER COLORS, ETC.

EDWARD WARWICK.

695 The Hunting of Peallias (Pen and Ink).

PAUL DOUGHERTY.

696 Autumn.

GERTRUDE KING.

697 Callers (Water Color and Ink).

RICHARD F. LAHEY.

698 Street Talker (Water Color, Charcoal).

HENRY M. HOYT.

699 By Hose House No. 5 (Etching).

TOD LINDENMUTH.

700 Cathedral Spires (Wood-block Print).

ADOLPHE W. BLONDHEIM.

701 Knotting (Etching).

WILFRED JONES.

702 Persian Gazelles (Illustration, Litho-
crayon).

OWEN MERTON.

703 The Village (Water Color).

ABRAHAM RATTNER.

704 German Prisoner of War (Crayon and
Water Color).

WATER COLORS, ETC.

ELLA S. TIEL.

705 A West Wind (Pastel).

706 Sunlit Wharf (Pastel).

S. J. WOOLF.

707 Mess in the Trenches (Water Color).

ABRAHAM RATTNER.

708 German Prisoner Carrying American
Wounded (Crayon and Water Color).

S. J. WOOLF.

709 Swapping Stories (Water Color).

OWEN MERTON.

710 The Bay (Water Color).

ABRAHAM RATTNER.

711 German Prisoner (Crayon and Water
Color).

ELLA S. TIEL

712 Mist (Pastel).

713 In the Fog (Pastel).

WILFRED JONES.

714 A Man of Letters: Turkey (Illustration,
Litho-crayon).

ALEX A. BLUM.

715 Ruth (Etching).

716 The Wind (Etching).

ALICE I. BLANKENBERG.

717 Marchand House (Pencil).

718 Carroll Lane (Pencil).

WILFRED JONES.

719 Stamboul (Illustration, Litho-crayon).

720 White Peacock (Illustration, Litho-crayon).

721 A Persian Garden (Illustration, Litho-crayon).

ALEX A. BLUM.

722 So This's Peace! (Etching).

WILFRED JONES.

723 The Golden Horn (Illustration, Litho-crayon).

TROY KINNEY.

724 Swallows (Etching).

ALEX A. BLUM.

725 Rythmic Construction (Etching).

ALICE I. BLANKENBERG.

726 The Green Door (Pencil).

ELENORE PLAISTED ABBOTT.

727 The King's Daughter Had Been Carried
Away by a Dragon: Grimm's Fairy
Tales (Water Color).

H. VANCE SWOPE.

728 Church at Miami (Opaque Water Color).

WILLIAM JEAN BEAULEY.

729 Old New York (Water Color).

ELENORE PLAISTED ABBOTT.

730 Cover Design: Grimm's Fairy Tales
(Water Color).

731 The Nix in the Pond: Grimm's Fairy Tales
(Water Color).

JULES GUERIN.

732 A Bazar: Damascus.

ELENORE PLAISTED ABBOTT.

733 The Griffin Carried Them Over the Red
Sea: Grimm's Fairy Tales (Water
Color).

H. VANCE SWOPE.

734 Street in Detona, Florida (Opaque Water
Color).

INDEX TO ARTISTS

REPRESENTED IN THE PRESENT EXHIBITION.

The figures following the address
refer to the numbers in this Catalogue.

- Abbott, Elenore Plaisted,
75 West Fifty-fifth Street, New York City.
727, 730, 731, 733.
- Archambault, A. Margaretta,
1710 Chestnut Street, Philadelphia, 1, 6, 7, 9.
- Basing, Charles,
163 Clymer Street, Brooklyn, New York, 476,
478, 480, 483, 485.
- Baxter, Martha Wheeler,
58 West Fifty-seventh Street, New York City,
8, 36.
- Beauley, William J.,
19 West Thirty-first Street, New York City,
729.
- Beaumont, Arthur,
112 Rhine Avenue, Staten Island, New York,
391, 392.
- Beck, Minna McLeod,
University of Kentucky, Lexington, Kentucky,
655.
- Beebe, Dee,
231 Garfield Place, Brooklyn, New York, 648.
- Belcher, Hilda,
939 Eighth Avenue, New York City, 450, 454,
679.

INDEX.

- Bellows, George,
146 East Nineteenth Street, New York City,
306.
- Benson, Frank W.,
Salem, Massachusetts, 470 to 475.
- Betts, Anna Whelan,
59 High Street, Germantown, Philadelphia,
643.
- Blankenberg, Alice I.,
1629 Chestnut Street, Philadelphia, 717, 718,
726.
- Blondheim, Adolphe W.,
Provincetown, Massachusetts, 701.
- Blum, Alex A.,
"The Kennar," Tenth and Pine Streets, Phila-
delphia, 715, 716, 722, 725.
- Boardman, Rosina C.,
Huntington, New York, 106, 111.
- Bodine, Helen,
Chestnut Hill, Philadelphia, 70.
- Bonsall, Mary W.,
3430 Walnut Street, Philadelphia, 32.
- Boyle, Sarah Y. McF.,
94 S. Munn Avenue, East Orange, New Jersey,
99, 108.
- Brangwyn, Frank,
London, England, 406 to 416.
- Brown, Dorothy Hunter,
69 Arlington Avenue, Providence, Rhode
Island, 618.
- Brown, Mary Page,
Bryn Mawr, Pennsylvania, 11, 44.

INDEX.

- Brown, Pamela Vinton,
175 Lexington Avenue, New York City, 65.
- Brown, Roy,
Salmagundi Club, New York City, 389, 393.
- Buergerniss, Carl,
2819 West Girard Avenue, Philadelphia, 693.
- Burt, Beatrice Milliken,
355 Union Street, New Bedford, Massachusetts, 3, 59.
- Bush, Ella Shepard,
223 West Laurel Avenue, Sierra Madre, California, 67.
- Campbell, Edmund S.,
Art Institute of Chicago, Chicago, 422, 426,
436.
- Carew, Berta,
Pine Forge, Pennsylvania, 86.
- Carman, Eva L.,
Van Dyck Studios, 939 Eighth Avenue, New
York City, 45, 97.
- Carson, Frank,
26 Line Street, Boston, Massachusetts, 530.
- Cassatt, Mary,
Care Durand-Ruel, 12 East Fifty-seventh
Street, New York City, 439 to 441.
- Castello, Eugene,
3728 Locust Street, Philadelphia, 569.
- Clarke, René,
46 Bayley Avenue, Yonkers, New York, 323,
327, 331.

INDEX.

- Cole, Walter,
254 West Thirty-fourth Street, New York
City, 341, 639, 662, 665, 668.
- Collins, Marjorie S.,
701 Nottingham Road Wawaset, Wilmington,
Delaware, 41, 73, 74.
- Coolidge, Bertha,
22 River Street, Boston, Massachusetts, 50, 112.
- Cooper, Colin Campbell,
222 West Fifty-ninth Street, New York City,
434, 437, 449.
- Cooper, Emma Lampert,
222 West Fifty-ninth Street, New York City,
536, 649.
- Copeland, J. Frank,
320 South Broad Street, Philadelphia, 573.
- Corson, Emmasita R.,
New Hope, Pennsylvania, 284, 286, 294, 296,
300, 302, 553.
- Craig, Beatrice Doane,
510 West One Hundred and Twenty-third
Street, New York City, 672.
- Crawford, Brenetta Herrman,
The Enclosure, Nutley, New Jersey, 91.
- Cross, Sally,
120 Riverway, Boston, Massachusetts, 5,
60, 104.
- Davies, Arthur B.,
53 West Thirty-ninth Street, New York
City, 231, 233 to 254.
- deHaas, Alice Preble Tucker,
939 Eighth Avenue, New York City, 24, 90.
- Delany, Inez Livingston,
403 South Fifty-first Street, Philadelphia,
678.

INDEX.

- Demuth, Charles,
Daniel Gallery, 2 West Forty-seventh
Street, New York City, 307, 309 to 312.
- Donaldson, Alice Willits,
313 West Twentieth Street, New York
City, 477, 486, 488, 492.
- Donly, Eva Brook,
34 East Thirty-second Street, New York
City, 554.
- Dougherty, Paul,
14 East Tenth Street, New York City, 283,
285, 287 to 293, 295, 385, 696.
- Dufner, Edward,
939 Eighth Avenue, New York City, 442.
- Dunbar, Harold C.,
The Hayden Studio, Belmont, Massachu-
setts, 456.
- Eastman, William J.,
1868 East Eighty-second Street, Cleveland,
Ohio, 539, 546, 549.
- Elder, Arthur J.,
Nutley, New Jersey, 578.
- Emerson, Edith,
"Cogslea," Allen Lane, Chestnut Hill,
Philadelphia, 517, 522.
- Erickson, Carl,
112 Waverly Place, New York City, 680,
687.
- Feldman, Baruch M.,
320 Harmony Street, Philadelphia, 494, 498,
500.
- Fernow, Bernice P. A.,
432 Lafayette Place, Milwaukee, Wiscon-
sin, 18, 92.

INDEX.

- Fincken, James H.,
1012 Walnut Street, Philadelphia, 172, 174.
- Foresman, Alice Carter,
2117 Eighth Avenue, Seattle, Washington,
69, 76.
- Frazier, John,
University of Kansas, Lawrence, Kansas,
274, 276, 279.
- Gardiner, Eliza D.,
2139 Broad Street, Providence, Rhode
Island, 420.
- Gilmore, Ada,
Provincetown, Massachusetts, 272, 273, 281,
282.
- Glackens, William J.,
50 South Washington Square, New York
City, 320.
- Goesle, Sylvan G.,
95 Madison Avenue, New York City, 571,
574, 579, 582.
- Greene, Albert V.,
Addingham, Pennsylvania, 538.
- Guerin, Jules,
24 Gramercy Park, New York City, 417,
429, 503, 504, 506, 508, 510, 511, 512, 732.
- Guislain, J. M.,
725 West One Hundred and Seventy-second
Street, New York City, 390, 394.
- Hale, Philip L.,
Fenway Studios, Boston, Massachusetts, 529,
532, 535, 537.
- Hamilton, John McLure,
1700 Walnut Street, Philadelphia, 219.

INDEX.

- Hammond, Helen Todd,
344 Boyleston Street, Boston, Massachusetts,
66.
- Harding, George,
10 South Eighteenth Street, Philadelphia, 531.
- Harper, Marion Dunlap,
847 Grove Street, Glencor, Illinois, 43.
- Harris, Alexandrina Robertson,
186 Quincy Street, Brooklyn, New York, 68,
100, 103.
- Harrison, Birge,
Woodstock, New York, 457.
- Hassam, Childe,
130 West Fifty-seventh Street, New York
City, 322, 324, 326, 328, 330.
- Hawley, Margaret Foote,
20 St. Botolph Street, Boston, Massachusetts,
13, 39, 95.
- Hayward, Alfred,
200 South Fifteenth Street, Philadelphia, 395,
396, 398, 400, 403, 405.
- Hazzard, Sara,
Jamestown, New York, 84, 101.
- Heitland, Wilmot, E.,
26 East Twenty-third Street, New York City,
671, 674, 677.
- Held, Jr., John,
4 West Fortieth Street, New York City, 566,
570, 575, 581, 663.
- Henri, Robert,
10 Gramercy Park, New York City, 376 to 382,
384, 386, 387, 388.
- Herman, Leonora,
1521 Pine Street, Philadelphia, 664.

INDEX.

- Hills, Laura Coombs,
66 Chestnut Street, Boston, Massachusetts, 80.
- Hofstetter, W. A.,
Glenside, Pennsylvania, 567, 583.
- Horter, Earl,
4920 Parkside Avenue, Philadelphia, 161, 170,
199 to 213.
- How, Kenneth G.,
35 West Thirty-ninth Street, New York City,
544, 548.
- Howell, Felicie Waldo,
58 West Fifty-seventh Street, New York City,
479, 481, 482, 484.
- Howes, Edith Wright,
4430 Sansom Street, Philadelphia, 55.
- Hoyt, Henry M.,
37 West Tenth Street, New York City, 160, 699.
- Huey, Florence Greene,
Ruxton, Bates County, Maryland, 72.
- Hurry, Lucy W.,
60 Greenwich Street, Hempstead, Long Island,
502, 507, 509.
- Jackson, Annie Hurlburt,
329 Tappan Street, Brookline, Massachu-
setts, 46, 96, 107.
- Johnson, Harry L.,
Swarthmore, Pennsylvania, 14, 49.
- Jones, Wilfred,
65 West Eleventh Street, New York City,
159, 173, 702, 714, 719, 720, 721, 723.

INDEX.

- Kaelin, C. S.,
52 East Fifty-third Street, New York City,
451, 453, 455, 459, 461, 463.
- Kahle, Julie,
325 West End Avenue, New York City,
2, 12.
- King, Gertrude,
32 Miller Street, Newark, New Jersey, 697.
- Kinney, Troy,
Room 1, 67 West Sixty-seventh Street, New
York City, 724.
- Knowles, Elizabeth A. McG.,
332 Smith Street, Peekskill, New York,
77, 88.
- Kremelberg, Mary,
1007 N. Charles Street, Baltimore, Mary-
land, 682, 689.
- Lahey, Richard F.,
520 Summit Avenue, Jersey City, New Jer-
sey, 568, 698.
- Lazzell, Blanche,
Provincetown, Massachusetts, 654, 656, 660.
- Lesshafft, Franz,
1020 Chestnut Street, Philadelphia, 534.
- Leusch, Frances,
114 Wharton Avenue, Glenside, Pennsyl-
vania, 147, 149, 151.
- Lever, Hayley,
253 West Forty-second Street, New York
City, 314, 315, 316, 319, 321.
- Lewis, Allen,
Southington, Connecticut, 158, 164, 169.
- Ligget, Jane S.,
130 South Fifteenth Street, Philadelphia,
304.

INDEX.

- Lindenmuth, Tod,
26 North Sixth Street, Allentown, Pennsylvania, 692, 700.
- Little, John Wesley,
Picture Rocks, Pennsylvania, 430, 526.
- Lord, Austin W.,
New Canaan, Connecticut, 584.
- Lowdon, Elsie M.,
105 East Seventeenth Street, New York City, 27, 57.
- Ludovici, Alice E.,
167 North Orange Grove Avenue, Pasadena, California, 62.
- Lynch, Anna,
9 Tree Studio Bldg., 4 East Ohio Street, Chicago, Illinois, 89.
- McIntire, Katharine,
160 Waverly Place, New York City, 20, 21.
- MacCord, Mary Nicholena,
358 John Street, Bridgeport, Connecticut, 431, 435.
- Madeira, Clara N.,
2300 Pine Street, Philadelphia, 632, 634.
- Marin, John,
291 Fifth Avenue, New York City, 270, 271,
305, 332 to 338.
- Marks, Stella Lewis,
80 West Fortieth Street, New York City,
79, 87.
- Martin, Ann,
6341 Kimbark Avenue, Chicago, Illinois,
109.
- Marwede, Richard L.,
976 Anderson Avenue, New York City, 225,
230, 257, 262.

INDEX.

- Mason, Kathleen,
212 West Cheltenham Avenue, Germantown,
Philadelphia, 661.
- Maxwell, Guida B.,
180 Manheim Street, Germantown, Phila-
delphia, 297, 298, 299, 301, 303.
- Merton, Owen,
Daniel Gallery, 2 West Forty-seventh
Street, New York City, 308, 313, 703, 710.
- Miller, Mildred B.,
Chester Springs, Chester County, Pennsylv-
ania, 397, 399, 401, 402, 404, 552, 563 to 565.
- Moeller, Selma M. D.,
612 West One Hundred and Thirty-eighth
Street, New York City, 105, 110.
- Molarsky, Maurice,
39 West Sixty-seventh Street, New York
City, 542.
- Morris, Catharine Wharton,
Oak Lane Post Office, Philadelphia, 432,
433, 490, 559.
- Nathans, Gwendolyn,
352 East Nineteenth Street, New York
City, 560.
- Neuhaus, Eugen,
2922 Derby Street, Berkeley, California,
438.
- Nunn, Frederic,
320 Harmony Street, Philadelphia, 556, 562.
- Oakley, Thornton,
10 South Eighteenth Street, Philadelphia,
127, 128, 152, 153, 214, 588 to 597.

INDEX.

- Oakley, Violet,
"Cogslea," Allen Lane, Chestnut Hill,
Philadelphia, 340, 342, 344, 516, 518 to 521,
637.
- Osnis, Benedict Anton,
1611 Chestnut Street, Philadelphia, 628, 629.
- Otis, Amy,
Wheaton College, Norton, Massachusetts,
51, 63.
- Otis, Samuel Davis,
112 Waverly Place, New York City, 607
to 614.
- Patterson, Margaret,
Trinity Court, Dartmouth Street, Boston,
Massachusetts, 631, 633, 635, 636, 638, 640.
- Patton, Katharine,
1522 Chestnut Street, Philadelphia, 673.
- Pearson, Jane Mumford,
Feather Farm, High Falls, Ulster County,
New York, 19, 94.
- Pennell, Joseph,
Windermere Hotel, Philadelphia, 175 to 198.
- Perrie, Bertha E.,
808 Seventeenth Street, N. W., Washing-
ton, D. C., 64.
- Perrine, Van Dearing,
Englewood, New Jersey, 493, 495, 496, 497,
499, 501, 527.
- Peterson, Jane,
58 West Fifty-seventh Street, New York
City, 423.
- Pew, Gertrude L.,
30 East Fifty-seventh Street, New York,
City, 47, 98.

INDEX.

- Philbrick, Otis,
10 Hillcrest Parkway, Winchester, Massa-
chusetts, 383, 622.
- Phillips, Caroline King,
2 Walnut Street, Boston, Massachusetts, 71.
- Portnoff, Alexander,
703 Walnut Street, Philadelphia, 557.
- Potts, W. Sherman,
45 East Fifty-ninth Street, New York City,
52.
- Prendergast, Maurice B.,
50 South Washington Square, New York City,
325, 329.
- Pullinger, Herbert,
1430 South Penn Square, Philadelphia, 263 to
269.
- Purdie, Evelyn,
Ware Hall, 383 Harvard Street, Cambridge,
Massachusetts, 54, 56.
- Rattner, Abraham,
1523 Chestnut Street, Philadelphia, 681, 685,
686, 688, 704, 708, 711.
- Remington, Edith Liesee,
223 East Washington Square, Philadelphia,
600 to 606.
- Reuterdaahl, Lieut.-Com. Henry, U.S.N.R.F.,
U. S. Navy Recruiting Bureau, 318 West
Thirty-ninth Street, New York City, 444, 446,
447, 448, 558, 666, 667.
- Robeson, Edna Amelia,
Bettendorf, Iowa, 37.
- Robinson, Alexander,
Care Morgan Harges & Co., 14 Place Ven-
dome, Paris, 419, 421, 424, 425, 427, 445.

INDEX.

- Ryden, Henning,
186 East Seventy-second Street, New York
City, 647.
- Ryerson, Margery Austen,
30 East Fifty-seventh Street, New York City,
653, 658, 659.
- Sacks, Joseph,
10 South Eighteenth Street, Philadelphia, 626.
- Saint-Gaudens, Carlota,
Windsor, Vermont, 81, 83, 85.
- Sandzen, Birger,
Bethany College, Lindsborg, Kansas, 339, 343,
598, 599, 615, 616.
- Sawyer, Edith,
246 Fulton Street, Brooklyn, New York, 23,
35, 78.
- Schille, Alice,
1166 Bryden Road, Columbus, Ohio, 129 to 133,
641.
- Schnakenberg, H. E.,
601 West End Avenue, New York City, 670,
691, 694.
- Scott, Jeannette,
1111 East Genesee Street, Syracuse, New
York, 619.
- Sears, Sarah C.,
12 Arlington Street, Boston, Massachusetts,
135, 138, 140, 143, 154, 577.
- Shisler, Clare Shepard,
1605 East Madison Street, Seattle, Washing-
ton, 38, 48, 58.
- Siegler, Maurice,
721 Walnut Street, Philadelphia, 215, 630.
- Simpson, Edna Heustis,
211 South Parsons Avenue, Flushing, New
York, 4, 93.

INDEX.

- Smith, Anne Fry,
102 Oakdale Avenue, Glenside, Pennsylvania,
528, 646, 652.
- Smith, Jessie Willcox,
McCallum Street above Allen Lane, Chestnut
Hill, Philadelphia, 513, 514, 515, 523, 524.
- Smith, Mabel Beatrice,
295 Fifth Avenue, New York City, 61.
- Springer, Eva,
"The Dresden," Washington, D. C., 10.
- Stanton, Lucy M.,
926 North Charles Street, Baltimore, Mary-
land, 22, 40, 53.
- Starr, Loraine Webster,
Hope House, Easton, Maryland, 17, 26.
- Sterner, Albert,
1 Lexington Avenue, New York City, 216,
220, 222, 533, 586, 625.
- Stevens, W. Lester,
Rockport, Massachusetts, 418.
- Stoddard, Alice Kent,
1603 Walnut Street, Philadelphia, 224, 226
to 229, 256, 258 to 261.
- Stroud, Clara,
61 Poplar Street, Brooklyn, New York, 683,
690.
- Sturtevant, Edith,
5340 Kenmore Avenue, Chicago, 676.
- Suydam, Edward Howard,
1629 Chestnut Street, Philadelphia, 572,
580.

INDEX.

- Swope, H. Vance,
Van Dyck Studio, 939 Eighth Avenue, New
York City, 728, 734.
- Tait, Agnes,
244 West Fourteenth Street, New York
City, 587.
- Taylor, Emily Drayton,
1504 Pine Street, Philadelphia, 28 to 31,
33, 34.
- Taylor, F. Walter,
1012 Walnut Street, Philadelphia, 464 to
469, 617, 620, 623, 627.
- Thater, Marie Louise,
121 North Twenty-first Street, Philadel-
phia, 621.
- Tiel, Ella S.,
30 Milbourne Avenue, Milbourne, Dela-
ware County, Pennsylvania, 705, 706, 712,
713.
- Tuttle, Adrianna,
97 Quitman Street, Newark, New Jersey, 42.
- Tyson, Carroll S., Jr.,
319 Walnut Street, Philadelphia, 345 to 375.
- Van den Hengel, Walter,
Sixty-third and Overbrook Avenue, Phila-
delphia, 146, 148, 150.
- Verheyden, François,
Monument Road, Concord, Massachusetts,
134, 136, 137, 139, 141, 142, 144, 145.
- Verrier, James,
71 Pleasant Place, Arlington, New Jersey,
126.
- Wagner, Fred,
1520 Chestnut Street, Philadelphia, 645, 651.

INDEX.

- Walker, Horatio,
Montross Gallery, 550 Fifth Avenue, New
York City, 443.
- Walkowitz, Abraham,
12 Union Square, New York City, 317, 318.
- Warwick, Edward,
5407 Chester Avenue, Philadelphia, 695.
- Washington, Elizabeth F.,
1710 Chestnut Street, Philadelphia, 75, 555,
561, 576.
- Weill, Edmond,
756 East Ninth Street, Brooklyn, New
York, 505.
- Welsh, H. Devitt,
32 South Seventeenth Street, Philadelphia.
162, 163, 165 to 168, 171, 540, 541, 543, 545,
547, 550, 551.
- Welch, Mabel R.,
939 Eighth Avenue, New York City, 15,
82, 102.
- Wheeler, Clifton,
5317 Lowell Avenue, Indianapolis, Indiana,
525.
- Whiteside, Frank Reed,
1010 Clinton Street, Philadelphia, 428.
- Whiting, Florence,
117 East Walnut Avenue, Merchantville,
New Jersey, 125, 657, 675, 684.
- Whitney, Helen Reed,
Moylan, Pennsylvania, 585, 642.
- Whitney, Philip R.,
Moylan, Pennsylvania, 644, 650.
- Williams, Otey,
5743 DeLancey Street, Philadelphia, 624.

INDEX.

- Wilmot, Alta E.,
939 Eighth Avenue, New York City, 16, 25.
- Woodbury, Charles H.,
Oguinquit, Maine, 452, 458, 460, 462.
- Woolf, S. J.,
154 West Fifty-fifth Street, New York
City, 218, 707, 709.
- Wright, John,
England, 155, 156, 157.
- Yaffee, Edith W.,
The Pennsylvania Academy of the Fine
Arts, Philadelphia, 217, 221, 232, 255.
- Zimmerman, M. W.,
1518 Waverly Street, Philadelphia, 487, 489,
491.
- Zorach, William,
123 West Tenth Street, New York City,
275, 277, 278, 280, 669.
- Zorn, A.,
Sweden, 223.

MOST OF THE WORK IN THIS EXHIBITION IS FOR SALE AT STUDIO PRICES. INFORMATION IN REGARD TO SALES MAY BE HAD FROM THE SALES-MANAGER OR FROM ANY ATTENDANT IN THE GALLERIES OR AT THE OFFICE.

DUPLICATE PRINTS OF ETCHINGS CAN, IN MOST CASES, BE SUPPLIED.

The Schools of The Pennsylvania Academy of the Fine Arts train students in painting, sculpture and illustration. The success achieved by the schools is testified to by the number of artists of great reputation who received their training in them.

The present instructors are: Hugh H. Breckenridge, Charles Grafly, Henry McCarter, Joseph T. Pearson, Jr., Daniel Garber, Philip L. Hale, Robert Vonnoh, N.A., A.N.A., Arthur B. Carles, John F. Harbeson, B.S., M.S.A., and Charles de Geer. Detailed information in regard to the Schools will gladly be furnished to any one interested in the subject. The second term of the present school year begins February 2, 1920, but students may enter at any time.

THE BECK ENGRAVING COMPANY

Philadelphia : New York

Engraving in Black and
White and Color for all
purposes *of* Illustration

STATON BROTHERS
STATIONERY AND ART SHOP

NEW A. P. ETCHINGS AND MEZZOTINTS
FINE FRAMING AND REGILDING
RELINING AND RESTORING
OF PAINTINGS

NORTHWEST COULTER CORNER
GERMANTOWN, PHILADELPHIA

Weber Artists' Materials

A New Addition to Our Manufacture

TEMPERA COLORS in Tubes.

TEMPERA COLOR CANVASSES and
ACADEMY BOARDS.

TEMPERA COLOR VARNISHES and
MEDIUMS.



Write for samples and circular on
TEMPERA TECHNIQUE.

Ivory in Sheets for Miniature
Painting.

WATER COLOR PAPERS and
ILLUSTRATION BOARDS.

MODELING CLAYS, Tools and
Stands.

PLASTILINA, the always Pliable
Modeling Clay.

F. WEBER & CO.'S ARTISTS'
OIL and **WATER COLORS**
Standard for over half century.

Manufacturing **ARTISTS'**
COLORMEN since 1854.

F. WEBER & COMPANY

1125 Chestnut St., Philadelphia, Pa.

Main House }
and }
Factory } **PHILADELPHIA**

Branches:
SAINT LOUIS, Mo.
BALTIMORE, Md.

The Pennsylvania Academy of the Fine Arts has opened a school of landscape painting at Chester Springs, Chester County, Pa.

The object of the Academy in establishing this school is to afford fine art instruction in the open air, with all the beautiful surroundings of nature herself, rather than within the walls of classrooms, and to afford an opportunity for the study of art in the Summer to school teachers and to others who can not now spare the time to study in the Winter.

Chester Springs is about 300 feet above mean ocean tide level and the scenery is typical Pennsylvania farm land, enriched by the beauties of Pickering Creek with its meadows and valleys. It was a favorite watering place in Colonial days and in the early part of the nineteenth century.

For full information apply to

D. ROY MILLER,
Resident Manager,
CHESTER SPRINGS, PA.

TO
Picture Lovers

IF you are interested in pictures we wish you would visit our galleries with the same freedom as you would The Pennsylvania Academy of the Fine Arts.

We have a representative collection of the best things in the artistic world—of paintings, water-colors, engravings, etchings, prints in colors. As members of the British Print Sellers' Association we offer the latest publications on the day that they appear in London.

In addition to the modern school we have old prints and etchings of great variety and beauty; French line-engravings; English color-prints after George Morland; old copper-plates by Dürer; etchings by Rembrandt, Meryon and Whistler.

The Rosenbach Galleries
1320 Walnut Street

THE CARE exercised in choosing and testing the many materials incident to the making of our product, the elasticity of our mill equipment together with the minute attention given each and every detail of manufacture, has permitted us to originate and maintain an extended line of HIGH-GRADE PRINTING PAPERS, the supremacy of which is unquestioned.

DILL & COLLINS CO.

ACTUAL MAKERS AND DIRECT
DISTRIBUTORS OF



High-Grade Printing Papers

Philadelphia

New York

Rochester

Baltimore

Boston

Works of Art
from
Japan and China

YAMANAKA & CO.

680 FIFTH AVENUE

NEW YORK

BRANCHES

OSAKA

KYOTO

LONDON

BOSTON

PEKING

SHANGHAI



GOLD & SILVER
FINDINGS
FOR
CRAFT WORKERS

WRITE FOR CATALOG

HERPERS BROS.
18 CRAWFORD ST. NEWARK, N. J.
ESTABLISHED 1865

PICTURE GLASS

The very superior grade of 16 oz. A. A. quality PICTURE GLASS produced by the American Window Glass Co., and of which we are distributors in Philadelphia, is unexcelled for surface, flatness and general freedom from imperfections. We strongly advise its use for all high-grade work.

**Glass for Every Requirement in the
Construction of Buildings**

Benjamin H. Shoemaker
205 to 211 North Fourth Street, Philadelphia

ESTABLISHED 1882

Northwest Storage & Trust Co.

S. E. Cor. Seventeenth and Poplar Sts.

Paintings and All Art Objects Packed,
Shipped and Handled by
Experienced Men

HENRY M. TAWS

**Artists', Designers' and
Illustrators' Supplies**

WHATMAN AND ARNOLD
WATER COLOR PAPERS

ILLUSTRATION BOARDS ALL MAKES
WINSOR *and* NEWTON WATER COLORS
WINSOR *and* NEWTON FINEST IVORIES
WINSOR *and* NEWTON FINEST BRUSHES

MARTINI TEMPERA COLORS
PASTELS OF SEVERAL MAKES

920 ARCH STREET, PHILADELPHIA, PA.

SPECIAL FACILITIES FOR INSURANCE ON PAINT-
INGS, WORKS OF ART AND JEWELRY

INDEPENDENCE ASSOCIATES

INSURANCE BROKERS AND ADVISERS

REPRESENTING

HENRY W. BROWN & COMPANY

BROWN, CROSBY & COMPANY

INDEPENDENCE SQUARE

PHILADELPHIA



THE PHILADELPHIA ART GALLERIES AND AUCTION ROOMS

S. E. Corner Fifteenth
and Chestnut Streets
PHILADELPHIA, PA.

REED H. WALMER
Auctioneer

**PUBLIC SALES OF IMPORTANT ART
FURNITURE AND CERAMICS**

Estates and Consignments Solicited

ARNOLD & FOSTER, Ltd.

Eynsford Paper Mills

KENT, ENGLAND

“ UNBLEACHED ARNOLD ”
Water Color Paper

USE “ UNBLEACHED ARNOLD ”

BECAUSE it is Hand Made.

BECAUSE only the purest Linen and Cotton Rags are used.

BECAUSE no Bleach or Chemicals are allowed to enter into the manufacture.

BECAUSE the beautiful soft White Color is obtained from the wonderful purity of the water from the Artesian Wells at Eynsford Mills.

BECAUSE the paper is never hung but dried flat.

BECAUSE Greater Brilliancy of Color and more permanent results are obtained on “ *Unbleached Arnold* ” than on any other Water Color Paper.

Samples will be sent free on application

By **FAVOR, RUHL & CO., 43 W. 23rd St.**
NEW YORK

Distributors for the United States

SCOTT & FOWLES

High-Class Paintings

ALWAYS ON VIEW AT THEIR GALLERIES

590 Fifth Ave., NEW YORK CITY

BETWEEN 47th AND 48th STREETS

COLLECTING AND FORWARDING FOR EXHIBITIONS A SPECIALTY

Packers, Shippers, and Removers of
Paintings, Bric-a-Brac, Furniture,
Telephone Etc.
Connection, 120 Columbus

New York Agents for The
Pennsylvania Academy
of the Fine Arts

Excellent
References
Cheerfully Furnished

W. S. BUDWORTH & SON

ESTABLISHED 1867

Pictures, etc., received,
delivered to, and returned from, all
NEW YORK CITY EXHIBITIONS
424 WEST 52nd STREET, NEW YORK

J. B. Lippincott Company

PUBLISHERS, PRINTERS
AND BOOKBINDERS

227-231 SOUTH SIXTH STREET



PROGRAMMES AND CATALOGUES
GENEALOGICAL AND HISTORICAL
PUBLICATIONS FOR GENERAL
OR PRIVATE DISTRIBUTION
FINE LEATHER BINDINGS

Established 1846

M. Knoedler & Co.



Publishers and Dealers in
**WORKS OF ART
PAINTINGS
ENGRAVINGS
ETCHINGS, ETC.**

556 Fifth Avenue

Paris

17 Place Vendome

New York

London

15 Old Bond Street

ANNUAL MEMBERSHIP
IN
**THE PENNSYLVANIA ACADEMY
OF THE FINE ARTS**

Annual members are such persons as contribute \$10 annually for the maintenance of the Academy.

LIFE MEMBERSHIP

Life members are those who contribute the sum of \$100.

Annual and life members are admitted to all the public exhibitions and lectures at the Academy, have a right to use its library, subject to the regulations of the institution, and receive an admission ticket. They have all the privileges of stockholders except the right to vote.

Checks may be sent to George H. McFadden, Treasurer, at the Academy.

FORM OF BEQUEST

*I give, devise and bequeath to "The Pennsylvania Academy of the Fine Arts".....
Dollars in trust to invest and keep invested and
apply the income only to the maintenance of the
said Academy.*