



# Survey of

# RYCROFT



*Prepared By*

INDUSTRIAL DEVELOPMENT BRANCH  
DEPARTMENT OF INDUSTRY & DEVELOPMENT  
Government of the Province of Alberta



Digitized by the Internet Archive  
in 2015

<https://archive.org/details/surveyofrycroft00albe>

# Town of Rycroft

(Revised August 1962)

## 1. LOCATION

Section 16-78-5-W6 in Census Division No. 15. Rycroft is situated 43 miles north of Grande Prairie on Highway No. 2 and on the Edmonton to Dawson Creek, B.C., line of the Northern Alberta Railway.

## 2. ALTITUDE

2,300 feet      Latitude - 55/45      Longitude - 118/43

## 3. TEMPERATURE

Average summer - 57.6° F.

Average winter - 4.5° F.

Average annual - 33° F.

## 4. RAINFALL

Average annual rainfall - 9.82 inches.

Average annual snowfall - 48 inches.

Average annual precipitation - 14.62 inches.

(Note - Sections 3 and 4 taken from the weather station at Berwyn)

## 5. GEOLOGY

The Lower Smoky River shale or Kaskapar formation forms bedrock at Rycroft. The shales of this formation are dark to black marine shales of Upper Cretaceous Age and are notably lacking in good water horizons.

## 6. SOIL

Rycroft is in the dark grey soil zone.

### Vegetation

Mainly woodland in which the tree growth is frequently denser and has more evergreens than in the black zone.

### Soil Profile

Generally variable, ranging from nearly black to grey. The surface horizon consists of a thin layer of semi-decomposed leaf litter, which may be absent in burned over area, underlain by a mineral horizon that can usually be divided into parts. The upper part may be black, grey black, or dark brown. The lower part is frequently somewhat leached of organic matter and consid-

erably greyer than the top soil. The total depth of these surface horizons average about 10 to 12 inches. The sub-soil is generally dark brown in color and lime is found at depths of 30 to 50 inches.

### **Fertility**

These soils are usually not as rich as those of the black zone. Leaching of the surface horizons has resulted in the loss of some plant nutrients. Nitrogen, phosphorus and sometimes sulphur may be deficient.

### **Land Use**

A system of mixed farming that includes legumes and grasses in the crop rotation, supplemented with applications of fertilizer when required, should be practised for best results.

## **7. HISTORY**

The Village of Rycroft was named for R. H. Rycroft, who was a local Justice of the Peace. Until 1920 Rycroft and Spirit River were one and the same, but in that year Rycroft Post Office moved to the crossroads, while Spirit River moved two miles to the west.

The first settlers in the district are said to have arrived in 1915, and railway steel was laid in the area during the summer and fall of the same year. The first train to steam into Rycroft reached the hamlet on January 16, 1916.

The first church in the district was the United Church, with the Reverend Mitchell in charge.

In 1927 fire destroyed three business buildings in the village, and in 1942 the entire west side of Main Street was burned out.

Rycroft Utilities Ltd., formed by a group of community-minded men, supplied electricity for the district from 1942 to 1947, when they sold their interests to Canadian Utilities Ltd.

On April 5, 1944, Rycroft was incorporated as a village.

## **8. LIVING CONDITIONS**

The Rycroft district boasts some very fine farms and farm buildings. Prize wheat and cattle have been shown at the winter fairs in Toronto and Chicago.

The main street is wide and lined with modern stores and buildings.

There are 175 houses in Rycroft with an average monthly rent of \$60.

## **9. ADMINISTRATION**

The village is governed by a council consisting of a mayor, selected from the council for a one year term, and two councillors, one elected each year for a three year term. The secretary-treasurer carries out the policies set by the council.



## 10. LAWS AND REGULATIONS

All new business premises and homes must be built on a cement foundation and must be over \$3,000 in value.

Electrical installations must comply with the Alberta Electrical Protection Act.

Sanitary installations must comply with the Alberta Health Regulations.

Gas installations must comply with the Alberta Gas Protection Act.

## 11. FIRE PROTECTION

The fire brigade consists of a fire chief and 8 volunteer firemen.

Equipment - One 1948 - 500 GPM pumper with 500 gallon tank, one 500 gallon tank truck, 1,500 feet of 2½ inch hose, spot-light, axes, ladders, rubber boots, coats, etc.

Water Supply - Water is obtained from the river and piped into two reservoirs with a total capacity of 37,000,000 gallons.

There are 10 fire hydrants conveniently located throughout the village.



Residential areas are neat, modest

## 12. TAX STRUCTURE

	1962 Net Assessment			
Land, 100% of value				\$ 56,280
Improvements, 100% of fair value				449,570
Business				95,980
Power				7,919
Pipeline				2,635
Total Assessment				<u>\$612,384</u>
	<b>Municipal</b>	<b>School</b>	<b>Hospital</b>	<b>Total</b>
Mill Rate	23	35	4	62

## 13. AREAS

Area of village - 319.8 acres.

Streets, roads and lanes - 32.5 acres.

Parks and playgrounds - 28.5 acres.

Miles of roads, street and lanes:

	<b>Gravel</b>	<b>Improved Earth</b>	<b>Unopened</b>	<b>Total</b>
Streets and roads	3.28		1.68	4.96
Lanes		.61		.61
				<u>5.57</u>

There are 2.25 miles of cement sidewalk.

## 14. SEWER AND WATER MAIN MILEAGE

Storm sewers - nil.

Sanitary sewers - 2 miles.

Water mains - 2.2 miles.

## 15. POWER

Three phase 60 cycle power is supplied under a franchise by Canadian Utilities Ltd.

### Residential Rate

First 10 KWH used per month - \$1.80.

Next 25 KWH used per month - 6c per KWH.

Next 100 KWH used per month - 4c per KWH.

Excess KWH used per month - 3c per KWH.

Minimum bill - \$1.80.

Penalty - 5%.

### Commercial Rate

- Demand charge - First KW of connected load - \$1.10.
- Each additional KW of connected load - 50c per KW.
- Energy charge - First 50 KWH used per KW of connected load - 8c per KWH.
- Next 200 KWH used per month - 7c per KWH.
- Excess KWH used per month - 3c per KWH.
- Minimum bill - the demand charge but not less than \$1.80.

### Power Rate

- Demand charge - \$1.00 per HP or KVA of connected load.
- Energy charge - First 25 KWH used per month per HP, KW or KVA of connected load - 7c per KWH.
- Next 25 KWH used per month per HP, KW or KVA of connected load - 5c per KWH.
- Next 50 KWH used per month per HP, KW or KVA of connected load - 4c per KWH.
- All additional used per month - 3c per KWH.
- Minimum bill - the demand charge but not less than \$2.00 per meter.

## 16. WATER

Water is pumped from the Spirit River, into a reservoir and then through a filtration plant to the water mains.

### Domestic Rate

- First 2,500 gallons or less used per month - \$4.00.
- All additional used per month - \$1.50 per M gallons.
- Sewerage charge - \$2.50 per month.

### Commercial Rate

\$5.00 to \$30.00 per month plus sewerage charge of \$2.50 to \$15.00 per month.

Water Analysis	Parts per Million
Total Solids	332
Ignition Loss	118
Hardness	175
Sulphates	85
Chlorides	4
Alkalinity	100
Nature of Alkalinity	- Bicarbonate of Lime and Magnesium
Nitrates	nil
Nitrites	nil
Iron	nil
Remarks	- Chemically this water is suitable.

## **17. GAS**

Gas is supplied under a franchise by Northland Utilities Ltd. The quality of the natural gas supplied to the consumer by the company shall have a heat content of not less than 950 b.t.u. per cubic foot.

### **Residential Rate**

Available to all customers.

First 3 MCF or less used per month - \$3.00.

All additional MCF used per month - 70c per MCF.

General Conditions - When accounts are not paid on or before the due date, the charge per MCF shall be increased by 3c per MCF and the gross rate so arrived at shall apply.

Minimum charge - \$3.00 per month.

### **Commercial and Industrial Rate**

Available to all commercial and industrial customers.

Fixed charge - \$7.00 per month.

plus

Consumption charge - 67c per MCF.

Minimum charge - \$7.00 per month.

General Conditions - This schedule is available only on annual contract which shall continue from year to year thereafter until either party shall give to the other party at least 30 days prior to the expiration of any such year a written notice of desire to terminate same, whereupon at the expiration of such year it shall cease and determine.

When accounts are not paid on or before the due date, the charge per MCF shall be increased by 3c per MCF and the gross rate so arrived at shall apply.

### **High Load Factor**

Available to consumers on annual contract whose annual consumption of gas is not less than six million cubic feet and whose total consumption during the six meter reading periods ending in May, June, July, August, September and October is not less than 40% of their total consumption for the year.

Fixed charge - \$30.00 per month.

plus - \$1.50 per MCF of maximum 12 hour demand.

Commodity charge - 56c per MCF.

Determination of Demand - The maximum 12 hour demand shall be the greatest amount of gas in cubic feet delivered in any 12 consecutive hours during the current billing period or the preceding 11 billing periods as ascertained by the company. In the case of a new customer of gas, the said maximum 12 hour demand shall be estimated by the company. The company will, upon receipt of a written request from a consumer, install a recording meter to meas-



ure the said maximum 12 hour demand established for the current period or for the previous 11 billing periods whether ascertained by the company as aforesaid or as measured by the said recording meter shall apply. Provided, however, that the company may with the consent of the consumer estimate the maximum 12 hour demand taking into consideration such factors as the effect of the consumer's demands for gas upon the company's peak load or any other relevant factor.

Terms of contract - One year and thereafter until terminated by 30 days written notice.

**18. L.P. GAS**

Heat value - 2,521 b.t.u. per cu. ft. at 60° F.  
100 lb. cylinders - \$6.50.  
Bulk - 18c per gallon.  
Storage facilities - 1,500 gallons.

**19. DIESEL FUEL**

Heat value - 135,000 to 140,000 b.t.u. gallon at 60° F.  
Winter grade - 21c per gallon.  
Summer grade - 21c per gallon.  
Storage capacity - 24,000 gallons.

**20. COAL**

Coal is secured from the Drumheller, Coalspur and Wabamun coal fields.  
Prices per ton delivered:

<b>Location of Mine</b>	<b>B.T.U.</b>	<b>Stoker</b>	<b>Nut</b>	<b>Lump</b>
Drumheller	11,000		\$14.00	\$18.00
Coalspur	12,500		15.00	19.00
Wabamun	9,600	\$12.00		

**21. LOCAL RESOURCES**

Straw, cereal grain, dairy products, poultry, eggs, horses, cattle, sheep, hogs, honey, sand and gravel, gas and oil, forage crops, seeds.

**22. GOVERNMENT OFFICES AND SERVICES**

Federal - Post Office, Veteran's Land Act Officer.

Provincial - Treasury Branch, Alberta Government Telephones, Department of Public Works.

Municipal - Village Hall (housing Secretary-Treasurer), Fire Hall.

### 23. HEALTH SERVICES

There is no hospital in the village, the nearest being in Spirit River, six miles west. Doctors and dentists are also located in Spirit River.

The Grande Prairie Health Unit calls monthly and maintains a sub-office in the village.

### 24. PROFESSIONAL AND SKILLED PERSONAL SERVICES

(excluding Health Services)

Type of Service	No. of Establishments
Beauty Parlor	1
Barber Shop	1

### 25. TRANSPORTATION

Northern Alberta Railway - twice weekly, Edmonton to Dawson Creek, B.C., via Rycroft.

Canadian Coachways - daily from Edmonton to Peace River via Rycroft.

Local truck - daily service to and from Grande Prairie and Edmonton.



The Community Rink at Rycroft serves both town and district curlers

**26. NEWSPAPERS**

Nil.

**27. COMMUNICATIONS**

Northern Alberta Telegraphs, Post Office, Alberta Government Telephones.

Nearest Radio Station - Grande Prairie CFGP.

**28. FINANCIAL FACILITIES**

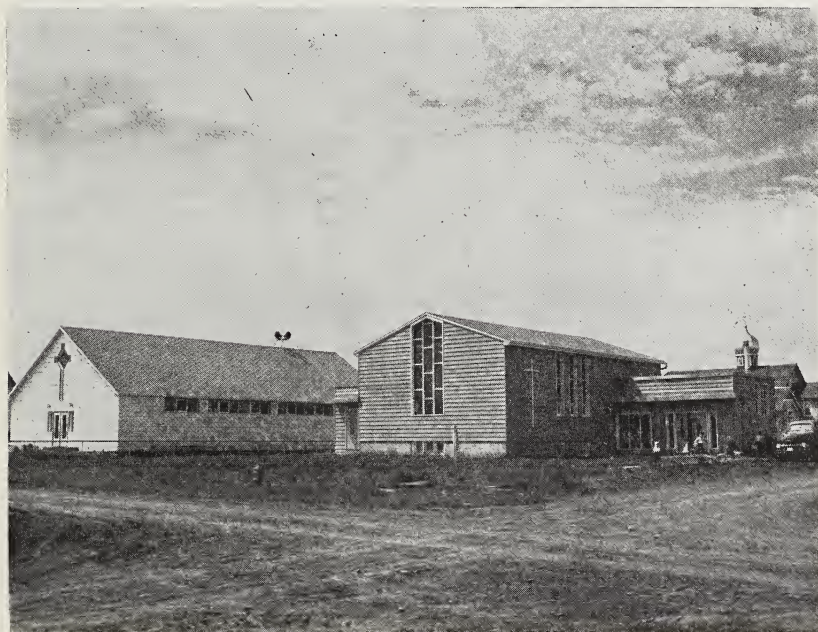
Alberta Treasury Branch Agency.

**29. HOTELS**

	<b>No. of Rooms</b>	<b>Single Rate</b>	<b>Beer License</b>
Rycroft	16	\$1.75 up	yes

**30. TOURIST CAMPS**

	<b>No. of Units</b>	<b>Grade</b>	<b>Rate</b>
LucKey L Suite-Motel	9	4 Star	\$5.00 up



Several churches cater to the religious needs of the community

**31. CHURCHES**

United, Greek Catholic, Roman Catholic, Greek Orthodox.

**32. LODGES AND SERVICE CLUBS**

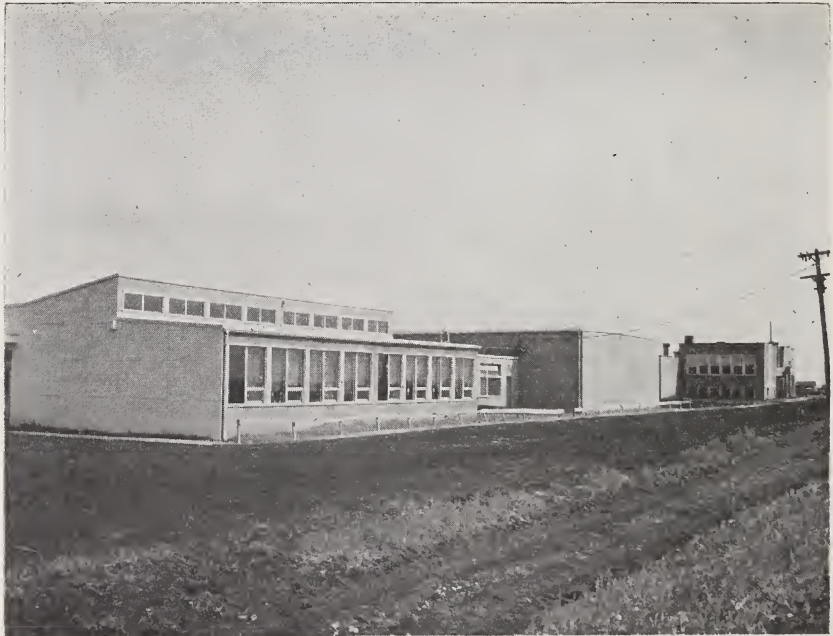
Elks, Royal Purple, Board of Trade, Canadian Legion.

**33. SOCIETIES AND ASSOCIATIONS**

Athletic Association, Agricultural Society, Red Cross Society, Curling Association, Catholic Men's Club, Women's Church Organization, Co-op Livestock Shipping Association.

**34. EDUCATION**

The Rycroft schools are a unit of the Spirit River School Division No. 47. Grades 1 to 12 are taught along with the following optional subjects: Typing, Music, Art, Drama. High school students are transported to Spirit River for Home Economics and Vocational Agriculture.



Old and new schools are side by side in Rycroft



The school population is made up as follows:

	<b>Grades</b>	<b>No. of Teachers</b>	<b>No. of Pupils</b>
Elementary	1 - 6	6	171
Junior High	7 - 9	3	84
High	10 - 12	3	62

### **35. THEATRES AND HALLS**

	<b>Capacity</b>	<b>Stage</b>	<b>Piano</b>
Athletic Association Hall	350	yes	yes

### **36. CULTURAL ACTIVITIES**

One four piece local orchestra.

Music, Art and Drama at the school.

### **37. YOUTH ACTIVITIES**

Boys - Tuxis, Trail Rangers, 4 H Club.

Girls - C.G.I.T., Explorers, 4 H Club.

### **38. SPORTS**

Baseball (senior and junior), hockey (senior and junior), softball (ladies' and men's), curling.

Facilities - Covered curling rink with four sheets natural ice, open air hockey and skating rink, baseball diamond, schoolgrounds for playgrounds.

### **39. FAIRS**

Sports Day only.

### **40. HISTORIC SITES**

Dunvegan Mission - 13 miles north.

### **41. CO-OPERATIVES**

United Grain Growers, Alberta Wheat Pool, Co-op General Store, Co-op Livestock Shipping Association, Co-op Farm Machinery Distributor, U.F.A. Oil Distributor, Rycroft Credit Union.

## 42. INDUSTRY AND BUSINESS

Type of Industry or Business	No. of Establishments	Producer or Manufacturer	Wholesale	Retail	Type of Industry or Business	No. of Establishments	Producer or Manufacturer	Wholesale	Retail
Auctioneer	1	—	—	—	Hardware	1	—	—	1
Auction Mart	1	—	—	—	Hotel	1	—	—	—
Bank	1	—	—	—	Implements (farm)	4	—	—	4
Barber	1	—	—	—	Insurance & Real Estate	1	—	—	—
Beauty Parlor	1	—	—	—	Iron Works	1	1	1	—
Building Contractor	1	—	—	—	Lumber Yard	1	—	1	1
Building Supplies	1	—	—	1	Milk Distributor	1	—	1	1
Blacksmith	1	1	—	1	Motel	1	—	—	—
Butcher	1	—	—	1	Oil Distributors	2	—	2	—
Cartage Delivery	1	—	—	—	Painter & Decorator	1	—	—	—
Creamery	1	1	1	1	Planing Mill	1	1	1	—
Coal Dealer	1	—	—	1	Propane Gas Dist.	1	—	—	1
Electrical Appliances	1	—	—	1	Restaurants	3	—	—	—
Electrical Contractor	1	—	—	—	Truck Transports	2	—	—	—
Garages and Service Stations	4	—	—	4	Welding & Machine Shop	1	1	—	1
Grain Elevators	3	(Total cap. 200,000 bushels)			Woodworking	1	1	—	1
General Stores	4	—	—	4					

## 43. SITES

The village has no property to sell but property along highway and rail-way can be secured from private owners.

## 44. INDUSTRIAL DEVELOPMENT

The production of grain for cash sale is the major farm enterprise in the Rycroft area. The production of grass and legume seed is important; however livestock, especially cattle and hogs is increasing. There is little dairying.

In 1956 the average size of farm exceeded 400 acres, 75% of which was owned by the operator. Two hundred and sixty-five acres were improved. The area in principal crops was as follows: wheat 41 acres, oats 27 acres, barley 79 acres, flaxseed 9 acres, and tame hay including seed crops 24 acres. The average area in summerfallow and improved pasture was 70 and 8 acres respectively.

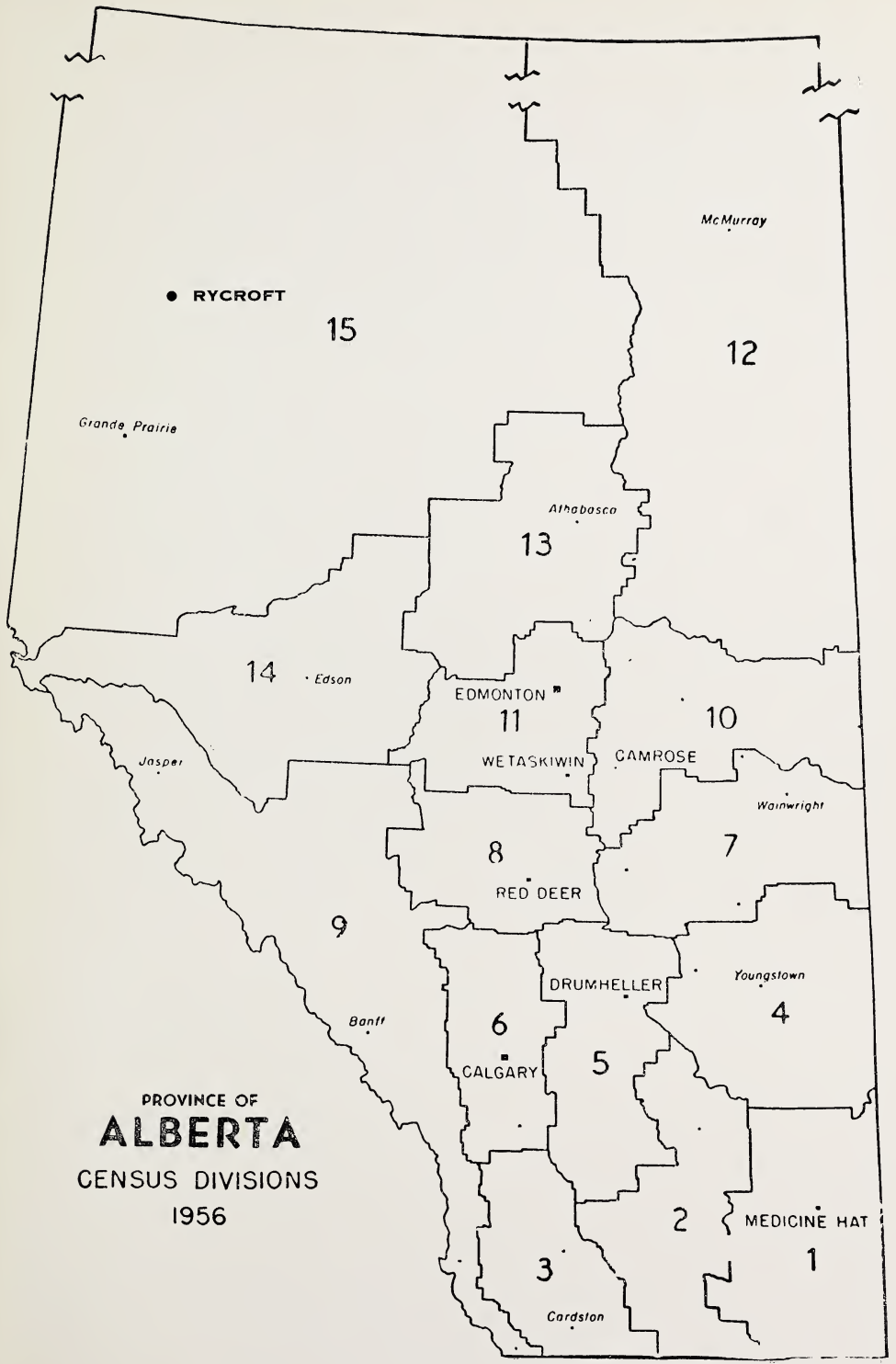
## 45. TRADING AREA

North 15 miles; West 15 miles; South 15 miles; East 27 miles.

## 46. POPULATION

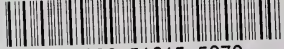
Trading area population, 1961 Dominion Census - 5,860.

Village population, 1961 Dominion Census - 500.



PROVINCE OF  
**ALBERTA**  
 CENSUS DIVISIONS  
 1956

National Library of Canada  
Bibliothèque nationale du Canada



3 3286 51615 5070

