

B
0
0
0
0
1
7
3
8
7
2



UC SOUTHERN REGIONAL LIBRARY FACILITY

Trans-Mississippi and International Exposition



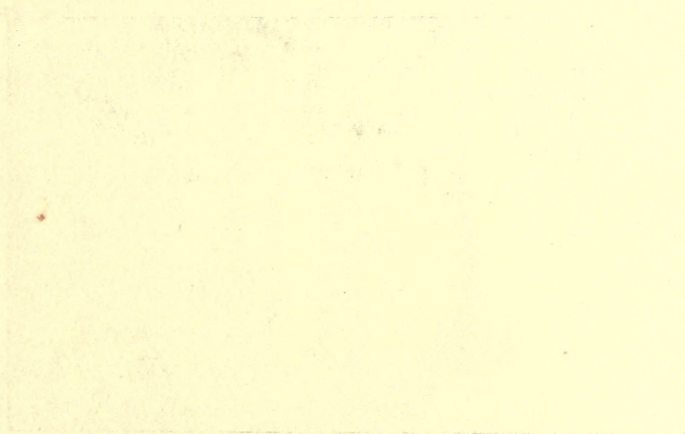
California
Regional
Facility

Omaha, Nebraska, 1898.



PUBLISHED BY F. A. RINEHART, OFFICIAL PHOTOGRAPHER.

THE UNIVERSITY OF CHICAGO
LIBRARY



THE UNIVERSITY OF CHICAGO LIBRARY

VIEWS

....OF THE....

TRANS-MISSISSIPPI AND INTERNATIONAL EXPOSITION

.. HELD AT ..

OMAHA, NEBRASKA,

JUNE 1ST TO NOVEMBER 1ST, 1898.

.....PUBLISHED BY.....

F. A. RINEHART, OFFICIAL PHOTOGRAPHER.

COWAN LIBRARY, 1936

M 12-30-44

C1



304780

COPYRIGHT 1936
P. E. BINEHART
D. New York, N.Y.

OPENING DAY, JUNE 1st, 1898.



COPYRIGHT 1898.
F. B. THOMAS

BIRD'S-EYE VIEW GRAND COURT

MANZ
CHICAGO

BIRD'S-EYE VIEW OF GRAND COURT.



GOVERNMENT BUILDING.



NEBRASKA STATE BUILDING.



MINES AND MINING BUILDING.



KNEHART
PHOTO.

ILLINOIS BLDG.

MANZ
CHICAGO
No 12

ILLINOIS STATE BUILDING.





STREETS OF ALL NATIONS.



COPYRIGHT 1896.
F. A. RINEHART,
OMAHA, NEB.

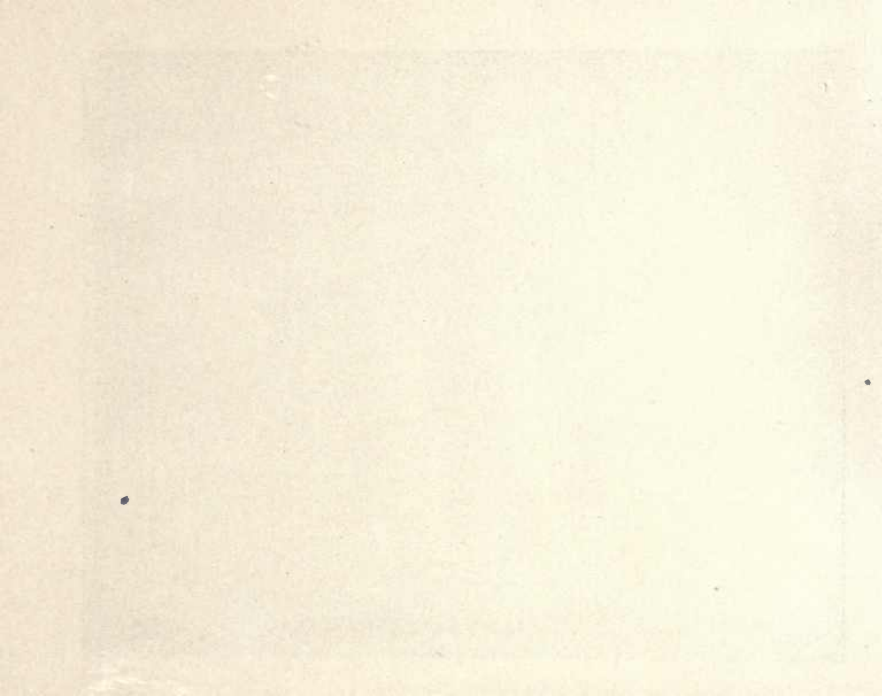
FOUNTAIN OF NEPTUNE

№37

FOUNTAIN OF NAUTILUS.



KANSAS STATE BUILDING.





SECTION IN FINE ARTS BUILDING.



SECTION IN FINE ARTS BUILDING.



SECTION OF GRAND COURT FROM GOVERNMENT BUILDING.



COPYRIGHTED 1898
BY F. A. RINEHART, OMAHA.

ADMINISTRATION ARCH.

NO. 3

ADMINISTRATION ARCH.



COPYRIGHTED 1898
BY F. A. R. NEHART, CHICAGO.

ENTRANCE, AGRICULTURAL BLDG.

NO 2

ENTRANCE, AGRICULTURAL BUILDING.



COPYRIGHT 1898.
P. H. WILSON, ART.
GRAND

HORTICULTURE BLDG.

MANZ
NEW YORK

HORTICULTURE BUILDING.





COPYRIGHTED 1898
by F.A. RINEHART, OMAHA.

FINE ART BLDG.

MANX
REPROD. BY
M.D. 4

FINE ARTS BUILDING.



IOWA BUILDING—Dedicated June 23, 1898.



COPYRIGHT 1898
F.A. RICHART, OMAHA.

BRIDGES & ARCH OF STATES

11357

BRIDGES AND ARCH OF STATES.



Copyright 1898.
F. A. KIRKHAM, CHICAGO.

LIBERAL ARTS BLDG.

10335

LIBERAL ARTS BUILDING.



MACHINERY AND ELECTRICITY BUILDING.



EAST MIDWAY.



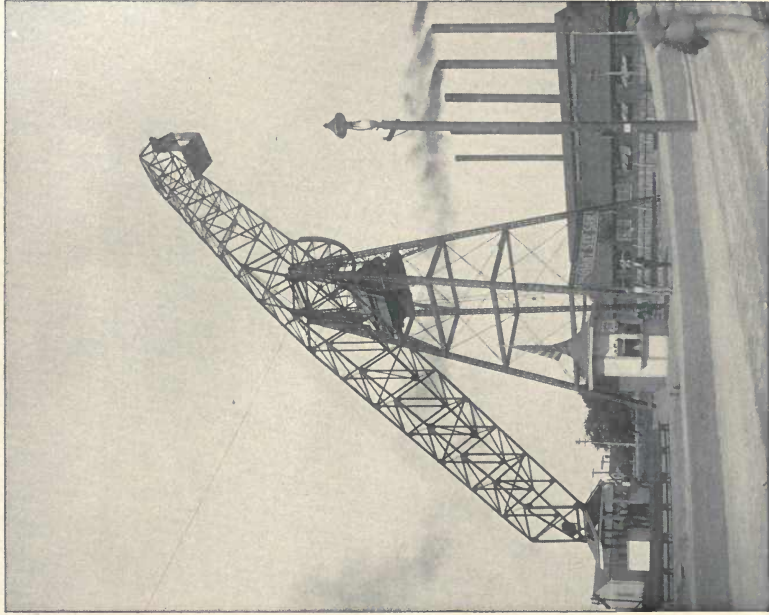
NORTH MIDWAY.



WISCONSIN BUILDING.



MINIATURE RAILWAY—Smallest in the World—Branch of the Union Pacific R. R.



THE GIANT SEE-SAW.—225 feet high.



COPYRIGHT 1938
F. A. HARTMAN

MIDWAY S. TO ADMINISTRATION ARCH

NE356

MIDWAY SOUTH TO ADMINISTRATION ARCH.



EAST HALF GRAND COURT.—NGHT.



AGRICULTURE BUILDING.



Copyright 1938
P. H. RICHMOND, PHOT.

U. S. GOVERNMENT BUILDING, (NIGHT).

17286

U. S. GOVERNMENT BUILDING—NIGHT.



MANUFACTURES BUILDING.



GEORGIA STATE BUILDING.



RICHARD
PHOTO.

IN CHINESE VILLAGE.

no 160

IN CHINESE VILLAGE.



LADIES' DRAWING ROOM—MINES AND MINING BUILDING.



COPYRIGHT BY
F. A. PINCHART
ST. LOUIS, 1904

NO 6

SECTION OF GRAND COURT.



COPYRIGHT 1898
F. A. PINENART, OMAHA

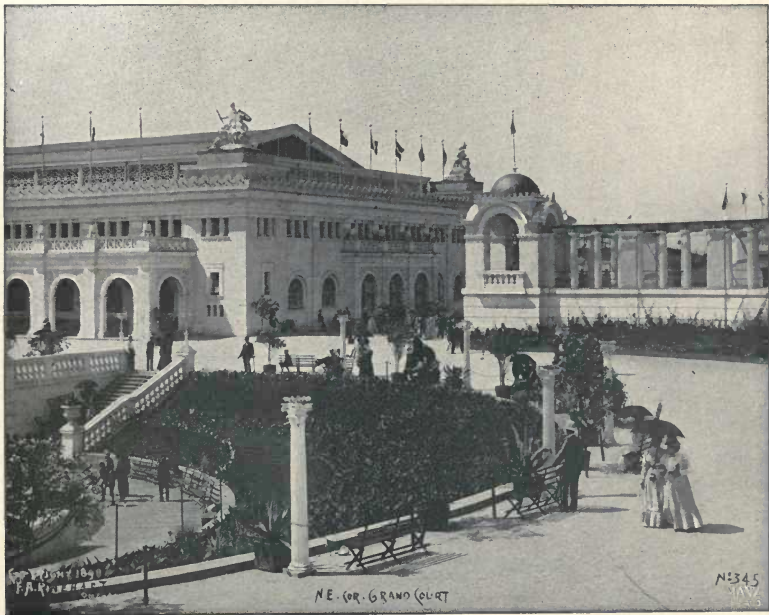
COURT - FINE ARTS BLDG.

70155

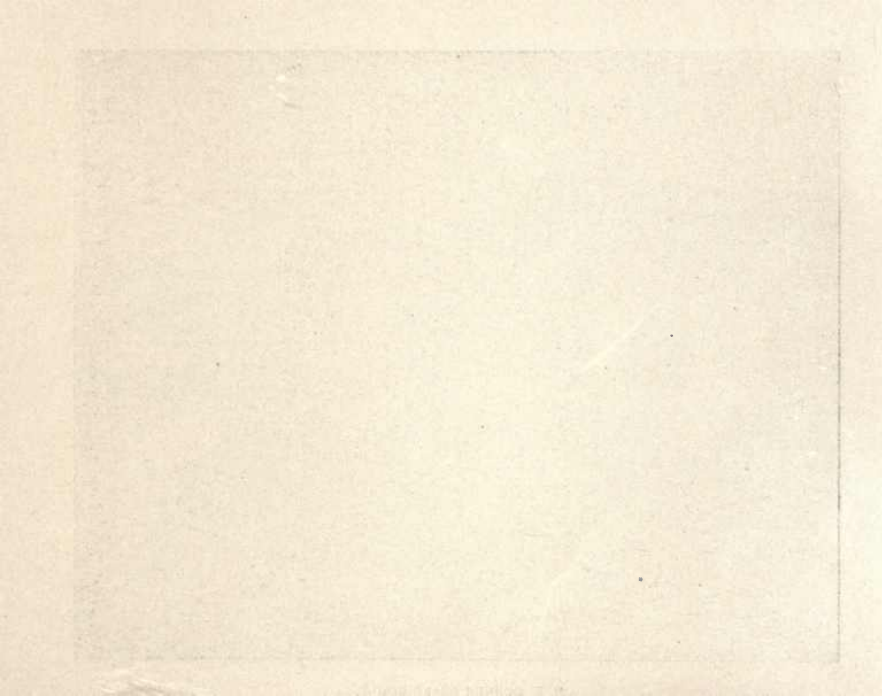
COURT, FINE ARTS BUILDING.



NORTH FROM ADMINISTRATION ARCH.



N. E. CORNER GRAND COURT.



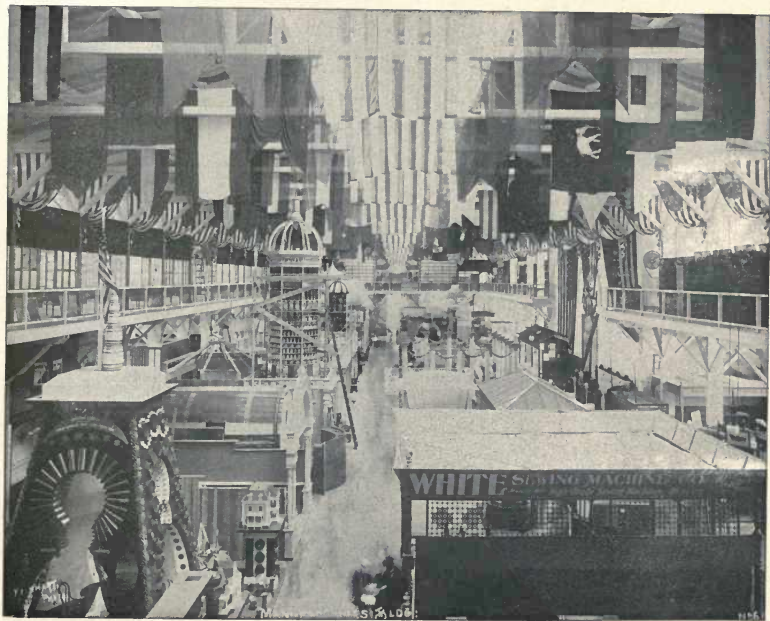


COPYRIGHT 1895.
F. A. RINEHART
CHICAGO.

GRAND COURT; LOOKING WEST, (NIGHT)

1195.

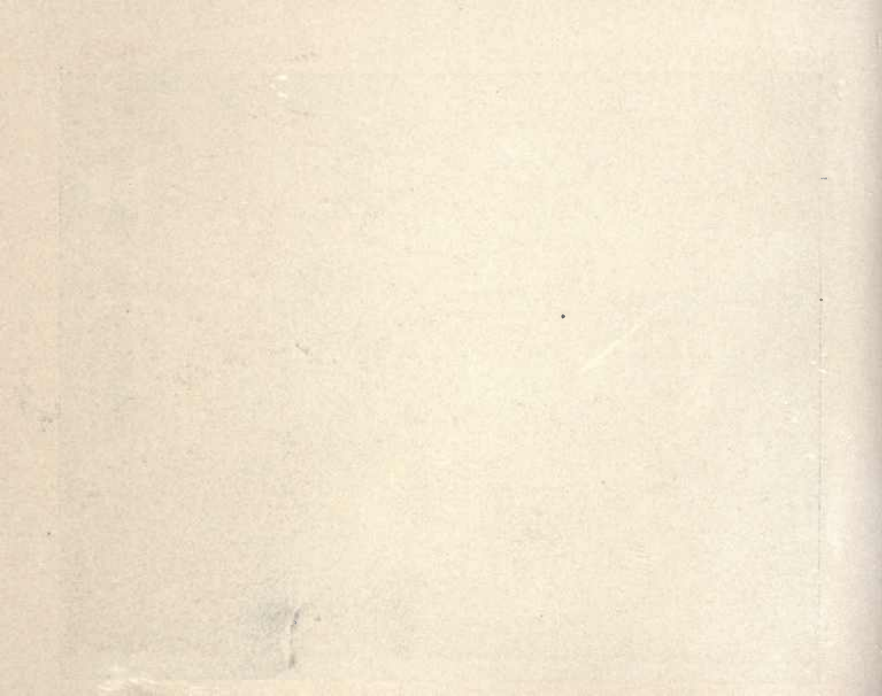
GRAND COURT—NIGHT.

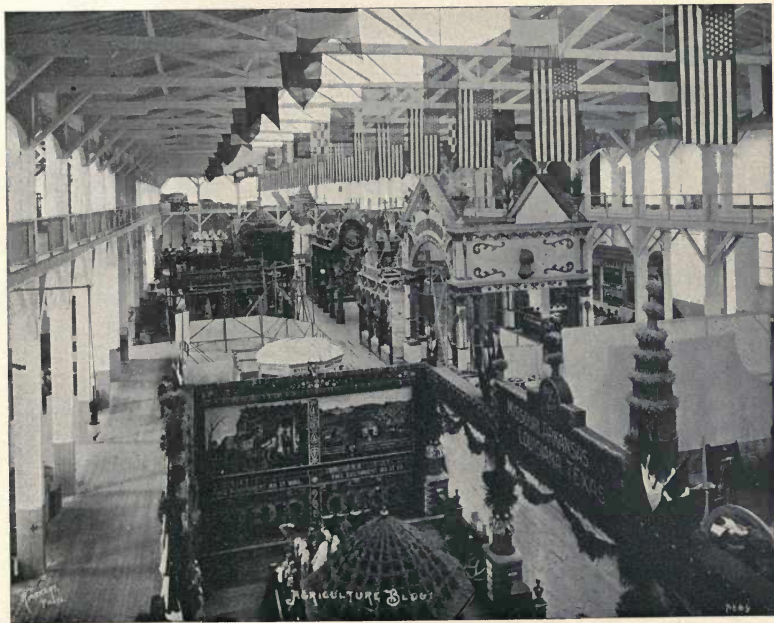


INTERIOR OF MANUFACTURES BUILDING.

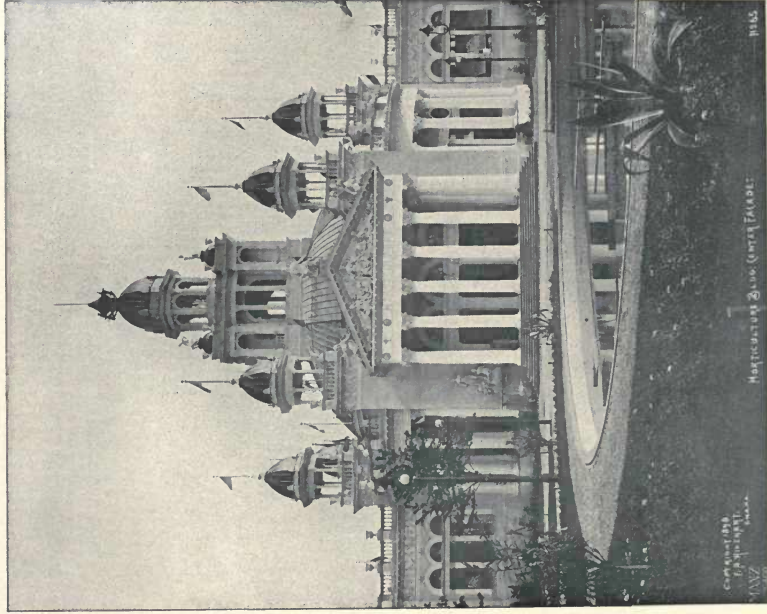


AGRICULTURE BUILDING AND ADMINISTRATION ARCH.





INTERIOR OF AGRICULTURE BUILDING.

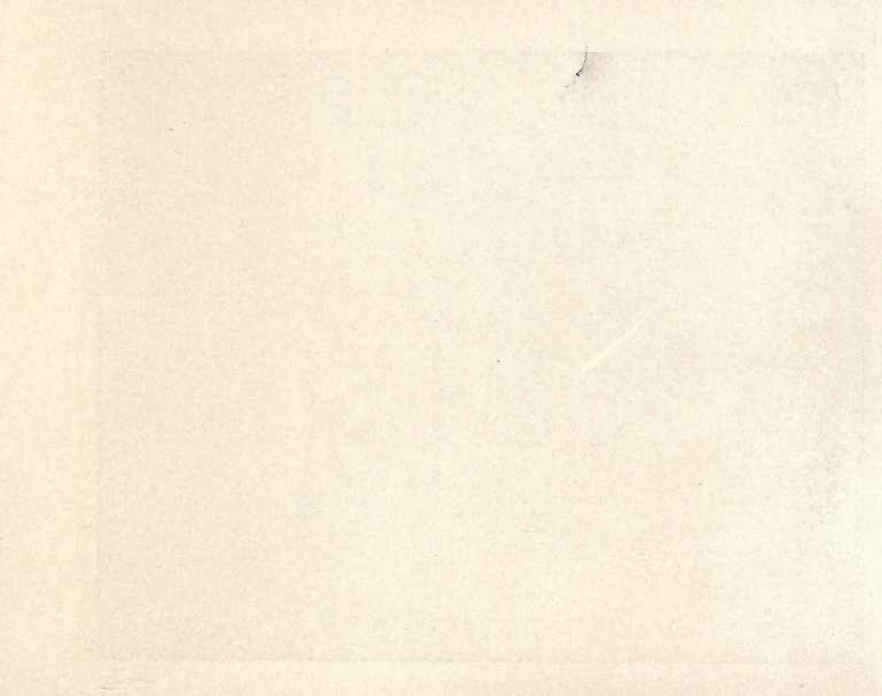


Copyright 1939
Photograph
by
MAX
1939

Horticulture Building, Santa Fe, N.M.

11165

MAIN ENTRANCE, HORTICULTURE BUILDING.

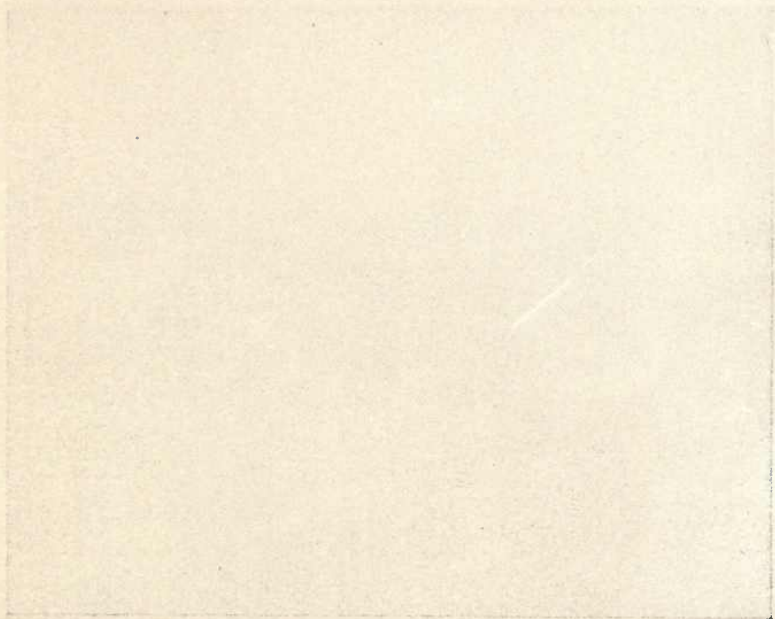




STATE BUILDINGS

1072

GROUP OF STATE BUILDINGS.





GERMAN VILLAGE.



Copyright 1893
C. F. G. HART
MADE IN U.S.A.

COURT, WEST END.

No 5

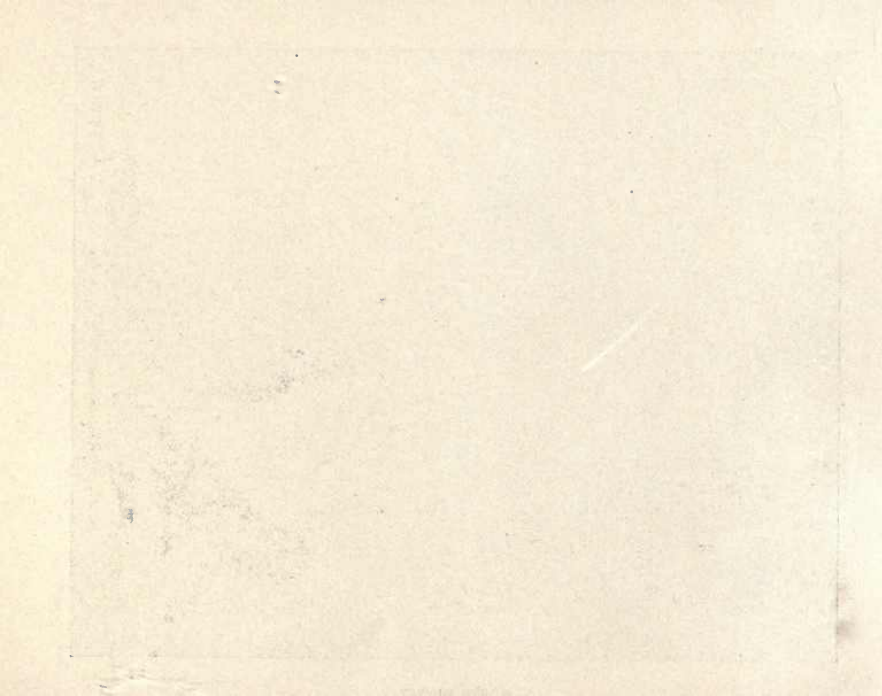
GRAND COURT—WEST END.



COLONNADE.



NORTH MIDWAY.





"A WORDLESS FAREWELL"—By R. Lorenz—In Fine Arts Building.

Copyrighted.

304780

University of California
SOUTHERN REGIONAL LIBRARY FACILITY
305 De Neve Drive - Parking Lot 17 • Box 951388
LOS ANGELES, CALIFORNIA 90095-1388

Return this material to the library from which it was borrowed.

QUARTER LOAN

OCT 08 2002

LIBRARY

UC SOUTHERN REGIONAL LIBRARY FACILITY



B 000 017 387 2

UNIVERSITY OF CALIFORNIA
AT
LOS ANGELES
LIBRARY