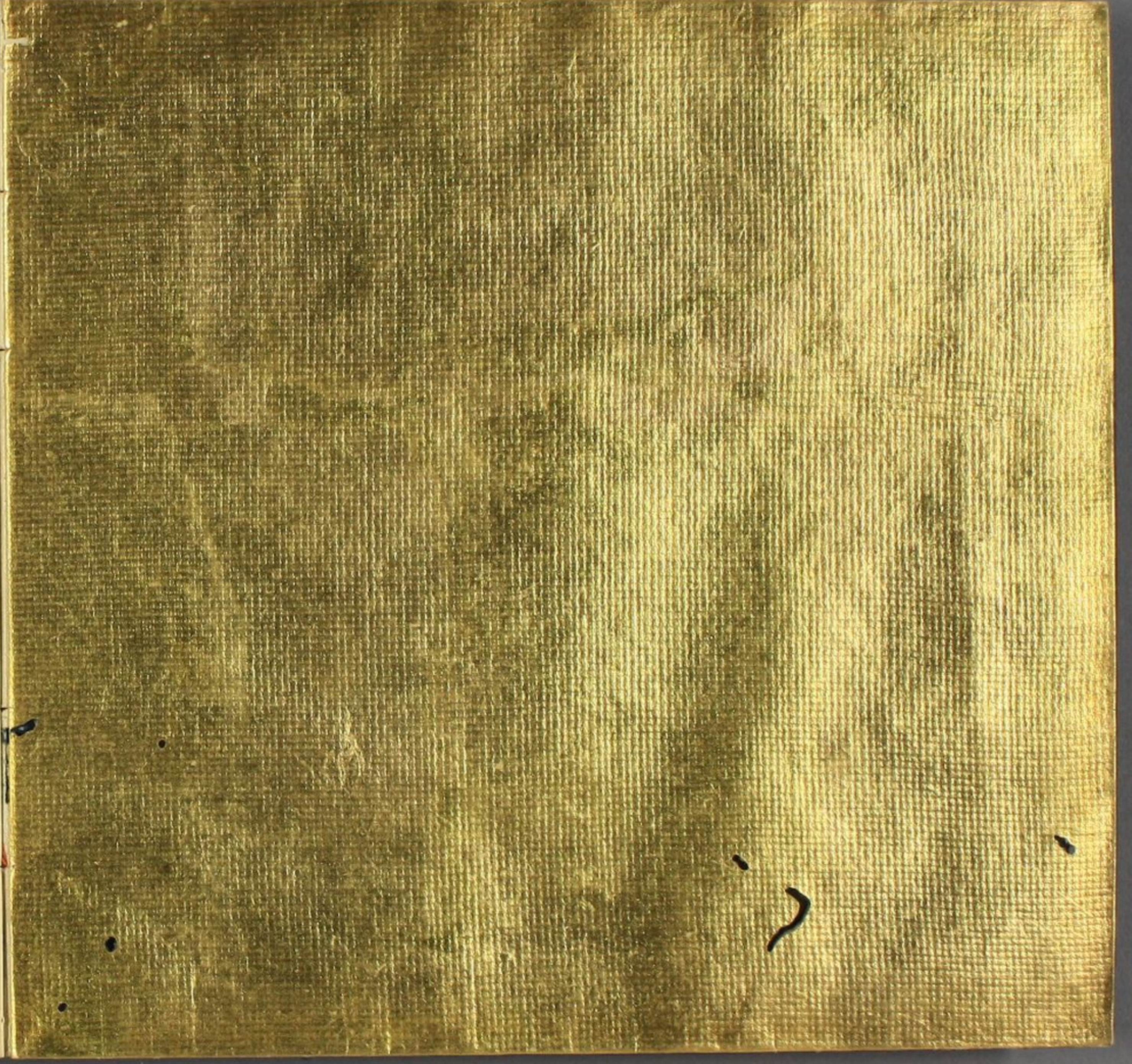


天
下
第
一
書



Handwritten text in Arabic script, consisting of approximately 12 lines of dense, cursive writing.

Handwritten text in Arabic script, consisting of approximately 12 lines of dense, cursive writing.

Handwritten text in Arabic script, consisting of approximately 14 lines of dense cursive writing.

Handwritten text in Arabic script, consisting of approximately 14 lines of dense cursive writing.

Handwritten text in Arabic script, consisting of approximately 14 lines of dense, cursive writing.

Handwritten text in Arabic script, consisting of approximately 14 lines of dense, cursive writing.

Handwritten text in Arabic script, consisting of approximately 14 lines of dense, cursive writing.

Handwritten text in Arabic script, consisting of approximately 14 lines of dense, cursive writing.

Handwritten text in a cursive script, likely a letter or document, written on the left page of an open book. The text is arranged in approximately 12 horizontal lines, flowing from right to left across the page. The ink is dark and the paper shows signs of age.

Handwritten text in a cursive script, likely a letter or document, written on the right page of an open book. The text is arranged in approximately 12 horizontal lines, flowing from right to left across the page. The ink is dark and the paper shows signs of age.

Handwritten text in a cursive script, likely a letter or a page from a manuscript. The text is written in a fluid, connected style across approximately 12 lines.

Handwritten text in a cursive script, continuing from the previous page. The text is written in a fluid, connected style across approximately 12 lines.

Handwritten text in a cursive script, likely a letter or document. The text is written in a fluid, connected style across approximately 12 lines. The ink is dark and the paper is aged and yellowed.

Handwritten text in a cursive script, continuing from the previous page. The text is written in a fluid, connected style across approximately 12 lines. The ink is dark and the paper is aged and yellowed.

Handwritten text in a cursive script, likely a historical document or manuscript, written on the right page of an open book. The text is arranged in approximately 12 horizontal lines. A red vertical mark is visible on the left edge of this page, near the gutter.

Handwritten text in a cursive script, likely a historical document or manuscript, written on the left page of an open book. The text is arranged in approximately 12 horizontal lines, mirroring the layout of the right page.

Handwritten text in Arabic script, consisting of approximately 14 lines of dense, cursive writing.

Handwritten text in Arabic script, consisting of approximately 14 lines of dense, cursive writing.

Handwritten text in a cursive script, likely a letter or document, written on the right page of the manuscript. The text is arranged in approximately 12 horizontal lines, flowing from right to left across the page.

Handwritten text in a cursive script, likely a letter or document, written on the left page of the manuscript. The text is arranged in approximately 12 horizontal lines, flowing from right to left across the page.

Handwritten text in a cursive script, likely a historical document or manuscript. The text is written in a dark ink on aged, yellowish paper. It consists of approximately 14 lines of text, starting with a large initial character on the left side of the page.

Handwritten text in a cursive script, likely a historical document or manuscript. The text is written in a dark ink on aged, yellowish paper. It consists of approximately 14 lines of text, starting with a large initial character on the left side of the page.

Handwritten text in a cursive script, likely a letter or a page from a manuscript. The text is written in a fluid, connected style across approximately 15 lines.

Handwritten text in a cursive script, continuing from the previous page. The text is written in a fluid, connected style across approximately 15 lines.

Handwritten text in a cursive script, likely a letter or a page from a manuscript. The text is written in a fluid, connected style across approximately 12 lines.

Handwritten text in a cursive script, likely a letter or a page from a manuscript. The text is written in a fluid, connected style across approximately 12 lines.

Handwritten text in a cursive script, likely a letter or a page from a manuscript. The text is written in a fluid, connected style across approximately 12 lines.

Handwritten text in a cursive script, likely a letter or a page from a manuscript. The text is written in a fluid, connected style across approximately 12 lines.

Handwritten text in cursive script, likely a letter or document, written on the right page of the manuscript. The text is dense and fills most of the page.

Handwritten text at the top of the right page, possibly a signature or a specific heading.

Handwritten text in cursive script, likely a letter or document, written on the left page of the manuscript. The text is dense and fills most of the page.

Handwritten text in a cursive script, likely a historical document or letter. The text is written in a dark ink on aged, yellowish paper. It consists of approximately 15 lines of text, starting with a large initial letter. The script is highly stylized and difficult to decipher without a key.

Handwritten text in a cursive script, likely a historical document or letter. The text is written in a dark ink on aged, yellowish paper. It consists of approximately 15 lines of text, starting with a large initial letter. The script is highly stylized and difficult to decipher without a key.

Handwritten text in cursive script, likely a letter or document, written on the right page of an open book. The text is dense and fills most of the page.

Handwritten text in cursive script, likely a letter or document, written on the left page of an open book. The text is dense and fills most of the page.

Handwritten text in cursive script, likely a letter or document, written on the right page of an open book. The text is dense and fills most of the page.

Handwritten text in cursive script, likely a letter or document, written on the left page of an open book. The text is dense and fills most of the page.

Handwritten text in a cursive script, likely Arabic or Persian, consisting of approximately 12 lines of text.

Handwritten text in a cursive script, likely Arabic or Persian, consisting of approximately 12 lines of text.

Handwritten text in a cursive script, likely a historical document or letter. The text is written in a dark ink on aged, yellowish paper. It consists of approximately 14 lines of text, starting with a large initial letter 'D' and ending with a flourish. The script is highly stylized and characteristic of the 17th or 18th century.

Handwritten text in a cursive script, likely a historical document or letter. The text is written in a dark ink on aged, yellowish paper. It consists of approximately 14 lines of text, starting with a large initial letter 'D' and ending with a flourish. The script is highly stylized and characteristic of the 17th or 18th century.

Handwritten text in Arabic script, consisting of approximately 14 lines of dense, cursive writing.

Handwritten text in Arabic script, consisting of approximately 14 lines of dense, cursive writing.

Handwritten text in a cursive script, likely Arabic or Persian, consisting of approximately 14 lines of text.

Handwritten text in a cursive script, likely Arabic or Persian, consisting of approximately 14 lines of text.

سورة الفاتحة
بسم الله الرحمن الرحيم
الحمد لله رب العالمين
الذي هدانا لهذا
ما كنا لنهتدي لولا
هدى الله لنا
ولا لولا فضل
الله العظيم
لانا لفلان
الذي هدانا لهذا
ما كنا لنهتدي لولا
هدى الله لنا
ولا لولا فضل
الله العظيم
لانا لفلان

سورة الفاتحة
بسم الله الرحمن الرحيم
الحمد لله رب العالمين
الذي هدانا لهذا
ما كنا لنهتدي لولا
هدى الله لنا
ولا لولا فضل
الله العظيم
لانا لفلان
الذي هدانا لهذا
ما كنا لنهتدي لولا
هدى الله لنا
ولا لولا فضل
الله العظيم
لانا لفلان

Handwritten text in a cursive script, likely a historical document or letter, written on the left page of an open manuscript. The text is arranged in approximately 15 horizontal lines, flowing from right to left across the page.

Handwritten text in a cursive script, likely a historical document or letter, written on the right page of an open manuscript. The text is arranged in approximately 15 horizontal lines, flowing from right to left across the page.

بسم الله الرحمن الرحيم
الحمد لله رب العالمين
والصلاة والسلام على
سيدنا محمد وآله الطيبين
الطاهرين أجمعين
اللهم صل على محمد
وعلى آل محمد
الذين هم خير
الخلق أجمعين
اللهم صل على
سيدنا محمد
الذي هو خير
الخلق أجمعين
اللهم صل على
سيدنا محمد
الذي هو خير
الخلق أجمعين

بسم الله الرحمن الرحيم
الحمد لله رب العالمين
والصلاة والسلام على
سيدنا محمد وآله الطيبين
الطاهرين أجمعين
اللهم صل على محمد
وعلى آل محمد
الذين هم خير
الخلق أجمعين
اللهم صل على
سيدنا محمد
الذي هو خير
الخلق أجمعين
اللهم صل على
سيدنا محمد
الذي هو خير
الخلق أجمعين

Handwritten text in Arabic script, consisting of approximately 14 lines of cursive script.

Handwritten text in Arabic script, consisting of approximately 14 lines of cursive script.

Handwritten text in Arabic script, consisting of approximately 12 lines of cursive script.

Handwritten text in Arabic script, consisting of approximately 12 lines of cursive script.

Handwritten text in a cursive script, likely a form of Arabic or Persian calligraphy, consisting of approximately 12 lines of text.

Handwritten text in a cursive script, likely a form of Arabic or Persian calligraphy, consisting of approximately 12 lines of text.

قوله في قوله تعالى
وَالَّذِينَ آمَنُوا وَعَمِلُوا الصَّالِحَاتِ
سَنَجْزِيهِمْ أَجْرَهُمْ
أَكْبَرَ الَّذِي هُمْ فِيهَا
كَانُوا مُسْتَقِيمِينَ
قوله في قوله تعالى
وَالَّذِينَ آمَنُوا وَعَمِلُوا
الصَّالِحَاتِ سَنَجْزِيهِمْ
أَجْرَهُمْ أَكْبَرَ الَّذِي
هُمْ فِيهَا كَانُوا
مُسْتَقِيمِينَ

قوله في قوله تعالى
وَالَّذِينَ آمَنُوا وَعَمِلُوا
الصَّالِحَاتِ سَنَجْزِيهِمْ
أَجْرَهُمْ أَكْبَرَ الَّذِي
هُمْ فِيهَا كَانُوا
مُسْتَقِيمِينَ
قوله في قوله تعالى
وَالَّذِينَ آمَنُوا وَعَمِلُوا
الصَّالِحَاتِ سَنَجْزِيهِمْ
أَجْرَهُمْ أَكْبَرَ الَّذِي
هُمْ فِيهَا كَانُوا
مُسْتَقِيمِينَ

Handwritten text in a cursive script, likely a historical document or manuscript. The text is written in a dark ink on aged, yellowish paper. It consists of approximately 15 lines of text, starting with a large initial letter 'H' and ending with a large final letter 'H'. The script is highly stylized and characteristic of the early modern period.

Handwritten text in a cursive script, likely a historical document or manuscript. The text is written in a dark ink on aged, yellowish paper. It consists of approximately 15 lines of text, starting with a large initial letter 'H' and ending with a large final letter 'H'. The script is highly stylized and characteristic of the early modern period.

Handwritten text in Arabic script, likely a religious or historical document. The text is written in a cursive style and spans approximately 12 lines across the page.

Handwritten text in Arabic script, continuing from the previous page. The text is written in a cursive style and spans approximately 12 lines across the page.

Handwritten text in Arabic script, consisting of approximately 14 lines of cursive script.

Handwritten text in Arabic script, consisting of approximately 14 lines of cursive script.

Handwritten text in a cursive script, likely a form of Arabic or Persian calligraphy, consisting of approximately 12 lines of text.

Handwritten text in a cursive script, likely a form of Arabic or Persian calligraphy, consisting of approximately 12 lines of text.

Handwritten text in Arabic script, consisting of approximately 12 lines of cursive script.

Handwritten text in Arabic script, consisting of approximately 12 lines of cursive script.

Handwritten text in a cursive script, likely a form of shorthand or a specific dialect. The text is arranged in approximately 12 horizontal lines across the page.

Handwritten text in a cursive script, likely a form of shorthand or a specific dialect. The text is arranged in approximately 12 horizontal lines across the page.

Handwritten text in a cursive script, likely Arabic or Persian, spanning the left page of the manuscript. The text is arranged in approximately 12 horizontal lines, written from right to left. The ink is dark and the script is highly fluid and connected.

Handwritten text in a cursive script, likely Arabic or Persian, spanning the right page of the manuscript. The text is arranged in approximately 12 horizontal lines, written from right to left. The ink is dark and the script is highly fluid and connected.

Handwritten text in Arabic script, likely a religious or historical document. The text is written in a cursive style and spans the width of the page.

Handwritten text in Arabic script, continuing from the previous page. The text is written in a cursive style and spans the width of the page.

Handwritten text in a cursive script, likely a historical document or letter. The text is written in a dark ink on aged, yellowish paper. It consists of approximately 12 lines of text, starting with a large initial letter. The script is highly stylized and characteristic of the early modern period.

Handwritten text in a cursive script, likely a historical document or letter. The text is written in a dark ink on aged, yellowish paper. It consists of approximately 12 lines of text, starting with a large initial letter. The script is highly stylized and characteristic of the early modern period.

Handwritten text in Arabic script, consisting of approximately 12 lines of cursive script.

Handwritten text in Arabic script, consisting of approximately 12 lines of cursive script.

سورة الفاتحة
بسم الله الرحمن الرحيم
الحمد لله رب العالمين
الذي هدانا لهذا
ما كنا لنهتدي لولا
هدى الله لنا
ولا لولا ان
نكون من
المسلمين
الحمد لله رب العالمين
الذي هدانا لهذا
ما كنا لنهتدي لولا
هدى الله لنا
ولا لولا ان
نكون من
المسلمين

سورة الفاتحة
بسم الله الرحمن الرحيم
الحمد لله رب العالمين
الذي هدانا لهذا
ما كنا لنهتدي لولا
هدى الله لنا
ولا لولا ان
نكون من
المسلمين
الحمد لله رب العالمين
الذي هدانا لهذا
ما كنا لنهتدي لولا
هدى الله لنا
ولا لولا ان
نكون من
المسلمين

Handwritten text in a cursive script, likely Arabic or Persian, consisting of approximately 15 lines of text.



Handwritten text in a cursive script, likely Arabic or Persian, consisting of approximately 15 lines of text.

Handwritten text in a cursive script, likely a historical document or manuscript. The text is written in a dark ink on aged, yellowish paper. It consists of approximately 15 lines of text, with some lines starting with a small red mark. The script is highly stylized and difficult to decipher without a key.

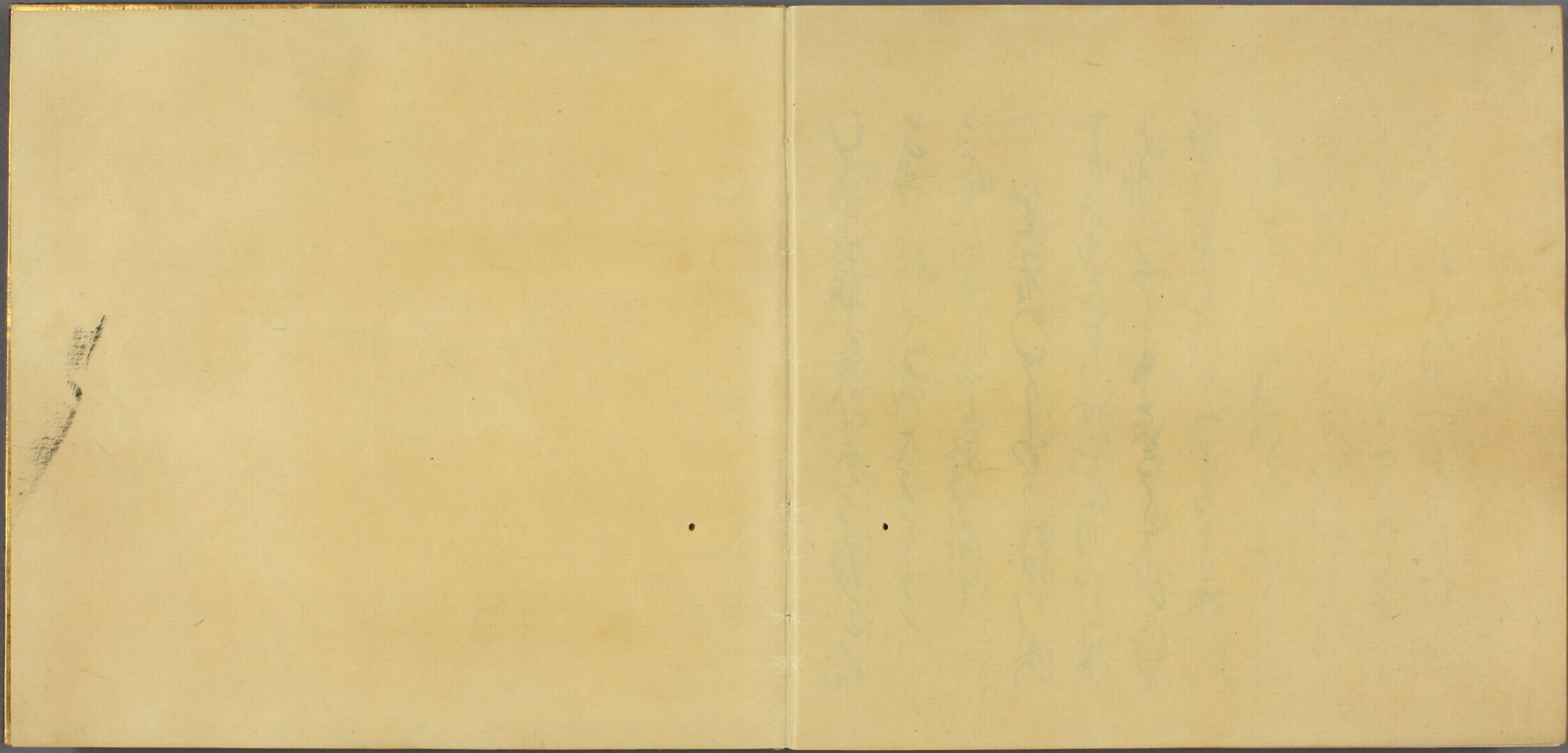
Handwritten text in a cursive script, likely a historical document or manuscript. The text is written in a dark ink on aged, yellowish paper. It consists of approximately 15 lines of text, with some lines starting with a small red mark. The script is highly stylized and difficult to decipher without a key.

Handwritten text in a cursive script, likely a historical document or letter. The text is written in a dark ink on aged, yellowish paper. It consists of approximately 15 lines of text, starting with a large initial letter. The script is highly stylized and characteristic of the Ottoman or Persian calligraphic tradition.

Handwritten text in a cursive script, likely a historical document or letter. The text is written in a dark ink on aged, yellowish paper. It consists of approximately 15 lines of text, starting with a large initial letter. The script is highly stylized and characteristic of the Ottoman or Persian calligraphic tradition.

Handwritten text in a cursive script, likely a historical document or letter. The text is written in a dark ink on aged, yellowish paper. It consists of approximately 12 lines of text, starting with a large initial letter 'D'.

Handwritten text in a cursive script, likely a historical document or letter. The text is written in a dark ink on aged, yellowish paper. It consists of approximately 12 lines of text, starting with a large initial letter 'D'.



A small, dark, irregular smudge or mark on the left page, possibly a pencil scribble or ink blot.

Faint, illegible ghosting of text from the reverse side of the right page, appearing as light blue or greyish marks.

