

## **Historic, Archive Document**

Do not assume content reflects current scientific knowledge, policies, or practices.



Plant Bountiful  
Ridge Trees  
They Bring Results

Plant Bountiful  
Ridge Trees  
They Bring Results

Sole Introdurers  
The Hope Farm Peach  
originating on Hope  
Farm, owned by H. W.  
Collingwood, Editor The  
Rural New Yorker.



Also Introdurers  
of the New Apple  
Monmouth Beauty  
America's Most  
Beautiful Apple

Growers and Distributors of the New RICHARD Apple—the all Red DELICIOUS Supreme  
The BLAXTAYMAN—a new ALL RED Staymans Winesap

Also Apple, Peach, Pear, Cherry and Plum Trees, Evergreens, Roses and  
Shrubbery and Other Small Vines

PRINCESS ANNE, MD.

Dear Friends:

I suppose that all of our patrons are expecting to find this letter chuck full of thanks to them and a lot of so called bunk but I don't want them to feel that way about it for we fellows here at Bountiful Ridge know they are fine, big-hearted conservative buyers and boy! we do appreciate this too, but we want this letter to convey some personal thoughts that can mean something to us both in the future. It surely would be nice to meet all our patrons and those who receive our catalog and price list, for personal contact can mean so much in business. It seems to take away some of the formalities which usually accompany business dealings but to meet you all personally is physically impossible so I hope I can say what I have to say as though I were at your place.

We are all interested in the future and what it holds for us. Most of us can see the clouds of depression lifting and can vision another era of prosperity to all. Whether or not this comes is more or less up to us all. If we have cooperation and pull on the same oar the old ship will speed ahead faster and faster. There never has been a time when we did not have some complaining people and there never will be such a time. The accomplishments of men are up to the individuals. The individual must decide how, when, and where to act, to insure his success. I don't think there has been the opportunity in many years for ultimate individual achievements that we have today and I believe the reliable NURSERY can have a definite part in the building of your future fortunes and happiness.

No one can question the health giving essentials contained in our many and varied fruits. Fruits are absolutely necessary for the health and happiness of all individuals, therefore, our varied fruits are always going to occupy an important place in the markets of the world. The consumption of fruits is going to increase as time passes because medical science at last realizes that fruit is our natural food and are urging the use of fruits and fruit products more and more each year. It is up to you growers to properly advertise your fruits, grow the best in flavor and appearance and prepare to reap the benefits of this naturally increasing demand for your products. Eliminate those poorer varieties. Retain only the best and market only the best so as to satisfy that natural appetite of the public for fruit. They will always come back for more if you give them something good. You must renew your plantings with young trees and plants, selected and grown properly by the Nurseryman, to keep producing the best. You must plant the best of the new varieties being introduced so as to have the best for future markets. If you don't do this you have no better chance for success than an automobile manufacturer would if he tried to continue to sell the same style car he was producing in 1925. We, as alert Nurserymen, have realized this and are trying to employ every known means of improving the quality of our stock and are constantly adding new varieties to our list which we feel are worthy of being planted.

Ornamental trees and Shrubs complete a home and make it a real place to live, bringing to you a sense of restfulness with flowers and shade trees through the Summer, and the Evergreens stand out as a thing of beauty during the cold Winter months. Aside from this, an adequate planting of Ornamentals will increase the value of your property from 10 to 40%, depending on how elaborate a planting you make. You will find a tree, shrub or evergreen for every purpose listed in this price list at unusually low prices.

Our stock has made a splendid growth this year, and we should be able to deliver as good or better stock than we have in the past. We wish to co-operate with you in every way possible to further your success. You should make every effort to plant this Fall for the good of the plants and as a saving to yourself. We will appreciate your order and will do our utmost to serve you in a satisfactory way.

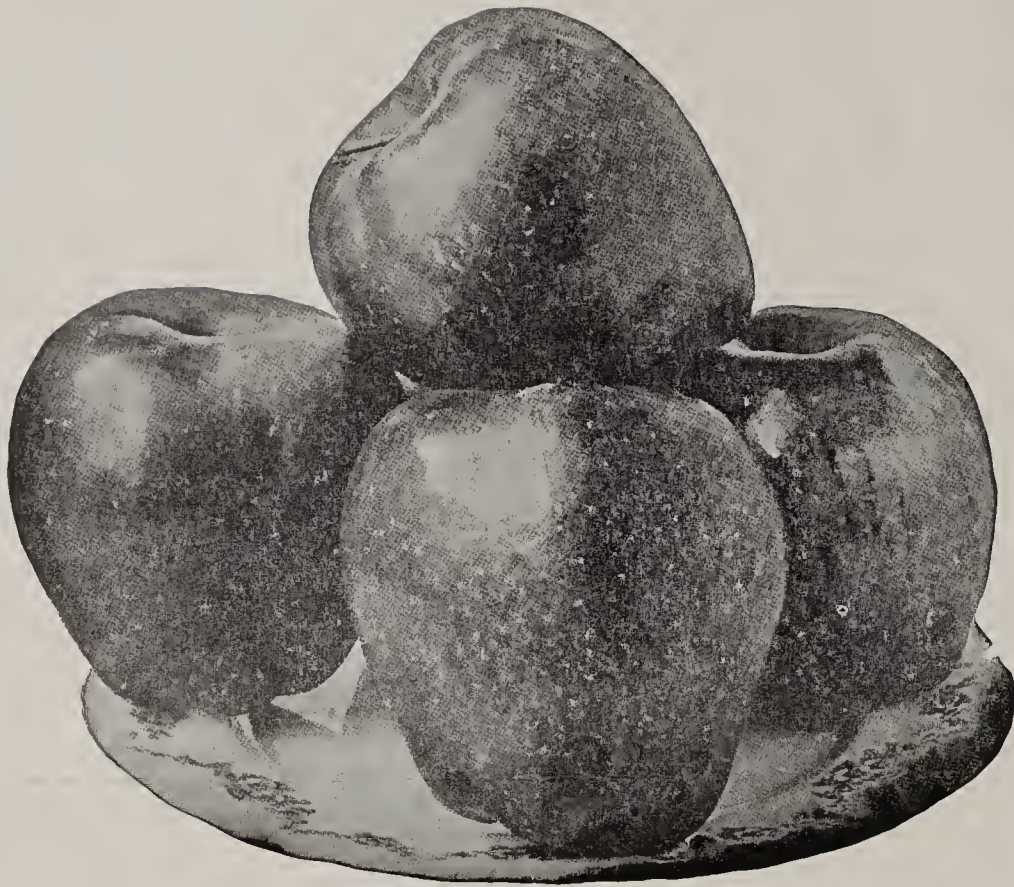
Very truly yours,

BOUNTIFUL RIDGE NURSERIES

*Homer Kemp*







# RICHARED

TRADEMARK REG. U. S. PAT. OFF.

## The DELICIOUS *Supreme*

THE DELICIOUS APPLE IS CONCEDED TO BE THE MOST POPULAR VARIETY IN CULTIVATION TODAY AND IT LEADS IN GIVING TO THE APPLE INDUSTRY NEW AND IMPROVED BUD VARIATIONS. THE RICHARED, IN OUR ESTIMATION, IS ONE OF THE BEST NOW BEING OFFERED BY THE VARIOUS NURSERIES IN THE U. S. THE COLOR MAY NOT BE AS DARK AS SOME OTHERS BUT THE CLEAR BRIGHT RED COMPLETELY COVERING THE FRUIT BEFORE IT ACTUALLY MATURES SHOULD MAKE IT THE FAVORITE. IT IS PAST THE EXPERIMENTAL STAGE NOW AND IS FRUITING GENERALLY IN THE U. S. AND HAS PROVEN ITSELF TO BE JUST WHAT WE CLAIM.

Think of the increased profits such an apple would give to you for you can grade out practically 100% extra fancy fruit with the RICHARED DELICIOUS. The tree characteristics are the same as the old Delicious but the apple is a clear bright red. You can pick it earlier; you can keep it longer; you can ship it to distant markets more successfully; you have no loss from drop apples and you have an apple that will sell more readily on any market. YOU HAVE AN APPLE THAT WILL SELL AT AN ADVANCE PRICE AT ALL TIMES OVER THE OLD DELICIOUS. Considering these points of merit we say without hesitation that anyone desiring the Delicious type of fruit should plant the RICHARED DELICIOUS. WE SHALL HAVE A FINE SUPPLY OF BOTH ONE AND TWO YEAR TREES OF THE RICHARED AND WE WOULD ADVISE ORDERING EARLY FOR THERE IS A GENERAL SHORTAGE OF APPLE TREES THIS YEAR. For more detailed description send for our complete catalogue.

## FALL PLANTING

Our years of experience in the Nursery and orchard business has taught us that every one should do their planting in the FALL wherever it is possible for them to do so and their climatic conditions are not too severe and where they can secure well matured stock to plant. We do not recommend that plantings be made on land which is inclined to heave from the effects of frost unless the plants can be heavily mulched or are protected by drawing a mound of earth about them to help hold them. We do especially recommend the planting of fruit and shade trees and small berry plants except Strawberry plants. The roots will heal where cut when dug, the winter rains will settle the dirt well about the roots, the tree will be ready to start with the first movement of sap in the spring and you will have 25% more growth and almost a perfect stand on the planting. Then too you will have more time to make the planting in the fall after you have harvested your fruit and are awaiting pruning time. By fall planting time we mean any time that the ground is not frozen during the fall and winter months. If you get a cold snap and then it warms up go ahead and do your planting but in late planting be sure and finish each tree as it is planted and draw a mound of earth about it 12 inches tall to protect it against swaying by winter winds. In all cases where fall planting is done do not trim your trees 'till spring. Remember it is essential that the stock be well matured and if you are dealing with the right kind of a nursery they won't ship 'till the stock is right. We are sure you will find fall planting much to your advantage and we will do our part to supply you good stock, so let the order come forward now so we can prepare to ship at the right time.

### NEW PRICES ON RICHARED DELICIOUS AND BLAXTAYMAN TREES FOR FALL 1933

	ONE YEAR				
	1-11	12-24	25-49	50-99	100-499
4-6 ft., 1 yr.....	\$.80	\$.70	\$.60	\$.50	\$.45
3-4 ft., 1 yr.....	.75	.65	.55	.45	.40
2-3 ft., 1 yr.....			.40	.30	.25
	TWO YEAR				
	1-11	12-24	25-49	50-99	100-499
5-7 ft., 2 yr., 11-16 in. up..	\$1.00	\$.80	\$.65	\$.55	\$.50
4-5 ft., 2 yr., 9-16-11-16 in.	.90	.70	.55	.45	.40
3-4½ ft., 2 yr., 8-9-16 in...	.60	.50	.40	.30	.20

These prices are for Richared and Blaxtaylor trees delivered to you. Further discounts allowed on large quantities. Write to us if you are interested in planting some of these, the finest of all recent introductions of fruits. Give quantities and grade desired.

## BLAXTAYMAN

(Trade-Mark)

Just the apple the fruit growers have been wanting for years. A full bright red apple with the same quality as the famous Staymans Winesap.

NO ONE CAN QUESTION THE POPULARITY OF THE STAYMANS WINESAP ON THE MARKETS AND LACK OF COLOR WAS ITS CHIEF FAULT. NOW THIS HAS BEEN OVERCOME WITH THE INTRODUCTION OF THE BLAXTAYMAN. THE COLOR IS EQUAL TO THE SOLID RED OF THE JONATHAN AND THE TREES AND BUDS HAVE THE SAME HARDY CHARACTERISTICS AS THE OLD STAYMANS.

No grower can afford to pass up these tried and proven new sports we are offering. They will mean added profits to them in the future. They can be compared with a new model automobile, the same dependable tree with an improved finished product. The fruit of these new varieties with its increased color will sell for more money and you will be able to sell it when the older, poorer colored type of the same varieties will be a drag on the markets. PREPARE TO GIVE THE CONSUMING PUBLIC THE BEST WITHOUT ANY ADDED EXPENSE TO YOU. The difference in price of the tree will be realized from the sale of the first bushel of fruit harvested. Every alert grower should readily see the many advantages of these improved fruits and plant this year for the future markets and bring his orchard up to date. Because of the extremely heavy sale on Blaxtaylor last spring our supply is very limited this year. We have only a few 2 yr. trees but do have some splendid 1 yr. stock which will grade 4 to 6 ft. high. Prices remain the same so order now and be sure of getting what you want.



# THE RED ROME BEAUTY SPORTS

## GALLIA BEAUTY - OHIO RED ROME - DARK RED ROME

The advantages of either growing highly colored fruit or growing green colored apples in the past few years has been clearly demonstrated to all growers, and it is with this in mind we want to call your attention to the above sports of the Rome Beauty Apple. Possibly where the Rome Beauty thrives no other apple brings as much return to the grower as this variety of apple, and with increased color the return would be much greater. There have been many variations of the Rome Beauty in color and quality, but few of them have been worth while. The Gallia Beauty Red Rome, Ohio Red Rome and Dark Red Rome seem to be the only ones to stand the test. We mean by this they have retained the size and texture of the old Rome, which is one of its valuable assets, at the same time having the same vigorous and productive tree. There is little difference in the Gallia Beauty and the genuine Ohio Red Rome, possibly the Gallia Beauty being slightly larger in size. Both are about equal in color, being a clear bright red, without the usual Rome Beauty stripe. The trees bear unusually young, and every planter will find it superior to the regular Rome Beauty. The Dark Red Rome should be planted on very light soil or on dry, high elevation, or else it will get too dark for the Eastern grower. We have received the grafts for our trees from the original trees in Ohio, and we know they are true-to-name, and we can recommend these improved Rome Beauty varieties to all our patrons where they want more color on the Rome Beauty type of apple.

WE OFFER THEM AT THE SAME PRICE AS ALL OTHER STANDARD VARIETIES.

## GOLDEN JUBILEE PEACH

A Development of the New Jersey Experiment Station - the Outstanding Peach of All Recent Introductions.

A HIGH QUALITY, EARLY, YELLOW, FREESTONE PEACH. THE VALUE OF THIS PEACH TO EASTERN AND SOUTHERN GROWERS CANNOT BE ESTIMATED. A TYPICAL ELBERTA TYPE FRUIT, HIGHLY COLORED, RIPENING BEFORE CARMAN OR ABOUT FOUR WEEKS BEFORE THE REGULAR ELBERTA.

The BOUNTIFUL RIDGE NURSERIES was the first nursery to offer this peach to the planters outside of the State of New Jersey. We have watched it carefully since its introduction and it continues to show unusual merit, and today stands superior and without an equal for a peach of its season. The GOLDEN JUBILEE reaches its highest state of perfection on light sandy soil, where the elevation is not too great.

TO THE SOUTHERN PLANTERS WE WISH TO SAY you are letting millions of dollars pass by you by not planting this variety of peach more extensively. You would be able to harvest this peach and market them with no competition from any other section. "THE

FIRST YELLOW FREESTONE, HIGH QUALITY PEACH TO GO ON THE MARKET."

TO THE NORTHERN GROWERS WE WISH TO SAY THAT EVERY MAN KNOWS THE VALUE OF A PEACH OF THIS SEASON. A PEACH WHICH WILL ENABLE HIM TO GO ON ANY MARKET AND COMPETE WITH SOUTHERN PEACHES AND GET A PAYING PRICE FOR THEM.

The Golden Jubilee is a second generation seedling of the Elberta crossed with the Greensboro. The tree is unusually hardy. The buds resist winter freezes well and open after Elberta, which insures a regular crop. The blossoms are self-fertile. The peach is medium to large size and firm. It has proven a good shipper. WE RECOMMEND IT TO BE PLANTED ANY PLACE WHERE OTHER PEACHES CAN BE GROWN SUCCESSFULLY.

PRICES—THE SAME AS ALL OTHER STANDARD PEACH TREES LISTED ON INSIDE OF THIS PRICE LIST. THIS IS THE YEAR FOR YOU TO PLANT THE GOLDEN JUBILEE AND GET YOUR TREES FROM THE BOUNTIFUL RIDGE NURSERIES. THE GOLDEN JUBILEE WILL BE REPRODUCED IN ACTUAL COLORS IN OUR 1934 CATALOGUE.



## The McIntosh Apple and Its Hybrids As Money Makers

**EARLY McINTOSH:** Typical McIntosh in appearance; not quite so good quality, ripening about DUCHESS season or six to eight weeks before regular McIntosh. Extremely thrifty and good cropper.

**MILTON:** Typical McIntosh, coloring full red; very good quality, about equal to McIntosh, being same textured apple. Tree not as vigorous as Early McIntosh. Ripens three to four weeks before McIntosh or just before Wealthy.

**MELBA:** Truly a McIntosh in quality and appearance, only more flat in shape, ripening a week before McIntosh. Drops badly before coloring as it should in southern districts. Vigorous tree.

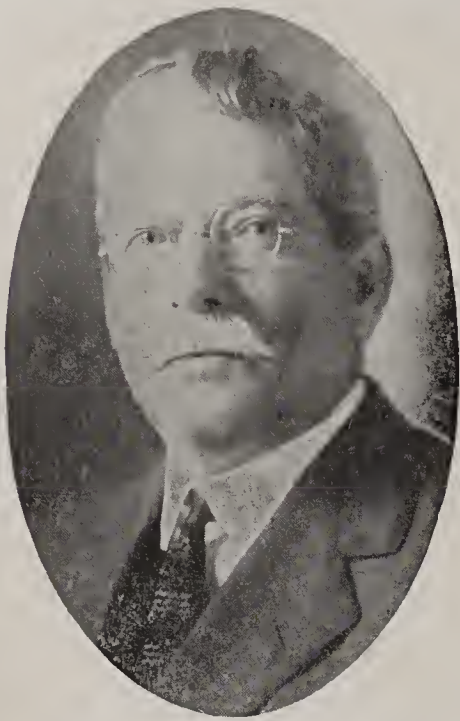
**LOBO:** Same season as the McIntosh, larger apple, and colors a more full red than the regular McIntosh before dropping. Extra good quality. Tree equal to McIntosh. Comes recommended highly to replace the regular McIntosh for the Middle Atlantic and Southern growers.

**CORTLAND:** A cross between Ben Davis and McIntosh, ripening two to four weeks later than McIntosh. About equal in size, colors well, same textured fruit, but not quite as good quality. ITS MAIN QUALITY IS THAT IT HANGS TO THE TREE TILL IT IS WELL COLORED AND WILL SELL AS McINTOSH ON THE MARKETS.

**MACOUN:** Very highly colored, having no stripe. Same quality as McIntosh, same textured fruit, hangs to tree better than McIntosh, and ripens two to three weeks after Cortland. Tree about equal to McIntosh, a regular bearer, and strongly recommended to lengthen the McIntosh season and give the Middle Atlantic and Southern growers a McIntosh type fruit they can grow successfully.

WE OFFER ALL OF THE ABOVE HYBRIDS AT NO ADVANCED PRICE OVER OUR REGULAR VARIETIES.

# WORDS OF WISDOM



Geo. W. Kemp, Gen. Mgr.

The people of America are naturally imbued with the spirit of PROGRESSIVENESS, always looking ahead, never acknowledging defeat. Today we can see definite signs of rapid recovery from the depressing period we have been passing through. The foundations for future independence and fortunes are often laid in such times by properly investing a small amount of money. Price levels may never again be as low as they have been or as low as they are today. The prices of Nursery stock are naturally going to advance along with other commodities, they are advancing now and will advance more by next spring. Possibly no small investment can bring you greater return in money, health and happiness than by carefully selecting, buying, and planting high grade nursery stock such as we offer you today. Even the most conservative cannot afford to hesitate. The radical upward swing we told you of last year is now under way. Plan now to extend your plantings. Buy today at these prices for fall and spring planting. Your purchase will represent a real saving and investment. Let us help you build for the future by filling your order with the now famous, Bountiful Ridge Nursery grown stock.

## BOUNTIFUL RIDGE NURSERIES.



Growers of the World's Finest Fruit and Ornamental Trees  
PRINCESS ANNE, MARYLAND

POSTMASTER:—Postage for return and forwarding guaranteed. This package may be opened for postal inspection if necessary. If forwarded to new address notify sender on Form 3547. Postage for notice guaranteed.



OUR COMPLETE PRICE LIST FOR FALL 1933  
CONSTRUCTED TO MEET THE DEMANDS OF OUR PRESENT TIMES



## PUT YOUR DOLLARS TO WORK

### 10% DISCOUNT FOR CASH

With Order on All Orders Received Before January 1st. 1934

What a saving to you to buy from the Bountiful Ridge Nurseries. It would pay you to borrow the money at 6% per annum if necessary and take advantage of this discount. In spite of this liberal discount and generally increasing overhead we are listing our stock at about the same prices as last fall. This is only made possible through the spirit of progressiveness and the practice of every economy possible by the managers of our Nursery. We have made every effort to improve the quality of our stock and pass on to you the results of our constant vigil for new and better varieties of fruits and ornamentals.

We now seek your cooperation for we feel you appreciate our sincere efforts to produce the best and our desire to help you make your dollars go as far as possible in buying what Nursery stock you need. We always have and are today paying fair wages to our men. We are doing our part to keep the wheels of progress moving on by cooperating with and adhering to the wishes of our National Government in their present drive for prosperity as far as it is possible to do so. We are sincere in our belief that now is the time for you to renew your old plantings and make new plantings with new and improved varieties. We are making every sacrifice humanly possible to let you buy what nursery stock you need at a saving. **WE WANT YOUR ORDER FOR WHAT YOU ARE GOING TO PLANT THIS YEAR AND WILL GUARANTEE ABSOLUTE SATISFACTION IN WHAT YOU BUY FROM US. PLAN TO BUY AND PLANT THIS FALL AND NEXT SPRING. ORDER NOW.**

We ship Prepaid all orders of \$50.00 or more within 500 miles of our Nursery.

Sec. 435 1/2, PL.&R.  
U. S. Postage  
**1c. Paid**  
Princess Anne, Md.  
Permit No. 4

INDEXED  
★ SEP 27 1933  
U. S. Department of Agriculture

United States Department of  
Agri.

Bureau of Plant Industry

Wash. D. C.