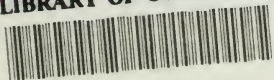


E 99  
.T8 E5

LIBRARY OF CONGRESS



00013419425







# INDIAN NOTES AND MONOGRAPHS

EDITED BY F. W. HODGE



A SERIES OF PUBLICA-  
TIONS RELATING TO THE  
AMERICAN ABORIGINES

---

## SLATE MIRRORS OF THE TSIMSHIAN

BY

GEORGE T. EMMONS

---

NEW YORK  
MUSEUM OF THE AMERICAN INDIAN  
HEYE FOUNDATION

1921

THIS series of INDIAN NOTES AND MONOGRAPHS is devoted primarily to the publication of the results of studies by members of the staff of the Museum of the American Indian, Heye Foundation, and is uniform with HISPANIC NOTES AND MONOGRAPHS, published by the Hispanic Society of America, with which organization this Museum is in cordial coöperation.

Only the first ten volumes of INDIAN NOTES AND MONOGRAPHS are numbered. The unnumbered parts may readily be determined by consulting the List of Publications issued as one of the series.





MIRROR OF HOMOGENEOUS GRAY-BLACK SLATE. LENGTH,  $5\frac{1}{8}$  IN.  
Courtesy of the American Museum of Natural History



# INDIAN NOTES AND MONOGRAPHS

EDITED BY F. W. HODGE



A SERIES OF PUBLICA-  
TIONS RELATING TO THE  
AMERICAN ABORIGINES

---

## SLATE MIRRORS OF THE TSIMSHIAN

BY

GEORGE T. EMMONS

---

NEW YORK  
MUSEUM OF THE AMERICAN INDIAN  
HEYE FOUNDATION

1921

E99

.T8 E5

21

5. 10. 11. 12. 13. 14. 15. 16. 17. 18.  
2213

SLATE MIRRORS OF THE  
TSIMSHIAN

BY

GEORGE T. EMMONS



## SLATE MIRRORS OF THE TSIMSHIAN

BY GEORGE T. EMMONS,

Lieutenant, U. S. Navy



THE peculiar physical features of the Northwest coast of America, its ragged shoreline cut by deep fiords and innumerable bays, and flanked to seaward by a continuous breakwater of islands, offered protection and exceptional advantages to travel by canoe through thousands of miles of navigable channels, thus bringing together distant peoples. This resulted in a general interchange of ideas and products, and ultimately developed a distinct cultural area very different from any other on the continent. But notwithstanding this intimacy through intermarriage and trade relations, each people retained its tribal

entity and excelled in certain arts and industries. Such might be the result of natural resources, as in the case of the Haida war and traveling canoe fashioned from the giant red cedar of the Queen Charlotte islands, or of artistic sense and skill, as shown by the same people in the carved spoons, ladles, and dishes made from the horn of the mountain goat and sheep, which they procured in trade with the mainland natives. Again, while spruce is equally abundant throughout the coast region, no other tribe approached the northern Tlingit in the weaving and ornamentation of basketry made from its roots. Furthermore, the transfer of an industry is seen in the so-called Chilkat blanket that originated among the Tsimshian, but in the course of time was lost to them and is perpetuated by the Chilkat Tlingit, four hundred miles distant.

But of particular interest are those arts or products that never passed beyond tribal limits, being confined to narrow districts. Of this class the stone mirror

is a notable example: it was the product of the Tsimshian, and if known to their neighbors of the coast, the Tlingit, Haida, and Kwakiutl, it was never used by them, and is not represented in any of the very complete collections gathered among them, nor mentioned in the writings of any collector.

The Tsimshian as a whole are made up of several different people from both the interior and the coast, that have come together through intermarriage, migration, or accident, and in time have been welded together in a homogeneous body. They occupy the extreme northwest coast of British Columbia, the adjacent islands, and the valleys of the Skeena and the Nass. They comprise three dialectic divisions, made up of village bands, tribal as to territory, which is divided among the various clans, each of which is independent under its own chief. Hence there is no centralized governing power in either tribe or village.

Those known specifically as Tsimshian live directly on the seaboard and claim

the lower waters of the Skeena as their fishing rights. Their principal winter habitation was at Metlakahtla until 1835, when the Hudson's Bay Company established a post at Port Simpson, where the majority of the people moved, and it thus became the central trading point on the northern coast, to which all the different tribes flocked; this brought prestige and wealth to the residents, and they became the most progressive and important of the three divisions.

The Nishka people occupy the valley of the Nass and form a link between the coast and the interior. While possibly less advanced than the Tsimshian of the coast, they are equally intelligent, and are artistic in a high degree. In fact, I think that the most delicate and pleasing examples of carving and painting gathered throughout the whole extent of the coast are from this people.

The Kitikshan ("people of the Shian or Skeena"), who claim the Skeena river as their own, are the original stock from which the other two Tsimshian branches





PART OF A CARVED MIRROR OF HOMOGENEOUS GRAY-BLACK SLATE.  
MAXIMUM WIDTH,  $2\frac{7}{8}$  IN.

Courtesy of the American Museum of Natural History



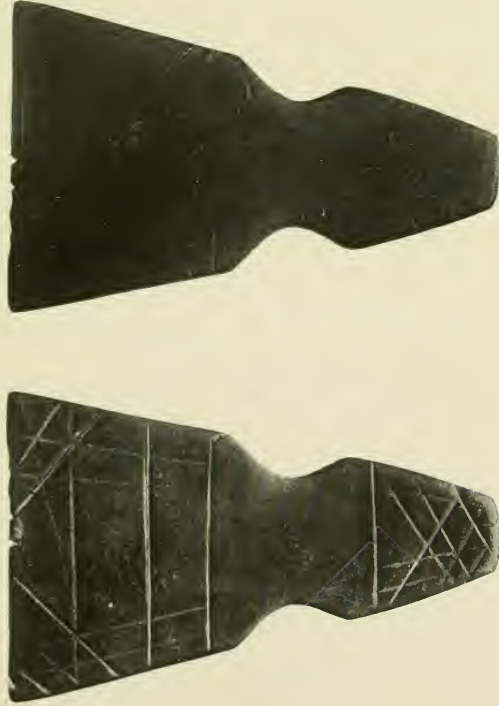
came; they are scattered along the upper reaches of the river and its tributaries. The Kitikshan are the most primitive division of the three, and from their necessities and the character of their country are more hunters and trailers than water men, although they look to the river for their staple food-supply of salmon.

The stone mirror was common to all the divisions of the Tsimshian, and I found one specimen among their Athapascan neighbors, the Babine. Up to the present, after diligent search, only nine specimens have been located in either museums or private collections. None remain in possession of the people, although old houses and village-sites may yet yield a few. That so few of these objects survive a century of disuse is not surprising, when the fragile material and their delicate proportions are considered; for when the early European traders reached this coast, in the latter half of the eighteenth century, they distributed and traded unlimited numbers

of small looking-glasses, which were so much more practical and so inexpensive that the native ones of stone were at once discarded.

The Nishka claim to have been the originators of the mirror in this region. They fashioned it from a homogeneous, grayish-black slate found in a ledge on the north bank of the Nass, across from the old village of Kitaix, flushing the rock with water to procure pieces of suitable size for working. It is a fact that specimens found among the Nishka and the coast Tsimshian seem to be of like material and are similar in form, thus tending to substantiate the Nishka claim. The mirrors found on the upper Skeena are of a much harder, blacker stone, and somewhat different in shape, while the one from the Babine of Bulkley river is unlike any other in either material or form.

The mirror was the property of the women of the higher class, and was worn suspended around the neck by a cord of hide or of twisted root, hanging over the



SLATE MIRROR FROM NASS RIVER (OBVERSE AND REVERSE)

Lent to the Museum of the American Indian, Heye Foundation, by Dr Charles F. Newcombe, Victoria, B. C.  
Length,  $5\frac{5}{8}$  in.



breast. When required for use, it was wetted (most conveniently licked or spit upon) and rubbed over, then held at such an angle to the light as was most favorable for reflection. If required for a comparatively long period, it was rubbed over with a thin coat of grease or oil. The usual form had a handle at the narrower end, a contracted neck curved or notched, around which the neck-cord passed, and an expanded reflecting surface. Some were double, that is, polished on both faces; others were incised or carved on one side, and notched along the upper or lower edges. Whether these marks were decorative in character or were designed for identification is not known, but certainly the work on the one illustrated in pl. II is ornamental in a high degree.

A comparison of all the known specimens shows the material to be of slate and exhibits general uniformity in shape, the most noticeable differences being in the handle and the connecting neck.

The five specimens (pl. I-V and

fig. 1, 2) obtained among the coast Tsimshian and the Nishka are of the same grayish-black slate. Pl. 1 and

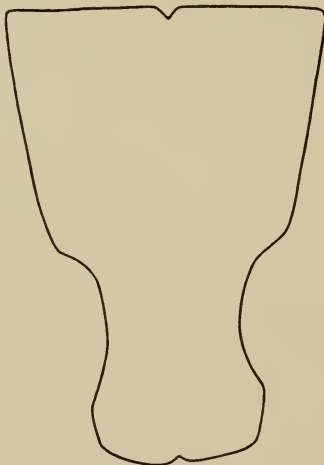


FIG. 1.—Outline of a slate mirror in the collection of Dr R. W. Large, Port Simpson, B. C. (Length,  $4\frac{3}{4}$  in.; maximum width,  $3\frac{1}{4}$  in.)

fig. 1 show mirrors with plain faces; they are almost exactly alike in size and outline, and both are notched at top and



bottom. Those illustrated in pl. III and fig. 2 have straight sides, and the former

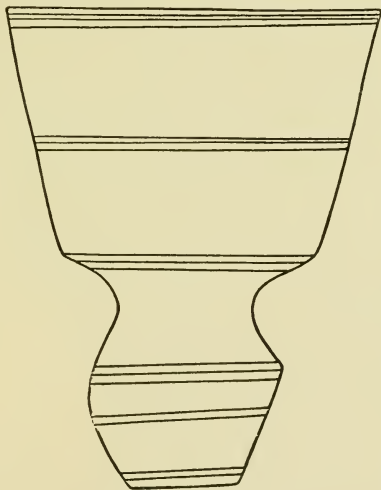


FIG. 2.—Outline of a slate mirror from Nass River district, in the collection of the Venerable Archdeacon W. H. Collison, of Nass Harbor, B. C. (Length, 5 in.)

a longer handle; both are scored with lines or cross-lines on the back.

The mirror represented in pl. II,

which was procured, with the one shown in pl. I, from a Tsimshian who knew only that it had been found about the Nass, is unfortunately broken, but it shows the back of the reflecting surface elaborately carved in low relief. The principal design represents a crude face, more human than animal, which, bisected, exhibits two profiles difficult to determine. Below are three parallel divisions of lines and cross-lines. Ornamentation of precisely this character is commonly found incised on the hunting and trapping implements of bone employed by the Tahltan and the Babine, with whom the Nishka living farther inland come in contact; it bears no resemblance to the delicate technic of Nishka art of the last hundred years, as known to us from their artifacts of wood, bone, and ivory, but it might express the work of a much earlier period in the life of this people when some of the divisions that claim an inland origin still retained the practice of their ancestors and had not yet adopted the culture of the coast tribes.



SLATE MIRROR FROM UPPER SKEENA RIVER

Courtesy of the Peabody Museum of Harvard University. Length,  $7\frac{1}{8}$  in.



The two mirrors from the Kitikshan of the upper Skeena are of a hard, black slate, quite different from that of the Nishka specimens. Pl. iv exhibits one which, in size and shape, is similar to the mirrors of the Nishka, but the upper and lower edges are curved, a difference noticeable in all the specimens from the interior. It is polished on both faces, incised with cross-lines on one side of the handle, and notched along the upper edge.

Pl. v represents what is possibly the most interesting mirror of all, by reason of its symmetry and its peculiarly notched neck, together with the slight history associated with it. It was the property of an old shaman originally of the Kuldo band, but who, after this (the farthest inland of all the Skeena villages) had been abandoned, settled at Kispiox. He said that the mirror had been dug up on the old village-site and handed down through generations in his family. At that time nothing could induce him to part with it, and it was only in later



FIG. 3.—Outline of a mirror of slate, without grain, from the Babine village of Hawilget, at the mouth of the Bulkley River cañon, B. C. Provincial Museum, Victoria. (Length,  $6\frac{5}{8}$  in.; width,  $4\frac{1}{2}$  in.; thickness,  $\frac{1}{2}$  in.)

years, when it had descended to a younger generation, which thinks little of the past, that it was procured.

The mirror illustrated in fig. 3 was obtained from an older woman of the Babine living at Hawilget, on Bulkley river, near its mouth. There is no known history connected with it, except that it was an old family piece and had been preserved, as such things useless in themselves are treasured, for sentimental reasons by primitive peoples. It is quite different from any Tsimshian specimen, being of brownish slate, and larger and heavier, as it is at least half an inch in thickness. Both ends, moreover, are noticeably rounded, and the upper edge is scalloped. The handle and the reflecting surface are barely separated from each other by a very slight notch for the neck-cord.

For information respecting mirrors among the Déné, I wrote to Father A. G. Morice, whose intimate study of this people is so well known. He courteously replied at some length that

the stone mirror was unknown among the Athapascan tribes of the far north and that he had never seen a specimen among them. Father Morice states:

"Further, the age of such articles, I mean their antiquity, the time they came into use among them, is usually predicated by the kind of noun (primary or secondary root, common substantive or verbal noun) by which they are called. Now, the Carriers call a mirror *pe-na'-tsndθ-nθ'en*, which is merely a verb in the impersonal to which is prefixed the preposition *pe*, resulting in a verbal noun which means 'whereby one looks at one's self.' This characterizes such household and other implements as are adventitious among them."

The finding of a single specimen among the Babine is not significant. Hawilget was originally Kitikshan territory, and was given to the Babine only after a great rock-slide in the cañon of the Bulkley had so obstructed the stream that the salmon could not reach the valley beyond, thus cutting off the staple food of the former inhabitants. In settling at this point, only four miles from Hazelton, the Babine came in

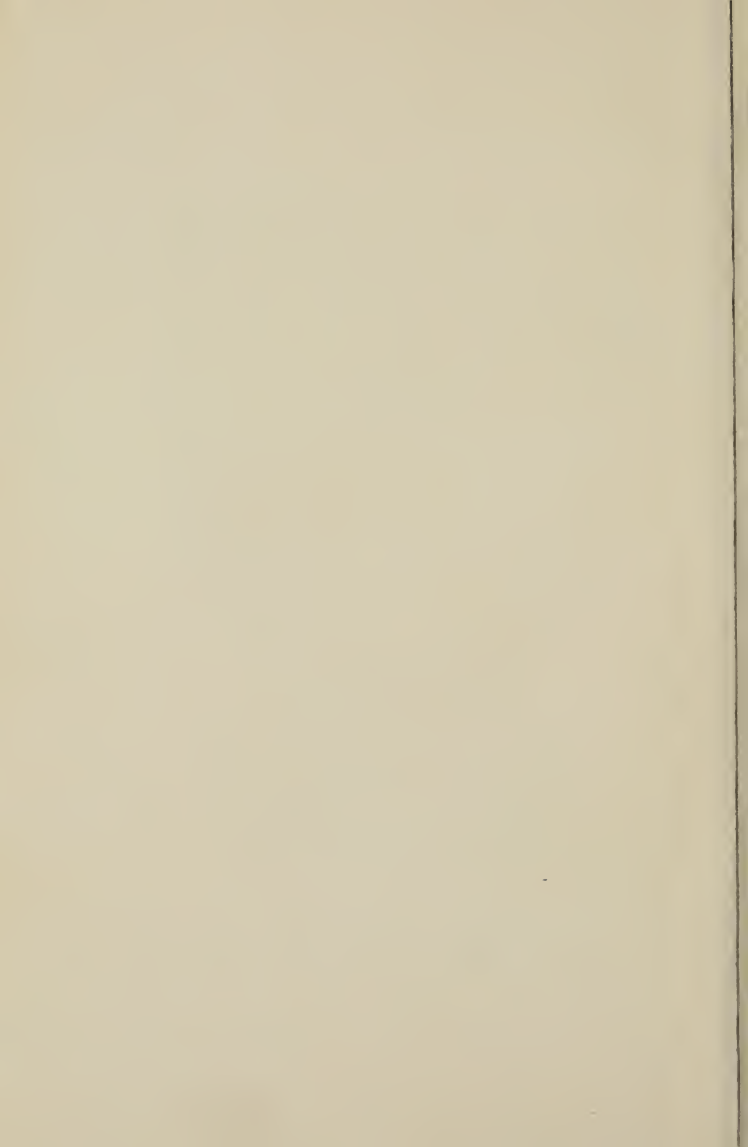




SLATE MIRROR DUG FROM THE DESERTED VILLAGE OF KULDO,  
UPPER SKEENA RIVER, B. C.

In the Museum of the American Indian, Heye Foundation.

Length,  $5\frac{3}{4}$  in.



constant intercourse with the Kitikshan, and being a crude people, copied much from their neighbors. This might readily account for this piece being in their possession—made by them or possibly dug up in gardening, as this locality has furnished some of the most remarkable and beautifully carved stone clubs that have been found in the Northwest. Mr J. A. Teit, of Spences Bridge, British Columbia, writes me as follows in answer to an inquiry regarding this article among the Salish:

“The only direct information I have is from the Thompson [Indians], who claim that long ago, stone, generally of a very dark color, was occasionally made into or used as looking-glasses by them; they say the stone was rare and seldom to be found. It took a very high polish, and fragments used for looking-glasses were generally small (about 4 inches in width or height) and thin. Some of them were bored for suspension. I have never seen any myself. The Thompson and other interior Salish tribes also used looking-glasses made of mica, which mineral can be found in large clear sheets in some places. It seems these were comparatively common, whilst stone ones were very rare.

The remaining living old men here (Spences Bridge) can give me no further light on the stone mirrors, except to say they were oblong in shape, thin, and about four inches in length; some were perforated or notched at one end like some sap-scrapers. They were very rare and none of the three men I lately interviewed remembered having seen any. Those they had heard of belonged to old men of Lytton or the neighboring part of Fraser river above."

From these general notes, particularly from mention of the shape of the sap-scraper, the material, and the size, the suggestion arises whether this article might not have originated herabouts and have been carried to the coast through emigration or have been brought thither in trade by the more northerly interior tribes.

The stone mirror is variously named among the Tsimshian and neighboring people, as noted below:

Tsimshian: *nicks-klu-nesk gum tzcl*, 'reflection of face,' also *dza gdt*, 'shaped like a fish-tail.'

Nishka: *na haun*, indicating the shining skin of a fresh salmon, from *na*, a prefix indicating the properties of; *haun*,

'salmon' referring to its reflective quality.

Kitikshan: *an-gux lu la gal tku*, 'in which to examine yourself.'

A mirror of any kind is variously known as—

Babine: *pe-na' tsndθ-nθl'en*, 'whereby one looks at one's self.'

Haida: *hung jow*, 'reflection.'

Tlingit: *a tu nuch ga teen*, 'casting reflections.'  
The Tlingit, however, knew nothing of the stone mirror and had no other means of examining themselves than in a pool of still water, until trade mirrors were introduced.











39

H 160 71.583







MAY 74



N. MANCHESTER,  
INDIANA

