

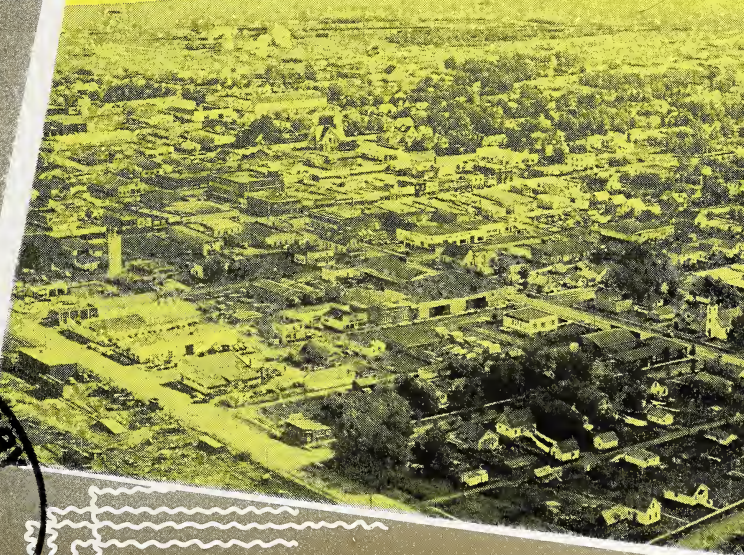
CA2 ALID 15
1959C15

ALBERTA LEGISLATURE LIBRARY




3 3398 00409 3455

Survey of Camrose



Prepared By
Department of Industry and Development
INDUSTRIAL DEVELOPMENT BRANCH

Government of the Province of Alberta



Digitized by the Internet Archive
in 2017 with funding from
Legislative Assembly of Alberta - Alberta Legislature Library

<https://archive.org/details/surveyofcamrose00albe>

CITY OF CAMROSE

(Revised November 1959)

1. -- LOCATION . . .

Section 2-47-20 W4, in Census Division No. 8. This location is 26 miles east of Wetaskiwin on Highway No. 13 and on the Edmonton-Camrose-Drumheller-Calgary line of the C.N.R.; the Camrose-Tofield line of the C.N.R.; the Edmonton-Camrose-Alliance line of the C.N.R.; the Camrose-Vegreville line of the C.N.R.; the Edmonton-Saskatoon-Winnipeg line of the C.N.R., and the Edmonton-Saskatoon-Winnipeg line of the C.P.R.

2. — ALTITUDE	LATITUDE	LONGITUDE
2,430 ft.	53/01	112/50

3. — TEMPERATURE . . .

Mean summer temperature	53° F.
Mean winter temperature	18° F.
Mean yearly temperature	36° F.

4. — RAINFALL . . .

Average rainfall	12.10 inches
Average snowfall	45.8 inches
Average total precipitation	16.2 inches

5. — GEOLOGY . . .

The area is underlain by non-marine rocks of the Edmonton Formation (Upper Cretaceous) which consist of bentonic sandstone, shales, thin seams of bentonite and coal seams. The Edmonton Formation is underlain by marine shales of the Bearpaw Formation also of Upper Cretaceous Age. There is a thin cover of clay and boulders at the surface which was deposited by the last glacier to cover this area. Glacial meltwaters were channeled through a deep valley a few miles south of Camrose (Dried Meat Lake) and this channel contains a large quantity of glacial gravel on high level benches on the valley sides.

6. — SOIL . . .

Camrose is in the black soil zone.

Climate.—Annual precipitation averages between 17 and 19 inches and droughts are rare. Evaporation is lower and hot winds less frequent than in other zones.

Vegetation.—Grassland which has been partially invaded by woodlands (mainly deciduous trees) often referred to as a parkland.

Soil Profile.—The normal profile has a very black to very dark brown surface (A) horizon that averages about 12 to 14 inches in depth. The (B) horizon is brown to dark brown and the lime layer (Bca) is usually found 30 to 40 inches below the surface.

Fertility.—Soils in this zone are the most fertile in the province and they have in their surface foot 3 to 4 times as much nitrogen and organic matter as there is in the average brown or grey wooded soil. Every precaution should be taken to see that they are not allowed to deteriorate.

Land Use.—A high percentage of the zone is arable. Wheat of fairly good quality can be grown, but mixed farming, including the use of fertilizer when needed, is most desirable from the standpoint of both profit and permanence.

7. — HISTORY . . .

The City of Camrose was originally the Hamlet of Sparling, so named after the Rev. Dr. Sparling of Winnipeg. It was incorporated as the Village of Sparling on May 4, 1905, and was incorporated as the Town of Camrose on December 11, 1906. Camrose was incorporated as a City on January 1, 1955.

In June 1905 the railway grade was completed between Wetaskiwin and Sparling, and a mixed train operated between Wetaskiwin and the village three times weekly.

The first school was opened in the Presbyterian Church in 1905 and the first school building was opened on May 24, 1907.

The first church service was conducted in a shack by the Rev. Thomas Philips, a Methodist Minister, and the first church to be built in the area was of the Lutheran faith.

Prior to the arrival of the railway all goods had to be freighted from Wetaskiwin by oxen and horses, which took three days.

Camrose had electricity in 1911 when a steam electric plant was erected. This plant was taken over by the Calgary Power Company in 1929.



LOOKING NORTH ON THE BROAD MAIN STREET OF THE CITY

8. — LIVING CONDITIONS . . .

The City lies in the valley through which flows Stoney Creek on its way to join the Battle River. The main streets are wide and kept clean. New modern stores show the prosperity of the district. The residential area is well treed and the homes have flowers and vegetable gardens. Excellent facilities for both winter and summer sports are available for the sportsman. Camrose is noted for its outstanding skiers. Modern schools offer courses in grades 1 to 12. The Camrose Lutheran Junior College offers advanced educational courses. Fourteen churches supply the spiritual needs of the community. There are 1,700 houses within the city limits, the average rent ranging from \$75 to \$100 per month.

Value of building permits: 1956	\$ 958,670
1957	1,277,300
1958	1,247,250
1959	2,081,410

About 85% of the homes are owner occupied.

9. — ADMINISTRATION . . .

The City is governed by a Mayor elected for a two year term and eight Councillors, four elected each year for a two year term. The City Clerk and his staff carry out the policies set by the Council.

10. — LAWS and REGULATIONS . . .

The National Building Code of Canada has been adopted by the City.

The electrical installations must comply with the Alberta Electrical Protection Act.

Sanitary installations must comply with the Provincial Health Regulations.

Gas installations must comply with the City By-Law.

The City Police Force consists of a police chief and six constables.



BETHANY HOME FOR THE AGED

11. — FIRE PROTECTION . . .

There is a full time fire chief and 25 volunteer firemen who are paid for weekly practices and by the hour for fire-fighting. All fire personnel are St. John's Certificate holders. There are 77 fire hydrants with a static pressure of 62 lbs. The water supply is adequate for any emergencies. Camrose has one of the best Civil Defence units in Alberta under the paid director or co-ordinator with a permanent headquarters of its own next to the Agricultural Building.

Equipment.—A new modern Fire Hall houses:

- 1 Chev. LaFrance triple combination 500 G.P.M. pumper with 200 gal. booster tank.
- 1 Ford Bickle Seagrave auxiliary unit with a 250 G.P.M. pump and a 300 gal. booster tank.
- 1 three-ton Ford horse truck.
- 1 LaFrance 500 G.P.M. trailer pumper, all of recent make, with a total of 3,700 feet of 2½ inch hose, 1,200 feet of 1½ inch hose, plus ladders, tools, helmets, coats, hand extinguishers, self-contained masks and first aid inhalator (2 persons).

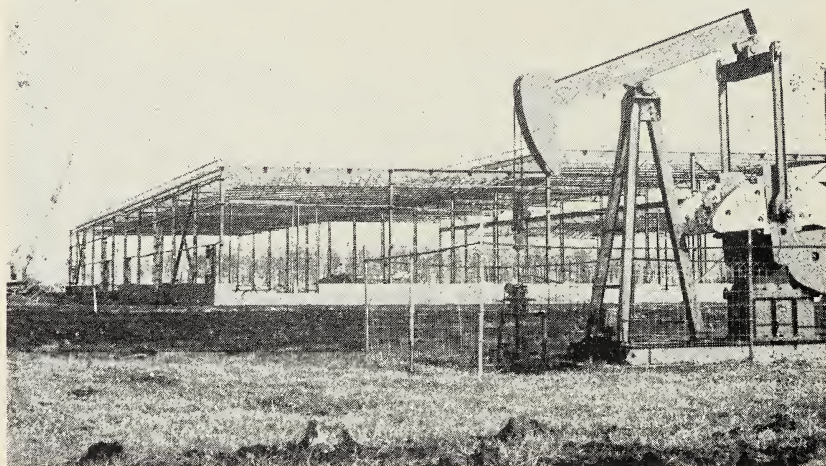
12. — TAX STRUCTURE . . .

	1959 Net Assessment
Land, 100% of value	\$1,298,570
Improvements, 100% of fair value	5,907,960
Business	2,030,910
Electric light and power	228,600

Total Assessment

\$9,466,040

	Municipal	School	Hospital	Total
Mill Rate:	26	29	4	59 mills



OIL WELLS ADJOIN THE NEW MULTI-MILLION DOLLAR PAGE-HERSEY STEEL PLANT

13. — AREAS . . .

Area of City — 1,870 acres.
Streets and Lanes — 126 acres.
Public parks and playgrounds — 55 acres.

Miles of Roads, Streets and Lanes:

	Bituminous	Bit. Surface	Gravel	Imp Earth	Total
Streets and Roads	3.79	8.20	12.80	2.95	27.74
Lanes and alleys			10.50		10.50
			Total Miles		38.24

All streets and lanes are either bituminous surface or gravelled. The city owns a 50 acre gravel pit located 10 miles south of the city. The pit has a 20 foot strata of clean gravel. There are 14 miles of asphalt sidewalk and 20 miles of cement sidewalk.

14 — SEWER and WATER MILEAGE . . .

Storm Sewers — 4.60 miles.
Sanitary sewers — 19.45 miles.
Water mains: Supply — 9.12 miles, Distribution — 15.71 miles.

15. — POWER . . .

Three phase 60 cycle electric power is supplied under a ten year franchise by Calgary Power Ltd. Rates effective as of January 1, 1958.

Domestic Service.— Available only for lighting, cooking, domestic power and ordinary uses in houses and apartments, used exclusively for residential purposes:

First 20 KWH (or less) per month — \$2.30 gross minimum. Subject to 30c prompt payment discount, making a \$2.00 net minimum.

All over 20 KWH used per month — 1½c net per KWH.

NOTE—Discount of 30c applies to all monthly bills paid within 10 days of date rendered.

Connection charge of new customers — \$1.00.

Re-connection charge — \$4.00.

Commercial Service.— Available where other rates listed do not apply.

Service charge — First 500 watts of installed capacity—60c per month. Each additional 250 watts of installed capacity—20c per month.

Energy charge — First 50 KWH per month per KW of installation—6c per KWH.

Next 150 KWH per month per KW of installation—2c per KWH.

All over 200 KWH per month per KW of installation—1½c per KWH.

Discount—nil.

Minimum charge—\$1.25 per month.

Minimum deposit—twice minimum.

Reconnection charge—\$2.50.

Power Service.— A.C., available for motors, rectifiers, commercial heating apparatus, etc., in commercial establishments.

Service charge — \$1.00 per month per kilovolt-ampere (KVA) of installation, (one motor horsepower or one kilowatt in heating apparatus to be considered equivalent to one KVA).

Energy charge — First 100 KWH per month per KVA of installation—3½c per KWH.

Over 100 KWH per month per KVA of installation—1½c per KWH.

Discount—nil.

Minimum charge—\$3.00 per month.

Minimum deposit—\$2.00 per HP, with minimum of \$6.00.

Reconnection charge—\$6.00.

Industrial Service.— Special rates for specific large industrial loads will be quoted upon request.

No. of Consumers:—	1948	1953	1956	1957	1958
Domestic	871	1206	1353	1403	1463
Commercial	212	263	285	295	307
Power	69	71	77	83	92

Total Consumption:—

1948 — 3,209,456 KWH

1953 — 5,227,000 KWH

1956 — 7,700,000 KWH

1957 — 7,832,226 KWH

1958 — 8,538,673 KWH

There are three sources of power, to take care of any emergency, as follows:

Bow River Basin Hydro Plants via Calgary and Wetaskiwin.

From Wabamun via Wetaskiwin or Tofield.

From Vegreville via Holden.



AN ATTRACTIVE RESIDENTIAL STREET IN CAMROSE

16. — WATER . . .

Water is supplied to the city under a franchise by Calgary Power Limited. The city has sufficient water to meet the demand of industry as well as for residential purposes. Water is now piped in from Dried Meat Lake. It is filtered through 2,000 feet of sand and gravel and comes from underground streams, through the gravel bed into the supply main and from there into two water reservoirs of 500,000 gallons each. In addition there is a third ground reservoir of 130,000 gallons and an elevated tank of 100,000 gallons.

Water Analysis:—

Parts per Million

Total solids	228
Ignition loss	88
Hardness	180
Sulphates	96
Chlorides	13
Alkalinity	15
Nature of Alkalinity — Bicarbonate of Lime and Magnesium	
Nitrates4
Nitrites	trace
Iron2

Remarks: This water is chemically suitable.

Rates.—

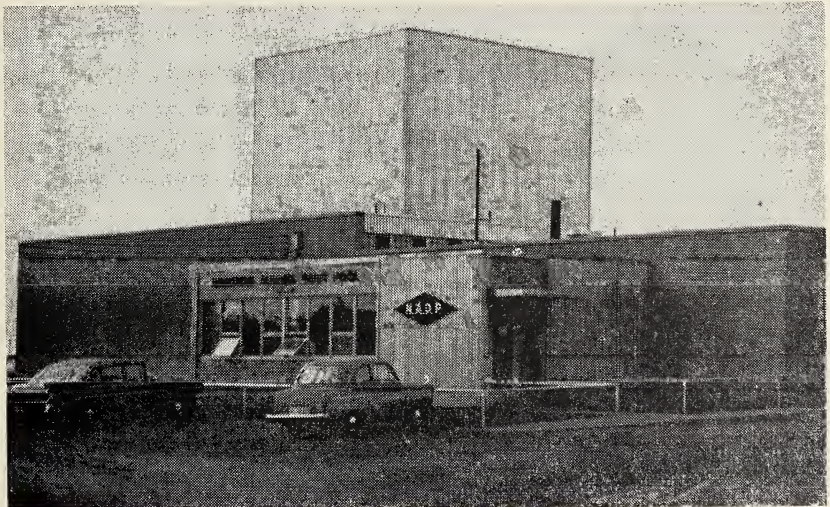
First 200 cu. ft. or less used per month — \$2.75.

Next 4800 cu. ft. used per month — 55c per 100 cu. ft.

Over 5000 cu. ft. used per month — 50c per 100 cu. ft.

Minimum monthly rate — \$2.75.

Industries using large quantities of water can secure rates from the Company.



THE DRIED MILK PLANT IS A NEW INDUSTRY IN THE CITY

17. — GAS . . .

Natural gas is supplied to the City under franchise by Northwestern Utilities Ltd.

General Rate Rate No. 1 — available to all customers .

First 20 therms or less — \$3.00 per month.

All additional therms — 4.3c per therm.

Minimum Monthly Charge — \$3.00.

When accounts are not paid on or before the due date the charge per therm, other than the first 20 therms, shall be increased by 0.3c and the gross rate so arrived at shall apply.

Optional Rate Rate No. 2 — Available on annual contract to all customers whose annual consumption is more than 11,900 therms.

Fixed Charge — \$20.00 per month.

Plus Commodity Charge — 2.5c per therm.

Minimum Monthly Charge — \$20.00.

When accounts are not paid on or before the due date the charge per therm shall be increased by 0.2c and the gross rate so arrived at shall apply.

Optional High Load Factor Rate Rate No. 3 — Available on annual contract to all customers whose annual consumption is more than 100,000 therms and whose total consumption during the six meter reading periods ending in May, June, July, August, September and October, is not less than 40 per cent of their total consumption during the year.

Fixed Charge — \$20.00 per month plus 22c per month per therm of maximum 12 hour demand.

Commodity Charge for all consumption — 1.5c per therm.



CAMROSE CITY HALL

Minimum Monthly Charge — Fixed Charge.

The maximum 12 hour demand shall be the greatest amount of gas in terms delivered in any 12 consecutive hours during the current billing period of the preceding eleven billing periods as determined by the company by measurement. The maximum 12 hour demand of a new customer of gas shall be estimated by the company. Provided that the company may with the approval of the Board of Public Utility Commissioners, take into consideration in determining the fixed charge the effect of the customer's demand for gas upon the company's peak load.

General Conditions Affecting Rate No. 2 and Rate No. 3:

These rates are available only on annual contract, which shall continue from year to year thereafter until either party shall give the other party, at least thirty days prior to the expiration of any such year, a written notice of desire to terminate same whereupon at the expiration of such year, it shall cease and determine.

18. — L.P. GAS . . .

Heat value — 135,000 to 140,000 b.t.u. per gal. at 60 degrees F.

100 lb. cylinder — \$6.50.

Bulk — 17c per gal.

Storage capacity — 42,000 gal.

Two Bulk Trucks — 1300 gal. each.

Two Service Trucks.

19. — DIESEL FUEL . . .

Heat value — 135,000 to 140,000 b.t.u. per gal. at 60 degrees F.

Summer grade — 17.2c per gal.

Winter grade — 18c per gal.

Total storage capacity — 40,000 gal.

20. — COAL . . .

Coal is secured from a strip mine 5 miles east of the City.

Sub-bituminous, heat value — 8,970 b.t.u.

Prices f.o.b. mine per ton: —

Lump	Egg	Stoker	Slack
\$5.00	\$4.50	\$3.25	\$1.00

21. — LOCAL RESOURCES . . .

Wheat, Oats, Barley, Rye, Flax, Grass Seed, Coal, Oil and Gas, Sand and Gravel, Honey, Straw, Horses, Cattle, Sheep and Hogs, Poultry and Eggs, Dairy Products.

22. — GOVERNMENT OFFICES and SERVICES . . .

FEDERAL

Post Office, Department of National Defence—Reserve Army Unit, Customs Office, R.C.M.P. Detachment, Department of Veterans Affairs—District Office, Dominion Veterinary, Postal Inspectorate.

PROVINCIAL

Court House, Police Magistrate, Liquor Store, Alberta Government Telephones, Treasury Branch, Department of Public Works, Superintendent of Schools, Supervisor of 4H Club Activities, Camrose School Division No. 20, District Agriculturist, District Home Economist, Fish and Game Warden, Poultry Branch, Electrical Inspector, Gas Inspector, Rosehaven Old Folks Home, East Central Alberta Health Unit, Oil Conservation Board.

MUNICIPAL

City Hall, housing — Council Chamber, City Office, City Clerk and staff, City Police; Fire Hall, Municipal Library, Recreation Director, Public Works Superintendent, Gas and Plumbing Inspector, City of Camrose School Division No. 1315, Camrose Roman Catholic Separate School District No. 60, Camrose Municipal District No. 63.

23. — HEALTH SERVICES . . .

The St. Mary's Hospital is operated by the Sisters of Charity. There are 100 beds and 18 bassinets with operating room, case room and emergency ward. The staff consists of a matron, 18 graduate nurses, 10 nurses aides, lab. technician, cooks, etc.

	Residents	Non-residents
Rates for Public Wards per day.....	\$1.80	\$13.00

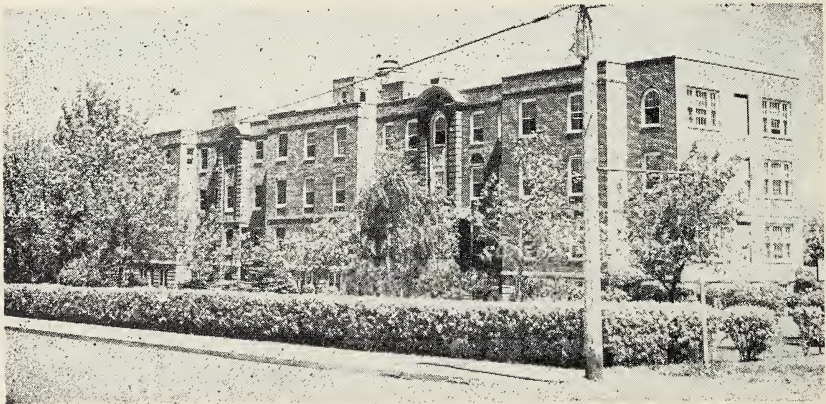
The Bethany Chronic Hospital has 50 beds and is used for chronic patients. The Bethany Old People's Home has 50 beds.

The Rosehaven Provincial Mental Hospital for the aged has 500 beds.

The East Central Alberta Health Unit, with offices at Camrose, is responsible for medical examinations of pre-school and school age children. The staff consists of a doctor, three registered nurses, two steno technicians, one lab technician and one sanitary inspector.

Senior Citizens Home — 50 beds.

Other Health Services: nine doctors, four dentists, two chiropractors, six veterinary surgeons, five drug stores, three optometrists, one dental laboratory, one dental mechanic, two sanitary inspectors, two ambulance services, two funeral parlors, three florists.



ST. MARY'S HOSPITAL

24. — PROFESSIONAL and SKILLED PERSONAL SERVICES (excluding Health Services) . . .

Type of Service:	No. of Establishments
Chartered Accountants	2
Barbers	5
Barristers	4
Beauty Parlors	4
Watch Repairs	4

25. — TRANSPORTATION . . .

C.N.R.—Camrose to Edmonton and Calgary via Drumheller, Camrose to Vegreville, Camrose to Alliance, Camrose to Calgary via Alix.

C.P.R.—Camrose to Wetaskiwin to Edmonton and Winnipeg.

Sunburst Motor Coaches—between the following points via Camrose: Edmonton, Macklin, Sask., Alliance, Hay Lakes via Alix.

Two Taxi Stands — five cabs.

Camrose Transfer — Daily truck service to and from Edmonton and Hardisty.

Hi-Way 13 Transport Ltd. — Daily truck service to and from Edmonton and Hardisty.

26. — NEWSPAPERS . . .

Camrose Canadian (weekly); Camrose Booster (weekly).

27. — COMMUNICATIONS . . .

Canadian National Telegraphs

Canadian Pacific Telegraphs

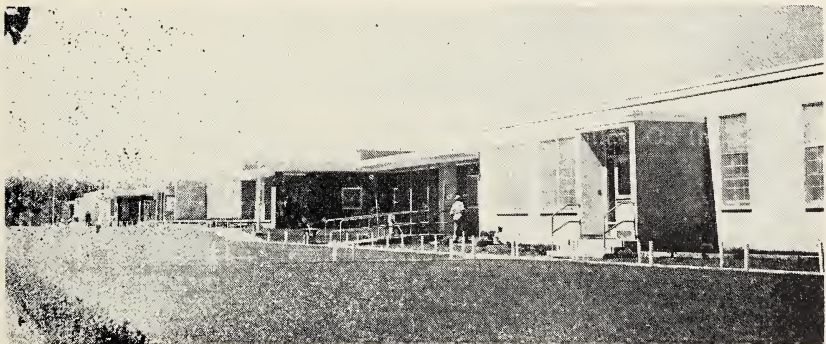
Alberta Government Telephones

Post Office — Divisional

Radio Station — CFCW, Camrose

Nearest Television Station — Edmonton, CFRN - TV
Red Deer, CHCA - TV

Radio reception is good in the city and district from Edmonton and Red Deer stations.



SOME INDIVIDUAL UNITS AT ROSEHAVEN PROVINCIAL HOME FOR THE AGED

28. — FINANCIAL FACILITIES . . .

Bank of Montreal
Royal Bank of Canada
Canadian Bank of Commerce
Imperial Bank of Canada
Provincial Treasury Branch
Toronto-Dominion Bank (opening 1960.)

29. — HOTELS . . .

	No. of Rooms	Single Rates	Licensed Premises
Alice	52	\$2.25 up	Yes
Arlington	42	2.00 up	Yes
Windsor	26	1.50 up	Yes

30. — MOTELS . . .

	Units	Rating	Rates
Johnson's Motel	7	4 star	
	3	3 star	\$4.50 up
Star Dust Motel	7	not classified	4.50 up

One Trailer Park with electric lights, water and sewer. Rates—\$20.00 and \$25.00 per month.

31. — CHURCHES . . .

Roman Catholic, Greek Catholic, United Church, Anglican, Baptist (2), Pentecostal, Grace Lutheran, Evangelical Lutheran, Church of God, Bethel Lutheran, Mission Covenant, Salvation Army, Jehovah's Witnesses.

32. — LODGES . . .

Masonic, Knights of Columbus, V.A.S.A. Scandinavian, O.O.R.P., Eastern Star, I.O.O.F., Moose, L.O.B.A., B.P.O.E., I.O.D.E.

33. — SERVICE CLUBS . . .

Rotary, Kinsmen and Kinettes, Canadian Legion, Chamber of Commerce, Junior Chamber of Commerce, Women's Professional and Business Club, Lions and Lionesses, Ladies' Hospital Guild, Ladies' Auxiliary to the Canadian Legion.

34. — SOCIETIES . . .

Home and School Association, Camrose Agricultural Society, Canadian Institute for the Blind, Red Cross, Fish and Game Association, Old Timers Association, Camrose Historical Society, St. John's Ambulance, Camrose Swimming Club, Toastmasters, Camrose Light Horse Improvement Society, Horticultural Society, Camrose Recreation Association, Camrose Public Library Board, Camrose Flying Society.



SIFTON SCHOOL, OPERATED BY CAMROSE SCHOOL DIVISION

35. — SCHOOLS . . .

The City of Camrose School District No. 1315 teaches grades 1 to 12, along with the following optional subjects: complete commercial course, French, art, music, drama, home economics and shop.

The school population is made up as follows:

	Grades	No. of Teachers	No. of Pupils
Elementary	1 - 6	17	554
Junior High	7 - 9	10	276
High	10 - 12	11	210

The Camrose School Division No. 20 teaches grades 1 - 9 with a staff of nine teachers and 225 pupils. Optional subjects are home economics and shop.

The school division headquarters in the city include a complete office staff of secretary and stenographers, also a well-equipped service garage servicing all the school buses in the division.

The Camrose Separate School District No. 60 teaches grades 1 to 12, along with the following optional subjects: typing, art, French and drama, home economics and shop.

	Grades	No. of Teachers	No. of Pupils
Elementary	1 - 6	6	180
Junior High	7 - 9	3	67
High	10 - 12	4	48

The Camrose Lutheran College teaches grades 10 to 12 and first year University and Commercial Course. Total enrollment 215 pupils with a staff of 14 teachers — Boarding School.

Alberta Bible Institute teaches senior matriculation courses and religious instruction — Boarding School.

Canadian Lutheran Bible Institute offers a short course in theological instruction for prospective teachers and missionaries.

36. — THEATRES and HALLS . . .

	Seating Capacity	Stage	Music
Bailey Theatre	450	yes	piano
Kam Theatre	475	no	no
Kar-Vue Drive-In Theatre	375 cars		
Exhibition Grand Stand	1500	yes	no
Skating Arena	3000	no	bandstand
Anglican Hall	100	no	piano
Elks' Hall	600	yes	piano and Hi-Fi
United Church Hall	500	yes	piano
Canadian Legion Club Rooms	150	no	piano
John Russell School Auditorium	300	yes	piano
High School Auditorium	400	yes	piano
Lutheran College Auditorium	150	yes	piano
Moose Hall	150	no	piano
City Auditorium	1800	yes	piano
Oddfellows' Hall	100	no	piano
Charlie Killam Gymnasium	1000	yes	piano

37. — CULTURAL ACTIVITIES

Camrose Public Library with 8,000 books. There is a Librarian in attendance from 2:00 to 6:00 p.m., except on Wednesday, and 2:00 to 9:00 p.m. on Friday. Reading room in connection. This Library is supported by the city with the usual Provincial Government grants under the Library Act.

Camrose Historical Society and Museum.

Extra curricular subjects at High School in music, drama, art or various crafts.

Music appreciation: School Band—40 instruments; Jubilee City Band—30 instruments.

Lutheran College Choir.

Several qualified music and voice teachers have trained many outstanding pupils.

Craft Centre (permanent quarters).

Camrose Chapter S.P.E.B.S.Q.S.A. — 48 members.

Camrose Overture Society.

Cultural Activities Co-ordinator taking in Recreational Commission of eight members co-ordinating all cultural activities including: art, drama, leathercraft, woodwork and ceramics.

A public recreation program is operated by a duly appointed recreation board at council levels who employ a full time director and activity specialists including indoor and outdoor activities. A recreation centre is operated the year around for all ages. The recreation program covers playgrounds, swimming pools, all major sports, youth clubs, adult clubs, crafts, library, pre-school programs, senior citizens club. Summer resorts are but a short drive from the city. Camrose Recreation Board has sponsored several national events in the athletic field.

38. — YOUTH ACTIVITIES . . .

BOYS—Boy Scouts, Wolf Cubs, Air Force Cadets, Sea Cadets, Boys' Club, Gun Club, 4H Club, Calf Club.

GIRLS—C.G.I.T., A.Y.P.A., Brownies, Explorers, Gun Club, Calf Club, 4H Club.

39. — SPORTS . . .

Hockey (senior, junior, midgets, and mites), Skating, Baseball (senior, junior and Pony league), Softball (ladies' and men's), Curling (ladies' and men's), Golf, Skiing, Badminton, Tennis, Rifle Shooting, Swimming.

Sports Facilities — Covered arena for hockey and skating, Covered artificial ice curling rink (6 sheets), Open air hockey and skating rinks with club house (2), Ski jump, Baseball diamonds, Agricultural Building (badminton, boxing, wrestling, and basketball, etc.), Golf course (9 holes), Swimming pool, Wading Pool (2), 7 Kinsmen playgrounds operated by the City of Camrose, Rifle range, Tennis Courts, Jubilee Park (covered picnic facilities).

40. — FAIRS . . .

One of the best laid out and equipped exhibition grounds in the province. Class B. Fair sponsored and directed by Camrose Agricultural Society, who also sponsor an annual sale for cattle and swine each fall and spring.

41. — HISTORIC SITES . . .

Telegraph house on the N½ Sec. 32-48-21 W4 is on the east side of Little Hay Lake. It was the terminal of the first telegraph service in Alberta, established about 1885.

42. — CO-OPERATIVES . . .

Northern Alberta Dairy Pool
Alberta Poultry and Egg Producers
Rural Telephone Co-ops
Rural Electrification Co-ops
Alberta Wheat Pool
United Grain Growers
United Farmers Assoc. Central Co-op
Alberta Wheat Pool Seed Division

43. — INDUSTRY and BUSINESS . . .

Type of Industry or Business	Number of Establishments	Producer or Manufacturer	Wholesale	Retail	Type of Industry or Business	Number of Establishments	Producer or Manufacturer	Wholesale	Retail
Accountants	2	—	—	—	Hardware	5	—	—	5
Advertising	3	—	—	—	Hatcheries	2	2	2	—
Ambulance	2	—	—	—	Hotels	3	—	—	—
Association (Auto)	1	—	—	—	Ice Cream (bulk)	2	1	2	—
Auctioneers	2	—	—	—	Insurance Agents (Life)	4	—	—	—
Auto Accessories	2	—	2	2	Insurance Agents (Gen.)	3	—	—	—
Auto Camps	1	—	—	—	Investments Dealer	1	—	—	—
Auto & Truck Dealers	10	—	—	10	Implement	3	—	—	3
Auto Body	2	—	—	—	Jewellers	3	—	—	3
Auto Paint	1	—	—	1	Laundries	2	—	—	—
Auto Electric	1	—	—	1	Law Offices	4	—	—	—
Auto Radiator	1	—	—	1	Livestock Dealers	1	—	—	—
Bakeries	2	2	2	2	Lumber Yards	5	—	—	5
Banks	5	—	—	—	Machine Shops	3	3	—	—
Barbers	5	—	—	—	Mail Order Offices	2	—	—	2
Beauty Parlors	4	—	—	—	Manufacturers (valves)	1	1	1	—
Blacksmiths	4	—	—	—	Milk Distributors	2	2	1	2
Books and Stationery	2	—	—	2	Motels	2	—	—	—
Bowling Alleys	2	—	—	—	Music Stores	1	—	—	1
Breakfast Food	1	1	1	—	Needlecraft	1	1	—	1
Butchers	5	—	—	5	Oilfield & Gas Well Servicing	3	—	—	—
Building Contractors	7	—	—	—	Optometrists	3	—	—	—
Building Supplies	6	—	—	6	Painters & Decorators	4	—	—	—
Cartage Delivery	3	—	—	—	Paint Shop	1	—	1	1
Chiropractors	2	—	—	—	Plumbers & Gas Fitters	4	—	—	4
Clinics (Medical)	1	—	—	—	Photographers	2	2	—	2
Cleaners & Dyers	3	—	—	—	Pool Halls	2	—	—	—
Clothing (men's)	8	—	—	8	Piano Tuning	1	—	—	—
Clothing (women's)	8	—	—	8	Pipelines	1	—	—	—
Clothing (children's)	2	—	—	2	Printers	3	3	3	3
Coal Mines	2	2	2	2	Propane Gas	1	—	1	1
Commercial Signs	1	1	1	1	Radio Station	1	—	—	—
Concrete (Ready Mix)	1	1	1	1	Radio Repairs	4	—	—	—
Coal Dealers	3	2	2	3	Real Estate Agents	4	—	—	—
Cold Storage Lockers	2	2	2	2	Restaurants	8	—	—	—
Dairies	2	2	2	2	Sash & Door	1	1	1	1
Dairy & Snack Bars	5	—	—	5	Scrap Metal Dealers	1	—	—	—
Dentists	4	—	—	—	Second Hand Store	1	—	—	1
Dental Mechanic	1	1	1	1	Seed Cleaning Plants	2	—	2	1
Department Stores	5	—	—	5	Sewing Machine Agents	2	—	—	2
Doctors	9	—	—	—	Sheet Metal	3	3	—	—
Drugs	4	—	—	4	Shoe Repair	4	—	—	—
Draperies	1	—	—	1	Shoe Stores	2	—	—	2
Egg Grading Stations	2	—	2	2	Sign Writers	2	2	—	—
Electrical Appliances	7	—	1	6	Steam Baths	2	—	—	—
Electrical Contractors	4	—	—	—	Stationery & Office	2	—	2	2
Farm Machinery	6	—	—	6	Sporting Goods	4	—	—	4
Florists	2	—	—	2	Tailor Shops	3	—	—	3
Flour Mills	1	1	1	1	Taxis	2	—	—	—
Flour Mills (pancake)	1	1	1	—	Tire Repairs	2	—	—	—
Funeral Parlors	2	—	—	—	Theatres	3	—	—	—
Furniture Stores	4	—	—	4	Trailer Camps	1	—	—	—
Garages & Service Stations	25	—	—	25	Variety Store	3	—	—	3
Gardening (Landscape)	1	—	—	—	Veterinaries	4	—	—	—
Gas Companies	1	1	1	1	Welding & Machine Shop	5	—	—	—
Greenhouses	1	1	1	1	Vulcanizing	2	—	—	—
Grain Elevators	5	—	—	—	Vacuum Cleaners	1	—	—	—
(total capacity 200,000 bu.)					Woodworking	1	1	—	1
Groceries	6	—	—	5					

44. — SITES . . .

Excellent industrial and residential sites served with all utilities can be purchased from the City and from private owners at a reasonable cost.

45. — INDUSTRIAL DEVELOPMENT . . .

The Page-Hersey Tubes Limited now being constructed on 65 acres in the northeast section of the city, manufacture large diameter steel pipe. This is one of the largest plants of its kind in the world, employing a maximum of 350 employees. It will be in full operation by the spring of 1960. Registered name will be Camrose Tubes Limited.

The Alberta Wheat Pool Seed Division specializes in processing and cleaning of grass and legume seed. The 10 million pounds of seed handled each year is exported to all parts of the world, only a small portion being used locally. They employ between 18 and 40 persons.

Camrose Transit Mix Limited has a capacity of 500 yards per day and keeps four transit mix trucks and six employees busy.

Brager Transport operate heavy industrial equipment in a sand, gravel, crushing and excavating business. They operate six trucks from their 100 acre gravel pit and employ 10 men.

Magcobar, a plant processing Bentonite and Barite used in oilfield drilling and foundry work, is situated 26 miles southeast of the city. The capacity is 200 tons per day, employing 14 persons. The product is exported all over Canada.



OFFICES OF CAMROSE MUNICIPAL DISTRICT NO. 63

Ness' Dairy employ 15 or 16 persons and have three trucks distributing bottled white and chocolate milk and cream in the city. The milking herd averages 100 head of Holstein cattle.

Northern Alberta Dairy Pool with its new \$400,000 plant process milk and cream, manufacturing butter oil, powdered and skim milk, powdered buttermilk plastic cream and cream concentrate. They retail bottled milk and cream with two trucks serving the city and wholesale butter, cream, white and chocolate milk, ice cream and a complete line of fountain sundries to the cafes and hotels. Two other trucks are kept busy with farm milk pickups throughout the district keeping the plant running to their capacity of 10,000 lbs. of fluid milk per hour. They have 23 on the payroll.

The Camrose Collieries Ltd. is a strip coal mine operation. The coal field is five miles east of the city on Highway 13. The present capacity is 1,000 tons per eight hour shift. The registered name is Camcoal.

The M & R Controls manufacture safety valves for oil and gas lines.

The Byers Flour Mills Ltd. is a large industry in the Camrose area. This firm produces flour, breakfast cereal, pancake flour, feed etc. "Sunny Boy" breakfast cereal, known throughout Canada, is produced at this mill. They have 20 employees on the payroll.

The Imperial Lumber Sash and Door Factory manufacture all sizes and shapes of custom made windows and doors. They employ four or five workmen in their well equipped plant.

Camrose is in the heart of the densely populated area of the province, approximately 31% of the population live within a 50 mile radius, 61% of this is farm population, 21% non farm but rural and 18% in urban areas. There are 42% of all farms in the province located in this area. Almost half of all oats and barley acreage sown in the province is grown in the vicinity and 29% of wheat acreage. Field crop production for cash sale is relatively important in the Camrose district. Livestock and poultry is growing in importance for a farm cash income, cattle 37%, hogs 47%, poultry 45% of the provincial population total. The city of Camrose is believed to be the largest hog shipping centre in Canada. The progress toward mechanization in this district is outstanding. There are 1.1 autos per farm and an average of one combine (or grain) per farm. More than 70% of the farms are electrified. The net effective buying income of this district as of 1956 was \$63,933,000, averaging \$4,409.00 per family.

The Newsom Concrete Products plant is a new and completely efficient concrete block producing operation. Its complete production can be absorbed in the territory tributary to, and serviced by Camrose.

46. — TRADING AREA

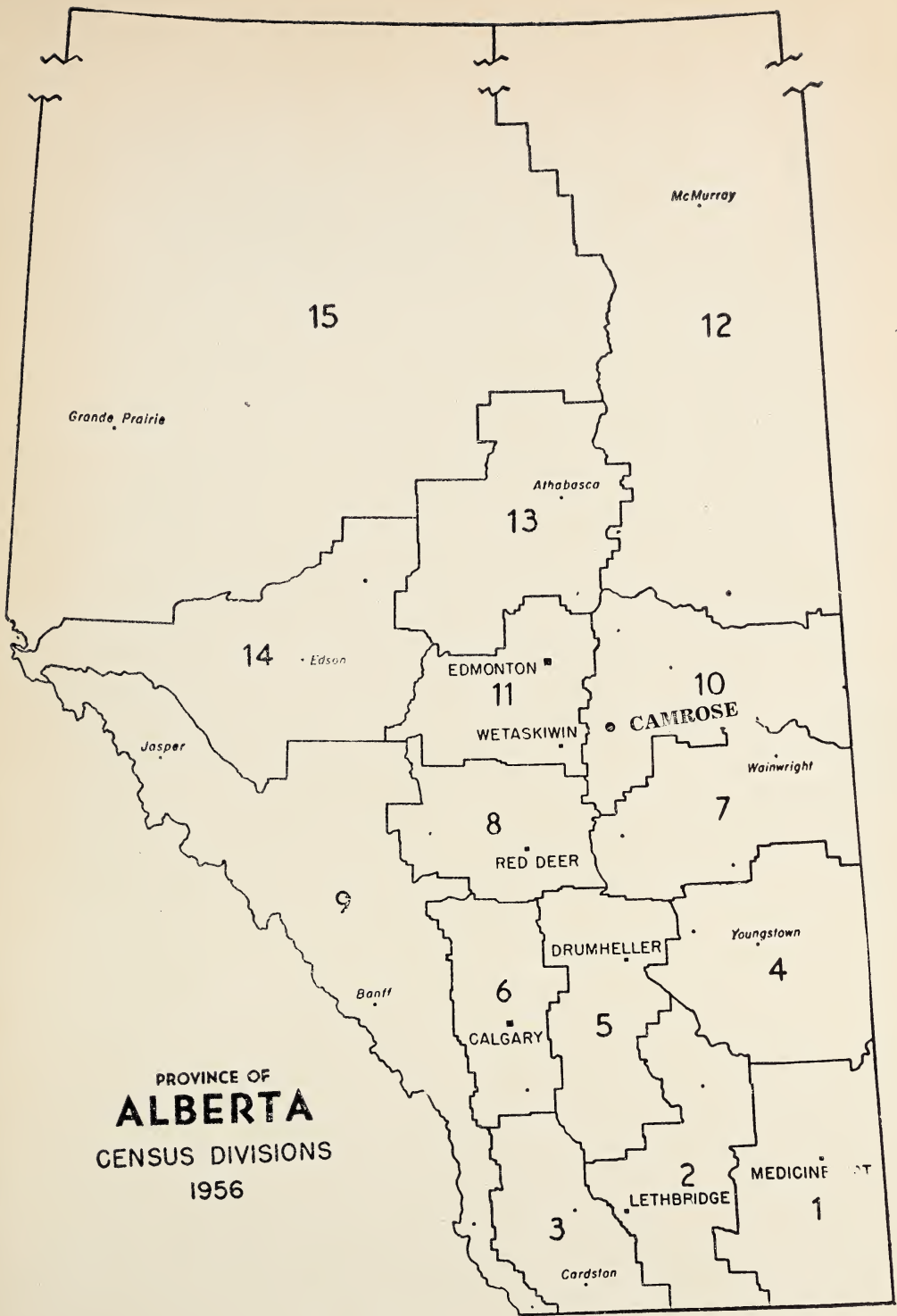
On the north — 25 miles; On the west — 18 miles; On the south — 35 miles; On the east — 120 miles.

47. — POPULATION . . .

Trading area population — 60,000.

City population, 1956 — 5,743

City population, 1959 — 6,042



PROVINCE OF
ALBERTA
 CENSUS DIVISIONS
 1956

0 8200 1000002 1

