

Historic, archived document

Do not assume content reflects current scientific knowledge, policies, or practices.

62.61

LIBRARY
RECEIVED
★ AUG 2 1923 ★
Department of Agriculture



VICK'S

Wholesale Price List,

1891.





Verbena, "Vick's Select Strain." Mr. Benary, the celebrated seed grower, says we have the best mixture he ever saw. (See page 43.)

1852.

1891.

VICK'S

Wholesale Price List

—OF—

SEEDS,

BULBS, PLANTS,

—AND—

FLORISTS' SUPPLIES.

FOR DEALERS ONLY.

—♦♦♦—

James *Vick, *Seedsman,

ROCHESTER, N. Y.

TO OUR PATRONS.


ROCHESTER, N. Y., January, 1891.

These quotations are for the Trade only, and are subject to advance without notice. The seeds quoted are to be relied on as fresh and strictly pure, and of the finest quality, largely grown on our own seed-farms, or under our own inspection. It has been our aim to supply the public with seeds of a superior strain, such as will produce the finest vegetables and most perfect flowers.

In making our prices for the current year, we have endeavored to put them as low as possible, consistent with the cost of producing seeds, etc., of the first quality. We do not, however, attempt to compete in price with parties who have no reputation to lose, and who often furnish seeds of questionable reliability.

SHIPPING.

Purchasers will please send explicit shipping instructions with each order ; where no such instructions are given, we shall exercise our best judgment in the matter ; but when goods have been so delivered, in first-class condition, addressed as ordered, we disclaim all responsibility for any accident, damage or delay that may occur on the route. We pay no freight or express charges unless by special agreement. When goods are desired sent by mail, postage must be added at the rate of ten cents per pound.

 Bags, boxes and barrels will be charged at cost. No charge for cartage or packing.

TERMS.

Orders amounting to Ten Dollars, or less, must be accompanied by the cash. To regular customers, orders exceeding that amount for seeds, bulbs, or plants, made before June 1st, will be due at that date, and those made after that time will be due December 1st. A discount of one per cent. per month will be allowed when payment is made previous to these dates. *Grass Seed, Clover Seed, Potatoes, and Onion Sets invariably net cash.* Satisfactory reference required from all new or unknown correspondents desiring credit. We decline to send C. O. D. unless a partial remittance is made as guarantee of good faith. *We send out no seeds on commission.*

Prices of Flower and Vegetable Seeds.

FIVE CENT PAPERS—Per 100, \$2.00; per 1000, \$18.00.

TEN CENT PAPERS—Per 100, \$4.00; per 1000, \$35.00.

FIFTEEN CENT PAPERS—Per 100, \$6.00; per 1000, \$50.00.

TWENTY CENT PAPERS—Per 100, \$8.00; per 1000, \$70.00.

TWENTY-FIVE CENT PAPERS—Per 100, 10.00; per 1000, \$80.00.

Not less than 100 papers at the 100 rate, nor than 1000 papers at the 1000 rate. Dealers who prefer can make their own selection from our Retail Catalogue at the above rates, provided not less than 100 papers are ordered, nor less than five papers of a kind. Where a less quantity is desired a discount of 50 per cent. from retail prices will be allowed.

Ounce papers of Vegetable Seeds 40 per cent. discount from retail prices. Flower Seeds by the ounce and pound, and Vegetable Seeds by the pound, quart, peck and bushel, are priced net in the body of this catalogue—pints at quart rates, four quarts at peck rates, and twenty pounds at hundred pound rates.

Boxes of Flower and Vegetable Seeds.

For the convenience of small dealers we put up boxes of seeds in papers, embracing those varieties most in demand, and in such proportions as our long experience has taught us are called for. The boxes are neat, showy and convenient for retailing from.

THE BOX OF VEGETABLE SEEDS contains 250 five cent papers; retail value \$12.50, price to dealers \$5.00, *delivered on board cars or to express company.*

THE BOX OF FLOWER SEEDS contains \$5.00 worth of retail papers; price to dealers \$2.00. As these boxes are filled early in the season, before the press of business begins, no changes can be made from the assortments we have put up.

HANDSOME LARGE SHOW CARDS, lithographed in colors, furnished with first order.

For the assistance of those selling our seeds, we will furnish our Abridged Catalogue free, and VICK'S FLORAL GUIDE, when desired, at \$3.00 per hundred; our retail price for same is ten cents each, which is much less than cost.



THE LATEST NOVELTY
 AND
 COMING PINK CARNATION,
Nellie Lewis.

The most beautiful Pink Variety
 ever offered.

Superior to Gracie Wilder in every respect. Flowers large, handsome, showy, and of the most brilliant color.


SAMPLE FLOWERS ON APPLICATION.

Rooted Cuttings, per 100 \$10.00

Strong Plants, from 2-inch pots, per 100 12.00

Ready for delivery about March 1st.

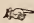
TRADE LIST FOR 1891.

 *A Telegraphic Cipher is attached to each article, which will enable orders to be sent by wire at comparatively little expense. For example:*

Two Bade means two bushels Early Valentine Beans; or

Fifty Beget means fifty pounds Egyptian Blood Turnip Beet, etc.

VEGETABLE AND GARDEN SEEDS.

 **Prices Net, without Discount.**

ARTICHOKE.	Tel. Cipher.	100 lbs.	Per lb.
Green Globe	Abbott		\$1 75
Jerusalem, . per peck, 60 cents; per bu., \$2.00	Abhal		
ASPARAGUS.			
New Mammoth	Abib		75
Conover's Colossal	Abject	\$15 00	20
Conover's Roots one year old	Able		
60 cents per 100; \$4.00 per 1000			
Conover's Roots two years old	Aboma		
80 cents per 100; \$6.00 per 1000.			

The long continued rains under which the Bean crops of 1890 were harvested, not only reduced the quantity secured, but at the same time seriously injured the vitality. We give our customers the best stocks we have, and equal to any of the past season's growth.

BEANS, DWARF OR SNAP.	Tel. Cipher.	Per bu.
Long Yellow Six Weeks	Babe	\$ 4 00
Miller's Round Yellow	Babel	5 00
Extra Early Valentine	Bacon	4 50
Early Valentine	Bade	4 00
Early Mohawk	Badge	4 00
Best of All	Badian	4 50
Emperor William	Baffle	4 00
China Red-Eye	Bag	4 00
New Prolific German Wax	Bahar	5 00
German Wax, or Butter	Bain	4 00
Golden Wax	Bake	4 50
Improved Golden Wax	Balcon	5 50
Mont d'Or Wax	Ball	4 50
Black-Eyed Wax	Balloon	5 50
Flageolet Red Wax	Balm	5 50
Yosemite Mammoth Wax	Balse	25 00
Ivory Pod Wax	Ban	5 00

BEANS, DWARF OR SNAP, Continued.		Tel. Cipher.	Per bu.
Crystal White Wax		Band	\$ 5 00
Wardwell's Kidney Wax		Baptist	5 00
Extra Early Refugee		Barbel	5 00
Refugee		Bard	4 00
Dwarf Horticultural		Barras	6 00
Henderson's Bush Lima		Barrow	12 00
" Boston" Small Pea Bean (novelty)		Basin	4 00
White Kidney, or Royal Dwarf		Bate	4 00
White Marrowfat		Baulk	4 00
Broad Windsor		Bavin	5 00
BEANS, RUNNING.			
Early Golden Cluster Wax		Bawn	10 00
Early Jersey Lima		Baxter	8 00
King of the Garden Lima		Baying	8 00
Large Lima		Bazat	7 00
Dreer's Lima		Bead	8 00
Small Lima, or Sieva		Beck	6 00
London Horticultural, or Cranberry		Bedim	4 50
Dutch Case Knife		Beech	5 00
Southern Prolific		Beetle	5 00
Scarlet Runners		Befog	6 00
German Wax Pole		Before	7 00
Giant Wax (red seed)		Beg	9 00
Crease-Back		Bega	7 00
Lazy Wife's		Begem	12 00
BEE T.			100 lbs. Per lb.
Egyptian Blood Turnip		Beget	25 00 \$ 30
Eclipse		Behest	25 00 30
Extra Early Bassano		Bekah	20 00 25
Edmand's Blood Turnip		Bell	20 00 25
Early Blood Turnip		Bema	20 00 25
Dewing's Turnip		Bend	20 00 25
Bastian's Early Turnip		Bepale	20 00 25
Early Yellow Turnip		Berg	25 00 30
Henderson's Pine Apple, true		Besom	40 00 50
Long Smooth Blood Red		Betide	15 00 20
Imperial Sugar		Bever	12 00 15
Red-top Sugar		Bewake	12 00 15
Swiss Chard, Beck's Sea Kale		Bey	40
" " Silver Beet		Bezan	25 00 30
" " Scarlet Brazilian		Bias	40
" " Yellow Brazilian		Bib	40
Mangel Wurzel, Long Red		Bice	10 00 15
" " Norbiton Giant		Biddy	12 00 15
" " Carter's Mammoth Long Red		Bifer	12 00 15
" " Olive-shaped Red		Bigot	12 00 15
" " Red Globe		Bijou	15 00 20
" " Elvetham Long Yellow		Bilbo	18 00 20

VICK'S WHOLESALE PRICE LIST.

7

BEETS, Continued.		Tel. Cipher.	100 lbs.	Per lb.
Mangel Wurzel, Common Long Yellow		Bimane	\$10 00	\$ 15
" " Golden Tankard		Bind	15 00	20
" " Golden Giant, new		Biped	20 00	25
" " Yellow Globe		Bird	12 00	15
" " Carter's Improved Orange Globe		Birk	12 00	15
" " Yellow Ovoid		Bisk	15 00	20

BORECOLE.

Dwarf German Greens, or Sprouts	Bison	30
Dwarf Purple Kale	Bite	60
Dwarf Green Curled or Scotch Kale	Blab	60
Tall Green Curled or Scotch Kale	Bleat	65

BRUSSELS SPROUTS.

Improved Dwarf	Blind	1 00
--------------------------	-----------------	------

BROCOLI.

Purple Cape	Block	3 00
Southampton	Bluff	2 50



Cabbage, Perfection Savoy.



Cabbage, Fottler's Improved Brunswick.

CABBAGE.

	Tel. Cipher.	100 lbs.	Per lb.
Early Wakefield	Cab	\$ 1 50	
Henderson's Early Summer	Cackle	1 50	
Succession	Caddis	4 00	
Newark Early Flat Dutch	Cadet	1 50	
Early Flat Dutch	Cafe	1 00	
Early Dwarf York,	Cage	\$60 00	70
Large York	Cairn	60 00	70
Louisville Drumhead	Cake		2 00
Large French Oxheart,	Calf		1 00
Winnigstadt	Cameo	75 00	85
Fottler's Improved Brunswick	Cane		1 25
All Seasons	Cape		1 75
Danish Round Winter	Card		2 50
Filder, or Pomeranian,	Cask		1 50
Stone Mason Marblehead	Cater		1 25
Marblehead Mammoth	Caulk		1 25

VICK'S WHOLESALE PRICE LIST.

CABBAGE, Continued.		Tel. Cipher.	100 lbs.	Per lb.
Excelsior Large Flat Dutch		Cave		\$ 1 25
Premium Flat Dutch		Cawk	\$85 00	1 00
Large Late Drumhead		Caxon	85 00	1 00
Large Late Blood Red		Cease		1 00
Early Blood Red		Cedar		1 75
Perfection Drumhead Savoy		Cell		1 25
Dwarf Green Curled Savoy		Cement		75
Early Dwarf Ulm Savoy		Cent		1 00

CAULIFLOWER.

Vick's Ideal, oz., \$5; ½ oz., \$2.50; ¼ oz., \$1.25	Cepola	
Henderson's Early Snowball, true, per oz., \$2.00	Ceroma	24 00
Erfurt Earliest Dwarf per oz., \$2.00	Cess	24 00
Extra Early Paris	Cetus	7 00
Algiers, best of the late sorts	Chaff	7 00
Italian Giant	Chick	4 50
Le Normand's Short-Stemmed	Chrome	7 00



Celery, Golden Self-Blanching.

CELERY.		Tel. Cipher.	100 lbs.	Per lb.
Henderson's White Plume		Client		\$2 00
Giant Paschal		Climax		4 00
Golden Self-Blanching		Clock		2 50
Turner's Incomparable Dwarf White		Club		1 00
Sandringham		Coal		1 00
Henderson's Dwarf White		Cob		1 25
Golden Heart		Coca		1 25
Crawford's Half Dwarf		Code		1 25
Boston Market		Coeval		1 00
Sealey's Leviathan		Coffee		1 00
New Rose		Cognac		2 50
Laing's Mammoth Red		Cohort		1 25
Carter's Incomparable Dwarf Crimson		Coin		1 25
Turnip-rooted, or Celeriac		Collar		1 00
For Flavoring		Comet	\$15 00	20

VICK'S WHOLESALE PRICE LIST.

CARROT.

	Tel. Cipher.	100 lbs.	Per lb.
Early Forcing	Cicely		\$0 60
Early French Horn	Cider	\$45 00	50
Guerande, or Oxheart	Cigar		60
Chantenay Stump-rooted	Cimbal		50
Half Long Scarlet Stump-rooted Nantes	Cinder	40 00	45
Danvers Orange	Cion	40 00	45
Half Long Scarlet, pointed-rooted	Cipher	40 00	45
Half Long Scarlet Carentan	Circus		50
Long Red Coreless	Cisco		50
Long Orange	City	35 00	40
Altringham	Civic		45
Large Orange Belgian Green-Top	Clam	35 00	40
Long White Belgian Green-Top	Cleat	25 00	30

CHICORY.

Large Rooted Long Magdeburg	Convoy	30 00	35
---------------------------------------	------------------	-------	----

CHIVES, per 100 bunches, \$10.00

CORN.

		Per bu.
Cory	Cooper	\$ 3 00
Perry's Hybrid	Copy	2 50
Early Marblehead	Coquet	2 50
Early Minnesota	Coral	2 50
Chicago Market, or Ballard's Early	Cost	2 50
Russel's Prolific	Cotton	2 50
Crosby's Early	Couch	2 25
Early Eight-Rowed Sugar	Cove	2 25
Moore's Early Concord	Cow	2 25
Ne Plus Ultra	Coyish	3 50
Excelsior	Crab	2 25
Hickox Improved Sugar	Crack	2 50
Triumph	Craft	2 50
Mammoth	Cramp	2 50
Stowell's Evergreen	Crank	2 50
Egyptian, or Washington Market	Crash	2 25
Black Mexican	Crate	3 00
Early Adams	Crazy	2 00
Extra Early Adams	Cream	2 25
Parching (ears)	Credit	1 50

CORN SALAD.

		100 lbs.	Per lb.
Best	Creed	\$85 00	\$ 40

COLLARDS.

Georgia	Creep		50
-------------------	-----------------	--	----

CRESS.

Fine Curled	Creole	15 00	20
Plain-leaved	Crust		20
Broad-leaved	Crew		40
Australian	Crimp		40
Water	Crisis		2 50



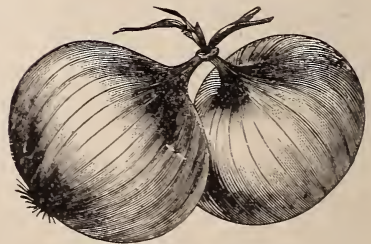
Beet, Eclipse.
(See page 6.)



Carrot, Chantenay.
(See page 9.)



Cabbage, Early Wakefield.
(See page 7.)



Onion, Danvers Yellow Globe.
One of our Specialties. (See page 13.)

VICK'S WHOLESALE PRICE LIST.

11

CUCUMBER.

	Tel. Cipher.	100 lbs.	Per lb.
Early Russian	Crisp	\$30 00	\$0 35
Early Green Cluster	Crispen	30 00	35
Early Frame	Critic	30 00	35
Early White Spine	Croak	30 00	35
Short Green	Crocky	30 00	35
Boston Pickling	Croft	30 00	35
Chicago Pickling	Crook	30 00	35
Green Prolific	Crop	30 00	35
Nichol's Medium Green	Cross	30 00	35
Cleveland Pickling	Croton		35
Long Green	Crouch	35 00	40
West India Gherkin	Crutch		75
Long Green Southgate	Cry		2 00
Chinese Long Green	Cubit		2 00
Giant of Arnstadt per oz., \$2.50	Cuff		
Rollisson's Telegraph per 100 seeds, 1.50	Culver		
General Grant per 100 seeds, 1.00	Cupid		
Carter's Champion per 100 seeds, 1.00	Cygnet		
Carter's Model per 100 seeds, 2.75	Cynic		

EGG PLANT.

Early Long Purple	Eagle		1 00
Improved New York Purple	Ebony		4 50
Round Purple	Egg		2 00
Black Pekin	Eider		3 00

ENDIVE.

Green Curled	Eject		80
Moss Curled	Elgin		1 20
White Curled	Engine		1 50
Batavian	Estate		80

GARLIC,

Esteem		15
-------------------------	--	----

HORSERADISH.

Roots per 100, 70 cents; per 1000, \$5.00	Horse		
---	------------------------	--	--

KOHL RABI.

Early White Vienna, first quality	Keel		2 00
Early Purple Vienna, first quality	Kilt		2 00
Large Early White	King		1 00
Large Early Purple	Kitten		1 00
Large Late Green	Knave		1 00
Large Late Purple	Koba		1 00

LEEK.

Broad Flag, American,	Label		1 25
Musselburg	Labor		1 25

LETTUCE.

Premium Cabbage, the best for all purposes	Lac	90 00	1 00
Buttercup	Lace		75
New Early Hanson	Lady	60 00	70
Prize Head	Lake		75

VICK'S WHOLESALE PRICE LIST.

LETTUCE, Continued.	Tel. Cipher.	100 lbs.	Per lb.
Imperial White	Leaf		\$0 75
All-the-Year-Round	Ledge	\$65 00	75
Satisfaction	Lemon	65 00	75
Early Curled Simpson	Left	60 00	70
Black Seeded Simpson,	Light		75
Early Curled Silesian	Liver	60 00	70
Early Egg	Load		1 50
Early Tennis Ball, white-seeded	Lock	50 00	60
Early Tennis Ball, black-seeded	Lotus	60 00	70
Boston Market	Luck	60 00	70
Salamander	Luff		70
Boston Curled	Lunar	60 00	70
Hardy Green Hammersmith	Lying		1 20
Paris White Cos	Lynch		75
MELON, MUSK.			
Vick's Prolific Nutmeg	Mab		50
Irondequoit	Mace		2 00
Early Christiana	Madcap		35
Jenny Lind	Magnet		35
Bird Cantaloupe	Mahot		35
Golden Netted Gem	Mail		35
Emerald Gem	Major		50
Montreal Green Nutmeg	Malt		35
Champion Market	Mamma		35
Miller Cream	Mango		35
Skillman's Fine Netted	Maple		35
White Japan	Marble		35
Surprise	Mask		35
Green Citron	Match		35
Large Green Nutmeg	Mate		35
Hackensack	Mavis		35
New Early Hackensack	Mawk		35
Casaba, or Persian	Maxy		35
Bay View	Maying		35
Long Yellow Cantaloupe	Mazy		35
MELON, WATER.			
Vick's Early	Mead	30 00	35
Florida Favorite	Medal	30 00	35
Kolb's Gem	Melt	30 00	35
Pride of Georgia	Mentor	30 00	35
Mammoth Ironclad	Merino	30 00	35
Seminole	Mess	30 00	35
Green and Gold	Metal	35 00	40
Mountain Sweet	Mica	30 00	35
Mountain Sprout	Midas	30 00	35
Ice Cream, or Peerless	Miffed	30 00	35
Dark Icing, or Ice Rind	Milk	30 00	35
Light Icing	Mina	30 00	35

VICK'S WHOLESALE PRICE LIST.

13

MELON, WATER, Continued.		Tel. Cipher.	100 lbs.	Per lb.
Scaly Bark		Mine	\$30 00	\$0 35
Odella		Minor	30 00	35
Georgia Rattlesnake		Mirth	30 00	35
Black Spanish		Miser	30 00	35
Phinney's Early		Mishna	30 00	35
Cuban Queen		Misle	30 00	35
The "Boss"		Mitre		35
Orange		Mitten		50
Citron, for preserves		Moat		40
Colorado Preserving		Model	35 00	40

MUSHROOM SPAWN.

English		Mouse	8 00	10
French	Per 2 lb. box, 75 cts.	Muffin		

MUSTARD.

White		Mush	12 00	16
Black		Myrtle		16

OKRA.

Long Green		Oak		20
Dwarf White		Oasis		20
Extra Early Dwarf White		Oath		40
White Velvet		Obey		30

ONION.

Large Red Wethersfield		Obole		1 10
Early Red Globe		Ocean		1 25
Extra Early Red		Octavo		1 25
Danvers Yellow Globe, our own growing		Offer		1 25
Danvers Yellow		Office		85
Large Yellow Dutch		Ogre		1 00
White Globe		Oil		1 75
White Portugal		Oliver		1 75
White Pearl		Opium		2 00
Mammoth White Garganus, or Silver King		Optic		1 75
New Giant Rocca of Naples		Orange		1 00
Large Blood Red Italian Tripoli		Orbit		1 25
Giant White Italian Tripoli		Osmand		1 25
Early White Flat Italian Tripoli		Otis		1 25
Marzagole		Otter		1 25
New Queen		Outlet		1 50

ONION SETS. *Prices subject to fluctuations of the market.*

		Per bu.
Red Bottom Sets	Ovoid	3 75
Yellow Bottom Sets	Owl	3 75
White Bottom Sets	Oyster	4 50
English Multipliers, or Potato Onion Sets	Ozone	3 00

PARSNIP.

		100 lbs.	Per lb.
Long Hollow Crown	Parcel	20 00	25
Carter's New Maltese	Paste	20 00	25

PARSLEY.		Tel. Cipher.	100 lbs.	Per lb.
Beauty of the Parterre		Pace		\$0 75
Champion Moss Curled		Padalc		50
Enfield Matchless		Pagoda		50
Giant Curled		Pail		40
Fern-leaved		Palace		50
Plain		Panda		25
Hamburg Large-rooted		Paper		80
PEAS. <i>Those marked * are wrinkled varieties.</i>			Per bu.	
Vick's Extra Early		Patch	\$	3 50
Carter's First Crop		Pauper		2 50
Philadelphia Extra Early		Pave		2 50
Waite's Caractacus		Pawn		2 50
Early Kent		Payday		2 50
Kentish Invicta, best sort for canning		Pearl		3 50
Alaska		Pebble		3 50
McLean's Blue Peter		Pecan		3 75
Tom Thumb		Pedal		4 00
*Bliss' American Wonder		Peel		4 50
*Carter's Premium Gem		Peg		4 00
*McLean's Little Gem		Pellet		4 00
*Vick's King of the Dwarfs		Pencil	20	00
*Laxton's Alpha		Pepo		3 00
*McLean's Advancer		Perch		3 00
*Horsford's Market Garden		Peso		2 75
*Bliss' Everbearing		Petal		2 75
*Bliss' Abundance		Phase		2 75
*Eugenie		Pheon		4 00
*Champion of England		Phial		2 50
*Carter's Telephone		Phlox		5 00
*Pride of the Market		Photel		5 00
*Yorkshire Hero		Phrase		2 75
Dwarf Gray Sugar		Piano		5 00
Tall Gray Sugar		Pica		5 00
Tall White Sugar		Piece		5 00
White Marrowfat		Pigeon		2 00
Black-eyed Marrowfat		Pike		1 75
Canada Field		Pill		1 25
PEPPER.			100 lbs.	Per lb.
Large Bell		Pine		\$1 50
Sweet Mountain, or Mammoth		Piot		2 00
Ruby King		Pipe		2 50
Golden Dawn		Pirate		2 00
Squash, or Tomato-formed, red		Pistol		1 75
“ “ “ yellow		Pitch		2 25
Monstrous, or Grossum		Pivot		2 25
Long Red		Place		1 50
Long Yellow		Pledge		2 00
Cherry-formed		Plight		2 00

VICK'S WHOLESALE PRICE LIST.

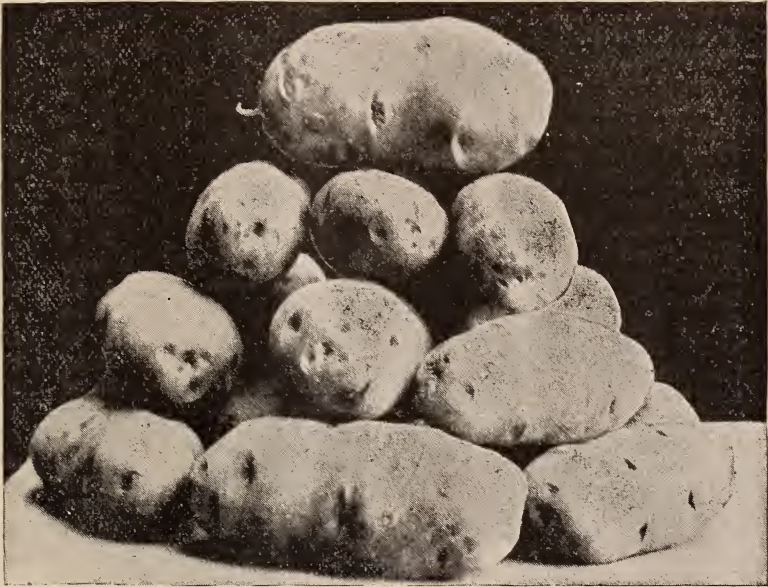
15

PEPPER, Continued.

Tel. Cipher.

100 lbs. Per lb.

Cayenne, true	Plot	\$1 75
Chili, very small, for Pepper sauce	Pluck	2 00
Cranberry	Poach	2 00
Red Cluster	Pocket	3 00



Potato, Vick's Perfection.

POTATOES.

		Per bbl
Early Market (new)	Pod	5 00
Ohio Junior, (new)	Poem	5 00
Early Gem	Point	4 00
Early Ohio	Poker	5 00
Early Hebron	Polar	4 00
Early Rose	Pomade	4 00
Boston Market	Pond	4 00
Chicago Market	Pool	4 00
Green Mountain	Pope	4 00
Monroe Seedling	Porch	4 00
Vick's Champion (new)	Post	5 00
White Star	Potash	4 00
White Superior	Preach	4 00

PUMPKIN.

		100 lbs.	Per lb.
Large Cheese	Prime	30 00	35
Cushaw	Proof	30 00	35

PUMPKIN, Continued.

	Tel. Cipher.	100 lbs.	Per lb.
Sugar	Prune	\$80 00	\$0 35
Large Tours, or Mammoth	Puck		60
Bright Red Etampes Mammoth	Fug		60
Large Yellow Mammoth	Pump		60
Connecticut Field per bushel, \$1.75	Puppy		10

RADISH.

Rose Olive-shaped	Rabid	30 00	35
Scarlet Olive-shaped	Raft	30 00	35
Scarlet Olive-shaped, White Tip, French Breakfast,	Rake	30 00	35
White Olive-shaped	Rapid	35 00	40
Vick's Early Scarlet Globe, finest variety for forcing,	Raven	35 00	40
Philadelphia White "Box"	Razor	40 00	50
Early Round Dark Red	Reach	30 00	35
Scarlet Turnip	Reap	25 00	30
Scarlet Turnip, White Tip	Recoil	30 00	35
White Turnip	Reel	30 00	35
Golden Yellow Turnip	Reward	35 00	40
Beckert's Chartier	Rhyme	35 00	40
Wood's Early Frame	Ribbon	30 00	35
Long Scarlet Short Top	Rice	25 00	30
Long White Naples	Ride	35 00	40
Long White Vienna, or Lady Finger	Rifle	35 00	40
White Strasburg	Ripe	35 00	40
Giant White Stuttgart	Rival	35 00	40
Chinese Rose Winter	Roast	35 00	40
Black Spanish Winter, Round	Robe	25 00	30
Black Spanish Winter, Long	Rock	25 00	30
Long Coal Black Parisian Winter	Roman		50
Large White Spanish, Winter	Rosin	30 00	35
California Mammoth White Winter	Rubber	40 00	45

RHUBARB.

Linnaeus	Ruby		1 00
Myatt's Victoria	Rust		1 00
Roots per 100, \$4.00	Ryder		

SALSIFY.

White French	Sack		60
Mammoth Sandwich Island	Salt		75
Black, or Scorzonera	Scale		1 00

SEA KALE

Scrunt 1 25

SPINACH.

Round or Summer	Seal	10 00	12
New Thick-leaved Round	Sermon	12 00	15
Bloomsdale	Shad	12 00	15
Prickly or Fall	Short	12 00	15
New Zealand	Sick		40

SQUASH.

Early White Bush Scollop	Sift	30 00	35
Early Yellow Bush Scollop	Skate	30 00	35

VICK'S WHOLESALE PRICE LIST.

17

SQUASH, Continued.	Tel. Cipher.	100 lbs.	Per lb.
Early Bush Crook-Neck	Skirt	\$30 00	\$0 35
Perfect Gem	Slang	30 00	35
Hubbard	Smoke	40 00	45
Sibley, or Pike's Peak	Snail	35 00	40
Marblehead	Soap	35 00	40
Turban, or Turk's Cap	Spade	35 00	40
Bay State, new	Squall	40 00	45
Essex Hybrid, true	Stand	35 00	40
Boston Marrow	Sugar	35 00	40
Winter Crook Neck	Swan		40
Mammoth	System		75

TOMATO.

Hathaway's Excelsior	Tabby		2 00
McCullom's Hybrid	Tack		2 00
Dwarf Champion	Talpa		1 50
Livingston's Favorite	Tansy		1 50
Livingston's Perfection	Tape		1 50
Livingston's Beauty	Tart		1 50
Paragon	Tear		1 50
Acme	Teeth		1 50
Mikado	Temple		1 75
Optimus	Tent		1 75
Horsford's Prelude	Test		2 00
Conqueror	Text		1 50
Trophy (extra selected)	Thatch		2 00
The Cardinal	Thirst		1 50
Early Mayflower	Thorn		1 50
Large Yellow	Throne		1 50
Pear-shaped Red	Thumb		1 50
Pear-shaped Yellow	Thump		1 75
Plum-shaped Yellow	Tick		1 75
Red Cherry	Tide		1 75
Yellow Cherry	Tiger		1 75
Strawberry	Time		2 50

TURNIP.

Extra Early Milan	Tin	35 00	40
Early Purple-top Munich	Title	25 00	30
Early White Flat Dutch	Toast	16 00	20
Early Yellow Dutch	Tody	20 00	25
Strap-leaved, Purple Top	Token	15 00	20
Strap-leaved, White Top	Tonic	16 00	20
Early White Six Weeks	Torch	20 00	25
Early Snowball	Tower	20 00	25
Early White Stone	Trade	20 00	25
Early Yellow Stone	Tree	20 00	25
New White Egg	Trick	20 00	25
White Norfolk	Trot	15 00	20
Purple Top White Globe	Trout	16 00	20

TURNIP, Continued.		Tel. Cipher.	100 lbs.	Per lb.
White Globe		Truck	\$15 00	\$ 20
Yellow Globe		Trunk	18 00	25
Orange Jelly		Trust	20 00	25
Yellow Aberdeen		Try	15 00	20
Long White Cowhorn		Tub	20 00	25
Jersey Navet		Tubing	25 00	30
Sweet German		Tune	25 00	30
Seven top (for greens)		Tunk	25 00	30
SWEDES, or RUTA BAGAS.				
White Sweet		Turbit	25 00	30
White Red Top		Tusk	20 00	25
Green Top		Tuton	16 00	20
Laing's Purple Top		Twang	16 00	20
Carter's Imperial Purple Top		Twig	15 00	20
Hall's Westbury		Twist	15 00	20
Skirving's Liverpool		Tycoon	15 00	20
American Purple Top		Type	18 00	25
Purple Top Ruta Baga		Tyron	12 00	20
HERBS.			Per oz.	Per lb.
Anise		Ugly	\$0 5	\$0 50
Balm		Ultra	25	2 50
Basil, Sweet		Umber	10	75
Borage		Umpire	10	80
Caraway		Unarm	5	50
Catnip		Unawed	30	3 00
Coriander		Unbar	5	40
Cumin		Unbay	10	70
Dandelion		Unbid	15	1 25
Dill		Unbow	5	40
Elecampane		Unchain	25	2 50
Fennel, Large Sweet		Uncial	5	50
Hoarhound		Undine	15	1 25
Hyssop		Union	10	75
Lavender		Unite	10	60
Marjoram, Sweet		Unrip	10	1 00
Nigella sativa (All Spices,)		Unwise	5	50
Rosemary		Upbar	25	2 50
Rue		Upset	10	60
Saffron		Upsun	10	60
Sage, Broad-leaved English		Uptown	10	1 00
Savory, Summer		Urate	5	50
Savory, Winter		Urbane	15	1 20
Sorrel (French)		Urchin	5	60
Tansy		Urgent	25	2 50
Thyme, Broad-leaved English		Usher	30	3 00
Thyme, Summer, (French)		Usual	30	3 00
Thyme, Winter, (German)		Utmost	30	3 00
Wormwood		Utter	15	1 50

GRASS SEEDS. <i>Subject to market fluctuations.</i>		Tel. Cipher.	Per bu.	Per lb.
Agrostis vulgaris, Red Top, (14 lbs.)	Vade		\$0 90	
Anthoxanthum odoratum, Sweet Vernal Grass	Vague			15
“ “ perennal Sweet Vernal	Vailer			60
Dactylis glomerata, Orchard Grass, (14 lbs.)	Valet		1 85	
Festuca pratensis, Meadow Fescue	Valid			20
Lolium Italicum, Italian Rye Grass, (18 lbs.)	Valley			1 25
Lolium perenne, Perennial Rye Grass, (24 lbs.)	Valor			1 25
Panicum Germanicum, Hungarian Grass, market price	Value			
Phleum pratense, Timothy market price	Vamp			
Fine Mixed Lawn Grass	Venom		3 00	

CLOVER SEEDS, ETC.			100 lbs.	Per lb.
White Clover, first quality	Vent		18 00	20
Medium Red market price	Vicar			
Mammoth Red market price	Victim			
Alsike	View		16 00	20
Scarlet or Crimson	Vocal			20
Sweet, or Bokhara	Wager			25
Lucerne (Alfalfa) California	Wall		15 00	20

TOBACCO.				
Connecticut Seed Leaf	Wand			1 50
Havana	Warbling			1 50

MISCELLANEOUS.				
Honey Locust	Weapon		18 00	25
Amber Sugar Cane	Wing		4 00	10
Evergreen Broom Corn	World		6 00	12
Sainfoin	Yeast		8 00	10

STANDARD FIELD GRAINS.

OATS.		Tel. Cipher.	Per bu.
Vick's American Banner	Gaff		\$1 25

CORN.			
Pride of the North	German		1 50
Champion White Pearl	Ginger		1 75
Chester County Mammoth	Glass		1 75
Golden Beauty	Gnat		1 75
Improved Leaming	Grape		1 50
Angel of Midnight	Ghost		2 00
Longfellow	Grass		1 75

BARLEY.			
Manshury	Grub		1 50
Hulless	Guard		2 50

BUCKWHEAT.			
New Japanese	Gull		1 00

RYE.			
Choice Spring	Gypsy		1 60



Cabbage, All Seasons. (See page 7.)



Radish, Vick's Early Scarlet Globe. "Earliest and Best." (See page 16.)

FLOWER SEEDS.

Quantities under half pound will be charged at the rate per ounce. For quantities under one ounce the ratio of price will be slightly increased.

	Per lb.	Per oz.
ABOBRA		
viridiflora, (Ornamental Climber,)	\$	\$ 50
ABRONIA		
umbellata	2 50	25
arenaria		50
ABUTILON		
Finest varieties mixed, per 100 seeds, 30 cents .		
ACROCLINIUM		
roseum	1 00	10
roseum album	1 00	10
Mixed colors	1 00	10
roseum flore-pleno		30
album flore-pleno		30
ADLUMIA		
cirrhosa, (Allegany Vine,) :		1 50
ADONIS		
æstivalis	60	10
vernalis		20
AGERATUM		
conspicuum		60
Mexicanum		15
Mexicanum albiflorum		15
Mexicanum albiflorum nanum		25
Swanley Blue		50
coelestinum Tom Thumb		20
Lasseauxii		75
Mixed varieties		20
AGROSTEMMA		
coronaria atrosanguinea (Rose Champion,)		15
(Viscaria,) new scarlet		15
Cœli Rosa		10
elegans picta		15
cardinalis		15
Mixed varieties		15
AGROSTIS		
nebulosa, (Ornamental Grass,)	4 00	35
ALONSOA		
grandiflora		20
linifolia		20
Warzewiczii		25
Mixed varieties		20

	Per lb.	Per oz.
ALYSSUM.		
Sweet	2 00	20
Benthami compactum	2 75	25
Wierczbeckii		40
saxatile compactum		25
AMARANTUS		
atropurpureus		10
bicolor ruber	50	15
caudatus, (Love-Lies-Bleeding,)		10
cruentus, (Prince's Feather,)	50	10
Henderi	50	30
melancholicus ruber		10
salicifolius, (Fountain Plant,)		50
Sunrise per 1,000 seeds 20 cents.		
tricolor, (Joseph's Coat,)	2 00	20
Mixed varieties	50	10
AMMOBIUM		
alatum grandiflorum	2 00	20
AMPELOPSIS		
quinquefolia, (Shrubby Climber,)		15
Veitchii		35
ANAGALLIS		
grandiflora, mixed varieties		40
ANEMONE CHINENSIS		
Fine mixed		35
ANTIRRHINUM MAJUS, (Snapdragon,)		
Extra fine mixed	3 00	30
Ten named varieties, each		35
Tom Thumb, fine mixed		50
AQUILEGIA (Columbine,)		
caerulea		4 00
leptoceras chrysantha		75
Carnation striped, true per 100 seeds 30 cents.		
Skinneri		5 00
glandulosa vera per 1000 seeds 50 cents.		
Fine double mixed		20
Single varieties mixed		20
ARISTOLOCHIA		
Sipho (Dutchman's Pipe)	2 25	
ARGEMONE		
grandiflora, (Prickly Poppy,)		15
Mexicana		15
Hunnemanni		15
Mixed varieties		15
ARUNDO		
Donax fol. var., (Ornamental Grass,)		50
ASPERULA		
azurea setosa	50	10
odorata		40

ASTER.

	Per lb.	Per oz.
Truffaut's Pæony-flowered Perfection, mixed colors		1 50
“ “ “ 24 separate colors, each		2 00
New Rose, mixed colors		1 75
“ “ 15 separate colors, each		2 25
Imbrique Pompon, mixed colors		1 25
Diamond, mixed colors		2 50
Cocardeau, or New Crown, mixed colors		1 40
New Pæony-flowered Globe, mixed colors		1 00
New Victoria, mixed colors		2 00
New Victoria, white		2 75
New Washington, mixed colors		2 00
“ “ 6 separate colors, each		3 00
Dwarf Chrysanthemum-flowered, mixed colors		1 75
Dwarf Chrysanthemum-flowered, Snowy White		2 25
Dwarf Victoria, mixed colors		3 50
Comet		3 00
Newest Dwarf Bouquet, mixed colors		1 50
Half Dwarf Multiflora Mauve		4 00
Hedgehog, or Needle Perfection, mixed colors		3 00
German Quilled, mixed	3 50	35
Mixed varieties	6 00	50

AVENA

sterilis, (Animated Oat,)	60	10
-------------------------------------	----	----

BALLOON VINE.

(Cardiospermum Halicacabum,)		10
--	--	----

BALSAM.

Camellia-flowered, mixed colors	9 00	75
Camellia-flowered, ten separate colors, each		1 00
Camellia-flowered, White Perfection, (for florists,)		2 00
Camellia-flowered, Blood-Red		1 00
Camellia-flowered Spotted, mixed colors		75
Camellia-flowered Spotted, ten separate colors, each		1 00
Improved Camellia-flowered, mixed colors		3 00
Carnation Striped		75
Solferino, spotted and striped		75
Half Dwarf, mixed colors		50
Double Dwarf, mixed colors		40
Dwarf Camellia-flowered, spotted, mixed colors		50
Fine Double, mixed colors	3 00	30

BARTONIA

aurea		10
aurea nana		25

BEGONIA.

Tuberous-rooted per pkt. \$1.00		
---	--	--

BENINCASA

cerifera, (Wax Gourd,)		35
----------------------------------	--	----

BIGNONIA

radicans, (Trumpet Creeper,)		60
--	--	----

	Per lb.	Per oz.
BOSTON SMILAX , (<i>Myrsiphyllum asparagoides</i>),	12 00	1 00
BRACHYCOME		
iberidifolia, (Swan River Daisy,) Blue, White, and mixed, each .		35
BRIZA		
maxima, (Ornamental Grass,)	1 00	35
maxima compacta	2 00	10
geniculata	4 00	20
BRIZOPYRUM		
siculum, (Ornamental Grass,)	1 50	15
BROMUS		
brizæformis, (Ornamental Grass,)	60	20
BROWALLIA		
Cerviakovskii		10
elata alba		50
elata grandiflora		60
Mixed varieties		50
BRYONOPSIS		
laciniosa, (Ornamental Climber,)		60
CACALIA		
coccinea, (Scarlet Tassel-flower,)		35
flore-luteo, (Yellow Tassel-flower,)		25
CALAMPELIS		
scabra, (Ornamental Climber,)		25
CALANDRINIA		
grandiflora		1 00
umbellata		40
CALCEOLARIA		
hybrida tigrina, from choice collection per pkt. \$2.00 .		75
hybrida grandiflora, large, superb flowers, . . . per pkt. \$2.00 .		
James' Prize, from choicest flowers only . . . per pkt. \$2.00 .		
rugosa (true shrubby bedding varieties) . per 1,000 seeds, 50 cts .		
CALENDULA		
officinalis, (Pot Marigold,)	50	10
Le Proust	70	10
Meteor	1 00	10
Prince of Orange	1 00	10
Mixed varieties	80	10
CALLIOPSIS. (See also <i>Coreopsis</i> .)		
coronata (<i>Coreopsis</i>)		15
Drummondii (<i>Coreopsis</i>)		15
bicolor		15
nigra speciosa		15
marmorata		15
cardaminifolia atrosanguinea		15
Burridgi, (<i>Cosmidium</i>),		15
Mixed varieties	1 00	10

	Per lb.	Per oz.
CALLIRRHOE		
pedata		35
pedata nana compacta	1	00
involucrata		50
CAMPANULA		
Carpathica, blue		15
Carpathica, white		15
Carpathica, mixed		15
grandiflora		35
Lorei—blue, white, and mixed, each	1	00
macrostyla	2	25
Medium—see Canterbury Bell.		
pyramidalis, blue		50
pyramidalis, white		35
pyramidalis, mixed		40
speculum, (Venus' Looking Glass,) mixed colors		15
speculum, rose, white, and blue, each		15
CANARY BIRD FLOWER, (Tropæolum perigrinum,) . . .	3	00
CANDYTUFT.		
Purple	1	25
White		60
Rocket		60
Empress		40
Lilac	1	25
Sweet Scented		60
Flesh	1	50
Dunnett's Extra Dark Crimson	1	35
New Carmine		35
Mixed colors	1	00
Dwarf hybrid varieties mixed	8	00
CANNA, (Indian Shot).		
Mixed varieties	1	00
Dark-leaved varieties mixed	3	50
Crozy's New Hybrids		1 50
compacta elegantissima		25
Indica rubra		35
Nepalensis		50
President Faivre		50
Selowii		25
Warszewiczii		35
CANTERBURY BELL, (Campanula Medium).		
Single Blue		15
Single White		15
Single Lilac		25
Double Blue		35
Double White		35
Double Lilac		35
Single varieties mixed		15
Double varieties mixed		35

	Per lb.	Per oz.
CANTERBURY BELL , Continued.		
Calycanthema, blue		40
Calycanthema, white		50
Calycanthema, lilac		65
Calycanthema, mixed		50
CARNATION .		
Extra fine double, mixed		5 00
Early flowering Vienna, extra fine mixed, excellent for cutting		3 00
Choicest, from named flowers per 100 seeds 25 cents		
Choicest, Yellow ground, per 100 seeds \$1.00		
Choicest, White ground per 100 seeds \$1.00		
Grenadin, double scarlet, per 1000 seeds 50 cents		
Grenadin, dark varieties in mixture per 1000 seeds 75 cents		
Remontant, or Tree Carnation, per 100 seeds 40 cents		
CARDIOSPERMUM		
Halicacabum, (Balloon Vine,)		10
CASTOR BEANS —See Ricinus.		
CATCHFLY .		
Lobel's, mixed	70	10
Red, white, and rose, each,		10
CEDRONELLA		
Cana		1 50
CELASTRUS		
scandens, (Shrubby Climber,)		50
CELOSIA		
plumosa superba		35
CENTAUREA		
gymnocarpa per 1000 seeds 20 cents		75
candidissima per 1000 seeds 40 cents		2 75
Clementei		80
Americana		60
depressa		10
depressa rosea		10
Cyanus (Bachelor's Button, Blue Bottle,) mixed colors	1 00	10
moschata (Sweet Sultan,) Blue		15
" " Purple		15
" " White		15
suaveolens, (Yellow Sweet Sultan,)		50
Sweet Sultan, mixed varieties	2 00	20
Annual varieties mixed	1 50	15
CENTRANTHUS		
macrosiphon		10
macrosiphon flore-albo		10
macrosiphon flore-carneo		10
macrosiphon bicolor		10
Mixed varieties	1 00	10
CHÆNOSTOMA		
fastigiata		50

	Per lb.	Per oz.
CHAMÆPEUCE		
diacantha		35
Casabonæ, (Fish-bone Thistle,)		50
CHINESE PRIMROSE —see <i>Primula Sinensis</i> .		
CHRYSANTHEMUM		
Indicum, fine double	2	75
Pompon, fine mixed	2	75
Burridgeanum		15
Eclipse		40
Lord Beaconsfield		15
The Sultan		15
W. E. Gladstone		15
venustum		15
Double White		50
Double Yellow		50
Segetum grandiflorum		15
Mixed annual varieties		25
CHRYSURUS		
cynosuroides, (Ornamental Grass,)		15
CINERARIA		
hybrida, first quality pkt. \$2.00 .		
hybrid grandiflora, choicest mixed, pkt. \$2.00 .		
New Double per 1000 seeds \$1.75 .		
maritima candidissima		40
CLARKIA		
Double varieties mixed	1 50	15
Single varieties mixed	1 00	10
CLEMATIS		
flammula, (Shrubby Climber,)	75	10
Vitalba, (Shrubby Climber,)	50	10
CLEOME		
speciosissima		40
CLIANTHUS		
Dampieri		3 00
COBÆA		
scandens, (Ornamental Climber,)	8 00	70
COCCINEA		
Indica		75
COCKSCOMB.		
New Japan		1 00
Glasgow Prize		2 50
New Crimson Giant		6 00
Dwarf varieties, first quality mixed		1 65
Tall varieties, first quality mixed		1 00
COIX LACHRYMA.		
(Job's Tears,) Ornamental Grass	35	5
COLEUS.		
Fine mixed per 1000 seeds 50 cents. .		

	Per lb.	Per oz.
COLLINSIA.		
Mixed varieties	50	10
COLUMBINE —see <i>Aquilegia</i> .		
CONVOLVULUS		
Mauritanicus		65
CONVOLVULUS MINOR.		
Mixed colors	35	5
Nine separate varieties, each	45	5
CONVOLVULUS MAJOR, (Morning Glory,)		
Mixed colors per 100 lbs. \$30 .	40	5
Twelve named varieties		
COREOPSIS, (See also Calliopsis,)		
<i>coronata</i>		15
<i>Drummondii</i>		15
<i>lanceolata, (Golden Coreopsis,)</i>	2 50	25
CREPIS.		
Mixed varieties	75	10
CRUCIANELLA		
<i>stylosa</i>		25
CUCUMBER.		
Wild		25
CUPHEA		
<i>platycentra, (Cigar, or Fire Cracker Plant,)</i>		4 00
CYCLAMEN		
<i>Persicum</i>		10 00
<i>Persicum giganteum</i> per 100 seeds, \$1.00 .		
CYPRESS VINE.		
Scarlet, White, and mixed, each	1 75	15
DAHLIA.		
From our choice collection of named sorts		4 00
Choicest single varieties mixed		1 50
DATURA		
<i>Wrightii</i>		15
<i>humilis flava flore-pleno</i>		25
<i>fastuosa alba plena</i>		30
<i>fastuosa violacea plena</i>		35
<i>fastuosa Huberiana flore-pleno</i>		35
Mixed varieties	3 00	30
DELPHINIUM —See <i>Larkspur</i> .		
DIANTHUS CHINENSIS, (China Pink).		
Best double varieties, mixed	2 75	25
<i>flore-albo pleno, (Double White China Pink,)</i>		30
<i>imperialis, (Double Imperial Pink,)</i> mixed	3 50	35
<i>imperialis flore-albo pleno, (Double White Imperial Pink,)</i>		35
<i>imperialis ruber striatus pl.</i>		35
<i>imperialis purpureus striatus pl.</i>		35
<i>imperialis atrosanguineus pl.</i>		35
<i>Heddewigii diadematus pl., (Diadem Pink,)</i>		1 00

VICK'S WHOLESALE PRICE LIST.

29

DIANTHUS CHINENSIS, Continued.

Per lb. Per oz

Heddewigii, finest single-flowering, mixed		\$0 60
Heddewigii flore-pleno, extra fine double-flowering, mixed		75
Heddewigii flore-albo pl.		75
Heddewigii fl. pl. atropurpureus		75
laciniatus, single-flowering mixed, extra		40
laciniatus flore-pleno, choicest double varieties mixed		75
Heddewigii and laciniatus, double and single varieties mixed		70
Best Dwarf varieties mixed		40
plumaris, (Pheasant's Eye,)		25

DIDISCUS

cœruleus		50
--------------------	--	----

DIGITALIS (Foxglove).

purpurea		15
purpurea alba		15
gloxinæflora		15
Mixed varieties, extra fine		20

DOLICHOS

Lablab, (Hyacinth Bean,) Ornamental Climber	\$0 60	10
albus	60	10
giganteus		15

DOUBLE DAISY, (*Bellis perennis*),

Choicest, from collection flowers, extra fine		2 50
Extra double white, constant		4 50
“Longfellow,” flowers very large, dark rose . per pkt., 50 cents		4 00
		7 00

DUTCHMAN'S PIPE

2 25

ERIANTHUS

Ravennæ, (Ornamental Grass,)		35
--	--	----

ERYSIMUM

Perowskianum		10
Arkansanum		15

ESCHSCHOLTZIA

Californica	1 25	15
crocea	1 25	15
crocea alba	1 25	15
crocea striata	1 25	15
crocea rosea	1 25	15
Mixed varieties	1 25	15

EUPHORBIA

marginata	1 75	15
---------------------	------	----

EUTOCA

viscida		10
Wrangeliana		10
multiflora		15
Mixed varieties		10

EVENING PRIMROSE—see *Oenothera*.

FENZLIA

dianthiflora per pkt., 50 cents,		3 50
--	--	------

	Per lb.	Per oz.
FEVERFEW —see Pyrethrum.		
FORGET-ME-NOT —see Myosotis.		
FOUNTAIN PLANT , (<i>Amaranthus salicifolius</i>),	\$0	50
FOUR O'CLOCK —see <i>Mirabilis</i> .		
FUCHSIA .		
Choice mixed	per 100 seeds	30 cents .
GAILLARDIA		
<i>picta</i>		10
<i>Josephus</i>		10
<i>albo marginata</i>		10
<i>Lorenziana fl. pl.</i>		40
<i>Amblyodon</i>		20
Mixed varieties		20
<i>Grandiflora</i> , perennial varieties mixed		50
GERANIUM , (<i>Pelargonium</i>)		
Zonale, finest mixed		1 00
Choicest fancy varieties, mixed sorts . . . per 100 seeds	\$1.50 .	
Apple-scented, . per 100 seeds	15 cents ; per 1,000 seeds	\$1.00 .
GEUM		
<i>atrosanguineum flore-pleno</i>		50
GILIA .		
Eleven varieties, each	\$0	60 10
All varieties mixed	40	5
GLADIOLUS .		
Saved from our own unrivalled collection		5 00
GLAUCIUM		
<i>corniculatum</i>		50
GLOXINIA		
<i>hybrida</i> , from Benary's choice collection pkt.	\$2.00 .	
<i>hybrida erecta</i> , fine variety, upright flowers pkt.	\$2.00 .	
GODETIA		
<i>Bijou</i>		50
<i>Duchess of Albany</i>		35
<i>Lady Albemarle</i>		25
<i>Lady Satin Rose</i>		35
<i>The Bride</i>		15
<i>Whitneyi</i>		15
<i>Whitneyi Brilliant</i>		25
Mixed varieties	1 25	15
GOMPHRENA		
<i>globosa</i> , (<i>Globe Amaranth</i>), four colors, each	1 00	10
<i>aurea superba</i>	1 50	15
Mixed colors	1 00	10
GOURDS, Cucumbers, and other Ornamental Cucurbitaceæ.		
<i>Abobra viridiflora</i>		50
<i>Benincasa cerifera</i> , (<i>Wax Gourd</i>),		35
<i>Bryonopsis laciniosa</i>		35
<i>Calabash</i> , or <i>Dipper</i>	2 00	20

VICK'S WHOLESALE PRICE LIST.

31

GOURDS, ETC., Continued.

Per lb. Per oz.

Coccinea Indica		\$0 75
Cucumis odoratissimus		35
Echinocystis lobata, (Wild Cucumber,)		25
Egg-formed, (True Nest-egg Gourd),	\$2 50	25
Gooseberry		40
Hercules' Club		15
Mock Orange		30
Momordica Balsamina, (Balsam Apple,)		25
Momordica charantia, (Balsam Pear,)		25
Pear-formed		30
Smallest Lemon		30
Striped Apple		30
Sugar Trough	2 00	20
Tricosanthes Colubrina, (Serpent Gourd,)		25
Mixed varieties	2 50	25

GRAMMANTHES

gentianoides, fine for pots per pkt., \$1.00 .		40
--	--	----

GRASSES, ORNAMENTAL.

Mixed varieties	1 50	15
---------------------------	------	----

GYNERIUM

argenteum, (Pampas Grass,)		10
--------------------------------------	--	----

GYPSOPHILA

elegans		25
muralis		15
paniculata		10

HEDYSARUM

coronarium, (French Honeysuckle,)		10
coronarium flore albo		15

HEDGEHOGS

HELIANTHUS (Sunflower).

globosus fistulosus, finest of all	1 75	15
Californicus flore-pleno		10
Double Green-centered	1 00	10
Dwarf Double	1 50	15
New Mammoth Russian per 100 lbs., \$5.00 .		10
Common Single		10

HELICHRYSUM

monstrosum, mixed colors		35
monstrosum, Double Rose		40
monstrosum, Double Red		40
monstrosum, Double White		40
monstrosum, Double Yellow		25
minimum, mixed colors		50
bracteatum		40
nanum atrosanguineum		50

HELIOTROPE,

Best mixed		1 00
----------------------	--	------

	Per lb.	Per oz.
HELIPTERUM		
Sanfordii		\$0 35
corymbiflorum		25
HIBISCUS		
immutabilis		1 25
coccineus		50
Africanus		10
HOLLYHOCK,		
Finest double mixed		1 00
Eight separate colors, each		1 50
HONESTY,		
Purple		25
HORDEUM		
jnbatum, (Squirrel-tail Grass,)	\$1 75	15
HUMULUS		
Japonicus (Japanese Hop)		50
HUNNEMANNIA		
fumariæfolia		80
ICE PLANT,		15
IMPATIENS		
Sultani per 1,000 seeds, \$1.00 .		
IPOMŒA		
limbata elegantissima		15
grandiflora superba		25
coccinea, (Star Ipomœa,)	1 00	10
coccinea hederæfolia, Ivy-leaved		15
Quamoclit—see Cypress Vine.		
IPOMOPSIS (Standing Cypress).		
mixed		35
JOSEPH'S COAT, (Amaranthus tricolor,)	2 00	20
KAULFUSSIA,		
Mixed colors		25
KENILWORTH IVY, (Linaria Cymbalaria,)		1 50
LAGURUS		
ovatus, (Ornamental Grass,)	1 50	15
LANTANA,		
Finest mixed		25
LARKSPUR, ANNUAL.		
Double Dwarf Rocket, mixed	1 20	15
Double Tall Rocket, mixed	1 20	15
Double Stock-flowered, mixed	1 50	15
New Dwarf Candelabrum, mixed		1 00
New Emperor, mixed	4 00	40
LARKSPUR, PERENNIAL.		
Delphinium formosum		65
Delphinium formosum cœlestinum	1 20	
Delphinium nudicaule	2 00	
Chinese mixed		20
New varieties mixed		20

VICK'S WHOLESALE PRICE LIST.

33

	Per lb.	Per oz.
LEPTOSIPHON,		
New French hybr. ls, mixed		\$0 35
LINARIA		
Cymbalaria	1	25
Marocana, mixed varieties		25
LINUM		
grandiflorum rubrum		10
perenne, blue		15
perenne, white		20
perenne, rose		25
luteum		40
Narbonense		60
Mixed		20
LOASA		
tricolor		25
lateritia		40
LOBELIA		
cardinalis, (Cardinal Flower,)	1	50
hybrida grandiflora		35
gracilis rosea		40
Erinus marmorata		40
Erinus compacta		40
Erinus compacta alba	1	00
speciosa, Crystal Palace		75
Crystal Palace compacta	3	00
speciosa, Cobalt Blue	1	00
Emperor William	1	75
Mixed varieties		40
LOVE-IN-A-MIST —see Nigella.		
LOVE-LIES-BLEEDING, (Amaranthus caudatus,)	\$0 50	10
LUPINUS,		
Mixed varieties	50	10
LYCHNIS		
Chalcedonica		20
Chalcedonica flore-albo		25
Haageana	1	25
Haageana hybrida		75
fulgens		75
grandiflora gigantea	1	25
MALOPE		
grandiflora, purple and white, each	2 50	10
MARIGOLD,		
African, mixed varieties		25
French, striped	1 75	40
French, tall varieties mixed	1 75	20
French, dwarf varieties mixed		20
Tagetes signata pumila		30
Pot or Cape—see Calendula.		

	Per lb.	Per oz.
MARTYNIA		
Mixed varieties	\$2 50	\$0 25
MAURANDYA, Fine Ornamental Climbers.		
Barclayana alba		1/8 oz., \$2.00
Barcalyana, blue		2 25
Barclayana purpurea grandiflora		2 25
Finest mixed		2 00
MESEMBRYANTHEMUM		
crystallinum, (Ice Plant,)		15
glabrum, (Dew Plant,)		30
MIGNONETTE,		
Sweet, (Reseda odorata,) per 100 lbs., \$40	50	10
Crimson Queen		30
Gabriele, fine red		80
Giant Pyramidal	1 50	15
Golden Queen	3 00	30
grandiflora ameliorata		75 10
Parson's New White	3 00	30
Matchet		75
Miles' Hybrid Spiral		30
Victoria, best dark red	5 50	50
MIMOSA		
pubica, (Sensitive Plant)	3 75	35
MIMULUS (Monkey Flower.)		
cupreus Brilliant		2 50
hybridus tigrinus		1 30
hybridus tigrinus grandiflorus		3 50
hybridus tigrinus flore-pleno		2 00
muschatus, (Musk Plant,)		3 00
quinquevulnerus maximus		1 00
Mixed varieties		1 00
MARVEL OF PERU, (Four O'Clock.)		
Mixed colors	40	5
Tom Thumb, White	1 25	15
MIRABILIS		
longiflora		15
longiflora violacea		15
Jalapa foliis-variegatis		10
MOLUCCA BALM,		
MOURNING BRIDE—see Scabiosa.		1 00
MYOSOTIS (Forget-me-not).		
Alpestris, blue		60
Alpestris, rose		75
Alpestris, white		50
Alpestris robusta grandiflora		1 00
Alpestris Victoria		2 50
Alpestris, mixed		50
Azorica		8 00

VICK'S WHOLESALE PRICE LIST.

37

PEA, SWEET, Continued.

Per lb. Per oz.

Painted Lady	\$0 50	\$0 5
Princess Beatrice	4 00	40
Princess of Wales	1 50	15
Purple and Blue	50	5
Purple Striped	50	5
Queen of the Isles	5 00	40
Queen Victoria		30
Scarlet	50	5
Scarlet Striped	50	5
Splendor		80
The Queen		80
Vesuvius	1 00	10
Violet Queen		65
White	50	5
All colors mixed	35	5

PEA, FLOWERING,

Winged Scarlet	60	5
Winged Yellow	60	5

PEAS, PERENNIAL 7 00 60

PENNISETUM

longistylum, (Ornamental Grass,)		25
--	--	----

PENTSTEMON,

Fine mixed		1 50
Extra choice Florists' varieties		2 50

PERILLA

Nankinensis		10
-----------------------	--	----

PETUNIA HYBRIDA

grandiflora alba per 1000 seeds, 20 cents.		
grandiflora kermesina per 1000 seeds, 20 cents.		
grandiflora maculata per 1000 seeds, 20 cents.		
grandiflora marginata per 1000 seeds, 50 cents.		
grandiflora purpurea per 1000 seeds, 20 cents.		
grandiflora rosea per 1000 seeds, 50 cents.		
grandiflora superbissima per 1000 seeds, 50 cents.		
grandiflora venosa per 1000 seeds, 20 cents.		
grandiflora violacea per 1000 seeds, 30 cents.		
Choicest mixed, from named flowers . . per 1000 seeds, 20 cents.		
Vick's New Fringed per 1000 seeds, 20 cents.		
Choicest Double, mixed per 1000 seeds, \$1.50 .		
Choicest Double Fringed per 1000 seeds, \$1.50 .		
Choicest Double White Fringed 40 cents per pkt. .		
Countess of Ellesmere		40
Inimitable nana compacta multiflora		7 00
Blotched and Striped		1 00
Fine mixed	4 50	40
Choicest mixed	10 00	75

PHACELIA

congesta		10
tanacetifolia alba		10



Phlox. "We have grown for years and have taken prizes at every Fair and Exposition at which they were exhibited." (See page 39.)



Pansy. "Grown on our farm from the most perfect flowers." (See pages 35, 36.)



Petunia.
(See page 37.)

PHLOX DRUMMONDII

	Per lb.	Per oz.
Deep Blood Purple	\$6 00	\$0 50
Brilliant Scarlet	6 00	50
Carmine Queen		1 00
Chamois Rose		1 00
flore-albo	6 00	50
flore-albo oculata	6 00	50
Isabellina		1 00
Leopoldii	6 00	50
Radowitzii	6 00	50
Radowitzii Kermesina striata	6 00	50
Radowitzii violacea	6 00	50
rosea	6 00	50
rosea albo-oculata	6 00	50
variabilis	6 00	50
Vick's New Double White		2 00
Violet Queen		1 00
Choicest mixed	5 00	40

PHLOX DRUMMONDII GRANDIFLORA

alba pura		75
atropurpurea albo-oculata		75
atropurpurea striata		75
carminea albo-oculata		75
coccinea		75
elegans		1 00
quadricolor rosea		75
splendens		75
violacea albo-oculata		75
Choicest mixed	8 00	65

PHLOX DRUMMONDII NANA COMPACTA

carminea		2 00
atrosanguinea striata,		2 00
Chamois rose,		2 50
cinnabarina,		2 00
Fireball,		2 00
hortensiaeflora,		2 00
Snowball,		2 00
variabilis,		2 00
Best dwarf varieties mixed,		1 75

POPPY,

Dwarf Ranunculus-flowered,	1 50	15
Carnation-flowered, mixed colors,	50	10
Pæony-flowered, mixed colors,	50	10
Pæony-flowered, Scarlet, White, and Striped, each,		10
Mikado		70
New Hardy Double,		1 00
The Shirley,		2 00
Common Field,		20
somniferum (Opium Poppy,) white seeded,	50	5

POPPY, Continued.

	Per lb.	Per oz.
Papaver bracteatum,		\$0 35
Papaver Danebrog, (Danish Flag,)		15
Papaver orientale		1 75
Papaver involucreatum maximum,		30
Papaver nudicaule,		70
Papaver umbrosum,		25

PORTULACA,

Eight separate colors, each,		40
Mixed colors,	\$3 50	35
Double Rose-flowered, mixed,		3 00
Double Rose-flowered, seven separate colors, each,		7 00

PRIMULA SINENSIS, (Chinese Primrose,) Choicest Fringed—

fimbriata alba, (Waltham White,) per 100 seeds, 35 cents	
fimbriata carminea, deep carmine, per 100 seeds, 40 cents	
fimbriata kermesina splendens, crimson, per 100 seeds, 35 cents	
fimbriata punctata elegantissima per 100 seeds, 25 cents	
fimbriata rosea superba, fine, per 100 seeds, 25 cents	
fimbriata striata, (Village Maid,) per 100 seeds, 25 cents	
fimbriata filicifolia (Fern-leaved) rubra, red, per 100 seeds, 25 cents	
fimbriata filicifolia (Fern-leaved) alba, white, per 100 seeds, 25 cents	
Choicest Fringed varieties mixed, per 100 seeds, 25 cents	
fimbriata cristata nana alba, pure white, semi-double, per 100 seeds, 25 cents	
flore-pleno, a large proportion of flowers perfectly double, 100 seeds, \$1.20	

PRIMULA

auricula, first quality mixed,	10 00
auricula, choicest, from named sorts, per pkt. \$2.00	24 00
obconica per 1000 seeds, 40 cents	
Polyantha, first quality,	2 50
vulgaris,	2 50

PRINCE'S FEATHER (Amaranthus cruentus,) 50 10

PYRETHRUM,

double varieties mixed, per 1000 seeds \$1.00	
Double White,	15
Golden Feather,	60
Golden Gem,	60
Parthenifolium selaginoides, New Fern-leaved,	2 00
roseum,	75
Fine mixed	70

RANUNCULUS ASIATICUS,

Very fine mixed	60
---------------------------	----

RHODANTHE

Manglesii,	60
maculata,	60
maculata alba,	60
maculata atrosanguinea,	2 00

	Per lb.	Per oz.
RICINUS (Castor Beans),		
Africanus,	\$1 00	\$0 10
Borboniensis,	75	10
Gibsoni, (Duchess of Edinburgh,)	85	10
giganteus,	1 50	15
macrocarpus,	2 00	20
New species from the Philippines,	1 25	15
purpureus,	75	10
sanguineus,	40	5
communis,	25	5
Mixed varieties,	65	10
ROCKET,		
Sweet Purple,	60	10
Sweet White,	60	10
Mixed,	60	10
SALPIGLOSSIS,		
Extra choice large-flowering, mixed,		75
SALVIA		
bicolor,		50
patens, per 100 seeds 80 cents.		
Roemeriana,		75
splendens, (true, large-flowered,)		3 00
SANVITALIA		
procumbens flore-pleno,		60
SAPONARIA		
Calabrica,		15
Calabrica alba,		15
SCABIOSA (Mourning Bride),		
All colors mixed,	1 00	10
Tall double, mixed colors,	3 00	30
Dwarf double, mixed colors,	1 50	15
stellata, for winter bouquets,		10
SCHIZANTHUS,		
Mixed varieties,		15
SEDUM		
cœruleum,		3 00
Mixed varieties,		50
SENSITIVE PLANT, (Mimosa pudica,)	3 75	35
SMILAX, BOSTON, (Myrsiphyllum asparagoides,)	12 00	1 00
SNAILS,		15
SNAPDRAGON—see Antirrhinum.		
STATICE		
Bonduelli,		10
incana hybrida nana,		15
sinuata,		10
Suworowi,		25

	Per lb.	Per oz.
STOCK,		
Large-flowering Dwarf, Ten-weeks, mixed colors,	\$ 2	75
Large Flowering Dwarf, Ten-weeks, thirty separate colors, each .		3 50
Dwarf Forcing, Ten-weeks, "Snow-Flake," . . per 1/8 oz., \$1.50.		
New Largest-flowering Pyramidal Dwarf, Ten-weeks, mixed, . . .		5 50
Large-flowering Pyramidal, sky blue,		5 00
Dwarf German, Ten-weeks, mixed colors, open-ground seed, . .	\$12 00	1 00
Large-flowering Wallflower-leaved, Ten-weeks, mixed colors, . .		4 00
" " " " white,		4 50
" " " " blood-red,		4 50
Early Autumn-flowering, mixed colors,		5 00
Brompton, Mixed,		4 00
Emperor,		5 50
Tree Giant Cape Winter,		4 00
SOLANUM		
ciliatum,		35
SPRAGUÆA		
umbellata,		3 00
STIPA		
pennata, (Feather Grass,)		30
SUNFLOWER —see Helianthus.		
SWAN RIVER DAISY —see Brachycome.		
SWEET PEAS , see pages 36, 37.		
SWEET SULTAN,		
Mixed varieties	2 00	20
SWEET WILLIAM,		
Hunt's Perfection,	2 00	20
Auricula-eyed, the finest strain,		40
Dunnett's dark Crimson,		15
Double, mixed,		45
TASSEL FLOWER —see Cacalia.		
THUNBERGIA , (Ornamental Climber,)		
Five separate colors, each,		75
Mixed varieties,	7 00	60
TORENIA		
Bailloni per pkt., \$1.00.		
Fournieri, per pkt., \$1.00.		
TROPÆOLUM		
Peregrinum, (Canary Flower,)	3 50	35
pentaphyllum, per 100 seeds 30 cents.		
Tom Thumb, Beauty,	70	10
Tom Thumb, cœrulea rosea,	75	10
Tom Thumb, Crimson,	70	10
Tom Thumb, Crystal Palace Gem,	75	10
Tom Thumb, Empress of India,	2 50	25
Tom Thumb, Lady Bird,	1 75	15
Tom Thumb, Pearl,	85	10
Tom Thumb, Rose,	85	10

VICK'S WHOLESALE PRICE LIST.

43

TROPÆOLUM, Continued.		Per lb.	Per oz.
Tom Thumb, Scarlet,		\$0 70	\$0 10
Tom Thumb, Spotted,		70	10
Tom Thumb, Yellow,		75	10
Tom Thumb, King Theodore,		1 75	15
Tom Thumb, Golden King,		1 50	15
Tom Thumb, Ruby King,		1 50	15
Tom Thumb, Spotted King,		1 25	15
King of Tom Thumbs,		1 25	15
Tom Thumb, mixed varieties,		70	7
Lobbianum, Caroline Smith,			20
Lobbianum, King of the Blacks,			20
Lobbianum, Lili Smith,			20
Lobbianum, Napoleon III,			20
Lobbianum, Queen Victoria,			20
Lobbianum, Giant of Battles,			20
Lobbianum, Schulzii,			20
Lobbianum, mixed varieties,		1 20	10
TROPÆOLUM MAJUS, (Nasturtium,)			
atropurpureum,		50	10
coccineum,		50	10
Dunnet's Orange,		50	15
Edward Otto,		50	10
hemisphæricum,		50	10
King Theodore,		1 75	20
Regelianum,		50	10
Scheuerianum,		50	10
Scheuerianum coccineum,		50	10
Schultzii,		50	10
luteum,		50	10
Common mixed,	Per 100 lbs., \$35.	40	5
TRUMPET CREEPER, (Bignonia radicans,)			60
TRYCHOLÆNA			
rosea, (Ornamental Grass,)			20
VALERIANA			
coccinea, rubra, alba, and mixed varieties, each,			15
VENUS' LOOKING GLASS—see Campanula speculum.			
VERBENA HYBRIDA,			
Choicest mixed,		3 00	
Scarlet Defiance, true,		2 00	
New Italian Striped,		2 00	
Pure White,		2 00	
VERONICA,			
Perennial sorts mixed,			15
VISCARIA—see Agrostemma.			
VINCA			
rosea,			85
rosea alba		1 15	
new species,		1 15	
Mixed,		1 00	

	Per lb.	Per oz.
VIRGINIAN STOCK,		
Crimson King, Fairy Queen, Rose, Red, White, Sulphur Yellow,		10
Mixed varieties,	1 00	10
WAITZIA, (Everlasting flower,)		
aurea		1 00
grandiflora,		1 00
WALLFLOWER,		
Finest double mixed,		3 00
WHITLAVIA		
grandiflora,	1 00	10
grandiflora alba,	1 00	10
gloxinoides,	1 00	10
Mixed varieties,	1 00	10
WILD CUCUMBER,		25
XERANTHEMUM,		
Double Purple-flowered, extra fine,		50
Double White, extra fine,		50
plenissimum roseum,		50
superbissimum fl. pl., purple, pompon-flowering,		50
superbissimum fl. pl., white, pompon-flowering,		50
Mixed colors, extra fine,		50
YUCCA		
filamentosa,		1 25
ZINNIA,		
Double, Choicest, all the best colors mixed,	3 00	30
Eight separate colors, each,		50
Tom Thumb, mixed colors		1 50
Double Lilliput, mixed colors,		50



Phlox Drummondii, Vick's New Double White.

(See page 39.)

GLADIOLUS.

	Per 100	Each.
Addison , dark amaranth with white stripes,	\$ 4 00	\$0 06
Admiral Courbet , carmine violet, white blotch streaked with cherry rose,		15
Adonis , light cherry, lower petals yellow with crimson blotch, . . .	3 00	5
Africaine , slaty brown on scarlet ground, streaked with scarlet and pure white, white blotch,		18
Agatha , large flower; rose, orange tinged, blazed with amaranth, . .	4 00	6
Agrius , salmon pink, flaked at the edges with vermilion; blotch cream color,	8 00	10
Amalthee , white, streaked with garnet; large garnet blotch,	6 00	8
Ambroise Verschaffelt , carmine, garnet flamed,	6 00	8
Amitie , rosy-flesh, shaded straw color on lower petals, outer edges flamed bright rose	15 00	20
Andromede , fine rose, slightly tinted with carmine, streaked white; large yellow blotch,	6 00	8
Anna , cherry, orange tinged; lower petals striped with carmine on white ground,	8 00	10
Antigone , delicate rose, flamed with carmine	6 00	8
Arabi Pacha , very bright scarlet, blotch ivory-white, bordered with yellow	10 00	12
Arsinoe , satin rose, flamed with carmine,		6
Astree , white, with carmine blotch, beautifully striped,		10
Asmodee , dark crimson; white blotch and stripes,	6 00	8
Atlas , white, slightly tinged with lilac, striped with bright violet, . .		50
Ball of Fire , scarlet crimson, maroon blotch with blue center, . . .		25
Bayard , carmine-red, slightly tinged with lilac, white line in center of each petal,		50
Beatrix , white ground, flushed with carmine lilac,		15
Benvenuto , orange red, with white blotch,	10 00	12
Bernard de Jussieu , violet, shaded cherry and purple, with purple blotch,		6
Bertha Rabourdin , white, with light carmine streaks, and prominent carmine blotch,		10
Brenchleyensis , vermilion scarlet; fine old variety,	2 50	4
Brennus , crimson maroon; white center; violet stripe on lower petals,	12 00	15
Brunette , beautiful shade of carmine; blotch cream color, striped with purple; white line in each petal,	5 00	7
Brutus , dark rose; flamed carmine; yellow throat striped with violet,	12 00	15
Bryant , rose, striped and flaked with deep scarlet; blotch lemon col- or; white line in each petal,	5 00	7
Calypso , flesh colored rose, blotched with carmine,		8
Canary , light yellow, rose striped, sometimes pink,	8 00	10
Carnation , fleshy white, tinged at the edges with rich carmine, lower petals blotched purplish carmine,	10 00	12
Cassini , rose, flamed with carmine,	8 00	10

	Per 100	Each..
Celimene , light orange red, flamed with bright red,	\$10 00	\$0 12
Ceres , white, marbled and striped with rose and purple,	6 00	8
Chateaubriand , cherry rose, carmine striped,	6 00	8
Christopher Columbus , rosy carmine, flamed red; violet-red blotch on lower petals,	8 00	10
Charlotte Cushman , brilliant scarlet; beautiful large white throat; white line in each petal,	5 00	7
Chloris , white ground, mottled with carmine, lower petals blotched carmine purple,	15 00	18
Ciceron , dark rose tinged with violet crimson, flamed with bright car- mine, white throat,	4 00	6
Citrinus , a very fair yellow,	10 00	12
Cleopatra , large flower; soft lilac, tinged with violet; purple feath- ered blotch,		8
Colbert , cherry red, white blotch; white line in each petal,		10
Coquette , cherry red, striped with delicate rose, white blotch,		12
Daubenton , rosy lilac, shading to bright rose, flamed with carmine; carmine violet blotch; white line in the center of each petal,	20 00	25
David Copperfield , pink, flushed with carmine; throat gold, striped and feathered with carmine,	15 00	20
Delicatissima , white, tinged with carmine lilac,	6 00	8
Diamant , fleshy white; throat ivory white, blotched and streaked carmine,	12 00	15
Didon , white and lilac; large and fine,		15
Dr. Warder , blush, flaked with rose and cherry-red; garnet blotch		30
Edwin Booth , rose; striped and flamed with brilliant scarlet; garnet stripe in throat,	10 00	12
Eldorado , pure yellow, slightly striped with purple,	10 00	12
Elvire , white, flamed with carmine,	8 00	10
Etendard , large flower, white, blazed with lilac,		10
Eugene Scribe , flower large and wide, rose, blazed with carmine red; very fine,	5 00	7
Eva , white, slightly tinged with rose and pale lilac,	12 00	15
Fanny Rouget , bright rose, striped with carmine,	4 00	6
Fatima , ivory white, profusely striped with bright rosy-salmon, violet blotch on creamy white ground,	10 00	12
Flamboyant , fiery-scarlet; fine spike,	12 00	15
Flamingo , fiery red; blotch of rich purple; very brilliant and showy,	12 00	15
Fenelon , rose, violet tinged, flamed with carmine,	15 00	18
Galilee , brilliant currant-red, flamed with dark crimson,	8 00	10
Giganteus , large flower, rose, shading to cherry; carmine blotch; whole flower stained with white,	15 00	18
Hecla , fiery orange scarlet, center pure white, feathered with carmine,		30
Henry Clay , rose striped with scarlet; white blotch; white line in each petal,	4 00	6
Holmes , clear rose, striped with darker rose; large white blotch, flushed with lemon,	8 00	10
Ida , large flower; white, rose tinted, blazed with carmine rose,	6 00	8

VICK'S WHOLESALE PRICE LIST.

47

	Per 100	Each..
Imperatrice, white, striped and dashed with carmine,	\$4 00	\$0 6
Innocence, pure white,		1 00
James Carter, light orange red, very bright, with a large, pure white throat,	4 00	6
Joconde, cherry rose, fringed bright carmine, streaked white, clear throat,	8 00	10
John Bull, whitish, sometimes striped with lilac,	4 00	6
La France, white; flamed with carmine at outer edges; amaranth blotch on creamy white ground,		12
Leda, bright flesh, striped with lilac-carmine,		25
Le Phare, brilliant fiery red; very showy,		8
Le Poussin, light red, white ground; very pretty,	4 00	6
Le Vesuve, intense fiery red,		15
Longfellow, white; a very fine line of violet in each of the lower petals,		25
Lord Byron, brilliant scarlet, stained and ribboned with pure white,	4 00	6
L'Ornement des Parterres, white ground, blazed with lilac, rose and carmine,	10 00	12
Louis Van Houtte, velvety carmine, branches freely, and flowers a long time,	2 50	4
Lowell, rose, shaded with scarlet; a shade of garnet in the throat,	8 00	10
Mad Furtado, white; flamed with crimson; dark crimson stripe in throat,	10 00	12
Madame Monneret, delicate rose, carmine blotch,	8 00	10
Madame Vilmorin, rose, with white center, and edged with dark rose,		12
Margarita, white; suffused with dark crimson,	6 00	8
Matador, brilliant carmine-red; striped and blotched pure white,	10 00	12
Mazeppa, rosy orange, large yellow blotch, striped with carmine,		6
Mars, beautiful scarlet,	4 00	6
Merville, cherry rose, flamed with carmine, with lighter center,	20 00	25
Meyerbeer, brilliant scarlet, amaranth red blotch,		12
Meteor, dark red; large white blotch,	8 00	10
Minerva, crimson; carmine-feathered, white blotch,		40
Mons. Legouve, fiery red; white blotch; white line in each petal,	10 00	12
Mr. Burley, cherry-rose; yellow blotch striped with violet,	10 00	12
Mr. Derry, amaranth, flaked with purple; white line in each petal,	12 00	15
Murillo, cherry rose on white ground; white blotch; white line in each petal,	12 00	15
Napoleon III, bright scarlet, white line in each petal,	8 00	10
Nelly, white, carminate rose, dark stain,	4 00	6
Nestor, yellow; lower part darker, striped with red,	18 00	22
Ophir, dark yellow, mottled with purple,	10 00	12
Pactole, yellow, tinged with rose at the edges; blotch of darker shade,	10 00	12
Panorama, lilac, shaded and mottled with brilliant carmine; throat creamy white; white line in each petal,	10 00	12
Penelope, blush white, lower petals tinted with yellow and streaked		8
with carmine,		8
Phedre, long spike, pure white, bordered and blazed with cherry rose,		10

	Per 100	Each.
Phœbus , firey red, with large, showy white blotch,	\$10 00	\$0 12
Pictum , salmon scarlet, flaked with carmine,	12 00	15
Picturata , carmine lilac, flamed with violet; dark carmine blotch,		15
Plutarque , rosy carmine, tinged with crimson, carmine feather on white ground,		25
Primatice , long spike, large flowers, fine rose, lilac tinged, blazed with bright carmine; carmine stain on white ground; showy,	10 00	12
Princess of Wales , white, blazed with carmine and rose, stained deeper carmine,	6 00	8
Psyche , satin rose, bordered with dark crimson, with lighter center,	12 00	15
Queen Victoria , very large flower, pure white stained with carmine; fine,	10 00	12
Reine Blanche , white, slightly feathered with crimson; garnet stripe in throat,		12
Richard Cœur de Lion , crimson red, flamed with garnet; lower petals spotted golden yellow,	15 00	20
Roi Leopold , rose, crimson blazed. carnation stripe,	6 00	8
Romulus , brilliant dark red, large white blotch,	6 00	8
Rosea Perfecta , fine rose, tinged with violet, white line in each petal,		15
Rossini , long spike, amaranth red, lined with white,	18 00	22
Rubis , carmine, cherry center, light carmine blotch,		15
Sappho , long spike, large, fine cherry, orange tinted; lower division white stained, bright red striped,	6 00	8
Seduction , rosy salmon; bright and open; white blotch, feathered with carmine,		12
Sylphide , white, flamed with carmine; large purple carmine blotch,	4 00	6
Sylvie , white, edged with cherry rose; throat clear		8
Themis , satin rose, flushed with carmine, cream blotch,	6 00	8
Triumphans , cherry, shading off to currant red,	8 00	10
Van Spandonck , fiery red; long spike,		10
Velleda , delicate rose, striped with light scarlet, lilac blotch,	8 00	10
Virginalis , pure white, bordered and flamed carmine,		10

Ten bulbs of one variety furnished at 100 rate.

UNNAMED GLADIOLUS.

Our unnamed Gladiolus are very fine. The bulbs we offer are sound and perfect in every respect, and will produce large handsome flowers. A large portion of them are our own seedlings. Many of which produce flowers that are equal in beauty to our best named varieties.

	Per 1000	Per 100
Fine Mixed Varieties, of light colors,	\$20 00	\$ 2 50
Fine Mixed Varieties, of various shades of red,	15 00	2 00
Fine Mixed Varieties, assorted colors, first size,	12 00	1 50

250 at 1000 rate; 25 at 100 rate.

PLANTS AND BULBS.

The plants named are offered at the rates quoted, provided that not less than six of each class or variety are taken.

While we wish to allow our customers to select the varieties of Geraniums, Roses, &c., still we reserve the right to substitute, in case our stock will not warrant the sending kinds chosen.

Many of our customers select new and high priced plants from our FLORAL GUIDE, and expect us to furnish them at the same price we offer their respective class here. This we cannot do; but will allow a discount of 50 per cent. on all new or high priced plants, and 33 $\frac{1}{3}$ per cent. on bulbs not offered in the following list.

NOTE.—On page 57 of our FLORAL GUIDE, we offer plants and bulbs in collections at very low rates. This is done for the benefit of our retail customers. Where such collections are ordered by those in the trade, we shall bill the plants or bulbs at prices given in this list.

No charge made for packing. Purchasers to pay their own Express charges.

	Per 100
Abutilons, in variety,	\$ 6 00
Achyranthes, in variety,	5 00
Achillea Ptarmica, fl. pl.,	6 00
Achania Malvaviscus,	8 00
Ageratum, in variety,	6 00
Akebia quinata	8 00
Agapanthus umbellatus,	15 00
“ flore-pleno each 50 cents .	
“ variegatus	20 00
“ albus	25 00
Alternantheras, in variety,	4 00
Alyssum, in variety,	6 00
Althæa, Double Red, Single White and Double Variegated	8 00
Ampelopsis, quinquefolia,	8 00
veitchii,	8 00
Amaryllis. formosissima, strong,	10 00
Johnsoni,	50 00
Atamasco alba	6 00
Anemone, Japonica alba and rubra,	6 00
Anthericum, vittatum var,	8 00
“ picturatum,	12 00
Aquilegia, leptoceras chrysantha	8 00
Arabis, alpina	8 00
Aristolochia, Siphon, (Dutchman's Pipe),	20 00
Asparagus, tenuissimus	6 00
Astilbe Japonica, fine clumps,	7 00
Azaleas, each 30 to 75 cents .	
Begonias, flowering sorts,	6 00
Argyrostigma picta, and rubra,	10 00

	Per 100.
Begonias , Gilsoni double,	\$15 00
semperflorens gigantea rosea,	10 00
Manicata aurea, and sceptra	20 00
Rex, varieties,	15 00
Louis Chretien, finest of the Rex type,	12 00
Tuberous, single, assorted, finest strain,	12 00
" red,	12 00
" yellow,	15 00
" white,	18 00
double, assorted, best strain,	40 00
Bignonia , radicans, strong,	8 00
Bouvardia , Double and single, in variety,	8 00
Caladium esculentum, \$6.00, extra large,	12 00
(Fancy-foliaged,) in variety,	20 00
Calycanthus , floridus,	8 00
Calla , dormant, strong,	12 00
extra strong,	18 00
spotted, (Richardia albo-maculata),	8 00
Calceolaria , (shrubby),	8 00
Campsidium ,	10 00
Carnations , Clifton, E. G. Hill, Florence, Geneva, Grace Fardon, Gracie Wilder, Hinzie's White, J. J. Harrison, Juliet, May Queen, Mrs. F. Mangold, Orient, President Garfield, Portia, Robert Craig, Seawan, Silver Spray, Scarlet Defiance, Tidal Wave, and Wm. Swayne,	5 00
New varieties: Buttercup, and L. L. Lamborn	6 00
Christmas, J. R. Freeman, and Mrs. Fisher,	10 00
NELLIE LEWIS, best pink,	12 00
LIZZIE MCGOWAN, best white, dozen, \$3.00,	20 00
Cannas , assorted varieties,	6 00
Ehemanni, Noutoni and President Faivre,	12 00
New French, Brilliant, Gen. Boulanger, and Goldfinch,	10 00
Adolph Weick, and Cardinalis,	15 00
A. Crozy, Chevalier Besson, Louis Chretien, Lutea splendens, Revol-Massot and Tonkin,	25 00
Antoine Chatin, Jules Chretien, and Victor Hugo,	35 00
Capricieux,	40 00
Edouard Andre, and Mad. Gobet,	50 00
Camellias , each 30 cents to \$1.50.	
Cactus , Epiphyllum truncatum, (Lobster Cactus,)	10 00
Cereus grandiflorus,	8 00
C. M. Hovey, very fine,	20 00
Cestrum , in variety,	8 00
Centaurea , gymnocarpa	6 00
Chrysanthemums , fine assortment of Chinese, Japanese and Pompon,	6 00
Novelties: Avalanche, Bohemia, Cortez, Connecticut, Carrie Denny, Clara Riemen, Chas. A. Reeser, Elliott F. Shepard, Huron, Iowa, John Lane, Kearsarge, Landon Humphrey, Mad. Louise LeRoy, Mrs. Hicks Arnold, Mrs. Libbie Allan, Mollie Bawn, Mrs. J. T. Emlin, Mrs. W. Sargent, Mrs. Chas. Dissell, Passaic, Robert S. Brown, Raleigh, Shasta, Twilight, and White Cap	15 00

VICK'S WHOLESALE PRICE LIST.

Per 100

Chrysanthemums, Specialties: Ada Spaulding, Arizona, Edwin Lonsdale, Governor of Guernsey, Gipsy, Jean Humphrey, Kioto, Lilian B. Bird, Mrs. Alpheus Hardy, Mrs. Andrew Carnegie, Mrs. T. A. Edison, Model, Malabar, Osceola, President Harrison, Rohallion, and Tacoma.	\$10 00
Chives , bunches,	6 00
Cineraria , maritima,	6 00
Clematis coccinea, scarlet,	10 00
<i>crispa</i> ,	10 00
Jackmanii, Fair Rosamond, Gem, Lady Caroline Neville, Miss Bateman, Nigricans, Standishi, Stella and The Queen. <i>Extra strong Holland grown roots</i>	45 00
Home-grown , Fair Rosamond, Jackmanii, Nigricans and The Queen,	30 00
Virginiana,	8 00
Clerodendron Balfourii,	10 00
Coleus , general collection,	5 00
Cobea , scandens,	8 00
Crape Myrtle , pink,	8 00
Cuphea platycentra, and Hillfieldiana,	6 00
Cyclamen Persicum,	12 00
Cyperus alternifolius,	8 00
Dahlias , named varieties, fine assortment,	10 00
New varieties,	20 00
Daisy , hardy, red or white,	5 00
Day Lily . Japonica, and cerulea,	6 00
undulata media picta, foliage beautifully variegated,	20 00
Yellow (<i>Hemerocallis flava</i>),	10 00
White,	15 00
Delphinium , Chinese,	8 00
Deutzia , double white, strong, one year \$8.00, two years,	10 00
<i>gracilis</i> , one year \$8.00, two years,	10 00
<i>crenata</i> , fl. pl., one year \$8.00, two years,	10 00
Dicentra spectabilis,	8 00
Dictamus Fraxinella,	10 00
Dracæna terminalis,	35 00
<i>indivisa</i> ,	25 00
Echeverias , in variety, \$5.00 and	8 00
Hoveyi,	10 00
Erianthus Ravennæ,	8 00
Eulalia Japonica variegata,	8 00
Zebrina,	15 00
<i>gracillima univittata</i> , new,	12 00
Ferns , in variety,	10 00
<i>Lygodium scandens</i> , (climbing fern),	20 00
Feverfew , Little Gem,	8 00
Golden,	5 00
Ficus , <i>repens</i> ,	8 00
Parcelli,	20 00
<i>elastica</i> , \$25.00 to	50 00

	Per 100
Fringe , purple, \$10.00, white, \$12 00	
Fuchsias , fine assortment,	6 00
Phenomenal, and Frau Emma Topfer (Storm King),	6 00
New Varieties: Nellie and Rosain's Patrie,	10 00
Ernest Renan, Molesworth and President Carnot,	20 00
Gardenia florida ,	12 00
Geraniums , single, scented, double and Ivy-leaved, in variety,	6 00
Bronze, and Silver-Leaf,	8 00
Apple-scented, and Variegated Rose Scented	10 00
Lady Reed and Queen of the Whites Improved,	10 00
New single: Bridesmaid, La Lorraine, L'Immortel, Marguerite de Layre, Port Royal, Souvenir de Mirande and Univers	12 00
New Double: Bonnat, Beaute Poitevine, Cautelle Mendes, Dr. Chaumier, Mons. Berger, Mlle. Marie Richard, Paul Arene, President Carnot, Triomphant and Victorien Sardou	12 00
Gloxinia , mixed colors, good assortment,	20 00
Separate colors,	25 00
Heliotropes , in variety,	6 00
Hibiscus (Chinese,) fine collection of strong plants,	8 00
Schizopetalus,	12 00
Honeysuckles , in variety,	8 00
Helianthus , multiflorus plenus, (Double Dwarf Sunflower,)	6 00
Hollyhocks , in colors,	6 00
Hoya carnosa , and globulosa, (Wax Plant.)	8 00
Hydrangeas , best varieties,	8 00
stellata fimbriata,	10 00
New Red Branched,	50 00
paniculata grandiflora, . . . strong, one year \$8.00, two years.	12 00
Hyacinthus candicans ,	6 00
Ipomœa Bona Nox (Moon Flower,)	5 00
Leari, (Blue Moon Flower,)	5 00
Ivy , English, 1 year,	5 00
German,	5 00
maculata, 1 year \$8.00, 2 years,	10 00
rhombia var., 1 year \$8.00, 2 years,	10 00
New Silver Striped,	10 00
Iberis , gigantea alba, and sempervirens fl. pl.,	8 00
Jasminum grandiflorum ,	8 00
revolutum,	8 00
Lantanas , in variety,	6 00
Laurestinus	8 00
Lavender ,	6 00
Lemon Verbena ,	6 00
Lilacs (Syringa), white or purple,	10 00
New varieties: Hyacinthiflora plena, Lemoinei, Mathieu de Dom- basle, and rubella plena,	15 00
Lily of the Valley , strong pips, per 1000, \$13.00	2 00
Madeira Vine ,	2 00

	Per 100
Mahernia odorata ,	8 00
Moon Flower (<i>Ipomœa Bona Nox</i> and <i>Leari</i>),	5 00
Myosotis , blue,	8 00
Myrtus communis ,	8 00
Oleander , Double pink,	10 00
Single White,	12 00
Prof. Durand,	15 00
Madonna grandiflora,	20 00
Othonna ,	6 00
Oxalis lasiandra ,	25
Deppii,	25
floribunda, alba and rosea,	4 00
Ortgiesi,	8 00
Pansy , plants of finest strain,	4 00
Passiflora , in variety,	8 00
Eynsford Gem, new,	20 00
Pelargoniums , in variety,	10 00
Pentstemon , Gyp and Jules Claretie,	8 00
Petunias , single, seedlings,	5 00
double, fine assortment,	8 00
Perennial Phlox ,	8 00
Pea, pink,	8 00
Pilea serpœfolia ,	6 00
Pilogyne suaveis ,	6 00
Pinks , Florists, five varieties,	8 00
Plumbago capensis ,	8 00
Pomegranate , (dwarf) James Vick,	8 00
Primula , single white, (Chinese Primrose),	8 00
single pink,	8 00
double white,	25 00
Obconica, new,	10 00
Pyrus Japonica , seedlings,	8 00
Pyrethrum uliginosum ,	10 00
Reineckia carnea ,	8 00
Roses , monthly; All the leading varieties,	7 00
New or scarce varieties: Niphotos, Perle des Jardins, and Sunset,	8 00
Mad. Hoste, Mad. Welche, Red Pet, Sappho and Souvenir de Wootton,	10 00
Baroness M. Werner, Joseph Metral, The Queen, Therese Lambert and White Perle	12 00
Climbing Niphotos, Climbing Perle des Jardins, Duchess of Albany, Lady Castlereagh and Mrs. James Wilson,	20 00
Hybrid Perpetual, best standard varieties,	9 00
New varieties: American Beauty, Gloire Lyonnaise, Charles Dickens, Grand Mogul, Marchioness of Lorne and Silver Queen, Comtesse Julie de Schulenburg, Duchess of Leeds, Gloire de Margottin, Mad. Sophie Stern, Marshall P. Wilder and Mrs. John Laing, Climbing, best varieties,	15 00
	20 00
	8 00

	Per 100
Roses , Gem of the Prairies,	\$12 00
Moss, best varieties,	10 00
Polyantha varieties,	7 00
Blanche Rebatel and Clothilde Soupert	10 00
Richardia , albo-maculata, (Spotted Calla),	8 00
Rhubarb , roots,	4 00
Rhynchospermum jasmunoides,	15 00
Rivina humilis,	8 00
Rosemary	8 00
Sage ,	6 00
Salvias , in variety,	6 00
Santolina Indica . Fine for carpet bedding,	5 00
Smilax ,	5 00
Snowball (Viburnum opulus,)	8 00
Spiræa prunifolia, and Van Houttei,	8 00
Syringa (Philadelphus) grandiflora,	8 00
New varieties: Microphyllus, rosæflorus plenus, grandiflorus specio-	
sissimus plenus,	12 00
Thyme , Golden, or Lemon,	5 00
Thrift ,	6 00
Tigridia conchiflora,	5 00
pavonia,	5 00
grandiflora alba,	7 00
Tradescantia , zebrina,	5 00
Tritoma Uvaria,	8 00
Tuberose , Pearl, per 1,000, \$20.00	2 50
Verbenas , mixed, per 1,000, \$25.00	3 00
named varieties, fine assortment per 1,000, \$35.00	4 00
in colors, per 1,000, \$30.00	3 50
Veronica , Blue Gem, and variegata,	8 00
Vincas , Harrisonii, and major var.	6 00
Violets , in variety,	8 00
Water Lily , (Nymphaea odorata),	10 00
Wax Plant , (Hoya carnosa and globulosa),	8 00
Weigela candida, rosea, Desboisii, and variegata,	8 00
Wistaria Sinensis,	15 00
alba,	40 00
Yam , Chinese,	6 00
Yucca filamentosa, 1 year,	8 00
filamentosa, 2 years,	15 00

AMPELOPSIS VEITCHII.

Strong plants, per 100 \$8 00

DOUBLE HOLLYHOCKS.

Strong blooming plants, from the finest strain of seed, all our own growing,
per hundred, \$6.00; per thousand, \$50 00

LILIUM AURATUM.

Imported bulbs, first quality, per 100, \$12 00
Extra strong bulbs, per 100, 15 00



Sweet Peas.
(See pages 36, 37.)

VICK'S PRIZE STRAIN ASTERS.



New Rose.
(See page 23.)



Washington.
(See page 23.)



Dwarf Bouquet.
(See page 23.)

CARNATION.



Carnation Lizzie McGowan. This grand Carnation is a cross between Hinzie's white and Peter Henderson. It is a splendid grower, producing very large pure white flowers that are beautifully fringed, delightfully fragrant, and all borne on long stiff stems. The best white Carnation ever introduced. Plants of this variety will be ready for distribution about March 1. Per dozen \$3, hundred \$20.

SMALL FRUITS.

The trade supplied with the best new and leading varieties of Small Fruits, in large or small quantities.

	Per doz.	Per 100.	1000
RASPBERRIES—RED.			
Brandywine,	\$ 25	\$1 00	\$ 8 00
Cuthbert,	25	1 00	8 00
Hansell,	25	1 00	8 00
Herstine,	25	1 00	8 00
Marlboro,	25	1 00	8 00
Rancocas,	35	1 25	10 00
Shaffer's Colossal,	35	1 25	10 00
RASPBERRIES—BLACK.			
Doolittle's Improved,	35	1 50	10 00
Gregg,	35	1 50	10 00
Mammoth Cluster,	35	1 50	10 00
Ohio,	35	1 50	10 00
Souhegan,	35	1 50	10 00
RASPBERRIES—YELLOW.			
Caroline,	50	1 50	
Golden Queen, new,	40	1 70	12 00
BLACKBERRIES.			
Erie, new,	75	3 00	
Early Cluster,	60	2 00	15 00
Early Harvest,	40	1 70	12 00
Snyder,	40	1 70	12 00
Kitatinnny,	40	1 70	12 00
Wilson,	40	1 70	12 00
Wilson Junior,	75	3 00	
CURRANTS.			
Black Champion, black, new, 1 year,	1 00	6 00	
“ “ “ “ 2 years,	1 50	12 00	
Fay's New Prolific, red, 1 year,	1 00	7 00	
“ “ “ “ 2 years,	2 00	12 00	
Cherry, red, 1 year,	50	3 00	
White Grape, white, 1 year,	50	3 00	
Red Grape, red, 1 year,	50	3 00	
Black Naples, black, 1 year,	50	3 00	
Lee's Prolific, black, 1 year,	50	3 00	
GOOSEBERRIES.			
Smith's, 2 years,	60	4 00	
Downing's, 2 years,	75	5 00	
Industry, new,	2 00	12 00	
Golden Prolific, new,	4 80		

STRAWBERRIES.

	Per doz.	Per 100	1000
Belmont, new,	25	75	5 00
Burt Seedling, new,	15	60	4 00
James Vick,	15	60	4 00
Chas. Downing,	15	60	4 00
Cloud Seedling, new,	15	60	4 00
Crescent Seedling,	15	60	4 00
Cumberland Triumph,	15	60	4 00
Jessie, new,	25	75	5 00
Manchester,	15	60	4 00
Parry,	25	75	5 00
Sharpless,	15	60	4 00
Wilson's Albany,	15	60	4 00

GRAPES.

	Per doz.	Per 100.
Agawam, 1 year,	1 00	6 00
Agawam, 2 years,	1 60	10 00
Brighton, 1 year,	1 00	6 00
Brighton, 2 years,	1 60	10 00
Concord, 1 year,	1 00	6 00
Concord, 2 years,	1 50	8 00
Delaware, 2 years,	1 75	12 00
Lady, 1 year,	2 25	15 00
Lady, 2 years,	3 00	20 00
Merrimack, 1 year,	1 00	6 00
Merrimack, 2 years,	1 25	8 00
Moore's Early, 1 year,	1 60	10 00
Moore's Early, 2 years,	2 50	15 00
Salem, 1 year,	1 00	6 00
Salem, 2 years,	1 60	10 00
Wilder, 1 year,	1 25	8 00
Wilder, 2 years,	1 75	12 00
Worden, 1 year,	1 60	10 00
Worden, 2 years,	2 50	15 00

GRAPES—NEW VARIETIES.

Amber Queen, 1 year,	each 20 cents.	15 00
Amber Queen, 2 years,	each 30 cents.	25 00
Eaton, new, 1 year,	each 35 cents.	
Eaton, new, 2 years,	each 45 cents.	
Empire State, 1 year,		10 00
Empire State, 2 years,		15 00
Golden Pocklington, 1 year,		10 00
Golden Pocklington, 2 years,		15 00
Moore's Diamond, new, 1 year,		15 00
Moore's Diamond, 2 years,		25 00
Niagara, 1 year,		8 00
Niagara, 2 years,		12 00
Vergennes, 1 year,		10 00
Vergennes, 2 years,		15 00

Wire Designs for Cut Flowers.

A discount of 20 per cent. on orders of \$30.00; 15 per cent. on orders of \$20.00; 10 per cent. on orders of \$10.00, net cash.

Flat Crosses.

Cents		Cents	
8 inch,	4	18 inch,	9
10 "	5	20 "	11
12 "	6	22 "	13
14 "	7	24 "	14
16 "	8		

Flat Slanting Crosses.

12 inch,	8	18 inch,	11
14 "	9	20 "	13
16 "	10		

Flat Wreaths.

7 inch,	4	12 inch,	9
8 "	5	13 "	10
9 "	6	14 "	11
10 "	7	15 "	12
11 "	8		

Elevated Wreaths.

7 inch,	6	11 inch,	10
8 "	7	12 "	11
9 "	8	13 "	12
10 "	9		

Flat Stars.

6 inch,	8	12 inch,	13
8 "	9	15 "	16
10 "	10		

Stars on Stand.

8 inch,	18	12 inch,	25
10 "	22	15 "	33

Sickles.

12 inch,	15	18 inch,	25
15 "	20		

Standard Leaning Anchors.

12 inch,	30	18 inch,	00
14 "	35	20 "	55
16 "	40		

Coronet and Cross.

10 inch,	15	12 inch,	45
--------------------	----	--------------------	----

Flat Anchors.

10 inch,	15	16 inch,	22
12 "	17	18 "	25
14 "	20	20 "	30

Standard Lyres.

15 inch,	35	21 inch,	45
18 "	40	24 "	50

Standard Harps.

15 inch,	35	21 inch,	45
18 "	40	24 "	50

Flat Crowns.

9 inch,	25	15 inch,	40
12 "	30		

Elevated Crosses.

12 inch,	9	18 inch,	13
15 "	11		

Flat Maltese Crosses.

Cents		Cents	
8 inch,	10	12 inch,	15
10 "	13	14 "	20

Standing Crosses.

8 inch,	12	18 inch,	22
10 "	14	20 "	25
12 "	16	22 "	30
14 "	18	24 "	40
16 "	20		

Wreaths with Designs.

Wreath with Cross, 25	Wreath with Ma-
" " Star, 25	sonic Emblem, 30
" " Heart, 25	" " with Rest, . 50

Add 20 cents for Standard.

Monuments.

11 inch,	25	21 inch,	50
15 "	30	24 "	60
18 "	40		

Standard Hearts.

8 inch,	20	13 inch,	30
10 "	25	15 "	40
11 "	27		

Flat Hearts.

Open or solid in the center.			
8 inch,	10	12 inch,	15
10 "	12		

Faith, Hope and Charity.

15 inch,	35	21 inch,	60
18 "	50	14 "	75

Flat Square and Compass.

12 inch,	30	16 inch,	40
14 "	35		

Three Links.

14 inch,	25	18 inch,	35
16 "	30		

Crescents.

8 inch,	10	15 inch,	20
10 "	13	18 "	25
12 "	15		

Triangles.

10 inch,	13	15 inch,	25
12 "	16	18 "	30

Palette and Easel.

12 inch,	70	14 inch,	80
--------------------	----	--------------------	----

Double Crowns.

8 inch,	25	10 inch,	35
9 "	30	12 "	45

Crown on Star.

8 inch,	75	10 inch,	1 00
8 inch,	90	12 inch,	1 40

Bells.

12 inch base,	70	18 inch base,	1 00
15 "	80	12 "	1 25

FLOWER BASKETS.



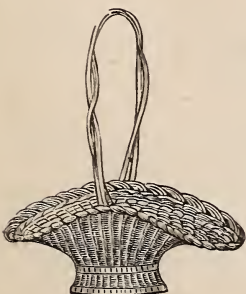
71



114

WICKER.

		Per nest of 3.			Per nest of 3.
No. 71, A,	\$0 40	No. 114, A,	70
" B,	45	" B,	75
" C,	60	" C,	1 15
" D,	70			
" E,	75			
" F,	1 15			



72

WHITE WILLOW.

		Each.
No. 72, A,	9½ inches,	\$0 20
" B,	11 "	25
" C,	12 "	30
" D,	12¾ "	40
" E,	13¼ "	50

MOSS.

	3¼ in.	4 in.	4½ in.	6 in.	7 in.
No. 67, plain, per dozen,30	.40	.50	.75	1 00
No. 115, Fancy rim, per dozen,			1 00	1 20	1 50

ORNAMENTAL GRASSES.

- Agrostis pulchella.—Colored, per lb. 90 cents; pure White, per lb. 90 cents.
- Bromus.—Bromus brizæformis, natural, per lb. 35 cents; pure White, per lb. 70 cents; sun bleached, per lb. 45 cents.
- Briza maxima.—Pure White, per lb. 80 cents.
- Briza media.—Natural, per lb. 35 cents; colored, per lb. 75 cents; pure White, per lb. 60 cents.
- Briza minor.—Natural, per lb. 45 cents; colored, per lb. 90 cents; sun bleached, per lb. 50 cents.
- Sea Oates.—Colored, per lb. 40 cents.
- Stipa pennata.—Colored, per lb. 80 cents.
- Bleached Italian Wheat.—Long fine, lb. 60 cents; 10 lbs., @ 50 cents.
- French Moss.—Large Paris packages, per dozen, 90 cents.

TOOTH PICKS. (For Stemming.)

Pointed at both ends. Per box, 10 cents; per dozen boxes 90 cents; 50 boxes	\$2 75
100 boxes,	5 00

ANNEALED WIRE.

No. 25, per pound, 20 cents; per stone of 12 pounds,	1 50
" 30, " 25 " " "	1 75

VICK'S WHOLESALE PRICE LIST.

IMMORTElLES.

Best German bleached and colored, White, Purple, Scarlet, Blue, &c., BUNCH. DOZ. \$50 15 \$1 50

BOUQUET PAPERS.

Fancy Italiens, 12 scollops; measurement exclusive of lace, assorted patterns of the best quality of stock.

	DOZ.	GROSS.		DOZ.	GROSS.
No. 0, 7 inches diameter,	75	\$8 75	No. 4, 4½ inches diameter,	42	\$4 80.
" 1, 6½ " "	65	7 50	" 5, 4 " "	38	4 25
" 2, 5¾ " "	60	6 50	" 6, 3½ " "	35	3 85
" 3, 5 " "	50	5 50	" 7, 3 " "	30	3 25.

TIN FOIL. (Net Cash.)

Per pound, 20 cents; 10 pounds @ 15 cents; 50 pounds @ 14 cents; 100 pounds @ 13 cents.

CANE PLANT-STAKES.

From 4 to 8 feet in length, light and strong, per 100, \$1.00; 1000 7 50

SPHAGNUM.

Sphagnum, or Packing Moss, for Wire Frames, packing plants, &c., free from dirt and sticks, per barrel, \$2 00

WOODEN POT LABELS.

PLAIN.

3½ inch Pot labels, per 1000,	\$0 45	2½ inch Tree labels, notched,	\$0 40
4 " " " "	50	3½ " " " "	45
4½ " " " "	55	3½ " " " pierced,	50
5 " " " "	75	1 by 5 " " notched,	1 00
6 " " " "	1 00	1¼ by 6 inch package labels,	1 20
8 " " " "	3 00	Garden Stakes, 1¼ x 12,	4 00

Add 30 per cent. to above prices where *painted* labels are desired.

PARCHMENT PAPER.

Especially adapted to the use of Nurserymen and Florists, for the wrapping and packing of plants for shipment. It is superior to the waxed and oiled papers hitherto used in every desirable particular. We note the following points, viz.: It is stronger. It is absolutely waterproof. It has more perfect surface, no flaws, air-holes, weak spots, or rotten places. It is cheaper, as one thickness of this paper is sufficient where three of the others are required. It can be written on legibly with pen or pencil. It is much pleasanter to handle. It is more attractive in appearance. Four sizes; viz.: 9x12, 12x18, 18x24, 24x36. Price, per pound, 25 cents. 50 pounds or more @ 20 cents.

FLORISTS' BRASS SYRINGES.



No. 1 E., Length of barrel, 14 inches.	One stream and two spray Roses, price, . . .	\$1 75
" 2 E., " " " 16 "	One " " " " " " . . .	2 25
" 3 E., " " " 18 "	One " " " " " " . . .	2 50
" 4 E., " " " 18 " ball valve.	One " " " " " " . . .	3 25

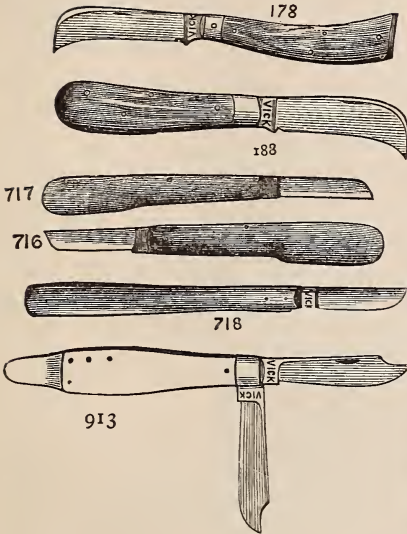
SULPHO-TOBACCO SOAP.

Wherever tried, this Soap has given the greatest satisfaction; in fact, there is no insect that will not succumb to its power. It is, therefore, unnecessary to enumerate them, or to mention the flowers, shrubbery, berry bushes, vegetables, etc., on which it may be used with great advantage. One or two thorough applications will generally rid the plants of the pest for the entire season.

Price, ½ lb. can, 20 cents; per dozen cans, \$2 00

FLORAL REQUISITES.

KNIVES.



Price by mail, prepaid

- | | |
|---|----|
| No. 178, Cocoa Handle Pruning Knife, Steel Capped, Hook Blade, $2\frac{3}{4}$ inches, \$0 | 50 |
| No. 188, Cocoa Handle Prun'g Knife, round end, Hook Blade, 3 inches, . . . | 50 |
| No. 716, Cocoa Handle Budding Knife, . . | 35 |
| No. 717, Cocoa Handle Propagating Knife, . . | 35 |
| No. 718, Bench Budding Knife, open blade, . . . | 20 |
| No. 913, Ivory Handle Budding Knife, two blades, | 75 |
| English Ivory Handle Budding Knife, one blade, | 75 |



ROCHESTER PRUNING SHEARS. ALL STEEL.

- | | |
|--------------------------|--------|
| No. 1, | \$1 00 |
| No. 2, | 75 |
| Extra springs, | 25 |

WISS'

PRUNING SHEARS.

No. 1, Handle 5 inches, knife edge 3 inches in length. Price, each \$2.00.

No. 2, Handle $3\frac{3}{4}$ in., knife edge $2\frac{7}{8}$ in. in length. Price, each \$1.90.

No. 3, Handle $4\frac{1}{2}$ in. knife edge $2\frac{3}{4}$ in. in length. Price, each \$1.70.

No. 4, Handle 4 in., knife edge $2\frac{3}{8}$ in. in length. Price, each \$1.40.



Vick's Excelsior Insect Exterminator.

DESTROYS STRIPED FLEAS, CABBAGE LICE, GREEN CABBAGE WORMS, POTATO BUGS, APHIS, SQUASH BUGS, ETC.

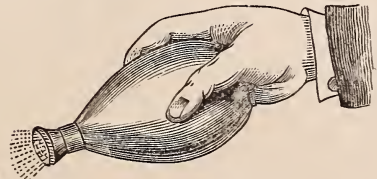


Harmless to Plants or Vegetables. Sure death to all Plant Insects, particularly the GREEN CABBAGE WORM. Apply Exterminator by means of the Bellows, as illustrated. The Bellows can be worked as fast as a person would ordinarily walk.

Powder 25 cents per pound.

- | | |
|---|--------|
| Twelve inch Bellows | \$1 25 |
| Eight inch Bellows | 1 00 |
| Small Zinc Bellows, for use in Conservatory : | |
| No. 1, each 7 cents ; per dozen | \$0 70 |
| No. 2, " 18 " " " | 1 75 |

ELASTIC PLANT SPRINKLER.



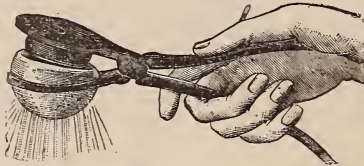
- | | |
|--|--------|
| $\frac{1}{2}$ pints, each 75 cents ; per dozen | \$8 50 |
| $\frac{1}{4}$ pints, each 45 cents ; per dozen | 4 75 |

EXCELSIOR HAND WEEDER.



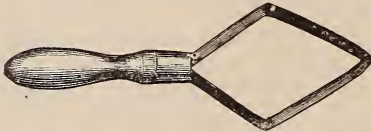
Each 10 cents. | Per dozen \$1 00

GOLDMAN'S ATOMIZER.



Each 25 cents; per dozen \$2 50

NOYES' HAND WEEDER.



Each 20 cents. | Per dozen \$2 00

HASELTINE'S HAND WEEDER and SCRAPER



Each 20 cents; per dozen \$2 25

GARDEN TROWELS.

7-inch, per dozen, \$1 00 | 8-inch, per dozen, \$1 50

MISCELLANEOUS.

Whale Oil Soap, in one, two and five pound bars, at 12 cents per pound.

Grafting Wax, per pound 20 cents.

Floral Fertilizer, 1 pound boxes, per dozen, \$2.25; ¼ pound boxes, per dozen, 30 cents.

Peruvian Guano, 5 pounds 25 cents; 10 lbs., 50 cents.

Dissolved Bone, 5 pounds 25 cents; 10 lbs., 40 cents; 100 lbs., \$2.50.

Iron Reservoir Lawn Vases. Send for illustrated catalogue with trade discount.

WHOLESALE PRICES OF IMPLEMENTS.

For illustration and descriptions see FLORAL GUIDE.

Iron Age Plain Horse Cultivator	\$3 75
Iron Age Plain Horse Cultivator, with wheel	4 40
Iron Age Plain Horse Hoe	4 50
Iron Age Plain Horse Hoe, with wheel	5 15
Iron Age Combined Horse Hoe and Cultivator	5 35
Iron Age Combined Horse Hoe and Cultivator, with wheel	6 00
Iron Age Combined Horse Hoe and Cultivator and Coverer	6 85
Iron Age Combined Horse Hoe, Cultivator, Cover and Weeder	7 75
Iron Age Covering Attachment (Wheel and Leveler)	1 50
Iron Age Leveler (without Wheel)	85

Iron Age Weeder Attachments	\$1 00
Iron Age Cultivator Point, Set of 5	75
The New Model Seed Drill	6 75
Planet Jr. Combined Seed Drill, Wheel Hoe, Cultivator and Plow	9 00
Planet Jr. No. 2, Seed Drill	6 75
Planet Jr. Double Wheel Hoe, Cultivator and Plow	6 00
Planet Jr. Single Wheel Hoe, Cultivator and Plow	4 50
Firefly, Single Wheel Hoe, Cultivator and Plow	3 75
Firefly Wheel Garden Plow	2 10
Matthews' Seed Drill	7 50



Celery, Giant Paschal.
(See page 8.)

NEW STRIPED ROSE.



VICK'S CAPRICE.

This grand novelty is a true hybrid perpetual Rose, being a sport from the H. P. Rose *Arboretescence d'Autriche*, then bred perfectly hardy. We esteem this one of its greatest advantages, as it may be grown to perfection by the amateur equally as well as by the professional florist. The flowers are large, grander color and many pink, broadly striped and dished with white, and opening. It is beautiful in the bud form being quite long and pointed also showing the stripes and markings to great advantage, making it a valuable and desirable variety for culture. Strong plants from 3 inch pots per hundred \$20.00, extra strong 2 year four year ground per hundred \$15.00.