



Digitized by the Internet Archive
in 2013

ON FREE VIEW
AT THE AMERICAN ART GALLERIES
MADISON SQUARE SOUTH, NEW YORK

BEGINNING SATURDAY, MARCH 24TH, 1917
AND CONTINUING UNTIL THE DATE OF SALE

RARE AND BEAUTIFUL
SARACENIC, PERSIAN AND
GREEK ART

TO BE SOLD AT UNRESTRICTED PUBLIC SALE
AT THE AMERICAN ART GALLERIES
ON FRIDAY AND SATURDAY AFTERNOONS
MARCH 30TH AND 31ST, 1917
BEGINNING EACH AFTERNOON AT 2.30 O'CLOCK

ILLUSTRATED CATALOGUE
OF
AN EXTRAORDINARY COLLECTION
OF
GREEK, SARACENIC, MESOPOTAMIAN AND PERSIAN
FAÏENCES, GLASS
AND OTHER OBJECTS
OF EXCEEDING RARITY AND ARTISTIC BEAUTY

TO BE SOLD AT UNRESTRICTED PUBLIC SALE

BY DIRECTION OF

MESSIEURS ÉMILE TABBAGH ET CIE
OF PARIS AND NEW YORK

AT THE AMERICAN ART GALLERIES
MADISON SQUARE SOUTH, NEW YORK

ON THE AFTERNOONS HEREIN STATED

CATALOGUE WRITTEN BY MR. HORACE TOWNSEND

THE SALE WILL BE CONDUCTED BY
MR. THOMAS E. KIRBY
AND HIS ASSISTANT, MR. OTTO BERNET, OF
THE AMERICAN ART ASSOCIATION, MANAGERS
MADISON SQUARE SOUTH
NEW YORK



THE AMERICAN ART ASSOCIATION
DESIGNS ITS CATALOGUES AND DIRECTS
ALL DETAILS OF ILLUSTRATION
TEXT AND TYPOGRAPHY

THE TABBAGH COLLECTION

This collection has been gathered together with rare knowledge and discrimination. It is formed mainly of interesting examples of Saracenic art from the ninth to the seventeenth centuries—Persian faiences and the wares of Rhages, Rakka, Sultanabad, Koubatcha, Bokhara and Kashan, besides an exceptional showing of Rhodian faience of the sixteenth century. Among the rare Rhages faience are a bowl and bottle, of which the former is of a very distinguished character, while the latter represents a school of decoration hitherto unknown to students and experts.

The Persian Miniatures, mainly of the sixteenth century, are of superb quality, among them appearing examples of the Indo-Persian, Mongolian, Timouride and Behzad Schools.

The ancient glass has been selected for its decorative quality as well as its historical interest. Among it will be found specimens of the Græco-Roman, Phœnician, Sidonian and Arabian ateliers, as well as a number of examples of that rarest of all ancient glass, the Mosaic or Murrhine glass of Alexandria of the first century B.C.

The rugs, chiefly dating from the seventeenth century, are of the Turkish and Persian weaves of Ghiordes, Kulak, Ladik and Sehna, as well as a well-preserved specimen of Rhodian weave of the sixteenth century.

HORACE TOWNSEND.

NEW YORK, March 20, 1917.

CONDITIONS OF SALE

1. Any bid which is merely a nominal or fractional advance may be rejected by the auctioneer, if, in his judgment, such bid would be likely to affect the sale injuriously.

2. The highest bidder shall be the buyer, and if any dispute arise between two or more bidders, the auctioneer shall either decide the same or put up for re-sale the lot so in dispute.

3. Payment shall be made of all or such part of the purchase money as may be required, and the names and addresses of the purchasers shall be given immediately on the sale of every lot, in default of which the lot so purchased shall be immediately put up again and re-sold.

Payment of that part of the purchase money not made at the time of sale shall be made within ten days thereafter, in default of which the undersigned may either continue to hold the lots at the risk of the purchaser and take such action as may be necessary for the enforcement of the sale, or may at public or private sale, and without other than this notice, re-sell the lots for the benefit of such purchaser, and the deficiency (if any) arising from such re-sale shall be a charge against such purchaser.

4. Delivery of any purchase will be made only upon payment of the total amount due for all purchases at the sale.

Deliveries will be made on sales days between the hours of 9 A. M. and 1 P. M., and on other days—except holidays—between the hours of 9 A. M. and 5 P. M.

Delivery of any purchase will be made only at the American Art Galleries, or other place of sale, as the case may be, and only on presenting the bill of purchase.

Delivery may be made, at the discretion of the Association, of any purchase during the session of the sale at which it was sold.

5. **Shipping**, boxing or wrapping of purchases is a business in which the Association is in no wise engaged, and will not be performed by the Association for purchasers. The Association will, however, afford to purchasers every facility for employing at current and reasonable rates carriers and packers; doing so, however, without any assumption of responsibility on its part for the acts and charges of the parties engaged for such service.

6. **Storage** of any purchase shall be at the sole risk of the purchaser. Title passes upon the fall of the auctioneer's hammer, and thereafter, while the Association will exercise due caution in caring for and delivering such purchase, it will not hold itself responsible if such purchase be lost, stolen, damaged or destroyed.

Storage charges will be made upon all purchases not removed within ten days from the date of the sale thereof.

7. **Guarantee** is not made either by the owner or the Association of the correctness of the description, genuineness or authenticity of any lot, and no sale will be set aside on account of any incorrectness, error of cataloguing, or any imperfection not noted. Every lot is on public exhibition one or more days prior to its sale, after which it is sold "as is" and without recourse.

The Association exercises great care to catalogue every lot correctly, and will give consideration to the opinion of any trustworthy expert to the effect that any lot has been incorrectly catalogued, and, in its judgment, may either sell the lot as catalogued or make mention of the opinion of such expert, who thereby would become responsible for such damage as might result were his opinion without proper foundation.

AMERICAN ART ASSOCIATION,
American Art Galleries,
Madison Square South,
New York City.

CATALOGUE

FIRST AFTERNOON'S SALE

FRIDAY, MARCH 30, 1917

AT THE AMERICAN ART GALLERIES

BEGINNING AT 2.30 O'CLOCK

Catalogue Nos. 1 to 175, inclusive

PERSIAN FAIENCES

Dating from the Sixteenth to the Eighteenth Centuries

NOTE: The circumstances under which all existing examples of Rhages, Rakka, Sultanabad and other faiences are procured, render it practically impossible to find a piece which is not in need of some repairs, however slight. It has, therefore, not been deemed necessary in the following catalogue to specifically refer to such repairs in each case.

No. 1

KIRMAN FAIENCE VASE (Sixteenth Century)

Lengths, 3½ and 4⅞ inches

Globular body; cylindrical neck, with relief band. Invested with a crackled turquoise-blue glaze.

No. 2

PAIR OF KUTAIS FAIENCE MOSQUE GLOBES
(Seventeenth Century)

Lengths, 3½ and 4⅞ inches

Egg-shaped and pierced for suspension. Invested with a brilliant cream-colored glaze and decorated, in yellow, green and aubergine, with detached designs of grotesque human faces and scrolled figures.

First Afternoon

No. 3

PERSIAN FAIENCE EWER (Sixteenth Century)

Height, 6½ inches

Club-shaped body, with cylindrical neck, looped handle and pointed tip. Invested with a crackled dark blue glaze stopping short of the base and decorated with a scroll design in black.

No. 4

KASHAN FAIENCE VASE (Seventeenth Century)

Height, 7½ inches

Pear-shaped body, with cylindrical neck. Invested with a cream-colored glaze and decorated, in blue, with five panels of floral sprays.

No. 5

PERSIAN FAIENCE VASE (Seventeenth Century)

Height, 5 inches

Bottle-shaped, with flat pointed arch sides. Invested with a heavy dark green glaze.

No. 6

PERSIAN FAIENCE VASE (Seventeenth Century)

Height, 5¼ inches

Pear-shaped body, with cylindrical neck and spreading rim. Neck invested with a white glaze, the body with a blue glaze having a pattern of heart-shaped floral scrollings in a line of white reserve.

No. 7

KASHAN FAIENCE VASE (Seventeenth Century)

Height, 7¼ inches

Pear-shaped body, with cylindrical neck. Invested with a brownish-white glaze and decorated with rock forms and flowers in blue outlined in black.

No. 8

KIRMAN FAIENCE VASE (Sixteenth Century)

Height, 5 inches

Pear-shaped body, with short cylindrical neck. Invested with a crackled turquoise-blue glaze.

No. 9

BOKHARA FAIENCE PLATE (Seventeenth Century)

Diameter, 12¾ inches

Circular shape, with flat rim. Invested with a fine white glaze and decorated, as to the center, with a design of four rayed medallions in green, brown and blue, and as to the rim, with a checkered patterning in dark blue.

No. 10

KASHAN FAIENCE VASE (Seventeenth Century)

Height, 10 inches

Pear-shaped, with cylindrical neck and annular rim. Invested with a crackled ivory-colored glaze and decorated, in blue, with a scroll and rosette patterning.

No. 11

KIRMAN FAIENCE VASE (Sixteenth Century)

Height, 5¾ inches

Pear-shaped body, cylindrical neck and three looped handles. Invested with a crackled turquoise-blue glaze.

No. 12

PERSIAN FAIENCE PLATE (Sixteenth Century)

Diameter, 9 inches

Circular shape, with curved rim. Invested with an ivory-white glaze and decorated, as to the center, with a conventional bird colored in blue and manganese and surrounded by conventional flowers.

First Afternoon

No. 13

KASHAN FAIENCE VASE (Seventeenth Century)

Height, 10¼ inches

Pear-shaped, with cylindrical neck and annular rim. Invested with a white glaze and decorated, in blue, with diagonal bandings of scrolled patterning.

No. 14

BOKHARA FAIENCE PLATE (Seventeenth Century)

Diameter, 13½ inches

Circular shape, with flat rim. Invested with a boldly crackled cream-colored glaze and decorated, in blue, green and pale red, with a central four-pointed medallion from the sides of which spring stems of chrysanthemum flowers and leaves. The border has oblong panels of imbrications on a ground of deep blue.

From the Thomas B. Clarke Collection.

No. 15

KIRMAN FAIENCE VASE (Sixteenth Century)

Height, 8 inches

Club-shaped body, with incurved cylindrical neck. Invested with a turquoise-blue glaze stopping short of the base.

No. 16

KOUBATCHA FAIENCE PLATE (Sixteenth Century)

Diameter, 13¾ inches

Circular shape. Invested with a crackled turquoise-blue glaze and decorated, as to the center, with a design of scrollings and bryony blossoms, and as to the rim, with a meander pattern of bryony blossoms.

No. 17

KASHAN FAIENCE VASE (Seventeenth Century)

Height, 10 inches

Pear-shaped body, with outcurved rim. Invested with a cloudy and crackled brownish-white glaze and decorated, in blue, with flower forms betraying a Chinese influence.

No. 18

KIRMAN FAIENCE EWER (Sixteenth Century)

Height, 7½ inches

Pear-shaped body, cylindrical neck and looped handle. Invested with a crackled turquoise-blue glaze.

No. 19

BOKHARA FAIENCE PLATE (Seventeenth Century)

Diameter, 11¾ inches

Circular shape, with flat rim. Invested with a fine white glaze and decorated, in brown, blue and green enamels, as to the center, with a quatrefoiled figure, with round medallion center of scrollings on a hatched ground, and as to the rim, with a checkered pattern.

No. 20

KASHAN FAIENCE VASE (Seventeenth Century)

Height, 7½ inches

Squat pear-shaped body, with short cylindrical neck. Invested with a bluish white glaze stopping short of the base and decorated with nine panels outlined with a double line in blue and containing floral sprays in blue and brown.

No. 21

KASHAN FAIENCE VASE (Seventeenth Century)

Height, 11 inches

Pear-shaped, with annular rim. Invested with a white glaze and decorated, in light blue, with diagonal bands of scrolled patterning.

No. 22

PERSIAN FAIENCE BOTTLE (Seventeenth Century)

Height, 6 inches

Melon-shaped body, cylindrical neck and spreading scalloped rim. Invested with a heavy blue glaze and decorated with four segmental panels of raised floral scrolls in white reserve on dark brown grounds.

No. 23

BOKHARA FAIENCE DEEP PLATE (Seventeenth Century)

Diameter, 11¼ inches

Circular shape, with flat rim. Invested with a white glaze and decorated, in brown, blue and green, as to the center, with a bird form surrounded by branches of lilies, hyacinths and leaves, within a border of rosette forms.

No. 24

KIRMAN FAIENCE VASE (Sixteenth Century)

Height, 5 inches

Pear-shaped body, with cylindrical neck and two looped panels. Invested with a crackled turquoise-blue glaze.

No. 25

PERSIAN FAIENCE PERFUME BOTTLE (Seventeenth Century)

Height, 4½ inches

Spade-shaped body, with cylindrical neck and flat and molded sides, the former decorated with panels of Saracenic interlacements in relief. Invested with a heavy blue glaze.

No. 26

PERSIAN FAIENCE VASE (Seventeenth Century)

Height, 6¼ inches

Pear-shaped, with cylindrical rim and fluted sides. Invested with a heavy bluish green glaze.

No. 27

KOUBATCHA FAIENCE PLATE (Seventeenth Century)

Diameter, 13¼ inches

Circular shape. Invested with a crackled white glaze. Interior decorated with a design of two storks and water plant forms, the border with scrolled branches and leaves, all in dark blue.

No. 28

KIRMAN FAIENCE VASE (Sixteenth Century)

Height, 5½ inches

Pear-shaped body, cylindrical neck, and three looped handles. Invested with a crackled turquoise-blue glaze stopping short of the base.

No. 29

KOUBATCHA FAIENCE PLATE (Sixteenth Century)

Diameter, 13⅞ inches

Circular-shaped, with curved rim. Invested with a crackled white glaze and decorated, in light and dark blue, as to the center, with a large medallion of interlaced design, and as to the rim, with heart-shaped medallions. Back decorated with radiating lines in blue.

No. 30

BOKHARA FAIENCE PLATE (Seventeenth Century)

Diameter, 14 inches

Circular shape, with curved rim. Invested with a greenish glaze and decorated, as to the center, with design of eight radiating pointed leaves within a circular medallion, and as to the rim, with a meander ribbon pattern on a checkered ground.

No. 31

KASHAN FAIENCE VASE (Seventeenth Century)

Height, 10 inches

Pear-shaped body, with short cylindrical neck. Invested with a crackled cream-colored glaze and decorated, in light blue, with medallions and leaf forms.

No. 32

KIRMAN FAIENCE VASE (Sixteenth Century)

Height, 5¾ inches

Pear-shaped body, cylindrical neck, annular rim, and three looped handles. Invested with a turquoise-blue glaze.

No. 33

BOKHARA FAIENCE PLATE (Seventeenth Century)

Diameter, 13¾ inches

Circular shape. Invested with a cream-colored glaze and decorated, as to the center, with a medallion of white reserve bordered by a scroll design and surrounded by four circular scrolled medallions on a blue ground. There are two borders, one of leaf design in white reserve, the other of a meander leaf scroll design, also in white reserve.

No. 34

PERSIAN FAIENCE PERFUME BOTTLE
(Seventeenth Century)

Height, 14 inches

Pear-shaped, with cylindrical neck and metal cover. Invested with a fine white glaze and decorated, as to the body, with branches of peony flowers; as to the neck, with diapered scrollings—all betraying a Chinese influence, and in underglaze blue.

No. 35

KIRMAN FAIENCE VASE (Sixteenth Century)

Height, 14 $\frac{3}{4}$ inches

Pear-shaped body, with cylindrical neck and two flat looped handles. Invested with a crackled turquoise-blue glaze stopping short of the base.

No. 36

CAUCASIAN FAIENCE PLATE (Eighteenth Century)

Diameter, 16 inches

Circular shape, with flat rim. Invested with a heavy brown and green glaze and decorated, as to the rim, with alternate Imperial eagles and honeysuckle figures in high relief.

No. 37

KIRMAN FAIENCE VASE (Seventeenth Century)

Height, 9 $\frac{3}{4}$ inches

Pear-shaped, with cylindrical neck and four straight loop handles. Invested with a heavy turquoise-blue glaze and decorated with a band of raised meander patterning. (One handle repaired.)

No. 38

KOUBATCHA FAIENCE DEEP DISH (Sixteenth Century)

Diameter, 13 $\frac{1}{4}$ inches

Circular shape. Invested with a crackled turquoise-blue glaze and decorated, as to the interior, with a design of detached leaf and floral scrollings, and as to the rim, with a meander pointed-leaf design with voluted scrollings.

No. 39

KOUBATCHA FAIENCE PLATE (Sixteenth Century)

Diameter, 13 $\frac{7}{8}$ inches

Circular shape, with curved rim. Invested with a crackled ivory-colored glaze and decorated, as to the center, in light and dark blue, with rock forms, flowers and birds. The rim in a pattern of pointed leaves in white reserve on a dark blue ground.

No. 40

KIRMAN FAIENCE VASE (Sixteenth Century)

Height, 7½ inches

Club-shaped form, with cylindrical neck. Invested with a turquoise-blue glaze stopping short of the base.

No. 41

PERSIAN FAIENCE VASE (Sixteenth Century)

Height, 13¼ inches

Pear-shaped form, with cylindrical neck and four flat looped handles. Invested with a blue glaze and decorated, as to the body, with vertical panels of incised leaf ornament and with bands of flutings and acanthus-leaves also incised.

No. 42

KOUBATCHA PLATE (Seventeenth Century)

Diameter, 13½ inches

Circular form. Invested with a white crackled glaze. Center occupied by a pattern of flowers and leaves surrounded by a border of serrated leaf design; the rim, with flower forms and scrollings of Chinese influence. All in underglaze blue.

ANCIENT GLASS OF GRÆCO-ROMAN, ALEXAN-
DRIAN, SIDONIAN, ARABIAN AND
OTHER MAKES

Chiefly of a Fine Iridescence

No. 43

GRÆCO-ROMAN GLASS BOTTLE (First Century B.C.)

Height, 4 inches

Greenish-white glass. Pear-shaped body and cylindrical neck. Rich silvery iridescence.

No. 44

PHŒNICIAN GLASS BOTTLE (First Century B.C.)

Height, 3¼ inches

White glass. Globular body, with cylindrical neck and flat rim. The body decorated with a pressed reticulated patterning. Silvery patina and rich iridescence.

No. 45

SIDONIAN GLASS VASE (First Century A.D.)

Height, 3¾ inches

Molded purple glass. Pear-shaped body, decorated in relief with a pattern of reticulations, cylindrical neck and spreading rim. Original condition.

No. 46

GRÆCO-ROMAN GLASS VASE (First Century B.C.)

Height, 3¼ inches

White glass. Pear-shaped body, with cylindrical neck and flat rim. Silvery iridescence.

No. 47

SIDONIAN GLASS VASE (First Century A.D.)

Height, 3¾ inches

Purple glass. Cylindrical body, with annular rim and base and two loop handles of applied glass. Slight iridescence.

No. 48

GRÆCO-ROMAN GLASS VASE (First Century B.C.)

Height, 2½ inches

White glass. Pear-shaped body, with pinched-in sides, cylindrical neck and spreading rim. Silvery iridescence.

No. 49

SIDONIAN GLASS "GRAPE" BOTTLE

(*First Century B.C.*)

Height, 5 inches

Purplish blown and molded glass. Pear-shaped body, formed in relief as bunch of grapes, cylindrical neck, spreading rim and annular base. Slight iridescence.

No. 50

EGYPTO-PHŒNICIAN GLASS VASE

(*Second Century B.C.*)

Height, 5 inches

Purple glass. Body of cylindrical form, with spreading rim. Rich silvery iridescence.

No. 51

GRÆCO-ROMAN GLASS BOTTLE

(*First Century B.C.*)

Height, 5 inches

Amber-colored glass. Pear-shaped body, with cylindrical neck and flat rim. Entirely covered with a dark patina touched with silvery iridescence.

No. 52

ROMAN GLASS BOTTLE

(*Fourth Century B.C.*)

Height, 4 inches

Turquoise-blue glass. Pear-shaped body, with cylindrical neck and flat rim. Partial silvery iridescence.

No. 53

SYRIO-ARABIAN GLASS BOTTLE (*Fourth Century A.D.*)

Height, 4½ inches

Green glass. Pear-shaped body, with short cylindrical neck and spreading rim. The body decorated with five applied ornaments of "trailed" glass and applied quilled glass band around the shoulders. Silvery iridescence.

No. 54

SYRIAN GLASS BOTTLE (Eighth Century A.D.)

Height, 4 inches

Olive green glass. Pear-shaped with cylindrical neck. Rich iridescence.

No. 55

EGYPTIAN GLASS VASE (Third Century A.D.)

Height, 3½ inches

Yellowish glass. Pear-shaped body, with cylindrical neck and spreading rim decorated with varicolored veinings. Rich iridescence.

No. 56

SIDONIAN GLASS BOTTLE (First Century A.D.)

Height, 4 inches

Purple glass. Hexagonal body, with cylindrical neck, decorated with beaded ornamentation in relief. Slight iridescence.

No. 57

GRÆCO-ROMAN TERRA-COTTA PLATE

(Third Century B.C.)

Diameter, 3¾ inches

Circular shape, of fine red terra-cotta. Decorated, as to the center, with an incised circular medallion with the word "Kopanou" in Corinthian Greek characters, showing the owner's name to have been "Kopanos."

No. 58

PHŒNICIAN GLASS VASE (First Century B.C.)

Height, 3¾ inches

Purple glass. Cylindrical fluted body, with spreading rim. Rich iridescence.

No. 59

SYRIO-EGYPTIAN GLASS BOTTLE

(*Eighth Century A.D.*)

Height, 4½ inches

Molded purple glass. Pear-shaped body, decorated with circular ringed medallions, cylindrical neck and spreading rim. Rich varicolored iridescence.

No. 60

ALEXANDRIAN GLASS PHIAL (*First Century B.C.*)

Height, 3¾ inches

Yellowish onyx glass. Decorated with dragged zigzags in white, with three horizontal bands. Rich iridescence.

No. 61

GRÆCO-ROMAN GLASS VASE (*Fourth Century B.C.*)

Height, 3¾ inches

Amber-colored glass. Pear-shaped body, with cylindrical neck, spreading rim and two applied looped handles of white glass. Golden iridescence.

No. 62

ROMAN GLASS BOTTLE (*First Century B.C.*)

Height, 2¾ inches

Yellowish white glass. Pear-shaped body, with cylindrical neck and annular rim. Silvery iridescence.

No. 63

ARABIAN GLASS EWER (*Eighth Century A.D.*)

Height, 5¼ inches

Blown and molded dark blue glass. Pear-shaped, with straight sides, pointed spout and applied looped handle. The body decorated with a molded reticulated patterning. Slight iridescence.

No. 64

GRÆCO-ROMAN UNGUENTARIUM

(*Fourth Century B.C.*)

Height, 3½ inches

Honey-colored glass. Formed of twin tubes of columnar shape bound by spiral filament of glass with two straight looped handles. Rich silvery iridescence.

No. 65

GRÆCO-ROMAN GLASS BOTTLE (*First Century B.C.*)

Height, 4¾ inches

Dark blue glass. Globular-shaped body, with cylindrical neck encircled by spiral glass filament. Silvery patina and rich iridescence.

No. 66

SIDONIAN GLASS PASTE BOWL (*First Century A.D.*)

Height, 1½ inches; diameter, 3½ inches

Opaque cream-colored glass paste. Coupe-shaped, with curved rim and annular foot. In original condition.

(*Illustrated*)

Note: This and the succeeding example are exceptionally well-preserved specimens of the remarkable vitreous paste material of the early Sidonian and Tyrian glass-workers.

No. 67

SIDONIAN GLASS-PASTE BOWL (*First Century B.C.*)

Height, 1 inch; diameter, 3¼ inches

Gray opaque glass. Flat coupe-shaped, with straight sides. Mottled with white enamel and partially coated with a white patina.

No. 68

GRÆCO-ROMAN GLASS VASE (Fourth Century B.C.)

Height, 5 $\frac{3}{4}$ inches

Thick wheel-finished opaque glass. Amphora-shaped, with cylindrical neck and two applied looped handles of clear yellowish glass. The body decorated with "dragged" loops of feather patterning in yellow, white and brown on a dark ground.

(Illustrated)

No. 69

SIDONIAN GLASS VASE (First Century A.D.)

Height, 2 $\frac{3}{4}$ inches

Purple glass. Pear-shaped body, with short cylindrical neck and incurved rim. Rich iridescence.

(Illustrated)

No. 70

GRÆCO-ROMAN GLASS BOTTLE (First Century B.C.)

Height, 2 $\frac{3}{4}$ inches

Honey-colored glass. Pear-shaped and fluted body, with cylindrical neck and spreading rim. Partial iridescence.

No. 71

GRÆCO-ROMAN GLASS VASE (First Century B.C.)

Height, 2 $\frac{3}{4}$ inches

Amber-colored glass. Pear-shaped body, with short curved neck and two looped handles of applied purple glass. The body is decorated with a band of pinched-out "thorns." Silvery iridescence.

(Illustrated)

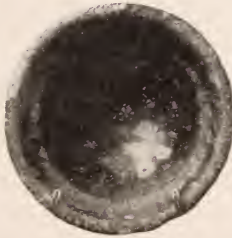
No. 72

ALEXANDRIAN GLASS BOTTLE (First Century B.C.)

Height, 3 inches

Yellow onyx glass. Pear-shaped body, with cylindrical neck decorated with marblings of blue and white. Silvery iridescence.

(Illustrated)



GRECO-ROMAN, SIDONIAN, ALEXANDRIAN GLASS

No. 75

No. 68

No. 76

No. 71

No. 74

No. 69

No. 72

No. 66

No. 73

No. 73

SIDONIAN GLASS EWER (First Century A.D.)

Height, 3¼ inches

Purple glass. Pear-shaped body, with applied loop handle. The body decorated with flutings and a band of scroll ornamentation in relief. Rich silvery iridescence.

(Illustrated)

No. 74

ALEXANDRIAN GLASS BOWL (First Century B.C.)

Height, 1¾ inches; diameter, 3⅞ inches

Mosaic or Murrhine glass. Coupe-shaped, on annular foot. Ground of greenish glass mottled with red and white in a "Madrepore" patterning. Partial iridescence.

(Illustrated)

No. 75

SIDONIAN GLASS BOTTLE (First Century A.D.)

Height, 4 inches

Thick dark blue glass. Globular-shaped body, with cylindrical neck encircled by a spiral filament of white glass. Rich purple iridescence.

(Illustrated)

No. 76

SIDONIAN GLASS BOTTLE (First Century B.C.)

Height, 3¾ inches

Blown and molded greenish-white glass. Pear-shaped body, decorated with bands of reticulated patterning, cylindrical neck and spreading rim. Patina and rich varicolored iridescence.

(Illustrated)

No. 77

GRÆCO-ROMAN FAIENCE HAND LAMP

(*Third Century B.C.*)

Length, 4½ inches

Boat-shaped oil receptacle, with pointed wick nozzle and looped carrying handle. Invested with a turquoise-blue glaze, the exterior decorated in relief with a dotted pattern.

No. 78

ALEXANDRIAN GLASS BOWL

(*First Century B.C.*)

Height, 1¾ inches; diameter, 3½ inches

Mosaic or Murrhine glass. Coupe-shaped, with flat rim on annular foot. Mottled with oval-shaped tesserae of white, brown and turquoise-blue glass.

No. 79

SIDONIAN GLASS "JANUS" BOTTLE

(*First Century B.C.*)

Height, 2¾ inches

Blown and molded greenish glass. Barrel-shaped body, with two human heads in relief, and cylindrical neck. Rich silvery iridescence.

No. 80

ROMAN GLASS BOTTLE

(*First Century A.D.*)

Height, 3 inches

Blue onyx glass. Pear-shaped body, with cylindrical neck and spreading rim. Decorated with varicolored veinings. Slight iridescence.

No. 81

ALEXANDRIAN GLASS BOWL

(*First Century B.C.*)

Height, 2 inches; diameter, 3¾ inches

Mosaic or Murrhine glass. Coupe-shaped, with outcurved rim and annular foot. Amber-colored ground, with irregular tesserae of brown, black and white glass. Partial iridescent patina.

No. 82

ARABIC GLASS GOBLET (Ninth Century A.D.)

Height, 4 $\frac{7}{8}$ inches

Of white glass. Conical-shaped, with incurved sides decorated with a band of Kufic inscriptions in blue, red, white and gold enamel bordered by lines of white and red enamel. Rich silvery iridescence. (Repaired.)

No. 83

COLLECTION OF FOUR ASSYRIAN CYLINDERS
(Eighteenth Dynasty)

Black obsidian. Cylindrical shapes of various sizes longitudinally pierced and engraved in intaglio with figures and inscriptions in cuneiform characters.

No. 84

COLLECTION OF SIXTEEN ASSYRIAN CYLINDERS
(Eighteenth Dynasty)

Black obsidian. Cylindrical shapes of various sizes longitudinally pierced and engraved in intaglio with figures and inscriptions in cuneiform characters.

PERSIAN AND SARACENIC FAIENCES

Dating from the Ninth to the Thirteenth Centuries

*RAKKA, KOUATCHA, SULTANABAD, RHODIAN
AND OTHER MAKES*

No. 85

RHODIAN FAIENCE PLATE (Sixteenth Century)

Diameter, 9 $\frac{1}{2}$ inches

Circular shape, with deep center and flat rim. Invested with a greenish-white glaze and decorated in green, blue, yellow and red enamel, with a diaper pattern extending over interior and rim of connected circular medallions enclosing spiral scrolls, blue cinquefoils and red quatrefoils.

No. 86

RHODIAN FAIENCE PLATE (Sixteenth Century)

Diameter, 12 inches

Circular, with flat rim and scalloped edge. Invested with a fine white glaze and decorated, as to the center, with a circular medallion enclosing circular rosettes in white reserve dotted with red enamel on a ground of imbrications, and surrounded by a border of a string of red and blue beads with small leaves in green, and as to the rim, with similar rosettes dotted with red on an imbricated ground of green. The back decorated with detached leaves and floral sprays in blue. (Repaired.)

No. 87

RHODIAN FAIENCE PLATE (Sixteenth Century)

Diameter, 12¼ inches

Circular shape, with flat rim. Invested with a fine white glaze and decorated, as to the center, with the figure of a man in green robe with blue sleeves, red hat and trousers, flanked by pointed serrated leaves. One hand is on a dagger in his girdle, the other holds a flower. The rim is decorated with a pointed-leaf pattern in blue and green.

No. 88

RHODIAN FAIENCE PLATE (Sixteenth Century)

Diameter, 11⅔ inches

Circular shape, with flat rim. Invested with a fine white glaze and decorated, in overglaze blue and green enamel, with a central medallion of pointed serrated leaves surrounded by a Saracenic trefoil border of green and white reserve, and as to the rim, with a border of spirals in blue and black on a white ground. The back is patterned with fleurettes in blue and green.

No. 89

KOUBATCHA FAIENCE DEEP DISH (Sixteenth Century)

Diameter, 14 inches

Circular shape. Invested with a turquoise-blue glaze and decorated, as to the interior, with a design of scrolled ribbons and pointed leaves, and as to the rim, with a design of heart-shaped scrollings.

No. 90

RHODIAN FAIENCE PITCHER (Sixteenth Century)

Height, 7 $\frac{7}{8}$ inches

Pear-shaped body, cylindrical neck and round looped handle. Invested with a white glaze and decorated, as to the body, with a diapered pattern of imbrications in black and blue, and with pomegranate-shaped medallions of white reserve with red enamel dottings.

(*Illustrated*)

No. 91

RHODIAN FAIENCE PLATE (Sixteenth Century)

Diameter, 11 $\frac{1}{2}$ inches

Circular shape, of shallow saucer form. Invested with a fine white glaze and decorated, as to the center, with a circular medallion occupied with six floral sprays in white reserve touched with green and brown on a blue ground and surrounded by a border of Saracenic trefoil pattern in black, green and blue.

(*Illustrated*)

No. 92

RHODIAN FAIENCE PITCHER (Sixteenth Century)

Height, 8 $\frac{7}{8}$ inches

Pear-shaped body, cylindrical neck and looped handle. Invested with a brilliant white glaze and decorated, as to the body, with curved pointed leaves and carnations in green, blue and red. Around the shoulder is a raised band.

(*Illustrated*)

No. 93

KOUBATCHA FAIENCE PLATE (Seventeenth Century)

Diameter, 8 $\frac{1}{4}$ inches

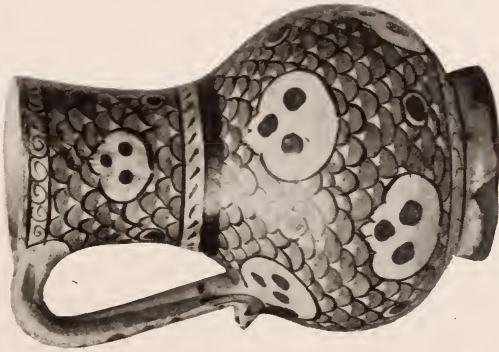
Circular shape, with flat rim. White crackled glaze, decorated, as to the center, with a circular medallion occupied by flower forms, surrounded by a border of diamond-shaped panels formed by intersecting curved line enclosing fleurettes. All in underglaze blue and red and yellow enamels.



No. 92



No. 91



No. 90

RHODIAN FAIENCE PITCHERS AND PLATE OF THE SIXTEENTH CENTURY

No. 94

DAGHESTAN FAIENCE BOTTLE (Sixteenth Century)

Height, 10¾ inches

Rectangular shape, with short cylindrical neck. Invested with a fine white glaze and decorated, in brown and blue, on two sides with figures of warriors on horseback surrounded by flower forms, and on the other two sides by a design of palm leaves.

No. 95

KOUBATCHA FAIENCE PLATE (Seventeenth Century)

Diameter, 13 inches

Circular form. Invested with a crackled white glaze. The center occupied by a design of water fowl, rock forms and foliage, the rim with branches of fruits and leaves symmetrically disposed, all in underglaze blue.

No. 96

KOUBATCHA FAIENCE VASE (Sixteenth Century)

Height, 9 inches

Pear-shaped body, cylindrical neck, spreading rim and foot. Invested with a partially crackled cream-colored glaze and decorated, as to the body, with the figure of a woman in a blue robe served by attendants, in a flowery landscape, with wine cups and vases in blue, yellow, brown and green, and as to the neck, with a lily blossom bordering.

No. 97

KOUBATCHA FAIENCE DEEP DISH (Sixteenth Century)

Diameter, 14 inches

Circular shape, with scalloped edge. Invested with a green blue glaze and decorated, in black, as to the interior, with a medallion of two fish surrounded by a quatrefoil border. The rim with panels in reserve of Arabic inscriptions and a meander leaf-patterned border.



No. 98

KOUBATCHA FAIENCE PLATE (Sixteenth Century)

Diameter, 14½ inches

Circular shape, with flat rim. Invested with a crackled ivory-colored glaze. Decorated in colored enamels, as to the center, with a medallion formed of four blossoms with pointed leaves and four palmettes springing from a quatrefoiled square. The border, with panels of white reserve, occupied with floral sprays on a ground of deep blue.

No. 99

KOUBATCHA FAIENCE PLATE (Sixteenth Century)

Diameter, 15½ inches

Circular shape, with flat rim. Invested with a crackled cream-colored glaze and decorated, as to the center, with a design of curving pointed leaves in white reserve outlined in manganese with flowers in white reserve outlined in black. Surrounded by a border of eight panels containing flower forms in blue, manganese and light brown.

First Afternoon

No. 100

KOUBATCHA FAIENCE PLATE (Sixteenth Century)

Diameter, 13 $\frac{3}{8}$ inches

Circular shape, with flat rim. Invested with a crackled white glaze and decorated in black, red, blue and brown, as to the interior, with a central medallion of flower forms, and as to the rim, with a lozenge-shaped diaper in black enclosing dots of red, brown, gray and blue enamels.

No. 101

RAKKA FAIENCE EWER (Twelfth Century)

Height, 5 $\frac{1}{4}$ inches

Pear-shaped body, with cylindrical neck, pinched-in spout and flat looped handle. Invested with a fine turquoise-blue glaze and decorated in black, as to the body and neck, with panels of scrolled pattern and wide bands.

No. 102

RAKKA FAIENCE VASE (Twelfth Century)

Height, 5 $\frac{3}{4}$ inches

Pear-shaped body, with cylindrical neck. Invested with a turquoise-blue glaze stopping short of the base. Silvery iridescence.

No. 103

RAKKA FAIENCE DEEP PLATE (Twelfth Century)

Diameter, 9 $\frac{7}{8}$ inches

Circular shape, with curved rim. Invested with a crackled ivory-colored glaze decorated with four rings, symmetrically disposed in alternate overglaze blue and green.

No. 104

RAKKA FAIENCE PITCHER (Twelfth Century)

Height, 5 inches

Pear-shaped body, cylindrical neck and flat looped handle. Invested with a cream-colored glaze. Entirely coated with a silvery iridescence.

No. 105

SULTANABAD FAIENCE BOWL (Thirteenth Century)

Height, 3 inches; diameter, 8¾ inches

Coupe-shaped, with annular foot. Invested with a turquoise-blue glaze and decorated in black, as to the interior, with concentric circles of lines of blue reserve.

No. 106

RAKKA FAIENCE PITCHER (Twelfth Century)

Height, 5½ inches

Pear-shaped body, with slender cylindrical neck and flat looped handle. Invested with a turquoise-blue glaze stopping short of the base and decorated in black, as to the body and neck, with lines and bands of lozenge-shaped dots and scrolls. Silvery iridescence.

No. 107

RAKKA FAIENCE BOWL (Twelfth Century)

Height, 2¾ inches; diameter, 5¼ inches

Coupe-shaped, with annular foot. Invested with a crackled turquoise-blue glaze stopping short of the base and decorated in black, as to the interior, with lines and bands of scrolled pattern, and as to the exterior, with radiating lines.

No. 108

SULTANABAD FAIENCE BOWL (Twelfth Century)

Height, 4¼ inches; diameter, 7¼ inches

Melon-shaped, with curved rim on annular foot. Invested with an ivory glaze and decorated, in brown, green and blue, the interior with intersecting lines of green, the exterior divided into compartments decorated alternately with heart-shaped medallions and scrolls of white reserve and with Saracenic interlacements in brown on blue grounds.

No. 109

RAKKA FAIENCE BOTTLE (Twelfth Century)

Height, 7¼ inches

Pear-shaped body, with bulbous cylindrical neck. Invested with a turquoise-blue glaze, the body decorated, in black, with a scrolled patterning. Fine iridescence.

No. 110

RAKKA FAIENCE PITCHER (Twelfth Century)

Height, 6 inches

Pear-shaped body, cylindrical neck and flat looped handle. Invested with a cream-colored glaze stopping short of the base and decorated in light blue, as to the body, with Arabic inscriptions. Fine iridescence.

No. 111

RAKKA FAIENCE PITCHER (Twelfth Century)

Height, 4¼ inches

Pear-shaped body, with cylindrical neck. Invested with a crackled turquoise-blue glaze stopping short of the base and decorated, in black, with horizontal bandings and scroll designs.

No. 112

PERSIAN FAIENCE BOWL (Fifteenth Century)

Height, 2¾ inches; diameter, 6¾ inches

Coupe-shaped, with serrated edge. Invested with a finely crackled turquoise-blue glaze.

No. 113

RAKKA FAIENCE PITCHER (Twelfth Century)

Height, 5¼ inches

Pear-shaped body, cylindrical neck and flat looped handle. Invested with a turquoise-blue glaze, the neck decorated, in black, with a band of zigzags, the body with a band of scrolled patterning. Rich iridescence.

No. 114

SULTANABAD FAIENCE "BUDDHA"
(Thirteenth Century)

Height, 5 inches

Bottle formed as a human figure. Invested with a finely crackled turquoise-blue glaze, with a scrolled decoration in black. Partial iridescence.

No. 115

RAKKA FAIENCE EWER (Twelfth Century)

Height, 5 inches

Pear-shaped body, with cylindrical neck, annular foot and flat looped handle. Invested with a crackled turquoise-blue glaze stopping short of the base. The body decorated, in black, with scrollings, and the neck with a band of hatched ornamentation. Partial silvery iridescence.

No. 116

SULTANABAD FAIENCE EWER (Fourteenth Century)

Height, 7½ inches

Pear-shaped body, with spreading neck and round looped handle. Invested with a heavy turquoise-blue glaze, stopping short of the base, the body decorated, in black, with vertical panels occupied alternately by flower forms and a herring-bone ornamentation. Partial silvery iridescence.

No. 117

RAKKA FAIENCE BOWL (Twelfth Century)

Height, 5¾ inches

Tapering body, with annular base. Invested with a greenish-white glaze stopping short of the base and decorated in black and blue, with lines and bands of scrolled trefoil leaf design. Iridescent patina.

No. 118

RAKKA FAIENCE EWER (Twelfth Century)

Height, 8¼ inches

Pear-shaped body, spreading neck and flat looped handle. Invested with a fine turquoise-blue glaze and decorated, as to the shoulder, with a band in relief colored black. Fine silvery iridescence.

No. 119

RAKKA FAIENCE DEEP PLATE (Twelfth Century)

Diameter, 10½ inches

Circular shape with flat rim. Invested with a turquoise-blue glaze and decorated, as to the center, with a medallion in black, surrounded by a band of patterning in dark blue, and as to the rim, with a border based on Cufic inscriptions.

No. 119A

RAKKA FAIENCE PITCHER (Twelfth Century)

Height, 5 $\frac{7}{8}$ inches

Pear-shaped body, cylindrical neck and flat looped handle. Invested with a crackled turquoise-blue glaze stopping short of the base and decorated in black, as to the body and neck, with horizontal bandings and scrollings. Silvery iridescence.

No. 120

RAKKA FAIENCE BOWL (Twelfth Century)

Height, 4 inches; diameter, 7 $\frac{1}{4}$ inches

Coupe-shaped. Invested with a heavy crackled cream-colored glaze and decorated in black, as to the interior, with radiating lines springing from a quatrefoiled medallion. Around the rim is a band of blue.

No. 121

RAKKA FAIENCE PITCHER (Twelfth Century)

Height, 5 $\frac{3}{4}$ inches

Pear-shaped body, cylindrical neck and looped handle. Invested with a crackled turquoise-blue glaze.

No. 122

SULTANABAD FAIENCE BOWL (Thirteenth Century)

Height, 3 $\frac{1}{4}$ inches; diameter, 8 $\frac{7}{8}$ inches

Straight-sided coupe shape, with incurved rim. Invested with a greenish-blue glaze and decorated, as to the interior, in black so as to show the pattern in blue reserve, with a pattern of scrolled interlacements with an octagonal medallion in the center.

No. 123

SULTANABAD FAIENCE BOTTLE (Twelfth Century)

Height, 12¾ inches

Pear-shaped body, with fluted under portion, and long cylindrical neck. Invested with a dark blue glaze and decorated, in gold and red and white enamels, with a pattern of circular medallions between bands of trefoil pattern in gold. The ground is patterned with scrollings in white on gold. Decoration scaled off in places revealing the blue glaze beneath. (Neck slightly restored.)

No. 124

RAKKA LUSTRED FAIENCE VASE (Ninth Century)

Height, 5 inches

Straight tapering sides, with spreading rim and annular foot. Invested with a crackled cream-colored glaze stopping short of the base and decorated in brown luster, as to the body, with a band of Arabic inscription on a ground of spirals, and as to the neck, with a broad band from which spring flower forms.

No. 125

RAKKA FAIENCE BOWL (Twelfth Century)

Height, 3⅞ inches; diameter, 9 inches

Coupe-shaped, with annular foot. Invested with a crackled turquoise-blue glaze stopping short of the base and decorated in black, as to the center, with a circular medallion, and as to the inner rim, with a band of interlacements. The exterior decorated with a scrolled pattern. Silvery iridescence.

No. 126

RAKKA FAIENCE EWER (Twelfth Century)

Height, 5¼ inches

Pear-shaped body, cylindrical neck and flat looped handle. Invested with a pale green glaze and decorated, in black, blue and reddish brown, with a design of paneled scrollings. Slight silvery iridescence.

No. 127

PERSIAN FAIENCE VASE (Sixteenth Century)

Height, 3½ inches

Bottle-shaped, with cylindrical neck. Invested with a fine white glaze and decorated with vertical panels of floral sprays in copper lustre.

No. 128

PERSIAN FAIENCE VASE (Sixteenth Century)

Height, 6¾ inches

Pear-shaped body, with long cylindrical neck and bulbous rim. Invested with a white glaze and decorated with spiral bands of leaf forms and floral sprays in copper lustre.

No. 129

PERSIAN LUSTRED FAIENCE BOWL
(Sixteenth Century)

Height, 2½ inches; diameter, 5½ inches

Coupe-shaped. Interior decorated, on a white ground, with a design of floral groups and pointed serrated leaves in gold lustre. Exterior glazed a rich blue, with four bands of scrollings in copper lustre.

No. 130

PERSIAN LUSTRED FAIENCE BOWL

(*Seventeenth Century*)

Height, 4½ inches

Bottle-shaped, with metal neck and rim of later date. Invested with a fine white glaze and decorated with a design of leaf forms in rich copper lustre.

No. 131

GRÆCO-ROMAN FAIENCE VASE (*First Century B.C.*)

Height, 11½ inches

Pear-shaped body, the lower part vertically ribbed, cylindrical neck and two straight looped handles. Invested with a blue glaze and decorated in relief with bands of disk-shapes and semi-rosettes. Below the handles are raised palm branch ornamentations.

(*Illustrated*)

No. 132

RAKKA FAIENCE INKSTAND (*Ninth Century*)

Height, 8 inches

Rectangular shape, on four cylindrical feet. Invested with a rich greenish glaze. The top is pierced with two circular openings surrounded by a panel of Saracenic interlacements in relief; the sides are patterned with Arabic inscriptions in relief and scrollings, while the ends are decorated with pointed-arch panels of ornamentation in relief. Largely covered with silvery and golden iridescence.

(*Illustrated*)

Note: This inkstand is said to have been exhumed from among the ruins of the palace of Haroun-al-Raschid, whose favorite place of abode was the City of Rakka.

No. 133

GRÆCO-ROMAN FAIENCE VASE (*First Century B.C.*)

Height, 12 inches

Pear-shaped vertically ribbed body, cylindrical neck and two flat looped handles. Invested with cracked greenish-blue glaze.

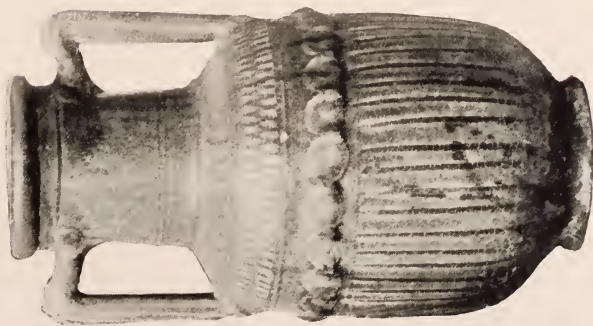
(*Illustrated*)



No. 133



No. 132



No. 131

Nos. 131-133. GRECO-ROMAN VASES OF THE FIRST CENTURY B.C.
No. 132. RAKKA FAIENCE INKSTAND OF THE NINTH CENTURY

No. 134

HISPANO-MAURESQUE DISH (Seventeenth Century)

Diameter, 15 inches

Circular shape, with raised bars. Center occupied with a patterning of floral sprays and quatrefoils in copper lustre. Border patterned with floral sprays and branches of heart-shaped leaves in blue and copper lustre.

No. 135

*HISPANO-MAURESQUE LUSTRED FAIENCE ALBA-
RELLO* (Sixteenth Century)

Height, 11 $\frac{7}{8}$ inches

Cylindrical shape, with incurved sides and short cylindrical neck. Invested with an ivory-colored glaze and decorated in lustred brown, blue and black with vertical lines, two bands of pseudo-Cufic inscriptions and a narrower band of Saracenic patterning in white reserve on a brown ground.

No. 136

HISPANO-MAURESQUE DISH (Seventeenth Century)

Diameter, 16 inches

Circular shape, with raised gadrooned boss. Interior occupied with alternating panels of dotted pattern and pseudo-Cufic inscriptions in copper lustre. Border decorated with raised serrated leaf forms and scrollings in blue and copper lustre. (Repaired.)

No. 137

SULTANABAD FAIENCE VASE WITH HANDLES
(Thirteenth Century)

Height, 6 $\frac{1}{2}$ inches

Pear-shaped body, with two straight looped handles and cylindrical neck. Invested with a turquoise-blue glaze, decorated in black and almost entirely coated with a silvery iridescent patina.

No. 138

RAKKA FAIENCE VASE (Twelfth Century)

Height, 10 inches

Pear-shaped body, with cylindrical neck and annular rim. Invested with a pale green glaze, decorated with vertical lines of dark blue. Almost entirely covered with a silvery iridescent patina.

No. 139

RAKKA FAIENCE VASE (Thirteenth Century)

Height, 15 inches

Pear-shaped form, with four flat loop handles and annular rim. Invested with a turquoise-blue glaze, nearly covered with a silvery iridescence due to age.

PERSIAN MINIATURES OF THE SIXTEENTH AND
SEVENTEENTH CENTURIES

Painted in Gold and Colors

OF THE MONGOLIAN INDO-PERSIAN AND
OTHER SCHOOLS

No. 140

INDO-PERSIAN MINIATURE (Seventeenth Century)

Height, 5½ inches; width, 4 inches

Painted in gold and colors. In the foreground a princess kneels praying before the tomb of a Sage hung with votive offerings. In the background is a landscape painted in dark green with the sun setting behind a mountain.

No. 141

INDO-PERSIAN MINIATURE (Sixteenth Century)

Height, 6 inches; width, 3½ inches

Painted in gold and colors. By a miniaturist of the school of Jahangir. Full-length figure of a princess against a blue background, surrounded by a double border, one with conventional flowers and birds on a yellow ground, one with animals in gold on a red ground.

No. 142

INDO-PERSIAN MINIATURE (Seventeenth Century)

Painted in gold and colors. From a MS. illustrated by Muhammad Nadir of Samarkand. In a Persian garden a prince and princess are meeting and clasping hands. On either side are rows of women attendants. In the foreground are peacocks, other birds and animals. In the background a lake and trees, and in the distance a city with houses and minarets.

No. 143

INDO-PERSIAN MINIATURE (Early Seventeenth Century)

Height, 8½ inches; width, 5½ inches

Painted in gold and colors. By a miniaturist of the schools of Akbar and Jahangir. In the interior of a palace a shah sits on his chairlike throne of jeweled gold watching two of his courtiers playing a game of chess. In front of him stand his son and a dervish. Panels of text above and below.

No. 144

INDO-PERSIAN MINIATURE (Sixteenth Century)

Height, 6¼ inches; width, 5 inches

Painted in gold and colors. By a miniaturist of the school of Akbar. Full-length portrait of Shayista Khan dressed in a green robe with a gold girdle and scimitar and a green halo against a blue background.

No. 145

INDO-PERSIAN MINIATURE (Seventeenth Century)

Height, 10 inches; width, 5½ inches

Painted in gold and colors. From a MS. illustrated by Muhammad Nadir of Samarkand. In a rocky landscape surmounted by a blue sky a horseman with bent bow aims an arrow at a man concealed in a tree trunk.

No. 146

INDO-PERSIAN MINIATURE (Seventeenth Century)

Height, 9½ inches; width, 6¾ inches

Painted in gold and colors. From a MS. illustrated by Muhammad Nadir of Samarkand. Equestrian portrait of Shayista Khan riding a white horse in an open flower-besprinkled meadow beneath a cloudy sky.

No. 147

PERSIAN ILLUMINATION (Sixteenth Century)

Height, 4¼ inches; width, 2 inches

Painted in gold and colors. From a MS. by Mir-Ali. Two panels of text divided vertically by a band of blue with Persian inscriptions on either side.

No. 148

PERSIAN ILLUMINATION (Sixteenth Century)

Height, 10 inches; width, 6¼ inches

Painted in gold and colors. Page of calligraphy by Ali-el-Kateb written in gold and colors around a series of Persian inscriptions in black. Surrounded by a border of birds and flowers in colors on a gold ground.

No. 149 .

PERSIAN MINIATURE (Sixteenth Century)

Height, 10¾ inches; width, 6½ inches

Painted in gold and colors. From a MS. of one of Nizami's works. In a room of a palace a prince lies dying surrounded by his weeping wives. From a balcony above members of the Harem look on.

No. 150

PERSIAN MINIATURE (Sixteenth Century)

Height, 10 inches; width, 7½ inches

Painted in gold and colors. From a MS. Nizami. Into the open doorway of a crenellated fortress, the Shah, dismounted, pursues with drawn sword a horseman. To his right is a body of his followers on horseback and armed with spears and bows. In the foreground is the abandoned horse of the Shah, while on the battlements of the fort are armed men.

No. 151

PERSIAN MINIATURE (Sixteenth Century)

Height, 10¾ inches; width, 8 inches

Painted in gold and colors. From a MS. of one of Nizami's works. At the entrance of a palace the queen with outstretched arms welcomes the young prince who rides up on horseback. Behind the queen is one of her attendants, and on her left a woman accompanying on a tambourine two singers. Above is a panel of calligraphy.

No. 152

PERSIAN MINIATURE (Sixteenth Century)

Height, 12½ inches; width, 5¾ inches

Painted in gold and colors. From a MS. Bustan of Saadi. On a dais in a kiosque a royal family group are seated around the queen listening to two musicians and singers. In the background are trees and flowers.

No. 153

PERSIAN MINIATURE (Sixteenth Century)

Height, 10 $\frac{3}{4}$ inches; width, 7 $\frac{1}{2}$ inches

Painted in gold and colors. From a MS. of Nizami's Khamsah, dated 924 A.H. (1518 A.D.). In a cave Shah Freidoum is killing a devil. On the left a man is bound to a tree, in the foreground are three of Freidoum's attendants, and in the background wait three devils armed with clubs.

No. 154

PERSIAN MINIATURE (Sixteenth Century)

Height, 9 $\frac{1}{2}$ inches; width, 5 $\frac{1}{4}$ inches

Painted in gold and colors. From a MS. of one of Nizami's works. On a divan in the interior of the palace the shah and one of his wives sit and listen to musicians, while women attendants hand refreshments. In the background, through a curtained opening, is seen a flower garden. Above and below are panels of calligraphy.

No. 155

PERSIAN MINIATURE (Sixteenth Century)

Height, 6 $\frac{3}{4}$ inches; width, 6 $\frac{3}{4}$ inches

Painted in gold and colors. From a MS. Bustan of Saadi. In the interior of a morgue four men are prostrating themselves and praying, while in the foreground a princess kneels on a prayer rug with ducks on either side of her.

No. 156

PERSIAN MINIATURE (Sixteenth Century)

Height, 11 inches; width, 7 $\frac{3}{4}$ inches

Painted in gold and colors. From a MS. of Nizami's Haft Paikur. Shah Iamaz, having wounded Freidoum, regrets his action and, throwing himself on his knees, asks the latter's forgiveness. Around stand the shah's attendants.

No. 157

PERSIAN MINIATURE

(*Sixteenth Century*)

Height, 6½ inches; width, 4½ inches

Painted in gold and colors. From a MS. Bustan of Saadi. On one side of a palace courtyard one of the shah's wives is seen in a dark cell loaded with chains, and being comforted by three attendants who hold lighted candles and bring her food. Above, on the left, the shah and his courtiers look on from a window. Landscape background, with trees.

No. 158

PERSIAN MINIATURE

(*Sixteenth Century*)

Height, 9 inches; width, 5½ inches

Painted in gold and colors. From a MS. Bustan of Saadi. Two women riding in a rocky landscape greet each other as they meet. In the middle distance a man on his knees supplicates a princess on horseback. Beyond are rocks with tents and trees.

No. 159

PERSIAN MINIATURE

(*Sixteenth Century*)

Height, 7¾ inches; width, 4¼ inches

Painted in gold and colors. From a MS. illustrated by Shah Mahmud, dated 1522 A.D. In a royal tent near a brook in front of which is laid a meal, Bahram Gur sits conversing with Khoustran, while Zuleika and a female companion stand under a tree outside listening to the conversation. Surrounded by a border of flowers and foliage in gold on an ivory ground.



No. 160

PERSIAN MINIATURE

(Sixteenth Century)

Height, 6½ inches; width, 3½ inches

Painted in gold and colors. From a MS. of Nizami's Haft Paikur. In a tent in an open landscape Freidoum sits and greets Bahram and Zuleika, who are paying her a visit. Above the rocky crags in the background are seen the heads of three youths. Surrounded by a border of figures, animals and birds on a dotted ground and panels of calligraphy.



No. 161

PERSIAN ILLUMINATION

(*Sixteenth Century*)

Height, 9¾ inches; width, 13½ inches

Painted in gold and colors. From a MS. of one of Nazami's works. Three pages of calligraphy, one by Mir Hassan, the others by Diwan Hoja Hafez. Written in spaces of reserve on a gold ground and with panels above of decoration painted in gold and colors.



No. 162

PERSIAN MINIATURE

(Sixteenth Century)

Height, 6¼ inches; width, 3¼ inches

Painted in gold and colors. From a MS. *Bustan* or *Saadi*. By a miniaturist of the school of *Behzad*. In the courtyard of a palace is a gathering of court officials discussing important events. In the background from a palace balcony members of the Harem are watching what is going on. On the left, through an open gate, is seen a Persian garden. Surrounded by an elaborate border, painted in gold and rich colors, of quatrefoil medallions enclosing Persian inscriptions and connected by Sarcenic interlacements.

No. 163

PERSIAN MANUSCRIPT

(*Fifteenth Century*)

Height, 11¼ inches; width, 6¾ inches

One of the works of Nizami. An exquisite specimen of calligraphy written on vellum. On alternate pages the text is plain and written in spaces of reserve on gold grounds, and in both cases surrounded by borders of gold. The chapter headings are elaborately illuminated in gold and colors, with panels of medallions and Saracenic interlacements. In the original binding of boards, lacquered in a design of figures and flowers, the doublures of panels of raised Saracenic diapers and rosetted patternings in gold and colors.

ANTIQUÉ PERSIAN AND TURKISH RUGS

Chiefly of the Seventeenth Century

No. 164

TURKISH MAT

(*Eighteenth Century*)

Length, 4 feet; width, 2 feet 10 inches

Kurd weave. Center with field of turquoise-blue geometrically patterned in red and blue, surrounded by borders of red patterned in blue and white and of brown. Border patterned with diamond shapes on a yellow ground and rosetted outer guard.

No. 165

PERSIAN RUG

(*Eighteenth Century*)

Length, 4 feet 4 inches; width, 2 feet 5 inches

Bokhara weave. The field, of dark red, is decorated with a patterning of oval medallions in bright red, dark blue and white, surrounded by a triple inner guard of a band of geometrical patterning in red, blue and white between narrow stripes of hook pattern in blue on a bright red ground. The border, wider on one side, is patterned with a pattern of tridents and conventional leaf forms in yellow, white, blue and bright red on a dark red ground.

No. 166

TURKISH PRAYER RUG (Seventeenth Century)

Length, 5 feet 11 inches; width, 4 feet

Kulah weave. The mihrab, arched at either end and with a pale buff-colored ground, is decorated by two vertical floral stalks in blue and green. The sky above and below, of light ground decorated with conventional leaf forms, in white and yellow. Double inner and outer guard of meander and scroll patternings on dark and white grounds respectively. Double border of two rows of flower forms in red, brown, green and yellow separated by a narrow stripe of meander patterning on a dark ground.

No. 167

TURKISH PRAYER RUG (Seventeenth Century)

Length, 6 feet 9 inches; width, 3 feet 4 inches

Ladik weave. Mihrab with red ground, pointed stepped arch and star-shaped and hook-patterned figures in white and black. Sky with conventional vase and leaf forms in red and black on light ground. Below, a panel with red ground and three lily forms. Double inner guard, with broad band of conventional flower forms in red, blue and yellow on a light ground. Border with medallions and leaf forms in red, white and blue on a yellow ground and triple outer guard.

No. 168

TURKISH PRAYER RUG (Eighteenth Century)

Length, 6 feet; width, 4 feet

Kir-sheer weave. The mihrab, with a green ground, has a stepped arch with hook-pattern enrichments in red, yellow and white. Blue sky, with floral rosette in red. Panels above and below, with red and white ground. Inner guard of seven alternate stripes of red, white, brown and yellow. Border of varicolored floral rosettes on a yellow ground, and double outer guard of broad band of blue ground with floral sprays in red and black and a narrow band of red.

No. 169

TURKISH PRAYER RUG (Seventeenth Century)

Length, 5 feet 11 inches; width, 4 feet

Ladik weave. The triple-arched mihrab, with a red ground, is decorated with a central medallion of conventionalized mosque-lamp form in blue and white. The sky has a blue ground, with red, brown and white flower and leaf forms, while below is a panel with red ground of three pendent lily forms in blue and black. Triple inner guard of angular meander and rosetted patterings, border of brown, blue and white flower forms on a red ground, and triple outer guard of a red meander on a brown ground between red and blue stripes.

No. 170

TURKISH PRAYER RUG (Seventeenth Century)

Length, 6 feet 3 inches; width, 3 feet 10 inches

Kulah weave. Pointed-arched mihrab with a blue field decorated with a vertical band of light-colored stars and scrollings with profile flowers at the sides. Sky of blue extending down the sides, with a diapered pattern of imbrications in yellow. Panels above and below, with red and black grounds. Triple inner guard of stripes, with light grounds patterned with scrolling in black and blue. Border of a double row of flower forms in blue, yellow and black on a white ground and triple outer guard of a band of leaf forms in yellow on a white ground between stripes of black with yellow fleurettes.

No. 171

PERSIAN RUG (Seventeenth Century)

Length, 6 feet; width, 4 feet

Schna weave. Field of dark blue, covered with a diapered pattern of floral interlacements in red, light blue and white. Central diamond-shaped medallion, with a red ground covered by a similar pattern to that of the field in pale blues, purples and white. Inner and outer guards with dark blue grounds rosetted in red, light blue and white.

No. 172

SARACENIC RUG

(Seventeenth Century)

Length, 6 feet 7 inches; width, 5 feet 7 inches

Rhodian weave. Field is occupied with a diamond-shaped medallion with stalk forms above and below formed by variations of the hook pattern in dark blue with passages of white and light blue on a red ground. Inner guard of a guilloche patterning in red and white on a dark ground. Border of meander and rosette pattern in dark and light blue and white on a red ground. Triple outer guard patterned in dark blue on a red ground.

No. 173

TURKISH PRAYER RUG

(Seventeenth Century)

Length, 6 feet; width, 4 feet

Kulah weave. Mihrab with greenish blue field patterned with a vertical floral stalk and floral sprays at the sides in red, light blue and black. Red sky patterned in light blue. Triple inner guard of blue, yellow and brown patterned with rosettes and floral sprays. Border of alternating stripes of brown and white. Double outer guard of a blue ground patterned in yellow and black and a dark ground with zigzag patterning.

No. 174

TURKISH PRAYER RUG

(Seventeenth Century)

Length, 7 feet 9 inches; width, 4 feet 8 inches

Ladik weave. Mihrab with blue field, stepped arch of hook-pattern design and conventional branched stem of flowers in red and white. Sky of dark red patterned with flower forms in blue and white. Panel below of five lily forms in blue on a red ground. Triple inner guard of band of meander patterning in white on a green ground between narrow stripes of blue and white. Border of leaf forms and medallions in blue, white and brown on a red ground. Triple outer guard of a band of meander pattern in blue on a white ground between stripes of red and blue.

174/48

No. 175

TURKISH PRAYER RUG

(Eighteenth Century)

Length, 6 feet 2 inches; width, 4 feet 2 inches

Ghiordes weave. Mihrab with cream-colored field, pointed arch supported by two pilaster forms in colors, and with mosque-lamp medallion of floral form. Fawn-colored sky, patterned with scrolled branches in red and blue. Triple inner guard, patterned in red, blue and yellow. Border of palmettes, medallions, flowers and buds in various colors on a blue ground. Double outer guard patterned in red, blue, white and yellow.

SECOND AND LAST AFTERNOON'S SALE

SATURDAY, MARCH 31, 1917

AT THE AMERICAN ART GALLERIES

BEGINNING AT 2.30 O'CLOCK

PERSIAN FAIENCES

Of the Sixteenth and Seventeenth Centuries

KOUBATCHA, BOKHARA, KASHAN, KIRMAN
AND OTHER WARES

No. 176

PERSIAN FAIENCE VASE (Seventeenth Century)

Height, 5½ inches

Cylindrical fluted body, with cylindrical rim and annular base. Invested with a heavy turquoise-blue glaze.

No. 177

PERSIAN FAIENCE PERFUME BOTTLE (Seventeenth Century)

Height, 5¾ inches

Spade-shaped body, with cylindrical metal rim of later date and flat and molded sides. The former decorated with panels of raised Saracenic interlacements. Invested with a green glaze.

No. 178

KASHAN FAIENCE VASE (Seventeenth Century)

Height, 7¾ inches

Pear-shaped body, with short cylindrical neck. Invested with a cream-colored glaze and decorated with silhouetted figures of birds and goats on a ground sown with star shapes.

No. 179

BOKHARA FAIENCE PLATE (Seventeenth Century)

Diameter, 13 inches

Circular shape, with curved rim. Invested with a creamy glaze and decorated, as to the center, with a Greek cross outlined in white reserve, the arms patterned with rows of circular floral medallions. In the spaces between are heart-shaped medallions of scrolled and foliage patternings in green and brown. There are two borders of leaf and floral patterning. The back is invested with a crackled turquoise-blue glaze.

No. 180

KASHAN FAIENCE VASE (Seventeenth Century)

Height, 9¾ inches

Pear-shaped body, with cylindrical neck. Invested with a white glaze and decorated, in blue, with bands of rock forms and flowers, the neck with a reticulated patterning.

No. 181

BOKHARA FAIENCE PLATE (Seventeenth Century)

Diameter, 13¾ inches

Circular shape, with flat rim. Invested with a white glaze and decorated in blue, the center with a Greek cross outlined in white reserve, with arms filled with rows of rayed blossoms and a circular medallion in the center. The rim is decorated with a pattern of scrolled leaves in white reserve on a blue ground.

No. 182

KIRMAN FAIENCE VASE (Sixteenth Century)

Height, 8¾ inches

Club-shaped body, with cylindrical neck. Invested with a turquoise-blue glaze stopping short of the base.

No. 183

KASHAN FAIENCE VASE (Seventeenth Century)

Height, 9¾ inches

Pear-shaped body, with cylindrical neck. Invested with a heavy ivory-colored glaze and decorated, in blue, with trefoil leaf forms betraying a Chinese influence.

No. 184

BOKHARA FAIENCE PLATE (Seventeenth Century)

Diameter, 12½ inches

Circular shape, with curved rim. Invested with a white glaze and decorated, as to the center, with four pointed leaves in white reserve on a blue scrolled ground radiating from a star medallion. In the spaces between are detached blossoms and spirals in green and brown, and the rim is decorated with a checkered pattern.

No. 185

KASHAN FAIENCE VASE (Sixteenth Century)

Height, 11¾ inches

Pear-shaped body, with spreading neck and one large and three small looped handles. Invested with a heavy white glaze stopping short of the base and decorated, in black, blue and green, with a pattern of large flowers, buds and leaves.

Second and Last Afternoon

No. 186

KIRMAN FAIENCE VASE (Sixteenth Century)

Height, 7 inches

Pear-shaped body, with short cylindrical neck and three looped handles. Invested with a crackled turquoise-blue glaze stopping short of the base.

No. 187

KASHAN FAIENCE VASE (Seventeenth Century)

Height, 10 inches

Pear-shaped, with short cylindrical neck and flat rim. Invested with a heavy white glaze and decorated, in blue, with a pattern of detached flower and leaf forms and pagodas, betraying a Chinese influence.

No. 188

BOKHARA FAIENCE PLATE (Seventeenth Century)

Diameter, 12 $\frac{3}{4}$ inches

Circular shape with curved rim. Invested with a crackled white glaze and decorated, as to the center, with a design of four pointed leaves of black, blue and green, with a center checkered medallion. In the spaces between are leaves of white reserve on a ground of blue spirals. The rim has a checkered pattern in white reserve and blue.

No. 189

KIRMAN FAIENCE VASE (Sixteenth Century)

Height, 12 inches

Club-shaped body, spreading cylindrical neck with incised lines, and two looped handles. Invested with a crackled turquoise-blue glaze.

No. 190

KASHAN FAIENCE VASE (Seventeenth Century)

Height, 10 inches

Pear-shaped body, with short cylindrical neck. Invested with a crackled white glaze and decorated with bands of rock forms and flowers in blue outlined in brown.

No. 191

BOKHARA FAIENCE PLATE (Seventeenth Century)

Diameter, 15½ inches

Circular-shaped, with flat rim. Invested with a white glaze. The center is entirely occupied by a checkered pattern of alternate solid and hatched squares in blue and manganese, bordered by a band of diagonal, straight and waved lines. The rim has an indented and scrolled patterning in white reserve and blue.

No. 192

KASHAN FAIENCE VASE (Sixteenth Century)

Height, 16⅞ inches

Pear-shaped body, with bulbous cylindrical neck and four looped handles. Invested with a white glaze stopping short of the base, and decorated, as to the body, with quatrefoiled medallions of a three blossomed flower and leaves separated by floral sprays, and as to the shoulder and neck, with similar sprays symmetrically disposed.

No. 193

KOUBATCHA FAIENCE PLATE (Sixteenth Century)

Diameter, 13¼ inches

Circular shape. Invested with a crackled turquoise-blue glaze and decorated in black. Interior occupied by a design of sprays of bryony blossoms and the rim with a pattern of leaf forms.

Second and Last Afternoon

No. 194

KIRMAN FAIENCE VASE (Sixteenth Century)

Height, 13 inches

Pear-shaped body, with spreading neck. Invested with a crackled turquoise-blue glaze stopping short of the base.

No. 195

KOUBATCHA FAIENCE PLATE (Sixteenth Century)

Diameter, 14 inches

Circular shape, with flat rim. Invested with an ivory-colored glaze and decorated, in light and dark blue, as to the interior with two birds in a landscape with flowers and foliage, and as to the rim, with a lozenge-shaped diaper in brown with trefoil figures in the center of each compartment.

No. 196

PERSIAN FAIENCE NARGILEH (Sixteenth Century)

Height, 11 inches

Pear-shaped body, with cylindrical neck and side nozzle. Invested with a blue glaze and decorated with branching groups of carnation and bryony blossoms in lighter blue enamel.

No. 197

KOUBATCHA FAIENCE PLATE (Sixteenth Century)

Diameter, 13 $\frac{7}{8}$ inches

Circular shape, with flat rim. Invested with a turquoise-blue glaze and decorated in black, as to the interior, with sprays of scrolled bryony springing from a star-shaped medallion in the center, and as to the rim, with a meander pattern of bryony and leaves.

No. 198

PERSIAN FAIENCE BOTTLE (Sixteenth Century)

Height, 11 inches

Pear-shaped body, with cylindrical bulbous neck. Invested with an ivory-colored glaze, the body decorated with two vases of flowers in reserve on a brown ground, the neck with a scrolled design betraying Chinese influence.

No. 199

KOUBATCHA FAIENCE DEEP PLATE (Sixteenth Century)

Diameter, 12¼ inches

Circular shape, with flat rim. Invested with a crackled ivory-colored glaze and decorated, as to the center, with a large flower and leaves, in blue, surrounded by a band of honeycomb diaper pattern in gray dotted with red enamel. The rim is decorated with a border of volutes in blue, the back with pointed-leaf scrollings.

No. 200

KIRMAN FAIENCE FLOWER VASE (Sixteenth Century)

Height, 7¼ inches

Straight-sided flaring shape, on a spreading base. Invested with a crackled turquoise-blue glaze stopping short of the base.

No. 201

PERSIAN FAIENCE BOWL (Sixteenth Century)

Height, 2½ inches; diameter, 7¼ inches

Coupe-shaped, with raised interior boss. Invested with a greenish-white glaze, and decorated, as to the interior, with a medallion figure in blue and black; around the rim with a band of à jour ornamentation, the incisions filled with glaze.

No. 202

DAMASCUS FAIENCE VASE (Sixteenth Century)

Height, 4 inches

Pear-shaped, with short cylindrical neck mounted with metal screw top. Invested with an ivory-colored glaze and decorated in blue, the body with a band of scrolled trefoils, the shoulder with bands of looped and scrolled floral patterns. The decoration of body and shoulder separated by a band of chain pattern.

No. 203

KASHAN FAIENCE VASE (Sixteenth Century)

Height, 15¼ inches

Inverted pear-shaped body, with spreading foot and incurved neck. Invested with a crackled turquoise-blue glaze and decorated around the shoulder with two incised lines.

No. 204

KOUBATCHA FAIENCE DEEP DISH (Seventeenth Century)

Diameter, 13 inches

Circular shape, with scrolled edge. Invested with a crackled white glaze and decorated in black, as to the center, with a design of five flying storks disposed in the form of a cross and with floral sprays in white reserve on a blue ground, and as to the rim, with zigzag pattern and floral sprays.

No. 205

KOUBATCHA FAIENCE DEEP PLATE (Twelfth Century)

Height, 13 inches

Circular shape, with flat rim. Invested with a finely crackled greenish-blue glaze and decorated, as to the center, with a scrolled design of pointed leaves and bryony blossoms; as to the rim, with scrollings of leaves and bryony blossoms.

No. 206

KOUBATCHA FAIENCE PLATE (Sixteenth Century)

Diameter, 13¼ inches

Circular shape, with scalloped edge. Invested with a white glaze and decorated in blue, as to the center, with a design of three flying birds and flowers surrounded by six similar birds, and as to the rim, with a serrated design.

No. 207

KOUBATCHA FAIENCE VASE (Sixteenth Century)

Height, 12¼ inches

Pear-shaped body, cylindrical neck and flat rim. Invested with a bluish-white glaze stopping short of the base, and decorated, as to the body, with a diapered pattern of brown lines enclosing blue medallions, and as to the neck, with eight arched panels in brown enclosing leaf sprays. Around the shoulder is a band of twisted rope design.

**ANCIENT GLASS, OF GRÆCO-ROMAN, ALEXAN-
DRIAN, SIDONIAN, ARABIAN, AND
OTHER MAKES**

Including Some Notable Examples of Mosaic Glass

No. 208

GRÆCO-ROMAN GLASS GOBLET (First Century B.C.)

Height, 4¼ inches

Thin white glass. Tapering-shaped, with outcurved rim. Rich silvery iridescence.

No. 209

GRÆCO-ROMAN GLASS BOTTLE (First Century B.C.)

Height, 3 inches

Greenish-white glass. Pear-shaped body, with cylindrical neck and spreading rim. Rich iridescence.

Second and Last Afternoon

No. 210

GRÆCO-ROMAN GLASS BOTTLE (First Century B.C.)

Height, 3½ inches

White glass. Pear-shaped body, with cylindrical neck and flat rim. Rich iridescence.

No. 211

GRÆCO-PHŒNICIAN GLASS BOTTLE
(Fourth Century B.C.)

Height, 3 inches

Amber-colored glass. Pear-shaped body with cylindrical neck. Partially coated with a silvery patina and a rich iridescence.

No. 212

SIDONIAN GLASS PERFUME HOLDER
(First Century A.D.)

Blue glass. Pear-shaped body, with cylindrical neck and two looped handles. Decorated with horizontal ribbings in relief. Partial iridescence.

No. 213

GRÆCO-ROMAN GLASS BOWL (Fourth Century B.C.)

Height, 2 inches; diameter, 3¾ inches.

White glass. Coupe-shaped, the under side of exterior decorated with vertical ribbings in high relief. Rich iridescence.

No. 214

SIDONIAN GLASS VASE (First Century A.D.)

Height, 4¾ inches

Purple glass. Cylindrical body, with long cylindrical neck and annular rim. Silvery iridescence.

Second and Last Afternoon

No. 215

GRÆCO-EGYPTIAN GLASS VASE (*Fourth Century B.C.*)

Height, 3 inches

Blue glass. Amphora-shaped, with cylindrical neck and two looped handles. Body decorated in dragged zigzags in yellow, light green and black.

No. 216

EGYPTIAN GLASS PHIAL (*Eighteenth Dynasty*)

Height, 4¼ inches

Dark blue glass. Cylindrical shape, with flat rim and two applied handles. Decorated with dragged zigzags and horizontal bands in yellow and light blue.

No. 217

EGYPTIAN GLASS PHIAL (*Eighteenth Dynasty*)

Height, 4¼ inches

Blown glass. Cylindrical form, with flat rim and two handles. Decorated with dragged zigzags of white and yellow.

No. 218

EGYPTIAN GLASS PHIAL (*Eighteenth Dynasty*)

Height, 5 inches

Heavy blue glass. Cylindrical form, with flat rim and two handles. Decorated with a dragged feather patterning in orange.

No. 219

SIDONIAN GLASS BOTTLE (*First Century B.C.*)

Height, 3¾ inches

Purple glass. Square body, with cylindrical neck and spreading rim. The body decorated with panels occupied by scroll designs in relief. Rich silvery iridescence.

Second and Last Afternoon

No. 220

BYZANTINE GLASS BOTTLE (Fourth Century A.D.)

Height, 4½ inches

Blown and molded white glass. Hexagonal body, with cylindrical neck and flat rim. Two sides decorated with medallions and Greek cross, the other four with tree forms and a dotted design, all in relief. Rich silvery iridescence.

No. 221

ALEXANDRIAN GLASS PERFUME FLASK

(First Century A.D.)

Height, 3 inches

Yellow onyx glass. Pear-shaped body, with cylindrical neck and spreading rim. Decorated with veinings. Rich iridescence.

No. 222

SIDONIAN GLASS BOTTLE (First Century A.D.)

Height, 13 inches

Heavy dark blue glass. Pear-shaped body, with long cylindrical neck and bulbous rim encircled with spiral glass filament. Rich varicolored iridescence and veinings.

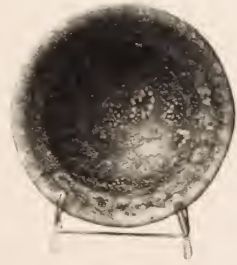
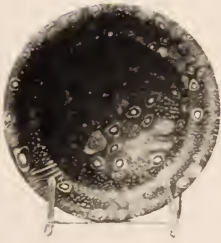
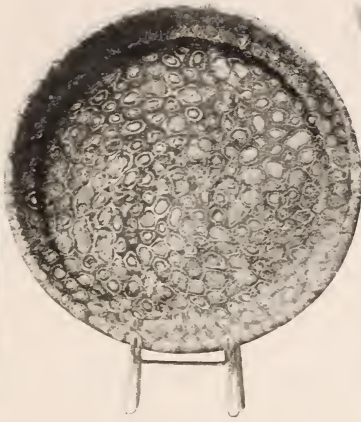
No. 223

ALEXANDRIAN GLASS PERFUME BOTTLE

(First Century B.C.)

Height, 2½ inches

Purple onyx glass. Pear-shaped body, with cylindrical neck and annular rim. Decorated with veinings. Original condition.



No. 232
No. 233
No. 224

No. 227
No. 230
No. 229

No. 234
No. 231
No. 225

Second and Last Afternoon

No. 224

GREEK GLASS EWER (First Century B.C.)

Height, 5 inches

Dark blue glass. Pear-shaped body, with cylindrical neck, spreading rim and flat looped handle. Body decorated with a pattern of reticulations in relief. Rich iridescence.

(Illustrated)

No. 225

SIDONIAN GLASS PASTE EWER (First Century A.D.)

Height, 4½ inches

Dark blue glass paste. Pear-shaped body, with cylindrical neck and two flat looped handles. In original condition.

(Illustrated)

No. 226

SIDONIAN GLASS GOBLET (First Century A.D.)

Height, 2¾ inches

Purple glass. Coupe-shaped and decorated with veinings in relief. Rich iridescence.

No. 227

ALEXANDRIAN GLASS PLATE (First Century B.C.)

Diameter, 6¼ inches

Mosaic or Murrhine glass. Circular shape, with curved rim. Purple glass ground, splashed with patches of lighter purple and mottled with spots of green and yellow encircled by black and white in a "madrepore" pattern. (Repaired.)

(Illustrated)

Note: This, and the other examples here catalogued, are unusually well preserved specimens of the famous "Murrhine" glass, regarded as almost priceless by the ancients, and are typically representative of the pre-eminence of the Alexandrian glassworkers of the first century B.C.

No. 228

GRÆCO-ROMAN BOWL (Fourth Century B.C.)

Height, 5½ inches; diameter, 8½ inches

Thick greenish-white glass. Conical-shaped, with rounded bottom. The interior decorated with a spirally disposed filament of glass. Entirely covered with an exceptionally rich varicolored iridescence. (Repaired.)

Note: This unusually decorative example of iridescent glass was recently exhumed on the plains of El-Jazireh.

No. 229

ALEXANDRIAN GLASS BOWL (First Century B.C.)

Height, 1½ inches; diameter, 3½ inches

Mosaic or Murrhine glass. Coupe-shaped, on annular foot. Ground of purple glass with splashes of lighter purple and oval spots of yellow and white encircled by lines of red and turquoise-blue.

(Illustrated)

No. 230

SIDONIAN GLASS FLASK (First Century A.D.)

Height, 4¾ inches

Thick dark blue glass. Flat heart-shaped body of pilgrim-bottle character, short incurved neck and two straight looped handles. Rich iridescence.

(Illustrated)

No. 231

ALEXANDRIAN GLASS BOWL (First Century B.C.)

Height, 1¾ inches; diameter, 3¾ inches

Mosaic or Murrhine glass. Coupe-shaped, with annular foot. Rich amethystine blue glass with mottlings of oval spots in yellow, brown and red encircled by lines of black and dark blue in a madreporé patterning.

(Illustrated)

No. 232

SIDONIAN GLASS VASE

(*First Century B.C.*)

Height, 7 inches

Blown and molded honey-colored glass. Hexagonal body, with cylindrical neck, spirally encircled by a filament of glass, spreading rim and flat loop handle. The sides of the body decorated in relief alternately with panels of lozenge-shaped medallions, hatchings, and herring-bone patternings. Rich silvery iridescence.

(*Illustrated*)

No. 233

ALEXANDRIAN GLASS BOWL

(*First Century B.C.*)

Height, 1¾ inches; diameter, 3¾ inches

Mosaic or Murrhine glass. Coupe-shaped, with outcurved rim and annular foot. Purple glass ground, with mottlings of oval spots of green and yellow encircled by lines of white and black in a madrepora patterning.

(*Illustrated*)

No. 234

ARABIAN GLASS GOBLET

(*Thirteenth Century A.D.*)

Height, 7 inches

White glass. Cylindrical shape, with curved sides. The body decorated with a broad band enclosed by lines of red enamel and enclosing floral medallions in red, yellow, green and white enamels, with birds and fish in red enamel. Around the rim is a band of zigzag patterning in red and gold.

(*Illustrated*)

No. 235

PAIR OF GRÆCO-ROMAN GOLD EARRINGS

(Fourth Century B.C.)

Of pure gold. Shaped as bulls' heads, with irregularly cut emeralds between the horns. Bands of filigree work around the necks and curved tails of serpentine character in delicate relief work.

No. 236

PAIR OF EGYPTIAN GOLD EARRINGS

(Eighth Century A.D.)

Of pure gold. Shield-shaped plates, decorated with applied whorls of filigree work; below are drops in the form of clusters of grapes consisting of eleven spheres with spiral pendants and bands.

PERSIAN FAIENCE

Dating from the Ninth to the Eighteenth Centuries

**LUSTRED RAKKA, AND SULTANABAD, RHODIAN
AND OTHER WARES**

Including Some Notable Examples of Rhages Ware

No. 237

RAKKA FAIENCE EWER

(Twelfth Century)

Height, 7½ inches

Pear-shaped body, cylindrical neck, pinched-in spout and looped handle. Invested with a turquoise-blue glaze, the body decorated, in black, with a lozenge-diapered pattern and horizontal bandings. Silvery iridescence.

No. 238

SULTANABAD FAIENCE PITCHER (Thirteenth Century)

Height, 4½ inches

Pear-shaped body, with spreading neck, flat looped handle and cylindrical spout. Glazed in turquoise-blue, overglazed in black, leaving the decoration, which consists of Persian inscriptions in curious characters and vertical lines, in blue reserve.

No. 239

RAKKA FAIENCE PITCHER (Twelfth Century)

Height, 5¼ inches

Pear-shaped body, with short cylindrical neck and flat looped handle. Invested with a rich greenish-blue glaze, the body decorated, in black, with bands of scrolled leaf patterning between horizontal lines. Partial iridescence.

No. 240

SULTANABAD FAIENCE VASE (Thirteenth Century)

Height, 10½ inches

Pear-shaped body, with cylindrical neck. Invested with a turquoise-blue glaze, decorated with heart-shaped medallions and leaf scrollings in underglaze black. Partial silvery iridescence.

No. 241

SULTANABAD FAIENCE BOWL (Thirteenth Century)

Height, 4 inches; diameter, 8 inches

Straight-sided coupe shape. Invested with a crackled greenish-white glaze and decorated, as to the interior, with light radiating panles in dark blue and manganese; as to the exterior, with pseudo-flutings.

No. 242

RAKKA FAIENCE PITCHER (Thirteenth Century)

Height, 4¾ inches

Pear-shaped body, with cylindrical neck and looped handle. Invested with a turquoise-blue glaze, the neck decorated, in black, with a band of cursive character inscriptions. Partial iridescence.

No. 243

GRÆCO-ROMAN VASE (Second Century B.C.)

Height, 9¾ inches

Pear-shaped body, with cylindrical neck and two straight looped handles. Invested with a turquoise-blue glaze, the body decorated in relief with vertical ribbings and bands of zigzag and disk-shaped patterning, the handles and shoulder with fourteen roundels in relief.

No. 244

RAKKA FAIENCE "BUDDHA" (Twelfth Century)

Height, 8⅞ inches

Figure of a woman in robe and high crown standing with outstretched arms. Invested with a crackled greenish-white glaze and decorated with an overglaze patterning of scrolls in overglaze blue.

No. 245

RAKKA FAIENCE VASE (Twelfth Century)

Height, 5¼ inches

Pear-shaped body, cylindrical neck and outcurved rim. Invested with a turquoise-blue glaze. Almost entirely coated with silvery iridescence.

Second and Last Afternoon

No. 246

RAKKA FAIENCE VASE (Twelfth Century)

Height, 11 inches

Pear-shaped body, encircled by a band in relief, cylindrical neck and two flat looped handles. Invested with a crackled turquoise-blue glaze. Silvery iridescence.

No. 247

RAKKA FAIENCE PITCHER (Twelfth Century)

Height, 5½ inches

Pear-shaped body, cylindrical neck and looped handle. Invested with a cream-colored glaze and decorated, as to the body, with an Arabic inscription in blue overlaid on a band of scrolled ornamentation in black.

No. 248

SULTANABAD FAIENCE VASE (Thirteenth Century)

Height, 3¼ inches

Spool-shaped, with receding rim and foot. Invested with a crackled turquoise-blue glaze and decorated, on a black ground, as to the upper part with a band of Persian inscription, and as to the lower part, with vertical lines simulating flutings—all in blue reserve.

No. 249

RAKKA FAIENCE EWER (Twelfth Century)

Height, 5½ inches

Pear-shaped body, cylindrical neck and flat looped handle. Invested with a pale green glaze and decorated, in black, as to the body with a band of Saracenic interlacements, and as to the neck, with a band of Arabic inscription.

No. 250

SULTANABAD FAIENCE PITCHER (Thirteenth Century)

Height, 6¾ inches

Octagonal body, with cylindrical neck, flaring lip and round looped handle. Invested with a cream-colored glaze stopping short of the base, and showing traces of a decoration in dark blue and green. Almost covered with a silvery iridescence.

No. 251

SULTANABAD FAIENCE BOWL (Thirteenth Century)

Height, 4¾ inches; diameter, 7½ inches

Coupe-shaped, with straight vertical sides. Invested with a cream-colored glaze. Decorated, as to the exterior, with a band of pointed arched panels containing human figures, and as to the interior, with a pattern of interlacements and intersecting lines—all in copper lustre.

No. 252

RHAGES LUSTRED FAIENCE DEEP PLATE

(Eleventh Century)

Diameter, 13¼ inches

Circular shape, with flat rim. Decorated in golden lustre, as to the center, on a ground diapered with scrollings with a central circular medallion occupied by the figure of a seated woman, in a dotted robe, and Saracenic leaf scrollings, surrounded by six smaller circular medallions occupied by half-length figures of women and leaf scrollings, and as to the rim, with a border of pointed-leaf patterning in white reserve on a lusted ground. The back invested with a dark blue glaze. (Repaired.)

Second and Last Afternoon

No. 253

RAKKA FAIENCE DEEP PLATE (Twelfth Century)

Diameter, 10¼ inches

Circular shape, with flat rim. Invested with a turquoise-blue glaze and decorated in black, as to the center, with a medallion of Saracenic pointed leaf interlacements, and as to the rim, with panels of Arabic inscriptions.

(Illustrated)

No. 254

RAKKA FAIENCE VASE (Twelfth Century)

Height, 6¼ inches

Pear-shaped body, cylindrical neck and two twisted loop handles. Invested with a crackled turquoise-blue glaze and decorated, in black, with vertical lines and horizontal bandings. Rich iridescence.

(Illustrated)

No. 255

RAKKA FAIENCE DEEP PLATE (Twelfth Century)

Circular shape, with flat rim. Invested with a boldly crackled turquoise-blue glaze and decorated in black, as to the center, with the figure of a rabbit surrounded by scrollings. Partial silvery iridescence.

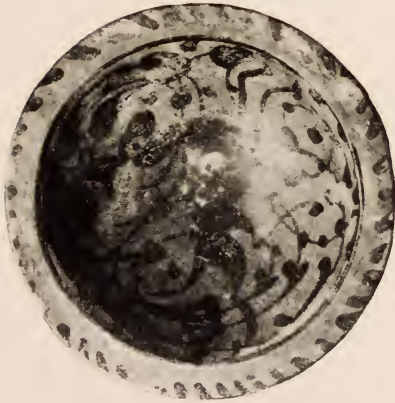
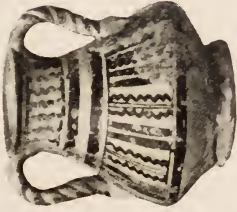
(Illustrated)

No. 256

RAKKA FAIENCE INKSTAND (Ninth Century)

Height, 8 inches; length of sides, 11½ inches

Triangular shape, on three cushion feet. The top pierced with three circular openings surrounded by raised scrollings, the three sides decorated with Arabic inscriptions on grounds of raised scrollings. Invested with a turquoise-blue glaze, largely coated with a silvery iridescence. (Repaired.)



No. 253
No. 259



No. 254
No. 264



No. 255
No. 257

No. 257

RHODIAN FAIENCE PITCHER (Sixteenth Century)

Height, 8½ inches

Pear-shaped body, cylindrical neck and round looped handle. Invested with a fine cream-colored glaze and decorated with curving stalks of tulips, other flowers and leaves, in blue, green, brown and black, and with a border of spiral scrolls.

From the Thomas B. Clarke Collection.

(*Illustrated*)

No. 258

RHODIAN FAIENCE PLATE (Sixteenth Century)

Diameter, 12 inches

Circular shape, with flat rim. Invested with a fine white glaze and decorated, as to the center, with a medallion enclosing figures of a dog, hare and deer, in white reserve on a green ground, and as to the rim, with alternate panels of scrolls and spirals. The back is decorated with blue fleurettes symmetrically disposed.

(*Illustrated*)

No. 259

RHODIAN FAIENCE PITCHER (Sixteenth Century)

Height, 8¼ inches

Pear-shaped body, cylindrical neck and looped handle. Invested with a fine white glaze and decorated in blue, green and red enamel, as to the body, with curved stems of tulips and hyacinths, and as to the neck, with a border of spirals and stems of tulips. The handle is dashed with blue.

From the Thomas B. Clarke Collection.

(*Illustrated*)



No. 261
No. 262



No. 258
No. 265



No. 263
No. 260

Second and Last Afternoon

No. 260

RHODIAN FAIENCE PLATE (Sixteenth Century)

Diameter, 11¼ inches

Circular shape, with flat rim. Invested with a fine white glaze and decorated, as to the center, with a cluster of stems of tulips and hyacinths and pointed serrated leaves, in green and red enamel, the border with a leaf pattern in white reserve with dots of red enamel.

(Illustrated)

No. 261

RHODIAN FAIENCE BEAKER (Sixteenth Century)

Height, 9 inches

Cylindrical body, with flat bracket handle. Invested with a fine white glaze and decorated, as to the body, with leaf-shaped medallions of interlacements in blue and green outlined in black, between two borders of half rosettes in white reserve with red enamel dots on a blue ground.

From the Thomas B. Clarke Collection.

(Illustrated)

No. 262

RHODIAN FAIENCE PLATE (Sixteenth Century)

Diameter, 11½ inches

Circular shape, with scalloped flat rim. Invested with a fine white glaze and decorated, in blue, green and red enamel, as to the interior, with four bouquets of tulips and leaves separated by medallions of Saracenic interlacements, and as to the rim, with a border of spirals in white reserve on blue and in blue on white. The back is decorated with tulips and floral sprays in blue and green.

From the Thomas B. Clarke Collection.

(Illustrated)

No. 263

RHODIAN FAIENCE BEAKER (Sixteenth Century)

Diameter, 8¾ inches

Cylindrical body, with bracket handle. Invested with a crackled cream-colored glaze and decorated with large foliated medallions of blue enclosing floral sprays in white reserve touched with green, and with smaller medallions in copper-colored enamel patterned in white reserve. At intervals are green fleurettes and around the rim a border of white reserve in red and blue.

From the Thomas B. Clarke Collection.

(Illustrated)

No. 264

RHODIAN FAIENCE PLATE (Sixteenth Century)

Diameter, 12¼ inches

Circular shape, with flat rim. Invested with a fine white glaze and decorated in blue, green and red enamel, with a heart-shaped medallion from which springs a cluster of seven-petalled flowers, with floral sprays above and below, and carrying stems of flowers at the side, the border of detached floral sprays. The back is decorated with floral sprays in blue and green.

From the Thomas B. Clarke Collection.

(Illustrated)

No. 265

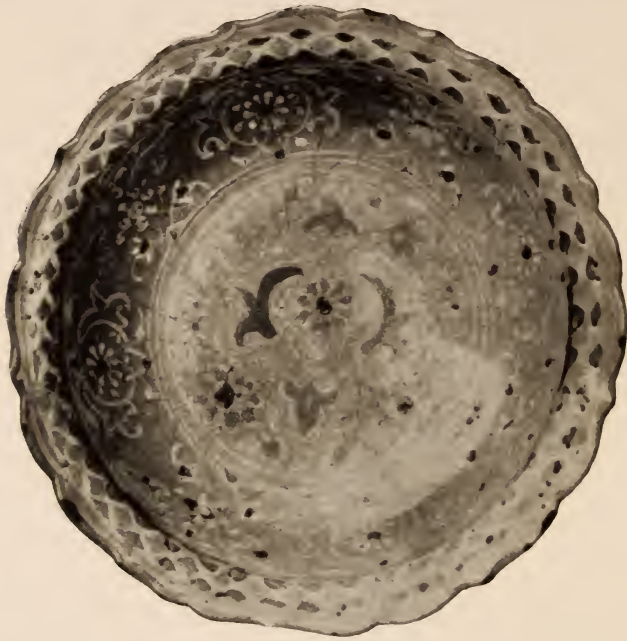
RHODIAN FAIENCE BEAKER (Sixteenth Century)

Height, 9¾ inches

Cylindrical body, with flat bracket handle. Invested with a fine white glaze and decorated, as to the body, with sprays of pointed serrated leaves and flowers, on a blue ground, in white reserve with touches of red and green enamels. Above and below are borders of interlacements in white reserve on a green ground. The handle is scrolled in blue.

From the Thomas B. Clarke Collection.

(Illustrated)



No. 266

KOUBATCHA FAIENCE PLATE (Sixteenth Century)

Diameter, 13¼ inches

Circular shape, with curved rim and scalloped edge. Invested with a crackled cream-colored glaze and decorated, as to the center, with a large circular medallion of flowers and foliage in brown and light blue, and as to the rim, with a checkered patterning of blue and red. The back is decorated with a scrolled pattern of white and red with blue and brown medallions.

No. 267

KOUBATCHA FAIENCE DEEP DISH (Sixteenth Century)

Diameter, 14 inches

Circular shape, with scalloped edge. Invested with a green glaze and decorated, as to the center, with a design of leaf scrollings, and as to the rim, to match. All in underglaze black.

No. 268

RHODIAN FAIENCE VASE (Sixteenth Century)

Height, 15¾ inches

Pear-shaped body, with tall cylindrical bulbous neck and spreading foot. Invested with a fine white glaze and decorated in blue, green and red enamel and gold, as to the body, with scrolled sprays of carnations, tulips and hyacinths separated by cypress trees, as to the shoulder, with vertical paneling, and as to the neck, with floral sprays and cypress trees.

From the Thomas B. Clarke Collection.

No. 269

RAKKA FAIENCE VASE (Twelfth Century)

Height, 6¼ inches

Pear-shaped body, cylindrical neck and outcurved rim. Invested with a peacock blue glaze stopping short of the base, and decorated, in black, with a band of Arabic inscription. Largely iridescent.

No. 270

SULTANABAD FAIENCE BOWL (Thirteenth Century)

Height, 3¼ inches; diameter, 8¼ inches

Coupe-shaped, with broad flat rim. Invested with a turquoise-blue glaze and decorated, in black, as to the interior with radiating panels of Persian inscriptions in blue, separated by panels of scrolled leaf design, and as to the exterior, with similar radiating panels of scrolled ornamentation.

No. 271

RAKKA FAIENCE VASE (Twelfth Century)

Height, 7 inches

Pear-shaped body, with cylindrical neck. Invested with a cream-colored glaze flashed with turquoise-blue and decorated, in relief, with a scrolled patterning. Entirely coated with a silvery iridescence.

No. 272

KOUBATCHA FAIENCE PLATE (Sixteenth Century)

Diameter, 15½ inches

Circular shape, with flat rim. Invested with a crackled cream-colored glaze and decorated, in blue, green and brown, as to the center, with a medallion enclosing a spray of flowers and leaves, and as to the rim, with a scrolled design of flowers and leaves.

From the Thomas B. Clarke Collection.

(Illustrated)

No. 273

KOUBATCHA FAIENCE PLATE (Sixteenth Century)

Diameter, 12¼ inches

Circular shape, with curved rim. Invested with a crackled cream-colored glaze and decorated, in blue, green, yellow and brown, as to the center with a medallion, enclosing a pointed rock form in blue surrounded by flower forms, and surrounded by a double border of leaf forms, and as to the rim, with a border of imbrications.

From the Thomas B. Clarke Collection.

(Illustrated)

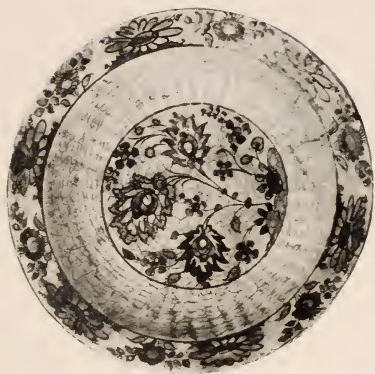
No. 274

KOUBATCHA FAIENCE PLATE (Sixteenth Century)

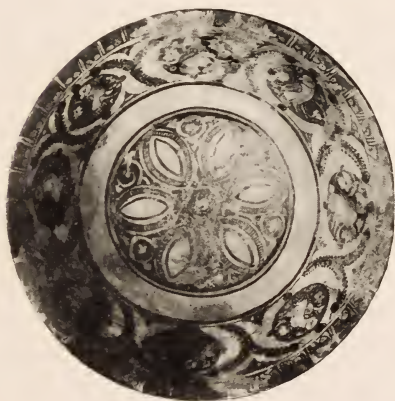
Diameter, 13½ inches

Circular shape. Coated with a crackled cream-colored glaze, and elaborately decorated in blue, copper red, green, yellow and brown, with conventional flowers, grasses in the center and a wave design surrounding the border.

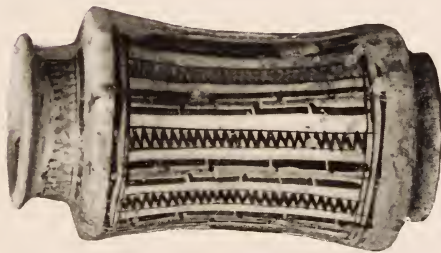
(Illustrated)



No. 272
No. 277



No. 273
No. 276



No. 274
No. 275

Second and Last Afternoon

No. 275

RAKKA FAIENCE ALBARELLO (Twelfth Century)

Height, 9½ inches

Octagonal-shaped body, with incurved sides and rim. Invested with a greenish-white glaze and decorated with vertical panels of zigzag patterning in blue and black. Around the shoulder is a band of fleurettes in black. On one side is a splash of vivid green glaze.

(Illustrated)

No. 276

SYRIO-EGYPTIAN FAIENCE BOWL. (Ninth Century)

Height, 3¾ inches; diameter, 7 inches

Coupe-shaped, with straight sides. Invested with a cream-colored glaze and decorated, in black, red and blue, as to the interior, with a central medallion of oval interlacements surrounded by volutes and surrounded by a broad band of medallions occupied by birds and floral scrolls and separated by curving sprays of fern-leaf form, and as to the inner rim, with a narrow border of blue and white reserve lined with black. The outer rim has a band of black. (Slightly restored.)

(Illustrated)

No. 277

SULTANABAD FAIENCE ALBARELLO
(Twelfth Century)

Cylindrical form, with incurved sides, cylindrical neck and annular foot. Invested with a cream-colored glaze and decorated, in blue and black, with interlacements and bands of zigzag pattern enclosing flower and leaf forms, in white reserve outlined in black. Below is a band of vertical lines. Slight iridescence.

(Illustrated)

No. 278

PANEL OF DAMASCUS FAIENCE TILES

(Fourteenth Century)

Height, 39 inches; width, 39 inches

Consisting of eight square and four oblong tiles, invested with a white glaze and decorated, in blue, green and brown, with a double curved band of rosettes in white reserve on a blue ground, branches of hyacinths, carnations and tulips and a conventional flower form in blue and green. This panel is surrounded by a double border of pointed-leaf forms in white reserve on blue and of a Saracenic "counter change" pattern in green and white. Framed.

No. 279

SYRIO-EGYPTIAN FAIENCE EWER *(Eighth Century)*

Height, 5 $\frac{7}{8}$ inches

Pear-shaped body, slender cylindrical neck, looped handle and pointed lip. Invested with a fine crackled ivory-colored glaze and decorated with a sunken band of strapwork scrollings in low relief. Silvery iridescence.

No. 280

RAKKA FAIENCE VASE *(Twelfth Century)*

Height, 8 inches

Pear-shaped vertically ribbed body, spreading foot and neck, and inversely scalloped rim. Invested with a turquoise-blue glaze appearing beneath incrustations and iridescence.

No. 281

RAKKA LUSTRED FAIENCE EWER *(Ninth Century)*

Height, 4 $\frac{1}{2}$ inches

Pear-shaped and fluted body, cylindrical neck, spreading foot and looped handle. Invested with a cream-colored glaze and decorated, in brown lustre, with a band of inscription in cursive characters.



No. 282

RAKKA LUSTRED FAIENCE VASE (Ninth Century)

Height, 9 inches

Pear-shaped, cylindrical neck and annular rim. Invested with a crackled cream-colored glaze stopping short of the base and decorated, in lusted brown and blue, as to the body and shoulder with three bands of Arabic inscriptions in brown and two bands of interlacements and spirals in white reserve, and as to the neck, with a band of Arabic inscription. Silvery iridescence. (Slightly restored.)

No. 283

RHAGES LUSTRED FAIENCE BOWL

(*Twelfth Century*)

Height, 3 $\frac{1}{8}$ inches; diameter, 6 $\frac{7}{8}$ inches

Straight-sided coupe shape. Invested with a yellow glaze and decorated, as to the interior, with a band of cursive inscriptions around the rim in blue surrounded by a scrolled and palm-leaf pattern in yellow reserve. The exterior is paneled with roughly drawn scrolls.

No. 284

RAKKA LUSTRED FAIENCE VASE

(*Ninth Century*)

Height, 4 $\frac{1}{4}$ inches

Pear-shaped body, with cylindrical neck and annular rim. Invested with a cream-colored glaze, stopping short of the base, and decorated, in brown lustre, green and blue, with a band of heart-shaped medallions and scrollings.

No. 285

PERSIAN FAIENCE VASE

(*Fifteenth Century*)

Height, 5 $\frac{1}{2}$ inches

Bottle-shaped, with fluted sides and neck and rim of metal of a later date. Invested with a fine white glaze and decorated in a floral spray and pointed-leaf design in copper lustre.

No. 286

PERSIAN FAIENCE FLOWER VASE (*Sixteenth Century*)

Height, 8 inches

Pear-shaped body, with five cylindrical necks of metal of a later date. Invested with a pale blue glaze, and decorated with spirally disposed bryony flowers and leaves in copper lustre.

No. 287

RHAGES FAIENCE BOWL (Eleventh Century)

Height, 4½ inches; diameter, 8¼ inches

Coupe-shaped. Invested with an ivory-colored glaze, decorated, in turquoise and gray blues and brownish-red with black and brown outlines, as to the center of the interior with the figure of a princess on horseback surrounded by six repeats of the same design separated by medallions of interacements, and as to the inner rim, with a border of meander lines interrupted by six medallions. Around the outer rim runs a band of Cufic inscription.

(Illustrated)

No. 288

RHAGES FAIENCE BOTTLE (Eleventh Century)

Height, 8½ inches

Pear-shaped, with long cylindrical neck. Invested with an ivory-colored glaze and decorated, in gray with touches of red enamel, as to the body with eight panels bordered in red and enclosing scrolled and diapered patternings, as to the shoulder with a band of interacements, and as to the neck with a honeycomb diapered pattern with center of green and red, interrupted by circular medallions bordered with red.

(Illustrated)

No. 289

RHAGES FAIENCE BOWL (Eleventh Century)

Height, 3 inches; diameter, 7¾ inches

Coupe-shaped, with curved sides and annular foot. Invested with an ivory-colored glaze and decorated, as to the center of the interior, in blue, black, red and gold, with the figure of a queen on horseback, encircled by four winged sphinxes in yellow with women's heads separated by medallions of interacements. Around the inner rim is a border in black and blue based on Cufic characters, and the edge is decorated with a scalloped band in blue. Around the interior is a band of Cufic characters in black on white.

(Illustrated)



No. 287



No. 288



No. 289

No. 290

PERSIAN LUSTRED FAIENCE BOWL

(*Sixteenth Century*)

Height, 3¼ inches; diameter, 7¼ inches

Coupe-shaped, with straight sides. Invested with a fine white glaze and decorated, as to the interior, with a design of cypress tree forms, and as to the exterior, with leaf-shaped medallions and floral sprays—all in copper lustre.

No. 291

PERSIAN LUSTRED FAIENCE BOTTLE

(*Sixteenth Century*)

Height, 8¼ inches

Pear-shaped body, with slender cylindrical neck. Invested with a rich dark blue glaze, patterned with an all-over design in copper lustre of tulips and other flower forms, between borders of conventional design.

From the Thomas B. Clarke Collection.

No. 292

SYRIO-EGYPTIAN FAIENCE LAMPHOLDER

(*Eighth Century*)

Height, 5 inches

Cylindrical shape, with straight projecting carrying handle, supported on four sphinxlike feet, a large pointed arched opening on one side and a dome-shaped top. Invested with a crackled cream-colored glaze and decorated in brown, as to the body, in a design of birds and scrolls, as to the neck with a border of scroll design and a band of blue. The top is divided into eight pierced panels with a central medallion.



No. 293

RHAGES FAIENCE BOTTLE

(*Eleventh Century*)

Height, 12½ inches

Pear-shaped body, with cylindrical, reversed pear-shaped neck, incurved rim and annular foot. Of a semi-porcelainous paste, invested with an ivory-white glaze and decorated, as to the body, with six raised and gilded scrolled and floral pendants enclosing heart-shaped medallions of green enamel and separated by raised and gilded pendants supported by seated human figures. Above is a band of Persian inscription in raised reserve on a gold ground and the shoulder is decorated with six spade-shaped medallions, with alternate red, blue and black grounds scrolled in contrasting colors and enclosing raised and gilded human figures. The neck is decorated with three raised and gilded pendants enclosing heart-shaped medallions of green enamel and separated by raised, gilded and scrolled pendants. The ground is decorated with waved lines of blue and white, and the bottle is banded at intervals in blue.

Note: Though of undoubted Rhages facture, this bottle represents a hitherto unknown school of decoration, and its counterpart is not to be found in any museum or private collection, so far as is known to its present owner.

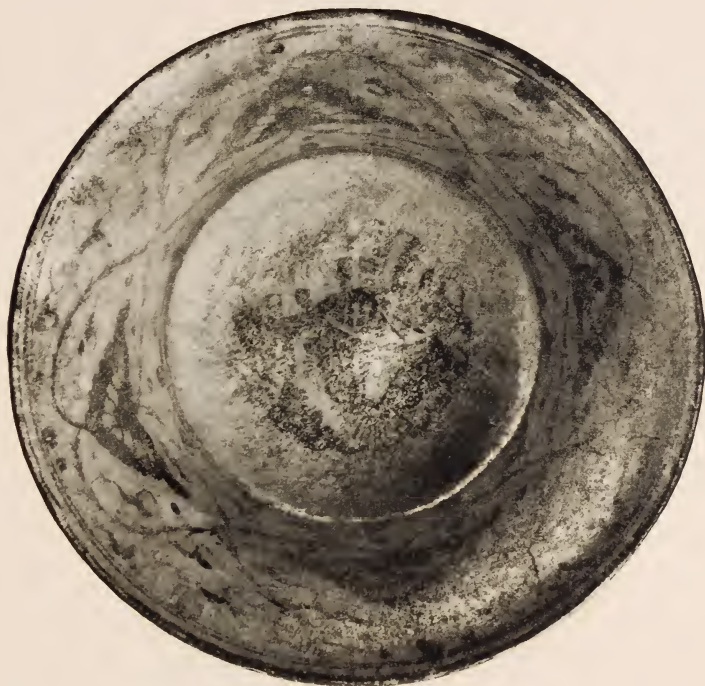


No. 294

RAKKA LUSTRE FAIENCE BOWL (Ninth Century)

Height, 4 $\frac{1}{4}$ inches; diameter, 8 $\frac{1}{2}$ inches

Coupe-shaped, with incurved rim. Invested with an ivory-colored glaze and decorated, in brown lustre with passages of blue, as to the center with an inscription in Arabic characters, "Prosperity," surrounded by spiral whorls, and as to the inner rim with a cusped border, the cusps filled with leaf forms, and as to the exterior with a border of spiral whorls in line.



No. 295

SULTANABAD FAIENCE BOWL (Thirteenth Century)

Height, 3½ inches; diameter, 7¾ inches

Coupe-shaped, with annular foot. Invested with a thick ivory-colored glaze and decorated in black, as to the center of the interior, with a large medallion encircled by four large triangular shaped flowers with scrolled leaves. The exterior decorated, also in black, with scrolled interlacements and flowers, all betraying a Chinese influence.



No. 296

RAKKA FAIENCE MOSQUE LAMP (Twelfth Century)

Height, 10½ inches

Cylindrical shape, on three sphinxlike feet, with domed top and arched opening. Invested with a cracked turquoise-blue glaze and decorated with sunken relief bands of Arabic inscriptions in black. The dome is patterned in relief with pierced interlacements and the side with panels of an interlaced patterning in low relief and pierced.

Second and Last Afternoon

No. 297

RAKKE LUSTRED FAIENCE VASE (Ninth Century)

Height, 13 inches

Pear-shaped, with cylindrical neck and outcurved rim. Invested with a heavy turquoise-blue glaze stopping short of the base and decorated in relief with a pattern of palm-leaf forms, in black. The ground between is dotted in black. (Restored.)

Note: This and No. 300 are typical of the first Rakka ware which reached Europe. M. Migeon in his "Manual of Moslem Art," published in 1907, notes only three known examples, one of which, a counterpart of No. 300, was in the du Cane Godman Collection.

No. 298

RAKKA FAIENCE VASE (Twelfth Century)

Height, 25½ inches

Pear-shaped, with large cylindrical neck, outcurved rim, and three round looped handles with baluster-shaped finials. Invested with a cream-colored glaze flashed with turquoise-blue and stopping short of the base. Decorated with bands of sunken relief ornamentation of dotted, reticulated and diagonally fluted design. Entirely coated with an exceptionally rich silvery iridescence.

Note: This magnificent vase or jar was exhumed on the plain of El-Jazireh a few months before the outbreak of the present war.

No. 299

RAKKA FAIENCE VASE (Ninth Century)

Height, 18½ inches

Pear-shaped, with cylindrical neck and outcurved rim. Invested with a cream-colored glaze flashed with dark blue and stopping short of the base, and decorated, as to the body, with Cufic inscriptions and vertical panels of scroll design in relief. Rich silvery iridescence.

No. 300

RHAGES FAIENCE BOWL

(*Eleventh Century*)

Height, 5 inches; diameter, 11½ inches

Coupe-shaped, with straight sides and high annular foot. Of semi-porcelainous paste, invested with a fine crackled ivory-white glaze. Decorated, as to the center of the interior, with a circular medallion formed by lines of purple and gold and containing the figure of a queen, habited in a blue robe dotted with gold and riding through a flowery landscape on a horse rendered in man-ganese. The medallion is surrounded by a band of gold and by a broader band of Persian inscriptions raised, gilded and interrupted by four lozenge-shaped medallions of alternate purple and gold. Around the inner rim runs a band of thirteen sphinxes with women's heads and winged tigers' bodies colored alternately in green, blue and manganese. The exterior is decorated with a band of Saracenic interlacements in gold and blue.

Note: This bowl is considered to be one of the most notable examples of the rare Rhages ware in existence and in paste, glaze and decoration is worthy of being classed with the celebrated Rhages cup formerly in Mr. Tabbagh's Collection.

(*Illustrated on Cover*)

No. 301

RAKKA LUSTRED FAIENCE MOSQUE LAMP

(*Ninth Century*)

Height, 16 inches

Rectangular shape, with a domed top surmounted by a minaret-shaped finial with four similar finials at the angles, and two arched openings, on four feet. Invested with a crackled cream-colored glaze and decorated, in brown lustre, with Cufic inscriptions and a scrolled patterning. The dome is pierced with star-shaped openings and decorated with four medallions in blue and the sides have arched panels of pierced interlacements. On the floor of the interior is the signature of the potter, "Mohammed, son of Omar."



No. 302

RHAGES FAIENCE EWER

(Eleventh Century)

Height, 18 $\frac{7}{8}$ inches

Pear-shaped body, cylindrical neck and twisted looped handle. Invested with a fine turquoise-blue glaze and decorated in brown, white and gold with nine panels framed by pointed serrated leaf forms and enclosing two rosetted ornamentations. Around the neck and shoulder are inscriptions in Cufic characters consisting of a repetition of the name "Abd-el-Malek."

PERSIAN MINIATURES

Of the Fourteenth to the Sixteenth Centuries, Painted in
Gold and Colors and of the

BEHZAD, RIZA-ABBASI, TIMOURIDE, INDO-
PERSIAN AND OTHER SCHOOLS

No. 303

PERSIAN ILLUMINATION (Sixteenth Century)

Height, 9¾ inches; width, 4¾ inches

Painted, in gold and colors, from a MS. of one of Nizami's works. Panel of Persian text surrounded by panels of quatrefoil interlacements with a border of Saracenic trefoils.

No. 304

PERSIAN ILLUMINATION (Sixteenth Century)

Height, 8 inches; width, 5 inches

Painted in gold and colors. By Ali-el-Kateb. Page of Persian text surrounded by a border of birds and flowers silhouetted in gray on a ground of dotted blue.

No. 305

INDO-PERSIAN MINIATURE (Sixteenth Century)

Height, 6¼ inches; width, 5 inches

Painted in gold and colors. By a miniaturist of the school of Akbar. In a palace courtyard and under a pavilion on whose roof a bird is perched. Shah Parviz sits listening to a band of musicians and singers who are grouped around a fountain in which ducks are swimming. Landscape background with a large tree.

No. 306

INDO-PERSIAN MINIATURE (Seventeenth Century)

Height, 7½ inches; width, 4¾ inches

Painted in gold and colors. On the marble-paved terrace of a palace two bayadères, one Hindu and one Persian, are dancing with clasped hands. They wear the typical dress of their class, embroidered tights, and folds of filmy draperies. Two trees rise at the edge of the terrace with three shrubs in full blossom. Beyond these stretches a green lawn, fading above into a sky of gray and purple.

No. 307

INDO-PERSIAN MINIATURE (Seventeenth Century)

Height, 6 inches; width, 4 inches

Painted in gold and colors. Based on an Italian Cinquecento painting of an Annunciation. The Virgin in a red robe and blue mantle holds in one hand a vase and spray of flowers and listens to the Angel, who is shown without wings. Surrounded by a border of conventional flowers and scrolls in gold and colors on a light ground.

No. 308

INDO-PERSIAN MINIATURE (Sixteenth Century)

Height, 5½ inches; width, 5½ inches

Painted in India ink. By Mohammed of Ispahan. Figure of a lion secured by a chain attached to a broad collar. Signed: "Mohammed-el-Ispahani."

Second and Last Afternoon

No. 309

PERSIAN MINIATURE

(*Sixteenth Century*)

Height, 3 $\frac{7}{8}$ inches; width, 2 $\frac{1}{2}$ inches

Painted in gold and colors. By a miniaturist of the school of Shah Mahmud. The poet Saadi, in a blue robe with a gold mantle and a white turban with gold ornaments, kneels and writes in a book held in his left hand.

No. 310

PERSIAN MINIATURE

(*Sixteenth Century*)

Height, 6 inches; width, 4 $\frac{1}{2}$ inches

Painted in gold and colors. From a MS. Bustan of Saadi. Episode in the war between the Persians and Mongolians. The former on horseback, the latter on an elephant, attack each other with drawn swords.

No. 311

PERSIAN MINIATURE

(*Sixteenth Century*)

Height, 9 inches; width, 5 $\frac{3}{4}$ inches

Painted in gold and colors. From a MS. of Nizami's *Khamseh*. In the courtyard of a palace the Shah Thamarp and his wife are seated listening to the poem recited by one of the courtiers. In the background a Persian garden is seen through a curtained opening. Above are panels of calligraphy.

No. 312

PERSIAN MINIATURE

(*Sixteenth Century*)

Height, 10 $\frac{1}{4}$ inches; width, 5 $\frac{1}{2}$ inches

Painted in gold and colors. From a MS. of one of Nizami's works. An engagement, in a rocky landscape, between two troops of horsemen armed with shields, swords and spears. Mutilated bodies are scattered in every direction, a bugler sounds his long trumpet and the standard-bearer waves a red pennant. In the background other horsemen watch the combat. Above and below are panels of calligraphy.

No. 313

PERSIAN MINIATURE

(*Sixteenth Century*)

Height, 5½ inches; width, 3¾ inches

Painted in gold and colors. From a MS. of Nizami's *Laila and Majnun*. In a landscape of rosy-colored rocks and crags Laila sits and receives the homage of wild beasts, who are shown in profusion. Above is a sky of solid gold.

No. 314

PERSIAN MINIATURE

(*Sixteenth Century*)

Height, 11 inches; width, 6½ inches

Painted in gold and colors. From a MS. of one of Nizami's works. In a palace courtyard the king and queen, surrounded by their courtiers, discuss the affairs of their daughter, who looks out of a window on the left, while her lover stands below. Above and below are panels of calligraphy.

No. 315

PERSIAN MINIATURE

(*Sixteenth Century*)

Height, 8 inches; width, 4¼ inches

Painted in gold and colors. From a MS. illustrated by Shah Mahmud dated 1522 A.D. Bahram Gur, seated on a golden throne, with palace buildings in the background, is receiving contributions from his ministers, who are accompanied by their slaves. In the foreground is seen an old woman bringing him a message from Zuleika, who appears on a balcony above. On the right is a brook, beyond which three bearers of offerings are approaching. Above and below are panels of text, and the whole is surrounded by a border painted in gold on an ivory ground.

Second and Last Afternoon

No. 316

PERSIAN MINIATURE (Sixteenth Century)

Height, 10 inches; width, 6¼ inches

Painted in gold and colors. From a MS. Shah Namah. In his royal tent the shah, surrounded by his courtiers, watches the execution of a man who lies before him, with a soldier leaning above and stabbing him with a curved dagger. In the background is a rocky landscape with trees. Panels of calligraphy.

No. 317

PERSIAN MINIATURE (Sixteenth Century)

Height, 6 inches; width, 4½ inches

Painted in gold and colors. By a miniaturist of the school of Herat. Shah Ismail and one of his wives, seated outside a tent pitched in an open landscape, listens to a band of musicians and singers. In the background are other tents and a landscape with trees.

No. 318

PERSIAN MINIATURE (Sixteenth Century)

Height, 7 inches; width, 5¼ inches

Painted in gold and colors. From a MS. illustrated by Shah Mahmud and dated 1522 A.D. Zuleika, with her attendants, listens to a group of musicians playing on the banks of a stream. Beside her stands Bahram Gur. Surrounded by a border of foliage and animals painted in gold on an ivory ground.

No. 319

PERSIAN MINIATURE (Sixteenth Century)

Height, 5¾ inches; width, 5 inches

Painted in gold and colors. From a MS. of Nizami's Khamsah. A combat of warriors in a rocky landscape. Some are mounted on camels, some on horseback, others on foot. Mutilated bodies are strewn everywhere.

No. 320

PERSIAN MINIATURE

(*Sixteenth Century*)

Height, 5¼ inches; width, 4 inches

Painted in gold and colors. From a MS. of one of Nizami's works. In the interior of the palace Bahram Gur is kneeling before his father, who admonishes him and orders him to leave the country. The news is being brought to Zuleika by her father. Above and below are panels of calligraphy and the whole is surrounded by a ground of powdered gold.

No. 321

PERSIAN MINIATURE

(*Fifteenth Century*)

Height, 10¼ inches; width, 6¾ inches

Painted in gold and colors. By the miniaturist Mirak. In the interior of his palace, Shah Khousrau sits on a divan watching two dancing girls who dance to the music of instrumentalists and singers. At the right is a group of courtiers and in the background three cypress trees. Below are panels of calligraphy.

No. 322

PERSIAN MINIATURE

(*Fifteenth Century*)

Height, 6¾ inches; width, 4¼ inches

Painted in gold and colors. From a MS. Bustan of Saadi. By a minaturist of the school of Behzad. In a palace courtyard a youth is dancing to the music of a group of instrumentalists and singers, while a servant hands refreshments to the onlookers. From the palace windows members of the Harem look on. In the background, through a gateway is seen a landscape with cypress and blossoming almond trees. Surrounded by a border painted in gold and colors of quatrefoil medallions connected by Saracenic interlacements.

Second and Last Afternoon

No. 323

PERSIAN MINIATURE

(Fifteenth Century)

Height, 9 inches; width, 5¼ inches

Painted in gold and colors. From a MS. Bustan of Saadi. By a miniaturist of the school of Behzad. In a palace courtyard the shah and his courtiers are partaking of refreshments. In the foreground are other courtiers playing games, while others listen to a story-teller. In the background is a Persian garden with cypress and almond trees, while through a gate on the left is seen a gardener at work. Surrounded by a border painted in gold and rich colors of quatrefoil medallions enclosing Persian inscriptions and connected by Saracenic interlacements.

No. 324

PERSIAN MINIATURE

(Fifteenth Century)

Height, 4⅝ inches; width, 5⅝ inches

Painted in gold and colors. By a miniaturist of the Mongolian school. On the left a king, followed by his courtiers, approaches the door of a palace. On the right is a mosque with dome and minaret, in front of which are two figures lightly sketched in. In the background is a landscape with trees and flowers.

(Illustrated)

No. 325

PERSIAN MINIATURE

(Fifteenth Century)

Height, 5⅝ inches; width, 5⅝ inches

Painted in gold and colors. By a miniaturist of the Mongolian school. On the right is a warrior in pointed helmet on horseback riding through a fire of faggots and surrounded by flames. On the left is a palace with a king and queen at an open window. Landscape background, with four figures and blue sky.

(Illustrated)



No. 324



No. 325

No. 326

PERSIAN MINIATURE

(*Sixteenth Century*)

Height, 4½ inches; width, 1⅞ inches

Painted in India ink, with washes of color. From a MS. of Nizami's "Laila and Majnun." Attributed to Seyyed Ahmed of Tabriz. Laila sits on a ledge of rock in a mountainous desert, while a lion, a bear, a leopard and other animals pay homage to her. In the foreground her lover, the shepherd Majnun, tends his flock of sheep. Surrounded by a border of scroll patterning in gold on a rose-colored ground and mounted on a panel painted in simulation of grained wood.

(*Illustrated*)

No. 327

PERSIAN MINIATURE

(*Sixteenth Century*)

Height, 6½ inches; width, 4½ inches

Painted in India ink and sepia. By Mahomed-el-Khajin. An old man seated on an emaciated horse, with a dog running before him. Above, three birds are flying, and the sky is flecked with conventional clouds. Signed and dated 920 A.H. (1514 A.D.).

(*Illustrated*)

No. 328

PERSIAN MINIATURE

(*Sixteenth Century*)

Height, 4 inches; width, 4½ inches

Painted in gold and colors. By the celebrated miniaturist Riza Abbari. Figure of an artist sitting cross-legged under the shade of a conventional tree. In one hand he holds a pen, in the other a red ink bottle. From the realistic character of the face this is evidently a portrait. Surrounded by a border of counter trefoiled pattern in red, gold and black on a blue ground. Above are four panels of calligraphy and a decoration in gold and colors. Signed by the artist: "Riza Abbasi."



No. 327



No. 326



No. 329

PERSIAN MINIATURE

(Fifteenth Century)

Height, 5¾ inches; width, 7¾ inches

Painted in India ink, with light washes of color. By the celebrated miniaturist Behzad. In the foreground of a rocky landscape are seen two cranes and many birds of other species. In the background is a tree, in the branches of which is the name of the artist, "Behzad."

No. 330

PERSIAN MINIATURE

(Sixteenth Century)

Height, 7 inches; width, 4¼ inches

Painted in gold and colors. From a MS. illustrated by Shah Malmoud, dated 1522 A.D. In an open meadow are three tents, in one of which Bahram Gur is standing with his wife, who holds a child in her arms. In another, two women are conversing. Outside an old man leans upon a stick, another plays a pipe. Goats and gazelles nurse their young, while on the trees birds are perched. Surrounded by a border of foliage and animals in gold on an ivory ground.



No. 331

PERSIAN MINIATURE

(Sixteenth Century)

Height, 6¼ inches; width, 4½ inches

Painted in India ink, heightened with touches of gold and color. By a miniaturist of the school of Riza Abbasi. Imam, wearing a turban of light blue, is seated on a donkey, drawn with astonishing realism. Surrounded by an inner border rosetted in gold on a red ground and by a broad border of rocks with trees and birds in gold on a pale purple ground.

Second and Last Afternoon

No. 332

PERSIAN MINIATURE

(*Sixteenth Century*)

Height, 7 inches; width, 5 inches

Painted in gold and colors. From a MS. illustrated by Shah Mahmoud and dated 1522 A.D. On one side of a brook are pitched tents, in one of which sit Bahram Gur and Khousrau. In another a woman prepares food, while a butcher near by is cutting up meat. On the other side of the brook a woman is boiling food over a fire, and in the brook Bahram's son is bathing. Surrounded by a border of flowers, animals and birds in gold on an ivory-colored ground.

No. 333

PERSIAN MINIATURE

(*Sixteenth Century*)

Height, 6 inches; width, 4 inches

Painted in gold and colors. From a MS. illustrated by Shah Mahmoud and dated 1522 A.D. Beneath a canopy Zuleika sits weeping, while her mother and two attendants endeavor to console her. In the foreground is her father in an attitude of grief. Surrounded by a border of animals and birds in gold on an ivory-tinted ground.

ANTIQUÉ PERSIAN AND TURKISH RUGS

Chiefly of the Seventeenth Century

No. 334

But R 2 1/2 140

TURKISH PRAYER RUG

(*Seventeenth Century*)

Length, 6 feet 3 inches; width, 4 feet

Kulah weave. The pointed-arch mihrab, with a red ground, is decorated by a vertical stalk of oval leaves and profile trefoils in yellow. The sky extending down the sides is of light blue, patterned with yellow trefoils. Above is a panel with dark blue ground. Triple inner guard, with broad band of flower forms on a yellow ground, border of blocks of twelve flower forms in alternate colorings on a white ground, and double outer guard of a band of S-curves in red and blue on a yellow ground and a band of dark ground.

No. 335

CAUCASIAN RUG

(*Seventeenth Century*)

Length, 6 feet 4 inches; width, 3 feet 9 inches

Daghestan weave. The field of a rich, but variegated, green is patterned with rosettes and flower and leaf forms in white, red, blue and yellow. The wide inner guard is of a hook and conventional leaf pattern in white with red and yellow flowers on a dark blue ground. The border is patterned on a red ground, with flower forms in yellow, blue and black, and the outer guard is a repeat of the inner guard.

No. 336

PERSIAN RUG

(*Seventeenth Century*)

Length, 5 feet 10 inches; width, 4 feet

Farahan weave. The field is occupied with a diaper pattern of interlacements, rosettes and leaf forms in red, white and turquoise-blue on a dark blue ground. Inner and outer guards of a rosetted zigzag pattern in red and yellow on a green ground. Border of interlacements, palmettes, medallions and leaf forms in white, blue and yellow on a red ground.

No. 337

TURKISH PRAYER RUG

Length, 6 feet .8 inches; width, 4 feet 2 inches

Kulah weave. Mihrab with dark blue field, double-stepped arch, central flower stalk and profile flowers at sides. Sky with blue, brown and rose-colored flower forms on a yellow ground, repeated below. Panels above and below of floral sprays on a dark ground. Triple inner and outer guards and border of rows of small flower forms in alternating colors on a white ground.

Second and Last Afternoon

No. 338

TURKISH PRAYER RUG

(*Eighteenth Century*)

Length, 6 feet; width, 4 feet

Bergamo weave. The pointed and stepped-arch mihrab has a brown field, with an all-over pattern of vase forms, flowers and leaves in red, yellow and blue. The sky is of dark blue, patterned with flowers, rosettes and leaf forms. The triple inner guard has a broad band of light blue, with a scrolled patterning in red and dark blue. The border is of meander pattern, with carnation blossoms and leaves in red and blue and the triple outer guard has a band with dark ground between two narrow stripes of red.

No. 339

TURKISH PRAYER RUG

(*Seventeenth Century*)

Length, 5 feet 6 inches; width, 3 feet 7 inches

Milas weave. Mihrab with red field, pointed arch and decoration of four varicolored lonzege-shaped medallions. Sky patterned, on a white ground, with red, light and dark blue and yellow flower forms. Triple inner guard, with alternating bands of light and dark blue and red. Border of medallions and flower forms in brown, white, red and blue on a yellow ground. Triple outer guard of band of quatrefoils on a white ground between serrated stripes of red, blue and yellow.

No. 340

TURKISH RUG

(*Seventeenth Century*)

Length, 6 feet; width, 4 feet 8 inches

Ghiordes weave. The pointed-arched mihrab has a rich red ground with soffits and borders of a hook pattern in white and red on a blue and green ground. Above is a panel with blue ground, patterned with flower forms in red and white. The triple inner and outer guards are of red and white rosetted bands of blue between narrow stripes of red scrolled in yellows. The border is of bold flower forms and palmettes with hyacinth blossoms and leaves in red, white and blue on an amber yellow ground.

(*Illustrated*)



No. 340

TURKISH RUG

No. 341

TURKISH PRAYER RUG

(*Seventeenth Century*)

Length, 6 feet 3 inches; width, 4 feet

Kulah weave. The mihrab, with pointed and stepped arch, has a green ground decorated with a vertical stalk of blossoms in yellow, red and black. The blue sky, extended in vertical panels down the side of the mihrab, has an imbricated pattern in yellow. The triple inner guard is patterned on a yellow ground with S-scrolls in red, blue and white, the border has a pattern of highly conventionalized flower forms in red, yellow, blue and buff on a white ground, and the outer guard is of dark brown patterned with floral sprays in red and blue.

No. 342

TURKISH PRAYER RUG

(*Seventeenth Century*)

Length, 5 feet 10 inches; width, 4 feet

Kulah weave. The mihrab with a red field and pointed arch is flanked by two narrow vertical panels with rows of yellow flowers in profile, and has a mosque lamp medallion. The sky is of light blue, with a diapered pattern in blue and yellow. Above and below are panels patterned in yellow, white and light blue on dark blue grounds. Triple inner and outer guards, with bands of flower forms between narrow stripes of red and blue. Border of flower forms in red, yellow and turquoise blue on a dark blue ground.

No. 343

TURKISH PRAYER RUG

(*Sixteenth Century*)

Length, 6 feet 4 inches; width, 4 feet

Ladik weave. The triple-arched mihrab has a field in two shades of blue, the sky is red patterned with flower forms in blue and green, and below is a panel with red ground and five pendent lily forms in light blue. The triple inner guard is a broad band of meander pattern in white, red and blue on a brown ground between narrow stripes of red and blue. The border is patterned with rosettes and lilies in blue, yellow and white on a red ground, and the outer guard repeats the inner except that the meander is in red on a blue ground.

Part of No. 341
2 1/2 - 2 1/2

Second and Last Afternoon

No. 344

TURKISH PRAYER RUG

(*Seventeenth Century*)

Length, 7 feet 2 inches; width, 5 feet 3 inches

Ghiordes weave. The stepped and pointed-arch mihrab, with a light green ground, is decorated with a floral mosque lamp medallion in light colors and dark blue and surrounded by profile flowers. The sky is of dark green, patterned with scrolled branches of flowers and leaves. Above and below are panels with dark ground. The triple inner and outer guards have broad bands of floral sprays in red and light blue on yellow grounds, and the border is of conventionalized vases and flowers in high coloring and dark blue ground.

*Parker &
576*

AMERICAN ART ASSOCIATION,

MANAGERS.

THOMAS E. KIRBY,

AUCTIONEER.

FOR INHERITANCE TAX

AND OTHER PURPOSES

THE AMERICAN ART ASSOCIATION

IS EXCEPTIONALLY WELL EQUIPPED
TO FURNISH

INTELLIGENT APPRAISEMENTS

OF

ART AND LITERARY PROPERTY
JEWELS AND PERSONAL EFFECTS OF EVERY
DESCRIPTION

IN CASES WHERE

PUBLIC SALES ARE EFFECTED

A NOMINAL CHARGE ONLY WILL BE MADE

THE AMERICAN ART ASSOCIATION

MADISON SQUARE SOUTH
NEW YORK

TELEPHONE, 3346 GRAMERCY

COMPOSITION, PRESSWORK
AND BINDING BY



