

GENERAL HEADQUARTERS, FAR EAST COM AND
ADJUTANT GENERAL'S OFFICE
RADIO AND CABLE CENTER

INCOMING MESSAGE

311777
ROUTINE

G-4 ROUTING	
JA/1	C/S G-4
	D AC/S G-4
	EXECUTIVE
13 Aug 50	OPERATIONS
	CONST & FAC
	SUPPLY
	PETROLEUM
	ADMINISTRATION

FROM : ASPPA
TO : CINCFE (APO)
INFO : COMNAVFE, COMSTS
NR : 311777

Weekly estimated arrival schedule.

Part I-Clean products:

Aug: Naha: F-2 San Diego Maru 81 mogas 12th.
 Shimotsu: F-19 Miss Solance 88 JP-1 17th.
 Sasebo: F-19 Miss Solano 30 JP-1 15th.
 Yokohama: F-32 Miss San Jose 13380 octane mogas 17th
 F-21 Cedar Creek 12880 octane mogas 19th, F-13 Miss Soledad
 120 JP-1 29th, C-12 Miss San Diego 115 diesel 30th, F-35 Cargo
 130 Gr 115 avgas 31st.
 Sep: Yokohama: F-30 Cargo 130 Gr 100 avgas 3d, F-14
 Cargo 130 Gr 100 avgas 3d, F-33 Cargo 13080 octane mogas 16th,
 F-24 Cargo 130 Gr 100 avgas 17th, F-15 Cargo 90 JP-1 21st,
 F-31 Cargo 130 Gr 100 avgas 18th, F-23 Cargo 130 Gr 100 avgas
 20th.
 Naha: F-16 Daisui Maru 102 diesel 16th, F-15 Cargo
 30 JP-1 17th.
 Oct: Yokohama: F-27 Cargo 50 Gr 115 avgas 800 Gr 100
 avgas 4th, F-29 Tsuruoka Maru 91 diesel 14th, F-34 Cargo 13080
 octane mogas 15th, F-26 120 JP-1 15th, F-28 Cargo 130 Gr 100
 avgas 16th.

Part II-Navy Special. All ex-Persian Gulf.

Balance Aug: Buckner Bay: FB-26 Fuji San Maru 90 M 21st.
 Sep: Buckner Bay: FB-83 Cossatot 100 M 2d.
 Naha: FB-28 Yuyo Maru 92 M 10th, FB-11 Toa
 Maru 85 M 14th, FB-30 Shoho Maru 93 M 21st, FB-33 Miss San
 Rafael 100 M 30th.
 Yokosuka: FB-4 Daiho Maru 89 M 5th, FB-27,
 Uium Maru 90 M 7th, FB-2 Mitsushima Maru 93 M 10th, FB-85
 Tamalpaizo 100 M 13th, FB-29 Nbr 5 Yamamizu Maru 80 M 15th,

23690

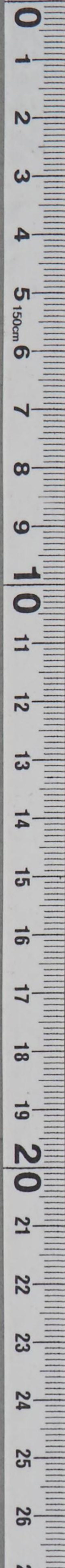
(over)
ROUTINE

Paraphrase not required. Handle as correspondence of classification
carried hereon per paragraphs 17a(1)(2) and 4lc(2)(3) and g(1),
AR 380-5, 15 November 1949.

CONFIDENTIAL

COPY No.

weekly tanker schedule



RECEIVED
14 AUG 1950
G-4
GHQ

CORRECTED COPY

Routinized
ROUTINE

FROM : ASPPA NR : 311777 13 AUG 50 CONTINUED: _____

FB-52 Ryuno Maru 90 M 29th.
 Sasebo: FB-1 Seria Maru 89 M 14th, FB-86 Tolovana 100 M 30th.
 Oct: Sasebo: FB-84 Miss Santa Clara 100 M-10th.
 Yokosuka: FB-31 Cheui Maru 91 M 11th, FB-34 Talullah 100 M 14th, FB-35 Miss San Luis Obispo 100 M 23d.
 Part III-Crude oil all ex-Socony Vacuum Rastanura except FY 13, FY-14, FY-15, FY-16 (Elkhills crude).
 Bal Aug: Shimotsu: FY-13 Shawnee Trail 111 M 18th, FY-7 Cache 110 M 26th, FY-8 Miss Santa Clara 110 M 28th, FY-9 Miss Santa Ana 110 M 29th.
 Yokohama: FY-6 Miss Santa Ana 117 M 18th.
 Shimizu: FY-37 114 M 26th.
 Sep: Kudamatsu: FY-10 Miss San Luis Obispo 110 M 9th.
 Shimotsu: ~~FY-4 Saban~~ Maru 99 M 22d.
 Oct: Shimizu: FY-14 Cargo 110 M 7th, FY-5 San Diego Maru 75 M 16th.
 Yokohama: FY-15 Cargo 110 M 17th.
 Kudamatsu: FY-16 Cargo 110 M 22d.

Part IV: Remarks:

Item A-Navy Special recap per Slate 1.

Aug: Slate 599 Schedule 265;
 Sep: Slate 699 Schedule 1201;
 Oct: Slate 499 schedule 391.

Total Aug/Oct Slate 1797 Schedule 1857.

Item B-Source Navy Special liftings Aug/Oct all ex Bahrein except FB-2, FB-85, FB-34 ex Rastanura.

Item B-Balance Elkhills crude FY-14, FY-15, FY-16 deferred result non-availability product. Advise if same destinations satisfactory. ^{10/17} ^{10/17} ^{10/22} delayed

Item C-Avgas continues in very tight supply. Advise acceptability all cargoes.

TRIFI

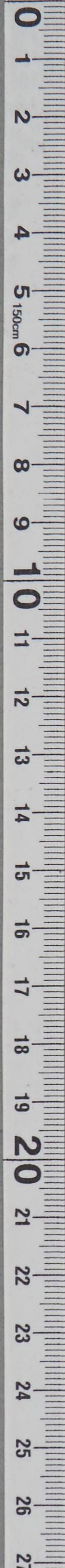
INFORMATION : G-4, COMNAVFE

NOTE: Corrected Copy read AG-OR 141030 I.

23690

ROUTINE
Routinized
-2-

TOO : 112127 Z
MCN : 70776



GENERAL HEADQUARTERS, FAR EAST COMMAND
ADJUTANT GENERAL'S OFFICE
RADIO AND CABLE CENTER

G-4 ROUTING	
A O/S G-4	_____
D AC/S G-4	_____
EXECUTIVE	_____
OPERATIONS	_____
CONST & FAC	_____
SUPPLY	_____
PETROLEUM	_____
ADMINISTRATION	_____

INCOMING MESSAGE

ROUTINE

13 Aug 50

FROM : ASPPA
 TO : CINCPAC (APO)
 INFO : COMNAVFE, COMSTS
 NR : 311777

Weekly estimated arrival schedule.

Part I-Clean products:

Aug: Naha: F-2 San Diego Maru 81 mogas 12th.
 Shimotsu: F-19 Miss Solance 88 JP-1 17th.
 Sasebo: F-19 Miss Solano 30 JP-1 15th.
 Yokohama: F-32 Miss San Jose 13380 octane mogas 17th
 F-21 Cedar Creek 12880 octane mogas 19th, F-13 Miss Soledad
 120 JP-1 29th, C-12 Miss San Diego 115 diesel 30th, F-35 Cargo
 130 Gr 115 avgas 31st.
 Sep: Yokohama: F-30 Cargo 130 Gr 100 avgas 3d, F-14
 Cargo 130 Gr 100 avgas 3d, F-33 Cargo 13080 octane mogas 16th,
 F-24 Cargo 130 Gr 100 avgas 17th, F-15 Cargo 90 JP-1 21st,
 F-31 Cargo 130 Gr 100 avgas 18th, F-23 Cargo 130 Gr 100 avgas
 20th.
 Naha: F-16 Daisui Maru 102 diesel 16th, F-15 Cargo
 30 JP-1 17th.
 Oct: Yokohama: F-27 Cargo 50 Gr 115 avgas 800 Gr 100
 avgas 4th, F-29 Tsuruoka Maru 91 diesel 14th, F-34 Cargo 13080
 octane mogas 15th, F-26 120 JP-1 15th, F-28 Cargo 130 Gr 100
 avgas 16th.

Part II-Navy Special. All ex-Persian Gulf.

Balance Aug: Buckner Bay: FB-26 Fuji San Maru 90 M 21st.
 Sep: Buckner Bay: FB-83 Cossatot 100 M 2d.
 Naha: FB-28 Yuyo Maru 92 M 10th, FB-11 Toa
 Maru 85 M 14th, FB-30 Shoho Maru 93 M 21st, FB-33 Miss San
 Rafael 100 M 30th.
 Yokosuka: FB-4 Daiho Maru 89 M 5th, FB-27,
 Uzun Maru 90 M 7th, FB-2 Mitsushima Maru 93 M 10th, FB-85
 Tamalpais 100 M 13th, FB-29 Nbr 5 Yamamizu Maru 80 M 15th,

23690

(over)
ROUTINE

Paraphrase not required. Handle as correspondence of classification
 carried hereon per paragraphs 17a(1)(2) and 41c(2)(3) and g(1),
 AR 380-5, 15 November 1949.

Restricted
ROUTINE

FROM : ASPPA NR : 311777 13 AUG 50 CONTINUED:

52 Hyuho Maru 90 M 29th.

Sasebo: FB-1 Seria Maru 89 M 14th, FB-86 Tolovana
100 M 30th.

Oct: Sasebo: FB-84 Miss Santa Clara 100 M 10th.

Yokosuka: FB-31 Cheul Maru 91 M 11th, FB-34
Talullah 100 M 14th, FB-35 Miss San Luis Obispo 100 M 23d.

Part III-Crude oil all ex-Socony Vacuum Rastanura except
FY 13, FY-14, FY-15, FY-16 (Elkhills crude).

Bal Aug: Shimotsu: FY-13 Shawnee Trail 111 M 18th, FY-7
Cacho 110 M 26th, FY-8 Miss Santa Clara 110 M 28th, FY-9 Miss
Santa Ana 110 M 29th.

Yokohama: FY-6 Miss Santa Ana 117 M 18th.

Shimizu: FY-37 114 M 26th.

Sep: Kudamatsu: FY-10 Miss San Luis Obispo 110 M
9th.

Shimotsu: FY-***** Maru 99 M 22d.

Oct: Shimizu: FY-14 Cargo 110 M 7th, FY-5 San Diego
Maru 75 M 16th.

Yokohama: FY-15 Cargo 110 M 17th.

Kudamatsu: FY-16 Cargo 110 M 22d.

Part IV: Remarks:

Item A-Navy Special recap per Slate 1.

Aug: Slate 599 Schedule 265;

Sep: Slate 699 Schedule 1201;

Oct: Slate 499 schedule 391.

Total Aug/Oct Slate 1797 Schedule 1857.

Item B-Source Navy Special liftings Aug/Oct all ex Bahrein
except FB-2, FB-85, FB-34 ex Rastanura.

Item B-Balance Elkhills crude FY-14, FY-15, FY-16 deferred
result non-availability product. Advise if same destinations
satisfactory.

Item C-Avgas continues in very tight supply. Advise ac-
ceptability all cargoes.

TRIFI

INFORMATION : G-4, COMNAVFE

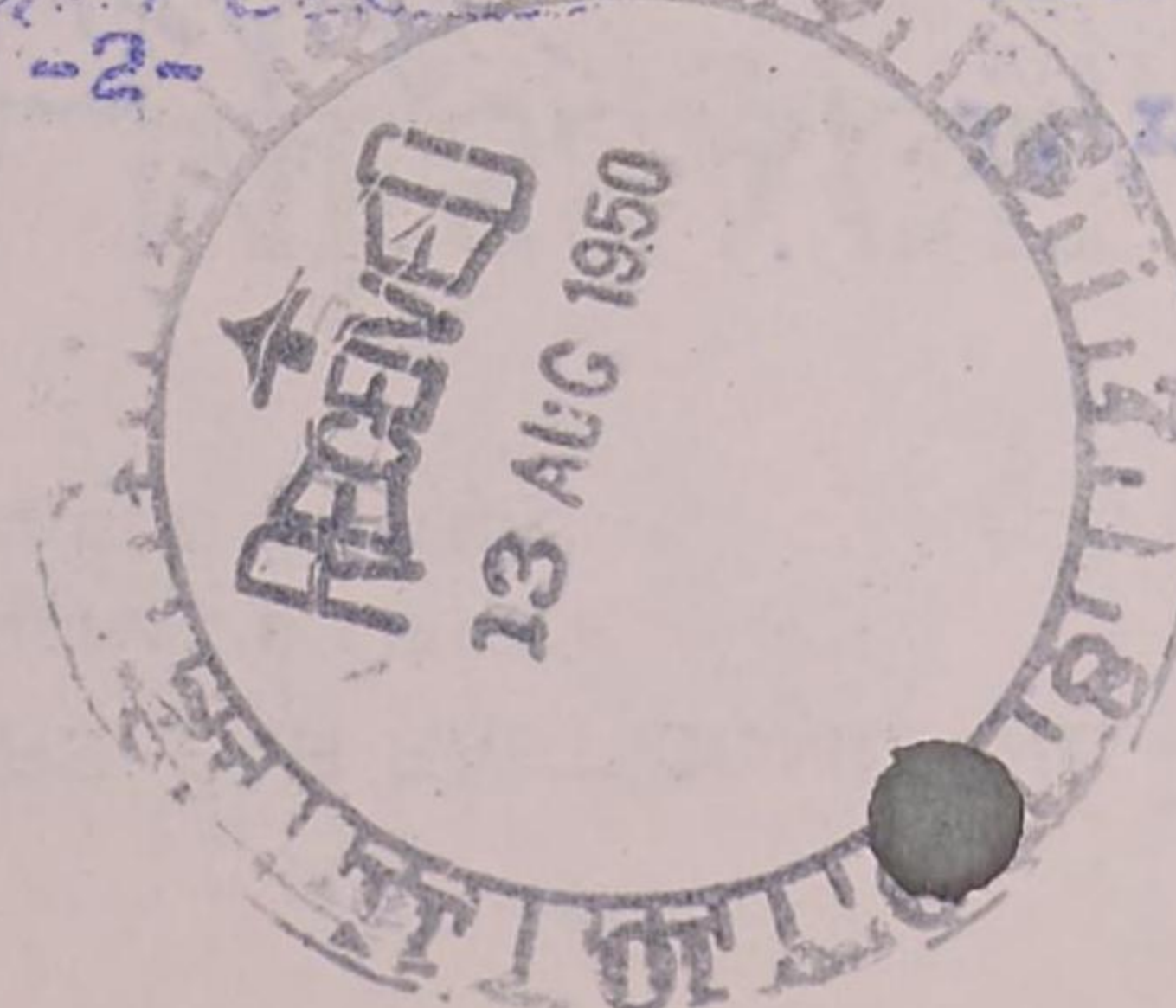
NOTE: Svc has been reqtd for missing portions indicated by
asterisks.

23690

ROUTINE

TOO : 112127 Z

MCM : 70776



GENERAL HEADQUARTERS, FAR EAST COMMAND
ADJUTANT GENERAL'S OFFICE
RADIO AND CABLE CENTER

INCOMING MESSAGE

Restricted
ROUTINE

E-4 ROUTING	
C/S G-4	
AC/S G-4	
EXECUTIVE	<i>2</i>
OPERATIONS	
CONST 50 FAC	
<i>2</i> SUPPLY	
PETROLEUM	
<i>3</i> ADMINISTRATION	<i>RT</i>

FROM : ASPRA
TO : CINCPAC (APO)
INFO : COMNAVFE
NR : NUMBER 311755

Weekly estimated arrival schedule.
Part 1. Clean products.

August: Naha

F-2 Sandiego Maru 81 mogas 12th,

Yokohama:

F-4 Marias 118 JP-1 14th,

F-32 Miss San Jose 130 Grade 80 octane mogas 16th,

F-21 Cedar Creek 130 80 octane mogas 18th,

F-24 cargo 130 Grade 100 avgas 26th,

F-30 Cargo 130 Grade 100 avgas 26th,

F-13 Miss Soledad 120 JP-1 29,

F-12 Miss San Diego 115 diesel 30th;

F-35 Cargo 130 Grade 115 avgas 31st.

Sasebo:

F-19 Miss Solano 30 JP-1 17th,

September: Yokohama;

F-14 Cargo 130 Grade 100 avgas 3d,

F-23 Cargo 130 grade 100 avgas 15th,

F-33 130 80 octane mogas 16th,

F-31 Cargo 130 Grade 100 avgas 17th,

F-15 Cargo 90 JP-1 21st.

Naha:

F-16 Daisui Maru 102 diesel 16th,

F-15 Cargo 30 JP-1 17th.

19848

(over)

ROUTINE

CONSULT CRYPTO CENTER BEFORE DECLASSIFYING

Inclosure No. 1

Paraphrase not required. Handle as correspondence of classification carried hereon per paragraphs 17a(1)(2) and 41c(2)(3) and g(1), AR 380-5, 15 November 1949.

COPY No.

Restricted

ROUTINE

FROM : ASPPA NR : NUMBER 311755 6 AUG 50 CONT'D

October: Yokohama:

F-34 Cargo 130 80 octane mogas 4th,
 F-27 Cargo 50 Grade 115 avgas 80 grade 100 avgas 13th,
 F-26 Cargo 120 JP-1 15th,
 F-28 Cargo 130 Grade 100 avgas 16th.

Yokosuka:

F-29 Tsuruoka Maru 91 Navy diesel 14th,
 Part 2- Navy Special. All EX Persian Gulf.

August: Sasebo:

FB-3 Suruoka Maru 83 10th,

Naha:

FB-5 Chuei Maru 92 M 10,

Yokosuka:

FB-26 Fujisan Maru 90 M 21st,

September: Yokosuka:

FB-4 Daiho Maru 89 M 2d,
 FB-93 M 10,
 FB-29 B Yamamizu Maru 80 M 12th,
 FB-85 Tamalpais 100 M 13,
 FB-52 Ryuho Maru 91 M 24th.

Sasebo:

FB-83 Cossatot 100 M 3d,
 FB-1 Seria Maru 89 M 6th,
 FB-84 Tallulah 100 M 14;
 FB-86 Tolovana 100 M 30.

Naha:

FB-28 Yuyo Maru 92 M 5th,
 FB-11 TOA Maru 85 M 9th,
 FB-30 Shoho Maru 87 M 16th.

October: Yokohama.

B-31 Chuei Maru 91 M 11,

Naha:

FB-33 Seria Maru 88 M 18th.

Yokosuka.

FB-34 Toa Maru 83 M 23d,
 FB-35 Mitsushima Maru 100 M 28th.

Part 3. Crude oil all EX Socony Vacuum Ras Tanura except
 FY-13, FY-14, FY-15, FY-16, (Elkhills crude).

August: Shimotsu:

FY-13 Shawnee Trail 111 M 18th,
 FY-7 Cache 110 M 25th,
 FY-8 Miss Santa Clara 110 M 28th,
 FY-9 Miss Santa Ynez 110 M 29th,

19848

ROUTINE

Restricted

GENERAL HEADQUARTERS, FAR EAST COMMAND
 ADJUTANT GENERAL'S OFFICE
 RADIO AND CABLE CENTER

INCOMING MESSAGE

Retitled
 ROUTINE

FROM : ASPPA NR : NUMBER 311755 6 AUG 50 CONT'D

Yokohama:

FY-6 Miss Santa Ana 110 M 20th.

Shimizu:

FY-3 Sebec 110 M 26th.

September: Shimizu:

FY-14 Pamanset 110 M 5th.

Shimizu:

FY-10 Miss San Luis OBISPO 110 M 7th.

Shimotsu:

FY-4 Saban Maru 99 M 22d.

Yokohama:

FY-15 Shawnee Trail 110 M 26th.

October: Shimizu:

FY 5 San Diego Maru 75 M 16th.

Kudamatsu:

FY-16 Cargo 100 M 22d.

Part 4. Remarks.

IA-Navy special recap current schedule per slate one.

October:

Slate 599 Schedule 305.

September:

Slate 699 Schedule 1196.

October: Slate 499 Schedule 360.

Total August/October:

Slate 1797 Schedule 1823.

IB source Navy special liftings August FANT October all
 ex Bahrain except FB-2 EXTRAS Tanura FB-86 and October cargoes
 not yet determined.

COTULLA

INFORMATION : G-4, DEPCOMSTSWESPAC, SIGNAL, TRANS, FEAF, COMNAVFE

NOTE : This msg passed by AG Rad Unit via Courier to CG EIGHTH
 ARMY for info.

19848

ROUTINE

TOO : 041932 Z

MCN : 69237

Retitled
 -3-
 CONSULT CRYPTO CENTER BEFORE DECLASSIFYING

Inclosure No. 1

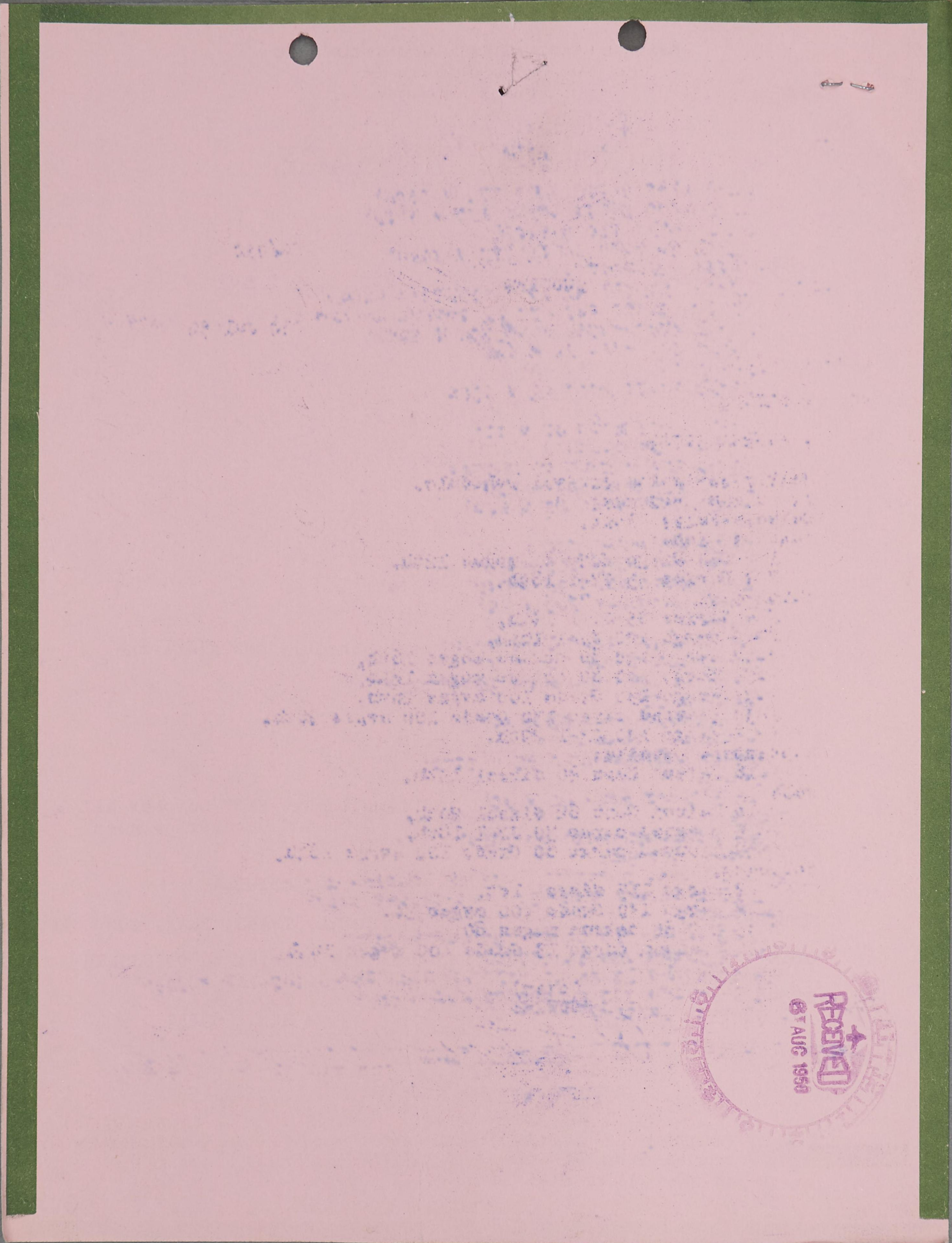
Paraphrase not required. Handle as correspondence of classification
 carried hereon per paragraphs 17a(1)(2) and 41c(2)(3) and g(1),
 AR 380-5, 15 November 1949.

COPY No.

DECLASSIFIED

Authority NNO975029

0
1
2
3
4
5
6
7
8
9
10
11
12
13
14
15
16
17
18
19
20
21
22
23
24
25
26
27



RECEIVED
81 AUG 1950

GENERAL HEADQUARTERS, FAR EAST COMMAND
ADJUTANT GENERAL'S OFFICE
RADIO AND CABLE CENTER

INCOMING MESSAGE

*319.1
Arrivals*

Restricted
ROUTINE

WG/djr *AH*

30 Jul 50

FROM : ASPPA
TO : CINCPAC
NR : NUMBER 31744

G-4 ROUTING	
A C/S G-4	<input checked="" type="checkbox"/>
D AG/S G-4	<input checked="" type="checkbox"/>
EXECUTIVE	<input checked="" type="checkbox"/>
OPERATIONS	<input type="checkbox"/>
CONST & FAC	<input type="checkbox"/>
SUPPLY	<input type="checkbox"/>
PETROLEUM	<input checked="" type="checkbox"/>
ADMINISTRATION	<input checked="" type="checkbox"/>

Weekly estimated arrival schedule.

1. Clean products:

Balance July: None.

August: Naha:

F-2 San Diego Maru 81 mogas 12th,
F-4 Marias 35 JP-1 18th.

Yokohama:

F-4 Marias 85 JP-1 14th,
F-19 cargo 120 JP-1 16th,
F-32 cargo 130 80 octane mogas 16th,
F-21 cargo 130 80 octane mogas 18th,
F-24 cargo 130 Grade 100 avgas 26th,
F-30 planned cargo 130 Grade 100 avgas 26th,
F-13 cargo 120 JP-1 29th.

September: Manila:

F-16 Daisui Maru 40 diesel 13th.

Naha:

F-16 Daisui Maru 62 diesel 20th,
F-15 planned cargo 30 JP-1 18th,
F-23 planned cargo 60 Grade 100 avgas 18th.

Yokohama:

F-12 cargo 115 diesel 1st,
F-14 cargo 130 Grade 100 avgas 3d,
F-33 120 80 octane mogas 8d,
F-31 planned cargo 13 Grade 100 avgas 16th,

16070

(over)
ROUTINE
Restricted

CONSULT CRYPTO CENTER BEFORE DECLASSIFYING

Inclosure No. 1

Paraphrase not required. Handle as correspondence of classification carried hereon per paragraphs 17a(1)(2) and 4lc(2)(3) and g(1), AR 380-5, 15 November 1949.

COPY No.

Restricted
ROUTINE

FROM : ASPPA NR : NUMBER 31744 30 JUL 50 CONT'D

F-15 90 JP-1 22d,

F-23 70 Grade 100 avgas 2d.

October: Yokohama:

F-27 cargo 50 Grade 115 avgas 80 Grade 100 avgas 10th,

F-26 cargo 120 JP-1 15th,

F-34 cargo 130 80 octane mogas 15th,

F-28 cargo 70 Grade 100 avgas 22d.

Naha:

F-28 cargo 60 Grade 100 avgas 18th.

Yokosuka:

F-29 Tsuruoka Maru 91 diesel 15th.

2. Navy special: Allez Persian Gulf.

Balance July: None.

August: Sasebo:

FB-3 Tsuroka 83 M 10th.

Naha:

FB-5 Chuei 92 M 10th,

Yokosuka:

FB-26 Fujisan Maru 90 M 21st.

September: Yokosuka:

FB-4-89 M 2d,

FB-2 Mitsushima 33 M 15th,

FB-27 Ufun 90 M 7th,

FB-29 Number 5 Yamazizu 80 M 12th,

FB-85 Tamalpais 100 M 13th,

FB-52 Yuho 91 M 24th.

Sasebo:

FB-83 Cossatot 100 M 3d,

FB-1 Seria Maru 89 M 6th,

FB-84 Tallulah 100 M 14th,

FB-86 Tolovana 100 M 13th.

Naha:

FB-28 Yuyo Maru 92 M 5th,

FB-11 TOA 85 M 9th,

FB-30 Shoho 87 M 16th.

Manila:

FB-2 Mitsushima 60 M 6th.

October: Yokohama:

FB-31 Chuei 91 M 11th.

Naha:

FB-33 Seria 88 M 18th.

15070

ROUTINE

Restricted

GENERAL HEADQUARTERS, FAR EAST COMMAND
 ADJUTANT GENERAL'S OFFICE
 RADIO AND CABLE CENTER

Permitted
 ROUTINE
INCOMING MESSAGE

FROM : ASPRA NR : NUMBER 31744 30 JUL 50 CONT'D

Yokosuka:

FY-34 TOA 83 M 23d,

FY-35 Mitsushima 100 M 28th.

3: Curde oil. All ex Socony Vacuum Ras Tanura except:
 FY-13, FY-14, FY-15, FY-16 (Elk Hills crude).

Balance July: None.

August: Shimotsu:

FY-1 Tamalpais 114 M 2d,

FY-13 Shawnee Trail 100 M 20th,

FY-7 Cache 110 M 25th,

FY-8 Mission Santa Clara 110 M 28th,

FY-9 Mission Santa Ynez 110 M 29th.

Yokohama:

FY-6 Mission Santa Ana 100 M 20th.

Shimizu:

FY-3 Sebec 110 M 26th.

September: Shimizu:

FY-14 Panaset 110 M 5th.

Kudanatsu:

FY-10 Mission San Luis Obispo 110 M 7th.

Shimotsu:

FY-4 Saban Maru 100 M 26th.

Yokohama:

FY-15 Shawnee Trail 110 M 26th.

October: Shimizu:

FY-5 San Diego Maru 75 M 16th.

Kudanatsu:

FY-16 cargo 110 M 22d.

4. Remarks. IA-Navy special; Recap current schedule per

Slate 1.

July:

Slate 499 Schedule 408.

August:

Slate 599 Schedule 265.

September:

Slate 699 Schedule 1196.

October:

Slate 499 Schedule 326.

16070

(over)
 ROUTINE

Permitted
 -3-

CONSULT CRYPTO CENTER BEFORE DECLASSIFYING

Inclosure No. 1

Paraphrase not required. Handle as correspondence of classification carried hereon per paragraphs 17a(1)(2) and 41c(2)(3) and g(1), AR 380-5, 15 November 1949.

COPY No.

Restricted
ROUTINE

FROM : ASPPA NR : NUMBER 31744 30 JUL 50 CONT'D

Total: July/October:
Slate 2296 Schedule 2231.

IB source Navy special lifting July/ September Alex Babreink
except FB-86 and October lifting not yet determined. ETA avgas
cargos F-28, F-30, F-31 dependent upon availability of product.
Adviser acceptability above schedule.

NO SIG

INFORMATION : G-4, SIGNAL, FEAF, COMNAVFE

NOTE : This msg passed by AG Rad Br via courier to CG EIGHTH ARMY
(SAPOJ) for info.



16070

ROUTINE
Restricted

TOO : 282110 Z
MCN : 67717

GENERAL HEADQUARTERS, FAR EAST COMMAND
ADJUTANT GENERAL'S OFFICE
RADIO AND CABLE CENTER

INCOMING MESSAGE

JA/cmk

319.1

UNCLASSIFIED
DEFERRED

FROM : ASPPA
TO : CINCPAC (APO)
INFO : COMNAVFE
NR : NUMBER 311673

8 Jul 50

EXECUTIVE

OPERATIONS
CONST & FAC

SUPPLY
PETROLEUM

ADMINISTRATION

Weekly Estimated Arrival Schedule.

Part I. Clean products.

July.

Manila.

F-93 Gyokuei 50 diesel 9th.

Yokohama.

F-5 Ryuho 100 mogas 24th,

F-20 Vice F-100 Saban 97 diesel 25th,

F-18 Soubarissen 80 grade 115 avgas 50 JP-1 26th,

Sasebo.

F-93 Gyokuei 42 diesel 19th,

August.

Naha.

F-2 San Diego 73 mogas Vice diesel 1st,

F-4 -48 35 JP-1 15th,

Yokohama.

F-19 Cargo 120 JP-1 2d

F-4 Marias 85 JP-1 19th,

F-17 Mission Buena Ventura 130 mogas 18th,

F-14 Soubarissen 130 grade 100 avgas 28th.

Manila.

F-12 Mission San Diego 50 diesel 27th balance Yokohama

Sep 3d.

Part II. Navy special all ex PG.

July.

Kure.

FB-286 Number 5 Yamamizu 81 M 8th.

Yokohama.

04926

(over)
DEFERRED
UNCLASSIFIED

Inclosure No. 1

UNCLASSIFIED
DEFERRED

FROM : ASPPA NR : NUMBER 311673 8 JULY 50 CONT'D

FB-346 Number 1 Nisshin 85 M 11th.

Sasebo.

FB-308 Shoho 93 M 23d.

August.

Yokosuka.

FB-25 Chigusa 87 M 13th,

FB-2 Mitsushima 40 M 26th,

FB-5 Chuei 95 M 15th,

FB-26 Fujisan 93 M 20th,

FB-4 Daiho 89 M 27th,

FB-11 ***** 83 M 28th.

Manila.

FB-2 Mitsushima 60 M 14th,

Sasebo.

FB-3 Tsuruoka 87 M 16th,

FB-1 Seria 88 M 26th,

September.

Yokosuka.

FB-29 Number 5 Yamamizu 75 M 1st,

FB-28 Yuyo 25 M 14th,

FB-27 Zuiun 89 M 5th,

FB-30 Shoho 87 M 22d,

FB-52 Ryuho 91 M 27th.

Manila.

FB-28 Yuyo 60 M 2d,

Part III. Crude oil all ex Socony Vacuum Ras Tanura.

July.

Shimizu.

FY-35 Mission Santa Clara 115 M 14th,

Yokohama.

FY-31 Shawnee Trail 116 M 13th,

FY-2 Saugatuck 114 M 23d.

Kudamatsu.

FY-32 Cohocton 111 M 13th,

FY-36 Mission Santa Ynez 115 M 15th.

Shimotsu.

FY-33 Mission San Rafael 115 M 14th,

FY-34 Cache 114 M 15th,

FY-11 Mission San Luis Obispo 110 M 26th.

August.

04926

DEFERRED
UNCLASSIFIED

GENERAL HEADQUARTERS, FAR EAST COMMAND
 ADJUTANT GENERAL'S OFFICE
 RADIO AND CABLE CENTER

INCOMING MESSAGE

UNCLASSIFIED
 DEFERRED

FROM : ASPPA NR : NUMBER 311673 8 JULY 50 CONT'D

Shimotsu.

FY-1 Tamalpais 110 M 1st;
 FY-5 Cohocton 110 M 25th,
 FY-7 Cache 110 M 26th,
 FY-7 Mission Santa Clara 110 28th

Shimizu.

FY-3 Mission Santa Ana 110 M 20th,
 FY-9 Mission Santa Ynez 110 M 29th.

Yokohama.

FY-6 Mission San Rafael 110 M 22d.

Destination requested including longitude and latitude

FY-13 Pamanset 110 M 15th.

September.

Shimizu.

FY-10 Mission San Luis Obispo 110 M 7th.

Kudamatsu.

FY-4 Tallullah 110 M 11th.

Part IV. Remarks Item A-Navy special. Recap current schedule per slate 12.

July. Slate 384 schedule 408.

Aug. Slate 533 schedule 722.

Sep. Slate 500 schedule 427.

Total July/Sep Slate 1417 schedule 1557.

Item B-Navy special liftings.

July. Ex Bahrain.

Aug. Undetermined.

Item C. Cargo F-2 mogas viceo diesel for Naha discharge.

NO SIG

INFORMATION : C-4

NOTE : Service has been requested for correction of underscored portions and for portions missing indicated by asterisks.

NOTE : This msg passed by AG Rad Unit via Courier to CG EIGHTH (SAP OJ) for info.

04926

DEFERRED
 UNCLASSIFIED

TOO : 072110 Z
 MEN : AUB 128/08

-3-



UNITED STATES
DEPARTMENT OF THE ARMY
HEADQUARTERS, ARMY
WASHINGTON, D.C.

TO : SAC, [illegible]

FROM : SAC, [illegible]

SUBJECT: [illegible]

1. [illegible]

2. [illegible]

3. [illegible]

4. [illegible]

5. [illegible]

6. [illegible]

7. [illegible]

8. [illegible]

9. [illegible]

10. [illegible]

11. [illegible]

12. [illegible]

13. [illegible]

14. [illegible]

15. [illegible]

16. [illegible]

17. [illegible]

18. [illegible]

19. [illegible]

20. [illegible]

21. [illegible]

22. [illegible]

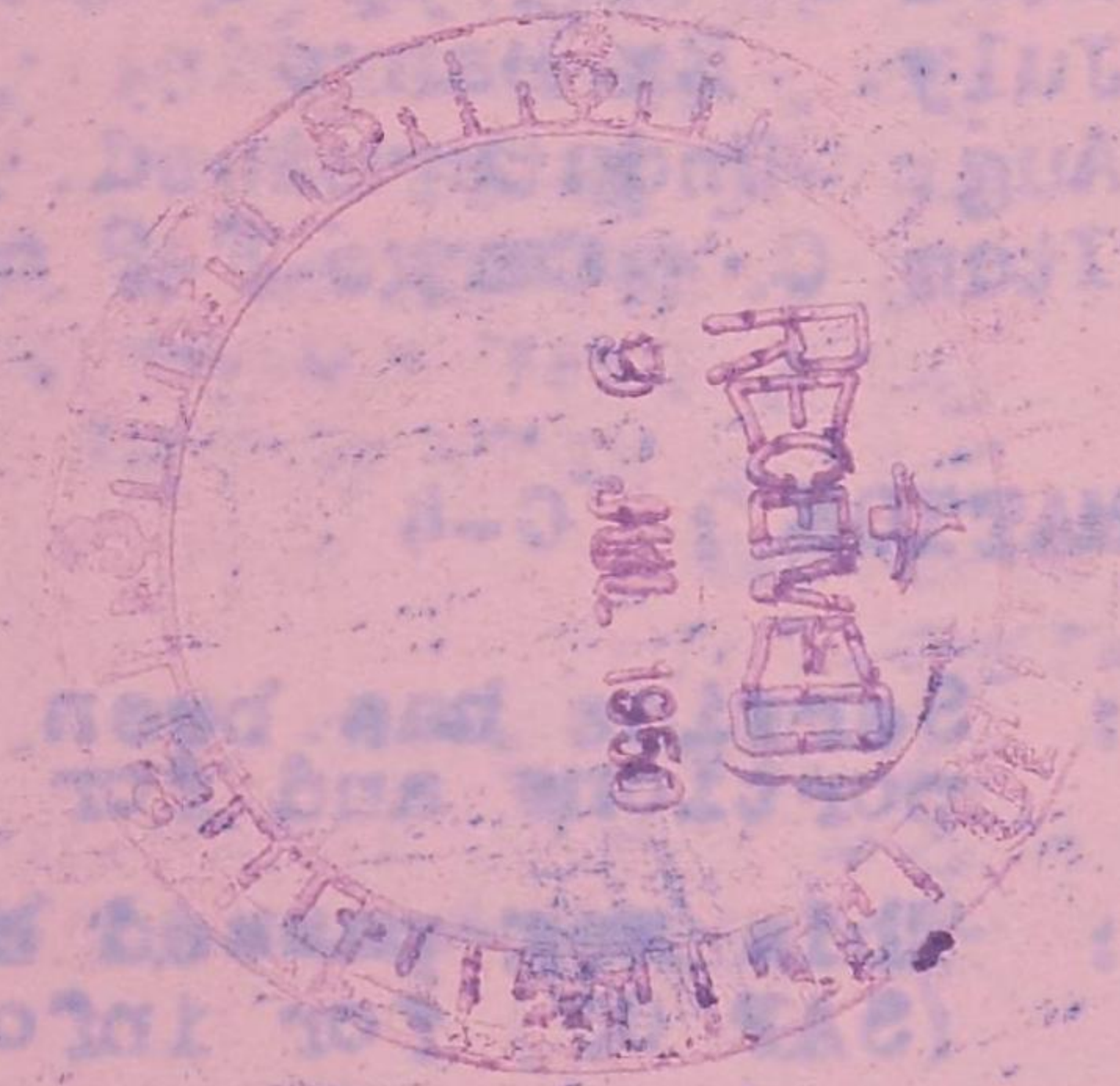
23. [illegible]

24. [illegible]

25. [illegible]

26. [illegible]

27. [illegible]



NOTE: [illegible]

NOTE: [illegible]

DATE: [illegible]

BY: [illegible]

GENERAL HEADQUARTERS, FAR EAST COMMAND
ADJUTANT GENERAL'S OFFICE
RADIO AND CABLE CENTER

INCOMING MESSAGE

JA/cmk

G-4

319.1
Arrival

UNCLASSIFIED
DEFERRED

1 July 50

FROM : ASPPA WASH DC
TO : CINCPAC TOKYO JAPAN
INFO : COMNAVFE (APO) TOKYO JAPAN
NR : NUMBER 311661

G-4 ROUTING	
4. C/S G-4	
D-AC/S G-4	
EXECUTIVE	my
OPERATIONS	
CONST & FAC	
SUPPLY	
PETROLEUM	✓
REGISTRATION	19

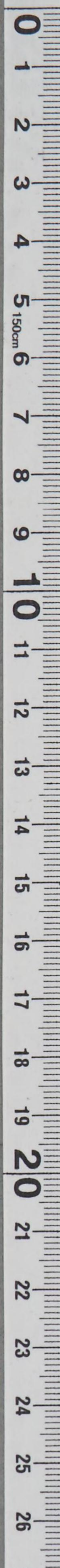
Weekly Estimated Arrival Schedule.
Part 1. Clean products.
July.

Manila.
P-98 Mission Dolores 60 JVAQ 7th,
P-93 Diesel 9th.
Yokohama.
P-98 Mission Dolores 60 JP-1 2d,
P-99 Nichinan 48 mogas 4th,
P-100 Saban 100 diesel 20th,
P-5 Pyuho 100 mogas 31st,
Sasebo.
P-9 Byokuei 42 diesel 19th.

August.
Naha.
P-2 San Diego 73 diesel 1st,
P-4 cargo 35 JP-1 8th,
Yokohama.
P-4 cargo 85 JP-1 13th,
P-17 cargo 130 mogas 17th,
Part 2. Navy special all ex PG.

July:
Kure.
FB-307 Zuiun 89 7th,
FB-286 Number 5 Yamamizu 81 M 8th.
Manila.
FB-345 Hashi Date 60 M 7th.
Yokohama.
FB-346 Number 1 Nisshin 85 M 11th,

01525
DNC (over)
DEFERRED
UNCLASSIFIED



UNCLASSIFIED
DEFERREDFROM : ASPPA WASH DC NR : NUMBER 311661 1 JULY 50 CONT'D

Sasebo.

FB-308 Shoho 93 M 23d.

August.

Yokosuka.

FB-25 Chigusa 87 M 13th.

FB-2 Mitsushima 40 M 26th.

FB-5 Chuei 95 M 15th.

FB-26 Fujisan 93 M 20th.

FB-4 Daiho 89 M 27th.

FB-11 Toa 83 M 28th.

Manila.

FB-2 Mitsushima 60 M 14th.

Sasebo.

FB-3 Tsuruoka 87 M 16th.

FB-1 Seria 88 M 26th.

September.

Yokosuka.

FB-29 Number 5 Yamamizu 75 M 1st.

FB-28 Ryuho 25 M 14th.

FB-27 Zuiun 89 M 5th.

FB-30 Shoho 87 M 22d.

FB-52 Ryuho 91 M 27th.

Manila.

FB-28 Yuyo 60 M 2d.

Part 3. Crude oil all ex Socony Vacuum Res Tanura.

July.

Shimizu.

FY-30 Mission Santa Ana 116 M 7th.

FY-35 Mission Santa Clara 115 M 14th.

Yokohama.

FY-31 Shawnee Trail 116 M 13th.

FY-2 Saugatuck 110 M 25th.

Kusamatsu.

FY-32 Cohocton 111 M 13th.

FY-36 Mission Santa Ynez 115 M 15th.

Shimotsu.

FY-33 Mission San Rafael 115 M 14th.

FY-34 Cache 114 M 15th.

FY-11 Mission San Luis Obispo 110 M 26th.

August.

Shimotsu.

01525

DEFERRED
UNCLASSIFIED

GENERAL HEADQUARTERS, FAR EAST COMMAND
 ADJUTANT GENERAL'S OFFICE
 RADIO AND CABLE CENTER

INCOMING MESSAGE

UNCLASSIFIED
 DEFERRED

FROM : ASPPA WASH DC NR : NUMBER 311651 1 July 50 CONT'D

FY-1 Tamalpais 110 V 5th,
 FY-5 Cohocton 110 M 25th,
 FY-7 Cache 110 M 25th,
 FY-8 Mission Santa Clara 110 M 28th.
 Shimizu.
 FY-3 Mission Santa Ana 110 M 20th,
 FY-9 Mission Santa Ynez 110 M 29th.
 Kujamitsu.
 FY-4 Shawnee Trail 110 M *th,
 Yokohama.
 FY-6 Mission San Rafael 110 M 26th,
 Sept.
 Shimizu.
 FY-10 Mission San Luis Obispo 110 M 7th.
 Part 4. Remarks.
 Item A/Navy special. Recap current schedule per
 slate 12.
 July. Slate 384 schedule 408.
 August. Slate 533 schedule 722.
 September. Slate 500 schedule 427.
 Total July/Sept Slate 1417 schedule 1557.
 Item B-source Navy special fittings.
 July ex Bahrain. Source August cargos undetained
 Item C. Advise is all diesel cargo F-100 for dis-
 charge Yokohama acceptable.

MORROW

INFORMATION : G-4

NOTE : This msg passed by AG Radio Unit via courier to CG
 EIGHTH ARMY (SAPOJ) YOKOHAMA JAPAN for info.

01525

DEFERRED
 UNCLASSIFIED

TOO : 301910 Z
 MCN : AUB 09/01

DECLASSIFIED

Authority NNO975029

0
1
2
3
4
5
6
7
8
9
10
11
12
13
14
15
16
17
18
19
20
21
22
23
24
25
26
27

DECLASSIFIED
REMOVED

FROM: AFRICA WASH DC ... NUMBER 211521 ... 1 JULY 50

21-1 ...
 21-2 ...
 21-3 ...
 21-4 ...
 21-5 ...
 21-6 ...
 21-7 ...
 21-8 ...
 21-9 ...
 21-10 ...
 21-11 ...
 21-12 ...
 21-13 ...
 21-14 ...
 21-15 ...
 21-16 ...
 21-17 ...
 21-18 ...
 21-19 ...
 21-20 ...
 21-21 ...
 21-22 ...
 21-23 ...
 21-24 ...
 21-25 ...
 21-26 ...
 21-27 ...

MORNING



... passed by AG Radio Unit via courier to CG ... YOKOHAMA JAPAN for info.

TO : 30910 S
FROM : AUC 09101

DECLASSIFIED
REMOVED

01222

GENERAL HEADQUARTERS, FAR EAST COM AND
ADJUTANT GENERAL'S OFFICE
RADIO AND CABLE CENTER

INCOMING MESSAGE

TER/1fm

UNCLASSIFIED
DEFERRED

24 Jun 50

*319
Arrival*

G-4

FROM : ASPPA WASH DC
TO : CINCPAC (APO) TOKYO JAPAN
INFO : COMNAVPE TOKYO JAPAN
NR : NUMBER 311644

Weekly Estimated Arrival Schedule.
Part I. Clean products. Balance June.
Yokohama.

F-95 Mission San Fernando 40 kero 84 mogas 25th.
July.
Manila.

F-98 Mission Dolores 60 JP-1 6th,
F-93 Gyokuei 50 diesel 9th.
Yokohama.

F-98 Mission Dolores 60 JP-1 1st,
F-99 Nichinan 48 mogas 4th,
F-100 Saban 66 mogas 20th,
F-5 Ryuhō 100 mogas 31st.

Sasebō.
F-93 Gyokuei 42 diesel 19th.

Naha.
F-100 Saban 40 mogas 15th.

August.
Naha.
F-2 San Diego 73 diesel 1st.
F-4 Marias 35 JP-1 8th.

Yokohama.
F-4 Marias 85 JP-1 13th.

98260

(over)
DEFERRED
UNCLASSIFIED

G-4 ROUTING	
A C/S G-4	_____
D AC/S G-4	_____
EXECUTIVE	_____ <i>M</i>
OPERATIONS	_____
CONST & FAC	_____
SUPPLY	_____
PETROLEUM	_____ <i>/</i>
ADMINISTRATION	_____ <i>/</i>



UNCLASSIFIED
DEFERREDFROM : ASPPA WASH DC NR : NUMBER 311644 24 JUNE 50 CONTINUED

Part II. Navy special all ex PG.

Balance Jun.

Yokosuka.

FB-260 Mitsushima 32 M 26th,

FB-284 Daiho 95 M 25th,

FB 304 Yuyo 93 M 26th.

Jul.

Kure.

FB 307 Zuiun 10 M 7th,

FB 386 Nbr 5 Yamamizu 81 M 8th.

Manila.

FB 345 Hashi date 60 M 7th.

Yokohama.

FB 346 Nbr 1 Nisshin 85 M 11th.

Sasebo.

FB 308 Shoho 93 M 23d.

August.

Yokosuka.

FB 25 Chigusa 87 M 13th,

FB 2 Misushima 40 M 26th,

FB 5 Chuei 95 M 15th,

FB 26 Fujisan 93 M 23d,

FB 4 Daiho 98 M 27th,

FB 11 Toa 83 M 28th.

Manila.

FB 2 Mitsushima 60 M 14th.

Sasebo.

FB 3 Tsuruoka 82 M 20th,

FB 1 Seria 88 M 26th,

September.

Yokosuka.

FB 29 Nbr 5 Yamamizu 75 M 1st,

FB 28 Yuyo 25 M 14th,

FB 27 Zuiun 89 M 5th,

FB 30 Shoho 87 M 22d,

FB 52 Ryuho 91 M 27th,

Manila.

FB 28 Yuyo 60 M 2d.

Part III. Crude oil all ex Socony Vacuum Ras Tanura.

Balance Jun. None.

July.

Kudamatsu.

FY 32 Cohocton 110 M 13,

FY 36 Mission Santa Ynez 110 M 17th,

98260

DEFERRED
UNCLASSIFIED

GENERAL HEADQUARTERS, FAR EAST COMMAND
 ADJUTANT GENERAL'S OFFICE
 RADIO AND CABLE CENTER

INCOMING MESSAGE

UNCLASSIFIED
 DEFERRED

FROM : ASPPA WASH DC NR : NUMBER 211644 24 JUNE 50 CONT'D

Shimizu.

FY 30 Mission Santa Ana 116 M 9th,
 FY 35 Mission Santa Clara 110 M 16th.

Shimotsu.

FY 33 Mission San Rafael 110 M 14th,
 FY 34 Cache 110 M 14th,
 FY 11 Mission San Luis Obispo 110 M 26th,

Yokohama.

FY 31 Shawnee Trail 110 M 13th,
 FY 2 Saugatuck 110 M 25th.

August.

Shimotsu.

FY 1 Tamalpais 110 M 5th,
 FY 5 Cohocton 110 M 25th,
 FY 7 Cache 110 M 26th,
 FY 8 Mission Santa Clara 110 M 28th.

Shimizu.

FY 3 Mission Santa Ana 110 M 20th,
 FY 9 Mission Santa Ynez 110 M 29th.

Kudamatsu.

FY 4 Shawnee Trail 10 M 24th.

Yokohama.

FY 6 Mission San Rafael 110 M 26th.

September.

Shimizu.

FY 10 Mission San Luis Obispo 110 M 7th.

Part IV. Remarks.

Item A-Navy special. Recap current schedule per Slate

12.

June.

Slate 806 schedule 814.

July.

Slate 384 schedule 408.

August.

Slate 533 schedule 717.

98260

(over)
 DEFERRED
 UNCLASSIFIED

UNCLASSIFIED
DEFERREDFROM : ASPPA WASH DX NR : NUMBER 311644 24 JUNE 50 CONT'D

September.

Slate 500 schedule 427.

Total June/September. Slate 2223 schedule 2366.

Item B-Source Navy special liftings. All June/July ex
Bahrein except FB 260 and FB 306.

Source August cargoes undetermined.

Item C. Confirm acceptability above schedule. Advise
soonest.

NO SIG



INFORMATION : G-4

NOTE: This msg passed by AG Rad Unit via Courier to CG EIGHTH
ARMY (ATTN SAPOJ) YOKOHAMA JAPAN for info.

98260

DEFERRED
UNCLASSIFIEDTOO : 232026 Z
MCN : AUA 21/24

-4-

GENERAL HEADQUARTERS, FAR EAST COMMAND
ADJUTANT GENERAL'S OFFICE
RADIO AND CABLE CENTER

INCOMING MESSAGE

*319-1
Arrival*

TR/cnk

9-4

UNCLASSIFIED
DEFERRED

17 Jun 50

FROM : ASPFA WASH DC
TO : CINCPAC TOKYO JAPAN
INFO : COMNAVPE TOKYO JAPAN
NR : NUMBER 311632

Weekly estimated arrival schedule.

- Part I. Clean products.
- Balance June.
- Yokohama.
 - F-95 Mission San Fernando, 40 kero, 84 megas, 25th,
 - F-98 Mission Dolores 60 JP-1, 29th,
- July.
- Manila.
 - F-98 Mission Dolores 60, JP-1, 5th,
 - F-93 Gyokuei 50 diesel, 9th,
- Naha.
 - F-99 Nishinan, 48 megas, 4th,
 - F-100 Saban, 40 megas, 15th,
- Sasebo.
 - F-93 Gyokuei, 42 diesel, 19th,
- Yokohama.
 - F-100 Saban, 66 megas 20th,
 - F-5 Ryuko, 100 megas, 31st,
- August.
- Naha.
 - F-2 San Diego, 72 diesel, 1st,
 - F-4 Cargo, 35 JP-1, 8th,
- Yokohama.
 - F-4 cargo, 65 JP-1 13th.
- Part II. Navy special all ex PG.
- Balance June.

G-4 ROUTING	
AC/S G-4	_____
AC/S G-4	_____
EXECUTIVE	_____
OPERATIONS	_____
CONST & FAC	_____
SUPPLY	_____
PETROLEUM	_____

95851

(over)
DEFERRED
UNCLASSIFIED

UNCLASSIFIED
DEFERRED

FROM : ASPPA WASH DC MR : NUMBER 311632 17 JUNE 50 CONT'D

Yokosuka,

FB-283 Tsuruoka, 84 M, 19th,
 FB-287 Tba, 86 M, 20th,
 FB-260 Mitsubishi, 32 M, 26th,
 FB-284 Daiho, 95 M, 25th,
 FB-304 Yiyō, 93 M, 26th.

Manila,

FB-260 Mitsubishi, 60 M, 20th,
 FB-345 Heshi Date, 58 M, 30th.

Yokohama,

FB-306 Chigusa, 87 M, 26th.

July,

Kure,

FB-307 Zuiun, 89 M, 7th,
 FB-286 Number 5 Yamazaki, 78 M, 14th,

Yokohama,

FB-346 Number 1 Nishina, 73 M 13th.

Sasebo,

FB-308 Shoho, 93 M, 23d.

August,

Manila,

FB-2 Mitsubishi, 60 M, 14th.

Yokosuka,

FB-2 Mitsubishi, 40 M 26th,
 FB-5 Chuci, 91 M, 15th,
 FB-4 Daiho, 89 M, 27th,
 FB-11 Tba, 83 M, 28th,

Sasebo,

FB-3 Tsuruoka, 82 M, 20th,
 FB-1 Seria, 88 M, 26th,
 FB-25 Chigusa, 87 M, 13th,
 FB-26 Fujisan, 92 M, 23d destinations requested.

Port III. Crude oil all ex Socany Vacuum Res Tanura.
 Balance June. None,

July,

Kuchisatani,

FY-30 Mission Santa Ana, 110 M, 9th,
 FY-36 Mission Santa Ynez, 110 M, 17th,

Yokohama,

FY-31 Shawnee Trail, 110 M, 13th
 FY-2 Saughtuck, 110 M, 25th,

95851

DEFERRED
UNCLASSIFIED

GENERAL HEADQUARTERS, FAR EAST COMMAND
 ADJUTANT GENERAL'S OFFICE
 RADIO AND CABLE CENTER

INCOMING MESSAGE

UNCLASSIFIED
 DEFERRED

FROM : ASPPA WASH DC NR : NUMBER 311632 17 JUNE 50 CONT'D

Shimizu.

FY-32 Cohocton, 110 M, 13th,
 FY-35 Mission Santa Clara, 110 M, 16th,

Shimotsu.

FY-33 Mission San Rafael, 110 M, 14th
 FY-34 Cache, 110 M, 14th,
 FY-11 Mission San Luis Obispo, 110 M, 26th,

August.

Shimotsu.

FY-1 Tamalpais, 110 M, 5th,
 FY-5 Cohocton, 110 M, 25th,
 FY-7 Cache, 110 M, 26th,
 FY-8 Mission Santa Clara, 110 M, 28th,

Shimizu.

FY-3 Mission Santa Ana, 110 M, 20th,
 FY-9 Mission Santa Ynez, 110 M, 29th,

Kudamatsu.

FY-4 Shawnee Trail, 110 M, 24th,

Yokohama.

FY-6 Mission San Rafael, 110 M, 26th.

September.

Shimizu.

FY-10 Mission San Luis Obispo, 110 M, 7th,

Part IV. Remarks. Item A-Navy special. Recap current schedule per Slate 12.

June. Slate 707 schedule 872.

July. Slate 384 schedule 333.

August. Slate 533 schedule 712.

Total June/August. Slate 1624 schedule 1912.

Item B-Source: Navy special liftings. All June/July ex Bahrein except FB-260 and FB-306. Source August cargoes undetermined.

INFORMATION : G-4

COTULLA

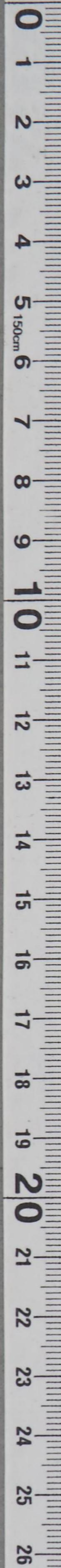
NOTE: This msg passed by AG Radio Unit via courier to CG EIGHTH ARMY (ATTN SAPOJ) YOKOHAMA JAPAN for info.

95851

DEFERRED
 UNCLASSIFIED

TOO : 161545 Z
 MCN : AUB 113/15

G-4 ROUTING	
A C/S G-4	_____
D AC/S G-4	_____
OPERATIONS	_____
CONST & FAC	_____
SUPPLY	_____



DECLASSIFIED

Authority NNO975029

0
1
2
3
4
5
6
7
8
9
10
11
12
13
14
15
16
17
18
19
20
21
22
23
24
25
26

[Faint, illegible text, likely bleed-through from the reverse side of the page]



GENERAL HEADQUARTERS, FAR EAST COMMAND
ADJUTANT GENERAL'S OFFICE
RADIO AND CABLE CENTER

INCOMING MESSAGE

319. Arrival

ELT/rbo

UNCLASSIFIED
DEFERRED

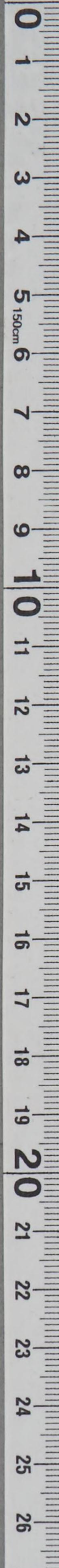
ROUTINE	
A C/S G-4	
D AG/S G-4	
10 Jun 50	
OPERATIONS	
CONST & FAC	
SUPPLY	
PETROLEUM	<input checked="" type="checkbox"/>
ADMINISTRATION	<input checked="" type="checkbox"/>

FROM : ASPPA WASH DC
 TO : CINCPAC (APO) TOKYO JAPAN
 INFO : COMNAVFE TOKYO JAPAN
 NR : NUMBER 311620

Weekly Estimated Arrival Schedule.
 Part I-Clean Products. Balance June.
 Naha, F-88 Daisui 40 diesel 13th,
 Yokohama, F-88 Daisui 63 diesel 16th, F-95 Mission
 San Fernando 40 kero 80 mogas 24th, F-98 Mission Dolores 60
 JP-1 26th, July,
 Manila, F-98 Mission Dolores 60 JP-1 3d, F-93 Gyokuei
 50 diesel 9th,
 Naha, F-99 Michinan 48 mogas 4th, F-100 Saban 50 mogas
 15th,
 Sasebo, F-93 Gyoci grw diesel 19th,
 Yokohama, F-100 Saban 56 mogas 20th, F-5 Ryuho 100 mogas
 31st, August,
 Yokohama, F-4 cargo 85 JP-1 13th, F-2 San Diego 73 diesel
 20th,
 Naha, F-4 cargo 35 P-1 8th,
 Part II-Navy Special all ex pg, balance June.
 Sasebo, FB-285 Fujisan 93 M 11th,
 Yokosuka, FB-282 Chuei 95 M 14th, FB-283 Tsuruok 84 M
 19th, FB-287 TOA 85 M 20th, FB-260 Mitsushima 32 M 26th, FB-284
 Daiho 95 M 25th, FB-304 Yuyo 93 M 26th,
 Manila, FB-260 Mitsushima 60 M 20th, FB-345 Hashi Date
 58 M 30th,
 Yokohama, FB-306 Chigusa 87 M 26th, July,

93522

(over)
DEFERRED
UNCLASSIFIED



UNCLASSIFIED
DEFERREDFROM: ASPPA NR : NUMBER 311620 10 JUN 50 CONT'D

Kure, FB-307 Zuion 91 M 10th, FB-286 Nr 5 Yamamizu 78 M 14th,

Yokohama, FB-346 Nr 1 Nisshin 73 M 13th,

Sasebo, FB-308 Shoho 93 M 23d, August,

Manila, FB-2 Mitsushima 60 M 14th,

Yokosuka, FB-2 Mitsushima 40 M 26th, FB-5 Chuei 91 M 15th,

FB-1 Seria 88 M 26th, FB-4 Eaino 89 M 27th, FB-11 to 83 M 28th,,

Sasebo, FB-3 Tsuruoka 82 M 20th, FB-25 Chigusa 87 M 13th and FB-26 Fujisan 92 M 23d destinations requested.

Part III-Crude oil all ex Sococoq Vacuum Ras Tanura, July.

Kudamatsu, FY-30 Mission Santa Ana 110 M 8th, FY-6 Mission Santa Ynez 110 M 17th,

Yokohama, FY-31 Shawnee Trail 110 M 13th, FY-2 Saugatuck 110 M 25th,

Shimizu, D-32 Cotocton 110 M 13th, FY-35 Mission Santa Clara 110 M 16th,

Shimotsu, FY-33 Mission San Rafael 110 M 14th, FY-34 Cache 110 M 14th, FY-11 Mission San Luis Obispo 110 M 26th, August,

Shimotsu, FY-1 Tamalpais 110 M 5th, FYGT Cohocton 110 M 25th, FY-7 Cache 110 M 26th, FY-8 Mission Santa Clara 110 M 28th,

Shimizu, FY-3 Mission Santa Ana 110 M 20th, FY-9 Mission Santa Ynez 110 M 29;5 / (7¢-.057/ ?6¢-4 Shawnee Trail 110 M 24th,

Yokohama, FY-6 Mission San Rafael 110 M 26th, September,

Shimizu, FY-10 Mission San Luis Obispo 110 M 7th,

Part IV-Remarks, Item A-Navy-Special.

Recan current schedule per Slate 110 June,

Slate 705 Schedule 783, July,

Slate 384 Schedule 35 M August,

Slate 524, Schedule 712,

Total June, August,

Slate 1613 Schedule 1830,

Item T-source Navy special liftings, all June-July ex Bahrain except FB-260 and FB-306,

Source August cargoes undetermined.

COTULLA

INFORMATION : 0-4

NOTE : Svc has been requested for correction of underscored portions.

NOTE : This msg will be passed as requested when svc is received.

93522

DEFERRED
UNCLASSIFIEDTOO : 091531 Z
MCN : AUA 146/09

GENERAL HEADQUARTERS, FAR EAST COMMAND
ADJUTANT GENERAL'S OFFICE
RADIO AND CABLE CENTER

INCOMING MESSAGE

3/9! arrival

ELT/1fm

UNCLASSIFIED
DEFERRED

27 May 50

FROM : ASPPA WASH DC
TO : CINCPAC (APO) TOKYO JAPAN
INFO : COMNAVFE TOKYO JAPAN
NR : NUMBER 311598

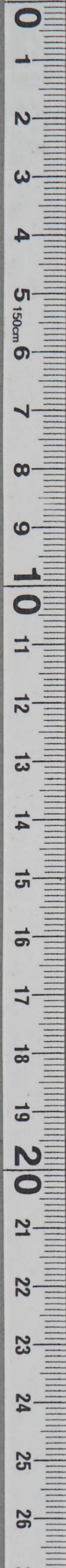
Weekly estimated arrival schedule.
Part 1. Clean products, Balance May. None.
June.
Shimotsu.
F-94 Mission Buenaventura 135 megas 2nd.
Yokosuka.
F-96 San Diego 77 diesel 4th.
Naha.
F-88 Daisui 40 diesel 13th.
Yokohama.
F-88 Daisui 62 diesel 16th.
F-95 Mission San Fernando 40 kero 80 megas 16.
Manila.
F-98 cargo 60 JP-1 30th.
July.
Yokohama.
F-98 cargo 60 JP-1 6th,
F-3 Saban 40 megas 28th,
F. 97 Ryuho 90 megas 28th.
Naha.
F-99 Niehinan 48 megas 4th,
F-3 Saban 50 megas 23rd.
Manila.

89222

(over)
DEFERRED
UNCLASSIFIED

G-4 ROUTING	
<input checked="" type="checkbox"/>	A C/S 6-4
<input checked="" type="checkbox"/>	D AC/S 6-4
<input checked="" type="checkbox"/>	EXECUTIVE
<input type="checkbox"/>	OPERATIONS
<input type="checkbox"/>	CONST & FAC
<input type="checkbox"/>	SUPPLY
<input checked="" type="checkbox"/>	PETROLEUM
<input type="checkbox"/>	ADMINISTRATION

Inclosure No. 1



UNCLASSIFIED
DEFERREDFROM : ASPPA WASH DC NR : NUMBER 311598 27 MAY 50 CONT'D

F-93 Gyokuai 40 diesel 19th.

Sasebo.

F-93 Gyokuai 52 diesel 19th.

Part II. Navy special all ex PG. Balance May.

Yokosuka.

FB-281 Seria 79 M 29th.

June.

Sasebo.

FB-285 Fujisan 93 M 11th.

Manila.

FB-260 Mitsushima 60 M 14th,

FB-245 Hashi date 58 M 20th.

Yokohama.

FB-306 Chigusa 84 M 18th.

Yokosuka.

FB-260 Mitsushima 30 M 26th,

FB-282 Chuei 95 M 14th,

FB-283 Tsurueka 90 M 22nd,

FB-287 Tea 85 M 24th,

FB-284 Daihop 90 M 28th,

FB 304 Yuyo 90 M 29th.

July.

Kure.

FB-307 Zuiun 91 M 10th,

FB-286 Number 5 Yamamizu 78 M 13th.

Yokohama.

FB346 Number 1 Nisshin 73 M 13.

Sasebo.

FB-308 Shoho 87 M 25th.

August.

Yokosuka.

FB-1 Seria 88 M 5th,

FB-2 Mitsushima 40 M 22nd,

FB-5 Chuei 91 M 15th,

FB-4 Daiho 89 M 28th,

FB-11 Tea 83 M 28th.

Manila.

FB-2 Mitsushima 60 M 10th.

Sasebo.

FB-3 Tsuruea 82 M 29th.

89222

DEFERRED
UNCLASSIFIED

DECLASSIFIED

Authority NNO975029

GENERAL HEADQUARTERS, FAR EAST COMMAND
ADJUTANT GENERAL'S OFFICE
RADIO AND CABLE CENTER

INCOMING MESSAGE

UNCLASSIFIED
DEFERRED

FROM : ASPPA WASH DC NR : NUMBER 311598 27 MAY 50 CONT'D

Part III. Crude oil. Balance May.
Yokohama.

FY-27 Mission Santa Clara 105 M 26th.
Kudamatsu.

FY-26 Pamanset 102 M 27th.
Shimetsu.

FY-28 Mission Santa Ynez 106 M 31st.
June.

Shimizu.
FY-29 Mission San Luis Obispo 106 M 5th.

Part IV. Remarks. Item A-Navy special.
Recap current schedule per slate 11.

May.
Slate 272 schedule 263.

June.
Slate 705 schedule 795.

July.
Slate 384 schedule 339.

August.
Slate 524 schedule 533.

Total May/Aug. Slate 1885 schedule 1930.

Item B. Source Navy special liftings. All May/July
ex Bahrain except FB-260 and FB-306. Source August cargoes
undetermined.

COTTULA

INFORMATION : G-4

NOTE : This msg passed by AG Radio Unit via Courier to CG
EIGHTH ARMY (SAPGJ) YOKOHAMA JAPAN for info.

89222

DEFERRED
UNCLASSIFIED

TOO : 261451 Z
MCN : AUB 110/26

-3-

Inclosure No. 1

GENERAL HEADQUARTERS, FAR EAST COMMAND
ADJUTANT GENERAL'S OFFICE
RADIO AND CABLE CENTER

INCOMING MESSAGE

G-4

*319.1
arrival*

UNCLASSIFIED
DEFERRED

FROM : ASPPA WASH DC
TO : CINCFE (APO) TOKYO JAPAN
INFO : COMNAVFE TOKYO JAPAN
NR : NUMBER 311590

TER/hdw

G-4 ROUTING	
<input checked="" type="checkbox"/>	A C/S G-4
<input checked="" type="checkbox"/>	DAC/S G-4
<input checked="" type="checkbox"/>	EXECUTIVE
	20 May 50
	OPERATIONS
	CONST & FAC
	SUPPLY
	PETROLEUM
<input checked="" type="checkbox"/>	ADMINISTRATION

Weekly Estimated Arrival Schedule.
Part 1. Clean Products.
Balance May.
Yokohama.
F-89 Schuykill 81 mogas 44 range fuel 20th.
June.
Yokohama.
F-94 Mission Buenaventura 135 mogas 2d,
F-88 Daisui 62 diesel 16th,
F-95 cargo 40 kero 80 mogas 16th.
Yokosuka.
F-96 San Diego 77 diesel 4th.
Naha.
F-88 Daisui 40 diesel 13th.
Manila.
F-93 Gyokuei 40 diesel 29th,
F-98 60 JP-1 30th.
July.
Sasebo.
F-93 Gyokuei 40 diesel 9th.
Yokohama,
F-98 cargo 60 JP-1 6th,
F-3 Saban 40 mogas 28th,

87214

(over)
DEFERRED
UNCLASSIFIED



UNCLASSIFIED
DEFERRED

FROM : ASPPA WASH DC NR : NUMBER 311590 20 MAY 50
----- ----- CONT'D

F-97 Ryuho 90 mogas 28th.
 Naha.
 F-99 Nichinan (vice F-1 Nichinan) 48 mogas 4th,
 F-3 Saban 50 mogas 23d.
 Part II. Navy special all ex PG.
 Balance May.
 Yokohama.
 FB-261 Shoho 93 M 23d.
 Yokosuka.
 FB-281 Seria 79 M 29th.
 June.
 Manila.
 FB-260 Mitsushima 60 M 9th,
 FB-345 Hashi date 58 M 30th.
 Yokosuka.
 FB-260 Mitsushima 30 M 21st,
 FB-2 2 Chuei 94 M 16th,
 FB-283 Tsuruoka 90 M 22d,
 FB-287 Toa 85 M 24th,
 FB-284 Daiho 90 M 25th,
 FB-304 Yuyo 90 M 29th.
 Sasebo.
 FB-285 Fujisan 90 M 15th.
 Yokohama.
 FB-306 Chigusa 84 M 18th.
 July.
 Kure.
 FB-307 Zuiun 91 M 10th,
 FB-286 Number 5 Yamamiz 78 M 13th.
 Yokohama.
 FB-346 Number 1 Nisshin 73 M 13th.
 Sasebo.
 FB-308 Shoho 87 M 25th.
 August.
 Yokosuka.

87214

DEFERRED
UNCLASSIFIED

DECLASSIFIED

Authority NN0975029

GENERAL HEADQUARTERS, FAR EAST COMMAND
ADJUTANT GENERAL'S OFFICE
RADIO AND CABLE CENTER

INCOMING MESSAGE

UNCLASSIFIED
DEFERRED

FROM : ASPPA WASH DC NR : NUMBER 311590 20 MAY 50
CONT'D

FB-1 Seria 88 M 5th,
FB-2 Mitsushima 40 M 22d,
FB-5 Chuei 91 M 15th,
FB-4 Daiho 89 M 28th,
FB-11 Toa 83 M 28th.
Manila,
FB-2 Mitsushima 60 M 10th.
Sasebo.
FT-3 Tsuruoka 82 M 29th.
Part III. Crude oil.
Balance May.
Mayinotsu.
FY-23 Cache 105 M 22d,
FY-28 Mission Santa Ynez 104 M 31st.
Yokohama.
FY-27 Mission Santa Clara 105 M 26th.
Kudamatsu.
FY-26 Pamanset 102 M.27th.
June.
Shimivzu.
FY-29 Mission San Luis Obispo 104 M 5th.
Part IV. Remarks Item A Navy special.
Recap current schedule per slate 11.
May.
Slate 272 schedule 263.
June.
Slate 705 schedule 771.
July.
Slate 384 schedule 329.
August.
Slate 524 schedule 533.

87214

(over)
DEFERRED
UNCLASSIFIED

UNCLASSIFIED
DEFERRED

FROM : ASPPA WASH DC NR : NUMBER 311590 20 MAY 50

CONT. D

Total May/August. Slate 1885 schedule 1896.
Item B. Source Navy special liftings.
All May/July ex Bahrein except FB-260 FB-306.
Source August cargoes undetermined.
Item C. Crude oil.
Additional cargoes will be indicated when product has
been purchased.

NO SIG

INFORMATION : G-4 UNCLASSIFIED

NOTE : This msg passed by AG Radio Unit via Courier to CG
EIGHTH ARMY (SAPO) YOKOHAMA JAPAN for info.

87214

DEFERRED
UNCLASSIFIED

TOO : 191750 Z
MCN : AUB 33/20

UNCLASSIFIED

GENERAL HEADQUARTERS, FAR EAST COMMAND
ADJUTANT GENERAL'S OFFICE
RADIO AND CABLE CENTER

319 arrival

INCOMING MESSAGE

UNCLASSIFIED
DEFERRED

13 May 50

FROM : ASPPA WASH DC
TO : CINCPC (APO) TOKYO JAPAN
INFO : COMNAVFE TOKYO JAPAN
NR : NUMBER 311579



Wkly estimated arrival schedule.
Part I-clean products.
Balance May.

- Yokohama. F-92 Mission San Fernando 48 diesel 15th,
- F-81 Mission San Diego 137 mogas 14th,
- F-57 Mission Purisima 56 grade 80 mogas 76 grade 72 mogas 17th.
- F-89 Schuykill 81 mogas 44 range fuel 19th.
- June. Yokohama. F-94 cargo 130 mogas 3d,
- F-95 cargo 40 kero 80 mogas 16. F-98 cargo 60 JP-1 26th.
- Yokosuka. F-96 San Diego 77 diesel 4th.
- Naha. F-88 Daiyu 102 diesel 13th.
- Manila. F-93 Gyokuei 40 diesel 29th.

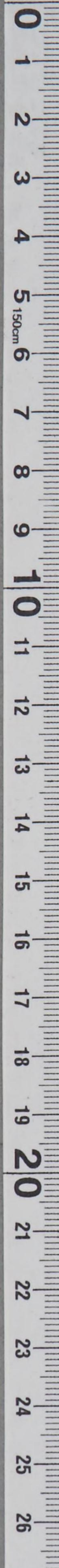
- July.
- Manila. F-98 cargo 60 JP-1 2d.
- Sasebo. F-93 Gyokuei 40 diesel 9th.
- Naha. F-1 Michinan 46 mogas 22d,
- F-3 Jaban 50 mogas 23d.
- Yokohama. F-3 Jaban 40 mogas 28th,
- F-97 Ryuho 90 mogas 28th.

Part II-Navy special all ex PG.
Balance May.
Yokohama. O-261 Shocho 93 M 23d.
Yokosuka. FB-281 Seria 79 M 29th.

84829

(over)
DEFERRED
UNCLASSIFIED

G-4 ROUTING	
<input checked="" type="checkbox"/>	A C/S G-4
<input checked="" type="checkbox"/>	D AC/S G-4
<input checked="" type="checkbox"/>	EXECUTIVE
<input type="checkbox"/>	PLANS & POLICY
<input type="checkbox"/>	OPERATIONS
<input type="checkbox"/>	CONST & FAC
<input type="checkbox"/>	SUPPLY
<input checked="" type="checkbox"/>	PETROLEUM
<input type="checkbox"/>	REGISTRATION



UNCLASSIFIED
DEFERRED

FROM : ASPPA NR : NUMBER 311579 13 MAY 50 CONT'D

June.
Manila. FB-260 Mitsushima 60 M 9th,
FB-345 Hashi date 58 M 30th.
Sasebo. FB-285 Fujisan 90 M 15th.
Yokosuka. FB-260 Mitsushima 30 M 21st,
FB-282 Chuei 94 M 16th,
FB-283 Tsuruoka 90 M 22d,
FB-287 Toa 85 M 24th,
FB-284 Daiho 90 M 25th,
FB-304 Yuyo 90 M 29th,
Yokohama. FB-306 Chigusa 84 M 18th.

July.
Kure. FB-286 No 5 Yamamizu 75 M 6th,
FB-307 Zuiun 91 M 10th.
Yokohama. FB-346 No 1 Nisshin 73 M 13th.
Sasebo. FB-308 Shoho 87 M 25th.
August. Yokosuka. FB-1 Seria 88 M 5th,
FB-2 Mitsushima 40 M 22d,
FB-5 Chuei 91 M 15th,
FB-4 Daiho 89 M 28th,
FB-11 Toa 83 M 28th.
Manila. FB-2 Mitsushima 60 M 10th.
Sasebo. FB-3 Tsuruoka 82 M 29th.

Part III-crude oil.
Bal May.
Shimotsu. FY-24 Mission San Rafael 107 M 16th,
FY-23 Cache 105 M 22d,
FY-28 Mission Santa Ynez 104 M 31st.
Yokohama. FY-27 Mission Santa Clara 105 M 25th.
Kudamatsu. FY-26 Pamanset 104 M 27th.

June.
Shimizu. FY-29 Mission San Luis Obispo 104 M 5th.
Part IV-Remarks. *****

August. Slate 524 schedule 533. Total May/August.
Slate 1885 schedule 1893.
Item B-source Navy special liftings. All May/July ex
Bahrein except FB-260 and FB-286.
Source August cargoes undetermined.

INFORMATION : G-4

COTULLA

NOTE: Svc has been reqstd for missing portions indicated by asterisks.

84829

DEFERRED
UNCLASSIFIED

TOO : 121916 Z
MCN : AUA 27/13

GENERAL HEADQUARTERS, FAR EAST COMMAND
ADJUTANT GENERAL'S OFFICE
RADIO AND CABLE CENTER

INCOMING MESSAGE

JA/hdw

31901 arrival

UNCLASSIFIED
DEFERRED

G-4 ROUTING	
A C/S G-4	_____
D AC/S G-4	_____
6 May 50 EXECUTIVE	_____
PLANS & POLICY	_____
OPERATIONS	_____
CONST & FAC	_____
SUPPLY	_____
PETROLEUM	_____
PERSONNEL	_____
ADMINISTRATION	_____

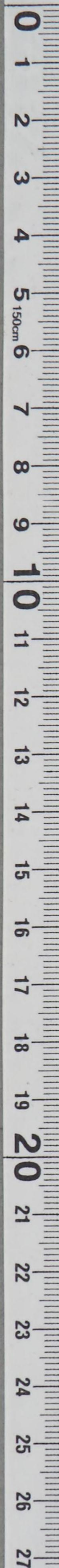
FROM : ASPPA WASH DC
 TO : CINCFE (FOR AREA PETROLEUM OFFICER) TOKYO JAPAN
 INFO : COMNAVFE TOKYO JAPAN
 NR : NUMBER 311559

Weekly Estimated Arrival Schedule.
 Part I-Clean products.
 Balance May.
 Yokohama.

- F-83 Soubarissen A***** QS 1 8th,
- 6th, F-90 Mission Los Angeles 15 Grade 115 avgas 71 JP-1
- F-92 Mission San Fernando 48 diesel 15th,
- F-81 Mission San Diego 137 mogas 14th,
- 17th, F-57 Mission Purisima 56 grade 80 mogas 76 grade 72 mogas
- F-89 Schuylkill 81 mogas 44 range fuel 18th,
- Manila. F-90 Mission Los Angeles 15 grade 115 avgas 20 JP-1 13th.
- Naha. F-92 Mission San Fernando 70 diesel 10th.
- June.
- Yokohama. F-94 cargo 130 mogas 4th,
- F-95 cargo 40 kero 80 mogas 16th,
- Yokosuka. F-96 San Diego 77 diesel 4th.
- Naha. F-88 Daisui 102 diesel 13th.

82421

(over)
DEFERRED
UNCLASSIFIED



UNCLASSIFIED
DEFERREDFROM: ASPPA NR: NUMBER 311559 6 MAY 50 CONT:D

Manila.

F-93 Gyokusai 40 diesel 28th.
Part II-Navy special all EX PG.
Balance May.

Yokohama.

FB-259 Zuiun 91 M 10th,
FB-261 Shoho 93 M 23d.

Yokosuka.

FB-281 Seria 79 M 29th.

June.

Manila.

FB-260 Mitsushima 60 M 10th.

Yokosuka.

FB-260 Mitsushima 40 M 22d,
FB-282 Chuei 94 M 16th,
FB-283 Tsuruoka 90 M 22d,
FB-287 Toa 85 M 23d,
FB-284 Daiho 90 M 25th,
FB-304 Yuyo 90 M 29th.

Sasebo.

FB-285 Fujisan 90 M 17th.

Yokohama.

FB-306 Chigusa 84 M 18th.

July.

Yokosuka.

FB-286 Nbr 5 Yamamizu 75 M 1st,
FB-307 Zuiun 90 M 18th,
FB-308 Shoho 87 M 25th,
FB-346 Nbr 1 Niesshin 82 M 29th.

Manila.

FB-245 Hashi date 50 M 1st.

Part III-Crude oil.

Balance May.

Kudamatsu.

FY-20 Shawnee Trail 104 M 9th,
FY-26 Pamanset 104 M 27th.

Shimotsu.

FY-22 Mission San Luis Rey 105 M 9th,
FY-24 Mission San Rafael 107 M 16th,
FY-23 Cache 104 M 21st,

82421

(over)
DEFERRED
UNCLASSIFIED

DECLASSIFIED

Authority NNO975029

GENERAL HEADQUARTERS, FAR EAST COMMAND
ADJUTANT GENERAL'S OFFICE
RADIO AND CABLE CENTER
UNCLASSIFIED
DEFERRED

INCOMING MESSAGE

FROM : ASPPA NR: TUMBLE 31055 6 MAY 90 CONT'D

FY-28 Mission Santa Ynez 104 M 26th.
Yokohama.

FY-25 Cohocton 101 M 11th,

FY-27 Mission Santa Clara 104 M 25th,
June.
Shimizu.

FY-29 Mission San Luis Obispo 104 M 5th.

Part IV-Remarks.

Item A-Navy special.

Recap current schedule per Slate 10.

May.

Slate 200 Schedule 263.

June.

Slate 1036 Schedule 713.

July.

Slate 332 Schedule 384.

Total May/July.

Slate 1568 Schedule 1360.

Item B-source Navy special liftings.

All May/July Ex Bahrain except FB-260 and FB-286.

Item C-crude oil.

July, Aug, and Sept crude schedule will be given when product purchased.

COTULLA

INFORMATION : G-4, FEAF

NOTE : Svc has been requested for correction of underscored portions and for verification of mission portions as indicated by asterisks.

NOTE : This msg will be passed as required when svc is recd.

82421

DEFERRED
UNCLASSIFIED

T00 : 051725 Z
MCN : AUC 130/05

DECLASSIFIED

Authority NNO975029

0
1
2
3
4
5
6
7
8
9
10
11
12
13
14
15
16
17
18
19
20
21
22
23
24
25
26
27

G-4 ROUTING
A C/S G-4
D AC/S G-4

GENERAL HEADQUARTERS, FAR EAST COMMAND
ADJUTANT GENERAL'S OFFICE
RADIO AND CABLE CENTER

G-4

INCOMING MESSAGE

ELT/cmk

3191

UNCLASSIFIED
DEFERRED

29 Apr 50

FROM : ASPPA WASH DC
TO : CINCFE (APO) TOKYO JAPAN
INFO : COMNAVFE TOKYO JAPAN
NR : NUMBER 311551

G-4 ROUTING	
A C/S G-4	_____
OPAC/S G-4	_____
EXECUTIVE	<i>M</i>
PLANS & POLICY	_____
OPERATIONS	_____
CONST & FAC	_____
SUPPLY	_____
PETROLEUM	<i>/</i>
PERSONNEL	_____
ADMINISTRATION	<i>D</i>

Weekly Estimated Arrival Schedule.

Part I. Clean products.

Balance Apr.

Yokohama.

F-85 Pioneer Valley 42 mogas 29th.

May.

Yokohama.

F-91 Mission San Jose 125 mogas 4th,

F-83 Subarissen 65 JP-1 8th,

F-90 Mission Los Angeles 15 Grade 115 avgas 71 JP-1 6th,

F-92 Mission San Fernando 48 diesel 13th,

F-81 Mission San Diego 137 mogas 14th,

F-57 Mission Purisima 55 Grade 80 mogas 75 Grade 72

mogas 16th,

F-89 cargo 83 mogas 45 range fuel 15th.

Naha.

F-83 Subarissen 50 JP-1 4th,

F-92 Mission San Fernando 70 diesel 8th.

Manila.

F-90 Mission Los Angeles 15 Grade 115 avgas 20 JP-1 13th,

Jun.

Yokohama.

F-94 cargo 130 mogas 4th,

F-95 cargo 40 kero 80 mogas 17th.

Yokosuka.

F-96 San Diego 74 diesel 4th.

Naha.

F-88 Daisui 102 diesel 13th.

Manila. F-93 Gyokuei 40 diesel 28th.

Part II. Navy Special all ex FO.

(over)

DEFERRED
UNCLASSIFIED

80193

0
1
2
3
4
5
6
7
8
9
10
11
12
13
14
15
16
17
18
19
20
21
22
23
24
25
26

UNCLASSIFIED
DEFERREDFROM : ASPPA WASH DC NR : NUMBER 311551 29 APR 50 CONT'D

Balance Apr.

Yokohama.

FB-238 Yuyo 88 M 29th.

May.

Yokohama.

FB-259 Zuiun 91 M 10th,

FB-261 Shono 90 M 25th,

Yokosuka.

FB-281 Seria 89 M 31st,

June.

Manila.

FB-260 Mitsushima 60 M 10th.

Sasebo.

FB-285 Fujisan 90 M 17th.

Yokosuka.

FB-260 Mitsushima 30 M 22d,

FB-283 Tsuruoka 82 M 12th,

FB-282 Chuei 94 M 16th,

FB-284 Baiho 90 M 20th,

FB-287 Toa 83 M 25th,

FB-304 Yuyo 85 M 29th.

Yokohama.

FB-206 Chigusa 84 M 18th.

July.

Yokosuka.

FB-286 Number 5 Yamamizu 75 M 1st,

FB-307 Zuiun 90 M 18th,

FB-308 Shoho 87 M 25th,

FB-346 Number 1 Niashin 82 M 29th.

Manila.

FB-245 Hashi Date 50 M 1st.

Part III. Crude oil.

Balance Apr.

Kudamatsu.

FY-19 Mission San Luis Obispo 106 M 30th,

May.

Kudamatsu.

FY-20 Shawnee Trail 104 M 7th,

FY-26 Pamanset 104 M 23d.

Shinotsu.

FY-22 Mission San Luis Rey 105 M 9th,

FY-23 Cache 104 M 17th,

FY-24 Mission San Rafael 104 M 17th,

80193

DEFERRED
UNCLASSIFIED

DECLASSIFIED

Authority NNO975029

GENERAL HEADQUARTERS, FAR EAST COMMAND
ADJUTANT GENERAL'S OFFICE
RADIO AND CABLE CENTER

INCOMING MESSAGE

UNCLASSIFIED
DEFERRED

FROM : ASPPA WASH DC NR : NUMBER 311551 29 APR 50 CONT'D

FY-28 Mission Santa Ynez 104 M 29th,
Yokohama.

FY-25 Cohocton 104 M 15th,

FY-27 Mission Santa Clara 104 M 27th.

June.

Shimizu.

FY-29 Mission San Luis Obispo 104 M 5th.

Part IV. Remarks.

Item A-Navy special. Recap current schedule per slate 10.

Apr. Slate 1106 schedule 1129.

May. Slate 200 schedule 270.

Jun. Slate 1036 schedule 698.

Jul. Slate 332 schedule 384.

Total Apr-Jul. Slate 2674 schedule 2481.

Item B-Source Navy special liftings. All Apr-Jun ex
Bahrein except FB-249, FB-315 and FB-260. Source FB-306, FB-304
and all Jul cargoes undetermined.

NO SIG

INFORMATION : G-4

NOTE : This msg passed by AG Rad Unit via Courier to CG
EIGHTH ARMY (ATTN SAPOJ) YOKOHAMA JAPAN for info.
(29 Apr 50)

80193

DEFERRED
UNCLASSIFIED

TOO : 282035 Z
MCN : AUB 17/29

GENERAL HEADQUARTERS, FAR EAST COMMAND
ADJUTANT GENERAL'S OFFICE
RADIO AND CABLE CENTER

INCOMING MESSAGE

*3/9/50
arriving*

CORRECTED COPY
UNCLASSIFIED
DEFERRED

ELF/bgn	6-4
A C/S G-4	
D AC/S G-4	
EXECUTIVE	
PLANS & POLICY	
22 Apr 50	
OPERATIONS	
CONST & FAC	
SUPPLY	
PETROLEUM	ERC(m)
PERSONNEL	
ADMINISTRATION	K

FROM : ASPPA WASH DC
TO : CINCPAC (APO) TOKYO JAPAN
INFO : COMNAVFE TOKYO JAPAN
NR : NUMBER 311536

Weekly Estimated Arrival Schedule.
Part 1. Clean products.
Balance Apr.

Sasebo: F-82 Mission Buenaventura 120 diesel 24th.
Naha: F-85 Pioneer Valley 39 Grade 100 avgas 40 mogas 24th.
Yokohama: F-85 Pioneer Valley 52 mogas 29th.
May.
Naha: F-91 Mission San Jose 50 mogas 1st, F-83 Soubarissen 50 JP-1 4th, F-92 cargo 70 diesel 10th.
Yokohama: F-91 Mission San Jose 75 mogas 4th, F-83 Soubarissen 65 JP-1 8th, F-90 cargo 15 Grade 115 avgas 70 JP-1 6th, F-92 cargo 45 diesel 15th, F-57 cargo 55 Grade 80 mogas 75 mogas 14th, F-89 cargo 83 mogas 45 range fuel 15th, F-81 cargo 130 mogas 16th.
Manila: F-90 cargo 15 Grade 115 avgas 20 JP-1 13th.
Jun.
Yokohama: F-94 cargo 130 mogas 5th, F-95 cargo 40 kero 80 mogas 17th.
Yokosuka: F-96 San Diego 74 diesel 9th.
Naha: F-88 Daisui 102 diesel 13th.
Manila: F-93 Gypkeui 40 diesel 28th.
Part 2. Navy special all ex PG.
Balance Apr.

77810

(over)
DEFERRED
UNCLASSIFIED

TOO : 211528 Z
MCN : AUB 121/21

COMMUNICATIONS SECTION

CORRECTED COPY
UNCLASSIFIED
DEFERRED

FROM : ASPPA WASH DC NR : NUMBER 311536 22 APR 50 CONT'D

Yokosuka: FB-315 Tallulah 105 M 22d.
 Sasebo: FB-337 Number 5 Yamamizu 76 M 24th, FB-36.
 Aucilla 80 M NS 30 diesel 25th.
 Yokohama: FB-238 Yuyo 88 M 29th.
 May.
 Yokohama: FB-259 Zuion 91 M 10th, FB-261 Shoho 90 M 25th.
 Yokosuka: FB-281 Seria 89 M 31st.
 Jun.
 Manila: FB-260 Mitsushima 60 M 10th.
 Yokosuka: FB-260 Mitsushima 30 M 22d, FB-283 Tsuruoka
 82 M 12th, FB-282 Chuei 94 M 16th, FB-284 Daiho 90 M 20th,
 FB-287 Toa 83 M 25th, FB-304 Yuyo 85 M 29th.
 Sasebo: FB-285 Fujisan 90 M 17th.
 Yokohama: FB-306 Chigusa 84 M 18th.
 Yokosuka: ~~FB-286 number 5 Yamamizu 75 M 1st, FB-307 Zuion
 99 M 15th, FB-308 Shoho 87 M 25th, FB-346 Nbr 1 Misshin, 82 M 29th~~
 Manila: FB-345 Hashi date 50 M 1st.
 Part 3. Crude oil.
 Balance Apr.
 Shimotsu: FY-17 Mission Santa Clara 106 M 23d, FY-18
 Mission Santa Ynez 103 M 24th.
 Shimizu: FY-21 Mission Santa Ana 105 M 28th.
 Kudamatsu: FY-19 Mission San Luis Obispo 106 M 30th.
 May.
 Kudamatsu: FY-20 Shawnee Trail 104 M 7th, FY-26 Pamanset
 104 M 23d.
 Shimotsu: FY-22 Mission San Luis Rey 104 M 8, FY-23 Cache
 104 M 16th, FY-24 Mission San Rafael 104 M 16th, FY-28 Mission
 Santa Ynez 104 M 29th.
 Yokohama: FY-25 Cohocton 104 M 15th, FY-27 Mission
 Santa Clara 104 M 27th.
 Jun.
 Shimizu: FY-29 Mission San Luis Obispo 104 M 5th.

77810

DEFERRED.
 UNCLASSIFIED

GENERAL HEADQUARTERS, FAR EAST COMMAND
 ADJUTANT GENERAL'S OFFICE
 RADIO AND CABLE CENTER

CORRECTED COPY

UNCLASSIFIED
 INTERNAL

INCOMING MESSAGE

FROM : ASPPA WASH DC NR : NUMBER 311536 22 APR 50 CONT'D

Part 4. Remarks: Item A-Navy special. Recap current schedule per Slate 10.

Apr. Slate 1106 schedule 1129.

May. Slate 200 schedule 270.

Jun. Slate 1036 schedule 698.

Jul. Slate 332 schedule 384.

Total Apr/Jul. Slate 2674 schedule 2481.

Item B. Source Navy special liftings. All Apr/Jun ex Bahrain except FB-249, FB-232, FB-315 and FB-260.

Source FB-306 and all Jul cargoes not determined.

COTULLA

REVISED (22 Apr 50)

INFORMATION : G-4, FEAF

NOTE : Corrected copy received AG/OR 221710 I.

NOTE : This msg passed by AG Rad Unit via Courier to CG EIGHTH ARMY (SAPOJ) YOKOHAMA JAPAN for action. (22 Apr 50)

77810

DEFERRED
 UNCLASSIFIED

TOO : 211528 Z
 MCN : AUB 121/21

DECLASSIFIED

Authority NNO 975029

0
1
2
3
4
5
6
7
8
9
10
11
12
13
14
15
16
17
18
19
20
21
22
23
24
25
26
27



GENERAL HEADQUARTERS, FAR EAST COMMAND
 ADJUTANT GENERAL'S OFFICE
 RADIO AND CABLE CENTER

INCOMING MESSAGE

6-4
319.1
arrivals

ELT/bgn

UNCLASSIFIED
 DEFERRED

22 Apr 50

FROM : ASPPA WASH DC
 TO : CINCFE (APO) TOKYO JAPAN
 INFO : COMNAVFE TOKYO JAPAN
 NR : NUMBER 311536

①

CRCL(m)

②

K

Weekly Estimated Arrival Schedule.

Part 1. Clean products.

Balance Apr.

Sasebo: F-82 Mission Buenaventura 120 diesel 24th.

Naha: F-85 Pioneer Valley 39 Grade 100 avgas 40 mogas 24th.

Yokohama: F-85 Pioneer Valley 52 mogas 29th.

May.

Naha: F-91 Mission San Jose 50 mogas 1st, F-83 Soubarissen 50 JP-1 4th, F-92 cargo 70 diesel 10th.

Yokohama: F-91 Mission San Jose 75 mogas 4th, F-83 Soubarissen 65 JP-1 8th, F-90 cargo 15 Grade 115 avgas 70 JP-1 6th, F-92 cargo 45 diesel 15th, F-57 cargo 55 Grade 80 mogas 75 mogas 14th, F-89 cargo 83 mogas 45 range fuel 15th, F-81 cargo 130 mogas 16th.

Manila: F-90 cargo 15 Grade 115 avgas 20 JP-1 13th.

Jun.

Yokohama: F-94 cargo 130 mogas 5th, F-95 cargo 40 kero 80 mogas 17th.

Yokosuka: F-96 San Diego 74 diesel 9th.

Naha: F-88 Daisui 102 diesel 13th.

Manila: F-93 Gypkeui 40 diesel 28th.

Part 2. Navy special all ex PG.

Balance Apr.

(over)

77810

DEFERRED
 UNCLASSIFIED

TOO : 211528 Z
 MCN : AUB 121/21

UNCLASSIFIED
DEFERRED

FROM : ASPPA WASH DC NR : NUMBER 311536 22 APR 50 CONT'D

Yokosuka: FB-315 Tallulah 105 M 22d.
 Sasebo: FB-337 Number 5 Yamamizu 76 M 24th, FB-95
 Aucilla 80 M NS 30 diesel 25th.
 Yokohama: FB-238 Yuyo 88 M 29th.

May.

Yokohama: FB-259 Zuiun 91 M 10th, FB-261 Shoho 90 M 25th.
 Yokosuka: FB-281 Serial 89 M 31st.

Jun.

Manila: FB-260 Mitsubishi 60 M 10th.
 Yokosuka: FB-260 Mitsubishi 30 M 22d, FB-283 Tsuruoka
 82 M 12th, FB-282 Chuei 94 M 16th, FB-284 Daiho 90 M 20th,
 FB-287 Toa 83 M 25th, FB-304 Yuyo 85 M 29th.
 Sasebo: FB-285 Fujisan 90 M 17th.
 Yokohama: FB-306 Chigusa 84 M 18th.

Jul.

***** FB-308 Shoho 87 M 25th, FB-346 Nbr 1 Misshin
 82 M 29th.

Manila: FB-345 Hashi date 50 M 1st.

Part 3. Crude oil.

Balance Apr.

Shimotsu: FY-17 Mission Santa Clara 106 M 23d, FY-18
 Mission Santa Ynez 103 M 24th.

Shimizu: FY-21 Mission Santa Ana 105 M 28th.

Kudamatsu: FY-19 Mission San Luis Obispo 106 M 30th.

May.

Kudamatsu: FY-20 Shawnee Trail 104 M 7th, FY-26 Pamanset
 104 M 23d.

Shimotsu: FY-22 Mission San Luis Rey 104 M 8, FY-23 Cache
 104 M 16th, FY-24 Mission San Rafael 104 M 16th, FY-28 Mission
 Santa Ynez 104 M 29th.

Yokohama: FY-25 Cohocton 104 M 15th, FY-27 Mission
 Santa Clara 104 M 27th.

Jun.

Shimizu: FY-29 Mission San Luis Obispo 104 M 5th.

77810

DEFERRED
UNCLASSIFIED

DECLASSIFIED

Authority NNO975029

GENERAL HEADQUARTERS, FAR EAST COMMAND
ADJUTANT GENERAL'S OFFICE
RADIO AND CABLE CENTER

INCOMING MESSAGE

UNCLASSIFIED
DEFERRED

FROM : ASPPA WASH DC NR : NUMBER 311536 22 APR 50 CONT'D

Part 4. Remarks: Item A-Navy special. Recap current schedule per Slate 10.

Apr. Slate 1106 schedule 1129.

May. Slate 200 schedule 270.

Jun. Slate 1036 schedule 698.

Jul. Slate 332 schedule 384.

Total Apr/Jul. Slate 2674 schedule 2481.

Item B. Source Navy special liftings. All Apr/Jun ex Bahrein except FB-249, FB-232, FB-315 and FB-260.

Source FB-306 and all Jul cargoes not determined.

COTULLA

REVISED (22 Apr 50)

INFORMATION : G-4, NEAP

NOTE : Service has been requested for correction of missing portions indicated by asterisks.

NOTE : This msg will be passed as requested when service is received.

77810

DEFERRED
UNCLASSIFIED

TOO : 211528 Z
MCN : AUB 121/21

-3-

DECLASSIFIED

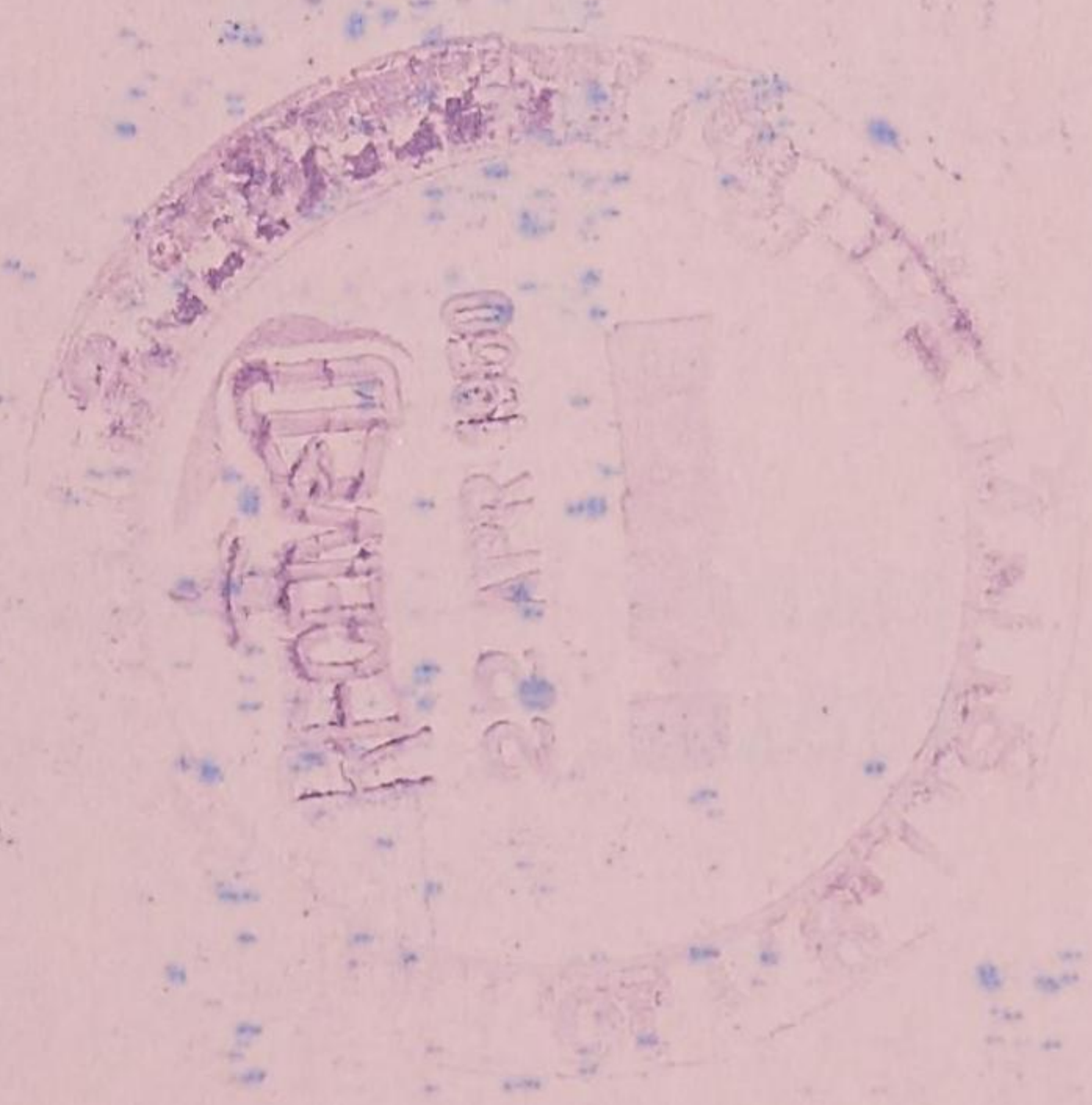
Authority NNO975029

0
1
2
3
4
5
6
7
8
9
10
11
12
13
14
15
16
17
18
19
20
21
22
23
24
25
26
27

[Faint, illegible text and markings on a light-colored page with two punch holes.]

SECRET (TOP SECRET)
EXCLUDED FROM AUTOMATIC DOWNGRADING AND
DECLASSIFICATION

This document is classified SECRET and is to be controlled in accordance with the provisions of the Atomic Energy Act of 1954, as amended, and Executive Order 12958, as amended.



GENERAL HEADQUARTERS, FAR EAST COMMAND
ADJUTANT GENERAL'S OFFICE
RADIO AND CABLE CENTER

INCOMING MESSAGE

*319.1
Arrival*

UNCLASSIFIED
DEFERRED

G-4 ROUTING	
AS/S G-4	
AD/S G-4	
EXECUTIVE	
WG/ank POLICY	
OPERATIONS	
CONST & FAC	
SUPPLY	
15 APR 50	
PETROLEUM	
PERSONNEL	
ADMINISTRATION	

FROM : ASPPA WASH DC
 TO : CINCPAC (APO) TOKYO JAPAN
 INFO : COMNAVFE TOKYO JAPAN
 NR : NUMBER 311523

Weekly Estimated Arrival Schedule.
 Part 1. Clean Products.
 Balance April.

Sasebo. F-72 Daisui 103 diesel 18th, F-82 Mission Buena Ventura 120 diesel 24th.
 Naha. F-35 Pioneer Valley 39 grade 100 avgas 40 mogas 24th, F-91 cargo 50 mogas 29th.
 Yokohama. F-85 Pioneer Valley 52 mogas 29th.

May:

Yokohama. F-91 cargo 80 mogas 3d, F-83 cargo 70 JP-1 6th, F-90 cargo 15 grade 115 avgas 70 JP-1 6th, F-92 cargo 45 diesel 15th, F-89 cargo 83 mogas 45 range fuel 15th, F-57 cargo 70 grade 80 mogas 60 grade 72 mogas 16th, F-81 cargo 130 mogas 16th.
 Naha. F-83 cargo 50 JP-1 1st, F-92 cargo 70 diesel 10th.

Manila. F-90 cargo 15 grade 115 avgas 20 JP-1 13th.

June:

Yokohama. F-94 cargo 130 mogas 5th, F-95 cargo 40 kero 80 mogas 6th,
 Yokosuka. E San Diego 74 diesel 9th,
 Naha. F-38 Daisui 100 diesel 15th,
 Manila. F-93 Gyokusai 40 diesel 28th.

Part 2. Navy special ail ex PG.

Balance April.

Yokosuka. FB-249 Tomahawk 44 M 16th, FB-236 Toa 84 M 20th, FB-315 Tallulah 105 M 22d.
 Yokohama. FB-235 Tsukuba 90 M 10th, FB-210 Mitsushima 99 M 12th, FB-232 Daiho 104 M 13th, FB-234 Fujisan 100 M 15th, FB-211 Chuo 101 M 17th, FB-238 Yuyo 88 M 29th.

(over)

DEFERRED
UNCLASSIFIED

75561

UNCLASSIFIED
DEFERRED

FROM : AMPRA WASH DC RM : NUMBER 311523 15 APR 50 CONT'D

Sasebo. FB-296 Aucilla 80 M NS 30 diesel 25th,
FB-237 Number 5 Yamazizu 75 M 26th.

May:

Yokohama. FB-259 Zuiun 90 M 12, FB-261 Shoho 90 M
25th.

Yokosuka. FB-281 Noeria 89 M 31st.

June:

Manila. FB-260 Mitsushima 60 M 1st.

Yokosuka. FB-260 Mitsushima 40 M 13th, FB-283
Suzuka 82 M 12th, FB-282 Chuei 91 M 20th, FB 284 Daiho
90 M 20th, FB-287 Toa 83 M 25th, FB-304 Yuyo 85 M 29th.Sasebo. FB-285 Fujisan 89 M 16th, FB-306 Chigusa
83 M 30th (destination desired).

July:

Yokosuka. FB-286 Number 5 Yamazizu 75 M 1st, FB-307
Zuiun 90 M 18th, FB-308 Shoho 87 M 25th, FB-346 Number 1
Nishin 82 M 29th.

Manila. FB-345 Hashi Date 50 M 1.

Part 3. Crude Oil

Balance April.

Yokohama. FY-16 Pamanset 102 M 18th,

Shimotsu. FY-17 Mission Santa Clara 106 M 23d, FY-18
Mission Santa Ynez 103 M 24th.

Shizu. FY-21 Mission Santa Ana 105 M 28th.

May:

Kudanatsu. FY-19 Mission San Luis Obispo 104 M 1st
FY-20 Shawnee Trail 104 M 8th, FY-26 Pamanset 104 M 22d.Shimotsu. FY-22 Mission San Luis Rey 104 M 9th,
FY-23 Cache 104 M 16th, FY-24 Mission San Rafael 104 M 18th,
FY-28 Mission Santa Ynez 104 M 29th.Yokohama. FY-25 Cohocton 104 M 17th, FY-27 Mission
Santa Clara 104 M 27th.

June:

Shizu. FY-29 Mission San Luis Obispo 104 M 5th.

Part 4. Remarks. Item A-Navy special. recap current
schedule per slate 10.

Apr. Slate 986-schedule 1129.

May. Slate 200-schedule 269.

Jun. Slate 876-schedule 703.

Jul. Slate 282-schedule 384.

Total April/July. Slate 2344-schedule 2485.

Item B-Crude Oil. Recap current schedule per Slate 10.

75561

DEFERRED
UNCLASSIFIED

DECLASSIFIED

Authority NNO975029

GENERAL HEADQUARTERS, FAR EAST COMMAND
ADJUTANT GENERAL'S OFFICE
RADIO AND CABLE CENTER

INCOMING MESSAGE

UNCLASSIFIED
DEFERRED

FROM : ASPFA WASH DC, NR : NUMBER 311523 15 APR 50 CONT'D

Apr. Slate 1049-schedule 1041.

May. Slate 945-schedule 936.

Jun. Slate 105-schedule 104.

Jul. Slate 0-schedule 0.

Total April/July. Slate 2099-schedule 2081.

Item C-Source Navy special liftings. All April/June ex
Bahrein except FB-249, FB-232, FB-315 and FB-284. Source
FB-304, FB-305 and all July cargoes not determined.

COTULLA

INFORMATION : G-4

NOTE : This msg passed by AG Radio Unit via courier to CG EIGHTH
ARMY (ATTN SAPOJ) YOKOHAMA JAPAN for info.

75561

DEFERRED
UNCLASSIFIED

TOO : 142157 Z
MCN : AUB 32/15

DECLASSIFIED

Authority NN0975029

11

0
1
2
3
4
5
6
7
8
9
10
11
12
13
14
15
16
17
18
19
20
21
22
23
24
25
26
27

RECEIVED
15 APR 1950

GENERAL HEADQUARTERS, FAR EAST COMMAND
ADJUTANT GENERAL'S OFFICE
RADIO AND CABLE CENTER

INCOMING MESSAGE

*319.1
Arrivals*

UNCLASSIFIED
DEFERRED

PTS/111

8 Apr 50

G-4 ROUTING	
<input checked="" type="checkbox"/>	C/S G-4
<input checked="" type="checkbox"/>	DAO/S G-4
<input checked="" type="checkbox"/>	EXECUTIVE
<input checked="" type="checkbox"/>	PLANS & POLICY
<input checked="" type="checkbox"/>	OPERATIONS
<input checked="" type="checkbox"/>	INST & FAC
<input checked="" type="checkbox"/>	SUPPLY
<input checked="" type="checkbox"/>	PETROLEUM
<input checked="" type="checkbox"/>	PERSONNEL
<input checked="" type="checkbox"/>	ADMINISTRATION

FROM : ASPPA WASH DC
 TO : CINCPAC (APO) TOKYO JAPAN
 INFO : COMNAVFE TOKYO JAPAN
 NR : NUMBER 311505

Weekly estimated arrival schedule.
 Part 1-clean products.
 Balance April.

Naha. F-85 Schuskill 34 diesel 12th, F-91 cargo 50 mogas 29th, F-8 cargo 50 30th.
 Sasebo. F-72 Daishui 103 diesel 18th, F-82 Mission Buenaventura 120 diesel 25th.

May.

Yokohama. F-91 cargo 80 mogas 3d, F-83 cargo 70 JP-1, 5th F-90 cargo 15 grade 115 avgas 70 JP-1 7th, D-81 cargo 130 mogas 12th, F-92 cargo 45 diesel 20th, F-57 cargo 50 JP-1 70 grade 80 mogas 16th, F-89 cargo 90 mogas 40 range fuel 16th.

Manila. F-90 cargo 15 grade 115 mogas 20 JP-1 14th.

Naha. F-92 cargo 70 diesel 15th, F-83 cargo 40 grade 100 avgas 40 mogas 26th.

Part 2-Navy special all ex PG.

Balance April.

Subic Bay. FB-249 Tomahawk 60 M 8th.

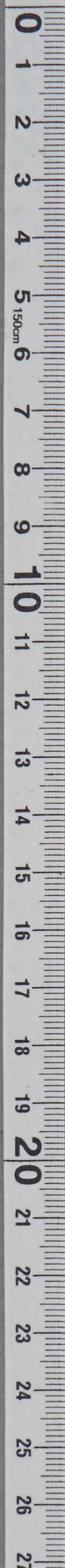
Yokosuka. FB-249 Tomahawk 44 M 16th, FB-236 Toa 84 M 20th, FB-315 Tallulam 105 M 22d.

Yokohama. FB-235 Tsuruoka 90 M 10th, FB 210 Mitsushima 99 M 12th, FB 232 Daiho 104 M 85th, FB-234 Fujisan 100 M 15th, FB-211 Chusei 101 M 17th, FB-238 Yuyo 88 M 29th.

(over)

73128

DEFERRED
UNCLASSIFIED



UNCLASSIFIED
DEFERREDFROM : ASPPA WASH DC NR NER 311505 8 APR 50 CONTINUEDNagasaki. FB-296 Aucilla 80 M NS 30 diesel 25th.
Sasebo. FB-237 Number 5 Yamemizu 76 M 26th.

May.

Yokohama. FB-259 Zuiun 90 M 12th, FB-261 Shoho
87 M 25th.

Yokosuka. FB-281 Seria 88 M 30th.

June.

Manila. FB-260 Mitsushima 60 1st.

Yokohama. FB-260 Mitsushima 40 M 13th.

Yokosuka. FB 283 Tsuruoka 82 M 12th, FB-282 Chuoi
91 M 20th, FB-284 Daiho 90 M 20th, FB-287 Toa 83 M 25th, FB-
304 Yuyo 100 M 29th.

Destination unknown. FB-206 Chigusa 100 M 30th.

Part 3-crude oil.

Balance April.

Shimotsu. FY-13 Cache 102 M 11th, FY-14 Mission
San Rafael 105 M 13th, FY-18 Mission Santa Ynez 104 M 24th.

Mudamatsu. FY-15 Cohocton 104 M 13th.

Yokohama. FY-16 Pamanset 102 M 18th.

Shimizu. FY-17 Mission Santa Clara 104 M 24th, FY-
21 Mission Santa Ana 104 M 30th.

May.

Kudamatsu. FY-19 Mission San Luis Obispo 104 M 1st,
FY-20 Shawnee Trail 104 M 8th, FY-26 Pamanset 104 M 22d .Shimotsu. FY-22 Mission San Luis Rey 104 M 11th,
FY-23 Cache 104 M 16th, FY-24 Mission San Rafael 104 M 18th,
FY-28 Mission Santa Ynez 104 M 29th.Yokohama. FY-25 Cohocton 104 M 17th, FY-27 Mission
Santa Clara 104 M 27th.

June.

Shimizu. FY-29 Mission San Luis Obispo 104 M 5th.

Part 4-remarks.

Item A-Navy special. Recap current schedule per Slate
9. April. Slate 264-schedule 1129. May Slate 376-schedule
265. June. Slate 928 schedule 735. Total April/June. Slate
258-schedule 2129.
73128DEFERRED
UNCLASSIFIED

DECLASSIFIED

Authority NNO975029

GENERAL HEADQUARTERS, FAR EAST COMMAND
ADJUTANT GENERAL'S OFFICE
RADIO AND CABLE CENTER

INCOMING MESSAGE

UNCLASSIFIED
DEFERRED

FROM : ASPPA WASH DC NR : NBR 311505 8 APR 50 CONTINUED

Item B-source Navy special liftings. All April/
June ex Zahrein except FB-249, FB-232, FB-315 and FB-284.

Item C-crude oil. Recap current schedule per Slate
9. April. Slate 1050-schedule 933. May. Slate 735-schedule
936. June. Slate 315-schedule 104. Total April/June. Slate
2100-schedule 1973.

NO SIG

INFORMATION : G-4 PEAR

NOTE : This msg passed by AG Radio Unit via courier to
CG EIGHTH ARMY (SAPOJ) YOKOHAMA JAPAN for info.

73128

DEFERRED
UNCLASSIFIED

TOO : 071746 Z
MCN : AUC 128/07

-3-

GENERAL HEADQUARTERS, FAR EAST COMMAND
ADJUTANT GENERAL'S OFFICE
RADIO AND CABLE CENTER

G-4 ROUTING	
A C/S G-4	_____
D AC/S G-4	_____
EXECUTIVE	_____
PLANS & POLICY	_____
OPERATIONS	_____
CONST & FAC	_____
SUPPLY	_____
PETROLEUM	_____
PERSONNEL	_____
ADMINISTRATION	_____

INCOMING MESSAGE

JA/com

*319-1
Arrival*

UNCLASSIFIED
DEFERRED

1 Apr 50

FROM : ASPFA WASH DC
 TO : CINCPAC (APO) TOKYO JAPAN
 INFO : COMNAVFE TOKYO JAPAN
 NR : NUMBER 311489

Weekly estimated arrival schedule.
Part I-clean products.

April.

Yokohama. F-71 Nichinan 46 diesel 1st, F-80 Mission
 San Diego 133 grade 100 avgas 4th.
 Shimotsu. F-84 Muir Woods 129 Mogas 2d.
 Manila. F-54 Mission Dmexts Hojp-1 20 Gfry bx 115
 avgas 7th, F-86 Schuykill 80 diesel 6th.
 Naha. F-86 Schuykill 34 diesel 12th, F-91 cargo 50
 mogas 29th, F-83 cargo 50 JP-1 30th.
 Sasebo. F-72 Daisui 103 diesel 18th, F-82 cargo 115
 diesel 23d.

May.

Yokohama. F-91 cargo 80 mogas 3d, F-83 cargo 70 JP-1
 5th, E-90 cargo 15 grade 115 avgas 70 JP-1 7th, F-81 cargo
 130 mogas 13th, F-89 cargo 90 mogas 40 range fuel 16th,
 F-92 cargo 45 diesel 20th, F-57 cargo 50 JP-1 70 grade 80
 mogas 16th.
 Manila F-90 cargo 15 grade 115 avgas 20 JP-1 14th.
 Naha. F-92 cargo 70 diesel 15th, F-85 cargo 40 mogas
 40 grade 100 avgas 28th.

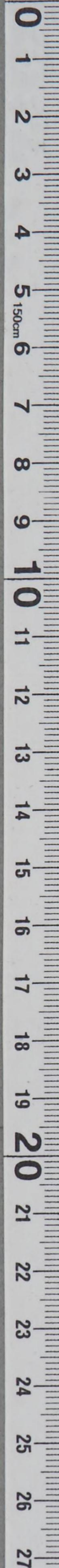
Part II-black products all ex PG.

April.

Yokohama. FB-233 seria 98 NS 3d, FB-235 Tsuruoka
 90 NS 10th, FB-210 Mitsuishina 99 NS 12th, FB-232 Daiho 104 13th,
 FB-234 Fujisan 100 NS 15th, FB-211 Chuei 101 NS 17th, FB-238
 Quyo 85 NS 28th.

(over)
DEFERRED
UNCLASSIFIED

70721



UNCLASSIFIED
DEFERREDFROM : ASPPA WASH DC NR : NO 311489 1 APR 50 CONT'D

Subic Bay. FB-249 Tomahawk 60 NS 8th.
 Yokosuka. FB-249 Tomahawk 44 NS 16th, FB-236 Toa 84 NS
 20th, FB-315 Tallulah 100 NS 23d.
 Nagasaki. FB-296 Aucilla 80 NS 30 diesel 25th.
 Sasebo. FB-237 No 5 Yamamizu 75 NS 27th.

May.

Yokohama. FB-259 Zulu 90 NS 12th, FB-261 Shoho 87
 NS 27th.

June.

Manila. FB-216 Mitsushima 60 NS 1st.
 Yokohama. FB-260 Mitsushima 40 NS 13th.
 Yokosuka. FB-281 Seria 88 NS 5th, FB-283 Tsuruoka 82
 NS 12th, FB-280 San Diego 73 NS 14th, FB-284 Daiho 90 NS 18th,
 FB-282 Chuel 91 NS 20th, FB-287 Toa 83 NS 26th, FB 286 No 5
 Yamamizu 7 NS 27th.

Sasebo. FB-285 Fujisan Gio NS 18th.

Part III- Crude oil.

Shimotsu. FY-11 Mission Soledad 104 M 4th, FY-12 Mission
 San Luis Rey 103 M 8th, FY-18 Mission Santa Ynez 104 M 24th,
 Yokohama. FY-13 Cache 102 M 9th, FY-16 Pamapsat 104 M
 20th.

Kudamatsu. FY-15 Cohocton 105 M 13th, FY-14 Mission
 San Rafael 105 M 14th, FY-21 Mission Santa Ana 104 M 30th.
 Shimizu. FY-17 Mission Santa Clara 104 M 23d.

May.

Kudamatsu. FY-19 Mission San Luis Obispo 104 M 1st.
 Yokohama. FY-20 Shawnee Trail 104 M 5th, FY-25 Cohocton
 104 M 17th.

Shimotsu. FY-22 Mission San Luis Rey 104 M 11th, FY-23
 Cache 104 M 14th, FY-24 Mission San Rafael 104 M 19th, FY-26
 Pamapsat 104 M 23d, FY-28 Mission Santa Ynez 104 M 29th.
 Shimizu. FY-27 Mission Santa Clara 104 M 29th.

June.

Shimizu. FY-29 Mission San Luis Obispo 104 M 7th.

Part IV-remarks.

Item A-Navy special. Recap current schedule per slate 9.
 April. Slate 864-schedule 1120. May. Slate 376-schedule 177.
 June. Slate 928-schedule 771. Total April/June. Slate 2168
 schedule 2068.

Item B-source Navy special liftings. All April/May ex
 Bahrain except FB-249, FB-232 and FB-315. Source June cargoes
 undetermined.

70721

DEFERRED
UNCLASSIFIED

DECLASSIFIED

Authority NNO975029

GENERAL HEADQUARTERS, FAR EAST COMMAND
ADJUTANT GENERAL'S OFFICE
RADIO AND CABLE CENTER

UNCLASSIFIED

INCOMING MESSAGE

FROM : ASPPA WASH DC NR : NO 311489 1 APR 50 CONT'D

Item C. Crude Oil. Recap current schedule per slate 9.
April. Slate 1050-schedule 935. May. Slate 735-schedule 936.
June. Slate 315-schedule 104. Total April/June. Slate
2100-schedule 1975.

Item D. Meru will be omitted from ves names.

COTULLA

INFORMATION: 6-4, PEAR

NOTE: This msg passed by AG Radio Unit via courier to
CG EIGHTH ARMY (SAFOJ) YOKOHAMA JAPAN per info.

70721

DEFERRED
UNCLASSIFIED

TOO : 311544 Z
MCN : AUA 149/31

GENERAL HEADQUARTERS, FAR EAST COMMAND
ADJUTANT GENERAL'S OFFICE
RADIO AND CABLE CENTER

INCOMING MESSAGE

319.1

G + ROUTING	
①	A C/S G-4
	AC/S G-4
	EXECUTIVE
	JA/COM
	PLANS & POLICY
	OPERATIONS
	CONST & FAC
	SUPPLY
	PETROLEUM
	25 Mar 50
	PERSONNEL
②	ADMINISTRATION

UNCLASSIFIED
DEFERRED

FROM : ASPPA WASH DC
 TO : CINCPAC (APO) TOKYO JAPAN
 INFO : COMNAVFE TOKYO JAPAN
 NR : NUMBER 311476

Weekly estimated arrival schedule.
 Part 1-clean products.
 Balance March.

Yokohama. F-78 Mission San Carlos 121 diesel 29th, F-84
 Muir Woods 129 mogas 31st, F-77 Mission San Fernando 138 mogas
 31st, F-54 Mission Dolores 5 JP-1 25 grade 115 avgas 30 grade 30
 lube 31st.

April.

Manila. F-54 Mission Dolores 40 JP-1 20 grade 115 avgas
 7th, F-86 Schuylkill 80 diesel 6th.

Yokohama. F-71 Nichinan Maru 46 diesel 1st, F-80 cargo
 130 grade 100 avgas 4th.

Naha. F-86 Schuylkill 35 diesel 12th, F-91 cargo 50 mogas
 29th, F-83 cargo 50 JP-1 30th.

Sasebo. F-72 Daisui Maru 103 diesel 18th, F-82 cargo 115
 diesel 23d.

May.

Yokohama. F-91 cargo 80 mogas 3d, F-83 cargo 70 JP-1 5th,
 F-81 cargo 130 mogas 13th, F-89 cargo 90 mogas 40 range fuel 14th,
 F-90 cargo 15 grade 115 avgas 70 JP-1 17th, F-57 cargo 50 JP-1 70
 grade 80 mogas 16th, F-92 cargo 45 diesel 21st.

Manila. F-90 cargo 15 grade 115 avgas 20 JP-1 14th.

Naha. F-92 cargo 70 diesel 16th, F-85 cargo 40 grade 100
 avgas 40 mogas 28th.

18210

(over)
 DEFERRED
 UNCLASSIFIED

UNCLASSIFIED
DEFERREDFROM : ASPPA WASH NR : NUMBER 311476 25 MAR 50 CONT'D

Part II-black products all ex PG.

Bal March. None.

April.

Yokohama. FB-233 Seria Maru 98 NS 3d, FB-235 Tsuruoka Maru 90 NS 10th, FB-210 Mitsushima Maru 99 NS 12th, FB-232 Daiho Maru 104 NS 13th, FB-24 Fujisun Maru 100 NS 15th, FB-211 Chuei Maru 100 NS 21st, FB-238 Yuyo Maru 95 NS 28th.

Subic Bay. FB-249 Tomahawk 60 NS 11th,

Yokosuka. FB-249 Tomahawk 40 NS 17th, FB-315 Tallulah 100 NS 23d, FB-236 Toa Maru 91 NS 27th.

Nagasaki. FB-296 Aucilla 80 NS 30 diesel 25th.

Sasebo. FB-237 Number 5 Yamamizu Maru 84 NS 27th.

May.

Yokohama. FB-259 Zuion Maru 100 NS 12th, FB-261 Shoho Maru 100 NS 27th XHQCE.

Manila. FB-260 Mitsushima Maru 60 NS 1st.

Yokohama. FB-260 Mitsushima Maru 40 NS 13th.

Yokosuka. FB-281 Seria Maru 100 NS 5th, FB-283 Tsuruoka Maru 90 NS 12th, FB-280 San Diego Maru 72 NS 14th, FB-284 Daiho Maru 100 NS 18th, FB-282 Chuei Maru 100 NS 20th, FB-287 Toa Maru 80 NS 26th, FB-286 No 5 Yamamizu Maru 84 NS 27th.

Sasebo. FB-285 Fujisun Maru 100 NS 18th.

Part III-crude oil.

Balance March. None.

April.

Shimotsu. FY-11 Mission Soledad 104 M 2d, FY-12 Mission San Luis Rey 103 M 5th, FY-18 Mission Santa Ynez 104 M 24th.

Shimizu. FY-10 Shawnee Trail 106 M 3d, FY-17 Mission Santa Clara 104 M 23d.

Yokohama. FY-13 Cache 104 M 9th, FY-16 Pamanset 104 M 20th.

Kudamatsu. FY-15 Cohocton 104 M 10th, FY-14 Mission San Rafael 104 M 11th.

May.

Kudamatsu. FY-19 Mission San Luis Obispo 104 M 1st, FY-21 Mission Soledad 104 M 8th.

Yokohama. FY-20 Shawnee Trail 104 M 5th, FY-25 Cohocton 104 M 17th.

Shimotsu. FY-22 Mission San Luis Rey 104 M 11th, FY-23 Cache 104 M 16th, FY-24 Mission San Rafael 104 M 19th, FY-26 Pamanset 104 M 23d.

Shimizu. FY-27 Mission Santa Clara 104 M 22d.

68210

DEFERRED
UNCLASSIFIED

DECLASSIFIED

Authority NNO975029

GENERAL HEADQUARTERS, FAR EAST COMMAND
ADJUTANT GENERAL'S OFFICE
RADIO AND CABLE CENTER

INCOMING MESSAGE

DEFERRED

FROM : ASPPA WASH NR : NUMBER 311476 25 MAR 50 CONT'D

June.

Shimotsu. FY-28 Mission Santa Ynez 104 M 1st.

Shimizu. FY-29 Mission San Luis Obispo 104 M 4th.

Part IV-remarks.

Item A-Navy Special. Recap current schedule per slate 9.

March. Slate 791-schedule 805.

April. Slate 864-schedule 1141.

May. Slate 376-schedule 200.

June. Slate 928-schedule 1141.

May. Slate 376-schedule 200.

June. Slate 928-schedule 836.

Total March/June. Slate 2959-schedule 2982.

Item B-source Navy Special liftings all March/May ex
Bahrein except FB-188, FB-208, FB-269, FB-247, FB-249, FB-232
and FB-315.

Source June cargoes undetermined.

Item C-crude oil. Recap current schedule per slate 9.

March. Slate 520-schedule 532.

April. Slate 1050-schedule 937.

May. Slate 735-schedule 936.

June. Slate 315-schedule 204.

COTULLA

INFORMATION : G-4, FEAF

NOTE : This msg passed by AG Radio Unit via Courier to CG
EIGHTH ARMY (SAPOJ) YOKOHAMA JAPAN for info.

68210

DEFERRED
UNCLASSIFIED

TOO : 241806 Z
MCN : AUB 167/24

GENERAL HEADQUARTERS, FAR EAST COMMAND
ADJUTANT GENERAL'S OFFICE
RADIO AND CABLE CENTER

6-3

INCOMING MESSAGE

TER/ghc

UNCLASSIFIED
DEFERRED

18 Mar 50

FROM : ASPPA WASH DC
TO : CINCPAC (APO) TOKYO JAPAN
INFO : COMNAVFE TOKYO JAPAN
NR : 311464

m

G-4 ROUTING

1 C/S G-4

D AC/S G-4

EXECUTIVE

PLANS & POLICY

OPERATIONS

CONST & FAC

SUPPLY

PETROLEUM

PERSONNEL

ADMINISTRATION

2

319.1

Weekly Estimated Arrival Schedule.

I. Clean products.

Balance Mar:

Naha:

F-79 Mission San Jose 60 mogas 19th,
F-78 Mission San Carlos 60 diesel 28th.

Yokohama:

F-84 Muir Woods 129 mogas 29th,
F-77 Mission San Fernando 138 mogas 31st,
F-54 cargo 5 JP-1 25 Grade 115 avgas 30 Grade 30

lube 31st.

April:

Yokohama:

F-78 Mission San Carlos 66 diesel 3d,
F-71 Nichina Maru 46 diesel 1st,
F-80 cargo 130 mogas 6th.

Manila:

F-54 cargo 40 JP-1 20 Grade 115 avgas 7th,
F-86 cargo 80 diesel 6th.

Naha:

F-86 cargo 35 diesel 12th,
F-91 cargo 50 mogas 29th,
F-83 cargo 50 JP-1 30th.

Sasebo:

F-72 Daisui Maru 103 diesel 18th,
F-82 cargo 115 diesel 23d.

65713

(over)
DEFERRED
UNCLASSIFIED

UNCLASSIFIED
DEFERREDFROM : ASPPA WASH DC NR : NBR 311464 18 MAR 50 CONT'D

May:

Yokohama:

F-91 cargo 80 mogas 3d,
 F-83 cargo 70 JP-1 5th,
 F-81 cargo 130 mogas 13th,
 F-89 cargo 90 mogas 40 range fuel 14th,
 F-90 cargo 15 Grade 115 avgas 70 JP-1 17th,
 F-57 cargo 50 JP-1 70 Grade 80 mogas 16th,
 F-92 cargo 45 diesel 21st.

Manila:

F-90 cargo 15 Grade 115 avgas 20 JP-1 14th.

Naha:

F-92 cargo 70 diesel 16th,
 F-85 cargo 40 Grade 100 avgas 40 mogas 28th.

II. Black products all ex PG.

Balance Mar:

Yokosuka:

FB-247 Millicoma 106 NS 18th.

Yokohama:

FB-209 Shoho Maru 98 NS 23d.

April:

Yokohama:

FB-233 Seria Maru 98 NS 4th,
 FB-210 Mitsushima Maru 100 NS 11th,
 FB-235 Tsuruoka Maru 90 NS 13th,
 FB-232 Daiho Maru 100 NS 14th,
 FB-234 Fujisan Maru 100 NS 17th,
 FB-211 Chuei Maru 100 NS 21st,
 FB-238 Yuyo Maru 95 NS 28th.

Subic Bay:

FB-249 Tomahawk 60 NS 11th.

Yokosuka:

FB-249 Tomahawk 40 NS 17th,
 FB-315 Tallulah 100 NS 23d,
 FB-236 Toa Maru 91 NS 22d.

Sasebo:

FB-237 Nbr 5 Yamemizu Maru 84 NS 27th.

May:

Nagasaki:

FB-296 Aucilla 80 NS 30 diesel 1st.

Yokohama:

FB-259 Zuiun Maru 100 NS 12th,
 FB-261 Shoho Maru 100 NS 27th.

65716

DEFERRED
UNCLASSIFIED

GENERAL HEADQUARTERS, FAR EAST COMMAND
 ADJUTANT GENERAL'S OFFICE
 RADIO AND CABLE CENTER

INCOMING MESSAGE

UNCLASSIFIED
 DEFERRED

FROM : ASPPA WASH DC NR : NBR 311464 18 MAR 50 CONT'D

June:

Manila:

FB-260 Mitsushima Maru 60 NS 1st.

Yokohama:

FB-260 Mitsushima Maru 40 NS 13th.

Yokosuka:

FB-281 Seria Maru 100 NS 5th,

FB-283 Tsuruoka Maru 90 NS 12th,

FB-280 San Diego Maru 72 NS 14th,

FB-284 Daiho Maru 100 NS 18th,

FB-282 Chuei Maru 100 NS 20th,

FB-287 Toa Maru 90 NS 26th,

FB-286 Nbr 5 Yamamizu Maru 84 NS 27th.

Sasebo:

FB-285 Fujisan Maru 100 NS 18th.

III. Crude oil.

All cargoes ETA Japan area per MYMSG 311448 DTG 102030 Z.
 Suppliers all cargoes per MYMSG Nbr 311455 DTG 142106 Z. Advise
 destinations earliest.

IV. Remarks.

Item A-Navy special. Recal current schedule per Slate 9.

Mar: Slate 791-Schedule 805,

Apr: Slate 864-Schedule 1058,

May: Slate 376-Schedule 280,

Jun: Slate 928-Schedule 746.

Total Mar/June: Slate 2959-Schedule 2889.

Item B-Source Navy special liftings.

All Mar/May ex Bahrain except: FB-188, FB-208,
 FB-269, FB-247, FB-249 and FB-232.

Source June cargoes undetermined.

Advise desired crude cargo destinations soonest.

COTULLA

INFORMATION : G-4

NOTE : This msg passed by AG Radio Unit via Courier to CG
 EIGHTH ARMY (SAPOJ) YOKOHAMA JAPAN for info.

65716

DEFERRED
 UNCLASSIFIED

TOO : 171633 Z
 MCN : AUB 155/17

GENERAL HEADQUARTERS, FAR EAST COMMAND
ADJUTANT GENERAL'S OFFICE
RADIO AND CABLE CENTER

INCOMING MESSAGE

G-4

319.1
Arrival

UNCLASSIFIED
DEFERRED

TER/tjc

ROUTING	
A. C/S G-4	
AC/S G-4	
EXECUTIVE	
PLANS & POLICY	
OPERATIONS	
CONST & FAC	
SUPPLY	
PETROLEUM	<input checked="" type="checkbox"/>
PERSONNEL	
ADMINISTRATION	

11 Mar 50

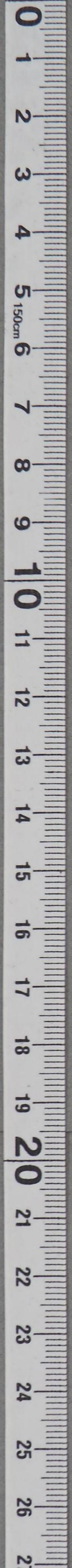
FROM : ASPPA WASH DC
 TO : CINCFE (FOR AREA PETROLEUM OFFICER) TOKYO JAPAN
 INFO : COMNAVFE TOKYO JAPAN
 NR : NUMBER 311448

Weekly Estimated Arrival Schedule.
 Part 1. Clean products.
 March.

Naha.
 F-79 Mission San Jose 60 mogas 19th, F-78 cargo 60
 diesel 29th;
 Shimotsu.
 F-79 Mission San Jose 71 mogas 24th.
 Yokohama.
 F-78 cargo 55 diesel 3d, F-77 cargo 130 mogas 31st,
 F-84 cargo 130 mogas 31st, F-54 cargo 5 JP-1 25 grade 115 avgas
 30 grade 30 lube 31st.
 April.
 Manila.
 F-54 cargo 40 JP-1 20 grade 115 avgas 7th, F-86 cargo
 80 diesel 6th.
 Yokohama.
 F-71 Nichinan Maru 46 diesel 1st, F-80 cargo 130 grade
 100 avgas 6th.
 Naha.
 F-86 cargo 35 diesel 12th, F-91 cargo 50 mogas 29th,
 F-83 cargo 50 JP-1 30th.
 Sasebo.
 F-72 Daisui Maru 100 diesel 14th, F-82 cargo 115 diesel
 21st.

63178

(over)
DEFERRED
UNCLASSIFIED



UNCLASSIFIED
DEFERREDFROM : ASPPA WASH DC NR : NUMBER 311448 11 MAR 50 CONT'D

May.

Yokohama.

F-91 cargo 80 mogas 3d, F-83 cargo 70 JP-1 5th, F-92 cargo 45 diesel 7th, F-90 cargo 15 grade 115 avgas 70 JP-1 18th, F-81 cargo 130 mogas 12th, F-57 cargo 50 JP-1 70 grade 80 mogas 14th, F-89 cargo 90 mogas 40 range fuel 14th, F-85 cargo 50 mogas 28th.

Naha.

F-92 cargo 70 diesel 2d, F-85 cargo 40 grade 100 avgas 40 mogas 24th.

Manila.

F-90 cargo 15 grade 115 avgas 20 JP-1 11th.

Part 2. Black products all ex PG.

March.

Yokohama.

FB-269 Pamanset 105 NS 11th, FB-209 Shoho Maru 98 NS 23d.

Manila.

FB-248 Aucilla 91 NS 27 diesel 13th.

Yokosuka.

FB-247 Millicoma 106 NS 14th.

April.

Yokohama.

FB-233 Seria Maru 99 NS 5th, FB-210 Mitsushima Maru 100 NS 11th, FB-235 Tsuruoka Maru 90 NS 13th, FB-232 Daiho Maru 100 NS 14th, FB-234 Fujisan Maru 100 NS 17th, FB-211 Chuei Maru 100 NS 21st, FB-238 Yuyo Maru 95 NS 28th.

Subic Bay.

FB-249 Tomahawk 60 NS 11th.

Yokosuka.

FB-249 Tomahawk 40 NS 17th, FB-315 Tallulah 100 NS 23d, FB-236 Toa Maru 91 NS 27th.

Sasebo.

FB-237 Nbr 5 Yamamizu Maru 84 NS 27th.

May.

Nagasaki.

FB-296 Aucilla 80 NS 30 diesel 1st.

Yokohama.

FB-259 Zuiun Maru 100 NS 12th, FB-261 Shoho Maru 100 NS 27th.

June.

Yokosuka.

FB-281 Seria Maru 100 NS 5th, FB-283 Tsuruoka Maru 90 NS 12th, FB-280 San Diego Maru 72 NS 14th, FB-284 Daiho Maru 100 NS

63178

DEFERRED
UNCLASSIFIED

GENERAL HEADQUARTERS, FAR EAST COMMAND
 ADJUTANT GENERAL'S OFFICE
 RADIO AND CABLE CENTER

INCOMING MESSAGE

UNCLASSIFIED
 DEFERRED

FROM : ASPPA WASH DC NR : NUMBER 311448 1 MAR 50 CONT'D

18th, FB-282 Chuei Maru 100 NS 20th, FB-287 Toa Maru 90 NS
 26th, FB-286 Nbr 5 Yamamizu Maru 84 NS 27th.

Sasebo.

FB-285 Fujisan Maru 100 NS 18th.

Manila.

FB-260 Mitsushima Maru 60 NS 1st.

Yokohama.

FB-260 Mitsushima Maru 40 NS 13th.

Part 3. Crude oil.

Balance March.

Kidamatsu.

FY-9 Mission Santa Clara 108 M 17th.

Yokohama.

FY-7 Mission Santa Ynez 109 M 18th.

Shimizu.

FY-8 Mission San Luis Obispo 104 M 23d.

April.

Yokohama.

FY-10 Shawnee Trail 104 M 1st, FY-16 Pamanset 104 M 16th.

Kudamatsu.

FY-11 Mission Soledad 104 M 4th, FY-17 Mission Santa
 Clara 104 M 20th.

Shimotsu.

FY-12 Mission San Luis Rey 104 M 8th, FY-15 Cohocton 104
 M 13th, FY-14 Mission San Rafael 104 M 14th, FY-18 Mission Santa
 Ynez 104 M 24th.

Shimizu.

FY-13 Cache 104 M 10th.

May.

Shimotsu.

FY-19 Mission San Luis Obispo 104 M 1st, FY-22 Mission
 San Luis Rey 104 M 14th, FY-24 Mission San Rafael 104 M 21st,
 FY-26 Pamanset 104 M 22d, FY-27 Mission Santa Clara 104 M 26th.

Yokohama.

FY-20 Shawnee Trail 104 M 2d, FY-25 Cohocton 104 M 20th.

63178

DEFERRED
 UNCLASSIFIED

UNCLASSIFIED
DEFERREDFROM : ASPPA WASH DC NR : NUMBER 311448 1 MAR 50 CONT'D

Kudamatsu.

FY-21 Mission Soledad 104 M 8th.

Shimizu.

FY-23 Cache 104 M 16th.

June.

FY-28 Mission Santa Ynez 104 M destination requested.

Part 4. Remarks.

Item A. Navy special.

Recap FY-29 Mission San Luis Obispo 104 M 4th destination requested- Schedule 1059.

May. Slate 376-Schedule 280.

June. Slate 928-Schedule 746.

Total March/June Slate 2959-Schedule 2889.

Item B. Source Navy special liftings.

All March/May ex Bahrein except FB-188, FB-208, FB-269, FB-247, FB-249 and FB-232.

Source June liftings undetermined.

Item C. Request entire schedule black, clean and crude be reviewed and acceptability confirmed.

COZULLA
COZULLA

INFORMATION : G-4

NOTE : This msg passed by AG Rad Unit via Courier to CG
EIGHTH ARMY (SAPOJ) YOKOHAMA JAPAN for info.

63178

DEFERRED
UNCLASSIFIEDTOO : 102030 Z
MCN : AUB 04/11

GENERAL HEADQUARTERS, FAR EAST COMMAND
ADJUTANT GENERAL'S OFFICE
RADIO AND CABLE CENTER

INCOMING MESSAGE

3/9/1

WG/ole

UNCLASSIFIED
DEFERRED

4 Mar 50

FROM : ASPPA WASH DC
TO : CINCPC (APO) TOKYO JAPAN
NR : NUMBER 311423

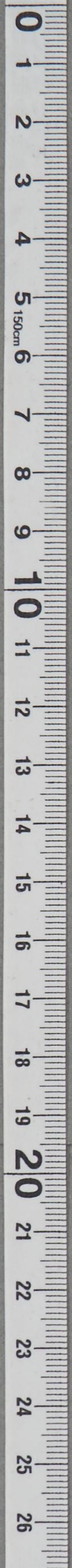
G-4 ROUTING	
A C/S G-4	
D AC/S G-4	
EXECUTIVE	
PLANS & POLICY	
OPERATIONS	
CONST & FAC	
SUPPLY	
PETROLEUM	
PERSONNEL	
ADMINISTRATION	

Weekly Estimated arrival schedule.
Part 1-Clean Products.
March.

Yokohama
 tube 4th, F-52 Mission Santa Ana balance 95 mogas 28 gde 30
 F-75 Mission Santa Barbara balance 120 diesel 6th,
 F-77 cargo 130 mogas 31st.
 Osaka.
 F-75 Mission Santa Barbara 28 diesel 3d.
 Naha.
 F-79 cargo 60 mogas 21st,
 F-78 cargo 60 diesel 28th.
 Shimotsu.
 F-79 cargo 70 mogas 25th.
 April.
 Yokohama.
 F-78 cargo 55 diesel 2d,
 F-84 cargo 130 mogas 5th,
 F-54 cargo 5
 JP-1 25 grade 115 avgas 30 grade 30 tube 13th,
 F-71 Nichinan Maru 46 diesel 7th,
 F-80 cargo 130 grade 100 avgas 10th,
 F-57 cargo 50
 JP-1 70 grade 80 mogas 30th.
 Manila.
 F-54 cargo 40
 JP-1 20 grade 115 avgas 6th,
 F-86 cargo 80 diesel 6th,

60711

(over)
DEFERRED
UNCLASSIFIED



UNCLASSIFIED
DEFERRED

FROM : ASPPA NR : NUMBER 311423 4 MAR 50 CONT'D

Naha.

F-86 cargo 35 diesel 12th,
 F-83 cargo 50,
 JP-1 30th.

Sasebo.

F-72 Da'eui Maru 100 diesel 14th,
 F-82 cargo 115 diesel 17th.

May.

Naha.

F-92 cargo 70 diesel 2d.
 F-91 cargo 50 mogas 3d,
 F-85 cargo 40 grade 100 avgas 40 mogas 24th.

Yokohama.

F-92 cargo 45 diesel 7th,
 F-91 cargo 80 mogas 7th,
 F-90 cargo 15 grade 115 avgas 70
 JP-1 18th,
 F-81 cargo 130 mogas 12th,
 F-89 cargo 90 mogas 40 range fuel 14th,
 F-85 cargo 50 mogas 28th.

Manila.

F-90 cargo 15 grade 115 avgas 20,
 JP-1 11th.

Part 2- Black Products all ex PG.

March.

Yokohama.

FB-208 Zuiun Maru 101 NS 4th,
 FB-269 Panapset 105 NS 11th,
 FB-209 Shoho Maru 98 NS 23d,
 FB-248 Achilles 91 NS 27 diesel 24th.

Osaka.

FB-246 Cache 104 NS 7th.

Yokosuka.

FB-247 Milligoma 106 NS 14th.

April.

Yokohama.

FB-233 Seria Maru 99 NS 6th,
 FB-210 Mitsushima Maru 100 NS 11th,
 FB-249 Tomahawk 40 NS 18th,
 FB-235 Teuruoka Maru 90 NS 13th.

60711

DEFERRED
UNCLASSIFIED

GENERAL HEADQUARTERS, FAR EAST COMMAND
 ADJUTANT GENERAL'S OFFICE
 RADIO AND CABLE CENTER

INCOMING MESSAGE

UNCLASSIFIED
 DEFERRED

FROM : ASPPA NR : NUMBER 311423 4 MAR 50 CONT-D

Yokohama. (cont'd)

FB-232 Daiho Maru 100 NS 14th.
 FB-234 Fujisan Maru 100 NS 17th.
 FB-211 Chuei Maru 100 NS 21st.

Subic Bay.

FB-249 Tomahawk 60 NS 12th.

Sasebo.

FB-237 Number 5 Yamanizu Maru 84 NS 26th.

Yokosuka.

FB-236 Toa Maru 90 NS 28th.

May.

Yokohama.

FB-238 Tuyo Maru 100 NS 2d.
 FB-259 Zuiun Maru 100 NS 12th.
 FB-261 Shoho Maru 100 NS 27th.

Nagasaki.

FB-206 Aucilla 80 NS 30 diesel 5th.

Part 3-Crude oil.

March.

FY-5 Mission San Rafael 107 M 5th Kudamatsu,
 FY-9 Mission Santa Clara 104 M 19th Kudamatsu,
 FY-7 Mission Santa Ynez 104, 21st Yokohama,
 FY-8 Mission San Luis Obispo 104 M 23d Shimizu.

Part 4-Remarks.

Item A-Navy Special, recap per Slate 8.

March. Slate 776-Schedule 698.

April. Slate 764-Schedule 863.

May. Slate 376-Schedule 380.

Total March/May. Slate 1916-Schedule 1941.

Item B-Source Navy Special lifting.

All March/April ex Bahrain except FB-208, FB-269;
 FB-247, FB-249, FB-232 and FB 234. Source May liftings unde-
 termined.

Item C-Additional crude oil cargoes will be indicated
 when supplier and ships determined.

COTULLA

(over)

DEFERRED

UNCLASSIFIED

DECLASSIFIED

Authority NNO975029

UNCLASSIFIED
DEFERRED

FROM : ASPPA NH : NUMBER 311423 4 MAR 50 CONF'D.

INFORMATION : G-4

NOTE : This msg passed by AG/ Radio Unit via Courier to
CG EIGHTH ARMY YOKOHAMA JAPAN for info.

60711

DEFERRED
UNCLASSIFIED

TOO : 032053 Z
MCN : AUA 31/04

3

DECLASSIFIED

Authority NNO975029

GENERAL HEADQUARTERS, FAR EAST COMMAND
ADJUTANT GENERAL'S OFFICE
RADIO AND CABLE CENTER

INCOMING MESSAGE

319.1 arrival

UNCLASSIFIED
DEFERRED

EXECUTIVE	<input checked="" type="checkbox"/>
PLANS & POLICY	<input type="checkbox"/>
OPERATIONS	<input type="checkbox"/>
PERSONNEL ADMINISTRATION	<input checked="" type="checkbox"/>
SUPPLY PETROLEUM	<input checked="" type="checkbox"/>
ST & FAC	<input type="checkbox"/>

25 Feb 50

FROM : ASPPA WASH DC
 TO : CINCPAC (FOR AREA PETROLEUM OFFICER) TOKYO JAPAN
 INFO : COMNAVFA TOKYO JAPAN
 NR : NUMBER 311410

Weekly estimated arrival schedule.
 Part I-clean products,
 March.

Naha.
 F-52 Mission Santa Ana maximum 95 mogas 1st,
 F-79 cargo 60 mogas 23rd,
 F-78 cargo 60 diesel 28th.

Yokohama.
 F-52 Mission Santa Ana balance 95 mogas 24 grade 30

lube 4th,
 F-75 Mission Santa Barbara balance 120 diesel 6th,
 F-77 cargo 130 mogas 31st,

Osaka.
 F-75 Mission Santa Barbara 28 diesel 3rd,

Shimotsu.
 F-79 cargo 70 mogas 27th.

April,
Yokohama.
 F-78 cargo 55 diesel 2nd,

Manila.
 F-86 cargo 80 diesel 6th,

58263

(over)
DEFERRED
UNCLASSIFIED



UNCLASSIFIED
DEFERRED

FROM: ASPPA NR: 244746 25 FEB 50 CONT'D

F-54 cargo maximum 45 JP-1 20 grade 115 avgas 10th,
Naha.

F-86 cargo 35 diesel 12th,

F-83 cargo maximum 120 JP-1 30th.

Yokohama.

F-71 Nichinan Maru 46 diesel 7th,

F-54 cargo balance 45 JP-1 25 grade 115 avgas 30 grade
30 lube 18th.

F-80 cargo 130 grade 100 avgas 11th,

F-84 cargo 130 megas 25th,

Asebo.

F-72 Daisui Maru 100 diesel 14th,

F-82 cargo 115 diesel 20th.

Part II-Black product all ex FG
March.

Yokohama.

FB-188 Yuyo Maru 93 NS 1st,

FB-208 Zuiun Maru 101 NS 4th,

FB-269 Femanset 105 NS 11th,

FB-249 Tallulah 60 NS 28th,

FB-248 Aucilla 80 NS 30 diesel 24th,

FB-209 Shoho Maru 100 NS 26th.

Osaka.

FB-246 Cache 104 NS 7th.

Yokosuka.

FB-247 Millicoma 106 NS 11th.

Subic Bay.

FB-249 Tallulah 60 NS 17th.

April.

Yokohama.

FB-233 Seria Maru 99 NS 6th,

FB-210 Mitsushima Maru 100 NS 11th,

FB-211 Chuei Maru 100 NS 13th,

FB-235 Tsuruoka Maru 90 NS 13th,

FB-232 Daiho Maru 100 NS 14th,

FB-234 Fujisan Maru 100 NS 17th.

Sasebo.

FB-237 Number 5 Yamamizu Maru 84 NS 26th.

Yokosuka.

FB-236 Toa Maru 90 NS 28th.

58263

DEFERRED
UNCLASSIFIED

GENERAL HEADQUARTERS, FAR EAST COMMAND
 ADJUTANT GENERAL'S OFFICE
 RADIO AND CABLE CENTER

INCOMING MESSAGE

UNCLASSIFIED
 DEFERRED

FROM : ASPPA NR : 311410 25 FEB 50 CONT'D

May.

Yokohama.

FB-238 Yuyo Maru 100 NS 2d.

FB-259 Zuinn Maru 100 NS 12th.

FB-261 Shoho Maru 100 NS 27th.

Nyvasaki.

FB-296 cargo 80 NS 30 diesel 5th.

Part III-Crude Oil.

March.

FY-5 Mission San Rafael 107 M 4th Kudamatsu.

FY-6 Cohocton 101 M 4th Shimizu.

FY-9 Mission Santa Clara 104 M 19th Kudamatsu.

FY-7 Mission Santa Ynez 104 M 21st Yokohama.

FY-8 Mission San Luis Obispo 104 M 23d Shimizu.

Part IV-Remarks.

Item A-Navy special. Recap current schedule per
 Slate 8.

February: Slate 914-Schedule 974.

March: Slate 776-Schedule 789.

April: Slate 764-Schedule 763.

May: Slate 376-Schedule 380.

Total February/March: Slate 2830-Schedule 2906.

Item B-Source Navy special liftings: All February/April
 ex Bahrein except FB-162, FB-160, FB-188, FB-208, FB-247, FB-269,
 FB-249, FB-232 and FB-234. Source May liftings undetermined.

Item C. Additional crude oil cargoes will be indicated
 as soon as supplier is determined.

Item D. Cargoes F-85, F-81 and balance F-83 now
 May arrivals.

NO SIG

INFORMATION : G-4

NOTE : This msg passed by AG Rad & Cable Center via Courier to
 CG EIGHTH ARMY (ATTN: SAPOJ) YOKOHAMA JAPAN for info.

58263

DEFERRED
 UNCLASSIFIED

TOO : 241746 Z
 MCN : AUA 81/25

GENERAL HEADQUARTERS, FAR EAST COMMAND
ADJUTANT GENERAL'S OFFICE
RADIO AND CABLE CENTER

G-4 ROUTING

A C/S G-4

D AC/S G-4

EXECUTIVE

PLANS & POLICY

OPERATIONS

CONST & FAC

WG/mfo
SUPPLY
PETROLEUM

PERSONNEL
ADMINISTRATION
18 Feb 50

INCOMING MESSAGE

UNCLASSIFIED
DEFERRED

FROM : ASPPA WASH DC
TO : CINCPAC (AREA PETROLEUM OFFICER) TOKYO JAPAN
INFO : COMNAVFE TOKYO JAPAN
NR : NUMBER 311400.

Weekly estimated arrival schedule.
Part I - clean products. Balance Feb.
Yokohama.

F-67 Muir Woods 137 mogas 22d.
Shimotsu.

F-51 Mission Dolores 93 mog 30 grade 10 lube 23d.
Baseso.

F-74 Mission Purisima 120 diesel 25th.
Naha.

F-52 Mission Santa Ana maximum 95 mogas 28th.
March.

Yokohama.
F-52 Mission Santa Ana balance 95 mogas 28 grade 30 lube
4th,

F-75 Mission Santa Barbara 120 diesel 4th.

F-79 cargo 70 mogas 27th,
F-77 cargo 130 mogas 27th.

Naha.
F-79 cargo 60 mogas 23d.,
April.

Naha.
F-78 cargo 69 diesel 3d.

F-86 cargo 35 diesel 12th,
F-85 cargo 40 grade 100 avgas 40 mogas 23d

F-83 cargo 50 JP-1 30th.

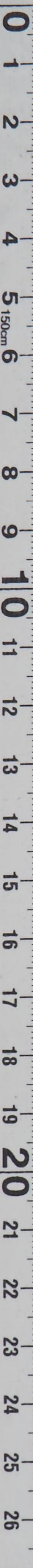
(over)

DEFERRED

UNCLASSIFIED

55818

319.1



UNCLASSIFIED
DEFERREDPROM : ASPPA WASH DC : NR : NBR 311400 18 FEB 50 CONT'D

Yokohama.

F-78 cargo 55 diesel 4th,

F-54 cargo 5 JP-1 25 grade 115 avgas 30 grade 30 lube 14th,

F-71 Nichinan Maru 46 diesel 7th,

F-80 cargo 130 grade 100 avgas 11th,

F-85 cargo 50 mogas 28th,

F-84 cargo 130 mogas 25th,

F-81 cargo 130 mogas 26th,

Manila.

F-54 cargo 40 JP-1 20 grade 115 avgas 8th,

F-86 cargo 80 diesel 6th.

Sasebo.

F-72 Daisui Maru 100 diesel 14th,

F-82 cargo 115 diesel 20th.

Part II-black products A T EX PG. Balance Feb.

Yokohama.

FB-185 Toa Maru 91 NS 19th,

FB-18 Number 5 Yamamizu Maru 84 NS 09th.

March.

Yokohama.

FB-188 Yuyo Maru 93 NS 1st,

FB-200 Zuiun Maru 101 NS 4th,

FB-246 Cache 104 NS 10th,

FB-269 Pamanset 100 NS 13th,

FB-249 Tallulah 40 NS 28th,

FB-209 Shoho Maru 100 NS 26th,

Yokohama.

FB-247 Nillicoma 100 NS 15th.

Subic Bay.

FB-249 Tallulah 60 NS 17th,

Nagasaki.

FB-248 Aucilla 80 NS 30 diesel 24th.

April.

Yokohama.

FB-233 Eria Maru 99 NS 6th,

FB-210 Mitsushima Maru 100 NS 10th,

FB-232 Dalho Maru 100 NS 12th,

FB-211 Chuel Maru 100 NS 13th,

FB-235 Tsuruoka Maru 90 NS 13th,

FB-234 Fujisan Maru 100 NS 16th,

Sasebo.

55818

DEFERRED
UNCLASSIFIED

GENERAL HEADQUARTERS, FAR EAST COMMAND
 ADJUTANT GENERAL'S OFFICE
 RADIO AND CABLE CENTER

INCOMING MESSAGE

UNCLASSIFIED
 DEFERRED

FROM : ASSPPA WASH DC NR : NBR 311400 18 FEB 50 CONT'D

FB-237 Number 6 Yamamizu Maru 84 NS 26th.
 Yokosuka.

FB-236 Toa Maru 90 NS 28th,
 May.
 Yokohama.

FB-238 Yuyo Maru 100 NS 2d,
 FB-259 Zuiun Maru 100 NS 12th,
 FB-261 Shoho Maru 100 NS 27th,
 Nagasaki.

FB-296 Cargo 80 NS 30 diesel 4th,
 Part III-Crude Oil.
 Balance Feb.

FY-4 Mission Soledad 108 M 18th.
 Yokohama.
 March.

FY-5 Mission San Rafael 104 M 3d Kudamatsu,

FY-6 Cohocton 104 M 5th Shimizu,

FY-9 Mission Santa Clara 104 M 17th Kudamatsu,

FY-7 Mission Santa Ynez 104 M 20th Yokohama,

FY-8 Mission San Luis Obispo 104 M 23d Shimizu,

Part IV-Remarks, item--Navy special. Recap current schedule
 per slate 8.

Feb.
 Slate 914-scheduled 923.

March.
 Slate 776-schedule 778.

Apr.
 Slate 764-schedule 763.

May.
 Slate 376-schedule 380.

Total Feb/May.
 Slate 2830-schedule 2844.

Item B-source Navy special liftings.

All Feb/Apr ex Bahrain except FB-188, FB-208, FB-269,
 FB-247, FB-249, FB-232 and FB-234.

Source may liftings undetermined.

Item C. Additional crude oil cargoes will be indicated
 as soon as suppliers is determined.

55818.

DEFERRED
 UNCLASSIFIED

COTULLA

DECLASSIFIED

Authority NNO975029

UNCLASSIFIED
DEFERRED

FROM : ASPPA WASH DC NR : NBR 311/100 18 FEB 50 CONT'D



INFORMATION : G-4

NOTE : Service has been requested for correction of underscored portions.

NOTE : This msg will be passed as requested when service is received.

55818

DEFERRED
UNCLASSIFIED

-4-

TOO : 171715 Z
MCN : AUB 15/18

0
1
2
3
4
5
6
7
8
9
10
11
12
13
14
15
16
17
18
19
20
21
22
23
24
25
26
27

GENERAL HEADQUARTERS, FAR EAST COMMAND
ADJUTANT GENERAL'S OFFICE
RADIO AND CABLE CENTER

INCOMING MESSAGE

UNCLASSIFIED
DEFERRED

FROM : ASPPA WASH DC
TO : CINCPAC (APO) TOKYO JAPAN
INFO : COMNAVFOR TOKYO JAPAN
NR : 311378

ELC/jve
G-4 ROUTING

A C/S G-4	
D AC/S G-4	
EXECUTIVE PLANS & POLICY	
OPERATIONS	
CONST & FAC	
SUPPLY	
PETROLEUM	<input checked="" type="checkbox"/>
PERSONNEL ADMINISTRATION	<input checked="" type="checkbox"/>

11 Feb 50

Weekly Estimated Arrival Schedule.
Part I-Clean Products.

February.
Yokohama,

F-73 Mission San Fernando balance 119 diesel 12th,
F-65 San Diego Maru 75 diesel 17th,
F-67 Muir Woods 137 mogas 22d,

Shimotau,

F-51 Mission Dolores 93 mogas 30 grade 10 lube 23d,

Sasebo,

F-74 Mission Purisma 120 diesel 25th,

Naha,

F-52 cargo balance 90 mogas 30 grade 30 lube 4th,

F-75 cargo 115 diesel 5th,

F-79 cargo 70 mogas 27th,

F-77 cargo 130 mogas 25th,

Naha,

F-79 cargo 60 mogas 23d,

F-78 cargo 60 diesel 23th.

Part II-Black Products all EX PG.

February.

Yokohama,

FB-160 Fujisan Maru 100 NS 13th,

FB-258 Cassatot 106 NS 16th,

FB-185 Tea Maru 91 NS 19th,

FB-186 Number 5 Yamemizu Maru 84 NS 19th.

53387

(over)
DEFERRED
UNCLASSIFIED

UNCLASSIFIED
DEFERREDFROM : ASPPA WASH DC NR : 311378 11 FEB 50 CONT'D

Nagasaki,

FB-214 Tomahawk 107 NS 16th.

March,

Yokohama,

FB-188 Yuyo Maru 93 NS 1st,

FB-208 Zuiun Maru 101 NS 4th,

FB-246 Cache 100 NS 10th,

FB-269 Femandet 100 NS 13th,

FB-249 Tallulah 40 NS 28th,

FB-209 Shobo Maru 100 NS 25th.

Yokosuka,

FB-247 Millicoma 100 NS 15th.

Subic Bay,

FB-249 Tallulah 60 NS 17th.

Nagasaki,

FB-246 Aucilla 80 NS 30 diesel 24th.

April,

Yokohama,

FB-210 Mitsubishi Maru 100 NS 10th,

FB-233 Seris Maru 100 NS 11th,

FB-232 Daibo Maru 100 NS 12th,

FB-211 Chusei Maru 100 NS 13th,

FB-235 Tsuruoka Maru 90 NS 13th,

FB-234 Fujisan Maru 100 NS 16th.

Sasebo,

FB-237 Number 5 Yamamizu Maru 84 NS 26th.

Yokosuka,

FB-236 Toa Maru 90 NS 28th.

Part III-Crude oil.

February,

FY-4 Mission Soledad 108 M 18th Yokohama.

March,

FY-5 Mission San Rafael 104 M 1st Shimizu,

FY-6 Cohocton 104 M 5th Kudamatsu,

FY-7 Mission Soledad 104 M 25th Yokohama.

April,

FY-8 Mission San Rafael 104 M 2d Shimizu,

FY-9 Cohocton 104 M 6th Kudamatsu.

53387

DEFERRED
UNCLASSIFIED

DECLASSIFIED

Authority NNO975029

GENERAL HEADQUARTERS, FAR EAST COMMAND
ADJUTANT GENERAL'S OFFICE
RADIO AND CABLE CENTER

INCOMING MESSAGE

DEFERRED

FROM : ASPPA WASH DC NR : 311378 11 FEB 50 CONT'D

Part IV-Remarks.

Item A-Navy Special. Recap current schedule per Slate 7.

January,

Slate 480-Schedule 483.

February,

Slate 962-Schedule 879.

March,

Slate 880-Schedule 774.

April,

Slate 464-Schedule 764.

Total January/April. Slate 2786-Schedule 2900.

Item B-Source Navy Special liftings.

All February/March EK Bahrain except FB-162, FB-160, FB-188, FB-208, FB-269, FB-247, FB-249, FB-252, and FB-254.

Item C-Every effort being made to advance ETA FY-6 to 1 March FY-7 to 23 March and FY-9 to 22 March.

NO SIG

INFORMATION : G-4,

53387

DEFERRED
UNCLASSIFIED

-3-

TOC : 101551 Z
MCN : AUA 136/10

DECLASSIFIED

Authority NNO975029

121



RECEIVED
11 FEB 1950

GENERAL HEADQUARTERS, FAR EAST COMMAND
 ADJUTANT GENERAL'S OFFICE
 RADIO AND CABLE CENTER

INCOMING MESSAGE

UNCLASSIFIED
 DEFERRED

JA/bdh

G-4 ROUTING	
A C/S G-4	<input type="checkbox"/>
D AC/S G-4	<input type="checkbox"/>
EXECUTIVE	<input checked="" type="checkbox"/>
PLANS & POLICY	<input type="checkbox"/>
OPERATIONS	<input type="checkbox"/>
CONST & FAC	<input type="checkbox"/>
SUPPLY	<input type="checkbox"/>
PETROLEUM	<input checked="" type="checkbox"/>
PERSONNEL	<input type="checkbox"/>
ADMINISTRATION	<input checked="" type="checkbox"/>

FROM : ASPPA WASH DC
 TO : CINCPAC (APO) TOKYO JAPAN
 INFO : COMNAVFE TOKYO JAPAN
 NR : NUMBER 311363

Weekly Estimated Arrival Schedule.
 Part I-clean products.
 February.

Yokohama. F-73 Mission San Fernando balance 119 diesel
 12th, F-47 Mission San Diego 43 JP-1 41 kero 30 grade 10 lube
 10th, F-65 San Diego Maru 75 diesel 17th, F-67 Muir Woods 137
 mogas 22d.

Naha. F-73 Mission San Fernando maximum 90 mogas 28th.
 Shimotsu. F-61 cargo 90 mogas 30 grade 10 lube 24th.
 Sasebo. F-74 cargo 115 diesel 25th.

March.

Yokohama. F-52 cargo balance 90 mogas 30 grade 30 lube
 4th, F-75 cargo 115 diesel 5th, F-79 cargo 70 mogas 27th, F-77
 cargo 130 mogas 25th.

Naha. F-79 cargo 60 mogas 23d, F-78 cargo 60 diesel 28th.
 Part II-black products, all ex PG.
 February.

Yokohama. FB-161 Chuei Maru 100 NS 6th, FB-184 Seria
 Maru 99 NS 6th, FB-162 Daiho Maru 104 NS 7th, FB-187 Tsuruoka
 Maru 88 NS 10th, FB-160 Fujisan Maru 100 NS 13th, FB-258
 Cossatot 106 NS 16th, FB-185 Toa Maru 90 NS 19th, FB-186 Number
 5 Yamamizu Maru 84 NS 19th.

Nagasaki. FB-214 Tomahawk 107 NS 16th.

March.

Yokohama. FB-188 Yuyo Maru 96 NS 1st, FB-208 Zuiun Maru
 98 NS 3d, FB-269 Pamanset 100 NS 8th, FB-246 Cache 100 NS 10th,

50931

(over)
 DEFERRED
 UNCLASSIFIED

UNCLASSIFIED
DEFERRED

FROM : ASPPA WASH DC NR : NUMBER 311363 4 FEB 50 CONT'D

FB-249 Tallulah 40 NS 26th, FB-209 Shomo Maru 100 NS 26th.
Yokosuka. FB-247 Millicoma 100 NS 15th.
Subic Bay. FB-249 Tallulah 60 NS 15th.
Nagasaki. FB-248 Aucilla 80 NS 30 diesel 24th.

April.

Yokohama. FB-210 Mitsushima Maru 100 NS 10th, FB-233
Seria Maru 100 NS 14th, FB-232 Daiho Maru 100 NS 12th, FB-211
Chuei Maru 100 NS 13th, FB-235 Tsuruoka Maru 90 NS 13th, FB-234
Fujisan Maru 100 NS 16th.

Sasebo. FB-237 Number 5 Yamamizu Maru 84 NS 26th.

Yokosuka. FB-236 Toa Maru 90 NS 28th.

Part III-crude oil.

February.

FY-4 Mission Soledad 104 M 18th Yokohama, FY-5 Mission San
Rafael 104 M 27th Shimizu.

March.

FY-6 Cohocton 104 M 1st Kudamatsu, FY-7 Mission Soledad
104 M 25th Yokohama.

April.

FY-8 Mission San Rafael 104 M 2d Shimizu, FY-9 Cohocton
104 M 6th Kudamatsu.

Part IV-remarks.

Item A-Navy special. Recap current schedule per Slate 7.

January. Slate 480-Schedule 483.

February. Slate 962-Schedule 879.

March. Slate 880-Schedule 774.

April. Slate 464-Schedule 764.

Total January/April. Slate 2786-Schedule 2900.

Item B-source Navy special liftings. All February/March ex
Bahrein except FB-162, FB-160, FB-188, FB-208, FB-269, FB-247
and FB-249. Source April lifts undetermined.

Item C. Cargoes F-53, F-56, F-59, F-50 and F-55 cancelled
as requested.

COTULLA

INFORMATION : G-4

NOTE : This msg passed by AG Radio & Cable Center via Courier to
CG EIGHTH ARMY (SAPOJ) YOKOHAMA JAPAN for info.

50931

DEFERRED
UNCLASSIFIEDTOO : 031738 Z
MCN : AUB 159/03

GENERAL HEADQUARTERS, FAR EAST COMMAND
ADJUTANT GENERAL'S OFFICE
RADIO AND CABLE CENTER

INCOMING MESSAGE

G-4 ROUTING

A C/S G-4	
D AC/S G-4	
EXECUTIVE	<input checked="" type="checkbox"/>
PLANS & POLICY	
OPERATIONS	
CONST & FAC	<input checked="" type="checkbox"/>
SUPPLY	
PETROLEUM	<input checked="" type="checkbox"/>
PERSONNEL	
ADMINISTRATION	<input checked="" type="checkbox"/>

JA/bdh

UNCLASSIFIED
DEFERRED

28 Jan 50

FROM : ASPPA WASH DC
 TO : CINCPAC (APO) TOKYO JAPAN
 INFO : COMNAVFE TOKYO JAPAN
 NR : NUMBER 311348

*319.1
annuals*

Weekly Estimated Arrival Schedule.
Part 1-clean products.
February.

Yokohama. F-47 cargo 50 JP-1 40 kero 30 grade 10 lube
7th, F-73 Mission San Fernando 49 diesel 12th, F-65 San Diego
Maru 75 diesel 17th, F-52 cargo balance 90 mogas 30 grade 30
lube 24th, F-67 cargo 130 mogas 22d.

Naha. F-73 Mission San Fernando 70 diesel 8th, F-52
cargo maximum 90 mogas 20th.

Sasebo. F-74 cargo 115 diesel 23d, Shimotsu. F-51 cargo
90 mogas 30 grade 10 lube 24th.

March.

Yokohama. F-75 cargo 115 diesel 5th, F-50 cargo 35
grade 115 avgas 25 JP-1 30 grade 30 lube 26th, F-77 cargo 130
mogas 25th.

Manila. F-50 cargo 10 grade 115 avgas 30 JP-1 19th.

Naha. F-78 cargo 60 diesel 28th. F-78 cargo 59 diesel
now ETA Yokohama 2 April.

Part 2-black products all ex PG.

Balance January.

Nagasaki. FB-194 Severn 82 NS 27 diesel 29th.

Yokohama. FB-149 Mitsushima Maru 101 NS 25th.

February.

Yokohama. FB-184 Secia Maru 99 NS 6th, FB-161 Chuag
Maru 100 NS 6th, FB-162 Daiho Maru 104 NS, FB-187 Tsuruoka Maru
88 NS 10th, FB-160 Fujisan Maru 100 NS 13th, FB-258 Cossatot
106 NS 16th, FB-186 Number 5 Yamamizu Maru 84 NS 19th, FB-185
Toa Maru 90 NS 23d.

Nagasaki. FB-214 Tomahawk 107 NS 14th.

48424

(over)
DEFERRED
UNCLASSIFIED

UNCLASSIFIED
DEFERRED

FROM : ASPPA NR : NUMBER 311348 28 JAN 50 CONT'D

March.

Yokohama. FB-188 Yuyo Maru 96 NS 1st, FB-207 Zaiun Maru 98 NS 4th, FB-269 Pamanset 100 NS 8th, FB-246 Cache 100 NS 10th, FB-249 Tallulah 40 NS 26th, FB-210 Mitsushima Maru 100 NS 1st, FB-209 Shoho Maru 100 NS 30th.

Yokosuka. FB-247 Millicoma 100 NS 15th.

Subic Bay. FB-249 Tallulah 60 NS 15th.

Nagasaki. FB-248 Aucilla 80 NS 30 diesel 22d.

April.

Yokohama. FB-233 Seria Maru 100 NS 6th, FB-232 Daiho Maru 100 NS 9th, FB-211 Chuei Maru 100 NS 10th, FB-234 Fujisan Maru 100 NS 17th, FB-235 Tsuruoka Maru 90 NS 16th.

Sasebo. FB-237 Number 5 Yamamizu Maru 84 NS 23d.

Yokosuka. FB-236 tea Maru 90 NS 26th.

Part 3-crude oil.

February. FY-4 Mission Soledad 104 M 18th Yokohama, FY-5 Mission San Rafael 104 M 27th Shimizu.

March. FY-6 Cohocton 104 M 1st Kudamatsu, FY-7 Mission Soledad 104 M 25th Yokohama.

April. FY-8 Mission San Rafael 104 M 2d Shimizu, FY-9 Cohocton 104 M 6th Kudamatsu.

Part 4-remarks.

Item A-Navy special. Recap current schedule per Slate 7.

January. Slate 480-Schedule 483.

February. Slate 962-Schedule 870.

March. Slate 880-Schedule 874.

April. Slate 464-Schedule 664.

Total January/April. Slate 2786-Schedule 2891.

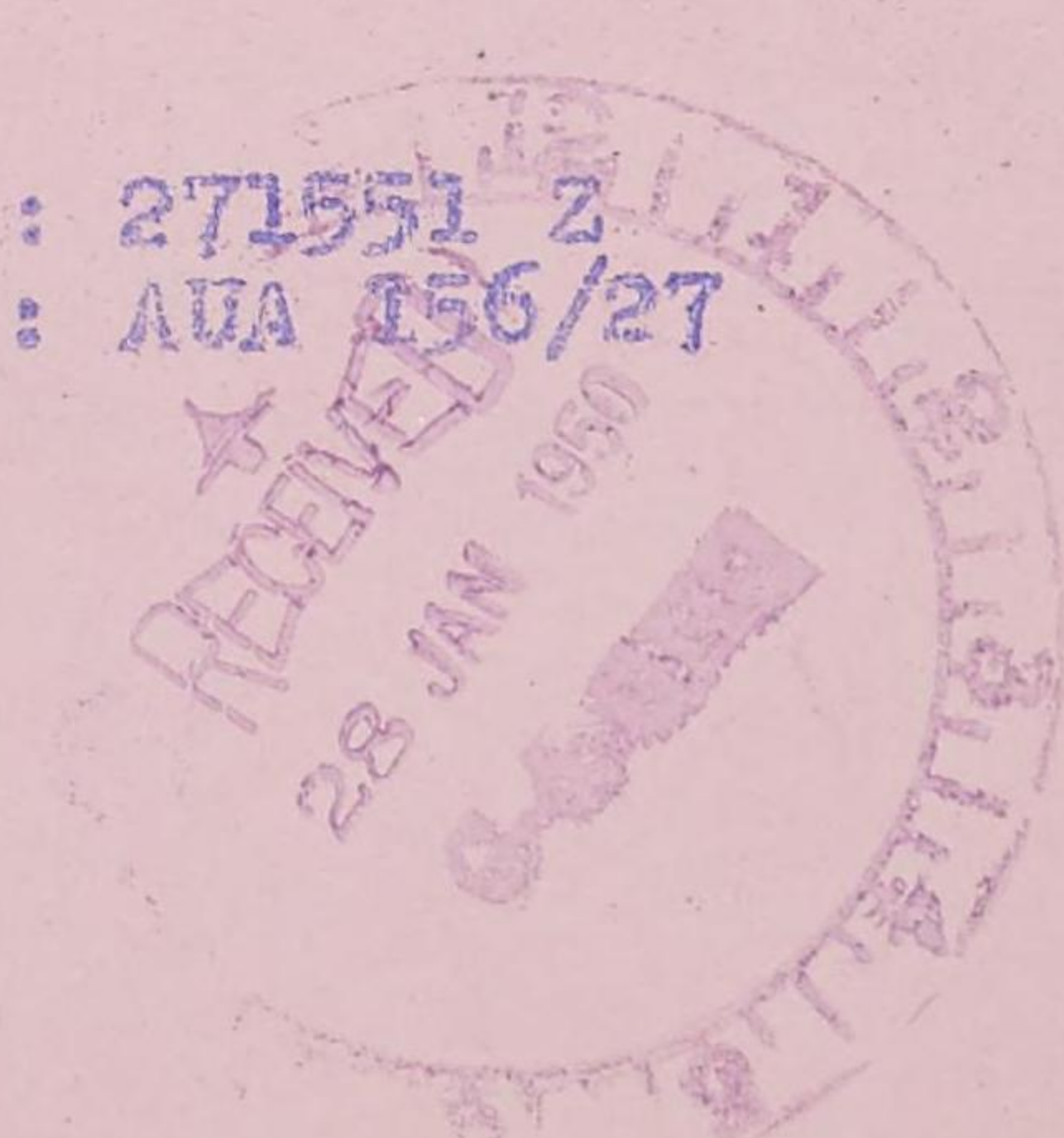
Item B-source Navy special liftings. All January/March ex Bahrain except FB-162, FB-160, FB-188, FB-208 and FB-247. Source April lifts undetermined.

COTULLA

INFORMATION : G-4

NOTE: This msg passed by AG Rad & Cable Ctr via courier to CG EIGHTH ARMY (SAPOJ) YOKOHAMA JAPAN for info.

48424

DEFERRED
UNCLASSIFIEDTOC : 271551 Z
MCN : AUA 156/27

GENERAL HEADQUARTERS, FAR EAST COMMAND
 ADJUTANT GENERAL'S OFFICE
 RADIO AND CABLE CENTER

*319.1
 arrivals*

INCOMING MESSAGE

UNCLASSIFIED
 DEFERRED

FROM : ASPPA WASH DC
 TO : CINCPAC (APO) TOKYO JAPAN
 INFO : COMNAVFE TOKYO JAPAN
 NR : NUMBER 311333

le **G-4 ROUTING** *my*

A C/S G-4	_____
D AC/S G-4	_____
EXECUTIVE	_____
PLANS & POLICY	_____
OPERATIONS	_____
CONST & FAC	_____
SUPPLY	_____
PETROLEUM	_____
PERSONNEL	_____
ADMINISTRATION	_____

21 Jan 50

WG/cmk

(2)

Weekly estimated arrival schedule.
 Clean products.
 Balance January.

Yokohama.

F-61 Michinan Maru 46 diesel 25th.

February.

Yokohama.

F-47 cargo 50 JP-1 40 kero 30 grade 10 lube 6th,
 F-73 Mission San Fernando balance 119 diesel 12th,
 F-65 San Diego Maru 75 diesel 17th,
 F-52 cargo balance 90 mogas 30 grade 30 lube 23d,
 F-67 cargo 130 mogas 22d.

Naha.

F-73 Mission San Fernando 70 diesel 8th,
 F-52 cargo maximum 90 mogas 18th,

Shimotsu.

F-51 cargo 90 mogas 30 grade 10 lube 20th.

Sasebo.

F-74 cargo 115 diesel 23d.

March.

Yokohama.

F-75 cargo 115 diesel 4th,
 F-50 cargo 35 grade 115 avgas 25 JP-1 30 grade 30
 lube 26th,

F-77 cargo 130 mogas 25th,

Manita.

F-50 cargo 10 grade 115 avgas 30 JP-1 19th,

Naha.

F-78 cargo 60 diesel 28th.

Part II-black products all ex PG.
 Balance January.

45963

(over)
 DEFERRED
 UNCLASSIFIED

UNCLASSIFIED
DEFERREDFROM : ASPPA WASH DC NR : NUMBER 311333 21 JAN 50 CONT'D

Tokuyama.

FB-194 Severn 82 NS 27 diesel 29th.

Yokohama.

FB-149 Mitsushima Maru 101 NS 25th.

February.

Yokohama.

FB-184 Seria Maru 99 NS 6th,

FB-161 Ch Uei Maru 100 NS 6th,

FB-162 Diaho Maru 104 NS 7th,

FB-187 Tsuruoka Maru 88 NS 10th,

FB-160 Fujisan Maru 100 NS 13th,

FB-258 Cossatot 100 NS 17th,

FB-186 Number 5 Yamamizu Maru 83 NS 21st,

FB-185 Toa Maru 90 NS 23d.

Nagasaki.

FB-214 Tomahawk 100 NS 14th.

March.

Yokohama.

FB-188 Yuyo Maru 96 NS 1st,

FB-208 Zuiun Maru 98 NS 4th,

FB-269 Pamanset 100 NS 8th (new cargo),

FB-246 Cache 100 NS 10th,

FB-249 Tallulah 40 NS 26th,

FB-210 Mitsushima Maru 100 NS 21st,

FB-209 Shoho Maru 100 NS 30th,

Yokosuka.

FB-247 Millicoma 100 NS 15th,

Subic-Bay.

FB-249 Tallulah 60 NS 15th.

Nagasaki.

FB-248 Aucilla 80 NS 30 diesel 22d.

April.

Yokohama.

FB-233 Seria Maru 100 NS 4th,

FB-232 Daiho Maru 100 NS 9th,

FB-211 Cheui Maru 100 NS 10th,

FB-234 Fujisan Maru 100 NS 15th,

FB-235 Tsuruoka Maru 90 NS 16th,

Sasebo.

FB-237 Number 5 Yamamizu Maru 84 NS 23d.

Yokosuka.

FB-236 Toa Maru 90 NS 26th.

45963

DEFERRED
UNCLASSIFIED

GENERAL HEADQUARTERS, FAR EAST COMMAND
 ADJUTANT GENERAL'S OFFICE
 RADIO AND CABLE CENTER

INCOMING MESSAGE

UNCLASSIFIED
 DEFERRED

FROM : ASPPA WASH DC NR : NUMBER 311333 21 Jan 50 CONT'D

Part III-crude oil.

January.

FY-1 Shawnee Trail 104 M Yokohama ETA indefinite,

FY-2 Mission San Rafael 104 M 20th Shimizu,

FY-3 Cohocton 101 M 26th Kudamatsu.

February.

FY-5 Mission San Rafael 104 M 24th Shimizu.

March.

FY-4 Shawnee Trail 104 M 5th Yokohama,

FY-6 Cohocton 104 M 1st Kudamatsu,

FY-8 Mission San Rafael 104 M 30th Shimizu.

April.

FY-9 Cohocton 104 M 6th Kudamatsu,

FY-7 Shawnee Trail 104 M 9th.

Part IV-Remarks.

Item A. Navy Special: Recap current schedule per slate

7.

January. Slate 480-schedule 483.

February. Slate 962-schedule 864.

March. Slate 880-schedule 874.

April. Slate 464-schedule 664.

Total January/April. Slate 2786-schedule 2885.

Item P-Source of Navy Special liftings. All January/March ex Bahrain except FB-162, FB-160, FB-188, FB-208 and FB-247. Source April lifts undetermined.

TO
 COTULLA

INFORMATION : G-4

NOTE : This msg passed by AG Radio & Cable Center via Courier to CG EIGHTH ARMY (SAPOJ) YOKOHAMA JAPAN for info.

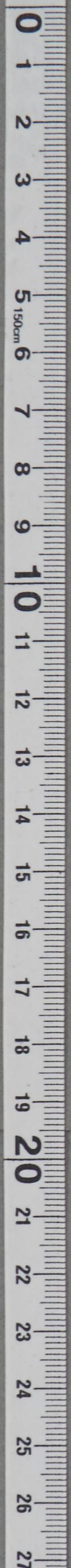
45963

DEFERRED
 UNCLASSIFIED

TOO : 201711 Z
 MCN : AUA 11/21

DECLASSIFIED

Authority NNO975029



DECLASSIFIED

Authority NNO975029

GENERAL HEADQUARTERS, FAR EAST COMMAND
ADJUTANT GENERAL'S OFFICE
RADIO AND CABLE CENTER

INCOMING MESSAGE

319.1
ARRIVAL

UNCLASSIFIED
DEFERRED

G-4 ROUTING	
A C/S G-4	
D AC/S G-4	
EXECUTIVE	
PLANS & POLICY	
OPERATIONS	
CONST & FAC	
SUPPLY	
PETROLEUM	
14 Jan 50	
PERSONNEL	
ADMINISTRATION	

ELT/mje

FROM : ASPPA WASH DC
TO : CINCFE (AREA PETROLEUM OFFICER) TOKYO JAPAN
INFO : COMNAVFE TOKYO JAPAN
NR : NUMBER 311318

Weekly estimated arrival schedule.
part I-clean products.
Balance January.

yokohama.

F-70 Mission Solano 47 grade 100 avgas 75 jp-1 fuel 15th,
F-61 Nanchinan Maru 46 diesel 25th.

shimotsu.

F-48 Mission Dolores 84 kero 30 grade 30 lube 16th,
yokosuka.

Daisui Maru 103 diesel 18th.

February.

yokohama.

F-73 cargo 115 diesel 11th,
F-47 cargo 50 jp-1 fuel 40 kero 30 grade 10 lube 7th,
F-67 cargo 130 mogas 14th,
F-52 cargo balance 90 mogas 30 grade 30 lube 22d,
F-65 San Diego Maru 72 diesel 19th.

naha.

F-52 cargo maximum 90 mogas 16th,
F-75 cargo 60 diesel 26th.

shimotsu.

F-51 cargo 90 mogas 30 grade 10 lube 20th.

gasebo.

F-74 cargo 115 diesel 23d,
F-75 cargo 55 diesel now ETA Yokohama 1 Mar.

43573

(over)
DEFERRED
UNCLASSIFIED

UNCLASSIFIED
DEFERRED

FROM : ASPPA WASH DC NR : NUMBER 311318 14 JAN 50 CONT'D

part II-black products all ex pg.
January.

Yokohama.

FB-149 Mitsushima Maru 101 NS 25th.

Tokuyama.

FB-194 severn 82 NS 27 diesel 20th.
February.

Yokohama.

FB-162 Daiho Maru 104 NS 8th,

FB-184 seria Maru 98 NS 8th,

FB-161 chuei Maru 100 NS 10th,

FB-160 Fujisan Maru 100 NS 13th,

FB-258 Cossatot 100 NS 17th,

FB-187 Tsuruoka Maru 90 NS 17th,

FB-186 Number 5 Yamamizu Maru 83 INS 21st,

FB-185 Toa Maru 90 NS 23d.

Nagasaki.

FB-214 Tomahawk 100 NS 16th.

March.

Yokohama.

FB-188 Yuyo Maru 96 NS 1st,

FB-208 Zuiun Maru 100 NS 4th,

FB-246 Cache 100 NS 10th,

FB-249 Tallulah 40 NS 26th,

FB-210 Mitsushima Maru 100 NS 21st,

FB-209 Shoho Maru 100 NS 30th.

Yokosuka.

FB-247 Millicoma 100 NS 15th,

Nagasaki.

FB-248 Aucilla 80 NS 30 diesel 22d.

Subic Bay.

FB-249 Tallulah 60 NS 15th,

FB-233 seria Maru 100 NS now ETA 6 APRIL.

part III-crude oil.

January.

FY-1 Shawnee Trail 104 M 18th Yokohama,

FY-2 Mission San Rafael 104 M 20th Shimizu,

FY-3 Cohocton 104 M 26th Kudamatsu.

February.

FY-4 Shawnee Trail 104 M 20th Yokohama,

FY-5 Mission San Rafael 104 M 24th Shimizu.

43573

DEFERRED
UNCLASSIFIED

GENERAL HEADQUARTERS, FAR EAST COMMAND
 ADJUTANT GENERAL'S OFFICE
 RADIO AND CABLE CENTER

INCOMING MESSAGE

UNCLASSIFIED
 DEFERRED

FROM : ASPPA WASH DC NR : NUMBER 311218 14 JAN 50 CONT'D

March.

FY-6 Cohocton 104 M 1st kudamatsu,

FY-7 shawnee trail 104 M 27th yokohama,

FY-8 Mission san rafael 104 M 30th shimizu.

April.

FY-9 Cohocton 104 M 6th kudamatsu.

part IV-remarks.

Item A/Navy special. Recap current schedule per slate 6.

January, slate 778-schedule 483.

February, slate 764-schedule 865.

March, slate 780-schedule 876.

Total Dec-Mar, slate 3076-schedule 3172.

Item B-source Navy special liftings. All Jan/Mar ex
 Bahrain except FB-162, FB-160, FB-188, FB-208 and FB-247 ex
 Ras Tanura. Source FB-209 not yet determined.

COTULLA

INFORMATION : G-4, FEAF

NOTE : This msg passed by AG Rad & Cable Center via Courier to
 CG EIGHTH ARMY (ATTN SAPOJ) YOKOHAMA JAPAN for info.

43573

DEFERRED
 UNCLASSIFIED

-3-

TOO : 131846 Z
 MCN : AUB 08/14