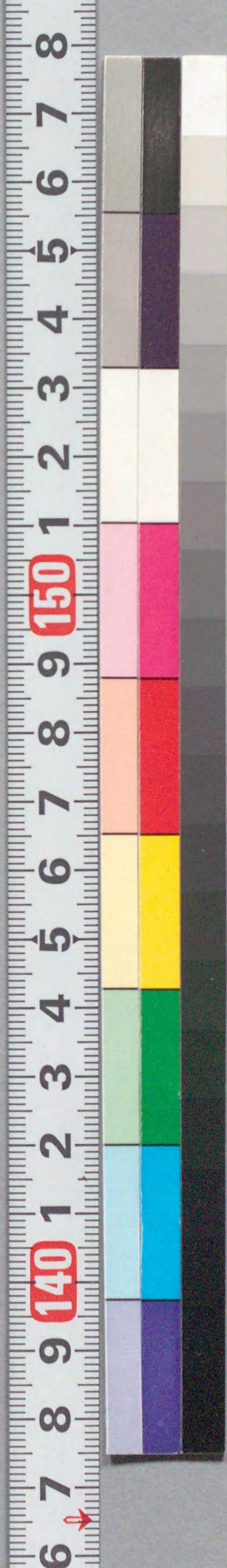


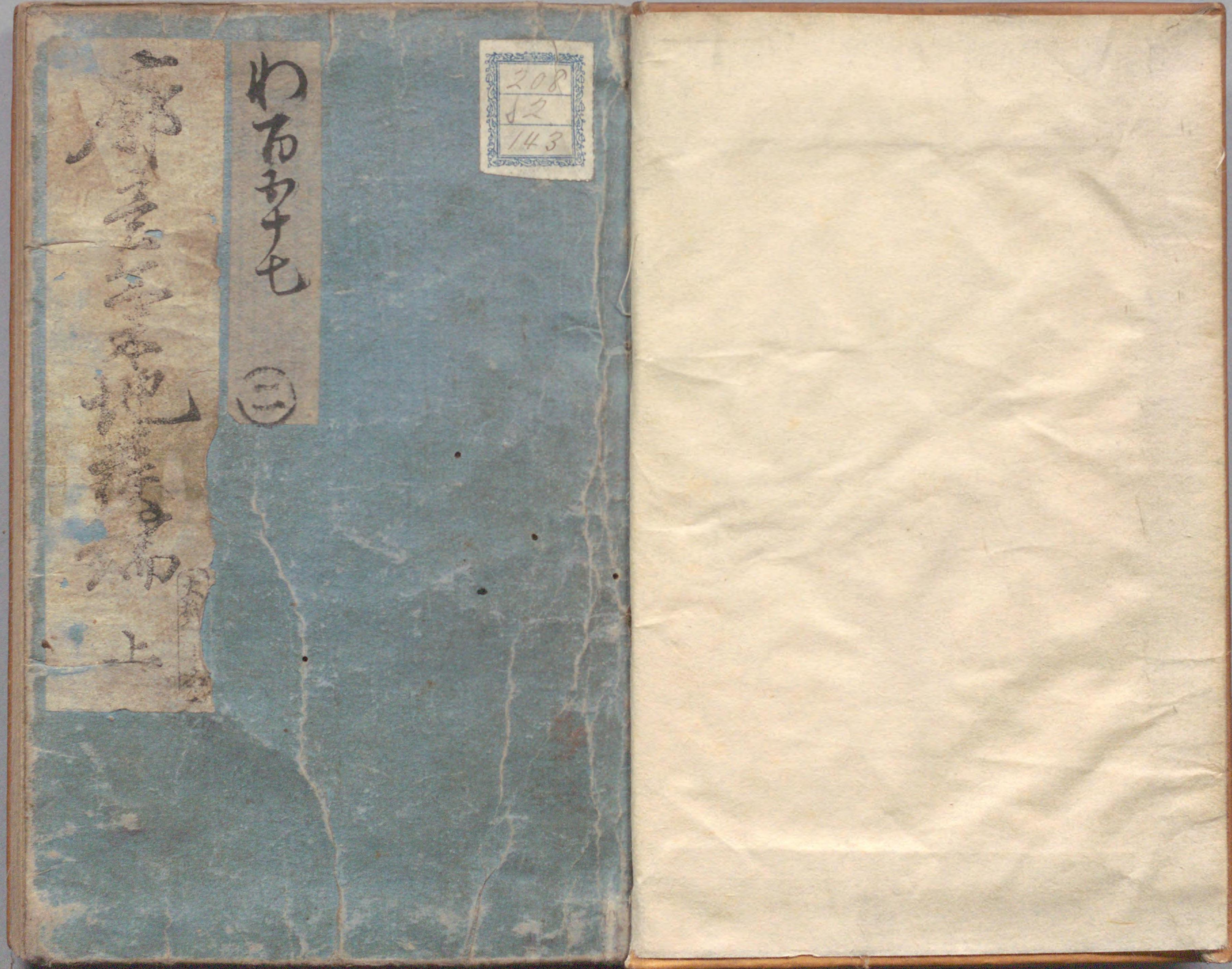
208
2
143

郭意氣地
上



国立国会図書館 郭の意氣地 2巻 208-143

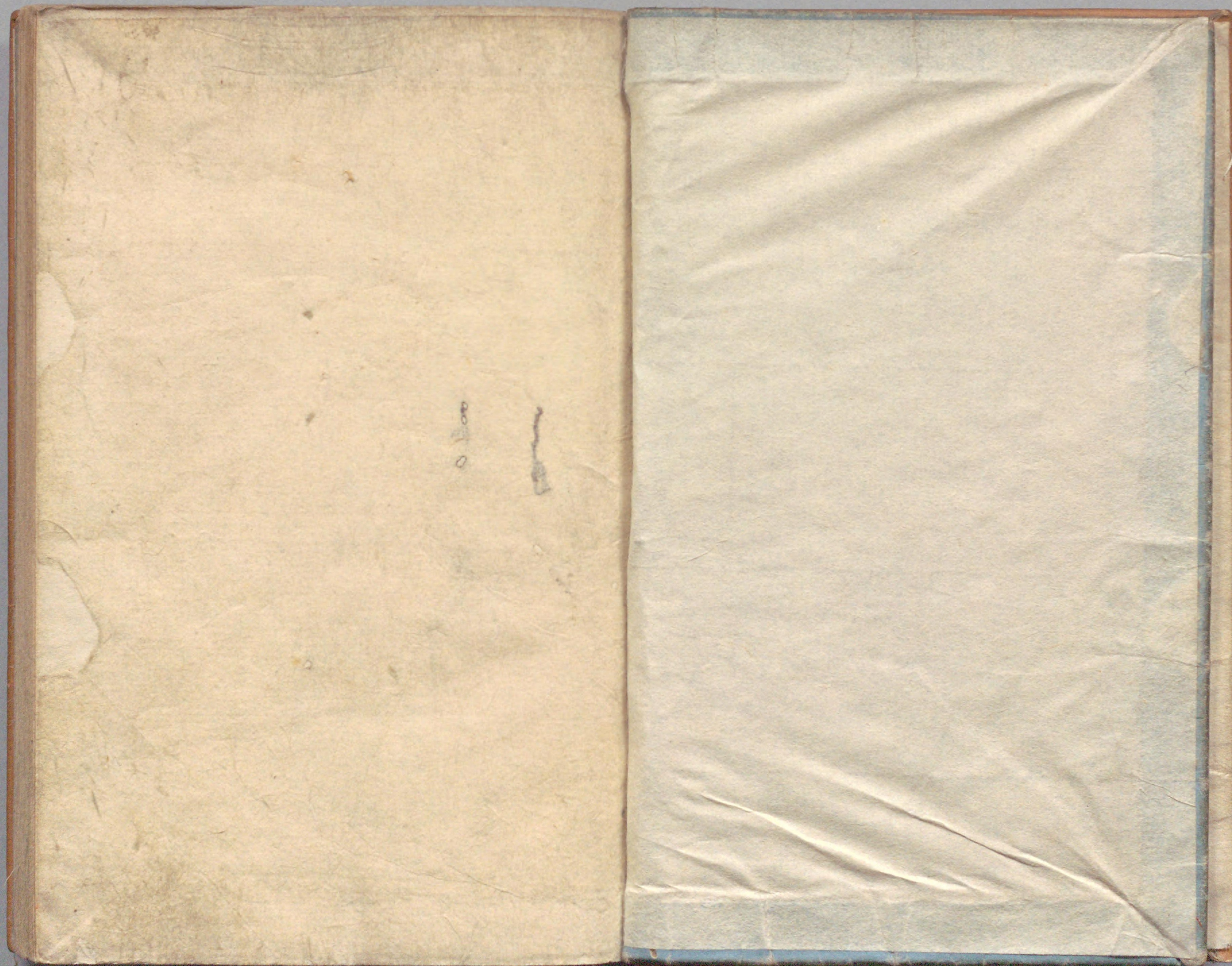
ガラス使用



郭の意気地 2巻 208-143

わろふ七 (三)

208
J2
143



国立国会図書館 郭の意気地 2巻 208-143

ガラス使用

木

叙
 傾城に賢か類わ世柳とらむれ
 ありあも成るは二高かまもと遊り白丸
 なまへ電が庵にたるゆも授里り
 いくちらん琴を思ふらるるの常
 さづら流ゆつとけとが知れ



大

書尾州名古屋
 大野屋惣八
 林長嶋町五丁目

6 7 8 9 110 1 2 3 4 5 6 7 8 9 120 1 2 3 4 5 6 7 8 9



6 7 8 9 110 1 2 3 4 5 6 7 8 9 120 1 2 3 4 5 6 7 8 9



6 7 8 9 110 1 2 3 4 5 6 7 8 9 120 1 2 3 4 5 6 7 8 9

Handwritten text in a cursive script, likely a historical record or account. The text is written in a dark ink on aged paper and is contained within a rectangular border. The script is dense and fills most of the page.

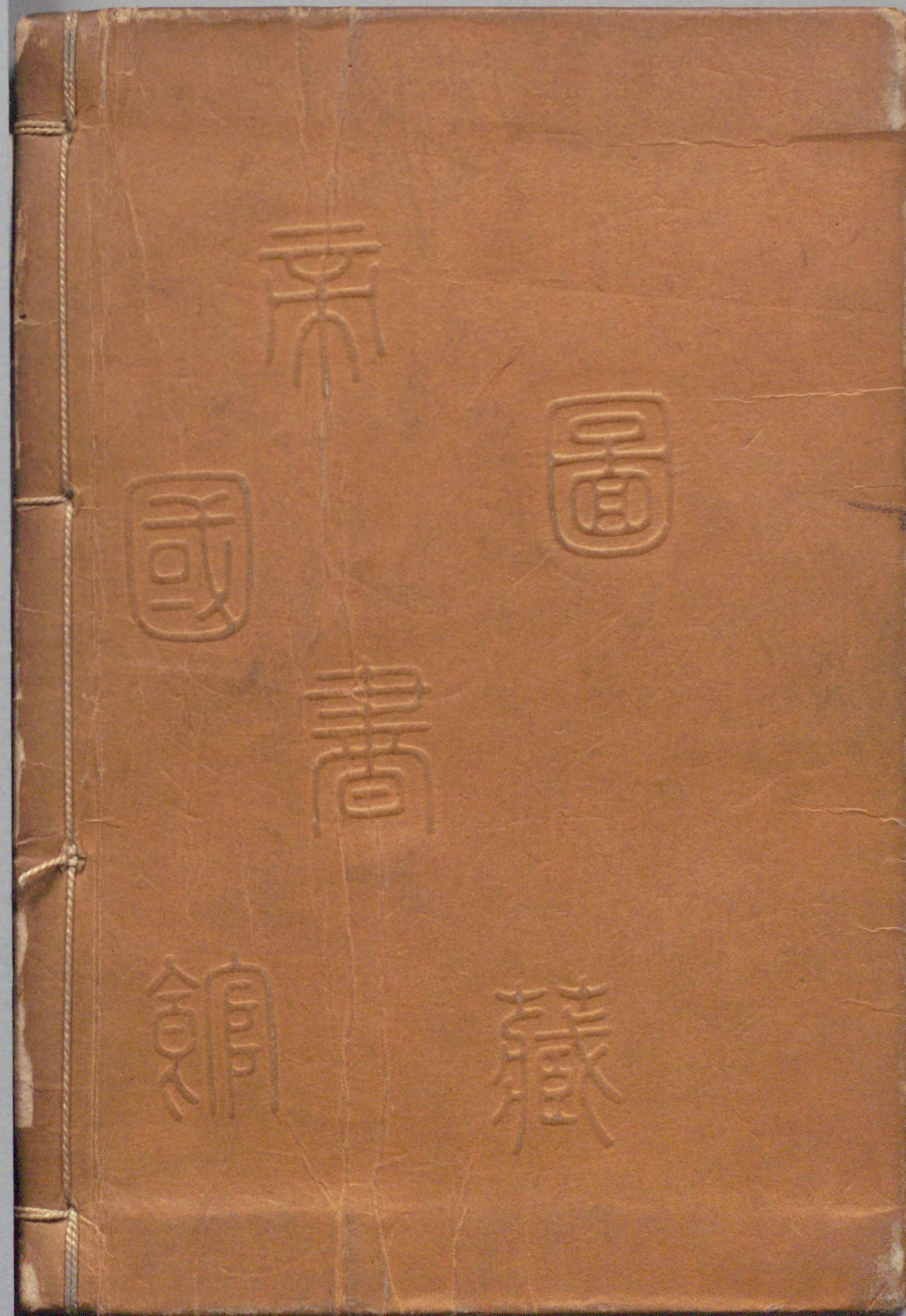
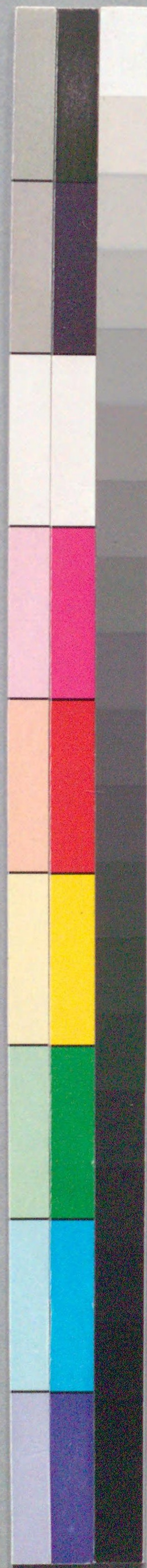
Handwritten text in a cursive script, likely a historical record or account. The text is written in a dark ink on aged paper and is contained within a rectangular border. The script is dense and fills most of the page.





208
2
143





国立国会図書館 郭の意気地 2巻 208-143

ガラス使用