

The

RHODODENDRON



1943

Donated by Sr. Julian Yoder
August 1987



Digitized by the Internet Archive
in 2009 with funding from
University of North Carolina at Chapel Hill



The 1943
RHODODENDRON



*O say! can you see, by the dawn's early light,
What so proudly we hailed at the twilight's last gleaming?
Whose broad stripes and bright stars, thro' the perilous fight,
O'er the ramparts we watch'd, were so gallantly streaming?
And the rockets' red glare, the bombs bursting in air,
Gave proof thro' the night that our flag was still there.
Oh say, does that Star-spangled Banner yet wave
O'er the land of the free and the home of the brave?*



The 1943
RHODODENDRON



ANNUAL OF
APPALACHIAN STATE
TEACHERS COLLEGE
BOONE, NORTH CAROLINA



ON ACTIVE SERVICE

FACULTY

Glenn L. Bushey, Army
Clyde Canipe, Army
Edwin Dougherty, Army
E. C. Duggins, Navy

William Dukes, Army
Leonard Eury, Army
Eugene Garbee, Navy
Gordon Nash, Navy

Burke Smith, Navy
Flucie Stewart, Navy
Gene Wike, Navy
Gordon Wood, Army

1940

Ralph Abernathy, Navy
Henry Baggett, Army
Dewey Barnhill, Army
David Black, Army
Garnett Clark, Navy
George Corn, Navy
John Crisp, Army
Lost in Action
William Franklin, Army

Milton Gaskill, Navy
Horace Goode, Army
Dwight Grubbs, Navy
Jerome Honeycutt, Army
Robert Long, Army
Marshall McClure, Army
William Mitchell, Navy
R. T. Musslewhite, Marine
Corps

Wayne Nance, Army
George Parrish, Army
Lost in Action
Cecil Poe, Army
Byron Stuart, Army
Charles Walters, Army
Joe White, Navy
Ralph Willis, Army
Roy Wilson, Army

1941

Russell Blanton, Army
Raymond Brady, Army
Bob Broome, Army
R. B. Castellow, Marine
Corps
Ed Clay, Army
Bruce Daniels, Navy
George Davis, Army
Tom Dougherty, Army
Ernest Ervin, Navy
Banard Harris, Army

Frank E. Hendricks, Army
Lawrence Hornbeck, Army
Maxwell Hovis, Navy
Phil Hudson, Navy
Craig Hull, Navy
Clarence Ingram, Navy
Edwin Johnson, Navy
George Martin, Army
Lawson Mathews, Army
Glenn Miller, Navy

Forest McClure, Army
Roland Phillips, Army
John Rackley, Navy
Cowan Rhodes, Army
Bill Robertson, Navy
Tommy Seals, Navy
Edwin Stewart, Army
Harvey Taylor, Navy
John Thompson, Army
L. W. Woody, Army
James Yoder, Army

1942

Cecil Adderholt, Army
Miles Annas, Army
Charles Baker, Army
A. B. Barefoot, Army
Ralph Beshears, Navy
Hal Bingham, Marine
Corps
Bill Clay, Merchant
Marine
Frank Crayton, Army
Burke Fidler, Army
Wilbur Franklin, Army
Paul Freeman, Army
Bob Gibbs, Army

Eugene Groff, Navy
Mack Henderson, Army
Robert Jamison, Navy
Bill Jones, Navy
Irwin Kelly, Army
Charles Lowman, Army
Archie McRimmon, Navy
Danny Miller, Navy
James Newmeyer, Army
James Norris, Army
John Novotny, Navy
James O'Tools, Navy
Hobart Perdue, Navy

J. C. Phillips, Army
John Rackley, Navy
Sam Ray, Navy
Ted Reitzle, Army
Joe Savage, Navy
James Storie, Navy
Paul Swofford, Army
David Thurman, Army
Thomas Turbyfill, Army
George Vuckan, Army
Buren Whisnani, Army
Tom Wright, Army
Frank Yoder, Army

LIBERTY strikes to preserve the FOUR FREEDOMS

In the future days which we seek to make secure, we look forward to a world founded upon four freedoms. The first is Freedom of speech—everywhere in the world. The second is Freedom of worship—everywhere in the world. The third is Freedom from want—everywhere in the world. The fourth is Freedom from fear—everywhere in the world.

—President Roosevelt.

DEDICATION

“These freedoms shall be preserved.” We are assured of that by our president. Even more assurance is afforded us by the knowledge that these members of the past three senior classes have pledged their lives to this preservation. Many former faculty members, too, are fighting that we may live in a free land. To those men we, the senior class of 1943, dedicate this volume of the RHODODENDRON.

We have included in our service page the names of faculty members and graduates during our four years' stay at Appalachian. To the hundreds of other former students and faculty members of Appalachian in service, whom we do not mention by name we extend the same recognition and tribute.

—THE STAFF.

RESERVISTS

Seniors

Warren Austin	Marine Corps	Eugene Knott	Marine Corps
Loyd Barnett	Navy	Jimmy Miller	Navy
James Carpenter	Navy	Johnny Miller	Marine Corps
Jack Faircloth	Marine Corps	Clifford Ousley	Marine Corps
Bill Hornfeck	Marine Corps	Richard Pierce	Army
Hoy Isaacs	Navy	Bill Rankin	Navy
William Killian	Navy	Pride Ratteree	Army
Preston Mull	Army	Merl Steimer	Marine Corps
Ralph Newton	Army	Paul Yarborough	Army
Sam Osborne	Army		
Aubrey Payne	Navy		
Hugh Reavis	Army		
Morley Sigmon	Navy		
Belus Smawley	Navy		
Eugene Stroup	Navy		
James Taylor	Navy		
James Ray Walker	Navy		
Robert Warren	Navy		

Juniors

Harold Beaver	Navy		
Palmer Blair	Army		
Harry Bowman	Marine Corps		
Leo Brevard	Marine Corps		
Max Carpenter	Navy		
Claire Caskey	Army		
Robert Courts	Marine Corps		
Sam Crawley	Navy		
Bill Dale	Army		
James Dehart	Army		
Andy Dickerson	Army		
Heath Duncan	Army		
Robert Eddleman	Army		
Reeves Edens	Marine Corps		
Vernon Felton	Navy		
Edward Gomedela	Navy		
Cecil Hackney	Army		
Warren Hawkins	Army		
Clifton Hill	Marine Corps		
David Kirkham	Army		

Sophomores

James Brandon	Marine Corps
Ronald Craven	Marine Corps
R. P. Dove	Army
Frank Greer	Navy
J. R. Hamilton	Marine Corps
Marvin Hoffman	Army
Lloyd Isaacs	Army
John Kirk	Marine Corps
Daniel Lane	Navy
Ernest Magness	Army
Horace Mull	Army
Dan O'Connell	Navy
Vernon Ramsey	Marine Corps
Luther Self	Army
Frank Roland	Navy
Wayne Shoaf	Army
Tom Sinclair	Marine Corps
Wm. Underwood	Marine Corps

Freshmen

Tom Beach	Marine Corps
Buford Dixon	Marine Corps
James Hendrix	Marine Corps
Dewitt Hyder	Marine Corps
Eugene Johnston	Army
Willard Kaylor	Marine Corps
Pete Webb	Marine Corps
Jim White	Marine Corps
Thomas Wilkinson	Navy
Bassil Wright	Marine Corps

Freedom of Speech



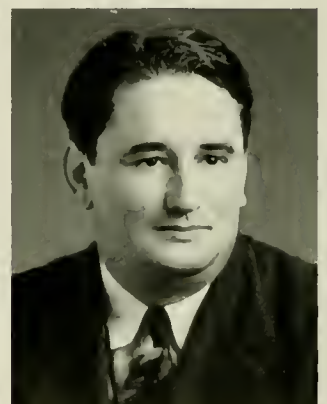
BOOK I THE COLLEGE

*"The first is FREEDOM OF SPEECH
—everywhere in the world."*



ADMINISTRATION AND FACULTY

B. B. DOUGHERTY
B.S., Ph.B., D.Litt., D.Ed.
President



J. D. RANKIN
A.B., A.M., S.T.D.
Dean

HERMAN R. EGGERS
A.B., A.M.
Registrar—Education

MYRTLE BRANDON, B.S., M.A.
Dean of Women—Education

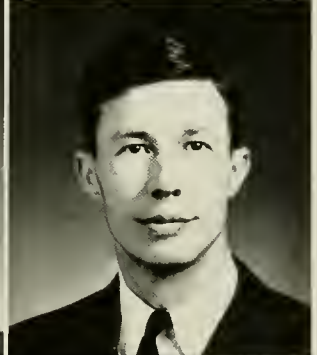
BARNARD DOUGHERTY, B.S.
Business Manager

CHAPELL WILSON, A.B., A.M.
Director Demonstration School

JOHN HOWELL
B.S., M.A., M.Ed.
Principal Elementary School

HERBERT W. WEY, B.S., M.A.
Principal High School

D. J. WHITENR
A.B., M.A., Ph.D.
History and Government



V. C. HOWELL, A.B., A.M.

History

G. L. SAWYER, A.B., A.M.

History

F. E. WARMAN, B.S., M.A., B.D., D.D. *History, Sociology*

W. M. GRUBBS, B.A., M.A. *Economics and Government*

J. T. C. WRIGHT, A.B., A.M., Ph.D. *Mathematics, Physics*

THELMA GIBSON, A.B., M.A. *Mathematics*

W. F. SMITH, A.B., M.A., Ph.D. *Psychology*

ANNA CARSTENS, B.M., B.A., M.A. *Psychology*

W. AMOS ABRAMS, A.B., M.A., Ph.D.

English

GRAYDON P. EGGERS, A.B., M.A., Ph.D.

English

META SWAIN LILES, A.B., M.A.

English

MRS. C. F. MCCOLLUM, A.B., M.A.

English

STARR M. WOOD, A.B., M.A.

English

ROBERT H. GAUGH, B.A., M.A.

English

J. A. WILLIAMS, A.B., M.A.

Geography

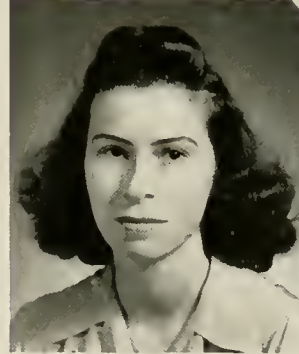
JULIAN YODER, B.S., M.A.

Geography



E. E. GARBEE, B.S., M.A. *Physical Education*
 BEATTIE FEATHERS, B.S. *Physical Education*
 R. W. WATKINS, A.B., M.A. *Physical Education*
 CLEON HAYNES HODGES, A.B., M.A. *Physical Education*
 THURSA STEED, B.S., M.A. *Physical Education*
 A. R. SMITH, A.B., M.A. *Chemistry*
 MAUDE CATHCART, B.S., M.A., Ph.D. *Biology*
 R. C. BUSTEED, B.S., M.S., Ph.D. *Biology*

IDA BELLE LEDBETTER, A.B., M.A. *Biology*
 VIRGINIA WARY, B.M. *Music*
 J. ELWOOD ROBERTS, A.B. *Music*
 HELEN FOSTER, B.S. *Music*
 GORDON NASH, A.B. *Music*
 GLADA B. WALKER, A.B., M.A. *Art*
 CATHERINE SMITH, A.B. *Art*
 HARRY B. HEFLIN, B.A., M.A., Ph.D. *Education*



LUCY BROCK, A.B., M.S.

NEEL MIMS, A.B., M.A.

MABEL TODD, B.S.,

MRS. EMMA H. MOORE

ALLIE AUSTIN, B.S., B.S. in L.S.

LEONARD EURY, A.B., B.S. in L.S.

LOUISE MOORE, B.S. in L.S.

EDITH HESS, A.B., A.M.

Home Economics

Home Economics

Home Economics

Librarian

Library

Library

Library

Business Education

MRS. HARDIN

MISS BERDINE CHARTIER

MISS HELEN BURCH

LOUISE MCCREADY

BERNICE GRAGG

MELBA TUGMAN

JENNIE SUE ALLEN

MADGE KILBY

Matron, Blan Dolph Hall

Matron, White Hall

Matron, Lovill Hall

Secretary to Registrar

Secretary to Business Manager

Secretary to Business Manager

Secretary to President

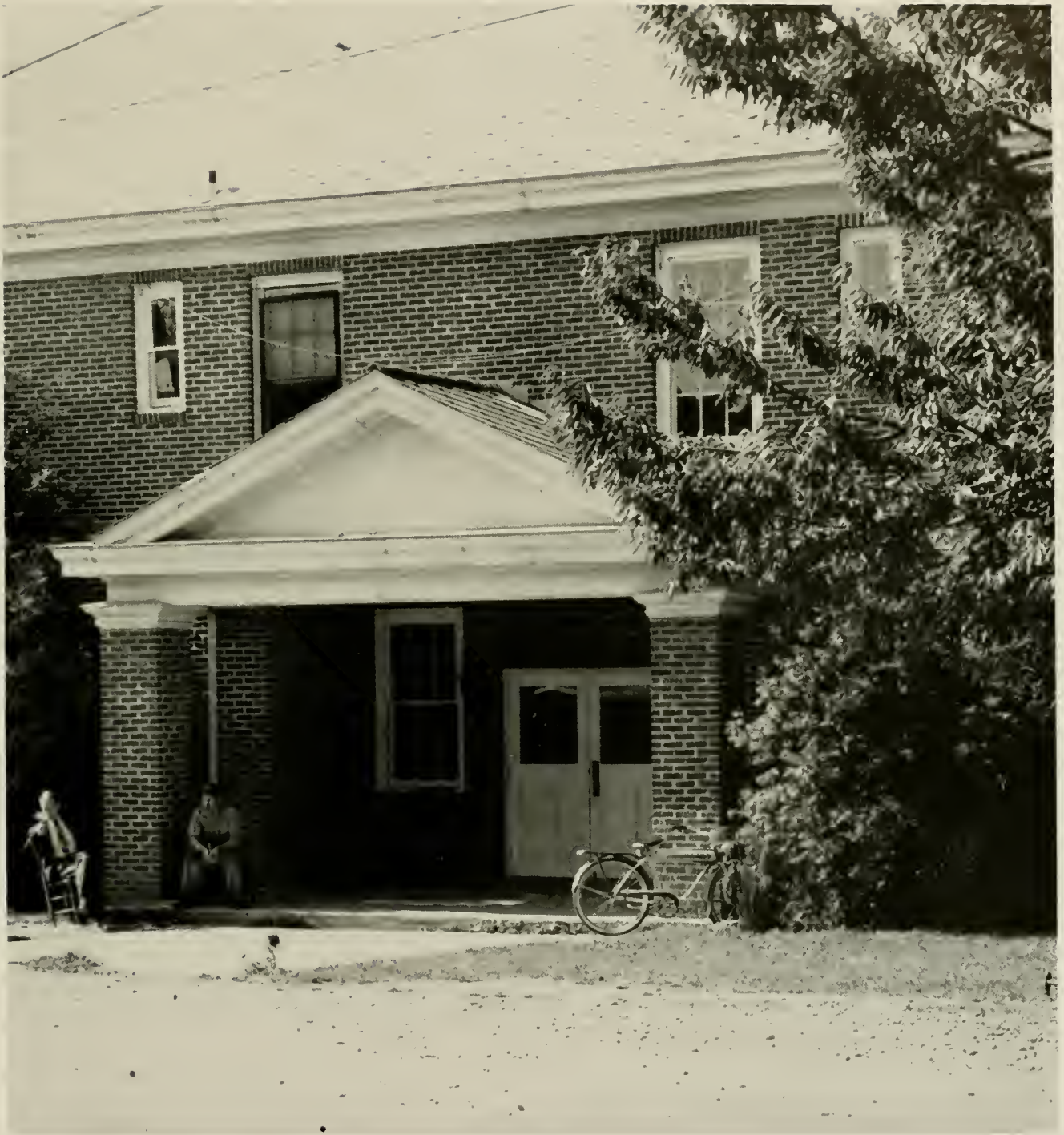
Secretary to Business Manager

IN MEMORIAM

ANDREW JACKSON GREENE

March 2, 1883

August 12, 1942



Boys' Gymnasium



Library



Cafeteria



Newland Hall

Freedom of Religious Worship



BOOK II **CLASSES**

*"The second is FREEDOM OF WORSHIP
—everywhere in the world."*



SENIOR CLASS OFFICERS

AUBREY PAYNE

President

RUTH ORDERS

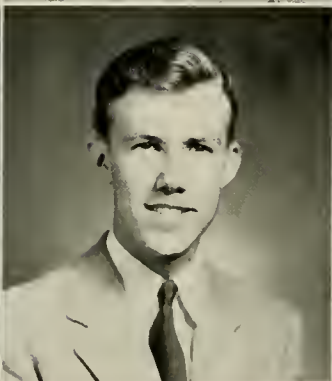
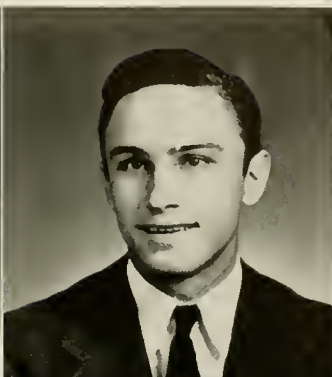
Vice-President

RUTH ISAACS

Secretary

MARGARET PIERCE

Treasurer



SARA ALEXANDER Charlotte, N. C.
English and History

Queens College 1, 2; Playcrafters 3; Thalian Literary Society 3, 4.

LOUISE BAKER Bakersville, N. C.
Physical Education and History

Physical Education Major Club 1, 2, 3, 4; Intramural Sports 1, 2, 3, 4; Y. W. C. A. 4; The Flying Fish 4; White Hall Club 1, 2, 3; A. H. S. A. Official 3; Captain of Black Team 4.

SYBIL ALLEN Peachland, N. C.
Grammar Grade Education

Forensic Club 1, 2; Dynician Literary Society 1, 2, 3, 4; Y. W. C. A. 2, 3, 4; Baton Twirling Club 2, 3, 4, Vice-President 4; Playcrafters 1, 2, 3, 4; White Hall Club 1, 2, 3.

LOYD BARNETT Ellenboro, N. C.
Mathematics and History

RHODODENDRON Staff 3, 4, Editor 4; Student Council 3; Class Officer 3; Y. M. C. A. 1, 2, 3; B. S. U. Council 2; Forum Club 2, 3; I. R. C. 3, 4; Chief Junior Marshal; Intramural Sports 1, 2, 3, 4; Senior Superlative 4; *Who's Who* 4; A Cappella Choir 4.

ALICE ANTHONY Raleigh, N. C.
English and History

Freshman Glee Club; Forum Club 2, 3, 4; I. R. C. 3, 4; Forensics 3; President Student Council 4.

LILLIAN FAYE BAIRD Banner Elk, N. C.
Grammar Grade Education

WARREN AUSTIN Boone, N. C.
Science and Physical Education

PEGGY BEALE Snow Camp, N. C.
Physical Education and History

Physical Education Major Club 1, 2, 3, 4; White Hall Club 2; Y. W. C. A. 4; Baton Twirling Club 1, 2, 3, 4, President 4; History Major Club 2.





HELEN NOVELLA BEATTY Stanley, N. C.
Grammar Grade Education

Asheville College 1; Methodist Club 3, 4; White Hall Club 3; Vernician Literary Society 3, 4, Officer 3, 4; Y. W. C. A. 1, 2, 4.

MARY BLACK Milton, Delaware
Physical Education and Mathematics

White Hall Club 1, 2, President 2; Mathematics Club 3; Physical Education Major Club 1, 2, 3, 4, Vice-President 3; Basketball 1, 2, 3; Junior Marshal; I. R. C. 4; Y. W. C. A. 4, Officer 4; Student Council 2; *Who's Who* 4; RHODODENDRON Staff 3; *Appalachian* Staff 2, 3, 4.

EVA BINGHAM Boone, N. C.
Grammar Grade Education

Freshman Glee Club; Band 1, 2, 3, 4; A Cappella Choir 2; White Hall Club 3, 4.

RUTH IRENE BOLICK Blowing Rock, N. C.
English and History

L. S. A. 3; Creative Writing Club 1, 2, 3.

MYRTLE MOORE BIVENS Monroe, N. C.
Grammar Grade Education

MARY ELIZABETH BRUTON Mt. Gilead, N. C.
Mathematics and History

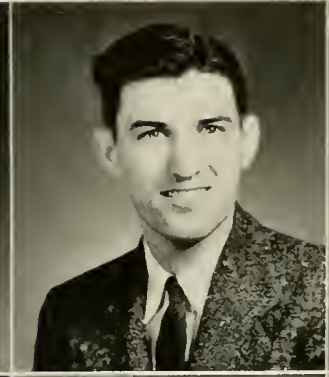
Dynician Literary Society 1, 2, 3, 4; Methodist Club 1, 2, 3, 4, Officer 3, 4; Y. W. C. A. 1, 4; White Hall Club 1, 2, 3; History Major Club 2, 3; Mathematics Club 3, 4, President 4; A. H. S. A. Basketball Official 3; Future Teachers Club 4, Officer.

RACHEL ANNE BIVENS Monroe, N. C.
Grammar Grade Education

ROSEMARY LOUISE BUCHANAN Charlotte, N. C.
Mathematics and English

Lovill Club 1, 2, 3, 4, Officer 2; Mathematics Club 2, 3, 4; Creative Writing Club 1, 2, 3, Officer 3; Christian Fellowship Alliance 4, Officer 4; Playcrafters 2, 3, 4; Y. W. C. A. 2, 3, 4; B. T. U. 1, 2, 3, 4.





DORIS ELIZABETH BURGESS Broadway, N. C.
English and History

MYRTLE LEE CHURCH Elk Park, N. C.
Primary Education

VIRGINIA ELIZABETH BURGESS Avondale, N. C.
English and French

GAIL CLAY Boone, N. C.
Physical Education and History

Mars Hill College 1, 2; Future Teachers Club 4; Le Cercle Française 3, 4; Y. W. C. A. 3, 4; Playcrafters 3, 4; Christian Fellowship Alliance 3, 4, President 4; Creative Writing Club 3; Lovill Club 3, 4; B. T. U. 3, 4.

Physical Education Major Club 1, 2, 3, 4; Baton Club 1; Playbill Staff 2; Appalachian Staff 4; Forum Club 3, 4; I. R. C. 4; Intramural Sports I, 2, 3, 4; History Majors Club 2; Gym Instructor 2, 3, 4.

JAMES CEBRON CARPENTER Rutherfordton, N. C.
Mathematics and Science

CLEET CLYDE CLEETWOOD Carthage, N. C.
History and Science

Mathematics Club 2, 3, 4; Student Council 4; Alpha Sigma Gamma 1, 2; Intramural Sports 1, 2, 3, 4; Varsity Wrestling 4; RHODODENDRON Staff 3, 4, Business Manager 4; "A" Club 4.

University of North Carolina 1; Brevard College 2; "A" Club 3, 4; Football 3, 4; Baseball 3, 4; Intramural Sports 3, 4; Campus Superlative 4; Delta Phi Sigma 3.

JANE ELIZABETH COCHRAN Star, N. C.
Primary Education

LOGENE MARIE CAUDILL Piney Creek, N. C.
English and Science

White Hall Club 1, 2; A. C. E. 4, Officer 4; Dyncian Literary Society 1, 2, 3, 4; Methodist Club 1, 2, 3, 4; Y. W. C. A. 1, 2, 3, 4.





MARY TRUETT COGGIN Meadows of Dan, Va.
Primary Education

Wingate Junior College 1, 2; White Hall Club 3; Y. W. C. A. 4; A. C. E. 4.

RACHEL COVINGTON Rural Hall, N. C.
English and Science

Thalian Literary Society 1, 2, 3, 4; Y. W. C. A. 4; B. S. U. 3, 4; White Hall Club 1, 2.

DOROTHY FLORENCE COMER Cameron, N. C.
Physical Education and Science

Physical Education Major Club 1, 2, 3, 4; Intramural Sports 1, 2, 3, 4; "B" Team Basketball 3; White Hall Club 1, 2, 3; Forum Club 3, 4; Baton Club 1, 2, 3, 4, Officer 4; Y. W. C. A. 1, 4; Choir 1, 2; Dyncian Literary Society 4; A. H. S. A. Official 2, 3; First Aid Instructor 4.

FRANCES CRAWFORD Cooleemee, N. C.
Primary Education

White Hall Club 1, 2; Y. W. C. A. 1, 2, 4; Methodist Club 1, 2; A. C. E. 4; Band 2, 4; Dyncian Literary Society 4.

SARAH KATHRYN COGLER Chester, S. C.
Grammar Grade Education

Winthrop College 1; Playcrafters 2, 3, 4; Y. W. C. A. 2, 3, 4; White Hall Club 2, 3; Forensic Club 2; Thalian Literary Society 3, 4; May Court 2.

JOHNIE CRAWFORD Gastonia, N. C.
Primary Education

White Hall Club 1, 2; Presbyterian Club 1, 2, 4; Y. W. C. A. 1, 2, 4; Dyncian Literary Society 4; A. C. E. 4.

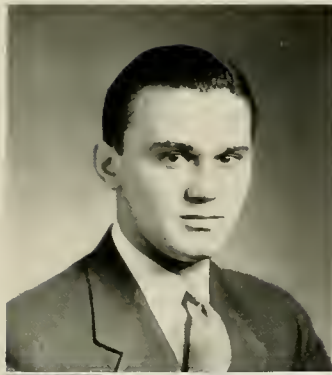
YVONNE FAYE CORNWELL Shelby, N. C.
Primary Education

Asheville College 1, 2; Y. W. C. A. 3; A. C. E. 4; A Cappella Choir 4.

MILDRED LOUISE CROUCH Hiddenite, N. C.
Home Economics and Science

Brevard Junior College 1, 2; Home Economics Club 3, 4; Methodist Club 3, 4; Christian Fellowship Alliance 4; Lovill Club 3, 4.





HUGH SIDNEY DANIEL Franklinton, N. C.
Mathematics and Physical Education

A. H. S. A. Basketball Official 1, 2, 3, 4; Class Officer 2, 3; Student Council 3, 4; Intramural Sports 1, 2, 3, 4; Varsity Tennis 1, 2; *Who's Who* 4; Junior Marshal; Future Teachers Club 4, President 4; *Appalachian Staff* 1, 2, 3, 4, Sports Editor 3, Business Manager 4; Vice-President Student Section of N. C. Association of Physical Education, Health and Recreation.

JOHNNIE DAVIS Earl, N. C.
Science and History

FAIRY DOBBINS Rusk, N. C.
Grammar Grade Education

Lovill Club 1, 2, 3, 4; B. T. U. 2, 3, Officer 2, 3; Y. W. C. A. 1; Choir 1; Vernician Literary Society 3, 4, Officer 3, 4; Christian Fellowship Alliance 4, Officer 4.

ETHELEEN WEBB DOVER Shelby, N. C.
Grammar Grade Education

MILDRED RUTH DULL Cana, N. C.
Grammar Grade Education

GRACE EDNA DUNCAN Penland, N. C.
Grammar Grade Education

Asheville College 1, 2; B. T. U. 3, 4; Christian Fellowship Alliance 3; Y. W. C. A. 4.

HELEN EDMISTON Mooresville, N. C.
Primary Education

Y. W. C. A. 1, 4; Presbyterian Club 1, 2, 3, 4, Officer 3; Creative Writing Club 1, 2, 3; Lovill Club 1, 2, 3, 4; Vernician Literary Society 1, 2, 3, 4, Officer 3, 4; A. C. E. 4.

JACQUELINE EVERHART Thomasville, N. C.
Home Economics and Science

Home Economics Club 2, 3, 4; Freshman Glee Club 1; Y. W. C. A. 2, 3, 4; Dynician Literary Society 1, 2, 3, 4; B. T. U. 1; Lutheran Students Association 2, 3, 4.





PAULINE L. GILLIAM Thomasville, N. C.
Grammar Grade Education

Playcrafters 3; Y. W. C. A. 3, 4; White Hall Club 1, 2, 3;
B. T. U. 1, 2, 3, 4; B. S. U. 2, 3, 4; Art Club 2; Dynician
Literary Society 1, 2, 3, 4.

ALVAH IMOGENE GREENE Boone, N. C.
Primary Education and Music

Freshman Glee Club 1; Symphony Orchestra 1, 2, 3; Band
3, 4; A. C. E. 4.

PAULINE GOLD Shelby, N. C.
Primary Education

Asheville College 1, 2; Y. W. C. A. 3, 4; A. C. E. 4;
Christian Fellowship Alliance 4; Lovill Club 3, 4.

PETER W. HAMLET Boone, N. C.
English

NADINE ADDIE GRAGG Boone, N. C.
English and History

MARIE HAMRICK Cliffside, N. C.
Grammar Grade Education
Gardner-Webb 1, 2; Lovill Club 3, 4.

AILEEN GREENE Sugar Grove, N. C.
English and History

B. T. U. 1, 2, 3; Christian Fellowship Alliance 2; Phila
Retian Literary Society 1, 2, 3, 4. Officer 3, 4; Y. W. C. A.
1, 2; Future Teachers Club 3; Lovill Club 3, 4.

DOROTHY SUE HAMRICK Boiling Springs, N. C.
Home Economics and Science





MARY EVELYN HAMRICK Ellenboro, N. C.
Grammar Grade Education

Dynician Literary Society 1, 2, 3, 4; Y. W. C. A. 1, 2, 3, 4;
White Hall Club 1, 2, 3; B. T. U. 1, 2, 3, 4

HAZEL ANNE HAWKINS Henrietta, N. C.
Primary Education

Spartanburg Junior College 1, 2; A. C. E. 4; Lovill Club 4;
Christian Fellowship Alliance 4; B. T. U. 4

EDNA RUTH HATHCOCK Oakboro, N. C.
English and History

Pfeiffer Junior College 1, 2; Baptist Choir 3, 4; B. T. U.
3, 4; Future Teachers Club 4; Christian Fellowship Alliance
3, 4; Y. W. C. A. 3, 4; Y. W. A. 3, 4

ELIZABETH HAWKINS Cliffside, N. C.
Primary Education

Gardner Webb 1, 2; Lovill Club 3, 4; A. C. E. 4.

EVA MYRNA HATHCOCK Oakboro, N. C.
Physical Education and Science

STELLA R. HILDEBRAND Knightdale, N. C.
English and French

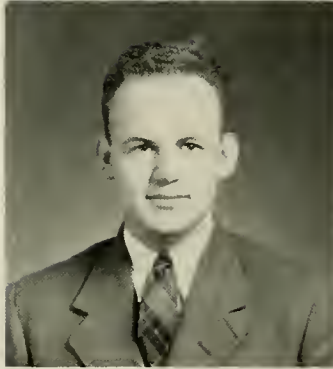
THELMA HAUSER Pfafftown, N. C.
Primary Education

Thalian Literary Society 1, 2, 3, 4; Methodist Club 2, 3, 4.
Officer 3, 4; Y. W. C. A. 1, 2, 3, 4, Officer 1; Camp Fire Girls
3; White Hall Club 1, 2; A. C. E. 4; Intramural Sports 4.

CARRIE IMOJEAN HOPPERS Whitehead, N. C.
Home Economics and Science

W. C. U. N. C. 1; Pfeiffer Junior College 2; Home Economics
Club 3, 4; Dynician Literary Society 3, 4; Y. W. C. A. 3, 4;
Baptist Student Union 3.





BILL HORNFECK Glassport, Pa.
Mathematics and Science

HOY LEE ISAACS Sherwood, N. C.
Physical Education and History

FAYE ELIZABETH HORTON Marshville, N. C.
Primary Education
W. C. U. N. C. 1, 2.

RUTH ISAACS Boone, N. C.
Physical Education and History

Baton Twirlers 1, 2, Officer; Band Majorette 3, 4; *Playbill* Staff 2; Class Officer 4; Physical Education Major Club 1, 2, 3, 4; History Major Club 2; Gym Class Instructor 2, 3, 4.

IRENE ELIZABETH HOWARD Sherrill's Ford, N. C.
English and History

MARTHA FRANCES JACKSON Pilot Mountain, N. C.
English and French

French Club 1, 2, 3, 4; White Hall Club 1, 2; Thalian Literary Society 1, 2, 3, 4; Y. W. C. A. 4; Playcrafters 3, 4.

CARMEN HUNEYCUTT Indian Trail, N. C.
Primary Education

Mitchell Junior College 1, 2; White Hall Club 3, 4; A. C. E. 4, Officer 4; Phila Retian Literary Society 4, Officer 4; Y. W. C. A. 4.

RUBY ELLEN JESSUP Francisco, N. C.
Grammar Grade Education





VIVIAN JOINSON Vale, N. C.
English and French

Y. W. C. A. 1, 2, 3, 4, Officer 4; Chorister and Choir Director 3; Playcrafters 1, 2, 3, 4, President 4; Vernician Literary Society 1, 2, 3, 4, Officer 1, 2, 3, 4; Freshman Glee Club 1; A Cappella Choir 2, 3, 4, Officer 3; *Appaluchian* Reporter 4; Christian Fellowship Alliance 2; Le Cercle Française 3, 4; Methodist Club 1, 2, 3, Officer 3.

ALICE FRANCES JOYCE Mount Airy, N. C.
Grammar Grade Education and Music

White Hall Club 1, 2; Freshman Glee Club 1; Christian Fellowship Alliance 1, 2, Officer 2; Vernician Literary Society 2, 3, 4, Officer 3, 4; May Court 3; A Cappella Choir 3, 4, Officer 4; Y. W. C. A. 3, 4.

JULIA KENDALL Norwood, N. C.
Home Economics

LILLIAN B. KENT Lenoir, N. C.
Grammar Grade Education

Dynician Literary Society 1; Y. W. C. A. 1; White Hall Club 1.

WILLIAM KILLIAN Lincolnton, N. C.
Mathematics and Science

Student Council 2; I. R. C. 2, 3, 4; President Junior Class; *Appalachian* 1, 2, 3, 4, Managing Editor 3, Editor 4; Junior Marshal; *Who's Who* 4; Most Valuable Man 4; Intramurals 1, 2, 3, 4.

RUTH LOVEN Linville, N. C.
Physical Education and History

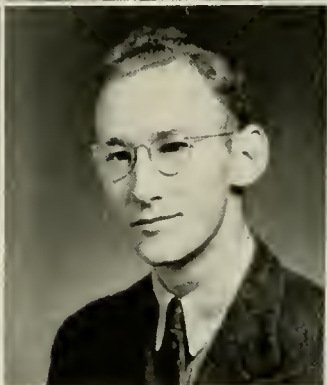
Physical Education Majors Club 1, 2, 3, 4 Officer 4; Camp Fire Girls 2, 3, Officer 3; Vernician Literary Society 1, 2, 3, 4; Y. W. C. A. 1, 2, 3, 4; Baton Twirlers 1, 2, 3, 4, Majorette 2, 3, 4; Lovill Club 1; White Hall Club 2; Senior Life Saving 3; Intramurals 1, 2, 3, 4; Flying Fish 4; Basketball Squad 1; May Court 1, 4; Gym Instructor 2, 3; A. H. S. A. Official 1, 2, 3.

HELEN LOWE Caroleen, N. C.
Home Economics

HELEN CHRISTINE LUTZ Newton, N. C.
Primary Education

Lovill Club 1, 2, 3, 4; Vernician Literary Society 1, 2, 3, 4, Officer 3, 4; Lutheran Student Association 1, 2, 3, 4, Officer 2, 3; Y. W. C. A. 1, 2, 3, 4; Christian Fellowship Alliance 4; A. C. E. 4, Officer 4.





LILLIAN FLORENE LUTZ Newton, N. C.
Grammar Grade Education

Lutheran Student Association 1, 2, 3, 4; Vernician Literary Society 1, 2, 3, 4; Y. W. C. A. 1, 4.

WILLIE EARL LYON Hickory, N. C.
English, History, and French

Freshman Glee Club 1; White Hall Club 1, 2; Playcrafters 1, 2, 3, 4; Methodist Club 1, 2, 3, 4, Officer 2, 3, 4; History Major Club 2; Le Cercle Française 2, 3, 4, Officer 4; Y. W. C. A. 3, 4, Officer 4; *Appalachian* Staff 4; Thalian Literary Society 2, 3, 4, Officer 2, 3, 4.

RUBY JOSEPHINE MANN Gastonia, N. C.
English and History

Playcrafters 1; Methodist Club 1; Lovill Club 1, 2, 3; French Club 1, 2; Thalian Literary Society 1, 2, 3, 4, Officer 3, 4; Y. W. C. A. 1, 2, 3, 4, Officer 4; Forum Club 2, 3, 4, Officer 3; *Appalachian* Staff 4; Student Council 4.

CORA MARTIN Statesville, N. C.
History and Science

Y. W. C. A. 1, 4; Methodist Club 1, 2, 3; Phila Retian Literary Society 1, 2, 3, 4; White Hall Club 1; Lovill Club 2.

FLOWERS ELLEN MAST Lovill, N. C.
Grammar Grade Education

REBECCA SUE MAST Sherwood, N. C.
Grammar Grade Education

TERRENCE J. MATTERN Islip Terrace, N. Y.
English and History

PAULINE MCRARY Lenoir, N. C.
English and History

Lovill Club 1, 2, 3, 4; Thalian Literary Society 1, 2, 3, 4, Officer 4; Y. W. C. A. 1, 3, 4; Future Teachers Club 3; Forum Club 3, 4, Officer 3, 4; Student Council 4.





EUGENIA LORENE MELTON Albemarle, N. C.
English and Science

Playcrafters 1, 2; Y. W. C. A. 4; Lovill Club 1, 2, Officer 2; White Hall Club 3; B. S. U. 1, 2; History Major Club 2.

CHARLENE MORRIS Stanley, N. C.
Primary Education

Phila Retian Literary Society 1, 2, 3, 4, Officer 2, 3, 4; Girls Varsity Basketball 1, 2, 3; Girls "A" Club 1, 2, 3, 4; Intramural Sports 4; White Hall Club 3; A. C. E. 4, Officer 4.

CLETA MILLER Clifton, N. C.
Primary Education

Methodist Club 3; Campfire Girls 2, 3; White Hall Club 1, 2; Y. W. C. A. 1, 2.

HILDA MOSS Earl, N. C.
Mathematics and History

GLENDRID POLLY MILLS Polkton, N. C.
English, French and History

PRESTON ALFONZO MULL Marion, N. C.
Physical Education and Science

HAZEL M. MORETZ Boone, N. C.
Grammar Grade Education

LELIA NEAL Reidsville, N. C.
Home Economics and Science





NAOMI PARKER Marshville, N. C.
Grammar Grade Education

Vernician Literary Society 1, 2, 3, 4; Y. W. C. A. 4; Forum Club 4; B. T. U. 1, 2; White Hall Club 3; Playcrafters 4; Lovill Club 1, 2.

MARGARET CATHERINE PIERCE Harmony, N. C.
Primary Education

Phila Retian Literary Society 1, 2, 3, 4. Officer 2, 3, 4. Band Sponsor 2, 3; White Hall Club 1, 2, 3; Class Officer 4. RHODODENDRON Staff 4.

AUBREY H. PAYNE Mt. Airy, N. C.
Mathematics and Science

Alpha Sigma Gamma Literary Society 1, 2; Intramural Sports 1, 2, 3, 4; *Appalachian* Staff 1, 2, 3. Circulation Manager 3; Assistant Business Manager RHODODENDRON 4; *Who's Who* 4; Class President 4; Wrestling Manager 3, 4; "A" Club 4; A Cappella Choir 4.

NELLIE PLEASANT Leasburg, N. C.
Mathematics and History

HELEN MAE PEELER Hickory, N. C.
Home Economics and Science

Home Economics Club 2, 3, 4, Officer 2, 3; Forum Club 4; *Appalachian* Staff 3, 4; Playcrafters 2; Thalian Literary Society 4. Lovill Club 1, 2, 3.

FRANCES ELIZABETH POWELL Statesville, N. C.
Grammar Grade Education

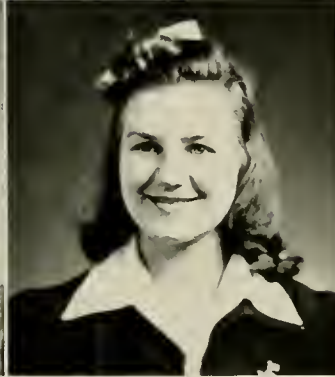
Mitchell College 1, 2; Baptist Student Union 3. Publicity Director 4; I. R. C. 4; Y. W. C. A. 4; News Editor *Appalachian* 4; Playcrafters 4; Associate Editor *Plaubill* 4; Secretary Women's Dormitory Council 4; B. T. U. 3, 4. President 4

MARGAGET HELEN PERRY Sugar Grove, N. C.
Home Economics and Science

Mars Hill College 1, 2; Y. W. C. A. 4; Home Economics Club 3, 4. Officer 3, 4; White Hall Club 3. Officer 3.

HELEN PRICE Salisbury, N. C.
Home Economics





MARY SUE RATCHFORD Gastonia, N. C.
Mathematics and History

Y. W. C. A. 1, 2, 3, 4; Cabinet 2; Officer 3, 4; I. R. C. 2, 3, 4; President 4; Forum Club 2, 3, 4; President 4; Presbyterian Club 1, 2, 3; Officer 2, 3; Mathematics Club 2, 3, 4; Officer 2; Lovill Club 1, 2, 3; Thalian Literary Society 2, 3, 4; Officer 2, 3, 4; Forensic Club 1, 2, 3; Officer 2, 3; Intercollegiate Debating 1, 2, 3, 4; Intramural Sports 3, 4; Future Teachers Club 4; *Who's Who* 4.

HUGH L. REAVIS Statesville, N. C.
Mathematics and History

Mitchell College 1, 2; B. S. U. Council 3; Mathematics Club 3, 4; *Appalachian Staff* 3, 4; Y. M. C. A. 3, 4; Delta Phi Sigma 3; Forensic Club 3, 4.

ALTA LEE REDMAN Olin, N. C.
Primary Education

Mitchell College 1, 2; Y. W. C. A. 3; White Hall Club 3, 4; Christian Fellowship Alliance 3, 4; Playcrafters 3; B. T. U. 3, 4; A. C. E. 4; Y. W. A. 4.

ELIZABETH REDMAN Olin, N. C.
Primary Education

Mitchell College 1, 2; Y. W. C. A. 3; B. T. U. 3, 4; White Hall Club 3, 4; Y. W. A. 4; A. C. E. 4; Christian Fellowship Alliance 4.

MARY REDMOND New Hope, N. C.
Grammar Grade Education

Dynician Literary Society 4; Y. W. C. A. 4; Choir 1, 2; Intramural Sports 1, 2, 3; White Hall Club 1, 2, 3.

ELOISE MARIE REESE Mars Hill, N. C.
Home Economics

Mars Hill College 1; University of Tennessee 2; Home Economics Club 3, 4; Future Teachers Club 4; B. T. U. 3, 4; Officer 3, 4.

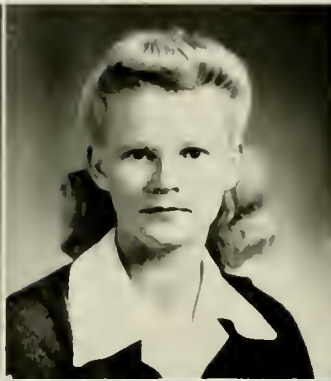
PATYRAE REEVES Sparta, N. C.
Grammar Grade Education

Lovill Club 1; White Hall Club 2, 3, 4; Home Economics Club 2; Christian Fellowship Alliance 4; Y. W. A. 4.

ANNIE LAURA ROBERTS Kings Mountain, N. C.
Primary Education

Gardner-Webb Junior College 1, 2; B. T. U. 3, 4; Christian Fellowship Alliance 3; A. C. E. 4.





SUE ALICE RUDDOCK Kings Mountain, N. C.
Primary Education

W. C. U. N. C. 1; Y. W. C. A. 2, 3, 4; A. C. E. 4; Baton Club 3, 4; Dyncian Literary Society 4; Presbyterian Club 2, 3, 4; Lovill Club 2; Intramural Sports 4.

GENEVA SEARCY Uree, N. C.
Primary Education

Phila Retian Literary Society 1, 2, 3, 4; French Club 1, 2; B. S. U. Council 1; Lovill Club 1, 2, 3, 4; Y. W. C. A. 1

KATHLEEN GAYNELLE SCHELL Statesville, N. C.
Grammar Grade Education

Mitchell College 1, 2; Thalian Literary Society 3, 4; Future Teachers 3, 4; Y. W. C. A. 3, 4.

MARY JANE SHEEK Advance, N. C.
Primary Education

Y. W. C. A. 1, 2, 4; Lovill Club 1, 2, 3, 4; Dyncian Literary Society 1, 2, 3, 4; Future Teachers Club 3; A. C. E. 4; B. T. U. 1, 2, 3.

ELIZABETH SCHULKER Whiteville, N. C.
Grammar Grade Education

MORLEY SIGMON Barium Springs, N. C.
Grammar Grade Education

EVELYN SEALEY Barnesville, N. C.
English and History

RUTH MAE SIMPSON Monroe, N. C.
English and History

Wingate Junior College 1, 2; B. S. U. Council 4; Dyncian Literary Society 4; Playerafters 4; Y. W. C. A. 4; Christian Fellowship Alliance 4; White Hall Club 3, 4.





BELUS VAN SMAWLEY Ellenboro, N. C.
Physical Education and History

Basketball 1, 2, 3, 4, Coach 4; Baseball 1, 2, 3, 4; "A" Club 1, 2, 3, 4, President 4; Senior Superlative 4.

EDITH SPENCER Boonville, N. C.
Grammar Grade Education

Lovill Club 1, 2; Thalian Literary Society 1, 2, 3, 4; Methodist Club 2.

RACHEL SMITH Granite Falls, N. C.
Library Science and History

Mars Hill Junior College 1, 2; Y. W. C. A. 4; B. T. U. 3, 4; B. S. U. 3, 4; Future Teachers Club 3, 4; Le Cercle Française 3; Christian Fellowship Alliance 4; Lovill Club 3.

IVA SPILLMAN Winston-Salem, N. C.
Primary Education

Freshman Glee Club 1; A Cappella Choir 2, 3; Y. W. C. A. 3, 4; May Court 3; White Hall Club 2; Dyncian Literary Society 1, 2, 3, 4, Officer 4; A. C. E. 4.

VIRGINIA SMITH Lexington, N. C.
English and Physical Education

Y. W. C. A. 1, 2, 3, 4; Physical Education Major Club 1, 2, 3, 4; Dyncian Literary Society 1, 2, 3, 4, Officer 4; White Hall Club 1, 2; International Relations Club 3, 4; *Appalachian* Staff 4; RHODODENDRON Staff 4; Intramural Sports 1, 2, 3, 4; May Court 3; Flying Fish 4; Campus Superlative 4.

ARVETA STAFFORD Taylorsville, N. C.
Home Economics and Science

Y. W. C. A. 1, 4; Lovill Club 1, 2, 3; Home Economics Club 1, 2, 3, 4, Officer 4; Lutheran Students Association 1, 2, 3, 4, Officer 4; Future Teachers Club 4; Christian Fellowship Alliance 1, 2, 3, 4.

DORIS MAXINE SPENCER Grassy Creek, N. C.
Home Economics and Science

Mars Hill College 1, 2; Home Economics Club 3, 4, President 4; Christian Fellowship Alliance 3; B. T. U. 3.

JEAN WINIFRED STIREWALT Durham, N. C.
English and History

Lutheran Student Association 1, 2, 3, 4, Officer 2, 3, 4; Forum Club 2, 3, 4, Officer 3; Vernician Literary Society 2, 3, 4, Officer 2; *Appalachian* Staff 4; RHODODENDRON Staff 4; Playcrafters 1; Lovill Club 1, 2, 3; International Relations Club 4; *Who's Who* 4; History Major Club 2; Y. W. C. A. 4.





EMMA FLOWERS STORY Blowing Rock, N. C.
Primary Education

FRANCES V. SUTLIFF Leaksville, N. C.
Grammar Grade Education

Thalian Literary Society 1, 2, 3, 4, Officer 4; St. Luke's Club 2; Forum Club 2, 3, 4; Y. W. C. A. 3, 4; Lovill Club 1, 2.

EUGENE ROBERTS STROUP Cherryville, N. C.
Mathematics and Science

Mathematics Club 2, 3, 4; Playcrafters 3, 4; Football 1.

JAMES HARLEY TAYLOR, JR. Corinth, N. C.
Mathematics and Science

WILDA SUDDERTH Montezuma, N. C.
Primary Education

White Hall Club 1, 2, 3; Methodist Club 3, 4; Home Economics Club 1; Thalian Literary Society 4; Camp Fire Girls 2, 3, 4, Officer 4; Y. W. C. A. 4; A. C. E. 4.

LUCILLE TEMPLETON Olin, N. C.
Primary Education

Mitchell College 1, 2; Methodist Club 3; White Hall Club 3, 4; A. C. E. 4; Y. W. A. 4.

LILLIAN SUGGS Raleigh, N. C.
English, French, and History

VIRGINIA TESH Clemmons, N. C.
Grammar Grade Education

Y. W. C. A. 1, 4; Choir 1, 2; Thalian Literary Society 1, 2, 3, 4; Lovill Club 1, 2; Playcrafters 2.





ALTA IRENE TILLEY Mount Airy, N. C.
Grammar Grade Education

White Hall Club 1, 2; Christian Fellowship Alliance 2, 3, Officer 2, 3; Vernician Literary Society 3, 4; Y. W. C. A. 4; B. T. U. 4; Playcrafters 4.

KATHLEEN VESTAL Boonville, N. C.
History and Library Science

Y. W. C. A. 1, 2, 3, 4, Cabinet 4; B. S. U. 1, 2, 3, 4, Council 3, 4; B. T. U. 1, 2, 3, 4, Officer 2, 3; Future Teachers Club 4; Thalian Literary Society 1, 2, 3, 4, Officer 3; Le Cercle Française 1, 2, 3; Christian Fellowship Alliance 1, 2, 3, 4, Officer 3; Lovill Club 1, 2, 3, Officer 2.

VIRGINIA CATHERINE TOMS Shelby, N. C.
Grammar Grade Education

Freshman Glee Club 1; Playcrafters 1; Student Council 2; School Council 2; B. S. U. Council 1; Forum Club 2, 3; Y. W. C. A. 1, 3; Junior Council 1, 2; Future Teachers Club 3; Dynician Literary Society 3.

JAMES RAY WALKER Morganton, N. C.
Mathematics and History

LORENE TURPIN Mt. Airy, N. C.
Grammar Grade Education

White Hall Club 1, 2; Y. W. C. A. 3, 4; May Court 4; Thalian Literary Society 4, Officer 4.

CLAUDINE WARF Reidsville, N. C.
Primary Education

Phila Retian Literary Society 1, 2, 3, 4, Officer 3, 4; White Hall Club 1, 2, 3, 4; Christian Fellowship Alliance 2, Officer 2; A. C. E. 4; B. S. U. Council 4; B. T. U. 2, 3, 4, Officer 3; Y. W. A. 4; Camp Fire Girls 3, 4, Officer 4.

KATHERINE S. UNDERDOWN Blowing Rock, N. C.
Primary Education





ROBERT DANIEL WARREN New Orleans, La.
History and Music

Spartanburg Junior College 1, 2; Converse College, Music School 3; Y. M. C. A. 4; A Cappella Choir 4; Student Council 4, Officer 4

ELIZABETH WORSHAM Ruffin, N. C.
Grammar Grade Education

Phila Retian Literary Society 1, 2, 3, 4, Officer 3, 4; Methodist Club 1; White Hall Club 1, 2.

DOROTHY WILLIAMS Maiden, N. C.
Home Economics and Science

Home Economics Club 1, 2, 3, 4, Officer 4; Y. W. C. A. 4; Future Teachers Club 4; Phila Retian Literary Society 1, 2, 3, 4; Baptist Training Union 1, 2, 3, 4; Lovill Club 1, 2, 3; Christian Fellowship Alliance 4

MARY DORIS WRIGHT Boone, N. C.
Physical Education and History

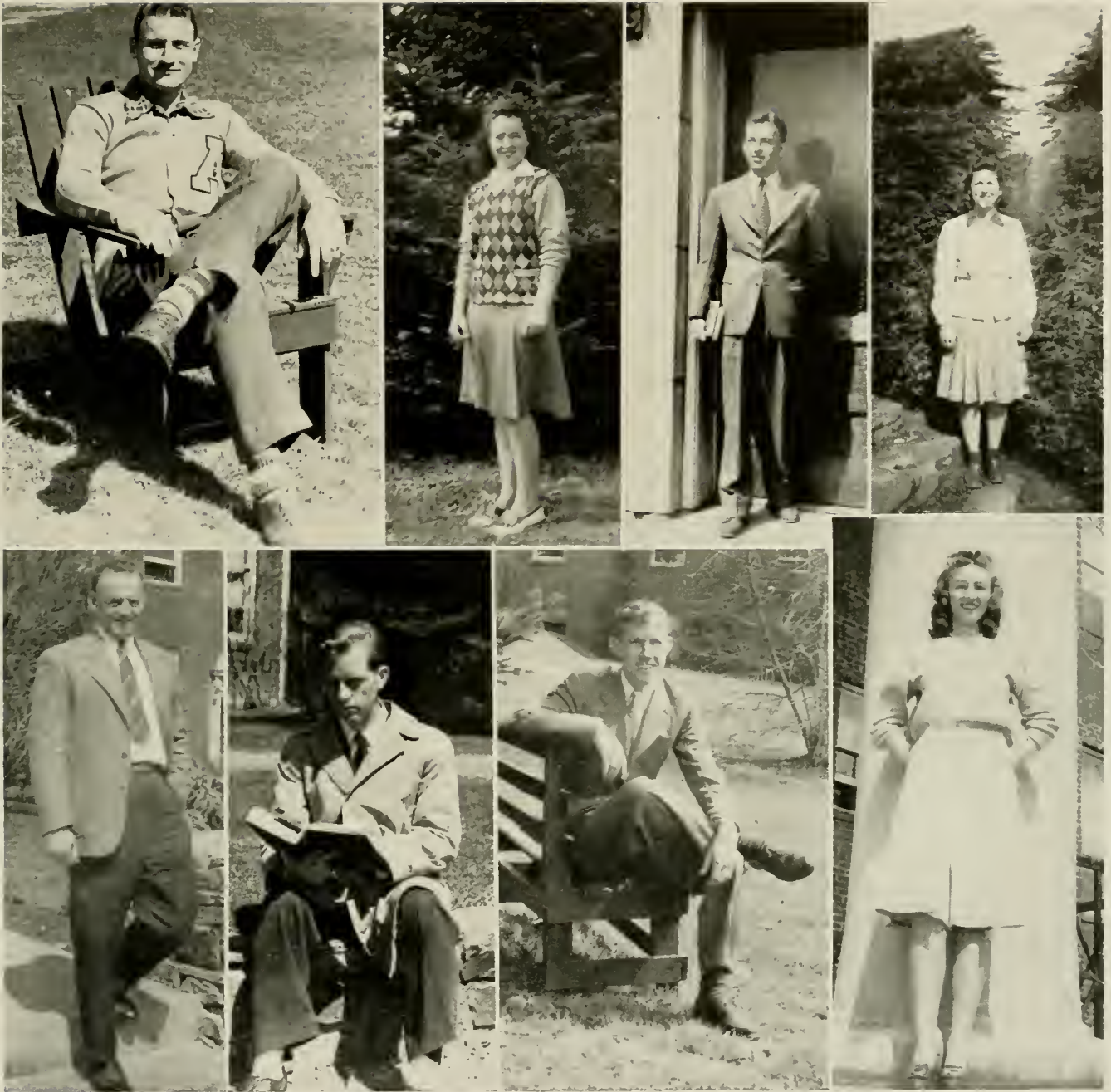
EDITH WILSON Statesville, N. C.
Grammar Grade Education

Mitchell College 1, 2; Methodist Club 3, 4; Lovill Club 3, 4; Y. W. C. A. 3; Christian Fellowship Alliance 4.

KATHLEEN WINBORNE Woodville, N. C.
English and History

Louisburg Junior College 1, 2; A Cappella Choir 3.





SENIOR SUPERLATIVES

<i>Best Athlete (man)</i>	BELUS SMAWLEY
<i>Best Athlete (woman)</i>	JOSEPHINE NICHOLS
<i>Most Intellectual</i>	AUBREY PAYNE
<i>Most Versatile</i>	MARY BLACK
<i>Friendliest</i>	HOY ISAACS
<i>Most Likely to Succeed</i>	SELBY COFFMAN
<i>Most Handsome</i>	LOYD BARNETT
<i>Prettiest</i>	RUTH ORDERS



JUNIOR CLASS OFFICERS

MERL STEIMER
 WARREN HAWKINS
 MARGARET BERRIER
 PEARL STEELMAN

President
Vice-President
Secretary
Treasurer



ALICE RUTH ADAMS
Gainesville, Florida

LUCY PAT ALLEN
Marshville, N. C.

GEORGIA MAE AYERS
Boone, N. C.

MARGARET BANKS
Burnsville, N. C.

HAROLD WARREN BEAVER
China Grove, N. C.

MARGARET K. BERRIER
Lexington, N. C.

NAOMI BILLINGS
Dockery, N. C.

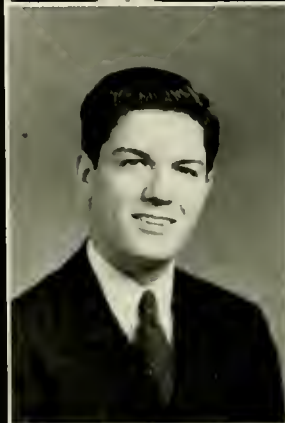
ELIZABETH MAST BINGHAM
Sherwood, N. C.

MARY ELLA BINGHAM
Fallston, N. C.

PALMER SLIGH BLAIR
Boone, N. C.

HAZEL LOUISE BLOODWORTH
Kelly, N. C.

DAFFIE VELLON BOONE
Asheboro, N. C.



ERMA JANE BOWIE
Scotts, N. C.

JAMES HARRY BOWMAN
Winston-Salem, N. C.

LEO DONAL BREVARD
Hendersonville, N. C.

MYRTLE PAULINE BROWN
Creston, N. C.

RUBY JEAN BROWNE
Waco, N. C.

NAOMI BROYHILL
Boomer, N. C.

WINONA K. BUCKLAND
Piney View, W. Va.

MARJORIE CALL
Mocksville, N. C.

MAX WILSON CARPENTER
Rutherfordton, N. C.

CLAIRE OMAR CASKEY
Charlotte, N. C.

WAYNE JACK CAUDILL
North Wilkesboro, N. C.

FRANCES ETHEL CLINARD
High Point, N. C.



MARY KATHERINE COBLE
Overhills, N. C.

ANN CORN
Lexington, N. C.

ROBERT B. COURTS
Reidsville, N. C.

SAM JONES CRAWLEY
Lattimore, N. C.

DORIS VIRGINIA CROUSE
Thomasville, N. C.

LILLIAN LEONA CRUMP
Upton, N. C.

MARY LOUISE CULP
Badin, N. C.

BILL DALE
Spruce Pine, N. C.

SARAH KATE DAVIS
Forest City, N. C.

JAMES DEHART
Spray, N. C.

ANDY DONALDSON DICKERSON
China Grove, N. C.

BETTY LOU DIXON
Mebane, N. C.



HEATH LEE DUNCAN
Kannapolis, N. C.

MEREDITH BROOKS DUNCAN
Trade, Tenn.

ALICE B. EAST
Lowgap, N. C.

REEVES MURCHISON EDENS
Rowland, N. C.

DOROTHY VIRGINIA FARTHING
Boone, N. C.

VERNON SPEIGHT FELTON
Rocky Mount, N. C.

JANETTE SPARROW FORBES
Gastonia, N. C.

DOROTHY C. FREDERICK
Turkey, N. C.

BETTY GERALD
Statesville, N. C.

EDWARD JAMES GOMEDELA
Erwin, N. C.

MABEL AREY GOODMAN
Gold Hill, N. C.

VIRGINIA DARE GOODMAN
West Jefferson, N. C.



DOLA FRANCES GRAYBEAL
Fig, N. C.

AMA BETH GREENE
Deep Gap, N. C.

CECIL EDGAR HACKNEY
Pittsboro, N. C.

LOIS HARDIN
Laxon, N. C.

SARAH WILMA HARMON
Sherwood, N. C.

SARAH HARPER
Star, N. C.

WARREN GEORGE HAWKINS
Spray, N. C.

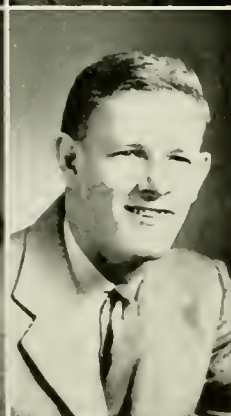
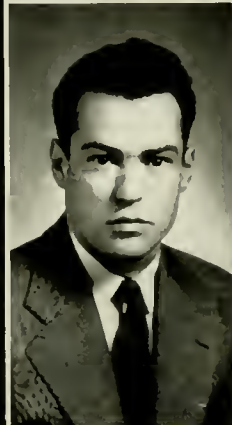
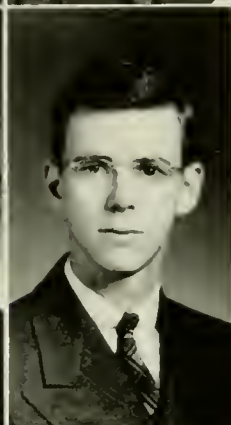
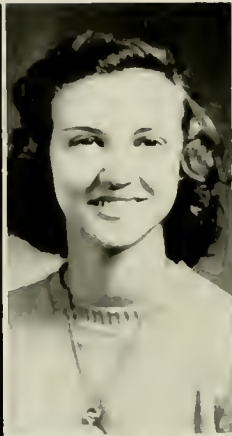
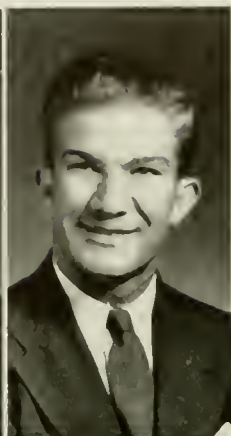
CHARLES CLIFTON HILL
Thomasville, N. C.

ANNIE MAE HUNTER
Tobaccoville, N. C.

DORIS LEE HUNTER
Day Book, N. C.

ELIZABETH H. HUTCHINSON
Cycle, N. C.

CHARLES G. JAMES
Farmington, N. C.



LOUIS JOYCE
Sandy Ridge, N. C.

WALTER C. JOYCE
Sandy Ridge, N. C.

BARBARA ADELE JUSTICE
Belwood, N. C.

DAVID RICHARD KIRKHAM
Winston-Salem, N. C.

KATHERINE LOUISE KISER
Kings Mountain, N. C.

EUGENE W. KNOTT
Oxford, N. C.

DESSIE M. LAWING
Marion, N. C.

MARY EDITH LUCAS
Greensboro, N. C.

MARY MILDRED MACKIE
Granite Falls, N. C.

MARY ELIZABETH MARSH
Marshville, N. C.

MARGARET MCKNIGHT
Greensboro, N. C.

HELEN MCNEELY
Henrietta, N. C.

NANCY E. MIDDLETON
Raleigh, N. C.

JIMMY MILLER
Braddock, Pa.

JOHNNY JEROME MILLER
High Point, N. C.

RUTH VIRGINIA MILLER
Boone, N. C.

CLOYCE ELIZABETH MOOSE
Statesville, N. C.

JOE F. MULL
Shelby, N. C.



ELIZABETH ANN MUSE
High Point, N. C.

RUTH MAE NIXON
Mountain Park, N. C.

CLIFFORD OUSLEY
Buies Creek, N. C.

ROSALIND PAGE
Boone, N. C.

GEORGIA LUCILLE PARRISH
Walkertown, N. C.

EDNA LENORE PAYNE
Boone, N. C.

MARTHA LEOTA PAYNE
Hiddenite, N. C.

EDWARD PENDRY
Hays, N. C.

MARGIE PENDRY
Hays, N. C.

MARJORIE GRACE PERRY
Brevard, N. C.

RICHARD RAYMOND PIERCE
Mooreville, N. C.

ELOISE PITTS
Ware Shoals, S. C.

JANIE RUTH PLEASANT
Yanceyville, N. C.

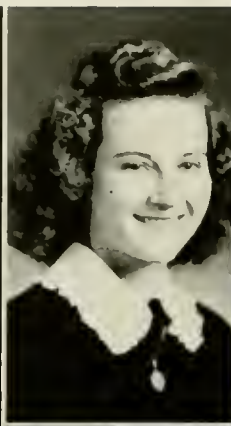
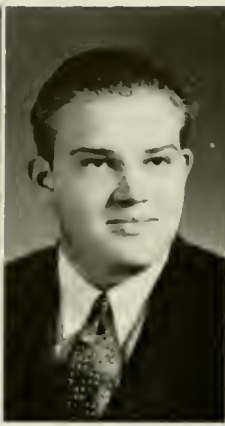
EVANGELINE POTEAT
Bakersville, N. C.

MARGARET WILLS PRITCHETT
Elon College, N. C.

ALICE IRWIN RAGAN
Gastonia, N. C.

WILLIAM BENJAMIN RANKIN
Salisbury, N. C.

PRIDE GRAHAM RATTERREE
Kings Mountain, N. C.



ALICE LEE RITCHIE
Salisbury, N. C.

JOHN GROVER ROACH
Forest City, N. C.

MARTHA ROMA ROBERSON
Leaksville, N. C.

HELEN MARGARET ROBERTS
Roaring River, N. C.

STELLA CHLOF ROGERS
Boone, N. C.

MARTHA ALYECE RUSSELL
Burlington, N. C.

ELVA MAE SPAKE
Casar, N. C.

DOROTHY LEE SHARPE
Cedar Grove, N. C.

HELEN BROWN SHERWOOD
Sugar Grove, N. C.

DORCAS MARGARET SIGMON
Newton, N. C.

LENA SMITH
Linwood, N. C.

MARY ALLETA SMITH
La Grange, N. C.

PEARL LORETTA STEELMAN
Hamptonville, N. C.

MERL B. STEIMER
Duquesne, Pa.

NORA SUMMEY
Black Mountain, N. C.

EDITH TAYLOR
Corinth, N. C.

RAY WILLET THOMAS
Lenoir, N. C.

VIOLET K. THORNBURG
Gastonia, N. C.



RUTH AILEEN THORPE
Ronda, N. C.

LEO EUGENE TREECE
Albemarle, N. C.

MAE SUETTA TUCKER
Mount Holly, N. C.

RACHEL BELLE TUCKER
Monroe, N. C.

RUBY MAE TUCKER
Monroe, N. C.

MILDRED PERRY TURBYFILL
Sugar Grove, N. C.

ANNA VON OESEN
Wilmington, N. C.

HENRIETTA WADDELL
Rockingham, N. C.

ROBERT MIMS WAKEFIELD
De Land, Fla.

REVIATHA FRANCES WATSON
Mt. Pleasant, N. C.

ALICE DARE WATTS
Purlear, N. C.

MARTHA MARIE WELLBORN
Deep Gap, N. C.

FRANCES SUSIE WHITENER
Hickory, N. C.

HELEN PAYNE WILCOX
Boone, N. C.

NELL WILLIAMS
Hamptonville, N. C.

VERNA GLADYS WILLIAMS
Granite Falls, N. C.

NINA MAE WILSON
Statesville, N. C.

HELEN WILLS WINKLER
Boone, N. C.

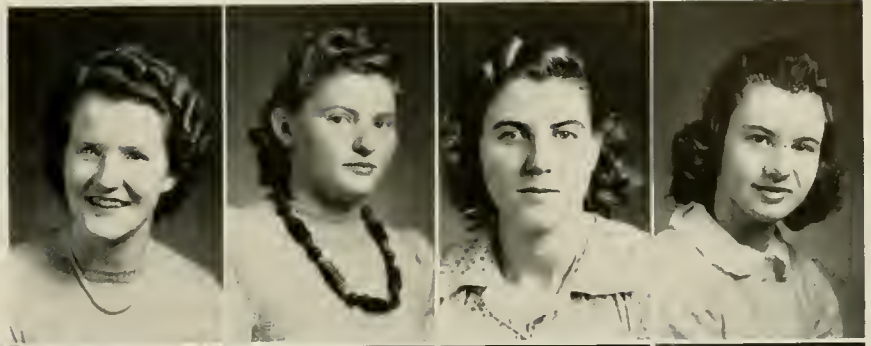
PAUL VERNON YARBOROUGH
Lexington, N. C.



SOPHOMORE CLASS OFFICERS

- | | |
|---------------|-----------------------|
| FRANK GREER | <i>President</i> |
| WAYNE SHOAF | <i>Vice-President</i> |
| BETTY MCMAHAN | <i>Secretary</i> |

LAURA MARIE ALEXANDER
Huntersville, N. C.
RUBY CARRIE ASHLEY
Boone, N. C.
BESSIE JANE BALDWIN
West Jefferson, N. C.
MARIE GRIFFIN BARNES
Lenoir, N. C.



★

ROYSTER LUCILLE BARNETT
Boone, N. C.
RUTH MAE BEESON
Winston-Salem, N. C.
HAZEL GRIFFIN BELK
Monroe, N. C.
FLOE ELIZABETH BINGHAM
Boone, N. C.



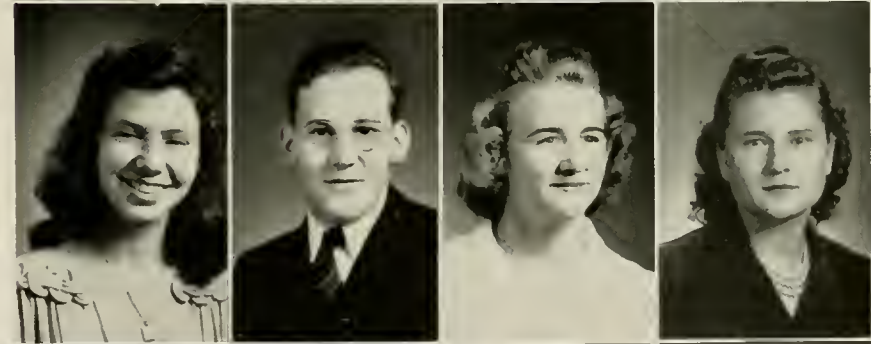
★

MARY GEORGE BLAIR
Boone, N. C.
ESTELLA IRENE BLEVINS
Lansing, N. C.
VERA ELIZABETH BOLICK
Lenoir, N. C.
THOMAS MEREDITH BOLTON
Rich Square, N. C.



★

REBEKAH ESTHER BOONE
Boone, N. C.
JAMES D. BRANDON
Yadkinville, N. C.
OLETA DORIS BROWN
Olin, N. C.
JESSIE EVELYN BROYHILL
Boomer, N. C.



★

MABEL GEORGIA BRYAN
Sparta, N. C.
MARY JO BUMGARDNER
Belmont, N. C.
GENEVA MARY CANNON
Boone, N. C.
POLA LOUISE CARSON
Swannanoa, N. C.

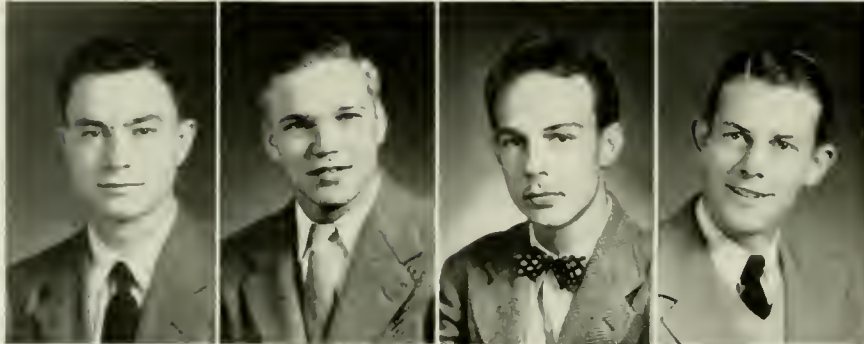




RUTH PAULINE CASTLE
Blowing Rock, N. C.
MILDRED LOUISE CLAPP
Morganton, N. C.
JAMES A. COBB
Rhodhiss, N. C.
BENNY COLF
Forest City, N. C.



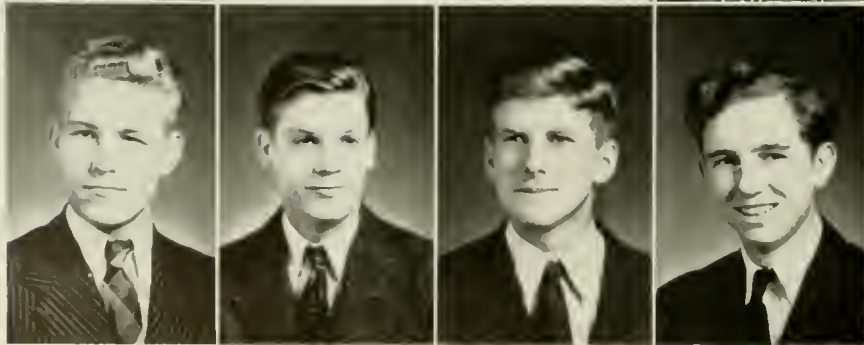
BETSY HILL COLF
Chapel Hill, N. C.
DORCAS GOLD CORNWELL
Shelby, N. C.
MINNIE FAYE COSTNER
Casar, N. C.
HOLTON B. CORNETT
Creston, N. C.



JOHN WINIFRED COVINGTON
Ellerbe, N. C.
FRANK C. COWAN
Leaksville, N. C.
TOMMY MILLER CRAIG
Cramerton, N. C.
RONALD ARTHUR CRAFFEN, JR.
High Point, N. C.



MARY PAULINE CRESS
Salisbury, N. C.
JANNIE LOUISE CROW
Ellenboro, N. C.
I ETHA JUANITA DOBSON
Nebo, N. C.
VIRGINIA DOUGLAS
Glenfield, N. C.



R. P. DOVE, JR.
Rowland, N. C.
WADE HERMAN DUNCAN
Pine Hall, N. C.
ROBERT MORRISON EDDLEMAN
Gastonia, N. C.
STACY CLYDE EGGERS, JR.
Boone, N. C.

LINNEA HOPE ELLER
Boone, N. C.
JOHN ENGLISH
Burnsville, N. C.
MERIAM EPERT
Cincinnati, Ohio
RUTH FREEMAN
Marion, N. C.



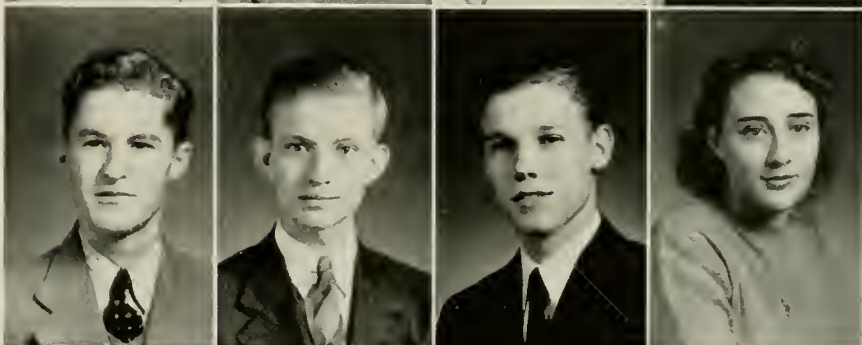
★

FRANCES PAULINE FULCHER
Leasburg, N. C.
NANCY FAE FURCHES
Mocksville, N. C.
MYRTLE PAULINE FURR
Oakboro, N. C.
ORLAND WILSON GABRIEL
Sherrill's Ford, N. C.



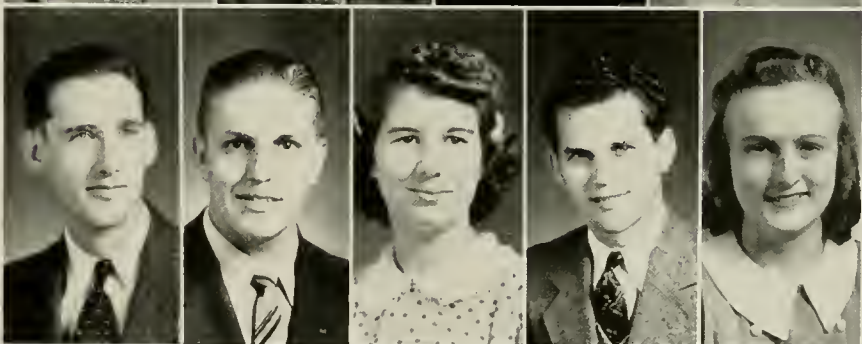
★

MACK WILLIAMS GARDNER
Angier, N. C.
WILLIAM G. GILLIAM
Thomasville, N. C.
GEORGE HUGH GREENE
Ronda, N. C.
EDITH LILLIAN GREER
Fleetwood, N. C.



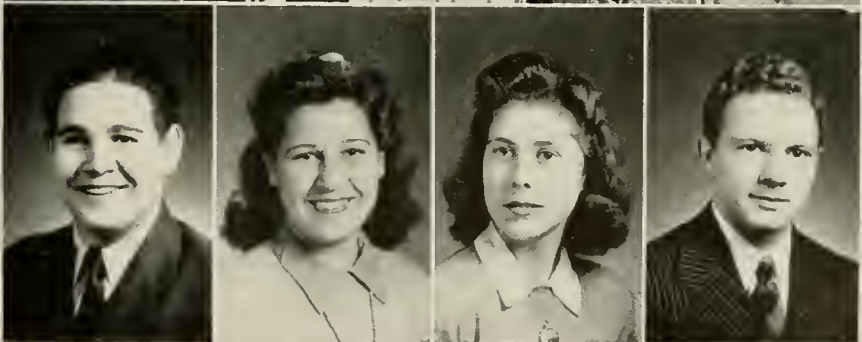
★

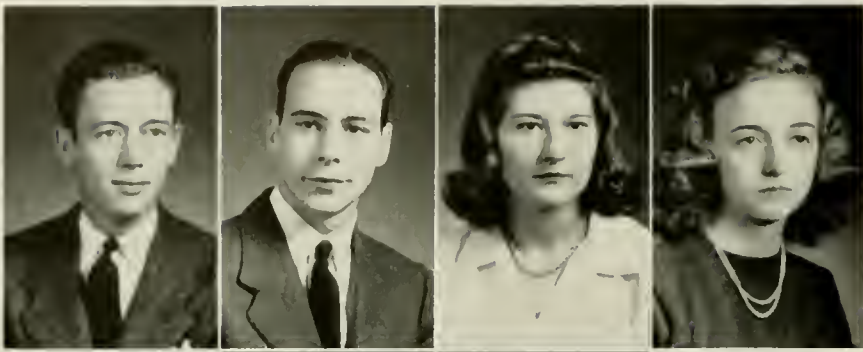
FRANK GREER
Butler, Tenn.
CHARLES WILLIAM HALL
Iva, N. C.
ELSIE HALLYBURTON
Morganton, N. C.
J. R. HAMILTON, JR.
Thomasville, N. C.
CAROLYN LOUISE HARTMAN
Advance, N. C.



★

GEORGE HEMPHILL
Forest City, N. C.
GEORGIE MARGARET HERMAN
Oakboro, N. C.
RUBY JACQUELINE HINSON
Oakboro, N. C.
MARVIN HOFFMAN
Statesville, N. C.





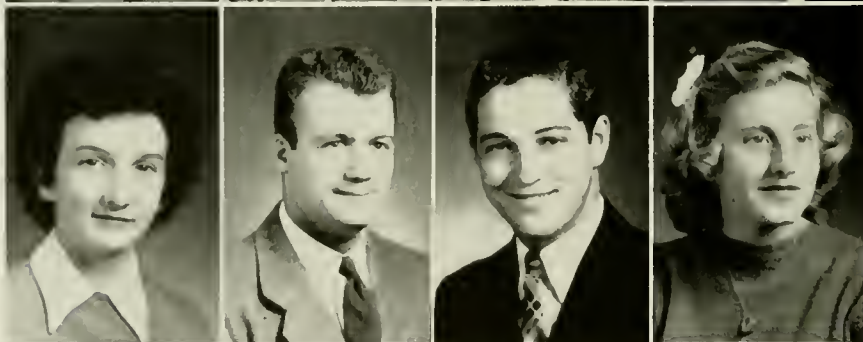
LONNIE WORTH HUDSON
Fieldale, Va
LLOYD ISAACS
Boone, N. C.
CAROLYN JEAN JARRETT
Shelby, N. C.
MARY ALICE JARVIS
Coolsmce, N. C.



FRANCES LOUISE JOBE
Mebane, N. C.
ALENE JONES
Elon College, N. C.
ALICE ELIZABETH JONES
Lakeland, Fla
BESSIE AVOLENE JONES
Ellenboro, N. C.



CHARLES J. JONES
Cramerton, N. C.
KATHLEEN JONES
Elon College, N. C.
WILLARD KAYLOR
Marion, N. C.
JOHN T. KING
Boone, N. C.



MARY JANE KING
Stoneville, N. C.
JOHN ZEB KIRK
Lexington, N. C.
DANIEL LANE
Bostic, N. C.
CATHERINE LEDBETTER
Marion, N. C.

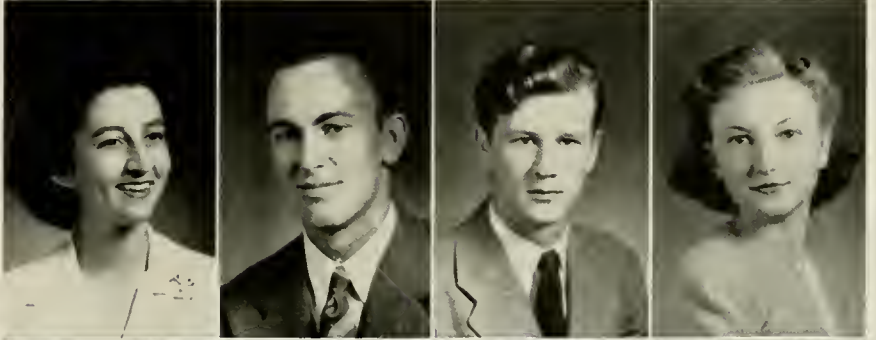


RUBY BEATRICE LISK
Charlotte, N. C.
OPAL DOLORES LOPP
Lexington, N. C.
ROBERT CHESTER LOWE
Banner Elk, N. C.
ERNEST R. MAGNESS
Forest City, N. C.

CLYDE EUGENE MAHAFFEE
Caroleen, N. C.
HELEN ELIZABETH MAHAFFEE
Forest City, N. C.
KATHERINE MARSH
Sophia, N. C.
EDITH ESTELLE MARSHALL
Concord, N. C.



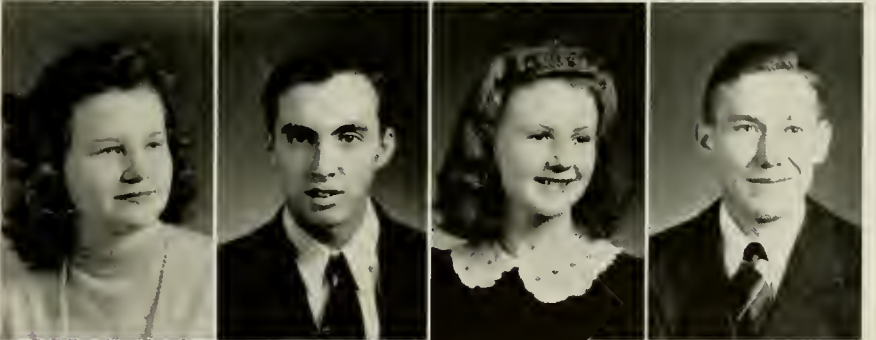
MARY PAULINE MARTIN
Albemarle, N. C.
CLYDE MASON
Boone, N. C.
DAVID MURRAY MCCORMICK
Goldsboro, N. C.
EUNICE NELLIE MCCOURY
Senia, N. C.



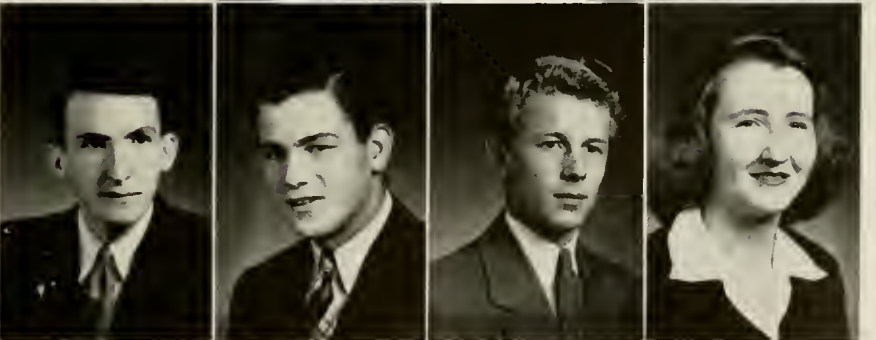
MARGIE MOORE MCGEE
Lenoir, N. C.
MARGARET IONE MCINTYRE
High Point, N. C.
DORIS LELIA MCKNIGHT
Greensboro, N. C.
BETTY ANNE MCMAHAN
Mocksville, N. C.

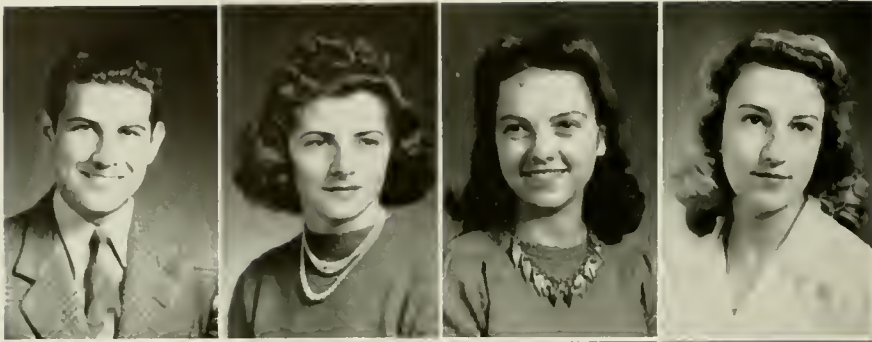


JUANITA MCSWAIN
Kings Mountain, N. C.
JOHN DAVID MILLER
Todd, N. C.
KATHLEEN EDNA MILLER
Marion, N. C.
WALTER BERNARD MILLER
Clifton, N. C.



EUGENE DELLINGER MODLIN
Lincolnton, N. C.
HORACE HANK MULL
Marion, N. C.
CLAUD SHERMAN NANTZ
Lincolnton, N. C.
LAVONNE NEAL
Mooresboro, N. C.





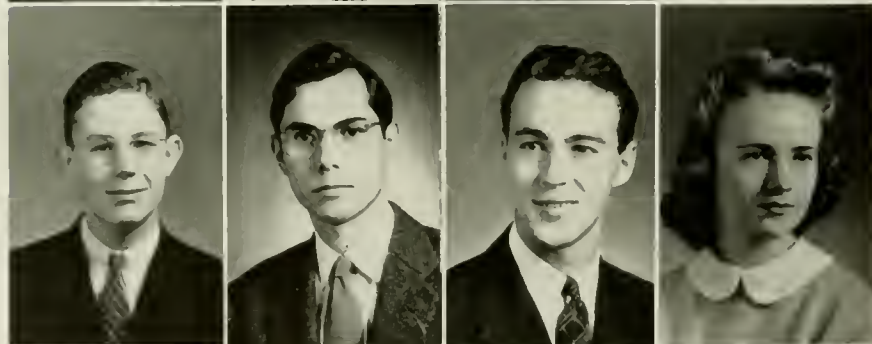
DANNIE MARTIN O'CONNELL
Rankin, Pa.
THFO HELEN OLIVER
Banner Elk, N. C.
RUBY MOORE PAYNE
High Point, N. C.
CATHERINE PAYSFUR
Shelby, N. C.



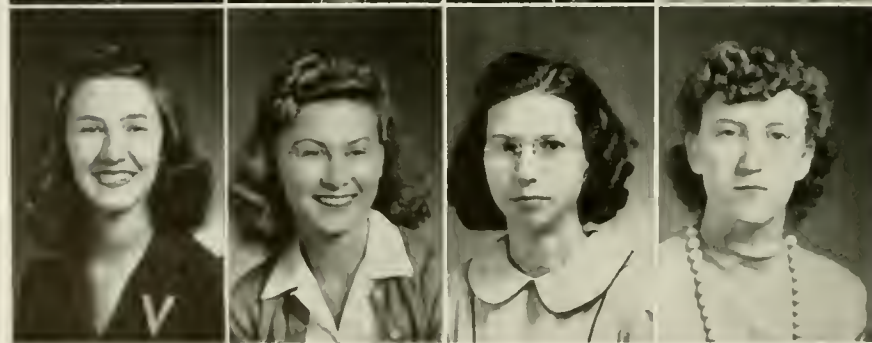
LILLIAN AGNES PRESTON
Boone, N. C.
VIRGINIA CAROLINE RAKESTRAW
Stoneville, N. C.
VERNON JEROME RAMSEY
Salisbury, N. C.
STEVE WALTER ROBERSON
Charlotte, N. C.



FRANK EDWIN ROLAND
Clifton, N. C.
MARY ALICE ROSS
Fallston, N. C.
J. C. ROTAN
Cramerton, N. C.
LUCILE WILSON RUSSELL
Concord, N. C.



WILLIAM SEAFORD
Mocksville, N. C.
LUTHER W. SELF
Greensboro, N. C.
WAYNE HOYT SHOAF
Linwood, N. C.
MARGARET LOUISE SHUFORD
Ellenboro, N. C.



MARGARET ELIZABETH SMITH
Boone, N. C.
LALA SMITHWICK
Williamston, N. C.
DORIS SNOW
Elkin, N. C.
DORIS BRENDA SPARKS
Amherst, Va.

HAROLD JASPER STONE
Cramerton, N. C.
SYBIL HUTCHINS SWOFFORD
Winston-Salem, N. C.
SARAH PHYLMA SWAIN
High Point, N. C.
ANNIE LAURIE TAYLOR
Salisbury, N. C.

★

MARY JOSEPHINE TAYLOR
Marion, N. C.
FLORA MAE TEMPLETON
Olin, N. C.
IRIS MARIE THOMAS
Franklinville, N. C.
ROWENA KATHERINE TODD
Elk Creek, Va.

★

DOROTHY LOUISE TOWE
Skyland, N. C.
JEANNE COOKE TURBYFILL
Maiden, N. C.
JEWELL WILLIAM UNDERWOOD
Forest City, N. C.
EDNA M. VENABLE
Dobson, N. C.

★

DAPHENE WILMA WADDELL
Grassy Creek, N. C.
LILLIAN WADDELL
Concord, N. C.
LEO WAYNE WAGONER
Hamptonville, N. C.
CHARLES WEAVER WILLIAMS
Cleveland, N. C.

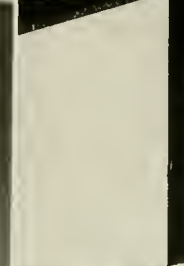
★

HUNTER LEE WILSON
Huntersville, N. C.
ELOISE WINKLER
Lenoir, N. C.
FLORENCE ELIZABETH WOOSLEY
Clemmons, N. C.
IRIS DEANE YOUNG
Lansing, N. C.

★

THARON ELIZABETH YOUNG
Boone, N. C.
ALMAROSE YOUNTS
Lexington, N. C.
JEAN BEALE YOUNT
Pittsboro, N. C.
ROBERT RUSSELL YOUNT, JR.
Staunton, Va.





FRESHMAN CLASS OFFICERS

BEN GOFORTH, JR.
FRANCIS ESSIC
DOROTHY JONES
ELLEN PHILBECK

President
Vice-President
Secretary
Treasurer



First Row

KATHRYN JAMES ALEXANDER	Charlotte, N. C.
VIRGINIA ATKINS	Pensaiola, N. C.
RUBY VICTORIA BAILEY	Cooleemee, N. C.
FRED DIAMOND BAKER	Elkin, N. C.
TOM BEACH	Boone, N. C.
HALDANE HARTSFIELD BEAN	Asheville, N. C.

Third Row

ELIZABETH T. BLACKWELDER	Mooresville, N. C.
BONNIE HASKELL BLEVINS	Laurel Springs, N. C.
MAURICE FRANKLIN BLEVINS	Dobson, N. C.
MARJORIE LOUISE BOWERS	Boone, N. C.
ROSADA BOWMAN	Taylorsville, N. C.
JAMES DONALD BRADFORD	Mooresville, N. C.

Second Row

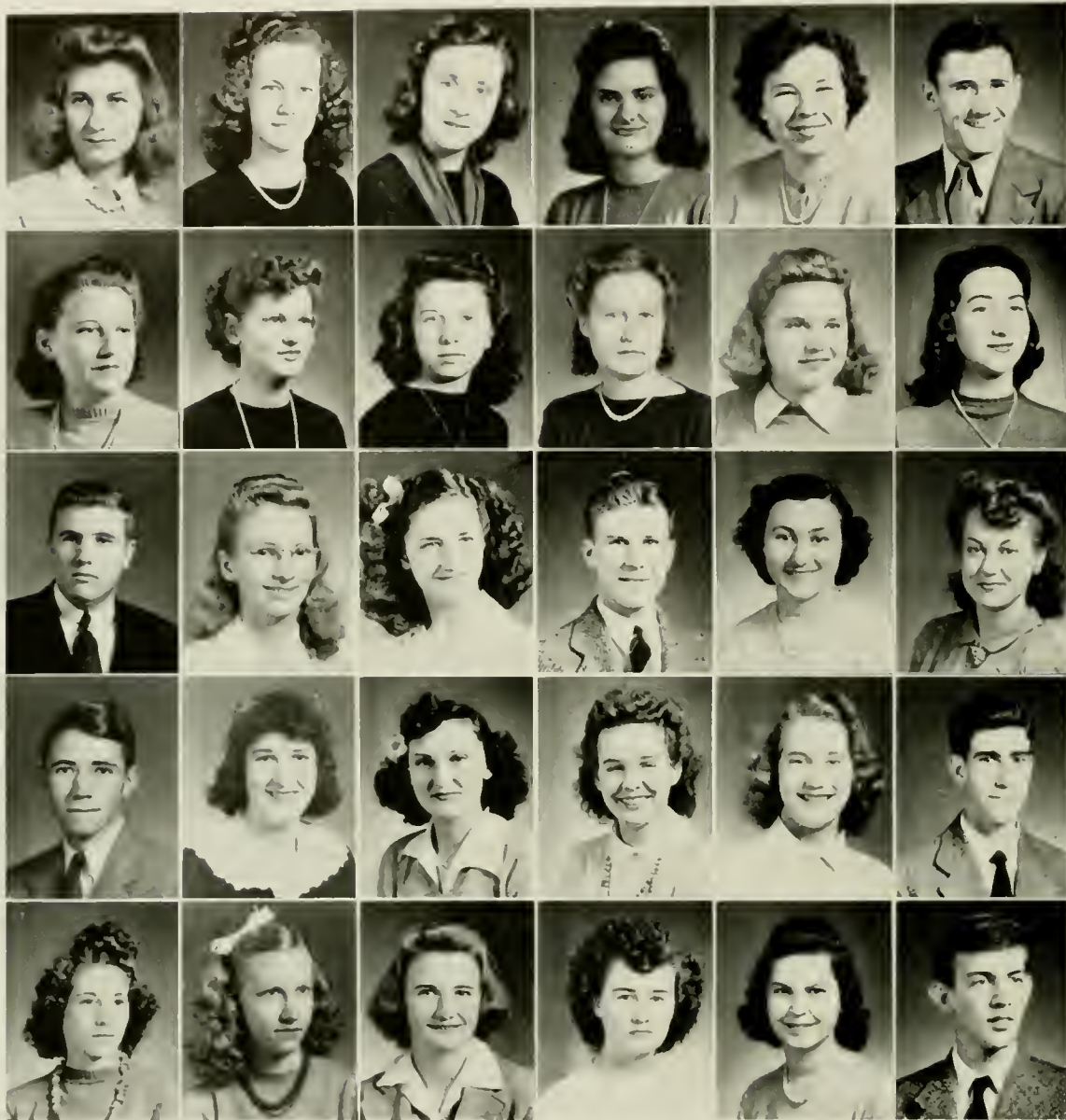
BEN BEAVER	Rockwell, N. C.
GLENN TRAVIS BEAVER	Rockwell, N. C.
RUBY EVELYN BEESON	Winston-Salem, N. C.
ADDIE IRENE BINGHAM	Boone, N. C.
GENE BINGHAM	Boone, N. C.
RICHARD FRANK BINGHAM	Boone, N. C.

Fourth Row

MARGARET RUTH BRITTAIN	Casar, N. C.
JACK FRYE BROWN	Cycle, N. C.
LENA RIVERS BROWN	Sandy Ridge, N. C.
ARTHUR BURWELL BRUTON	Greensboro, N. C.
HELEN FRANCES BRUTON	Mt. Gilead, N. C.
ELLEN GRAY BURRIS	Stanfield, N. C.

Fifth Row

WILLIAM BRYAN CAMPBELL	Mooresville, N. C.
POLLY CARPENTER	Polkton, N. C.
BEATRICE LOUISE CASTEVENS	Trap Hill, N. C.
ELIZABETH LOUISE CHAMPION	Rowland, N. C.
ANNIE REID CHOATE	Charlotte, N. C.
MADelyn IRENE CLARK	Troutman, N. C.



First Row

EVELYN MAXINE CLONTZ
 CLARA COOKE
 JUANITA COOKE
 MARY ALICE COOK
 MARY ELIZABETH COOPER
 BILLY VAUGHN CROSS

Charlotte, N. C.
 Westfield, N. C.
 Boone, N. C.
 Boone, N. C.
 Union Grove, N. C.
 Maryville, Tenn.

Third Row

BUFORD W. DIXON
 MILDRED ELIZABETH EATON
 DORIS EDENS
 HAL EDMISTEN
 AUGUSTA LEE ELMORT
 MARY LOUISE EPPS

Marion, N. C.
 Cooleemee, N. C.
 Rowland, N. C.
 Boomer, N. C.
 Morganton, N. C.
 Newton, N. C.

Second Row

ALMA JEANETTE CROWDER
 CAROLI CROWGEY
 RUBY LUTITIA DANCY
 DOROTHY IMOGENE DAVIS
 DOROTHY RUTH DEAL
 LOUISE BONNIF DEVINE

Morganton, N. C.
 Wytheville, Va.
 Boone, N. C.
 Clemmons, N. C.
 Boone, N. C.
 Lincolnton, N. C.

Fourth Row

JOHN FRANCIS ESSIC
 EVELYN GAIL EVERHART
 BETTY FRANCES FAIRES
 CARRIE LEE FARTHING
 AMANDA LEE FEREBEE
 CARE FIDLER

Cana, N. C.
 Lexington, N. C.
 Gastonia, N. C.
 Boone, N. C.
 Mocksville, N. C.
 Cornelius, N. C.

Fifth Row

DIMPLES FORTUNE
 ROSALYN MELBA FRANCIS
 BETTY AMELIA GABRIEL
 NELLIE GABRIEL
 FRANCES GADDY
 BEN GOFORTH, JR.

Nebo, N. C.
 Shelby, N. C.
 Lincolnton, N. C.
 North Wilkesboro, N. C.
 Goldsboro, N. C.
 Kings Mountain, N. C.



First Row

PEARL GOLD
 POLLY ANNA GORDON
 DOROTHY DELL GOULDING
 KATHLEEN REBECCA GRAGG
 L. D. GRAHAM
 MARY ELIZABETH GREER

Shelby, N. C.
 Pinnacle, N. C.
 New Bern, N. C.
 Boone, N. C.
 Todd, N. C.
 Boone, N. C.

Third Row

ANNA SUE HAMMOND
 BONNIE JEAN HAMRICK
 MARY FRANCES HARRILL
 DAVID ANDREW HARRIS, JR.
 MILDRED ELIZABETH HARRISON
 JOYCE CAROLYN HAYES

Hickory, N. C.
 Ellenboro, N. C.
 Forest City, N. C.
 Statesville, N. C.
 Boone, N. C.
 Oakwoods, N. C.

Second Row

VELDA BLAIR GREER
 BETTY JEAN GRIFFIN
 FREDA MARIE GRUBBS
 SARA M. HALLYBURTON
 HELEN ESTELLE HALSEY
 WILLIAM IRA HALSTEAD

Boone, N. C.
 Forest City, N. C.
 Winston-Salem, N. C.
 Morganton, N. C.
 Stratford, N. C.
 Pennington Gap, Va.

Fourth Row

MADELINE ADA HEMRIC
 JAMES ROBERT HENDRIX, JR.
 MARJORIE B. HODGES
 WILLIAM ASBURY HOLBROOK
 MARGUELIN R. HOLLAND
 PAUL HOLLINGSWORTH

Cycle, N. C.
 Raeford, N. C.
 Boone, N. C.
 Roanoke, Va.
 Union Grove, N. C.
 Erwin, N. C.

Fifth Row

MARIE EVA HUDLER
 BERNITA HUGHES
 SARAH HUNTER
 DEWITT GLADSTONE HYDER
 MILDRED VICKERY INGRAM
 LESLIE EUGENE JOHNSTON

Grassy Creek, N. C.
 Bakersville, N. C.
 Asheville, N. C.
 Forest City, N. C.
 Statesville, N. C.
 Mooresville, N. C.



First Row

DOROTHY LOUISE JONES	Morehead City, N. C.
NELL AVETT KENDALL	Norwood, N. C.
JOAN VIPOND KIRKHAM	Winston-Salem, N. C.
DORIS LACKEY	Kannapolis, N. C.
OTIS MANNING LEDBETTER	Marion, N. C.
MACK LAWRENCE LEONARD	Morganton, N. C.

Second Row

MARGARET LINDBERGER	Lincolnton, N. C.
FRANCES ANN MAGUIRE	Elkin, N. C.
Helen MARTIN	Broadway, N. C.
GLORIA LEE MATKINS	Elon College, N. C.
LOTT MARVIN MAYBERRY	Jonesville, N. C.
JIAN EDWARDS MCCOLLUM	Monroe, N. C.

Fifth Row

HAROLD EUGENE NICHOLS
MACK NICHOLS, JR.
JOSEPH PASKY
MARY UNA PERRY
ELLEN ESKRIDGE PHILBECK
JEAN WILLIAMS PIPKIN

Third Row

MARY LEE MCMAHAN	Mocksville, N. C.
OLA MCNEILL	Purlear, N. C.
JEROME HOWARD MELTON	Ruby, S. C.
JOSEPHINE ELIZABETH MILLER	Boone, N. C.
LOVELY EMMA MILLER	Boone, N. C.
MARTHA VIRGINIA MILLER	Nathans Creek, N. C.

Fourth Row

DOROTHY LEE MOORE	Boone, N. C.
FRANCES REBECCA MOORE	Thomasville, N. C.
LOU WALLACE MOORE	Greensboro, N. C.
CHARLES CURTIS MURRAY	Boone, N. C.
BLANCHE ESTELLE MYERS	Thomasville, N. C.
MARY NEWTON	Shelby, N. C.

Belmont, N. C.
Elizabethton, Tenn.
Pittsburgh, Pa.
Morganton, N. C.
Shelby, N. C.
Broadway, N. C.



First Row

IVEY ELLIS PLEASANT, JR.	Leasburg, N. C.
JOSEPH EDWARD POLITE	West Chester, Pa.
EDWARD SPENCER QUALLS	Boone, N. C.
MARGARET SUE RHODES	North Wilkesboro, N. C.
ARZIE CECIL RICHARDSON	Sparta, N. C.
UNA LEE RICHARDSON	Sparta, N. C.

Second Row

ERNEST ROBERSON	Charlotte, N. C.
BONITA ROSE ROMINGER	Rominger, N. C.
MARY SABA	Marion, Ill.
BRUCE DANIEL SAPP	Rich Square, N. C.
EUGENE CALDWELL SCHUYLER	Lowgap, N. C.
CONRAD ALDEAN SHAW	Edgewood, Md.

Fifth Row

LOVILL SOUTH	Tamarack, N. C.
MAX SPARKS	Elkin, N. C.
ELNEDA MAE STANALAND	Shalotte, N. C.
VIRGINIA IRENE TARLTON	Charlotte, N. C.
JANE LOUISE TAYLOR	Corinth, N. C.
LAURA LOUISE THACKER	Winston-Salem, N. C.

Third Row

BENNIE JACK SHERRILL	Davidson, N. C.
MARY FRANCES SHERRILL	Mooresville, N. C.
FLOY ALICE SHORE	Boone, N. C.
MARY LEE SHULL	Boone, N. C.
BILLIE LORRAINE SIMPSON	Monroe, N. C.
AMOS JUDSON SMITH	Whiteville, N. C.

Fourth Row

DORIS ALESE SMITH	Greensboro, N. C.
EVELYN SMITH	Deep Gap, N. C.
KATHRYN INEZ SMITH	Morganton, N. C.
MARY ELOISE SMITH	Charlotte, N. C.
OLIVIA SMITH	Francisco, N. C.
HELEN MADELEINE SMOOT	Mocksville, N. C.



First Row

CLAUDIA BELLE THARPE	Statesville, N. C.
WILMA ANNE THOMAS	York, S. C.
EARLEY LEE TILLEY	Westfield, N. C.
LOUISE CAROLINE UPCHURCH	Mt. Gilead, N. C.
ELEANOR VANCE	Huntersville, N. C.
ANNA EUGENIA WADDELL	Durham, N. C.

Second Row

RACHEL LOUISE WAGNER	Troutman, N. C.
DERAN WALTERS	Statesville, N. C.
EDITH MAE WARD	Madison, N. C.
THOMAS LUCKY WARD	Sugar Grove, N. C.
PETER ANCELL WEBB	Raeford, N. C.
MARY LILLIAN WILCOX	Boone, N. C.

Fifth Row

MARTIN OSWALD YOUNG	Cramerton, N. C.
VELMA RUTH YOUNG	Minneapolis, N. C.
CHRISTINE ZACHARY	Taylorsville, N. C.
A. TYPHUS FRESHMOND	Wootoogoo, U. C.

Third Row

THOMAS O. WILKINSON	Jacksonville, Fla.
BETTY JANE WILSON	Morganton, N. C.
CORA ELIZABETH WILSON	Rowland, N. C.
BETTY RUTH WINKLER	Boone, N. C.
MARY SUE WINKLER	Boone, N. C.
LORRAINE HELEN WINTERS	Elk Park, N. C.

Fourth Row

ALWIN BASSIL WRIGHT	Raeford, N. C.
VIRGINIA WRIGHT	Rutherfordton, N. C.
JENNIE LEE WYANT	Hickory, N. C.
FRANCES HOLT YARBOROUGH	Lexington, N. C.
CHARLES LEE YOUNG	Boone, N. C.
MARY KATHRYN YOUNG	Boone, N. C.

Freedom From Want



BOOK III ATHLETICS

*"Freedom from WANT
—everywhere in the world."*



COACHES



Wearers of the "A"

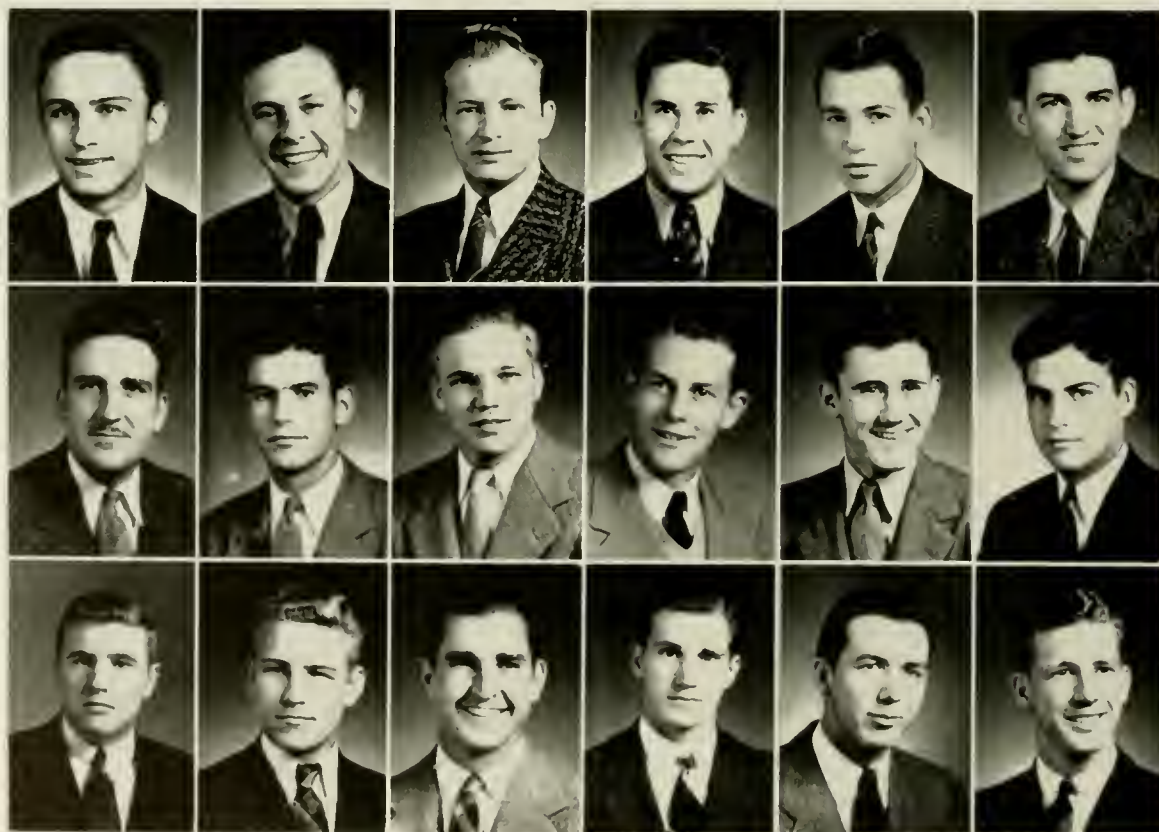
COACHES

R. W. WATKINS
 BEATTIE FEATHERS
 STARR WOOD
 BELUS SMAWLEY

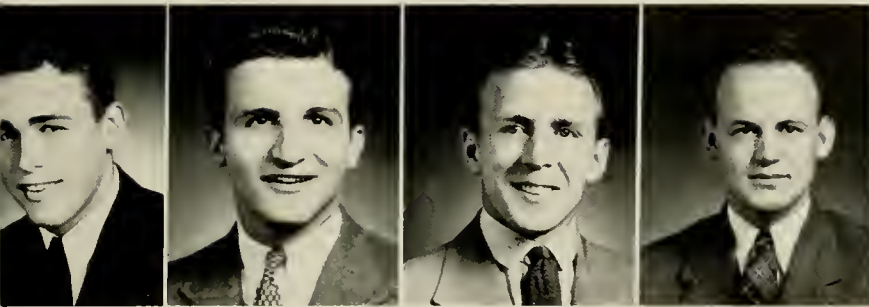
Wrestling
Football
Football
Basketball

OFFICERS

BELUS SMAWLEY *President*
 PRESTON MULL *Vice-President*
 BILL HORNFECK *Secretary*
 MERL STEIMER *Treasurer*
 HOY ISAACS *Sergeant-at-Arms*



OFFICERS



for Appalachian

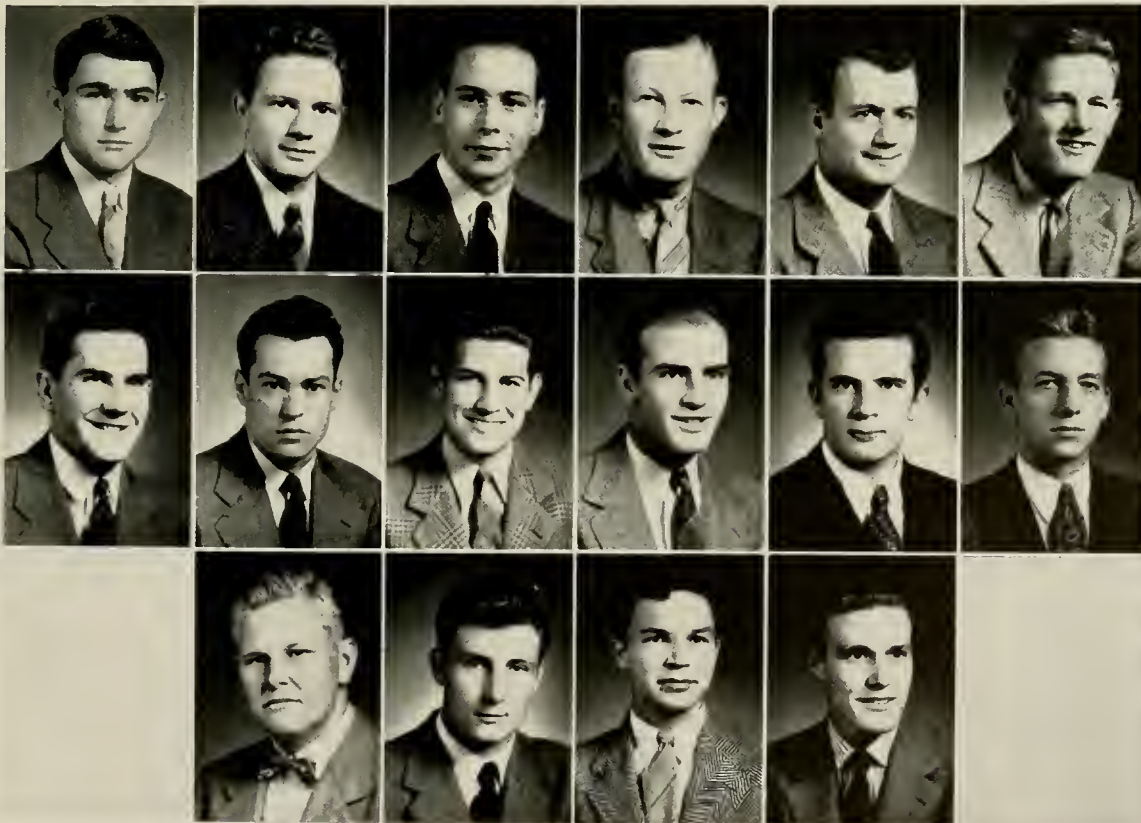
AUSTIN, WARREN
 BEACH, TOM
 BOWMAN, HARRY
 BREVARD, LEO
 BRUTON, ARTHUR
 CARPENTER, JAMES
 CLEETWOOD, CLYDE
 COURTS, BOB
 COWAN, FRANK
 CRAVEN, RONALD

CROSS, BILL
 DEHART, JAMES
 DIXON, BUFORD
 DOVE, R. P.
 FELTON, VERNON
 HALSTEAD, BILL
 HARRIS, DAVE
 HAWKINS, WARREN
 HENDRIX, JAMES
 HOFFMAN, MARVIN

HOLLARS, JOHNNY*
 ISAACS, LLOYD
 KAYLOR, WILLARD
 KIRK, JOHN
 KNOTT, EUGENE
 MILLER, JIMMY
 MILLER, JOHNNY
 MOIR, SAM*
 O'CONNELL, DANNIE
 OUSLEY, CLIFFORD

PASKY, JOE
 PAYNE, AUBREY
 RATTERREE, PRIDE
 RAMSEY, VERNON*
 SIGMON, MORLEY
 SINCLAIR, TOM*
 UNDERWOOD, BILL
 WALTERS, DERAN

* No Picture.



FOOTBALL

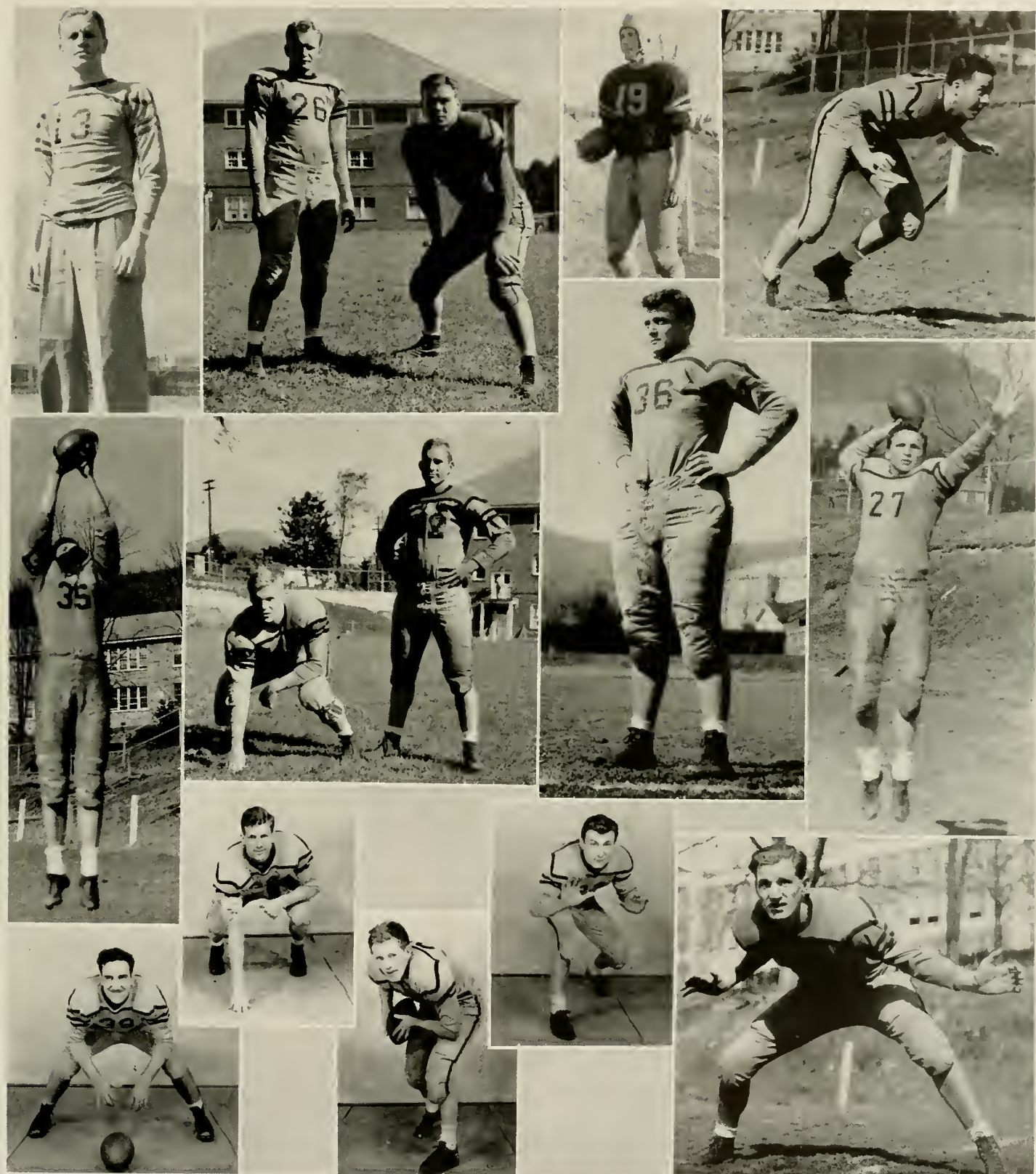
Coaches

BEATTIE FEATHERS
STARR WOOD



RESULTS

Appalachian	16	Naval Apprentice	14	Appalachian	0	Catawba	7
Appalachian	13	Camp Davis	13	Appalachian	20	Maryville	6
Appalachian	27	High Point	0	Appalachian	0	Catawba	27
Appalachian	20	Newberry	0	Appalachian	44	High Point	0

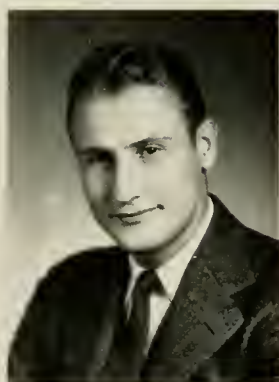


Left to right: Hall, manager; Bowman, center; Sinclair, center; Hollars, back; Brevard, guard; Harris, end; Cowan, guard; Felton, guard; Kirk, tackle; Hornfeck, back (co-captain); Cleetwood, center; Hawkins, end; Knott, back; Sigmon, end (co-captain); Halstead, tackle.



Left to right: Dove, back; Mull, back; Dixon, guard; Steimer, back; Polite, tackle; Cross, back; Courts, end; Ratterree, tackle; Leonard, M., back; Nichols, back; Underwood, back; Ramsey, guard; Leonard, B., tackle; Dehart, end; Hoffman, back; Ousley, end.

BASKETBALL



SMAWLEY, Coach
HEMPHILL, Manager

RESULTS

Appalachian	61	Winston-Salem Signal Corps	30
Appalachian	36	Charlotte Y	41
Appalachian	53	Chapel Hill Pre-Flight	48
Appalachian	64	High Point	31
Appalachian	40	Norfolk Training Station	55
Appalachian	36	Norfolk Air Station	40
Appalachian	64	Langley Field	33
Appalachian	54	Naval Apprentice	55
Appalachian	64	Guilford	35
Appalachian	63	Barq's Bottlers	33
Appalachian	59	W. C. T. C.	41
Appalachian	52	W. C. T. C.	39
Appalachian	59	Catawba	31
Appalachian	64	Catawba	34
Appalachian	75	W. C. T. C.	33
Appalachian	54	W. C. T. C.	41
Appalachian	41	Barq's Bottlers	24
Appalachian	40	High Point	26

CONFERENCE TOURNAMENT

Appalachian	41	High Point	33
Appalachian	36	W. C. T. C.	31

NATIONAL INTERCOLLEGIATE TOURNAMENT

Appalachian	48	Simpson College (Iowa)	31
Appalachian	64	Kansas Wesleyan	40
Appalachian	34	Maryville (Mo.) Teachers	46

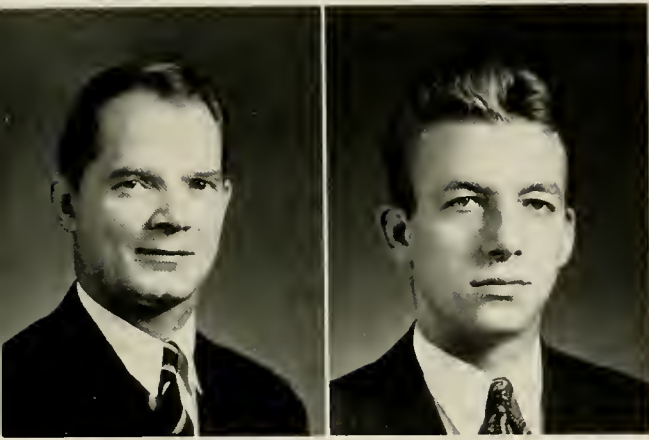


SHOAF, Guard
MILLER, Guard
MOIR, Guard

SHAWLEY, Center
CRAVEN, Forward
H. ISAACS, Guard

BEACIL, Forward
KNOTT, Guard
WALTERS, Center

L. ISAACS, Forward
HAWKINS, Forward
HACKNEY, Forward



COACH WATKINS

PAYNE, *Manager*

WRESTLING



Kneeling: JOYCE, BRUTON, MILLER, AUSTIN, HENDRIX.

Standing: GABRIEL, *Mgr.*, CARPENTER, O'CONNELL, OUSLEY, MULL, KIRK, WATKINS, *Coch.*

WRESTLING

RESULTS

Appalachian	13	Naval Apprentice	18
Appalachian	15	Pre-Flight	25
Appalachian	26 ¹ / ₂	University of Tenn.	9 ¹ / ₂
Appalachian	13	Maryville	18
Appalachian	29	W. C. T. C.	6



AUSTIN, 145
CARPENTER, 121

KIRK, *Unlimited*
HENDRIX, 155

MILLER, 136
O'CONNELL, 165

BRUTON, 128
OUSLEY, 175

INTRAMURAL BASKETBALL



MERL STEIMER
CLIFTON HILL
RICHARD PIERCE

VERNON FELTON
PRIDE RATTERREF
LEO BREVARD

BOXING TEAM



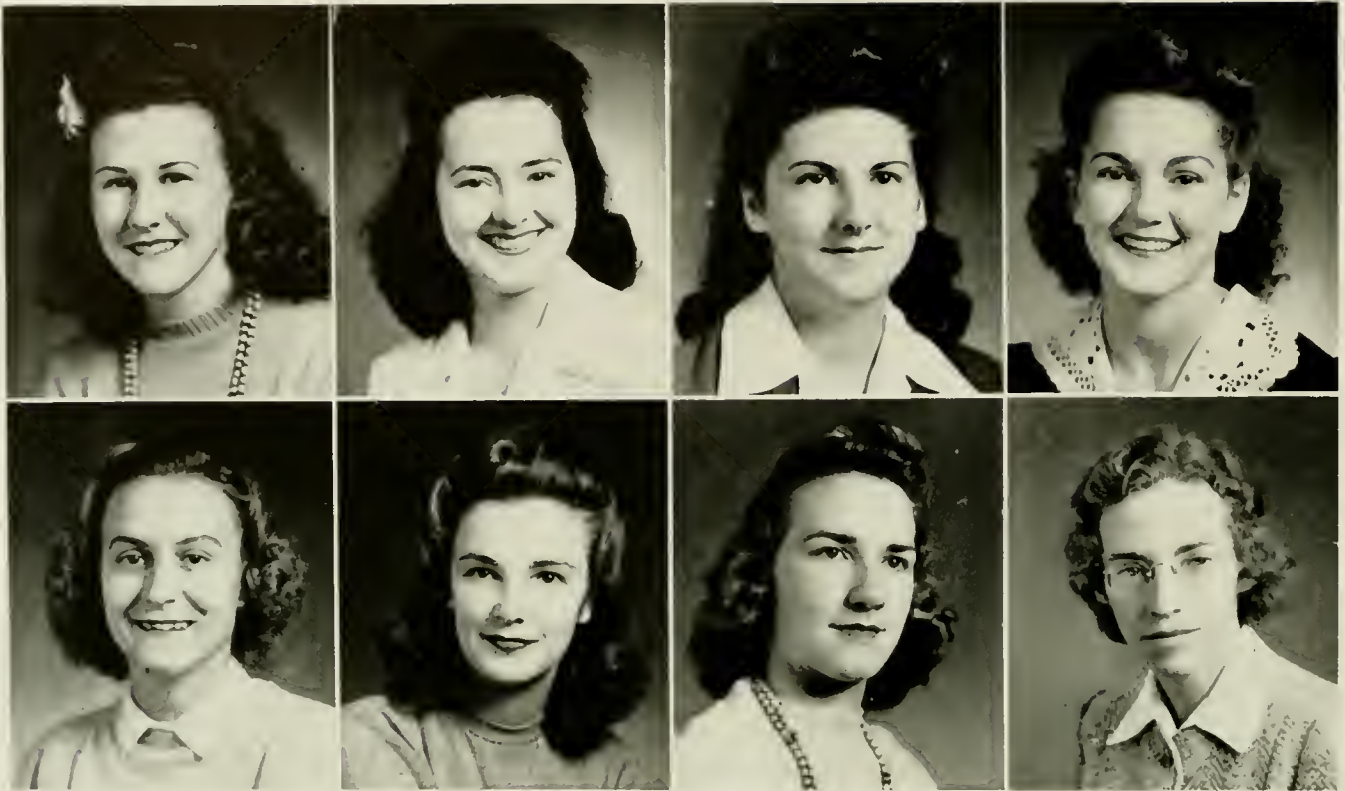
Front row:

BRUTON
HAMILTON
QUALLS
BINGHAM

Back row:

PIERCE, Manager
BLEVINS
MULL
CRAWLEY

GIRLS' "A" CLUB



RUTH THORPE
 JOSEPHINE NICHOLS
 MARY BLACK
 CHARLENE MORRIS

ANN CORN
 LOUISE TOWE
 JANETTE FORBES
 THURSA STEED, *Coach*

LIFE SAVERS

Front row: Betty Gerald, Ruth Loven, Marjorie Call, Janette Forbes, Ellen Philbeck, Mildred Formyduval, Louise Baker, Evangeline Poteat, Margaret Pritchett, Mary Mildred Mackie, Betty Gabriel. *Back row:* Spencer Qualls, Richard Bingham, Deran Walters, Randolph Brown, Gene Bingham, Merl Ste'mer.



PHYSICAL EDUCATION MAJOR CLUB

Front row: Mary Smith, Virginia Smith, Mildred Perry, Louise Baker, Janette Forbes, Evangeline Poteat, Ellen Philbeck. *Second row:* Sarah Harper, Margie Call, Alene Jones, Pauline Furr, Estelle Blevins, Iris Young, Betty Gabriel. *Back row:* Mildred Formyduval, Dorothy Moore, Margaret McKnight, Mabel Goodman, Margaret Pritchett, Lena Smith, Dorothy Comer, Josephine Nichols, Louise Upchurch.



GOLDS

Front row: Mildred Formyduval, Evangeline Poteat, Dorothy Moore, Lena Smith. *Second row:* Margie Call, Louise Upchurch, Sarah Harper. *Top:* Ellen Philbeck.

Those not shown are: Virginia Smith (Captain), Margaret McKnight, Mary Black, Ann Corn, Gail Clay.



BLACKS

Front row: Janette Forbes, Estelle Blevins, Mary Smith, Ruth Loven, Mildred Perry, Iris Young. *Back row:* Dorothy Comer, Louise Baker (Captain), Mabel Goodman, Myrna Hathcock, Jo Nichols, Betty Gabriel, Pauline Furr

GIRLS' INTRAMURALS



Volleyball Varsity

MILDRED FORMYDUVAL
ELLEN PHILBECK
PAULINE FURR
MABEL GOODMAN

GAIL CLAY
BETTY GABRIEL
JO NICHOLS
JANETTE FORBES

Softball Varsity

MILDRED FORMYDUVAL
ELLEN PHILBECK
MABEL GOODMAN
JANETTE FORBES

BETTY GABRIEL
LOUISE UPCHURCH
MARGIE CALL

Soccer Varsity

First row:
MILDRED FORMYDUVAL
JANETTE FORBES
MARGIE CALL
VIRGINIA SMITH
ELLEN PHILBECK

Second row:
MABEL GOODMAN
LOUISE UPCHURCH
JO NICHOLS
BETTY GABRIEL
MYRNA HATHCOCK

Basketball Varsity

First row:
JANETTE FORBES
MARGIE CALL
ELLEN PHILBECK
ESTELLE BLEVINS

Second row:
EVANGELINE POTEAT
BETTY GABRIEL
CHARLENE MORRIS
MYRNA HATHCOCK
FREIDA GRUBBS
JO NICHOLS

CHEERLEADERS



SENIOR SQUAD

MARY JO TAYLOR MARGARET PRITCHETT
 MARY JANE KING EVANGELINE POTEAT
 BETTY NEWTON, *Chief*



JUNIOR SQUAD

BEN GOFORTH DOROTHY JONES
 MARGARET SMITH MARY ALICE COOKE
 JAMES COBB



President of Major Club and Intramural Manager: MILDRED FORMYDUVAL and JO NICHOLS.



INTRAMURAL CHAMPIONS *From left to right:* Ping Pong, Mildred Formyduval; Tennis Singles, Ellen Philbeck; Tennis Doubles, Ellen Philbeck and Sue Ratchford; Horseshoe, Martha Miller.

INTRAMURAL WRESTLING



Left to right: SHAW, EDENS, RAMSEY, STEIMER, COBB, PAYNE, FELTON, COURTS.

INTRAMURAL VOLLEYBALL



*Front row: FELTON, BLAIR, STEIMER, BREVARD.
Back row: SWEET, COURTS, HILL, RATTERREI.*

Freedom From Fear



BOOK IV

ACTIVITIES

"Freedom from FEAR
—everywhere in the world."



THALIAN LITERARY SOCIETY

OFFICERS

Fall Quarter

WILLIE EARL LYON
RUBY MANN
FRANCES SUTLIF
PAULINE MCRARY
SUE RATCHFORD

President
Vice-President
Recording Secretary
Corresponding Secretary
Treasurer

Winter Quarter

FRANCES SUTLIF
RUBY MANN
PAULINE MCRARY
LORENE TURPIN
EDITH LUCAS

President
Vice-President
Recording Secretary
Corresponding Secretary
Treasurer

Spring Quarter

PAULINE MCRARY
KATHLEEN SCHELL
EDITH TAYLOR
MARJORIE CALL
NANCY MIDDLETON

President
Vice-President
Recording Secretary
Corresponding Secretary
Treasurer

MEMBERS

SARA ALEXANDER
MARJORIE CALL
RACHEL COVINGTON
KATHRYN COOGLER
LOUISE CROWE
BETTY GERALD
THELMA HAUSER
LOIS HARDIN
STELLA HILDEBRAND
MILDRED INGRAM
FRANCES JACKSON
RUBY JESSUP

RUBY LISK
EDITH LUCAS
WILLIE EARL LYON
RUBY MANN
PAULINE MCRARY
NANCY MIDDLETON
JOSEPHINE NICHOLS
RUTH ORDERS
HELEN PEFLER
ALICE RAGAN
SUE RATCHFORD

KATHLEEN SCHELL
MARY E. SMITH
MADELINE SMOOT
EDITH SPENCER
WILDA SUDDERTH
FRANCES SUTLIF
EDITH TAYLOR
JANE TAYLOR
VIRGINIA TESH
LORENE TURPIN
PEGGY WOOD
KATHLEEN VESIAL



VERNICIAN LITERARY SOCIETY

OFFICERS

Fall Term

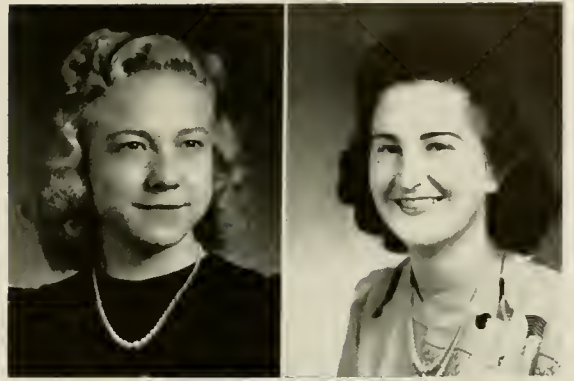
VIVIAN JOHNSON	President
DORCAS SIGMON	Vice-President
FAIRY DOBBINS	Recording Secretary
JANETTE FORBES	Corresponding Secretary
KATHERINE COBLE	Treasurer

Winter Term

ELIZABETH HOWARD	President
RUTH GILBERT	Vice-President
ALICE JOYCE	Recording Secretary
KATHERINE COBLE	Corresponding Secretary
DORCAS SIGMON	Treasurer

Spring Term

HELEN BEATTY	President
ANNA VON OESEN	Vice-President
KATHERINE COBLE	Recording Secretary
RUTH GILBERT	Corresponding Secretary
HELEN LUTZ	Treasurer



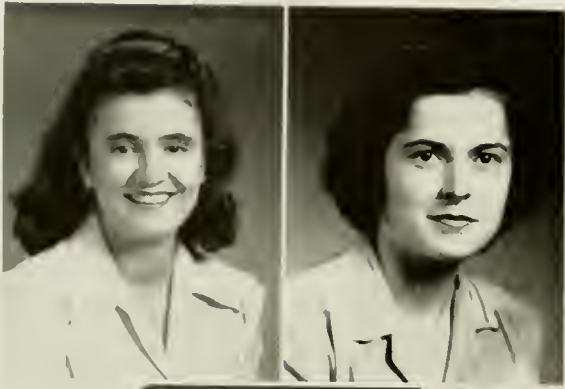
MEMBERS

HELEN BEATTY
 EVELYN BROYHILL
 NAOMI BROYHILL
 KATHERINE COBLE
 FAIRY DOBBINS
 HELEN EDMISTON
 EUGENIA FORBES
 JANETTE FORBES
 RUTH GILBERT
 ANNIE MAE HUNTER

ELIZABETH HOWARD
 VIVIAN JOHNSON
 ALICE JOYCE
 LOUISE KISER
 OPAL LOPP
 RUTH LOVEN
 FLORENCE LUTZ
 HELEN LUTZ
 MARY MILDRED MACKIE

HELEN MCNEELY
 RUTH PARK
 NAOMI PARKER
 HELEN ROBERTS
 DORCAS SIGMON
 JEAN STIREWALT
 ALTA TILLEY
 MAE TUCKER
 EDNA VENABLE
 ANNA VON OESEN





DYNICIAN LITERARY SOCIETY

OFFICERS

First Quarter

VIRGINIA SMITH	<i>President</i>
RACHEL TUCKER	<i>Vice-President</i>
ANN CORN	<i>Secretary</i>
MARGARET BERRIER	<i>Treasurer</i>

Second Quarter

IVA SPILLMAN	<i>President</i>
PAULINE GILLIAM	<i>Vice-President</i>
MARY LOUISE CULP	<i>Secretary</i>
PAULINE FURR	<i>Treasurer</i>

Third Quarter

MARY ELIZABETH BRUTON	<i>President</i>
RUBY TUCKER	<i>Vice-President</i>
RACHEL TUCKER	<i>Secretary</i>
JACQUELINE EVERHART	<i>Treasurer</i>

MEMBERS

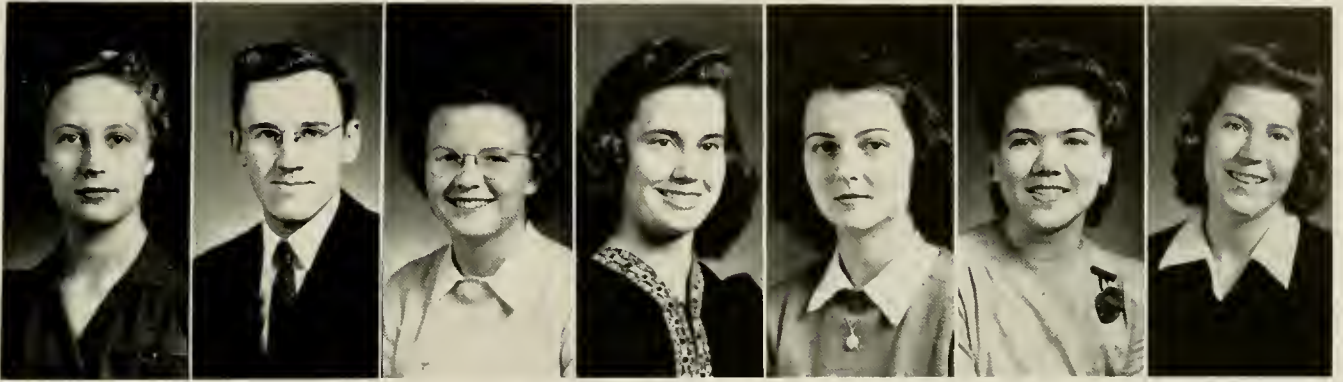
SYBIL ALLEN
 MARGARET BERRIER
 MARY ELIZABETH BRUTON
 ELLEN GRAY BURRIS
 JANE COCHRANE
 DOROTHY COMER
 ANN CORN
 DORIS CROUSE
 JOHNNIE CRAWFORD
 FRANCES CRAWFORD
 MARY LOUISE CULP
 JOHNNIE MAF DAVIS
 ALICE EAST
 JACQUELINE EVERHART
 PAULINE FURR
 EVELYN GALLOWAY
 PAULINE GILLIAM

BONNIE JEAN HAMRICK
 MARY EVELYN HAMRICK
 SARAH HARPER
 CAROLYN HARTMAN
 GEORGIA HERMAN
 IMOGENE HOPPERS
 LILLIAN KENT
 HELEN LOWE
 FRANCES MOORE
 ANN MUSE
 BLANCHE MYERS
 GEORGIA PARRISH
 MARY REDMOND
 ROMA ROBERSON
 SUE RUDDOCK
 DORCAS SHARPE
 MARY JANE SHEEK

FRANCES SHERRILL
 RUTH SIMPSON
 LORRAINE SIMPSON
 LENA SMITH
 MARY ALLETA SMITH
 VIRGINIA SMITH
 LALA SMITHWICK
 IVA SPILLMAN
 PEARL STEELMAN
 LILLIAN SUGGS
 VIRGINIA TOMS
 RACHEL TUCKER
 RUBY TUCKER
 HENRIETTA WADDELL
 GLADYS WILLIAMS
 EULA WILSON
 FRANCES YARBOROUGH



APPALACHIAN FORUM CLUB



OFFICERS

First Half of Year

ALICE ANTHONY	President
CLAIRE CASKEY	Vice-President
MARY MILDRED MACKIE	Secretary
PAULINE MCRARY	Treasurer

Second Half of Year

MARY MILDRED MACKIE	President
DORCAS SIGMON	Vice-President
KATHERINE COBLE	Secretary
MARGARET PRITCHETT	Treasurer

MEMBERS

HAZEL BELK	PAULINE MARTIN
MARY BLACK	J. D. MILLER
GAIL CLAY	NAOMI PARKER
PAULINE CRESS	HELEN PEELER
DOROTHY COMER	SUE RATCHFORD
BETTY GERALD	MARY ALICE ROSS
SARAH W. HARMON	JEAN STIREWALT
ELIZABETH HOWARD	FRANCES SUTLIFF
RUBY MANN	VIRGINIA TOMS

W. M. GRUBBS, Sponsor



Y. W. C. A.



SUE RATCHFORD	<i>President</i>
VIVIAN JOHNSON	<i>Vice-President</i>
BETTY GERALD	<i>Secretary</i>
MARY BLACK	<i>Treasurer</i>
MILDRED FORMYDUVAL	<i>Social Chairman</i>
ALICE JOYCE	<i>World Fellowship</i>
MARY PAULINE MARTIN	<i>Publicity Chairman</i>
BETTY MCMAHAN	<i>Membership Chairman</i>
WILLIE EARL LYON	<i>Social Service Chairman</i>
RUBY MANN	<i>Chapel Program Chairman</i>
KATHLEEN VESTAL	<i>Assembly Program</i>
MARGARET BERRIER	<i>Chorister</i>
MARY FRANCES FLETCHER	<i>Pianist</i>
MRS. G. P. EGGERS	<i>Sponsor</i>

MEMBERS

Alice Adams	Dorothy Comer
Kathryn Alexander	Claire Cooke
Laura Alexander	Dorcas Cornwell
Pat Allen	Rachel Covington
Sybil Allen	Frances Crawford
Virginia Atkins	Doris Crouse
Ruby Bailey	Alma Crowder
Louise Baker	Louise Crowe
Margaret Banks	Mary Louise Culp
Jean Beale	Dorothy Davis
Haldane Bean	Dorothy Deal
Helen Beatty	Letha Dobson
Rubye Beeson	Grace Duncan
Hazel Belk	Alice East
Margaret Berrier	Mildred Eaton
Naomi Billings	Doris Edens
Mary Black	Helen Edmiston
Estella Blevins	Augusta Lee Elmore
Rosada Bowman	Meriam Eppert
Jean Brown	Evelyn Everhart
Pauline Brown	Jacqueline Everhardt
Evelyn Broybill	Bunny Ferrebee
Naomi Broybill	Mary Flake
Helen Bruton	Eugenia Forbes
Mary Elizabeth Bruton	Janette Forbes
Rosemary Buchanan	Mildred Formyduval
Winona Buckland	Dimples Fortune
Doris Burgess	Rosalyn Frances
Virginia Burgess	Frances Fulcher
Ellen Gray Burris	Nancy Furches
Marjorie Call	Pauline Furr
Polly Carpenter	Betty Gabriel
Pola Carson	Nellie Gabriel
Betty Champion	Frances Gaddy
Sunshine Choate	Evelyn Galloway
Mildred Clapp	Ruth Gilbert
Frances Clinard	Pauline Gilliam
Katherine Coble	Pauline Gold
Jane Cochran	Freda Grubbs
Mary Truett Coggin	Elsie Hallyburton

Sara Hallyburton
 Helen Halsey
 Bonnie Jean Hamrick
 Mary Evelyn Hamrick
 Lois Hardin
 Thelma Hauser
 Joyce Hayes
 Madeline Hemric
 Georgia Herman
 Stella Hildebrand
 Ruby Hinson
 Elizabeth Howard
 Marie Hudler
 Bernita Hughes
 Carmen Huneycutt
 Annie Mae Hunter
 Doris Hunter
 Mrs. Elizabeth Hutchinson
 Mildred Ingram
 Frances Jackson
 Mary Alice Jarvis
 Ruby Jessup
 Alene Jones
 Dorothy Jones
 Kathleen Jones
 Elizabeth Jones
 Alice Joyce
 Joan Kirkham
 Louise Kiser
 Margaret Lineberger
 Ruth Loven
 Edith Lucas
 Florene Lutz
 Helen Lutz
 Willie Earl Lyon
 Mary Mildred Mackie
 Ruby Mann
 Mary Marsh
 Cora Martin
 Helen Martin
 Polly Martin
 Gloria Matkins
 Lorene Melton
 Jean McCollum

Eunice McCoury
 Margaret McIntyre
 Doris McKnight
 Margaret McKnight
 Betty McMahan
 Mary Lee McMahan
 Helen McNeely
 Polly McRary
 Nancy Middleton
 Kathleen Miller
 Martha Miller
 Frances Moore
 Lou Wallace Moore
 Ann Muse
 Blanch Myers
 Helen Newlin
 Anna Von Oeson
 Ruth Orders
 Ruth Park
 Naomi Parker
 Georgia Parrish
 Leota Payne
 Ruby Payne
 Catherine Payseur
 Margie Pendry
 Margaret Perry
 Marjorie Perry
 Una Perry
 Ellen Philbeck
 Evangeline Poteat
 Frances Powell
 Helen Price
 Margaret Pritchett
 Sue Ratchford
 Mary Redmond
 Margaret Rhodes
 Roma Roberson
 Helen Roberts
 Bonita Rominger
 Alice Ross
 Sue Ruddock
 Mary Saba
 Kathleen Schell
 Dorcas Sharpe
 Dorothy Sharpe

Mary Jane Sheek
 Frances Sherrill
 Helen Sherwood
 Ruby Sisk
 Doris Smith
 Lena Smith
 Mary Alleeta Smith
 Mary E. Smith
 Rachel Smith
 Dorcas Sigmon
 Madeline Smoot
 Arveta Stafford
 Elneda Stanaland
 Pearl Steelman
 Jean Stirewalt
 Wilda Sudderth
 Frances Sutliff
 Annie Laurie Taylor
 Edith Taylor
 Jane Taylor
 Virginia Tesh
 Iris Thomas
 Wilma Thomas
 Claudia Tharpe
 Alta Tilley
 Virginia Toms
 Mae Tucker
 Rachel Tucker
 Ruby Tucker
 Lorene Turpin
 Eleanor Vance
 Kathleen Vestal
 Anna Waddell
 Henrietta Waddell
 Lillian Waddell
 Edith Mae Ward
 Reviatha Watson
 Marie Welborn
 Dorothy Williams
 Nell Williams
 Elizabeth Wilson
 Frances Holt Yarborough
 Iris Young
 Christine Zachary



INTERNATIONAL RELATIONS CLUB



OFFICERS

SUE RATCHFORD
 BILL KILLIAN
 ALICE ANTHONY
 PEARL STEELMAN
 MARGIF CALL
 DR. D. J. WHITENER

President
Vice-President
Recording Secretary
Corresponding Secretary
Treasurer
Sponsor

MEMBERS

LOYD BARNETT
 MARGARET BERRIER
 MARY BLACK
 CLAIRE CASKEY
 GAIL CLAY
 SELBY COFFMAN*
 MARY LOUISE CULP
 HEATH DUNCAN
 FRANK GREER
 SARAH HARMON

MARY MILDRED MACKIE
 MARY PAULINE MARTIN
 BETTY MCMAHAN
 J. D. MILLER
 RUTH ORDERS
 FRANCES POWELL
 MARY ALICE ROSS
 DORCAS SIGMON
 VIRGINIA SMITH

*No picture.



A CAPPELLA CHOIR

DAVID KIRKHAM
President

JUANITA MCSWAIN
Vice-President

ALICE JOYCE
Secretary-Treasurer

VIVIAN JOHNSON
Reporter



Sopranos

MARGARET BERRIER
PAULINE CRESS
HOPE ELLER
ALICE JOYCE
JUANITA MCSWAIN
ALICE LEE RITCHIE

Altos

YVONNE CORNWELL
ROYSTER BARNETT
VIVIAN JOHNSON
ADELE JUSTICE
AGNES PRESTON
ANNIE LAURIE TAYLOR

Bass

GLENN BEAVER
BEN GOFORTH
DAVID KIRKHAM
ERNEST MAGNESS
JOE MULL
JOHN ROACH
ERNEST ROBERSON
CALDWELL SCHUYLER

Tenors

TOMMY CRAIG
A. J. SMITH
ROBERT WAKEFIELD
BOB WARREN



A. C. E.

MEMBERS

JEAN BROWNE
 MYRTLE LEE CHURCH
 JANE COCHRAN
 MARY TRUETT COGGIN
 YVONNE CORNWELL
 FRANCES CRAWFORD
 JOHNNIE CRAWFORD
 HELEN EDMISTON
 DOROTHY FARTHING
 MARY FLAKE
 PAULINE GOLD
 IMOGENE GREENE
 ELIZABETH HAWKINS
 HAZEL HAWKINS
 CARMEN HUNEYCUTT
 THELMA HAUSER
 ANNIE MAE HUNTER
 HELEN LUTZ
 MARY MARSH
 HELEN MCNEELY
 NANCY MIDDLETON
 CHARLENE MORRIS
 BETTY NEWTON



RUTH PARK
 MARGIE PERRY
 MARGARET PIERCE
 ALTA LEE REDMAN
 ELIZABETH REDMAN
 ANNIE LAURA ROBERTS
 SUE RUDDOCK

MARY JANE SHEEK
 WILDA SUDDERTH
 LUCILLE TEMPLETON
 KATHERINE UNDERDOWN
 ANNA VON OESER
 HENRIETTA WADDELL
 CLAUDINE WARF

STUDENT COUNCIL



ALICE ANTHONY
President Student Body

Senior Members

SELBY COFFMAN
 RUBY MANN
 PAULINE MCRARY
 RUTH ORDERS
 ROBERT WARREN

Junior Members

PALMER BLAIR
 MARGARET MCKNIGHT
 MARGARET PRITCHETT
 MERL STEIMER

Sophomore Members

FRANK GREER
 MARJORIE MCGEE

President and Secretary of the
 Freshman Class are ex-officio
 members.

Seated: BEN GOFORTH, DOT JONES, RUTH ORDERS, ALICE ANTHONY, PAULINE MCRARY, RUBY MANN. *Standing:* MERL STEIMER, SELBY COFFMAN, MARGIE MCGEE, FRANK GREER, MARGARET PRITCHETT, PALMER BLAIR. Not in picture: ROBERT WARREN, MARGARET MCKNIGHT.

BAND



GORDON NASH, J. ELWOOD ROBERTS, *Directors*

MEMBERS

EVA BINGHAM
GENE BINGHAM
RICHARD BINGHAM
PALMER BLAIR
WALTER BOONE
ANNIE CHOATE
J. B. COFFEY
BEN COLE
DORCAS CORNWELL

TOMMY CRAIG
FRANCES CRAWFORD
PAULINE FURR
MACK GARDNER
IMOGENE GREENE
MARY GREER
ALMA R. HAGAMAN
TED HAGAMAN
ALBERT KING

JOHN T. KING
CATHERINE LEDBETTER
OTIS LEDBETTER
ERNEST MAGNESS, *Captain*
CLYDE MAHAFFEE
BLANTON MILLER
JOSEPHINE MILLER
GENE MODLIN
CLAUD NANTZ

ROSALIND PAGE
EDWARD PENDRY
AGNES PRESTON
SPENCER QUALLS
BONITA ROMINGER
KATHRYN SMITH
BETTY STUBBS
STANLEY SOUTH
RUTH TATUM

EDWIN TROUTMAN
LORRAINE WINTERS
BOB WAKEFIELD
BETTY R. WINKLER
MARY SUE WINKLER
VIRGINIA WRIGHT
HELEN WILCOX
THARON YOUNG

LOVILL CLUB

BETTY MCMAHAN, *President*

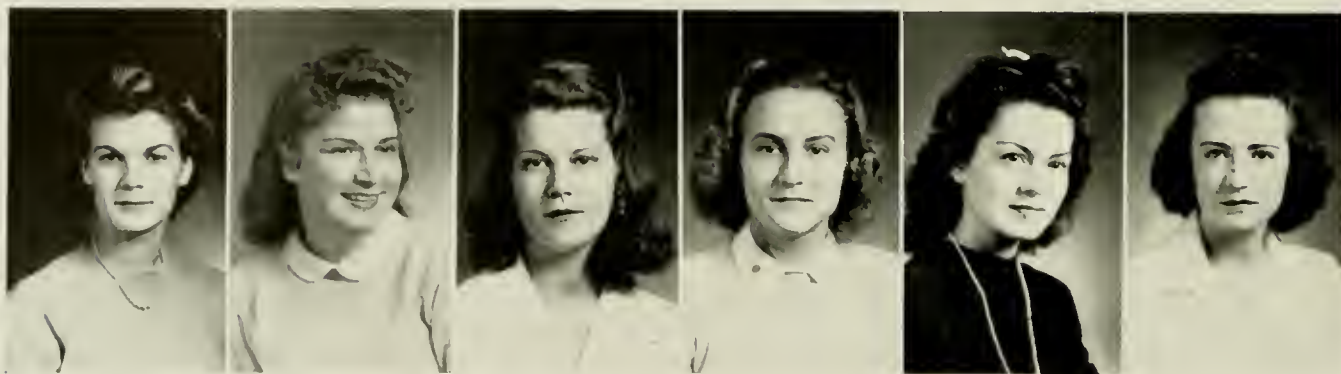
MEMBERS

Ruby Bailey, Haldane Bean, Rubye Beeson, Ruth Beeson, Hazel Belk, Naomi Billings, Elizabeth Blackwelder, Louise Bloodworth, Vera Bolick, Daffie Boone, Erma Jane Bowie, Rosada Bowman, Ruth Brittain, Jean Brown, Oleta Brown, Rosemary Buchanan, Virginia Burgess, Madeline Clark, Frances Clinard, Maxine Clontz, Betsy Cole, Dorcas Cornwell, Mildred Crouch, Fairy Dobbins, Letha Dobson, Mildred Eaton, Helen Edmiston, Meriam Eppert, Louise Epps, Amanda Ferebee, Dimples Fortune, Ruth Freeman, Mary Flake, Nancy Furchess, Ruth Gilbert, Carol Glass, Pauline Gold, Pearl Gold, Mahel Goodman, Polly Gordon, Dorothy Goulding, Aileen Green, Edith Greer, Betty Jean Griffin, Elsie Hallyburton, Marie Hamrick, Lois Hardin, Mary F. Harrill, Edna Hatcock, Myrna Hatcock, Elizabeth Hawkins, Hazel Hawkins, Joyce Hayes, Annie Mae Hunter, Sarah Hunter, Mildred Ingram, Mary Alice Jarvis,

Elizabeth Jones, Adele Justice, Julia Kendall, Nell Kendall, Madge Kilby, Doris Lackey, Mrs. Dessie Lawing, Opal Lopp, Helen Lutz, Helen Martin, Polly Martin, Margie McGee, Margaret McIntyre, Betty McMahan, Helen McNeely, Pauline McRary, Kathleen Miller, Dorothy Moore, Theo Oliver, Ruby Payne, Margie Pendry, Jean Pipkin, Bonita Rominger, Mary Saba, Mary Jane Sheek, Mary E. Smith, Madeline Smoot, Elva Spake, Doris Spenser, Elueda Stanaland, Phylma Swain, Virginia Tarleton, Edith Taylor, Jane Taylor, Mary Jo Taylor, Iris Thomas, Claudia Tharpe, Dorothy Travis, Katherine Tuttle, Edna Venable, Lillian Waddell, Rachel Wagner, Dare Watts, Gladys Williams, Edith Wilson, Nina Wilson, Virginia Wright, Jennie Lee Wyant, Christine Zachary.



THE APPALACHIAN TWIRLING CLUB



OFFICERS

PEGGY BEALE	<i>President</i>
SYBIL ALLEN	<i>Vice-President</i>
DOROTHY COMER	<i>Secretary</i>
ANN CORN	<i>Treasurer</i>
EDITH TAYLOR	<i>Reporter</i>
RUTH LOVEN	<i>Leader</i>
MR. EUGENE GARBEE	<i>Sponsor</i>

MEMBERS

SYBIL ALLEN	LETHA DOBSON	JEAN PIPKIN
VIRGINIA ATKINS	DIMPLES FORTUNE	SUE RUDDOCK
PEGGY BEALE	EVELYN GALLOWAY	LALA SMITHWICK
HALDANE BEAN	ELSIE HALLYBURTON	LILLIAN SUGGS
PAULINE BROWN	HELEN HALSEY	EDITH TAYLOR
BETTY CHAMPION	SARAH HUNTER	JANE TAYLOR
DOROTHY COMER	FRANCES JOBE	RACHEL TUCKER
ANN CORN	RUTH LOVEN	ANNA WADDELL
MINNIE FAYE COSTNER		FRANCES YARBOROUGH



FRESHMAN GLEE CLUB

OFFICERS

MR. ROBERTS *Director*
 JOAN V. KIRKHAM *President*
 MARY ALICE COOKE *Vice-President*
 MADELINE SMOOT *Secretary and Treasurer*



MEMBERS

Ruby Baily	Ruby Dancy	Nell Avett Kendall	Wilma Thomas
Rubye Beeson	Augusta Elmore	Joan V. Kirkham	Anna Waddell
Addie Bingham	Velda Greer	Margaret Lineberger	Betty R. Winkler
Juanita Cooke	Margie Hodges	Jean Pipkin	Mary S. Winkler
Mary Alice Cooke	Marie Hudler	Madeleine Smoot	Virginia Wright
Elizabeth Cooper			Gloria Matkins

Y. M. C. A.

OFFICERS

<i>Winter Quarter</i>			<i>Fall Quarter</i>
FRANK GREER	<i>President</i>	CLIFFORD OUSLEY	<i>President</i>
FRANK ROLAND	<i>Vice-President</i>	FRANK ROLAND	<i>Vice-President</i>
ERNEST MAGNESS	<i>Secretary and Treasurer</i>	ERNEST MAGNESS	<i>Secretary-Treasurer</i>



MEMBERS

Harold Beaver	Ernest Magness, Jr.
Maurice Blevins	John Miller
James Brandon	Harold Nichols
Holton Cornett	Clifford Ousley
Winifred Covington	Hugh Reavis
Andy Dickerson	James Reese
Heath Duncan	John G. Roach, Jr.
Meredith Duncan	J. E. Roberts
Wade Duncan	Frank Roland
Robert Eddleman	William Seaford
Orland Gabriel	Ray Thomas
Bill Gilliam	Early Tilley
Edward Gomedela	Leo Treece
Frank Greer	Bob Warren
Paul Hollingsworth	Robert Wakefield
Eugene Johnson	Paul Yarbrough
Robert Lowe	Bobby Yount

WHITE HALL CLUB

OFFICERS

RUBY HINSON	<i>President</i>
MARY JO BUMGARDNER	<i>Vice-President</i>
EDITH MARSHALL	<i>Secretary</i>
JUANITA MCSWAIN	<i>Treasurer</i>

MEMBERS

Katherine Alexander, Laura Alexander, Virginia Atkins, Myrtle Bivens, Rachel Bivens, Margaret Banks, Eva Bingham, Estella Blevins, Lena Brown, Pauline Brown, Naomi Broyhill, Evelyn Broyhill, Helen Bruton, Mary Jo Bumgardner, Doris Burgess, Ellen Gray Burris, Polly Carpenter, Pola Carson, Beatrice Castevens, Polly Castle, Betty Champion, Clara Cook, Elizabeth Cooper, Minnie Faye Costner, Pauline Cress, Alma Crowder, Louise Crowe, Jessie Lee Dugger, Sarah Kate Davis, Betty Lou Dixon, Doris Edens, Augusta Elmore, Evelyn Gail Everhart, Betty Faires, Rosalyn Frances, Frances Fulcher, Betty Gabriel, Nellie Gabriel, Frances Gaddy, Mary Greer, Freda Grubbs, Sara Hallyhurton, Helen Halsey, Bonnie Jean Hamrick, Madeline Hamrick, Ruby Hinson, Margueline Holland, Carmen Huneycutt, Marie Hudler, Bernita Hughes, Alene Jones, Kathleen Jones, Dorothy Jones, Joan Kirkham, Louise Kiser, Catherine Ledbetter, Margaret Lineberger, Katherine Marsh, Edith Marshall, Gloria Matkins, Jean McColum, Eunice McCoury, Doris McKnight, Ann McGuire, Juanita McSwain, Martha Miller, Frances Moore, Lou Wallace Moore, Blanche Myers, Mary Newton, Una Perry, Ellen Philbeck, Nellie Pleasant, Alta Lee Redmond,



Elizabeth Redmond, Pattyræ Reeves, Margaret Rhodes, Una Lee Richardson, Alee Ross, Alyce Russell, Lucille Russell, Ruth Mae Simpson, Lorraine Simpson, Frances Sherrill, Helen Sherwood, Doris Smith, Kathryn Smith, Olivia Smith, Venita Smith, Margaret Shuford, Doris Snow, Doris Sparks, Wilma Thomas, Annie Laurie Taylor, Flora Mae Templeton, Lucille Templeton, Laura Thacker, Kathleen Thornburg, Ruth Thorpe, Mae Tucker, Louise Upehurch, Eleanor Vance, Anna Waddell, Edith Mae Ward, Claudine Warf, Elizabeth Wilson, Frances Yarborough, Iris Young, Velma Young.

CHRISTIAN FELLOWSHIP ALLIANCE

OFFICERS

<i>Spring Quarter</i>	<i>President</i>	VIRGINIA BURGESS	<i>Fall Quarter</i>	<i>President</i>
RUBY TUCKER	<i>Vice-President</i>	RUTH GILBERT		<i>Vice-President</i>
MARY FLAKE	<i>Secretary and Treasurer</i>	LILLIAN CRUMP		<i>Secretary and Treasurer</i>
HELEN LUTZ	<i>Reporter</i>		<i>Winter Quarter</i>	<i>President</i>
VIRGINIA BURGESS	<i>Pianist</i>	EDWARD GOMEDELA		<i>Vice-President</i>
ADFLE JUSTICE	<i>Chorister</i>	ROSEMARY BUCHANAN		<i>Secretary and Treasurer</i>
FAIRY DOBBINS	<i>Sponsor</i>	HAZEL HAWKINS		
DR. WILFY SMITH				



MEMBERS

Louise Bloodworth, Erma Jane Bowie, Ruth Brittain, Oleta Brown, Rosemary Buchanan, Virginia Burgess, Frances Clinard, Lillian Crump, Fairy Dobbins, Merian Eppert, Mary Flake, Ruth Gilbert, Virginia Goodman, Edward Gomedela, Mary Frances Harrill, Edna Hatcock, Ruby Hinson, Mary Alice Jarvis, Elizabeth Jones, Joan Kirkham, Helen Lutz, Margaret McIntyre, Helen McNeely, Kathleen Miller, Marie Hamrick, Adele Justice, Anna Von Oesen, Ruby Payne, Alta Lee Redman, Pattyræ Reeves, Helen Roberts, Bonita Rominger, Helen Sherwood, Dorcas Sigmon, Ruth Mae Simpson, Mary Eloise Smith, Rachel Smith, Doris Spencer, Arveta Stafford, Flora Mae Templeton, Claudia Tharpe, Ruby Tucker, Bob Wakefield, Alice Dare Watts, Dorothy Williams, Edith Wilson, Hunter Lee Wilson, Jean Wright, Almarose Younts, Elizabeth Redman, Hazel Hawkins, Carol Glass, Elizabeth Hawkins.

BAPTIST STUDENT UNION

MEMBERS

PAULINE GILLIAM
 MADELINE SMOOT
 MINNIE FAYE COSTNER
 LORRAINE SIMPSON
 LOUISE CROWE
 HAZEL HAWKINS
 MARGIE MCGEE
 HAZEL BELK
 RACHEL COVINGTON
 BERNITA HUGHES
 FRANCES POWELL
 RACHEL TUCKER
 PEARL STEELMAN
 NELL WILLIAMS
 CLIFFORD OUSLEY
 FRANCIS ESSIC
 BILL GILLIAM
 EARLY TILLEY
 FRANK GREER
 CALDWELL SCHUYLER
 RUTH SIMPSON
 A. J. SMITH
 FRANCES YARBOROUGH
 PAT ALLEN
 KATHLEEN VESTAJ
 HELEN WILCOX
 CLAUDINE WARF
 RUTH BRITTAIN
 STELLA CHLOE ROGERS
 RUTH MILLER
 RUTH ORDERS
 ALTA TILLEY
 UNA LEE RICHARDSON
 TOMMY WILKINSON



METHODIST CLUB OFFICERS

WILLIE EARL LYON

President

LEOTA PAYNE

Vice-President

JANE KING

Secretary and Treasurer



LE CERCLE FRANCAISE

OFFICERS

RUTH ORDERS
FRANCES JACKSON
PEARL STEELMAN
MARGARET MCINTYRE
WILLIE EARL LYON

President
Vice-President
Secretary
Treasurer
Reporter



MEMBERS

MARGARET BANKS	MARGARET MCINTYRE
ROYSTER BARNETTE	POLLY MILLS
NAOMI BILLINGS	RUTH ORDERS
VIRGINIA BURGESS	GEORGIA PARRISH
MARY LOUISE CULP	MARGIE PENDRY
LOIS HARDIN	MARGARET RHODES
STELLA HILDEBRAND	MARY ALLETA SMITH
FRANCES JACKSON	LALA SMITHWICK
VIVIAN JOHNSON	PEARL STEELMAN
WILLIE EARL LYON	MAE TUCKER
THARON YOUNG	

FUTURE TEACHERS CLUB



OFFICERS

T. J. MATTERN
HUGH DANIEL

President MARY ELIZABETH BRUTON
Vice-President MR. H. B. HEFLIN, MR. H. W. WEY

Secretary
Sponsors

ROLL

SARAH ALEXANDER
ALICE ANTHONY
MARY ELIZABETH BRUTON
DORIS BURGESS
VIRGINIA BURGESS
HUGH DANIEL

EUGENIA FORBIS
EDNA HATHCOCK
T. J. MATTERN
HILDA MOSS
NELLIE PLEASANT
SUE RATCHFORD
ELOISE REECE

KATHLEEN SCHELL
LENA SMITH
ARVETA STAFFORD
VIRGINIA TOMS
KATHLEEN VESTAL
RAY WALKER

HOME ECONOMICS CLUB



OFFICERS

First Term

DORIS SPENCER
DOROTHY SUE HAMRICK
MARGARET PERRY
FRANCES WHITENER

President
Vice-President
Secretary
Reporter

Second Term

DOROTHY WILLIAMS
ARVETTA STAFFORD
RUTH NIXON
MARY ALICE JARVIS
MISS TODD

President
Vice-President
Secretary and Treasurer
Sergeant-at-Arms
Sponsor

MEMBERS

Kathryn Alexander, Miss Lucy Brock, Oleta Brown, Pauline Brown, Haskell Blevins, Beatrice Castevens, Madelyn Clark, Alma Crowder, Minnie Faye Costener, Mildred Crouch, Jacqueline Everhardt, Merriam Eppert, Nancy Furchess, Dola Graybeal, Mary Greer, Pearl Gold, Dorothy Sue Hamrick, Bonnie Hamrick, Georgia Herman, Imojean Hoppers, Bernita Hughes, Sara Hunter, Mildred Ingram, Mary Alice Jarvis, Elizabeth Jones, Julia Kendall, Helen Lowe, Edith Marshall, Mary Lee McMahan, Cloyce Moose, Lelia Neal, Ruth Nixon, Lucille Nye, Ruby Payne, Leota Payne, Margaret Perry, Helen Peeler, Eloise Pitts, Helen Price, Eloise Reese, Doris Spencer, Elva Spake, Arvetta Stafford, Edith Taylor, Miss Mabel Todd, Iris Thomas, Claudia Tharpe, Dorothy Travis, Eleanor Vance, Edith Mae Ward, Marie Welborn, Frances Whitener, Dorothy Williams, Christine Zachery.

PHILA RETIAN LITERARY SOCIETY

OFFICERS

Fall Quarter

CHARLENE MORRIS
CLAUDINE WARF
MARGARET PIERCE

President
Vice-President
Secretary and Treasurer

Winter Quarter

MARGARET PIERCE
CARMEN HUNEYCUIT
CHARLENE MORRIS
CLAUDINE WARF

President
Vice-President
Secretary
Treasurer

Spring Quarter

CLAUDINE WARF
JEANNE COOKE
ELIZABETH WORSHAM
LOUISE TOWE

President
Vice-President
Secretary
Treasurer

MEMBERS

Pola Carson, Jeanne Cooke, Frances Fulcher, Aileen Green, Carmen Huneycutt, Frances Jobe, Cora Martin, Charlene Morris, Lelia Neal, Margaret Pierce, Claudine Warf, Dorothy Williams, Elizabeth Worsham, Louise Towe, Alice Ritchie, Alvece Russell, Carolyn Jarrett.



PLAYCRAFTERS



OFFICERS

VIVIAN JOHNSON
SAM OSBORNE
MARGIE MCGEE

President LARA ALEXANDER
Vice-President FRANCES POWELL
Secretary and Treasurer MR. YODER

Editor Playbill
Associate Editor
Sponsor

MEMBERS

ALICE ADAMS
LARA ALEXANDER
VIRGINIA ATKINS
HELEN BEATTY
HAZEL BELK
ROSEMARY BUCHANAN
VIRGINIA BURGESS
MARJORIE LOUISE BOWERS
ANNIE REID CHOATE
MILDRED CLAPP
KATHERINE COBLE
SELBY COFFMAN
KATHERINE COOGLER
MARY ALICE COOKE

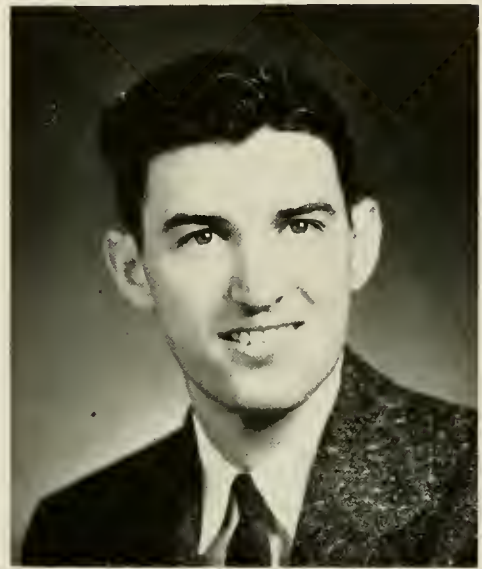
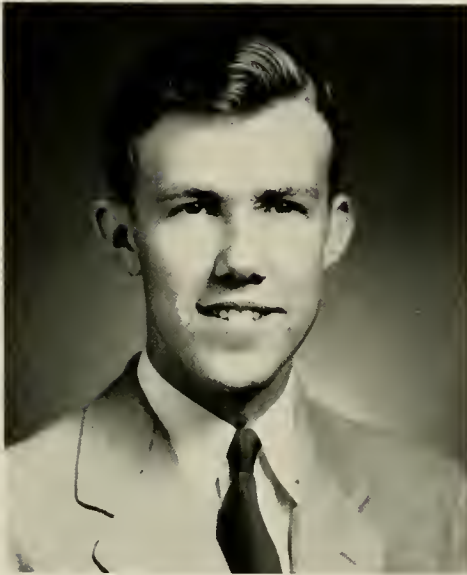
DORIS CROUSE
RUBY DANCEY
ALICE EAST
LOUISE EPPS
CARRIE LEE FARTHING
NADINE GRAGG
SARA HALLYBURTON
LOIS HARDIN
MADELINE HEMRIC
RUBY HINSON
MARJORIE HODGES
FRANCES JACKSON
VIVIAN JOHNSON
WILLIE EARL LYON

MARGIE MCGEE
MARGARET MCINTYRE
BETTY MCMAHAN
POLLY MARTIN
NANCY MIDDLETON
ANN MUSE
BETTY MILLS
RUTH ORDERS
GEORGIA PARRISH
NAOMI PARKER
FRANCES POWELL
BRUCE SAPP
LUTHER SELF
RUTH SIMPSON

DORIS SPARKE
MARY ALLETTA SMITH
MARGARET SMITH
LALA SMITHWICK
PEARL STEELMAN
EUGENE STROUP
ALTA TILLEY
RACHEL TUCKER
RUBY TUCKER
BOB WAKEFIELD
TOMMY WILKINSON
ELEANOR VANCE
FRANCES HOPE YARBOROUGH
KATHRYN YOUNCE
ALMA ROSE YOUNTS



RHODODENDRON STAFF



LOYD BARNETTE *Editor*

JOSEPHINE NICHOLS *Sports Editor*

JAMES CARPENTER *Business Manager*

T. J. MATTERN *Sports Editor*

MARGARET PIERCE *Associate Editor*

VIRGINIA SMITH *Senior Class Editor*

AUBREY PAYNE *Assistant Business Manager*

BETTY GERALD *Junior Class Editor*

LLOYD ISAACS *Associate Editor*

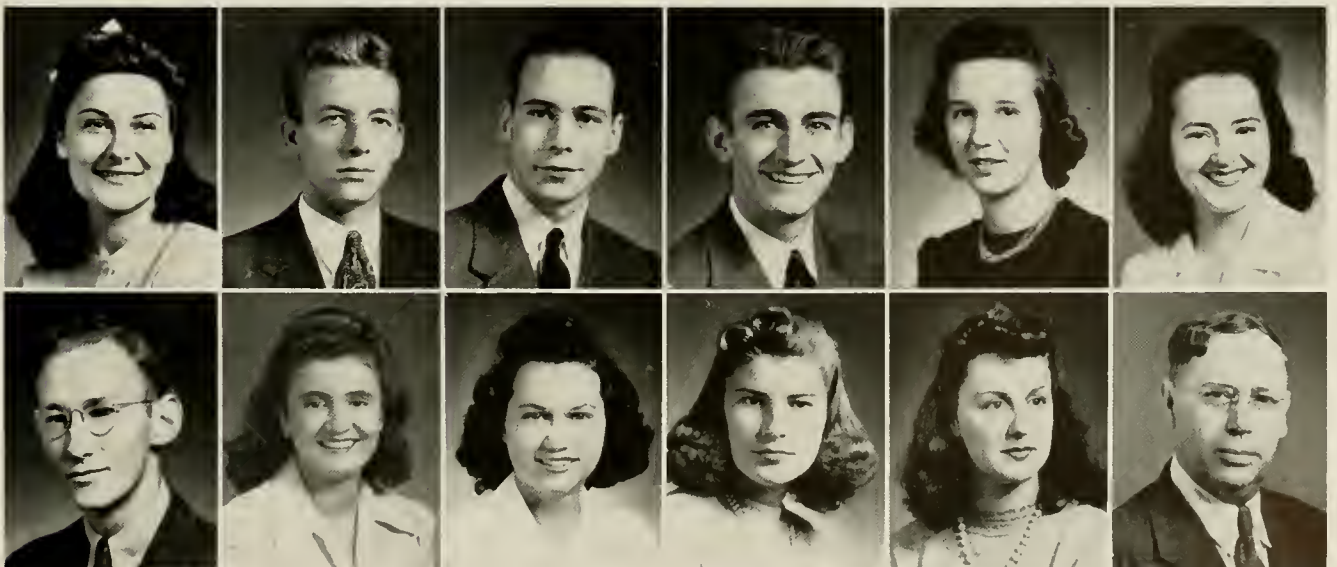
POLA CARSON *Sophomore Class Editor*

RICHARD PIERCE *Photography Editor*

VIRGINIA TARLETON *Freshman Class Editor*

JEAN STIREWALT *Managing Editor*

VANCE HOWELL *Faculty Adviser*



THE APPALACHIAN



BILL KILLIAN
FRANCES POWELL

Editor-in-Chief
News Editor

HUGH DANIEL
RUTH ORDERS

Business Manager
Feature Editor

Reporters: Virginia Smith, Helen Peeler, Alice Ross, Jean Stirewalt, Betty McMahan, Ruby Mann, Willie Earl Lyon, Margaret Rhodes, Frances Yarborough, Lloyd Isaacs, Rachel Tucker.

Reporters: Gene Knott, Mary Black, Clifton Hill, Early Tilley.

RICHARD PIERCE

Sports Editor

ERNEST ROBERSON
ED GOMEDELA

Advertising Manager
Circulation Manager

Assistants: Hugh Reavis, Bill Gilliam.

DR. D. J. WHITENER

Faculty Adviser



WHEN, in the course of human events it becomes necessary for one people to dissolve the political bands which have connected them with another, and to assume among the powers of the earth, the separate and equal station to which the Laws of Nature and Nature's God entitle them, a decent respect to the opinions of mankind require that they should declare the causes which impel them to the separation. We hold these truths to be self-evident, that all men are created equal, that they are endowed by their Creator with certain unalienable Rights, that among these are *Life, Liberty and the pursuit of Happiness* . . . That to secure these rights, Governments are instituted among men, deriving their just powers from the consent of the governed . . . That whenever any form of Government becomes destructive of these ends, it is the Right of the People to alter or abolish it, and to institute new Government, laying its foundation on such principles and organizing its powers in such form, as to them shall seem most likely to effect their safety and happiness.

DECLARATION OF INDEPENDENCE OF THE THIRTEEN
UNITED STATES OF AMERICA, JULY 4, 1776.

Today

*We defend for others the principles
we declared and defended for ourselves*

BOOK V
FEATURES



MAY QUEEN

Ruth Orders

MAID OF HONOR

Lorene Turpin



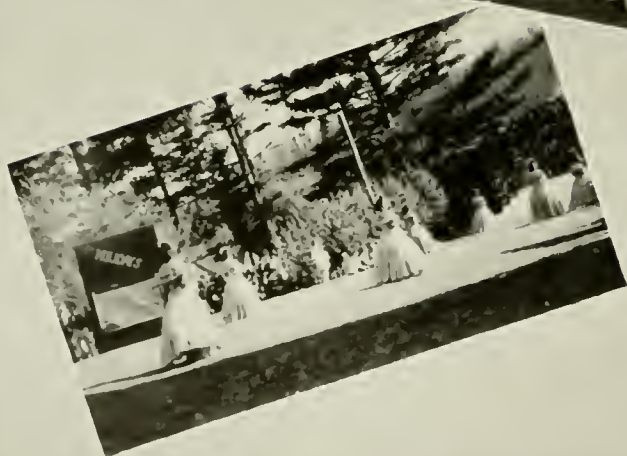
SENIOR ATTENDANTS

Margaret Perry

Ruth Loven

Frances Crawford





JUNIOR ATTENDANTS

Roma Roberson

Marjorie Call

Evangeline Poteat



SOPHOMORE ATTENDANTS

Kathleen Jones

Hazel Belk

FRESHMAN ATTENDANTS

Dorothy Jones

Nellie Gabriel



Mary Black

Miss Appalachian



Clyde Cleetwood

Mr. Appalachian

Bill Killian
Most Valuable Man



Sue Ratchford
Most Valuable Woman



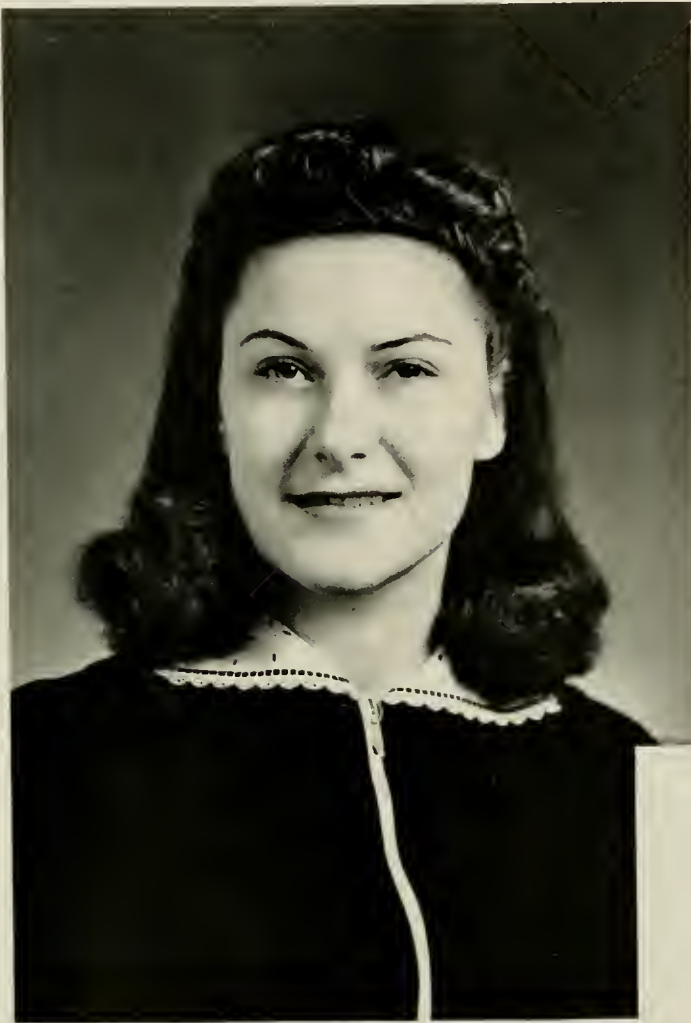
Virginia Smith

Most Popular

CAMPUSALITY



PUBLICATION SPONSORS—RHODODENDRON



Margaret Pierce

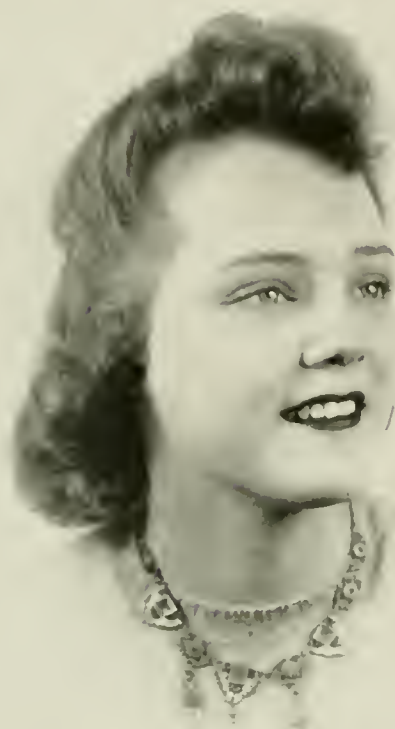
Editor RHODODENDRON

Mrs. Albert B. Carpenter

Business Manager RHODODENDRON



PUBLICATION SPONSORS—APPALACHIAN



Jessie Lois Jones

Editor Appalachian

Ruby Donald

Business Manager Appalachian



CLASS SPONSORS

Senior Class

Mrs. G. H. Payne



Junior Class

Pola Carson

CLASS SPONSORS



Sophomore Class
Mrs. Wilson Barton



Freshman Class
Mrs. J. B. Goforth



Pitching the placards Patient? Come on, let's flop one Getting an education
 Woof, woof Entrance to the Blue Room First of the month Resting Physically clean
 Tails, I win Mama, why do people have to bathe? Straight from the islands Going
 A. W. O. L... Wait, I'll tie it Their women wear the pants What'll it be, gas?
 Meditation Show's over Hell-day

JEFFERSON STANDARD LIFE
INSURANCE COMPANY

PAUL A. COFFEY
Special Representative

BOONE, N. C.

SMITHEY'S DEPT. STORE

Boone's Largest New Daylight Store

DRY GOODS, GROCERIES, FEEDS,
POULTRY, GASOLINE, AND OILS

Visit Our Lunch Room

All Sandwiches 5c

Coffee Free

WALKER'S JEWELRY STORE

WATCHES, DIAMONDS, RINGS, AND
SCHOOL SUPPLIES

FINE WATCH REPAIRING

*Appalachian State Teachers College
Students Always Welcome*

Compliments of

BOONE DRUG CO.

"The Rexall Store"

Phone 17

G. K. MOOSE, *Manager*

Compliments of

B. W. STALLINGS

"Your College Jeweler"

BOONE, N. C.

WATCHES DIAMONDS JEWELRY



NETTIE LEE DRESS SHOP

*Be Well Groomed to Keep
Morale for Men in Service*

FAYE BROWN, MARIE HODGES, BETTY NEWTON.

Compliments of the
DANIEL BOONE
SHOE SHOP

Complete Shoe Service

+

CHARLES C. ROGERS, *Prop.*



Only saps study... It can't happen here... A little curve has kept many a man from going straight. Jerking off. Coach? Coming thru the rye Nice building Dress it up Felton boys. Nice to come home to. It's only for the annual Plotting?... Good thing cows don't live in trees. Freshman week. Homecoming art Is it cold up there?... The forgotten man... Little "Red"... The ratio at Appalachian...

APPALACHIAN
THEATRE

D. J. NORMAN, *Manager*



Western North Carolina's Finest

BOONE, N. C.

CAROLINA CAFE &
HOTEL

"Boone's Finest"

FRIED SPRING CHICKEN
COUNTRY HAM
T-BONE STEAKS

MILTON YOUNG, *Manager*

GATEWAY CAFE

An Ultra Modern Cafe

WESTERN T-BONE STEAKS
COUNTRY HAM

COMPLETE FOUNTAIN SERVICE

MR. AND MRS. G. C. GREENE, *Prop.*

S. C. EGGERS

Real Estate Broker

We Buy and Sell Real Estate



RENTALS

Compliments of

McGUIRE'S BEAUTY
SALON

Boone's Oldest and Most Modern Shop

MRS. PAT McGUIRE, *Manager*

BOONE, N. C.

PHONE 91

BOONE TRAIL CAFE



The Best Place to Eat in Boone



B. G. TEAMS, *Manager*

"ENJOY PET ICE CREAM,

A HEALTH FOOD"

PET DAIRY PRODUCTS
COMPANY

JOHNSON CITY, TENNESSEE

Compliments of

PEARCE, YOUNG, ANGEL
COMPANY

ASHEVILLE, N. C.

WHOLESALE FRUITS AND
PRODUCE

CHARLIE'S BOWLING CENTER

+ +

RENDEZVOUS FOR SPORTS

+ +

BOONE, NORTH CAROLINA

H. G. FARTHING, *President* A. W. SMITH, *Vice-President*
W. H. GRAGG, *Sec.-Treas.*

WATAUGA BUILDING & LOAN ASSOCIATION

Office over Watauga County Bank

BOONE, N. C.

SAFE FOR YOUR SAVINGS SINCE 1921

BURGESS ANTIQUE SHOP

COMPLETE HOME FURNISHING
NEW AND USED FURNITURE
ANTIQUES A SPECIALTY

BOONE, N. C.

PHONE 195

HUNT'S DEPARTMENT STORE

Two Large Floors of Moderate
Priced Clothing and Shoes
for Entire Family

PHONE 188

MODERN MERCANTILE COMPANY

Home of Real Bargains

For the Best in Bolt Materials, Remnants, and Beautiful Quilt-tops at bargain prices; shop at our store.

DAISY LYONS, *Mgr.*

QUALLS FURNITURE STORE

ANTIQUE CHINA AND GLASSWARE

PERIOD FURNITURE

BOONE, N. C.

Appalachian State Teachers College

BOONE, NORTH CAROLINA

*Devoted Exclusively to Teacher Training
For Public Education in the South*

SPECIALIZATION IN OBSERVATION WORK

FULL SUMMER QUARTER

**REINS-STURDIVANT FUNERAL HOME AND
BURIAL ASSOCIATION**

Day and Night Ambulance Service

PHONE 24

**A. S. T. C.
BOOK STORE**

Student Headquarters

“SOFT DRINKS, OFFICIAL COLLEGE
JEWELRY, AND PENNANTS”

CAROLINA PHARMACY

Your Drug Store

PRESCRIPTIONS

Phone 47

BOONE, N. C.

DANIEL BOONE HOTEL

*“In the heart of the mountains of the
Blue Ridge Parkway”*

DINING ROOM SERVICE

Elevation 3333 Feet

C. A. PRICE, *Assistant Manager*

BOONE, N. C.

Compliments of

FARMERS HARDWARE CO., Inc.

**EVERYTHING IN HARDWARE
AND ASSOCIATE LINES**

BOONE, N. C.

BELK-WHITE COMPANY

BOONE, N. C.

200 DEPARTMENT STORES

Sell it for less

PARKWAY COMPANY

**HARDWARE—ELECTRICAL
APPLIANCES**

RADIO SERVICE

BOONE, N. C.

A. S. T. C. MOUNTAINEERS
TRAVEL BY
TRAILWAYS

SAFE — ECONOMICAL — COMFORTABLE
RELIABLE



QUEEN CITY TRAILWAYS

Owned and Operated by
QUEEN CITY COACH COMPANY

Compliments of

WATAUGA DEMOCRAT

ESTABLISHED 1888

Compliments of

Waldensian Baking Company

VALDESE, N. C.

Member of Quality Bakers of America

GREETINGS FROM

B. F. HUNTLEY FURNITURE COMPANY

WINSTON-SALEM, N. C.

Compliments of

The Coca-Cola logo is written in its classic, flowing script font.

Coca-Cola Bottling Company

OF ASHEVILLE, N. C.

HICKORY, N. C.

Photographs
DUNBAR STUDIO
Charlotte, N. C.

Engravings
CHARLOTTE ENGRAVING CO.
Charlotte, N. C.

Printed By
OBSERVER PRINTING HOUSE
Charlotte, N. C.

