

Historic, Archive Document

Do not assume content reflects current scientific knowledge, policies, or practices.

THIS CATALOGUE TAKES THE PLACE OF ALL PREVIOUS ISSUES

Fall 1906.

Established 1875—(31 Years.)

Spring 1907.

WHOLESALE AND RETAIL PRICE LIST

— OF THE —

Sarcoxie Nurseries

WILD BROS. NURSERY CO.

Successors to J. B. WILD & BROS.

SARCOXIE, (JASPER CO.,) MO.



BEST COOL STORAGE AND PACKING HOUSE EXTANT

31st ANNUAL WHOLESALE AND RETAIL PRICE LIST.

Issued July 25, 1906.

WESTERN GROWN NURSERY STOCK.

Extensive Growers of Ornamental Trees for City or Private Parks.

Our Exhibit was Awarded Gold Medal at World's Fair, St. Louis, Mo.

Our Nurseries are advantageously located on the line of the St. Louis & San Francisco R. R. (Frisco System) between diverging points. Three passenger trains (Wells Fargo Express) daily each way. It is but 15 minutes walk from depot to our grounds. Shipping and business facilities unsurpassed. Side track adjoining grounds. Connected by Home Mineral Belt and Local Telephone Companies; Missouri, Kansas & Texas (Bell) Long Distance phone in our office.

COPY OF CERTIFICATE.
AGRICULTURAL COLLEGE OF MISSOURI EXPERIMENT STATION, DEPARTMENT OF ENTOMOLOGY.—CERTIFICATE OF INSPECTION OF NURSERY STOCK

To Whom It May Concern:

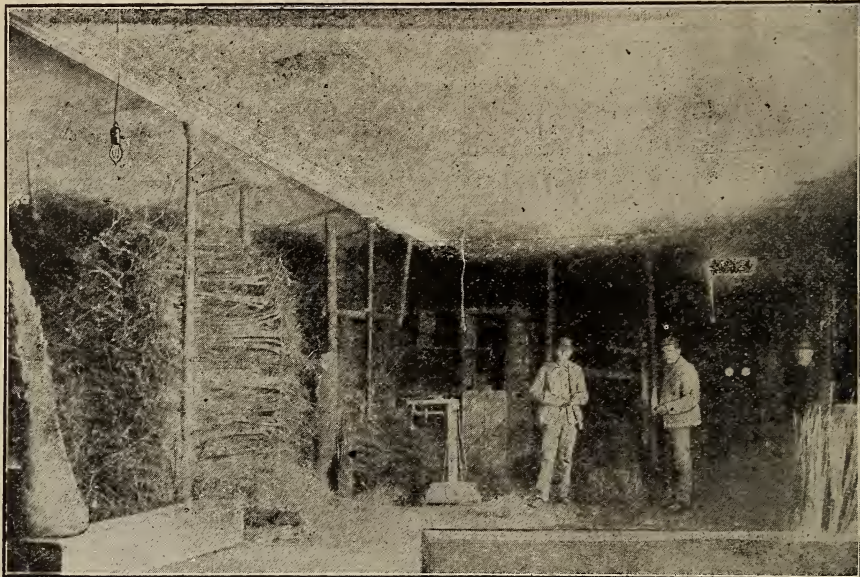
Columbia, Mo., July 21st, 1906.

This is to certify that on the 18th day of July, 1906, I examined the Nursery Stock of the Sarcoxie Nurseries, Wild Bros., Nursery Co., proprietors, grown in their Nurseries at and in the vicinity of Sarcoxie, Jasper county Missouri, and found no indications of the presence of San Jose Scale, Peach Yellow, Rossette, or other DANGEROUS insects or plant diseases liable to be transferred on nursery stock from the nursery to the orchard.

This certificate is good for one year from date of inspection.

J. M. STEDMAN, Entomologist, Experiment Station.

NOTE.—Copy of certificate showing examination for fall, 1906, and spring, 1907, will appear on invoice.



INTERIOR OF OUR COOL STORAGE BUILDING.

The above cut shows the interior of our frost-proof brick packing and cool storage rooms, 60 feet by 120 feet. A system of waterworks is maintained for use at all times.

"The Wild Bros. are pioneers in the process of storing trees without packing them in moss, excelsior or shingle tow. This process consists of regulating the temperature in the storage building to a certain point where the evaporation is lessened as much as possible, and the possibility of mould and mildew is thereby decreased."

SPECIAL MENTION—COOL STORAGE WINTER SHIPMENTS.

The past years have demonstrated the necessity of winter storing of young nursery stock and plants, and we now have with our COOL STORAGE PROCESS the best method of keeping and wintering trees and plants for shipment at any time, likewise extending planting and shipping into the month of May.

FOR WINTER AND SPRING ORDERS our storage room (see above cut), having a capacity of over twenty carloads will be supplied with an assortment of leading Fruit Trees, Forest Tree Seedlings Grape Vines, etc. which will enable us to ship to our Texas Pacific or Western and other distant customers as early as they may desire.

All orders requiring storing for early winter or late spring shipment must be sent in by December 10th. Customers can order any time between October and April 15th, and shipments can be made without danger to any point south of the fortieth parallel in winter (except January) from our storage house of such stock as we have in storage.

A list of stock in storage will be sent to applicants after December 20th of each year.

We clip the following from the editorial correspondence in the Prairie Farmer (Orange Judd editor), Chicago June 26th, 1886, relative to the reports on exhibits at the eleventh annual meeting of the Nurserymen, Seedsmen and Florists, held at Washington, D. C. June 16th to 20th, 1886: "J. B. Wild & Bros., Sarcoxie, Mo., exhibited a lot of trees and plants kept in cool storage up to June 10th, having been placed there November last, without moss, sand or coal, and trees being corded up in fine condition, the plan making it possible to extend the shipping season much longer than usual."

MODES OF PROPAGATION IN APPLE TREES.

We propagate our trees from regular Scion Orchards (mother blocks), and not from nursery rows, except in newly introduced novelties and scarce sorts, which are necessarily propagated from young trees until top-worked trees can come into bearing. We are the largest growers of Apple Scions, being headquarters for the nursery trade.

"WHOLE ROOT TREES," SO CALLED.—All nurserymen grow Apricot, Cherry, Peach, Pear and Plum on whole stocks, so there is no difference in these. Neither is there much, if any, in Apple Trees grown as "Whole Root" grafted (which are in reality piece root), "shortened in" while planting just right, you see, "so that the scion also roots." "Catch 'em a comin' and a goin'."

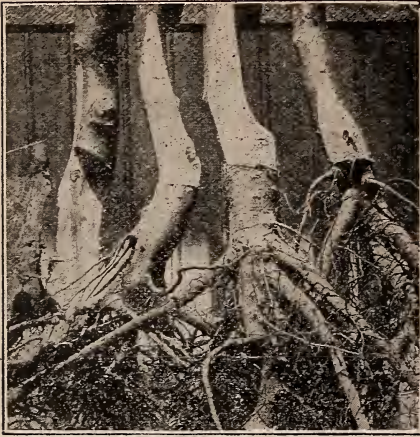
We are sometimes asked whether this or that method of propagation is best. Years ago when there was a great claim made for the so-called whole-root (?) grafts, we ordered some of these so-called whole-root grafts from a Missouri nursery claiming to make a specialty of the so-called whole-root grafts and trees. Fig. 3 is from a photo of what we received as whole-root grafts. Also in this order were several varieties of two-year-old Apple trees sent in as whole-root trees, but neither grafts nor trees were found to be such, although billed and labeled as such. Since Fig. 3 represents an average of the kind of grafts that the so-called whole-root grafted trees are grown from, it is to be wondered at that the purchaser not familiar cannot discover a difference except in price (which is about the only difference)? What we believe should be sent out as whole-root grafts, or from which the nearest truly whole-root trees can be grown, is from grafts like our Fig. 4, which is worked on the ENTIRE STOCK, (not as in Fig. 3). We do not, however, claim any advantage for whole-stock grafts, as represented in Fig. 4. In fact, this kind of graft offers many serious objections, since the stocks or seedlings are subject to great variations as to hardness, as a rule not being as hardy as the leading commercial varieties, and in planting places the trees upon the greater part of the seedling, which will not stand the cold climate of some sections. Then there is the objection of sprouting from the ground, rendering the susceptibility of being affected by woolly Aphis much more than in any of the other methods. THIS ALSO APPLIES TO BUDDED APPLE TREES, EVEN TO A GREATER EXTENT, as also in the uneven keeping quality of the fruit, which is not so apparent on trees more nearly on their own root system, thereby rendering the keeping quality more uniform. Observation shows that most planters, as well as some nurserymen, cut off or shorten in this kind of graft before planting to about where the lower tie appears, making these grafts practically the same as in Fig. 5, which are called crown or collar grafts, and places the crown some four or five inches below where it originally stood. Fig. 11, worked on second cut of a stock, more nearly conforms to placing the root, when planted in the ground, in its natural or former position than any other method, and also does away with most of the sprouting eyes, and is, in our opinion, the best kind of a graft obtainable from a seedling or stock. Fig. 6 represents piece-root grafts as generally made and sold as such.

President Wellhouse gave his experience as follows: "In 1876 we planted out about 30,000 grafts and some 4,000 or 5,000 of whole roots. We had heard a great deal about these whole roots, so we planted about 5,000. We ran a dead furrow and put the lister in and made the furrow just as deep as we could get it, and when we planted the whole roots we had to take a spade and dig down still further. We took them all up at two years old and planted about 30,000, which were from piece roots of the usual length—two inches. In the orchard there were two rows of Missouri Pippins and two rows of Ben Davis on whole roots, planted in the spring of 1878, and growing there now. If any man can tell the difference he can do more than I can. The only difference I saw in that time was that the whole roots sent up more seedling sprouts and caused us lots of work but so far as the longevity of the trees was concerned, we could see no difference. But they were terrible things to sprout. About nine-tenths of our two-inch roots, when we took them up from the nursery, had sent out roots from the scion, and the more we experimented in that line the more we desired them that way; and from that time on we have used only short roots, to get the roots from the scion, and have always been satisfied with them. Whenever you pay one mill more for a whole-root than a piece-root you are out just that much money."

Prof. W. L. Howard, of the Missouri State Agricultural College, says, on the subject of whole and piece roots: "Experiments conducted by the government fruit stations, after experience with four years' growth, conclude there is no difference in the growth and vitality of a tree, whether grown from whole or piece-root graft, and that whether nursery stock is called whole-root or piece-root."

Read Terms and Conditions of Sale Before Ordering.

BUDDED TREES EXPOSE EQUALLY THE DEFECT.



The oily-tongued tree agent, with his rubber-tired rig, carrying some three or four grafted trees, to show to his would-be customers, who impudently asks you to dig up your orchard and plant his budded trees is still plying his game, first in one state, then another. He carries no circulars or catalogue (this alone ought to cause an inquiry). He invariably selects specimens that are poor (if not grafted purposely) and shows them to effect his sale of budded trees. Here is the defect. If he would equally show the more injurious defect of budded trees (see half-tone in upper left hand corner) he would not dupe the purchaser, for it would be apparent to any intelligent tree planter that a defect, whether above ground or below, is a defect, nevertheless, and as one of the best orchardists in Lawrence county, Mo., puts it, that he prefers whatever defect there must necessarily be in all methods of propagation that it be under the ground and NOT AT THE TOP OF THE GROUND, as must be in budded apple trees.

Just take one of their budded trees, and cut out a section as in the illustration, and you will find THE DEFECT EXPOSED to your entire satisfaction and the other fellow's discomfort. Most nurserymen carry a portion of their varieties in apple either in budded

or grafted trees as the case may be, and if you will write them, you can get a list of varieties of either method of propagation, and they will not cost 35 to 50 cents either, but will be furnished at the listed prices, which are generally one-fourth of the price these fellows ask. Try it; expose the defect.

Give this matter your unprejudiced research and you will ultimately come to the conclusion, as Prof. T. V. Munson, puts it: "That process which in the shortest time puts the tree upon its own roots in a healthy condition is the best." That rule naturally follows from the law of vegetable growth that all the other parts of a tree or plant depends upon its own leaves for sustenance, and takes on gradually characteristics in harmony with the life process of the leaf. Hence the cutting, when it will not root of itself, is the most natural way of reproduction, next to that from the seed itself. But if the scion will not grow as a cutting itself, then a foster root must be supplied to sustain the cutting until it forms roots of its own. This is most perfectly done with a short piece of healthy root comparatively free from sprouting eyes, carefully fitted to the lower end of a long scion, and which is now considered the best for uniformity of fruit bearing, as well as keeping qualities.

THE VARIOUS HABITS AND GROWTH OF TREES.

Upon this we feel necessitated to give some information, especially since there is frequently dissatisfaction expressed by purchasers upon receiving their trees when they are not all of equal size and beauty. The unsightly, crooked and small trees are looked upon as being inferior, and the nurseryman is charged with fraudulent motives for having sent out such trees, while at the same time he may have acted for the benefit of the purchaser and have given him the most costly as well as the most valuable trees—for there might be a large number of handsome, rapid growing varieties, collected for cultivation, which would be the most profitable for nurserymen to cultivate, but would they do for the purchaser? From the fact that such can be grown fit for sale in two or three years and upon clearing off the nursery grounds no refuse trees will be found, while among the crooked growers many will have to be left in the digging on account of being too extremely crooked to send out. And there will be still more among the feeble growers, for many of them are not large enough at even three or four years. The loss of these often reaches 25 per cent left on the grounds to be cleaned up and burned.

The question may here be asked: Why do not nurserymen cultivate only the nice, thrifty growers? Because those planting trees are desirous of getting good fruit, and we must raise those recommended by our leading horticulturists and fruit growers, also such as our own markets and palates say are good. These recommend certain varieties, of which the crooked and feeble growers are recommended as well as the handsome, irrespective of the habit and growth of the tree, from which the nurseryman is induced to cultivate it, not because he takes delight in sending out inferior trees, as they are generally called, to receive

the abuse of the people, but as a candid, reflecting man, conscious of his responsibility to the community at large for the dissemination of good fruit, his utmost endeavor—first, to cultivate good fruit, and, second, as nice trees as those fruits can be made to grow—not only such as will dazzle the eye in size and beauty, but such as have all the good qualities of which the leading characteristics are flavor and productiveness—in short, most profitable—which, as he well knows, not only benefits his fellowman, but greatly involves his own personal welfare in after time, as it requires more than mere raising of showy trees to preserve or establish a nurseryman's reputation. However, the free and rapid growing of a variety (when accompanied with good fruit) is an important consideration in favor of its extensive cultivation.

ADVERTISEMENT.

Our Nurseries are situated on the western slope of the Ozark mountain range, at an elevation of over 1150 feet above the sea (about 800 feet above St. Louis), adjoining open prairie lands. These conditions, together with the character of soil, will at once convey the superior advantages we hold for growing Nursery Stock of the best quality, and maturing same in advance of the more northern and southern states.

Having handled some of the products of a number of the leading nurseries east, north and south the past few seasons, we are convinced that we have better matured stock here by October 10th than many nurseries can claim for same time. The conditions confronting us have brought about the necessity of growing a more complete line of stock, and which we now claim to have, thus assuring our patrons of as good quality, well matured and as complete in assortment as can be found in any one nursery.

TO OUR FRIENDS AND PATRONS.

We sincerely thank all our customers and friends who have so generously patronized us in this and former years, for your kind favors. We appreciate them, and assure you, and shall always strive to make your dealings with us both pleasant and profitable.

We hope to hear from all our old customers and friends during the coming season, and from as many new ones as we can make it an object through OUR PRICES AND MANNER OF DEALING DIRECT WITH THEM, to kindly favor us with their orders.

We give our attention wholly to the Nursery business—no other interests conflicting. Aided with thirty years' experience in the most approved methods of growing and handling nursery products, customers can rely on receiving the benefit of our large experience. We confidently ask the attention of our patrons to our stock, and trust when possible they will look through it and see what we have. Our grounds are open and free to all visitors, except Sunday.

THE GREATEST CARE being taken not to send out anything that is not true to name, holding ourselves ready to replace or refund upon proof, equal to the amount of first cost of trees, etc., that prove untrue, but to no greater amount or extent.

No sale by us carries a warranty of quality, expressed or implied, and for any error we shall not be liable for more than the purchase price. Every purchase from us is made on these terms.

REFERENCES.—That we are in actual and permanent business, we deem it only fair to place the information regarding the responsibility of the firm with whom you entrust your orders and commands:

REFER TO Messrs. Theo. Sabert, Cashier State Bank, Sarcoxie; H. B. Boyd, Cashier First National Bank; Reynolds & Son, S. P. Burris, Red Front Mercantile Co., or any business house in Sarcoxie.

TO CORRESPONDENTS.

If you have sent us an order with remittance and do not hear from us in a reasonable time, write again. We invariably acknowledge all orders received by postal card or letter and give an ORDER NUMBER for reference, which you will please preserve.

We answer all correspondence relative to our line of business that is not or cannot be answered in our printed list; but anything about growing or planting, where a reply is wanted, must be so written as to allow us to insert answers.

RECEIPTS.—The receipt of every remittance is promptly acknowledged by us. Each order received is duly numbered, and as the receipts given mention said number, customers preserving their receipts can readily refer to any order sent us by simply giving the number and we can instantly refer to the original order, which we preserve for a number of years, for future reference. We hope each purchaser will save their receipts and when making inquiries concerning any order always give its number, for without it requires time and patience to look it up.

WHAT TO ORDER.

While leaving every one to make his own choice, we advise you not to order too many varieties, whether intended for domestic use or marketing. Select sparingly such varieties as have been favorites in the localities from which you come, especially if you are remote

from there, but rather select such varieties as are suited to the locality you intend to plant in. In doing this you may have to give up some favorite sort, but it will be an easy matter when you see how unprofitable and out of season your favorites generally become.

We desire also to call your attention to those so called Fruit Unions—that agree to plant orchards for you and claim to know better what you want, and are willing to select for you; your successful neighboring fruit-grower is better able to tell you what to plant than any nurseryman or fruit-grower remote from where you desire to plant.

EXECUTION OF ORDERS.

We endeavor to execute all orders promptly and as nearly as possible in rotation as received, giving each order the most scrupulous care and attention to insure reasonable satisfaction. Spring shipping brings with it an unusual amount of items to be looked after, and notwithstanding we have a largely increased force of men, orders are liable to be delayed some days. Then, again, the mails are sometimes missent, or delays occur on the road that we are not responsible for. Occasionally errors occur in the hundreds and even thousands of details incident to our business, but we are always ready to rectify them on proper proof, but cannot do so unless informed just what the trouble is within the limited time printed on the invoice sheet. When the bill and goods are received check it up at once; if correct, give proper credit without delay; if not correct, advise us of the fact then and there. See Article 11, Terms and Conditions of Sale.

Adjustments are easy while the details are fresh in mind, but we cannot be blamed for looking with suspicion upon complaints made weeks afterwards or in refusing to consider them.

SECURE YOUR SELECTION BY SENDING ORDERS EARLY.

If your friends on receiving this catalogue will make a list of trees and plants they want, and send their orders at once, we can then reserve, until proper shipping season, such stock that may be on hand at time order is received. Orders will be booked by complying with terms and conditions of sale.

PACKING AND DELIVERING SEASON.

Which generally commences about October 10, in the fall; for spring, from open ground, about February 10 (often earlier). For California and the South we pack and ship in mild weather from Storage House all winter, and it gives ample time for long shipments. Past experience has demonstrated the fact that nursery stock arrives in best condition, when long time is required in transit, if shipped when stock is in most dormant condition—being during the months from November to February.

CARE OF TREES ON ARRIVAL.

As soon as you unpack trees, having your trenches previously dug to receive them, set in a slanting position, then fill in around the roots, treading the soil sufficiently to make it firm, and avoid having bunches set side by side without soil between them. This is a serious drawback attending the growth of trees, as much damage results from having trees "heeled in" with openings, allowing drying or freezing before planting, and the nurseryman is charged with having sent poor stock, when the fault is in mishandling after arrival.

Should trees arrive in a shriveled condition, after a long delay in shipment, take out all shriveled trees, and bury tops and all for about ten days, to restore them. Should trees arrive in a frozen condition, place in the cellar, to allow gradual thawing, or bury in soil until thawed out. Do not expose stock to hasten thawing. It is most essential to let frozen stock thaw out gradually in a dark, cool place; therefore avoid exposure to sunlight or heat when transferring to a cool place.

FALL PLANTING.

The spring planting season is often of such short duration that much intended work is necessarily omitted or postponed. In the fall there is an abundance of time to plan and plant, and the work therefore can frequently be done as satisfactorily as in the spring.

The once prevalent notion that fall planting is not advantageous has proven to be erroneous, and, with the exception of a few varieties of evergreens, almost everything called hardy can be planted successfully in the autumn, except in some regions where the winters are extremely severe, or in exposed situations, in which case spring planting is absolutely necessary.

Plant as early after the first killing frosts as the trees become thoroughly dormant, thereby avoiding delay until the spring months. In a climate like this, where the severe cold is often broken, trees planted in November or December will before spring have formed new roots sufficient to give it a firm start in the ground, and will grow off more rapidly when spring growth begins. Trees can be planted up till April, but the success is rendered less certain than if planting is done in fall or early winter.

NO AGENTS, NO TRADE MARKS.

We are often asked if we employ agents to sell our trees and plants. In order to avoid much correspondence we here state that we have not since we began business employed any agents.

Our efforts are directed toward the growing of FRUIT TREES, Forest and Evergreen Trees, and Plants, which shall be the best that can be produced. Hence we look to the growing as of first importance, and offer our stock to the Wholesale and Retail Trade through our price list direct, our only authorized agent.

We desire the patronage of all fruit-loving people, of men who know the value of fruit trees and plants when bought. We want the patronage of careful men who will take care of fruit trees when bought. We want to sell to men who sell again and keep themselves familiar with the best varieties and needs of a planter.

If you desire to sell stock, there is nothing to prevent you from soliciting orders on your own account, and you can sell at prices that will remunerate you, according to your zeal and energy.

Should you purchase trees at wholesale to sell again, we have no objection to your saying that your trees (as much as are purchased of us) are from our Nurseries, but in no case can other stock be represented as our growing. Our trees and plants are guaranteed true to name to the purchaser only, after which our control ceases; hence our responsibility also.

TRADE MARKS.

Organic articles, as trees and plants are not considered subject to trade mark. The U. S. Circuit Court of Appeals has decided this. See Hoyt vs. J. T. Lovett Co., 71 Fed. 173.

READ CAREFULLY BEFORE ORDERING THE TERMS AND CONDITIONS OF SALE.

1. **TERMS.**—The prices in this list are under the following conditions, and for CASH WITH ORDER. Sales, however, to known, responsible, prompt-paying customers we will book before shipping season, and forward orders during shipping season to be paid for promptly on receipt of invoice, no countermands accepted. Parties unknown, or with whom we have had no business transactions will please send cash or satisfactory security with their orders. Stock ordered booked in advance of shipping season, to be reserved, must be accompanied with remittance of AT LEAST ONE-THIRD OF THE LIST PRICE; balance to be paid when shipping season arrives. Orders so booked we will name list of stock reserved, and such will be held subject to agreement, unavoidable accidents excepted. When any accidents have occurred notice will be given, stating nature of loss or damage. Orders given for future shipment, without earnest money accompanying same, will only be entered subject to stock ordered being on hand when shipping time arrives.

2. **TELEGRAPH ORDERS.** to receive prompt attention, when from unknown parties, must place sufficient deposit subject to our order with bank or express agent, and note same in message.

3. **GOODS SENT C. O. D.** when half the amount is sent us or deposited with bank or express agent. When deposited it must be certified and certificate sent with order.

4. **REMITTANCE AT OUR RISK** if made by Postal Money Order on Sarcoxie, Mo., or money by express prepaid or draft on New York, St. Louis or Chicago. Drafts or checks on other points must be drawn with exchange; otherwise we can not accept them at par. Drafts and money orders should be made payable to WILD BROS. NURSERY CO.

5. **ANY REMITTANCE IN EXCESS** of invoice will be promptly returned, or held subject to order.

6. **ORDERS AND CONDITIONS OF SALE.**—At prices in this list, not less than 5, 10, 50, 100, 500 or 1000 of a sort and size of a class will be furnished at the respective 5, 10, 50, 100 or 500 rate, except when a class is offered in assortment, then 10 or more of a sort in that class may be selected in making up the 100 or 500 of that class to secure the 100 or 500 rate on same. Less than 10 of a sort will be charged ten cents to the proportion of the 10 rate. For example: When the 10 rate is \$1 for 10, 5 will be furnished for 60 cents or 1 for 20 cents. Further, prices herein quoted are for your selection of sorts at respective prices given, but we reserve the right to fill in a smaller or larger size (or age) than ordered, should we be out of the size or age of sorts wanted, charging therefor at the respective size or age of sorts used in filling the order. Parties ordering should state preference of a larger or smaller grade, so that we can be governed accordingly. Uniform grades cannot be guaranteed when sorts ordered are to be strictly adhered to. Orders joined with needed specifications not quoted or agreed to in this price list will not be entertained, except by special agreement in writing. When sorts are ordered that we do not offer in this list, we will exercise our judgment and send as nearly similar sorts as we have at command.

7. **GRADES**—size, height—or caliper measurements—are taken from the collar near the root, and are stated for guidance only. Slight variations may sometimes occur. Reasonable customers will understand that it is not calculated to mean measurement of each plant or tree. If any items in sizes, ages or height requested are sold out, then the most available will be observed as filling the desired place, unless prohibited in the order given.

Read Terms and Conditions of Sale Before Ordering.

8. SAMPLES, when ordered, will be invoiced at list rates, but subject to a rebate to equal prices given on order placed through same.

9. BOXING, BALING AND PACKING.—Prices herein do not include same. A moderate charge will be made for such, but no charge for delivering to railroad depot or express office here. We charge for boxes (which includes the packing) as follows:

8x 8 inches by 8 ft.,	\$. 75	20x20 inches by 8 ft.,	\$1.85	28x28 inches by 10 ft.,	\$2.95
10x10 inches by 8 ft.,	.90	20x20 inches by 9 ft.,	2.05	30x30 inches by 8 ft.,	2.80
12x12 inches by 8 ft.,	1.10	20x20 inches by 10 ft.,	2.25	30x30 inches by 9 feet	3.00
12x12 inches by 9 ft.,	1.20	22x22 inches by 8 ft.,	2.00	30x30 inches by 10 ft.,	3.25
12x12 inches by 10 ft.,	1.25	22x22 inches by 9 ft.,	2.20	32x32 inches by 8 ft.,	3.00
14x14 inches by 8 ft.,	1.40	22x22 inches by 10 ft.,	2.35	32x32 inches by 9 ft.,	3.25
14x14 inches by 9 ft.,	1.50	24x24 inches by 8 ft.,	2.20	32x32 inches by 10 ft.,	3.40
14x14 inches by 10 ft.,	1.80	24x24 inches by 9 ft.,	2.45	34x34 inches by 8 ft.,	3.20
16x16 inches by 8 ft.,	1.60	24x24 inches by 10 ft.,	2.55	34x34 inches by 9 ft.,	3.50
16x16 inches by 9 ft.,	1.75	26x26 inches by 8 ft.,	2.35	34x34 inches by 10 ft.,	3.75
16x16 inches by 10 ft.,	1.95	26x26 inches by 9 ft.,	2.55	36x36 inches by 8 ft.,	3.40
18x18 inches by 8 ft.,	1.75	26x26 inches by 10 ft.,	2.75	36x36 inches by 9 ft.,	3.65
18x18 inches by 9 ft.,	1.90	28x28 inches by 8 ft.,	2.55	36x36 inches by 10 ft.,	4.00
18x18 inches by 10 ft.,	2.10	28x28 inches by 9 ft.,	2.75		

And in proportion for larger or smaller boxes. Bales from 10 cents to \$3.00 each. Boxes ordered paper lined, or double lined and filled with sawdust, will be extra cost. Packing of car load lots in bulk with ordinary straw or hay packing, from \$5.00 to \$8.00 per car; where special material, as moss, and extra packing is ordered the same will be at additional cost of material and labor required.

10. TRANSPORTATION.—Our responsibility ceases on the shipment of goods in good order and transmittal of Bill of Lading to consignee; and payment of bill is in no instance to be subject to arrival or non-arrival of goods at destination, though we will at any and all times use our utmost endeavors to trace up any missing goods.

NOTE: In order to secure third-class freight rates under ruling of the "Western Classification" on Nursery stock, boxed (not baled), shipper must release to value of \$5.00 per cwt., and in order that our patrons may have the benefit of the lower freight rates we will release and guarantee freight charges through for them, unless instructed on order not to do so. Freight charges not guaranteed must be prepaid, or forwarders will not accept goods for shipment.

11. RECLAMATION.—Claims for deduction from whatever cause **MUST BE MADE IMMEDIATELY ON RECEIPT OF GOODS.** No shortage claim entertained unless itemized list of all stock as found is promptly submitted to us. Check off goods when you unpack, and then and there note carefully on a memoranda, itemized as to sort, size labeled, with number of bunches and number in each bunch received, thereby giving a detailed report of stock as found. Don't state so and so was short, without stating also what you did get. Remember, we, too, want to know what you base your claims upon, and must have facts, as you may be over on some items, or mistook one sort for another, or you may have intended to order such and such, or more of some, but failed to note same on order as sent in. Further, in case of damaged stock and where you have just reason to believe that fault rests with us for its condition, under such conditions we here request that such stock be immediately taken proper care of, so that no further damage may result, **AND AT ONCE NOTIFY US OF THE FACTS,** so that we may have opportunity to direct its disposition. **CLAIMS WILL NOT BE ENTERTAINED** after original bundles or packages are broken and part of said goods used or disposed of, and claim set up afterwards, to seek reductions on same. Your failure to do so must exempt us from further responsibility in the matter. Adjustments are easy while all the details are fresh in mind, but we cannot be blamed for declining claims upon complaints made weeks afterwards.

12. INSURANCE.—At the prices in this list we do not guarantee stock to live, nor absolutely free from insect pests or disease common to respective line of stock offered; nor will we replace free of cost that which dies or fails to grow; nor can we, in view of the various incidents that it is subject to, as the success or failure depend largely upon climatic conditions, manner of planting, after-care, etc. Having been in the nursery business for thirty years at Sarcocix, and our business having increased with wonderful rapidity, now covering many hundred acres in a body devoted to the Nursery proper, is sufficient evidence that we are up with the times and have won the confidence of the patronizing public, and number among our patrons the leading nurseries of the United States, Canada and Mexico. When a guarantee is wanted, exceptional to these terms then the prices will necessarily be based on the nature of the risks to be assumed.

Certificate of Inspection Will Be Furnished With Each Shipment.

13. FUMIGATION OF STOCK.—Same will be done when requested to do so, or where a state to which the stock is to be shipped makes it compulsory to do so. Formula to be used will be such as may be recommended by state or states; but it must be understood that we will assume **NO RESPONSIBILITY** for results when we have carried out such instructions.

14. **GUARANTEE.**—While we exercise every possible care and diligence to have our trees, plants, etc., true to label; and hold ourselves in readiness, on proper proof, to replace any that may prove untrue to label, without charge, or refund the amount paid for the same, it is mutually understood and agreed between the purchaser and ourselves that this covers the full extent of our guarantee or responsibility in the premises, and orders are accepted on no other terms.

15. **POSITIVELY NO DEVIATION** from the foregoing terms, unless made by special agreement in writing, setting forth in specific terms, where at variance to the foregoing.

16. The publication of this list abrogates previous quotations.

GIVE PLAIN DIRECTIONS FOR SHIPPING.

Don't forget to write postoffice address plainly, also freight or express, if different from postoffice. Purchasers will confer a favor by stating the manner in which they wish their goods send—freight or express—also route. When none are designated we forward to the best of our judgment; but in no case do we assume any responsibility after the packages are shipped.

PROMPT SHIPMENTS.—To meet this want we have adapted our packing house to every convenience for the rapid and thorough dispatching of orders.

WEIGHT OF TREES PACKED can only be given approximately; 1,000 trees packed for shipment, ordinary weight: 1 to 2 feet, 150 to 200 lbs.; 2 to 3 feet, 300 to 400 lbs.; 3 to 4 feet, 500 to 650 lbs.; 4 to 5 feet 900 to 1,200 lbs.; 5 to 6 feet, 1,500 to 2,000 lbs.; 5 to 7 feet, three-year-old, 2,500 to 3,500 lbs.; 6 to 8 feet, 3,000 to 4,000 lbs. Evergreens weigh more.

A CAR LOAD WILL HOLD, when packed in bulk in box cars, from ten to twelve thousand 5 to 6 foot trees; from fourteen to sixteen thousand 4 to 5 foot trees, and from six to eight thousand 5 to 8 foot trees, and from one-fourth to one-third more when boxed.

Coal or flat cars boxed up will hold about double the quantity of ordinary cars. Cost of boxing up a coal car is about \$30 per car.

To arrive at the approximate cost for boxing or baling we submit the following:

On 6 to 8 foot trees.....	\$9.00 to	\$12.00 per 1000	\$2.50 to \$3.00 per 100	50c to 60c per 10
On 5 to 6 foot trees.....	7.00 to	9.00 per 1000	1.50 to 2.00 per 100	30c to 40c per 10
On 4 to 5 foot trees.....	5.00 to	7.00 per 1000	.90 to 1.25 per 100	20c to 25c per 10
On 3 to 4 foot trees.....	3.00 to	5.00 per 1000	.50 to .75 per 100	15c to 20c per 10
On 2 to 3 foot trees.....	1.50 to	3.00 per 1000	.25 to .50 per 100	15c per 10
On 1 to 2 foot trees.....	.75 to	1.50 per 1000	.20 to .25 per 100	15c per 10
Plants, 6 to 7 inches.....	.30 to	.50 per 1000	.10 per 100	10c per 10
Vines and Stw. plants....	.30 to	.50 per 1000	.10 per 100	10c per 10

To approximate cost for boxing and baling transplanted evergreens:

On 5 to 6 ft. trees.....	\$60.00 to \$70.00 per 1000	\$6.00 to \$7.00 per 100	\$1.00 to \$2.00 per 10
On 4 to 5 ft. trees.....	30.00 to 60.00 per 1000	3.00 to 6.00 per 100	.75 to 1.50 per 10
On 3 to 4 ft. trees.....	10.00 to 30.00 per 1000	2.00 to 3.00 per 100	.50 to .75 per 10
On 2 to 3 ft. trees.....	7.00 to 9.00 per 1000	1.50 to 2.00 per 100	.30 to .50 per 10
On 1 to 2 ft. trees.....	3.00 to 5.00 per 1000	.50 to .75 per 100	.20 to .30 per 10
On 8 to 12 in. trees	.75 to 1.50 per 1000	.20 to .30 per 100	.10 to .20 per 10

Seedling evergreens:

On 6 to 8 in. trees.....	\$.50 to \$.75 per 1000	\$.10 to \$.15 per 100	\$.10 per 10
--------------------------	---------------------------	--------------------------	---------------

No package put up for less than 10 cents.

FREIGHT RATES.—Boxed per 100, St. Louis 50c; Memphis, Tenn., 50c; Kansas City, 35c; Denver, Colo., 80c; Wichita, Kans., 59c; Oklahoma City, Okla., 78c; Fort Worth, Texas, 96c.

Rules for Ascertaining the Number of Plants Required for One Acre of Ground, Which Contains 43,560 Square Feet.

Multiply the distance in feet between the rows by the distance the plants are apart in the row, and their product will be the number of square feet for each plant or hill, which divided into the number of feet in an acre will show how many plants or hills the acre will contain, thus:

Blackberries.....	8 ft. by 3 ft.....	24	43,560	1,815 plants
Raspberries.....	7 ft. by 3 ft.....	21	43,560	2,074 plants
Strawberries (for field culture).....	4 ft by 2 ft.....	8	43,560	5,445 plants
Strawberries (hill culture).....	3 ft. by 16 in.....	4	43,560	10,890 plants
Dwarf Pears.....	10 ft. by 10 ft.....	100	43,560	435 trees
Peaches.....	18 ft. by 18 ft.....	324	43,560	134 trees
Standard Pears and Cherries.....	20 ft. by 20 ft.....	400	43,560	108 trees
Apples.....	30 ft. by 30 ft.....	900	43,560	48 trees

Read Terms and Conditions of Sale Before Ordering.

LIST OF STANDARD VARIETIES APPLES OFFERED AT PRICES ON PAGE 10.

NOTE.—1, 2, 3 denotes ages we have in each sort. Varieties in full faced type in large supply.

LIST OF SUMMER APPLES OFFERED AT PRICES ON PAGE 10.

A. S. Pearmain.....1 2	Early May1 2	Red Astrachan1
Bietigheimer1 2	Early Ripe 2	Red June1 2 3
Benoni1 2 3	Early Colton1	Sweet Bough1 2 3
Chenango1 2 3	Fanny1 2 3	Sweet June1 2 3
Cole's Quince 2	Golden Sweet1 2 3	Sops of Wine.....1 2
Duch. of Oldenburg...1 3	Horse (Yellow)1 2 3	Summer Queen1 2 3
Early Harvest1 2 3		Yellow Transparent ...1 2 3

LIST OF FALL APPLES OFFERED AT PRICES ON PAGE 10.

Bailey Sweet1 2	Lowell1 2	R. I. Greening1 2 3
Fall Pippin1 2 3	Mam. Pip. Ark.....1	Shannon Pippin1 2
Famusee (Snow) 1 2 3	Maiden Blush1 2 3	Switzer 2
Falawater1 2 3	Pa. Red Streak.....1 2 3	Tolman Sweet1 2 3
Gravenstein1 2 3	Pound Sweet1 2 3	Twenty Ounce1 2 3
Grimes' Golden1 2 3	Rambo1 2 3	Wealthy1 2 3
Jonathan1 2 3	Ramsdell Sweet.....1 2 3	

LIST OF WINTER APPLES OFFERED AT PRICES ON PAGE 10.

Ark. or M. B. Twigg...1 2	Ingram1 2 3	***Reagan (Ark)1 2 3
Arkansas Black1 2 3	Kinnaid's Choice1 2 3	(**Black Ben Davis)
Baldwin1 2 3	Lady 2	Rome Beauty1 2 3
BEN DAVIS1 2 3	L Red Romanite1 2 3	Seedless (novelty) ... 2
*** Collins (Ark)1 2 3	Milam1 2 3	Salome1 2 3
(**Champion)	Minkler (Nero) 2	Stayman Winesap1 2 3
Downing Blush1 2 3	Missouri Pippin1 2 3	White Pippin 2 3
Gold. Russet, Eng.....1 2 3	Newtown Pippin1 2 3	W. W. Pearmain1 2 3
Gano1 2 3	Nixonite 2 3	Wolf River1 2 3
Geneton (Rawls) ... 2	Northern Spy1 2 3	Winesap1 2 3
Givens (Ark) 2 3	N. W. Greening1 2 3	Yellow Bellflower...1 2 3
Gill's Beauty 2	Ozark (Ark) 3	York Imperial1 2 3
Hastings (Ark) 2 3	Payne's Keeper1 2 3	
Huntsman1 2 3	Red Limbertwig1 2 3	

LIST OF CRAB APPLES OFFERED AT PRICES ON PAGE 10.

Excelsior1	Martha 2 3	Van Wycks Sweet.....1 2
Florence1 2	Red Siberian1 2 3	Whitney No. 20.....1 2 3
Gen. Grant 3	Souland 3	Yellow Siberian1 2 3
Hyslop1 2 3	Transcendent1 2 3	

NEW AND RARE VARIETIES APPLE TREES.

The following APPLES—NEW AND RARE VARIETIES—2 cents per tree higher.

***Beach (Ark)1 3	Garden Seedling (Ark) 3	Patton Greening 3
(**Lady Pip., Ap. of Com.)	Howard's Sweet 3	Quick 3
Bismarck1 2	Ladies' Sweet1	Red Bellflower 2 3
Black Burgess (Ark) 1 3	Livland Raspberry ...1 2 3	Sandbrook 3
Boiken1 2 3	Mo. Crab1 2	Virginia Beauty1 2
Dees Appr'nt Jon.x	Mason's Orange1 3	Wandering Spy1 2 3
Ark. Black1 2	Nordhausen1 2	(Winter) Banana1 3
	***Oliver (Ark)1 2	Wismer's Dessert1
	(**Senator)	Wilson June1 3

**See Bulletins Nos. 8 and 56, U. S. Department of Agriculture, Division of Pomology.

***See Bulletins Nos. 49 and 60 of Arkansas Agricultural Experiment Station for correct names and renaming of these varieties. Also 24th Annual Report Arkansas State Horticultural Society, page 129. Statement of John F. Reagan: "After Guthrie grafted it is was called the "Reagan Red." and many people still call it by that name."

Read Terms and Conditions of Sale Before Ordering.

A BLOCK OF PEACH TREES IN WINTER



At prices on this and the following page not less than 10 of a sort and grade will be furnished at the 10 rate; but by the 100 and 500 you are permitted to select in lots of 10 or more of a sort in a respective grade selected, to make up the number that will entitle you to 100 or 500 rate. When less than 10 of a sort and grade is selected then one will be charged up at the single rate, and each additional at the ten rate until the 10 rate is reached.

PRICE ON PEACH TREES IN ASSORTMENT, STANDARD SORTS.

Varieties marked (new), add 1 cent per tree higher in price.

	Each	Per 5	Per 10	Per 50	Per 100	Per 500	Per 1000
XX 1 yr., 4½ ft. and up, heavy.....	.20	.60	\$1.00	\$3.50	\$6.50	\$26.00	\$50.00
Extra 1 yr., 4½ ft. up.....	.19	.55	.90	3.20	5.50	23.00	45.00
Standard 1 yr., 4 to 4½ ft.....	.18	.50	.80	2.80	5.00	21.00	40.00
Medium 1 yr., 3 to 4 ft.....	.17	.45	.70	2.50	4.50	18.00	35.00
Light 1 yr., 1½ to 3 ft.....	.16	.40	.60	2.25	4.00	16.00	30.00

Two year, where we have them, same price as same size one year.

PEACH TREES—ALL ARE BRANCHED EXCEPT IN LIGHT SIZE.

STANDARD SORTS PEACH—Sorts in Full Face Type in Large Supply.

Alton (New)	Family Favorite	Matthews' Beauty
Admiral Dewey	Fitzgerald	Munson Free
Arkansas Mammoth Cling	Guinn (new)	Munson Cling
Alexander	Greensboro	Niagara (new) 2 year
Arp Beauty (New)	Heath Cling	Nix Late
Banner (2 year)	Hiley (new) 2 year	Oldmixon Cling
Bernice (2 year)	Hill's Madera (2 year)	Russell (Nebr.) (new)
Belle of Georgia	Indian Blood Cling	Salway
Carman	Indian Blood Free	Slappy Early
Champion	Iron Mountain	Success
Chinese Cling	Krummel's October	Strout's Early (new)
Crawford's Early	Kalamazoo (new)	Victor
Crawford's Late	Lewis Seedling	Waddell
Crosby	Lemon Cling	Woolsey (Nebr.) (new)
Elbera	Mountain Rose	Wright (Nebr.) (new)
Everbearing (new)	Mamie Ross	Wheeler's Early (new)

ORNAMENTAL PEACHES.

	Each	Per 5	Per 10	Per 50	Per 100
Blond Leaf.—A very remarkable tree, with leaves red as the Purple					
Beach; quite ornamental 1 and 2 years.....	.20	.60	\$1.00		
Pyramidal—Form like the Lombard Poplar, 4 to 6 ft. 1 and 2 yrs....	.20	.60	1.00		
Double Camelia Flowering, red, any grade 1 and 2 yrs.....	.25	.85	1.50		
Double White Flowering, any grade, 1 and 2 yrs.....	.25	.85	1.50		

APRICOTS ON PEACH.

	Each	Per 5	Per 10	Per 50	Per 100
Extra 1 and 2 years, usually 4½ feet and all up.....	.28	\$1.00	\$1.80	\$8.00	\$15.00
Standard 1 and 2 years, 3½ and up to 4½ feet.....	.25	.85	1.50	6.50	12.00
Medium 1 and 2 years, usually 3 and up to 3½ feet.....	.22	.70	1.20	5.50	10.00
Light 1 and 2 years, usually 1½ and up to 3 feet.....	.20	.60	1.00	4.50	8.00

SORTS APRICOT OFFERED—Royal, Russian No. 20, Superb.

NECTARINES.

	Each	Per 5	Per 10	Per 50	Per 100
Extra, 1 year from bud, 4½ feet and all up.....	\$.22	\$.70	\$1.20		
Standard, 1 year from bud, 3 to 4 feet.....	.20	.60	1.00		
Medium, 1 year from bud, 3 to 4 feet.....	.18	.50	.80		
Light, 1 year from bud, 1½ to 3 feet.....	.16	.40	.60		

VARIETIES.—Boston, Stanwick and New White Nectarine.

PLUM ON PEACH STOCKS.

New sorts and Prunes, 2 cents per tree higher.

	Each	Per 5	Per 10	Per 50	Per 100
Standard sorts Plum.					
Extra, 1 and 2 year from bud, 4½ feet and up.....	\$.25	\$.85	\$1.50	\$6.50	\$12.00
Standard, 1 year from bud, 4 to 4½ feet.....	.22	.70	1.20	5.50	10.00
Medium, 1 year from bud, 3 to 4 feet.....	.20	.60	1.00	4.50	8.00
Light, 1 year from bud, 1½ to 3 feet.....	.19	.55	.90	4.00	7.00

STANDARD SORTS.—American: American Golden, Forest Garden, Hoosier, Rockford, Wild Goose, Wyant, Wolf Free, Wayland.
 European Sorts; Deck's Blue Damson, Green Gage, Shipper's Pride, Sophie, Shropshire Damson, Coe's Late Red.
 Japan Sorts: Abundance (Botan), Burbank, Chabot, Ogon, Red Nagate, Satsuma, Willard.
 NEW AND SCARCE SORTS PLUM.—American. Free Silver, Funk, (Hybd), Minco, Ward, (October).
 New Japan Sorts: America, Apple Plum, Bartlett Plum, Chalco, Gonzales, Doris.
 PRUNE.—French, German, Holman, Italian, Wiseman's, Hungarian.

STANDARD PEAR

	Each	Per 5	Per 10	Per 50	Per 100
Extra, 2 and 3 years or over, usually 5 to 7 feet.....	\$.35	\$1.35	\$2.50	\$11.00	\$20.00
Standard, 2 and 3 years, usually 4 to 5 feet.....	.30	1.10	2.00	8.00	15.00
Medium, 2 years, usually 3 to 4 feet.....	.25	.85	1.50	6.50	12.00
Extra, 1 year, usually 4 feet and up, not branched.....	.30	1.10	2.00	8.00	15.00
Standard, 1 year, usually 3 to 4 feet, not branched.....	.25	.85	1.50	6.50	12.00
Light, 1 year from bud, usually 1 to 2 feet.....	.22	.70	1.20	5.50	10.00

SORTS—Standard Pear: ANJOU, BARTLETT, Clapp's Favorite, DUCHESS, KIEFFER, Flemish Beauty, Garber, Idaho, Lincoln, L. B. DE JERSEY, Seckel, Vermont Beauty, WILDER.

DWARF PEAR.

	Each	Per 5	Per 10	Per 50	Per 100
XX, 2 and 3 year or over, 11-16 up caliper.....	\$.25	.85	\$1.50	\$6.50	\$12.00
Extra size, 2 and 3 years, 5-8 to 11-16 caliper.....	.22	.70	1.20	5.50	10.00
Standard size, 2 and 3 years, ½ to 5/8 caliper.....	.20	.60	1.00	4.50	8.00

SORTS.—Dwarf Pear: ANJOU, BARTLETT, Clapp's Favorite, DUCHESS, L. B. De Jersey, Vermont Beauty.

CHERRY ON MAHALEB STOCKS.

Note: We advise planting Cherry in the Fall for best results.

	Each	Per 5	Per 10	Per 50	Per 100
XX, 1 and 2, from bud, usually 4 feet and all up.....	\$.45	\$1.85	\$3.50	\$16.00	\$30.00
Extra, 1 and 2 years from bud, usually 3 to 3½ feet.....	.38	1.50	2.80	13.00	25.00
Standard, 1 and 2 years from bud, usually 2½ to 3 feet.....	.35	1.35	2.50	11.00	20.00
Medium, 1 and 2 years from bud, usually 2 to 2½ feet.....	.30	1.10	2.00	8.00	15.00
Light, 1 and 2 years from bud, usually 1 to 2 feet.....	.25	.85	1.50	6.50	12.00

SORTS AT ABOVE RATES.—Baldwin, Early Richmond, English Morello, Montmorency.

ORANGE QUINCE—(One of the Best)

	Each	Per 5	Per 10
2 to 2½ feet	\$.16	\$.40	\$.60
2½ to 3 feet17	.45	.70
3 to 4 feet20	.60	1.00

CURRANTS

	Each	Per 5	Per 10	Per 50	Per 100
One and 2 year	\$.15	\$.35	\$.50	\$2.25	\$4.00
SORTS.—Frاندall, Fay's, Holland, Red Dutch, Victoria, White Dutch.					

GOOSEBERRY

	Each	Per 5	Per 10	Per 50	Per 100
Houghton, two year	\$.18	\$.50	\$.80	\$3.50	\$6.50
Pearl, two year20	.60	1.00	4.50	
Downing, two year20	.60	1.00	4.50	

GRAPE VINES

	Each	Per 5	Per 10	Per 50	Per 100
Agawam, 1 year, large, red, mid-season.....	\$.16	\$.40	\$.60	\$2.75	\$5.00
Agawam, 2 year old17	.45	.70	3.25	6.00
Brighton, 1 year old, medium size, red, early.....	.16	.40	.60		
Brighton, 2 years old.....	.17	.45	.70		
Campbell's Early, black22	.70	1.20		
Concord, 2 years, large, black, mid-season.....	.14	.30	.40	1.50	2.50
Concord, 1 year old13	.25	.30	1.25	2.00
Delaware, 2 year old16	.40	.60	2.50	4.50
Moore's Early, 2 years, large, black, early.....	.16	.40	.60	2.75	5.00
Moore's Early, 1 year old.....	.15	.35	.50	2.00	3.50
Niagara, 1 year old15	.35	.50	2.00	3.50
Worden, 1 and 2 year, large, black, early.....	.15	.35	.50	2.00	3.50
Wyoming, 2 year, large red, early16	.40	.60	2.75	5.00

RASPBERRY

	Each	Per 5	Per 10	Per 50	Per 100
Cardinal, purple (transplants).....	.13 1/2	.20	.35	.90	1.75
Conrath, black cap10	.15	.25	.60	1.00
Cumberland10	.15	.25	.70	1.20
Kansas, black cap10	.15	.25	.60	1.00
Brilliant, red10	.15	.25	.60	1.00
King, red10	.15	.25	.60	1.00
Miller's Red10	.15	.25	.45	.70
					3.00
					5.00

BLACKBERRY

	Each	Per 5	Per 10	Per 50	Per 100
Ancient Britton	\$.10	\$.15	\$.25	\$1.00	\$1.50
Early Cluster10	.15	.25	1.00	1.50
Early Harvest10	.15	.25	.60	1.00
Erie10	.15	.25	1.00	1.75
King's Early10	.15	.25	1.00	1.75
Kittatinny10	.15	.25	1.00	1.50
Maxwell Early10	.15	.25	1.00	1.75
Lovett10	.15	.25	1.00	1.75
Ohmer10	.15	.25	1.00	1.75
Oregon Late10	.15	.40		
Snyder10	.15	.25	.60	1.00
Taylor's Prolific10	.15	.25	1.00	1.50
Wilson's Early10	.15	.25	1.00	1.50
Crystal White10	.15	.25	1.00	1.75
Iceberg15	.25	.50		
					8.00
					15.00

DEWBERRY

	Each	Per 5	Per 10	Per 50	Per 100
Dewberry, Lucretia (field plants).....	\$.10	\$.15	\$.25	\$.60	\$1.00
Premo Dewberry (field plants).....	.10	.15	.25	.60	1.00
McDonald (ap't hybrid)25				
					\$3.50
					\$6.00

GARDEN ESCULENT ROOTS

	Each	Per 5	Per 10	Per 50	Per 100
Rhubarb, Myatt's Linacus, best, divisions 1 to 3 crowns \$.16	\$.40	\$.60	\$2.75	\$5.00
Asparagus, Conover's Colossal, 2 year.....	.10	.15	.15	.40	.60
Asparagus, Columbian Mammoth, white, 2 year.....	.10	.15	.15	.40	.60
Sage15	.35	.50	1.50	
Horseradish sets13	.25	.30	1.00	

Read Terms and Conditions of Sale Before Ordering.

STRAWBERRIES

This is the most popular of small fruits. No fruit is so free from objectionable features as the strawberry. No thorns, no briars, easy of culture, easy to gather, and the most refreshing of all fruits, coming in before any other. Set plants in rows four feet apart and one foot apart in the rows. Cultivate well, and by fall the plants will have matted the ground well over. Mulch lightly in winter to prevent plants from heaving.

We endeavor to handle our plants in the very best manner. They are carefully cleaned, the roots straightened and neatly tied in bunches of fifty each, labeled and packed in paper and mossed.

Order strawberry plants early in spring by all means; as early as possible if to be shipped as freight; small lots or late in season must be sent by express. Have us book your orders early.

All varieties marked "p" are pistillate, (flowers without stamens), imperfect in blossom, and need at least every fourth row to be planted with some perfect or staminate sort, which find marked "s" to select from.

We can supply strawberry plants in the fall after October 20th, during November, and in the spring at 10, 100 and 1,000 rates. No plants furnished at 1,000 rate in the fall until after October 20th. The prices herein named are layer plants—not pot plants.

For number of plants required to set one acre for field culture, see rules, page 9.

Twelve Strawberry Plants will be mailed for 10 cents additional to 10 rate of respective variety; at the 100 rate, add 25 cents per 100 to cover postage, packing, etc.

Send for special prices for large quantities of Strawberry Plants

(For delivery after October 20th only).

NOTE.—Varieties marked (p) are pistillate; varieties (s) are staminate.

	Per	Per	Per	Per	Per
Aroma (s), large, glossy red, productive, profitable, mid-season, to late	10	50	100	500	1000
Bismarck (s), large, similar to Bubach	\$.15	\$.30	\$.50	\$1.50	\$2.50
Bubach No. 5 (p), large, a great favorite	.15	.30	.50	1.75	3.00
Clyde (s), large, prolific	.15	.30	.50	1.75	3.00
Crescent (p), very productive, medium	.15	.25	.40	1.00	1.75
Duff (p), claimed to be like Lady Thompson	.15	.25	.40	1.25	2.00
Excelsior (s), medium to large; season of Michel; darker, firmer berry	.15	.25	.40	1.25	2.00
Gandy, (s), large, standard, late, handsome, fine, best on timber land	.15	.30	.50	1.75	3.00
Haverland (p), large, long, productive, good market sort; mid-season to late	.15	.30	.50	1.50	2.50
Hero (s), fruit large, well formed	.15	.30	.50	1.50	2.50
Johnson's Early (s), ripens with Michel	.15	.25	.40	1.25	2.00
Lady Thompson (s), even size, good color, favorite in South; early	.15	.25	.40	1.25	2.00
Michel (s), earliest market sort generally known; good pollenizer	.15	.25	.40	.90	1.50
Ridgeway (s), large to very large	.15	.30	.50	1.50	2.50
Shuster Gem (p), large, productive	.15	.30	.50	1.50	2.50
Senator Dunlap (s), darker than Warfield, same season	.15	.25	.40	1.25	2.00
Texas (s), much like Excelsior, larger	.15	.30	.50	2.00	3.50
Warfield, (p) medium to large, dark red; best market and canning berry extant	.15	.25	.40	1.25	2.50
NEW.—COLUMBIA (p), (Wild's No. 176): A gem for the strawberry grower. This berry is the product of systemitized crossing Warfield with Gandy, two of the best shippers. The variety possesses about all that is desired in a commercial variety, being very large and of a bright attractive color that appeals. As to size, it is uniformly large, season between Aroma and Gandy. It has been fruiting with us for five years and we are offering it with confidence.					
Columbia, (p)	\$.12½	.25	\$1.25	\$2.00	\$8.00

Read Terms and Conditions of Sale Before Ordering.



MISCELLANEOUS FRUITS AND NUTS

	Each	Per 5	Per 10	Per 50	Per 100
Almonds, hard shell, 3 to 5 feet.....	.22	\$.70	\$1.20	\$ 5.00	\$ 9.00
Almonds, paper shell, 3 to 4 feet.....	.25	.85	1.50	6.00	
Varieties: Ne Plus, Ultra, Texas Prolific.					
American Sweet Chestnut, 2 to 3 feet.....	.25	.85	1.50		
American Sweet Chestnut, 1 to 2 feet.....	.20	.60	1.00	4.50	
Chestnut, top-grafted, 3 to 4 feet.....	.60	2.60	5.00		
Chinquapin, dwarf chestnut, 2 feet.....	.20	.60	1.00		
Elaeagnus Longipes (Japan), 18 inches.....	.20	.60	1.00	4.00	
Elaeagnus Longipes (Japan), 18 to 24 inches.....	.25	.85	1.50		
Elaeagnus Longipes (Japan), 2 to 3 feet.....	.30	1.10	2.00		
Figs, in assortment, 2 to 3 feet.....	.25	.85	1.50	6.00	10.00
Figs, in assortment, 1 to 2 feet.....	.20	.60	1.00	4.50	8.00
Varieties—Brunswick Celestial, Col Cheney, Lemon, Orleans, White Adriatic.					
Hickory, shell bark, 5 feet and up.....	.30	1.10	2.00		
Hazlenut, from selected seed, 1 to 2 feet.....	.20	.60	1.00	4.50	
Mulberry, Russian 7 to 8 feet.....	.35	1.35	2.50	11.00	
Mulberry, Russian, 6 to 7 feet.....	.30	1.10	2.00		
Mulberry, Russian, 5 to 6 feet.....	.25	.85	1.50	6.50	12.00
Mulberry, Russian, 4 to 5 feet.....	.20	.60	1.00	4.50	8.00
Mulberry, Russian, 3 to 4 feet.....	.18	.50	.80	3.50	6.00
Pecans (from selected Texas nuts), 5 to 6 feet.....	.70	3.10	6.00		
Pecans (from selected Texas nuts), 4 to 5 feet.....	.50	2.10	4.00	18.00	
Pecans (from selected Texas nuts), 3 to 4 feet.....	.40	1.60	3.00	13.00	
Pecans (from selected Texas nuts), 2½ to 3 feet.....	.30	1.10	2.00	8.00	
Pecans (from selected Texas nuts), 2 to 2½ feet.....	.25	.85	1.50	6.00	11.00
Pecans (from selected Texas nuts), 1 to 2 feet.....	.22	.70	1.20	5.00	9.00
Pecans (from selected Texas nuts), 1 year.....	.20	.60	1.00	4.50	8.00
Pecans (from extra select Tex. nuts, 60 to lb), 2 year.....	.25	.85	1.50	6.00	11.00
Pecans (Indian Territory), 2 years.....	.18	.50	.80	2.75	5.00
Sarvis, Dwarf Juneberry, 2 to 3 feet.....	.18	.50	.80	2.75	5.00
Sarvis, Dwarf Juneberry, 1 to 2 feet.....	.15	.35	.50	2.00	3.50
Persimmon, American, 6 to 8 inch.....	.15	.35	.50		
Persimmon, Early Golden, top-grafted, 6 to 7 feet.....	.70	3.10			
Pawpaw, 2 year.....	.15	.35	.50		
Walnut, Black, 12 to 18 inch.....	.18	.50	.80	2.75	5.00
Walnut, English, 4 to 5 feet.....	.50	2.10	4.00		
Walnut, English, 3 to 4 feet.....	.35	1.35	2.50	11.00	20.00
Walnut, English, 2 to 3 feet.....	.30	1.10	2.00	9.00	16.00

Read Terms and Conditions of Sale Before Ordering.

Hardy Ornamental Trees.

WILD BROS.

SARCOXIE, MO.

WERE AWARDED

A GOLD MEDAL

on their exhibit in
group 108 on

Ornamental Evergreens
and Shade Trees

at the Louisiana
Purchase Exposition
at Saint Louis,
Mo., 1904.



We furnish Large
Estates with Orna-
mental Trees
and Plants.

Extensive Grow-
ers of Fruit and
Ornamental Trees

We had other ex-
hibits near the
Floral Clock be-
sides the Ever-
greens in the Rose
Gardens; also near
the Missouri State
Building, etc.

EVERGREENS For the Lawn.

NOTE. All Evergreens offered are of our own growing, from seeds and cuttings. Do not compare our rates with "forest pulled seedlings" nor with Northern nursery grown, so-called, but note that those we offer can be had long before you can get them from the North. Aside from this, ours are acclimated to the West and South, which gives them a decided advantage over others for timber plantations, windbreaks and ornamental planting.

ALL HERE LISTED ARE TRANSPLANTED AND ROOT-PRUNED. For rooted cuttings see pages 29 and 30.

Selected specimens are 25 per cent higher; extra selected specimens 50 per cent higher than the list price.

	Each	Per 5	Per 10	Per 50	Per 100
Arbor Vitae, American, 1 1/2 to 2 feet.....	.25	.85	1.50		
Arbor Vitae Woodward (Globe), 20 inches and over.....	.35	1.35	2.50	11.00	20.00
Arbor Vitae, Woodward (Globe), 18 inches and over.....	.30	1.10	2.00	8.00	15.00
Arbor Vitae, Woodward (Globe), 12 inches and over.....	.25	.85	1.50	6.00	10.00
Arbor Vitae, Douglas Golden, 3 to 4 feet.....	.45	1.85	3.50	15.00	
Arbor Vitae, Douglas Golden, 2 to 3 feet.....	.40	1.60	3.00	12.50	22.00
Arbor Vitae, Hovey's 3 to 4 feet.....	.45	1.85	3.50	15.00	
Arbor Vitae, Hovey's 2 1/2 feet and up.....	.35	1.35	2.50	11.00	20.00
Arbor Vitae, Hovey's, 2 to 2 1/2 feet.....	.30	1.10	2.00	8.00	15.00
Arbor Vitae, Hovey's, 18 inches to 2 feet.....	.25	.85	1.50	6.00	10.00
Arbor Vitae, Hovey's, 12 to 18 inches.....	.22	.70	1.20	5.00	8.00
Arbor Vitae, Pyramidal, 4 to 4 1/2 feet.....	.50	2.10	4.00	18.00	
Arbor Vitae, Pyramidal, 3 feet and up.....	.45	1.85	3.50		
Arbor Vitae, Pyramidal, 2 to 2 1/2 feet.....	.40	1.60	3.00	12.50	22.00
Arbor Vitae, Pyramidal, 1 1/2 feet up.....	.35	1.35	2.50	11.00	20.00
Arbor Vitae, Pyramidal, 12 inches up.....	.25	.85	1.50	6.00	
Arbor Vitae, Siberian, 3 feet up.....	.45	1.85	3.50	15.00	
Arbor Vitae, Siberian, 2 feet up.....	.35	1.35	2.50	11.00	20.00
Arbor Vitae, Siberian, 18 to 24 inches.....	.30	1.10	2.00	8.00	
Arbor Vitae, Chinese Gold, Df., 8 in. (Biota aurea nana)	.30	1.10	2.00		
Arbor Vitae, Chin. Golden (Biota aurea conspicua) 12 in	.40	1.60	3.00		
Cedar, Red, 2 to 2 1/2 feet.....	.35	1.35	2.50	11.00	
Cedar, Red, 2 1/2 to 3 feet.....	.45	1.85	3.50	15.00	
Cedar, Red, 3 to 4 feet.....	.55	2.35	4.50	20.00	
Cypress, Lawson, 18 inches and up.....	.35	1.35	2.50		
Cypress, Lawson, 2 to 3 feet.....	.45	1.85	3.50		
Cypress, Lawson, 1 foot and up.....	.30	1.10	2.00		
Cypress, Lawson, Blue, 3 feet.....	.55	2.35	4.50	20.00	
Cypress, Lawson, Blue, 2 to 3 feet.....	.45	1.85	3.50	15.00	
Cypress, Lawson, Blue, 1 foot and up.....	.35	1.35	2.50		
Fir, Balsam, 12 inches and over.....	.30	1.10	2.00	8.00	15.00

Read Terms and Conditions of Sale Before Ordering.

EVERGREENS—Continued

	Each	Per 5	Per 10	Per 50	Per 100
Fir, Balsam, 18 inches and over.....	.35	1.35	2.50	11.00	
Fir, Balsam, 2 feet and over.....	.45	1.85	3.50		
Fir, Balsam, 2½ feet.....	.50	2.35	4.50		
Hemlock, Spruce, 5 feet up.....	.70	3.10	6.00		
Hemlock Spruce, 4 feet and up.....	.55	2.35	4.50	20.00	
Hemlock Spruce, 3 feet and up.....	.45	1.85	3.50	15.00	
Hemlock Spruce, 2½ to 3 feet and up.....	.40	1.60	3.00	13.00	
Hemlock Spruce, 2 to 2½ feet.....	.35	1.35	2.50	11.00	20.00
Hemlock Spruce, 18 to 24 inches.....	.30	1.10	2.00	8.00	15.00
Juniper, Prostrata.....	.30	1.10	2.00		
Juniper, Savin, 36 inch spread.....	.40	1.60	3.00	13.00	
Juniper Savin, 24 inch spread.....	.30	1.10	2.00	3.00	15.00
Juniper, Savin, 18 inch spread.....	.25	.85	1.50	5.50	10.00
Juniper, Savin, 15 inch spread.....	.22	.70	1.20	5.00	8.50
Juniper, Savin, 12 inch spread.....	.20	.60	1.00	4.00	6.50
Juniper, Irish, 4 feet.....	.60	2.60	5.00	22.00	
Juniper, Irish, 3½ to 4 feet in height.....	.50	2.10	4.00	18.00	35.00
Juniper, Irish, 3 to 3½ feet in height.....	.45	1.85	3.50	15.00	27.00
Juniper, Irish, 2½ to 3 feet in height.....	.40	1.60	3.00	13.00	25.00
Juniper, Irish, 2 to 2½ feet in height.....	.35	1.35	2.50	11.00	20.00
Juniper, Irish, 18 to 24 inches in height.....	.30	1.10	2.00	8.00	15.00
Pine, Scotch, 3 feet and up.....	.45	1.85	3.50	15.00	
Pine, Austrian, 2½ feet and up.....	.45	1.85	3.50	15.00	
Pine, Austrian, 18 to 24 inches.....	.30	1.10	2.00	9.00	17.00
Pine, White, 2 to 3 feet.....	.50	2.10	4.00		
Pine, white, 18 to 24 inches.....	.45	1.85	3.50		
Pine, White, 12 to 18 inches.....	.35	1.35	2.50		
Pine, Red, 2 to 3 feet.....	.45	1.85	3.50	15.00	
Retinospora Plumrosa, 8 to 12 inches.....	.30				
Retinospora Plumrosa Aurea, 8 to 12 inches.....	.35	1.35			
Spruce, Colorado Blue, 8 inches and over.....	.60	2.60	5.00		
Spruce, Colorado Blue, 12 inches and over.....	.70	3.10	6.00		
Spruce, Colorado Blue, 4 feet, green type.....	1.30	6.10	12.00		
Spruce, Colorado Blue, 5 feet, select in color.....	3.00	14.60			
Spruce, Norway, 8 inches.....	.20	.60	1.00	4.50	8.00
Spruce, Norway, 12 inches.....	.25	.85	1.50	6.50	12.00
Spruce, Norway, 18 inches.....	.30	1.10	2.00	9.00	17.00

SHRUB EVERGREENS, HOLLY, MAHONIA,, ETC.

	Each	Per 5	Per 10	Per 50	Per 100
Box Tree (Buxus Arborescens) 18 inch.....	\$.30	\$1.10	\$2.00	\$ 8.00	\$15.00
Mahonia Aquifolia, 12 inch.....	.30	1.10	2.00		
Holly, American, 12 inch.....	.35	1.35	2.50		
Holly, American, 18 inch.....	.50	2.10	4.00		
Holly American, 2 feet.....	.70	3.10	6.00		
Holly, American, 2½ to 3 feet.....	1.00	5.50	9.00		
Pyracantha (Evergreen Thorn), 12 to 18 inches.....	.20	.60	1.00	4.50	8.00
Yucca Fillamentosa (Washington Plume), strong plants.....	.20	.60	1.00	4.50	8.00

CHRISTMAS TREES.

AND EVERGREEN BOUGHS FOR FESTOONING—ALL NURSERY GROWN

Prices are for common run. Selected specimens add 25 per cent. to respective rates, and for extra selected specimens add 50 per cent to respective rates named.

	Each	Per 5	Per 10	Per 50	Per 100
Cedar, Red, 8 feet.....	\$.75	\$3.35	\$6.50		
Cedar, Red, 9 feet.....	1.00	4.00	9.00		
Cedar, Red, 10 feet.....	1.25	5.75	11.50		
Cedar, Red, 11 feet.....	1.50				
Cedar, Red, 12 feet.....	1.75	8.35			
Cedar, Red, 13 feet.....	2.00				
Cedar, Red, 14 feet.....	2.50	12.10			
Cedar, Red, 15 feet.....	3.00				
Norway Spruce, 5 feet and over in height.....	.35	1.35	2.50		
Norway Spruce, 6 feet and over in height.....	.40	1.60	3.00		
Norway Spruce, 7 feet and over in height.....	.50	2.10	4.00		
Norway Spruce, 8 feet and over in height.....	.60	2.60	5.00		
Norway Spruce, 9 feet and over in height.....	.80	3.60	7.00		
Norway Spruce, 10 feet and over in height.....	1.00	4.60	9.00		
Norway Spruce, 11 feet and over in height.....	1.50				
Norway Spruce, 12 feet and over in height.....	2.00				

Read Terms and Conditions of Sale Before Ordering.

CHRISTMAS TREES—Continued

	Each	Per 5	Per 10	Per 50	Per 100
Norway Spruce, 13 feet and over in height.....	2.50				
Norway Spruce, 14 feet and over in height.....	3.00				
Norway Spruce, 15 feet and over in height.....	3.50				
Norway Spruce, from 16 to 20 ft. in ht. from \$4.00 to 12.00 each					
Evergreen Boughs in assortment from above named species of trees, 12 to 15 inches, \$1.25 per 100 pounds; 1,000 pounds for \$10.00. Norway Spruce, \$1.50 per 100 pounds; 1,000 pounds for \$12.50. Holly Boughs with berries, 12 to 15 inches, \$5.00 per 100 pounds. Ivy leaves (1,000 for \$2.50).					

ORNAMENTAL TREES—All Nursery Grown

NOTE.—Large trees above eight feet will be cut back unless otherwise ordered. Trees here offered have been one or more times transplanted and root pruned. Seedlings for timber planting, etc., and for lining out in nursery rows, see pages 29 and 30.

	Each	Per 5	Per 10	Per 50	Per 100
Ash, Black, 2 to 3 feet.....	.20	\$.60	\$1.00		
Ash, Blue, 2 to 3 feet.....	.20	.60	1.00		
Ash, White, 2 to 3 feet.....	.16	.40	.60	2.50	4.50
Ash, White, 3 to 4 feet.....	.18	.50	.80	3.50	6.00
Ash, White, 4 to 5 feet.....	.20	.60	1.00	4.50	8.00
Ash, White, 5 to 6 feet.....	.22	.70	1.20	5.00	
Ash, White, 6 to 7 feet.....	.25	.85	1.50	6.00	10.00
Ash, White, 7 to 8 feet.....	.30	1.10	2.00		
Ash, White, 1½ inch caliper.....	.45	1.85	3.50	16.00	
Ash, White, 1½ inch caliper.....	.60	2.60	5.00	22.00	
Ash, Variegated, elegant, 4 to 5 feet.....	.35	1.35	2.50		
Ash, Variegated, elegant, 5 to 6 feet.....	.40	1.60	3.00		
Ash, Variegated, elegant, 6 to 7 feet.....	.50	2.10	4.00		
Ash, English in assortment, 6 feet and up.....	.40	1.60	3.00	13.00	
Ash, English in assortment, 2 to 3 feet.....	.25	.85	1.50	6.00	
Sorts: Rufa, Single Leaf, Sharp Leaf, Willow Leaf, Broad Leaf.					
Ash, Mountain, 3 feet and over in height.....	.30	1.10	2.00		
Ash, Mountain, 4 feet and over in height.....	.35	1.35	2.50		
Ash, Mountain, Oakleaf, 3 feet and over.....	.40	1.60			
Ash, Mountain, Oakleaf, 4 feet and over.....	.50	2.10	4.00		
Beech, American, 5 feet and up.....	.35	1.35	2.50		
Birch, European White, 2 to 3 feet.....	.16	.40	.60	2.50	4.50
Birch, European White, 3 to 4 feet.....	.18	.50	.80	3.50	6.00
Birch, European White, 4 to 5 feet.....	.25	.85	1.50	6.00	
Birch, European White, 5 to 6 feet.....	.30	1.10	2.00	9.00	
Birch, European White, 6 to 7 feet.....	.35	1.35	2.50	11.00	20.00
Birch, European White, 7 to 8 feet.....	.40	1.60	3.00	13.00	
Birch, European White, 1½ inch caliper.....	.50	2.10	4.00	18.00	
Birch, European White, 1½ inch caliper.....	.60	2.60	5.00	22.00	40.00
Buckeye, 4 feet.....	.25	.85	1.50		
Buckeye, 5 feet and over.....	.35	1.35	2.50		
Catalpa Bungeii, top worked, 6 feet and over.....	.50	2.10	4.00		
Catalpa Bungeii, top worked, 7 feet and over.....	.60	2.60	5.00		
Catalpa Bungeii, top worked, 8 feet and over.....	.70	3.10	6.00		
Catalpa Bungeii, top worked, 9 feet and over.....	.80	3.60	7.00		
Catalpa Speciosa, 3 to 4 feet.....	.16	.40	.60	2.50	4.00
Catalpa Speciosa, 4 to 6 feet.....	.20	.60	1.00	4.50	8.00
Catalpa Speciosa, 1½ inch caliper.....	.35	1.35	2.50	11.00	20.00
Catalpa Speciosa, 2 inch caliper.....	.40	1.60	3.00	13.00	25.00
Catalpa Speciosa, 2½ inch caliper.....	.45	1.85	3.50	15.00	28.00
Catalpa Speciosa, 3 inch caliper.....	.60	2.60	5.00	22.00	40.00
Elm, Red or Slippery, 3 feet and over in height.....	.20	.60	1.00		
Elm, Red or Slippery, 4 feet and over in height.....	.35	1.35	2.50		
Elm, Red or Slippery, 5 feet and over in height.....	.45	1.85	3.50		
Elm, White, 4 to 5 feet.....	.22	.70	1.20	4.50	8.00
Elm, White, 5 to 6 feet.....	.30	1.10	2.00	9.00	17.00
Elm, White, 6 to 7 feet.....	.35	1.35	2.50	11.00	20.00
Elm, White, 1¼ inch caliper.....	.45	1.85	3.50	16.00	30.00
Elm, White, 1½ inch caliper.....	.60	2.60	5.00	22.00	40.00
Elm, White, 2 inch caliper.....	.80	3.60	7.00	32.00	60.00
Elm, White, 2½ inch caliper.....	1.20	5.60	11.00	50.00	90.00
Elm, White, 3 inch caliper.....	1.60	7.60	15.00		
Elm, White, 3½ inch caliper.....	2.10	10.10	20.00		
Elm, White, 4 inch caliper.....	3.00	14.60	29.00		
Hackberry, 9 feet and over in height.....	.40	1.60	3.00		
Hackberry, 12 feet and over in height.....	.50	2.10	4.00		

Read Terms and Conditions of Sale Before Ordering.

ORNAMENTAL TREES—Continued

	Each	Per 5	Per 10	Per 50	Per 100
Hornbeam, 8 feet and over in height.....	.50	2.10	4.00		
Horse Chestnut, 4 to 5 feet in height.....	.50	2.10	4.00		
Horse Chestnut, 5 to 6 feet in height.....	.60	2.60	5.00		
Judas Tree (Red Bud), 4 to 5 feet.....	.50				
Kentucky Coffee Tree, 3 to 4 feet.....	.25	.85	1.50	6.00	9.00
Kentucky Coffee Tree, 4 to 5 feet.....	.30	1.10	2.00	9.00	17.00
Kentucky Coffee Tree, 5 to 6 feet.....	.35	1.35	2.50	11.00	20.00
Kentucky Coffee Tree, 6 to 8 feet.....	.40	1.60	3.00	13.00	25.00
Kentucky Coffee Tree, 8 to 10 feet.....	.50	2.10	4.00	18.00	35.00
Kentucky Coffee Tree, 1½ inch caliper.....	.60	2.60	5.00	22.00	
Kentucky Coffee Tree, 1½ inch caliper.....	.70	3.10	6.00	27.00	
Linden, American, 2 feet and over.....	.20	.60	1.00	4.50	
Linden, European, 18 to 24 inches.....	.15	.35	.50		
Linden, European, 2 to 3 feet.....	.20	.60	1.00		
Linden, European, 3 to 4 feet.....	.25	.85	1.50		
Maple, Norway, 1½ to 2 feet.....	.20	.60	1.00		
Maple, Norway, 2 inch caliper.....	1.60	7.60	15.00		
Maple, Norway, 2½ inch caliper.....	2.10	10.10	20.00		
Maple, Soft or White, 4 to 5 feet.....	.16	.40	.60	2.50	4.50
Maple, Soft or White, 5 to 6 feet.....	.18	.50	.80	3.50	6.00
Maple, Soft or White, 6 to 8 feet.....	.22	.70	1.20	5.00	8.50
Maple, Soft or White, 8 to 10 feet.....	.25	.85	1.50	6.00	9.00
Maple, Soft or White, 1¼ to 1½ inch caliper.....	.30	1.10	2.00	9.00	17.00
Maple, Soft or White, 1½ to 2 inch caliper.....	.35	1.35	2.50	11.00	20.00
Maple, Soft or White, 2 to 2½ inch caliper.....	.45	1.85	3.50	15.00	25.00
Maple, Soft or White, 2½ to 3 inch caliper.....	.55	2.25	4.50	20.00	35.00
Maple, Soft or White, 3 to 3½ inch caliper.....	.90	4.10	8.00	35.00	65.00
Maple, Soft or White, 3 to 3½ inch caliper.....	1.30	6.10	12.00	55.00	100.00
Maple, Soft or White, 3½ to 4 inch caliper.....	1.60	7.60	15.00		
Maple, Soft or White, 4 to 5 inch caliper.....	2.10	10.10	20.00		
Maple, Sugar (Rock), 3 feet and over in height.....	.20	.60	1.00	4.50	
Maple, Sugar (Rock), 4 feet and over in height.....	.30	1.10	2.00	8.00	15.00
Maple, Sugar (Rock), 5 feet and over in height.....	.35	1.35	2.50	11.00	
Maple, Sugar (Rock), 8 to 10 feet.....	.45	1.85	3.50	15.00	25.00
Maple, Sugar (Rock), 1¼ to 1½ inch caliper.....	.55	2.35	4.50	20.00	35.00
Maple, Sugar (Rock), 1½ to 1¾ inch caliper.....	.70	3.10	6.00	25.00	45.00
Maple, Sugar (Rock), 1¾ to 2 inch caliper.....	1.00	4.60	9.00	40.00	70.00
Maple, Sugar (Rock), 2 to 2½ inch caliper.....	1.20	5.60	11.00	45.00	80.00
Maple, Sugar (Rock), 2½ to 3 inch caliper.....	1.60	7.60	15.00		
Maple, Sugar (Rock), 3 to 3½ inch caliper.....	2.10	10.10	20.00		
Maple, Sugar (Rock), 3½ to 4 inch caliper.....	3.00	14.60	29.00		
Maple, sugar (Rock), 4 inch caliper.....	4.00	19.60	39.00		
Maple, Sugar (Rock), 5 inch caliper.....	5.00	24.60	49.00		
Maple, Weir's Cut Leaf, 4 to 5 feet.....	.30	1.10	2.00		
Maple, Weir's Leaf, 5 to 6 feet.....	.40	1.60	3.00		
Maple, Weir's Leaf, 6 to 7 feet.....	.50	2.10	4.00		
Oak, Black, 6 feet.....	.50	2.10	4.00		
Oak, Black, 7 feet.....	.60	2.60	5.00		
Oak, Black, 8 feet.....	.70	3.10	6.00		
Oak, Black, 1½ to 1¾ inch caliper.....	.90	4.10	8.00		
Oak, Black, 2 to 2½ inch caliper.....	1.10	5.10	10.00		
Oak, Burr, 3 to 4 feet.....	.35	1.35	2.50		
Oak, Burr, 5 to 6 feet.....	.50	2.10	4.00	18.00	35.00
Oak, Burr, 6 to 7 feet.....	.60	2.60	5.00	22.00	40.00
Oak, Burr, 1¼ inch caliper.....	1.00	4.60	6.00		
Oak, Burr, 1½ inch caliper.....	1.30	6.10	12.00		
Oak, Chinquapin, 5 to 6 feet.....	.50	2.10	4.00	18.00	32.00
Oak, Chinquapin, 6 to 8 feet.....	.60	2.60	5.00	22.00	40.00
Oak, Chinquapin, 8 to 9 feet.....	.70	3.10	6.00		
Oak, Chinquapin, 1¼ inch caliper.....	.90	4.10	8.00	35.00	
Oak, White, 4 to 5 feet.....	.40	1.60	3.00	13.00	25.00
Oak, White, 5 to 6 feet.....	.50	2.10	4.00	18.00	32.00
Oak, White, 7 to 8 feet.....	.60	2.60	5.00	22.00	40.00
Oak, White, 1¼ inch caliper.....	.90	4.00	8.00	35.00	
Oak, White, 1½ inch caliper.....	1.20	5.60	11.00		
Oak, White, 2 inch caliper.....	1.60	7.60	15.00		
Poplar, Abele, (Silver) 5 feet.....	.35	1.35	2.50		
Poplar, Abele, (Silver) 7 feet.....	.45	1.85	3.50		
Poplar, Abele, (Silver) 8 feet.....	.55	2.35	4.50		
Poplar, Abele, (Silver) 1¼ inch caliper.....	.60	2.60	5.00		
Poplar, Bolleana, 5 to 6 feet.....	.50	2.10	4.00		

Read Terms and Conditions of Sale Before Ordering.

ORNAMENTAL TREES—Continued

	Each	Per 5	Per 10	Per 50	Per 100
Poplar, Aspen (Quaking) 5 feet.....	.40	1.60	3.00		
Poplar, Balm of Gilcad, 3 to 4 feet.....	.35	1.35	2.50		
Poplar, balm of Gilcad, 4 to 5 feet.....	.40	1.60	3.00		
Poplar, Balm of Gilcad, 5 to 6 feet.....	.50	2.10	4.00		
Poplar, Carolina, 4 feet and up.....	.20	.60	1.00	4.50	8.00
Poplar, Carolina, 5 to 6 feet.....	.25	.85	1.50	6.00	9.00
Poplar, Carolina, 6 to 7 feet.....	.30	1.10	2.00	9.00	17.00
Poplar, Carolina, 8 feet.....	.35	1.35	2.50	11.00	20.00
Poplar, Carolina, 1¼ inch caliper.....	.40	1.60	3.00	13.00	25.00
Poplar, Carolina, 1½ inch caliper.....	.50	2.10	4.00	18.00	32.00
Poplar, Carolina, 1¾ inch caliper.....	.60	2.60	5.00		
Poplar, Carolina, 2 inch caliper.....	.70	3.10	6.00		
Poplar, Golden Leaf, 3 to 4 feet.....	.35	1.35	2.50		
Poplar, Golden Leaf, 4 to 5 feet.....	.40	1.60	3.00		
Poplar, Golden Leaf, 5 to 6 feet.....	.50	2.10	4.00		
Poplar, Golden Leaf, 6 to 8 feet.....	.60	2.60	5.00		
Poplar, Lombard, 2 to 3 feet.....	.14	.30	.40		
Poplar, Lombard, 3 to 4 feet.....	.16	.40	.60		
Poplar, Lombard, 4 to 5 feet.....	.18	.50	.80		
Poplar, Lombard, 5 to 6 feet.....	.22	.70	1.20		
Poplar, Lombard, 6 feet and over.....	.25	.85	1.50		
Poplar, Lombard, 7 feet.....	.30	1.10	2.00		
Poplar, Lombard, 8 feet and over.....	.35	1.35	2.50		
Poplar, Lombard, 1¼ inch caliper.....	.40	1.60	3.00		
Poplar, Lombard, 1½ inch caliper.....	.50	2.10	4.00		
Poplar, Lombard, 1¾ inch caliper.....	.60	2.60	5.00		
Sapindus Marginatus, 2 to 3 feet.....	.50	2.10	4.00		
Salisburia (Ginko, Maiden Hair) 5 to 6 feet.....	.50	2.10	4.00		
Salisburia (Ginko, Maiden Hair) 6 to 7 feet.....	.60	2.60	5.00		
Salisburia (Ginko, Maiden Hair) 8 to 9 feet.....	1.00	4.60	9.00		
Salisburia (Ginko, Maiden Hair) 10 to 12 feet.....	1.30	6.10	12.00		
Sassafras (Laurus) 7 feet and over.....	.40	1.60	3.00		
Sycamore, American, 7 to 8 feet.....	.50	2.10	4.00	18.00	
Sycamore, American, 8 feet.....	.60	2.60	5.00		
Sycamore, American, 1¼ inch caliper.....	.80	3.60	7.00		
Sycamore, American, 1½ inch caliper.....	1.00	4.60	9.00		
Sycamore, American, 2 inch caliper.....	1.30	6.10	12.00		
Tree Foli, or Water Ash, 4 feet and over.....	.25	.85	1.50		
Tulip Tree (Liriodendron) 3 to 4 feet.....	.25	.85	1.50	6.00	9.00
Tulip Tree (Liriodendron) 4 to 5 feet.....	.35	1.35	2.50	11.00	
Tulip Tree (Liriodendron) 5 to 6 feet.....	.40	1.60	3.00	13.00	25.00
Tulip Tree (Liriodendron) 6 to 7 feet.....	.45	1.85	3.50	15.00	28.00
Tulip Tree (Liriodendron) 8 feet.....	.50	2.10	4.00	18.00	35.00
Tulip Tree (Liriodendron) 1¼ inch caliper.....	.55	2.35	4.50	20.00	38.00
Willow Golden, 3 to 4 feet.....	.25	.85	1.50		
Willow, Laurel Leaf, 1 foot and over.....	.25	.85	1.50		
Willow, Osler or Basket, 2 feet and over 1 year.....	.20	.60	1.00		

WEEPING TREES

	Each	Per 5	Per 10	
Mulberry, Teas' Grafted 3 feet and over.....	\$.50	\$2.10	\$4.00	
Mulberry, Teas' Grafted, 3½ feet and over.....	.55	2.35	4.50	
Mulberry, Teas' Grafted, 4 feet and over.....	.60	2.60	5.00	
Mulberry, Teas' Grafted, 4½ feet and over.....	.65	2.30	5.50	
Mulberry, Teas, Grafted, 5 feet and over.....	.75	3.30	6.50	
Mulberry, Teas' Grafted, 5½ feet and over.....	.90	4.10	8.00	
Mulberry, Teas' Grafted, 6 feet and over.....	1.10	5.10		
Mulberry, Teas' Grafted, 7 feet and over.....	1.35	6.35		
Weeping Elm, Camperdown, 4 feet.....	.45	1.85		
Weeping Elm, Camperdown, 5 feet.....	.60	2.60		
Weeping Elm, Camperdown, 6 feet.....	.90	4.10		
Weeping Elm, Camperdown, 7 feet.....	1.00			
Weeping Willow, Babylonian, 4 feet, Golden.....		.30	1.10	2.00
Weeping Willow, Babylonian, 5 feet and up, Golden.....		.40	1.60	3.00
Weeping Willow, Babylonian, 7 feet and up, Golden.....		.50	2.10	4.00
Weeping Willow, Babylonian, 4 feet.....		.30	1.10	2.00
Weeping Willow, Babylonian, 5 feet.....		.40	1.60	3.00
Weeping Willow, Babylonian, 7 feet.....		.50	2.10	4.00
Weeping Willow, Wisconsin, 5 feet and up.....		.35	1.35	2.50



Read Terms and Conditions of Sale Before Ordering.

100,000 ORNAMENTAL FLOWERING SHRUBS.

	Each	Per 5	Per 10	Per 50	Per 100
Acacia Rose or Moss Locust, 2 feet and over.....	\$.18	\$.50	\$.80	\$ 3.50	\$ 6.00
Almond, Dwarf, Double Flowering, Red, 1 foot.....	.20	.60	1.00		
Almond, Double Flowering, White.....	.20	.60	1.00		
Althea, Variegated Leaf, 1 foot and over.....	.20	.60	1.00		
Althea, Variegated Leaf, 2 feet and over.....	.30	1.10	2.00		
Althea, in sorts named below, 1 foot and over.....	.15	.35	.50	2.25	4.00
Althea, in sorts named below, 2 feet and over.....	.18	.50	.80	3.50	6.00
Althea, in sorts named below, 3 feet and over.....	.20	.60	1.00	4.50	8.00
Althea, in sorts named below, 4 feet and over.....	.22	.70	1.20	5.50	10.00
Sorts Althea: Banner, Light Rose, Double White, Double Lilac, Atrorubans or Red, Totus Albus (white), Double Blue					
Berberry, Purple Leaf, 1 foot.....	.15	.35	.50	2.25	
Berberry, Thunbergii, 18 to 24 inches.....	.20	.60	1.00		
Berberry, Thunbergii, 2 feet up.....	.25	.85	1.50		
Calycanthus (Sweet scented Shrub) 2 feet.....	.18	.50	.80	3.50	6.00
Calycanthus, (Sweet scented Shrub), 3 feet.....	.20	.60	1.00	4.50	
Calycarpa Purpurea, 3 feet and over in height.....	.25	.85	1.50		
Deutzia, sorts noted below, 2 feet and over in height.....	.15	.35	.50	2.50	4.00
Deutzia, sorts noted below, 3 feet.....	.16	.40	.60	2.75	5.00
Sorts Deutzia: Crenata, Double White, and Pink, Pride of Rochester.					
Elder, Cut Leaf.....	.30	1.10	2.00		
Euonymus (Strawberry Tree), 3 feet and over.....	.20	.60	1.00		
Euonymus, (Strawberry Tree), 4 feet and over.....	.25	.85	1.50		
Exochordia Grandiflora, 1 foot and over.....	.20	.60	1.00	4.50	8.00
Exochordia Grandiflora, 2 feet and over.....	.22	.70	1.20	5.50	10.00
Exochordia Grandiflora, 3 feet and over.....	.25	.85	1.50	6.50	12.00
Flowering Currant, 2 feet in height.....	.20	.60	1.00	4.50	8.00
Fringe White Chionanthus, 2 feet in height.....	.30	1.10	2.00		
Fringe Purple (Smoke Tree), 2 feet.....	.25	.85	1.50		
Globe Flower, Japan, 2 feet in height.....	.20	.60	1.00		
Golden Bell Fortuni, 2 feet in height.....	.20	.60	1.00	4.50	8.00
Golden Bell Fortuni, 3 feet in height.....	.22	.70	1.20	5.50	10.00
Golden Bell Forsythia Suspensa, 2 feet in height.....	.20	.60	1.00	4.50	8.00
Golden Bell Forsythia Suspensa, 3 feet in height.....	.22	.70	1.20	5.50	10.00
Golden Bell Forsythia Viridissima (Green), 2 feet over.....	.20	.60	1.00	4.50	8.00
Golden Bell Forsythia Viridissima (Green), 3 feet over.....	.25	.85	1.50	6.50	12.00
Halesia (Silver Bell), 2 feet in height.....	.25	.85	1.50	6.00	
High Bush Cranberry, Viburnum Opulis Oxycoccos, 1½ ft.....	.22	.70	1.20	5.00	
High Bush Cranberry, 2 feet.....	.25	.85	1.50	6.50	
Honeysuckle, Bush, 1 foot in height.....	.20	.60	1.00		
Hydrangea Grandiflora, 1 foot in height.....	.22	.70	1.20	5.50	10.00
Hydrangea Grandiflora, 2 feet in height.....	.25	.85	1.50	6.50	12.00
Hydrangea Grandiflora, 3 feet.....	.35	1.35	2.50	11.00	20.00
Hypericum Kalmianum.....	.25	.85	1.50		
Jasmine, White.....	.25				
Jasmine, Yellow.....	.25				
Kolreuteria, China Bladder Nut, 2 to 3 feet.....	.15	.35	.50		
Kolreuteria, China Bladder Nut, 3 to 4 feet.....	.20	.60	1.00		
Kolreuteria, China Bladder Nut, 4 to 5 feet.....	.25	.85	1.50		
Lilac, Purple, Double, 2 feet and over.....	.25	.85	1.50	6.50	
Lilac, Purple, Double, 3 feet and over.....	.35	1.35	2.50	11.00	20.00
Lilac, Purple, Double, 4 feet and over.....	.40	1.60	3.00		
Lilac, Purple, 2 feet and over.....	.20	.60	1.00	4.50	
Lilac, Purple, 3 feet and over.....	.22	.70	1.20	5.50	10.00
Lilac, Purple, 4 feet.....	.25	.85	1.50		
Lilac, Persian, 2 feet and over.....	.20	.60	1.00	4.50	
Lilac, Persian, 3 feet.....	.25	.85	1.50	6.50	
Lilac, Persian, 4 feet.....	.30	1.10	2.00		
Lilac, White, 1 foot and over.....	.30	1.10	2.00		
Philadelphus, Mock Orange, 2 feet and over.....	.20	.60	1.00	4.50	8.00
Philadelphus, Mock Orange, 3 feet and over.....	.22	.70	1.20	5.50	10.00
Philadelphus, Dianthiflorus, plenus, 2 feet.....	.25	.85	1.50		
Philadelphus Grandiflorus, 2 feet and over.....	.20	.60	1.00	4.50	8.00
Philadelphus Grandiflorus, 3 feet and over.....	.25	.85	1.50	6.50	
Privet, California, 1 foot and over.....	.15	.35	.50	2.50	
Privet, California, 2 feet and over.....	.18	.50	.80	3.50	6.00
Prunus Passardi (Purple Leaf Plum), 4 feet.....	.30	1.10	2.00		

Read Terms and Conditions of Sale Before Ordering.

ORNAMENTAL AND FLOWERING SHRUBS—Continued

	Each	Per 5	Per 10	Per 50	Per 100
Pyrus Japonica, Scarlet (Japan Quince) 1 foot and over	.16	.40	.60	2.50	4.00
Pyrus Japonica, Scarlet, 2 feet and over	.17	.45	.70	3.00	5.50
Pyrus Japonica, 3 feet and over	.18	.50	.80	3.50	6.00
Pyrus Japonica, White, 2 feet and over	.22	.70	1.20	5.50	
Pyrus Japonica, White, 3 feet and over	.25	.85	1.50	6.50	
Snowball, 1 foot and over	.16	.40	.60	2.50	4.00
Snowball, 2 feet and over	.18	.50	.80	3.50	6.00
Snowball, 3 feet and over	.20	.60	1.00	4.50	8.00
Snowball, 4 feet and over	.25	.85	1.50	6.50	
Snowball, Japan, 2 feet	.25	.85	1.50	6.50	
Snowball, Japan, 3 feet	.35	1.35	2.50		
Snowberry, Red Fruited (Coral Berry), 1 foot	.15	.35	.50	1.75	3.00
Snowberry, Red Fruited (Coral Berry), 2 feet	.16	.40	.60	2.50	4.00
Snowberry, White, 1 foot	.20	.60	1.00		
Spiraea Anthony Waterer, 1 foot	.25	.85	1.50		
Spiraea, 1 foot and over	.15	.35	.50	2.00	3.50
Spiraea, 2 feet and over	.17	.45	.70	3.00	5.00
Spiraea, 3 feet and over	.18	.50	.80	3.50	6.00
Sorts Spiraea: Reeves, Fontenaysi Alba, Prunifolia, Billardi, Thunbergii, Aurea (Gold. Leaf), Van Houtteii					
Styrax Japonica, 2 feet	.25	.85	1.50		
Sumac, Stag Horn, 3 feet and over	.20	.60	1.00		
Sumac, Stag Horn, 5 feet and over	.30	1.10	2.00		
Weigelia, Variegated Foliage, 2 feet	.25	.85	1.50		
Weigelia, in sorts, 1 foot	.18	.50	.80	3.50	6.00
Weigelia, in sorts, 2 feet	.20	.60	1.00	4.50	8.00
Weigelia, in sorts, 3 feet	.25	.85	1.50	6.50	12.00
Sorts Weigelia: Rosea, Hendersoni, Desboisii, Amabilis.					

ROSES

NOTE.—The Roses we here offer are grown in open ground, and must not be confounded with pot plants. All offered are strong plants, suitable for general planting, also for conservatories, cemeteries, etc. Size of plants according to class will average from 10 to 20 inches in height. Climbing Roses will be cut back to about 15 inches cane. Prices are for each variety.

	Each	Per 5	Per 10	Per 50	Per 100
June Roses, Harrison Yellow	\$.22	\$.70			
Japan Rose, Rugosa Rubra, 2 feet	.18	.50	.80	3.50	6.00
Japan Rose, Rugosa Rubra, 1 foot	.16	.40	.60	2.50	4.00
Japan Rose, Rugosa, White	.25	.85	1.50		
Climbing Rose, Prairie Queen, rosy red	.20	.60	1.00		
Climbing Rose, Baltimore Bell, bluish changing to white	.20	.60	1.00	4.50	
Climbing Rose, Seven Sisters, bluish changing to white	.20	.60	1.00	4.50	
Rambler, Crimson	.20	.60	1.00	4.50	8.00
Rambler, White	.25	.85	1.50		
Rambler, Yellow	.25	.85	1.50		
Rambler, Dorothy Perkins, shell pink	.30	1.10	2.00		
Rambler, Psyche, White with Pink	.30	1.10	2.00		
Trailing Rose, Wichuriana, single white	.18	.50	.80		
Trailing Rose, Wichuriana, (Hybd) Jersey Beauty	.30	1.10	2.00		
Trailing Rose, Wichuriana, Pink Roamer	.25	.85	1.50		
American Beauty H. P. deep rose	.50	2.10	4.00		
Etoile de France (H. T.), Clear Crimson	.50	2.10	4.00		
Gruss An Tiplitz, (H. T.), Bright Scarlet	.30	1.10	2.00		
Gen. McArthur (H. T.), Brilliant Crimson	.30	1.10	2.00		
Frau Karl Druschke, (H. P.), Pure White	.50	2.10			
Helen Gould (Balduin), (H. T.), Rosy Crimson	.30	1.10	2.00		
Ideal (H. T.), Beautiful pink rose	.25				
Killarney (H. T.) Beautiful bright pink	.50	2.10	4.00		
Mad Ant Marie (T), creamy bluish white	.50	2.10	4.00		
Richmond Best, red forcing rose	.65	2.85	5.50		
Caroline Mariniesse, everblooming white Cemetery rose, hardy	.25	.85	1.50		
Baby Rambler, everblooming Crimson Rambler, (Dwarf)	.40	1.60	3.00		

HYBRID PERPETUAL ROSES.—General List.

Clio, Flesh color, shaded rosy pink	.22	.70	1.20		
Coquette des Alps, white	.22	.70	1.20		
Coquette des Blanches, white	.22	.70	1.20		
Gen. Jacqueminot, Brilliant Crimson	.22	.70	1.20		
Glory Lyonnaise, Salmon Yellow	.22	.70	1.20		

Read Terms and Conditions of Sale Before Ordering.

HYBRID PERPETUAL ROSES—General List.—(Continued.)

	Each	Per 5	Per 10	Per 50	Per 100
Madam Masson, Bright rose.....	.22	.70	1.20		
Paul Neyron, Bright deep rose.....	.22	.70	1.20		
P. C. de Rohan, (dark Crimson).....	.22	.70	1.20		
Ulrich Brunner, Rich Crimson.....	.22	.70	1.20		
Vicks Caprice, Striped rose.....	.22	.70	1.20		

EVERBLOOMING OR MONTHLY ROSES.

Aurora, Bright deep pink.....	.22	.70	1.20		
Boquet of Gold, Deep Golden Yellow.....	.22	.70	1.20		
Bridesmaid, pink.....	.22	.70	1.20		
Burbank, Cherry rose.....	.22	.70	1.20		
Championo of the World, soft pink.....	.22	.70	1.20		
Clothilde Soupert, pink center, shaded white.....	.22	.70	1.20		
Duchesse de Brabant, soft light rose.....	.22	.70	1.20		
Etoile de Lyon, Yellow or Cream.....	.22	.70	1.20		
Francicka Krueger, Chamois color.....	.22	.70	1.20		
Hermosa, soft deep pink.....	.22	.70	1.20		
Kaeserin A. Victoria, pure white.....	.22	.70	1.20		
Mad Caroline Testout, Silvery rose.....	.22	.70	1.20		
Maman Cochet, pink.....	.22	.70	1.20		
Marie Guillott, white.....	.22	.70	1.20		
Queens Scarlet, Scarlet.....	.22	.70	1.20		
Snowflake, white.....	.22	.70	1.20		
The Queen, white.....	.22	.70	1.20		
Yellow Soupert or Moselle, Yellow.....	.22	.70	1.20		

MOSS ROSES, HARDY.

Glory of Mosses, pale rose.....	.22	.70	1.20		
Henry Martin, bright red.....	.22	.70	1.20		
Salet, light rose.....	.22	.70	1.20		

VINES AND CREEPERS

Ampelopsis Englemanni; clinging form; scarce.....	\$.20	\$.60	\$1.00		
Ampelopsis Veitchi (Japan Ivy), miniature foliage.....	.20	.60	1.00	4.50	
Ampelopsis Virginia Creeper, or American Ivy.....	.18	.50	.80	3.50	
Bignonia Capreolata (Cross Vine), evergreen.....	.30	1.10	2.00		
Bignonia (Tecoma radicans), Trumpet Creeper.....	.22	.70	1.20		
Clematis, 2 years; Jackmani, purple, and Henryii, white.....	.45	1.85	3.50		
Climbing Bittersweet (Celastrus Scandens).....	.25				
Euonymous, clinging, variegated foliage, ever'n climber.....	.30	1.10	2.00		
Honeysuckle, Golden Netted.....	.22	.70	1.20	5.50	
Honeysuckle Halleana (Hall's Japan), almost evergreen.....	.17	.45	.70	3.00	5.00
Honeysuckle, Monthly Fragrant, red and yellow.....	.20	.60	1.00	4.50	
Honeysuckle, Scarlet Trumpet.....	.17	.45	.70	3.00	
Honeysuckle, Yellow Trumpet.....	.20	.60	1.00	4.50	
Ivy, English, evergreen, clings freely to brick or stone.....	.18	.50	.80		
Myrtle (Vinca Minor), evergreen, blue flowers.....	.18	.50	.80	3.50	
Moon Seed.....	.25	.85	1.50		
Periploca, Virginia Silk Vine.....	.18	.50	.80	3.50	
Wisteria, Purple, 2 year.....	.20	.60	1.00		
Wisteria, White 2 year.....	.20	.60	1.00		

HARDY HERBACEOUS AND PERENNIAL PLANTS.

Aquilegia (Columbine), mixed colors.....	\$.16	\$.40	\$.60	\$2.50	\$4.00
Bleeding Heart (Dicentra Spectabilis).....	.20	.60	1.00	4.50	8.00
Catchfly (Fire Pink).....	.15	.35	.50	2.00	3.50
Hibiscus Crimson Eye.....	.16	.40	.60	2.50	
Iris, Purple.....	.20	.60	1.00		
Iris, Yellow.....	.22	.70	1.20		
Lilium Candidum (White Garden Lily).....	.20	.60	1.00	4.50	8.00
Lily, Blackberry (Pardensis-Chinensis).....	.14	.30	.40	1.75	3.00
Lily, Day, single orange (Hemerocallis).....	.15	.35	.50	2.00	3.50
Lily, Day, double, orange (Hemerocallis).....	.15	.35	.50	2.00	3.50
Lily, Lemon (Flava).....	.16				
Lily, Tiger (Lilium Tigrinum), single.....	.15	.35	.50	2.00	3.50
Lily, Tiger (Lilium Tigrinum), double.....	.15	.35	.50	2.00	3.50
Lily of the Valley pips.....	.15	.35	.50	2.00	3.50
Narcissus Poeticus.....	.12½	.22½	.25	1.00	1.75
Pea Vine, hardy red.....	.20	.60	1.00		
Rudbeckia, Golden Glow.....	.14	.30	.40	1.75	2.50
Spirea, Goat's Beard.....	.30	1.10	2.00		
Star of Bethlehem.....	.12½	.22½	.25	1.00	1.75

Read Terms and Conditions of Sale Before Ordering.

HARDY AND ORNAMENTAL GRASSES

	Each	Per 5	Per 10	Per 50	Per 100
Eulalia Japonica (Zebra Striped Grass).....	\$.17	\$.45	\$.70	\$3.00	\$5.00
Eulalia Variegated, creamy stripes running through center of leaf17	.45	.70	3.00	5.00
Erianthus Ravennae, resembling Pampas.....	.20	.60	1.00	4.50	8.00
Ribbon Grass15	.35	.50	2.00	

WATER LILIES

	Each	Per 5	Per 10	Per 50	Per 100
Nelumbium Luteum (Am. Lotus, Water Chinquapin yel).....	.50	\$2.10	\$4.00		
Nelumbium Roseum, rosy pink.....	.70	3.10	6.00		
Nymphaea Gladstonian, fine, immense, white40	1.60	3.00		
Nymphaea Odorata, the fragrant white.....	.35	1.35	2.50	10.00	18.00
Nymphaea Odorata Minor, miniature.....	.22	.60	1.20		
Nymphaea, Odo. Rosea (Cape Cod Water Lily), rose pink.....	.50	2.10	4.00		
Nymphaea Odorata Sulphurea, yellow.....	.50	2.10	4.00		
Nymphaea Odorata Sulphurea Grandiflora.....	.75	3.35	6.50		
Nymphaea Robinsoni, yellow, overlaid with purplish red.....	.75	3.35	6.50		
Nymphaea Tuberosa Richardsoni, immense double peony-like white flowers50	2.10	4.00		
Nymphaea Tuberosa Rubra	1.50				
Nymphaea Lilacea Leyderkia	1.50				



HERBACEOUS PEONIES

(P. Chinensis)

Old, established favorites, long neglected, but now growing in popularity, having been greatly improved in form and color; will no doubt become the rage among flowers. Suitable for nearly all positions—in the garden, along walks, borders, terraces, drives or wild garden. The flowers are large, massive, perfect in outline, and most beautiful. Useful in decorating, and possessing the symmetry and fragrance of the rose. Valuable as cut flowers shipping admirably. Other effective bulbs planted among them are Dahlias, Gladiolus, Tritoma, Tuberoses.

Prices are for divided plants of two to four eyes.

	Each	Per 5	Per 10	Per 50	Per 100
Alba Grandiflora, large long-stemmed white.....	\$.35	\$1.35	\$2.50		
Andre Lauries, deep bright red, Late bloomer. This Rosea and Lord Byron are practically identical.....	.20	.60	1.00	4.00	7.00
Bride (Terry) Flesh, inside high straw, nearly white.....	.40	1.60	3.00		
Caroline, Alliance, extra early, pink30	1.10	2.00		
Chrysanthemiflora, light pink center, yellow stamens.....	.30	1.10	2.00		
Couronne d'or, pure white tinted yellow.....	.75				

Read Terms and Conditions of Sale Before Ordering.

HERBACEOUS PEONIES, (*P. Chinensis*) Continued

	Each	Per 5	Per 10	Per 50	Per 100
Delachii, bright crimson, full double, yellow stamens.....	.25	.85	1.50	6.50	12.00
Dorchester, (Richardson), beautiful soft pink.....	.60	2.60	5.00		
Doyenne de Engheim, dark pink.....	.20	.60	1.00	5.00	9.00
Excelsior, dark crimson, full double, fine, early.....	.35	1.35	2.50		
Festiva Maxima, strong grower, large paper white flower, with purplish crimson blotches on outer central petals, blooms early, finest white.....	.50	2.10	4.00	18.50	35.00
Floral Treasure, double, shapely bloom, very fragrant blooms long, fine, clear, bright pink.....	.50	2.10	4.00		
Gardensis, similar to Humeii, but better every way.....	.30	1.10	2.00	8.00	15.00
Giessler, rose pink.....	.75	3.35			
Gigantea, clear light pink, rose shading, early.....	.60	2.60	5.00		
Golden Harvest, nearest approach to yellow, producing large tri-colored blooms, fragrant and showy.....	.30	1.10	2.00		
Humeii, large flower, strong grower, full double, dark rose color, late, cinnamon fragrance.....	.25	.85	1.50	6.50	12.00
Jenny Lind, clear rose pink, fine form bloom, fragrant	.50	2.10	4.00	16.00	30.00
La Tulipe or multicolor (Calot), flesh pink, outer petals striped, whole flower shading to white, strong erect habit, fragrant.....	.70	3.10	6.00		
Lee's Grandiflora Rubra, first prize for best 100 blooms, at Chicago show, 1905.....	1.00	4.60	9.00	42.50	
L' Esperence, fine rose colored, early, free, very fragrant	.35	1.35	2.50	11.00	20.00
Livingston, (Crousse), solid pale pink late.....	.75	3.35			
Lord Byron, similar to Rosea.....	.20	.60	1.00	4.00	7.00
Madam Calot, white, faint blush guard petals.....	.75	3.35			
Madam de Verneville, pure white with large guard petals.....	.75	3.35			
Marie Lemoine, (Tree) (Crousse) fine double white, late	1.00	4.60	9.00		
Model de Perfection, solid clear pink.....	.75	3.35	6.50		
Monsieur Jules Elie, glossy pink, good form.....	.75	3.35	6.50		
Monsieur Rosselon, double red.....	.35	1.35	2.50		
Mont Blanc, sulphur white, tall grower.....	.75	3.35			
Paganini (Holland Lists) lively rose, center yellow.....	.20	.60	1.00	5.00	9.00
Pink Beauty, double pink free bloomer.....	.30	1.10	2.00		
Pottsi, dark crimson, yellow stamens thro' flower, early blooming.....	.25	.85	1.50	6.50	12.00
Queen Emma, large, bright pink, strong grower, stiff stems.....	.35	1.35	2.50	11.00	20.00
Queen Victoria, see Whitley.					
Reevesii, purplish rose, center rose, flesh and white....	.25	.85	1.50		
Rosea, deep bright rose, fragrant, blooms very late.....	.20	.60	1.00	4.00	7.00
Rosea Superba, brilliant deep pink, fine form, mid- season.....	.30	1.10	2.00		
Rubra Violacea, dark roses, center salmon, scarlet.....	.25	.85	1.50	6.50	12.00
Thomas Meehan (Terry), dark crimson, full double, early.....	\$.30	\$1.10	\$2.00	\$ 8.00	\$15.00
Unique, similar to Chrysanthemiflora.....	.30	1.10	2.00	8.00	15.00
Wacht-am Rhine, dark, crimson, full, free blooming, fine early.....	.25	.85	1.50	6.50	12.00
Whitley (A. B. R. 1799-1812, and R. B. London 1815- 1847), large creamy white, full compact bloom, broad guard petals, opens flesh white, and is one of the best shippers for placing in cold storage. Queen Victoria, a later appellation (Eng. Hort. 1830), often catalogued as synonymous, is different as shown by the varieties obtained from the vari- ous European (Holland) firms.....	.30	1.10	2.00	8.25	15.00
Officialis Alba Mutabilis, also called white Japan Peony, well formed bloom, light pink, finishing ivory white.....	.35	1.35	2.50	11.00	
Officialis Rosea, large, well formed, deep purplish rose.....	.30	1.10	2.00	8.00	15.00
Officialis Rubra, the old fashioned deep crimson Peony (''Piney'') early, blooms just before the snowballs	.22	.70	1.20	5.50	10.00
Tenuifolia flora plena, double, dark purplish red, ear- liest of any to bloom, fennel-shaped leaves, scarce....	.25	.85	1.50	6.50	12.00
Mixed Peonies, from named varieties, but labels lost....	.18	.50	.80	3.50	6.00

Read Terms and Conditions of Sale Before Ordering.

TENDER BULBS AND ROOTS FOR SPRING PLANTING

CANNAS.

Cannas begin to bloom shortly after planting and make an effective showing from the time they are in foliage and when in bloom they are so well liked that many make a large circular planting.

	Each	Per 5	Per 10	Per 50	Per 100
Admiral Welland, red with yellow border.....	.15	.35	.50	2.00	3.50
Burbank, light or Canary Yellow14	.30	.40	1.60	3.00
Neuniversal Red, strong grower, early bloomer.....	.15	.35	.50	2.00	3.50

DAHLIA.

The Dahlia has always been a favorite for autumn flowering. The flowers are so symmetrical and perfect, and the range of colors so large and varied that they will always be popular where display is wanted. The roots are tender and easily injured by frost. They should be set out three feet apart, after all danger of frost is over, and during winter placed in a cool cellar and not allowed to freeze. The plants should be pinched back at first to avoid tying to stakes. Our collection of named Dahlias is of the best, comprising all the leading colors.

LARGE FLOWERING DECORATIVE AND SHOW DAHLIAS

	Each	Per 5	Per 10	Per 50	Per 100
Admiral Dewey, brilliant imperial purple, fine form.....	\$.18	\$.50	\$.80	\$3.50	\$6.00
Black Dahlia, maroon18	.50	.80	3.50	6.00
Clifford W. Bruton, pure yellow.....	.18	.50	.80	3.50	6.00
Iridescent, orange red, margined violet and blue.....	.18	.50	.80	3.50	6.00
John Walker, pure white20	.60	1.00		
King Cactus, deep magenta, overlaid rosy crimson.....	.20	.60	1.00	4.50	
Nymphae (Wat. Lily Dah.), shrimp pink, shading darker	.20	.60	1.00	4.50	8.00
Strahlen Krohne (Cactus), cardinal red, twisted petals	.22	.70	1.20		
Wm. Agnew, intense dazzling red.....	.20	.60	1.00	4.50	8.00

QUILLED DAHLIAS

	Each	Per 5	Per 10	Per 50	Per 100
A. D. Livoni, clear pink, very free bloomer.....	\$.20	\$.60	\$1.00	\$4.50	\$8.00
Grand Duke Alexis, massive, ivory, tinged lavender.....	.20	.60	1.00	4.50	
Queen Victoria, handsome, deep yellow, profuse bloomer	.20	.60	1.00	4.50	8.00
Mixed Dahlias, from named varieties but labels lost.....	.18	.50	.80	3.00	5.00

GLADIOLUS

No flower has gained more rapidly in public favor, for in addition to the intrinsic merit of the flower it is easy of cultivation and blooms freely. The culture is very simple. They thrive in almost any good soil. Plant the roots six to nine inches apart, the large ones four inches and the small ones three inches deep. Make several plantings of the smallest roots first as soon as the ground is sufficiently dry and warm. Then continue to plant at intervals of two weeks during the spring and early summer. In this way a succession of bloom may be had from mid-summer until frost. In autumn, before freezing, they should be dug and dried, separate the new bulbs from the old, the earth and old roots removed, and then stored in a cool, dry place, secure from frost until spring. For bouquets the flowers are admirable. As soon as the two lower flowers open the spike may be cut and placed in water, and it will last for weeks, all the other flowers opening as well as if growing in the garden.

MIXED GLADIOLI, From Cowee's World's Fair Strain

These mixtures must not be confounded with the common mixed sorts.

	Each	Per 5	Per 10	Per 50	Per 100
Choice Mixed, all colors, including striped and blotched					
kinds, first size	\$.14	\$.30	\$.40	\$ 1.60	\$ 3.00
Choice Mixed, all colors, second size	\$.12½	\$.22½	.25	1.25	2.00

TUBEROSE

The flowers of this popular plant are waxy white, double, and so fragrant that they perfume the whole atmosphere for some distance around. They are useful in button-hole bouquets, in large bouquets or as single specimens. Each bulb flowers but once, but the smaller bulbs can be set out for future flowering.

	Each	Per 5	Per 10	Per 50	Per 100
Tuberose	\$.14	\$.30	\$.40	\$1.75	\$3.00

Read Terms and Conditions of Sale Before Ordering.

APPLE ROOT GRAFTS

ROOT Grafts are Cions and Roots grafted and tied or bound together and are thus ready for planting in permanent nursery rows.

Orders for Root Grafts given without special agreed specifications will be put up in same manner as those we put up for our own planting. Length of graft 6 to 7 inches, which includes Root and Cion. Not less than 100 of a variety will be put up in the general assortment of varieties. Smaller or broken lots, as to varieties, or of new and scarcer kinds, will be priced as list will allow.

GRAFTS WEIGH from 15 to 40 pounds per 1,000 packed. All orders put up at our risk of damage in storage up to March 1st, after that date same will be at purchaser's risk.

Orders must be accompanied with one-fourth amount in order to secure same.

We make any style of grafts wanted, with any length of scion or root wanted. Styles are illustrated.



PRICES OF VARIOUS STYLES APPLE ROOT GRAFTS OFFERED.

SPECIAL PRICES will be given when in want of large quantities; give list with number wanted in each sort, and the style.

Style 3.—Grafts worked on No. 1 3-16 up caliper stock, using first and second cut of a seedling, with from 4 to 5 inches to a cut, and about 5-inch cion. Such grafts are termed by many nurserymen as **WHOLE-ROOT GRAFTS**. Price of 100 of a sort, 50 cents; if worked on No. 2 stock, 40 cents per 100.

Style 4.—Grafts worked on what is termed **WHOLE STOCK**, using No. 1 3-16 up caliper seedling and about 5-inch cion. Price of 100 grafts of a sort, 80 cents; if worked on No. 2 stock, 70 cents per 100.

Style 5.—Grafts worked on No. 1 3-16 up caliper stock, using first 5 inches of a seedling and 5-inch cion. This style of graft is termed **COLLAR OR CROWN GRAFT**. Price per 100 grafts of a sort, 60 cents; if worked on No. 2 stock, 45 cents per 100.

Style 6.—Grafts worked on No. 1 3-16 up caliper stock, using all of such seedlings, usually making about three cuts of 3 inches each, and with about 5-inch cion. Such grafts are termed **PIECE-ROOT GRAFTS**. Price per 100 of a sort, 40 cents; if worked on No. 2 stock, 30 cents per 100.

Style 8.—Grafts worked on No. 1 3-16 caliper stock, using about 2 inches of seedling, (using up the entire stock), and about 7 to 8 inch cion. This graft we recommend as a most

Read Terms and Conditions of Sale Before Ordering.

suitable one to grow the tree mainly upon its own roots, and the least subject to suckers sprouting up from the seedling. Price per 100 grafts of a sort, 60 cents; if worked on No. 2 stocks, 45 cents per 100.

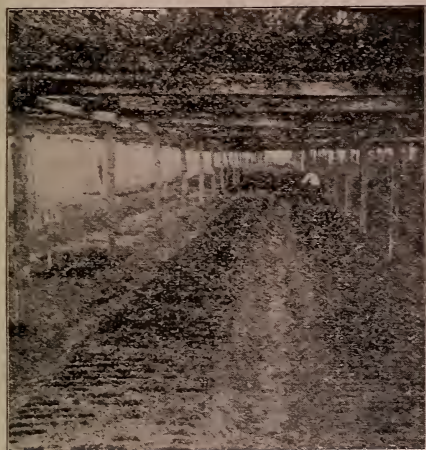
Style 11.—Grafts worked on No. 1 2-16 up caliper stock, using only second cut, and same to be about 5 inches, with 5-inch cion. Such grafts are termed **SECOND-CUT GRAFTS**, and are, in our estimation, the best grafts that can be secured from a seedling stock. Price per 100 grafts of a sort, 75 cents; if worked on No. 2 stocks, 60 cents per 100.

Fig. 1 in above cut represents a bunch of cions.

Figure 7 in above cut represents a bunch of No. 1 Apple Seedlings.

Figure 10 in above cut represents a bunch of No. 2 Apple Seedlings, branched roots.

APPLE SEEDLINGS PRICED ON APPLICATION.



YOUNG STOCK for LINING OUT in NURSERY ROWS AND FOREST TREE PLANTING

Half Tone Photo Snowing Section Propagation Sheds—Covering about Two Acres, under which the many Seeds are Germinated and likewise Cuttings are Rooted.

YOUNG STOCK FOR LINING OUT IN NURSERY ROWS SEEDLINGS AND SHRUBS.

	Per 10	Per 50	Per 100	Per 500	Per 1000
Barberry, Thunbergia seedlings, 4 inches.....	.50	1.50	2.75		
Barberry, Thunbergia seedlings, 12 to 18 inches.....	.75	2.50	3.75		
Deutzia Gracilis (Florist Flower), 6 to 8 inches.....	.60	2.00	3.50		
Deutzia, assorted in 4 sorts, 8 to 12 inches, each sort....	.50	1.50	2.75		
Exochordia, 12 to 18 inches.....	.40	1.25	2.00	9.00	15.00
Golden Bell, (two year), 8 to 12 inches, each variety	.40	1.25	2.00	9.00	
Japan Quince (scarlet), Rooted Stools.....	.50	1.75	3.00		
Japan Quince (white), Rooted Stools.....	.60	2.00			
Kerria Japonica, Rooted Stools.....	.40	1.25	2.00		
Lilac, Common, Rooted Stools.....	.40	1.25	2.00		
Paw Paw 2 year.....	\$.50	\$1.25	\$2.00	\$ 9.00	\$15.00
Privet, California, 6 to 8 inch.....	.30	1.00	1.75	5.50	10.00
Privet, (Amoor) River, 4 to 6 inches.....	.60	2.00			
Spirea, 5 sorts 8 inches up, each variety.....	.50	1.50	2.75	12.50	
Snowball, Rooted Layers.....	.60	2.25	4.00	15.00	
Weigelia, 7 to 10 inches, 4 sorts; each variety.....	.60	2.25	4.00	15.00	
Weigelia, Variegated, 6 to 8 inches.....	.90	3.25	6.00		

VINES AND CREEPERS.

	Per 10	Per 50	Per 100	Per 500	Per 1000
Honeysuckle, 3 varieties, rooted plants, each variety.....	\$.30	\$1.00	\$1.75	\$5.00	\$8.00
Ivy, Boston (Ampelopsis Veitchii).....	.50	1.50	2.75		

Read Terms and Conditions of Sale Before Ordering.

FOREST TREE SEEDLINGS.

	Per 10	Per 50	Per 100	Per 500	Per 1000
Birch, European, 6 to 8 inches.....	\$.12½	\$.25	\$.45	\$2.40	\$4.50
Birch European White, 8 to 12 inches.....	.15	.35	.60	2.75	5.00
Birch, European White, 12 to 18 inches.....	.20	.50	.80	3.75	7.00
Birch, 2 to 3 feet60	2.50	4.50		
Elm, White, 12 to 18 inches, 2 year.....	.15	.30	.50	2.25	4.00
Russian Mulberry, 1 year15	.25	.40	1.75	3.00
Soft Maple, 8 to 12 inches, 1 year.....	.15	.20	.30	1.25	2.00
Soft Maple, 12 to 18 inches, 1 and 2 year.....	.15	.25	.40	1.75	3.00

EVERGREENS—ROOT CUTTINGS AND GRAFTED.

Arbor Vitae, American, 8 inches and up.....	\$.50	\$1.50	\$2.50	\$11.00	\$20.00
Arbor Vitae, American Golden, 6 to 8 inches.....	.60	2.00	3.50	16.00	
Arbor Vitae, Hovey's 6 inches and up.....	.50	1.50	2.50	11.00	20.00
Arbor Vitae, Pyramidal, 4 inches and up.....	.40	1.25	2.00	8.00	15.00
Arbor Vitae, Pyramidal, 6 inches and up.....	.50	1.50	2.50	11.00	20.00
Arbor Vitae, Siberian, 6 inches and up.....	.50	1.75	3.00	15.00	28.00
Arbor Vitae, Woodward, 4 inches and up.....	.40	1.25	2.00	8.00	15.00
Arbor Vitae, Woodward, 6 inches and up.....	.50	1.50	2.50	11.00	20.00
Cypress, Lawson, Blue, 6 to 8 inches.....	1.20	4.00	7.00		
Juniper, Savin, 6 inches and up.....	.50	1.50	2.50	11.00	20.00
Juniper, Irish, 6 inches and up.....	.50	1.75	3.00	15.00	28.00
Retinospora Plumosa Aurea, 4 o 6 inches.....	.80	3.00			
Retinospora Pisifera Aurea, 4 to 6 inches.....	.80	3.00	5.00		

YOUNG EVERGREENS, CLIMBERS AND CREEPERS

	Per 10	Per 50	Per 100	Per 500	Per 1000
Cross Vine Bigonia Crucigera	\$.60	\$2.00	\$3.50		
Eunonymous Radicans Variegated60	2.00	3.50		
Eunonymous Radicans Green50	1.75	3.00		
Ivy, English, hardy on a stone or brick wall or as a ground vine50	1.75	3.00		
Vinca Minor (Blue Myrtle)30	1.00	1.75		

MOSS AND MISCELLANEOUS ARTICLES.

Label Wire, brass, per pound.....					\$.60
Labels, Tree, (packing contains 1,000) per package.....					.70
Burlap, per yard.....					.10
Sisal Rope, per pound15
Binder Twine, per pound.....					.15
Moss, dampened for packing, per 100 pounds.....					1.00
Moss, dry, per bale (in orders of two bales and over @ \$2.00 per bale).....					2.25
The Henry Coil Spring Pruning Shears, postpaid, each.....					1.00
Raffia, per pound20

THOMAS' AMERICAN FRUIT CULTURIST

Containing practical directions for the propagation and culture of fruits adapted to the United States. Twenty-first edition thoroughly revised, greatly enlarged, up-to-date. A very handsome volume of over 800 pages, profusely illustrated with over 800 figures and engravings. Bound in English muslin.

Price, by mail, postage free to all parts of United States, \$3.00.

This book has long been the most practically useful one upon the fruits of the United States, and is today the only one in the English language which is up-to-date, all others being from ten to twenty years old. In this edition entirely new chapters have been added upon insects and diseases. "The Spraying of Fruits," by Prof. Bailey; on Agricultural Experiment Stations; on Wild Fruits; on Nuts; on the Citrus Fruits and other Sub-Tropical Fruits; the Persimmon, etc., by Mr. Hart. Prof. Budd has added descriptions and figures of new Russian apples, while hundreds of new varieties of apples, cherries, grapes, peaches, pears, plums and the bush fruits have been described and figured.

All figures of fruits are drawn to a scale, so as to give a correct idea of size.

NOTE.—Orders for Thomas' American Fruit Culturist will be sent to publishers to be filled, as we do not keep the books in stock.

We want all our customers to read first-class, up-to-date horticultural papers, so as to keep thoroughly posted on horticultural matters. Therefore, after thorough investigation into the merits of the several publications of the character, we cheerfully recommend that you subscribe for as many of the following as you can, each having a special line:

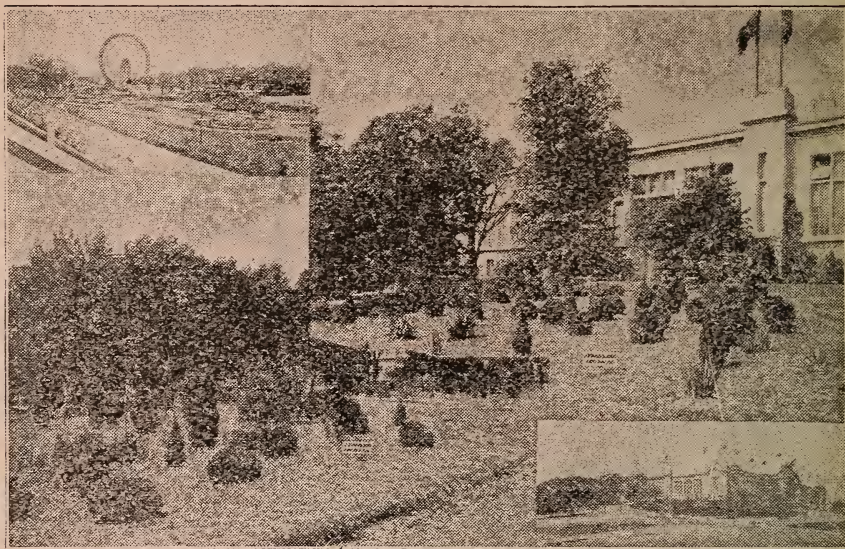
THE FARM MONEY MAKER, Cincinnati, O., special fruit and vegetable paper; fully illustrated; from 16 to 36 pages every month. Regular price is 50 cents a year.

PRACTICAL FRUIT GROWER, "True to Name," Springfield, Mo. Articles by experienced fruit growers a special feature. Published monthly at 50 cents a year. Send 10 cents as a trial subscription for three months.

THE RURAL NEW-YORKER. The Business Farmer's Paper. A national weekly journal for country and suburban homes. Subscription, one dollar a year. Remittances may be made by money order, express order or bank draft to The Rural New-Yorker, 409 Pearl Street, New York.

Read Terms and Conditions of Sale Before Ordering.

Four Sections of our Exhibit of Ornamental Evergreens, Deciduous Trees, Etc. at the World's Fair, St. Louis, Mo., 1904, East of Agricultural Building. Other Exhibits we had in the Rose Gardens and near the Floral Clock, besides some at the Missouri State Building.



Embellishments that won the Gold Medal for us at World's Fair, St. Louis.

We were awarded **A GOLD MEDAL** on our Exhibits in Group 108 on Ornamental Evergreens, Shrubs and Shade Trees.

A SILVER MEDAL in Group 107 on Exhibit of Fruits.

We Furnish Large Estates with Ornamental Trees and Plants

Extensive Growers of Ornamental Trees, Evergreens, Shrubs, Vines, Roses, **PEONIES**, Dahlias, Etc. for Landscape Planting, Parks and Cemeteries.

Read Terms and Conditions of Sale Before Ordering.

Bud and Scion Price List Sent on Application.

ADDRESS ALL ORDERS TO

WILD BROS. NURSERY CO., SARCOXIE, MO.