

Historic, archived document

Do not assume content reflects current scientific knowledge, policies, or practices.

62,01

LIBRARY
RECEIVED
★ OCT 5 1926 ★
U. S. Department of Agriculture

WHOLESALE PRICE LIST
FALL 1926 - SPRING 1927

EXCLUSIVELY
ORNAMENTALS
and
Nursery Supplies
AT WHOLESALE



CHASE NURSERY CO., INC.
CHASE, ALABAMA



Our 36th Year In Alabama

CHASE, ALABAMA,

October 1st, 1926.

TO THE TRADE:

At this writing everything seems rosy. Of late we have had ample moisture, and, as a whole, the nursery grounds at Chase never looked better. With no mishap, we should have about the nicest lot of Shrubs, Evergreens and Roses we have ever dug. We are a little short on Amoor River North Privet, but otherwise our stock is well balanced.

Our production now is "Ornamentals Exclusively," and we are "Wholesale Exclusively." We are now in our fourth year since cutting out fruit trees and heavy shade trees, and the fact that by having fewer lines of endeavor we can better serve on the items that we specialize in is evidenced by the many nice bouquets thrown our way by our friends who really like "Chase's Alabama Grown." These greatly appreciated and delightfully fragrant bouquets are, in part, scattered throughout this list. Ain't life GRAND?

We are always greatly pleased to add new customers to our list, but to hold our old friends for more than thirty years is the most satisfying thing we do—and there are many on our books who have had goods from us without a break for more than a quarter of a century.

North Alabama is not "away down South among the crocodiles and palm trees" as can readily be realized when you glimpse the two winter views (photographed last January) shown herein. Our products are not grown in a tropical land, but are produced under just-right conditions of climate and soil. While we do not always have winter scenes like those shown herein, yet we do always have real winter conditions, temperatures around zero, four to six inches of frost in the ground, plenty of cold to harden up the stock properly—and not too much to interfere with digging and shipping every week (usually) from October to April. As a result of these conditions, coupled with right methods of digging and handling, our products are "right at home and doing well" in every state in the Union,—and in Cuba, Mexico and China. If YOU have not yet tried out "CHASE'S ALABAMA GROWN," please let us figure on your want list no matter where you live.

And do not fail to take a good look at the list of Nurserymen's Supplies herein. There are a number of new and interesting items shown for the first time in this issue.

Remember that Chase, Alabama, is on two railroads, has both Express Companies, both Telegraph Lines, and that the Post Office is within a hundred yards of our office. Try us on a RUSH order.

Yours very truly,
CHASE NURSERY COMPANY.

Our thirty-sixth year in Alabama.

WHOLESALE PRICE LIST

FALL AND SPRING
1926-1927

Chase Nursery Company

(INCORPORATED)

CHASE, ALABAMA

HENRY B. CHASE
President

ROBERT C. CHASE
Secretary-Treasurer



CHASE, ALABAMA, IS SERVED BY

POSTAL TELEGRAPH COMPANY
WESTERN UNION TELEGRAPH COMPANY
BELL TELEPHONE. Local and Long Distance
N., C. & ST. L. RAILWAY
SOUTHERN RAILWAY
AMERICAN RAILWAY EXPRESS COMPANY
SOUTHEASTERN EXPRESS COMPANY
And is a Money Order Postoffice



SPECIAL NOTICE—This list is intended for the **TRADE ONLY**. If it reaches people **NOT** entitled to Trade Prices, we will thank any Nurseryman or Florist to advise us, so that our mailing list may be corrected. We do not employ agents. We do not sell at retail. We do not pack dealers' orders on our grounds. We do not authorize dealers to use our name.

TERMS AND CONDITIONS

SHIPMENTS

Please state how you want your shipments made, whether by freight or express; also route. Where no instructions are given, we will ship as we think best serves your interests without assuming responsibility.

The risk and cost of transportation belong to purchaser.

CREDIT

Usual terms to parties of known responsibility. We will not accept orders until we believe the buyer is good for the account. Cash before shipment required from parties unknown to us, or references with sufficient time for investigation before shipment.

PRICES

We quote prices, per 10, per 100, per 1,000, as our stock warrants, and will supply nurserymen and dealers at prices named regardless of the size of the order, except in cases of long assorted lists of small quantities, when an additional charge will be made to cover the extra labor involved. Prices are subject to market changes.

GRADES

We grade liberally. All shrubs of specified sizes are well furnished and well rooted. Culls are as rigidly excluded from the lightest grades listed as from the heavier stock. Our rule is, "WHEN IN DOUBT, PUT IT IN THE LOWER GRADE." Detailed information as to our method of grading Hedge Plants and Roses is given elsewhere in this list.

LIABILITY AND CLAIMS

We are not liable for injury to stock from frost, hail, fire, or other causes beyond our control, and book all orders with this understanding. While we use every means at our command to secure prompt delivery, we are not liable for delays in transit; our responsibility ends upon delivery in good order to railway company. Remedy for loss must lie between the buyer and the railway company, but we will gladly render all the aid we can. Any other claims must be made immediately after receipt of stock.

NON-WARRANTY CLAUSE

We give no warranty, express or implied, as to description, quality, productiveness, or any other matter, of any nursery stock, seeds, bulbs or plants we sell.

Nanking, China, Feb. 26, 1926—"The nursery stock arrived day before yesterday. Material in fine shape."



"AWAY DOWN SOUTH IN ALABAMA"

Our Office Grounds January 7, 1926

CODE WORDS—TELEGRAPHIC ORDERS

When more than one grade is listed, a code word is used. Much expense can be saved in telegraphic orders by using these code words.

BOXING

Charges as low as possible for well-made boxes, paper-lined:

	7½ ft.	9½ ft.
30 x 30.....	\$3.50	\$4.00
24 x 30.....	3.25	3.50
24 x 24.....	3.00	3.25
18 x 24.....	2.50	2.75
18 x 18.....	2.25	2.50
15 x 15.....	1.75	---
12 x 12.....	1.50	---

On orders for roses, small shrubs, etc., we can frequently use dry goods cases or shoe boxes at lower cost, and shall endeavor at all times to make lowest possible charges.

Bales: 25c to \$3.50, according to size.

REFERENCE

As to our standing and responsibility we refer to any bank or business house in Huntsville, Alabama, the Commercial Agencies, and the leading nurserymen of the United States.

We cannot undertake to supply long and much assorted lists of stock calling for only small quantities of each kind, save at an advance of 10 to 25 per cent above our printed rates.



OUR OFFICE FROM TOP OF PACKING HOUSE

DECIDUOUS SHRUBS

NOTE: All stock in our List is recorded under names recommended by the American Joint Committee on Horticultural Nomenclature in their book, "Standardized Plant Names." You should have a copy of this book which can be secured from Harlan P. Kelsey, Secretary, Salem, Mass.

All stock two years old except as noted, grown in wide rows and well furnished.

	Code	Per 10	Per 100
AMYGDALUS, Flowering Almond.			
3 to 4 feet	Sable	\$ 6.00	
2 to 3 feet	Sabot	5.00	
18 to 24 inches	Sachet	4.00	
Red	White		
BACCHARIS halimifolia, Groundselbush.			
4 to 5 feet	Sack	5.00	
3 to 4 feet	Sacred	4.00	
BERBERIS thunbergi, Japanese Barberry.			
30 to 36 inches	Sad		\$35.00
24 to 30 inches	Sadden		20.00
18 to 24 inches	Safe		12.00
15 to 18 inches	Saffron		9.00
12 to 15 inches	Sag		7.00
BUDDLEIA lindleyana, Lindley Butterflybush.			
2 year	Sage	2.50	
1 year	Sailor	2.00	
BUDDLEIA veitchi, Veitch Butterflybush.			
2 year	Saint	2.50	
CALYCANTHUS floridus, Common Sweetshrub.			
3 to 4 feet	Sallow	5.00	
2 to 3 feet	Salary	4.00	
18 to 24 inches	Salic	3.00	
12 to 18 inches	Sally	2.00	
CARYOPTERIS incana, Common Bluebeard.			
2 year, 12 to 18 inches	Salon	2.50	
1 year, 8 to 12 inches	Salt	2.00	
CEDRELA sinensis, Chinese Cedrela.			
4 to 5 feet	Salute	7.50	
3 to 4 feet	Salve	5.00	



THE SIGN BY THE OFFICE DOOR

DECIDUOUS SHRUBS—Continued

	Code	Per 10	Per 100
CERCIS canadensis, American Redbud.			
2 to 3 feet	Sambo	3.50	
18 to 24 inches	Sample	2.50	
CORNUS florida plena, Doubleflowering Dogwood.			
3 to 4 feet	Sand	30.00	
2 to 3 feet	Sandal	20.00	
18 to 24 inches	Sanity	15.00	
CORNUS florida rubra, Redflowering Dogwood.			
4 to 5 feet	Sank	40.00	
3 to 4 feet	Sap	30.00	
2 to 3 feet	Sapid	20.00	
18 to 24 inches	Sapter	15.00	
DEUTZIA gracilis, Slender Deutzia.			
18 to 24 inches	Sash	4.00	
15 to 18 inches	Sat		30.00
12 to 15 inches	Satan		25.00
DEUTZIA lemoinei, Lemoine Deutzia.			
15 to 18 inches	Satchel	3.00	
12 to 15 inches	Sateen	2.50	
DEUTZIA, Pride of Rochester.			
3 to 4 feet	Satire		20.00
2 to 3 feet	Sauce		15.00
18 to 24 inches	Saute		10.00
DEUTZIA scabra, Fuzzy Deutzia.			
2 to 3 feet	Savage		16.00
18 to 24 inches	Savant		10.00
DEUTZIA scabra plena, Double Rose Deutzia.			
3 to 4 feet	Save		20.00
2 to 3 feet	Savior		15.00
18 to 24 inches	Saw		10.00
EXOCHORDA grandiflora, Common Pearlbrush.			
2 to 3 feet	Sawfly	\$ 4.00	
18 to 24 inches	Sax	3.00	

Connecticut, January 2, 1926—"We are very glad to say that Car F. G. E. 33237 came thru in fine shape. Everything has passed muster, and bill is O. K'd for payment June 1st."



ALTHEAS

WE HAVE 'EM—TREE AND BUSH FORM

OUR ALTHEA BLOCKS ARE FREE OF MIXTURES

DECIDUOUS SHRUBS—Continued

	Code	Per 10	Per 100
FOSYTHIA.			
3 to 4 feet.....	Saxon		20.00
2 to 3 feet.....	Scab		15.00
18 to 24 inches.....	Scald		10.00

intermedia, Border F.
 suspensa fortunei, Golden Bell
 viridissima, Greenstem F.

HIBISCUS syriacus, Shrub-Althea (Bush Form).			
3 to 4 feet, 3 year old.....	Scalp		25.00
2 to 3 feet.....	Scamp		17.50
18 to 24 inches.....	Scan		12.50
12 to 18 inches.....	Scant		7.50

anemonaeflorus (dbles. rose)	Jeanne d'Arc (dbles. white)
Ardens (dbles. violet)	Lady Stanley
Boule de Feu	(semi-dbles. pink)
(dbles. reddish purple)	paeonaeflorus (dbles. flesh)
Duchess de Brabant	purpurea semi-plena
(dbles. red)	(dbles. purple)
	totus albus (single white)

HIBISCUS syriacus, Shrub-Althea, (Rare varieties. Grafted).			
18 to 24 inches.....	Scoff		35.00
12 to 18 inches.....	Scorn		25.00

coelestis (single blue)
 rubis (single red)
 Variegated Leaf

HIBISCUS syriacus, Shrub-Althea (Tree Form).			
4 to 5 feet.....	Scream		45.00
3 to 4 feet.....	Screw		35.00
2 to 3 feet.....	Scrip		20.00

anemonaeflorus	Jeanne d'Arc
Ardens	Lady Stanley
Boule de Feu	paeonaeflorus
Duchess de Brabant	purpurea semi-plena



BLOCK OF TOTUS ALBUS AT CHASE

DECIDUOUS SHRUBS—Continued

	Code	Per 10	Per 100
HYDRANGEA arborescens sterilis, Snowhill.			
2 to 3 feet.....	Scroll		45.00
18 to 24 inches.....	Sea		35.00
HYDRANGEA paniculata grandiflora, Peegee.			
2 to 3 feet.....	Search		40.00
18 to 24 inches.....	Seal		30.00
12 to 18 inches.....	Seat		20.00
HYPERICUM moserianum, Goldflower.			
1 year, 8 to 12 inches, bushy.....	Secret		25.00
HYPERICUM patulum henryi, Henry Hypericum.			
1 year, 8 to 12 inches, bushy.....	Sect		25.00
JASMINUM nudiflorum, Winter Jasmine.			
3 to 4 feet.....	Sedan		25.00
2 to 3 feet.....	Sedate		20.00
18 to 24 inches.....	Sedge		15.00
KERRIA japonica flore-pleno, Double Kerria.			
2 to 3 feet.....	Seek	\$ 4.50	
18 to 24 inches.....	Seer	3.50	
LAGERSTROEMIA indica, Crapemyrtle.			
2 to 3 feet.....	Sense	3.50	
18 to 24 inches.....	Sentry		\$25.00
12 to 18 inches.....	Serf		20.00
Lavender	Pink	Red	
LONICERA, Upright Honeysuckle.			
3 to 4 feet.....	Shake		22.50
2 to 3 feet.....	Shaken		17.50
18 to 24 inches.....	Shame		12.50
bella albida, white Belle H.	tatarica alba, white Tatarian		
fragrantissima, Winter H.	tatarica, rosea, pink Tatarian		
morrowi, Morrow H.	tatarica rubra, red Tatarian		
MELIA azedarach umbraculiformis, Texas Umbrella Tree.			
4 to 5 feet.....	Shameful		50.00
3 to 4 feet.....	Shampoo		40.00
2 to 3 feet.....	Shank		30.00
PHILADELPHUS, Mock Orange.			
3 to 4 feet.....	Shark		20.00
2 to 3 feet.....	Sheep		15.00
18 to 24 inches.....	Sheen		10.00
coronarius,	nivalis, Snowbank M.		
Sweet Mock Orange	speciosissimus,		
grandiflorus,	Roundleaf M.		
Big Scentless M.			

Maryland, September 14, 1925—"I never lost a single plant of the Abelia bought last year."



CULTIVATING BLOCKS OF SHRUBS AT CHASE

DECIDUOUS SHRUBS—Continued

	Code	Per 10	Per 100
PHILADELPHUS, Mock Orange (Rare varieties).			
2 to 3 feet.....	Sheet	2.50	
18 to 24 inches.....	Shekel	2.00	
Avalanche	lemoinei erectus		
Banniere	Mont Blanc		
Conquete	Rosace		
diantheflorus plenus	Zeyher		
(double Mock Orange)			
PHYSOCARPUS opulifolius aureus, Goldleaf Ninebark.			
3 to 4 feet.....	Shelf		25.00
2 to 3 feet.....	Ship		20.00
18 to 24 inches.....	Shoe		15.00
PRUNUS othello, Purpleleaf Plum.			
5 to 7 feet.....	Shook	7.50	
4 to 5 feet.....	Shower		60.00
3 to 4 feet.....	Shred		50.00
2 to 3 feet.....	Shrill		35.00
PRUNUS triloba plena, Doubleflowering Plum.			
4 to 5 feet.....	Shrine	6.00	
3 to 4 feet.....	Sill		50.00
2 to 3 feet.....	Simple		40.00
18 to 24 inches.....	Sing		30.00
SAMBUCUS, aurea, Golden Elder.			
3 to 4 feet.....	Sink	3.50	
2 to 3 feet.....	Sit	2.50	
18 to 24 inches.....	Sister	2.00	
SPIREA Anthony Waterer.			
18 to 24 inches.....	Skate		25.00
15 to 18 inches.....	Skirt		17.50
12 to 15 inches.....	Slat		12.50
8 to 12 inches.....	Slave		8.50
SPIREA arguta, Garland Spirea.			
30 to 36 inches.....	Sled		25.00
24 to 30 inches.....	Slice		20.00
18 to 24 inches.....	Slide		17.50
12 to 18 inches.....	Slip		12.50
8 to 12 inches.....	Slot		7.50

Maryland, March 19, 1926—"The car of stock came in Tuesday in splendid shape, packed beautifully, and we are very much pleased with the plants."

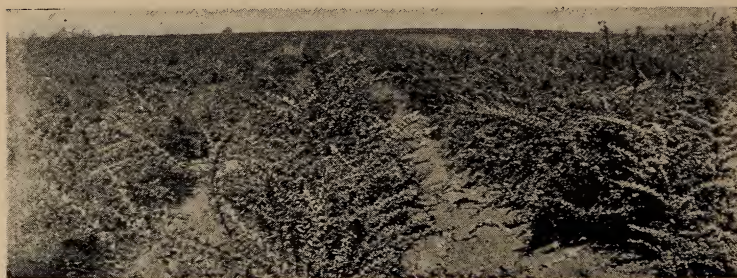


BLOCK OF VERY NICE SPIREA A. W.

DECIDUOUS SHRUBS—Continued

	Code	Per 10	Per 100
SPIREA <i>billiardi alba</i> , White Billiard Spirea.			
3 to 4 feet.....	Slug	\$ 2.50	
2 to 3 feet.....	Song		\$18.00
18 to 24 inches.....	Sow		12.50
SPIREA <i>billiardi rosea</i> , Pink Billiard Spirea.			
2 to 3 feet.....	Soup	2.00	
18 to 24 inches.....	Souse		15.00
12 to 18 inches.....	South		10.00
SPIREA <i>douglasi</i> , Douglas Spirea.			
2 to 3 feet.....	Space		18.00
18 to 24 inches.....	Span		12.00
12 to 18 inches.....	Spangle		7.50
SPIREA <i>froebeli</i> , Froebel Spirea.			
24 to 30 inches.....	Spank	2.50	
18 to 24 inches.....	Spar		20.00
15 to 18 inches.....	Spark		15.00
12 to 15 inches.....	Spat		10.00
SPIREA <i>opulifolia</i> —See <i>Physocarpus</i> .			
SPIREA <i>prunifolia plena</i> , Double Bridalwreath Spirea.			
3 to 4 feet.....	Spear	3.50	
2 to 3 feet.....	Speck		25.00
18 to 24 inches.....	Speech		18.00
SPIREA <i>reevesiana</i> , Reeves' Spirea (single).			
3 to 4 feet.....	Speed		25.00
2 to 3 feet.....	Spend		20.00
18 to 24 inches.....	Spice		15.00
SPIREA <i>thunbergi</i> , Thunberg Spirea.			
30 to 36 inches.....	Spin		35.00
24 to 30 inches.....	Spire		25.00
18 to 24 inches.....	Spite		20.00
15 to 18 inches.....	Splint		17.50
12 to 15 inches.....	Spoke		12.50
8 to 12 inches.....	Spot		8.00

Washington, D. C., March 10, 1926—"I wish to say that your shipment arrived in very good condition, and the method of shipping it without boxes in this case was very satisfactory."



TWO YEAR BARBERRY OF CHARACTER
DECIDUOUS SHRUBS—Continued

	Code	Per 10	Per 100
SPIREA vanhoutti, Vanhoutte Spirea.			
4 to 5 feet.....	Spray		25.00
3 to 4 feet.....	Spree		17.50
2 to 3 feet.....	Sprint		12.50
18 to 24 inches.....	Squib		8.00
12 to 18 inches, 1 year.....	Stab		5.00
SPIREA walufi, Waluf Spirea.			
15 to 18 inches.....	Stack		20.00
12 to 15 inches.....	Stage		15.00
8 to 12 inches.....	Stain		10.00
SYMPHORICARPOS mollis, Spreading Snowberry.			
2 to 3 feet.....	Stamp		20.00
18 to 24 inches.....	Star		12.50
12 to 18 inches.....	Stave		7.50
SYMPHORICARPOS racemosus, Common Snowberry.			
2 to 3 feet.....	Stear		20.00
18 to 24 inches.....	Stem		12.50
12 to 18 inches.....	Stench		7.50
SYMPHORICARPOS vulgaris, Coralberry.			
2 to 3 feet.....	Stencil		15.00
18 to 24 inches.....	Step		10.00
12 to 18 inches.....	Stew		5.00
SYRINGA, Lilac (Assorted named varieties).			
18 to 24 inches.....	Stiff	4.50	
12 to 18 inches.....	Still	3.00	
alba grandiflora	Ludwig Spaeth		
(single white)	(single purple)		
Chas. X (single purple)	Marc Micheli (double blue)		
Doyen Keteleer (double blue)	Michel Buchner		
Jacques Callot	(double pale lilac)		
(double reddish violet)	Vauban		
Jean Mace (double purple)	(double pinkish purple)		
SYRINGA chinensis, Chinese Lilac.			
3 to 4 feet.....	Stilted		\$45.00
2 to 3 feet.....	Sting		35.00
18 to 24 inches.....	Stir		25.00
SYRINGA rothomagensis—See Syringa chinensis.			
SYRINGA japonica, Japanese Tree Lilac.			
2 to 3 feet.....	Stove	\$ 4.00	
18 to 24 inches.....	Stork	3.00	

Long Island, March 27, 1926—"The car of plants has been unloaded this morning, and I wish to say that I am very much pleased with the shipment. Everything is up to expectations.



YOUNG SPIREA THUNBERGI AT CHASE

DECIDUOUS SHRUBS—Continued

	Code	Per 10	Per 100
TAMARIX, Assorted.			
3 to 4 feet.....	String		25.00
2 to 3 feet.....	Stripe		18.00
africana, African Tamarix	gallica, French Tamarix		
VIBURNUM carlesi, Fragrant Viburnum.			
15 to 18 inches.....	Strive	10.00	
12 to 15 inches.....	Stud	7.50	
WEIGELA, Assorted.			
3 to 4 feet.....	Stun		25.00
2 to 3 feet.....	Stupid		20.00
18 to 24 inches.....	Style		15.00
12 to 18 inches.....	Subdue		10.00
amabalis (rose)	Steltzner (pink)		
gigantiflora (white)	Vanhoutte (pink)		
rosea (pink)			
WEIGELA Abel Carriere.			
3 to 4 feet.....	Sublime	3.50	
2 to 3 feet.....	Submit	3.00	
18 to 24 inches.....	Subside	2.50	
WEIGELA candida, Snow Weigela.			
3 to 4 feet.....	Subsist	3.50	
2 to 3 feet.....	Subway	3.00	
18 to 24 inches.....	Suck	2.50	
WEIGELA Eva Rathke.			
2 to 3 feet.....	Suds	4.50	
18 to 24 inches.....	Suffer	3.50	
12 to 18 inches.....	Sugar	2.50	
WEIGELA nana variegata, Dwarf Variegated Weigela.			
18 to 24 inches.....	Sulk		25.00
12 to 18 inches.....	Summer		17.50
WEIGELA, Variegated (Panaches).			
2 to 3 feet.....	Sung		25.00
18 to 24 inches.....	Sure		20.00
12 to 18 inches.....	Sustain		15.00

Iowa, December 17, 1925—"We recognize the fact that your firm are good graders, and your stock averages good."



BLOCK OF CONIFERS AT CHASE

CONIFERS

Prices include balling and burlapping, but many of the smaller sizes of the more hardy varieties may be safely handled with roots puddled in stiff mud. If wanted with roots puddled, you may deduct from the printed prices as follows:

Plants under 2 feet.....		10c
2 to 3 feet.....		15c
3 to 4 feet.....		20c
	Code	Per 10
BIOTA—See Thuja.		
Cedrus deodara, Deodar.		
4 to 5 feet.....	Eager	\$50.00
3 to 4 feet.....	Eagle	40.00
30 to 36 inches.....	Ear	35.00
CHAMAECYPARIS lawsoniana, Lawson Cypress.		
6 to 8 feet.....	Earl	50.00
CHAM. laws. alumi, Scarab Cypress.		
18 to 24 inches.....	Earth	20.00
15 to 18 inches.....	Ease	17.50
CUNNINGHAMIA lancelota, Chinese Fir.		
3 to 4 feet.....	East	30.00
30 to 36 inches.....	Easy	25.00
24 to 30 inches.....	Eat	20.00
18 to 24 inches.....	Ebb	15.00
CUPRESSUS arizonica, Arizona Cypress.		
30 to 36 inches.....	Ebony	35.00
24 to 30 inches.....	Eclat	30.00
CUPRESSUS sempervirens fastigiata, Columnar Italian C.		
3 to 4 feet.....	Edge	45.00
30 to 36 inches.....	Edict	40.00
24 to 30 inches.....	Edify	35.00
18 to 24 inches.....	Edit	25.00

Peking, China, February 23, 1926—"The bundle of plants arrived on Sunday, the 21st, and were unpacked yesterday. They appeared to be in fine condition. The roots were still moist and the wood appears healthy. It was a surprise to us that they could come so far and be in such good condition."



“AWAY DOWN SOUTH” IN JANUARY

Another winter scene taken near by.

CONIFERS—Continued

	Code	Per 10
JUNIPERUS communis, Common or English Juniper.		
3 to 4 feet.....	Editor	20.00
30 to 36 inches.....	Educate	15.00
24 to 30 inches.....	Educe	10.00
JUNIPERUS communis hibernica, Irish Juniper.		
4 to 5 feet.....	Eel	30.00
3 to 4 feet.....	Effect	20.00
30 to 36 inches.....	Effigy	15.00
24 to 30 inches.....	Effort	10.00
18 to 24 inches.....	Egad	7.50
JUNIPERUS communis montana, Mountain Juniper.		
18 to 24 inches.....	Egg	20.00
15 to 18 inches.....	Eject	15.00
12 to 15 inches.....	Else	10.00
JUNIPERUS excelsa stricta, Spiny Greek Juniper.		
24 to 30 inches.....	Elude	25.00
18 to 24 inches.....	Embed	20.00
15 to 18 inches.....	Emit	15.00
12 to 15 inches.....	Enlist	10.00
JUNIPERUS pfitzeriana, Pfitzer Juniper.		
18 to 24 inches.....	Enroll	22.50
15 to 18 inches.....	Ensue	17.50
12 to 15 inches.....	Enter	12.50
JUNIPERUS sabina, Savin.		
18 to 24 inches.....	Entice	22.50
15 to 18 inches.....	Entry	17.50
12 to 15 inches.....	Envy	12.50
JUNIPERUS sabina, tamariscifolia, Tamarix Savin.		
15 to 18 inches.....	Epic	20.00
12 to 15 inches.....	Equal	15.00

New Jersey, October 29, 1925—"The stock came in today, and we are very much pleased with same."



CEDRUS DEDORA ON OFFICE GROUNDS
(A nice block of these this year.)

CONIFERS—Continued

	Code	Per 10
JUNIPERUS scopulorum, Colorado Juniper.		
18 to 24 inches.....	Equip	\$22.50
15 to 18 inches.....	Equity	17.50
12 to 15 inches.....	Era	12.50
JUNIPERUS virginiana, Redcedar.		
6 to 8 feet.....	Erase	50.00
4 to 5 feet.....	Erode	40.00
3 to 4 feet.....	Escort	30.00
2 to 3 feet.....	Estate	22.50
PICEA excelsa, Norway Spruce.		
24 to 30 inches.....	Etch	12.50
18 to 24 inches.....	Ether	10.00
15 to 18 inches.....	Evade	7.50
12 to 15 inches.....	Even	5.00
RETINOSPORA plumosa, Plume Retinospora.		
3 to 4 feet.....	Excel	30.00
30 to 36 inches.....	Exert	25.00
24 to 30 inches.....	Exit	20.00
18 to 24 inches.....	Extend	17.50
RETINOSPORA plumosa aurea, Goldenplume Retinospora.		
3 to 4 feet.....	Extol	30.00
30 to 36 inches.....	Extract	25.00
24 to 30 inches.....	Exude	20.00
18 to 24 inches.....	Exult	17.50
THUJA orientalis, Chinese Arborvitae.		
3 to 4 feet.....	Fact	17.50
2 to 3 feet.....	Fad	12.50
18 to 24 inches.....	Fair	8.00
15 to 18 inches.....	Falter	6.00
12 to 15 inches.....	Fame	4.00
T. or. aurea conspicua, Goldspire Arborvitae.		
3 to 4 feet.....	Farm	37.50
30 to 36 inches.....	Fast	32.50
24 to 30 inches.....	Fat	27.50
T. or. aurea gracilis, Diana Arborvitae.		
15 to 18 inches.....	Fear	17.50
12 to 15 inches.....	Feast	15.00
T. or. aurea nana, Berckman's Golden Arborvitae.		
30 to 36 inches.....	Feat	35.00
24 to 30 inches.....	Feeble	30.00
18 to 24 inches.....	Feed	22.50
15 to 18 inches.....	Feel	15.00
12 to 15 inches.....	Feline	12.50



LOOKING ACROSS BLOCK OF CONIFERS

CONIFERS—Continued

	Code	Per 10
T. or. aurea pyramidalis, Golden Pyramidal Arborvitae.		
24 to 30 inches.....	Fell	27.50
18 to 24 inches.....	Fence	20.00
15 to 18 inches.....	Fend	15.00
T. or. compacta, Compact Arborvitae.		
24 to 30 inches.....	Ferment	25.00
18 to 24 inches.....	Fern	20.00
15 to 18 inches.....	Ferry	15.00
T. or. elegantissima, Yellow Column Arborvitae.		
30 to 36 inches.....	Fetch	30.00
24 to 30 inches.....	Fetter	25.00
18 to 24 inches.....	Fever	20.00
T. or pyramidalis, Pyramidal Arborvitae (Baker's).		
4 to 5 feet.....	Fickle	45.00
3 to 4 feet.....	Fiddle	40.00
30 to 36 inches.....	Field	30.00
24 to 30 inches.....	Fife	25.00
18 to 24 inches.....	Fight	20.00
T. orientalis, Rosedale Hybrid.		
24 to 30 inches.....	Fill	\$17.50
18 to 24 inches.....	Final	15.00
15 to 18 inches.....	Finance	12.50
TSUGA canadensis, Canadian Hemlock.		
24 to 30 inches.....	Find	20.00
18 to 24 inches.....	Fire	17.50
15 to 18 inches.....	Firm	15.00

Nebraska, December 15, 1925—"Everything reached us in good condition and was satisfactory. I think the Chase Nursery Company, so far, has been the only one that really delivered everything we bought at one time."

Missouri, June 23, 1926—"Enclosed herewith please find our check covering our account in full. To write this check was certainly the greatest pleasure of our spring business. After purchasing some \$14,000.00 worth of nursery stock, of which your account was next highest, we just wish to say that your grading and the Chase way of handling nursery stock in general, exceeded the others so far that it would be heartless to make a comparison."

Arkansas, December 11, 1925—"The car arrived, and everything looks fine."



**SOLID FIELD OF ABELIA
EVERGREEN SHRUBS**

Broadleaved Evergreens—Prices quoted are for plants with puddled roots, except as noted. Where we specify "B. & B.," in our judgment plants should be handled with a ball. If you prefer to handle such plants with roots puddled you may deduct from list price as per scale on Conifers—see page—12. If you want plants dug with a ball that are not listed "B. & B.," there will be an additional charge as follows:

Plants under 2 feet.....	10c
2 to 3 feet.....	15c
3 to 4 feet.....	25c
4 to 5 feet.....	35c
5 to 6 feet.....	50c

In ordering please say if wanted "puddled" or "B. & B."

	Code	Per 10	Per 100
ABELIA grandiflora, Glossy Arbutus.			
3 year, 4 to 5 feet, B.&B.	Habit	\$15.00	
3 year, 3 to 4 feet, B.&B.	Hack		\$100.00
2 year, 2 to 3 feet	Hackle		35.00
2 year, 18 to 24 inches	Hag		25.00
2 year, 15 to 18 inches	Hall		15.00
1 year, 12 to 15 inches	Hallow		10.00
BUXUS sempervirens arborescens, Tree Box.			
12 to 15 inches	Halt	3.50	
8 to 12 inches	Hamlet	2.50	
BUXUS sempervirens suffruticosa, Dwarf Box.			
6 to 8 inches	Hammer		17.50
4 to 6 inches	Hamper		12.50
3 to 4 inches	Hang		7.50
EUONYMUS bungeanus, Winterberry Euonymus			
30 to 36 inches	Happy		60.00
24 to 30 inches	Harbor		45.00
18 to 24 inches	Harden		30.00
12 to 18 inches	Hark		20.00
EUONYMUS japonicus, Evergreen Burningbush.			
15 to 18 inches, B.&B.	Harm	7.50	
12 to 15 inches	Harsh	3.50	
8 to 12 inches	Hasp	2.00	
EUONYMUS radicans, Wintercreeper.			
24 to 30 inches	Hasten		45.00
18 to 24 inches	Hat		35.00
12 to 18 inches	Hazard		25.00



GROWTH TO JULY 15TH ON YOUNG LIGUSTRUM LUCIDUM

EVERGREEN SHRUBS—Continued

	Code	Per 10	Per 100
GARDENIA florida, Cape-Jasmine.			
18 to 24 inches, B.&B.	Haze	7.50	
15 to 18 inches, B.&B.	Head	6.00	
12 to 15 inches, B.&B.	Heal	4.50	
LAUROCERASUS, caroliniana, Cherry-Laurel.			
5 to 6 feet, B.&B.	Heat	30.00	
4 to 5 feet, B.&B.	Heavy	25.00	
3 to 4 feet, B.&B.	Heed	17.50	
LIGUSTRUM japonicum, Japanese Privet.			
3 to 4 feet, B.&B.	Herd	7.50	
2 to 3 feet	Hero	5.00	
18 to 24 inches	Hill	4.00	
LIGUSTRUM lucidum, Glossy Privet.			
30 to 36 inches, B.&B.	Hilt	17.50	
24 to 30 inches, B.&B.	Hint	12.50	
18 to 24 inches, B.&B.	Hire	10.00	
MAGNOLIA GLAUCA, Sweetbay.			
2 to 3 feet, B.&B.	Hiss	15.00	
18 to 24 inches, B.&B.	History	10.00	
MAGNOLIA grandiflora, Southern Magnolia.			
3 to 4 feet, B.&B.	Hitch	\$17.50	
2 to 3 feet, B.&B.	Hither	12.50	
18 to 24 inches, B.&B.	Hive	7.50	
MAHONIA aquifolium, Oregon Holly-Grape.			
2 to 3 feet, B.&B.	Hoarse	20.00	
18 to 24 inches, B.&B.	Hobby	15.00	
12 to 18 inches, B.&B.	Hock	10.00	
NANDINA domestica, Nandina.			
24 to 30 inches, B.&B.	Hoist	25.00	
18 to 24 inches, B.&B.	Hold	20.00	
15 to 18 inches, B.&B.	Holiday	15.00	
12 to 15 inches, B.&B.	Holster	10.00	
PHOTINIA serrulata, Low Photinia.			
15 to 18 inches, B.&B.	Home	20.00	
12 to 15 inches, B.&B.	Homely	15.00	
PYRACANTHA coccinea lalandi, Laland Firethorn.			
18 to 24 inches, B.&B.	Honey	20.00	
15 to 18 inches, B.&B.	Hook	15.00	
12 to 15 inches, B.&B.	Hopeful	10.00	



WISTERIA COMING ONE YEAR

These plants WILL BLOOM—propagated from blooming wood.

VINES

	Code	Per 10	Per 100
AMPELOPSIS quinquefolia, Virginia Creeper.			
2 year, No. 1.....	Vacant		\$12.50
2 year, Medium.....	Vacate		7.50
AMPELOPSIS quinquefolia engelmanni, Engelman's Creeper.			
2 year, No. 1.....	Vague		15.00
2 year, Medium.....	Vain		10.00
AMPELOPSIS veitchi—Boston Ivy—See Ampelopsis tricuspidata			
AMPELOPSIS tricuspidata, Japanese Creeper.			
2 year, Medium.....	Vale	\$3.00	
CLEMATIS, Large Flowering Assorted.			
2 year, No. 1.....	Valise		40.00
2 year, Medium.....	Valor		25.00
Henryi (white) Jackmani (purple) Mad. Andre (red)			
CLEMATIS paniculata, Sweet Autumn C.			
2 year, No. 1.....	Valid		20.00
2 year, Medium.....	Valet		15.00
HEDERA helix, English Ivy.			
2 year, No. 1.....	Valve	3.00	
LONICERA halliana, Hall's Jap. Honeysuckle.			
2 year, No. 1.....	Vamp		15.00
2 year, Medium.....	Van		10.00
LONICERA punicea, Scarlet Trumpet Honeysuckle.			
2 year, No. 1.....	Vanish		15.00
2 year, Medium.....	Vanity		10.00
WISTERIA sinensis, Seedlings.			
2 year, No. 1.....	Veal		15.00
2 year, Medium.....	Veneer		10.00
WISTERIA sinensis alba, White Chinese Wisteria.			
1 year, No. 1, Grafts and Layers.	Vapid		40.00
1 year, Medium.....	Varlet		30.00
WISTERIA sinensis purpurea, Purple Chinese Wisteria.			
1 year, No. 1, Grafts and Layers.	Vase		35.00
1 year, Medium.....	Vat		25.00

NOTE: The Wisterias listed as grafts and layers are propagated from blooming wood.

New Jersey, November 17, 1925—"Enclosed please find check for your invoice of November 12th. The nice Abelia came today and pleases us."



A BLOCK OF AMOOR RIVER NORTH

PRIVET

We grade California and Amoor River Privet "Heavy" and "Light," according to the number of canes. The 18 to 24-inch and all up "heavy" grades carry four or more strong canes from the ground. The "light" grades in these sizes carry two and three strong canes.

The 12 to 18-inch "heavy" grade carries three canes or more and the 12 to 18-inch "light" only two canes. All single stems are put in the "transplanting" grade.

	Code	Per 100	Per 1000
CALIFORNIA PRIVET.			
3 to 4 feet, heavy	Poach		\$50.00
3 to 4 feet, light	Pocket		35.00
2 to 3 feet, heavy	Poem		35.00
2 to 3 feet, light	Point		25.00
18 to 24 inches, heavy	Poise		25.00
18 to 24 inches, light	Poke		22.50
12 to 18 inches, heavy	Poker		22.50
12 to 18 inches, light	Polar		17.50
6 inches and up, transplanting ..	Polka		10.00
AMOOR RIVER NORTH.			
3 to 4 feet, heavy	Poll		100.00
3 to 4 feet, light	Polo		90.00
2 to 3 feet, heavy	Pond		90.00
2 to 3 feet, light	Ponder		70.00
18 to 24 inches, heavy	Pone		70.00
18 to 24 inches, light	Pork		50.00
12 to 18 inches, heavy	Portal		50.00
12 to 18 inches, light	Pose		35.00
6 inches and up, transplanting ..	Post		22.50
AMOOR RIVER SOUTH.			
2 to 3 feet, well branched ..	Praise		75.00
18 to 24 inches, well branched ..	Prance		50.00
12 to 18 inches, well branched ..	Prank		35.00
IBOLIUM PRIVET.			
2 to 3 feet, well branched ..	Prate	10.00	
18 to 24 inches, well branched ..	Pray	7.50	
12 to 18 inches, well branched ..	Preen	5.00	

Iowa, March 10, 1926—"We are pleased to advise we have received the Amoor River North Privet in good condition, and everything checks out satisfactorily. Many thanks for the attention given our order."



A BLOCK OF CALIFORNIA PRIVET

LODENSE PRIVET

The New DWARF Privet—It is low and dense as its name indicates. Supposed to be a sport from *Ligustrum vulgare* and is hardy. A most useful plant in formal gardens, outlining drives, walks, etc.

	Code	Per 100	Per 1000
LODENSE PRIVET.			
12 to 15 inches, well branched.....	Preface	10.00	
8 to 12 inches, well branched.....	Prig		75.00
6 to 10 inches, well branched.....	Prim		50.00

REGALS PRIVET (from cuttings, true regelianum).

2 to 3 feet, well branched.....	Prince	\$17.50	
18 to 24 inches, well branched.....	Prize	15.00	
12 to 18 inches, well branched.....	Probe	12.50	

LIGUSTRUM vulgare, European Privet.

2 to 3 feet, well branched.....	Prod		75.00
18 to 24 inches, well branched	Profit		50.00
12 to 18 inches, well branched.....	Promote		35.00
6 inches and up, transplanting....	Prop		15.00



THE "BIG BARN" AT CHASE



BLOCK OF BUDDED ROSES AT CHASE

ROSES

**Climbing Roses—2 Year—Own Roots,
Except As Noted**

The No. 1 grade carries three canes at least and 24 to 30 inches of wood. The medium grade carries two strong canes at least and about 18 inches of wood.

	No. 1 Per 100	Medium Per 100
Alida Lovett, Pink	\$30.00	\$20.00
American Pillar, Pink	20.00	14.00
Beauty of the Prairie, Red	20.00	14.00
Bess Lovett, Red	30.00	20.00
Christine Wright, Pink	30.00	20.00
Climbing American Beauty, Red	30.00	20.00
Climbing Baby Rambler, Crimson	20.00	14.00
Climbing Gruss an Teplitz, Red	30.00	20.00
Climbing Orleans, Pink	20.00	14.00
Climbing Souv. de la Malmaison, Flesh	30.00	20.00
Crimson Rambler	20.00	14.00
Dorothy Perkins, Pink	20.00	14.00
Dr. Van Fleet, Pink	30.00	20.00
Emily Gray, Yellow (Buds)	30.00	20.00
Ernst Grandpierre, White	30.00	20.00
Eugene Jacquet, Red	30.00	20.00
Excelsa, Red Dorothy Perkins	20.00	14.00
Flower of Fairfield, Everblooming Crimson R.	28.00	20.00
Fraulein Octavia Hesse, Pink	28.00	20.00
Gardenia, Yellow	30.00	20.00
Goldfinch, Yellow	30.00	20.00
Graf Zeppelin, Pink	20.00	14.00
Lady Gay, Pink	20.00	14.00
Mary Lovett, White	28.00	20.00
MARY WALLACE, Pink (Buds and Own Root)	30.00	20.00
Paul's Scarlet Climber (Buds)	30.00	20.00
Philadelphia Rambler, Crimson	20.00	14.00
Purity, White (Buds and Own Root)	28.00	20.00
Roserie, Pink	28.00	20.00
Seven Sisters, Pink	20.00	14.00
Silver Moon, White	30.00	20.00
Tausendschon, Pink	28.00	20.00
Veilchenblau, Blue	20.00	14.00
White Dorothy	20.00	14.00
White Rambler	20.00	14.00
Wichuriana	28.00	20.00

Iowa, October 21, 1925—"The roses arrived this morning in very fine shape. That sure was service, all in capital letters. for I did not expect them quite so soon. Thanks."



WHITE BABY RAMBLER (KATHARINA ZIEMET)
OWN ROOT. SHOWING GROWTH TO JUNE 15TH.

ROSES—Continued

Miscellaneous Bush Roses—2 Year—Own Root

	No. 1 Per 100	Medium Per 100
Aennchen Muller, Pink Baby.....	\$30.00	\$20.00
Blanche Double de Coubert, White Rugosa.....	30.00	20.00
Clotilde Soupert, White Polyantha.....	30.00	20.00
Elizabeth Rowe, Pink Moss.....	30.00	20.00
Hansa, Red Rugosa.....	30.00	20.00
Henry Martin, Red Moss.....	30.00	20.00
Katharina Zeimet, White Baby.....	30.00	20.00
Mme. Norbert Levavasseur, Crimson Baby.....	30.00	20.00
Mme. Plantier, Hybrid Bengal White.....	20.00	14.00
Mousseline, White Moss.....	30.00	20.00
New Century, Pink Rugosa.....	30.00	20.00
Rosa rugosa rubra.....	20.00	14.00
Sir Thomas Lipton, White Rugosa.....	30.00	20.00

Iowa, December 17, 1925—"I surely appreciate your efforts to complete our order, and especially to supply the Purple Fringe. I do not know of many firms who would have filled the order for the Purple Fringe. Most of them would have written us they could not furnish, and let us go out and hustle for the stock to cover orders taken."

New Jersey, January 29, 1926—"I am pleased to advise you that this second car of stock from you has come in, and although I am still pleading with our foreman for an unfavorable report covering the stock contained in this car, I haven't as yet made the slightest headway."



YOUNG STOCK IN CHASE VALLEY

ROSES—Continued

Budded Roses

		No. 1 Per 100	Medium Per 100
Alexander Hill Gray	Yellow H. T.	\$35.00	\$25.00
America	Pink H. T.	35.00	25.00
American Beauty	Red H. P.	30.00	20.00
Anna de Diesbach	Pink H. P.	30.00	20.00
Blumenschmidt	Yellow H. T.	35.00	25.00
Climbing Sunburst	Yellow H. T.	50.00	35.00
Clio	Flesh H. P.	30.00	20.00
Conrad F Meyer	Pink Rugosa	30.00	20.00
Eugene Feurst	Crimson H. P.	30.00	20.00
Francois Levet	Pink H. P.	30.00	20.00
F. J. Grootendorst	Pink Rugosa (and Own Root)	30.00	20.00
Frau Karl Druschki	White H. P. (and Own Root)	30.00	20.00
Gen. Jacqueminot	Scarlet H. P. (and Own Root)	30.00	20.00
Gruss an Teplitz	Red H. T.	35.00	25.00
Hugh Dickson	Crimson H. P.	30.00	20.00
HUGONIS	Yellow (and Own Root)	50.00	35.00
J. B. Clarke	Crimson H. P.	30.00	20.00
Lady Ashton	Pink H. T.	35.00	25.00
Luxenburg	Yellow H. P.	30.00	20.00
Magna Charta	Pink H. P. (and Own Root)	30.00	20.00
Marechal Niel	Yellow Climbing T.	50.00	35.00
Marshall P. Wilder	Crimson H. P.	30.00	20.00
Mlle. Franziska Kruger	Yellow T.	35.00	25.00
Mme. Jenny Gillemot	Yellow H. T.	35.00	25.00
Mrs. B. R. Cant	Red T.	35.00	25.00
Paul Neyron	Pink H. P. (and Own Root)	30.00	20.00
Premier	Pink H. T.	35.00	25.00
Prince Cam. de Rohan	Red H. P. (and Own Root)	30.00	20.00
Radiance	Pink H. T.	35.00	25.00
Red Radiance	Red H. T.	35.00	25.00
Ulrich Brunner	Red H. P.	30.00	20.00
Wellsley	Pink H. T.	35.00	25.00
William R. Smith	Flesh T.	35.00	25.00

DEPARTMENT OF NURSERY SUPPLIES

This Department did not "just happen," but has grown along with our nursery business over a period of more than thirty years. It started away back in the '90s, when at times we had great difficulty in securing needed supplies in a hurry and of the right quality. We finally began to anticipate our needs, to buy in sufficient quantity to secure best prices, and so were in position to help out our neighbor nurseryman when they ran short and were in a rush. Now, for many years we have maintained a stock of all needed supplies for the Nurseryman, Orchardist, Gardener and Landscape-Planter, stocking only such items as, after thorough test in our own nursery work, are found to be of the right quality. There are many items in the list that are often hard to locate. Each item is priced reasonably. We always try to carry a complete stock and to ship by next train after receipt of order, except printed matter which usually requires three to five days' time.

Your orders will have our careful attention.

Yours very truly,

CHASE NURSERY COMPANY.

TERMS ON SUPPLIES:

All prices are net, subject to market changes, and are for CASH WITH ORDER except to parties with an established rating. We have to buy far ahead, lock up our money for months and, as the margin of profit is very small we greatly appreciate prompt payment of all supply invoices.



DOWN IN CHASE VALLEY

SUPPLIES

PRICES—All prices on Supplies are subject to market changes.

KNIVES

Some of these knives are especially made for us by one of the great cutlery makers who has a reputation for quality. All knives offered are dependable brands, selected after testing out in our own nursery work.



BUDDING

HEAVY IMPORTED BUDDER

—This is a REAL Budding knife. Well made, heavy brass lining; blade of highest quality steel; ivory tip. Price, each postpaid \$1.65; per dozen, \$18.00, postage extra.



STATIONARY BUDDER

(Blade does not fold)—Note shape, size and “hang” of blade. Made for budding, but not as convenient for the pocket as others; 50c each, postpaid; \$5.00 per dozen, postage extra.

WHETSTONE

WHETSTONE—The best for budding and grafting knives; 20c each, postpaid; per dozen, \$2.00, postage extra.

Heavy Imported Budder.
Ivory Tip. ($\frac{3}{4}$ Size.)

Stationary Budder



Budders' and Grafters'
Whetstone Pocket size
Carborundum.

Orders for half-dozen invoiced at dozen rate.

We have added two good combination (double-bladed) Nursery Knives to our list. Both are made by Remington of the highest grade metal. We have added these only after a thorough tryout in our own work. They are good.

BUDDER AND GRAFTER COMBINATION



Two Blades, 1 Budding and 1 Grafting. Lined with Brass; is strong and well made. Cannot be beat for a high-grade pocket knife. Price each, \$1.50, postpaid. Price per dozen, \$16.50, postage extra.

PRUNER AND BUDDER COMBINATION

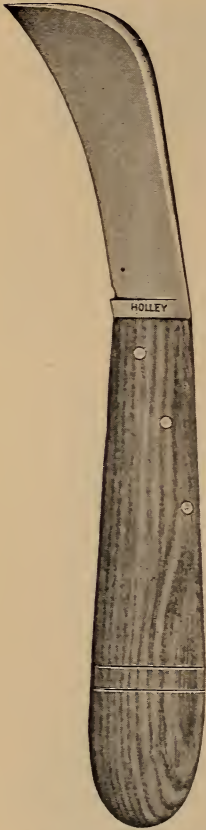


Stag Handle, Two Blades, 1 Pruning and 1 Budding. First quality materials used throughout. A compact tool for all summer work on the small nursery. Price each, \$1.50, postpaid. Price per dozen, \$16.50, postage extra.



GRAFTING CHISEL

For top grafting large limbs. All metal, 9 inches long, cutting edge 2 3-4 inches. Strong wedge on end. Price each, postpaid, \$1.35.



C. A. G. Pruner

C.A.G. PRUNER

Stationary handle; full length 8 inches; length of blade $3\frac{1}{4}$ inches; well balanced "hook" and easy on the operator. Handle of hardwood fastened with three rivets set diagonally. After testing out this knife in our own work we have decided to offer it to the trade as the best Pruning Knife of reasonable cost that we can find. Price 75c each, postpaid; \$8.00 per dozen, postage extra.

Stationary Grafter— (Blade does not fold) A bully good "stiff" Grafting Knife well made of fine steel. Price each 50c, postpaid; \$5.00 per dozen, postage extra.



Stationary Grafter ($\frac{3}{4}$ Size)

C. A. G. GRAFTER—

It is more knife for grafting and general use for the money than any on the market. Makes a good serviceable pocket knife. Cocoa handle: 65c each, postpaid; \$6.25 per dozen, postage extra.



C. A. G. Grafter ($\frac{3}{4}$ Size)



JUMBO PECAN GRAFTING KNIFE

Extra size and strength for field grafting Pecans or other heavy stocks. Length over all 8 inches; blade $3\frac{1}{4}$ inches; shank $2\frac{1}{2}$ inches; fastened in solid handle with three strong pins. Best quality cutlery steel. Price, each, postpaid, 90c; per dozen, postage extra, \$9.00.



DOUBLE-BLADED PECAN BUDDER

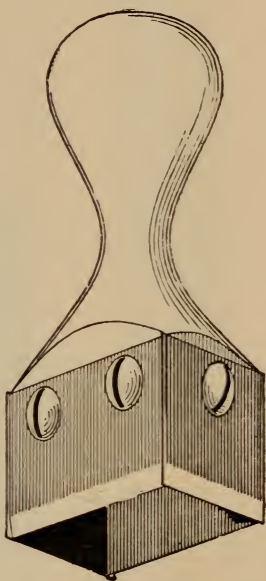
(For Ring Budding)

Two straight-handled, high-grade knives set perfectly true with blades 7-8 inch apart. Fastened with special screw and dowel pins; easily taken apart for sharpening, and just as easily reassembled. Preferred by many Pecan budders over all other makes or styles. Price, postpaid, each, \$1.75.

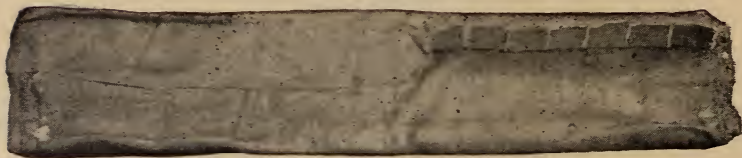
JONES PATCH BUDDER

Designed especially for budding Nut Trees or other subjects which cannot be propagated by ordinary methods. With this Budder, Pecans, Walnuts, Hickories, Chestnuts, Persimmons, etc., may be budded successfully.

Made of aluminum, machined perfectly true and nicely finished. The blades are made from safety razor blade steel, but of heavier stock. With full directions for budding Nut Trees handling buds, preparing waxed muslin, etc. Price \$2.00 each, postpaid.



(Patented)
THE JONES PATCH
BUDDER



WAXED MUSLIN

For use in connection with the above described Budders, for wrapping buds of Nut trees, etc. This material is cut into strips about 7 x 36 inches. Each strip will wrap about 50 buds on nursery seedlings, a less amount when top working large limbs. Price per strip, postpaid, 20c; six strips, postpaid, for \$1.00.

PRUNING SHEARS

FRENCH, VOLUTE SPRING—9-inch—Per pair postpaid, \$2.35; per dozen pairs, freight or express (weight per dozen pairs, 11 lbs.), \$25.00.

FRENCH, VOLUTE SPRING—8-inch—Per pair, postpaid, \$2.10; per dozen pairs, freight or express (weight per dozen pairs, 7 lbs.), \$22.00.

FRENCH, VOLUTE SPRING—6-inch—Per pair, postpaid, \$1.85; per dozen pairs, freight or express (weight per dozen pairs, 5½ lbs.), \$19.00.

The French Shears stand at the head of the list for making cuttings of all kinds. For this work the 8-inch size is just right. For cutting back seedlings to the bud or any heavy work, the 9-inch is recommended.

The 6-inch is just right for light pruning of all kinds like roses, shrubs, cutting scions, etc.

This is the most popular size with the ladies for use around shrubs and roses.

NOTE—Our French Shears this year are all equipped with high grade VOLUTE Springs. This is a decided improvement, so much easier replaced than the old type Roller spring. We carry extra springs of both types in stock—in ordering extra springs state whether ROLLER or VOLUTE.

Extra Springs (Roller Type)
For French Shears

Roller (old type) each 20c, postpaid.



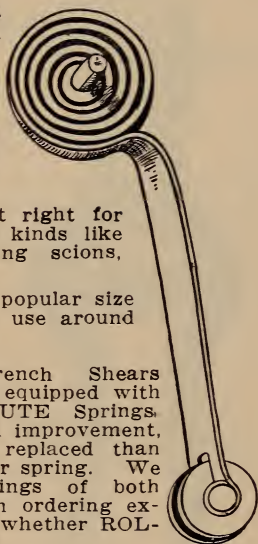
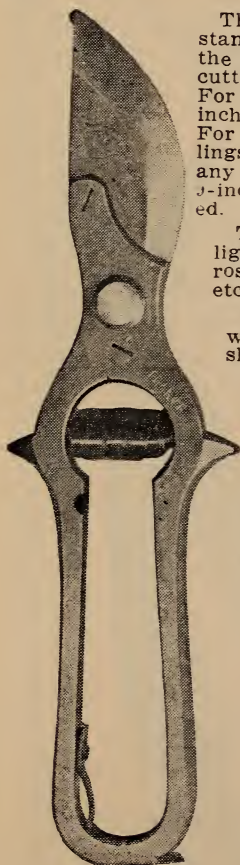
Volute (new type) each 15c, postpaid.

State TYPE and SIZE wanted.

Can also supply extra Blades, Bolts and screws. In ordering parts always state size.

French Shears with
Volute spring.

Florida—"Please send us four pairs of 9-inch French Shears with volute springs. They are good ones and we would not know how to get along without them."



PRUNING SHEARS—Continued

AMERICAN, 9 inches, Volute Spring—This is a low-priced, good, well built, all around pruning shear. Have handled these for years and they give full value in service. Weight, 14 ounces; volute steel spring. Per pair, postpaid, 90c; per dozen, \$9.00, postage extra. Extra Springs and extra Bolts, each, 15c, postpaid.



American, 9-inch



Volute Spring
For American Shears.
Each, 15c, postpaid.

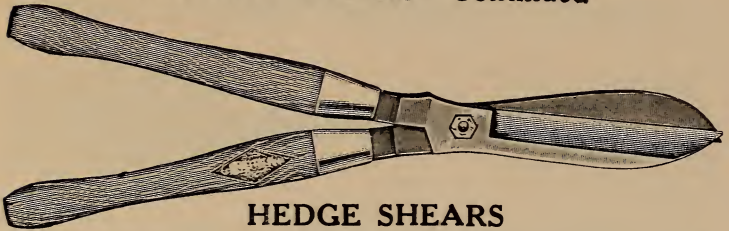


PRUNING SAW

PRUNING SAW—"The Virginian," a real Simonds Saw, handle curved exactly to fit the hand; draw cut, with teeth on inside of curve of blade; differs from all other saws in angle of teeth, number to inch, and curve of blade. Cuts small branches without tearing bark, and will cut with ease the larger limbs. Designed by G. C. Starcher, expert Virginia Orchardist. High grade metal; twenty gauge; handle of hardwood, securely fastened. Set and filed. Price—14 inches long, postpaid, \$1.10 each; per dozen, postage extra, \$10.00.

Orders for half-dozen at the dozen rate.

PRUNING SHEARS—Continued



HEDGE SHEARS

Cronk's Improved; riveted through ferrule. Not too heavy, 8-inch blades; notched. Best size for continuous and rapid work. Price \$2.25; postpaid, \$2.40.



FORGED STEEL TROWEL

The polished blade is 6 inches long by 3 inches wide across center. Blade and shank forged out of one piece of steel. Strong and stout. Price each, postpaid, 75c; per dozen, postage extra, \$7.75.

**D. HANDLE
DIBBLE**

The polished steel point is 8 inches long tapered from a diameter of 1¼ inches at handle. Handle of wood which gives just the right balance. Easy on the operator and well made of high grade metal. Price each, postpaid, 90c; per dozen, postage extra, \$9.50.

TWO-HAND PRUNERS

After trying them all we have gone back to this heavy Cronk single-cut as the most satisfactory. Well built by master builders. Length 26 inches, extra long ferrules, patent lock-nut. Weight 3¼ pounds. Price \$3.00; postpaid, \$3.15.

GENUINE OLIVER AMES 9-POUND, D. HANDLE NURSERY SPADE



For continuous hard nursery digging we can find none better than this heavy double strapped genuine Oliver Ames Nursery Spade. The Straps (both sides) run full length of handle; blade is tapered from 7½ inches at top to 5½ at point. Weight, 9 lbs. Price, each, \$3.50; per dozen, \$39.00.



SHUSTER BRAND 6½-POUND D. HANDLE NURSERY SPADE

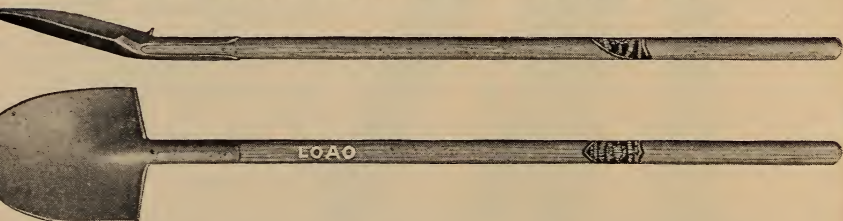
Many customers ask for a lighter and less expensive Nursery Spade than the Ames. After trying out many makes we offer this as the best value. Tapered blade; full double strapped; strong metal D. handle; weight about 6½ lbs. Price, each, \$2.75; per dozen, \$31.00.

GENUINE OLIVER AMES 9½-POUND, LONG-HANDLED, DOUBLE-STRAPPED, PECAN SPADE



For Pecan growers particularly, who need extra length of handle coupled with good weight and great strength. Same spade in every way as the Ames D. Handle Nursery Spade except that it has a long straight handle and a square blade which works better in sandy or light soils. Weight 9½ lbs; handle 4½ feet long. Price, each, \$3.75; per dozen, \$41.50.

LADIES' HOME GARDEN SHOVEL-SPADE



For garden use this dandy tool fills the gap between trowel and spade; it weighs only 2 pounds, but is so sturdy and "workable" that the home gardeners, especially the ladies, simply grab it on sight. "The most highly prized tool in my kit," nearly every user says. Handy in transplanting and work around seed beds. Blade is 8½x7½ inches; handle 33 inches long. Widely advertised in the garden magazines. Price, each, \$1.25; postpaid, \$1.45; per dozen, \$13.00.

SPADING FORK



SPADING-DIGGING FORK—English pattern; fork, shank and strap in one solid piece of steel; the strongest fork we know, a joy to use it; square tines 12 inches long; extra length shank; will outlast a dozen cheap forks. Price, each, \$2.25; per dozen, \$25.50.

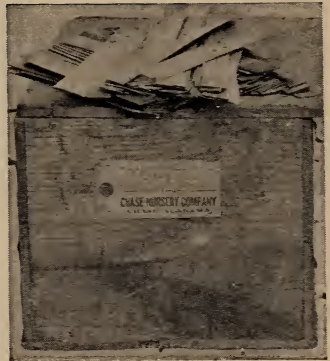


CHASE'S "DIG EZY" HOE

One of the best weeding hoes, especially for closely planted stock, beds, etc. Double riveted, well made, properly balanced. Price each, \$1.00; per dozen, \$10.00.

BOX STRAPS

STEEL BOX STRAPS—One inch wide, 9 inches long, thin, soft steel, strong enough to hold the heaviest box. You can drive an ordinary nail through it without punching. About 2,300 pieces in 100 pounds. Less than 50 pounds, per lb., 9½c; 50-lb. boxes, per lb., 8c.



50-lb. Box Steel Box Straps

Mississippi—"The Saw is a mighty good one, and we are thoroughly well pleased with it."

Mississippi—"I am herewith enclosing stamps to pay for postage on Spading-Digging Fork which you recently shipped to me. I am well pleased with the fork."

Kansas—"The pruning tools arrived O. K. Those French Pruners can't be beat. We thank you."

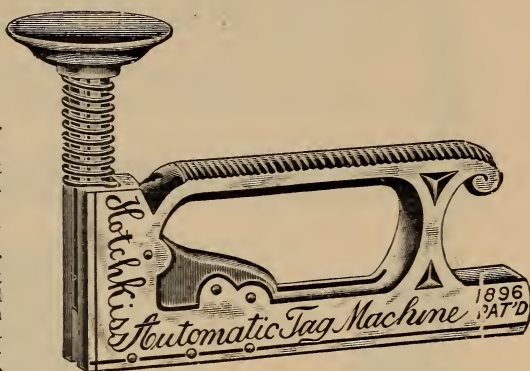
Mississippi—"The French Shears I bought from you, and the saw and other tools, are strictly fine. They give entire satisfaction. Your prompt shipments have given me extreme satisfaction."

BOX MAKER'S HATCHET

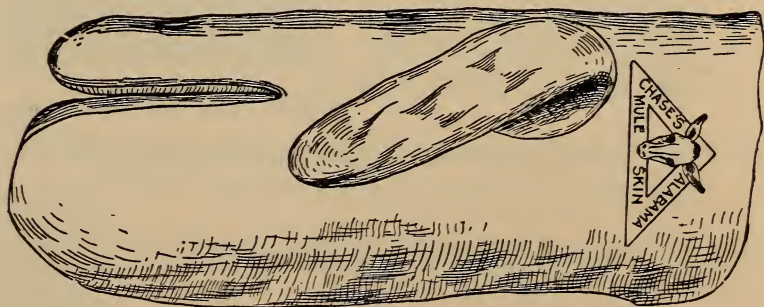
Improved



ALL METAL HATCHET—This Box Maker's and All-Purpose Hatchet is a dandy; has checkered face; heavy steel reinforced neck, very strong and just the right weight. Will get lost just as easily as one costing three times the price. Price, each, 75c; per dozen, \$7.50. Postage extra.

AUTOMATIC TACKING MACHINE

For fastening tags or cards to tree boxes, cars, etc. The slickest little labor saver in our packing house. No hunting for tacks, no finger pricks, fumbling for hammer or lost motion. Just lay it on top of card and tap the knob with palm of hand; a lightning, quick as lightning, will tag a box so quickly and easily that it is a joy to do it. Instead of round headed tacks this little machine automatically staples the tag or card in place. Guaranteed to work on any wood. Money back if not satisfactory; will ship on thirty days' trial to any responsible nurseryman. Machine, each, \$2.25; staples, per box of 5,000, \$1.50; postage extra.

**ALABAMA MULE SKIN MITTENS**

MULE SKIN MITTENS—The old reliable; made of Alabama Mule Skin, nearly as durable as buckskin. We can find no heavy work-glove or mitten that gives greater value for the money. Price, per pair, postpaid, 80c; per dozen, \$8.75, postage extra.

Orders for half-dozen at the dozen rate.

CORDAGE, TWINES, BURLAP, ETC.



Bale of Wool Twine

WOOL TWINE

Four Ply — For tying in bunches; in balls of about one pound each; packed in bales of about 150 pounds each. Per pound, less than bale lots, 20c; per pound in full bale lots, 18½c.

WOOL TWINE

Three Ply — For bunching small fruits, roses, etc., this is plenty strong, and because of the greater yardage it is cheaper than the four ply. Price, same as four-ply.

EXPRESS CORD

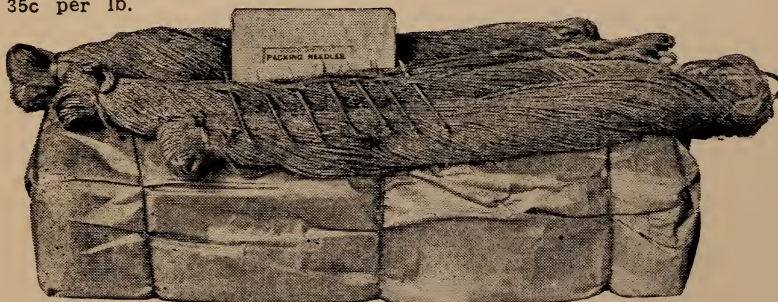
For heavy bales. Two-ply Sisal. Just the thing for express bales. Single end, on reels of about fifty pounds each. Cannot break reels. Price 18½c per pound.



Reels of Sisal Express Cord

JUTE SAIL TWINE

For sewing bur-lapped bales, bags, etc. A better grade than heretofore offered, smaller strand but stronger, easier to thread through needle and will "follow through" without knotting. Much less expensive than Cotton sewing twine. In skeins, 12 lbs. to package. Price in lots under 12 lbs., 38½c per lb. Full packages of 12 lbs., 35c per lb.



Jute Sail (Sewing) Twine

NEEDLES FOR SEWING BURLAP



BEST GRADE—Five-inch, large stiff shaft, wide flat shank, sharp point and large eye. Per dozen, postpaid, 55c.

BURLAP



SELECTED ONCE-USED, CLEAN BURLAP

40-Inch 8-Ounce

New burlap is still too high; this once-used, clean 40-inch material is just as good as new. It has been once used, largely on rugs and furniture; is in mostly large pieces, and is clean; has been carefully sewed into 100-yard bolts, and packed four bolts to the bale. Its use this year will save you about \$18.00 cash money on each thousand yards—and \$18.00 saved is \$36.00 made, according to Poor Richard.

Price, per yard, in 100-yard bolts.....	8¼c
Price, per yard, in 400-yard bales.....	7¾c

Texas—"We are in receipt of the Ames Nursery Spade, and are highly pleased with same. Please express us one-half dozen more of these spades."

BOX LINING PAPER



ROLLS KRAFT PAPER

30, 36 and 40 inches wide

KRAFT PAPER

The same high grade Kraft paper that we have handled for many years, the best we can buy. It is more economical than cheaper grades because of greater yardage and strength. Has body enough to resist moisture to a considerable degree. One of our customers says that he used again the paper from boxes of nursery stock received from us—and those boxes had been in cold storage for ten weeks. Put up in rolls of about 50 pounds each; widths 30, 36 and 40 inches. Cannot break rolls. Price, per pound, 8c.



“DRY WRAP” DUPLEX PAPER—Two sheets of Kraft cemented together with asphalt. In rolls of 100 yards each, width 36 inches, per roll, \$2.25.

Louisiana—“The Jumbo Grafting Knife is the kind of tool we have been looking for for pecan work. We are sure that it will sell on sight to any one who grafts pecans; have shown it to several, all wanted to buy it.”

Tennessee—“Counter is fine, and we are herewith inclosing our check to cover your invoice for same. Thank you for your prompt attention to our order.”

Texas—“Shears ordered of you received, and will say they are the best I have ever used.”

Virginia—“We used your Grafting Thread last winter, and it is the best we have ever used.”

LABELS



Plain Labels

PLAIN IRON WIRED— $3\frac{1}{2}$ inches, plain, 1,000 to package; per thousand, \$1.60; in 5,000 lots, per thousand, \$1.55; in 10,000 lots, per thousand, \$1.45; by freight or express.

PLAIN COPPER WIRED—Size same as above, add 35c per 1,000.

PRINTED LABELS—Impossible to carry in stock all varieties wanted. By shipping direct from factory, requiring usually seven to ten days, we can cover your exact list. These printed labels are $2\frac{1}{2}$ inch, notched, printed one side. Price, for the average order, direct shipment from factory, \$2.00 per thousand. **NO ORDER ACCEPTED FOR LESS THAN 100 OF A VARIETY.** If your order averages more than five varieties per thousand add 20c per thousand. Large orders are entitled to a discount. Submit your list and we will quote best price possible.

DON'T WAIT TILL YOU NEED LABELS—LOOK AHEAD—ORDER NOW.



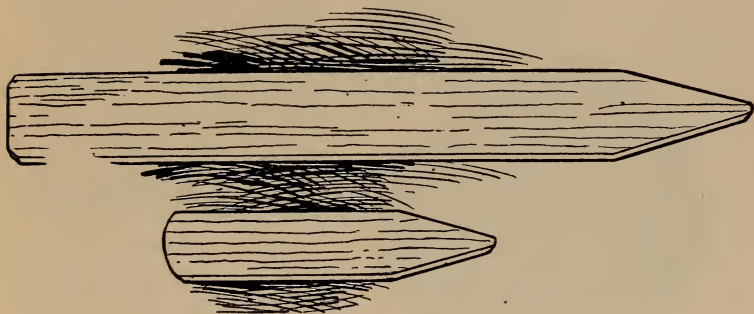
LARGE "HEAD" LABELS—Size 6x1 1-8 inches, notched, not wired, plain. Packed 200 in box. Price, per box. 80c.



LABEL WIRE—Best quality Copper Label Wire, cut 7 inches long. Per pound, 80c.

LABEL WIRE—Best quality Iron Label Wire cut 7 inches long. Per pound, 50c.

LABELS—Continued



STRAWBERRY AND FLORISTS' POT LABELS

STRAWBERRY LABELS (Pointed)—Size $4 \times \frac{7}{8}$ plain (not painted or printed), packed 1,000 to box, slip under strings on bunches of strawberry plants. Also used in small flower pots. Price per thousand, **\$1.25**.

FLORISTS' POT LABELS (Pointed)—Size $8 \times \frac{7}{8}$, plain (not painted or printed), packed 250 to box. Price, per box, **\$1.25**.



SHEET COPPER PERMANENT LABEL

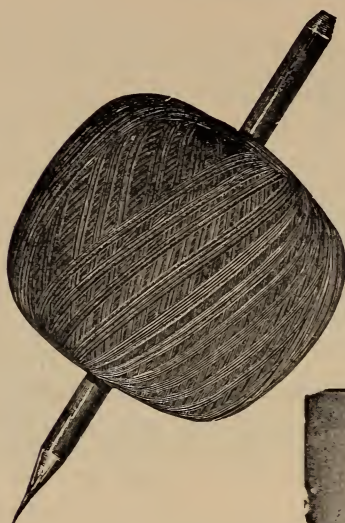
An indestructible label for use on trees, shrubs, etc., as a **PERMANENT MARKER**. Directions: Lay label on folded newspaper; write with very hard pencil or wire nail, bearing on to indent metal. Give wire one turn around branch, securing end in loop. Remove to smaller branch every two years to prevent cutting wood. Price, per 10, postpaid, **28c**; per 50, postpaid, **\$1.05**; per 100, postpaid, **\$2.00**.

Texas—"Kindly let us know when you get some more of the Jute Sail Twine. This is a very good grade, and we are unable to find it right now."

Mississippi—"Please mail us two pairs 6-inch French Shears. No shears like these for light work."

Georgia—"The Labels came and are fine. Thank you for your prompt service."

GRAFTING THREAD



Put up in balls and packed 20 balls to the box. A box of twenty balls will wrap about 40,000 average grafts.

Price per ball unwaxed, 12c; price per ball, waxed 20c; price per box 20 balls unwaxed, \$2.10; price per box 20 balls, waxed, \$3.50.

(If mailed add 2c ball unwaxed and 3c ball waxed.)

The opposite illustration shows a ball of our grafting thread with a pencil run through the hole in the center.



GRAFTING WAX

GRAFTING WAX—for top grafting fruit trees, etc., and fine for applying to cuts after pruning. Prepared ready for use. ¼-lb. cake, postpaid, 18c; ½-lb. cake, postpaid, 30c.



RAFFIA

Best quality. One pound will wrap about 2,500 average peach stocks when June budding or about 1,000 average rose stocks. Put up in bundles ready for quick shipment. Prices:

Under 5 pounds, per pound	35c
In 5-lb. bundles, per pound	30c
In 10-lb. bundles, per pound	25c
In 25-lb. bundles, per pound	20c
In 50-lb. bundles, per pound	17c
In 100-lb. bundles, per pound	16c

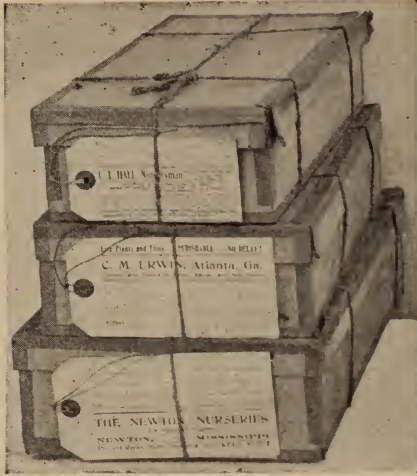
Write for price on full bales of about 225 lbs.



SPHAGNUM MOSS IN BURLAPPED BALES

Fresh stock from Wisconsin; each bale wrapped in burlap. Almost bone dry; weight of bales not guaranteed; size about 14x16x46 inches. Fine for Florists and Strawberry Plant shippers. Price, per bale, \$2.00.

SHIPPING TAGS PRINTED



Printed Tags

All Shipping Tags are printed to order. We usually ship second day after receipt of order though when the rush is on we are sometimes unable to do so. This year all tags are furnished unstrung but a bunch of good quality Tag String cut to the right length is included with each lot. NO ORDER FOR LESS THAN 500 WILL BE ACCEPTED.

Tags of Extra Quality, Waterproof with Reinforced brass bound Eyelet.

PRICES INCLUDE STRINGS

	Per 500	Per 1000
Size No. 5, 2½x4¾ inches, printed on one side	\$3.60	\$5.30
Printed on two sides	4.20	6.20
Size No. 7, 2⅞x5¾ inches, printed on one side	3.90	6.20
Printed on two sides	4.50	6.80
Size No. 8, 3⅛x6⅜ inches, printed on one side	4.20	6.50
Printed on two sides	4.80	7.10

DISCOUNT ON QUANTITY ORDERS

On orders for 3000 and over, with no change in form or size, the following discounts will apply:

3000 at the 1000 price less	3%
5000 at the 1000 price less	6%
10000 at the 1000 price less	10%

Note the large size (No. 8). This tag has plenty of room for address and Inspection Certificate on one side without crowding.

Always send copy showing how tags are to be printed. Samples on request.

Note—The No. 5 Tag is too small for Inspection Certificate. The No. 7 is too crowded if Inspection Certificate and address is used on one side. The No. 8 size is the best where Certificate is to be printed on the address side.

IF YOUR JOB CALLS FOR AN UNUSUAL AMOUNT OF TYPE SETTING THERE WILL BE AN EXTRA CHARGE TO COVER.

Please compare our tag prices with others and in so doing remember that we use only HIGH GRADE tags as described and that we include strings. Our prices are right.

OFFICE SUPPLIES

ORDER BOOKS—The old standard form, size 4¼x10 inches, your name and address printed at top and bottom, 100 orders to the book, on best quality heavy grade paper. Price, per 5 books, \$4.50, per 10 books, \$6.75. Postage extra. If any change from our regular form there will be an extra charge to cover. Sample sheets mailed free. Please make your "copy" plain.

Prices Subject to Change.

ORDER BOOKS

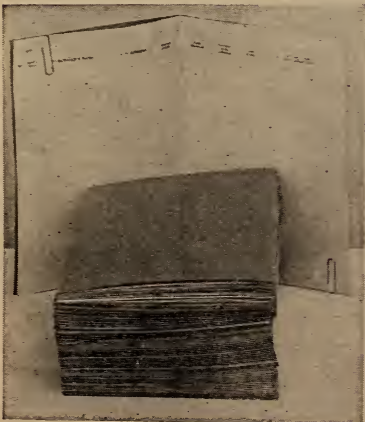
Special (new) form. Intended for special work, city trade, etc. A very neat, flexible leather cover. The order sheets are in triplicate with two sheets of carbon paper. Printed in your name; top sheet white, second sheet buff, third sheet plain tissue. A very classy order book, sample sent free.



Order Books—New Form

NEW FORM—ORDER BOOK

Price for 10 pads (25 sets to pad) with cover\$7.65
 Price for cover alone, each\$1.90
 Price for pads alone, per ten\$5.75



Delivery Books

DELIVERY BOOKS

Bound in paper cover, ruled, showing name of customer, post office address, amount of order, how settled, etc., printed in copying ink. For 23 accounts, 50 cents per dozen, postpaid; for 69 accounts, 75 cents per dozen, postpaid; for 115 accounts, 85 cents per dozen, postpaid; 161 accounts, \$1.00 per dozen, postpaid. Half dozen at dozen rates. Inexpensive and mighty handy.

OFFICE SUPPLIES—Continued**PLATE BOOKS
SALESMAN'S PLATE BOOKS****FOLIO PLATE BOOK**

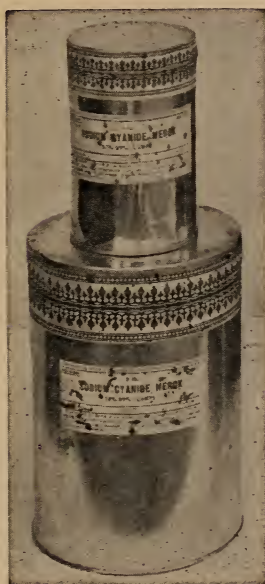
Shows three in a row, six at a time.

Contains 112 high grade plates in color. Carefully selected for the territory south of the Ohio river. Covers the full line of Fruit Trees, Small Fruits, Grapes, Figs, Nuts, Shrubs, Shade Trees, Evergreens, Vines and Roses. Neat, compact and well made. Price each, postpaid, \$7.90.

**ORNAMENTAL PLATE BOOK****10 PLATE FOLDER OF ORNAMENTALS**

Here is a compact Folder-Plate-Book (size 5 3-4 x 8 3-4 folded—will slip in coat pocket) containing 10 plates of selected Shrubs and Hedges for the South. Designed to aid the salesman in meeting the ever increasing demand for Ornamentals. Price, each, postpaid, \$1.65.

FUMIGATING CHEMICALS



Cyanide

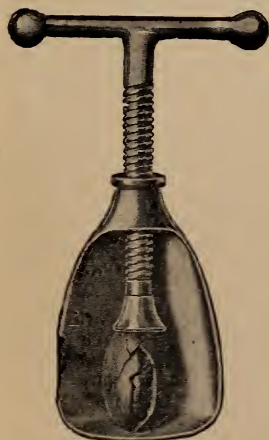


Sulphuric Acid

SODIUM CYANIDE (Merck & Co.'s 96-98%) Lumps, in original sealed tin packages, 1-lb. cans, 75c. Cyanide is excluded from the mails, but can be shipped by express or freight.

SULPHURIC ACID (Specific Gravity 1.83). Large glass stoppered bottles, securely packed in cases ready for shipment. 9-lb. bottle, \$2.25.

NOTE—On the next page you will find complete instructions for fumigating nursery stock.



The Ideal Nut Cracker

THE IDEAL NUT CRACKER

Here is a little novelty that is so handy and useful that we have added it to our list of Supplies. The Ideal Nut Cracker operates quickly and easily with no danger of hammered fingers. It keeps the shells from flying all over and gives you "whole meats." Comes in an attractive box, makes a very welcome holiday gift. Simply place the nut in the cracker, place the palm of the hand over nut and turn the handle just enough to crack the shell and there you are.

PRICE

Price, 45c Postpaid

DIRECTIONS FOR FUMIGATING NURSERY STOCK WITH HYDROCYANIC ACID GAS

The necessary equipment consists of an air-tight chamber (box or room), a glazed earthenware vessel, a measuring glass graduated to ounces, and a set of accurate scales. The necessary chemicals are either Cyanide of Potash (98%) or Sodium Cyanide (96-98%) and Sulphuric Acid (specific gravity 1.83). Care should be taken to secure either the 98% Cyanide of Potash or 96-98% Sodium Cyanide, otherwise an insufficient amount of gas would be generated. This chemical must be kept in air-tight containers and so packed will keep indefinitely. It is a deadly poison and should not be left where it will fall into the hands of children or careless persons, and should never be handled by a person having open sores, cuts or bruises on his hands. The gas is colorless and if inhaled in quantity is fatal; smaller amounts induce headache or dizziness.

The best commercial grade of Sulphuric Acid should be used. This acid must be kept in a glass or earthenware vessel tightly stopped with a glass or lead stopper. Be sure that your fumigating box or room is air-tight or gas-proof.

The standard formula for fumigating each 100 cubic feet of space contained in the fumigating house is as follows:

One ounce Cyanide of Potash (98%) or $\frac{3}{4}$ of one ounce Sodium Cyanide (96-98%).

Two Fluid ounces Sulphuric Acid.

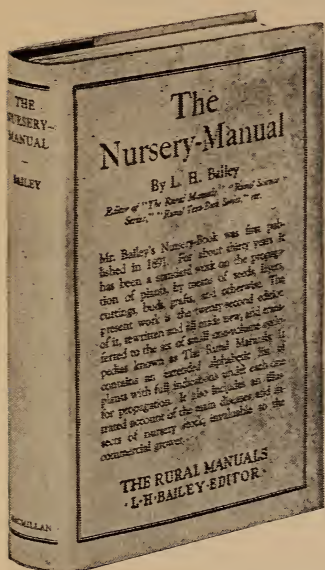
Four Fluid ounces Water.

The glazed earthenware vessel should be somewhat larger than is necessary to hold the chemicals. A one or two-gallon jar is perhaps the best container.

The trees as dug and brought from the field should be placed in the fumigating house, care being taken to see that they are free from any considerable quantities of mud or dirt. The trees should not be fumigated when they are wet, as it has been shown that in this condition they are likely to be injured by the gas. When the compartment is full of stock, close all openings except the door. Place the jar on the floor near the middle of the room, pour in the required amount of water, and then slowly pour in the acid. The cyanide, previously weighed and inclosed in a tight paper bag, is now dropped into the jar and the operator leaves immediately and closes the door tight. The steps in this operation should never be varied. If water is poured into the acid, a violent action takes place and may be the cause of injury to the operator. Inclosing the cyanide in a paper bag makes it convenient and safe to handle and retards the generation of the gas for a moment after being dropped, thus allowing time to leave the room and close the door securely.

Keep the door closed for forty minutes, at the end of which time the door and window should be thrown open, care being taken to avoid the outward rush of the gas. After fifteen minutes of airing, the room may be safely entered and the stock removed, being now ready for packing or heeling in. After fumigating the contents of the jar should be buried.

Buy chemicals of your local druggist if you can secure Merck's cyanide in unbroken, original packages, and sulphuric acid that has been kept in a glass-stoppered bottle.



BAILEY'S NURSERY MANUAL

We are often asked about the best books on nursery practice and methods. If there is a better guide than this book by Dr. L. H. Bailey, we do not know of it. Contains 456 pages written in simple non-technical language with hundreds of illustrations covering the propagation of plants from seeds, cuttings, layers, budding, grafting, etc. Postpaid, \$2.50 per copy.

Ohio, July 2, 1926—"It gives me pleasure to be sending you our check in full for account for spring of 1926. We are very much pleased with all stock shipped us this spring, and have cleaned up O. K."

Missouri, October 19, 1925—"The car of Evergreens arrived in due time, and was unloaded Friday afternoon. We are pleased to note the prompt delivery made by the Railroad Company. We have your tracer of the 14th, and the car got here almost as quickly as the tracer did."

Ohio, November 17, 1925—"I unpacked the Abelia plants a couple of hours ago, and I am well pleased with them. I am sending check for full amount, and \$1.00 in cash for a round of smokes for quick delivery and good puddled plants."

Missouri, December 7, 1925—"Your stock arrived in St. Louis this A. M., and as usual was regular Chase stock and service."

Wisconsin, December 8, 1925—"We received the carload of stock. The stock you sent was all exceptionally nice and entirely satisfactory."

New Jersey, December 21, 1925—"Your car of shrubs reached us on Saturday, the 19th instant. Our men are now unloading this stock, and I have just received a report from our foreman to the effect that everything thus far unloaded has been found up to your usual high standard."

Connecticut, May 21, 1926—"We want to take this opportunity to thank you for the attention you have given us in our business dealings this year, and hope that our transactions have been satisfactory to you."

MEMORANDUM

Certificate and Fumigation

Entomologist's Certificate of Inspection will accompany all shipments unless we are otherwise instructed.

Where state laws do not require certificates we can ship under plain tag if desired.

We are prepared to fumigate with Hydrocyanic Acid Gas, and will do so when requested, or where State Laws require it.



