





**BRAND BOULEVARD  
WELCOMES YE  
WHITE INN**

**Hundreds of Guests  
Crowd Mrs. Thomas'  
Cafeteria**

Tewes, who will jointly operate this inn, were at the door to greet the guests as they entered, and to escort them to unoccupied tables. The lobby of the inn was a-bloom with many floral pieces, contributed by the various business houses in the city. The second floor of this inn consists of 22 beautifully furnished rooms, the appointments of which are truly artistic. The rooms are grouped around a landing which will be converted into a lobby for the guests of the hotel. The furniture in these rooms is of birdseye maple, mahogany, walnut and oak, and each room has draperies which will harmonize beautifully with the color schemes of the formal opening of Ye White Inn, 223 South Brand boulevard. Previous to taking possession of the inn, Mrs. Thomas had been looking forward to this event. Even her reputation for real since it was announced that Yerville, Mr. Tewes, who is now White Inn would change its location associated with Mrs. Thomas in tion, hundreds of people have beenis establishment, is a hotel man holding their breath, as it were long experience. He has been until the opening of this extremely resident of Glendale for some popular inn should take place, and before coming here was Last night, the opportunity peculiar in business circles in the sented itself and many of Glendale west. The same "home dale's leading citizens availed Beginning this morning and con themselves of this chance to stuning indefinitely Ye White Inn test to the popularity of this verill maintain the cafeteria style capable hostess. The same "home service. The same "home At the opening last night "ooking" that held forth at the White Inn had a seating arrange white Inn when it was at its old ment for 150 people, and through and will maintain in the new out most of the evening all of theme. The same unexcelled serv places were taken. There was a really good food that steady stream of Glendale folk white Inn patrons have enjoyed pasting in and out. During the past three years will continue, evening music was furnished byd on account of more modern Miss Nathalia Yoe and Miss Dorad up-to-date quarters, the inn thy Welcome, on the violin and its new home will probably be le to render even more efficient piano. Mrs. Jack Thomas and O. Bd satisfactory service than ever.

**COAL MINERS' LEADERS AND LEGISLATORS WHO HEARD PLEA**



This photograph was made after representatives of labor had appeared in Washington before the house labor committee to present the striking coal miners side of the wage controversy. From left to right are seen Frank Morrison, secretary of the American Federation of Labor; John L. Lewis, president of the United Mine Workers of America; Samuel Gompers, president of the American Federation of Labor; Representative W. O. Atkeson of Missouri; Representative John I. Nolan of California, chairman of the house labor committee, and Representative William J. Burke of Pennsylvania.

**UNIVERSITY OF OREGON GROWS**

EUGENE, Ore., May 2.—Because the number of students at the University of Oregon has increased more than 30 per cent since the higher educational millage tax was passed in 1920, the need for new buildings on the campus cannot be met by the present income, according to President P. D. Campbell. There will be another increase of 20 per cent in the registration next year, according to President Campbell, and with the present income it will be practically impossible to take care of all of

them. He declared that the present cramped conditions in some of the buildings are deplorable. "At present, with the tax situation as it is, there is only one hope in increased revenue. That is by means of gifts from individuals. Without any particular effort on the part of the university almost \$200,000 has been given already this year and approximately \$220,000 was given last year. The \$1,000,000 needed immediately for new buildings to be constructed within the next three years could be raised in this way if a campaign were to be carried on, in the opinion of President Campbell.

**YAW ASSEMBLY IS SET FOR MAY 10**

The assembly at which Ellen Beach Yaw, the great singer, was expected to entertain members of the student body of Glendale High today at 11 o'clock was postponed until May 10. Mrs. Yaw's name is a household word in Southern California, so no comment on the character of her concert is needed. It will be given as a benefit for the treasury of the student body. There's little fun in being the kind of a fellow that can't see the point of a joke on himself.

**FIVE DAYS' SALE FOR BUDDIES' BUILDINGS**

**Quality Toggery Make Known Percents for Entire Period**

A 5-day sale for Glendale's buddies will be held at the Quality Toggery, 111 North Glendale avenue, beginning tomorrow. A percentage of the receipts during this sale will be given to help pay for the homes for the soldiers in La Crescenta. William Sapin, pro-

one of the new boosters in Glendale and he says he will at any time do all he can to help the boys who were wounded in the world war. Since coming to Glendale Mr. Sapin has demonstrated that he is just the kind of a booster that is needed here. He is up and doing all the time for the good of Glendale. Since coming here he has purchased two business buildings on Glendale avenue, in addition to other property. His establishment is one of which this city may justly feel proud. It is up to the minute in every respect and in every way reflects the confidence that Mr. Sapin has in the future of Glendale.

More marriages would be successful if fewer men and women were failures.

**Glendale Theatre**

Wm. A. Howe, Lessee & Mgr.  
**TODAY ONLY  
ALICE LAKE**  
—IN—  
**"THE HOLE IN THE WALL"**

International News  
KINETO REVIEW  
Newest ROLIN Comedy  
**"THE ANVIL CHORUS"**

Now is the time to advertise and the Press Want Ad Columns are the best result getters.

**L-A Dairy Products**  
—Milk  
—Cream  
—Butter  
—Cheese  
—Ice Cream  
PHONE ORDERS TO  
**The Broadway Pharmacy**  
BROADWAY AND KENWOOD  
TELEPHONE GLENDALE 1902

**Furnish Your Home NOW**

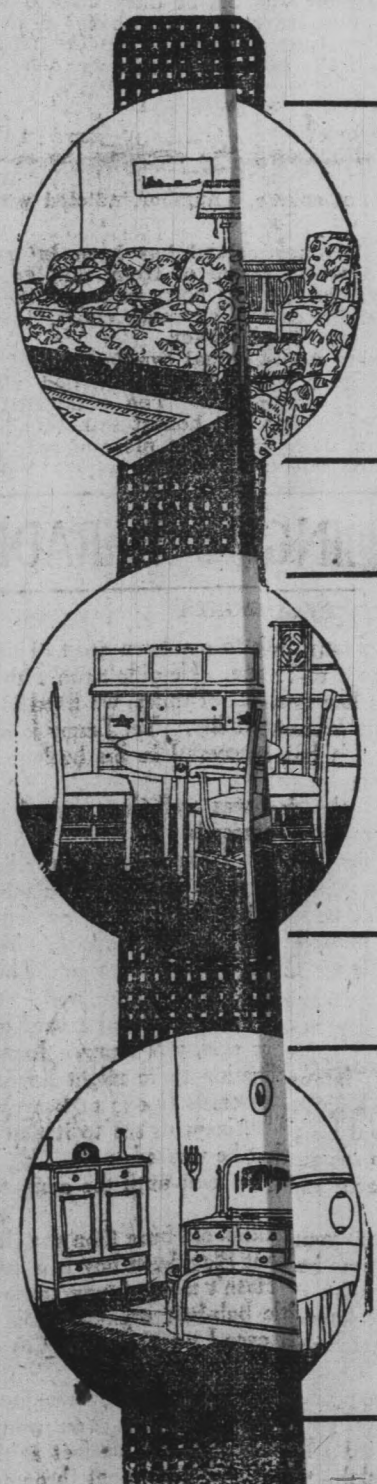
**FURNITURE SALE**

**We Must Have Room for A New Department**

**Specials**

IN ORDER TO BE ABLE TO GIVE OUR MANY PATRONS THE OPPORTUNITY OF BUYING GOOD, DEPENDABLE USED FURNITURE AT LOW PRICES WE HAVE DECIDED TO OPEN A

**USED FURNITURE AND EXCHANGE DEPT.**



**Living Room Specials**

From Luxurious Divans to Floor Lamps. Very attractive Wicker Sets and Tasteful Rugs—all at Sale Price

**Dining Room Specials**

Mahogany, Walnut, Oak or the Popular Morning Sets.

**Bedroom Specials**

Single or Twin Beds, Chairs, Dressing Tables and Chiffoniers.

And, in the future, in addition to our retail line of Quality Furniture, Will Buy, Sell or Exchange Used Furniture of the Better Grade Only. Every piece will be put in first class condition before being offered for sale. In order to make room for this new department we must reduce our present stock of high grade merchandise, and beginning TODAY are giving the people of Glendale and vicinity

*An Opportunity to Furnish Their Homes from Our Large Assortment of Furniture and Rugs at Wholesale Prices and Less*

**We Are Not Quoting Prices as the Values Must Be Seen to Be Appreciated. COME IN! You Will Not Be Urged to Buy**

**EVERYTHING REDUCED!**

Refrators—Gas Ranges  
Lino—Congoleum and  
Above All the Sale Specials

**PAGE FURNITURE CO.**

306-308 E. BROADWAY

PHONE GLEN. 1934

**DAMAGED**





# Reliable Home Builders' Directory and Guide

## Hardwood Floors

Add to the Value of Your Home  
Save Rugs—Save Work  
Phone Glen. 557 for Estimates on New Floors  
Old Floors Scraped and Refinished

### GLENDALE HARDWOOD FLOORING CO.

Oak, Maple and Birch Flooring  
304 E. Broadway Phone Glen. 723-W

## GLENDALE SASH and DOOR HOUSE

1422 South San Fernando Road  
GLENDALE  
Phone Glendale 1687-W

Manufacturers of

### SASH and DOORS

also

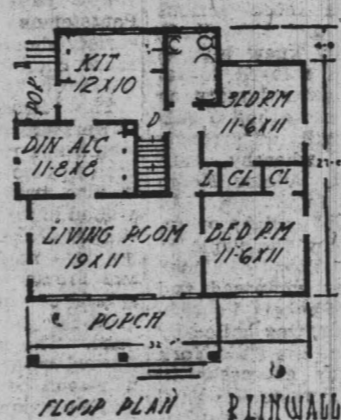
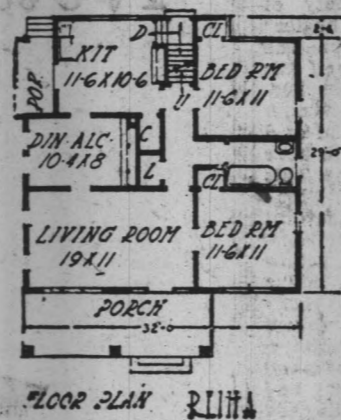
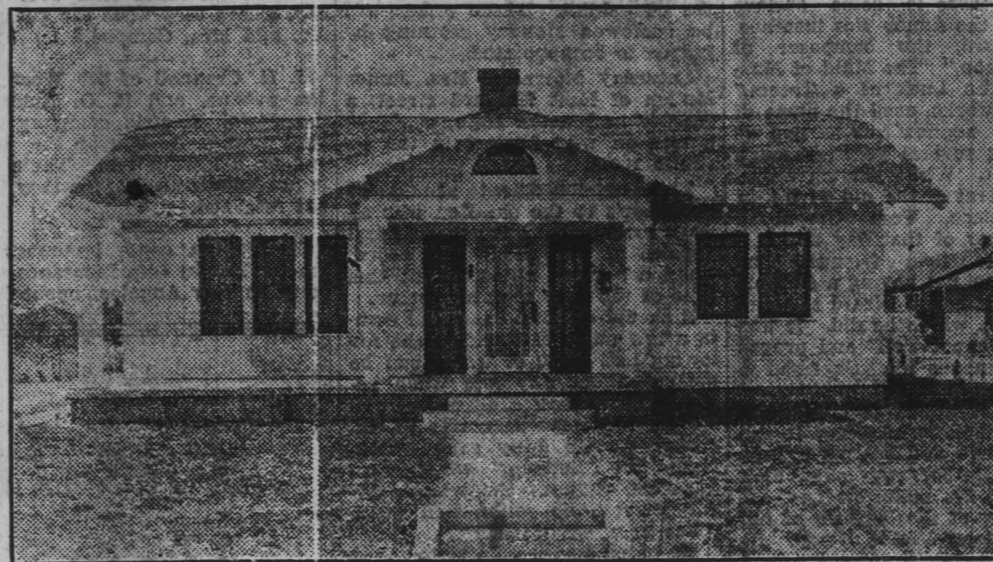
### China Cupboard Doors

High Grade Mirrors for Doors and Buffets  
a Specialty

Estimates Furnished on Application

Call Glendale 1687-W

## Here's a Good Investment for Your Home Building Fund



Here is a simple, cozy, modest one-story dwelling, which has every desirable home feature and yet is very inexpensive to build.

There are no freakish ideas in the design to add to building expense. You have a choice here of two interior arrangements, both of which portray the utmost in housekeeping convenience.

You will be surprised at the very moderate cost entailed in building this very attractive little home.

## Wall Paper, Paints, Oils, Varnishes, Etc.

Exclusive agency for Kyanize Varnishes and Enamels  
We carry a full and complete line of Sunset Paint Co. Products  
Interior Decorating Paperhanging Sign Writing  
Information and Estimates Cheerfully Given

### Harry Moore Co.

304 East Broadway, Glendale  
PHONE GLENDALE 328

## A. N. CLINE

Builder of Fine Homes

CONTRACTOR and BUILDER

Estimates on your home Cheerfully Furnished  
PLANS FREE

372 W. Lexington St. Phone Glen. 2296-M

I have two new California 5-room Colonial Homes for sale

### LEWIS C. DAVIS

Window Shades  
Curtain Rods and  
Linoleum

Salesroom 417 E. Bdw.  
Glendale, Calif.

Telephone Glendale 2012  
Evenings 1933-W

### BROADWAY NURSERY AND SEED STORE

F. H. REED, Proprietor  
Poultry Supplies a Specialty  
All Kinds of Seeds  
Potato Seeds  
We do Lawn and Gardening Work  
826 EAST BROADWAY  
GLENDAL, CALIF.

### CESSPOOLS

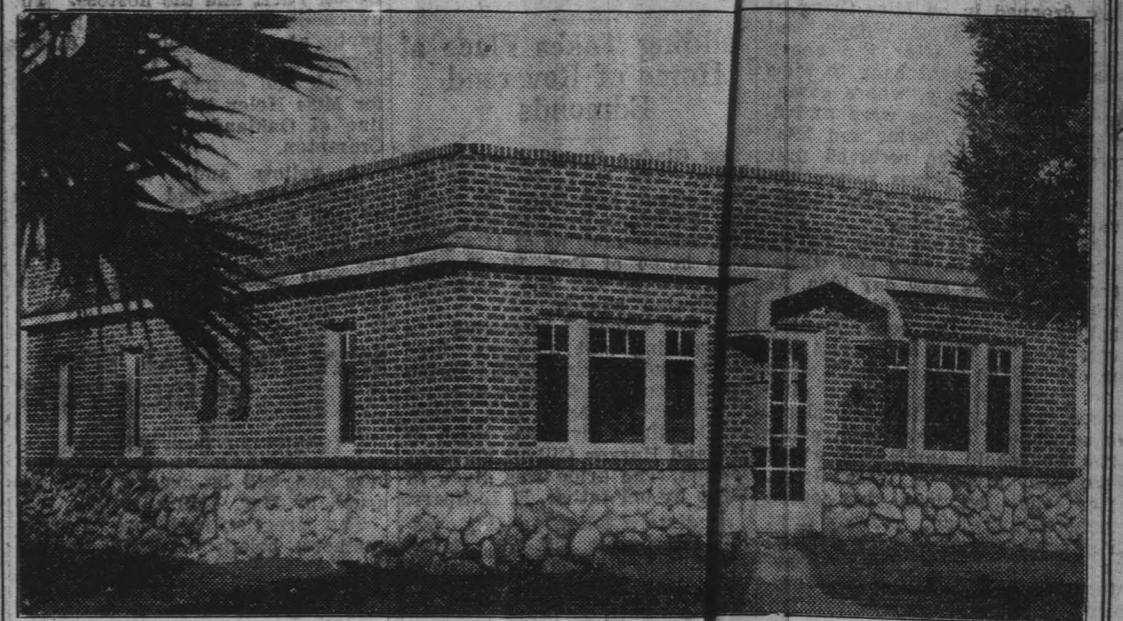
You will need a cesspool for your house. Promptness and reliability count.

F. C. BUTTERFIELD  
1246 East California  
Phone Glen. 840-M  
Special attention given to overflows

## HOME BUILDERS!

BRICK is adapted to all types of architecture and comes in itself the good features of all other building materials. In addition it is proof against damage by the elements. When you have built a home of brick, the expense ceases; with many other materials it has only begun.

And It Does Not cost 10% More Than the Most Perishable Material



BRICK FOR BEAUTY, STABILITY ECONOMY

### SIMONS BRICK CO.

Main 126 Los Angeles 125 W. Third St.

There Is a Big Difference Between

## GAS HEATERS and GAS EATERS

### The "Magic Way" Furnaces

Most Convenient, Economical and Sanitary Method of Burning Gas  
Touch the Button for Instant Heat When and where Wanted  
Ten Years Without a Rust, Out or Burn Out.  
Complete Information and Estimates Cheerfully Given

### Glendale Sheet Metal Work

"Everything in Sheet Metal"

127 N. Glendale Ave. Phone Glendale 1422

## WHY a Name in Sash and Door?



### THE DIXON SASH AND DOOR COMPANY

puts the above distinctive design on all sash, doors, and glass for the same reason that other manufacturers of good merchandise stamp their brand on their products, whether it be so hardware or hats.

Goods thus marked are known as reliable merchandise. The manufacturer of a good product takes pride in it, and really wants to be given credit for the goodness he builds into it.

### THE DIXON SASH AND DOOR COMPANY

believe that the buyer of sash and doors entitled to the same protection that he gets on other merchandise. Insist on Dixon's "American Made," and your protection is assured.

Glendale Office, 205 E. Broadway Phone Glen. 424

### Don't Buy our

## Builders' Hardware

until you see. We can save you money. We carry a complete line of all kinds of hardware. We also carry

### FMO RANGES and ASHOD REFRIGERATORS

### Broadway Hardware Store

205 West Broadway Phone Glen. 493-J

Buy your Material and Build Now.

There is no prospect for lower prices.

DAMAGED







# RADIO PAGE

## Press Radio Department EDITED BY N. D. GARVER

### WAVES

(Continued from yesterday)  
 Nature of Waves—In so far as the term wireless telegraphy relates to the absence of wires between stations, indispensable to other methods of communication it is appropriate, but as a great deal of wire is used in the station itself the word wireless is not descriptive enough. As explained before, communication is carried on by means of electromagnetic waves of high potential which are radiated through the ether so that the term radiotelegraphy or radiotelephony is more apt and has been adopted by all government and amateur publications.



The popular idea of a wave is that motion of a body, for example, a wave in the water is considered to be a forward motion in the water or a motion on the surface of the water, to be more exact. Where the surf is breaking on the beaches this case is true to a certain extent, but the action of the surf does not represent a true wave. The latter can only be seen several miles off the shore where, if one were to watch a small boat floating on the surface, it would be seen to rise and fall, that is, it would rise on the crest of one wave and fall into the trough between that wave and the succeeding wave, without making any progress toward the shore whatsoever. Wave is motion through a body which, after it passes, leaves the body in the same state or position as before.

The continuing action of the wave which lasts until the energy causing it is expended, may be shown more clearly in a long piece of rope suspended vertically and not fastened at the lower end. By giving the rope a sharp snap to the right or left, a wave will be seen to travel up the rope and when it reaches the point at which it is fastened it will start back downward although it is much smaller in size and there will be a notable decrease in the speed of

the wave upon its return. Therefore, as stated above, the wave after passing through the body leaves it in its original state or position. In the case of the wave the boat is left in its original position, and in the case of the rope the rope is left in its original state. Supposing there were a number of waves one right after the other, in either case. The distance from the crest of one wave to the crest of another is a wave length. The number of these waves that pass a given point in one second is the wave frequency, while the speed with which they pass this given point per second is the wave velocity. These terms are all employed in connection with electromagnetic waves.

In order that wave motion may be sent up in any body or medium, the body or medium must possess the properties of elasticity and inertia. Elasticity is the property by virtue of which the bodies assume their original form after the passage of the form which altered them, while inertia is that property of matter by reason of which tends to resist any change in the motion or rest. Air possesses perfect elasticity inasmuch that it resists compression and once compressed will completely return to its original state when the force causing the compression has expended. Air is likewise possessed of inertia inasmuch that it resists a force tending to set it in motion and once in motion it resists the natural forces which tend to bring it to rest again. The motion of the air or wind does not cease immediately when the force which caused its motion is removed, but by virtue of inertia continues a certain distance after the original force has ceased to act.

(To be continued.)

### PHUNNY STUFF

**Radio Goose Rhyme**  
 Sing a song of wireless,  
 A table filled with junk,  
 Four and twenty hook-ups,  
 Mostly all the bunk;  
 When the music's going,  
 And the voice is coming in,  
 Isn't it a merry thing to realize  
 That the darn set's workin' even  
 though the aerial is connected to  
 the "B" battery.  
 (Taken from "Radio.")

### DON'TS

- DON'T try to hook the filament of a vacuum tube to the house-lighting circuit, even when a toy transformer is used.
- DON'T expect to throw the parts of your set together and still get good results.
- DON'T be afraid to use solder when making connections. The vacuum tube will notify you of bad connections by a persistent series of groans and squeaks.
- DON'T expect to hear telephone music 500 miles on a crystal set or one detector bulb. You will need several stages of amplification for that.
- DON'T stink your ground. Use all the good grounds you can obtain with the shortest leads possible.

(Taken from "Popular Science.")

### SWAPS

Jack Trafton, Glendale 1246-R. For sale—a loose coupler and detector in A1 condition. Privilege of testing instruments before purchase, or may be able to swap if you have something I want.

Wallace Haynes, Glendale 645-J. Vario-coupler tuned to 600 meters. Manufactured by Radio shop and has had very little use. For sale at reasonable price or will swap if you have something that I want.

**Theory Class Tonight**  
 The second theory class will be held tonight in the household arts building of the Glendale High School on Harvard street. This meeting will be devoted to the election of officers of the Radio club and also to arrange the nights and the hours most convenient to the members. The theory of Saturday evening's class will be reviewed for the benefit of those unable to attend Saturday evening and also for the benefit of the new members obtained or enrolled since then which total about 28. After the review the lecture will be carried as far as possible during this small amount of time. Everyone be there with bells on as this is to be one BIG meeting. 7:30 to 8:30 o'clock.

**Code Class Wednesday**  
 The code class Wednesday will be held also in the high school so as to provide the proper facilities for copying code. Those scheduled for the Wednesday evening class which starts at 7:30, are George Pearson, Grover Loftus, Fletcher West, Geo. Drinkwater, Carl Gom-

meil, David Small, Wm. Martland, John Bender, A. N. Early, Walton Andrews, Jack Trafton, Kenneth Lee, Graham Trafton, Edward Flannigan, Eldwin V. Soper.

Those whose names are not in this list and wish to be in the Wednesday class may also be present at 7:30 and you will be enrolled in this class.

**Wouldn't it Be Great—IF**  
 Some of those broadcasting stations would change records once in a while, for instance "Ruddy Weidoff's Comedy Trombone solo?"

Storage batteries never ran down?

### Questions and Answers

Q.—Could I get a commercial license and where could I get it—L. F. Eagle.  
 A.—You could get a commercial license if you were able to answer all the questions on a commercial examination and it would be impossible for me to mention all of the questions here, but if you could come to one of the school classes I would be willing to tell you as many of the questions as I could. The examination for such a license would have to be taken at San Francisco.

Q.—I don't even know the code and do you think I would be able to attend your code class Wednesday night?—F. R. B., Glendale.  
 A.—Most assuredly you can attend one of the code classes whether you know the code or not. There are many others in the same boat and that is what the code class is for, to teach the code to beginners.

### AMPLIFIERS

By C. E. WEAVER,  
 Manager Radio Department,  
 J. A. Newton Electric Co.  
 It is the purpose of this first article to describe the amplifiers now in use and to show the essential differences between each type. Mechanical amplifiers, those being the ones which make use of some microphone device, although possible, are not practical, and therefore will not be discussed here. In radio communication the signals sent out by a transmitting station, set up oscillating currents in the antenna of the receiving station, which is tuned to the wave or frequency of the transmitter. These currents are then transferred either by induction or direct coupling to the detector and receiver circuit. The action of the detector, as has been explained in a previous article, is simply a device which allows the alternating or oscillating current to flow in one di-

rection, producing in turn a pulsating direct current. This direct current then makes the sound in the receiver which we interpret either as a telegraph signal or speech. In many cases the energy received in the antenna circuit is so very small that the receivers cannot operate, or else an extremely weak signal is heard. It is obvious therefore, that some method of increasing the strength of the signal becomes necessary.

The operation of a vacuum tube amplifier is closely analogous to the water faucet, in the fact that the person controlling the flow of water can be likened to the grid of the vacuum tube, which in turn regulates, so to speak, the flow of energy from the "B" battery, which then produces the sound in the head receivers.

We will now take up the two systems of amplification, those of audio and radio frequency.

### Audio Frequency Amplification

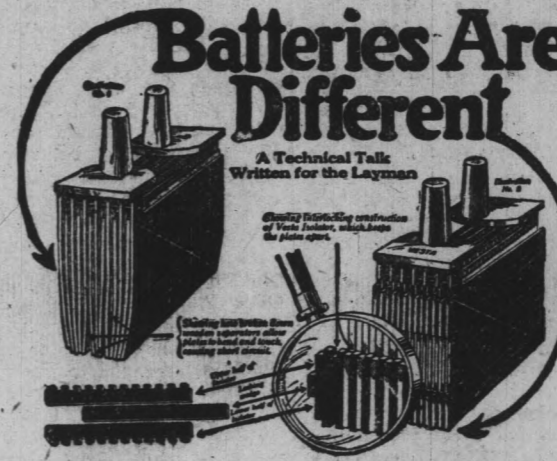
By the term audio frequency we mean those sounds audible to the human ear. These range roughly from 25 to 10,000 vibrations or cycles per second. This system has one disadvantage in particular in the fact that no detector tube is "fair" to the incoming signal. The detector gives a signal, audibility depending upon the square of the voltage impressed on the grid of the detector tube. It can be seen, therefore, that a strong signal gives much more volume in proportion than a weak one. Consequently, if a signal were so weak that it would not operate the detector tube, then no matter how many stages of audio frequency amplification were used, the signal would still remain inaudible. Obviously the logical thing to do is to amplify the signal before it reaches the detector. This is called radio frequency amplification.

**Radio Frequency Amplification**  
 As soon as we consider radio frequency amplification, immediately there are numerous difficulties presented. Every one knows that high frequency currents have different habits than those used for power purposes. Those used for power are usually 50 or 60 cycles per second, while a radio signal tuned to 200 meters, which is the amateur wave-length, has a frequency of 1,500,000 cycles per second. Consequently, we have absolutely different conditions in radio frequency from those in audio frequencies. Furthermore, each particular stage must be designed to cover a certain band of wave lengths, and as a consequence it is usually necessary to tune the am-

### CARE OF YOUR "A" BATTERY

By T. L. CURRIE  
 of the W. H. Hooper & Co.  
 The term "storage battery" as applied to that familiar form of chemical generator of electrical energy so popular as a source of current for radio work, is a misnomer which proves misleading to many not well informed in storage battery work. (The cut accompanying this story shows a set of abused or worn out plates and also shows through a magnifying glass a set of good, healthy plates.) Such an appliance does not store electricity in the source of being a reservoir, but the pas-

posite to that of the flow on discharge, is known as a storage battery. Such a couple or assembly of couples may be used on either a closed or open circuit, and when the battery no longer supplies sufficient energy for lighting the filament of the vacuum tube or whatever the battery might be used for, it may be restored to efficiency by passing a direct current for a certain length of time, or to be exact, a voltage reading of 2.6 volts under charge, with a gravity reading of 1275 to 1280. There are many couples or combinations of substances which theoretically will fulfill the condition



sage of a current through an accumulator, as it is sometimes improperly called, produces a certain chemical change in the nature of elements of which it is composed so that after a time a current may be obtained, varying in quantity and pressure in keeping with the capacity of the battery and the amount of time and strength and energy which previously has passed through it. It is a known fact that the simple chemical cell, for instance, the commercial dry battery, is not suitable for continued service and unless used intermittently will soon become exhausted and totally unfit for further use. Any voltaic couple which is reversible, that is capable of regeneration after exhaustion by passing an electric current through it in a direction op-

posite to that of the flow on discharge, is known as a storage battery. Such a couple or assembly of couples may be used on either a closed or open circuit, and when the battery no longer supplies sufficient energy for lighting the filament of the vacuum tube or whatever the battery might be used for, it may be restored to efficiency by passing a direct current for a certain length of time, or to be exact, a voltage reading of 2.6 volts under charge, with a gravity reading of 1275 to 1280. There are many couples or combinations of substances which theoretically will fulfill the condition of regeneration after exhaustion and which can be used as storage batteries, but none are commercially available, except the lead plate combinations, and as this type is used exclusively of other types for this work, it will be the only one considered in this account. As in common with other chemical cells, such a couple consists of two elements, a positive and negative being one element and the electrolyte, the other. The positive and negative plates can easily be distinguished by their color, the positive being a chocolate brown and the negative a light gray. After the formation is complete, the active material in the plates is not metallic lead. It is oxide, which is a combination of lead and oxygen, and while it is not within the scope of the article to go into chemical changes and accepted theories of electrolyte action, it will be well to present some of the requirements of such a cell and difficulties which designers have had to contend with to develop a satisfactory form of battery. (To be continued.)

## NEW TYPE RADIO SET DESIGNED BY TAYLOR

Glendale's Radio Expert Has Home Equipment at Reasonable Price

A new and very satisfactory type of radio set for the home has been constructed by Pearson Taylor, of 506 North Jackson street, who is one of Glendale's foremost radio experts. This set will be installed in any home in Glendale at a very reasonable figure. It is equipped with a nicely finished cabinet with head phones and a two strand aerial. It is claimed to be far superior to the crystal set that is so widely used by amateurs, and has a range of 30 miles with both voice and music, doing very efficient work. Mr. Taylor is a licensed United States operator. He is a graduate of the Y. M. C. A. wireless school of Los Angeles, and took post graduate work in San Francisco, Portland and Seattle. He was for a space of one year radio operator at Fort Bliss, Texas, a large government wireless station, and is now manager of the stock room of a large Los Angeles radio concern.

### APPLICATION TO RADIO SCHOOL AND CLUB

(Please print your name in full address and occupation.)  
 Name.....  
 Address.....  
 Phone.....  
 Occupation.....  
 State what you wish to know about radio:  
 Signature.....

# RADIO SETS FREE

Now the Fun Begins! Get in on This Wave!

## BE A RADIO BUG!

### DESCRIPTION

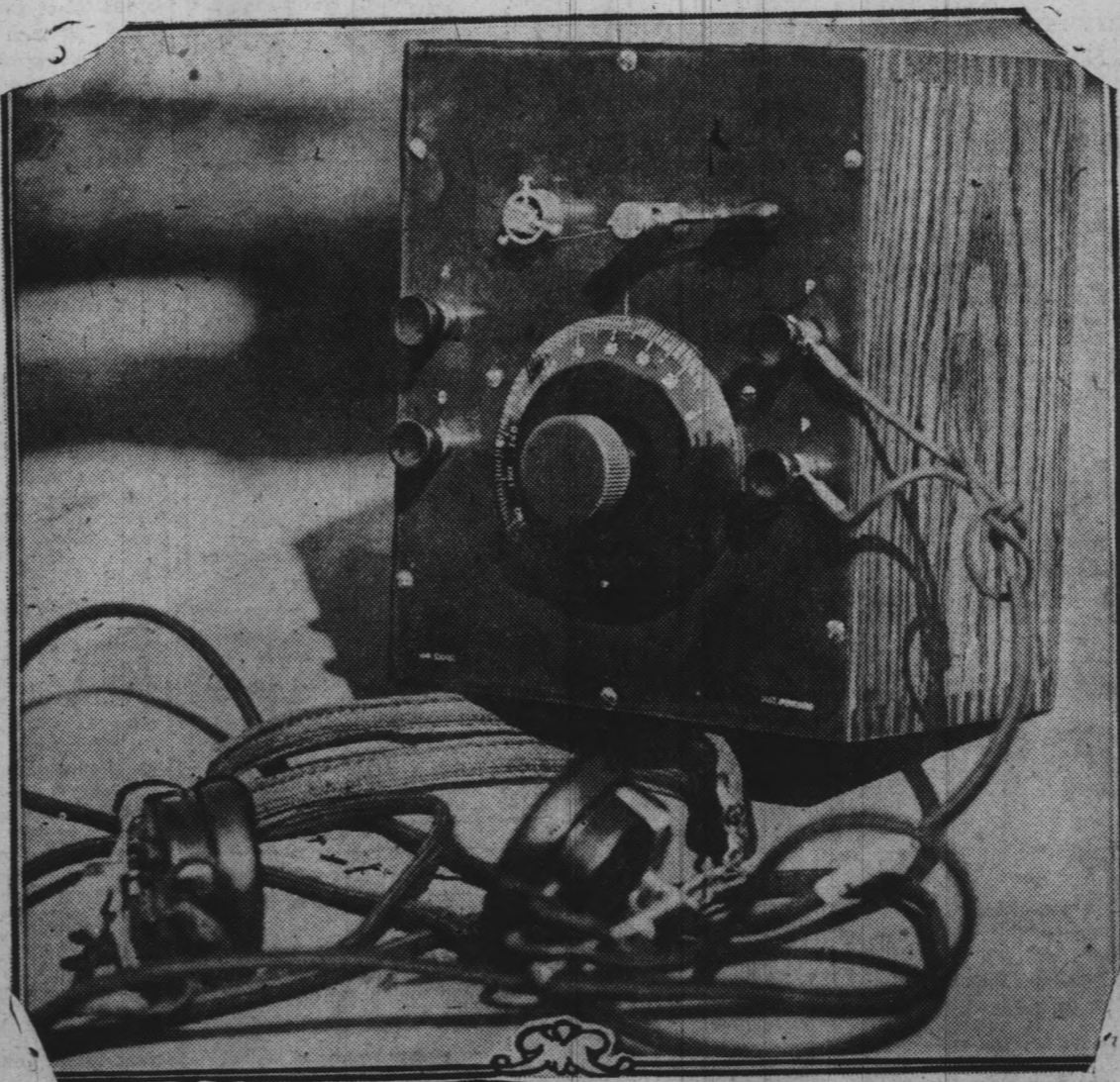
The Crystal Set is a complete Radio Receiving Set for local broadcasting.

It requires no technical knowledge of any kind to install or operate. It has a special tuning coil that needs no adjustment.

It requires no batteries to operate. The only thing required to "listening in" is a pair of phones.

### Get a Crystal Radio Set

and you can enjoy all the thrill and excitement that comes with even the most expensive instrument.



FOR 15 NEW ONLY 3 MONTHS SUBSCRIPTIONS

To the Glendale Daily Press and the Los Angeles Evening Express

65c a Month For the Two Papers

For subscription blanks and a chance to "listen in" yourself on this wonderful instrument come to

Circulation Department  
 GLENDALE DAILY PRESS, 222 S. Brand

The Glendale Daily Press 222 SOUTH BRAND BLVD.

LEGION ASKED TO PLANT TREES

Living Memorials to Remain After Men Are Gone

INDIANAPOLIS, May 2.—"Living memorials" in the form of trees to be planted on Arbor day and dedicated to the memory of the service men who gave their lives during the world war are planned by the American Legion...

Although Arbor days are celebrated at different times in the various states, being proclaimed by the governor, the Legion has so arranged its program that it will fit in on whatever day the state executives set aside for the observances.

BARBER FIXED HIM UP RIGHT HE SAYS

SAN FRANCISCO, May 2.—It is going to take a court to decide just what a man means when he says "Fix me up," to a barber. President James T. Maguire, head of the Kern Mutual Telephone company and Bakersfield Gold club, nicknamed by his friends—until a few days ago "Walrus Jim." Maguire's facial adornment was described legally as follows: "That for years past the plaintiff was owner of a heavy black mustache, not less than three inches in width and six inches

Girl Accused of Huge Platinum Theft



Miss Emma Weiler, with four men, is held by New York authorities for alleged complicity in the theft of \$250,000 worth of platinum from a plant in Jackson, Tenn.

Maguire went into a San Francisco barber shop and said "Fix me up." While being fixed up, he took a little snooze. When he woke up his mustache was gone.

"It" is a small word, but the most unsatisfactory one in the dictionary.

The Barton Bedtime Stories

TAD COON NEE DS RESCUING

By JOHN BARTON (Copyright, 1921, by Associated Newspapers)

There wasn't much sleep in Tommy Peele's woods that day or that night, either. The broken airplane in the Broad Field never moved. But every time any of the woodfolk came to see it, those scary noises would begin. Then whoever it was would take his "foot in his paw" or "his wing in his beak" as the saying is, and hustle to Dr. Muskrat's Pond to tell about them.

Dr. Muskrat would look wise as an owl and wag his head as if he were horrified most to death, but he wasn't worrying. He has his spicions. Because he'd seen Tad Coon walk right up to the big machine as if it didn't frighten him any more than it did Mr. Peele or Tommy or the man they'd helped out of it.

But even Dr. Muskrat felt sort of troubled as the night wore on and no siggly coon came prancing back to the pond to get his evening drink and to tell what he'd been doing.

Next Story—A TRAP FOR CURIOUS FOEKES.



He Crept Closer and Closer With His Heart in His Mouth. He Paused, Listening.

Calling the Doctor

By H. ADDINGTON BRUCE

Author of "The Riddle of Personality," "Self-Development," Etc. (Copyright, 1922, by The Associated Newspapers.)

Here is a little story of significance to an unfortunately large number of people. Its central figure is a woman who one afternoon telephoned to her physician's office to say that she wished he would come to see her immediately.

"The doctor cannot do that," explained his secretary. "He is busy with appointments in the office all afternoon, and he is engaged in a consultation out of town this evening."

"But he can at least see me for a few minutes if I go to the office," said the patient. "I have a very sore arm and am much alarmed because of it. I simply must have it looked at."

"Please hold the wire a moment," was the secretary's response. She consulted the physician, whose entire afternoon was indeed crowded with appointments. Thinking, however, that the arm condition mentioned might be the result of an acute infection which would call for prompt treatment, he told his secretary to let the anxious patient come.

Half an hour later she was ushered into his office. Her first words disabused the physician of the idea of acute infection, and provoked in him mingled feelings of amusement and indignation.

"Off and on for two months," she began, "I have had a pain in my left arm. I kept putting off coming to you until today. Then I decided that I ought not to delay any longer in learning why my arm hurts me."

"But, madam, if your arm has been troubling you this way for two months and you have not thought it necessary to see me, surely you could now have waited a few hours longer, instead of trespassing on the time already allotted to other patients. That is not fair either to them or to me."

As a matter of fact, thus to trespass needlessly on a doctor's time is to sow the seeds of possibly serious trouble for the trespasser in the future. To quote a medical friend, an eminent Boston physician, who happened to bring up this subject when we were chatting together recently:

"Any doctor worthy of the name will drop everything to respond to an emergency call. But suppose a doctor gets an emergency call from a patient and hurries out to the patient's house only to find that the trouble for which he has been imperatively summoned is absurdly trivial or has been present for some time, the patient having postponed from day to day the seeking of medical advice."

"Suppose the same patient does this sort of thing repeatedly. There may come a time when a real emergency arises and the doctor, being busy with other patients, does not promptly respond, suspecting that the emergency call from this particular patient is of no more urgency than the 'false alarms' so frequently turned in before."

Questions I commend to the serious consideration of all whose habit it is to expect instant attention from their doctor for every little ailment that afflicts them, and to expect such attention even after they have themselves been needlessly dilatory in giving the doctor opportunity to see them without inconvenience to him and to other of his patients.

BERKELEY MAN GOES TO AFRICA

BERKELEY, Calif., May 2.—

Even in these days when there are plenty of dangers in crossing metropolitan streets, then hunting is still drawing men to the wilds of Africa.

Ryan Curtiss Baird of this city is making preparations for a trip to

Darkest Africa with Leslie Simpson, famous lion hunter. The two men will go via London, and expect to reach Cape Town, South Africa, some time early in the summer. The trip will take more than a year. They will explore parts of Africa practically unknown to white men.

Smiles that won't come off are apt to become monotonous.

Removal Notice

We wish to announce that we will move to our new location, 510 East Broadway (just across from Glendale Sanitarium) on or about May the 1st and will be better equipped than ever to give you the service for which we are noted.

Barton Bros. Garage

Glendale 1077 510 East Broadway

Authorized CHEVROLET Dealer. Easiest Terms. Used cars taken on first payment. C. L. SMITH. Glendale 880. Temporary Quarters, Rear 400 E. Broadway

To Home Builders:

We build Pacific Ready Cut Homes. We Ready Cut any plan, FRAME or STUCCO. We save you from 15 to 20 per cent. We finance buildings. LOW BUILDING CO. Contractors and Builders. 612 E. Broadway. Glendale 26 and 898-R

Classified BUSINESS DIRECTORY

"THE BUTCHER, THE BAKER, AND THE CANDLESTICK MAKER"—READY REFERENCE FOR THE BUSINESS MAN AND THE HOUSEWIFE

Grid of classified advertisements including: ATTORNEYS (LEE A. DAYTON), BUILDERS (A. T. GRAY, B. W. Sherwood), CARPET AND MATTRESS (GLENDALE CARPET AND MATTRESS WORKS), DYERS AND CLEANERS (Buffalo Dye Works), HARDWOOD FLOORS (INLAID FLOOR CO.), NEWSPAPERS (Glendale Daily Press), PAINTING (Auto Painting, Glendale Plumbing Co.), SIGN PAINTERS (Viola-Baker Sign Co.), CHIROPRACTORS (EBLE & EBLE), BRAND CLEANERS (LADIES' WORK A SPECIALTY), DETECTIVES (Allen O. Martin), INSURANCE (GENERAL INSURANCE), JOBBING (Press Job Printing Company), MILLINERY (Margaret Burgess Lane), MUSICAL INSTRUCTION (HARRY GIRARD), ROOFING (Pinkney Roofing Co.), SCHOOLS (Glendale Commercial School), SHEET METAL (L. G. SCOVERN), SHOE REPAIRING (Expert Shoe Repairing), and many others.

BUY A DIRECTORY CARD! Press Want Ads Always Bring Quick Results. Make Your Wants Known Through the Press Want Ad Columns THEY BRING QUICK RESULTS.



But the fool who is wise in his own conceit probably is happier than one who isn't wise at all.

# Glendale Daily Press

Be sure you're right, if you can be, but anyway be sure you think you're right.

## THREE PER CENT COMPANIES ARE ANALYZED

### Daugherty Declares New Loan Organizations Charge More

SACRAMENTO, May 2.—A statement was issued today by the Commission of Corporations Edwin M. Daugherty relative to the so-called 3 per cent loan companies, as follows:

"First. The companies were insolvent during the greater part, if not the whole, of existence.

"Second. The companies assumed that money had not market value.

"Third. Equality of benefits of contract holders was not considered. (Early investors were the gainers and the average and later ones were the material losers.)

"Fourth. Strees was laid upon a rate of interest charged on loans—in most instances 3 per cent. This was deceptive in that the actual rate of interest charged average borrowers exceeded 12 per cent.

"Fifth. Many companies contemplated no investment by promoters. But few companies provided for bonding officials against dishonest acts.

"Sixth. All of the companies were organized as common law trusts. Such organizations attempt to usurp the functions of corporations without bearing their just burden of taxation, and attempt to evade the liability of the corporate form of organization.

"Seventh. Criticism of this department for this exhaustive research is unjust and unwarranted. It emanated from the uninformed and the biased. A new field of financing had to be pioneered, because (a) adequate precedent by legislation had not been established in this or other states; (b) financial unsoundness or rank inequality was discovered upon analyzing every contract submitted and obtainable by us throughout the entire United States.

"The requirements herewith issued appear to be just, fair and equitable.

"Attention is especially called to the clause in the corporate securities act, which reads: 'Every permit . . . is permissive only and does not constitute a recommendation or an endorsement of the security to be issued.'

"Now, therefore, in view of this exhaustive investigation, I herewith set forth the requirements for these cooperative loan companies in the conduct of their business.

"The department has attempted to provide for:

"1.—The financial solvency and soundness of the company, throughout its existence.

"2.—The establishment of a just rate of interest to be credited to the contract holder during his wait for a loan.

"3.—The establishing of fair surrender values for contract holders who desire to draw.

"4.—The elimination of flagrant

## LORD'S SUPPER AT PRESBYTERIAN CHURCH

### Large Congregation Sees New Members Received Into Body

The Lord's Supper was observed Sunday morning at the Presbyterian church. A very large congregation was in attendance, and the occasion was of deep interest. A large number of new members were received.

The evening service, according to custom, for this day, was a praise service; a number of special musical features of value had been prepared by the choir director, Mrs. Fannie Marple Retts. Among these were violin solos by Miss Esther Gless. The congregation had an unexpected visit with John Brown, the evangelist, by his ambassador, Dr. F. W. Collins, who brought vividly both the man and his great work in his school.

Rev. Louis Tinning, assistant pastor, gave the sermon of the evening, based upon the words of those Greeks who came seeking Christ, saying, "We would see Jesus." "Men coming to seek Jesus come because of burdens. The world in those days was full of unrest and trial. This, likewise, is a time when men are burdened and tried as perhaps never before. In the world are unparalleled poverty and hunger. And yet those are trifling beside the still greater spiritual need. What is the need? Peace, and a deliverer who can bring it. The world needs a Redeemer (not an example), a Redeemer from sin. Is it worth while to seek Jesus? A little time spent as those Greeks spent it, meeting Jesus, will mean more in life than any thing else ever can mean.

**SPICE IMPORTATIONS**

During 1921 the United States has been the best foreign customer of the Dutch spice dealers. Pepper, nutmeg, mace and cloves are the main spices imported.

**BUILDING GLASS FACTORY**

Plans have been completed for the erection of a large glass manufacturing plant near Auckland, New Zealand.

gambling features.

"5.—The limiting of the company to the issuance of one series only so that false vitality cannot be injected into the company by starting a new series.

"6.—The establishment of three defined and standardized funds, namely, loan and trust fund, expense fund, and reserve fund.

"7.—The investment of a substantial sum by the promoters, which is placed in the reserve fund.

"8.—The bonding of both officials and salesmen against dishonest acts.

"9.—The supervision of loan's made, limiting them to 60 per cent of the value of the real estate securing them."

## Foley's Friendly Fancies



JAMES W. FOLEY

### THE DREAMS

Somebody dreamed of him as man full-grown, Strong, earnest, useful in the world of men. Making his way by his stout soul alone— (He was but little more than baby then!) Somebody dreamed those little arms grown strong. Those eyes alight with purpose sure and great. Somebody was impatient—days were long Until he should reach manhood's high estate.

And then another day Somebody saw The man grown big and strong and great and all;

And looked upon him, it may be, with awe, At such a tiny being grown so tall, So gruff of voice and given to mastery, His place so high in the great world of men. Somebody dreamed another dream—that he Was that beloved little boy again.



## BANQUET FOR THE REALTORS' HEAD TUJUNGA SCHOOL TRUSTEES ISSUES DEFI TO ALL GOLFERS

**P. T. A. to Honor Board and Teachers at Big Supper**

TUJUNGA, May 2.—A banquet is to be given Friday, May 7, at 7:30, in the schoolhouse for the board of school trustees and the teachers. The executive board of the Parent-Teacher association is arranging the affair.

At a meeting of the board last night routine matters were discussed and several bills ordered paid. Last night's meeting was the last for Wilmet Parcher, retiring president, whose place on the board is being taken by Mrs. B. B. Reynolds.

**Boy Scout Doings**

The call for Tujunga boys to join the Boy Scouts of America has met with instant and strong response. Troop No. 1, Tujunga, of the B. S. A., is an accomplished fact in scout history. Regular meetings are taking place every Thursday night at Bolton hall. The committeemen are regularly elected members of various committees on the Round Table Council of the B. S. A. of the Verdugo Hills district. The boys of Tujunga are showing the world what they can do in scout lore, almost every one of the troop members having past the test 100 per cent.

**New Store Building**

The Wells Construction company has started work on a building on Sunset boulevard just south of the Tujunga Valley Bank building, for Miss Griffs and Miss Crutchshank of the Cozy Cup Inn. The building is to be finished in stucco and will contain two stores, one of which is to be occupied by the owners with a ladies' apparel shop.

**Realty Board Meeting**

A meeting of the Tujunga realty board will be held tomorrow at 10 o'clock at Insley's. Further plans are to be made for the dinner to be given on the occasion of the visit of the state realty board president, C. C. Tatum, which is to be at an early date.

**Tamale Supper for Auxiliary**

The ladies' auxiliary of the local Legion post will give a tamale supper at Legion hall tomorrow evening from 5:30 to 7:30. Tamales with chili sauce, coffee, soup or salad will be served for 35 cents. Pie will be served for 10 cents extra.

**UNIVERSITY TO TEST RELATIVITY**

BERKELEY, Calif., May 2.—The University of California is preparing to send to Australia a special expedition which will test the validity of the Einstein theory of relativity.

The scientists who will compose the party will take observations of the total eclipse of the sun which will take place in that part of the world on September 21, 1922.

The eclipse will extend from Abyssinia over the Maldiva peninsula, and the Christmas islands, to Northwestern Australia. The party will take their observations from a point on the famed "Ninety Mile Beach."

The Berkeley expedition will be the only American one to make the trip. A British expedition, composed of members of the Royal society, the Royal Observatory and the Royal Astronomical society, will take similar sights from Christmas Island.

Several scientists from Lick observatory, on Mount Hamilton, near San Jose, Calif., will be in the Berkeley party. Dean of the party will be Dr. W. W. Campbell, one of the world's most noted astronomers. Dr. Campbell will leave in May, and the other members in July, according to present plans.

The weather at Nine-Mile Beach in September is generally extremely clear, and the expedition hopes to be able to obtain some highly important observations.

"Have you had any experience in salesmanship?" asked a sales manager of a college graduate applying for a job.

"Oh yes," replied the other confidentially. "I assisted for two years in selling the seats for the Yale-Harvard football game."

## GLNDALE MAKING BUILDING RECORD JUST NOW

### Material Men of City Tell of Goods Being Sold

"Glendale has before her one of the most active building years that she has ever known."

This statement was made by the manager of one of the leading lumber yards of Glendale. He went on further to state that from the number of contracts he had on hand at this time it is certain that a vast number of homes will be built in this city during the coming year. These homes will make their appearance in all sections of the city, showing that Glendale as a whole is making a steady growth. Lumber will be furnished by this company, also, for a number of business structures. A pleasing feature about the growth of Glendale is that the business section and the residential portion are growing hand in hand—one is keeping pace with the other, as it should.

The business houses and manufacturing concerns that furnish the material for the homes and business buildings in Glendale, are headed by men that are wide-awake, and that are doing everything that can be done to keep down the cost of building materials to those who are erecting these structures. Following are a few of the concerns furnishing home-building materials for the boosters of the valley:

**Hardwoods**

The Glendale Hardwood Flooring company, 304 East Broadway, is furnishing hardwood floors and other features for a lot of the homes in Glendale. This firm says that hardwood floors add far more than their cost to the value of a home. New floors are laid at very reasonable rates, and old floors are rescrapped and varnished.

**Going Down**

"There has been a big drop in building materials," said Mr. Beran, proprietor of the S. S. Beran company, 305 South Brand boulevard, and for this reason we are able to build houses better and cheaper than ever. We signed up a large number of buildings in February. These buildings have been finished and we are now making contracts for other structures. Our prices are extremely moderate, and the homes we are erecting are right up-to-the-minute in every respect.

**Promptness and Accuracy**

Listen to the Dixon Sash and Door Co.:

"Promptness and accuracy are the most important features that enter into the operation of a sash and door company, so far as the builder and contractor are concerned. We are in a position to give both of these at prices that are right and that are sure to please both the contractor and the fellow who is erecting his first little love nest—as well as all the others that come in between. We are equipped to give low figures on sash and door, plate glass and mirror lists."

**Shine Up**

Nothing improves the appearance of the home place so much as does a new coat of paint for the exterior and new painting and papering for the inside of the home. These do as much for the house as the clothes do for the man. The Harry Moore company, 304 East Broadway, is one of the leading paint stores in Glendale. They carry everything for interior decorating, paperhanging, etc., and also do sign writing. This firm is exclusive agent for the Kyanize varnishes and paints and enamels. Also, a complete line of Sunset Paint company products is carried.

**More Glim**

Everything in the line of electricity for the home is carried by the J. A. Newton Electric company, 154 South Brand boulevard. This is one of the oldest electrical concerns in Glendale, and for years and years it has been furnishing electric features to the people of Glendale. One of the most elaborate lighting fixture showrooms in Glendale is found in this store. This department is a dream.

"We can furnish lighting fixtures for the most elaborate home or the humblest shack," said Jimmy Smith, morning, "and our long run is to give the buyer the very lowest price possible for honest goods."

**More Bricks**

"If the people of Glendale realized the value of bricks for home building purposes they would use more of them," said the manager of the Simons Brick company, 125 West Third street, Los Angeles.

"Brick is adaptable to all types of architecture and combines in itself the good features of all the other building materials. In addition, it is proof against damage by the elements. When you have a home built of brick the expense ceases, while with other materials it has just begun. Brick does not cost 10 per cent more than the most perishable material. It is ideal for beauty, stability and economy."

**Heat the Magic Way**

There are gas heaters and gas heaters. There is as much difference between gas heaters as there is between homes. The Glendale Sheet Metal Works, 127 North Glendale avenue, says:

"We believe the 'Magic Way' gas furnace is the finest gas furnace on the market today. It is the most convenient, economical and sanitary method of burning gas. You touch the button and you get instant heat where and when you want it. These heaters have been made for the past ten years and have not had a rust out or burn out. Every home must

## OSTEOPATHICS OF GLENDALE ARE ENTERTAINED

### Dr. Caroline Jackman Is Hostess at Big Gathering

Dr. Caroline Paine Jackson of 515 North Kenwood street entertained the Osteopathic Physicians and Surgeons of Glendale last Friday evening at her home.

The main feature of the evening was the discussion of the Osteopathic act, No. 20, to be voted on November 7, 1922. They urge every one to vote "yes" on this act, which creates a board of osteopathic examiners appointed by the governor, who prescribes powers and duties thereof; authorizes said board in respect to graduates of osteopathic schools to carry out the provision of medical practice act of 1913 and acts amendatory thereof, and issued to them in the form of certificates authorized thereunder; confers upon said board all functions relating to said graduates heretofore exercised by a board of medical examiners; creates contingent fund from receipts under acts requiring compensation of members of board and of persons appointed thereby.

Dr. Charlie Spencer of Pacific Southern States association and past president of the State association, and Ellis Purlee, field secretary of California Osteopathic association, and former manager of the Ellis-White Chautauqua were present on Friday night.

Mollie came home after a visit for the afternoon with five-year-old Nellie.

"Oh, mother!" she cried, "Nellie was rude and cross all the afternoon. She just quarreled and quarreled!"

"Well," said the mother, "if a little girl had treated me that way when I was a little girl, I should have come home."

"Well, I didn't," said Mollie. "I just slapped her face and stayed."

**GLAD HANDING**

President Harding on reception days sometimes shakes hands with 1500 persons.

Why try to pull yourself out of a hole with a corkscrew?

## THE T-D-L THEATRE TODAY WALLACE REID



**"ACROSS the CONTINENT"**

WALLY'S BEST YET

Another automobile story by Byron Morgan, like "ROARING ROAD," "WHAT'S YOUR HURRY?"—only better. With Theodore Roberts and great cast. YOU'LL RAVE ABOUT THIS ONE.

The T. D. L. will break all records in attendance with this picture

COME EARLY COME EARLY

## 11 one-eleven cigarettes



## 10¢ for FIFTEEN

In a new package that fits the pocket— At a price that fits the pocket-book— The same unmatched blend of TURKISH, VIRGINIA and BURLEY Tobaccos

Guaranteed by The American Tobacco Co. FIFTH AVE. NEW YORK CITY

## Under New Management

C. C. KUPER Announces that he has purchased the

## BROADWAY BAKERY

116 W. BROADWAY, GLENDALE and will Remodel the Interior and Conduct a FIRST CLASS BAKERY

We will put out a line of Bakery Products that will merit your patronage. Give us a trial.

## Special Sale on Silverware

Every Day This Week Only See Our Display Window YOUR CHOICE, \$1.50. SOME PIECES 50 CENTS

We give 10 per cent on everything sold this week to help build a disabled soldier a home.

## H. F. BRANDENBURG

WATCHMAKER AND JEWELER 229 1/2 North Brand—Near California