

TS 1893

.67

Copy 1

John W. Gray & Co.

BOOKS

Hartford, Conn.



ILLUSTRATED CATALOGUE

—OF—

# INDIA-RUBBER GOODS.



CHARLES GOODYEAR.

**JOHN W. GRAY & CO.,**

MANUFACTURERS, EXPORTERS AND DEALERS,

**147 & 149 Asylum Street,**

HARTFORD, CONNECTICUT, U. S. A.

188-?

*Plimpton Print, Hartford.*

TS 1893  
G7

*We respectfully call the attention of our friends and the trade in general to our very extensive line of India-Rubber Goods adapted to all classes of trade.*

*It is our constant endeavor to offer goods of the most excellent qualities, devoting our energies to raising the standard of quality of our goods, rather than in seeing how cheap we can make them. "The Best is the Cheapest."*

*Besides the goods illustrated in the following pages, we have many others, and are constantly adding to our line the new kinds of India-Rubber Goods as they appear upon the market.*

*Our prices will always be found to be as low as is consistent with the quality.*

*Yours very truly,*

*JOHN W. GRAY & CO.*

*1021B4  
Jan 5 43*

**GOSSAMER WATER-PROOF GARMENTS.**



Fig. 1.  
Lady's Newport.



Fig. 2.  
Ladies' and Misses'  
Leggins.

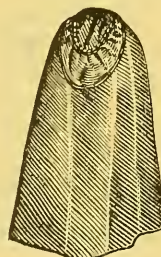


Fig. 3.  
Lady's or Miss's Circular.

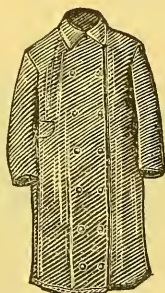


Fig. 4.  
Gent's Coat.

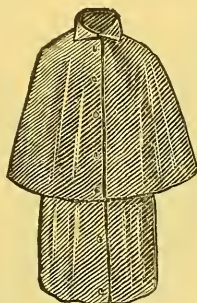


Fig. 5.  
Gent's Talma.



Fig. 6.  
Gent's Leggin.



Fig. 7.  
Ulster.



Fig. 8.  
Hat and Cap.

Ladies' Garments are measured by the length in the back, and sizes kept in stock are from 36 to 60 inches. The sizes of Gents' Garments are 36 to 50 inches, breast measure, and should usually be large enough to go easily over the overcoat.

SEND FOR PRICES.

M 1110 26 Mar 43

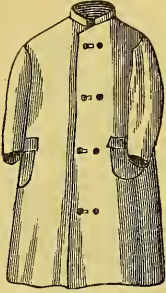


Fig. 9.  
Man's or Boy's Sack.  
About 45 inches long.

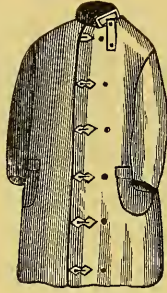


Fig. 10.  
Long Coat.  
About 50 inches long.

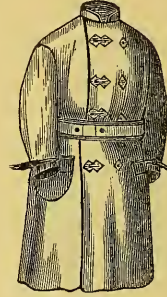


Fig. 11.  
Ulster.  
About 54 inches long.

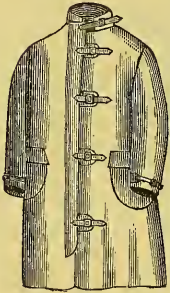


Fig. 12.  
Fireman's Coat.

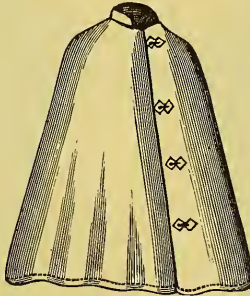


Fig. 13.  
Gent's Cape.



Fig. 14.  
Gent's Fine Light Coat  
on Silicia.

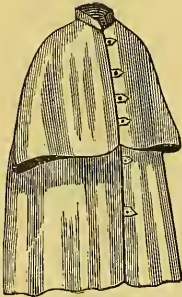


Fig. 15.  
Gent's Talma.

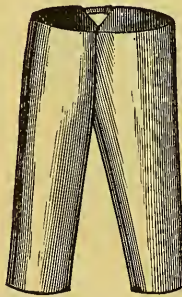


Fig. 16.  
Pants.

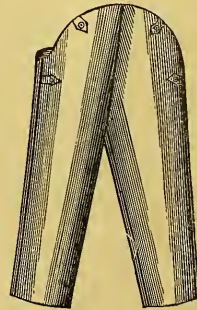


Fig. 17.  
Overalls.

SEND FOR PRICES.



Fig. 18.  
Gun Cover.

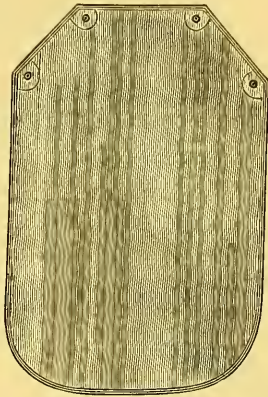


Fig. 19.  
Ice Apron.—Light and Heavy—  
Rubber both sides.  
Mechanic's Apron.—Rubber one  
side or both sides.



Fig. 20.  
Sou'-Wester.



Fig. 21.  
Fish Hat.



Fig. 22.  
Cape Cap.



Fig. 23.  
Light Hunting  
Boot, made also  
Square Top.



Fig. 24.  
Riding or Walking  
Leggins.

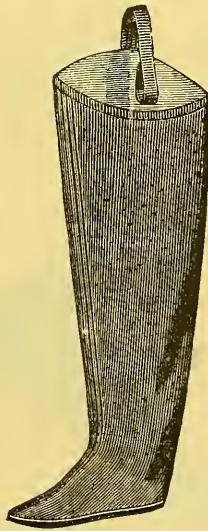


Fig. 25.  
Fishing Stocking,  
worn inside of  
the shoe.



Fig. 26.  
Fishing Pants,  
worn inside of  
the shoe.

SEND FOR PRICES.

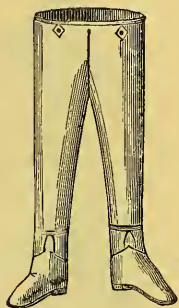


Fig. 27.  
Fisherman's Pants with Boots.  
Cloth Surface.



Fig. 28.  
Baptismal Pants.  
Alpaca.

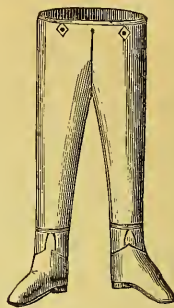


Fig. 29.  
Lumberman's Pants.  
Rubber Surface.

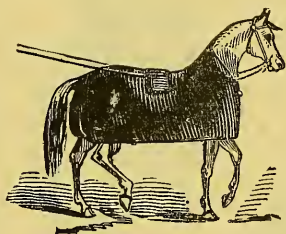


Fig. 30.  
Horse Cover.

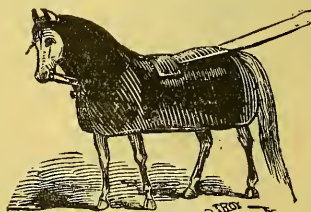


Fig. 31.  
Horse Cover with Hood.

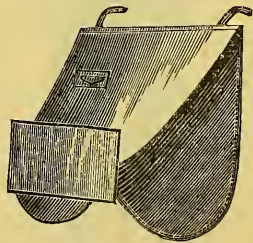


Fig. 32.  
Wagon Apron with Pocket  
to slip onto dash.  
Sizes to fit all widths of  
Dashes.



Fig. 33.  
Horse Hood.

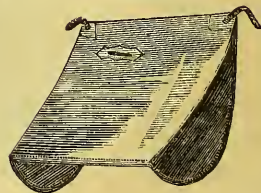


Fig. 34.  
Wagon Apron,  
all sizes.

SEND FOR PRICES.



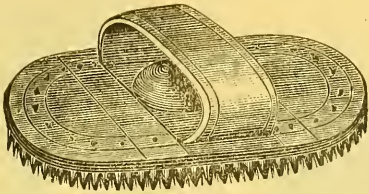


Fig. 35.  
Curry Comb.



Fig. 36.  
Wagon Spring.

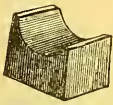


Fig. 37.  
Anti Shaft Rattler.

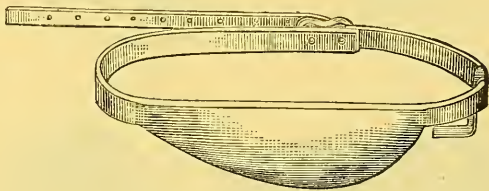


Fig. 38. Hoof Pad.

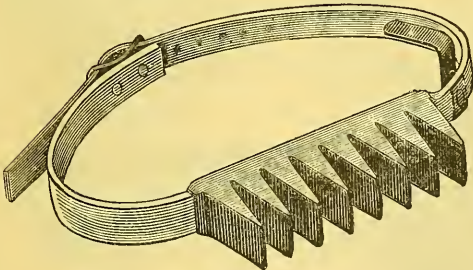


Fig. 39. Hoof Brusher.

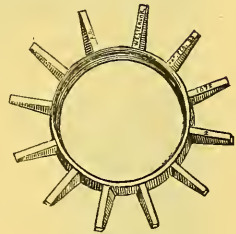


Fig. 40.  
Tickler.

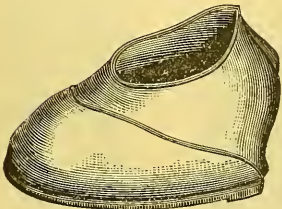


Fig. 41.  
Trotting and Soak Boot.



Fig. 42.  
Improved Spiral Trotting Roll.

SEND FOR PRICES.



Fig. 43.  
Ankle Boot.

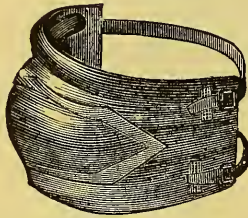


Fig. 44.  
Ankle Boot.

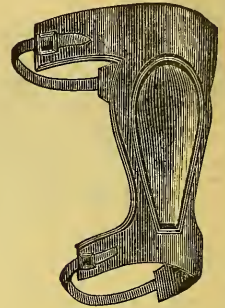


Fig. 45.  
Knee Boot.

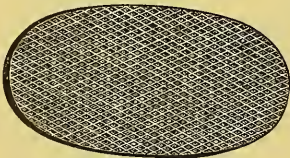


Fig. 46. Door Mat.  
17 x 31 in.

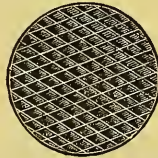


Fig. 47.  
Pitcher Mat, 8 1/2 in.

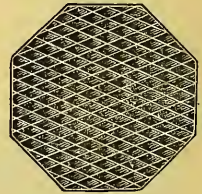


Fig. 48.  
Pitcher Mat, 10 1/2 in.

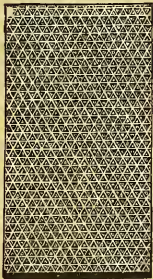


Fig. 49.  
Door Mat, 17 x 31 in.

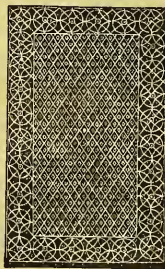


Fig. 50.  
Door Mat, 17 x 31 in.

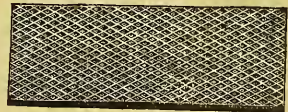


Fig. 51. Door Mat.  
11 x 31 in.



Fig. 52. Corrugated Stair Plate.  
No. 1, 27 x 12 1/2 in. No. 2, 22 x 12 1/2 in. No. 3, 27 x 8 in.

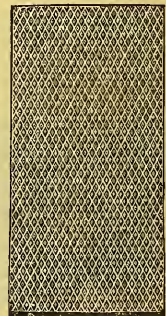


Fig. 53. Door Mat.  
2 Sizes: 18x36, 20x40.

SEND FOR PRICES.

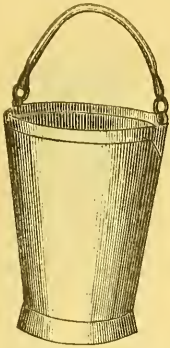


Fig. 54.  
Fire Bucket.

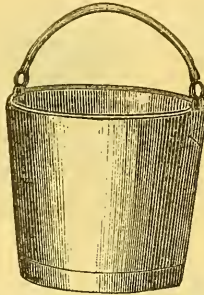


Fig. 55.  
Water Pail.

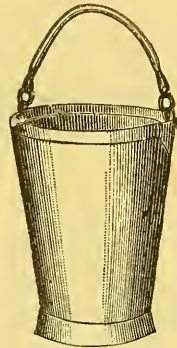


Fig. 56.  
Acid Pail.

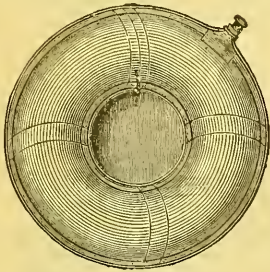


Fig. 57. Bed Pan.

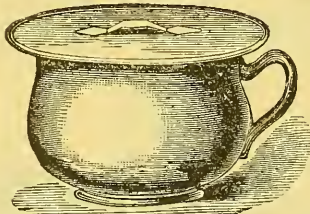


Fig. 58. Air-Tight Noiseless  
Cover. Rubber Chamber.



Fig. 59.  
Cuspadore.



Fig. 62.  
Waste-Pipe Force-Cup.  
For forcing out the  
stoppage in Discharge-  
Pipes of Sinks, Bowls,  
etc.

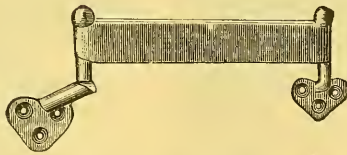


Fig. 60. Door Spring.

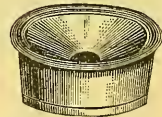


Fig. 61. Spittoon.

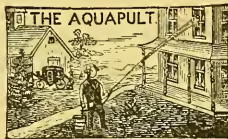


Fig. 63.  
Portable Force-Pump.

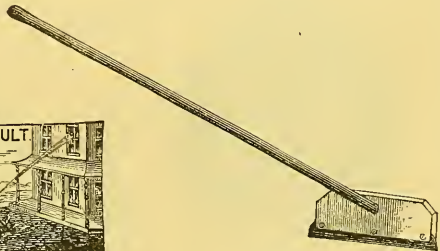


Fig. 64.  
Squeegee, for Cleaning Floors.

SEND FOR PRICES.



Fig. 65.  
Dilator.



Fig. 66.  
Flexible Cup.



Fig. 67. Tumbler.  
Either Hard or Soft Rubber.

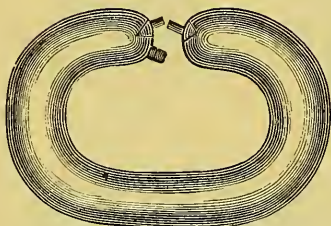


Fig. 68. Circular Life Preserver.



Fig. 69. Flat Life Preserver.

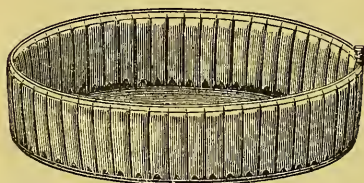


Fig. 70. Bath Tub, Oval.  
Size, 20 x 24 in.

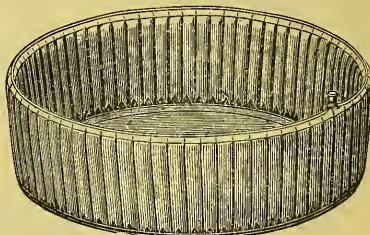


Fig. 71. Bath Tub, Round.  
Sizes, 24, 30, and 34 in. diam.

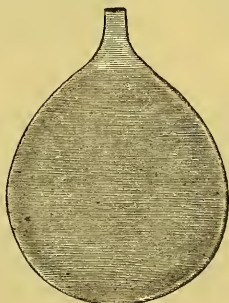


Fig. 72.  
Gas Bag (Pure Gum).  
All sizes, from  $\frac{1}{2}$  to 10 gals.

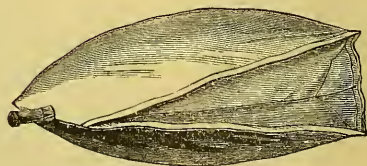


Fig. 73.  
Gas Bag, Made to Stand Pressure.  
Sizes, 18 x 24, 20 x 30, 24 x 30, and 30 x 40.

SEND FOR PRICES.



Fig. 74.

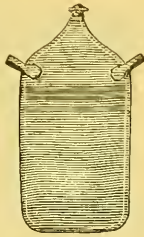


Fig. 75.

Water Bottles, for Hot or Cold Water.

These Bottles are extensively used, and wherever once introduced are absolutely indispensable. For warming in bed, they are vastly superior to the foot-stone, glass bottle, etc.; instantly made ready for use, and holding the heat much longer. They are soft and pliable, and emit pleasant heat. Boiling water will not injure them; or, they can be used with ice-water for headache, etc. Indispensable for travelers.



Fig. 76. Ice Cap.

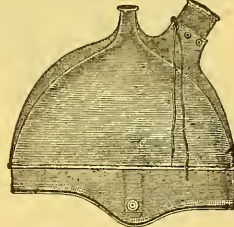


Fig. 77. Ice or Water Cap.  
(Three Sizes.)

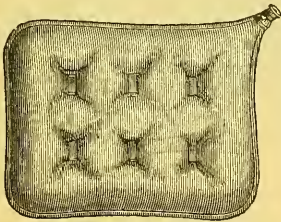


Fig. 78. Water Bag.

Sizes, 14 x 14, 16 x 16, 18 x 18 in.



Fig. 79.

Ice Bag.

Spinal, 12 to 20 inches.

Throat, 7 to 11 "



Fig. 80.

Sponge Bag.

Plain or Fancy.

Sizes, 6 x 7 inches.

7 x 8 "

8 x 9 "

9 x 10 "

10 x 11 "

11 x 12 "

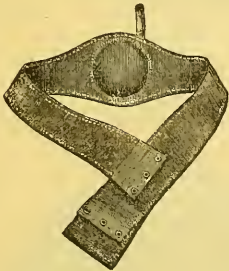


Fig. 81. Umbilical Belt.

Pure Gum. 10 to 18 in. long.

Air Bed.

Sizes, 32 x 80 inches.

42 x 80 "

52 x 80 "



Fig. 82.

Water Bed.

Sizes, 24 x 36 inches.

32 x 80 "

42 x 80 "

52 x 80 "

SEND FOR PRICES.

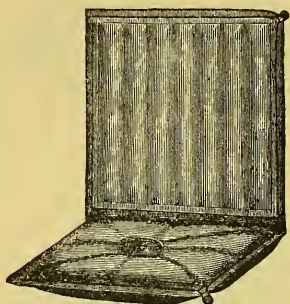


Fig. 83.

Chair Cushion with Back.

Seat.	Back.
16 x 16 inches.	16 x 16 inches.
16 x 16 "	16 x 18 "
16 x 18 "	18 x 18 "
18 x 18 "	18 x 20 "

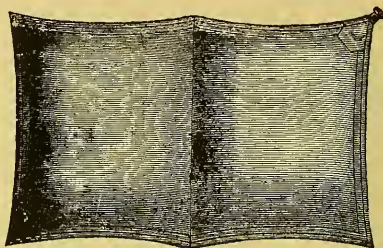


Fig. 84. Air Pillow.

Sizes, 9 x 13, 10 x 16, 12 x 18, and 14 x 23, inches.

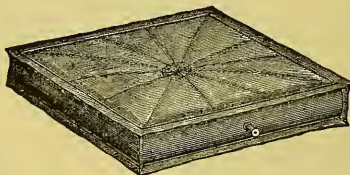


Fig. 85. Carriage Cushion.

Sizes, 14 x 16 inches, 16 x 16 inches.

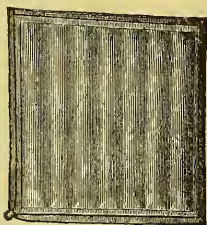


Fig. 86.

Chair Cushion, Square Reeded.

Cloth Surface. Sizes, 12 x 16, 14 x 16, 16 x 16, 15 x 18, inches.



Fig. 87.

Chair Cushion, Center Reeded.

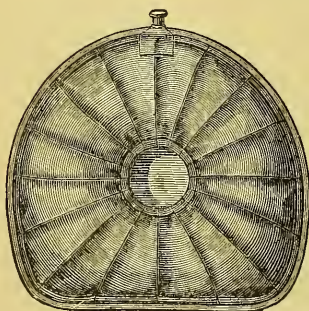


Fig. 88.

Chair Cushion, Linen Surface.

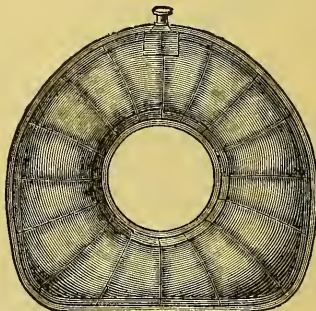


Fig. 89.

Hospital Cushion, Linen Surface.

SEND FOR PRICES.

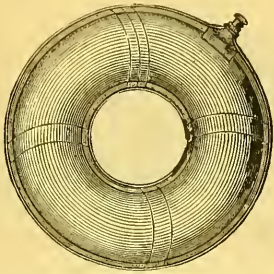


Fig. 90. Invalid Cushion.  
 Sizes, from 9 to 18 in., outside diam.

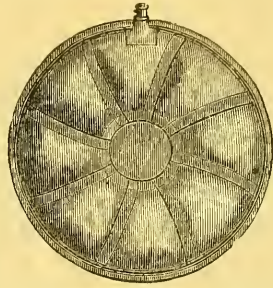


Fig. 91. Chair Cushion, Linen Surface.  
 Sizes, 15 and 17 in. diam.

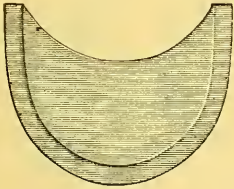


Fig. 92.  
 Dress Shield.

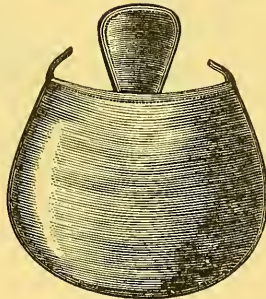


Fig. 93.  
 Lady's Apron.

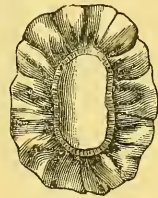


Fig. 94.  
 Bath Cap.

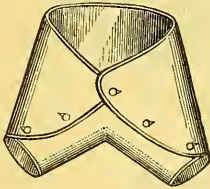


Fig. 95. Diaper.  
 Three Sizes.

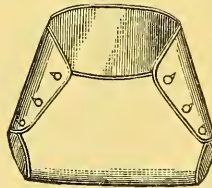


Fig. 96. Diaper.  
 Three Sizes.



Fig. 97.  
 Child's Bib.

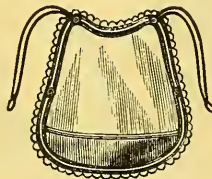


Fig. 98.  
 Child's Bib.

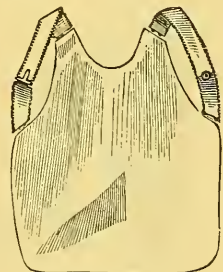


Fig. 99.  
 Child's Bib.

SEND FOR PRICES.

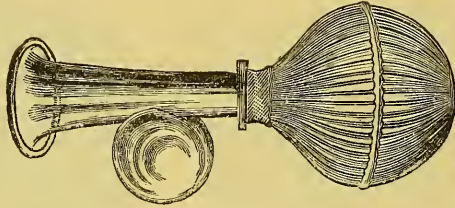


Fig. 100. Breast Pump.

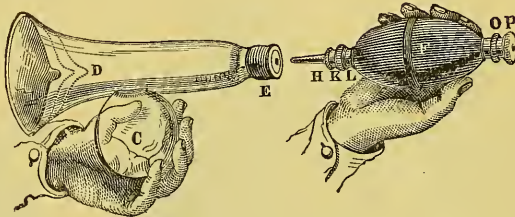


Fig. 101. Mattson's Improved Breast Pump.

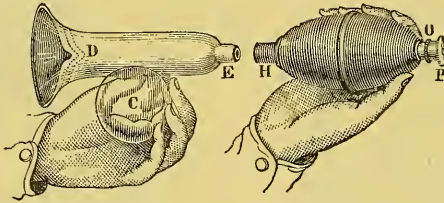


Fig. 102. Vibratory Breast Pump.



Fig. 103.

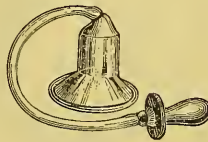


Fig. 104.  
Glass Nipple Shields.



Fig. 105.

SEND FOR PRICES.





Fig. 106.  
Breast Shield.

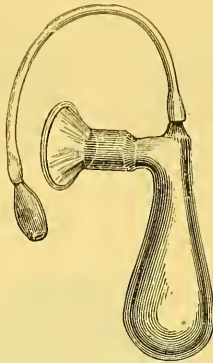


Fig. 107. Breast Pipe.

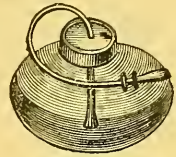


Fig. 108.  
Patent Manx Feeding  
Bottle.  
Pure Rubber Fittings.

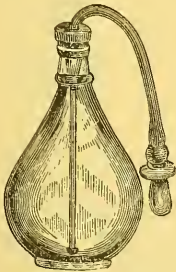


Fig. 109.

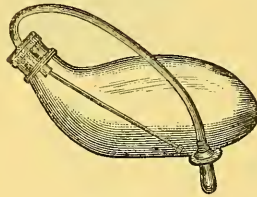


Fig. 110.

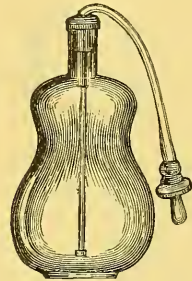


Fig. 111.

Nursing Bottles with White Rubber or Pure Gum Fittings.



Figs. 112 and 113.  
Bottle Fittings.



Fig. 114.  
Original.



Fig. 115.  
Davidson's.  
Nipples, Pure Gum and White Rubber.



Fig. 116.  
Maw's.



Fig. 117.  
Burr's.

SEND FOR PRICES.



Fig. 118. Rattle.



Fig. 119. Rattle.



Fig. 120.  
Teething-Ring.

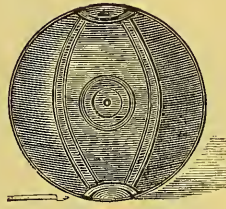


Fig. 121.  
Foot-Ball.



Fig. 122.  
Teething-Pad.



Fig. 123. Medicine Dropper.



Fig. 124. Eye Dropper.



Standard  
**Medicine Dropper**

60 Drops Distilled Water to a Fluid Drachm.

Fig. 125.

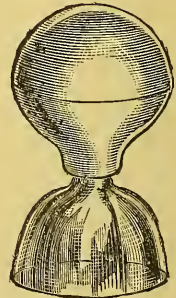


Fig. 126. Cupping Cup.

SEND FOR PRICES.

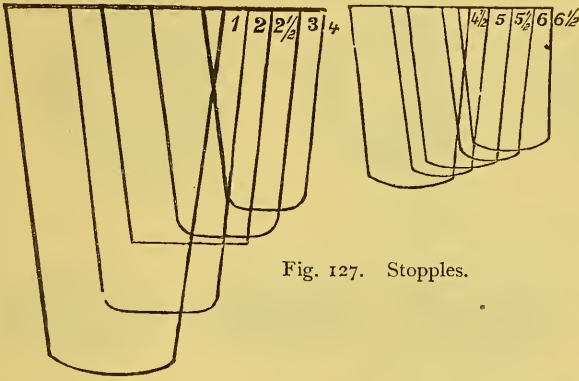


Fig. 127. Stopples.



Fig. 128.  
Eye and Ear  
Syringe.

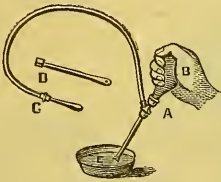


Fig. 129.  
Family Syringe.

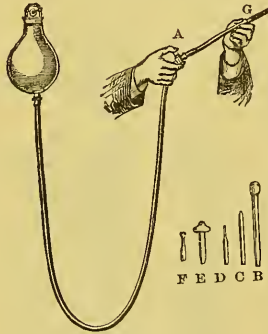


Fig. 130.  
Fountain Syringe.

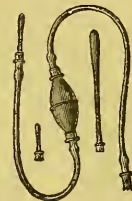


Fig. 131.  
Family Syringe.



Fig. 132.  
Bag  
Syringe.



Fig. 133.  
Vaginal  
Syringe.

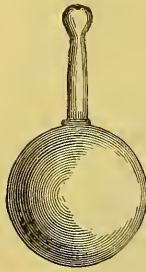


Fig. 134.  
Eye, Ear & Nasal  
Syringe.

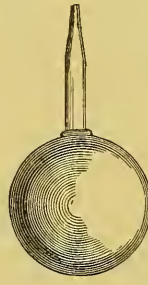


Fig. 135.  
P. Syringe.



Fig. 136.  
Uterine  
Syringe.

SEND FOR PRICES.

**BULBS.**

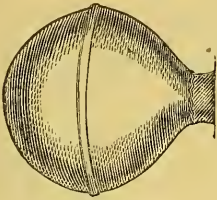


Fig. 137. B. Pump.

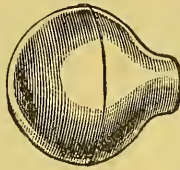


Fig. 138. Cupping Cup.

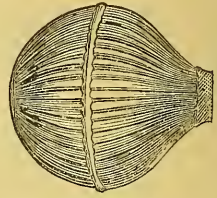


Fig. 139. B. Pump.



Fig. 140.  
Atomizer, Pat. Valve.

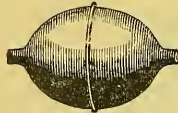


Fig. 141.  
Atomizer.



Fig. 142.  
Syringe.



Fig. 143.  
Syringe.

**URINALS.**



Fig. 144.  
Male.



Fig. 145.  
Male,  
Day & Night.



Fig. 146.  
Female,



Fig. 147.  
Male,  
Day.

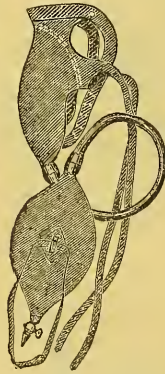


Fig. 148.  
Male,  
Day & Night.



Fig. 149  
Female  
Day.

**PESSARIES (Assorted Sizes).**



Fig. 150.  
Stem Ring.

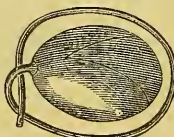


Fig. 151.  
Stem Oval.

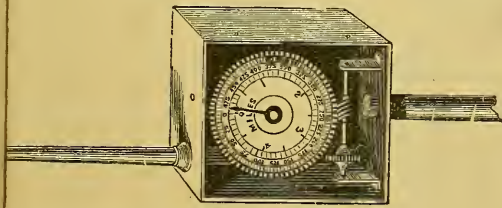


Fig. 152.  
Inflated Ring.

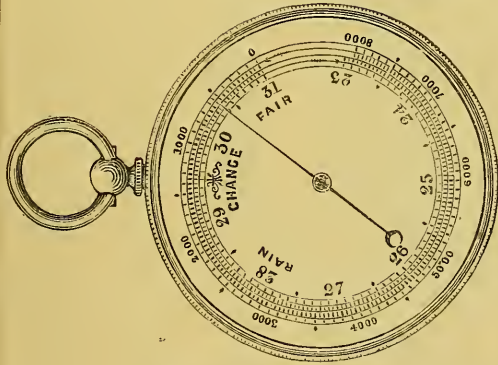


Fig. 153.  
Steel Spring.

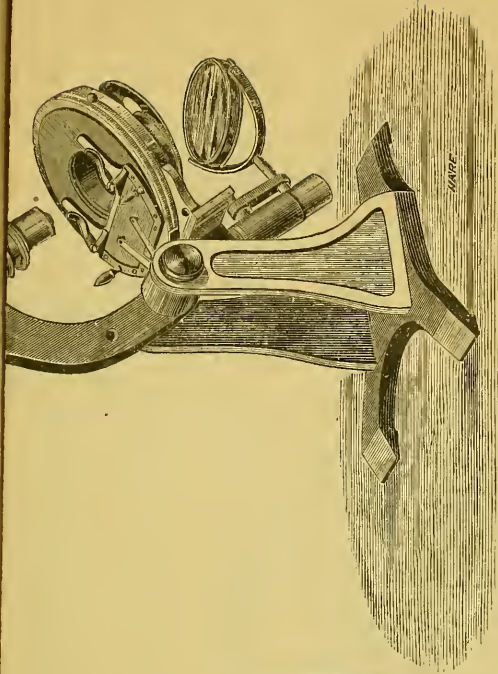
SEND FOR PRICES.



ANEMOMETERS.

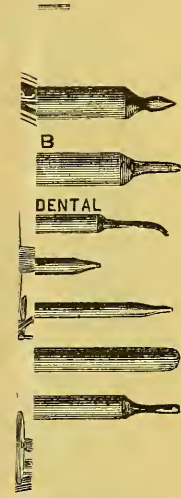
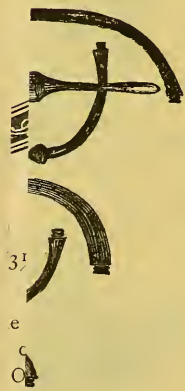


BAROMETERS.



COMPOUND MICROSCOPES.

**JAMES W. QUEEN & CO., 924 Chestnut Street, Philadelphia.**



DENTAL

B

es  
ig  
M  
s,

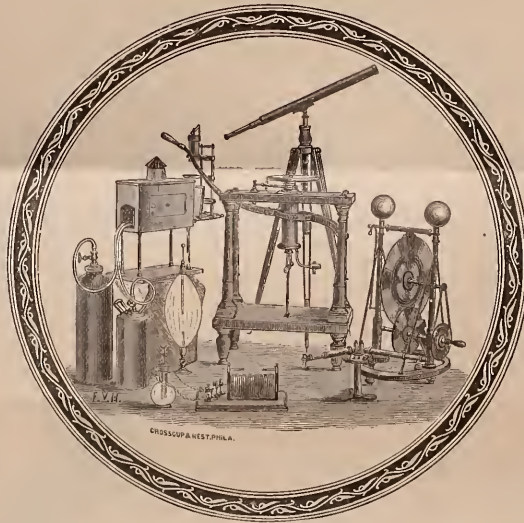
Philadelphia, February 1st, 1879.

*Mc*

You will please take notice that I have this day sold and transferred to SAMUEL L. FOX, (trading as JAMES W. QUEEN & CO.) all the Stock, Tools, Fixtures, Book Accounts, Goodwill and Interest of my Business.

N. H. EDGERTON.

We would call attention to the Act of Congress, June 22d, 1874, under which Schools, Colleges, Scientific, Literary and Religious Societies are entitled to import from any foreign country, free of duty, Mathematical Instruments, Microscopes, Telescopes, Philosophical Apparatus, Text Books, Scientific Books, &c.



Importations under this Act will cost about 33 1/3 per cent. less than the same would if full duties were paid.

We are prepared to take charge of and execute any order you may commission us with, to be imported, free of duty, and can furnish for inspection Catalogues of many of the Foreign Manufacturers of Optical, Mathematical and Philosophical Instruments and Book Publishers.

By the above notice you will observe that the Philosophical Instrument and Magic Lantern Business, which has been conducted by N. H. EDGERTON since 1875, has reverted to us. It is our intention to again add it to our business, and conduct it as the Philosophical Instrument Department, under the management of an educated and experienced head, with skilled workmen. We shall strive to merit and secure the patronage of those desiring to purchase Scientific Instruments by promptness in filling orders, accuracy of the instruments furnished, and fairness of the prices asked. It will be our aim and intention to make and sell none but perfect instruments in each of the departments of our business, and to supply to customers the exact articles ordered, or that which will be best suited for the purposes wished to be accomplished.

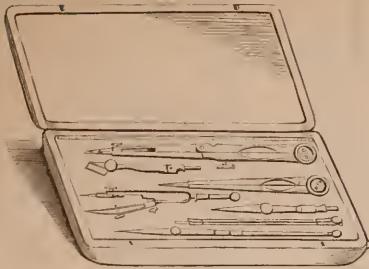
Our Priced and Illustrated Catalogue will be published in four parts, any or all of which will be mailed on application.

- Part 1st—**Mathematical Instruments**, 160 pages; contains list and prices of Drawing Instruments, Drawing Materials, Pocket Compasses, Surveying Compasses, Engineers' Transits and Levels, Surveying Chains, Tape Measures, Pocket Rules, and Books relating to Drawing, Engineering and Mechanics.
- Part 2d—**Optical Instruments**, 144 pages; contains list and prices of Spectacles, Eye-Glasses, Lenses, Spy Glasses, Telescopes, Opera and Field Glasses, Graphoscopes, Stereoscopes, Camera Obscuras, Camera Lucidas, Microscopes, Microscopic Preparations, and Books on Optics and Microscopy.
- Part 3d—**Magic Lanterns and Slides**, 112 pages; contains list and prices of Magic Lanterns for Toys, for Public and Private Exhibitions, Sciopticons, Stereopticons, Scientific Lanterns, and accessory apparatus to be used with them; Magic Lantern Slides, both colored and uncolored.
- Part 4th—**Physical Instruments**, 183 pages; contains list and prices of Instruments to illustrate Lectures in every department of Physics and Chemical Science, Air Pumps, Electric Machines, Galvanic Batteries, Barometers, Thermometers, Rain Gages, Globes, Spectroscopes, Auzoux's Anatomical Models, and Books relating to Scientific Subjects.

**JAMES W. QUEEN & CO.**

Mathematical, Optical and Philosophical Instrument Makers,

924 Chestnut Street, Philadelphia.



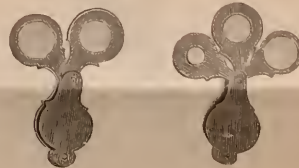
DRAWING INSTRUMENTS.



OPERA AND FIELD GLASSES.



SURVEYING INSTRUMENTS.



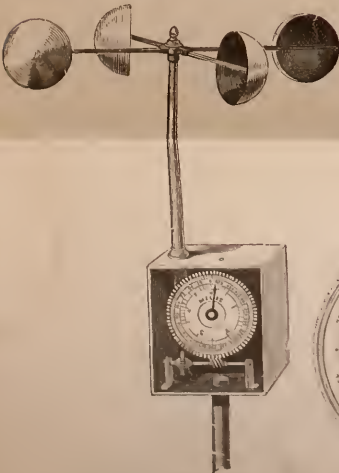
BOTANICAL MICROSCOPES.



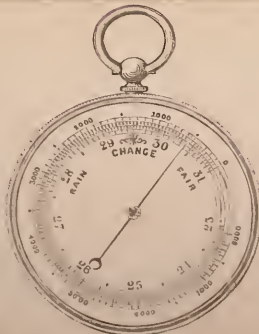
SPY GLASSES.



COMPOUND MICROSCOPES.



ANEMOMETERS.



BAROMETERS.

JAMES W. QUEEN & CO., 924 Chestnut Street, Philadelphia.

**HARD RUBBER GOODS.**

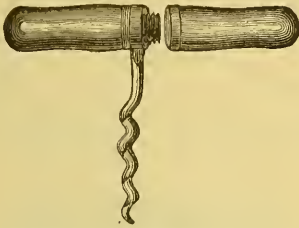


Fig. 171. Pocket Cork-Screw.



Fig. 172. Oiler.

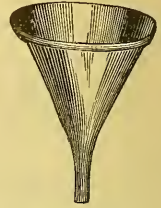


Fig. 173. Funnel.



Fig. 174.  
Dice-Cup.



Fig. 175.  
Ear-Trumpet.



Fig. 176.  
Thimble.



Fig. 177.  
Napkin-Ring.

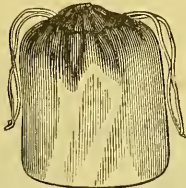


Fig. 178.  
Tobacco Bag,  
Made of Pure Gum, or Rubber  
and Cloth, Assorted Colors.

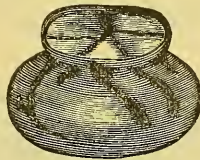


Fig. 179.  
Tobacco Pouch.



Fig. 180.  
Tobacco Wallet.



Fig. 181.  
Pencil Tip



Fig. 182.  
Velvet Square Eraser.

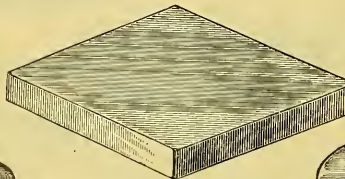


Fig. 183.  
School and Ink Eraser.



Fig. 184.  
Velvet Oblong Eraser.

SEND FOR PRICES.



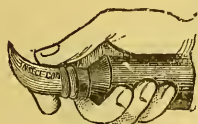


Fig. 185.  
Insect Gun.

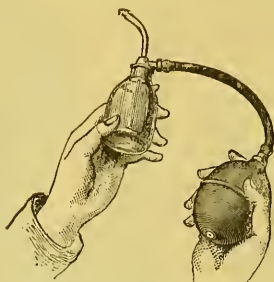


Fig. 186. Delano Atomizer.



Fig. 187.  
Cologne Atomizer.

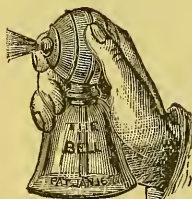


Fig. 188.  
Bell Atomizer.



Fig. 189.  
Unique Atomizer.

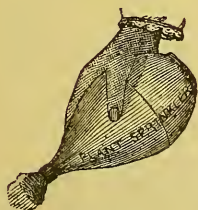


Fig. 190.  
Plant Sprinkler.

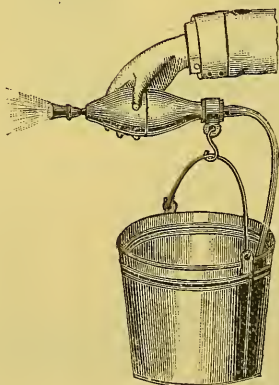


Fig. 191. Plant Sprinkler with Tin Pail.

SEND FOR PRICES.

GOODYEAR'S POCKET GYMNASIUM AND HEALTH PULL.

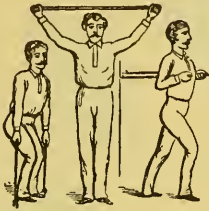


Fig. 192.



Fig. 193.



Fig. 194.

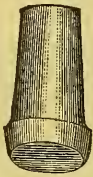


Fig. 195.  
Chair Tip.



Fig. 196.  
Corrugated  
Finger-Cot.



Fig. 197.  
Light  
Finger-Cot.

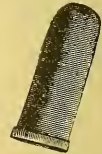


Fig. 198.  
Heavy  
Finger-Cot.



Fig. 199. Fig. 200.  
Ladies' Fine Gloves.



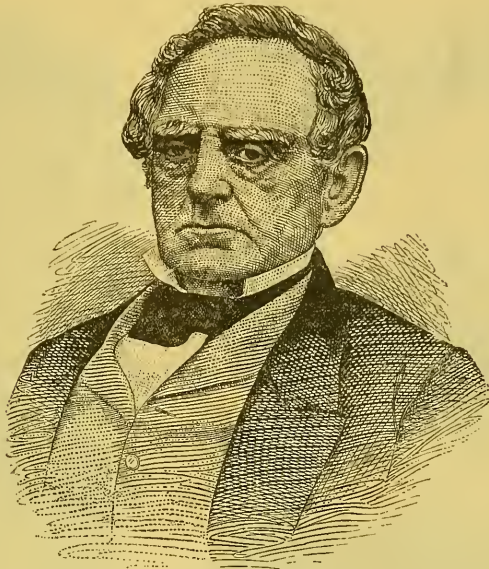
Fig. 201.  
Mittens,  
Light or Heavy,



Fig. 202. Fig. 203.  
Gents' Gloves,  
Light, Heavy and Acid.



SEND FOR PRICES.



LEVERETT CANDEE,

The earliest manufacturer of Rubber Shoes.

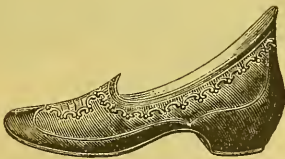


Fig. 204.

Lady's Gossamer Croquet Overshoe.  
Made also with French Heels.



Fig. 205.

Queen City.

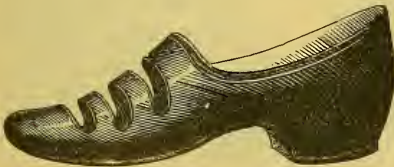


Fig. 206. Sandal.



Fig. 207. Sandal.

SEND FOR PRICES.

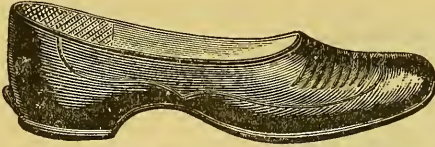


Fig. 208. Self-Acting.

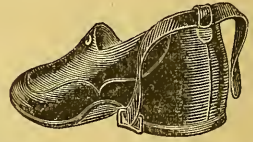


Fig. 209. Pat. Adjustable  
Metallic Loop for  
Ankle Strap.

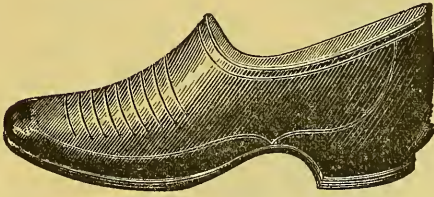


Fig. 210. Imitation Sandal.



Fig. 211. Peerless.  
(Pat. Adjusting Fastener.)

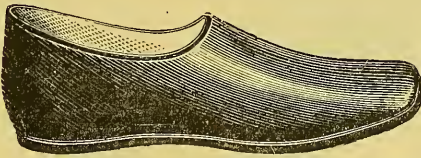


Fig. 212. Lumberman's Shoe. No Heels.

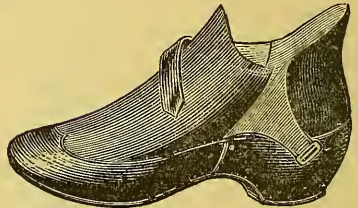


Fig. 213. Snow-Proof Arctics.  
High Cut.

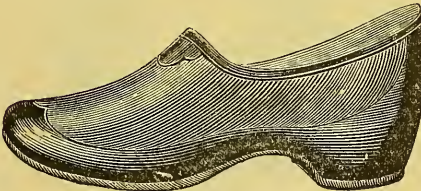


Fig. 214. Alaska.

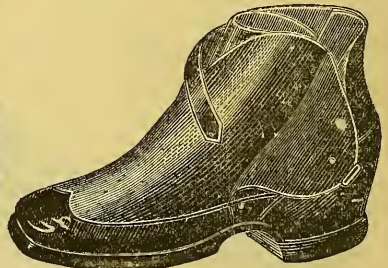


Fig. 216. Snow-Excluder.

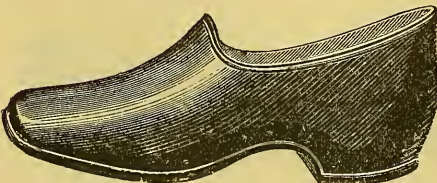


Fig. 215. Heavy Plain Overshoe.

SEND FOR PRICES.

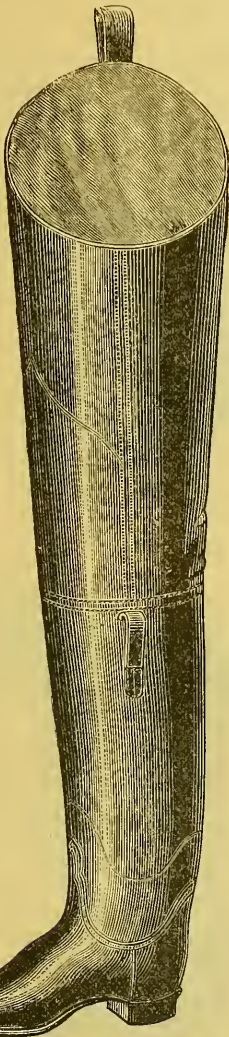


Fig. 221.  
Hip Boot.



Fig. 217.  
Lady's Long Boot,  
Wool or Net Lined.

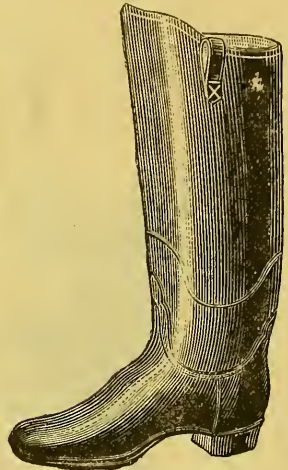


Fig. 218. Man's Heavy  
Wool-Lined Boot.



Fig. 219. Child's  
Warm Wool-Lined.

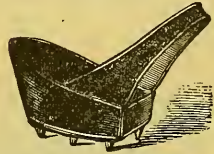


Fig. 220. Ice-Creeper.



Fig. 222. Pure Gum,  
warranted.



Fig. 223. Light Boot,  
Imitation Goat Top.

SEND FOR PRICES.

**OILED CANVAS GOODS.**

Two Qualities, Light and Heavy.



Fig. 224. Hood.

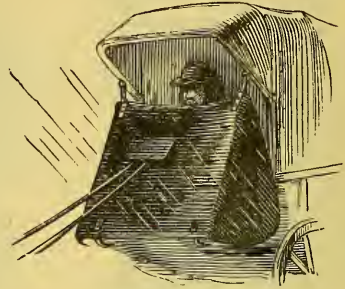


Fig. 225. Apron.

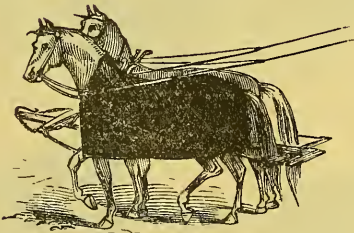


Fig. 226. Team-Covers.

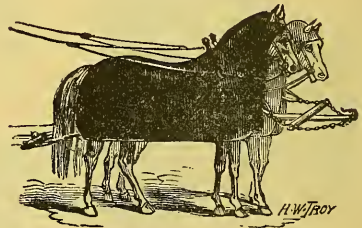


Fig. 227. Long Team-Covers.

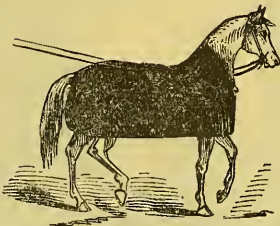


Fig. 228. Livery Cover, Single.

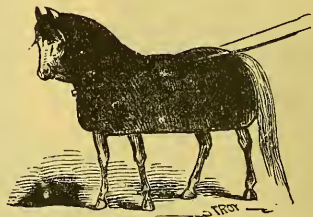


Fig. 229. Long Cover, Single.

Oiled Duck Wagon Covers, all sizes, warranted water-proof.

SEND FOR PRICES.

## HARTFORD HOSE CARRIAGES.

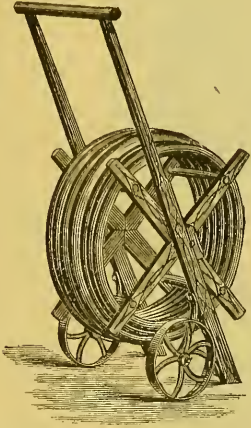


Fig. 230.  $\frac{3}{4}$  Inch Lawn Hose.  
50-75 feet.

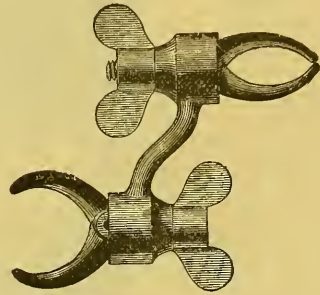


Fig. 231. Universal Nozzle Holder.

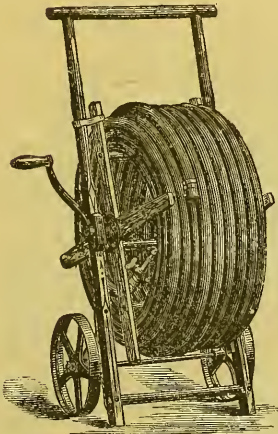


Fig. 232.  $\frac{3}{4}$  Inch Lawn Hose.  
100-200 feet.

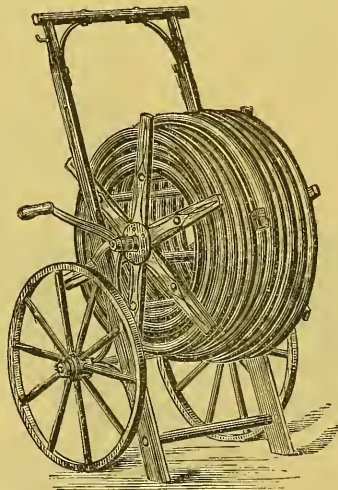


Fig. 233.  $\frac{3}{4}$  Inch Lawn Hose.  
100-250 feet.

For Factories, Public Buildings, Parks, etc., we manufacture Hose Carriages about the style of Fig. 233 of any desired capacity.

SEND FOR PRICES.



Fig. 234. Revolving Lawn Sprinkler.

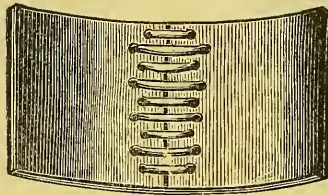


Fig. 235. Rubber Belting.

We have constantly on hand a large stock of Rubber Belting, Packing, Hose Gaskets, and all kinds of Rubber Goods for Mechanical purposes, and furnish any special Rubber Goods to order at short notice.

### LAUNDRY MACHINERY.

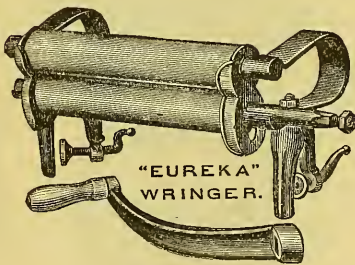


Fig. 236. Family.  
No. 2 Rolls, 10 x 1 7/8.

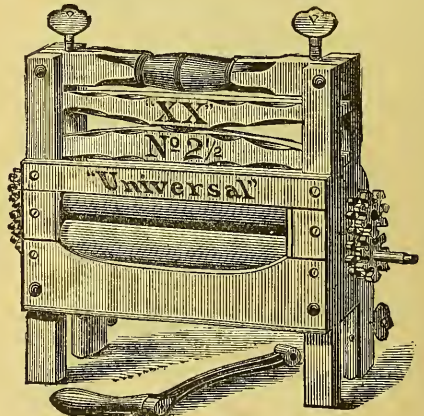


Fig. 237. Family Wringer.  
Usual Family, No. 2 1/2 Rolls, 10 x 1 3/4.  
" " " 2 " " 10 x 1 7/8.  
Large " " 1 1/2 " " 11 x 1 7/8.

SEND FOR PRICES.



All kinds of Wringers Repaired.

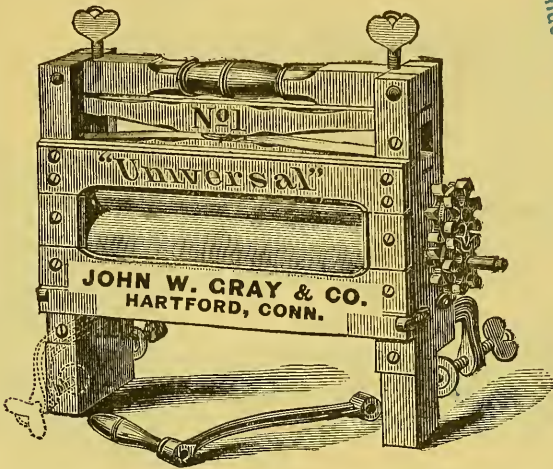


Fig. 238. Large Family, Hotel and Laundry Wringer.  
 Reversible Clamps for Round or Box Tub. Wring Backward or Forward from either side.  
 No. 1 Rolls, 12 x 2 inches.

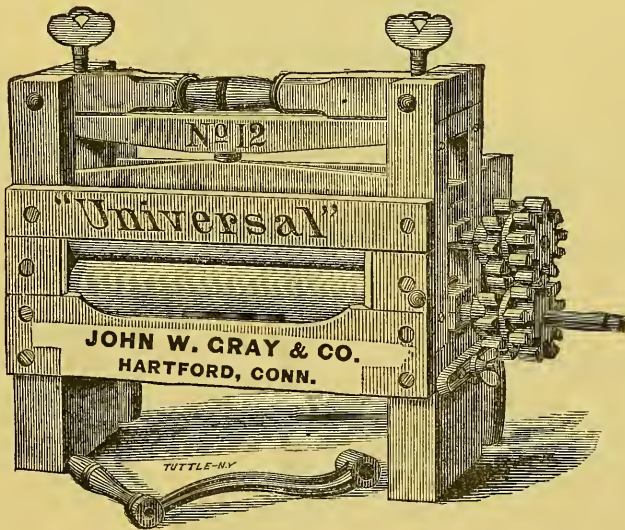


Fig. 239. Hotel and Laundry Wringer.  
 No. 12 Rolls, 14 x 3¼ inches.  
 No. 8 " 14 x 2¼ "

SEND FOR PRICES.

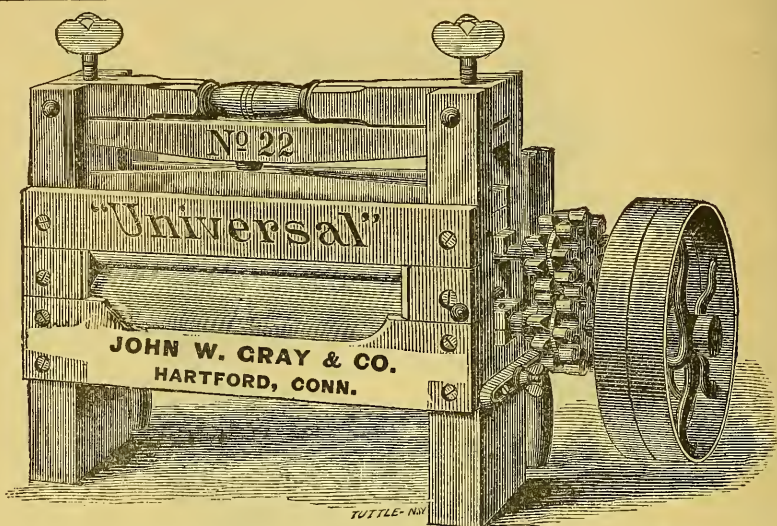


Fig. 240. Large Wringer for Factory, Laundry, etc., for Hand or Power.  
No. 18 Rolls, 17 x 2¼ inches. No. 22 Rolls, 17 x 3¼ inches.

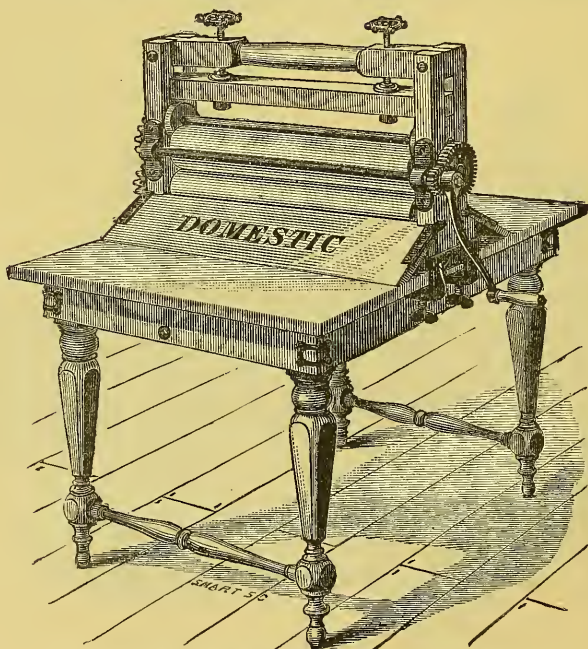


Fig. 241. Mangle, for Smoothing Table Linen, Sheets, Pillow Cases, etc., for Hotels and Laundries.

SEND FOR PRICES.

# ELASTIC BANDS AND RINGS,

FOR

PACKAGES OF PAPERS, TICKETS, PUTTING UP SMALL WARES, Etc.

Warranted Pure Rubber and to give perfect satisfaction invariably.

## BANDS.

(Twelve Gross of a kind in a package.)

	Inches Wide.	Inches Long.	Gross in Box.	Per Gross.
<b>Light,</b>	$\frac{1}{2}$	$3\frac{1}{2}$	$\frac{1}{2}$	\$1 75
"	$\frac{3}{4}$	$3\frac{1}{2}$	$\frac{1}{2}$	2 25
"	1	$3\frac{1}{2}$	$\frac{1}{2}$	3 25
"	$1\frac{1}{2}$	4	$\frac{1}{2}$	4 75
<b>No. 0,</b>	$\frac{1}{4}$	2	1	1 00
"	$\frac{1}{2}$	2	$\frac{1}{2}$	2 00
"	$\frac{3}{4}$	2	$\frac{1}{2}$	2 50
<b>No. 00,</b>	$\frac{1}{4}$	$2\frac{1}{2}$	1	1 25
"	$\frac{1}{2}$	$2\frac{1}{2}$	$\frac{1}{2}$	2 25
"	$\frac{3}{4}$	$2\frac{1}{2}$	$\frac{1}{2}$	3 00
<b>No. 000,</b>	$\frac{1}{4}$	3	1	1 50
"	$\frac{1}{2}$	3	$\frac{1}{2}$	2 50
"	$\frac{3}{4}$	3	$\frac{1}{2}$	3 50
<b>No. 0000,</b>	$\frac{1}{4}$	$3\frac{1}{2}$	1	1 75
"	$\frac{1}{2}$	$3\frac{1}{2}$	$\frac{1}{2}$	2 75
"	$\frac{3}{4}$	$3\frac{1}{2}$	$\frac{1}{2}$	4 00
<b>No. 27,</b>	$\frac{1}{8}$	1	1	50
" <b>28,</b>	$\frac{1}{8}$	$1\frac{1}{4}$	1	60
" <b>29,</b>	$\frac{1}{8}$	$1\frac{1}{2}$	1	65
" <b>30,</b>	$\frac{1}{8}$	2	1	70
" <b>31,</b>	$\frac{1}{8}$	$2\frac{1}{4}$	1	80
" <b>32,</b>	$\frac{1}{8}$	3	1	90
" <b>33,</b>	$\frac{1}{8}$	$3\frac{1}{4}$	1	1 00
" <b>51,</b>	$\frac{1}{8}$	1	1	40

(Twelve Great Gross of a kind in a package.)

About  $\frac{1}{16}$  inch wide.

	Inches Long.	Gross in Box.	Per Gt. Gro.
<b>No. 8, Heavy,</b>	$\frac{7}{8}$	1	\$1 75
" <b>9</b>	1	1	1 90
" <b>10</b>	$1\frac{1}{4}$	1	2 00
" <b>11</b>	$1\frac{1}{2}$	1	2 25
" <b>11, Thread,</b>	$1\frac{1}{2}$	1	2 25
" <b>12, Heavy,</b>	$1\frac{3}{4}$	1	2 50
" <b>13</b>	$1\frac{3}{4}$	1	2 75
" <b>14</b>	2	1	3 00
" <b>15</b>	$2\frac{1}{4}$	1	3 25
" <b>16</b>	$2\frac{1}{2}$	1	3 50
" <b>17</b>	$2\frac{3}{4}$	1	3 75
" <b>18</b>	3	1	4 00
" <b>19</b>	$3\frac{1}{2}$	1	4 50
" <b>20</b>	$1\frac{1}{2}$	1	3 00

THE MOST LIBERAL DISCOUNT TO THE TRADE.

## LARGE PACKAGE BANDS.

	Inch Wide.	Gross in Box.	Per Gross.
<b>4 inch, Heavy,</b>	$\frac{5}{8}$	$\frac{1}{4}$	\$7 25
<b>5</b>	$\frac{3}{8}$	$\frac{1}{4}$	9 00
<b>7</b>	$\frac{3}{8}$	$\frac{1}{4}$	12 00
<b>9</b>	$\frac{5}{8}$	$\frac{1}{4}$	15 00

## RINGS.

(Twelve Gross of a kind in a package.)

	Inside Diam.	Gross in Box.	Per Gross.
<b>No. 1, Light.</b>	2 in.	$\frac{1}{2}$	\$1 75
" <b>2</b>	$1\frac{1}{2}$	$\frac{1}{2}$	1 25
" <b>3</b>	1	1	75
" <b>1, Heavy,</b>	2	$\frac{1}{2}$	3 00
" <b>2</b>	$1\frac{1}{2}$	$\frac{1}{2}$	2 00
" <b>3</b>	1	1	1 00
" <b>42</b>	$\frac{3}{8}$	1	1 00
" <b>43</b>	$1\frac{1}{8}$	1	1 25
" <b>44</b>	$1\frac{1}{4}$	$\frac{1}{2}$	1 50
" <b>45</b>	$1\frac{1}{8}$	$\frac{1}{2}$	2 00
" <b>50</b>	1	1	40

## ELECTION RINGS.

(Twelve Thousand in a package.)

$\frac{3}{8}$  In. diam., 1,000 in Box, per 1,000 \$0 75

## ASSORTED RINGS.

$\frac{1}{2}$  Gross assorted in 1 Box, per Gro., \$1 65

Containing  $1\frac{1}{2}$  doz. each, 42, 43, 44, 45.

## SPECIAL BANDS.

Special sizes of Bands made to order.

Parties using large quantities, or who are now putting up small wares with string when the Bands might be used, would do well to confer with us, as we are prepared to make such prices as will bring these goods into more general use.



# The Fairy Hose Nozzle.

(Patented May 14, 1878.)

THE BEST NOZZLE EVER INVENTED.

THIS NOZZLE changes the solid stream to finest or coarsest spray, by merely turning the Key. It possesses the following points of excellence not combined in any other nozzle:

1. Water-way for jet, straight and unobstructed, thus throwing water the greatest possible distance.

2. Spray: misty, fine, coarse, widely diffused or concentrated.

3. All changes made without stopping the flow of water, thus causing *no strain on the Hose*.

4. Shuts off the water *from the jet only*, obviating the annoyance caused by nozzles shutting off only at the spray.

5. The Key-Cock being at the large end, the best proportions are secured for strength, appearance, and convenient handling.

6. For localities where the pressure is very great, we make them without the *Shut-off*. The operation of Spray and Jet are just the same.

## JOHN W. GRAY & CO.,

Patentees and Sole Manufacturers.





LIBRARY OF CONGRESS



0 018 373 624 3