

418
33

むろし渡更紗

三冊之内
下

0 1 2 3 4 5 6 7 8 9 10 11 12 13 14 15

始



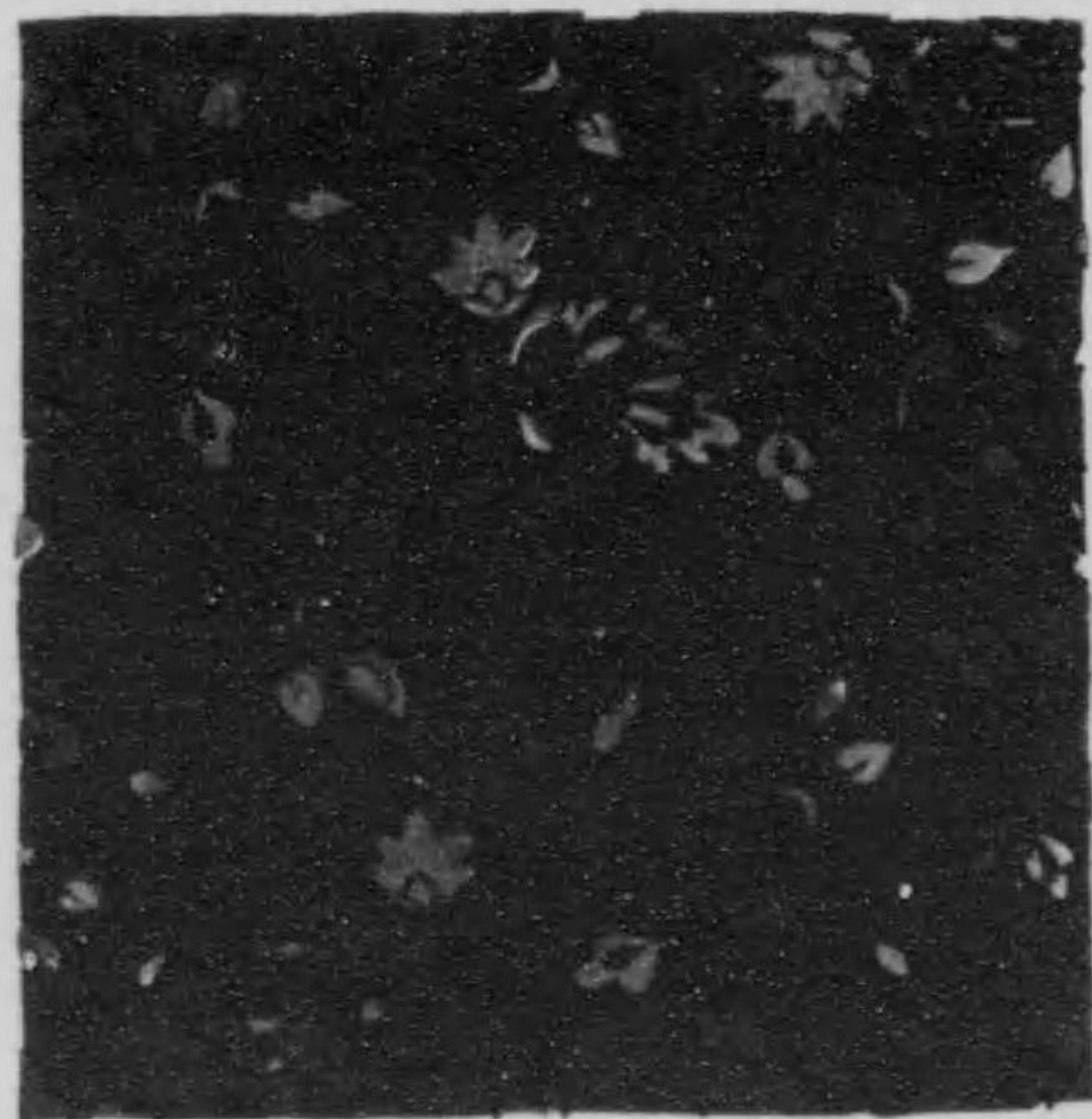
418
33

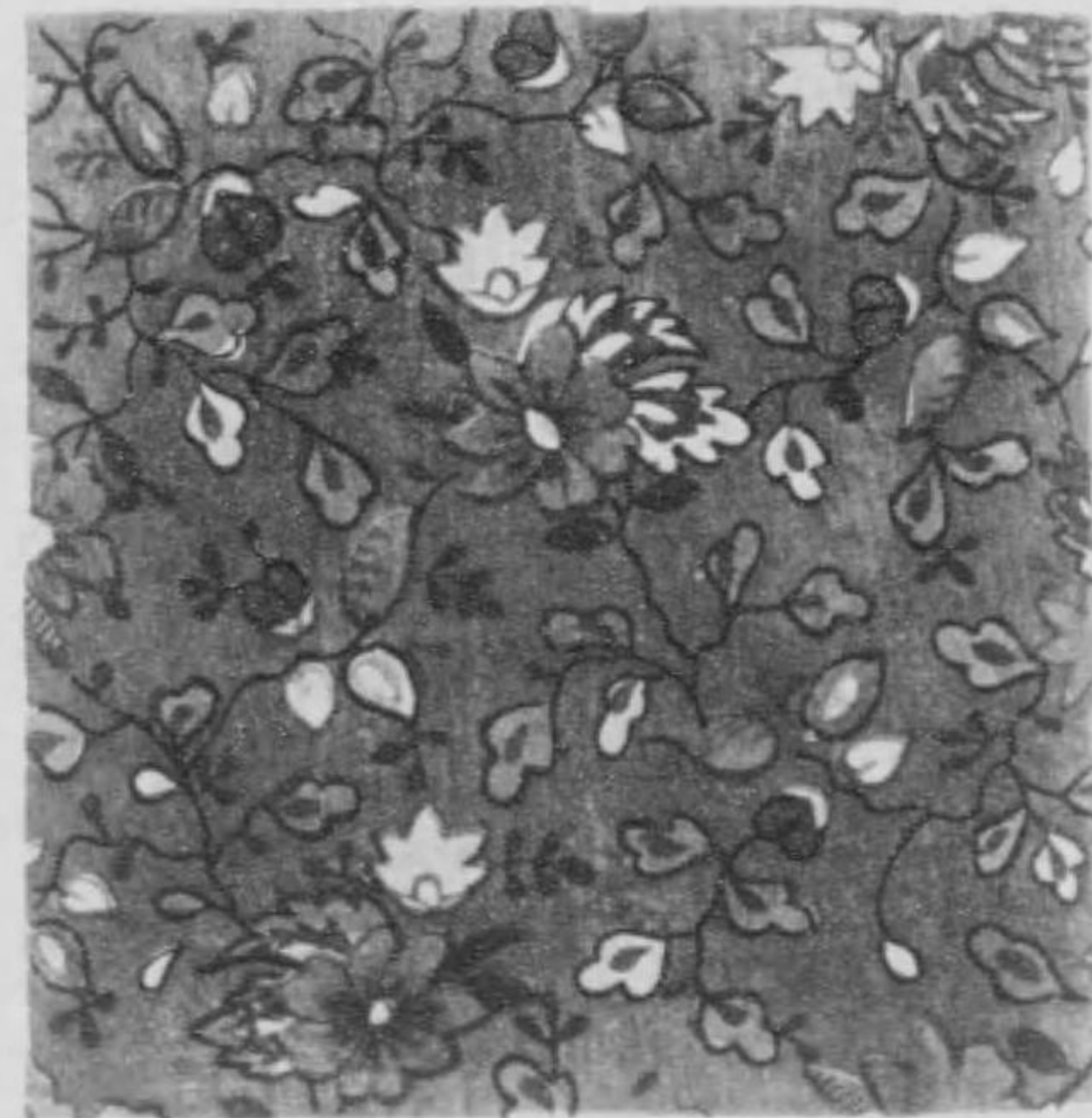
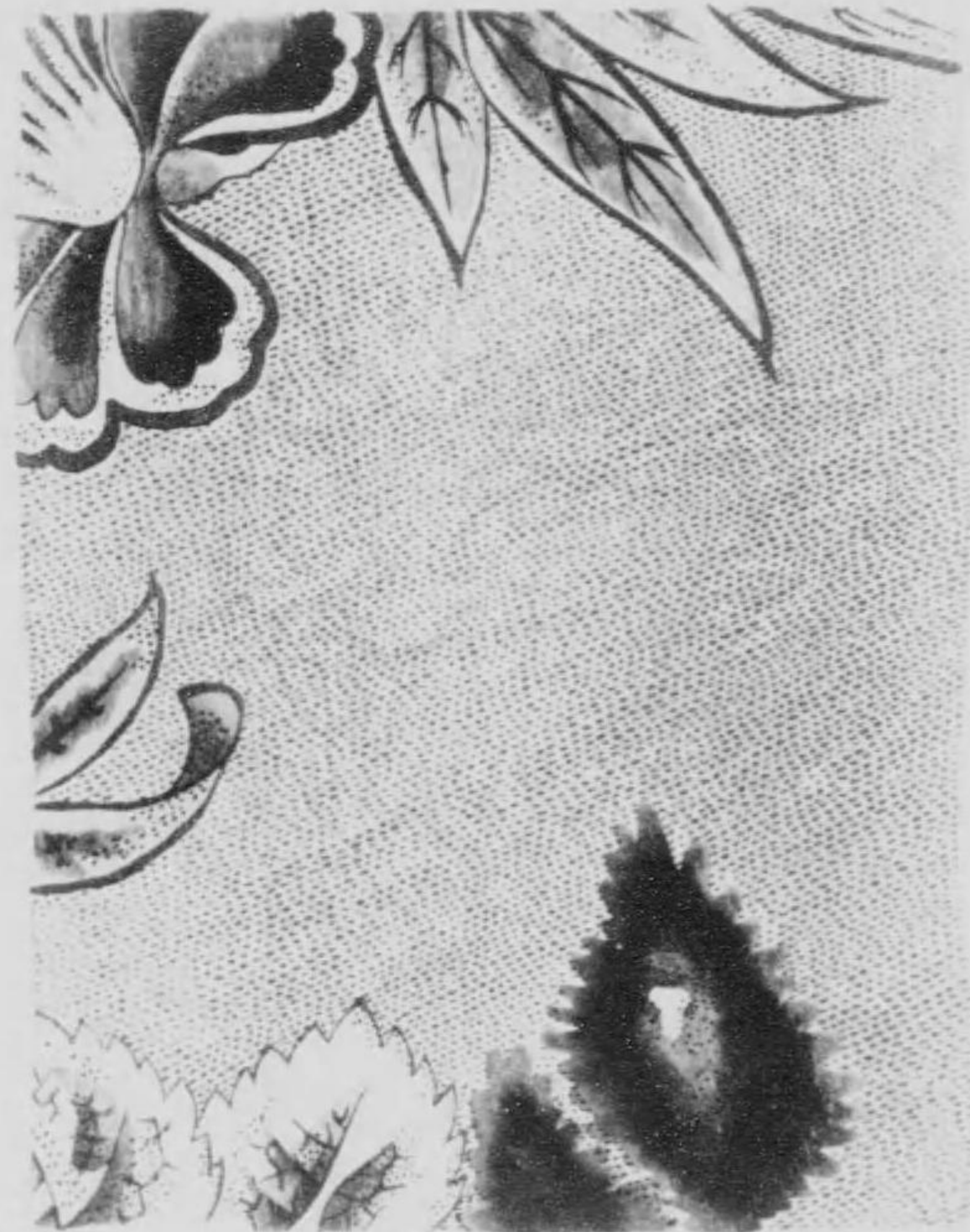
むらさき更紗

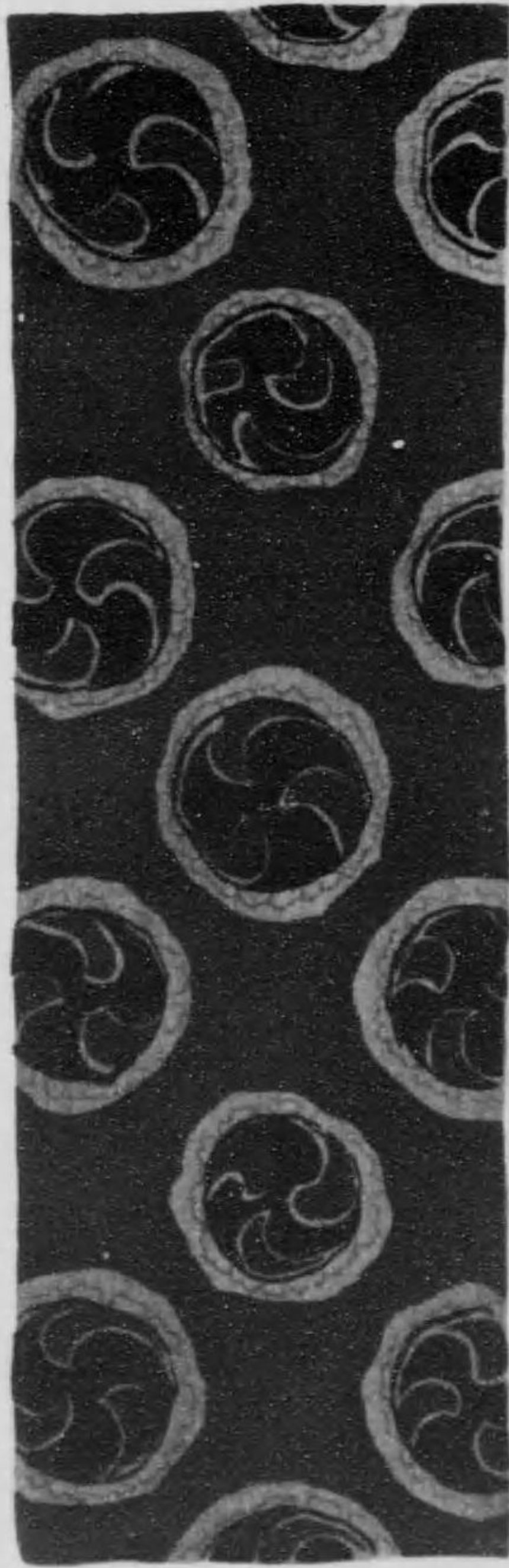
下

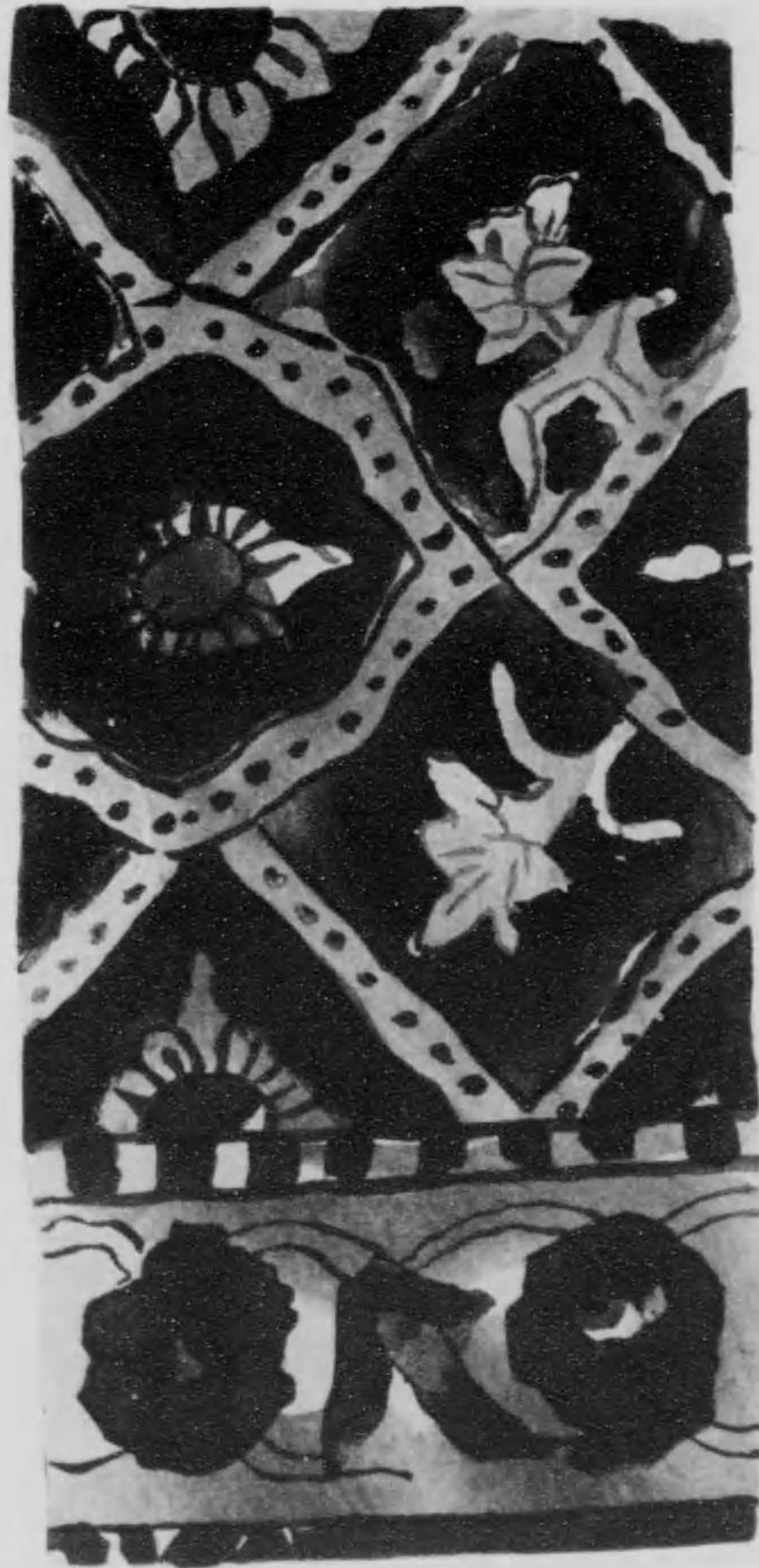
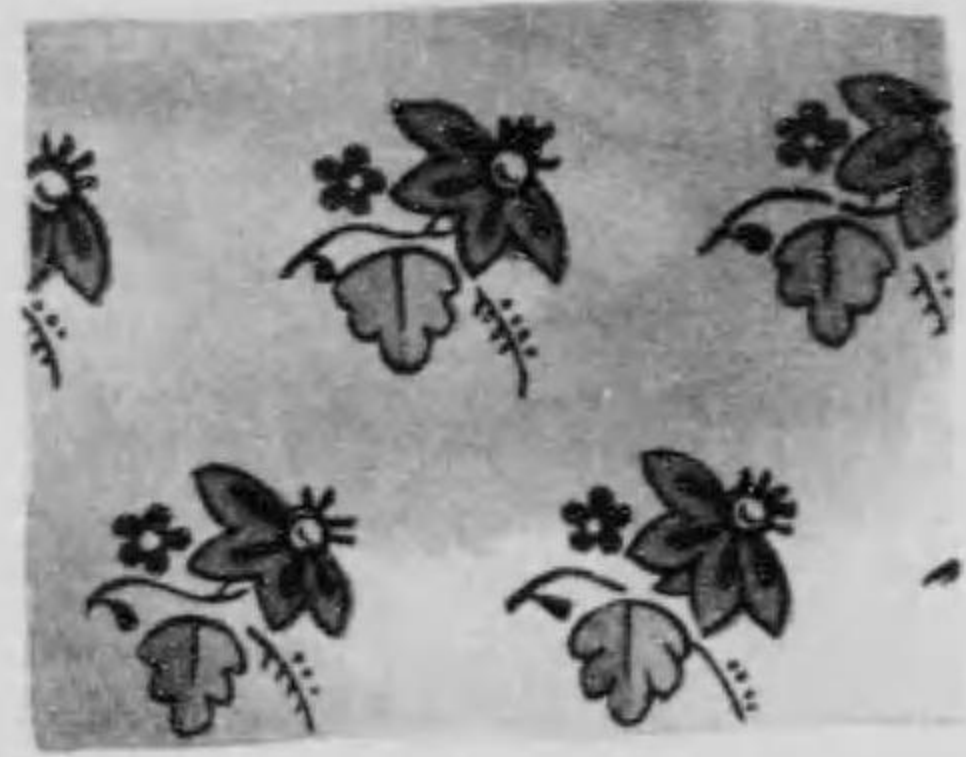


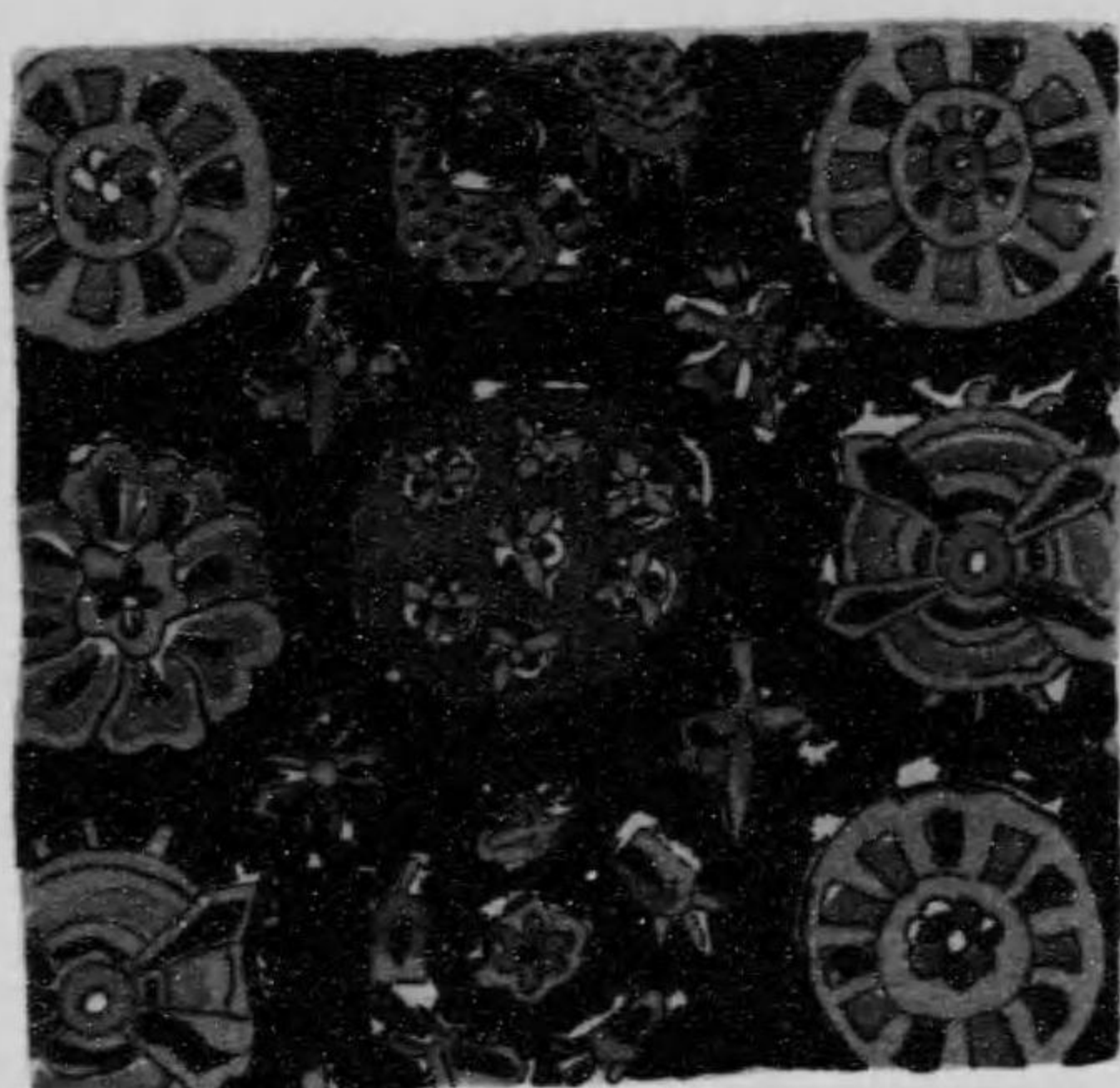
大正
6. 10. 18
内交

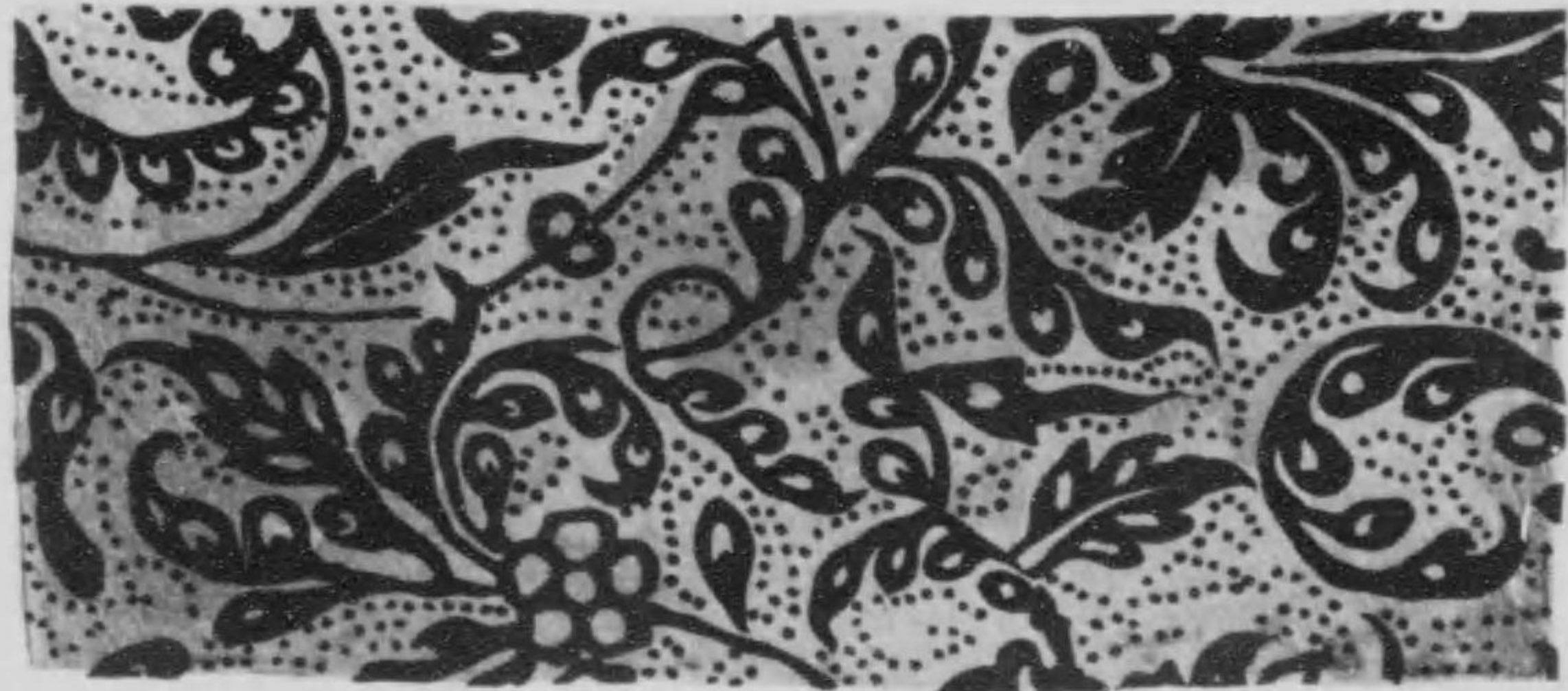


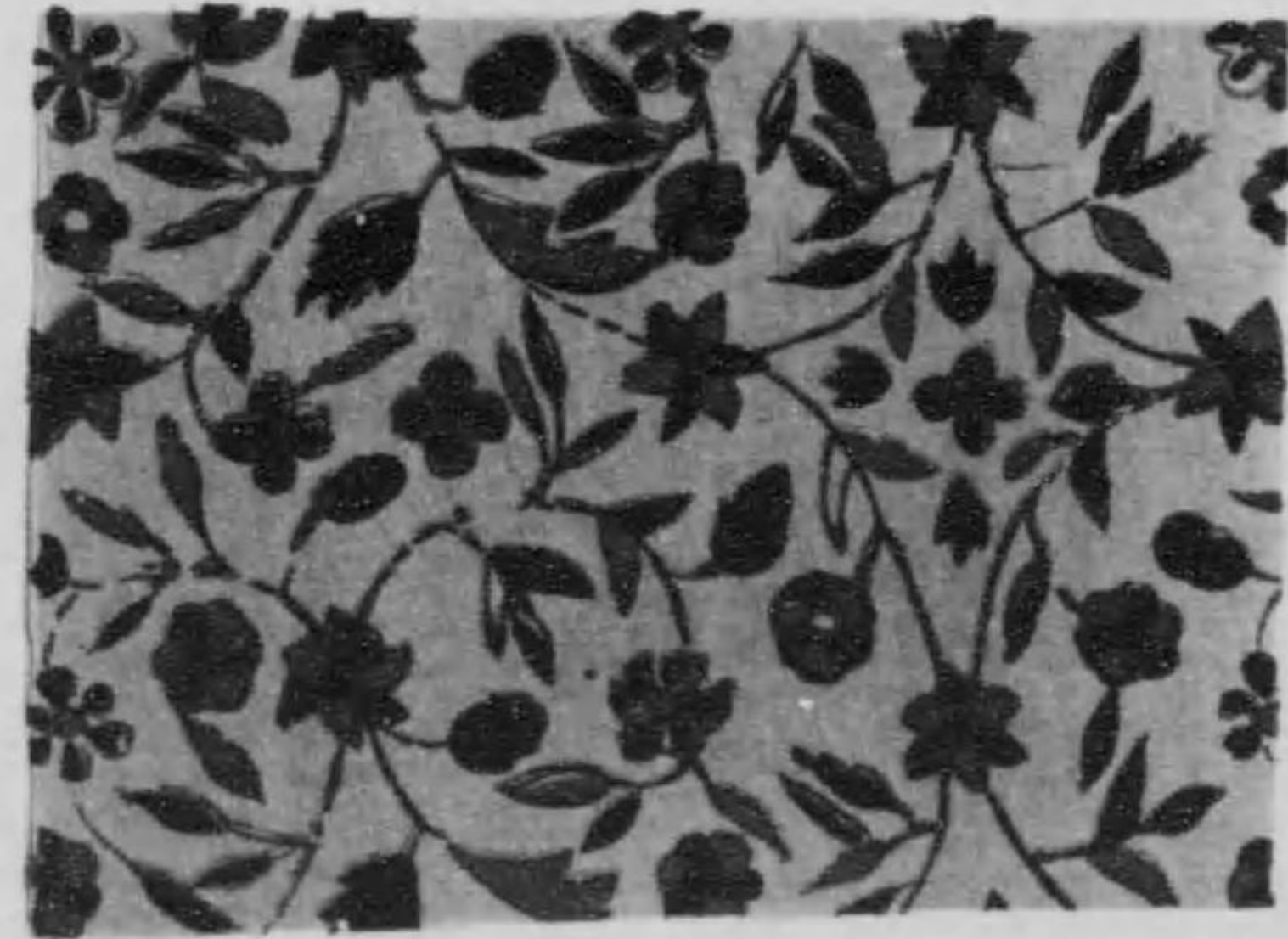






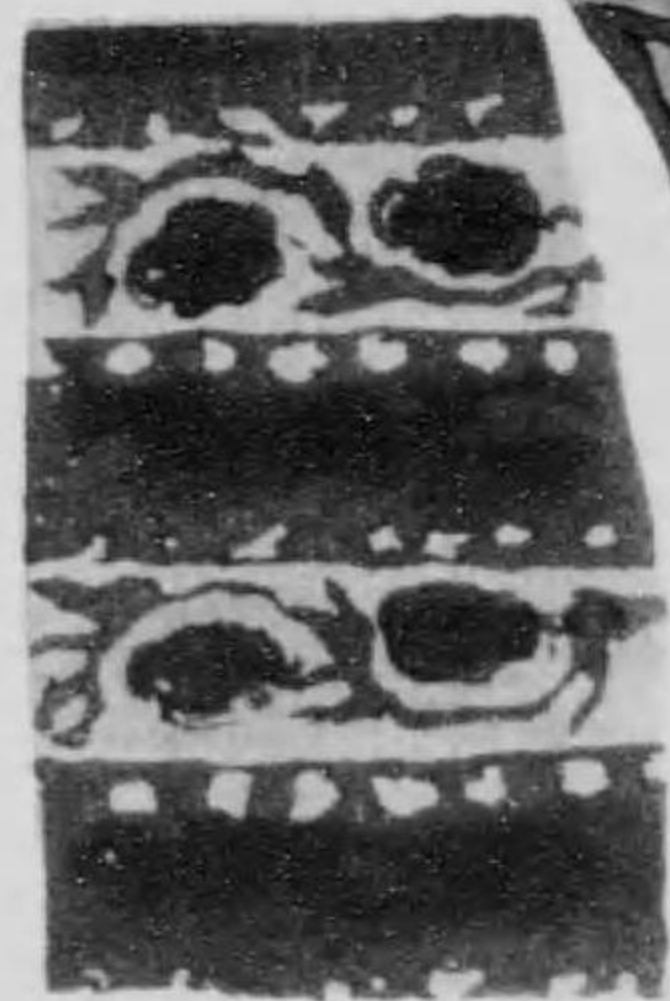


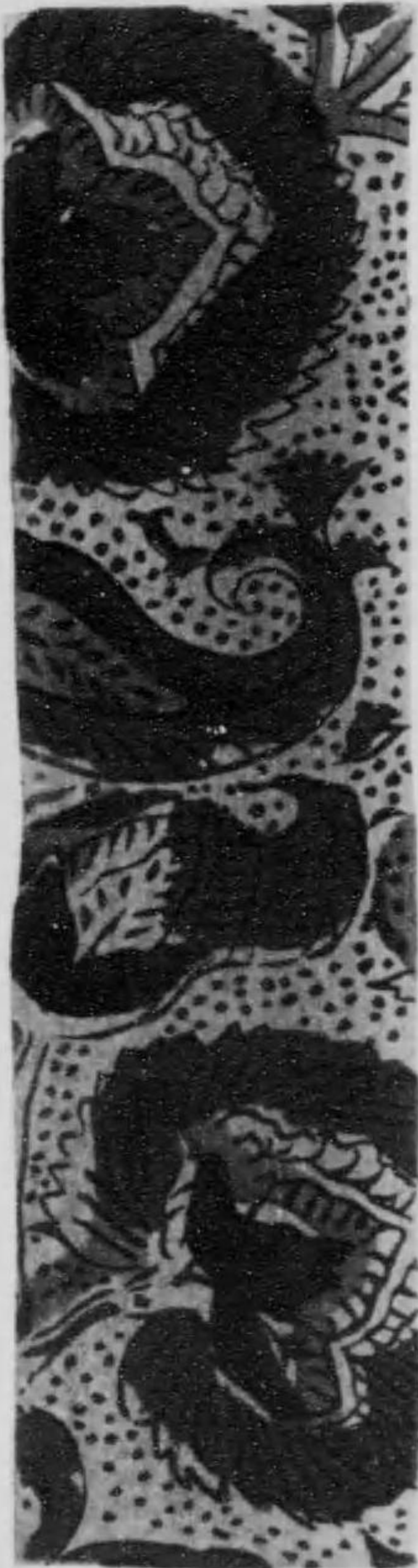




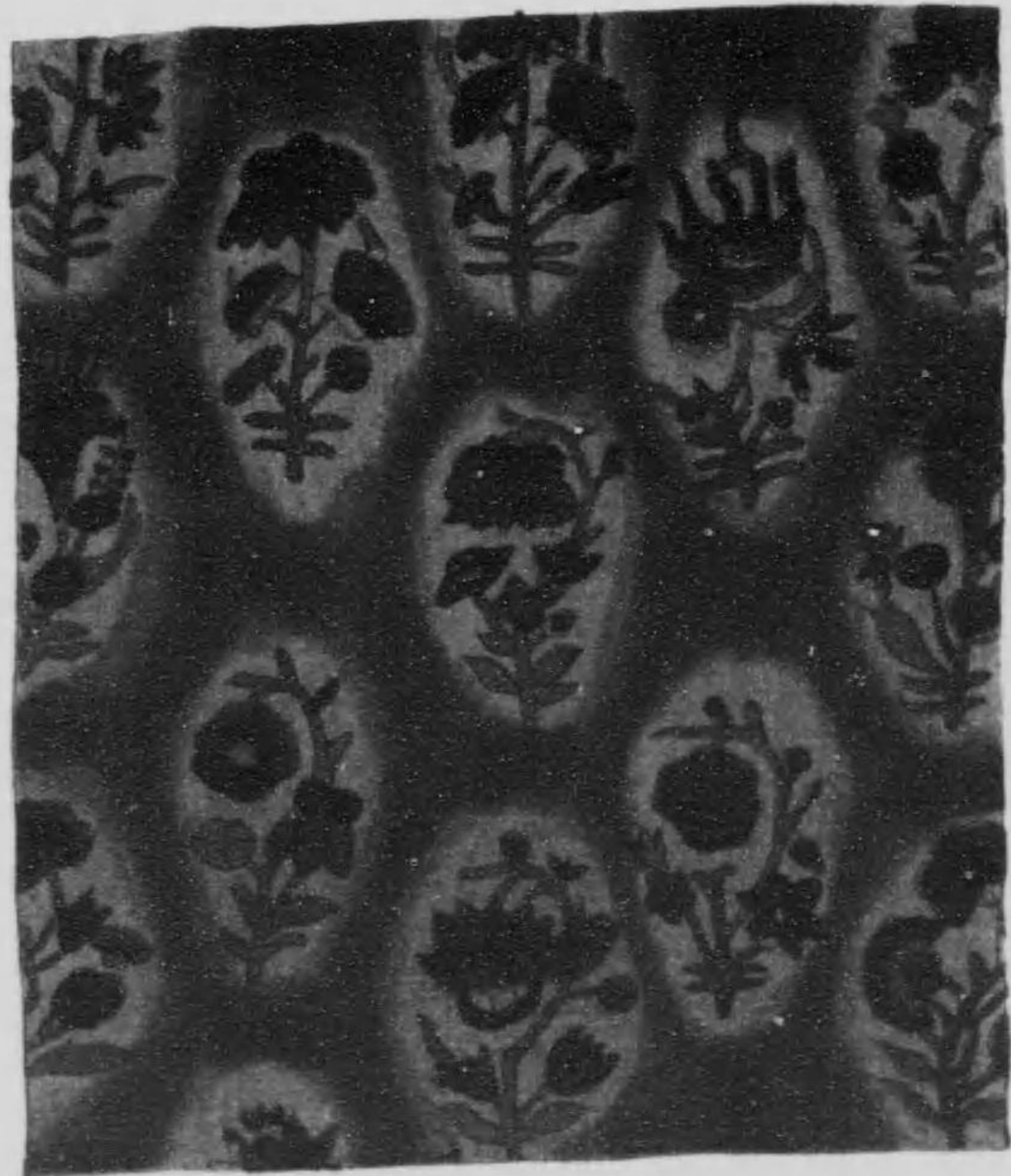


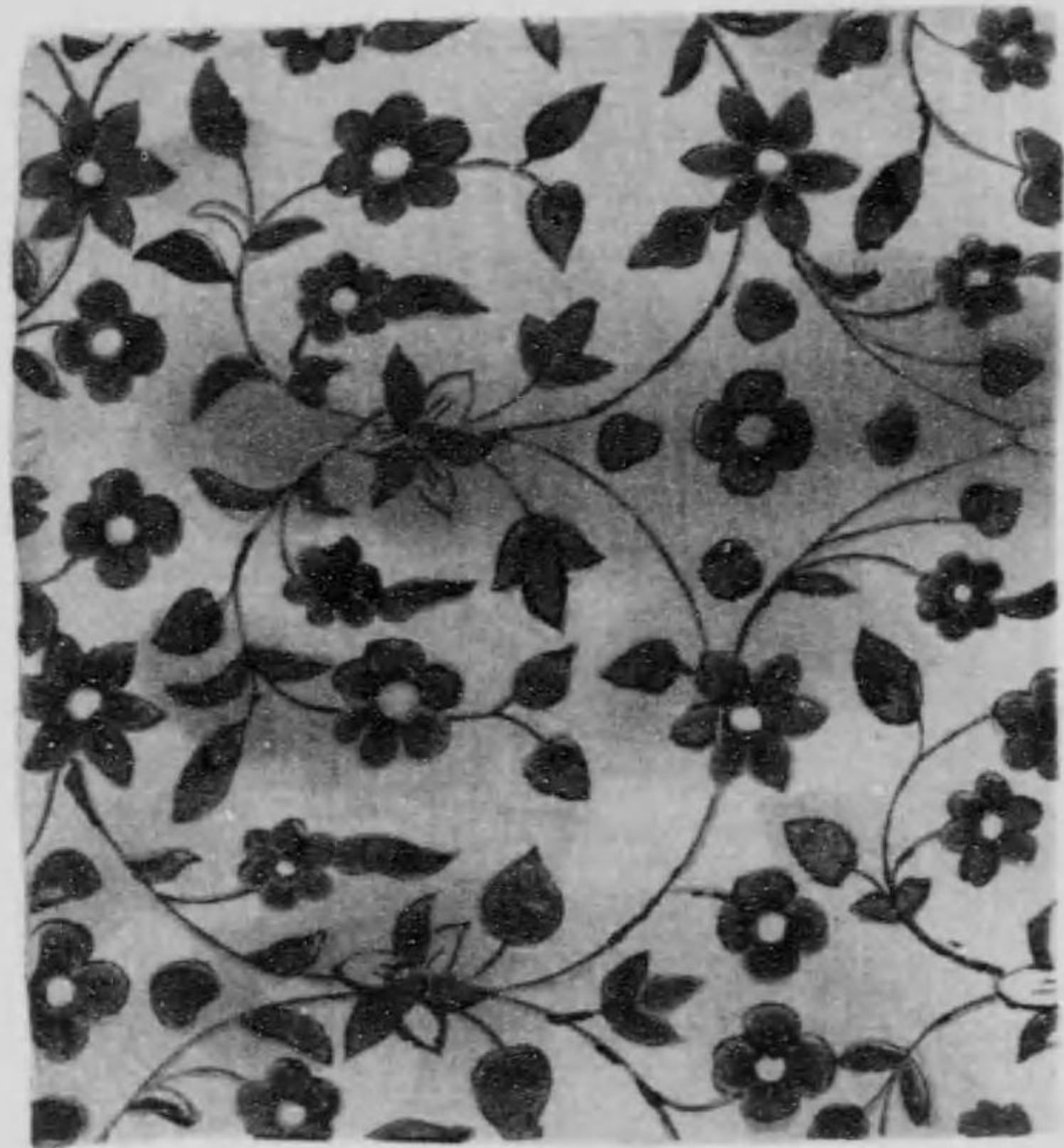








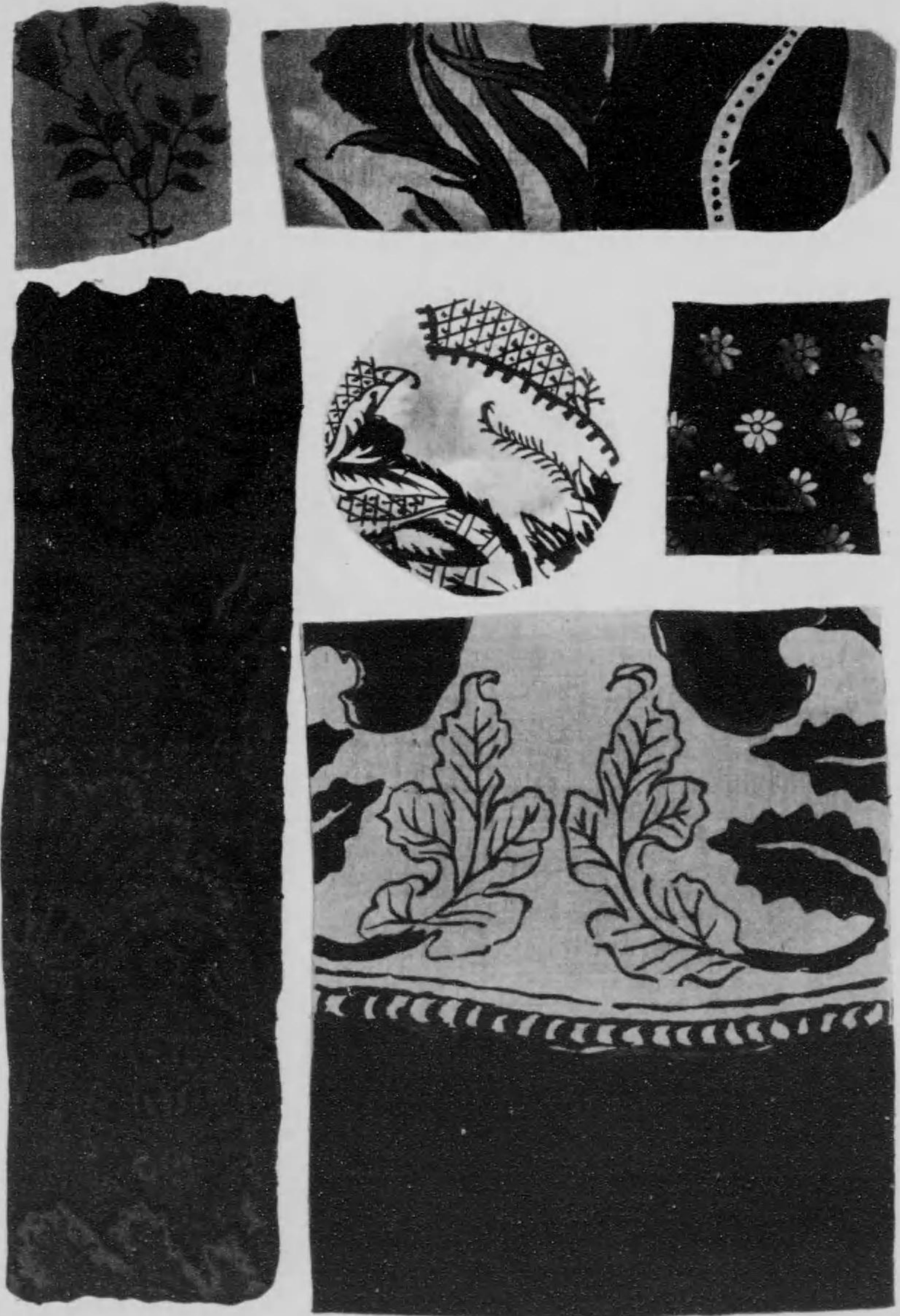


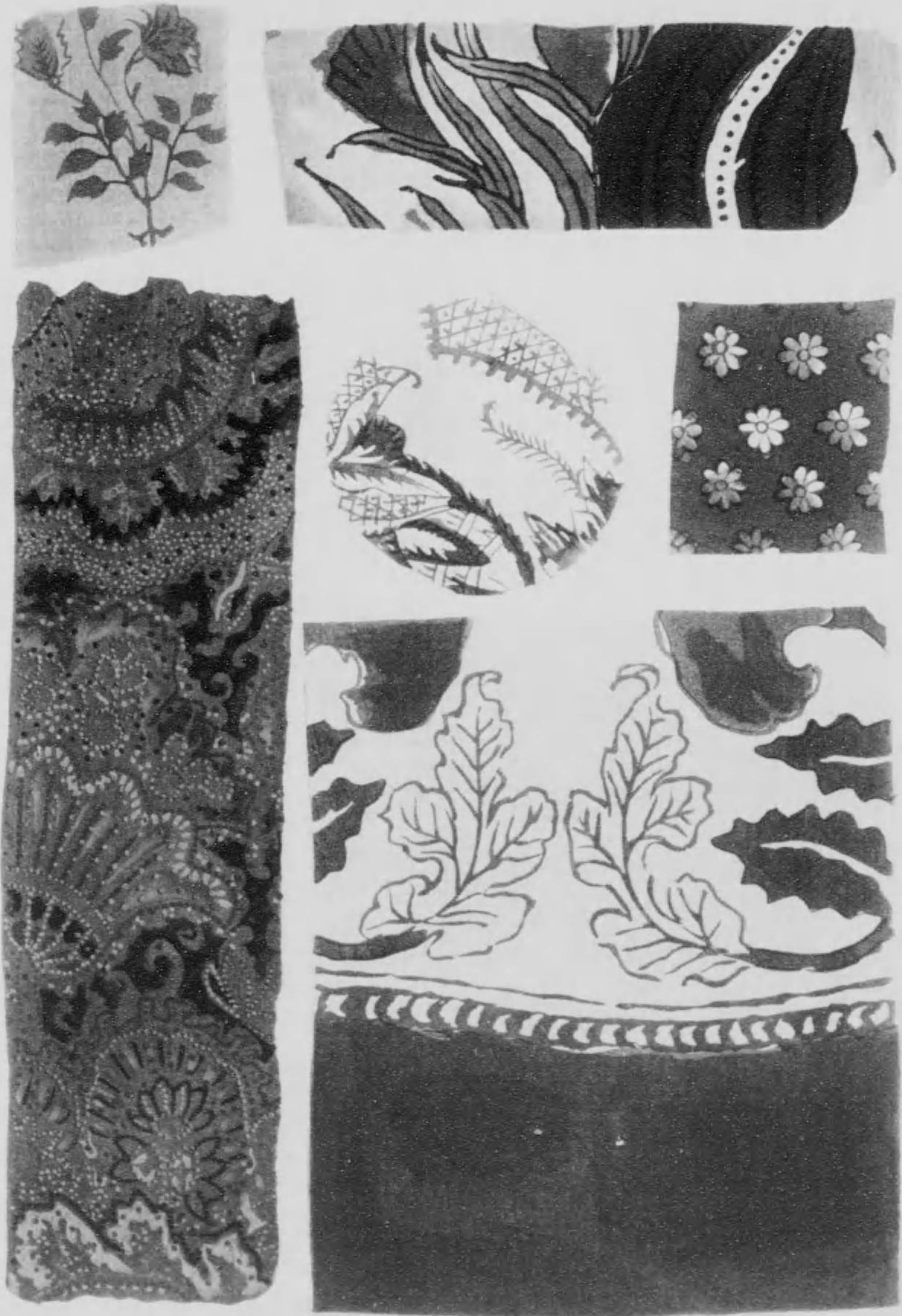


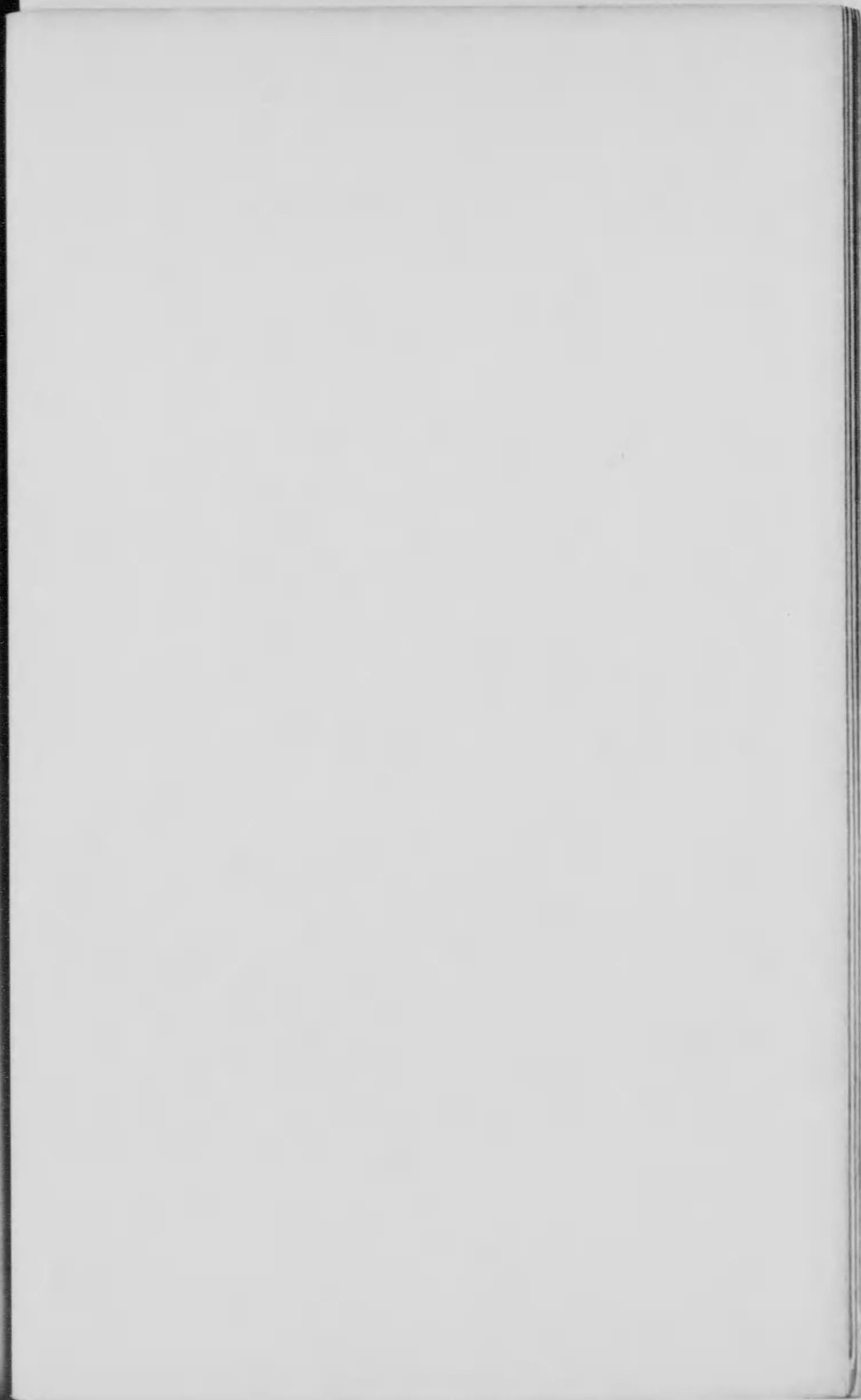






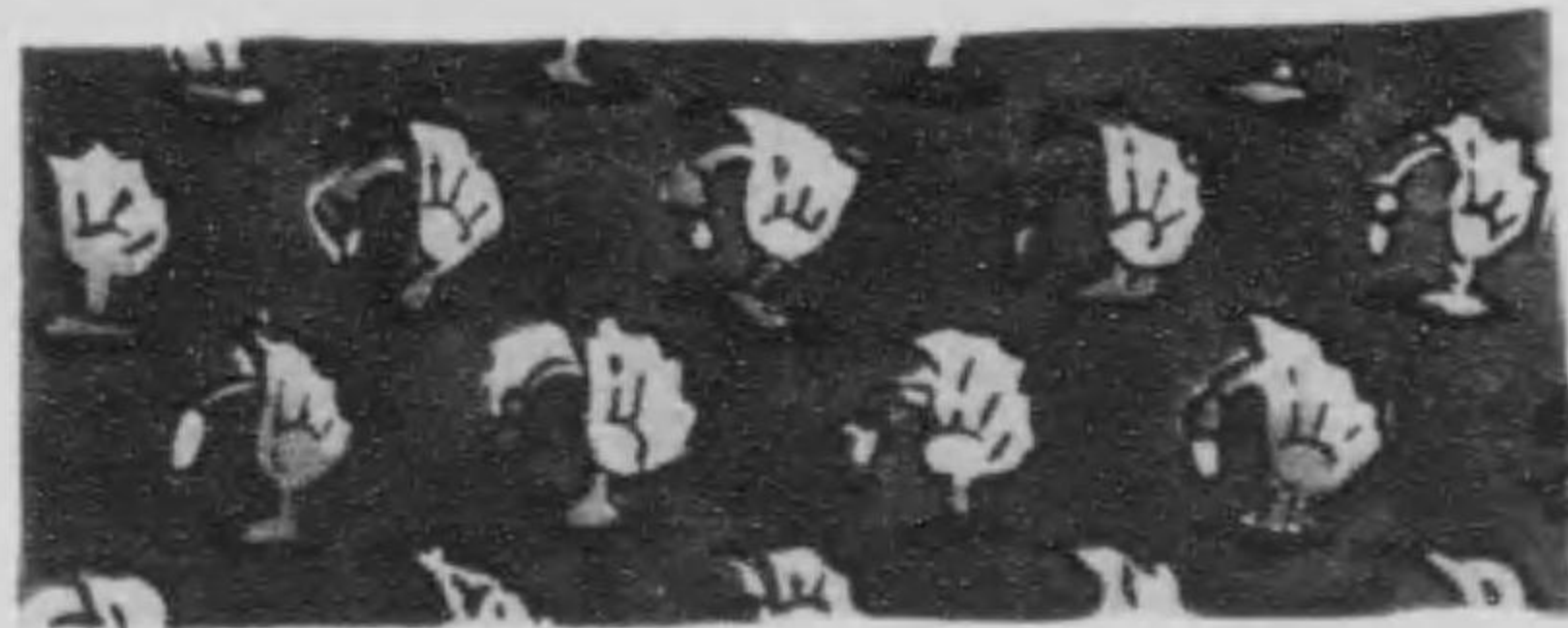
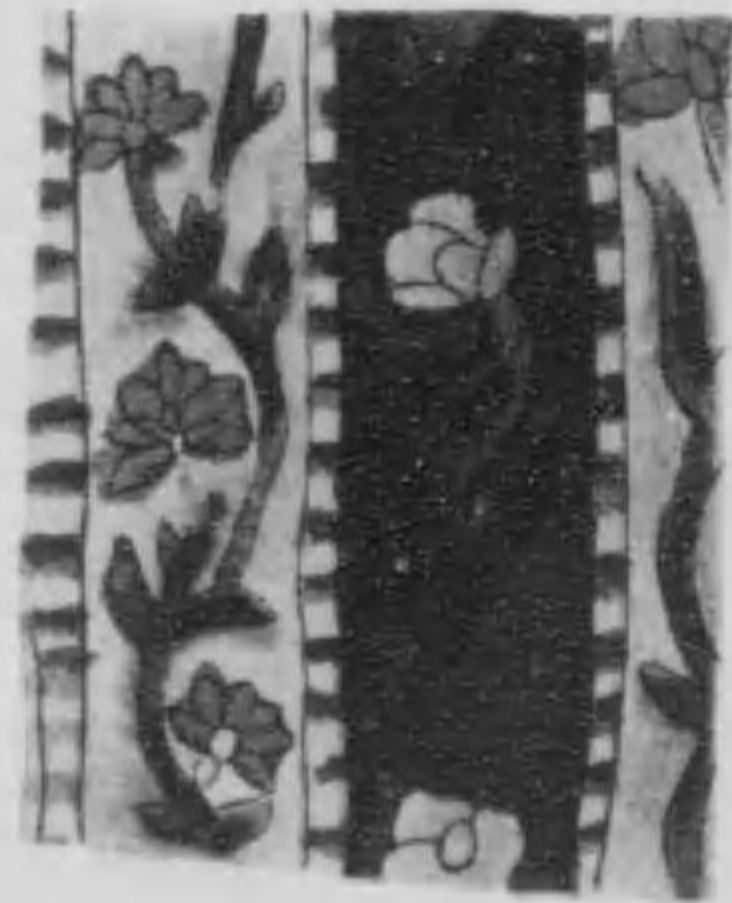


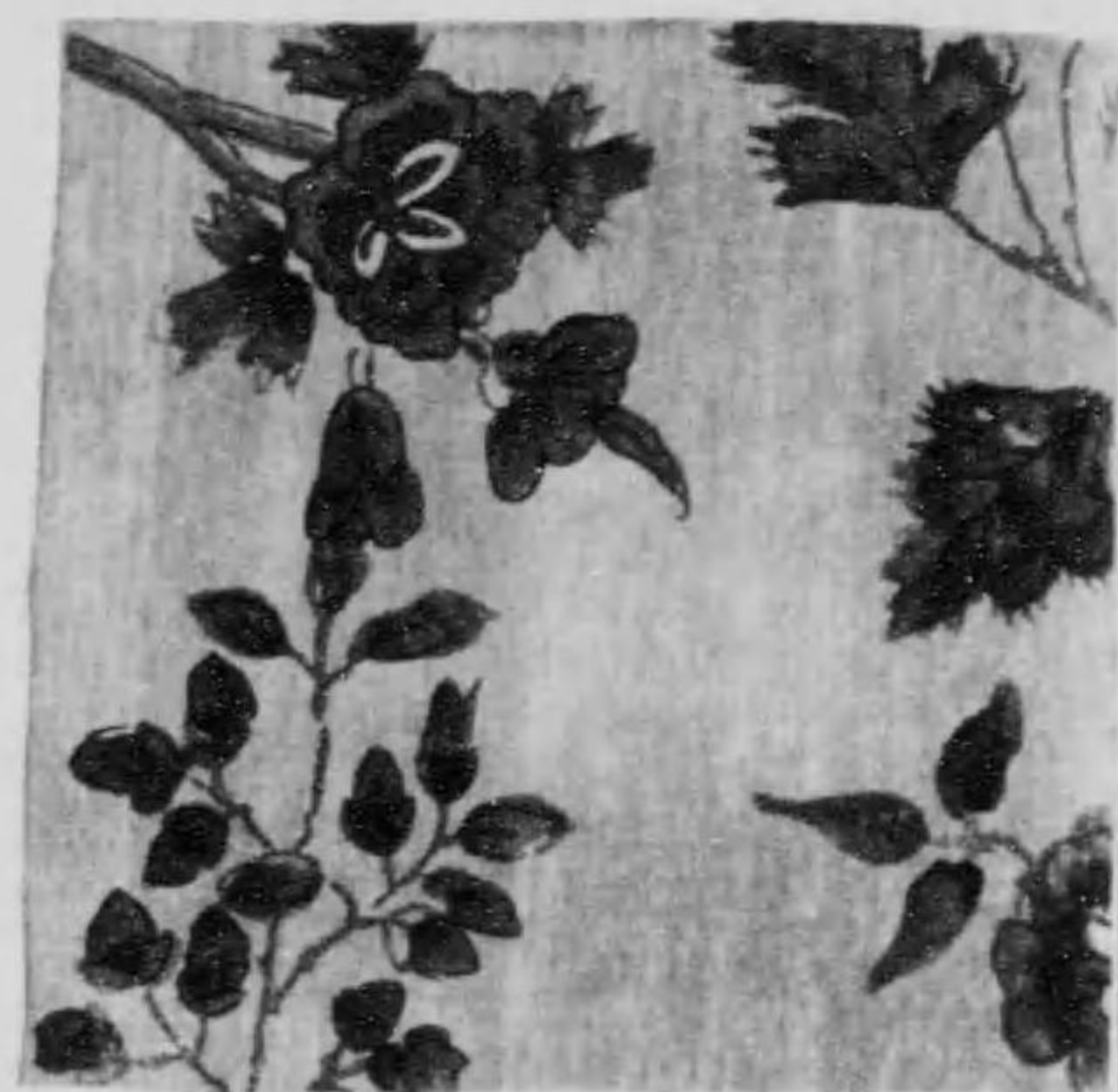
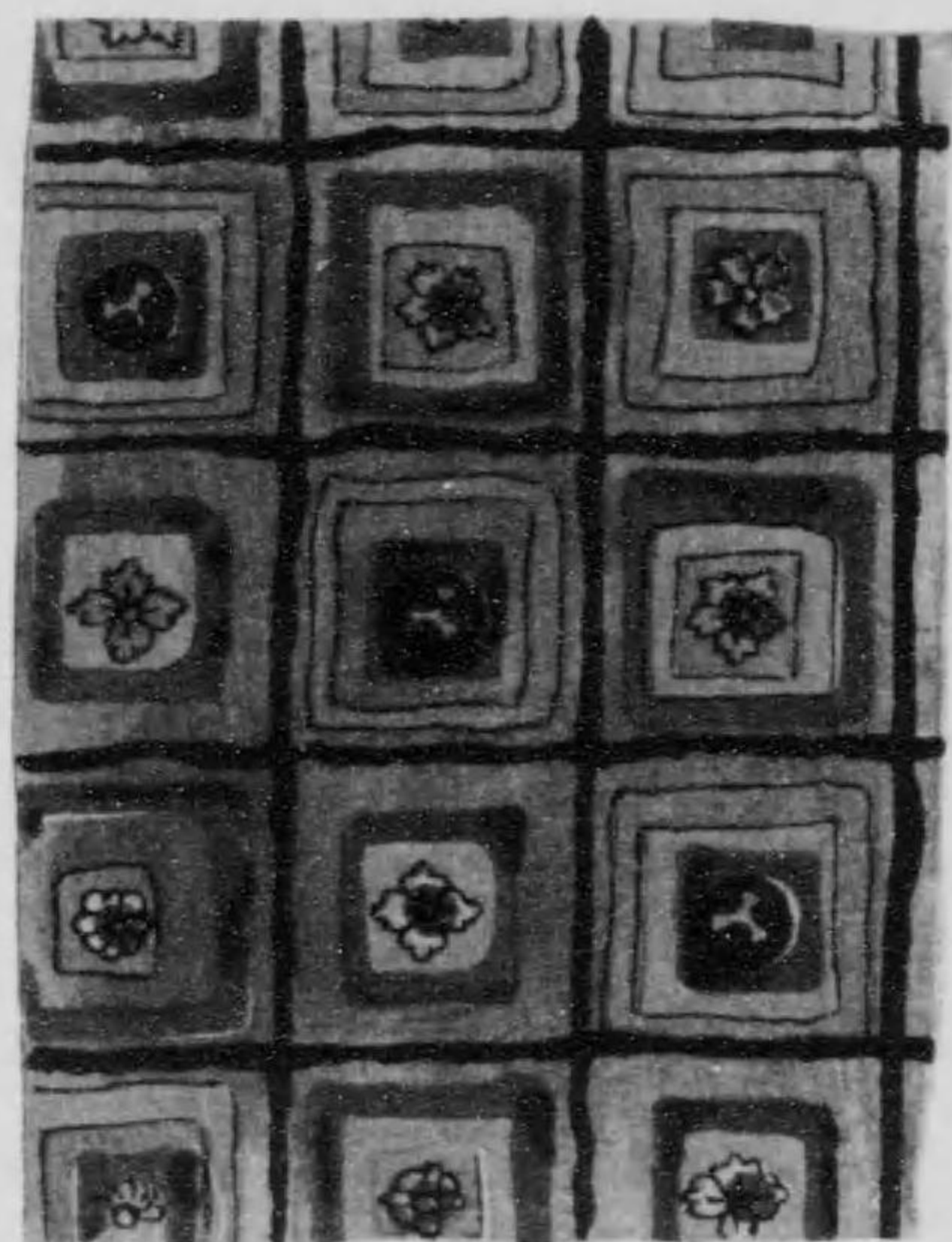












古代更紗 其語を独りだぶ引つけらる心地す様式の
純東洋的にして色彩単純而も綃紋津に盡きざるもの
あれもあり 其暹羅に盡したるを即夜に起りたるを問はず
亦これ數百年前の我海外貿易の盛を語るものたり今や
世界苟も殊發を作らば地更紗を出さるべしと云風潮が
兼ゆるに雅紋を以てするものは古代更紗を指して他に非む
處うらざるあり 余積年之を聚集して坐者の師とす
保善軒主人之を親て公に以て斯界に益せんことを乞ふ 余
亦平生斯種を考ふは一人の私すをまにあらずと爲すもの
乃ち盡んで居し其優秀あるものを撰んで撰字一之以
主人に附す庶幾は以て余の志を源とせん乎

大正六年初秋

山原清兼發

418
33

不許
復製

大正六年十月一日印刷
大正六年十月十五日發行

編輯者 山鹿清華

發行所 京都府京橋區通三條南入妙滿寺前町十九番戶

印刷者 本田金之助

發賣所 京都府京橋區通三條南入十九番戶

合名 芸州堂



終

