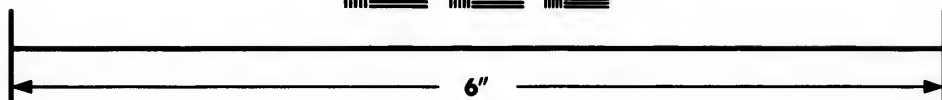
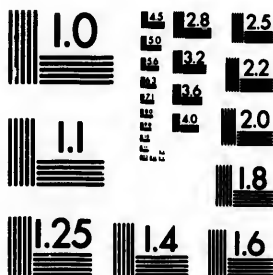


**IMAGE EVALUATION
TEST TARGET (MT-3)**



**Photographic
Sciences
Corporation**

23 WEST MAIN STREET
WEBSTER, N.Y. 14590
(716) 872-4503

**CIHM/ICMH
Microfiche
Series.**

**CIHM/ICMH
Collection de
microfiches.**



Canadian Institute for Historical Microreproductions / Institut canadien de microreproductions historiques

© 1982

Technical and Bibliographic Notes/Notes techniques et bibliographiques

The Institute has attempted to obtain the best original copy available for filming. Features of this copy which may be bibliographically unique, which may alter any of the images in the reproduction, or which may significantly change the usual method of filming, are checked below.

L'Institut a microfilmé le meilleur exemplaire qu'il lui a été possible de se procurer. Les détails de cet exemplaire qui sont peut-être uniques du point de vue bibliographique, qui peuvent modifier une image reproduite, ou qui peuvent exiger une modification dans la méthode normale de filmage sont indiqués ci-dessous.

- Coloured covers/
Couverture de couleur
- Covers damaged/
Couverture endommagée
- Covers restored and/or laminated/
Couverture restaurée et/ou pelliculée
- Cover title missing/
Le titre de couverture manque
- Coloured maps/
Cartes géographiques en couleur
- Coloured ink (i.e. other than blue or black)/
Encre de couleur (i.e. autre que bleue ou noire)
- Coloured plates and/or illustrations/
Planches et/ou illustrations en couleur
- Bound with other material/
Relié avec d'autres documents
- Tight binding may cause shadows or distortion
along interior margin/
La reliure serrée peut causer de l'ombre ou de la
distortion le long de la marge intérieure
- Blank leaves added during restoration may
appear within the text. Whenever possible, these
have been omitted from filming/
Il se peut que certaines pages blanches ajoutées
lors d'une restauration apparaissent dans le texte,
mais, lorsque cela était possible, ces pages n'ont
pas été filmées.
- Additional comments:/
Commentaires supplémentaires:

- Coloured pages/
Pages de couleur
- Pages damaged/
Pages endommagées
- Pages restored and/or laminated/
Pages restaurées et/ou pelliculées
- Pages discoloured, stained or foxed/
Pages décolorées, tachetées ou piquées
- Pages detached/
Pages détachées
- Showthrough/
Transparence
- Quality of print varies/
Qualité inégale de l'impression
- Includes supplementary material/
Comprend du matériel supplémentaire
- Only edition available/
Seule édition disponible
- Pages wholly or partially obscured by errata
slips, tissues, etc., have been refilmed to
ensure the best possible image/
Les pages totalement ou partiellement
obscurcies par un feuillet d'errata, une pelure,
etc., ont été filmées à nouveau de façon à
obtenir la meilleure image possible.

This item is filmed at the reduction ratio checked below/
Ce document est filmé au taux de réduction indiqué ci-dessous.

10X	14X	18X	22X	26X	30X
<input type="checkbox"/>	<input type="checkbox"/>	<input type="checkbox"/>	<input checked="" type="checkbox"/>	<input type="checkbox"/>	<input type="checkbox"/>
12X	16X	20X	24X	28X	32X

The copy filmed here has been reproduced thanks to the generosity of:

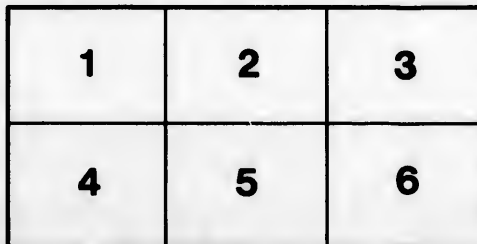
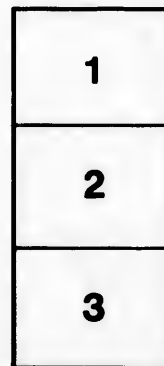
Library of the Public
Archives of Canada

The images appearing here are the best quality possible considering the condition and legibility of the original copy and in keeping with the filming contract specifications.

Original copies in printed paper covers are filmed beginning with the front cover and ending on the last page with a printed or illustrated impression, or the back cover when appropriate. All other original copies are filmed beginning on the first page with a printed or illustrated impression, and ending on the last page with a printed or illustrated impression.

The last recorded frame on each microfiche shall contain the symbol \rightarrow (meaning "CONTINUED"), or the symbol ∇ (meaning "END"), whichever applies.

Maps, plates, charts, etc., may be filmed at different reduction ratios. Those too large to be entirely included in one exposure are filmed beginning in the upper left hand corner, left to right and top to bottom, as many frames as required. The following diagrams illustrate the method:



L'exemplaire filmé fut reproduit grâce à la générosité de:

La bibliothèque des Archives
publiques du Canada

Les images suivantes ont été reproduites avec le plus grand soin, compte tenu de la condition et de la netteté de l'exemplaire filmé, et en conformité avec les conditions du contrat de filmage.

Les exemplaires originaux dont la couverture en papier est imprimée sont filmés en commençant par le premier plat et en terminant soit par la dernière page qui comporte une empreinte d'impression ou d'illustration, soit par le second plat, selon le cas. Tous les autres exemplaires originaux sont filmés en commençant par la première page qui comporte une empreinte d'impression ou d'illustration et en terminant par la dernière page qui comporte une telle empreinte.

Un des symboles suivants apparaîtra sur la dernière image de chaque microfiche, selon le cas: le symbole \rightarrow signifie "A SUIVRE", le symbole ∇ signifie "FIN".

Les cartes, planches, tableaux, etc., peuvent être filmés à des taux de réduction différents. Lorsque le document est trop grand pour être reproduit en un seul cliché, il est filmé à partir de l'angle supérieur gauche, de gauche à droite, et de haut en bas, en prenant le nombre d'images nécessaire. Les diagrammes suivants illustrent la méthode.

aire
détails
ues du
modifier
ger une
filmage

ées

re

by errata
ed to

nt
ne pelure,
açon à



E
AND TH

Cont
S

PRIN

At h

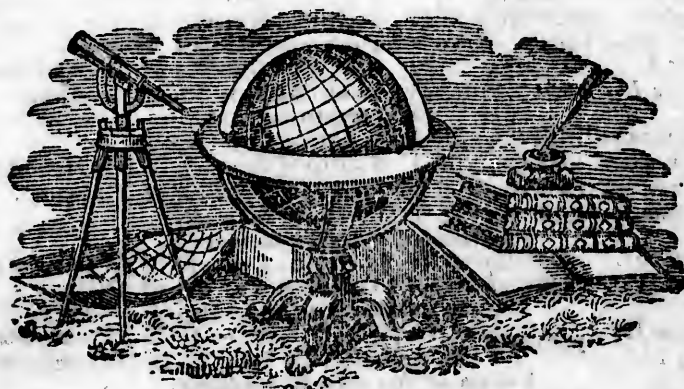
THE
MERCHANTS' & FARMERS'
ALMANACK.

FOR THE YEAR OF OUR LORD

1844,

BEING BISSEXTILE OR LEAP YEAR;
AND THE SEVENTH OF THE REIGN OF HER MOST GRACIOUS MAJESTY
QUEEN VICTORIA.

*Containing, besides the usual Information, a choice
Selection of Reading Matter; a Table of the
Sovereigns of England since the Conquest,
and a Map containing the principal part
of the Province of New Brunswick.*



SAINT JOHN, N. B.

PRINTED AT THE BRUNSWICK PRESS, AND SOLD, WHOLESALE
AND RETAIL, BY

WILLIAM L. AVERY,

*At his Store, Prince William Street; and to be had of the Prin-
cipal Booksellers throughout the Province.*

SOVEREIGNS OF ENGLAND SINCE THE CONQUEST.

SOVEREIGNS.	Reigns began			Reigned.			Reigns ended			Age	Where buried
	Y.	M.	D.	Y.	M.	D.	Y.	M.	D.		
<i>Will. Conq.</i>	1066	Dec	25	20	8	15	1087	Sept	9	60	Caen, Norm.
<i>Will. Rufus</i>	1087	Sept	26	12	10	7	1100	Aug	2	43	Winchester.
<i>Henry I.</i>	1100	Aug	5	35	3	27	1135	Dec	1	67	Reading.
<i>Stephen</i>	1135	Dec	26	18	10	0	1154	Oct	25	49	Faversham.
The Saxon Line Restored.											
<i>Henry II.</i>	1154	Dec	19	34	6	18	1189	July	6	55	Fontevrault.
<i>Richard I.</i>	1189	Sept	3	9	7	3	1199	April	6	43	Fontevrault.
<i>John</i>	1199	May	27	17	4	23	1216	Oct	19	60	Worcester.
<i>Henry III.</i>	1216	Oct	28	56	0	19	1272	Nov	16	65	Westminster.
<i>Edward I.</i>	1272	Nov	20	37	7	17	1307	July	7	67	Westminster.
<i>Edward II.</i>	1307	July	8	19	6	12	1327	Jan	20	43	Gloucester.
<i>Edward III.</i>	1327	Jan	25	50	4	27	1377	June	21	65	Westminster.
<i>Richard II.</i>	1377	June	22	29	3	7	1399	Sept	29	33	Westminster.
The Line of Lancaster.											
<i>Henry IV.</i>	1399	Sept	30	13	5	20	1413	Mar	20	46	Canterbury.
<i>Henry V.</i>	1413	Mar	21	9	5	10	1422	Aug	31	33	Westminster.
<i>Henry VI.</i>	1422	Sept	1	38	6	3	1461	Mar	4	40	Windsor.
The Line of York.											
<i>Edward IV.</i>	1461	Mar	4	22	1	5	1483	April	9	49	Windsor.
<i>Edward V.</i>	1483	April	9	0	2	16	1483	June	25	12	Not known.
<i>Richard III.</i>	1483	June	26	2	1	26	1485	Aug	22	42	Leicester.
The Families of York and Lancaster united.											
<i>Henry VII.</i>	1485	Aug	22	23	7	30	1509	April	21	52	Westminster.
<i>Henry VIII.</i>	1509	April	22	37	9	6	1547	Jan	28	55	Windsor.
<i>Edward VI.</i>	1547	Jan	28	6	5	9	1553	July	6	15	Westminster.
<i>Mary I.*</i>	1553	July	6	5	4	11	1558	Nov	17	42	Westminster.
<i>Elizabeth</i>	1558	Nov	17	44	4	7	1603	Mar	24	69	Westminster.
The Union of the English and Scotch Crowns.											
<i>James I.</i>	1603	Mar	24	22	0	3	1625	Mar	27	58	Westminster.
<i>Charles I.</i>	1625	Mar	27	23	10	3	1649	Jan	30	48	Windsor.
Interregnum.											
<i>Commonweal</i>	1649	Jan	31	4	10	12	1653	Dec	12		
<i>O. Cromwell</i>	1653	Dec	16	4	8	21	1658	Sept	3	59	Westminster.
<i>R. Cromwell</i>	1658	Sept	4	0	7	19	1659	April	22	86	Cheshunt.
<i>Commonweal</i>	1659	April	22	1	1	4	1660	May	29		
The Stuart Family Restored.											
<i>Charles II.</i>	1660	May	29	24	0	7	1685	Feb	6	54	Westminster.
<i>James II.</i>	1685	Feb	6	8	10	5	1688	Dec	11	67	Paris.
The Revolution.											
<i>William III.</i>	1689	Feb	13	13	0	20	1702	Mar	8	52	Westminster.
<i>Mary II.</i>	1689	Feb	13	4	10	12	1694	Dec	28	32	Westminster.
Union of the two Kingdoms.											
<i>Anne</i>	1702	Mar	8	12	4	24	1714	Aug	1	49	Westminster.
<i>George I.</i>	1714	Aug	1	12	10	10	1727	June	11	67	Hanover.
<i>George II.</i>	1727	June	11	33	4	14	1760	Oct	25	77	Westminster.
<i>George III.</i>	1760	Oct	25	59	3	4	1820	Jan	29	82	Windsor.
<i>George IV.</i>	1820	Jan	29	10	4	26	1830	June	26	68	Windsor.
<i>William IV.</i>	1830	June	26	6	11	24	1837	June	26	72	Windsor.
<i>VICTORIA</i>	1837	June	20	Whom God preserve!							

* Some legal documents between July 5 and 17, 1553, refer to *Jane (Grey)* as *Qn.*

There
of the M
1. A
will rise
2. A
New Br
3. A
only in
4. A
she will
6m.; et
5. A
ning at
Eclipse

Dominic
Golden

☉ The
⊕ The
● ● ●
● ☉ ●

♁ Conj
□ Quad
8 Opp

0 ♀ Ari
1 ♀ Ta
2 ♀ Ge
3 ♀ Ca

Septua
Sexage
Shrove
Ash W
Mid. L
Palm S
Good
Easter

Janna
March
April
May
June
June
June
Sept.

INQUEST.

here buried
 en, Norm.
 inchester.
 eading.
 versham.
 ntevault.
 ntevault.
 orchester.
 estminster.
 estminster.
 uecester.
 estminster.
 estminster.
 terbury.
 estminster.
 dsor.
 dsor.
 t known.
 ceester.
 d.
 estminster.
 dsor.
 estminster.
 estminster.
 estminster.
 estminster.
 dsor.
 estminster.
 unt.
 estminster.
 estminster.
 estminster.
 er.
 estminster.
 or.
 or.
 or.
 as Qn.

ECLIPSES OF 1844.

There will be *five* Eclipses this year, three of the Sun, and two of the Moon, in the manner following:—

1. A total Eclipse of the Moon on the 31st of May, when she will rise about sunset, partly Eclipsed; end of the Eclipse, 7h. 50 m.
2. A partial Eclipse of the Sun on the 15th June, invisible in New Brunswick. It will be visible in the South Pacific Ocean.
3. A partial Eclipse of the Sun on the 10th of November, visible only in a small part of the great Southern Ocean.
4. A total Eclipse of the Moon on the 24th of November—when she will rise partly eclipsed. Beginning 5h. 16m.; middle, 7h. 6m.; end, 9h. 2m.
5. A partial Eclipse of the Sun on the 9th of December, beginning at 3h. 40m.; greatest obscuration. 4h. 26m.; end, 5h.—Digits Eclipsed, 2.51 on Sun's Northern limb.

Chronological Cycles of 1844.

Dominical Letter, G F	Epact,	11	Roman Indication, 2
Golden Number, 2	Solar Cycle,	5	Julian Period, 6557

Names and Characters of the Planets.

☉ The Sun.	♁ Mercury.	♃ Vesta.	♃ Jupiter.
♁ The Earth.	♀ Venus.	♄ Juno.	♄ Saturn.
☾ } The Moon.	♂ Mars.	♅ Pallas.	♅ Herschel, or Uranus.
☽ } The Moon.		♆ Ceres.	

Names and Characters of the Aspects and Nodes.

♁ Conjunction.	♁ Ascending Node.	♁ Sup. Superiour.
□ Quadrature, 90°.	♁ Descending Node.	♁ N. North. S. South.
♁ Opposition, 180°.	♁ Inf. Inferiour.	♁ E. East. W. West.

Names and Characters of the Signs of the Zodiac.

♈ Aries, head.	♌ Leo, heart.	♍ Sagittarius, thighs.
♉ Taurus, neck.	♍ Virgo, belly.	♎ Capricornus, knees.
♊ Gemini, arms.	♏ Libra, reins.	♏ Aquarius, legs.
♋ Cancer, breast.	♐ Scorpio, secrets.	♑ Pisces, feet.

Moveable Festivals of the Church in 1843.

Septuagesima Sunday,	Feb. 4	Low Sunday,	April 14
Sexagesima Sunday,	" 11	Rogation Sunday,	May 12
Shrove Sunday,	" 18	Ascension Day, Holy }	
Ash Wed. Lent beg.	" 21	Thursday,	" 16
Mid. Lent Sunday,	March 17	Whit. Sun. or Pentecost,	" 26
Palms Sunday,	" 31	Trinity Sunday,	June 2
Good Friday,	April 5	Advent Sunday,	Dec. 1
Easter Day,	" 7		

Holidays at the Public Offices.

January 1, New Year's Day,	Nov. 30, Saint Andrew,
March 17, Saint Patrick,	Dec. 25, Christmas Day,
April 23, Saint George,	" 26, } Christmas Holidays,
May 24, Queen's Birth Day,	" 27, }
June 20, Queen's Accession,	Ash Wednesday,
June 24, Saint John,	Good Friday,
June 28, Queen's Coronation,	Easter Monday,
Sept. 29, Michaelmas,	Easter Tuesday.

LIGHT HOUSES.

Commissioners for Light Houses in the Bay of Fundy.—John Ward, Senior, Robert W. Crookshank, John Ward, Junior, J. Wilsor, J. Allanshaw, T. Wyer, Lauchlan Donaldson, W. F. W. Owen, and I. Woodward, Esquires.

L. Donaldson, Esq., Surveyor of those Light Houses in the Bay of Fundy belonging to New Brunswick; and also of those belonging to Nova Scotia, which are partly supported by New Brunswick.

Cape Sable Seal Island Light.—The first Light in approaching the Bay of Fundy, is on the South Point of the Seal Island. This is a plain white Light, elevated about 80 feet above high water mark, and may be seen in approaching the Island from any point of the compass. A very dangerous rock, under water, but upon which the sea always breaks, called *Blonde Rock*, lies about 2 miles S. S. W. by compass, from the Light House. Between this rock and the Island, there are some dangers—the ground is rocky throughout, and large vessels, therefore, ought not to attempt passing between them.

Brier Island Light.—In advancing up the Bay, the next Light is situated on Brier Island, about half a mile N. E. from the N. W. point thereof. A plain white light.

Digby Gut Light.—The next light on the coast of Nova Scotia is placed side of the Digby Gut—from Brier Island N. Eastward. The coast is very bold and not indented; the Light is therefore chiefly intended as a guide into Digby Basin. The Lamps and Lanterns were renewed in the Spring of 1835, and reflectors furnished, so that this Light is in high order.—A white Light.

Gannet Rock Light.—This Light bears from the Light on Brier Island, N. W. $\frac{1}{2}$ W. 21 miles. It is intended to warn vessels of their approach to a very dangerous range of shoals and ledges, which extend from the Old Proprietor to the Seal Islands off Machias, a distance of about twenty miles.

Bearings from the Gannet Rock Light House—

- To the Old Proprietor, which dries at $\frac{3}{4}$ ebb; (very dangerous), E. by N. $\frac{1}{4}$ N. 7 miles.
- " Black Rock, (always above water 25 feet) off White Head, N E. $\frac{1}{4}$ E.
- " South West Head of Grand Manan, N. W. $\frac{1}{2}$ N.
- " Northernmost of the Murr Ledges, (dry at two thirds ebb), N. W. by W. $\frac{1}{4}$ W.
- " Southernmost of ditto, called Saint Mary's Ledge, (always out of water), S. W. by W. $\frac{1}{2}$ W.
- " Machias Seal Island Lights, distant about 13 miles, W. by N. $\frac{1}{4}$ N.

NOTE.—Between the Northernmost and Southernmost of the Murr Ledges, there is a range of dangerous rocks and shoals, many of them always above water, and which extend Westward from the Light House about four miles; from this range, farther Westerly, about eight miles, lies a dangerous breaker called the Roaring Bull. This may be avoided by keeping three remarkable headlands near the S.

W. end of
from the
dark and
atripes, v

Two fi
operation
water, an
200 feet,
station, t
upon the
ings from

To the

"

"

"

"

"

Vessels
Gannet R
Lights in
mile from
lights.

Head H
and the p
Head Ha
Campo B
West Isle
enables v
light.

Point I
are place
can be se
ful—both
Home G
in stripes
seen mor

Partrie
Harbour
years, re
light, an
stripes.

Beacon
which ex
dries at
a light is
of Saint
ables th
fixed w
tically.

Cape
side of

W. end of Grand Manan, open.—The red glass having been removed from the Lantern, there is now a flash light—white—twenty seconds dark and forty light in each minute.—The Light House is painted in stripes, vertical, black and white.

Two fixed *white* lights upon the Machias Seal Islands, were put into operation in 1832—they were elevated about forty-five feet above high water, and bear from each other E. S. E. and W. N. W. distant about 200 feet, by which circumstance of two Light Houses at the same station, they will be immediately distinguished from all other lights upon the coast, (British or American)—the following are the bearings from them, viz :

- To the Southernmost Murr Ledge, (St. Mary's) E. S. E. easterly.
- " Gannet Rock Light. E. by S. $\frac{1}{4}$ S. 13 miles.
- " Southern Head of Grand Manan. E. by N. $\frac{1}{4}$ N.
- " Northern Head of Grand Manan. N. E. $\frac{1}{4}$ E.
- " N. E. Rock, distant 2 miles, N. E. by N.
- " Little River Head. N. by
- " Libby Island Light House, (American.) N. W. by W.

Vessels standing into the Northward, between these Lights and the Gannet Rock, should tack or haul off the moment they bring these Lights in one, as they will not then be more than three fourths of a mile from the Murr Ledges, if more than five miles to the East of the lights.

Head Harbour Light.—Next in order after passing Grand Manan, and the plain white Light, (American) on West Quoddy Point, is Head Harbour Light. This is placed on the North East extremity of Campo Bello, and is a guide to vessels entering the main Channel to West Isles, Moose Island, and the inner Bay of Passamaquoddy: it enables vessels at all times to enter Head Harbour—it is a fixed *white* light.

Point Le Preau Lights.—Upon this projecting head land two lights are placed, one above the other, and distant 28 feet.—Both lights can be seen from every point of the compass, where they may be useful—both are fixed and *white*. In consequence of orders from the Home Government, this Light was, in 1840, painted red and white, in stripes of five feet broad each, horizontally, in order that it may be seen more distinctly at a distance.

Partridge Island Light.—This light, at the entrance of the River and Harbour of Saint John, having been established upwards of forty years, requires no particular notice, further than that it is a fixed *white* light, and that the Light House is red and white, in vertical stripes.

Beacon Light.—Within Partridge Island, and upon a Spit or bar, which extends about half a mile S. S. E. off Sand Point, and which dries at two-thirds ebb, stands the Beacon Tower. Upon this Tower a light is established, which is eminently useful to the coasting trade of Saint John, and to all other vessels having pilots on board, as it enables them to enter the harbour at all hours of the night. A fixed *white* light. The House is white and black, in stripes vertically.

Cape Forchu Light.—The Light House on Cape Forchu, on the W. side of the entrance to Yarmouth, (Nova-Scotia,) in lat. 43, 39, N.

long. 66 8, West, was put in operation on the 15th January, 1840, and exhibits a plain revolving light—visible one minute and a quarter, and invisible half a minute. The building is painted white, and is elevated 135 feet above the level of the sea.

Quaco.—A revolving *white* light is placed on a small rock off Quaco Head, showing twice full and twice dark in a minute. This light can be seen from any quarter where a vessel can approach. The Light House is painted white and red in horizontal stripes.

Cape Enrage.—A new Light House, nearly opposite to Apple River Harbour. A plain *white* light. The House is painted white, and about 120 feet above tide mark.

The half of the expense of the Cape Sable and Brier Island Lights is paid by New Brunswick, as they are so highly useful to vessels trading with this Province.

West Quoddy Light.—This is an American Light, and is placed on the West side of the entrance into the Saint Croix by Lubec and Eastport; a new light house has lately been erected here, and the light much improved.

Light Houses in Nova Scotia—in addition to those previously noticed.

Sambro—Sambro Island, mouth of Halifax Harbour—a fixed Light.

Roseway—M'Nutt's Island, mouth of Shelbourne Harbour—two Lights, one above the other.

Liverpool—Coffin's Island, mouth of Liverpool Harbour—one revolving Light.

Canso—Island, Gut of Canso, two Lights, one above the other.

Halifax—Meagher's Beach, Halifax—one Light.

Pictou—Entrance to Pictou Harbour—one fixed Light, for eight months in the year.

Cross Island—Cross Island, near Lunenburg.

Low Point—Entrance to Sydney Harbour—one fixed Light.

RATES OF WHARFAGE.

Established by Act 54 Geo. III, cap. 9.

For every decked vessel, or vessel of the description called Wood

Boats, not exceeding 50 tons,	1s. 6d. per day.
Above 50 tons, and not exceeding 100 tons,	2s. 6d. "
Above 100 tons, and not exceeding 150 tons,	3s. 6d. "
Above 150 tons, and not exceeding 200 tons,	5s. 0d. "
Above 200 tons, and not exceeding 300 tons,	7s. 6d. "
Above 300 tons, and not exceeding 400 tons,	10s. 6d. "
400 Tons and upwards,	12s. 6d. "

☞ The following names to be added to the List of Attornies, inserted in a subsequent part of the Almanack:—

St. John.—William J. Gilbert, Esquire. *Fredericton*.—Thomas Francis S. Street, Esquire.

D. M. | D. V. |
 1 M |
 2 T |
 3 W |
 4 Th |
 5 Fr |
 6 Sa |
 7 Su |
 8 M |
 9 T |
 10 W |
 11 Th |
 12 Fr |
 13 Sa |
 14 Su |
 15 M |
 16 T |
 17 W |
 18 Th |
 19 Fr |
 20 Sa |
 21 Su |
 22 M |
 23 T |
 24 W |
 25 Th |
 26 Fr |
 27 Sa |
 28 Su |
 29 M |
 30 T |
 31 W |

JANUARY.

1844.]

Forty-four, Father Janus! and can it be true,
 That your *double-fac'd* sconce is again in our view?
 Take a chair, my old boy--while our glasses we fill,
 And tell us, "what news"--for you can if you will.
 Shall we have any war? or will there be peace?
 Will swindlers, as usual, the credulous fleece?
 Will the seasons produce us a *deluge* of ruin?
 Will the winter bring coughs and catarrhs in his train?
 Will *quid-nuncs* from scandalous whispers refrain?
 Will poets the peak of Parnassus attain?
 Will travellers' tones touch the truth to a T?
 Will critics from caustic coercion be free?

- Full Moon 5th day, 0h. 55m. evening. N.
- Last Quarter 12th day, 4h. 52m. evening. N. W.
- New Moon 19th day, 1h. 39m. evening. S.
- First Quarter 27th day, 7h. 52m. morning. N. E.

D. N.	D. W.	CALENDAR, &c.	☉		☽		☿		Pla.	High water h. m.
			Ri. h. m.	Sets h. m.	de. d. m.	S. d. m.	R. h. m.	S. h. m.		
1	Mo	Planet Ceres dis. by Pinzzi.	7 26	4 34	23 3	3 56	nec	8 32		
2	Tu	Edm. Burke b. 1730. [1801.	7 26	4 34	22 58	4 54	arm.	9 23		
3	W.	Battle of Princeton, 1777.	7 25	4 35	22 52	5 49	arm.	10 8		
4	Th	Arch. Usher b. 1580. <i>Snow.</i>	7 25	4 35	22 46	6 38	bres	10 48		
5	Fri	Duke of York died, 1827.	7 24	4 36	22 40	rises.	bres	11 27		
6	Sat	Epiphany.—Old Christmas.	7 24	4 36	22 33	5 55	bres	morn		
7	SU	1st Sunday after Epiph. <i>Clear</i>	7 23	4 37	22 26	7 4	h'art	0 2		
8	Mo	Galileo died, 1642. <i>and cold.</i>	7 22	4 38	22 18	8 14	h'art	0 38		
9	Tu	Cape Good Hope t. by Fr. '06	7 22	4 38	22 10	9 25	belly	1 14		
10	W.	Penny Post beg. (Eng.) 1840.	7 21	4 39	22 1	10 37	belly	1 51		
11	Th	Cimarosa died, 1801. <i>Fair.</i>	7 20	4 40	21 52	11 50	rein	2 34		
12	Fri	Lavater died, 1801. Low tid.	7 20	4 40	21 43	morn	rein	3 23		
13	Sat	Old New Year's Day.	7 19	4 41	21 33	1 4	secr.	4 28		
14	SU	2d Sunday after Epiphany.	7 18	4 42	21 22	2 18	secr.	5 50		
15	Mo	☉ per. <i>High winds.</i>	7 18	4 42	21 12	3 31	thig	7 22		
16	Tu	Battle of Corunna, 1809.	7 17	4 43	21 1	4 38	thig	8 39		
17	W.	Battle of Falkirk, 1746.	7 16	4 44	20 49	5 39	kne.	9 39		
18	Th	Prisca beheaded 275.	7 15	4 45	20 37	6 28	kne.	10 28		
19	Fri	Congreve (poet) died, 1728.	7 14	4 46	20 25	sets.	kne.	11 10		
20	Sat	Garrick died, 1779. ☉ per.	7 13	4 47	20 12	6 17	legs	11 46		
21	SU	3d Sun. after Eph. St. Agnes.	7 13	4 47	19 59	7 26	legs	ev 21		
22	Mo	Byron born, 1788. <i>Very cold.</i>	7 12	4 48	19 46	8 32	feet	0 54		
23	Tu	Duke of Kent died, 1820.	7 11	4 49	19 32	9 36	feet	1 27		
24	W.	Frederick the Great b. 1712.	7 10	4 50	19 18	10 39	head	2 1		
25	Th	Robert Burns born, 1759.	7 9	4 51	19 3	11 40	head	2 38		
26	Fri	Dr. Jenner d. 1823. <i>Moderate.</i>	7 8	4 52	18 49	morn	head	3 22		
27	Sat	Duke Sussex b. 1773. ☉ per.	7 7	4 53	18 33	0 42	nec	4 15		
28	SU	4th Sunday after Epiphany.	7 6	4 54	18 18	1 42	nec	5 24		
29	Mo	George III. died, 1820.	7 4	4 56	18 2	2 41	arm.	6 42		
30	Tu	Charles I. beh. 1649. <i>Clear.</i>	7 3	4 57	17 46	3 37	arm.	7 54		
31	W.	Prince C. Stewart d. 1788.	7 2	4 58	17 30	4 29	arm.	8 55		

January, 1840,
 minute and a
 ng is painted
 ca.
 ck off Quaco
 This light can
 The Light
 to Apple Ri-
 ed white, and
 Island Lights
 to vessels tra-
 is placed on
 y Lubec and
 ere, and the
 sly noticed.
 xed Light.
 -two Lights,
 -one revolv-
 other.
 eight months
 ght.
 9.
 alled Wood
 per day.
 "
 "
 "
 "
 "
 Attornies,
 -Thomas

Shall we check crafty care in his cunning career /
 In short—shall we welcome a happy new year ?
 What, *mum*, Father Janus ;—egad, I suppose,
 Not one of our queries you mean to disclose
 Let us, therefore, the blessings which Providence sends,
 'To our country, to us, our relations and friends,
 With gratitude own—and employ the supplies,
 As prudence suggests, "to be merry and wisep."
 Nor ever, too curious the future to pry,
 Presume on our own feeble strength to rely ;
 But, taught by the *past* ; for the *future*, depend
 Where the wise and the good all their wishes extend.

- Full Moon 4th day, 4h. 4m. morning. W.
- ☾ Last Quarter 11th day, 0h. 42m. morning. E
- ☽ New Moon 18th day, 4h. 7m. morning. N. E.
- First Quarter 26th day, 5h. 18m. morning. N.

D. M.	D. W.	CALENDAR, &c.	Ri. h.	Sets h. m.	dc. d.	S. m.	R&S h. m.	Plat.	High water h. m.
1	Th	Battle of Rothiere, 1814.	7 14	59 17	12		5 15	bres	9 44
2	Fri	Candlemas. <i>A thaw.</i>	7 05	0 16	55		5 56	bres	10 28
3	Sat	Mont Vedeo taken, 1807.	6 59	5 11	6 38		6 31	h'art	11 7
4	SU	Septuagesima Sunday.	6 58	5 2	16 20		rises	h'art	11 42
5	Mo	Wm. Cullen died, 1790.	6 57	5 3	16 2		7 12	bely	morn
6	Tu	Charles II. died 1685.	6 56	5 4	15 44		8 25	bely	0 19
7	W.	Mrs. Radcliffe d. 1823. <i>Fine</i>	6 54	5 6	15 25		9 39	rein.	0 55
8	Th	Samuel Butler born, 1612.	6 53	5 7	15 7		10 54	rein.	1 33
9	Fri	Dr. Gregory d. 1773. ☉ per.	6 52	5 8	14 48		morn	secr	2 16
10	Sat	Lord Darnley killed, 1567.	6 51	5 9	14 28		0 8	secr	3 6
11	SU	Sexagesima Sunday. <i>Cold</i>	6 50	5 10	14 9		1 21	secr	4 10
12	Mo	Cotton Mather born, 1673.	6 49	5 11	13 49		2 30	thi.	5 38
13	Tu	Revolution in England, 1689.	6 47	5 13	13 29		3 30	thi.	7 11
14	W.	St. Valentine. <i>Moderate.</i>	6 46	5 14	13 9		4 23	kne	8 29
15	Th	500 loyalists shot in Fr. 1793.	6 45	5 15	12 43		5 6	kne	9 25
16	Fri	Melancthon born, 1497.	6 44	5 16	12 28		5 42	legs.	10 9
17	Sat	Michael Angelo died, 1563.	6 43	5 17	12 7		6 13	legs.	10 47
18	SU	Quinqua or Shrove Sunday.	6 41	5 19	11 46		sets.	feet	11 22
19	Mo	<i>A snow storm may be ex.</i>	6 40	5 20	11 25		7 20	feet	11 54
20	Tu	Mrs. E. Rowe d. 1731. <i>pected.</i>	6 39	5 21	11 3		8 24	feet	ev 26
21	W.	Ash Wednesday.	6 37	5 23	10 42		9 26	head	0 57
22	Th	Washington born, 1732.	6 36	5 24	10 20		10 28	head	1 30
23	Fri	Sir Joshua Reynolds d. 1792.	6 34	5 26	9 58		11 29	nek.	2 5
24	Sat	St. Matthias. ☉ in apogee.	6 35	5 27	9 36		morn	nek.	2 46
25	SU	1st Sunday in Lent.	6 32	5 28	9 14		0 28	nek.	3 36
26	Mo	Bonaparte esc. fm. Elba, '15.	6 30	5 30	8 51		1 25	arm.	4 40
27	Tu	<i>Blustery and disagreeable.</i>	6 29	5 31	8 29		2 18	arm.	5 55
28	W.	J. B. V. Gullotine beh. 1794.	6 28	5 32	8 6		3 6	bres	7 16
29	Th	Sir Wm. Jones died, 1794.	6 27	5 33	7 44		3 48	bres	8 25

D. W. 1 Fri
 D. M. 2 Sat
 3 SU
 4 Mo
 5 Tu
 6 W.
 7 Th
 8 Fri
 9 Sat
 10 SU
 11 Mo
 12 Tu
 13 W.
 14 Th
 15 Fri
 16 Sat
 17 SU
 18 Mo
 19 Tu
 20 W.
 21 Th
 22 Fri
 23 Sat
 24 SU
 25 Mo
 26 Tu
 27 W.
 28 Th
 29 Fri
 30 Sat
 31 SU

MARCH.

[1844.

Now looks the eye up to the sky,
 But mists and clouds surround us;
 The whole is clad in vesture sad,
 No charming scenes around us.
 She smiles and blooms—then wintry glooms
 A milder aspect borrow;
 Just as the mind, when fortune's kind,
 Forgets the hour of sorrow.
 Yet like the flower within the bower,
 Man blooms and fears no weather;
 Though in his prime, the scythe of time
 Oft cuts down altogether.

- Full Moon 4th day, 4h. 29m. evening. N. E.
- ⊙ Last Quarter 11th day, 8h. 40m. morning. S. W.
- New Moon 18th day, 7h. 38m. evening. W.
- ⊙ First Quarter 27th day, 0h. 22m. morning W.

D. M.	D. W.	CALENDAR, &c.	Ri. & Sets		dc. S.	R. & S.		High water
			h. m.	h. m.		d. m.	h. m.	
1	Fri	St. David. <i>Fine, but cold.</i>	6 26	5 34	7 21	4 26	hart	9 19
2	Sat	Horace Walpole died, 1797.	6 25	5 35	6 58	5 0	hart	10 2
3	SU	2d Sunday in Lent.	6 23	5 37	6 35	5 29	hart	10 43
4	Mo	Lord Somers born, 1650.	8 22	5 38	6 12	rises.	bely	11 20
5	Tu	Bish. Ravenscroft diad, 1830.	6 21	5 39	5 49	7 19	bely	11 58
6	W.	Michael Angelo born, 1475.	6 19	5 41	5 26	8 36	rein.	morn
7	Th	Canute procl. King, 1011.	6 18	5 42	5 2	9 54	rein.	0 37
8	Fri	William III. died, 1702. <i>Rain.</i>	6 17	5 43	4 39	11 9	secr.	1 18
9	Sat	Rizzio assassinated, 1566.	6 15	5 45	4 15	morn	secr.	2 2
10	SU	3d Sunday in Lent.	6 14	5 46	3 52	0 20	thi.	2 55
11	Mo	Alioth south, 1h. 35m. morn.	6 12	5 48	3 28	1 25	thi.	4 1
12	Tu	Chelsea Hosp. found. 1682.	6 11	5 49	3 5	2 20	kne.	5 25
13	W.	2 ^d rises 5h. 58m. morn.	6 10	5 50	2 41	3 6	kne.	6 54
14	Th	Bish. Berkley b. 1684. <i>Low</i>	6 8	5 52	2 17	3 43	legs	8 6
15	Fri	Klopstock died, 1603. [<i>tid.</i>]	6 7	5 53	1 54	4 15	legs	9 2
16	Sat	Bishop Burnet d. 1715. <i>Snow.</i>	6 6	5 54	1 30	4 43	legs	9 46
17	SU	4th Sun. in Lent. St. Patrick.	6 4	5 56	1 6	5 8	feet	10 22
18	Mo	Sir R. Walpole died, 1745.	6 3	5 57	0 43	sets	feet	10 56
19	Tu	Dantzic surren. to Fr. 1807.	6 2	5 58	S. 19	7 14	head	11 27
20	W.	Newton died, 1727. <i>High</i>	6 0	6 0	N. 5	8 16	head	11 58
21	Th	St. Benedict. <i>winds, and ra-</i>	5 59	6 1	0 28	9 17	nec	ev. 30
22	Fri	Plague in London, 1665. <i>ther</i>	5 58	6 2	0 52	10 17	nec	1 3
23	Sat	☉ in apogee. <i>disagreeable.</i>	5 56	6 4	1 16	11 15	arm	1 39
24	SU	5th Sunday in Lent.	5 55	6 5	1 39	morn	arm	2 19
25	Mo	Peace of Amiens, 1802. ☉	5 53	6 7	2 3	0 9	arm	3 5
26	Tu	Pr. G. of Cam. b. 1819. [<i>runs</i>]	5 52	6 8	2 26	0 58	bres	4 0
27	W.	♀ sets 9h. 57m. even. [<i>high.</i>]	5 51	6 9	2 50	1 42	bres	5 12
28	Th	Abercrombie d. 1801. Alioth	5 49	6 11	3 13	2 21	bres	6 31
29	Fri	Low tid. [<i>south, 0h. 24m.</i>]	5 48	6 12	3 37	2 55	h'art	7 43
30	Sat	Siege of Acre, 1799. <i>Fair</i>	5 47	6 13	4 0	3 26	h'art	8 45
31	SU	5th Sun. in Lent. Palm Sun.	5 45	6 15	4 24	3 55	bely	9 35

[1844.

APRIL.

The blood is breathing through each vein,
 The cheek is warm again.
 The old man's chair hath left the fire,
 It stands beneath his father heaven ;
 The half-clad youngling from his sire
 The kiss hath ta'en, the snow-drops given,
 And laugh'd the simple laugh of joy.
 The matron sings the maiden's song,
 As the budding fields she looks along ;
 The old man smiles, as doth the boy ;
 He hath forgot how worldly cares annoy.

- Full Moon 3d day, 2h. 18m. morning. S. W.
- ⊙ Last Quarter 9th day, 5h. 30m. evening. N.
- New Moon 17th day, 11h. 53m. morning. S.
- ⊙ First Quarter 25th day, 3h. 38m. evening. S. E.

D. M.	D. W.	CALENDAR, &c.	☉		☽	☾	☼	High water
			Ri. h. m.	Sets h. m.	dc. d. in.	R. & S h. m.	Pla.	
1	Mo	Bonaparte mar. 1810. ♀ st.	5 44	6 16	4 46	4 23	bely	10 18
2	Tu	Battle of Copenhagen, 1801.	5 43	6 17	5 9	4 52	rein	10 59
3	W.	John Napier d. 1617. <i>Fine.</i>	5 41	6 19	5 32	rises	rein	11 40
4	Th	St. Ambrose. ☉ in per.	5 40	6 20	5 55	8 47	secr.	morn
5	Fri	Good Friday. <i>Showery.</i>	5 39	6 21	6 18	10 4	secr.	0 22
6	Sat	Wellington storms Badajoz.	5 37	6 23	6 40	11 13	thigs	1 7
7	SU	Easter Sunday. [1812.	5 36	6 24	7 3	morn	thigs	1 58
8	Mo	Easter Monday. <i>Fair and fine.</i>	5 35	6 25	7 25	0 13	kne	2 47
9	Tu	Lord Bacon died, 1626.	5 33	6 27	7 48	1 3	kne	3 48
10	W.	Battle of Toulouse 1814. Low	5 32	6 28	8 10	1 44	legs	5 2
11	Th	Wm. & Mary cr. 1689. [tid.	5 30	6 30	8 32	2 17	legs	6 20
12	Fri	Alioth south, 11h. 21m. even.	5 29	6 31	8 54	2 46	legs	7 31
13	Sat	Catholic Emancp. 1829.	5 28	6 32	9 15	3 12	feet	8 31
14	SU	1st Sunday after Easter.	5 27	6 33	9 37	3 36	feet	9 15
15	Mo	Austrians enter Paris, 1814.	5 25	6 35	9 59	4 0	head	9 53
16	Tu	Battle of Culloden, 1746.	5 24	6 36	10 20	4 24	head	10 28
17	W.	Benj. Franklin died, 1790.	5 23	6 37	10 41	sets.	head	11 1
18	Th	Earl Camden d. 1794.	5 22	6 38	11 2	6 9	nec	11 34
19	Fri	☉ in apogee. <i>Showery.</i>	5 21	6 39	11 22	9 7	nec	ev 7
20	Sat	Spanish fleet destroyed, 1657.	5 19	6 41	11 43	10 2	arm	0 41
21	SU	2d Sunday after Easter.	5 18	6 42	12 3	10 53	arm	1 18
22	Mo	Henry Fielding born, 1707.	5 17	6 43	12 24	11 38	arm	1 56
23	Tu	St. George. Shakspeare b.	5 16	6 44	12 44	morn	bres	2 39
24	W.	O. Cromwell b. 1599. [1564.	5 14	6 46	13 3	0 17	bres	2 29
25	Th	Duke of Gloucester b. 1776.	5 13	6 47	13 23	0 53	h'art	4 28
26	Fri	David Hume b. 1711. <i>Fine.</i>	5 12	6 48	13 42	1 24	h'art	5 41
27	Sat	Edward Gibbon born, 1737.	5 11	6 49	14 1	1 53	belly	6 59
28	SU	3d Sunday after Easter.	5 10	6 50	14 20	2 21	belly	8 6
29	Mo	L. Melville impeached, 1806.	5 8	6 52	14 39	2 48	belly	9 5
30	Tu	Rebellion in Lisbon, 1824.	5 7	6 53	14 57	3 18	rein	9 54

D. M.	D. W.	S.
1	W.	S
2	Th	P
3	Fri	A
4	Sat	S
5	SU	4
6	Mo	S
7	Tu	S
8	W.	P
9	Th	C
10	Fri	T
11	Sat	L
12	SU	R
13	Mo	O
14	Tu	V
15	W.	♀
16	Tu	A
17	Fri	R
18	Sat	L
19	SU	1
20	Mo	C
21	Tu	M
22	W.	J
23	Th	B
24	Fri	Q
25	Sat	L
26	SU	V
27	Mo	J
28	Tu	G
29	W.	C
30	Th	S
31	Fri	C

Queen of fresh flowers,
Whom vernal stars obey,
Bring thy warm showers,
Bring thy genial ray.
In nature's greenest livery drest,
Descend on earth's expectant breast,
To Earth and Heaven a welcome guest,
Thou merry month of May.
Flocks on the mountains,
And birds upon the spray,
Tree, turf, and fountains,
All hold holiday.

- Full Moon 2d day, 10h. 37m. morning. N.
- Last Quarter 9th day, 3h. 43m. morning. S. E.
- New Moon 17th day, 4h. 14m. morning. N. E.
- First Quarter 25th day, 2h. 51m. morning. N. W.
- Full Moon 31st day, 6h. 8m. evening. E.

W.
N.
S.
E.

Pla.	High water h. m.
bely	10 18
rein	10 59
rein	11 40
ecr. morn	0 22
ecr.	1 7
higs	1 58
higs	2 47
ne	3 48
ngs	5 2
ngs	6 20
ngs	7 31
et	8 31
et	9 15
ead	9 53
ead	10 28
ead	11 1
ec	11 34
ec	ev 7
ec	0 41
m	1 18
m	1 56
es	2 39
es	2 29
art	4 28
art	5 41
lly	6 59
lly	8 6
lly	9 5
n	9 54

D. M.	D. W.	CALENDAR, &c.	Ri. & Sets h. m. h. m.	dc. N. d. m.	R & S h. m.	Pla.	High water h. m.
1	W.	St. Philip and St. James, Ap.	5 6 6 54	15 15	3 50	rein	10 41
2	Th	Pr. Charlotte mar. 1816. ☺	5 5 6 55	15 33	rises.	secr.	11 26
3	Fri	Arch. Sharpemur. 1679. [per	5 4 6 56	15 51	8 52	secr.	morn
4	Sat	Seringapatam t. 1799. ☺ low.	5 3 6 57	16 8	9 58	thigs	0 11
5	SU	4th Sunday after Easter.	5 2 6 58	16 25	10 54	thigs	0 57
6	Mo	St. John the Evang. Warm.	5 1 6 59	16 42	11 40	kne	1 43
7	Tu	Septen. Parliaments com. '16	4 5 9 7	1 16 58	morn	kne	2 32
8	W.	Pæsiello born, 1740.	4 5 8 7	2 17 15	0 17	legs	3 25
9	Th	Cor. & Test Acts rep. 1826.	4 5 7 7	3 17 31	0 48	legs	4 24
10	Fri	Totila took Rome, 546.	4 5 6 7	4 17 46	1 16	feet	5 31
11	Sat	Lord Chatham died, 1778.	4 5 5 7	5 18 2	1 40	feet	6 43
12	SU	Rogation Sunday. Clear and	4 5 4 7	6 18 17	2 4	head	7 45
13	Mo	Old May-day. comfortable.	4 5 3 7	7 18 32	2 28	head	8 38
14	Tu	Vaccination first tried, 1796.	4 5 2 7	8 18 46	2 53	head	9 22
15	W.	♀ south, 11h. 15m. even.	4 5 1 7	9 19 0	3 21	nec	10 1
16	Th	Ascension. ☺ apo. Rain.	4 5 0 7	10 19 14	3 53	nec.	10 37
17	Fri	Robert Tannahill died, 1810.	4 5 0 7	10 19 28	sets.	arm	11 13
18	Sat	Loyalists landed in St. John,	4 4 9 7	11 19 41	8 49	arm	11 48
19	SU	1st Sun. after Ascen. [1788.	4 4 8 7	12 19 54	9 36	arm	ev 23
20	Mo	Columbus died, 1506	4 4 7 7	13 20 6	10 17	bres	0 59
21	Tu	Montrose executed, 1750.	4 4 6 7	14 20 18	10 54	bres	1 37
22	W.	Jorea taken by French, 1800.	4 4 5 7	15 20 30	11 26	hart.	2 16
23	Th	Battle of Ramillies, 1706.	4 4 4 7	16 20 42	11 55	hart.	2 58
24	Fri	Queen's Birth day, bo. 1819.	4 4 4 7	16 20 53	morn	hart.	3 49
25	Sat	Dr. Paley d. 1805. Pleasant.	4 4 3 7	17 21 3	0 21	bely	4 54
26	SU	Whit Sunday.	4 4 2 7	18 21 14	0 48	bely	6 8
27	Mo	John Calvin died, 1564.	4 4 1 7	19 21 24	1 15	rein	7 27
28	Tu	George I. born, 1660.	4 4 1 7	19 21 33	1 45	rein	8 38
29	W.	Charles II. restored, 1660.	4 4 0 7	20 21 43	2 20	secr.	9 36
30	Th	Sir J. Mackintosh died, 1832.	4 3 9 7	21 21 52	3 0	secr.	10 27
31	Fri	☺ in apo. Wind and rain.	4 3 9 7	21 22 0	rises.	thigs	11 15

Call

Call

[1844.

JUNE.

Now have young April and blue-eyed May
 Vanished awhile, and lo! the glorious June
 (While nature ripens in his burning noon)
 Comes like a young inheritor; and gay,
 Although his parent months have passed away;
 But his green crown shall wither, and the tune
 That ushered in his birth be silent soon,
 And in the strength of youth shall he decay.
 What matters this—so long as in the past
 And in the days to come we live and feel
 The present nothing worth, until it steal
 Away, and, like a disappointment, die?

- ☉ Last Quarter 7th day, 3h. 50m. evening N. W.
- ☾ New Moon 15th day, 7h. 47m. evening. N. W.
- ☽ First Quarter 23d day, 10h. 45m. morning. E.
- ☀ Full Moon 30th day, 1h. 37m. morning. S.

D. M.	D. W.	CALENDAR, &c.	☉		☽		☾		☀		High water h. m.
			Ri. h. m.	& Sets h. m.	dc d.	N. m.	R. h. m.	& S. h. m.	Pla.		
1	Sat	Battle of Drumclog, 1769.	4 38	7 22	22	8	8	39	thi.	morn	
2	SU	Trinity Sund. Riots in Lon.	4 38	7 22	22	16	9	31	kne	0 1	
3	Mo	Wm. Harvey d. 1657. [don.	4 37	7 23	22	23	10	13		0 45	
4	Tu	George III. b. 1738. [1780	4 37	7 23	22	30	10	48	leg.	1 27	
5	W.	King of Hanover born, 1771.	4 36	7 24	22	37	11	17	leg.	2 9	
6	Th	Beatham d. 1832. <i>Warm and</i>	4 36	7 24	22	43	11	44	feet	2 53	
7	Fri	Reform B. enact. 1832. <i>plea-</i>	4 36	7 24	22	49			morn feet	3 42	
8	Sat	Mrs. Siddons d. 1831. <i>sant.</i>	4 35	7 25	22	54	0	8	feet	4 39	
9	SU	1st Sunday after Trinity.	4 35	7 25	22	59	0	32	head	5 42	
10	Mo	☽ sets 10h. 33m. even.	4 35	7 25	23	4	0	57	head	6 54	
11	Tu	Robert Bruce born, 1274.	4 34	7 26	23	8	1	24	nec	7 54	
12	W.	Battle of Naseby, 1655. ☽ ap.	4 34	7 26	23	12	1	54	nec	8 49	
13	Th	Ld. Hastings behended, 1483	4 34	7 26	23	15	2	28	nec	9 36	
14	Fri	Battle of Marengo, 1800.	4 33	7 27	23	18	3	8	arm.	10 16	
15	Sat	Magna Charta signed, 1215.	4 33	7 27	23	21			sets. arm.	10 53	
16	SU	2d Sun. after Trinity. <i>Rain.</i>	4 33	7 27	23	23	8	17	bres	11 30	
17	Mo	St. Albans. Addison d. 1719.	4 33	7 27	23	25	8	56	bres	ev. 5	
18	Tu	Battle of Waterloo, 1815.	4 33	7 27	23	26	9	29	bres	0 41	
19	W.	☽ rises 0h. 15m. morn.	4 32	7 28	23	27	9	59	h'art	1 15	
20	Th	Queen Vic. accession, 1830.	4 32	7 28	23	27	10	26	h'art	1 51	
21	Fri	Battle of Victoria, 1815. <i>Heat.</i>	4 32	7 28	23	27	10	52	bely	2 32	
22	Sat	Battle of Morat, 1476.	4 32	7 28	23	27	11	18	bely	3 18	
23	SU	3d Sunday after Trinity.	4 32	7 28	23	26	11	46	rein	4 13	
24	Mo	Battle of Bannockburn, 1314	4 33	7 27	23	25			morn rein	5 28	
25	Tu	Crusades first planned, 1190.	4 33	7 27	23	24	0	17	seer	6 57	
26	W.	George IV. d. 1830. ☽ per.	4 33	7 27	23	22	0	53	seer	8 17	
27	Th	Dr. Dodd exec. 1777. <i>Fine.</i>	4 33	7 27	23	19	1	37	thi.	9 23	
28	Fri	Edward IV. crowned, 1461.	4 33	7 27	23	16	2	30	thi.	10 17	
29	Sat	St. Peter. Rubens b. 177.	4 33	7 27	23	13	2	32	kne	11 4	
30	SU	4th Sunday after Trinity.	4 34	7 26	23	10			rises kne	11 47	

All t
 The
 Wit
 Win
 The
 It w
 A ch
 Fron
 To s
 The
 Smi
 The

- ☉ L
- ☽ N
- ☾ F
- ☀ F

D. M.	D. W.	
1	Mo	J. J.
2	Tu	J. J.
3	W.	Aris
4	Th	St. M
5	Fri	Sink
6	Sat	Allie
7	SU	5th S
8	Mo	La F
9	Tu	Burl
10	W.	Sir J
11	Th	Rob
12	Fri	Batt
13	Sat	Mar
14	SU	6th
15	Mo	St. :
16	Tu	Batt
17	W.	Bea
18	Th	Hoc
19	Fri	Lad
20	Sat	St.
21	SU	7th
22	Mo	Bat
23	Tu	Gib
24	W.	Con
25	Th	St.
26	Fri	St.
27	Sat	Spa
28	SU	8th
29	Mo	1st
30	Tu	Gra
31	W.	Blo

All the flocks of Ocean are abroad: like floating foam,
 The sea-gulls rise and fall upon the waves;
 With long-protruded neck the cormorants
 Wing their far flight aloft, and round and round
 The plovers wheel, and give their note of joy.
 It was a day that sent into the heart
 A cheerful feeling; even the insect swarms,
 From their dark nooks and coverts issued forth,
 To sport through one day of existence more.
 The forest and the everlasting hills,
 Smiled in that joyful sunshine—they partook
 The universal blessing.

- ☉ Last Quarter 7th day, 6h. 11m. morning. S.
- ☾ New Moon 15th day, 9h. 44m. morning. S. E.
- ☽ First Quarter 22d day, 4h. 33m. evening. S.
- ☽ Full Moon 29th day, 9h. 54m. morning. N. W.

W.
W.
E.
S.

☉	High water h. m.
hi.	morn
kne	0 1
eg.	0 45
eg.	1 27
eg.	2 9
bet	2 53
bet	3 42
bet	4 39
ead	5 42
ead	6 54
ec	7 54
ec	8 49
ec	9 36
rm.	10 16
rm.	10 53
res	11 30
res	ev. 5
art	0 41
art	1 15
art	1 51
ly	2 32
ly	3 18
in	4 13
in	5 28
er	6 57
er	8 17
i.	9 23
i.	10 17
e	11 4
e	11 47

CALENDAR, &c.		Ri. & Sets	dc. N.	R & S	Pl.	High water	
D. M.	D. W.	h. m. h. m.	d. m.	h. m.	Pl.	h. m.	
1	Mo	<i>Very warm and sultry.</i>					morn
2	Tu	J. J. Rousseau died, 1778.	4 34	26 23	6 8 44	kne	
3	W.	Aristotle d. b. c. 421. ☽ in apo.	4 34	26 22	56 9 45	legs	
4	Th	St. Martin. ☽ Thunder.	4 35	25 22	51 10 11	feet	
5	Fri	Sinking Fund estab. 1786.	4 35	25 22	45 10 35	feet	
6	Sat	Allies enter Paris, 1815.	4 36	24 22	39 11 0	head	
7	SU	5th Sunday after Trinity.	4 36	24 22	33 11 27	head	
8	Mo	La Fontaine b. 1621. Fair.	4 37	23 22	26 11 56	nec	
9	Tu	Burke died, 1797.	4 37	23 22	19 11 0	nec	
10	W.	Sir J. Banks b. 1743.	4 38	22 22	11 0 23	nec	
11	Th	Robert Bruce b. 1274. ♀ st.	4 38	22 22	3 1 6	arm	
12	Fri	Battle of Agrim, 1691. Rain.	4 39	21 21	55 1 49	arm	
13	Sat	Marat assassinated, 1793.	4 39	21 21	46 2 39	bres	
14	SU	6th Sunday after Trinity.	4 40	20 21	37 3 35	bres	
15	Mo	St. Swithin. Fine growing	4 41	19 21	28 sets.	bres	
16	Tu	Battle of Belgrade, 1717. wea-	4 41	19 21	18 8 2	hart.	
17	W.	Beaumont b, 1555. High tid.	4 42	18 21	8 8 31	hart.	
18	Th	Hooke born, 1635. ther.	4 43	17 20	57 8 57	bely	
19	Fri	Lady Jane Grey. proc. 1553.	4 43	17 20	46 9 23	bely	
20	Sat	St. Margaret. Very sultry.	4 44	16 20	35 9 51	rein	
21	SU	7th Sunday after Trinity.	4 45	15 20	23 10 20	rein	
22	Mo	Battle of Salamanca, 1812.	4 46	14 20	11 10 54	rein	
23	Tu	Gibraltar taken, 1804.	4 47	13 19	59 11 23	secr.	
24	W.	Comet seen, 1819.	4 48	12 19	47 10 20	morn	
25	Th	St. James. Thunder showers	4 48	12 19	34 0 21	thigs	
26	Fri	St. Anne. ☽ in per.	4 49	11 19	20 1 17	thigs	
27	Sat	Spanish Armada dest. 1588.	4 50	10 19	7 2 22	kne	
28	SU	8th Sunday after Trinity.	4 51	9 18	53 3 33	kne	
29	Mo	1st English Newspaper 1588.	4 52	8 18	39 rises.	legs	
30	Tu	Gray died, 1771. Clear and	4 53	7 18	24 7 44	legs	
31	W.	Bloomfield born, 1765. hot.	4 54	7 18	9 8 11	feet	

Oh! fly ye golden slumbers, fly,
 And let me hear the south winds sigh;
 They that have kiss'd my native streams,
 Are dearer than your brightest dreams.
 They tell my heart that they have been
 In play upon the joyous green,
 Where oft with bosoms young and gay
 I've whil'd the glowing hours away.
 Around my long-lost bow'rs they've play'd;
 And loiter'd in the willow's shade,
 Sweet as the rapture they bestow—
 Oh! blow soft winds, for ever blow.

- ☉ Last Quarter 5th day, 10h. 47m. evening. E.
- ☾ New Moon 13th day, 9h. 52m. evening. N. W.
- ☽ First Quarter 20th day, 9h. 36m. evening S. W.
- ☀ Full Moon 27th day, 7h. 54m. evening. S. E.

D. M.	D. W.	CALENDAR, &c.	Ri. & Sets h. m. h. m.	dc. N. d. m.	R & S h. m.	Pla.	High water h. m.
1	Th	Lanmas Day. <i>Bright & fair.</i>	4 55 7 5	17 54	8 37	feet	0 39
2	Fri	Bonaparte made Consul 1802.	4 56 7 4	17 39	9 3	head	1 13
3	Sat	Gainsborough died 1788.	4 57 7 3	17 23	9 29	head	1 48
4	SU	9th Sunday after Trinity.	4 58 7 2	17 7	9 56	head	2 26
5	Mo	Lord North died, 1792.	4 59 7 1	16 51	10 28	nec	3 8
6	Tu	Ben. Johnson died, 1637.	5 07 0	16 34	11 4	nec	3 59
7	W.	Bridgewater d. 1803. <i>Rain</i>	5 16 59	16 18	11 48	arm	5 8
8	Th	Canning d. 1827. <i>and wind.</i>	5 23 58	16 1	morn	arm	6 23
9	Fri	Temple at Jerusalem bt. 70.	5 38 57	15 43	0 32	arm	7 38
10	Sat	St. Lawrence. <i>Very warm.</i>	5 56 55	15 26	1 25	bres	8 40
11	SU	10th Sunday after Trinity.	5 66 54	15 8	2 24	bres	9 31
12	Mo	George IV. born, 1762.	5 76 53	14 50	3 27	hart	10 12
13	Tu	Lavosier born, 1743.	5 86 52	14 31	sets	hart	10 48
14	W.	Burgoyne d. 1792. <i>Pleasant.</i>	5 96 51	14 13	7 1	hart	11 25
15	Th	Walter Scott born, 1771.	5 106 50	13 54	7 28	bely	11 59
16	Fri	Burke born, 1730.	5 126 48	13 35	7 56	bely	ev. 34
17	Sat	Bruce died, 1329. <i>Thunder</i>	5 136 47	13 16	8 24	rein.	1 10
18	SU	11th Sun. after Tri. <i>showers.</i>	5 146 46	12 57	8 57	rein.	1 50
19	Mo	Edward I. crowned, 1274.	5 156 45	12 37	9 34	seccr.	2 37
20	Tu	Buffon born, 1707. <i>Clear and</i>	5 166 44	12 17	10 18	seccr.	3 36
21	W.	Battle of Vimmera, 1808. <i>warm.</i>	5 186 42	11 57	11 11	thi.	4 53
22	Th	Admiral Byng born, 1704.	5 196 41	11 37	morn	thi.	6 25
23	Fri	Admiral Byron died, 1786.	5 206 40	11 17	0 11	kne.	7 51
24	Sat	St. Bartholomew. <i>Cloudy.</i>	5 216 39	10 56	1 18	kne.	8 58
25	SU	12th Sunday after Trinity.	5 236 37	10 35	2 29	legs	9 49
26	Mo	Battle of Dresden, 1813.	5 246 36	10 14	3 41	legs	10 30
27	Th	Admiral Blake d. 1657. <i>Fair.</i>	5 256 35	9 53	rises.	feet	11 8
28	W.	St. Augustine.	5 266 34	9 32	6 39	feet	11 40
29	Th	St. John the Baptist beh. 32.	5 286 32	9 11	7 4	feet	morn
30	Fri	W. Paley born, 1743.	5 296 31	8 49	7 30	head	0 13
31	Sat	Bunyan died, 1688. <i>Rain.</i>	5 306 30	8 27	7 56	head	0 45

D. M.	D. W.	
1	SU	13th
2	Mo	Gre
3	Tu	Col
4	W.	Len
5	Th	Cax
6	Fri	Coy
7	Sat	Cha
8	SU	14th
9	Mo	Bat
10	Tu	Wi
11	W.	Bo
12	Th	La
13	Fri	Ch
14	Sat	Ch
15	SU	15th
16	Mo	Ja
17	Tu	O
18	W.	D
19	Th	C
20	Fri	S
21	Sat	E
22	SU	16th
23	Mo	D
24	Tu	H
25	W.	P
26	Th	S
27	Fri	J
28	Sat	E
29	SU	17th
30	Mo	S

SEPTEMBER.

[1844.]

Sweet is the hour whose twilight shade has given
 A milder radiance to the arch of Heaven ;
 When raised above the world, the lifted eye
 Rests on the blended glories of the sky—
 As the last brightness of departing day,
 In mellow splendour softly fades away ;
 And glittering in the dew, each tree, and flower
 Breathe of the balmy freshness of the hour,—
 And the faint breezes from the distant hill
 Sigh through the grove, and die along the rill,—
 Who has not known the sweet enchanting power
 The magic influence of the evening hour?

- ☾ Last Quarter 4th day, 5h. 4m. evening. N.
- ☾ New Moon 12th day, 8h. 37m. morning. S. E.
- ☽ First Quarter 19th day, 3h. 13m. morning. N. W.
- ☾ Full Moon 26th day, 8h. 34m. morning. N. W.

E.	High water	h. m.
W.	0	39
W.	1	13
E.	1	48
☾	2	26
☽	3	8
☾	3	59
☽	5	8
☾	6	23
☽	7	38
☾	8	40
☽	9	31
☾	10	12
☽	10	48
☾	11	25
☽	11	59
☾	ev.	34
☽	1	10
☾	1	50
☽	2	37
☾	3	36
☽	4	53
☾	6	25
☽	7	51
☾	8	58
☽	9	49
☾	10	30
☽	11	8
☾	11	40
☽	morn	
☾	0	13
☽	0	45

D. M.	D. W.	CALENDAR, &c.	Ri. & Sets h. m. h. m.	dc. N. d. m.	R & S h. m.	☾ Pla.	High water h. m.
1	SU	13th Sunday after Trinity.	5 32 6 28	8 6	8 28	kne	1 19
2	Mo	Great Fire in London, 1666.	5 33 6 27	7 41	9 2	kne	1 55
3	Tu	Collingwood died, 1810.	5 35 6 25	7 22	9 41	kne	2 36
4	W.	Leunox ass. 1751. ☽ in ap.	5 36 6 24	7 0	10 25	arm	3 25
5	Th	Caxton b. 1410. <i>Fair and fine.</i>	5 37 6 23	6 37	11 16	arm	4 22
6	Fri	Copenhagen surren. 1807.	5 38 6 22	6 15	morn	bres	5 36
7	Sat	Charles XII. born, 1682.	5 39 6 21	5 52	0 12	bres	6 55
8	SU	14th Sunday after Trinity.	5 41 6 19	5 30	1 12	bres	8 3
9	Mo	Battle of Flodden field, 1513.	5 42 6 18	5 7	2 16	h'art	8 58
10	Tu	William the Conq. d. 1081.	5 43 6 17	4 44	3 23	h'art	9 45
11	W.	Battle of Malploquet, 1709.	5 44 6 16	4 22	4 32	bely	10 25
12	Th	Lord Thurlow d. 1806. <i>Wet</i>	5 46 6 14	3 59	sets.	bely	11 1
13	Fri	Chatham died, 1778. <i>and</i>	5 47 6 13	3 36	6 26	rein	11 38
14	Sat	Chaucer born, 1328. <i>Cloudy.</i>	5 48 6 12	3 13	6 59	rein	ev 16
15	SU	15th Sunday after Trinity.	5 50 6 10	2 49	7 35	seer.	0 56
16	Mo	James II. died, 1791.	5 51 6 9	2 26	8 18	seer.	1 40
17	Tu	Overbury poisoned, 1617.	5 52 6 8	2 3	9 8	thigs	2 29
18	W.	Dr. S. Clarke b. 1675.	5 54 6 6	1 40	10 6	thigs	3 28
19	Th	Cranmer d. 1556 <i>Clear</i>	5 55 6 5	1 16	11 11	kne	4 43
20	Fri	St. Matthew. <i>and fine.</i>	5 56 6 4	0 53	morn	kne	6 8
21	Sat	Edward II. murdered, 1372.	5 57 6 3	0 30	0 19	kne	7 31
22	SU	16th Sunday after Trinity.	5 59 6 1	N. 6	1 30	legs	8 37
23	Mo	Dacier died, 1722.	6 0 6 0	S. 17	2 39	legs	9 26
24	Tu	Humphrey Davey b. 1778.	6 1 5 59	0 41	3 47	feet	10 5
25	W.	Professor Porson died, 1838.	6 2 5 58	1 4	4 53	feet	10 41
26	Th	St. Cyprian. <i>Rain.</i>	6 4 5 56	1 27	rises	head	11 15
27	Fri	James Brindley died, 1772.	6 5 5 55	1 51	5 59	head	11 47
28	Sat	Erasmus born, 1428.	6 7 5 53	2 14	6 28	nec	morn
29	SU	17th S. aft. Tr. St. Michael.	6 8 5 52	2 37	7 1	nec	0 20
30	Mo	Saint Jerome. <i>Pleasant.</i>	6 10 5 50	3 1	7 38	nec	0 54

[1844.

OCTOBER.

The leaf that falls in Autumn's hour,
 The rose that fades upon the stem,
 Are emblems of the silent power,
 Of time and change o'er us and them.
 Yet happier is the rose's fate,
 For Spring will other leaves restore,
 And Summer will new flowers create,
 As bright as those that bloom'd before!
 But when life's morning dreams depart
 And grief succeeds to fancied bliss;
 Oh, what shall cheer the lonely heart,
 Or soften sorrow's bitterness?

- ☉ Last Quarter 4th day, 11h. 50m. morning W.
- ☽ New Moon 11th day, 6h. 45m. evening. W.
- ☉ First Quarter 18th day, 10h. 36m. morning. E.
- ☾ Full Moon 26th day, 0h. 26m. morning. S.

D.	D. W.	CALENDAR, &c.	Ri. & Sets	dc S.	R. & S	☉	☽	High water
D. M.			h. m. h. m.	d. m.	h. m.	Pa.		h. m.
1	Tu	Sir F. Drake died, 1596.	6 11 5 49	3 24	8 20	arm.		1 30
2	W.	Major Andre excq. 1780.	6 13 5 47	3 47	9 8	arm		2 8
3	Th	Battle of Jena, 1806. <i>Fine.</i>	6 14 5 46	4 11	10 1	bres		2 52
4	Fri	Bishop Horsley died, 1806.	6 15 5 45	4 34	10 58	bres		3 44
5	Sat	Marquis Cornwallis d. 1805.	6 17 5 43	4 57	12 0	bres		4 48
6	SU	18th Sunday after Trinity.	6 18 5 42	5 20	morn	h'art		6 1
7	Mo	Zimmerman died, 1795.	6 19 5 41	5 43	1 5	h'art		7 18
8	Tu	Wellington ent. France 1813.	6 21 5 39	6 6	2 11	bely		8 21
9	W.	Cervantes b. 1549. <i>Rain and</i>	6 22 5 38	6 29	3 20	bely		9 13
10	Th	Hurricane at Barbadoes, '80.	6 23 5 37	6 52	4 32	rein		9 57
11	Fri	Dr. Samuel Clarke b. 1675.	6 25 5 35	7 14	sets.	rein		10 39
12	Sat	Ad. Rooke's vict. 1702. <i>high</i>	6 26 5 34	7 37	5 31	rein		11 20
13	SU	19th Sun. aft. Trinity. <i>winds.</i>	6 27 5 33	7 59	6 12	seer		ev. 2
14	Mo	Peace of Vienna, 1814.	6 29 5 31	8 22	7 2	seer		0 46
15	Tu	Evelyn died, 1651.	6 30 5 30	8 44	7 59	thi.		1 32
16	W.	Queen of France beh. 1793.	6 31 5 29	9 6	9 4	thi.		2 22
17	Th	Athlesian died, 941. <i>Ligh</i>	6 33 5 27	9 23	10 12	kne		3 18
18	Fri	St. Luke. <i>frost.</i>	6 34 5 26	9 50	11 22	kne		4 24
19	Sat	Galvani born, 1737	6 35 5 25	10 12	morn	leg.		5 39
20	SU	20th Sunday after Trinity.	6 36 5 24	10 33	0 31	leg.		6 57
21	Mo	Bat. of Traf. 1805. Nelson k.	6 38 5 22	10 55	1 38	feet		8 2
22	Tu	Grattan born, 1750. <i>Pleasant.</i>	6 39 5 21	11 16	2 44	feet		8 53
23	W.	Sir Clouds. Shovel wrecked.	6 40 5 20	11 37	3 49	head		9 37
24	Th	[on Scilly Islands, 1707.	6 42 5 18	11 58	4 53	head		10 14
25	Fri	St. Crispin. R. Steel d. 1729.	6 43 5 17	12 18	5 55	head		10 49
26	Sat	Dr. Doddridge died, 1751.	6 44 5 16	12 39	rises	nee		11 24
27	SU	21st Sunday after Trinity.	6 45 5 15	12 59	5 36	nee		11 58
28	Mo	St. Simon and St. Jude.	6 47 5 13	13 19	6 17	arm.	morn	
29	Tu	Dr. Edmund Halley b. 1656.	6 48 5 12	13 39	7 3	arm.		0 33
30	W.	Dr. Cartwright died, 1823.	6 49 5 11	13 59	7 54	arm.		1 8
31	Th	Reformation beg. 1517. <i>Cool.</i>	6 50 5 10	14 19	8 49	bres		1 45

☉ L.
 ☽ N.
 ☉ F.
 ☽ F.

D. M.	D. W.	
1	Fri	All S
2	Sat	All S
3	SU	22d S
4	Mo	Fr. fl
5	Tu	Gau
6	W.	Prin
7	Th	Fort
8	Fri	Kos
9	Sat	Win
10	SU	23d S
11	Mo	Sain
12	Tu	Laf
13	W.	Pel
14	Th	Loc
15	Fri	Ma
16	Sat	Ric
17	SU	24
18	Mo	Re
19	Tu	An
20	W.	Sir
21	Th	Pe
22	Fri	St
23	Sat	Dr
24	SU	25
25	Mo	Se
26	Tu	W
27	W.	Jo
28	Th	E
29	Fri	O
30	Sat	S

134
 7

NOVEMBER.

[1844.

The wind is sweeping o'er the hill ;
 It hath a mournful sound,
 As if it felt the difference
 Its weary wing hath found.
 A little while that wandering wind
 Swept over leaf and flower ;
 For there was green for every tree,
 And bloom for every hour.
 It wandered through the pleasant wood,
 And caught the dove's lone song ;
 And by the garden beds, and bore
 The rose's breath along.

- ☉ Last Quarter 3d day, 5h. 40m. morning. S
- ☾ New Moon 10th day, 4h. 57m. morning. E.
- ☉ First Quarter 16th day, 8h. 51m. evening. S. W.
- ☾ Full Moon 24th day, 7h. 3m. evening. E.

W.
W.
E.
S.
☉ High water h. m.
arm. 1 30
arm 2 8
bres 2 52
bres 3 44
bres 4 46
h'art 6 1
h'art 7 18
bely 8 21
bely 9 13
rein 9 57
rein 10 39
rein 11 20
ecr ev. 2
ecr 0 46
hi. 1 32
hi. 2 22
ne 3 18
ne 4 24
g. 5 39
g. 6 57
et 8 2
et 8 53
ad 9 37
ad 10 49
e 11 24
e 11 58
n. morn
n. 0 33
n. 1 8
s 1 45

D. M.		D. W.		CALENDAR, &c.		☉ Ri. & Sets	☉ dc. S.	☉ R & S	☉ Pla	High water h. m.
						h. m. h. m.	d. m.	h. m.		h. m.
1	Fri	All Saints.	<i>Clouds and wind.</i>	6 52	5 8	14 38	9 48	bres	2 26	
2	Sat	All Souls.		6 53	5 7	14 57	10 49	h'art	3 10	
3	SU	22d Sunday after Trinity.		6 54	5 6	15 15	11 54	h'art	4 1	
4	Mo	Fr. fleet t. by Sir R. Strachan,		6 55	5 5	15 34	morn	h'art	5 9	
5	Tu	Gunpowder plot 1305. [1805.		6 56	5 4	15 52	1 0	bely	6 21	
6	W.	Princess Charlotte died 1817.		6 57	5 3	16 10	2 8	bely	7 34	
7	Th	Fort Niagara t. by Br. 1813.		6 59	5 1	16 28	3 19	rein.	8 38	
8	Fri	Kosciusko d. 1817. <i>Snow.</i>		7 0	5 9	16 45	4 33	rein.	9 32	
9	Sat	Wm. Camden died, 1623.		7 1	4 29	17 3	5 50	seer	10 19	
10	SD	23d Sunday after Trinity.		7 2	4 28	17 19	sets.	seer	11 6	
11	Mo	Saint Martin. ☉ in per.		7 3	4 27	17 36	5 44	thi.	11 51	
12	Tu	Lafontaine b. 1621. <i>Cool, and</i>		7 4	4 56	17 52	6 47	thi.	ev 37	
13	W.	Pelagius b. 354. <i>frosty.</i>		7 5	4 55	18 8	7 57	kne	1 22	
14	Th	Locke born 1632.		7 6	4 54	18 24	9 9	kne	2 8	
15	Fri	Macknight died, 1800.		7 7	4 53	18 39	10 21	legs.	2 57	
16	Sat	Riots at Nottingham, 1811.		7 8	4 52	18 54	11 31	legs.	3 53	
17	SU	24th Sunday after Trinity.		7 9	4 51	19 9	morn	feet	4 59	
18	Mo	Reubens b. 1577. <i>Fair.</i>		7 10	4 50	19 23	0 37	feet	6 8	
19	Tu	Am. Navy first com. 1794.		7 11	4 49	19 37	1 42	feet	7 18	
20	W.	Sir J. Mackintosh died, '32.		7 12	4 48	19 51	2 45	head	8 18	
21	Th	Pestalozzi d. 1327. <i>Cloudy.</i>		7 13	4 47	20 4	3 48	head	9 6	
22	Fri	St. Cecilia. <i>and disagreeable.</i>		7 14	4 46	20 17	4 49	nek.	9 49	
23	Sat	Dr. John Wallis born, 1616.		7 15	4 45	20 29	5 49	nek.	10 27	
24	SU	25th Sunday after Trinity.		7 16	4 44	20 41	rises.	arm.	11 3	
25	Mo	Saint Catherine. ☉ in apo.		7 16	4 44	20 53	4 59	arm.	11 33	
26	Tu	W. Roscoe died, 1832.		7 17	4 43	21 4	5 48	arm.	morn	
27	W.	John Knox d. 1572. <i>Snow.</i>		7 18	4 42	21 15	6 42	bres	0 13	
28	Th	Earl of Warwick exec. 1449.		7 19	4 41	21 26	7 40	bres	0 48	
29	Fri	Oliver Goldsmith b. 1741.		7 19	4 41	21 36	8 40	bres	1 22	
30	Sat	Saint Andrew. <i>Fair & mild.</i>		7 20	4 40	21 46	9 43	h'art	1 58	

13 1/2 lbs of Pork from ...

But hoarse and sullenly it sweeps;
 No rose is opening now—
 No music, for the wood-dove's nest
 Is vacant on the bough.
 Oh, human heart and wandering wind,
 Go look upon the past;
 'The likeness is the same with each,
 Their summer did not last.
 Each mourns above the things it loved—
 One o'er a flower and leaf;
 The other over hopes and joys,
 Whose beauty was as brief.

- ☾ Last Quarter 2d day, 9h. 28m. evening. N. E.
- ☾ New Moon 9th day, 3h. 34m. evening. S. W.
- ☽ First Quarter 16th day, 10h. 42m. morning. E.
- ☾ Full Moon 24th day, 2h. 50m. evening. N. E.

D.	D.	CALENDAR, &c.	Ri.	Sets	dc.	S.	R&S	☽	High
M.	W.		h.m.	h.m.	d.	m.	h. m.	Pa	water
									h. m.
1	SU	Advent Sunday. <i>Fine bra-</i>	7 21	4 39	21	55	10 46	h'art	2 39
2	Mo	Battle of Austerlitz, 1805. <i>cing</i>	7 22	4 38	22	4	11 51	belly	3 25
3	Tu	Saladin died, 1193. <i>weather.</i>	7 22	4 33	22	12	morn	belly	4 18
4	W.	Sterne d ed, 1768 <i>Low tid.</i>	7 23	4 37	22	20	0 59	rein	5 28
5	Th	Flaxman (sculptor) d. 1827.	7 23	4 37	22	28	2 8	rein	6 47
6	Fri	Saint Nicholas. <i>Snow.</i>	7 24	4 36	22	35	3 22	secr.	8 3
7	Sat	First German Railroad, 1835.	7 24	4 36	22	42	4 37	secr.	9 2
8	SU	2d Sunday in Advent.	7 25	4 35	22	48	5 52	thig	10 2
9	Mo	Sobieski b. 1629. ☽ in per.	7 25	4 35	22	54	sets.	thig	10 52
10	Tu	Hogarth born, 1697. <i>Fair.</i>	7 26	4 34	22	59	5 32	kne.	11 40
11	W.	Gray (Poet) died, 1732.	7 26	4 34	23	4	6 46	kne.	ev 25
12	Th	Cromwell, protector, 1653.	7 26	4 34	23	8	8 1	legs	1 7
13	Fri	St. Lucia. <i>Blustery and disa-</i>	7 27	4 33	23	12	9 14	legs	1 49
14	Sat	Washington d. 1799. <i>greacle.</i>	7 27	4 33	23	16	10 24	legs	2 32
15	SU	3d Sunday in Advent.	7 27	4 33	23	19	11 32	feet	3 19
16	Mo	Dr. R. Long died, 1770.	7 27	4 33	23	22	morn	feet	4 10
17	Tu	Sir Wm. Wallace exc. 1305.	7 27	4 33	23	24	0 37	head	5 16
18	W.	Sir R. Ackwright b. 1742.	7 28	4 32	23	25	1 40	head	6 26
19	Th	2 ^d so. 5h. 51m. ev. <i>Cool, but</i>	7 28	4 32	23	26	2 42	nec	7 35
20	Fri	War with the Mahrattas, '03	7 28	4 32	23	27	3 43	nec	8 35
21	Sat	St. Thomas. <i>pleasant.</i>	7 28	4 32	23	27	4 41	nec	9 23
22	SU	4th Sun. in Adv. ☽ in apo	7 29	4 32	23	27	5 36	arm.	10 4
23	Mo	Code Napoleon pub. 1807.	7 28	4 32	23	26	6 27	arm.	10 43
24	Tu	John Wesley died, 1791.	7 28	4 32	23	25	rises.	bres	11 19
25	W.	Christmas Day. <i>Snow.</i>	7 28	4 32	23	24	5 33	bres	11 54
26	Th	Saint Stephen.	7 27	4 33	23	22	6 34	bres	morn
27	Fri	Saint John the Evangelist.	7 27	4 33	23	19	7 35	h'art	0 27
28	Sat	Innocents. <i>Clear and cold.</i>	7 27	4 33	23	16	8 36	h'art	1 0
29	SU	1st Sunday after Christmas.	7 27	4 33	23	12	9 40	bely	1 34
30	Mo	Dr. Watts b. 1674. ☽ in apo.	7 27	4 33	23	8	10 47	bely	2 10
31	Tu	Wickliffe d. 1384. <i>Moderate.</i>	7 26	4 34	23	4	11 53	bely	2 51

He
 W
 Th
 Gr
 Th
 Ge
 Th
 Jan
 Jan
 Jan
 Geor
 Th
 Geor
 Robe
 gee,
 Wetm
 Bradw
 Rol
 Kelly
 Samu
 Wil
 Tho
 Smith
 Port V
 Dan
 Josiah
 Dan
 Assess
 Jam
 Alex
 Jam
 Alex
 Tho
 Fyle
 Slip;
 ditto a
 Jam
 Marke
 Char
 Step
 A. C
 Jaco
 pisley
 surers

CITY OF SAINT JOHN.

LAUCHLAN DONALDSON, Esquire, *Mayor.*

The Hon. WILLIAM B. KINNEAR, *Recorder.*

ALDERMEN.

Henry Porter,
Wm. O. Smith,
Thomas Harding,
Gregory Vanhorne,
Thomas Coram,
George Bond,

Esquires.

ASSISTANTS.

Mr. Joseph Fairweather, - *Kings.*
" Lewis W. Durant, - *Queens.*
" William Hagarty, - *Dukes.*
" Ewen Cameron, - *Sidney.*
" William Beateay, - *Guy's.*
" Joseph Beatey, - *Brooks.*

WARDS.

Thomas Mettrick, Treasurer or Chamberlain.
James Peters, Junior, Esquire, Common Clerk.
James William Boyd, Esquire, Deputy Common Clerk.
James Stockford, High Constable.
James Stockford, Thomas M'Gaghey, George W. Busted, and George Stockford, Marshals.

Thomas M'Gaghey, Ebenezer Herrington, Matthew Morrison, George Stockford, R. Shewbridge, Alexander Downs, John Nixon, Robert M'Kelvy, Levi Lockhart, George W. Busted, Wm. Magee, John Fitzpatrick, Abraham Magee, Paul Daley, Jesse L. Wetmore, George Williams, George Mason, John Powers, Robert Bradwell, and Moses M'Connell, Constables.

Roland Bunting, William Fearerby, Robert M'Kelvey, Patrick Kelly, George Stockford, Thomas M'Gaghey, Levi Lockhart, and Samuel Beateay, Hog Reeves on the Eastern Side of the Harbor.
William Cronk, and R. Irvine, Hog Reeves at Carleton.

Thomas Reed, William D. Faulke, Isaac Woodward, T. M. Smith, Thomas Leavitt, James U. Thomas, and Wm. Leavitt, Port Wardens.

Daniel Jordan, Daniel J. M'Laughlan, Simeon L. Lugin, and Josiah Wetmore, Junior, Assessors of Taxes and Statute Labour.

Daniel Jordan, Daniel J. M'Laughlan, and Simeon L. Lugin, Assessors of Nightly Watch and Scavenger Tax.

James Gerow, Junior, Collector of Taxes.

Alex. Robertson, Collector of Taxes at Carleton.

James Gerow, Junior, Collector of Statute Labour Fines.

Alex. Robertson, Collector of Statute Labour Fines at Carleton.

Thomas M'Gaghey, Collector of Dog Tax.

Fyler Dibblee, Inspector of Cord Wood and Bark in the Market Slip; Stephen Gerow, ditto ditto at North Slip; John Paul, ditto ditto at Lower Cove; ——— ditto ditto at Carleton.

James Williams, Collector of Wharfage and Slippage at the Market Slip.

Charles Adams, Collector of Slippage at Union Street.

Stephen Gerow, ditto at North Slip.

A. C. O. Trentowsky, ditto at the Lower Cove.

———, ditto at the Public Slips in Guy's Ward.

Jacob Wilson, William M'Aulay, Francis Wilson, Edward Hippsley, John Jones, Henry Austin, and Wm. H. Williams. Measurers of Coals.

High water
h. m.

2 39
3 25
4 18
5 28
6 47
8 3
9 8
10 2
10 52
11 40
ev 25
1 7
1 49
2 32
3 19
4 10
5 16
6 26
7 35
8 35
9 23
10 4
10 43
11 19
11 54
morn
0 27
1 0
1 34
2 10
2 51

Jacob Wilson, William M'Aulay, Edward Hipplesley, John Jones, Henry Austin, and Wm. H. Williams, Measurers of Salt.

S. Gerow, Weigh Master at the North Slip; James Schoales, ditto at Union Street; James Price, ditto at Lower Cove.

David S. Marshall, and Charles P. Betts, Inspectors of Lime.

John Kirk, Collector of Wharfage at the Breakwater.

John Kirk, Collector of Anchorage.

Peter Besnard, Collector of Wharfage and Slippage at Rodney Slip.

Thomas Reed Harbour Master.

Benjamin C. Chaloner, City Guager.

Andrew G. Lordly, and Samuel Gillespie, Guagers, and Searchers of Oil.

— — —, Fence Viewer; Samuel Clarke, ditto at Carleton

Robert C. Minnette, City Surveyor.

John Boyd, M. D., and J. G. Harding, M. D., Visiting Physicians.

John V. Thurgar, W. D. W. Hubbard, J. Lordly, Henry Hawkins, Thomas Hanford, and Thomas L. Nicholson & Co., Licensed Auctioneers.

John Reed, George Thomas, John Murray, Daniel Hatfield, Alexander Mills, Abraham Benteay, William Seely, Edward Murray, James Reed, John Spears, J. Price Thomas, John Mills, Thomas Vaughan, William Spears, John Scott, John W. Seely, Donald M'Dougal, and William Leavitt, Junior, Branch Pilots.

Alexander Reed, Keeper of the Par ridge Island Light House.

George Lane Keeper of the Beacon Light House.

Samuel Jordan, Alexander M'Grotty, John M. Campbell, David M. Whiting, John Jordan, George Cassie, Thomas Fairweather, G. W. F. Fairweather, Thomas Leach, John O'Neil, Jeremiah Gove, Thomas Nixon, Alexander M'Grotty, Junior, William Shives, Hiram Edgett, William H. A. Keans, James Stewart, Josiah Wetmore, Junior, Edward D. Gore, Zechariah Adams, James H. Fairwoather, Ezekiel Jordan, James H. Bartlett, Charles M. Gove, Thomas Coram, and Charles E. Harding, Surveyors of Lumber.

Thomas Miles, Andrew George Lordly, and Samuel White, Inspectors of Lathwood, Staves, Hoop Poles, &c.

Andrew G. Lordly, and Samuel Gillespie, Cullers of Dried Fish.

William Dunham, John Kinney, Henry Nice, John Dunn, John Christopher, Junior, Samuel White, Samuel Gillespie, Joseph O. Dunham, Thomas Miles, Joseph Wilson, William Colwell, James Kotchum, William C. Britain, George Price, and James Stackhouse, Inspectors of Pickled Fish.

Nathaniel Clinton, John Humbert, Thomas Rankine, Junior, and John Clarke, Inspectors of Flour.

Fyler Dibblee, Superintendent of Carts, Hand Carts, and Hacks.

Roland Bunting, Pound Keeper.

William Cronk, and Richard Irvine, Pound Keepers at Carleton.

James Peacock, Inspector of Bread.

George Bond, the Rev. A. Stewart, and Joseph B. Whipple, Trustees of Schools.

Thomas M. Smith, Chief Engineer.

W
nald
liam
Jo
Hose
Jo
Jo
Ladd

Displ

One
One
Tw
Tw
A P
A d
A d
A d
A d
A F
The
to the
soon as
hoisted
A U
vessel.
A bl
A re
A w
A re

A Ba
Sh

In fo
return
her des
place a

TIME

The
flood, a
in twen
rule can
John, a
ed by h

Wm. Barlow, David Waterberry, Samuel Jordan, J. E. M'Donald, George L. Cumber, Richard Duff, John Robinson, and William Olive, Engineers.

Joshua Mercer, Junior, Captain, or Head of the Company of Hosemen.

John Wilson, Captain, or Head of the Company of Axemen.

John Paterson, Captain, or Head of the Company of Hook and Ladder Men.

SIGNALS

Displayed at Partridge Island, on the approach of Vessels to the Harbour of Saint John:

One ball close, for one square-rigged Vessel.

One ball half hoisted for two ditto.

Two Balls close, for three Vessels.

Two Balls separated, for four ditto.

A Pendant of any colour, for five ditto.

A ditto under a Ball, for six ditto.

A ditto over a Ball half hoisted, for seven ditto.

A ditto under two Balls close, for eight ditto.

A ditto under two Balls separate, for nine ditto.

A Flag of any colour, for ten or more ditto.

The above are displayed at the East or West yard arm, according to the direction in which the Vessels are at first observed, and as soon as their rig can be distinguished, descriptive Colours will be hoisted at the mast head, in the following order:

A Union Jack, with a white Pendant over, for a small armed vessel.

A blue Pendant for a Merchant Ship.

A red ditto, for a Merchant Brig.

A white and blue ditto, for a Foreign Vessel.

A white ditto, (without a ball,) for a Topsail Schooner or Sloop.

A red Flag pierced white, for a steamboat from Saint Andrews and Eastport.

A Ball at the mast head, Vessel is on Shore or in distress.

☞ Should immediate aid be necessary, guns to be fired.

In foggy weather a gun will be fired from Partridge island, in return for each heard at sea. Should a vessel require a Pilot her descriptive Pendant will be displayed at a yard arm in the place of a Ball.

TIME FOR GOING THROUGH THE FALLS (near St. John).

The Falls are level (or still water), at about $3\frac{1}{2}$ hours on the flood, and about $2\frac{1}{2}$ on the ebb, which makes them passable four times in twenty four hours, about 10 or 15 minutes each time.—No other rule can be given, as much depends on the floods in the River St. John, and the time of high water or full sea, which is often hastened by high winds, and in proportion to the height of them.

RATES OF PILOTAGE,

Established by a Law or Ordinance of the Common Council of the City of Saint John—passed July, 1835.

Five Shillings per foot, for bringing any Ship or Vessel into the Harbour of Saint John, and mooring her into a safe place or berth, or securing her alongside of one of the Wharves; and Five Shillings per foot for removing and taking any Ship or Vessel out of the Harbour.

In cases where Pilots shall be detained on board of Vessels, under and by virtue of the Quarantine or Health Laws of the Province, they shall be entitled to demand and receive from Masters of such Vessels, the sum of Ten Shillings per day, for every day of such detention, in addition to the allowance aforesaid.

Coasting Vessels, going from one part of the Bay of Fundy to another, British or Foreign Steam Boats, or British Vessels drawing under six feet of water, are not compelled to take pilots; when employed, they are to be paid according to the rate above mentioned.

For removing Vessels from any mooring ground to any Wharf, or from one Wharf to another Wharf, and seeing them properly moored, or secured, the following rates: For Vessels not exceeding One Hundred Tons, Seven Shillings and Sixpence; for Vessels over One Hundred and not exceeding Two Hundred Tons, Ten Shillings; for Vessels over Two Hundred and not exceeding Three Hundred Tons, Fifteen Shillings; and for all Vessels over Three Hundred Tons, the sum of Twenty Shillings.

First Distance.—From Partridge Island to Musquash Cove Head, bearing North West, Five Shillings per foot.

Second Distance.—From Musquash Head to Point LePreaux, bearing North West, Six Shillings and Threepence per foot.

Third Distance.—From Point LePreaux to North Head of Grand Manan, bearing North West—or North Channel, bearing South East, Seven Shillings and Sixpence per foot.

Fourth Distance.—From the North Head of Grand Manan—or North Channel as aforesaid—to Machias Seal Island, bearing South, Eight Shillings and Ninepence per foot.

Fifth Distance.—Any where outside the aforesaid distance, Ten Shillings per foot.

HARBOUR MASTER'S FEES.

On Vessels of 30 Tons and under 50, 2s. 6d.; Vessels of 50 Tons and under 75, 3s. 9d.; 75 and under 100 tons, 5s.; 100 and under 150 tons, 6s. 3d.; 150 and under 200 tons, 7s. 6d.; 200 and under 300 tons, 10s.; 300 and under 400 tons, 12s. 6d.; 400 tons and upwards, 15s.; Decked Vessels, under 100 tons, owned and registered at Saint John, and all British Vessels under that tonnage trading within the Bay of Fundy, or arriving from Ports to the Northward of Cape Cod, or the Westward of Cape Canso, or from any Port in Nova Scotia, to pay annually as follows: Under 30 tons, 3s. 9d.; over 30 and under 50 tons, 5s.; over 50 and under 75 tons, 6s.; over 75 and under 100 tons, 10s.

For a
For a
For a
tues, or
ing, ex
For a
the door
For a
10 cwt.
For a
10 cwt.
For a
fish, o
and sto
For a
Treena
Goods,
tioned,
crate of
a hogsh
or quan
taining
Turpen
Quantit
load of
For a
Molasse
or a load
For C
coil, per
For H
For B
For I
For the
half a lo

The
south l
the we
of Prin
buildin
ket squ
street,

Seco
north l
lies wit
line of

Thir
out or
Sidney

Four
beyond
warther

Fifth
beyond

Rates of Cartage in Saint John.

ARTICLES AND WEIGHT.	DISTRICTS.									
	1st.		2d.		3d.		4th.		5th.	
	s.	d.	s.	d.	s.	d.	s.	d.	s.	d.
For a load of Wood, (Quarter of a Cord,)	7	9	10	1	0	1	1	1	1	1
For a load of Coals, (Half a Chaldron,)	1	3	1	4	1	6	1	7	1	9
For a load containing 15 bushels of Grain, Salt, Potatoes, or any other articles measured at loading or unloading, except Coals,	10	1	0	1	1	1	1	3	1	4
For a pipe of Wine, Gin, or Brandy, and housing within the door of the first floor,	3	0	3	1	3	3	3	4	3	6
For a puncheon of Rum, or a tierce of Sugar, from 7 to 10 cwt., and housing,	1	6	1	7	1	9	1	1	0	0
For a puncheon of Molasses, a hoghead of Sugar of 10 cwt. or upwards, or a hoghead of Tobacco, & housing,	3	0	2	1	2	3	2	4	2	6
For a hoghead or puncheon of Cider, or a load of Dried Fish, of 15 cwt. or a common load of household Goods, and storing,	1	3	1	4	1	6	1	7	1	9
For a load of Shingles, Hoop Poles, Heading, Staves, Treenails, Smoked Fish in boxes, Salmon in kits, Dry Goods, or a load of any other articles not herein mentioned, or a hoghead of Lime, or a hog-head or crate of Earthenware, or two tierces of Earthenware, a hoghead of Dried Fish, two tierces of Coffee or quantity in bags not exceeding 12 cwt. or a load containing 6 lbs. Flour, or 3 barrels Sugar, Fish, Beef, Pork, Turpentine, or Cider, or half a ton of iron, or the same Quantity of Cordage, in coils not exceeding 4 cwt. or a load of any articles not herein mentioned,	0	9	10	1	0	1	1	1	1	3
For a 64-gallon cask of Wine, Rum, Gin, Brandy, Molasses, or Porter, or for a load of Sand, Gravel or Stones, or a load of 4 barrels of any Spirituous Liquor or molasses,	1	0	1	1	1	3	1	4	1	6
For Cables and Cordage, in coils above a cwt. or if to coil, per ton, or if for flay loose, per ton,	5	0	5	3	5	6	5	9	6	0
For Hay, screwed, per ton,	2	6	3	8	1	10	3	0	3	9
For Bricks, per thousand,	4	0	4	3	1	6	4	9	5	0
For Lumber, per thousand feet,	3	0	3	3	3	3	3	9	4	0
For the cartlage of any article or articles not exceeding half a load,	6	7	9	10	1	0	1	0	1	0

The First District to comprise all that part of the City between the south line of Pond street and north line of Duke street, which lies to the westward of the East line of Mill street, Dock street, and that part of Prince William street situated between the north line of the brick building belonging to Mr. James K. M'Kee, (northward of the Market square,) and the north line of Duke street, and including King street, to the westward of the west line of Germain street.

Second District to comprise all that part of the City between the north line of Union street and south line of Saint James' street, which lies without or beyond the First District, to the westward of the east line of Charlotte street.

Third District to comprise all that part of the City, which lies without or beyond the Second District, to the westward of the east line of Sidney street.

Fourth District to comprise all that part of the City lying without or beyond the Third District, to the westward of the East line of Carmarthen street.

Fifth District to comprise all that part of the City lying without or beyond the Fourth District.

PUBLIC PORTERS AND HAND-CART MEN.

For loading, carrying, and housing any goods or any other articles on any hand cart, from the Market Slips in King's and Queen's Wards or from any other place within the limits of the First District, to any other place within the said several Five Districts, the rates of price, are as follow:—For the First District, Threepence; Second District, Three pence half-penny; Third District, Fourpence; Fourth District, Fourpence half-penny; Fifth District, Fivepence.

HACKNEY-COACH FARES.

For conveying not exceeding Four persons from any public stand to any other part of the City, or from any one part of the City to any other part thereof, One Shilling; and for every Passenger over Four, Sixpence additional: if Carriage be detained, to pay additional, at the rate of One Shilling for every half hour.

RATES AT THE PUBLIC WEIGHING MACHINES.

Every Load not exceeding 1000 lbs. weight, One Shilling; and One Penny for every additional cwt.; payable, half by the seller, and half by the purchaser.

RATES OF SLIPPAGE AT THE CORPORATION SLIPS.

All Decked Vessels, same rates as for Wharfage; Wood Boats—Three half-pence for every Ton-burthen, and allowed to remain six days each trip, for the purpose of discharging; if they remain longer to pay One Penny per ton additional for each day. No Boat to remain longer than twenty days.

RATES OF FERRIAGE,

Between St. John and Carleton—from Ferry Landing at the foot of Princess street to the Landing at the end of Rodney street, in Carleton—and to the Landing at Sand Point, called Steam Ferry.

Every grown person, 3d.; Children under 14 years of age, 1½d.; every Horse, 3d.; every Ox, Cow, or other large animal, 4d.; every Calf, Swine, Sheep, Lamb, or Goat, 1d.; every Waggon, Cart, Sled, Carriage, or other Vehicle, (loaded or not loaded with goods) usually drawn by cattle, 3d.; every Hand Cart, Sled, or wheelbarrow, 1d.; every Barrel, 1½d.; every Pipe, Hogshead, or Puncheon, 9d.; every Cask of Lime, 3d.; every Firkin, Keg, or Small Box, not exceeding in size a Firkin, 1d.; Grain, Salt, Potatoes, Turnips, or Vegetables, usually sold by the bushel, per bushel, ½d.; Iron, Steel, Copper, and the like, per cwt. 1d. And the rates of Ferriage for the Short Ferry, so called, and also for Ferriage across the Steam Ferry, so called, when the Steamer is lying by to clean boilers, or other circumstances preventing the plying of the Steam Ferry Boat, as follow, viz.:—Foot Passengers, 3d.; Two Horses, with Waggon or Stage, 2s. 6d.; One Horse and Gig, Sleigh, Sled, Cart, or Waggon, 1s. 6d.; an Ox, Horse, or Cow, 1s.; a Swine, 5d.; a Sheep, 4d.; a Barrel of Flour, 3d.; a Keg of Powder, 3d.

Chan

H. Stre
ward,
Duncan
Esquire
for the
Commis

Mech

M. Rob
terson,
tary; S
ther, T
Lawton
James I

Saint

Simond
Archiba
Dunn, C
Kerr, D
Gillies,
Peters, I
Thomas
Treasur

H. J. CH

Public

tor of Sa
Ward C
Judge P
Hugh Jo
Clerk; J

Saint

Saint Joh
of the M
School.

Saint

tian Kno
Hon. W
dents;

Ter
tion, and
trict Co
Books a

Saint

John Kin
ferent de
G. T. Ra
Tilley, R

Saint

James Co
H. Hart
tary and
from 12 t

Chamber of Commerce.—Hon. John Robertson, President; W. H. Street, and John Pollock, Esquires, Vice Presidents; Isaac Woodward, Esquire, Secretary; Charles Ward, John Wishart, John Duncan, James Whitney, James Kirk, and Frederick A. Wiggins, Esquires, together with the Members of the House of Assembly for the City and County (being the non-elective part), compose the Committee.

Mechanics' Institute.—James Cudlip, Esquire, President; John M. Robinson, and Isaac Woodward, Vice Presidents; James Paterson, Corresponding Secretary; H. J. Chubb, Recording Secretary; S. L. Tilley, Treasurer; George Fleming, Edwin Fairweather, Thomas Daniel, W. A. Robertson, Thomas Nisbet, jr., James Lawton, Robert Shives, Joseph W. Lawrence, Samuel Jordan, James Pettingill, and John Owens, Directors.

Saint John County Agricultural and Horticultural Society—Hon. C. Simonds, President; R. M. Jarvis, Walker Tisdale, James Brown, and Archibald Menzies, Vice Presidents; Messrs. Geo. G. Gilbert, James Dunn, Charles Drury, E. Sentill, James Cother, G. C. Carman, John Kerr, Dr. Cook, Dr. Bayard, Peter Dewar, M. H. Perley, John Gillies, W. Ritchie, T. L. Nicholson, Thomas Trafton, James W. Peters, Isaac Clark, Richard Calvert, James Travis, George Brown, Thomas Bean, and George Ball, Directors; John Duncan, Esquire, Treasurer; M. H. Perley, Esquire, Corresponding Secretary; Mr. H. J. Chubb, Recording Secretary.

Public Grammar School in Saint John.—The Reverend the Rector of Saint John, President; the Mayor, the Recorder, the Hon. Ward Chipman, L. L. D., the Hon. William Black, the Hon. Judge Parker, R. F. Hazen, William Wright, Esquires, and Hon. Hugh Johnston, Directors; J. H. Gray, Esquire, Treasurer and Clerk; James Paterson, L. L. D., Principal.

Saint John Church of England Sunday School.—The Rector of Saint John, President; Samuel Huyghue, Esquire, Superintendent of the Male School; Miss Deblois, Superintendent of the Female School.

Saint John District Committee of the Society for promoting Christian Knowledge.—The Rev. the Rector of Saint John, President; Hon. William Black, and William Scovil, Esquire, Vice Presidents; Beverley Robinson, Esquire, Secretary and Treasurer. Terms of admission to the Parent Society, One Guinea Donation, and One Guinea annually. Terms of admission to the District Committee, Half a Guinea annually. The depository of Books and Tracts is at Mr. Samuel Hallett's.

Saint John Religious Tract Society.— — — — —, President; Mr. John Kinnear, Secretary. Committee—The Ministers of the different denominations, and Messrs. W. B. Kinnear, N. S. Demill, G. T. Ray, L. H. DeVeber, John Wishart, John Duncan, S. L. Tilley, Richard W. Thorne, and A. Smithers.

Saint John Society Library.—Rev. Frederick Coster, President; James Cudlip, Esquire, Vice President; G. D. Robinson, and J. H. Hartt, Esquires, Committee; James W. Peters, Esquire, Secretary and Treasurer; W. L. Avery, Librarian. Library hours from 12 to 1 and from 3 to 4.

Sacred Music Society.—John Boyd, Esquire, President; John W. M'Leod, Vice President; Thomas G. Barr, Secretary; George Whittekir, Junior, Treasurer; Stephen K. Foster, Conductor. Charles J. Melick; Stephen Whittekir, Samuel Steven, Thomas Hatheway, and Thomas P. Williams, Committee.

Temperance Society.—The Rev. B. G. Gray, D. D., President; the Honorable Judge Parker, and William Boyd Kinnear, Vice Presidents; Francis A. Kinnear, Esquire, Secretary, &c.

Saint George's Society.—John V. Thurgar, Esquire, President; Mr. John Rhodes, Vice President; Isaac L. Bedell, Esquire, Treasurer; Lewis W. Durant, Secretary; Messrs. Henry Chubb, John Sandall, and John J. Roberts, Standing Committee.

Saint Andrew's Society.—John Boyd, Esquire, M. D., President; John Wishart, Esquire, Vice President; John Duncan, Esquire, Treasurer; Mr. James Robertson, Secretary.

Saint Patrick's Society.—William End, Esquire, M. P. P., President; William Parks, Esquire, Vice President; William Hutchinson, Esquire, Treasurer; Mr. William Mills, Secretary.

Highland Society of Saint John, N. B.—Branch of the Highland Society in London.—(Organized in November, 1842.)—His Excellency the Lieutenant Governor of the Province for the time being, Patron; Lieut. Gen. Sir Archibald Campbell, Bart., G. C. B., &c. &c., Chief; Hon. John Robertson, President; John Duncan, John Boyd, M. D., and John Wishart, Esquires, Vice Presidents; Rev. W. T. Wishart, Chaplain; Adam Jack, Esquire, Treasurer; James Robertson, Thomas Nisbet, jr., Secretaries; Alex. Robertson, James Malcolm, Alex. Balloch, Duncan Robertson, George Murray, Thomas Nisbet, John W. M'Leod, Committee of Management.

Friendly Fire Club—Robert W. Crookshank, Esquire, President; Thomas L. Nicholson, Esquire, Secretary, &c.

Union Fire Club.—Daniel Leavitt, Esquire, President; Leveret H. DeVeber, Vice President; John Wishart, Esquire, Treasurer; E. W. Greenwood, Esquire, Secretary.

Protection Fire Club—Mr. G. Thomas, President; ——— Vice President; S. L. Tilley, Secretary.

AN AGRICULTURAL FAIR is held on King's Square in the City of Saint John, on the last Thursday in every month.

PROBATE COURTS.—The Probate Court for the City and County of Saint John is held every Monday, at three o'clock, at the Chambers of the Judge; and the like Court in the other Counties of the Province is held at the times specially appointed by the respective Judges.

MARINE HOSPITAL.

For the Relief of Sick and Disabled Seamen, (Saint John.)

Commissioners—John Ward, Junior, R. W. Crookshank, Daniel Leavitt, Ezekiel Barlow, John Wishart, and William Hammond, Esquires; *Treasurer*—The Bank of New Brunswick; *Secretary*—L. Donaldson, Esquire; *Physician and Surgeon*—J. Boyd, Esquire, M. D.

CIT

The M
The
Thomas
Bond, E
John
Charles
George
Gilbert,
Robert
Peters,
Daniel
Daniel
Leavitt,
James
George
Justices
James
Sheriff.
James
William
William
Isaac
Alfred
Charles
Benja
the Sup
Henry
James
F. Haze
M. Robi
Sands, J
William
bertson,
W. Pet
Wardla
M Burt
Junior,
James J
M. How
George
Esquire
Court.
Robert
Gehan
Commis
Charl
Board
ter, and
Surve
Flewell

CITY AND COUNTY OF SAINT JOHN.

The Mayor and Recorder, Justices of the Mayor's Court.

The Mayor and Recorder, Henry Porter, William O. Smith, Thomas Harding, Gregory VanHorne, Thomas Coram, and George Bond, Esquires, Justices of the Peace and of the Quorum.

John Ward, William Scovil, James Peters, Ralph M. Jarvis, Charles Simonds, G. C. Carman, Zalmon Wheeler, John Jordan, George Anderson; James Moran, Hon. Hugh Johnston, Henry Gilbert, Robert W. Crookshank, Senior, Noah Disbrow, Senior, Robert Payne, Archibald Menzies, George Brown, Benjamin L. Peters, Charles Ward, Hon. John Robertson, William H. Street, Daniel Leavitt, John Gillies, Calvin L. Hatheway, James Brown, Daniel Ansley, John Kerr, James Kirk, John Pollock, William Leavitt, George A. Lockhart, William Olive, Samuel Strange, James Gallagher, Jacob C. Allan, John Wishart, L. H. DeVeber, George Moffat, Robert Keltie, and William Hammond, Esquires, Justices of the Peace.

James White, Esquire, High Sheriff; Mr. G. V. Nowlin, Deputy Sheriff.

James Peters, Junior, Esquire, Clerk of the Peace &c.; James William Boyd, Assistant Clerk of the Peace, &c.

William Bayard, Esquire, M. D., Coroner.

Isaac L. Bedell, Esquire, County Treasurer.

Alfred L. Street, Esquire, Surrogate.

Charles Drury, Esquire, Register of Deeds and Wills.

Benjamin L. Peters, Esquire, Commissioner for taking Bail in the Supreme Court.

Henry Swyimmer, Hon. William B. Kinnear, Alfred L. Street, James Peters, Junior, William End, Francis A. Kinnear, Robert F. Hazen, William Wright, Peter Stubbs, H. N. H. Lugin, John M. Robinson, Moses H. Perley, Hon. Robert L. Hazen, Richard Sands, Junior, John Johnston, James Wm. Boyd, George Wheeler, William H. Needham, William Jack, Judah H. Hartt, Duncan Robertson, Charles Johnston, N. W. Wallop, John H. Gray, James W. Peters, Robertson Bayard, William J. Ritchie, Charles W. Wardlaw, Samuel J. Scovil, William M. Greenwood, William R. M. Burtis, Edward B. Peters, Charles Duff, William Tyng Peters, Junior, James A. Harding, William C. Hare, Gustavus R. Jarvis, James J. Kaye, Edgar Wheeler, William E. Twynham, William M. Howe, Charles Doherty, John G. Campbell, George F. Rouse, George W. Ritchie, B. Boyd Kinnear, and Humphrey T. Gilbert, Esquires, Commissioners for taking Affidavits in the Supreme Court.

Robert F. Hazen, Esquire, Commissioner of Bankrupts.

Gehardus C. Carman, John Jordan, and James Moran, Esquires, Commissioners for Solemnizing Marriage.

Charles Drury, Esquire, Issuer of Marriage Licenses.

Board of Education.—The Mayor, the Recorder, Rev. F. Coster, and James Peters, Junior, Esquire.

Surveyors of Lumber in the County.—Michael Fisher, James Flewelling, Gilbert Jordan, Junior, Alexander M'L. Seely, Moses

Tuck, William W. Jordan, Francis Jordan, J. F. Goddard, James Scott, Charles Sorrell, Stephen H. Shaw, Thomas L. Langen, John Morrison, James Clark, Daniel M'Goldrick, Charles Eagles, Geo. Eagles, William A. Reynolds, John G. Tobin, James L. Woodworth, William H. Travis, Thomas Jordan, Robert Stevens, Robert Cunard, David Tapley, Isaac Flewelling, John S. Brown, Robert Ewing, and David B. Roberts.

James Stockford, William Munford, George Mason, and Joseph C. Littlehale, Overseers of the Fisheries.

Terms of the General Sessions and Common Pleas.—Third Tuesday in March, and first Tuesday in June, September and December.

PARISH OF PORTLAND.

Hugh Sharkey, James Travis, and Thomas Allan, Assessors of Taxes.

Andrew Miles, Collector of Taxes.

Matthew S. Manks, Jacob Pidgeon, George M'Donald, James Dixon, John Taylor, George Dixon, James Dean, and William M'Garvey, Constables.

James Dixon, William Logan, George Butler, and James Dean, Hog Reeves.

Michael Campbell, William Logan, and William M'Garvey, Pound Keepers.

Ptolemy Lombard, Maurice Delaney, and Patrick Harrigan, Fence Viewers.

James Flewelling, James Harris, and Thomas Hillyan, Commissioners of Highways.

William Eagles, Patrick Harrigan, Patrick M'Gouldrick, Bernard M'Callum, Nathaniel Peacock, Claudius Hamilton, Eugene Golding, Surveyors of Highways.

The Reverend William Harrison, William Harding, and James Flewelling, Trustees of Schools.

Samuel Dalton, Superintendent of the Ferry Landing.

John Coleman, Ferryman.

James Scott, Superintendent of the Portland Slips.

John Butler, Inspector of Fish.

Jacob Pidgeon, Town Clerk and Clerk of the Market.

James Joyce and David M'Coy, Overseers of the Fisheries.

John Pollock, James Payne, John Duncan, and James Travis, Firewardens.

PARISH OF LANCASTER.

George Anderson, Archibald Menzies, and John Stevens, Commissioners of Highways.

Isaac Clarke, John Gillies, and John Scott, Assessors of Taxes.

John Harding, Collector of Taxes.

John Gillies, G. C. Carman, and Isaac Clarke, Trustees of Schools.

J. Dunham, J. Harding, and J. M'Auley, Constables.

John Vaughan, John Harding, and William Scott, Fence Viewers.

George
John
Alfred
John
James W
niel Mon
ningham
Danie

John
vid Bra
Willia
Schools.
Willia
Taxes.
Danie
James
William
Edwa
and Joh
Willia
Willia
Hog Re
Thom
Rober
bank, P
Henry S
B. Coug
James B
John Ba

George
Trustee
Rober
John
John
Robert
and Dan
Thom
rison, W
Garnett
John D
James
William
Daniel
H. D
Wallac
Thomas

George Howe and Patrick Donnelly, Hog Reeves.

John Harding, and Maurice Tilton, Pound Keepers

Alfred Quinton, Town Clerk and Clerk of the Market.

John Harding, John Dunham, John Brundage, Hugh Belmour, James Wynn, Richard Sinnott, Leacy Hayward, James Gault, Daniel Morris, George Mullin, Major P. Baldwin, and Samuel Cunningham, Surveyors of Highways.

Daniel Morris and John Cunningham, Overseers of the Fisheries.

PARISH OF SAINT MARTINS.

John Brown, Senior, William Flaherty, Allen M'Lean, and David Bradshaw, Commissioners of Highways.

William Fowns, James Bustin, and James S. Smith, Trustees of Schools.

William Vail, George Marr, and William Ruddick, Assessors of Taxes.

Daniel Brown, Collector of Taxes.

James Shanklin, Patrick Malony, James Fowns, Daniel Fritch, William Compton, and Archibald Parks, Constables.

Edward Brown, James Smith, John Smith, George Cochran, and John Howard, Fence Viewers.

William Scott, Pound Keeper.

William M'Cumber, Thomas Scott, and James O'Donnell, Hog Reeves.

Thomas H. Black, Town Clerk and Clerk of the Market.

Robert Floyd, Andrew Smith, William M'Affee, Gabriel Marchbank, Philip Mosher, James Ford, Samuel Shanklin, John Fritch, Henry Smith, Henry Hendrihan, Junior, James Davidson, Oliver B. Cogle, Aaron Delong, Charles Moran, Junior, Robert Fletcher, James Berry, Samuel Carson, Hezekiah Delong, Dennis Crow, John Bane, Henry Sands, and Wm. Floyd, Surveyors of Highways.

PARISH OF SIMONDS.

George Moffat, Nugent Creighton, and John Jordan, Junior, Trustees of Schools.

Robert Long, Joseph Ball, and Wm. Dixon, Assessors of Taxes.

John Johnston, Collector of Taxes.

John Johnston, James Burley, William M'Geoch, Richard Daley, Robert Bowes, John Maxwell, Patrick M'Manus, James M'Guire, and Daniel Thomas, Junior, Constables

Thomas Bean, W. Robinson, William Bean, Senior, John Morrison, William Daley, Hugh Ryan, Corbyn M'Whooton, Thomas Garnett, William Wood, Robert Bowes, Thomas Trafton, and John Douglas, Fence Viewers.

James Burley, Richard Daley, James Bustin, William Blair, William M'Geoch, John Maxwell, Thomas Kays, Charles Boyle, Daniel Thomas, Junior, and John Munford, Hog Reeves.

H. Dunn, Philip Furlong, John Morrison, John Johnston, John Wallace, Daniel Gallagher, Neil Quinn, Ephraim C. Sentill, and Thomas Trafton, Pound Keepers.

Robert Bowes, Town Clerk and Clerk of the Market.
Nugent Creighton, John Johnston, and George Moffat, Commissioners of Highways.

Winthrop Robinson, Philip Furlong, James Dalzell, William M'Bean, John Dowd, Simon Fraser, Thomas Long, Ephraim Sentill, Thomas Garnett, William Tipping, John Morrison, James Bowes, Thomas M'Garry, James Stackhouse, Thomas Trafton, Daniel Gallagher, James Kibler, John W. Scott, William Hawks, Benjamin Ellison, Ishmael Reed, Robert Gracey, William M'Gri-gor, William Slack, Charles Emslie, Jas. Stewart, Owen M'Guire, William White, Peter Carney, Gordon Irvin, John M'Cauley, Edward Marter, Alexander Ford, Patrick M'Manus, and Neal Quinn, Surveyors of Highways.

Daniel Gallagher and William Bean, Overseers of the Fishery.

COUNTY OF YORK.

Hon. John Simcoe Saunders, John Allen, Hon Thomas C. Lee John Robinson, and George Minchin, Esquires, Justices of the Inferior Court of Common Pleas.

Hon. John S. Saunders, John Allen, Hon. Thomas C. Lee, John Robinson, George Minchin, Jacob Ellegood, James A. Maclauchlan, Thomas Emerson, Thomas Jones, James Harrison, William Davidson, Patrick Campbell, James Miles, Ross Currie, (*of the Quorum.*) Adam D. Allan, George Garden, L. Bradshaw Rainsford, Hugh J. Hansard, Henry Morehouse, Solomon Parent, David B. Shelton, George Cheyne, William J. Bedell, Benjamin Wolhaupter, Thomas Gill, Thomas Earle, Richard Hayne, George Clements, James Taylor, Allan M'Lean, Thomas Pickard, Thomas R. Robertson, William Dell Hartt, John T. Smith, Asa Coy, and Isaac Kilburn, Esquires, Justices of the Peace.

Edward W. Miller, Esquire, High Sheriff; Mr Joseph Myshrall, Deputy Sheriff.

George J. Dibblee, Esquire, Keeper of the Rolls, and Clerk of the Peace and Inferior Court of Common Pleas.

Hon. George F. Street, Surrogate.

John C. Allen, Esquire, Register of Probates.

Joseph Beek, Esquire, Register of Deeds and Wills.

William Woodforde, Henry Fisher, Junior, and Henry Jones, Esquires, Coroners.

Mark Needham, Esquire, County Treasurer.

Hon. John S. Saunders, and William Tyng Peters, Esquire, Commissioners for taking Bail in the Supreme Court.

Honourable Charles J. Peters, William Tyng Peters, Honorable John S. Saunders, Hon. George F. Street, Daniel L. Robinson, Geo. J. Dibblee, Charles P. Wetmore, T. R. Wetmore, Lemuel A. Wilmot, George Botsford, Charles Fisher, J. A. Harding, George F. H. Minchin, William H. Odell, David Shank Kerr, John M'Mahon, Francis A. H. Stratton, John C. Allen, George Lee, Junior, William Watts, B. W. Hammond, George N Segee, James P. Wetmore, James F. Berton, Edward H. Wilmot, William H. Shore, Andrew C. Black, and Colin Irvine Allan, Esquires, Commissioners for taking Affidavits in the Supreme Court.

Commis-
William
rain Sen-
n, James
Trafton,
n Hawks,
m M'Gri-
M'Guire,
uley, Ed-
al Quinn,
e Fishery.

as C. Lee
the Infe-
Lee, John
clauchlan,
am David-
Quorum.)
, Hugh J.
Shelton,
r, Thomas
es Taylor,
illiam Dell
es, Justices

a Myshrall,
lark of the

Jones, Es-

ire, Com-
Honorable
nson, Geo.
A. Wilmot,
erge F. H.
M'Mahon,
r, William
Wetmore,
e, Andrew
for taking

D. Ludlow Robinson, Esquire, Commissioner of Bankrupts.
James A. Maclauchlan, John Allen, Jacob Ellegood, John Robin-
son, and J. Harrison, Esquires, Commissioners for Solemnizing Mar-
riage.

Asa Coy, F. E. Beckwith, Mark Needham, F. W. Hatheway, G.
W. Gaynor, Henry Fisher, and J. E. Perley, Licensed Auctioneers.
Board of Education.—John Robinson, G. J. Dibblee, D. L. Robin-
son, George Lee, Jr., Esquires, Very Rev. William Dollard, V. G.,
and the Rev. J. M. Sterling, A. M.

Alms House and Work House.—Benjamin Wolhaupter, Lemuel A.
Wilnot, William J. Bedell, Thomas Gill, Moses Pickard, Thomas
Murray, and John Simpson, Esquires, Commissioners; Joseph Fle-
ming, Keeper.

Terms of the General Sessions and Common Pleas.—First Tuesday
in January and June. *Additional Terms of the Common Pleas.*—
Third Tuesday in March, and second Tuesday in October.

Frederickton Library.—J. E. Woolforde, Esquire, President; F. E.
Beckwith, Esquire, Vice President; R. Gowan, Esquire, Secretary
and Treasurer; W. H. Shore and G. S. Flood, Committee; Michael
White, Librarian Terms, £3 on admission, and 15s. annually.

Frederickton Society of Saint Andrew.—W. Fraser, M. D., President;
John Gregory, Esquire, 1st Vice President; Robt. Fulton, 2d ditto;
John F. Taylor, Treasurer; William M'Beath, Secretary.

Frederickton Society of Saint Patrick.—Hon. Thomas Baillie, Presi-
dent; L. A. Wilmot, Esquire, Vice President; Joseph Beek, Esquire,
Treasurer; Matthew Brannen, Secretary; Stephen White, Assistant
Secretary.

Frederickton Society of Saint George.—Hon. George Shore, President;
J. E. Woolforde, and the Hon. G. F. Street, Vice Presidents; —
—, Secretary and Treasurer; Ven. Archdeacon Coster, Chaplain.

Floral and Horticultural Society of New Brunswick, (at Frederickton).
J. E. Woolforde, Esquire, President; Hon. Neville Parker, and L. A.
Wilmot, Esquire, Vice Presidents; who, with Messrs. Oliver Smith,
and S. Flemming, constitute the Committee of Management and
Decision.—George Lee, Jun., Esquire, Secretary and Treasurer.

Firewards in Frederickton.—Hon. Thomas Baillie, George Minchin,
Mark Needham, William Dell Hartt, John A. Beckwith, Benjamin
Wolhaupter, L. A. Wilmot, and John T. Smith, Esquires.

COUNTY OF CARLETON.

B. C. Beardsley, Esquire, Commissioner of Bankrupts.
John F. W. Winslow, Esquire, High Sheriff.

Terms of the General Sessions and Common Pleas.—Fourth Tuesday
in January and June. *Additional Terms of Common Pleas.*—First
Tuesday in March and October.

COUNTY OF CHARLOTTE.

Honorable Harris Hatch, Commissioner of Bankrupts.
Thomas Jones, Esquire, High Sheriff.

Terms of the General Sessions and Common Pleas.—Second Tuesday
in April and third Tuesday in September. *Additional Terms of the
Common Pleas.*—Second Tuesday in July and December.

COUNTY OF WESTMORLAND.

Robert F. Hazen, Esquire, Commissioner of Bankrupts.
William P. Sayre, Esquire, High Sheriff.
Terms of the General Sessions and Common Pleas.—Third Tuesday in June and November. *Additional Terms of the Common Pleas.*—First Tuesday in April and second Tuesday in September.

COUNTY OF GLOUCESTER.

William Carman, Esquire, Commissioner of Bankrupts.
Henry W. Baldwin, High Sheriff.
Terms of the General Sessions and Common Pleas.—Second Tuesday in January and last Tuesday in July. *Additional Terms of the Common Pleas.*—First Tuesday in April and last Tuesday in October.

KING'S COUNTY.

Robert F. Hazen, Esquire, Commissioner of Bankrupts.
Le Baron Drury, Esquire, High Sheriff.
Terms of the General Sessions and Common Pleas.—First Tuesday in March and third Tuesday in October. *Additional Terms of the Common Pleas.*—First Tuesday in May and January.

QUEEN'S COUNTY.

D. L. Robinson, Esquire, Commissioner of Bankrupts.
Nathaniel Hubbard DeVeber, Esquire, High Sheriff.
Terms of the General Sessions and Common Pleas.—Fourth Tuesday in January and June. *Additional Terms of the Common Pleas.*—Fourth Tuesday in April and October.

COUNTY OF SUNBURY.

D. L. Robinson, Esquire, Commissioner of Bankrupts
John Hazen, Esquire, High Sheriff.
Terms of the General Sessions of the Common Pleas.—Third Tuesday in March and Third Tuesday in October.

COUNTY OF KENT.

William Carman, Esquire, Commissioner of Bankrupts.
William A. Black, Esquire, High Sheriff.
Terms of the General Sessions and Common Pleas.—Second Tuesday in January and Fourth Tuesday in June. *Additional Terms of the Common Pleas.*—Last Tuesday in April and September.

COUNTY OF RESTIGOUCHE.

William Carman, Esquire, Commissioner of Bankrupts.
James Paul, Esquire, High Sheriff.
Terms of the General Sessions and Common Pleas.—First Tuesday in January and Second Tuesday in July. *Additional Terms of the Common Pleas.*—Second Tuesday in October and Second Tuesday in April.

COUNTY OF NORTHUMBERLAND.

William Carman, Esquire, Commissioner of Bankrupts.
John M. Johnson, Esquire, High Sheriff.

Te
in Ja
Tues

His E
C

Alfred
EX
mond
B. Ch
L. A.

LEG
Lord
Hon.
Hon.
Amos
Lee, H
Robert
Hugh

Cou
Wilmo
Cou
John J
Cou
Hazen
Cou
Stilma
Cou
Cou
Cou
Esqu
Cou
Esqu
Cou
Street.
Cou
Esqu
Cou
Cou
Esqu
City
Street,

Terms of the General Sessions and Common Pleas.—Second Tuesday in January and July. *Additional Terms of the Common Pleas.*—First Tuesday in May and October.

PROVINCE OF NEW BRUNSWICK.

His Excellency Lieutenant Colonel Sir WILLIAM MACBEAN GEORGE COLEBROOKE, K. H., Lieutenant Governor of the Province of New Brunswick, &c. &c. &c.

Alfred Reade, Esquire, Private Secretary to the Lieut. Governor.

EXECUTIVE COUNCIL.—Hon. John S. Saunders, Hon. Charles Simonds, Hon. Hugh Johnston, Hon. Joseph Cunard, Hon. Edward B. Chandler, Hon. John Montgomery, Hon. Robert L. Hazen, Hon. L. A. Wilnot.

LEGISLATIVE COUNCIL.—The Honorable William Black, President; Lord Bishop of Nova Scotia, Hon. George Shore, Thomas Baillie, Hon. Harry Peters, Hon. Joseph Cunard, Hon. James Allanshaw, Hon. William H. Robinson, Hon. John Simcoe Saunders, Hon. Amos F. Botsford, Hon. The Attorney General, Hon. Thomas C. Lee, Hon. Edward B. Chandler, Hon. George F. Street, Hon. John Robertson, Hon. Harris Hatch, Hon. William B. Kinnear, Hon. Hugh Johnston.

HOUSE OF ASSEMBLY.

The Honorable JOHN WESLEY WELDON, Speaker.

County of York.—John Allen, James Taylor, Hon. Lemuel A. Wilnot, and Charles Fisher, Esquires.

County of Saint John.—Hon. Charles Simonds, John R. Partelow, John Jordan, and Robert Payne, Esquires.

County of Westmorland.—Philip Palmer, John Smith, William Hazen Botsford, and Daniel Hanington, Esquires.

County of Charlotte.—Robert Thomson, James Boyd, George Stilman Hill, and James Brown, Esquires.

County of King's.—Samuel Freeze, and Sylvester Z. Earle, Esq's.

County of Queen's.—John Earle, and Thomas Gilbert, Esquires, County of Sunbury.—Wm. Scoullar, and Whitehead S. Barker, Esquires.

County of Carleton.—Charles Perley, and Jeremiah M. Connell, Esquires.

County of Northumberland.—Alex. Rankin, and John Ambrose Street, Esquires.

County of Kent.—Honorable John W. Weldon, and David Wark, Esquire.

County of Gloucester.—William End, Joshua Alexandre, Esquires.

County of Restigouche.—Andrew Barberie, and Peter Stewart, Esquires.

City of Saint John.—Hon. Robert L. Hazen, and William H. Street, Esquire.

Lawyer
8
James
13
Murphy
7
Gene
2

OFFICERS OF THE CROWN.—Hon. Charles J. Peters, Attorney General; Hon. George F. Street, Solicitor General; William Wright, Esquire, Acting Advocate General; Hon. William F. Odell, Provincial Secretary; Honorable Thomas Baillie, Surveyor General; Hon. Thomas C. Lee, Receiver General; J. A. Street, Esquire, Hon. Wm. B. Kinnear, Hon. E. B. Chandler, Hon. L. A. Wilmot, and William End, Esquire, Queen's Counsel

OFFICER OF THE EXECUTIVE COUNCIL.—Hon. W. F. Odell, Clerk.

OFFICERS OF THE LEGISLATIVE COUNCIL.—William Tyng Peters, Esquire, Clerk; John Gregory, Esquire, Clerk Assistant; B. R. Jonett, Esquire, Sergeant at Arms, and Usher of the Black Rod; Rev. George Coster, A. M., Chaplain.

OFFICERS OF THE HOUSE OF ASSEMBLY.—Charles P. Wetmore Esquire, Clerk; George Lee, Jr., Esquire, Clerk Assistant; George Garden, Esquire, Sergeant at Arms; Rev. John M. Sterling, A. B., Chaplain.

COURT OF CHANCERY.—His Excellency the Lieutenant Governor, Chancellor; Honorable Neville Parker, Master of the Rolls; Hon. William F. Odell, Clerk of the Crown in Chancery; Daniel Ludlow Robinson, Esquire, Registrar; Broke W. Hammond, Esquire, Deputy Registrar; Hon. George F. Street, Henry Swynnor, George J. Dibblee, Robert F. Hazen, John Ambrose Street, Timothy Robert Wetmore, and William Jack, Esquires, Masters; A. K. S. Wetmore, Alfred L. Street, Andrew Barberie, William Chandler, Alexander Campbell, George D. Street, and Christopher Milner, Junior, Esquires, Masters Extraordinary; William M. Beath, Esquire, Sergeant at Arms. *Terms: Hilary*—Last Tuesday in January, to end on Saturday same week; *Trinity*—First Tuesday in June do. do.; *Michaelmas*—First Tuesday in October do. do. The Court generally sits for the transaction of business on the first Tuesday of every month.

SUPREME COURT OF JUDICATURE.—Chief Justice, Hon. Ward Chipman, L. L. D., 29th September 1834; Justices, Hon. William Botsford, 2d April, 1823; Hon. James Carter, October 1834; Hon. Robert Parker, October 1834. John Ambrose Street, Esquire, Clerk of the Crown; Hon. George Shore, Clerk of the Pleas; William Tyng Peters, Esquire, Clerk of the Circuits, and Clerk of the Crown on the Circuits. *Terms*—The first Tuesday in February and the second Tuesday in June and October. *Nisi Prius sittings in the County of York*—Third Tuesday in February, fourth Tuesday in June, and fourth Tuesday in October

David S. Kerr, Esquire, Reporter of the Decisions in the Supreme Court.

CIRCUIT COURT.—*Saint John*: Second Tuesday in January, and first Tuesday in August; *Charlotte*: Fourth Tuesday in April, and the Tuesday after the Fourth Tuesday in October; *Kings*: Second Tuesday in July; *Queens*: First Tuesday in March; *Kent*: Last Tuesday in August; *Westmorland*: First Tuesday in September; *Gloucester*: First Tuesday in September; *Northumberland*: Second Tuesday in September; *Carlton*: Last Tuesday in September; *Sunbury*: Last Tuesday in February; *Restigouche*: Last Tuesday in August.

Co
cunse
tenar
siden
bers;
seco
Octo

Co
Judg
neral
Scrib

Co
ces or
other

Coun
Publi
tains,
time
W. M

pointe
or one
ralty,

Joh
Surve
Gesne
quire,
Gage
Rose,
Chris
W. S
H. M
Duga
Bathu
Esqui
Esqui
ander

Por
Geor
Esqu
Sear
side,
ringt

COURT OF GOVERNOR AND COUNCIL, for hearing and determining causes relating to Marriage and Divorce.—His Excellency the Lieutenant Governor, President; Honorable Judge Botsford, Vice President; the Honorable Her Majesty's Executive Council, Members; John C. Allan, Esquire, Registrar and Clerk; *Terms*: The second Tuesday in February, and third Tuesdays in June and October.

COURT OF VICE ADMIRALTY.—Honorable William B. Kinnear, Judge and Commissary; William Wright, Esquire, Advocate General, *ad interim*; John M. Robinson, Esquire, Registrar and Scribe; John Humbert, Esquire, Marshal, *ad interim*.

COURT for the Trial and Punishment of Piracy and other Offences on the High Seas.—The Governor; The Chief Justice, and other Judges of the Supreme Court, the Members of the Executive Council; Judge of the Vice Admiralty; The Public Secretary; Public Treasurer; Commander in Chief, Flag Officers, and Captains, and Commanders of Ships of War on this Station for the time being; William Tyng Peters, Registrar and Scribe; Edward W. Miller, Esquire, Marshal.

☞ The Court sits at any place within the Province to be appointed by any three of the members, the Governor, Chief Justice, or one of the Judges of the Supreme Court, or Judge of the Admiralty, being one.

POST OFFICE DEPARTMENT.

John Howe, Esquire, Deputy Post Master General; T. B. Lenny, Surveyor; J. Hopley, First Clerk, W. D. French, Second do., H. Gesner, Third do., Saint John; *Post Masters*: William B. Phair, Esquire, A. Phair, Clerk, Fredericton; William F. Bonnell, Esquire, Gagetown; George F. Campbell, Esquire, Saint Andrews; David A. Rose, Esquire, Saint Stephen; Gideon Knight, Esq., Saint George; Christopher Milner, Esquire, Dorchester; C. Theal, Esq., Shediac; W. Steadman, Esquire, Petitcodiac; James Caie, Esquire, Chatham; H. Morrell, Esquire, Newcastle; John W. Weldon, Esq., Richibucto; Dugald Stewart, Esquire, Dalhousie; Thomas M. Deblois, Esquire, Bathurst; Richard English, Esquire, Woodstock; Edward B. Smith, Esquire, Kingston; E. A. Earl, Esquire, Sussex Vale; John H. Ryan, Esquire, Grand Falls; P. C. Amereaux, Esquire, Madawaska; Alexander Lockhart, Esquire, Quaco.

HER MAJESTY'S CUSTOMS.

PORT OF SAINT JOHN.—Henry Bowyer Smith, Esquire, Collector; George Hamilton Smith, Esquire, Landing Surveyor; James Walker, Esquire, Waiter and Searcher; Jas. D. Lewin, Esquire, Waiter and Searcher; Mr. John Longmaid, Tide Surveyor; Mr. William White, side, First Clerk; Mr. William Smith, Second Clerk; Coburg Carlington, Third Clerk.

Charles Drury, Esquire, Admeasurer of Ships and Vessels.
Sub-Collectors.—James Sayre, Esquire, Dorchester; John Mack-
edie, Esquire, Dalhousie, David Swayne, Esquire, Richibucto; H.
E. Dibblee, Esquire, Woodstock; Thomas M. Deblois, Esquire, Ba-
thurst; J. Blackhall, Acting, Caraqueet—under the principal Officers
of Her Majesty's Customs at the Port of Saint John.

Warehouse Department—William Stringer, Esquire, Warehouse
Keeper at Saint John; Thomas P. Marter, Esquire, Locker at ditto.

PORT OF MIRAMICHI.—John Wright, Esquire, Collector; Joseph
Dean, Esquire, Principal Waiter and Searcher; Mr. Richard Hockin,
Clerk—under the Principal Officers of Her Majesty's Customs at the
Port of Saint John.

PORT OF SAINT ANDREWS.—Alexander Grant, Esquire, Collector;
C. V. Forster, Esquire, Landing Surveyor; R. Ker, Esquire, Acting
Waiter and Searcher; Wm. Ellman, Esquire, First Clerk and Ware-
house Keeper.

Sub-Collectors.—D. Bennett, Esquire, Campobello; T. Armstrong,
Esquire, Saint Stephen; Cochran Craig, Esquire, Grand Manan;
A. J. Wetmore, Esquire, Saint George.

PROVINCIAL REVENUE.

BEVERLEY ROBINSON, Esquire, *Province Treasurer.*

DEPUTY TREASURERS.—Joseph Beek, Esquire, Fredericton; David
W. Jack, Esquire, Saint Andrews; A. J. Wetmore, Esquire, Saint
George; Thomas Moses, Esquire, West Isles; Robert Watson, Es-
quire, Saint Stephen; T. H. Peters, Esquire, Miramichi; J. W. Wel-
don, Esquire, Richibucto; Daniel Hanington, Esquire, (Shediac,)
John M'Almon, Edward Wood, Wm. Carter, Westmorland; George
Hoit, Stephen Hubble, Sunbury; D. Stewart, Esquire, Restigonche;
John Miller, Esquire, Bathurst; Bill Chappel, Esquire, Bay Verte;
H. E. Dibblee, Esquire, Woodstock; Cochran Craig, Esquire, Grand
Manan.

Mr. Henry Whiteside, Treasury Clerk.

Benjamin C. Chaloner, Esquire, Guager of Dutiable Articles, and
Tide Surveyor at the Port of Saint John.

David W. Jack, Esquire, ditto ditto, at Saint Andrews.

William Joplin, ditto ditto at Miramichi.

Tide Waiters.—Stephen Humbert, John Abrams, and Thomas
Griffiths, Saint John; William Payne, Fredericton; Edmund Walsh,
Saint Stephen; Charles M'Donald, Restigonche; Henry Johnston,
and William Stoop, St. Andrews; R. Sutherland, St. George; Alex-
ander Anderson, Bathurst; E. J. Stewart, Dalhousie; George Sive-
ret, Sen., Shippegan and Caraqueet; John Craven, Woodstock.

George D. Robinson and Isaac Woodward, Esquires, Appraisers
of Dutiable Articles at Saint John.

Hon. Thomas Wyer, J. W. Street, James Douglas, and William
Garnett, Esquires, Appraisers of Dutiable Articles in Charlotte
County.

OFFICE OF AUDIT.

Honorable Frederick P. Robinson, Auditor General.

PH

His
cil, Pat
Institut
draws,
John, C
Officer

CHUR

Patro
Hon. a
dents, T
Membe
Majesty
the Jud
citor G
and W.
Assista

UN

Patro
Chance
Archde
deacon
Chipma
liam Bl
Street,
Rev. Ed
and Mo
Rev. D
Jack, A
COL
Mr. Jar

THE

The
being;
Membe
Speake
John: t
Church
Hon. E
Scovil,

St. J
n and
Treasu
Agents,

PROVINCIAL VACCINE ESTABLISHMENT.

Central Station—Saint John.

His Excellency the Lieutenant Governor and Her Majesty's Council, Patrons of the Institution; Hon. William Black, Director of the Institution; Committee: Fredericton, Hon. W. F. Odell; St. Andrews, Rev. Jerome Alley, D. D.; Vaccinating Surgeons: Saint John, George P. Peters, Esquire, M. D.; Fredericton, the Medical Officer in charge of the Troops.

CHURCH SOCIETY OF THE ARCHDEACONRY OF NEW BRUNSWICK.

Patron, His Excellency the Lieutenant Governor; President, The Hon. and Right Rev. the Lord Bishop of the Diocese; Vice Presidents, The Venerable the Archdeacon, the Hon. the Chief Justice, the Members of Her Majesty's Executive Council, the Members of Her Majesty's Legislative Council, the Speaker of the House of Assembly, the Judges of the Supreme Court, Her Majesty's Attorney and Solicitor Generals, being members of the Society, with William Scovil, and W. F. W. Owen, Esquires; Secretary, the Rev. Frederick Coster; Assistant Secretary, the Rev. John M. Sterling.

UNIVERSITY OF KING'S COLLEGE—FREDERICTON.

Patron, the Queen; Visitor on Her Majesty's behalf, the Bishop; Chancellor, the Administrator of the Government; President, the Archdeacon; Council—the Lieutenant Governor, Venerable Archdeacon Coster, Rev. Dr. Jacob, Hon. W. Botsford, Honorable Ward Chipman, L. L. D., Honorable John S. Saunders, Honorable William Black, D. C. L., Honorable Neville Parker; Honorable G. F. Street, Registrar. COLLEGE—Vice President and Principal—The Rev. Edwin Jacob, D. D.; Professors—Classical Literature, History, and Moral Philosophy—Rev. Dr. Jacob; Metaphysics and Divinity, Rev. Dr. Jacob; Mathematics and Natural Philosophy—W. Bryden Jack, A. M.; Chemistry and Natural History—James Robb, M. D.

COLLEGIATE SCHOOL.—Masters, Mr. George Roberts, and Mr. James Holbrook; French Tutor — —.

THE GOVERNOR AND TRUSTEES OF THE MADRAS SCHOOL IN NEW BRUNSWICK.

The Lieutenant Governor or Commander in Chief for the time being; the Lord Bishop of the Diocese; the Chief Justice; the Members of Her Majesty's Council; the Judge of the Admiralty; the Speaker of the House of Assembly; the Mayor and Recorder of Saint John; the Ecclesiastical Commissary of the Province; the Rector and Churchwardens of Trinity Church in Saint John; together with the Hon. Edward J. Jarvis, the Rev. George Burns, D. D., and William Scovil, Esq.; R. F. Hazen, Esq., Treasurer; J. W. Boyd, Esq. Clerk.

EMIGRANT DEPARTMENT—NEW BRUNSWICK.

St. John, M. H. Perley, Esquire, Chief Agent; Fredericton, Edmund Ward, Esquire, Assistant Emigration Agent. The Deputy Treasurers at the several Out Ports of the Province act as Emigrant Agents, when requisite.

NEW BRUNSWICK BAPTIST EDUCATION SOCIETY.

Reverend Joseph Crandall, President; Reverend John Masters, and John T. Wilmot, Esquire, Vice Presidents; Asa Coy, Esquire, Treasurer; Messrs. John T. Smith, and Samuel W. Babbitt, Secretaries; Rev. S. Robinson, Hon. W. B. Kinnear, Jarvis Ring, Aaron Hartt, J. T. Smith, and W. D. Hartt, Esquires, Committee of Management.

Teacher in the Male Department, Mr. Hall, Principal.

In the Female Department, Mrs. Ackerley, Principal.

BANKS.

Bank of New Brunswick, (St. John.) Capital £100,000. President, Thomas Leavitt, Esquire; Directors: John Boyd, M. D., L. H. Deveber, Robert F. Hazen, Hon. Hugh Johnston, Charles C. Stewart, George Swinney, W. P. Ranney, and William Wright, Esquires. Cashier, Richard Whiteside, Esquire; Solicitor, John M. Robinson, Esquire; Notary, James William Boyd, Esquire.

Commercial Bank of New Brunswick, (St. John.) Incorporated by Royal Charter. Capital £150,000, with power to increase to £300,000. President, John Duncan, Esquire; Directors: I. L. Bedell, Mark Dole, John Duncan, Stephen Gerow, R. L. Hazen, William Jack, Daniel J. McLaughlin, William Parks, A. S. Perkins, Charles Simonds, William O. Smith, James Travis, and A. W. Whipple, Esquires. Cashier, George P. Saucton, Esquire; Solicitor, Robert L. Hazen, Esquire.

Commercial Branch Bank, (Newcastle, Miramichi.) Committee of Management: William Loch and Alexander Rankin, Esquires; Cashier, Thomas C. Allen, Esquire.

Commercial Bank Agency at Woodstock. Committee of Management, Charles Perley, Charles Connell, Richard English, and A. B. Sharp, Esquires; Cashier, G. F. Williams, Esquire.

Central Bank of New Brunswick. Capital, £35,000, with power to increase to £50,000. President, William J. Bedell, Esquire; Cashier, Samuel W. Babbit, Esquire; Solicitor, George J. Dibblee, Esquire.

Central Bank Agency, at Woodstock. Committee of Management, Richard Ketchum, James Robertson, and A. B. Sharp Esquires. Agent, A. B. Sharp, Esquire.

Charlotte County Bank. Capital £15,000. President, Hon. Harris Hatch; Cashier, John Rodgers, Esquire.

Saint Stephen's Bank. Capital, £25,000. President, William Porter, Esquire; Cashier, David Upton, Esquire.

Bank of British North America. (Established in London.) Capital £1,000,000 sterling, in 20,000 shares, of £50; (three fourths of which have been subscribed in England, and the remainder in the North American Colonies,) with power to increase the capital. Manager of the Branch at Saint John, Alfred Smithers, Esquire. Local Directors at Saint John: James Kirk, Hon. John Robertson, W. H. Street, and J. Pollock, Esquires; Standing Counsel, Hon. G. F. Street, Solicitor General; Solicitor and Notary, Geo. Wheeler, Esquire.

Fredericton Branch. Manager, George Taylor, Esquire; Directors, S. J. Barker, John Simpson, and James Taylor, Esquires.

City of Saint John Savings' Bank, (Saint John). His Excellency the Lieutenant Governor, Patron; Hon. Ward Chipman, L. L. D.; Hon. Hugh Johanson, John R. Partelow, Thomas Barlow, John Ward, Junior, R. F. Hazen, and R. W. Crookshank, Esquires, Trustees; The Bank of New Brunswick, Treasurer; Daniel Jordan, Esquire, Cashier and Register.

COUNSELLORS AND ATTORNIES PRACTISING IN THE PROVINCE.

Fredericton.—Honourable Charles J. Peters, (*Attorney General*,) William Tyng Peters, Honourable John S. Saunders, Hon. George F. Street, (*Solicitor General*,) Daniel L. Robinson, George J. Dibblee Charles P. Wetmore, T. R. Wetmore, Lemuel A. Wilmot, (*Queen's Counsel*,) George Botsford, Charles Fisher, J. A. Harding, George F. H. Minchin, William H. Odell, David S. Kerr, John M. Mahon, Francis A. H. Stratton, John C. Allen, George Lee, Junior, William Watts, B. W. Hammond, George N. Segee, James P. Wetmore, James F. Berton, Edward H. Wilmot, William H. Shore, Andrew C. Black, and Colin Irvine Allan, Esquires.

Saint John.—Henry Swymmer, Hon. Wm. B. Kinnear, (*Queen's Counsel*,) Alfred L. Street, James Peters, Junior, William End, (*Queen's Counsel*,) Francis A. Kinnear, Robert F. Hazen, William Wright, Peter Stubs, H. N. H. Lugin, John M. Robinson, Mcas H. Perley, Robert L. Hazen, Richard Sands, Junior, John Johnston, James William Boyd, George Wheeler, William H. Needham, William Jack, Judah H. Hartt, Duncan Robertson, Charles Johnston, Wm. S. Sands, N. W. Wallop, John H. Gray, James W. Peters, Robertson Bayard, William J. Ritchie, Charles E. Millidge, Elias Tupper, Charles W. Wardlaw, Samuel J. Scovil, William M. Greenwood, William R. M. Burtis, Edward B. Peters, Charles Duff, Gustavus R. Jarvis, William T. Peters, Junior, James A. Harding, William C. Hare, James J. Kaye, Edgar Wheeler, William E. Twynham, William M. Howe, Charles Doherty, George F. Rouse, John G. Campbell, Humphrey T. Gilbert, B. Boyd Kinnear, and George W. Ritchie, Esquires.

Saint Andrews.—Hon. Harris Hatch, Samuel H. Whitlock, Jas. W. Chandler, Richard M. Andrews, George Dixon Street, Wellington Hatch, Thomas Burton Wilson, Thomas Wyer, Junior, Esquires.

Miramichi.—Thomas H. Peters, John A. Street, (*Queen's Counsel*,) William Carman, Junior, George Kerr, Edward Williston, John M. Johnson, Allan Davidson, Esquires.

Dorchester.—Hon. Edward B. Chandler, (*Queen's Counsel*,) T. S. Sayle, Christopher Miller, Junior, M. B. Palmer, Robert K. Gilbert, and Thomas C. Chipman, Esquires.

Dalhousie.—Andrew Barberie, Theophilus Desbrisay, Esquires.

Bathurst.—Richard Carman, James S. Morse, Esquires.

Restigouche.—Chipman Botsford, Patrick Coughlan, Esquires.

Hopewell.—Samuel G. Morse, Esquire.

Bend of Petitcodiac.—Bliss Botsford, Esquire.

St. Stephens.—George Stilman Hill, Alexander Campbell, Stephen H. Hitchings, T. B. Abbott, G. J. Thomson, Esquires.

Saint George.—Samuel G. Andrews, Wm. B. Chandler, Peter Clinch, Jun., Esquires.

Richibucto.—John W. Weldon, William Chandler, Esquires.

Gagetown.—Henry S. Peters, Esquire.

Kingston.—William Simpson, Edward B. Smith, Esquires.

Woodstock.—B. Crannel Beardsley, A. K. Smedes Wetmore, A. Nelson Garden, David Lewis Dibblee, William T. Wilmot, Charles Edward Beardsley, Lewis P. Fisher, George Connell, Horace H. Beardsley, and William M. Maclauchlan, Esquires.

Tobique.—Andrew W. Rainsford, Esquire.

Oromocto.—Edward A. Clowes, Andrew R. Wetmore, Esquires.

Non-Residents.—Charles Inglis Haliburton, John D. Kinnear, W. H. Lee, Jonathan M'Cully, James S. Morse, Alexander Stewart, J. Stewart, J. H. Peters, Wm. M. Hoffman, Esquires.

PROVINCIAL MILITIA.

STAFF

His Excellency Lieutenant Colonel Sir WILLIAM M'BEAN GEORGE COLEBROOKE, K. H., Commander in Chief.

The Honorable Lieutenant Colonel George Shore, Adjutant General—21st March, 1821.

The Honorable Lieutenant Colonel W. H. Robinson, Assistant Adjutant General—11 March, 1839.

Lieutenant Colonel John Allen, Quarter Master General—4 May, 1839.

Lieutenant Colonel Hayne, N. B. Regt. of Artillery, Provincial Aid-de-Camp—7 May, 1841.

Captain Charles Drury, Assistant Provincial Aid-de-Camp—26 July, 1841.

Major Lemuel Allen Wilmot, Judge Advocate General—6 August, 1834.

Major George Priestley, Staff Adjutant—9 May, 1839.

STAFF OF THE ARMY.

SERVING IN THE PROVINCE OF NEW BRUNSWICK, UNDER

Major General Sir JEREMIAH DICKSON, K. C. B., Commanding Her Majesty's Troops in Nova Scotia, New Brunswick, and its Dependencies.

_____, _____, _____ Regiment, Commanding Her Majesty's Troops in New Brunswick.

Garrisons.—Saint John, Lieut. Colonel Slade, (30th Regiment,) Commandant; Town Major Gallagher, (H. P. 96th Regt.); Fredericton, Lieutenant Colonel _____, Commandant; St. Andrews, Lieut. E. Hearde, (30th Regt.), ditto; Woodstock, Capt. _____, ditto.

Chap
John, I
Cum
Assistu
White,
Deputy
missuri
Ordn
Ordnan
Robert
William
Barr
A. Wh
Barrack
Royal
L. And
ricton,
Boar
Mee, a

OFFI
Royal
Neil; E
30th
Major,
Andrew
J. B. E
Ensign
R. C. M
Regime
MacDo
Cockbu

Mart
the his
whatev
for the
version

Stand
wish to
a man-
not gue
They r
to unde
strengt
over w
ashore
Nev

Chaplains.—Fredericton, Ven. Archdeacon Coster, A. M.; St. John, Rev. B. G. Gray, D. D.; St. Andrews, Rev. J. Alley, D. D.

Commissariat Department.—St. John, Oliver Goldsmith, Esq., Assistant Commissary General; Robert Baker, and Augustus R. White, Commissariat Clerks; Fredericton, Richard Inglis, Esq., Deputy Assistant Commissary General; James D. Willan, Commissariat Clerk.

Ordnance Department.—Frederick C. Frith, Esquire, Deputy Ordnance Storekeeper; Lieutenant Samuel Huyghue, First Clerk; Robert Pickthall, Second Clerk; William Bond, Storehouseman; William Harrison, Armourer; James Emison, Office Keeper.

Barrack Department.—St. John, Capt. French, Barrack Master; A. White, Barrack Sergeant; Fredericton, J. E. Woolforde, Esq., Barrack Master; William Fairburn, Barrack Sergeant.

Royal Engineer Department.—St. John, Major F. W. Whinyates; L. Anderson, Clerk; H. Hennigar, Overseer of Works; Fredericton, Wm. Crewdson, Clerk of Works.

Board of Respective Officers.—Major F. W. Whinyates, Capt Mee, and F. C. Frith.

OFFICERS OF CORPS SERVING IN THE PROVINCE.

Royal Artillery.—St. John, Captain Mee, Commanding; Lieut Neil; Fredericton, Capt. Poulden.

30th Regiment at Saint John.—Lieutenant Colonel, —Slade; Major, H. S. Ormond, *lt. col.*; Captains, J. W. Poyntz, R. A. Andrews, C. Sillery, E. J. Grant; Lieutenants, W. A. Steele, D. J. B. Edwards, R. W. Smith, R. W. Wilkinson, G. F. Broome; Ensigns, J. B. Pattullo, C. D. Oliver, J. H. Keough; Paymaster, R. C. MacDonald (Lieut. Col. King's County, or Castle Tioram, Regiment of Highlanders, Prince Edward Island); Adjutant, A. MacDonald, *lt.*; Quarter Master, J. Ward; Assistant Surgeon, J. Cockburn. At Saint Andrews, Lieut. W. H. Hearde.

MISCELLANEOUS.

Martyrdom.—There is no truth more abundantly exemplified in the history of mankind, than that the blood of martyrs, spilt in whatever cause, political or religious, is the best imaginable seed for the growth of favor towards their persons, and, as far as conversion depends on feeling, of conversion to their opinions.

Stand Fast.—Under all the trials of life *stand fast!* Would you wish to live without trial? Then would you wish to die but half a man—at the very best but half a man. Without trial, you cannot guess your strength. Men do not learn to swim upon a table. They must go into deep water, and buffet the surges. If you wish to understand their true character, if you would know their whole strength, and of what they are capable, throw them overboard!—over with them! and if they are worth saving, they will swim ashore themselves.

Never speak evil of any one, on any pretence whatever.

Profanity.—We ask for no surer indication of an ill-regulated mind, than is to be derived from the conversation of a person habitually profane. We desire no greater proof of vulgarity than is to be drawn from the constant recurrence of blasphemous expressions in the intercourse of men with each other; and as we would shun the pestilential atmosphere of an infected room, so would we shun association with, and the company of those who in every sentence they utter, impiously blaspheme the name of the Deity. The practice of profanity is almost universally prevalent, and from the lips of the aged and the young, oaths proceed shocking to the sensibility of every person of correct thought. Why is this? The answer is plain, and the reason easily divined. We are all, more or less, creatures of habit, imbibed by imitation of the practices of others. Men swear, and children imitate them; constant repetition sears the conscience, and in a short time from the period of using the first oath, the practice is thoughtlessly indulged, and the swearer will utter the most impious language without compunction.

Good Nature.—Good nature is the best feature in the finest face; wit may raise admiration, judgment may command respect, and knowledge attention. Beauty may inflame the heart with love, but good nature has a more powerful effect: it adds a thousand attractions to the charms of beauty, and gives an air of beneficence to the most homely face.

Sensuality.—How different is the night of nature from that of man, and the repose of her scenes from the misrule of his sensual haunts; what a contrast between the refreshing return of her morning, and the feverish agonies of his day dreams.

Self-Knowledge.—We often hear people call *themselves* fools. Now a man ought to know whether he is a fool or not, and he would not say it if he did not believe it; and there is also a degree of wisdom in the discovery that one has been a fool, for thereby it is intimated that the season of folly is over. Whosoever therefore actually says that he was a fool formerly, virtually says that he is not a fool now.

Sentiment—A worthy writer of a love tale, in describing his heroine said, "Innocence dwells in the rich curls of her dark hair." A happy critic, commenting on this passage, observed, "Sorry to hear it, because we think it stands a perilous chance of being combed out."

Aggravations.—A dull razor, a dull apprentice, a dull newspaper, and dull times, are the greatest aggravations that a man can put up with.

Fashionable Routs.—"How strange it is," said a lady, "that fashionable parties should be called *routs*! Why rout formerly signified the defeat of an army, and when the soldiers were all put to flight or to the sword, they were said to be routed." "This title has some propriety too," said a clergyman, "for at these meetings whole families are frequently *routed out of house and home*."

Gipsies—The first appearance of Gipsies in Europe was in 1417: they reached Switzerland in 1419; Italy in 1422; France in 1427; and England in 1512. The total number in Europe is estimated at 7 or 800,000, of whom 40,000 are supposed to belong in Spain.

Valentines.—Menage, in his "Etymological Dictionary," has accounted for the term "Valentine," by stating that Madame Royale, daughter of Henry IV. of France, having built a palace near Turin, which, in honor of the saint, then in high esteem, she called the Valentine; at the first entertainment which she gave in it, she was pleased to order that the ladies should receive their lovers for the year by lots, reserving to herself the privilege of being independent of chance, and of choosing her own partner. At the various balls which this gallant princess gave during the year, it was directed that each lady should receive a nosegay from her lover, and that at every tournament the knight's trappings for his horse should be furnished by his allotted mistress, with this proviso, that the prize allotted should be her's. This custom, says Menage, occasioned the parties to be called Valentines.

A singular fact in vegetation presents itself at the Glacier of Roccosecco, which forms one of the branches of the Berneria, in Switzerland. On its summit there is a valley nearly horizontal, filled with ice; on this the avalanches have brought down masses of earth. This earth, thus resting on a basis of ice, produces a number of Alpine plants, that supply abundant and nourishing food to the flocks of the inhabitants of Samaden. There are documents which prove that this singular pasture has been used since the year 1536,

In Paris there are scores of little shops, where gentlemen may sit on a raised bench, and read the newspapers, whilst a *garçon* cleans their boots—for *two sous*.

Accommodation for Three Half-pence.—A gentleman on a wet evening entered the bar of an inn, and while standing before the fire, called to a servant girl who had come to receive his orders. "Margaret, bring me a glass of ale, a clean pipe, a spittoon, a pair of snuffers, and the newspaper. And Margaret, take away my great coat, carry it into the kitchen, and hang it before the fire to dry, and dry my umbrella, and tell me what o'clock it is; and if Mr. Higgins should come in, request him to come this way, for I think 'tis near seven, and he promised to meet me at that hour. And Margaret, get me change for a sovereign, and see that all the change is good; take for the glass of ale out of it, and put the coppers in a piece of paper. And Margaret, tell Jemima to bring some more coals, take away the ashes, and wipe the table. And Margaret, pull down the blinds, shut the door, and put to the window shutters." N. B. The gentleman found his own tobacco.

Bad.—Why is a widower, going to be married, like Fau de Cologne? Because he is *re-wiving*.

Very Bad.—Why is it better for a man to have two losses than one? Because the first is a loss, and the second is *a-gain*.

RECIPES FOR PLAIN COOKING.

Apple Bread.—A very light pleasant bread is made in France, of a mixture of apples (when pared, cored and baked, or stewed with a very little water,) and flour, in the proportion of one part of apples to two of flour, employing the usual quantity of purified yeast, which must be beat up in the flour with the warm pulp of the apples. The sponge may then be considered set. Let it rise eight or ten hours, then make it up, and bake it in long loaves like rolls. Little or no water is necessary.

Potatoe Bread—To fourteen pounds of good sound flour, either coarse or fine, take five pounds of potatoes, pared and washed very clean; boil them in a proper quantity of water till quite soft; mash them, and rub them through a wire sieve into the middle of the flour, adding water sufficient to make it of a proper heat, and some salt; when well mixed, add a due proportion of yeast; let it rise an hour or more in the sponge; and then knead it well. Let it stand to rise an hour or longer, according to the quantity, and bake it in the usual manner.

Clap Bread.—Mix well some oatmeal and water, of about the same consistence as common dough; then roll it into cakes as thin as possible; bake them on a stone or iron plate of a moderate heat over the fire; when baked on both sides, set them on one edge before the fire till perfectly dry. This bread will continue good many weeks, if kept in a dry place.

Bread Pudding.—Take a loaf of white bread, cut a hole in the bottom, add as much new milk as it will soak up; tie it in a cloth, and boil it an hour.

Another.—Take three pints of milk, one pound of baker's bread, four large spoonfuls of sugar, and three of molasses; put in a layer of bread cut thin, then a few raisins, then bread, &c.; pour on the milk and sweetening. If baked one hour and a half, it is sufficient. If boiled, two or three hours. Boil it in a tin pudding boiler.

Newly invented Pudding.—Take some good sweet apples; wash and core, but do not pare them; chop them as fine as cranberries, put them in a kettle, and put in just enough of good milk to cover them, and if you choose add a little salt; some even add a little cinnamon or ginger. Next, proceed to scald them, but without burning them, and while scalding them, stir in fine Indian meal enough to form the milk into a thin batter; then put the mess into a deep pan, set it into an oven or stove, well heated, and bake it about six hours.

Potatoe Pudding.—Two pounds of potatoes boiled and mashed, one pound of wheat meal and a little salt; mix well together into a stiff paste; tie it in a wet cloth, dasted with flour. Boil it two hours.

Arrow-root Jelly.—Stir a table spoonful of arrow-root powder into half a cup of water, pour it into a pint of boiling water, and let it cook six or eight minutes. Sweeten it to your taste.

Rice Jelly.—Boil a quarter of a pound of rice flour with half a pound of loaf sugar, in a quart of water, till the whole becomes a glutinous mass. Then strain it, and let it cool.

Fr

Ho

Br

Ma

Pa

Da

W.

Me

Fre

On

To

Go

Kin

Hea

Was

Jem

Tille

Wid

Fred

To

Tilt

M'L

Gray

M. G

Wat

Shav

Burn

Sain

S

To

Beatt

Quac

Vang

Melv

Big S

Tuft

Little

Marti

ROADS AND DISTANCES.

<i>From St. John to Fredericton, by the Nerepis.</i>	Miles.	<i>St. John to Shepody.</i>	Miles.
Harding's, (Yorkshire tav.)	4	To Debone's, French Village,	30
Brundage's,	10	Drummond's,	12
Mather's (Douglas Arms),	4	M'Manus's,	12
Purdy's,	12	Dorman's,	12
Darby Gillan's,	10	Meeting House, Shepody,	13
W. Smith's,	7	Total,	79
Morrison's (Oromocto),	7	<i>St. John to Amherst, N. S., via Sussex Vale, Dorchester, &c.</i>	
Fredericton,	11	To Robinson's,	5
Total, 65	—	Hennigar's,	4
<i>On the Eastern side of the River.</i>		Campbell's,	3
To Black's Farm,	7	Ketchum's,	4
Gondola Point,	9	Hampton Ferry,	7
Kingston,	4	Hay's,	5½
Head of Belleisle,	14	Baxter's (Finger Board),	4½
Washademoac,	13	Roache's,	10
Jemseg Ferry,	6	M'Monagle's,	13
Tilley's (Sheffield),	13	Total,	46
Widow Perley's,	8	To Sussex Vale,	—
Fredericton,	12	To M'Leod's (Portage),	12
Total, 86	—	Pittfield's,	13
<i>St. John to St. Andrews.</i>		Nixon's,	12
To Byrne's (Lakefield),	9	Lewis',	12
Tilton's (Musquash),	6½	Total,	—
M'Lauchlan's,	6	To Bend of Peticodiac,	95
Gray's,	5	Charter's, Memramcook,	16
M. Gowan's (half way),	6½	Hickman's, Dorchester,	8
Watters',	8	Total,	—119
Shaw's, (Magaguadavic),	9	To Dorchester,	—
Burn's, (St. Patrick),	10	Evans', Westcock,	7
Saint Andrews,	12	Wells', Tantamar,	10
Total, 72	—	Ferguson's, Amherst,	9
<i>St. John to Martin's Head.</i>		Total,	146
To Cody's,	11	<i>Amherst to Halifax.</i>	
Beatty's,	9	To Stewart's,	10
Quaco,	11	Hewson's, River Philip,	9
Vaughan's Creek,	1½	Purdy's (mountain),	10
Melvin or Fuller's Beach,	4½	Sutherland's,	6
Big Sulmen River,	3	Yewill's, Londonderry,	10
Tuft's (along shore),	1½	Blanchard's, Truro,	15
Little Salmon River,	4	Hill's, Stewiacke,	17
Martin's Head,	4	Miller's, Gay's River,	9
Total, 48½	—	Keyes',	10
		Shultz',	9
		Halifax,	11½
		Total,	120½

W. L. AVERY, GENERAL PRINTING ESTABLISHMENT, SAINT JOHN, N. B.

Every variety of **BOOK and JOB PRINTING** executed in the neatest manner, and on the lowest terms.

*Business, Visiting, and Ball Cards, printed in a superior style, with Gold Bronze, of various shades; specimens shown at the office.
On Hand: A general assortment of School Books & Stationery.*

Counting House Calendar.	
1848	1849
SUNDAY	SUNDAY
MOND.	MOND.
TUESD.	TUESD.
WEDNESD.	WEDNESD.
THURSD.	THURSD.
FRIDAY	FRIDAY
SATUR.	SATUR.
JAN.	JAN.
FEB.	FEB.
MAR.	MAR.
APR.	APR.
MAY.	MAY.
JUNE.	JUNE.
JULY.	JULY.
AUG.	AUG.
SEPT.	SEPT.
OCT.	OCT.
NOV.	NOV.
DEC.	DEC.

Religious, Literary, Scientific, and Historical Works; Music; Accordions; Ladies' and Gents' Dressing Cases; Glass-boards; Musical Instruments; Clocks, Globes, &c., &c.

Pamphlets, Catalogues, Handbills, Show-bills, Circulars, Bank Checks, Bills of Lading, Receipts, Druggists' Labels, &c. printed at short notice. **BLANKS** of every description always on hand.

BOOKBINDING,

In its various branches executed with neatness and despatch.

* * All kinds of **RULING** executed on liberal terms.

Files.
 6
 3
 5
 7
 7
 6-64
 2
 8
 3
 8
 10
 3
 18-62
 12
 15
 7
 3
 1
 24
 14
 36
 18
 22
 22
 15
 18
 12-220
 —
 total, 346
 —
 az.
 19
 58
 27
 45
 —
 total, 149
 —
 12
 16
 13
 12
 26
 16
 —
 total, 95
 —
 73
 67
 —
 total, 140

MAP OF NEW BRUNSWICK.





Βίτουρ
Βυρραγ
Ρελμινσ
Γρεσάδ
Βιολυπία
Κυακ
Ιόλη
Κενμελακ



COTIA

