

Wikidata for authority control

Sharing museum knowledge with the world

Alicia Fagerving

Wikimedia Sverige

alicia.fagerving@wikimedia.se

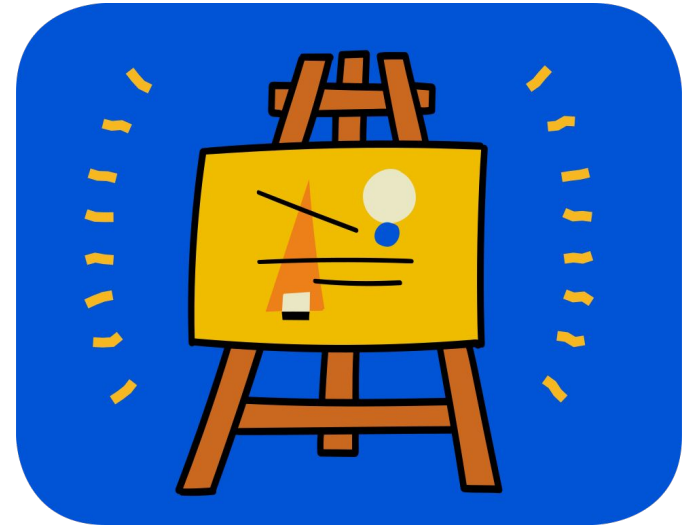
Background

Wikidata would not be where it is today without data from GLAMs!

Volunteers do a lot of work with it...

But GLAM professionals can make excellent Wikidatans.

They take Wikidata seriously!



Our work

Usable authorities for data-driven cultural heritage research

- WMSE + Nationalmuseum (art museum) and Statens Historiska Museer (historical museum)
- *Investigate whether vocabularies as Linked Data stimulate new data-driven research on museum collections and whether Wikidata is a suitable platform for linking different authority files and vocabularies*



Two main parts

1. Upload the data about the people in the museums' authority files to Wikidata
2. Visualise that data to make it interesting, show connections – to see whether the use of Wikidata can stimulate new data-driven research



Welcoming GLAM professionals to Wikidata

- A small project group with some previous knowledge of Wikipedia, Wikimedia Commons.
- Regular meetings, training
 - How does Wikidata work?
 - How are cultural heritage items (artworks institutions, artists) modelled?
 - SPARQL



Wikidata @wikidata · 30 juin

Have you written your own SPARQL query yet?

30% Huh? What's SPARQL?

24% I adapted an example

18% Yeah but it was hard

28% Yes and I owned it!

219 votes

OpenRefine is great!

- It looks like a spreadsheet!
- Easy to import and export data in different formats
- Covers all the steps
 - analyse the data at hand
 - clean up – using basic GREL
 - reconciliation
 - Wikidata schema and upload
- Good documentation
- Actively maintained, the effort to learn it pays off long-term



OpenRefine

Internal work

OpenRefine turned out to be a great tool to work with the museums' data internally and prepare them for a Wikidata sync

- Discover posts with missing data
- Clean up duplicate posts
- Opportunity and time to get an overview of what's exactly in there



On Wikidata...

- **P2538** – Nationalmuseum Sweden actor ID
 - 9795 uses, some of which had been added previously by the community
- **P9495** – National Historical Museums of Sweden agent ID
 - 7140 uses, new property, all added within this project

Beskow, August

Förnamn August

Efternamn Beskow

Födelsedatum 1880

Dödsdatum 1946

Yrke/verksamhet Ämbetsman

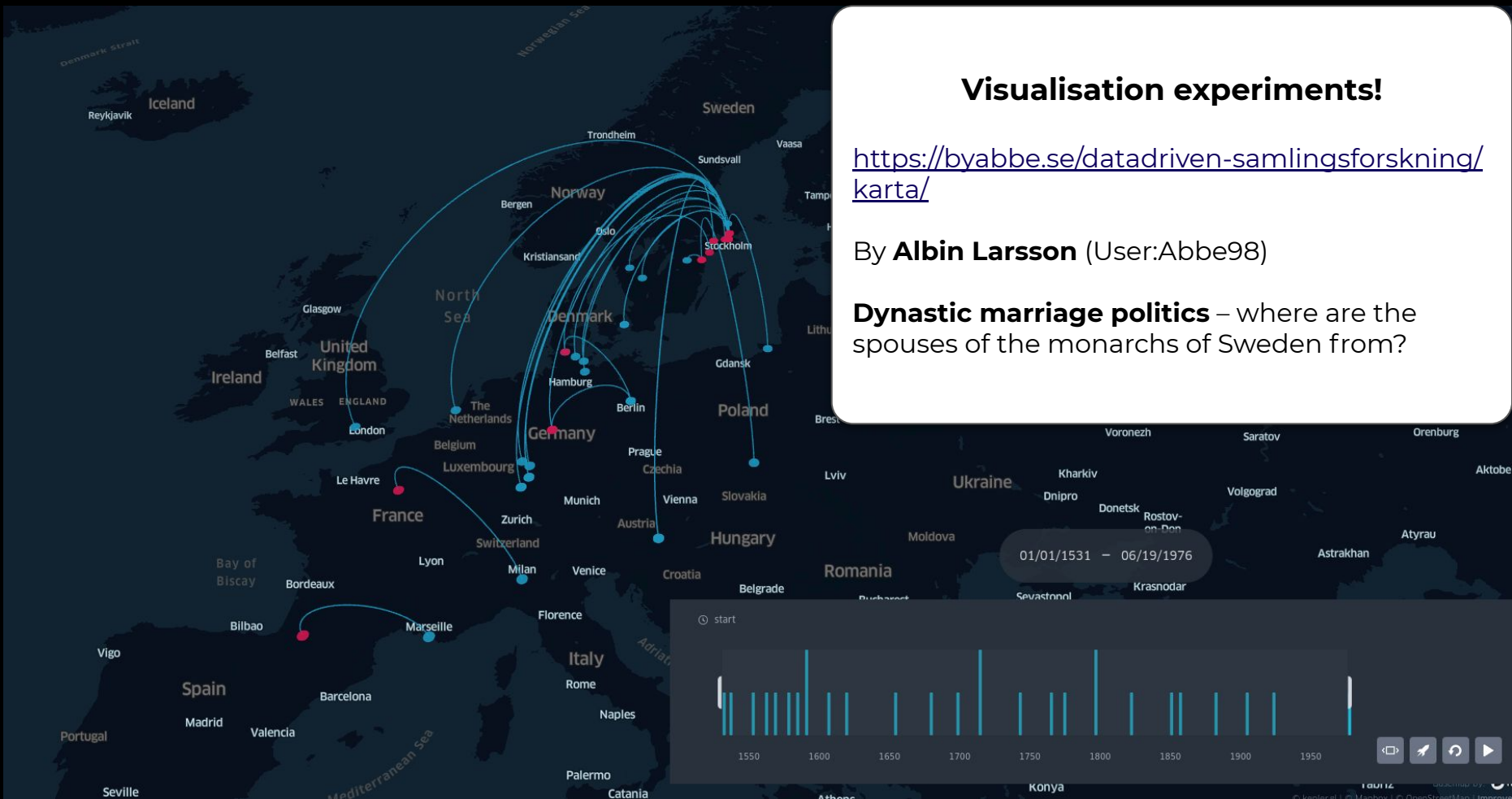
Externa källor <http://www.wikidata.org/entity/Q5574680>

Visualisation experiments!

<https://byabbe.se/datadriven-samlingsforskning/karta/>

By **Albin Larsson** (User:Abbe98)

Dynastic marriage politics – where are the spouses of the monarchs of Sweden from?



Gösta Florman ▼

Nationalmuseum, 5 av 5 ↻



Statens historiska museer, 5 av 38 ↻



Visualisation experiments!

<https://byabbe.se/datadriven-samlingsforskning/jamforelse>

By **Albin Larsson** (User:Abbe98)

Comparison – works by an artists in the collections of the two museums

Skills involved

- SPARQL
- GREL
- Wikidata structure
- Wikidata community norms
 - how to create a property?
 - what are the notability criteria?
 - who can delete items?
 - how to discuss with others?



Property talk:P9495

[Wikidata item not found.](#)

Documentation

National Historical Museums of Sweden agent ID

[Start a query](#) - [Current uses](#) - [Statistics by class](#) - [String length](#) -

authority identification for an agent (artist, owner, maker etc. Can be both persons and institutions) in the collections of the National Historical Museums of Sweden

Represents

[samlingar.shm.se](#) (Q106592165)

Applicable "stated in" value

[samlingar.shm.se](#) (Q106592165)

Data type

External identifier

Allowed values

[0-9A-Z]{8}-[0-9A-Z]{4}-[0-9A-Z]{4}-[0-9A-Z]{4}-[0-9A-Z]{12}

Example

[Gustavus Adolphus of Sweden](#) (Q52938) → [12B982E1-011A-4A93-A258-08FA34B1FC22](#)

[Wilhelmina von Hallwyl](#) (Q2576159) → [AFFBDE1B-4701-4327-B74A-C959F345B5A0](#)

[no label](#) (Q61270897) → [8BE57501-C82B-4288-8D8C-52B7535D78DD](#)

<https://samlingar.shm.se>

Source

Formatter URL

[https://samlingar.shm.se/person/\\$1](https://samlingar.shm.se/person/$1)

Related to country

[Sweden](#) (Q34) (See 87 others)

See also

[Nationalmuseum Sweden actor ID](#) (P2538), [Swedish Open Cultural Heritage URI](#) (P1260)

Lists

- [Items with the most statements of this property](#)
- [Count of items by number of statements \(chart\)](#)
 - [Items with the most statements](#)
 - [Items with the fewest statements](#)
- [Count of items by number of sitelinks \(chart\)](#)
 - [Items with the most sitelinks](#)
 - [Items with the most sitelinks, but no link to one Wikipedia \(sample: Welsh Wikipedia, cywiki\)](#)
 - [Items with the fewest sitelinks](#)
- [Items with the most identifier properties](#)
- [Items with no other external identifier](#)
- [Items with no other statements](#)
- [Most recently created items](#)
- [Items with novalue claims](#)
- [Items with unknown value claims](#)
- [Usage history](#)
- [Chart by item creation date](#)
- [Database reports/Constraint violations/P9495](#)
- [Man](#)

"So cool! I had no idea about these!"

User:Alicia Fagerving (WMSE)/SHM coverage

< User:Alicia Fagerving (WMSE)

all entities | count | all groupings | without grouping property | below threshold (5) | Grouping by occupation (P106)

Top groupings (Minimum 5 items)			Top Properties (used at least 0 times per grouping)					
↕	Name	Count	date of birth (P569)	date of death (P570)	sex or gender (P21)	country of citizenship (P27)	svenska	English
	writer (Q36180)	970	99.18% (962)	98.76% (958)	99.69% (967)	88.45% (858)	92.89% (901)	99.48% (965)
	politician (Q82955)	805	98.88% (796)	97.89% (788)	100.0% (805)	96.65% (778)	94.16% (758)	100.0% (805)
	painter (Q1028181)	775	98.71% (765)	97.94% (759)	100.0% (775)	93.42% (724)	97.68% (757)	100.0% (775)
	No grouping	654	55.81% (365)	53.52% (350)	58.56% (383)	25.08% (164)	77.98% (510)	90.52% (592)
	university teacher (Q1622272)	474	100.0% (474)	98.52% (467)	100.0% (474)	92.19% (437)	94.51% (448)	100.0% (474)
	historian (Q201788)	446	99.1% (442)	99.33% (443)	100.0% (446)	83.63% (373)	88.79% (396)	100.0% (446)
	military personnel (Q47064)	444	99.55% (442)	97.97% (435)	100.0% (444)	96.17% (427)	95.95% (426)	99.55% (442)
	poet (Q49757)	372	99.46% (370)	99.19% (369)	100.0% (372)	88.71% (330)	92.2% (343)	100.0% (372)
	theologian (Q1234713)	328	99.7% (327)	99.7% (327)	100.0% (328)	86.89% (285)	90.55% (297)	100.0% (328)
	diplomat (Q193391)	278	99.28% (276)	97.84% (272)	100.0% (278)	89.21% (248)	94.24% (262)	100.0% (278)
	engraver (Q329439)	264	98.48% (260)	98.11% (259)	100.0% (264)	82.58% (218)	87.88% (232)	99.62% (263)
	publisher (Q2516866)	256	93.36% (239)	96.88% (248)	98.83% (253)	60.94% (156)	67.97% (174)	98.83% (253)
	sculptor (Q1281618)	254	98.43% (250)	89.76% (228)	99.61% (253)	90.0%	90.0%	90.0%
	drawer (Q15296811)	237	98.73% (234)	98.73% (234)	100.0% (237)	90.0%	90.0%	90.0%
	printer (Q175151)	237	81.86% (194)	94.51% (224)	94.51% (224)	45.0%	45.0%	45.0%
	translator (Q333634)	236	98.73% (233)	99.15% (234)	100.0% (236)	89.0%	89.0%	89.0%
	philosopher (Q4964182)	221	100.0% (221)	98.64% (218)	100.0% (221)	90.0%	90.0%	90.0%
	physician (Q39631)	193	100.0% (193)	98.96% (191)	100.0% (193)	88.0%	88.0%	88.0%
	jurist (Q185351)	176	97.16% (171)	97.16% (171)	100.0% (176)	77.0%	77.0%	77.0%
	Catholic priest (Q250867)	174	100.0% (174)	100.0% (174)	100.0% (174)	73.0%	73.0%	73.0%
	artist (Q483501)	165	93.94% (155)	90.3% (149)	99.39% (164)	87.0%	87.0%	87.0%
	gunsmith (Q1371796)	156	66.03% (103)	67.31% (105)	81.41% (127)	8.3%	8.3%	8.3%
	graphic artist (Q1925963)	152	100.0% (152)	98.68% (150)	100.0% (152)	94.0%	94.0%	94.0%
	priest (Q42603)	150	98.67% (148)	99.33% (149)	99.33% (149)	92.0%	92.0%	92.0%

They love Integrality!

<https://integrality.toolforge.org/>

Provides an easy overview of data coverage for a subset of items – here all items with **P9495** (National Historical Museums of Sweden agent ID) grouped by occupation.

Thanks for your attention!

Get in touch with us:

Alicia Fagerving
WMSE x GLAM
alicia.fagerving@wikimedia.se

Karin Glasemann, PhD
project manager, Nationalmuseum
karin.glasemann@nationalmuseum.se

Albin Larsson
visualisations
albin.post@gmail.com