

Historic, archived document

Do not assume content reflects current scientific knowledge, policies, or practices.

62,39

LIBRARY
RECEIVED
★ AUG 70 1920
U. S. Department of Agriculture

FARQUHAR'S Summer Bulletin

1920



FARQUHAR'S POT-GROWN STRAWBERRIES

ORNAMENTAL EVERGREENS IN TUBS
BULBS — VINES AND ROSES
FLOWER SEEDS FOR SUMMER SOWING

R. & J. FARQUHAR COMPANY

6 South Market Street

Boston, Mass.

NON-WARRANTY. We do not give as to description, quality, productiveness or any other matter, any warranty, express or implied, of any seeds, bulbs, plants, insecticides, fungicides, or fertilizers, which we send out, and we shall not be liable for any mistake made in the filling of any order. If the purchaser does not accept the goods on these terms, they are at once to be returned.

R. & J. FARQUHAR COMPANY.

FARQUHAR'S POT-GROWN STRAWBERRY PLANTS.



Strawberry
William Belt.

All the varieties offered are perfect-flowering (bi-sexual) except where marked P. The latter are pistillate and require a row of a perfect-flowering sort planted every 8 or 10 feet to pollinize their blossoms.

These, if planted in July and August, produce a large crop the next Summer. Being grown in pots they may be shipped to a distance and planted with almost no interruption to their growth. The plants may be set in beds of three rows, one foot apart and one foot distant in the rows, with a space of two and one-half feet between the outside rows of adjoining beds left for a pathway. They may also be planted in single rows three feet apart and one foot apart in the rows.

NEW STRAWBERRIES.

BUCKBEE. (*Originator's description.*) A new hybrid strawberry excelling all others in size, quality, quantity and flavor. Buckbee produces enormous bright glossy red berries which are round in shape and similar in flavor to Chesapeake from which it originated. Price, \$5.00 per doz.; \$35.00 per 100.

KEVETT'S JUBILEE. The New Black Strawberry. (*Originator's description.*) The plants are extremely vigorous and healthy producing an abundance of very dark red luscious fruits of exquisite flavor and giant size well above the ground. Midseason to late. \$3.00 per doz.; \$20.00 per 100.

FARQUHAR'S "SELECT" VARIETIES.

EARLY.

Campbell's Early. One of the earliest berries, unusually productive; fruit large and of a beautiful rich red color.

Excelsior. This is decidedly the best early Strawberry and the earliest good Strawberry. The fruit is of round, conical form, glossy-dark-red color, and of mildly acid flavor.

Glen Mary. Large, conical, bright red berries; fine flavor.

Premier. A wonderfully productive and very early new variety. The mammoth berries are of beautiful form, rich bright red throughout and very delicious. An excellent keeper and fine for shipping. Pot-grown Plants, \$10.00 per 100.

Senator Dunlap. The fruit is large, rich and dark red clear to the centre, with a very rich flavor. It will keep in fair condition for several days on the vines after being ripe enough to pick.

MEDIUM.

Early Jersey Giant. A new, medium-early variety of great merit. The berries are of conical shape with pointed tips and are a bright crimson in color, with a delicious flavor and aroma.

Big Joe. A magnificent new Strawberry of robust growth and very prolific. The berries are light crimson in color, unusually large and of fine quality.

MEDIUM.—Continued.

Marshall. The fruit of this remarkable sort is of enormous size, of handsome, glossy dark crimson color, and of delicious flavor. It is one of the best midseason berries, either for private use or market. It is a vigorous grower and requires good soil and high cultivation. As it does not thrive in all soils, it should not be planted extensively until its adaptability is ascertained.

McAlpin. Very productive, and is considered by many growers to be one of the best of the newer introductions. The berries are a beautiful scarlet in color, very large and of rich, luscious flavor.

LATE TO VERY LATE.

Chesapeake. The plants of the Chesapeake are large and vigorous with rich dark green foliage. The fruit is of large size, deep red in color and of a rich aromatic flavor.

Commonwealth. This is the latest of all Strawberries; bearing large, conical, deep crimson fruit, sweet and of quality equal to the well-known Bubach. Not only an extra large berry, but also very productive, of deep rich color, solid and quite juicy.

First Quality. A strong, healthy and vigorous grower producing a quantity of large pointed berries of delicious flavor. Excellent variety for New England and other northern locations. Pot-grown Plants, \$10.00 per 100.

William Belt. An exceptionally fine berry. In quality it heads the list. The large berries are glossy, deep red; late as Gandy.

POT-GROWN PLANTS of the above "Select" Varieties, from 2½-in. pots, well rooted, delivery in July and August. \$7.00 per 100; \$60.00 per 1000 (except where otherwise priced). Not less than 250 at thousand rate.

SUPERIOR VARIETIES.

For full crop next Summer
plant early.



Strawberry, Marshall.

STANDARD VARIETIES.

EARLY.

Early Ozark. One of the most productive early varieties, producing large dark-red berries of rather acid flavor, but very delicious. The plants are of vigorous growth with fine dark-green foliage.

Sample P. Excellent for either market or home use; prolific, large, firm and delicious.

MEDIUM.

Abington. A strong growing variety of recent introduction. The fruit is of large size, bright red in color, very solid and of excellent flavor.

POT-GROWN PLANTS of the above Standard varieties, from 2½-in pots, well-rooted, delivery in July and August. \$6.00 per 100; \$50.00 per 1,000. Not less than 250 at thousand rate.

MEDIUM.—Continued.

Brandywine. A large heart-shaped berry, perfect in form, bright red in color, firm flesh, red to the center and of rich spicy flavor. A great cropper, especially on heavy soils, holds its fruit well up from the ground and generally succeeds everywhere.

LATE TO VERY LATE.

Gandy. This popular old variety is probably known by most berry growers. It is more largely grown than any other late variety. On sandy soils it is unproductive.

Rewastico. A very productive new variety. The plants are of vigorous growth with an abundance of dark green foliage and producing uniformly large berries. Color rich cardinal red, penetrating to centre.

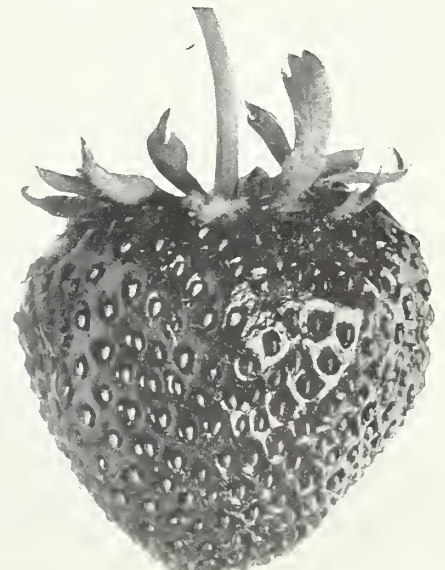
FALL-BEARING STRAWBERRIES.

The Fall-bearing varieties produce fruit at the same season as the ordinary Strawberries, but keep bearing until frost. To get the best results for a late crop, the blossoms must be carefully kept off until July or the plants will completely exhaust themselves before Fall. If the runners are kept cut during the Summer, it will give additional vigor to the late crop.



Strawberry, Commonwealth.

Progressive. This variety is considered to be one of the best perpetual bearing Strawberries. The fruit is rich and sweet, a deep red inside and out: of good medium size and quite firm. **Pot-Grown Plants, \$8.00 per 100.**



Strawberry, Excelsior.

FARQUHAR'S FOLIAGE AND FLOWERING PLANTS.—Continued.



Cyclamen, Farquhar's Giant.

FERNS.

Adiantum Farleyense Gloriosa. (*Glory of Moordrecht.*) This grand new variety is identical in appearance with the variety Farleyense, but has a stronger constitution, and can be grown under the same conditions as any ordinary Maidenhair sort. Plants in 4-in. pots, \$1.00 each; \$10.00 per doz.

Adiantum Hybridum. A very hardy variety producing magnificent fronds. Plants in 4-in. pots, 90 cts. each; \$9.00 per doz.; 5-in. pots, \$1.25 each; \$12.00 per doz.

Adiantum Cuneatum. The popular Maidenhair. An elegant variety with graceful fronds; fine for cutting. Plants in 4-in. pots, 90 cts. each; \$9.00 per doz.; 5-in. pots, \$1.25 each; \$12.00 per doz.

Asplenium Nidus-Avis. (*Bird's Nest Fern.*) Fronds bright green, growing in a crown. Plants in 4-in. pots, 75 cts. each; \$7.50 per doz.; 5-in. pots, \$1.25 each; \$12.00 per doz.

Cyrtomium Rochfordianum. (*New Crested Holly Fern.*) The foliage of this beautiful new fern is of a glossy dark green, the leaflets being waved or undulated on the edges, giving the plant a graceful appearance. Plants in 4-in. pots, 50 cts. each; \$5.00 per doz.

Nephrolepis Exaltata Bostoniensis. (*Boston Sword Fern.*) One of the best Ferns for conservatory or window cultivation. Plants in 4-in. pots, 50 ct. each; \$5.00 per doz.; 6-in. pots, \$1.50 each; 8-in. pots, \$2.50 each.

Nephrolepis Exaltata "Roosevelt." This new variety resembles the Boston Fern in appearance, but produces more fronds, thus forming a bushier plant. The pinnae are beautifully undulated, giving the long fronds a wavy appearance. Plants in 4-in. pots, 50 cts. each; \$5.00 per doz.; 6-in. pots, \$1.50 each.

Nephrolepis Whitmani. (*Ostrich Plume Fern.*) A beautiful crested fern with broad plume-like fronds. Plants in 4-in. pots, 60 cts. each; \$6.00 per doz.

Nephrolepis Verona. Similar to the Whitman Fern, but more compact; fronds beautifully crested. Plants in 4-in. pots, 60 cts. each; \$6.00 per doz.

Miniature Ferns for Jardinieres. In variety. Plants in 2½-in. pots, \$1.50 per doz.; \$10.00 per 100.

Selaginellas in variety, \$3.00 per doz.

DRACAENA.

Baptistii. Long, broad foliage; cream, red and orange. 4-in. pots, \$1.00 each; \$10.00 per doz.

Godseffiana. A distinct variety forming compact graceful specimens; foliage dark green with irregular, creamy-white spots. 3-in. pots 60 cts. each; \$6.00 per doz.

Harmony. Leaves green and white bordered with red. Plants from 4-in. pots, \$1.00 each; \$10.00 per doz.

Massangeana. Leaves green, striped yellow in centre. Plants from 4-in. pots, \$1.00 each; \$10.00 per doz.; 5-in. pots, \$1.50 each; \$15.00 per doz.

Shepherdii. Carmine and green leaves. 4-in. pots, \$1.00 each; \$10.00 per doz.

Sunset. Broad leaves striped red and green. Plants from 4-in. pots, \$1.00 each; \$10.00 per doz.

Terminalis. Foliage olive-green, striped with carmine and pink. Young leaves bright crimson. Plants from 4-in. pots, \$1.00 each; \$10.00 per doz.; 5-in. pots, \$1.50 each; \$15.00 per doz.

Youngii. Foliage bright green when young, changing to metallic bronze. Plants from 4-in. pots, \$1.00 each; \$10.00 per doz.; 5-in. pots, \$1.50 each; \$15.00 per doz.

PALMS.

Kentia Belmoreana. Of the erect-growing feather-leaved Palms, this is the best adapted to house decoration and one of the most beautiful. The foliage is glossy dark green, the segments wide and gracefully recurved. Plants in 3½ or 4-in. pots, \$1.00 each; \$10.00 per doz.; 5-in. pots, \$3.00 each; \$35.00 per doz.; 6-in. pots, \$5.00 each; 7-in. pots, \$7.50 each.

Forsteriana. This variety is similar to K. Belmoreana, but of stronger growth, with broader and heavier foliage. Plants in 3½ or 4-in. pots, \$1.00 each; \$10.00 per doz.; 5-in. pots, \$3.00 each; \$35.00 per doz.; 6-in. pots, \$5.00 each; 7-in. pots, \$7.50 each.

Raphis humilis. Very attractive, ornamental Palm. \$10.00 to \$25.00 each.

Raphis flabelliformis. Highly ornamental Palm with graceful, slender divided leaves. 6-in. pots, \$10.00 each; Larger Plants, \$15.00 to \$30.00 each.

POINSETTIAS.

Single-flowering. (*June and later delivery.*) Plants in 2½-in. pots, \$2.00 per doz.; \$15.00 per 100. 3-in. pots (*July*), \$4.00 per doz.; \$30.00 per 100. 4-in. pots (*August*), \$7.00 per doz.; \$50.00 per 100.

Asplenium Nidus-avis. (*Bird's Nest Fern.*)

HARDY PERENNIAL PLANTS.

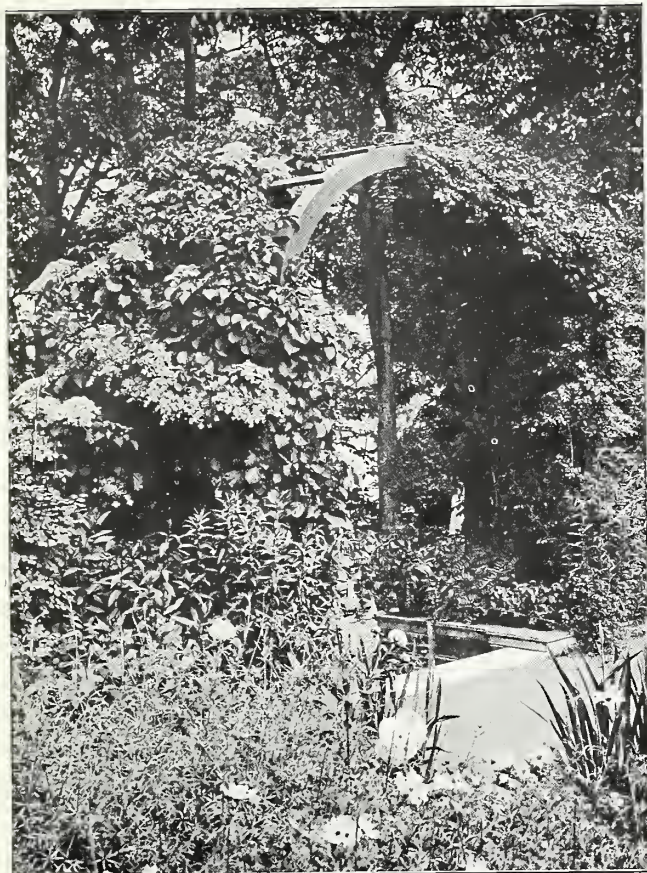
(Pot-Grown.)



Aster. Climax.

ACANTHUS mollis. White	Doz.	\$1.00
ACHILLEA ptarmica. Perry's White. White	Doz.	3.50
ANCHUSA italica. Dropmore variety. Gentian blue	Doz.	4.50
italica. Perry's variety. Rich deep blue	Doz.	4.50
italica Opal. Pale blue	Doz.	4.50
ARENARIA montana. White	Doz.	3.50
NEW HARDY ASTERS.		
ASTERS Novi-Belgii. Amos Perry. Deep pink	Doz.	4.00
Climax. Clear light blue	Doz.	4.00
Climax White. White	Doz.	4.00
Holtwhites. Delicate light blue	Doz.	4.00
Perry's Blue. Rich lavender blue	Doz.	4.00
Top Sawyer. Large, soft blue flowers	Doz.	4.00
Novi-Anglæ Lil Fardell. Bright pink	Doz.	4.00
Inez Perry. Lavender-mauve	Doz.	4.00
STANDARD VARIETIES.		
Cordifolia Hon. Edith Gibbs. Pale lavender	Doz.	3.50
Cordifolia Ideal. Pale blue	Doz.	3.50
Mackii. Clear blue, yellow centre	Doz.	3.50
Novae-Angliæ. Bluish purple	Doz.	3.50
Alba. White	Doz.	3.50
rosea. Pink	Doz.	3.50
Novi-Belgii Acris. Bright blue	Doz.	3.50
Airship. Pure white	Doz.	3.50
Amethystinus. Amethyst-blue	Doz.	3.50
Annie. Sky blue	Doz.	3.50
Dainty. White, faintly tinged lavender	Doz.	3.50
Perry's Pink. Reddish pink	Doz.	3.50
Robert Parker. Light blue	Doz.	3.50
St. Egwin. Light pink	Doz.	3.50
White Queen. White	Doz.	3.50
tataricus. Blue	Doz.	3.50
tradescanti. Pinkish white	Doz.	3.50
Tranchii. Purple	Doz.	3.50
turbunellus. Lavender	Doz.	3.50
umbellatum. White	Doz.	3.50
ASTER. DWARF VARIETIES.		
alpinus speciosus. Deep blue	Doz.	4.00
albus. White	Doz.	4.00
sub-coeruleus. Mauve	Doz.	4.00
AQUILEGIA. Farquhar's long-spurred hybrids. New and beautiful shades	Doz.	3.50
chrysantha. Golden-yellow	Doz.	3.50
coerulea. Blue and white	Doz.	3.50
alba. White	Doz.	3.50
Haylodgensis. Shades of blue	Doz.	3.50
nivea grandiflora. Pure white	Doz.	3.50
BOLTONIA latisquama. Pink tinged with lavender	Doz.	3.50
CAMPANULA persicifolia grandiflora alba. White	Doz.	3.50
persicifolia grandiflora coerulea. Blue	Doz.	3.50
CARNATIONS. Her Majesty. Pure white	Doz.	3.00
CERASTIUM tomentosum. White	Doz.	3.50
CHRYSANTHEMUM maximum. White	Doz.	3.50
Hardy Pompone. White, Pink, Yellow and Bronze	Doz.	2.50
COREOPSIS grandiflora. Golden-yellow	Doz.	3.50
lanceolata. Golden-yellow	Doz.	3.50
DAISY. Burbank's Shasta. Snow-white	Doz.	3.50
DELPHINIUMS. Farquhar's Hybrids. Shades of blue	Doz.	3.50
Belladonna. Sky-blue	Doz.	3.50
chinensis. Light and bright blue	Doz.	3.50
alba. White	Doz.	3.50
formosum. Deep blue	Doz.	3.50
coelestinum. Sky blue	Doz.	3.50
DIANTHUS plumarius. Mixed colors	Doz.	3.50
Brilliant. Deep pink	Doz.	3.50
Gregory. Light pink	Doz.	3.50
White Witch. Pure white	Doz.	3.50
Glen Valley. Rosy-pink, carmine eye	Doz.	3.50
Lilac Queen. Lavender-pink	Doz.	3.50
GAILLARDIA grandiflora. Red and yellow	Doz.	3.50
GYPSOPHILA paniculata. Pure white	Doz.	3.50
HELIANTHEMUM perfoliatum roseum. Salmon-pink; centre yellow	Doz.	3.50
Golden Queen. Golden-yellow	Doz.	3.50
multiflorum. Orange-pink	Doz.	3.50
HEUCHERA sanguinea. Delicate coral-red	Doz.	3.50
Farquhar's Hybrids. From pale pink to red	Doz.	4.00
HYPERICUM Moserianum. Golden-yellow	Doz.	3.50
LOBELIA syphilitica. Blue	Doz.	3.50
LYCHNIS chalcedonica. Scarlet	Doz.	3.50
chalcedonica. fl. pl. Double scarlet	Doz.	4.00
chalcedonica alba. White	Doz.	3.50
Flos-cuculi. Bright pink	Doz.	3.50
Viscaria single. Scarlet	Doz.	3.50
LYTHRUM roseum superbum. Rose-pink	Doz.	3.50
roseum Perry's Variety. Bright cherry-red	Doz.	4.00
MONARDA didyma. Deep scarlet	Doz.	3.50
ÆNOTHERA fruticosa major. Golden-yellow	Doz.	3.50
Youngi. Bright yellow	Doz.	3.50
PACHYSANDRA terminalis. White	Doz.	3.50
PENSTEMON barbatus Torreyi. Brilliant scarlet	Doz.	3.50
diffusus. Violet-blue	Doz.	3.50
digitalis. Pure white	Doz.	3.50
lævigatus. Rosy-lilac	Doz.	3.50
PLATYCODON grandiflora. Violet-blue	Doz.	3.00
grandiflora alba. White	Doz.	3.00
Mariesi. Violet-blue	Doz.	3.00
Mariesi alba. White	Doz.	3.00
PHLOX subulata alba. White	Doz.	3.00
subulata rosea. Rosy-pink	Doz.	3.00
subulata Lilac. Lilac	Doz.	3.00
suffruticosa Miss Lingard. White	Doz.	3.50
PRIMULA japonica. Mixed colors	Doz.	3.50
vulgaris. Canary-yellow	Doz.	3.50
vulgaris. Mixed	Doz.	3.50
veris. Mixed colors	Doz.	3.50
veris. Yellow	Doz.	3.50
PYRETHRUM roseum. Single hybrids. Mixed	Doz.	3.50
SAPONARIA ocymoides splendens. Rosy-crimson	Doz.	3.50
STATICE latifolia. Deep blue	Doz.	3.50
STOKESIA cyanea. Sky-blue	Doz.	3.50
cyanea alba. Pure white	Doz.	3.50
THERMOPSIS caroliniana. Clear yellow	Doz.	3.50
TRITOMA uvaria grandiflora. Crimson shaded yellow	Doz.	3.50
VINCA minor. Bright blue	Doz.	3.00
VIOLA CORNUTA. Violet-blue	Doz.	3.50
alba. White	Doz.	3.50

POT-GROWN HARDY VINES and TRAILING PLANTS.



Hydrangea petiolaris.

	Each	Doz.
<i>Akebia quinata</i> . A rapid climber; flowers dark purple	\$1.00	\$10.00
<i>Aristolochia siphon</i> . Broad, handsome, heart-shaped, light green foliage; flowers green and purple	1.50	16.00
<i>Ampelopsis quinquefolia</i> . Deeply cut green foliage changing in Autumn	.75	7.50
<i>Ampelopsis quinquefolia</i> var. <i>Englemanni</i> . Small, glossy green foliage	.75	7.50
<i>Clematis paniculata</i> . Rapid grower; dark green foliage; pure white flowers	.85	9.00
<i>Hydrangea petiolaris</i> . Foliage bright green; large flat flower cymes of pure white	1.50	15.00
<i>Lycium chinensis</i> . (<i>Matrimony Vine</i> .) Light green foliage; pale purple flowers. Showy orange and scarlet fruits in Fall	1.00	10.00
<i>Wistaria chinensis</i> . Light green foliage and long pendulous racemes of pale blue flowers	2.00	
<i>Wistaria chinensis alba</i> . White form of the preceding	2.00	
<i>Wistaria multijuga</i> . A Japanese variety with very long racemes of purple flowers	2.50	

EVERGREEN VINES.

<i>Euonymus radicans</i> . Evergreen trailer with dark green foliage	.85	9.00
<i>Euonymus radicans vegetus</i> . Large-leaved evergreen trailer	1.00	10.00
English Ivy. Foliage broad, thick, dark glossy green. (Not hardy in New England). 4-in. pots	.50	5.00
Larger Plants in 5-in. pots, \$1.00 each; \$10.00 per doz.; 7-in. pots, \$2.00 each; 9-in. pots, \$3.50 each. Specimens, \$5.00 to \$10.00 each.		

HARDY CLIMBING AND RAMBLER ROSES.

(Strong Pot-Grown Plants.)

	Each	Doz.
The Farquhar. Double, clear pink	\$1.50	\$15.00
Aglaia. Double, bright yellow	1.50	15.00
Crimson Rambler. Double, bright crimson	1.50	15.00
Dorothy Perkins. Double, shell-pink	1.50	15.00
Dr. W. Van. Fleet. Double, flesh-pink	2.00	22.00
Excelsa. Double, rich crimson-red	1.50	15.00
Lady Gay. Double; delicate cherry-pink fading to soft white	1.50	15.00
Lucille. Double; delicate flesh pink tinged rosy-salmon	1.50	15.00
Mrs. M. H. Walsh. Double; pure white	1.50	15.00
Silver Moon. Semi-double; clear primrose shading to silvery white	2.00	22.00
Tausendschon. Semi-double; deep rosy-pink	1.50	15.00
White Dorothy. Double; pure white	1.50	15.00

BOXWOOD. (*Buxus sempervirens*.)

These are trained in the form of Bay Trees and are used for similar purposes. They have been found to survive the Winter out of doors on the Massachusetts coast, with slight protection.

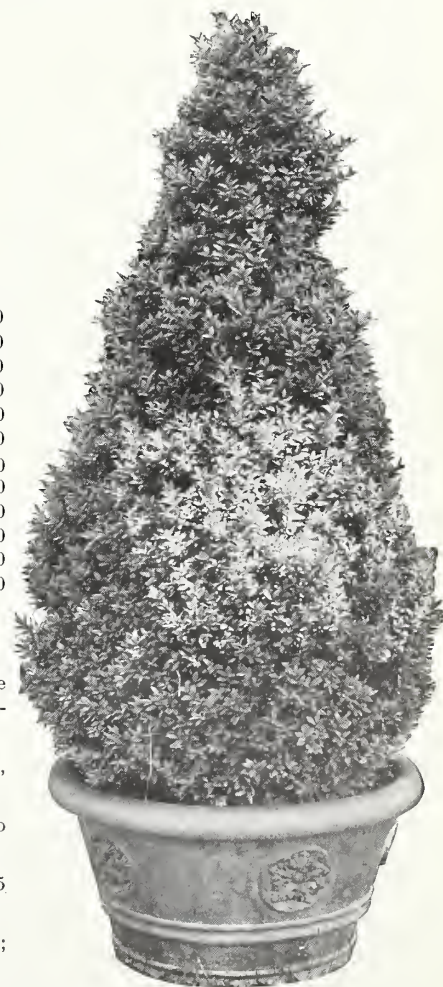
Pyramidal. 2½ ft., \$5.00 each; 3 ft., \$7.50 each; 3½ ft., \$10.00 each; 4 ft., \$12.00 each; 4½ ft., \$15.00; 5 ft., \$20.00 each.

Standards. Crowns 16 to 18 inch diam., \$9.00 each; 18 to 20 inch diam., \$12.50 each; 22 to 24 inch diam., \$16.00 each.

Bush Form. Bushy plants 12 to 15 inches, \$2.00 each; \$22.00 per doz.; 15 to 18 inches, \$2.75 each; \$30.00 per doz.; 18 to 20 in., \$3.50 each; \$35.00 per doz.; 21 to 24 in., \$5.00 each.

Globe-shaped. Very ornamental. 15 in. x 15 in., \$10.00 each; 18 in. x 18 in., \$20.00 each; 24 in. x 24 in., \$30.00 each.

The prices quoted on Box Trees do not include tubs. If wanted in heavy, green painted tubs add \$1.50 for each plant.



Pyramidal Boxwood.

BULBS FOR EARLY FORCING.

Prices Subject to Change Without Notice.



Freesia, Purity.

FREESIAS.

The gracefully branched, fragrant flowers are of long duration, and being freely produced are profitable for commercial purposes, and satisfactory to amateurs. If planted early they may be had in bloom by Christmas. Plant eight or ten bulbs in a six-inch bulb pan, covering them one inch.

- Purity, Mammoth Bulbs.** 60 cts. per doz.; \$4.00 per 100; \$38.00 per 1,000.
Extra Large Bulbs. 50 cts. per doz.; \$3.00 per 100; \$28.00 per 1,000.
Fardel's Colored Freesias. In separate shades. **Lavender, Yellow, Pink, Orange.** \$1.25 per doz.; \$9.00 per 100.
Mixed Colors. \$1.00 per doz.; \$7.00 per 100.

POLYANTHUS NARCISSI.

A very decorative class of bulbous plants for greenhouse and window cultivation, but not hardy out of doors in our climate. They may be easily and quickly forced; our florists frequently have them in bloom by Thanksgiving.

- Early Large-Flowering Paper White.** The earliest, largest and most vigorous form of the *Paper White*; the best of all for very early forcing; pure white.
Mammoth Bulbs. 75 cts. per doz.; \$5.00 per 100; \$45.00 per 1,000.
Extra Large Bulbs. 60 cts. per doz.; \$4.00 per 100; \$35.00 per 1,000.
Early Double Roman. White, with deep yellow cup; large flower trusses; excellent for early forcing. 45 cts. per doz.; \$3.25 per 100; \$30.00 per 1,000.
Soleil d'Or. Yellow, with orange cup, an excellent forcing variety. 90 cts. per doz.; \$7.00 per 100; \$68.00 per 1,000.

NARCISSI FOR FORCING.

- Trumpet Major.** French grown. Trumpet and perianth deep golden yellow; flower large, very effective. \$4.50 per 100; \$42.00 per 1,000.
Emperor. Immense flower trumpet clear, golden yellow; perianth deep primrose, often three and a half inches across; fine forcing sort. \$1.00 per doz.; \$7.50 per 100; \$72.00 per 1,000.
Empress. Rich yellow trumpet with broad white perianth; a flower of great size and substance; one of the finest Daffodils; forces well. \$1.00 per doz.; \$7.50 per 100; \$72.00 per 1,000.
Golden Spur. Dutch grown. Very large and fine flower, immense golden trumpet, reflexed at the lip; perianth very broad. 85 cts. per doz.; \$6.00 per 100; \$58.00 per 1,000.
Princeps Maximus. A large and greatly improved form of the popular N. Princeps, which has always been a favorite forcing sort. It is very early, of good substance and keeps well when cut. The trumpet is of large size and deep yellow; perianth pale primrose. 65 cts. per doz.; \$5.00 per 100; \$48.00 per 1,000.
Von Slon. (*Telamonious Plenus.*) The renowned "Old Double Yellow Daffodil." Flowers deep golden yellow; large and very decorative; the most extensively grown of all Daffodils for florists' use. Dutch grown.
Double Nosed Bulbs. Extra large. \$1.10 per doz.; \$8.50 per 100; \$80.00 per 1,000.
Single Nosed Bulbs. Extra large. 85 cts. per doz.; \$6.50 per 100; \$62.00 per 1,000.

CALLA LILIES.

- White Calla.** Mammoth Roots. \$3.00 per doz.; \$24.00 per 100.
White Calla. Extra Size Roots. \$2.00 per doz.; \$15.00 per 100.
The Godfrey. Large, pure white flowers; slightly fragrant. 35 cts. each; \$3.50 per doz.

LILIES FOR FORCING.

The bulbs may be potted from August onward in a compost of equal parts tuft loam, leaf mold, rotted cow manure, and sand. It is best to start them in pots not exceeding twice their own diameter, in which they may remain until started eight inches or more. They should be transferred then to larger pots in which to bloom, exercising great care not to disturb the roots or break the soil from about them, and setting them considerably deeper in the larger pots. This method prevents the soil from becoming sour, and enables the roots forming at the base of the stem to become feeders, greatly increasing the number and size of the blossoms.

LILIUM HARRISII. (*The Bermuda Easter Lily.*)

- Very choice, thoroughly ripened bulbs from the finest stock in Bermuda.
Mammoth Size. 9 to 11 in. circ. \$9.00 per doz.; \$70.00 per 100.
Extra Large Bulbs. 7 to 9 in. circ. \$5.00 per doz.; \$38.00 per 100.

LILIUM LONGIFLORUM—Japan Grown.

- Giganteum.** The flowers of this type are of a large size, perfect in form and of superior substance; stems marked black.
Formosum. An early flowering type blooming as early as the Harrisii. *On account of unsettled conditions we are unable to quote fixed prices on Japanese Lilies at the time of printing this catalogue. Prevailing prices will be charged at time of shipment.*

LILIUM CANDIDUM.

(*The Ascension or Old-Fashioned English Lent Lily.*)

- These are grown for us in France, and are the large, thick petalled variety. Pure white bell-shaped flowers, borne in erect spikes, excellent both for forcing and open garden cultivation. Bulbs from the Marseilles district have become degenerate and affected by disease. They should be avoided.
Mammoth Bulbs. \$2.50 per doz.; \$18.00 per 100.

OXALIS.

- Lovely little bulbous plants for hanging pots and baskets. The bulbs should be planted an inch deep, six or eight in a 5-inch pot. They need a sunny situation.
Bermuda Buttercup. Flowers clear yellow; very beautiful. 40 cts. per doz.; \$3.00 per 100.
Bowell. Large rosy crimson flowers and handsome foliage. 40 cts. per doz.; \$3.00 per 100.



Polyanthus Narcissus, Paper White.

FARQUHAR'S HARDY PERENNIAL FLOWER SEEDS.

FOR PRESENT SHOWING.

For Complete List See Our Garden Annual.

- | | | |
|------|---|-----------------------|
| 5925 | ACHILLEA Ptarmica, The Pearl. One of the finest perennials, blooming all Summer; the flowers are borne in clusters on long stems, and are of purest white. 1½ ft. Pkt. | |
| | | 1-16 oz., \$1.50; .25 |
| | ACONITUM. (Monkshood.) Hardy perennials with showy spikes of hood-shaped flowers; invaluable for planting in shady beds or borders. | |
| 5935 | Napellus. Large dark blue flowers. August and September. 3 ft. ¼ oz., \$1.00. .15 | |
| 5945 | Pyrenaicum. Flowers large, pure yellow. 3 ft.15 | |
| 5946 | Wilsoni. Light blue flowers in large trusses; very late. 4 ft.25 | |
| 5955 | ADONIS Vernalis. One of the best Spring flowering perennials; large yellow blossoms. 1 ft. ¼ oz., .75; .10 | |
| 5965 | AGROSTEMMA Coronaria Atrosanguinea. (Mullein Pink.) An old-fashioned perennial with silvery-white foliage and dark crimson flowers; June to August. 2 ft. ½ oz., 60; .10 | |
| 5970 | Coronaria Alba. Similar to the preceding; with white flowers. ¼ oz., 60; .10 | |
| 5972 | Flos-Jovis. (Flower of Jove.) Deep pink. 1 ft. ¼ oz., 40; .10 | |
| 5985 | ALYSSUM. Saxtile Compactum. (Gold Dust.) Valuable hardy perennial of spreading growth, producing masses of bright yellow flowers in Spring. 9 in. ¼ oz., .50; .10 | |
| 5990 | Saxatile Silver Queen. A new variety with lovely pale lemon-colored blossoms. 9 in. ¼ oz., \$1.00; .25 | |
| 6006 | ANCHUSA. Italica Dropmore Variety. A grand improvement on the type. The plants are more vigorous in growth with larger flowers of a lovely shade of gentian blue; June to September. 3 to 4 ft. ¼ oz., 50; .25 | |
| 6008 | Italica Opal. Large, pale blue flowers; very beautiful; June to August. 3 to 4 ft. ¼ oz., .75; .25 | |
| 6015 | ANTHEMIS Tinctoria Kelwayi. A greatly improved strain of this handsome perennial with bright yellow daisy-like flowers; June to September. 1½ ft. ¼ oz., 40; .10 | |
| 6130 | ARABIS Alpina. (Rock Cress.) Very early-flowering hardy perennial with erect spikes of pure white flowers; valuable for edgings and rockeries. 6 to 9 in. ¼ oz., .50; .10 | |
| 6135 | ARMERIA Formosa. (Thrift or Sea Pink.) A pretty edging plant with deep pink flowers; May to September. 1 ft.10 | |
| 6145 | ASCLEPIAS tuberosa. (Butterfly-weed.) One of the finest native perennials with compact umbels of brilliant orange-red flowers. Invaluable for border or shrubbery groups; July and August. 2 ft. ¼ oz., .75; .15 | |

AQUILEGIA. (Columbine.)

- | | | |
|------|---|--|
| 6030 | Farquhar's Giant Long-spurred Hybrids. These hybrids comprise the best and brightest colors as well as many new and beautiful combinations of charming and striking contrasts in the same flower. This strain includes shades of blue, lavender, pink, scarlet, yellow and white, of the large-flowered and long-spurred forms. 2 ft. ½ oz., \$1.50; .50 | |
| 6032 | Selected Hybrids Mixed. A beautiful strain of Columbines, comprising many colors. ¼ oz., \$1.25; ½ oz., .75; .25 | |
| 6040 | California hybrida. Petals golden-yellow, sepals and spurs crimson; magnificent. 2 ft. ¼ oz., \$1.25; .25 | |
| 6045 | Canadensis. The small scarlet and yellow native species. ¼ oz., \$1.00; .10 | |
| 6050 | Chrysantha. Pale yellow, long-spurred flowers. 2 ft. ¼ oz., \$1.50; .15 | |
| 6060 | Coerulea. (Rocky Mountain Columbine.) Exquisite variety with pale blue and white flowers, long spurs. 3 ft. ¼ oz., \$1.50; .25 | |
| 6065 | Coerulea White. (Rocky Mountain White Columbine.) The best long-spurred white.25 | |
| 6067 | Farquhar's Pink. Beautiful pink long-spurred flowers. 3 ft.25 | |
| 6070 | Glandulosa. Dark blue with white corolla, flowers 3 in. across. A superb sort. 1 ft.25 | |
| 6075 | Haylodgensis. (Caerulea hybrida.) Large-flowered hybrids with long spurs; shades of blue, white and yellow. 3 ft.20 | |
| 6095 | Skinneri. (Mexican Columbine.) Large scarlet and yellow flowers; long spurs. 2 ft. ¼ oz., \$1.00; .25 | |
| 6115 | Farquhar's Double Hybrids Mixed. Our selection contains only the finest forms of the double Columbine. ¼ oz., \$1.00; .25 | |
| 6120 | Single Mixed. In great variety. ¼ oz., .75; .10 | |

ASTER. (Michaelmas Daisy.)

These showy hardy perennials are easily raised from seeds and if sown early in Spring are likely to bloom the following Autumn. They may also be sown from May to July.

- | | | |
|------|---|--|
| 6170 | Alpinus. Purple, large yellow centre. 1 ft. ¼ oz., .75; .15 | |
| 6185 | Novae Angliae. Bright violet-purple. 4 ft. ¼ oz., .75; .15 | |
| 6190 | Parmicoides. Distinct variety with pure white flowers; useful for cutting. 1½ ft. ¼ oz., .75; .15 | |
| 6195 | Sub-coeruleus. A grand species from India, with giant flowers mauve-colored with bold orange centre, borne on long straight stems. The flowers are from two to three inches in diameter, and the plants commence blooming very early in the season. 2 ft. ¼ oz., \$1.00; .25 | |



Aquilegia. Farquhar's Giant Long-Spurred Hybrids.

ASTER.—Continued.

- | | | |
|------|--|--|
| 6205 | New Hybrids Mixed. Many beautiful shades. 2 to 3 ft. Pkt. ¼ oz., \$1.00; \$.25 | |
| 6230 | BOLTONIA Asteroides. One of the showiest of our native perennials closely resembling and allied to the hardy Asters; flowers pure white. August and September. 6 ft.25 | |
| 6235 | Latisquama. Flowers pink, slightly tinged with lavender; finest of the section. August and September. 5 ft. (Crop failed)10 | |
| 6245 | CALLIRHOE Verticillata. (Poppy Mallow.) Elegant hardy Mallow of easy culture and spreading growth, blooming all Summer; large crimson Linum-like flowers. 1½ ft. ¼ oz., \$1.25; .10 | |

CAMPANULA. (Bell-flower.)

- | | | |
|------|--|--|
| 6250 | Carpatia. (Carpathian Blue Bell.) Neat hardy perennial growing in compact tufts; flowers clear blue; in bloom all Summer; splendid for mixed borders. 8 in. ¼ oz., .75; .10 | |
| 6255 | Carpatia Alba. (White Carpathian Bell.) White. ¼ oz., .75; .10 | |
| | Campanula Grandiflora, see Platycodon. 7430-7440 | |
| 6260 | Glomerata. (Clustered Bell-flower.) Dense clusters of funnel-shaped violet-blue flowers. July and August. 1½ ft. ¼ oz., \$1.00; .15 | |
| 6262 | Glomerata dahurica. Deep violet-blue, large tuess. 1½ ft.15 | |
| 6265 | Grandis. (Great Bell-flower.) Large saucer-shaped violet-blue flowers. 1½ ft.25 | |
| 6268 | Lactiflora coerulea. A handsome variety with flowers in loose heads, pale lilac, shaded white; July and August. 3 ft.25 | |

FARQUHAR'S HARDY PERENNIAL FLOWER SEEDS.—Continued.

CANTERBURY BELLS.—Continued.

CUP-AND-SAUCER VARIETIES.

(*Campanula medium Calycanthema.*)

		Pkt.
6380	Pink. A charming color..... ¼ oz., \$1.25;	\$.25
6385	Blue. 6390 Mauve. 6395 White. 6400 Mixed.	
	Each of the above colors and mixture, except pink.	
	¼ oz., \$1.00;	.15
	CANDYTUFT. Free-flowering dwarf perennials blooming in early Spring; suitable for rock-work and the edges of herbaceous borders.	
6410	Gibraltarica. White, shaded with pink. 1 ft. ¼ oz., \$1.00;	.25
6415	Sempervirens. A very hardy variety, with glossy, deep green foliage which is evergreen; flowers white. Valuable for Spring gardens or rockeries..... ¼ oz., \$1.50;	.15
6495	CERASTIUM tomentosum. (<i>Snow in Summer.</i>) The foliage of this hardy perennial is perfectly white and its dense matted growth makes it valuable for edgings and rockeries. 4 inches.....	.25
6498	CHEIRANTHUS Allioni. (<i>Siberian Wallflower.</i>) An exceedingly showy rock and border plant; flowers bright orange. Continues in bloom all Summer if the seed pods are removed. 1 ft..... ¼ oz., \$1.00;	.25

HARDY CARNATIONS.

A delightful class of fragrant hardy plants blooming profusely during May and June. They are indispensable for the hardy border and for cutting. It is advisable to protect them with a light covering of pine boughs or coarse straw during Winter. 1 to 2 ft.

6435	Farquhar's Prize Strain Mixed. Our Prize Strain is particularly adapted to garden planting and includes only the best types in a great variety of colors. ¼ oz., \$1.50;	.25
6440	Fine Mixed ¼ oz., \$1.25;	.10
6445	Plumarius Cyclope Double Mixed. A charming race of double <i>Pheasant-Eye</i> pinks. Very fragrant and hardy...	.25
6450	Plumarius Double Mixed. (<i>Pheasant-Eye Pink.</i>)	
	¼ oz., \$1.00;	.25
6455	Plumarius Scoticus. (<i>Paisley Pink.</i>) This race of Scotch pinks is quite as much in favor for Winter forcing as for border cultivation. The flowers have the strongest spice fragrance.....	.50
6503	CHELONE Hybrida Torreyi. Extremely showy bedding plant, with brilliant scarlet flowers. June to August. 2 ft.	.15



Canterbury Bells, *Campanula Media*.

CAMPANULA.—Continued.

		Pkt.
6275	Macrantha. Purplish-blue; large flowers. 2 ft.....	\$.10
6285	Nobilis. Long tubular light purplish flowers of medium size. July. 2 ft.....	.25
6290	Persicifolia Grandiflora Blue. One of the finest Campanulas, with large, bright blue cup-shaped flowers. June and July. 2 ft..... ¼ oz., \$1.50;	.25
6295	Persicifolia Grandiflora White. Erect spikes of snow white flowers..... ¼ oz., \$1.75;	.25
6300	Persicifolia Mixed. Shades of blue and white. ¼ oz., \$1.50;	.25
6310	Pyramidalis. (<i>The Chimney Campanula.</i>) Stately hardy perennial producing large blue flowers in abundance; very handsome as a border plant or grown in pots for conservatory decoration. 4 ft..... ¼ oz., .75;	.10
6315	Pyramidalis Alba. White..... ¼ oz., .60;	.10

CANTERBURY BELLS. (*Campanula Medium.*)

Showy, hardy biennials, growing in pyramidal form and bearing many large, bell-shaped flowers; very effective in mixed borders and in shrubberies. 2½ ft. Seedlings raised in May or June bloom the following Summer.

6325	Farquhar's Prize Mixed. A combination of the finest colors including single, and cup-and-saucer varieties.	Pkt.
	Oz., \$2.75; ¼ oz., .85;	.25

SINGLE CANTERBURY BELLS. (*Campanula medium.*)

6330	Pink.	6335 Mauve.	6340 Blue.
6345	White.	6350 Striped.	6355 Mixed.
	Each of the above varieties and mixture..... ¼ oz., .60;		

DOUBLE VARIETIES.

6360	Blue.	6365	White.	Each, ¼ oz., \$1.00;	.10
6370	Pink, ¼ oz., \$1.25; pkt., .15	6375	Mixed.	Each ¼ oz., 1.00;	.10



Delphinium hybridum, Farquhar's Improved.

CHELONE.—Continued.

- 6504 **Hybrida Mixed.** The colors vary from light pink to deep Pkt. red and violet. 2 ft. $\frac{1}{8}$ oz., .50; \$.15
- 6510 **CHRYSANTHEMUM. Shasta Daisy.** A large free-bloom- ing hybrid from California; flowers white. 2 ft.25

COREOPSIS. (*Calliopsis.*)

These frequently bloom the first year from seed sown in Spring. It is more satisfactory, however, to sow in May or June, protecting the plants with coarse straw or pine boughs during Winter. 3 ft.

- 6530 **Grandiflora.** Bright golden-yellow flowers. 3 to 4 in. in Pkt. diameter. $\frac{1}{4}$ oz., .50; .10
- 6540 **Lanceolata.** Rich golden-yellow. $\frac{1}{4}$ oz., .60; .15

DAISY. (*Bellis Perennis fl. pl.*)

Favorite Spring-flowering perennials, producing charming effects when planted in masses or in combination with Pansies, Forget-Me-Nots, or Silene. They are easily raised from seed, flowering in Autumn if sown in Spring, although it is better to sow in July or August in cold frames and plant them out the following April. 4 inches.

- 6546 **Farquhar's Giant Double Pink.** A magnificent strain of Pkt. English Daisy producing flowers nearly twice as large as the old variety. The plants are of robust growth. $\frac{1}{8}$ oz., \$1.25; .25
- 6547 **Farquhar's Giant Double White.** A companion to the preceding, with white flowers. $\frac{1}{8}$ oz., \$1.25; .25
- 6548 **Farquhar's Giant Quilled Red.** Bright red; very attractive. .25
- 6550 **Farquhar's Double White.** 6555 **Farquhar's Double Pink.**
- 6560 **Farquhar's Double Mixed.** Saved from the finest double flowers. Each of the above colors, Pink, White, or Mixed. $\frac{1}{8}$ oz., \$1.25; .15

DELPHINIUM. (*Larkspur.*)

The perennial Larkspurs are perfectly hardy and can be grown with ease in any garden. When sown in April or May they will usually bloom in September; they may also be sown in June or July to bloom the following season. 1 $\frac{1}{2}$ to 4 ft.

- 6561 **Hybridum, Farquhar's Improved Mixed.** A very beautiful Pkt. strain with large handsome flower spikes. It also includes seeds saved from some of the finest of the named varieties. The colors vary from pearly white to lavender and from soft azure blue to rich indigo. $\frac{1}{4}$ oz., \$1.75; .50
- 6562 **Hybridum, Light Blue Shades Mixed.** A very beautiful, large-flowered strain including various shades of light blue. Very showy when planted in masses. $\frac{1}{4}$ oz., \$1.50; .25
- 6565 **Selected Hybrids Mixed.** A splendid mixture of large-flowering hybrids varying in color from pale blue to deep purple. $\frac{1}{4}$ oz., \$1.00; .25
- 6566 **Bella Donna.** A grand plant of branching habit, producing numerous spikes of large single flowers of a clear turquoise-blue. 4 ft. $\frac{1}{8}$ oz., \$1.50; .25
- 6570 **Cardinale.** Bright scarlet with yellow centre. 3 ft.20
- 6585 **Chinensis.** (*Grandiflorum.*) Azure blue. 1 $\frac{1}{2}$ ft. $\frac{1}{4}$ oz., .50; .10
- 6590 **Chinensis. White.** $\frac{1}{4}$ oz., .50; .10
- 6595 **Chinensis, Mixed.** Shades of blue and white. $\frac{1}{4}$ oz., .50; .10
- 6600 **Elatum.** (*Bee Larkspur.*) Rich blue shades, with black centres. 4 ft.15
- 6605 **Formosum.** Splendid dark blue with white eye. 3 ft. $\frac{1}{4}$ oz., \$1.00; .10
- 6610 **Formosum Coelestinum.** Very beautiful large, pale-blue flowers. 3 ft.25
- 6640 **DIANTHUS Deltoides.** (*Maiden Pink.*) Trailing variety; flowers pink with dark circle. 6 in.15
- 6645 **Deltoides Alba.** White. 8 in.15
- 6655 **DICTAMNUS Fraxinella.** (*Dittany.*) Fine hardy perennial with handsome spikes of reddish flowers. The leaves are fragrant, giving off an odor of balsam when rubbed. 3 ft. $\frac{1}{4}$ oz., .50; .10
- 6660 **Fraxinella Alba.** Handsome spikes of pure white, sweet-scented flowers. $\frac{1}{4}$ oz., .75; .15
- 6662 **Caucasicus.** Very showy border plant with large spikes of attractive rosy-red flowers; excellent for cutting. $\frac{1}{4}$ oz., .75; .15

DIGITALIS. (*Foxglove.*)

- 6665 **Farquhar's Superb Mixed.** Includes all the finest colors in great variety; June and July. 3 to 4 ft. Oz., \$2.00; $\frac{1}{4}$ oz., .60; .25
- 6667 **Farquhar's Superb Mixed.** Second size packet.10
- 6670 **Gloxinaeflora Mixed.** Flowers spotted in the throat. $\frac{1}{4}$ oz., .40; .10
- 6675 **Gloxinaeflora Rosea.** Delicate pink. $\frac{1}{4}$ oz., .50; .15
- 6680 **Grandiflora.** Pale yellow; flowers small. $\frac{1}{4}$ oz., .35; .10
- 6685 **Ivery's Spotted.** Beautiful spotted flowers of various colors. $\frac{1}{4}$ oz., .50; .10
- 6690 **Monstrosa Mixed.** The tall spikes have a monstrous saucer-shaped terminal flower. $\frac{1}{4}$ oz., .60; .10
- 6695 **Purpurea.** Common red Foxglove. Oz., \$1.00; .10
- 6700 **Purpurea Alba.** White. $\frac{1}{4}$ oz., .50; .15
- 6702 **Purpurea Rosea.** Pink. $\frac{1}{4}$ oz., .50; .15
- 6705 **Mixed.** Various colors. Oz., \$1.00; .10
- 6765 **ERYSIMUM Pulchellum.** Dwarf perennial with pale yellow flowers; desirable for Spring gardening; May. 6 in. $\frac{1}{4}$ oz., .40; .10



Digitalis, Farquhar's Superb Mixed.

GAILLARDIA GRANDIFLORA. (*Blanket Flower.*)

These are handsomer Summer and Autumn flowering plants, quite hardy and easily grown. It is advisable to mulch them with straw during Winter. 3 ft. Pkt.

- 6785 **New Hybrids Mixed.** Yellow and red. $\frac{1}{4}$ oz., .50; \$.15
- 6790 **Maxima.** Pure yellow; flowers very large. $\frac{1}{4}$ oz., .40; .10
- 6835 **GEUM Atrosanguineum.** Large double crimson flowers; valuable for cutting; July to September. 2 ft.20
- 6840 **Coccineum.** Bright orange-scarlet; single.10
- 6842 **Coccineum fl. pl. Mrs. J. Bradshaw.** One of the finest recent introductions. The flowers are very large, quite double and of the brightest scarlet; in bloom all Summer. 1 $\frac{1}{2}$ ft. $\frac{1}{4}$ oz., .75; .25
- 6895 **GYPHOPHILA Repens.** A pretty trailing plant, fairly smothered with tiny white flowers. $\frac{1}{4}$ oz., .35; .15
- 6900 **Paniculata.** Small white flowers in light panicles; extensively used in bouquets; July and August. 2 ft. $\frac{1}{4}$ oz., .40; .10
- 6935 **HESPERIS Matronalis. Purple.** (*Rocket.*) Spring-flowering herbaceous perennial; fragrant. 3 ft. $\frac{1}{4}$ oz., .35; .10
- 6940 **White.** Beautiful as a cut flower. $\frac{1}{4}$ oz., .35; .10
- 6945 **Dwarf White.** Very early. 1 ft. $\frac{1}{4}$ oz., .50; .15
- 6950 **HEUCHERA Sanguinea.** Compact hardy perennial producing erect spikes of vivid crimson flowers; July and August. 1 ft.25

HIBISCUS. (*Mallow.*)

Showy plants of vigorous growth, producing large, handsome flowers from July to September. They are especially for mixed beds or borders where massive effects are desired. 2 to 5 ft.

- 6955 **Crimson Eye.** An excellent plant for lawn groups and borders; blooming the first season from seed in the open ground. Flowers pure white, with crimson center. 4 ft. $\frac{1}{4}$ oz., .40; .10
- Moscheutos.** (*Swamp Mallow.*) None of the hardy Hibiscus are more useful and beautiful than our native Swamp Mallows. They begin to bloom in July and continue to September, producing flowers like Single Hollyhocks, but much larger. They are excellent for moist places, but succeed in any good soil. 4 ft.
- 6965 **Albus.** Pure white. $\frac{1}{4}$ oz., .30; .15
- 6970 **Roseus.** Large pink flowers. $\frac{1}{4}$ oz., .50; .15



Hollyhock, Chaters Double.

HOLLYHOCK.

Hollyhocks succeed best in rich, well-drained soil. They should be lightly protected during Winter with pine boughs, coarse straw, or other mulch not liable to rot. Seeds sown in June or July produce fine plants for blooming the following Summer. Hardy biennials.

- 6980 **Double Special Mixture.** A greatly improved strain of this popular plant. Pkt. $\frac{1}{4}$ oz., \$1.00; \$.15
- 6985 **Double Crimson** 6990 **Double Pink** 6995 **Double Salmon**
- 7000 **Double Purple** 7005 **Double White** 7010 **Double Yellow**
- Each of the above colors and Special Mixture
- 7020 **Collection of 6 Varieties, Separate.** .75

SINGLE VARIETIES

- 7025 **Pink.** 7030 **Salmon** 7035 **White** 7040 **Crimson** 7045 **Scarlet**
Each of the above colors. $\frac{1}{4}$ oz., .75; .15
- 7060 **Single Mixed.** $\frac{1}{4}$ oz., .50; .10
- 7065 **Allegheny Mixed.** Single and semi-double fringed flowers. $\frac{1}{4}$ oz., .50; .10
- 7070 **HONESTY Mixed Colors.** (*Lunaria biennis*.) Hardy biennial flowering the first year from seeds if sown early; flowers purple or white, followed by round seed vessels of silvery appearance highly prized for Winter decoration. 2 ft. $\frac{1}{4}$ oz., .35; .10

LATHYRUS LATIFOLIUS. (*Perennial Pea*.)

- Magnificent hardy perennial climbers with white, pink and crimson pea-shaped flowers in clusters. They are excellent vines for covering old stumps and fences as they bloom all Summer. 6 ft. Pkt.
- 7090 **White.** Charming as a cut flower. $\frac{1}{4}$ oz., .35; .10
 - 7095 **Giant White.** A giant form of the preceding, with flowers of the purest white. .25
 - 7100 **Pink Beauty.** Bright rosy-pink. $\frac{1}{4}$ oz., .40; .10
 - 7105 **Splendens.** Rosy-carmine in large clusters. $\frac{1}{4}$ oz., .35; .10
 - 7110 **Mixed.** $\frac{1}{4}$ oz., .35; .10
 - 7135 **LINUM Perenne, Blue.** Showy variety, suitable for borders; June to August. 1 $\frac{1}{2}$ ft. $\frac{1}{4}$ oz., .35; .10
 - 7140 **Perenne, White.** $\frac{1}{4}$ oz., .35; .10
 - 7145 **LOBELIA Cardinalis.** (*Cardinal Flower*.) A native species, succeeding best in rather moist situations; flowers intense scarlet; August to October. 2 ft. . . . 1-16 oz., \$1.00; .25

LUPINS. (*Lupinus*.)

- Beautiful Spring-blooming plants with long spikes of pea-shaped flowers. 2 to 3 ft. Pkt.
- 7165 **Polyphyllus, Blue.** Oz., .75; \$.10
 - 7170 **White.** Oz., .75; .10
 - 7175 **Rose.** Immense spikes of soft pink flowers. $\frac{1}{4}$ oz., .50; .15
 - 7178 **Moerheimi.** An exceedingly handsome variety producing long spikes of pink and white flowers, which are invaluable for table decoration. .25
 - 7180 **Mixed.** Oz., .75; .10

LYCHNIS.

Profuse-blooming hardy perennials, remarkable for the brilliancy of their flowers; excellent for massing in large beds and borders.

- 7195 **Chalcedonica.** (*Jerusalem Cross*.) Large scarlet flower heads. June and July. 2 ft. $\frac{1}{4}$ oz., .35; .10
- 7200 **Chalcedonica Alba.** Flowers white. $\frac{1}{4}$ oz., .35; .10
- 7225 **Viscaria splendens.** Scarlet. 1 $\frac{1}{2}$ ft. $\frac{1}{4}$ oz., .25; .10
- 7240 **LYTHRUM Roseum Superbum.** (*Loose Strife*.) A strong growing plant, thriving in any good soil. Erect spikes of bright rose-colored flowers. July to September. 4 ft. $\frac{1}{4}$ oz., .40; .15

MYOSOTIS. (*Forget-me-not*.)

Most of the Forget-me-nots will bloom the first year from seed if sown early. If sown in July or August in shaded frames, fine plants will be obtained for Spring blooming. They are beautiful planted in combination with Spring Bulbs, Daisies, Arabis, or Golden Alyssum.

- 7280 **Alpestris Victoria.** The plants are of dwarf compact growth, with long sprays of bright blue flowers, produced in dense umbels. 6 in. $\frac{1}{4}$ oz., \$1.25; .15
- 7285 **White.** Large white flowers. $\frac{1}{4}$ oz., .75; .10
- 7290 **Pink.** Fine bedding variety. $\frac{1}{4}$ oz., .75; .10
- 7292 **Farquhar's Indigo Blue.** A lovely shade. $\frac{1}{4}$ oz., \$1.25; .15
- 7295 **Farquhar's Royal Blue.** Flowers deep indigo blue, borne on long sprays; fine for cutting. $\frac{1}{4}$ oz., \$1.25; .15
- 7306 **Ruth Fischer.** Very large pale blue flowers; plants compact. .25

OENOTHERA. (*Evening Primrose*.)

- 7320 **Fraseri.** Attractive perennial with large yellow flowers. 1 $\frac{1}{2}$ ft. $\frac{1}{4}$ oz., .75; .15
- 7330 **Lamarekiana.** Enormous yellow flowers, three to four inches in diameter; very free-flowering. 3 ft. $\frac{1}{4}$ oz., .35; .10
- 7340 **Youngi.** A very showy variety producing large, bright-yellow flowers the entire Summer. 3 ft.15
- 7380 **PENTSTEMON Diffusus.** Violet blue flower; free blooming .15
- 7400 **Pubescens.** Rosy-purple. 1 $\frac{1}{2}$ ft.10
- 7410 **Spectabilis.** Flowers blue and red, very beautiful.15
- 7430 **PLATYCODON Grandiflora.** (*Japanese Balloon Flower*.) A most desirable perennial of erect bushy growth and bearing a profusion of large bell-shaped flowers of deep blue; May to October. 2 ft. $\frac{1}{4}$ oz., \$1.00; .10
- 7435 **Grandiflora Alba.** White form of the preceding. $\frac{1}{4}$ oz., \$1.00 .10
- 7440 **Mariesi.** Dwarf variety of compact habit; flowers rich violet. 1 ft. $\frac{1}{4}$ oz., \$1.25; .15
- 7445 **POLEMONIUM Coeruleum Grandiflorum.** (*Jacob's Ladder or Greek Valerian*.) Hardy perennial with deeply cut foliage and clusters of handsome blue flowers; June and July. 2 ft. $\frac{1}{4}$ oz., .75; .10
- 7450 **Grandiflora Album.** Pure white. $\frac{1}{4}$ oz., \$1.00; .15
- 7452 **Richardsoni.** Sky blue. 2 ft. $\frac{1}{4}$ oz., .60; .15

POPPY. (*Papaver*.)

All perennial Poppies may be sown from April to June to bloom the following Summer.

ICELAND POPPY. (*Papaver nudicaule*.)

This beautiful species will bloom the first season if sown early in Spring. Its delicate form and bright colors render it desirable as a border plant and exquisite for cutting. 1 ft.

- 7480 **Farquhar's Superb Mixed.** Shades of yellow, scarlet and white. $\frac{1}{4}$ oz., \$1.25; .25
- 7485 **Bright Yellow.** 7490 **Pure White.** 7495 **Orange-Scarlet.** 7501 **Mixed.**

Each of the above colors and mixed. $\frac{1}{4}$ oz., \$1.00; .15

ORIENTAL POPPY. (*Papaver Orientale*.)

The most gorgeous of all the Poppies. 3 ft.

- 7510 **Orientele.** Brilliant orange-scarlet with black spots; very early; May to July. 3 ft. $\frac{1}{4}$ oz., .60; .10
- 7515 **Hybrids.** Immense flowers, many of them larger than Orientale, the colors varying from blush white to orange and deep red. 3 ft. $\frac{1}{4}$ oz., .75; .15
- 7516 **Mrs. Perry.** An attractive shade of salmon-rose.25
- 7540 **POTENTILLA Double Hybrids Mixed.** Splendid hardy perennials with ornamental foliage and brilliant flowers, chiefly shades of yellow and red, borne in great profusion; June to August. 2 ft.25
- 7545 **Single mixed.** Various shades of yellow and brown. . . .10

PRIMULA. (*or Primrose*.)

- 7550 **Acaulis.** Farquhar's Hybrids Mixed. A greatly improved strain with flowers of large size containing many bright and beautiful colors. $\frac{1}{4}$ oz., \$1.50; .25
- 7555 **Yellow.** (*Yellow English Primrose*.) The best sort for forcing and bunching for corsage bouquets. $\frac{1}{4}$ oz., \$1.25; .25
- 7560 **Blue.** Color rich purple-blue.25

POLYANTHUS. (*Primula elatior*.)

- 7565 **Farquhar's Giant Fancy Mixed.** The colors range from white to deep maroon; the yellow, rose and crimson shades being particularly fine. These larger forms are desirable for Winter flowering in the conservatory as well as for bedding out in Spring. 9 in. $\frac{1}{4}$ oz., \$1.75; Pkt. \$.25
- 7570 **Giant White.** Pkt., .25 7575 **Giant Yellow.** .25
- 7580 **Giant Blue.** Pkt., .50 7585 **Giant Crimson.** .25
- 7590 **Gold-laced.** Flowers of brilliant colors with distinct yellow edges. 1-16 oz., \$1.50; .15
- 7595 **Mixed.** $\frac{1}{4}$ oz., \$1.25; .10
- 7605 **PRIMULA Japonica Mixed.** One of the finest Primroses for the garden, producing several whorls of large flowers, on erect stems, varying from white to crimson. 1 $\frac{1}{2}$ ft. *The seeds germinate slowly and unevenly.* $\frac{1}{8}$ oz., \$1.25; .15

PYRETHRUM.

- Very handsome herbaceous perennials. The flowers are of brilliant colors and very lasting; June. 2 ft.
- 7625 **Roseum. Double Hybrids Mixed.** Beautiful, aster-like flowers, ranging in color from white to brilliant rose and crimson. $\frac{1}{8}$ oz., \$3.00; .25
- 7630 **Roseum. Single Hybrids Mixed.** Daisy-like flowers or brilliant colors with yellow centers. $\frac{1}{4}$ oz., \$1.25; .15
- 7685 **SCABIOSA Caucasica.** Magnificent perennial with beautiful large, light blue flowers; June to August. 2ft. $\frac{1}{4}$ oz., \$1.50; .15
- 7690 **Caucasica Alba.** A pure white form of the preceding.25
- 7750 **STOKESIA Cyanea.** This splendid hardy perennial bears from July to October a number of large, light blue flowers resembling semi-double Asters. $\frac{1}{4}$ oz., \$1.00; .15
- 7752 **Cyanea Alba.** A pure white form. $\frac{1}{4}$ oz., \$1.00; .15

SWEET WILLIAM. (*Dianthus Barbatus*.)

- Showy hardy biennials of easiest culture; admirable for clumps among shrubs or borders. 1 $\frac{1}{2}$ ft.
- 7768 **Farquhar's Giant Mixed.** A magnificent strain of this popular plant with very large flowers, and containing Pkt. many attractive shades. Oz., \$2.50; $\frac{1}{4}$ oz., .75; \$.25
- 7770 **Superb Mixed.** In great variety. Oz., \$1.50; $\frac{1}{4}$ oz., .50; .10
- 7775 **Farquhar's Pink Beauty.** Salmon. $\frac{1}{4}$ oz., \$1.00; .15
- 7776 **Farquhar's Scarlet Beauty.** Bright scarlet. $\frac{1}{4}$ oz., .75; .25
- 7780 **Dark Crimson.** Rich dark shade. $\frac{1}{4}$ oz., .35; .10
- 7785 **White.** Excellent for cut flowers. $\frac{1}{4}$ oz., .35; .10
- 7790 **Giant Auricula-Eyed.** Various colors with clearly defined eyes. $\frac{1}{4}$ oz., .50; .10
- 7800 **Double Fine Mixed.** $\frac{1}{4}$ oz., .75; .15
- 7830 **TROLLIUS Europaeus.** (*Globe Flower*.) A large-flowered variety of the buttercup with bright-yellow globular flowers. 2 ft.15
- 7845 **VALERIAN Red.** (*Valeriana Rubra*.) Old-fashioned perennial, adapted to wild gardens or large rockeries. 2 ft. $\frac{1}{4}$ oz., .30; .10
- 7850 **White.** A white form of the preceding. $\frac{1}{4}$ oz., .25; .10

WALLFLOWER.

- Half-hardy perennials of delicious fragrance. If sown in heat in March or April good plants will be obtained for flowering during the following Winter in a cool greenhouse, or they may be kept in cold frames and bloomed in the Spring and early Summer. Pkt.
- 7915 **Blood Red.** Rich color. $\frac{1}{4}$ oz., .50; .10
- 7920 **Primrose Yellow.** Fine light shade. $\frac{1}{4}$ oz., .50; .10
- 7925 **Mixed.** Shades of yellow and red. $\frac{1}{4}$ oz., .35; .10
- 7935 **Double Mixed.** Splendid branching varieties. $\frac{1}{4}$ oz., \$1.50; .25

FARQUHAR'S SUPERB PANSIES.

- 3085 **Farquhar's Finest Show Strain, Mixed.** A superb mixture of the largest and best types in an immense variety of brilliant colors. $\frac{1}{4}$ oz., \$3.50; $\frac{1}{8}$ oz., \$2.00; packet of Pkt. about 250 seeds. \$.50
- 3090 **Farquhar's Finest Show Strain, Mixed.** Second size packet of about 100 seeds.25
- 3095 **Farquhar's Frame Giants.** The finest strain known, the flowers being of perfect form and richest colors. For frame culture this mixture is unexcelled, producing flowers of great size and perfection; equally good out of doors. $\frac{1}{4}$ oz., \$3.00; 1.00
- 3100 **Special Mixture.** Embracing the leading strains, all grown by specialists and including the finest colors and markings in endless variety. This mixture is extensively used by florists. Oz., \$6.00; $\frac{1}{4}$ oz., \$1.75; .25
- 3105 **Cassier's Giant Mixture.** An excellent strain for outdoor or greenhouse cultivation. The plants are of sturdy growth, producing large flowers, beautifully blotched. $\frac{1}{4}$ oz., \$2.00; .25
- 3106 **Bugnot's Large Blotched.** Finely formed flowers of rich and brilliant colors. $\frac{1}{4}$ oz., \$3.00; .25
- 3108 **Choice Mixture.** $\frac{1}{4}$ oz., .75; .10
- Farquhar's "Regal Giants."** A remarkable strain of Giant Pansies producing flowers of mammoth size on long strong stems.
- 3112 **Prince Henry.** Dark blue.25
- 3114 **Madame Perret Improved.** Wine colors, edged with white.25
- 3115 **Purple King.**25
- 3116 **Parisian Yellow.** Pure yellow.25
- 3118 **Black Mastodon.** Velvety-black.25
- 3122 **Meteor.** Wine-red.25
- 3124 **Grand Duke Michael.** Pure white.25
- 3125 **Bronze.**25
- Each of the above varieties of "Regal Giant" Pansies, $\frac{1}{8}$ oz., \$2.50

PANSIES, Giant or Trimardeau.

- 3130 **Cornflower.** Ultramarine blue; the finest dark blue variety.15
- 3135 **Queen of the Blues.** Lavender.15
- 3140 **Golden Gem.** Pure yellow.15
- 3145 **Snow Queen.** Pure white.15
- 3150 **Golden Yellow with Dark Eye.**15
- 3155 **King of the Blacks.** Coal black.15
- 3160 **Lord Beaconsfield.** Violet; upper petals shading to white.15
- 3165 **White with Violet Eye.**15
- 3180 **Mixed.** Fine assortment of colors.15
- Each of the above varieties and mixed, $\frac{1}{4}$ oz., \$1.50; $\frac{1}{8}$ oz., 85 cts.

TUFTED PANSIES. (*Viola Cornuta*.)

- Free-blooming plants for partially-shaded beds and borders.
- 3275 **Admiration.** Rich dark blue. $\frac{1}{4}$ oz., \$2.00; .15
- 3280 **Blue Perfection.** Mauve, yellow eye. $\frac{1}{4}$ oz., 1.75; .15
- 3285 **Grandiflora lutea.** Golden-yellow flowers. $\frac{1}{4}$ oz., 1.75; .15
- 3290 **Mauve Queen.** Light blue. $\frac{1}{4}$ oz., 1.75; .15
- 3300 **Papilio.** A lovely violet-lilac; very free. $\frac{1}{4}$ oz., 1.75; .15
- 3305 **White Perfection.** Snowy white. $\frac{1}{4}$ oz., 1.75; .15
- 3310 **Mixed.** All colors. $\frac{1}{4}$ oz., 1.50; .10



HORTICULTURAL SUNDRIES.

For Other Tools See Our Garden Annual.

RUBBER HOSE.

In 25 and 50-foot Lengths.

Farquhar's Reliable. $\frac{3}{4}$ -inch., 3-ply, at 30 cts. per foot; $\frac{1}{2}$ -inch, 3-ply, at 25 cts. per foot, couplings included.

Farquhar's Extra. $\frac{3}{4}$ -inch, 3-ply, at 25 cts. per foot; $\frac{1}{2}$ -inch., 3-ply, at 20 cts. per foot, couplings included.

HOSE REELS.

All Iron. This reel is light in weight with high wheels, and constructed entirely of wrought iron pipe and malleable iron; almost indestructible. No. 10, capacity, 100 feet, price, \$5.00. No. 20, capacity, 150 feet, price, \$6.00.

HOSE NOZZLES.

Bordeaux Nozzle. A fine Nozzle for spraying liquid insecticides. \$1.75 each.

Graduating Spray Hose Nozzle. This is a superior Sprinkler for the lawn or garden. 85 cents each.

Farquhar's Spraying Nozzle. Made of very heavy brass, 3-inch. \$1.25 each; 4-inch, \$1.50 each.

Shut-off Connection. For Rose Spray Nozzle. \$1.00 each.

Improved Vermorel Nozzle. Fitted for $\frac{1}{2}$ -inch male end pipe, \$1.50 each.

HOSE MENDERS.

Electric Tape for Mending Hose. Coil, 25 cts.; large coil, 50 cts.

Hose Menders' Cooper. Made in $\frac{1}{2}$ and $\frac{3}{4}$ -inch sizes. \$1.25 per dozen.

Hose Menders' Clincher. $\frac{1}{2}$ -inch and $\frac{3}{4}$ -inch. 15 cts. each; \$1.50 per dozen.

Hose Couplings. $\frac{1}{2}$ -inch and $\frac{3}{4}$ -inch. 30 cts. per set.

Siamese Couplings. For connecting two leads of hose 75 cts. each.

WATERING POTS.

Galvanized Iron, Wotherspoon's. Two copper-faced roses go with each pot for fine and coarse watering. Four quarts, \$3.50; 6 quarts, spout 21 inches long, \$3.75; 8 quarts, spout 23 inches long, \$4.50; 10 quarts, spout 25 inches long, \$5.25; 12 quarts, spout 25 inches long, \$6.00.

Heavy Tin. Nicely painted green. Made of extra strong, double-thick tin, braced and stayed; very substantial. Two quarts, \$2.00; 4 quarts, \$2.50; 6 quarts, \$2.75; 8 quarts, \$3.00; 10 quarts, \$3.25; 12 quarts, \$3.50; 16 quarts, \$4.00.

LAWN SPRINKLERS.

Columbian. Three arms; \$2.25 each.

Enterprise. Each machine is furnished with a cord so that the Sprinkler may be easily moved over the lawn without turning off the water. Price, \$8.00 each.

The Fountain. Made of heavy brass. Price, \$1.25 each.

Skinner System Complete Garden Lines. In 50 foot lengths, including wooden posts. Price, \$25.00.

Peacock Sprinkler. Mounted on two wheels at one end and a single stand at the other. It can easily be moved without turning off the water. Throws a gentle rain from sprays that spread themselves out like a peacock's tail. No moving parts to wear or stick. Length 12 $\frac{1}{2}$ feet. Price, \$16.00.

Peacock Sprinkler, Junior. It differs only from the preceding in being shorter and with five nozzle clusters spaced 18 inches apart, instead of 24 inches and being mounted on skids instead of wheels. Length, 7 feet. Price, \$12.00.

Campbell Oscillating Irrigator. Can be adjusted to throw the water to both sides, or on one side only. Price, 5-ft. section, \$10.00; 10-ft. section, \$18.00.

Campbell Turbo-Irrigator. This machine is made entirely of brass, simple in design and very efficient for sprinkling large areas. Complete with tripod, \$18.00.

SPRAYERS.

For Other Sprayers See Our Garden Annual.

Auto Spray No. 1 B. With auto-pop nozzle. A compressed air sprayer which, when properly charged by a few strokes of the plunger will operate automatically for five to ten minutes. Price, \$12.00.

Farquhar's Bucket Spray Pump. A strong and durable hand pump with all brass working parts. It is double acting and has a large air chamber which ensures a continuous stream or fine spray. Price complete, with hose and Bordeaux nozzle, \$9.00.

Aquapult Hand Force Pump. Strong and durable; not liable to get out of order. A handy bucket spraying pump for garden, greenhouse and orchard use. \$10.00 each.

LAWN MOWERS.

TOWNSEND'S "TRIPLEX" HORSE LAWN MOWER.

This machine consists of three high-grade Lawn Mowers mounted in such a way as to allow each mower to adjust itself to the contour of the lawn, thereby cutting an 86-inch swath with extreme evenness. It is of extremely light draught, due partly to ball-bearing and partly to the excellence of design and workmanship. Three levers at the driver's right enable him to lift any or all the cutting units from the ground to avoid obstructions or in going to or from the field. A small lever in the center of each wheel operates the clutch, throwing the machine in gear or out. Price on application.

COLDWELL "UNIVERSAL IMPROVED" HORSE LAWN MOWER.

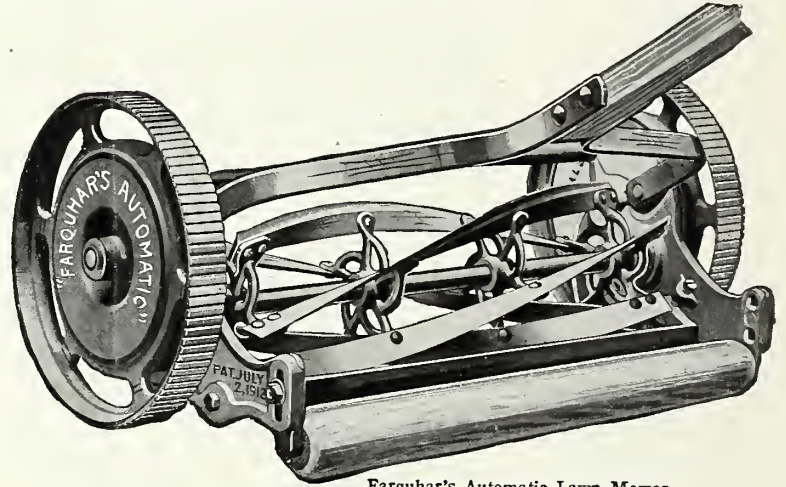
In material, workmanship and finish, is unsurpassed, and is furnished complete, with seat, shafts and side draught attachments. This mower has four blades in the revolving cutter, but can be supplied with six blades if desired, at \$14.00 additional. 30-inch cut, \$120.00; 35-inch cut, \$135.00.

NEW EXCELSIOR HORSE LAWN MOWER.

Every mower fully warranted to give satisfaction. These mowers are used by the government and on the largest public parks and lawns in the country. Complete with seat, shafts and side draught attachments. 30-inch cut. \$120.00; 35-inch cut, \$135.00.

HORSE LAWN BOOTS.

For use on Golf Links, Tennis Courts and Fine Lawns. Where care is exercised in ordering by size to fit the horse's feet, perfect satisfaction will be found. Three sizes, Nos. 2, 4 and 6. Numbers correspond to sizes of horseshoes. Price, \$18.00 per set of four.



Farquhar's Automatic Lawn Mower.

FARQUHAR'S AUTOMATIC LAWN MOWER.

The perfection of Lawn Mower construction, and is without doubt one of the best machines on the market. Positively the best materials and workmanship are used in the construction of these mowers. Price, 16-inch, \$17.00; 18-inch, \$19.00.

THE VICTORY BALL-BEARING LAWN MOWER.

10-inch wheel, four-bladed reel, construction light; easily run and almost silent. One of the best mowers ever built.

14 in., \$16.00 16 in., \$17.00 18 in., \$18.00 20 in., \$20.00

PHILADELPHIA LAWN MOWERS.

STYLE A. 4 blades, 10-inch wheel, 6 $\frac{1}{2}$ -inch Cylinder. Train of 3 gears, Double Ratchet, making both wheels drivers.

One of the lightest draft mowers manufactured. For parks and cemeteries where mowers are in use every day this style will be found very durable. 15-inch, \$23.50; 17-inch, \$26.00.

STYLE K. 5 Blades, 10-inch. Wheel, 6 $\frac{1}{2}$ -in. Cylinder, Single Pinion, Geared on Both Sides.

For all-round general purposes this is one of the best style mowers on the market. With its high wheels it runs lightly, and five knives it cuts smooth and even, with the principles of construction so evenly balanced that it has the greatest amount of durability. 14-inch, \$17.50; 16-inch, \$19.50; 18-inch, \$22.00.

Townsend's Gleaner. (Ball Bearing.) For finishing or trimming lawn, and borders. Much quicker and better than finishing by hand. This machine will cut close to shrubbery, buildings or curbing. Made with four blades of crucible steel. Cuts 8-inch swath. Price, \$9.00 each.

Coldwell's Lawn Trimmer. Invaluable for trimming the edges of lawns, flower beds, shrubbery and places that cannot be reached with a Lawn Mower. It cuts 8 inches in width. Price, \$9.00 each.

Grass Catcher, "Simplex." The Simplex Catcher will fit every style of mower and consists of a galvanized iron bottom with canvas sides and back. The 16-inch will fit all sizes from 12 to 16. 20-inch all sizes from 18 to 22. Each, \$2.50.

GARDEN TOOLS.

PLANET JR. FARM AND GARDEN TOOLS.

No. 17. SINGLE WHEEL HOE.
Equipment: One pair 6-inch hoes, three steel cultivator teeth, one large garden plow. Price, \$10.75.

No. 4. COMBINED HILL AND DRILL SEEDER, WHEEL HOE, CULTIVATOR AND PLOW.

Equipment: One pair of 4½-inch hoes, three cultivator teeth, one garden plow, one leaf guard. Price, complete, \$23.50.

No. 14. DOUBLE AND SINGLE WHEEL DISC HOE, CULTIVATOR AND PLOW.

Equipment: One set of disc hoes, one pair plows, one pair 3-prong cultivator teeth, two leaf lifters. Price, \$17.00.

No. 25. COMBINED HILL AND DRILL SEEDER, DOUBLE AND SINGLE WHEEL HOE, CULTIVATOR AND PLOW.

Equipment: One pair of 6-inch hoes, four cultivator teeth, one pair plows, two leaf guards, one marker. Price, complete, \$26.50.

NO. 12. DOUBLE WHEEL HOE.

Equipment: One pair of 6-inch hoes, two pairs of hollow steel cultivator teeth, one pair of plows, one pair of leaf lifters. Price, \$15.50.

Melon Nets. For supporting fruit. \$1.75 per doz.; \$13.50 per 100.

Roffea. For tying purposes. 50 cts. per lb.

Rakes, Hay. Wooden, 3 bow 14 teeth, \$1.00 each.

Rakes, Steel Garden. Long Teeth. 12 teeth, \$1.00; 14 teeth, \$1.10; 16 teeth, \$1.15; 18 teeth, \$1.25.

Rakes, Steel Garden. Long Teeth. 12 teeth, \$1.00; 14 teeth, \$1.10; 16 teeth, \$1.15; 18 teeth, \$1.25.

Rakes, Lawn. Wooden, 3 bow, 24 teeth, \$1.10 each.

Scythes, Solid Steel. \$2.25 each.

Scythes, Broad, English or Lawn. \$3.50 each.

Scythe, Bush. \$2.50 each.

Scythe Snaths. \$1.85 each. **Bush.** \$2.00 each.

Scythe Rifles. 30 cts. each.

Scythe Stones. Genuine Welsh. 75 cts. each.

Scythe Stones Carboxite. 50 cts. each; \$5.50 per dozen.

Shears, Ridgeway's Pattern. Very useful for trimming hedges. \$12.00 each.

Shears, Grass, with long Handles. Saynor's. For cutting the edges of grass borders. Blade 8½ in., \$5.00; 9-in. \$5.50; 9½-in. \$6.00; 10-in., \$6.50.

Shears, Grass. English blade, 5½-in., \$3.50; 8-in., \$4.00; 9-in., \$4.50; 10-in., \$5.00.

Shears, Grass or Sheep. English, 7-in., \$2.00 each.

Shears, Grass or Sheep, True Vermonter. \$1.50 each.

Stakes, Cane. These canes are strong end durable and will be found very satisfactory where light supports are required. Length 6 feet. 60 cts. per doz.; \$4.00 per 100.

Stakes, Southern Cane. Not as strong as the genuine bamboo, but useful for temporary stakes. 8-10 ft., \$1.50 per 100; \$3.00 per bundle of 250.

Stakes, Bamboo. Dyed Green. Very useful light stakes for pot plants.

100	1000	100	1000
1½ ft.	\$1.00 \$8.00	3 ft.	\$1.80 \$17.00
2 ft.	1.30 12.00	4 ft.	2.20 20.00
2½ ft.	1.40 13.00	5 ft.	3.00 28.00

Stakes, Garden, Square, Green Painted, Tapering.

	Doz.	100		Doz.	100
1½ ft.	\$0.30	\$1.75	3½ ft.	\$1.15	\$7.50
2 ft.	.35	2.50	4 ft.	1.35	10.50
2½ ft.	.60	3.75	5 ft.	1.75	13.50
3 ft.	.90	6.50	6 ft.	2.25	16.00

Stakes, Square, Green Painted, Tapering, Extra Heavy, Black Points.

	Doz.	100		Doz.	100
4 ft.	\$2.00	\$14.50	6 ft.	\$2.85	\$21.00
5 ft.	2.40	19.00			

Stakes, Round, Green Painted, Tapering, Light.

	Doz.	100		Doz.	100
1½ ft.	\$0.25	\$1.80	3½ ft.	\$1.25	\$8.85
2 ft.	.50	3.50	4 ft.	1.50	10.80
2½ ft.	.75	5.25	5 ft.	1.75	12.75
3 ft.	.85	6.00			

Stakes, Round, Green Painted, Heavy.

	Doz.	100		Doz.	100
3 ft.	\$1.50	\$10.50	5 ft.	\$2.50	\$18.50
3½ ft.	1.75	12.50	6 ft.	3.00	22.50
4 ft.	2.00	14.75			

Trellis, Fan for Vines. Made of wood and rattan and painted green.

High Wide	Each	Doz.	High Wide	Each	Doz.
1½ ft. 7 in.	\$0.40	\$4.50	4 ft. 27 in.	\$1.85	\$21.00
2 ft. 10 in.	.60	5.50	5 ft. 32 in.	2.25	26.00
2½ ft. 13 in.	.80	8.75	6 ft. 38 in.	2.75	32.00
3 ft. 16 in.	1.35	15.00	7 ft. 42 in.	3.25	36.00
3½ ft. 21 in.	1.50	17.00	8 ft. 46 in.	3.75	42.00

Trellis, Lattice. This style is built to meet a growing demand for a plain yet substantial plant support which will be in harmony with the present day architecture. This trellis is offered in only one width, but other sizes can be built to order.

High Wide	Each	High Wide	Each
6 ft. 18 in.	\$2.75	10 ft. 18 in.	\$4.50
8 ft. 18 in.	3.50	12 ft. 18 in.	5.25

Trellis, Veranda, for Vines. Made of wood and rattan, and painted green.

High Wide	Each	High Wide	Each
2 ft.	\$1.00	8 ft. 18 in.	\$3.50
3 ft.	1.15	8 ft. 28 in.	4.50
4 ft.	1.50	9 ft. 20 in.	4.00
5 ft. 18 in.	2.15	10 ft. 20 in.	4.35
6 ft. 18 in.	2.75	10 ft. 31 in.	5.50
6 ft. 28 in.	3.40	11 ft. 24 in.	4.85
7 ft. 18 in.	3.00	12 ft. 24 in.	5.25
		12 ft. 36 in.	6.50

Plant Support "Adjusto." 3 feet, \$2.00 per doz.; 4 feet, \$2.50 per doz.

Trellis, "Handy" Tomato and Vine. \$4.25 per doz.

Trellis, "Two Barrel Hoop" Tomato. \$2.50 per doz.

Trellis, Wood Tomato. These are made of neatly finished hard wood. Height, two and one-half feet. One and one-half feet square at top, one foot at bottom. \$4.25 per doz.

Weeder and Cultivator, Norcross. \$1.00 and \$1.35 each.

Weeder, Excelsior Hand. 20 cts. each.

Weeder, Hazeltine. 35 cts. each.

Weeder, Cleveland. Useful tool for large weeds, handle 3½ ft. \$1.25 each.

Weeder, Eureka. 3 forged steel prongs. 60 cts. each. Long handle \$5 cts. each.

Wheelbarrows, Garden. No. 4, \$8.50, No. 5, \$9.50.

Wheelbarrow, "The Farquhar." Large, \$9.50; medium, \$8.50.

INSECTICIDES AND FUNGICIDES.

Poisons and Fluids Are Not Mailable.

Arsenate of Lead. (Paste.) Price, 1-lb. jar, 50 cts.; 5 lbs., \$2.25; 10 lbs., \$3.75; 25 lbs., \$7.50; 50 lbs., \$12.50; 100 lbs., \$21.00.

Arsenate of Lead. (Dry.) 1 lb., 70 cts.; 5 lbs., \$3.00; 10 lbs., \$5.00; 25 lbs., \$11.50; 50 lbs., \$21.00; 100 lbs., \$38.00.

"Black Leaf 40." (Sulphate of Nicotine.) A concentrated liquid for use in destroying Green Aphid and Thrips. Price, 1-oz. bottle, 25 cts.; ¼-lb., \$1.00; 2 lbs., \$3.25; 10 lbs., \$13.75.

Bordeaux Mixture, Liquid. An indispensable fungicide for black rot, mildew, rust, and scab on fruit trees and plants. Price, 1 quart, 60 cts.; 1 gallon, \$1.60; 5 gallons, \$7.00; 10 gals., \$12.50.

Bordeaux Mixture. (Dry.) Price, 1-lb. box, 50 cts.; 5 lbs., \$2.00; 25 lbs., \$6.00.

Bug Death. For the potato, squash and cucumber bugs, currant and tomato worms. It is best applied dry with a duster or bellows at the rate of about 12 lbs. per acre. Price 1 lb., 25 cts.; 3 lbs., 60 cts.; 5 lbs., \$1.00; 12½ lbs., \$2.00; 100 lbs., \$11.00.

Diekey Shaker, for applying above, 70 cts. each.

Copper Solution. A highly concentrated liquid fungicide for plants affected with rot, blight or scab, and is frequently used for late spraying when fruit is nearly mature. Price per quart, \$1.50; gallon, \$4.50.

Grape Dust, Hammond's. A preparation for destroying mildew on grape vines and other plants or trees. Price, 5-lb. package, \$1.00.

Hellebore Powder, White. Price, ¼-lb., 45 cts.; 1 lb., 75 cts.

Herbicide Weed Exterminator. An occasional application will keep gutters, paths and roadways clear of weeds, poison ivy, grasses, mosses, dandelions, burdocks, etc. In ½ gallon cans, \$1.25; 1-gallon cans, \$2.25; in 2-gallon kegs, sufficient to make 80 gallons of liquid, \$4.00; in 5-gallon kegs, \$9.00; in 10-gallon kegs, \$15.00.

Imperial Soap Spray. Particularly effective against red spider on fruit, the rhododendron fly, and all insects affecting the rose. Price, 1 pint, 65 cts.; 1 quart, \$1.00; 1 gallon, \$3.25; 5 gallons, \$12.00; 10 gallons, \$22.00.

Kerosene Emulsion. (Liquid.) Price, 1 quart, 60 cts.; 1 gallon, \$1.75 5 gallons, \$7.50.

Pyrox, Bowker's. Price, 1 lb., 50 cts.; 5 lbs., \$2.00; 10 lbs., \$3.50; 25 lbs., \$7.50; 50 lbs., \$10.00; 100 lbs., \$22.00.

Slug Shot. An effectual remedy for potato bugs, slugs, worms, caterpillars, green and black flies infesting vegetables and other plants. Price, 1-lb. carton, 25 cts.; 5-lb., packages, 75 cts.; 10 lbs., \$1.35, in kegs of 125 lbs., \$12.00.

Tobacco Dust. Price, 1 lb., 15 cts.; 5 lbs., 50 cts.; 10 lbs., 90 cts., 100 lbs., \$6.00.

Whale Oil Soap, with Tobacco. Price, in boxes, with full directions for use. 1 lb., 40 cts.; 5 lbs., \$1.50; 10 lbs., \$2.75.

ALL PRICES QUOTED IN THIS CATALOGUE ARE SUBJECT TO CHANGE WITHOUT NOTICE.



ROCK GARDEN DESIGNED AND BUILT BY R. & J. FARQUHAR COMPANY.

LANDSCAPE GARDENING

We now make a specialty of this work, furnishing plans and estimates for the improvement and planting of private estates and public grounds. We have a large assortment (over 200 acres) of the best Hardy Nursery Stock, suitable for the Northern States, embracing trees, shrubs, vines and perennial plants. We have also competent designers and gardeners in our permanent employ for the carrying out of such work. We invite correspondence from those contemplating improvement of their estate.

R. & J. FARQUHAR COMPANY.

All prices in this catalogue are subject to change without notice.