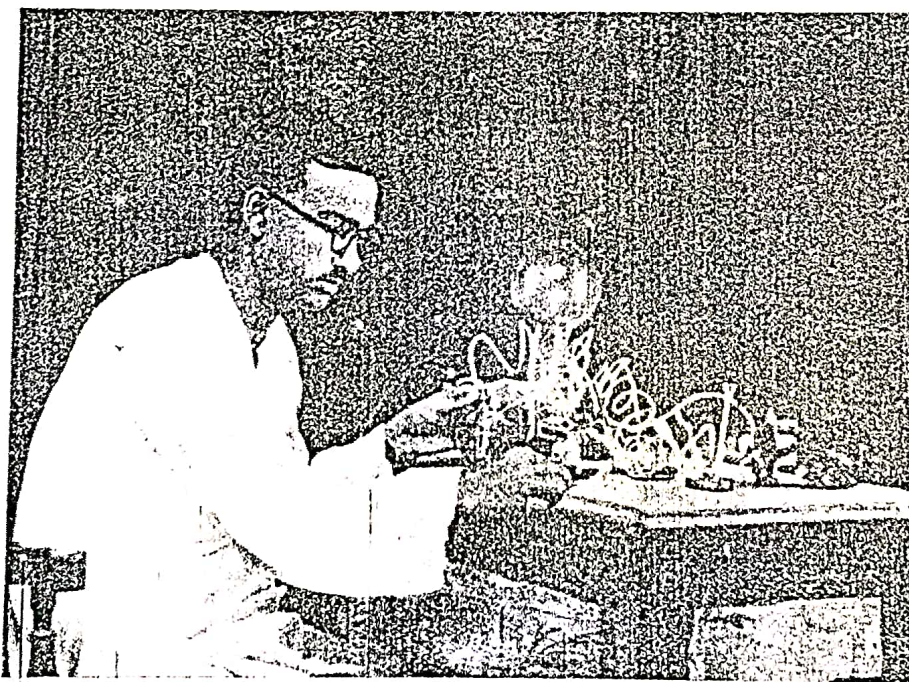


Industrial India

MAY, 1934



AUTO-SWITCH INVENTION

The working of a new kind of electrical contrivance has been demonstrated by Mr. S. C. Roy Choudhury, Electric Inspector of the Calcutta Corporation, the inventor of Automatic Time Switch, before the Mayor of Calcutta, Chief Executive Officer, Lighting Superintendent of Calcutta Corporation and others. The Lighting Superintendent, Mr. B. C. Ray remarked that this is absolutely an original invention and would be much helpful in household and various other purposes.

The outward appearance of it is like an ordinary switch and Mr. Roy Choudhury has named it as an "Auto Switch". There is a key affixed to it which on being pressed on, will put on the light for an infinite time, just like an ordinary switch. There is another automatic key for time regulation which while displaying light for the fixed period will itself put off the light. It is so arranged that it need not be operated by hand at all. By some mechanical contrivance it will automatically put on

and off the lights according to the necessity of the user and can be so manipulated as to yield a permanent or temporary stream as required in sundry other ways; thus saving much electric current. It seems that by its use a householder will be spared the trouble to switch in or out the lights. In the gate, out-house, landing, stair-case, inner compartments, bed rooms, bath rooms, and other places, it will be universally utilised with great comfort and ease, and it will soon turn out to be a household necessity and it can be hoped that it will be extensively prized by every householder, rich or poor.

There are diverse ways for its secret and unwarranted uses in the landing and stair-case or gate, etc, of a house by being so placed underneath an iron frame-work with a spring that the passage of any body over it will light up the passage lights or the same will be communicated unawares to the man in the room by the illumination of the light which will go out after the time regulated therefor

by the user. The mechanism is so very simple that any body can easily and comfortably handle it. The price too as anticipated will be very cheap. In the field of advertisement by electric signs, it will variedly play a very important role. It also may be used as a preventive measure against the incursions of thieves, burglars and robbers, etc. This switch can also be utilised for counting the heads making ingress and egress to and from a particular place.

Mr. Roy Choudhury is known to a wide public both here and elsewhere by the invention of his "Automatic Time Switch" which has been in use in some streets and markots of the Calcutta Corporation. His genius has spurred him to greater and useful researches which have led him to the invention of this present new Auto-Switch. May God condescend him a long and prosperous career so that he may fulfil his future mission of life o the service of mankind.

