



Know about the world's paradise, Manchoukuo, through the films of the Manchoukuo Motion Picture Corporation (Manei)!



BRANCHES OF BUSINESS:

- Dramatic, cultural publicity, news and cartoon films; 16-millimetre films produced also on contract.
- Sectional filming, recording, developing, editing of films on reduced scale contracts also undertaken.
- Sale of films material equipment on commission.
- Sales of various films.
- Importing, exporting and distribution of films.
- Studio rented.

(Tourists will be afforded every convenience)

THE MANCHOUKUO MOTION PICTURE CORPORATION

HEAD OFFICE: 602, HUNG-HSI CHIEH, HSINKING

Telephone: 2-5616

Tokyo Agency: Mantetsu (S.M.R.) Bldg., Aoicho, Akasaka-ku, Tokyo, Japan

Telephone: Akasaka (48) 5063

Tohendo Kaihatsu Kabushiki Kaisha

(TOHENDO DEVELOPMENT CO., LTD.)

President:
YOSHISUKE AIKAWA



Managing Director:
SHINJI OKUMURA

ESTABLISHED: 1938

Subscribed Capital - - Yen 140,000,000

Paid-up Capital - - - ,, 102,950,000



Head Office: TATUNG TACHIEH, HSINKING

ACTIVITIES OF THE COMPANY

1. Mining and distribution of iron ore, coal and other minerals essential for the production of iron in Tunghua Province.
2. Manufacturing and distribution of pig iron, steel and their by-products.
3. Manufacturing, treatment and distribution of high grade iron.
4. Undertakings connected with the above enterprises.
5. Investment and advancement of loans to undertakings connected with the aforementioned enterprises.

AREA OF EXPLOITATION

The area of the Tunghua Province is approximately 31,000 square kilometers. This region is rich in iron ore, coal and other subterranean mineral resources and it is often mentioned as the Saar district of the Orient which assertion has been amply verified by actual surveying of the area conducted by Dr. Henry F. Bain, an American geologist in 1938.

Manchuria Electric Co., LIMITED

ESTABLISHED: NOV., 1934

Capital Subscribed - - M.¥160,000,000

Capital Paid-up - - - - ,, 142,500,000

Head Office:

301 Tatung Tachieh, Hsinking, Manchoukuo

President: HAN YUN CHIEH

Vice-President: MOTOKI YAMASAKI

Electric Light and Power Supply
Accessories and Installations
Public Utility Investment in Manchuria

BRANCHES:

Dairen	Yingkow	Mutanchiang	Peian
Fengtien	Chinhsien	Tsitsihar	Hailar
Hsinking	Anshan	Chiamussu	Jehol
Harbin	Kirin	Yenki	Ssuping kai
Antung	Hsian	Tungan	Taonan



The Manchuria Mining Co., Ltd.

(MANSHU KOZAN KABUSHIKI KAISHA)

ESTABLISHED: FEB., 1938

Capital (fully paid-up): Yen 100,000,000

LINE OF BUSINESS:

Mining of Gold, Silver, Copper, Zinc, Lead,
Antimony, etc.

Head Office:

No. 213, Daido Daigai, Hsinking

Chairman, Board of Directors:

YOSHISUKE AIKAWA

President:

RIKICHI SHIMADA

The Manchuria Mining Development Co., LIMITED

(The Manshu Kogyo Kaihatsu Kabushiki Kaisha)

Established: August, 1935

Capital: M.¥50,000,000

Representative:

TOKUI TAKEUCHI

(Chairman of the Board of Directors)

Head Office:

Hsinking, Manchoukuo



The Manchuria Colliery Co., Ltd.

(MANSHU TANKO KABUSHIKI KAISHA)

Capital Subscribed - - M.¥300,000,000

Capital Paid-up - - - M.¥300,000,000

Established: 1934

PRESIDENT: YOSHISUKE AIKAWA



HEAD OFFICE: HSINKING

*Mining and Distribution of Coal
Surveying and Exploitation of New Mines
Study of Improved Mining Methods*



The Industrial Bank of Manchou

Subscribed Capital - - - - M.¥30,000,000

Paid-up Capital - - - - - „ 30,000,000

Governor: Y. TOMITA



*Banking Service for all Kinds of Commercial Business,
Industrial and Agricultural Enterprises and
Security Business.*

Head Office: HSINKING

Branches: Dairen, Mukden, Harbin, Kirin, Antung, Yingkou
and Other Principal Places in Manchoukuo.



The Central Bank of Manchou

ESTABLISHED 1932

CAPITAL - - - - - M.¥30,000,000

HEAD OFFICE:

HSINKING, MANCHOUKUO



Governor KAN CHAO-HSI

Branches:

MUKDEN	DAIREN
KIRIN	YINGKOW
HARBIN	ANTUNG
TSITSIHAR	TOKYO

(149 offices in all)

Foreign Correspondents:

New York, London, Paris, Berlin, Shanghai, Tientsin, Peking, Mongol
Autonomous Republic, Tokyo, Yokohama, Osaka, Kobe,
and at all other principal cities throughout Japan

Governor: KAN CHAO-HSI

Vice-Governor: KIKUTARO OSAWA

KABUSHIKI KAISHA
HONKEIKO BAITETSU KOSHI

(PEN-HSI-HU COLLIERY AND IRON CO., LTD.)

Established: May, 1910

Head Office:

Pen-hsi-hu, Mukden Province, Manchoukuo

Branch Office: Hsinking, Manchoukuo

Subscribed Capital - - Yen 100,000,000

Paid-up Capital - - - ,, 100,000,000

President: S. OSAKI

Managing Director: I. TAKAHASHI

Directors: B. IDO T. YAMAMOTO HU SUNG-YING
 KWAN-LUN Y. AIKAWA Y. YANO
 J. NAGAZUMI K. HAYASHI M. OUCHI

Cable Address: "HONKEIKO BAITETSU"

Activities of the Company:

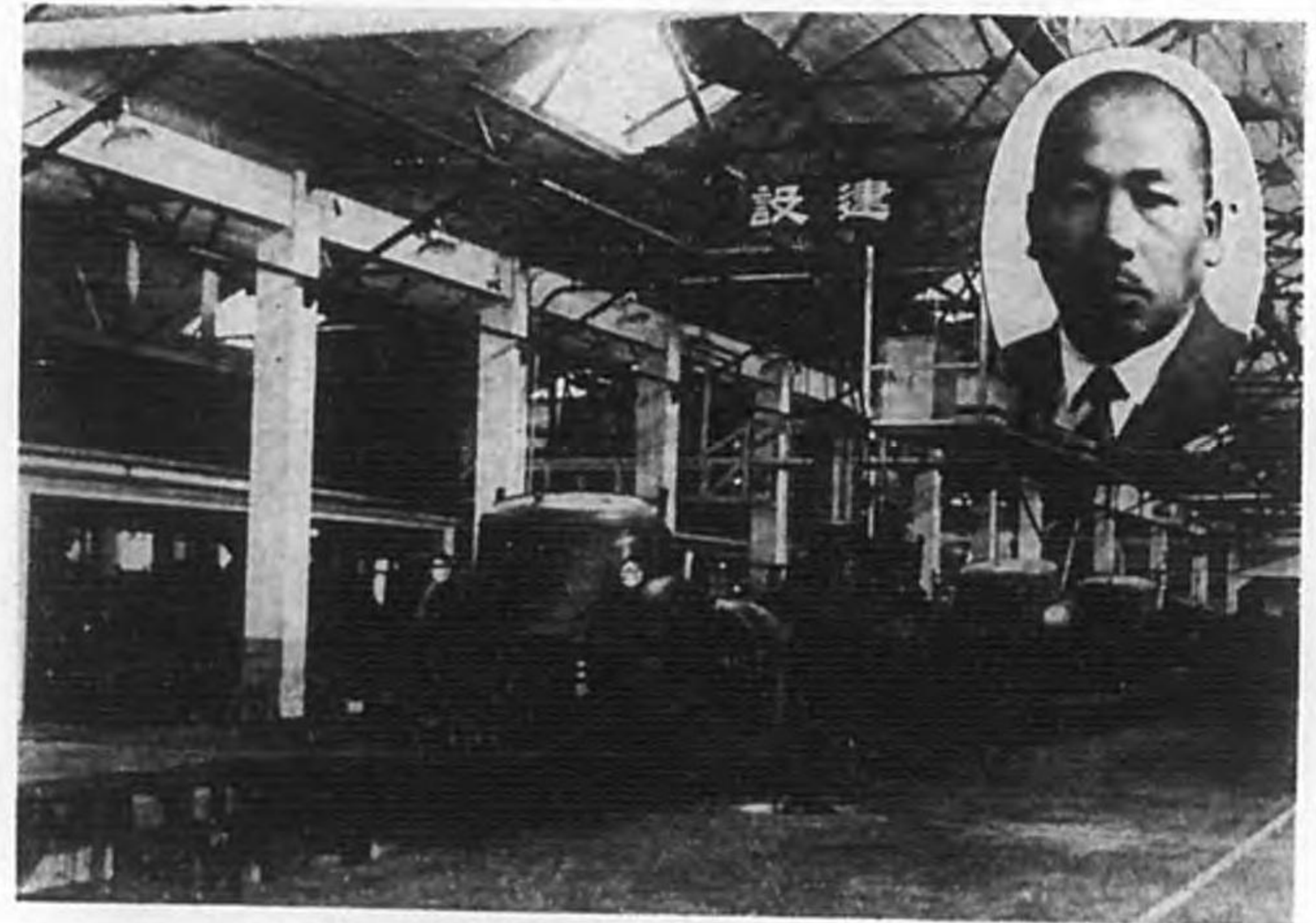
1. Mining of coal, iron and other minerals essential for iron manufacturing
2. Production of pig iron and cokes
3. Distribution of coal, cokes and pig iron
4. Production of ammonia, coal tar and fire-brick

THE
DOWA AUTOMOBILE MANUFACTURING CO.

Established: March, 1934

Head Office: MUKDEN, MANCHOUKUO

Capital Subscribed - - - M.¥30,000,000



*Sectional View of Assembly Plant. Inset: Den Takehara,
Chairman of the Board of Directors*

BUSINESS:

- Assembling of automobiles
- Manufacture of automobile chassis and of automobile parts for replenishment
- Sale of automobiles, parts and accessories
- Repairing of automobiles
- Enterprises incidental to the afore-mentioned items.

The Manchuria Daily News

32 Yashima-dori, Hsinking

Phones: 2-5666 & 3-5456

7 Awaji-cho, Dairen

The Key to the Solution of Any Problems on Manchoukuo

“MANCHURIA”

A Monthly Publication

This periodical is a supplement to The Manchuria Daily News, the oldest and by far the best English daily paper in Manchuria, which gives a wealth of information and illustration on Manchuria, valuable for all of those who are studying Manchurian current events and history.

Subscription Prices (including postage):

	Dairen	Japan Manchoukuo and China	Other Countries
	G ¥	G ¥	G ¥
Single copy	0.20	0.25	0.30
Six months	2.40	3.00	3.60
One year	4.80	6.00	7.20

(All payable in advance)

The Manchuria Public Information Association

(MANSHU KOHO KYOKAI)



Headquarters of The Manchuria Public Information Association, Hsinking.
Inset: Hisashi Morita, Chairman of the Board of Directors.

Member Companies:

News Agency:

The Manchoukuo News Agency . Hsinking

Japanese language dailies:

The Manshu Nichi-Nichi Shimbun. Mukden

The Dairen Nichi-Nichi Shimbun. Dairen

The Manshu Shimbun. Hsinking

The Harbin Nichi-Nichi Shimbun. Harbin

The Anto Shimbun. Antung

The To-Man Shimbun. Yenki

The To-Man Nichi-Nichi Shimbun. Mutankiang

The Chichiharu Shimbun. Tsitsihar

The Nekka Shimpō. Jehol

The Sanko Nichi-Nichi Shimbun . Chiamussu

The Kinshu Shimpō Chinchow

Manchoukuo language dailies:

The Antung Jih Pao. Antung

The Tung Man Jih Pao. Yenki

The Tatung Jih Pao. Hsinking

The Tung Man Pao. Mutankiang

The Sheng King Jih Pao. Mukden

The Ta Tung Jih Pao. Dairen

The Ta Pei Jih Pao. Harbin

The Lungkiang Mimpao. Tsitsihar

The Sankiang Pao. Mutankiang

The Liao Hsi Chen Pao. Chinchow

Chosenese language daily:

The Mansen Nippo. Hsinking

Russian language daily:

The Harbinscoe Vremier. Harbin

English language daily:

The Manchuria Daily News Hsinking



The Manchuria Telephone & Telegraph Company, Ltd. was established in August, 1933 to take unified control of the whole network of communication in Manchuria. Following the transfer to Manchoukuo of the Russian-owned Chinese Eastern Railway in March, 1935, the company also took over all communication facilities within the districts along that railway. In April of the following year the company concluded an agreement with the Chosen Government-General whereby the electric communication enterprises in the Chientao region were ceded to the former. With this, the company placed all communication facilities in Manchuria under its complete control.

Radio Broadcasting

The radio broadcasting enterprise is also under the operation of The Manchuria Telephone & Telegraph Company. The number of listeners-in which aggregated 5,800 in number at the time of the company's establishment in 1933 is at present in excess of 200,000. In November, 1934 the company constructed a 100 kilo radio broadcasting station at Hsinking at a cost of ¥2,000,000. The number of broadcasting stations have since increased four-folds.

The Manchuria Telephone & Telegraph Company, Ltd.

Established: Sept., 1933

Head Office: DAIDO AVENUE, HSINKING

Capital Subscribed . . . ¥100,000,000

Business:

**Management of Telephonic, Telegraphic and
Radio Communications in Manchoukuo**

Telephone Service.

With regard to its telephone enterprise, special note must be made not only of the expansion of this service throughout Manchoukuo, but also of the inauguration in 1934 of radio-telephonic service between Manchoukuo and Japan.

Telegraphic Service

The telegraphic service under its management has been greatly improved in recent years. At present offices accepting telegraphic messages number over 900, indicating an increase in excess of 200% since 1934.

Okura & Co. (Trading) of Manchuria, LIMITED

[Sister Company of Okura & Co. (Trading) Ltd., Tokyo, Japan]

*Importers & Exporters, Manufacturers,
Commission Merchants, Brokers*

Chairman of Board of Directors:
T. MINAGAWA

Head Office: Hsinking, Manchoukuo

Branch Offices:

Mukden, Dairen, Harbin, Anshan, Antung, New York, London, Berlin, Paris, Rome, Sydney, Singapore, Melbourne, Tientsin, Peking, Hankow, Shanghai, Tsingtau, Osaka, Yokohama, Yokosuka, Kobe, Kure, Moji, Mitu, Sasebo, Maizuru, Nagoya, Himezi, Taihoku, Keijo, etc.

Principal Lines of Business:

Power Plant Equipment	Metallic Ores	Soya Beans
Electric Machinery & Instrument	Aluminium, Brass	Soya Bean Oil & Cake
Chemical Industry Machinery	Copper, Cobalt, Nickel	Vegetable Oil
Mining Machinery	Ferro-Alloys	Hardened Fish Oil
Railway Machinery	Special Steel	Wheat, Wheat Flour
Machine Tools	Steel Bars, Plates	Tea, Rice
Textile Machinery	Wire Nails, Rails	Barley, Maize
Automobiles	Coal, Petroleum	Canned Goods
Armaments & Aeronautical Equipment	Cement, Salt, Rubber	Fertilizers
Any Other Machineries	Cotton, Silk, Wool	etc., etc.
	Chemical Products	

REGULAR AIR SERVICE
Comfort - Speed - Safety



THE MANCHURIA AVIATION CO.

Manchuria Industrial



Capital: ¥450,000,000



Head Office:

HSINKING, MANCHOUKUO

Cable Address

Head Office:

"MAINDEC" HSINKING

Tokyo Office:

Tokyo Office:

President:
YOSHISUKE AIKAWA

Tamura-cho 1-chome, Shiba-ku, Tokyo "MAINDEC" TOKYO

Principal Affiliated Companies in Manchoukuo

Showa Steel Works, Ltd.

(K.K. Showa Seiko Sho)
Established 1929. Capital ¥200,000,000.
Head Office: Anshan.

Dowa Automobile Co., Ltd.

(Dowa Jidosha Kogyo K.K.)
Established 1934. Capital ¥30,000,000.
Head Office: Mukden.

Manchuria Colliery Co., Ltd.

(Manshu Tanko K.K.)
Established 1934. Capital ¥300,000,000.
Head Office: Hsinking.

Manchuria Light Metals Co., Ltd.

(Manshu Keikinzoku Seizo K.K.)
Established 1916. Capital ¥80,000,000.
Head Office: Fushun.

Manchuria Magnesium Industry Co., Ltd.

(Manshu Magnesium Kogyo K.K.)
Established 1938. Capital ¥10,000,000.
Head Office: Hsinking.

Fushun Cement Co., Ltd.

(Bujun Semento K.K.)
Established 1934. Capital ¥5,000,000.
Head Office: Fushun.

Antung Cement Co., Ltd.

(Anto Semento K.K.)
Established 1940. Capital ¥8,000,000.
Head Office: Antung.

Manchuria Mining Co., Ltd.

(Manshu Kozan K.K.)
Established 1938. Capital ¥100,000,000.
Head Office: Hsinking.

Manchuria Lead Co., Ltd.

(Manshu Enko K.K.)
Established 1935. Capital ¥30,000,000.
Head Office: Mukden.

Manchuria Airplane Mfg. Co., Ltd.

(Manshu Hikoki Seizo K.K.)
Established 1938. Capital ¥100,000,000.
Head Office: Mukden.

Tohendo Development Co., Ltd.

(Tohendo Kaihatsu K.K.)
Established 1938. Capital ¥140,000,000.
Head Office: Hsinking.

Manchuria Automobile Mfg. Co., Ltd.

(Manshu Jidosha Seizo K.K.)
Established 1939. Capital ¥100,000,000.
Head Office: Hsinking.

Development Corporation

Penhsihu Coal & Iron Co., Ltd.

(K.K. Honkeiko Baitetsu Koshi)
Established 1910. Capital ¥100,000,000.
Head Office: Penhsihu.

Kyowa Iron Mining Co., Ltd.

(Kyowa Tetsuzan K.K.)
Established 1939. Capital ¥10,000,000.
Head Office: Hsinking.

Manchuria Heavy Machine Co., Ltd. (Manshu Juki Seizo K.K.)

Established 1940. Capital ¥50,000,000. Head Office: Hsinking.

Manchuria Boring Co., Ltd.

(Manshu Boring K.K.)
Established 1940. Capital ¥2,000,000.
Head Office: Hsinking.

Manchuria Soya Bean Industry Corp.

(Manshu Daizu Kogyo K.K.)
Established 1934. Capital ¥5,000,000.
Head Office: Dairen.

Principal Affiliated Companies in Japan

Nippon Mining Co., Ltd.

(Nippon Kogyo K.K.)
Established 1929. Capital ¥240,150,000.
Head Office: Tokyo.

Hitachi, Ltd.

(K.K. Hitachi Seisakusho)
Established 1920. Capital ¥204,500,000.
Head Office: Tokyo.

Osaka Iron Works, Ltd.

(K.K. Osaka Tekkosho)
Established 1914. Capital ¥30,000,000.
Head Office: Osaka.

Hitachi Electric Power Co., Ltd.

(Hitachi Denryoku K.K.)
Established 1927. Capital ¥10,000,000.
Head Office: Tokyo.

Nissan Automobile Co., Ltd.

(Nissan Jidosha K.K.)
Established 1933. Capital ¥30,000,000.
Head Office: Yokohama.

Nissan Automobile Sales Co., Ltd.

(Nissan Jidosha Hanbai K.K.)
Established 1935. Capital ¥5,000,000.
Head Office: Tokyo.

Nissan Chemical Industrial Co., Ltd.

(Nissan Kagaku Kogyo K.K.)
Established 1934. Capital ¥124,000,000.
Head Office: Tokyo.

Japan Fat & Oil Industrial Co., Ltd.

(Nippon Yushi K.K.)
Established 1917. Capital ¥50,500,000.
Head Office: Tokyo.

Nippon Marine Products Co., Ltd.

(Nippon Suisan K.K.)
Established 1925. Capital ¥93,000,000.
Head Office: Tokyo.

Borneo Fishing Co., Ltd.

(Borneo Suisan K.K.)
Established 1933. Capital ¥2,500,000.
Head Office: Tokyo.

Nissan Nohrin Kogyo K.K.

Established 1934. Capital ¥20,600,000.
Head Office: Tokyo.

Nissan Steamship Co., Ltd.

(Nissan Kisen K.K.)
Established 1934. Capital ¥20,000,000.
Head Office: Tokyo.

Nissan Fire & Marine Insurance Co., Ltd.

(Nissan Kasai Kaijo Hoken K.K.)
Established 1911. Capital ¥10,000,000.
Head Office: Tokyo.



S.M.R.

President:
TAKUICHI OHMURA

Head Office:
HIGASHIKOEN-CHO, DAIREN

Authorized Capital . ¥1,400,000,000

Total Employees 250,000

Enterprises:

Railway Lines 10,000 km.

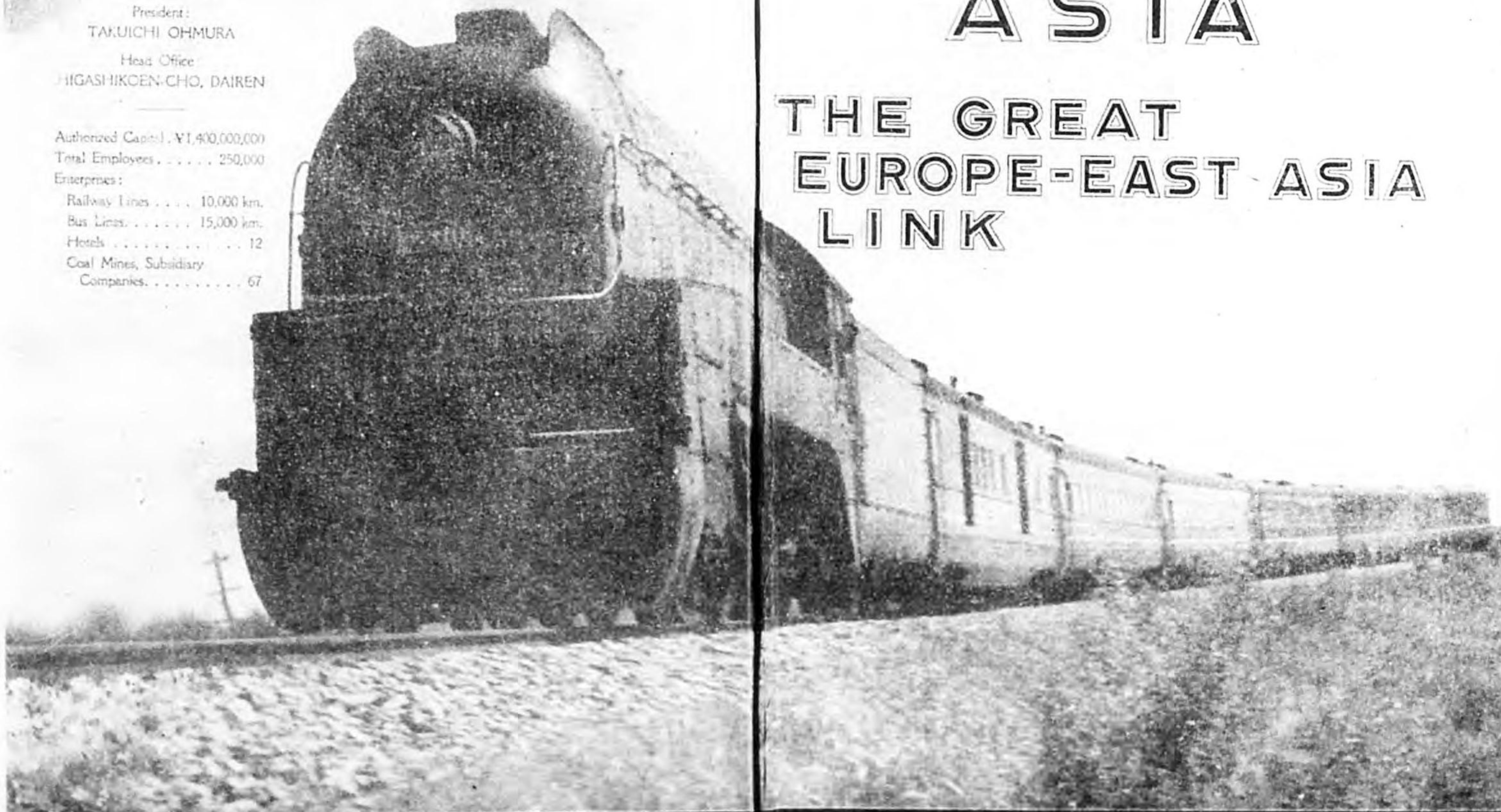
Bus Lines 15,000 km.

Hotels 12

Coal Mines, Subsidiary
Companies 67

“ASIA”

THE GREAT
EUROPE-EAST-ASIA
LINK



SOUTH MANCHURIA RAILWAY