

厚化粧

三編上下

60

紀の書

851
60



三



堪忍を五兩と定め密夫の償代を七兩貳分とありしもの
 何の頃の極めありけん然る春宵一刻の價千金と
 積り相場をぐまの入れたる一さらば晋子其の月を
 蚊を疵小しと五百兩と吟し秀句のたもを思ひ這ハ月花小
 教心遊べて只かの文人墨客等が仲間の通り相場小し
 一字千金と教へしもの有難き世の本直段よとて爰ハ僕等
 ぶたありて文字の端をいささか並べもて小冊とありし
 婦幼の玩具とあるせむ是三文が智慧もふたげんと下直
 のまじりふらん

戊辰新春

為永春水記る

三三三

中村七郎氏寄贈本



851
60



尾作巻三

具禮人



〇一〇六三
 〇一〇六四
 〇一〇六五
 〇一〇六六
 〇一〇六七
 〇一〇六八
 〇一〇六九
 〇一〇七〇
 〇一〇七一
 〇一〇七二
 〇一〇七三
 〇一〇七四
 〇一〇七五
 〇一〇七六
 〇一〇七七
 〇一〇七八
 〇一〇七九
 〇一〇八〇
 〇一〇八一
 〇一〇八二
 〇一〇八三
 〇一〇八四
 〇一〇八五
 〇一〇八六
 〇一〇八七
 〇一〇八八
 〇一〇八九
 〇一〇九〇
 〇一〇九一
 〇一〇九二
 〇一〇九三
 〇一〇九四
 〇一〇九五
 〇一〇九六
 〇一〇九七
 〇一〇九八
 〇一〇九九
 〇一一〇〇



〇一〇六一
 〇一〇六二
 〇一〇六三
 〇一〇六四
 〇一〇六五
 〇一〇六六
 〇一〇六七
 〇一〇六八
 〇一〇六九
 〇一〇七〇
 〇一〇七一
 〇一〇七二
 〇一〇七三
 〇一〇七四
 〇一〇七五
 〇一〇七六
 〇一〇七七
 〇一〇七八
 〇一〇七九
 〇一〇八〇
 〇一〇八一
 〇一〇八二
 〇一〇八三
 〇一〇八四
 〇一〇八五
 〇一〇八六
 〇一〇八七
 〇一〇八八
 〇一〇八九
 〇一〇九〇
 〇一〇九一
 〇一〇九二
 〇一〇九三
 〇一〇九四
 〇一〇九五
 〇一〇九六
 〇一〇九七
 〇一〇九八
 〇一〇九九
 〇一一〇〇



Handwritten text in a Gothic script, likely a list or index, located at the top of the right page.

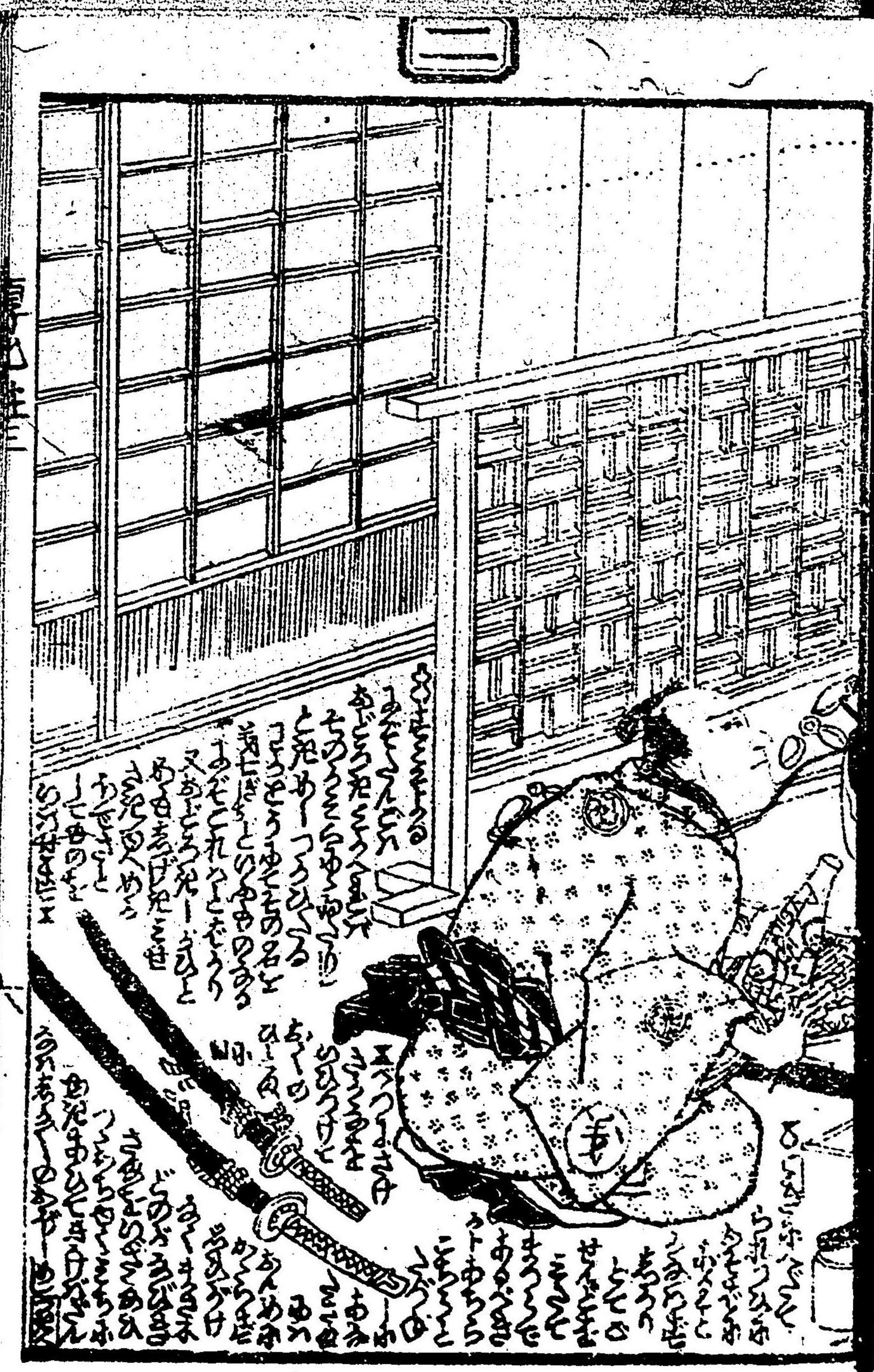


Small handwritten text at the bottom of the right page, possibly a signature or a note.

Handwritten text in a Gothic script, likely a list or index, located at the top of the left page.



Small handwritten text at the bottom of the left page, possibly a signature or a note.



Handwritten text in a cursive style, likely a transcription of a speech or a list of items, located on the left side of the illustration.



志
Handwritten text at the top of the right page, including the character '志' and several lines of cursive text.

Handwritten text on the wall behind the person, including the characters '茶' and '香'.

Handwritten text in a cursive style, likely a transcription of a speech or a list of items, located on the right side of the illustration.



Handwritten text in the left margin of the top page.

Handwritten text in the right margin of the top page.

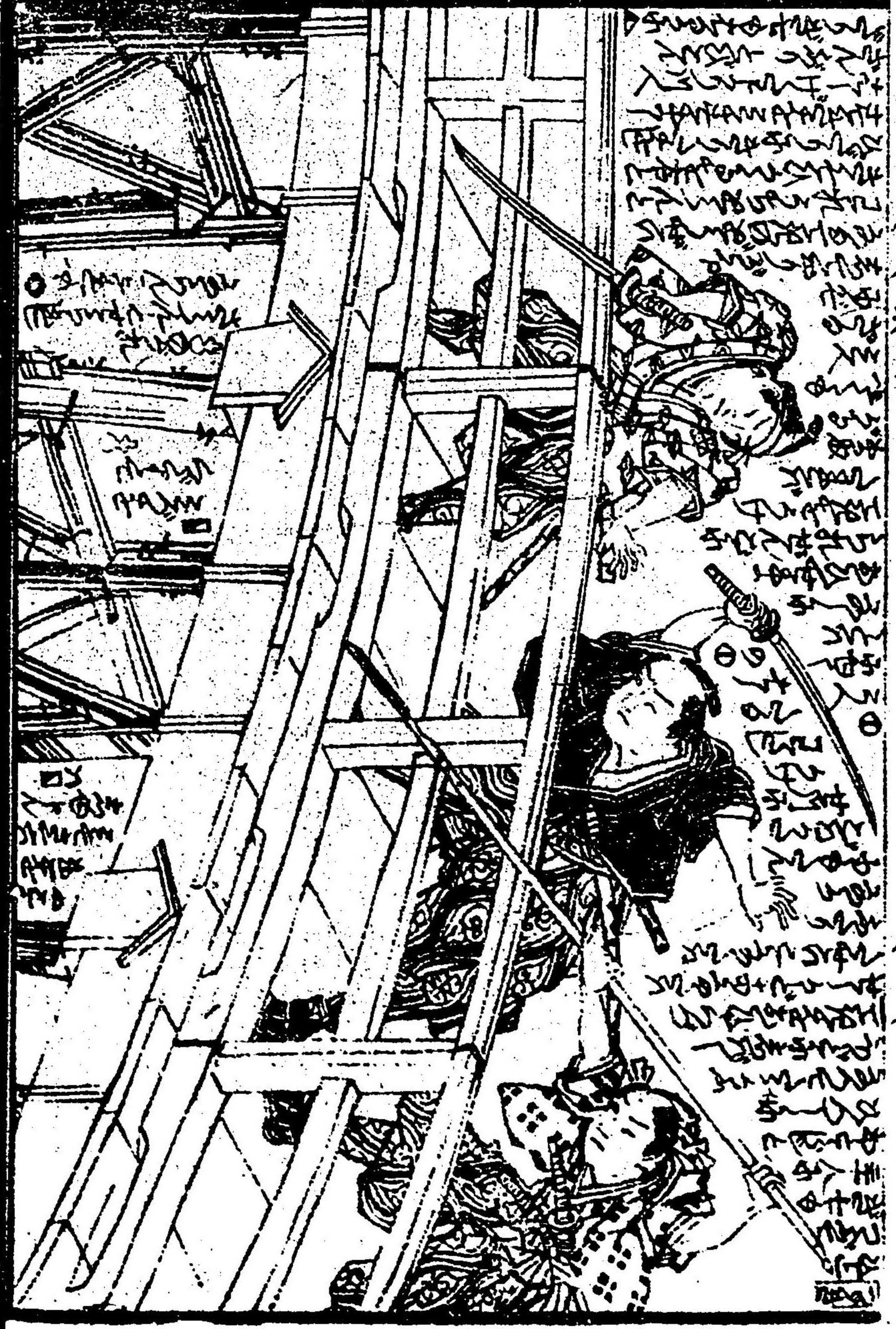
Main body of handwritten text on the top page, written in a dense Gothic script.

Main body of handwritten text on the bottom page, written in a dense Gothic script.

Handwritten text in a medieval script, likely Latin, arranged in columns. The text is partially obscured by a large, detailed illustration of a man in a patterned tunic and a dark cap, possibly a knight or noble, standing on a wooden structure. The illustration is rendered in a woodcut style with fine lines and cross-hatching for shading.



Handwritten text in a medieval script, likely Latin, arranged in columns. The text is partially obscured by a large, detailed illustration of a man in a patterned tunic and a dark cap, possibly a knight or noble, standing on a wooden structure. The illustration is rendered in a woodcut style with fine lines and cross-hatching for shading.

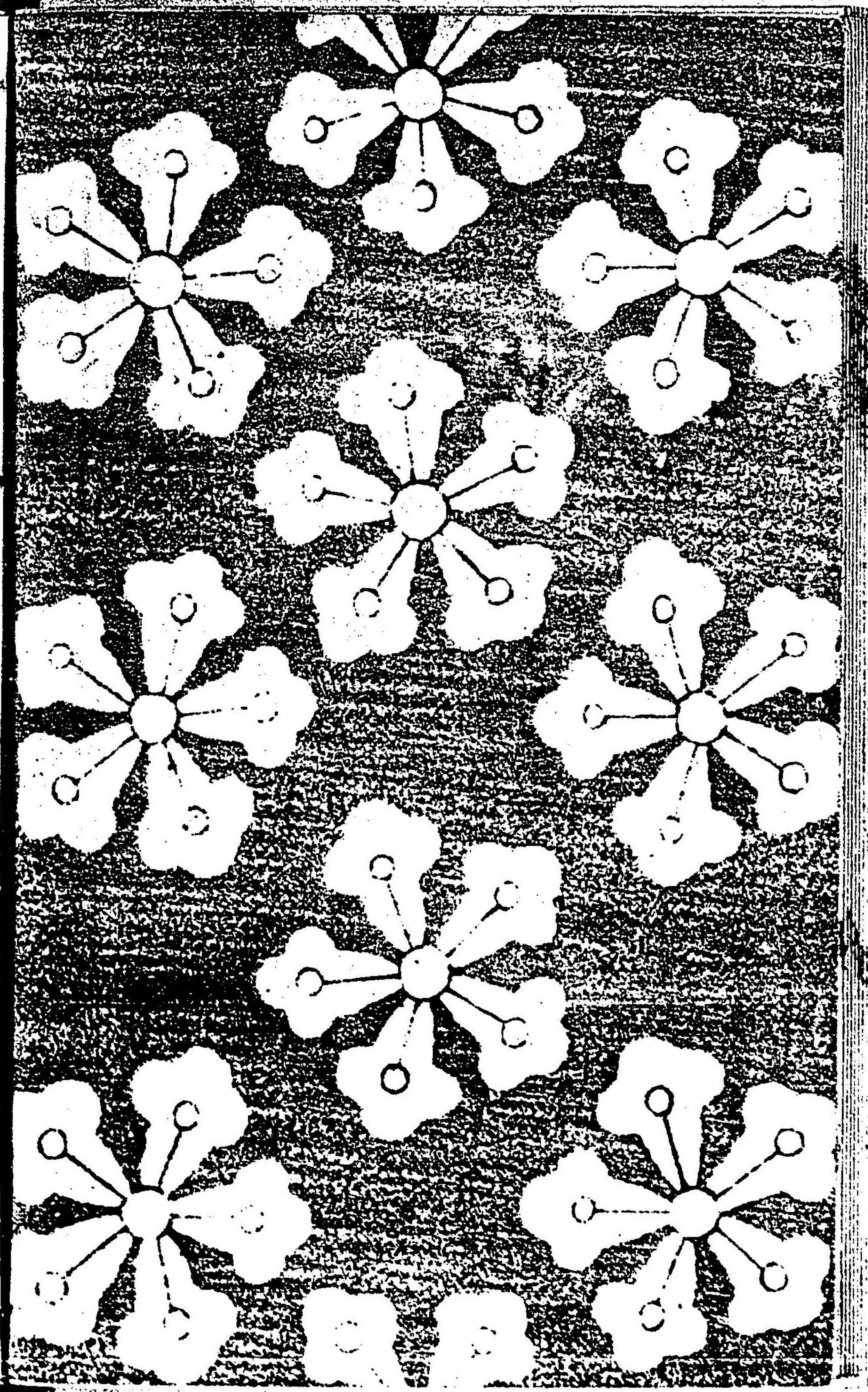




高化粧

九

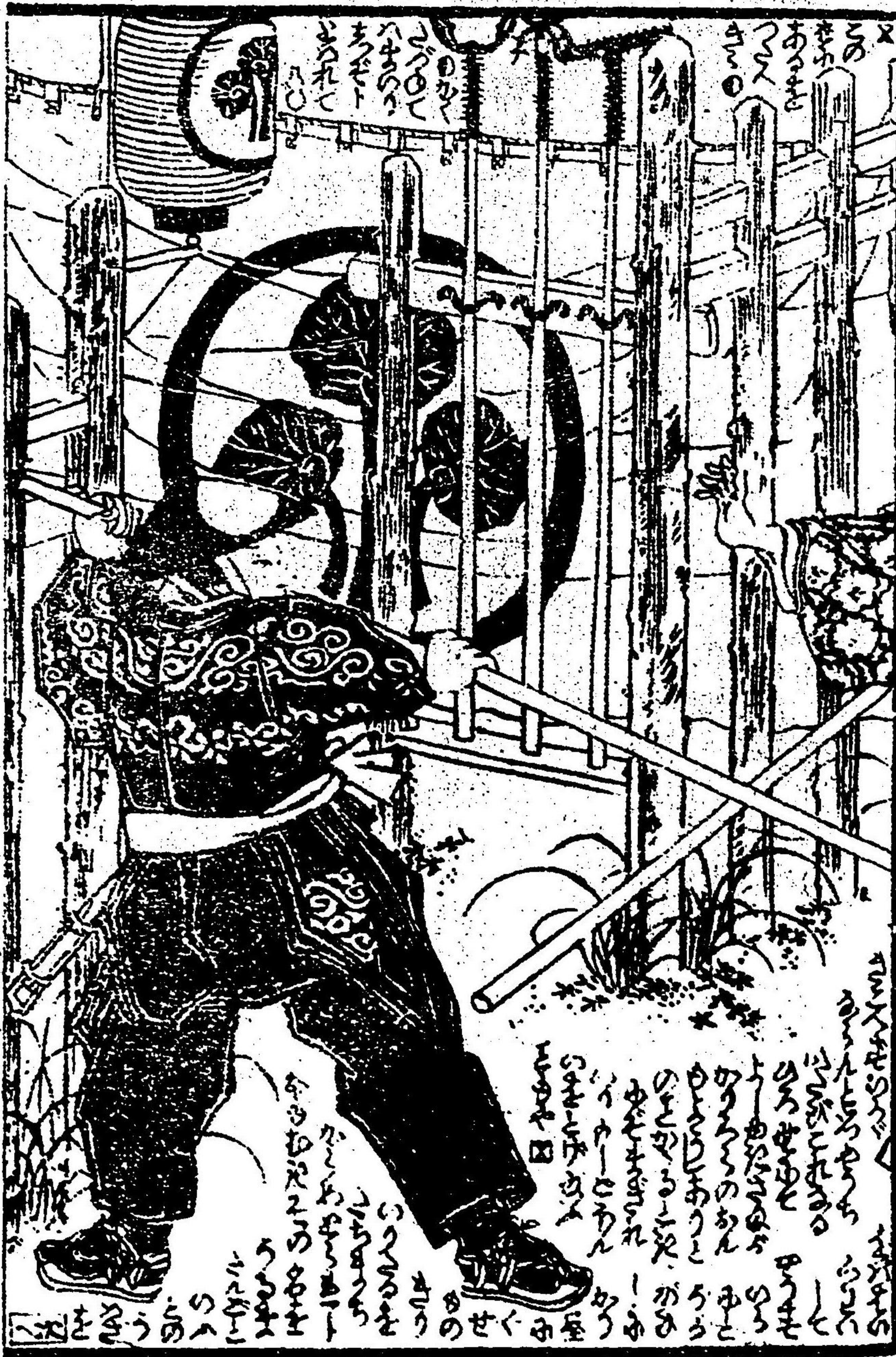
851
60



中村七郎氏寄贈本
 此圖為中村七郎氏之肖像，其面容清癯，鬚髮皆白，頭戴高冠，身著華麗之衣，腰佩寶劍，手持一物，其姿態莊嚴，令人肅然起敬。



中村七郎氏寄贈本



Vertical text on the left side of the illustration.

Vertical text at the top of the illustration.

Vertical text at the bottom of the illustration.



Vertical text on the right side of the illustration.

Vertical text at the top of the illustration.

Vertical text at the bottom of the illustration.



Handwritten text on the left side of the illustration.

Handwritten text in the upper right quadrant of the illustration.

Handwritten text in the lower right quadrant of the illustration.



Handwritten text in the upper right quadrant of the illustration.

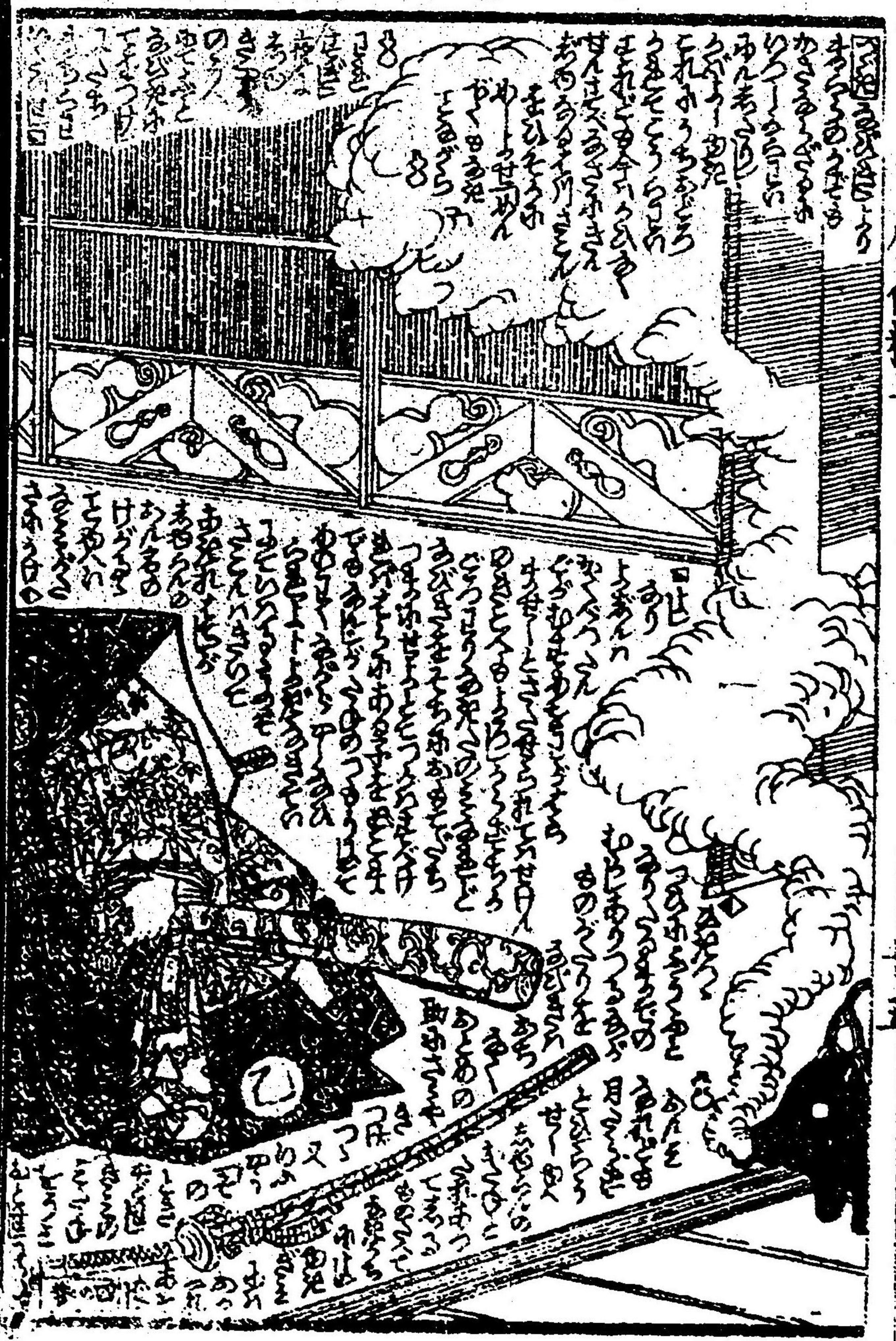
Handwritten text in the lower right quadrant of the illustration.

Handwritten text in a cursive script, likely a form of shorthand or a specific dialect. The text is arranged in vertical columns, with some lines appearing to be part of a list or a series of entries. The script is dense and difficult to decipher without a key.



Handwritten text in a cursive script, similar to the left page. The text is arranged in vertical columns. There are some larger characters or symbols interspersed within the columns, possibly indicating specific sections or important points.





Handwritten text in a stylized font, arranged in several lines within the upper speech bubble. The text is difficult to decipher due to its cursive and stylized nature.

Handwritten text in a stylized font, arranged in several lines below the speech bubble. The text is difficult to decipher due to its cursive and stylized nature.



Handwritten text in a stylized font, arranged in several lines within the upper speech bubble. The text is difficult to decipher due to its cursive and stylized nature.

Handwritten text in a stylized font, arranged in several lines below the speech bubble. The text is difficult to decipher due to its cursive and stylized nature.







Handwritten text in a cursive style, likely a Japanese dialect or a specific script, located above the illustration.

Handwritten text in a cursive style, continuing the narrative or dialogue, located to the left of the illustration.

Handwritten text in a cursive style, located below the illustration.



Handwritten text in a cursive style, likely a Japanese dialect or a specific script, located above the illustration.

Handwritten text in a cursive style, continuing the narrative or dialogue, located to the left of the illustration.

Handwritten text in a cursive style, located below the illustration.



1111





明治七年甲戌陽春開板

厚化粧萬年鳴田

八編 春水作 國貞画

新司九尾傳

十三 春水作 國貞画

室町源氏胡蝶卷

廿三 種彦作 國貞画

筆海四國聞書

十三 種彦作 國貞画

鼠祠通夜譚

八編 種彦作 國貞画

明鴉墨画廻禱福

十五 種彦作 國貞画

童謡妙々車

二十五 種彦作 國貞画

花封苔玉章

十編 種彦作 國貞画

薄俤幼日記

廿七 春水作 國貞画

八犬傳犬の友紙

五十五 柳亭作 國貞画

七幼き葛飾譚

十 辻種彦作 國貞画

南傳馬町壹丁月 葛屋吉藏板

朝牛肉丸 中肉三味 二百丸

春水作國貞画

春水作國貞画

857

60

