



U2M-1717



The first thing I did
 was to go to the
 bank and get some
 money out of the
 machine. I was
 surprised to find
 that it was still
 working. I had
 heard that it was
 broken, but it
 seems to be in
 good order. I
 will be using it
 for a while.

Handwritten text in a cursive script, likely a Japanese calligraphic style (sōsho), arranged in approximately seven lines. The text is written on aged, yellowish paper.



Handwritten text in a cursive script, likely a list or account, written on aged paper. The text is oriented vertically and appears to be a list of items or entries, possibly related to a ledger or inventory. The script is dense and difficult to decipher due to its cursive nature and the age of the document.

Handwritten text in a cursive script, continuing the list or account from the previous page. The text is oriented vertically and appears to be a list of items or entries, possibly related to a ledger or inventory. The script is dense and difficult to decipher due to its cursive nature and the age of the document.

Handwritten text in a cursive script, likely a list or account, written on aged paper. The text is arranged in approximately 15 lines, starting with a large initial letter 'M'.

Handwritten text in a cursive script, likely a list or account, written on aged paper. The text is arranged in approximately 15 lines, starting with a large initial letter 'M'.



Handwritten text in a cursive Japanese style (sōsho), likely a chapter title or a section heading. The text is written vertically and is difficult to decipher due to its cursive nature. It appears to be a title for a chapter or a section of a book, possibly related to the illustration above.

Handwritten text in a cursive script, likely a letter or a page from a manuscript. The text is written in dark ink on aged, yellowish paper. The lines are somewhat irregular and slanted, characteristic of cursive handwriting. The text is arranged in approximately 15 lines, filling most of the page.

Handwritten text in a cursive script, continuing from the previous page. The text is written in dark ink on aged, yellowish paper. The lines are somewhat irregular and slanted, characteristic of cursive handwriting. The text is arranged in approximately 15 lines, filling most of the page.

Handwritten text in a cursive script, likely a letter or document, written on the top page of a folded manuscript. The text is arranged in approximately 15 lines, starting from the top left and moving downwards. The ink is dark, and the paper shows signs of age and wear.

Handwritten text in a cursive script, likely a letter or document, written on the bottom page of a folded manuscript. The text is arranged in approximately 15 lines, starting from the top left and moving downwards. The ink is dark, and the paper shows signs of age and wear.

Handwritten text in a cursive script, likely a letter or document, written on the top page of an open book. The text is arranged in approximately 15 lines, flowing from right to left across the page.

Handwritten text in a cursive script, likely a letter or document, written on the bottom page of an open book. The text is arranged in approximately 15 lines, flowing from right to left across the page.

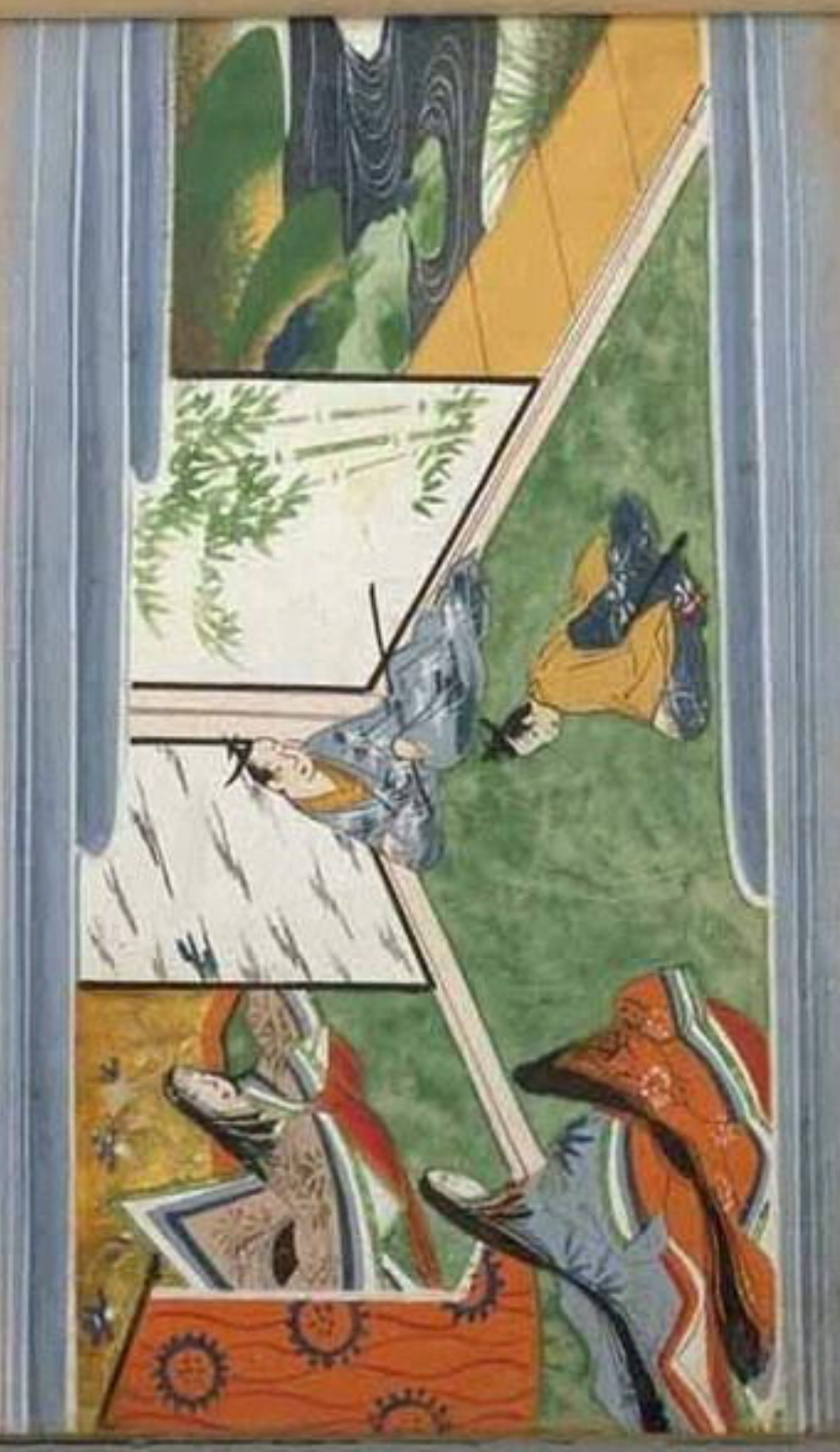
Handwritten text in a cursive script, likely a list or account, written on the top page of a manuscript. The text is arranged in approximately 15 horizontal lines, starting from the top left and moving towards the right. The ink is dark, and the paper shows signs of age and wear.

Handwritten text in a cursive script, likely a list or account, written on the bottom page of a manuscript. The text is arranged in approximately 15 horizontal lines, starting from the top left and moving towards the right. The ink is dark, and the paper shows signs of age and wear.

Handwritten text in a cursive script, likely a list or account, written on the top page of a manuscript. The text is arranged in approximately 15 lines, starting with a large initial letter 'H'.

Handwritten text in a cursive script, likely a list or account, written on the bottom page of a manuscript. The text is arranged in approximately 15 lines, starting with a large initial letter 'H'.

Handwritten text in a cursive script, likely a letter or a page from a manuscript. The text is written in dark ink on aged, yellowish paper. The script is dense and fills most of the page. The characters are highly stylized and difficult to decipher without knowledge of the specific language and script used.



Handwritten text in cursive script, likely a letter or document, written on the top page of a manuscript. The text is dense and fills most of the page.

Handwritten text in cursive script, likely a letter or document, written on the bottom page of a manuscript. The text is dense and fills most of the page.

Handwritten text in a cursive script, likely a list or account, written on the top page of a manuscript. The text is arranged in approximately 15 horizontal lines, with some lines starting with a small mark resembling a checkmark or a stylized 'L'. The ink is dark and the paper shows signs of age.

Handwritten text in a cursive script, likely a list or account, written on the bottom page of a manuscript. The text is arranged in approximately 15 horizontal lines, continuing the list or account from the top page. The ink is dark and the paper shows signs of age.

Handwritten text in a cursive script, likely a letter or document, written on aged paper. The text is arranged in approximately 15 lines, starting from the top left and moving downwards. The ink is dark, and the paper shows signs of age and wear.

Handwritten text in a cursive script, continuing from the previous page. The text is arranged in approximately 8 lines, starting from the top left and moving downwards. The ink is dark, and the paper shows signs of age and wear.

Handwritten text in a cursive script, likely a transcription of a story or poem. The text is written on a light-colored background and is oriented vertically, reading from right to left. The script is dense and fluid, characteristic of traditional East Asian calligraphy.



Handwritten text in a cursive script, likely a form of Chinese calligraphy, arranged in approximately 12 horizontal lines across the top page of the manuscript.



Handwritten text in a cursive script, likely a form of Chinese calligraphy, arranged in approximately 12 horizontal lines across the top half of the page.



Handwritten text in cursive script, likely a letter or document, written on the top page of an open book. The text is dense and fills most of the page.

Handwritten text in cursive script, likely a letter or document, written on the bottom page of an open book. The text is dense and fills most of the page.

Handwritten text in a cursive script, likely a form of German or Dutch, written on a light-colored paper. The text is arranged in approximately eight lines, though some characters are difficult to decipher due to the cursive style and fading. It appears to be a formal or official document, possibly a letter or a record.



Handwritten text in a cursive script, likely a letter or document, written on aged paper. The text is arranged in approximately 15 lines, starting from the top left and moving downwards. The ink is dark, and the paper shows signs of wear and discoloration.

Handwritten text in a cursive script, likely a letter or document, written on aged paper. The text is arranged in approximately 15 lines, starting from the top left and moving downwards. The ink is dark, and the paper shows signs of wear and discoloration.

Handwritten text in a cursive script, likely a letter or a page from a manuscript. The text is written in dark ink on aged, yellowish paper. The script is dense and flowing, characteristic of 17th or 18th-century handwriting. The lines are somewhat irregular, suggesting a single hand writing. The text is arranged in approximately 15 lines, with some lines being longer than others. The overall appearance is that of a personal or official document from the early modern period.

Handwritten text in a cursive script, continuing from the previous page. The text is written in dark ink on aged, yellowish paper. The script is dense and flowing, characteristic of 17th or 18th-century handwriting. The lines are somewhat irregular, suggesting a single hand writing. The text is arranged in approximately 15 lines, with some lines being longer than others. The overall appearance is that of a personal or official document from the early modern period.

Handwritten text in Arabic script, likely a title or introductory text, located at the top of the page.

Handwritten text in Arabic script, possibly a signature or date, located below the main title.

Handwritten text in Arabic script, possibly a name or title, located below the signature.

Handwritten text in Arabic script, possibly a name or title, located below the previous line.

Handwritten text in Arabic script, possibly a name or title, located below the previous line.

Handwritten text in Arabic script, possibly a name or title, located below the previous line.



Handwritten text in a cursive script, likely a letter or document, written on aged paper. The text is arranged in approximately 15 lines, starting from the top left and moving downwards. The ink is dark, and the paper shows signs of age and wear.

Handwritten text in a cursive script, continuing from the previous page. The text is arranged in approximately 15 lines, starting from the top left and moving downwards. The ink is dark, and the paper shows signs of age and wear.

Handwritten text in a cursive script, likely a letter or a page from a manuscript. The text is written in dark ink on aged, yellowish paper. The lines are closely spaced and run horizontally across the page.

Handwritten text in a cursive script, continuing from the previous page. The text is written in dark ink on aged, yellowish paper. The lines are closely spaced and run horizontally across the page.

Handwritten text in a cursive script, likely a list or account, written on the top page of a manuscript. The text is arranged in approximately 15 horizontal lines, starting from the top left and moving towards the right. The ink is dark, and the paper shows signs of age and wear.

Handwritten text in a cursive script, likely a list or account, written on the bottom page of a manuscript. The text is arranged in approximately 10 horizontal lines, starting from the top left and moving towards the right. The ink is dark, and the paper shows signs of age and wear.

Handwritten text in a cursive script, likely a signature or a short inscription, located on the left side of the page.



