

SB115
Z9C632
R

IP



PACIFIC PANORAMA



LORNA LEE



GOLDEN DELIGHT



Greetings... To our multitude of friends and customers everywhere we present our 39th annual catalog of superb modern Iris. Here in the fertile Willamette Valley of Oregon both soil and climate are favorable to the production of superior plants for the gardens of America and the world. If you find the pictures and contents of this catalog fascinating, just wait 'til you see some of them blooming in your garden!



HIGH LIFE

Bonus Offer

On Newer Kinds Again This Year

See page 33 for a very special offer . . . a list of 198 of the newest and finest. Order \$25 or more from that list and select 100% more from the same list. **FREE!**

Our usual annual "SHOPPING CENTER" begins on page 42

There you pay only two-thirds of the total amount of your order, thus selecting 50% more than you pay for.

Time of Shipment, Terms, etc.

SHIPMENTS will begin July 1st and continue through the summer and early fall. During July and August we will ship constantly in the sequence received. Your success is assured if planted any time during this period, but early ordering is advisable to avoid stock being sold short.

TRANSPORTATION is by prepaid parcel post or express.

TERMS are cash with the order, either check, draft or money order. We do not advise the enclosure of currency with your order. No C.O.D. shipments—this adds to cost and involves red tape for you and for us.

WE GUARANTEE all plants to be true to name, top quality and size, free from insect pests and disease, and to reach you in a live and healthy condition. If for any reason you are not completely satisfied, please notify us promptly.

MINIMUM ORDER—\$5.00

No Shipments Made During Spring Months.

Fall Shipping Season Closes in Late October.

THIS CATALOG is free to all customers of record over a 2-year period, otherwise copies may be obtained for 50¢ and this amount deducted from your first order.

DOGE OF VENICE



RADIANT APOGEE



The Perennial Supreme

IRIS . . . for ease of culture, long life, adaptability to a vast range of climate and soil, and COLOR . . . beyond that in a hundred rainbows! Here you will find the pastels in pinks, palest blues, softest violets and richest purples, delicate apricots and striking oranges, yellows from ivory to deep golden, smooth light tans to darkest browns. And, there are myriads of others . . . crystal whites, ebony blacks, softest shades of rose to richest ruby red. Besides all these you may have them in numberless blends of tints and in marbled, stitched and sanded patterns. Yes, the Iris is truly the *perennial supreme . . . and so easy to grow!*

A BIT OF HISTORY . . .

As we put together our 39th annual catalog of selected Iris, we thought that perhaps some of our customers—old and new—might be interested in looking back these almost four decades.

It all began in a small backyard garden as a mail carrier's hobby in 1922. From the very beginning a Silverton doctor, R. E. Kleinsorge, stimulated our interest, since he was making some crosses employing several of the then newest and finest introductions to be had. Most of them were from France and England in those days. He became world famous in due time, especially for his tans, browns and yellows and for one of the first successful "onco" crosses involving the memorable hybrid Wm. Mohr. For thirty years and until he ceased hybridizing, the Kleinsorge creations found their way into gardens via the yearly editions of this catalog. Still active and in good health at 82, the Doctor still works in and enjoys his Iris garden.

In the mid-forties the Hall Flamingo Pinks came into sharp focus on the Iris horizon. Here was truly something new in Iris colors! Dave Hall, of Wilmette, Illinois, a "retired" attorney for the A. T. & T., continued to produce luscious pink, rose and amber things of distinctive and remarkable quality from that time on and up to the

present. Now, at age 91, he has likewise retired from Iris breeding but still has a lovely collection and is most active in his garden. Yes, we are proud indeed to have introduced the Hall Iris for the past twenty years.

More recently, the matchless plicatas (stitched, sanded, peppered) from Jim Gibson, of Porterville, California, have gone into commerce through our catalog. Jim is a retired high school teacher and his garden is a magnet for flower fanciers at Iris time. Both he and his Iris have been and still are winning national and international honors.

And now, for the first time, we offer you three brand new ones from Larry Gaulter, of Castro Valley, California. A member of the Board of Directors of the American Iris Society, he has been breeding Iris for many years and has such prominent ones as Claudia Rene, Laurie and Mademoiselle to his credit. More will follow in the years ahead.

And finally, our son and son-in-law are doing some pretty good things with Iris, too. Fairly Fable and Tahiti Sunrise are good examples. This year brings you "Late Date." We have never been known to flood the market with new introductions but rather to stress *quality* instead of *quantity*. The 1967 releases on the next two pages are in line with this policy and we are confident that they will prove outstanding.

EVER AND EVER



RIPPLING WATERS





APRIL MELODY



ETCHED APRICOT

New Iris For 1967

APRIL MELODY (*Gibson, '67*)

Each \$20.00

This is a pretty close approach to being a pink plicata . . . the ground color light, almost white, pinkish lavender and the markings a bright and intense shade of lavender-rose. In 1965 this was awarded the cup for best seedling at the regional A.I.S. meeting. As noted in the picture, the flowers are a bit lacy and especially well proportioned. Large and long lasting. 34-36 inches. No. 37-IPF.

BACCARAT (*Gaulter, '67*)

Each \$20.00

A carnival of color, blended graduations of brown, amber and light purple . . . like changeable silk . . . in the heavily ruffled standards, and extremely broad, flat, flaring falls of bright violet banded golden brown. Hafts are solid light brown and the beard is bright orange. Remindful of some pagan ceremonial dance! Large blossoms; 36-inch, well branched, heavy stems. No. 63-260.

CAPE TOWN (*Gaulter, '67*)

Each \$20.00

This subtle interfusion of delicate beige and rose-lilac results from a cross of Claudia Rene and Glittering Amber, as does the new Baccarat. However, there is no color similarity in the two. The first is flamboyant and lively; this one is less exciting, more tranquil, but equally beautiful and appealing. Standards and falls are about the same shade of mauve, but the contrasting brown-purple hafts provide a sharp contrast. Beard is deep orange. Very wide falls and abundant ruffling enhance its all 'round high quality. Huge in size; 38 inches in height. No. 63-145.

ETCHED APRICOT (*Gibson, '67*)

Each \$20.00

Warm golden apricot color, the standards without markings and the falls creamy ivory in the center with fine etchings of apricot. None of the many other Gibson plicatas match this most attractive hue and the flower itself is absolute perfection in form. Extra large, 3-inch petal width and ideal ruffling and fluting are added features. Height about 30 inches. No. 51-OPF.

HIGH SIERRA (*Gaulter, '67*)

Each \$25.00

We have seen a host of white Iris in our time and there are many truly magnificent ones listed in this catalog. This one, however, is so huge, so flawless and so immaculate that after flowering it the past two seasons we think it superior to any white we know. A complete self, medium late. 38-inch stems. No. 63-259, HC AIS, 1966.

AFTER ALL (*Dave Hall, '67*)

Each \$20.00

The heavily fringed and flounced petals of this deep, ivory-cream Iris suggests some of the intricate lace-like work of Oriental artisans. Even the style-arms exhibit this "fancy work" pattern. Very large, with flaring falls and thick substance. 30 inches. The name has been chosen because this is a fitting finale to the long line of Iris of merit from Mr. Hall. No. 63-06. Illustrated on the right.



LATE DATE

LATE DATE (*Ernst, '67*)

Each \$20.00

Illustrated on the left . . . and comes honestly by the name, since it is at its peak of bloom after almost all others have practically finished. Standards and falls are both white in the central areas and shade gradually to a uniform, bright violet-blue at the outer edges. Beard is white but glows slightly orange within the flower. This is a bi-tone blend and not in any sense a plicata. 36 inches tall, with good placement.

The World's Finest Irises



AFTER ALL

ACCENT (*Buss, '53*)

Each \$1.00; 3 for \$2.50

Large, tall and vigorous variegata. The clean yellow standards contrast most agreeably with the rose-red falls. Its bright color and huge size resulted in its having been selected as one of the five "Iris of the Year" for 1958. 36 inches.

AFTER DARK (*Schreiner, '63*)

Each \$5.00

Deepest, velvety, rich violet-blue. The big, slightly ruffled flowers are produced on four-branched stems reaching to 44 inches in height. Early. HM AIS, 1964.

ALALOA (*Gibson, '59*)

Each \$1.00; 3 for \$2.50

Lemon-yellow with a lighter area in the center of the falls. Falls flare and possess a heavy enamel-like texture. It is a flower for foreground planting since its height is only about two feet. HM AIS, 1961. See page 58.

ALASKAN CROWN (*J. Nelson '66*)

Each \$20.00

This ruffly combination of white and gold is regarded by Mrs. Nelson as one of the most distinct and beautiful things she has originated. Broad of petal, in both standards and falls, it is pure white with heavy lace and "crimpings" of yellow all about the edges. Hafts are deep yellow set with reddish-orange beards. Height, branching, size and substance are all excellent.



CAPE TOWN



TAHITI SUNRISE



ALLEGIANCE

AL BORAK (DeForest, '52) Each \$1.00; 3 for \$2.50

A very large brown and copper-russet flower, having wide spreading falls with extremely wide hafts. A light brown garden effect in an Iris which many judges regard as absolutely perfect in form. Three feet in height, finely branched. HM AIS, 1953.

ALLAGLOW (Tompkins, '58) Each \$1.50; 3 for \$4.00

A gigantic Iris of bright sunburst-gold, blended bittersweet-orange, with an all-over flush of clear copper-yellow. The whole flower has a glistening gold dusted finish and a tiny dash of orchid at the tip of the chrome beard. Very broad petaled, with flaring, ruffled falls and wide domed standards. Late; 38 inches. HM AIS, 1958; AM, 1960.

ALLEGIANCE (Cook, '58) Each \$2.00

The giant flowers are of deepest navy blue, overlaid with velvet, the standards are silky and lustrous. The beards are medium blue tipped lemon-chrome. Color is even and solid clear into the throat. 40 inches; late. HM AIS, 1958; AM, 1960; Dykes Medal, 1964. Shown on page 6.

ALPENROSE (Schreiner, '59) Each \$2.00

Silvery, iridescent lavender-rose—a sort of ashes-of-roses tone—with a dusty beard in perfect harmony. Stems reach 38 inches and the broad falls flare gracefully. A quiet, restful and serene hue in a large and well formed Iris. HM AIS, 1961.

ALPINE BLUE (Schreiner, '62) Each \$3.50

Pale, yet intensely blue coloring with precisely sculptured classical form. A sheen of silvery dust makes the perfectly formed large blooms sparkle as if drenched with morning dew. Three flowers open at once on 36-inch stems.

AMETHYST FLAME (Schreiner, '58) Each \$2.00

Immense in size and elegant in form, a curiously tinted blend of lavender or light violet and rosy heliotrope. The "shoulders" of the falls carry an overlay of chestnut and the beard is almost white. Nicely ruffled, 38 inches tall, medium late. HM AIS, 1958; AM, 1960. Dykes Medal, 1963. Plant Patent No. 1793. See page 30.

ANNETTE (Hall, '55) Each \$1.00; 3 for \$2.50

A tawny deep rose with widely flaring, almost flat falls. The entire flower carries a coppery cast but the center is all aglow with the brilliant red beards. Quite different from other Hall things. 34 inches tall. HM AIS, 1956. See page 54.

ANTHEM (Schreiner, '58) Each \$1.00; 3 for \$2.50

The richness of the fuchsia-purple tone is intensified by a generous margin of bronze around the huge falls. Metallic plum might well describe the general color effect of this new giant. Beard is lemon. 40 inches, fairly early. HM AIS, 1960.

APPLE VALLEY (DeForest, '58) Each \$1.50

Almost white, flushed pink, with deeper pink cast about the hafts. The pink-tinted beard intensifies the pinkish glow of an otherwise almost white, very beautiful and different flower. Very large, with broad petals and tall stalks. HM AIS, 1960. See page 57.

APRICOT DANCER (Noyd, '58) Each \$1.25

A late flowering orange-apricot self. The horizontal and flaring falls are nicely fringed with lace. Substance is extra heavy. Here is a decidedly rich piece of color which won the HM of the AIS in 1959.

ARCTIC FLAME (Fay, '60) Each \$6.00

This breathtakingly beautiful big white has heavy texture and much ruffling. The beard is thick and wide, and glows with a fiery reddish tinge. A stalwart grower, the 35-inch stalks sturdy and well branched. HM AIS, 1960; AM, 1962.

ARCTIC SKIES (Fay, '60) Each \$2.50

A large white with blue tinted standards. A lovely and fresh looking flower, although the blue cast of the standards is rather phantom-like. HM AIS, 1961; AM, 1964.

ARGUS PHEASANT (DeForest, '48) Each \$1.00; 3 for \$2.50

A smooth soft brown, deeper in tone and more metallic in finish than Pretty Quadroon. Huge flowers with broad flaring falls and wide standards; orange-brown beard. 38 inches tall. HM AIS, 1948; AM, 1950; Dykes Medal, 1952. Shown on page 45.

ASPENGLow (Loomis, '56) Each \$1.00; 3 for \$2.50

Vivid cadmium yellow self, the standards pleated near the base. This fine, large deep yellow is quite late and thus aids in extending the Iris season. One of the "Five Iris of the Year" for 1962. HM AIS, 1958.

AUGUST MOON (Schmelzer, '62) Each \$5.00

Cool, greenish cream of heavy, leather-like substance. Flowers are of good form with lacy ruffles and the beard is deep yellow. 36 inches; midseason. HM AIS, 1964.

AZURITE (Sass, '60) Each \$3.00

A new and distinct white plicata pattern, the borders very lightly stitched blue and style arms and crest almost solid moorish blue. Flowers are of thick texture and the stems well branched. Large, bright and sparkling! HM AIS, 1961.

BANG (Craig, '55) Each \$1.00; 3 for \$2.50

A red with a name in keeping with the impression it creates in the garden! Broad falls of brilliant color and heavy substance, slightly waved. Height 36 inches. HM, AIS, 1955, AM 1960. See page 51. One of the "Five Iris of the Year" for 1963.



GYPSY LULLABY



BRILLIANT STAR



GAY TRACERY



CELESTIAL GLORY

BAZAAR (*Schreiner, '55*) Each \$1.00; 3 for \$2.50
 A glorified version of Raspberry Ribbon, far more brilliant and more deeply colored. The blooms are very large, on 36-inch stems. HM AIS, 1956.

BEECHLEAF (*Kleinsorge, '55*) Each \$1.00; 3 for \$2.50
 This seedling of Pretty Quadroon has attracted a lot of attention for the past several seasons. It is more ruffled than its parent and, while bearing some resemblance because of its brownish hue, it is more coppery and is enlivened by a violet undertone. The beard is orange-brown. Very large blooms on 3-foot stalks. HM AIS, 1955; AM, 1959. Pictured on page 54.

BERMUDA HIGH (*Tompkins, '64*) Each \$15.00
 A self of glowing "Blood Ruby" red, clean and unblemished, with chocolate brown beard. Wide, domed standards and broad, flaring falls are special features of this new and exciting bright red. 40 inches, perfectly branched. HM AIS, 1966.

BIG CHIEF (*Hall, '64*) Each \$6.00
 Deep, dark and handsome are appropriate words to apply to this big, rich mulberry with orange-brown beards. The wide flaring falls curve slightly and a bit of lace along the edge adds elegance. Very tall and quite late, lasting until the end of the season. Stems will reach 40 inches or over.



DAWN CREST

BIG TIME (Lapham, '51) Each 75c; 3 for \$2.00

This is a big deep red with a rosy cast in the standards. Falls are velvety and appear almost black-red in certain lights. Hafts are brownish and the beard is bronzy orange-yellow. Huge in size and a good grower. 3½ feet, well branched.

BLACK HILLS (Fay, '51) Each 75c; 3 for \$2.00

A very tall ebony-black Iris with lots of bloom, widely spaced on the stem. We have grown it to a height of 4 feet. AM AIS, 1954.

BLACK SWAN (Fay, '60) Each \$2.50

As sleek and as ebony-hued as the graceful bird for which it is named. It will satisfy those looking for just about the ultimate in dark Iris—great size, very wide petals, smooth velvety surface and a brown beard tipped black. 35 inches. HM AIS, 1960 AM, 1962. See page 28.

BLACK TAFFETA (Songer, '54) Each \$1.00; 3 for \$2.50

Glistening blackish purple standards and broad velvety black falls, slightly ruffled, combine to give us one of the very best of these rich and sultry beauties. The beard is tipped bronze. Medium late, height 34 inches. HM AIS, 1955; AM, 1957. See page 46.

BLUE BARON (Schreiner, '62) Each \$7.50

A massive, rich, marine blue of huge size and classical form. The blooms are ruffled and well spaced on 40-inch stalks bearing up to 15 buds each. This and Deep Space certainly rank near the top among all recently introduced intensely deep blue Iris! HM AIS, 1963; AM, 1965.

BLUEBEARD (Hall, '55) Each \$1.00; 3 for \$2.50

A large deep blue with very full flaring falls which drop gracefully near the tips. The beard is not blue, but has blue tips which make it appear blue all over. Silky sheen and brilliant color! 3 feet.

BLUE GROTTO (Grinter, '59) Each \$2.00; 3 for \$5.00

One of the largest Iris we have grown or seen anywhere, the wide falls squarely held and the large standards erect and closed. Color is a uniform shade of light violet-blue, the substance that of fine china. Well branched, late, three feet in height. See page 58.

BLUE MOUNTAINS (Schreiner, '64) Each \$12.00

Rich, medium violet blue of exceptionally large size and perfect form. A clump of this Iris loaded with huge blooms on heavy, well branched stalks, was the talk of visitors at the Denver A.I.S. convention. 38 inches. HM AIS, 1965.

BLUE SAPPHIRE (Schreiner, '53)

Each \$1.00; 3 for \$2.50

"Heavenly blue" is a phrase befitting this ruffled addition to an increasingly popular color class. Lighter in tone than many others, with a glowing gold beard it is large in size, on tall well branched stalks which defy both wind and rain. HM AIS, 1954; AM, 1956; Dykes Medal, 1958. See page 47.

BLUE SPINEL (Gibson, '61) Each \$2.00

A genuine gem of unsurpassed quality and color perfection. The huge, spreading blossoms will measure 8 inches in width, the substance is like leather and has an enamel-like finish. It is lighter than indigo but still a deep shade of blue. Exceptionally free blooming. 3 feet tall. HM AIS, 1962.

BLUSHING BEAUTY (Noyd, '64) Each \$15.00

A warm white with hafts of definite blush pink and a bright coral red beard. Apple Valley is in its parentage. Contrast of colors is striking, the very large blossoms well spaced on stems over three feet in height as it grows here. HM AIS, 1965.

BRASILIA (Schreiner, '61) Each \$3.50

Deep but very brilliant henna-brown-red. This is a new and striking color in Iris, much more lively than others in the brownish color tones. It is large, well proportioned and beautifully branched. Height 35 inches. HM AIS, 1962.

BRASS ACCENTS (Schreiner, '59) Each \$2.50

Golden coffee-brown, regal in carriage, huge in size, ideal in form, 40 inches in height. We regard this seedling of Inca Chief as a leader amongst the host of beautiful brown Iris now available. HM AIS, 1959 AM, 1961. Shown on page 28.



BRAVADO (Hall, '59) Each \$1.50; 3 for \$4.00

Deepest golden yellow, ruffled and with wide petals. There is something about this flower—heaviness of texture, metallic glisten, or uniform depth of golden richness—that draws instant attention in the garden or on the show table. Height 33-36 inches. HM AIS, 1959; AM, 1963. Shown on page 57.

BREATHLESS (Schreiner, '62) Each \$7.50

A new flamingo pink of large size and spreading form, medium in tone but vivid and alive. The flowers are beautifully tailored, the petals waved, and the hafts are flushed with peach. Coral beard. 38 inches. HM AIS, 1963.

BRIGHT CLOUD (O. Brown, '61) Each \$4.00

With white standards and blue falls this descendant of Melodrama has more and much sharper color contrast than its parent. It does carry the extra wide falls and moderate ruffling, however. Huge blossoms, on 36-40 inch stems. Midseason; long-lasting. HM AIS, 1962. See page 30.

BRIGHT FORECAST (Hamblin, '60) Each \$3.00

Ruffles and lace in blazing golden yellow. The heavy beard is deep orange. Petals are broad and possess the quality of hammered and crimped metal. A mass of brilliant gold in the garden. 34 inches; quite late. HM AIS, 1960; AM, 1964.

BRIGHTSIDE (Schreiner, '61) Each \$5.00

Pale, shimmering lemon yellow that is huge, frothy and ivory smooth. The broad petals are heavily laced at the edges. Fine form and branching are added good features of this sparkling new Iris. HM AIS, 1962.

BRIGHT WORLD (Shoop, '61) Each \$3.50

Pure bright yellow, smooth and uniform. The lightly ruffled flowers are of thick substance and are produced in great profusion. 3 feet or over in height.

BRILLIANT STAR (Hall, '61) Each \$5.00

We regard this as the finest red-bearded white we have grown or seen. It is very broad petaled, full and rather rounded but not drooping, beautifully branched and very large. Quite early, 36 inches. See page 7. HM AIS, 1962.

BROADWAY STAR (Schreiner, '57) Each \$1.50; 3 for \$4.00

Cream standards and rose-red falls combine to fashion a totally different and refreshingly beautiful creation. Hafts are almost free of any venation, lending sharp contrast to the bright ivory standards. 38 inches tall, classically formed and large in size. HM AIS, 1957. See page 43.

BRONZE BELL (Schreiner, '57) Each \$2.00

Reddish copper-bronze in a huge flower of perfect form and large size. The stalks are heavy and well branched, with many blossoms per stem. It is taller, redder and better branched than its parent, Inca Chief. HM AIS, 1957; AM, 1959. Plant patent No. 1728.

BUTTERCUP BOWER (Tompkins, '61) Each \$3.50

The fine new blend of lemon, lime and yellow with giant, fully rounded flowers, broad segments and strong color contrasts. 38 inches. HM AIS, 1962. Shown on page 29.

BUTTERHORN (Sass, '55) Each \$1.00; 3 for \$2.50

Cool, icy and lemon colored, shading to greenish white in the center of the falls. The form is quite distinct, as is also the hue of this unusual Iris. It is three feet in height, nicely branched, large in size. HM AIS, 1955.

BUTTERSCOTCH KISS (Plough, '57) Each \$2.50

A caramel shade of yellow, glistening brightly with gold dust particles. There is an intensification of yellow in the heart and on the petal edges. The large flowers are heavily laced and crinkled at the margins. 36 inches. HM AIS, 1957; AM, 1959. See page 50.

CALDRON (Schreiner, '57) Each \$1.00; 3 for \$2.50

A vivid red from the copper side. Its 3-foot stems, well branched, are somewhat unusual in the red class and the flowers are large and splendidly formed.

CAMELOT ROSE (Tompkins, '65) Each \$25.00

An exciting new Iris with standards of silky, silvery orchid and brightly glowing Burgundy red falls of great width and velvety finish. Hafts are solidly colored and are set with a heavy, bright orange-red beard. 39 inches. HM AIS, 1966.

CANDLEFLAME (Hall, '61) Each \$3.00

Gigantic ivory-cream self with a tangerine-orange beard which shades to almost white. There is a suggestion of greenish veining in the falls. Style arms are deeper ivory. Extremely broad falls and heavy 3-foot stems with good branching. HM AIS, 1962. See page 30.



IN ORBIT



CASHMERE

CANDLE MAGIC (DeForest, '61) Each \$2.00

Wide standards of pink-tinted tan; the falls are cream with bright tan-gold hafts. A creamy version of the Dawn Crest and Dawn Star lusciousness might be an apt description. Tall and large. See page 59.

CAPTAIN GALLANT (Schmelzer, '59) Each \$2.50

Probably the finest red to date. The introducer calls it "the red Iris that is red throughout, with no purple influence and no haft markings." Huge in size and holds its color in heat or wind. HM AIS 1959; AM, 1961. See page 28.



DESERT THISTLE

CARIBOU TRAIL (Plough, '57) Each \$1.00, 3 for \$2.50

Light but rich golden brown with a bright blaze radiating out into the falls. All petal edges are heavily crimped and shirred on this large, heavily substantiated creation. Shown on page 55. HM AIS, 1957; AM, 1959.

CARMELA (Schreiner, '55) Each \$1.00; 3 for \$2.50

One of the laciest and most exotic of all the new crinkled introductions, selected as one of the "5 Iris of the Year" for 1961. Color is a blend of honey and caramel. Height 38 inches mid-season bloom. HM AIS, 1955; AM, 1958.

CAROLINA PEACH (Powell, '64) Each \$10.00

A delightful shade of light peach or soft flesh pink, the petals very broad and laced at the margins. Uniform in color. A two-year clump is a mass of big blooms in palest pastel-pink. 34 inches. Fairly late.

CAROLINA RUBY (Powell, '64) Each \$10.00

New deep or glowing Carmelian Rubv. Broad flowers of heavy substance with smooth, clean hafts. Tall stems with good branching and the flowers do not fade in the sun. 36 inches; long season of bloom.

CAROLINE JANE (DeForest, '51) Each \$1.00; 3 for \$2.50

Flowers are huge, the stems very tall, and the white ground glistens like snow. Markings are clean and distinct—a delicate violet blue. Must be seen to be fully appreciated. One of the "Iris of the Year" for 1959. HM AIS, 1951; AM, 1955. See page 47.

CASA GRANDE (Gibson, '63) Each \$4.00

A giant deep Burgundy red plicata, it is one of the most sweetly scented of all Iris. Standards are almost solid Burgundy, the falls are the same with a creamy white central area. Bold in habit and bright and rich in garden value.

CASHMERE (Fay, '59) Each \$6.00

Deep rose-pink or rose-red, however you may choose to describe the color. The very full, heavy beard is brilliant, almost pure red. It is as close to perfection as one could wish for and the color is alive and pleasing. 3 feet tall. HM AIS, 1959; AM, 1963. Shown on page 9.

CATALINA (Schreiner, '63) Each \$12.00

A magnificent marine blue Iris of unrivalled richness, with falls four inches across, heavy substance, superb enamel finish, excellent branching, high bud count and good height. Early. 34 inches. HM AIS, 1965.

CAYENNE CAPERS (Gibson, '61) Each \$3.00

Shown on page 8 in precise and accurate detail. Vivid and flashing with the sunshine on it or through it . . . glowing and alive on a cloudy day or in pouring rain. For rich, intense color in a plicata, this red-hot eye-catcher has no parallel. Dominant color is fiery burgundy to red pepper but a minor area on the falls is lit with cream. Beard is orange-bronze. HC AIS, 1960; HM AIS, 1962; AM, 1964. 3 feet tall.

CELESTIAL GLORY (Bro. Charles, '61) Each \$5.00

Bright golden orange or tan with a very bright red beard. It is large, ruffled, and extra heavy in texture. 3 feet. HM AIS, 1962; AM, 1964. Shown on page 7.

CELESTIAL SNOW (Bro. Charles, '57) Each \$2.00

An absolutely spectacular pure white, the great falls ruffled and folded like white draperies. Stalks are widely branched and will reach a height of almost four feet. Beard is white, tipped lemon. HM AIS, 1957; AM, 1959. See page 21.

CELESTIAL SUNLIGHT (Bro. Charles, '60) Each 3.00

Clear medium yellow with a small lighter area near the tip of the bright yellow beard. Both standards and falls are beautifully ruffled. Stems are straight and the large blossoms are well spaced on good branches. An Iris of great charm and personality. 35 inches.

CHECKMATE (Tompkins, '63) Each \$7.50

A brand new red of sleek and glistening finish. Standards are silky and ruffled, the falls lacquer-like rather than velvety. Beard is bronze-yellow. The shade of red is described as rich carmine, the flowers large and flaring on 38-inch stalks. HM AIS, 1965.

CHINESE CORAL (Fay, '62) Each \$10.00

A self of strong, pinkish-orange that flaunts a striking beard of Chinese coral-red. Vigorous in growth, with 3-foot stems and fine branching. Color that can be seen a block away! HM AIS, 1963; AM, 1965. Late. 36 inches.

CHINESE LANTERN (Fay, '58) Each \$1.00; 3 for \$2.50

Deep yellow with a tangerine-red beard. This is a seedling of Techny Chimes crossed with Mary Randall. It is smoothly tailored, large, and grows to 42 inches; midseason. HM AIS, 1958.

CHINQUAPIN (Gibson, '60) Each \$1.50

A big golden brown plicata, the standards solid golden brown, the falls same color with ivory shading in the central areas where they are speckled and blended with brown. Beard is bronzy orange. Height 34-36 inches. HM AIS, 1960; AM, 1962. Shown on page 40.

CHRISTMAS ANGEL (DeForest, '60) Each \$2.50

An extra large, warm white with bright gold at the haft, evenly laid on. Beard is white, tipped gold, and solid golden yellow within the flower. Very tall and robust; magnificent in every way. Well illustrated on page 52. HM AIS, 1961, AM, 1965.

CLAUDIA RENE (Gaulter, '63) Each \$7.50

Raspberry pink standards with overtones of amber; rose-violet falls with rich sienna-brown shoulders and a bold burnt-orange beard. Wide, ruffled petals. Midseason; 36 inches. HM AIS, 1964; AM, 1966. See page 32.

CLIFFS OF DOVER (Fay, '53) Each \$1.00; 3 for \$2.50

Large, flaring and ruffled clear white of great substance. There are no haft markings and the beard is light yellow. A strong grower, hardy, 36 inches tall. HM AIS, 1953; AM, 1955. See page 38.

CLOUD CAP (DeForest, '50) Each \$1.00; 3 for \$2.50

Probably the largest pink to date, with very wide falls and an extra heavy bright tangerine beard. Termed "blossom-pink" by the originator, the big flowers are borne on 3½- to 4-foot stalks. HM AIS, 1951; A.M., 1953. Shown on page 25.

COFFEE ROYAL (Merrill, '61) Each \$3.00

A gigantic blend of reddish brown and reddish purple, the standards garnet brown and the falls Doge purple. Beard is brownish with purple tips. This is a stalwart, vigorous grower, over three feet. HM AIS, 1963.

COLLEGE QUEEN (Hall, '64) Each \$7.50

This new pink is adorned with frills and ruffles. It is devoid of any other color, with exception of the tangerine beard. Great size and heavy texture are traits sometimes lacking in pinks but this one has both! 36 inches. HM AIS, 1966. See back cover.

COLOR CARNIVAL (DeForest, '49) Each \$1.00; 3 for \$2.50

The ground color is a deep shade of pink in both standards and falls, with heavy markings of vivid purple on the falls. Beard is tangerine-red. Big flowers, very well formed, on excellent stalks. HM AIS, 1950.

COMFORTING THOUGHT (*Tompkins, '63*) Each \$7.50

Rich lemony gold and lime chiffon flowers enhanced by a daintily laced crimped and frilled edge. The fat beard is creamy lemon. 36-inch stems with four blooms often open at once. Quite late.

CONCORD RIVER (*Buttrick, '56*) Each \$1.50; 3 for \$4.00

Light blue, with very wide hafts and domed standards. The beard is white. Color is smooth and even, without the detracting veins so often evident in blue varieties. The 38-inch stalks are strong and well branched. HM AIS, 1956.

COOL COMFORT (*Tompkins, '58*) Each 75c; 3 for \$2.00

A lovely citron-yellow Iris of large size and delightful form. The broad, heavily substantiated petals have a sleek sparkling finish and a hint of lace. A luscious and refreshing flower, certain to please. Rather late, 36 inches tall. HM AIS, 1961. See page 53.

COPPER HALO (*Gibson, '58*) Each \$1.00; 3 for \$2.50

A creamy white or ivory ground in both standards and falls, heavily peppered and stitched with rosy copper. Broad petals, graceful ruffling and thick texture mark this strain and set a new standard for plicata types. Very late. 34-36 inches in height. HM AIS, 1958. See page 50.

CORABAND (*Hamblen, '63*) Each \$7.50

Both standards and style-arms are rich coral-buff, the falls smooth white bordered coral-buff and set off with a fiery orange beard. Falls are thick and heavy with wavy margins. HM AIS, 1964; AM, 1966. 36 inches.

COUNTRYSIDE (*DeForest, '59*) Each \$1.50

An eye-popper for size, in lovely chartreuse-yellow. There is a faint plicata dusting of lavender across the wide hafts. Tall, vigorous and excellent in every way. HM AIS, 1962. Very late.

COUNTRY SQUIRE (*Gaulter, '66*) Each \$20.00

From Rococo breeding comes this elegant new white plicata with deep blue stitching and a rich blue-purple beard. Huge flowers with lots of ruffles, closed standards and arching falls. 38 inches; excellent branching.

COURT BALLET (*Moldovan, '60*) Each \$5.00

Here is a new and exquisitely ruffled big pink self of extra heavy porcelain-finish. Refined and lovely even though it ranks among the largest in this color class. Beard is deep red-orange. Heavy 36-inch stems. HM AIS, 1961; AM, 1963.

CRINKLED BEAUTY (*Schreiner, '61*) Each \$10.00

A fine example of the progress in breeding for lace—possibly the top production in this line. The large flowers, a delicate orchid pink in color, have wide petals and extra heavy substance. Height 38 inches. HM AIS, 1962.

CRINKLED IVORY (*Schreiner, '58*) Each \$2.00; 3 for \$2.50

Sparkling ivory-cream, simply huge in size, with crepy petals and lacy ruffling. A cool lemon flush at the heart and the pale yellow beard add to its translucent charm. 34 inches. HM AIS, 1959. See page 23.

CRISPETTE (*Schreiner, '54*) Each \$1.00; 3 for \$2.50

A fluted and waved deep orchid-pink with rich orange beard and suffusion of brown on the hafts. Of ideal form and garden habit, the coloring having the extra quality of "carrying power" in the garden. 34 inches. HM AIS, 1955; AM, 1957. See page 43.

CROSS COUNTRY (*Knocke, '63*) Each \$5.00

This very large light blue with extra wide petals made a magnificent showing at the recent convention of the American Iris Society in Memphis. Smooth color and nice ruffling, with flaring falls. 38 inches. HM AIS, 1964; AM, 1966.

CURLS OF GOLD (*Schortman, '61*) Each \$5.00

Delightfully fluted and ruffled rich golden yellow. Although of medium size the 40-inch stems are well branched and carry many flowers and buds. It is well named! HM AIS, 1961.

DANCING RILL (*Schreiner, '64*) Each \$7.50

A subtle blend of rose and sunburst gold with an over-all sparkle of gold dust. Standards almost solid rose, crimped and fluted; falls golden, shading to rose at the margins. Yellow beard and style-arms. Flaring form; 36 inches tall.

DANCING TIGER (*Schreiner, '53*) Each \$1.50; 3 for \$4.00

Here is a very large jewel-bright, really yellow ground plicata. The half-inch border of penny-brown is deftly cut, as if shot with fine slender lines on the edge of the falls. Gay and brilliant. 38 inches.



ELEANOR'S PRIDE

DARK FURY (*Luihn, '62*) Each \$3.00

Sultry blue-black self with self beard. Great width and ruffling, coupled with flaring falls and closed standards, set Dark Fury apart in its color class. It is a vigorous grower with fine foliage and low, widely branched 36 inch stalks. HM AIS, 1963; AM, 1965. See page 35.

DARK SPLENDOR (*Fay, '61*) Each \$2.00

A fit companion to this introducer's Black Swan but approaching black from the blue side. The beard is midnight blue. The large flowers have excellent form, with closed standards and silky finish. Stout 29-inch stems, well branched. HM AIS, 1962.

DAVE'S ORCHID (*Hall, '60*) Each \$2.00

The color is orchid-rose with bluish overlay on the falls. Hafts are marked with amber, running quite far down on the falls and the lacy edges are trimmed with a narrow band of this amber-copper tint. Base of standards and style-arms are flushed amber. Beard is bright tangerine. A fine grower, 36 inches and over in height. HM AIS, 1961. Shown on page 44.



WINE AND ROSES



DENVER DAWN

DAWN CREST (*DeForest, '60*) Each \$4.50

Considered by the late Fred DeForest as one of his all time finest productions. Standards are bright orange-pink, three inches wide, and ruffled. Falls, yellowish ivory, measure a good three inches at the haft and are flaring. HM AIS, 1960; AM 1962. See page 8.

DEEP BLACK (*Cook, '55*) Each \$1.00; 3 for \$2.50

This is the blackest and the "slickest" deep hued Iris we have seen. In the garden of the originator, where thousands of so-called black seedlings have come into being, this was our choice. Height 34-36 inches. HM AIS, 1955; A.M. 1957. Shown on page 58.

DEEP SPACE (*Tompkins, '61*) Each \$3.50

Richest indigo blue, a gigantic flower, broad petaled and smooth in the extreme. There are no veinings or haft marks. Beard is heavy and rich indigo in color. 40-inch stems and heavy foliage. A real stand-out! HM AIS, 1962. See page 31.

DEMETRIA (*Hinkle, '58*) Each \$1.00

Big and beautiful medium blue, slightly ruffled, with a hint of lavender in the falls. The Hinkle blues — Helen Novak, Symphony, and Demetria — occupy a special niche in the world of topnotch Iris in shades of blue. 36 inches. HM AIS, 1958; AM, 1960. See page 48.

DENVER DAWN (*Durrance, '64*) Each \$7.50

Colorado is noted for its clear blue skies. Before the sun peeks over the horizon this azure hue is flushed with rose and mauve and the tints in this new Iris could hardly be more aptly described. The flowers are extra large and handsome, symmetrically ruffled, and borne on 36 to 40-inch stems carrying many branches. Mid-season to late. Shown on Page 12.

DESERT GLOW (*E. Smith, '63*) Each \$2.50

A rosy, bronzy brown self descended from Gracie Pfost and Watermelon. The large, frilled blooms are heavy in texture and both standards and falls are very broad. Bright orange beard. 36-40 inches.

DESERT THISTLE (*Gibson, '61*) Each \$3.50

This one is not pink but is a glowing, rosy mauve, or perhaps a captivating blend of lavender-rose, slightly blued, would better describe it. Tall, large and exciting, with wide standards and falls, finely laced. See page 10. HM AIS, 1962.

DIVINE BLUE (*Waters, '59*) Each \$2.50

As blue as they come, with porcelain texture and extremely broad form. The shade of blue approaches azure — not pale but a very definite and vivid sky blue. Beard is light yellow. 36 inches. HM AIS, 1959.

DOCTOR K. (*Tell, '60*) Each \$3.50

Truly brown in all its parts, with a silken sheen which does not fade. Hafts are smooth and unmarked and the falls flare jauntily. Named for Dr. Kleinsorge who pioneered the brown line in Iris breeding. 36 inches. HM AIS, 1961.

DOGE OF VENICE (*J. Nelson, '65*) Each \$15.00

This giant ruffled deep purple matches exactly the shade designated as "Doge Purple" in the Wilson color chart. There is no other color nor markings in the broad petaled flowers, except for the heavy brown beard, which adds depth and richness. 36 inches and well branched. HM AIS, 1966. See inside front cover.

DOT & DASH (*Hall, '60*) Each \$2.00; 3 for \$5.00

Almost solidly colored blackish violet standards and bright falls of pure white with blackish margins. Most of the peppery effect is confined to the outer area of the falls. The beards are inconspicuous. Flowers are waved and flaring, well spaced on good branches, and are produced in great profusion. 33-36 inches. HM AIS, 1960; AM, 1962. See page 56.

DOTTED SWISS (*Sass, '56*) Each \$1.00; 3 for \$2.50

The ground color is sparkling white and the dots and stitchings are decidedly blue, the very large flowers elegantly ruffled. It truly lives up to its name. Over three feet tall, very well branched, blooms early. HM AIS, 1956; AM, 1958. See page 49.

DREAM MAIDEN (*E. Smith, '63*) Each \$10.00

An exquisitely beautiful and large flower in shades of creamy buff, blue-white and gold. Petal edges and style-arms are heavily laced. The general color effect is deep cream or ivory. Stout stalks with good branching. 34-36 inches. HM AIS, 1965.

DREAM SPUN (*Gibson, '62*) Each \$3.00

A blend of pinkish amethyst on white ground, actually a plicata, of course, but with a less definite pattern than is usually associated with the term. The central area and the style-arms glow with a waxy, coppery tint. Beard is light yellow. Both standards and falls are abundantly ample in width, the former erect but nearly closed, waved and ruffled, the latter semi-flaring and likewise heavily ruffled. Height 40 inches. Shown on page 27. HM AIS, 1963.

EDENITE (*Plough, '59*) Each \$5.00

"Sooty" black with a deep red undertone; a seedling of Sable Night. The uniform blackness of this flower immediately attracts all who see it in the garden. Domed standards and flaring falls. Blooms rather early. 30 inches. HM AIS, 1959; AM, 1961.

ELEANOR'S PRIDE (Watkins, '56) Each \$1.50; 3 for \$4.00
Majestic and beautifully branched, this powder-blue Iris has quality in every detail. A self of soft even tone, the full white beard providing added attractiveness. Falls are wide and flaring, the whole flower nicely ruffled. Blooms in midseason. 36-40 inches tall. HM AIS, 1956; AM, 1958; Dykes Medal in 1961. Shown on page 11.

ELMOHR (Loomis, '42) Each \$1.00; 3 for \$2.50
Winner of the Dykes Medal in 1945, this giant Iris has consistently led all others in point of sales popularity. And no wonder! The great rich red-violet blooms are daintily ruffled, of a silky texture and remarkable substance. The stems are well branched and at least 3 feet tall. HM AIS, 1942; AM, 1943. See page 48.

EL MONSOUR (Hall, '63) Each \$5.00
An immense greenish ivory Iris with amber lights and shadings. The thick petals are greenish amber on the under sides. The extra wide falls are crimped, ruffled and fringed at the edges. There is a smooth amber shoulder near the upper portion of the falls and this combines with the orange-red beard to give the heart of the flower a very warm glow. Wonderful branching and long season of bloom. 36 inches. Shown on page 30. HM AIS, 1965.

EMMA COOK (Cook, '59) Each \$3.00
A new pattern, the standards clear white, the falls white with a distinct half-inch border of bright violet-blue. Beard is yellow. Named for the charming wife of one of the world's greatest Iris breeders. HM AIS, 1959; AM, 1961. Shown on page 23.

EMERALD FOUNTAIN (O. Brown, '61) Each \$5.00
Standards uranium green, falls flax blue blended with uranium and primrose yellow. All petals edged with lace. Tall and well branched, with many buds. 38 inches. HM AIS, 1962.

ENCHANTED VIOLET (Hamblen, '58) Each \$1.50
This striking creation is unique for the combination of pink and orchid tints in the heart of the flower. It is a lovely shade of light violet, slightly ruffled, and the heavy beard is fiery tangerine-red. HM AIS, 1958; AM, 1960. Illustrated on page 25.

ESTHER FAY (Fay, '61) Each \$6.00
A beautiful pink self, large in size, ruffled and broad petaled. This is new and a favorite of one of America's best known producers of quality originations. A bright, reddish-pink beard makes the center glow. 35 inches. HM AIS, 1962; AM, 1964.

ETHEREAL PINK (Gibson, '62) Each \$2.50
This is an exquisitely laced new pink self with melon pink beard, jewel-like in finish and color. The standards are large and domed, the falls wide and held high before arching. Style arms are large and heavily lacinated in keeping with the "pinking shears" treatment of all petal edges. Vigorous, well branched, three feet in height.

EVER AND EVER (Hope, '62) Each \$10.00
Light orchid-violet, a peculiar shade not matched by any other Iris. The large flowers are symmetrically perfect and lightly ruffled. Very lovely indeed! 36 inches. HM AIS, 1964; AM, 1966. See page 3.

FABULOUS (Kleinsorge, '58) Each \$2.00
Here is a flower remindful of the splendor in a scene from a tale in the Arabian Nights! A blend of red, rose, violet and copper. Very large, quite late. 36-38 inches. HM AIS, 1958.

FAIRY FABLE (Ernst, '61) Each \$3.50
This one, resulting from Lynn Hall crossed with May Hall combines the best features of both parents. The shade of pink is about midway between these two. The falls possess great width, extra thick substance and are ruffled and waved at the margins. The heavy beard is deep tangerine-red. 36 inches. Shown on page 20. HM AIS, 1962.



SIVA-SIVA



GREEN QUEST

ENCHANTRESS (Hall, '54) Each \$1.00; 3 for \$2.50
Delicate parchment color, faintly flushed with pink, especially in the standards. The central area of the falls has an overlay of amber and the beard is brilliant orange. Unlike any other of Mr. Hall's fine things. It is an extra late Iris, with heavy stems and an enamel-like finish to the large flowers. 34-36 inches. See page 25.

FAIRY ROSE (Schreiner, '64) Each \$7.50
A giant size new one from Amethyst Flame and Pretty Carol. Massive in all its parts, a rich rose self in color, it is an especially effective garden subject. 38 inches; quite late.

FASHION FLAIR (Valette, '65) Each \$15.00
Dark taffeta-like purple with a shimmering bluish glow in the heart, due in part to the matching blue beard. This fine Iris results from a cross of two Dykes Medal winners, First Violet and Violet Harmony. Large, velvety, tall and fairly late.

FASHION FLING (Hall, '65) Each \$12.00
A fresh and brilliant shade of pink with a suggestion of tints ranging from cerise to bright orchid. The standards are upright and domed, the falls very wide and flaring with ruffles on all petals. There is a special luminous quality about this Iris which makes it appear as if fashioned from glass or porcelain. Slight shading of yellow on the haft and the beard is deep orange. Rather late; 36 inches. HM AIS, 1966. See page 35.

FASHION SHOW (Hamblen, '59) Each \$1.50

Here is a combination of shades and tints in violets, mauve and gold dust, unmatched by any Iris we know. Flowers are widely flaring, the standards closed, and handsome ruffling adds attractiveness. Beard is brilliant orange. Long blooming season. 36 inches. HM AIS, 1959. Shown on page 57.

FESTOON (Hall, '58) Each \$1.00; 3 for \$2.50

A luscious blend of caramel and peach and salmon-pink, with extra heavy beard of tangerine-red. The coloring is positively mouth-watering! It is quite early, of good size, well branched on 38-inch stems. HM AIS, 1959. See page 42.

FIRE BRIGADE (Schreiner, '57) Each \$1.00; 3 for \$2.50

Glowing crimson-red, shapely in form of flower, of good size and 36 inches in height. The beard is bronze-orange. Well named, it provides an especially fiery clump of garden color. HM AIS, 1958.



TALLY-HO

FIRE CHIEF (Galyon, '59) Each \$1.50; 3 for \$4.00

The most brilliant variegata, the deep yellow standards clean and clear, the very red toned falls large and devoid of haft markings. Stalks will often reach to four feet in height. HM AIS, 1959. See page 56.

FIRECRACKER (Hall, '43) Each 75c; 3 for \$2.00

A glowing bright burgundy-red plicata, with yellow trim. Well named, it is one of the flashiest things in any Iris collection. The fairly large flowers have good substance and are carried on stout 32-inch stems. HM AIS, 1943. Pictured on page 45.

FIRE MAGIC (Schreiner, '62) Each \$5.00

Big and bold, tall and faultlessly branched; a gleaming, fiery, copper-red with widely flaring falls and large closed standards. Exceptionally red for an Iris and with the sun on it or through it, Fire Magic really lives up to its name! 42 inches. HM AIS, 1963.

FIRST VIOLET (DeForest, '52) Each \$1.00; 3 for \$2.50

Lovely clear light violet self, the standards, falls and even the beard being of uniform hue. Winner of Dykes Medal in 1956.

FLASHING GEM (Gibson, '63) Each \$6.00

Very tall and very large bright yellow with a band of bright rose-purple surrounding each fall. The standards are yellow shading into the same rose-purple trim on the falls. Actually more brilliant than our picture on page 26 seems to portray — but this gives you a fair idea. Note the purple tips on the style arms. Widely branched and blooms over a very long season. 40 inches in height. HM AIS, 1966.

FLEET ADMIRAL (Tompkins, '64) Each \$10.00

This very late, glossy violet-blue sports a wide and thick beard of brilliant Royal violet. One of the largest, tallest, and surely most outstanding things in this color range. 42-inch stems, splendidly branched. HM AIS, 1965.

FLORADORA FLOUNCE (Gibson, '64) Each \$6.00

The large, silky standards are extra broad and closed, beautifully ruffled, a solid, metallic light brown. Falls are extra wide, striated and dotted deep nutmeg on cream, deeper at the margins and the beard is orange. The entire flower is flounced and ruffled. Height 34 inches. HM AIS, 1965. See page 30.

FLUTED COPPER (Kleinsorge, '57) Each \$1.00; 3 for \$2.50

Carrying on the long line of bronze, brown and tan Iris for which the Doctor has become so well known, this distinct one is in metallic shades of hammered copper. Both the standards and falls are bright coppery tan, curled and crinkled, broad and in good balance. The beard is bronzy orange. Height 34-36 inches.

FLUTED HAVEN (Reynolds, '58) Each \$4.00

A swirly and frilly big white of heavy substance. This bears some resemblance to Celestial Snow but is more on the creamy side. The flaring falls are delightfully fluted. Quite early; 35 inches. AM, 1962.



LITTLE DOLLY

FOAMING SEAS (Stevens, '60) Each \$2.00

A frothy, ruffly light blue with deeper veins, suggestive of the churning surf against a rocky shore. The beard is bluewhite. Massive flowers, widely spreading in form and freely produced on 3-foot stalks. HM AIS, 1960.

FORTUNE'S GIFT (Mitsch, '55) Each \$1.00; 3 for \$2.50

Huge, 7-inch flowers with very wide and spreading falls, a seedling of Cordovan crossed with Inca Chief. The color is deep but bright metallic brown, with bronze beard. 40 inches in height. HM AIS, 1956.

FOXFIRE (Fox, '53) Each 75c; 3 for \$2.00

A grand golden yellow which was awarded the President's Cup at the American Iris Society convention in 1957 in Memphis. Very free flowering, the large blooms are of perfect form, and glisten with a metallic sheen. 40 inches tall. HM AIS, 1953; AM, 1957.

FROST and FLAME (Hall, '57) Each \$1.00; 3 for \$2.50

Mr. Hall worked for several years in an effort to bring out a faultless white with the tangerine beard so closely associated with the flamingo-pinks. And here we have it! The flowers are large, the stiff stems reach four feet, and the thick petals are as clean and white as a sheet. HM AIS, 1957; AM, 1959. Illustrated on page 51.

- FULL DRESS** (O. Brown, '60) Each \$4.00
Heavily laced bright yellow with saffron yellow beard. The flowers have domed standards and graceful, semi-flaring falls. Tall, strong stalks with fine branching. HM AIS, 1960.
- FULL REWARD** (Kleinsorge, '55) Each \$1.00; 3 for \$2.50
One of the largest and most deeply toned yellows. The falls are exceptionally wide right up to the point where they meet the fully domed standards. Extra good branching and an abundance of blossoms. 3 feet or over. HM AIS, 1956.
- GALA GOWN** (Corey, '59) Each \$5.00
Described as "melon color," a blend of apricot-tan and peach-pink. This is a self, even the beard harmonizing with this luscious but brilliant tint. Large, rounded and slightly flaring; silky finish. 36 inches. HM AIS, 1959. See page 30.
- GALILEE** (Fay, '56) Each \$1.50; 3 for \$4.00
Giant medium blue self with a white beard. The color holds in sun or rain and is decidedly blue for an Iris. Mr. Fay has produced some excellent things in blues but this tops them all! HM AIS, 1956; AM, 1958.
- GARDEN GOLD** (Hall, '56) Each 75c; 3 for \$2.00
Solid, deep chrome-yellow throughout, except for the fiery orange-red beard. While the beard is not actually red it is so deep an orange tone as to appear almost red and certainly sets this Iris apart from all other yellows. 36 inches. HM AIS, 1957. See page 59.
- GAY TRACERY** (Gibson, '65) Each \$20.00
A smoky amethyst on white, the etching on the falls being quite evenly distributed and the standards flushed rather than dotted or etched with white. The huge bronze style arms are a stunning feature of this slightly sombre but artistically lovely flower. It is wide of petal and heavily fluted and ruffled. Very large, 34 inches in height. See page 7. HM AIS, 1966.
- GEORGIE ERNST** (Hall, '62) Each \$3.00
Fluffy pale pinkish lilac, or might be described as an orchid shade with a faint hint of blue in its make-up. Standards and falls are identical in color, the hafts lighter in tone and a tangerine beard literally sets the center on fire. As bubbly and frothy as an evening gown beset with jewels in the form of the brilliant beards! Height 34 inches. See page 30.
- GIANT ROSE** (Schreiner, '59) Each \$2.50
Possibly the largest Iris ever introduced, the blooms actually measuring 11 inches, from top to bottom! Color is a pleasing shade of lilac-rose with yellow glow at the heart. Beard is bright yellow. The inch-thick stems reach 40 inches. Patent No 2067. HM AIS, 1961.
- GINGERSNAP** (Schreiner, '65) Each \$15.00
A new and most worthy Iris in rich and brilliant shades of brown. It is massive in size, both standards and falls exhibiting extreme width. Spicy and snappy, with a heavy orange-brown beard. 36-38 inches. HM AIS, 1966.
- GLISTENING SNOW** (Schreiner, '63) Each \$6.00
A very full-bodied flower with magnificent petal breadth and serene flaring form, nicely ruffled. As white as Celestial Snow and with the classic appearance of Cliffs of Dover. 38 inches.
- GOLDEN BLAZE** (Mitsch, '56) Each \$1.00; 3 for \$2.50
Derived from Inca Chief, a more golden and less brown affair, and with much more life. Very large in size, with heavy texture, producing a mass of bloom. A clump in bloom is a real eye catcher! 34 inches.
- GOLDEN CROWN** (Kleinsorge, '54) Each \$1.00; 3 for \$2.50
An absolutely stunning combination of old gold and richest plush-like brownish maroon velvet. 36 inches tall. HM AIS, 1957. See page 45.
- GOLDEN DELIGHT** (E. Smith, '60) Each \$3.50
Surely one of the most outstanding yellows we have seen - large, glittering deep golden yellow, lacy and ruffled in both standards and falls. Even the style arms are fringed. This is from pink breeding. 38 inches. Shown on front cover.
- GOLDEN FILIGREE** (Gibson, '65) Each \$10.00
Light honey-tan standards which are larger than normal as compared to the size of the falls. Blossoms are heavily laced and crimped, even including the style arms. The broad falls are creamy white, edged with the bright golden tan of the standards and the undersides are also golden flushed with tan. Creates a glittering and sparkling clump of massive but delicately fringed and laced blossoms on excellent stems. 36 inches. HM AIS, 1966. See page 36.
- GOLDEN GARLAND** (Hall, '57) Each \$1.00; 3 for \$2.50
A veritable giant on stalks fully four feet in height, blooming very late in the season. The flower has definite golden yellow standards and almost white falls bordered yellow. The lacework and crimped petals on both standards and falls are exceptional. HM AIS, 1957; AM, 1959. Illustrated on page 44.
- GOLDEN SPICE** (Muhlestein, '60) Each \$2.00
Deep yellow plicata, the standards solid golden yellow and the falls the same shade marked with reddish ginger-brown. A more golden My Honeycomb and one of the finest yellow ground plicatas we have seen. 36 inches. HM AIS, 1961.
- GOLDEN SUNSHINE** (Schreiner, '52) Each \$1.00; 3 for \$2.50
Not deep golden, not lemon, but a clean, clear bright yellow of an intermediate tone. This is a big flower with wide petals and lovely form - "soft as sunshine on a spring day!" 38 inches. HM AIS, 1954; AM, 1956.
- GOLDEN YEARS** (Hall, '61) Each \$3.50
A combination of lacy white fringed with gold. Given the name of "Golden Years" in fond recognition of the era into which Mr. Hall's long association with Iris is now fitted. Illustrated on page 23. HM AIS, 1962.
- GOLD PIECE** (Schreiner, '59) Each \$2.50
Solid golden yellow with conical ruffled standards and very spreading falls, poised as if in full flight. The leathery texture is derived from Inca Chief, a parent. The brilliant Golden Sunshine is also in its breeding. 33 inches; midseason. HM AIS, 1959.
- GRACIE PFOST** (E. Smith, '61) Each \$5.00
A new blend in shades of henna-brown and copper-rose, simply colossal in size and up to 40 inches in height of stem. Colors are bright and the flowers are ideally formed, with the texture of satin. HM AIS, 1962; AM, 1965. Shown on page 32.
- GRAND COULEE** (Plough, '58) Each \$1.50
A very large and beautifully fringed and ruffled yellowish tan with rose blendings. The beard is contrasting bright yellow. Wide, domed standards, and falls of great width, the stalks well branched and about 34 inches. HM AIS, 1959. See page 57.
- GRAND TETON** (DeForest, '56) Each \$1.50; 3 for \$4.00
One of the largest of all Iris, with 8-inch flowers on 40-inch stalks. Wax-yellow standards, the falls slightly deeper and heavily ruffled. Hafts are broad and the style arms are crinkled like an oncobred. HM AIS, 1957. See page 59.
- GREEN QUEST** (R. Brown, '60) Each \$4.00
We hear a great deal about "green Iris" these days but the term is largely an exaggeration. This is as near green as any, actually bright primrose yellow with a chartreuse green cast. Added to the unusual color is perfection of form, large size, perfect branching. It blooms rather late. Height 36 inches. HM AIS, 1962. See page 13.
- GYPSY JEWELS** (Schreiner, '63) Each \$5.00
Here is a ruby to garnet red of different tonal value from any red in this catalog. Crisply flaring, remarkable heavy substance, and a plushy sheen on the falls, with no haft markings. 35 inches. HM AIS, 1964; AM, 1966.
- GYPSY LULLABY** (O. Brown, '61) Each \$7.50
Ruffled standards of butterscotch with a light violet flush; flaring, very wide falls of medium red-violet shading to the color of the standards. This is distinctly different and has produced some novel seedlings. 36 inches. HM AIS, 1962; AM 1964. See page 7.
- HAPPY BIRTHDAY** (Hall, '52) Each \$1.00; 3 for \$2.50
Peer of all the flamingo-pinks. Happy Birthday is not just a sumptuous flower . . . it has bold foliage, big, heavy stalks, large rhizomes and increases at a rapid rate. Height 3 feet. HM AIS, 1952; AM, 1954. One of the "5 Iris of the Year" in 1960.
- HAPPY WANDERER** (Lapham, '57) Each \$1.00; 3 for \$2.50
A clear tapestry-red self with clean, smooth hafts and a dark orange beard. This is the largest red Iris we have seen. Both standards and falls are full, well rounded and the shade of red is vibrant and glowing. Illustration on page 47. Height 36 inches.
- HARVEST SPLENDOR** (Kleinsorge, '56) Each 75c; 3 for \$2.00
A smooth blend of gold and apricot, the standards solid apricot faintly tinted rose, the falls bright old gold shading to apricot near the margins. Beard is orange-yellow. An ideal variety for mass effect in the garden. 3 feet; mid-season. In color on page 49.



LA ROSITA



STEP FORWARD

HAWAIIAN BREEZE (Hall, '61) Each \$2.50

A delicately colored flower that is neither pink nor mauve, but is from pink breeding and could be called a pink blend. It is so different from others of this series, so enchanting in its pastel shadings and so excitingly unique. Large, well formed and nicely branched. 3 feet. See page 25. HM AIS, 1963.

HEARTBEAT (Lapham, '58) Each \$1.50; 3 for \$4.00

Among the vast number of pink Iris now in commerce, this is real unique. Not only is the "La France" shade quite apart from others, but the heavy pink beard extending far down on the falls is unlike any Iris we know. 36 inches; quite late. HM AIS, 1958.

HEARTBREAKER (Hall, '64) Each \$7.50

A large, flaring pink self, with deep pink beard and a worthy member of the finest trio of pink Iris we have ever introduced from Mr. Hall. Heartbreaker has extra fine branching and flowers from mid-season to late. 36 inches. Shown on page 42. HM AIS, 1965.

HEATHER HAWK (Gibson, '66) Each \$15.00

Almost pure white falls with a narrow band of pinkish copper and light plicata markings on the haft. The standards are pale copper shading into white, delicately ruffled and flounced. Style-arms and beard are a contrasting old gold tint. Large blooms, admirable placement, on 3-foot stems. See back cover.

HEAVENLY DAYS (Wickersham, '63) Each \$4.00

Too many blues? Not with the quality, form, size and crisp clear June sky hue of this one! Standards are wide and upright, practically closed at the top, waved and of heavy substance. The falls are extra broad and flaring, set off with a creamy white beard. Good branching and very long lasting. Height 3 feet. Shown on page 30.

HELEN COLLINGWOOD (K. Smith, '49) Each \$1.00; 3 for \$2.50

A very brilliant Iris in the neglecta class. Standards are light lavender, the falls bright violet-purple . . . a decided contrast. Stalks are 40 inches tall, sturdy and vigorous. HM AIS, 1950; AM, 1952. Shown on page 53.

HELEN NOVAK (Hinkle, '58) Each \$1.50

A ruffled medium blue of intense color, lovely billowy fullness of form and delightful ruffling. The beard is tipped blue. Great size and 38-inch, nicely branched stalks are additional complements. It is free flowering and a fast increaser. HM AIS, 1958.

HENNA STITCHES (Gibson, '61) Each \$2.00

Well illustrated on page 19. A very bright combination of frosty white and gleaming henna-copper. The petals are gracefully flounced and ruffled. A feature which enlivens this new plicata is the metallic gleam of the reddish copper margins and stylearms. 36 inches. HM AIS, 1962.

HENRY SHAW (C. Benson, '59) Each \$4.00

A giant white, perfectly proportioned, crimped and ruffled and with a greenish undertone on the falls. The huge buds have a greenish cast and the beard is white. Many flowers and good branching. 38 inches. HM AIS, 1959; AM 1961. Best white Iris of 1965.

HIGH ABOVE (DeForest, '61) Each \$3.50

One of the late Fred DeForest's masterpieces. Color is pale sky blue, smooth and even, the texture like satin. Very spreading falls, waved at the edges, seven to nine blooms to the 36-inch stalk. HM AIS, 1962; AM, 1964. Shown on page 36.

HIGH LIFE (Schreiner, '64) Each \$10.00

A spirited burgundy red plicata on the order of Karachi but both larger and taller than that fine variety. The giant, richly hued flowers resemble some rare tropical orchid, borne on stalks 3 feet or over in height. Late. HM AIS, 1965. Shown on page 2.

IMPERIAL LILAC (Schreiner, '63) Each \$7.50

Shimmering, frosty, fresh-toned self of clean lilac-lavender, huge in size and extra heavy in substance. This is one hard to fault and is probably the very best in its color class. 36 inches. HM AIS, 1965.

IMPERIAL WOMAN (K. Smith, '58) Each \$2.00

An odd shade of violet-blue with underlying amethyst cast; tall and imperial in carriage with exceptionally wide, large flaring falls which are lightly ruffled. Beard is pale violet and there are flecks of turquoise on the crests. Medium late, 40 inches in height. HM AIS, 1961. See page 29.

INCA CHIEF (Mitsch, '52) Each \$1.00; 3 for \$2.50

Burnished golden bronze, evenly colored throughout. The ruffled flowers, with very broad hafts, are of immense size and are produced on heavy stalks. Height about 3 ft. HM AIS, 1952; AM, 1954. See page 50.

INDIGLOW (*Schortman, '59*) Each \$5.00

Deepest violet-blue, velvety and brilliant, gigantic in size and faultless in form. What more can one ask? Placement on the heavy stalks is ideal and they will reach a height of 40 inches. HM AIS, 1959; AM, 1961.

IN ORBIT (*Gibson, '63*) Each \$6.00

A new pattern in plicatas, as regards both the combination of colors and the striking contrast between standards and falls. Standards are waved and fluted, solid tan with a flush of light violet; the ruffled falls striated and peppered deep plum on a white ground. Large flowers on stocky, 30-inch, well branched stems. HM AIS, 1964.

IRENE BROWN (*R. Brown, '60*) Each \$4.00

If you are looking for deep color in the pink class you will find it here! Clean and rich in tone, the coral red beard adding to its brightness. Large, fairly early, on 40-inch stems. HM AIS, 1962.

IRMA MELROSE (*DeForest, '56*) Each \$1.00; 3 for \$2.50

Extra large lemon-yellow with faint plicata markings near the beard and throat. Although of unusual size the ruffled flowers are graceful and long lasting in rain or sun. Stems are very tall but strong and well branched. 38-40 inches. HM AIS, 1956. Shown on page 53.

IVORY GOWN (*E. Smith, '63*) Each \$12.50

Lovely ivory-cream, almost white, from Celestial Snow and Idaho Gold. Both standards and falls are very waved and frilled and the large flowers are on well spaced, 40-inch stalks. Pale yellow beard. HM AIS, 1966.

JAN ELIZABETH (*Muhlestein, '59*) Each \$2.00

Luscious blending of Flamingo pink, peach and pale orchid-pink. Lace and frills bedeck both the cupped standards and wide spreading falls. The heavy beard is bright tangerine. 34 inches. HM AIS, 1959.

JANE PHILLIPS (*Graves, '50*) Each 75c; 3 for \$2.00

A light blue that is deeper in color than Helen McGregor, of which it is a seedling, but because it carries more color it is distinct and worthy in its own right. We have seen no Iris which appears nearer true blue. HM AIS, 1950; AM, 1952. See page 50.

JEAN SIBELIUS (*C. Benson, '59*) Each \$3.50

One of the handsomest of all the blues and about as near perfection as any Iris can be. Clear and crisp steel blue, noble in carriage and of giant size. 38-inch well branched stalks. HM AIS, 1959; AM, 1962. See page 54.

JET FIRE (*Tompkins, '64*) Each \$12.50

A stunning and shockingly brilliant red plicata; snowy white falls heavily bordered solid bright red; tall, pointed standards of solid red, but white on the inside. White style arms tipped red and a rich orange-bronze beard complete this truly unusual flower. 42 inches. HM AIS, 1965.

JUDY MARSONETTE (*Hall, '62*) Each \$3.00

Here is the deepest pink Iris we have thus far introduced! In addition to its luscious and smoothy uniform color the large blossoms are of tailored perfection in form, the falls semi-flaring and of thick texture. Beard is brilliant red-orange. Stems are stout, well branched, 34 inches tall. HM AIS, 1964.

JUNE MEREDITH (*Muhlestein, '54*) Each \$1.50

A complete self of rich, deep pink. Color is uniform in both standards and falls; vivid and alive. Large flowers on 36-inch stems. HM AIS, 1954; AM, 1956. See page 24.

JUNGLE FIRES (*Schreiner, '60*) Each \$2.00

A smooth, evenly colored new red self, with jaunty, flaring form and silken sheen. A "coals-of-fire" shade of red, rather than the red effect derived from the purple or garnet side of the color spectrum. Bronze yellow beard. Free blooming, large size, height 3 feet. HM AIS, 1960; AM, 1964. Shown on page 41.

KAHILI (*Schreiner, '61*) Each \$3.00

A big bright, contrasty variegata. Falls are deep, velvety maroon-brown; the standards are luminous pale gold deepening toward the edges. Style arms are stained with crimson and the beard is rich yellow. Height 3 feet. HM AIS, 1962.

KARACHI (*Schreiner, '58*) Each \$2.00

Newest, deep burgundy, wine-on-white plicata, darker and redder than Port Wine or Bazaar. In fact it is more red than anything else; the only white appears as a patch in the center of the falls. Large, perfectly formed, on 3-foot stems. HM AIS, 1958. See page 59.

LADY ILSE (*K. Smith, '51*) Each \$1.00; 3 for \$2.50

The brilliant blue of the sky brought down and into the garden in a flower of exquisite charm and alluring form. Perfection of style and great width of petals point up this Iris. 38 inches. HM AIS, 1952; AM, 1955. See page 39.

LA NEGRA FLOR (*Crosby, '57*) Each \$1.00; 3 for \$2.50

The name means "Black Flower" in Spanish. Here is a tall, ruffled, very dark Iris which won the Primio Firenze Gold Medal in international competition in Florence, Italy in 1959. 38 inches. HM AIS, 1958.

LA ROSITA (*Hall, '60*) Each \$2.00

A large, broad petaled, soft uniform rose self. Area below the beard is paler, almost white, in center. Haft markings are not conspicuous, but give a rosy tan flush near the center of the flower. Beard is pale tangerine — not red. Photo on page 16 is a good likeness. Very tall — 36-40 inches. HM AIS, 1961.





ROMULUS

"I was amazed at the beautiful roots you sent. I have grown Irises for over forty years. Have bought roots from many growers but have never seen finer roots than those you sent me. Yes: this order has indeed made a new customer for you in coming years."

Mrs. M. C. Senne, Fairmont, Minnesota



SON OF SATAN

LAVANESQUE (Schreiner, '53) Each \$1.00; 3 for \$2.50

Color is an even shade of delicate orchid-pink, the very broad petals nicely ruffled, the beard and hafts rich gold. This is a very full-bodied flower in all its parts . . . possibly the very finest of all the orchid or lilac-purple. 40 inches tall. HM AIS, 1955; AM, 1959.

LEDA KNIGHT (Hinkle, '65) Each \$15.00

Here is something new in the "bass viol" category of colors . . . ranging from deepest red-violet to sooty black. The extra broad petals are sleek and silky, elegantly ruffled. Beard is deep blue-violet lightly tipped orange-brown. 34 inches. HM AIS, 1966.

LICORICE STICK (Schreiner, '61) Each \$3.00

A blue-black of exceptional size with 40-inch stems. A nugget of color richness in the Iris colorama. Even the beard is deep indigo. Although intensely dark, a velvety sheen imparts brightness to this unusually fine new black. HM AIS, 1962; AM, 1964.



MAY MAGIC

LIGHTUP (Plough, '63) Each \$12.50

Standards are Indian yellow with pink infusion in center. Falls are a novel blend of pink and lemon, lighter in the center and shaded to buttercup yellow at the margins. The beard is deep Saturn red, heavy and wide. Well branched; 36 inches. HM AIS, 1964.

LILAC FESTIVAL (Plough, '59) Each \$5.00

A classic, lightly ruffled, wide petaled, light orchid self including the beard which is almost white. The entire flower has a silvery appearance. Truly a masterpiece in delicacy of tone, form and size. 33 inches. HM AIS, 1959; AM, 1963. Picture on page 32.

LILAC LANE (Whiting, '47) Each 75c; 3 for \$2.00

Pink-toned lilac self, not a pink but a delicate mauve color of heavy substance. Beard is very pale yellow. Slightly ruffled, very refined in effect, 3 feet tall. HM AIS, 1948; AM, 1951. Picture on page 53.

LIMELIGHT (Hall, '52) Each 75c; 3 for \$2.00

A canary-yellow to greenish yellow. One of the most novel Iris we have ever grown and one of the most beautiful as well. The lace-like blossoms are produced on 35-inch stems. HM AIS, 1952; AM, 1954. See page 59.

LITTLE DOLLY (Hall, '61) Each \$3.00

An intensely colored, medium size, brilliant true pink. Slender of stem, reaching a height of about 20 inches, it is loaded with flowers and lasts and lasts. This has found enthusiastic acceptance in Median Iris circles. HM AIS, 1962. Shown on page 14.

LITTLE GREMLIN (Hall, '62)

Each \$2.00

Something entirely different, a perky little almost black-and-white fellow on 10 to 12-inch stems. The falls are stiff and almost horizontal, white except for a short band of solid blackish violet on the outer edge and extending about the length of the soft brownish beard. Standards and style-arms are almost solid deep blackish violet, lightly flaked white. AM AIS, 1966.

LORNA LEE (Gibson, '66)

Each \$20.00

A true pink, produced on heavy stalks reaching up to four feet, well branched and with so many flowers per stem that it blooms for almost three weeks. Blossoms are very large, the falls wide and horizontally held, with tangerine beard. Grand champion and winner of the Premio Firenze Medal in Italy in 1965. Shown on front cover.

LORNA LYNN (Plough, '61)

Each \$3.00

This is a luscious blend of salmon, pink and apricot. The large flowers are flaring and there is a yellow flush below the bright Saturn-red beard. Very long blooming season. 35 inches. HM AIS, 1963.

LOVELY LETTY (Hall, '60)

Each \$1.00; 3 for \$2.50

Bright violet-blue with very brilliant tangerine beard, 30-32 inches tall, with many flowers. Very flaring falls, standing almost horizontal—a fine feature for an Iris of medium height. Self colored except for the fiery beard. HM AIS, 1961. See page 50.

LOVELY LIGHT (Tompkins, '64)

Each \$15.00

Richest orange-apricot in color and one of the very best of the new ones in this popular color group. The smooth and handsomely fashioned big blossoms are solidly colored and the beard is bright tangerine. 36 inches; late. A winner at Florence, Italy in 1965. HM AIS, 1965.

"Received the second box of Irises last Tuesday morning. They were in good condition when they arrived here. Last year's blossoms were really beautiful and different from what is usually grown up in this country."

Mrs. S. Mikalishen, Montrose, British Columbia, Canada



HENNA STITCHES

"The shipment of Iris arrived and the plants are beautiful and in excellent condition. Thank you so much for always sending such top quality rhizomes, and a very special thanks for the extra."

Mr. and Mrs. Phil Huey, Cleburne, Texas

"I just received my Iris order, as usual in perfect condition, the biggest, healthiest, cleanest plants I ever saw with the most amazing root system! Last spring your Iris from previous shipments provided the most spectacular display of color I have ever had in my garden. Many of my gardening friends were so enthusiastic that they asked for your catalog. I hope you now have many new customers from the Washington, D. C./Maryland/Virginia area."

Mrs. L. B. Watson, McLean, Virginia

"My 1966 order came yesterday and it looks fine. But it is the performance of last year's order that I sing. I got a bloom from eight out of ten with no losses, as opposed to only eight out of nineteen, with four losses, from your competitor's stock. The flowers seemed larger too. I have grown Iris for twenty years and never have I had such fine performance from first year stock."

Mrs. Norman Frey, Lyons, Nebraska



TALL CHIEF



FAIRY FABLE

LUCY LEE (Gibson, '60) Each \$1.50; 3 for \$4.00

Clean sparkling white with bright red-violet stitching; of a size and quality that sets a new standard in plicatas of this color combination. It is very large, the stems tall and fully branched and it produces an abundance of bloom. The beard is light yellow on a gleaming white haft. Height 3 feet. HM AIS, 1961.

LUNAR FIRE (Hall, '63) Each \$7.50

Featured in color on page 33 . . . a big, spreading, lace-edged flower of golden amber hues, the sharply contrasting beard a blazing tangerine red. In addition to form and size it has petals of extra heavy thickness and very stout well branched stems. 36 inches. HM AIS, 1964.

LUSTY SONG (Gibson, '66) Each \$15.00

A unique shade of Burgundy on white, the falls very squarely held, thick in substance, with just a narrow band of bright Burgundy. The conical standards are almost solidly colored Burgundy, matching the band on the falls. As distinct from other red or wine patterned plicatas as Siva-Siva is singular in its field. Large, 36 inches, ideally branched. Picture on back cover.

LYNN HALL (Hall, '57) Each \$2.50

Invariably draws a crowd of admirers. A very deep and uniform shade of luscious pink. It flowers freely, is beautifully branched and grows and increases vigorously. 3 feet in height. HM AIS, 1957; AM, 1959. See page 23.

MAD MAID (Gibson, '66) Each \$15.00

One of the tasks encountered in trying to describe these novel plicatas is that of finding adequate words. So when we say that Mad Maid has reddish-tan standards, and white ground falls bordered copper which shades into reddish-brown markings, let us assure you that it really is different, and good! 34 inches.

MAIN EVENT (Peterson, '60) Each \$2.00

Self combination of light Indian-Lake and Garnet-Lake reds; dull yellow beard. Heavily substandard large flowers in an unusual shade of red, the falls wide and flaring. This is a vigorous grower, with 3-foot stems. HM AIS, 1961.

MARIE PHILLIPS (Tell, '63) Each \$10.00

A complete self of light Wisteria violet, an enchanting shade hard to describe. Beard is the same color. The nearest thing to this is Lilac Festival, which is somewhat lighter. Domed standards and flaring falls, lightly ruffled. 36 inches. HM AIS, 1964; AM 1966. See page 37.

MARRIOTT (Marriott, '59) Each \$1.00

A novel shade of pale blue, sort of dove colored, with a striking blue beard. Sleek finish and flaring form add to the attractiveness of this unique Iris. 30 inches. HM AIS, 1961.

MARTEL (Tell, '62) Each \$12.00

A deep and rich sultry blend of red, maroon and violet with a yellow beard. Width of petals, smoothness, substance and ruffling add to its high quality. One of Tell's best and it flowers rather late. 36 inches. HM AIS, 1963; AM, 1965.

MARY RANDALL (Fay, '51) Each \$1.00; 3 for \$2.50

A deep rose-pink self, with bright tangerine-red beard. Haft is very wide, free from markings. The form is near perfection and the flowers are well spaced along a nicely branched, 36-inch stem. Dykes Medal, 1954.

MAUVE MAGIC (E. Smith, '63) Each \$7.50

Lovely, tall and very lacy mauve pink, from Limelight crossed with Happy Birthday. Falls, standards and style arms all have lace and the beard is bright tangerine. 40 inches.

MAUVE MINK (Hall, '61) Each \$3.00

This is pretty much a self — a bewitching shade of rosy lilac and a hint of blue — paling to an almost white area about the haft, in sharp contrast to the red-orange beard. Note the opulence of the ruffled standards and the breadth of the spreading falls. Flowers are large in size, produced on stout 3-foot, well branched stalks. Shown on page 24. HM AIS, 1962.

MAY HALL (Hall, '54) Each \$1.00; 3 for \$2.50

A shade of pink which everyone expects in a flower of this hue. Many spreading blossoms to the stem, good branching, and a vivid beard to set it off. 36 inches tall. HM AIS, 1954; AM, 1956.

MAY MAGIC (Schreiner, '56) Each \$1.00; 3 for \$2.50

A fresh, light hearted, radiant orchid-pink. Not related to nor resembling the flamingo-pinks, it is a frilly edition of the Lavanisque series. Luscious and delicate, with opalescent hues. HM AIS, 1956.

MAYTIME (Whiting, '50) Each \$1.00; 3 for \$2.50

Two tones of bright orchid-pink. A handsomely formed full flower with lots of color. There is a definite contrast in color of standards and falls, making it near amoena. 36 inches. HM AIS, 1950; AM, 1953.

MAZATLAN (Hall, '59) Each \$2.00

Standards are practically snow-white, flushed amber at the base. Falls have a white ground but blend into blue beyond the center. Beard is red-orange on an amber ground. The entire flower is fringed and shirred at the margins and is from pink breeding. 30-33 inches, well branched.

MELODRAMA (Cook, '56) Each \$1.50; 3 for \$4.00

This new break in Iris breeding has attracted wide attention. The standards are pale violet, deepening in tone to the deep lilac of the flaring falls. With its very broad petals and huge size it will be immediately spotted in any planting. 40 inches. HM AIS, 1956; AM, 1958. See page 21.

MELODY LANE (Hall, '49) Each 75c; 3 for \$2.00

Bright glistening golden apricot. The color is most attractive, with great carrying power in the garden. The flowers are very large with some ruffling, good form and a heavy brilliant tangerine beard. Early, with 36-inch stems. HM AIS, 1950; AM, 1952.

MEMPHIS LASS (Schortman, '57) Each \$2.50

A very ruffled white plicata, with rose to Burgundy markings on the clean white falls and standards of almost solid Burgundy-rose. Big fully formed flowers on 38-inch stems. One of the "5 Iris of the Year" for 1967. See page 29. *

CULTURE OF BEARDED IRIS

Irises prefer full sun but will grow and bloom well if given half a day of sunlight. The bearded iris will not tolerate wet feet and the gardener can avoid many problems by providing good drainage.

Irises will grow in any good garden soil. If other plants make good growth in your garden, irises will flourish in it. But extra food is necessary for best growth and bloom. For the new planting a balanced chemical fertilizer can be dug into the soil at the rate of one ounce per square foot, if this is done three weeks before the plants are set in. Half this amount should be used if it is added just before planting time. Large quantities of well-rotted compost or well-rotted manure are good additions but should be placed eight inches deep or dug into the soil and they should not be piled around the rhizome. It is good to combine the chemical fertilizer with the rotted materials and to dig both in together. In general, *fertilizers high in nitrogen should be avoided.*

Each spring, after growth begins, one handful of granulated super phosphate plus two handfuls of agricultural gypsum can be sprinkled in a circle around each clump. A half ounce of balanced fertilizer may be substituted for the super phosphate. It is good to make these applications just before a rain, or to hose the plants clean of any fertilizer which has fallen on the new growth.

Like many perennial plants, irises may be moved at any time if proper care is taken. However, there is a best time to move them. This is during the dormant period which extends from soon after they bloom until the time when new growth develops. (It is for this reason that we ship in July, August and September.) If you move your irises within this period you will have the least trouble and the greatest success.

Just one word of caution about injury is necessary. Since disease may enter through open wounds it is better to trim foliage away with shears rather than to tear it away, and to cut rhizomes apart rather than to break them apart. Cut surfaces and injuries which do occur should be exposed to the sunlight for several hours before replanting. A light dusting of sulphur on such wounds is still further insurance against future troubles.

Although your bloom should be fairly good the year after transplanting, your best bloom will occur in the second to fourth years, so do not divide your clumps too soon. But after three or four years the rhizomes will become crowded and should be dug, divided, and replanted. This is also the time to revitalize your soil by adding humus and fertilizer as was recommended for the new planting.

HOW TO DIVIDE AND PLANT AN IRIS



After about 3 or 4 years an old clump should be dug up and divided. Healthy, growing rhizomes are separated from old bloomstalks and weak, wornout portions discarded. Wash rhizomes thoroughly before replanting. Best time to do this is July, August or early Sept.



Before planting a new bed of Iris, dig in plant food and cultivate well. When ready to plant, dig two slanting holes, leaving a dividing ridge in the center.

Place the rhizome directly over the center of the ridge and spread the feeding roots to either side, so the plant is securely anchored.

Pull dirt towards plant from either side. By pressing on top of root, proper planting depth may be regulated. Firm with foot and water well.



MELODRAMA



CELESTIAL SNOW



TECHNY CHIMES



SYMPHONY

MILLIONAIRE (*Brizendine, '58*) Each \$1.50; 3 for \$4.00
Glamorous light golden brown self, the standards a shade lighter than the falls. There is a metallic shine to the ruffled petals and this gives it much more life than the usual brown or tan varieties. 36 inches. HM AIS, 1958; AM, 1960. See page 59.

MINERAL KING (*Gibson, '65*) Each \$6.00
A very late, very large and very tall plicata which will bring a thrill to jaded Iris appetites near season's end. Both standards and falls are of huge proportions and the color is spirited and gay — a rich yellow ground bordered deep rose to copper. Standards are almost solid rose-red. 40 inches tall.

Ace Collection

Select 12 for \$15.00

(Choose from brackets as indicated)



WHOLE CLOTH

Select
2

ARCTIC SKIES
AZURITE
BLACK SWAN
BRASS ACCENTS
BRIGHT FORECAST
BUTTERSCOTCH KISS
CAPTAIN GALLANT
CHRISTMAS ANGEL
DESERT GLOW
DIVINE BLUE

ETHEREAL PINK
GIANT ROSE
GOLD PIECE
HAWAIIAN BREEZE
MEMPHIS LASS
PINK MAGIC
POINT LACE
PRETTY CAROL
UTAH VALLEY
WHOLE CLOTH

Select
2

ALPINE BLUE
BRASILIA
BRIGHT WORLD
BUTTERCUP BOWER
CANDLEFLAME
CAYENNE CAPERS
DARK FURY
DEEP SPACE
DESERT THISTLE
DOCTOR K.
DREAM SPUN
EMMA COOK
FAIRY FABLE
GEORGIE ERNST
GOLDEN YEARS

HIGH ABOVE
JEAN SIBELIUS
JUDY MARSONETTE
KAHILI
LICORICE STICK
LORNA LYNN
MAUVE MINK
PINWHEEL
REAL DELIGHT
ROCOCO
ROMANESQUE
SON OF SATAN
SORORITY GIRL
SYLVAN STREAM
TOMEKO

VELVET ROBE

Select
3

ALLEGIANCE
ALPENROSE
AMETHYST FLAME
BLUE SPINEL
BRONZE BELL
CANDLE MAGIC
CRINKLED IVORY
DARK SPLENDOR
DAVE'S ORCHID
DOT & DASH
FABULOUS
FOAMING SEAS
HENNA STITCHES
IMPERIAL WOMAN

JAN ELIZABETH
JUNGLE FIRES
KARACHI
LA ROSITA
MAIN EVENT
MAZATLAN
MOUNTAIN MUSIC
OLYMPIC TORCH
PRETTYFIELD
SHEIK OF ARABY
SILVERTONE
STEP FORWARD
TOLL GATE
ULTRA VIOLET

OLYMPIC TORCH





LYNN HALL



GOLDEN YEARS



CRINKLED IVORY



EMMA COOK

Select
5

ALLAGLOW
APPLE VALLEY
BRAVADO
CHINQUAPIN
CONCORD RIVER
COUNTRYSIDE

DANCING TIGER
ELEANOR'S PRIDE
ENCHANTED VIOLET
FASHION SHOW
FIRE CHIEF
GALILEE

GRAND COULEE
GRAND TETON
HEARTBEAT
HELEN NOVAK
JUNE MEREDITH
LUCY LEE

MELODRAMA
MILLIONAIRE
MR. WONDERFUL
PARTY PINK
ROBERT J. GRAVES
ROYAL VIOLET

SYMPHONY
TALLY-HO
TECHNY CHIMES
VALIMAR
WAYWARD WIND
WONDERMENT

"All Pink" Collections

Group "A" Nine for \$5

Pink Sensation	\$0.75	Cloud Cap	\$1.00
Raspberry Ribbon	0.75	Enchantress	1.00
Rosedale	0.75	Maytime	1.00
Watermelon	1.00	Annette	1.00
		May Magic	\$1.00

(Total Value \$8.25)



MAUVE MINK



JUNE MEREDITH



Group "B" Eight for \$7.50

Spring Festival	\$1.00	Mr. Wonderful	\$1.50
June Meredith	1.50	Enchanted Violet	1.50
Pink Chimes	1.00	Heartbeat	1.50
Party Pink	1.50	Jan Elizabeth	2.00

(Total Value \$11.50)



ENCHANTRESS



HAWAIIAN BREEZE



CLOUD CAP



ENCHANTED VIOLET

Group "C" Ten for \$16

Mauve Mink	\$3.00	Irene Brown	\$4.00
Hawaiian Breeze	2.50	La Rosita	2.00
Dave's Orchid	2.00	Pretty Carol	2.50
Fairy Fable	3.50	Rosecrest	4.00
Lynn Hall	2.50	Judy Marsonette	3.00

(Total Value \$29.00)



FLASHING GEM

MME. BUTTERFLY (Tompkins, '61) Each \$5.00

Quite striking and bizarre is this amoena pattern with pure white standards and white falls which are lined with blue-violet veins in a ray-like design. The beard is white and the hafts are edged with gold. 38 inches. HM AIS, 1964.

MORNING BRIGHT (Cook, '51) Each \$1.00; 3 for \$2.50

Bright cream and rose bicolor or in some lights, cream and salmon. Standards cream tinted pink, falls creamy old rose; deeper rose in the central portions. It is most vigorous as a plant, with robust stems and flowers of extra large size. Height 40 in. HM AIS, 1952. Pictured on page 46.

MOUNTAIN MUSIC (Tompkins, '59) Each \$2.00

Huge ruffled, very broad petaled flowers in a subdued shade of dusty rose-violet, lighted by a bright electric blue beard. This is one of our favorites of all the Tompkins' varieties. 42 inches. HM AIS, 1961.

MR. WONDERFUL (Crosby, '59) Each \$1.50

A new pink with rich color, wide tailored flaring falls and a pink beard. There is a light brushing of gold on the haft. Pink Enchantment and Hall's Flamingo line are in the parentage. 36 inches. HM AIS, 1959.

MUSIC MAKER (Waters, '63) Each \$12.00

The much heralded supreme blue which some critics have judged as the very best, particularly in form and color, of any blue Iris thus far. A sky blue self, wide petaled, gracefully ruffled, on stout 34-inch stems. HM AIS, 1964; AM, 1966.

MY HONEYCOMB (Gibson, '59) Each \$1.00; 3 for \$2.50

A molasses and honey blended plicatas of great size, and excellent branching, embracing the quality of Taholah, one of its parents, in a taller and flashing combination of colors. The illustration on page 43 shows what to expect . . . a giant Firecracker, deeper, richer and with twice the stem of this fine old favorite. Height 36-38 inches. HM AIS, 1960.

NATIVE CHIEF (Gibson, '66) Each \$15.00

Yellowish tan or "buckskin" colored standards, very ruffled and full, and white falls bordered with the same soft tan of the standards over ivory white. This is one of Gibson's very largest new things and is undoubtedly one of his best in every way. 36 inches, well spaced. Shown on back cover.

NEWPORT (Schreiner, '63) Each \$6.00

The bluest of blue plicatas, the snowy ground edged a delightful cerulean blue. It is brighter than Rococo and the colors are in sharper contrast. Tall, large and well branched. Early. 38 inches. HM AIS, 1966.

NEW SNOW (Fay, '46) Each 75c; 3 for \$2.00

A white Iris which is neither a warm nor a cold white but is as white as new snow. The beard is full and light yellow, adding a great deal of life. Stalk is sturdy and well branched, 40 inches tall, the big flowers much ruffled and flaring. HM AIS, 1946; AM, 1948.

NOB HILL (Gaulter, '66) Each \$10.00

A soft, sort of bamboo yellow with slight amber overlay on the falls. Hafts are slightly deeper in tone and the beard is still deeper yellow. Huge in size and the great blooms are perfectly formed. Height to 40 inches.

NOMOHR (Gibson, '55) Each \$1.00; 3 for \$2.50

An odd shade of wax-yellow, described as "bamboo-cream." This is from a cross of Snow Flurry and Elmohr and the very large flowers show their onco parentage. The substance is very thick and heavy, the large blooms beautifully formed. HM AIS, 1956. 40 inches in height. See page 46.

NUEVO LAREDO (Kleinsorge, '56) Each \$1.00; 3 for \$2.50

This distinct Iris is an odd shade of coppery tan with suffusion of violet and brown. It is very large in size, the petals waved and curled; the growth vigorous, with tall stems and ideal branching. Height 3½ to 4 feet. See page 38.



ROCKET RUST

OH BOY! (Grinter, '59) Each \$1.00; 3 for \$2.50

Waxy chrome-yellow, a complete self, very large in size and of extra heavy petal texture. This was sent to us for trial along with Blue Grotto and they make a pair of excellent companions. Heavy stems and foliage. 3 feet tall.

OLYMPIC TORCH (Schreiner, '58) Each \$2.00

This grand coppery yellow-bronze is our choice of all the Schreiner introductions. It has great size, moderate ruffling, lovely even coloring, and perfect height and branching. 40 inches; late. HM AIS, 1958; AM, 1960. Illustrated on page 22.

ONE DESIRE (Shoop, '60) Each \$7.50

Nearly all pink Iris carry a certain amount of peach, salmon or apricot blended together. Here is one which is devoid of these influences and in some quarters is regarded as the nearest approach to real pink. Color is rich and deep with beard in harmony. 34 inches. HM AIS, 1960; AM, 1963.

ORANGE BANNER (Waters, '55) Each \$1.00; 3 for \$2.50

Handsome and brilliant orange-yellow of very large size. The heavy beard is slightly deeper in shade than the rest of the flower. Petals are broad and well formed. 34 inches. HM AIS, 1955.

ORANGE PARADE (Hamblen, '61) Each \$7.50

A vivid and moderately laced and ruffled orange bi-tone, between Marigold and Spanish orange. A startling and rich orange effect. Wide, flaring falls and closed standards. Fairly early. 38 inches. HM AIS, 1962; AM, 1964.

ORELIO (DeForest, '47) Each 75c; 3 for \$2.00

Deep crimson-brown, more red than brown. It is large, tall and well branched. HM AIS, 1948. Shown on page 49.

PACIFIC PANORAMA (Sexton, '60) Each \$5.00

A spectacular sea-blue self of great-size and imposing carriage. The ruffled flowers are produced on 40-inch, well branched stems. Beard is yellow tipped white. HM AIS, 1961; AM, 1963. Dykes Medal 1965. Shown on front cover.

PALOMINO (Hall, '52) Each \$1.00; 3 for \$2.50

The falls are pale ivory with an amber-copper shoulder and thin band all the way around. Beard is like a bonfire. For size, form, substance, branching and truly marvelous color, this is indeed supreme. Height 3 ft. HM AIS, 1952; AM, 1954. See page 45.



DREAM SPUN

PARISIAN BLUE (Schreiner, '65) Each \$15.00

Bright and uniform azure blue without haft markings and of serenely fashioned form. With petals of great width and 40-inch stems ideally branched, we think it probably the best of all the Schreiner blues. Medium late. HM AIS, 1966.

PARTY PINK (Crosby, '59) Each \$1.50

Here is a variation in the constantly growing assemblage of what was a lean and seemingly overlooked color class. Without the yellow-salmon influence of most kinds this one inclines to the orchid side and the prominent beard is in harmony but of deeper tone. 38-40 inches tall, large and loaded with flowers.

PATHFINDER (Whiting, '48) Each \$1.00; 3 for \$2.50

A big, broad petaled, pearly rose-pink with very heavy substance. Actually a blend, rather than a pink, with some coppery suffusion about the haft and style arms. The beard is yellow. Height 36 inches. HM AIS, 1948. See page 55.

PATIENCE (Schortman, '55) Each \$1.00; 3 for \$2.50

A rare shade of rich magenta or light red-violet, standards and falls uniform in color, the beard cream tipped yellow. Wide petaled and very large in size. 40 inches. HM AIS, 1956; AM, 1958. One of the "Five Iris of the Year" for 1963.

PATRICIAN (H. Hall, '53) Each \$1.00; 3 for \$2.50

Standards are pure white, lightly flushed yellow at the base. The falls are wide and flaring, also white, but with a heavy overlay of gold entirely covering the hafts. Exceptionally large, evenly balanced. HM AIS, 1953; AM, 1958; President's Cup, 1958. 36 inches.

PAY DAY (Tompkins, '62) Each \$4.00

One of the most brilliant of all yellows; large, nicely formed, very heavily ruffled and fluted. Blooms early through late mid-season on well branched stems. Parentage is Fusilier x Allaglow. HM AIS, 1965.

PIERRE MENARD (Fought, '48) Each 75c; 3 for \$2.00

Finest of the medium toned blues; a hyacinth-blue, with some fine netting in slightly deeper shade. Beard is canary-yellow. Very flaring in form, large, with broad segments, 36 to 40 inches tall. A very late Iris. HM AIS, 1948; AM, 1950. See page 45.

PINK CHEEKS (Randolph, '57) Each \$2.00

An odd shade of greenish yellow with very distinctive flush of pink on the hafts and a pinkish glow in the standards. Beard is reddish orange. Attractive and colorful. 38 inches. HM AIS, 1962.

PINK CHIMES (Hall, '57) Each \$1.00; 3 for \$2.50

This might be termed a "refined" Pink Sensation. The rich pink falls carry a smooth overlay of gold near the base of the standards. There is no veining and the beard is fiery tangerine. Prolific in growth and very free blooming with large flowers. 34 inches. HM AIS, 1957. One of the "Five Iris of the Year" for 1963. See page 43.

PINK FULFILLMENT (Muhlestein, '54) Each \$1.50

Large, wide flaring, medium deep pink with a lighter pink area on the falls. It is taller than June Meredith but is in the same unique shade or hue of pink. HM AIS, 1954; AM, 1956; President's Cup, 1954.



SPARKLING CHAMPAGNE

PINK MAGIC (Hall, '61) Each \$2.50

This is a very large apple-blossom or blush-pink shading to a coppery pink tinge at the outer margins of both standards and falls. It is an Iris with superb form, the standards full and slightly crinkled, the falls wide and perfectly held. Stout stems, 34 inches in height. HM AIS, 1964.

PINK SENSATION (David Hall, '48) Each 75c; 3 for \$2.00

True delicate light pink, without any influence of lilac or salmon tones, and sporting the famous tangerine or orange-red beard. A large flower, full and rounded in form, with lacinated petal edges. Extremely early - one of the very first of the tall bearded to come into flower. Height about 33 inches. HM AIS, 1950; AM, 1952. See page 49.

PINNACLE (Stevens, '49)

Each 75c; 3 for \$2.00

Standards of clear sparkling white and well formed broad falls of clean primrose-yellow. Bred in New Zealand; it is a good grower with perfect branching on 3-foot stems. HM AIS, 1949; AM, 1951. Illustrated on page 54.

PINWHEEL (Schreiner, '62)

Each \$3.00

Ruby-burgundy on cream, the standards solid burgundy and the starchy, flaring falls cream striated with radiating lines, hence the "pinwheel" effect. Crisp and lively - and different! 34 inches. HM AIS, 1963.

POINT LACE (Gibson, '60)

Each \$2.50

Here is a big, clean, ivory-cream-pink flower with tangerine beard. As the name implies, the entire blossom is fringed with lace at the edges - both standards and falls. Even the style arms carry this ornamentation. Stalks are rigid and reach a height of 36 inches. HM AIS, 1961.

BRASS ACCENTS



CAPTAIN GALLANT

5 Iris of the Year

CAPTAIN GALLANT

MEMPHIS LASS

BLACK SWAN

BRASS ACCENTS

BUTTERCUP BOWER

All 5 for \$7

BLACK SWAN





MEMPHIS LASS



IMPERIAL WOMAN

RIBBON ROUND

BUTTERCUP BOWER





GALA GOWN



DEEP SPACE



GEORGIE ERNST

EL MONSOUR



VELVET ROBE

BRIGHT CLOUD

"NOVELTY COLLEC
All 12 for \$25

CANDLEFLAME
 EL MONSOUR
 AMETHYST FLAME
 DEEP SPACE
 BRIGHT CLOUD
 GALA GOWN
 GEORGIE ERNST
 FLORADORA FLOUNCE
 HEAVENLY DAYS
 SPLASH O' PINK
 VELVET ROBE
 GOLDEN DELIGHT
 (On front cover)

Catalog val



CANDLEFLAME





AMETHYST FLAME

SPASH O' PINK

"SUPER NOVELTY" GROUP

20 for \$50

All 12 in collection at left \$ 49.50 plus—(see next page)

CLAUDIA RENE	7.50
RAINBOW GOLD	6.00
STEPPING OUT	12.00
REAL DELIGHT	3.00
LILAC FESTIVAL	5.00
GRACIE PFOST	5.00
LUNAR FIRE	7.50
PACIFIC PANORAMA	5.00

(On front cover)

Total value \$100.50

DN"
\$3.00
5.00
2.00
3.50
4.00
5.00
3.00
6.00
4.00
7.50
3.00
3.50
49.50



HEAVENLY DAYS

FLORADORA FLOUNCE







GALA GOWN



DEEP SPACE



AMETHYST FLAME



SPASH O' PINK

"SUPER NOVELTY" GROUP
20 for \$50

All 12 in collection at left \$ 49.50 plus—(see next page)	
CLAUDIA RENE	7.50
RAINBOW GOLD	6.00
STEPPING OUT	12.00
REAL DELIGHT	3.00
LILAC FESTIVAL	5.00
GRACIE PFOST	5.00
LUNAR FIRE	7.50
PACIFIC PANORAMA	5.00
<small>(On front cover)</small>	
Total value \$100.50	



GEORGIE ERNST

EL MONSOUR



VELVET ROBE

BRIGHT CLOUD

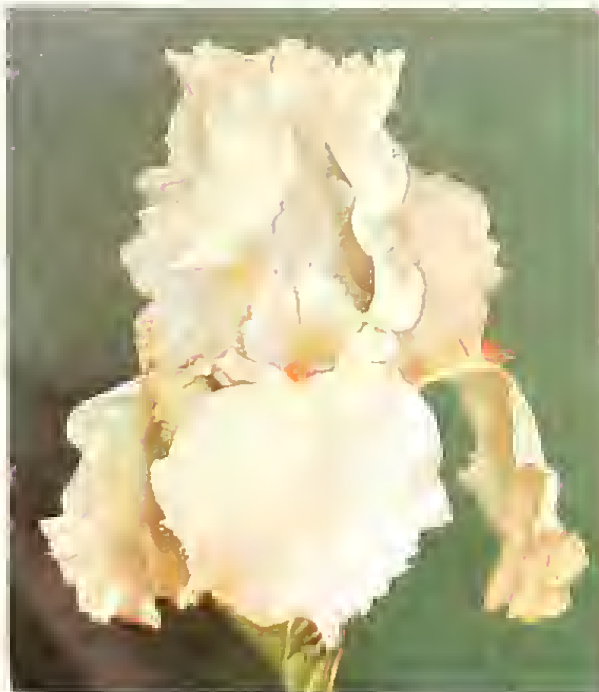
"NOVELTY COLLECTION"
All 12 for \$25

CANDLEFLAME	\$3.00
EL MONSOUR	5.00
AMETHYST FLAME	2.00
DEEP SPACE	3.50
BRIGHT CLOUD	4.00
GALA GOWN	5.00
GEORGIE ERNST	3.00
FLORADORA FLOUNCE	6.00
HEAVENLY DAYS	4.00
SPLASH O' PINK	7.50
VELVET ROBE	3.00
GOLDEN DELIGHT	3.50
<small>(On front cover)</small>	
Catalog value \$49.50	



HEAVENLY DAYS

FLORADORA FLOUNCE





CLAUDIA RENE



RAINBOW GOLD



STEPPING OUT

GRACIE PFOST



REAL DELIGHT

LILAC FESTIVAL





Gold Cup Collection

100% in Extras!

See next
two pages

LUNAR
FIRE

[33]



WILD APACHE



ROCOCO

100% in Extras!

It works like this: from the following list of 198 varieties you select a minimum of \$25 worth — one of a kind — and choose an equal amount in value, FREE! For example . . .

\$25 will get you \$50 worth

\$40 will buy \$80 worth

\$50 will pay for \$100 worth . . . and so on.

This offer is limited to these 198 kinds only. Minimum selection \$50 worth . . . payment \$25 or more.

After Dark	\$ 5.00	Candleflame	\$ 3.00
Allegiance	2.00	Candle Magic	2.00
Alpenrose	2.00	Capt. Gallant	2.50
Alpine Blue	3.50	Carolina Peach	10.00
Amethyst Flame	2.00	Carolina Ruby	10.00
Arctic Flame	6.00	Casa Grande	4.00
Arctic Skies	2.50	Cashmere	6.00
August Moon	5.00	Catalina	12.00
Azurite	3.00	Cayenne Capers	3.00
Bermuda High	15.00	Celestial Glory	5.00
Big Chief	6.00	Celestial Snow	2.00
Black Swan	2.50	Celestial Sunlight	3.00
Blue Mountains	12.00	Checkmate	7.50
Blue Spinel	2.00	Chinese Coral	10.00
Blushing Beauty	15.00	Christmas Angel	2.50
Brasilia	3.50	Claudia Rene	7.50
Brass Accents	2.50	College Queen	7.50
Breathless	7.50	Comforting Thought	7.50
Bright Cloud	4.00	Court Ballet	5.00
Bright Forecast	3.00	Coraband	7.50
Brightside	5.00	Crinkled Beauty	10.00
Brilliant Star	5.00	Crinkled Ivory	2.00
Bronze Bell	2.00	Cross Country	5.00
Buttercup Bower	3.50	Curls of Gold	5.00
Butterscotch Kiss	2.50	Dancing Rill	7.50

Dark Fury	\$ 3.00	Gala Gown	\$ 5.00
Dark Splendor	2.00	Georgie Ernest	3.00
Dave's Orchid	2.00	Giant Rose	2.50
Dawn Crest	4.50	Glistening Snow	6.00
Deep Space	3.50	Golden Delight	3.50
Denver Dawn	7.50	Golden Filigree	10.00
Desert Glow	2.50	Golden Spice	2.00
Desert Thistle	3.50	Golden Years	3.50
Divine Blue	2.50	Gold Piece	2.50
Doctor K.	3.50	Gracie Pfost	5.00
Dot & Dash	2.00	Green Quest	4.00
Dream Maiden	10.00	Gypsy Jewels	5.00
Dream Spun	3.00	Gypsy Lullaby	7.50
Edenite	5.00	Hawaiian Breeze	2.50
El Monsour	5.00	Heartbreaker	7.50
Emerald Fountain	5.00	Heavenly Days	4.00
Emma Cook	3.00	Henna Stitches	2.00
Esther Fay	6.00	Henry Shaw	4.00
Ethereal Pink	2.50	High Above	3.50
Ever and Ever	10.00	High Life	10.00
Fabulous	2.00	Imperial Woman	2.00
Fairy Fable	3.50	Imperial Lilac	7.50
Fairy Rose	7.50	Indiglow	5.00
Fashion Fling	12.00	In Orbit	6.00
Fire Magic	5.00	Irene Brown	4.00
Flashing Gem	6.00	Ivory Gown	12.50
Fleet Admiral	10.00	Jan Elizabeth	2.00
Floradora Flounce	6.00	Jean Sibelius	3.50
Fluted Haven	4.00	Jet Fire	12.50
Foaming Seas	2.00	Judy Marsonette	3.00
Full Dress	4.00	Jungle Fires	2.00
Full Voltage	3.50	Kahili	3.00



FASHION FLING



DARK FURY

Karachi	\$ 2.00	Real Delight	\$ 3.00
La Rosita	2.00	Ribbon Round	10.00
Leda Knight	15.00	Rippling Waters	6.00
Licorice Stick	3.00	Rocket Rust	5.00
Light Up	12.50	Rococo	3.00
Lilac Festival	5.00	Romanesque	3.00
Little Dolly	3.00	Romulus	5.00
Lorna Lynn	3.00	Rosecrest	4.00
Lovely Light	15.00	Rose Flame	4.00
Lunar Fire	7.50	Royal Tapestry	12.00
Lynn Hall	2.50	Ruffled Dream	15.00
Mme. Butterfly	5.00	Rumbling Thunder	7.50
Main Event	2.00	Seashell Music	12.00
Marie Phillips	10.00	Shadow Waltz	5.00
Martel	12.00	Sheik of Araby	2.00
Mauve Magic	7.50	Silvertone	2.00
Mauve Mink	3.00	Siva-Siva	4.00
Mazatlan	2.00	Son of Satan	3.00
Mineral King	6.00	Sorority Girl	3.50
Mountain Music	2.00	Southern Comfort	15.00
Music Maker	12.00	Sparkling Champagne	10.00
Newport	6.00	Splash O' Pink	7.50
Olympic Torch	2.00	Step Forward	2.00
One Desire	7.50	Stepping Out	12.00
Orange Parade	7.50	Sterling Silver	7.50
Pacific Panorama	5.00	Striped Butterfly	4.00
Parisian Blue	15.00	Sun Chariot	5.00
Pay Day	4.00	Sunny Splendor	15.00
Pink Magic	2.50	Sylvan Stream	3.00
Pinwheel	3.00	Tahiti Sunrise	5.00
Point Lace	2.50	Thunder Road	10.00
Pompano Peach	6.00	Toll Gate	2.00
Pretty Carol	2.50	Tomeco	3.50
Prettyfield	2.00	Top Dollar	7.50
Primrose Path	6.50	Torch Bearer	7.50
Prince Indigo	12.00	Twilight Zone	5.00
Rainbow Gold	6.00	Ultrapoise	12.50



WENATCHEE KID

Ultra Violet	\$ 2.00	Whole Cloth	\$ 2.50
Utah Valley	2.50	Wild Apache	12.00
Velvet Brass	15.00	Wild Ginger	5.00
Velvet Robe	3.00	Wine & Roses	7.50
Wenatchee Kid	5.00	Winter Olympics	12.00



HIGH ABOVE

RADIANT APOGEE (Gibson, '66) Each \$20.00

It would be difficult to conjure up a more colorful or "attention getting" Iris than this. While a member of the plicata line, of course, it is devoid of much in the way of dots and stitches peculiar to its kinfolk. Standards are solid, bright deep yellow, with no markings. Falls are clear white in the center, banded deep gold with some brownish markings high on the haft. Beard is deep orange. Ruffled and well branched. 36 inches. Shown inside front cover.

RAINBOW GOLD (Plough, '60) Each \$6.00

Intense buttercup yellow, heavily laced and crimped at the margins, with an almost red beard. One of the very best and most popular or recent introductions. Large flowers on 34-inch stalks. HM AIS, 1960; AM, 1962. See page 32.

RANGER (Kleinsorge, '43) Each 75c; 3 for \$2.00

Dark but very bright, almost true crimson-red. A decided self, with long, cone-shaped closed standards and wide falls of glossy velvet. One of the last to bloom, with straight stems and fine branching. Very large. 36 inches tall. HM AIS, 1944; AM, 1946.

RASPBERRY RIBBON (Schreiner, '51) Each 75c; 3 for \$2.00

The standards are almost completely raspberry-red, the falls gleaming white in the center of a surrounding band matching the standards. Beard is orange. HM AIS, 1951; AM, 1955.



GOLDEN FILIGREE

POMPANO BEACH (Schreiner, '63) Each \$6.00

This new peach-apricot blend is especially noteworthy on account of its luscious luminescent quality and lacquered sheen. Large, well formed and frilled, on 36 inch stems. Rather early. HM AIS, 1964.

PORT WINE (Sass, '50) Each \$1.00; 3 for \$2.50

Deep wine-red standards shot with white, the falls broad and rounded with an almost solid border of wine-purple. The color is sharp and vivid. Height 3 feet. HM AIS, 1950; AM, 1953. See page 49.

PRETENDER (Cook, '51) Each 75c; 3 for \$2.00

Standards are soft yellow, falls solid velvety blue-purple with narrow lighter margin. Genuinely different! 35 inches tall with large flowers. HM AIS, 1952; AM, 1955. Shown on page 45.

PRETTY CAROL (Hamblen, '59) Each \$2.50

Lovely rich orchid self with a lighter area in the center of the falls, highlighted by a complementary tangerine beard. The large flowers are broad and fully formed, stalks heavy and well branched, reaching 3 feet or more. One of the very best. HM AIS, 1959; AM, 1961.

PRETTYFIELD (Cook, '59) Each \$2.00

Clean white standards; white falls delicately blended or flushed clear blue around the outer margins. The beard is bright yellow. This may sound like the familiar blue plicata pattern but it is a decidedly different type. Large flower; 36-inch stems. HM AIS, 1959. See page 43.

PRETTY QUADROON (Kleinsorge, '48) Each \$1.00; 3 for \$2.50

Smooth, metallic, light copper-brown or pale tan, with a hint of lavender and gold. The flowers are of faultless form—wide hafts, spreading falls and large, closed standards. The beard is brown. Height 33 to 36 inches. HM AIS, 1948; AM, 1950. See page 42.

PRIMROSE PATH (Framke, '63) Each \$6.50

Perfection in this cool, creamy, greenish yellow or primrose yellow class. Large, velvety and perfect in form. A real beauty and one which, once seen, is not soon forgotten. Very long blooming season. 39 inches.

PRINCE INDIGO (Schreiner, '64) Each \$12.00

Of richest pansy-violet hue, uniform in standards, falls and beard, with velvety-like pile on the falls and silken finish in the standards, here is truly an Iris supreme! 38 inches tall, generous in size, ideally branched. Late. HM AIS, 1965.

QUEEN'S TASTE (Douglas, '52) Each \$1.00; 3 for \$2.50

Lavender-pink standards with a strong mid-rib. The falls are a blended rose to violet-red, the entire flower full and very large in size. HM AIS, 1953; AM, 1955. Shown on page 55.

REAL DELIGHT (Waters, '60) Each \$3.00

A huge and gorgeous blend of blush pink and deep apricot. Petals are broad and thick in texture, the falls flaring and supporting a heavy, bright red-orange beard. There is a greenish chartreuse glow within the flowers. 3½ feet. HM AIS, 1960. Shown on page 32.

REHOBETH (DeForest, '53) Each 75c; 3 for \$2.00

Palest sky-blue—almost the lightest shade of blue imaginable! Of such perfect form and thick texture that it appears to be wrought from porcelain. The blooms measure seven inches and over. HM AIS, 1954; AM, 1956. Premio Firenze Award in Italy, 1957.

RIBBON ROUND (Tompkins, '63) Each \$10.00

Snow white and sharply contrasting blue, surely the most exciting plicata of this type to date. Huge in size, moderately ruffled and ideally branched on stems up to 48 inches in height. It is one of the first to come into flower and continues right through the season. HM AIS, 1964; AM, 1966. Shown on page 29.

RIPPLING WATERS (Fay, '61) Each \$6.00

Pale bluish-orchid, a shade difficult to describe but it certainly is not in any sense pink. The very bright tangerine beard, on a creamy ground, creates a dramatic and unusual effect. Big blossoms, flaring falls, with ripples, ruffles and frills. 36 inches. HM AIS, 1962; AM, 1964. Dykes Medal, 1966. Shown on page 3.

ROBERT J. GRAVES (*K. Smith, '58*) Each \$1.50

A gigantic late white with yellow beard. It is flawless in form with big closed standards and broad falls of enamel-like finish. Three to four-foot stems are ramrod straight and the branching is perfect.

ROCKET RUST (*Gibson, '63*) Each \$5.00

Falls are bright rusty copper smoothly blended on a creamy ground, the standards solidly colored rusty copper. Lighter, brighter and much larger than Chinquapin but with some of the same hues and tints found in that fine new plicata. Petals are thick, broad, and lightly ruffled. Height 36 inches. HM AIS, 1964. Shown on page 26.

ROCOCO (*Schreiner, '60*) Each \$3.00

Ruffled and fluted, giant plicata of bright blue on clean white, the blue pattern especially wide and heavy in the folds of the standards. The falls are pure white in the center, with a quite distinct band of blue encircling a full half inch of the pleated and ruffled border. Beard is deep yellow. Early; 40 inches. Patent No. 2077. HM AIS, 1960; AM, 1962. See page 34.

ROMANESQUE (*Hall, '60*) Each \$3.00

A very large, deep mulberry flower, near the color of Elmohr but a bit more "rosy." The beard is not heavy but is quite reddish. Ruffled and waved, with very broad standards and falls. Stalks are tall and stiff, the branching very good. HM AIS, 1961. See page 17.

ROSE AMETHYST (*Kleinsorge, '57*) Each \$1.00; 3 for \$2.50

A plum-colored Iris with rosy glow and soft brown hafts. Unique in color, the flowers large and perfectly formed; we are quite sure that you will find it a lovely garden subject and one that will attract immediate attention in any collection of the very finest. Height 3 feet or over.



WILD GINGER

ROMULUS (*Hall, '63*) Each \$5.00

A giant mulberry-rose self with an extra heavy brownish orange beard. The outer margins of both standards and falls are lacinated and ruffled; even the style arms exhibit this feature. Here is a flower full, deep and mellow in tone, the rich but quiet hues of which seem to exude mystery and luxury! Height 3 feet; very late. See page 18. HM AIS, 1965.

ROSECREST (*Hall, '63*) Each \$4.00

Surely a completely new color combination — soft flesh pink shading to bright rose-peach along the margins of both the standards and falls. Flowers are produced in profusion and are fluted and ruffled. Good size, spreading falls, 3-foot stems. HM AIS, 1965.

ROSEDALE (*Hall, '52*) Each 75c; 3 for \$2.00

Much ruffled salmon-pink blend, the falls held squarely horizontal. A two-year clump is a mass of bloom. It is very late, about 30 inches in height, ideal for the front of the border. HM AIS, 1954.

ROSE FLAME (*Hall, '61*) Each \$4.00

A brilliant pinkish self with an underlying cerise glow and a cherry-red beard. This Iris has a quality, texture and color fluctuations akin to that of changeable silk — difficult indeed to describe. 36 inches, well branched.

ROYAL TAPESTRY (*Schreiner, '64*) Each \$12.00

A deep blend of red, bronze, copper and violet, lavishly beautiful and imposing in appearance. Of giant size, the ruffled flowers exhibit a regal richness and an ember-like glow. Ruffled petals; excellent branching. 38 inches. HM AIS, 1965.

ROYAL VIOLET (*Riddle, '59*) Each \$1.50

The great size and all-round majesty of this fine Iris cannot be adequately brought out in our picture on page 59. It is more blue than Violet Hills, velvety rather than silky and the beard is light blue to almost white. The petals are extremely broad and flaring. 40 inches. HM AIS, 1959.

RUFFLED DREAM (*E. Smith, '63*) Each \$15.00

A lovely ruffled and frilled soft yellow; standards, falls and style-arms all lacy and crimped. 38-inch stems, large flowers.

RUMBLING THUNDER (*Tompkins, '62*) Each \$7.50

A pure self of Midnight Violet, with broad, domed standards and huge, rounded, near horizontal falls. The violet beard with bronze-yellow tips is set on smooth and solidly colored hafts. Majestic in every way! 36 inches. HM AIS, 1963.



MARIE PHILLIPS

SABLE NIGHT (*P. Cook, '52*) Each \$1.00; 3 for \$2.50

Richest black velvet, with very deep glow of underlying red. Heavy bronze beard. Winner of the Dykes Medal in 1955. One of the "5 Iris of the Year" for 1961. Shown on page 51.

SEAFAIR QUEEN (*R. Brown, '61*) Each \$5.00

Beautiful ivory white with heavily laced edges of pale yellow and a yellow beard. Excellent form with wide, flaring falls. A good parent for lacy seedlings. 32 inches. HM AIS, 1963.

SEASHELL MUSIC (*Ernst, '65*) Each \$12.00

A blend of rose and copper etched on creamy white, remindful of some of the colorful seashells from tropic shores. Huge in size, ideal in form, and the flowers of thick enamel-like substance are produced on 40-inch stems. This is from My Honeycomb x Fairy Fable, so you see it is one-half pink and should provide good opportunity for breeding.

SHADOW WALTZ (*Tompkins, '62*) Each \$5.00

Cool, translucent orchid with a shimmering silvery undertone and an orchid beard. The huge, swirled flowers have ruffled standards and wide, ruffled, semi-horizontal falls. Tall, strong and widely branched. 40 inches. HM AIS, 1963.

"I want to tell you how pleased I am with the Iris rhizomes I received from you. I was a bit reluctant to order from a place so far away, but they arrived in excellent condition."

Mrs. Bernard C. Smith, Meredith, New Hampshire



CLIFFS OF DOVER



NUEVO LAREDO

SHEIK OF ARABY (Wickersham, '60) Each \$2.00

A symphony in muted violets, bronze and copper. The very large flowers lack nothing in either form, substance or width of petal that goes into the making of a perfect Iris. Stems are strong and sturdy, the branching well placed. Height is about 36-38 inches. Shown on page 56.

SIERRA SKIES (Shortman, '54) Each \$1.00; 3 for \$2.50

Here we have the blue of a bright blue sky, the large blossoms superbly held on tall stems, the wide falls flaring gracefully. This lovely Iris is in great demand as one which comes nearest to spectrum-blue 38 inches. HM AIS, 1954; AM, 1956.

SILVERTONE (Hall, '59) Each \$2.00

A beautifully proportioned silvery pale blue — almost white — with tangerine beard. There is a slight hint of orchid in the color of this large Iris. Heavy stems, 36 inches. HM AIS, 1960. See page 43.

SIVA-SIVA (Gibson, '62) Each \$4.00

A flamboyant combination of rich golden standards flushed with cinnamon and porcelain white falls heavily bordered and etched brilliant red-mahogany-brown. All petals are fluted and rippled and the flaring falls are almost horizontal. The large, long lasting flowers are fragrant with the scent of spice. Height 36 inches. HM AIS, 1963. See page 50.

SOLID GOLD (Kleinsorge, '51) Each 75c; 3 for \$2.00

The deepest yellow imaginable, without actually being orange rather than yellow. Huge in size, very wide at the haft, ideally formed and supremely branched. Height over 3 feet. HM AIS, 1951; AM, 1953. See page 38.

SON OF SATAN (Wickersham, '62) Each \$3.00

A large blackish-maroon self, with a sooty overlay and bronzy brown beard in harmony. The falls are especially wide at the haft and are semi-flaring. This is a vigorous grower, producing many well-branched 3-foot stems to the clump. See page 18.

SORORITY GIRL (Moldovan, '60) Each \$3.50

Ruffled salmon-pink with an almost white area in the center of each fall. Very large blooms with conical swirled standards and large rounded falls. Salmon colored beard. 34 inches. HM AIS, 1960.

SOUTHERN COMFORT (Hinkle, '65) Each \$15.00

A rich, creamy beauty with an intensification of deeper yellow on the hafts and in the heart. Beard is matching yellow. Extra wide standards and falls are pleated and ruffled. One of the finest of all recent novelties. 36 inches. HM AIS, 1966.



SOLID GOLD

SOUTH PACIFIC (Smith, '54) Each \$1.00; 3 for \$2.50

Famous light blue, introduced at one-hundred dollars per rhizome. Regarded by many judges as the best of its color, it is perfectly formed, bright and silky. 40 inches tall. The beard is almost white. HM AIS, 1954; AM, 1958. Shown on page 56. One of the "Five Iris of the Year" for 1963.

SPANISH FANDANGO (Kleinsorge, '51) Each \$1.00; 3 for \$2.50

A swirling and ruffly affair in brilliant coppery yellow and vivid chestnut-red. A rampant grower, easily reaching 4 feet, with plenty of good wide branching and lots of big blossoms. HM AIS, 1952.

SPARKLING CHAMPAGNE (Ernst, '65) Each \$10.00

Although this would be classed as a plicata it really carries but a minimum of dots or etchings, mostly near the center and on the hafts. The color is less buff or brownish than our illustration, and inclines more to a chartreuse or champagne shade. Very large, slightly spreading, with extra broad falls and superb branching. 36 inches. See page 27. HM AIS, 1966.

SPLASH O' PINK (Hall, '64) Each \$7.50

Beautifully formed and broad petaled, with a brilliant, near geranium red beard. The shade of pink is bright, clean and just what we like to look for in an Iris of this popular hue. There is an amber glow in the central area. This one has large size to go with its other qualities which include especially fine branching. Flowers are ruffled and very long lasting. 36 inches. Shown on page 31.

SPRING CHARM (Hall, '58) Each \$1.00; 3 for \$2.50

Standards are pure bright pink, the falls a sort of buff-pink with heavy reddish beard. This is an exceptionally large Iris, the petals broad and smoothly tailored, rounded in form and the falls flare gracefully. Very late, over three feet tall.

SPRING FESTIVAL (Hall, '58) Each \$1.00

Not a deep shade of pink but is rather a definite appleblossom tint with heavy geranium-red beards. The flowers are very large, faultlessly formed and slightly ruffled. Stems are tall with the blooms widely spaced. Plant growth is robust and it increases rapidly. Height 36 to 40 inches. HM AIS, 1958. See page 24.

STEP FORWARD (Hall, '59) Each \$2.00

Truly a gigantic flower of light lavender-blue on imposing stems. Although of great size it appears graceful and attractive because of the waved or ruffled extra wide falls. The stalks will reach 38-40 inches and the branching is ideal. This is an extraordinary Iris in a somewhat staid color group. HM AIS, 1961. See page 16.

STEPPING OUT (Schreiner, '64) Each \$12.00

A new plicata reminding of a combination of Dot and Dash and Rococo. The ground color is snowy white, the margins of both standards and falls rimmed with a broad band of deep pansy-violet. All petals are stylishly ruffled. 4-way branching; 38 inches tall. HM AIS, 1965. See page 32.

STERLING SILVER (Moldovan, '63) Each \$7.50

After being open a few hours, a silver-like edge develops around the petal edges of this extremely ruffled and fluted violet bi-tone. Perfection in form, with domed standards and wide, almost horizontal, flaring falls. 36 inches. HM AIS, 1964; AM, 1966.

STRIPED BUTTERFLY (Noyd, '58) Each \$4.00

An intense medium shade of blue with an utterly different pattern of deep violet-blue lines extending out on the widely flaring falls. There is a slight olive cast on the haft and the beard is bright yellow. Well branched, 36-inch stems. HM AIS, 1958. See page 42.

SUN CHARIOT (Hall, '63) Each \$5.00

A widely spreading, bright chrome to sulphur yellow giant, the lighter shades being predominant in the center of the falls and near the beard. Margins of the falls are heavily serrated and fringed. Beard is deep yellow, not orange. Blossoms measure 8 inches in width and the stalks reach 38 inches or more in height.

SUNNY SPLENDOR (Schreiner, '65) Each \$15.00

A gigantic, clean and clear deep yellow self. There are up to eleven buds per stem, and this provides an extra long season of bloom. The wide falls are ruffled at the margins and the fluted standards are closed and overlapping. Midseason to late. 36 inches.

SUNSET BLAZE (Kleinsorge, '48) Each 75c; 3 for \$2.00

A tall and huge golden flame-salmon blend, almost a red, but with so much of the gold influence in it that it is not really a red Iris. A most impressive flower, blooming very early on widely branched stalks reaching 42 inches. HM AIS, 1949; AM, 1951. Color picture on page 48.

SURPRISE PARTY (Kleinsorge, '55) Each 75c; 3 for \$2.00

A new combination of colors—rosy lavender standards and golden apricot falls—pastel hues with definite contrast and strong garden value. Good sized flowers on extra well branched 3-foot stems. HM AIS, 1956. See page 46.

SWAN BALLET (Muhlestein, '55) Each \$1.50; 3 for \$4.00

Very wide and ruffled pure white, the falls flaring and lightly crinkled at the edges. Beard is pale yellow tipped white. Height up to 40 inches. HM AIS, 1955; AM, 1957; Dykes Medal, 1959.

SYLVAN STREAM (Schreiner, '61) Each \$3.00

Utmost clarity of color combined with a smooth enamel-like finish gives this new blue remarkable garden value. It has size, substance, unexcelled branching and many buds to the 38-inch stem. Add a touch of ruffling and you come up with about all one could ask for. HM AIS, 1962.

SYMPHONY (Hinkle, '58) Each \$1.50

Gracefully ruffled sea-blue self, slightly lighter in the center of the falls and with some darker texture veining. Petals are wide and full, crisp and firm in substance. Midseason; 38 inches. HM AIS, 1958; AM, 1963. See page 21.

TAHITI SUNRISE (Ernst, '63) Each \$5.00

Beautifully tailored and perfectly proportioned pink with an undertone of salmon. The heavy Saturn red beard and the very broad falls are remindful of Fairy Fable but the shade of pink is entirely different. The blooms are extra large in size, especially for a pink and the texture is like heavy porcelain. We regard it as one of the best so far, in every way. Sturdy 36-inch stems, well branched. H.C. AIS, 1962; HM AIS, 1965. Shown on page 6.

TAHOLAH (Gibson, '56) Each \$1.00; 3 for \$2.50

The ground color is creamy ivory, the standards heavily shaded cinnamon-red and the falls are evenly brushed with this same russet-red tint on the haft and at the outer edges. Long lasting, very large, on stout 3-foot stems. HM AIS, 1956; AM, 1958. Early. See page 52.

TALLCHIEF (DeForest, '56) Each \$1.00; 3 for \$2.50

Bright, richly glowing red self, with brilliant orange beard. By the Ridgeway color chart it is Brazil-red to carmine. A real advance in red Iris, tall, and very well branched. HM AIS, 1957.

TALLY-HO (Hall, '49) Each \$1.50; 3 for \$4.00

The upper part of the falls is close to the deep coloring seen in bright fuchsia colored Orchids. The domed standards and lower part of the falls are lighter. This is something new, pleasing and different! The 32-inch stems are stout but a little closely branched. HM AIS, 1957.



LADY ILSE



VIOLET HILLS



CHINQUAPIN

TEMPLE BELLS (Hall, '52) Each 75c; 3 for \$2.00

A sort of apricot-yellow with no peachy undertone. The blooms are extra large, the falls flaring way out and drooping gracefully with a slight ruffle. Heavy red-orange beard. 36 inches, well branched. HM AIS, 1952. Shown on page 49.

THOTMES III (Kleinsorge, '50) Each \$1.00; 3 for \$2.50

Medium light in tone, a smooth self of glistening golden tan with a light bronze beard. It is a gigantic Iris with extra broad falls and heavy texture. 40 inches tall. HM AIS, 1951; AM, 1953. See page 44.

THUNDER ROAD (Tompkins, '64) Each \$10.00

Another in the giant violet-blue class. This is a blend of violet-blue, rose-violet and purple with a chocolate haft and a vivid electric blue, purple tipped, beard. Very late. 44 inches.

TOAST AN' HONEY (Kleinsorge, '58) Each \$1.00; 3 for \$2.50

General color is rich light golden brown, like butter and honey, and the falls are shaded toast-brown, especially on the edges and near the hafts. It is of stocky build, well branched, with very large blooms produced on 36-inch stems. HM AIS, 1955.

TOLL GATE (Cook, '59) Each \$2.00

From the same line of breeding as Whole Cloth. Standards are palest blue—almost white—the falls dark violet with a long yellow beard extending across the lighter haft. Very tall, with many flowers per stem; widely spaced, it should be very valuable to hybridizers. HM AIS, 1959; AM, 1962. Well illustrated on page 58.

TOMECO (Suiter, '60) Each \$3.50

Smoothly burnished oxblood red self without haft markings. Tailored in appearance, the big rounded standards domed and closed and the broad falls semiflaring. Bronze yellow beard. Well branched and sun resistant. 36 inches. HM AIS, 1962. Cook-Lap- ham Award for best Red Iris in 1965.

TOP DOLLAR (Tompkins, '61) Each \$7.50

A truly exciting new yellow. Huge flowers with extremely broad petals, perfectly domed standards and flaring falls. Extra heavy substance and a sleek glistening unmarked finish. Midseason. 40 inches. HM AIS, 1964.

TOP FAVORITE (Schreiner, '57) Each \$1.00; 3 for \$2.50

Colossal orchid-pink. The beard is white and there is a soft overlay of amber-buff at the center of the flowers. Color is clear and bright and the blossoms are ideally formed, flaring and ruffled at the outer edges. It is tall, strong and branched to perfection. HM AIS, 1957.

TOP FLIGHT (Hall, '53) Each \$1.00; 3 for \$2.50

A more deeply colored Temple Bells, more apricot than yellow. Standards and falls are practically the same shade but the beard is fiery orange-red and very thick and heavy. Height 34 inches. HM AIS, 1953; AM, 1955. See page 55.

TORCHBEARER (Nelson, '63) Each \$7.50

Reddish brown with dark red-brown or chocolate-like thumb prints on the hafts. Beard is bright orange. This combination results in a rather startling effect and is sure to attract a lot of attention. Flaring falls and good branching. 36 inches. HM AIS, 1964.

TRANQUILITY (Fay, '54) Each 75c; 3 for \$2.00

This very large milk-white flower is carried on perfectly branched, strong stems 38 inches tall. The haft is wide and clean and the beard is white. Some judges regard it as the best of all whites. HM AIS, 1950; AM 1953.

TRIM (McKee, '56) Each \$1.50

A wonderful new red with an underlay of bronze. The blooms are large and broad in all their parts, the stalks husky and well branched. Very late; 40 inches. Plant Pat. No. 1592. HM, 1956.

TRUDY (Tompkins, '64) Each \$15.00

Here is a color break in the amoena class. The standards are pure white shading to gold at the base. Falls are brownish with old gold beard. A breeder's Iris that is certainly different. Very late. 36 inches.

TRULY YOURS (Fay, '49) Each \$1.00; 3 for \$2.50

The heart of this spectacular creation is bright yellow, shading off to almost white at the top of the standards and the bottom of the falls. The entire flower is ruffled and edged in lace. Unopened buds are yellow, because the under sides of the falls are yellow although faced white on top. Gigantic in size, 38 inches tall; very late. HM AIS, 1949; AM, 1951; Dykes Medal, 1953. Shown on page 47.

TWILIGHT ZONE (Tompkins, '63) Each \$5.00

A blend of blue, rose and violet with undertones of coppery cocoa. A thick beard of smoky red-purple dominates the center of the massive blooms. A beautiful novelty in subtle tones. 44-inch stalks, well balanced.

TECHNY CHIMES (Bro. Charles, '55) Each \$1.50

A gorgeous light yellow with very deep red-orange beard. This is certainly a striking Iris and the branching is a special feature. HM AIS, 1955; AM, 1957; tied for Dykes Medal in 1960. 36 inches. See page 21.

Thank You!

FROM

- PLEASE KEEP A COPY OF YOUR ORDER.

- HAVE YOU FILLED IN YOUR NAME AND ADDRESS

Cooley's
GARDENS
SILVERTON, OREGON 97381

FOLD HERE

FOLD HERE

FOLD HERE

ULTRAPOISE (Noyd, '62) Each \$12.50

Here is something really new and different in yellow. Described as straw yellow with a flush of pink in the standards, the very bright reddish tangerine beard glows like fire. 34 inches tall and perfectly branched. HM AIS, 1963; AM, 1965.

ULTRA VIOLET (Buss, '55) Each \$2.00

Serenely beautiful deep violet self of large proportions with domed standards and flaring falls. The beard is violet too, and there is no thinning out of the color at the center. Broad petaled and perfectly supported on sturdy, well branched stalks. 36 inches.

UTAH CREAM (Muhlestein, '54) Each \$1.25; 3 for \$3.00

As luscious as it sounds, delightfully formed, flaring, waved, heavy in texture. Cream is the one color which will combine with and bind together every other hue—reds, blues, yellows, pinks and the greens of the grass and foliage. This one flowers late on 36-inch stems. HM AIS, 1954.

UTAH VALLEY (Muhlestein, '59) Each \$2.50

A crisp, ruffled, bright violet with a large, round, white patch in the center of each fall. Shoulder high stems bring the flowers almost up to eye level! HM AIS, 1959; AM, 1961.

VALIMAR (Hamblen, '58) Each \$1.50

Derived from Palomino, its a smooth apricot-pink with a wide nasturtium-red beard. Judges raved over this at the 1958 American Iris Society Convention in New York, and so will you! HM AIS, 1958; AM, 1960. See page 59. One of the "5 Iris of the Year" for 1965.

VANITY FAIR (Hall, '51) Each \$1.00; 3 for \$2.50

Clear medium true pink, very smooth and tailored in appearance. An ideal flamingo-pink Iris, with lots of color, stems at least three feet in height, beautiful form and a very fiery tangerine beard. It is very late. HM AIS, 1952.

VELVET BRASS (Tompkins, '65) Each \$15.00

Blended tan-gold-brown self, with some hints of French lilac in the standards and around the edges of the falls. A novel color pattern. 38 inches.

VELVET ROBE (Schreiner, '60) Each \$3.00

Well named, a deep but glowing shade of plushy crimson red with golden beard. The haft is solidly colored and petals are lightly ruffled. This is our choice of the Schreiner reds to date. HM AIS, 1960. See page 30.

VIOLET HARMONY (Lowry, '52) Each \$1.00; 3 for \$2.50

Light violet in color, with a lighter patch in the center of the falls. Very large, of elegant form, and nicely ruffled. Winner of the President's Cup in 1953; Dykes Medal, 1957.

VIOLET HILLS (DeForest, '56) Each \$1.00; 3 for \$2.50

Here is the last word in deep true violet color! The 7-inch flowers shine like taffeta, even on a rainy day, and they will take rain, wind, or sun. Standards, falls and beard are a uniform rich violet-purple, the beard is lightly tipped blue. 38 inches. HM AIS, 1956; AM, 1958. Winner of the President's Cup 1960. See page 40.

WANDERING RAINBOW (Tompkins, '65) Each \$25.00

A shimmering blend of rose, brown, gold and electric blue. This combination of tints is found also in Martel and Royal Tapestry, yet the three are distinct from each other. This one has extra heavy stalks with good branching and reaches 39 inches. Very late. HM AIS, 1966.

WATERMELON (Waters, '54) Each \$1.00; 3 for \$2.50

A blending of greenish light lemon and deep watermelon-pink . . . a cut watermelon not quite ripe. Extra large, with ruffled petals and very heavy substance. HM AIS, 1954.

WAYWARD WIND (Baker, '58) Each \$1.50

Burnished bronze, a peculiar greenish shade of tan or brown. Even the beard is in harmony. This Iris has rather flat, flaring falls, with some ruffling and the large blooms are produced in profusion. Height 3 feet. HM AIS, 1958; AM, 1961.

WEDDING BOUQUET (Buttrick, '52) Each \$1.00; 3 for \$2.50

This ruffled beauty has chartreuse buds which unfold into gorgeous pure white flowers leaving the unique color of the buds on the under side of the petals. This gives the entire blossom a hint of cool greenish ivory. 35 inches. HM AIS, 1952; AM, 1956.

WENATCHEE KID (Noyd, '58) Each \$5.00

Large tan, with most striking haft markings of burnt sienna. The effect is that of chocolate-brown on light tan, and there is a greenish midrib line to add further distinction. 34-36 inches; rather late. Shown on page 35. HM AIS, 1961.



JUNGLE FIRES

WHOLE CLOTH (Cook, '58) Each \$2.50

This is the first of the series of new style amoenas from the garden of Paul Cook. Standards are pure white, the falls soft medium blue and the beard is practically white. Petals are broad and flaring. HM AIS, 1958; AM, 1960. Dykes Medal, 1962. Shown on page 22.

WILD APACHE (Gibson, '65) Each \$12.00

So vivid and lively that the name is truly in keeping with this sensational new plicata. The color is cinnamon-violet on white, the standards almost solidly colored cinnamon-violet. Beard is orange-bronze. An exceptionally large flower, with perfect balance and ideal ruffling, very broad in all its parts. Heavy stems, extra good branching, 35 inches tall. HM AIS, 1966. See page 34.

WILD GINGER (Gibson, '62) Each \$5.00

A deeply flounced and ruffled new plicata in ginger brown and creamy white, the standards almost solid soft brown. Flowers measure almost 8 inch from tip to tip. The heavy ruffling extends far up into the throat which is peppered with a warm golden brown. Petals possess a waxed or starchy quality of stiffness which adds to the especially long lasting period of each blossom. Height 35 inches. See page 37. HM AIS, 1963; AM, 1965.

WINE AND ROSES (Hall, '63) Each \$7.50

A break much sought after by hybridizers has been a combination of clear rose-pink and deep violet purple. Now here is the flower which brings these colors out in truly splendid fashion—ruffled, flaring, clean and sharp in contrast! The edging of rose-pink around the velvety falls exactly matches the standards. There is a warm glow at the heart of the flower and the beard is red-orange. Large blooms; well branched. 35-inch stems. HM AIS, 1964; AM 1966. See page 12.

WINTER OLYMPICS (O. Brown, '63) Each \$12.00

Domed standards and extra wide falls with elegant ruffling are features of this sensational new white Iris. It was the leader in the "Judges' Choice" in 1964 and was likewise first among those which won the HM Award of the AIS in 1965; AM, 1966.

WONDERMENT (Cook, '58) Each \$1.50; 3 for \$4.00

This is one of his series with white standards and blue falls, in this case a stain of blue rather than a solid color or pattern. The beard is chrome-yellow. Large and flaring. 36 inches. HM AIS, 1958.

ZEBRA (*Pallida variegata*) Each 75c; 3 for \$2.00

The only Iris with leaves striped creamy yellow and green. Excellent for a foliage accent in the border and it lends itself particularly well in some types of flower arrangements. Bears lavender-blue blossoms but its chief value lies in its novel foliage.

Get 50% More!

Make Your Own Selection



HEARTBREAKER



STRIPED BUTTERFLY



FESTOON

The



PRETTY QUADRON

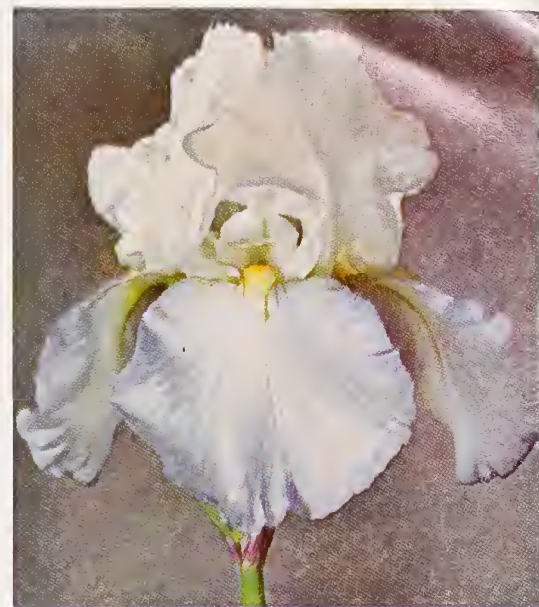
YES, YOU ACTUALLY SELECT 50% MORE THAN YOU PAY and you can choose as many kinds as you wish . . . as long as the order totals \$5 or more, and varieties are chosen from those which appear in the lists on pages 43 to 55. All illustrated between pages 37 and 56 are also in this shopping center.

FOR EXAMPLE, you may choose \$7.50 worth and pay just \$5; or pick \$12 worth and pay \$8. For \$10 you could select \$15 in value . . . and so on. In other words, you make up your list from these next twelve pages and then deduct one-third the total price . . . minimum order \$5, and not less than three different varieties. Do not include Irises not listed in these groups. Pay only 2/3 of total.

Accent	\$ 1.00
After Dark	5.00
Alaloo	1.00
Al Borak	1.00
Allaglow	1.50
Allegiance	2.00
Alpenrose	2.00
Alpine Blue	3.50
Amethyst Flame	2.00
Annette	1.00
Anthem	1.00
Apple Valley	1.50
Apricot Dancer	1.25
Arctic Flame	6.00
Arctic Skies	2.50
Argus Pheasant	1.00
Aspenglow	1.00
August Moon	5.00
Azurite	3.00
Bang	1.00
Bazaar	1.00
Beechleaf	1.00
Big Chief	6.00
Big Time	.75
Black Hills	.75
Black Swan	2.50
Black Taffeta	1.00
Bluebeard	1.00
Blue Grotto	2.00
Blue Mountains	12.00
Blue Sapphire	1.00
Blue Spinel	2.00
Brasilia	3.50
Brass Accents	2.50
Bravado	1.50
Breathless	7.50
Bright Cloud	4.00
Bright Forecast	3.00
Brightside	5.00



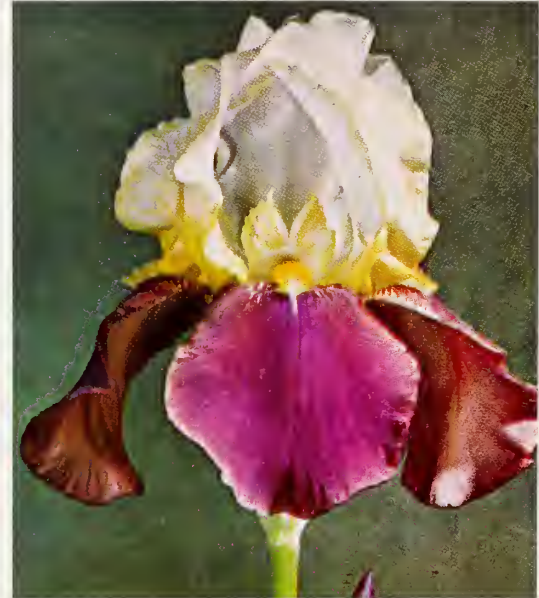
CRISPETTE



PRETTYFIELD



MY HONEYCOMB



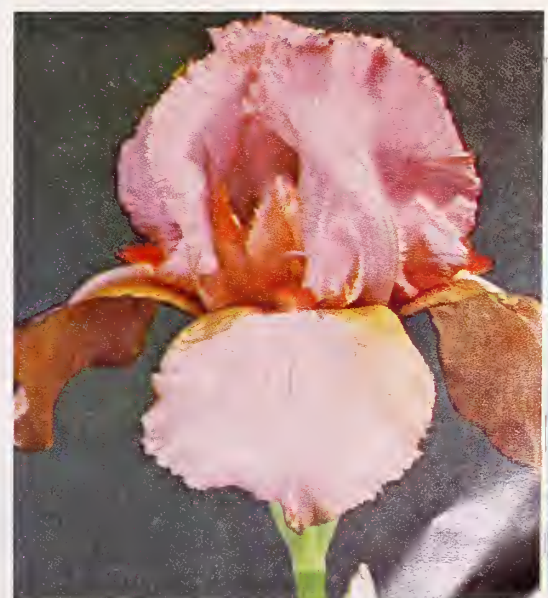
BROADWAY STAR

Shopping Center

Bright World	\$ 3.50
Brilliant Star	5.00
Broadway Star	1.50
Bronze Bell	2.00
Buttercup Bower	3.50
Butterhorn	1.00
Butterscotch Kiss	2.50
Caldron	1.00
Candleflame	3.00
Candle Magic	2.00
Captain Gallant	2.50
Caribou Trail	1.00
Carmela	1.00
Carolina Peach	10.00
Carolina Ruby	10.00
Caroline Jane	1.00
Casa Grande	4.00
Cashmere	6.00
Catalina	12.00



SILVERTONE



PINK CHIMES

Shopping Center

1/3 OFF!

Cayenne Capers	\$ 3.00	Cross Country	\$ 5.00
Celestial Glory	5.00	Curls of Gold	5.00
Celestial Snow	2.00	Dancing Tiger	1.50
Celestial Sunlight	3.00	Dark Fury	3.00
Checkmate	7.50	Dark Splendor	2.00
Chinese Lantern	1.00	Dave's Orchid	2.00



THOTMES III

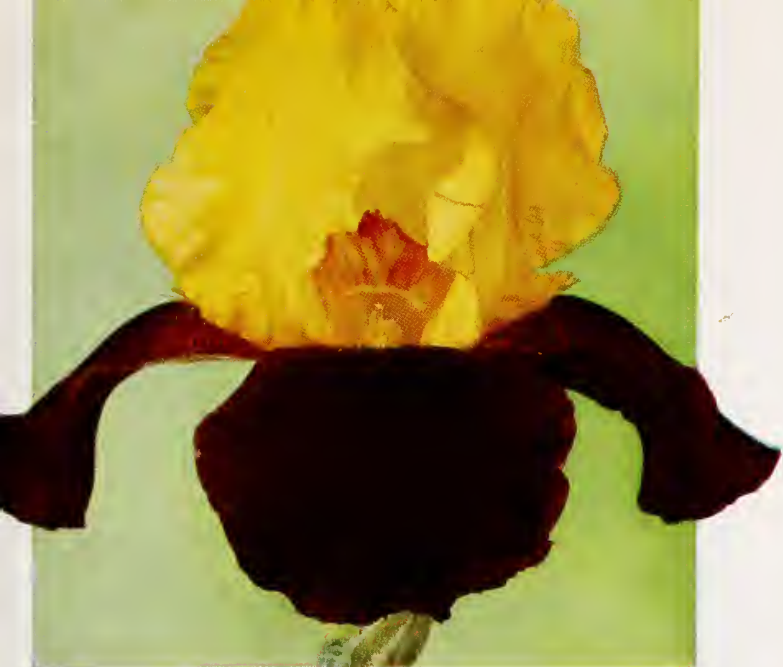


DAVE'S ORCHID



GOLDEN GARLAND

Chinquapin	\$ 1.50	Dawn Crest	\$ 4.50
Christmas Angel	2.50	Deep Black	1.00
Claudia Rene	7.50	Deep Space	3.50
Cliffs of Dover	1.00	Demetria	1.00
Cloud Cap	1.00	Denver Dawn	7.50
Coffee Royal	3.00	Desert Glow	2.50
College Queen	7.50	Desert Thistle	3.50
Color Carnival	1.00	Divine Blue	2.50
Comforting Thought	7.50	Doctor K.	3.50
Concord River	1.50	Dot & Dash	2.00
Cool Comfort	.75	Dotted Swiss	1.00
Copper Halo	1.00	Dream Maiden	10.00
Coraband	7.50	Dream Spun	3.00
Countryside	1.50	Edenite	5.00
Court Ballet	5.00	Eleanor's Pride	1.50
Crinkled Beauty	10.00	Elmohr	1.00
Crinkled Ivory	2.00	El Monsour	5.00
Crispette	1.00	Emma Cook	3.00



GOLDEN CROWN



FIRECRACKER



PRETENDER



PIERRE MENARD



ARGUS
PHEASANT



PALOMINO



SURPRISE PARTY



NOMOHR

Shopping Center
1/3 OFF!

Emerald Fountain	\$ 5.00	Esther Fay	\$ 6.00
Enchanted Violet	1.50	Ethereal Pink	2.50
Enchantress	1.00	Fabulous	2.00

Fairy Fable	\$ 3.50	Firecracker	\$.75
Fairy Rose	7.50	Fire Magic	5.00
Fashion Flair	15.00	First Violet	1.00
Fashion Fling	12.00	Flashing Gem	6.00
Fashion Show	1.50	Fleet Admiral	10.00
Festoon	1.00	Floradora Flounce	6.00
Fire Brigade	1.00	Fluted Copper	1.00
Fire Chief	1.50	Fluted Haven	4.00



MORNING BRIGHT



BLACK TAFFETA



HAPPY WANDERER



BLUE SAPPHIRE

Foaming Seas	\$2.00	Georgie Ernst	\$ 3.00
Fortune's Gift	1.00	Giant Rose	2.50
Foxfire	.75	Glistening Snow	6.00
Frost and Flame	1.00	Golden Blaze	1.00
Full Dress	4.00	Golden Crown	1.00
Full Reward	1.00	Golden Delight	3.50
Galilee	1.50	Golden Filigree	10.00
Garden Gold	.75	Golden Garland	1.00



CAROLINE JANE



TRULY YOURS

Shopping Center

1/3 OFF!



THE
GIANT ELMOHR

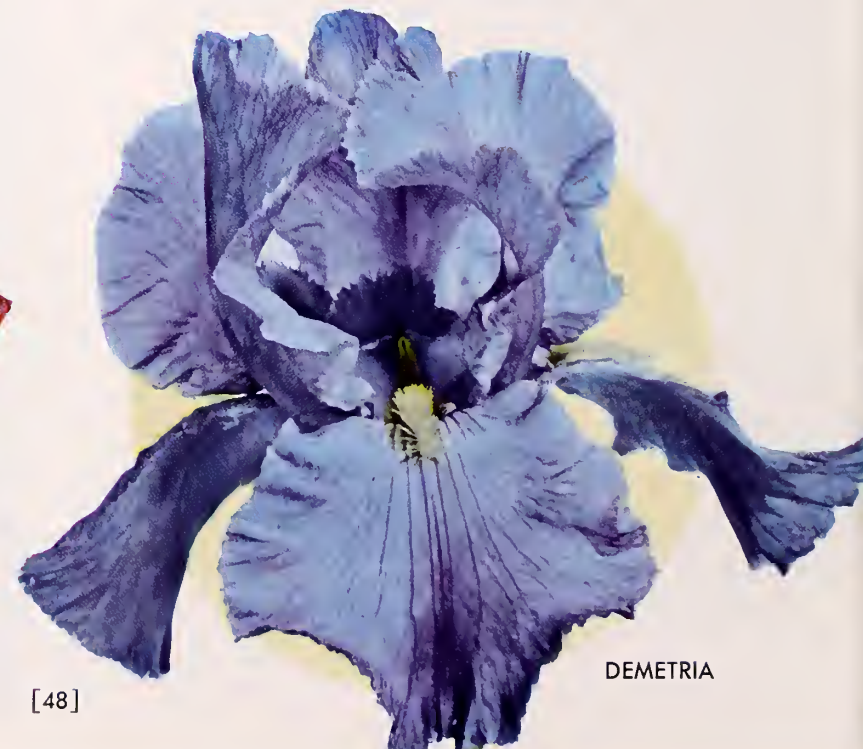
Golden Spice	\$ 2.00
Golden Sunshine	1.00
Gold Piece	2.50
Gracie Pfost	5.00
Grand Coulee	1.50
Grand Teton	1.50
Gypsy Jewels	5.00
Gypsy Lullaby	7.50
Happy Birthday	1.00
Happy Wanderer	1.00
Harvest Splendor	.75
Hawaiian Breeze	2.50
Heartbeat	1.50
Heartbreaker	7.50
Heavenly Days	4.00
Helen Collingwood	1.00
Helen Novak	1.50
Henna Stitches	2.00
Henry Shaw	4.00
High Above	3.50
Imperial Lilac	7.50
Imperial Woman	2.00
Inca Chief	1.00
Indiglow	5.00
In Orbit	6.00
Irene Brown	4.00
Irma Melrose	1.00
Ivory Gown	12.50
Jan Elizabeth	2.00
Jane Phillips	.75
Jean Sibelius	3.50

"All 31 Iris shipped to me last year are blooming. They are quite an attraction, because of their immense size and color. Thank you again for the lovely bonus Iris."

Ray Cornwall, London, Ontario, Canada



SUNSET
BLAZE



DEMETRIA



TEMPLE BELLS



DOTTED SWISS



PORT WINE



HARVEST SPLENDOR



PINK SENSATION



ORELIO



BUTTERSCOTCH KISS



JANE PHILLIPS



I
N
C
A
C
H
I
E
F

Shopping Center

Jet Fire	\$12.50	Kahili	\$ 3.00
Judy Marsonette	3.00	Karachi	2.00
June Meredith	1.50	Lady Ilse	1.00
Jungle Fires	2.00	La Negra Flor	1.00



LOVELY LETTY

COPPER HALO



La Rosita	\$ 2.00	Lovely Letty	\$ 1.00	Mauve Magic	\$ 7.50	Mineral King	\$ 6.00
Lavanesque	1.00	Lucy Lee	1.50	Mauve Mink	3.00	Mme. Butterfly	5.00
Licorice Stick	3.00	Lunar Fire	7.50	May Hall	1.00	Morning Bright	1.00
Lilac Festival	5.00	Lynn Hall	2.50	May Magic	1.00	Mountain Music	2.00
Lilac Lane	.75	Main Event	2.00	Maytime	1.00	Mr. Wonderful	1.50
Limelight	.75	Marie Phillips	10.00	Mazatlan	2.00	My Honeycomb	1.00
Little Dolly	3.00	Marriott	1.00	Melodrama	1.50	Newport	6.00
Little Gremlin	2.00	Martel	12.00	Melody Lane	.75	New Snow	.75
Lorna Lynn	3.00	Mary Randall	1.00	Millionaire	1.50	Nomohr	1.00

BANG



FROST AND FLAME



S
A
B
L
E

N
I
G
H
T



BLUEBEARD

TAHOLAH



CHRISTMAS ANGEL

Shopping Center Selections

Nuevo Laredo	\$ 1.00	Patience	\$ 1.00
Oh Boy!	1.00	Patrician	1.00
Olympic Torch	2.00	Pay Day	4.00
One Desire	7.50	Pierre Menard	.75
Orange Banner	1.00	Pink Cheeks	2.00
Orange Parade	7.50	Pink Chimes	1.00
Orelia	.75	Pink Fulfillment	1.50
Pacific Panorama	5.00	Pink Magic	2.50
Palomino	1.00	Pink Senation	.75
Party Pink	1.50	Pinnacle	.75
Pathfinder	1.00	Pinwheel	3.00



LILAC LANE



IRMA MELROSE



COOL COMFORT



HELEN COLLINGWOOD

Point Lace	\$ 2.50	Pretty Quadroon	\$ 1.00
Pompano Peach	6.00	Primrose Path	6.50
Port Wine	1.00	Prince Indigo	12.00
Pretender	.75	Queen's Taste	1.00
Pretty Carol	2.50	Rainbow Gold	6.00
Prettyfield	2.00	Ranger	.75

Raspberry Ribbon	\$.75	Rocket Rust	\$ 5.00
Real Delight	3.00	Rococo	3.00
Rehobeth	.75	Romanesque	3.00
Ribbon Round	10.00	Romulus	5.00
Rippling Waters	6.00	Rose Amethyst	1.00
Robert J. Graves	1.50	Rosecrest	4.00



ANNETTE



JEAN SIBELIUS

Shopping Center Selections

Rosedale	\$.75	Ruffled Dream	\$ 15.00
Rose Flame	4.00	Rumbling Thunder	7.50
Royal Tapestry	12.00	Sable Night	1.00
Royal Violet	1.50	Seafair Queen	5.00

Seashell Music	\$ 12.00	Splash O' Pink	\$ 7.50
Shadow Waltz	5.00	Spring Charm	1.00
Sheik of Araby	2.00	Spring Festival	1.00
Sierra Skies	1.00	Step Forward	2.00
Silvertone	2.00	Sterling Silver	7.50
Siva-Siva	4.00	Striped Butterfly	4.00
Solid Gold	.75	Sun Chariot	5.00
Son of Satan	3.00	Sunset Blaze	.75
Sorority Girl	3.50	Surprise Party	.75
South Pacific	1.00	Swan Ballet	1.50
Spanish Fandango	1.00	Sylvan Stream	3.00
Sparkling Champagne	10.00	Symphony	1.50



BEACHLEAF



PINNACLE



TOP FLIGHT



PATHFINDER

Tahiti Sunrise	\$ 5.00	Tomeco	\$ 3.50
Taholah	1.00	Top Dollar	7.50
Tallchief	1.00	Top Favorite	1.00
Tally-Ho	1.50	Top Flight	1.00
Techny Chimes	1.50	Torchbearer	7.50
Temple Bells	.75	Tranquility	.75
Thotmes III	1.00	Trim	1.50
Thunder Road	10.00	Trudy	15.00
Toast an' Honey	1.00	Truly Yours	1.00
Toll Gate	2.00	Twilight Zone	5.00

Ultrapoise	\$12.50	Wayward Wind	\$ 1.50
Ultra Violet	2.00	Wedding Bouquet	1.00
Utah Cream	1.25	Wenatchee Kid	5.00
Utah Valley	2.50	Whole Cloth	2.50
Valimar	1.50	Wild Apache	12.00
Vanity Fair	1.00	Wild Ginger	5.00
Velvet Robe	3.00	Wine and Roses	7.50
Violet Harmony	1.00	Winter Olympics	12.00
Violet Hills	1.00	Wonderment	1.50
Watermelon	1.00	Zebra	.75



QUEEN'S TASTE



CARIBOU TRAIL



SHEIK OF ARABY

"My Iris arrived Monday and if possible they were even better than last year's — such beautiful rhizomes and so well packed and labeled."

Mrs. Ivan James Stewart, Patterson, California

"Received your fine plants today and they are the best I have seen and nice service too!"

C. E. Degner, Swanton, Ohio

"I thank you so much for the wonderful extra Iris as gift. The Iris I received yesterday were just like fresh dug. You must be really having some wonderful soil."

Mrs. Frank Dietz, Waterloo, Wisconsin



FIRE CHIEF

"I am very pleased with the order of Irises I received today. They are the healthiest rhizomes and leaves I have ever seen in an Iris. And that extra! These buys are the best that I have ever seen. You can count on me always referring other people to you as customers."

Charles S. Durrin III, Kerrville, Texas

"The rhizomes were top quality, and I deeply appreciate the fine Irises sent as extras. You go the 'extra mile'—your efficiency and generosity are utmost!"

John W. Humphrey, Stillwater, Oklahoma

"Your package came exactly like it always does — wonderfully!"

The Hardemans, Fort Worth, Texas



D
O
T
&
D
A
S
H



SOUTH PACIFIC



CANDLE MAGIC

**“MEDLEY”
COLLECTION**

All 10 for \$10

CANDLE MAGIC	\$ 2.00
FASHION SHOW	1.50
BRAVADO	1.50
FIRE CHIEF	1.50
SOUTH PACIFIC	1.00
DOT & DASH	2.00
SHEIK OF ARABY	2.00
GRAND COULEE	1.50
TOLL GATE	2.00
SPRING FESTIVAL	1.50

(Page 24)

Catalog value **\$16.50**

FASHION SHOW

GRAND COULEE

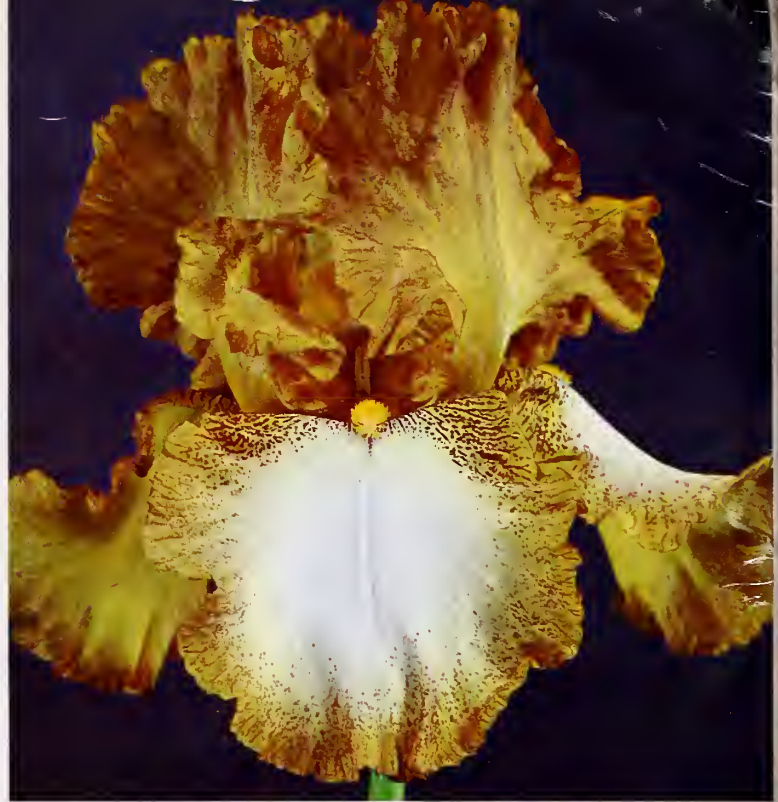


BRAVADO





LUSTY SONG



NATIVE CHIEF



COLLEGE QUEEN



HEATHER HAWK

