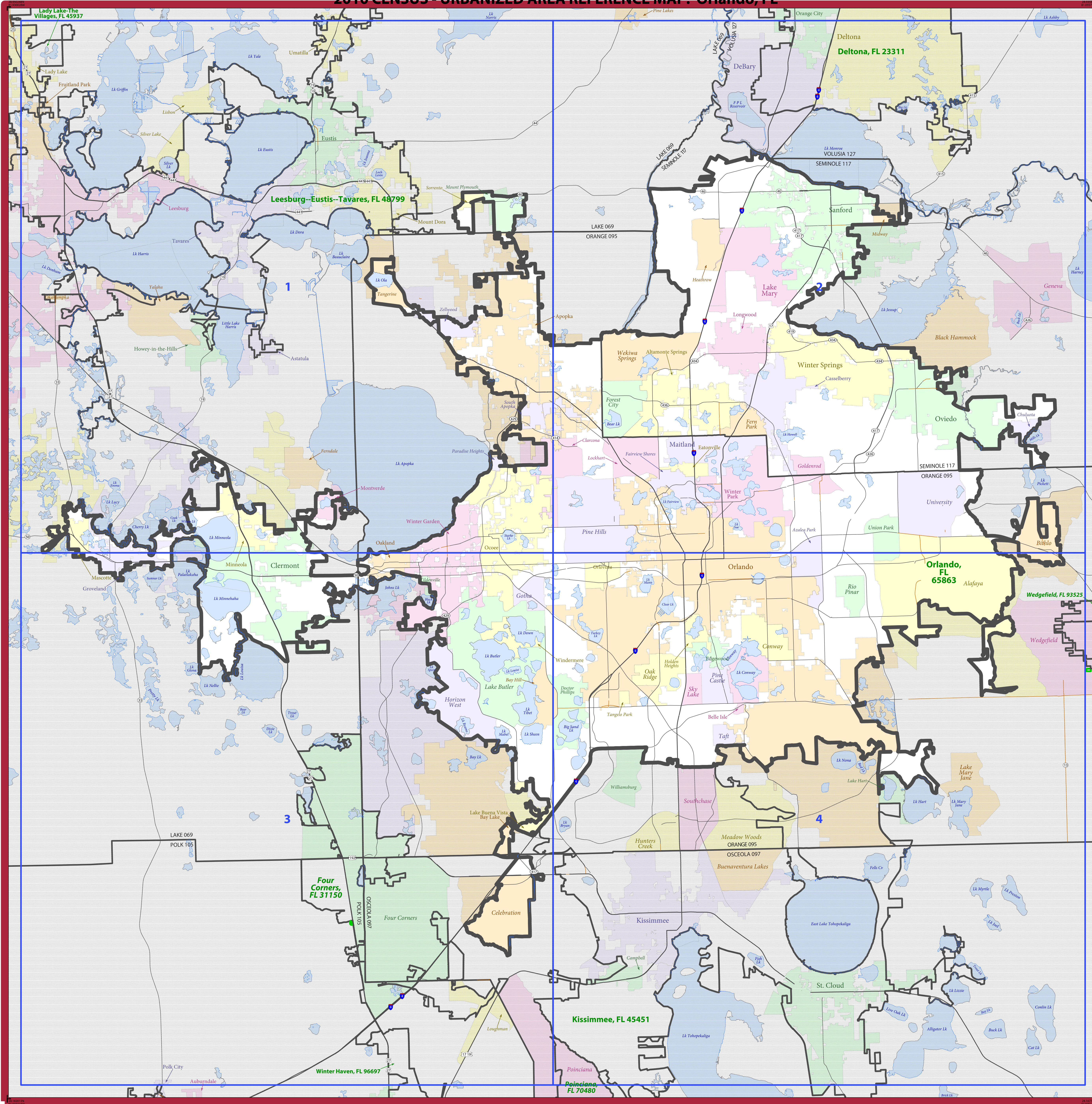


2010 CENSUS - URBANIZED AREA REFERENCE MAP: Orlando, FL



LEGEND

SYMBOL DESCRIPTION	SYMBOL	SYMBOL	DESCRIPTION	SYMBOL
International	--- ---	--- ---	Water Body	
Federal American Indian Reservation	Military	
Off-Reservation Trust Land	Outside Subject Area	
Urbanized Area		Pleasant Lake	
Urban Cluster		Fort Belvoir	
State (or statistically equivalent entity)	--- ---		
County (or statistically equivalent entity)	--- ---		
Minor Civil Division (MCD) ^{1,2}	--- ---		
Consolidated City		
Incorporated Place ³		
Census Designated Place (CDP) ³		

Where international, state, county, and/or MCD boundaries coincide, the map shows the boundary symbol for only the highest-ranking of these boundaries.

1 A ** following an MCD name denotes a false MCD. A *** following a place name indicates that a false MCD exists with the same name and FIPS code as the place; the false MCD label is not shown.

2 MCD boundaries are shown in the following states in which some or all MCDs function as general-purpose governmental units: Connecticut, Illinois, Indiana, Kansas, Maine, Massachusetts, Michigan, Minnesota, Missouri, Nebraska, New Hampshire, New Jersey, New York, North Dakota, Ohio, Pennsylvania, Rhode Island, South Dakota, Vermont, and Wisconsin. (Note that Illinois and Nebraska have some counties covered by nongovernmental precincts and Missouri has most counties covered by nongovernmental townships.)

3 Place label color corresponds to the place fill color.
Label colors: Davis Davis Davis Davis Davis

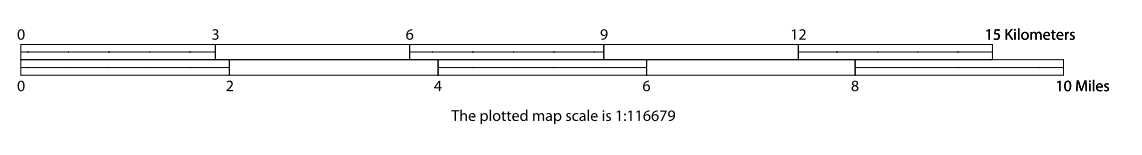
COUNTIES IN SUBJECT URBANIZED AREA

12069 Lake
12095 Orange
12097 Osceola
12117 Seminole

All legal boundaries and names are as of January 1, 2010. Urban areas are based on results from the 2010 Decennial Census. The boundaries shown on this map are for Census Bureau statistical data collection and tabulation purposes only; their depiction and designation for statistical purposes does not constitute a determination of jurisdictional authority or rights of ownership or entitlement.

Geographic Vintage: 2010 Census (reference date: January 1, 2010)
Data Source: U.S. Census Bureau's MAI/TIGER database (TAB10)
Map Created by Geography Division: March 21, 2012

Projection: Albers Equal Area Conic
Datum: NAD83
Spheroid: GRS 80
1st Standard Parallel: 29 29 46
2nd Standard Parallel: 29 53 54
Central Meridian: 83 48 17
Latitude of Projection's Origin: 24 23 45
False Easting: 0
False Northing: 0

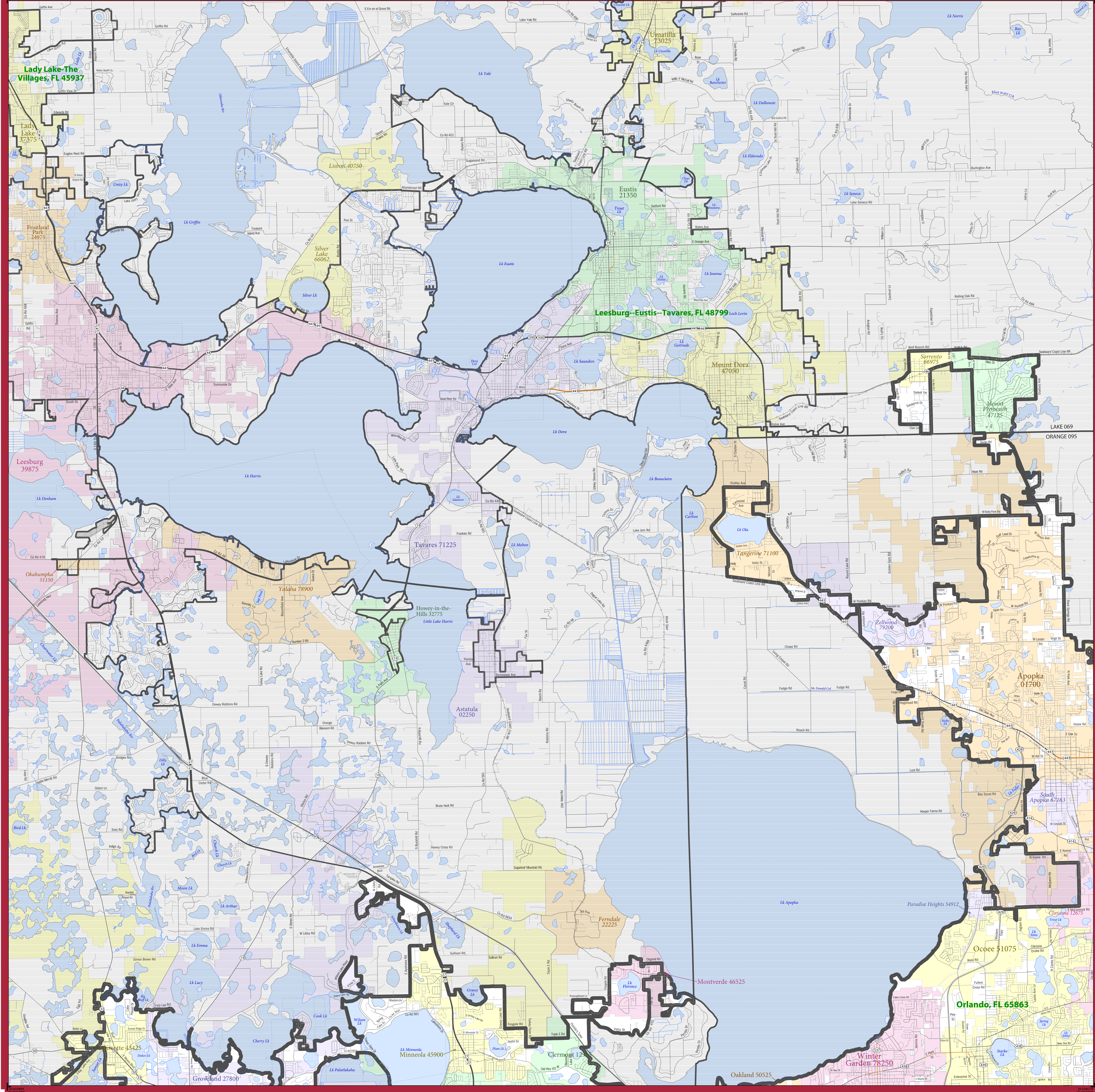


INDEX SHEET

Total Sheets: 5
Index Sheets: 1
Parent Sheets: 4

UA NAME: Orlando, FL
UA CODE: 65863
ENTITY TYPE: Urbanized Area (UA)
ST: Florida (12)

2010 CENSUS - URBANIZED AREA REFERENCE MAP: Orlando, FL



LEGEND

SYMBOL DESCRIPTION	SYMBOL	LABEL STYLE
International	— · — · — ·	CANADA
Federal American Indian Reservation	· · · · ·	L'ANSE RES 1880
Off-Reservation Trust Land	· · · · ·	T1880
Urbanized Area	— (thick green)	Dover, DE 24580
Urban Cluster	— (thick green)	Toolee, VT 88057
State (or statistically equivalent entity)	— (dashed)	NEW YORK 36
County (or statistically equivalent entity)	— (solid)	ERIE 029
Minor Civil Division (MCD) ^{1,2}	— (dashed)	Bristol town 07485
Consolidated City	· · · · ·	MILFORD 47500
Incorporated Place ³	· · · · ·	Davis 18100
Census Designated Place (CDP) ³	· · · · ·	Incline Village 35100

DESCRIPTION	SYMBOL	DESCRIPTION	SYMBOL
Interstate	— (thick blue)	Water Body	— (blue)
U.S. Highway	— (orange)	Military	— (blue with 'M')
State Highway	— (orange)	Outside Subject Area	— (grey)
Other Road	— (grey)		
Railroad	— (black with cross-ticks)		
Perennial Stream	— (blue)		
Intermittent Stream	— (blue)		

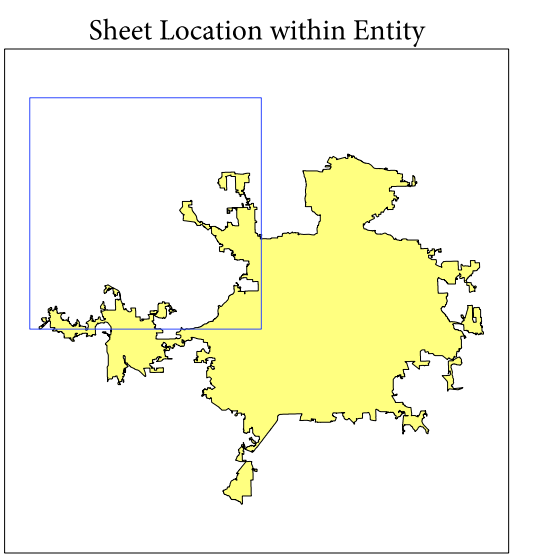
Where international, state, county, and/or MCD boundaries coincide, the map shows the boundary symbol for only the highest-ranking of these boundaries.

1 A " " following an MCD name denotes a false MCD. A " " following a place name indicates that a false MCD exists with the same name and FIPS code as the place; the false MCD label is not shown.

2 MCD boundaries are shown in the following states in which some or all MCDs function as general-purpose governmental units: Connecticut, Illinois, Indiana, Kansas, Maine, Massachusetts, Michigan, Minnesota, Missouri, Nebraska, New Hampshire, New Jersey, New York, North Dakota, Ohio, Pennsylvania, Rhode Island, South Dakota, Vermont, and Wisconsin. (Note that Illinois and Nebraska have some counties covered by nongovernmental precincts and Missouri has most counties covered by nongovernmental townships.)

3 Place label color corresponds to the place fill color.
Label colors: Davis Davis Davis Davis Davis

SUBJECT AREA COUNTIES ON MAP SHEET
 12069 Lake
 12095 Orange



All legal boundaries and names are as of January 1, 2010. Urban areas are based on results from the 2010 Decennial Census. The boundaries shown on this map are for Census Bureau statistical data collection and tabulation purposes only; their depiction and designation for statistical purposes does not constitute a determination of jurisdictional authority or rights of ownership or entitlement.

Geographic Vintage: 2010 Census (reference date: January 1, 2010)
 Data Source: U.S. Census Bureau's MA/TIGER database (TAB10)
 Map Created by Geography Division: March 21, 2012

U.S. DEPARTMENT OF COMMERCE Economics and Statistics Administration U.S. Census Bureau

Projection: Albers Equal Area Conic
 Datum: NAD83
 Spheroid: GRS 80
 1st Standard Parallel: 29 29 46
 2nd Standard Parallel: 29 53 54
 Central Meridian: 83 48 17
 Latitude of Projection's Origin: 24 23 45
 False Easting: 0
 False Northing: 0

The plotted map scale is 1:37000



Key to Sheets

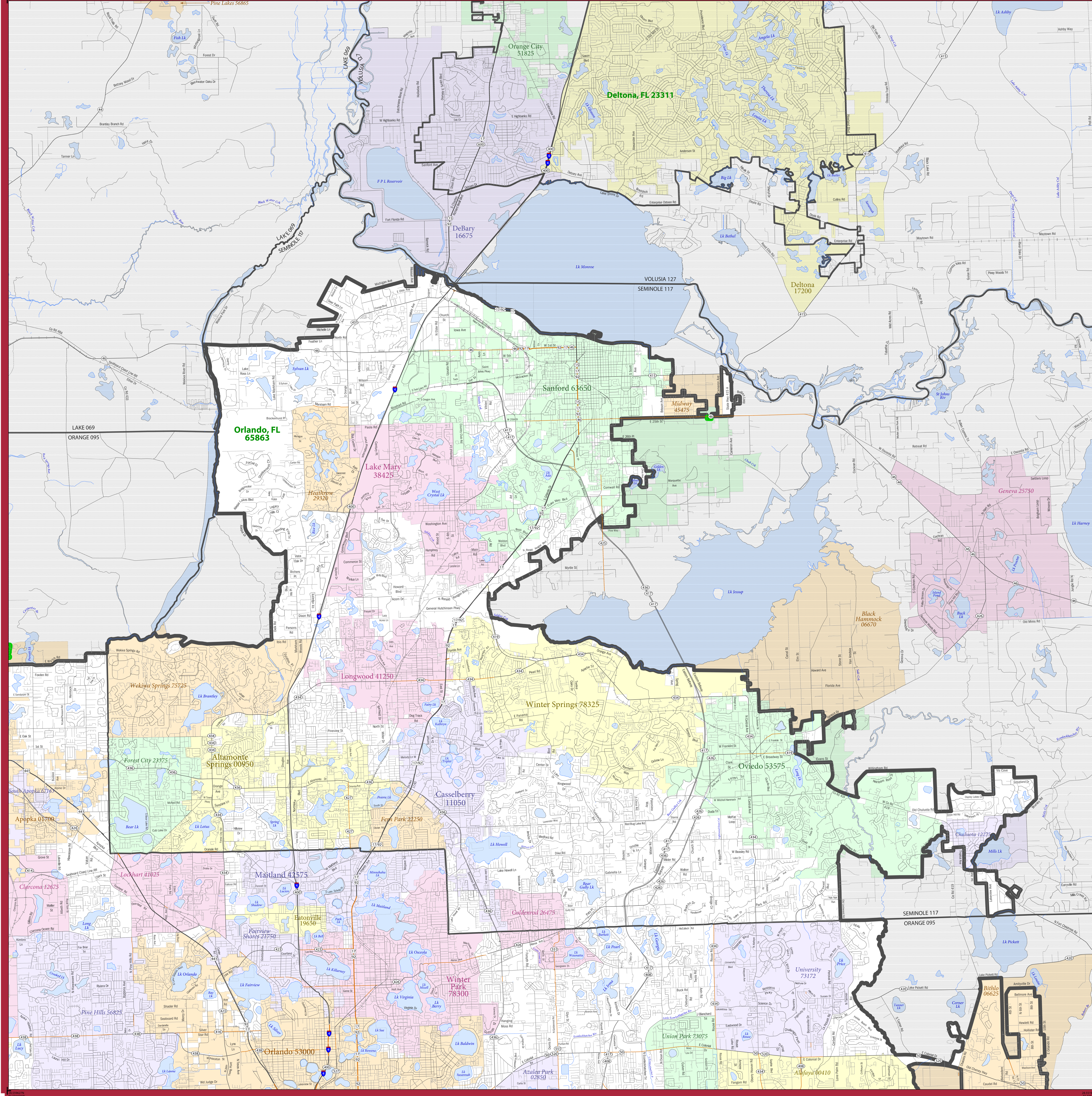
1	2
3	4

PARENT SHEET 1
 Total Sheets: 5
 Index Sheets: 1
 Parent Sheets: 4

UA NAME: Orlando, FL
 UA CODE: 65863
 ENTITY TYPE: Urbanized Area (UA)
 ST: Florida (12)

2010 CENSUS UA REF MAP (PART 2)
 2/16/08/0001

2010 CENSUS - URBANIZED AREA REFERENCE MAP: Orlando, FL



LEGEND

SYMBOL DESCRIPTION	SYMBOL	LABEL STYLE
International	--- ---	CANADA
Federal American Indian Reservation	L'ANSE RES 1880
Off-Reservation Trust Land	T1880
Urbanized Area	█	Dover, DE 24580
Urban Cluster	█	Toolee, VT 88057
State (or statistically equivalent entity)	---	NEW YORK 36
County (or statistically equivalent entity)	---	ERIE 029
Minor Civil Division (MCD) ^{1,2}	---	Bristol town 07485
Consolidated City	MILFORD 47500
Incorporated Place ^{1,3}	Davis 18100
Census Designated Place (CDP) ²	Incline Village 35100

DESCRIPTION	SYMBOL	DESCRIPTION	SYMBOL
Interstate	— — —	Water Body	Blue Area
U.S. Highway	— —	Military	Blue Area with Star
State Highway	— —	Outside Subject Area	Grey Area
Other Road	— —		
Railroad	— — —		
Perennial Stream	— — —		
Intermittent Stream	— — —		

Where international, state, county, and/or MCD boundaries coincide, the map shows the boundary symbol for only the highest-ranking of these boundaries.

1 A ** following an MCD name denotes a false MCD. A *** following a place name indicates that a false MCD exists with the same name and FIPS code as the place; the false MCD label is not shown.

2 MCD boundaries are shown in the following states in which some or all MCDs function as general-purpose governmental units: Connecticut, Illinois, Indiana, Kansas, Maine, Massachusetts, Michigan, Minnesota, Missouri, Nebraska, New Hampshire, New Jersey, New York, North Dakota, Ohio, Pennsylvania, Rhode Island, South Dakota, Vermont, and Wisconsin. (Note that Illinois and Nebraska have some counties covered by nongovernmental precincts and Missouri has most counties covered by nongovernmental townships.)

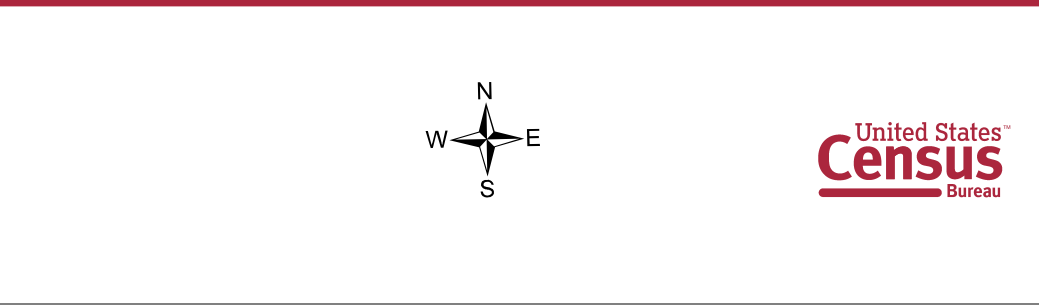
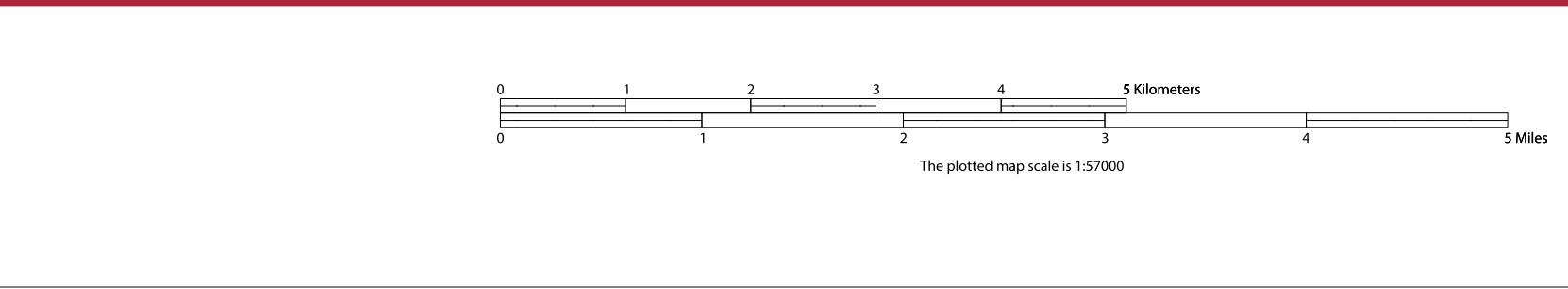
3 Place label color corresponds to the place fill color.
Label colors: Davis Davis Davis Davis Davis

SUBJECT AREA COUNTIES ON MAP SHEET
 12095 Orange
 12117 Seminole

All legal boundaries and names are as of January 1, 2010. Urban areas are based on results from the 2010 Decennial Census. The boundaries shown on this map are for Census Bureau statistical data collection and tabulation purposes only; their depiction and designation for statistical purposes does not constitute a determination of jurisdictional authority or rights of ownership or entitlement.

Geographic Vintage: 2010 Census (reference date: January 1, 2010)
 Data Source: U.S. Census Bureau's MA/TIGER database (TAB10)
 Map Created by Geography Division: March 21, 2012

Projection: Albers Equal Area Conic
 Datum: NAD 83
 Spheroid: GRS 80
 1st Standard Parallel: 25 29 46
 2nd Standard Parallel: 29 53 54
 Central Meridian: 83 48 17
 Latitude of Projection's Origin: 24 23 45
 False Easting: 0
 False Northing: 0



Key to Sheets

1	2
3	4

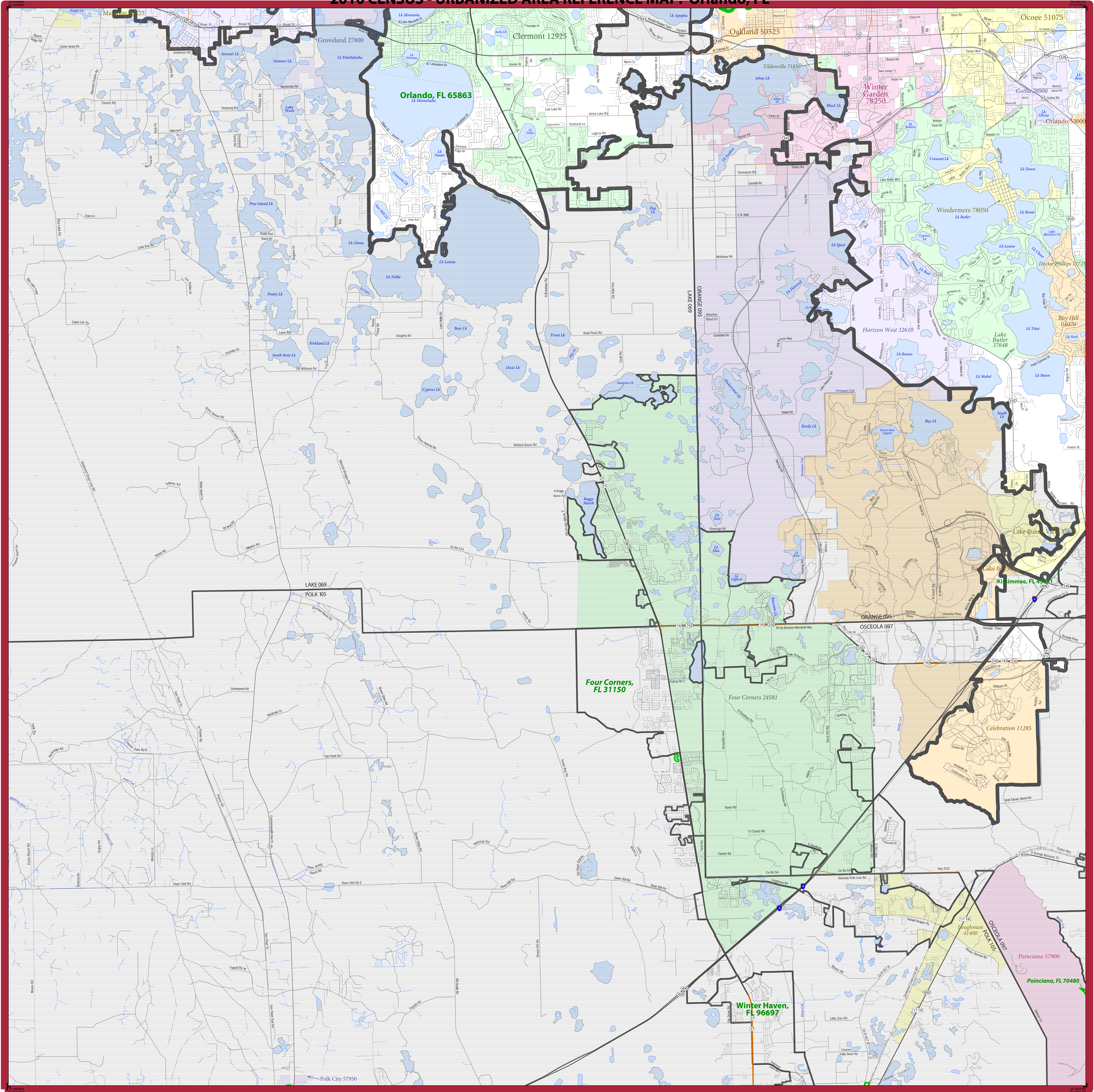
PARENT SHEET 2
 Total Sheets: 5
 Index Sheets: 1
 Parent Sheets: 4

Sheet Location within Entity

UA NAME: Orlando, FL
 UA CODE: 65863
 ENTITY TYPE: Urbanized Area (UA)
 ST: Florida (12)

2010 CENSUS UA REF MAP (PART 2)
 2/16/2010/002

2010 CENSUS - URBANIZED AREA REFERENCE MAP: Orlando, FL



LEGEND

SYMBOL DESCRIPTION	SYMBOL	LABEL STYLE
International	--- --	CANADA
Federal American Indian Reservation	L'ANSE RES 1880
Off-Reservation Trust Land	T1880
Urbanized Area	█	Dover, DE 24580
Urban Cluster	█	Toolee, VT 88057
State (or statistically equivalent entity)	--- --	NEW YORK 36
County (or statistically equivalent entity)	---	ERIE 029
Minor Civil Division (MCD) ^{1,2}	---	Bristol town 07485
Consolidated City	MILFORD 47500
Incorporated Place ³	Davis 18100
Census Designated Place (CDP) ²	Incline Village 35100

DESCRIPTION	SYMBOL	DESCRIPTION	SYMBOL
Interstate	—+—	Water Body	■ Pleasant Lake
U.S. Highway	—+—	Military	■ Fort Belvoir
State Highway	—+—	Outside Subject Area	■
Other Road	—+—		
Railroad	—+—		
Perennial Stream	—+—		
Intermittent Stream	—+—		

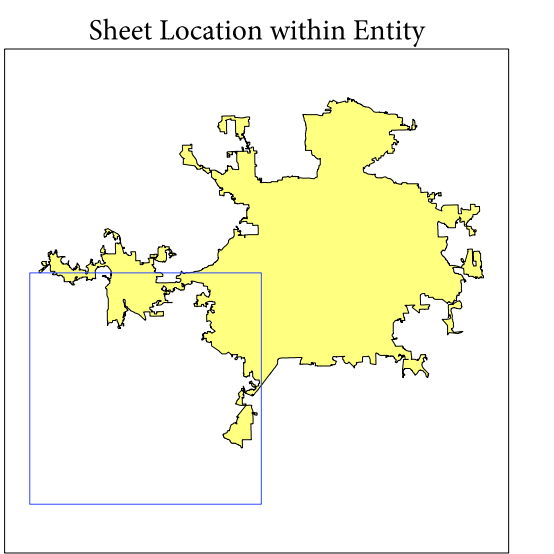
Where international, state, county, and/or MCD boundaries coincide, the map shows the boundary symbol for only the highest-ranking of these boundaries.

1 A ** following an MCD name denotes a false MCD. A ** following a place name indicates that a false MCD exists with the same name and FIPS code as the place; the false MCD label is not shown.

2 MCD boundaries are shown in the following states in which some or all MCDs function as general-purpose governmental units: Connecticut, Illinois, Indiana, Kansas, Maine, Massachusetts, Michigan, Minnesota, Missouri, Nebraska, New Hampshire, New Jersey, New York, North Dakota, Ohio, Pennsylvania, Rhode Island, South Dakota, Vermont, and Wisconsin. (Note that Illinois and Nebraska have some counties covered by nongovernmental precincts and Missouri has most counties covered by nongovernmental townships.)

3 Place label color corresponds to the place fill color.
Label colors: Davis Davis Davis Davis Davis

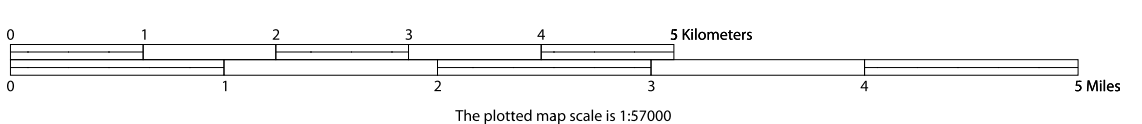
SUBJECT AREA COUNTIES ON MAP SHEET
 12069 Lake
 12095 Orange
 12097 Osceola



All legal boundaries and names are as of January 1, 2010. Urban areas are based on results from the 2010 Decennial Census. The boundaries shown on this map are for Census Bureau statistical data collection and tabulation purposes only; their depiction and designation for statistical purposes does not constitute a determination of jurisdictional authority or rights of ownership or entitlement.

Geographic Vintage: 2010 Census (reference date: January 1, 2010)
 Data Source: U.S. Census Bureau's MAI/TIGER database (TAB10)
 Map Created by Geography Division: March 21, 2012

Projection: Albers Equal Area Conic
 Datum: NAD83
 Spheroid: GRS 80
 1st Standard Parallel: 25 29 46
 2nd Standard Parallel: 29 53 54
 Central Meridian: 83 48 17
 Latitude of Projection's Origin: 24 23 45
 False Easting: 0
 False Northing: 0



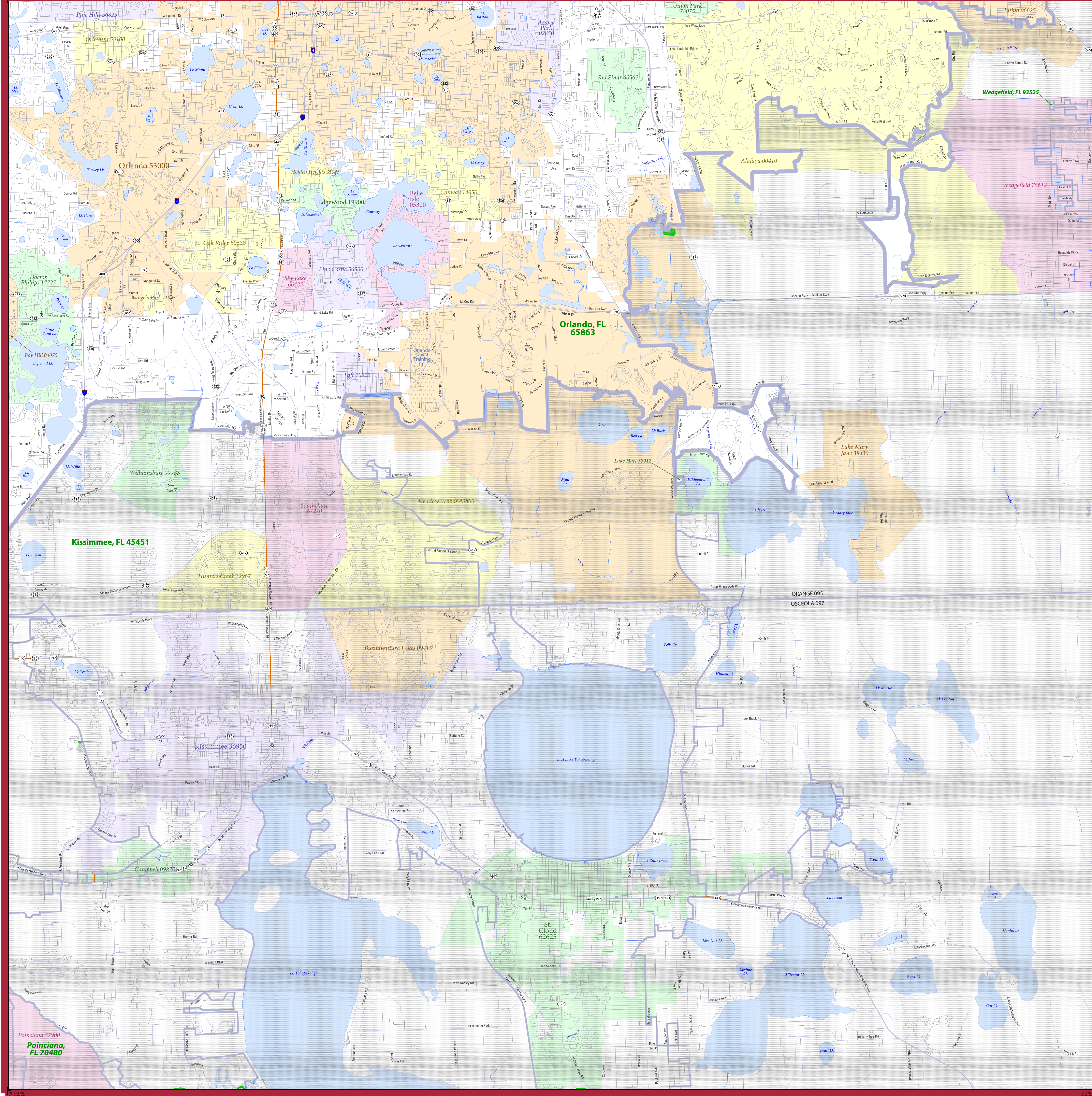
Key to Sheets

1	2
3	4

PARENT SHEET 3
 Total Sheets: 5
 Index Sheets: 1
 Parent Sheets: 4

UA NAME: Orlando, FL
 UA CODE: 65863
 ENTITY TYPE: Urbanized Area (UA)
 ST: Florida (12)

2010 CENSUS - URBANIZED AREA REFERENCE MAP: Orlando, FL



LEGEND

SYMBOL DESCRIPTION	SYMBOL	LABEL STYLE
International	— · — · — ·	CANADA
Federal American Indian Reservation	· · · · ·	L'ANSE RES 1880
Off-Reservation Trust Land	· · · · ·	T1880
Urbanized Area	— (thick green)	Dover, DE 24580
Urban Cluster	— (thick green)	Toolee, VT 88057
State (or statistically equivalent entity)	— (dashed)	NEW YORK 36
County (or statistically equivalent entity)	— (dashed)	ERIE 029
Minor Civil Division (MCD) ^{1,2}	— (dashed)	Bristol town 07485
Consolidated City	· · · · ·	MILFORD 47500
Incorporated Place ^{1,3}	· · · · ·	Davis 18100
Census Designated Place (CDP) ²	· · · · ·	Incline Village 35100

DESCRIPTION	SYMBOL	DESCRIPTION	SYMBOL
Interstate	— (thick blue)	Water Body	— (blue)
U.S. Highway	— (orange)	Military	— (blue with 'F')
State Highway	— (orange)	Outside Subject Area	— (grey)
Other Road	— (grey)		
Railroad	— (black with cross-ticks)		
Perennial Stream	— (blue with wavy lines)		
Intermittent Stream	— (blue with wavy lines)		

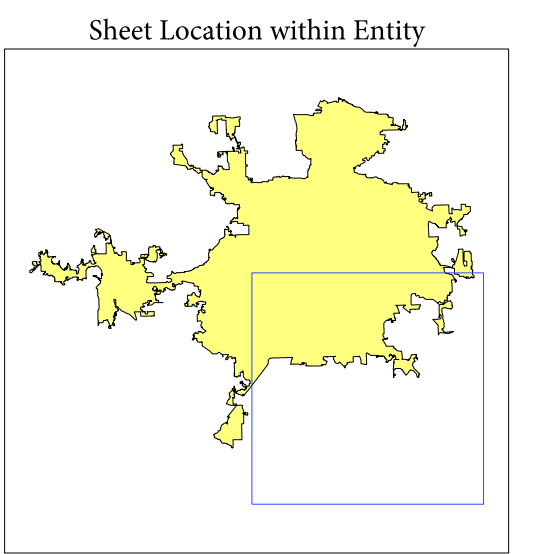
Where international, state, county, and/or MCD boundaries coincide, the map shows the boundary symbol for only the highest-ranking of these boundaries.

1 A ** following an MCD name denotes a false MCD. A *** following a place name indicates that a false MCD exists with the same name and FIPS code as the place; the false MCD label is not shown.

2 MCD boundaries are shown in the following states in which some or all MCDs function as general-purpose governmental units: Connecticut, Illinois, Indiana, Kansas, Maine, Massachusetts, Michigan, Minnesota, Missouri, Nebraska, New Hampshire, New Jersey, New York, North Dakota, Ohio, Pennsylvania, Rhode Island, South Dakota, Vermont, and Wisconsin. (Note that Illinois and Nebraska have some counties covered by nongovernmental precincts and Missouri has most counties covered by nongovernmental townships.)

3 Place label color corresponds to the place fill color.
Label colors: Davis Davis Davis Davis Davis

SUBJECT AREA COUNTIES ON MAP SHEET
12095 Orange

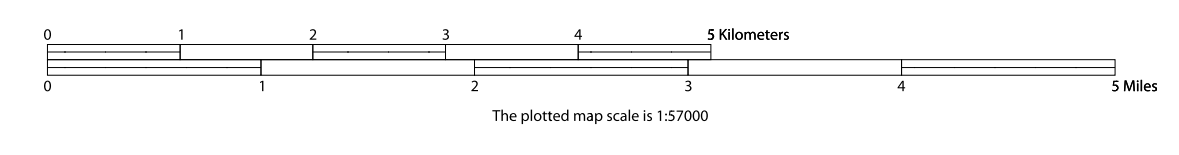


All legal boundaries and names are as of January 1, 2010. Urban areas are based on results from the 2010 Decennial Census. The boundaries shown on this map are for Census Bureau statistical data collection and tabulation purposes only; their depiction and designation for statistical purposes does not constitute a determination of jurisdictional authority or rights of ownership or entitlement.

Geographic Vintage: 2010 Census (reference date: January 1, 2010)
Data Source: U.S. Census Bureau's MA/TIGER database (TAB10)
Map Created by Geography Division: March 21, 2012

U.S. DEPARTMENT OF COMMERCE Economics and Statistics Administration U.S. Census Bureau

Projection: Albers Equal Area Conic
Datum: NAD 83
Spheroid: GRS 80
1st Standard Parallel: 25 29 46
2nd Standard Parallel: 29 53 54
Central Meridian: -83 48 17
Latitude of Projection's Origin: 24 23 45
False Easting: 0
False Northing: 0



Key to Sheets

1	2
3	4

PARENT SHEET 4
Total Sheets: 5
Index Sheets: 1
Parent Sheets: 4

UA NAME: Orlando, FL
UA CODE: 65863
ENTITY TYPE: Urbanized Area (UA)
ST: Florida (12)