

## **Historic, Archive Document**

Do not assume content reflects current scientific knowledge, policies, or practices.



72.43

LIBRARY  
RECEIVED  
★ MAR 5 1932 ★  
Department of Agriculture



Monument Carnot Lilac—Mary Brand Peony

**B**RAND'S PEONIES  
OWN-ROOT LILACS AND  
OTHER ORNAMENTALS  
**FALL OF 1931**

# The **Martha Bulloch Collection**

TEN BEAUTIFUL PEONIES EACH RATED 9.0 OR BETTER

Each one a Masterpiece

ALL BELONG IN THE WORLD'S 26 BEST PEONIES



Reds	
Philippe Rivoire (Riviere) 9.2....	\$ 10.00
Longfellow (Brand) 9.0.....	1.50
Whites	
Kelway's Glorious (Kelway) 9.8	5.00
Le Cygne (Lemoine) 9.9.....	4.00
Light Pinks	
Lady Alexandra Duff (Kelway) 9.1.....	1.00
Mme. Jules Dessert (Dessert) 9.4.....	2.00
Tourangelle (Dessert) 9.4.....	1.50
Deep Pinks	
Martha Bulloch (Brand) 9.1.....	4.00
Souvenir de Louis Bigot (Dessert) 9.1.....	2.00
Walter Faxon (Richardson) 9.3	2.00
A TOTAL VALUE OF.....\$ 33.00	

TEN YEARS AGO THIS COLLECTION SOLD FOR \$158.

NOW YOU CAN BUY THESE  
10 BEAUTIFUL PEONIES FOR

**\$30.00**

DO NOT TAKE A DISCOUNT  
ON ANY COLLECTIONS

**Philippe Rivoire**—Highest rated red yet introduced. Especially desirable, as it shows no stamens. Fragrant.

**Longfellow**—A close second to Philippe Rivoire. This splendid variety shows the least purple of any of the reds.

**LeCygne and Kelway's Glorious**—Our two highest rated white peonies. Very different types: LeCygne, large and symmetrical; Kelway's Glorious, loose and lacy.

**Lady Duff, Mme. Jules Dessert, and Tourangelle**—All three classified as light pink, yet each is distinct in color. Lady A. Duff blooms early and is past its prime when Tourangelle bursts into flower. Mme. Jules Dessert—a fine, late, midseason light pink—is what we

regard as almost a perfect flower. These three peonies usually vie with one another for first place in the show room.

**Walter Faxon**—Of all pinks, this is certainly a real show flower. Some pinks may be seen and forgotten, but not Walter Faxon. Its beauty lingers in the memory.

**Souv. de Louis Bigot**—A fine field flower as well as a show flower.

**Martha Bulloch**—A wonderful garden flower. The tall pink peony on heavy stiff stems, which transcends all others in the field, is the same as the bright old-rose pink among the winning exhibits in the show room. It's Martha Bulloch! Later than any other pink.

REMEMBER, EVERY ROOT  
—IN EVERY COLLECTION—  
IS A BRAND DIVISION



Mr. Brand in the Peony Fields

## Our Prices

It will be noted from our catalog that we list no peony for less than \$1.00. There are many good reasons why we cannot handle 50c and 75c roots and make a fair profit. In the first place, it takes expert labor to divide peonies, and such labor deserves good pay. Hence we divide with larger divisions, which decreases the cost of labor and gives our customers more satisfactory roots. Moreover, we include in our list only the really desirable varieties. It will be seen that very few peonies in our list are rated below 8, and even these few exceptions are such as we believe will have a higher rating in the future. If we wanted to work off undesirable stock, we could sell it cheap to get rid of it, but that is not our policy. We want our customers to plant peonies that will give them PERMANENT PLEASURE; the kind they will not wish to discard when they come to know peonies better. We believe our plan of giving good sized divisions, from varieties selected for their superior merit, is true economy to our customers. The cost of peonies should be figured, not merely according to the price per root, but rather according to the size and beauty of bloom as well as the quality and quantity of yield.

This is why we have designated the size of root which we supply as **A Brand Division**. Before making their purchases last year, many people wrote to us asking how large our divisions are. We promise a root containing from three to five or more eyes. However, the following letter from a customer will probably give you a better idea of the kind of root you may properly expect to receive:

"I find you are much too modest in your description of your Peony divisions. Anyone who has not purchased 'A Brand Division' will not understand from your description what a fine root he may expect to receive. You may rest assured that the Brand Peony Divisions will be recommended to all my flower-loving friends."

# Brand Peony Farms, Inc.

Box 408

Faribault, Minnesota

A. M. BRAND, President

MYRTLE GENTRY, Sec'y-Treas.



*A Beauty Spot in a Peony Field*

## Our Peony List

**ADDIELANCHEA** (Brand) 8.8. White. A peony of the rose type. Creamy white with base of center petals yellow. Guard petals are prominently flecked with crimson; the crown petals slightly so. A fine peony, comparable to *Enchantresse* and *Grace Loomis*. A Brand Division \$5.00.

**ADOLPHE ROUSSEAU** (Dessert & Mechin) 8.5. Red. One of the very best of the early dark reds. Petals large, long, broad, and of good substance. The plant is very tall with heavy dark foliage. Flowers of great size, held well erect, extremely showy. A landscape variety, also a wonderful show flower. Color, a deep rich velvety maroon red, showing stamens. A Brand Division \$1.00.

**ALBERT CROUSSE** (Crousse) 8.6. Great as were his other peonies, Crousse regarded three as specially worthy to bear his own name—Albert, Felix and Marie. Albert Crousse is a beautiful soft shell pink. Petals are narrow, very compact, symmetrical—a distinct globular form. Consistently outstanding among midseason varieties. A Brand Division \$1.00.

**ALEX D. VORIES** (Vories) 8.4. Red. Tall, strong, upright stems. Blooms are large, loosely built with broad petals of pleasing American Beauty shade. Protruding above the foliage, the gorgeous blooms are very showy—a wonderful landscape variety. A Brand Division \$4.00.

**ALICE BALFOUR** (Kelway) Pink. Fine growing plant of medium height. Flowers large rose type. Color delicate rose pink. Midseason. One of the good new Kelway peonies. A Brand Division \$4.00.

**ALSACE LORRAINE** (Lemoine) 8.8. White. Of all peonies this is one of the daintiest and refined. Others may be larger or more robust but few of them could be prettier. Flowers of beautiful form. Petals are long, cupped at the end, exquisite in shape. Color, a rich creamy white mellowing to just a suggestion of brownish yellow at the center, the color that makes *Solange* so fascinating. Medium height plant. Stiff upright stems. Very floriferous. Indeed a beautiful flower. A Brand Division \$1.00.

**A. M. SLOCUM** (Franklin) 9.0. White. A recent introduction by Mr. Franklin. Large, loosely built, rose type; showing stamens. Almost pure white with a few central petals edged crimson. A strong upright grower. Blooms profusely. A Brand Division \$2.00.

**A. P. SAUNDERS** (Thurlow) 8.6. Delicate pink. This variety of pink is one that fades almost to pure white. Large, loosely built flower of true rose-type. Outside petals are very large, of splendid substance, enclosing a ball of shorter petals which gradually unfold into one of the most beautiful of all our peonies. A Brand Division \$3.00.

**ARCHIE BRAND** (Brand) 7.5. Pink. Large, round, full rose-type blossom of an even shade of sea shell pink. Foliage and stems are light green, very clean in appearance. The buds, as they develop, are very attractive, enormous in size; beautiful as they open. This variety becomes coarse when heavily fertilized. It does best on clay soil. A Brand Division \$1.00.

**ARGENTINE** (Lemoine 24) 8.6. A large, globular flower, with symmetrically arranged petals of good substance; color purest white with a creamy tint toward the center; fragrant, late midseason. A new variety of great promise. A Brand Division \$20.00.

**ASA GRAY** (Crousse) 8.1. Pink. Properly grown in suitable soil, this is a beautiful peony. Thrives best in heavy dark loams. Flowers are large, of true rose-type. Guard petals are salmon pink, thickly marked with minute specks of deeper pink. Easy to identify. A prolific bloomer. Fragrant. A Brand Division \$1.00.

**ASSMANHAUSEN** (Goos and Koenemann) 8.0. A good peony sent out by this great German firm a few years ago. Opens an immense white with delicate pink tints. Stems tall, strong and erect. A very desirable landscape variety. A Brand Division \$2.00.

**AUGUSTE DESSERT** (Dessert) 8.7. Red. Among Dessert's latest peonies, this is one of his finest; regarded by the originator as worthy of his own name. He gives this description: "Flower cup-shaped of fine form, with rounded petals, very brilliant, velvety crimson, carmine, with silvery reflex and often streaked white; very large silvery border; visible stamens intermixed with the petals in many flowers. A superb variety, awarded certificate of merit at the Paris show, June 2, 1920." A Brand Division \$3.00.

**AVALANCHE** (Crousse) 8.7. White. Large, compactly built—a globular cone-shaped flower. Blossom develops a distinct creamy white collar, surrounding a center of delicately tinted lilac-white petals with a few wide petals edged with tracings of carmine. Medium height plant; strong and upright; a profuse bloomer. Splendid for landscape effect and a wonderful show flower. At the National Show in Ontario this variety was adjudged the best specimen bloom in the show. *Avalanche* and *Albatre* are one and the same. A Brand Division \$1.00.

**AVIATEUR REYMOND** (Dessert) 8.0. Red. Rather open or semi-double—this is a large, beautiful, very showy variety. Bright cherry red, shaded garnet and amaranth. A Brand Division \$1.50.

**BALL O' COTTON** (Franklin) 8.8. White. Good whites are in strong demand. This is one of the finest brought out in a long time. Flowers are globular in form, entirely transformed, purest white. Wherever it is shown, *Ball O' Cotton* is regarded an outstanding white. Awarded first prize in the class of twenty best blooms of white, North-western Peony and Iris Show, Faribault, 1927. A Brand Division \$3.00.

**BARONESS SCHROEDER** (Kelway) 9.0. White. Considered one of the finest peonies grown. In the last Symposium taken, it received a rating of 9.0 after seventy-nine had voted. Opens a delicate blush, fading to milky-white. Should be in every collection. Blooms late, after most of the whites are gone. A Brand Division \$1.00.

**BENJAMIN FRANKLIN** (Brand) 8.1. Red. Unusually tall. Dark red. In color and form it resembles *Adolphe Rousseau*, yet the plant is much stronger and blooms more profusely. Tall, strong stems hold the blooms erect for a desirable landscape effect. Each stem carries a single blossom—a preferred quality for cut flowers. A good dark red which has not been fully appreciated. It will complement any collection. A Brand Division \$1.00.

**BISHOP BURKE** (Vories). Red. A strong plant, medium height, holding the bloom erect. Flower of medium size—a very pleasing shade of rose red, distinctly different. Very desirable, both for landscape and show room. A Brand Division \$10.00.

**BLANCHE KING** (A. M. Brand 1925). Deep pink. Peony lovers are constantly searching for a good, deep pink. The old variety, *Edulis Superba*, has the most coveted color but it is very early. This new variety, *Blanche King*, has practically the same color—a large, round, rose type flower; brilliant, glowing, deep pink. Holds its color in the field, yet shows unusually well when cut in the bud and opened inside. Received an Award of Merit, London Ontario National Peony Show, 1922. A Brand Division \$25.00.

**BRAND'S MAGNIFICENT** (Brand) 8.2. Red. We have produced many exceptional reds. This is one of the finest. Medium height plant. Blooms profusely, starting in midseason. Semi-rose; the flower resembles an American Beauty Rose more than a peony. Color, a deep dark red with bluish cast. Carries more blue than any other good peony. Noted for its beautiful form, prolific bloom, broad symmetrical petals, and magnificent color. At the National Show in Des Moines this variety appeared in the gold medal collection. In the class of ten named varieties, it appeared in collections winning both first and second prizes. A Brand Division \$1.00.



### *A Planting of Therese*

**CANDEUR** (Dessert) 8.4. Pink. Large, globular, rose-type flower, showing stamens. Very beautiful delicate pink, slightly tinged lilac-rose, fading to iridescent white; center petals flecked carmine. Very vigorous grower; clean, light green foliage. **A Brand Division \$2.00.**

**CHARLES McKELLIP** (Brand) 7.8. Red. Large, loosely built, semi-rose, deep red. We think it is the most perfect in form of all deep reds; especially beautiful in the bud. Rapidly growing in public favor. In the next Symposium, we are quite sure it will rate above 8.5. Comes into bloom just after Mary Brand, and we believe it is as good. **A Brand Division \$1.00.**

**CHERRY HILL** (ThurLOW) 8.6. Red. Very tall; semi-double; bright dark red. Early. A splendid landscape variety. Color, a deep garnet with a sheen that is conspicuous among all other reds. Blooms are not at their best until the plant is established; then they are perfect in form, good size, wonderful color. Awarded a silver medal by the Mass. Horticultural Society. **A Brand Division \$3.00.**

**CHESTINE GOWDY** (Brand) 8.4. Pink. A striking specimen of the cone-shaped peony. The broad outer petals are silvery pink. These enclose a zone of fine, irregularly shaped, closely set petals, of deep rich cream, all climaxed by a prominent cone of broad pink petals, splashed and tipped with crimson. This variety of color is the object of special admiration, even in a group of the finest peonies. A late variety with delicate fragrance. Very thrifty, a profuse bloomer. In great demand as a late pink cut flower. **A Brand Division \$1.00.**

**CLAIRE DUBOIS** (Crousse) 8.7. Pink. A late flower of immense globular form, with long incurved petals of a uniform shade, clear violet rose, tipped silvery white. Wonderfully attractive; a late variety parallel in color and beauty to the early variety Mons. Jules Elie. The best cut flower of its color in its season. **A Brand Division \$1.00.**

**CLEMENCEAU** (Dessert) 8.5. Pink. Very robust grower and free bloomer. Immense flowers come in great quantity on a tall, thrifty plant. If you like the Sarah Bernhardt type of flower, you will adore Clemenceau, as the two are much alike. Very late. **A Brand Division \$3.00.**

**COMMANDER** (A. M. Brand 1928). Red. An extra large, high built flower; very compact. A cone-shaped, rose type peony. Color, a true self Solferino red. Al-

though late it blooms consistently, which cannot be said of most late varieties. A real acquisition to our quality list of Brand's reds. **A Brand Division \$2.00.**

**CORNELIA SHAYLOR** (Shaylor) 9.1. Pink. "A coming flower" was our first impression of this variety, now attracting so much attention. We think it's one of the very best of Mr. Shaylor's entire list. A large, late variety, on heavy stems, dark luxuriant foliage. Blooms are high built with a great dome of compact petals in the center surrounded by broad prominent guard petals of pale rose, a collar of flesh white, and a darker rose-like center. **A Brand Division \$5.00.**

**CORONATION** (Kelway 1902) 8.5. White. Very beautiful, even in the bud which is tinted a delicate pink. Great white creamy flowers with pale pink guard petals. Golden light radiates from base of petals. Very symmetrical in form. Late midseason. **A Brand Division \$1.00.**

**COURONNE D'OR** (Calot) 8.1. White. In all respects, a reliable flower—unlike all other whites—easy to identify in any collection. Outer petals pure white; then a ring of yellow stamens around a tuft of center petals, tipped carmine. Comes into bloom just before Marie Lemoine. Belongs in the class which one can always recommend. **A Brand Division \$1.00.**

**CRYSTAL LAKE** (Franklin). New; not yet rated. Dark Rose. Large flower, semi-rose type. Very large petals of good substance with stamens showing prominently between. For a good deep pink, Crystal Lake is ideal. **A Brand Division \$2.00.**

**DAVID HARUM** (Brand) 8.4. Red. One of our newest reds. Flowers very large with prominent guard petals surrounding a great ball of closely packed petals, same shade. Over all, an even shade of soft Tyrian-rose. Upright growing plant, very strong stems, blooms held erect. Excels as a landscape red. Appeared in five prize-winning collections, National Show, Des Moines, 1924. **A Brand Division \$2.00.**

**DESIRE** (Brand) 8.5. Pink. Very large flower, rather loose, with long broad petals, showing stamens. Color a delicate lilac pink fading lighter toward the edges. Do not hastily judge this flower by a single season—wait till the plant is three years or older. Then see the beautiful pink petaloids bordered with distinct golden edges, which fairly illuminate the flower—a thrice wondrous beauty! **A Brand Division \$1.00.**



**DUCHESS de NEMOURS** (Calot) 8.1. White. Beautiful; early—almost pure white with shadings of green at the base of petals. Blossom cup-shaped with marked crown effect. Splendid cut flower. A comparatively old variety, yet unexcelled for beauty of form, purity of color, and all-around attractiveness. It should be in every planting. Seldom listed in our collections, as most people who plant peonies have long since chosen this beautiful flower. **A Brand Division \$1.00.**

**E. B. BROWNING** (Brand) 9.2. White. The American Peony Society voted E. B. Browning as one of the group of four flowers to stand ninth highest on the entire list; one of the world's greatest peonies. For best effect, this variety requires rich, well drained soil. Very late; comes into bloom with Marie Lemoine; therefore not recommended to our southern customers. It has had some undeserved adverse criticism; almost invariably due to planting in poor soil or lack of good cultivation. It thrives in heavy black soil. Flower very large of semi-rose type. Buds are often as large as the whole blooms of other fair-sized peonies. As the bud opens slowly and the petals unfold, a delicate pink coloring appears; and the inner surface of petals are washed with the most delicate pinkish canary. The perfume is strong and sweet. So late it is not always seen in peony shows. **A Brand Division \$2.00.**

**EDULIS SUPERBA** 7.6. Pink. We believe this grand old variety has been greatly underrated. Undoubtedly the next Symposium will be far more generous, as no flower with so many good qualities should rate below 8.0. The first good early deep pink; sometimes open for Decoration Day here in Minnesota. Large flowers, borne profusely on tall strong stems. A loose, crown type flower; also one of the greatest of all cut flowers in its color and season. **A Brand Division \$1.00.**

**EDWIN C. SHAW** (ThurLOW) 9.1. Pink. A large cup-shaped flower, borne on strong stems. Outer petals are broad, rounded with carmine tracings; inner petals graduate smaller and shorter to the center. Color a clear shell pink. Highly impressed as we are with all of ThurLOW's seedlings which we have grown and admired, this variety is now our favorite. First we thought President Wilson to be the finest of the lot; yet now, after years of comparison, we have shifted our preference to E. C. Shaw. It is our first choice of ThurLOW peonies, all of which excel. **A Brand Division \$5.00.**

**E. J. SHAYLOR** (Shaylor) 8.7. Pink. A very solid, globular bloom in a deep rose pink, shading lighter at the tips of the petals. Surrounding the central petals is a distinct band of petals edged and tipped with gold. A very pretty flower. Medium height stems. Late mid-season. **A Brand Division \$5.00.**

**ELISA** (Dessert) 8.5. Pink. Flowers are large, rather open; long narrow petals form a cupped center. Color a soft shade of bright pink, with a very distinct shading of salmon at the base of the petals which makes the flower very beautiful. **A Brand Division \$2.50.**

**ELWOOD PLEAS** (Pleas) 8.7. Pink. Large to very large. True rose-type. Opens flat. There are many years when Elwood Pleas is one of the most pleasing pinks that we have. Strong, sturdy plant of medium height with rich, healthy foliage extending to the ground for desirable landscape effect. The blooms, fine in form, have a very pleasing shade of pink. Late midseason. Very fragrant. **A Brand Division \$1.00.**

**ENCHANTRESSE** (Lemoine) 8.9. White. Another great show variety. Creamy white with crimson tracings. Very large, compact, globular flower. Tall plant, a vigorous grower. In all respects, a charming variety. **A Brand Division \$1.00.**

**EUGENE BIGOT** (Dessert) 8.3. Red. In color, a deep purple amaranth. The flower is compact with large petals. A free bloomer. A very late variety to greatly extend your blooming season. **A Brand Division \$1.00.**

**EUGENE VERDIER** (Calot) 8.3. Pink. Another variety, L'Indispensable, is often sold under this name, but we supply the genuine Eugene Verdier. Outer guard petals are lilac white, yet the composite effect is pale hydrangea pink. A great show flower. **A Brand Division \$1.00.**

**EUGENIE VERDIER** (Calot) 8.6. Pink. An ideal pink variety, coming into bloom early midseason. Semi-rose type. Opens a fresh delicate hydrangea pink with primary petals lighter, and the center of flushed crimson. Fragrant and very desirable. **A Brand Division \$1.00.**

**EUNICE SHAYLOR** (Shaylor) 8.9. Flesh Pink. A mid-season semi-double variety; beautiful on matured plants. Outer petals are a light pink. Center petals are a flesh white with a circle of golden stamens around the center tuft. A good show flower. **A Brand Division \$5.00.**

**EXQUISITE** (Kelway) 8.5. Pink. A large size flat flower of a bright, warm pink; long, narrow, pointed petals. On well established plants, it produces splendid flowers. Very fragrant. Midseason to late. **A Brand Division \$2.00.**

**FANNY CROSBY** (Brand) 7.7. Yellow. An early yellow which is growing rapidly in favor. Strong, thrifty plant; very floriferous, with blooms held erect. Side buds are in bloom almost with the main flower—a very pretty landscape effect. Flowers medium in size. A central globe of deep yellow incurved petals, some seasons heavily tipped with white, are surrounded by very prominent large light pink guard petals. This gives the bloom a wonderful setting. **A Brand Division \$2.50.**

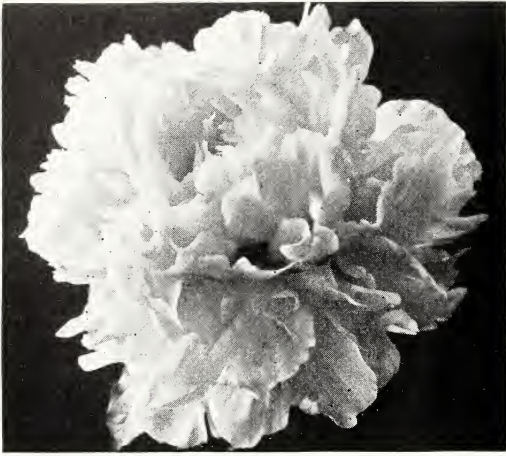
**FANNIE LEE** (Vories) 8.4. Red. This beautiful plant produces a profusion of medium sized flowers of a beautiful shade of American Beauty Red. Like all the other Vories seedlings, this variety makes a strong, robust growth. Splendid both for show and landscape. **A Brand Division \$6.00.**

**FARIBAULT** (Brand) 8.2. Pink. A choice late variety coming into bloom with Marie Lemoine. Color a deep rose with a silver sheen. Collar petals are a trifle lighter than the guards. Center petals are silver tipped. The total color effect of several blooms is like blending shades of rose. A mild fragrance. Stems are long and very strong. A free bloomer with large sized blooms—a wonderful money-maker as a cut flower. **A Brand Division \$1.00.**

**FELIX CROUSSE** (Crousse) 8.4. Red. A deep rose-red flower of medium size; very profuse bloomer. It consists of a central bomb of narrow incurved petals surrounded by broad prominent guard petals of the same color as the center. A total absence of stamens. As a red, it is one of the greatest of all cut flowers. Also a wonderful show flower; almost invariably it is found among the winners. **A Brand Division \$1.00.**



*Duchesse de Nemours*



*Henry Avery*

**FESTIVA MAXIMA** (Meillez) 9.3. White. The most all around popular white peony; the oldest of our real good sorts. Flowers are large. The petals of purest white are broad, rounding, of wonderful substance. The blossom is true rose type with great broad guards surrounding a compact inner mass of rich white petals almost as large. Bright carmine flakes on the edge of the central petals. This flower is invariably admired; should be in every collection. **A Brand Division \$1.00.**

**FRANCES WILLARD** (Brand) 9.1. White. Listed among the World's 26 Most Beautiful Peonies. Perfectly formed, the petals are of varying sizes, forming a very large rounding flower, often having a raised cup-shaped center enclosing golden stamens. Opens an exquisite blush white, occasionally with a carmine touch, changing on the lawn to pure white. Although delicate in appearance, it is an excellent cut flower with good substance—a wonderful combination of strength and daintiness. Found among the winning classes in every show room. **A Brand Division \$1.50.**

**FRANCES SHAYLOR** (Shaylor) 8.6. Creamy white. A distinct variety. Guard petals are a pure white, very large, surrounding a symmetrical cone of narrow incurved petals, creamy white, intermingled with partially transformed petals edged with gold. This gives the entire flower a beautiful yellowish cast. Midseason. **A Brand Division \$3.00.**

**FRANKIE CURTIS** (Vories) 9.3. White. Except in color, this flower much resembles Mons. Jules Elie. Almost pure white—it is a large flower with a slight tracing of pink on the central petals. Guards are large, very prominent, and surmounted by a great ball of narrow petals gathered together in perfect chrysanthemum-form. Very distinct. **A Brand Division \$6.00.**

**GALATHEE** (Lemoine) 8.1. Pink. A large, full, double flower; rose type. Color fleshy white. Fragrance pronounced and pleasant. A tall, strong grower. One of the very good late ones. **A Brand Division \$1.50.**

**GENERAL GORGAS** (Vanleeuwen 1924) 8.5. Cup-shaped flowers. Large petals. Pure white. Some of the petals edged or flecked crimson. Strong, tall, straight stems. A very strong flowering sort. (Originator's Description.) **A Brand Division \$3.00.**

**GEORGIANA SHAYLOR** (Shaylor) 8.9. We have always held that this is Mr. Shaylor's greatest flower, and we still do. If he had never produced another variety, this one alone would immortalize his name among peony lovers. (See illustration in color, inside back cover.) **A Brand Division \$2.00.**

**GIGANTEA** (Calot) 8.2. Pink. A brilliant rose pink of almost uniform color except for the edges of the guards and collar which are tipped with silvery white. A tall, early free bloomer that always attracts so much attention. A pleasant spicy fragrance. **A Brand Division \$1.00.**

**GINETTE** (Dessert) 8.6. Pink. Large, imbricated cup-shaped flower. Very soft flesh pink, shaded salmon. Frequently flecked carmine. Fragrant. Free bloomer in clusters. **A Brand Division \$1.00.**

**GRACE LOOMIS** (Saunders) 9.2. White. One of the very choicest of all white peonies, almost perfect in form. Tall, strong, light green stems. Large, rose shaped, cream tinted blooms held well erect. Beautiful in the field and show room alike. **A Brand Division \$7.00.**

**GRACE OTT** (Gumm) 8.8. Red. A beautiful tall, erect, free blooming, midseason variety. Beautifully formed flowers of the most brilliant dark crimson. We consider this one of the coming reds; a flower that deserves to be noted. **A Brand Division \$8.00.**

**GRANDIFLORA** (Richardson) 8.8. Pink. A very large flower of true rose type; in form, one of the most beautiful of all peonies. Even from a distance, this flower arrests attention. Rather flat bloom, very large, with a graceful and beautiful arrangement of petals. A soft shell pink, shading to white with faint shadings of rose. A very late variety. When one thinks the peony season is ended, he can still go out and cut fine blooms of Grandiflora. **A Brand Division \$1.00.**

**HELEN WOLAVER** (Brand) 7.9. Pink. Very late. Does not come to perfection until the plant is about four years old. Then the blooms are wonderful. Rose type flowers of medium size. Guard petals are prominent, stiff, of a sea shell pink, and more or less splashed with deeper pink. Outer petals are drawn away, leaving a compact mass of petals in the center, in rosebud shape. Rose scented, it resembles a rose more than a peony. **A Brand Division \$1.00.**

**HENRY AVERY** (Brand) 8.8. Light pink. With a stock now of sufficient size to demonstrate the merits of this variety, we find it to be one of the very choicest peonies. Medium height plant. Midseason bloom. Flowers large to very large. General color effect, pinkish creamy white. Guard petals large and prominent, enclosing a great ball of large rose-type petals of the same even color as the guards. Running between the guards and the central petals is a very distinct collar, from an inch to an inch and a half wide, of deep bright yellow petals. This gives the flower a very striking appearance, as the petals are real deep yellow. Delicate fragrance, very pronounced. For something very refined in beauty, you will be gratified with Henry Avery. Covering the Boston Show in 1924 for Peony Bulletin No. 22, Prof. Saunders wrote: "In several places in the hall, there were impressive blooms of Henry Avery, which struck me as one of the best Brand varieties I had ever seen on the exhibition table." **A Brand Division \$2.00.**

**HENRY M. VORIES** (Vories) 8.9. Pink. A large, flat flower of true rose type. Petals long, broad, and of great substance. A beautiful light salmon pink, with darker shadings of pink at the base of petals. A tall growing variety with strong stiff stems. Very late. At the Peoria National Show in 1926, this variety distinguished itself in the response and admiration it attracted. **A Brand Division \$7.00.**

**H. F. REDDICK** (Brand) 7.7. Red. One of our best dark reds. Medium height. Midseason bloom. The flowers are large, semi-rose, and brilliant, with gold stamens showing among the petals. For its fine growing habits, beautiful blossoms, and profuse blooming, this variety should be in every collection. H. F. Reddick and Ben Franklin will produce the most cut flowers of any reds we know. **A Brand Division \$1.00.**

**JAMES BOYD** (Thurlow 1919) 8.9. Flesh, changing to nearly white, tinted at base of petals with yellowish salmon. Guard petals notched at tips, giving a fringed effect. Very fragrant. Late. **A Brand Division \$3.50.**

**JAMES KELWAY** (Kelway) 8.7. White. In the last symposium, this variety received a rating of 8.7 after 49 had voted. This alone places it among the choice varieties. Flower is very large, loose and semi-rose in type. Opens a rose white changing to milk white with base of petals tinged yellow. Fragrance, strong and pleasing. **A Brand Division \$1.00.**

**JAMES R. MANN** (Thurlow 1920) 8.7. Pink. Large; deep, rosy pink, with one or two crimson streaks in the center of the flower and an occasional marking on back of guard petals. Central petals incurved; a very graceful effect. Midseason. **A Brand Division \$5.00.**

**JEANNOT** (Dessert) 9.2. Pink. Among Dessert's last productions, this flower is of unusually high quality. In the first symposium it received a rating of 8.9 with nine votes, while four years later it had grown in favor to merit a rating of 9.2 on eighteen votes. This speaks for itself. A large, high-built, round flower of rose type with a cupped center. Color, a delicate lavender pink with salmon pink shadings at the base of petals. **A Brand Division \$4.00.**

**JUBILEE** (Pleas) 8.9. White. Very large, flat, ivory-white flowers. Petals long, narrow, and loosely arranged, producing a very attractive feathery effect. Everyone familiar with peonies knows that Jubilee is a fine flower. Its only defect is a weak stem, yet one can well afford to support such a beautiful flower. **A Brand Division \$1.00.**

**JUDGE BERRY** (Brand) 8.6. Pink. This immense, delicate pink flower—the very best of its season—comes so early that it is seldom on exhibition. However, at the Des Moines show it appeared in five of the winning collections. The bud is pink, and as the petals gradually open, it becomes a flat pink disc of surpassing beauty. Often seven or eight inches in diameter. Petals narrow, long and fringed, with some stamens intermingled. Delightful fragrance. Coming at the outset of the peony season, when most varieties are small or medium size, this immense flower has peculiar distinction, preferred by all who want a really good early pink. **A Brand Division \$2.00.**

**JUNE DAY** (Franklin) 9.0. Pink. Mr. A. B. Franklin of Minneapolis has produced some very choice peonies, equal in quality to the best. For years we have watched his work, adding the different varieties to our collection as we became acquainted with them. Of these peonies, we think June Day one of the very best. A flower of striking beauty, rose type, light flesh with lavender shadings on the edge of the central petals. Pleasing fragrance. Upright grower with dark green foliage. Midseason. **A Brand Division \$3.00.**

**KARL ROSENFELD** (Rosefield) 8.8. Red. A brilliant and striking variety, coming into bloom early midseason. Flowers very large, semi-rose type, and slightly fragrant. Karl Rosenfeld and Richard Carvel are our two best sellers among the reds. Both are very desirable as cut flowers. **A Brand Division \$1.00.**

**KATHARINE HAVEMEYER** (Thurlow) 9.0. Originator's description: "Large, rose-type, flesh pink in color; guard petals broad and rounded, somewhat notched at the ends. Center petals narrow and fringed. Full, high center. Sweet fragrance. Midseason to late. Honorable Mention, American Peony Society, London, Ontario, 1922." Of all of Thurlow's peonies, which we regard very highly, Katharine Havemeyer is one of the finest. In our show room last season we had many blooms from two-year plants that showed up beautifully. An extraordinary peony. **A Brand Division \$7.00.**

**KELWAY'S GLORIOUS** (Kelway) 9.8. White. Although not as symmetrical as Le Cygne, we believe this wonderful variety is fully as good and deserves as high a rating. At the St. Paul show in 1926 Kelway's Glorious was shown in perfection, flowers of unsurpassable beauty. Immense blooms with very long petals, so arranged that the entire bloom resembles a great downy ball of the most exquisite, delicate, snow white lace. For a peony of great size, probably no other can exhibit such perfection of beauty. **A Brand Division \$5.00.**

**KELWAY'S QUEEN** (Kelway) 8.8. Pink. The stocks of this variety have been badly mixed and many spurious sorts have been sold under the name of Kelway's Queen. Once the genuine variety is seen, there can be no mistake. It is a distinct peony, both in flower and plant. We have the true variety and guarantee our stock of Kelway's Queen to be absolutely genuine. A large, compact, rose type flower of uniform mauve, with center flecked crimson. A tall, strong grower, very profuse bloomer. Late midseason. One of Kelway's finest. Very distinct color, a great show flower. **A Brand Division \$5.00.**

**LADY ALEXANDRA DUFF** (Kelway) 9.1. Pink. One of the largest and most beautiful of all peonies. An immense, loosely built flower with great broad rounded petals. Color, a lovely French White. Although it looks white, when closely scrutinized it proves to be tinted with the most delicate pink imaginable. When not disbudded, the central flower is loosely double, of a rather flattened, circular form; central petals touched with carmine. A beautifully formed flower; sweet scented. Very floriferous. Very showy. Opening after the central flower, the side flowers come semi-double, saucer-shaped, showing stamens. **A Brand Division \$1.00.**

**LA FAYETTE** (Dessert) 7.8. Pink. Rose type. Midseason. Flowers are large, last well, and the petals are beautifully fringed. Color, a lovely shade of salmon-pink with touches of heliotrope and a delicate tinting of cerise in the reflex—a striking and beautiful effect. One of Dessert's late productions. Very attractive. With so much salmon, the color is different from any other peony. **A Brand Division \$1.00.**

**LA FEE** (Lemoine) 9.2. Pink. A scarce variety, seldom seen in any garden. Plants tall with but few stalks to the plant. Long narrow sharply pointed foliage. Flowers very large, loosely built, with long narrow petals sharply notched at the edges. Guards mauve-rose. Collar creamy white. A beautiful mottling of different shades of pink. Strikingly beautiful, both in the field and show room. Healthy stock of this variety being scarce, we started with two small plants years ago; and, being careful, we have developed a small stock of very choice plants, perfectly clean. **A Brand Division \$5.00.**

**LA FRANCE** (Lemoine) 9.0. Pink. A flower that gives wonderful results in our soil and climate. Blooms very large, true rose type. Color a true uniform apple blossom pink, with crimson splashes on the guards. Tall, strong, robust plant—a suitable support for enormous blooms. In the years when La France is in prime, no flower in the pinks outranks it in the shows. We consider it one of the ten greatest peonies. **A Brand Division \$2.00.**



*Judge Berry*



*A Drive Through the Peony Fields*

**LAKE O' SILVER** (Franklin) 8.1. Pink. A light pink, silver-tipped variety, with prominent golden anthers throughout the flower. Blooms very large, often seven to eight inches in diameter on established plants. Profuse bloomer. Very desirable. A remarkable landscape flower. **A Brand Division \$2.00.**

**LA LORRAINE** (Lemoine) 8.6. Pink. A large flower, nicely rounded, with great broad petals beautifully arranged. Color, a soft even shade of creamy pink. In our opinion, this flower is not fully appreciated, for it is one of the choicest of all peonies and should rate well above 9.0. From our first observation of the flower, this has been our constant impression. When shown together with magnificent blooms of *Le Cygne*, *Therese*, *Kelway's Glorious* and *Mme. Jules Dessert*, we have seen blooms of *La Lorraine* which showed up equally beautiful; and we think it is just as good a flower. **A Brand Division \$5.00.**

**LA PERLE** (Crousse) 8.5. Pink. In selecting 25 peonies for our own planting, we could not exclude *La Perle*. When it first opens, the flower is a beautiful soft shade of pink which fades almost to pure white. Remarkably beautiful both in the opening bud and expanded bloom. **A Brand Division \$1.00.**

**LA ROSIERE** (Crousse) 8.3. White. Large flowers in clusters; straw-yellow at the center, shading to a creamy white border—this is indeed a striking variety. Pleasing fragrance. The flower is loose, showing a band of yellow stamens which light up the flower with a yellowish cast. **A Brand Division \$1.00.**

**LAURA DESSERT** (Dessert) 8.8. Yellow. This peony, *Premevere*, and *Fanny Crosby* are the three finest yellow peonies. The flower is round, of rose type. Guard petals creamy white, enclosing a dome-like center of pure canary yellow. Like *Fanny Crosby*, the plant is an upright grower, holding blossoms erect for good landscape value. Like all yellows, it must be developed inside away from the sun to preserve its color. **A Brand Division \$6.00.**

**LAURA VORIES** (Vories). Not yet rated. Pink. Like all the rest of *Vories'* new famous seedlings, this is a strong, robust plant. Flowers are large, delicate flesh-white, shading to a deeper pink in the center, with a few

central petals edged crimson. A beautifully formed peony. **A Brand Division \$7.00.**

**LE CYGNE** (Lemoine) 9.9. White. A flower of true rose type, perfect in form. Creamy white with no tracings of color. Strong, medium height stems; each one produces a perfect bloom. Flowers large and delightfully fragrant. *Le Cygne* is the highest rated peony and fully deserves its rating. Early midseason. **A Brand Division \$4.00.**

**LIBELLULE** (Dessert) 8.2. Pink. Very excellent flower, flesh color, slightly shaded and splashed carmine, straw and salmon at base; very pleasant fragrance. (Introducer's description). **A Brand Division \$5.00.**

**LILIAN GUMM** (Gumm) 8.8. Pink. A new flower of outstanding qualities, good enough to be repeatedly singled out from hundreds of varieties in the field. Very large, globular in form, rose type, with great broad petals, and a cupped center. Color, uniform apple blossom pink with more brilliant shadings at the base of petals. We are confident this is a coming flower. **A Brand Division \$2.50.**

**LIVINGSTONE** (Crousse) 8.1. Pink. A deep pink that comes into bloom just before *Grandiflora*. Blossoms very large, compact, perfect rose type. Center petals flecked with carmine. Not as fragrant as *Grandiflora*, but an extra good peony. One of the most satisfactory of the late pink peonies. **A Brand Division \$1.00.**

**LONGFELLOW** (Brand) 9.0. Red. Undoubtedly, most everyone considers *Longfellow* the best of all the reds for color. At the *Des Moines* show it appeared in seven of the winning collections. In the class calling for twenty red blooms of one variety, *Longfellow* was first. At the *Minneapolis* show, a few days later, this variety again won first in the same class. Equally striking in field and show room, as it neither fades nor darkens like most reds. **A Brand Division \$2.50.**

**LORA DEXHEIMER** (Brand) 8.4. Red. To us, the splendid habit and brilliant color of this plant have exceptional merit. We first selected it from the seed bed in 1904. Each succeeding year it has grown in our esteem. Color, intense flaming crimson. Early midseason. A variety that ranks with *Longfellow*. From all parts of the country, we have reports of the wonderful qualities of *Lora Dexheimer*. **A Brand Division \$1.00.**

**LORCH** (Goose & Koenemann) 8.7. White. Outer petals very large, pure snow-white, incurving over a pale lemon and cream center, with pale crimson tracings on edge of center petals. A plant of good habit; large, nicely shaped flowers, held well up. Blooms not only of splendid color but also of beautiful form. One of the very best of the G. & K. varieties; indeed a beautiful peony. A Brand Division \$4.00.

**LOVELINESS** (Hollis) 8.8. Pink. Produces very large, flat, hydrangea pink flowers; blooms of wonderful beauty. It is Hollis' best peony. Plants tall with heavy foliage and stems strong enough to hold the immense blooms erect. The flowers, a uniform shade of pink, make wonderful show flowers. A Brand Division \$1.00.

**LUETTA PFEIFFER** (Brand 1916) 8.7. Pink. Very large, semi-double, pinkish white. Foliage, large and clean; stems long and stout. Immense blooms are produced in great profusion. Petals are long, broad, of great substance; a pure hydrangea pink interspersed with just enough golden stamens to be beautifully fascinating. Blooms early. A Brand Division \$2.00.

**LUELLA SHAYLOR** (Shaylor). White. Midseason. Another very fine Shaylor variety with so much yellow in the white as to give the entire flower a distinct yellow cast. Wonderfully rich in appearance. A Brand Division \$5.00.

**MABEL L. FRANKLIN** (Franklin) 9.0. Pink. Outer petals a light pink with extreme center petals a darker pink. Short, creamy petals are intermingled near the crown of the flower, adding greatly to its beauty. Light margin of lavender on the inner petals. Delightfully fragrant. A Brand Division \$5.00.

**MADELON** (Dessert 1922). Pink. A beautiful silvery pink among the latest of Dessert's originations. Petals imbricated and slightly touched with carmine. A splendid late variety. A Brand Division \$7.00.

**MARIE LEMOINE** (Calot) 8.5. White. Has the most pleasing and pronounced fragrance of any peony. A sulphur-white, occasionally showing a carmine tip. One of the most beautiful of all peonies. Very late; it should be in every collection. A Brand Division \$1.00.

**MARIE CROUSSE** (Crousse) 8.9. Pink. A very attractive flower. Color, very delicate shell pink bordering on salmon. Stiff, upright stems. Fragrant. Midseason to late. A splendid variety, distinct in color from any other pink you may have. A most desirable sort for distant effect. Such a clear pure self color—it attracts the eye, even when blooming among a hundred different pinks. A Brand Division \$1.00.

**MARIE JACQUIN** (Verdier) 8.3. White. A flower with purest white guards; then a collar of yellow stamens surrounding a row of shorter pure white petals, then a tuft of yellow stamens, giving the flower a pronounced water-lily effect. One of the most dainty peonies in the list. The stems are erect, a clean light green, as is also the foliage. The flower is semi-double, held perfectly erect, and on young plants it often comes a beautiful single. A Brand Division \$1.00.

**MARTHA BULLOCH** (Brand) 9.1. Pink. Very tall, very large, late—one of the greatest of all peonies. We must judge peonies not alone by individual taste but by performance over a long period. The great peonies receive the awards at the large shows. The Northwest Peony Show is staged alternate years in St. Paul and Minneapolis. Outside of the National Show, it is the largest Peony Show in America, taken year after year. Here peonies from all varieties are shown at their best by expert showmen. The class that brings out the best flowers is the class that calls for ten vases, one each of ten varieties, three blooms to a vase. Into this class go the ten best vases of each exhibitor. Martha Bulloch is almost invariably in the exhibit that wins first. Bright

old-rose pink; center of lighter rose, and pink. Rose-like fragrance. Tall, straight stems. Immense blooms. The most beautiful peony of its size. A Brand Division \$4.00.

**MARY BRAND** (Brand) 8.7. No red peony ever won favor so quickly as Mary Brand. Always found among the winning reds in every show room. Comes into bloom with Frances Willard. Color so distinct, it is easily recognized by amateurs, no matter how often they see it in our fields. A rose type peony showing stamens. A red in which there is little trace of purple. One of the most satisfactory reds as a cut flower as it will last a week and hold right up stiff, if cut in the bud. A Brand Division \$1.00.

**MARY B. VORIES** (Vories) 8.0. White. A large rose type flower showing a few stamens. Opens a large, round, cup-shaped flower, flat on top. Pure white, with just an occasional faint tracing of carmine. Late. Very strong stems. A Brand Division \$5.00.

**MARY P. KING** (Franklin) 8.7. Pink. One of the good new varieties sent out in recent years. We first saw it on exhibition at the Northwestern Show three years ago and have studied it ever since. We regard it very desirable. Large, semi-double, crown type. Uniform light rose pink, shaded deeper at the center with crimson markings. A Brand Division \$3.00.

**MARY WOODBURY SHAYLOR** (Shaylor) 9.0. Pink. A very large flower of most refined beauty, borne erect on very strong dwarfish stems. Outer petals are a delicate light shell pink; central petals a yellowish creamy white tinted salmon. Very fragrant; a most beautiful sort. Midseason. A Brand Division \$3.00.

**MIDNIGHT** (Brand) 7.3. Dark red. Often called the "BLACK PEONY"—it is almost as dark as Mons. Martin Cahuzac, considered the darkest red. Medium early, preceding Longfellow. Flowers are large and borne on long, stiff stems. For a very dark red peony, order this variety. A Brand Division \$1.00.

**MILTON HILL** (Richardson) 9.0. Pink. A very beautiful flower of a delicate shade of salmon pink, resembling Walter Faxon. Seen in the show room in first class form, this variety is impossible to beat in its color. It received a rating of 9.0 with sixty-three voting. We can never supply the demand for roots. To obtain Milton Hill, you should reserve your stock of this variety. A Brand Division \$2.00.

**MINNIE SHAYLOR** (Shaylor) 8.9. Pink. Semi-double, large, midseason. Rather openly built, consisting of several rows of fluffy, crepe-like petals of clear, light pink, serrated at the tips of the central petals. Stamens very prominent, carpels green with pink base. A beautiful flower that will rank among the finest. A Brand Division \$10.00.

**MISS SALWAY** (Kelway) 7.8. Pink. The true Miss Salway is one of the most refined and beautiful peonies. Its low rating of 7.8 was an injustice and misfortune, as many had the old variety Solfatarre which they had bought for Miss Salway. The true variety is crown type, guards and center a delicate flesh pink with a creamy white collar of smaller petals, irregularly notched. Sweetest of fragrance; in every way a most desirable flower. A Brand Division \$4.00.

**Mlle. LEONIE CALOT** (Calot) 8.1. Pink. Typical rose type. Very delicate, rose-white, center of deeper shading, slight carmine tips. Fine form, medium height, rather spreading habit. Late midseason. A great favorite with many admirers. A Brand Division \$1.00.

**MME. AUGUSTE DESSERT** (Dessert 1899) 8.6. Rose. Very large flower, semi-rose type. Uniform violet rose, petals slightly flecked crimson. Erect, medium height, free bloomer. Early midseason. A Brand Division \$2.00.



*A Planting Scene on the Brand Farms*

**MME. de VERNEVILLE** (Crousse) 7.9. White. We feel this variety is much underrated. Flower large, very full, bomb type. Guard petals sulphur white; center petals rose white with carmine touches. Good substance. Stems, long and strong. An ideal cut flower. Pleasing fragrance. Comes into bloom after Festiva Maxima, and we regard it superior in beauty. **A Brand Division \$1.00.**

**MME. EDOUARD DORIAT** (Dessert-Doriat) 8.6. White. Loose, globular flower, large size with beautiful rounded petals, slightly tipped and penciled crimson on the edges. The outer petals reflex about a cupped center; stamens visible among the petals. Having watched this variety for five years, we regard it as one of the best flowers coming from Europe in late years. **A Brand Division \$5.00.**

**MME. EMILE GALLE** (Crousse) 8.5. Pink. Blooms of this variety are large, compact, flat rose type. Color, delicate sea shell pink with touches of heliotrope and lavender. Strong, medium tall plant; a free bloomer. Extra fine in the bud. Comes into bloom with the very late ones of which it is one of the best. Often mistaken for Tourangelle. **A Brand Division \$1.00.**

**MME. EMILE LEMOINE** (Lemoine) 8.9. White. A rare, beautiful peony; strong grower, free bloomer. Flowers very large, uniform in shape and size. Plant rather tall with strong erect stems. Bloom is very perfect in form, with large rounded rose-like petals of a tender glossy white, overlaid with a sheen of delicate satiny pink, covered with tiny dots of deeper pink. Petals of great substance. **A Brand Division \$1.00.**

**MME. GAUDICHAU** (Millet) 8.8 Red. Strictly a first-class red. Very dark crimson, it resembles M. Martin Cahuzac, although it's a much prettier plant. Flowers are large, loose, and stand the sun remarkably well. Late midseason. Stems are red; foliage both in the spring and again in the fall is of dark reddish color. **A Brand Division \$3.00.**

**MME. JULES DESSERT** (Dessert) 9.4. Pink. One of the finest of all peonies—flowers very large, well-formed, with long, broad petals. Blooms held rigidly erect on good straight stems of medium height. Color a creamy white, lighted with buff and salmon shades. A few golden stamens appear to beautify an already beautiful flower. Always among the main prize winners at the great shows. **A Brand Division \$2.00.**

**MONSIEUR DUPONT** (Calot) 8.3. One of the old standard peonies, always desirable. A glistening ivory white, with center petals bordered with carmine. Golden stamens mingled with the petals throughout the flower.

Deliciously fragrant, wonderfully prolific, a consistent bloomer. Appears just before Couronne d'Or. **A Brand Division \$1.00.**

**MONS. JULES ELIE** (Crousse) 9.3. Pink. One of the largest, most beautiful peonies; in fact, the largest of the globe type varieties. An immense self-colored flesh pink, shading a trifle deeper toward the base of petals. Great prominent broad guard petals enclose an immense ball of incurved narrow petals of the same color, all covered with an intense silvery sheen. **A Brand Division \$1.00.**

**MONS. MARTIN CAHUZAC** (Dessert) 8.8. A shade darker than Midnight or Prince of Darkness. If you wish the darkest red peony grown, order this one. Flowers medium to large, rose type, with stamens. Color a deep maroon red. One of the most earnestly sought peonies. **A Brand Division \$2.50.**

**MONT. BLANC** (Lemoine) 8.4. The stocks of this variety have been badly confused. Many do not have the genuine. We have incurred much expense to true up our stock so we know we have only the genuine. Milk-white with center slightly tinted rose. Large, very compact, globular flower, borne on stiff medium height stems. Very fine. **A Brand Division \$2.00.**

**MR. L. VAN LEEUWEN** (Nieuwenhugzan). Red. Outer petals very large and cupped; center petals form a beautiful rosebud center. Very tall robust grower; most profuse bloomer. Flowers very large, color of the Red Radiance Rose. Took first prize at Ft. Wayne National Show as best vase of twenty reds. Very striking. **A Brand Division \$7.00.**

**MRS. A. G. RUGGLES** (Brand) 8.3. Pink. Resembles Therese. When grown in the same row and in bloom at the same time, critical visitors have taken all the plants for Therese. Mrs. A. G. Ruggles should be disbudded to give the best blooms. In an occasional year, this variety is disappointing; then other years it is simply wonderful. In 1926 it was the finest flower in our entire fields. **A Brand Division \$1.50.**

**MRS. CHARLES GILBERT** (Shaylor). Pink. Large, loose, the exact color of Therese but it blooms later. Combines remarkable delicacy of color with exceptionally beautiful form. **A Brand Division \$5.00.**

**MRS. C. S. MINOT** (Minot) 9.2. Pink. Very large. Late. Guard petals large, flesh pink with coppery tints on outer surface; center incurved flesh white darkening to cream pink; a few golden stamens showing; occasionally a purple blotch. Semi-dwarf, strong stiff stems. Unusually good—we class it as one of the very best. **A Brand Division \$15.00.**

**MRS. F. A. GOODRICH** (A. M. Brand 1925) 9.0. Pink. Our estimation of this peony is constantly rising. Large, deep pink, great broad petals of splendid substance, arranged in the most perfect form, true rose type. Mr. Goodrich chose this flower in our fields to be named for his wife. Received an Award of Merit, London, Ontario, 1922. Very late. Fragrant. **A Brand Division \$25.00.**

**MRS. HARRIET GENTRY** (A. M. Brand 1925). White. One of the most refined flowers in the list. Another white of most perfect rose type. Petals very large, of the purest glistening white, arranged in wonderful perfection. Comparable to a perfect specimen of that wonderful flower, Mirielle. Mrs. Harriet Gentry invariably blooms well with flowers of utmost beauty, while Mirielle gives perfect bloom so seldom that we do not recommend it. **A Brand Division \$25.00.**

**MRS. JOHN M. KLEITSCH** (A. M. Brand 1925) 9.0. Pink. The flower that claimed everyone's attention the third day of the St. Paul-Minneapolis show. On the first day the buds taken to this show just started to open; the second day they were about half out; the third day they were in full bloom—the most remarkable vase of peonies in the whole vast room. Color a violet rose with distinct lavender cast. Petals long, broad, pointed, of great substance. Pleasing and perfect in form—a wonderful flower of true rose type. Very late; fragrant. Took first prize as the best flower in the entire show, 1928 Northwest Peony and Iris Show. **A Brand Division \$25.00.**

**NINA SECOR** (Secor) 9.0. White. Flowers medium to large. Tall, graceful, light green stems. Rather narrow, clean, light green foliage. Bloom absolutely pure white, of true rose type. Built high with a cupped rosebud center. Very fragrant. One of the very best pure whites. Much like Kelway's Glorious. For years we have watched this flower, greatly impressed with its wonderful qualities. Now in bloom on old established plants in our own fields, we are still more impressed and we venture that its rating will climb still higher. **A Brand Division \$5.00.**

**NYMPHAEA** (Thurlow) 8.8. White. Large flat flowers with wide, silky petals of delicate creamy white, notched at tips, edges somewhat rolled; yellow stamens in center reflect a golden light throughout. Fragrant. Midseason. Remindful of a water-lily only much larger and more beautiful than any water-lily we have ever seen. Very refined; a real addition to our growing list of good peonies. **A Brand Division \$2.00.**

**OCTAVIE DEMAY** (Calot) 8.5. Pink. A very early flesh pink. Collar has ribbon-like white petals; center a deeper pink than guard petals. Rather dwarfish plant, yet an excellent cut flower, as the foliage extends to the ground. In the delicate pinks, the best early cut flower. **A Brand Division \$1.00.**

**OFFICIALIS RUBRA** 8.6. Red. Large, round bloom of vivid crimson. The deep bright red peony of olden times. Earliest of all good peonies. Very desirable in this latitude; often in bloom on Memorial Day. The red "piney" of our grandmothers' gardens. **A Brand Division \$1.00.**

**OPAL** (Pleas) 8.5. Pink. Guard petals a delicate pink, fading to white; the center is opal pink. Tall vigorous plant; profuse bloomer. One of the daintiest and most beautiful of all Pleas' peonies. **A Brand Division \$1.00.**

**PERRETTE** (Dessert) 8.3. White. A beautiful flower borne in clusters. White, slightly tinged flesh and straw-yellow. Pleasing fragrance. A variety that must be seen to be appreciated. **A Brand Division \$2.00.**

**PETER PAN** (Hollis, 1907) 8.6. Double type; large; late. Irregularly cupped flowers of bright old-rose, opening flat, showing a fluffy center of yellow stamens mixed with long, shaggy petals, a few of which are edged red; moderate rose fragrance. Average height; floriferous; stiff, wiry stems. Foliage small and glossy. **A Brand Division \$2.00.**

**PHILIPPE RIVOIRE** (Riviere) 9.2. Red. Very fine bright crimson. Beautiful form, splendid in plant growth; most fragrant of the reds. Midseason. A fine show flower. No stamens. Most distinct in color of all the reds; not bright like Mary Brand or Longfellow yet it shows an absence of the purple which is so objectionable. The extremely beautiful form and uniform soft color makes a flower loved by all who see it. The true stock is very scarce; much spurious stock is on the market but ours is absolutely true. **A Brand Division \$10.00.**

**PHILOMELE** (Calot) 7.7. Rose. Medium size. Flat crown type. Guards bright violet rose; anemone center of amber yellow petals, changing to cream. As flower develops, a crown of bright rose appears in the center. Midseason. A strong, free bloomer, very desirable with much deep yellow in make-up. A very striking landscape sort. **A Brand Division \$1.00.**

**PHOEBE CARY** (Brand) 8.8. Pink. Much like Martha Bulloch. Introduced in 1907, it met such quick demand that our stock was almost gone before we knew. What we had for sale last year was gone before the season was over, and we were obliged to refund on late orders. A true rose type. Petals large, broad, of good substance, slightly cupped. Color a beautiful rose pink with center slightly deeper in shade. Pleasing fragrance. Late in season with Marie Lemoine. Tall plant; abundant clean, light green foliage. **A Brand Division \$3.00.**

**PHYLLIS KELWAY** (Kelway) 8.8. Pink. Very large, loosely built, the most exquisite beauty. Color deep lavender flesh with long rays of lighter lavender playing the length of the petals through the deeper colors. A row of broad petals surrounds a loosely built cup-shaped center of long narrow petals intermingled with conspicuous yellow stamens. Long, stiff stems hold blossoms erect—a gorgeous beauty in the rays of sunlight—one of the most brilliant and striking peonies in the list. **A Brand Division \$6.00.**

**PIERRE DUCHARTRE** (Crousse) 8.2. Pink. Beautifully formed globular flower, often mistaken for La France. Beautiful symmetrical form with great broad rounded petals; true rose type. Color a pale lilac flesh with glossy reflex, bordered with silver. We have always considered this peony as not being fully appreciated and much underrated. It is in a class with Reine Hortense, Livingstone, La Perle, etc. **A Brand Division \$1.00.**

**PRESIDENT WILSON** (Thurlow) 9.3. Pink. A large flower, on very stout stems of medium length. A very pleasing soft pink changing to shell pink, the guards sometimes showing crimson markings. Asked to examine a private show of wonderful peonies staged by Mr. E. C. Shaw, I was asked to pick out the best vase of flowers without looking at the labels; and my choice was a vase of President Wilson. One of the great peonies. **A Brand Division \$10.00.**

**PRIDE OF ESSEX** (Thurlow) 8.9. A delicate light pink, blooming in midseason. Tall plant, vigorous and free blooming. Large, loose, rose type flower—a very fine variety. **A Brand Division \$3.00.**

**PRIMEVERE** (Lemoine) 8.6. A fine yellow peony. Guard petals creamy white, enclosing a central ball of sulphur yellow. If cut in the bud, as it begins to open, so the flower may develop away from the sun, it will hold a clear yellow color, very beautiful. **L.D. \$2.00.**

**RACHEL** (Lemoine) 8.3. Pink. Not to be confused with another bearing the same name originated by Terry. This is a tall-growing variety, with long, straight stems. Color a beautiful shade of soft pink with salmon shadings. Late midseason. **A Brand Division \$2.00.**

**RAOUL DESSERT** (Dessert) 9.0. Pink. Large, globular, high built, with long broad petals. Flowers perfect in form with pleasing fragrance are borne on tall stout stems. Color much like Walter Faxon and Souv. de Louis Bigot only more brilliant with shadings more marked. A much better plant and performer in the field than either. **A Brand Division \$4.00.**



*Reine Hortense*

**REINE HORTENSE** (Calot) 8.7. Pink. A showflower usually found in the winning classes. Sometimes sold under the name of President Taft. Tall growing, it produces lots of large perfectly-formed flowers on long, stiff stems. Color a uniform hydrangea pink, minutely splashed on a white background; also prominently flecked with crimson. Truly a wonderful flower—we can seldom supply the demand. **A Brand Division \$1.00.**

**RENEE MARIE** (Dessert) 8.4. White. A flower very elegant in form, soft flesh pink, shaded salmon, fading to silvery white, flecked with carmine. Good strong stems. Very erect. Free midseason bloomer. **A Brand Division \$3.00.**

**REV. H. TRAGITT** (A. M. Brand 1928). White. Very large, of true rose type. Great blooms of the most perfect form resemble large balls of snow; pure white. The dwarf plants with strong stems hold the great white blooms erect. Very sturdy, even growth—planted in rows, they present a remarkable sight when in bloom. So profuse, the blooms cover the whole plant with a solid mass of white. Usually pure white, yet occasionally a faint trace of red shows on an inner petal. Globular in form; great broad snow-white petals of great substance. Very distinct. **A Brand Division \$10.00.**

**RICHARD CARVEL** (Brand) 8.8. Red. An early crimson parallel to the pink Mons. Jules Elie. With its extra early blooming qualities, large size, and splendid habits, this variety is already a well-established favorite. The demand is increasing so rapidly, we advise you to order early. A single plant on the lawn is attractive and delightful, beautiful and lasting. A valuable cut flower. The best of all early dark reds. Unlike most reds, the odor is pleasant and pronounced, a very rare quality in the reds. **A Brand Division \$1.50.**

**ROSA BONHEUR** (Dessert) 9.0. Pink. A very fine midseason flower. Color, light violet rose with guard petals flecked crimson. Erect, medium strong grower. Flowers are large, flat, of rose type. **A Brand Division \$2.00.**

**ROSE SHAYLOR** (Shaylor 1920) 9.1. Very large, mid-season, pale flesh pink, tinted rose-pink. Creamy yellow at the base of petals; center petals strongly marked at the edges with crimson. Tall, strong, free flowering; stiff stems. Good foliage. **A Brand Division \$10.00.**

**ROSETTE** (Dessert) 8.8. Pink. Pretty flower of fine shape like a Captain Christy rose, silvery flesh shading to a salmon at base of petals and flecked crimson on the edges. A splendid variety of erect habit. **A Brand Division \$2.00.**

**RUTH BRAND** (Brand) 7.9. Pink. One of the good early pinks; very large; bomb type. Prominent guard petals enclose a grand ball of compact center petals. Color, a uniform soft lavender pink splashed with a deeper lavender. Stems are tall, fine, and graceful, hold-

ing but a single bloom. Early midseason. Ideal to cut. A delicate, pleasing fragrance. We know of no other pink with such delicate blending of color. **A Brand Division \$1.00.**

**SARAH BERNHARDT** (Lemoine) 9.0. Pink. Another variety that prevails in the show room. So well known, it seems unnecessary to say that it should be in every garden. Semi-rose type. Late midseason. Color, apple blossom pink with each petal silver tipped. Agreeable fragrance. **A Brand Division \$1.00.**

**SHAYLOR'S DREAM** (Shaylor) 8.5. Pink. Variable in habit like Marie Jacquin. On young plants not thoroughly established, it may come single, but as the plant ages and matures the blooms come true semi-doubles of great beauty. Outer petals, a delicate flesh pink with cream white center petals, long and fringed, illuminated with a rich golden reflection from many conspicuous yellow stamens. We paid \$50.00 for a very small one-eye division as a start. **A Brand Division \$5.00.**

**SILVIA SAUNDERS** (Saunders) 8.7. A beautiful little flower reminding of a semi-double wild prairie rose. Semi-double blooms open out flat slightly cupped. Around the edge is a double row of wide rounded rose-colored petals which in turn surround a central cluster of short stamens with delicate light green carpels, tipped bright pink. Delicately beautiful—a peony masterpiece. **A Brand Division \$7.00.**

**SOLANGE** (Lemoine) 9.7. Pink. Color a deep orange salmon, or Havana-brown at the heart, overlaid with a delicate, tender, rich cream. Rose type. Midseason. A splendid variety. **A Brand Division \$2.50.**

**SOUVENIR de LOUIS BIGOT** (Dessert) 9.1. Salmon pink. Color, a brilliant rose, slightly tinted carmine at the base, turning to a salmon pink. Resembles Walter Faxon in color but stands up much better in the field. **A Brand Division \$2.00.**

**STANDARD BEARER** (Hollis) 8.5. Pink. Color, light violet rose. Resembles Mons. Jules Elie. Medium tall plant; strong, stiff stems; very free bloomer. **A Brand Division \$2.00.**

**STRASSBURG** (Goos & Koenemann) 8.4. Pink. Rose. Very large bloom; exquisite form. Flowers very large, loosely built, semi-rose. Petals very large, broad, delicate lilac-rose. This German firm has sent out many beautiful peonies, all distinct, but in their entire list this is one of the best. Stock of this variety is very scarce. **A Brand Division \$2.00.**

**THERESE** (Dessert) 9.8. Pink. Very large; somewhat loosely built; long narrow pointed petals. Plant of medium height with strong stems. Usually produces large typical flowers, even on one-year plants, if they are allowed to bloom. Prolific with blooms of immense size and ravishing beauty. Beholding Therese for the first time, people stand spellbound at a new revelation. Truly there is no peony more beautiful—it is comparable to Le Cygene, Solange, and Kelway's Glorious. Color, uniform light violet rose shading to lilac white at the center. With seventy-one voting, this variety rated 9.8. **A Brand Division \$3.50.**

**TOURANGELLE** (Dessert) 9.4. Pink. Rose type; late midseason; a vigorous grower, bearing large high-built flowers with cupped centers. Color, delicate pearly white, suffused with shades of delicate salmon and La France rose. In discussing which are the very best peonies, we never hesitate to place this one among them. **A Brand Division \$1.50.**

**VENUS** (Kelway) 8.3. Pink. Especially good as a cut flower. Both buds and foliage are clean. Flowers of medium size; compact; pale hydrangea pink. Large petals. Tall growing; a very free bloomer. **A Brand Division \$1.00.**

**VICTOIRE de LA MARNE** (Dessert) 8.2. Red. Mid-season; a large globular flower; brilliant dark crimson with a silver reflex; intense in color, very striking. A loosely formed flower with strong, vigorous stems. No matter what critics may say of the color, this flower is one that always attracts much attention both in the field and show room; it is almost universally admired. **A Brand Division \$1.50.**

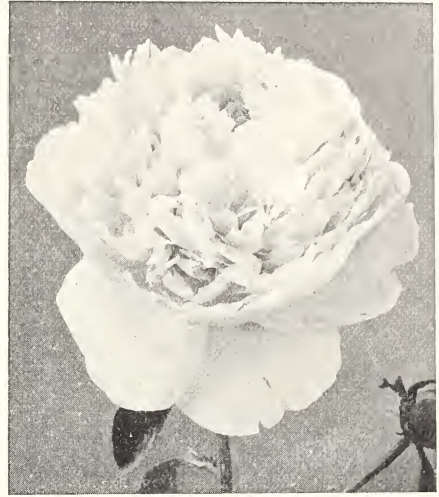


**WALTER FAXON** (Richardson) 9.3. Pink. A remarkable flower, at its best in the show room. Cut in the bud, held in a dark cool room for a day or two, then brought into the light—it develops as a flower of wonderful coloring and exquisite beauty. Color, the most vivid of all pinks, the only “real pink” as someone has said. To anyone acquainted with its color, a mere glance over the show room will disclose every vase of this beautiful flower. Flowers medium size, attractive in form. In the fields it does not hold up as well as *Souv. de Louis Bigot*, to which it is similar in color. Unique for show purposes or home decoration. **A Brand Division \$2.00.**

**W. F. CHRISTMAN** (Franklin) 8.8. Pink. A beautiful flesh pink. Flowers of fine form, rose type, very large, and double. Fragrant. **A Brand Division \$2.50.**

**WINNIFRED DOMME** (Brand) 8.3. Scarlet Red. No matter how many good reds you have, you will still want Winnifred Domme. Unlike most reds, it has practically no purple; the nearest scarlet of all peonies. The plant is dwarfish but stems are strong and erect, each producing a single bloom. In the next symposium, we believe this variety will be rated 9.0 or better. **A Brand Division \$1.50.**

**WM. PENN** (Brand) 7.9. Pink. A variety producing such immense blooms that the strong stems need support to keep the blossoms off the ground. When well supported, it is a splendid variety for landscape work. Color, a light rose, changing to a more delicate rose at the edges of petals, which are notched. Plant of medium height; strong grower; a lavish bloomer. One of the sweetest perfumed of all peonies. **A Brand Division \$1.00.**



*Sarah Bernhardt*

## Good Single Peonies

Few people are familiar with the beauty of the single peony. When we see a good one, we often think it is prettier than the doubles because of its delicacy and wonderful substance. For both house decoration and garden effects, the single peony has an artistic value different from the double form. The main bud opens first; but before it has passed its prime the lateral buds also open, making the plant a mass of bloom. The singles hold well both in wind and sun. They survive heavy winds and rains apparently better than the doubles. They come into bloom at least a week before the earliest doubles. This

lengthens the peony blooming season. In the past, many have hesitated to order the singles because they were expensive, and they could buy the more massive doubles for less. But we have greatly reduced our prices on singles, having multiplied our stocks, and we now offer the very best of the single varieties at prices within the means of all.

In our one single collection, we have placed four splendid varieties which we know will give satisfaction. Those who have grown these four are constantly increasing their collection of singles.

## Our List of Singles

**ALBIFLORA** (The Bride) (Dessert 1902) 8.4. White. Very large. White with long yellow stamens. Tall, fragrant, very early. Free blooming in clusters. A third larger bloom than the ordinary *Albiflora*. Identical with *La France*. **A Brand Division \$1.00.**

**DARKNESS** (Brand 1913) 8.2. Red. Large; very dark, maroon with darker markings in lower half of petals, surrounding a bold cluster of golden stamens. Tall, strong stems. Good bloomer. Very early. Ideal for cut flowers because of its charming blend of color and delightful fragrance. **A Brand Division \$2.00.**

**DEPARTING SUN.** Red. There are two peonies of this name; one a single, the other a Japanese. This is the single. A bright attractive red. The petals, of great substance, hold up well after cutting. Many singles do not hold their shape well after cutting but *Departing Sun* does. Very striking. **A Brand Division \$3.00.**

**EDITH WEST** (Brand 1920). White. Resembles *Albiflora* but comes into bloom later. The flower is not quite as large but the petals have more substance than *Albiflora*. **A Brand Division \$2.00.**

**FLANDERS' FIELDS** (A. M. Brand 1928). Red. Eight years ago in one of our seedling beds of many varieties, we noticed a most conspicuous red. Even from twenty rods' distance, this brilliant color stood out from all the others. The next season it was just as noticeable. The second fall we lifted and divided the plant for a three-year test, and last season completed its second three-year test. Every year, in every way, it has proven a splendid flower. A single of the most brilliant red. Two rows of petals surround a large prominent center of golden stamens. Petals of great substance stand out flat; rich and velvety in appearance. **A Brand Division \$5.00.**

**HARRIET OLNEY** (Brand 1920). Pink. Flowers large; petals long, broad and shapely. Color, a soft rose combined with attractive prominent yellow center. Medium length stems, perfectly straight, hold the large flower erect. Midseason. **A Brand Division \$2.00.**

**KRINKLED WHITE** (A. M. Brand 1928). White. First noticeable in the bud which resembles the bud of a pale pink tulip just ready to burst. The bud is comparatively small and beautiful in effect. As it opens, it expands into a large flower with great broad pure white petals, crinkled like crepe paper. A most beautiful effect. Stems tall, straight, slender but strong; clean light green. Splendid both as a show flower and field flower. Award of merit, *Des Moines National Show*. **A Brand Division \$5.00.**

**LA NUIT** (Shaylor) 7.7. Very rich dark carmine with an intense velvety sheen. Medium height stems, slender but erect. Medium size flowers; very pretty; they last well in the sun. **A Brand Division \$1.00.**

**LE JOUR** (Shaylor) 8.6. White. Very large; in fact the largest single white peony. Purest white with great heavy petals; center, an immense tuft of golden stamens. Strong upright plant holds the great blooms well erect when the side buds have been disbudded. This and *Krinkled White* are the two best white singles. **A Brand Division \$2.00.**

**L'ETINCELANTE** (Dessert) 8.4. Dark Pink. Very large flowers; decidedly cup-shaped; great broad petals of deep bright pink, heavily margined with silver; a large center of bright yellow stamens. Tall thrifty plant, wonderful as a landscape variety. **A Brand Division \$1.50.**

**MADLINE GAUTHIER** (Dessert) 8.5. Light Pink. Early midseason. Dessert is noted for his Singles. This is

*Toro No Maki (Jap.)**Albiflora (Single)**Harriet Olney (Single)*

a good specimen; a beautiful flesh pink of most perfect form. A Brand Division \$3.00.

**MABEKING** (Kelway) 8.2. Very large; midseason; smooth cupped guards of dark ruby red; center a great tuft of golden stamens with ruddy filaments; carpels nearly white. Wild mint-like fragrance. Tall; free blooming; bright dark red. A Brand Division \$3.00.

**MARGUERITE DESSERT** (Dessert 1913) 8.5. Pale pink. Medium size flower. Petal similar to the double, Asa Gray. Central tuft of golden stamens. Very desirable. A Brand Division \$3.00.

**MELLEN KNIGHT** (Brand 1920). Red. Tall, straight growing; strong enough to hold the flowers well up. Petals long, narrow, and evenly rounded on the edges, giving a beautiful effect both at close examination and from a distance. Color, a bright, rich crimson. Extra good. A Brand Division \$2.00.

**PERLE BLANCHE** (Dessert) 8.4. Large, early, mid-season. Very valuable for landscape effect because of its erect habit and lovely white flowers in beautiful contrast with an immense central cushion of golden stamens. A Brand Division \$2.00.

**PRIDE OF LANGPORT** (Kelway 1909) 8.9. Pink. An immense flower of brilliant, soft peach-pink. Wonderfully beautiful; retains its color in the sun almost a week after it opens; the finest light single. A Brand Division \$3.00.

**SCHWINDT** (Goos & Koenemann). Not yet rated. Pink. Blooms in clusters. Large silvery pink, beautifully formed. Excellent for landscaping. Stock scarce. A Brand Division \$1.50.

**WATTEAU** (Goos & Koenemann). Not yet rated. White. Large snow-white guard petals. Center flesh with a mass of golden stamens. Resembles *Albiflora*, the *Bride*, but comes into bloom much later. A Brand Division \$2.50.

## Laciniata

**Bright scarlet.** If you wish a splendid peony that will give you bloom about two weeks earlier than *Officinalis Rubra*, you must have this variety. It comes into bloom as early as the finely cut-foliaged peony, *Tenuifolia*. The foliage of this variety is not so fine as that of *Tenuifolia*, but is distinctly different from the *Chinensis* varieties. It is not so hard to propagate as *Tenuifolia*, and we feel that it is just as satisfactory. The stock is very scarce and you will find it listed in very few catalogs. A Brand Division \$2.00.

## Collection of Singles

Edith West—White .....	\$2.00
Harriet Olney—Soft rose pink with prominent yellow center .....	2.00
Marguerite Dessert—Pale pink with golden stamens .....	3.00
Mellen Knight—Bright rich crimson .....	2.00

A TOTAL VALUE OF .....

Special Combination Price **\$6.00**

# Japanese Peonies

**AKASHIGATA** (Japan). Bright rose. A new Japanese variety not yet rated. After growing it about five years, we consider it very satisfactory. Guard petals a bright rose, surrounding a heavy center of filamental petals of bright pink bordered with gold. **A Brand Division \$2.00.**

**ALMA** (Shaylor) 8.5. Pink. Guard petals a delicate pale pink, enclosing a mass of incurved golden petaloids. Resembles a Chrysanthemum with incurved petals. **A Brand Division \$1.50.**

**ALTAR CANDLES** (Pleas) 8.0. Flesh Pink. Very nicely shaped; an evenly formed row of delicately colored flesh pink petals, surrounding a center of completely transformed narrow filamental petals which open cream-white. Very floriferous; one of the most dependable Japanese Peonies. **A Brand Division \$1.50.**

**AMA-NO-SODE** (Japan) 9.2. Very large. Midseason. Flower has two rows of long widespread petals of rose-pink, forming a saucer-like cup about an immense center of long yellow staminodes with flattened, crinkled tips, stained with rose. **A Brand Division \$6.00.**

**EXQUISITE** (Japan 1912) 8.9. White. A large row of pure white guard petals surround a larger center of white filamental petals bordered with yellow. A splendid variety. **A Brand Division \$3.00.**

**FLAMBOYANT** (Japan) 8.5. Violet Crimson. Large; very evenly shaped petals. Color, just a trifle lighter shade than King of England. Center filled with partially transformed staminodes; light yellow edged with gold and red, same shade as outer petals. Also known as Kame-No-Kegoromo. A splendid flower. **A Brand Division \$1.50.**

**FUJI-ZOMO-GORONO** (Japan). A great delicate colored pink that is very scarce. We bought our first stock years ago; and, while building this up, we have not cared to offer much of it for sale. We have just enough now to offer a very few roots this season. A wonderful pink. **A Brand Division \$3.00.**

**FUYAJO** (Japan) 9.2. We first saw this grand variety at the National Peony Show at Cleveland, being greatly impressed with its beauty. A single row of rich, dark mahogany red petals surround a full center of broad petaloids of the same dark rich color as the outer petals. Very striking. **A Brand Division \$5.00.**

**KAME-NO-KEZOROMO.** Same as Flamboyant.

**KING OF ENGLAND** (Kelway) 8.6. Red. A very fine Japanese peony. Large petals of great substance, uniformly rounded, beautiful in form. Color, a rich uniform shade of deep red. Center, a large tuft of long self-colored petaloids, prominently edged with gold. **A Brand Division \$2.00.**

**OHANAGASA** (Japan). A splendid Japanese flower with distinct color effect. Guards are rich violet red; staminodes cream white, rose red, and gold. **A Brand Division \$2.00.**

**PRINCESS DULEEP SINGH** (Kelway) 8.7. Guard petals are broad, of a soft shade of deep wild rose. Center a spherical tuft of partially transformed rose and gold staminodes. The flower is large; holds up well as a cut flower. The tall, strong plant with dark green foliage is also attractive. **A Brand Division \$3.00.**

**RASHOOMON** (Japan) 8.7. This flower attracts much attention in our field, not only for its beauty but also the pleasing appearance of the plant. Clear, glossy green foliage; leaves pointed and crinkled; plant very symmetrical; one of the best peonies for landscape planting. Large blossoms; outer row of petals a deep rose red, surrounding a large tuft of crinkled golden filamental petals. **A Brand Division \$3.00.**

**SOME-GA-NOKA** (Japan) 9.0. The highest rated red Jap. Guard petals are a rich dark, velvety red. The center is a ball of golden yellow staminodes partially transformed and streaked red. This dark red and King of England, which is brighter, make two splendid red Japs for any garden. **A Brand Division \$4.00.**

**TAIHO** (Japan). One of the new varieties imported from Japan. Not sufficiently distributed as yet to receive a rating by members of the American Peony Society. Broad guard petals, clear soft pink; a large central tuft of creamy yellow. One of the fine pink Japanese. **A Brand Division \$1.00.**

**TAMATE-BOKU** (Origin unknown) 9.4. Generally considered the finest pink Japanese peony. Flowers unusually large; stems strong; medium height; faintly fragrant. **A Brand Division \$15.00.**

**TOKIO** (Origin unknown) 8.9. An excellent Japanese variety with flowers somewhat smaller than Tamate-Boku. Plant taller than that variety, but in other respects similar. Color old-rose pink. **A Brand Division \$2.50.**

**TORO NO MAKI** (Japan) 9.0. White. One of the finest of all the Japanese peonies. Midseason. A double row of lilac white guard petals surround a center amber yellow. Very striking in the field and for cut flowers. **A Brand Division \$5.00.**

**TORPILLEUR** (Dessert 1913) 8.0. Rose Red. A large fine, splendid flower, held rigidly erect on long stiff stems. Guard petals deep rose red; center petals same color tipped with cream. Distinctly different from all other Japs. **A Brand Division \$2.00.**

## Japanese Collection "A"

King of England—One of our best red Japanese peonies.....	\$2.00
Alma—Delicate Rose-pink .....	1.50
Akashigata—Deep Carmine-rose .....	2.00
Exquisite—Purest white, center sulphur yellow.....	3.00

A TOTAL VALUE OF.....\$8.50

This Collection in Strong 3-to-5 Eye Divisions, Only **\$6.00**

## Japanese Collection "B"

HIGH 9

9.0 Some-Ga-Noka—Rich dark red.....	\$ 4.00
9.2 Ama-no-Sode—Bright rose pink.....	6.00
9.0 Toro-no-maki—Blush white, fading to pure white.....	5.00

A TOTAL VALUE OF.....\$15.00

This Superb Collection Now for **\$12.00**



Down go the price bars on

# 10 EXCLUSIVE PEONIES

Never Before Listed For Less Than \$50 Per Root

The ten highest rated new peonies ever offered at one time by the Originator.

## BRAND'S NEW PEONIES

In the fall of 1899 we began the work of producing new peonies. That fall we planted four quarts of peony seed from which we produced such varieties as Mary Brand, Frances Willard, Chestine Gowdy, Henry Avery, Phoebe Cary, Martha Bulloch, Richard Carvel, Lora Dexheimer, Longfellow, Winnifred Domme, Luetta Pfeiffer, and Judge Berry.

Every year thereafter, we have planted peony seed in our fields where we are constantly producing new varieties of superlative beauty.

In the summer of 1923, we displayed an unusually fine collection of new peonies at the National Peony Show, held that year in St. Paul-Minneapolis. Even until now, that remains the greatest peony show ever staged throughout the world. The display occupied the entire floor space of the great Hippodrome Building on the State Fair Grounds.

Our display of seedlings was judged by the late Bertrand H. Farr of Wyomissing, Pennsylvania; the late E. H. Schwartz of Washington, D. C.; and Harry F. Little of Baldwinville, New York. To one of our seedlings, Mrs. A. M. Brand, the Committee awarded a Gold Medal. To another of our seedlings, Myrtle Gentry, the Committee awarded a Silver Medal. They proclaimed the collection of seedlings the greatest display of new peonies ever displayed at one time by an originator. These new seedlings were of

such outstanding merit that we immediately booked orders for 110 roots at \$50.00 each or a total of \$5500.00; a unique feat in peony history.

That was in 1923. We did not deliver any of these peonies until the fall of 1925. Up to this time we have never sold any of them for less than \$50.00 per root.

From the origin of their development, we have now had these peonies under our observation for more than fifteen years. We have had them in our private showroom all these years, side by side with the greatest show peonies of the world, and we can honestly say that at least five or six of these new varieties are easily at par with the very best; they will eventually rate 9.5 and better.

Now we have multiplied our stocks so that we can offer these peonies for sale at modified prices. This made occasion for us to consult the Manual of the American Peony Society for their official ratings. In doing so, we find an amazing situation which we had never before stopped to realize:

While there now remains only two of these peonies as yet too new to be rated (President Coolidge and Mrs. Deane Funk, both of which we rank among the finest seedlings we ever produced) there is NOT A SINGLE PEONY IN ALL THIS EXCLUSIVE LIST WHICH RATES BELOW 8.9; THEY ALL RATE FROM 8.9 TO 9.6 INCLUSIVE!

No other offering of new peonies ever made could show 10 varieties rating 8.9 and above. We have never voted on the rating of our own peonies; but, should we vote, we would place Victory Chateau-Thierry (the only one of the ten that rates below 9.0) among the five highest rated peonies we have ever produced.

The entire list of these ten new peonies (which we will describe individually) includes: Ella Christiansen, Hansina Brand, Hazel Kinney, Mrs. A. M. Brand, Mrs. Deane Funk, Mrs. Frank Beach, Mrs. Romaine B. Ware, Myrtle Gentry, President Coolidge, and Victory Chateau-Thierry.

## Special Offer of Brand's New Peonies for Fall of 1931

Each root, of course, a real Brand Division

Any one of these New Brand Peonies.....	\$ 25.00
Any five of these New Brand Peonies.....	75.00
All ten of these New Brand Peonies.....	100.00

## Descriptive List of Brand's New Peonies

**ELLA CHRISTIANSEN** (A. M. Brand 1925) 9.0. Pink. Although not so deep a pink as Blanche King, Ella Christiansen is so distinct from the delicate pinks in coloring as to be a real acquisition. The flower is exceedingly large, both on the plant in the field and when handled as a cut flower. As a bloomer, it is probably the most profuse of this exclusive list. Petals are long, narrow, and heavily serrated on the edges. The flower first opens cup-shaped, then flat. Irresistibly appealing—Ella Christiansen receives the unbounded praise of every visitor. We like it better every year. **A Brand Division \$25.00.**

**HANSINA BRAND** (A. M. Brand 1925) 9.1. Pink. A flower of beautiful form and great size. Plant very tall and strong; holds the mammoth blooms erect. Color, glistening flesh pink with a salmon reflex shading toward the base of the petals. Very distinct. As it fades, it resembles a perfectly formed specimen of Solange, for which it is often mistaken in our show room. Yet Solange sometimes fails to develop its flowers at all or produces imperfect bloom, while Hansina Brand comes good every year. One of the very best of this particular group. **A Brand Division \$25.00.**

**HAZEL KINNEY** (A. M. Brand 1925) 9.0. Delicate pink. I can still remember this beautiful flower as it appeared on the plant the first time. The form was so superb and the color so pure; it impressed us at once as a flower of great promise, which it since has proved. A great show flower when displayed alongside the very best. True rose type. Color, a delicate, clear hydrangea pink. Medium height plant; clean, light green foliage; late mid-season; a prolific bloomer. **A Brand Division \$25.00.**

**MRS. A. M. BRAND** (A. M. Brand 1925) 9.6. Pure white. When this flower was a two-year-old, we were first attracted with its large, uniform, remarkable white blooms; the clean, thrifty, light green stocks; the luxuriant foliage. Blooms cut in the bud and taken inside develop in remarkable form. Opens a pure, glistening white; pure rose type; a large flat flower with prominent guards and petals of wonderful substance. Received the Gold Metal of the American Peony Society, St. Paul, 1923. Very late. **A Brand Division \$25.00.**

**MRS. DEANE FUNK** (A. M. Brand). Too new to be rated. Pink. Large and peculiarly beautiful in formation. The broad guards and half of the petals turn outward, gracefully downward, then up. Next is a distinct band of golden stamens as in Phyllis Kelway. Lighting up the entire flower, these stamens enclose a rosebud cup-shaped center of large incurving petals. Color, a Walter Faxon pink. Magnificent in the show room; holds up well as a cut flower; beautiful in the field. Among the five or six best seedlings we ever produced. **A Brand Division \$25.00.**

**MRS. FRANK BEACH** (A. M. Brand 1925) 9.0. Ivory White. A very large, flat, perfect rose type flower with long, narrow, lacinated petals of the same lacy effect as in Jubilee. Blooms equally large as Jubilee but borne finely erect on rather dwarfish plants with very strong stems. Much as we admire Jubilee, it is handicapped by a weak

stem. Mrs. Frank Beach is a glorified Jubilee. Deep cream, it fades but little even when developed in the field. Like Le Cygne, this variety develops a flower true to type even on a yearling. Blooms profusely as a two-year-old. Received an Award of Merit, American Peony Society, London, Ontario, 1922. Late midseason. Sweetly fragrant. **A Brand Division \$25.00.**

**MRS. ROMAINE B. WARE** (A. M. Brand 1925) 9.1. Pink. One of the most delicately beautiful peonies ever produced. First selected from the seed bed because of its striking beauty of form. True rosebud effect in the center, the petals radiating in peculiar fashion to give a pleasing effect to the entire bloom. Returning from the National Show at Boston, I stopped with my good friend Harry F. Little. Mrs. Romaine B. Ware was in full bloom. Of this wonderful flower Mr. Little said, "I think this one of the daintiest of all peonies in its perfect beauty." Exquisitely delicate; medium size; rose type. Medium height plant; profuse bloomer; midseason. Fragrant. **A Brand Division \$25.00.**

**MYRTLE GENTRY** (A. M. Brand 1925) 9.1. Pink. A plant of splendid growth and clean appearance holds the beautiful great flower erect and well above the foliage. Immense flowers of perfect rose form with great broad, nicely rounded petals of wonderful substance. Color, beautiful pink with tints of flesh and salmon. While all of these new peonies have a pleasing odor, this one is the sweetest; the fragrance of a tea rose. Awarded Silver Medal at St. Paul Show in 1923. **A Brand Division \$25.00.**

*(Descriptive list of Brand's New Peonies concluded on page 20)*



*Myrtle Gentry*

**A**DMIRED every summer by countless thousands of tourists on their way to the North Woods;

One of the principal scenic beauties of Southern Minnesota;

Surrounded by seemingly endless miles of golden, billowing wheat fields;

Gracefully adorning the Land of Ten Thousand Lakes along the upper Mississippi;

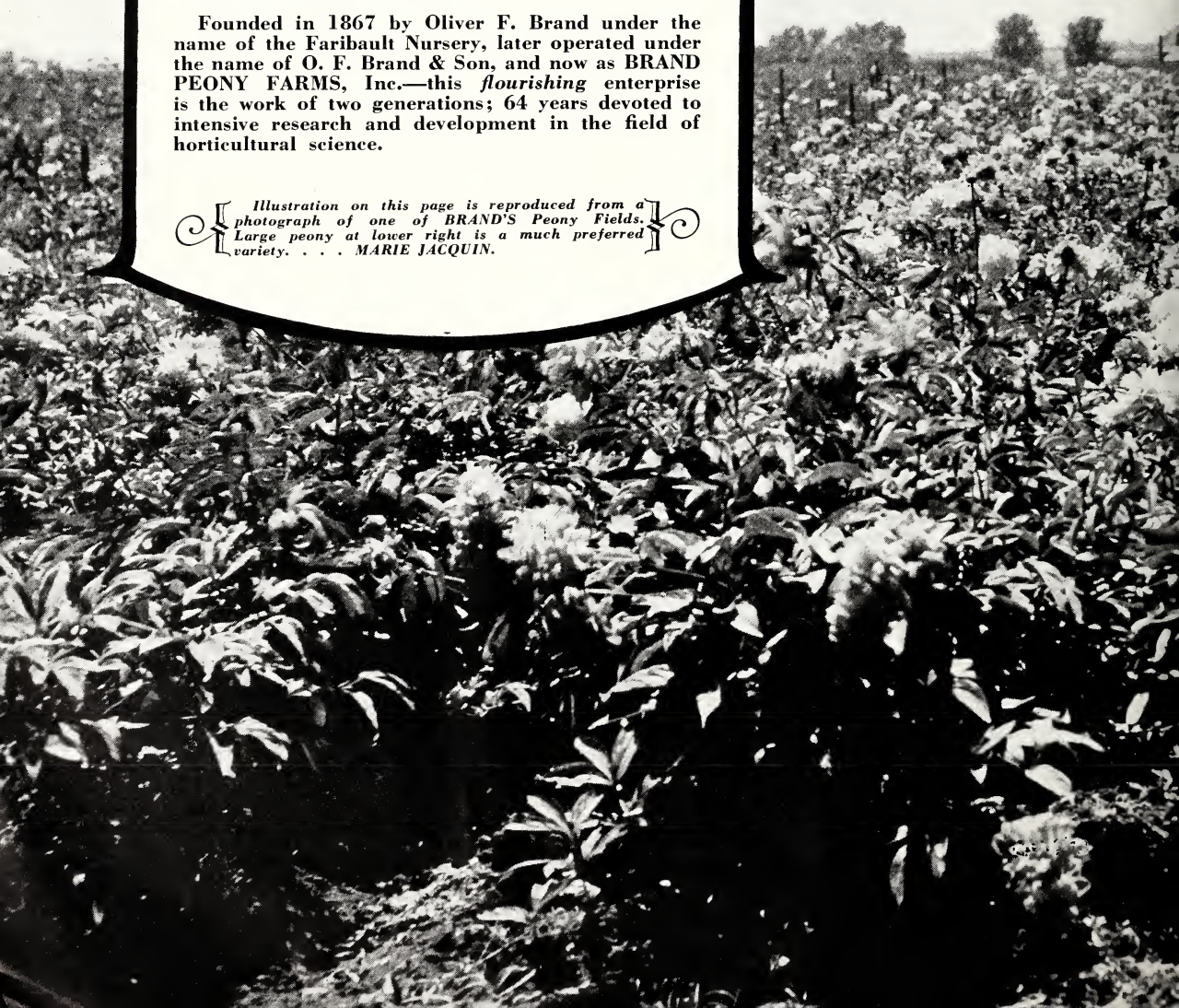
Here (as far as Peonies, Lilacs and other Perennials are concerned) lies the garden spot of the world—**BRAND PEONY FARMS, Inc.**

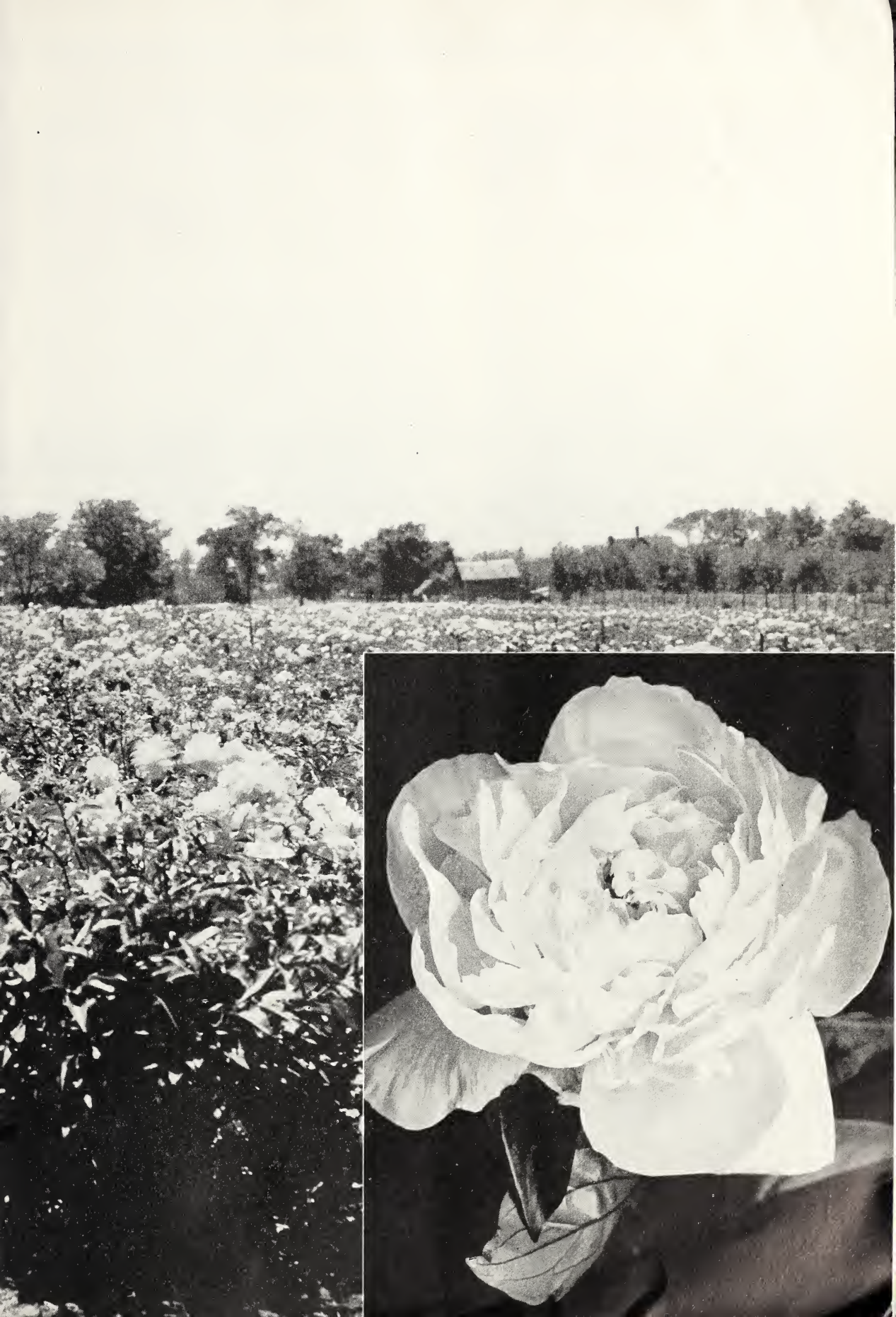
Imagine, if you will, a nursery of 240 acres—much larger than the average wheat farm—and nearly all flowers! For instance, 60 acres confined exclusively to the World's Finest Peonies!

But it's not only tourists who stop, pause, and marvel. Purposely to visit **BRAND'S** Annual Peony Show which is held every June, flower lovers from coast to coast come to Faribault . . . they come also from foreign countries to see the late developments and the new creations in Peony Culture . . . and peony enthusiasts, the world over, send to **BRAND'S** for strong, vigorous roots, productive of large and handsome blooms.

Founded in 1867 by Oliver F. Brand under the name of the Faribault Nursery, later operated under the name of O. F. Brand & Son, and now as **BRAND PEONY FARMS, Inc.**—this *flourishing* enterprise is the work of two generations; 64 years devoted to intensive research and development in the field of horticultural science.

*Illustration on this page is reproduced from a photograph of one of BRAND'S Peony Fields. Large peony at lower right is a much preferred variety. . . . MARIE JACQUIN.*







*Mrs. A. M. Brand*

(Descriptive list of Brand's New Peonies continued from page 17)

**PRESIDENT COOLIDGE** (A. M. Brand 1928). Too new to be rated. Pink. Large, beautiful flowers; a rather uniform lavender pink. Irregular petals in unique irregular formation. The prominent guards stand out from the rest of the flower; very attractive from a distance. The entire flower is climaxed by a striking rosebud effect. Blooms carried well above the foliage on strong stems. A late peony, remarkable both as a show flower and landscape variety. A Brand Division \$25.00.

**VICTORY CHATEAU-THIERRY** (A. M. Brand 1925) 8.9. Pink. Occasionally there appears in a seedling bed a flower so beautiful—either in form, color, or both—that the breeder recognizes at once a masterpiece. Such was Victory Chateau-Thierry. Having noticed its immense, pure, clean, pink buds just before they opened in the seed bed, I rose the next morning long before the sun to see the opening flower. As my eyes rested upon the five immense half-opened blooms, I realized that then and there a milestone was reached in peony history. At noon, when four of these blooms were fully open, I knew for certain that another peony, a great pink, had come to take its station with Le Cygne, Solange, Therese and Lady Alexandra Duff. This flower is so early that we have never been able to take it to a National Show. In our own show room, it bloomed in perfection in 1927 and easily outclassed all others, although it was shown alongside the world's highest rated peonies. A very large flower with immense, broad, evenly arranged, rounded petals of great substance; petals remindful of those on Lady Alexandra Duff. Bright clear pink. One of those outstanding flowers of which we have so few in peonies. A Brand Division \$25.00.

## Letters from Our Customers

### "WONDERFUL PLANTS"

Maywood, Ill., May 15, 1931.

I cannot understand how you can send such wonderful roots to everyone. It makes me feel that you're treating me especially nice, yet I know others receive just such wonderful plants too.—Mrs. R. J. McE.

### "YOU HAVE THE VERY BEST"

Sabbathday Lake, Maine, May 17, 1931.

Enclosed please find \$1.00 for which I would like sent to my address two roots of Bleeding Heart. I am getting these from you, as I know from experience that everything you have is the very best quality.—M. F. C.

### MUCH PREFERS OWN-ROOT LILACS

Harrisburg, Pa., Mar. 25, 1930.

I take pleasure in enclosing postage covering the Lilac which I recently received from you, and was very much pleased with the sturdiness of this plant. I personally wish to congratulate you upon the stand which you have taken in regard to selling "Own-Root" Lilac stock, as my experience with the grafted varieties has been most unsatisfactory. In my opinion, your position is the only correct one to take, and if the "Own-Root" plant costs twice as much as a grafted variety, it is cheap at the price and I believe the public will ultimately come to that conclusion.—C. H.

## Peony Supports

Every peony grower has felt the need of protecting his plants from damage by wind and rain, thus preserving their beauty throughout the entire blooming season. We know of no peony support on the market which is so simple yet so practical and strong as the

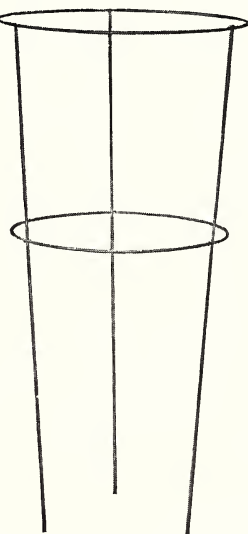
### Adams Support

These supports are made of No. 6 galvanized wire that will not rust. They are very substantial; and with ordinary care, they should last many years. If ordered ahead of time, they can be sent by freight, which makes the carrying charges very reasonable.

Special 6-gauge, 24-inch tops, 80 cents each. 12 for \$8.00.

Shipped by freight or express, F. O. B. Faribault, or factory. Send for prices where larger quantities are wanted.

*Brand's Peonies grow in spacious fields,  
From sixty acres! . . . gorgeous yields.*



*Adams Peony Support*



# New Improved French Lilacs

## *Far More Beautiful Than the Common Lilac*

The common lilac is one of the hardiest and longest lived of all the flowering shrubs. Old lilac bushes may be seen all about the city of Faribault, planted by the first white settlers when they came here nearly 90 years ago. These old bushes are large and thrifty; there is no apparent reason why they should not live still another seventy years to beautify the yards which they adorn. These are the old fashioned lilacs.

For many years hybridists have been at work improving the lilac. The most of this work has been done in France, and from there the great bulk of our improved lilacs have come. For this reason, these new lilacs are called Improved French Lilacs.

These new lilacs usually come to us propagated either on the root of the common lilac or on a root of one of the many varieties of privet. Neither of these understocks have proven satisfactory. The common lilac is a rapid grower and throws up many suckers from its roots. As a rule, these suckers grow more rapidly than the graft of the Improved Lilac and the result is that the choice lilac top is overgrown and choked out. Again, where privet is used as an understock—if the lilac is not planted deep enough so that the union of lilac and privet is at least a foot under ground—the privet root will kill out in the winter or, if it lives, it sends up privet suckers about the lilac top and proves a great nuisance.

Finding several years ago that good lilacs, propagated in either of these ways, were very disappointing in our cold climate—we set about to bring out the improved lilac on its own root. We find that we can work some varieties

onto their own roots very readily, while it is very difficult to grow others in this way. Some of these stubborn sorts seem to unite readily with the root of *Villosa*, a hardy lilac that seldom sends up any sprouts, and we are using this *Villosa* root where we are compelled to do so but not otherwise.

**Advantage of the Own-Root Lilac:** The lilac you buy from us is on its own root. If this lilac sends up a sucker, the sucker is the same as the bush from which it springs. It grows at the same rate as does the mother bush and when it blooms, the bloom is identical with that of the original plant of which it becomes a part.

We have never had any success with these new lilacs where they were on common lilac root and not more than 50% success where they were grafted on privet root, yet we have always had perfect success with Own-Root Lilacs, so we believe it is the only lilac to plant and to offer our customers.

Growing an Improved Lilac on its own root is a slow process. It actually takes us two years longer to produce a lilac of a given grade on its own root than it would take to produce the same grade on privet. Yet we insist on sending out only those lilacs that will prove satisfactory, so our customers can depend upon receiving only genuine own-root plants.

We have a wonderful deep rich alluvial soil; the soil in which the lilac revels. This contributes to strong thrifty tops with a large, well-balanced root system. This fall our stock will be unusually fine.

**How to Plant.** Lilacs can be planted either in spring or fall. If planted in the spring, it should be done very early before the buds start, but about October 1st is really the very best time for planting. To allow the French Lilac its natural spread, the plants should be set not less than eight feet apart. Dig a hole as large as a bushel basket. Fill back rich top soil and tramp down firmly until you can place the plant on this soil so that when roots are spread out naturally the crown will be an inch or two lower than it was in the nursery. Work the soil in carefully among the roots until the hole is half full; then tramp this down unusually hard. Then pour in a full pail of water. After this has settled away, fill the hole with loose mellow soil until it is rounding full; then tramp lightly. Keep plants well hoed.

**Fertilizers.** A lilac likes a sweet soil and responds wonderfully to applications of lime. Use four quarts of lime to a large bush each year. Any good well-balanced fertilizer can be used with good results.

**Pests.** Oystershell scale and the lilac borer are about the only enemies of the lilac. For oystershell scale, if affected, use a Miscible Mineral Oil Spray as a dormant spray just before the buds open in the spring. This must be done thoroughly while the scale is at its tenderest stage. Spray early in the day so the bushes will be dry by night. The lilac borer is best handled by prevention. If bushes are kept well cultivated and growing, there is but little borer trouble. Where the borer is at work, he may be taken and killed by running a small wire into the hole and twisting it around to accomplish this. One can also shoot carbon bisulphide into the burrow of the borer with a medicine or fountain pen dropper; then plug up the entrance with putty.

## Our Lilac Collection

We have over 150 kinds of the best lilacs. Whenever we hear of a new one, we buy it and try it out.



*Congo*

We bloom all of these in our trial gardens. In this way we can choose from the entire range of varieties, compare one with the other, and eventually retain the best.

We find some of the older sorts as good as the best of the new ones. These we retain. We find many superb things among the newer sorts. These we add definitely to our list. But we also find many of both old and new that we can do without. These we drop. It is our constant aim to keep an offering of New Lilacs as good as the best.

This fall we are offering an unusually fine list of French Lilacs. With but few exceptions they are all recent introductions. Since we offer no new lilac until we have it on its own root, we may not always offer these same lilacs as soon as those who grow them on privet.

If you were to try to write a description of the most beautiful sunset you ever saw, you would be in the same position that we are in today when we try, in this brief description, to convey the beauty of all the lilacs we offer. The best we can do is to give you the color, form, size, and type; leaving you to imagine the rest.

Remember, the following list are mostly new lilacs, all of the very best. They are own-root lilacs. New lilacs on their own root are decidedly scarce. If you want any of these for fall, place your order early. We do not have many of any one kind and they will not last long.

**BERRYER.** Semi-double, clear mauve interspersed with deep carmine buds. Large pyramid shaped panicles. Exceedingly pretty.

**BUFFON.** Single-mauve pink, Panicle medium to large. A decided pink.

**CONGO.** Immense, single, wine-red. This is the best Lilac of its color. I have asked many Lilac experts for their choice of the 12 most beautiful Lilacs and almost without exception, Congo is one of the first named. We place Congo among the six best of all lilacs.

**DE CAISNE.** Single. Panicle medium size. Color a clear azure blue with darker blue in center of floret and petals edged bright pink. Very attractive.

**DE SAUSSURE.** Double. Medium sized compact slender spike. Buds open deep wine red to a deep bright violet and fade to a light bright violet. A very distinct lilac.

**GEHEIMRAT SINGLEMARK.** Single. A medium lobelia blue. A very noticeable and distinct color.

**JULES SIMON.** Double. Very large compact panicle with very large individual florets. Immense bush. Bluish violet fading lighter blue.

**KATHERINE HAVEMEYER.** Double. Enormous flower. Cobalt blue, flushed mauve. One of the best lilacs.

**LEON GAMBETTA.** Double. Panicles of the greatest size. Buds and reverse of petals very pink, which gives the flower a general pink effect. Deep pink buds open into very double, little rose-like florets of the daintiest pink and lavender. We still say it's the finest of all lilacs.

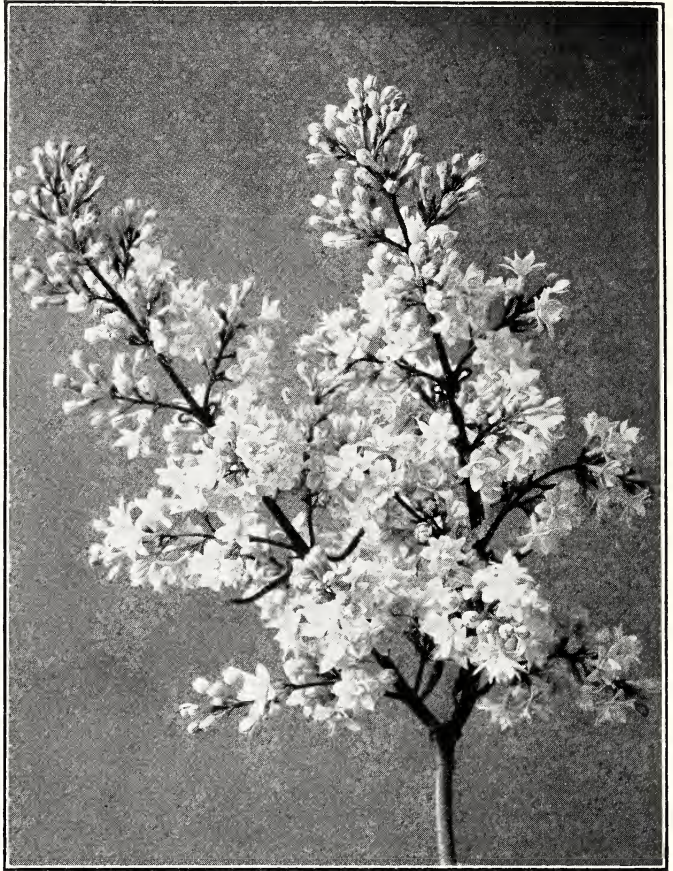
**L'ONCLE TOM.** About the darkest of all lilacs.

**MAURICE de VILMORAN.** Double. Panicle of medium size, slender, compact, very graceful. Blossom a very pleasing combination of colors. Buds a bright pink, gradually fade in the opening florets to a decided cream.

**OLIVER de SERRIES.** Double. Immense panicles made up of great large florets. One of the largest and finest of all the lilacs. For real quality this is one of the best. General effect of the bloom as it develops is a delicate blue. Splendid bush.

**PASCAL.** Single. Very early, true lilac color. (On *Villosa*.)

**PRESIDENT LOUBET.** Double. Panicles of largest size. Buds before they open develop into an intense red which gradually fades to an old rose as they open. Immense blooms.



*Alphonse Lavalle*

**REAUMUR.** Single. Violet-carmine. Panicles of immense size even on small plants. One 3 to 4 ft. plant had one great bloom this season (1931) 16 inches through by 16 inches deep. Very showy. (On *Villosa*.)

**THUNBURG.** Double. Very large, long slender spikes generally two to the panicle. Buds and reverse of florets a violet mauve. Florets large and open a light lilac. A very showy lilac.

**VOLCAN.** Single. One of the most robust and shapely growers of all the best lilacs. As near a true deep red as we have. The darkest of all our reds. Long, large, shapely panicles come up well above the foliage. They look rather open in the bud but as they develop they open into one of the finest, most shapely, and largest of all these lilacs. This variety is in such demand that we have but a few plants for sale. We class it right up with Congo, only it is a different red.

**WALDECK ROUSSEAU.** Double. A very large rather open panicle composed of large very double florets on many branches. Large flower and very fine. Deep violet fading lighter.

**WM. ROBINSON.** Double, yes, very double. A compact ball-like panicle with a whole lot of beauty crowded into a small space. Almost everyone picks this as one of the best. Buds and reverse of petals decidedly deep rose red; opening light lilac gives it a rose pink effect.

Most of the foregoing lilacs will come in nice 2 to 3 ft. bushes. Some will even run 3 to 4 ft. but as stocks run low a very few varieties will have to be 18- to 24-inch stock. Order early.

**Price, each, \$4.00. Any 6 for \$20.00.**

**Persian Lilac**

The Persian Lilac makes a most wonderful tall hedge or screen. It is wonderfully floriferous. It is graceful and carries its bloom all on the outside where it can be seen. It grows 12 to 14 ft. high if desired or can be kept trimmed down. We have it on own root in large quantities at 50c each; \$3.50 for 10; \$15.00 per 50; or \$25.00 per hundred for nice 3 to 5-ft. bushes.

**Most Sensational Lilac Offer Ever Made**

**10 Beautiful Named French Lilacs**

Among the new French Lilacs which we have been successful in propagating on their own root, there are ten choice varieties in which we have now multiplied our stocks sufficiently so that we can make an unusual offer. This offer comprises one each of these ten beautiful named French Lilacs in large 2- to 4-foot bushes—all grown on their own roots — all colors — all named and correctly labeled. A TOTAL VALUE OF \$13.50 as priced singly in the following list. All ten for only.....

**\$7.50**

The ten new named French Lilacs in the foregoing offer include:

**ALPHONSE LAVALLE.** Blue. Double. Tall, robust growing; makes a very shapely bush. Panicles long, broad, shapely, and compact. Opens an intense blue, but as the florets develop it changes to a beautiful shade of lavender. A wonderful bloomer. Splendid sort. **Each \$1.50.**

**CHARLES TENTH.** Red. Single. One of the most dependable of the red singles. Very thrifty. Begins blooming very young and produces great quantities of large, nicely shaped panicles. **Each \$1.00.**

**CHARLES JOLY.** Double. Purple red. One of the very best of the double dark reds. Bush medium both in size and height, limbs growing very upright. Rather large blooms, held erect well above the foliage; very striking. We consider this the best double red in our list. **Each \$1.00.**

**CHARLES SARGENT.** Double. Medium tall growing variety. Very shapely and vigorous plant. Color, a beautiful light lavender. Very double flower with florets; long narrow pointed petals. **Each \$1.00.**

**MARIE LE GRAYE.** Single. Pure creamy white. To us, this good single French Lilac is a special sensation. Panicles, very large and rather openly built. The individual petals and florets are very large. Blooms profusely, often as a two-year-old. Sells very readily at a good price as a cut flower. **Each \$1.00.**

**MME. CASIMER PERIER.** Double. Creamy white. Very thrifty. Produces a profusion of large size panicles; very double creamy-white flowers. Bush medium height, compact, with bright, light green foliage. Everyone should plant one of these beautiful lilacs. **Each \$1.00.**

**MONUMENT CARNOT.** One of the greatest of all lilacs. Panicles of immense size, from nine inches to a foot long. Florets large, semi-double. A clear light blue of a most pleasing shade. Finest of all light blue lilacs. Our stock is limited. **Each \$2.50.**

**PRESIDENT CARNOT.** Lavender. Double. One of the most profuse bloomers. Panicles very large, regular in form, rather oblong and compact. Florets very large in the bud. Back of floret deep reddish blue, center bluish violet. Very vigorous and dependable. **Each \$1.50.**

**SENATOR VOLLAND.** Pink. Double. Very floriferous. Very pretty with a large bloom somewhat open. In the bud the reverse of the petals shows a distinctly bright touch of pink which continues to show as the florets open, giving a very dainty effect to the bloom. Center of florets, pinkish light lilac. Very dainty. **Each \$1.00.**

**SOUV. DE LUDWIG SPAETH.** Single. Dark reddish purple. One of our oldest varieties among the better lilacs; it remains one of the most striking. Panicles very long, narrow and perfectly cylindrical. As the plant ages the bloom becomes profuse. Blossoms produced well on the outside of the foliage; very showy. **Each \$2.00.**

**Final Lilac Collection**

Naturally, the law of average cannot possibly regulate the demand for all lilacs so evenly as to prevent a surplus of some and a shortage of others. It is nothing unusual to find that the varieties in which we have a surplus include the very finest. To keep our stocks arranged in balanced quantities, we are willing to send these out at a special low price which provides for this Final Collection Offer:

Three Fine French Lilacs, All Different Colors, All Labeled, Our Selection

**\$2.50**



*Iris in the Border*

## Selected Iris

### *Why the Iris is so popular*

Nowadays every garden must have iris. There are many reasons for the growing demand. In the first place, iris are as beautiful as the rarest orchids; their form perhaps more distinctive, their coloring more varied. During recent years, many new varieties have appeared with wonderful new combinations of color. One may now enjoy all shades; from the palest lavender to the deepest purple, from the most delicate cream to the deepest gold. With pure white, delicate blue, deep blue, pink, rose, maroon and bronze—now, more than ever, the flower justifies its name, Iris, "The Rainbow."

There are also practical reasons why the Iris is so popular. It is inexpensive. New varieties are produced so quickly and they multiply so rapidly that even the recent varieties do not long remain expensive. Large stocks of the good old sorts are very cheap. Moreover, iris blooms quickly. Plants set out this year will blossom next, and they soon form large clumps. The rules to follow are few and easy:

**CULTIVATION.** Iris should be planted in a sunny location; and in dry, well drained soil. Unlike the wild flag, garden iris cannot stand water around the roots. Do not plant deep. The bulb or rhizome should be just below the surface. Spread out the roots and pack the soil around them. No fertilizer should touch the rhizomes. A very little, well-rotted manure may be applied to the surface of the ground. Bone meal and finely ground limestone are good.

Iris soon forms big clumps with masses of rhizomes and roots which are likely to rot. It is hard to keep grass out of these clumps. That is why iris should be taken up,

divided, freed from grass roots, and reset once in four or five years. The best time to plant or reset is just after the blooming season. July and August are probably the best months, but iris may be planted any time of the year when not in bloom or when the ground is not frozen.

**SUGGESTIONS.** The sunny side of a shrubbery hedge is a good place for iris. Unlike the peony, it is not likely to be robbed of moisture and food by the larger plants. It is especially beautiful with lilacs or Spirea Van Houttii as a background. All these bloom at once. The colors of the lilac harmonize with the iris, and both contrast beautifully with Spirea white.

As suggested in connection with peonies, iris is a good companion for peonies in a hedge which borders a walk or drive. First the two flowers may be alternated; later, when the peonies need all the space, the border may be widened and the iris moved to the front.

Clumps of iris are useful to give color in a border of herbaceous plants. After the blooming season the ragged tops of the leaves may be trimmed off so the foliage of surrounding plants will partially cover them.

For large grounds, extensive plantings of iris give wonderful effects. It may be planted in beds as borders of walks, drives or pools. Beds may be arranged also to form an iris garden—a month or more of joy.

Best results are obtained by planting groups of one variety together, so arranged as to harmonize with each other. For this reason, we offer a very low price on three of a kind.

ANY 35-CENT IRIS.....	.85c for 3
ANY 50-CENT IRIS.....	\$1.00 for 3
ANY 60-CENT IRIS.....	\$1.50 for 3
ANY 75-CENT IRIS.....	\$2.00 for 3
ANY \$1.00 IRIS.....	\$2.50 for 3

## Our Iris List

**ALABASTER** (Andr.). New, snow-white, fine form, wonderful texture. Edges slightly ruffled; beard nearly white with shadings of yellow. 36 inches. \$1.00.

**AMBASSADEUR** (Vim). In richness of coloring, fine form, and growing habits—truly one of the most beautiful of all irises. Standards smoky, reddish violet. Falls dark velvety purple-maroon. Very rich. 35c.

**AMBER** (Dykes). Called the best yellow iris to date. Uniform citron-yellow; delicate bronze markings on the haft. \$1.00.

**ANNA FARR** (Farr). Large flower with broad petals of good substance. Standards and falls purest white flushed violet blue. Most beautiful. 50c.

**ANN PAGE** (Hort). A beautiful lovely pale blue, rated one of the best in its color. Long, conical standards of a uniform light wisteria violet. Falls Bradley's violet. Resembles Crusader. 35c.

**APACHE** (Farr). A new and interesting color, Indian Red. Very taking and distinct. Standards coppery purple; Falls dark crimson-brown with heavy light brown reticulations on the haft. 20 inches. Strong growers. \$1.00.

**APHRODITE** (Dykes). A clear bright yellow pink self; no veinings to mar its beautiful color. Best of all so-called pink irises. 4 ft. \$1.00.

**ARGYNNIS** (Williamson). Granted an award of merit by American Iris Society. A tall true variegata, distinct in coloring. Standards strontian-yellow, narrowly margined Aniline yellow. Falls a solid, dark violet-carmine. Late midseason. 40 inches. 35c.

**ASIA** (Yeld). Standards pale lavender; Falls light violet purple. Both standards and falls of immense size. Taken all in all, this is a wonderful iris; many say it's the finest grown. 50c.

**AURIFERO** (Mohr-Mitchell). Standards palest lavender; Falls flushed rosy-lavender. Tall; brilliant golden beard; large flowers. 42 inches. \$1.50.

**BANDOLLERO** (Mohr). A distinctive light blue, beautifully veined. Tall, vigorous grower. 40 inches. 50c.

**BEN BOW** (Bliss). Standards and falls a deep, bluish violet, slightly ruffled effect; Beard white, tipped orange. 36 inches. Free flowering. 35c.

**BRANDYWINE** (Farr). Generally regarded the best of all Mr. Farr's irises. Standards and falls, light hyssop-violet; entire flower lit up by a prominent bright orange beard. Large flower of fine form. 50c.

**BRUNO** (Bliss). A Dominion Seedling. Very large looms; beautiful form; great substance. Standards, light purple with a yellow flush at the base. Falls, rich velvety deep violet. A preferred variety, now much used in producing new irises. \$2.00.

**CARDINAL** (Bliss). One of the most superb of the Dominion family. Standards, lavender overlaid with rose; Falls, rich raisin purple, very broad and rounded. Most striking; wonderfully rich. \$3.50.

**CANDLELIGHT** (Andrews). New. One of the most outstanding irises produced in recent years. Large flowers; pale pinkish lavender; illuminated by a rich golden glow. Very vigorous. We heartily recommend it. 48 inches. \$2.00.

**CAROLINE E. STRINGER** (Sass). Standards and falls, delicate light pink. Large flowers; petals beautifully frilled; bright yellow beard. 33 inches. \$1.00.

**CHALLENGER** (Jacob Sass 1930). Standards very large, overlapping, dark purple; Falls dark blackish violet. Flaring. White beard, tipped orange. One of the very largest intermediates. New. \$3.00.

**CHESTNUT** (Jacob Sass 1930). Standards cinnamon drab, ruffled; Falls cream, faintly dotted petunia violet with brown stripes on a yellow haft. A fine ruffled blend. New; distinct. \$3.00.

**CHIEF** (Jacob Sass). A large royal purple intermediate. Late. 22 inches. 75c.

**CONQUISTADOR** (Mohr). Standards lavender-violet; Falls, deep shade of violet with reddish-brown reticulation. Tall with fine foliage. Outstanding in size and height. Very vigorous. 36 inches. \$1.00.

**COPPERSMITH** (Shull). Handsome. Large flowers on tall stems. Standards crimson-purple; Falls Dahlia carmine. General appearance, rich coppery red. 42-inch. \$2.50.

**CRIMSON GLOW** (Perry). A large free-flowering variety of excellent form and substance. Strong branching stems. Wonderful landscape sort. Standards and falls, a uniform shade of brilliant crimson, tinted rose. 42-inch. \$1.00.

**DAMOZEL** (Mor.). Very fine shaped plicata. Standards blue-lavender etched; Falls white lavender, veined border. 34-inch. 50c.

**DIMITY** (Bliss 1919). Standards white, slightly veined mauve; Falls wide and long with finely veined lavender on upper haft. 36-inch. Different. 35c.

**DOLLY MADISON** (Williamson). Flowers up to 4½ inches high by 5 inches wide. A seedling of Lent A. Williamson, yet even greater in size. Our own favorite among the best iris. An immense mauvette-lilac pink of most outstanding quality. Unquestionably one of the best new ones. \$3.00.

**DOMINION** (Bliss). We paid \$45.00 for our first rhizome of this iris which we never regret. The first distinct advance in many years toward better iris. Standards bluish-violet; Falls rich Indigo-purple. Most perfect form, great size, gorgeous coloring. \$1.00.

**DOROTHEA K. WILLIAMSON** (Williamson). One of the very finest of the beardless sorts. A rich velvety blue-purple. Very distinct; it should be in every garden. Likes more moisture than bearded iris. 50c.

**DR. HIDERSHIDE** (Pfeiffer). A fine dark blue, almost uniform, heavily branched. Shows up wonderfully in mass either in field or inside. 50c.

**DREAM** (Sturtevant) 8.5. A very graceful tall-growing variety; vigorous growth; good bloomer. A uniform soft violet. Most delicate and pleasing color. Well branched stalk. 40-inch. 35c.

**DUKE OF YORK** (Perry). A flower of great size; vigorous grower. Branched stems over 4 feet high. Standards broad, cupped, bluish lavender; Falls drooping, same color, lit up by a bold orange beard. 50c.

**EDITH SCOVILLE** (Pfeiffer 1928). Self color. Standards and falls, a rich uniform purple wine color; beard bright yellow. Very hardy, thrifty, and profuse bloomer. Splendid in field and show room. 30 inches. 50c.

**E. H. JENKINS** (Bliss). A splendid grower both in the garden and show room. Standards light violet; Falls litho purple, shading lighter toward the edges. Low, well branched; many flowers in bloom together. 45 inches. 50c.

**ELIZABETH EGELBERG** (Egelberg). We have been greatly impressed with this beautiful new variety. Flowers of enormous size; one stem is enough for a vase. The general effect is pink. A vigorous grower. We heartily recommend it. 48-inch. \$10.

**ELSINORE** (Hall). A charming flower of primrose-yellow, bordered with purple. 36-inch. \$3.00.

**ESPLENDIDO** (Mohr). A very large iris, borne on tall well-branched stems. A rich-red-purple bicolor of great size. Quite distinct. 50c.

*Good character is quickly told;  
It prizes flowers more than gold!*



*A Suggestive Border Planting for a Drive to the Garage*

**EVENING GLOW** (Tuthill). Although a recent introduction, we feel this variety has great promise. The general effect is pale lavender-blue. Heavy orange beard. Excellent foliage. 36-inch. \$2.50.

**F. B. SCHERMERHORN** (Pfeiffer). A lavender blue self. Another fine new iris that shows up unusually well inside when displayed in masses. 50c.

**FLAMMENSCHWERT** (G. & K.). Largely regarded as the best of the blended bicolors, even better than Marsh Marigold, The Inca or Maori King. Standards a bright Empire yellow; Falls rich velvety deep brown; intense yellow border. Brilliant; very striking. 35c.

**FOLKWANG** (Goos & K.). Standards light bright pink; Falls Claret-red with brownish-yellow veinings. A wonderful blending of colors. Among the best of the very good irises produced by this famous firm. 50c.

**FRIEDA MOHR** (Mohr). Good enough in the originator's opinion to bear the name of his wife. A beautiful flower both in form and color. Unusually tall with clean foliage; ideal for either mass planting or for specimen flowers. A pink bicolor. Standards a light pinkish violet; Falls a deep lilac rose. 50-inch. \$3.00.

**FRITJOFF** (G. & K.). General effect, light purple. Standards lavender; Falls soft purple. Tallest of the intermediates. 35c.

**FRO** (Goos & K.). A brilliant rich colored variegata; one of the best in its color class. Standards Empire Yellow; Falls rich velvety Bordeaux; narrow yellow border. 24-inch. 35c.

**GEO. TRIBOLET** (Williamson). Deep violet standards, velvety red purple falls—a magnificent iris in quality and richness of color. 40-inch. \$1.00.

**GEO. YELD** (Perry). Standards light apricot, shaded rose; Falls rose-crimson, edged buff. 40-inch. Most beautiful. 75c.

**GEORGIA** (Farr) 8.3. General effect pink. Standards and falls phlox purple; light center; white beard tipped orange. 35c.

**GERMAINE PERTHUIS** (Millet) 9.1. Received a special award, Paris Iris Commission. General effect purple; Standards beautiful shade of violet-purple; Falls deep velvety rich violet. Fragrant. Thrifty. Highly recommended. \$2.00.

**GLOWING EMBERS** (Sturt.). Standards tan, slightly flushed violet; Falls rich velvety pansy-purple; conspicuous orange beard. Vigorous grower; considered one of Miss Sturtevant's finest. 48-inch. \$1.00.

**GOLDEN HARVEST** (Jacob Sass 1930). Standards olive yellow with a bluish sheen toward the haft; Falls yellow citron, haft sulphur yellow, striped white with a brown bluish sheen. Especially desirable, as it blooms both in the fall and in the spring. \$3.00.

**GOLD CREST** (Lykes). A beautiful blue violet with white beard tipped orange; lovely color. 35c.

**GOLD IMPERIAL** (Sturtevant). One of the finest of all yellow irises. A pure yellow self of beautiful clear coloring. A lemon-chrome-yellow of beautiful form on a thrifty vigorous plant. One of the few good yellows. 50c.

**HALO** (Yeld 1917). Standards a light violet; Falls a dull bluish violet. A vigorous grower of good habit. Resembles Lord of June. 35c.

**HARRIET PRESBY** (Presby). A tall vigorous variety, often with 50-inch stalks. Standards and falls soft petunia violet; white beard tipped orange. General effect reddish. 50c.

**IMPERATOR** (Cayeux). Large, late flowering, with cupped standards and straight hanging falls of raisin purple. Strong superb plant. 40-inch. 35c.

**JACINTO** (Berry). Standards light Lobelia violet; Falls Ageratum violet. Excellent. 44-inch. 75c.

**JACQUELINE GUILLOT** (Cayeux). Very large flowers of pure lavender blue. Stalks strong and well branched; free flowering; wonderfully fragrant. Very satisfactory. 36-inch. 75c.

**JAPANESQUE** (Farr). Standards white with streaks of lavender flecked violet; Falls deep violet with lavender edge. The six petals stand out horizontally like those of a Japanese iris; therefore distinctly different. 35c.

**JEAN CHEVEREAU** (Cayeux). New. Standards primrose-yellow, shading to buff; Falls cream stippled and edged red; yellow beard. Beautifully odd-colored. 50c.

**JUBILEE** (Sass). Standards a rich peach color; Falls creamy-white, dotted and veined light brown. Flower ruffled. 30-inch. 75c.

**JULIA MARLOWE** (Shull). A tall stately flower with pink tones of Chinese-violet and raisin purple. Large, Magnifica form. 40-inch. \$1.00.

**JUMBO** (Jacob Sass). Standards Vanderpool's violet; Falls mulberry purple with distinct brown stripes on haft. \$1.00.

**KASHMIR WHITE** (Foster). An unusually fine, large, pure white flower. Stems well branched. 48-inch. 50c.

**KATHERINE E. LEES** (Pfeiffer). White and delicate lavender; standards ruffled; fragrant, tall grower. Very beautiful. 35c.

**KING KARL** (Sass). A heavily ruffled richly colored plicata. Ground color cream, deeply frilled, dotted with a rich brown. Best of the Sass Plicatas. Award of Merit by American Iris Society. \$1.00.

**LABOR** (La-Boar) (Cayeux). Standards dark violet heliotrope; Falls darker shade than standards. General effect, reddish copper. A wonderful color, very distinct. One of the comparatively new introductions. We highly recommend it. 36-inch. \$2.00.

**LADY BYNG** (Bliss). A beautiful flower that might be classed as clear pale lavender or orchid bordering on pink. Profuse bloomer. A sister flower to Susan Bliss. 36-inch. 50c.

**LE CORREGE** (Vilm.). Standards smoky bronze; Falls plum red; brilliant prominent beard; spikes long and well branched. Very striking both for garden and show room. 46-inch. \$3.50.

**LONA** (Sass). Another beautiful, richly colored, ruffled Plicata of which Sass has produced so many. A soft buff, heavily marked purple at the edges. 30 inches. Very striking. \$1.00.

**LORD LAMBOURNE** (Perry). Standards a soft shade of rose fawn; Falls a rich crimson with white reticulations at the base. Heavy bright yellow beard. 44-in. 35c.

**LORD OF JUNE** (Yeld) 9.1. As irises come and go, I believe we shall always keep Lord of June and class it as one of the greatest. Standards broad and floppy, light chicory-blue; Falls large, broad, lavender-violet. Several great blooms open at once. 35c.

**MAGNIFICA** (Vilmoren) 8.7. Standards white flushed with violet blue; Falls long, drooping, deep reddish violet, reticulated chestnut. Great large blooms; tall strong well-branched stems. 40-inch. 35c.

**MAJESTIC** (Bliss) 8.8. A Dominion seedling. Very large flowers of fine form and lasting quality. Standards round, light lavender to mauve shaded bronze at base; Falls straight hanging, rich raisin-purple. Free bloomer; stout stems; 36-inch. 50c.

**MARJORIE TINLEY** (Perry) Enormous flowers borne on strong branching stems over 4 feet. Standards broad incurved, soft lavender blue; falls deeper shade of same color with very showy orange beard. Falls held out horizontally to give the flower a beautiful form. 50c.

**MARY BARNETT** (Crumbler). To be like Princess Beatrice is a fine recommendation. Mary Barnett is a Princess Beatrice improved! A larger flower with a great golden beard, so intensely brilliant it enlightens the whole flower. \$1.50.

**MAORI PRINCESS** (Shull). Resembles Marsh Mari-gold, except much richer in color. The richest of all the yellow bicolor blends. 75c.

**MARY GIBSON** (Perry). Standards a beautiful shade of light bronze, overlaid old rose; Falls old rose, suffused bronze. Distinct; fragrant; free flowering; a vigorous grower. 42-inch. 35c.

**MARY ORTH** (Farr). Standards light blue-violet; Falls velvety dark blue violet. A fine blue bicolor, regarded as one of Mr. Farr's best. 30-inch. 35c.

**MATHILDA** (Jacob Sass). Standards soft bluish violet, sprinkled on a white ground; Falls same color. Medium large flower. 30-inch. The nearest to a blue plicata. 75c.

**MESTOR** (Perry). Standards a light violet blue; Falls a rich violet purple. Large; very free flowering. An iris you'll like. 42-inch. 75c.

**MICHELLINE CHAIRRAIRE** (Denis). A wonderful white, of large size, good substance. Very tall with strong stems. Pure white with golden reticulations. 4 to 5 feet. \$1.50.

**MIDGARD** (Sass). A wonderful blending of pink and yellow. General effect, a rich shade of pink. Large flowers, perfectly formed. We can strongly recommend this variety. 36-inch. \$3.50.

**MILDRED PRESBY** (Farr). Standards ivory-white, faintly flushed lavender. Falls, rich pansy-violet, faintly edged lavender white. Considered by many as Mr. Farr's very best iris. 32-inch. 75c.

**MLLE. SCHWARTZ** (Denis). Standards and Falls, a uniform soft light lavender blue. Distinct and beautiful. 48-inch. 35c.

**MME. HENRI CAYEUX** (Cayeux). Standards reddish violet purple; Falls dark purple with edges lighter. Very fine. 36-inch. \$1.00.

**MOA** (Bliss). Standards pure violet; Falls deep violet purple. Enormous flowers of great substance. A Dominion Seedling. 42-inch. \$1.00.

**MOONLIGHT** (Dykes). Standards pale amber yellow; Falls sulphur yellow, with heavy greenish gold reticulation. Broad lemon yellow beard. Fragrant. A large, well formed flower. Well named. 36-inch. 50c.

**MORNING SPLENDOR** (Shull). Standards Petunia violet; Falls velvety raisin purple; general effect, rich crimson. Everything considered, we think there is no greater, no finer Iris than this one. In size, form, color and substance, it is everything desirable. Very fragrant; free blooming. Awarded the Silver Medal of the Garden Club of America in 1926. 42-inch. 75c.

**MOTHER OF PEARL** (Sturtevant). Standards and falls, light bluish lavender with a faint creamy undertone. Large flowers; beautiful form; a popular favorite. 35c.

**MRS. ALBERT SHERMAN HOYT** (Sass). Standards, pale ruffled pink; Falls, dotted and veined pink with an open creamy white space in center. General effect, pink. Mr. Sass seems to be noted for his many good pinks but we consider this one of his foremost. 27-inch. \$1.50.

**MRS. HETTIE MATTSON** (Perry). Standards purple fawn, flushed bronze; Falls rich crimson purple; golden yellow beard. Flowers large. Strong grower; profuse bloomer. 36-inch. 35c.

**MRS. H. F. BOWLES** (Perry). Standards soft brown, overlaid with old gold; Falls brilliant brick red. Very distinct. 36-inch. 35c.

**MRS. MARION CRAN** (Perry). One of the very finest of the soft rose pinks. Large flowers of perfect shape. For a real pink, this is the one to order. 48-inch. \$1.50.

**MRS. VALERIE WEST** (Bliss). Dominion Seedling. We regard this the greatest of all the Bliss irises. Standards, lavender shot with bronze; Falls, rich deep crimson. Strong stems, well balanced. 42-inch. \$12.50.

**NEBRASKA** (H. P. Sass). Standards apricot yellow, ruffled; Falls, same color, striped and clouded brown; dark yellow beard. 34-inch. \$3.00.

**NEHAWKA** (Jacob Sass). A self-colored plicata, but the darkest purple of all of them. \$2.00.



*A Small Section of One of Our Two-Year-Old Iris Fields*

**NIMBUS** (Shull). An iris we have always liked. Large, of good color, fine stately form. Standards, arched light Lobelia-violet with a narrow darker edge. Falls, velvety deep purple. 36-inch. 50c.

**OLD GOLD** (H. P. Sass). Standards, primoline yellow, ruffled; Falls, Old Gold, overlaid buff; a few stripes on haft. Distinct yellow beard tipped brown. 28-inch. 75c.

**OMAHA** (H. P. Sass). Standards and Falls reddish purple. A deep rose bordering to red. 30-inch. \$2.00.

**OPERA** (Vilmoren) 8.7. A very bright violet-red bi-color, much admired. We sell out every year long before the season is over. Standards bright purple; Falls rich deep red purple. 32-inch. 35c.

**OPHELIA** (Cayeux). A fine combination of color blending. Standards and Falls, orange cream, mauve and bronze; heavy orange beard. One of the most beautiful of the new irises. 36-inch. \$2.00.

**OTOE** (H. P. Sass). A deep toned purple red. New. \$1.00.

**PEAU ROUGE** (Cayeux). Standards coppery-red, faintly shaded violet; Falls deep blood red with light brownish yellow beard. One of the best of the cheaper red toned irises. 50c.

**PEERLESS** (Dykes). A wonderful mahogany-red flower; most perfect form. Standards very broad, erect, reddish violet; Falls long, straight hanging, deep purple-red; rich golden beard. A masterpiece. 38-inch. \$3.00.

**PHYLLIS BLISS** (Bliss). Standards and Falls soft lavender. Large; finest form; free blooming; vigorous. A delicate lavender tone. A sister iris of the pink Susan Bliss. 36-inch. 50c.

**PIONEER** (Bliss). An immense great red-purple of beautiful form. Standards large, bright ampara-purple; Falls very broad, of great substance, warm deep pansy purple. \$1.00.

**PRAIRIE GOLD** (Sass). A beautiful deep rich yellow. Not tall but wonderful for landscape. Considered one of Sass' finest. \$1.00.

**PRIMROSE** (Sturt.). Standards amber yellow; Falls a lighter yellow; center a clear lemon yellow. Long blooming; splendid form and substance. 30-inch. \$1.50.

**PRINCESS OSRA** (Bliss). A very fine white iris with wide border of pale violet; heavy orange beard. 36-inch. 35c.

**PRINCESS WENONAH** (Pfeiffer, 1929). Standards and Falls, beautiful uniform shade of light lavender, similar in color to Caroline Stringer. Prominent yellow beard. Heavy stiff stem, well branched. General effect pink. 30-inch. \$1.00.

**RAGUSA** (H. P. Sass 1929). Standards fancy purple, erect; Falls blackish red purple; five to seven flowers on a 26-inch stem. One of the best dark red purple blends of the intermediates. \$5.00.

**REVERIE** (Sturt.). Standards creamy-pink; Falls deep rose. Beautiful. 42-inch. \$1.00.

**RHEINGAUPERLE** (G. & K.). Standards soft rose pink; Falls a brightest shade of rose. 75c.

**RHEINTRAUBE** (Goos & K.). A medium toned blue for mass effect. Makes the finest blue mass planting. 35c.

**ROMOLA** (Bliss). Dominion Seedling. Standards pale lilac, tinged ivory yellow; Falls rich velvety red violet. Vigorous; free flowering; large, beautiful blooms. 42-inch. \$2.00.

**ROSE MADDER** (Sturtevant) 8.2. General effect rosy purple. Standards light purple with dark narrow margin; Falls darker and very rich; orange beard. Fragrant. Beautiful. 40-inch. 50c.

**ROBERT W. WALLACE** (Perry). Standards rich violet; Falls deep purple. Striking orange beard. One of the very best of the rich dark colored irises. Immense flowers. A free flowering dark pallida; good form and substance. 42-inch. \$2.00.

**SEQUOIAH** (Shull). Standards light lilac; Falls pansy purple, shading to rich velvety red purple. Charming. \$3.00.



**SIMONA VAISSIERE** (Millet). Standards white, slightly shaded blue; Falls violet-blue. Resembles Lord of June, though standards are of better substance; more brown in the falls. Wonderful. 35c.

**SIR GALAHAD** (Schull). Standards mauve; Falls pansy-violet. A striking brilliant bicolor; very large fragrant flowers. You will like it. 40-inch. 75c.

**SNOW WHITE** (Sturt.). A pure clear white. Beautified by a greenish haft; tall, strong, hardy. Like White Knight, except much larger and somewhat taller. 36-inch. \$2.00.

**SOUV. de MME. GAUDICHAU** (Millet) 9.0. Standards very rich deep blue-purple; Falls deeper shade almost black purple. Beard blue, tipped yellow. A wonderful iris with every imaginable good quality. Has won more awards than most any other. 36-inch. 35c.

**SUNSET** (Denis). Standards beautiful golden; Falls same color suffused blue-violet; prominent deep yellow beard. Vigorous; free flowering; late fragrant. 42-inch. 50c.

**SUSAN BLISS** (Bliss). Rich rose pink self with a delicate purple sheen. Pale orange beard. Vigorous; free flowering; excellent garden flower. Rhizomes always small. Increases rapidly. 38-inch. 50c.

**TAJ MAHAL** (Sturt.). A very fine white with large petals of great substance. Tall stems, well branched. One of the very best whites. 42-inch. 75c.

**TENEBRAE** (Bliss) 8.8. A dark colored Dominion seedling of dependable growth. Standards violet purple, darker at center; Falls velvety blackish purple; center flushed straw yellow. 36-inch. 50c.

**TITAN** (Bliss). A Dominion seedling. Standards light violet blue; Falls violet purple. When first introduced, it

sold at \$50 per rhizome. Very striking, of fine form and texture. Hardy plant; strong massive stems. 38-inch. \$1.00.

**TROSTRINGER** (H. P. Sass). A cross between C. E. Stringer and Trojana. Taller than either of these two good iris. General effect pink or rose purple. \$1.50.

**TRUE CHARM** (Sturtevant). A beautiful Plicata of elegant form. Flowers white with delicate blue-lavender margin. Hardy, vigorous grower. 40-inch. 50c.

**VALENCIA** (Mohr). A beautiful bright orange buff self. Large flowers; excellent form; remarkable substance. A popular favorite. 36-inch. 75c.

**VALERY MAYET** (Denis). Standards coppery-rose, flushed orange; Falls deep velvety bronzy red. Medium size flowers on tall, high-branched stalks. A color gem. 30-inch. 35c.

**WEDGEWOOD** (Dykes). Standards and Falls an even tone of rich blue. Large flowers with prominent white beard. As the flower ages it fades to a lighter blue which doesn't mar its beauty. Prolific. 42-inch. \$1.00.

**WHITE KNIGHT** (Saunders). A beautiful, absolutely snow-white iris with no markings whatever. Very sweet scented. 30-inch. 35c.

**WILD ROSE** (Sturt.). An iris well named. A dainty satiny-pink. One you will admire. 36-inch. 50c.

**YELLOW MOON** (Sturt.). Standards and Falls a soft yellow. A variety of wonderful texture. A real addition to any garden. 36-inch. \$1.00.

**YOLANDE** (Millet). Standards and Falls, dark velvety blue. Enormous flowers of great substance. Strong, hardy grower; a wonderful landscape variety. 40-inch. 50c.

## Some Entirely New Irises

Years ago on a trip to Washington, D. C., I first heard of the Danenhauer Irises. I was told that Mr. Lee Danenhauer had produced several new ones of striking merit. Hearing this from many sources made me curious, and on my next trip East, I ran down to May's Landing, New Jersey, to see Mr. Danenhauer and his irises. His hybridizing work was indeed impressive. At once I reserved stock of his very best varieties, with the understanding that when we had tried them out we were to introduce them. Having had these new varieties under test for many seasons, we are more than pleased with these remarkable irises:

**BRONZE SPHYNX** (Danenhauer 1929). A large and beautiful ruffled bronze; base of falls heavily reticulated brown. Standards cupped, beautifully frilled. Profuse bloomer. Strong, medium height stems, covered with many blooms open at once. \$5.00.

### A Red Iris

**GOBELIN RED** (Danenhauer 1929). An absolutely new color; actually ox blood red, contrasting sharply with the known "red Iris" by complete lack of red purple in make-up. Now used as a foundation to develop a race of fine reds. By request, a bench has been placed under the apple tree near the original plant. An outstanding beauty! Flowers of medium size; very finely formed and carried. Unusually long blooming period. Stems and leaves are thin, strong, erect. This variety alone is reward enough for ten years' effort. \$20.00.

**MANON LESCAUT** (Danenhauer 1929). One of those indescribable things called plicata, but which are not. Standards, cream delicately edged with violet; a fine line divides a cream white center; then a wider area overlaid with violet. Falls much the same except for the unusual cream and purple beard. Enriched with red brown coloring in the throat. Very strong; develops rapidly; blooms lavishly. \$5.00.

**NAIAD ATLANTA** (Danenhauer 1929). Color, entirely flesh-pink effect with true pink standards. Standard, light Congo pink 7''d. Fall, Congo pink cast Argyle purple 65''b. The very finest of our hybrids blooming in 1926 and highly rated by qualified visiting judges. A beautiful flesh-pink flower of medium size, carried at varying heights throughout the plant on strong, straight stalks of varying length. The bloom is effectively distributed. Plant foliated with straight leaves; vigorous growth; a very large number of blooms. Seeing Naiad unfold for the first time on May 26, 1926, a prominent visitor was so enthralled with its beauty that he offered a substantial check for the original entire plant; yet it remained intact, now available to all. \$7.50.

**PENN TREATY** (Danenhauer 1929). A cross between Ambassadeur and Sou. de Mme. Gaudichau and inherits very rich qualities from both parents. A deep rich velvet or blackish violet. Perfect form; very thick texture. Standards, Dauphins violet; Falls, deep blackish violet. Of all the irises in our garden, this is undoubtedly the richest in color. We class it as one of the very greatest and most beautiful. \$10.00.

## SPECIAL OFFER ON NEW IRIS

One each of the above five varieties for July 1st delivery,

**\$35.00** Postpaid



*Iris in Full Bloom—Brand Peony Farms*

## Standard Iris Collection

**\$2.25** Postpaid

From our Bargain List we have chosen twelve beauties, all distinctly different, all correctly labeled, all colors; postpaid anywhere in the United States for only \$2.25. Three collections to one address for \$6.

**VARIETY**

- Sweet Lavender .....
- Princess Beatrice .....
- Corrida .....
- Lent A. Williamson .....
- Shekinah .....
- Midwest .....
- Leota .....
- Roseway .....
- Seminole .....
- Kathryn Fryer .....
- Solana .....
- Dalila .....

**COLOR**

- Rose lavender
- Fine light blue
- Late light blue
- Rich, velvety, royal purple
- Best yellow for the price
- Wonderful white dotted rose
- Ivory white
- A rose pink Pallida
- A rich velvety crimson
- A large reddish bronze
- Variegated. S. lemon-chrome; F. Bordeaux
- Variegated. S. creamy-white; F. Plum red

## Bargain Prices for Good Iris

Iris multiplies rapidly and new varieties are being introduced in large numbers, as it does not take nearly as long to produce a fine iris as a fine peony. We have cleared our fields of all old inferior iris and we have increased our stock of the better varieties. Now we can offer even those preferred varieties, which were very expensive a few years ago, at a new low price of only 25c. Compare this price with prices listed for the same iris

just a few years back, and you will readily see why we call this page "Bargain Prices for Good Iris."

We classify each variety according to its general color effect; yet to save space, we do not give complete descriptions. We have arranged one collection from this list which we consider an exceptional value, giving a wide range of color. Any variety chosen from this page will be sure to please.

**REDDISH BRONZE**

- Dejazet
- Indian Maid
- Katherine Fryer
- Prosper Laugier
- W. J. Fryer

**YELLOW TONED**

- Aurea
- Shekinah
- Sherwin Wright
- Soledad
- Virginia Moore

**WHITE**

- Leota
- Mme. Chereau
- Mrs. H. Darwin
- Midwest
- Profusion
- Ruth Pfeiffer

**RED TONED**

- Col. Candelot
- Medrano
- Seminole

**PINK**

- Arsace
- Caprice
- Cecil Minturn
- Her Majesty
- Isolene
- Mrs. Allan Gray
- Mme. Chobaut
- Roseway
- Rose Unique
- Troost

**LAVENDER**

- Alcazar
- Grevin
- Nine Wells
- Prospero

**LAVENDER, Continued**

- Queen Caterina
- Romona
- Rodney
- Sweet Lavender
- Trojana
- Zwanenburg

**LIGHT BLUE**

- Azure
- Blue Boy
- Bluet
- Celeste
- Clematis
- Cluny
- Corrida
- Firmament
- Juanjata
- Pallida Dalmatica
- Princess Beatrice
- Sylvia Lucas
- Zanardalia

**DARK BLUE TO PURPLE**  
 Amas  
 Kochii  
 Lent A. Williamson  
 Monsignor  
 Parc de Neuilly  
 Perfection  
 Pumila (Baby Iris)

**BLENDED SHADES OF ROSE AND BUFF**  
 Afterglow  
 Dora Longdon  
 Quaker Lady  
 Trianon

**BI-COLOR**  
 Anne Leslie  
 Barton Harrington  
 Dalila  
 Iris King  
 Rhein Nixe  
 Solana

**Prices for Any of the Foregoing Varieties**

Each .....	25c
3 of any one kind.....	50c
12 of any one kind.....	\$1.50
12 of different kinds.....	\$1.75

All Labeled and True to Name.

**Iris Collection II**

From the medium priced iris, we have chosen twelve especially fine varieties with great range of color. We have considered the thriftiness of each variety; and we offer you this collection, knowing it will give you the greatest satisfaction.

Amber, Deep Yellow.....	\$1.00
Aurea, Bright Golden Yellow.....	.25
Apache, Velvety Indian Red.....	1.00
Ambassadeur, Velvety Maroon Purple.....	.35
Duke of York, Bluish Lavender.....	.50
Lord of June, Light Blue.....	.35
Dream, Soft Rose Pink.....	.35
Susan Bliss, A Rare Pink.....	.50
Phyllis Bliss, Soft Light Lavender.....	.50
Mildred Presby, Ivory White and Pansy Purple.....	.75
Morning Splendor, Velvety Raisin Purple.....	.75
Pioneer, A Reddish Purple.....	1.00
True Charm, White and Blue Lavender Plicata.....	.50

A TOTAL VALUE OF.....\$7.80

Collection Price, Postpaid

**\$5.00**

One Souv. de Mme. Gaudichau FREE with each order received before August 1.

**Special Bargain**  
**ONE HUNDRED IRIS**

—For Mass Effect—

One hundred iris, not labeled; at least ten distinct varieties, our choice, in a wide range of color combinations, all good iris

**\$6.00**

Express Collect

**Siberian Iris**

The Siberian Iris is so graceful, so bright, and so attractive that it fits nicely into all planting schemes, coming just at the close of the main iris season. When most of the German Iris are gone it fills the gap until the peonies appear. Especially adaptable to planting about the bird bath, in the rockery, and along water fronts. Most graceful of all iris for basket and bouquet work.

**DISTINCTION.** A very fine medium blue, between a light and a dark. Harmonizes with the other colors. 34-inch. 50c.

**EMPEROR.** A wonderful variety; a splendid rich violet blue. 4 feet. 50c.

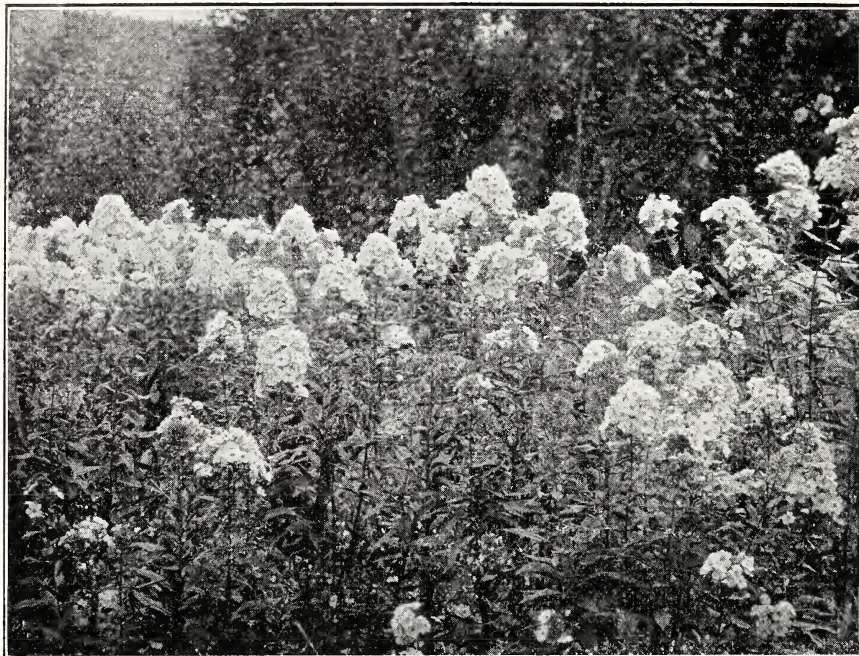
**MME. BUTTERFLY.** A very pretty light blue. Most profuse bloomer. 30-inch. 50c.

**PERRY'S BLUE.** Wonderful clear shade of sky blue with white markings on the falls. Generally considered the finest Siberian. 4 feet. 50c.

**SNOW QUEEN.** Very lovely with pure white flowers, lit up with a rich yellow blotch at the throat. 36-inch. 50c.

Any 3 of one kind.....\$1.00  
 6 as you wish..... 1.50

The Siberian Iris are shipped out in the spring with other stock.



*Planting of Perennial Phlox Siebold*

## Hardy Phlox

No other flower fits into the late color scheme of the garden as well as the perennial phlox. Starting to bloom in midseason, they carry loads of the most brilliant color far into the fall or until touched with frost.

Phlox come in many colors; from the purest white through the many shades of pink, lavender, red, purple, to the deepest crimson.

For best results, the soil should have well rotted manure worked in, and the planting should be in a fairly sunny location. Water heavily during dry spells. If lower leaves turn rusty and dry up during the summer, water and spray the plants heavily with cold water and dust with powdered sulphur such as is used to control black spot on roses. If the first flower spikes are cut off as soon as the flowers fall and the plants are well watered, a second setting of bloom will come on and continue late into the fall.

### Our Phlox Collection

There are many new phlox coming out all the time, but few of these are any better than those which have been longer tried. We buy the new ones as they are offered and try them out in our gardens. We save the few really good ones and discard the rest. We offer at all times

what we consider the best in phlox.

NOTE—When you order phlox from us you get a real Brand Peony Farms plant. Our phlox plants are of the same quality as our Brand Division peony roots. Our plants are selected No. 1, one-year field-grown plants.

Do not compare the prices for our phlox plants with cheaper prices where orders are filled with plants commonly called Baby Phlox Plants.

#### PRICES FOR PHLOX, ALL POSTPAID

1 Phlox of any one variety . . . . .	\$0.35
3 Phlox of any one variety . . . . .	1.00
6 Phlox of any one variety . . . . .	1.50
12 Phlox of any one variety . . . . .	2.50

In Collections A and B, we are offering two equally good combination values. We have tried to arrange the varieties in each of these two collections so that one is just as desirable as the other. Each collection consists of twelve first class sorts; all seasons, all colors. We will send either collection postpaid for \$3.25, or the two to one address for \$6.00.

If you prefer, you may make up your own choice of twelve from the entire twenty-four varieties—one of a kind, as you desire—12 for \$3.50 Postpaid.

### Collection A

**B. COMPTE.** A brilliant rich satiny red. One of the most striking of all phlox.  
**BARON VON DEDEM.** Bright orange-scarlet with trusses and individual flowers of immense size.

**BEACON.** A fine brilliant bright cherry red. Trusses of most beautiful form.

**FLORA REIDY.** A pure rich white with large florets of beautiful form and substance.

**INDEPENDENCE.** A white with compact panicles; tall; good to use in outer border.

**JULES SANDEAU.** A very large flowering pure pink. One of the finest.

**MILLY VON HOBOKEN.** A pure soft pink self color. Grows tall, thrifty and branching. Large, well-shaped flowers. A splendid new one.

**MISS LINGARD.** An early white phlox with waxy leaves and glistening petals. The cut-and-come-again phlox. Very much used by florists for cut flowers.

**PANTHEON.** A clear deep carmine-pink with a faint halo. A variety you can depend upon.

**PROF. VIRCHOW.** Large, flat flowers; bright carmine overlaid with orange scarlet.



*Milly von Hoboken*

**RIVERTON JEWELL.** A beautiful mauve-rose, made very striking by a large brilliant carmine-red eye.

**SPECIAL FRENCH.** A wonderful blush pink with a salmon eye. Attractive new phlox with immense trusses. Profuse bloomer.

**This Entire Collection—One of Each Kind  
12 Fine Phlox**

**\$3.25** Postpaid

**Collection B**

- ATHIS.** A very tall growing phlox. Very hardy. A beautiful salmon pink.
- BRIDESMAID.** Large, beautifully formed white, with carmine eye.
- ECLAIREUR.** A purplish crimson with white aureole. One of the phlox that seldom kills out.
- ENCHANTRESS.** A beautiful salmon pink. Looks very much like Elizabeth Campbell, but a much better grower.
- FRAU VON LASSBERG.** The purest snow white in cultivation; large open truss; wonderful cut flower.
- R. P. STRUTHERS.** Rosy carmine with claret eye. Wonderful variety, as it stands up well in hot sun.
- RHEINLANDER.** A fine salmon pink with a large claret red eye. Flowers very large.
- SIEBOLD.** Orange scarlet with red eye. Very thrifty; profuse bloomer; immense spikes and many of them.
- SIR EDWIN LANDSEER.** A very profuse-blooming, bright crimson. One of the most showy varieties.
- THOR.** Great trusses and immense florets. Deep salmon pink with aniline red eye. A charming variety.
- VON HOCHBERG.** A medium, tall-growing, very thrifty sort. Deep brilliant red. One of the very best of the red Phlox.
- WIDAR.** Very large individual florets of lavender purple with large white center. Large panicles; very attractive.



*Siebold Phlox*

**This Entire Collection—One of Each Kind  
12 Fine Phlox**

**\$3.25** Postpaid

**Collection C**

If purchased singly, one each of the following twelve choice varieties would comprise a total value of \$4.60. Offered here as a special collection for only \$3.50 Postpaid—this makes an exceptional bargain in quality phlox:

- AFRICA.** This is one of our new carmine-red phlox with a blood red eye. Florets large; color very brilliant. 40c each.
- CHAMPS ELYSEES.** A fine dark magenta that is very attractive. One of the very best of the darker phlox. 35c each.
- COMMANDER.** Brilliant crimson red with a darker eye. Covered over with immense spikes of flowers. A superb phlox. 40c each.
- COUNT ZEPPELIN.** A pure white variety with a vermilion-red eye. Free flowering and a good grower. Eye very distinct. 40c each.
- FIREBRAND.** A brilliant orange scarlet. A very free flowering variety of medium height. One of the most brilliant phlox known. 40c each.
- J. H. KAHLER.** This is a very fine pink phlox produced by the late W. J. Fryer. One of his best phlox. Very fine. 40c each.
- MISS ETHEL PRICHARD.** A fairly tall-growing new phlox, with large panicles of individual florets of the greatest size. A delightful French-mauve. Almost a blue. 40c each.
- MRS. JENKINS.** One of the best whites ever produced. Beautiful large trusses of perfect form with large beautiful florets. Pure white. Early. 35c each.
- MRS. HARDING.** A new deep rose pink shaded salmon. Large trusses of beautiful form. 40c each.
- MME. BEZANSON.** A splendid new phlox of an intense aniline-red color. 40c each.
- PRIME MINISTER.** A great large white with a large crimson red eye. Eye very prominent. 35c each.
- WM. RAMSEY.** A very effective deep reddish purple. Every one who likes a dark phlox likes this. 35c each.



*Enchantress*



*Frau von Lassberg*

**This Entire Collection—One of Each Kind  
12 Preferred Varieties, only**

**\$3.50** Postpaid



*Delphinium Planting*

## Delphinium

The Delphinium or Perennial Larkspur is one of the most indispensable plants in the garden. It works nicely into so many places. It starts blooming in June and continues throughout the season until frost, providing the old spike is cut off and the root well watered as soon as the first bloom falls. New shoots then will soon appear and the second crop of blooms will quickly follow. Delphinium should be planted in full sun in mellow soil, enriched with well-rotted manure. Water as soon as planted.

We have in our fields a fine lot of strong one-year plants that all bloomed last season. While in bloom we went through the different beds and personally checked the blooming plants, so you can depend on getting worthwhile stock. This is the only way that one can be sure of really good Delphinium. We give the same careful attention to the selection of our Delphinium that we always give to our peonies, so those entrusting us with their orders may be sure of receiving only first class specimens when they come to bloom. The seed from which these stocks are grown is the very finest we could procure in America and in England. The plants will be strong rooted, one-year field grown. We will make a uniform price for the different strains according to selection.

These plants will be of the following strains:

**BLACKMORE AND LANGDON STRAIN.** Tall graceful spikes of bloom, covered from top to bottom with captivating blooms in charming color combinations. All the clear shades of blue with many delightful opaline variations, and with bees of contrasting colors.

**VANDERBILT HYBRIDS.** Immense flower stalks with great heads of bloom tapering to the tip. Nearly all flowers open at once and exhibit the greatest combination of colors.

**WREXHAM STRAIN** (hollyhock Delphinium). The chief distinguishing features of the "Hollyhock" Delphiniums are the extraordinary length and the tapering spire-like shape of the spikes; indescribably rich and varied tints; remarkably long flowering season.

### PRICES

Plants not selected, just as they run, all colors—50c each; 12 for \$5.00.

Choice Selected, any strain—\$1.00 each; 12 for \$10.00.

Choice Extra Selected, any strain—\$2.00 each; 12 for \$20.00.

*A garden plot, what inspiration!  
A sweet, delightful recreation.*

## Seeds

During the course of the season as the seeds of the different flowers mature, we gather quantities of these seeds from our very choicest specimens for our own plantings. We always have some left over which we offer to

our customers, who can depend upon always receiving absolutely fresh seed from us. Planting instructions will be found on the seed packets.

## Delphinium Seed

Fresh seed will be sent out in July or August. It should be planted immediately on arrival. Order your seed now and it will be sent to you just as soon as the new crop is ripe. Delphinium seed loses its vitality very fast and the sooner it is planted after you get it, the better. Seed collected from good select specimen spikes, all shades, all strains—mixed 25c packet, about 200 seeds. Seed from a still more select lot of blooms with special attention given to purity of color and size of florets—\$1.00 packet, about 200 seeds. Seed selected from absolutely the very best in every respect—\$2.00 packet, about 200 seeds.

## Peony Seed

Each year we save large quantities of peony seed for our own planting. Of late years we have had a constantly growing demand from our customers for this seed. Again this fall we will gather seed selected for the best possible results. From seed saved in this way, we have grown all the wonderful peonies that bear our name, including such sorts as Longfellow, Judge Berry, Mary Brand, Henry Avery, Martha Bulloch, Richard Carvel, Mrs. A. M. Brand, Myrtle Gentry, Victory Chateau-Thierry, Mrs. Deane Funk, and many other good peonies.

From the seed sent out by us this fall, there is always the possibility of getting one good peony as good as some

of these or perhaps even a better peony than any of these. You may originate a better peony than anyone else. This makes an interesting experiment. To a flower lover, it is the most fascinating sport in the world. This seed will be offered in six different very desirable combinations.

Per Pkt. 25 seeds selected from all first class singles .....	\$1.00
Per Pkt. 25 seeds selected from all first class Japanese .....	1.00
Per Pkt. 25 seeds selected from all first class Doubles, all colors.....	1.00
Per Pkt. 25 seeds selected from all first class double brilliant red.....	1.00
Per Pkt. 25 seeds selected from all first class double whites .....	1.00
Per Pkt. 25 seeds selected from all first class double pinks .....	1.00
One pkt. each of the above six, all six packages for .....	5.00

This is an opportunity to get some remarkable peony seed, and a wonderful chance to produce a world's best peony.

## Oriental Poppies

For real gorgeousness—something remindful of the warm, extravagant colors of the East—nothing in all the world of flowers can compare with the Oriental Poppy. Coming with the early peonies, they give the garden a touch no other flower can give.

The Oriental Poppy blooms, ripens its seed pods, and then the top dies to the ground. The root remains perfectly dormant for several weeks and then starts a new growth. It is during this dormant period that it is most safely moved; generally during late August and September. We fill our oriental poppy orders during that period. Please do not order Oriental Poppies after September 30th.

**BEAUTY OF LIVERMORE.** A splendid Oriental Poppy with good stiff stems. Immense deep red flowers. Blooms later than Wurtembergia.

**LULA A. NEELEY.** When this wonderful poppy first came out it sold for \$15.00 a root. Stout stems. Medium sized, cup-shaped, brilliant red flowers.

**MRS. PERRY.** Where the red or orange will not blend well with other flowers, use Mrs. Perry, a beautiful large salmon pink.

**OLYMPIA.** A new semi-double poppy, bright scarlet in color. Very nice. Ten days earlier than the rest in the list.

**ORANGE QUEEN.** An early variety. Blooms of greatest size. Stout straight stems. Brilliant deep orange.

**PRINCESS VICTORIA LOUISE.** Large, soft lilac rose. Beautiful. One of the finest named sorts.

### PRICES

\$1.00 each; or the above 6 beautiful varieties, all for \$5.00 Postpaid.

### SIZE OF ROOTS

We supply a large root. We do not handle the small Oriental Poppy root sold at cheap prices.



*Oriental Poppy*

*There cannot be more pleasant hours  
Than those you spend among the flowers.*

## Improved Philadelphus

### Mock Orange or Sweet Syringea

Wonderful improvements have been made in late years in that grand shrub, the Philadelphus; or, as it is better known to us, the Sweet Syringea or Mock Orange.

The Lemoines of France, the same men who produced the most of our new Lilacs, are the ones who have produced these beautiful new Philadelphus.

The older varieties are single. The new ones come in singles, semi-doubles and doubles. They are more beautiful than the older sorts, as their blooms are larger, borne in greater profusion and of more exquisite form. These different Philadelphus may be selected as to their final growth in sizes to suit almost any want. Some are real dwarf, others are of medium height, while still others grow into plants eight or ten feet high. Most of them are very sweet scented. Often a single bush, covered with its beautiful bloom, will scent the air of an entire city block.

**BOULE ROSE.** An upright growing variety attaining a height of about 5 feet. Good dark green foliage. Large semi-double blooms, nearly pure white; usually in clusters of five or six. Very sweet; one of the most profuse bloomers.

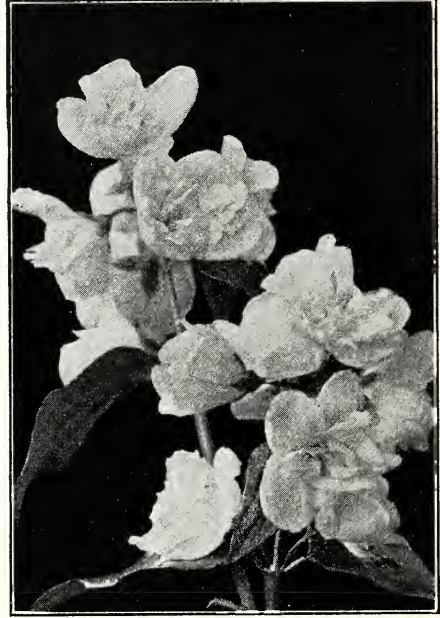
**BOUQUET BLANC.** Develops an upright shapely bush with dark rich foliage. Flowers come in clusters; large, pure white, and quite double. Very sweet scented. One of the hardiest and most dependable bloomers.

**FAVORITE.** Produces very large flowers, fully three inches across. These flowers are single, pure white, with a bunch of golden stamens in the center. The bush is an upright grower with rich glossy foliage. A marvelous flower.

**MT. BLANC.** A tall growing variety, wonderful as a hedge to grow on a line between lots. Flowers large, pure white, semi-double. Produced in great profusion. One of the most prolific of all.

**PAVILLION BLANC.** Beautiful flowers of the purest white, sweetly fragrant. Grows into a nice shapely bush about five feet high, of the most striking of all Philadelphus.

**VIRGINAL.** Double. White. Ever-blooming. Everything considered, this is the most sensational of all the Philadelphus. In fact, we regard it the most valuable acquisition to the flower garden of recent years. The bush is a moderately strong grower, with us attaining a height of six to seven feet. Rather open sparse foliage



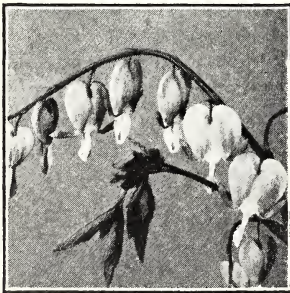
*Philadelphus Virginal*

to make the wonderful blooms all the more conspicuous. Flowers pure white, double, often two inches in diameter. Begins to bloom about June 15th with us, and blooms profusely for about three weeks. Then it rests a few weeks and starts to bloom again, continuing with a small amount of bloom until frost.

**Prices of All Philadelphus**  
Strong 3- to 4-ft. plants 75c each;  
3 of any ONE kind for \$1.50.

### Special Offer

1 each of the above 6 plants in strong 3- to 4-ft. size for \$4.00 by express collect.



*Bleeding Heart*

### WELL PLEASSED WITH OUR STOCK

Atwater, Ohio.  
The bleeding heart received O. K. and set out. I wish to thank you for your prompt service. Next year, if all goes well, I will be in the market for different things. I am certainly well pleased with your stock and your way of doing business. I will remember you to my flower friends.—A. M.

## Bleeding Heart

### (Dielytra)

The Dielytra or old-fashioned Bleeding Heart was, in our grandmother's time, one of the best known and best liked of flowering plants. Every old-fashioned garden had one of these plants, but its great value in the modern perennial border is far from appreciated.

Its graceful foliage is a beautiful green and the plant itself gives beautiful masses of soft greenery all summer. Its long swaying sprays of bright rose, heart-shaped flowers cover the plant. These come two weeks before Iris and give color to the garden when it is much needed.

The Dielytra is as hardy as the peony. A single plant will live and develop for years. For all these reasons, every border should have these invaluable plants generously interspersed. There should be a Bleeding Heart season as well as an Iris, Peony, or Phlox season.

50 cents each; 6 for \$2.50; 12 for \$4.50



# Three Unusual Collections —TO GIVE YOU— A Whole Season of Peony Pleasure

## Early Flowering Collection

If you wish four excellent peonies to brighten your garden early in the season, we suggest:

**Richard Carvel**—the best early red on the market. Wonderfully fragrant. Strong, upright grower. Very free bloomer.

**Mons. Jules Elie**—one of the world's 26 best peonies. Fragrant. A wonderful lilac pink.

**Mme. De Verneville**—a splendid early white; parallel in form, type and beauty to Richard Carvel and Mons. Jules Elie.

**Eulis Superba**—a deeper pink than Mons. Jules Elie, known as the Decoration Day pink. Noted for its wonderful fragrance.

All four varieties will be in bloom at the same time, but Richard Carvel will appear first.

Regular Price — \$4.50.

COLLECTION PRICE,

**\$3.50**



*Georgiana Shaylor*

## Midseason Flowering Collection

Three from this list rate 9.0 and belong in the world's 26 best.

**Sarah Bernhardt**—a prize winning peony in every show room. Equally superb as a garden variety. Deep pink, tipped silver. Unusually large; delightfully fragrant.

**Georgiana Shaylor** (Shaylor) 8.9—Pink. We have always held that this is Mr. Shaylor's greatest flower, and we still do. If he had never produced another variety, this one alone would immortalize his name among peony lovers. Every year we find ourselves more eager for the time when this flower appears.

**David Harum** (Brand) 8.4—As a red, this is one of our newest varieties. Very large. Prominent guard petals surround a great ball of closely packed petals. Entire flower is an even shade of soft Tyrian-rose. Upright growing—the strong stems hold the great blooms erect. Excellent landscape variety. Appeared in five prize-winning collections at the National Show, Des Moines, 1924.

**Baroness Schroeder**—Classed as a white but opens blush pink, fading to white. Considered one of Kelway's best productions. In the last symposium, it continued to rate 9.0 after seventy-nine people had voted.

These four peonies will bloom together, closely following those in the previous collection.

Regular Price — \$6.00.

COLLECTION PRICE, **\$5.00**

## Late Flowering Collection

**Marie Lemoine**—A beautiful creamy white. Probably the most fragrant of all peonies. Very late.

**Grandiflora**—Soft shell pink. When you think the peony season is over, you can still cut beautiful large blooms from Grandiflora.

**Eugene Bigot** must be in your garden if you wish a very late good red. Unlike most reds, it has a delightful fragrance. A desirable cut flower with stiff, straight stems.

**Claire Dubois** (Crousse). 8.7.—Pink. Among hundreds of varieties, you occasionally find one peony which, for all-around good qualities, excels all others. Such is Claire Dubois. Immense globular form. Long incurved petals—a uniform shade of clear violet rose, tipped silvery white. A late flower otherwise comparable to the early variety, Mons. Jules Elie. Excellent cut flower.

Regular Price — \$4.00.

COLLECTION PRICE, **\$3.00**

All 12 of The Above Peonies

A Total Value of \$14.50 at a Special Low Combination Price

DO NOT TAKE A DISCOUNT  
ON ANY COLLECTIONS

**\$11.00**

A BED-ROCK PRICE FOR  
QUALITY PEONIES

# A Brand Collection

10 CHOICE PEONIES  
ALL ORIGINATED  
BY BRAND



A Regular \$15 Value  
NOW As a Special Collection, only

**\$13.00**

LIKE many others, perhaps you have long watched the prices of good peonies—hoping that some day you could enhance your list with a few of the very finest. Now, **you can!** Growing and multiplying peonies on a mass-production scale—we have increased our stocks to 60 acres of splendid varieties. That is why we can now reduce our prices so your wish may come true. Note the high ratings of this entire list. Here is an “all-star” collection.

Name and Rating	Regular Price
<b>Brand's Magnificent</b> (8.2). A garnet red with petals as symmetrical as a rose.....	\$ 1.00
<b>Winnifred Domme</b> (8.3). A brilliant scarlet unlike all others.....	1.50
<b>Richard Carvel</b> (8.8). Unquestionably the best early red ever introduced.....	1.50
<b>Mary Brand</b> (8.7). A fine midseason red. Good for both exhibition and garden purposes.....	1.00
<b>E. B. Browning</b> (9.2). One of the world's 26 best peonies. A late white variety that prolongs the blooming season.....	2.00
<b>Frances Willard</b> (9.1). A fine midseason white that never fails to give satisfaction	1.50
<b>Faribault</b> (8.2). A deep rose with a silver sheen, named for our city.....	1.00
<b>Mrs. A. G. Ruggles</b> (8.3). Often mistaken for Therese.....	1.50
<b>Judge Berry</b> (8.6). Indispensable to every garden. Our best early light pink.....	2.00
<b>Henry Avery</b> (8.8). A shell pink showing a distinct band of yellow about the collar. A distinct and pleasing variety.....	2.00
A TOTAL VALUE OF.....	\$15.00

**Buy Them NOW As a Special Collection**

DO NOT TAKE A DISCOUNT  
ON ANY COLLECTIONS

**\$13.00**

A BED-ROCK PRICE FOR  
QUALITY PEONIES