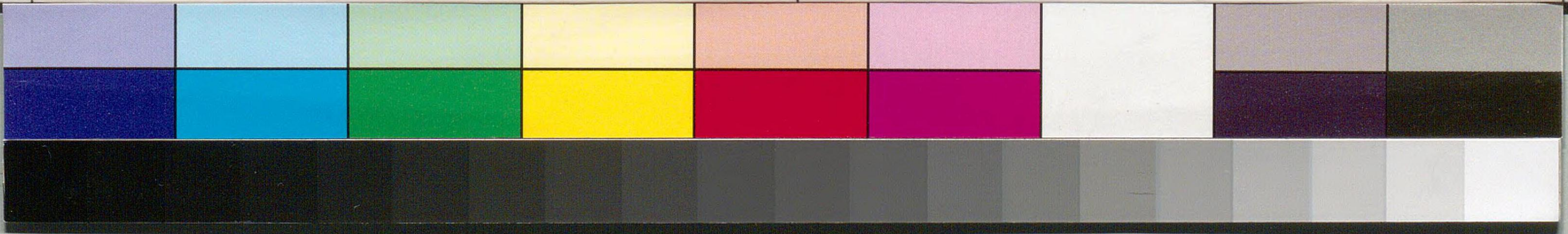
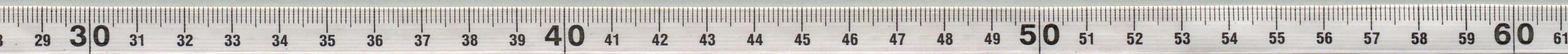


国立国会図書館 尾崎三良関係文書 21-40

如 由 家
由 由 家
由 由 家
由 由 家



Handwritten Japanese text in vertical columns, likely bleed-through from the reverse side of the paper. The characters are faint and difficult to decipher, but appear to be arranged in several columns. On the right side, there is a small, distinct mark that resembles a hash symbol (#).

