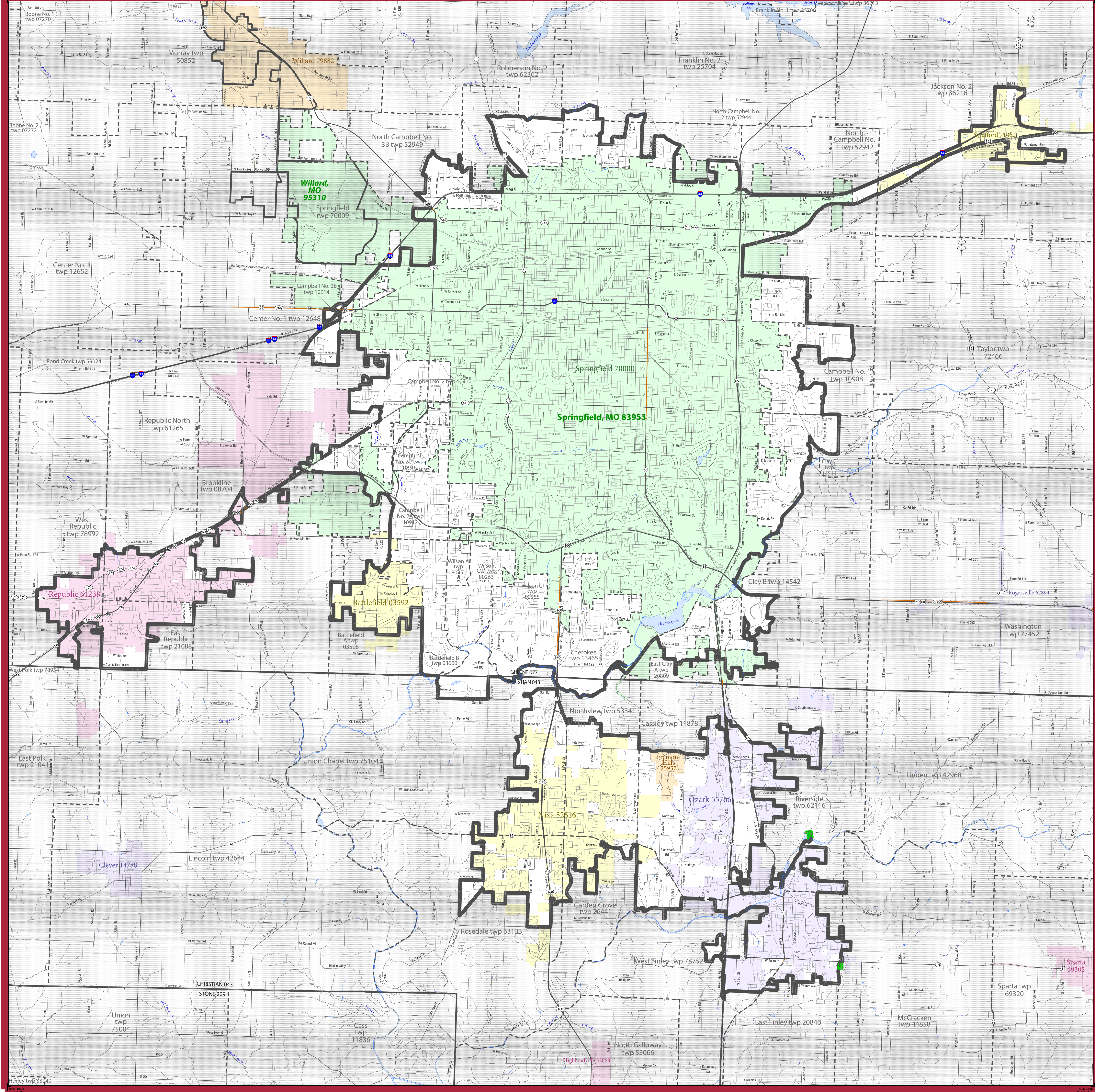


# 2010 CENSUS - URBANIZED AREA REFERENCE MAP: Springfield, MO



### LEGEND

SYMBOL DESCRIPTION	SYMBOL	SYMBOL DESCRIPTION	SYMBOL
International	--- ---	CANADA	
Federal American Indian Reservation	.....	L'ANSE RES 1880	
Off-Reservation Trust Land	.....	T1880	
Urbanized Area	.....	Dover, DE 24580	
Urban Cluster	.....	Toolee, VT 88057	
State (or statistically equivalent entity)	--- ---	NEW YORK 36	
County (or statistically equivalent entity)	--- ---	ERIE 029	
Minor Civil Division (MCD) <sup>1,2</sup>	--- ---	Bristol town 07485	
Consolidated City	.....	MILFORD 47500	
Incorporated Place <sup>1,3</sup>	.....	Davis 18100	
Census Designated Place (CDP) <sup>2</sup>	.....	Incline Village 35100	

DESCRIPTION	SYMBOL	DESCRIPTION	SYMBOL
Interstate	.....	Water Body	.....
U.S. Highway	.....	Military	.....
State Highway	.....	Outside Subject Area	.....
Other Road	.....		
Railroad	.....		
Perennial Stream	.....		
Intermittent Stream	.....		

Where international, state, county, and/or MCD boundaries coincide, the map shows the boundary symbol for only the highest-ranking of these boundaries.

1 A \*\* following an MCD name denotes a false MCD. A \*\*\* following a place name indicates that a false MCD exists with the same name and FIPS code as the place; the false MCD label is not shown.

2 MCD boundaries are shown in the following states in which some or all MCDs function as general-purpose governmental units: Connecticut, Illinois, Indiana, Kansas, Maine, Massachusetts, Michigan, Minnesota, Missouri, Nebraska, New Hampshire, New Jersey, New York, North Dakota, Ohio, Pennsylvania, Rhode Island, South Dakota, Vermont, and Wisconsin. (Note that Illinois and Nebraska have some counties covered by nongovernmental precincts and Missouri has most counties covered by nongovernmental townships.)

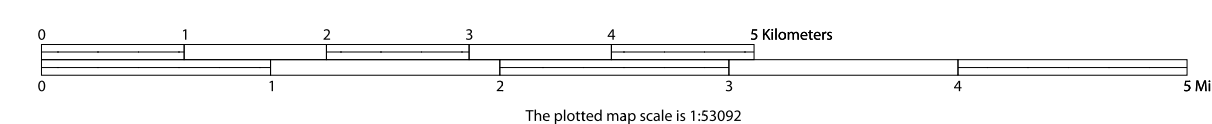
3 Place label color corresponds to the place fill color. Label colors: Davis Davis Davis Davis Davis

**SUBJECT AREA COUNTIES ON MAP SHEET**  
 29043 Christian  
 29077 Greene

All legal boundaries and names are as of January 1, 2010. Urban areas are based on results from the 2010 Decennial Census. The boundaries shown on this map are for Census Bureau statistical data collection and tabulation purposes only; their depiction and designation for statistical purposes does not constitute a determination of jurisdictional authority or rights of ownership or entitlement.

Geographic Vintage: 2010 Census (reference date: January 1, 2010)  
 Data Source: U.S. Census Bureau's MAI/TIGER database (TAB10)  
 Map Created by Geography Division: March 09, 2012

Projection: Albers Equal Area Conic  
 Datum: NAD83  
 Spheroid: GRS 80  
 1st Standard Parallel: 36 45 55  
 2nd Standard Parallel: 39 50 38  
 Central Meridian: 92 51 50  
 Latitude of Projection's Origin: 35 59 44  
 False Easting: 0  
 False Northing: 0



PARENT SHEET 1  
 Total Sheets: 1  
 Index Sheets: 0  
 Parent Sheets: 1

UA NAME: Springfield, MO  
 UA CODE: 83953  
 ENTITY TYPE: Urbanized Area (UA)  
 ST: Missouri (29)