

IMPORTANT COLLECTION OF  
ANCIENT CHINESE  
ART

\*\*\*\*\*

Getz.

THE  
JAMES A. THOMAS  
COLLECTION



DUKE UNIVERSITY LIBRARY  
DURHAM, N. C.

Date October 25, 1929

J. A. Thomas  
Donor







Digitized by the Internet Archive  
in 2017 with funding from  
Duke University Libraries







BLACK HAWTHORNE GINGER JAR, K'ANG HSI  
[NUMBER 638]



SALE NUMBER 1486

ON PUBLIC EXHIBITION FROM WEDNESDAY, MARCH THIRTY-FIRST

AN  
IMPORTANT COLLECTION  
OF ANCIENT  
CHINESE ART

TO BE SOLD BY ORDER OF

EDWARD G. GETZ

WHOSE BUILDING AT 14 EAST 45th STREET

IS TO BE TORN DOWN

TO BE SOLD

WEDNESDAY, THURSDAY, FRIDAY AND SATURDAY AFTERNOONS

APRIL SEVENTH, EIGHTH, NINTH AND TENTH

AT TWO-THIRTY O'CLOCK

138712

THE ANDERSON GALLERIES

[MITCHELL KENNERLEY, PRESIDENT]

PARK AVENUE AND FIFTY-NINTH STREET, NEW YORK

1920

## CONDITIONS OF SALE

1. All bids to be PER LOT as numbered in the Catalogue.
2. The highest bidder to be the buyer; in all cases of disputed bids the lot shall be resold, but the Auctioneer will use his judgment as to the good faith of all claims and his decision shall be final. He also reserves the right to reject any fractional or nominal bid which in his judgment may delay or injuriously affect the sale.
3. Buyers to give their names and addresses and to make such cash payments on account as may be required, in default of which the lots purchased to be resold immediately.
4. The lots to be taken away at the buyer's expense and risk within twenty-four hours from the conclusion of the sale, and the remainder of the purchase money to be absolutely paid on or before delivery, in default of which The Anderson Galleries, Incorporated, will not be responsible if the lot or lots be lost, stolen, damaged, or destroyed, but they will be left at the sole risk of the purchaser, and subject to storage charges.
5. To prevent inaccuracy in delivery, and inconvenience in the settlement of purchases, no lot will be delivered during the sale.
6. All lots will be exposed for public exhibition in The Anderson Galleries before the date of sale, for examination by intending purchasers, and The Anderson Galleries, Incorporated, will not be responsible for the correctness of the description, authenticity, genuineness, or for any defect or fault in or concerning any lot, and makes no warranty whatever, but will sell each lot exactly as it is, WITHOUT RECOURSE.
7. TERMS CASH. Upon failure to comply with the above conditions any sum deposited as part payment shall be forfeited, and all such lots as remain uncleared after twenty-four hours from the conclusion of the sale, will be resold by either private or public sale at such time as The Anderson Galleries, Incorporated, shall determine, without further notice, and if any deficiency arises from such re-sale it shall be made good by the defaulter at this sale together with all the expenses incurred thereby. This condition shall be without prejudice to the right of The Anderson Galleries, Incorporated, to enforce the contract with the buyer, without such re-sale.
8. BIDS. We make no charge for executing orders for our customers and use all bids competitively, buying at the lowest price permitted by other bids.
9. The Anderson Galleries, Incorporated, will afford every facility for the employment of carriers and packers by the purchasers, but will not be responsible for any damage arising from the acts of such carriers and packers.

*Priced Copy of the Catalogue may be secured for fifty cents  
for each session of the sale*

## THE ANDERSON GALLERIES

PARK AVENUE AND FIFTY-NINTH STREET, NEW YORK

Telephone, Plaza 9356

Catalogues on request.

SALES CONDUCTED BY MR. FREDERICK A. CHAPMAN

Telephone Murray Hill 7328

739 50  
A 34 2-1



**Edward G. Getz**  
**Antique Chinese Works of Art**  
14 East 45th Street  
New York

Porcelains  
Patteries  
Bronzes  
Jades  
Crystals  
Etc.

Celadon of the  
Ming Period

March 15th, 1920

The Anderson Galleries, Inc.,  
489 Park Avenue,  
City.

Dear Sirs:

Owing to the fact that the building I now occupy at 14 East 45th Street is to be torn down, and the difficulty now existing of finding a store large enough to accomodate my stock, I have decided to sell my Objects of Ancient Chinese Art at your Galleries. I will not place any limits on the pieces, as I want them all disposed of.

I have described each piece carefully and correctly, and for a period of one year, will guarantee my description.

Yours very truly,

138712



ANCIENT CHINESE ART  
THE COLLECTION OF  
EDWARD G. GETZ

FIRST SESSION

LOTS 1-180

- 1 OVIFORM VASE TAO KUANG  
Coated with a mustard yellow glaze on fine even crackled  
ground. Height, 10½ inches.
- 2 URN SHAPE VASE AND STAND YUNG CHENG  
Band of earved decoration on the neck. The entire body is  
coated with a heavy cafe-au-lait glaze on crackled ground.  
Height, 12 inches.
- 3 OLD SHIGARAKI JAR  
The entire body covered with a thick, gray glaze on crackled  
ground. Signed Denko, name of the potter.  
Height, 10 inches.
- 4 SWEETMEAT BOWL YUNG CHENG  
Panel decoration in famille rose on cafe-au-lait ground.  
Height, 5 inches.

COLLECTION OF CHINESE  
BLUE AND WHITE PORCELAINS

LOTS 5 to 27

- 5 PAIR OF OVIFORM JARS K'ANG HSI  
Long Eliza decoration in blue on hard white-paste porcelain.  
With original covers. Height, 7½ inches.

- 6 BOTTLE SHAPE VASE CH'IEN LUNG  
Decorated with a woman in blue, holding a fan on semi soft-paste porcelain. Height, 6½ inches.
- 7 BOTTLE-SHAPED VASE K'ANG HSI  
Dog Foo decoration in dark brown on white crackled ground. So-called sprinkler bottle. Height, 7½ inches.
- 8 BOWL YUNG CHENG  
Fluted shape. Landscape decoration in the center surrounded by floral patterns on border. Diameter, 9 inches.
- 9 BEAKER VASE K'ANG HSI  
Palm leaf design in blue on hard-paste porcelain. Double ring mark. Height, 8 inches.
- 10 BOTTLE-SHAPED VASE CH'IEN LUNG  
Conventional tiger lilies forming a band at the neck. The lower part of the vase is decorated with a palm leaf pattern. With stand. Height, 7½ inches.
- 11 WATER COUPE AND STAND CH'IEN LUNG  
Decorated with lotus flowers and leaves in two color blue on white porcelain. Height, 3½ inches.
- 12 HAWTHORNE BEAKER VASE K'ANG HSI  
Decoration of me-fleurs on fine Prussian blue ground. Double ring mark. With stand. Height, 7 inches.
- 13 BEAKER VASE AND STAND K'ANG HSI  
Conventional palm leaf decoration in brilliant blue on hard-paste porcelain. Hall mark on bottom. Height, 9½ inches.
- 14 CABINET JAR WITH COVER AND STAND CH'IEN LUNG  
Rice grain decoration on the surface and a band of clouds in light blue key pattern on the edge. Height, 2½ inches.
- 15 ROUGE BOX AND STAND CH'IEN LUNG  
Dragon decoration on semi soft-paste porcelain. Height, 2 inches.
- 16 ROUGE BOX AND STAND YUNG CHENG  
Decorated with peonies delicately painted in light blue on gray, crackled, soft-paste porcelain. Hall mark on bottom. Height, 2½ inches.

- 17 HAWTHORNE JAR K'ANG HSI  
 Decoration of me-fleurs in white on deep cobalt blue ground.  
 With cover and stand. Height, 7½ inches.
- 18 BOTTLE-SHAPED VASE AND STAND K'ANG HSI  
 Conventional tiger lily decoration delicately painted on  
 hard-paste porcelain. Seal mark on bottom.  
Height, 8 inches.
- 19 IRREGULAR GOURD SHAPE VASE K'ANG HSI  
 Floral decoration in panels surrounded with peony and leaf  
 design in brilliant Prussian blue. With cover and stand.  
Height, 9½ inches.
- 20 JAR WITH COVER AND STAND K'ANG HSI  
 Hundred antique pattern in panels in brilliant blue on hard-  
 paste porcelain. Double ring mark on bottom.  
Height, 9½ inches.
- 21 OVIFORM VASE WITH STAND K'ANG HSI  
 Decoration of famous willow pattern in panels. It has a  
 slight Persian influence in its decoration. Height, 17 inches.
- 22 LARGE TEMPLE JAR MING  
 Decoration of peonies and flying pheasants in light blue on  
 hard, white paste porcelain. Height, 16½ inches.
- 23 JAR-SHAPED VASE MING  
 Japonica design descending from the neck in deep blue on  
 white ground. Height, 12 inches.
- 24 BOTTLE-SHAPED VASE AND STAND K'ANG HSI  
 Blue decoration of various landscapes and flowers on pure  
 white ground. Height, 10 inches.
- 25 BOTTLE-SHAPED VASE AND STAND K'ANG HSI  
 Conventional lotus design in light blue on white porcelain.  
Height, 9 inches.
- 26 PAIR TEMPLE JARS K'ANG HSI  
 Decoration of garden scene of summer palace in two panels  
 surrounded by a band of crests and geometrical designs in

light blue. Double ring mark with leaf on bottom. With covers and stands. Height, 15½ inches.

- 27 PAIR HAWTHORNE TEMPLE JARS K'ANG HSI  
Decoration of me-fleurs in branches in white on even blue ground. With original cover and wood stand.  
Height, 18 inches.

## COLLECTION OF CELADON PIECES

LOTS 28 to 66

- 28 TRIPOD AND STAND MING  
Incised basket design under shaded celadon glaze.  
Diameter, 8 inches.
- 29 PLACQUE MING  
Coated with an even color of thick celadon glaze.  
Diameter, 11 inches.
- 30 PLACQUE AND STAND MING  
Incised peony design in center. Border with chrysanthemum pattern.  
Diameter, 14½ inches.
- 31 PLACQUE AND STAND MING  
Conventional peony design incised under a soft celadon glaze.  
Diameter, 16 inches.
- 32 PLACQUE MING  
Conventional peony decoration in center. The border in chrysanthemum form, coated with a soft celadon glaze.  
Diameter, 12 inches.
- 33 TRIPOD AND STAND MING  
Pa Kwa design carved on the surface and covered with a light celadon glaze.  
Diameter, 9 inches.
- 34 SHALLOW BOWL MING  
Conventional peony decoration in center. The border with comb pattern incised under an even celadon glaze.  
Diameter, 12 inches.



- 35 WINE POT MING  
 Decoration of carved peonies and leaves. The pot is supported by three legs and coated with a thick celadon glaze. With cover and stand. Height, 10 inches.
- 36 BOTTLE-SHAPED VASE AND STAND MING  
 Conventional peony under the glaze. The entire surface of giant crackles under a celadon glaze. Height, 13½ inches.
- 37 VASE WITH HANDLES MING  
 Carved decoration of leaf in center. Side handles with dragons and rings. The entire surface is coated with a brilliant celadon glaze. Height, 13½ inches.
- 38 CYLINDRICAL VASE AND STAND MING  
 The entire surface covered with a giant crackle under a celadon glaze. Height, 10 inches.
- 39 RETICULATED VASE AND STAND MING  
 Beaker form. Decoration of peonies and leaves carved in pierced work and coated with a light celadon glaze. Height, 11 inches.
- 40 BOTTLE-SHAPED VASE MING  
 Peony design incised under glaze of celadon. The bottom part of the vase is a soft brown glaze mixed with celadon. This is an unusual specimen. Height, 14 inches.
- 41 WRITER'S BRUSH HOLDER MING  
 Decoration of peonies carved in pierced work and covered with a heavy celadon glaze. With stand. Height, 5 inches.
- 42 TRIPOD WITH COVER AND STAND MING  
 Pa Kwa decoration carved on the surface, under a celadon glaze. Height, 11 inches.
- 43 TRIPOD WITH COVER AND STAND MING  
 Pa Kwa decoration carved on the surface, under a heavy celadon glaze. Height, 9 inches.
- 44 JAR WITH COVER AND STAND MING  
 In form of carved chrysanthemum under celadon glaze. Height, 12 inches.

- 45 TRIPOD WITH COVER AND STAND MING  
 Pa Kwa decoration in form of a band under a heavy celadon  
 glaze. Height, 12 inches.
- 46 TRIPOD AND STAND MING  
 Incised decoration of peony under glaze of celadon. Sup-  
 ported by three feet. Diameter, 9 inches.
- 47 LARGE PLACQUE AND STAND MING  
 Center decoration of incised geometrical key pattern. Bor-  
 der with etched peony and tiger lily under heavy celadon  
 glaze. Stand inlaid with jade. Diameter, 19 inches.
- 48 LARGE WINE POT MING  
 Various fruits of longevity in panels under a heavy celadon  
 glaze. With cover and stand. Height, 16 inches.
- 49 BOTTLE-SHAPED VASE AND STAND MING  
 Flaring neck. Entire surface covered with giant crackle  
 under the celadon glaze. Height, 8 inches.
- 50 GOURD-SHAPED VASE AND STAND MING  
 Tiger lily boldly carved on the neck. The base is decor-  
 rated with rice pattern incised under celadon glaze.  
Height, 12 inches.
- 51 GALLIPOT VASE AND STAND MING  
 Conventional lily design carved on the body and band of  
 palm leaves on the bottom. The entire surface coated with  
 an even celadon glaze. Height, 10 inches.
- 52 JAR AND STAND MING  
 Decoration of peonies carved in pierced work and coated  
 with a celadon glaze. Height, 7 inches.
- 53 STATUETTE AND ORIGINAL STAND MING  
 Seated figure of Kwan-yin in a white robe. Stand repre-  
 senting railing in temple. It is supported by four legs.  
 Entire surface is coated with a celadon glaze.  
Height, 15 inches.

- 54 CYLINDRICAL VASE MING  
 In form of carved baskets. The entire decoration carved  
 in pierced work and coated with a celadon glaze.  
Height, 9½ inches.
- 55 CYLINDRICAL VASE MING  
 Decoration of peony and key pattern carved on surface of  
 celadon glaze. Height, 9½ inches.
- 56 VASE AND STAND MING  
 Decoration of figure and willow tree in brown, carved on the  
 surface of a celadon ground. This is a rare specimen.  
Height, 7 inches.
- 57 CABINET VASE AND STAND MING  
 Coated with an even celadon glaze. Height, 5 inches.
- 58 CABINET VASE AND STAND MING  
 Invested with crackles under light celadon glaze.  
Height, 5½ inches.
- 59 BOTTLE-SHAPED VASE AND STAND K'ANG HSI  
 Conventional tiger lily decoration incised under glaze of  
 light celadon. Height, 9 inches.
- 60 RECTANGULAR VASE MING  
 Palm leaf pattern carved under the celadon glaze.  
Height, 11 inches.
- 61 TRIPOD WITH COVER AND STAND MING  
 Pa Kwa decoration carved on the surface. The jar is sup-  
 ported by three legs. Height, 8½ inches.
- 62 GALLIPOT VASE CH' IEN LUNG  
 Coated with an even color of celadon glaze on hard white  
 paste porcelain. Height, 13 inches.
- 63 BOTTLE-SHAPED VASE AND STAND MING  
 Decoration of peonies incised under glaze of celadon. Giant  
 crackle. Height, 13½ inches.
- 64 BEAKER VASE AND STAND MING  
 Bold decoration of peonies etched under glaze of beauti-  
 ful celadon. Height, 20 inches.

- 65 CABINET VASE AND STAND K'ANG HS  
Etched lotus decoration under celadon glaze.  
Height, 7 inches
- 66 GOOSE NECK VASE AND STAND K'ANG HSI  
Etched decoration of conventional dragons under celadon glaze. Hall marks on the bottom. Height, 10 inches.

## COLLECTION OF SNUFF BOTTLES

LOTS 67 to 158

- 67 SNUFF BOTTLE CH'IEN LUNG  
With coral stopper. Conventional flower decoration on white porcelain.
- 68 SNUFF BOTTLE WITH GLASS STOPPER YUNG CHENG  
Blue and white coiled dragon decoration on semi soft paste porcelain.
- 69 SNUFF BOTTLE WITH QUARTZ STOPPER YUNG CHENG  
Tiger lily and leaf decoration in blue and white on hard paste porcelain.
- 70 SNUFF BOTTLE WITH AMBER STOPPER CH'IEN LUNG  
In form of handbag with attached netsuke. Blue and white tiger lily decoration.
- 71 SNUFF BOTTLE YUNG CHENG  
Blue and white landscape decoration minutely painted on semi soft-paste porcelain.
- 72 SNUFF BOTTLE YUNG CHENG  
Square shape. Decoration of children's festival in panels in blue and white on soft-paste porcelain.
- 73 SNUFF BOTTLE WITH CORAL STOPPER CH'IEN LUNG  
Coiled dragon decoration in coral-red on blue and white porcelain.
- 74 SNUFF BOTTLE WITH JADE STOPPER CH'IEN LUNG  
Decoration of Chinese Sages boating on the "forbidden lake." The entire surface of carved landscape, enameled in five colors.

- 75 SNUFF BOTTLE WITH ORIGINAL STOPPER  
 CH' IEN LUNG  
 Birds of paradise and dragons carved on the surface. Coated with a blue enamel glaze.
- 76 SNUFF BOTTLE WITH JADE STOPPER CH' IEN LUNG  
 Carved decoration of Shou marks and bats of longevity in pierced work on yellow enamel glaze.
- 77 SNUFF BOTTLE WITH QUARTZ STOPPER  
 CH' IEN LUNG  
 Carved decoration of Shou Marks and bats of longevity in pierced work, on turquoise blue glaze.
- 78 SNUFF BOTTLE WITH QUARTZ STOPPER  
 CH' IEN LUNG  
 Group of Dog Foo, beautifully carved and enameled in five colors.
- 79 SNUFF BOTTLE WITH AGATE STOPPER CH' IEN LUNG  
 Lohan figures carved on the surface and decorated in five color enamel glaze.
- 80 SNUFF BOTTLE WITH ORIGINAL STOPPER  
 TAO KUANG  
 Group of Sages, performing miracles on the sea. Carved in porcelain and enameled in five colors.
- 81 SNUFF BOTTLE WITH IVORY STOPPER CH' IEN LUNG  
 Carved decoration of birds of paradise and dragons on red enamel glaze.
- 82 SNUFF BOTTLE WITH ORIGINAL STOPPER  
 CH' IEN LUNG  
 Decoration of birds of paradise and dragons in gold on blue enamel ground.
- 83 SNUFF BOTTLE WITH IVORY STOPPER CH' IEN LUNG  
 Carved decoration of birds of paradise and dragons in the clouds, on turquoise blue glaze.
- 84 SNUFF BOTTLE WITH JADE STOPPER CH' IEN LUNG  
 Carved Chinese Sage on five color porcelain.

- 85 SNUFF BOTTLE WITH IVORY STOPPER CH' IEN LUNG  
Landscape and figure decoration on five color enamel.
- 86 SNUFF BOTTLE WITH QUARTZ STOPPER CH' IEN LUNG  
Coated with liver color glaze on hard-paste porcelain.
- 87 SNUFF BOTTLE WITH JADE STOPPER CH' IEN LUNG  
Carved decoration of tiger and clouds in blue and gold.
- 88 SNUFF BOTTLE WITH QUARTZ STOPPER CH' IEN LUNG  
Dog Foo decoration carved on red enamel glaze.
- 89 SNUFF BOTTLE WITH CORAL STOPPER CH' IEN LUNG  
Mandarin receiving a message. Painted on blue and white porcelain.
- 90 SNUFF BOTTLE CH' IEN LUNG  
Coated with a pink soufflé enamel glaze.
- 91 SNUFF BOTTLE CH' IEN LUNG  
Coated with a pink soufflé enamel glaze.
- 92 SNUFF BOTTLE CH' IEN LUNG  
Small club-shaped. Coated with a pink soufflé glaze.
- 93 SNUFF BOTTLE CH' IEN LUNG  
Cylindrical shape. Coated with a rose soufflé glaze.
- 94 SNUFF BOTTLE CH' IEN LUNG  
Carved Dog Foo decoration in rich green, red and gold glaze.
- 95 MINIATURE VASE K' ANG HSI  
Bottle-shaped. Coated with cafe-au-lait glaze.
- 96 MINIATURE VASE K' ANG HSI  
Pear-shaped. Coated with cafe-au-lait glaze.
- 97 MINIATURE VASE AND STAND CH' IEN LUNG  
Coated with a mustard yellow glaze on crackled ground.

- 98 CABINET VASE AND STAND K'ANG HSI  
Coated with a smooth brown glaze on crackled ground.
- 99 WATER COUPE AND STAND CH'IEN LUNG  
Carved, coiled dragon decoration on yellow crackled glaze.
- 100 CABINET VASE AND STAND CH'IEN LUNG  
Rectangular shape. Invested with a mustard yellow glaze of fine crackle.
- 101 PAIR IMPERIAL BOWLS AND STANDS K'ANG HSI  
Incised decoration of medallion and cloud under the imperial yellow glaze.
- 102 CABINET VASE AND STAND YUNG CHENG  
Amphora shape. Coated with an iron rust glaze of even quality.
- 103 CABINET VASE YUNG CHENG  
Bottle-shaped. Slight varying neck. Coated with an iron rust glaze.
- 104 CABINET VASE AND STAND YUNG CHENG  
Amphora shape. Coated with an iron rust glaze of even quality.
- 105 CABINET VASE YUNG CHENG  
Gallipot shape. Invested with a smooth even iron rust glaze.
- 106 PLACQUE CH'IEN LUNG  
Decoration of dragons incised in the center. The border of floral design, beautifully etched on imperial yellow glaze.  
Diameter, 12½ inches.
- 107 PORCELAIN STATUETTE CH'IEN LUNG  
Figure of Kylin in seated position. Coated with a light celadon glaze. Height, 7 inches
- 108 CABINET VASE AND STAND YUNG CHENG  
Coated with a coral-red glaze.

- 109 BOTTLE-SHAPED VASE CH' IEN LUNG  
Entire surface coated with a thick coral-red glaze.  
Height, 5 inches.
- 110 INCENSE BURNER K' ANG HSI  
Jar form with animal head handles. Coated with a coral-red glaze on white porcelain. With cover and stand.  
Height, 6 inches.
- 111 BOTTLE-SHAPED VASE AND STAND CH' IEN LUNG  
Slight flaring neck. Bamboo decoration in gold on coral-red glaze.  
Height, 8½ inches.
- 112 BOTTLE-SHAPED VASE AND STAND YUNG CHENG  
Entire surface coated with a coral-red glaze.  
Height, 8 inches.
- 113 BOTTLE-SHAPED VASE YUNG CHENG  
Coated with coral-red glaze on white paste porcelain.  
Height, 8 inches.
- 114 BOTTLE-SHAPED VASE AND STAND CH' IEN LUNG  
Entire surface coated with a liver color glaze of cherry type. Inside of neck in light celadon on hard white porcelain.  
Height, 13 inches.
- 115 PEAR-SHAPED VASE YUNG CHENG  
Invested with a liver color glaze of even tone.  
Height, 11 inches.
- 116 CABINET VASE K' ANG HSI  
Amphora form. Coated with a steel black glaze of unusual tone on white bisque ground.  
Height, 5 inches.
- 117 BOTTLE-SHAPED VASE AND STAND CH' IEN LUNG  
Coated with a thick aubergine glaze of even tone.  
Height, 8 inches.
- 118 CABINET VASE K' ANG HSI  
Invested with a mezarine blue glaze on hard white-paste porcelain. With cover and stand.  
Height, 4 inches.



- 119 GALLIPOT VASE YUNG CHENG  
Coated with an even blue glaze on hard white paste porcelain.  
Height, 7 inches.
- 120 TALL JAR-SHAPED VASE K'ANG HSI  
Faded gold decoration on mirror black glaze. With cover.  
Height, 7 inches.
- 121 MINIATURE VASE K'ANG HSI  
Gallipot form. Coated with a mirror black glaze of even tone.
- 122 GOURD-SHAPED VASE YUNG CHENG  
Coated with a brilliant mirror black glaze of even tone on white porcelain.  
Height, 5 inches.
- 123 MINIATURE VASE K'ANG HSI  
Bottle-shaped. Coated with a mirror black glaze of even tone.
- 124 OVIFORM VASE WITH COVER AND STAND K'ANG HSI  
Faded gold decoration on mirror black glaze.  
Height, 8½ inches.
- 125 PAIR PLACQUES K'ANG HSI  
Incised dragon decoration under deep aubergine glaze of even tone.  
Diameter, 10 inches.
- 126 GOOSE NECK VASE AND STAND K'ANG HSI  
Invested with a deep violet glaze of even tone on hard paste porcelain.  
Height, 15 inches.
- 127 BOWL AND STAND K'ANG HSI  
Incised decoration of branches and trees in aubergine and yellow on green ground.  
Diameter, 8 inches.
- 128 BLUE VASE YUNG CHENG  
Bottle-shaped. With flaring neck. Coated with an even blue glaze on hard-paste porcelain.  
Height, 6 inches.
- 129 MINIATURE VASE YUNG CHENG  
Oviform jar-shape. Coated with a forest green enamel glaze.  
Height, 3 inches.

- 130 MINIATURE VASE YUNG CHENG  
Jar-shaped. Coated with a cucumber glaze of even tone.  
Height, 2½ inches.
- 131 MINIATURE VASE YUNG CHENG  
Jar-shaped. Coated with an emerald green glaze on fine  
crackled ground. Height, 2½ inches.
- 132 BOTTLE-SHAPED VASE AND STAND YUNG CHENG  
Coated with a peacock blue mottled glaze on crackled ground.  
Height, 7½ inches.
- 133 BOTTLE-SHAPED VASE AND STAND YUNG CHENG  
Invested with a turquoise blue glaze on crackled ground.  
Height, 7 inches.
- 134 GALLIPOT VASE AND STAND YUNG CHENG  
Coated with a turquoise blue glaze. Height, 7½ inches.
- 135 PAIR BOTTLE-SHAPED VASES YUNG CHENG  
Coated with a turquoise blue glaze on fine crackled ground.  
With stands. Height, 7 inches.
- 136 OVIFORM VASE AND STAND CH' IEN LUNG  
Coated with a cucumber green glaze on fine crackled ground.  
Height, 7 inches.
- 137 CABINET VASE AND STAND CH' IEN LUNG  
Oviform shape. With short flaring neck. Coated with a  
brilliant green glaze on crackled ground. Height, 7½ inches.
- 138 CABINET VASE YUNG CHENG  
Bottle-shaped. With flaring neck. Coated with a Nile  
green glaze. Height, 5 inches.
- 139 MELON-SHAPED JAR K'ANG HSI  
Incised medallion decoration carved on the surface of starch  
blue glaze. With cover and stand. Height, 7 inches.
- 140 SQUARE BOTTLE-SHAPED VASE YUNG CHENG  
Coated with a flambe glaze of rich turquoise hue. Has side  
handles. With stand. Height, 13 inches.

- 141 PEACOCK BLUE VASE AND STAND CH' IEN LUNG  
Oviform shape. With flaring neck. Rich peacock blue glaze  
on fine crackled ground. Height, 14 inches.
- 142 JAR-SHAPED VASE AND STAND K'ANG HSI  
Coated with a deep violet glaze on bisque porcelain.  
Height, 15 inches.
- 143 GROUP OF VASES AND STAND CH' IEN LUNG  
Representing six vases in one group. Coated with a beau-  
tiful light celadon glaze of even tone. Height, 10 inches.
- 144 CABINET VASE AND STAND YUNG CHENG  
Amphora shape. Coated with a heavy tea leaf green of dark  
even tone. Height, 6 inches.
- 145 CABINET VASE AND STAND YUNG CHENG  
Bottle-shaped. Coated with a light cafe-au-lait glaze on  
crackled ground. Height, 6 inches.
- 146 GALLIPOT VASE K'ANG HSI  
Coated with a light cafe-au-lait glaze on crackled ground.  
Height, 5½ inches.
- 147 KORO WITH COVER AND STAND YUNG CHENG  
Covered with a cafe-au-lait glaze on crackled ground.  
Height, 6 inches.
- 148 KORO WITH COVER AND STAND MING  
Coated with a cafe-au-lait glaze on giant crackled ground.  
Height, 5 inches.
- 149 CABINET VASE AND STAND K'ANG HSI  
Oviform shape. Coated with a cafe-au-lait glaze on large  
crackled ground. Height, 5½ inches.
- 150 KORO WITH COVER AND STAND MING  
Invested with a light cafe-au-lait glaze on large crackled  
ground. Height, 6 inches.
- 151 KORO WITH COVER AND STAND MING  
Coated with a smooth cafe-au-lait glaze on giant crackled  
ground. Supported by three feet. Height, 8 inches.

- 152 BOTTLE-SHAPED VASE AND STAND K'ANG HSI  
Blue and white decoration in form of peaches on cafe-au-lait glaze of crackled surface. Very rare specimen.  
Height, 15 inches.
- 153 CABINET VASE AND STAND K'ANG HSI  
Cylindrical shape. Semi soft-paste white porcelain with fine crackles.  
Height, 5 inches.
- 154 CABINET VASE AND STAND K'ANG HSI  
Cylindrical shape. Semi soft-paste porcelain of cream white on crackled ground.  
Height, 5 inches.
- 155 PAIR DOG FOOS MING  
Coated with a gray crackled glaze. Height, 5¾ inches.
- 156 WHITE VASE AND STAND YUNG CHENG  
Incised decoration of conventional palm leaves on pure white porcelain.  
Height, 8½ inches.
- 157 BOTTLE-SHAPED VASE AND STAND K'ANG HSI  
Tiger lily decoration carved on the surface of white soft-paste porcelain.  
Height, 13 inches.
- 158 PORCELAIN STATUETTE MING  
Figure of Kwan-yin standing erect on a rock and holding a scroll in her hand. Coated with a beautiful cream white glaze.  
Height, 13 inches.

## COLLECTION OF DECORATIVE PORCELAINS

LOTS 159 to 180

- 159 PAIR MANDARIN VASES AND STANDS CH'IEN LUNG  
Five color figure decoration in panels of reserved white. Surrounded with blue and white decoration in form of me-fleurs and petals.  
Height, 6 inches.
- 160 SET OF THREE MANDARIN VASES CH'IEN LUNG  
Consisting of a pair of vases and one center ornament. Famille rose decoration of flower venders in panels sur-

rounded by various flowers in rose, green and blue, beautifully painted on semi soft paste porcelain.

Height, 7½ inches.

- 161 MANDARIN VASE AND STAND CH' IEN LUNG  
Oviform shape. Famille rose decoration in panels surrounded by various flowers in red, blue and gold on semi soft-paste porcelain of the finest type. Height, 10½ inches.
- 162 SET OF THREE MANDARIN PIECES CH' IEN LUNG  
Consisting of a pair of jars and one beaker vase. Five color decoration in panels of white reserve surrounded by key pattern in blue on red ground. Height, 11 inches.
- 163 PAIR MANDARIN JARS WITH COVERS CH' IEN LUNG  
Famille rose decoration of imperial personages in garden, in blue bordered panels surrounded by key pattern and blue flowers on red ground. Height, 14 inches.
- 164 PAIR OF FIVE COLOR JARS MING  
Decoration of immortals roaming around the garden. Painted in five enamel colors mixed with under glaze blue on white porcelain. With Stands. Height, 9 inches.
- 165 ALTAR ORNAMENT CH' IEN LUNG  
In form of lotus supported by stand representing carved leaf pattern. Decoration in five colors. Height, 7 inches.
- 166 JAR YUNG CHENG  
Famille rose decoration and green vines on famille noire enamel glaze. With original cover and stand. Height, 11 inches.
- 167 SMALL TABLE SCREEN YUNG CHENG  
Decoration of peonies and pomegranates in five colors on white bisque porcelain of the imperial kiln. It has a teak-wood frame, beautifully carved and inlaid with silver wire. Height, 15 inches.
- 168 BOTTLE-SHAPED VASE AND STAND YUNG CHENG  
Famille rose decoration of peaches and heron delicately painted on hard, white paste porcelain. Height, 9½ inches.

- 169 IMPERIAL VASE AND STAND CH' IEN LUNG  
Famille rose decoration of children among the pine trees enameled in green. The border is decorated in blue and white. Height, 15 inches.
- 170 BEAKER VASE K'ANG HSI  
Decoration of Sages under the pine trees in blue and peach, raised on the surface of beautiful celadon glaze. Height, 18 inches.
- 171 CLUB-SHAPED VASE AND STAND K'ANG HSI  
Blue and white decoration of hawthorne blossoms and birds raised on celadon glaze. Height, 17 inches.
- 172 CLUB-SHAPED VASE YUNG CHENG  
Band of medallion and Shu marks in rose, blue, yellow and white enamel. The entire decoration represents a brocade pattern. Height, 15 inches.
- 173 FAMILLE ROSE PLACQUE YUNG CHENG  
Rose peony decoration in enamel colors in center. The border with rose peony and Buddhistic emblems. Diameter, 14 inches.
- 174 CLUB-SHAPED VASE AND STAND YUNG CHENG  
Coiled dragon decoration in green, yellow and aubergine enamel colors, surrounded by conventional wave pattern decorated with various fish and seaweed in red and green glaze. Height, 17 inches.
- 175 TEMPLE JAR MING  
Five color decoration of horses, petals, flowers and blue and white rock in brilliant enamel glaze. With original cover and stand. Height, 18 inches.
- 176 TEMPLE JAR WITH COVER AND STAND MING  
Similar to the preceding.
- 177 FAMILLE ROSE PLACQUE YUNG CHENG  
Decoration of rose peony and birds in the center. Border of various flowers in green, rose and yellow enamel colors. Diameter, 14 inches.

- 178 FAMILLE ROSE PLACQUE YUNG CHENG  
 Peony decoration in rose, beautifully painted in the center  
 surrounded with three borders. Diameter, 15½ inches.
- 179 OVIFORM VASE K'ANG HSI  
 Chinese Sage comfortably seated under a pine tree. Entire  
 decoration in raised work. Coated with a brilliant blue on  
 celadon ground. Height, 17 inches.
- 180 TEMPLE JAR WITH COVER AND STAND MING  
 Decoration of birds of paradise and peony in famille verte  
 and aubergine on hard-paste porcelain. Height, 14 inches.

## SECOND SESSION

### LOTS 181-381

- 181 JADE SNUFF BOTTLE K'ANG HSI  
Pork fat jade of natural pebble form. It has a jade stopper.
- 182 JADE SNUFF BOTTLE CH'IEN LUNG  
Fei-ts'ui jade of transparent quality. It has an ivory stopper.
- 183 AMBER SNUFF BOTTLE MING  
Carved fish decoration on dark amber. It has a coral stopper.
- 184 JADE SNUFF BOTTLE CH'IEN LUNG  
Pork fat jade. Flat shape. The sides of the bottle are carved out so that a cord may be used. It has a coral stopper.
- 185 AGATE SNUFF BOTTLE CH'IEN LUNG  
White crystalized agate on transparent agate. It has a jade stopper.
- 186 JADE SNUFF BOTTLE CH'IEN LUNG  
Square shape. Fine quality of white jade. It has a jade stopper.
- 187 AGATE SNUFF BOTTLE CH'IEN LUNG  
Unusual brown and greenish moss agate of transparent quality. It has a green jade stopper.
- 188 AGATE SNUFF BOTTLE CH'IEN LUNG  
White wood grain agate mixed with gray. It has a tourmaline stopper.



- 189 CRYSTAL SNUFF BOTTLE CH' IEN LUNG  
Brilliant pure crystal of exceptional quality. It has an ivory stopper.
- 190 JADE SNUFF BOTTLE CH' IEN LUNG  
Entire body is coated with a grayish tint of jade. It has a coral stopper.
- 191 AGATE SNUFF BOTTLE CH' IEN LUNG  
Spotted with dark brown on crystalized agate. It has a coral stopper.
- 192 AGATE SNUFF BOTTLE CH' IEN LUNG  
Transparent agate of fine quality. It has a coral stopper.
- 193 IVORY SNUFF BOTTLE CH' IEN LUNG  
Pear shape. Carved decoration of personages and castles, beautifully colored in red and green lacquer. It has the original ivory stopper.
- 194 AGATE SNUFF BOTTLE CH' IEN LUNG  
Tiger skin color on dark brown transparent agate. It has a green jade stopper.
- 195 SNUFF BOTTLE MING  
Made of natural bean. Mounted at mouth with silver. It has a green jade stopper.
- 196 AGATE SNUFF BOTTLE CH' IEN LUNG  
Tortoise shell color transparent agate. It has an amber stopper.
- 197 AGATE SNUFF BOTTLE CH' IEN LUNG  
Pilgrim bottle shape. Showing beautiful natural agate. It has an ivory stopper.
- 198 AGATE SNUFF BOTTLE CH' IEN LUNG  
Flat, slender bottle-shape. Map like mark on transparent agate. It has a glass stopper.
- 199 AGATE SNUFF BOTTLE CH' IEN LUNG  
Beautiful transparent white agate. It has a carnelian stopper.

- 200 SNUFF BOTTLE CH'IEN LUNG  
Pure white crystal of fine quality. It has an amber stopper.
- 201 AGATE SNUFF BOTTLE CH'IEN LUNG  
Pure white grain on smooth gray transparent agate. It has an amber stopper.
- 202 AGATE SNUFF BOTTLE CH'IEN LUNG  
Mottled dark brown on transparent agate. It has an amber stopper.
- 203 JADE SNUFF BOTTLE CH'IEN LUNG  
Rare yellow jade of exceptional quality. It has a green jade stopper.
- 204 AGATE SNUFF BOTTLE CH'IEN LUNG  
Flat shape. Brown vein running through the bottle. It has an amber stopper.
- 205 SNUFF BOTTLE CH'IEN LUNG  
Octagonal shape. Beautiful white crystal. It has the original stopper.
- 206 AGATE SNUFF BOTTLE CH'IEN LUNG  
Vein of dark agate on transparent brown. It has a celluloid stopper.

## COLLECTION OF BLUE AND WHITE PORCELAINS

LOTS 207 to 229

- 207 TWO BLUE AND WHITE PIECES CH'IEN LUNG  
One a bottle-shape vase. Peacock decoration under a blue cloud. One water coupe and stand. (Base chipped.)
- 208 CABINET VASE CH'IEN LUNG  
Decoration of chrysanthemums and birds on blue and white, semi soft-paste porcelain. Height, 5½ inches.
- 209 BEAKER VASE K'ANG HSI  
Conventional palm leaf decoration in blue. Center with medallions. Height, 7½ inches.

- 210 CYLINDRICAL CABINET VASE YUNG CHENG  
 Decoration of moon and deer, beautifully painted in rich blue on fine, white, soft-paste porcelain.  
Height, 5½ inches.
- 211 CABINET VASE AND STAND YUNG CHENG  
 Pine tree decoration, beautifully painted in sapphire blue on soft paste ground. Fine specimen.  
Height, 8 inches.
- 212 PAIR GALLIPOT VASES K'ANG HSI  
 Floral decoration in deep blue in band of several panels on hard paste porcelain. With covers & stands.  
Height, 7 inches.
- 213 BEAKER VASE K'ANG HSI  
 Landscape decoration, beautifully painted in brilliant blue on hard white-paste porcelain.  
Height, 8 inches.
- 214 SPRINKLER AND STAND K'ANG HSI  
 Bottle-shaped. Conventional Van Dyke design, beautifully painted in soft blue on pure white porcelain. With stand.  
Height, 9 inches.
- 215 PAIR CABINET VASES AND STANDS K'ANG HSI  
 Long Eliza decoration in panels on white, hard-paste porcelain.  
Height, 5 inches.
- 216 CABINET VASE AND STAND YUNG CHENG  
 Coiled dragon and cloud decoration in clear blue on pure white porcelain.  
Height, 5 inches.
- 217 PLACQUE K'ANG HSI  
 Peony decoration, beautifully painted in the center. Border of brocade patterns in blue on white porcelain.  
Diameter, 15 inches.
- 218 PLACQUE K'ANG HSI  
 Personages under the willow tree, beautifully painted in the center. Border of brocade patterns in even color blue on hard white paste porcelain.  
Diameter, 14 inches.

- 219 PLACQUE K'ANG HSI  
 Woman standing by a bench under the pine tree. Border of brocade pattern painted under blue glaze.  
Diameter, 16 inches.
- 220 PAIR PLACQUES K'ANG HSI  
 Peony and rock design within two borders covered with various decoration of fungus in panels in deep blue. Hall marks on the bottom.  
Diameter, 14 inches.
- 221 PAIR PLACQUES K'ANG HSI  
 Decoration of weeping willow, beautifully painted in the center. The border with key patterns and panels in light blue on hard-paste porcelain.  
Diameter, 14½ inches.
- 222 MAGNIFICENT PLACQUE K'ANG HSI  
 Bold lotus and tiger lily decoration in brilliant blue on hard white paste porcelain. With double ring and six character marks. Very rare.  
Diameter, 15 inches.
- 223 LARGE BRUSH HOLDER K'ANG HSI  
 Decoration of warrior and pine trees in brilliant blue on semi soft-paste crackled ground.  
Height, 6 inches.
- 224 OVIFORM VASE CH' IEN LUNG  
 Famous decoration of four horses under the trees, beautifully painted in deep blue on semi soft-paste porcelain.  
Height, 15 inches.
- 225 OVIFORM VASE K'ANG HSI  
 Decoration of the four seasons in panels, beautifully painted in deep blue on hard white-paste porcelain.  
Height, 17½ inches.
- 226 LARGE GINGER JAR K'ANG HSI  
 Panel decoration of court dancers in brilliant blue on white paste porcelain. With cover and stand.  
Height, 14 inches.
- 227 BOTTLE-SHAPED VASE AND STAND K'ANG HSI  
 Coiled dragon decoration in blue and peach on white paste ground. Six character marks on the base. Height, 10 inches.

- 228 BEAKER VASE K'ANG HSI  
 Conventional peony and leaf decoration, beautifully painted  
 in deep sapphire blue on hard, white paste porcelain.  
Height, 19 inches.
- 229 RECTANGULAR VASE CH'YEN LUNG  
 Pa Kwa decoration in raised white on blue key pattern re-  
 serve.  
Height, 18 inches.

## COLLECTION OF CELADONS

LOTS 230 to 262

- 230 PLACQUE MING  
 Peony and vine decoration under glaze of deep celadon.  
Diameter, 17 inches.
- 231 LARGE PLACQUE MING  
 Chrysanthemum border. Entire surface coated with a deep  
 celadon glaze.  
Diameter, 19 inches.
- 232 PLACQUE MING  
 Chrysanthemum in center. Coated with a rich celadon glaze.  
Diameter, 15 inches.
- 233 SHALLOW BOWL AND STAND MING  
 Pa Kwa decoration incised under crackled celadon glaze.  
Diameter, 12 inches.
- 234 TRIPOD WITH COVER AND STAND MING  
 Conventional carved peony decoration on celadon glaze.  
Height, 10 inches.
- 235 TRIPOD MING  
 Coated with a sea-green crackled glaze.  
Diameter, 11½ inches.
- 236 TRIPOD MING  
 Decoration of wave pattern incised under light celadon glaze.  
Diameter, 9 inches.
- 237 TRIPOD WITH COVER AND STAND MING  
 Checker patterns incised under glaze of deep celadon crackles.  
Height, 12 inches.

- 238 LARGE JAR WITH ORIGINAL COVER MING  
Peonies boldly carved on entire surface of rich celadon glaze.  
Height, 12 inches.
- 239 TEMPLE JAR WITH COVER AND STAND MING  
Chinese characters and peonies raised in panels on surface  
of deep celadon glaze. Height, 21 inches.
- 240 LARGE TRIPOD WITH COVER AND STAND MING  
Decoration of peonies boldly carved on the surface under deep  
even celadon glaze. It has side handles. Height, 17 inches.
- 241 JAR WITH COVER AND STAND MING  
Conventional peony decoration in raised work on celadon  
glaze. Height, 14 inches.
- 242 JAR-SHAPED VASE MING  
Fine crackled ground. Coated with celadon glaze.  
Height, 14 inches.
- 243 TRIPOD WITH COVER AND STAND MING  
Pa Kwa and peony decoration carved on the surface of  
celadon glaze. Height, 14 inches.
- 244 BEAKER VASE MING  
Peony decoration etched under celadon glaze.  
Height, 19 inches.
- 245 CABINET VASE AND STAND MING  
Gallipot shape. Coated with a light celadon with giant  
crackles. Height, 9 inches.
- 246 OVIFORM VASE AND STAND MING  
Coated with a celadon glaze on crackled ground.  
Height, 8½ inches.
- 247 EGG-SHAPED VASE WITH COVER AND STAND MING  
Light celadon glaze on fine crackled ground.  
Height, 8 inches.
- 248 TRIPOD WITH COVER AND STAND MING  
Pa Kwa decoration carved on body. Coated with a celadon  
glaze. Height, 8 inches.

- 249 WINE POT WITH ORIGINAL COVER MING  
Coated with a celadon glaze on crackled ground.  
Height, 7½ inches.
- 250 TRIPOD WITH COVER AND STAND MING  
Carved Pa Kwa decoration under a light sea-green glaze.  
Height, 9 inches.
- 251 SHALLOW TRIPOD MING  
Pa Kwa decoration carved on the surface and covered with  
a celadon glaze. With cover and stand. Height, 12 inches.
- 252 SHRINE MING  
Statuette of war-god and attendant, beautifully carved and  
placed in a shrine in the form of a pagoda. It is coated  
with a beautiful celadon glaze. Height, 14 inches.
- 253 TEMPLE JAR MING  
Chinese characters and conventional peonies carved on the  
surface in panels. Coated with a celadon glaze. With  
original cover and stand. Height, 16 inches.
- 254 SHALLOW TRIPOD MING  
Peony decoration carved on the entire surface. Coated with  
a brownish celadon glaze. Height, 9 inches.
- 255 GARDEN SEAT MING  
Perforated surface. Coated with a celadon glaze on crackled  
ground. Height, 18 inches.
- 256 LARGE JAR WITH COVER MING  
Conventional chrysanthemum decoration carved on surface  
under celadon glaze. Height, 16 inches.
- 257 LARGE JAR MING  
Chinese characters and peach decoration in panels carved  
under glaze of celadon. With original cover and stand.  
Height, 19 inches.
- 258 SHALLOW TRIPOD WITH COVER AND STAND MING  
Pa Kwa decoration carved under celadon glaze.  
Height, 14 inches.

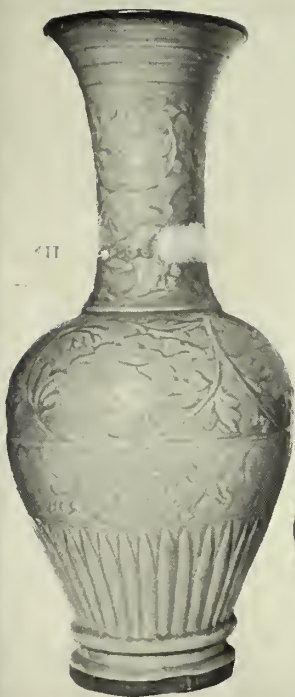
- 259 JAR WITH COVER AND STAND MING  
 Chrysanthemum form. Coated with a thick Sung type  
 celadon glaze. Height, 14 inches.
- 260 LARGE TEMPLE VASE MING  
 Globular body with flaring neck. Conventional peony dec-  
 oration carved on surface. Coated with a celadon glaze.  
Height, 24 inches.
- 261 TEMPLE VASE MING  
 Globular form with long flaring neck. Tiger lily decora-  
 tion carved under celadon glaze. Height, 27 inches.  
 [SEE ILLUSTRATION]
- 262 TEMPLE VASE MING  
 Globular body with long flaring neck. Incised decoration  
 of peonies under glaze of celadon on cracked ground.  
Height, 24½ inches.  
 [SEE ILLUSTRATION]

## COLLECTION OF FIVE COLOR PORCELAINS

LOTS 263 to 316

- 263 JAR WITH COVER AND STAND K'ANG HSI  
 Landscape decoration in blue and celadon, carved on  
 white-paste porcelain. Height,
- 264 CABINET VASE AND STAND K'ANG HSI  
 Club-shaped. Decoration of animals in immortal and painted  
 in blue and pink raised work on celadon ground.  
Height, 11 inches.
- 265 GALLIPOT VASE AND STAND MING  
 Decoration of peonies in center. Shoulder and base in con-  
 ventional Van Dyke pattern. Decorations in raised yellow  
 enamel glaze on blue. Height, 15 inches.
- 266 GINGER JAR WITH COVER AND STAND MING  
 Five color decoration of fish and seaweeds in green, red  
 and aubergine enamel on white porcelain.  
Height, 11 inches.





411

[261]



[707]



[262]

TEMPLE VASE, MING  
CARVED CELADON JAR, MING  
TEMPLE VASE, MING



- 267 TEMPLE JAR MING  
 Famous fish decoration painted in five color enamel on hard white-paste porcelain. With cover & stand.  
Height, 19 inches.
- 268 PORCELAIN PLACQUE K'ANG HSI  
 Decoration of the four seasons in famille verte in panels. Border with panel decoration of peonies and key pattern. It has a plaque holder inlaid with jade.  
Diameter, 14 inches.
- 269 PORCELAIN PLACQUE AND HOLDER K'ANG HSI  
 Famille verte decoration of peonies, rocks and butterflies, beautifully enameled on white porcelain.  
Diameter, 13½ inches.
- 270 STATUETTE CH'IEN LUNG  
 Figure of a dog comfortably seated. His fur beautifully penciled in black on white porcelain.
- 271 PAIR BOWLS YUNG CHENG  
 Five color decoration of conventional peonies, beautifully painted on white paste porcelain. Imperial six marks on base.  
Diameter, 9 inches.
- 272 IMPERIAL BOWL CH'IEN LUNG  
 Siamese decoration of four Kwan-yin figures and lotus medallion in green and red enamel.  
Diameter, 7 inches.
- 273 TALL CUP AND STAND K'ANG HSI  
 Figure decoration in rich famille verte on white ground.  
Height, 5 inches.
- 274 CABINET VASE AND STAND K'ANG HSI  
 Club-shaped. Famille verte decoration of chrysanthemums and Chinese characters.  
Height, 9 inches.
- 275 GALLIPOT VASE K'ANG HSI  
 Famille verte decoration of Mandarin and attendants, beautifully painted on six color porcelain. With cover and stand.  
Height, 12 inches.

- 276 HEXAGON VASE MING  
 Decoration of birds of paradise in green. Panels with geometrical pattern under dark red glaze. With cover and stand. Height, 10 inches.
- 277 CABINET VASE K'ANG HSI  
 Decoration of cherry flowers in famille verte mixed with aubergine and yellow, beautifully painted on hard white-paste porcelain. With cover and stand. Height, 10 inches.
- 278 PAIR WALL VASES K'ANG HSI  
 Famille verte figure decoration in panels. Border of powder-blue with gold decoration. Height, 7 inches.
- 279 IMPERIAL TEA POT K'ANG HSI  
 Famille verte decoration in two panels, corner with key patterns in red. It has the original cover. Height, 5 inches.
- 280 SQUARE BOWL AND STAND K'ANG HSI  
 Famille verte landscape decoration, beautifully painted on hard white-paste porcelain. Height, 6 inches.
- 281 CABINET VASE AND STAND K'ANG HSI  
 Club-shaped. Decoration of Sage seated on a chair performing miracles. Height, 9 inches.
- 282 CABINET VASE AND STAND  
 Gallipot shape. With flaring neck. Famille verte decoration of Sage and attendant. Height, 6 inches.
- 283 CABINET VASE AND STAND K'ANG HSI  
 Club-shaped. Famille verte decoration of court lady and attendant, beautifully painted on smooth, white paste porcelain. Height, 9 inches.
- 284 CABINET VASE K'ANG HSI  
 Globular shape. With flaring neck. Decoration of birds in black and brown perched on flower branches. Height, 8 inches.
- 285 VASE WITH COVER AND STAND K'ANG HSI  
 Famille verte decoration of peonies, rocks and flying birds on hard-paste porcelain. Height, 11 inches.

- 286 CABINET VASE K'ANG HSI  
 Five color decoration in panels of lotus and chrysanthemums.  
 With cover and stand. Height, 8 inches.
- 287 RECTANGULAR VASE K'ANG HSI  
 Five color enamel decoration in four panels of animals and  
 flowers. Border with key patterns inserted in small panels.  
 With original cover and stand. Height, 11 inches.
- 288 CABINET VASE WITH COVER AND STAND K'ANG HSI  
 Famille verte figure decoration. Seated figure of court lady,  
 beautifully painted on smooth white porcelain.  
Height, 7 inches.
- 289 GALLIPOT VASE AND STAND K'ANG HSI  
 With flaring neck. Decoration of birds of paradise in green,  
 aubergine and yellow enamel, painted on hard white-paste  
 porcelain. Height, 9 inches.
- 290 GALLIPOT VASE WITH COVER AND STAND K'ANG HSI  
 Famille verte decoration of personages. Border of red haw-  
 thorne on green ground. Height, 8 inches.
- 291 JAR WITH STAND MING  
 Decoration of boys' festival in five colors on hard-paste  
 porcelain. Height, 8 inches.
- 292 CABINET VASE AND STAND K'ANG HSI  
 Famille verte decoration of personages and cocks, beautifully  
 painted on hard white-paste porcelain. Height, 9 inches.
- 293 BRUSH HOLDER AND STAND K'ANG HSI  
 Spill-shape. Five color decoration of butterflies and lotus,  
 beautifully painted in two panels. Height, 9 inches.
- 294 BRUSH HOLDER AND STAND K'ANG HSI  
 Five color decoration of chrysanthemums and birds in panels.  
Height, 7 inches.
- 295 BRUSH HOLDER K'ANG HSI  
 Decoration of Mandarin dressed in a red robe and walking  
 in the garden. Height, 5 inches.

- 296 PAIR IMPERIAL BOWLS K'ANG HSI  
 Five color decoration of Shu marks. Inside with panels decorated with famous flowers. Diameter, 7 inches.
- 297 JAR WITH STAND MING  
 Figure decoration in panels on red and green. Height, 8½ inches.
- 298 JAR WITH COVER K'ANG HSI  
 Cylindrical form. Famille verte decoration of me-fleurs and birds on white porcelain. Height, 7 inches.
- 299 TALL CUP K'ANG HSI  
 Famille verte figure decoration on white paste porcelain. Height, 3½ inches.
- 300 PAIR PLATES AND HOLDERS K'ANG HSI  
 Famous five fish decoration in enamel colors, on fine hard-paste porcelain. Six Hall marks. Diameter, 6½ inches.
- 301 FOUR PLATES K'ANG HSI  
 Semi egg-shell porcelain. Hundred antique decoration in five colors on white porcelain. Diameter, 6½ inches.
- 302 ROSE BACK PLATE  
 So-called seven border. Decoration of court ladies and children, beautifully painted in rose enamel colors. Border painted with key patterns in several enamel colors. Diameter, 8¼ inches.
- 303 EGG-SHELL ROSE-BACK PLATE  
 Decoration of court ladies seated at a table. They are dressed in gorgeous costumes of pink and surrounded by a so-called "seven border." The border is decorated with famous key patterns in panels. Diameter, 8 inches.
- 304 CABINET VASE AND STAND K'ANG HSI  
 Club-shaped. Famille verte decoration of Jiurojin. Height, 10 inches.
- 305 BRUSH HOLDER AND STAND YUNG CHENG  
 Famille rose decoration of personages on hard-paste porcelain. Height, 8 inches.

- 306 CLUB-SHAPED VASE AND STAND K'ANG HSI  
 Five color decoration of chrysanthemums and birds, beautifully painted on hard-paste porcelain. Height, 11½ inches.
- 307 LIBATION CUP K'ANG HSI  
 Famille verte and yellow decoration in panels, beautifully painted on bisque. Carved lizard handles.  
Height, 2 inches.
- 308 THREE ROSE PLATES YUNG CHENG  
 Decoration of personages painted in three panels on rose enamel ground on semi egg-shell porcelain.  
Diameter, 6 inches.
- 309 PAIR BOWLS AND SAUCER YUNG CHENG  
 Decoration of figures in three panels, on rose enamel ground of semi egg-shell porcelain.
- 310 ROSE ENAMEL DISH YUNG CHENG  
 Three figures and landscape painted in panels on rose enamel ground.
- 311 PLACQUE YUNG CHENG  
 Famille rose figures in panels. Border decorated with rose peonies and pomegranates. Diameter, 16 inches.
- 312 FOUR PLACQUES K'ANG HSI  
 Decoration of chrysanthemums in gold on under glaze blue. Border of four panels painted in red on blue and white ground. Diameter, 13½ inches.
- 313 PORCELAIN PLACQUE K'ANG HSI  
 Famille verte decoration of rocks and red poppies on white porcelain. It has six character marks. Diameter, 13½ inches.
- 314 PORCELAIN PLACQUE K'ANG HSI  
 Famille verte decoration of court ladies under the willow tree. Border decorated with butterflies and geometrical key pattern in green. Diameter, 13 inches.
- 315 PLACQUE YUNG CHENG  
 Famille rose decoration of court lady watching children at play. Diameter, 14 inches.

316 PLACQUE

YUNG CHENG

Decoration of court lady admiring flowers. Border of famous flowers and fruits painted in five enamel colors.

Diameter, 14 inches.

## COLLECTION OF SINGLE COLOR PORCELAIN

LOTS 317 to 381

- 317 CABINET VASE AND STAND MING  
Melon shape. Coated with a cafe-au-lait glaze on crackled ground. Height, 7 inches.
- 318 KORO WITH COVER AND STAND MING  
Coated with a cafe-au-lait glaze on giant crackles. Height, 5 inches.
- 319 CABINET VASE AND STAND MING  
Dog Foo handles. Key patterns in dark brown on cafe-au-lait glaze. Height, 7 inches.
- 320 CABINET VASE AND STAND MING  
Cylindrical shape. Cafe-au-lait glaze on crackled ground. Height, 7 inches.
- 321 KORO WITH COVER AND STAND MING  
Coated with a rich cafe-au-lait glaze on giant crackles. Height, 6½ inches.
- 322 PAIR CABINET VASES AND STANDS MING  
Coated with a cafe-au-lait glaze of even tone on fine crackled ground. Height, 9 inches.
- 323 CYLINDRICAL VASE AND STAND YUNG CHENG  
Decoration of chrysanthemums and bamboo carved on the surface of fine white soft-paste porcelain. Height, 8 inches.
- 324 PEAR-SHAPED VASE MING  
Incised chrysanthemum decoration under cream glaze. Height, 7 inches.



- 325 ROUGE BOX WITH ORIGINAL COVER AND STAND MING  
 Decoration of five Buddhistic emblems incised on cream white ground.
- 326 CYLINDRICAL VASE WITH HANDLES MING  
 Coated with a rich cream glaze on crackled ground.  
 Height, 10 inches.
- 327 OVIFORM VASE MING  
 Coated with a light celadon glaze on gray crackled ground.  
 Height, 14 inches.
- 328 PORCELAIN STATUETTE MING  
 Seated figure of a priest holding a sceptre in his left hand.  
 Coated with a cream white glaze. Height, 12 inches.
- 329 PORCELAIN STATUETTE MING  
 In form of Dog Foo seated on a stand. The entire body is coated with a creamy porcelaneous translucent glaze.  
 Height, 5½ inches
- 330 CABINET VASE AND STAND K'ANG HSI  
 Pear-shaped. With flaring neck. Peony decoration raised on semi soft-paste, white porcelain. Height, 9½ inches.
- 331 PORCELAIN STATUETTE MING  
 Figure of Kwan-yin standing on a rock. Coated with a translucent porcelaneous white ground. Height, 19 inches.
- 332 SOFT PASTE VASE AND STAND K'ANG HSI  
 Bulbous center. With slightly flaring neck. Conventional tiger lily carved in the center. Neck and base in form of bamboo. Height, 12½ inches.
- 333 PAIR TEMPLE JARS MING  
 Globular shape. Coated with a cream white glaze on hard-paste porcelain. With covers and stands. Height, 19 inches.
- 334 GALLIPOT VASE AND STAND YUAN  
 Coated with a light celadon glaze on crackled ground.  
 Height, 12½ inches.

- 335 GOURD-SHAPED VASE AND STAND YUAN  
 Decoration of peonies, beautifully incised under a soft, cream  
 white glaze. Height, 12½ inches.
- 336 CABINET VASE CH' IEN LUNG  
 Chrysanthemum form. Coated with a white glaze on semi  
 egg-shell porcelain. Height, 5½ inches.
- 337 PAIR OVIFORM VASES AND STANDS CH' IEN LUNG  
 Incised decoration of dragons under glaze of deep aubergine.  
 Six character marks. Height, 12 inches.
- 338 CABINET VASE AND STAND  
 Bottle-shaped. Coated with a smooth aubergine glaze.  
Height, 8½ inches.
- 339 BOTTLE-SHAPED VASE AND STAND CH' IEN LUNG  
 Entire surface coated with a white soufflé glaze.  
Height, 9 inches.
- 340 MINIATURE VASE AND STAND CH' IEN LUNG  
 Coated with a white soufflé glaze. Height, 3½ inches.
- 341 CABINET VASE AND STAND YUNG CHENG  
 Gallipot shape. Coated with an iron rust glaze of brilliant  
 quality. Height, 5 inches.
- 342 GINGER JAR WITH COVER AND STAND K' ANG HSI  
 Coated with a deep forest green glaze on hard-paste por-  
 celain. Height, 9½ inches.
- 343 PAIR JARS CH' IEN LUNG  
 Entire surface coated with camilla-leaf green glaze of even  
 tone. Diameter, 5 inches.
- 344 JAR & STAND CH' IEN LUNG  
 Invested with camilla-leaf green glaze on fine crackled ground.  
Height, 6½ inches.
- 345 CABINET VASE AND STAND CH' IEN LUNG  
 Tiger lily decoration in famille verte on brilliant black  
 ground. Height, 5½ inches.

- 346 BEAKER VASE AND STAND CH' IEN LUNG  
Coated with camilla-leaf green glaze of even tone on cracked ground. Height, 10 inches.
- 347 SMALL JAR WITH COVER AND STAND CH' IEN LUNG  
Coated with camilla-leaf green glaze. Height, 5 inches.
- 348 JAR WITH COVER AND STAND MING  
Entire body coated with a brilliant green glaze on cracked ground. Height, 12 inches.
- 349 MINIATURE JAR AND STAND CH' IEN LUNG  
Coated with a cucumber green glaze. Height, 3½ inches.
- 350 CABINET VASE AND STAND YUNG CHENG  
Bottle-shaped. With flaring neck. Coated with camilla-leaf green glaze on cracked ground. Height, 7 inches.
- 351 BOTTLE-SHAPED VASE AND STAND K'ANG HSI  
Entire surface coated with a rich lang yao green glaze of even tone. Height, 8½ inches.
- 352 PAIR KYLINS AND STANDS YUNG CHENG  
Animals in seated position. Coated with a brilliant turquoise blue glaze on cracked porcelain. Height, 13½ inches.
- 353 CABINET VASE CH' IEN LUNG  
Bottle-shape. Coated with a turquoise blue glaze on cracked ground. Height, 6 inches.
- 354 CABINET VASE AND STAND CH' IEN LUNG  
Coated with a brilliant turquoise blue glaze on cracked ground. Height, 7 inches.
- 355 CABINET VASE AND STAND CH' IEN LUNG  
Bottle-shape. Coated with a turquoise blue glaze. Height, 7½ inches.
- 356 PAIR CABINET VASES AND STANDS CH' IEN LUNG  
Bottle-shape. Coated with a beautiful turquoise blue glaze of even tone. Height, 4½ inches.

- 357 PAIR CABINET VASES AND STANDS CH' IEN LUNG  
 Bottle-shape. Coated with a rich turquoise blue glaze on  
 crackled ground. Height, 7 inches.
- 358 CABINET VASE AND STAND K'ANG HSI  
 Inverted pear shape. Coated with a lang yao green glaze  
 with red flame. Height, 8 inches.
- 359 GALLIPOT VASE AND STAND YUNG CHENG  
 Coated with a brilliant blue glaze of even tone.  
 Height, 9½ inches.
- 360 SQUARE VASE AND STAND CH' IEN LUNG  
 Coated with a mustard yellow glaze on crackled ground.  
 Height, 9½ inches.
- 361 CABINET VASE AND STAND CH' IEN LUNG  
 Invested with a lemon yellow glaze on crackled ground.  
 Height, 8 inches.
- 362 JAR AND STAND MING  
 Coated with a wax glaze of deep green on stone ware.  
 Height, 5½ inches.
- 363 TEMPLE JAR WITH COVER CH' IEN LUNG  
 With animal head handles. Coated with an imperial yellow  
 glaze. Six seal marks. Height, 16 inches.
- 364 PAIR BRUSH HOLDERS AND STANDS K'ANG HSI  
 Incised decoration of white dragon on coral-red ground.  
 Height, 7 inches.
- 365 TEMPLE JAR WITH COVER YUNG CHENG  
 Coated with a coral-red glaze of even tone on hard white-  
 paste porcelain. Height, 15 inches.
- 366 CLUB-SHAPED VASE AND STAND K'ANG HSI  
 Coated with a brilliant mirror black glaze of even tone. Faint  
 gold decoration on surface. Height, 11 inches.
- 367 GALLIPOT VASE AND STAND YUNG CHENG  
 Coated with a beautiful wine color of even quality on white  
 porcelain. Height, 11 inches.

- 368 PAIR STATUETTES MING  
 Figure of Dog Foo seated on a stand. Coated with a greenish yellow glaze. Height, 8 inches.
- 369 PAIR STATUETTES MING  
 Carved figure of Dog Foo seated on a stand. Coated with a yellow and green glaze. Height, 8 inches.
- 370 PAIR STATUETTES CH' IEN LUNG  
 Figure of dog. Coated with a coral-red splash on white porcelain. Height, 6½ inches.
- 371 PAIR STATUETTES MING  
 Figure of warrior on horseback. Old ancient roof tiles. Coated with a cream and yellow glaze. Height, 13 inches.
- 372 JAR WITH COVER AND STAND MING  
 Incised decoration of yellow dragon in panels on green ground. Six character marks. Height, 11½ inches.
- 373 CABINET VASE AND STAND MING  
 Hawthorne decoration painted under glaze of deep green. Height, 9 inches.
- 374 WINE JAR AND STAND MING  
 Coated with a rich turquoise blue glaze of even quality. Height, 9 inches.
- 375 WINE JAR IAN  
 Decoration of mythological subjects carved on band. Coated with an iridescent silver glaze. Height, 5½ inches.
- 376 STATUETTE TANG  
 Representing one of the two Gods of Heaven, dressed in armour. Painted with green and red on gray pottery. Height, 23½ inches.
- 377 STATUETTE MING  
 Seated figure of a Sage. Coated with a dark brown glaze on crackled white ground. Height, 8½ inches.

- 378 WINE JAR HAN  
 Carved decoration of dragons and conventional birds of  
 paradise in band. Coated with a green and brown glaze.  
Height, 5½ inches.
- 379 STATUETTE AND STAND K'ANG HSI  
 In form of a wild cat. Coated with a green and black glaze  
 on bisque porcelain. Height, 7 inches.
- 380 STATUETTE K'ANG HSI  
 Woman leaning against the trunk of a tree. Her robes are  
 coated with a green and aubergine glaze on bisque.  
Height, 4 inches.
- 381 LIBATION BOWL AND STAND HAN  
 In form of a lotus flower. Coated with a green glaze.  
Height, 5 inches.



[452]

[454]

LARGE JADE ORNAMENT, MING  
CHLOROMALADITE ORNAMENT, MING





## THIRD SESSION

LOTS 382-581

### COLLECTION OF SNUFF BOTTLES

LOTS 382 to 454

- 382 SNUFF BOTTLE WITH GLASS STOPPER CH' IEN LUNG  
Entire surface coated with a ruby red mottled glaze.
- 383 SNUFF BOTTLE WITH QUARTZ STOPPER CH' IEN LUNG  
Carved decoration of poppies in natural colors on white glass.
- 384 SNUFF BOTTLE WITH IVORY STOPPER CH' IEN LUNG  
Amber in imitation of a grain of wood.
- 385 SNUFF BOTTLE WITH GLASS STOPPER CH' IEN LUNG  
Decoration of children's party, beautifully painted inside of crystal. With stand.
- 386 SNUFF BOTTLE WITH JADE STOPPER CH' IEN LUNG  
Decoration of fish in several colors, beautifully painted inside of quartz-crystal.
- 387 SNUFF BOTTLE WITH AGATE STOPPER CH' IEN LUNG  
Carved decoration of magnolias in white on smoked quartz.
- 388 SNUFF BOTTLE WITH JADE STOPPER CH' IEN LUNG  
Carved decoration of flowers and vases on dark quartz.
- 389 SNUFF BOTTLE WITH JADE STOPPER CH' IEN LUNG  
Seated figure of court lady, beautifully painted in black inside of crystal. With stand.

- 390 SNUFF BOTTLE WITH AMBER STOPPER CH' IEN LUNG  
Square form. Fine amber of tortoise shell color.
- 391 SNUFF BOTTLE WITH IVORY STOPPER. K'ANG HSI  
Round shape. Salmon color amber.
- 392 AMBER SNUFF BOTTLE CH' IEN LUNG  
Carved decoration of horses and trees, beautifully executed on the surface. Has a coral stopper.
- 393 AMBER SNUFF BOTTLE WITH WOOD STOPPER  
Flat shape. Beautiful transparent amber.
- 394 AMBER SNUFF BOTTLE CH' IEN LUNG  
Flat shape. Smoked transparent amber. Has amber stopper.
- 395 AMBER SNUFF BOTTLE CH' IEN LUNG  
Carved decoration of children under the pine trees. Has coral stopper.
- 396 AMBER SNUFF BOTTLE CH' IEN LUNG  
Oval shape. Carved personages under the pine trees.
- 397 AMBER SNUFF BOTTLE CH' IEN LUNG  
Carved decoration of animals, roaming through the woods. Has rose quartz stopper.
- 398 AMBER SNUFF BOTTLE CH' IEN LUNG  
Carved birds of paradise among the flowers. Has a green glass stopper.
- 399 AMBER SNUFF BOTTLE CH' IEN LUNG  
Carved parrots and flowers. Has a green glass stopper.
- 400 AMBER SNUFF BOTTLE CH' IEN LUNG  
Animal decoration at the shoulder. Has jade stopper.
- 401 AMBER SNUFF BOTTLE CH' IEN LUNG  
Square oval form. Mottled salmon on yellow. Has rose quartz stopper.



SET OF THREE IMPERIAL VASES, K'ANG HSI

[NUMBER 588.]



- 402 LAPIS SNUFF BOTTLE CH' IEN LUNG  
Birds and flowers carved on the surface. Has coral stopper.
- 403 JADE SNUFF BOTTLE CH' IEN LUNG  
Flat round shape. Carved decoration of emblem of bats in the clouds on fei-ts'ui jade. With jade stopper.
- 404 JADE SNUFF BOTTLE CH' IEN LUNG  
Carved in form of lemon in white jade. Has coral stopper and wood stand.
- 405 AVENTURINE SNUFF BOTTLE CH' IEN LUNG  
Flat oval shape. Entire surface covered with brilliant sparkles. Has jade stopper.
- 406 JADE SNUFF BOTTLE CH' IEN LUNG  
Carved decoration of parrot and magnolia on white jade. Has glass stopper.
- 407 JADE SNUFF BOTTLE CH' IEN LUNG  
Oval shape. Tinted with green and brown jade on white. Has coral stopper.
- 408 JADE SNUFF BOTTLE CH' IEN LUNG  
Melon shape. Mixed with beautiful emerald green of translucent jade. With coral stopper.
- 409 JADE SNUFF BOTTLE CH' IEN LUNG  
Fei-ts'ui green jade of even color. Has carnelian stopper.
- 410 JADE SNUFF BOTTLE CH' IEN LUNG  
Mottled light green fei-ts'ui jade. Has a green glass stopper.
- 411 CRYSTAL SNUFF BOTTLE CH' IEN LUNG  
Carved bats of longevity on pure crystal. Has rose quartz stopper.
- 412 AGATE SNUFF BOTTLE CH' IEN LUNG  
Carved horses. Has metal stopper.
- 413 TORQUOISE SNUFF BOTTLE CH' IEN LUNG  
Form of jar. Surrounded with branches of flowers. Has original stopper.

- 414 TORQUOISE SNUFF BOTTLE CH' IEN LUNG  
In form of a melon. Has original stopper.
- 415 JADE SNUFF BOTTLE HAN  
In form of pebble. Beautifully colored in dark brown and carved with branches of me-fleurs. Has glass stopper.
- 416 JADE SNUFF BOTTLE HAN  
Flat round shape. Mottled with brown jade. Has glass stopper and wood stand.
- 417 AGATE SNUFF BOTTLE CH' IEN LUNG  
Decoration of carved bugs. Has jade stopper.
- 418 JADE SNUFF BOTTLE AND STAND HAN  
One side carved with emblem of longevity on dark ground the reverse on white.
- 419 SNUFF BOTTLE WITH GREEN JADE STOPPER HAN  
Various dark colors on soft jade.
- 420 PORCELAIN SNUFF BOTTLE YUNG CHENG  
Beautiful white porcelain with giant crackles. Has jade stopper.
- 421 PORCELAIN SNUFF BOTTLE K'ANG HSI  
Dragon decoration of blue glaze.
- 422 CARNELIAN ORNAMENT AND STAND CH' IEN LUNG  
In form of a boat. Two figures carved in white and boat in red carnelian.
- 423 CORAL ORNAMENT AND STAND  
Carved figures of boys' and birds, beautifully executed in pink coral.
- 424 PAIR HAN JADE SWANS AND STANDS  
The birds are in a resting attitude. Chiefly used as paper weights.
- 425 CRYSTAL STATUETTE AND STAND  
Kwan-yin comfortably seated and holding the peaches of longevity. Height, 4 inches.



[601]

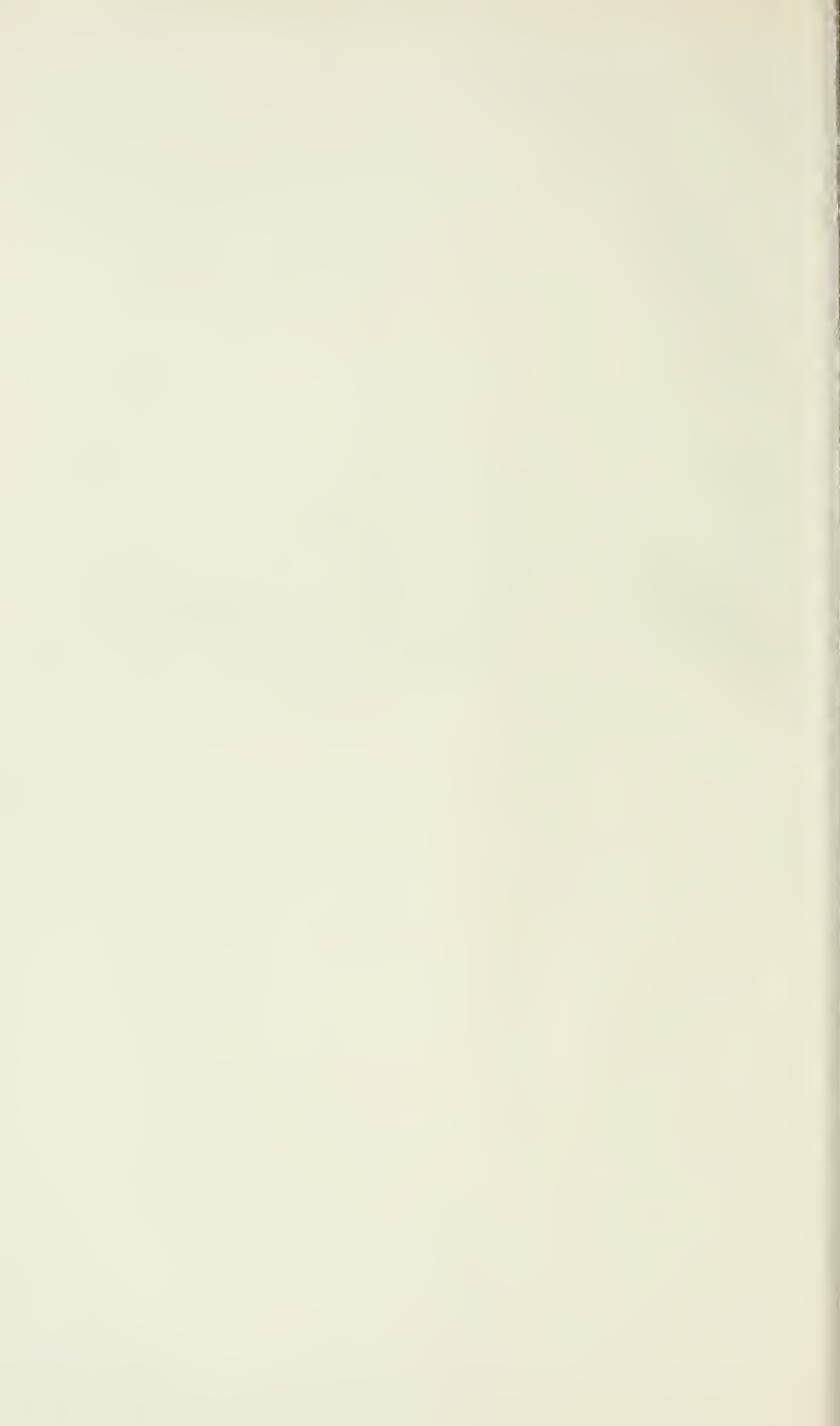


[600]



[599]

BEAUTIFULLY PAINTED BEAKER VASE, K'ANG HSI  
LONG NECK VASE, K'ANG HSI  
BEAKER VASE, K'ANG HSI





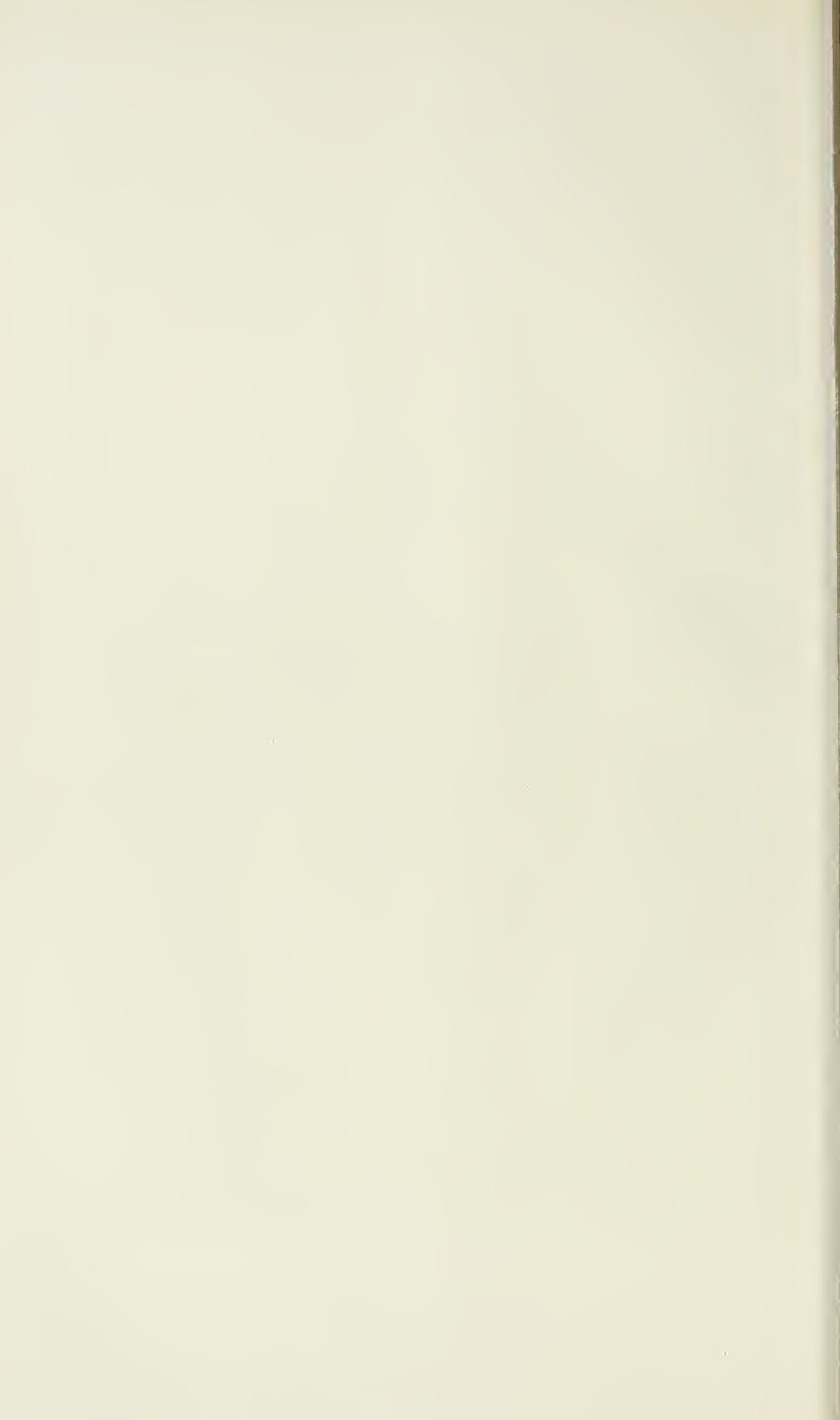
- 426 JADE FIGURE AND STAND HAN  
 Chinese Sage holding branches of me-fleurs.  
 Height, 4½ inches.
- 427 TORQUOISE STATUETTE AND STAND  
 Carved figure of a sacred animal holding a fungus in his mouth. Height, 3 inches.
- 428 TWO JADE ORNAMENTS AND STANDS  
 Carved decoration of a phoenix on a rock. Carved on white jade and mounted on a teak-wood stand. The other ornament is decorated with a figure of a Chinese Sage representing happiness.
- 429 JADE BRACELET  
 Beautiful emerald green of fei-ts'ui jade.
- 430 JADE SEAL  
 Carved figure of Dog Foo on a pedestal of mutton fat jade.  
 Height, 3 inches.
- 431 AMBER ORNAMENT AND STAND  
 Figure of carved, seated Buddha on a pedestal.  
 Height, 3 inches.
- 432 AMBER STATUETTE MING  
 Carved figure of a Sage, standing on a rock.  
 Height, 5 inches.
- 433 JADE ORNAMENT AND STAND HAN  
 Carved figures of horses resting. Height, 4 inches.
- 434 PAIR STATUETTES CH' IEN LUNG  
 Figure of Lohan, beautifully carved on mutton fat jade. With double stands. Height, 8 inches.
- 435 JADE VASE CH' IEN LUNG  
 Side carved ring handles. Dog Foo carved and mottled with fei-ts'ui green jade on transparent white. With original cover and stand. Height, 5½ inches.

- 436 JADE DISH AND STAND CH'IEN LUNG  
 Pure pork fat jade of finest quality. Carved in form of a  
 lotus flower. Height, 3 inches.
- 437 ROSE QUARTZ JAR CH'IEN LUNG  
 Side handles. Cover with carved Dog Foo. Conventional  
 decoration of bats of longevity carved on the surface. Has  
 original cover and stand. Height, 6 inches.
- 438 JADE COUPE AND STAND CH'IEN LUNG  
 In form of wine jar. Handles with carved figures. Neck  
 decorated with birds on yellowish jade. Height, 4½ inches.
- 439 JADE COUPE AND STAND HAN  
 In form of peach. Branches carved out on side of handles.  
Height, 3 inches.
- 440 AMBER ORNAMENT AND STAND MING  
 Groups of fungus, peaches and pomegranates, beautifully  
 carved on dark brown transparent amber.  
Height, 5 inches.
- 441 ORNAMENT AND STAND MING  
 Tiger chasing a monkey under the rocks, beautifully carved  
 in pierced work on rich transparent amber.  
Height, 5 inches.
- 442 JADE VASE AND STAND K'ANG HSI  
 In form of old bronze jar. Supported by mythological birds,  
 beautifully carved on white jade. Height, 5 inches.
- 443 AGATE VASE AND STAND CH'IEN LUNG  
 Old bronze form. Loose rings carved on the sides. Cover  
 attached with chain, beautifully carved out from the agate.  
Height, 5 inches.
- 444 AGATE VASE CH'IEN LUNG  
 Flat shape. Carved loose ring handles. Flower decoration  
 carved on the surface. With original cover and stand.  
Height, 5 inches.
- 445 JADE VASE AND STAND MING  
 In form of fungus, beautifully carved on gray jade.  
Height, 8½ inches.



BEAUTIFULLY PAINTED TEMPLE JAR, K'ANG HSI

[NUMBER 636]



- 446 TURQUOISE VASE CH' IEN LUNG  
 In form of jar surrounded by peonies carved in openwork.  
 With original cover and stand. Height, 7 inches.
- 447 JADE VASE CH' IEN LUNG  
 Loose side ring handles, beautifully carved out in old bronze  
 form. Decoration of a band of palm leaves and brocade pat-  
 tern on blue-white jade. Rare piece. With original cover  
 and stand. Height, 8 inches.
- 448 CRYSTAL VASE CH' IEN LUNG  
 In form of double vase. Decoration of lizard and fungus  
 carved in relief. With original cover and stand.  
Height, 9 inches.
- 449 MALACHITE ORNAMENT AND STAND CH' IEN LUNG  
 Carved figure of Dog Foo. Carved from malachite, utilizing  
 natural color of stone. Height, 5 inches.
- 450 AMBER ORNAMENT  
 Carved lizard on palm leaf. Transparent rich tortoise shell  
 color. In wooden box.
- 451 TOMB JADE AND STAND HAN  
 Carved in the form of Pa Kwa design. Rich brown vein  
 running through the jade. Height, 6 inches.
- 452 LARGE JADE ORNAMENT AND STAND MING  
 Mountain form. Horses and landscape decoration carved on  
 the surface of dark green jade. Height, 10½ inches.  
[SEE ILLUSTRATION]
- 453 JADE VASE AND STAND CH' IEN LUNG  
 Beaker shape. In form of flowers after old Han bronze.  
 Beautifully carved and ornamented with key patterns on four  
 sides. The entire body with etched decoration of brocade  
 and palm leaf on white jade. Height, 10 inches.
- 454 CHLOROMALADITE ORNAMENT AND STAND MING  
 Represents a flower holder in form of the trunk of a tree,  
 surrounded by pine trees and birds, beautifully carved in  
 openwork. Fine workmanship. Height, 9 inches.  
[SEE ILLUSTRATION]

# COLLECTION OF MING, SUNG AND TANG PIECES

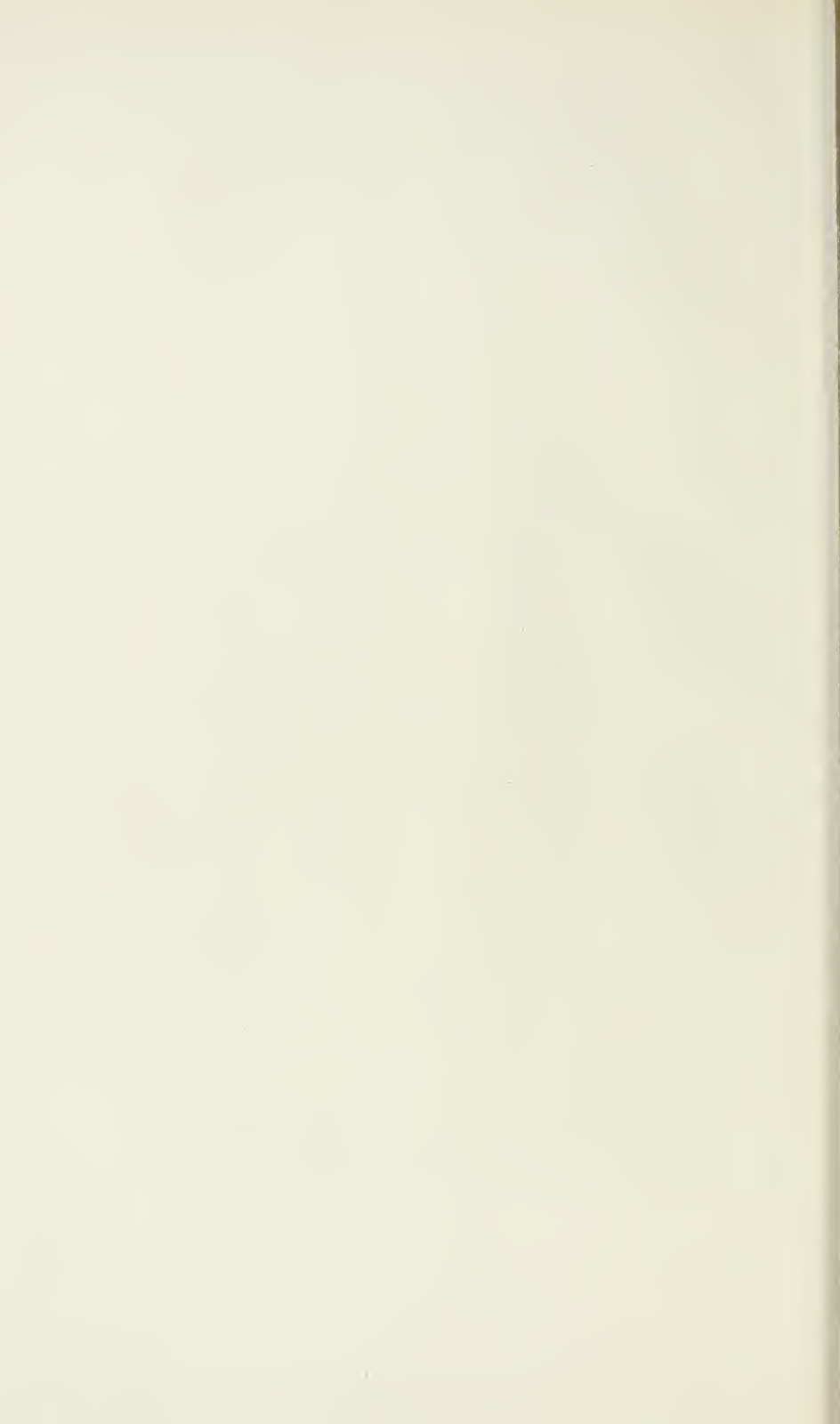
LOTS 455 to 482

- 455 PAIR STATUETTES MING-YUAN  
Man on galloping horse. Coated with a rich green and yellow glaze. Base in form of water and rock enameled with deep green glaze. Height, 28 inches.
- 456 TALL GALLIPOT VASE SUNG  
Incised dark brown decoration of peonies on white ground. Height, 13 inches.
- 457 TING YAO BOWL AND STAND SUNG  
Incised decoration of vines on green ground. Diameter, 8½ inches.
- 458 OVIFORM VASE AND STAND YUAN  
Coated with a sky-blue glaze on fine crackled ground. Height, 7 inches.
- 459 CHUN YAO BOWL AND STAND SUNG  
Coated with a rich clair-de-lune glaze on crackled ground. Inside is the same. Diameter, 8½ inches.
- 460 TWO BOWLS AND STANDS SUNG  
One Chun yao bowl with red spot on clair-de-lune crackled ground. The other is a brown Sung bowl, the inside is decorated with a red splash on yellow ground.
- 461 PAIR STATUETTES TANG  
Seated figure of personage in green robe on white horse. Height, 14 inches.
- 462 PAIR STATUETTES MING  
Chinese mythological images their robes coated in blue, yellow and brown. Height, 8 inches.
- 463 THREE FIGURES HAN  
Two mythological figures. Coated with a green and red glaze. The other is the figure of a rooster. Coated with a green and iridescent silver glaze.



LARGE GILT BRONZE IMPERIAL VASE, CH' IEN LUNG

[NUMBER 639.]





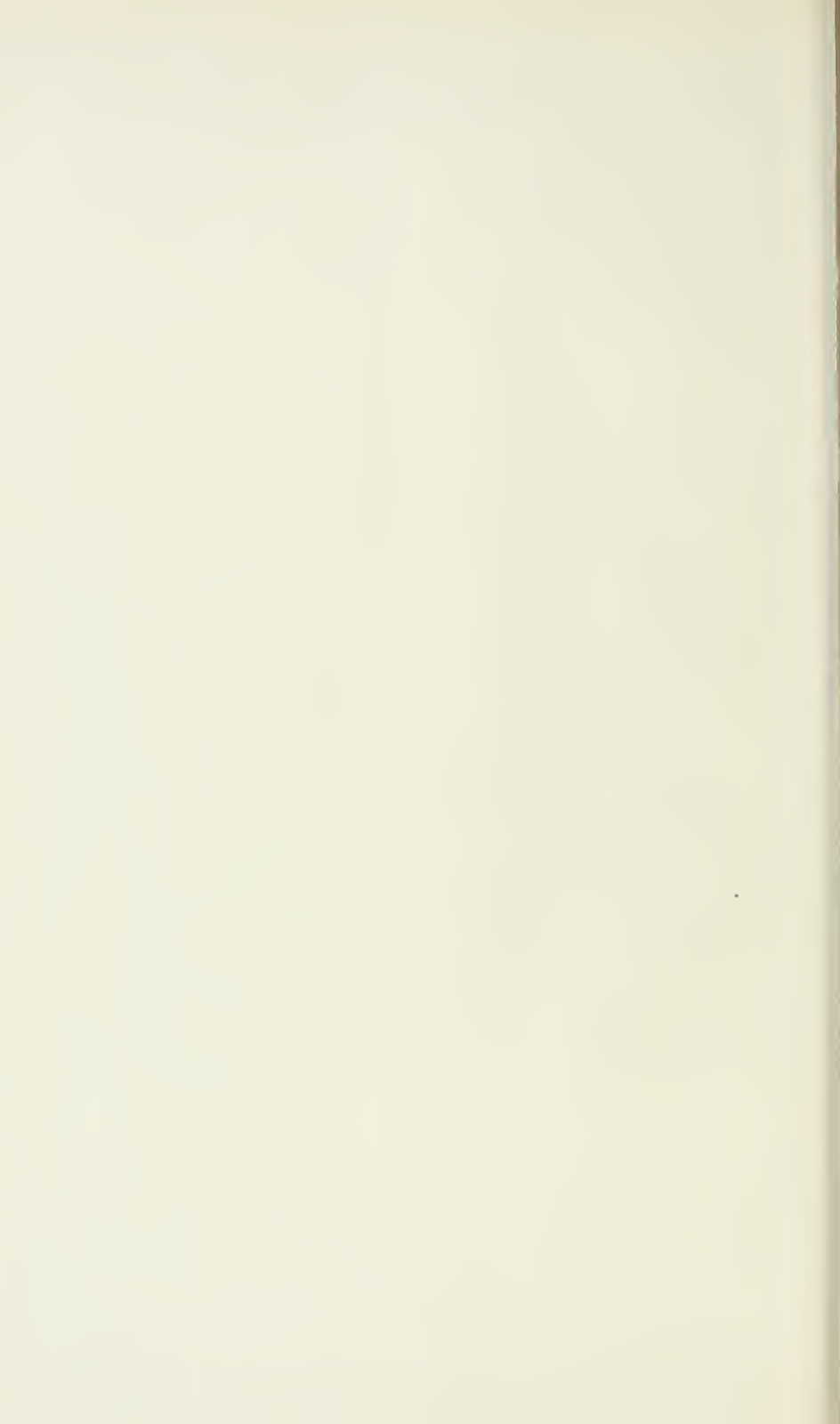
- 464 PAIR STATUETTES MING  
Carved Dog Foo seated on a pedestal. Coated with a green and yellow glaze. Height, 8½ inches.
- 465 TWO HAN JARS HAN  
Coated with an iridescent silver glaze on green.
- 466 WINE JAR MING  
Tiger lily decoration carved in yellow on a brilliant green glaze of Cochin china. Height, 10 inches.
- 467 STATUETTES MING  
Seated figure of Run'tsu. Coated with a deep turquoise glaze. Finest type of three color porcelain. Height, 12 inches.
- 468 TWO STATUETTES MING  
One a seated figure of Kwan-yin, holding a child. Coated with a turquoise blue glaze. The other is the figure of a Sage dressed in robes of green and yellow. Height, 13½ inches.
- 469 TRIPOD WITH COVER AND STAND MING  
Coiled dragon decoration carved on the surface of a tortoise shell glaze. Height, 11 inches.
- 470 STATUETTE TANG  
Woman on horseback. Painted in green and pink on white. Height, 15 inches.
- 471 THREE FIGURES  
Han rooster. Coated with an iridescent silver glaze. Ming seated figure of Kwan-yin. Dog Foo figure. Coated with gilt lacquer.
- 472 TRIPOD CENSER MING  
In form of three elephant heads. Coated with a rich turquoise blue glaze. With cover and stand. Height, 11 inches.
- 473 TWO VASES  
One Han jar-shaped vase. Decoration of mythological subjects carved in a band on the surface of silver green glaze. The other is a Ming pear-shaped vase. Coiled dragon decoration in yellow on green glaze. Height, 12½-14 inches.

- 474 STATUETTE AND STAND SUNG  
 Figure of the Goddess of Children, holding a child. Coated with a cream white glaze. Height, 12 inches.
- 475 BOWL AND STAND MING  
 In form of a leaf. Coated with a dark brown mottled glaze. Height, 4 inches.
- 476 WINE JAR AND STAND SUNG  
 Decoration of Sages in four panels outlined in dark brown. Inside of jar totally covered with a dark brown glaze. Height, 11 inches.
- 477 GARDEN SEAT MING  
 In form of a drum. Coated with a turquoise and dark aubergine glaze. Center with incised peonies. Height, 14 inches.
- 478 GARDEN SEAT MING  
 In form of a drum. Center decorated with lotus flowers carved in relief in aubergine and yellow on turquoise blue ground. Height, 15 inches.
- 479 GARDEN SEAT MING  
 With animal head handles. Center decorated with tiger lilies in yellow and aubergine on turquoise blue enamel. Height, 14½ inches.
- 480 MAGNIFICENT TEMPLE JAR MING  
 Entire surface coated with a brilliant green of even color. With stand. Height, 24 inches.
- 481 STATUETTE MING  
 Figure of Dog Foo and a man holding a rope, beautifully carved and coated with a green and yellow glaze. Height, 17 inches.
- 482 LARGE STATUETTE MING  
 Figure of a man holding a jewel box. His coat is coated with a brilliant green and yellow glaze mixed with deep aubergine. With original stand. Height, 35 inches.



—BEAUTIFULLY CARVED TEMPLE JAR, MING

[NUMBER 640]



# COLLECTION OF BRONZES AND OLD CLOISSONNE ENAMELS

LOTS 483 to 522

- 483 BRONZE TRIPOD CENSER HAN  
 Shallow jar-shape. With side handles. Supported by three feet and coated with green on blue patina. With cover and stand. Height, 10 inches.
- 484 BRONZE TRIPOD CENSER HAN  
 With side handles. Supported by three legs. Coated with red and green patina on blue. With cover and stand. Height, 12½ inches.
- 485 BRONZE BEAKER VASE MING  
 Feather design inlaid in silver on Hsuan Te bronze. Height, 10½ inches.
- 486 BRONZE CABINET VASE MING  
 Willow patterns inlaid in silver on Hsuan Te bronze. Height, 4 inches.
- 487 BRONZE STATUETTE MING  
 Figure of Kwan-yin in prayer. Coated with gilt bronze and green patina. Height, 10 inches.
- 488 BRONZE STATUETTE MING  
 Kwan-yin seated on a lotus flower. Entirely made of gilt bronze. Height, 16 inches.
- 489 WROUGHT IRON VASE MING  
 Oviform jar shape. Carved decoration of key patterns and small medallions inlaid with silver. Height, 15 inches.
- 490 IRON TEMPLE VASE MING  
 Bottle-shaped. Panel decoration of key patterns inlaid with silver. Height, 23 inches.
- 491 IRON TEMPLE VASE MING  
 Oviform shape. Flaring neck. Decoration of key patterns carved on entire surface and inlaid with silver. Height, 21½ inches.

- 492 FRENCH BRONZE STATUETTE  
Group of two horses beautifully cast. After the painting by Rosa Bonheur. Made by P. J. Mene. Signed.  
Height, 14 inches.
- 493 BRONZE STATUETTE  
Tiger with his prey. Entire surface, beautifully chiseled in bronze color. Made by Barye. Signed. From Barbedienne foundry.  
Height, 15 inches.
- 494 PAIR ENAMEL BOXES CH' IEN LUNG  
Medallion decoration of Shu marks in red. Entire surface covered with small floral decorations enameled on pink ground. (Slightly chipped.) Diameter, 13½ inches.
- 495 CLOISONNE FEATHER HOLDER AND STAND MING  
Decoration of flowers in red and white on turquoise blue enamel.  
Height, 4½ inches.
- 496 SQUARE CABINET VASE MING  
Decoration of leaves and Chinese characters of happiness inlaid with red and blue enamel on turquoise ground.  
Height, 4¾ inches.
- 497 CHAMP-LEVE SQUARE VASE CH' IEN LUNG  
With flaring neck. Decoration of tiger lily and branches inlaid in champ-leve enamel on gilt bronze.  
Height, 7½ inches.
- 498 CABINET GARNITURE SET CH' IEN LUNG  
Pekin enamel. Consisting of one incense burner, two flower holders and two candle sticks. Landscape decoration in panels executed with great skill in various colored enamels.  
Height, 5 inches.
- 499 TRIPOD AND STAND MING  
Coiled dragons forming handles. Tiger lily decoration on entire surface in red, yellow and blue enamel on turquoise ground.  
Height, 9 inches.
- 500 CLOISONNE VASE MING  
With long flaring neck. Tiger lily decoration inlaid in red, yellow, blue and white on turquoise enamel ground. The edges of the flowers and vines are coated with lacquer.  
Height, 16 inches.



[664]



[663]



[685]

CHERRY-RED GLAZE VASE, K'ANG HSI  
LIVER-COLOR VASE, YUNG CHENG  
LANG YAO BOWL, K'ANG HSI





- 501 CLOISONNE JAR-SHAPED VASE MING  
 Flaring neck. Side ring handles in bronze. Tiger lily decoration between three enameled bands in red, blue and white on brilliant turquoise enamel glaze. Height, 13 inches.
- 502 PAIR CLOISONNE VASES AND STANDS MING  
 Square shape. With side ring handles. Each panel profusely decorated and inlaid with design of birds, animals and flowers in several colors on turquoise enamel ground. Height, 17 inches.
- 503 PAIR CLOISONNE VASES AND STANDS MING  
 Square shape. Each panel with conventional tiger lily decoration in red, white and blue enamel inlaid on turquoise blue ground. The lip and base of each vase of openwork design in bronze. Height, 18 inches.
- 504 PAIR IMPERIAL VASES AND STANDS CH' IEN LUNG  
 Rectangular, double gourd-shape. Lotus and peony decoration in pink and blue on yellow Peking enamel. It has six panels each inserted with glass pictures. There is a rim at the top and base studded with semi-precious stones. These were made to order and used as lighting ornaments by a Russian nobleman. This is the highest quality enamel. Height, 19½ inches.
- 505 ANTIQUE CHINESE RUG CH' IEN LUNG  
 Center decoration of medallions in blue on salmon. Dimensions, 2' x 3' 9"
- 506 ANTIQUE CHINESE MAT CH' IEN LUNG  
 Conventional key pattern on red. Border with two blue lines. Dimensions, 1' 10½" x 3' 2"
- 507 CHINESE ANTIQUE RUG CH' IEN LUNG  
 Center decoration of swastika design on brown. Blue and white border. Dimensions, 2' 3" x 4' 4"
- 508 ANTIQUE CHINESE RUG CH' IEN LUNG  
 Center decoration of medallions in five colors on red ground. Border with various flowers on yellow. Dimensions, 2' x 3' 9"

- 509 ANTIQUE CHINESE RUG CH' IEN LUNG  
 Medallion decoration in two shades of blue in the center.  
 Border with swastika patterns in blue on salmon ground.  
 Dimensions, 2' 4" x 5' 5"
- 510 ANTIQUE CHINESE RUG CH' IEN LUNG  
 Blue and white medallion and swastika decoration in the center. Border with various flowers in blue on gray ground.  
 Dimensions, 2' x 3' 7"
- 511 MIRROR PICTURE CH' IEN LUNG  
 Chinese court lady seated at a table admiring gold fish, beautifully painted inside of the mirror. Frame of old teak.  
 Height, 22½ inches, width, 16 inches.
- 512 CHINESE RUG CH' IEN LUNG  
 Center decoration of medallions and hundred antiques. Two borders beautifully decorated in blue and brown on golden yellow ground.  
 Dimensions, 6' 4" x 4' 2"
- 513 CHINESE RUG CH' IEN LUNG  
 Center decoration of medallions and various flowers in white and light blue on dark blue. Border with key patterns in blue.  
 Dimensions, 4' 8½" x 2' 5"
- 514 CHINESE RUG CH' IEN LUNG  
 Medallion and flower decoration in yellow, brown and light blue on dark blue ground. Border with conventional flower pattern in blue and yellow on salmon color ground.  
 Dimensions, 4' 5" x 2' 3"
- 515 CHINESE RUG CH' IEN LUNG  
 Decoration of mythological animals in old blue on dark blue ground. Border with geometrical key pattern on dark blue ground. This is a very fine specimen. Dimensions, 4' x 2' 1"
- 516 CHINESE RUG CH' IEN LUNG  
 Center decoration of geometrical ring pattern in blue on white ground. Border with key pattern in blue and white.  
 Dimensions, 4' x 2'



[666]



[665]



[667]

AMPHORA SHAPE VASE, YUNG CHENG  
PEACOCK BLUE GINGER JAR  
PEACOCK BLUE VASE



- 517 CHINESE MAT CH' IEN LUNG  
 Blue and white medallion decoration in the center. Border  
 with key patterns. Dimensions, 3' 5" x 1' 10"
- 518 CHINESE MAT CH' IEN LUNG  
 Medallion design in center in yellow and blue on salmon  
 color. Border of key patterns on salmon ground.  
Dimensions, 2' 3" x 2' 3"
- 519 SET OF FOUR GOBLIN TAPESTRIES K' ANG HSI  
 Court scene and personages on real gold thread. Border  
 decorated with vines in gold on dark gray ground.  
Dimensions, 3' 6" x 11"
- 520 SET OF FOUR GOBLIN TAPESTRIES K' ANG HSI  
 Celebrities of Chinese court enjoying an outing in the garden  
 of the summer palace. Their robes are of various colors on  
 gold ground. Dimensions, 3' 9" x 11"
- 521 CHINESE KAKEMONO PAINTING SUNG  
 Famous painting of horse under the tree. Various colored  
 horses enjoying freedom in the fields under the shade.
- 522 PAIR STONE STATUETTES MING  
 Dog Foo seated on a stand. Height, 25 inches.

## COLLECTION OF CHINESE ANTIQUE GLASS

LOTS 523 to 549

- 523 BOTTLE-SHAPED VASE AND STAND CH' IEN LUNG  
 Chrysanthemum pattern. Coated with a yellow glass glaze.  
Height, 9 inches.
- 524 PAIR WALL VASES CH' IEN LUNG  
 Bottle-shape. Yellow glaze of even color. Height, 6 inches.
- 525 PAIR WALL VASES CH' IEN LUNG  
 Beaker shape. Imperial yellow glaze. Height, 7 inches.
- 526 PAIR WALL VASES CH' IEN LUNG  
 Cream white transparent glass. Height, 6 inches.

- |     |  |                      |
|-----|--|----------------------|
| 527 | PAIR WALL VASES                              | CH' IEN LUNG         |
|     | Jar shape. Cream white glaze.                | Height, 4 inches.    |
| 528 | PAIR WALL VASES                              | CH' IEN LUNG         |
|     | Jar shape. Deep violet blue color.           | Height, 4½ inches.   |
| 529 | WALL VASE                                    | CH' IEN LUNG         |
|     | Jar shape. Coated with a yellow glaze.       | Height, 4 inches.    |
| 530 | WALL VASE                                    | CH' IEN LUNG         |
|     | Bottle-shape. Beautiful violet blue.         | Height, 6½ inches.   |
| 531 | BOTTLE-SHAPED VASE                           | CH' IEN LUNG         |
|     | Green running glaze on yellow glass.         | Height, 5 inches.    |
| 532 | GLASS VASE                                   | CH' IEN LUNG         |
|     | Oviform shape. Light shaded lavender glaze.  | Height, 5 inches.    |
| 533 | GLASS BOWL                                   | CH' IEN LUNG         |
|     | Beautiful transparent wine color.            | Diameter, 4½ inches. |
| 534 | GLOBULAR JAR                                 | CH' IEN LUNG         |
|     | Coated with a green glaze.                   | Height, 4 inches.    |
| 535 | WHITE GLASS VASE                             | CH' IEN LUNG         |
|     | Bottle-shape with flaring neck.              | Height, 7 inches.    |
| 536 | GLASS VASE AND STAND                         | CH' IEN LUNG         |
|     | Animal head handles.                         | Height, 5 inches.    |
| 537 | GLASS VASE                                   | CH' IEN LUNG         |
|     | Turquoise blue glaze.                        | Height, 8½ inches.   |
| 538 | GLASS VASE                                   | CH' IEN LUNG         |
|     | Gourd shape. Brilliant turquoise blue glaze. | Height, 7 inches.    |
| 539 | GLASS VASE                                   | CH' IEN LUNG         |
|     | Bottle-shape. Mottled turquoise blue glaze.  | Height, 6½ inches.   |



[668]

[669]

CLUB-SHAPE CABINET VASE  
BLACK BOTTLE-SHAPE VASE





- 540 GLASS VASE CH' IEN LUNG  
Pilgrim bottle shape. Dark wine color. Height, 8 inches.
- 541 GLASS VASE CH' IEN LUNG  
Bottle-shape. Globular body. Ruby red glaze.  
Height, 10 inches.
- 542 GLASS VASE CH' IEN LUNG  
Gourd shape. Clear white glass. (Repaired.)  
Height, 12 inches.
- 543 GLASS VASE CH' IEN LUNG  
Bottle-shape. Deep green color. Height, 10 inches.
- 544 GLASS VASE CH' IEN LUNG  
Beaker shape. Ruby red color. Height, 6 inches.
- 545 GLASS VASE  
Flower shape with slender flaring neck. Purplish blue glaze.  
Old English. Height, 8½ inches.
- 546 GLASS VASE  
Gourd shape. Transparent blue. Old English.  
Height, 8 inches.
- 547 PAIR GLASS VASES  
Transparent blue. Old English. Height, 10 inches.
- 548 PAIR GLASS VASES  
Gourd shape. Brilliant blue. Old English.  
Height, 14 inches.
- 549 GLASS VASE  
Bottle-shape. Coated with a beautiful shaded blue glaze on  
white glass. Old English. Very rare. Height, 8 inches.

## COLLECTION OF CHINESE CABINET PIECES

. LOTS 550 to 581

- 550 MINIATURE VASE AND STAND YUNG CHENG  
Gallipot shape. Coated with a tea leaf green glaze.  
Height, 3½ inches.

- 551 MINIATURE JAR WITH COVER AND STAND  
 CH' IEN LUNG  
 Coated with a mustard yellow glaze on crackled ground.
- 552 CABINET VASE AND STAND  
 K' ANG HSI  
 Jar-shape. Coated with a sang-de-bocuf glaze.  
 Height, 3½ inches.
- 553 MINIATURE VASE AND STAND  
 CH' IEN LUNG  
 Bamboo and orchid decoration in green on yellow ground.  
 Height, 3½ inches.
- 554 MINIATURE BOTTLE  
 CH' IEN LUNG  
 Long neck. Coated with lemon yellow glaze on crackled  
 ground. Height, 3 inches.
- 555 GOURD-SHAPED BOTTLE AND STAND  
 CH' IEN LUNG  
 Coated with a mustard yellow crackled glaze.  
 Height, 6 inches.
- 556 MINIATURE SQUARE VASE  
 CH' IEN LUNG  
 Decoration of five color medallions in openwork panels. En-  
 tire surface covered with a snowflake pattern on gray ground.  
 Height, 3½ inches.
- 557 CABINET VASE AND STAND  
 YUNG CHENG  
 Bottle-shaped. With flaring neck. Coated with an iron rust  
 glaze. Height, 5½ inches.
- 558 CABINET VASE AND STAND  
 CH' IEN LUNG  
 Bottle-shaped. With flaring neck. Coated with a mustard  
 yellow crackled glaze. Height, 6½ inches.
- 559 CABINET VASE  
 CH' IEN LUNG  
 Pear-shaped. With flaring neck. Coated with a mustard yel-  
 low crackled glaze. Height, 7 inches.
- 560 CABINET VASE  
 CH' IEN LUNG  
 Oviform shape. With flaring neck. Coated with a mustard  
 yellow crackled glaze. Height, 6 inches.



[NUMBER 670]

BLACK TEMPLE VASE



- 561 CABINET VASE AND STAND CH' IEN LUNG  
 Raised Pa Kwa decoration on mustard yellow cracked glaze.  
 Height, 6½ inches.
- 562 CLUB-SHAPED VASE AND STAND CH' IEN LUNG  
 Coated with a brilliant powder blue glaze of even tone.  
 Height, 11½ inches.
- 563 SMALL CABINET PEDESTAL K'ANG HSI  
 Circle shape. Supported by three legs. Coated with a deep  
 violet glaze on bisque porcelain. Diameter, 6 inches.
- 564 TRIPOD CENSER WITH COVER AND STAND CH' IEN LUNG  
 In form of old Chinese bronze. Various decorations in  
 panels, beautifully incised on gold ground.  
 Height, 8 inches.
- 565 BOTTLE-SHAPED VASE AND STAND CH' IEN LUNG  
 With elephant handles. In form of bronze. Chou bronze  
 decoration carved in gold on mottled deep blue ground. Im-  
 perial seal mark on the base. Height, 9½ inches.
- 566 SIX TEAKWOOD STANDS  
 Assorted shapes and sizes.
- 567 TEAKWOOD STAND  
 Circle shape. Supported by five legs. Fine carving on edge.  
 Diameter, 10", Height, 9½ inches.
- 568 TEAKWOOD WALL BRACKET  
 In square form. With railing enclosure.  
 10½ inches square.
- 569 TEAKWOOD STAND  
 Circle shape. Supported by five legs. Height, 13 inches.
- 570 TWO TEAKWOOD STANDS  
 Circle shape. Each one supported by five legs.  
 Diameter, 9", Height, 9"  
 " 6" " 9"
- 571 PAIR TEAKWOOD PEDESTALS  
 Circle shape. Supported by five legs. Beautifully carved  
 panels. Diameter, 11 inches, height, 21½ inches.

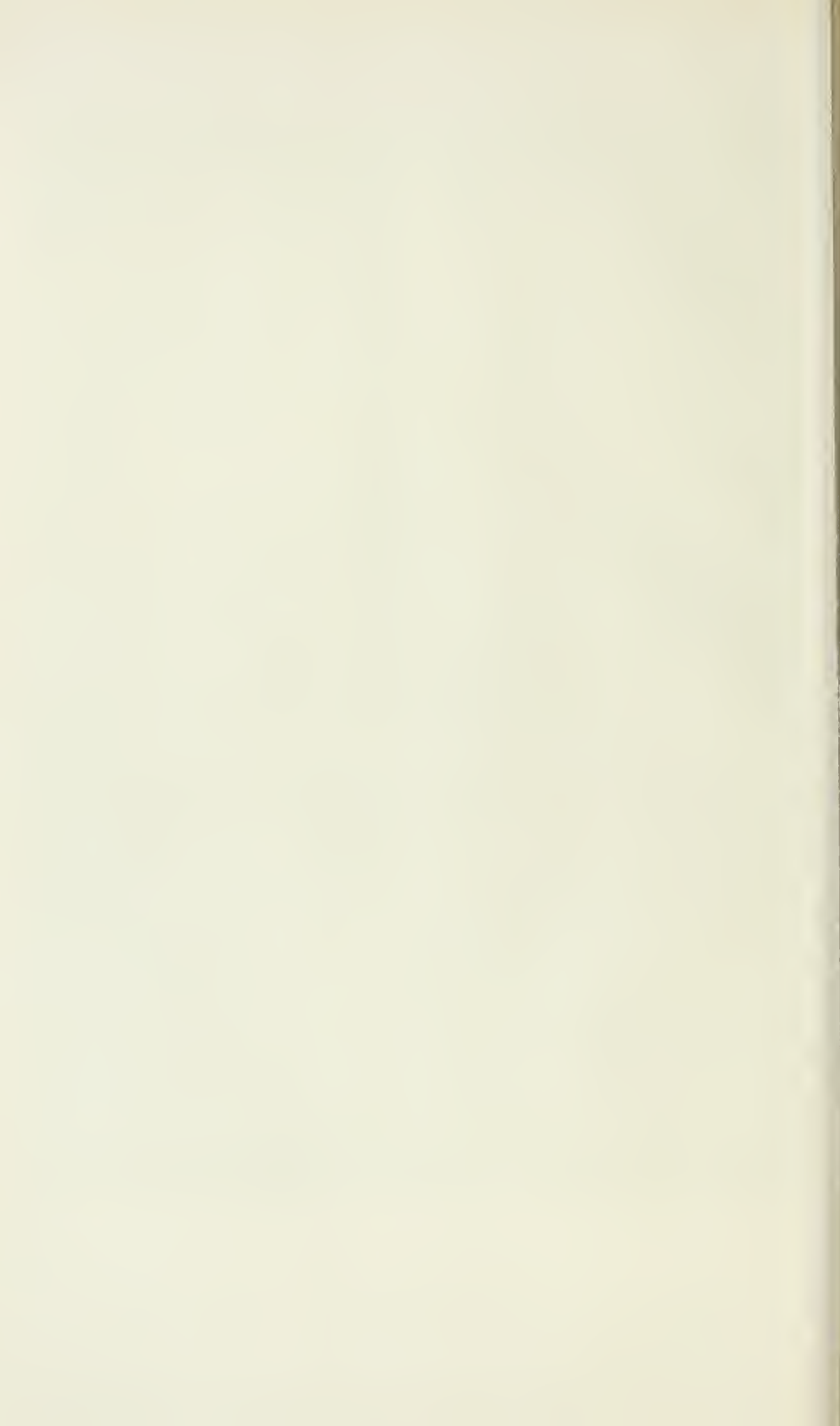
- 572 RED LACQUER STAND  
Supported by three legs. Top of the stand with beautifully carved dragon heads in gold lacquer on red.  
Diameter, 12 inches, height, 24 inches.
- 573 PAIR TEAKWOOD STANDS  
Circle shape. Supported by five legs carved with openwork key patterns. Diameter, 14 inches, height, 20 inches.
- 574 TEAKWOOD STAND  
Circle shape. Carved key patterns on edge.  
Diameter, 15½ inches, height, 34 inches.
- 575 CONSOLE TABLE  
With marble top. Supported by four legs.  
Height, 34 inches.
- 576 CONSOLE TABLE  
Supported by four legs. Has marble top.  
Height, 34 inches.
- 577 TEAKWOOD TABLE  
Oblong. Supported by four legs. Carved border of grapes and vines.  
Height, 33 inches, width, 15½ inches, length, 46 inches.
- 578 TEAKWOOD TABLE  
Same as preceeding.
- 579 SQUARE TEAKWOOD SHOW CASE AND STAND  
Entire body carved in bamboo design.  
Height, 72 inches, length, 24 inches, depth, 13 inches.
- 580 CURIO CABINET  
Glass door and sides. Six removable glass shelves. Lined with red plush. Has three drawers.  
Height, 7 feet, 3 inches.
- 581 CURIO CABINET  
Similar to preceeding.



[NUMBER 675]

[NUMBER 673]

KWAN-YIN STATUETTE, GODDESS OF MERCY, MING  
KWAN-YIN STATUETTE, MING





## FOURTH SESSION

LOTS 582-707

### COLLECTION OF IMPORTANT CHINESE BLUE AND WHITE PORCELAIN

LOTS 582 to 601

- 582 CABINET VASE AND STAND K'ANG HSI  
Inverted pear shape. Chrysanthemum decoration in brilliant blue on hard-paste porcelain. Height, 6 inches.
- 583 PERFUME BOTTLE AND STAND K'ANG HSI  
Long Eliza decoration in panels, beautifully painted in under glaze blue on white porcelain. Height, 6 inches.
- 584 PEAR-SHAPED VASE AND STAND YUNG CHENG  
Pomegranate decoration in brilliant blue on beautiful white soft-paste porcelain. Height, 10 inches.
- 585 OVIFORM VASE AND STAND K'ANG HSI  
Conventional tiger lily and leaf decoration in Prussian blue on clear, white porcelain. Six marks on the bottom. Height, 8½ inches.
- 586 BOTTLE-SHAPED VASE AND STAND K'ANG HSI  
With slight flaring neck. Persian design in soft blue on pure white porcelain. Height, 8½ inches.
- 587 TALL JAR-SHAPED VASE K'ANG HSI  
Van Dyke pattern and flowers in panels, beautifully painted in deep blue on hard white-paste porcelain. Has original cover and stand. (Cover repaired.) Height, 10 inches.

- 588 SET OF THREE IMPERIAL VASES K'ANG HSI  
 Consisting of a pair of beaker vases and one tall jar-shape vase in center. Van Dyke pattern in brilliant blue on pure white-paste porcelain. Height, 8 inches.  
[SEE ILLUSTRATION]
- 589 GINGER JAR WITH COVER AND STAND K'ANG HSI  
 Decoration of a Mandarin receiving a gift from his subject, beautifully painted in cobalt blue on hard white-paste porcelain. Height, 11½ inches.
- 590 GINGER JAR WITH ORIGINAL COVER AND STAND K'ANG HSI  
 Landscape and hundred antique decoration in four panels in brilliant blue on powder blue ground. Height, 13 inches.
- 591 GINGER JAR WITH COVER AND STAND K'ANG HSI  
 Decoration of boys' festival in brilliant cobalt blue on hard-paste porcelain. Height, 13 inches.
- 592 SQUARE SWEETMEAT BOX MING  
 Coiled dragon and wave decoration in blue. Border with tiger lily decoration on hard, white porcelain. Six marks of Wan Li, (Base slightly chipped.)  
Length, 9½ inches, height, 4½ inches.
- 593 HAWTHORNE TEMPLE JAR K'ANG HSI  
 Ascending and descending me-fleurs in white reserve on brilliant blue ground. With original cover and stand. Height, 17 inches.
- 594 CYLINDRICAL VASE AND STAND YUNG CHENG  
 Tiger lily decoration in deep blue on pure white porcelain. From the imperial factory.
- 594 CYLINDRICAL VASE AND STAND YUNG CHENG  
 Tiger lily decoration in beautiful deep blue on pure white porcelain. It has the Imperial seal mark on the base. Height, 9 inches.
- 595 LARGE WINE JAR MING  
 Decoration of fish and sea weeds in brilliant blue on hard-paste porcelain. With cover and stand. (Slight repairs.) Height, 16 inches.



[676]

[678]

[677]

INVERTED PEAR-SHAPE CABINET VASE, K'ANG HSI  
APPLE-GREEN JAR, K'ANG HSI  
APPLE-GREEN VASE, K'ANG HSI



- 596 TALL OVIFORM VASE AND STAND MING  
 Bold decoration of dragons in light blue on hard-paste  
 porcelain. Six marks of Wan Li. Height, 26 inches.
- 597 LARGE SQUARE VASE YUENG CHENG  
 Conventional tiger lily and peony decoration in light blue.  
 Border decorated with waves and geometrical key patterns.  
 Height, 25 inches.
- 598 IMPERIAL TEMPLE VASE AND STAND CH' IEN LUNG  
 Decoration of tiger lily, dragons and leaves, beautifully  
 painted in brilliant cobalt blue on pure white porcelain.  
 Height, 26 inches.
- 599 BEAKER VASE AND STAND K'ANG HSI  
 Hawthorne and magnolia design on white porcelain.  
 Height, 20½ inches.  
 [SEE ILLUSTRATION]
- 600 LONG NECK VASE AND STAND K'ANG HSI  
 Tiger lily decoration painted in blue on pure white-paste  
 porcelain. Height, 18 inches.  
 [SEE ILLUSTRATION]
- 601 BEAKER VASE AND STAND K'ANG HSI  
 Landscape scene of summer palace, beautifully painted in  
 underglaze blue of brilliant color on white porcelain.  
 Height, 20½ inches.  
 [SEE ILLUSTRATION]

## COLLECTION OF CELADON PIECES

LOTS 602 to 621

- 602 JAR WITH COVER AND STAND MING  
 Panel decoration of conventional peonies and fruit carved on  
 the surface of deep celadon glaze. Height, 17 inches.
- 603 LARGE PLACQUE AND TEAKWOOD HOLDER MING  
 Key patterns in the center. Border decoration of tiger lily  
 incised under an even celadon glaze. Diameter, 19 inches.

- 604 TRIPOD CENSER WITH COVER AND STAND MING  
 Decoration of vines under celadon glaze on crackled ground.  
 Height, 13 inches.
- 605 LARGE WINE JAR AND STAND MING  
 Carved decoration of peonies under a deep celadon glaze.  
 Height, 15 inches.
- 606 TRIPOD CENSER WITH COVER AND STAND MING  
 Conventional peonies and leaves incised under the celadon  
 glaze.  
 Height, 12 inches.
- 607 LARGE WINE JAR WITH COVER AND STAND MING  
 Incised decoration of peonies in panels of deep celadon glaze.  
 Height, 17 inches.
- 608 TRIPOD JAR WITH COVER AND STAND MING  
 Bold decoration of peonies carved under glaze of celadon.  
 Height, 12 inches.
- 609 LARGE PLACQUE AND TEAKWOOD HOLDER MING  
 Geometrical key patterns carved in the center. Border deco-  
 rated with tiger lilies incised under even celadon glaze.  
 Diameter, 17½ inches.
- 610 PLACQUE MING  
 Incised lotus flower in the center. Border in form of chrysan-  
 themum and coated with a deep celadon glaze.  
 Diameter, 16 inches.
- 611 LARGE WINE JAR WITH COVER AND STAND MING  
 Famous floral decoration carved in panels under celadon  
 glaze.  
 Height, 18½ inches.
- 612 TRIPOD WITH COVER AND STAND MING  
 Pa Kwa decoration carved on the surface under celadon glaze.  
 Height, 9 inches.
- 613 PLACQUE AND TEAKWOOD HOLDER MING  
 Incised lotus decoration in the center. The border of sea-  
 weed design, under an even celadon glaze.  
 Diameter, 14 inches.



[680]



[682]



[681]

PEACH-BLOOM COUPE, K'ANG HSI  
PEACH-BLOOM JAR, K'ANG HSI  
PEACH-BLOOM COUPE, K'ANG HSI





- 614 LARGE WINE JAR MING  
 Panel decoration of peonies and various flowers carved under the celadon glaze. With cover and stand. Height, 16 inches.
- 615 IMPERIAL PLACQUE MING  
 Carved decoration of three unglazed fish on geometrical key patterns of celadon glaze. Fluted panel edge, each panel is decorated with incised peonies. With teakwood holder.  
 Diameter, 17½ inches.
- 616 WINE JAR MING  
 Conventional fungus decoration carved in band. Border with palm leaf. The entire surface is coated with a beautiful Lung Ching celadon glaze. With original cover and stand.  
 Height, 12½ inches.
- 617 OVIFORM VASE AND STAND SUNG  
 Decoration of peonies and leaves deeply carved on the surface of Lung Ch'ing celadon glaze. Height, 12½ inches.
- 618 OVIFORM VASE AND STAND SUNG  
 Carved decoration of chrysanthemums and vines on Lung Ch'ing celadon glaze. Height, 9½ inches.
- 619 GLOBULAR-SHAPED VASE AND STAND SUNG  
 Decoration of conventional peonies carved on the surface of Lung Ch'ing celadon glaze. Height, 9 inches.
- 620 OVIFORM VASE AND STAND SUNG  
 Conventional tiger lily decoration carved on the surface of Lung Ch'ing celadon glaze. Height, 8½ inches.
- 621 LARGE JARDINIÈRE MING  
 Carved lily decoration under celadon glaze. Tall wood pedestal. (Slightly repaired.) Diameter, 21"; height, 32"

## COLLECTION OF IMPORTANT DECORATED PORCELAINS

LOTS 622 to 707

- 622 MELLON-SHAPED JAR K'ANG HSI  
 Hundred antique decoration in under glaze blue on three medallions. Border with eight Buddhist emblems. Coated

with a starch blue glaze of finest quality. With cover and stand. Height, 8 inches.

- 623 GINGER JAR WITH COVER AND STAND MING  
Decoration of four fish carved on bisque porcelain on ground of deep blue. Height, 10 inches.
- 624 JAR WITH COVER AND STAND MING  
Decoration of four flying fish carved out on bisque. Conventional water design on the base also carved and glazed in thin yellow tint on smooth blue glaze. (Slightly repaired.) Height, 10½ inches.
- 625 BOWL AND STAND K'ANG HSI  
Incised decoration of orchids in yellow and green on the surface of an aubergine glaze. So-called, three color porcelain of the finest type. Diameter, 7 inches; height, 6 inches.
- 626 BOWL AND STAND K'ANG HSI  
Conventional peony decoration in white and yellow incised on even tone of olive green glaze. So-called "three color porcelain of the finest type." Diameter, 8½ inches; height, 6½ inches.
- 627 PAIR BOWLS K'ANG HSI  
Conventional peony and leaf decoration incised in aubergine-yellow and white on deep forest green glaze. So-called "three color porcelain of the finest type." Diameter, 7 inches; height, 3½ inches.
- 628 PAIR VASES K'ANG HSI  
Octagonal oviform. With slight flaring neck. Decoration of the four seasons and animals enameled in brilliant colors. The neck of the vase decorated with the hundred antique design in five colors. With covers and stands. (Slight repair on neck of one vase.) Height, 14 inches.
- 629 PAIR BOTTLE-SHAPED VASES K'ANG HSI  
Globular body with long flaring neck. Decoration of waves and rocks on the body incised under glaze of deep starch blue. The neck is painted with coiled dragon in blue and peach on hard white-paste porcelain. (Neck of one vase slightly chipped.) Height, 10 inches.



[689]

[691]

[690]

THREE LANG YAO VASES WITH STANDS, K'ANG HSI



- 630 STAUETTE K'ANG HSI  
 Representing Dog Foo seated on a three colored stand. Coated with a rich green, aubergine and yellow glaze on bisque porcelain. Height, 12½ inches.
- 631 TEMPLE JAR WITH COVER AND STAND K'ANG HSI  
 Famille verte decoration of various flowers in medallion surrounded with leaves. Lower part of the vase with comb pattern in aubergine on green. Height, 20 inches.
- 632 TEMPLE JAR WITH COVER AND STAND K'ANG HSI  
 Famille verte decoration of birds and flowers between the rocks. The top of the jar has four medallions painted with Buddhistic emblems and key patterns in rich enamel colors of green and red. Height, 16 inches.
- 633 TEMPLE ALTAR STAND K'ANG HSI  
 Square form. Famille verte decoration of swastika carved in pierced work in four panels. The top of the stand covered with a brocade pattern which has four panels, each decorated with peonies in yellow and aubergine. So-called, three color bisque porcelain of the finest type. Height, 14 inches.
- 634 TEMPLE VASE AND STAND YUNG CHENG  
 Pear-shape. With trumpet neck. Decoration of a birthday party at the imperial house. The figures are painted in green-aubergine glaze of soft tone. Court ladies are seen seated at circle window and dressed in gorgeous robes of green, rose and yellow. Tall pine trees coated with a green glaze form a part of the decoration, the trunks of the trees with aubergine enamel glaze. Height, 24 inches.
- 635 LARGE TEMPLE JAR MING  
 Decoration of several court ladies, some enjoying a game of chess, the others playing soft melodies on harps. Painted in five color enamel colors and surrounded by a landscape of high rocks represented in under-glaze blue. With original cover and stand. Height, 24 inches.
- 636 TEMPLE JAR WITH COVER AND STAND K'ANG HSI  
 Famille verte decoration of baskets and flowers in panels,

beautifully painted in detail. Border lines also decorated with vases and butterflies in five colors on geometrical key patterns in green enamel. Height, 26 inches.

[SEE ILLUSTRATION]

637 GLOBULAR JAR AND TALL STAND MING

Decoration of fish and lotus in underglaze blue, red and green enamel on hard-paste porcelain. The upper part of the body is divided in panels of red, blue and yellow enamel. The lower part with conventional leaf pattern in underglaze blue. It has the six character marks of Ta Ming Ch'eng Hua nien-chic. Height, 39 inches.

638 BLACK HAWTHORNE GINGER JAR K'ANG HSI

Famille verte decoration of pheasant, peonies and rocks on brilliant under-glaze black. With cover and stand, the cover is inlaid with a jade disc of carved peony pattern.

Height, 12 inches.

[SEE ILLUSTRATION]

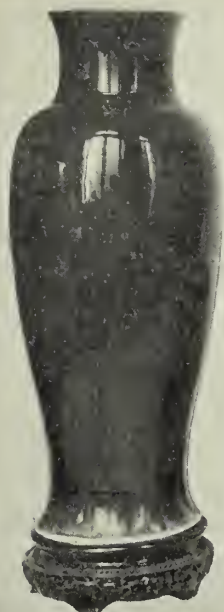
639 IMPERIAL VASE AND STAND CH'EN LUNG

Ovoid body, with graceful receding neck. Dull gold gilt bronze, with champ-leve enamel in arabesque design, studded with precious stones, including jade, malachite, lapis-lazuli, oriental turquoise, agate, carnelian and aventurine or gold stone, representing the various precious stones known and found in China during the eighteenth century; the colors employed in the enameling are identical with those of the minerals. The body of the vase has eight enameled panels; four of these show respectively, lotus, chrysanthemum, epidendrum and prune blossoms and each of the alternation four has a poem upon its accompanying flower, two of them composed by the Emperor Ch'ien Lung. The base bears the full seal-mark, in champ-leve of the Ch'ien Lung period, 1736-96. Height, 32 inches; diameter, 15 inches.

[SEE ILLUSTRATION]

640 TEMPLE JAR WITH COVER AND STAND MING

Oviform shape. Decoration of Chinese Sages performing miracles in a garden of pine and bamboo, beautifully carved on the surface and coated with turquoise blue, aubergine and



[693]



[688]



[692]

FINE LANG YAO VASE, K'ANG HSI  
LANG YAO JAR, K'ANG HSI  
LANG YAO VASE, K'ANG HSI





yellow on dark blue ground. Inside of the jar entirely covered with a rich motled-green glaze. (Slight repair on neck.)

Height, 22 inches.

[SEE ILLUSTRATION]

- 641 GLOBULAR COUPE AND STAND MING  
Coated with a dark celadon glaze on giant crackles.  
Height, 4 inches.
- 642 SAUCER AND STAND SUNG  
Coated with clair-de-lune glaze of finest quality on crackled ground.  
Diameter, 4½ inches; height, 3 inches.
- 643 GALLIPOT VASE AND STAND YUNG CHENG  
The entire surface coated with a brilliant iron rust glaze on hard porcelain.  
Height, 9 inches.
- 644 PAIR GOURD-SHAPED VASES AND STAND MING  
Coated with ox blood glaze on crackled celadon glaze.  
Height, 7 inches.
- 645 BOTTLE-SHAPED VASE AND STAND K'ANG HSI  
Coated with a light cafe-au-lait glaze of even tone on crackled ground.  
Height, 9 inches.
- 646 GALLIPOT VASE AND STAND YUNG CHENG  
Coated with a brilliant iron rust glaze. Height, 8 inches.
- 647 CABINET VASE AND STAND YUNG CHENG  
Flat body with long neck. Coated with a beautiful shade of violet blue on hard-paste porcelain. Height, 9 inches.
- 648 CABINET VASE AND STAND YUNG CHENG  
Coated with a beautiful starch blue glaze of finest quality on semi-eggshell porcelain.  
Height, 10 inches.
- 649 CABINET VASE AND STAND K'ANG HSI  
Oviform with trumpet neck. Faint decoration of chrysanthemums in gold on powder blue ground. Height, 10 inches.
- 650 CABINET VASE AND STAND K'ANG HSI  
Globular body with thin neck. Coated with a thin starch blue glaze on crackled ground. Height, 13 inches.

- 651 TEMPLE JAR WITH COVER AND STAND K'ANG HSI  
Coated with famous lang yao blue on large crackled ground.  
Height, 17 inches.
- 652 CABINET VASE AND STAND YUNG CHENG  
Bottle-shape. Coated with an even glaze of coral-red on  
white porcelain. Height, 7 inches.
- 653 KORO WITH COVER AND STAND K'ANG HSI  
Coated with a coral-red glaze on white porcelain.  
Height, 5 inches.
- 654 KORO AND STAND YUNG CHENG  
Coated with a coral-red glaze of even tone on white hard-  
paste porcelain. Height, 6 inches.
- 655 CABINET VASE AND STAND YUNG CHENG  
Bottle-shape. Coated with a brilliant coral-red glaze of  
even tone. Height, 7 inches.
- 656 CABINET VASE AND STAND K'ANG HSI  
Bottle-shape. Coated with a brilliant coral-red of even tone.  
Height, 10 inches.
- 657 VASE WITH COVER AND STAND YUNG CHENG  
Cylindrical form. Coated with a coral-red glaze of even  
tone. Height, 10 inches.
- 658 AMPHORA VASE AND STAND CH' IEN LUNG  
Entire surface coated with a coral-red glaze of brilliant tone.  
Height, 11 inches.
- 659 GLOBULAR VASE CH' IEN LUNG  
With flaring neck. Coated with an even glaze of coral-red.  
Height, 8 inches.
- 660 JAR WITH COVER AND STAND YUNG CHENG  
Coated with a brilliant coral-red glaze. Height, 12 inches.
- 661 CABINET VASE AND STAND K'ANG HSI  
Bottle-shape. Coated with a wine color glaze of finest qual-  
ity on white hard-paste porcelain. Height, 9 inches.
- 662 VASE AND STAND CH' IEN LUNG  
Globular body. The entire body is coated with a cherry-red  
glaze. Of the imperial kiln. Height, 12 inches.



[698]



[700]



[699]

CARVED VASE, HAN  
BLUE AND PEACH COLOR VASE, SUNG  
FINE TEMPLE VASE, HAN



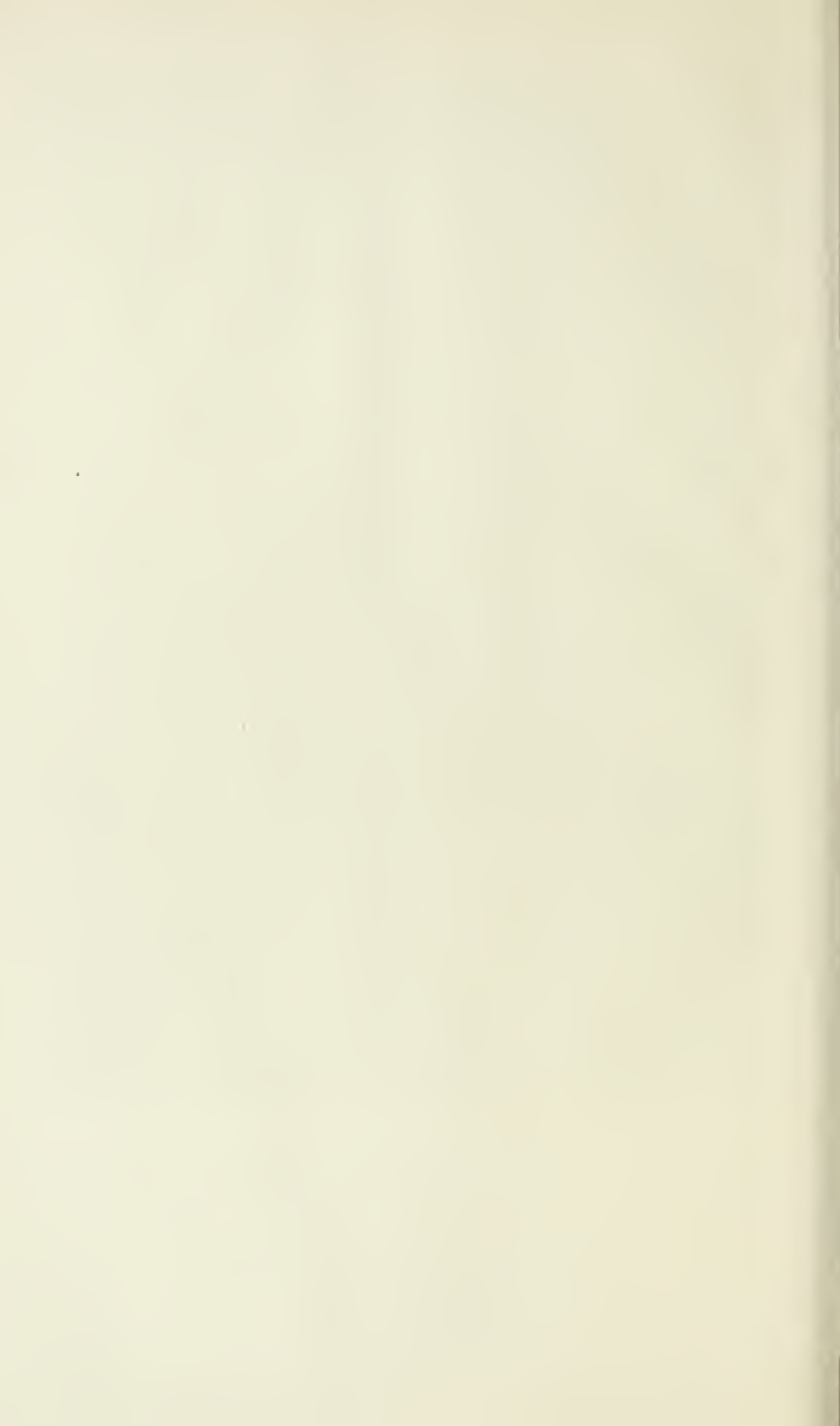
- 663 VASE AND STAND YUNG CHENG  
 Bottle-shape. Coated with a liver color which runs into  
 "ashes of roses" tint. Height, 14 inches.  
 [SEE ILLUSTRATION]
- 664 VASE AND STAND K'ANG HSI  
 Bottle-shape with globular body. Slight flaring neck. The  
 entire body is coated with a beautiful cherry-red glaze of un-  
 equaled quality. Height, 11 inches.  
 [SEE ILLUSTRATION]
- 665 GINGER JAR YUNG CHENG  
 The entire surface is coated with a peacock blue glaze of  
 even tone on fine crackled ground. Height, 12½ inches.  
 [SEE ILLUSTRATION]
- 666 VASE AND STAND YUNG CHENG  
 Amphora shape. With flaring neck. Coated with a brilliant  
 peacock blue glaze on fine fishroe crackle. Height, 17 inches.  
 [SEE ILLUSTRATION]
- 667 VASE AND STAND YUNG CHENG  
 Bottle-shape with globular body. The entire surface is coated  
 with a brilliant peacock blue glaze on fishroe crackled ground.  
Height, 19 inches.  
 [SEE ILLUSTRATION]
- 668 CABINET VASE AND STAND K'ANG HSI  
 Club-shape. Coated with a brilliant mirror black glaze of  
 even tone. Faint decoration of flowers on the surface.  
Height, 12 inches.  
 [SEE ILLUSTRATION]
- 669 BOTTLE-SHAPED VASE AND STAND K'ANG HSI  
 Globular body with long neck. Faint decoration of chry-  
 santhemums and key patterns on brilliant mirror black glaze  
 of exceptionally fine quality. Height, 19 inches.  
 [SEE ILLUSTRATION]
- 670 TEMPLE VASE AND STAND YUNG CHENG  
 Globular body with short neck. The entire surface is coated  
 with a mirror black glaze on hard-paste porcelain.  
Height, 24 inches.  
 [SEE ILLUSTRATION]

- 671 VASE AND STAND YUNG CHENG  
 Globular body with a slight flaring neck. Coated with a deep blue glaze on white hard-paste porcelain.  
 Height, 29 inches.
- 672 TEMPLE VASE AND STAND CH' IEN LUNG  
 Decoration of tiger lilies and leaves, carved on the entire surface of pure white porcelain.  
 Height, 23 inches.
- 673 KWAN-YIN STATUETTE MING  
 Standing erect on the waves. Her robes and draperies are coated with a beautiful porcelaneous glaze of cream. The expressions of peace and virtue are particularly noticeable in her features.  
 Height, 23 inches.  
 [SEE ILLUSTRATION]
- 674 EBONY SHOW CASE  
 Three glass panels. Suitable for the preceding Kwan-yin figure. The inside is covered with brocade.
- 675 KWAN-YIN STATUETTE MING  
 Goddess of Mercy, standing erect on the water, her robes artistically arranged and tied with a cord at the waist. She is holding a sceptre of justice in her right hand. The entire surface is coated with a thick cream white glaze on hard-paste porcelain.  
 Height, 34 inches.  
 [SEE ILLUSTRATION]
- 676 CABINET VASE AND STAND K'ANG HSI  
 Inverted pear-shape. Coated with a brilliant camilla-leaf green on fishroe crackled ground. This is a matchless piece of this type.  
 Height, 7 inches.  
 [SEE ILLUSTRATION]
- 677 APPLE-GREEN VASE AND STAND K'ANG HSI  
 Bottle-shape with globular body. Coated with a rich apple-green glaze on large crackled ground. It is a collectors' piece.  
 Height, 7 inches.  
 [SEE ILLUSTRATION]
- 678 JAR WITH COVER AND STAND K'ANG HSI  
 The entire surface is coated with a brilliant apple-green glaze on crackled ground.  
 Height, 7 inches.  
 [SEE ILLUSTRATION]



MAJESTIC JARDINIERE, MING YUAN

[NUMBER 705]





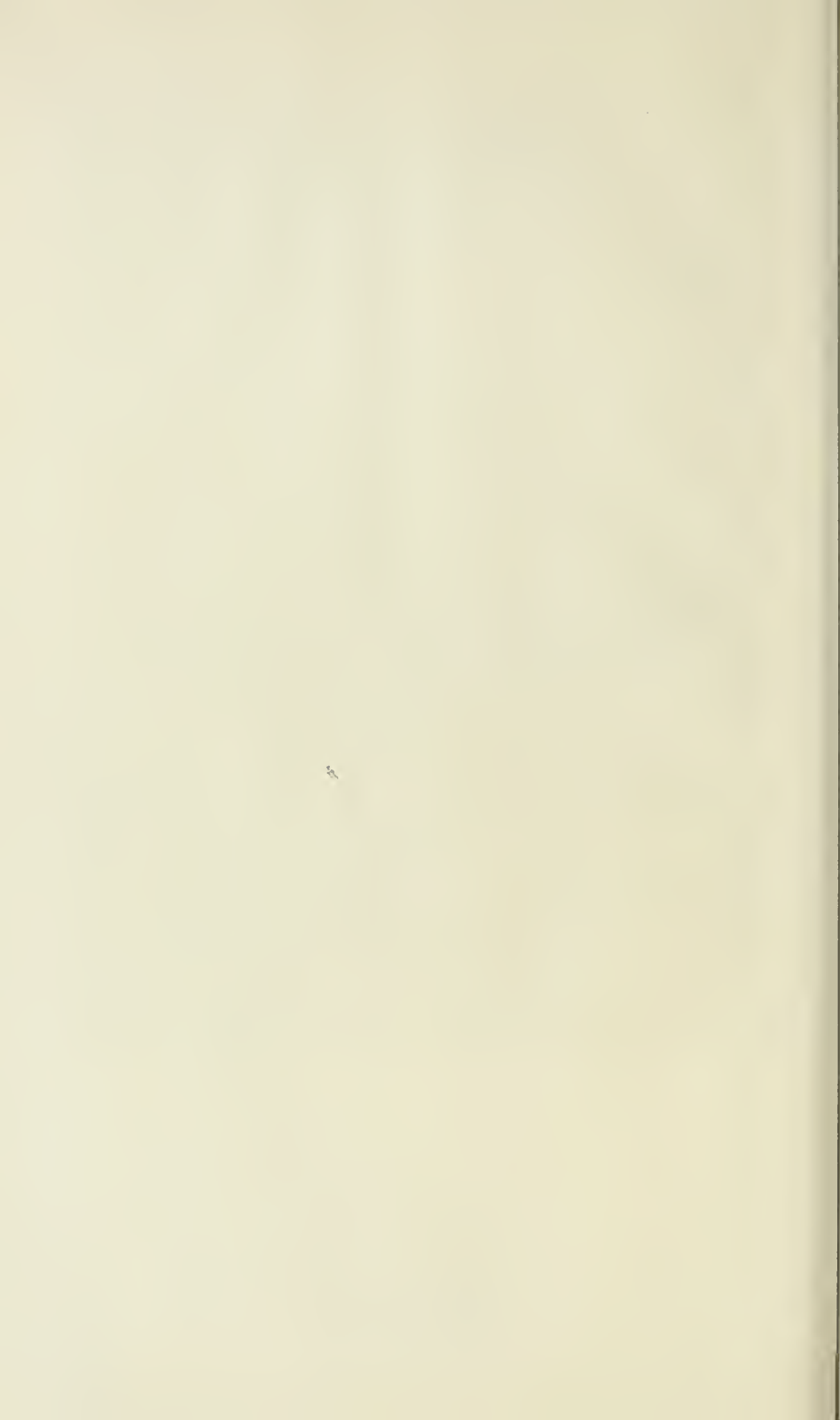
- 679 PEACHBLOOM COUPE AND STAND K'ANG HSI  
The entire surface is coated with a peachbloom glaze on hard-paste porcelain. Six underglaze blue marks on the bottom. Height, 5 inches.
- 680 PEACHBLOOM COUPE K'ANG HSI  
Coated with a peachbloom glaze shading into ashes of roses on hard-paste porcelain. Six character marks in underglaze blue. With cover and stand. Height, 3½ inches.  
[SEE ILLUSTRATION]
- 681 PEACHBLOOM COUPE AND STAND K'ANG HSI  
Coated with a mottled peach glaze of brilliant color. Six character marks in underglaze blue on the bottom. Height, 5 inches.  
[SEE ILLUSTRATION]
- 682 PEACHBLOOM JAR AND STAND K'ANG HSI  
The entire surface is coated with an unripe peach glaze of mottled tone. Six character marks in unglazed blue on the base. Height, 5½ inches.  
[SEE ILLUSTRATION]
- 683 PEACHBLOOM WATER COUPE K'ANG HSI  
Ineised medallion decoration of a lizard under peachbloom glaze. It has six character marks in unglaze blue on the bottom. Height, 4½ inches.  
[SEE ILLUSTRATION]
- 684 PEACHBLOOM VASE AND STAND K'ANG HSI  
Bottle-shape. Coated with a peachbloom glaze shading to ashes of roses. Height, 9½ inches.  
[SEE ILLUSTRATION]
- 685 LANG YAO BOWL AND STAND K'ANG HSI  
Coated with a brilliant deep sang-de-boeuf glaze on crackled celadon ground. Diameter, 8½ inches; height, 6½ inches.  
[SEE ILLUSTRATION]
- 686 LANG YAO JAR K'ANG HSI  
Coated with a deep Lang yao sang-de-boeuf glaze on crackled ground. It has six character marks on the bottom in underglaze blue. With cover and stand. Height, 4½ inches.

- 687 LANG YAO VASE AND STAND K'ANG HSI  
 In form of fruit. Coated with a brilliant sang-de-boeuf glaze  
 of even tone on crackled ground. Height, 7 inches.
- 688 LANG YAO JAR AND STAND K'ANG HSI  
 Coated with a rich sang-de-boeuf glaze of dark and mottled  
 quality. Diameter, 9 inches; height, 10 inches.  
[SEE ILLUSTRATION]
- 689 LANG YAO VASE AND STAND K'ANG HSI  
 Oviform with slight flaring neck. Coated with a sang-de-  
 boeuf glaze on crackled celadon ground. (Slight repair on  
 base and neck has been ground.) Height, 18 inches.  
[SEE ILLUSTRATION]
- 690 LANG YAO VASE AND STAND K'ANG HSI  
 Oviform with flaring neck. Coated with a rich sang-de-  
 boeuf glaze of brilliant tone on cream white crackled ground.  
Height, 19½ inches.  
[SEE ILLUSTRATION]
- 691 LANG YAO VASE AND STAND K'ANG HSI  
 Oviform with flaring neck. The neck is coated with a bril-  
 liant sang-de-boeuf glaze. Entire surface flecked with run-  
 ning tears on a sang-de-boeuf glaze. Height, 21½ inches.  
[SEE ILLUSTRATION]
- 692 LANG YAO VASE AND STAND K'ANG HSI  
 Globular body with long flaring neck. Coated with a rich  
 sang-de-boeuf glaze, showing tears on the surface.  
Height, 20½ inches.  
[SEE ILLUSTRATION]
- 693 LANG YAO VASE AND STAND K'ANG HSI  
 Slender oviform body. Coated with a rich sang-de-boeuf  
 glaze of crushed strawberry type, showing tears on the sur-  
 face. This is a very fine specimen. Height, 19½ inches.  
[SEE ILLUSTRATION]
- 694 CABINET STATUETTE AND STAND K'ANG HSI  
 Seated figure of Hotei. His robes are coated with a yellow  
 and green glaze on bisque porcelain. Height, 4 inches.



LARGE TURQUOISE BLUE JARDINIÈRE, MING

[NUMBER 706]



- 695 OLD IVORY BRUSH HOLDER MING  
 Decoration of mythological animals carved in four panels  
 in pierced work. The entire surface carved in swastika de-  
 sign. (Slightly cracked.) Height, 7½ inches.
- 696 GINGER JAR MING  
 Coated with a brilliant blue glaze on hard porcelain. With  
 cover and stand. Height, 11 inches.
- 697 TEMPLE JAR K'ANG HSI  
 The entire surface is coated with a brilliant deep aubergine  
 glaze on hard-paste porcelain. With cover and stand.  
Height, 17 inches.
- 698 VASE AND STAND HAN  
 Carved side ring handles. The entire surface is coated with  
 an iridescent silver on green glaze. Height, 16 inches.  
[SEE ILLUSTRATION]
- 699 TEMPLE VASE AND STAND HAN  
 Globular body with short neck. The entire surface is coated  
 with a iridescent silver glaze on terra-cotta and green ground.  
 It is a very fine specimen. Height, 19 inches.  
[SEE ILLUSTRATION]
- 700 OVIFORM VASE WITH COVER AND STAND SUNG  
 Panel decoration of stork and kylin in blue and peach out-  
 lined with a dark brown border. The top of the vase is  
 decorated with medallions in peach. Height, 10 inches.  
[SEE ILLUSTRATION]
- 701 JARDINIÈRE AND STAND MING  
 Side handles of ring and animal heads. The entire surface  
 is coated with a rich peacock blue glaze. Height, 26 inches.
- 702 JARDINIÈRE AND STAND MING  
 Square shape. The entire surface is carved in form of bam-  
 boo and fence, coated with a beautiful turquoise blue glaze  
 of even tone. The stand is also in form of bamboo to match  
 the jar. Diameter, 18 inches; height, 33 inches.

- 703 GIANT WINE JAR AND STAND MING  
 Decorated in Sung style with conventional leaf design in dark brown on cream ground. The inscription at the top of the jar reads: manufactured, 16th of June, 26th year of Chia Ching. Height of jar, 33 inches.  
Height of stand, 25 inches.
- 704 JARDINIÈRE AND STAND YUNG CHENG  
 The entire surface is coated with a celadon glaze almost approaching a clair-de-lune. Diameter, 13 inches.  
Height of jar, 20 inches; height of stand, 30 inches.
- 705 MAJESTIC JARDINIÈRE AND STAND MING-YUAN  
 The entire surface is coated with a deep aubergine glaze mixed with turquoise. Diameter, 25 inches.  
Height, 40 inches with stand.  
[SEE ILLUSTRATION]
- 706 LARGE JARDINIÈRE AND STAND MING  
 The entire surface coated with a turquoise blue glaze which changes here and there to peacock. Diameter, 30½ inches.  
Height, 44 inches with stand.  
[SEE ILLUSTRATION]
- 707 CELADON JAR MING  
 Carved dragon and wave decoration under celadon glaze. Has teakwood cover and stand, cover ornamented with jade. [SEE ILLUSTRATION]











709.51      A546G      138712

Andersson Galleries  
Important Collection of  
Ancient Chinese Art.

709.51      A546G      138712



D80020598W

709.51 A546G

An important collection of ancient China

DUKE UNIVERSITY LIBRARIES