

VMB-423

158
⑨

Report # 220

JTC(9)

5

AIRCRAFT ACTION REPORT

RESTRICTED
(Reclassify when filled out)

CONFIDENTIAL

(OMIT THIS SHEET IF NO ATTACK WAS MADE)

REPORT No **220**

XI. ATTACK ON ENEMY SHIPS OR GROUND OBJECTIVES (By Own Aircraft Listed in II Only).

- (a) Target(s) and Location(s) **Vunakenau # 10, New Britain** (b) Time Over Target(s) **0930 & 0932** (Zone)
(FOR SHIPS INCLUDE ALL IN AREA UNDER ATTACK)
- (c) Clouds Over Target **CAVU**
(BASE IN FEET, TYPE AND TENTHS OF COVER)
- (d) Visibility of Target **Clear** (e) Visibility **30 miles**
(CLEAR, HAZY, PARTIALLY OBSCURED BY CLOUDS, ETC.) (MILES)
- (f) Bombing Tactics: Type **Level** Bomb Sight Used **Mark 15**
(LEVEL, GLIDE OR DIVE) (TYPE)
- Bombs Dropped per Run **2** Spacing _____ Altitude of Bomb Release **10,900-12,000**
(NUMBER) (FEET) (FEET)
- (g) Number of Enemy Aircraft Hit on Ground: Destroyed **None** Probably Destroyed **None** Damaged **None**

(h) AIMING POINT	(i) DIMENSIONS OR TONNAGE	(j) NO A/C ATTACKING (k) SQUADRON	(l) BOMBS AND AMMUNITION EXPENDED EACH AIMING POINT	(m) NO HITS On Aiming Point	(n) DAMAGE (None, slight, serious, destroyed or sunk)
1 Vunakenau # 10		7 VMB-423	14 X 1000# GP	See (c)	
2					
3					
4					
5					
6					
7					
8					

(o) RESULTS: (For all hits claimed on ship targets and for land targets of special interest, draw diagram, top or side view or both, as appropriate, showing type and location of hits. For all targets give location and effect of hits, and identify by numbers above. Use additional sheets if necessary.)

All bombs were in the target area with the exception of two which were salvaged and fell north of the target. The pattern of bomb hits is shown by the attached photograph.

(p) Were Photographs Taken? **Yes** Photographs of Damage, When Taken, Should Be Attached By Staple.

AIRCRAFT ACTION REPORT

RESTRICTED
(Reclassify when
filled out)

REPORT No _____

XIII. MATERIAL DATA. (Comment freely on performance or suitability, following check list at left.
Use additional sheets if necessary).

ARMAMENT

Guns, Gunsights
Turrets
Ammunition
Bombs, Torpedoes
Bomb Sights
Bomb Releases

COMMUNICATIONS

Radio, Radar
Homing Devices
Visual Signals
Codes, Ciphers

RECOGNITION

IFF
Signals
Battle Lights
Procedures

PROTECTION

Armor; Points and Angles
of Fire Needing Further
Protection
Leak Proofing

EMERGENCY EQUIPMENT

Parachutes
Life Belts, Life Rafts
Safety Belts
Emergency Kits
Rations, First Aid

NAVIGATIONAL EQUIPMENT

Compasses
Driftsights
Octants
Automatic Pilots
Charts
Field Lighting

INSTRUMENTS

Flight
Power Plant

OXYGEN SYSTEM

**CAMOUFLAGE AND
DECEPTION DEVICES**

STRUCTURE

Airframe
Control Surfaces
Control System
Dive Flaps
Landing Gear
Heating System
Flight Characteristics
At Various Loadings

POWER PLANT

Engines
Engine Accessories
Propellers
Lubricating System
Starters
Exhaust Dampers

HYDRAULIC SYSTEM

ELECTRICAL SYSTEM

Auxiliary Plant
Lights

FUEL SYSTEM

FLIGHT CLOTHING

MAINTENANCE

BASE FACILITIES

Plane Servicing Equipment
Personnel Facilities

(All times in this narrative are local).

REPORT PREPARED BY:

WARD D. MARTIN
Capt., USMCR
Intelligence Officer

APPROVED BY:

NORMAN J. ANDERSON
LtCol., USMC
Commanding Officer

SIGNATURE

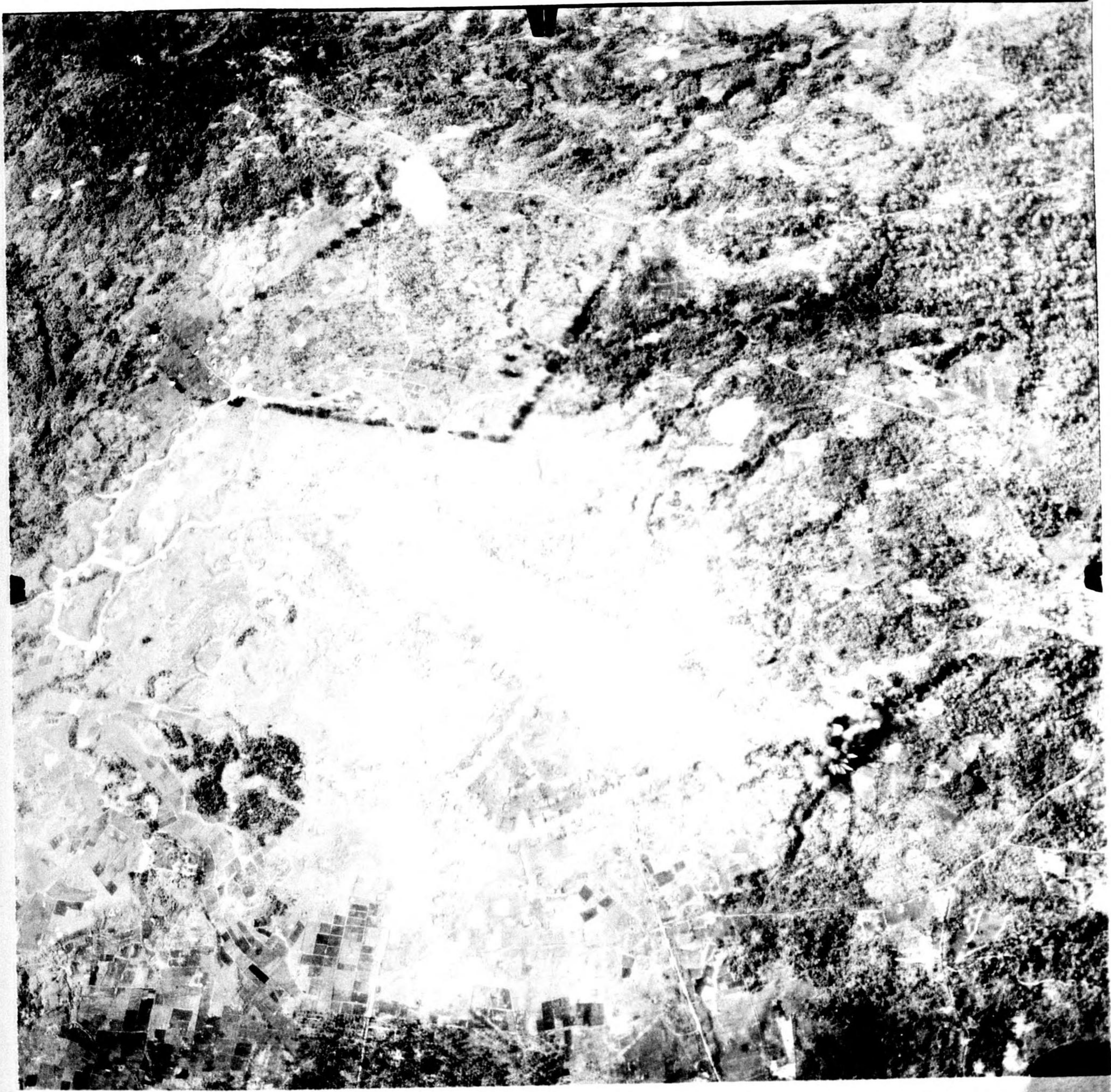
RANK AND DUTY

SIGNATURE

RANK AND DUTY

DATE





3

E-4