

CA2 ALID 15  
1960S72

ALBERTA LEGISLATURE LIBRARY



3 3398 00400 2928

# Survey of

# EDSON




*Prepared By*

INDUSTRIAL DEVELOPMENT BRANCH  
DEPARTMENT OF INDUSTRY & DEVELOPMENT

Government of the Province of Alberta

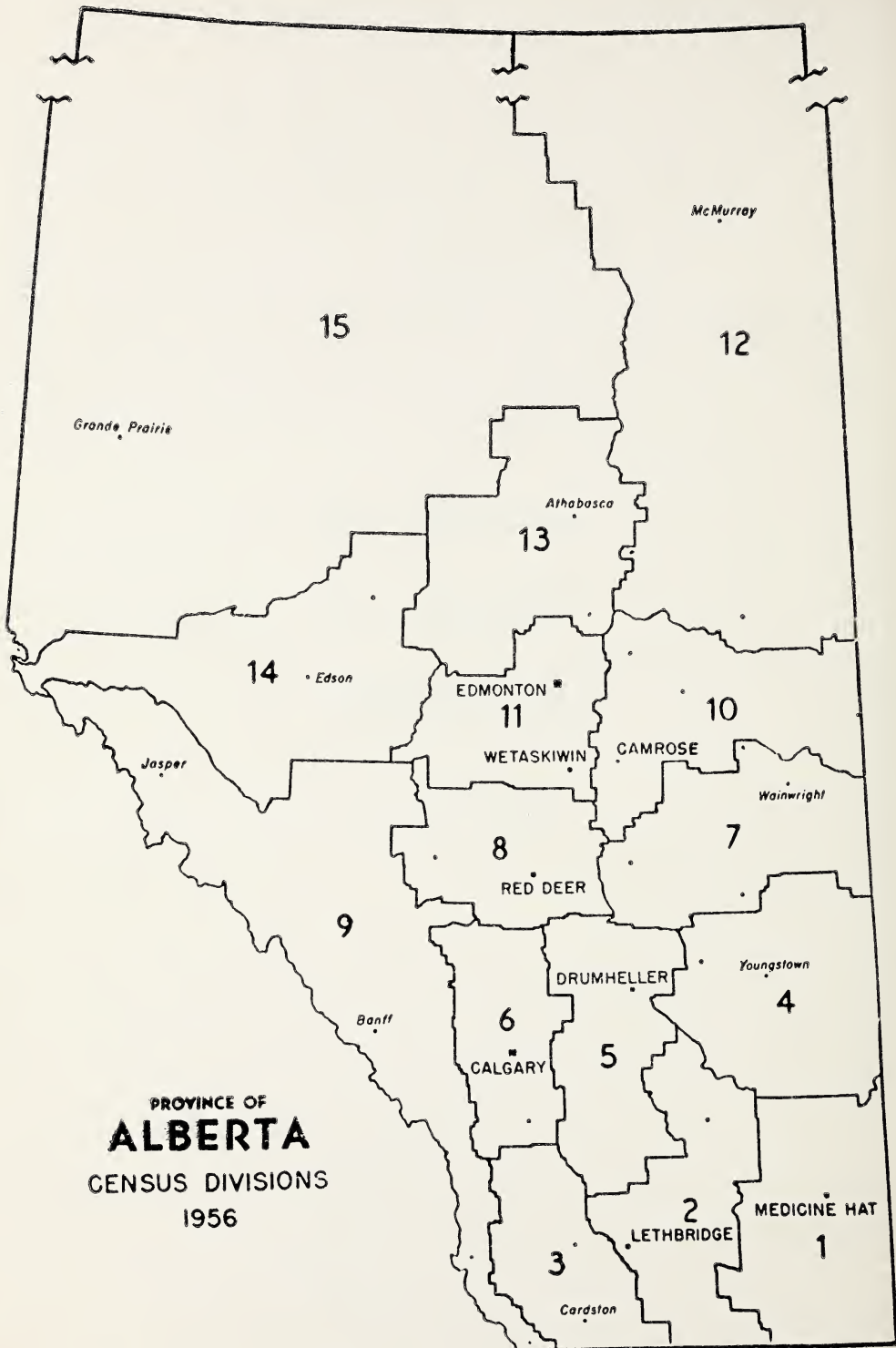




Digitized by the Internet Archive  
in 2017 with funding from  
Legislative Assembly of Alberta - Alberta Legislature Library

Survey of  
Town of  
EDSON

(Revised July, 1960)



PROVINCE OF  
**ALBERTA**  
CENSUS DIVISIONS  
1956

# TOWN OF EDSON

(Revised July 1960)

## 1. LOCATION

Section 15-53-17-W5 in Census Division 12. This location is 130 miles west of Edmonton on Highway No. 16 (Yellowhead Route); and on the main line of the Canadian National Railway from Edmonton to Vancouver.

## 2. ALTITUDE

2,985 feet

### Latitude

53/35

### Longitude

116/25

## 3. TEMPERATURE

Mean summer temperature 53 degrees F.

Mean winter temperature 23 degrees F.

Mean yearly temperature 36 degrees F.

These averages cover a period of 22 years.

## 4. RAINFALL

Total annual precipitation 20.27 inches.

These averages cover a period of 37 years.

## 5. GEOLOGY

The underlying rocks in the Edson district are shales and sandstones which were deposited by streams in lakes and deltas. Fresh water in origin, they are several hundred feet thick in that area. The rocks are of the "Paskapoo Formation" and have an early Tertiary Age which began some fifty million years ago. Since these rocks were deposited, the North American Continent has been uplifted. Consequently the rocks have eroded and only a fraction of their original thickness remains. During the Ice Age, glaciers moved over this area depositing on the surface, boulder clay and similar glacial deposits. Many of the hills and smaller elevations in this area consist of glacial deposits.

## 6. SOIL

The soil in this district is of the Grey Wooded variety.

### Soil Profile—

These soils have developed under humid soil moisture conditions. The surface horizons consist of a semi-decomposed leaf mold layer that may be absent if the area has been burned over; a thin (sometimes absent) lower horizon that may be grey-black, brown or grey-brown, and a severely leached and platy, grayish horizon, whose depth will average about six to eight inches. The deeper horizons are heavier textured, compact and often darker in color than the top. The depth to lime is quite variable, often ranging from 30 to 50 inches.

### **Fertility—**

Soils in this zone are relatively less fertile because of leaching; the deeper the leached layer, the less fertile. However, patches of transition soils are found within the zone.

### **Vegetation—**

A mixed deciduous and evergreen woodland in which peats and muskegs frequently occur.

### **Land Use—**

This is a mixed farming area which legumes, hays and coarse grains are the most desirable crops. Rotations, including legumes supplemented with fertilizers, where needed, have given the most satisfactory results.

## **7. HISTORY**

The town of Edson was originally established as Heatherwood, but in 1911, it was renamed for Edson J. Chamberlain, vice-president and general manager of the Grand Trunk Pacific Railway.

The steel for the railroad was laid in 1910 and the first train arrived in July of that year. B. G. Latta, later chief express agent for the C.N.R., was the first station agent at Edson.

Wolf Creek, 10 miles east of Edson, was the original site for the town. Real estate brokers had acquired all the property with the idea of re-selling it to the rail company, but the C.N.R. refused to buy and so Edson was located as a divisional point on a site that included much muskeg.

Some of the early settlers in the district included W. H. Jellis, who came to Canada with the Barr colonists. He opened a hardware, lumber and construction business. Others were H. A. Switzer, who established a drug store; H. Spanner, who opened Spanner Bros. Store and later sold to another early settler, H. Goldstick; J. D. McKenzie, who opened a shoe store, M. Schwartz of Schwartz General Store; P. Robbins, W. Orr; W. Hope; John Leyden, customs officer; W. Bulten and Jerry Calahan, the first yard-masters for the railroad and also first liquor agent. Fulmer and Covert Real Estate, Swanson Grocery and Davies' Men's Wear were three of the earlier businesses in Edson.

The first postmaster in Edson was J. Griggs. C. C. Markam and Company opened a wholesale feed and grain business. J. H. Lloyd, Sr. was named first village reeve.

Edson was incorporated as a town in September 1911 with G. Lawrence as mayor and H. Switzer, J. H. Lloyd, Sr., John Grigg and P. F. Robbins as councillors. The same year the Merchants Bank of Canada opened a branch in Edson which later was taken over by the Imperial Bank. That was the year Edson built a two room school, too. The first school board was formed by F. Fulmer, chairman; W. Jellis, John Griggs and R. H. Bradley.

In 1911 the settlers of Edson, in keeping with the town's rapid progress, formed a 14 piece brass band which held sway in the town until 1918.

Religion came to town with the arrival of Rev. G. S. Provis of the Anglican Church and Rev. J. Whelan of the Methodist Church.

At one time Edson was the jumping-off point for the north and mail from Grande Prairie was taken over this road by stage coach and horseback from 1911 to April 1915. When the first mail left in July, 1911, Edson residents held a big celebration to salute the ever-increasing expansion of the northwest.

The Edson Leader, the town's first newspaper, was established in 1912 with W. C. R. Garrioch as editor. In 1914 Edson got a hospital through the work of the Victorian Order of Nurses. This hospital was later taken over by the Sisters of Service of Canada. The first doctor in the town was Dr. Cortiso. Appropriately enough, the first child born in Edson was christened Edson Reid.

Over the years, from its beginnings on an acre of muskeg, Edson has grown and is today the centre of a large lumber and pulp cutting industry. A number of lumber and oil companies maintain headquarters in the town and in the immediate vicinity.

## **8. LIVING CONDITIONS**

The town of Edson is situated in the foothills of the Rocky Mountains, 75 miles from the Jasper National Park gate and 105 miles from the town of Jasper, Alberta.

It is a busy centre with ties, lumber, pulp, gas, oil and sulphur development as the focal point. Numerous stores give excellent service to the populace. Edson schools instruct students from grades one to twelve and in addition offer such subjects as Home Economics, Industrial Arts, music and business courses.

Recreationally speaking Edson is a sportsman's paradise. Good fishing and boating in streams and rivers within a short distance of the town offer family recreation. There is much wild life in the Edson district and hunters from many distant points arrive each fall to hunt duck, bush partridge, chicken, deer, moose, elk and bear.

Some 85% of the homes in Edson are owner-occupied. House rentals run about \$50 for a four room home equipped with water, sewer, natural gas and lights and \$75 a month for five rooms with water, sewer, natural gas and lights. Construction in Edson continues yearly with 28 buildings erected in 1957, 35 in 1958 and 13 in 1959.

## **9. ADMINISTRATION**

The town is governed by a mayor elected for a two year term and six councillors, two elected each year for a three year term. It is administered by a permanent secretary and staff.

## 10. LAWS AND REGULATIONS

A zoning by-law divides the town into districts, prescribing the purpose for which buildings and land may be used. All plans for new buildings, alterations to buildings and the removal of buildings must be submitted to the Building Inspector who in turn issues a permit.

Sanitary regulations comply with Alberta Public Health Regulations.

The R.C.M.P. also has barracks in the town. The force consists of one corporal, two constables and a five-man highway patrol.

The town has its own police protection. There is a chief and three constables.

## 11. FIRE PROTECTION

The fire brigade consists of a fire chief and 11 volunteer firemen.

Equipment — one 1952 Chevrolet fire truck, 500 G.P.M. pumper with a 500 gallon water tank.

2,000 feet 2½ inch hose.

200 feet 1½ inch hose.

1 chemical tank.

Extension and roof ladders.

Coats, boots, axes, helmets etc.

Water is secured from five wells and is pumped into a 100,000 gallon reservoir and a 50,000 gallon elevated tower.

There are 38 fire hydrants conveniently located throughout the town. A new fire alarm system is connected to all firemen's homes.

## 12. TAX STRUCTURE

	1960 Net assessment
Land, 100% of value	\$788,700
Improvements, 60% of value	2,460,971
Total Assessment	\$3,249,671

### Mill Rate - 1960

Municipal	School	Hospital	Total
17	44	4	65 mills

## 13. AREAS

Area of town	1,397.34 acres
Streets, lanes and highways	120 acres
Public parks and playgrounds	7 acres

### Miles of roads, streets and lanes:

	Asphalt	Gravel	Improved Earth	Oil	Total
Provincial Main	2.5				2.5
Roads and Streets	.5	8.5	.5	1.5	11.0
Public Lanes		5.75	.5		6.25
Total Miles					19.75

There are 8 miles of cement sidewalk, one mile of asphalt.



#### 14. SEWER AND WATER MAIN MILAGE

Storm sewers	nil
Sanitary sewers	8½ miles
Water mains	9¾ miles

#### 15. POWER

Three phase 60 cycle electrical power is supplied to the town by Calgary Power Limited.

##### Domestic Service:

Available only for lighting, cooking, domestic power and ordinary use in private houses and individual apartments used exclusively for residential purposes:

First 20 kwh (or less) per month	\$2.60 gross minimum
Subject to 30c prompt payment discount, making	\$2.30 net minimum
All over 20 kwh used per month	.02 net per kwh.
Connection charge for new consumers	\$1.00
Reconnection charge	\$4.60

##### Commercial and General Service:

Available where other rates listed do not apply:

For the first kilowatt, or fraction thereof of billing demand, minimum monthly charge	\$2.30 net including 20kwh.
For each additional half kilowatt, or fraction thereof of billing demand	.50 net including 5 kwh
Next 100 kwh per month per kilowatt of billing demand	.06 per kwh
All additional kwh consumed per month	.02 per kwh.

##### Discount:

The above charges for commercial and general service are net rates. For billing purposes the net bill will be increased by approximately 10% (but not less than 30c) in order to arrive at the gross amount. Bills are payable net within 10 days of date rendered.

##### Deposit:

Twice the minimum monthly bill or at the company's option, twice the estimated bill.

##### Reconnection charge:

Twice the minimum monthly bill.

##### Power Service: - (A.C.)

Available for single and three phase motors, x-ray equipment and welders.

##### Service Charge:

\$1.00 per month per kilovolt-ampere (kva) of installation (one motor horsepower or one kilowatt to be considered equivalent to 1 kva).

##### Energy Charge:

First 50 kwh per month per kva of installation	5c per kwh.
Next 50 kwh per month per kva of installation	3½c per kwh.
All over 100 kwh per month per kva of installation	1 2/3c per kwh.

**Discount:**

10% if paid within discount period - based on the even dollars only of total bill, with a minimum discount of 30c.

**Minimum Charge:**

\$5.00 gross; \$4.50 net per month, or the amount of the service charge, whichever is greater.

**Minimum Deposit:**

\$2.00 per H.P. with a minimum of \$10.00 or at the company's option, twice the estimated monthly bill.

**Reconnection Charge:**

\$10.00

**16. WATER**

Water is obtained from five wells (108 feet to 316 feet deep). Approximately 162,000 gallons are used every 24 hours. The water is pumped electrically into a 100,000 gallon cement reservoir and then into a 50,000 gallon elevated tower and then into the water mains. There are 756 service connections of which 441 are metered.

Total consumption during 1959 - 59,229,200 gallons.

Present consumption - 162,000 gallons daily.

**Water Rates:**

First 1,000 gallons used per month	\$1.00 net per month.
All additional gallons used per month	50c per M gallons.
Minimum charge	\$2.50 net per month.

**Water Analysis:**

	Parts per Million
Total Solids -----	504
Ignition Loss -----	38
Hardness -----	115
Sulphates -----	5
Chlorides -----	6
Alkalinity -----	475
Nature of Alkalinity ---	Bicarbonate of soda, lime and magnesium
Nitrites -----	trace
Nitrates -----	trace
Iron -----	nil

**Remarks:**

Chemically this water is suitable. Soda content equals 26.74 grains per gallon. Will harm plants and corrode aluminum.

**17. GAS**

Natural gas is supplied to the town under a franchise to North-western Utilities Ltd.

### General Rate No. 1:

Available to all customers.

First 20 therms or less \$2.50 per month.

All additional therms 5.7c per therm.

Minimum monthly charge \$2.50

When accounts are not paid on or before the due date the charge per therm, other than the first 20 therms, shall be increased by .3c and the gross rate so arrived at shall apply.

### Optional Rate No. 2:

Available on annual contract to all customers where annual consumption is more than 31,000 therms.

Fixed charge 35.00 per month.

Commodity charge plus 4.4c per therm.

Minimum monthly charge 35.00

When accounts are not paid on or before the due date the charge per therm shall be increased by 0.2c and the gross rate so arrived at shall apply.

This rate is available only on an annual contract, which shall continue from year to year thereafter until either party shall give to the other party, at least 30 days prior to the expiration of any such year a written notice of desire to terminate same whereupon at the expiration of such year, it shall cease and determine.

### 18. L.P. GAS

Heat value 2,521 b.t.u. per gallon at 60 degrees F.

100 pound cylinder \$6.00 F.O.B. Edson.

Bulk rate 14c per gallon.

There is 9,000 gallon storage capacity at present in Edson.

### 19. DIESEL FUEL

Heat value - 135,000 to 140,000 b.t.u. per gallon at 60 degrees F.  
17.9c per gallon.

Storage capacity - 26,000 gallons

### 20. COAL

None used in town.

### 21. LOCAL RESOURCES

Soft woods such as spruce, poplar and pine; clay for bricks; sand and gravel: marl: straw (hay); cereals; dairy products; poultry, eggs, etc.; cattle, sheep, horses and hogs; honey; oil, gas; seed potatoes, vegetables.

### 22. GOVERNMENT OFFICES AND SERVICES

#### Federal:

Post Office, Department of Veterans' Affairs (VLA) district office, Unemployment Office, R.C.M.P. Barracks (one corporal, two constables, 5 highway patrol), Meteorological 24 hr. Station.

**Provincial:**

Court House, Resident Police Magistrate, Liquor Store, Treasury Branch, Alberta Government Telephones, Microwave Tower, Machinery Maintenance Depot, Resident District Road Engineer, District Superintendent of Schools, Improvement District I.D. 95, Department of Lands and Forests, Forest Superintendent, Radio Technician and Operator, Mechanical Foreman, Department of Welfare Officer.

**Municipal:**

Civic Building - Town Secretary, Superintendent of Works, Police Office, Fire Hall, Public Library (approximately 4,500 volumes), Edson School Board. Garbage collected weekly by town employees.

**23. HEALTH SERVICES**

The St. John's Hospital is operated by the Sisters of Service of Canada and is staffed by a superior administrator, nine graduate nurses, five nurses aids, one registered and one certified x-ray technician. The hospital contains 37 beds and five bassinets.

**Rates:**

	<b>Alberta Residents</b>	<b>Non-Residents</b>
Public Ward -----	\$1.60	\$12.00
Semi-Private -----	2.60	13.00
Private -----	3.60	14.00

There is an up-to-date clinic which houses the doctors and dentists. Each office has an examination room with the latest lighting and equipment.

**Other Health Services:**

- 3 doctors, M.D.
- 1 dentist
- 1 chiropractor
- 1 optometrist
- 2 drug stores
- 1 ambulance service
- 1 funeral parlor

The Edson Health Unit with headquarters at Edson, serves an area from Drayton Valley and Evansburg west to Hinton. The unit is staffed by a doctor, health inspector, sanitary inspector, nurses, and stenographer technician.

**24. PROFESSIONAL AND SKILLED SERVICES (excluding Health Services)**

<b>Type of Service</b>	<b>Number of Establishments</b>
Barristers & Lawyers -----	2
Beauty Parlors -----	2
Barber Shops -----	4
Watch Repairs -----	1



**A NEWLY DEVELOPED RESIDENTIAL AREA OF THE TOWN OF EDSON**

## **25. TRANSPORTATION**

Main line Canadian National Railway - Vancouver to Montreal via Edson.

Highway 16 - hard surface Lloydminster to Jasper via Edson.

Greyhound Bus Line - daily service east and west.

Daily truck service to Edmonton and return.

One taxi - 3 cabs.

Ambulance service.

Airstrip - light craft only

## **26. NEWSPAPERS**

Edson Leader - weekly circulation 1,647.

## **27. COMMUNICATIONS**

Canadian National Railways.

Alberta Government Telephones (automatic microwave circuits).

Post Office.

Nearest radio stations - Edmonton - CJCA, CFRN, CHED, CHFA, CKUA, CBX.

Nearest Television station - Edmonton - CFRN-TV.

A repeater station with low power transmitter is located in town - on 1,110 kilocycles CBXD.

## **28. FINANCIAL FACILITIES**

Imperial Bank of Canada. Bank of Nova Scotia, Alberta Treasury Branch, Edson District Credit Union.



A VIEW OF EDSON'S MAIN STREET ON AN ORDINARY BUSINESS DAY

## 29. HOTELS

	No. of Rooms	Rates	Beer License
Commodore	35	\$3.50	yes

## 30. TOURIST CAMPS

	No. of Units	Grade	Rates
Jasper Highway Tourist Camp	12	1 star	\$1.75 up
Oil Centre Motel	11	4 star	\$5.00 up
Pine Bluff Auto Court	8	1 star	\$4.00 up
Sunset Motel	21	4 star	\$4.50 up
Totem Motel	11	4 star	\$6.00 up
Ciciarelli's Auto Camp	6	not graded	\$3.00 up
Edson Auto Court Motel	8	not graded	\$4.00 up

### Trailer Parks:

Ciciarelli's Auto Court  
 Jasper Highway Tourist Camp  
 Pine Bluff Auto Court  
 Sunset Motel

## 31. CHURCHES

Anglican, United, Pentecostal Tabernacle, Roman Catholic, Russian Greek Orthodox, Dutch Christian Reformed, Baptist, Jehovah's Witnesses.



**THE MODERN NEW HOSPITAL SERVES A WIDE AREA**

### **32. LODGES**

Masonic, I.O.O.F., Eastern Star, Royal Purple, Rebekahs, Knights of Columbus, B.P.O.E.

### **33. SERVICE CLUBS**

Chamber of Commerce, Canadian Legion, Kinsmen, Women's Auxiliary Canadian Legion, Lions, Optimist, Opti Mrs, Optimettes, Kinettes.

### **34. SOCIETIES AND ASSOCIATIONS**

Glenwood Community Club, Red Cross Society, Fish and Game Association, Home and School Association, Edson Amateur Athletic Association, Civil Service Association, St. John's Hospital Auxiliary, Farmer's Union of Alberta, Tri-Service Rodeo Association.



THE NEW FEDERAL BUILDING HOUSING EDSON'S POST OFFICE

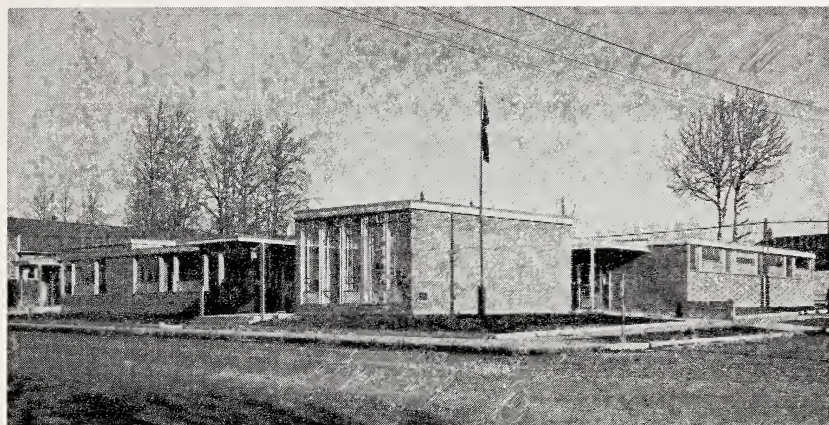
### 35. EDUCATION

The Edson School Divisional Board of the Edson School District No. 2298 operates a complete elementary, junior and senior high school system, providing all grades up to and including Grade 12. A program of ungraded primary grouping which was introduced in the Edson Division in September 1957 has proved to be most successful and is being extended in the upper elementary levels of instruction. Nearly all electives are taught in the junior and senior high schools, with home economics and shop providing a maximum number of courses. All units are provided with an audio-visual room either in auditoriums or in separate rooms. The school population is made up as follows:

	Grades	No. of Teachers	No. of Pupils
Elementary	1 to 6	31	729
Junior High	7 to 9	13	261
High (Senior)	10 to 12	8	150

All schools are heated by natural gas, have complete toilet facilities and each school has a large playground.





**EDSON IS JUSTIFIABLY PROUD OF ITS CIVIC BUILDING**

(photo by Wells Studio)

### 36. THEATRES AND HALLS

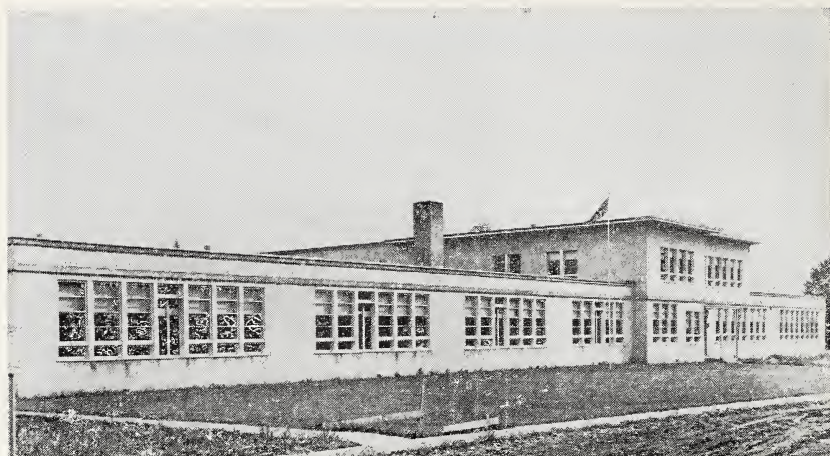
	Seating Capacity	Stage	Piano
New Edson Theatre	250	yes	no
Oddfellows Hall	100	yes	yes
Canadian Legion	350	yes	yes
Glenwood Community	100	yes	yes
Ciciarelli's (6 miles east)	100	yes	yes
Nova Theatre	514	yes	no
High School Auditorium	700	yes	yes
Elks Hall	100	no	yes
Parish Hall	150	yes	yes
Drive-In Theatre	—	—	—

### 37. CULTURAL ACTIVITIES

Edson Public Library which contains 4,500 volumes is in charge of the Library Committee. The Library receives the usual provincial grant and membership fees.

Two local, 5 piece orchestras - Elks Band.

Edson Craft Centre has established a shop and offers participation and classes in weaving, pottery, leather work, wood work and art.



**SCHOOLS IN EDSON ARE MODERN, WELL EQUIPPED**

### **33. YOUTH ACTIVITIES**

#### **Boys**

Scouts  
 Wolf Cubs  
 Optimist Junior Forest Rangers  
 Optimist Oratorical Club  
 Army Cadets  
 Optimist Radio Club  
 Optimist Violin Group

#### **Girls**

Brownies  
 Guides  
 Optimettes  
**Mixed**  
 Junior Red Cross  
 Teen Club  
 Catholic Youth Organization

### **39. SPORTS**

Baseball (senior and junior), Softball (men's and women's), Hockey, Curling, Skiing, Badminton, Rifle Range (pistol and rifle), Fishing, Swimming, Hunting, Skin Divers, and Golfing.

#### **Sports Facilities:**

Covered curling rink - three sheets artificial ice.  
 Covered hockey and skating arena - 100 x 200 feet.  
 Sports grounds.

School playgrounds.

All sports except swimming are under the jurisdiction of the Edson Amateur Athletic Association.

### **40. FAIRS**

Agricultural Fair, Two Day Stampede, Two Sports Days held yearly.

Edson District Credit Union, Farmer's Union of Alberta.

### **41. HISTORIC SITES**

Starting point of the old Grande Prairie Trail.

## 42. CO-OPERATIVES

Edson District Credit Union, Farmer's Union of Alberta.

## 43. BUSINESS AND INDUSTRY

Type of Business or Industry	No. of Establishments	Producer or Manufacturer	Wholesale	Retail	Type of Business or Industry	No. of Establishments	Producer or Manufacturer	Wholesale	Retail
Ambulance	1	—	—	—	Insurance & Real Estate	3	—	—	—
Bakeries	1	—	1	1	Jewelers	1	—	—	1
Banks	3	—	—	—	Law Offices	1	—	—	—
Barbers	4	—	—	—	Laundry - dry cleaners	2	—	—	2
Bowling Alleys	—	—	—	—	Lumber Yards	3	—	3	3
Body Shops	2	—	—	2	Lumber Mills	2	2	2	—
Books & Stationery	See	Drug	Stores	—	Milk Distributors	2	2	2	2
Butchers	4	—	4	4	Motels	7	—	—	—
Building Contractors	3	—	—	3	Music Teachers	3	—	—	—
Building Supplies	3	—	3	3	Optometrists	1	—	—	—
Blacksmiths	1	—	—	—	Oil Distributors	5	—	5	—
Cartage Delivery	1	—	—	—	Painters & Decorators	3	—	—	—
Clothing - men's	1	—	—	1	Paint Shops	1	—	—	1
Clothing - women's	2	—	—	2	Photographers	1	—	—	—
Chiropractors	1	—	—	—	Plumbers	3	—	—	—
Confectionery	2	—	—	2	Pool Rooms	1	—	—	—
Coal Dealers	1	—	1	1	Printing Shops	2	—	—	2
Cold Storage Lockers	1	—	1	1	Propane Gas Agents	2	—	—	2
Creameries, pasturization plants	1	1	1	1	Public Accountants	1	—	—	—
Dentists	1	—	—	—	Radio Repairs	3	—	—	3
Department Stores	2	—	—	2	Restaurants	6	—	—	—
Doctors	3	—	—	—	Shoe Repairs	1	—	—	—
Drug Stores	2	—	—	2	Shoe Stores	2	—	—	2
Dry Goods	1	—	—	1	Sign Writers	1	—	—	—
Electrical Appliances	3	—	—	3	Second Hand Stores	1	—	—	1
Electrical Contractors	5	—	—	—	Storage Plant	2	—	—	—
Funeral Parlors	1	—	—	—	Tailor Shops	1	—	—	1
Feed Stores	2	—	—	2	Theatres	2	—	—	—
Garages & Service Stations	12	—	—	12	Drive-In	1	—	—	—
Groceries	6	—	—	6	Tinsmiths	3	—	—	—
Hair Dressers	2	—	—	—	Transports	2	—	—	—
Hardware	4	—	—	4	Variety Stores	2	—	—	2
Hotels	1	—	—	—	Welding & Machine Shops	2	—	2	2
Implements	2	—	—	2	Woodworking	2	2	—	2

#### 44. SITES

Choice industrial sites with adjacent trackage and highway facilities are available.

An excellent industrial site lies 2½ miles south of town on the banks of the McLeod River with railway spur and gravelled highway partially finished.

##### **Vacant Buildings:**

C.N.R. roundhouse - 90' x 250' plus 92' x 105'.

C.N.R. machine shop - 75' x 93' plus 12' x 93',

Main Street - 1 building 945 sq. ft. suitable for shop or office.

1 building 2,169 sq. ft. suitable for cafe.

1 building 136 sq. ft. suitable for taxi office.

1 building 442 sq. ft. older type building.

1 building 1,024 sq. ft., new, suitable for store.

1 building 1,056 sq. ft., new, suitable for store.

Upstairs of new building 456 sq. ft. suitable for offices.

West end of town, building 390 sq. ft. suitable for service station.

East end of town, upstairs of dairy, suitable for office.

1 service station with cafe, 504 sq. ft.

#### 45. INDUSTRIAL DEVELOPMENT

The mixed woodland soil in the Edson district supports relatively small-scale mixed farming enterprises. Perhaps more than one-third of cash farm income is obtained through the sale of forest products. Live-stock raising has gained in importance since 1950 when cash receipts from grain, cattle and hogs were 17, 10 and 10 percent respectively. In 1956 the average size of farm was 368 acres; more than 90% consisted of fewer than 760 acres. However, 80% of all farms were owned and 17% partly owned. In 1956 an average of fewer than 5 acres per farm were devoted to wheat while 30 acres were in tame hay and other fodder, there were 13 acres of improved pasture per farm. Only one in every 20 farms were equipped with a grain combine.

The North Western Pulp & Power Company located at Hinton, 65 miles west, purchases pulpwood from local farmers. This new revenue has assisted the economy of the district. Many sawmills in the area hire local help, including the farmers, during the winter months, which also keeps the economy healthy. The Marten Shoe factory, which manufacturers work boots, established in Edson four years ago. These boots are hand made and a good demand from bushmen, linemen, farmers etc. keep this factory busy the year round.

#### **46. TRADING AREA**

North for 35 miles, west for 60 miles, south to the McLeod River and east for 60 miles.

#### **47. POPULATION**

Town population, June 1956 - 2,560.

Town population, 1960, local census - 3,248.

Trading area population, 1960 - 13,000.





3 3286 51615 5039

