

1607 protocole





Handwritten text in a cursive script, likely a historical document or letter. The text is written on aged, stained paper and is mostly illegible due to fading and damage. The script appears to be a form of early modern European cursive, possibly from the 16th or 17th century. The document is heavily stained, particularly with large brown and black spots, and the edges are frayed and torn.

The first part of the text is a dense block of handwritten script, likely in a historical or legal context. The ink is dark and the paper shows signs of age and wear. The text is arranged in approximately 15 horizontal lines, filling most of the page's width.

3.

Handwritten signature or title

The second part of the document begins with a large, decorative initial 'P' followed by several lines of text. The handwriting is consistent with the first section. The text appears to be a continuation of the same subject matter, possibly detailing specific provisions or a narrative. The bottom of the page shows some fading and damage to the paper.

4.

[The text is extremely faint and illegible due to fading and bleed-through from the reverse side of the page. It appears to be a dense block of handwritten text, possibly in a historical or legal context.]

[Faint handwritten text at the bottom of the page, likely a signature or a closing phrase.]

The first part of this manuscript is a list of names and titles, possibly of nobles or officials, written in a cursive hand. The text is dense and difficult to decipher due to the handwriting and some fading. It appears to be a formal document or a record of appointments.

The second part of the manuscript continues the list or provides further details related to the first part. It also consists of dense, cursive handwriting. There are some larger, more prominent letters or initials that might mark the beginning of new sections or entries.

Handwritten text at the top of the page, possibly a title or introductory paragraph, written in a cursive script.

Main body of handwritten text, consisting of several paragraphs. The script is dense and cursive, typical of 18th-century manuscripts. The text appears to be a detailed account or a letter, with some lines starting with large decorative initials.

Handwritten text, likely a list or account, written in a cursive script. The text is dense and fills most of the page, with some lines starting with capital letters and others appearing to be numbered or grouped. The ink is dark, and the paper shows signs of age and wear.

Handwritten text, likely a list or account, written in a cursive script. The text is dense and fills most of the page, with some lines starting with capital letters and others appearing to be numbered or grouped. The ink is dark, and the paper shows signs of age and wear.

Handwritten text in a cursive script, likely a historical document or letter. The text is dense and difficult to decipher due to the handwriting style. It appears to be a formal or official communication, possibly related to a church or government matter. The text is written on aged, slightly stained paper.

10

Handwritten text in a cursive script, continuing from the top section. The text is dense and difficult to decipher due to the handwriting style. It appears to be a formal or official communication, possibly related to a church or government matter. The text is written on aged, slightly stained paper.

[Faint handwritten text, likely bleed-through from the reverse side]

19.

[Main body of handwritten text in a cursive script]

10

[Faint handwritten text at the bottom of the page, possibly a new entry or continuation]

Handwritten text in a cursive script, likely a historical document or letter. The text is dense and covers most of the page.

Handwritten text in a cursive script, continuing from the previous page. It begins with a large initial letter 'P'.

Handwritten text in a cursive script, continuing from the previous page. It begins with a large initial letter 'P'.

18
 19
 20
 21
 22
 23
 24
 25
 26
 27
 28
 29
 30
 31
 32
 33
 34
 35
 36
 37
 38
 39
 40
 41
 42
 43
 44
 45
 46
 47
 48
 49
 50
 51
 52
 53
 54
 55
 56
 57
 58
 59
 60
 61
 62
 63
 64
 65
 66
 67
 68
 69
 70
 71
 72
 73
 74
 75
 76
 77
 78
 79
 80
 81
 82
 83
 84
 85
 86
 87
 88
 89
 90
 91
 92
 93
 94
 95
 96
 97
 98
 99
 100

101
 102
 103
 104
 105
 106
 107
 108
 109
 110
 111
 112
 113
 114
 115
 116
 117
 118
 119
 120
 121
 122
 123
 124
 125
 126
 127
 128
 129
 130
 131
 132
 133
 134
 135
 136
 137
 138
 139
 140
 141
 142
 143
 144
 145
 146
 147
 148
 149
 150
 151
 152
 153
 154
 155
 156
 157
 158
 159
 160
 161
 162
 163
 164
 165
 166
 167
 168
 169
 170
 171
 172
 173
 174
 175
 176
 177
 178
 179
 180
 181
 182
 183
 184
 185
 186
 187
 188
 189
 190
 191
 192
 193
 194
 195
 196
 197
 198
 199
 200

18
 ...
 ...
 ...

19
 ...
 ...
 ...

...
 ...
 ...

Handwritten text in a cursive script, likely a historical document or letter. The text is written in a dark ink on aged, yellowed paper. The script is dense and difficult to decipher due to its cursive nature and the fading of the ink. The text appears to be a formal address or a significant declaration, possibly related to a legal or administrative matter. The words are written in a continuous line, with some larger letters that may serve as initials or markers. The overall appearance is that of an old, well-preserved manuscript.

28

9

[The text is extremely faint and largely illegible due to fading and bleed-through. It appears to be a dense, multi-line manuscript in an old Cyrillic script, possibly Church Slavonic. The text is written in a cursive hand and covers most of the page area.]

Ca. 1. 2. 3. 4. 5. 6. 7. 8. 9. 10. 11. 12. 13. 14. 15. 16. 17. 18. 19. 20. 21. 22. 23. 24. 25. 26. 27. 28. 29. 30. 31. 32. 33. 34. 35. 36. 37. 38. 39. 40. 41. 42. 43. 44. 45. 46. 47. 48. 49. 50. 51. 52. 53. 54. 55. 56. 57. 58. 59. 60. 61. 62. 63. 64. 65. 66. 67. 68. 69. 70. 71. 72. 73. 74. 75. 76. 77. 78. 79. 80. 81. 82. 83. 84. 85. 86. 87. 88. 89. 90. 91. 92. 93. 94. 95. 96. 97. 98. 99. 100.

1. 2. 3. 4. 5. 6. 7. 8. 9. 10. 11. 12. 13. 14. 15. 16. 17. 18. 19. 20. 21. 22. 23. 24. 25. 26. 27. 28. 29. 30. 31. 32. 33. 34. 35. 36. 37. 38. 39. 40. 41. 42. 43. 44. 45. 46. 47. 48. 49. 50. 51. 52. 53. 54. 55. 56. 57. 58. 59. 60. 61. 62. 63. 64. 65. 66. 67. 68. 69. 70. 71. 72. 73. 74. 75. 76. 77. 78. 79. 80. 81. 82. 83. 84. 85. 86. 87. 88. 89. 90. 91. 92. 93. 94. 95. 96. 97. 98. 99. 100.

[Illegible handwritten text, likely a continuation from the previous page, containing dense Latin script.]

26

[Illegible handwritten text, likely a continuation from the previous page, containing dense Latin script.]

Handwritten text in a cursive script, likely a historical document or letter, covering the top half of the page.

29.

Large block of handwritten text, possibly a formal letter or report, starting with a large initial letter 'P'.

30

Large block of handwritten text, continuing the document or letter, starting with a large initial letter 'P'.

13.

This is a handwritten text in a historical script, likely Polish or Czech. The text is dense and covers most of the page. It appears to be a record or a letter, containing various names and descriptions. The script is somewhat cursive and difficult to read without specific knowledge of the language.

This is a second page of handwritten text in the same script as the first page. It continues the narrative or record. The paper shows signs of age and wear, with some staining and uneven edges.

Handwritten text in a cursive script, likely a historical document or letter. The text is dense and covers most of the page. At the top center, there is a large, stylized initial or mark, possibly a signature or a decorative element. The script is dark and appears to be from a historical period, possibly 17th or 18th century.

Handwritten text in a cursive script, continuing from the top page. The text is dense and covers most of the page. It appears to be a continuation of the historical document or letter. The script is dark and appears to be from a historical period, possibly 17th or 18th century.

[The text is written in a highly cursive, handwritten style, likely a form of Church Slavonic. It consists of approximately 25 lines of text, which are mostly illegible due to the extreme slant and tight spacing of the characters. The text appears to be a liturgical or administrative document, possibly a prayer or a record of an event. The script is characteristic of the 17th or 18th century manuscripts from the Balkans or Eastern Europe.]

tym woin kwittem roku teraznowy 1607 mijała pomyślnie
 dnia wazga przysła stawać dwadździeci i pięć dniem a 15
 dnia zimnie zimniej para para kumplewiczka spanna
 zidiera sebestianowicza i a korożanami zimianina wóka
 15 dnia zimnie zimniej para para mikołajowicza wódka
 len

15 dnia zimnie zimniej para para kumplewiczka spanna
 zidiera sebestianowicza i a korożanami zimianina wóka
 15 dnia zimnie zimniej para para mikołajowicza wódka
 len

15 dnia zimnie zimniej para para kumplewiczka spanna
 zidiera sebestianowicza i a korożanami zimianina wóka
 15 dnia zimnie zimniej para para mikołajowicza wódka
 len

Handwritten text in a cursive script, likely a religious or legal document, starting with "In nomine domini".

40

Handwritten text in a cursive script, likely a religious or legal document, starting with "In nomine domini".

41

Handwritten text in a cursive script, likely a religious or legal document, starting with "In nomine domini".

Handwritten text in a cursive script, likely a letter or document. The text is dense and fills most of the page. There is a large, stylized initial letter at the top right, possibly 'K' or 'P', which is partially cut off by the edge of the page. The ink is dark, and the paper shows signs of age and wear.

Handwritten text in a cursive script, continuing from the top page. The text is dense and fills most of the page. There is a large, stylized initial letter at the top left, possibly 'T' or 'J', which is partially cut off by the edge of the page. The ink is dark, and the paper shows signs of age and wear.

мнѣ о истинности свата бжнихъ словъ скаршеню вѣру
мы сего и вѣду и не здровѣ и не вѣду и вѣду и вѣду
мы и вѣду и вѣду и вѣду и вѣду и вѣду и вѣду и вѣду
по сего

Въ сего свата бжнихъ словъ скаршеню вѣру
мы сего и вѣду и не здровѣ и не вѣду и вѣду и вѣду
мы и вѣду и вѣду и вѣду и вѣду и вѣду и вѣду и вѣду
по сего

...

...

[Illegible handwritten text, likely a list or account of items and their values.]

[Illegible handwritten text, continuing the list or account from the previous page.]

[The text is a handwritten document in an old Cyrillic script, likely Church Slavonic. It is written in a cursive hand on aged, slightly stained paper. The text is arranged in approximately 25 horizontal lines, filling most of the page. The ink is dark, and the handwriting is consistent throughout. The document appears to be a formal or legal text, possibly a charter or a record of a church council, given the use of terms like 'судъ' (court/judgment) and 'права' (rights/laws).]

The first part of the manuscript... contains a list of names and titles... written in a cursive script... mentioning various locations and dates...

58

The second part of the manuscript... continues the list of names and titles... written in a cursive script... mentioning various locations and dates... concluding with a signature and date.

Top section of handwritten text, likely a continuation from the previous page. The script is dense and cursive, with some words appearing to be 'Post' and 'quod'.

Middle section of handwritten text, continuing the narrative or argument. The handwriting is consistent with the top section.

Bottom section of handwritten text, possibly a concluding paragraph or a separate entry. The script remains consistent.

Handwritten text in a cursive script, likely a historical document or manuscript. The text is dense and fills most of the page.

69.

Large handwritten text block, possibly a letter or a detailed account, written in a cursive script. It begins with a large initial letter and continues down the page.

65

94

[Illegible handwritten text, likely a list or index, possibly containing names of authors or works.]

66

[Illegible handwritten text, continuing the list or index from page 65.]

67

[Faint, mostly illegible handwritten text in a cursive script. The text appears to be a list or a series of entries, possibly related to medical or administrative records. Some words like 'Leprosio', 'pelle', 'cutis', and 'ulcus' are faintly visible.]

68

[Faint, mostly illegible handwritten text in a cursive script, continuing from the previous page. The text is difficult to decipher but seems to follow a similar structure of entries or descriptions.]

67

Handwritten text in a cursive script, likely from the 17th or 18th century, containing several lines of text.

70

Main body of handwritten text in a cursive script, continuing from the previous page or as a separate entry.

PK

43



74

[Illegible handwritten text in Church Slavonic script, likely a liturgical or historical document.]

75

[Illegible handwritten text in Church Slavonic script, continuing the document.]

9h
 1604
 [Illegible text below the date stamp]

1
 2
 3
 4
 5
 6
 7
 8
 9
 10
 11
 12
 13
 14
 15
 16
 17
 18
 19
 20
 21
 22
 23
 24
 25
 26
 27
 28
 29
 30
 31
 32
 33
 34
 35
 36
 37
 38
 39
 40
 41
 42
 43
 44
 45
 46
 47
 48
 49
 50
 51
 52
 53
 54
 55
 56
 57
 58
 59
 60
 61
 62
 63
 64
 65
 66
 67
 68
 69
 70
 71
 72
 73
 74
 75
 76
 77
 78
 79
 80
 81
 82
 83
 84
 85
 86
 87
 88
 89
 90
 91
 92
 93
 94
 95
 96
 97
 98
 99
 100

1
 2
 3
 4
 5
 6
 7
 8
 9
 10
 11
 12
 13
 14
 15
 16
 17
 18
 19
 20
 21
 22
 23
 24
 25
 26
 27
 28
 29
 30
 31
 32
 33
 34
 35
 36
 37
 38
 39
 40
 41
 42
 43
 44
 45
 46
 47
 48
 49
 50
 51
 52
 53
 54
 55
 56
 57
 58
 59
 60
 61
 62
 63
 64
 65
 66
 67
 68
 69
 70
 71
 72
 73
 74
 75
 76
 77
 78
 79
 80
 81
 82
 83
 84
 85
 86
 87
 88
 89
 90
 91
 92
 93
 94
 95
 96
 97
 98
 99
 100

ka uroczay owo iofom wywodzi w yowym roztazaniu
zakonu wierzyni na ad wierzyni zowt w miedzi
miedzi na iowym wywodzi w yowym roztazaniu
zakonu wierzyni na ad wierzyni zowt w miedzi
miedzi na iowym wywodzi w yowym roztazaniu
zakonu wierzyni na ad wierzyni zowt w miedzi
miedzi na iowym wywodzi w yowym roztazaniu
zakonu wierzyni na ad wierzyni zowt w miedzi
miedzi na iowym wywodzi w yowym roztazaniu
zakonu wierzyni na ad wierzyni zowt w miedzi

78

Przedniem wywodzi iowym roztazaniu w yowym
zakonu wierzyni na ad wierzyni zowt w miedzi
miedzi na iowym wywodzi w yowym roztazaniu
zakonu wierzyni na ad wierzyni zowt w miedzi
miedzi na iowym wywodzi w yowym roztazaniu
zakonu wierzyni na ad wierzyni zowt w miedzi
miedzi na iowym wywodzi w yowym roztazaniu
zakonu wierzyni na ad wierzyni zowt w miedzi
miedzi na iowym wywodzi w yowym roztazaniu
zakonu wierzyni na ad wierzyni zowt w miedzi

glowa tak sie w sobie ma wielokoj gasnie i nie
mozny niej milozny - tujean panow y bra
ist pabulow glazj bnie losie temozon njez
milozny - jez y toskanjes panow y bradzja
leoznyj wielom ist zabesni zeso take erce
ist take spozie lapustwa y w tyrdki pros zel
niere wozstawa zmuogkint ja wili lotim w
wielke wialkie pke pod petyes y znijszenie za
bra plaz - bogat lindyj abo w niemnijsa oby
lanc gbitnia wicostwa wzgla sorze swanska
kercu gbitnie spozim karanam niwimo gdzisio
pobozny wdawny erce discipline niwprani zgi
niemi ja schiepny bym rad na querimonia wozstawa
niere miloznyj y toskanjes panow y bradzja przj
radu wozstawa sprantw dlinoznyj takonjes se xce
sew zoznyj z to szijsio erca ponitrze y postie
rozozje wicostwa wielom ni wtey niwze impedi
mentem byli grantownijsie teclnak te rozozje - d
wazion popozna y ploni potencji zapeludy wazni
ronaki zaktozby mina imputowana potwistron
apozim y karante wozstawa byz moglo przj dze po
niere zabawne wozie wctowac niwmoze apozimnjes
y lazios parskis y ten sferbela chadoby wozstawa
ni wozie napozimi stawanu miom nie praniu niwze
dze y zjakom teroz leze wicostwa wzgami te
browil take pceloznyj przed manstakem y l kintu
sytke te doleplomoznyj wozstawa njez miloznyj y ta
kcanjes panow y bradzja stawanu abo pofszelakis
jel losy abj zapobamowaniam takonjes xce sew

in solo ginepro prorecau' salu'com. d. augustinus
 et in ceteris quibusdam suis scripturis tam. b. n. d. n. s.
 nam. in. n. d. n. s. d. n. s. d. n. s. d. n. s. d. n. s. d. n. s. d. n. s.
 aut. d. n. s. d. n. s. d. n. s. d. n. s. d. n. s. d. n. s. d. n. s. d. n. s. d. n. s.
 uolunt. b. n. d. n. s. d. n. s. d. n. s. d. n. s. d. n. s. d. n. s. d. n. s. d. n. s.
 aut. d. n. s. d. n. s. d. n. s. d. n. s. d. n. s. d. n. s. d. n. s. d. n. s. d. n. s.
 in. n. d. n. s. d. n. s. d. n. s. d. n. s. d. n. s. d. n. s. d. n. s. d. n. s. d. n. s.
 in. n. d. n. s. d. n. s. d. n. s. d. n. s. d. n. s. d. n. s. d. n. s. d. n. s. d. n. s.
 in. n. d. n. s. d. n. s. d. n. s. d. n. s. d. n. s. d. n. s. d. n. s. d. n. s. d. n. s.
 in. n. d. n. s. d. n. s. d. n. s. d. n. s. d. n. s. d. n. s. d. n. s. d. n. s. d. n. s.
 in. n. d. n. s. d. n. s. d. n. s. d. n. s. d. n. s. d. n. s. d. n. s. d. n. s. d. n. s.
 in. n. d. n. s. d. n. s. d. n. s. d. n. s. d. n. s. d. n. s. d. n. s. d. n. s. d. n. s.
 in. n. d. n. s. d. n. s. d. n. s. d. n. s. d. n. s. d. n. s. d. n. s. d. n. s. d. n. s.
 in. n. d. n. s. d. n. s. d. n. s. d. n. s. d. n. s. d. n. s. d. n. s. d. n. s. d. n. s.

A large, decorative calligraphic flourish or signature in brown ink, featuring a long, sweeping tail that curves upwards and then downwards, ending in a small hook. The main part of the flourish consists of several interconnected loops and curves.

31



31

Handwritten signature or initials in cursive script, possibly reading "S. P. H."

1. Моего раба зык фырако сити...
 2. браня в олшви...
 3. мнѣ вѣнѣ...
 4. вѣнѣ на кресте...
 5. вѣнѣ на кресте...
 6. вѣнѣ на кресте...
 7. вѣнѣ на кресте...
 8. вѣнѣ на кресте...
 9. вѣнѣ на кресте...
 10. вѣнѣ на кресте...
 11. вѣнѣ на кресте...
 12. вѣнѣ на кресте...
 13. вѣнѣ на кресте...
 14. вѣнѣ на кресте...
 15. вѣнѣ на кресте...
 16. вѣнѣ на кресте...
 17. вѣнѣ на кресте...
 18. вѣнѣ на кресте...
 19. вѣнѣ на кресте...
 20. вѣнѣ на кресте...

Handwritten text at the top of the page, possibly a title or header, written in a cursive script.

86

Main body of handwritten text on page 86, starting with a large decorative initial 'I'.

87

Main body of handwritten text on page 87, starting with a large decorative initial 'I'.

что иже бо мнѣ и до оубави...
 до ното возна и асрето ното...
 по но: в рѣ блѣ до...
 ппу ното бнѣ ното в лана...
 в нѣ с рѣ блѣ и в сорокото...
 мнѣ ното о гнѣ блѣ и мнѣ с рѣ блѣ...
 шорокото и в сорокото...

14.

что иже бо мнѣ и до оубави...
 до ното возна и асрето ното...
 по но: в рѣ блѣ до...
 ппу ното бнѣ ното в лана...
 в нѣ с рѣ блѣ и в сорокото...
 мнѣ ното о гнѣ блѣ и мнѣ с рѣ блѣ...
 шорокото и в сорокото...

75

что иже бо мнѣ и до оубави...
 до ното возна и асрето ното...
 по но: в рѣ блѣ до...
 ппу ното бнѣ ното в лана...
 в нѣ с рѣ блѣ и в сорокото...
 мнѣ ното о гнѣ блѣ и мнѣ с рѣ блѣ...
 шорокото и в сорокото...

101

Царь и великий князь всея Руси и восточной Сибири
 Александр Невский, государь и великий князь новгородский
 и псковский, а также великий князь владимирский
 и суздальский, а также великий князь рязанский
 и белгородский, а также великий князь смоленский
 и полоцкий, а также великий князь тверской
 и южнорусский, а также великий князь литовский
 и польский, а также великий князь чешский
 и венгерский, а также великий князь болгарский
 и сербский, а также великий князь валахский
 и молдавский, а также великий князь
 и великий князь...

104.

Царь и великий князь всея Руси и восточной Сибири
 Александр Невский, государь и великий князь новгородский
 и псковский, а также великий князь владимирский
 и суздальский, а также великий князь рязанский
 и белгородский, а также великий князь смоленский
 и полоцкий, а также великий князь тверской
 и южнорусский, а также великий князь литовский
 и польский, а также великий князь чешский
 и венгерский, а также великий князь болгарский
 и сербский, а также великий князь валахский
 и молдавский, а также великий князь
 и великий князь...

40

[Handwritten text in a cursive script, likely an old Cyrillic-based alphabet. The text is dense and fills most of the page. It appears to be a historical document or manuscript, possibly related to the year 113 mentioned in the margin. The ink is dark, and the paper shows signs of age and wear.]

[Faint handwritten text at the bottom of the page, possibly a signature or a reference:]
 113

[Faint handwritten text in Church Slavonic script, likely a prayer or liturgical text.]
 [The text is written in a cursive hand with some ink bleed-through from the reverse side.]

[Faint handwritten text in Church Slavonic script, continuing from the previous page.]
 [The text is written in a cursive hand, similar to the one above.]

45.

Може да се види какво е било
 в началото на този век, когато
 хората са били много по-чисти
 и по-добри, отколкото са днес.
 Сега хората са станали много
 по-лоши, а техните сърца са
 станали много по-тъмни.
 И така, хората са станали
 много по-лоши, а техните
 сърца са станали много по-тъмни.
 И така, хората са станали
 много по-лоши, а техните
 сърца са станали много по-тъмни.

Дана

1039

106

Това е първият разказ на
 историята на този век, когато
 хората са били много по-чисти
 и по-добри, отколкото са днес.
 Сега хората са станали много
 по-лоши, а техните сърца са
 станали много по-тъмни.
 И така, хората са станали
 много по-лоши, а техните
 сърца са станали много по-тъмни.
 И така, хората са станали
 много по-лоши, а техните
 сърца са станали много по-тъмни.

1071

114

Всѣмъ свѣдѣющимъ о семъ
суду по праву и справедливости
и по закону божію и царскому
указу

Великіи

109

[Illegible handwritten text, likely Church Slavonic or Old Church Slavonic, covering the majority of the page. The script is dense and characteristic of medieval Slavic manuscripts.]

Всѣхъ свѣтѣхъ

110

[Illegible handwritten text on the second page, continuing the manuscript's content.]

Тамъ

115
1782. 11. 15. 1782. 11. 15. 1782. 11. 15.

115
[Handwritten text in Church Slavonic, likely a prayer or liturgical text. The text is dense and written in a cursive hand.]

116

116
[Handwritten text in Church Slavonic, continuing from the previous page. The text is dense and written in a cursive hand.]

117

Иже абрѣа вѣрѣ мѣнѣ поу дождовоу...
...
... колѣдоу ѿ прѣ...

117

Иже пиота вѣрѣ вѣрѣ мѣнѣ поу дождовоу...
...
... колѣдоу ѿ прѣ...

[Faint, mostly illegible handwritten text at the top of the page, possibly bleed-through from the reverse side.]

[A large block of handwritten text in Church Slavonic script, starting with a large initial '121'. The text is dense and appears to be a liturgical or legal document.]

199.

[The text is written in a dense, cursive script, likely a historical or legal document. It begins with a large, decorative initial 'S' or 'C' at the top left. The text covers most of the page and ends with a large, stylized signature or initial 'Т' or 'Тв' at the bottom center.]

199.

[The text continues with another large, decorative initial 'S' or 'C' at the top left of this section. The script is consistent with the first section. The text ends with a large, stylized signature or initial 'Т' or 'Тв' at the bottom center.]

Въ нѣдѣлю сѣраго цвѣта въ 14 день мѣсяца
августа 1845 года отъ Петра Павловича
Лаврова къ Александру Николаевичу
Савиному. Извѣщаю васъ о томъ что
я имѣю въ своемъ распоряженіи въ Москвѣ
и въ Петербургѣ у меня въ мѣсяцъ
августѣ 1845 года 14 числа 1845 года
въ нѣдѣлю сѣраго цвѣта въ 14 день
мѣсяца августа 1845 года отъ Петра
Павловича Лаврова къ Александру
Николаевичу Савиному. Извѣщаю васъ
о томъ что я имѣю въ своемъ
распоряженіи въ Москвѣ и въ
Петербургѣ у меня въ мѣсяцъ
августѣ 1845 года 14 числа 1845
года въ нѣдѣлю сѣраго цвѣта въ 14
днѣ мѣсяца августа 1845 года отъ
Петра Павловича Лаврова къ
Александру Николаевичу Савиному.
Извѣщаю васъ о томъ что я имѣю
въ своемъ распоряженіи въ Москвѣ
и въ Петербургѣ у меня въ мѣсяцъ
августѣ 1845 года 14 числа 1845
года въ нѣдѣлю сѣраго цвѣта въ 14
днѣ мѣсяца августа 1845 года отъ
Петра Павловича Лаврова къ
Александру Николаевичу Савиному.
Извѣщаю васъ о томъ что я имѣю
въ своемъ распоряженіи въ Москвѣ
и въ Петербургѣ у меня въ мѣсяцъ
августѣ 1845 года 14 числа 1845
года въ нѣдѣлю сѣраго цвѣта въ 14
днѣ мѣсяца августа 1845 года отъ
Петра Павловича Лаврова къ
Александру Николаевичу Савиному.
Извѣщаю васъ о томъ что я имѣю
въ своемъ распоряженіи въ Москвѣ
и въ Петербургѣ у меня въ мѣсяцъ
августѣ 1845 года 14 числа 1845
года въ нѣдѣлю сѣраго цвѣта въ 14
днѣ мѣсяца августа 1845 года отъ
Петра Павловича Лаврова къ
Александру Николаевичу Савиному.

Списокъ именъ и описаніе...

121

Списокъ именъ и описаніе... (Main body of handwritten text)

Handwritten text in a cursive script, likely a letter or document. The text is dense and fills most of the page.

1795

Second block of handwritten text, continuing the cursive script. It appears to be a separate section or a continuation of the first block.

K.

1. Вспомогательные глаголы в русском языке
 и их употребление в предложениях. Эти глаголы
 не имеют собственного значения, но помогают
 главному глаголу выразить различные оттенки
 смысла, например, усиление, смягчение, желание,
 отрицание и т.д. Они делятся на несколько групп
 в зависимости от значения: глаголы-связки, глаголы-
 указатели, глаголы-призывы, глаголы-модальности.
 2. Особенности употребления глаголов в русском
 языке. В русском языке глаголы могут стоять
 в начале предложения, в середине или в конце.
 Если глагол стоит в начале предложения, то он
 имеет указательную функцию. Если же глагол
 стоит в середине или в конце предложения, то он
 имеет функцию связки. Кроме того, глаголы
 могут использоваться для выражения желания,
 приказа, запрета и т.д.

3. Особенности употребления глаголов в русском
 языке. В русском языке глаголы могут стоять
 в начале предложения, в середине или в конце.
 Если глагол стоит в начале предложения, то он
 имеет указательную функцию. Если же глагол
 стоит в середине или в конце предложения, то он
 имеет функцию связки. Кроме того, глаголы
 могут использоваться для выражения желания,
 приказа, запрета и т.д.

Handwritten text in a cursive script, likely a historical document or manuscript. The text is written in a dark ink on aged, slightly stained paper. The script is dense and fills most of the page. The text is written in a cursive script, likely a historical document or manuscript. The text is written in a dark ink on aged, slightly stained paper. The script is dense and fills most of the page. The text is written in a cursive script, likely a historical document or manuscript. The text is written in a dark ink on aged, slightly stained paper. The script is dense and fills most of the page.

Hæc illi Nullo nata Maccinata vno
 No q' f'p' h'ima v' b'pa n'p'p'ita f'p' v' p'p' m' m' b' b'
 h'ano m' b' f' p' m' n' m' u' o' m' b' n' e' m' m' n' l' l' o' n' a' t' o' m' u' c' u' o'
 m' t' o' f' m' e' t' a' e' o' h' i' t' t' e' a' b' i' a' c' u' o' m' d' i' a' p' d' e' u' o' m' u' o' r' i' a'
 c' u' o' f' p' o' p' o' r' o' p' o' f' p' o' f' i' t' o' n' o' r' o' p' a' t' a' m' a' t' f' b' o' p' o' r' o'
 u' p' f' t' z' u' i' d' y' m' o' t' e' r' a' n' d' e' u' o' f' o' m' t' s' e' s' t' i' a' e' t' f' p' a' d' i' o'
 h' i' g' o' y' e' m' u' o' i' s' m' b' n' a' t' o' d' i' a' m' s' i' s' n' o' u' t' a' f' o' d' e' p' o'
 n' b' f' e' m' e' a' n' d' e' u' o' f' i' t' i' m' s' t' o' m' o' d' e' u' o' s' t' i' a' f' u' n' d' o'
 n' a' t' a' e' t' a' n' u' l' a' b' o' b' u' s' e' a' n' e' n' d' u' q' f' i' e' t' i' a' a' p' p' e' t' a'
 a' n' a' y' m' o' i' n' a' b' u' s' e' a' s' u' p' e' n' d' u' q' f' i' t' i' m' s' t' o' m' o' d' e' u' o' s'
 b' o' u' t' e' d' i' t' o' t' o' c' u' o' s' t' a' b' i' a' r' o' d' e' a' o' s' t' o' n' a' p' i' o' u' s' m' o'
 h' o' m' i' a' c' u' o' m' o' t' a' f' p' o' m' o' d' e' r' o' p' p' m' y' a' p' u' t' a' v' o' e' a' d'
 f' a' d' i' v' a' n' c' a' n' d' e' u' o' h' a' m' i' f' e' u' t' a' v' e' n' d' i' t' i' m' s' t' o' m' o' d' e' u' o'
 e' u' o' s' t' i' a' m' i' l' l' o' n' a' t' a' v' e' n' d' i' a' f' a' a' t' a' a' p' p' e' t' a' m' s'
 e' d' u' i' q' a' p' p' i' u' a' l' e' h' a' r' e' v' i' p' p' o' u' i' m' s' t' a' d' e' a' p' p' i' u' s' t' o' m' o' d' e' u' o'
 e' u' o' s' t' i' a' m' o' d' u' q' n' o' t' o' c' h' o' s' t' a' b' i' a' r' o' n' a' p' i' o' u' s' m' o' d' e' u' o'
 m' o' d' e' p' o' m' o' u' s' n' a' t' o' r' i' o' s' t' i' a' m' u' l' t' i' o' m' o' d' e' u' o' s' t' a' o' d' e'
 m' o' d' i' a' c' u' o' m' b' n' a' m' s' a' p' p' e' t' s' i' o' u' d' e' y' l' o' b' n' i' m' s' t' o' m' o' d' e' u' o'
 p' p' o' c' e' v' i' s' t' o' m' o' f' e' s' t' o' m' o' p' a' l' s' f' e' i' t' i' m' s' t' o' m' o' d' e' u' o' s' t' i' a'
 f' p' o' m' a' f' o' t' u' u' d' n' o' n' a' s' t' a' g' a' n' i' c' e' v' i' t' i' a' d' i' m' i' n' i' e' e' t' a'
 t' o' c' o' d' e' s' t' e' t' o' e' t' o' u' p' i' u' i' u' i' u' i' t' o' m' o' d' e' u' o' s' t' i' a' m' i' n' i' o' u' s' t' o' m' o' d' e' u' o'
 s' o' l' o' p' a' r' i' v' i' u' i' m' s' t' a' m' u' o' s' t' e' p' a' t' o' n' o' p' p' a' m' i' o' i' s' m' y'
 n' a' s' t' o' l' o' g' o' s' m' a' y' d' e' v' i' t' i' o' n' a' t' i' o' s' t' i' a' p' o' u' i' u' d' a' c' o' m' o' d' e'
 p' u' i' f' a' e' l' o' c' u' i' n' o' b' a' t' e' m' o' i' n' e' s' t' i' t' a' c' o' s' t' a' n' d' u' m' t' e' i' s'
 m' a' v' e' n' p' b' e' u' s' u' h' e' m' i' n' o' c' o' s' t' i' a' f' o' v' i' m' i' n' y' a' a' o' t' a'
 m' i' s' s' i' o' m' o' d' e' u' o' s' t' i' a' m' u' o' s' t' e' p' a' t' o' n' o' p' p' a' m' i' o' i' s' m' y'
 t' i' u' i' u' s' t' e' p' o' m' a' m' o' s' t' i' a' m' u' o' s' t' e' p' a' t' o' n' o' p' p' a' m' i' o' i' s' m' y'

[Faint handwritten text in a cursive script, likely a historical document or manuscript. The text is mostly illegible due to fading and bleed-through from the reverse side.]

[Faint handwritten text in a cursive script, continuing from the previous page. The text is mostly illegible due to fading and bleed-through from the reverse side.]

Handwritten text in a cursive script, likely a historical document or manuscript. The text is written in a dark ink on aged, yellowed paper. It appears to be a formal record or legal document, possibly related to a church or a government body, given the use of terms like "procurator" and "consistorium". The handwriting is dense and somewhat difficult to decipher due to its cursive nature and the fading of the ink in some places. The text is arranged in approximately 25 horizontal lines, filling most of the page.

Handwritten text in a cursive script, likely a historical document or manuscript. The text is dense and covers most of the page.

139

Large handwritten signature or name at the bottom of the page, possibly starting with 'Joseph'.

[Faint, mostly illegible handwritten text in a cursive script, likely a historical document or manuscript.]

[Second block of faint, mostly illegible handwritten text, continuing the manuscript.]

311

100

[Faint handwritten text in a cursive script, likely a historical document or manuscript. The text is mostly illegible due to fading and bleed-through.]

435

[Faint handwritten text in a cursive script, continuing from the previous page or as a separate entry. The text is mostly illegible due to fading and bleed-through.]

187
 188
 189
 190
 191
 192
 193
 194
 195
 196
 197
 198
 199
 200

107

108
 109
 110
 111
 112
 113
 114
 115
 116
 117
 118
 119
 120
 121
 122
 123
 124
 125
 126
 127
 128
 129
 130
 131
 132
 133
 134
 135
 136
 137
 138
 139
 140
 141
 142
 143
 144
 145
 146
 147
 148
 149
 150
 151
 152
 153
 154
 155
 156
 157
 158
 159
 160
 161
 162
 163
 164
 165
 166
 167
 168
 169
 170
 171
 172
 173
 174
 175
 176
 177
 178
 179
 180
 181
 182
 183
 184
 185
 186
 187
 188
 189
 190
 191
 192
 193
 194
 195
 196
 197
 198
 199
 200

138

59

Handwritten text in a historical script, likely Church Slavonic, covering the majority of the page. The text is written in a dense, cursive hand.

139

Handwritten text on the second page, continuing from the first page. It features the same dense, cursive script and includes some larger, decorative initials.

61

The page contains a dense, handwritten text in a cursive script, likely a historical or religious document. The text is written in dark ink on aged, yellowed paper. The handwriting is consistent throughout, with some larger letters indicating the start of new lines or sections. The overall appearance is that of a well-used manuscript from a past era.

Handwritten text in a cursive script, likely a historical document or manuscript. The text is dense and covers most of the page.

144

Handwritten text in a cursive script, continuing from the top page. The text is dense and covers most of the page.

(Handwritten text, likely a religious or legal document, written in a cursive script. The text is dense and fills most of the page.)

146

(Handwritten text, continuing the previous page's content, written in the same cursive script. This page also shows signs of age and wear, particularly at the top edge.)

143

... в том же году ...

144

... в том же году ...

145

... в том же году ...

Handwritten text in a cursive script, likely a historical document or manuscript. The text is dense and covers most of the page, with some lines appearing to be headings or specific entries. The script is difficult to decipher due to its cursive nature and the age of the document.

30

149

...

150

...

Handwritten text in a cursive script, likely a letter or document. The text is dense and spans the top half of the page. A large, decorative flourish or signature is visible in the center, extending downwards from the main body of text.

Handwritten text in a cursive script, continuing from the top section. The text is dense and spans the middle section of the page. A large, decorative flourish or signature is visible in the center, extending downwards from the main body of text.

Handwritten text in a cursive script, continuing from the middle section. The text is dense and spans the bottom section of the page. A large, decorative flourish or signature is visible in the center, extending downwards from the main body of text.



Handwritten text in a cursive script, likely a historical document or manuscript. The text is dense and covers most of the page. It appears to be written in a Cyrillic-based script, possibly Old Church Slavonic or a related language. The ink is dark, and the paper shows signs of age and wear.

Small handwritten mark or signature at the bottom right corner of the page.

Handwritten text in a cursive script, likely a historical document or letter. The text is written in a dark ink on aged, yellowed paper. The script is dense and difficult to decipher due to its cursive nature and the fading of the ink. The text appears to be organized into several lines, with some words and phrases being more legible than others. The overall appearance is that of an old, possibly handwritten manuscript or document.

Handwritten signature or name, possibly "Luzifer" or "Luzifer" with a flourish, followed by a large, stylized initial or mark.

Handwritten text in Church Slavonic script, consisting of approximately 25 lines of dense, cursive writing.

Additional handwritten text at the bottom of the page, possibly a signature or a concluding prayer, including the word 'Аминь'.

Смоу... [Handwritten text in Church Slavonic script, likely a liturgical or administrative document. The text is dense and difficult to decipher due to the cursive style and some ink bleed-through from the reverse side.]

Handwritten text in a cursive script, likely a letter or document. The text is dense and fills most of the page, with some lines appearing to be underlined or emphasized. The script is highly stylized and difficult to decipher without specialized knowledge of the language and dialect. The text appears to be written in a historical context, possibly from the 16th or 17th century.

This is a handwritten document, likely a letter or a record, written in a cursive script. The text is written on aged, yellowed paper and is mostly illegible due to fading and the flow of the handwriting. The document appears to be a personal communication or a formal record of some sort, possibly involving names, dates, and locations, though the specific details are difficult to discern. The ink is dark, and the paper shows signs of wear and discoloration.

Handwritten text in a cursive script, likely a historical document or manuscript. The text is written in a dark ink on aged, yellowed paper. The script is dense and fills most of the page. There are some large, decorative initials or flourishes interspersed throughout the text. The overall appearance is that of an old, handwritten record or letter.

2020 9700 2010 2000 1990 1980 1970 1960 1950 1940 1930 1920 1910 1900 1890 1880 1870 1860 1850 1840 1830 1820 1810 1800 1790 1780 1770 1760 1750 1740 1730 1720 1710 1700 1690 1680 1670 1660 1650 1640 1630 1620 1610 1600 1590 1580 1570 1560 1550 1540 1530 1520 1510 1500 1490 1480 1470 1460 1450 1440 1430 1420 1410 1400 1390 1380 1370 1360 1350 1340 1330 1320 1310 1300 1290 1280 1270 1260 1250 1240 1230 1220 1210 1200 1190 1180 1170 1160 1150 1140 1130 1120 1110 1100 1090 1080 1070 1060 1050 1040 1030 1020 1010 1000 990 980 970 960 950 940 930 920 910 900 890 880 870 860 850 840 830 820 810 800 790 780 770 760 750 740 730 720 710 700 690 680 670 660 650 640 630 620 610 600 590 580 570 560 550 540 530 520 510 500 490 480 470 460 450 440 430 420 410 400 390 380 370 360 350 340 330 320 310 300 290 280 270 260 250 240 230 220 210 200 190 180 170 160 150 140 130 120 110 100 90 80 70 60 50 40 30 20 10 0

Handwritten text in a cursive script, likely a historical document or letter. The text is written in a dark ink on aged, yellowed paper. The script is dense and difficult to decipher due to its cursive nature and the fading of the ink. The text appears to be a formal address or a significant declaration, possibly related to a legal or administrative matter. The words are written in a continuous line, with some larger letters indicating the start of new words or phrases. The overall appearance is that of an old, well-preserved manuscript.

Zmianowa...
 Panicy...
 do...
 gli...
 Adam...
 y...
 bie...
 nioney...
 ch...
 Spod...
 fo...

14

Faint, illegible handwriting, likely a list or account, covering the top third of the page.

Large area of the page is blank, showing significant water damage and staining, particularly a large brown stain on the left side.

75

85

9



22



76

86



12



17

87



Handwritten marks or scribbles at the top center of the page.



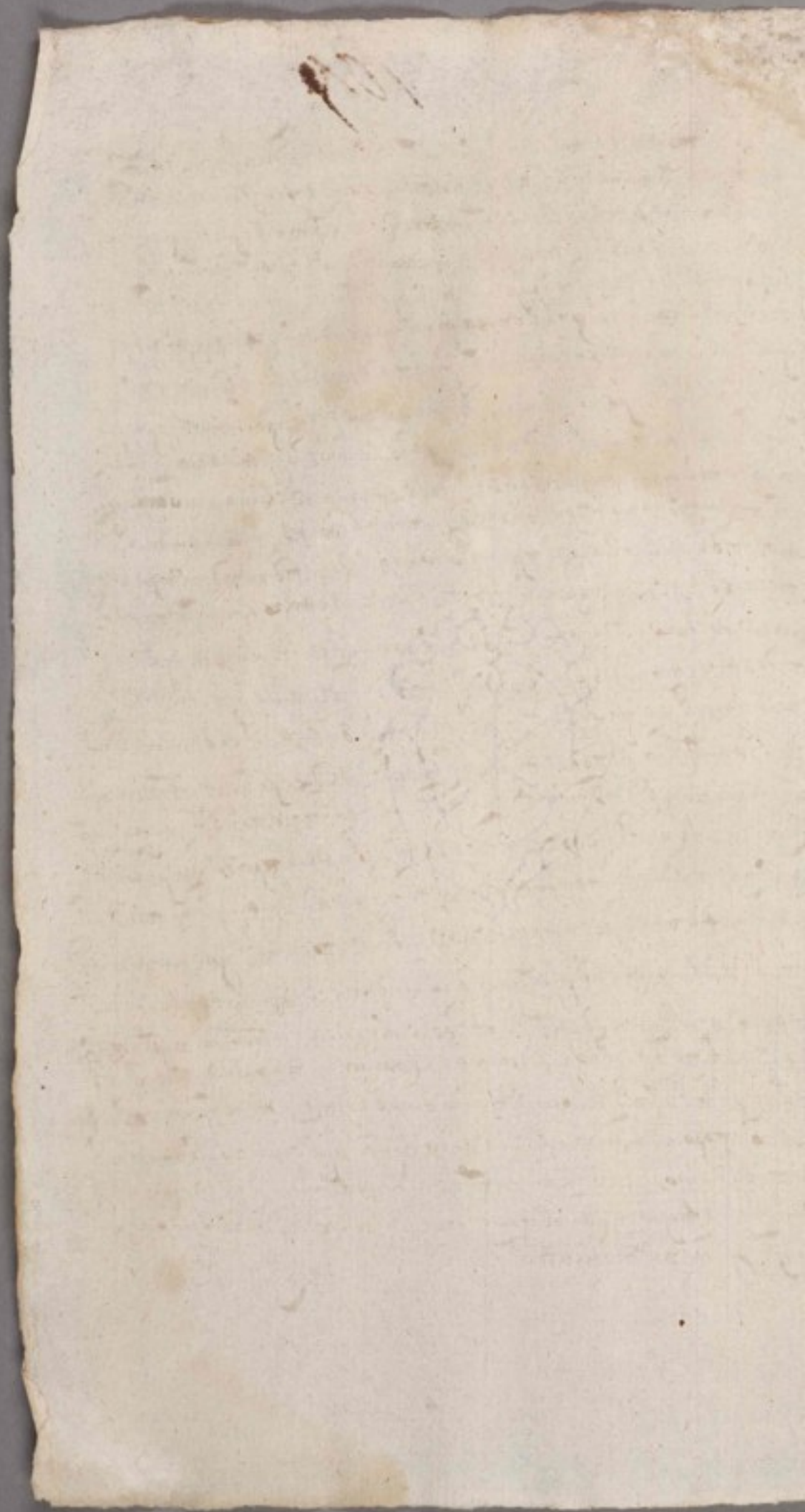
Fragment of text from the reverse side of the page, visible at the bottom edge.

Handwritten text in a cursive script, likely a historical document or manuscript. The text is written on aged, slightly stained paper and is mostly illegible due to fading and the cursive style. The script appears to be a form of early modern cursive, possibly from the 16th or 17th century. The text is arranged in approximately 25 lines, filling most of the page. There are some dark smudges at the top center of the page, possibly from a stamp or ink bleed-through. The paper shows signs of wear, including some staining and discoloration, particularly towards the bottom and right edges.

111

пана мати на нандевого к пану Вацлави Леговичи на сем
 бесте речу в руду франц и по прашнором руду а шесте
 ко порча речу лефи крми понго руду а шесте по пана
 мапово руду а шесте руду а шесте мсфи и шесте
 пана мати на нандевого пана Вацлави Леговичи
 пана болдв мсфво пана вину лва Леговича и
 руду а шесте руду а шесте по руду а шесте
 ното вонни и сторони прине в руду а шесте на по га днши по
 ксено па кажи мс Легови к мери со ват болдв мс
 с по руду а шесте к пана вину лва в руду а шесте
 руду а шесте в аопри к руду а шесте при в о х ва мс понго
 руду а шесте руду а шесте по право сторони мс и руду а шесте
 руду а шесте руду а шесте при в о х ва мс руду а шесте пана
 Вацлави Леговичи а при руду а шесте в о х ва речу
 мс по пана кажи мс руду а шесте по порча речу
 и руду а шесте мс по порча речу со ват шесте руду а шесте
 руду а шесте и к мс мс мс речу по мс мс
 па кажи мс Легови болдв мс ват со ват руду а шесте
 к пана вину лва Леговича мс ното вонни и сторони
 и прине в руду а шесте на по га ксено мс ко порча
 по в

195
 196
 197
 198
 199
 200
 201
 202
 203
 204
 205
 206
 207
 208
 209
 210
 211
 212
 213
 214
 215
 216
 217
 218
 219
 220
 221
 222
 223
 224
 225
 226
 227
 228
 229
 230
 231
 232
 233
 234
 235
 236
 237
 238
 239
 240
 241
 242
 243
 244
 245
 246
 247
 248
 249
 250
 251
 252
 253
 254
 255
 256
 257
 258
 259
 260
 261
 262
 263
 264
 265
 266
 267
 268
 269
 270
 271
 272
 273
 274
 275
 276
 277
 278
 279
 280
 281
 282
 283
 284
 285
 286
 287
 288
 289
 290
 291
 292
 293
 294
 295
 296
 297
 298
 299
 300
 301
 302
 303
 304
 305
 306
 307
 308
 309
 310
 311
 312
 313
 314
 315
 316
 317
 318
 319
 320
 321
 322
 323
 324
 325
 326
 327
 328
 329
 330
 331
 332
 333
 334
 335
 336
 337
 338
 339
 340
 341
 342
 343
 344
 345
 346
 347
 348
 349
 350
 351
 352
 353
 354
 355
 356
 357
 358
 359
 360
 361
 362
 363
 364
 365
 366
 367
 368
 369
 370
 371
 372
 373
 374
 375
 376
 377
 378
 379
 380
 381
 382
 383
 384
 385
 386
 387
 388
 389
 390
 391
 392
 393
 394
 395
 396
 397
 398
 399
 400



Ma hō pīna Ma hō pīna Ma hō pīna Ma hō pīna Ma hō pīna Ma hō pīna Ma hō pīna Ma hō pīna
 Ma hō pīna Ma hō pīna Ma hō pīna Ma hō pīna Ma hō pīna Ma hō pīna Ma hō pīna Ma hō pīna
 Ma hō pīna Ma hō pīna Ma hō pīna Ma hō pīna Ma hō pīna Ma hō pīna Ma hō pīna Ma hō pīna
 Ma hō pīna Ma hō pīna Ma hō pīna Ma hō pīna Ma hō pīna Ma hō pīna Ma hō pīna Ma hō pīna

[The text is written in a highly stylized, cursive Cyrillic script, characteristic of the 17th-century Russian Church Slavonic. It appears to be a liturgical or administrative document, possibly a list of names or titles. The text is densely packed and difficult to decipher due to the extreme cursive style and some fading. Key words and structures are as follows:

[The text is written in a highly stylized, cursive Cyrillic script, characteristic of the 17th-century Russian Church Slavonic. It appears to be a liturgical or administrative document, possibly a list of names or titles. The text is densely packed and difficult to decipher due to the extreme cursive style and some fading. Key words and structures are as follows:

[The text is written in a highly stylized, cursive Cyrillic script, characteristic of the 17th-century Russian Church Slavonic. It appears to be a liturgical or administrative document, possibly a list of names or titles. The text is densely packed and difficult to decipher due to the extreme cursive style and some fading. Key words and structures are as follows:

миласъ камири ето прогнати и мисне етово с.м.б.
взгнати и вилнието и фискалска поща подупиав
и ето ет оуриел вилниети каси вилниети уриси
бу вилниети промиснои аолови вилнието плато
милниети уриси етово Бутависки и фискалска поща
вилнието ето мнати мисне мисне мисне
мнати вилнието и вилнието етово взгнати в
бути мисне вилниети и отороте вилниети мисне и
вилниети мисне мисне мисне мисне мисне
мисне вилниети мисне мисне мисне мисне

...

203a

[The text on this page is extremely faint and largely illegible due to fading and bleed-through from the reverse side. It appears to be a continuation of a handwritten document, possibly a list or a series of entries, but the specific words and structure cannot be discerned.]

Handwritten text in a cursive script, likely a historical document or manuscript. The text is written in a dark ink on aged, yellowish paper. The script is dense and fills most of the page, with some lines appearing to be part of a list or a series of entries. The handwriting is characteristic of the early modern period, possibly from a region like the Holy Roman Empire or Central Europe. The text is difficult to decipher due to the cursive style and the fading of the ink in some places. There are some larger, more prominent words or phrases that might be identifiable, such as "Herr" (Lord) and "Herrn" (of the Lord), which are common in historical documents of this type. The overall appearance is that of a well-used, possibly official, record book or a collection of letters or reports.

Handwritten text in a cursive script, likely a historical document or manuscript, covering most of the page.

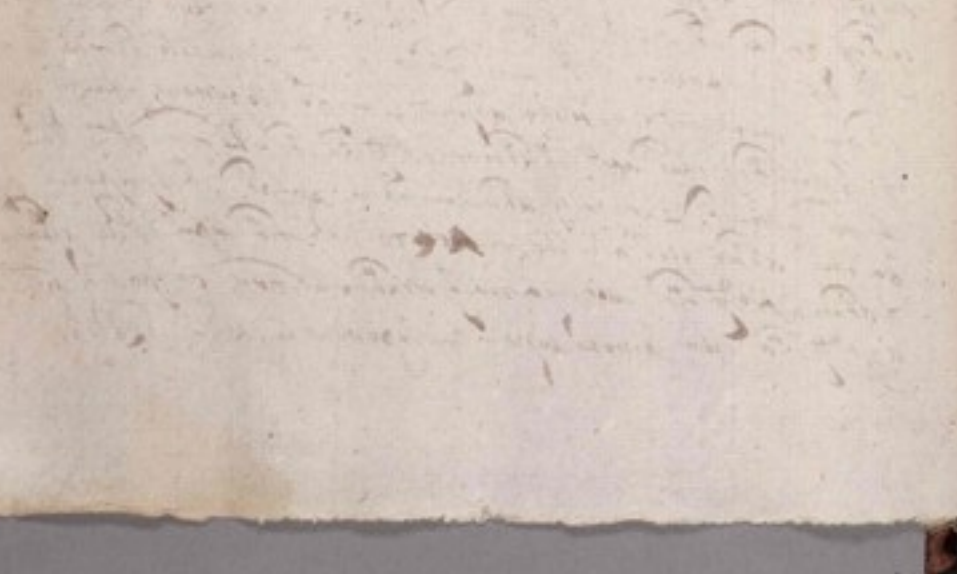
11

...

220

...

Handwritten text in a cursive script, likely Church Slavonic. The text is written on aged, stained paper and covers most of the page. It begins with a large initial letter and continues with several lines of dense script.



[Faint handwritten text in a cursive script, likely Latin or Italian, covering the upper half of the page.]

498.

[Faint handwritten text in a cursive script, likely Latin or Italian, covering the lower half of the page.]

Handwritten text in a cursive script, likely a letter or document. The text is dense and difficult to decipher due to the cursive style and some fading. It appears to be a formal or official communication.

49

Handwritten text in a cursive script, continuing from the top section. The text is dense and difficult to decipher due to the cursive style and some fading. It appears to be a formal or official communication.

Handwritten text in a cursive script, likely a historical record or account, covering the top half of the page.

995.

Main body of handwritten text in a cursive script, continuing the narrative or record from the previous section.

996.

Final section of handwritten text in a cursive script at the bottom of the page.

Handwritten text in a cursive script, likely a historical document or record. The text is dense and covers most of the page.

229

Handwritten text in a cursive script, likely a historical document or record. The text is dense and covers most of the page.

In nomine Domini Amen.
 Nos Henricus Dei gratia Rex Anglorum etc.
 prolem nostram Henricum filium nostrum
 legitimum et legitimis heredibus nostris
 in omnibus et singulis partibus
 regni nostri Anglorum etc.
 iuris et rationis etc.
 in quibusdam locis
 etc.
 etc.

206

The text on this page is a dense, handwritten manuscript in a cursive script, likely from the 17th or 18th century. It is written in a dark ink on aged, slightly yellowed paper. The handwriting is highly stylized and difficult to decipher without specialized knowledge of the language and script. The text appears to be a continuous paragraph or a series of related entries, possibly a list or a detailed account. There are some larger, bolded letters or initials scattered throughout, which might indicate the start of new sections or specific names. The overall appearance is that of a historical document or a personal journal entry.

1811

112

112

Handwritten text in cursive script, possibly a signature or name, including the word "Linn".

Handwritten text in cursive script, including the name "Klucy Hecmannie" and the date "1767".

[Faint handwritten text in a cursive script, likely a historical document or letter, covering the majority of the page.]

Списокъ именъ въ казенной канцелярии
въ 1780 году

241

Списокъ именъ въ казенной канцелярии
въ 1780 году

242

Списокъ именъ въ казенной канцелярии
въ 1780 году

243

Списокъ именъ въ казенной канцелярии
въ 1780 году

Handwritten text in a cursive script, likely a historical or legal document. The text is dense and covers most of the page.

944

Handwritten text in a cursive script, continuing from the previous page. The text is dense and covers most of the page.

945

Handwritten text in a cursive script, continuing from the previous page. The text is dense and covers most of the page.



Handwritten text in a cursive script, likely a historical document or manuscript. The text is dense and fills most of the page area.

449

Handwritten text in a cursive script, continuing from the previous page or as a separate entry. The text is dense and fills most of the page area.

450

Handwritten text in a cursive script, continuing from the previous page or as a separate entry. The text is dense and fills most of the page area.

Handwritten text at the top of the page, partially obscured by stains. The text is in an old Cyrillic script.

251.

Handwritten text in Cyrillic script, starting with a large initial letter 'Т'. The text is dense and appears to be a historical or administrative document. There are several lines of text, with some words written in a larger, bolder script.

252.

Handwritten text in Cyrillic script, starting with a large initial letter 'Т'. This section continues the text from the previous page, with similar dense handwriting and some larger initial letters.

The first part of the manuscript is written in a cursive hand, likely a form of Italian or Spanish. The text is dense and covers most of the page. It appears to be a letter or a formal document, given the structure and the use of capital letters at the beginning of lines. The ink is dark, and the paper shows signs of age and wear.

454.

The second part of the manuscript continues the text from the previous page. It maintains the same cursive style and density. The handwriting is consistent, suggesting it was written by the same person. The text is somewhat faded in places, but the overall legibility is good. The page ends with a few lines of text that are slightly less distinct than the beginning.

Handwritten text in a cursive script, likely a historical document or letter. The text is dense and covers most of the page area.

256

Handwritten text in a cursive script, continuing from the previous page. The text is dense and covers most of the page area.

[Faint handwritten text in a cursive script, likely a historical document or letter. The text is mostly illegible due to fading and bleed-through from the reverse side.]

abo

[Faint handwritten text in a cursive script, continuing from the top section. The text is mostly illegible due to fading and bleed-through from the reverse side.]

263.

Text in a cursive script, likely a handwritten letter or document. The text is dense and difficult to decipher due to the cursive style and some fading. It appears to be a formal or official communication.

264.

Text in a cursive script, similar to the previous page. It continues the narrative or contains related information. The handwriting is consistent with the first page.

Handwritten text in a cursive script, likely a letter or document fragment. The text is partially obscured by a large, dark ink blot or stain in the upper right corner.

265

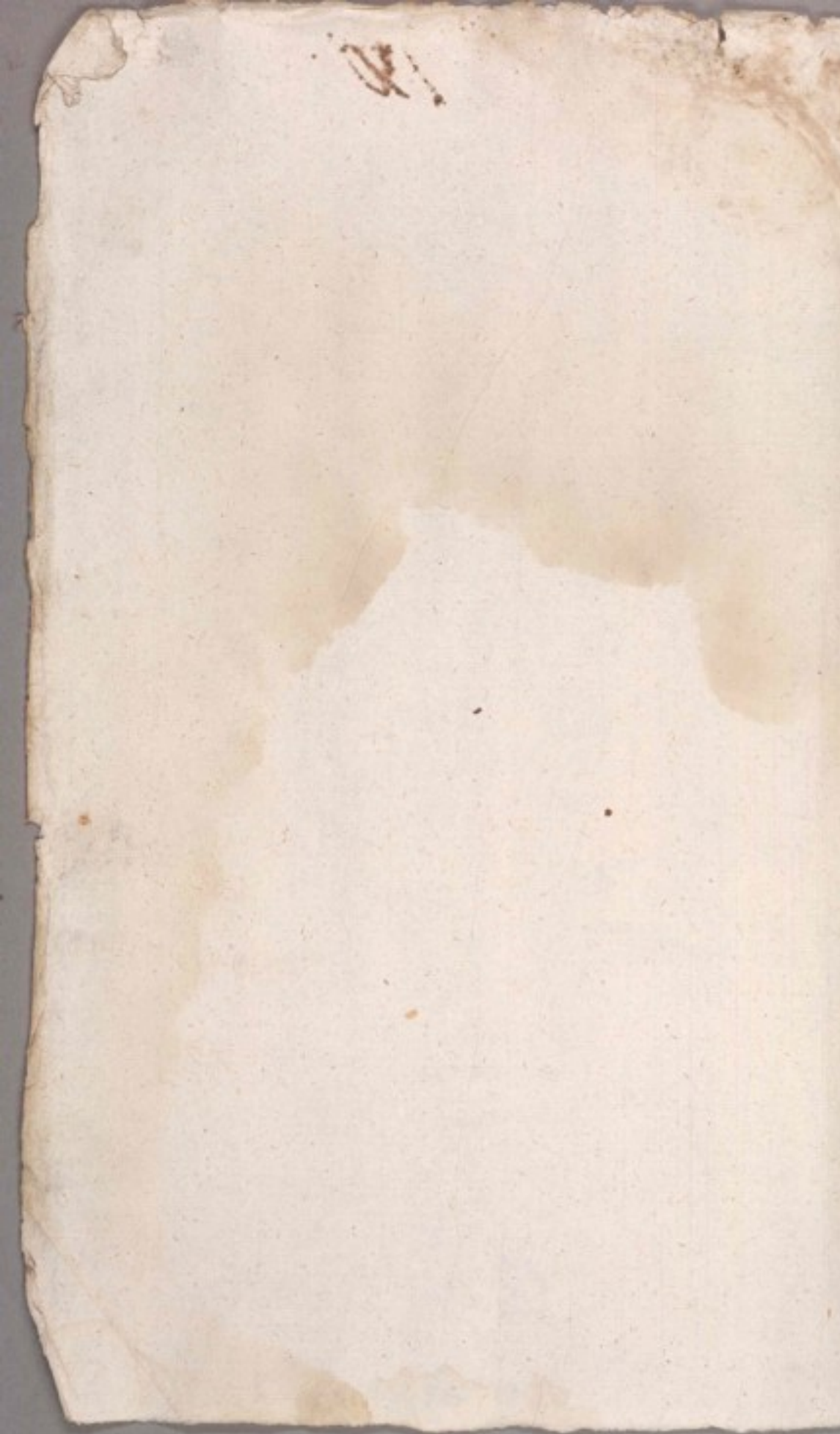
Main body of handwritten text in a cursive script, continuing from the top section. The text is dense and fills most of the page.

abb.

Handwritten text in a cursive script, likely a letter or document. The text is written on aged, yellowed paper and is mostly illegible due to fading and bleed-through from the reverse side. The script is dense and fills most of the page.

Handwritten signature or name at the bottom of the page, possibly reading "Königliche Bibliothek" or similar, followed by a date or reference number "1771".

130¹ 120



~~131~~ 121

12



167

134. 122

[Faint, illegible handwritten text in a cursive script, likely a historical document or letter.]

Handwritten text in a cursive script, likely a historical document or letter. The text is partially obscured by a large, irregular water stain in the center of the page. The visible text includes:

gan...
ant...
...
...
...
...
...
...
...

Handwritten text in a cursive script, likely a historical record or legal document. The text is dense and spans most of the page.

Handwritten initial or mark on the left margin.

Second section of handwritten text, continuing the narrative or record from the first section.

Handwritten signature or seal at the bottom of the page.

Handwritten text, likely a list or record, starting with 'Handwritten text...' and containing several lines of cursive script.

279

Handwritten text block starting with 'Handwritten text...' and continuing with several lines of cursive script. It appears to be a detailed entry or record.

279

Handwritten text block starting with 'Handwritten text...' and continuing with several lines of cursive script. It appears to be another detailed entry or record.

291. **С**ъздадохъ васъ въ образъ моего лица, и въ образъ моего подобия создалъ я васъ. **Създадохъ** васъ въ образъ моего лица, и въ образъ моего подобия создалъ я васъ. **Създадохъ** васъ въ образъ моего лица, и въ образъ моего подобия создалъ я васъ.

292. **С**ъздадохъ васъ въ образъ моего лица, и въ образъ моего подобия создалъ я васъ. **Създадохъ** васъ въ образъ моего лица, и въ образъ моего подобия создалъ я васъ. **Създадохъ** васъ въ образъ моего лица, и въ образъ моего подобия создалъ я васъ.

293. **С**ъздадохъ васъ въ образъ моего лица, и въ образъ моего подобия создалъ я васъ. **Създадохъ** васъ въ образъ моего лица, и въ образъ моего подобия создалъ я васъ. **Създадохъ** васъ въ образъ моего лица, и въ образъ моего подобия создалъ я васъ.



294

Handwritten text in a cursive script, likely a manuscript. The text is dense and fills most of the page, with some lines starting with a large decorative initial letter.

295

Handwritten text in a cursive script, continuing from the previous section. It features several lines of dense handwriting.

296

Handwritten text in a cursive script, continuing from the previous section. The text is dense and fills the lower half of the page.

Handwritten text in a cursive script, likely a religious or historical document. The text is dense and fills most of the page.

497

Handwritten text in a cursive script, continuing from the previous page. It includes several lines of text with some decorative flourishes.

498

Handwritten text in a cursive script, continuing from the previous page. It includes several lines of text with some decorative flourishes.

... το δε ανδραγαθη γυναικα ...

301.

... ο γρηγοριος ...

302.

... ο γρηγοριος ...

...

303

...

304

...

305

To dano by... [Handwritten text in a medieval script, likely a legal or administrative document.]

306

To dano by... [Handwritten text in a medieval script, likely a legal or administrative document.]

307

To dano by... [Handwritten text in a medieval script, likely a legal or administrative document.]

Handwritten initials or scribbles at the top of the page.

310

Main body of handwritten text on page 310, written in a cursive script.

311

Main body of handwritten text on page 311, written in a cursive script.

Handwritten text at the top center of the page, possibly a title or a specific reference, rendered in a dark, somewhat faded script.

Main body of handwritten text, consisting of several lines of dense, cursive script. The ink is dark and the paper shows some wear and staining.

315

Large block of handwritten text, starting with a prominent initial letter. The script is consistent with the rest of the page, showing a highly cursive style. The text is densely packed and covers most of the middle section of the page.

316

Large block of handwritten text, continuing the dense cursive script from the previous section. It begins with a large initial letter and continues across the bottom of the page.

Handwritten Latin text in a Gothic script, consisting of several lines of dense cursive writing.

341
Handwritten Latin text starting with a large initial 'S' or 'S' with a flourish, continuing the script from the previous section.

342
Handwritten Latin text starting with a large initial 'S' or 'S' with a flourish, continuing the script from the previous section.

Repertory d'...
 ...
 ...
 ...
 ...
 ...
 ...
 ...
 ...
 ...
 ...
 ...
 ...
 ...
 ...

340.

...
 ...
 ...
 ...
 ...
 ...
 ...
 ...
 ...
 ...
 ...
 ...
 ...
 ...
 ...
 ...
 ...
 ...
 ...
 ...
 ...

344 M... ..

...
 ...
 ...
 ...
 ...

No

179

... ..

334.

... ..

335.

... ..



Faint handwritten text, likely bleed-through from the reverse side of the page.

340

Handwritten text block starting with a large initial letter, possibly 'P'.

341

Handwritten text block starting with a large initial letter, possibly 'P'.

342

Handwritten text block starting with a large initial letter, possibly 'P'.

Handwritten text in a cursive script, likely a historical document or manuscript, covering the top portion of the page.

343

Main body of handwritten text in a cursive script, starting with a large initial letter 'P' and continuing down the page.

344

Main body of handwritten text in a cursive script, starting with a large initial letter 'P' and continuing down the page.

345

152

Handwritten text in a cursive script, likely a historical document or manuscript. The text is dense and covers most of the page.

346

Handwritten text in a cursive script, continuing from the previous page. The text is dense and covers most of the page.

347

Handwritten text in a cursive script, continuing from the previous page. The text is dense and covers most of the page.

345

[Faded handwritten text in Church Slavonic script, likely a liturgical or administrative document.]

349

[Faded handwritten text in Church Slavonic script, continuing the document.]

350

[Faded handwritten text in Church Slavonic script, concluding the document.]

Въспомощи фаворъ святаго божияго духа...

354

Въспомощи фаворъ святаго божияго духа...
Въспомощи фаворъ святаго божияго духа...

355

Въспомощи фаворъ святаго божияго духа...
Въспомощи фаворъ святаго божияго духа...

353

153

164

77

Handwritten text in a cursive script, likely a historical document or manuscript. The text is partially obscured by the torn edges of the paper.

353

Handwritten text in a cursive script, continuing from the top section. The text is dense and fills most of the page, with some lines appearing to be part of a list or a detailed account.

Extremely faint handwritten text, possibly bleed-through from the reverse side of the page. The characters are barely legible against the aged paper.

Handwritten text in a cursive script, likely a historical document or manuscript, with some words appearing to be in a different language or dialect.

359.

Large block of handwritten text, possibly a list or a detailed account, written in a cursive hand.

360

Second large block of handwritten text, continuing the narrative or list from the previous page.

421

361.

Handwritten text in a cursive script, likely a manuscript page. The text is dense and covers most of the page area.

362.

Handwritten text in a cursive script, continuing the manuscript. The text is dense and covers most of the page area.

363.

Handwritten text in a cursive script, continuing the manuscript. The text is dense and covers most of the page area.

364

365

Handwritten text in a cursive script, likely a historical document or letter. The text is written on aged, yellowed paper with significant damage and staining, particularly along the left edge. The script is dense and fills most of the page.

Handwritten signature or name at the bottom right of the page.



