

Harbour scene at Port Burwell

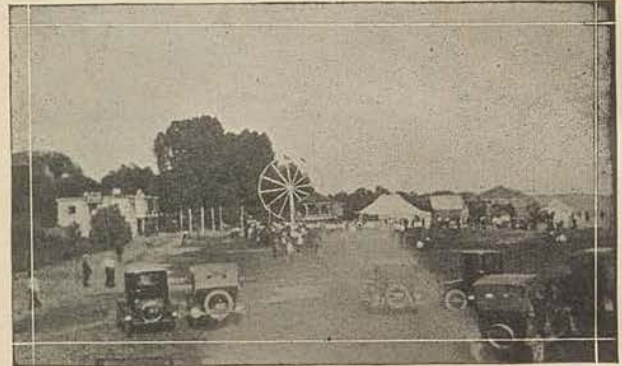
Foundry; Dominion Linens, Limited; Huntly Manufacturing Company, Limited; Maple Leaf Harvest Tool Company, Limited; Regal Oil Refineries, Limited; Lorne Tractors, Limited; Tillsonburg Shoe Company, Limited; Darrow Foundry; Bremmer Tannery; News Printing Company, Limited; West & Jackson Planing Mill; Tillsonburg Evaporator Works.

Tourists wishing any information are invited to write or phone C. H. Denton, Secretary-Treasurer, Tillsonburg Motor Club.

A side trip of 16 miles to a splendid summer resort at Port Burwell or Port Rowan.



Free Camping Grounds between Tillsonburg and Delhi



Community Memorial Park at Port Burwell, good camp grounds nearby

## PORT BURWELL

WHEN the first settlers began pushing their way westward along the shores of Lake Erie a number of Nova Scotians landed at the most central port on the North Shore, and homesteaded the land in the adjacent territory. The beautiful country highway leading across the famed Stalter canyon bridge is still called Nova Scotia street and approaches Port Burwell from the west. A splendid provincial road, at one time a planked stage coach route, connects Tillsonburg and Port Burwell on the north, and an Indian trail, now the Front or Lake road, follows along the lake bank east to the famous sand dunes of Houghton, one of the most interesting sights of this part of America. Hence, this beautiful little summer resort is easily accessible to tourists, and its beautiful parks and beaches will amply repay a visit. Autos drive right to the water's edge on either beach.

Iroquois Park, large, roomy and shaded with stately trees lies on the west side of the Big Otter River. In connection is a small town of summer cottages and shady drives. Dancing pavilion, bath houses, casino, swings, seats, etc., offer every facility for comfort and recreation to the tourist. The beach on this side of the harbor is very large, being laid out in a sub-division of summer cottage lots, baseball diamond, etc. The bathing is unexcelled. The Community Memorial Park is on the east side of the harbor, and though smaller, is very attractive. Here is the free tourist camping grounds, within a stone's throw of the water. Here also are seats, swings, tables, hot and cold water, bowling green, baseball grounds, dancing pavilion, casino, etc. The beach is beautiful and the lake bottom smooth and sandy. It is also protected and safe for bathing and boating. Angling is good at any time during the summer, but in June hundreds of perch are caught from the piers. Larger fish are caught in both lake and river.

Just east of the village, on the road out to the Sand Hills, stands the Marconi Wireless Station, which is one of the chain across the continent. It assists navigation on Lake Erie and is in constant touch with Ashtabula, from which port the largest car ferry on fresh water in the world makes daily trips to Port Burwell. Two up-to-date hotels cater to the needs of the travelling public. There are many shops and stores, four churches, and a most modern school building. Perhaps the chief charm of Port Burwell