

Historic, archived document

Do not assume content reflects current scientific knowledge, policies, or practices.

BRIDGMAN NURSERY CO.

F. C. STAHELIN & SON

BRIDGMAN, MICHIGAN

CATALOG OF STRAWBERRIES
AND OTHER SMALL FRUIT PLANTS

RECEIVED
FEB 23 1923
U.S. DEPARTMENT OF AGRICULTURE

PLANT
PREMIER

THE BEST AND MOST
POPULAR EARLY BERRY

Description on inside Page

SET
GIBSON

FOR
BIGGER CROPS AND
GREATER PROFITS



Dr. Burrill

a variety that does
well anywhere. A
great moneymaker.
Description on inside page

1923

AB7C



Dr. Burrill

DR. BURRILL

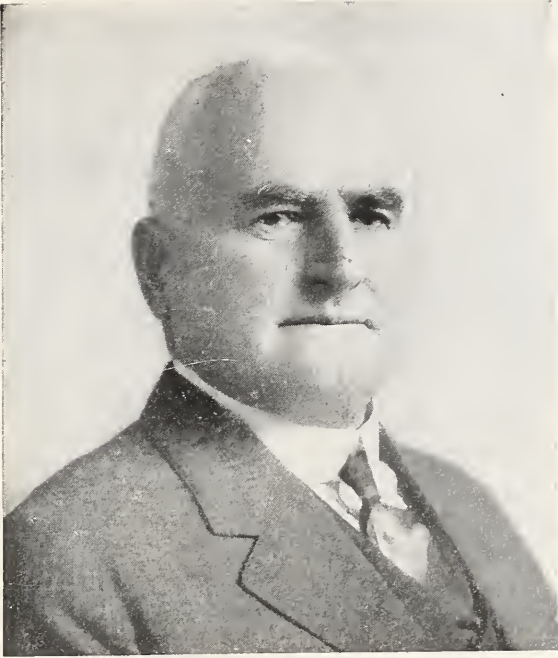
THE MILLION DOLLAR STRAWBERRY

This variety should be included in every order sent to us this season. Our trial grounds have shown it to be a berry of the Dunlap type which has been crossed with the Crescent. It is a splendid shipper, having a nice rich red color, large and firm enough to make a desirable berry. Wherever known, Dr. Burrill is gaining many friends, and we advise putting it in your collection this year. The plant will make a good fruiting row under the most trying conditions. It is healthy and productive and a few days earlier than the Dunlap, which it greatly resembles. We have a wonderful stock of them and every plant is true to name.

The call for Dr. Burrill has been exceptionally great, in fact so great that we were all sold out long before the season ended. To give you an idea of its reputation, about 65 per cent. of all our orders during the past season had Dr. Burrill in them. We have the very best Dr. Burrills you can buy, every plant a perfect beauty and sure to grow. Try them. If you have had trouble getting good fruiting rows heretofore with other kinds, we can assure you success with our Dr. Burrill.

Our fields of them are a fine sight and we have perhaps the best lot of them in the U. S. today. Just try us on Dr. Burrill; we personally recommend them.

See page 16 for prices.



Mr. F. C. Stahelin.



Mr. Carl A. Stahelin.

The Men You are Dealing With

We would like to meet you personally—would like to have you visit our large propagating farms so that we might show you some of our improved methods of growing and handling strawberries and other small fruit plants.

We have tried to make our 1923 catalog interesting and instructive and hope you will enjoy reading it. The descriptions are truthful and complete. If you go by our catalog you will not go wrong. We give nothing but facts and never knowingly misrepresent them. We have been in this business a lifetime and have made an intensive study of strawberries and small fruits, and the knowledge we have gained is yours for the asking. Your success is our success.

Each year that we greet you we try to come better prepared in every way to fill the demand that has been made for Stahelin's plants. They have been called for from more than forty states during the past season. Many of them from growers who know of the superior quality of our plants. We have staunch friends in many localities who continually boost Stahelin's plants as the very best for all purposes. **THERE IS A REASON FOR**

THIS. We live in a region where strawberry plant diseases are practically unknown. This gives you a clean bill of health for the plants and saves you a great deal of money and time. Secondly, on account of the ideal fitness of the soil. We grow a perfect plant to such an extent that they are shipped every day from March 20th to May 20th. When you buy of Stahelin you get the best. We have added eighty-four acres of the very choicest strawberry plant soil to our already large acreage. Land that has never grown a strawberry plant on it. We have many acres on this farm to take plants from this year and you are sure to get the cream of the season. Please remember all plants are from strictly new fields that never have grown a berry plant before; from fields that have never been fruited. This gives you the strong healthy plant, you will always find by getting them from Stahelin—Plants that you can depend on. Naturally we expect you to take care of them, give them a show, work with them, feed them, and keep them clean and great will be your reward.

Yours very truly,
F. C. STAHELIN & SON.

Concerning Last Season's Orders

The Spring of 1922 was one of the most disagreeable seasons we have ever had. There were a few days in the beginning of April that were ordinarily fair. Then it commenced to rain and weather was bad. There were but few days of sunshine in the whole month. Fields that were of the best growth were covered with water, not just for one day but for several weeks. It was next to impossible to get out the plants. The same condition prevailed over most every section; cities and towns were flooded everywhere. Few could do anything in the farming line. We were kept idle for many days and the time was slipping

by when all orders should have been shipped, or on their way.

Some of our orders were not shipped before the latter part of May and the plants looked like a shipment of flowers, even half sized berries were on them.

In our great hurry to get these plants to you we did not always tell you how to treat these blooming plants. Everyone should have been taken separately and all foliage and every blossom and stem removed so there would be merely a skeleton left. Then every plant would have grown just as well as though it had been sent earlier.

We have plants come to us from the south at different times that are full of blossoms and green berries and even ripe ones and the first thing we do is to remove everything but the main crown. If they are very dry we wet the roots but not the top and set them in soil that is as moist as the time will allow and the stand we

get is usually good. They do not mat as heavily as earlier set plants but usually they are plenty heavy for good large fruit.

The letters we received from our patrons generally were courteous and patient as the same condition existed at the planting end as at the shipping point.

About Ordering

When to Order. Order early, by all means. The rule generally is "First come first served."

Our customers will please remember that the time for filling orders is short, and it would facilitate our work greatly if orders were sent before the rush.

Always Write Plainly With Ink, giving name and address in full, postoffice, county and state. Write these the same every time you write. If you want the goods shipped to a different point than your address, write this shipping point in full, county and state.

Always Tell How You Want Your Goods Sent, otherwise we will use our best judgment, sending the cheapest way.

Transportation Charges. Unless otherwise specified, all prices in this catalog, or quotations by letter, are F. O. B. Bridgman.

Our Terms Are Cash With Order. Or we will book early orders, if one-third the amount is sent with the order, and balance payable April 1st or before plants are shipped. Remit by Draft, Express or Postoffice Money order, Registered Letter, or your check will do.

Express Shipments. When conditions are normal, we would advise you to have all fair-sized shipments of plants sent by express, and very small orders by parcel post.

Freight Shipments. It is not a safe and reliable way to have live plants shipped.

Shipping Season. Begins from March 20th to April 1st and continues until about May 10th, depending on the season being early or late.

No C. O. D. Orders. We must ask that customers strictly adhere to the above terms. Each year we have quite a few requests that plants be shipped C. O. D., but must refuse such requests. We are offering our plants at a low price, and consequently cannot afford to sell on anything but a strictly cash basis.

Correspondence. We try to give prompt attention to all proper letters of inquiry, etc. We ask, as a favor, that all questions be stated clearly and briefly, written on separate paper and not on order sheets.

Remittances. Should be made by Post Office Money Order, Drafts on New York Banks or Express Money Orders.

Where it is not possible to obtain these, the letter should be registered. Postage stamps will be found a convenient method of remitting for

small amounts and can be used by us to advantage. Coin should not be sent by mail.

Errors. We exercise the utmost care in filling orders; yet, in the press of business, errors sometimes do occur, in which event we wish to be promptly notified of the fact, and will make such corrections as will be satisfactory.

Be Sure to Mention Order Number. When writing about an order that has been placed with us, always mention the Order Number we gave you. Write your name and address every time you write to us.

One Dollar Orders. We like nice large orders, but to become acquainted and introduce Staehlin's well grown plants to you and your friends, we will gladly book your order for as low as one dollar. Please do not send any order for less than one dollar.

Your Postmaster will tell you the Zone you live in. As high as 70 pounds may be shipped in one lot to 2nd, 3rd and 4th zones, and 50 pounds to all other zones.

Lost Orders. All orders are acknowledged by postal card same day received, but should you not hear from us in a reasonable length of time after sending an order, please write, giving all the particulars—when forwarded, the amount of money sent, and in what form remittance was made—and enclose a duplicate order, giving name and address plainly and in full. Therefore, no matter how often you have written, always give name, postoffice, county and state in full, and **WRITE PLAINLY, ESPECIALLY YOUR NAME.**

Complaints. Any complaints will be promptly taken care of, but must be made at once upon arrival of stock, or not later than five days after arrival; after which we will not be responsible.

Every Order Receives Our Personal Attention. If you set for market or home use, we can supply you with any sized order you may wish and at prices that are right.

New Pioneer Crates. Our new Pioneer Crates are made of southern gum and bound with 4 and 5 wires, are 4 to 6 pounds lighter than the crates we have formerly used. Will insure safe arrival as it is almost impossible to break them. They are completely bound by strong soft wires, which are firmly twisted by a specially made tool. No nails are used in closing the top on these crates. By using this crate, which we furnish with all shipments as long as they last, you are the gainer, by saving Express and Postal charges on your shipments.

Do not place your order with anyone else until you write us. We will meet any competitive price for good plants.

TRY US AND BE SATISFIED



Field View of Dr. Burrill on Our Farm. These Plants Were Cultivated, Hoed and Sprayed Every Week During the Past Summer to Insure Our Customers Getting the Very Best of Plants.

Stahelin's Plants Will Make You A Pleasant and Profitable Business

There are few occupations more profitable than the growing of strawberries. There is more money to be made per acre with strawberries than almost any other crop. You get your money early in the spring when you need it most, and it's spot cash.

Stahelin's Plants Assure Big Crops

We wish you could visit as and see our fields of strawberry plants this year. Visitors, some of whom have grown strawberries for 40 years, have said that our plants are the finest they have seen during their whole lifetime. And by STAHELIN'S superior plants and methods of packing, the universal call is for STAHELIN grown plants. This means that our plants have but few equals and none better. Plants that will give you ample returns for your time and labor. STAHELIN grows the best—that's why our customers stand by us year after year. The quality of our plants is our best advertisement. This is the basis on which we have built our business.

Demand Will Be Big

There will be a large demand for STAHELIN'S plants this season and rest assured we can supply any order, MILLIONS if need be.

Now is the time to plant fruit. Farm products are produced in such large quantities, and in many cases by machinery, that grains have

become very cheap, and below the cost of production. If you have just a few acres of land and a little help, you can make more money from it than you could from a large grain farm.

Everybody likes fruit. Why not raise it? STAHELIN'S plants will help you. No methods are employed that are not at your own command. You can succeed with them just as well as we can. They are grown nature's way.

STAHELIN'S plants are the hardy, strong, natural outdoor growth, with long and fibrous root system, which readily adapts itself to any soil.

Grow your own fruit; you can pick it fresh, and whenever you want it. You are independent of everyone else. A few dollars spent for plants will be a good investment. It is a good business proposition. It is easily done if you will read over the simple rules which we publish in this catalog. They will tell you how to do it.

To The New Beginner

If you have lived in your section for some time; long enough to become one of its people and the strawberry business is new to you, ask somebody that you have confidence in, what kinds

to set, how many and on what land. A. more than one and you will get their experience and knowledge also. Ask your grocer what kind the people demand. A great many are taking advantage of the good roads which bring the market right up to your door. Put your berries up in an attractive way both as to package and berries, giving good measure and fair prices. You soon will have established a trade which is bound to grow. A few miles drive for the man that wants berries, freshly picked, is practically nothing. STAHELIN'S main interest is to sell you the right plants for the right place. If you need advice, write us. We will give it to you cheerfully.

You can make from \$300 to \$1,000 per acre growing strawberries; this depends on the way you take care of them and the market you have. Good strawberries are always in demand. We have without doubt the largest and finest lot of strawberry plants grown. We have varieties suited to all sections of the United States.

Our Prices Are Low

We are asked almost daily during the plant season, "How can you sell plants so cheap?" We don't wonder at it when we look at some of the catalogs, many of which ask twice as much as we do. There is a reason why STAHELIN can sell plants cheap. We own 144 acres of the best strawberry plant land in this country.

We live in a section where everybody knows and loves the strawberry, where there is more expert help that knows how to dig and put up

plants than anywhere in the world. Also one very important item, we do not need to cover the fields with straw for winter, to keep them from freezing and thawing, which makes them heave out of the ground. Nature furnishes the best of covering, a blanket of snow underneath which the plant is always fresh and green and the roots grow all winter. This is one of the reasons why we have such extra long roots on STAHELIN'S plants. If we are careful we sometimes dig plants that are 10 inches long. If roots are too long cut off part before planting.

Plant Industry. Nowhere can you see such large fields of magnificent plants as we grow. Stahelin's plants have come to the front in an amazing manner.

This section practically supplies the planters of the United States and STAHELIN'S plants stand pre-eminent for everything that is desirable for great results.

Our help is all experienced in the plant growing industry. Most of them or at least 95% have been at it a life time.

New Varieties This Year. We are listing several new kinds this year that we can recommend to our best friends. These varieties have gone through the experimental stage, have been tested in many sections of our country with great success. We will mention a few of them and we feel satisfied that you will find them fully as good if not better, than we told you. If they were not of the very best we would never ask you to plant them. These varieties will be fully described in this catalog.

Strawberries and Their Care

A spade, a pail, any light drag or marker, or chain, and a cultivator; this is all that is necessary after ground is plowed, dragged and rolled or floated to get it nice and level so you can see the marks. We take a good spade, well sharpened, and make the hole just a little deeper than the roots of the plants require. Set it just about as it grew. Setting too deep means that your crown will be covered should the wind blow or the rain come.

Anyone with a little care can raise Strawberries where any farm crop will grow; they will stand more rain and water than potatoes. Sometimes there is a low spot in a field, and if water never stays on it more than 48 to 60 hours, your plants will come out all right. Strawberries will stand more water than Raspberries or Blackberries. As soon as you can, go over them with a cultivator, then hoe them in the row where the cultivator did not get; hoe close and carefully. Keep up this hoeing and cultivating every ten days or two weeks.

Different Systems

There are several different systems by which strawberries are grown. The matted row, the hill, the single-hedge and double-hedge are the principal systems. The hill system which is carried out by growing only the mother plant, keeping all runners off, is preferable for those wishing to grow fancy berries.

Cultivation

Cultivation should commence immediately after plants are set and be continued throughout the growing season. Cultivate shallow and not too close to the plants. Cultivation is essential for several reasons; it keeps the weeds down and preserves moisture. Keep at them when conditions are favorable. Once a week is none too often and you will be well paid for every hour's work given your berries.

STAHELIN'S GUARANTEE

We guarantee every plant shipped by us to be from **NEW FIELDS** that have never been fruited. To be freshly dug for every order. Free from disease, to be true to name and inspected by authorized state inspectors. That all Plants will be **CAREFULLY PACKED** to reach you in good condition.

The Matted Row

This is the system most widely in use, and we recommend it as the most profitable for the commercial grower. The rows are set four feet apart, with the plants 18 to 24 inches apart in the row. Young plants are allowed to take root, and if conditions are favorable you will have a fine fruiting row. This is the most simple method of culture, and the one most widely in use.

Mulching

If you live in a country where your soil heaves out the wheat, clover and so on, in the winter time, mulch your plants with anything that will prevent repeated freezing and thawing during the winter. The best time to apply the mulch is when the ground is frozen, so you can go on it with your team. When the leaves commence to start up in the spring, rake off toward the center.

Wetting Plants

If your plants seem to be wilted when they reach you, take each bunch by the top and gently let it down in a pan of water. Hold it there just a little while, lift it up and let it drain. You can put them in your crate again or heel them in, which is preferable. Try not to get any water in the crown of the plant, as this is very important. It took practically one-half million strawberry plants to set our new fields this year, and we never wet a single plant either before or after setting.

Inspection

If you are taking plants for setting purposes from an old bed, one that has borne berries, it will pay you well to have them inspected, to know that the plants are all right, and free from disease. STAHELIN'S plants are always taken from new fields, and thoroughly inspected before being shipped.

Distance for Planting

- Grapes—Rows 8 to 10 feet apart, 10 to 12 feet in the row.
- Raspberries—Rows 5 to 6 feet apart, 3 to 4 feet in the row.
- Blackberries—Rows 6½ feet apart, 3 feet in the row.
- Strawberries for the field—3½ to 4 feet apart, 1½ feet in the row.

Plants Required to Set an Acre

Plants 12 inches by 3 feet.....	14,520
Plants 18 inches by 3 feet.....	9,680
Plants 18 inches by 3½ feet.....	8,297
Plants 24 inches by 3 feet.....	6,222
Plants 24 inches by 4 feet.....	5,445
Plants 30 inches by 3½ feet.....	4,356

Parcel Post Rates

Zones 1 and 2.....	10c per 100 plants or less.
Zone 3.....	15c per 100 plants or less.
Zone 4.....	20c per 100 plants or less.
Zone 5.....	25c per 100 plants or less.
Zone 6.....	30c per 100 plants or less.
Zone 7.....	35c per 100 plants or less.
Zone 8.....	40c per 100 plants or less.



A Bunch of Our Gibson Plants, Ready for Packing. This Bunch Shows the Wonderful Root System of Our Plants, Due to Our Superior Method of Cultivation and Handling.

Trimming Plants

Be sure and trim your strawberry plants before setting them.

Trim off all the leaves from the plants we send you. Take each plant separately and remove all the stems but two or three of the strong ones. Break the leaves from them and let only the main crown of the plant remain. Set them about even with the ground, be careful and press the soil around each plant firmly, closing all air spaces. Your patch will look as though it had been struck with a hail storm, but just watch it a few days and it will speak for itself, these new crowns will start up and spread out, new leaves will come and soon you will have a real live berry patch. Pick off blossoms from newly set plants as this allows the strength to go into the roots. Do not try to grow berries on newly set plants.

Staminate - Pistillate

Most of the berries are staminate or male and can fertilize themselves but such berries as Warfield, Haverland, Big Late are pistillate or female plants and will not do to set alone. They will need mates about one to two, or every third row staminate, the other two pistillate.

The everbearing we are listing are all self fertilizing or staminate. You can set any number of plants—they need no mates.

STRAWBERRIES ARE SAFE AND SURE

The profits are big and the chances for success in growing strawberries for market are greater than with any other known crop.

We have eliminated this season a few of the older varieties, that are so far surpassed by newer sorts, that we are not growing them. We place before you here all the best of the old sorts and those new ones that we have tested and found to be satisfactory to commercial growers.

Our list of strawberries embraces those that have been tried in all sections of our country and found to be desirable varieties to plant. We have to offer this year in great quantity all of the known and successful favorites. The descriptions which we give of these varieties are true to the character of the berries and also the plants.

They may bewilder you—it is much like automobile advertising. Each one claims to be the best. While you will find they are all good, some are better than others. Each one serves its purpose; each one has some outstanding merit that brings it in a class by itself. The same applies to strawberry plants. Read the descriptions carefully.

Eaton

(Per.) We are offering this variety for the first time, this season, for we are firmly convinced that it will soon make a great place in the strawberry plant world. We take the originator's description as follows: "Fruit is of a deep red color, which extends clear through to the heart of the fruit. Is conical in shape, much on the order of Dunlap. Berries are of exceptionally fine quality, being very firm, making it a berry that will stand the

most severe handling, and still arrive in good shape. The foliage has a tendency to be upright, holding the fruit from the ground, which is a very good point in its favor. Is of great size, and maintains same until the end of the picking season." Mr. Whitten, the introducer, praises it very highly, and we guarantee our Eaton plants to be absolutely true to name. Plant a few of this variety, for we recommend it to you as one of the best.



Eaton.

Bun Special Strawberry.



Senator Dunlap

(Per.) Does well in most localities, is a fine table and canning berry, a good shipper, an excellent cropper.

You can't go wrong if you set our Dunlaps, which by continuous selection for health, vigor and productiveness, have continued to improve under our system of cultivation until they are recognized by Fruit Plant Inspectors, by men thoroughly versed in the ways of fancy fruit culture, by nurserymen, by our neighbors, as a plant of highest merit, with productive qualities unsurpassed. The berry is a beautiful crimson color, large size, firm, dark red flesh; its bright golden seeds making it very attractive. On account of its great firmness it can be shipped to distant markets. Holds up a long while after being picked.

The wonderful vigor of the plant will fill your row a long time before any of the other get fairly started. The plant makes runners so freely that you must check it by keeping the row cut down to about eight inches wide. Don't let the plants mat too thickly.

We are constantly testing and trying out new varieties of Strawberries. If you have something new, send us a few plants for trial. It may mean big money for you.



A Box of Senator Dunlap Strawberries as Raised from Our Plants.

Bun Special

(Per.) Is a perfect flowering variety of great promise, which was introduced from Bridgman, and originated by Mr. E. M. Buechley, of Ohio. The plant is very vigorous, and of good size, producing fruit of fine flavor. We have carefully watched this truly great variety for two seasons, and can safely say that it is one of the best new introductions we have ever seen. The berries are of splendid shape and fine flavor, being deep red, and making an extra fine appearance when crated ready for shipment. Our supply of plants is limited, and we earnestly urge every one to order early, so that plants may be reserved for you.

Standard Spray Pumps

We have taken the agency for the Standard Spray Pump—the pump of 100 uses.

Every Standard Spray Pump is warranted for five years.

The Standard Spray Pump is a Bucket, Barrel or Knapsack pump, as desired.

If you grow potatoes, you need the Knapsack and extension. Ten acres a day are easily sprayed.

The Standard is very efficient for whitewashing, disinfecting livestock, fire protection, washing vehicles, veterinary injections, dampening tobacco, pumping out boats, etc. Send for pamphlet on same.



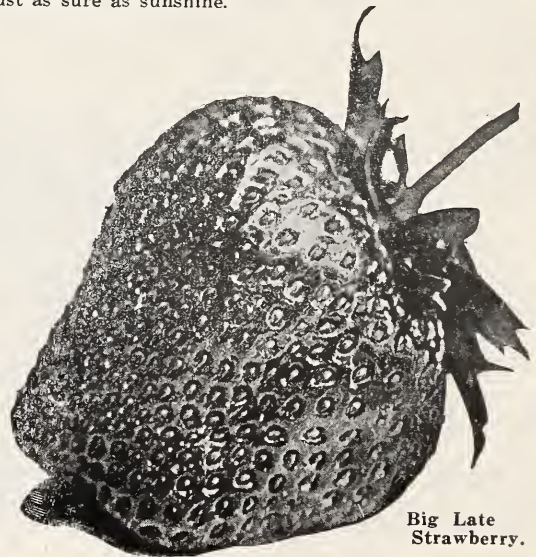
Howard No. 17
Strawberries.

Howard No. 17 *Big Late*

(Per.) This is a comparatively new variety, which has been growing in a few of the strawberry sections of the east for the past several years. For some reason it has been kept under cover, and not offered to the strawberry growers in the middle West. By chance we saw this berry in full fruiting, and were so impressed with it that we immediately bought all the plants that we could—which was not very many. These we have been testing and growing here for two years, and the Howard 17 has proven to be of such high quality, large size, flavor and firmness, that we have hesitated in offering it in our catalog, for our supply of plants was so small that we did not wish to disappoint our customers in not being able to furnish it. We now have a remarkably fine stand of them, which we hope will be enough to allow each one of our patrons to try them out. In our long history of strawberry growing, we have never seen a berry introduced that has been put before the public with such remarkable statements as those of the originator, whose description we give as follows: "The Howard 17 is a berry of the Premier type, staminate, and yields at times 15,000 quarts to the acre. Plants very vigorous, with perfect foliage. Berries large, firm, very beautiful and of delicious flavor. Season is very early to late. A strawberry without a fault, that will solve the variety question for both home use and market. This berry was produced after thirty years of scientific plant breeding, and after 25,000 seedlings had been originated." We have nothing to add to the originator's description, as we consider it perfect. To those that require more evidence we ask that you plant a few hundred and see the remarkable qualities of this fine variety, for we firmly believe that there is no variety more prolific and of better quality in the entire world than Howard 17.

(Imp.) We have been offering this plant for several seasons, and can say that it is one of the finest, if not the best, of late berries. The fruit is very firm and of the highest flavor. Under ordinary culture it will outyield any late variety that we know of, for most late varieties are shy bearers. The plant is very tall and of good size, the leaves are a wonderful glossy green. The plant is imperfect flowering, and we advise setting Magic Gem with it in order to get the best results.

A man with a few acres of Strawberries has a bank account beat. They cannot be taken away from him, and he needs no gun or burglar alarm to watch it. It is just as sure as sunshine.



Big Late
Strawberry.

Stahelin's Improved Progressive Everbearing

*Fresh, Luscious
Berries from
June until
Snow Flies*

**On Single
Plants We
Have Often
Counted 50
to 100 Ripe
and Green
Berries**

WE ARE again presenting this year *Stahelin's Improved Progressive*, which was first offered to our customers last season. It met with such a tremendous success that we were obliged to send back a great many orders and the requests for plants received this summer has been so heavy that it will take a lot of plants to fill them.

The illustration at the side is an actual one of our *Improved Progressive* in full bearing. The large amount of fruit shown is due simply to the fact that for years we have been selecting mother plants that were more than usually prolific and as a result we have today *Stahelin's Improved Progressive*, all a result of plant selection. On single plants we have often counted 50 to 100 ripe and green berries at the same time. The leaves are a bright, glossy green, covering the blossoms and fruit so as to make them practically frost proof. Even if they do freeze they will send out a new set of blossoms at once.

No garden or home is complete without *Stahelin's Improved Progressive* to provide fresh, luscious berries from June until the snow flies

(See Page 16 for Prices)



Cumberland Raspberries.

Cumberland Black Raspberries

The best black raspberry grown. We ship plants safely to every section of the country. Cumberland plants are hardy everywhere. Berries jet black, very large, prolific, fine quality.

Eldorado Blackberries The Hardy Berry That Withstands the Severest of Cold Weather

We have grown them for the past ten years, during which time they have never frozen back, or failed to produce a large crop of berries. The berries, which are a beautiful jet black, ripen in large quantities, without red seeds, green tips, or the hard pits in the center found in inferior berries. They respond well to careful culture and repay the grower many times for his care and attention.

Each plant in our fine lot of root-cutting blackberry plants has a well-developed root system of its own. You are certain to get a liberal picking from them the first season after planting. The culture of blackberries is a very simple matter. It is important that they be placed in the ground, at just the depth at which they were grown, preferably in light soil. Trim to a height of two or three feet the following season. It is well to pick out the centers of the plants while they are growing to increase the number of branches. The root-cutting blackberry will cost a little more than the ordinary blackberry, but will more than repay you for the added expense. We have a limited supply of these plants, so advise you to place your orders early. See page 16 for prices.



Eldorado Blackberries.

See page 16 for prices.



Premier

**The Best Early Variety That Is
Making Many Growers \$1,000
Per Acre**

We never recommend a variety to our customers until we are thoroughly convinced that it is satisfactory in every way. Without a doubt *Premier* is the best all around *early berry* grown today. We wish that our patrons could have seen this wonderful berry in fruiting this year. The vines were simply a mass of fruit, and the size was so large that they all went as *extra fancy* commanding almost double the price of other early sorts. The fruit ripens very early and has perhaps the longest fruiting season of any variety. Is very firm and an extra heavy yielder. Is a *perfect* flowering variety and may be set alone or with some other variety. Plants are large with light green foliage and thrive and do well in all parts of the country. Is practically *frost proof*. The fruit is crimson red clear to the core, perfect in shape and can stand shipment to distant markets and arrive in fine shape. We

have the genuine *Kellogg's Premier*, and have on file many letters from growers telling us of the wonderful qualities of this berry and only wish that we had space to publish them. So great is the popularity of this wonderful berry that last season we turned back hundreds of orders for them. So if you want the true *Premier* send us your order early. If you are growing berries for home or commercial uses you should not be without them and we guarantee this variety to please you and give you perfect satisfaction. See page 16 for prices.

The Great New Everbearing Strawberry CHAMPION

THE most wonderful everbearer, which has come into the greatest popularity the quickest of any variety ever known. A big yielder, fine flavored, firm, and good plant maker. Plant your CHAMPION now and in a few weeks you will be convinced that our description is not half as good as this great new everbearer is. The plant growth is of big size, is very hardy, and vigorous.

Marvelously Productive

Will thrive and do well in any section. *Berries are large and firm.* The flavor is delicious and the fruit holds its size throughout the year. The foliage greatly resembles the Progressive. The plant roots deeply and is able to stand drought to a remarkable degree. This variety has taken growers by storm and the demand for CHAMPION plants will be enormous, so order early and avoid being disappointed. Our stock is pure and absolutely true to name, as our original stock came direct from the originator, Mr. Luebke, who says,

F. C. Stahelin
& Son



“THE CHAMPION in a few years will displace all other sorts.” The illustration at the side will give you an idea as to the great size and perfect color of the Champion, whose wonderful flavor, and great firmness makes it a great shipper. We recommend it to you.

The First Ripe Berries in the Spring and the Last in the Fall
(See Page 16 for Prices)

CHAMPION

We are offering this new Everbearing variety this season to our customers, with the assurance that it is without a doubt one of the greatest new things offered in everbearing strawberries for all time. This sort has been tested by us for two seasons, both very dry, and it has so far out-produced all other kinds (with the exception of our Improved Progressive) that these two sorts are the only ones we are offering this year.

Our original stock was bought from the introducer, who lives very near us, and who was constantly telling us of the many fine qualities of the Champion. After testing it for two seasons, we can only say that he did not praise it enough.

A Wonderful Producer

The Champion berry is of the Progressive type, inclined to be conical, foliage dark glossy green, and standing very upright in the field. The producing qualities of the Champion are simply wonderful, and it takes a great deal of faith to believe all that is said for them. They are one of the first in the spring, and bear heavily all summer and fall, and go into winter with the vines loaded with fruit and flowers.

A Good Plant Maker—Fruit Firm and of Fine Quality

Another good point of this great variety is that it is a good plant maker, and will make good picking rows easily if planted on good soil. The fruit has an exceptionally fine quality, from the fact that it is very firm and will stand a number of days without picking, and still be in good shape. Flavor is excellent.

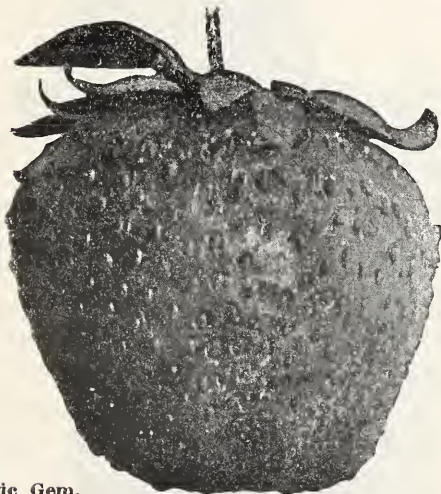
Make Some Easy Money

To those that live on heavily traveled roads or live in towns, we earnestly urge that you plant the

THE NEW EVERBEARING AND BIG YIELDER

Champion. Demand for the fruit is so great that any price can be gotten. Many of our customers who bought last year are sending us in reports this fall of the hundreds of dollars they are making from them, simply by selling to people passing by. It is a great chance to make some easy money, and a few dollars invested in Champion this year will make you huge returns.

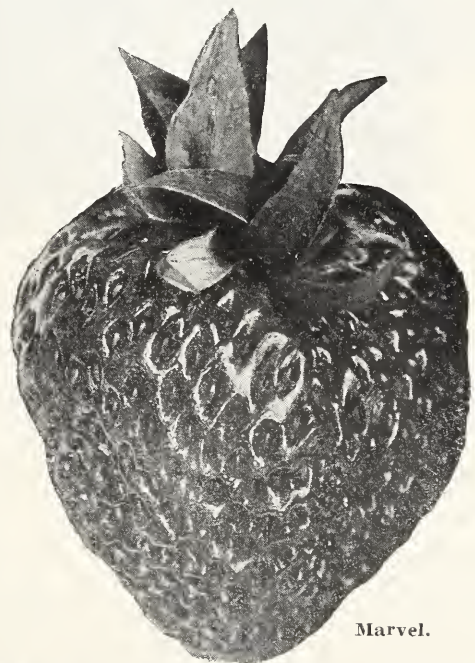
In just a short time this marvel will outstrip all of the everbearers on the market, and the plants you get from STAHELIN are the true strain, having purchased the original stock direct from the introducer. There will be a great demand for the Champion this year, and the stock of plants we have will not last long. They have had authoritative backing, being tested by the majority of growers in the United States and one prominent Ohio Nurseryman, who was a visitor at our farms just recently said he would like to get every Champion Everbearing Berry Plant that we would sell him. The fact is we have none to offer at wholesale to dealers, but will give you the benefit of a lower price. If you knew how prolific, healthy and beautifully colored they are, you would be willing to give \$10.00 for a single plant to get started on this variety which is bound to be ruler over all other varieties. It is just a question of time, just another Ford case where the Original Dollar invested has made almost a fortune.



Magic Gem,

Magic Gem

(Per.) This variety is a late introduction, which is coming into great popularity. It is a medium late sort and a wonderful producer. The berry is extra large, very firm, and of a wonderful color, dark red, with the seeds standing out very prominently, which quickly draws attention wherever shown. Magic Gem has a fine flavor and is a good, strong plant maker.



Marvel.

Marvel

(Kellogg's) A variety introduced by the Kellogg Co. last year. Is a cross between the Dunlap and Warfield, which should be the best recommendation. The plant is exceptionally vigorous, making a fine picking row on any soil. Foliage is of fine color, the plants standing up very tall, and somewhat resembling the Dunlap. Is marvelously productive and the enormous size to which the plant grows, with its large crowns and roots, makes it able to stand the most severe of dry weather. Berries are bright red clear through and are very firm, making it a very fine variety. Marvel plants are not plentiful, as there are very few which have them at our price. Do not wait too long, or we may be out of them.

Kellogg's Prize
Strawberries.



Stevens' Late
Strawberry.

STEVENS' LATE CHAMPION. (Per.) This new late variety seems to do well wherever tested. Very large, fine flavored, bright color, good shipper, a fine bed maker, a heavy yielder, fine foliage. It ripens later than the Gandy. It certainly is a strong and healthy grower, and a prolific bearer.

AROMA. (Per.) A popular berry grown by many in place of the Gandy. Foliage smooth, deep green, of spreading habit. The leaves are long, broad and clean. As a pollinizer for late pistillates it is unexcelled. The berries of this variety are very large, bright red. The flavor of the fruit is deliciously aromatic and very rich, the flesh is smooth and solid. A very popular berry in the South.

Lupton (Per.) Is truly a great berry, and one of the best sellers on the market. Plants are very large and productive. The fruit is of good color, the berry having a large showy calyx, that shows its bright red color off to full advantage. Is a mid-season to late sort, that is sure to be a winner with all commercial growers who try it. We are one of the few to have Lupton, and we recommend it highly.

KELLOGG'S PRIZE. (Imp.) This is a pistillate variety, and it is claimed to cover a long season. The originator describes it as follows "Kellogg's Prize continued to bear a little later than the Sample and Stevens' Late Champion, and was the last to be found on the vines. If the public knew of the value of this variety, the demand for plants could not be supplied." Very high colored, with golden seeds, the rich coloring extending to the center; flavor delicious; the cap is ample and in harmony with the size of the berries.

WARFIELD (Imp.) One of the oldest and best known varieties of strawberries grown, and it still has many staunch friends scattered everywhere, who have grown it regularly and find it one of the best. It is a good sized berry, dark color, fine flavor, very productive. Warfield grows particularly well on heavy soils; a clay soil seems to be its home. Wherever you offer Warfield berries for sale, you have no trouble in getting customers. For canning purposes it has no superior.



Aroma Strawberries.



A Field of Premier Showing the Remarkable Growth When Our Plants are Planted. See the Clean Cultivation and Care With Which Our Strawberries are Raised for You.

Gibson (Per.) A wonderful strawberry. Gibson commences to bear with Senator Dunlap, Warfield, etc. Owing to its productiveness, it continues till quite late, so we class it with our medium late varieties. It is a very strong grower, with long roots that withstand dry weather; has plenty of dark green foliage to protect its enormous crops of fruit from the direct rays of the sun.

The Gibson, the berry that is bound to make Bridgman as famous as the automobile has made Detroit; real genuine Gibson can only be found here, its home and origin. It should be in every collection, and is the best berry before the American people today. Once grown, always grown. One of the reasons is that it holds its size; the last berry is just as large as the first. One young lady picked in ten hours, 368 quarts. This will give an idea as to its size, and the ease with which it came off the vines. It is a good shipper and a firm berry, uniform in size; the berry that everyone will plant when known. It is but a few years since its introduction, and nearly every order has Gibson in it.

The vines are loaded with berries. You will hardly understand how the plants can produce such quantities of fruit.

Berry is extra large. One of very largest strawberries.

Beautiful dark glossy red. The flesh of the berry is red clear through. Calyx bright green, adding to its beauty and market value.

Flavor fine; a perfect table and canning berry and is one of the very best shipping varieties.

Fruit stems strong and upright. This keeps the fruit clean and easy to find and pick.

The Gibson is one of the most profitable commercial strawberries in the great "Fruit Belt." Growers are setting Gibson in large lots.

Cooper (Per.) A new sort introduced by Mr. Emlong, who has fruited it several seasons, and on whose farm we saw it in full bearing. The fruit is of immense size, one of the largest we have ever seen, and it certainly produces a wonderful crop of them. It is a very good plant maker, the foliage covering up the fruit and blossoms to such an extent that it is almost immune from frosts. When packed ready for shipment it makes an exceptionally fine appearance, owing to the very large size of the fruit, and readily commands the top market prices. Our stock of plants is very small, and we will be sold out early. To those wishing Cooper, we earnestly advise placing your order as soon as our catalog arrives, for we shall not have enough to supply the demand.

HAVERLAND. (Imp.) This is a mid-season producer. The plants are healthy, vigorous and large, producing ample runners; the stems are unable to hold the fruit from the ground. This makes mulching desirable.

Get Started in Black Raspberry Growing This Year
Wonderful Producers—Big Profits
A Big Stock of Plants at Right Prices



A Box of Winfield Berries. Note the Large Size and Perfect Shape of the Fruit.

Black Raspberries

Black Raspberries should have a nice, warm, dry piece of land. One that is quite sandy is best. It requires a light soil to keep black raspberries healthy and to make them bear. As soon as the new growth has attained a height of 2 feet, pinch out the tip of the new growth; hack them off as near the top as you can, cutting off about two inches of new growth. Then in the following spring, just after they show life, trim all of the laterals or new shoots that have come out, so they will be about six inches long. Then you will have a cane that will support itself, and the berries will be larger and of best flavor.

Winfield—The King of Black Raspberries

This great new Blackcap after ten years of testing, has proven itself to be one of the greatest varieties ever introduced. Through all these years of testing it has never winter-killed, and the strong cane and root system which it grows, makes the plant a fine drought resister.

In hardiness and productiveness it is unexcelled by any other sort that we know of. The fruiting season is a few days ahead of Cumberland, making it an ideal one to use in connection with this sort, thus extending your picking season over a longer period. The fruit is of enormous size, the plant producing five to seven great clusters on each cane, and averaging from four to six quarts per bush.

The canes are thrifty, and practically immune from all diseases. The bush is stocky and robust,

easily supporting the heavy loads of fruit which they will bear.

We have watched this variety at fruiting time for the past few years, and have often picked single berries that were practically as large as a quarter, and the bush bearing such loads of fruit that it is almost impossible to describe them.

To all those who are planning on setting Blackcaps, whether for home use or market, we earnestly urge you to give the Winfield a trial, for it certainly is an exceptional sort. We are one of the few having Winfield to offer, and owing to the scarcity of plants, and wishing as many as possible to try them, we are limiting each order to 250 plants, which is all that we can supply to any one party.

HOOSIER. This new variety is one of the finest and most profitable black raspberries on the market. Hoosier will please you and make you big profits. The plants are hardy, do not winter kill, and will mature a good crop. Canes are strong and are proof against anthracnose and other raspberry pests. Hoosier ripens with Cumberland, mid-season.

PLUM FARMER. A good cropper of nice large berries. Ripens a few days ahead of the Cumberland, and lengthens the season of shipping. Plants are exceptionally healthy and strong. Berries are of splendid flavor and color. Many growers are planting the Plum Farmer, and are highly pleased with it.

**Remember When You Buy Plants From Us, You Are Buying the Best.
All Are Taken From New Fields, From Fields That
Have Never Been Fruited
EVERY PLANT WE SHIP YOU IS FROM NEW SETTING**

Cumberland

The most popular black cap at the present time, because of its great size, firmness and productiveness. The fruit is the largest of the raspberry family, often measuring seven-eighths of an inch in diameter, and is of such handsome appearance that it is sure to bring the top of the market. Cumberland is very hardy and will stand many degrees below zero without injury. We have fruited all of the other varieties, but they all fall away behind the Cumberland. If you trim them back so the stalk will not be more than 2½ feet high and cut the laterals off to six inches in length, you will get fruit that will surprise you and give you the largest picking season of any black raspberry. Cumberland sets so many berries that it is absolutely necessary to give it a severe trimming. It could not hold up the immense load if they should all attain their proper size. See the illustration in color, showing the perfection which the Cumberland attains. The illustration on this page is made from a photograph of our own plants.

Purple Cap Raspberries

COLUMBIAN. Are neither red nor black, but seem to be half of each. The berries are covered with bloom and present a very enticing appearance when picked. Of very pleasing flavor, good size, and prolific bearer; fairly hardy, succeed on all soils; have met with great favor here. The purple caps produce an enormous quantity of fruit, and since they are becoming better known, are selling well in the large markets.

All of **STAHELIN'S** plants are grown for one purpose only, and that is to furnish the best plant possible that you can buy. All are of tremendous bearing quality.

All are grown on new fields for **PLANTS ONLY**. We have no patches from which we **PICK BERRIES AND ALSO DIG PLANTS**.



Early King Raspberries.



A Bunch of Our Cumberland Black Raspberry Plants.

Red Raspberries

EARLY KING. This variety has replaced the Cuthbert berry in all sections where the former has become known. Being a perfect beauty when picked, coming early and fruiting long, it is an immense cropper. The bright red berries, as large as a copper penny, very firm and fine flavored, pick nicely and do not crumble. Becoming too ripe does not affect the color at all. They are indeed a showy fruit, perfectly hardy and healthy in every way. There is more money in raising King Red Raspberries than any cane fruit we know of. We certainly cannot recommend the King too highly.

Early King will outsell any variety with which it comes in competition. Its bright fiery red color, its large uniform size, and its firmness, make it the most desirable raspberry grown. It is a wonderful producer, and has a long season, and is one of the very earliest berries on the market.

CUTHBERT. Late market variety, strong grower, immensely productive fruit, firm, large size, of finest quality; season medium to late; hardy, yielding immense crops. A general favorite.

Everbearing Raspberries

ST. REGIS EVERBEARING RED RASPBERRY. One of the most valuable of all the late introductions in the line of red raspberries; the habit of growth is of a bushy nature; will produce berries the first year in the fall, and a full crop the following spring and again in the fall.



Field of Eldorado. Grown from Our Root Cutting Plants. Practically a Full Crop Second Year After Planting.

Blackberries

Blackberries should be planted about 4 feet apart and with rows 7 feet wide, requiring about 1,800 plants per acre. The blackberry root likes to get down in the ground away from the surface, where it gathers those elements that are necessary for a crop of berries. If the soil is wet, its roots can only be on top, and a little dry spell cuts the crop. Can be grown without much trouble; are very easy to start. Simply make a hole with a spade and set the plant; put it in the ground fully as deep or a trifle more than it had been. For nice, fancy fruit it is quite necessary that you do not leave too much wood.

ELDORADO. Stands at the head of the list. They never freeze back in Michigan, and we hardly know how cold it will have to be to kill them. They do well in the cold Northwest, where the cold is intense. They have replaced the Snyder being twice as large and wonderfully productive. Are of fine quality, firm and good shippers, and for cold regions have no superior, doing equally as well in the warmer sections. Need no winter protection.

BLOWER. Mammoth early ironclad blackberry. Exceptionally sweet, rich and luscious. Canes of strong, upright habit, always strong enough to support the great crop of berries; bears regularly every year in any climate. A mid-season berry, following Early Harvest.

Eldorado Root Cuttings

We have a splendid lot this spring, and are offering these plants to you at very low prices considering such fine stock. These plants should give you a full crop the second year from planting. Get a good start in Blackberries this year.

There are but few firms that are offering Eldorado plants of any kind. This berry is very scarce and on account of its many splendid qualities it is a favorite berry to plant. When eating this berry you are reminded of those luscious large berries you sometimes come across when you were picking wild blackberries. It has no pit or core, can be eaten out of the hand without any sugar or fixings, makes a splendid pie, a healing cordial for colds and so on. It picks easily and has a wonderfully long picking season. If you have never had the pleasure of eating a dish of ripe Eldorado Blackberries you certainly have missed something great. **DO NOT DELAY YOUR ORDER FOR BLACKBERRY PLANTS.**

Dewberries

We have a nice lot of Lucretia Dewberry plants to offer. This is the earliest of all commercial blackberries. Great cropper of splendid, firm, large luscious, jet black berries.

Asparagus

This vegetable should find a place in every garden, whether on the farm or in town. You can grow such an immense quantity of it in so small a space that you certainly cannot afford to neglect it. Asparagus roots should be planted in a well-prepared bed, the roots covered about five or six inches and the soil made very rich with fertilizer each season in order to produce the maximum amount of very large shoots. Asparagus should be cut for use at the top of the ground, and when it stands about three to five inches high, this gives you the best flavored, tenderest shoots you can get at any time.

PALMETTO. Standard among the asparagus shippers is the Palmetto. This strain grows to mammoth proportions, and very even in size; the shoots are slightly tinted with pink, and are tender to an unusual length. No one will be disappointed with the productiveness and fine edible qualities of the Palmetto Asparagus.

CONOVER'S COLOSSAL. This sort is one of the largest and most extensively used green varieties. Short bright green, sometimes tinged with purple at the top, very tender and of the best quality.

We have supplied many gardeners during the past year with asparagus plants and of all the orders we shipped we have had nothing but praise. The quality of our plants is being recognized everywhere. The roots are long and fibrous, none of those short stubby roots you find when the plant is grown on soils that are too heavy. Order liberally this year as we have a very large and superior stock which we are convinced will give you the best of satisfaction. We can give you 5% off on five or ten thousand lots.

P. S. Asparagus roots are very peculiar; when we ship them we do not aim to put any packing on them. They will keep for months laid out on a shelf exposed to open air without a bit of moist packing material. Anybody can make it grow.

Grapes

The Demand is Increasing

The demand for STAHELIN'S grape plants has exceeded our fondest dreams. We have developed a system of growing grape vines that has enabled us to produce a vine in one year that it takes the average grower two and three years to produce. Our vines during the past year made a splendid growth, and are healthy and strong.

We have a very large crop of grape vines this year, and if you want to set a number of acres, or some of your friends, do let us know, and we will make you a satisfactory price on large quantities.

The demand for grapes is getting better every year. Should be planted about eight by twelve, requiring about 456 vines per acre. Grapes are very tempting fruit, and can be grown in any locality. Should receive regular trimming, cutting off all the new growth but four laterals, two each side of the main stalk, and these trellised on the wire so they nearly meet the laterals reaching from the next vine, making it one continuous line, one on each wire; no side shoots of any kind. This is the Michigan way, and we raise many thousand carloads of grapes in this (Berrien) county. The grape will make jelly, jam, preserves, cordial, vinegar, and grape juice, besides other table uses. It responds readily to good cultivation and fertilizing.

NIAGARA (White). The most popular white grape in existence. Fruit large and very productive; a good grower; ripening same season as Concord; equally good; valuable in every way.

SALEM (Red). A splendid grape with clusters often weighing one pound or more. Greatly resembles the California grape. Clusters firm and compact; a most splendid table grape. Vines are very healthy and hardy, the fruit ripening about one week ahead of the Concord.

CONCORD. A large blue black grape, ripens in Northern states about the middle of September. A vigorous grower, the standard for productiveness and hardiness all over the country. We advise setting Concord for main crop. They are an excellent grape and will please you. Seventy-five percent of the grapes grown are Concord. They will outbear any other variety, and when ripe are of best flavor, stand shipping to long distances, and many carloads from here go to Oklahoma, Kansas, Missouri, Minnesota, and other states.

The Concord Grape is the most popular grape grown today. Succeeds everywhere. Is the hardiest and most prolific of bearers, bunches are compact and extra large. The berries are large, round, almost black with a beautiful blue bloom; juicy and very sweet. Nine-tenths of all commercial plantings are of Concord.

Concord grapes will grow anywhere, rock, sand, clay, any soil that is not too wet. Anywhere any



Our Mr. C. A. Stahelin Showing the Remarkable Root System of Concord Grape Plants as Grown by Us. We guarantee Every Grape Plant We Ship.

tree will grow, a grape will grow and thrive and in a few years will be in full bearing and will live and thrive for the ordinary man's lifetime. We predict that the acreage can be trebled and still the demand will exceed the supply. You can grow any hoed crop among your grape setting the first year.

We have an immense stock and can supply both one- and two-year plants. Every plant guaranteed. Our price is right for we are growers and not jobbers and can furnish the best for the least price.

Concord Grape Vines 3 Years Old

We have a nice lot of Concord Grape Vines that have been replanted several times for those that want quick results. These vines should bear quite a crop the first year after setting. These are nice large thrifty vines. Price, \$10.00 per dozen.

1923 Price List

Instructions for Determining the Cost of Plants

Beneath the varieties in each column below is a complete scale of prices which applies separately to each individual variety listed in that column. If plants are wanted of more than one variety, figure that variety separate same as though you were ordering only one variety. If strawberry plants are wanted in large quantities write us. We can make better prices on large lots.

EVERBEARING STRAWBERRIES

	25	50	100	200	300	400	500	1000
Progressive (Everbearing)	.50	.90	1.50	3.00	4.50	5.75	7.00	14.00
Champion (Everbearing)	1.00	1.75	2.50	5.00	7.00	8.50	10.00	20.00

JUNE BEARING STRAWBERRIES

	25	50	100	200	300	400	500	1000
Bun Special	\$0.90	\$1.60	\$2.10	\$3.20	\$4.40	\$5.30	\$6.00	\$12.00

Section 1

Stevens Late Champion.

25 plants	\$0.35
50 plants	.50
100 plants	.85
200 plants	1.35
300 plants	1.75
400 plants	2.00
500 plants	2.25
1000 plants	3.50

Section 3

Aroma.
Gibson.
Haverland.

25 plants	\$0.40
50 plants	.75
100 plants	1.00
200 plants	1.60
300 plants	2.15
400 plants	2.60
500 plants	3.00
1000 plants	6.00

Section 5

Lupton.
Eaton.
Howard 17.

25 plants	\$0.75
50 plants	.90
100 plants	1.50
200 plants	2.45
300 plants	3.35
400 plants	4.15
500 plants	5.00
1000 plants	10.00

Section 2

Dunlap.
Warfield.
Dr. Burrill.

25 plants	\$0.35
50 plants	.50
100 plants	.85
200 plants	1.35
300 plants	1.85
400 plants	2.35
500 plants	2.50
1000 plants	5.00

Section 4

Big Late.
Magic Gem.
Kellogg's Prize.
Premier.

25 plants	\$0.45
50 plants	.65
100 plants	1.00
200 plants	1.85
300 plants	2.40
400 plants	2.90
500 plants	3.50
1000 plants	7.00

Section 6

Marvel.
Cooper.

25 plants	\$1.00
50 plants	1.75
100 plants	3.00
200 plants	5.00
300 plants	7.00
400 plants	8.50
500 plants	10.00
1000 plants	20.00

BLACKBERRY PLANTS

	25	50	100	250	500	1000
Eldorado (Sucker)	\$1.25	\$2.25	\$3.50	\$8.50	\$16.00	\$30.00
Eldorado (Root Cuttings)	1.75	2.75	5.00	12.00	22.00	40.00
Blower (Sucker)	1.25	2.25	3.50	8.50	16.00	30.00
Blower (Root Cuttings)	1.75	2.75	5.00	12.00	22.00	40.00
Wilson (Sucker)	1.25	2.25	4.00	8.50	16.00	30.00

RASPBERRIES

	25	50	100	250	500	1000
King (Red)	\$0.80	\$1.50	\$2.50	\$6.00	\$10.00	\$20.00
Cuthbert (Red)	1.00	1.75	3.00	7.00	13.00	25.00
St. Regis (Everbearing)	1.00	1.75	3.00	7.00	13.00	25.00
Columbian (Purple)	1.25	2.25	4.00	8.00	15.00	30.00
Cumberland (Black)	.75	1.00	2.00	4.25	8.00	15.00
Hoosier (Black)	.75	1.00	2.00	4.25	8.00	15.00
Plum Farmer (Black)	.75	1.00	2.00	4.25	8.00	15.00
Winfield (Black)	1.25	2.25	4.00	8.00	15.00	30.00

DEWBERRIES

Lucretia	\$1.25	\$2.25	\$4.00	\$8.00	\$15.00	\$30.00
----------	--------	--------	--------	--------	---------	---------

ASPARAGUS

Barr's Mammoth	\$0.50	\$0.80	\$1.50	\$3.00	\$5.50	\$10.00
Conover's Colossal	.50	.80	1.50	3.00	5.50	10.00

GRAPES

	Each	12	25	50	100	250	500	1000
Concord, 1-yr. xxx	\$0.25	\$1.00	\$1.75	\$3.00	\$5.00	\$11.00	\$20.00	\$40.00
Concord, 1-yr. xx	.20	.90	1.50	2.50	4.00	9.00	17.50	35.00
Concord, 1-yr. x	.15	.75	1.00	1.75	3.00	6.00	10.00	20.00
Concord, 2-yr.	.40	1.50	2.75	5.00	9.00	22.50	40.00	75.00
Niagara (White)	.50	2.00	3.50	6.00	10.00	24.00	45.00	90.00
Salem (Red)	.50	2.00	3.50	6.00	10.00	24.00	45.00	90.00

Note:—We are grading our Concord 1-yr. plants in three grades, the 1-yr-xxx being an extra heavy vine that a great many are selling for two-year.

5 Per Cent Discount for Early Orders

On all orders placed before March 15th, we will allow a discount of 5 per cent, provided the order amounts to \$10.00 or more. Cash in full must accompany same, or discount will not be allowed.

One of the Real Live Monarchs
GIBSON



Gibson—A Perfect Midseason Sort

THIS BERRY FRUITS IF SET ALONE—NEEDS NO MATE.

Since the introduction of this wonderful variety we have been watching it very carefully and we can now say, that of all the midseason sorts which we have seen in fruiting it has no equal. It has been tested in all sections of the country and is a proven success wherever tried and our own experience justifies us in saying that without a doubt it will produce twice the berries of any other sort. As a drought resister it is a wonder. Has an exceptionally fine color and bears extra large fine flavored fruit. Perhaps one of the best points of this remarkable variety is that it will hold its size until the very end of the picking season. This we believe is due to the extra large, healthy plant which this sort produces, having a very long root system and being almost immune from disease. Whether you grow strawberries for market or home use we recommend the Gibson and know that you will be more than satisfied with both the quantity and quality of berries, which this extraordinary sort will produce for you. In our section the growers plant almost exclusively of Gibson and there are hundreds of acres of them being grown around and near us at present. The plant is perfect flowering and is an exceptionally fine pollenizer, making it a good one to set with other imperfect varieties.

For large yields and big profits set Gibson. It is a wonderful shipper and will outsell almost any other midseason sort. We recommend it to you and don't forget to order early.

See page 16 for prices.



Concord Grapes

When Once Planted are Good for a Lifetime

The Concord Grape is the most popular grape grown today; succeeds everywhere. Is the hardiest and most prolific of bearers, bunches are extra large. The berries are large, round, almost black with a beautiful blue bloom, juicy and very sweet. Nine-tenths of all commercial plantings are Concord.

Concords will Grow Anywhere.

Concord grapes will grow almost anywhere, rock, sand, clay, any soil that is not too wet. Anywhere any tree will grow, a grape vine will grow and thrive and in a few years will be in full bearing and will live and thrive for the ordinary man's lifetime. We predict that the acreage can be trebled and still the demand will exceed the supply. You can grow any hoed crop among your grape setting the first year. We have an immense stock and can supply both one and two year plants. Every plant guaranteed.

Our price is right for we are growers and not jobbers and can furnish the best for the least price.
See page 16 for prices.

The Productive Senator Dunlap

We have taken great pains to improve the Dunlap plant and point with pride to the fact that they produce such large and elegant looking fruit that growers of long standing have repeatedly said, "Your plants and berries are so large and fine that it seems almost impossible that they are Dunlaps." As the Senator Dunlap is such a hardy plant and is so easily propagated, it has become the berry of the masses. It is easily grown on almost any kind of soil, will give good returns on ground that is fairly light. The main point to guard against is to see that you are not growing too many vines as it is one of the best plant-makers. You have no trouble in getting a good fruiting row. When your row is 10 to 12 inches wide, do not allow any more plants to set. It is always good policy to have a fair share of your picking patch set to Dunlaps. It gives you a variety of berries and if you are selling berries it will surprise you to hear how many people will ask for Dunlaps. See page 16 for prices.

