



Heft 73-78 mit je 24 Kupfern  
mit je 1 Textblatt  
coll. cyll. V. K. 22/VIII. 50

126

von Meierstein







- 
- Tab. 1. *Scarabaeus tristis* Zenker.  
 — 2. *Carabus oblongopunctatus* Fabric.  
 — 3. *Carabus chlorophanus* Zenker.  
 — 4. *Carabus decorus* Zenker.  
 — 5. *Carabus quadrinotatus* Zenker.  
 — 6. *Carabus tempestivus* Zenker.  
 — 7. *Carabus pavidus* Zenker.  
 — 8. *Carabus tenebroides* Rossi.  
 — 9. *Carabus affinis* Paykull.  
 — 10. *Helops sericeus* Zenker.  
 — 11. *Ichneumon variegatorius* Panzer.  
 — 12. *Ichneumon nigratorius* Panzer.  
 — 13. *Ichneumon antennatorius* Panzer.  
 — 14. *Ichneumon marginatorius* Fabric.  
 — 15. *Ichneumon ornatorius* Panzer.  
 — 16. *Ophion abbreviator* Panzer.  
 — 17. *Banchus spinipes* Panzer.  
 — 18. *Crabro lineatus* Fabric.  
 — 19. *Mellinus repandus* Panzer.  
 — 20. *Lygaeus elatus* Fabric.  
 — 21. *Conops flavipes* Mas Fabric.  
 — 22. *Conops flavipes* Fem. Fabric.  
 — 23. *Musca costata* Panzer.  
 — 24. *Musca aristata* Panzer.

22  
 482  
 G3  
 1796  
 [V. 13] HA 73-78  
 SCHMIDT





*Scarabaeus tristis* Lenthic.



SCARABAEVS tristis.

*Der dunkelfarbige Dungkäfer.*

*Scarabaeus tristis*: scutellatus ater, thorace inermi: capite subtrituberculato, elytris striatis.

Habitat Dresdae in stercore bovino. *Dn. Zenker.*

Clypeus ater punctulatus, antice submarginatus, tuberculis tribus minutissimis. Thorax ater immaculatus, undique punctatus, margine antico tenuissime pallescens. Elytra atra, thorace duplo longiora striata, interstitiis striarum punctis rarioribus minutissimis impressis. Antennae testaceae, capitulo cinerascens. Corpus cum pedibus atrum. Tarsi soli testacei. Z.

Variat non raro striga elytrorum humerali et puncto ante apicem testaceo. Interdum et apex rufescit.

a Magnitudo naturalis. b Eadem aucta.

சென்னை

சென்னை

சென்னை

சென்னை

சென்னை

சென்னை

சென்னை

சென்னை



*Carabus oblongopunctatus* Fabr.





CARABVS oblongopunctatus.

*Der länglichbtpunktirte Laufkäfer.*

*Carabus oblongopunctatus*: alatus niger elytris striatis: punctis dorsalibus plurimis impressis. *Fabric.* Entom. syst. T. I. n. 60. p. 138. Mant. Inf. T. I. n. 80. p. 202.

*Illiger - Kugel.* Käf. Preuf. I. n. 54. p. 181.

*Paykull.* Mon. Carab. 55. 33.

— — *Faun. Suec.* I. n. 32. p. 121. .

Habitat in sylvaticis sub muscis, et primo vere sub lapidibus.

a Magnitudo naturalis. b Eadem aucta.

THE UNIVERSITY OF CHICAGO

PHYSICS DEPARTMENT

RECEIVED  
MAY 10 1950

PHYSICS DEPARTMENT  
5712 S. UNIVERSITY AVE.  
CHICAGO, ILL.

TO THE PHYSICS DEPARTMENT

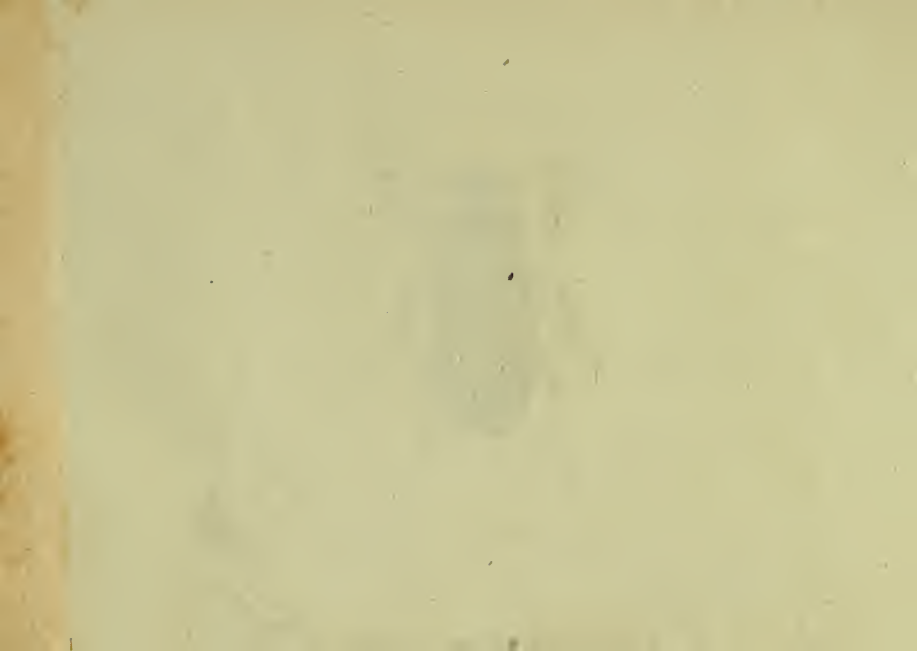
FROM THE PHYSICS DEPARTMENT

a



*Carabus chlorophanus* Zentker.

J. S. 11



## C A R A B V S chlorophanus.

### *Der grünglänzende Laufkäfer.*

*Carabus chlorophanus*: apterus ater, capite thoraceque violaceis punctatis, elytris cyaneis subpunctatis leviter striatis, antennis pedibusque ferrugineis.

*Mus. Dn. Zenker.*

Habitat rarus Dresdae in montosis sub lapidibus folis radiis expositis.

Caput violaceum nitens, raro punctatum, labio pulpis antennisque ferrugineis. Thorax violaceus, nitidus, subcordatus, postice truncatus, punctatus, linea dorsali obsoleta. Elytra cyanea, subpunctata, striis novem, quarum extrema puncta aliquot maiuscula gerit. Corpus atrum. Pedes validi ferruginei, tibiis anticis subpalmatis, mediis et posticis spinulosis. A latere adspectus, superficies tota pilis brevissimis griseis obtecta apparet. Variat colore magis minusve cyaneo, violaceo et viridi aeneo. Z.

a Magnitudo naturalis. b Eadem aucta.

THE HISTORY OF THE

REIGN OF

CHARLES THE FIRST

BY



*Carabus decorus* Zenker.





CARABVS decorus.

*Der geschmückte Laufkäfer.*

*Carabus decorus*: alatus subtus ater, supra viridi caeruleus, elytris striato-punctatis, pedibus rufis.

*Mus. Dom. Zenker.*

Habitat Dresdae rarissimus.

*Elaphroideis Kugelann.* abscribendus. Caput caeruleum nitidum oculis fuscis prominentibus, iuxta utrumque oculum longitudinaliter excavatum. Thorax caeruleo nitens, cordatus marginatus, linea dorsali impressus, basi utrinque excavatus. Elytra thorace latiora et duplo longiora, viridi caerulea marginata, disco depressa, striis quinque punctatis, ad apicem usque non decurrentibus, sed sensim decrescentibus, ita ut futurae proxima, longissima; extrema, brevissima appareat. In stria secunda puncta observantur duo maiuscula, quae elytra in tres partes dividunt. Antennae sunt fuscae canitie obductae, articulo primo testaceo. Pedes rufi. Z.

a Magnitudo naturalis. b Eadem aucta.

THE NEW YORK PUBLIC LIBRARY

ASTOR LENOX AND TILDEN FOUNDATIONS

1009 Broadway, New York, N. Y.  
1911

THE NEW YORK PUBLIC LIBRARY  
ASTOR LENOX AND TILDEN FOUNDATIONS  
1009 Broadway, New York, N. Y.  
1911



*Carabus quadrimaculatus* Zenker.



CARABVS quadrinotatus.

*Der viermahl gezeichnete Laufkäfer.*

*Carabus quadrinotatus*: alatus ater, thorace subcordato piceo, elytris truncatis fuscis, maculis duabus albicantibus, antennis pedibusque pallidis.

Habitat Dresdae sub lapidibus, rarus. *Dn. Zenker.*

Ad minimos referendus. Caput magnum prominens atrum, ore antennisque pallidis. Thorax piceus subcordatus, sive potius subquadratus, dorso canaliculato, postice truncatus, angulis acutis subreflexis. Elytra obscure fusca truncata, abdomine breviora leviter substriata maculis duabus albicantibus magnis quadratis, quarum altera ad basin in medio singuli elytri, altera in apice futuram attingens. Pedes pallidi. Z.

Differt a *Carabo quadrimaculato* statura duplo minori, thorace magis quadrato, et forma situque macularum. An *Carab. quadriguttatus Payk?* Z.

*A Carab. quagriguttat. Paykul* Mon. Carab. n. 55. p. 90. et *eiusd.* Faun. Suec. I. n. 59. p. 143, omnino diversissimus, cum magnitudine, tum forma, circumscriptione et colore thoracis, sic et pedibus. P.

a Magnitudo naturalis. b Eadem aucta.

MEMORANDUM

TO THE PRESIDENT

Very faint, illegible text, likely bleed-through from the reverse side of the page. The text appears to be a memorandum or report, but the specific details are unreadable due to the low contrast and blurriness of the scan.



*Carabus tempestivus* Zenker.





CARABVS tempeſtivus.

*Der kleine glatte braungelbe Laufkäfer.*

*Carabus tempeſtivus*: alatus teſtaceus, elytris ſubſtriatis, antenniſ pedibuſque pallidiſ.

Habitat Dreſdae ſub lapidibuſ primo vere haud infrequenſ. *Dn. Zenker.*

Magnitudo et ſtatura *Carab. meridian.* F. Caput teſtaceum, thorace elytriſque obſcuriſ. Thorax teſtaceuſ ſubquadratuſ, longitudine parum latior, ſubmarginatuſ, linea dorſali impreſſuſ, anguliſ poſticiſ obtuſiſ impunctatiſ. Elytra teſtacea, thorace vix quidem latiora, ſed triplo longiora ſubſtriata. Antennae et pedes pallidi.

a Magnitudo naturalis. b Eadem aucta.

REPORTS

The Board of Directors

of the Company

for the year ending

at the date of the

meeting of the

shareholders

held on the

day of

19

at

London



*Carabus pavidus* Zenker.

.3.3 j



CARABVS pavidus.

*Der scheue Laufkäfer.*

*Carabus pavidus*: alatus ater convexus, thorace cordato elytris striatis, antennis pedibusque pallidis.

Habitat minus frequens Dresdae. *Dn. Zenker.*

Maior inter minores. Caput atrum, oculis cinereis, palpis antennisque pallidis. Thorax nitens, cordatus, convexus, marginatus, elytris angustior, linea dorsali nudo oculo vix conspicua, basi subtiliter punctatus, angulis subreflexis. Elytra atra convexa, leviter striata, stria extrema tantum punctata. Pedes pallidi. Z.

a Magnitudo naturalis. b Eadem aucta.

THE UNIVERSITY OF CHICAGO

PHYSICS DEPARTMENT

Office of the Director of the Enrico Fermi Institute  
5712 South Ellis Avenue, Chicago, Illinois 60637

Telephone: (312) 937-1300

For information on the Institute's activities, contact the Director, Enrico Fermi Institute, at the above address or telephone number. The Institute is a part of the University of Chicago and is supported by the National Science Foundation, the National Endowment for the Humanities, and the University of Chicago.

Enrico Fermi Institute



*Carabus tenebrioides* Rossi.





CARABVS tenebrioides.

*Der Mehlkäferartige Laufkäfer. Le Bupreste paresseux. Geoffr.*

*Carabus tenebroides*: ater thorace lato elytrorum striis punctatis. *Rossi Faun.*

*Etrusc. Mant. n. 188. p. 82.*

*Geoffr. Inf. T. I. n. 34. p. 159.*

*Carabus piger. Foureroy. Ent. paris. 42.*

*Devill. Ent. 1. 377. 63.*

Habitat haud infrequens Norimbergae et Dresdae.

An *Carabus gibbus* Fabric. App. Ent. syst. T. VI. p. 442!

a Magnitudo naturalis. b Eadem aucta.

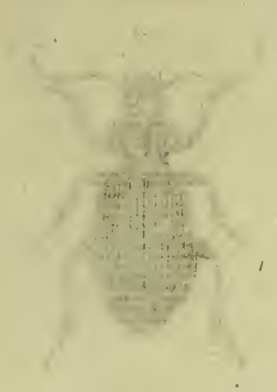
THE UNIVERSITY OF CHICAGO  
DEPARTMENT OF CHEMISTRY  
RESEARCH REPORT NO. 100  
BY  
J. H. GOLDSTEIN AND  
R. F. W. WILSON  
PUBLISHED BY THE UNIVERSITY OF CHICAGO PRESS  
CHICAGO, ILL., U.S.A.  
1954

RESEARCH REPORT NO. 100  
BY  
J. H. GOLDSTEIN AND  
R. F. W. WILSON  
PUBLISHED BY THE UNIVERSITY OF CHICAGO PRESS  
CHICAGO, ILL., U.S.A.  
1954



*Carabus affinis* Paykull.

J. St. fec.



*[Faint, illegible handwritten text at the bottom of the page, possibly a signature or date.]*

CARABVS assimilis.

*Der schmalleibichte Laufkäfer.*

*Carabus assimilis*: niger, thorace capite longiore, postice impunctato, elytris striatis, margine punctato. *Paykull.* Faun. Suec. I. n. 30. p. 119. *eiusd.* Mon. Car. n. 32. p. 53.

*Rossi* Faun. etrusc. Mant. n. 196. p. 87.

*Carabus iunceus.* *Scopol.* Ent. carn. n. 272. ic. 272.

Habitat Norimbergae et Dresdae.

a Magnitudo naturalis. b Eadem aucta.

1870

1870

1870

1870

1870

1870

1870



*Helops jericicus* Zenker.





HELOPS fericeus.

*Der zarthärigte Schattenkäfer.*

*Helops fericeus*: ovatus ater fericeo micans, antennis elytris pedibusque obscure fuscis.

Habitat Dresdae, primo vere sub lapidibus raro. *Dn. Zenker.*

Insectum propter affinitatem cum *Helope tristi* et *fusco* interim ad hoc genus relatum. Caput exsertum, semirobundatum, palpis articulo ultimo mucronato. Oculi sub lateribus capitis reconditi. Antennae clavatae ante oculos insertae fuscae, basi testaceae. Thorax subquadratus, antice posticeque truncatus. Elytra obscure fusca subtilissime punctata, stria unica futuram comitante. Pedes fusci, tibiis apice bispinosis. Totum animal fericie micat. Dignoscitur mas a femina tarsis anticis dilatatis, et tibiis posticis interiore latere parum sinuatis. Z.

Genus *Ptomophag.* a Cl. *Knoch* (*Illiger Kugel. Käf. Preuss. I. p. 84*) conditum, mihi aptissimum videtur, ad huius *Helopis* speciem recipiendam. P.

a Magnitudo naturalis. b Eadem aucta.

THE HISTORY OF

THE CITY OF BOSTON

FROM THE FIRST SETTLEMENT TO THE PRESENT TIME

BY JOHN W. COOPER

VOLUME I

THE FOUNDING OF THE CITY

1630-1639

THE ARRIVAL OF THE PILGRIMS



*Ichneumon variegatorius* Mihi.

18. fce



ICHNEVMON variegatorius.

*Die buntfarbigte Schlupfwespe.*

*Ichneumon variegatorius*: scutello flavicante, thorace maculato, abdomine atro: segmento primo et secundo punctis duobus pedibusque flavis.

Habitat in floribus, Norimbergæ. Benevole mecum communicavit Dr. *Stapf* Theol. Cand. et Entomolog. cultor eximius.

Antennæ atrae annulo medio flavicante, articulo primo subtus flavo. Clypeus os tegens maculis duabus flavis. Orbita oculorum, antice flava: punctum pone oculos utrinque flavum. Palpi flavi. Mandibulae fuscae. Nucha lineola flava. Thorax ater, lineola utrinque antice, puncto sub alis et alio calloso ante alas scutelloque flavis. Alae fuscae, macula marginis, antici crassioris flava. Abdomen atrum nitidum, petiolo s. segmento primo apice punctis duobus contiguis dorsalibus, secundo totidem marginalibus maioribus flavis. Pedes omnes flavi, femoribus mediis et posticis nigris apice flavis, anticis flavis basi nigris. Abdomen subtus flavum.

a Magnitudo naturalis. b Eadem aucta.

THE HISTORY OF THE

REIGN OF KING CHARLES THE FIRST

BY JOHN BURNET  
OF THE UNIVERSITY OF OXFORD

IN TWO VOLUMES.  
THE SECOND.

LONDON, Printed by J. Sturges, at the Black-Swan in St. Dunstons Church-yard, in the Strand, 1724.



*Ichneumon nigratorius* Michx.





ICHNEVMON ingratorius.

*Die schwarzeleibichte Schlupfwespe.*

*Ichneumon ingratorius*: scutello flavicante, thorace maculato, corpore pedibusque nigris, anticis fuscis.

Habitat in sylvaticis. Legit *Dn. Fleßa*.

Antennae atrae fascia flava. Palpi elongati pallidi. Mandibulae fuscae. Caput atrum orbita flava. Nucha lineola flava. Thorax ater lineola utrinque antice, striga tenuissima sub alis, puncto calloso ante alas, scutello et lineola sub scutello flavis. Alae fuscae, macula marginis antici crassioris nigri flava. Corpus atrum subopacum immaculatum. Pedes nigri, anticis fuscis. Pectus utrinque parum pubescit.

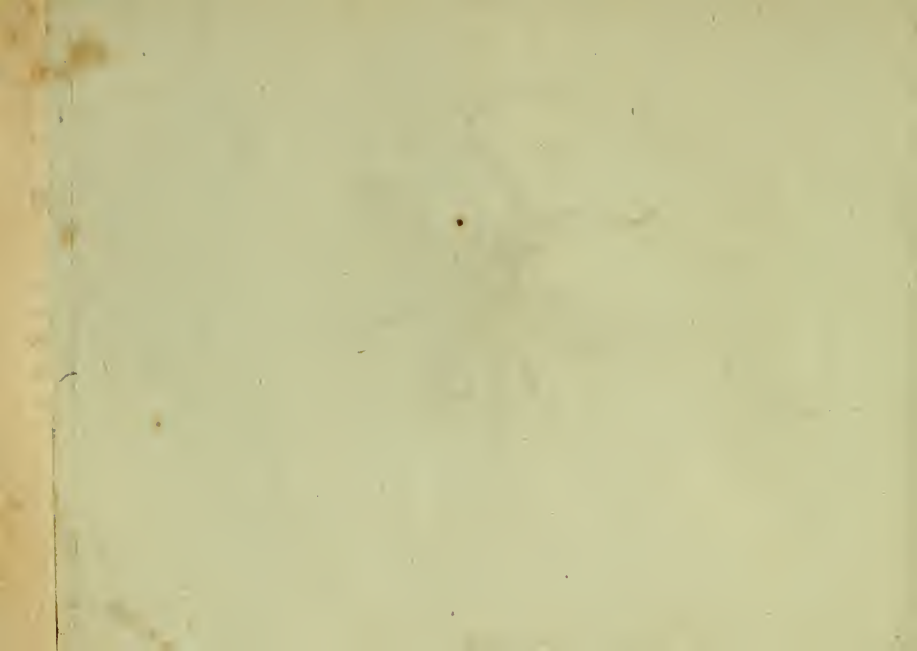
a Magnitudo naturalis. b Eadem aucta.

THE HISTORY OF THE  
CITY OF BOSTON

From its first settlement in 1630 to the present time  
its growth and development  
its political and social progress  
its economic and industrial expansion  
its cultural and educational achievements  
its military and naval history  
its role in the American Revolution  
its position in the Union  
its development in the nineteenth century  
its growth in the twentieth century  
its present status and future prospects



*Ichneumon antennatorius* Mili.



ICHNEVMON antennatorius.

*Die Schlupfwespe mit den buntfärbigten Fühlhörnern.*

*Ichneumon antennatorius*: scutello flavicante, thorace immaculato, abdominis segmentis primis tribus rufis, ultimis nigris.

Habitat in sylvaticis. Benevole mecum communicavit *Dn. Wolf* Medicinae Candidatus, Suinfurtensis, insectorum observator assiduus.

Antennae basi rufae, medio fascia flava, apice nigrae. Caput atrum orbita oculorum ferruginea. Mandibulae rufae apice nigrae. Palpi flavi. Thorax ater immaculatus. Scutellum flavum. Alae obscuro flaveolae. Abdomen nitidum, segmentis tribus primis rufis, ultimis nigris apice demum rufis: segmentum quartum margine laterali utrinque puncto interdum rufo notatum. Pedes omnes rufi. Abdomen subtus rufum.

a Magnitudo naturalis. b Eadem aucta.

THE UNIVERSITY OF CHICAGO

PHILOSOPHY DEPARTMENT

PHILOSOPHY 101  
Lectures on the Philosophy of Language  
Lecture 1: The Philosophy of Language  
The philosophy of language is a branch of philosophy that studies the nature of language, the relationship between language and reality, and the structure of meaning. It is a central part of analytic philosophy and has influenced many other areas of philosophy, including epistemology, metaphysics, and ethics.

One of the central questions in the philosophy of language is the relationship between words and the world. How do words refer to objects and concepts? What is the nature of meaning? These questions have been explored by many philosophers, including Frege, Russell, and Wittgenstein.

Another important question is the structure of meaning. How is meaning composed of smaller parts? What is the relationship between syntax and semantics? These questions have been explored by philosophers such as Quine and Grice.

The philosophy of language is a rich and complex field that continues to be an active area of research and debate. It is a field that has shaped our understanding of language and the world, and it is a field that is essential for a deep understanding of philosophy.

PHILOSOPHY 101



*Ichneumon marginatorius* Fabr.





ICHNEVMON marginatorius.

*Die gerändet gebänderte Schlupfwespe.*

*Ichneumon marginatorius*: scutello flavo, thorace maculato, abdomine segmentis duobus antice fascia, reliquis margine flavis. *Fabric. Ent. syst. T. III. n. 48. p. 145.*

Habitat Norimbergae.

a Magnitudo naturalis. b Eadem aucta.

THE UNIVERSITY OF CHICAGO  
LIBRARY

1950

1950

2



*Ichneumon ornatorius* Mihi.



ICHNEVMON ornatorius.

*Die geschmückte Schlupfwespe.*

*Ichneumon ornatorius*: scutello flavicante, thorace maculato, abdominis segmento secundo tertioque rufis, reliquis nigris, lineolis dorsalibus flavis.

Habitat Norimbergae.

Caput atrum immaculatum. Mandibulae fuscentes. Antennae nigrae. Thorax ater, antice lineola parva, alia sub alis scutelloque flavis. Abdomen nigrum, segmento secundo tertioque rufis, reliquis nigris lineolis parvis marginalibus flavis. Pedes flavi, femoribus nigris, anticis flavis, basi nigris: tibiis posticis apice fusco annulatis. Alae obscuro flavae, nervo antico crassiori fusco, macula flava. Abdomen subtus basi rufum.

a Magnitudo naturalis. b Eadem aucta.

THE UNIVERSITY OF CHICAGO  
LIBRARY

THE UNIVERSITY OF CHICAGO  
LIBRARY  
1207 EAST 58TH STREET  
CHICAGO, ILLINOIS 60637  
TEL: 773-936-3000  
WWW.CHICAGO.LIBRARY.EDU

THE UNIVERSITY OF CHICAGO  
LIBRARY

D



*Ophion abbreviator* Mihi.





OPHION abbreviator.

*Die kurzleibichte Schlangenwespe.*

*Ophion abbreviator* : ater abdomine nitidissimo compresso integro, scutello elevato obtuso, pedibus piceis.

Legi in umbelliferis pratensibus 1799.

Singulare insectum, sed vix huius generis. Corpus totum atrum immaculatum nitidissimum nudum, subtus parum pubescens. Caput parvum. Antennae breves, articulis rotundatis omnibus fere aequalibus, exceptis primo et ultimo. Thorax gibbus dorso nitidus glaberrimus, lateribus minus nitidis punctis plurimis impressis. Scutellum elevatum obtusum scabrum. Abdomen ovatum nitidissimum, sessile compressum, integrum, id est nullis annulis s. segmentis distinctum. Aculeus exertus brevis fuscus. Pedes picei femoribus nigris. Alae hyalinae subaveniae.

a Magnitudo naturalis. b Eadem aucta.





*Banchus spinipes* Mihi.

J. St. fec.



*[Faint, illegible text, possibly a signature or date]*

BANCHVS spinipes.

*Der Stachelfüßichte Raupentödter.*

*Banchus spinipes*: ater abdomine compresso supra fasciis tribus flavis marginalibus, pedibus flavis, tibiis posticis medio spinosis.

Legi haud infrequens in montosis. 1799.

Habitus et statura *Banch. pict.* F. (F. G. LXXI. 18.) ast alius et omnino distinctus. Caput atrum Palpi exserti flavi. Mandibulae flavae, apice fuscae. Antennae nigrae apicem versus incrassatae subclavatae. Thorax ater elevatus. Scutellum gibbum. Abdomen sessile compressum clavatum apice oblique truncatum atrum, dorso fasciis tribus flavis marginalibus: basi macula flava. Pedes flavi femoribus mediis et posticis nigris. Tarsi postici nigri. Tibiae posticae intus medio denticulo armatae. Alae hyalinae.

a Magnitudo naturalis. b Eadem aucta.

THE UNIVERSITY OF CHICAGO

THE EAST ASIAN LIBRARY

100 East East Asia Library, 5405 University Avenue, Chicago, Illinois 60637

Phone: (773) 936-3300

Fax: (773) 936-3300

The East Asian Library is a part of the University of Chicago Library system. It is one of the largest and most comprehensive collections of books, journals, and other materials in the field of East Asian studies in the United States. The library's holdings include a wide range of languages, including Chinese, Japanese, Korean, and Vietnamese, as well as materials in English and other Western languages. The library is open to all members of the University community and is a valuable resource for students, faculty, and researchers alike.

For more information, please contact the library staff.

East Asian Library, University of Chicago



*Crabro lineatus* Fabr.

J. S. 177





CRABRO lineatus.

*Die gestrichelte Horneise.*

*Crabro lineatus*: scutello bidentato mucronatoque niger, thorace flavo lineato, abdomineque fasciato, pedibus rufis. *Fabric. Ent. syst. T. III. n. 24. p. 300.*

*Nomada lineata. Fabric. Mant. Inf. T. I. n. 3. p. 206.*

Habitat Norimbergae. *Dn. I. Sturm.*

E Crabron. genere omnino exterminandus. Exemplum nostrum in nonnullis a  
descript. Fabric. recedit.

a Magnitudo naturalis. b Eadem aucta. c Thorax cum scutello auctus.





*Mellinus repandus* Mili.

St. J. 1811



MELLINVS repandus.

*Die geschweifte Lehmvespe.*

*Mellinus repandus*: ater thorace maculato, scutello bipunctato, abdomine fasciis quinque flavis sinuatis marginalibus.

Habitat Erlangae: legit ibidem *Dn. Wolf.*

Vix ae ne vix huius generis? Caput atrum transversum pubescens, fronte pube argentea. Palpi flavi. (In inquirenda fabrica instrumentor. cibariarior., cautus et circumspectus esse debueram, ne laesione exemplar unicum corrumperem, quod amicissimo Possessori omnino erat reddendum.) Antennae breves, supra nigrae, subtus flavae, articulo primo maximo, subtus flavo. Thorax ater, antice lineola transversa, puncto ante alas et alio sub alis flavis. Scutellum punctis duobus flavis. Sub scutello lineola brevis flava. Lobus posticus thoracis postice utrinque maculis duabus flavis. Abdomen sessile atrum elongatum, supra fasciis quinque flavis marginalibus, quarum prima latior et parum in medio subsinuata: reliquis angustioribus in medio subdentatis. Pedes flavi, tibiis apice, femoribusque nigris: palmis plantisque ciliatis. Corpus subtus atrum; fasciis abdominalibus visilibus.

a Magnitudo naturalis, b Eadem aucta.





*Lygaeus elatus* Fabr.

J. St. fec.





LYGAEVS elatus.

*Die grofse bunte Schmalwanze.*

*Lygaeus elatus*: ater thoracis margine scutello elytrorumque fasciis duabus rubris, antennis apice capillaribus. *Fabric. Ent. syst. VI. n. 148. p. 176.*

Habitat ruri. Legit *Dn. Flessa.*

1871

1871

1871



*Conops flavipes* Mas Fabr.

1850. 100.



CONOPS flavipes. Mas.

*Die gelbfüßichte Stechfliege. Das Männchen.*

*Conops flavipes*: nigra glabra abdomine cylindrico: segmentis tribus margine flavis. *Fabric.* Ent. syst. T. VI. n. 8. p. 393. Syst. Entom. n. 4. p. 797. Spec. Inf. T. II. n. 5. p. 467. Mant. Inf. T. II. n. 5. p. 361.

*Conops flavipes.* *Linn.* Syst. Nat. n. 7. p. 1005. ed. XIII. n. 7. p. 2894. Faun. Suec. n. 1904.

*Rossi* Faun. Etrusc. T. II. n. 1572. p. 330.

Legi in sylvaticis nemorosis in copula. 1799.

Descript. b. a *Linné* in Faun. Suec. l. c. a meis speciminibus haud parum recedere videtur.

a Magnitudo naturalis. b Eadem aucta.

THE HISTORY OF THE

REIGN OF KING CHARLES THE FIRST

IN WHICH IS CONTAINED A FULL AND COMPLETE HISTORY OF HIS REIGN, FROM HIS CORONATION, TO HIS DEATH, AND THE CONSEQUENT DESTRUCTION OF HIS COMMONWEALTH.

BY JOHN BURNET, BISHOP OF SALISBURY.

IN TWO VOLUMES.

LONDON, Printed by J. Sturges, at the Black-Swan in St. Dunstons Church, in Fleet-Street, 1704.



*Conops flavipes* Fem. Fabr.





CONOPS flavipes. Femina.

*Die gelbfüchte Stechfliege. Das Weibchen.*

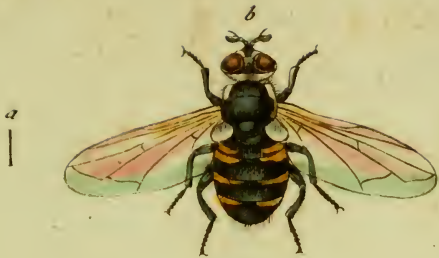
*Conops flavipes.* F. et L. l. l. c. c.

Lecta cum mare ibidem.

a Magnitudo naturalis, b Eadem aucta.

THE UNIVERSITY OF CHICAGO  
LIBRARY

1911



*Musca costata* Mihl.

S. M. fec.



MUSCA costata.

*Die schwarze Fliege mit braunrothen Rippenstreifen.*

*Musca costata*: antennis setariis atra, abdomine ovato, fasciis quatuor interruptis ferrugineis, primis duabus approximatis, alis basi flavis.

Legi ruri. 1799.

Habitus et statura *Musc. rotundat. F.* est minor et distincta. Caput atrum pubescens, fronte lacteo-villosa. Antennae nigrae setariae. Thorax ater, antice lineola marginali abbreviata alba. Scutellum atrum. Halteres rotundati albi. Alae hyalinae basi flavae. Abdomen atrum nudum, taeniis ferrugineis quatuor utrinque marginalibus angustis, quae totidem fascias interruptas mentiuntur: primis duabus latioribus approximatis: prima abbreviatissima. Anus pubescens. Pedes nigri.

a Magnitudo naturalis. b Eadem aucta.

1877

THE UNIVERSITY OF CHICAGO

PHILIP BRADSHAW

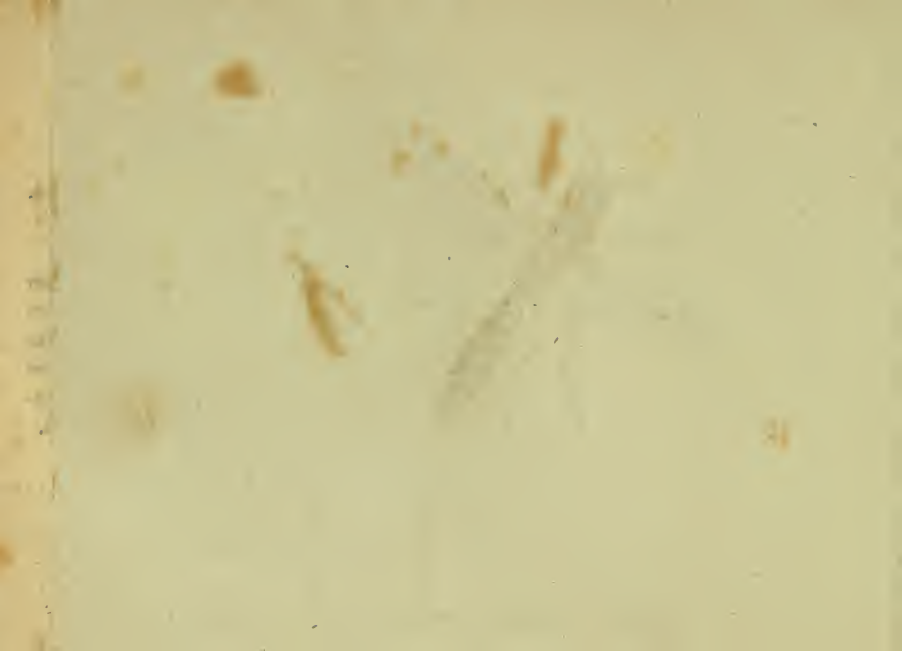
...

...



*Musca aristata* Mihi.

J. St. fec.





MUSCA aristata.

*Die langborstige Fliege.*

*Musca aristata*: antennis fetariis elongata atra, thorace postice rufo lineolis duabus nigris, pedibus flavis.

Legi in editoribus saxosis 1799.

Referenda inter *Muscas Fabric.* 102 — 115. quae omnes proprium genus constituere videntur.

Caput atrum nitidum subpilosum. Antennarum clava elongata atra, seta aristaeformi longiuscula pallida. Thorax antice ater nudus, postice rufus, lineolis duabus abbreviatis nigris. Scutellum rufum. Halteres petiolati, clava orbiculata alba. Alae hyalinae. Abdomen valde elongatum atrum subpubescens, margine segmentorum lucido. Pedes elongati flavi.

a Magnitudo naturalis. b Eadem aucta.







- Tab. 1. *Pimelia variolosa* Fabric.  
— 2. *Carabus gemmatus* Fabric.  
— 3. *Carabus arvensis* Fabric.  
— 4. *Carabus glabratus* Fabric.  
— 5. *Carabus convexus* Fabric.  
— 6. *Cychrus rostratus* Fabric.  
— 7. *Notoxus cornutus* Fabric.  
— 8. *Notoxus equestris* Panzer.  
— 9. *Cynips armata* Panzer.  
— 10. *Andrena Rosae* Panzer.  
— 11. *Apis campestris* Panzer.  
— 12. *Apis arenaria* Panzer.  
— 13. *Thereva subcoleoprata* Mas. Fabric.  
— 14. *Thereva subcoleoprata* Femina. Fab.  
— 15. *Thereva crassipennis* Fabric.  
— 16. *Thereva affinis* Fabric.  
— 17. *Thereva analis* Fabric.  
— 18. *Empis pennipes* Fabric.  
— 19. *Aranea atomaria* Panzer.  
— 20. *Aranea irregularis* Panzer.  
— 21. *Papilio Danaus Sinapis* Fabric.  
— 22. *Papilio Danaus Daplidice* Fabric.  
— 23. *Papilio Danaus Cleopatra* Mas Fabric.  
— 24. *Papilio Danaus Cleopatra* Femina Fab.





*Pimelia variolosa* Fabr.





PIMELIA variolosa.

*Der blatterigte Höckerkäfer.*

*Pimelia variolosa*: thorace marginato, marginibus reflexis, elytris linea media elevata dentata. *Fabric.* Entom. syst. Suppl. p. 45.

*Blaps variolosa.* *Fabric.* Entom. syst. T. I. n. 10. p. 108.

*Silpha granulata.* *Fabric.* Mant. Inf. T. I. n. 12. p. 49.

Habitat in Austriae campis sabulosis, unde in collectionem meam transit.

Cum illustr. *Fabricio* communicavi ante plures annos huius speciei exemplum, quod tum sub nomine *Silphae rugosae* Scopol. 53. fuerat ad me missum; idem, quod *Fabricius* statim pro *Blaps variolosa* agnoverat: hinc nullum dubium est, me veram hic *Pimeliam variol.* F. publicasse, quamvis ullo *synonymorum* strepitu, eandem comitari nolim, ne indubiam speciem infidam reddere velle videar.,.





*Carabus gemmatus* Fabr.



CARABVS gemmatus.

*Der brilliantirte Laufkäfer.*

*Carabus gemmatus*: apterus niger elytris striatis, punctis aeneis bilobis excavatis triplici serie. *Fabric. Entom. syst. T. I. n. 12. p. 127. Spec. Inf. T. I. n. 9. p. 300. Mant. Inf. T. I. n. 15. p. 196.*

*Carabus striatus. Degeer Inf. T. IV. p. 90. n. 5. tab. 3. fig. 1.*

*Paykull. Mon. Car. n. 6. p. 15.*

*Eiusd. Faun. Suec. T. I. n. 6. p. 101.*

*Panzer Entom. germ. I. n. 8. p. 45.*

Habitat in sylvaticis Harcyniae.

Nulla synonyma adduxi, praeter ea, quae prae aliis mihi equidem, magis certa videbantur. Puncta elytrorum biloba, numero variant. \_

CLARENCE

Dr. Williams' Pink Pills

Caution: Beware of cheap imitations. The name "Dr. Williams' Pink Pills" is prominent on the wrapper. Buy only from the original source.

Prepared by Dr. J. C. Williams

Small text at the bottom of the page, likely a copyright notice or address.



*Carabus arvensis* Fabr.

J. S. 1801





CARABVS arvensis.

*Der Feld - Laufkäfer.*

*Carabus arvensis*: apterus nigro cupreus, elytris striatis: punctis excavatis triplici serie. *Fabric. Mant. Inf. T. I. n. 18. p. 196.* *Entom. syst. T. I. n. 17. p. 128.*

*Paykull. Mon. Car. n. 10. p. 21.*

*Eiusd. Faun. Suec. T. I. n. 10. p. 105.*

*Illiger Kug. Preuss. Käf. T. I. n. 16. p. 153.*

*Panzer Entom. germ. I. n. 13. p. 46.*

Habitat in arvis fabulosis.

1870

1871

1872

1873



*Carabus glabratus* Fabr.



Scarabaeus

CARABVS glabratus.

*Der geglättete Laufkäfer.*

*Carabus glabratus*: apterus ater, elytris laevissimis unicoloribus. *Fabric. Ent.*  
syst. T. I. n. 4. p. 125.

*Paykull. Mon. Car.* n. 5. p. 14.

*Eiusd. Faun. Suec.* T. I. n. 5. p. 101.

*Carabus laevigatus. Scriba Beytr.* I. p. 4. n. 2. n. 2. tab. I. fig. 2.

*Carabus convexus. Herbst Archiv.* V. 2. n. 6. p. 130. tab. 29. f. 2.

*Illiger Kugel. Käfer Preuss.* T. I. n. 11. p. 149.

*Panzer Entom. germ.* I. n. 2. p. 44.

Habitat in sylvaticis.

1875

THE UNIVERSITY OF CHICAGO

LIBRARY OF THE UNIVERSITY OF CHICAGO

1875

1875

1875

1875

1875

1875

1875

1875



*Carabus convexus* Fabr.





CARABVS convexus.

*Der gewölbte Laufkäfer.*

*Carabus convexus*: apterus convexus ater laevis thorace postice emarginato. *Fabric.* Entom. syst. T. I. n. 21. p. 129. Syst. Ent. n. 11. p. 238. Spec. Inf. T. I. n. 14. p. 301. Mant. Inf. T. I. n. 22. p. 197.

*Paykull* Mon. Car. n. 13. p. 25.

*Eiusd.* Faun. Suec. T. I. n. 13. p. 107.

*Scriba* Beytr. I. p. 10. n. 5. tab. I. fig. 5.

*Illiger* Kug. Käf. Preuss. T. I. n. 12. p. 149.

*Panzer* Entom. germ. I. n. 14. p. 47.

Habitat in sylvaticis.

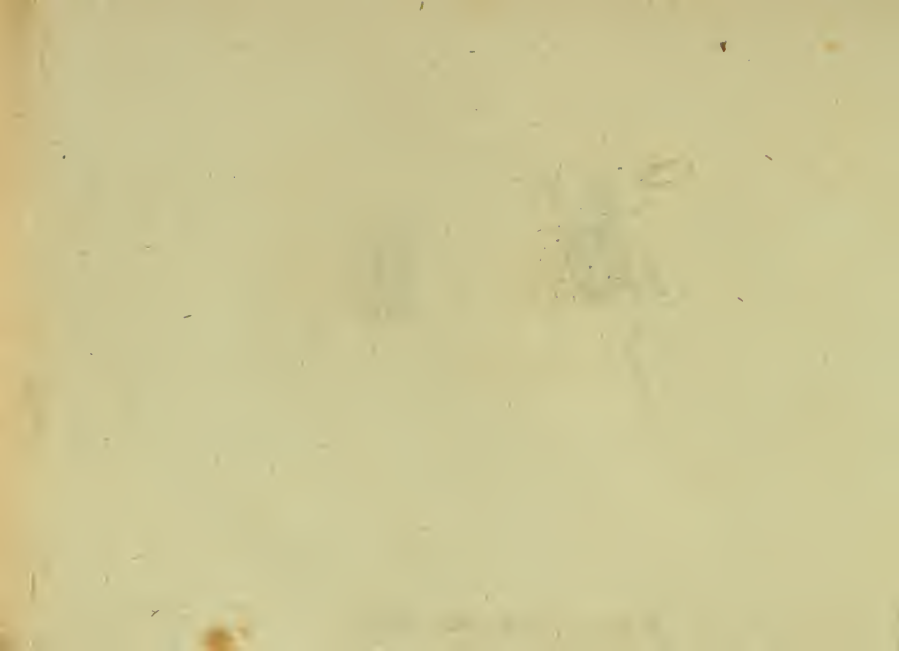
THE HISTORY OF THE

... ..  
... ..  
... ..



*Cychnus rostratus* Fabr.

J. St. f.



CYCHRVS rostratus.

*Der langgerüffelte Deckkäfer.*

*Cyclus rostratus*: elytris laevibus nigris, capite angustissimo. *Fabric. Entom.*  
syst. T. VI. app. p. 440.

*Carabus rostratus*. *Fabric. Entom. syst.* T. I. n. 31. p. 131. *Syst. Ent.* n. 21.  
p. 240. *Spec. Plant.* T. I. n. 26. p. 304. *Mant. Inf.* T. I. n. 36. p. 198.

*Tenebrio rostratus*. *Linn. Syst. Nat.* n. 20. p. 577. ed. XIII. n. 73. p. 1966.  
Fn. *Suec.* n. 823.

*Tenebrio caraboides*. *Linn. Syst. Nat.* n. 25. p. 577. ed. XIII. n. 25. p. 1997.  
Fn. *Suec.* n. 825.

*Paykull. Mon. Car.* n. 14. p. 26.

*Eiusd. Faun. Suec.* T. I. n. 1. p. 97.

*Petagna Inf. Calabr.* p. 25. n. 121. fig. 21.

*Scriba* Beytr. I. 5. 3. tab. 1. fig. 3.

*Carabus coadunatus*. *Degeer* Inf. IV. n. 7. p. 92. tab. 3. fig. 13.

*Illiger* Kug. Käf. Preuf. T. I. n. 1. p. 216.

*Pauzer* Entom. germ. I. n. 21. p. 48.

Habitat in quisquiliis.

a Magnitudo naturalis. b Caput etc. auctum.



*Notoxus cornutus* Fabr.





NOTOXVS cornutus.

*Der gehörnte Schildkrotenkäfer.*

- *Notoxus cornutus*: thorace in cornu supra caput protenso, elytris fasciis tribus  
atris. *Fabric.* Entom. syst. T. I. n. 7. p. 211.

*Rossi* Faun. Etrusc. T. I. n. 354. p. 139. Var.

Habitat in Austria.

a Magnitudo naturalis. b Eadem aucta. c Caput supine visum auctum.

WITNESS

The undersigned

do hereby certify that the above is a true and correct copy of the original as the same appears in the records of the office of the Secretary of the State of New York.

Witness my hand and seal

this 10th day of June 1900.



*Notoxus equestris* Mihi.



NOTOXVS equestris.

*Der Ritter - Schildkrotenkäfer.*

*Notoxus equestris*: fuscus thorace antennarum elytrorumque basi pedibusque rufis.

Legi semel in floribus Crataeg. Oxyacanth. 1799.

Caput transversum fuscum nudum. Antennae corporis dimidii longitudine rufae apice fuscae, articulis fere omnibus ciliatis. Thorax elongatus antice rotundatus postice angustatus rufus punctatus. Coleoptera fusca nitida margine ciliata basi rufa. Pedes rufi femoribus obscurioribus.

Similis *Not. pedestri Rossi* Faun. Etrusc. Mant. n. 114. p. 45., quem omnino huc referrem, nisi femorum anticorum fabrica dentata obstaret, quam huic *illustr. Fabric.* (Ent. syst. Suppl. p. 66.) assignavit.

a Magnitudo naturalis. b Eadem aucta.

PROCEEDINGS OF THE

ANNUAL MEETING OF THE

AMERICAN SOCIETY OF CLIMATE ENGINEERS  
HELD AT THE UNIVERSITY OF CALIFORNIA, BERKELEY, CALIF.,  
DECEMBER 15-17, 1954

EDITED BY  
W. B. MANN, UNIVERSITY OF CALIFORNIA, BERKELEY, CALIF.  
AND  
R. W. COLEMAN, UNIVERSITY OF CALIFORNIA, BERKELEY, CALIF.

PUBLISHED BY THE UNIVERSITY OF CALIFORNIA PRESS  
BERKELEY, CALIF., 1955

U. S. GOVERNMENT PRINTING OFFICE: 1955



*Cynips armata* Michx.

J. St. fec.





CYNIPS armata.

*Die bewafnete Gallwespe.*

*Cynips armata*: atra nitida, scutello bidentato, antennarum basi pedibusque rufis.

Legi in Quercu caesa et iam decorticata, quam sero autumnno 1799. circumvolabar.

Corpus totum nigrum nitidum. Caput transversum paullo a thorace remotum, punctatum. Antennae nigrae basi rufae. Thorax corporis maxima pars, ater inaequalis punctatus nitidus. Scutellum elevatum productum bidentatum. Abdomen ovatum nitidum. Pedes antici et medii rufi: femora postica valde incrassata, nigra, nitida, tibiis apice et basi plantisque rufis. Alae hyalinae subaveniae, fasciis duabus obsoletis fuscis.

a Magnitudo naturalis. b Eadem aucta. c Scutellum bidentatum. c Pes posticus, auctus.





*Andrena Rosae* Mihi.

J. et. f.



## ANDRENA Rosae.

### *Die Rosen - Waldbiene.*

*Andrena Rosae*: thorace pubescente, abdomine nigro nitido, segmento secundo tertioque rufis, macula media nigra.

Legi haud infrequens in Rosa sylvestri 1799.

Corpus mediae magnitudinis. Caput atrum transversum cinereo pubescens, vertice subnudo. Antennae nigrae tenues breves. Thorax ater subopacus dorso nudo, margine laterali cinereo pubescenti. Abdomen compressum nudum nitidulum nigrum: segmentis secundo, tertio, quandoque etiam primo postice, rufis; medio macula nigra, ut plurimum in secundo segmento sita. Alae subfuscae, nervo antico crassiori nigro, puncto obscure flavo. Pedes nigri, praesertim postici valde nigro pilosi: tarsi omnibus fuscis,

a Magnitudo naturalis. b Eadem aucta.





*Apis campestris* Mihi.

J. St. jec.





## APIS campestris.

### *Die Feldbiene. Die Feldhummel.*

*Apis campestris*: hirsuta nigra: thorace flavo fascia atra: abdomine nudo nitido, apice elongata acuminato, alis nigricantibus.

Legi haud infrequens in regione sylvarum fabulosa, floribus *Solidag. Virg. aur. L.* insidentem, mense Octobr. 1799.

Magnitudo et statura *Ap. lapidar. F.* Caput atrum nitidum fronte atro pilosa, vertice cum regione stemmatum calvis. Mandibulae productae validae crassae, oblique truncatae, subdentatae, extus lineis aliquot elevatis: apice parum rufo pilosae. Antennae nigrae. Oculi magni nigri, nebula cinerea. Thorax ater flavus, medio nudus. Alae obscure fuscae praesertim apice, s. nigricantes. Abdomen in viva Ape, valde elongatum: ano acuto, post mortem inflexo: atrum, dorso nitidissimo nudo, sub lente tamen obsolete pubescenti, inprimis ad marginem lateralem: anus acuminatus inflexus, saepius utrinque ad marginem lateralem flavo barbatus. Pedes nigri pilosi, tarsis fuscis.

ALPHABETIC

DEPARTMENT OF THE INTERIOR

This copy is for the use of the Department of the Interior, and is not to be distributed outside of the Department.

For a full description of the contents of this report, see the Introduction.

WAS. D. C. 1880.

Published by the Government Printing Office.

For sale by the Superintendent of Documents, Washington, D. C.

Price, 10 cents.

Order by mail from the Superintendent of Documents, Washington, D. C.

Accepted for mailing at special rate of postage provided for in Act of October 3, 1917, authorized on July 10, 1918.



*Apis arenaria* Mihi.

J. St. fcc.



APIS arenaria.

*Die Sandbiene. Die Sandhummel.*

*Apis arenaria*: atra pubescens, ano fulvo, alis nigricantibus,

Legi sero autumnò A. 1799. in floribus.

Similis quidem *A. rupestri* F. sed omnino ab illa diversa, quae frequens apud nos. Habitus et statura aliena. Corpus minus hirsutum ac in *A. rupestri*, abdominis dorso nudiusculo. Thorax antice hirsutiae fordide flavae, et anus omnino fulvus. Alae intensius nigricantes.

1875

THE UNIVERSITY OF CHICAGO

PHILOSOPHY DEPARTMENT

CHICAGO, ILL.

THE UNIVERSITY OF CHICAGO  
PHILOSOPHY DEPARTMENT  
CHICAGO, ILL.



*Therewa subcoleoptrata* Mas Fabr. J. St. fee





THEREVA subcoleoptrata. Mas.

*Die halbgedekte Käferfliege. Das Männchen.*

*Thereva subcoleoptrata*: thorace nigro alis cinereis: vittis duabus fuscis repandis.

*Fabric.* Entom. syst. Supplem. n. 1. p. 560.

*Syrphus subcoleoptratus.* *Fabric.* Entom. syst. T. VI. n. 21. p. 283. Syst. Entom.

n. 9. p. 764. Spec. Inf. T. II. n. 12. p. 423. Mant. Inf. T. II. n. 13. p. 335.

*Conops subcoleoptratus.* *Linn.* Syst. Nat. n. 13. p. 1006. ed. XIII. n. 335. p. 2869.

Legi saepius in copula, in umbelliferis, cymosis et corymbiferis. Animal inquietum, agile, ocyffime volitans.

a Magnitudo naturalis. b Eadem aucta.

THE UNIVERSITY OF CHICAGO

THE UNIVERSITY OF CHICAGO

THE UNIVERSITY OF CHICAGO

THE UNIVERSITY OF CHICAGO

THE UNIVERSITY OF CHICAGO

THE UNIVERSITY OF CHICAGO

THE UNIVERSITY OF CHICAGO



*Thereva subcoleoptrata* Fem. Fabr.

J. St. fem.



THEREVA subcoleoprata. Feminā.

*Die halbgedekte Käferfliege. Das Weibchen.*

*Thereva subcoleoprata* Fabr. l. c.

Habitat cum mare.

a Magnitudo naturalis. b Eadem aucta.

THE UNIVERSITY OF CHICAGO  
THE EAST ASIAN LIBRARY

1100 EAST 58TH STREET

CHICAGO, ILL.

ACQUISITIONS DEPARTMENT

74



*Thereva crassipennis* Fabr.

J. St. J.





THEREVA crassipennis.

*Die dickflügelichte Käferfliege.*

*Thereva crassipennis*: thorace flavescente, alis disco albido: puncto distincto nigro. *Fabric. Entom. syst. Supplem. n. 3. p. 560.*

*Syrphus crassipennis. Fabric. Entom. syst. T. VI. n. 23. p. 284.*

Habitat in floribus.

a Magnitudo naturalis. b Eadem aucta.

THERIACA CLASSICISSIMA.

Die wichtigsten Eigenschaften.

Theriacalium: Theriacale Pulver, als ein solches kann dieses  
nicht. Theriacale Pulver, als ein solches kann dieses  
Syrupus Theriacalis. Theriacale Pulver, als ein solches kann dieses

Habitus in Theriacis.

Theriacale Pulver, als ein solches kann dieses



*Thersea affinis* Fabr.

J Sturm fec.



THEREVA affinis.

*Die ähnliche Käferfliege.*

*Thereva affinis*: thoracis lateribus fulvis: abdomine atro lateribus testaceis. *Fabric.* Entom. syst. Supplem. n. 4. p. 561.

*Syrphus affinis.* *Fabric.* Entom. syst. T. VI. n. 24. p. 284.

A me lecta quotannis in editioribus in floribus. Abdominis macula lateralis minime in meis testacea, sed obscure rufa.

a Magnitudo naturalis. b Eadem aucta.

THESE

Die Künste

Die Kunst der Buchdruckerei

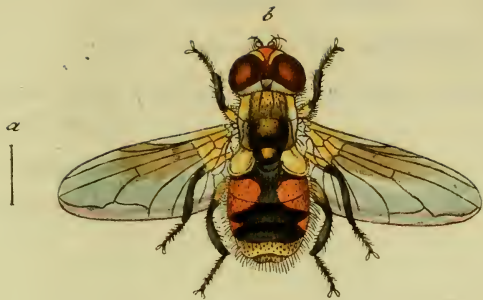
Die Kunst der Buchdruckerei

Die Kunst der Buchdruckerei

Die Kunst der Buchdruckerei

Die Kunst der Buchdruckerei

Die Kunst der Buchdruckerei



*Thereva analis* Fabr.

Jac. St. fec.





THEREVA analis.

*Die bleichafterichte Käferfliege.*

*Thereva analis*: fusca abdominis lateribus basi fulvis, ano albido. *Fabric. Entom. syst. Supplem. n. 5. p. 561.*

Legi non raro in montosis asperis. 1799.

.a Magnitudo naturalis. b Eadem aucta.

THE UNIVERSITY OF CHICAGO

PHYSICS DEPARTMENT

REPORT OF THE PHYSICS DEPARTMENT FOR THE YEAR 1955-56

BY THE DEPARTMENTAL COMMITTEE

REPORT OF THE PHYSICS DEPARTMENT

FOR THE YEAR 1955-56



*Empis pennipes* Fabr.

J. St. fec.



EMPIS pennipes.

*Die federfüßichte Schnepfenfliege.*

*Empis pennipes*: nigra pedibus posticis elongatis pennatis. *Fabric.* Entom. syst. T. VI. n. 5. p. 404. Syst. Entom. n. 2. p. 801. Spec. Inf. T. II. n. 2. p. 471. Mant. Inf. T. II. n. 3. p. 364.

*Empis pennipes.* *Linn.* Syst. Nat. n. 2. p. 1003. ed. XIII. n. 2. p. 2889. Faun. Suec. n. 1896.

*Asilus pennipes.* *Scop.* carn. n. 994.

*Sulzer* Kennz. d. Inf. tab. 21. fig. 137.

Primo vere frequens in pratensibus.

a Magnitudo naturalis. b Eadem aucta.

THE UNIVERSITY OF CHICAGO

THE UNIVERSITY OF CHICAGO

THE UNIVERSITY OF CHICAGO  
THE UNIVERSITY OF CHICAGO  
THE UNIVERSITY OF CHICAGO  
THE UNIVERSITY OF CHICAGO  
THE UNIVERSITY OF CHICAGO

THE UNIVERSITY OF CHICAGO  
THE UNIVERSITY OF CHICAGO

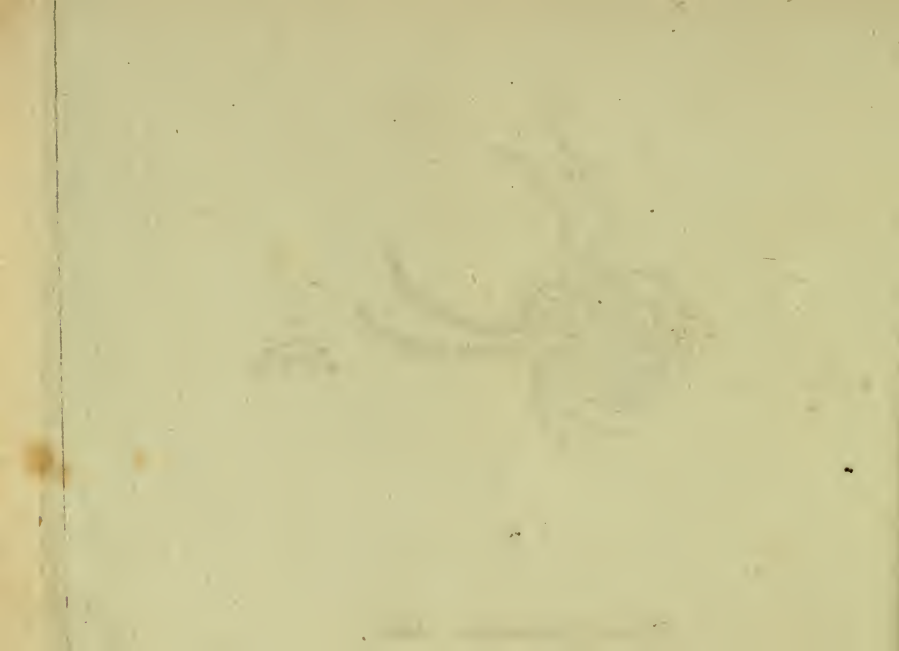
THE UNIVERSITY OF CHICAGO

THE UNIVERSITY OF CHICAGO



*Aranea atomaria* Mihi.

J. St. fée





ARANEA atomaria;

*Die zartgetupfte Spinne.*

*Aranea atomaria*: grisea, abdomine globoso punctulato, thorace vittis duabus basi coeuntibus fuscis.

Legi sero autumnò in sylvaticis sub muscis.

Parva. Thorax rotundatus margine laterali obscuro, linea dorsali tenuissima, vittisque duabus fuscis basi coeuntibus. Abdomen globosum, punctis, atomis et nebulis sparsis fuscis, obscuris. Pedes pallide fasciati.

a Magnitudo naturalis. b Eadem aucta. c Situs oculorum.

THE HISTORY OF THE

REIGN OF KING CHARLES THE FIRST

BY JOHN BURNET, BISHOP OF SALISBURY

IN TWO VOLUMES

LONDON, Printed by J. Sturges, at the Black-Swan in Strand, 1724.

IN TWO VOLUMES

THE SECOND VOLUME

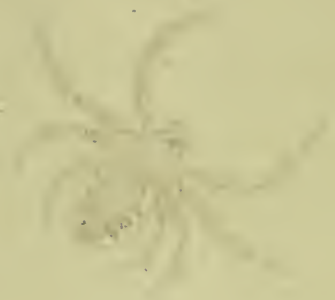
CONTAINING THE HISTORY OF THE



*Aranea irregularis* Miki.

J. St. fcc.

171



Small spider, 171

ARANEA irregularis.

*Die unregelmäßig gezeichnete Spinne.*

*Aranca irregularis*: atra, abdomine ovato margine laterali irregulariter repando testaceo.

Legi sub trunco Quercus caesae.

Parva. Corpus totum atrum. Thorax ovalis nudus glaber. Abdomen ovatum nigrum, margine omni irregulariter repando, seu interrupte testaceo. Pedes nigri pilosi.

a Magnitudo naturalis. b Eadem aucta. c Situs oculorum.

ANNALS OF THE

ROYAL CANADIAN MOUNTED POLICE

FOR THE YEAR 1900

1901

OTTAWA: KING AND COMPANY, PRINTERS

1901

1901

1901

1901



*Papilio D. Sinapis Fabr.*

*J. St. sc.*





PAPILIO Danaus Sinapis.

*Der Senffalter. Der Senfweisling. Papillon tout blanc. Papillon blanc de lait. Smal white wood Butterfly.*

*Papilio Dan. Sinapis*: alis rotundatis integerrimis albis: apicibus fuscis. *Fabric.* Entom. syst. T. IV. n. 577. p. 187. Syst. Entom. n. 114. p. 470. Spec. Inf. T. II. n. 164. p. 40. Mant. Inf. T. II. n. 186. p. 18.

*Papilio Dan. Cand. Sinapis. Linn.* Syst. Nat. n. 79. p. 760. ed. XIII. n. 79. p. 2261. Fn. Suec. n. 1038.

*Verz. d. W. Schmetterl.* n. 5. p. 163.

*Degeer* Inf. T. II. P. I. n. 4. p. 183. tab. 1. fig. 1.

*Scop.* Carn. n. 452. ic: 452.

*Schäffer* Ic: Inf. Ratisb. tab. 97. fig. 8—11.

*Esper* Eur. Schmett. T. I. tab. 3. fig. 4.

*Borkhausen* Eur. Schm. T. I. n. 9. tab. 124.

Von der Naturgeschichte dieses Falters ist gar nichts bekannt. Er selbst wird vom Frühling an bis in Herbst in niedrigen lichten Waldungen ziemlich häufig gefunden. *Borkhausen.*

*[The text on this page is extremely faint and illegible. It appears to be a list or a series of entries, possibly related to a collection or inventory.]*



*Papilio D. Daphidice* Fabr.

J. St. Sc.



PAPILIO Danaus Daplidice.

*Der grüngeflekte Weisling. Der Waufalter. Der Peterfilienvogel.*  
*Der Heiderichschmetterling. Le blanc marbrè de verd. Le Papillon*  
*perfillè batard. The slight greenish Half-mourner.*

*Papilio Dan. Daplidice:* alis rotundatis integris albis margine fuscis: subtus griseo  
virescentibus albo maculatis. *Fabric. Entom. syst. T. IV. n. 593. p. 191.*  
*Syst. Ent. n. 122. p. 471. Spec. Inf. T. II. n. 174. p. 41. Mant. Inf. T. II.*  
*n. 197. p. 19.*

*Papilio Dan. Cand. Daplidice. Linn. Syst. Nat. n. 81. p. 760. ed. XIII. n. 81.*  
*p. 2263.*

*Verz. d. Wien. Schmett. n. 6. p. 163.*

*Geoffr. Inf. T. II. n. 44. p. 71.*

*Pallas Spicil. IX. 32. tab. 10. fig. 4. 5. 6.*

*Schaeffer* Ic. Inf. Ratisb. tab. 79. fig. 2. 3.

*Esper* Eur. Schmett. T. I. tab. 3. fig. 5.

*Borkhausen* Eur. Schmett. T. I. n. 8 p. 123.

Nach dem Bericht der Wiener Entomologen, soll die Raupe dieses Falters auf dem *Färberwau* (*Reseda Luteola Linn.*) wohnen, und grün seyn. Er wurde schon im Frühjahr entdeckt, und im Sommer und Herbst beobachtet. Er liebt die mit Blumen besetzten Aecker, und die daran, oder an Wälder stossende Wiesen.  
*Borkhausen.*



*Papilio D. Cleopatra* *Nas Fabr.*

*J. St. sc.*





PAPILIO Danaus Cleopatra. Mas.

Die Orangefahne. Das Männchen. ' 1

*Papilio Dan. Cleopatra*: alis integerrimis: anticis supra disco fulvo, reliquis puncto ferrugineo. *Fabric. Ent. syst. T. IV. n. 667. p. 213. Syst. Entom. n. 160. p. 479. Spec. Inf. T. II. n. 225. p. 52. Mant. Inf. T. II. n. 258. p. 24.*

*Papilio Dan. Cand. Cleopatra. Linn. Syst. Nat. n. 105. p. 765. ed. XIII. n. 105. p. 2272.*

*Cyrill. Entom. neapolit. I. tab. 3. fig. 2.*

*Seba Mus. T. IV. tab. 16. fig. 7. 8.*

*Esper Eur. Schm. T. I. tab. 48. suppl. 24. fig. 1.*

*Borkhausen Eur. Schm. T. I. n. 2. p. 118.*

Dieser Falter, ist nicht nur nach sichern Beobachtungen in Europa zu Hause, sondern wird auch namentlich in der Schweiz angetroffen. Seine Naturgeschichte ist noch nicht hinlänglich genug aufgehell.

THE HISTORY OF THE

REIGN OF KING CHARLES THE FIRST

BY JOHN BURNET

IN TWO VOLUMES

LONDON

Printed by J. Sturges

at the Sign of the Sun in St. Dunstons Church

in the Strand

1680



*Papilio D. Cleopatra* Tem. Fabr. 3. St. sc.



PAPILIO Danaus Cleopatra. Femina.

*Die Orangefahne. Das Weibchen.*

*Papilio Danaus Cleopatra. Fabric. et Linn. l. l. c. c.*

Wohnt und lebt bey seinem Männchen, und unterscheidet sich vorzüglich, durch die dem Centro der Vorderflügel abgängige orangefarbne Makel.

1850's Great Migration

The Migration, 1850-1860

1850's Great Migration

1850's Great Migration







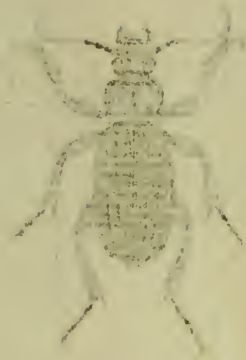
- Tab. 1. *Carabus clathratus* Fabric.  
— 2. *Carabus cupreus* Fabric.  
— 3. *Carabus azureus* Fabric.  
— 4. *Carabus aeneus* Fabric.  
— 5. *Carabus cyanocephalus* Fabric.  
— 6. *Carabus haemorrhoidalis* Fabric.  
— 7. *Carabus alpinus* Fabric.  
— 8. *Carabus borealis* Paykull.  
— 9. *Carabus meridianus*. Fabric.  
— 10. *Carabus quadrimaculatus* Fabric.  
— 11. *Carabus agilis* Fabric.  
— 12. *Carabus truncatellus* Fabric.  
— 13. *Dermeestes undatus* Fabric.  
— 14. *Dermeestes lunatus* Fabric.  
— 15. *Dermeestes adstrictor* Fabric.  
— 16. *Silpha grossa* Fabric.  
— 17. *Silpha ferruginea* Fabric.  
— 18. *Silpha oblonga* Fabric.  
— 19. *Apis ericetorum* Panzer.  
— 20. *Apis frutetorum* Panzer.  
— 21. *Apis saltuum* Panzer.  
— 22. *Papilio Danaus Cardamines* Fabric.  
— 23. *Papilio Danaus Eupheno* Mas. Fabric.  
— 24. *Papilio Danaus Eupheno Femina* Fab.





*Carabus clathratus* Fabr.

J. St. fec.



CARABVS clathratus.

*Der gegitterte Laufkäfer.*

*Carabus clathratus*: apterus nigricans elytris aeneis striatis interiectis punctis excavatis cupreis. *Fabric.* Entom. syst. T. I. n. 29. p. 131. Syst. Ent. n. 15. p. 238. Spec. Inf. T. I. n. 18. p. 302. Mant. Inf. T. I. n. 26. p. 197.

*Carabus clathratus.* *Linn.* Syst. Nat. n. 15. p. 238. ed. XIII. n. 5. p. 1962. Fa. Suec. n. 782.

*Carabus aeneopunctatus.* *Degeer* Inf. T. IV. n. 1. p. 87. tab. 3. fig. 12.

*Paykull.* Mon. Car. n. 8. p. 18.

*Eiusd.* Faun. Suec. n. 8. p. 103.

*Voet* Coleopt. II. n. 40. tab. 38. fig. 40.

*Rossi* Faun. Etrusc. T. I. n. 507. p. 205.

*Illiger* Kugel. Käf. Preuss. T. I. n. 19. p. 156.

*Panzer* Entom. germ. I. n. 19. p. 48.

Habitat raro in sylvaticis.

THE HISTORY OF THE

ROYAL NAVY

FROM THE EARLIEST PERIODS TO THE PRESENT  
BY JAMES SPENCER SMITH, ESQ.  
OF THE BARRISTERS AT LAW.  
IN TWO VOLUMES.

LONDON: Printed by R. and J. DODD, in Pall-mall.

1795.

Price 10s. 6d.

THE HISTORY OF THE

ROYAL NAVY

FROM THE EARLIEST PERIODS TO THE PRESENT

BY JAMES SPENCER SMITH, ESQ.

OF THE BARRISTERS AT LAW.

IN TWO VOLUMES.



*Carabus cupreus* Fabr.

J. Sc. fec





CARABVS cupreus.

*Der kupferfärbige Laufkäfer. Carabè rosette. Degeer.*

*Carabus cupreus* : alatus cupreus antennis basi rubris. *Fabric. Entom. syst. T. I.*  
n. 126. p. 153. *Syst. Ent. n. 40. p. 243. Spec. Inf. T. I. n. 50. p. 308.*  
*Mant. Inf. T. I. n. 68. p. 201.*

*Carabus cupreus. Linn. Syst. Nat. n. 29. p. 672. ed. XIII. n. 29. p. 1975. Fa.*  
*Suec. n. 801.*

*Carabus metallicus. Scop. Carn. 270.*

*Paykull Mon. Car. n. 71. p. 113.*

*Eiusd. Faun. Suec. n. 75. p. 155.*

*Degeer Inf. T. IV. n. 13. p. 97. tab. 3. fig. 15.*

*Rossi Faun. Etrusc. T. I. n. 518. p. 210.*

*Schaeffer Ic. Inf. Ratisb. tab. 18. fig. 5.*

*Harrer* Besch. d. Schaeff. Inf. n. 208. p. 130.

*Illiger* Kugel. Käf. Preuf. T. I. n. 31. p. 166. a)

*Panzer* Entom. germ. I. n. 60. p. 56.

Habitat sub lapidibus in pratis humidis, frequens.

a Magnitudo naturalis. b Eadem aucta.



*Carabus azureus* Fabr.

J. St. fec.



CARABVS azureus.

*Der azurene Laufkäfer.*

*Carabus azureus*: alatus cyaneus, antennis pedibusque rubris. *Fabric.* Entom. syst. T. I. n. 133. p. 155. Syst. Entom. n. 45. p. 244. Spec. Inf. T. I. n. 53. p. 308. Mant. Inf. T. I. n. 71. p. 201.

*Rossi* Faun. Etrusc. T. I. n. 550, p. 222.

*Illiger* Kugel. Käf. Preuss. T. I. n. 36. p. 169. α)

*Panzer* Entom. germ. I. n. 67. p. 57.

Habitat sub lapidibus, rarior. Varietas *Carab. aenei Fabr.*

a Magnitudo naturalis. b Eadem aucta.

1870

1870

...



*Carabus aeneus* Fabr.

J. St. fec.





CARABVS aeneus.

*Der bronzfärbige Laufkäfer.*

*Carabus aeneus*: alatus supra aeneus, antennis pedibusque ferrugineis. *Fabric.* Ent. syst. T. I. n. 142. p. 156. Syst. Ent. n. 49. p. 245. *Spec. Inf.* T. I. n. 59. p. 309. *Mant. Inf.* T. I. n. 81. p. 202.

*Carabus elegans.* *Scop.* carn. n. 269. 2.

*Carabus Proteus.* *Paykull.* Mon. Car. n. 72. 1. p. 115.

— — — Faun. Succ. n. 83. a. p. 163.

*Schaeffer* Ic. Inf. Ratisb. tab. 18. fig. 3.

*Harrer* Besch. d. Schöff. Inf. n. 207. p. 130.

*Illiger* Kugel. Käf. Preuf. T. I. n. 36. p. 169. β)

*Panzer* Entom. germ. I. n. 67. p. 57.

Habitat cum anteced. ubique pervulgaris. Magnitudine et coloribus ludit,  
inde mira huius varietatum progenies.

a Magnitudo naturalis. b Eadem aucta.





*Carabus cyanocephalus* Fabr.

3. St. fec.



CARABVS cyanocephalus.

*Der blauköpfigte Laufkäfer. Le Bupreste bleu à corcelet rouge. Geoffr.*

*Carabus cyanocephalus*: alatus thorace pedibusque ferrugineis, capite elytrisque cyaneis. *Fabric.* Ent. syst. T. I. n. 154. p. 159. Syst. Entom. n. 53. p. 245. Spec. Inf. T. I. n. 65. p. 310. Mant. Inf. T. I. n. 90. p. 203.

*Carabus cyanocephalus.* *Linn.* Syst. Nat. n. 21. p. 671, ed. XIII, n. 21. p. 1972. Fn. Suec. n. 794.

*Geoffr.* Inf. T. I. n. 40. p. 149.

*Degeer* Inf. T. IV. n. 17. p. 100. tab. 3. fig. 17.

*Rossi* Faun. Etrusc. T. I. n. 540. p. 218.

*Paykull.* Mon. Car. n. 36. p. 60.

*Eiusd.* Faun. Suec. T. I. n. 37. p. 125.

*Schäffer* Ic. Inf. Ratisb. tab. 11. fig. 14.

*Harrer* Besch. d. Schäff. Inf. n. 216. p. 134.

*Illiger* Kugel. Käf. Preuf. T. I. n. 92. p. 206.

*Panzer* Entom. germ. I. n. 62. p. 57.

Haud infrequens sub lapidibus.

a Magnitudo naturalis. b Eadem aucta.



*Carabus haemorrhoidalis* Fabr.

J. St. f. 22





CARABVS haemorrhoidalis.

*Der rothafterigte Laufkäfer.*

*Carabus haemorrhoidalis*: alatus thorace suborbiculato rufo, elytris nigris apice rufis. *Fabric.* Entom. syst. T. I. n. 162. p. 161. *Mant. Inf.* T. I. n. 97. p. 203.

Raro sub arborum cortice primo vere.

a Magnitudo naturalis. b Eadem aucta.

THE UNIVERSITY OF CHICAGO

PHYSICS DEPARTMENT

REPORT OF THE PHYSICS DEPARTMENT  
FOR THE YEAR 1911-1912

CHICAGO, ILL., 1912



*Carabus alpinus* Fabr.

J. St. fcc.



CARABVS alpinus.

*Der Alpen Laufkäfer.*

*Carabus alpinus*: alatus ater elytris striatis: disco ferrugineo. *Fabric.* Entom. syst. Suppl. p. 58.

*Carabus torridus.* *Illiger* Kugel. Käf. Preuf. T. I. n. 42. p. 173. var.  $\beta$ .

Habitat raro in Germania boreali.

a Magnitudo naturalis. b Eadem aucta.





*Carabus borealis* Paykull.

J. St. fecit.





CARABVS borealis.

*Der nördliche Laufkäfer.*

*Carabus borealis*: supra obscure aeneus, elytris duplici serie profunde punctatis, margine summo pedibusque rufis. *Paykull. Faun. Suec. T. I. n. 28. p. 118.*

*Carabus borealis. Paykull. Mon. Car. n. 30. p. 51.*

*Illiger Kug. Käf. Preuf. T. I. n. 66. p. 188.*

Habitat in sylvaticis primo vere sub arborum cortice. *Kugelann. l. c.*

a Magnitudo naturalis. b Eadem aucta.

CAROLINE BROWN

Der Herrliche Landwirt

Caroline Brown, eine schöne Frau, die in der Gegend von  
London lebt. Sie hat einen Mann, der ein Landwirt ist.  
Ihre Kinder sind sehr lieb und artig.

Es ist ein sehr schönes Haus, das sie haben.

Die Kinder sind sehr glücklich.



*Carabus meridianus* Fabr.



CARABVS meridianus.

*Der mittägliche Laufkäfer.*

*Carabus meridianus* : alatus niger elytris antice pedibusque testaceis, *Fabric.*  
Entom. syst. T. I. n. 177. p. 164. Syst. Entom. n. 62. p. 247. Spec. Inf.

T. I. n. 77. p. 312. Mant. Inf. T. I. n. 111. p. 205.

*Carabus meridianus.* *Linn.* Syst. Nat. n. 36. p. 673. ed. XIII, n. 36. p. 1978.

Fn. Suec. n. 797.

*Rossi* Faun. Etrusc. T. I. n. 554. p. 223.

*Schrank* inf. austr. n. 408.

*Illiger* Kugelann. Käf. Preuß. T. I. n. 82. p. 198.

*Panzer* Entom. germ. n. 101. p. 63.

Haud infrequens sub arborum cortice.

a Magnitudo naturalis. b Eadem aucta.

*Fünf und siebenzigstes Heft.*

THE UNIVERSITY OF CHICAGO

PHILOSOPHY DEPARTMENT

Office of the Chair of Philosophy  
540 East 5th Street, Chicago, Illinois 60607  
Tel. (312) 937-1234

Chair of Philosophy

1998-1999

Chair: [Name]

Deputy Chair: [Name]

Chair of Philosophy

1998-1999

Chair of Philosophy



*Carabus quadrimaculatus* Fabr.

J. St. fec.





CARABVS quadrimaculatus.

*Der viergefleckte Laufkäfer. Le Bupreste quadrille à corcelet plat, et etuis lisses. Geoffr.*

*Carabus quadrimaculatus*: alatus thorace ferrugineo glabro, elytris obtusissimis fuscis: maculis duabus albis. *Fabric.* Entom. syst. T. I. n. 180. p. 165. Syst. Ent. n. 64. p. 248. *Spec. Inf.* T. I. n. 79. p. 313. *Mant. Inf.* T. I. n. 113. p. 205.

*Carabus quadrimaculatus.* *Linn.* Syst. Nat. n. 40. p. 673. ed. XIII, n. 41. p. 1971. Fn. Suec. n. 813.

*Geoffr.* Inf. T. I. n. 24. p. 152.

*Rossi* Faun. Etrusc. T. I. n. 560. p. 225.

*Paykull* Mon. Car. n. 51. p. 83.

*Eiusd.* Faun. Suec. n. 56. p. 140.

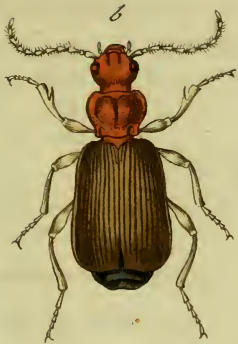
*Illiger* Kugel. Käf. Preuf. T. I. n. 88. p. 202. var.  $\alpha$ )

*Panzer* Entom. germ. I. n. 108. p. 64.

Habitat haud infrequens sub arborum cortice et sub foliis deciduis in sylvaticis humidiusculis.

a Magnitudo naturalis. b Eadem aucta.





*Carabus agilis* Fabr.

J. St. fce



CARABVS agilis.

*Der schnellfüßichte Laufkäfer.*

*Carabus agilis*: alatus rufus, elytris abdomineque nigris. *Fabric.* Entom. Syst.

T. I. n. 67. p. 139. Mant. Inf. T. I. n. 99. p. 204.

*Paykull* Mon. Car. n. 64. p. 102.

*Eiusd.* Faun. Suec. n. 69. p. 150. α)

*Illiger* Kugel. Käf. Preuf. T. I. n. 88. p. 202. δ)

*Carabus atricapillus.* *Herbst* Archiv. V. n. 37. p. 137. tab. 29. f. 10.

*Panzer* Entom. germ. I. n. 40. p. 52.

Haud raro sub frondibus arborum deciduis.

a Magnitudo naturalis. b Eadem aucta.

THE UNIVERSITY OF CHICAGO

PHYSICS DEPARTMENT

RECEIVED

NOV 10 1954

PHYSICS DEPARTMENT

UNIVERSITY OF CHICAGO

PHYSICS DEPARTMENT

UNIVERSITY OF CHICAGO

PHYSICS DEPARTMENT

UNIVERSITY OF CHICAGO

PHYSICS DEPARTMENT

UNIVERSITY OF CHICAGO

PHYSICS DEPARTMENT

UNIVERSITY OF CHICAGO

PHYSICS DEPARTMENT

UNIVERSITY OF CHICAGO



*Carabus truncatellus* Fabr.

J. St. fec.





CARABVS truncatellus.

*Der kleine abgestumpfte Laufkäfer.*

*Carabus truncatellus* : alatus supra obscure aeneus, subtus ater, elytris obtusis.

*Fabric.* Entom. syst. T. I. n. 194, p. 168. Mant. Inf. T. I. n. 123. p. 206.

*Carabus truncatellus.* *Linn.* Syst. Nat. n. 43. p. 672. ed. XIII. n. 43. p. 1980.

*Paykull* Mon. Car. n. 61. p. 98.

*Eiusd.* Faun. Suec. n. 22. p. 114.

*Illiger* Kugel. Käf. Preuss. T. I. n. 91. p. 206.

Habitat in apricis fabulosis.

a Magnitudo naturalis. b Eadem aucta.

THE LAST OF THE

THE LAST OF THE

THE LAST OF THE

THE LAST OF THE

THE LAST OF THE



*Dermestes undatus* Fabr.



DERMESTES undatus.

*Der wellenförmig gezeichnete Speekkäfer.*

*Dermestes undatus*: oblongus niger, elytris fascia undata alba duplici. *Fabric.*  
Entom. Syst. T. I. n. 6. p. 228. Syst. Ent. n. 5. p. 56. Spec. Inf. T. I.  
n. 6. p. 64. Mant. Inf. T. I. n. 6. p. 34.

*Dermestes undatus*. *Linn.* Syst. Nat. n. 3. p. 562. ed. XIII, n. 3. p. 1592. *Fn.*  
Suec. n. 410.

*Laichart.* tyr. Inf. T. I. n. 3. p. 61.

*Herbst* Nat. Käf. IV. n. 12. p. 131. tab. 40. fig. 9. G.

*Scriba* Beytr. n. 32. p. 221. tab. 14. fig. 3.

*Schäffer* Ic. Inf. Ratisb. tab. 157. fig. 7. a. b.

*Harrer* Besch. d. Schäff. Inf. n. 46. p. 37.

*Illiger* Kug. Käf. Preuf. T. I. n. 4. p. 315.

*Panzer* Entom. germ. I. n. 9. p. 96.

Habitat in floribus, et in cadaveribus.

a Magnitudo naturalis. b Eadem aucta.

THE UNIVERSITY OF CHICAGO

PH.D. THESIS

Submitted by [Name] in partial fulfillment of the requirements for the degree of Doctor of Philosophy in the Department of [Department]

Chicago, Illinois, [Date]

Approved by the Department of [Department]

[Signature]

[Signature]

[Signature]

[Signature]

[Signature]

[Signature]

[Signature]



*Dermestes lunatus* Fabr.





DERMESTES lunatus.

*Der mondförmig gezeichnete Speckkäfer.*

*Der mestes lunatus*: oblongus niger elytris lunula dorsali cinerea. *Fabric. Entom.*  
*Syst. T. I. n. 27. p. 232.*

Perraro in floribus: bis tantum vidi,

a Magnitudo naturalis, b Eadem aucta.

THE UNIVERSITY OF CHICAGO

PH.D. THESIS

BY

JOHN H. ...

IN

THE DEPARTMENT OF ...



*Dermestes adstrictor* Hellw.

f. 10. f.



DERMESTES adstrictor.

*Der unähnliche Speckkäfer.*

*Dermestes adstrictor*: oblongo-ovalis brunneus pubescens, elytris punctato striatis. Illiger Kug. Preuf. Käf. T. I. n. 10. p. 322.

Herbst Nat. d. Käf. IV. n. 20. tab. 41. fig. 4. D.

Panzer Entom. germ. I. n. 48. p. 106.

Habitat in floribus. Haud commode sub hoc genere militat.

a Magnitudo naturalis. b Eadem aucta.

THE UNIVERSITY OF CHICAGO

PHYSICS DEPARTMENT

RECEIVED

APR 1 1954

1954

CHICAGO, ILL.

TO THE PHYSICS DEPARTMENT

FROM THE PHYSICS DEPARTMENT

1954



*Silpha grossa* Fabr.

J. St. fec.





SILPHA grossa.

*Der breitgeschildete Aaskäfer.*

*Silpha grossa*: picea elytris punctatis: lineis elevatis tribus, thorace transverse emarginato. *Fabric.* Entom. syst. T. I. n. 6. p. 249.

*Silpha grossa*: *Linn.* Syst. Nat. n. 21. p. 572. ed. XIII. n. 21. p. 1623. Faun. Suec. n. 459.

*Herbst* Nat. d. Käf. V. n. 6. p. 177. tab. 50. fig. 10.

*Illiger* Kug. Käf. Preuf. T. I. n. 1. p. 375.

*Panzer* Entom. germ. I. n. 3. p. 119.

Sub Cortice arborum, raro.

1875

THE UNIVERSITY OF CHICAGO

PHILIP BRADSHAW  
1875

PHILIP BRADSHAW  
1875

THE UNIVERSITY OF CHICAGO



*Silpha ferruginea* Fabr.

2. St. fec



SILPHA ferruginea.

*Der rostfärbige Aaskäfer.*

*Silpha ferruginea*: ferruginea elytris lineis elevatis senis nigricantibus: margine ferrugineo. *Fabric.* Entom. syst. T. I. n. 21. p. 253. Syst. Ent. n. 16. p. 75. Spec. Inf. T. I. n. 19. p. 89. Mant. Inf. T. I. n. 22. p. 49.

*Silpha ferruginea.* Linn. Syst. Nat. n. 19. p. 572, ed. XIII. n. 19. p. 1623. Fa. Suec. n. 458.

*Ostoma rubicunda.* *Laichart.* tyr. Inf. I. n. 1. p. 102.

*Herbst* Nat. d. Käf. V. n. 21. p. 195. tab. 51. fig. 10.

*Illiger* Kugelan. Käf. Preuss. I. n. 2. p. 376.

*Panzer* Entom. germ. I. n. 15, p. 121.

Habitat sub corticibus arborum.

a Magnitudo naturalis. b Eadem aucta.

THE UNIVERSITY OF CHICAGO

THE DEPARTMENT OF CHEMISTRY

REPORT OF THE DEPARTMENT OF CHEMISTRY  
FOR THE YEAR 1911

CHICAGO, ILL., 1912

BY THE DEPARTMENT OF CHEMISTRY



*Silpha oblonga* Fabr.





SILPHA oblonga.

*Der länglichte Aaskäfer.*

*Silpha oblonga*: nigra elytris striato punctatis: lineis elevatis fenis, thorace emarginato. *Fabric.* Entom. syst. T. I. n. 22. p. 253. Syst. Ent. n. 17. p. 75. Spec. Inf. T. I. n. 20. p. 89. Mant. Inf. T. I. n. 23. p. 50.

*Silpha oblonga.* *Linn.* Syst. Nat. n. 22. p. 572. ed. XIII. n. 22. p. 1623. Faun. Suec. n. 460.

*Herbst* Archiv. IV. n. 9. p. 34. tab. 20. fig. 22.

*Illiger* Kug. Käf. Preuf. T. I. n. 3. p. 377.

*Panzer* Entom. getm. n. 16. p. 122.

Habitat cum antecedenti.

a Magnitudo naturalis. b Eadem aucta.

THE HISTORY

OF THE

... ..  
... ..  
... ..  
... ..

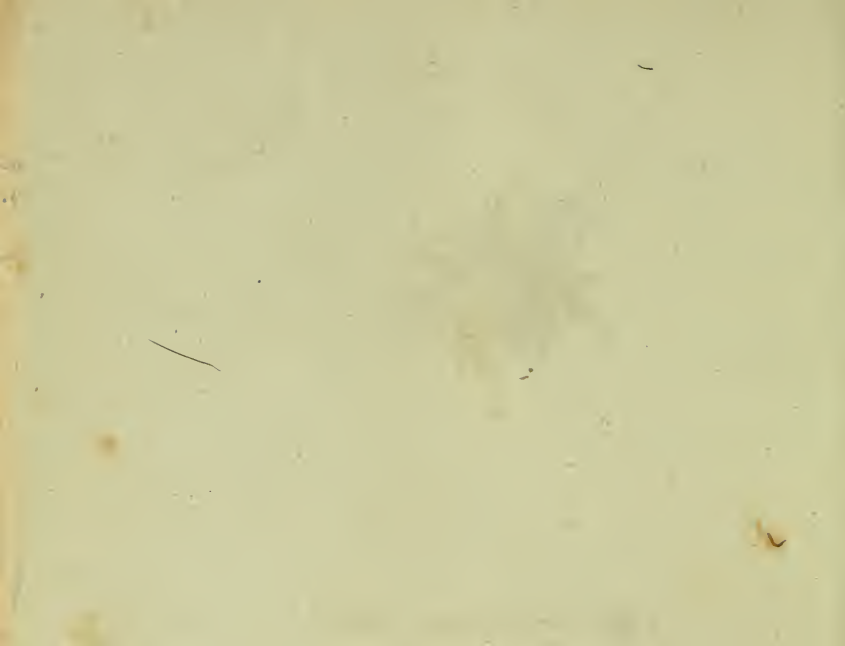
... ..  
... ..  
... ..

... ..  
... ..



*Apis ericetorum* Miki.

J. St. fec.



APIS ericetorum.

*Die Heide - Biene. Die Heide - Hummel.*

*Apis ericetorum*: hirsuta flava, abdominis fascia nigra, ano albo.

Habitat raro in ericetis. Legi autumnno 1799.

Magnitudo et statura *A. hortorum*. *F.* et habitus *A. hypnorum* *F.* sed ab utraque diversissima. Frons albo-hirsuta, interiecta hirsutiae flavescente. Antennae longiusculae nigrae. Thorax undique flavo hirsutus. Abdomen basi, s. segmentis primis duobus, flavum, dein fascia nigra; anus albus. Pedes nigri hirsutuli. Alae subfuscae.

संस्कृत-भाषा

संस्कृत-भाषा - भाग - १ - अध्याय - १

संस्कृत-भाषा - भाग - १ - अध्याय - १

संस्कृत-भाषा - भाग - १ - अध्याय - १

संस्कृत-भाषा - भाग - १ - अध्याय - १



*Apis frutetorum* Niki.

J. St. fec.





APIS frutetorum.

*Die Strauch-Biene. Die Strauchhummel.*

*Apis frutetorum*: hirsuta nigra, thorace cinerofcente fascia nigra: abdomine basi cinerofcente, ano fulvo.

Habitat in frutetis. Legi autumnno 1799.

Habitus et statura *A. autumnalis* F. sed diversa. Caput cum vertice atrum. Thorax dorso ater, antice et postice cinerofcens. Abdomen atrum, basi et medio cinerofcens: anus acutiufculus fulvus. Pedes nigri fulvo hirsutuli. Alae obscuro fulcae.

THE HISTORY

OF THE

REIGN OF

CHARLES

THE SECOND



*Apis saluum Miki.*



APIS saltuum:

*Die Schlag. Biene. Die Schlag - Hummel.*

*Apis saltuum*: hirsuta atra, thorace albo, fascia nigra: abdomine antice anoque albis.

Legi haud infrequens in saltibus, in *Solidag. Virg. aur. L.*

Distincta omnino species. Caput nigro hirsutum. Antennae longiusculae nigrae. Thorax dorso ater, antice et postice albus. Abdomen antice cinerascens, medio subcalvum; annis acutiusculus densius albo hirsutus. Pedes nigri cinereo pilosi: tarsi fuscis. Alae apice hyalinae, nervis et venis fuscis.

1874

The ... ..

The ... ..

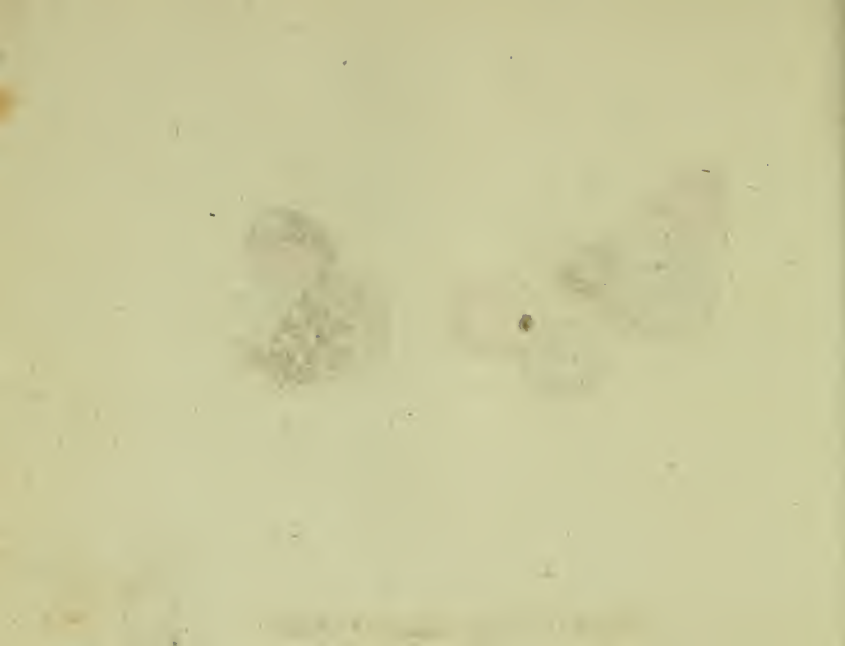
The ... ..

The ... ..



*Papilio D. Cardamines Fabr.*

J. St. fec.





PAPILIO Danaus Cardamines.

*Der Bergkrebsfalter. Die Aurora. Der Auroraweißling. L'Aurore.  
Le Papillon perfillè.*

*Papilio Danaus Cardamines*: alis rotundatis integerrimis albis: posticis subtus viridi marmoratis. *Fabric.* Entom. syst. T. IV. n. 600. p. 193. Syst. Ent. n. 126. p. 472. *Spec. Inf.* T. II. n. 179. p. 43. *Mant. Inf.* T. II. n. 203. p. 20.

*Papilio Dan. cand. Cardamines.* *Linn.* Syst. Nat. n. 85. p. 761, ed. XIII. n. 85. p. 2264. *Fn. Suec.* n. 1039.

*Verz. d. W. Schmetterl.* n. 7. p. 163.

*Geoffr.* Inf. T. II. n. 44. p. 71.

*Schäffer* Ic. Inf. Ratisb. tab. 91. fig. 1. 2.

*Scopol.* Carn. n. 454. ic. 454.

*Rösel* Inf. Bel. T. I. tab. 8.

Esper Eur. Schmett. T. I. tab. 4. fig. 1. tab. 27. fig. 3.

Borkhausen Eur. Schm. T. I. n. 7. p. 122. et p. 256.

Die Raupe dieses Falters findet man am gewöhnlichsten im Julius. Zur Nahrung dienen ihr der Waldkohl (*Turritis glabra L.*), der wilde Kohl (*Brassica campestris L.*) die Bergkresse (*Cardamine spec.*) und andere. Der Falter selbst erscheint in den ersten warmen Frühlingstagen, und man sieht ihn fast den ganzen Sommer hindurch. Er liebt Wiesen, grasigte Gärten, und grasigte Plätze in den Wäldern.



*Papilio D. Eupheno* Mas Fabi:

J. St. J.



PAPILIO Danaus Eupheno. Mas.

*Der Dreifstrich. Der Braunmond. L' Aurora de Provence. Das  
Männchen.*

*Papilio Danaus Eupheno*: alis integerrimis rotundatis flavis: anticis apice (medio fulvis) nigris, posticis subtus strigis tribus fuscis. *Fabríc.* Ent. Syst. T. IV. n. 644. p. 206. *Mant. Inf.* T. II. n. 241. p. 23.

*Papilio Danaus Candid. Eupheno.* *Linn.* Syst. Nat. n. 88. p. 726. ed. XIII. n. 88. p. 2266.

*Esper* Eur. Schm. T. I. tab. 28. fig. 1. a. b.

*Borkhausen.* Eur. Schm. 1 Th. n. 6. p. 121. et p. 255.

Die Raupe dieses Falters kommt an Bau und Farbe mit der, des vorhergehenden am nächsten überein Sie ist auf der *Biscutella didyma* L. entdeckt worden. Flugzeit hat dieser Falter mit dem vorhergehenden Kreisweisling überein.





*Papilio D. Eupheno* Tem. Fabr.

J. St. fec.





PAPILIO Danaus Eupheno Femina.

*Der Dreiftrich. Der Braunmond. Das Weibchen.*

*Papilio Dan. Eupheno. Edv. l. l. c. c.*

*Papilio Dan. Cand. Eupheno. Linn. l. c.*

*Esper Eur. Schm. T. I. tab. 63. fig. 2. 3.*

Lebt und wehnt bey seinem Männchen.

THE UNIVERSITY OF CHICAGO

PHYSICS DEPARTMENT

PHYSICS 351

LECTURE 1





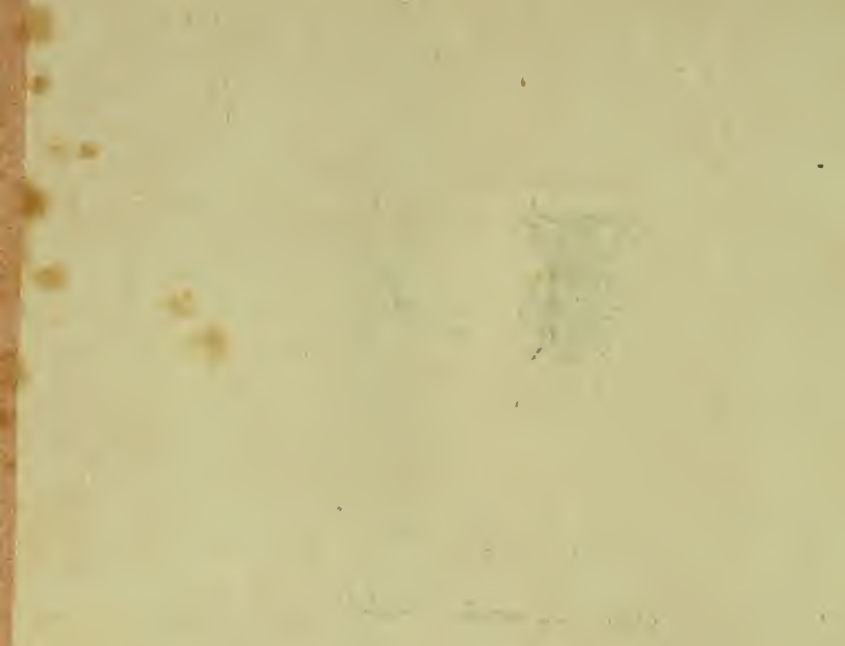
- Tab. 1. *Elater atomarius* Fabric.  
 — 2. *Elater fasciatus* Fabric.  
 — 3. *Elater varius* Fabric.  
 — 4. *Elater lepidopterus* Panzer.  
 — 5. *Elater taeniatus* Panzer.  
 — 6. *Elater cruciatus* Fabric.  
 — 7. *Elater crucifer* Rossi.  
 — 8. *Elater pulchellus* Fabric.  
 — 9. *Elater bimaculatus* Fabric.  
 — 10. *Elater bipustulatus* Fabric.  
 — 11. *Tenthredo Juniperi* Foem. Fabric.  
 — 12. *Ichneumon urinator* Fabric.  
 — 13. *Stephanus coronatus* Jurine.  
 — 14. *Chalcis Abrotani* Jurine.  
 — 15. *Sphex spirifex* Fabric.  
 — 16. *Pompilus annulatus* Jurine.  
 — 17. *Pompilus octopunctatus* Jurine.  
 — 18. *Larra ichneumoniformis* Fabric.  
 — 19. *Masaris apiformis* Fabric.  
 — 20. *Mutilla europaea* Fabric.  
 — 21. *Papilio Nymph.* *Selene* Fabric.  
 — 22. *Papilio Parnass.* *Crataegi* Fabric.  
 — 23. *Papilio Satyrus Semele* Fabric.  
 — 24. *Papilio Satyrus Cinxia* Fabric.





*Elater atomarius* Fabr.

J. St. fec.





ELATER atomarius.

*Der weisbestäubte schwarze Springkäfer.*

*Elater atomarius* : corpore atro : atomis numerosissimis albis. *Fabric.* Entom. syst. Supplem. p. 139.

*Elater carbonarius.* *Schrank.* aufr. n. 343.

*Elater punctatus.* *Herbst* in Act. soc. nat. cur. berol. IV. tab. 7. fig. E.

*Rossi* Faun. etrusc. T. I. n. 440. p. 177.

*Elater pulverulentus.* *Panzer* Entom. germ. I. n. 5. p. 235.

Habitat in ligno putrido.

*B. a* *Linné* neque in Systemate Nat. neque in Faun. suec. unquam unum, e Elaterum genere, sub *atomarii* nomine publicasse, quivis novit, hinc apud *Fabricium* l. c. delendus est ille *Elat. atomar.* *Linn.*

a Magnitudo naturalis. b Antenna aucta.

*Sechs und siebenzigstes Heft.*

LETTERS

THE UNIVERSITY OF CHICAGO

TO THE PRESIDENT OF THE UNIVERSITY OF CHICAGO

FROM THE FACULTY OF THE UNIVERSITY OF CHICAGO

RESOLUTION

ADOPTED BY THE FACULTY

AT A MEETING HELD AT CHICAGO

ON THE 15TH DAY OF MARCH 1906

IN RESPONSE TO A RESOLUTION

PASSED BY THE BOARD OF TRUSTEES



*Elater fasciatus* Fabr.

J. St. fer



ELATER fasciatus.

Der bandirte Springkäfer.

*Elater fasciatus*: thorace nigro pallidoque vario, elytris nigricantibus, fascia undulata alba. *Fabric.* Entom. syst. T. II. n. 29. p. 222. Syst. Ent. n. 12. p. 212. Spec. Inf. T. I. n. 17. p. 267. Mant. Inf. T. I. n. 21. p. 173.

*Elater fasciatus.* *Linn.* Syst. Nat. n. 27. p. 655. ed. XIII. n. 27. p. 1908. *Fn.* Suec. n. 737.

*Panzer* im *Naturforsch.* XXIV. n. 45. p. 32. tab. I. fig. 46.

— — Entom. germ. I. n. 9. p. 236.

Habitat in ligno.

London 20th 1841

My dear Sir

I have the pleasure to inform you that the  
proceedings of the Court of Directors  
in relation to the affairs of the Bank  
of England have been completed  
and the result is as follows

The Directors have resolved  
to pay a dividend of 5 per cent  
on the capital of the Bank  
and to distribute the same  
on the 1st day of January next



*Elater varius* Fabr.

J. St. f. m.





ELATER varius.

*Der buntschuppichte Springkäfer.*

*Elater varius*: niger thoracis margine elytrorumque basi fasciaque postica villosa  
flavescentibus. *Fabric.* Entom. Syst. T. II. n. 30. p. 222.

*Elater Quercus.* *Herbst* Archiv IV. n. 26. tab. 27. fig. 11. E.

*Panzer* Entom. germ. I. n. 11. p. 236.

Habitat in Quercu.

a Magnitudo naturalis. b Eadem aucta.

LETTER

Dear Sir,

I have the honor to acknowledge the receipt of your letter of the 14th inst. in relation to the above mentioned matter. I am sorry to hear that you are not satisfied with the result of the investigation. I will endeavor to do all in my power to rectify the same.

Very respectfully,  
Your obedient servant,

J. H. [Name]



*Elatēr lepidopterus Nishi.*

J. St. fec.



ELATER lepidopterus.

*Der goldschuppichte Springkäfer.*

*Elater lepidopterus*: ater, supra infraque aureo squamosus, pedibus obscure ferrugineis.

Lectus semel Berolini in muro, mens. Jun. 1798. a Dom. *Funck* Pharmacop. Ghesensi — Baruth., qui eandem benevole mecum communicavit.

Statura, habitus *Elat. var. F.* est maior et distinctus. Corpus subtus atrum, punctis vagis plurimis impressis, atomis squamosis numerosis aurulentis. Caput atrum fronte canaliculata. Antennae fuscae obtuso ferratae pubescentes. Thorax fuscus medio canaliculatus, utrinque puncto impresso. Elytra obscure ferruginea, impresso punctata, atomis numerosissimis, ut tota superficies — aurulentis adpersa. Pedes breves obscure ferruginei.

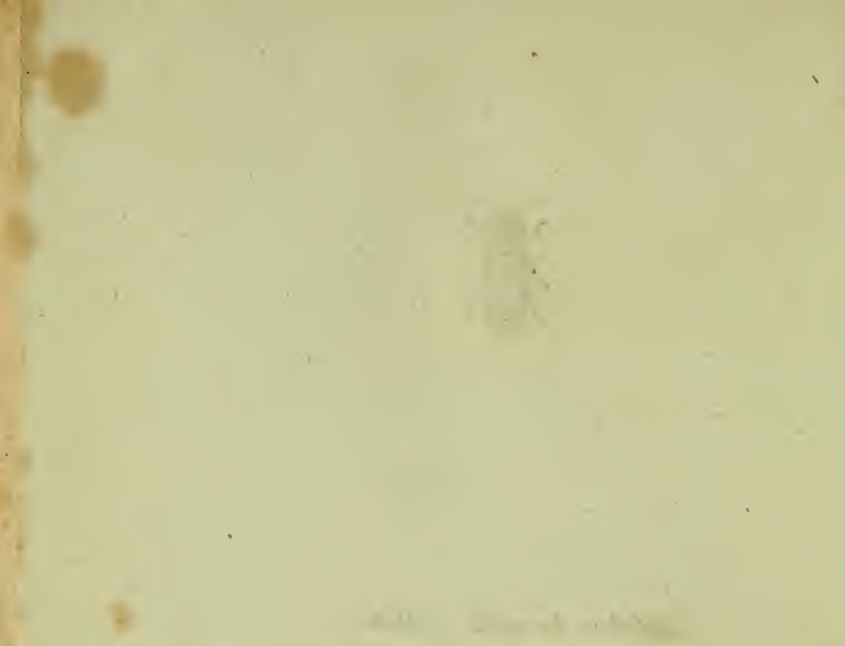
a Magnitudo naturalis. b Eadem aucta.





*Elater taeniata* Miki.

2015





ELATER taeniatus.

*Der silberschuppichte Springkäfer.*

*Elater taeniatus*: ater thorace elytrisque postice fasciis duabus interruptis argenteo squamosis.

*Elater taeniatus*. Panzer Entom. germ. I. n. 10. p. 236.

Lectus in trunco putrido montis piniferi in Franconia a Dom. FUNK.

Eadem species, quam in Entom. german. l. c. publicaveram: descripta ibidem ad exemplum magis oblitteratum et derafum.

Caput atrum ( argenteo squamosum ) fronte foveolata. Antennae ferratae thorace dimidio breviores, obscure fuscae, articulo primo maximo. Thorax ater medio canaliculatus, postice utrinque impressus: tota huius superficies atomis arcte superimpositis argenteo squamosis tecta, translucente hinc vel illinc tamen nigredine. Elytra atra, atomis rarioribus, postice fasciis duabus interruptis, argenteo squamosis, punctisque plurimis vagis impressis. Pedes breves fusci. Corpus subtus atrum argenteo squamosum.

THE HISTORY OF THE

REIGN OF CHARLES THE FIRST

BY JOHN BURNET

1679

LONDON: Printed by J. Streater, at the Sign of the Gun, in St. Dunstons Church-yard, 1679.

Price 1s. 6d.

For the Rights of the Crown, by the Kings Printer, J. Streater.

Printed by J. Streater, at the Sign of the Gun, in St. Dunstons Church-yard, 1679.

By Authority.

Charles the First, King of Great Brittain, Ireland, and France.

1629. Born at Windsor, the 29th of March.

1633. Married Henrietta Maria, daughter of Philip the Third, King of France.

1639. Began his personal Government.

1649. Executed at Whitehall.



*Elater cruciatus* Fabr.



ELATER cruciatus.

*Der groſe Kreuz-Springkäfer. Le Taupin porte-croix. Geoffr.*

*Elater cruciatus*: thorace nigro: lateribus ferrugineis, coleoptris flavis margine cruci-  
ceque nigris. *Fabric* Entom. ſyſt. T. II. n. 38. p. 225. Spec. Inf. T. I. n.  
21. p. 268 *Mant.* Inf. T. I. n. 25. p. 173.

*Linn.* Syſt. Nat. n. 12. p. 653. ed. XIII. n. 12. p. 1304. Fn. Suec. n. 722, *Amön.*  
*Acad.* T. V. tab. III. 209. 12.

*Geoffr.* Inf. T. I. n. 6. p. 133.

*Sulzer* abgek. Geſch. d. Inf. tab. 6. fig. 10.

*Voet* Coleopt. T. II. tab. 43. fig. 12.

*Panzer* Entom. germ. I. n. 16. p. 137.

Habitat in editioribus, in ligno putrido, et in floribus.

a Magnitudo naturalis. b Eadem aucta.

THE HISTORY OF THE

REIGN OF KING CHARLES THE FIRST

BY JOHN BURNET

IN TWO VOLUMES

LONDON

Printed by J. Sturges, in Strand

1704

Printed by J. Sturges, in Strand



*Elater crucifer* Rossi.





ELATER crucifer.

*Der kleine Kreuz-Springkäfer.*

*Elater crucifer*: thorace testaceo linea dorsali nigra, elytris concoloribus, cruce, margineque nigris. *Rossi* Faun. etrusc. T. I. n. 454. p. 183. tab. V. fig. 9.

Habitat sub Cortice putrido Quercus.

Facies *E cruciati*, a quo tamen differt colore minus nitido, et magnitudine multo minori, in reliquis omnino illi similis. Hic tamen etsi plures habuerim, numquam inventus est maior lineis duabus. *Rossi* l. c.

a Magnitudo naturalis. b Eadem aucta.

1870

1870

1870

1870

1870

1870

1870



*Elater pulchellus* Fabr.

J. St. fec!



ELATER pulchellus.

*Der schön gezeichnete Springkäfer.*

*Elater pulchellus*: capite thoraceque atris, elytris nigris maculis flavescens, pedibus flavis. *Fabric.* Entom. syst. T. II. n. 77. p. 233. Syst. Entom. n. 34. p. 215. Spec. Inf. T. I. n. 44. p. 272. Mant. Inf. T. I. n. 53. p. 175.

*Elater pulchellus.* *Linn.* Syst. Nat. n. 35. p. 656. ed. XIII. n. 35. p. 1910. Faun. Suec. n. 745.

*Herbst* in Archiv IV. n. 22. tab. 27. fig. 7.

*Panzer* Entom. germ. I. n. 53. p. 243.

Habitat in sylvaticis, in hortis in floribus. Variat numero figura situque figurarum.

a Magnitudo naturalis. b Eadem aucta.

THE HISTORY OF THE

REIGN OF KING CHARLES THE FIRST

BY JOHN BURNET, BISHOP OF SALISBURY

IN TWO VOLUMES

LONDON, Printed by J. Sturges, at the Black-Swan in St. Dunstons Church-yard, 1724.

Vol. I. p. 1.



*Elater bimaculatus* Fabr.





**ELATER bimaculatus.**

*Der zweyfleckigte Springkäfer.*

*Elater bimaculatus* : niger elytris testaceis apice nigris: puncto albo, *Fabricius*  
Entom. germ. I. n. 79. p. 233.

*Rossi* Faun. Etrusc. T. I. n. 452. tab. III. fig. 10.

Habitat in truncis putrid. Querc. et Salic. Varietas antecedentis videtur.

a Magnitudo naturalis. b Eadem aucta.

THE UNIVERSITY OF CHICAGO

PH.D. THESIS

Submitted by [Name] to the Faculty of the Divinity School

in partial fulfillment of the requirements

for the degree of Doctor of Philosophy

in the Department of [Department Name]

Chicago, Illinois, [Date]



*Elater bipustulatus* Fabr.



ELATER bipustulatus.

*Der zweyblatterigte Springkäfer. Le Taupin noir à taches rouges. Geoffr.*

*Elater bipustulatus*: ater nitidus elytris puncto baseos rubro. *Fabric. Ent. syst.*

T. II. n. 88. p. 235. *Syst. Ent. n. 36. p. 215. Spec. Inf. T. I. n. 47. p. 273.*

*Mant. Inf. T. I. n. 59. p. 175.*

*Elater bipustulatus, Linn. Syst. Nat. n. 9. p. 652. ed. XIII. n. 9. P. 1904.*

*Geoffr. Inf. T. I. n. 15. p. 136.*

*Herbst Archiv. IV. n. 23. tab. 27. fig. 8.*

*Voet. Coleopt. T. I. n. 22. tab. 44. fig. 22.*

*Panzer Entom. germ. I. n. 57. p. 243.*

Habitat sub cortice arborum, et in truncis putridis.

THE HISTORY OF THE

... of the ...

... of the ...

... of the ...



*Tenthredo Juniperi* Faem. Fabr.





TENTHREDO Juniperi Foemina.

*Die Wachholder Blattwespe. Das Weibchen.*

*Tenthredo Juniperi*: antennis pennatis obtusis, thorace glabro, corpore nigro.

*Fabric.* Entom. syst. T. III. n. 27. p. 112. Syst. Ent. n. 10. p. 319. Spec.

Inf. T. I. n. 16. p. 409. Mant. Inf. T. I. n. 17. p. 254.

*Tenthredo Juniperi.* Linn. Syst. Nat. n. 15. p. 923. ed. XIII. n. 15. p. 2657. Fn.

Suec. n. 1541.

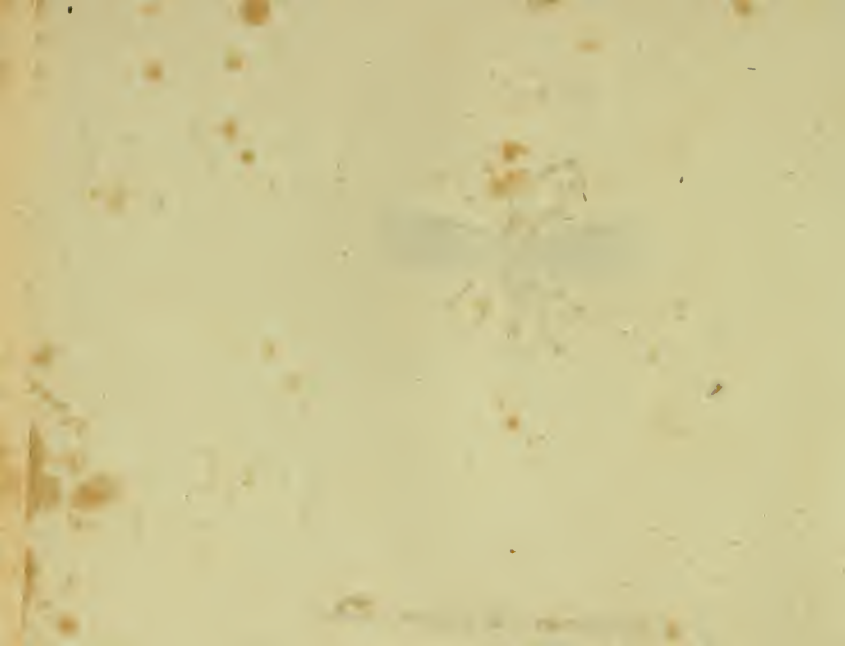
Habitat in Juniperetis, raro. Nullibi descripta et delineata videtur. Ad picturam amicissimi *Jurine*, quam ipse ad hunc finem benevole mecum communicavit, haec tabula excusa est.

a Magnitudo naturalis. b Eadem aucta. c Antenna aucta. d Mandibula aucta.





*Ichneumon urinator* Fabr.



ICHNEVMON urinator.

*Die rothe schwarzgefleckte Schlupfwespe.*

*Icbneumon urinator*: niger thorace antice rufo, abdomine rufo: maculis dorsali-  
bus nigris, alis fuscis. *Fabric.* Entom. syst. Snpplem. p. 224.

Habitat in nemoribus raro. Dn. *Jurine* cum pictura misit.

a Magnitudo naturalis. b Eadem aucta.

1847

Received of the Hon. the Secy of the Navy  
the sum of \$1000.00 for the purchase of  
the schooner "Enterprise" for the  
U.S. Navy



*Stephanus coronatus* Jurine.





STEPHANVS coronatus.

*Die Stachelkronigte Schlupfwespe.*

*Stephanus coronatus* : capite thoraceque nigris ; abdomine petiolato ferrugineo apice nigro, femoribus posticis trispinosis. *Jurine in litt.*

Dn. *Jurine*, qui ex hac specie characterem genericum mutavit, et ipse genus sub hocce nomine condidit, semper supra lignum exsiccatum reperit. Picturam eum anatome manu artificiosissima amicissimi Viri debeo.

Antennae nigrae filiformes triginta duabus articulis compositae. Caput nigrum coronatum tribus spinis. Mandibulae parvae ferrugineae. Vertex transversim sulcatus. Thorax niger antice productus. Abdomen ferrugineum petiolatum, petiolo supra thoracem infixio, tribus ultimis segmentis nigris. Femora nigra apice alba, posticis infra triplici spina armatis. Tibiae ferrugineae, posticis apice dilatatis. Tarsi fusci basi albi. Alae nigricantes in medio fascia transversa hyalina, puncto bicolore. Mas idem sed multo minor. Dn. *Jurine in litt.*

Magnitudo naturalis. a Caput. b Antenna. c Mandibula aucta.





*Chalcis abrotani Turine.*



CHALCIS Abrotani.

*Die Stabwurz - Zahnwespe.*

*Chalcis abrotani*: atra antennis difformibus, tibiis anticis ferrugineis.

Habitat in Artemisia Abrotano. L. Dn. *Jurine* pinxit.

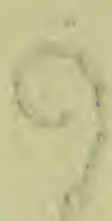
Corpus totum atrum. abdomine ovato nitido petioloto thorace duplo minori. Antennae singulares, uno versu pectinatae, pectinibus remotis, obtusissimis fere tetragonis, singulis utrinque quater ciliatis: articulis duobus ultimis connatis clavaeformibus. Pedes exiles nigri, tibiis anticis tarsisque mediis ferruginei. Femora simplicia. Alae aveniae albae hyalinae, nervo ad marginem anticum ferrugineo.

a Magnitudo naturalis, b Eadem aucta, c Mandibula. d Antenna aucta,





*Sphex spirifex* Fabr.



*Faint, illegible text or markings at the bottom of the page.*



SPIIEX spirifex.

*Die Wendel - Afterwespe.*

*Sphex spirifex*: ater thorace hirtio immaculato, petiolo inarticulato flavo longitudi-  
ne abdominis. *Fabric.* Entom. Syst. T. III. n. 24. p. 204. Syst. Ent. n. 11.  
p. 347. Spec. Inf. T. I. n. 15. p. 445. Mant. Inf. T. I. n. 20. p. 275.

*Sphex spirifex.* *Linn.* Syst. Nat. n. 9. p. 942. ed. XIII. n. 9. p. 2726.

*Reaumur.* Inf. VI. tab. 28. fig. 5.

*Rossi* Faun. Etrusc. T. II. n. 811. p. 61. tab. 2. fig. 13.

*Scop.* delic. fl. et faun. insubr. I. p. 57. tab. 25. fig. A.

*Schäffer* Ic. Inf. Ratisb. tab. 38. fig. 1.

Habitat in cylindris terreis spiralibus sub tectis, frequentans flores umbella-  
tos. Dn. *Jurine* pinxit.

a Antenna aucta.

THE HISTORY OF

THE CITY OF BOSTON

FROM THE FIRST SETTLEMENT TO THE PRESENT TIME  
BY NATHAN OLSZEWSKI  
IN TWO VOLUMES. VOL. I.

BOSTON: PUBLISHED BY  
J. B. LEECH, 15 NASSAU ST. N. Y.

NEW YORK: PUBLISHED BY  
J. B. LEECH, 15 NASSAU ST. N. Y.



*Pompilus annulatus* Jurine.



larva pupa adult

POMPILVS annulatus.

*Die geringelte Grabwespe.*

*Pompilus annulatus*: ater capite thoracis antico abdominisque segmentis basi flavis, alis ferrugineis apice atris. *Jurine*.

*Sphex annulata*. *Fabric*. Entom. syst. Supplem. p. 245.

Dn. *Jurine* ad Pompilos hanc Sphagem retulit, huiusque picturam communicavit.

a Antenna aucta. b Mandibula aucta.

THE UNIVERSITY OF CHICAGO

PHYSICS DEPARTMENT

REPORT ON THE PROGRESS OF WORK DURING THE YEAR 1957

BY

ROBERT S. SHULL

AND

WALTER T. WATSON



*Pompilus octopunctatus* Turine.



*[Faint, illegible handwritten text]*



POMPILVS octopunctatus.

*Die achtpunktirte Grabwespe.*

*Pompilus octopunctatus*: ater antennis thoracis striga antica scutello punctis quatuor abdominis alisque ferrugineis.

*Spbex quadripunctata*. *Fabric.* Entom. syst. T. III. n. 89. p. 219.

Singularis varietas *Sp. quadripunct.* *F.* punctorum ordine duplici, quam *Dn. Furine* ipso consensu naturae ad *Pompil.* retulit, cuius effigies ad picturam *Dn. Furine* sculpta est.

a Mandibula. b Antenna, aucta.

1875

1875

1875

1875

1875

1875

1875

1875



*Larra ichneumoniformis* Fabr.



LARRA ichneumoniformis.

*Die Schlupfwespenartige Prunkwespe.*

*Larra ichneumoniformis*: atra abdominis primo secundoque segmento rufis. *Fabric.* Ent. syst. T. III, n. 4. p. 221.

Habitat in pratibus floribus raro. Dn. *Jurine* picturam debeo.

Segmentum primum secundumque abdominis utrinque macula alba distincta.

1873

THE UNIVERSITY OF CHICAGO

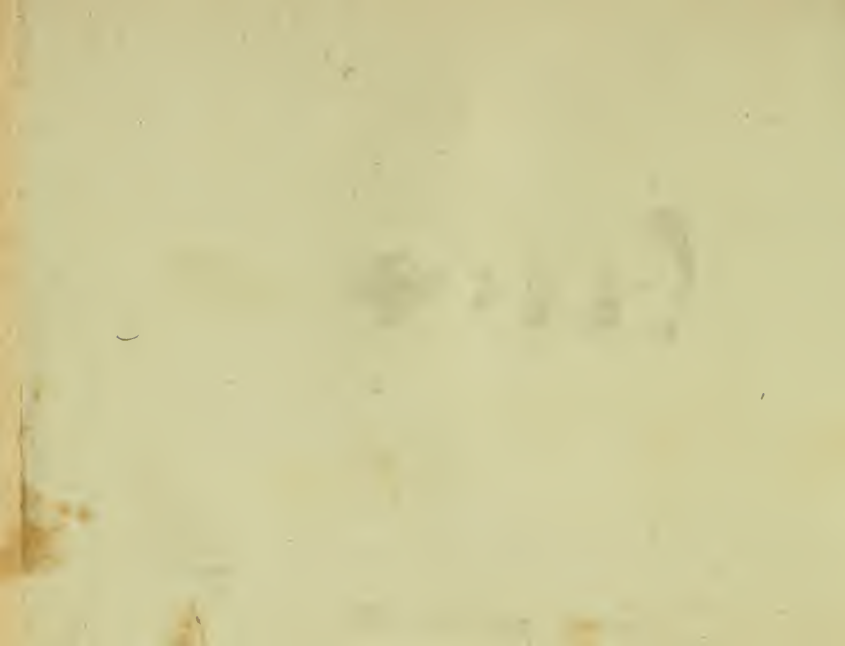
PHYSICS DEPARTMENT

REPORT ON THE PROGRESS OF THE DEPARTMENT

FOR THE YEAR 1873



*Masaris apiformis* Fabr.





MASARIS apiformis.

*Die Bienenförmige Kolbenwespe.*

*Masaris apiformis* : antennis clavatis ferrugineis, abdomine nigro, fasciis quinque flavis. *Fabric.* Entom. syst. T. III. n. 2. p. 284.

*Chrysis dubia.* *Rossi* Faun. etrusc. n. 849. p. 77. tab 7. fig. 10. 11.

Habitat in hortis in floribus, rarissime. Dn. *Jurine* picturam anatomemque hanc eximiam benigne suppeditavit.

a Antenna. b Mandibula c Labium. d Maxilla-aucta.

1871-1872

...

...



*Mutilla europaea* Fabr.



MVTILLA europaea.

*Die europäische Mutille.*

*Mutilla europaea*: nigra thorace rufo, abdominis segmentis margine albo. *Fabric.* Entom. syst. T. III. n. 9. p. 368. Syst. Entom. n. 7. p. 397. Spec. Inf. T. I. n. 7. p. 495. Mant. Inf. T. I. n. 8. p. 312.

*Matilla europaea.* *Linn.* Syst. Nat. n. 4. p. 397. ed. XIII. n. 4. p. 2806. Fn. Suec. n. 1727.

*Sulzer* abgek. Gesch. d. Inf. tab. 27. fig. 23. 24.

*Vådman.* nov. spec. Inf. n. 98. tab. 17. ed. nostr. aptera.

Habitat in sylvaticis. Dn. *Jurine* pinxit. Abdomen in nostr. specim. atro caeruleum.

THE HISTORY OF THE  
CITY OF BOSTON

FROM THE FIRST SETTLEMENT  
TO THE PRESENT TIME  
BY  
NATHANIEL BENTLEY  
VOLUME I  
BOSTON: PUBLISHED BY  
J. B. ALLEN, 1856.



*Papilio N. Selene Fabr.*





PAPILIO Nymphalis Selene.

*Die Selene. Das kleine silberne Halsband. Le petit collier argenté.*

*Papilio Nymph. Selene*: alis dentatis fulvis nigromaculatis: subtus posticis maculis argenteis 12 punctoque distincto baseos strigaeque postica atris. *Fabric. Ent. syst. T. IV. n. 451. p. 147.*

*Papilio Selene. Verz. d. W. Schm. Nachtr. p. 321.*

*Papilion d'Europe tab. 16. n. 23.*

*Esper eur. Schm. II. p. 150. tab. 30. fig. Euphros. var.*

*Borkhausen eur. Schm. I. n. 15. p. 42. et p. 220.*

Man hielte diesen Falter ehedem für eine Spielart einer freylich ihm sehr ähnlichen, entschied jedoch nachher zu seinem Vortheile dahin, daß auch er als eigene Art angeführt werden dürffe. Von seiner Raupe, und überhaupt von seiner Metamorphose ist noch nichts bekannt.

THE HISTORY OF THE  
CITY OF BOSTON  
FROM THE FIRST SETTLEMENT  
TO THE PRESENT TIME  
BY NATHANIEL BENTLEY  
VOLUME I  
PUBLISHED BY  
J. B. ALLEN, 1856



*Papilio P. Crataegi Fabr.*



PAPILIO Parnassius Crataegi.

*Der Baumweißling. Der Lilienvogel. Der deutsche Weißling. Der Weißdornfalter. Le Gazè. Geoffr. Papilion blanc à nervures noires. Degeer. The white Butterfly with black Veins.*

*Papilio Parnassius Crataegi*: alis rotundatis integerrimis albis: venis nigris. *Fabric.* Entom. Syst. T. IV. n. 563. p. 182. Syst. Ent. n. 101. p. 466. Spec. Inf. T. II. n. 149. p. 35. Mant. Inf. T. II. n. 171. p. 17.

*Papilio Helicon. Crataegi.* Linn. Syst. Nat. n. 72. p. 758. ed. XIII. n. 72. p. 2257: Fn. Suec. n. 1034. Jt. gotl. n. 182.

*Verz. der Wien. Schm.* p. 163. D.

*Geoffr.* Inf. T. II. n. 43 p. 71.

*Degeer* T. I. p. 221. et 693. tab. 14. fig 12 — 20.

*Schäffer* Ic. Inf. Ratisb. tab. 140. fig. 2. 3.

*Rösel* Inf. Bel. 1 Th. tab. 3.

*Esper* Eur. Schm. 1 T. tab. 2. fig. 3.

*Borkhausen* Eur. Schm. I. n. 21. p. 131. et p. 262.

Die jungen Raupen kriechen im August aus dem Ei, bleiben den Herbst in einem Gewebe beisammen, und wenn sie asen, so gehen sie in Gesellschaft. Sie überwintern in diesem gemeinschaftlichen Gewebe, aber im künftigen Frühjahre vertheilen sie sich. Ihre Futterpflanzen sind *Weisdorn*, Aepfe- Birn- Zwetschen- Pflaumen und andere Obstbäume. Die Chrysalide ist eckigt, grünlich gelb und schwarz gefleckt, mit einer eintachen Spitze auf dem Kopf. Nach vierzehn Tagen kriecht der Falter aus.



*Papilio S. Semele Fabr.*





PAPILIO Satyrus Semele.

*Der Adlerbraune safrangelb gefleckte Falter. Die Rostbinde. L'Agreste.*

*Papilio Satyrus Semele* ♂ alis dentatis; fascia maculari fulva ocellis duobus: anticis subtus disco baseos fulvo. *Fabric. Ent. Syst. T. IV. n. 725. p. 232. Syst. Ent. n. 224. p. 494. Spec. Inf. T. II. n. 341. p. 76. Mant. Inf. T. II. n.*

*Papilio Nymphal. Gemmat. Semele. Linn. Syst. Nat. n. 148. p. 772. ed. XII. n. 148. p. 2300. Fn. Suec. n. 1051.*

*Syst. Verz. der Wien. Schmett. n. 17. p. 169.*

*Sulzer* abgek. *Gesch. d. Inf. p. 145. tab. 17. fig. 5. 6.*

*Schäffer* *lc. Inf. Ratisb. tab. 207. fig. 3. 4.*

*Esper* *eur. Schmett. 1 Th. tab. 8. fig. 1.*

*Borkhausen* *eur. Schmett. 1 Th. n. 6. p. 69. et p. 230.*

Dieser Falter hält sich immer an steinigten Orten, in Blumen armen und kahlen Gefilden auf. Er kommt in der Mitte des Julius zum Vorschein und zeigt sich bis zu Ende des Septembers.

THE UNIVERSITY OF CHICAGO

THE UNIVERSITY OF CHICAGO  
DIVISION OF THE PHYSICAL SCIENCES  
DEPARTMENT OF CHEMISTRY  
5708 SOUTH CAMPUS DRIVE  
CHICAGO, ILLINOIS 60637

RECEIVED  
JAN 15 1964

FROM  
DR. J. H. GOLDSTEIN



*Papilio cinxia* Fabr.



*Faint, illegible text at the bottom of the page, possibly a signature or title.*

PAPILIO Satyrus Cinxia.

*Der Breitwegerichfalter. Das Damenbrett. Der gelbe Würfelvogel.*  
*Le Damier, premier espec. Geoffr. The black Fritillary.*

*Papilio Satyrus Cinxia*: alis dentatis fulvis nigro maculatis: posticis subtus fasciis  
tribus albidis nigro maculatis. *Fabric.* Entom. syst. T. IV. n. 779. p. 250.  
*Syst.* Entom. n. 304. p. 514. *Spec. Inf.* T. II. n. 465. *Mant. Inf.* T. II.  
n. 567. p. 58.

*Papilio Nymph. Phaleratus Cinxia.* *Linn.* *Syst. Nat.* n. 205. p. 784. ed. XIII.  
n. 205. p. 2329. *Fn. Succ.* n. 1063.

*Verz. der Wien. Schmett.* n. 7. p. 179.

*Geoffr.* *Inf.* T. II. n. 12. A. p. 45.

*Scopol.* *carn.* n. 160. *ic.* 160.

*Schäffer* *lc. Inf.* *Ratisb.* tab. 204. fig. 1. 2.

*Rösel* Inf. Bel. IV. tab. 13. fig. 4. 5. tab. 18. fig. 4.

*Esper* Eur. Schm. I Th. tab. 16. fig. 2. tab. 25. fig. 2. tab. 46. fig. 2. a. b.

*Borkbausen* Eur. Schm. I Th. n. 2. p. 49. p. 222.

Man findet die Raupe dieses Falters in lichten Waldungen, im Mai und Junius auf dem breiten und spitzigen Wegerich, Ehrenpreis und dem Leinkraute. Der Falter selbst fliegt am öftesten im Julius und Anfang des Augusts.







- Tab. 1. *Elater pectinicornis* Fabric.
- 2. *Elater cupreus* Fabric.
- 3. *Elater cupreus Varietas* Fabric.
- 4. *Elater castaneus* Fabric.
- 5. *Elater signatus* Panzer.
- 6. *Elater aulicus* Panzer.
- 7. *Elater haematodes* Mac. Fabric.
- 8. *Elater haematodes* Fem. Fabric.
- 9. *Elater sticticus* Panzer.
- 10. *Evania variegata* Fabric.
- 11. *Chalcis sispes* Fabric.
- 12. *Pompilus variegatus* Fabric.
- 13. *Pompilus gibbus* Fabric.
- 14. *Tiphia hemiptera* Fabric.
- 15. *Chrysis bidentata* Fabric.
- 16. *Chrysis succincta* Fabric.
- 17. *Mellinus ruficornis* Fabric.
- 18. *Mellinus diffectus* Panzer.
- 19. *Rhagio syrphoides* Panzer.
- 20. *Syrphus ruficornis* Fabric.
- 21. *Mulio sphegens* Fabric.
- 22. *Phalaena populata* Fabric.
- 23. *Phalaena pyraliata* Fabric.
- 24. *Phalaena chenopodiata* Fabric.





*Elater pectinicornis* Fabr.



ELATER pectinicornis.

*Der kammhörnigte Springkäfer. Le Taupin brun cuivreux Geoffr.*  
*Taupin bronzé à antennes barbues. Degeer.*

*Elater pectinicornis*: thorace elytrisq. aeneis, antennis maris pectinatis. *Fabric.*  
Syst. Ent. n. 14. p. 212. Spec. Inf. T. I. n. 19. p. 268. Mant. Inf. T. I.  
n. 23. p. 173. Entom. syst. T. II. n. 33. p. 223.

*Elater pectinicornis.* *Linn.* Syst. Nat. n. 32. p. 655. ed. XIII. n. 32. p. 1909.  
Fa. Suec. n. 741.

*Geoffr.* Inf. T. I. n. 7. p. 133.

*Degeer* T. IV. n. 2. p. 87 tab. 5. fig. 3.

*Scopol.* carn. n. 278. ic. 278.

*Schrank* austr. n. 338.

*Sulzer* Kennz. d. Inf. tab. 5. fig. 36. d.

*Sieben und siebenzigstes Heft.*

*Schäffer* Ic. Inf. Ratisb. tab. 2. fig. 5.

*Harrer* Besch. d. Schäff. Inf. T. I. n. 105. p. 69.

*Voet* Coleopt. I. n. 31. tab. 45. fig. 31.

*Panzer* Entom. germ. I. n. 13. p. 237.

Habitat in hortis.

a Magnitudo naturalis *maris*. b Eadem aucta.



*Elater cupreus* Fabr.





ELATER cupreus.

*Der kupferfärbigte Springkäfer.*

*Elater cupreus*: cupreus elytris dimidiato flavis. *Fabric.* Syst. Entom. n. 15. p. 212.  
Spec. Inf. T. I. n. 20. p. 268. Mant. Inf. T. I. n. 27. p. 173. Entom. 1yß.  
T. II. n. 37. p. 225.

*Panzer* Entom. germ. I. n. 15. p. 237.

Habitat in Montis piniferi, umbelliferis, unde pluries accepi. Fig. 2. in *Schäffer. Ic. Inf. Ratisb.* tab. 38 a u *Fabric.* et annos detenda, quae longe diversam speciem, minime vero *Elat. cupr.* repraesentat.

a Magnitudo naturalis. b Eadem ancta.

STATE OF

NEW YORK

In SENATE,  
January 10, 1887.

REPORT

OF THE

COMMISSIONERS OF THE LAND OFFICE,  
IN ANSWER TO A RESOLUTION PASSED BY THE SENATE,  
MAY 10, 1886.

ALBANY:



*Elater cupreus* var. *Fabr.*



*[Faint, illegible text, possibly a signature or date]*

ELATER cupreus Varietas.

*Der kupferfärbige Springkäfer. Eine Spielart.*

*Elater cupreus. Fabric. l. I. c. c.*

Habitat in sylvaticis Montis piniferi.

Verosimile equidem mihi videtur, eam ipsam varietatem, quam Cl. *Fabricius* l. c., propter *antennas* eiusdem *simplices*, *corpusque aeneum* separavit, potius propriam et distinctam utroque sexu praecellentem constituere speciem.

a Magnitudo naturalis. b Eadem aucta *Maris*. c Antenna *Feminae* aucta.

1863

...

...

...

...



*Elater castaneus* Fabr.

J. St. fec.





ELATER castaneus.

*Der kastanienfärbige Springkäfer. Le Taupin à corcelet velouté. Geoffr.*

*Elater castaneus*: thorace testaceo pubescente, elytris flavis apice nigris, corpore nigro. *Fabric. Syst. Entom. n. 18. p. 213. Spec. Inf. T. I. n. 23. p. 269. Mant. Inf. T. I. n. 27. p. 173. Entom. syst. T. II. n. 40. p. 225.*

*Elater castaneus. Linn. Syst. Nat. n. 18. p. 654. ed. XIII, n. 18. p. 1905. Fn. Suec. n. 727.*

*Geoffr. Inf. T. I. n. 4. p. 132.*

*Schäffer Ic. Inf. Ratisb. tab. 31. fig. 4. et tab. 11. fig. 9.*

*Harrer Besch. d. Schäf. Inf. T. I. n. 106. p. 70.*

*Voet. Coleopt. I. n. 14. tab. 43. fig. 14.*

*Panzer Entom. germ. I. n. 17. p. 237.*

Habitat in horcis in floribus.

a Magnitudo naturalis. b Eadem aucta.





*Elater signatus* Mihi.

287



## ELATER signatus.

*Der an den Spitzen der Flügeldecken schwarz gezeichnete Springkäfer.*

*Elater signatus*: obscuro viridi aeneus, thorace sulcato, elytris testaceis apice nigris, antennis pectinatis.

*Elater castaneus*. Scop. carn. n. 286. ic. 286.

*Elater pectinicornis*. Poda mus. graec. n. I. p. 41. tab. I. fig. 4.

*Elater castaneus*. Schrank austr. n. 337.

*Elater cupreus*. Harrer Beschr. d. Schäff. Inf. T. I. n. 104. p. 68.

Schäffer Ic. Inf. Ratisb. tab. 38. fig. 2.

Lectus in montibus Salisburgensibus a *Dn. Funk*. Vindicanda tandem distincta atque propria toties a pluribus Entomologis, cum aliis *Elateribus* confusa species! Magnitudo *Elatr. pectinicorn.*, habitus *Elatr. castan.*, quamvis maior et procerior.

Caput obscure aeneum, vertice foveolato. Oculi nigri. Antennae nudaе nigrae pectinatae: pectinibus septem. Thorax obscure s. atro viridi aeneus nitidus, margine laterali parum pubescens, punctis plurimis vage impressis: dorso sulco exaratus, pone utrinque spinosus. Scutellum obscurum. Elytra testacea nitida, striato-punctata, apice macula lanceolata atra, quae vero haud summam attingit. Pedes omnes nigri, unguibus testaceis. - Corpus subtus obscure viridi aeneum nitidum.



*Elater aulicus* Mihi.

J. P. f.





ELATER aulicus.

Der schöne Springkäfer.

*Elater aulicus*: obscuro viridi aeneus, elytris testaceis immaculatis antennis pectinatis.

Habitat in Austria. Dn. de *Megerle* communicavit.

Maioribus indigenis adnumerandus. Caput obscuro viridi aeneum depresso punctulatum. Os nigrum. Oculi fusci. Antennae nigrae pectinatae: pectinibus novem. Thorax subpubescens obscuro viridi aeneus nitidulus, pone utrinque acuminatus. Scutellum concolor pubescens. Elytra testacea margine baseos nigro, nitida striato punctata immaculata: antice baseos utrinque parum impressa. Pedes atro aenei pubescentes, unguis fuscis. Corpus subtus nitidum obscure aeneum.

1875

1875

1875

1875

1875



*Elater haematodes* Mas Fabr.

J. St. fœc



ELATER haematodes. Mas.

*Der purpurrothe Springkäfer. Das Männchen.*

*Elater haematodes*: niger thorace pubescente fulvo, elytris striatis sanguineis. *Fabric.* Gen. Inf. Mant. p. 235. Spec. Inf. T. I. n. 35. p. 271. Mant. Inf. T. I, n. 39. p. 173. Entom. syst. T. II. n. 54. p. 228.

*Elater istriacus.* Scop, carn. n. 289. ic. 289.

*Elater purpureus.* Poda mus. graecens. n. 3. p. 41.

*Elater purpureus.* Schrank. austr. n. 350.

*Sulzer* abgek. Gesch. d. Inf. p. 53. tab. 6. fig. 9.

*Schäffer* Abhandl. 1 Th. p. 82. tab. 2. fig. 9.

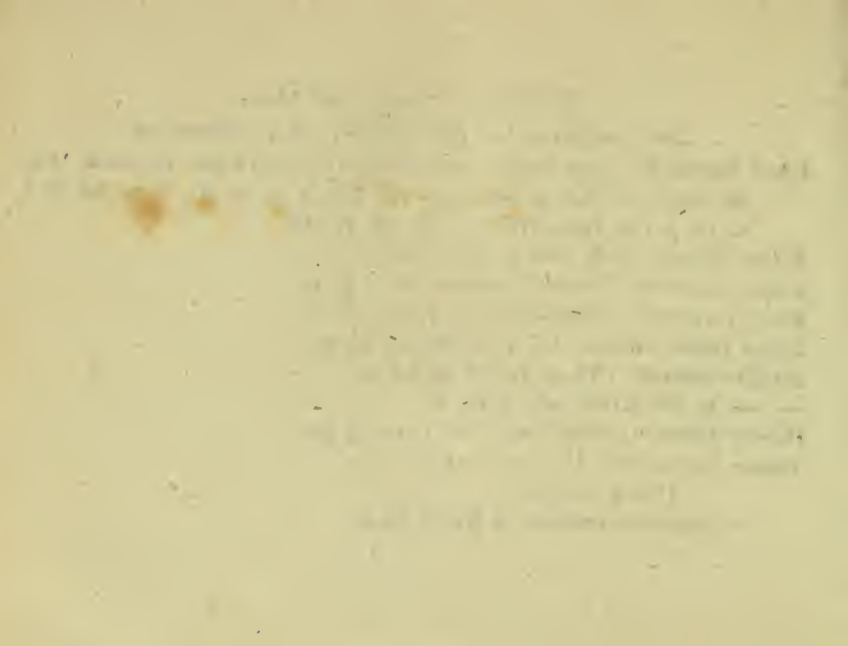
— — Ic. Inf. Ratisb. tab. 2. fig. 6.

*Harrer* Besch. d. Schöff. Inf. 1 Th. n. 110. p. 72.

*Panzer* Entom. germ. I. n. 32. p. 240.

Habitat in hortis.

a Magnitudo naturalis. b Eadem aucta.





*Elater haematodes* Fem. Fabr.

J. St. f. 1.





ELATER haematodes. Femina.

*Der purpurrothe Springkäfer. Das Weibchen.*

*Elater haematodes.* Fabric. l. l. c. c.

*Schäffer* Ic. Inf. Ratisb. tab. 31. fig. 6.

*Herbst* Archiv. V. I. n. 25. p. 113. tab. 27. fig. 10.

Habitat cum mare.

a Magnitudo naturalis. b Eadem aucta.





*Elater sicticus* Mihi.

J. St. fec.



*Very faint, illegible text, possibly a signature or date.*

ELATER sticticus.

Der hohlpunktirte Springkäfer.

*Elater sticticus*: thorace rufo punctis duobus dorsalibus impressis, elytris testaceis futura fusca.

Legi in Heracleo Spondyl. L. 1799.

Habitus et statura et magnitudo *Elat. livens*. F. cui similis, ast differt. Caput nigrum Os ferrugineum. Palpi testacei. Oculi nigri. Antennae testaceae, apice fusciscentes. Thorax leviter pubescens rufus punctatus, dorso fusco, punctis duobus impressis, pone, more conspicerum acuminatus. Elytra testacea punctato striata futura fuscescente. Pedes flavescentes, Corpus subtus fuscum, ano flavescente.

a Magnitudo naturalis. b Eadem aucta.





*Evania variegata* Fabr.

J. St. féc.



*Calliphora vicina*



EVANIA variegata.

*Die bunte Stielbauchigte Wespe.*

*Evania variegata*: nigra albo maculata abdomine rufo apice nigro: maculis tribus albis. *Fabric. Entom. syst. suppl. p. 241.*

Habitat in Umbelliferis in sabulosis.

a Magnitudo naturalis. b Eadem aucta.

1871

1871

1871

1871

1871

1871



*Chalcis sispes* Fabr.

J. St. fec.



CHALCIS fispes.

*Die rundschenklichte Schenkelwespe. La Guepe deginguendée. Geoffr.*

*Chalcis fispes*: nigra abdominis petiolo femoribusque posticis incrassatis flavis. *Fabric.* Entom. syst. T. III. n. 1. p. 194. *Mant. Inf.* T. I. n. 1. p. 272.

*Sphex fispes. Fabric.* Spec. Inf. T. I. n. 61. p. 446.

*Chrysis fispes. Fabric.* Syst. Entom. n. 15. p. 359.

*Geoffr.* Inf. T. II. n. 16. p. 380.

*Sphex myrifex. Sulzer* abgek. Gesch. d. Inf. p. 191. 1. tab. 27. fig. 1.

*Rossi* Faun. etrusc. T. II. n. 802. p. 58. (*exclus. Synonym. Geoffr.*)

*Hybner* in Naturf. XXIV. n. 18. p. 54. tab. 2. fig. 22. a. b.

Habitat in hortis, in floribus.

a Magnitudo naturalis. b Eadem aucta. c Pes posticus auct.

1870

The undersigned, being duly sworn, depose and say that the within and foregoing is a true and correct copy of the original as the same appears from the records of the Court of Sessions for the County of ...

Witness my hand and seal of office this ... day of ... 1870.

Notary Public for the County of ...

Subscribed and sworn to before me this ... day of ... 1870.

Notary Public for the County of ...

Witness my hand and seal of office this ... day of ... 1870.

Notary Public for the County of ...

Subscribed and sworn to before me this ... day of ... 1870.

Notary Public for the County of ...

Witness my hand and seal of office this ... day of ... 1870.

Notary Public for the County of ...

Subscribed and sworn to before me this ... day of ... 1870.



*Pompilus variegatus* Fabr.

J. St. fec.





POMPILVS variegatus.

*Die bunte Grabwespe.*

*Pompilus variegatus*: ater albomaculatus, thorace sub scutello rufo, alis apice fuscis. *Fabric. Entom. syst. Supplem. n. 10. p. 247.*

*Spex variegata. Fabric. Entom. syst. T. III. n. 53. p. 211.*

Habitat in sabulosis, flores saepius frequentans.

a Magnitudo naturalis. b Eadem aucta.

THE UNIVERSITY OF CHICAGO

PHYSICS DEPARTMENT

REPORT OF THE PHYSICS DEPARTMENT  
FOR THE YEAR 1957

1957

1957



*Pompilus gibbus* Fabr.

J. St. fec.



POMPILVS gibbus.

*Die höckerichte Grabwespe.*

*Pompilus gibbus*: niger abdomine ferrugineo apice fusco, alis anticis apice fuscis.

*Fabric* Entom. syst. Supplem. u. 17. p. 249.

*Spbex gibba*. *Fabric*. Entom. syst. T. III. n. 59. p. 212. Syst. Ent. n. 23. p. 350.

Spec. Inf. T. I. n. 34. p. 448. Mant. Inf. T. I. n. 40. p. 276.

*Spbex gibba*. *Linn*. Syst. Nat. n. 33. p. 946. ed. XIII. n. 33. p. 2732. Fn. Suec. n. 1658.

*Spbex gibba*. *Scopol*. carn. n. 786. (non 570!)

*Rossi* Faun. etrusc. T. II. n. 816. p. 63.

Habitat in sabulosis in floribus.

a) Magnitudo naturalis. b) Eadem aucta.

REPORT

ON THE

PROGRESS OF THE

WORK

DURING THE

YEAR

1880



*Tiphia hemiptera* Fabr.

J. St. fec.





TIPHIA hemiptera.

*Die kurzflügelichte Rauhwespe.*

*Tiphia hemiptera*: glabra atra alis brevissimis. *Fabric.* Entom. syst. Supplem. p. 254.

Habitat in pratis.

a Magnitudo naturalis. b Eadem aucta.

THE UNIVERSITY OF CHICAGO  
LIBRARY

1950



*Chrysis bilentata* Fabr.

J.St. fec.



CHRYSIS bidentata.

Die zweyzähniichte Goldwespe.

- Chrysis bidentata*: glabra nitida cyanea thorace bidentato abdominisque segmentis duobus primis aureis. *Fabric.* Entom. Syst. T. III. n. 11. p. 241. Syst. Ent. n. 7. p. 358. Spec. Inf. T. I. n. 9. p. 456. Mant. Inf. T. I. n. 10. p. 283.
- Chrysis bidentata*. *Linn.* Syst. Nat. n. 2. p. 947. ed. XIII. n. 2. p. 2745.
- Degeer* Inf. T. II. 2. n. 2. p. 159. tab. 29. fig. 3. 4.

Habitat ruri.

Abdominis segmentum primum supra aureum basi caerulea. *Linn.*

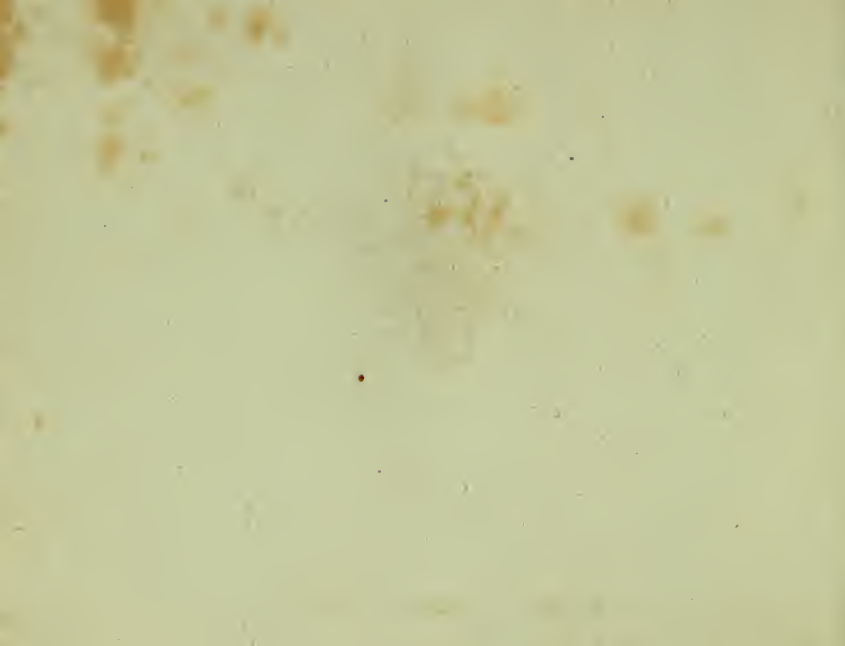
a Magnitudo naturalis. b Eadem aucta.





*Chrysis succincta* Fabr.

J.St.fec.





CHRYSIS succincta.

*Die gebänderte Goldwespe.*

*Chrysis succincta* : glabra viridis nitens thorace fascia coccinea, abdomine aureo subtridentato. *Fabric.* Entom. syst. T. III n. 13. p. 241. Syst. Ent. n. 8. p. 318. Spec. Inf. T. I. n. 10. p. 456. Mant. Inf. T. I. n. 12. p. 283.

*Chrysis succincta*, *Linn* Syst. Nat. n. 3. p. 947. ed. XIII. n. 3. p. 2745.

*Rossi* Faun. etrusc. T. II. n. 846. p. 76.

Habitat ruri.

a Magnitudo naturalis. b Eadem aucta.

1870

1870

Received of the Treasurer of the State of New York  
the sum of \$1000.00 for the year 1870

in full for the year 1870

1870

1870



*Mellinus ruficornis* Fabr.

70



MELLINVS ruficornis.

*Die rothhörnigte Viperwespe.*

*Mellinus ruficornis*: thorace maculato, abdomine fasciis tribus flavis: anticis interruptis, antennis pedibusque rufis. *Fabric. Entom. syst. T. III. n. 3. p. 286.*

Habitat in fabulosis, floribus plerumque insidens.

a Magnitudo naturalls. - b Eadem aucta.

The [illegible] [illegible]

[Illegible text]

[Illegible text]



*Mellinus diffectus* Mihi.

J. St. fec.





MELLINVS dissectus.

*Die unterbrochen gebänderte Viperwespe.*

*Mellinus dissectus*: ater abdomine fasciis tribus interruptis, segmento primo bima-  
culato.

Legi in floribus Syngenesiae et umbelliferis.

Habitus et statura *Mell. quinquecinct. F.*, cui similis, ast omnino diversus. Caput nigrum. Labium flavum. Palpi exserti apice flavescentes. Antennae nigrae, articulo primo subtus flavo. Thorax ater, lineola antica flava. Scutellum immaculatum. Alae hyalinae, macula apice opaca. Abdomen atrum nitidum, segmento primo subpetiolarum maculis duabus lutescentibus contiguis: reliquis fasciis angustis medio interruptis. Pedes fusco lutescentes, tibiis anticis flavis.

Nomen de *Mellino interrupto* Faun. LXXVII. 18., mutuavi, quoniam ille magis ad *Crabron. trimacul.* accedere mihi videtur.

a Magnitudo naturalis. b Eadem aucta.





*Rhagio syrphoides* Mihi.

J.St.fec.



## RHAGIO syrphoides.

### *Die Schwefelfliegenartige Schnepfenfliege.*

*Rhagio syrphoides*: ater thorace lineato, abdomine rufo basi apiceque nigro, alis fascia costali fusca, pedibus testaceis.

Lecta a Dn. *Funck* in ditionibus Baruthinis.

Maior *Rh. tringar.* et *scolopaceo* F. Caput, antennae, palpi, haustellum atra. Thorax parum elevatus ater opacus, lineis quatuor cinereis (in pictura omis-  
sis) mediis duabus approximatis, reliquis marginalibus. Scutellum subgibbum atrum. Abdomen elongatum medio rufum (segmenta 2. 3. 4) basi apiceque nigrum. Seg-  
mente 2. 3 lineolis dorsalibus nigris. Alae obscure flavescens subhyalinae fascio-  
la costali fusca, marginem inferiorem haud attingente. Pedes omnes testacei, po-  
stici elongati.

a Magnitudo naturalis. b Eadem aucta.





*Syrphus ruficornis* Fabr.

J. St. fci.





SYRPHVS ruficornis.

*Die rothhörnigte Schwebefliege.*

*Syrphus ruficornis* : antennis setariis tomentosus thorace lineato, abdomine aeneo, alis maculatis. *Fabric.* Entom. Syst. T. VI. n. 84. p. 301. Syst. Ent. n. 35. p. 769. *Spec. Inf.* T. II. n. 48. p. 431. *Mant. Inf.* T. II. n. 35. p. 339.

Habitat in floribus.

a Magnitudo naturalis. b Eadem aucta.





*Mulio sphaeus* Fabr.

J. St. fec.



MVLIO sphegeus.

Die Bastardwespenartige Schwebefliege.

*Mulio sphegeus*: niger pedibus ferrugineis. *Fabric.* Ent. syst. Supplem. n. 9. p. 559.

*Syrphus sphegeus* *Fabric.* Syst. Entom. n. 28. p. 768. Sp. Inf. T. II. n. 40. p. 429.

Mant. Inf. T. II. n. 47. p. 338. Entom. syst. T. VI. n. 72. p. 292.

Habitat in floribus.

Corpus vix atrum, potius atro violaceum. Inter *Muliones* aegre habitat, cum *S. ichneumoneo* (*Faun. Inf. Germ. LXXIII. 24.*)

a Magnitudo naturalis, b Eadem aucta,

STATE OF NEW YORK

IN SENATE

January 18, 1887

REPORT

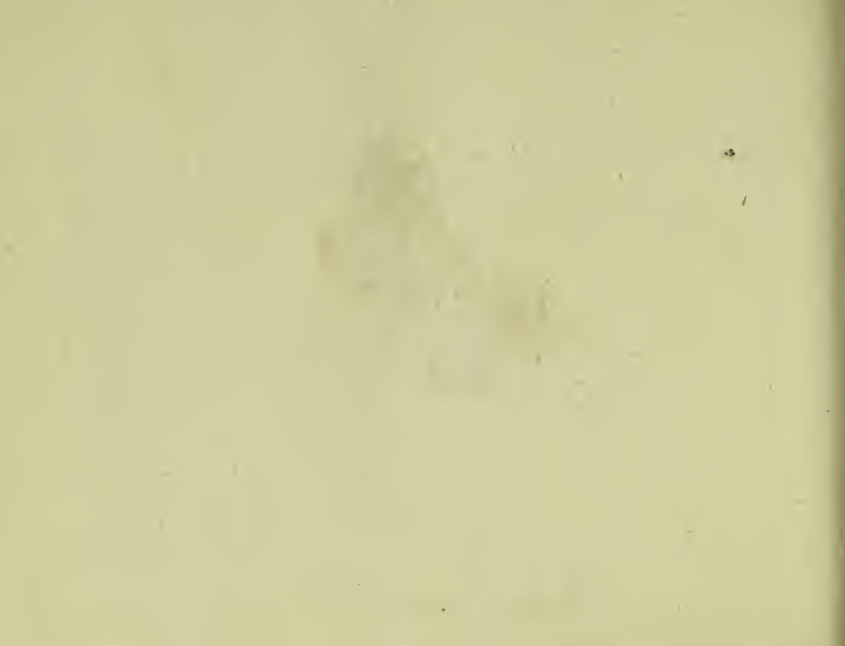
OF THE

COMMISSIONERS OF THE LAND OFFICE



*Phalaena populata* Fabr.

J. St. fec.





PHALAENA populata.

*Der Aefpenspanner.*

*Phalaena populata*: feticornis alis flavo pallidis: anticis subfasciatis apice subtus fusco contaminatis. *Fabric.* Syst. Ent. n. 60. p. 632. Spec. Inf. T. II. n. 92. p. 258. Mant. Inf. T. II. n. 136. p. 200. Entom. syst. T. V. n. 168. p. 176.

*Phalaena Geometr. populata*: *Linn.* Syst. Nat. n. 244. p. 868. ed. XIII. n. 244. p. 2473. Fn. Suec. n. 1266.

*Syst. Verz. der Wien.* Schmett. n. 17. p. 113.

Habitat in *Populo tremula*. *Linn.*

STATIONER

1850

THE  
OFFICE  
OF THE  
SECRETARY OF THE  
TREASURY  
WASHINGTON  
D. C.

1850

1850



*Phalaena pyrallata* Fabr.

J.S. f.



PHALENA pyraliata

*Der Waldstrohspanner.*

*Phalena pyraliata*: seticornis alis flavis: strigis quatuor undatis fuscis: posteriori maculari. *Fabric. Mant. Inf. T. II. n. 137. p. 201. Entom. Syst. Tom. V. n. 169. p. 176.*

*Syst. Verz. der W. Schmett. n. 1. p. 117.*

Habitat in *Galio vero* Linn.





*Phalaena chenopodiata* Fabr. J. St. fec.





PHALAENA chenopodiata.

*Der Acker - Trespspinner.*

*Phalena chenopodiata*: feticornis alis anticis testaceis: fasciis tribus griseis; puncto prominulo apicisque lineola supra fulca. *Fabric*, Syft. Ent. n. 83. p. 636. Spec. Inf. T. II. n. 124. p. 263. Mant. Inf. T. II. n. 187. p. 207. Entom. syft. T. V. n. 227. p. 191.

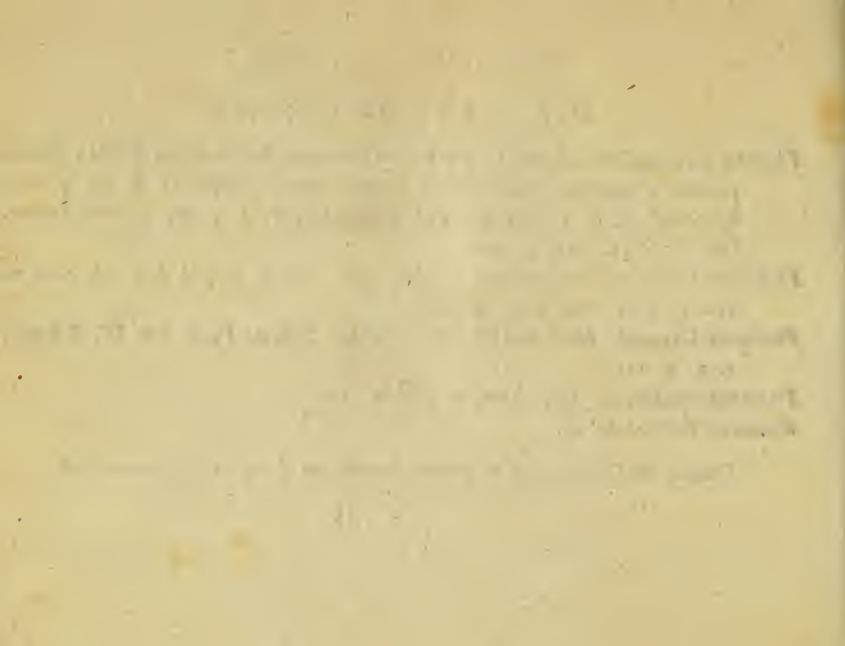
*Phalaena Geometr. chenopodiata*. *Linn*. Syft. Nat. n. 246. p. 868. ed. XIII. n. 246. p. 2475. Fn. Suec. n. 1263.

*Phalaena Geometr. Mediofasciat. Mensuraria*. *System. Verz. der W. Schmett.* n. 2. p. 111.

*Phalaena mensurata*. *Scop.* carn. n. 560. ic. 560.

*Kleemann* Beytr. tab. 37.

Habitat in Chenopodiis et Bromo arvensi, in ficcis et apricis collibus,







## des acht und siebenzigsten Hefts.

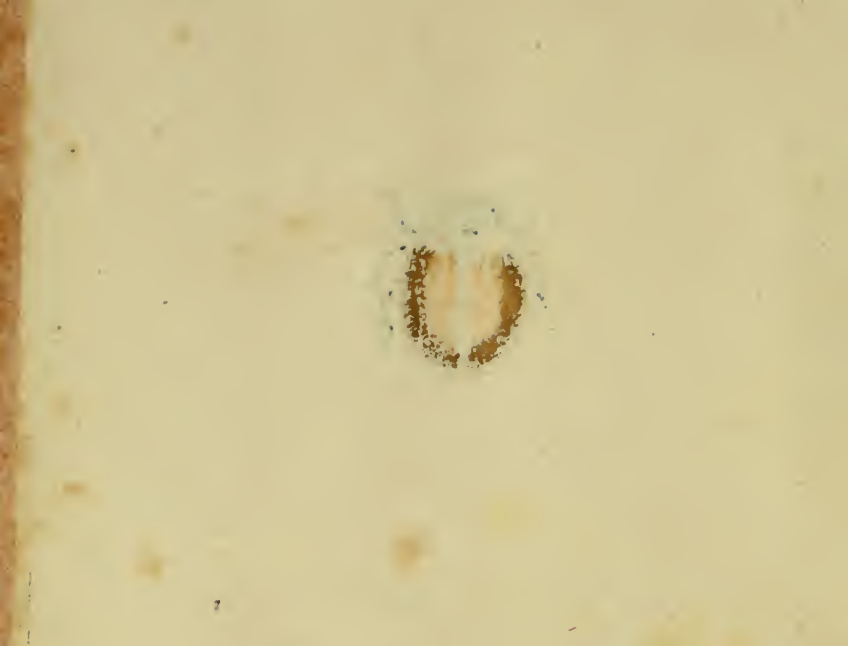
- 
- Tab. 1.** *Chrysomela lurida* Fabric.  
 — 2. *Chrysomela collaris* Fabric.  
 — 3. *Chrysomela viminalis* Fabric.  
 — 4. *Chrysomela pallida* Fabric.  
 — 5. *Chrysomela pectoralis* Fabric.  
 — 6. *Chrysomela litura* Fabric.  
 — 7. *Chrysomela haemorrhoidalis* Fabric.  
 — 8. *Ichneumon grossioides* Fabric.  
 — 9. *Ichneumon intractorius* Fabric.  
 — 10. *Ichneumon ambulatorius* Fabric.  
 — 11. *Ichneumon mercatorius* Fabric.  
 — 12. *Ichneumon flavatorius* Fabric.  
 — 13. *Ichneumon debellator* Fabric.  
 — 14. *Ichneumon dubitator* Panzer.  
 — 15. *Chalcis clavipes* Fabric.  
 — 16. *Chalcis flavipes* Fabric.  
 — 17. *Crabio trimaculatus* Fem. Rossi.  
 — 18. *Apis acervorum* Fabric.  
 — 19. *Apis tuberculata* Fabric.  
 — 20. *Nomada nigrita* Fabric.  
 — 21. *Phalangium phaleratum* Panzer.  
 — 22. *Aphis piccae* Panzer.  
 — 23. *Noctua quadra* Mas. Fabric.  
 — 24. *Nocua quadra* Femina Fabric.





*Chrysomela lurida* Fabr.

J. St. fce.





CHRYSOMELA lurida.

*Das fahle Goldhähnchen. La Chrysomele rouge à corcelet noir. Geoffr.*

*Chrysomele lurida*: ovata nigra elytris striatis punctatis castaneis. *Fabric. Syst. Entom.* n. 17. p. 97. *Spec. Inf. T. I.* n. 24. p. 120. *Mant. Inf. T. I.* n. 33. p. 69. *Entom. system. T. I.* n. 52. p. 3 8.

*Chrysomele lurida. Linn. Syst. Nat.* n. 28. p. 590. ed. XIII. n. 28. p. 1677. *Geoffr. Inf. T. I.* n. 3. p. 258.

*Panzer Entom. germ. I.* n. 21. p. 160.

Habitat in Vite Betula.

a Magnitudo naturalis. b Eadem aucta.

*Acht und siebenzigstes Heft.*

THE UNIVERSITY OF CHICAGO

Library of The University of Chicago

1000 University Avenue, Chicago, Illinois 60607

Telephone: (773) 936-3000

Internet: <http://www.library.uchicago.edu>

Library Hours: Monday - Friday, 9:00 am - 5:00 pm

Saturday, 10:00 am - 4:00 pm

Sunday, 12:00 pm - 4:00 pm

Library is closed on University holidays

Library is open 24 hours a day for emergency services

Library is open 24 hours a day for emergency services

Library is open 24 hours a day for emergency services

Library is open 24 hours a day for emergency services

Library is open 24 hours a day for emergency services

Library is open 24 hours a day for emergency services



*Chrysomela collaris* Fabr.

J. St. f.



*[Faint, illegible text or markings at the bottom of the page, possibly bleed-through from the reverse side.]*

CHRYSOMELA collaris.

*Das am Bruststück gefäumte Goldhähnchen.*

*Chrysomela collaris*: ovata violacea, thoracis marginibus albis puncto nigro. *Fabric.* Syst. Entom. n. 21. p. 97. Spec. Inf. T. I. n. 29. p. 121. Mant. Inf. T. I. n. 38. p. 69. Entom. syst. T. I. n. 56. p. 319.

*Chrysomela collaris.* *Linn.* Syst. Nat. n. 37. p. 591. ed. XIII. n. 37. p. 1680. Fn. Suec. n. 528.

*Rossi* Faun. Etrusc. ed. Hellwig, I. n. 210. p. 87.

*Voet* Coleopt. T. IV. n. 1. p. 27. tab. 30. fig. 1. *edit. nostr.*

*Panzer* Entom, germ. I. n. 22. p. 160.

Habitat in Salice.

a Magnitudo naturalis. b Eadem aucta.

CITIZENSHIP TEST  
FOR THE DISTRICT OF COLUMBIA

1. What is the name of the city in which you were born?  
2. In what State or Territory was the city born?  
3. How long have you lived in the District of Columbia?  
4. How long have you lived in the United States?  
5. How long have you lived in the District of Columbia?  
6. How long have you lived in the United States?  
7. How long have you lived in the District of Columbia?  
8. How long have you lived in the United States?



*Chrysomela viminalis* Fabr.

J. St. fec.





CHRYSOMELA viminalis.

*Das Band - Weiden Goldhähnchen.*

*Chrysomela viminalis*: ovata nigra thorace rufo bimaculato, elytris rufis. *Fabric.*  
Syst. Ent. n. 22. p. 98. Spec. Inf. T. I. n. 30. p. 121. Mant. Inf. T. I.  
n. 39. p. 69. Entom. syst. T. I. n. 59. p. 319.

*Chrysomela viminalis.* *Linn.* Syst. Nat. n. 31. p. 590. ed. XIII. n. 31. p. 1678.  
Fn. Suec. n. 524.

*Chrysomela signata.* *Scopol.* carn. n. 233. *absque icone.*

*Panzer* Entom. germ. I. n. 24. p. 160.

Habitat in Salice.

*Chrysom.* *Geoffr.* I. n. 18. p. 265. vix huc referenda. Varietatem *Chrysf.*  
10. *punct.* credit *Scriba* in ephemerid. n. 182. Maculae thoracis haud raro desunt.

a Magnitudo naturalis. b Eadem aucta.

THE HISTORY OF THE

REIGN OF

CHARLES THE FIRST

BY

JOHN BURNET

IN TWO VOLUMES

LONDON



*Chrysomela pallida* Fabr.

J. St. fcc.



CHRYSOMELA pallida.

*Das bleichgelbe Goldhähnchen.*

*Chrysomela pallida*: ovata flavescens oculis nigris. *Fabric.* Syft. Ent. n. 26. p 99.  
Spec. Inf. T. I. n. 34. p. 122. Mant. Inf. T. I. n. 44. p. 70. Entom. fyft.  
T. I. n. 64. p. 321.

*Chrysomela pallida.* *Linn.* Syft. Nat. p. 25. p. 589. ed. XIII. n. 25. p. 1676. Fn.  
Suec. n. 521.

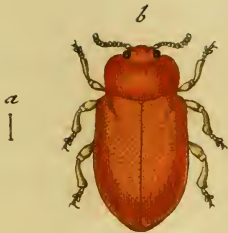
*Panzer* Entom. germ. I. n. 27. p. 161.

Habitat in Alno, Betula, Sorbo, Salice.

*Crioceris.* *Geoffr.* I. n. 6. p. 243. huc non pertinet. Antennae in nostris apice  
fuscescentes.

a Magnitudo naturalis. b Eadem aucta.





*Chrysomela pectoralis* Fabr.

J. St. fec.





CHRYSOMELA pectoralis.

*Das rothe Goldhähnchen mit schwarzer Brust.*

*Chrysomela pectoralis*: ovata rufa pectore abdominisque basi nigris. *Fabric. Entom. syst. T. I. n. 102. p. 328.*

*Dermeestes rufus*. *Herbst im Archiv IV. n. 14. p. 22. tab. 20. fig. 7.*

*Panzer Entom. germ. I. n. 46. p. 165.*

Habitat primo vere in floribus Pomonae frequens.

a Magnitudo naturalis. b Eadem aucta.

THE HISTORY OF THE

REIGN OF KING CHARLES THE FIRST

BY JOHN BURNET

IN TWO VOLUMES

LONDON, Printed by J. Sturges, at the Black-Swan in St. Dunstons Church-yard, 1724.

IN TWO VOLUMES

THE SECOND VOLUME

CONTAINING THE HISTORY OF THE



*Chrysomela litorea* Fabr.

J. St. fco.



CHRYSOMELA litura.

*Das gelbrothe Goldhähnchen, mit dem schwarzen Rückenstreif.*

- Chrysomela litura*: ovata rufescens elytris futura lineaque longitudinali, atris. *Fabric.*  
Syst. Entom. n. 44. p. 102. Spec. Inf. T. I. n. 57. p. 126. Mant. Inf. T. I.  
n. 74. p. 72. Entom. syst. T. I. n. 103. p. 328.  
*Herbst* im Archiv IV. n. 30. p. 57. tab. 23. fig. 18.  
*Panzer* Entom. germ. I. n. 46. p. 165.

Legi utrumque sexum frequens semper in *Spartio Scopario* Linn.

a Magnitudo naturalis. b Eadem aucta,





*Chrysomela haemorrhoidalis* Fabr.

J. St. f. 2.





CHRYSOMELA haemorrhoidalis.

• *Das rothafterichte Goldhähnchen.*

*Chrysomela haemorrhoidalis*: ovata nigra nitida, antennis basi flavescens, ano supra rubro. *Fabric.* Syst. Entom. n. 47, p. 102. Spec. Inf. T. I. n. 60. p. 116. Mant. Inf. T. I. n. 78. p. 72. Entom. syst. T. I. n. 107. p. 329.

*Chrysomela haemorrhoidalis.* *Linn.* Syst. Nat. n. 6, p. 587. ed. XIII, n. 6. p. 1669. Fn. Suec. n. 508.

*Panzer* Entom. germ. I. n. 49. p. 165.

Habitat in Betula, Alno, Salice,

a Magnitudo naturalis. b Eadem aucta.

The [illegible] [illegible]

[illegible]

[illegible]

[illegible]



*Ichneumon grosforius* Fabr.

J. St. fec.



*[Faint, illegible text at the bottom of the page, possibly a signature or title.]*

ICHNEVMON grossorius.

*Die grosse Schlupfwespe mit dem rothgeringelten schwarzen  
weissgefleckten Unterleib.*

*Ichneumon grossorius*: scutello albo, thorace maculato, abdominis segmento secundo tertioque rufis, ultimis apice albis. *Fabric.* Entom. syst. T. III, n. 17. p. 136.

Legi raro in *Carpino Betulo Linn.*

THE UNIVERSITY OF CHICAGO

PHYSICS DEPARTMENT  
530 SOUTH EAST ASIAN AVENUE  
CHICAGO, ILLINOIS 60607

RECEIVED  
MAY 15 1964

1964



*Ichneumon infractorius* Fabr.

J. St. fe.





ICHNEVMON infractorius.

*Die schwarze ununterbrochen gelbgebänderte Schlupfwespe.*

*Ichneumon infractorius*: scutello flavo thorace maculato, abdominis segmentis margine flavis, pedibus flavis, femoribus nigris. *Fabric.* Syst. Entom. n. 9. p. 328. *Spec. Inf.* T. I. n. 9. p. 422. *Mant. Inf.* T. I. n. 10. p. 260. *Entom. syst.* T. III. n. 5. p. 138.

*Ichneumon infractorius.* *Linn.* Syst. Nat. n. 7. p. 931. ed. XIII. n. 7. p. 2676. *Fn. Suec.* n. 1584.

*Rossi* Faun. Emusc. T. II. n. 744. p. 37.

*Schäffer* Ic. Inf. Ratisb. tab. 20. fig. 9.

Legi in dumetis, et in floribus umbelliferis.

a Magnitudo naturalis. b Eadem aucta.

THE UNIVERSITY OF CHICAGO

PHYSICS DEPARTMENT

REPORT ON THE PROGRESS OF WORK  
DURING THE YEAR 1911-12

BY  
J. W. GARDNER

CHICAGO, ILL., 1912

UNIVERSITY OF CHICAGO PRESS



*Ichneumon ambulatorius* Fabr.

J. St. fec.



ICHNEUMON ambulatorius.

*Die schwarze Schlupfwespe mit dem rothgebänderten schwarzen  
weissgerändeten Unterleib.*

*Ichneumon ambulatorius*: scutelio flavicante, thorace maculato, abdominis segmento secundo (*tertioque*) ferrugineo, reliquis margine albis. *Fabric. Syst. Entom.* n. 10. p. 329. *Spec. Inf. T. I.* n. 10. p. 422. *Mant. Inf. T. I.* n. 11. p. 260. *Entom. syst. T. III.* n. 26. p. 139.

*Schäffer Ic. Inf. Ratisb.* tab. 74. fig. 4.

Legi minus frequens in umbelliferis.

Frequentius occurrit abdomine atro, segmento primo petiolari nigro, secundo tertio rufis, quarto, quinto, sexto nigris postice albis. Pedes postici apice nigro annulati. Aiae fuscae, stigmatе marginali ordinario late flavo.

a Magnitudo naturalis, b Eadem aucta.

THE UNIVERSITY OF CHICAGO

THE UNIVERSITY OF CHICAGO  
LIBRARY

THE UNIVERSITY OF CHICAGO  
LIBRARY  
1850-1859  
1860-1869  
1870-1879  
1880-1889  
1890-1899  
1900-1909  
1910-1919  
1920-1929  
1930-1939  
1940-1949  
1950-1959  
1960-1969  
1970-1979  
1980-1989  
1990-1999  
2000-2009  
2010-2019  
2020-2029



*Ichneumon mercatorius* Fabr.

J. St. fec.





ICHNEVMON mercatorius.

*Die schwarze Schlupfwespe mit dem gelb gebänderten und geränderten Unterleib.*

*Ichneumon mercatorius*: scutello flavicante, thorace submaculato, abdominis segmento secundo tertioque basi, reliquis apice flavis. *Fabric.* Entom. syst. T. III. n. 41. p. 143.

*Schaeffer* Ic. Inf. Ratisb. tab. 72. fig. 5. tab. 205. fig. 6. et tab. 223. fig. 7.  
Legi haud raro in umbelliferis.

Occurrit non raro abdominis segmento *tertio*, apice etiam *flavo marginato*.

a Magnitudo naturalis, b Eadem aucta.

THE HISTORY OF THE

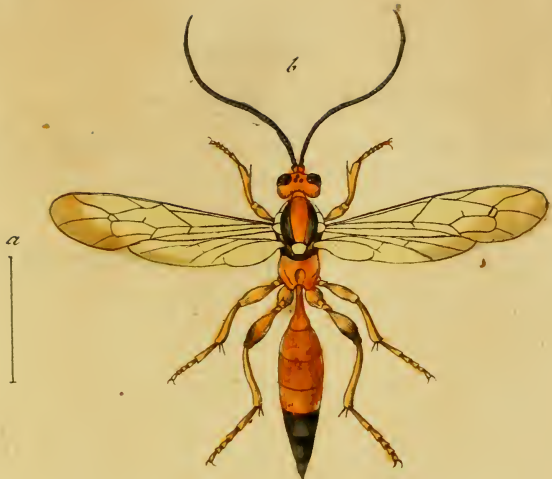
REIGN OF KING CHARLES THE FIRST

BY JOHN BURNET

OF THE HISTORY OF GREAT BRITAIN, FROM THE REIGN OF CHARLES THE FIRST TO THE PRESENT TIME, BY JOHN BURNET, BISHOP OF SALISBURY.

IN THREE VOLUMES. THE SECOND VOLUME.

LONDON, Printed by J. Sturges, in Pall-mall, 1724.



*Ichneumon flavatorius* Fabr.

J. St. J. fec.



ICHNEVMON flavatorius.

*Die rothe gelbbunte Schlupfwespe.*

*Ichneumon flavatorius*: scutello albo fulvus, antennis abdominisque ultimis segmentis atris. *Fabric.* Entom. syst. Supplem. p. 220.

Obvius rarissime in umbelliferis.

a Magnitudo naturalis. b Eadem aucta.

THE HISTORY OF THE

REIGN OF

CHARLES THE FIRST

BY

JOHN BURNET



*Ichneumon de bellator* Fabr.

J. St. fce.





ICHNEVMON debellator.

*Die schwarze Schlupfwespe mit dem in der Mitte rothen Unterleib.*

*Ichneumon debellator*: niger, abdominis quatuor segmentis intermediis rufis, femoribus clavatis nigris. *Fabric.* Syst. Ent. n. 37. p. 333. *Spec. Inf.* T. I. n. 41. p. 427. *Mant. Inf.* T. I. n. 49. p. 263. *Entom. syst.* T. III. n. 78. p. 152.

Raro in dumetis.

a Magnitudo naturalis. b Eadem aucta.





*Ichneumon dubitator* Michx.

J. St. fec.



ICHNEVMON dubitator.

*Die schwarze rothgebänderte und weissgeringelte Schlupfwespe.*

*Ichneumon dubitator*: niger, abdominis segmento primo apice, secundo tertioque totis rufis, reliquis apice albis.

Legi haud infrequens in umbelliferis.

Medius. Caput, antennae, thorax atra immaculata. Abdomen clavatum, atrum, nudulum, segmento primo apice, secundo tertioque totis rufis, reliquis nigris apice albo marginatis. Pedes ferruginei: tarsi postici nigri, Alae obscuro hyalinae.

a Magnitudo naturalis. b Eadem aucta.

The following conditions apply to the use of this material:

1. This material is to be used for personal or internal reference only.

2. It is not to be distributed, copied, or otherwise used.

3. The University of Chicago is not responsible for any errors or omissions in this material.

4. All rights are reserved by the University of Chicago.



*Chalcis clavipes* Fabr.

J. St. fcc.





CHALCIS clavipes.

*Die rothschenklichte Schenkelwespe.*

*Chalcis clavipes*: atra femoribus posticis incrassatis rufis. *Fabric. Mant. Inf.*

T. I. n. 2. p. 272. *Entom. system. T. III. n. 2. p. 195.*

*Sphex fispes. Linn. Syft. Nat. n. 13. p. 943. ed. XIII. n. 1. p. 2742, Faun. Suec.*  
n. 1657.

*Hübner im Naturforsch. XXIV. n. 19. p. 56. tab. II. fig. 23.*

*Rossi Faun. etrusc. T. II. n. 803. p. 58.*

Legi raro in fabulosis.

a Magnitudo naturalis. b Eadem aucta.

THE HISTORY OF THE

REIGN OF KING CHARLES THE FIRST

By Sir Samuel Purchas, Knight, Secretary to the Admiralty, and  
Author of the Description of the East-India Company's Territories,  
and of the History of the East-India Company's Voyages.

London, Printed by J. Sturges, at the Sign of the Gun,  
in St. Dunstons Church-yard, 1705.

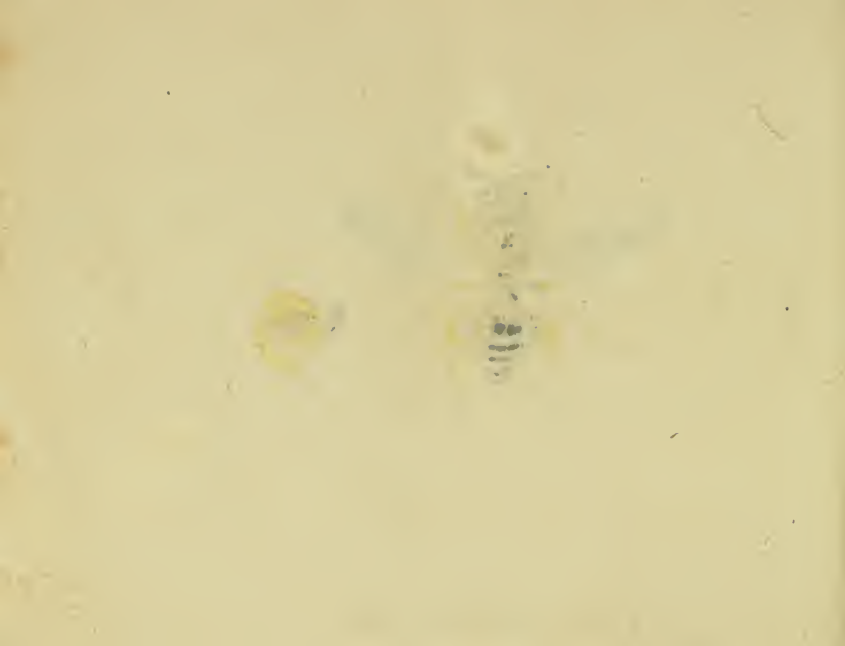
Price 1s. 6d.

Printed by J. Sturges, at the Sign of the Gun,  
in St. Dunstons Church-yard, 1705.



*Chalcis flavipes* Fabr.

J. St. fec.



## CHALCIS flavipes.

*Die gelbfüßichte Schenkelwespe.*

*Chalcis flavipes*: atra femoribus posticis incrassatis ferratis, macula apicis flava, pedibus flavis. *Fabric. Entom. syst. T. III. n. 10. p. 197.*

Quamvis haec *Chalcis* species, ad insularum *Americas meridionalis* indigenas, iam iam ab illustr. *Fabricio* relata fuerit, meumque exemplum, quod in propria collectione conservo, ex *India occidentali* profectum; attamen Dn. *Sturm* affirmabat, ipsum, aliud etiam *Norimbergae* reperiisse. Ad me nunc misso hoc exemplo, seduloque cum illo instituto examine, omnino patuit, nullum superesse dubium, et adeo utrumque exemplum inter se convenire, ut vel ulla discriminis nota, haud amplius detegi potuisset. Atqui, dum speciem antehac *Americas meridionalis* indigenis adscriptam, non spernentem paterna rura quoque cognoscerem, haud haesitavi, eam nunc inter insecta nostratia etiam enumerare.

a Magnitudo naturalis. b Eadem aucta.

CHIEF OF POLICE

City of New York

Dear Sir: I have the honor to acknowledge the receipt of your letter of the 10th inst. in relation to the above matter.

I have been advised by the Board of Police that the same has been referred to the Board of Police for their consideration. I am sorry to hear that you are unable to attend to the matter at this time, but I will endeavor to expedite the same as far as possible. I will keep you advised of any further developments.

Very respectfully,  
J. J. [Name]



*Crabro trimaculatus* Rossi Fem.

J. St. fec.





CRABRO trimaculatus. Femina.

*Die dreygefleckte Horneise. Das Weibchen.*

*Crabro trimaculatus*: ater thorace albo maculato, abdominis segmento primo rufo, reliquis utrinque linea transversa alba.

*Sphex maculata*. Fabric. Mant. Inf. T. I. n. 50. p. 277. Entom. system. T. III. n. 70. p. 215.

*Pompilus maculatus*. Fabric. Entom. syst. Supplem. n. 32. p. 251.

Sturm Verz. f. Insekt. tab. III. fig. 2.

Pluries legi huius exempla, obvia saepius in plantis umbelliferis ad dunetorum versuras, plusquam autem saepius ea in copula, cum mare, *Crabrone trimaculato* Ross. (*Faun. Insect. LI. 13.*) deprehendi. Quum autem animadverterem, marem nulla constanti nota, a *femina hac* sua differre, si excipis duntaxat pedum segmentique primi abdominis *ruborem*, coloremque hunc, haud satis esse aptum,

ad novam speciem condendam: arbitratus sum esse consultius, speciem a natura ipsa copulatam, etiam tradere coniunctam, nec illam ipsam, utroque nunc insignem sexu, in partes inique solvere.

Addendum, hanc speciem, neque inter Crabrones, neque inter Spheges, multo minus inter *Pompilos* apte militare sed potius proprium constituere genus.

a Magnitudo naturalis, b Eadem aucta.



*Apis acervorum* Fabr.

J. St. fec.



## APIS acervorum.

### Die Sandhäufchen - Biene.

*Apis acervorum*: hirsuta atra, tibiis posticis ferrugineis. *Fabric. Syst. Ent. n. 21.*  
p. 382. *Spec. Inf. T. I. n. 25. p. 479.* *Mant. Inf. T. I. n. 29. p. 301.* *Entom. syst. T. III. n. 36. p. 322.*

*Apis acervorum. Linn. Syst. Nat. n. 50, p. 961. ed. XIII. n. 50. p. 2783. Fn.*  
*Suec. n. 1717.*

*S. brank. inf. austr. n. 802.*

*Reffi Faun. etrusc. n. 907. p. 101.*

Habitat in floribus, saepius *Carduis* delectatur. *Schaefferi* figura 5. in  
tab. 78. *Apis muraria* repraesentatur, ideoque huc non pertinet.

a Magnitudo naturalis. b Eadem aucta.

THE UNIVERSITY OF CHICAGO

THE UNIVERSITY OF CHICAGO

The University of Chicago is a private research university in Chicago, Illinois. It was founded in 1837 as the first American university to be organized as a corporation. The university is known for its commitment to academic excellence and its diverse student body. It is a member of the Association of American Universities and the Ivy League.

The university is organized into several divisions, including the Division of the Physical Sciences, the Division of the Biological Sciences, the Division of the Social Sciences, and the Division of the Humanities. It is also home to several world-renowned research centers and institutes, such as the James Franck Institute, the Enrico Fermi Institute, and the Center for Experimental Research and Theoretical Physics.

The University of Chicago is a leader in the fields of physics, chemistry, biology, and the social sciences. It has produced many Nobel laureates and other distinguished scholars. The university is also known for its innovative teaching methods and its commitment to public service.



*Apis tuberculata* Fabr.

J. St. fec.





**APIS tuberculata.**

*Die unter dem Halse höckerichte Biene.*

*Apis tuberculata*: thorace pubescente, abdomine atro: margine cinerascete, ano fulvo. *Fabric. Entom. system. T. III. n. 84. p. 3.*

Legi infrequens in floribus compositis.

Processus conicus corneus sub gula, in hac specie maxime notabilis.

a Caput cum. b tuberculo sub gula aucta.

THE UNIVERSITY OF CHICAGO

THE UNIVERSITY OF CHICAGO LIBRARY

100 EAST SOUTH EAST STREET, CHICAGO, ILL. 60607

TEL: 773-936-3700 FAX: 773-936-3701

WWW.CHICAGO.EDU

CHICAGO, ILL. 60607

CHICAGO, ILL. 60607



*Nomada nigrita* Fabr.

J. St. fec.



NOMADA nigrita.

Die schwarze Trauerbiene.

*Nomada nigrita*: atra thorace cinereo villoso, abdomine nitido immaculato, alis apice fuscis.

*Nomada nigrita*. Fabric. inedit.

Schäffer Ic. Inf. Ratisb. tab. 224. fig. 3. 4.

Legi haud infrequens in *Mentha sylvestri* Linn. Magnitudine variat.

Inter maiores huius generis. Caput atrum. Frons villosita atra barbata. Oculi cinerei. Antennae nigrae thorace breviores. Thorax ater cinereo villosus. Scutellum depressum, minime elevatum. Abdomen atrum elongatum lucidum, basi et apice rara pube vestitum. Pedes nigro villosuli. Alae fuscescentes, apice intensius fuscae.

a) Magnitudo naturalis, b Eadem aucta.

THE HISTORY OF THE

REIGN OF KING CHARLES THE FIRST

By JOHN BURNET, BISHOP OF SALISBURY.

IN TWO VOLUMES.

LONDON, Printed by J. Sturges, at the Black-Swan in St. Dunstons Church; and by J. Smith, in Strand, 1724.

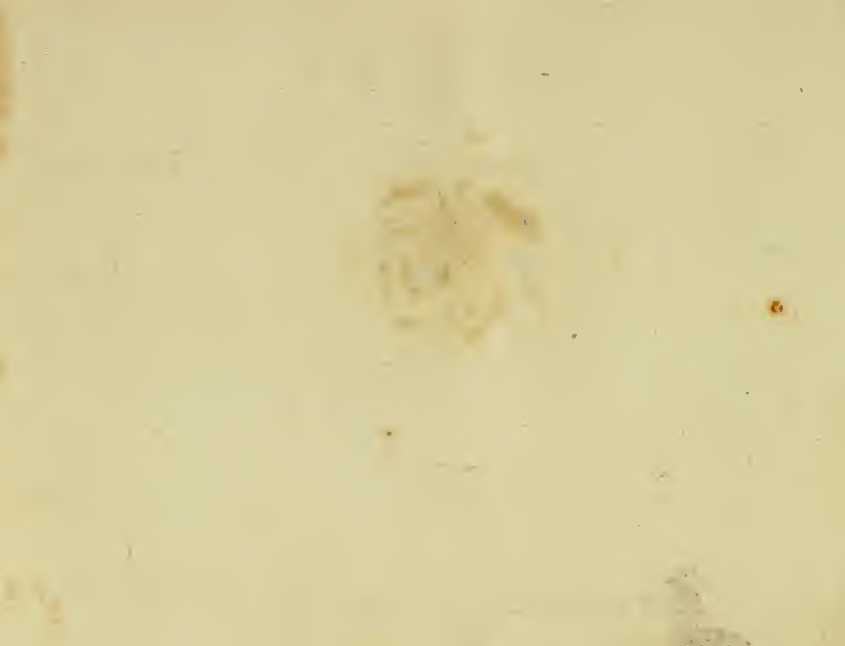
By J. Sturges, at the Black-Swan in St. Dunstons Church; and by J. Smith, in Strand, 1724.

a  
|



*Phalangium phaleratum* Müll.

J. St. fec.





PHALANGIVM phaleratum.

*Die buntfärbigte Afterspinne.*

*Phalangium phaleratum*: ferrugineum chelis atris, abdomine subrotundo nigro, basi, fascia interrupta, maculisque tribus dorsalibus flavis.

Legi in arenosis Mens. Junio 1800.

Caput cum thorace in unum corpus unitum, circumscriptione ovata, colore ferrugineo. Oculi subocto, duobus scilicet coalitis. Chelae nigrae petiolo ferrugineo insidentes. Abdomen subrotundum nigrum basi flavum, fascia medio interrupta, punctisque tribus dorsalibus flavis. Puncta duo fere in medio opposita, tertium ante apicem. Pedes ferruginei: femoribus primi paris, tibiisque omnibus apice nigro annulatis.

a Magnitudo naturalis. b Eadem aucta.

THE UNIVERSITY OF CHICAGO

PHYSICS DEPARTMENT

RECEIVED FROM THE PHYSICS DEPARTMENT OF THE UNIVERSITY OF CHICAGO  
ON FEBRUARY 10, 1950

TO THE PHYSICS DEPARTMENT OF THE UNIVERSITY OF CHICAGO

FROM THE PHYSICS DEPARTMENT OF THE UNIVERSITY OF CHICAGO  
ON FEBRUARY 10, 1950

PHYSICS DEPARTMENT, UNIVERSITY OF CHICAGO



*Aphis Piceae Mithi.*

*J. St. f.*



APHIS piceae.

Die Blattlaus auf der Weisstanne.

*Aphis piceae.* *Pinus piceae.* Linn.

Schäffer Ic. Inf. Ratisb. tab. 222. fig. 4. 5. ?

Legi ante aliquot annos in *Pinu picea* Linn. deinde etiam legit nuperrime eam amicissimus Carol. de Furtenbach, collegii norimbergensis de re saltuaria a consiliis, in *Pinu Abiete* Linn. benevoleque mecum huius numerosam gregem communicavit.

Fertilis, si quae alia species est huius generis, adeo, ut pene integer truncus *Pini Abietis* L, propter singularem copiam harum Aphidum, eminus nigredine aliqua obductus videretur.

Inter maiores species huius generis referenda. Corpus nigrum, margine laterali incrassato. Cornicula subnulla, Anus subobtusus, Antennae nigrae ad me-

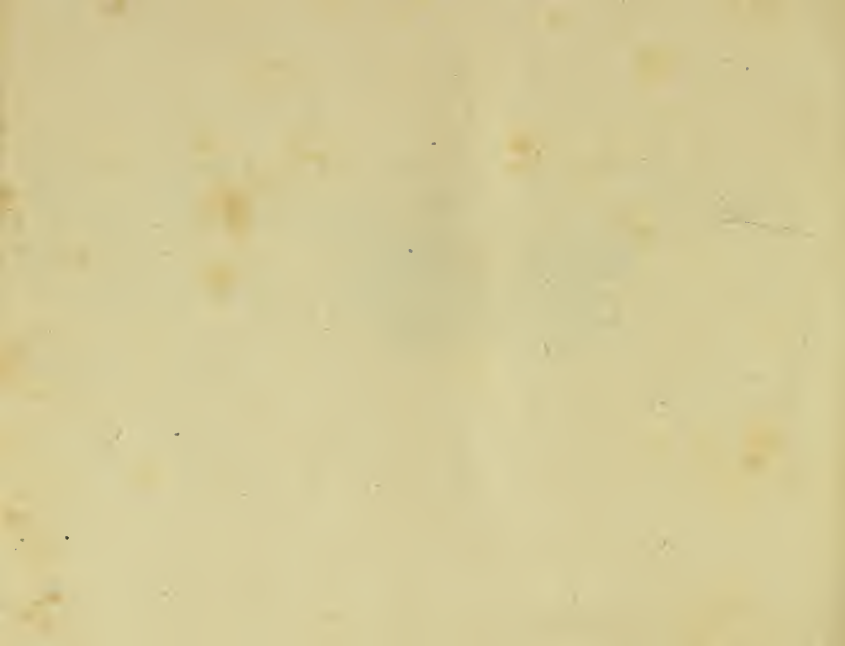
dium usque rufescentes: articulo primo crassiori. Pedes rufescentes, femoribus apice  
tarsisque nigricantibus: postici elongati. Alae praegrandes omnino albo-hyalinae,  
lineola marginis antici ante apicem nigra. Ad *Aphid. Ligustici Fabric.* propius  
accedere videtur.

a Magnitudo naturalis. b Eadem aucta.



*Noctua quadra* Mas Fabr.

J. St. f.





NOCTVA quadr. Mas.

*Der Vierpunkt. Der Strohhut. Die Stahlmotte. Der grosse Schabenspinner. Das Viereck. Das Männchen.*

*Noctua quadrata*: laevis alis depressis luteis: anticis punctis duabus cyaneis. *Fabric.* Entom. syst. T. V. n. 54. p. 24.

*Noctua deplana.* *Fabric.* Syst. Entom. n. 20. p. 595. Spec. Inf. T. II. n. 29.  $\beta$ .  
p. 215. Mant. Inf. T. II. n. 40. p. 139.  $\beta$ .

*Phalaena Noctua deplana.* *Linn.* Syst. Nat. Mant. I. p. 539. ed. XIII. n. 987.  
p. 2533.

*Rossi* Faun. etrusc. T. II. n. 1108. p. 179.

*Borkhausen* eur. Schmett. III. Th. n. 76. p. 239.

Die Raupe findet man auf verschiedenen Bäumen, als der Buche, der Esche, dem Maulbeerbaum, der Linde, den Zwetschen und Obstbäumen, durch deren

Verwüstung sie sich schon öfters furchtbar gemacht hat. Auch auf den Nadelhölzern findet man sie öfters, *sie frisst aber nicht die Nadeln derselben*, sondern die an ihren Stämmen befindlichen Flechten und Jungermannien. Auch an den vorge-  
nannten Bäumen frisst sie lieber die Flechten und Laubmoose, als die Blätter. Zur  
Verwandlung spinnt sie sich in ein zwar weitläufiges aber sehr dünnes Gewebe  
von eirunder Gestalt, in dessen Mitte die Chrysalide durch zarte Fäden, oder  
durch dünne Häute befestigt, schwebt. Sie ist beynahe eyrund, von Farbe braun-  
roth mit einigem Glanz, und äuffert kaum einige Zeichen des Lebens. Die Eule  
entwikelte sich in drey; längstens vier Wochen. *Borkhäusen.*



*Noctua quadra* Fem. Fabr.

J. St. fec.



NOCTVA quadra, Femina.

*Der Würfelvogel. Die Pflaumeneule. Der Vierpunkt etc. La Phalène jaune à quatre points. Geoffr. Das Weibchen.*

*Noctua quadra*: laevis alis depressis luteis: anticis punctis duobus cyaneis. *Fabricius*. Syst. Entom. n. 19. p. 595. Spec. Inf. T. II. n. 29. p. 254. Mant. Inf. T. II. n. 40. p. 1. Entom. syst. T. V. n. 54. p. 24.

*Phalaena noctua quadra*. Linn. Syst. Nat. n. 114. p. 840. ed. XIII. p. 2553. Syst. Verz. der W. Schmett. n. 1. p. 68.

*Geoffr.* Inf. T. II. n. 89. p. 154.

*Scopol.* carn. n. 519. cum icone absque numero.

*Pod. mus.* graecenf. tab. 2. fig. 8.

*Esper* eur. Schmett. T. II. p. 94. tab. 92. fig. 2—6.

*Roefel* Insekt. Bel. I. Th. p. 110. tab. 17.

*Borkhausen* a. a. O.

*Röfel* bemerkt einen besondern Kunsttrieb an der Raupe dieser Eule. Wenn sie sich nehmlich von einem höhern Ort zu einem niedrigern herablassen will, so zieht sie die Ringe zusammen und schnellt sich plözlich auseinander, und weiß so geschickt einen Sprung zu wagen, daß sie immer auf die Füße fällt.









