

1. *Rhus integrifolia*

2. *Lionothamnus asplenifolius* (= *floribundus asplenifolius*).

3. *Cerasus ilicifolia integrifolia*

4. *Heteromeles* "Tollon" "Christmas-fer"

1. *Rhus integrifolia*

2. *Lionothamnus asplenifolius* (= *floribundus asplenifolius*).

3. *Cerasus ilicifolia integrifolia*

4. *Heteromeles* "Tollon". "Christmas-fer"

Plants collected from the Colorado River
to the Pacific Ocean:

- ^{April 1-6, 1894.}
Mt. Yuma, Calif. April 2 and 6, 1894.
- ^{April 8-18}
Seven Wells, Salton River, S. Cal. - April 8, 12, 17.
- ^{April 18-27}
Gardner's Laguna. do Apr. 19 & 25.
- ^{April 27-28}
Laguna of Salton River, S. Cal., near monument No. 218 April 27.
- ^{April 28-May 3}
Unlucky Lake, New River, Calif. April 30 & May 2.
- ^{May 3-6}
Laguna Station do May 5.
- ^{May 6-7}
Coyote Well, San Diego Co., Calif. May 6.
- ^{May 7-9}
First Water Mt. Spgs. Canon, Coast Range. May 8.
- ^{May 9-16}
Mountain Springs, Coast Range Mts. May 10 & 15.
- ^{May 16-17}
West side, near Summit do May 17.
- ^{May 21-June 17-31}
Tribute Hot Springs, (monument 233) May 20, 24, 29.
- ^{May 31-June 7}
Nachogueno Valley, S. Calif. June 1, 5.
- ^{June 7-8 and 23}
Campo. June 8.
- ^{June 8-9}
J. M. Gray's ranch June 9.
- ^{June 9-21}
Laguna June 11, 16, 19.
- ^{June 21-23}
Thomas Cameron's ranch June 22.
- ^{June 23-27}
Teate River, southeast of Teate Mt. June 25.
- ^{June 27-July 3}
San Ysidro Ranch, S. Cal., June 28 and July 2.
- ^{July 3-9}
Tanol Creek, at the old date-palm. July 4 and 7.
- ^{July 9-20}
Otay Valley. July 9 (climbing asclepias, etc. Geoveve
Pacific Ocean at mouth of La Juana R. July 10,
- ^{August 12}
San Diego. July 20 - Aug 3; Aug 15-22; Aug. 29 - Sept. 9, 1894.
- La Jolla August 12 1894

L

Aug 17 + 19

Ocean Beach, San Diego Co., Calif. Aug. 17, 1894

Aug. 19

Point Loma, do " 19, 1894.

Aug 3-7 and 14-15

Alpine P. O., San do 1950 ft., elev. August 6, 1894

Aug 7-14

Pine Valley 4300 ft. elev. do Aug. 8 + 12, 1894

Aug 22-29

San Clemente Island, Pacific Ocean. Aug. 23, 25, + 28²⁶

2494-4085 . 1893

any

1894

NM

3

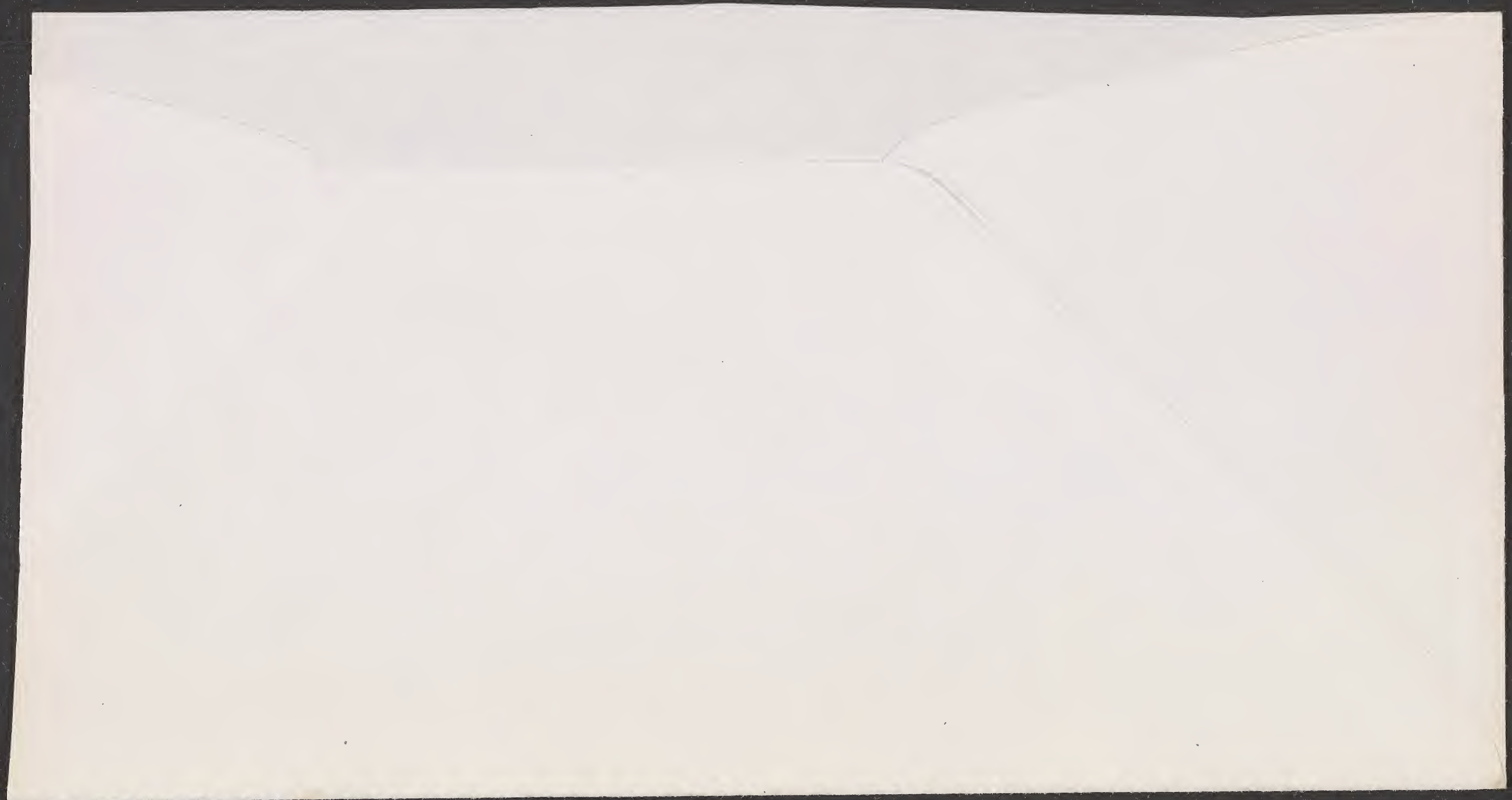
Calif

B. Calif

(Black p.)

coll. Holman
Schonberger

are these Bot:
Books? Can't find
them in catalogue.
K. S.



- ✓ 1. Rhus integrifolia
- ✓ 2. Leonothamnus asplenifolius (= floribundus
asplenifolius).
- ✓ 3. Cerasus sticifolia integrifolia.
- ✓ 4. Heteromeles ("Tollon; Christmasberry").
5. Cotyledon.

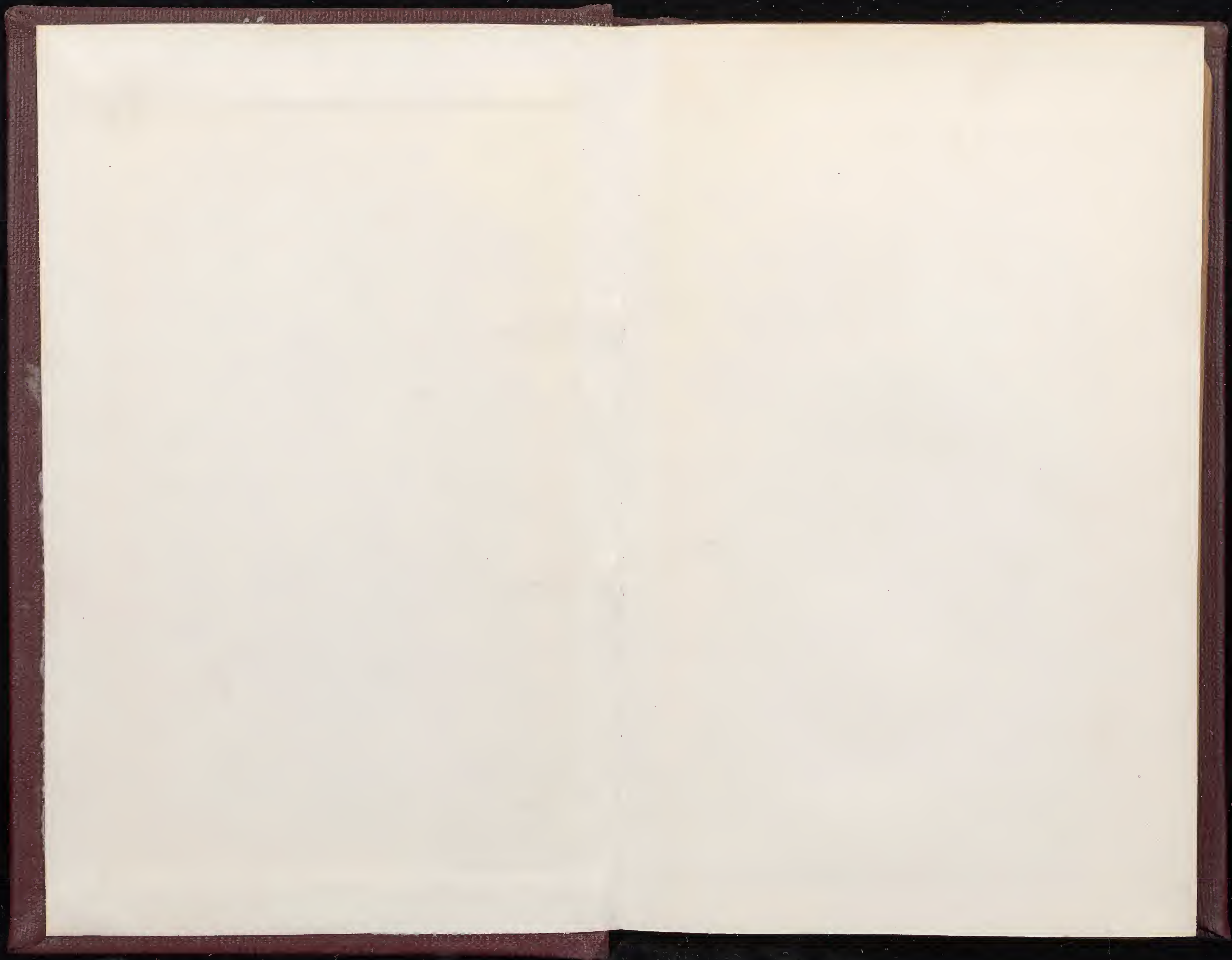
✓ Last plant collected was No. 4085.

Plants of San Clemente Island

Nos. 4046 - 4085 -

Eriogonum, Rhus, Lyonothamnus,
Selaginella, Convolvulus, Salicornia,
Abronia, Solanum, and Opuntia
are entered in plant list.

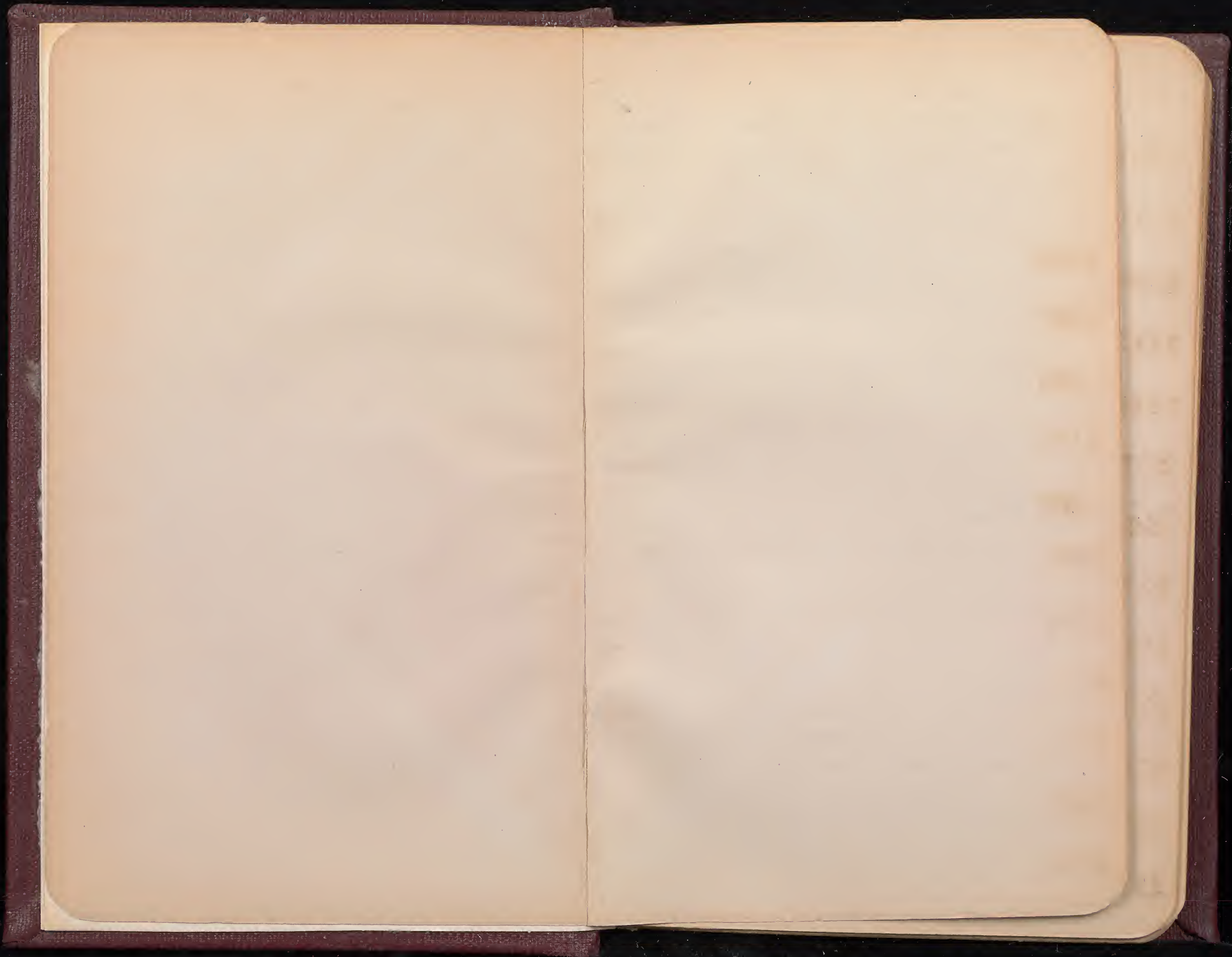
There were also Astragalus, Colydon



Edgar A. Mearns
Mexican Boundary
Survey

Catalogue

2494 - 4485



2494	<i>Meibomia</i>	OCT 2 1893
2495	<i>Viola</i>	OCT 2 1893
2496	<i>Asclepias</i>	OCT 2 1893
2497		OCT 2 1893
2498		OCT 2 1893
2499	<i>Mirabilis</i>	OCT 2 1893
2500	<i>Solidago</i>	OCT 2 1893
2501		OCT 2 1893
2502		OCT 2 1893
2503	<i>Gilia</i>	OCT 2 1893
2504		OCT 2 1893
2505	<i>Monarda</i>	OCT 2 1893
2506		OCT 2 1893

Animas Valley, New Mexico

"
"
"
"
"
"
"
"
"
"
"
"

2507

OCT 2 1893

Aguas Valley, New Mexico.

2508 *Cyperus*

OCT 2 1893

"

2509 *Cyperus*

OCT 2 1893

"

2510

OCT 2 1893

"

2511 *Eryngium*

OCT 2 1893

"

2512 *Lithospermum*

OCT 2 1893

"

2513

OCT 2 1893

"

2514 *Conium*

OCT 2 1893

"

2515 *Carduus*

OCT 2 1893

"

2516 *Notholaena*

OCT 2 1893

"

2517 *Aster*

OCT 2 1893

"

2518 *Eriocarpum*

OCT 2 1893

"

2519

OCT 2 1893

"

2520 OCT 2 1898

2521 Erigeron OCT 2 1898

2522 OCT 2 1898

2523 Juniperus OCT 2 1898

2524 Rhus OCT 2 1898

2525 Platanus Wrightii. OCT 2 1898

2526 Celtis OCT 2 1898

2527 Yucca OCT 2 1898

2528 Phoradendron OCT 2 1898

2529 OCT 2 1898

2530 Pinus OCT 2 1898

2531 Rhus OCT 2 1898

2532 Arbutus OCT 2 1898

Animas Valley, New Mexico.

"

"

Guadalupe Cañon, Mex. bound. line - alt. 5400 ft.

"

alt. 4600 ft.

"

alt. 4740 ft.

"

alt. 4800 ft.

"

alt. 4760 ft.

West side San Luis Mts. alt. 5375 ft.

Guadalupe Cañon Mex. bound. line. alt. 5400 ft.

West side San Luis Mts. alt. 5525 ft.

"

alt. 6000 ft.

"

alt. 5800 ft.

- | | | | |
|------|---------------------------|------------|---------------------------------------------------------------------------------|
| 2533 | <i>Fraxinus</i> | OCT 2 1898 | West side of San Luis Mts. alt. 5850 ft. |
| 2534 | <i>Phacelia</i> | OCT 2 1898 | " alt. 5750 ft. |
| 2535 | | OCT 3 1898 | Guadalupe Cañon, near monument. alt. 4600 ft. |
| 2536 | | OCT 3 1898 | " 4500. |
| 2537 | <i>Cyperus</i> | OCT 6 1898 | San Bernardino River at Monument 77. |
| 2538 | | OCT 6 1898 | " |
| 2539 | <i>Xanthium</i> | OCT 6 1898 | " |
| 2540 | | OCT 6 1898 | " |
| 2541 | | OCT 6 1898 | " |
| 2542 | <i>Prosopis juliflora</i> | OCT 7 1898 | Sulphur Spring Valley, Mexican boundary line. |
| 2543 | <i>Salix</i> | OCT 7 1898 | San Bernardino River at Monument no 77. |
| 2544 | <i>Yucca</i> | OCT 7 1898 | Sulphur Spring Valley, Mex. bound line. |
| 2545 | | OCT 7 1898 | San Bernardino ^{River} Ranch at Monument no 77
alt. 3975 |

2559 *Aster* OCT 16 1893
2560 *Carduus* OCT 16 1893
2561 *Polygonum* OCT 16 1893
2562 *Parthenocissus* OCT 16 1893
2563 *Platanus Wrightii* OCT 16 1893
2564 *Equisetum* OCT 16 1893
2565 OCT 16 1893
2566 *Rhus glabra* OCT 16 1893
2567 OCT 17 1893
2568 *Bastilleja* OCT 17 1893
2569 OCT 17 1893
2570 OCT 17 1893
2571 *Pentstemon* OCT 17 1893

Huachuca Mts, Arizona

"

"

"

"

"

"

"

"

"

"

"

"

2572

OCT 17 1893

Huachuca Mts., Arizona -

2573

OCT 17 1893

"

2574

OCT 17 1893

"

2575 *Pinus*

OCT 17 1893

"

2576 *Lobelia*

OCT 17 1893

"

2577 *Senecio*

OCT 17 1893

"

2578 *Quercus*

OCT 17 1893

"

2579 *Bromus*

OCT 17 1893

"

2580 *Delphinium scopulorum* *Almy* OCT 17 1893

"

2581 *Senecio*

OCT 17 1893

"

2582

OCT 17 1893

"

2583

OCT 17 1893

"

2584

OCT 17 1893

"

2585

OCT 17 1893

Huachuca Mts., Arizona -

2586

OCT 17 1893

"

2587

OCT 17 1893

"

2588 *Leucanthus*

OCT 17 1893

"

2589 *Chilanthus*

OCT 17 1893

"

2590 *Pinus*

OCT 17 1893

"

2591 *Kuhnistera*

OCT 17 1893

"

2592

OCT 17 1893

"

2593 *Erigeron*

OCT 17 1893

"

2594

OCT 17 1893

"

2595

OCT 17 1893

"

2596

OCT 17 1893

"

2597 *Solidago*

OCT 17 1893

"

2598

OCT 17 1893

Huachuca Mts, Arizona.

2599

OCT 17 1893

"

2600

OCT 17 1893

"

2601 *Geranium*

OCT 17 1893

"

2602 *cornus*

OCT 17 1893

"

2603

OCT 17 1893

"

2604

OCT 17 1893

"

2605 *Acer Negundo L.*

OCT 17 1893

"

2606 *Aster.*

OCT 17 1893

"

2607

OCT 17 1893

"

2608

OCT 17 1893

"

2609

OCT 17 1893

"

2610

OCT 17 1893

"

2611 OCT 17 1898

Huachuca Mts., Arizona

2612 OCT 18 1898

" Froud's Ranch

2613 Solidago OCT 18 1898

" "

2614 Salix OCT 18 1898

" "

2615 OCT 18 1898

" "

2616 Castilleja OCT 18 1898

" "

2617 Praxinus OCT 19 1898

Head of Barbacomori Creek, Ariz - alt. 5400.

2618 Salix OCT 19 1898

" alt 5320.

2619 OCT 22 1898

Santa Cruz, Sonora, Mexico

2620 Physalis OCT 22 1898

"

2621 OCT 22 1898

"

2622 Ambrosia OCT 22 1898

"

2623 Senecio OCT 22 1898

"

2624		OCT 22 1898	Santa Cruz, Sonora, Mexico.	
2625	Aster	OCT 22 1898	"	
2626	Juncus	OCT 22 1898	"	
2627		OCT 22 1898	"	
2628		OCT 22 1898	"	
2629		OCT 22 1898	"	
2630	Solanum	OCT 22 1898	"	
2631		OCT 22 1898	"	
2632	Ribes	OCT 22 1898	"	
2633	Polygonum	OCT 22 1898	"	
2634		OCT 22 1898	"	
2	2635	Sambucus	OCT 22 1898	"
3	2636	Leptalaria	OCT 22 1898	"

2637 Juniperus

OCT 22 1893

Santa Cruz, Sonora, Mexico

2638 Zauschneria

Oct. 24, 1893

Nogales, ~~Arizona~~ ^{Arizona} Sonora, Mexico

2639 Vitis

OCT 25 1893

"

2640 Rubus

OCT 25 1893

"

2641 Platanus Wrightii

OCT 25 1893

"

2642 Quercus

OCT 25 1893

"

2643 Phoradendron

OCT 26 1893

"

2644

Oct. 28, 1893

"

2645

Nov. 10, 1893.

Fort Lowell, Arizona (F. X. Holzner)

2646

Nov. 11, 1893

"

"

2647

NOV 11 1893

"

"

2648 Erigeron

NOV 11 1893

"

"

2649 Lycium

NOV 11 1893

"

"

2650 *Solidago*

NOV 11 1898

Port Lowell, Pima Co., Arizona (F. X. Holzner)

2651 *Covillea tridentata* (Dr. Vail)

NOV 11 1898

"

2652 *Sambucus*

NOV 12 1898

"

2653 *Nicotiana*

Nov. 18, 1893

"

2654 *Philibertia*

Nov. 21, 1893

Tucson, Arizona

2655 *Xanthium*

Nov. 21, 1893

"

2656 *Datura meteloides*

Nov. 21, 1893

"

2657

Nov. 21, 1893

"

2658 *Salix*

Nov. 21, 1893

"

2659 *Cheopodium*

Nov. 21, 1893

"

2660 *Nicotiana glauca*

Nov. 21, 1893

"

2661

DEC 3 1898

Oro Blanco Picacho, Mex. Bound. Lim

2662 *Arctostaphylos*

DEC 3 1898

"

2663 Juniperus

DEC 3 1898

Oro Blanco Picacho, Mexican boundary line

2664 Rhus

DEC 3 1898

"

2665 Pinus

DEC 3 1898

"

2666

DEC 3 1898

"

2667 Cereus giganteus

DEC 3 1898

Paso Verde, Pima Co, Arizona

2668

DEC 3 1898

Oro Blanco Picacho, Mexican boundary line.

2669 Quercus

DEC 3 1898

"

2670 Datura

DEC 5 1898

Warsaw Mill, Pima Co., Arizona.

2671 Philanthus

DEC 5 1898

"

2672

DEC 5 1898

"

2673

DEC 5 1898

"

2674 Zauschneria

DEC 5 1898

"

2675 Baccharis

DEC 5 1898

"

2676

DEC 6 1898

Warsaw Mill, Pima Co, Arizona -

2677 *Verbena*

DEC 6 1898

"

2678 .

DEC 6 1898

"

2679

DEC 6 1898

"

2680

DEC 6 1898

"

2681 *Salix*

DEC 6 1898

"

2682

DEC 6 1898

"

2683 *Opuntia*

DEC 6 1898

"

2684

DEC 6 1898

"

2685

DEC 6 1898

"

2686

DEC 6 1898

"

2687 *Selaginella*

DEC 6 1898

"

2688

DEC 25 1898

La Osa, Pima Co, Ariz-

2689

DEC 25 1893

La Osa, Pima Co., Arizona

2690 Eucalyptus

DEC 25 1893

" in cultivation -

2691 Ficus

DEC 25 1893

Paso Verde, Pima Co. Ariz.

2692

DEC 25 1893

La Osa, Pima Co., Ariz.

2693 Nicotiana

DEC 25 1893

"

2694

DEC 25 1893

"

2695

JAN 1 1894

Poso de Luis, Sonora, Mex.

2696

Jan. 4, 1894

"

2697

JAN 4 1894

"

2698 *Prosopis juliflora*

JAN 4 1894

"

2699 *Covillea tridentata*

JAN 4 1894

"

2700

JAN 4 1894

"

2701 *Selaginella*

JAN 6 1894

"

2702 *Opuntia*

Jan 6, 1894

"

2703 *Notholaena*

JAN 7 1894

"

2704 *Notholaena*

JAN 7 1894

"

2705

JAN 7 1894

"

2706

JAN 7 1894

"

2707

JAN 8 1894

"

2708

JAN 8 1894

Poso de Luis, Sonora, Mexico.

2709

JAN 8 1894

"

2710 *Fouquieria splendens*

JAN 8 1894

"

2711

JAN 8 1894

"

2712

JAN 8 1894

"

2713

JAN 8 1894

"

2714

JAN 8 1894

"

2715

JAN 13 1894

Sonoyta, Sonora, Mexico

2716

JAN 13 1894

"

2717

JAN 14 1894

Sonoyta River, at Santo Domingos, Sonora, Mex.

2718 *Sambucus*

JAN 14 1894

"

2719

JAN 15 1894

Sonoyta, Sonora, Mexico.

2720

JAN 15 1894

"

2721

JAN 15 1894

Sonoyta, Sonora, Mexico.

2722

JAN 15 1894

"

2723

JAN 15 1894

"

2724

JAN 15 1894

"

2725

JAN 15 1894

"

2726 *Opuntia*

JAN 15 1894

"

2727

JAN 15 1894

"

2728

JAN 15 1894

"

2729

JAN 15 1894

"

2730 *Opuntia*

JAN 15 1894

"

2731 *Oenothera*

JAN 15 1894

"

2732

JAN 15 1894

"

2733

Jan. 19, 1894

"

2734 *Covillea tridentata*

Jan. ²⁶ 1894

Quitovaquito, Pima Co, Arizona
~~Sonoyta, Sonora, Mexico.~~

2735

JAN 27 1894

"

2736

JAN 27 1894

"

2737

JAN 27 1894

"

2738 *Prosopis pubescens*

JAN 28 1894

"

2739

JAN 28 1894

"

2740

JAN 28 1894

"

2741

JAN 30 1894

Sonoyta River, Sonora, near Quitovaquito

2742

JAN 30 1894

Quitovaquito, Pima Co, Arizona

2743

JAN 30 1894

"

2744

JAN 30 1894

"

2745

JAN 30 1894

"

2746 *Euphorbia*

JAN 30 1894

"

Stems

2747

JAN 30 1894

Quitovaquito Pima Co, Arizona

2748 *Gymnogramme*

JAN 30 1894

"

2749

JAN 30 1894

"

2750 *Ephedra*

JAN 30 1894

"

2751

JAN 30 1894

"

2752

JAN 30 1894

"

2753

JAN 30 1894

"

2754

JAN 30 1894

"

2755

JAN 30 1894

"

2756

JAN 30 1894

"

2757

JAN 30 1894

"

2758

JAN 30 1894

"

2759

JAN 30 1894

"

2760

JAN 30 1894

Quitovaquito, Pima Co, Arizona -

2761.

JAN 30 1894

"

2762

JAN 30 1894

"

2763

FEB 1 1894

"

2764

FEB 1 1894

"

2765

FEB 1 1894

"

2766

FEB 2 1894

Bank of Sonoyta River, Mex. bound. line

2767

FEB 2 1894

Quitovaquito, Pima Co, Arizona -

2768

FEB 3 1894

"

2769 *Coriaria tridentata*

FEB 3 1894

"

2770

FEB 4 1894

"

2771 *Oenothera*

FEB 4 1894

"

2772

FEB 5 1894

"

2773

FEB 5 1894

Quitovaquito, Prima Co., Arizona -

2774 *Sida*

FEB 5 1894

"

2775

FEB 5 1894

"

2776

FEB 5 1894

"

2777

FEB 5 1894

"

2778 *Plantago*

FEB 5 1894

"

2779 *Aster*

FEB 5 1894

"

2780

FEB 5 1894

"

2781

FEB 7 1894

"

2782 *Eustoma*

FEB 7 1894

"

2783

FEB 7 1894

"

2784

FEB 7 1894

"

2785

FEB 7 1894

"

2786 *Aeluropsis*

FEB 7 1894 Quitovaquito, Pima Co, Arizona -

2787 *Distichlis*

FEB 8 1894 Sonoyta River at Agua Dulce, Sonora.

2788

FEB 8 1894 Monument no. 174, Mex. bound line

2789

FEB 8 1894 Tule Desert, west of the Sonoyta Valley
near Monument no. 175.

2790

FEB 8 1894 Sonoyta River, Sonora, Mex.

2791

FEB 8 1894 Near Monument no 178, Mex. bound line

2792

FEB 9 1894 "

2793

FEB 9 1894 Near Monument no. 181 "

2794

FEB 9 1894 Tule Desert, west of Monument no. 180.

2795

FEB 11 1894 Tule Mts, Mex. Bound line

2796

FEB 11 1894 "

2797. *Dasylicon*

FEB 11 1894 "

2798 *Ephedra*

FEB 11 1894 "

2799

2800

2801

2802 *Echinocactus*

2803

2804

2805

2806

2807

2808 *Agave*

2809

2810

2811

FEB 11 1894 Tule Mts., Mex. bound. Linn.

FEB 11 1894 "

FEB 11 1894 "

FEB 11 1894 "

FEB 11 1894 "

FEB 11 1894 "

FEB 11 1894 "

FEB 11 1894 "

FEB 11 1894 "

FEB 11 1894 "

FEB 11 1894 "

FEB 13 1894 Tule Wells, Arizona

FEB 21 Tinajas Altas, Yuma Co., Arizona.

- | | | | |
|------|---------------------------------------|-----------------------|----------------------------------|
| 2812 | <i>Opuntia</i> | MAR 1 1894 | Gila City, Gila Mts., Arizona - |
| 2813 | | MAR 1 1894 | Gila River at Gila City, Arizona |
| 2814 | <i>Heliotropium curassavicum</i> L. | MAR 1 1894 | " |
| 2815 | <i>Helianthus</i> | MAR 1 1894 | " |
| 2816 | | MAR 1 1894 | Gila City, Gila Mts. Arizona |
| 2817 | | MAR 1 1894 | " |
| 2818 | | MAR 1 1894 | " |
| 2819 | | MAR 1 1894 | " |
| 2820 | | MAR 1 1894 | " |
| 2821 | <i>Euphorbia</i> | MAR 1 1894 | " |
| 2822 | | MAR 1 1894 | Yuma, Arizona |
| 2823 | | MAR 16 1894 | Yuma Desert, at Monument 200. |
| 2824 | <i>Covillea tridentata</i> (DC.) Vail | MAR 16 1894 | " |

- | | | | |
|------|----------------------------|-------------|-----------------------------------------------------------------------------|
| 2825 | | MAR 16 1894 | Yuma Desert, at monument no. 200. |
| 2826 | <i>Ephedra</i> | MAR 17 1894 | " " no. 204. |
| 2827 | <i>Cyperus</i> | MAR 19 1894 | Colorado River at monument no. 205. |
| 2828 | <i>Yucca whipplei</i> | MAR 20 1894 | Yuma, Arizona - (L. Schoenfeldt)
Probably from Yuma, Coast Range, Calif. |
| 2829 | | MAR 23 1894 | Nache Bueno, Sonora. Mex. |
| 2830 | | MAR 24 1894 | Colorado River at Colonia Diaz, Sonora. |
| 2831 | | MAR 24 1894 | " " |
| 2832 | <i>Covillea tridentata</i> | MAR 24 1894 | " " |
| 2833 | <i>Ephedra</i> | MAR 24 1894 | " " |
| 2834 | | MAR 27 1894 | Colorado River, Sonora, below mouth of Hardy River |
| 2835 | <i>Heliotropium</i> | MAR 27 1894 | " " |
| 2836 | | MAR 27 1894 | " " |
| 2837 | | MAR 27 1894 | " " |

2838

MAR 25 1894 Colorado River, Sonora, below mouth of Hardy R.

2839

MAR 23 1894 "

2840 Salix

MAR 29 1894 Colonia Diaz, Sonora, Mexico.

2841

MAR 29 1894 Colorado River, Sonora, opposite mouth of Hardy R.

2842

MAR 29 1894 "

2843

MAR 29 1894 Colonia Diaz, Sonora, Mexico.

2844

MAR 29 1894 "

2845 Covillea tridentata

MAR 29 1894 "

2846

MAR 29 1894 Colorado River, Sonora, opposite mouth of Hardy R.

2847

MAR 29 1894 Colonia Diaz, Sonora, Mex.

2848

MAR 30 1894 "

2849

APR 7 1894 ^{west bank} Colorado River below Yuma, Arizona

2850

APR 7 1894 "

2851

APR 7 1894

West bank of Colorado River below Yuma, Ariz.

2852

APR 7 1894

"

2853

APR 7 1894

"

2854

APR 7 1894

"

2855

APR 7 1894

"

2856 *Fouquieria*

APR 7 1894

"

2857

APR 7 1894

"

2858

APR 8 1894

Seven Wells, on the Salton River, Lower Cal.

2859 *Datura meteloides*

APR 8 1894

"

2860

APR 8 1894

"

2861

APR 8 1894

"

2862

APR 8 1894

"

2863

APR 8 1894

"

2864	APR 8 1894	Seven Wells, on the Salton River, Lower Calif.
2865	APR 8 1894	"
2866 <i>Populus</i>	APR 8 1894	"
2867	APR 8 1894	"
2868	APR 8 1894	"
2869 <i>Salix</i>	APR 8 1894	"
2870	APR 8 1894	"
2871 <i>Erythraea</i>	APR 8 1894	"
2872 <i>Covillea tridentata</i>	APR 9 1894	" (L. Schoumfelder)
2873	APR 9 1894	" "
2874	APR 9 1894	" "
2875 <i>Distichlis</i>	APR 9 1894	" "
2876 <i>Erythraea</i>	APR 9 1894	" "

2877	<i>Salix</i>	APR 9 1894	Seven Wells, Salton River, Lower Cal. (L. Schoenfeldt)
2878		APR 9 1894	" "
2879		APR 9 1894	" "
2880		APR 9 1894	" "
2881		APR 9 1894	" "
2882		APR 12 1894	" "
2883		APR 12 1894	" "
2884	<i>Datura meteloides</i>	APR 12 1894	" "
2885		APR 12 1894	" "
2886	<i>Heliotropium</i>	APR 12 1894	" "
2887		APR 13 1894	" "
2888		APR 13 1894	" "
2889		APR 13 1894	" "

2890	<i>Cyperus</i>	APR 13 1894	Seven Wells, Salton River, Lower Cal. (L. Schoenfeldt)
2891		APR 13 1894	" "
2892	<i>Prosopis juliflora</i>	APR 13 1894	" "
2893		APR 16 1894	" "
2894		APR 21 1894	Gardner's Laguna, Lower Cal.
2895	<i>Salix</i>	APR 21 1894	" "
2896		APR 21 1894	" "
2897		APR 21 1894	" "
2898		APR 21 1894	" "
2899		APR 21 1894	" "
2900	<i>Heliotropium curassavicum</i>	APR 21 1894	" "
2901		APR 21 1894	" "
2902		APR 21 1894	" "

2903	<i>Erythraea</i>	APR 21 1894	Gardner's Laguna, Lower Calif. (L. Schoenfeldt)
2904		APR 21 1894	" "
2905		APR 21 1894	" "
2906	<i>Rumex</i>	APR 21 1894	" "
2907		APR 21 1894	" "
2908	<i>Datura meteloides</i>	APR 21 1894	" "
2909		APR 23 1894	" "
2910	<i>Covillea tridentata</i>	APR 23 1894	" "
2911		APR 23 1894	" "
2912		APR 23 1894	" "
2913		APR 23 1894	" "
2914		APR 23 1894	" "
2915		APR 27 1894	Salton River Crossing, Lower Cal. "

2916 *Ephedra*.

APR 27 1894

Gardner's Laguna Lower Cal. (L. Schoupsfeldt.)

2917 *Potentilla*

MAY 1 1894

Delucky Lagoon, Calif. "

2918 *Salix*

MAY 1 1894

" "

2919

MAY 1 1894

" "

2920

MAY 1 1894

" "

2921

MAY 1 1894

" "

2922 *Heliotropium curassavicum* L.

MAY 1 1894

" "

2923

MAY 1 1894

" "

2924

MAY 1 1894

" "

2925 *Verbena*

MAY 1 1894

" "

2926 *Sida*

MAY 1 1894

" "

2927

MAY 1 1894

" "

2928

MAY 1 1894

" "

2929	<i>Amaranthus</i>	MAY 1 1894	Unlucky Lagoon, Calif. (L. Schouffeldt)
2930		MAY 1 1894	" "
2931	<i>Lepidium</i>	MAY 1 1894	" "
2932	<i>Rumex</i>	MAY 1 1894	" "
2933		MAY 1 1894	" "
2934	<i>Prosopis juliflora</i>	MAY 4 1894	Laguna Station, Calif.
2935	<i>Covillea tridentata</i>	MAY 6 1894	" "
2936		MAY 6 1894	" "
2937	<i>Ephedra</i>	MAY 6 1894	" "
2938		MAY 6 1894	Signal Mountain, Lower Cal.
2939	<i>Fouquieria</i>	MAY 6 1894	" "
2940		MAY 6 1894	" "
2941		MAY 6 1894	" "

2942

MAY 6 1894

Signal Mountain, Lower Calif. (L. Schoenfeldt)

2943

MAY 6 1894

" "

2944

MAY 6 1894

" "

2945

MAY 6 1894

" "

2946

MAY 6 1894

" "

2947

MAY 6 1894

" "

2948

"Ironwood"

MAY 6 1894

" "

2949

MAY 6 1894

" "

2950

MAY 6 1894

" "

2951

MAY 6 1894

" "

2952

MAY 6 1894

" "

2953

MAY 6 1894

Eastern base of Coast Range, boundary line

2954

MAY 7 1894

" edge of Colorado Desert.

2955

MAY 7 1894

Eastern base of Coast Range, edge of Colorado Desert

2956 *Ephedra*

MAY 7 1894

"

2957

MAY 7 1894

"

2958 *Eriogonum*

MAY 7 1894

"

2959 *Minulus*

MAY 7 1894

"

2960

MAY 7 1894

"

2961

MAY 7 1894

"

2962 *Asclepias*

MAY 7 1894

"

2963

MAY 7 1894

"

2964

MAY 7 1894

"

2965 *Amaranthus*

MAY 7 1894

"

2966 *Chilopsis linearis*

MAY 7 1894

"

2967

MAY 7 1894

"

2968

MAY 7 1894

Eastern base of Coast Range, edge of Colorado Desert

2969

MAY 7 1894

"

2970

MAY 7 1894

"

2971

MAY 7 1894

"

2972 *Agave deserti*

MAY 7 1894

"

2973

MAY 7 1894

"

2974

MAY 7 1894

"

2975

MAY 7 1894

"

2976

MAY 7 1894

"

2977

MAY 7 1894

"

2978 *Asclepias*

MAY 8 1894

"

Mountain Springs Road.

2979

MAY 8 1894

"

"

2980

MAY 8 1894

"

"

2981

MAY 8 1894

Eastern base of Coast Range, Mountain Springs road.

2982

MAY 8 1894

"

2983

MAY 8 1894

"

2984 *Rhus integrifolia*

MAY 8 1894

"

2985

MAY 10 1894

Mountain Spring, San Diego Co, Cal.

2986 *Mimulus*

MAY 10 1894

"

2987 *Rhus integrifolia*

MAY 10 1894

"

2988 *Asclepias*

MAY 10 1894

"

2989

MAY 10 1894

"

2990 *Pentstemon*

MAY 10 1894

"

2991 *Polypogon*

MAY 10 1894

"

2992 *Anemopsis*

MAY 10 1894

"

2993 *Sambucus*

MAY 10 1894

"

2994

MAY 10 1894

Mountain Spring, San Diego Co., Cal.

2995 *Eriogonum*

MAY 10 1894

"

2996 *Xanthium*

MAY 10 1894

"

2997

MAY 10 1894

"

2998

MAY 10 1894

"

2999 *Solanum*

MAY 10 1894

"

3000

MAY 10 1894

"

3001

MAY 10 1894

"

3002 *Nicotiana*

MAY 10 1894

"

3003 *Lotus*

MAY 10 1894

"

3004

MAY 10 1894

"

3005 *Eriophyllum*

MAY 10 1894

"

3006 *beanothus*

MAY 10 1894

"

3007

MAY 10 1894

Mountain Spring, San Diego Co., Cal.

3008

MAY 10 1894

"

3009 *Phacelia*

MAY 10 1894

"

3010 *Symphoricarpos*

MAY 10 1894

"

3011 *Juncus*

MAY 10 1894

"

3012 *Ribes*

MAY 10 1894

"

3013

MAY 10 1894

"

3014 *Juniperus*

MAY 10 1894

"

3015

MAY 10 1894

"

3016

MAY 10 1894

"

3017

MAY 10 1894

"

3018 *Asclepias*

MAY 10 1894

"

3019

MAY 10 1894

"

3020

MAY 10 1894

Mountain Spring, San Diego Co., Cal.

3021

MAY 10 1894

"

3022

MAY 10 1894

"

3023 *Ammobroma*

MAY 10 1894

"

3024 *Ephedra*

MAY 10 1894

"

3025 *Agave*

MAY 10 1894

"

3026 *Astragalus*

MAY 10 1894

"

3027 *Castilleja*

MAY 10 1894

"

3028

MAY 10 1894

"

3029

MAY 10 1894

"

3030

MAY 10 1894

"

3031

MAY 10 1894

"

3032

MAY 10 1894

"

3033

MAY 10 1894

Mountain Spring, San Diego Co., Cal.

3034

MAY 10 1894

"

3035

MAY 10 1894

"

3036

MAY 10 1894

"

3037

MAY 10 1894

"

3038

MAY 10 1894

"

3039 Phacelia

MAY 10 1894

"

3040 Salix

MAY 10 1894

"

3041 Astragalus

MAY 10 1894

"

3042 Lotus

MAY 10 1894

"

3043 Mimulus

MAY 10 1894

"

3044 Carduus

MAY 12 1894

"

(L. Schoenfeldt)

3045

MAY 12 1894

"

3046

MAY 12 1894

Mountain Spring, San Diego Co., Cal. (L. Schweinfelt)

3047

MAY 12 1894

"

"

3048

MAY 12 1894

"

"

3049

MAY 12 1894

"

"

3050

MAY 12 1894

"

"

3051

MAY 12 1894

"

"

3052 *Phacelia*

MAY 12 1894

"

"

3053 *Phacelia*

MAY 12 1894

"

"

3054

MAY 12 1894

"

"

3055

MAY 12 1894

"

"

3056 *Eschscholtzia*

MAY 12 1894

"

"

3057 *Eriogonum*

MAY 12 1894

"

"

3058

MAY 12 1894

"

"

3059

MAY 12 1894

Mountain Spring, San Diego Co., Cal (L. Schoenfeldt)

3060

MAY 12 1894

"

"

3061

MAY 12 1894

"

"

alt. 2000 fr

3062

MAY 12 1894

"

"

"

3063

MAY 12 1894

"

"

alt. 1500 to 2500 fr.

3064

MAY 12 1894

"

"

3065

Canyons up to 2500 fr

Lupinus

alt. 2500 fr

MAY 12 1894

"

"

3066

MAY 12 1894

"

"

3067

Chilopsis linearis

MAY 12 1894

"

"

alt. 1800 fr.

3068

MAY 12 1894

"

"

alt. 2800 fr

3069

Meutzlia

MAY 12 1894

"

"

3070

MAY 12 1894

"

"

alt. 2000 fr.

3071

MAY 12 1894

"

"

"

3085

MAY 12 1894

Mountain Spring, San Diego Co., Cal. (L. Schoupsfeld)

3086

Salvia columbariae Benth.

MAY 12 1894

alt. 1800-2500fr

3087

MAY 12 1894

Above 2500fr

3088

Anurobroma

MAY 12 1894

3089

MAY 12 1894

3090

alt. 3000fr

MAY 12 1894

3091

MAY 12 1894

3092

alt. 2600fr

MAY 12 1894

3093

alt. 2800fr.

MAY 12 1894

3094

Eriogonum

alt. 1000 to 2800ft

MAY 12 1894

3095

Polypogon

MAY 12 1894

3096

MAY 12 1894

3097

alt. 1000-2800fr.

MAY 12 1894

alt. 1000-3000fr.

3098		MAY 12 1894	Mountain Spring, San Diego Co., Cal. (L. Schoupedt)
3099		MAY 12 1894	" " "
3100	<i>Covillea tridentata</i> (Dc.) Vail.	MAY 12 1894	" " "
	alt. 1000-2500 ft.		
3101	<i>Asclepias</i>	MAY 12 1894	" " "
3102		MAY 12 1894	" " "
	alt. 1500-2500 ft.		
3103	<i>Oenothera</i>	MAY 12 1894	" " "
	alt. 1800 ft.		
3104		MAY 12 1894	" " "
	alt. 2500 ft.		
3105		MAY 12 1894	" " "
3106		MAY 12 1894	" " "
3107	<i>Asclepias</i>	MAY 12 1894	" " "
	alt. 2800 ft.		
3108		MAY 12 1894	" " "
3109		MAY 13 1894	" " "
	above 1800 ft.		
3110	<i>Eriogonum</i>	MAY 13 1894	" " "

3111 ~~Dr.~~

MAY 13 1894

Mountain Spring, San Diego Co., Cal.

3112

MAY 13 1894

"

3113 *Astragalus*

MAY 13 1894

"

3114

MAY 13 1894

"

3115

MAY 13 1894

"

3116 *Ribes*

MAY 13 1894

"

3117 *Ephedra*

MAY 13 1894

"

3118 *Populus*

MAY 13 1894

"

3119 *Oenothera*

MAY 13 1894

"

3120 *Eschscholtzia*

MAY 13 1894

"

3121 *Anisocoma acaule*

MAY 13 1894

"

3122

MAY 13 1894

"

3123

MAY 13 1894

"

3124 *Pentstemon auricularis*

MAY 13 1894

Mountain Spring, San Diego Co., Cal.

3125

MAY 13 1894

"

3126 *Erodium*

MAY 13 1894

"

3127

MAY 13 1894

"

3128 *Potentilla*

MAY 13 1894

"

3129

MAY 13 1894

"

3130

MAY 13 1894

"

3131

MAY 13 1894

"

3132 *Distichlis*

MAY 13 1894

"

3133 *Polypogon*

MAY 13 1894

"

3134 *Ammobroma*

MAY 13 1894

"

3135

MAY 13 1894

"

3136

MAY 13 1894

"

3137

MAY 13 1894

Mountain Spring, San Diego Co., Cal.

3138

MAY 13 1894

"

3139

MAY 13 1894

"

3140

MAY 13 1894

"

3141 *Eriogonum*

MAY 13 1894

"

3142

MAY 13 1894

"

3143

MAY 13 1894

"

3144

MAY 13 1894

"

3145

MAY 13 1894

"

3146

MAY 13 1894

"

3147 *Agave*

MAY 14 1894

"

3148 *Rhus integrifolia*

MAY 14 1894

"

3149 *Juniperus*

MAY 14 1894

"

3150

MAY 14 1894

Mountain Springs, San Diego Co., Cal.

3151

MAY 14 1894

"

3152

MAY 14 1894

"

3153

MAY 14 1894

"

3154

MAY 14 1894

"

3155 *Ephedra*

MAY 14 1894

"

3156

MAY 14 1894

"

(*L. Schouppelder*)

3157

MAY 14 1894

"

"

3158 *Cleocharis*

MAY 14 1894

"

"

3159

alt. 2800 ft.

MAY 14 1894

"

"

3160 *Distichlis*

MAY 14 1894

"

"

3161

alt. 2800 ft.

MAY 14 1894

"

"

3162 *Selaginella*

MAY 14 1894

"

"

alt. 3000 ft.

3163

MAY 14 1894

Mountain Spring, San Diego Co., Cal. (L. Schoenfeldt)

3164

MAY 14 1894

"

"

alt. 2800ft

3165

MAY 14 1894

"

"

3166 *Seneciothera*

MAY 14 1894

"

"

3167 *Eriogonum* sp

MAY 14 1894

"

"

3168

MAY 14 1894

"

"

3169

alt. 2400ft

MAY 14 1894

"

"

3170

MAY 14 1894

"

"

3171 *Lobelia*

MAY 14 1894

"

"

3172 *Quercus*

MAY 14 1894

"

"

3173 *Eriogonum*

alt. 2800ft

MAY 14 1894

"

"

3174

alt. 2000ft

MAY 14 1894

"

"

3175 *Phacelia*

alt. 2800ft

MAY 14 1894

"

"

3176 *Eschscholtzia*

MAY 14 1894

Mountain Spring, San Diego Co., Cal (L. Schoenfeldt)

3177

MAY 14 1894

"

"

3178 *Plantago*

MAY 14 1894

"

"

alt. 2800 ft

3179

MAY 14 1894

"

"

3180 *Astragalus*

MAY 14 1894

"

"

3181

MAY 14 1894

"

"

3182 *Salvia columbariae*

MAY 14 1894

"

"

3183

MAY 14 1894

"

"

3184 *Astragalus*

MAY 14 1894

"

"

3185

MAY 14 1894

"

"

3186

MAY 14 1894

"

"

3187

MAY 14 1894

"

"

alt. 1500-2500 ft

3188

MAY 14 1894

"

"

alt. 2000 ft

3189

MAY 14 1894

Mountain Spring, San Diego Co., Cal. (L. Schoenfeldt)

3190 *Eriogonum*

MAY 14 1894

"

3191

MAY 14 1894

"

3192 *Populus*

MAY 14 1894

"

alt. 3000 ft.

3193

MAY 14 1894

"

3194 *Oenothera*

MAY 14 1894

"

3195

MAY 15 1894

Summit of Wagon pass, Coast Range, San Diego Co.

3196 *Quercus*

MAY 15 1894

"

3197 *Covillea tridentata* (DC) Vail

MAY 15 1894

"

3198

MAY 15 1894

"

3199

MAY 15 1894

"

3200 *Rhus integrifolia*

MAY 15 1894

"

3201

MAY 15 1894

"

3202

MAY 15 1894

Summit of wagon pass, Coast Range, San Diego Co.

3203 Phacelia

MAY 15 1894

Mountain Spring, San Diego Co., Cal

3204 Lathyrus

MAY 15 1894

"

3205 Astragalus

MAY 15 1894

"

3206

MAY 15 1894

"

3207 Eriodictyon tomentosum

MAY 15 1894

"

3208 Delphinium

MAY 15 1894

"

3209 Lupinus

MAY 15 1894

"

3210 Salvia carduacea

MAY 15 1894

"

3211 Achillea millefolium L.

MAY 15 1894

"

3212

MAY 15 1894

"

3213

MAY 15 1894

"

3214

MAY 15 1894

"

3215

MAY 17 1894

Lacumba Hot Springs, near Monument ^(Schneefeldt) no. 233.

3216

MAY 17 1894

"

"

3217 *Ephedra*

MAY 17 1894

"

"

3218

MAY 17 1894

"

"

3219

MAY 17 1894

"

"

3220

MAY 17 1894

"

"

3221

MAY 17 1894

"

"

3222 *Astragalus*

MAY 17 1894

"

"

3223 *Pectislemmon antirrhinoides*

MAY 17 1894

"

"

3224

MAY 17 1894

"

"

3225

MAY 17 1894

"

"

3226

MAY 17 1894

"

"

3227

MAY 17 1894

"

"

3228 *Eriogonum*

MAY 17 1894

Jacumba Hot Springs, near monument 233. (L. Schoupsfeldt) "

3229

MAY 17 1894

"

"

3230

MAY 17 1894

"

"

3231

MAY 17 1894

"

"

3232

MAY 17 1894

"

"

3233

MAY 17 1894

"

"

3234 *Rhus integrifolia*

MAY 17 1894

"

"

3235 *Salix*

MAY 17 1894

"

"

3236 *Castilleja*

MAY 17 1894

"

"

3237

MAY 17 1894

"

"

3238

MAY 17 1894

"

"

3239 *Pentstemon*

MAY 17 1894

"

"

3240 *Fraseria*

MAY 17 1894

"

"

3241 *Melilotus*

MAY 17 1894

Acumaba Hot Spring, near monument 233 (L. Schocumfeldt)

3242 *Fraseria*

MAY 20 1894

"

3243

MAY 20 1894

"

3244

MAY 20 1894

"

3245 *Salix*

MAY 20 1894

"

3246 *Lupinus*

MAY 20 1894

"

3247 *Astragalus*

MAY 20 1894

"

3248 *Quercus*

MAY 20 1894

"

3249

MAY 20 1894

"

3250

MAY 24 1894

"

(L. Schocumfeldt)

3251

MAY 24 1894

"

"

3252

alt. 3000 ft

MAY 24 1894

"

"

3253 *Pentstemon*

MAY 24 1894

"

"

"

"

3254

MAY 24 1894

lacumba Hot Springs, near monument ^(Schweinfelder) 233.

alt. 3000 fr.

3255 *Symphoricarpos*

MAY 24 1894

"

3256 *Argemone*

MAY 24 1894

3257

MAY 24 1894

lacumba H

alt. 3000 fr

3258

MAY 24 1894

alt. 2800 fr

3259

MAY 24 1894

3260 *Ephedra*

MAY 24 1894

alt. 3000 fr

3261

MAY 24 1894

alt. 2800 fr

3262

MAY 24 1894

"

3263

MAY 24 1894

"

3264

MAY 24 1894

alt. 2500 fr.

3265

MAY 24 1894

alt. 2800 fr

3266 *Castilleja*

MAY 24 1894

"

3267

MAY 24 1894

Yacumba Hot Spring, near monument 233 (K. Schoups)

3268 *Lupinus*

alt. 2800 fr.

MAY 24 1894

" "

3269 *Ceanothus*

alt. 3000 fr.

MAY 24 1894

" "

3270 *Mimulus*

alt. 2800 fr.

MAY 24 1894

" "

3271 *Artemisia*

"

MAY 24 1894

" "

3272 *Rorippa*

"

MAY 24 1894

" "

3273 *Adenostoma*

"

MAY 24 1894

" "

3274 *Eriogonum*

alt. 3000 fr.

MAY 24 1894

" "

3275

alt. 2800 fr.

MAY 24 1894

" "

3276

"

MAY 24 1894

" "

3277

"

MAY 24 1894

" "

3278

"

MAY 24 1894

" "

3279

MAY 24 1894

" "

alt. 3000 fr.

3293 *Baeria*

MAY 26 1894

Yacumba Hot Springs, near Monument no. 233. (L. Schoenepfefer)

3294

MAY 26 1894

"

"

3295 *Linum*

MAY 26 1894

"

"

3296

MAY 26 1894

"

"

3297

MAY 26 1894

"

"

3298 *Calochortus*

MAY 26 1894

"

"

3299 *Lotus*

MAY 26 1894

"

"

3300

MAY 26 1894

"

"

3301 *Prosopis*

MAY 26 1894

"

"

3302 *Achillea millefolium* L.

MAY 26 1894

"

"

3303 *Anemopsis californica*

MAY 26 1894

"

"

3304 *Lathyrus*

MAY 26 1894

"

"

3305

MAY 26 1894

"

"

3306

MAY 26 1894

Jacumba Hot Springs, near monument no. 233 (K.S.)

3307 *Lupinus*

MAY 26 1894

"

"

3308 *Lupinus*

MAY 26 1894

"

"

3309 *Leollisia*

MAY 26 1894

"

"

3310 *Thalictrum*

MAY 26 1894

"

"

3311 *Pentstemon*

MAY 26 1894

"

"

3312

MAY 28 1894

"

3313

MAY 28 1894

"

3314

MAY 28 1894

"

3315

MAY 28 1894

"

3316 *Quercus*

MAY 28 1894

"

3317

MAY 28 1894

"

3318 *Quercus*

MAY 28 1894

"

3319	<i>Symphoricarpos</i>	MAY 28 1894	Palumba Hot Springs, near monument 233
3320		MAY 28 1894	"
3321		MAY 28 1894	"
3322	<i>Salix</i>	MAY 28 1894	"
3323	<i>Melilotus</i>	MAY 28 1894	"
3324		MAY 28 1894	"
3325	<i>Pentstemon</i>	MAY 28 1894	"
3326	<i>Amorpha</i>	MAY 28 1894	"
3327		MAY 28 1894	"
3328	<i>Fraxina</i>	MAY 28 1894	"
3329	<i>Adenostoma</i>	MAY 28 1894	"
3330		MAY 28 1894	"
3331	<i>Juniperus</i>	MAY 28 1894	"

3332 Ephedra

MAY 29 1894

Jacumba Hot Springs, near monument 233.

3333

MAY 29 1894

"

3334 bastilleja

MAY 29 1894

"

3335 Rumex

MAY 29 1894

"

3336 Lupinus

MAY 29 1894

"

3337

MAY 29 1894

"

3338 Salvia

MAY 29 1894

"

3339 Thalesia

MAY 29 1894

"

3340 Astragalus

MAY 29 1894

"

3341 Pentstemon

MAY 29 1894

"

3342 Oenothera

MAY 29 1894

"

3343

MAY 29 1894

"

3344

MAY 31 1894

"

(L. Schoenfeldt)

3345 *Yuccadammum*

MAY 31 1894

Jacumba Hot Springs, near monument 233 (L.S)

3346 *Mimulus*

MAY 31 1894

" "

3347 *Mimulus brevipes* Benth

MAY 31 1894

" "

3348 *Pentstemon*

MAY 31 1894

" "

3349 *Eschscholtzia*.

MAY 31 1894

" "

3350 *Delphinium*

MAY 31 1894

" "

3351

MAY 31 1894

" "

3352 *Trichostema Parishii* Vasey.

MAY 31 1894

" "

3353 *Paeonia Brownii*

MAY 31 1894

" "

3354 *Prunus ilicifolia*

MAY 31 1894

" "

3355

MAY 31 1894

" "

3356

MAY 31 1894

" "

3357

MAY 31 1894

" "

3358 Lotus MAY 31 1894

Jacumba Hot Springs, near Monument 233 (L.S.)

3359 MAY 31 1894

"

3360 JUN 1 1894

Nachogueno Valley, Lower Cal.

3361 JUN 1 1894

"

3362 Anemopsis californica JUN 1 1894

"

3363 Sidalcea malvaeflora JUN 1 1894

"

3364 Vicia JUN 1 1894

"

3365 Sisyrinchium JUN 1 1894

"

3366 Quercus JUN 1 1894

"

3367 Cleonothus JUN 1 1894

"

3368 JUN 1 1894

"

3369 JUN 1 1894

"

3370 JUN 1 1894

"

3371 *Astragalus*

JUN 1 1894

Nachogueno Valley, Lower California

3372

JUN 1 1894

"

3373 *Arctostaphylos*

JUN 1 1894

"

3374 *Salvia*

JUN 1 1894

"

3375

JUN 1 1894

"

3376 *Rhus trilobata*

JUN 1 1894

"

3377 *Calochortus*

JUN 1 1894

"

3378 *Mimulus*

JUN 3 1894

"

3379

JUN 3 1894

"

3380 *Trifolium*

JUN 3 1894

"

3381

JUN 3 1894

"

3382 *Carduus*

JUN 3 1894

"

3383 *Phacelia*

JUN 3 1894

"

3384

JUN 3 1894

Nachogero Valley, Lower California

3385

JUN 3 1894

"

3386 *Sambucus*

JUN 3 1894

"

3387 *Adenostoma*

JUN 3 1894

"

3388

JUN 3 1894

"

3389 *Lathyrus*

JUN 3 1894

"

3390

JUN 3 1894

"

3391 *Pentstemon*

JUN 3 1894

"

3392 *Yucca*

JUN 3 1894

"

3393 *Prasera*

JUN 3 1894

"

3394

JUN 3 1894

"

3395

JUN 3 1894

"

3396 *Lupinus*

JUN 3 1894

"

3397 *Delphinium*

JUN 3 1894

Nachogueno Valley, Lower California.

3398

JUN 3 1894

"

3399 *Agave*

JUN 3 1894

"

3400 *Phoradendron*

JUN 4 1894

"

(L. Schoenfeldt)

3401

JUN 4 1894

"

"

3402 *Lupinus*

JUN 4 1894

"

"

3403

JUN 4 1894

"

"

3404 *Astragalus*

JUN 4 1894

"

"

3405

JUN 4 1894

"

"

3406

JUN 4 1894

"

"

3407

JUN 4 1894

"

"

3408

JUN 4 1894

"

"

3409

JUN 4 1894

"

"

3410

JUN 4 1894

Vachoguerra Valley, Lower Calif. (L. Schoenfeldt)

3411 *Rorippa*

JUN 4 1894

"

"

3412 *Collinsia*

JUN 4 1894

"

"

3413

JUN 4 1894

"

"

3414

JUN 4 1894

"

"

3415

JUN 4 1894

"

"

3416 *Minibus*

JUN 4 1894

"

"

3417

JUN 4 1894

"

"

3418 *Eschscholtzia*

JUN 4 1894

"

"

3419

JUN 4 1894

"

"

3420

JUN 4 1894

"

"

3421

JUN 4 1894

"

"

3422

JUN 4 1894

"

"

3423	JUN 4 1894	Wachogeros Valley, Lower California (L. S. Shoemaker)
3424 <i>Arctostaphylos</i>	JUN 4 1894	" "
3425	JUN 4 1894	" "
3426 <i>Artemisia</i>	JUN 4 1894	" "
3427	JUN 4 1894	" "
3428	JUN 4 1894	" "
3429	JUN 4 1894	" "
3430 <i>Rhus integrifolia</i>	JUN 4 1894	" "
3431	JUN 4 1894	" "
3432	JUN 4 1894	" "
3433	JUN 4 1894	" "
3434	JUN 4 1894	" "
3435	JUN 4 1894	" "

3436 Salix

JUN 4 1894

Nachogueno Valley, Lower California (L. Schoenfeldt)

3437 Rhus trilobata

JUN 4 1894

" "

3438

JUN 4 1894

" "

3439

JUN 4 1894

}
" "

3440

JUN 4 1894

" "

3441

JUN 4 1894

" "

3442

JUN 4 1894

" "

3443 Pellaea

JUN 4 1894

" "

3444

JUN 4 1894

" "

3445

JUN 4 1894

" "

3446 Eriogonum

JUN 4 1894

" "

3447

JUN 4 1894

" "

3448

JUN 4 1894

" "

3449

JUN 4 1894

Nachogueno Valley, Lower Cal. (L. Schoupsfeldt)

3450 *Trifolium*

JUN 4 1894

" "

3451

JUN 4 1894

" "

3452

JUN 4 1894

" "

3453 *Euphorbia*

JUN 4 1894

" "

3454

JUN 4 1894

" "

3455

JUN 4 1894

" "

3456

JUN 4 1894

" "

3457

JUN 4 1894

" "

3458

JUN 4 1894

" "

3459

JUN 4 1894

" "

3460

JUN 4 1894

" "

3461

JUN 4 1894

" "

3462

JUN 4 1894

Nachogueno Valley, Lower Cal. (L. Schoenfeldt)

3463 *Eriodictyon tomentosum*

JUN 4 1894

" "

3464

JUN 4 1894

" "

3465

JUN 4 1894

" "

3466. *Marrubium vulgare*

JUN 4 1894

" "

3467

JUN 4 1894

" "

3468 *Calochortus*

JUN 4 1894

" "

3469

JUN 4 1894

" "

3470

JUN 4 1894

" "

3471 *Calochortus*

JUN 4 1894

" "

3472 *Delphinium*

JUN 4 1894

" "

3473 *Diplacus*

JUN 4 1894

" "

3474

JUN 4 1894

" "

3475

JUN 4 1894

Nachoguero Valley, Lower Calif. (L. Schoenfeldt)

3476

JUN 4 1894

"

"

3477 *Quercus*

JUN 4 1894

"

"

3478

JUN 4 1894

"

"

3479 *Adenostoma*

JUN 4 1894

"

"

3480 *Minulus brevipes* Benth

JUN 4 1894

"

"

3481

JUN 5 1894

"

3482 *Lupinus*

JUN 5 1894

"

3483 *Trichostema*

JUN 5 1894

"

3484 *Lathyrus*

JUN 5 1894

"

3485 *Castilleja*

JUN 5 1894

"

3486 *Fraxina*

JUN 5 1894

"

3487 *Lupinus*

JUN 5

"

3488

JUN 5 1894

Nachogueno Valley, Lower Calif.

3489

JUN 5 1894

"

3490

JUN 5 1894

"

3491

JUN 5 1894

"

3492 *Solanum*

JUN 5 1894

"

3493 *Pellaea*

JUN 5 1894

"

3494

JUN 5 1894

"

3495

JUN 5 1894

"

3496 *Lupinus*

JUN 5 1894

"

3497

JUN 5 1894

"

3498 *Paonia Brownii*

JUN 5 1894

"

3499

JUN 5 1894

"

3500 *Convolvulus*

JUN 9 1894

Between the Tiajuana River and Laguna Lower Cal

3501		JUN 9 1894	Between the Tia Juana River and Laguna Town Cal.
3502	<i>Lupinus</i>	JUN 9 1894	"
3503	<i>Platanus</i>	JUN 9 1894	"
3504	<i>Rosa</i>	JUN 9 1894	"
3505	<i>Lupinus hirsutissimus</i>	JUN 9 1894	"
3506		JUN 9 1894	"
3507	<i>Mimulus brevipes</i>	JUN 9 1894	"
3508		JUN 9 1894	"
3509		JUN 9 1894	"
3510	<i>Leucanthus</i>	JUN 10 1894	Main peak of Coast Range southeast of Campbell's Ranch
3511	<i>Quercus</i>	JUN 10 1894	"
3512		JUN 10 1894	"
3513	<i>Lathyrus</i>	JUN 10 1894	"

3514 *Castilleja* JUN 10 1894
 3515 *beanothus* JUN 10 1894
 3516 JUN 10 1894
 3517 *Quercus* JUN 10 1894
 3518 *Lupinus* JUN 11 1894
 3519 JUN 11 1894
 3520 JUN 11 1894
 3521 *Trifolium* JUN 11 1894
 3522 *Trifolium* JUN 11 1894
 3523 JUN 11 1894
 3524 *Lotus* JUN 11 1894
 3525 JUN 11 1894
 3526 *Viola* JUN 11 1894

Main peak of ~~the~~ Coast Range, Southeast of Campbell's Ranch.

"
"
"

Campbell's Ranch at Laguna, Cal.

"
"
"
"
"
"
"

3527

JUN 11 1894

Campbell's Ranch at Laguna, Cal.

3528 *Collinsia*

JUN 11 1894

"

3529 *Euphorbia*

JUN 11 1894

"

3530

JUN 11 1894

"

3531 *Lupinus*

JUN 11 1894

"

3532

JUN 11 1894

"

3533

JUN 11 1894

"

3534

JUN 11 1894

"

3535 *Thalictrum*

JUN 11 1894

"

3536 *Solanum*

JUN 11 1894

"

3537

JUN 14 1894

Laguna, Calif. (L. Schoupsfeldt.)

3538

JUN 14 1894

"

"

3539

JUN 14 1894

"

"

3540

JUN 14 1894

Laguna, California (L. Schoupsfeldt)

3541 *Pentstemon*

JUN 14 1894

" "

3542

JUN 14 1894

" "

3543 *Dryopteris*

JUN 14 1894

" "

3544

JUN 14 1894

" "

3545

JUN 14 1894

" "

3546

JUN 14 1894

" "

3547

JUN 14 1894

" "

3548

JUN 14 1894

" "

3549 *Solanum*

JUN 14 1894

" "

3550 *Garrya*

JUN 14 1894

" "

3551

JUN 14 1894

" "

3552

JUN 14 1894

" "

3553

JUN 14 1894

Laguna, California. (L. Schouefeldt.)

3554

JUN 14 1894

" "

3555

JUN 14 1894

" "

3556 *Streptanthus*

JUN 14 1894

" "

3557 *Lathyrus*

JUN 14 1894

" "

3558 *Delphinium*

JUN 14 1894

" "

3559 *Heuchera*

JUN 14 1894

" "

3560

JUN 14 1894

" "

3561 *Galochotus*

JUN 14 1894

" "

3562

JUN 14 1894

" "

3563 *Lupinus*

JUN 14 1894

" "

3564

JUN 14 1894

" "

3565

JUN 14 1894

" "

3566 Viola

JUN 14 1894

Laguna, California (L. Schoenfeldt)

3567

JUN 14 1894

"

"

3568

JUN 14 1894

"

"

3569

JUN 14 1894

"

"

3570

JUN 14 1894

"

"

3571

JUN 14 1894

"

"

3572 *Erodium*

JUN 14 1894

"

"

3573

JUN 14 1894

"

"

3574

JUN 14 1894

"

"

3575

JUN 14 1894

"

"

3576 *Potentilla*

JUN 14 1894

"

"

3577 *Linum*

JUN 14 1894

"

"

3578 *Castilleja*

JUN 14 1894

3579 *Achillea millefolium*

JUN 14 1894

Laguna, California (L. Schoenefeldt.)

3580

JUN 14 1894

" "

3581

JUN 14 1894

" "

3582 *Lupinus*

JUN 14 1894

" "

3583 *Iris*

JUN 14 1894

" "

3584

JUN 14 1894

" "

3585 *Equisetum*

JUN 14 1894

" "

3586 *Lupinus*

JUN 14 1894

" "

3587

JUN 14 1894

" "

3588 *Carex*

JUN 14 1894

" "

3589

JUN 14 1894

" "

3590 *Ranunculus*

JUN 14 1894

" "

3591

JUN 14 1894

" "

3592

JUN 14 1894

Laguna, California (L. Schoenfeldt)

3593 *Lepidium*

JUN 14 1894

" "

3594 *Carex*

JUN 14 1894

" "

3595

JUN 14 1894

" "

3596 *Thalictrum*

JUN 14 1894

" "

3597 *Mimulus*

JUN 14 1894

" "

3598 *Rosa*

JUN 14 1894

" "

3599

JUN 14 1894

" "

3600 *Razoumofskya*

JUN 14 1894

" "

3601 *Lathyrus*

JUN 14 1894

" "

3602 *Carex*

JUN 14 1894

" "

3603

JUN 14 1894

" "

3604 *Godetia*

JUN 14 1894

" "

3605

JUN 14 1894

Laguna, California (L. Schoupsfeldt)

3606

JUN 14 1894

" "

3607

JUN 14 1894

" "

3608 *philanthus*

JUN 14 1894

" "

3609

JUN 14 1894

" "

3610

JUN 14 1894

" "

3611 *Quercus*

JUN 14 1894

" "

3612 *Quercus*

JUN 14 1894

" "

3613 *Quercus*

JUN 14 1894

" "

3614 *leucosthema*

JUN 14 1894

" "

3615 *Pinus*

JUN 14 1894

" "

3616

JUN 14 1894

" "

3617 *Phoradendron*

JUN 14 1894

" "

3618 *Collinsia*

JUN 14 1894

Laguna, California (L. Schoupslet)

3619

JUN 14 1894

"

"

3620

JUN 14 1894

"

"

3621

JUN 14 1894

"

"

3622

JUN 14 1894

"

"

3623

JUN 14 1894

"

"

3624

JUN 14 1894

"

"

3625

JUN 14 1894

"

"

3626

JUN 14 1894

"

"

3627

JUN 14 1894

"

"

3628

JUN 14 1894

"

"

3629

JUN 14 1894

"

"

3630

JUN 14 1894

"

"

3631

JUN 14 1894

Laguna, California (L. Schweinfeldt.)

3632

JUN 14 1894

" "

3633

JUN 14 1894

" "

3634

JUN 14 1894

" "

3635 *Castilleja*

JUN 14 1894

" "

3636

JUN 14 1894

" "

3637

JUN 14 1894

" "

3638 *Trifolium*

JUN 14 1894

" "

3639 *Leptochortus*

JUN 14 1894

" "

3640

JUN 14 1894

" "

3641 *Blepharipappus*

JUN 14 1894

" "

3642

JUN 20 1894

Campbell's Ranch, Laguna, Cal.

3643 *Thalictum*

JUN 20 1894

"

3644 *Collinsia* JUN 20 1894

Campbell's Ranch, Laguna, Cal.

3645 JUN 20 1894

"

3646 JUN 20 1894

"

3647 JUN 20 1894

"

3648 *Pinus* JUN 21 1894

Between Campbell's & Cameron's Ranches, Laguna, Cal.

3649 JUN 21 1894

"

3650 JUN 21 1894

"

3651 JUN 21 1894

"

3652 JUN 21 1894

"

3653 JUN 21 1894

"

3654 JUN 21 1894

"

3655 *Lupinus* JUN 21 1894

"

3656 *Lathyrus* JUN 21 1894

3648

3647

3649

3650

3651

3652

3653

3654

3655

3656

3657 *Aquilegia truncata* f. + m. JUN 21 1894

3658 *Astragalus* JUN 21 1894

3659 *Diplacus* JUN 21 1894

3660 JUN 21 1894

3661 JUN 21 1894

3662 JUN 21 1894

3663 JUN 21 1894

3664 *Lupinus* JUN 22 1894

3665 JUN 22 1894

3666 *Prasera* JUN 22 1894

3667 JUN 22 1894

3668 JUN 22 1894

3669 JUN 22 1894

Between Campbell's and Cameron's ranches,
Laguna, Calif.

"

"

"

"

"

"

Cameron's Ranch, Laguna, Cal. (L. Schouffeldt)

"

"

"

"

"

3670

JUN 22 1894

Cameron's Ranch, Laguna, Cal. (L. Schoenefeldt)

3671 *Erchocholtzia*

JUN 22 1894

"

"

3672

JUN 22 1894

"

"

3673

JUN 22 1894

"

"

3674

JUN 22 1894

"

"

3675

JUN 22 1894

"

"

3676

JUN 22 1894

"

"

3677 *Juncus*

JUN 22 1894

"

"

3678

JUN 22 1894

"

"

3679

JUN 22 1894

"

"

3680

JUN 22 1894

"

"

3681 *Rumex*

JUN 22 1894

"

"

3682 *Chenopodium*

JUN 22 1894

"

"

3683 *Scirpus* JUN 22 1894

3684 *Astragalus* JUN 22 1894

3685 JUN 22 1894

3686 *Plantago* JUN 22 1894

3687 JUN 22 1894

3688 JUN 22 1894

3689 JUN 22 1894

3690 *Rorippa* JUN 22 1894

3691 *Pinus* JUN 22 1894

3692 JUN 22 1894

3693 *Pentstemon* JUN 22 1894

3694 *Clematis pauciflora Nutt.* JUN 22 1894

3695 *Pellaea* JUN 22 1894

Cameron's Ranch, Laguna, Cal. (L. Schoupsfeldt)

" "

" "

" "

" "

" "

" "

" "

" "

" "

" "

" "

" "

3696 *Ceanothus*

JUN 22 1894

Cameron's Ranch Laguna, Cal. (L. Schoenfeldt)

3697

JUN 22 1894

"

"

3698 *Calochortus*

JUN 22 1894

"

"

3699 *Prunus ilicifolia*

JUN 22 1894

"

"

3700

JUN 22 1894

"

"

3701

JUN 22 1894

"

"

3702 *Grindelia tomentosa*

JUN 22 1894

"

"

3703

JUN 22 1894

"

"

3704 *Asclepias*

JUN 22 1894

"

"

3705

JUN 22 1894

"

"

3706

JUN 22 1894

"

"

3707 *Diplazis*

JUN 22 1894

"

"

3708 *Erigeron*

JUN 22 1894

"

"

36 3709

JUN 22 1891

Cameron's Ranch, Laguna, Cal (L. Schoupsfeldt)

36 3710

JUN 22

"

"

36 3711 *Eriogonum*

JUN 22

"

"

36 3712 *Ceanothus*

JUN 22 1891

"

"

37 3713 *Symphoricarpos*

JUN 22

"

"

37 3714 *Ammopsis Californica*

JUN 23 1891

Jecato River, Lower Cal., near Mon. 245 "

3 3715

JUN 23 1891

"

"

3 3716

JUN 23 1891

"

"

3 3717 *Demothura*

JUN 23 1891

"

"

3 3718

JUN 23 1891

"

"

3 3719

JUN 23 1891

"

"

3 3720

JUN 23 1891

"

"

3 3721

JUN 23 1891

"

"

33

33

33

33

33

33

33

33

33

33

33

33

33

33

1894



23
23
23
23
23

3722

JUN 23 1894

Picute River near Mon. 245, Lower Cal. (Petaluma)

3723 *Cotula coronopifolia*

JUN 23 1894

"

"

3724 *Trifolium*

JUN 23 1894

"

"

3725

JUN 23 1894

"

"

3726

JUN 23 1894

"

"

3727

JUN 23 1894

"

"

3728 *Heliotropium curassavicum*

JUN 23 1894

"

"

3729

JUN 23 1894

"

"

3730

JUN 23 1894

"

"

3731

JUN 23 1894

"

"

3732

JUN 23 1894

"

"

3733

JUN 23 1894

"

"

3734

JUN 23 1894

*Peccate River near monument no. 245, Lower Cal.
(L. Schoenfeldt)*

3735

JUN 23 1894

"

"

3736 *Pentstemon acutirrhizoides*

JUN 23 1894

"

"

3737

JUN 23 1894

"

"

3738

JUN 23 1894

"

"

3739

JUN 23 1894

"

"

3740

JUN 23 1894

"

"

3741 *Adiantum*

JUN 23 1894

"

"

3742

JUN 23 1894

"

"

3743 *Linum*

JUN 23 1894

"

"

3744 *Trifolium*

JUN 23 1894

"

"

3745 *Lotus*

JUN 23 1894

"

"

3746

JUN 23 1894

Decate River near mon. no. 245, Lower Cal.
(L. Schoupsfeldt)

3747

JUN 23 1894

"

"

3748 *Pentstemon*

JUN 23 1894

"

"

3749

JUN 23 1894

"

"

3750

JUN 23 1894

"

"

3751 *Scrophularia*

JUN 23 1894

"

"

3752

JUN 23 1894

"

"

3753

JUN 23 1894

"

"

3754 *Romneya Coulteri* Haw

JUN 23 1894

"

"

3755

JUN 23 1894

"

"

3756 *Erythraea*

JUN 23 1894

"

"

3757 *Delphinium cardinale* Hook

JUN 23 1894

"

"

3758	JUN 23 1894
3759	JUN 23 1894
3760	JUN 23 1894
3761	JUN 23 1894
3762 <i>Mimulus cardinalis</i>	JUN 23 1894
3763 <i>Asclepias</i>	JUN 23 1894
3764 <i>Quercus</i>	JUN 23 1894
3765 <i>Mimulus</i>	JUN 23 1894
3766 <i>Erodium</i>	JUN 24 1894
3767 <i>Phoradendron</i>	JUN 24 1894
3768 <i>Penothura</i>	JUN 24 1894
3769	JUN 24 1894

Tecate River near Mon. No. 245, Lower Cal.
(L. Schouffeldt)

"
"
"
"
"
"

Potrero San Diego Co., Cal.

Cameron's Ranch, San Diego Co., Cal.

Tecate Mts., Lower Cal.

Cameron's Ranch, San Diego Co., Cal.

Tecate Valley, Lower Cal.

Potrero, San Diego Co., Cal.

3770

JUN 24 1894

Jecate Valley, Lower Cal.

3771

JUN 25 1894

Jecate River, Lower Cal.

3772

JUN 25 1894

"

3773

JUN 25 1894

"

3774

JUN 25 1894

"

3775

JUN 25 1894

"

3776

JUN 25 1894

"

3777

JUN 25 1894

"

3778

JUN 25 1894

"

3779

JUN 25 1894

"

3780 *Ronneya Coulteri*

JUN 25 1894

"

3781

JUN 25 1894

"

3794	<i>Mimulus boreipes</i>	JUN 25 1894
3795		JUN 25 1894
3796	<i>Adenostoma</i>	JUN 25 1894
3797	<i>Adenostegia</i>	JUN 25 1894
3798		JUN 25 1894
3799	<i>bastilleja</i>	JUN 25 1894
3800		JUN 25 1894
3801		JUN 25 1894
3802	<i>Sambucus</i>	JUN 28 1894
3803		JUN 28 1894
3804	<i>Zauschneria</i>	JUN 28 1894
3805	<i>Ephedra</i>	JUN 28 1894

	<i>Tecate River, Lower Cal.</i>	
	"	
	"	
	"	
	"	
	"	
	"	
	"	
	<i>San Ysidro, Lower Cal. (L. Schoupslat)</i>	
	"	
	"	
	"	

3806 JUN 28 1894

3807 *Asclepias* JUN 28 1894

3808 JUN 28 1894

3809 JUN 28 1894

3810 JUN 28 1894

3811 JUN 28 1894

3812 JUN 28 1894

3813 *Asclepias* JUN 28 1894

3814 JUN 28 1894

3815 JUN 28 1894

3816 JUN 28 1894

3817 JUL 1 1894

San Ysidro, Lower Cal. (L. Schouffeldt.)

"

"

"

"

"

"

"

"

"

"

"

"

"

"

"

"

"

"

"

"

At

"

3830

JUL 2 1894

Summit Valley, Calif. (L. Schoupsfeldt)

3831

JUL 2 1894

"

"

3832

JUL 2 1894

"

"

3833 *Silene*

JUL 2 1894

"

"

3834

JUL 2 1894

"

"

3835 *Mimulus*

JUL 2 1894

"

"

3836

JUL 2 1894

"

"

3837

JUL 2 1894

"

"

3838 *Zauschneria*

JUL 2 1894

"

"

3839 *Delphinium cardinale* Hook. JUL 2 1894

"

"

3840

JUL 2 1894

"

"

3841 *Heteromelus arbutifolia*

JUL 2 1894

"

"

3842

JUL 2 1894

Jamul Valley, California (L. Schoenfeldt)

3843 *Diplacus*

JUL 2 1894

"

"

3844 *Pentstemon antirrhinoides*

JUL 2 1894

"

"

3845 *Solanum*

JUL 2 1894

"

"

3846

JUL 2 1894

"

"

3847

JUL 2 1894

"

"

3848

JUL 2 1894

"

"

3849

JUL 2 1894

"

"

3850

JUL 2 1894

"

"

3851 *Populus*

JUL 2 1894

"

"

3852 *Nicotiana*

JUL 2 1894

"

"

3853 *Eremocarpus setigerus*

JUL 2 1894

"

"

3854		JUL 2 1894
3855		JUL 2 1894
3856		JUL 2 1894
3857	<i>Anagallis arvensis</i>	JUL 2 1894
3858		JUL 2 1894
3859		JUL 2 1894
3860	<i>Asclepias albicans</i>	JUL 2 1894
3861		JUL 2 1894
3862		JUL 2 1894
3863		JUL 2 1894
3864	<i>Ephedra</i>	JUL 2 1894
3865	<i>Rosa</i>	JUL 2 1894

Jamul Valley, Calif. (L. Schoufflet)

" " " " " "

San Ysidro Ranch, Lower California

" " " " " "

3866		JUL 2 1894
3867		JUL 2 1894
3868		JUL 2 1894
3869	<i>Romneya bouletii</i>	JUL 2 1894
3870		JUL 2 1894
3871	<i>Platanus racemosa</i>	JUL 2 1894
3872	<i>Opuntia</i>	July 3, 1894
3873		JUL 4 1894
3874	<i>Salix</i>	JUL 4 1894
3875	<i>Nicotiana glauca</i>	JUL 4 1894
3876		JUL 4 1894
3877	<i>Eremocarpus setigerus</i>	JUL 4 1894

San Ysidro Ranch, Lower Calif.

"

"

"

"

"

"

Jamul Creek at El Nido P.O., San Diego Co., Cal.

"

"

Jamul Creek, San Diego Co., Cal.

"

3878	<i>Vitis</i>	JUL 4 1894
3879	<i>Rosa</i>	JUL 4 1894
3880	<i>Samolus</i>	JUL 4 1894
3881	<i>Selaginella</i>	JUL 4 1894
3882	<i>Eriogonum</i>	JUL 4 1894
3883	<i>Cotyledon</i>	JUL 4 1894
3884		JUL 4 1894
3885	<i>Baccharis</i>	JUL 4 1894
3886		JUL 5 1894
3887		JUL 5 1894
3888	<i>Zauschneria</i>	JUL 5 1894
3889		JUL 5 1894

<i>Jamul Creek, San Diego Co., Cal.</i>	
"	
"	
"	
"	
"	
"	
"	
"	
<i>Jamul Creek at El Nido P.O., San Diego Co., Cal.</i>	
<i>Sycamore Pass, San Diego Co., Cal</i>	
<i>Jamul Creek, San Diego Co., Cal</i>	
"	

3902	<i>Eriogonum</i>	JUL 10 1894
3903		JUL 10 1894
3904		JUL 10 1894
3905		JUL 10 1894
3906		JUL 10 1894
3907		JUL 10 1894
3908		JUL 10 1894
3909	<i>Abronia</i>	JUL 10 1894
3910		JUL 11 1894
3911		JUL 11 1894
3912		JUL 11 1894
3913		JUL 11 1894

Mouth of Tia Juana River, at mon. no. 258.

"

"

"

"

"

"

"

"

"

"

"

3914	JUL 12 1894
3915	JUL 12 1894
3916	JUL 12 1894
3917	JUL 15 1894
3918	JUL 15 1894
3919	JUL 15 1894
3920	JUL 15 1894
3921	JUL 15 1894
3922	JUL 15 1894
3 3923 <i>Ephedra</i>	JUL 15 1894
3 3924 <i>Astragalus</i>	JUL 15 1894
3 3925 <i>Lotus</i>	JUL 15 1894

Mouth of Tia Juana River, at monument 258.

"

Hay Valley, San Diego Co., Cal.

Neignty of Monument 258, Pacific Coast

"

"

"

"

"

"

"

"

"

	3926		JUL 15 1894
	3927	<i>Adenostegia</i>	JUL 15 1894
	3928	<i>Eriogonum</i>	JUL 15 1894
	3929	<i>Nicotiana</i>	JUL 15 1894
	3930	<i>Salicornia</i>	JUL 15 1894
3	3931		JUL 15 1894
3	3932		JUL 15 1894
3	3933	<i>Pennisetum</i>	JUL 15 1894
3	3934	<i>Oenothera</i>	JUL 15 1894
3	3935		JUL 15 1894
3	3936		JUL 15 1894
3	3937		JUL 15 1894

Vicinity of Monument 258, Pacific Coast

"
"
"
"
"
"
"
"
"
"

3938		JUL 16 1894	Vicinity of monument no. 258, Pacific Coast
3939		JUL 21 1894	San Diego, Cal
3940	<i>Pentstemon</i>	AUG 6 1894	Alpine P.O., San Diego Co., Cal
3941	<i>Trifolium</i>	AUG 6 1894	"
3942		AUG 6 1894	"
3943	<i>Typha</i>	AUG 6 1894	"
3944	<i>Oenothera</i>	AUG 6 1894	"
3945	<i>Erythraea</i>	AUG 6 1894	"
3946	<i>Lotus</i>	AUG 6 1894	"
3947	<i>Potentilla</i>	AUG 6 1894	"
3948	<i>Mimulus cardinalis</i>	AUG 6 1894	"
3949	<i>Quercus</i>	AUG 6 1894	"

3950	Lotus	AUG 6 1894	Alpine, San Diego Co., Cal.	1894
3951		AUG 6 1894	"	1894
3952	Quercus	AUG 6 1894	"	1894
3953		AUG 6 1894	"	1894
3954	Platanus racemosa	AUG 6 1894	"	1894
3955	Lotus	AUG 6 1894	"	1894
3956		AUG 7 1894	Cajon Valley, San Diego Co., Cal.	1894
3957	Quercus	AUG 11 1894	Noble's Ranch, betw. Pine Valley & Laguna, S. D. Co., Cal.	1894
3958	Umbellularia Californica	AUG 11 1894	"	1894
3959	Rhamnus	AUG 11 1894	"	1894
3960		AUG 11 1894	"	1894
3961		AUG 11 1894	"	1894

3962 *Castilleja*

AUG 11 1894

Noblis Ranch, betw. Pine Valley + Laguna, S.D. Co., Cal

3963

AUG 11 1894

"

3964 *Aquilegia truncata* *Wm.*

AUG 11 1894

"

3965

AUG 11 1894

"

3966

AUG 11 1894

"

3967

AUG 11 1894

"

3968

AUG 11 1894

"

3969

AUG 11 1894

"

3970 *Juncus*

AUG 11 1894

"

3971 *Lobelia*

AUG 11 1894

"

3972 *Solidago*

AUG 11 1894

"

3973 *Equisetum*

AUG 11 1894

"

3974 *Epilobium*

AUG 12 1894

Pine Valley, San Diego Co., Cal

3975 *Heteromeles arbutifolia*

AUG 12 1894

"

3976

AUG 12 1894

"

3977 *Salix*

AUG 12 1894

"

3978 *Pinus*

AUG 12 1894

"

3979 *Quercus*

AUG 12 1894

"

3980 *Arctostaphylos*

AUG 12 1894

"

3981 *Fraxinus*

AUG 12 1894

"

3982

AUG 12 1894

"

3983

AUG 12 1894

"

3 3984 *Rosa*

AUG 12 1894

"

3 3985 *Artemisia*

AUG 12 1894

"

3986		AUG 14 1894	Alpine, San Diego, Cal.	
3987	<i>Anthemis cotula</i> L.	AUG 14 1894	"	
3988	<i>Rumex</i>	AUG 14 1894	"	
3989		AUG 14 1894	"	
3990	<i>Erythronium</i>	AUG 14 1894	"	
3991		AUG 14 1894	"	
3992	<i>Clematis ligusticifolia</i> Nutt.	AUG 14 1894	"	
3993	<i>Phacelia</i>	AUG 14 1894	"	
3994		AUG 14 1894	"	
3995	<i>Pentstemon</i>	AUG 14 1894	"	
3996		AUG 14 1894	"	
3997		AUG 14 1894	"	

3998

AUG 14 1894

Alpine, San Diego Co., Cal -

3999 *Helianthemum*

AUG 14 1894

"

4000

AUG 14 1894

"

4001 *Gnaphalium*

AUG 14 1894

"

4002

AUG 14 1894

"

4003 *Lotus*

AUG 14 1894

"

4004 *Castilleja*

AUG 14 1894

"

4005 *Corthogyn*

AUG 14 1894

"

4006 *Pentstemon*

AUG 14 1894

"

4007 *Prasera*

AUG 14 1894

"

4008

AUG 14 1894

"

4009 *Oenothera*

AUG 14 1894

"

4010
4011
4012
4013
4014
4015
4016
4017
4018
4019
3 4020
3 4021

Adenostegia
Eriogonum
Quercus
Solidago
Rhus

AUG 14 1894
AUG 14 1894
AUG 14 1894
AUG 14 1894
AUG 14 1894
AUG 14 1894
AUG 14 1894
AUG 14 1894
AUG 14 1894
AUG 14 1894
AUG 14 1894
AUG 14 1894

Alpin, San Diego Co., Cal -

"
"
"
"
"
"
"
"
"
"
"

3103
3104
3105
3106
3107
3108
3109
3110
3111
3112
3113
3114

4022

AUG 14 1894

Alpine, San Diego Co., Cal -

4023 *Juncus*

AUG 14 1894

"

4024

AUG 14 1894

"

4025 *Artemisia*

AUG 14 1894

"

4026 *Phacelia*

AUG 14 1894

"

4027

AUG 14 1894

"

4028 *Galium*

AUG 14 1894

"

4029 *Lupinus*

AUG 14 1894

"

4030 *Lilium*

AUG 14 1894

"

4031

AUG 14 1894

"

4032

AUG 14 1894

"

4033

AUG 14 1894

"

4034

AUG 14 1894

Alpine, San Diego Co., Cal -

4035 *Platanus*

AUG 14 1894

"

4036

AUG 17 1894

Ocean Beach, near San Diego, Cal.

4037

AUG 17 1894

"

4038 *Alnus*

AUG 17 1894

Near mouth of San Diego River, S.D. Co., Cal.

4039

AUG 19 1894

Point Loma, San Diego Co., Cal.

4040

AUG 19 1894

"

4041

AUG 19 1894

"

4042

AUG 19 1894

"

4043

AUG 19 1894

"

4044

AUG 19 1894

"

4045

AUG 19 1894

"

4046

AUG 23 1894

San Clemente Island, Pacif. Ocean

4047 *Eriogonum*

AUG 23 1894

"

4048 *Rhus*

AUG 23 1894

"

4049 *Lyonothamnus*

AUG 25 1894

"

4050

AUG 25 1894

"

4051

AUG 25 1894

"

4052

AUG 25 1894

"

4053

AUG 25 1894

"

4054

AUG 25 1894

"

4055

AUG 25 1894

"

4056

AUG 25 1894

"

4057

AUG 25 1894

"

4058

AUG 25 1894

San Clemente Island, Pacific Ocean

4059

AUG 25 1894

"

4060 *Selaginella*

AUG 25 1894

"

4061

AUG 25 1894

"

4062

AUG 25 1894

"

4063

AUG 25 1894

"

4064

AUG 25 1894

"

4065

AUG 25 1894

"

4066

AUG 25 1894

"

4067

AUG 25 1894

"

4068 *Convolvulus*

AUG 25 1894

"

4069 *Salicornia*

AUG 25 1894

"

4070

AUG 25 1894

San Clemente Island, Pacific Ocean.

4071

AUG 25 1894

"

4072

AUG 25 1894

"

4073 *Abrovia*

AUG 25 1894

"

4074

AUG 25 1894

"

4075

AUG 25 1894

"

4076

AUG 25 1894

"

4078

AUG 25 1894

"

4079

AUG 25 1894

"

4080 *Solanum*

AUG 25 1894

"

4081

AUG 25 1894

"

4082

AUG 25 1894

4083

AUG 25 1894

San Clemente Island, Pacific Ocean

4084

AUG 25 1894

"

4085 *Opuntia*

AUG 25 1894

"



18 4284 (3)



