

SECRET

SECURITY INFORMATION

319.1

"To Japan + Okinawa"

(Weekly Report To 9 + Other Combined Aid)

Jan 50 thru 31 Dec 50,

G-4 Adm File
SECURITY INFORMATION

SECRET

GENERAL HEADQUARTERS, FAR EAST COMMAND
ADJUTANT GENERAL'S OFFICE
RADIO AND CABLE CENTER

G-4 ROUTING	
AC/S G-4	
AC/S G-4	
EXECUTIVE	
P-1	✓
C+RE	
TLD/jlp	✓
PETROLEUM	
KEA	✓
31 Dec 50	B

INCOMING MESSAGE

31 Dec 50
OK
31 Dec 50

RESTRICTED
DEFERRED

PROM : DEPTAR (TCTOI OP 156) WASH DC

TO : CINCPAC TOKYO JAPAN (PASS TO CG JLCOM YOKOHAMA JAPAN AND CG RYCOM OKINAWA FOR INFO)

INFO : CG SEPE SEATTLE WASH, CG SFPE FT MASON CALIF, CG NYPOE (PASS TO SCAP SHIP FOR INFO)

NR : W 80027

Weekly Rept Nbr 192 TOG and other civilian aid shpmts to Japan and Okinawa. Read in 7 colms: Colm 1 port, colm 2 SLG or start ldg date, colm 3 ves, colm 4 tons, colm 5 cargo, colm 6 ETA URAREA, colm 7 prog nbr (word same shown this colm denotes same prog nbr immediately preceding items).

Part 1. Vess SLD in period 21 to 27 Dec inclusive, Colm 2 is date SLD:

Astoria 22 SCAP Kiyokawa Maru 8400 wheat 6 Jan TOG 62-0-3012;

Seattle 19, SLD SFRAN 27, negotiated rate Ponce De Leon, 3000, wheat, 10 Jan same;

Portland 18 Vancouver 21 time charter Lipari 9300 wheat 12 Jan same;

SFRAN 18 SCAP Meiko Maru 7200 barley 7 Jan TOG 62-0/3011;

SFRAN 21 negotiated rate Philippine Bear 3000 barley 4 Jan same;

SFRAN 22 negotiated rate Philippine Transport 3000 barley 8 Jan same;

SFRAN 23 SCAP Hikawa Maru 6646 barley 11 Jan same;

SFRAN 24 negotiated rate George Luckenbach aprx 3000 barley 25 Jan same;

SFRAN 17 time charter West Linn Victory 132 misc for Okinawa 8 Jan prog nbrs not aval. (Meiko Maru and West Linn Victory shld have been shown Part 1 Rept Nbr 191).

Part 2. Vess ldg as of 27 Dec, Colm 2 is date started ldg:
(over)

17970

DEFERRED
RESTRICTED

Paraphrase not required. Handle as correspondence of classification carried hereon per paragraphs 17a(1)(2) and 41c(2)(3) and g(1), AR 380-5, 15 November 1949.

~~RESTRICTED~~
DEFERRED

FROM : DEPTAR NR : W 80027 31 DEC 50 CONTINUED

Vancouver 22 SCAP Kenkoku Maru 9200 wheat 20 Jan TOG 62-0-3012;

Seattle 24 SCAP Wakashima Maru 8400 wheat 6 Jan same;
Portland Syd 24, expected sail SFRAN 5 Jan, negotiated rate Edgar F Luckenbach 3000 wheat 7 Feb same;

Longview SLD 26, expected sail Vanc before 3 Jan, negotiated rate Island Mail 2000 wheat 16 Jan same;

Portland 27 negotiated rate Blue Grass State 4500 wheat 26 Jan same;

SFRAN 21 time charter Arcadia Victory 2127 barley 25 Jan TOG 62-0-3010.

Part 3. Vess sched load remainder Dec, incldg 1 early Jan, Colm 2 is date expected start ldg:

Portland 28 negotiated rate Oregon Mail 3500 wheat 22 Jan TOG 62-0-3012;

Longview 29 negotiated rate Peach Tree State 4500 wheat 28 Jan same;

Tacoma 30 time charter Portland Trader 9500 wheat 26 Jan same;

SFRAN 2 Jan negotiated rate Hong Kong Transport 1000 barley 19 Jan TOG 62-0-3011. (aprx 1400 barley open on TOG 62-0-3010 and 62-03011 still to be booked).

Part 4. Vess schd to load during Jan, Colm 2 is date expected start ldg:

Seattle 5 negotiated rate Young America 3000 wheat 28 Jan TOG 62-0-3013;

Seattle 5 time charter Holy Star 9500 wheat 31 Jan same;

Seattle 13 time charter Atlanticus 9500 wheat 8 Feb same;

Seattle 12 negotiated rate India Mail 3500 wheat 8 Feb same;

Seattle 18 negotiated rate Wolverine State 5000 wheat 20 Feb same;

Portland 7 negotiated rate Wide Awake 4000 wheat 30 Jan same;

Portland 12 negotiated rate Jacob Luckenbach 3000 wheat 8 Feb same;

Portland 19 negotiated rate Mathew Luckenbach 2000 wheat 4 Mar same;

Portland 16 SCAP Shoryu Maru 7500 wheat 10 Feb same;

Portland 22 SCAP Hakubasan Maru 7800 wheat 16 Feb same;

SFRAN 5 negotiated rate Pres Madison 1500 barley 13 Feb TOG 62-0-3014;

SFRAN 13 negotiated rate Pacific Bear 2000 barley 27 Feb same;

17970

DEFERRED
~~RESTRICTED~~

GENERAL HEADQUARTERS, FAR EAST COMMAND
ADJUTANT GENERAL'S OFFICE
RADIO AND CABLE CENTER

RESTRICTED
INCOMING MESSAGE

PROM : DEPTAR NR : W 80027 31 DEC 50 CONTINUED

SFRAN 15 negotiated rate Pres Pierce 1500 barley 3 Feb same;

SFRAN 26 negotiated rate Pacific Transport 3000 barley 17 Feb same;

SFRAN 29 negotiated rate American Transport 3000 barley 18 Feb same;

SFRAN 29 SCAP Kiyokawa Maru 8800 barley 26 Feb same.
(Jan allocated cargo yet to book: 45,200 wheat Pacific Northwest TOG 62-0-3013, 10,200 barley SFRAN 62-0-3014, 14,732 Soya Beans New Orleans 62-0-3005 and 9375 Soya Beans New Orleans 62-0-3008).

NO SIG

INFORMATION : COMMANDER IN CHIEF, CHIEF OF STAFF, G-4, AG,
DEPCOMSTSWESPAC, ECON & SCI, NAT RESOURCES,
PUBLIC H & W, RYUKYUS CA, TRANS

NOTE : This msg passed to comm cen for electrical transmission to CG RYCOM for info.

NOTE : This msg passed by AG Rad Br via courier to CG JLCOM for info.

17970

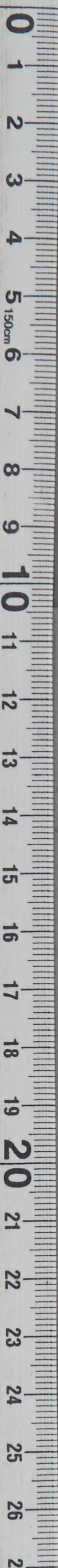
RESTRICTED
DEFERRED

TOO : 300925 Z
MCN : 55328

-3-

Paraphrase not required. Handle as correspondence of classification carried hereon per paragraphs 17a(1)(2) and 41c(2)(3) and g(1), AR 380-5, 15 November 1949.

COPY No.



GENERAL HEADQUARTERS
CENTRAL COMMAND

INCOMING MESSAGE

TO: [Illegible]
FROM: [Illegible]
SUBJECT: [Illegible]

[Illegible text block]

INFORMATION: COMMANDER IN CHIEF, CHIEF OF STAFF, [Illegible]
DEPARTMENTAL, [Illegible] [Illegible]
[Illegible]

NOTE: This message passed to [Illegible] for [Illegible]
[Illegible]



GENERAL HEADQUARTERS, FAR EAST COMMAND
 ADJUTANT GENERAL'S OFFICE
 RADIO AND CABLE CENTER

I N C O M I N G M E S S A G E

Restricted
 DEFERRED

ELT/bdh

23 Dec 50

G-4 ROUTING	
AC/SGA	/
AC/SG-4	/
EXECUTIVE	/
PRO	/
C+RE	/
SUPPLY	/
PETROLEUM	/
KEA	/
ADMIN	/

FROM : DEPTAR (TCTOI OP 136) WASH DC

TO : CINCFE TOKYO JAPAN

INFO : CG JLCOM YOKOHAMA JAPAN, CG RYCOM OKINAWA, CG SEPE SEATTLE WASH, DEPTAR (COT)
 WASH DC, CG NYPE (SCAPSHIP) BRKLN NY

NR : W 99546

Weekly Rept Nr 191 TOG and other civilian aid shipments to Japan and Okinawa.
 Read in 7 colms: Colm 1 port, colm 2 sld or start loading date, Colm 3 ves, Colm 4
 ltons, Colm 5 cargo, colm 6 ETA your area, Colm 7 Prog Nr (word same shown this colm
 denotes same Prog Nr immediately preceding item).

Part 1. Ves sld in period 14 to 20 Dec inclusive, Colm 2 is date sld:

1	2	3	4	5	6	7
Portland	13	Negotiated rate	3000	wheat	31 Dec	TOG 62-0-3009
Sld Seattle	19	China Mail				
Seattle	14	Negotiated rate Charles E Dant	3000	wheat	27 Dec	Same

(Foregoing ves Nov Program, following ves Dec Program)

Longview	15	SCAP Taikyū Maru	8600	wheat	1 Jan	TOG 62-0-3012
----------	----	------------------	------	-------	-------	---------------

Part 2. Ves loading as of 14 Dec, Colm 2 is date started loading:

Astoria	17	SCAP Kiyokawa Maru	8700	wheat	5 Jan	TOG 62-0-3012
Seattle	16	negotiated rate Ponce De Leon	3000	wheat		same

13170

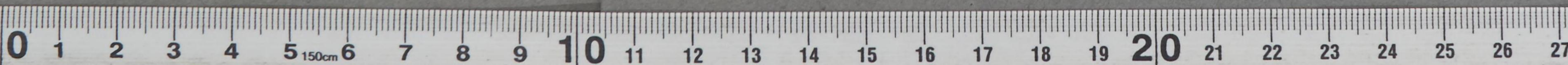
DEFERRED
Restricted

CONSULT CRYPTO CENTER BEFORE DECLASSIFYING

Paraphrase not required. Handle as correspondence of classification
 carried hereon per paragraphs 17 a (1) (2), 41 c (2) (3), and g (1),
 AR 380-5, 15 Nov 49.

319.1

DECLASSIFIED
 Authority NND 975029



GENERAL HEADQUARTERS, FAR EAST COMMAND
ADJUTANT GENERAL'S OFFICE
RADIO AND CABLE CENTER

INCOMING MESSAGE



Paraphrase not required. Handle as correspondence of classification carried hereon per paragraphs 17a(1)(2) and 41c(2)(3) and g(1), AR 380-5, 15 November 1949.

COPY No.

Restricted
DEFERRED

FROM : DEPTAR ----- NR : W 99546 ----- 23 DEC 50 ----- CONTINUED

Van Couver	18	time charter Lipari	9500	wheat	13 Jan	same
SFRAN	17	SCAP Hikawa Maru	7500	barley	11 Jan	TOG 62-0-3011
SFRAN	16	SCAP Meiko Maru	3200	barley	10 Jan	same
SFRAN	11	negotiated rate Geo Luckenbach	3000	barley	23 Jan	same
SFRAN	13	negotiated Philippine Bear	3000	barley	31 Dec	same
SFRAN	13	negotiated Philippine Transport	3000	barley	4 Jan	same

Part 3. Ves scheduled load remainder Dec, Colm 2 date expected start ldg:
SFRAN 21 time charter Arcadia 2685 barley 10 Jan TOG 62-0-3010
Victory

(Foregoing ves complete Nov allocation, following ves are Dec allocation)

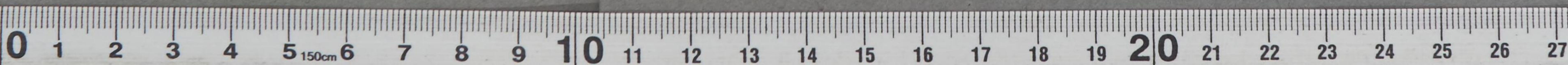
Seattle	25	SCAP Wakashima Maru	8400	wheat	18 Jan	TOG 62-0-3012
Portland	23	SCAP Kenkoku Maru	9200	wheat	19 Jan	same
Portland	26	negotiated rate Island Mail	2000	wheat	15 Jan	same
Seattle	29	negotiated rate Peach Tree State	4500	wheat	22 Jan	same
Portland	27	negotiated rate Oregon Mail	3500	wheat	22 Jan	same
Portland	21	negotiated rate Edgar F Luckenbach	3000	wheat	7 Feb	same
Portland	22	negotiated rate Blue Grass State	4500	wheat	22 Jan	same
Seattle	30	time charter Portland Trader	9500	wheat	25 Jan	same
SFRAN	23	negotiated rate Hong Kong Transport	1000	barley	11 Jan	same.

13170

DEFERRED


Restricted
-2-

DECLASSIFIED
Authority NND 975029



GENERAL HEADQUARTERS, FAR EAST COMMAND
ADJUTANT GENERAL'S OFFICE
RADIO AND CABLE CENTER

INCOMING MESSAGE

 Paraphrase not required. Handle as correspondence of classification carried hereon per paragraphs 17a(1)(2) and 41c(2)(3) and g(1), AR 380-5, 15 November 1949.

COPY No.

Restricted
DEFERRED

FROM : DEPTAR

NR : W 99546

23 DEC 50

CONTINUED

INFORMATION : COMMANDER IN CHIEF, CHIEF OF STAFF, O-4, AG, DEPCOMSTSWESPAC,
ECON & SCI, NAT RESOURCES, PUBLIC H & W, RYUKYUS CA, TRANS

13170

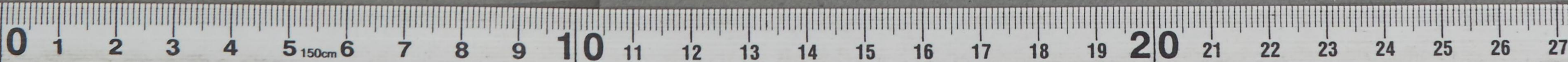
DEFERRED

Restricted

T00 : 221819 Z
MCN : 53799

-3-

DECLASSIFIED
Authority
NND 975029



GENERAL HEADQUARTERS, FAR EAST COMMAND
ADJUTANT GENERAL'S OFFICE
RADIO AND CABLE CENTER

INCOMING MESSAGE

DISPATCH : 007
CIPHER : N/A



1950
11/23

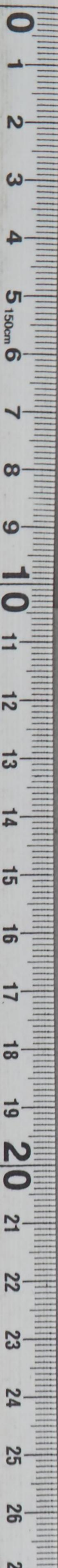
RECEIVED
ADJUTANT GENERAL'S OFFICE
RADIO AND CABLE CENTER
24 DEC 1950

1950
11/23



Paraphrase not required. Handle as correspondence of classification carried hereon per paragraphs 17a(1)(2) and 41c(2)(3) and g(1), AR 380-5, 15 November 1949.

COPY No. _____



GENERAL HEADQUARTERS, FAR EAST COMMAND
ADJUTANT GENERAL'S OFFICE
RADIO AND CABLE CENTER

G-4 ROUTING	
AC/SGA	
DA/SGA	
ROUTINE	<input checked="" type="checkbox"/>
P+3	<input checked="" type="checkbox"/>
C+RE	
SUPPLY	<input checked="" type="checkbox"/>
PETROLEUM	
KEA	<input checked="" type="checkbox"/>
20 Dec 50	MIN 91

INCOMING MESSAGE

*31911
Japan + Okinawa*

Restricted
ROUTINE

EFF/gr

FROM : DEPTAR (TCTOI OP 126) WASH DC

TO : CINCFE TOKYO JAPAN (CINCFE PASS TO CG JLCOM FOR INFO), CG SFPE
FT MASON CALIF

NR : W 99282

REOURMSG WX 99030. COMSTS has assigned time charter Arcadia
Victory 2685 Barley shut out China Transport.

NO SIG

INFORMATION : COMMANDER IN CHIEF, CHIEF OF STAFF, G-4, AG, DEPCOMSTSWESPAC, ECON & SCI, NAT RESOURCES, PUBLIC H & W, TRANS

NOTE : This msg passed by AG Rad Br via courier to CG JLCOM YOKOHAMA
JAPAN for info.

10971

ROUTINE

TOO : 192327 Z
MCN : 53078

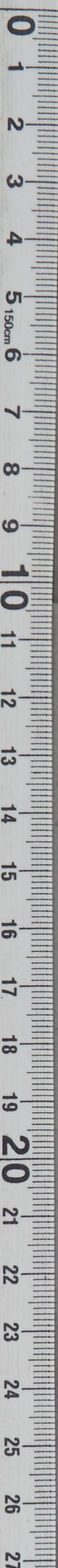
Restricted



Paraphrase not required. Handle as correspondence of classification carried hereon per paragraphs 17a(1)(2) and 4lc(2)(3) and g(1), AR 380-5, 15 November 1949.

COPY No.

DECLASSIFIED
Authority NND 975029



G 4 ROUTINE
 AC/S64
 DAC/S64
 EXECUTIVE
 PPO
 CTR
 SUPPLY
 PAMOLEUA
 SEA
 ADMIN

GENERAL HEADQUARTERS FAR EAST COMMAND
 ADJUTANT GENERAL'S OFFICE
 RADIO AND CABLE CENTER

EFF/rea

INCOMING MESSAGE

17 Dec 50

Restricted
 ROUTINE

FROM : DEPTAR (TCTOI OP 118) WASH DC
 TO : CINCFE TOKYO JAPAN (PASS TO CG JLCOM YOKOHAMA JAPAN AND CG RYCOM OKINAWA FOR INFO)
 INFO : CG NYPE (PASS TO SCAP SHIP) BROOKLYN NY, CG SFPE FT MASON CALIF, CG SEPE SEATTLE WASH
 NR : W 99030

Weekly Rept Nr 190 TOG and other civ aid shipments to Japan and Okinawa. Read in 7 colms:
 Colm 1 port, Colm 2 SLG or start loading date, Colm 3 vess, Colm 4 tons, Col 5 cargo, Colm
 6 ETA your area, Colm 7 prog nr (word same shown this colm denotes same prog nr in preceding
 item.

Part 1. Vess sld in period 7 to 13 Dec inclusive, Col 2 is date sld:

1.	2.	3.	4.	5.	6.	7.	
Long 26 Nov	SFRAN 11 Dec	negotiated rate William Luckenbach	2000	Wheat	11 Jan	TOG	62-0-2138
Vancouver 3	Longview 5	time charter Oregon Trader	9752	Wheat	27 Dec	TOG	62-0-3009
(This ves should have been shown Part 1 Rept Nr 189)							
Seattle 4	Portland 8	time charter Robin Goodfellow aprx for Okinawa	2500	flour	24 Dec	TOG	59-0-3005
SFRAN	8	negotiated rate China transport	492	barley	20 Dec	TOG	62-0-3010
SFRAN	11	SCAP Eiroku Maru aprx		600 barley shut out China transport TDM.			

Part 2. Vess loading as of 7 Dec, Col 2 is date started loading:
 Portland 10 negotiated rate China Mail 3000 wheat 3 Jan TOG 62-0-3009

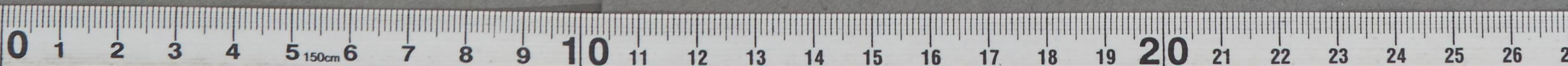
08817

(over)
 ROUTINE

CONSULT CRYPTO CENTER BEFORE DECLASSIFYING

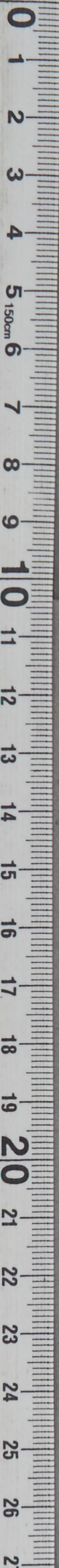
Paraphrase not required. Handle as correspondence of classification carrier hereon per Paragraphs 17 a (1) (2) and 41 c (2) (3) and g (1), AR 380-5, 15 Nov 1949.

DECLASSIFIED
 Authority NND 975029



GENERAL HEADQUARTERS, FAR EAST COMMAND
ADJUTANT GENERAL'S OFFICE
RADIO AND CABLE CENTER

INCOMING MESSAGE



[Faint, mirrored text from the reverse side of the page is visible through the paper. The text is mostly illegible but appears to be a message or report.]

Y1880



Restricted
ROUTINE

FROM : DEPTAR (TCTOI OP 118) WASH DC NR : W 99030 17 DEC 50 CONT'D

Seattle	15	negotiated rate Charles E Dant aprx	3000 wheat	28 Dec	same
Longview	11	SCAP Taikyū Maru	8600 wheat	1 Jan TOG	62-0-3012
SFRAN	11	negotiated rate Geo Luckenbach	3000 barley	26 Jan TOG	62-0-3011
SFRAN	13	negotiated rate Philippine Bear	3000 barley	31 Dec	same
SFRAN	13	negotiated rate Philippine transport	3000 barley	4 Jan	same.
Part 3. Vess scheduled load remained Dec, Col 2 date expected start ldg:					
Astoria	15	SCAP Kiyokawa Maru	8700 wheat	5 Jan	same
Seattle	25	SCAP Wakashima Maru	8400 wheat	18 Jan	same
Portland	23	SCAP Kenkoku Maru	9200 wheat	19 Jan	same
Portland	14	negotiated rate Island Mail	2000 wheat	10 Jan	same
Seattle	15	negotiated rate Ponce De Leon	3000 wheat	31 Dec	same
Seattle	29	negotiated rate Peach Tree State	4500 wheat	31 Jan	same
Portland	22	negotiated rate Oregon Mail	3500 wheat	18 Jan	same
Portland	22	negotiated rate Edgar F Luckenbach	3000 wheat	4 Feb	same
Portland	16	negotiated rate Blue Grass State	4500 wheat	21 Jan	same
Seattle	30	time charter Portland Trader	9500 wheat	25 Jan	SALYA
Vancouver	19	time charter Lipari	9500 wheat	13 Jan	same
SFRAN	15	SCAP Hikawa Maru	7500 barley	9 Jan	TOG 62-0-3011
SFRAN	14	SCAP Meiko Maru	7200 barley	8 Jan	same
SFRAN	23	negotiated rate Hong Kong Transport	1000 barley	11 Jan	same.

NO SIG

INFORMATION : COMMANDER IN CHIEF, CHIEF OF STAFF, G-4, AG, DEPCOMSTWESPAC, ECON & SUI, NAT RESOURCES, PUBLIC H & V, RYUKYUS CA, TRANS

NOTE : This msg passed by AG RAD BR via courier to CG JLCOM for info.

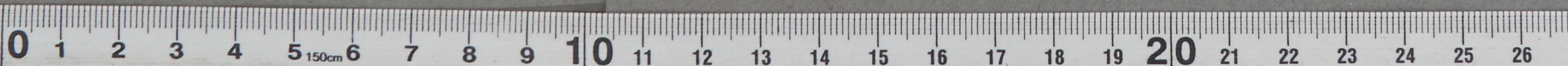
NOTE : This msg passed to Com Center for electrical transmission to CG RYCOM for info.

08817

ROUTINE
Restricted
-2-

TOO : 161352 Z
MCN : 52176

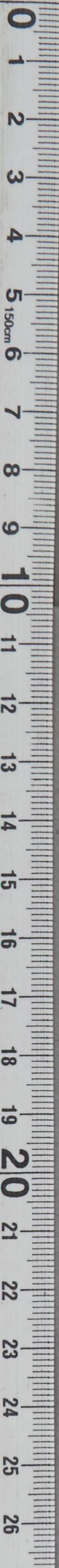
DECLASSIFIED
Authority
NND 975029



GENERAL HEADQUARTERS, FAR EAST COMMAND
ADJUTANT GENERAL'S OFFICE
RADIO AND CABLE CENTER

INCOMING MESSAGE

RECEIVED
17 DEC
G-4
GHO
04 05 06 07 08 09 10 11 12 13 14 15 16 17 18 19 20 21 22 23



[Faint, illegible text, likely bleed-through from the reverse side of the page]

GENERAL HEADQUARTERS, FAR EAST COMMAND
ADJUTANT GENERAL'S OFFICE
RADIO AND CABLE CENTER

G-4

G-4 ROUTING	
AC/S G-4	
DA/S G-4	
EXECUTIVE	
INFO	
G+RE	
SUPPLY	<i>J</i>
PETROLEUM	
KEA	
ADMIN	<i>21</i>

INCOMING MESSAGE

CORRECTED COPY

RESTRICTED

DEFERRED

TER/dga

10 Dec 50

*319.1
Japan*

FROM : DEPTAR (TCOI OF 87) WASH DC

TO : CINCPAC TOKYO JAPAN

INFO : CG JLCOM YOKOHAMA JAPAN, CG SEPE SEATTLE WASH, CG SEPE FT MASON CALIF, NYPOB NEW YORK, CG BTCOM OKINAWA, SCAPSHIP

NR : W 98454

Weekly Rept Nbr 189 TOG and other civilian aid shipments to Japan and Okinawa. Read in 7 cols:

Colm 1. Port,

Colm 2. Sld or start loading date,

Colm 3. Vess,

Colm 4. Ltons,

Colm 5. Cargo,

Colm 6. ETA your area,

Colm 7. Prog Nbr (word same shown this colm denotes same Prog Nbr immediately preceding item).

Part 1, ves sld in period 1 to 6 Dec inclusive, colm 2 is date sld:

1. Portland
2. 29 Nov,
3. Sld Seattle 5, negotiated rate American Mail
4. 3500
5. Wheat
6. 18 Dec
7. TOG 62-0-3009;
1. SFRAN
2. 4
3. Negotiated rate California Bear aprx

(over)
DEFERRED

03790

RESTRICTED

Paraphrase not required. Handle as correspondence of classification carried hereon per paragraphs 17a(1)(2) and 41c(2)(3) and g(1), AR 380-5, 15 November 1949.

CORRECTED COPY

RESTRICTED

DEFERRED

FROM DEPTAR (TOOT OF 87) MR : W 98454 10 DEC 50 CONT'D

4. 2000
5. Barley
6. 18 Dec
7. TOG 62-0-3010;
1. New York
2. 1
3. Space charter Polar US Pioneer aprx
4. 150
5. Lard
6. 26 Jan for Okinawa
7. TOG 59-0-3002.

Part 2, vess loading as of 1 Dec, col 2 is date started loadings:

1. Seattle
2. 22 Nov
3. Portland 5 Dec time charter Robin Goodfellow
4. 2500
5. Flour
6. For Okinawa 24 Dec
7. TOG 59-0-3005;

1. Longview
2. Sailed 26 Nov, expected sail SFRAN 9 Dec
3. Negotiated rate William Luckenbach
4. 2000
5. Wheat
6. 11 Jan
7. TOG 62-0-2138;

1. Vancouver
2. 2
3. Longview 4, time charter Oregon Trader
4. 9800
5. Wheat
6. 29 Dec
7. TOG 62-0-3009;

1. SFRAN
2. 2
3. Negotiated rate China Transport
4. 510
5. Barley
6. 19 Dec
7. TOG 62-0-3010.

03790

DEFERRED

RESTRICTED

GENERAL HEADQUARTERS, FAR EAST COMMAND
ADJUTANT GENERAL'S OFFICE
RADIO AND CABLE CENTER

INCOMING MESSAGE

RESTRICTED

DEFERRED

FROM : DEPTAR (TSOI OP 87) NR : W 98454 30 DEC 50 CONT'D

Part 3 vs scheduled load remainder Dec, solm 2 date expected start

- 1. Portland
- 2. 9
- 3. Negotiated rate China Mail
- 4. 3000
- 5. Wheat
- 6. 30 Dec
- 7. TOS 62-043009;
- 1. Tazawa
- 2. 7
- 3. Negotiated rate Charles E Dant
- 4. 3000
- 5. Wheat
- 6. 24 Dec
- 7. Same
- 1. SHAN
- 2. 8
- 3. SCAP Biwoku Maru
- 4. 6000
- 5. Bailey
- 6. 26 Dec
- 7. 62-0-3010;

510 are booking higher priority cargo. Remaining 2490 to be booked, details subsequent report. Above was low cargo allocation, SEPO indicating was load either Seattle or Portland depending cargo availability)

- 1. Portland
- 2. 9
- 3. SCAP Biwoku Maru
- 4. 8600
- 5. Wheat
- 6. 31 Dec
- 7. TOS 62-0-3012;

03790 DEFERRED

RESTRICTED



Paraphrase not required. Handle as correspondence of classification carried hereon per paragraphs 17a(1)(2) and 4lc(2)(3) and g(1), AR 380-5, 15 November 1949.

CORRECTED COPY
RESTRICTED
DEFERRED

FROM : DEPTAR (TCOI OP 87) NR : W 98454 10 DEC 50 CONT'D

- 1. Portland
- 2. 15
- 3. SCAP Kiyokawa Maru
- 4. 8700
- 5. Wheat
- 6. 5 Jan
- 7. Same;
- 1. Seattle
- 2. 13
- 3. SCAP Wakashima Maru
- 4. 8400
- 5. Wheat
- 6. 6 Jan
- 7. Same;
- 1. Portland
- 2. 20
- 3. SCAP Kenko Maru
- 4. 9200
- 5. Wheat
- 6. 16 Jan
- 7. Same;
- 1. SEPAO
- 2. 14
- 3. Negotiated rate Island Mail
- 4. 2000
- 5. Wheat
- 6. 10 Jan
- 7. Same;
- 1. SEPO
- 2. 15
- 3. Negotiated rate Ponce De Leon
- 4. 3000
- 5. Wheat
- 6. 31 Dec
- 7. Same;
- 1. SEPO
- 2. 29
- 3. Negotiated rate Peach Tree State
- 4. 500
- 5. Wheat
- 6. 31 Jan
- 7. Same;

03790

DEFERRED
RESTRICTED
-4-

GENERAL HEADQUARTERS, FAR EAST COMMAND
ADJUTANT GENERAL'S OFFICE
RADIO AND CABLE CENTER

INCOMING MESSAGE

Restricted

DEFERRED

PROM : DEPTAR (TCOL OP 87) NR : W 28454 10 DEC 50 CONT'D

- 1. SEPO
- 2. ~~22~~
- 3. Negotiated rate Oregon Mail
- 4. 3500
- 5. Wheat
- 6. 18 Jan
- 7. Same;
- 1. SEPO
- 2. 22
- 3. Negotiated rate J L Luckenbach
- 4. 3000
- 5. Wheat
- 6. 4 Feb
- 7. Same;
- 1. SEPO
- 2. 16
- 3. Negotiated rate Blue Grass State
- 4. 4500
- 5. Wheat
- 6. 21 Jan
- 7. Same;
- 1. SEPO
- 2. 23
- 3. Time charter Portland Trader
- 4. 9500
- 5. Wheat
- 6. 19 Jan
- 7. Same;
- 1. SEPO
- 2. 23
- 3. Time charter Holy Star
- 4. 9500
- 5. Wheat
- 6. 19 Jan
- 7. Same;

03790

DEFERRED

RESTRICTED

-5-

Paraphrase not required. Handle as correspondence of classification carried hereon per paragraphs 17a(1)(2) and 41c(2)(3) and g(1), AR 380-5, 15 November 1949.

COPY No.

CORRECTED COPY
RESTRICTED
DEFERRED

FROM : DEPTAR (TCOI OP 87) NR : W 98454 10 DEC 50 CONT'D

1. SPRAN
2. 11
3. SCAP Hikawa Maru
4. 7500
5. Barley
6. 3 Jan
7. TOG 62-0-3011;
1. SPRAN
2. 16
3. SCAP Meiko Maru
4. 7200
5. Barley
6. 9 Jan
7. Same;
1. SPRAN
2. 16
3. Negotiated rate Geo Luckenbach
4. 3000
5. Barley
6. 26 Jan
7. Same;
1. SPRAN
2. 8
3. Negotiated rate Philippine Bear
4. 3000
5. Barley
6. 28 Dec
7. Same;
1. SPRAN
2. 9
3. Negotiated rate Philippine Transport
4. 3000
5. Barley
6. 1 Jan
7. Same
1. SPRAN
2. 23
3. Negotiated rate Hong Kong Transport
4. 1000

03790

DEFERRED

RESTRICTED

GENERAL HEADQUARTERS, FAR EAST COMMAND
ADJUTANT GENERAL'S OFFICE
RADIO AND CABLE CENTER

INCOMING MESSAGE

CORRECTED COPY

RESTRICTED

DEFERRED

FROM : DEPTAR (TCOI OP 87) NR : W 98454 10 DEC 50 CONT'D

- 5. Barley
- 6. 11 Jan
- 7. Same.

Cargo all vess Taikyū Maru to end of msg Dec allocation.

NO SIG

INFORMATION : COMMANDER IN CHIEF, CHIEF OF STAFF, G-4, AG,
DEPCONSTSWESPAC, ECON & SCI, NAT RESOURCES, PUBLIC H & W,
RYUKYUS CA, TRANS

NOTE : Corrected Copy received in AGOR 101638 I.

03790

DEFERRED

TOO : 090005 Z
MCN : 50535

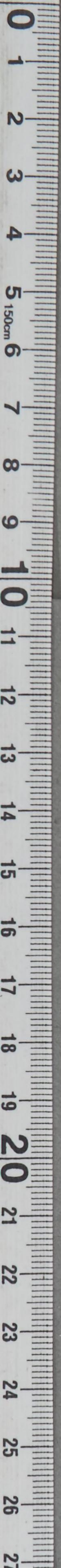
RESTRICTED

-7-



Paraphrase not required. Handle as correspondence of classification carried hereon per paragraphs 17a(1)(2) and 41c(2)(3) and g(1), AR 380-5, 15 November 1949.

COPY No.



INCOMING MESSAGE

TO: [Faint text]

FROM: [Faint text]

DATE: [Faint text]

INFORMATION & COMMUNICATIONS SECTION
DEPARTMENT OF DEFENSE, WASHINGTON, D.C. 20301
ATTENTION: [Faint text]

RECEIVED
71 DEC 1950
G-4
GHO

GENERAL HEADQUARTERS, FAR EAST COMMAND
ADJUTANT GENERAL'S OFFICE
RADIO AND CABLE CENTER

INCOMING MESSAGE

G-4 ROUTING	
ACSG	<input checked="" type="checkbox"/>
EXECUTIVE	<input checked="" type="checkbox"/>
P+O	<input checked="" type="checkbox"/>
C+RE	<input type="checkbox"/>
SUPPLY	<input checked="" type="checkbox"/>
PETROLEUM	<input type="checkbox"/>
KEA	<input checked="" type="checkbox"/>
ADMIN	<input checked="" type="checkbox"/>

RESTRICTED
DEFERRED

*319.1
Jap + Okinawa*

TER/bgc

10 Dec 50

FROM : DEPTAR (TCOI OP 87) WASH DC

TO : CINCPAC TOKYO JAPAN

INFO : CG JLCOM YOKOHAMA JAPAN, CG SEPE SEATTLE WASH, CG SFPE FT MASON CALIF, NYPOE NEW YORK, CG RYCOM OKINAWA, SCAPSHIP

NR : W 98454

Weekly Rept Nbr 189 TOG and other civilian aid shipments to Japan and Okinawa. Read in 7 colms:

- Colm 1. Port,
- Colm 2. Slg or start loading date,
- Colm 3. Vess,
- Colm 4. Ltens,
- Colm 5. Cargo,
- Colm 6. ETA your area,
- Colm 7. Prog Nbr (word same shown this colm denotes same Prog Nbr immediately preceding item).

Part 1, ves sold in period 1 to 6 Dec inclusive, colm 2 is date sld:

1. Portland

2. 29 Nov,

3. Sld Seattle 5, negotiated rate American Mail

4. 3500

5. Wheat

6. 18 Dec

7. TOG 62-0-3009;

1. SFRAN

2. 4

3. Negotiated rate Californai Bear aprx

03790

(over)
DEFERRED

RESTRICTED

Paraphrase not required. Handle as correspondence of classification carried hereon per paragraphs 17a(1)(2) and 41c(2)(3) and g(1), AR 380-5, 15 November 1949.

COPY No.

RESTRICTED
DEFERRED

FROM : DEPTAR (TCOI OP 87) NR : W 98454 10 DEC 50 CONT'D

4. 2000
5. Barley
6. 18 Dec
7. TOG 62-0-3010;
1. New York
2. 1
3. Space charter Polar US Pioneer aprx
4. 150
5. Lard
6. 26 Jan for Okinawa
7. TOG 59-0-3002.

Part 2, vess loading as of 1 Dec, col 2 is date started loadings:

1. Seattle
2. 22 Nov
3. Portland 5 Dec time charter Robin Goodfellow
4. 2500
5. Flour
6. For Okinawa 24 Dec
7. TOG 59-0-3005;
1. Longview
2. Sailed 26 Nov, expected sail SFRAN 9 Dec
3. Negotiated rate William Luckenwach
4. 2000
5. Wheat
6. 11 Jan
7. TOG 62-0-2138;
1. Vancouver
2. 2
3. Longview 4, time charter Oregon Trader
4. 9800
5. Wheat
6. 29 Dec
7. TOG 62-0-3009;
1. SFRAN
2. 2
3. Negotiated rate China Transport
4. 510
5. Barley
6. 19 Dec
7. TOG 62-0-3010.

03790

DEFERRED

RESTRICTED

GENERAL HEADQUARTERS, FAR EAST COMMAND
ADJUTANT GENERAL'S OFFICE
RADIO AND CABLE CENTER

INCOMING MESSAGE

RESTRICTED

DEFERRED

FROM : DEPTAR (TCOI OP 87) NR : W 98454 10 DEC 50 CONT'D

Part 3, ves scheduled load remainder Dec, colm 2 date expected start ldg:

1. Portland
2. 9
3. Negotiated rate China Mail
4. 3000
5. Wheat
6. 30 Dec
7. TCG 62-0-3009;
1. Tacoma
2. 7
3. Negotiated rate Charles E Dant
4. 3000
5. Wheat
6. 24 Dec
7. Same;
1. SFRAN
2. 8
3. SCAP Eiuoku Maru
4. 600
5. Barley
6. 26 Dec
7. 62-0-3010; (3000 broke on China Transport lifted only

510 due booking higher priority cargo. Remaining 2490 to be booked, details subsequent rpt. Above vess Nov cargo allocation. SEPO indicating vess load either Seattle or Portland depending cargo availability)

1. Portland
2. 9
3. SCAP Taikyu Maru
4. 8600
5. Wheat
6. 31 Dec
7. TCG 62-0-3012;

03790

DEFERRED

RESTRICTED

-3-

Paraphrase not required. Handle as correspondence of classification carried hereon per paragraphs 17a(1)(2) and 41c(2)(3) and g(1), AR 380-5, 15 November 1949.

COPY No.

RESTRICTED

DEFERRED

FROM : DEPTAR (TCOI OP 87) NR : W 98454 10 DEC 50 CONT'D

1. Portland
2. 15
3. SCAP Kiyokawa Maru
4. 8700
5. Wheat
6. 5 Jan
7. Same;
1. Seattle
2. 13
3. SCAP Wakashima Maru
4. 8400
5. Wheat
6. 6 Jan
7. Same;
1. Portland
2. 20
3. SCAP Kenkoku Maru
4. 9200
5. Wheat
6. 16 Jan
7. Same;
1. SEPAO
2. 14
3. Negotiated rate Island Mail
4. 2000
5. Wheat
6. 10 Jan
7. Same;
1. SEPO
2. 15
3. Negotiated rate Ponce De Leon
4. 3000
5. Wheat
6. 31 Dec
7. Same;
1. SEPO
2. 29
3. Negotiated rate Peach Tree State
4. 500
5. Wheat
6. 31 Jan
7. Same;

03790

DEFERRED

RESTRICTED

GENERAL HEADQUARTERS, FAR EAST COMMAND
ADJUTANT GENERAL'S OFFICE
RADIO AND CABLE CENTER

INCOMING MESSAGE

RESTRICTED
DEFERRED

FROM : DEPTAR (TCOI OP 87) NR : W 98454 10 DEC 50 CONT'D

- 1. SEPO
- 2. 22
- 3. Negotiated rate Oregon Mail
- 4. 3500
- 5. Wheat
- 6. 18 Jan
- 7. Same;
- 1. SEPO
- 2. 22
- 3. Negotiated rate J L Luckenbach
- 4. 3000
- 5. Wheat
- 6. 4 Feb
- 7. Same;
- 1. SEPO
- 2. 16
- 3. Negotiated rate Blue Grass State
- 4. 4500
- 5. Wheat
- 6. 21 Jan
- 7. Same;
- 1. SEPO
- 2. 23
- 3. Time charter Portland Trader
- 4. 9500
- 5. Wheat
- 6. 19 Jan
- 7. Same;
- 1. SEPO
- 2. 23
- 3. Time charter Holy Star
- 4. 9500
- 5. Wheat
- 6. 19 Jan
- 7. Same;

03790

DEFERRED

RESTRICTED
-5-

Paraphrase not required. Handle as correspondence of classification carried hereon per paragraphs 17a(1)(2) and 41c(2)(3) and g(1), AR 380-5, 15 November 1949.

COPY No.

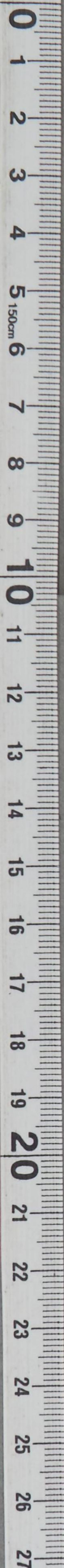
RESTRICTED
DEFERRED

FROM DEPTAR (TCOI OP 87) NR : W 98454 10 DEC 50 CONT'D

- 1. SFRAN
- 2. 11
- 3. SCAP Hikawa Maru
- 4. 7500
- 5. Barley
- 6. 3 Jan
- 7. TOG 62-0-3011;
- 1. SFRAN
- 2. 16
- 3. SCAP Meiko Maru
- 4. 7200
- 5. Barley
- 6. 9 Jan
- 7. Same;
- 1. SFRAN
- 2. 16
- 3. Negotiated rate Geo Luckenbach
- 4. 3000
- 5. Barley
- 6. 26 Jan
- 7. Same;
- 1. SFRAN
- 2. 8
- 3. Negotiated rate Philippine Bear
- 4. 3000
- 5. Barley
- 6. 28 Dec
- 7. Same;
- 1. SFRAN
- 2. 9
- 3. Negotiated rate Philippine Transport
- 4. 3000
- 5. Barley
- 6. 1 Jan
- 7. *****;
- 1. SFRAN
- 2. 23
- 3. Negotiated rate Hong Kong Transport
- 4. 1000

03790

DEFERRED
RESTRICTED



DECLASSIFIED

Authority NND 975029

GENERAL HEADQUARTERS, FAR EAST COMMAND
ADJUTANT GENERAL'S OFFICE
RADIO AND CABLE CENTER

INCOMING MESSAGE

Restricted

DEFERRED

FROM : DEPTAR (TCOI OP 87) NR : W 98454 10 DEC 50 CONT'D

- 5. Barley
- 6. 11 Jan
- 7. Same.

Cargo all vess Taikyu Maru to end of msg Dec allocation.

NO SIG

INFORMATION : COMMANDER IN CHIEF, CHIEF OF STAFF, G-4, AG,
DEPCONSTISHESFAC, ECON & SCI, NAT RESOURCES, PUBLIC H & W,
RYUKYUS CA, TRANS

NOTE : Service has been requested for missing portions indicated by asterisks.

03790

DEFERRED

TOO : 090005 Z

MCN : 50535

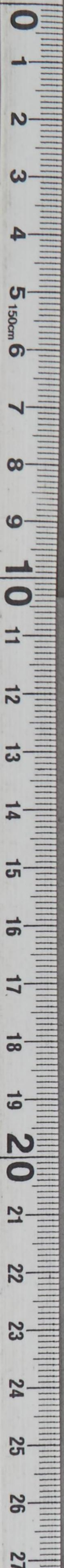
Restricted

-7-

Paraphrase not required. Handle as correspondence of classification carried hereon per paragraphs 17a(1)(2) and 41c(2)(3) and g(1), AR 380-5, 15 November 1949.

COPY No.

DECLASSIFIED
Authority NND 975029



RECEIVED
10 DEC 1959
G-4
GHO

*319.1
Wkly Report
Japan Okinawa*

GENERAL HEADQUARTERS FAR EAST COMMAND
ADJUTANT GENERAL'S OFFICE
RADIO AND CABLE CENTER

INCOMING MESSAGE
SECRET
DEFERRED

24

G-4 ROUTING	
AC/S G-4	
DA/S G-4	
Wg/mmc	
EXECUTIVE	
P+C	<input checked="" type="checkbox"/>
C+RE	<input checked="" type="checkbox"/>
SUPPLY	<input checked="" type="checkbox"/>
PETROLEUM	
CEA	<input checked="" type="checkbox"/>
ADTR	<i>ES</i>

3 Dec 50

FROM : DEPTAR (TCTOI OP 72) WASH DC
TO : CINCPAC TOKYO JAPAN (PASS TO CG JLCOM YOKOHAMA JAPAN AND CG RYCOM OKINAWA FOR INFO)
INFO : DEPCOMSTSWESPAC TOKYO JAPAN, CG SEPE SEATTLE WASH, CG SFPE FT MASON CALIF, CG NYPE (PASS TO SCAPSHIP FOR INFO) BKLYN NY, DEPCOMSTSNORPAC SEATTLE WASH
NR : W 97899

Weekly Rept Nbr 188 TOG and other civilian aid shipments to Japan and Okinawa. Read in 7 colms; Colm 1 port, Colm 2 SLG or start loading date; Colm 3 vess, Colm 4 ltons, Colm 5 cargo, Colm 6 ETA your area, Colm 7 prog nbr (word same shown this colm denotes same prog nbr immediately preceding item).

Part 1, vess sld in period 23 to 30 Nov inclusive, Colm 2 is date sld:

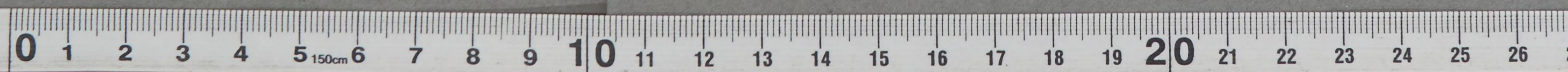
1	2	3	4	5	6	7
Portland	25	SCAP Stavros Coumantaros	9550	wheat	12 Dec	TOG 62-0-3009
Vancouver	23 sld					
SFRAN	30	SCAP Hoel Maru	9282	wheat	14 Dec	Same
Tacoma	17 sld SF	Negotiated rate America	aprx 2150	barley	15 Dec	TOG 62-0-3010
SFRAN	25	Negotiated rate Young America	3000	wheat	9 Dec	TOG 62-0-3009
New Orleans	27	Negotiated rate Arizona	3000	barley	10 Dec	TOG 62-0-3010
98822	28	SCAP Audrey	aprx 9640	soya beans	9 Jan	TOG 62-0-3005

DEFERRED
SECRET

CONSULT CRYPTO CENTER BEFORE DECLASSIFYING

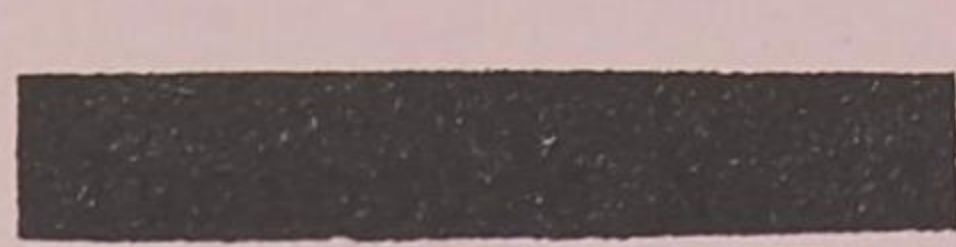
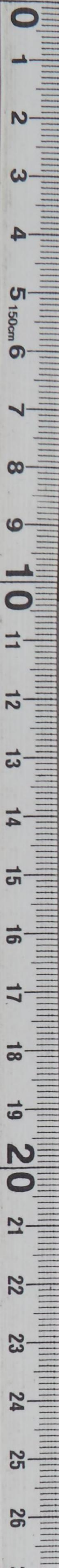
Paraphrase not required. Handle as correspondence of classification carried hereon per paragraphs 17a (1) (2) and 41c (2) (3) and g (1), AR 380-5, 15 Nov 49.

DECLASSIFIED
Authority
NND 975029



GENERAL HEADQUARTERS, FAR EAST COMMAND
ADJUTANT GENERAL'S OFFICE
RADIO AND CABLE CENTER

INCOMING MESSAGE



Paraphrase not required. Handle as correspondence of classification carried hereon per paragraphs 17a(1)(2) and 41c(2)(3) and g(1), AR 380-5, 15 November 1949.

COPY No.

Secret

DEFERRED

FROM : DEPTAR (TCTOI OP 72) NR : W 97899 3 DEC 50 CONT'D

Part 2, vess loading as of 23 Nov, Colm 2 is date started loading:

Longview	sailed 26 expected	negotiated rate Wm	2000	wheat	11 Jan	TOG 62-Q-2138
	sail SFRAN 9 Dec	Luckenbach				
Portland	sailed 29 expected	negotiated rate				
	sail Seattle 3 Dec	American Mail	3500	wheat	16 Dec	TOG 62-0-3009
Seattle	22	Time charter Robin		flour for		
Portland	4 Dec	Goodfellow	2500	Okinawa	23 Dec	TOG 59-0-3005
SFRAN	24	negotiated rate	2000	barley	16 Dec	TOG 62-0-3010
		California Bear				
New York	22	Space charter Polarus	150	lard for	26 Jan	TOG 59-0-3002
		Pioneer		Okinawa		

Part 3, vess scheduled load during Dec, Colm 2 is date expected start ldg.

Portland	5	negotiated rate	3000	wheat	29 Dec	TOG 62-0-3009
		China Mail				
Vancouver	2	Time charter	9800	wheat	28 Dec	Same
Longview	4	Oregon Trader				
Tacoma	5	negotiated rate	3000	wheat	2 Jan	Same
		Charles T Dant				
SFRAN	2	negotiated rate China	3000	barley	23 Dec	TOG 62-0-3010
		Transport				
SFRAN	6	SCAP Eiroku Maru	600	barley	24 Dec	TOG 62-0-3010

(Above vess Nov cargo allocation, the following vess Dec cargo allocation. SEPO indicating vess to lad either Seattle or Portland depending cargo availability).

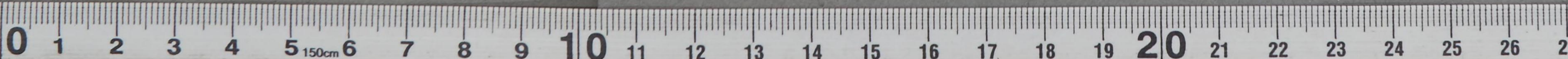
SEPO	8	SCAP Taikyuu Maru	8600	wheat	31 Dec	TOG 62-0-3012
SEPO	10	SCAP Kiyokawa Maru	8700	wheat	31 Dec	Same
SEPO	13	SCAP Wakashima Maru	8400	wheat	6 Jan	Same
SEPO	20	SCAP Kenkoku Maru	9200	wheat	16 Jan	Same
SEPO	14	negotiated rate	2000	wheat	10 Jan	Same
		Island Mail				
SEPO	15	negotiated rate	3000	wheat	31 Dec	Same
		Ponce De Leon				

98822

DEFERRED

Secret

DECLASSIFIED Authority NND 975029



GENERAL HEADQUARTERS, FAR EAST COMMAND
ADJUTANT GENERAL'S OFFICE
RADIO AND CABLE CENTER

INCOMING MESSAGE

SECRET

SECRET

Paraphrase not required. Handle as correspondence of classification carried hereon per paragraphs 17a(1)(2) and 41c(2)(3) and g(1), AR 380-5, 15 November 1949.

Secret
DEFERRED

FROM : DEPTAR (TCTOI OP 72) ----- NR : W 97899 ----- 3 DEC 50 ----- CONT'D -----

SEPO	29	negotiated rate Peach Tree State	4500	wheat	31 Jan	Same
SEPO	22	negotiated rate Oregon Mail	3500	wheat	18 Jan	Same
SEPO	22	negotiated rate J L Luckenbach	3000	wheat	4 Feb	Same
SEPO	16	negotiated rate Blue Grass State	4500	wheat	21 Jan	Same
SEPO	23	Time charter Portland Trader	9500	wheat	19 Jan	Same
SEPO	23	Time charter Holystar	9500	wheat	19 Jan	Same
SFRAN	11	SCAP Hikawa Maru	7500	barley	3 Jan	TOG 62-0-3011
SFRAN	16	SCAP Maiko Maru	7200	barley	9 Jan	Same
SFRAN	16	negotiated rate Geo Luckenbach	3000	barley	26 Jan	Same
SFRAN	8	negotiated rate Philippine Bear	3000	barley	28 Dec	Same
SFRAN	9	negotiated rate Philippine Transport	3000	barley	1 Jan	Same
SFRAN	23	negotiated rate Hong Kong Transport	1000	barley	11 Jan	Same

NO SIG

INFORMATION : COMMANDER IN CHIEF, CHIEF OF STAFF, G-4, AG, DEFCOMSTSWESPAC,
ECON & SCI, NAT RESOURCES, PUBLIC H & W, RYUKYUS MG, TRANS

NOTE : This msg passed by CG Rad Br via Courier to CG JICOM YOKOHAMA JAPAN for info.

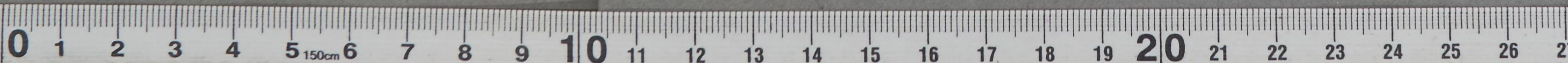
NOTE : This msg passed to Comm Center for electrical transmission to CG RYCOM OKINAWA
for info.

98822

DEFERRED

TOO : 020141 Z
MCN : 98751

Secret

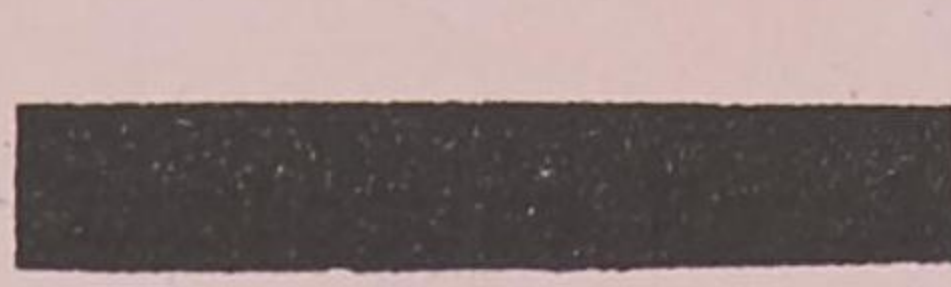


GENERAL HEADQUARTERS, FAR EAST COMMAND
ADJUTANT GENERAL'S OFFICE
RADIO AND CABLE CENTER

INCOMING MESSAGE



[Faint, mirrored text from the reverse side of the page, including words like 'RECEIVED', 'GHG', and various numbers.]



Paraphrase not required. Handle as correspondence of classification carried hereon per paragraphs 17a(1)(2) and 41c(2)(3) and g(1), AR 380-5, 15 November 1949.

GENERAL HEADQUARTERS, FAR EAST COMMAND
 ADJUTANT GENERAL'S OFFICE
 RADIO BRANCH

INCOMING MESSAGE

Confidential
 PRIORITY

G-4 ROUTING	
ECR/GAD	<input checked="" type="checkbox"/>
MAC/SGA	<input checked="" type="checkbox"/>
EXECUTIVE	<input checked="" type="checkbox"/>
PS/D Nov 5	<input checked="" type="checkbox"/>
C+RE	<input checked="" type="checkbox"/>
SUPPLY	<input checked="" type="checkbox"/>
PETROLEUM	<input checked="" type="checkbox"/>
KEA	<input checked="" type="checkbox"/>
ADMIN	<input checked="" type="checkbox"/>

FROM : CG SFPE (CHIEF OSD) FT MASON CALIF
 TO : DEPTAR (SUVC SUP AND PROC DIR GEN STAFF)
 INFO : CINCPAC TOKYO JAPAN
 NR : TCSFP 4992 GO C

319.1

Pol Ton Rpt for Japan and Korea log sup furn accordance instr ACOFS G-4. First figures mtms, 2d figures air mtms, 3d figures total mtms.

SFPE:			
Trp sup:			
Entracted since 17 Nov	55760	16	55776
En route port	23782	23	23,805
In port	18,500	21	18,521
Shipped since 17 Nov	68,782	47	68,829
To accompany trp:			
En route port	9465	0	9465
In port	1206	0	1206
Shipped since 17 Nov	1356	0	1356
SEFE:			
Trp sup:			
En route port	27,689	0	27,689
In port	16,729	0	16,725
Shipped since	17,621	0	17,621
To accompany trp:			
En route port	2318	0	2318
In port	643	0	643
Shipped since	998	0	998

NO SIG

INFORMATION : G-4, DEPCOMSTSWESPAC, TRAVIS

94935

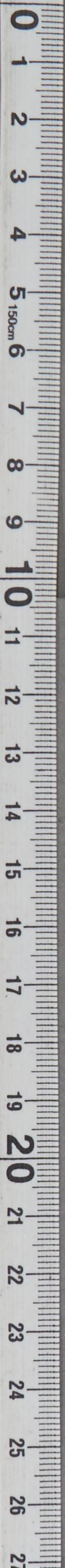
PRIORITY

TOO : 272010 Z
 MCN : 97417

CONSULT CRYPTO CENTER BEFORE DECLASSIFYING

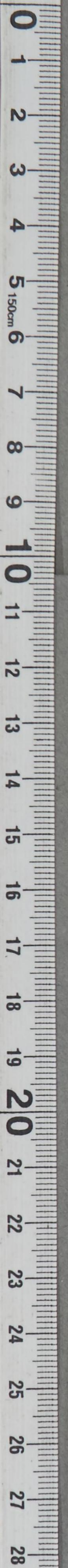
Paraphrase not required. Handle as correspondence of classification carried hereon per paragraphs 17a(1)(2) and 41c(2)(3) and g(1), AR 380-5, 15 November 1949.

COPY No.



RECEIVED
28 NOV 1950
HQ-4

INFORMATION : 0-2, DISCOMBATR STAC, STAIR



SECRET

SECRET