

Historic, Archive Document

Do not assume content reflects current scientific knowledge, policies, or practices.

62.15

1923

Indexed

LIBRARY
RECEIVED
 FEB 17 1923
 U.S. Department of Agriculture

ALLEN NURSERIES
 V. R. ALLEN, Proprietor
PLANTS, VINES AND SEEDS
OF SUPERIOR QUALITY



Chesapeake Strawberries

PROMPT SERVICE AND GOOD STOCK

Mr. V. R. Allen, Muncy, Pa., April 15, 1922
 Dear Sir:—I beg to acknowledge receipt of the strawberry plants ordered from you. I received them four days after ordering them in the finest of condition. Thanking you for your promptness and fine plants and assuring you of a large order in the spring of 1923, I am
 Yours respectfully, M. E. W.

ALLEN NURSERIES
SEAFORD, DELAWARE, U. S. A.

ADDRESS IN PART OF EX-GOVERNOR JOHN G. TOWNSEND OF
DELAWARE. BEFORE THE PENINSULA HORTICULTURAL
SOCIETY

Reprinted by Special Permission.

Ex-Governor Townsend is Probably the Largest Packer of Preserved Strawberries in the United State.

Getting back to my subject, strawberries on the peninsula have been the most profitable fruit crop grown on the peninsula for the last thirty years. The future of the crop on the peninsula should be assured when I tell you how one little community and in my town has progressed by centralizing on the growth of strawberries which has been the principle crop grown in that community.

Twenty to twenty-five years ago, Baltimore Hundred, in other states called Town or Township, Delaware, was struggling along with her land values around eight to forty dollars per acre, a great many of her people in debt, with poor homes, poor land, and conditions generally bad. Selbyville, the shipping point of the Hundred, was a town with few homes, one or two stores, streets that were covered with water and mud after every rain.

At that time there were few strawberries being grown and shipped to Commission Merchants in the cities, which brought to the grower very little returns for his labor. However with these very poor conditions, our berries began to attract attention on the markets, and a few buyers were induced to come to the town and buy the fruit direct from the farmer, loading it in refrigerator cars and shipping to distant markets; this gave new life to the industry and the business has grown until Baltimore Hundred has been divided into small farms of ten to thirty acres, and practically every farmer is a grower of strawberries, property clear of debt, land values have increased to fifty to two hundred dollars per acre, new homes, churches and schools have been built everywhere in the Hundred, and the town of Selbyville has been built up to be one of the prettiest little towns on the peninsula, with two banks in which people have a line of deposits of over a million dollars. And all of this, practically, from the growth of strawberries, as this is the principal money crop. Each year the crop brings back over half a million dollars.

The money from strawberries is widely distributed as you will readily see, when I tell you that in all this great quantity there was not one man that had more than fifteen acres set to strawberries, and most of them made up of small growers that ranged from one acre to five or six acres each. This simply shows what has been done in one locality. It is true that we have peculiarly adapted soil for the growing of strawberries, and the successful farmer of to-day is the one who specializes, and selects the soil best adapted to the crop he wishes to grow, and grows it, bringing that soil to the highest state of cultivation. My experience is that the soil best suited to the growing of strawberries is a clay subsoil and somewhat springy, but so located that it can be well drained. Be careful to so arrange that the land has a previous crop of peas, or is clean, as land filled with weeds and filth is not a proper place to put berries; new land is always preferable and a great many farmers are clearing up new land just for berries.

METHODS OF GROWING: Plow well in early Spring, the earlier the better, then keep the land pulverized well with spike-harrow or cultivator so that soil is perfectly mellow.

Take a corn planter and put in about 500 pounds of raw bone meal per acre. Set the plants on the mark, or as some prefer, on a slightly raised surface, setting the plants deep in the bed.

In our soil they should be cultivated every week and kept hoed well, keeping all vegetation out of them, and about the last of July add 400 pounds of phosphate made up of 2½ per cent ammonia derived from animal bone, 10 percent potash, and 10 per cent acid, and we put on as follows: Take a small plow and throw a furrow from the bed on each side, running as near the plants as possible, then throw in this furrow the fertilizer just mentioned, throwing a light furrow back over it. It is no good to put it on top the bed.

The following Spring our people use 7 per cent ammonia, 6 per cent potash, with 5 per cent acid, putting on 15 pounds to every hundred yards of bed, on the top of the bed, as early as the latter part of February or first of March. Some have adopted the method of not fertilizing in the Fall and putting on a larger amount of High Grade in the Spring, which has grown a heavy foliage and a large amount of fruit, but does not color up like the Fall fertilizing has done, nor does it seem to have the carrying qualities that the first method has.

The color and carrying quality and not the size is the thought of the well trained buyer when he looks over your load of fruit.

The varieties best adapted for the soil described I believe to be the Klondyke, Chesapeake and Gandy. The Parsons and Klondyke are the best adapted for canning and preserving purposes.

Select your crates and packages from the best on the market, fill the cups well, pack nicely and honestly. Get your crates early and keep them housed so that they will be nice and bright when filled. Haul on spring wagon keeping them securely wrapped to keep the dust from the crates and the fruit.

In conclusion, I wish to say that the strawberry has been the best paying crop in Sussex County for the last twenty-five years. A pretty good record for the strawberry.

You may not know that the estimate put on the acreage of berries is 125,000 acres in the United States, picking annually five hundred millions quarts. This at ten thousand quarts per car would make a train 300 miles long. Loading them as we do at seven thousand five hundred quarts per car would make a train 400 miles long. Selbyville alone one year shipped 1—120 of this crop.

Some think the crop will be overdone. Look at the past for your enlightenment on the question. For twenty-five years the crop has been the best paying crop in the County. What better evidence of the certainty of the crop, when it has been increasing every year.

Sell your berries at the station. We have found this the best method. All you have to do is to grow the fruit in sufficient quantities and pack properly. Put your fruit up attractively and in sufficient quantities and you will have markets seeking you.

READ INFORMATION BEFORE ORDERING.

TIME TO ORDER. Just as soon as you receive this Price-list, as that will insure you of getting just what you want. Plants will be reserved and shipped when you are ready for them.

TIME OF SHIPMENT. From October 20th to May 1st, after this date plants are shipped at customer's risk. Our Northern customers usually order throughout the month of May and with a late season the plants will go through in good condition. Yet we do not advise shipping at this late date. We will only fill orders at customer's risk. We will use every precaution in crating and packing and do everything in our power to put plants through in good condition.

PAYMENT. Invariably cash before shipping. To reserve orders for future shipment, one-fourth, cash must accompany order and balance before plants are shipped.

PACKING. No charge for boxing and packing. Everything is delivered F. O. B. trains at rates given in this Price-list, yet we use every precaution to see that your order is well packed and properly boxed.

NO ORDER TO SMALL. Your order for twenty-five plants will receive the same care and attention as will an order for twenty-five thousand.

TRUE TO NAME. We use every precaution to have our plants and seeds true to name and believe we make few mistakes, yet we will not be responsible for any sum greater than cost of stock proving untrue to name and in no way will we be responsible for the crop grown.

GENERAL INFORMATION. We cannot waste space to go into detained information as to the type of soil best adapted for strawberry cultivation neither shall we take up the matter of how the roots should be trimmed and blossoms clipped, ways for best setting and cultivation, or as to the proper mating of the pistillate variety (female generally referred to as imperfect blooms and are marked in the Price-list Imp.) with the bi-sexual variety (male variety generally referred to as perfect blooms and are marked in the Price-list as Per.,) yet all these points are worthy of careful consideration. We will be glad to give you full information on these points providing you need this information. We do not claim to possess the wisdom of Solomon, but have practically grown up in the strawberry patch and having been in the business sixteen years for ourselves, there may be just a few things we know which would be of interest to the beginner, and for the asking, our information is yours. However, there is one word we wish to say, **Set Your Plants Early**; ninety per cent of failures come from late planting.

TO CUSTOMERS NORTH OF US. It is a fact that your seasons are later than ours, yet it will be of mutual interest for us to do business together. We would suggest that you order your plants during March and April, before they are too far advanced, and on receipt of the plants open the bunches and place them in thin layers in trenches dug just deep enough to receive plants, heel them in, then cover lightly with straw for protection; you will have the plants in the very best condition when your conditions are right for planting.

VARIETIES. We have carefully selected the Varieties that are Making Money for the Growers of Strawberries all over the United States, varieties that are well adopted to almost every type and condition of soil. The Varieties that are Money Makers to the Man who Plants them.

We have the Postal and Western Union Telegraph with telephone connections. Tell your neighbors about us. If he will send his name and address on a postal card, we will be glad to mail him a Price-list, we have one for him.

Always write name and address very plainly.

This year plant **V. R. ALLEN'S Money Making Varieties** of Strawberry plants and have the satisfaction of knowing that you have the best, both as to variety and quality of plants.

Sussex County, Delaware, produce more strawberries than any other one county in the United States. We are located in the center of the strawberry belt, which enables us to select with care the best **Money Making and Garden Varieties.** May we have your order.



BIG JOE

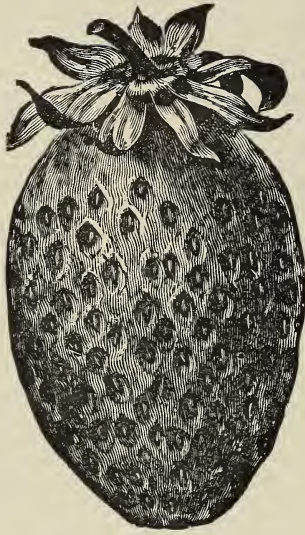
Varieties and Descriptions

Pollenizing:—Plants marked (per) are staminate or bi-sexual and will produce fruit without another variety being planted with them; those marked (imp) are a pistillate sort and will not produce fruit successfully unless some staminate or bi-sexual sort is planted with them. The rule is three rows pistillate sort and one row of the staminate or bi-sexual sort. Some growers plant the bi-sexual sorts in the rows with the pistillates, using one-fourth bi-sexual, which is better.

AROMA. (Per) Medium late. Valued because of its uniformity and productiveness.

BRANDYWINE. (Per) Originated at West Chester, Pa. in 1895. Medium late. Valued in many berry districts, especially Florida and southern California.

BIG JOE. (Per) Originated by J. H. Black & Son. One of the big money makers. Berry always attracts buyers attention and commands the highest price of the market. Cap large, light green; berry large, round-conic, dark crimson, flesh medium red, firm sub-acid. One of the best late varieties.

**EKEY****HAVERLAND**

CHESAPEAKE. (Per.) Very late. Considered by many to be the best late berry. The fruit is very much in demand, for the fancy trade and is a fine berry for the home table. If you want Chesapeake be sure to order early, as it is a shy plant maker and the demand is always greater than the supply.

CAMPBELL'S EARLY. (Per.) A very good early berry, quite productive of medium size perfect shape fruit. It is well to try this variety on your soil. Personally I do not consider it near as valuable as the Premier.

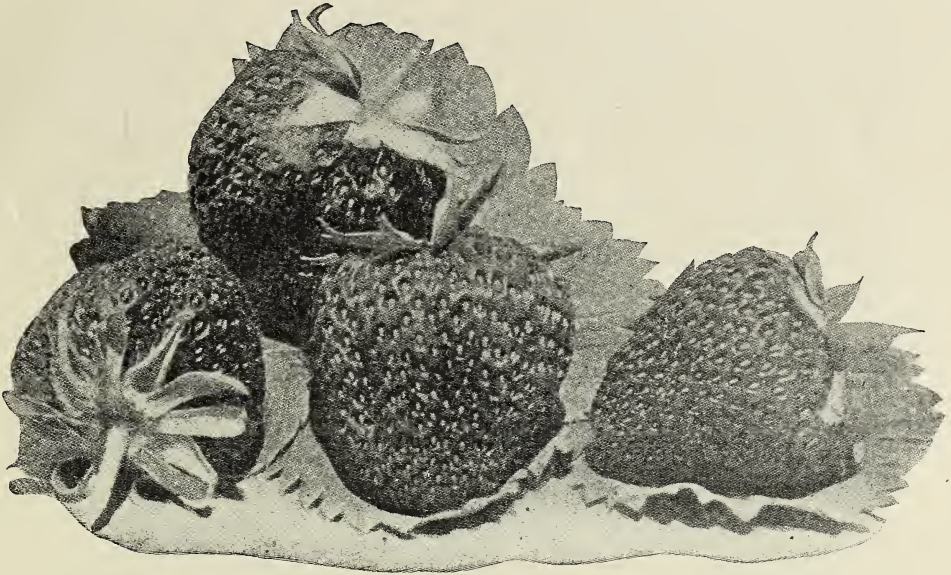
EARLY JERSEY GIANT. (Per.) Very large, good quality, much in demand for the fancy trade.

EKEY. (imp) Berry large, long-conic, dull crimson, flesh dark red, medium firm, acid, good, runners numerous. Medium early. Same as O. I. C., Ohio Monarch, Old Iron Clad, Phelps. This is a good early market or home garden berry. Try it.

FENDALL. (imp) Berry large to very large, irregular round conic, light scarlet; flesh light red, slightly soft, mild sub acid, good medium late.

HORSEY. (per) An early berry that comes to us very highly recommended and we urge you to give it a trial. Berry large and productive, good flavor and sells for highest prices.

HAVERLAND. (Imp.) Berry medium to large, long conic sometimes necked bright light scarlet. Calyx medium. Fruit early detached, quality **VERY GOOD**, early to mid-season. Popular for home use and near markets, carries well if picked early. It is a heavy cropper and has a long ripen season Wolverton, and Premier are very good to pollenize Haverland. and is seldom injured serious, by frost. Blossoms are imperfect. Dunlap,



CAMPBELL'S EARLY

HEFLIN EARLY. (Per.) Very early, fruit small to medium. A very heavy cropper and a safe variety for all soils, and will stand very poor treatment.

GANDY. (Per.) Very late. The berry that has paid more mortgages in Sussex Co., Delaware, than any other variety. This berry stands as the champion late berry, and holds the place among late varieties that the Premier holds among the early varieties. If you have Gandy-land (low springy or black loam) be sure to plant heavy with Gandy. Never under any circumstances plant on light sandy soil.

GLEN MARY. (Per.) Plants spreading, leaflets dark green, fruit stalks of medium length fairly erect, berry large irregular, round conic Calyx large, flesh medium red, firm juicy, core solid, flavor mild sub-acid to sweet, quality good. Popular for market and home use because of its productiveness and large handsome berries of good quality. Many of its early blossoms do not produce enough pollen to fertilize themselves and better results are obtained if planted with such varieties as Premier, Dunlap, and Wolverton

Centreville, Md., May 20, 1922

We thank you for sending the Asparagus seed that we ordered over telephone so promptly. H. & T.

East New Market, Md., May 1, 1922.

My plants arrived April 28th. I am pleased to state that plants are very nice, and are much better than the ones that I got from _____ Nurseries.

Thanking you for your prompt delivery, I am
Yours truly, E. P.



KLONDYKE

KLONDYKE (Per.) Early very heavy cropper and of fine shipping qualities will stand up as a long distance shipper for hundreds of miles. Not considered a home garden variety but a money maker to the commercial grower that has to have a berry that will stand shipping long distance. Planted very extensively all through the South and California.

LUPTON LATE. (Per.) Berry large and handsome very productive and almost as uniform as if made in a mold. Very firm will carry well. I believe that you should try Lupton's Late. Better suited to all soils than Gandy. This berry has a great future before it.

MISSIONARY (Per.) Very early, berry medium to large, flesh dark red, very firm, acid. Does well through the South. A long distance shipper.

MASCOT. (Per.) Late to very late. Berry large, round, conic, dull scarlet, medium firm.

MARSHALL. (Per.) Mid-season, a favorite sort among market gardeners who practice hill culture and manure heavily. Large in size, fails completely on poor sandy land.

MICHAEL'S EARLY. (Per.) Very early, berry small, but a good long distance shipper.



PREMIER



PARSONS' BEAUTY

NICK OHMERS. (Per.) One of the best healthy growing varieties, fruit large and of fine quality. Mid-season to late, requires high culture. A favorite among the California commercial growers who ship this berry to New York and other Eastern markets.

\$ \$ \$ \$ PREMIER \$ \$ \$ \$

STILL THE BEST EARLY BERRY IN THE WORLD

The wonderful productive berry that is putting new life into the strawberry industry. Demand for this variety is increasing from all parts of the United States. The berry is very large in size and a beautiful formed, bright red through and through, very delicious in flavor and a splendid shipper. It is the money making berry of all early varieties.

PARSONS' BEAUTY. (per) Plants vigorous and very productive. Berry medium to large, dark red in color, irregular-conic. Same as Pocomoke and Gibson.

Smoketown, Pa., May 24, 1922.

Enclosed another order for prompt shipment, the other plants were received this A. M. in good condition, and are of fine quality. P. L. R.

Narrowsbury, N. Y. May 11, 1922

Your catalogue received for which I thank you very much. I have not room enough this season to start strawberries, but will next spring. I have a brother at Cocheton who deals with you and he is well pleased. E. S.



WM. BELT

PAUL JONES (Imp.) Originated in Mass., in 1908. Berry medium to large, ripens evenly all over, good quality and a good shipper. Will grow on almost all soils, very heavy producer. Blossom imperfect, and should be planted with Sen. Dunlap, Big Joe, or Premier

SAMPLE, (Imp.) A Valuable berry, very large uniform in size. Very attractive in appearance, flavor delicious, mid-season to late, splendid shipper and fine for the home table. Blossom imperfect, well to plant with it, Big Joe, Stevens Late, Aroma, and other varieties of the perfect blooming kind.

SUPERIOR. (Per.) A sure cropper. Berry small to medium, suited to all soils and does well on light or sandy land. A splendid berry for the home table quite early a good long distant shipper.

STEVENS LATE CHAMPION. (Per.) Vigorous grower.. Remarkable for its heavy cropping qualities. Does well on light sandy or dry gravely land, yet is also a favorite with many heavy land growers.

Rutland, Vt. May 24, 1922.

Every one of the strawberry plants you sent me this spring are alive.

Mrs. M. L. H.

Strawberry plants arrived.

Manchester Depot, Vt. April 27, 1922.

S. K.



SENATOR DUNLAP (Per.) Probably the most widely grown variety in the Northern part of North America. A very good cosmopolitan sort, succeeds almost everywhere, a great drouth resister. Blossom perfect, a strong pollenizer, makes one of the best to plant with such varieties as Paul Jones, etc.

SUCCESS. (Per.) Berry medium, round-conic, sometimes irregular. Bright crimson, flesh light red, medium early. Valued for near-by markets. One of the best for the home garden.

WOLVERTON. (Per.) Berry medium to large, mid-season, popular market sort in many sections also a good table fruit if you like a mild sub-acid berry.

WM. BELT. (Per.) It is one of the best flavored berries grown, but is rather uncertain in yield and rust badly in some sections. It thrives best in moist soil where it often becomes very productive, and fails in sand.

EVERBEARING VARIETIES

PROGRESSIVE, AND SUPERB.—Will bear from July until killing frost stops them from maturing any more fruit. Sweet, delicious and full of real strawberry flavor. Not a commercial, but a home garden berry.

Yes, we endeavor to deliver promptly with plants in good, fresh condition. As all plants are dug after order is received and with the care used at our end we feel sure that they will always live and produce the best quality of big, delicious berries, if properly set and cared for.

Price List of Strawberry Plants

Purchaser to pay transportation charges.

I strongly advise customers to have their order shipped by Parcel Post, when possible to do so. Do not send any money for postage. I will ship C. O. D. for postage and you may pay these charges when you receive your plants. This saves us considerable book-keeping, as you very seldom could figure the correct postage in advance.

VARIETIES

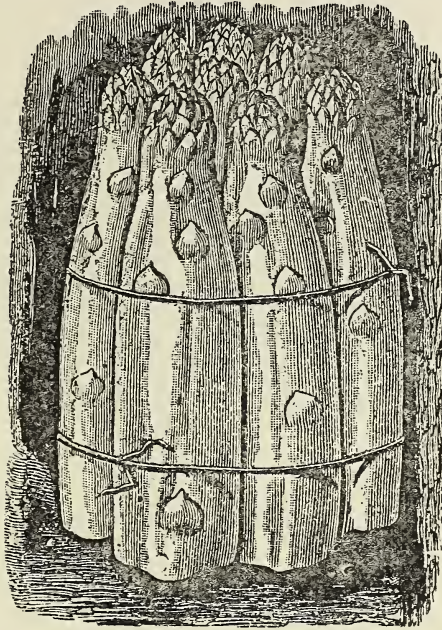
	NO. OF PLANTS						
	25	50	100	250	500	1000	5000
Aroma	\$.40	\$.65	\$1.00	\$2.00	\$3.00	\$5.00	\$23.00
Brandywine40	.65	1.00	2.00	3.25	6.00	28.00
Big Joe40	.65	1.00	2.00	3.00	5.00	23.00
Chesapeake50	1.00	1.60	2.40	4.25	8.00	38.50
Campbells Early40	.65	1.00	2.00	3.00	5.00	23.00
Dr. Burrill40	.60	.85	1.75	2.25	4.00	19.00
Early Ozark40	.65	1.00	2.00	3.25	6.00	28.00
Early Jersey Giant..	.40	.65	1.00	2.00	3.25	6.00	28.00
Excelsior40	.60	.85	1.75	2.25	4.00	19.00
Ekey40	.65	1.00	2.00	3.25	6.00	28.00
Fendall40	.65	1.00	2.00	3.25	6.00	28.00
Gandy40	.60	.85	1.75	2.25	4.50	20.00
Glen Mary50	1.00	1.35	2.25	4.00	7.50	35.00
Haverland40	.65	1.00	2.00	3.00	5.00	22.50
Heflin Early35	.50	.75	1.50	2.00	4.00	19.00
H rey50	1.00	1.35	2.25	4.00	7.50	35.00
Klondyke35	.50	.75	1.75	2.25	4.25	20.00
Luptons Late40	.65	1.00	2.00	3.25	6.00	28.00
Mascot50	1.00	1.35	2.25	4.00	7.50	35.00
Michaels Early40	.60	.85	1.75	2.25	4.50	20.00
Missionary40	.65	1.00	2.00	3.00	4.00	19.00
Marshall40	.65	1.00	2.00	3.25	6.00	28.00
Nick Ohmer40	.65	1.00	2.00	3.00	5.00	23.00
Norwood40	.65	1.00	2.00	3.25	6.00	28.00
Parsons' Beauty40	.65	1.00	2.00	3.00	5.00	23.00
Premier—Howard 17	.40	.65	1.00	2.00	3.25	6.00	28.00
Paul Jones40	.65	1.00	2.00	3.25	6.00	28.00
Sample40	.60	.85	1.75	2.25	4.50	20.00
Sen. Dunlap40	.60	.85	1.75	2.25	4.00	19.00
Superior35	.50	.75	1.50	2.00	3.50	15.00
Success40	.65	1.00	2.00	3.00	5.00	23.00
Stevens L. Champ.40	.65	1.00	2.00	3.00	5.00	23.00
Wolverton40	.65	1.00	2.00	3.00	5.00	23.00
Wm. Belt40	.65	1.00	2.00	3.00	5.00	23.00

EVERBEARING STRAWBERIES

	12	25	100	500	1000
Progressive	\$.60	\$1.00	\$2.50	\$8.00	\$15.00
Superb60	1.00	2.50	8.00	15.00
Minnesota 101760	1.00	2.50	8.00	15.00

NOTE:—When ordering plants or seeds from this catalog each variety must be added separate. Two or more varieties cannot be added together to make a cheaper rate.

Do not forget to order your plants this year from V. R. ALLEN, Seaford, Delaware, and get fine, healthy, clean rooted, clean foliage, true-to-name plants, of the highest fruiting quality; packed and crated by methods that insure you of good, live plants, which will grow and produce great crops of berries.



Asparagus Roots or Crowns

By planting enough Asparagus to supply your family you will help reduce the cost of living. By planting enough Asparagus for commercial purposes you will not only reduce your cost of living, but will have one of the best money crops that can be had.

For the best Asparagus give me your order. Stock consists of fine, healthy, vigorous roots of the following varieties.

**BARRS MAMMOTH, CONOVER COLOSSAL, GIANT ARGENTEUIL
PALMETTO.**

All The Above Varieties at Same Price.

FOR NO. 1 ROOTS; 10 Roots 30c.; 50 Roots \$1.00; 100 Roots \$1.75; 500 Roots \$5.00; 1000 Roots \$9.00.

FOR NO. 2 ROOTS; 10 Roots 20c.; 50 Roots 65c.; 100 Roots \$1.15; 500 Roots \$3.75; 1000 Roots \$6.00.

READING GIANT EARLY. Very large, very quick growers, said to be the best rust resisting. Very much in favor through New England States.

PRICE—10 Plants 50c.; 25 Plants 80c.; 50 Plants \$1.50; 100 Plants \$2.75; 500 Plants \$6.50; 1000 Plants \$11.00.

WASHINGTON. 25c each, \$1.50 for 10, \$5.00 for 100, \$25.00 for 1000.



St. Regis Raspberry

Raspberries

ST. REGIS. "Ever-bearing Raspberry," color brilliant crimson, large, juicy highest quality, ships well, very productive.

PRICE OF PLANTS. Prepaid 12 Plants 90c. 25 Plants \$1.50. 100 \$3.50.
not prep 500 \$8.50, 1000 \$16.00.

CUMBERLAND. Very hardy. Fruit very large, and coal black. Considered by many to be the best all round black cap ever introduced.

PRICE OF PLANTS. Prepaid, 12 for \$1.00, 25 for \$1.50, 100 for \$3.50,
not prepaid, 500 \$10.00, 1000 \$17.00

Gregg Plum Farmer, and Kansas, at Same Price as Cumberland.

Dewberries

When you want Lucretia Dewberry plants come to headquarters.

I sell more Lucretia Dewberry plants than any other nurseryman on the Peninsula. The Lucretia is the best of all dewberries, extremely hardy, bears large crop of big and handsome, sweet luscious and a glossy black fruit that carries well, keeps well, sells well.

PRICE OF PLANTS BY MAIL PRE PAID. 12 Plants 60c. 25 Plants 80c.
50 Plants \$1.25. 100 Plants \$2.00

BY PARCELS POST OR EXPRESS NOT PAID, 500 \$8.00 1000 \$15.00.
5000 \$70.00. Ask for special prices on larger quantities.

AUSTIN Dewberry. Do not need to be staked, yet I do not consider that they are equal to the Lucretia as they will not stand the long shipping as will the Lucretia.

PRICE of Austin Dewberry Plants prepaid: 12 for 70c, 25 for \$1.00, 50 for \$1.50
100 for \$2.50 Not prepaid, 500 \$9.00, 1000 \$17.00, 5000 \$75.00. Ask for special prices in larger lots.

COW PEAS AND SOY BEANS

I make a specialty of the Early Wilson Soy Bean, and the Gray Crowder Cow Pea. Prices are fluctuating, so when ready to buy either large or small quantities, be sure to ask me for prices and I believe that I will be able to save you some money on your supply.

Any way get my prices then if you can do better buy where you can purchase to advantage.

ASPARAGUS SEED**ARGENTUIL, PALMETTO.**

PRICE 1 oz. 10c. $\frac{1}{4}$ lb. 25c. 1 lb. 85c. 5 lbs. \$3.75 Post Paid.

Ask for Prices on large quantities not Prepaid.

WASHINGTON. 1 oz. 50c. $\frac{1}{4}$ lb. \$1.75. 1 lb. \$5.00 Post Paid.

PEPPER SEED

BULL NOSE, RUBY KING, Package 10c. 1 oz. 35c. $\frac{1}{4}$ lb. \$1.10 1 lb. \$4.00 Pre Paid.

TOMATO SEED

Chalk Jewell, Bonny Best, Greater Baltimore, Matchless, Red Rock, Stone, John Baer and Success.

PRICE: Package 10c. $\frac{1}{4}$ lb. 70c. 1 lb. \$2.00. 5 lb. \$ 9.00. Pre Paid.

RAFFIA. For tying your Asparagus bunches and other vegetables for market use good raffia, cheapest and best tying material for tying vegetables and plants.

PRICES F. O. B.:— 1lb. 25c. 5lbs \$1.00. 25 lbs. at 18c. per lb...Special price in bale lots. Small lots shipped by Parcels Post. .

MOSS..If you wish your Asparagus and other vegetables to arrive in market looking fresh as they left your farm then pack in Spagnum Moss. This is the same moss as I use to pack strawberry plants. This moss comes in several size bales. We do not break bales, price on application.

SWEET POTATOES FOR SEED

I am offering the leading commercial and home gardening sweet potatoes in the following varieties:

UP-RIVERS, JERSEY CHUNCK, BIG LEAF, CEADERVALE AND GOLD SKIN, Price 1 Peck 75c. $\frac{1}{2}$ bushel \$1.25. 1 to 4 bushels \$2.10 5 or more bushels \$1.10 per bushel.

You should have your seed sweet potatoes in your hot bed not later than April 20th.

SWEET POTATO PLANTS: Ready for shipment about May Fifth until July First.

PRICE BY PARCELS POST PREPAID; 12 for 25c. 25 for 40c.. 50 for 60c. 100 for 90c.

BY PARCELS POST OR EXPRESS NOT PREPAID; 500 for \$1.75. 1000 \$3.00. 10,000 \$17.00. Ask for special price on larger quantities.

TOMATO PLANTS

For late crop ready for shipment about June 1st. If possible place your order for tomato plants at least ten days before you want shipment made.

PRICE 50c. per 100 Post Paid. By Parcels Post or Express not paid \$1.75 per 1000.



Grape Vines

GRAPES:- the delicious, juicy, healthy fruit that should be on every farm and in most back yards.

Our stock consists of **GOOD LIVE HEALTHY** one year old plants of the following varieties.

NIAGARA (White). The leading American white grape. Bunches large and handsome, berries large, round; skin thin, tough, does not crack, and carries well. Has not much pulp when fully ripe; melting sweet. The Niagara makes a handsome and showy fruit and for this reason, sells readily on the markets, commanding a good price.

MOORE'S EARLY (Black). The most reliable very early variety and is proven very profitable to commercial growers, and splendid for the home garden. Berries large, jet-black good quality, very valuable as an early grape.

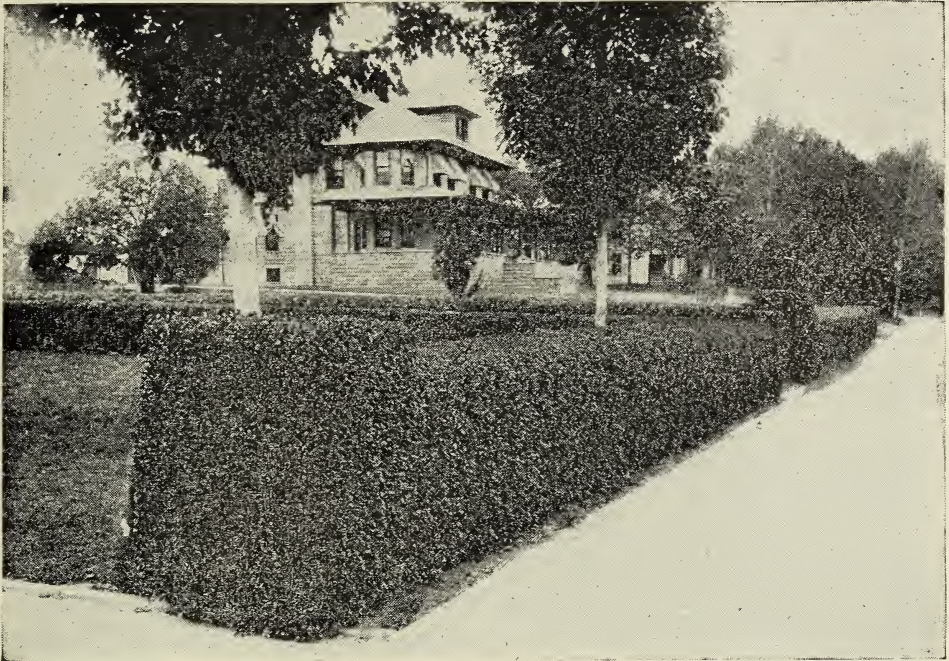
DELAWARE (Red). An old time red variety. Bunches and berries small, refine, high quality, with thin but firm skin, fresh juicy, very sweet and refreshing and of the best quality. Little later than the Concord. Vine is hardy, but grows slow.

CONCORD (Black). The most popular grape in America and most widely grown. Bunches large, compact, covered with **BIG** tender skin berries, yet sufficiently firm to carry well to distant markets.

Grape juice is largely made from Concord and owing to its productiveness of this variety, it can be produced so cheaply that no other grape can compete with it, either for this purpose or as a market variety.

PRICES	1 plant	10	100	1000
Niagara	20c	\$1.75	\$13.50	\$95.00
Moore's Early	20c	1.75	12.00	87.00
Delaware	20c	1.75	13.50	95.00
Concord	15c	1.25	8.50	62.50

ORDER EARLY PLEASE.



California Privet

One of the most beautiful plants for hedge in existence and more largely planted for ornamental hedge than any other shrub. Fine for hedge between city lots, or on rural grounds, parks, cemeteries, or any where an ornamental hedge is wanted. Very easy to grow on all soils even in partial shade, almost evergreen, foliage turning to purple in winter. If wanted as a screen for outbuildings, etc., do not trim and results will please.

		25	100	1000
6 to 12 inches	\$.75		\$1.75	\$15.00
12 to 18 inches	1.00		2.50	15.00
18 to 24 inches	1.50		3.50	30.00
2 to 3 feet	1.75		4.50	40.00

SPECIAL ASPARAGUS CRATES OR BOXES

Large size. 14 1-2 inch top, 17 inch bottom, ends 11 1-2 inches high, 25 inches long.

Small size. 9 inch top, 12 inch bottom, ends 10 inches high, 25 inches long.

These crates come knocked down, ready to nail, so take a low freight rate. Made from Delaware pine, so are light and strong, will stand shipping to the most distant market when packed with 18 bunches of Asparagus.

Prices F. O. . Seaford, Del.

10 crates \$3.00. 100 crates \$27.50. Ask for special price on larger quantities.

We also carry waterproof paper linings for asparagus crates, cut to fit, or in rolls, when wanted to use for wrapping plants or for other purposes. Price on application.

Let us quote you on Delaware 32-quart Berry Crates.

STATE OF DELAWARE
STATE BOARD OF AGRICULTURE
 Certificate of Nursery Inspection.

Dover, Delaware, September 21, 1922.

To Whom it May Concern:

This certifies that I have this day examined the nursery stock and premises of the Nurseries, of V. R. ALLEN, at Seaford, Sussex county, Delaware, and that said nursery stock is apparently free from crown gall, peach yellows, peach rosette, the San Jose scale, and other plant diseases and insects of a serious dangerous nature, that may be transferred on nursery stock.

This certificate may be revoked by the State Board of Agriculture for cause, and it is invalid after August 31, 1923, and does not include nursery stock not grown on the above named premises unless such stock is covered by certificate of a State or Government officer and accepted by the State Board of Agriculture.

A. BRAINARD PEET, Inspector

Geneva, N. Y., April 10, 1922

The Asparagus you sent us were very fine and we are much obliged to you for the care you took in grading.

T. C. N.

Sandy Creek, N. Y., May 1, 1922.

The Strawberry plants came in due time and I must say I am well pleased with them. Many thanks for the prompt delivery and for the extra ones that you sent, Should I need more plants, I will remember you.

J. E. F.

Reagefield, Conn., April 18, 1922.

Plants received, for which I thank you.

H. B. S.

Ellendale, Del., May 15, 1922.

Asparagus plants received O. K.

W. B.

Hartsfield, Ga., March 23, 1922.

The Strawberry plants reached me the 20th, in good condition. I am very much pleased with them.

Mrs. O. L.

Sciota, Pa., January 3, 1923.

I would like you to send a catalogue of your strawberry plants to Mr. A. J. S., Saylorsburg, Pa.

Mr. S. would like to buy some plants; and as my father got some very fine plants of you, I thought I perhaps could make a sale for you. I remain

Yours very truly,

T. F. A.

Thompson, Pa., June 1, 1922.

I received the strawberry plants and they are the best we ever had.

G. L.

Centreville, Md., May 10, 1922.

Enclosed find order for Dewberry plants please ship at once. I received the strawberry plants have set them all out, they are looking nice.

L. M. R.

Long Island, N. Y., May 3, 1922.

The 500 Dewberry plants arrived on Monday and certainly are a dandy lot. If they don't grow it will not be your fault.

Mrs. R. F. M.

Mt. Pleasant, N. C., November 15, 1922.

The Dewberry plants I ordered from you arrived in good condition, they are nice well rooted plants.

J.P. C.

All orders entrusted to our care, are delivered to Transportation Co., well packed, and in good order, and we get receipt to this effect.

As we have no further control over shipment after it leaves our hands, our responsibility ceases on delivery in good order to the Carriers.

Any claims for damage in transit or delays, should be made at point of delivery. If shipment is delayed in transit, be sure to examine at office, and if found damaged by delay or in transit, refuse same and notify us at once. Or accept same and have the agent to make notations on your express bill of the conditions. Unless you do this, you will find it hard to make collections on claims.

Monmouth Junction, N. J., June 7, 1922.

Plants arrived in good condition. W. H. P.

Batavia, N. Y., June 15, 1922.

The Sweet Potato plants came in fine shape and are growing. W. J. S.

Ridgewood, N. J., May 14, 1922.

The Early Jersey Giant Strawberry plants that I got from you this spring, are fine and growing nice. E. S.

Sollers, Md., May 15, 1922.

Please send me 1000 more Premier Strawberry plants at once. The 6000 plants arrived in good shape. E. W. S.

Sodus Point, N. Y., April 29, 1922.

Please find enclosed check of \$20.00 to cover balance on the 20,000 Asparagus roots, they are fine. Thanking you for your courtesy. C. H. D.

Pottstown, Pa., April 29, 1922.

Received the Strawberry plants and Asparagus roots this morning. Everything O. K. G. W. H.

Queen Anne Co. Md., April 18, 1921.

The strawberry plants received Friday and must say they are very nice plants. Mrs. T. L. D.

Penrod, Ky., April 14, 1921.

Everbearing strawberry plants arrived in good condition. The plants that I bought of you last year are fine. Wishing you success, Mrs. C. B.

Miami, Fla., November 27, 1921.

Brandywine strawberry plants arrived in good shape and are certainly fine stock. E. P.

Enon Valley, Pa., October 23, 1921.

The plants came Saturday and in good shape. I set them out same day and they are looking good. I expect to get more plants of you in April. D. K.

Grasonville, Md., May 13, 1921.

I received my plants and they were in good condition and I have them all out and they are doing well. I want to thank you very much. J. N. F.

Ransomville, N. Y., April 27, 1921.

Beg to acknowledge the receipt of the fine strawberry plants. Same came to me some days ago, in good condition and a full count. Thank you very much. Have them planted and all alive and doing well. You are a gentleman and a man of your word. W. P.

Uniondale, Pa., April 21, 1921.

The strawberry plants came in apparently good condition. Many thanks for your promptness.

Cantaloupes

Often yield a profit of \$50.00 to \$200.00 per acre. Why not plant more of them for home use also a commercial crop. But be sure you start right, buying your supply of seeds from reliable source.

VARIETIES

NETTED NUGGET. I have grown this variety for the past few years as a commercial crop and the only other cantaloupe that any where equals it as a commercial cantaloupe is the Pearl, Pink Meat, yet the Pearl Pink Meat does not equal it as a home garden variety. I cannot give the Netted Nugget any better discription than that used by its originator.

This new strain is the cantaloupe that the trade has been looking for ever since the importance of the cantaloupe industry was first realized. It was the hope that a cantaloupe might be found that had centered within all the necessary qualities that go to make the ideal commercial melon. We believe that this has been found in our new cantaloupe the "NETTED NUGGET" These are its qualities, it is very prolific, solid netted with no trace of sector, very even size, all fruit practically the same size and shape, flesh of beautiful salmon color from seed cavity to within one-half inch of rine, then a green color.

Texture of flesh smooth and fine, flavor exceedingly fine. Carrying qualities unusually good, will stand long hauls and arrive in prime condition. This cantaloupe will please the home gardener as well as the commercial shipper, and for the consumer it will be a pleasant surprise. We recommend this cantaloupe as far ahead of most others, and you will make no mistake in using it exclusively.

ABBOTT'S PEARL, Pink Meat. The greatest commercial cantaloupe on the market today. All markets are demanding Pear Pink Meat cantaloupes. Grow this fine melon which holds longer on the vine, stands up better under long distance shipment and gives more general satisfaction than any other cantaloupe on the market. My supply of seed are the true Abbot's Pear Pink Meat and the price is very reasonable.

BANANA CANTALOUPE. Has banana like flavor and shape. Melon grows 15 to 30 inches long and 2 to 6 inches in diameter. Will stand very hot sun better than any other variety, has a long fruiting season. Sells well in some markets, often a single melon sells for 25 to 75 cents.

EDEN GEM. A favorite among many growers.

NETTED ROCK KING. A standard commercial kind of great value.
PRICE OF SEED. SAME FOR ALL THE ABOVE VARIETIES. Pkg. 10c.

1 oz. 20c. ¼ lb. 65c. ½ lb. 1.10. 1 lb. \$2.00. 5 lbs. \$8.00. Pre Paid.
Ask for prices on large lots not Pre Paid.

SEND YOUR ORDERS DIRECT TO

ALLEN NURSERIES

Seaford, Delaware, U. S. A.