

Historic, Archive Document

Do not assume content reflects current scientific knowledge, policies, or practices.

62.19 1923

Rimes' Blight-proof Pineapple PEAR

LIBRARY
RECEIVED
★ SEP 24 1923 ★
U. S. Department of Agriculture.



THE ALTAMAHA NURSERIES

SOLE PROPAGATORS

LUDOWICI, GEORGIA



This is the old original parent tree, now more than 43 years old, in a flourishing and vigorous condition, and producing loads of beautiful Pineapple Pears every year. It never had a drop of spray or anything else to keep off blight, or any disease. Look what blight has done for its nearby neighbors (some of them as close as 60 feet), on page eight, consisting of Kieffers and other kinds of pears.

Genuine RIMES Blight-proof Pineapple Pear Trees

PRICES

Every Rimes Pineapple Pear Tree is guaranteed by The Altamaha Nurseries to be of full standard type, well grown, with vigorous root system and each shipment carefully packed and delivered in good condition to Post Office, Express or Freight Office at Ludowici. All prices are f. o. b. Ludowici.

1-2 feet	\$ 6.00 doz.	\$ 45.00 per 100
2-3 feet	9.00 doz.	65.00 per 100
3-4 feet	12.00 doz.	85.00 per 100
4-6 feet	15.00 doz.	110.00 per 100
6-8 feet	18.00 doz.	130.00 per 100

We do not care to ship orders amounting to less than \$2.00, and on all orders amounting to less than \$5.00, packing charges will be fifty cents extra. 25 per cent of amount of the order to be paid when order is placed, which guarantees that the stock will be reserved for you until shipping time. Otherwise, we can only accept the order subject to the stock being sold at any time.

Specimen Bearing Age Trees

We are able to offer this season for the first time, a limited number of beautiful Bearing Age Trees. These Large Bearing Age Trees are for quick results. They are the pick of our nurseries, Symmetrical Tops, heavily rooted, Smooth Trunks. Some of them will caliper one and a quarter inches now. They are so fine that their added expense will be forgotten when you receive them. If you want Big Trees for immediate results, Order Today.

Large Bearing Age Trees	\$2.50 each,	\$27.00 doz.
Extra Large Bearing Age Trees	3.00 each,	32.00 doz.
Extra Large Select Specimens .	3.50 each,	37.00 doz.

The packing of Bearing Age Trees is expensive,—it being necessary to pack them with great care to prevent the branches from being broken, and when less than three are ordered, the packing charges will be fifty cents extra.

Plan to place your orders early that we may have ample time to give you choicest selection of stock.

The Altamaha Nurseries

Propagators of the Genuine *RIMES* Blight-Proof Pineapple Pear
Ludowici, Georgia

Use Order Blank on other side in ordering.

We Can Also Offer You Choice Stock of the Following

Paper Shell Pecans

The best procurable at any price. (Budded and grafted.)

Varieties: Schley, Stuart, Frotscher and Van Deman.

Prices.	Each	Per 10	Per 100
2 to 3 feet.....	\$1.00	\$9.00	\$80.00
3 to 4 feet.....	1.20	11.00	100.00
4 to 5 feet.....	1.40	13.00	120.00
5 to 6 feet.....	1.60	15.00	140.00
6 to 8 feet.....	1.75	16.00	150.00
8 to 10 feet.....	2.00	18.00	170.00

Peaches

(Budded on Peach stock.)

Varieties: Hiley, Georgia Belle, Elberta and Carman.

Prices.	Each	Per 10	Per 100
1 to 2 feet.....	\$0.25	\$2.00	\$18.00
2 to 3 feet.....	.35	3.00	25.00
3 to 4 feet.....	.50	4.50	40.00
4 to 5 feet.....	.60	5.50	50.00

Plums

Varieties: Abundance, Burbank, Red June, Kelsey, Terrell, Excelsior.

Prices.	Each	Per 10
2 to 3 feet.....	\$0.35	\$3.00
3 to 4 feet.....	.50	4.50
4 to 6 feet.....	.65	6.00

Grapes

(Bunch.)

Varieties: Concord, Delaware, Diamond, Ives, Niagara, Green Mountain, Hubbard, Lutie, Moore's Early. They are extra fine.

Prices.	Each	Per 10	Per 100
1-year	\$0.35	\$3.00	\$25.00
2-year50	4.50	40.00
3-year65	6.00	50.00

Above prices apply on all except Green Mountain and Hubbard. The prices on these two being just double above prices.

ORDER SHEET

The Altamaha Nurseries

Ludowici, Georgia

DATE..... 192.....

For amount enclosed, \$....., send me by.....
Write here Freight, Express, Parcel Post or Use your discretion.

the Trees designated below:

WRITE PLAINLY—Ladies please give title Miss or Mrs.

Name

Street or Box No., or R. F. D. No.

P. O. Address State..... County.....

Shipping Address

Date you wish shipment made..... 192.....

Please read instructions in catalogue about ordering carefully before making out your order.

QUANTITY	FULL NAME OF VARIETY	SIZE	PRICE	
			EACH	TOTAL
TOTAL				

Signature of Customer.....

History and Origin

of

Rimes' Blight-proof Pineapple Pear



THE history of this wonderful pear is a simple one, but its origin is a mystery. When first brought to our attention, the parent tree was producing fruit of a most distinctive character and absolutely free of blight. The parent tree is now forty-three years old, is in a healthy, vigorous and flourishing condition, and produces annually a heavy crop of pears. During this period it has grown in close proximity to other well known varieties, such as Kieffer, Le Conte and others. These varieties, for a great many years, have blighted badly, but the Pineapple during all these years, has shown no evidence of blight. It is supposed to be a Hybrid. The original owner of the property where the parent tree now stands, and the one who planted it, has been dead for years, and all efforts to learn the source from which he obtained this wonderful tree have been in vain, and it is very doubtful, now, if its exact origin ever will be known.

After having been fully convinced, by experiments that it has taken years to conduct, that wood from the parent tree reproduces every characteristic of it, and after exhaustive experiments and tests to prove that the variety was absolutely **Blight-Proof**, and these have been most conclusive in their results, we undertook the propagation of this remarkable pear on an extensive scale, devoting our energies to this one variety; all our wood being selected from the very heaviest bearing trees.

It has been thoroughly tested for blight, including the grafting and budding of wood from other varieties, already badly infected with blight, into the Pineapple trees, also by inoculating them with laboratory cultures of pear-blight, but the **Pineapple** Pears maintain their complete resistance to the ravages of this disease. Even where the inoculation would take the organism did not spread sufficiently to damage the trees. The inoculated twig would die back for only a few inches, but the disease was not able to spread to any other twig, and was soon overcome. All trees of this variety which are descendants of the parent tree have likewise proven to be **Blight-Proof**.

They are a very rapid and strong grower, and extremely vigorous. The tree is remarkable from the point of view of precociousness, the first fruit appearing when it is about three years of age, and some ten-year-old trees here have produced as much as eighteen bushels per tree, while some of the oldest trees have yielded as

high as 66 bushels to the tree. The fruit commences to ripen about the end of July here. To the West and North its period of maturity, of course, would be considerably later than this.

The fruit is extremely attractive, large in size, a golden yellow with conspicuous small brown specks. Its aroma is remarkable, having a very distinct Pineapple odor, and it is sweet and juicy with a splendid Pineapple flavor. It is unusually good as a canning pear. It is firm, keeping for a long time after being taken from the tree, making it an extremely fine shipper.

When it comes to producing annual crops of marvelous size and beauty and resisting disease, there is nothing in fruits today that will equal it.

In introducing to you this wonderful Pear, we wish to call to the attention of those who are not familiar with the ravages of pear-blight that pear statistics for the United States show that the number of bearing trees in 1919 were three per cent less than 1909, and the number of non-bearing trees twenty-eight per cent less. In fact, during the past 25 years there has been no advance in American Pear culture, on the other hand, less pears are being produced now than were grown at the beginning of the present century, and while other fruits have made great increases in production, pear growing has been decreasing. This condition is due to one and only one single factor in pear culture, viz: pear-blight, a malignant bacterial disease, very contagious. Usually virulent and so terrible in its consequences as to warrant the common name, fire-blight. Year after year this disease has taken its toll of pear trees, and the plantings from year to year of young trees have not kept pace with the losses by more than twenty-five per cent.

It has been long recognized that the real solution of the difficulty of pear growing, lay in securing a variety of pears that would be immune to blight, and this is what we have in this wonderful **Blight-Proof** Pineapple Pear.

You can now plant an orchard of pears without any fear of this terrible disease, by planting our **Blight-Proof** Pineapple Pear trees.

Not one single tree shown in this catalogue ever had one drop of spray, or anything else used on them to prevent blight or any other disease. Believe you will agree with us that the Pineapple Pear trees shown are just about as vigorous and healthy looking as any kind of fruit trees you ever saw.

RIMES' BLIGHT-PROOF PINEAPPLE PEAR

EXPERT OPINION.

Mr. C. I. Lewis, a foremost horticulturist, and managing editor of The American Fruit Grower, says: "The package of your BLIGHT-PROOF Pineapple Pears received. They arrived in splendid condition. Before we could open the package, we could smell them all over the room. They certainly have a very strong, distinctive Pineapple odor. They have the characteristic flesh of the Oriental Hybrids, but **considerably more flavor and aroma than is typical of most varieties.** It seems to me that this pear certainly has a wonderful future, especially if it is vigorous and a good grower. The Pears were very nice and large, and would take well on the market." We can assure you that it is very vigorous, and a good grower, and extremely prolific. Many of the young trees coming into bearing at three years of age.

KEPT THEM FIVE WEEKS BEFORE UNPACKING THEM. FINE CONDITION.

Burlington, Iowa.
The splendid young Pineapple Pear trees were received in February. I kept them in a cellar for five weeks, watering them but once. When I opened the bale I found them in very fine condition, owing to your splendid pack. They are growing just fine and no indications of blight. E. F. K.

THIS IS THE WAY WE PACK OUR TREES FOR LONG SHIPMENTS.

Seattle, Washington.
I must say the Pineapple Pear trees arrived in first-class condition. Were exceedingly well packed. They are growing exceedingly fast. No indication of blight in any way. Foliage is large and fine indeed. I do not know as I have ever seen a tree that was transplanted make as fine growth in the same time as the trees you sent me. M. Y. C.

NO SIGN OF BLIGHT, THOUGH OTHER VARIETIES ARE BLIGHTING BAD.

Metcalfe, Georgia.
Replying to your letter am glad to say my Pineapple Pear trees, bought of you, have no signs of blight, though other varieties that I have are blighting bad. I did not even think of the Pineapple blighting. Will want more next winter. J. C. T.

SEVERE FREEZE DID NOT HURT THEM.

Herington, Kansas.
The Pineapple Pear trees we got from you last fall are coming along in great shape, except one. So far they are entirely free from blight. We had a severe freeze here this month as they were budding out, but did not hurt them. F. W. K.

Eldorado, Arkansas.
We have had an unusual spring. January was spring-like and put buds to swelling. Then in February came the first sleet and snow in twenty years, and freeze. When everything was leafed out, March 21st, came a second hard freeze which cleaned everything. The Pineapple Pears are outgrowing anything on the place, though not in the best land. No sign of blight. J. W. G.

Guernseyville, California.
We have your letter and wish to say that the Pineapple Pear trees are growing very rapidly, and the leaves are large and very glossy. We are Prune, Pear and Wine growers and have to raise what the canneries demand, and we are very much interested in this pear. F. K. & BROS.

HAVE FOUGHT BLIGHT FOR QUARTER CENTURY.

Normandy, Tenn.
The Pineapple Pear trees have proved hardy, vigorous and immune to blight. Their blooming as small trees indicates early bearing. Have fought pear blight for over a quarter of a century, and am in position to fully appreciate the immense value of a high quality pear absolutely immune to the greatest enemy of our most delicious fruit. J. W. W.

HAS 100 TREES.

Macon, Georgia.
All of the one hundred Pineapple Pear trees I got from you are doing nicely, and growing very fine. Do not see any blight, and hope to soon have some very fine fruit. W. D. L.

Greenfield, Tenn.
My Pineapple Pear trees are looking fine. They look rich and green and show no signs of blight. Later will send you a Kodak of some of them. Have not lost a single tree. J. D. L.

THE NATIONAL FRUIT MAGAZINE OF AMERICA

AMERICAN FRUIT GROWER MAGAZINE

Published Monthly by AMERICAN FRUIT GROWERS INC. CHICAGO

September 7th, 1922.

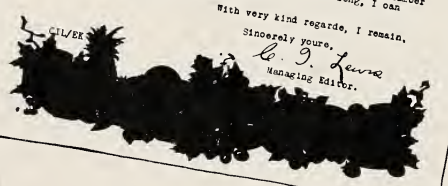
Mr. R. D. Rimes,
c/o The Alabama Nurseries,
Ludowici, Georgia.

My Dear Sir:-

Your recent letter received, also the package of your BLIGHT-PROOF Pineapple Pears, in splendid condition. Before we could open the package could smell them all over the room. They arrived in very strong, distinctive Pineapple odor. They have the characteristic flesh of the Oriental Hybrids, but considerably more flavor and aroma than is typical of most varieties. It seems to me that this Pear has a wonderful future, especially if it is vigorous and a good grower. The samples you sent were very nice and large, and would take well on the market.

I should be very pleased to receive the photographs which you say you can send me. I think in some number of the AMERICAN FRUIT GROWER MAGAZINE before long, I can find a place to use them.

With very kind regards, I remain,
Sincerely yours,
C. I. Lewis
Managing Editor.



THE CITIZENS BANK

INCORPORATED IN GEORGIA

CAPITAL \$25,000.00

LUDOWICI, GA.

May 16th, 1922.

To Whom it May Concern:-

The bearer hereof, Mr. R. D. Rimes, owner of The Alabama Nurseries, has been a customer of this bank, and so has been personally acquainted with him for more than eleven years, and have always found him reliable and trustworthy in all his dealings and statements.

We will also state that to our certain knowledge the Pineapple Pear, being propagated by them, is blight-proof. Trees of this variety have been grown for a great many years, here in the same country with other kinds of pears, and while all the other kinds are badly infected with blight, none of the Pineapple Pear trees have ever shown any indication of blight.

Very truly yours,
The Citizens Bank, Ludowici, Ga.,
by E. S. Rimes, Cashier.

RIMES' BLIGHT-PROOF PINEAPPLE PEAR



An average crop on Rimes' Pineapple Pear Trees. They bear regularly and the fruit is uniformly large and symmetrical.

RIMES' BLIGHT-PROOF PINEAPPLE PEAR

UNIVERSITY OF CALIFORNIA
COLLEGE OF AGRICULTURE
AGRICULTURAL EXPERIMENT STATION
BERKELEY

October 27, 1922.

Mr. R. D. Rimes,
The Altamaha Nurseries,
Ludowici, Ga.

My dear Mr. Rimes:

Your interesting letter of the 21st of October, has just been received.

We will be glad to display the Pineapple pear during the Third Annual Fruit Show, and I think it would be of interest, if you care to send them, to have available the photographs pertaining to this variety about which you write.

California, as you know, extends over as great a distance north and south as is found from Georgia to New Jersey, on the Atlantic Coast. We, therefore, have a great variation in the climate in which pears are at present being grown.

In most of the warmer, interior valley sections, pear blight has been a menace.

Some of the pear orchards are located in the southern part of the state, but when this is done the orchards are generally at higher altitude.

Very truly yours,
J. P. Oberholser
Asst. Prof. of Pomology.

ELC:EM.

Barnard, Missouri.
The Pineapple Pear trees I got from you are doing fine and I am well pleased with them. I sure want some more.
W. J. C.

Fordsville, Kentucky.
The Pineapple Pear trees are growing fine. Not any blight yet.
A. K.

Dorchester, Nebraska.
The Pineapple Pear trees growing fine and all O. K. No blight at all.
A. H.

BEARING THE FIRST SEASON AFTER PLANTING.

Belle Plaine, Kansas
Reporting on the Pineapple Pear trees will say they are certainly doing fine. One of Dr. B's trees has a pear on it.
M. L. B.

Butler, Alabama.
The Pineapple Pear trees are doing nicely. No blight has showed up yet.
A. G. H.

Mr. Wm. H. Stites, owner of Hill Head Orchards, and President of Kentucky State Horticultural Society, says: "The Pineapple Pear trees do not show any evidence of blight, though this has been one of the worst years for blight I have ever known in this section."

Rancho Bonzi, from California writes: "The Pineapple Pear trees are doing wonderfully well, and not a bit of blight."

RIMES' BLIGHT-PROOF PINEAPPLE PEAR.

A new, different and better variety. Different in outer appearance and distinctive in flavor. Strikingly attractive and beautiful, with a Pineapple flavor that lasts. Not exceeded by any in prolificness, and in keeping capacity, it is not equaled by any, making it an exceptionally fine shipper. Its power to resist disease and produce annual crops of marvelous size and beauty is unequalled by any.

A variety proven to be **Blight-Proof**, beyond all doubt, by being subjected to extremely severe tests, both artificial and natural for blight. The tree is remarkable from the point of view of precociousness, the first fruits appearing when it is about three years of age.

ADAPTED TO A WIDE RANGE OF TERRITORY.

Rimes' Blight-Proof Pineapple Pear is now growing in thirty-eight states, and with many State Experiment Stations. We have them with customers from the State of Washington across to Rhode Island and from New Mexico to Florida. Even as far North as British Columbia.

Get your trees from where the **Blight-Proof Pineapple Pear** originated, and avoid the risk of getting non-genuine trees. Introduced and first offered to the public by The Altamaha Nurseries.

Prof. Stuckey, Horticulturist and Director of the Georgia Experiment Station, says: "It is an unusually strong grower, is very prolific, and so highly resistant to blight that the orchardist may plant trees without any fear of blight."

PINEAPPLE PEAR CHARACTERISTICS.

The flavor is "simply wonderful" to quote almost everyone who has eaten a Pineapple Pear. Aromatic, sprightly, with the musky Pineapple flavor, the taste is delicious and lasting. The Pineapple Pear is in fair shape for market by the end of July, but better in August. A great advantage of the Pineapple Pear is the keeping quality, making it an ideal pear for shipping. The aroma and flavor improve the longer the fruit is kept.

UNIVERSITY OF CALIFORNIA
COLLEGE OF AGRICULTURE
AGRICULTURAL EXPERIMENT STATION
BERKELEY

Nov. 14, 1922.

Mr. R. D. Rimes,
The Altamaha Nurseries,
Ludowici, Ga.

My dear Mr. Rimes:

Please permit us to acknowledge the receipt of your letter of the 4th of November, together with the set of eleven photographs which came under separate cover.

We have arranged to have the photographs displayed in connection with the plates of the Pineapple Pears which are to be exhibited during the Third Annual Fruit Show of the University of California.

Pear trees are generally planted in this State during January, hence the trees which you plan to ship about the end of December or the first of January will arrive here at an excellent time for them to be planted.

I shall be glad to write you again at the close of the Fruit Show.
Assuring you we appreciate your kindly interest I am

Very sincerely yours,
J. P. Oberholser
Asst. Prof. of Pomology.

ELC:EM.

BEWARE OF ALL NON-GENUINE PINEAPPLE PEAR TREES.

We understand that other varieties of pears are being offered to the public under the Pineapple name, in order to do us harm, and to deceive the growers who may be persuaded to purchase them. We urge our friends and customers to protect themselves by getting Rimes' Blight-Proof Pineapple Pear trees direct from the original introducers, The Altamaha Nurseries.

RIMES' BLIGHT-PROOF PINEAPPLE PEAR

GOT 225 PINEAPPLE TREES, AND ALL LIVING.

Fresno, California.
Enclosed find check covering bill for Pineapple Pear trees. They are all living and doing just fine. If the fruit will ship and have a good flavor, this is a great pear. I. T.

Salmon Arm, British Columbia.
The Pineapple Pear trees arrived in fine shape and I must congratulate you on the packing. They are growing fine, and not a bit of sign of blight. Wish I could have got more trees at the time. Will want more next season. J. H. H.

Mitchellville, Maryland.
Reporting on the Pineapple Pear trees I got from you am glad to say they are doing fine. I put out some other trees including other kinds of pears, at the same time, and yours look very much more thrifty and vigorous. No sign of blight. M. L. E.

West Alexandria, Ohio.
The Pineapple Pear trees are doing fine, and we have not seen any sign of blight. A. C. F.

Lloyds, Maryland.
Wish to say that the Pineapple Pear trees are doing fine indeed, and no sign of blight. J. T.

Albany, N. Y.
Replying to your communication of recent date wish to say the Pineapple Pear trees I got from you were healthy, well-rooted trees, and they are doing well. I have not seen any blight. D. M. C.

Hanford, California.
Wish to say that the Pineapple Pear trees are growing very good. Have made about eighteen inches growth in a very short time. L. B.

Mohrsville, Pennsylvania.
The Pineapple Pear trees I got from you are doing fine. Do not see any blight at all yet. P. M. L.

Clarinda, Iowa.
The 15 Pineapple Pear trees I got from you are growing fine, despite the cold weather we have been having, and even on one occasion a very severe frost which cut vegetation close to the ground. DR. M. E. W.

Anaheim, California.
Wish to say that the Pineapple Pear trees are doing fine and have made a splendid growth. I don't see a bit of sign of blight. I. W. P.

Zillah, Washington.
The Pineapple Pear trees I got from you are making a fine growth. Have not seen any blight at all.

Dorchester Center, Mass.
The Pineapple Pear trees are looking very good indeed. No sign of blight. J. E. H.

Valdosta, Georgia.
Replying to your favor recent date wish to say that the fifty Pineapple Pear trees I got from you are all living, and doing nicely. I see no signs of blight.

South Hadley Falls, Mass.
My Blight-proof Pineapple Pear trees are doing fine. All are growing very fast and looking mighty good. They are certainly fine trees. J. D.

El Paso, Texas.
My Pineapple Pear trees are growing very fine, and look very vigorous and healthy. DR. S. T. T.

Division of Pomology
1. 4 WHITE BERRY
2. 4 RED BERRY
3. 4 TANGY BERRY
4. 4 SWEET BERRY
5. 4 BLENDED BERRY
6. 4 BERRY
7. 4 BERRY
8. 4 BERRY
9. 4 BERRY
10. 4 BERRY
11. 4 BERRY
12. 4 BERRY
13. 4 BERRY
14. 4 BERRY
15. 4 BERRY
16. 4 BERRY
17. 4 BERRY
18. 4 BERRY
19. 4 BERRY
20. 4 BERRY
21. 4 BERRY
22. 4 BERRY
23. 4 BERRY
24. 4 BERRY
25. 4 BERRY
26. 4 BERRY
27. 4 BERRY
28. 4 BERRY
29. 4 BERRY
30. 4 BERRY
31. 4 BERRY
32. 4 BERRY
33. 4 BERRY
34. 4 BERRY
35. 4 BERRY
36. 4 BERRY
37. 4 BERRY
38. 4 BERRY
39. 4 BERRY
40. 4 BERRY
41. 4 BERRY
42. 4 BERRY
43. 4 BERRY
44. 4 BERRY
45. 4 BERRY
46. 4 BERRY
47. 4 BERRY
48. 4 BERRY
49. 4 BERRY
50. 4 BERRY
51. 4 BERRY
52. 4 BERRY
53. 4 BERRY
54. 4 BERRY
55. 4 BERRY
56. 4 BERRY
57. 4 BERRY
58. 4 BERRY
59. 4 BERRY
60. 4 BERRY
61. 4 BERRY
62. 4 BERRY
63. 4 BERRY
64. 4 BERRY
65. 4 BERRY
66. 4 BERRY
67. 4 BERRY
68. 4 BERRY
69. 4 BERRY
70. 4 BERRY
71. 4 BERRY
72. 4 BERRY
73. 4 BERRY
74. 4 BERRY
75. 4 BERRY
76. 4 BERRY
77. 4 BERRY
78. 4 BERRY
79. 4 BERRY
80. 4 BERRY
81. 4 BERRY
82. 4 BERRY
83. 4 BERRY
84. 4 BERRY
85. 4 BERRY
86. 4 BERRY
87. 4 BERRY
88. 4 BERRY
89. 4 BERRY
90. 4 BERRY
91. 4 BERRY
92. 4 BERRY
93. 4 BERRY
94. 4 BERRY
95. 4 BERRY
96. 4 BERRY
97. 4 BERRY
98. 4 BERRY
99. 4 BERRY
100. 4 BERRY

UNIVERSITY OF CALIFORNIA
COLLEGE OF AGRICULTURE
AGRICULTURAL EXPERIMENT STATION
BERKELEY

December 5, 1922.

Mr. R. D. Rimes
The Altamaha Nurseries
Ludowici, Georgia

My dear Sir:

The Student Judging Committee takes great pleasure in announcing that the award listed below has been given to your exhibit in the Third Annual Fruit Show.

Pineapple Pear 1st Prize.

Very truly yours,

E. O. Quisenberry
Asst. Prof. of Pomology.

ELO:EM
Enc.

THREE OF THEM BLOOMING FIRST SEASON.

New Brookland, S. C.
The Pineapple Pear trees are coming O. K., and I am highly pleased with them. I can find no blight on them. Three of them had bloom on them last spring. L. E. R.

Orangeburg, S. C.
Of the fifty Pineapple Pear trees I got from you only one died. All the rest are doing fine, and I am certainly pleased with the way they are growing. W. H. D.

Savannah, Georgia.
ALL IN BLOOM FIRST SEASON AFTER PLANTING.
The Pineapple Pear trees I bought of you this winter have all bloomed out. There are no indications of blight. R. M. B.

Macon, Georgia.
GOT 100 TREES. ALL LIVING.
I have your favor of the 12th and wish to say that the one hundred Pineapple Pear trees that I got from you are all living and doing very well indeed, and I am very much pleased with them. There is no indication of blight. M. H. J.

Hempstead, Texas.
Wish to say that all the Pineapple Pear trees are growing and doing just fine, and there is not a bit of blight. We had some very severe cold weather here this spring after they had put out, but it did not hurt them. H. C. B.

Memphis, Tenn.
The Pineapple Pear trees that I bought of you are flourishing, and certainly do look fine. Not the least indication of blight. Wish I had bought more. R. W.

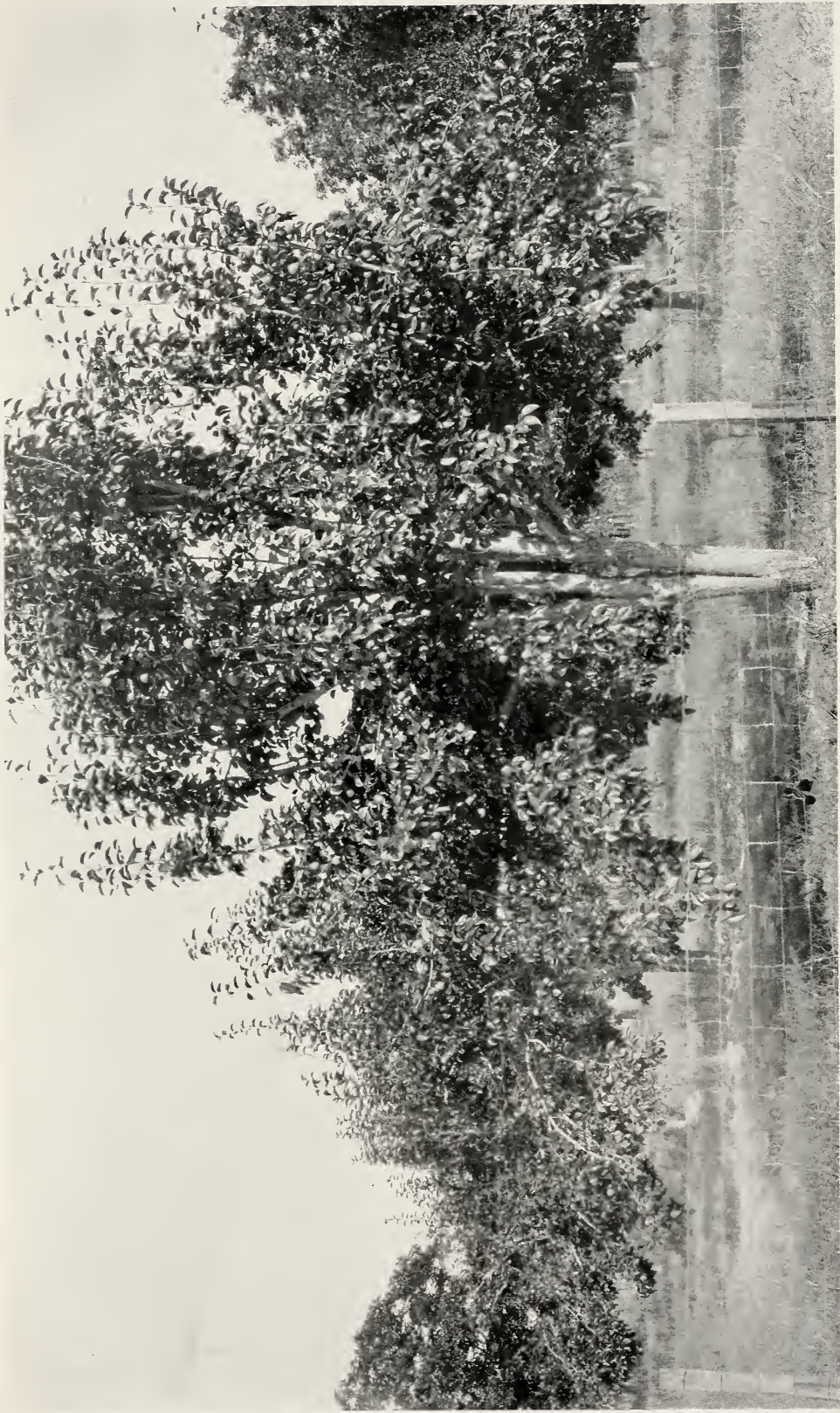
THIRD ANNUAL FRUIT EXHIBIT, 1922

UNIVERSITY OF CALIFORNIA, COLLEGE OF AGRICULTURE

FIRST PREMIUM



These old pear trees, consisting of Kieffer, LeConte and others, and themselves very, very old, are neighbors of the original old parent Pineapple Pear tree, some of them as near as sixty feet. They have been badly infected with blight for years and years, as you can see. These trees are pictured here merely to show that there is plenty of blight in the section where the Pineapple Pear originated, and where the Pineapple Pear trees are growing today.



Compare this view of orchard of Rimes' Pineapple Pear trees with the one above. These trees stand in the same orchard and within a few rods of those above. They have never had a drop of spray or anything to prevent blight.

RIMES' BLIGHT-PROOF PINEAPPLE PEAR



Does This Look Prolific!

RIMES' BLIGHT-PROOF PINEAPPLE PEAR

GEORGIA EXPERIMENT STATION
DEPARTMENT OF HORTICULTURE
EXPERIMENT GEORGIA

To whom it may concern:-

According to the inductive method of thinking, of a variety of fruit that persistently and continuously resists a disease for a dozen years when placed under varying environmental conditions, must be considered perpetually resistant to the disease. Such is the case with the Pineapple Pear, which has been growing at the Georgia Experiment Station for fourteen years in the same plot with thirty other varieties. Every other variety has blighted, varying in degrees from only a few dead twigs on some, to the killing point on others. But the ten trees on the Pineapple Pear that stand in the same rows with the other varieties have not shown any evidence of blight.

The writer has had occasion to see the nursery stock of the Altamaha Nurseries, and examine trees from the same nursery when planted in other localities, but has not detected blight on any trees of the Pineapple variety of Pears.

Signed
J. H. Stuckey
Assistant Horticulturist

STATE COLLEGE OF AGRICULTURE
DEPARTMENT OF HORTICULTURE
LUDOWICI, GEORGIA
May 8, 1923.

Mr. R. D. Rimes, Prop.,
The Altamaha Nurseries,
Ludowici, Georgia.

My dear Sir:-

It gives me great pleasure to answer your communication of recent date. With reference to the blight-proof qualities of the Pineapple pear, which you are propagating, will state that at the time of my visit to Ludowici and your nursery about a year ago, in company with Mr. Stuckey, Director of the State Experiment Station, and Mr. Reed, State Entomologist, the three old trees (which you stated were more than forty years old) showed no blight at all, and withstanding they have grown for a great many years in close proximity to other varieties badly infected in any way to be blighted and they only one small twig that appeared in any way to be blighted and this was a single twig on a tree. All the rest of the twigs around it were healthy and flourishing. Of course, we all understood from Mr. Stuckey that when the tree was inoculated with blight the disease would not spread to other twigs.

The trees that you forwarded me this last spring are planted and I anticipate using them in the due course of years in breeding for blight resistance.

Yours very truly,
F. M. Holliston
Horticulturist.

T.M.C/D

FROM THE SAVANNAH MORNING NEWS.

Ludowici, Georgia, May 6th, 1922.

"Professor H. P. Stuckey, Horticulturist, and Director State Experiment Station at Griffin; Prof. T. H. McHatton, Horticulturist State College Agriculture, at Athens, and Prof. M. V. Reed, State Entomologist, Atlanta, were here recently investigating the Blight-Proof Pineapple Pear being propagated by the Altamaha Nurseries of this place."

GEORGIA EXPERIMENT STATION
OFFICE OF DIRECTOR
EXPERIMENT, GEORGIA
April 26th, 1923.

To Whom It May Concern:-

The Pineapple pear trees, growing at the Experiment Station, have been subjected to the most rigid trials for succumbing to fire blight. In addition to being grown in a general variety collection where a large percentage of the trees were annually dying from blight, a number of the trees were inoculated with laboratory cultures, but no appreciable injury was ever observed. Even where the inoculation would take, the organism did not spread sufficiently to damage the trees appreciably. The inoculated twig would die back for a few inches, but the disease was not able to spread to any other twig, and was soon overcome. In fact, the variety is so highly resistant that the orchardist may plant trees without fear of blight. Ten year old trees now standing at the Georgia Experiment Station show no signs of blight, even though they have had every chance to become infected.

The Altamaha Nurseries at Ludowici, Ga., are at this time propagating large numbers of the Pineapple pear. The writer is personally acquainted with the owner of the Altamaha Nurseries and believe him to be reliable in every respect.

Yours very truly,
H. P. Stuckey
Director.

EPB/L

THE CURTIS PUBLISHING COMPANY
INCORPORATED IN OHIO
150 N. WASHINGTON ST. CLEVELAND, OHIO
PUBLISHERS OF THE SATURDAY EVENING POST
AND THE COUNTY GENTLEMAN

JUNE 11, 1923.

Mr. R. D. Rimes,
Altamaha Nurseries,
Ludowici, Georgia.

Dear Sir:

I have the photographs and testimonials you sent with your letter of June 1st. Certainly the pears which you are selling are well recommended, and with this evidence to support your claim we see no reason why the country gentlemen should not accept this advertising.

We are returning, under separate cover, the photographs which you sent us and enclose, herewith, the testimonials letters which you sent.

We shall be pleased to have you advertise at the proper time, and remain

Yours very truly,
James S. Sime
Advertising Manager,
THE COUNTY GENTLEMAN.

T.M.C

Planting Hints

Care of Young Trees. Unpack your trees as soon as received, and either plant them or heel them in at once, watering them good when you heel them out.

Selecting and Preparing the Soil. Rimes' Blight-Proof Pineapple Pear grows well on a great variety of soils, but be sure your soil is well drained. It will not thrive on soil that has no drainage, and is continually wet and soggy.

Planting. When ready to plant, dig your holes large—large enough so that you can spread out all roots, as far as they will go. Dig the holes about eight inches deeper than you will put the trees, and fill in with eight inches of top soil. Set the tree about as deep or possibly an inch deeper than it stood in the nursery. Place the tree in position, fill in around the roots with fine mellow soil, arranging all roots in their natural position, and when you have all the roots well covered with soil, then pack the soil firmly. Now, put in about two gallons of water and give it sufficient time to soak in, then fill up the hole to within about two inches of the top, and pack well again; now put in about two gallons of water, and while you are setting more trees, let this soak in, and then fill up the hole a little higher than the ground level. After the soil has had sufficient time to settle about the trees, see that it does not remain so that water will stand about the tree after rains.

The trees should be pruned back pretty severely. When you do so, you shape up your future orchard tree. The second season after setting, prune them back again. You want a tree headed out low, with plenty of limbs, and the way to get this is to prune pretty well.

Fertilizing. Be careful how you use fertilizer of any kind when you set the trees. Better use none at all at planting time than too much. It is probably better to wait until your trees get started to growing, say ninety days after planting, and then remove some of the top soil from around the tree, keeping some six inches away from the trunk, then put your fertilizer around the tree where you have removed the top soil, and cover it up. Many trees are killed by over-fertilizing when they are planted.

Planting Distance. Plant Pineapple Pear trees 25 feet apart, and thirty feet is probably better. It will require 70 trees to the acre, 25 feet apart.

Cultivation. Cultivate your orchard as you would your garden. You will be surprised the way they will respond to cultivation, especially the first year. Keep a well-worked surface all summer and until time for them to stop growing in the fall. The best nursery stock ever grown when planted and neglected will not grow off and do well.

Rimes' Blight-Proof Pineapple Pear is self-fertile, and it is not necessary to interplant other varieties to supply pollen.

Jackson, Tenn.
Out of the 25 trees I got from you, I only lost one. All of my other kinds of pear trees are badly infested or affected with blight, but none of yours.
H. G. Y.

Midway, Alabama.
My Pineapple Pear trees I got from you show no signs of blight, and are doing fine.
MRS. J. F. C.

Port Royal, Tenn.
Pineapple Pear trees are doing very fine. Not one bit of blight.
J. R. B.

Elizabethton, Tenn.
The Pineapple Pear trees you sold me are in excellent condition, and I am very much pleased with them. Every one is living, although they were not planted under the best conditions. No evidence of blight. Expect to send you an order for a good round number this fall.
A. L. R.

Thorsby, Alabama.
The Pineapple Pear trees I got from you are doing fine. Had a very heavy frost this spring after they had put out, but it did not seem to injure them any.
F. H.



**Rimes' Blight Proof
Pineapple Pear Trees
Guaranteed Immune to Blight
None Genuine Without This Signature**

This tag on every shipment. None genuine without it.



This is our Mr. R. D. Rimes, inspecting the bearing trees in the Rimes Orchards of these wonderful blight-proof pears. Note the immense crop of beautiful fruit on this tree.



This shows well the heavy cropping habit of Rimes' Blight-Proof Pear Trees. Many blight infected trees of other varieties stand in this same orchard, bearing very inferior crops as a result of their condition.

About Ordering

In writing your order, please write plainly your Signature, Postoffice, Street or R. F. D. address, and County. State whether you wish shipment made by freight, express or parcel post. When method of shipment is left to us, we will ship according to our best judgment.

Minimum Orders. We do not care to ship orders amounting to less than \$2.00, and on orders amounting to less than \$5.00, the packing charges will be fifty cents extra.

Terms Cash With Order, if for immediate shipment, unless through other arrangements credit has been provided for. On orders booked in advance of the shipping season, 25 per cent of the amount of the order must be paid when the order is placed with us, with the balance due when the shipping season opens. We do not care to ship C. O. D. Our shipping season opens about November 1st.

We Guarantee all stock sent out to be well rooted, well grown, properly packed, and shipped according to instructions.

Order Early. It is to your advantage to order early, as it is almost impossible during the rush of the planting season to fill an order on short notice, without injustice to those who have already placed their orders with us, and by placing your order early you are assured of getting the sizes you want. Last season we were compelled to turn down many orders, the most of those who waited late to place their orders not being able to get trees of any size, and while we have a very fine stock of trees in our nursery now, for the coming season, the bookings that we have already made clearly indicate that those who wait late to place their orders will have to wait another year for trees. The prompt placing of orders is essential, and we urge that you lose no time in advising us of your wants in Pineapple trees, that we may give them due consideration.

Grand Junction, Colorado.
The ten Pineapple Pear trees I got from you growing fine. See no blight at all yet.

Belmont, North Carolina.
The Pineapple Pears bought from you all lived and are doing unusually well. There is no sign of blight. If they can be counted on as regular bearers I want to plant a large number of acres to Pineapple Pears in the near future.
J. K. H.

Cullman County, Alabama.
All of our Pineapple Pears look good. No blight at all. They look mighty good. Very healthy and vigorous. We are betting on that other fifty we have ordered from you.
E. F. & N. CO.

Oaktown, Indiana.
Your Pineapple Pear trees are growing fine. Not a bit of blight. I am certainly pleased with them.

Santa Cruz, New Mexico.
The Pineapple Pear trees are growing nicely. No sign of blight yet.
H. J. J.

You are now offered for the first time what many leading Horticulturists and nurserymen have been trying for years to produce, viz: A pear of good quality, that is **absolutely Blight-Proof.**

The Savannah Morning News, in their Special Edition on the **Blight-Proof** Pineapple Pear, of October 19th, 1922, says: "This pear is being introduced and propagated by The Altamaha Nurseries, and is without a doubt the **greatest discovery in the fruit line that has been produced in years.**"

It is very doubtful if you could invest an equal amount in any other kind of nursery stock that will show you as large return on your investment, as quickly, as an orchard of Rimes' **Blight-Proof** Pineapple Pear trees.

We are propagating trees of Pineapple Pears just as rapidly as we can, consistent with our well known standards of quality, using wood from the heaviest bearing trees. Get your orders in early, and we will make every effort to fill them. Should we be unable to supply you this season, better book now for another season than risk non-genuine trees.

Prof. U. P. Hedrick, Vice-Director and Chief in Horticultural Research, of the New York Agricultural Experiment Station, in his book on "The Pears of New York" for 1921, says: "About the most important discovery to be made in pomology is a race of blight-resistant Pears." This discovery has been made in Rimes' **Blight-Proof** Pineapple Pear.

ATTENTION!

This catalogue is the result of some thought as well as expense. If you are not interested, give it to a friend or neighbor. Both your neighbor and ourselves will appreciate it.

IN APPRECIATION.

To all our patrons of the past nursery year, we just want to express our heartfelt appreciation of your patronage and confidence and proffer you a continuance of the service rendered in the past. Our earnest desire is to continue to serve you well.

THE ALTAMAHA NURSERIES

Ludowici, Georgia

Introducers and Propagators of *Rimes' Blight-proof*
Pineapple Pear

MEMBERS

American Association of Nurserymen.
Southern Nurserymen's Association.
Georgia and Florida Pecan Growers Association.
American Pomological Society.

REFERENCES

Dun and Bradstreet, Commercial Agencies.
The Citizens Bank, Ludowici, Georgia.



Not a single tree shown in this catalogue ever had a drop of spray, or anything else to prevent blight or any other disease. Ever see a healthier, more vigorous looking lot! They're all that way.