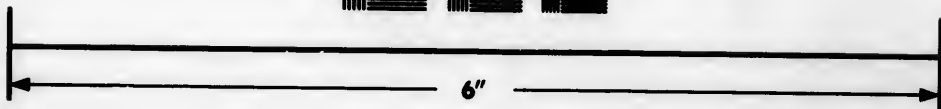
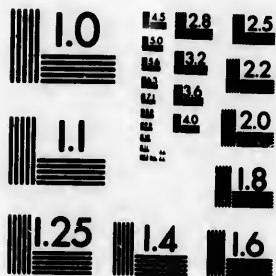


**IMAGE EVALUATION  
TEST TARGET (MT-3)**



**Photographic  
Sciences  
Corporation**

23 WEST MAIN STREET  
WEBSTER, N.Y. 14590  
(716) 872-4503

**CIHM/ICMH  
Microfiche  
Series.**

**CIHM/ICMH  
Collection de  
microfiches.**



**Canadian Institute for Historical Microreproductions / Institut canadien de microreproductions historiques**

**© 1983**

Technical and Bibliographic Notes/Notes techniques et bibliographiques

The Institute has attempted to obtain the best original copy available for filming. Features of this copy which may be bibliographically unique, which may alter any of the images in the reproduction, or which may significantly change the usual method of filming, are checked below.

L'institut a microfilmé le meilleur exemplaire qu'il lui a été possible de se procurer. Les détails de cet exemplaire qui sont peut-être uniques du point de vue bibliographique, qui peuvent modifier une image reproduite, ou qui peuvent exiger une modification dans la méthode normale de filmage sont indiqués ci-dessous.

- Coloured covers/  
Couverture de couleur
- Covers damaged/  
Couverture endommagée
- Covers restored and/or laminated/  
Couverture restaurée et/ou pelliculée
- Cover title missing/  
Le titre de couverture manque
- Coloured maps/  
Cartes géographiques en couleur
- Coloured ink (i.e. other than blue or black)/  
Encre de couleur (i.e. autre que bleue ou noire)
- Coloured plates and/or illustrations/  
Planches et/ou illustrations en couleur
- Bound with other material/  
Relié avec d'autres documents
- Tight binding may cause shadows or distortion along interior margin/  
La reliure serrée peut causer de l'ombre ou de la distortion le long de la marge intérieure
- Blank leaves added during restoration may appear within the text. Whenever possible, these have been omitted from filming/  
Il se peut que certaines pages blanches ajoutées lors d'une restauration apparaissent dans le texte, mais, lorsque cela était possible, ces pages n'ont pas été filmées.
- Additional comments:  
Commentaires supplémentaires:

- Coloured pages/  
Pages de couleur
- Pages damaged/  
Pages endommagées
- Pages restored and/or laminated/  
Pages restaurées et/ou pelliculées
- Pages discoloured, stained or foxed/  
Pages décolorées, tachetées ou piquées
- Pages detached/  
Pages détachées
- Showthrough/  
Transparence
- Quality of print varies/  
Qualité inégale de l'impression
- Includes supplementary material/  
Comprend du matériel supplémentaire
- Only edition available/  
Seule édition disponible
- Pages wholly or partially obscured by errata slips, tissues, etc., have been refilmed to ensure the best possible image/  
Les pages totalement ou partiellement obscurcies par un feuillet d'errata, une pelure, etc., ont été filmées à nouveau de façon à obtenir la meilleure image possible.

This item is filmed at the reduction ratio checked below/  
Ce document est filmé au taux de réduction indiqué ci-dessous.

10X	14X	18X	22X	26X	30X
<input type="checkbox"/>	<input type="checkbox"/>	<input checked="" type="checkbox"/>	<input type="checkbox"/>	<input type="checkbox"/>	<input type="checkbox"/>
12X	16X	20X	24X	28X	32X

The to t  
The pos of t film  
Orig beg the sion othe first sion or ill  
The shel TINU whic  
Map diffe entir begi right requ meth

The copy filmed here has been reproduced thanks to the generosity of:

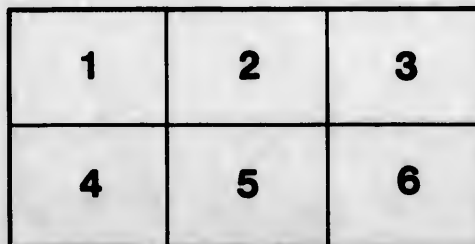
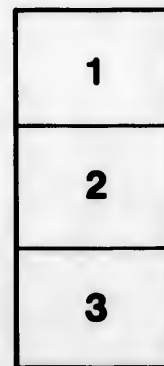
Library of the Public  
Archives of Canada

The images appearing here are the best quality possible considering the condition and legibility of the original copy and in keeping with the filming contract specifications.

Original copies in printed paper covers are filmed beginning with the front cover and ending on the last page with a printed or illustrated impression, or the back cover when appropriate. All other original copies are filmed beginning on the first page with a printed or illustrated impression, and ending on the last page with a printed or illustrated impression.

The last recorded frame on each microfiche shall contain the symbol  $\rightarrow$  (meaning "CONTINUED"), or the symbol  $\nabla$  (meaning "END"), whichever applies.

Maps, plates, charts, etc., may be filmed at different reduction ratios. Those too large to be entirely included in one exposure are filmed beginning in the upper left hand corner, left to right and top to bottom, as many frames as required. The following diagrams illustrate the method:



L'exemplaire filmé fut reproduit grâce à la générosité de:

La bibliothèque des Archives  
publiques du Canada

Les images suivantes ont été reproduites avec le plus grand soin, compte tenu de la condition et de la netteté de l'exemplaire filmé, et en conformité avec les conditions du contrat de filmage.

Les exemplaires originaux dont la couverture en papier est imprimée sont filmés en commençant par le premier plat et en terminant soit par la dernière page qui comporte une empreinte d'impression ou d'illustration, soit par le second plat, selon le cas. Tous les autres exemplaires originaux sont filmés en commençant par la première page qui comporte une empreinte d'impression ou d'illustration et en terminant par la dernière page qui comporte une telle empreinte.

Un des symboles suivants apparaîtra sur la dernière image de chaque microfiche, selon le cas: le symbole  $\rightarrow$  signifie "A SUIVRE", le symbole  $\nabla$  signifie "FIN".

Les cartes, planches, tableaux, etc., peuvent être filmés à des taux de réduction différents. Lorsque le document est trop grand pour être reproduit en un seul cliché, il est filmé à partir de l'angle supérieur gauche, de gauche à droite, et de haut en bas, en prenant le nombre d'images nécessaire. Les diagrammes suivants illustrent la méthode.

**A**

BEIN  
And

The U  
Facts  
Eclipse  
Rising  
The S  
Time o

**MR**

THE  
NEW-BRUNSWICK  
**ALMANACK,**

FOR THE YEAR OF OUR LORD,

**1831; 32 33**

BEING THE THIRD AFTER BISEXTILE OR LEAP YEAR,

And first of the Reign of His Most Gracious Majesty

**WILLIAM THE FOURTH,**

*Wm. Smith*  
**CONTAINING**

The Universal Calendar;  
Fests and Fasts of the Church;  
Eclipses of the Lunaries;  
Rising and Setting of the Sun;  
Rising and Setting of the Moon;  
The Sun's Declination;  
Time of High Water;

The Civil, Ecclesiastical, and Mi-  
litary Register for the Province;  
Sitting of the different Courts;  
A summary of the Laws regulating  
Pilgrage—the Customs, Mar-  
ine, &c.; and a variety of Agricul-  
tural and other useful information.

TOGETHER WITH A CORRECT LIST OF THE

**MILITIA OFFICERS**

IN THE PROVINCE.



**SAINT JOHN,**

PRINTED AND SOLD BY HENRY CHUBB, (CORNER  
OF THE) MARKET-SQUARE,

*Almanack*

## POST-OFFICE DEPARTMENT.

JOHN HOWE, Junior, Esquire, Deputy Postmaster-General for  
Nova-Scotia and New-Brunswick.

### *Post-Masters throughout the Province.*

Charles Drury, Esquire, *Saint John*,  
William B. Phair, Esquire, *Fredericton*,  
George Frederick Campbell, Esquire, *Saint Andrews*,  
James Caie, Esquire, *Miramichi*,  
John Wesley Weldon, Esquire, *Richibucto*,  
Thomas Keillor, Esquire, *Dorchester*,  
William Wiley, Esquire, *Peticodiac*,  
John C. Vail, Esquire, *Sussex Vale*,  
Asa Davidson, Esquire, *Kingston*,  
Thomas Armstrong, Esquire, *Saint Stephen*,  
T. M. DeBlois, Esquire, *Rathurst*,  
Gideon Knight, Esquire, *Saint George*.

### MAIL DAYS.

#### *Arrival and Departure of the MAILS, at and from Saint John, N. B.*

**MONDAY**—For Fredericton, &c. by the Nerepis, at 11, A M.  
From ditto, (in summer) by steam-boat, at — P M.  
**TUESDAY**—For St. Andrews, &c. by land, at 10, A M.  
For Fredericton, (in summer) by boat, at 4 P M.  
From Halifax, &c. (in summer) by boat, at — P M.  
**WEDNESDAY**—From St. Andrews, &c. by land, at 12, M.  
For Halifax, Miramichi, Dorchester, Richibucto,  
Sussex Vale, Kingston, &c. by land, at 1, P M.  
For St. Andrews, (in summer) by boat, at 4, P M.  
**THURSDAY**—From Fredericton and Canada, by land, at 11, A M.  
From ditto, (in summer) by the boat, at — P M.  
**FRIDAY**—For Fredericton and Canada, do. do. at 4 P M.  
**SATURDAY**—From Halifax, Miramichi, Richibucto, Dorches-  
ter, Sussex Vale, and Kingston, at 10, A M.  
For Digby and Halifax, (in summer) by boat, at 4 P M.  
From St. Andrews, (in summer) by boat, at — P M.

☉ The inland Postage on all Letters for Europe, New-  
foundland, the West-Indies and United States, must be paid  
at the rate of 9d. per single letter, and so in proportion for a  
double or treble packet; or they cannot be forwarded.

E  
The  
Sun, an  
I. The  
Saturday  
Be  
Mi  
En  
Du  
Digits

luminous  
ted States  
II. The  
tic & at C  
here; but  
on her so  
III. Th  
24m. in t  
Moon's sc  
eclipse on  
IV. Th  
of August  
follows:  
Begin  
Moon  
Midd  
Eclip  
End,  
Digits e

♀ Venu  
Star the r  
♃ Jupit  
10, and th

## ECLIPSES IN THE YEAR 1831.

There will be four Eclipses this year; two of the Sun, and two of the Moon, in the following order:

I. The first will be a great Annular Eclipse of the Sun, on Saturday, February 12<sup>th</sup>, and visible as follows:

Beginning,.....	11h. 56m. morn.	} Apparent time.
Middle,.....	1 19 even.	
End,.....	2 44	
Duration,.....	2 54	

Digits eclipsed  $11^{\circ} 19'$  on the Sun's southern limb.



In this Eclipse, the apparent diameter of the Moon will not be sufficient entirely to obscure the Sun; hence it can nowhere be total; at Boston, New-York, and Philadelphia, it will appear nearly as in the accompanying figure: but where the Eclipse is central, it will be *annular*, the Sun presenting the appearance of a

luminous ring. The Moon's shadow will pass over the United States and these Provinces, nearly from S. W. to N. E.

II. The second will be of the Moon, February 26<sup>th</sup>, eclipsed  $\delta$  at 0h. 11m. in the evening; consequently not visible here; but visible in Asia and Europe,  $6^{\circ} 18'$  being obscured on her south limb, and the eclipse enduring about 3 hours.

III. The third will be of the Sun, August 7<sup>th</sup>,  $\delta$  at 5h. 24m. in the evening; but invisible here, by reason of the Moon's southern latitude,  $59\frac{1}{2}'$  S. It will be almost a central eclipse on the meridian at the Society Islands.

IV. The fourth and last will be of the Sun, on Tuesday 23<sup>rd</sup> of August, the first part only of which will be visible here, as follows:

Beginning,.....	4h. 1 $\frac{1}{2}$ m.	} Apparent time in the morning.
Moon sets here,.....	5 11	
Middle,.....	5 19	
Ecliptic $\delta$ ,.....	5 26 $\frac{1}{2}$	
End,.....	6 34 $\frac{1}{2}$	

Digits eclipsed,  $5^{\circ} 48'$  on the Moon's northern limb.

### Morning and Evening Stars.

$\delta$  Venus will be Evening Star till October 8, and Morning Star the rest of the year.

$\zeta$  Jupiter will be Morning Star from January 20 to August 10, and then Evening Star to the end of the year.



*Chronological Cycles for 1831.*

Dominical Letter,	B	Solar Cycle,	20
Golden Number,	8	Roman Indiction,	4
Epaet,	17	Julian Period,	6544

*Names and Characters of the Signs of the Zodiac.*

♈ Aries, head.	♎ Libra, reins.
♉ Taurus, neck.	♏ Scorpio, secrets.
♊ Gemini, arms.	♐ Sagittarius, thighs.
♋ Cancer, breast.	♑ Capricornus, knees.
♌ Leo, heart.	♒ Aquarius, legs.
♍ Virgo, belly.	♓ Pisces, feet.

*Names and Characters of the Aspects and Nodes.*

♌ Conjunction.	Vc. Quincunx, 120 deg.
* Sextile, 60 degrees.	♌ Opposition, 180 deg.
□ Quartile, 90 degrees.	♌ Ascending Node.
△ Trine, 120 degrees.	♌ Descending Node.

*Names and Characters of the Planets.*

☉ The Sun.	♁ The Earth.
☾ The Moon.	♂ Mars.
☿ Mercury.	♃ Jupiter.
♀ Venus.	♄ Saturn.
	♃ Herschell.

**TABLE OF THE SOLAR SYSTEM.**

Names.	Mean diameters in Br. miles.	Mean distances from the Sun.	Time of Rotations round their Axes.	Time of Revolutions round the Sun.	Hourly motions in their Orbits
The Sun	883246	Miles,	25d 14h 8m	d. h. m.	Miles.
Mercury	3224	37 million	1d 5m 23s	87 23 15½	110000
Venus	7687	68 do	23h 20m 59s	224 16 49	79000
Earth	7912	95 do	1 day	365 6 9	68000
Moon	2180	95 do	29d 12h 44m	— — —	2300
Mars	4189	144 do	18 39m 22s	686 23 30½	55000
Ceres	1624	260 do	unknown.	1683 14 12	40460
Pallas	2099	266 do	do.	1703 16 48	40800
Juno	1425	275 do	1d 8h	2008 6 14	35800
Vesta	1517	300 do	unknown	2162 5 24	36300
Jupiter	89170	490 do	9h 55m 37s	4332 14 27	29600
Saturn	79042	900 do	10h 16m 0½s	10759 1 51	21900
Herschell	35112	1800 do	unknown	30737 18 0	15900

Septua  
Quinq.  
Ash W  
of Le  
Mid Le  
Palm S  
Easter I

1st Janu  
2d do  
17th Mar  
23d Apri  
29th May  
24th Jun  
21st Aug  
King's C  
29th Sept

His Maje  
brother  
the sist  
Her Maje  
Princess  
Ernest A  
married  
Strelitz  
Augustus  
Adolphus  
1774—  
niece of  
born in  
Mary, Du  
Sophia, to  
  
Sophia M  
ick, Du  
  
Alexand  
born May

**Moveable Festivals of the Church.**

Septuagesima Sunday,	Jan. 30	Low Sunday,	April
Quinquagesima, or Shrove do.	Feb. 13	Rogation Sunday,	May
Ash Wednesday, 1st day	} " 16	Ascension Day or Holy Thursday,	} " 1
of Lent,			
Mid Lent Sunday,	March 13	Whit Sunday,	" 1
Palm Sunday,	" 27	Trinity Sunday,	" 1
Easter Day,	April 3	Advent Sunday,	Nov. 2

**Holidays at the Public Offices.**

1st January, New-Year's Day	11th October
2d do.	30th November, Saint Andrew
17th March, Saint Patrick	25th December, Christmas Day
23d April, Saint George	26th do. } Christmas
29th May, King Charles	27th do. } Holidays.
24th June, Saint John	Ash Wednesday
21st August, King Wm. IV. born	Good Friday
King's Coronation.	Easter Monday
29th September, Michaelmas	Easter Tuesday

**THE ROYAL FAMILY.**

His Majesty William IV. born August 21, 1765, succeeded his brother, (George IV.) June 26, 1830—married in 1818, to the sister of Duke Saxe Meiningen.

Her Majesty Queen Adelaide, born 13th August, 1792.  
Princess Augusta Sophia, born November 8, 1768.

Ernest Augustus, Duke of Cumberland, born June 5th, 1771 married in 1815, daughter of the Duke of Mecklenburg Strelitz, then widow—Issue, George Frederick, born 1819.

Augustus Frederick, Duke of Sussex, born January 27, 1773  
Adolphus Frederick, Duke of Cambridge, born 24th February 1774—married in 1818, to Augusta Wilhelmina Louis: niece of the Landgrave of Hesse—Issue, George William born in 1819, and Augusta Caroline, born in 1822.

Mary, Duchess of Gloucester, born April 25, 1779.  
Sophia, born November 3, 1777.

*Cousins to His Majesty.*

Sophia Matilda, Duchess of Gloucester, and William Frederick, Duke of Gloucester.

*Presumptive Heiress to the Crown.*

Alexandrina, Victoria, daughter of the late Duke of Kent, born May 24, 1819.

20  
4  
6544  
  
Zodiac.  
  
ts.  
ighs.  
knees.  
s.  
  
Nodes.  
20 deg.  
80 deg.  
ode.  
Node.  
  
ts.  
  
Saturn.  
  
Hourly motions in their Orbits  
  
Miles.  
110000  
79000  
68000  
2300  
55000  
40460  
40800  
35800  
36300  
29600  
21900  
15300

## SIGNALS

*Made at Partridge Island, and repeated at the Tower in Carleton, on the approach of Vessels to this Harbour :*

- One Ball close, for one square rigged vessel,
- One Ball half hoisted, for two ditto,
- Two Balls close, for three ditto,
- Two Balls separated, for four ditto,
- A Pendant of any colour for five ditto,
- A ditto under a Ball, for six ditto,
- A ditto over a Ball half hoisted, for seven ditto,
- A ditto under two Balls close, for eight ditto,
- A ditto between two Balls separate, for nine ditto,
- A Flag of any colour for ten or more ditto.

[The above are hoisted at the East or West yard arm, according to the quarter the vessels first appear in, with the addition of a Ball at the centre of the yard, until the rig of the vessel can be made out,—when one or more of the following descriptive colours will be hoisted at the mast head :]

- An Union Jack for a Flag Ship, with or without a squadron.
- Ditto with a red pendant over, for a two decker.
- Ditto with a blue pendant over, for a Frigate.
- Ditto with a white ditto, for a small armed vessel

- A blue pendant for a merchant ship.
- A red ditto, for a merchant brig.
- A white and blue ditto for a Foreign vessel.
- A white ditto for a topsail schooner or sloop.
- A flag blue and white horizontally, a neutral fleet.
- A pendant white and blue, a neutral man-of-war.
- A blue flag, a neutral merchant ship.
- A flag, red, white and blue, an enemy's fleet.
- A pendant, red, white and blue, an enemy's man of war.
- An Union Jack over neutral or enemy's signals, the vessel is detained, or a prize.
- A white flag over any signal, the vessel bears a flag of truce.
- A red flag pierced white for the Digby Packet.
- A Ball at the mast head, vessel is on shore or in distress.—
- Should immediate aid be necessary, guns to be fired.

In thick weather, a gun will be fired at Partridge Island, in answer each gun heard at sea.—When a vessel requires a Pilot, her descriptive pendant will be shewn at a yard arm, instead of a Ball.

### TIME FOR GOING THROUGH THE FALLS.

The Falls are level (or still water) at about 3½ hours on the flood, and at about 2½ on the ebb, which makes them passable four times in 24 hours, about ten or fifteen minutes each time.—No other rule can be given, as much depends on the floods in the river Saint John, and the time of high water or full sea, which is often hastened by high winds, and in proportion to the height of them.

Geograph  
Americ

PLA

St. John,  
Partridge  
Beaver H  
Poin  
Navy Isla  
Bliss' Isla  
L'Et  
Head Har  
Grand M  
Ditto  
Ditto  
Brier's Isla  
Digby Lig  
HALIFAX,  
Green Isl.  
Canso Lig  
Eddy Poin  
Pictou Isla  
Pictou Har  
Liverpool  
Western H  
Long proj  
Island  
Shelburne  
Sandy Poi  
Cape Sabl  
South Sea  
Dit  
Sable Isla  
Ditto,  
Louisburg,  
Cape Bret  
City of Qu  
St. Paul's  
Cape Gas  
Anticosti,  
Magdalen  
Princes Ed  
St. John's  
Deck Yar

*Geographical Position of Headlands, &c. on the Coast of America, determined on the spot by Astronomical Observations.*

PLACE OF OBSERVATION.	LATITUDE North.	Longitude West of Greenwich
St. John, N. B. ....	45 15 0	66 6 19
Partridge Island Light House, ....	45 13 36	
Beaver Harbour, South West } Point of the entrance, }	... 45 3 12	66 47 28
Navy Island, South East Point, ....	45 2 24	67 5 47
Bliss' Island, South West Point, } L'Etang Harbour, }	... 45 0 15	66 54 27
Head Harbour Light H., Campo Bello, ...	44 56 50	66 56 58
Grand Manan, North Point, ....	44 46 49	66 49 7
Ditto, Swallow-tail Point, ...	44 44 54	66 47 21
Ditto, White Head Island, ...	44 36 59	66 45 4
Brier's Island Light House, ....	44 13 51	66 26 54
Digby Light House, ....	44 40 25	65 50 15
HALIFAX, Naval Yard, (Meridian) ...	44 39 26	63 37 43
Green Isl., Country Harbour, S. Point,	45 4 55	61 34 49
Canso Light House, ...	45 19 33	60 58 30
Eddy Point, Gut of Canso, ...	45 30 25	61 16 54
Pictou Island, South side, ...	45 47 52	62 37 33
Pictou Harbour, ...	45 41 56	62 42 0
Liverpool Light House, ...	44 1 52	64 40 49
Western Head, Liverpool Bay, ...	43 59 13	64 42 34
Long projecting Point between Rugged Island Harbour and Green Harbour,	43 39 40	65 11 28
Shelburne Light House, ...	43 37 31	65 18 40
Sandy Point, Shelburne Harbour, ...	43 41 57	65 22 11
Cape Sable, South Point, ...	43 23 57	65 38 3
South Seal Island, South Point, ...	43 23 51	65 59 42
Ditto North Point, ...	43 26 22	66 1 38
Sable Island, East end, ...	43 59 15	59 48 17
Ditto, West end, ...	43 56 30	60 13 34
Louisburg, Ruins of the old Light House,	45 53 31	59 59 43
Cape Breton, extreme Point, ...	45 56 28	59 50 15
City of Quebec, ...	46 48 30	71 16 25
St. Paul's Island, ...	47 12 39	60 11 24
Cape Gaspe, South East Point, ...	48 45 14	64 13 38
Anticosti, West Point, ...	49 52 29	64 36 54
Magdalen Island, North East Point, ...	47 37 37	61 26 51
Prince Edward Island, West Point, ...	46 37 43	64 24 31
St. John's, (N. F.) Fort Townshend, ...	47 33 33	52 43 10
Deck Yard, Bermuda, ....	32 19 1	64 54 18

Carle-  
to,  
ording to  
a Ball at  
de out,—  
e hoisted  
quadron.  
decker.  
igate.  
ed vessel  
of war.  
the vessel  
of truce.  
distress.—  
fired.  
in answer  
ot, her de-  
a Ball.  
LLS.  
n the flood,  
our times in  
er rule can  
t John, and  
ed by high

*Handwritten signatures and scribbles at the bottom of the page.*

**TABLE OF THE SUN'S DECLINATION,  
FOR THE YEAR 1831.**

[Carefully corrected from NORIK'S Epitome.]

Days	Jan.		Feb.		March.		April.		May.		June		Days
	South		South		South		North		North		North		
	o	'	o	'	o	'	o	'	o	'	o	'	
1	23	3	17	14	7	45	4	21	14	56	22	0	1
2	22	58	16	57	7	28	4	45	15	14	29	8	2
3	22	58	16	39	7	0	5	8	15	32	22	16	3
4	22	47	16	21	6	37	5	31	15	49	22	23	4
5	22	41	16	3	6	14	5	53	16	7	22	30	5
6	22	34	15	45	5	50	6	16	16	24	22	37	6
7	22	26	15	27	5	27	6	39	16	41	22	43	7
8	22	19	15	8	5	4	7	1	16	57	22	49	8
9	22	11	14	49	4	41	7	24	17	13	22	54	9
10	22	2	14	30	4	17	7	46	17	29	22	59	10
11	21	53	14	10	3	54	8	8	17	45	23	4	11
12	21	44	13	50	3	30	8	30	18	1	23	8	12
13	21	34	13	30	3	6	8	52	18	16	23	12	13
14	21	23	13	10	2	43	9	14	18	30	23	15	14
15	21	18	12	50	2	19	9	35	18	45	23	18	15
16	21	2	12	29	1	56	9	57	18	59	23	21	16
17	20	50	12	8	1	32	10	18	19	13	23	23	17
18	20	38	11	47	1	8	10	39	19	26	23	25	18
19	20	26	11	26	0	44	11	0	19	40	23	26	19
20	20	18	11	5	0	21 S	11	22	19	53	23	27	20
21	20	0	10	43	0	3 N	11	41	20	5	23	29	21
22	19	47	10	21	0	27	12	2	20	17	23	29	22
23	19	38	10	0	0	50	12	22	20	29	23	27	23
24	19	19	9	38	1	14	12	42	20	41	23	27	24
25	19	5	9	15	1	38	13	2	20	52	23	26	25
26	18	50	8	53	2	1	13	21	21	3	23	24	26
27	18	34	8	31	2	25	13	41	21	13	23	22	27
28	18	19	8	8	2	48	14	0	21	23	23	20	28
29	18	3			3	12	14	18	21	33	23	17	29
30	17	47			3	35	14	37	21	42	23	14	30
31	17	30			3	58			21	51			31

**TABLE**

Days	July.		Days
	North		
	o	'	
1	23	10	1
2	23	6	2
3	23	2	3
4	22	57	4
5	22	52	5
6	22	46	6
7	22	40	7
8	22	34	8
9	22	27	9
10	22	20	10
11	22	12	11
12	22	4	12
13	21	56	13
14	21	47	14
15	21	38	15
16	21	29	16
17	21	19	17
18	21	9	18
19	20	58	19
20	20	47	20
21	20	36	21
22	20	25	22
23	20	13	23
24	20	0	24
25	19	48	25
26	19	35	26
27	19	22	27
28	19	8	28
29	18	54	29
30	18	40	30
31	18	26	31

**TABLE OF THE SUN'S DECLINATION,  
FOR THE YEAR 1831.**

(Continued.)

June		Days	July.		August		Septemb.		Oct.		Nov.		Dec.		Days
North			North	North	North	South	South	South							
°	'	°	'	°	'	°	'	°	'	°	'	°	'		
22	0	1	1	23 10	18 11	8 29	2 59	14 17	21 45	1		21	45	1	
22	9	2	2	23 6	17 56	8 8	8 22	14 36	21 54	2		21	54	2	
22	16	3	3	23 2	17 40	7 46	3 46	14 55	22 3	3		22	3	3	
22	23	4	4	22 57	17 25	7 24	4 9	15 14	22 12	4		22	12	4	
22	30	5	5	22 52	17 9	7 2	4 32	15 33	22 20	5		22	20	5	
22	37	6	6	22 46	16 52	6 39	4 55	15 51	22 27	6		22	27	6	
22	43	7	7	22 40	16 36	6 17	5 18	16 9	22 35	7		22	35	7	
22	49	8	8	22 34	16 19	5 54	5 41	16 27	22 41	8		22	41	8	
22	54	9	9	22 27	16 2	5 32	6 4	16 44	22 43	9		22	43	9	
22	59	10	10	22 20	15 45	5 9	6 27	17 1	22 53	10		22	53	10	
23	4	11	11	22 12	15 27	4 46	6 50	17 18	22 59	11		22	59	11	
23	8	12	12	22 4	15 10	4 24	7 13	17 35	23 4	12		23	4	12	
23	12	13	13	21 56	14 51	4 1	7 35	17 51	23 8	13		23	8	13	
23	15	14	14	21 47	14 33	3 38	7 58	18 7	23 12	14		23	12	14	
23	19	15	15	21 38	14 15	3 15	8 20	18 23	23 16	15		23	16	15	
23	21	16	16	21 29	13 56	2 51	8 42	19 38	23 19	16		23	19	16	
23	23	17	17	21 19	13 37	2 29	9 4	18 53	23 22	17		23	22	17	
23	25	18	18	21 9	13 19	2 5	9 26	19 8	23 24	18		23	24	18	
23	26	19	19	20 58	12 58	1 42	9 48	19 22	23 25	19		23	25	19	
23	27	20	20	20 47	12 39	1 18	10 10	19 36	23 27	20		23	27	20	
23	29	21	21	20 36	12 19	0 55	10 32	19 50	23 27	21		23	27	21	
23	29	22	22	20 25	11 59	0 32	10 53	20 3	23 28	22		23	28	22	
23	27	23	23	20 13	11 39	0 8 N	11 14	20 16	23 27	23		23	27	23	
23	27	24	24	20 0	11 18	0 15 S	11 35	20 28	23 27	24		23	27	24	
23	26	25	25	19 48	10 58	0 39	11 56	20 41	23 26	25		23	26	25	
23	24	26	26	19 35	10 37	1 2	12 17	20 52	23 24	26		23	24	26	
23	22	27	27	19 22	10 16	1 26	12 38	21 4	23 22	27		23	22	27	
23	20	28	28	19 8	9 55	1 49	12 58	21 15	23 19	28		23	19	28	
23	17	29	29	18 54	9 34	2 12	13 18	21 25	23 16	29		23	16	29	
23	14	30	30	18 40	9 13	2 36	13 38	21 35	23 13	30		23	13	30	
		31	31	18 26	8 51		13 58		23 9	31		23	9	31	

# JANUARY HATH XXXI DAYS.

" — WINTER, regent of the opening year,  
 Now sways the sceptre of revolving time;  
 With keener looks his chilly trains appear,  
 Tho' length'ning days, attendant, onward climb.  
 And Hence now, designing envious war,  
 Musters his swift-wing'd legions in the air."

## MOON'S PHASES.

Last Quarter, 5th, 6h. 10m. A. | First Quarter, 21st, 2h. 45m. M.  
 New Moon, 13th, 8h. 53m. A. | Full Moon, 27th, 9h. 49m. A.

D. M.	D. W.	CALENDAR, &c.	☉ R. & S		☽ R. & S		Plac.	High water h. m.
			h. m.	h.	h. m.	h.		
1	Sat	Circumcision. <i>Clear</i>	7	39	5	9	13	hart. 1 31
2	SU	2d Sunday after Christmas.	7	39	5	9	18	belly 2 20
3	Mo	<i>and cold.</i>	7	37	5	10	21	belly 3 7
4	Tu		7	37	5	11	21	rein. 3 51
5	We	Rather low tides.	7	36	5	Morn	rein.	4 33
6	Th	Epiphany. <i>A snow storm</i>	7	36	5	0	21	rein. 5 17
7	Fri		7	35	5	1	18	secr. 6 0
8	Sat	☽ in apogee. <i>may be</i>	7	34	5	2	17	secr. 6 45
9	SU	1st Sunday after Epiphany.	7	34	5	3	13	thi. 7 30
10	Mo	<i>looked for.</i>	7	33	5	4	10	thi. 8 17
11	Tu	Greatest elongation of ♀	7	32	5	5	5	thi. 9 5
12	We	<i>More moderate</i>	7	31	5	5	58	knee 9 56
13	Th	Chas. J. Fox born, 1749.	7	31	5	Sets.	knee	10 47
14	Fri		7	30	5	5	31	leg. 11 37
15	Sat	High tides. <i>and changeable</i>	7	29	5	6	33	leg. ev. 27
16	SU	2d Sun. aft. Epiph. Battle of	7	28	5	7	37	leg. 1 16
17	Mo	<i>weather, [Corunna, 1809.</i>	7	27	5	8	44	feet 2 4
18	Tu	Prisca. <i>followed by a</i>	7	26	5	9	53	feet 2 53
19	We	Middling tides.	7	25	5	11	1	head 3 42
20	Th	☉ enters ☉☉ <i>rain storm.</i>	7	24	5	Morn	head	4 31
21	Fri	Louis 16 beheaded, 1793.	7	23	5	0	10	neck 5 24
22	Sat	Low tides.	7	22	5	1	22	neck 6 19
23	SU	3d Sunday after Epiphany.	7	21	5	2	32	arm 7 16
24	Mo	☽ in perigee. <i>Snow.</i>	7	19	5	3	40	arm 8 15
25	Tu	Conversion of St. Paul.	7	18	5	4	44	bre. 9 14
26	We	<i>Quite mild weather</i>	7	17	5	5	43	bre. 10 13
27	Th	Duke of Sussex born, 1773.	7	16	5	Rises.	hart.	11 9
28	Fri	Peter the Great died, 1725.	7	15	5	5	43	hart. Morn
29	Sat	George III. died, 1820. <i>for</i>	7	14	5	6	48	hart. 0 1
30	SU	Septuages. Sun. Chas. I. beh.	7	13	5	7	55	belly 0 50
31	Mo	Ald'n a. 7 30 eve. <i>the season.</i>	7	11	5	8	57	belly 1 37

Last Quarter  
New Moon

D. M.	D. W.	
1	Tu	
2	We	Pur
3	Th	Spa
4	Fri	
5	Sat	☽
6	SU	Sex
7	Mo	♀
8	Tu	Ma
9	We	Siri
10	Th	Lo
11	Fri	
12	Sat	An
13	SU	Qui
14	Mo	Val
15	Tu	Shr
16	We	Ash
17	Th	
18	Fri	☽
19	Sat	☉
20	SU	1st
21	Mo	Lo
22	Tu	
23	We	Siri
24	Th	St.
25	Fri	Ear
26	Sat	☽
27	SU	2d
28	Mo	

FE

" The  
 Tho  
 And  
 Yet  
 With  
 And  
 The  
 How  
 Blaz

# FEBRUARY HATH XXVIII DAYS.

" Let Winter reign ! let polar spirits sweep  
 The dark'ning world, and tempest-troubled deep !  
 Tho' boundless snows the wither'd heath deform,  
 And the dim Sun scarce wanders through the storm ;  
 Yet shall the smile of social love repay,  
 With mental light, the melancholy day,  
 And when its short and sullen moon is o'er,  
 The ice-chain'd waters slumb'ring on the shore,  
 How bright the faggots in the little hall  
 Blaze on the hearth, and warm the pictured wall ! "

## MOON'S PHASES.

Last Quarter, 4th, 8h. 29m. A.  
 New Moon, 12th, 0h. 15m. A.

First Quarter, 19th, 10h. 15m. M.  
 Full Moon, 26th, 0h. 15m. A.

2h. 45m. M.  
49m. A.

Plac.	High water	h.	m.
hart.	1	31	
belly	2	20	
belly	3	7	
rein.	3	51	
rein.	4	33	
rein.	5	17	
secr.	6	0	
secr.	6	45	
thi.	7	30	
thi.	8	17	
thi.	9	5	
knee	9	56	
knee	10	47	
leg.	11	37	
leg.	ev.	27	
leg.	1	16	
feet	2	4	
feet	2	53	
head	3	42	
head	4	31	
neck	5	24	
neck	6	19	
arm	7	16	
arm	8	15	
bre.	9	14	
bre.	10	13	
hart.	11	9	
hart.	Morn		
hart.	0	1	
belly	0	50	
belly	1	37	

D.	D.	CALENDAR, &c.	R.	S.	R.	S.	Plac.	High water
M.	W.		h.	m.	h.	m.		h. m.
1	Tu	<i>Cold winds</i>	7	10	5	9	59	rein. 2 21
2	We	Purification of B. V. Mary.	7	9	5	10	58	rein. 3 4
3	Th	Spanish Inquis. abo. 1913.	7	7	5	11	57	secr. 3 46
4	Fri	<i>with snow</i>	7	6	5	Morn	secr.	4 29
5	Sat	☽ in apogee. Low tides.	7	5	5	0	55	secr. 5 14
6	SU	Sexagesima Sunday. <i>and</i>	7	4	5	1	52	thi. 6 0
7	Mo	☽ stationary. <i>perhaps rain.</i>	7	3	5	2	47	thi. 6 48
8	Tu	Mary Q. of Scots beh. 1596.	7	1	5	3	42	knee 7 38
9	We	Sirius south 9h 6m <i>Fair and</i>	7	0	5	4	33	knee 8 29
10	Th	Lord Darnly mur. 1567.	6	58	6	5	20	knee 9 21
11	Fri	<i>fine sleighing.</i>	6	56	6	6	3	leg. 10 13
12	Sat	Annular eclipse of the Sun.	6	55	6	Sets.	leg.	11 6
13	SU	Quinquagesima Sunday.	6	54	6	6	27	feet 11 57
14	Mo	Valentine. <i>Changeable,</i>	6	52	6	7	37	feet ev 47
15	Tu	Shrove Tuesday. <i>and</i>	6	51	6	8	48	head 1 37
16	We	Ash Wednesday.	6	50	6	9	59	head 2 28
17	Th	<i>perhaps rain.</i>	6	48	6	11	10	neck 3 19
18	Fri	☽ in perigee.	6	47	6	Morn	neck	4 12
19	Sat	☽ enters ♋. <i>Pleasant</i>	6	45	6	0	20	arm 5 7
20	SU	1st Sunday in Lent.	6	44	9	1	30	arm 6 5
21	Mo	Low tides, <i>and clear,</i>	6	43	6	2	33	arm 7 3
22	Tu		6	41	6	3	34	bre. 8 1
23	We	Sirius south 8h 11m [1774	5	40	6	4	27	bre. 8 57
24	Th	St. Matthias. D. of Camb. b.	6	38	6	5	13	hart. 9 51
25	Fri	Earl Essex beh. 1601. <i>Snow.</i>	6	37	6	5	33	hart. 10 43
26	Sat	☽ eclipsed, invisible.	6	35	6	Rises	belly	11 32
27	SU	2d Sunday in Lent. <i>High</i>	6	33	6	6	41	belly Morn.
28	Mo	<i>Fair weather.</i> [tides.	6	31	6	7	44	rein 0 18



# MARCH HATH XXXI DAYS.

O haste thee, Spring! and strow around,  
The fairest of thy flowers;  
With roses deck the verdant mound,  
And on the cold and lifeless ground,  
O, pour thy warmest showers!

## MOON'S PHASES.

Last Quarter 6th, 0h. 27m. A. | First Quarter, 20th, 5h. 33m. A.  
New Moon, 14th, 1h. 5m. M. | Full Moon, 28th, 3h. 37m. M.

D.	D. W.	CALENDAR, &c.	☉		☽		R. S.	Plac.	High water	
			R. h.	S. m.	R. h.	S. m.			h.	m.
1	Tu	St. David.	6	30	6	8	47	reins	1	2
2	We	Sirius south 7h 49m eve.	6	23	6	9	46	reins	1	46
3	Th	<i>Rather unpleasant</i>	6	27	6	10	46	secr.	2	29
4	Fri	☽ in apogee. <i>and blustering</i>	6	26	6	11	43	secr.	3	12
5	Sat	<i>weather.</i>	6	24	6	Morn	thi.	3	56	
6	SU	3d Sunday in Lent.	6	23	6	0	39	thi.	4	41
7	Mo	Low tides. <i>Fine and</i>	6	21	6	1	33	thi.	5	29
8	Tu	<i>pleasant for March.</i>	6	20	6	2	26	knee	6	20
9	We	☽ south 10h 40m eve.	6	18	6	3	15	knee	7	11
10	Th	Sirius south 7h 16m. <i>Hea-</i>	6	17	6	3	59	legs	8	3
11	Fri	<i>vy rains may be</i>	6	15	6	4	42	legs	9	56
12	Sat	Gregory Martyr.	6	14	6	5	19	feet	9	49
13	SU	Mid Lent Sunday. <i>expected</i>	6	12	6	5	55	feet	10	42
14	Mo	<i>about</i>	6	11	6	Sets.	feet	11	34	
15	Tu	Quite high tides.	6	9	6	7	49	head	ev	26
16	We	☽ perigee. <i>this time.</i>	6	7	6	9	2	head	1	20
17	Th	St. Patrick.	6	6	6	10	15	neck	2	14
18	Fri	<i>Changeable,</i>	6	4	6	11	27	neck	3	9
19	Sat	<i>but generally fine.</i>	6	3	6	Morn	arms	4	5	
20	SU	5th Sunday in Lent.	6	1	6	0	34	arms	5	1
21	Mo	☉ enters ♈ SPRING begins.	5	59	7	1	35	bres.	6	0
22	Tu	Sir I. Newton died, 1797.	5	58	7	2	31	bres.	6	56
23	We	<i>Hail, rain, or snow,</i>	5	56	7	3	19	hart.	7	50
24	Th	<i>☽ sets 11h 28m succeeded</i>	5	55	7	4	0	hart.	8	42
25	Fri	Lady Day. <i>by pleasant</i>	5	53	7	4	36	belly	9	32
26	Sat	Bona. ret. from Elba, 1815.	5	52	7	5	8	belly	10	20
27	SU	Palm Sunday. <i>and season-</i>	5	50	7	5	39	belly	11	6
28	Mo	<i>able weather.</i>	5	49	7	Rises.	reins	12	50	
29	Tu	High tides. <i>to the</i>	5	47	7	7	42	reins	Morn	
30	We	Allies enter Paris, 1814.	5	45	7	8	43	secr.	0	33
31	Th	☽ apogee. <i>end of the month.</i>	5	44	7	9	41	secr.	1	16

Last Quarter  
New Moon

D.	D. W.
1	Fri Go
2	Sat
3	SU East
4	Mo East
5	Tu East
6	We Low
7	Th
8	Fri
9	Sat
10	SU test
11	Mo
12	Tu
13	We
14	Th High
15	Fri
16	Sat Sh
17	SU ad
18	Mo
19	Tu Low
20	We
21	Th Low
22	Fri
23	Sat St.
24	SU Ed
25	Mo St
26	Tu
27	We High
28	Th
29	Fri
30	Sat

# APRIL HATH XXX DAYS.

Now hawns the day to FOLLY ever dear,  
 And deem'd by her the fairest of the year;  
 APRIL's first morn, distinguish'd by her birth,  
 To Sloth she gives the day, the night to Mirth;  
 Comes when the hooting owls begin their flight,  
 For Folly keeps her holiday—at night!

## MOON'S PHASES.

Last Quarter 5th, 7h. 19m. M.      First Quarter, 19th, 1h. 48p. M.  
 New Moon, 12th, 11h. 16m. M.      Full Moon, 26th, 7h. 35m. A.

5h. 33m. A.  
 37m. M.

○ High water  
 Plac. h. m

	High water h. m			☉ R. & S. h. m	☽ R. & S. h. m	○ Plac.	High water h. m.
reins	1 2						
reins	1 46						
secr.	2 29						
secr.	3 12	1 Fri	Good Friday. All fools' day	5 42 7	10 38	secr.	2 0
thi.	4 41	2 Sat	<i>Beautifully serene</i>	5 41 7	11 33	thi.	2 45
thi.	4 41	3 SU	Easter Day	5 39 7	MORN	thi.	3 30
thi.	5 29	4 Mo	Easter Monday <i>and plea-</i>	5 38 7	0 25	knee	4 17
knee	6 20	5 Tu	Easter Tuesday <i>san-</i>	5 36 7	1 15	knee	5 6
knee	7 11	6 We	Low tides	5 35 7	2 1	knee	5 57
legs	8 3	7 Th	<i>Variable,</i>	5 34 7	2 48	legs	6 48
legs	9 56	8 Fri	h south Sh 44m evening	5 33 7	3 22	legs	7 40
feet	9 49	9 Sat	<i>with showers.</i>	5 31 7	3 58	feet	8 32
feet	10 42	10 SU	1st Sund. after Easter—Low	5 30 7	4 32	feet	9 23
feet	11 34	11 Mo	[Sunday	5 28 7	5 5	head	10 19
head	ev 26	12 Tu	g sets 1 h 18m <i>The wea-</i>	5 26 7	SERS.	head	11 15
head	1 20	13 We	D in perigee	5 24 7	8 3	neck	ev 10
neck	2 14	14 Th	High tides <i>ther becomes</i>	5 23 7	9 18	neck	1 6
neck	3 9	15 Fri	<i>more settled.</i>	5 21 7	10 30	arms	2 5
arms	4 5	16 Sat	Shakspeare born, 1564	5 20 7	11 35	arms	3 3
arms	5 1	17 SU	2d Sunday after Easter.	5 18 7	MORN	bres.	4 1
bres.	6 0	18 Mo	<i>Expect high winds</i>	5 17 7	0 34	bres.	4 58
bres.	6 56	19 Tu	Lord Byron died, 1824	5 16 7	1 27	hart.	5 58
hart.	7 50	20 We	<i>and snow or rain</i>	5 14 7	2 10	hart.	6 45
hart.	8 42	21 Th	Low tides	5 13 7	2 47	belly	7 35
belly	9 32	22 Fri	<i>Very mild and</i>	5 12 7	3 21	belly	8 23
belly	10 20	23 Sat	St. George. Shakspeare died	5 10 7	3 51	belly	9 10
belly	11 6	24 SU	3d Sun after Easter [1615	5 9 7	4 19	reins	9 54
reins	12 50	25 Mo	St Mark Ds. Glou. b. 1776	5 8 7	4 45	reins	10 49
reins	MORN	26 Tu	<i>agreeable weather.</i>	5 6 7	Rises	secr.	11 25
secr.	0 33	27 We	High tides	5 5 7	7 40	secr.	MORN
secr.	1 16	28 Th	h stationary <i>Very warm</i>	5 4 7	8 37	secr.	0 6
		29 Fri	D in apogee	5 2 7	9 23	thi.	10 50
		30 Sat	<i>for the season</i>	5 1 7	10 27	thi.	11 35

B

*What an intemperate falsehood*

# MAY HATH XXXI DAYS.

Soft gales to Winters chilling blasts succeed,  
 Perfum'd with odours, blooms the enamell'd mead;  
 Re-echoing music fills the vocal grove,  
 Inspiring every sense with joy and love:  
 Nature to its great Author homage pays,  
 Glowing with rapture, gratitude, and praise.

## MOON'S PHASES.

Last Quarter, 4th, 10h. 51m. A. | First Quarter, 18th, 11h. 28m. M.  
 New Moon, 11th, 7h. 17m. A. | Full Moon, 26th, 11h. 16m. M.

D.	D. W. M.	CALENDAR, &c.	☾		☀		R. S. & S.	O. Plac.	High water h. m.
			R. & S.	& S.	h. m.	h. m.			
1	SU	4th Sun. af. East. St. Philip	4	59	8	11	17	knee	2 22
2	Mo	[and St. James]	4	58	8	Morn	knee	3 9	
3	Tu	Fair and mild.	4	57	8	0	4	knee	3 57
4	We	Seringapatam taken, 1799	4	55	8	0	47	legs	4 43
5	Th	Bonaparte died, 1821 Agree-	4	54	8	1	25	legs	5 35
6	Fri	St John Evan. able showers.	4	53	8	2	1	feet	6 26
7	Sat	☽ rises 1h 36m morn	4	52	8	2	34	feet	7 17
8	SU	Rogation Sunday [1501]	4	51	8	3	7	head	8 9
9	Mo	Columbus sailed from Cadiz.	4	50	8	3	39	head	9 2
10	Tu	Becomes more warm	4	48	8	4	13	neck	9 58
11	We	Lord Chatham died, 1778	4	47	8	Sets.	neck	10 56	
12	Th	Ascen. Day—Holy Thursday	4	46	8	8	11	arms	11 54
13	Fri	High tides. and pleasant.	4	45	8	9	29	urms	ev 54
14	Sat	☽ stationary	4	44	8	10	27	breast	1 55
15	SU	Sunday after Ascension day.	4	43	8	11	25	breast	2 53
16	Mo	Appearance of	4	42	8	Morn	hart.	3 50	
17	Tu	☽ sets 10h 41m afternoon	4	41	8	0	11	hart.	4 49
18	We	thunder showers.	4	40	8	0	51	hart.	5 39
19	Th		4	39	8	1	26	belly	6 22
20	Fri	Columbus died, 1506	4	37	8	1	57	belly	7 9
21	Sat	☉ enters ☐ Fine grow-	4	36	8	2	26	rein.	7 58
22	SU	Whit Sun. Ps. Hom. b. 1770	4	35	8	2	52	rein.	8 37
23	Mo	Whit Monday ing weather.	4	34	8	3	19	rein.	9 21
24	Tu	Whit Tuesday	4	33	8	3	47	seer	10 6
25	We	Cloudy,	4	32	8	4	11	seer.	10 52
26	Th	☽ apogee	4	32	8	Rise	hi.	11 36	
27	Fri	perhaps rain.	4	31	8	8	23	hi.	Morn
28	Sat	☽ sets 10h 23m afternoon	4	30	8	9	15	hi.	0 27
29	SU	Trin. Sun. Chas II restore.	1	29	8	10	1	knee	1 1
30	Mo	Peace in Europe, 1814	1	28	8	10	46	knee	1 56
31	Tu	Very warm.	4	28	8	11	26	legs	2 4

Last Quarter  
New Moon,

D.	D. W. M.	
1	We	
2	Th	Peac
3	Fri	
4	Sat	Low
5	SU	lat S
6	Mo	
7	Tu	
8	We	☽ st
9	Th	☽ p
10	Fri	
11	Sat	St B
12	SU	3d S
13	Mo	
14	Tu	Lanc
15	We	Twil
16	Th	
17	Fri	St. A
18	Sat	Bart
19	SU	3d S
20	Mo	
21	Tu	Batt
22	We	☽ a
23	Th	
24	Fri	Nati
25	Sat	
26	SU	4th
27	Mo	High
28	Tu	King
29	We	St P
30	Th	

me

# JUNE HATH XXX DAYS.

The sweet lovely morning is clear and serene,  
 The innocent lambs are at play;  
 The birds in sweet notes as I pass o'er the green,  
 Delightfully sing on each spray.  
 The scenes that are round us profusely are deck'd,  
 The fields in rich verdure appear.  
 May providence kind all his creatures protect,  
 And send them a plentiful year.

## MOON'S PHASES.

Last Quarter, 3d, 10h. 36m. M.      First Quarter, 16th, 11h. 15m. A.  
 New Moon, 10th, 2h. 7m. M.      Full Moon, 25th, 2h. 16m. M.

11h. 28m. M.  
 1h. 16m. M.

O Plac.	High water h. m.	D. W.	D. W.	CALENDAR, &c.	☉			☿			High water h. m.
					R. h.	& S. m.	S. h.	R. h.	& S. m.	Plac.	
		1	We	<i>Vegetation will now</i>	4	27	8	MORN	legs	3	31
knee	2 22	2	Th	Peace signed at Paris, 1814	4	26	8	0	1	feet	4 18
knee	3 9	3	Fri	<i>advance rapidly.</i>	4	26	8	0	34	feet	5 6
knee	3 57	4	Sat	Low tides	4	25	8	1	6	feet	5 55
legs	4 45	5	SU	1st Sunday after Trin. D. of	4	24	8	1	36	head	6 46
legs	5 35	6	Mo	[Cumb. born, 1771	4	24	8	2	7	head	7 38
feet	6 26	7	Tu	<i>Hot, with</i>	4	23	8	2	43	neck	8 34
feet	7 17	8	We	☽ stationary	4	23	8	3	20	neck	9 31
head	8 9	9	Th	☽ perigee <i>agreeable and</i>	4	22	8	4	3	arms	10 32
head	9 2	0	Fri	<i>reviving showers.</i>	4	22	8	SETS	arms	11 33	
neck	9 58	1	Sat	St Barnabas	4	22	8	9	7	breast	ev 34
neck	10 56	2	SU	3d Sunday after Trinity	4	21	8	10	1	breast	1 33
arms	11 54	3	Mo	<i>Fine seasonable weather,</i>	4	21	8	10	45	hart	2 30
arms	ev 54	4	Tu	Landing of the Fr. at Algiers,	4	21	8	11	23	hart	3 23
breast	1 53	5	We	Twil. ends 10h 12m [1830	4	20	8	11	56	belly	4 11
breast	2 53	6	Th	<i>with occasional showers,</i>	4	20	8	MORN	belly	4 53	
hart	3 50	7	Fri	St. Albans <i>and</i>	4	20	8	0	25	rein.	5 43
hart	4 49	8	Sat	Battle of Waterloo, 1815	4	20	8	0	52	rein.	6 27
hart	5 38	9	SU	3d Sun af Trin. Magna Chr.	4	20	8	1	19	rein.	7 11
belly	6 29	0	Mo	[th signed, 1215	4	20	8	1	47	ecr.	7 56
belly	7 9	1	Tu	Battle of Vittoria, 1818	4	20	8	2	15	ecr.	8 41
rein.	7 53	2	We	☽ apogee <i>a warm sun.</i>	4	20	8	2	46	chi.	9 27
rein.	8 57	3	Th		4	20	8	3	2	hi.	10 14
rein.	9 21	4	Fri	Nativity of St John the Bap.	4	20	8	3	56	chi.	11 3
ecr	10 6	5	Sat	<i>Weather continues</i>	4	20	8	RISES	knee	11 15	
ecr	10 56	6	SU	4th Sun af Trin. K. Geo. IV.	4	20	8	8	40	knee	MORN
hi.	11 39	7	Mo	High tides [died, 1830	4	20	8	9	21	legs	0 38
hi.	Morn	8	Tu	King Wm. IV. proclaimed	4	20	8	9	55	legs	1 26
hi.	0 23	9	We	St Peter <i>fin.</i>	4	21	8	10	33	legs	2 13
knee	1 1	0	Th		4	21	8	11	3	feet	3 0

B2  
*Mure Filled.*

# JULY HATH XXXI DAYS.

On nature's green carpet my limbs I'll extend,  
 Fanned soft to delicious repose;  
 Within the deep shades the hot hours let me spend,  
 As o'er me a thousand sweet odours ascend,  
 From every gay wood-flower, that blows.

## MOON'S PHASES.

Last Quarter, 2d, 6h. 56m. A. | First Quarter, 10th, 1h. 19m. A.  
 New Moon, 9th, 9h. 39m. M. | Full Moon, 24th, 4h. 21m. A.

D.	W.	A.	CALENDAR, &c.	☉		☽		R.	S.	& sets	Plat.	High water
				h.	m.	h.	m.					
1	Fri	☉	farthest from the ☉	4	21	8	11	34	feet	3	46	
2	Sat		Visitation of B V Mary	4	22	8	Morn	head	4	33		
3	SU		5th Sunday after Trinity	4	22	8	0	4	head	5	24	
4	Mo		<i>Heat and signs of</i>	4	22	8	0	36	neck	6	16	
5	Tu		French take Algiers, 1830	4	23	8	1	11	neck	7	11	
6	We		<i>dry weather.</i>	4	23	8	1	49	arms	8	8	
7	Th	☽	in perigee	4	24	8	2	55	arms	9	9	
8	Fri	☽	sets 9h 59m <i>Cloudy,</i>	4	24	8	3	27	breast	10	11	
9	Sat		<i>with rain.</i>	4	25	8	Sets.	breast	11	14		
10	SU		6th Sunday after Trinity	4	25	8	8	30	hart.	11	14	
11	Mo		High tides	4	26	8	9	18	hart.	1	9	
12	Tu		<i>Warm</i>	4	27	8	9	49	belly	2	0	
13	We		<i>with thunder and lightning.</i>	4	28	8	10	21	belly	2	4	
14	Th	☽	sets 8h 46m <i>(within</i>	4	28	8	10	50	belly	3	3	
15	Fri		Bonaparte surrendered, 1815	4	29	8	11	17	reins	4	1	
16	Sat		<i>Fine weather</i>	4	30	8	11	45	reins	5	9	
17	SU		7th Sunday after Trinity	4	31	8	Morn	secr.	5	4		
18	Mo		<i>for the crops.</i>	4	31	8	0	12	secr.	6	3	
19	Tu		Low tides	4	32	8	0	43	sett.	7	1	
20	We		Margaret ☽ apogee	4	33	8	1	16	thi.	8	8	
21	Th		<i>Very sultry.</i>	4	34	8	1	53	thi.	9	5	
22	Fri		Magdalen.	4	35	8	2	36	knee	9	4	
23	Sat	☉	enters ♋ <i>Showery.</i>	4	36	8	3	28	knee	10	8	
24	SU		8th Sunday after Trinity	4	37	8	Rises.	knee	11	9		
25	Mo		St James	4	38	8	7	57	legs	Morn		
26	Tu		St Anne <i>Pleasant and</i>	4	39	8	8	31	legs	0	9	
27	We		<i>warm.</i>	4	40	8	9	4	feet	0	5	
28	Th		Revolution in France, 1830	4	42	8	9	35	feet	1	4	
29	Fri			4	43	8	10	5	head	2	3	
30	Sat		<i>Continues fine.</i>	4	44	8	10	36	head	3	9	
31	SU		9th Sunday after Trinity.	4	45	8	11	8	neck	4	4	

Last Quarter  
 New Moon  
 First Quarter

D.	W.	A.
1	Mo	La
2	Tu	
3	We	Al
4	Th	D
5	Fri	8
6	Sat	Tr
7	SU	10
8	Mo	Hip
9	Tu	
10	We	St
11	Th	Bu
12	Fri	
13	Sat	
14	SU	11
15	Mo	Lo
16	Tu	D
17	We	
18	Th	
19	Fri	
20	Sat	2
21	SU	12
22	Mo	☉
23	We	St
24	Th	Hip
25	Fri	Aq
26	Sat	He
27	SU	13
28	Mo	St.
29	Tu	
30	We	
31	We	

# AUGUST HATH XXXI DAYS.

The frail gandy flowers are now drooping their heads  
 Neath the dog-star's all-withering ray,  
 The thunders resound, and the rain soaks their beds,  
 Again they revive, when his light Phoebus sheds:  
 Thus the summer of life fades away.

## MOON'S PHASES.

Last Quarter, 1st, 0h. 57m. M.	Full Moon, 23d, 5h. 21m. M.
New Moon, 7th, 5h. 19m. A.	Last Quarter, 30th, 6h. 4m. M.
First Quarter, 15th, 5h. 40m. M.	

1h. 19m. A.  
21m. A.

Plac.	High water h. m.	D. M.	D. W.	CALENDAR, &c.		☉		☽		High water h. m.
						R. h. m.	S. h. m.	& sets h. m.	Pfac.	
feet	3 46	1	Mo	Lammas Day		4	46	8	11 45	neck 5 0
head	4 33	2	Tu	<i>Growing showers.</i>		4	47	8	0 27	neck 5 55
head	5 24	3	We	Abdication of Chas X. 1830		4	48	8	0 27	arms 6 58
neck	6 16	4	Th	☽ in perigeo		4	49	8	1 15	arms 7 53
neck	7 11	5	Fri	☽ ☿ ☿ ☿ <i>Variable,</i>		4	51	8	2 9	breast 8 54
arms	8 8	6	Sa	Transfiguration of Christ		4	52	8	3 12	breast 9 55
arms	9 8	7	SU	10th Sunday after Trinity		4	53	8	4 10	sets hart 10 54
breast	10 11	8	Mo	High tides. <i>and exces-</i>		4	54	8	7 44	hart 11 48
breast	11 14	9	Tu	<i>sively warm.</i>		4	55	8	8 19	belly ev 40
hart.	12 12	10	We	St Lawrence		4	56	8	8 50	belly 1 28
hart.	1 9	11	Th	Bull's Eye rises, 11h 53m		4	57	8	9 19	reins 2 14
belly	2 6	12	Fri	<i>Thunder and</i>		4	59	8	9 46	reins 2 58
belly	2 49	13	Sat	<i>lightning.</i>		5	0	7	10 15	secr. 3 42
belly	3 33	14	SU	11th Sunday after Trinity		5	2	7	10 44	secr. 4 25
reins	4 19	15	Mo	Low tides		5	3	7	11 16	secr. 5 11
reins	5 9	16	Tu	☽ in apogee.		5	5	7	11 53	thi. 5 58
secr.	5 47	17	We	<i>Warm for</i>		5	6	7	0 33	thi. 6 46
secr.	6 33	18	Th	<i>some days.</i>		5	7	7	1 18	knee 7 35
seft	7 18	19	Fri			5	8	7	1 18	knee 8 26
thi.	8 5	20	Sat	♃ south 11h 17m. eve		5	10	7	2 10	knee 9 17
thi.	8 5	21	SU	12th Sun af Trin. K Wm. IV.		5	11	7	3 7	legs 10 8
knee	9 4	22	Mo	[horn, 1775		5	12	7	4 7	legs 10 59
knee	10 3	23	Tu	☉ enters ♍ Declip. part vis.		5	14	7	5 12	feet 11 47
s. knee	11 2	24	We	St Bartholomew <i>High wind</i>		5	15	7	7 41	feet Morn
legs	Morn	25	Th	High tides <i>about this time</i>		5	16	7	8 12	head 0 35
legs	0 1	26	Fri	Aquila south 9h 23m eve		5	18	7	8 48	head 1 24
feet	0 5	27	Sat	Herschel died, 1822		5	19	7	9 17	head 2 14
feet	1 4	28	SU	13th Sunday after Trinity		5	21	7	9 51	neck 3 4
head	2 3	29	Mo	St. John Baptist beheaded		5	22	7	10 31	neck 3 57
head	3 9	30	Tu	<i>Fine haying weather.</i>		5	23	7	11 15	arms 4 51
neck	4	31	We	☽ perigeo Gr elongation		5	25	7	MOON arms 5 49	

# SEPTEMBER HATH XXX DAYS.

Shout, respers, shout, your "harvest home;"  
 Shout praises to the glorious Lord,  
 Who poured the rain, who warmed the sun,  
 Whose bounty has our garners stored.  
 And as ye raise your gladsome voice,  
 And higher grows the solemn tone,  
 Oh! let your thankful hearts rejoice  
 To the glad shouts of "Harvest Home!"

## MOON'S PHASES.

New Moon, 6th, 8h. 49m. M. | Full Moon, 21st, 5h. 11m. A.  
 First Quarter, 13th, 11h. 58m. A. | Last Quarter, 28th, 11h. 44m. M.

D.	D.	CALENDAR, &c.	☉		☽		High water
			R. & S.	& sets	R.	S.	
M.	W.		h. m.	h. m.	h. m.	h. m.	h. m.
1	Th	Giles. <i>Fine weather</i>	5 27	7 0	7	breast	6 48
2	Fri	London burnt, 1666, O S	5 29	7 1	6	breast	7 49
3	Sat	Cromwell died, 1658 <i>with oc.</i>	5 30	7 2	9	hart.	8 47
4	SU	14th Sunday after Trinity	5 32	7 3	16	hart.	9 49
5	Mo	Dog days end <i>casional show-</i>	5 33	7 4	26	belly	10 37
6	Tu	<i>ers and high winds.</i>	5 34	7	Sets.	belly	11 26
7	We		5 35	7	7 25	reins	ev 14
8	Th	Nativity of B. V. Mary	5 37	7 7	53	reins	0 59
9	Fri	Rather high tides <i>Cool</i>	5 38	7 8	23	reins	1 44
10	Sat	Alioth south 1h 35m m.	5 40	7 8	52	secr.	2 29
11	SU	15th Sun af Trin. <i>mornings</i>	5 41	7 9	23	secr.	3 13
12	Mo	<i>and evenings.</i>	5 43	7 9	57	thi.	3 57
13	Tu	Quebec taken, & Gen Wolfe	5 44	7 10	36	thi.	4 43
14	We	Holy Cross [slain, 1759	5 46	7 11	19	thi.	5 31
15	Th	Low tides <i>Wet and unplea-</i>	5 47	7	Morn	knee	6 21
16	Fri	<i>sant for some days.</i>	5 49	7 0	7	knee	7 13
17	Sat	Lambert [Québec, 1759	5 50	7 1	2	legs	8 3
18	SU	16th Sun. af. Trin. Cap. of	5 52	7 2	1	leg	8 54
19	Mo	<i>Warm and fine</i>	5 54	7 3	4	legs	9 45
20	Tu	<i>for the season.</i>	5 55	7 4	9	feet	10 36
21	We	St. Matthew	5 57	7	Rises.	feet	11 28
22	Th	High tides	5 58	7 6	53	head	Morn
23	Fri	Autumn begins ☽ en ☾	6 0	0	7 25	head	0 16
24	Sat	<i>Changeable about</i>	6 1	6	7 59	neck	1 7
25	SU	17th Sunday after Trinity	6 3	6	8 33	neck	2 0
26	Mo	St Cyprian <i>this time.</i>	6 4	6	9 23	arms	2 55
27	Tu		6 6	6	10 12	arms	3 51
28	We	[Ld Nelson born, 1758	6 8	6	11 3	breast	4 49
29	Th	St Michael. Q. of Wirt. b.	6 9	6	Morn	breast	5 43
30	Fri	St Jerome <i>Pleasant.</i>	6 11	6	0 10	hart.	6 40

New Moon  
Last Quarter

D.	D.	
M.	W.	
1	Sat	R
2	SU	14
3	Mo	
4	Tu	
5	We	♀
6	Th	H
7	Fri	♀
8	Sat	
9	SU	14
10	Mo	♀
11	Tu	D
12	We	
13	Th	
14	Fri	P
15	Sat	L
16	SU	2
17	Mo	
18	Tu	S
19	We	
20	Th	7
21	Fri	1
22	Sat	h
23	SU	2
24	Mo	
25	Tu	0
26	We	
27	Th	1
28	Fri	3
29	Sat	
30	SU	
31	Mo	

OCTOBER HATH XXXI DAYE.

A dieu, ye vernal fields! now Autumn reigns;  
 U loads her gifts—repays us for our pains;  
 T hen as our garners hardly hold the grain,  
 U ask'd, like Boaz, let the stranger glean.  
 More ample crops shall cover all the vale,  
 N or our rich pond'rous harvests ever fail.

MOON'S PHASES.

New Moon, 5th, 5h. 0m. A.  
 Last Quarter, 18th, 7h. 15m. A.

Full Moon, 21st, 4h. 0m. M.  
 Last Quarter, 27th, 7h. 18m. A.

11m. A.  
 11h. 44m. M.

High water h. m.  
 Plac. h. m.  
 breast 6 48  
 breast 7 49  
 hart. 8 47  
 hart. 9 45  
 belly 10 37  
 belly 11 26  
 reins ev 14  
 reins 0 59  
 reins 1 44  
 secr. 2 28  
 secr. 3 12  
 thi. 3 57  
 thi. 4 43  
 thi. 5 31  
 knee 6 21  
 knee 7 12  
 legs 8 5  
 legs 8 54  
 legs 9 45  
 feet 10 36  
 feet 11 26  
 head Morn  
 head 0 16  
 neck 1 7  
 neck 2 0  
 arms 2 55  
 arms 3 51  
 breast 4 25  
 breast 5 45  
 hart. 6 46

D. M.	D. W.	CALENDAR, &c.	☉ R. & S. h. m. In	☽ R. & sets h. m.	☽ Plac.	High water h. m.
1	Sat	Remigius	6 12 6	1 15	hart.	7 45
2	SU	18th Sunday after Trinity	6 14 6	2 22	belly	8 30
3	Mo	<i>Good weather continues.</i>	6 15 6	3 29	belly	9 20
4	Tu		6 17 6	4 35	belly	10 10
5	We	☽ stationary	6 18 6	5 31	reins	11
6	Th	High tides <i>Signs of rain.</i>	6 20 6	6 30	reins	11 4
7	Fri	☽ south, 8h 9m evening	6 22 6	7 10	secr.	ev 3
8	Sat		6 23 6	7 31	secr.	1 1
9	SU	19th Sunday after Trinity	6 24 6	8 4	secr.	2
10	Mo	☽ stationary [St Denys]	6 26 6	8 40	thi.	2 4
11	Tu	☽ in apogee <i>Slight frosts</i>	6 27 6	9 21	thi.	3 32
12	We	<i>will now be experienced.</i>	6 28 6	10 7	knee	4 20
13	Th		6 30 6	10 57	knee	5
14	Fri	Pretty low tides	6 31 6	11 52	knee	5 57
15	Sat	Day breaks 4h 52m	6 33 6	morn.	legs	6 4
16	SU	20th Sunday after Trinity	6 35 6	0 53	legs	7 13
17	Mo	[Q of France beb. 1793]	6 37 6	1 56	feet.	8 2
18	Tu	St. Luke <i>Clear and mild.</i>	6 38 6	3 4	feet.	9 15
19	We		6 40 6	4 13	head	10 1
20	Th	☽ stars south, 2h morn	6 41 6	5 25	head	11 4
21	Fri	☽ stationary <i>Weather con-</i>	6 42 6	6 rises.	neck	11 50
22	Sat	High tides	6 44 6	6 41	neck	morn
23	SU	21st Sunday after Trinity	6 45 6	7 23	arms	0 52
24	Mo	<i>tinues moderate</i>	6 47 6	8 12	arms	1 51
25	Tu	Crispin	6 48 6	9 8	breast	2 50
26	We	<i>and pleasant</i>	6 49 6	10 8	breast	3 48
27	Th	Low tides	6 51 6	11 12	breast	4 46
28	Fri	St Simon & St Jude <i>to the</i>	6 52 6	morn.	hart.	5 42
29	Sat	☽ stationary <i>end of the</i>	6 53 6	0 20	hart.	6 37
30	SU	22d Sunday after Trinity	6 55 6	1 23	belly	7 27
31	Mo	"Hallow E'en." <i>month.</i>	6 56 6	2 23	belly	8 16



# NOVEMBER HATH XXX DAYS.

The melancholy days are come, the saddest of the year,  
 Of wailing winds, and naked woods, and meadows brown and dear,  
 Heaped in the hollows of the grove, the summer leaves lie dead,  
 The rattle to the eddying wind, and to the rabbit's tread;  
 The robin and the wren are flown—and from the shrubs the jay,  
 And from the wood top calls the crow thro' all the gloomy day..

### MOON'S PHASES.

New Moon, 4th. 8h. 54m. M. | Full Moon, 19th, 2h. 13m. A.  
 First Quarter, 12th, 2h. 1m. A. | Last Quarter, 26th, 8h. 44m. M.

D. M.	D. W.	CALENDAR, &c.	☉		☽		R. S.	O. Plac.	High water	
			R. h.	S. m.	& h.	S. m.			h.	m.
1	Tu	All Saints.	6	58	6	3	35	reins	9	3
2	We	All Souls. <i>Expect cold</i>	6	59	6	4	39	reins	9	49
3	Th	☿ ☽ ♃	7	1	5	5	43	secr.	10	35
4	Fri		7	2	5	sets		secr.	11	20
5	Sat	Powder Plot, 1605	7	3	5	6	5	secr.	ev	4
6	SU	23d Sunday after Trinity	7	5	5	6	41	thi.	0	49
7	Mo	<i>Variable, with rain,</i>	7	6	2	7	20	thi.	1	35
8	Tu	☽ apogee, <i>or perhaps snow.</i>	7	7	5	8	3	knee	2	21
9	We	[Prs. Aug. Sophia b. 1768]	7	8	5	8	52	knee	3	8
10	Th	☽ stationary <i>Becomes more</i>	7	9	5	9	45	knee	3	55
11	Fri	St Martin <i>warm and</i>	7	11	5	10	40	legs	4	41
12	Sat	<i>pleasant for some</i>	7	12	5	11	42	legs	5	28
13	SU	24th Sunday after Trinity	7	14	5	morn.		feet	6	16
14	Mo	Low tides <i>days.</i>	7	15	5	0	44	feet	7	5
15	Tu	Machutus. Herschell horn,	7	16	5	1	50	feet	7	55
16	We	☽ rises, 5h 37m morn [1738]	7	17	5	2	59	head	8	46
17	Th	<i>Cooler, with</i>	7	18	5	4	11	head	9	40
18	Fri	<i>rain.</i>	7	19	5	5	25	neck	10	36
19	Sat	Very High tides	7	20	5	rises.		neck	11	34
20	SU	24th Sunday after Trinity	7	21	5	5	58	arms	morn	
21	Mo	☽ in perigee	7	22	5	6	52	arms	0	34
22	Tu	☽ enters ♄ <i>Clear and</i>	7	23	5	7	52	hrest	1	35
23	We	St Clement <i>serene.</i>	7	25	5	8	53	hrest	2	35
24	Th	Low tides	7	26	5	10	5	hart.	3	33
25	Fri		7	27	5	11	13	hart.	4	27
26	Sat	☽ south, 9h 5m eve <i>Cold</i>	7	28	5	morn.		belly	5	17
27	SU	Advent Sunday	7	28	5	0	20	belly	6	7
28	Mo	<i>and stormy.</i>	7	29	5	1	24	reins	6	54
29	Tu	Goldsmith born, 1731	7	30	5	2	23	reins	7	40
30	We	St Andrew <i>Fair</i>	7	31	5	3	30	reins	8	34

New Moon  
First Quar

D. M.	D. W.	
1	Th	Al
2	Fri	
3	Sat	
4	SU	2d
5	Mo	D
6	Tu	Ni
7	We	□
8	Th	Co
9	Fri	
10	Sat	Mi
11	SU	3d
12	Mo	
13	Tu	Lu
14	We	
15	Th	
16	Fri	
17	Sat	7 s
18	SU	4th
19	Mo	
20	Tu	Hi
21	We	St
22	Th	☽
23	Fri	h
24	Sat	h
25	SU	Ch
26	Mo	St
27	Tu	St
28	We	In
29	Th	
30	Fri	7
31	Sat	Si

# DECEMBER HATH XXXI DAYS.

Old Time, who ne'er stops in his rapid career,  
 Tho' the winter of life has an end,  
 Again leaves behind him another short year—  
 The earth is all faded, and nature all drear :  
 To eternity mortals all tend !

## MOON'S PHASES.

New Moon, 4th, 8h. 4m. M.      Full Moon, 19th, 0h. 26m. M.  
 First Quarter, 12th, 6h. 38m. M.      Last Quarter, 25th, 7h. 26m. A.

High water  
 Plac. h. m.

13m. A.  
 44m. M.

High water  
 Plac. h. m.

reins 9 3  
 reins 9 49  
 secr. 10 35  
 secr. 11 20  
 secr. ev 4  
 thi. 0 49  
 thi. 1 35  
 knee 2 21  
 knee 3 8  
 knee 3 65  
 legs 4 41  
 legs 5 28  
 feet 6 16  
 feet 7 5  
 feet 7 55  
 head 8 46  
 head 9 40  
 neck 10 36  
 neck 11 34  
 arms morn  
 arms 0 34  
 breast 1 35  
 breast 2 35  
 hart. 3 33  
 hart. 4 27  
 belly 5 17  
 belly 6 7  
 reins 6 54  
 reins 7 40  
 reins 8 24

D.	D.	CALENDAR, &c.	R. & S.	R.	R.	High
K.	W.		h. m. h.	& S.	Plac.	water
				h. m.		h. m.
1	Th	Alexander, Emp. Russia, d.	7 32 5	4 30	secr.	9 9
2	Fri	Look for [1825	7 33 5	5 30	secr.	9 54
3	Sat	a snow storm,	7 33 5	6 29	thi.	10 40
4	SU	2d Sunday in Advent	7 34 5	sets	thi.	11 25
5	Mo	☽ in apogee Clear and fine.	7 35 5	5 52	thi.	ev 10
6	Tu	Nicolas	7 35 5	6 39	knee	0 57
7	We	☽ ☺ ♄ Flying clouds	7 36 5	7 30	knee	1 44
8	Th	Conception of B. V. Mary	7 37 5	8 25	legs	2 30
9	Fri	with chilly winds,	7 37 5	9 21	legs	3 15
10	Sat	Milton born, 1608 accom-	7 38 5	10 24	legs	4 1
11	SU	3d Sunday in Advent	7 38 5	11 27	feet	4 46
12	Mo	penied by rain,	7 38 5	morn	feet	5 33
13	Tu	Lucy Low tides hail,	7 39 5	0 31	head	6 21
14	We	[Dr Johnson died, 1794	7 39 5	1 38	head	7 12
15	Th	or snow,	7 39 5	2 49	neck	8 5
16	Fri		7 40 5	4 2	neck	9 1
17	Sat	7 stars south, 9h 57m eve	7 40 5	5 16	arms	10 1
18	SU	4th Sunday in Advent	7 40 5	6 30	arms	11 4
19	Mo	More moderate	7 40 5	riser	breast	morn.
20	Tu	High tides and settled.	7 40 5	6 24	breast	0 6
21	We	St Thomas	7 40 5	7 38	hart.	1 7
22	Th	☽ enters ♄ Winter begins	7 40 5	8 44	hart.	2 5
23	Fri	☽ south, 5h 5m morn	7 40 5	9 53	belly	2 59
24	Sat	☽ stationary Hard frosts.	7 40 5	11 1	belly	3 49
25	SU	Christmas Day	7 40 5	morn	belly	4 37
26	Mo	St. Stephen More mild	7 40 5	0 27	reins	5 24
27	Tu	St John	7 40 5	1 9	reins	6 8
28	We	Innocents and pleasant.	7 40 5	2 10	secr.	6 53
29	Th		7 39 5	3 11	secr.	7 38
30	Fri	7 stars south, 9h eve	7 39 5	4 9	thi.	8 23
31	Sat	Silvester Falling weather.	7 39 5	5 5	thi.	9 9

5-1-6

# Province of New-Brunswick.

His Excellency Major-General Sir HOWARD DONGLAS, Bart.  
Lieutenant-Governor, &c. &c. &c. (*in England.*)

The Honorable WILLIAM BLACK, D. C. L., President and  
Commander-in-Chief, &c. &c. &c.

## HIS MAJESTY'S COUNCIL.

Hon. John Saunders, <i>President</i> ,	Hon. William Botsford,
Ld. Bishop of Nova-Scotia,	Ward Chipman,
John M. Bliss,	Samuel Proudfoot Hurd,
<del>George Shore,</del>	Harry Peters,
George Shore,	Frederick P. Robinson,
Thomas Baillie,	Richard Simonds.

## Officers of the Legislative Council.

William F. Odell, Esquire, *Clerk*,  
Xenophon Jouett, Esquire, *Sergeant at Arms, and Usher*  
*of the Black Rod.*  
Reverend George Coster, D. D., *Chaplain.*

## Principal Officers of Government.

Charles J. Peters, Esquire, *Attorney General*,  
Robert Parker, Esquire, *Solicitor General*,  
William F. Odell, Esquire, *Secretary, Register, and Clerk*  
*of the Council*,  
Honorable Thomas Baillie, *Commissioner of Crown Lands*,  
Honorable Thomas Baillie, *Surveyor General*,  
George P. Bliss, Esquire, *Receiver General*,  
Honorable Frederick P. Robinson, *Acting Auditor General*,  
Thomas Heaviside, Esquire, *Provincial Auditor.*

## HOUSE OF ASSEMBLY.

		, Esquire, <i>Speaker.</i>	
<i>County of Saint John.</i>		<i>County of Westmorland.</i>	
Stephen Humbert,	} Esquires.	Edward B. Chandler,	} Esquires.
Charles Simonds,		William Crane,	
John R. Partelow,		Rufus Smith,	
John Ward, jun.		Robert Scott,	

Coun  
James Brow  
Patrick Cl  
George S.  
Thomas W  
Co  
John Allen  
Jedediah S  
John Dow,  
William Ta  
K  
John Humb  
John C. Va  
Qu  
Thomas Gil  
Charles Har  
C  
T  
H  
R  
His Excell  
c  
The Chi  
Ass  
William  
Neville  
George  
Henry  
Daniel  
The Cou  
det  
His Excell  
Term

*County of Charlottis.*

James Brown, Jun. }  
Patrick Clinch, } Esquires.  
George S. Hill, }  
Thomas Wyer, }

*County of York.*

John Alton, }  
Jedediah Blason, } Esquires.  
John Dow, }  
William Taylor, }

*King's County.*

John Humbert, }  
John C. Vail, } Esquires.

*Queen's County.*

Thomas Gilbert, }  
Charles Harrison, } Esquires.

*County of Sunbury.*

George Hayward, }  
Thomas O. Miles, } Esquires.

*County of Northumberland.*

Alexander Rankin, }  
Joseph Cunard, } Esquires.

*County of Kent.*

John W. Weldon, Esquire.

*County of Gloucester.*

William End, Esquire.

*City of Saint John.*

Thomas Barlow, }  
William B. Kinnear, } Esquires.

*Officers of the House of Assembly.*

Charles P. Wetmore, Esquire, Clerk  
T. R. Wetmore, Esquire, Clerk Assistant  
Henry G Clopper, Esquire, Sergeant at Arms  
Reverend James Somerville, Chaplain

*COURT OF CHANCERY.*

His Excellency the Lieutenant-Governor, or the Command-  
er-in-Chief for the time being, *Chancellor.*

The Chief Justice, and the Judges of the Supreme Court,  
Assessors of the Court.

William F Odell, Esquire, Clerk of the Crown in Chancery

~~George F Street, Esquire~~  
Neville Parker, Esquire }  
George F Street, Esquire } Masters.  
Henry Swymmer, Esquire }  
Daniel Ludlow Robinson, Esquire, Register.

*The Court of Governor and Council for hearing and  
determining Causes relating to Marriage  
and Divorce.*

His Excellency the Lieutenant-Governor and the Honorabl<sup>e</sup>  
His Majesty's Council.

Henry G Clopper, Esquire, Clerk.

*Terms—The First Tuesday in February and July.*

*Supreme Court of Judicature.*

Honorable John Saunders, Chief Justice

" John M Bliss, } Justices.

" William Botsford, }

" Ward Chipman, }

Charles S Putnam, Esquire, Clerk of the Crown

Honorable George Shore, Clerk of the Pleas.

John T Murray, Esquire, Clerk of the Circuits ; and Clerk of  
of the Crown on the Circuits.

*Terms*—The first Tuesdays in February and May, and the  
second Tuesdays in July and October.

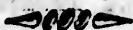
*Court of Vice Admiralty.*

Robert Parker, Esquire, Judge and Commissary

George F Street, Esquire, Advocate General

William Tyng Peters, Esquire, Registrar and Scribe

Thomas M Hazen, Esquire, Marshal.



**COUNSELLORS AND ATTORNIES,**

PRACTISING IN THE PROVINCE.

*Fredericton.*—~~Samuel D Sweet~~, George F Street  
George P Bliss, John Simcoe Saunders, Daniel Ludlow Ro-  
binson, George J Dibblee, Charles S Putnam, A K S Wet-  
more, C P Wetmore, G F S Bertron, A L Wilmot, Danie  
Hailes Smith, Esquires.

*Saint John.*—Charles J Peters, Wm Tyng Peters, Robert  
Parker, Henry Swymmer, John Thomas Murray, Wm Boye  
Kinnear, Neville Parker, James Peters, jun. Francis A Kin-  
near, Robert F Hazen, Le Baron Hazen, Robert Robertson,  
jun. H N H Lugin, John M Robinson, William Merritt  
M H Perley, Robert L. Hazen, and Richard Sands, jr. Esq<sup>r</sup>.

*Saint Andrews.*—Harris Hatch, Alfred L Street, Francis D  
Putnam, Samuel Hallet Whitlock, George Kerr, Thoma  
Chandler, and Samuel G Andrews, Esquires.

*Miramichi.*—Thomas H. Peters, John Ambrose S Street  
William Ed, John Lobban, William Carman, jun. Richard  
Hill and Richard Carman, Esquires.

*Dorchester.*—E B Chandler, and James Stewart, Esquires.

*Non-residents practising in Westmorland.*—James S Morris  
and Alexander Stewart, Esquires.

*Saint Stephens.*—G S Hill, and Robert S Mowatt, Esq<sup>r</sup>'s.

*Gage Town.*—T R Wetmore, Esquire.

*Richibucto*  
William C  
*Kingston*  
*Sunbury*  
*Woodstock*  
*Bay Cha*

F Odell,  
Samuel D S  
Harris Hatch  
Robert Park  
John A S St  
ville Park  
Charles S Pu  
Daniel L Ro  
Henry Swym  
George W C  
Francis A Ki  
Fred L Stre  
K S Wetm  
R Hathow  
Robert F Haz  
Baron Haz  
William Wri  
William Carm

*Court for*  
  
William  
  
Honorable  
Henry Sw  
Charles D  
Edward B  
Marmaduk  
Harris Ha  
Colin Cap  
Henry Na  
Kin  
N. H. De  
Valentine

*Richibucto.*—John Wesley Weldon, Peter Stubs, jun. and William Chandler, Esquires.

*Kingston.*—William Simpson, Esquire.

*Sunbury.*—George W Cleary, Esquire,

*Woodstock.*—E B Smith, Esquire,

*Bay Chaleur.*—Andrew Barbarie, and R H Peters, Esq'sr.

## PUBLIC NOTARIES.

Y F Odell, Esq. in the Province.	P. Stubs, jun. Esq. in the Province
Samuel D Street, Esq. do	Francis E Putnam, Esq do
Harris Hatch, Esq. do	Moses H Perley, Esq do
Robert Parker, Esq. do	John M Robinson, Esq do
John A S Street, Esq. do	William H Merritt, Esq do
Deville Parker, Esq do	Robert L Hazen, Esq do
Charles S Putnam, Esq do	Robert H. Peters, Esq do
Aniel L Robinson, Esq do	C J Peters, Esq. in the City of St.
Henry Swymmer, Esq do	W Tyng Peters, Esq. do [John
George W Cleary, Esq do	John T Murray, Esq do
Francis A Kinnear, Esq do	William B Kinnear, Esq do
Fred L Street, Esq do	James Peters, jun. Esq do
K S Wetmore, Esq do	H N H Lugin, Esq. in the City
R Hatheway, Esq do	and County of Saint John.
Robert F Hazen, Esq do	T H Peters, Esq. in Northumber-
Baron Hazen, Esq do	John W Weldon, Esq do [and
William Wright, Esq do	Sylvester C Hewes, Esq do
William Carman, jun. Esq do	Colin Campbell, Esq. in Charlotte

### *Court for the Probate of Wills and Granting Administrations.*

William F. Odell, Esquire, Register for the Province.

### *Surrogates and Registers.*

Honorable Samuel D. Street, Surrogate, York,	
Henry Swymmer, Esquire, Surrogate,	} Saint John,
Charles Drury, Esquire, Deputy Register,	
Edward B. Chandler, Esquire, Surrogate,	} Westmor-
Marmaduke L. Backhouse, Esq. Dep. Register,	
Harris Hatch, Esquire, Surrogate,	} Charlotte,
Colin Campbell, jun. Esq. Deputy Register,	
Henry Nase, Esquire, Surrogate and Deputy Register for King's County,	
N. H. DeVeber, Esquire, Surrogate,	} Queen's
Valentine H. Peters, Esquire, Deputy Register,	

John Hazen, Esquire, Surrogate, }  
 N. Hubbard, Esquire, Deputy Register, } Sunbury,  
 Thomas H. Peters, Esquire, Surrogate, }  
 Ambrose S. Street, Esquire, Deputy Register, } Northun-  
 William Chandler, Esquire, Surrogate, } berland  
 George Pagan, Esquire, Deputy Register, } Kent,  
 William End, Esquire, Surrogate, }  
 Hugh Monroe, Esquire, Deputy Register, } Gloucester.

**HIS MAJESTY'S CUSTOMS.**

*Port of Saint John.*

H. Bowyer Smith, Esquire, Collector,  
 Herbert Cornewall, Esquire, Comptroller,  
 J. C. Kelly, Esquire, Waiter and Searcher,  
 James Walker, Esquire, Waiter and Searcher.

**SUB-COLLECTORS.**

Wm. Hannington, Esq. *Chediac.* | James Sayre, Esq. *Dorchester*  
 Perry Dumaresq, Esq. *Dalhousie.* | Samuel M'Kean, Esq. *Richibou*

Charles Drury, jun. Esq. Admeasurer of ships and vessels  
 John Longmaid, Tide Surveyor,

*Warehouse Department.*

Alexander Grant, Esquire, Warehouse Keeper at St. John  
 Thomas P. Marter, Esquire, Locker up of ditto.

*Port of Miramichi.*

John Wright, Esquire, Collector,  
 George Pinchin, Esquire, Comptroller,  
 George Henderson, jun. Esq. Admeasurer of vessels.

*Port of Saint Andrews.*

J. M. Spearman, Collector,  
 J. Saunders, Esquire, Comptroller,  
 ——— Richmond, Esquire, Waiter and Searcher.

*Warehouse Department.*

Joseph Clarke, Esquire, Warehouse Keeper,  
 John G. Campbell, Esquire, Locker up of ditto.

Thos. Edg  
 and C  
 Armstro  
 Joseph  
 Cu  
 Hon  
 H. G. Clop  
 Beverley  
 Andr  
 C. H. Joue  
 Camp  
 T. H. Pete  
 M. L. Back  
 Benjam  
 David  
 George  
 William  
 John  
 Stephe  
 Um  
 Chancello  
 in hi  
 Visitor—  
 President  
 Vice-Pres  
 re  
 Professor  
 His Hon  
 The Pre  
 The Vic  
 The Pro  
 Registran

SUB-COLLECTORS.

Thos. Edgworth, Esq. <i>West Isles and Campo Bello,</i>	A. J. Watmore, Esq. <i>St. George, Mosses Gerrish, Esquire, Grand Manan.</i>
Armstrong, Esq. <i>St. Stephen,</i>	

Joseph Baxter, Esquire, Preventive Officer of His Majesty's Customs, and Commander of the Provincial Cutter.

PROVINCIAL REVENUE.

Honorable Richard Simonds, Province Treasurer,

DEPUTY TREASURERS.

H. G. Clopper, Esq. <i>Fredericton,</i>	Bill Chappell, Esq. <i>Bay Verte,</i>
Beverly Robinson, Esquire, <i>St. Andrews,</i>	William Wiley, Esq. <i>Pisitcodiac,</i>
C. H. Jouett, Esq. <i>West Isles and Campo Bello,</i>	J. W. Weldon, Esq. <i>Richibucto,</i>
T. H. Peters, Esq. <i>Miramichi,</i>	Wm. Hannington, Esq. <i>Chediac,</i>
M. L. Backhouse, Esq. <i>Sackville,</i>	Dugald Stewart, Esquire, <i>Restigouche,</i>
	John Miller, Esquire, <i>Bathurst.</i>

Benjamin C. Chaloner, Esquire, Guager of Dutiable Articles, and Tide Surveyor at Saint John,  
 David W. Jack, Esquire, ditto ditto at Saint Andrews,  
 George Henderson, jun. ditto ditto at Miramichi.  
 William Payne, Provincial Tide Surveyor at Fredericton.  
 John Abram, Provincial Tide Waiter at Saint John.  
 Stephen Humbert, Esquire, special do. do.

University of King's College, Fredericton.

Patron—THE KING.

*Chancellor*—His Excellency the Lieutenant-Governor; and, in his absence, His Honor the President of the Province.  
*Visitor*—The Right Reverend the Lord Bishop of the Diocese.  
*President*...The Venerable the Archdeacon of the Province.  
*Vice-President; (Resident and acting Principal)*—The Reverend Edwin Jacob, D. D.  
*Professors*—Reverend Edwin Jacob, D. D.  
 Reverend James Somerville, L. L. D.  
 Reverend George M'Cawley, A. M.

COUNCIL.

His Honor the Chancellor,	The Chief Justice,
The President,	Judge Botsford,
The Vice-President,	The Speaker of the House of Assembly,
The Professors,	The Secretary of the Province.

*Registrar*—George Frederick Street, Esquire.



**Public Grammar School in the City of Saint John.**

The Reverend the Rector of Saint John, *President*,

**DIRECTORS,**

The Mayor,  
The Recorder,  
The Honorable Ward Chipman,  
Charles J. Peters, Esquire,

Thomas Paddock, Esquire,  
Reverend George Burns, D. D.  
Reverend I. W. D. Gray,  
Neville Parker, Esquire.

John M. Robinson, Esquire, *Treasurer and Clerk*,  
Mr. James Paterson, *Master*.

**Public Grammar School in Saint Andrews.**

Reverend Jerome Alley, *President*.

**DIRECTORS,**

Colin Campbell, Esquire, Thomas Wyer, Esquire,  
David W. Jack, Esquire, Dr. S. Frye.  
Reverend John Cassell, *Master*.

**The Governor and Trustees of the Madras School  
in New-Brunswick.**

The Lieutenant-Governor or Commander-in-Chief of the  
Province for the time being,

The Lord Bishop of the Diocese,

The Chief Justice,

The Members of His Majesty's Council, (not being Judges  
of the Supreme Court,)

The Speaker of the House of Assembly,

The Judge of the Admiralty,

The Mayor and Recorder of Saint John,

The Ecclesiastical Commissary of the Province,

The Rector and Church Wardens of Trinity Church in St.  
John;—together with,

The Reverend George Burns, D. D. and

William Scovil, Esquire.

Robert F. Hazen, Esquire, *Treasurer*.

John M. Robinson, Esquire, *Secretary*.

**St. John Church of England Sunday School Society.**

*Patron*—His Excellency the Lieutenant-Governor,

*President*—The Rector of Saint John,

*Superintendent and Secretary*—The Curate of Saint John,

*Directors*—The Church Wardens.

*Saint John - District Committee of the Society for Promoting Christian Knowledge.*

His Excellency the Lieutenant-Governor, *Patron*,  
Reverend Benjamin G. Gray, D. D. *President*,  
Honorable William Black, } *Vice-Presidents*,  
William Scovil, Esquires, }  
Zalmon Wheeler, Esquire, *Treasurer*,  
Reverend I. W. D. Gray, *Secretary*.

*Terms of admission*:—One Guinea donation, and one Guinea annually.—Recommendation from a member of the society.  
The depository of Books and Tracts is the store of Messrs. George and Edward Sears.

*New-Brunswick Auxiliary Bible Society.*

His Excellency the Lieutenant-Governor, *Patron*,  
John M. Wilmot, Esquire, *President*,  
Charles I. Peters,  
John Ferguson,  
William B. Kinnear, } *Esquires, Vice-Presidents*,  
James Simonds, }  
Alexander M'Leod, Esquire, *Treasurer*,  
Mr. James Paterson, Rector of the Grammar School, *Sec'y*.

*BRANCH SOCIETIES*

*Saint Stephen.*

J. Duncan M'Coll, *President*,  
Armstrong, Esq. *Vice-Presid't*  
John Upton, *Treasurer*,  
David A. Rose, *Secretary*.

*Sussex Vale.*

\_\_\_\_\_, *President*,  
A. C. Evanson, Esq. *Treasurer*,  
Joseph R. Leggett, *Secretary*.

*Grand Lake.*

John Robertson, *President*,  
Thomas Clark, *Vice-President*,  
David Palmer, *Treasurer*,  
John Palmer, *Secretary*.

*Saint John Ladies' Bible Association.*

Mrs. Neville Parker, *President*,  
Mrs. Ferguson, *Treasurer*,  
Miss Wiggins, *Secretary*.

*Fredericton Bible Society.*

William Taylor, Esquire, *President*,  
Peter Fisher, Esquire, *Treasurer*,  
James Taylor, junior, Esquire, *Secretary*.

*Miramichi Ladies' Bible Association.*

Mrs. Peabody, *President*,  
Mrs. Clark, *Treasurer*,  
Mrs. Thomas, *Secretary*.



**BANK OF NEW-BRUNSWICK.**

Henry Gilbert, Esquire, *President.*

**DIRECTORS:**

Thomas Barlow,  
Hon. Ward Chipman,  
R. W. Crookshank,  
Nash Disbrow,  
Hugh Johnston,  
Nehemiah Merritt,

Esquires.

Solomon Nichols,  
Neville Parker,  
William Scovil,  
Charles Simonds,  
Benjamin Smith,  
Stephen Wiggins.

Zalmon Wheeler, Esquire, *Cashier,*  
Neville Parker, Esquire, *Solcitor.*

**CHARLOTTE COUNTY BANK.**

Harris Hatch, Esquire, *President,*

**DIRECTORS:**

Thomas Wyer,  
James Campbell,  
James Rait,  
John M'Master,

Esquires.

John Wilson,  
John M'Laughlan,  
John M'Allister,  
James Douglas.

Peter Stubs, Esquire, *Cashier.*

**CITY OF ST. JOHN SAVINGS' BANK.**

His Excellency the Lieutenant-Governor, *Patron.*

Thomas Heavside, Esquire, *President,*

Honorable William Black,

Judge Chipman, } *Vice-Presidents,*

Hugh Johnston, Esquire, }

The Bank of New-Brunswick, *Treasurer,*

~~.....~~ *Cashier and Register.*

**FREDERICTON SAVINGS' BANK.**

His Excellency the Lieutenant-Governor, *Patron.*

His Honor the Chief Justice, *President,*

Peter Fraser, Esquire, *Vice-President,*

James Taylor, senior, Esquire, *Treasurer,*

Henry G. Clopper, Esquire, *Secretary,*

Mr. John F. Taylor, *Cashier and Register.*

**Charlotte County Savings' Bank.**

Thomas Wyer, Esquire, *President,*

Peter Stubs, Esquire, *Cashier.*

*Committee:*—H. Hatch, S. Frye, E. Andrews, J. M'Master,  
P. Stubs, J. Parkinson, W. Ker, and J. M'Laughlan, Esquires.



PANY.

on,  
itt,  
obinson,  
gar,  
ins,

Society.

on,

Members of the Central

RCH.

otia, ex-  
al Juris-

hn  
ohn

- Rev. Jerome Alley, Rector of Saint Andrews
- Rev. Skefington Thompson, L. L. D., Rector of St. Stephen
- Rev. James Somerville, L. L. D., Missionary for Douglas
- Rev. Raper Milner, Rector of Maugerville [cc.
- Rev. Samuel D. L. Street, Rector of Woodstock
- Rev. Samuel R. Clarke, Rector of Gagetown
- Rev. Oliver Arnold, Rector of Sussex
- Rev. Elias Scovil, Rector of Kingston
- Rev. Christopher Milner, Rector of Sackville
- Rev. Gilbert L. Wiggins, Rector of Westfield & Greenwich
- Rev. Samuel Bacon, Rector of Miramichi
- Rev. Archibald Gray, Assistant at ditto
- Rev. Samuel Thomson, Rector of Saint George
- Rev. William Walker, Rector of Hampton
- Rev. John Burnyeat, Itinerant Missionary for the vacant Districts of the Province
- Rev. Addington D. Parker, Rector of Prince William
- Rev. Richard Wiggins, Minister at Westmorland
- Rev. Nelson Arnold, Itinerant Minister at Sussex
- Rev. Edwin Arnold, Minister at Chediac
- Rev. Abraham Wiggins, (acting) Rector of Grand Manan
- Portland, (Vacant)
- Loch Lomond, (Vacant)

*Established Church of Scotland*

- Saint John—The Reverend George Burns, D. D.
- Saint Andrews—Reverend Alexander McLean.
- Miramichi—Reverend James Souter, A. M.

*Roman Catholic Clergy.*

- Saint John—Rev John Carroll,
- Fredericton—Mr M'Sweeney,
- Miramichi—Mr Dollard,
- Saint Andrews—Mr Cullenins,
- Richibucto—Mr Tetreau,
- Nipisiguit—Mr Naud
- Caraget—Mr Fortier,
- Memramcook—Mr Gauvreau,
- Chediac—Mr Gagne,
- Madawaska—Mr Sirois,
- Chimogou—Mr Paquet
- Village of Sanguen—Mr Belleau.

*Wesleyan Missionaries—New Brunswick District.*

- Saint John—Rev. John B. Strong, and Samuel Joll.
- Fredericton and Sheffield—Rev. S. Busby, and A. McNutt.
- St. Andrews and St. Stephens—Rev. Richard Williams, Henry Daniel; Duncan McCall, (superannuated.)
- Westmorland—Reverend William Smithson.
- Pelitcodiac—Reverend Joseph F. Bent.

*Annapolis and Ligby*—Rev. Albert Desbrisny, and R. Douglas.  
*Sussex Vale*—Reverend William Murray.  
*Miramichi*—Reverend Michael Pickles.

**Baptist Ministers in New-Brunswick.**

*Fredericton*—Rev Robert Davis. *Miramichi*—Rev James Tozer.  
*Waterborough*—Rev J Masters. *Hopewell*—Rev N Cleaveland.  
*Saint John*—Rev F W Miles. *Wickham*—Rev Charles Lewis.  
*Prince Wm.*—Rev L Hammond. *Dorchester*—Rev William Sears.  
*Norton*—Rev Francis Pickle. *Salisbury*—Rev Joseph Crandall.

**COMMISSIONERS FOR SOLEMNIZING MARRIAGE.**

IN THE SEVERAL COUNTIES.

*County of York.*

Archibald M'Lean, John Allen,  
 Jacob Elliquod, Dan'l Morehouse,  
 Richard Ketchum, George More-  
 house, Joshua Brown, John Ru-  
 binson, and Jas Harrison, Esq's.

*County of Sanbury.*

David Burpe, Thomas O. Miles,  
 John Hazen, and Stephen Peabo-  
 dy, Esquires.

*County of Westmorland.*

Rufus Smith, John Keillor, Wil-  
 liam Crane, William Scott, Wm.  
 Haunington, William Chapman,  
 and Bill Chappell, Esquires.

*County of Northumberland.*

Wm. Abrams, Alexander Good-  
 fellow, Donald, M'Kay, Robert  
 Doak, and John Campbell, Esq's.

*County of Charlotte.*

Hugh M'Kay, Tristram Moore,  
 William Ross, James Allanshaw,  
 James Chaffey, William Buck  
 Cripps, and P. M'Callum, Esq's.

*King's County.*

Henry Nase, David B. Wat-  
 more, William M'Leod, Henry A.  
 Scovil, John C. Vail, Joshua Up-  
 ham, Isaac Perry, and James  
 Brittain, Esquires.

*Queen's County.*

Samuel Scovil, Harry Peters,  
 John Colwell, Stephen Golding,  
 William Foshay, Thomas Under-  
 hill, Thomas T. Hewlett, John  
 Earle, and John Humphrey, Esq's.

*City and County of Saint John.*

Gerhardus C. Carman, John  
 Jordan, and James Moran, Esq's.

*County of Kent.*

John Wheaton, John Jardine,  
 John Bowser, and William Han-  
 nington, junior, Esquires.

*County of Gloucester.*

Hugh Munro, Perry Dumaresq,  
 Robert Ferguson, John Young,  
 and James Blackball, Esquires.

**SUPERVISORS OF GREAT ROADS.**

Nathaniel H. DeVeber,  
 Colin Campbell,  
 James A. M'Lauchlan,  
 Thomas Wyer,  
 William Joplin,  
 John Wesley Weldon,  
 George Anderson,  
 Edward G. N. Scovil,

Esquires.  
 Robert Doak,  
 William Hannington,  
 John Young,  
 Alexander Goodfellow,  
 George Hayward,  
 Joseph Reid,  
 Benjamin L. Peters,  
 Amos Edwin Botsford,

John  
 Esquires  
 John  
 Clement  
 Smith,  
 Thomas  
 George  
 Simon H  
 William  
 Sharp, A  
 Curry, E  
 Edward  
 Henry  
 Peace an  
 Henry  
 William  
 West, Ed  
 Hen. B  
 binson, G  
 G F S B  
 Ketchum  
 Affidavit  
 William  
 Francis E

Samuel  
 of the Inf  
 Samuel  
 drew We  
 William  
 Christoph  
 Humphre  
 Amos Ed  
 Justices o  
 William  
 Edward  
 Peace and  
 James  
 Marm  
 Samuel  
 William  
 Commis  
 and the J  
 ers for tal  
 John C

R. Douglas.

ick.  
nes Tozer.  
leveland.  
ries Lewis.  
illiam Sears.  
ph Crandall.

MARRIAGE.

nty.  
id B. Wet-  
nd, Henry A.  
Joshua Up-  
and James

nty.

arry Peters,  
en Golding,  
omas Under-  
wlett, John  
phrey, Esq's.

Saint John.  
rman, John  
oran, Esq's.

Kent.

ohn Jardine,  
William Ha-  
ires.

ucester.

y Dumaresq,  
ohn Young,  
Esquires.

S.

gton,

dfellow,  
d,

ters,  
tsford.

## County of York.

John Allen, Peter Fraser, Thomas C. Lee, and John Robinson, Esquires, Justices of the Inferior Court of Common Pleas.

John Allen, Peter Fraser, Thomas C. Lee, John Robinson, Peter Clements, John Bedell, Jacob Ellegood, Daniel Morehouse, Henry Smith, Richard Ketchum, James Upham, James A. M'Laughlan, Thomas Emerson, Thomas Jones, Jedediah Stason, George Minchin, George Morehouse, Josiah Brown, John Dibblee, James Harrison, Simon Hammond, Jacob Allen, William Robinson, William Wilmot, William Davidson, Patrick Campbell, James Miles, John Dow, Adam Sharp, A. B. Walsh, W. Hallett, F. Rice, (of the Quorum) and Ross Curry, Esquires—Justices of the Peace.

Edward W. Miller, Esquire, High Sheriff.

Henry G. Clopper, Esquire, Keeper of the Rolls and Clerk of the Peace and Inferior Court of Common Pleas.

Henry G. Clopper, Esquire, Register of Deeds and Wills.

William Taylor, John Badall, jun. Hilhiah Kearnoy, and George West, Esquires, Coroners.—Mark Needham, Esq. County Treasurer.

Hon. S D Street, G F Street, G P Bliss, J S Saunders, D L Robinson, G J Dibblee, C S Putnam, A K S Wetmore, C P Wetmore, G F S Berton, A L Wilmot, E B Smith, D Hilles Smith, Richard Ketchum, and Daniel Morehouse, Esquires, Commissioners for taking Affidavits in the Supreme Court.

William Taylor, Asa Coy, Joseph Beck, Thomas C. Everitt, and Francis E. Beckwith, Licensed Auctioneers.

## County of Westmorland.

Samuel Gay, Rufus Smith, and John Keillor, Esquires—Justices of the Inferior Court of Common Pleas.

Samuel Gay, Rufus Smith, John Keillor, James Easterbrooks, Andrew Weldon, Edward Dixon, John Chapman, William Crane, jun. William Hannington, James Sayre, William Scott, Philip Palmer, Christopher Milner, Malcolm Wilmot, John Smith, Bill Chappell, Humphrey Gilbert, Marmaduke L. Backhouse, Harman Trueman, Amos Edwin Botsford, (of the Quorum) and Robert Scott, Esquires, Justices of the Peace.

William P. Sayre, Esquire, High Sheriff.

Edward B. Chandler, Esquire, Keeper of the Rolls and Clerk of the Peace and Inferior Court of Common Pleas.

James Hughson, John Edgett, and C. F. Allison, Esq's. Coroners.

Marmaduke L. Backhouse, Esquire, Register of Deeds and Wills. Samuel Gay, Rufus Smith, John Keillor, Edward B. Chandler, William Wiley, Peter Stubs, Junior, and James Stewart, Esquires—Commissioners for taking Affidavits to be read in the Supreme Court; and the Justices of the Inferior Court of Common Pleas, Commissioners for taking Bail in the same.

John Carey and Thomas Trenholm, Esq's. Licensed Auctioneers.



## County of Charlotte.

Hugh MacKay, Colin Campbell, Peter Stube, and Thomas Wyer, Esquires—Justices of the Inferior Court of Common Pleas.

Hugh MacKay, Colin Campbell, Peter Stube, Thomas Wyer, Peter McCallum, Thomas Armstrong, Moses Vernon, William Frankland, William Reay, Rev. Jerome Alley, John Wilson, Tristram Moore, Patrick Clinch, William Buck Cripps, Charles R. Hatheway, James Affenshaw, Aaron Upton, David Mowatt, Thomas Jones, Samuel Abbott, William Ker, George M. Porter, John Patterson, Cadwallader Curry. (of the Quorum) and Jas White, Esqrs.—Justices of the Peace.

Elisha Andrews, Esquire, High Sheriff.

Harris Hatch, Esquire, Keeper of the Rolls and Clerk of the Peace and Inferior Court of Common Pleas.

Harris Hatch, Esquire, Register of Deeds and Wills.

Donald McLauchlan and David Mowatt, Esquires, Coroners.

David W. Jack, Esquire, County Treasurer.

The Justices of the Pleas, together with Charles R. Hatheway, Joseph N. Clarke, Harris Hatch, Alfred L. Street, George S. Hill, Robert S. Mowat, Francis E. Putnam, Samuel H. Whitlock, George Kerr, Thomas Chandler, and Samuel G. Andrews, Esquires, Commissioners for taking Affidavits in the Supreme Court;—The Justices of the Common Pleas, together with Joseph N. Clarke, Charles R. Hatheway, and S. H. Whitlock, Esquires, Commissioners for taking Bail in the Supreme Court.

Colin Campbell, jun. Peter Stube, Thomas Armstrong, Charles R. Hatheway, and James Abbott, Licensed Auctioneers.

## County of Sunbury.

David Burpe, Thomas G. Miles, and Theodore V. W. Clowes, Esquires—Justices of the Inferior Court of Common Pleas.

David Burpe; Thomas G. Miles; Theodore V. W. Clowes; Isaac Hubbard; Chapman Smith; Stephen Peabody; Charles F. Street; Cyrus Hatheway; Nathaniel Hubbard; James Tiley; George Hayward; Charles Hazen; (of the Quorum) and William Hoyt, Esquires—Justices of the Peace.

John Hazen, junior, Esquire, High Sheriff.

George F. S. Barton, Esquire, Keeper of the Rolls and Clerk of the Peace and Inferior Court of Common Pleas.

Nathaniel Hubbard, Esquire, Register of Deeds and Wills.

Solomon Perley, and James Hatch, Esquires, Coroners.

Isaac Hubbard, Elijah Miles, and David Burpe, Esquires, Commissioners for taking Bail in the Supreme Court.—Hon. S. D. Street, Isaac Hubbard, Elijah Miles, David Burpe, and George W. Clary, Esqrs.—Commissioners for taking Affidavits in the Supreme Court.

## County of Northumberland.

Alexander Davidson, William Abrams, and Joseph O'Connell, Esquires, Justices of the Inferior Court of Common Pleas.

Alexander  
John T.  
Wright, C.  
McKay, I.  
D. Fraser  
Donald, S.  
Justices of  
Richard  
Thomas  
Peace and  
J. Wrig  
J. A. S.  
Hugh M.  
taking Bail  
Robert  
tle, John  
Jobban, V.  
Esquires, C.  
William  
James W.  
M. Johano

Henry N.  
and Isaac E.  
Pleas.

Henry N.  
Isaac Perry  
Brittain, G.  
C. Vail, All  
Upham, Eb  
(of the qua

Walter E.  
William  
Peace and  
Ninyon C.  
Henry N.

Frost, Esq  
Honorab  
for taking  
vil, and W  
in the name

Walter J.  
Grammar  
Caleb W.  
Licenced

Valentin  
tices of the

Alexander Davidson, Joseph Cunard, William Abrams, John Clarke, John T. Williston, William Joplin, Alexander Goodfellow, John Wright, Christopher Clarke, Dudley Perley, John Nesmith, Donald McKay, Robert Duke, John Campbell, J. Campbell, J. Gilmour, J. D. Fraser, H. B. Allison, R. Blackstock, A. Moore, R. Leslie, J. Donald, S. Henderson, (of the quorum) and Thomas Callan, Esqrs. Justices of the Peace.

Richard Samuel Clarke, Esquire, High Sheriff.

Thomas H. Peters, Esquire Keeper of the Rolls and Clerk of the Peace and Inferior Court of Common Pleas.

J. Wright, John Anderson, and J. M. Johnston, Esqrs., Coroners.

J. A. Street, Esquire, Register of Deeds and Wills.

Hugh Munro and Alexander Davidson, Esquires, Commissioners for taking Bail in the Supreme Court.

Robert Ferguson, Perry Dumaresq, Samuel McKeen, Thomas Oatle, John Wheaton, Thomas H. Peters, J. A. S. Street, W. End, J. Jobban, W. Carman Jun'r., Richard Hill, and Richard Carman, Esquires, Commissioners for taking Affidavits in the Supreme Court.

William Davidson, Richard Samuel Olarke, Patrick Henderson, James Wright, John Bell, James Davidson, Thomas C. Allan, John M. Johason, and Patrick Brannen, Esqrs. Licenced Auctioneers.

## King's County.

Henry Nase, Oliver Arnold, David B. Wetmore, George Hazen, and Isaac Perry, Esquires, Justices of the Inferior Court of Common Pleas.

Henry Nase, Oliver Arnold, David B. Wetmore, George Hazen, Isaac Perry, Thomas Ketchum, Rulof Rulofson, John Smith, James Brittain, Gould Pickett, Benjamin B. Crawford, Henry A. Scovil, John C. Vail, Alley C. Evanson, William McLeod, John Barberie, Joshua Upham, Ebenezer Smith, Azor Hoyt, Isaac Haviland, John Humbert, (of the quorum) and Samuel Foster, Esquires, Justices of the Peace.

Walter Bates Esquire, High Sheriff.

William Tyng Peters, Esq. Keeper of the Rolls and Clerk of the Peace and Inferior Court of Common Pleas.

Ninyon Chaloner, Esq. Register of Deeds and Wills.

Henry Nase, David B. Wetmore, George N. Arnold, and William Frost, Esquires, Coroners.

Honorable John Coffin and Elias Scovil, Esquires, Commissioners for taking Bail in the Supreme Court; Hon. John Coffin, Elias Scovil, and William Simpson, Esq. Commissioners for taking Affidavits in the same.

Walter Bates, and Edward G. N. Scovil, Esquires, Trustees of the Grammar School.

Caleb Wetmore, Simon Baxter, John Sheck, and William Frost, Licenced Auctioneers.

## Queen's County.

Valentine H. Peters, Samuel Scovil, Harry Peters, Esquires, Justices of the Inferior Court of Common Pleas.

Valentine H Peters, Samuel Scovil, John Colwell, John Golding, Richard Yeamans, Abiather Camp, Stephen Golding, William Foshay, Thomas Uuderhill, Thomas T Hewlett, John Earle, John Humphrey, (of the quorum) and Charles Harrison, Esquires, Justices of the Peace.—Nathaniel Hubbard DeVeber, Esq. High Sheriff.

T R Wetmore, Esquire, Keeper of the Rolls, and Clerk of the Peace and Inferior Court of Common Pleas.

Thomas Gilbert, John Earle, and Thomas T. Hewlett, Esquires, Coroners.

Valentine H Peters, Esquire, Register of Deeds and Wills.

Valentine H Peters and Samuel Scovil, Esquires, Commissioners for taking Bail in the Supreme Court; Valentine H Peters, Samuel Scovil, and T R Wetmore, Commissioners for taking Affidavits in the Supreme Court.

Timothy R Wetmore, and Nathaniel H DeVeber, Esquires, Trustees of the Grammar School.

Nathaniel Hubbard DeVeber, Esq. Licensed Auctioneer.

## City and County of Saint John.

The Mayor and } Justices of the Mayor's Court.  
Recorder,

Lauchlan Donaldson, George Harding, Daniel Ansley, Thomas Harding, Gregory Van Horne, George Bond, and Willam Olive, Esquires, Justices of the Peace and of the Quorum.

James Simonds, Thomas Menzies, John Ward, William Scovil, James Peters, Thomas Millidge, Ralph M Jarvis, Lewis Bliss, Charles Simonds, G C Carman, Zalmon Wheeler, John Jordan, Thomas Heaviside, Peter Duffis, George H Hazen, Allen Otty, George Anderson, John Brown, Jun. James Moran, Hugh Johnston, Henry Gilbert, Robert W Crookshank Sen'r., Noah Disbrow, Robert Ellis, Robert Payne, Archibald Menzies, George Brown, and James Hendricks, Esquires, Justices of the Peace.

James White, Esquire, High Sheriff.—Mr. A. Garrison, Deputy Sheriff.

James Peters, Jun. Esquire, Clerk of the Peace, &c.

Alexander M'Leod, Esquire, Coroner.

Alexander M'Leod, Esquire, County Treasurer.

Charles Drury, Esquire, Register of Deeds and Wills.

Henry Swymer, Esquire, Surrogate.

Robert Parker, and Benjamin L Peters, Esquires, Commissioners for taking Bail in the Supreme Court.

Charles J Peters, William Tyng Peters, Robert Parker, William B Kinnear, John Thomas Murray, Neville Parker, James Peters, Jun. Henry Swymer, Francis A Kinnear, Robert F. Hazen, Le-Baron Hazen, Robert Robertson, jun., H. N. H. Lugin, John M Robinson, William Merritt, M. H. Perley, Robert L. Hazen, and Richard Sands, jun. Esquires, Commissioners for taking Affidavits to be read in the S. Court.

John  
of the I  
John  
son, Th  
(of the  
Thom  
John  
the Pea  
Silver  
John  
Commis

Hugh  
tices of  
Hugh  
James  
Ferguson  
the Quor  
Willia  
Willia  
Peace an  
John A  
Robert  
for taking

TERMS :  
ary  
KING  
SUNBU  
QUEE  
CHAR  
KENT  
WEST  
NOAT

The Ter

SAINT J  
June,

## County of Kent.

John Wheaton, Samuel M'Kean, George Pagan, Esquires, Justices of the Inferior Court of Common Pleas.

John Wheaton, Samuel M'Kean, George Pagan, George Thompson, Thomas Ostle, John Jardine, John Bowser, William Hanningten, (of the Quorum) and Thomas Powell, Esquires, Justices of the Peace.

Thomas Lansdowne, Esquire, High Sheriff.

John Wesley Weldon, Esquire, Keeper of the Rolls and Clerk of the Peace and Inferior Court of Common Pleas.

Silvester C Hughes, Esquire, Coroner.

John W Weldon, Peter Stubs, Jun'r. and William Chandler, Commissioners for taking Affidavits to be read in the Supreme Court.

## County of Gloucester.

Hugh Munro, Perry Dumaresq, Robert Ferguson, Esquires, Justices of the Inferior Court of Common Pleas.

Hugh Munro, Perry Dumaresq, Robert Ferguson, John Miller, James Blackhall, Thomas N De Blois, Hugh Montgomery, Adam Ferguson, William Flemming, Benjamin Davidson, John Young, (of the Quorum) and Henry Adams, Esquires, Justices of the Peace.

William Carman, Esquire, High Sheriff.

William End, Esquire, Keeper of the Rolls, and Clerk of the Peace and Inferior Court of Common Pleas.

John Anderson, and Joseph Read, Esqrs. Coroners.

Robert H Peters, and Andrew Barberie, Esquires, Commissioners for taking affidavits in the Supreme Court.

## COURTS OF NISI PRIUS.

TERMS :—*County and City of St. John*—2d Tuesday in January, and 3d Tuesday in June.

KING'S—4th Tuesday in January.

SUNBURY—3d Tuesday in February.

QUEEN'S—4th Tuesday in February.

CHARLOTTE—1st Tuesday in August.

KENT—4th Tuesday in August.

WESTMORLAND—1st Tuesday in September.

NORTHUMBERLAND—3d Tuesday in September.

*The Terms of the sittings of the Court of General Scsion, and Inferior Court of Common Pleas.*

SAINT JOHN—Third Tuesday in March, and first Tuesday in June, September and December.

**YORK**—Second Tuesday in January and June—*Additional Terms of the Common Pleas*—third Tuesday in March, and second Tuesday in October.

**WESTMORLAND**—Third Tuesday in June, and second Tuesday in December—*Additional Terms of the Common Pleas*—first Tuesday in April and September.

**CHARLOTTE**—Second Tuesday in April, and third Tuesday in September—*Additional Terms of the Common Pleas*—second Tuesday in July and December.

**KING'S COUNTY**—First Tuesday in March and July—*Additional Terms of the Common Pleas*—first Tuesday in May and November.

**QUEEN'S COUNTY**—Fourth Tuesday in January and June—*Additional Terms of the Common Pleas*—fourth Tuesday in April and October.

**SUNBURY**—Third Tuesday in January and June—*Additional Terms of the Common Pleas*—fourth Tuesday in March and third Tuesday in October.

**NORTHUMBERLAND**—First Tuesday in March and August—*Additional Terms of the Common Pleas*—first Tuesday in June and November.

**KENT**—Third Tuesdays in January and June—*Additional Terms of the Common Pleas*—first Tuesday in April and September.

**GLOUCESTER**—Second Tuesday in January and June—*Additional Terms of the Common Pleas*—second Tuesday in April and October.

---

### TEN RULES,

TO BE OBSERVED IN PRACTICAL LIFE.

1. Never put off till to-morrow what you can do to day.
2. Never trouble another for what you can do yourself.
3. Never spend your money before you have it.
4. Never buy what you do not want because it is cheap.
5. Pride costs us more than hunger, thirst, or cold.
6. We never repent of having eaten to little.
7. Nothing is troublesome that we do willingly. [pened.]
8. How much pain have those evils cost us which never hap-
9. Take things always by their smooth handle.
10. When angry, count ten before you speak ; if very angry, a hundred.

Lieut

Comm  
ant Com  
Deputy

Ord

Barrack

Royal

Chapl  
Rev. Be

FREDE  
ST. JOE  
ST. AN

Offi

R

W. Ee

Thos.  
W. W  
G. Sim

D. M  
J. R. C  
Robert  
R. Jor  
W. H.  
R. W.

# Staff of the Army.

Lieutenant-Colonel J. F. LOVE, Commanding  
the Troops in the Province of New-Brunswick.

*Town Major*—J. Gallagher,  
*Hospital Assistant*—S. M. Hadaway,

*Commissariat Department*.—Wm. H. Robinson, Esquire, Assistant Commissary General; George Swinney and Wm. Milliken, Esqrs. Deputy Assistant Commissary Generals.

*Ordnance Department*.—F. C. Frith, Esq. Deputy Storekeeper, Lieut. Huyghue, and Wm. Bond, Clerks. William Hanley, Office Keeper.

*Barrack Department*.—J. E. Woolford, Esq. Ass. Barrack Master.

*Royal Engineer Department*.—Captain Williams, Commanding, Lionel Anderson, Clerk, Henry Hennigar; Overseer of Works.

*Chaplains*.—Frederickton, Venerable Archdeacon Cester; St. John, Rev. Benjamin G. Gray, D. D.; St. Andrews, Rev. Jerome Alley.

## GARRISONS.

FREDERICTON.—Lieut. Col. Eeles, Rifle Brigade, Commandant.  
ST. JOHN.—Lieutenant Colonel Love, Commandant,  
ST. ANDREWS.—Captain Hook, 34th Regt. Commandant,

## Officers of Corps serving in New-Brunswick.

*Royal Artillery*.—Captain Furneaux, Commanding,  
Lieut. B. O. Lyster.

## RIFLE BRIGADE.

*Lieut. Colonel*,

W. Eeles,  
*Captains*,

Thos. E. Kelly,  
W. Warren,  
G. Simmond.

*Lieutenants*.

D. M'Laughlan,  
J. R. Groves, (*Adjt.*)  
Robert Walpole,  
R. Jones,  
W. H. Shirley,  
R. W. D. Flamstead,

J. Munro,

K. W. Young,  
*Paymaster*.

W. Holden, (*Capt.*)  
*Assistant Surgeon*.

T. L. Lloyd  
*Quarter Master*.

W. Hill.

AT SAINT ANDREWS.

Captain Hook, (34th Regiment.)  
Lieutenant Reed, do do

# Staff of the Militia.

His Excellency Major-General Sir HOWARD DOUGLAS, Bart.  
Commander-in-Chief.

Lieutenant-Colonel J. F. Love, }  
Lieutenant-Colonel John Allen, } Inspecting Field Officers  
Honorable George Shore, Adjutant-General.  
Major John Gallagher, Quarter-Master General.  
Lieut.-Colonel Charles Drury, Provincial Aid-de-Camp.

## Pork County Militia.

### First Battalion.

#### Lieutenant-Colonel.

John Allen, 21st May, 1824

#### Major.

G. Minchin, 25th May, 1824

#### Captains.

M. Brannen, 14th June '24

G. K. Lugin, (African) do.

G. P. Bliss, (Art.) 10 Sept. '27

G. F. Street, 22d Nov '28

C. S. Putnam, 23 do.

D. L. Robinson, 24 do.

W. J. F. Winslow, 25 do.

W. M'Beath, (rif.) 30 Aug '30

Peter Fisher, 14th Sept do

John F. Taylor, 15th do do

#### Lieutenants.

J. Slason, (rifle) 25 May, 1824

R. Dibble, (Art) 9th Jan. '26

J. Holbrook, (art) 10 Sept. do

A K Swetmore (sr) 22 No '28

B. Rainsford, 22 Nov. do

G. E. Ketchum, 25 do do

C. A Wilmot, 26 do do

H. Vavasour, 27 do do

N. Walker, (Af.) 28 do do

T. Gardiner, (Af.) 29 do do

J. A. Beckwith, 1 Dec. do

G. F. H. Minchin, 24 Sep. '29

B. Wolhaupter, (r.) 30 Aug 30

F E Beckwith, (r.) 31 Aug '0

W. N. Akerley, (r.) 1 Sep do

D. Hailes Smith, 14 do do

Wm. Groevenor, 15 do do

C. Murray, 16 do do

N. Merrill Hazen, 18 do do

Asa Coy, 20 do do

#### Ensigns.

C W Marsh, (Af.) 25 Nov '28

Robert Fulton, 14 Sep '30

W. C. Hailes, 15 do do

John Gregory, 16 do do

A. C. Starritt, 17 do do

W. S. Estey, 18 do do

W. D. Hartt, 20 do do

#### Paymaster.

Jas Taylor, (capt) 14 June '24

#### Adjutant.

T R Wetmore, cap. 11 Sep '26

#### Quartermaster.

G F S Berton, (lt.) 22 Nov '28

#### Surgeon.

Thomas Emerson, 20 July, '19

### Second Battalion.

#### Major.

Rich'd Ketchum, 2 Apr. 1818

#### Captains.

John Dibblee, 9 March '16

Thos. G. Cunliffe 3 April, '19

Arthur P  
Geo. M  
Josiah B  
William  
James K  
Thomas  
Arth. N  
Benjn. T  
John D  
Edward

Benjami  
Rufus P  
John K  
James D  
C M'La  
Elisha C  
Elijah S  
Henry D  
Nath'l S  
Peter D  
M Giber  
George  
Wm Ma

Robert  
Wm M'  
Adam B  
Walter  
J N C N  
George  
Wm M'  
Charles  
J Brown  
Thos Bu  
John G  
James C  
Ralph K  
Joseph  
William

C Raym  
C. Peab

a.  
 GLAS, Bart.  
 eld Officers  
 l.  
 e-Camp.  
 31 Aug '0.  
 r.) 1 Sep do  
 14 do do  
 15 do do  
 16 do do  
 18 do do  
 20 do do  
 .  
 25 Nov '28  
 14 Sep '30  
 15 do do  
 16 do do  
 17 do do  
 18 do do  
 20 do do  
 er.  
 14 June '24  
 nt.  
 . 11 Sep '26  
 aster.  
 ) 22 Nov '28  
 n.  
 20 July, '19  
 -  
 ttalion.  
 2 Apr. 1818  
 us.  
 9 March '16  
 S April, '19

Arthur B Walsh, 25 June, '21  
 Geo. Morehouse, 6 May, '22  
 Josiah Browne, 14 June, '24  
 William Dibblee, 4 April, '25  
 James Ketchum, 5 do do  
 Thomas Phillips, 9 June, '23  
 Arth. Nicholson, 29 July, '28  
 Benjn. Tibbitts, 30 do do  
 John Dickenson, 30 Aug. '30  
 Edward Turner, 31 do do

*Lieutenants.*

Benjamin Griffith, 6 April, '25  
 Rufus Payson, 7 do do  
 John Kearney, 8 do do  
 James Dingee, 9 do do  
 C M'Laughlan, 10 Sept '27  
 Elisha Cunliffe, 28 July '28  
 Elijah Sisson, 30 do do  
 Henry Dibblee, 24 Aug. '29  
 Nath'l Stickney, 25 do do  
 Peter Dickenson, 30 Aug. '30  
 M Giberson, 31 do do  
 George Milbury, 1 Sept do  
 Wm Mallery, 25 Oct do

*Ensigns.*

Robert Hannah, 6 April '25  
 Wm M'Donald, 10 Sept '27  
 Adam B Sharp, 11 do do  
 Walter D Bedell, 28 July, '28  
 J N C Nicholson, 29 do do  
 George Murphy, 30 do do  
 Wm M'Kenzie, 24 Aug. '29  
 Charles Upham, 25 do do  
 J Brown, jr 30 Aug. '30  
 Thos Burlock, 31 do do  
 John Giberson, 1 Sept. do  
 James Cloyd, 2 do do  
 Ralph Ketchum, 3 do do  
 Joseph Phillips, 4 do do  
 William Shaw, 25 Oct. do

*Adjutant.*

C Raymond, cap. 28 July, '28

*Quartermaster.*

C. Peabody, lieu, 23 Sep '26

**Third Battalion.**

*Lieutenant-Colonel.*

John Allen, 21st May, 1824  
*Major.*

Simon Hammond, 14 Jun '24  
*Captains.*

Wm Davidson, 9 March, '16  
 Abraham Yerxa, 19 Jan. '18  
 V Harding, 19 Aug. '22  
 F Morehouse, 15 June, '24  
 George Long, 2 Feb. '29  
 Wm C Joslin, 3 do do  
 James Hartley, 4 do do  
 John Grant, 5 do do  
 Joseph Slood, 2 July, do  
 Thos Jones, (asr.) 3 do do  
 H Cronkhite, 4 do do  
 John Haggerman, 5 do do  
 James Miles, 2 April '22  
 John Barker, 20 Sept '30

*Lieutenants.*

William Kitchen, 3 Feb. '29  
 Enoch Dow, 5 do do  
 Judah Hammond, 6 do do  
 Witter Davidson, 7 do do  
 John Yerxa, 3 July '29  
 James Jones, 4 do do  
 S Lockwood, 6 do do  
 Chas Morehouse, 7 do do  
 Aaron Hartt, 8 do do  
 A Hammond, 9 do do  
 Daniel Parent, 10 do do  
 James Tibbitts, 11 do do  
 Arch. Moody, 12 do do  
 David Phillips, 13 do do  
 James Campbell, 20 Sept '30  
 Benjamin Burt, 21 do do

*Ensigns.*

D. Yerxa, jun 2 July '29  
 James Golder, 3 do do  
 Daniel Jewett, 4 do do  
 James Cliff, 5 do do  
 William Jones, 6 do do  
 J Christy, 7 do do



Thomas Parent, 8 July, '29  
 J Ingraham, jun 9 do do  
 Edward Garden, 10 do do  
 S Cronkhite, 11 do do  
 George Fox, 12 do do  
 David Dow, 13 do do  
 Peter Watson, 14 do do  
 Richard Barker, 18 Sept '30  
 B Wheeler, 19 do do  
 Robert Kilburn, 20 do do  
 Thos Saunders, 21 do do  
 John Brewer, 22 do do

*Paymaster.*

Jacob Allen, (cap.) 2 July, '29

*Adjutant.*

I Lawrence, (cap.) 20 Sep '30

*Quartermaster.*

J Parent, (capt.) 1 June, '22

*Surgeon.*

Wm Caverhill, 16 April, '22

**Fourth Battalion.**

*Lieutenant-Colonel.*

Peter Fraser, 7th Sept. 1830

*Captains.*

Peter Lizotte, 1 Dec. '24

Auth. Bellefleur, 2 do do

Firman Thibodeau, 3 do do

Francis Violette, 4 do do

Simon Hebert, 4 July '27

L R Coombes, 14 June '24

Francis Rice, adjt. 7 Sept '30

Germain Cere, 8 do do

Raphael Michaud, 9 do do

*Lieutenants.*

Xavier Cere, 2 Dec. '24

Leon Bellefleur, 4 do do

J Bapt. Martin, 5 do do

Joseph Cere, 7 Sept '30

Joseph Hebert, 8 do do

J B Daiale, 9 do do

Bonav. Lizotte, 10 do do

Thomas Nugent, 11 do do

Simon Hebert, jr. 12 do do

Michael Farrell, 13 Sept '30

Andrew M'Crear, 14 do do

*Ensigns.*

Dom. Violette, 5 Dec. '24

Ros. Violette, 7 Sept '30

Frs. M'Donnell, 8 do do

Michael Mercure, 9 do do

John Burgoine, 10 do do

Raphael Martin, 11 do do

Peter Mercure, 12 do do

Thomas Martin, 13 do do

David Cere, 14 do do

*Adjutant.*

Frs. Rice, (capt) 1 Dec. '24

*Quartermaster.*

J B Souci, 1st Dec. 1824

**Fifth Battalion.**

*Major.*

John Robinson, 22 Nov. 1828

*Captains.*

Alex M'Lean, 20 July, 1819

Ross Curry, 12 Dec. '23

Daniel Hallett, 13 do do

George Clements, 14 do do

Ludlow Campbell 15 do do

John M'Gibbon, 12 June '30

*Lieutenants.*

Pat'k Camphell, 13 Dec. '22

Henry Henley, 14 do do

D J Estey, 15 do do

George Sterling, 17 do do

A M'Lean, 12 June '30

*Ensigns.*

Alex. M'Gibbon, 13 Dec. '30

Walter Sterling, 14 do do

Charles Nevers, 15 do do

Donald Manson, 16 do do

Chas A Harding, 17 do do

Alexander Ross, 12 June '30

*Adjutant.*

Wm Carney, (cap.) 1 Jan. '15

*Quartermaster.*

M Pickard, (lieut.) 15 Dec. 23

York

Wm W

Thos L

F

His Exc

ral St

Bart.

&c. &

Lie

C Drury

B L Pet

G D Rob

Wm Sco

T Leavi

T Barlo

R W Cro

Daniel J

Thomas

Ezekiel I

John Sm

John J H

Michael

Thos L N

Fi

T Hanfor

G. Water

Edward I

Charles I

. M'Ma

William

Joali Dis

D J Merr

. J. Bud

A. M'Gro

**York County Cavalry.**  
*Captain.*  
 Wm Woodford, 22 Nov 1823  
*Lieutenant's.*  
 Thos L Langen, 22 Nov '28

G J Dibblee, 24 do do  
*Cornet.*  
 Wm H Odell, 22 Nov. '29  
*Quartermaster.*  
 J W Jouett, (cor) 15 Dec. '28

**Saint John City Militia.**

**First Battalion.**

*Colonel.*  
 His Excellency Major-General Sir Howard Douglas, Bart. Commander-in-chief, &c. &c.  
*Lieutenant-Colonel.*  
 C Drury, (staff) 25 Oct. 1824  
*Major.*  
 B L Peters, lt. col. 25 Oct '24  
*Captains.*  
 G D Robinson, (ad) 19 Ap. '22  
 Wm Scoullar, 22d Aug. '25  
 T Leavitt, (af.) do do  
 T Barlow, (art.) 9 Jan. '27  
 R W Crookshank, 26 Mar. do  
 Daaiel Jordan, 27 do do  
 Thomas Nisbet, 3 July '27  
 Ezekiel Barlow, jr. 4 do do  
 John Smyth, 5 do do  
 John J Roberts, 16 do '28  
 Michael Hennigar, 30 Aug '30  
 Thos L Nicholson, 31 do do  
*First Lieutenants.*  
 F Hanford, (Art) 3d Sept '22  
 G. Waterbery, (Art) 3d do  
 Edward L Jarvis, 9th Jan. '27  
 Charles Drury, 9th do do  
 T. M'Mackin, (r.) 26 Mar. '27  
 William Merritt, 27 do do  
 Noahi Dibrow, 3d July do  
 D J Merritt, 16 June '28  
 J. J. Budd, 30 Aug. '30  
 A. M'Grotty, 31 do do

C. Longstroth, (af.) 1 Sept do  
 H. N. H. Lugin, 2 do do  
*Second Lieutenants.*  
 H. T. Partelow, (af.) 22 Au. 25  
 Wm Y. Theal, 9 Jan. '27  
 W. O. Smith, (rif.) 26 Mar '27  
 Daniel Smith, 27 do do  
 John Robertson, 28 do do  
 Wm. Hutchinson, 3 July do  
 J.W.M'Leod, (ri) 16 June '28  
 C. J. Hendricks, 14 Sept '29  
 Richard Seely, 30 Aug. '30  
*Paymaster.*  
 W. Bowman, (capt) 5 Dec '24  
*Adjutant.*  
 G.D. Robinson, (c) 26 Mr. '27  
*Quartermaster.*  
 James Kirk, (capt) 22 Aug 25  
*Surgeon.*  
 J. Boyd, M. D. 16 Sept. '29  
*Enrolling Officer.*  
 J. O. Betts, (capt.) 3 July, '27

**Second Battalion.**

*Major.*  
 R.W.Crookshank, 12 Jun. '30  
*Captains.*  
 H. Flaherty, (adj) 23 Aug. '21  
 Thomas Smith, 5 Sept. 21  
 Gregory Vanhorne, do do  
 Thomas Merritt, 1st July '22  
 Stephen Smith, 25 Aug. '23  
 R. C. Minnette, do do  
 James T. Hanford, 5 Dec. '24

James Reed, (s r) 23 Sep. '26  
 J. V. Thurgar, (rifle) do do  
 Gilbert De Blois, 20 Aug. '27  
 And. Crookshank, 15 Mar '30  
 Thomas Reed, 2 Aug. '30

*Lieutenants.*

James Clarke, 5 Sept 1821  
 Wm Vaughan, (s r) do do  
 Benjamin Stanton, do do  
 William Leavitt, do do  
 T. B Millidge, (rif) 17 Sep. '29  
 William C Sears, 5 Dec '24  
 C J Peters, jr. 22 Aug '25  
 William Mullin, do do  
 W H Street, 23 Sept '26  
 Nicholas J Brown, do  
 George A Nagel, (s r) do  
 Wm P Scott, (s r) do  
 Hiram Smith, 20 Aug. '27

Jacob R Sneden, 22 Aug. '27  
 Charles Tisdale, 17 Mar. '29  
 J Hooper, (rifle) 18 do do  
 T. N. Smith, (s r) 7 Sept. do

*Ensigns.*

John Wishart, 23 Sept. '26  
 James Vernon, 13 June '24  
 Wm Hughson, 17 Mar. '29  
 Francis G Ward, 18 do do  
 E W Greenwood, 19 do do

*Paymaster.*

I L Bedell, (capt) 20 Sept '27

*Adjutant.*

H Flaherty, (cap) 25 do '21

*Quarter-Master.*

H Chubb, (capt) 11 Sept. '21

*Surgeon.*

Henry Cook, 20 August, '27

**Saint John County Regiment.**

*Lieutenant-Colonel Charles Simonds, Commanding.*

**First Battalion.**

*Majors.*

G Anderson, lt. c. 27 Apr. 25  
 A Wedderburn, d.li. 1 Jun 26

*Captains.*

Wm Eagles (s r) 10 May, '24  
 G C Carman, 21 June, do  
 Arch. Menzies, 3 Aug. do  
 S Strange, (s r) 29 Mar. '25  
 Samuel Dalton, 5 April do  
 Robert Payne, 17 May, do  
 William Craft, 11 June, do  
 John Cunard, 17 Sept. '27  
 James Ketchum, 23 July '28  
 Daniel Ansley, 25 Oct. do  
 Isaac Flewelling, 25 do do

*Lieutenants.*

Jos Ponsford, (s r) 29 Mar '25  
 Walter Drake (s r) do do

J Stackhouse (s r) 29 Mar '25  
 John Travis, 4 April do  
 George Clarke, 11 June '27  
 James Payne, 13 do do  
 Israel Merritt, 17 Sept. do  
 Geo Eagles, (s r) 19 do do  
 Barnes Travis, 20 do do  
 D L Dykeman, 28 July '28  
 Charles Theal, 29 do do  
 Joseph Ketchum, 30 do do  
 Richard Carman, 26 Oct. do  
 Isaac Stevens, 27 do do  
 Rbt Jenkins, (af.) 5 July '30  
 James Bartlett, 30 Aug. do  
 Wm H Travis, 25 Oct. do

*Ensigns.*

Samuel Bulyea, 7 Apr. '25  
 Thomas Cunnard, 17 Sept '27  
 George Vaughan, 25 Oct '28  
 Jos Beatteay, (af.) 5 July '30

Fred. Ha  
 Hugh Q  
 C L Hat  
 G Matth  
 S G Han  
 Q  
 Wm Scar  
 Seco  
 James M  
 Wm G C  
 Jehiel Par  
 John Jor  
 Daniel Va  
 John How  
 J Cunning

*Lieut*  
 Thos O M  
 T V W Cl  
 James Till  
 George Ha  
 John Dow  
 William H  
 F A DeVe  
 Edward A  
 John Brow  
 Jeremiah T  
 W S Barke  
 L  
 George Ne  
 N Hubbard  
 G H N Ha  
 Henry Loc  
 George Mi

Aug. '27  
Mar. '29  
do do  
Sept. do

Sept. '26  
June '24  
Mar. '29  
do do  
do do

0 Sept '27

5 do '21

Sept. '21

August, '27

ent.

ading.

29 Mar. '25

4 April do

1 June '27

13 do do

17 Sept. do

19 do do

20 do do

28 July '28

29 do do

30 do do

26 Oct. do

27 do do

5 July '30

30 Aug. do

25 Oct. do

.

7 Apr. '25

17 Sept '27

25 Oct '23

5 July '30

Fred. Hatheway, 30 Aug. '30  
Hugh Quinton, 31 do do

*Adjutant.*

C L Hatheway, (cap) 7 Sep '21  
*Paymaster.*

G Matthew (capt) 30 Aug '30  
*Surgeon.*

S G Hamilton, 30 Aug '30  
*Quartermaster.*

Wm Scammell, 30 Aug '30

## Second Battalion.

*Major.*

James Moran, 12 June, 1930

*Captains.*

Wm G Cody, 23 Aug. '21

Jehiel Partelow, 1 Sept do

John Jordan, 3 Jun. '22

Daniel Vaughan, 22 do '24

John Howard, 30 Aug '30

J Cunningham, 25 Oct do

*Lieutenants.*

Thomas Bean, 31 Aug '21

Ephraim Sentill, 3 Jun. '22

Abr. Bradshaw, 1 July, do

John Fownes, 21 Jan. '24

A S Hodge, 25 Oct. '28

Thomas H Black, 30 Aug '30

William O Cody, 25 Oct. do

*Ensigns.*

George M'Lean, 23 Aug '21

Henry Anthony, 22 Sept do

James Swim, 20 July '24

C M Wootton, 8 Apr. '25

Wm R Sentill, 25 Oct. '30

William Veal, 26 do do

*Adjutant.*

J Menzies, (capt) 31 Aug '30

*Paymaster.*

J R Partelow, (c) 24 Nov. '26

*Quartermaster.*

Thomas Stevens, 30 Aug '30

## Sunbury County Militia.

*Lieutenant-Colonel.*

Thos O Miles, 25 Oct. 1828

*Major.*

T V W Clowes, 25 Oct. 1828

*Captains.*

James Tilley, 25 Apr. '20

George Hayward, 3 Aug '24

John Dow, 3 do do

William Hoyt, 1 Oct. '25

F A DeVeber, 11 Sept '27

Edward A Miles, 26 Oct. '28

John Brown, 24 Aug '29

Jeremiah Tracey, 25 do do

W S Barker, 30 do '27

*Lieutenants.*

George Nevers, 3 Aug '24

N Hubbard, 11 Sept '27

G H N Harding, 12 do do

Henry Loder, 25 Oct. '23

George Miles, 26 do do

Charles Hazen, 24 Aug. '29

Lynus Seely, 25 do do

Thos Nason, jr. 26 do do

Moses Coburn, 30 Aug. '30

*Ensigns.*

Jeremiah Smith, 21 Sept '24

A S Hubble, 10 do '27

W Easterbrooks, 12 do do

G B Taylor, 25 Oct. '28

J Tilley, jr. 26 do do

Wm Kimball, 24 Aug. '29

John Bailey, 25 do do

Henry Boone, 26 do do

B Barker, 30 Aug. '30

*Adjutant.*

John Hazen, (cap) 25 Aug '23

*Quartermaster.*

Z B Brown, 29 March, '25

*Surgeon.*

J W Barker, 30 Aug. '30

# Charlotte County Militia.

## First Battalion.

### Colonel.

Hugh M'Kay, 1st Nov. 1793

### Lieutenant-Colonel.

Colin Campbell, 24 May 1824

### Major.

David Mowatt, 5 Dec. '24

### Captains.

N Marks, 27 Aug. '21

William Garnett, do do

P S Frink, 1 June '23

William Porter, 2 do do

Aaron Upton, 3 do do

James Brown, 1 June '24

James Boyd, 5 Dec. do

J Armstrong, (ar) 26 Mar. '27

R Lindsay, (rifle) 27 do do

Jacob Libby, 28 do do

Jacob Young, (ri) 29 do do

Thomas Connick 19 May, '28

Joseph Connick, 2 Feb. '29

George Walton, 8 do do

Wm Whitlock, (ar) 4 do do

G M'Master, (s r) 5 do do

John Rodgers, 28 June '30

### Lieutenants.

George Hunter, 2 June '23

Alexander Grant, 4 do do

Wm Thompson, 9 do do

J Atherton, (rifle) 5 Dec. '21

B Bradford, 5 do do

Hill M'Allister, 27 Mar. '27

A Clendenning, 28 do do

George Walton, 30 do do

J Frink, (art.) 31 do do

A Campbell, 1 Apr. '27

W Armstrong, 27 Mar. do

John Stubs, 28 do do

J Moore, (rifle) 3 Feb. '29

Thos Berry, (art.) 4 do do

John Grant, 5 do do

Jos Clendenning, 6 do do

Joseph Walton, 28 June, 30

John Aymar, (s r) do do

### Second Lieutenants.

John Porter, 1 June '24

G F Campbell, (r.) 5 Dec. do

J H Whitlock, (r.) do do

J Maxwell, (art.) 26 Mar. '27

James Berry, 19 May, '28

Rich. Wilson (rif.) do do

Robt Watson, (rif.) do do

D Townsend, (s r) 3 Feb. '29

S H Whitlock, 4 do do

Joseph Hill, (rifle) 5 do do

David Upton, 6 do do

David Thompson, 28 June '30

Geo M'ulloch, 29 do do

### Ensigns.

James Buchannan, 1 June '23

Timothy Crocker, 2 do do

George Porter, 3 do do

Caleb Bartlett, 5 Dec '24

Edward Wilson, 12 Sept. '25

Steph. Hitchings, 29 Mar. '27

William Hill, 30 do do

Thomas Connick, 1 April do

Robt Hutchinson, 2 do do

John Connick, 19 May '28

John M'Kirdy, 2 Feb. '29

Thomas Mitchell, 3 do do

S Shearman, jun 4 do do

John Campbell, 15 Feb. '30

William Walton, 28 June do

### Paymaster.

John Wilson, (cap) 2 Sept '25

### Adjutant.

Robert Mowatt, (capt)

### Quartermaster.

D W Jack, 25 Oct '23

## Second Battalion.

### Lieutenant-Colonel.

Thomas Wyer, 22 June, 1824

John M

M. M'

Patrick

Neil M

Jedediah

Hugh M

Henry

James

Samuel

John M

William

H Mat

Samuel

Thomas

A Wetn

Patrick

T H Ca

Wm Gr

J Missin

Joshua K

B Millik

Philip J

George

Arch. M

Duncan

Wm M'

John Li

John Ch

Isaac Jus

Rufus C

Caleb H

Peter Stu

W Flahe

Peter Cl

Thi

Lie

Harris H

tia.  
 28 June, 30  
 ) do do  
 tenants.  
 1 June '24  
 ) 5 Dec. do  
 ) do do  
 ) 26 Mar. '27  
 ) 19 May, '28  
 ) do do  
 ) do do  
 ) 3 Feb. '29  
 ) 4 do do  
 ) 5 do do  
 ) 6 do do  
 ) 29 June '30  
 ) 29 do do  
 ns.  
 n, 1 June '23  
 r, 2 do do  
 3 do do  
 5 Dec '24  
 12 Sept. '25  
 , 29 Mar. '27  
 30 do do  
 t, 1 April do  
 n, 2 do do  
 19 May '28  
 2 Feb. '29  
 l, 3 do do  
 4 do do  
 15 Feb. '30  
 28 June do  
 ster.  
 ap) 2 Sept '23  
 nt.  
 (capt)  
 aster.  
 25 Oct '23  
 attalion.  
 Colonel,  
 2 June, 1824

*Major.*  
 John M' Master, 5 Dec. 1824  
*Captains.*  
 M. M'Farline, 24 July '12  
 Patrick Clinch, 1 Apr. '21  
 Neil Morrison, do do  
 Jedediah Califf, 1 June do  
 Hugh M'Leod, 27 May '22  
 Henry Seelye, do do  
 James Pratt, 22 July '23  
 Samuel M'Farline, 5 Dec. '24  
 John Mowatt, (ar.) 2 July, '29  
 William Hyslopp, 19 May, '30  
*Lieutenants.*  
 H Matthewson, 10 May '24  
 Samuel Wallace, 5 Dec. do  
 Thomas Turner, do do  
 A Wetmore, 13 June '25  
 Patrick Morain, do do  
 T H Carman, 26 Mar. '27  
 Wm Gray, (art.) 10 do '28  
 J Missinett, (art) 11 do do  
 Joshua Knight, 13 do do  
 B Millikin, (art.) 2 July, '29  
 Philip Justison, 19 May, '30  
*Ensigns.*  
 George M'Kenzie, 5 Dec. '24  
 Arch. M'Callum, do do  
 Duncan M'Farline, do do  
 Wm M'Kenzie, 13 June do  
 John Linton, 26 Mar. 27  
 John Clinch, 27 do do  
 Isaac Justison, 11 do '28  
 Rufus Clinch, 2 Feb. '29  
 Caleb Hawkins, 18 May '30  
*Paymaster.*  
 Peter Stubs, (cap.) 12 June 26  
*Adjutant.*  
 W Flaherty, (cap) 13 June 25  
*Quartermaster.*  
 Peter Clinch, (lt.) 26 Mar. 27  
  
**Third Battalion.**  
*Lieutenant-Colonel.*  
 Harris Hatch, 13 Feb. 1826

*Major.*  
 C R Hatheway, 6 March 1826  
*Captains.*  
 John Chaffey, 1 Dec. '19  
 Joel Ingersoll, 1 June '22  
 William Franklin, 30 Nov. do  
 John Leeman, 9 June '23  
 James Wilson, 22 July do  
 Josiah Haney, 12 June 26  
 William M'Lean, 13 do do  
*Lieutenants.*  
 Daniel Leeman, 27 May '22  
 J E Hatheway, 9 June '23  
 John Appleby, 12 June '26  
 John Lord, 13 do do  
 William Ferris, 7 Sept '29  
 James Brown, 8 do do  
 Wm. Curry, 9 do do  
 Samuel Ingersoll, 2 Aug. '30  
*Ensigns.*  
 William Burke, 30 Nov. '22  
 F M'Kenny, 5 Dec. '24  
 John Leonard, 13 June '26  
 James White, 16 do '28  
 Edward Wilson, 7 Sept '29  
 William Huskins, 8 do do  
 Ethel Smith, 2 Aug 30  
*Paymaster.*  
 C. Guay, (capt) 12 June '26  
*Adjutant.*  
 W Hatch, (capt) 30 Nov. 22  
*Quartermaster.*  
 M Caukings, 25 Oct. '28  
*Surgeon.*  
 Wm C M'Stay, 18 May, '30  
  
**Charlotte County Cavalry**  
*Captain.*  
  
*Lieutenant.*  
 Jas Thompson, 12 Sept '25  
*Cornet.*  
 Thomas Watson, do do  
*Quartermaster.*  
 James Albee, do do

# Westmorland Militia.

Lieutenant-Colonel William Botsford, *Commanding.*

## First Battalion.

### *Major.*

Wm Chapman, 10 Mar. 1828

### *Captains.*

Thomas Milne, 23 Nov '23  
 Robert Scott, jr 25 Aug. do  
 Thos E Smith, 11 June '26  
 William Smith, 12 do do  
 Martin Wortman, 13 do do  
 James Chapman, 19 May '28  
 James Beatty, do do  
 Matth. Summers, 15 do '29  
 Enoch Stiles, 16 do do  
 William Wiley, 17 do do  
 Alex. Nevers, 18 do do

### *Lieutenants.*

S Underwood, 23 Nov '22  
 Jacob Gesner, 12 June '26  
 John Crandel, 13 do do  
 Albert Smith, 14 do do  
 Robert Stiles, 15 do do  
 John Jones, 19 May '28  
 Wm Bateman, 15 do '29  
 S Babinot, 16 do do  
 J N Chapman, 17 do do  
 Stephen Weldon, 18 do do  
 John M' Cormick, 19 do do  
 Daniel Hanning, 20 do do

### *Ensigns.*

William Welling, 21 Nov '22  
 John Scott, 13 June '26  
 Henry Stever, 14 do do  
 Alex. Crane, 15 do do  
 John Nelson, 19 May '28  
 Saml. S Wilmot, 19 do do  
 Abel Steves, 15 do '29  
 John Jacques, 16 do do  
 Zachariah Lutz, 17 do do  
 Jos Hannington, 18 do do  
 Thomas Taylor, 19 do do

### *Paymaster.*

J Robinson, (cap) 12 July, '26

### *Adjutant.*

Jas Kelly, (cap.) 23 July, '23

### *Quartermaster.*

J Charters, (ens.) 20 Nov '22

## Second Battalion.

### *Major.*

A E Botsford, 25 July, 1830

### *Captains.*

Bill Chappell, 22 July '23  
 C D Smith, 10 May '24  
 M M'Eachran, 4 Apr. '26  
 George Oulton, 5 do do  
 M Cornwall, 6 do do  
 Ephraim Allen, 7 do do  
 S Easterbrooks, 16 June '23  
 James Evans, 17 do do  
 John Chapman, 18 do do  
 G L Kinnear, (ad) 25 July '30  
 Wm P Sayre, 26 do do  
 Reuben Taylor, 27 do do

### *Lieutenants.*

Wm Raworth, 22 July '23  
 Wm Burnham, do do  
 Thos Lawerston, 10 May '24  
 Joseph Wells, 5 Apr. '26  
 John Anderson, 6 do do  
 Thomas Ayre, 16 June '28  
 Ralph Carter, 17 do do  
 Henry Charters, 25 July, '30  
 Charles Botsford, 26 do do  
 Thomas Keiller, 27 do do  
 Robt Chapman, 23 do do  
 Thos Cochran, 29 do do  
 James Cutler, 30 do do  
 George Botsford, 31 do do  
 George Ury, 1 Aug. do

Henry  
 John H  
 John I  
 G Tre  
 Robert  
 William  
 Joseph  
 John B  
 C Bots  
 James  
 Moses  
 William  
 Chas T  
 D Chap  
 James S  
 Rufus S  
 A  
 M Buck  
 Th  
 Philip P  
 Thomas  
 Fi  
 Li  
 A M I  
 John Ch  
 Alex. Fr  
 James M  
 Jacob M  
 George  
 Alex. Ru

anding,  
 rr.  
 12 July, '26  
 t.  
 23 July, '23  
 aster.  
 20 Nov '22  
 ttalion.  
 .  
 5 July, 1830  
 ss.  
 22 July '23  
 10 May '24  
 4 Apr. '26  
 5 do do  
 6 do do  
 7 do do  
 16 June '23  
 17 do do  
 18 do do  
 25 July '30  
 26 do do  
 27 do do  
 ants.  
 22 July '23  
 do do  
 10 May '24  
 5 Apr. '26  
 6 do do  
 16 June '28  
 17 do do  
 25 July, '30  
 26 do do  
 27 do do  
 28 do do  
 29 do do  
 30 do do  
 31 do do  
 1 Aug. do

*Ensigns.*

Henry Chapman, 10 May '24  
 John Raworth, do do  
 John Downing, do do  
 G Trenholm, 7 Apr. '26  
 Robert Chapman, 9 do do  
 William Dixon, 10 do do  
 Joseph Brown, 16 June '23  
 John Bulmer, 17 do do  
 C Botsford, 25 July '30  
 James Black, 26 do do  
 Moses Sayre, 27 do do  
 William Lamb, 28 do do  
 Chas Thibodeau, 29 do do

*Adjutant.*

D Chapman, (cap.) 4 Apr. '26

*Quartermaster.*

James Sayre, jr. 22 July, '23

*Surgeon.*

Rufus Smith, 1 June, '10

*Assistant Surgeon.*

M Buckhouse, 22 July, '23

**Third Battalion.**

*Major.*

Philip Palmer, 27 April, 1824

*Captains.*

Thomas Pearson, 24 Nov '22

Samuel Clarke, 26 Nov '22  
 Newton Wells, 28 do do  
 William Wilmot, 29 do do  
 John Smith, 30 do do  
 Jas. M'Latchey, 25 Oct. '28  
 George Turner, 26 do do

*Lieutenants.*

John M'Latchey, 25 Nov '22  
 Ezra Stiles, 27 do do  
 Wm M'Almon, 22 Aug '25  
 Daniel Cameron, 25 Oct. '23  
 Elisha Peck, 26 do do  
 William Read, 27 do do  
 John C Turner, 28 do do

*Ensigns.*

George Steeves, 25 Nov. '22  
 Elias Peck, 27 do do  
 H T M'Almon, 22 Aug '25  
 Joseph Turner, 30 Apr, '27  
 D Ackerly, jr 25 Oct. '28  
 Wm Kilpatrick, 26 do do  
 Thomas Taylor, 27 do do

*Adjutant.*

J Sterritt, (capt) 27 April, 24

*Surgeon.*

William Wilson, 25 Oct '28

*Quartermaster.*

George Rogers, 22 Aug. '25

**Northumberland Militia.**

**First Battalion.**

*Lieutenant-Colonel.*

A M'Donald, 2d July, 1829

*Major.*

John Clark, do do.

*Captains.*

Alex. Fraser, 1 June '22

James M'Donald, 2 do do

Jacob Mercereau, 3 do do

George Taylor, 4 do do

Alex. Russell, 5 do do

James Gilmour, 7 June '22  
 Roderick M'Leod, 8 do do  
 John Joseph, 9 do do  
 Wm Hamilton, 10 do do  
 Alex Loggie, 12 do do  
 Lewis Henry, 4 Apr. 26  
 Dudley Perley, 5 do do  
 Alex. Goodfellow, 6 do do  
 William Gray, 28 June, 30  
 Martin Cranny, 29 do do

*Lieutenants.*

R M'Donald, 2 June, 22



Finlay Morrison, 5 June '22  
 William Joplin, 7 do do  
 John Campbell, 8 do do  
 John Henderson, 11 do do  
 A Henderson, 4 April '26  
 Andrew Hay, 5 do do  
 J T Williston, 6 do do  
 Lewis Robichaud, 8 do do  
 William Carman, 9 do do  
 John M Johnson, 10 do do  
 John Fraser, 11 do do  
 Ward M'Donald, 12 do do  
 David Shaw, 28 June, '30  
 David Johnson, 29 do do  
 Thomas Ullock, 30 do do  
 John M'Lean, 1 July, '30

*Ensigns.*

J Osbaldtson, 1 June, '22  
 Alex Davidson, 2 do do  
 Alex Morrison, 7 do do  
 James Hierlihy, 8 do do  
 Andrew Clark, 4 Apr. '26  
 Peter Morrison, 5 do do  
 Chris. Clarke, 6 do do  
 Isaac Paley, 7 do do  
 William Taylor, 8 do do  
 John Stewart, 9 do do  
 Donald Fraser, 10 do do  
 Arthur Ritchie, 28 June, '30  
 John Porter, 29 do do  
 Andrew M'Iones, 30 do do  
 John M'Intyre, 1 July, do  
 Wm Douglas, 2 do do

*Adjutant.*

Donald M'Donald 9 June, '23

*Quartermaster.*

James Davidson, do do

*Surgeon.*

Alexander Key, 23 June, '30

**Second Battalion.**

*Lieutenant-Colonel.*

Alex Davidson, 2 July, 1829

*Major.*

James D Fraser, 2 July 1829

*Captains.*

John Astle, 20 Aug. '13  
 John Price, 21 do do  
 Alex Fraser, 19 do do  
 Chas M'Donald, 20 do do  
 Wm Abrams, (s F) 21 do do  
 Jared Betts, 22 do do  
 Elijah Fowler, 23 do do  
 John Fraser, 1 June, '23  
 Abel Pond, 10 May, '24  
 David Croker, 11 do do  
 William Loch, 25 Apr. '25  
 Donald M'Kay, 26 do do  
 R M'Laughlin, 27 do do  
 John Donald, 12 June '27  
 William Fiddes, 18 May, '30  
 Arch. Duncan, 19 do do  
 William End, 20 do do

*Lieutenants.*

David Tozer, 2 June '23  
 Thomas Smith, 11 May '24  
 Abraham Moores, 12 do do  
 Aaron Hovey, 13 do do  
 Nathan Ritchie, 23 April '23  
 Gilb. Henderson, 29 do do  
 E M'Quillan, 12 June '23  
 Henry B. Allison, 13 do do  
 Robt Henderson, 14 do do  
 Jacob Hovey, 18 May '30  
 John Sutton, 19 do do  
 George Kerr, 20 do do  
 Patk. Brannen, 21 do do  
 Thos Coughlin, 22 do do

*Ensigns.*

Wm. Saunders, 19 Aug. '23  
 Jared Tozer, 9 May, '24  
 Robert Wasson, 10 do do  
 Moses Hovey, 11 do do  
 Thos Newcomb, 13 do do  
 Andrew Young, 29 April '25  
 Phineas Davidson, 30 do do  
 Thos Underhill, 12 June do  
 James Gillan, 13 do do  
 Chas Coughlan, 14 do do  
 John Simpson, 16 do do

Dougl  
 Thos U  
 Alex C  
 Leonar  
 Robert  
 David

F  
 R Fergu

Miller  
 John A  
 John S  
 James I  
 John D  
 David M  
 William  
 Adam F  
 William  
 John Fr

Jar. Mu  
 William  
 William  
 James F  
 Chas. C  
 Murray  
 R. Clyd  
 William  
 R. Ferg  
 J. Mont  
 Samuel  
 Benj. D  
 John M

R. Cont  
 John E  
 Wm. M  
 David I  
 Dl. Rac

ns.  
 20 Aug. '18  
 21 do do  
 19 do 22  
 20 do do  
 21 do do  
 22 do do  
 23 do do  
 1 June, '23  
 10 May, '24  
 11 do do  
 25 Apr. '25  
 26 do do  
 27 do do  
 12 June '27  
 19 May, '30  
 19 do do  
 20 do do  
 ants.  
 2 June '28  
 11 May '24  
 12 do do  
 13 do do  
 28 April '25  
 29 do do  
 12 June '25  
 13 do do  
 14 do do  
 18 May '30  
 19 do do  
 20 do do  
 21 do do  
 22 do do  
 ns.  
 19 Aug. '22  
 9 May, '24  
 10 do do  
 11 do do  
 13 do do  
 29 April '25  
 30 do do  
 12 June do  
 13 do do  
 14 do do  
 16 do do

Douglas Clarke, 22 Feb. '30  
 Thos Underhill, 18 May do  
 Alex Campbell, 19 do do  
 Leonard Astle, 20 do do  
 Robert Jardine, 21 do do  
 David Mott, 22 do do

*Adjutant.*  
 Wm Harley, (cap) 19 Aug. 22  
*Quartermaster.*  
 John Henry, 1 June, 23  
*Surgeon.*  
 James Petrie, 9 May, 24

**Gloucester Militia.**

**First Battalion.**

Alex. M'Pherson, 16 May '29  
 N. Busted, 22 Feby. 1830

*Major.*

*Adjutant.*

R Ferguson, 6 June, 1821

J. M'Pherson, [cap] 11 Oct '23

*Captains.*

*Quartermaster.*

Miller, (rifle) 9 June '23  
 John Anderson, 11 Oct. do

Josh. Read, (lieut) 15 May '29

John Shea, 15 June '24  
 James Lee, 12 July, do

**Second Battallion.**

*Major.*

John Douglas, 26 do '25  
 David M'Intosh, 27 do do

John Young, 15th May, 1829

*Captains.*

William Miller, 10 do '26  
 Adam Ferguson, 26 Jan '27

Micl. Landrey, 13th ap. 1821  
 Wm. Drysdall, 14 June '24

William Munro, 15 May '29  
 John Fraser, 16 do do

Harvy Adams, 11 July '25  
 Augustrin Landry 12 do do

*Lieutenants.*

Jar. Munro, 12th July, 1823  
 William Gray, 13 do '24

John Adams, 13 do do  
 M Campbell [adt.] 12 July '26

William Craig, 13 do '25  
 James Fleming, 14 do do

*Lieutenants.*

Chas. Commeau, 15 do do  
 Murray Newton, 8 do '26

John Gennie, 13th July, '23  
 James Spence, 14 do do

R. Clyde [rifle] 9 Jan '27  
 William Young, 9 do do

Robert Hixon, 12 do '24  
 Marcell Martin, 11 do '25

R. Ferguson, jr. 26 do do  
 J. Montgomery, 27 do do

Alex. Campbell, 28 Jun '27  
 Peter Campbell, 29 do do

Samuel Waitt, 15 May '29  
 Benj. Dawson, 16 do do

*Ensigns.*

John M'Intosh, 17 do do

Augustin Louiser, 11 July 25  
 Urban Landry, 11 do 26

*Ensigns.*  
 R. Connacher, 13th July '25  
 John Edgar, 10 do '26

George Sivret, 12 do do

Wm. M'Kenzie, 27 Jan '27  
 David Duncan, 28 do do

*Adjutant.*

DI. Racarty, 29 do 1827

M. Campbell [capt] 15 May '29

*Quartermaster.*

John Ritchie, 15th May, 1829

## Kent Militia.

### *Major.*

Saml M'Kean, 25th Oct. 1829

### *Captains.*

Thos Powell, 2d Nov. 1812  
 John Wheten, 25th Aug. '21  
 David M'Almon, do do  
 Angus M'Intosh, do do  
 George Pagan, do do  
 Wm. Bowser, 10th May, '24  
 Robert Jardine 21st Feb. '26  
 S C Hewes, 24th Nov. '26  
 John P. Ford, 25th do do  
 James Long, 16th June, '28  
 T. Lansdowne, 25th Oct. '28

### *Lieutenants.*

D. Robichaud, 10th Mar. '10  
 Alex. M'Kean, 25th Aug. '21  
 B B Goldsmith, 13th Feb. '26  
 John Bowser, 15th do do  
 Wm. Wilson, 16th do do  
 Jonathan Cail, 17th do do  
 Colin Rankin, 18th do do  
 Donald Rankin, 19th do do  
 Robert Long, 20th do do  
 Peter Campbell, 21st do do  
 Solomon Powell, 4th Ap. do  
 Samuel Girvan, 24th Nov. do  
 William Brait, 25th do do

Charles Surrett, 26th Nov '24

Hugh M'Kay, 12th June '30

### *Ensigns.*

James Pine, 2d Nov. 1812  
 W Hannington, 10th May, '24  
 Archibald Frew, 15th do do  
 Israel Hicks, 16th do do  
 John M'Gregor, 17th do do  
 John Saunders, 18th do do  
 Jos. Muzeroll, 19th do do  
 Richard Bell, 24th Nov. '26  
 Robert Powell, 25th do do  
 William Roach, 26th do do  
 William Harper, 27th do do  
 Talang Bushea, 28th do do  
 P. Sutherland, 15th May '29  
 Robt Haddon, 12th June, '30  
 John Craig, 13th do do  
 Wm. Fitzgerald, 14th do do  
 Jas. A. Clure, 15th do do  
 S S Chapman, 16th do do  
 Wm. Girvan, 17th do do

### *Adjutant.*

T. Lansdowne, 25th Oct. '28

### *Quartermaster.*

P. Stubs, (lieut) 15th May '29

### *Surgeon.*

R. Masterton, 13th Feb. '26

## King's County Militia.

### First Battalion.

#### *Lieutenant-Colonel.*

D B Wetmore, 16th June, '28

#### *Captains.*

John Worden, 1st Feb. 1810  
 Wm. M'Leod, 27th May '22  
 Philip Dann, do do  
 Justus S Wetmore, do do  
 Ezkl Flewelling, 10th May '24

Philip Nase, 29 April, 27

Benj B Crawford, 30 do do

John Smith, 19 May '28

Thos. Botswiek, 25 Oct. '28

Abraham Price, 26 do do

#### *Lieutenants.*

W J Flewelling, 27 May '22

Jeremiah Mabee, do do

Zebulon Jones, do do

William Dickson, do do

Thos Flewelling, 28 April '27  
 Andrew Hamm, 29 do do  
 Joseph Lyon, 30 do do  
 Henry Belyea, 10 May, 1824  
 Lewis Carvel, 9 April, '25  
 Samuel Gorum, 25 Oct. '28  
 John Wright, 26 do do

*Ensigns.*

J. Flewelling, 27th May '22  
 Peter M'Kenzie, 11 Oct '23  
 James Price, 10 do do  
 James Williams, 28 Ap. '27  
 Gabriel Worden, 29 do do  
 James Reid, 30 do do  
 George Neil, 19 May '28  
 Nathaniel Warren, 25 Oct '28  
 Isaac Hoyt Foster, 26 do do

*Adjutant.*

D. Wetmore, (cap) 1 May '27

*Quartermaster.*

D. M., (lieut) 25 July '30

**Second Battalion.**

*Major.*

John C Vail, 24th Nov. 1826

*Captains.*

Arthur M'Arthur, 11 Oct '23  
 Samuel Freeze, 11 do do  
 Oliver Barbarie, 24 Nov '26  
 John Cogle, 25 do do  
 John M'Arthur, 26 do do  
 Samuel Goslin, 27 do do  
 James Ryan, 28 do do

*Lieutenants.*

Samuel M'Kully, 11 Oct. '23  
 William Barbarie, 25 Nov. 26  
 Daniel Sheck, 26 do do  
 A. Johnston, 27 do do  
 O B Cogle, 28 do do  
 R M' Monagle, 26 Aug '23  
 Charles Stockton, 2d July, 29  
 John M'Lean, 3d do do

*Ensigns.*

Samuel Cleveland, 11 Oct. 23

Morris Frazee, 25 Nov  
 George Dunfield, 26 do  
 Isaac Parlee, 27 do  
 Joshua Gidney, 28 do  
 John Burpe, 2d July, '27  
 George Morton, 3d do  
 Xenphn. Cogle, 4th do  
 Wm. Coates, 12 June 30

*Paymaster.*

John Marten, 6 March 1820

*Adjutant.*

J Barbarie, (capt) 25 Aug 25

*Quartermaster.*

James Hoyt, 11 October 25

**Third Battalion.**

*Major.*

Caleb Wetmore, 12 June '30

*Captains.*

James Hughson, 25th Aug '25  
 A C Evanson, do do do  
 John Davis, 10 May 1824  
 J. Humbert (rf) 5 Sept. 25  
 T. Fairweather, 12 June, '26  
 S. Fairweather, 14 do do  
 Jabez Upham, 14 Sept. '29  
 William Giou, 12 June, '30  
 James Wetmore, 13 do do  
 Ashton Ketchum 25 July, do  
 Wm. Gunter, 25 Oct. do

*Lieutenants.*

J. Fairweather, (rf.) 12 Dec 25  
 John M'Donald, 12 June 26  
 Samuel White, 13 do do  
 Samuel Sprague, 14 do do  
 William Frost, 15 do do  
 George Sprague, 17 do do  
 H. A. Demill, 14 Sept. 29  
 A. Dickie, (rifle) 29 Feby. 30  
 B. Cromwell, rf. 23 do do  
 John Hays, 11 June, do  
 Thomas Dixon, 12 do do  
 Jas. Sediquiest, 13 do do  
 John M'Cready, 14 do do  
 Mon. Fowler, 25 July do  
 William Debow, 25 Oct. do

*Ensigns.*  
 Milo Marvin, 10th May '24  
 E Davis, 13 June '26  
 Geo. Hughson, 14 do do  
 Samuel Hoyt, 15 do do  
 Jas. M. Fowler, 14 Sept. '29  
 I. Dickie, jun. 12 June, '30  
 Chas. E. Smith, 13 do do

J. F. Sherwood, 25 Oct 30  
*Adjutant.*  
 A. English, (Capt) 25 Aug 23  
*Quartermaster.*  
 Azor Hoyt, 5th Sept. 1825  
*Surgeon.*  
 C. Wilson, 12th June '26



## Queen's County Militia.

### First Battalion.

*Lieut.-Colonel.*  
 Harry Peters, 20th June 1825  
*Major.*

Wm. Foshay, 20th Aug. 27  
*Captains.*

Stephen Golding, 1 June '23  
 Thomas Hewlet, 6 do do  
 R. Golding (adjt.) 25 May '24  
 Absolom Smith, 20th Aug 27  
 Daniel Smith, 21 do do  
 Henry Lyons, 22 do do  
 James Corbett, 23 do do  
 Andrew Gunter, 25 July 30  
 Marcus Peters, 26 do do  
 Charles Smith, 7 Sept '30

*Lieutenants.*  
 Robert Smith, 7 June 1823  
 Robt Smith, jun. 21 do 25  
 John Belyea, 22 do do  
 James Colwell, 20 Aug. '27  
 Henry Babbitt, 21 do do  
 Henry Sharpe, 23 do do  
 B. Hewlett, 25 July '30  
 Richard Currie, 26 do do  
 James Graham, 27 do do  
 Robert Dingee, 7 Sept. 30

*Ensigns*  
 Richard Hewlett, 1 June '23  
 Caleb Scritt, 21 do 25  
 Thos Golding, 22 do do  
 Stephen Currie, 20 Aug 27

John Glass, 21 Aug 27  
 Martiu Ricard, 23 do do  
 George Vail, 25 July '30  
 Abr'm. Merritt 26 do do  
 Francis Wood, 29 do do  
 Isaac DeVeber, 7 Sept 30  
*Adjutant.*

R. Golding, 27th April 1824  
*Paymaster*

N H DeVeber, 24th Aug '29  
*Surgeon*  
 Robt P Smith, 24th Aug '29  
*Quartermaster*  
 Elijah Smith, 16 June 1816

### Second Battalion.

*Lieutenant-Colonel.*  
 Harry Peters, 20th June '25  
*Major.*

C P Wetmore, 20th Aug 27  
*Captains*

Peter Yeomans, 20 Aug 1807  
 John Earle, 7 June 23  
 John McLean, 8 do do  
 Anthy. Flowers, 10 do do  
 John Seacord, 20 Aug '27  
 John McAlister, 21 do do  
 Samuel White, 30 Aug '30  
 J. Humphreys 31 do do

*Lieutenants*  
 Thomas Belyen, 6 June, '23  
 Joshua Calkins, 10 do do

Lch  
 Cha  
 Jas  
 A.  
 Hire  
 Joh  
 A M  
 Tho  
 Ezel

Al  
 any  
 expo  
 dow  
 To  
 water  
 draug  
 some  
 To  
 is un  
 conse  
 or spi  
 To  
 under  
 the gr  
 To  
 table  
 practi  
 To  
 medic  
 mer c  
 tle.  
 excess  
 ciently  
 medic  
 To  
 be ver  
 To  
 tics of  
 of the

Lehln. M'Lean,	11 June, '23	David Stilwell,	10 June, 23
Chas L Corey,	20 Aug '27	Amos Corey,	20 Aug 27
Jas M'Donald,	22 do do	John Shearer,	21 do do
A. Branscomb,	30 Aug '30	James Butler,	30 Aug 30
Hiram Briggs,	31 do do	Geo. Currie,	31 do do
John Keith,	1 Sept do	William Alwood,	1 Sept do
<i>Ensigns</i>		<i>Adjutant</i>	
A McDónald,	4 June, 23	J. M'Donald (cap)	20 Aug 27
Thomas Corey,	7 do do	<i>Quartermaster</i>	
Ezekiel Stone,	9 do do	David Palmer,	20 Aug 1827

UNSEASONABLE AND DANGEROUS PRACTICES.

(*From the Journal of Health.*)

After a long and fatiguing walk, or laborious exercise of any kind, to throw off coat or outer garment, untie cravat, expose the neck and breast, and then sit down at an open window or door, in a current of air in the evening.

To drink after work, fatigue or exposure, very cold or iced water, or to take iced punch or iced cream, in place of a draught of clear river water, or that which has been exposed some time to the air.

To eat much of any kind of fruit, or any at all of that which is unripe, especially in the evening, or to suppose that the evil consequences are to be obviated by a glass of wine, or cordial, or spirits and water.

To eat much animal food, or to drink liquors of any kind, under the idea thereby of removing the weakness caused by the great heat of summer.

To give to infants, or children in general, any such detestable compositions as milk-punch, sangaree or toddy. This practice ought to be an indictable offence at common law.

To give to infants and children any of the various quack medicines which are recommended as cures for worms or summer complaints, even though sold for twenty-five cents a bottle. The common causes of disease, from teething, weaning, excess of or irregularity in food, extreme heat, &c. are sufficiently destructive without the auxiliaries of patent and quack medicines, old women's cures, or mother's sweet gifts.

To sleep exposed directly to the night air, especially if it be very damp, and much cooler than the air of the day.

To have recourse to morning bitters, drams, or *antifogmatics* of any description, other than sponging the whole surface of the body with salt water, or using a tepid bath of the same.

# CITY OF SAINT JOHN.

Lauchlan Donaldson, Esquire, Mayor.

William B. Kinnear, Esquire, Recorder.

## ALDERMEN.

George Harding,  
Daniel Ansley,  
Thomas Harding,  
Gregory Van Horne  
William Olive,  
George Bond,

Esquires.

## ASSISTANTS.

Mr. Isaac Woodward,  
Solomon Nichols,  
William Vaughan,  
Ewen Cameron,  
Joseph Ketchum,  
John Ring,

## WARDS.

*Kings,*  
*Queens,*  
*Dukes,*  
*Sidneys,*  
*Guys,*  
*Brooks,*

John R. Partelow, Esquire, Treasurer or Chamberlain.

James Peters, junior, Esquire, Common Clerk.

Mr. J. W. Boyd, Deputy Common Clerk.

Mr. Joshua Bunting, High Constable.

Edward Bennison, R. M'Elvy, A. M'Kenzie, Wm. Clukes,  
and John C. Littlehale, Marshalls.

Rowland Bunting, Lawrence Stivers, Benjamin Herrington,  
William Munford, John Chase, John Jenkins, Andrew Rose,  
John M'Authur, Lawrence Moore, Robert W. Nowlin, Hugh  
Wilson, William Fearerbey, Robert Riley, William Nixon,  
Lewis Fayerweather, Robt M'Elvy, Thomas Anderson, John  
C. Littlehale, and William Clarke, Junior, Constables.

Ebenezer Herrington, Benjamin Herrington, Rowland Bun-  
ting, William Fearerbey, Lawrence Stivers, Robert W. Now-  
lin, William Munford, William Clukes, Hog Reeves.

John Colwell and Geo. Wheaton, Hog Reeves at Carleton.

Ezekiel Barlow, John Ward, William Leavitt, Thomas Raw-  
leigh, and Nehemiah Merritt, Port Wardens.

William Walker, Leveritt H. DeVeber, Charles Ward, and  
Isaac Olive, Assessors of Taxes.

James Kirk, William H. Street, and Benjamin Smith, As-  
sessors of Nightly Watch Tax.

Thomas Baldwin, Collector of Taxes.

Thomas Coram, Collector of Taxes at Carleton.

Robert James, Inspector of cord wood and bark.

Seth Seely, collector of slippage and wharfage.

Seth Seely, measurer of grain, coals, and salt.

Seth Seely, weigher of hay.

Thomas Robson, collector of wharfage at the Breakwater.

Thomas Robson, harbor master.

Stephen Humbert, collector of anchorage.

Benjamin Chaloner, city gauger.

Henry Long, inspector of wood and collector of slippage, at the Lower Cove.

Levi Lockhart, fence viewer.

Samuel Clarke, ditto at Carlton.

Robert C. Minnette, city surveyor.

Messrs. John Kerr, Elisha D W Ratchford, George D Robinson, John V Thurgar, J & H Kinnear, John Robertson, and James T Hanford, licensed auctioneers.

John Boyd, M. D., Henry Cook, and S. G. Hamilton, Esquires, visiting physicians.

Thomas Reed, Esq. (*King's pilot*), James Reed, Esq. John Whightman, John Reed, Francis Leavitt, junior, Abraham Beatteay, Daniel Hatfield, John Leavitt, Smith Thomas, Geo. Thomas, John S. Anthony, Benjamin Dalton, John Woodley, Alexander Mills, Thomas Mills, J. Leavitt, junior, and John Murray, branch pilots.

James Reed, Esq. keeper of Patridge Island light house.

William Good, do. of Beacon Ditto.

Levi Lockhart, pound keeper.

Samuel Clarke, ditto at Carlton.

Samuel Jordan, Lyman Childs, Alexander M'Grotty, Thos. Traffon, Jacob Snider, Joseph Fayweather, John M. Campbell, John Sherrard, Robert L. Harris, George Bond, David Whiting, Thomas Booth, and Lewis Fairweather, surveyors of lumber.

Stephen Gerow, surveyor of North Slip.

Charles Kay, Archibald White, George Waterbury, John Shiels, James Bowen, and John Vallely, inspectors of lath-wood, staves, hoop-poles, &c.

George Waterberry and Wm. Barlow, cullers of dried fish.

William Dunham, John Shiels, James Bowen, John Dunn, Thomas Miles, Charles Kay, inspectors of pickled fish for the east side of the harbor.

Cornelius Nice, Jacob Sherwood, and Francis F. Lilly, do. for the west side.

Walker Tisdale, Thomas Sandall, Thomas Lockey, overseers of the poor.

James O. Betts, keeper of the Alms House.

Isaac Olive, Robert F. Hazen, and John S. Clarke, trustees of schools.

David Waterberry, chief Engineer of fire engines.



*Firewardens, on the Eastern side of the Harbour.*

Thomas Barlow, John M. Wilmot, Daniel Ansley, John Ward, junior, Thomas Harding, Lauchlan Donaldson, John R. Portelov, Thomas Heaviside, Thomas Sandall, Gregory Van Horne, Robert Robertson, Wm. Tyng Peters, A S Perkins, Daniel Smith, Geo. Harding, Solomon Nichols, Esq'rs.

*Firewardens, on the Western side of the Harbour.*

Tristram Ring, James F. Lilly, and J. Ketchum.

*St. John Society Library.*

William Scovil, Esquire, President  
James White, Esquire, Vice-President  
T. Millidge and G. D. Robinson, Esq'rs. Committee  
Robert F. Hazen, Esq. Secretary and Treasurer.  
Mr. Anthony R. Truro, Librarian.

Library hours from twelve to one o'clock, every day.

*Chamber of Commerce.*

Lauchlan Donaldson, Esquire, Chairman  
Wm. Walker, Esq } Deputy Chairmen.  
James Kirk, Esq }  
Isaac Woodward, junior, Esq. Secretary and Treasurer.  
William Leavitt  
Solomon Nichols, }  
George D. Robinson, } Esquires  
John Robertson, } Ordinary Members of  
B. D. W. Ratchford, } the Committee.

*Saint George's Society.*

H. Bowyer Smith, Esquire, President  
Robert F. Hazen, Esquire, Vice-President  
Thomas Sandall, Esquire, Treasurer  
John J. Roberts, Esquire, Secretary.

*Saint Andrew's Society.*

Robert W. Crookshank, Esquire, President  
John Boyd, Esq. M. D. Vice-President  
Mr. James Robertson, Treasurer  
Mr. John Robertson, Secretary.

Al  
Geo  
Dan  
Tho  
Gre  
Will  
Geo  
  
Jo  
Ja  
M  
M  
Ed  
and  
Ro  
Willi  
John  
Wila  
Lewi  
C. L  
Et  
ting,  
lin, V  
Jo  
Ez  
leigh  
W  
Isaac  
Ja  
sesso  
Ti  
Ti  
R  
Se  
Se  
Se

Pres  
Vice  
Secr

John C  
versers  
J. C. W  
taxes.  
Griffith  
John M

Harbour.  
nsley, John  
ldson, John  
ull, Gregory  
re, A S Per-  
ols, Esq'rs.

Harbour.  
chum.

Committee  
asurer.  
every day.

and Treasurer.

members of  
mittee.

ent  
resident  
er.

resident  
dent

### *Saint Patrick's Society.*

R B Armstrong, Esquire, President  
S G Hamilton, Esquire, Vice-President  
Francis A Kinnear, Esquire, Treasurer  
Mr James M'Cleery, Secretary  
Mr. Samuel Thompson, Assistant Secretary.

### *Albion Society.*

Mr G Bragg, President  
H Halsall, Esquire, Vice-President  
Samuel Bagshaw, Esquire, Treasurer  
Mr Anthony R Truro, Secretary.

### *British American Society.*

John Ward, Esquire, President  
Nehemiah Merritt, } Esq'rs. Vice-Presidents  
Ezekiel Barlow, }  
Daniel Leavitt, Esquire, Treasurer  
George D. Robinson, Esquire, Secretary,

### *Phil-Harmonic Society.*

John Boyd, Esquire, M D, President  
Mr Daniel Jordan, Vice-President  
Mr A Corry, Leader.  
H N H Lugin, Esquire Treasurer  
Mr John D M'Intyre, Secretary

### *Temperance Society.*

President.—Reverend Benjamin G. Gray, D. D.  
Vice-President—Reverend George Burns, D. D.  
Secretary—Alexander M'Leod, Esquire.

---

## PARISH OF PORTLAND.

John C. Waterberry, Robert Rankin, and James Travis,  
versers of poor.

J. C. Waterberry, John Cunard, and John Owens, assessors  
f taxes.

Griffith Morrison, collector of ditto.

John Moore, James Stevenson, junior, James Burley, Jas.

Stevenson, J. Stackhouse, John Robinson, Thos. Armstrong, Geo. Buckley, Jas. Joyce, and Nicholas Wyse, constables.

Ephriam Sentell, James M'Gregor, Thomas M'Faddin, William Patterson, John Niles, Maurice Delany, Jas. Grundy, Nugent Creighton, Jehiel Partelow, junior, and Thomas Bean, fence viewers.

William Robertson, James Burley, Michael Campbell, and Edward Hughes, pound keepers.

Patrick M'Crackin, George Buckley, John Robinson, John Moore, James Stephenson, James Stephenson, junior, James Burley, Nicholas Wyse, James Joyce, Thomas Armstrong, George Buckley, and John Robinson, hog reeves.

Robert Rankin, John C. Waterberry, and William G. Cody, trustees of schools.

William H. A. Keans, town clerk.

William H. A. Keans, inspector of weights and measures.

## PARISH OF LANCASTER.

Isaac Clarke, Jas. Olive, and John Gillies, overseers of poor.

Isaac Clarke, Jas. Olive, and Wm. Tilton, assessors of taxes.

John Harding, collector of taxes.

Isaac Flewelling, Richard H. Carman, Isaac Clarke, trustees of schools.

Joseph Boggs and Robert M'Crossin, constables.

Wm. Tilton, Geo. Vaughan, and Chas. Lord, fence viewers.

William Tilton and John Harding, pound keepers.

Hugh Quinton, town clerk.

## PARISH OF SAINT MARTINS.

Ebenezer Vaughar, William Bradshaw, and David Vaughan, overseers of the poor. [tees of schools.

James Moran, Joseph Brown, and Isaac Bradshaw, trustees of schools.

Stephen Mosher, Philip Mosher, and Abraham Mosher, assessors of taxes.

Thomas H. Black, collector of taxes.

Daniel Mosher and Hezekiah DeLong, constables.

Philip Black and Daniel Brown, fence viewers.

Daniel Vaughan, pound keeper.

Thomas H. Black, town clerk.

ABS

**T**HE dra  
ploys the  
Boat, an  
sufficiently  
before sh  
board,) a  
vessel be  
ceive half  
bound aft  
underweig  
age as if a  
offer to ta  
afterwards  
lowed by l  
first offence  
any longer  
Coasters  
another, an  
drawing mo  
pilotage; t  
recover the  
No Mast  
which shall  
Pilot is actu

Decked V  
to Report,—

Decked V  
to Report,—

To be paid

For ever  
For atte  
For ever  
(Pilot)

For exar  
a Bran  
mines  
To be paid

For ever

# ABSTRACT OF CORPORATION LAWS.

## PILOTAGE.

**T**HE Rate of Pilotage is *five shillings* for every foot the Vessel draws—to be paid by the Master or any other person who employs the Pilot.—Each Pilot is obliged to keep a good and sufficient Boat, and upon bringing a Vessel into the Harbour, must see her sufficiently moored, in a safe place.—If he offer his services to a Vessel before she comes abreast of the *Shag Rocks*, (no other pilot being on board,) and they are refused, he may recover full pilotage; unless the vessel belong to the Port of St. John, in which case he shall only receive half pilotage.—Should he offer his services to a vessel outward bound after she is cleared out at the Custom-House, and before she is underweigh, (no other Pilot being engaged,) he may recover full pilotage as if actually employed—should he be engaged, and be ready and offer to take out a vessel, he may recover full pilotage whether he be afterwards employed or not—If he demand higher Pilotage than is allowed by law, or be guilty of neglect of duty, he shall forfeit for the first offence *five pounds*; and for the second offence be disabled to act any longer as a Pilot.

Coasters and Vessels going from one part of the Bay of Fundy to another, as well as British and Foreign Steam Boats, and vessels not drawing more than six feet of water, are exempt from the payment of pilotage; unless a pilot be actually employed, in which case he may recover the same rate of pilotage as in other cases.

No Master of a Vessel is compelled to pay more than one Pilot, which shall be the one first speaking the Vessel; unless such other Pilot is actually employed, then both shall be paid.

## ANCHORAGE.

Decked Vessels, belonging to this Province, and which are obliged to Report,—if under thirty tons, pay 5s. per annum, thirty tons and upwards, 6s. 8d. do.

Decked Vessels, not belonging to the Province, which are obliged to Report,—if under thirty tons, pay 5s. per annum, thirty tons and upwards 6s. 8d. every voyage.

To be paid by the Master or person in charge.

## PORT WARDENS FEES.

For every survey, to each Warden attending, 7s. 6d.

For attending a Public sale, each Warden, 10s. per diem,

For every Certificate, (except for a Branch

Pilot) to each Warden signing, - - - 7s. 6d.

For examining a Candidate for the Office of

a Branch Pilot, to each Warden who examines and signs the Certificate, - - - 5s.

To be paid by the Person requiring the services.

## WEIGHING OF HAY.

For every Load under One thousand weight, - 1s.

above 1000 and under 1500 - 1s. 6d.

of 1500 and upwards, - - - 2s.

To be paid by the person bringing the Hay to Market, one half of which he may afterwards recover from the buyer.

Hay brought to Market by land carriage, cannot be offered for sale, until the same has been weighed, and a certificate of the weight has been received from the weigher, (which shall be produced if required) under the penalty of *twenty shillings* for each load.—And Hay brought for sale, by water, must in like manner be weighed, and a certificate produced if required, before the same is delivered, under the penalty of *twenty shillings*.

### MEASURING OF GRAIN.

For any quantity of Grain under 5 bushels, 3d. per bushel,  
over 5 and under 100 „ 1d. do.  
above 100 and under 300 „ 5s. per 100 do.  
over 300, - - - - „ 4s. do. do.

One half to be paid by the purchaser, and the other half by the seller

All Grain brought into the City by a foreign vessel and offered for sale, must be measured out to the purchaser, under the superintendance of the Mesurer of Grain, under the penalty of *one shilling* per bushel.—The Mesurer to attend to his duty under the penalty of *ten shillings* for each neglect or refusal.

### PEDLARS.

No Person can act as a Hawker or Pedlar unless licensed by the Mayor, under the penalty of *forty shillings* for every offence.

### PAWNBROKERS.

No Person can act as a Pawnbroker without a License from the Mayor, under the penalty of *five pounds* for every offence.

### MARKETS.

No Meat is allowed to be cut up or exposed to sale by the joint or in pieces less than a quarter, by any person, except a Licensed Butcher, nor in any other place than the Public Market, Market slip, Market square in King's and Queen's Wards, or the Market square in Sidney Ward, under the penalty of *twenty shillings* for each offence.—No dead Poultry must be brought to Market and exposed to sale within the City, until the entrails and crosses have been taken out, and the heads and feet cut off, or they will be forfeited.—No Licensed Butcher, by himself or an agent, must offer any meat for sale in the Country Market House at the head of the Market slip in King's and Queen's Wards, under the penalty of *twenty shillings*.—No licensed Butcher, or other person must purchase, or get into his hands to sell again any victuals or provisions for the use of Man, either on the way to, or in the Public Market, or on board any vessel or boat, or in any place in the City, until the same shall have been offered for sale in the City at least eighteen hours in the day time, between sunrise and sunset, under the penalty of *five pounds* for each offence—and if a Butcher he shall also lose his License.

Any person who shall offer BUTTER for sale in firkins, pails or casks of any description, unless the gross weight and tare are distinctly and visibly marked on such firkin, &c. is liable to a penalty of *five shillings*

lings for  
to be less  
for sale in  
wrongly  
Butter, e  
good, or  
of thirty  
found.—T  
Butter in  
receive th  
paid by th  
the purch  
spection,  
shillings f  
ing or refu  
five pound

None bu  
duce of th  
tables, but  
Market, u  
Clerk of th  
persons at  
therefrom;  
such person  
be dealt wit  
For defra  
clean, the C  
brought the  
proportion  
Hog, or Sho  
quarters, an

For every  
Persons  
their article  
Deputy, wi

### FOR

Persons  
except work  
(except Mi  
to be fined  
or sex) mee  
bance on S  
and unless  
offenders m  
keeper of  
lers, or th  
house, or  
liquor, he i  
and it is law  
pose appoin  
fore mention  
the same to

ings for each firkin, &c. so offered—And if the gross weight be found to be less, or the tare greater, the person selling or offering the same for sale is liable to forfeit *twenty shillings* for each firkin or cask so wrongly marked.—If any fraud has been practised in putting up the Butter, either by putting too much salt in it, or mixing bad Butter with good, or otherwise, the person offering the same is liable to a penalty of *thirty shillings* for each firkin or cask in which such fraud may be found.—The Deputy Clerk of the Market must weigh and inspect any Butter in firkins, &c. offered for sale, when required, for which he may receive *three pence* for weighing and *three pence* for inspecting; to be paid by the vender; one half of which he may afterwards receive from the purchaser.—If any Butter is sold without such weighing and inspection, when required, the vender is liable to a penalty of *twenty shillings* for each offence.—Any deputy clerk of the Market neglecting or refusing to perform his duty, is liable to forfeit for every offence *five pounds*.

None but Country People and others bringing to Market the produce of their own farms are allowed to offer for sale any meat, vegetables, butter, or other articles of Country Produce, in the Country Market, under the penalty of *forty shillings* for each offence.—The Clerk of the Market, or his deputy, may order any idle persons, or persons standing loitering in the Country Market House to remove therefrom; and in case such order is not complied with, may report such persons to the Mayor, Recorder, or any one of the Aldermen, to be dealt with as idle and disorderly persons, according to Law.

For defraying the expence of keeping the Country Market House clean, the Clerk or his Deputy, may demand and receive—for all Beef brought there for a carcase, or four quarters, *one shilling*, and in like proportion for one or more quarters—For every Calf, Sheep, Lamb, Hog, or Shoat, *three pence*, and in like proportion for two or more quarters, and when there is only one quarter to be paid for *one penny*.

For every tub or firkin of Butter, *three pence*.

Persons paying the foregoing fees have the privilege of weighing their articles in the Scales kept by the Clerk of the Market, or his Deputy, without any additional charge therefor.

#### FOR THE DUE OBSERVANCE OF SUNDAY.

Persons exercising Worldly labour or calling on the Lord's Day, except works of necessity and charity, or exposing any thing for sale (except Milk or Fresh Fish before 10 A. M.) on that day, are liable to be fined *five shillings* for every offence.—Persons (of whatever age or sex) meeting together and playing and making a noise or disturbance on Sunday, may be fined *five shillings* each for every offence; and unless the same is paid within three days after conviction, such offenders may be imprisoned.—If a tavernkeeper, retailer, victualler or keeper of any Ordinary shall permit any persons, except travellers, or those who lodge in their respective houses, to come into his house, or any premises thereunto adjoining, there to drink any liquor, he is liable to a penalty of *forty shillings* for every offence—and it is lawful for any Marshal, Constable or other person for that purpose appointed by the Mayor, to enter into the house of any of the before mentioned persons; and if they find any drinking there, to report the same to the Mayor, Recorder, or one of the Aldermen.

## AGRICULTURAL ITEMS.

**Furrowing.**—According to Mr. Marshall, there are three ideas which lay claim to the word *furrow*: 1. The trench made by the plough, which may be called a *plough-furrow*; 2. The collateral drains, or an *inter-furrow*; and 3. The transverse drains, or the *cross-furrow*. The proper formation and disposition of furrows, is an object of the last importance in tillage, to effect the complete draining of water. Hence, in plain fields, the rain-furrows ought to be drawn according to the declivity of the land: but in rising grounds, it will be most proper to direct them to that side which slightly deviates from the horizontal line. It also deserves to be remarked, that in all situations, where it is practicable, especially at the declivities of fields, reservoirs or pits should be dug, or formed, in order to collect the drained water, together with the finest particles of earth, mire, and other ingredients of manure: after the water has subsided, these valuable materials might be easily obtained in a solid form, and thus again employed on the same field, without incurring the additional expense of carriage. We trust judicious farmers will avail themselves of this hint.

**Food for Cattle.**—In a tract entitled *Notices of a Young Farmer*, written by the Hon. Judge PETERS, formerly President of the Penn. Agricultural Society, are the following directions:

“Cut or chaff your hay, straw, corn-tops or blades, and even your stalks with a straw cutter, and you will save a great proportion, which is otherwise wasted, or passed through the animal without contributing to its nourishment. One bushel of chaffed hay at a mess, given in a trough, three times in twenty-four hours is sufficient for a horse, ox, or cow. A bushel of chaffed hay, lightly pressed, weighs from 5 to 5½ pounds. A horse or horned beast thrives more on 15 pounds thus given, than on 24 or 25 pounds, as commonly expended, (including waste) in the usual manner of seeding in racks; to which troughs properly constructed are far preferable. Salt your clover, and other succulent as well as coarse hay. But over salting diminishes the nutriment. More than a peck to a ton is superfluous. Half that quantity is often sufficient. Ten or fifteen pounds is usually an ample allowance. Feeding your stock by weight and measure of food will not only save your provender, by its orderly distribution, but frequently the lives of animals, too often starved by niggardliness or neglect, or gorged and destroyed by profusion. If it be true,

*Lines add  
a*

Where any  
That not  
But when  
Don't all  
The God o  
But beau  
Thou too a  
And ever  
O happy gi  
For mark  
Man wants  
But wan

*Fee simple  
And all t  
Are nothin  
Thou be*

Spoken to  
young g  
asked if  
of them-  
plexion, t

Upon your el  
Heaven spa

There's som  
Dear ladies

*On a la*

All flesh is g  
tures sh  
All grass, wh  
to hay:  
Then lo! to  
stall tak  
Oh, conscie  
wilt ma

*On seeing  
Dir.*

In marble, l  
How see  
While some  
Think he

## VARIETIES.

*Lines addressed to Miss LONG,  
a little Lady.*

Where any thing abounds we find  
That nobody will have it :  
But when there's little of the kind,  
Don't all the people crave it ?  
The God of Love's a little wight,  
But beautiful as thought ;  
Thou too art little—fair as light,  
And every thing in short !  
O happy girl ! I think thee so,  
For mark the poet's song,  
Man wants but little here below,  
But wants that little LONG !

*Fee simple, and a simple fee,  
And all the fees entail, [thee,  
Are nothing when compared to  
Thou best of fees—female !*

Spoken to two young ladies, by a  
young gentleman whom they  
asked if he could say any thing  
of them—one excelled in com-  
plexion, the other had fine eyes :

(To the first.)

Upon your cheek sits blooming youth ;

(To the other)

Heaven sparkles in your eye ;

(To both.)

[mouth,  
There's something sweet about each  
Dear ladies, let me try !

### EPIGRAM,

*On a large fleshy person.*

All flesh is grass ! thus doth the Scrip-  
tures say.  
All grass, when cut and dried, is turn'd  
to hay :  
Then lo ! to thee, when death his scythe  
skull takes ;  
Oh, conscience, what a hay-stack thou  
wilt make !

### EPIGRAM,

*On seeing the Busts of Charles  
Dix, at the Statuary's :*

In marble, bronze, or alabaster,  
How fine is X Charles—some say ;  
While some (tho' not amiss in plaster,)  
Think he'd be better far in clay !

*Census Anecdote.*—A marshal  
in a certain town in one of the  
neighbouring States, on making a  
call at the house of one Cornwall,  
who, to use a Yankee phrase, was  
at the time, pretty well *corned*,  
enquired who was the head of the  
family ? ' She is,' replied the man,  
pointing to his better part. You  
are a boarder, I suppose, contin-  
ued the census man. ' Yes,  
I boards here, except *drinking*  
and *lodging* ;' and where do you  
*drink and lodge* ? ' I drink at the  
tavern, and lodge in the barn !'

A certain Hibernian lady, had a  
custom of saying to a favorite lit-  
tle dog, to make him follow her,  
' Come along, sir.' A would be  
witty gentleman stepped up to her  
one day, and accosted her with  
' Is it me, madam, you called ?'  
' Oh, no, sir,' said she, with great  
composure, ' it was *another pup-  
py* I spoke to.'

*Conundrums.*—When is her  
Grace's nose not a nose ?—when  
it's a little reddish.

What wig is it a barber cannot  
make ?—an ear-wig.

Why is the letter N like the suc-  
ceeding month ?—because it's N-  
su-ing.

Why is a person approaching  
a candle like a man getting off a  
horse ?—because he's going to  
a-light.

*ASPARAGUS.*—This delicious  
vegetable is among the first in the  
spring, and can be retained until  
the last in the fall, (by a substi-  
tute.) Boil green cucumbers un-  
til tender—slice them lengthwise,  
and serve them in the same man-  
ner as asparagus, and I will defy  
the best epicure, if blindfolded, to  
decide between cucumbers and as-  
paragus. 'Tis easily tried.

AN EPICURE.





Feb.  
1876

