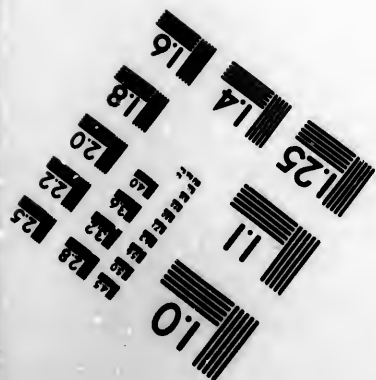
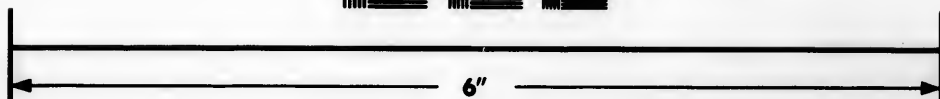
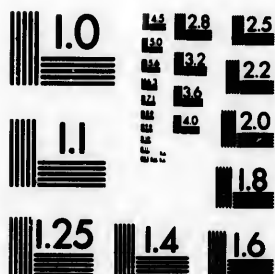


**IMAGE EVALUATION  
TEST TARGET (MT-3)**



**Photographic  
Sciences  
Corporation**

23 WEST MAIN STREET  
WEBSTER, N.Y. 14580  
(716) 872-4503

**CIHM/ICMH  
Microfiche  
Series.**

**CIHM/ICMH  
Collection de  
microfiches.**



**Canadian Institute for Historical Microreproductions / Institut canadien de microreproductions historiques**

**© 1983**

Technical and Bibliographic Notes/Notes techniques et bibliographiques

The Institute has attempted to obtain the best original copy available for filming. Features of this copy which may be bibliographically unique, which may alter any of the images in the reproduction, or which may significantly change the usual method of filming, are checked below.

L'institut a microfilmé le meilleur exemplaire qu'il lui a été possible de se procurer. Les détails de cet exemplaire qui sont peut-être uniques du point de vue bibliographique, qui peuvent modifier une image reproduite, ou qui peuvent exiger une modification dans la méthode normale de filmage sont indiqués ci-dessous.

- Coloured covers/  
Couverture de couleur
- Covers damaged/  
Couverture endommagée
- Covers restored and/or laminated/  
Couverture restaurée et/ou pelliculée
- Cover title missing/  
Le titre de couverture manque
- Coloured maps/  
Cartes géographiques en couleur
- Coloured ink (i.e. other than blue or black)/  
Encre de couleur (i.e. autre que bleue ou noire)
- Coloured plates and/or illustrations/  
Planches et/ou illustrations en couleur
- Bound with other material/  
Relié avec d'autres documents
- Tight binding may cause shadows or distortion along interior margin/  
La reliure serrée peut causer de l'ombre ou de la distorsion le long de la marge intérieure
- Blank leaves added during restoration may appear within the text. Whenever possible, these have been omitted from filming/  
Il se peut que certaines pages blanches ajoutées lors d'une restauration apparaissent dans le texte, mais, lorsque cela était possible, ces pages n'ont pas été filmées.
- Additional comments:/  
Commentaires supplémentaires:

- Coloured pages/  
Pages de couleur
- Pages damaged/  
Pages endommagées
- Pages restored and/or laminated/  
Pages restaurées et/ou pelliculées
- Pages discoloured, stained or foxed/  
Pages décolorées, tachetées ou piquées
- Pages detached/  
Pages détachées
- Showthrough/  
Transparence
- Quality of print varies/  
Qualité inégale de l'impression
- Includes supplementary material/  
Comprend du matériel supplémentaire
- Only edition available/  
Seule édition disponible
- Pages wholly or partially obscured by errata slips, tissues, etc., have been refilmed to ensure the best possible image/  
Les pages totalement ou partiellement obscurcies par un feuillet d'errata, une pelure, etc., ont été filmées à nouveau de façon à obtenir la meilleure image possible.

This item is filmed at the reduction ratio checked below/  
Ce document est filmé au taux de réduction indiqué ci-dessous.

10X	14X	18X	22X	26X	30X
<input type="checkbox"/>	<input type="checkbox"/>	<input checked="" type="checkbox"/>	<input type="checkbox"/>	<input type="checkbox"/>	<input type="checkbox"/>
12X	16X	20X	24X	28X	32X

The copy filmed here has been reproduced thanks to the generosity of:

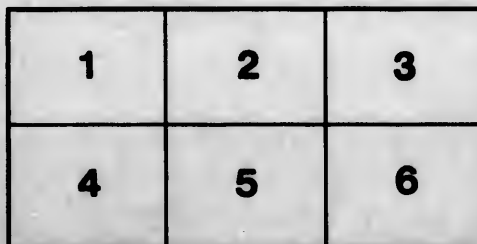
Library of the Public  
Archives of Canada

The images appearing here are the best quality possible considering the condition and legibility of the original copy and in keeping with the filming contract specifications.

Original copies in printed paper covers are filmed beginning with the front cover and ending on the last page with a printed or illustrated impression, or the back cover when appropriate. All other original copies are filmed beginning on the first page with a printed or illustrated impression, and ending on the last page with a printed or illustrated impression.

The last recorded frame on each microfiche shall contain the symbol  $\rightarrow$  (meaning "CONTINUED"), or the symbol  $\nabla$  (meaning "END"), whichever applies.

Maps, plates, charts, etc., may be filmed at different reduction ratios. Those too large to be entirely included in one exposure are filmed beginning in the upper left hand corner, left to right and top to bottom, as many frames as required. The following diagrams illustrate the method:



L'exemplaire filmé fut reproduit grâce à la générosité de:

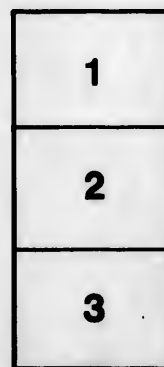
La bibliothèque des Archives  
publiques du Canada

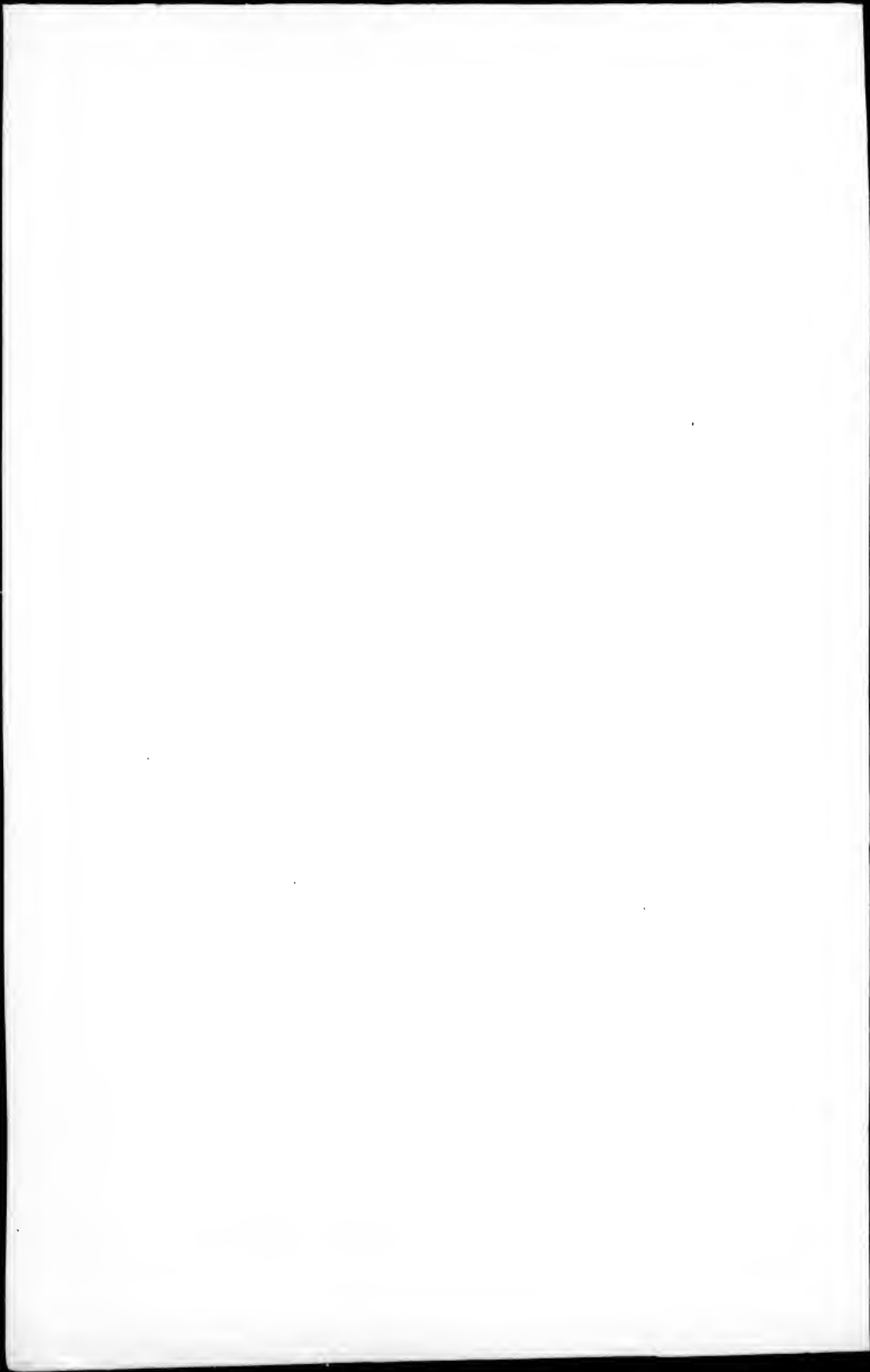
Les images suivantes ont été reproduites avec le plus grand soin, compte tenu de la condition et de la netteté de l'exemplaire filmé, et en conformité avec les conditions du contrat de filmage.

Les exemplaires originaux dont la couverture en papier est imprimée sont filmés en commençant par le premier plat et en terminant soit par la dernière page qui comporte une empreinte d'impression ou d'illustration, soit par le second plat, selon le cas. Tous les autres exemplaires originaux sont filmés en commençant par la première page qui comporte une empreinte d'impression ou d'illustration et en terminant par la dernière page qui comporte une telle empreinte.

Un des symboles suivants apparaîtra sur la dernière image de chaque microfiche, selon le cas: le symbole  $\rightarrow$  signifie "A SUIVRE", le symbole  $\nabla$  signifie "FIN".

Les cartes, planches, tableaux, etc., peuvent être filmés à des taux de réduction différents. Lorsque le document est trop grand pour être reproduit en un seul cliché, il est filmé à partir de l'angle supérieur gauche, de gauche à droite, et de haut en bas, en prenant le nombre d'images nécessaire. Les diagrammes suivants illustrent la méthode.





THE  
**NEW-BRUNSWICK**  
**ALMANACK,**  
FOR THE YEAR OF OUR LORD  
**1836:**

Being *BESSEXTILE*, or *LEAP YEAR*;  
And the Fifth of the Reign of His Most Gracious Majesty  
**WILLIAM IV.**

COMPILED FOR THE MERIDIAN OF  
**SAINT JOHN,**

But will serve for any other part of the Province  
—CONTAINING—

The usual Astronomical Calculations.—List of Provincial  
Officers.—Sittings of the different Courts.—Office  
Bearers of various Literary, Commercial,  
Charitable, and other Institutions.

With instructive and amusing Miscellaneous articles.

AND A DESCRIPTION OF THE  
**LIGHT HOUSES, &c.**

On the Coast of Nova-Scotia, and in the Bay of Fundy.



**SAINT JOHN:**

PRINTED BY HENRY CHASE, AND SOLD AT THE  
POST OFFICE, MARKET-SQUARE.

## THE COMET.

As the Comet has now (October, 1835,) reached its nearest point of approach to the earth, and is hurrying off towards the Sun, we think that some facts in relation to it, (culled from foreign journals,) might not be uninteresting. The early history of this remarkable body may be traced, with some degree of probability, as far back as 130 years before the Christian era, when a comet is said to have appeared of considerable magnitude and brilliancy, shining with a brightness which surpassed the splendour of the sun; it was supposed to have signalised the birth of Mithridates.—There is reason to believe also that the comets which were seen in the years 223 and 399, were returns of the same body; in the latter year it is also described of prodigious magnitude and horrid aspect. In the years 630, 856, 930, and 1006, it probably was again observed; the latter year described as four times as large as the planet Venus. It was also visible in 1230, 1305, and 1380; at the second of these returns it was termed "*cometa horrendae magnitudinis*;" whence it may be concluded that its aspect was very conspicuous.

In the year 1456 the Comet returned again, and was beheld by all Europe with fear and astonishment. The Turks were then engaged in a successful war, in which they destroyed the Greek Empire; they, therefore, might have regarded it as an auspicious omen. The Christians thought that their destruction was portended by its appearance, especially as its tail was turned towards the east. The Pope Calixtus regarded it as at once the sign and instrument of Divine wrath; he ordered public prayers to be offered up, and granted a year's indulgence to all who, at the tolling of the noon-bell, should say three paternosters and three ave-marias, to propitiate the mercy of Heaven.

In the year 1521, it appeared of a bright gold colour. In 1607 it pursued nearly the same apparent path through the heavens which it is now pursuing.—The celebrated Kepler observed it on his return from a convivial party on the 26th September. It continued visible about five weeks. Subsequent to its return in 1698, the attention of the celebrated astronomer Halley, was directed to the periodical return of these bodies, and from a comparison of the elements of various comets on record, he ventured to assert, that those which appeared in the years already specified were not different comets, but the same body returning at intervals of seventy-five and a half years. At that time, he also predicted that the same comet would again make its appearance about the end of the year 1758, or the commencement of 1759. The prediction was verified. It was first seen by George Palitzch, a farmer, near Dresden, on Christmas day, 1758; and was afterwards recognised by several European observatories.

The completion of another period of seventy-five years has just arrived, and a second verification of Halley's prediction has been accomplished, Through what unimaginable realms of space must this body have travelled during that period! What mighty associations are connected with its history! It is the same Comet which in ages back "perplexed monarchs," and in the imaginations of the people,

— "From its horrid hair,  
Shook pestilence and war."

Science has dispelled these credulous apprehensions, and also overturned those notions of the influences of Comets, which have prevailed to a considerable extent even in our own enlightened age.



## ECLIPSES IN 1836.

There will be four Eclipses this year; two of the *Sun*, and two of the *Moon*, in the manner following:—

I. The first will be of the *Moon*, Sunday, May 1st, and visible here, as follows:

Beginning, . . . . .	2h. 23m.	} Mean time, morning.
Ecliptic, . . . . .	3 19	
Middle, . . . . .	3 29	
End, . . . . .	4 33	
Duration, . . . . .	2 10	

Digits eclipsed,  $4^{\circ} 32'$  on the *Moon's* Southern limb.

II. The second will be of the *Sun*, Sunday, May 15th, and visible here, as follows:

Beginning, . . . . .	7h. 34m.	} Mean time, morning.
Greatest obscuration, . . . . .	8 48	
End, . . . . .	10 8	
Duration, . . . . .	2 34	

Digits eclipsed,  $8^{\circ} 12'$  on the *Sun's* southern limb. The Eclipse will begin at about  $90^{\circ}$  from the *Sun's* vertex or zenith, round his West or right hand side. The vertex of the *Sun* is the highest point of his disc at any moment.

III. The third will be of the *Moon*, which will be slightly eclipsed, October 24th,  $\delta$  at 8h. 24m. 37s., mean time, in the morning, and beginning at 7h. 56m. when it will have been set to us about an hour and a half. The quantity of the eclipse will be but about  $1^{\circ} 29'$  on the *C's* northern limb.

IV. The fourth will be of the *Sun*, November 8th,  $\delta$  at 8h. 55m. mean time, in the evening; *Moon's* lat.  $32' 11''$  South, descending; and on both accounts invisible here.

### *Morning and Evening Stars in 1836.*

The Planet *Venus* will be *Evening Star* till July 25th; then *Morning Star* to the end of the year.—*Jupiter* will be *Morning Star* till January 2d; then *Evening Star* till July 20th; then *Morning Star* to the end of the year.—*Mars* will be *Morning Star* throughout the year.—*Saturn* will be *Morning Star* till April 22d; then *Evening Star* till October 31st; then *Morning Star* to the end of the year.

### *Chronological Cycles for 1836.*

Domin. Letters, CB	Epact 12	Roman Indict. 9	
Golden Number, 13	Solar Cycle 25	Julian period 6549	

point of ap-  
we think  
le,) might  
body may  
130 years  
red of cen-  
ness which  
signalised  
the comets  
f the same  
magnitude  
it probably  
as large as  
180; at the  
magnitudi-  
onspicious.  
held by all  
engaged in  
ire; they,  
The Chris-  
pearance,  
pe. Calixus  
wrath; he  
indulgence  
aternosters

607 it pur-  
h it is now  
rom a con-  
about five  
s celebra-  
rn of these  
nets on re-  
e years al-  
y returning  
e, he also  
ance about  
he predic-  
rmer, near  
gnised by

ust arrived.  
omplished,  
y have tra-  
connected  
perplexed

also over-  
e prevailed



## THE PLANETS.

☉ The Sun. ☾ ☽ The Moon. ☿ Mercury.	♀ Venus. ⊕ The Earth. ♂ Mars.	♃ Jupiter. ♄ Saturn. ♃ Herschell.
---	-------------------------------------	---

## ASPECTS AND NODES.

♂ Conjunction. * Sextile, 60 degrees. □ Quartile, 90 degrees. Δ Trine, 120 degrees.	Ve Quincunx, 120 degrees ♂ Opposition, 180 degrees. ⚳ Ascending Node. ⚲ Descending Node.
--	---

## SIGNS OF THE ZODIAC.

♈ Aries, <i>Ram</i> , head. ♉ Taurus, <i>Bull</i> , neck. ♊ Gemini, <i>Twins</i> , arms. ♋ Cancer, <i>Crab</i> , breast. ♌ Leo, <i>Lion</i> , heart. ♍ Virgo, <i>Virgin</i> , belly.	♎ Libra, <i>Balance</i> , reins. ♏ Scorpio, <i>Scorpion</i> , secrets. ♐ Sagittarius, <i>Archer</i> , thighs. ♑ Capricornus, <i>Goat</i> , knees. ♒ Acquarius, <i>Waterman</i> , legs. ♓ Pisces, <i>Fishes</i> , feet.
---	---

## CARDINAL POINTS.

Vernal Equinox,	March 20th,	9h. 25m. A. M.
Summer Solstice,	June 21st,	6h. 27m. A. M.
Autumnal Equinox,	Sept. 22d,	8h. 23m. P. M.
Winter Solstice,	Dec. 21st,	1h. 48m. P. M.

## MOVEABLE FESTIVALS OF THE CHURCH.

Septuagesima Sunday, Jan. 31st.	Easter Day, . . . April 3d.
Sextagesima Sunday, . . . Feby. 7th.	Low Sunday, . . . " 10th.
Shrove Sunday, . . . Feby. 14th.	Rogation Sunday, . . . May 8th.
Ash Wednesday, . . . " 17th.	Ascension Day, . . . " 12th.
Quadragesima Sunday, . . . " 21st.	Whit Sun. or Pentecost, " 22d.
Mid-Lent Sunday, . . . March 18th.	Trinity Sunday, . . . 29th.
Palm Sunday, . . . " 27th.	Corpus Christi day, . . . June 2d.
Good Friday, . . . April 1st.	Advent Sunday, . . . Nov. 27th.

## HOLIDAYS AT THE PUBLIC OFFICES.

*By Order of His Excellency.*

January 1, New-Year's Day.	Sept. 29, Michaelmas.
Feb'y. 24, Queen's birth-day kept.	Nov. 30, Saint Andrew.
March 17, St. Patrick.	Dec. 25, Christmas Day.
April 23, St. George.	" 26, { Christmas Holidays.
May 28, King's birth day kept.	" 27, {
June 24, Saint John.	Ash Wednesday. Good Friday.
June 26, King's Accession.	Easter Monday. Easter Tuesday.
Sept. 7, King's Coronation.	

*If any Holiday happens on a Sunday, it will be kept the next day.*

1st

Full  
Last

D.

M.

1 F

2 S

3 S

4 M

5 T

6 W

7 T

8 F

9 S

10 S

11 M

12 T

13 W

14 T

15 F

16 S

17 S

18 M

19 T

20 W

21 T

22 F

23 S

24 S

25 M

26 T

27 W

28 T

29 F

30 S

31 S

HYMN OF THE BRITISH PEASANT.

For the pride of our fields, for our garden-decked land,  
 For our valleys and rivers, the works of thy hand,  
 We praise thee, we bless thee, our father, our God,  
 We praise thee, we bless thee, our father our God!

MOON'S PHASES.

Full Moon, 3d, 8h 25m evening. | New Moon, 18th, 3h 49m morn.  
 Last Quarter, 11th, 11h 51m morn. | First Quarter, 25th, 10h 6m morn.

D.	D. W.	CALENDAR, &c.	☉		☿		R. S.	Plac.	High water
			R. & S.	dec. S	h. m.	h. m.			
1	Fri	Circumcision. Irish U	7 39	5 23	9	5 38	arm	9 57	
2	Sat	Very Union, 1801.	7 39	5 22	59	6 39	arm	10 37	
3	SU	2d Sun after Christmas	7 38	5 22	53	Rises	bre.	11 16	
4	Mo	Cold weather	7 38	5 22	47	4 58	bre.	11 54	
5	Tu	and very stormy.	7 38	5 22	41	6 1	hart.	Morn	
6	We	Epiphany.	7 38	5 22	34	7 9	hart.	0 29	
7	Th	Spica rises 0h 50m	7 39	5 22	26	8 16	hart.	0 5	
8	Fri	Lucian. Very	7 38	5 22	19	9 26	belly	1 41	
9	Sat	Aldebran or Bull's Eye	7 37	5 22	11	10 55	belly	2 19	
10	SU	1st Sun after Epi [so. 9h]	7 37	5 22	2	11 46	rein.	3 0	
11	Mo	Linnaeus died, '78.	7 37	5 21	53	Morn	rein.	3 51	
12	Tu	severe weather.	7 36	5 21	44	0 59	secr.	4 56	
13	We	Low tides.	7 36	5 21	34	2 15	secr.	6 14	
14	Th	Dr. Halley died, 1742	7 36	5 21	24	3 35	thi.	7 39	
15	Fri	Day breaks 5h 51m.	7 35	5 21	13	4 55	thi.	8 52	
16	Sat	Bat. of Corunna, 1809.	7 35	5 21	2	6 11	kn.	9 53	
17	SU	2d Sun. after Epi.	7 34	5 20	50	7 18	knee	0 45	
18	Mo	A change	7 33	5 20	39	Sets.	legs	11 32	
19	Tu	Sirius south 10h 40m	7 33	5 20	26	6 25	legs	ev 14	
20	We	High tides. may be	7 32	5 20	13	7 42	feet	0 53	
21	Th	Agnes. Louis xvi. beh.	7 31	5 20	0	8 55	feet	1 30	
22	Fri	1793. expected.	7 31	5 19	47	10 4	feet	2 6	
23	Sat	Wm. Pitt died 1806.	7 30	5 19	33	11 11	head	2 34	
24	SU	3d Sunday after Eph.	7 29	5 19	19	Morn	head	3 28	
25	Mo	Conv. of St. Paul.	7 28	5 19	5	0 16	neck	4 19	
26	Tu	Stormy weather.	7 27	5 18	50	1 21	neck	5 22	
27	We	D. Sussex born '73.	7 26	5 18	35	2 25	arm	6 34	
28	Th	Very low tides.	7 25	5 18	19	3 29	arm	7 45	
29	Fri	George III. died, 1820	7 24	5 18	3	4 30	arm	8 45	
30	Sat	Charles I. beh.	7 23	5 17	47	5 28	bre.	9 56	
31	SU	Septuages. Sun. Cold	7 22	5 17	30	6 19	bre.	10 49	

For the fragrance of morn, for the lark's early song,  
 That bids us from slumber awake and be strong;  
 For the dews, for the clouds, for the day's varied sight,  
 We praise thee, we bless thee, the Fountain of Light.  
 For the sweets of our toil, for the oak's covert shade,  
 'Neath whose breathings at nonntide our banquet is laid;  
 For the strength of our limbs, for our cheek's joyous glow,  
 We praise thee, who crownest the sweat of our brow.

MOON'S PHASES.

Full Moon, 2d, 2h 10m evening. | New Moon, 16th, 3h 33m evening.  
 Last Quarter, 9th, 9h 13m evening. | First Quarter, 24th, 7h 7m morn.

D. M.	D. W.	CALENDAR, &c.	☺ R. & S. h. m. h.	SUN'S dec. S d. m. h.	● R. & S. h. m.	○ Plac.	High water h. m.
1	Mo	Battle Brienne, 1814.	7 21 5	17 14	7 4	hart.	10 58
2	Tu	Pur. B. V. Mary. Can-	7 20 5	16 57	Rises.	hart.	11 36
3	We	St. Blas. [dlemas.	7 19 5	16 39	6 6	hart.	Morn.
4	Th	Cessation hostil. '93.	7 18 5	16 21	7 17	belly	0 10
5	Fri	High tides. <i>Cloudy</i>	7 16 5	16 4	8 27	belly	0 44
6	Sat	Dr. Priestley d. 1804.	7 15 5	15 45	9 38	reins	1 17
7	SU	Sexagesima Sunday.	7 14 5	15 27	10 50	reins	1 53
8	Mo	<i>weather.</i>	7 13 5	15 8	Morn	secr.	2 34
9	Tu	Canada ceded to Eng	7 11 5	14 49	0 4	secr.	3 22
10	We	Low tides. [1763.	7 10 5	14 30	1 20	secr.	4 25
11	Th	French took Rome, '98	7 9 5	14 10	2 39	thi.	5 50
12	Fri	<i>Fine winter</i>	7 7 5	13 50	3 54	thi.	7 26
13	Sat	<i>weather</i>	7 6 5	13 30	5 3	knee	8 45
14	SU	Shrove Sunday.	7 4 5	13 10	6 0	knee	9 45
15	Mo	Shrove Monday. [Cold	7 3 5	12 50	6 45	legs	10 33
16	Tu	High tides. <i>with high</i>	7 1 5	12 29	Sets.	legs	11 16
17	We	Ash Wednes. [winds.	7 0 5	12 8	6 31	feet	11 53
18	Th	M. Luther d. 1546.	6 58 6	11 47	7 44	feet	ev 27
19	Fri	<i>Stormy</i>	6 57 6	11 26	8 53	head	1 0
20	Sat	<i>about this time.</i>	6 55 6	11 5 10	0	head	1 33
21	SU	First Sunday in Lent.	6 54 6	10 43	11 6	neck	2 7
22	Mo	Washington b. 1732.	6 52 6	10 21	Morn	neck	2 46
23	Tu	Lindley Murray d. '26.	6 50 6	10 0	0 12	neck	3 32
24	We	Matthias. D. Camb. b.	6 49 6	9 39	1 16	arms	4 31
25	Th	Earl of Essex beheaded	6 47 6	9 15	2 19	arms	5 44
26	Fri	Bona. left Elba, '15.	6 46 6	8 53	3 19	breast	7 7
27	Sat	Low tides. <i>Changeable.</i>	6 44 6	8 31	4 13	breast	8 16
28	SU	2d Sunday in Lent.	6 42 6	8 8	5 0	breast	9 12
29	Mo	Regul. south 11h 24m.	6 40 6	7 45	5 40	hart.	9 57

For evening's calm hour, when our labour is done,  
 For the fond little crowds, from each cottage that run,  
 For their greetings of love, when around us they come,  
 We praise thee, we bless thee, who giv'st us our home.

MOON'S PHASES.

Full Moon, 3d, 5h 13m morning. | New Moon, 17th, 4h 25m morning.  
 Last Quarter, 10th, 4h 45m morn. | First Quarter, 25th, 3h 45m morn.

D. M.	D. W.	CALENDAR, &c.	R. & S. h. m. h.	SUN'S dec. S d. m.	O R. & sets h. m.	Plac.	High water h. m.
1	Tu	St. David. <i>Rainy</i>	6 39 67	23	6 13	hart	10 57
2	We	John Wesley died '91.	6 37 67	0	5 40	belly	11 19
3	Th	<i>weather.</i>	6 35 66	37	Rises.	belly	11 47
4	Fri	Regulus south, 1h 8m	6 34 66	14	7 25	reins	Morn
5	Sat	<i>Falling</i>	6 32 65	50	8 39	reins	0 20
6	SU	3d Sunday in Lent.	6 30 65	27	9 54	reins	0 55
7	Mo	Lord Collingwood died	6 28 65	4	11 11	seer.	1 32
8	Tu	1910. <i>weather.</i>	6 27 64	41	Morn	seer.	2 14
9	We	<i>March weather.</i>	6 25 64	17	0 29	thi.	3 5
10	Th	Bat. of Aboukir, 1701.	6 23 63	54	1 45	thi.	4 12
11	Fri	C runs low.	6 21 63	30	2 55	knee	5 42
12	Sat	Grego. Mar.	6 19 63	6	3 55	knee	7 20
13	SU	Mid Lent Sunday.	6 17 62	43	4 49	legs	8 37
14	Mo	Day breaks, 4h 37m.	6 16 62	19	5 20	legs	9 33
15	Tu	<i>High winds</i>	6 14 61	55	5 50	feet	10 17
16	We	Battle Guilford, '81.	6 12 61	32	6 15	feet	10 53
17	Th	St. Patrick. <i>about</i>	6 10 61	8	Sets.	head	11 28
18	Fri	<i>this time.</i>	6 8 60	44	7 42	head	11 58
19	Sat	Alieth south, 1h 0m.	6 7 60	21	8 49	head	ev. 30
20	SU	Fifth Sunday in Lent.	6 5 6N.	3	9 56	neck	1 1
21	Mo	Cranmer burnt 1556.	6 3 60	27	11 2	neck	1 36
22	Tu	Sir I. Newton d. 1797.	6 1 60	50	Morn	arms	2 13
23	We	<i>A rain</i>	5 59 71	14	0 6	afms	2 27
24	Th	C runs high.	5 57 71	38	1 8	arms	2 52
25	Fri	Lady day. <i>storm may</i>	5 56 72	1	2 5	breast	3 3
26	Sat	Low tides. <i>[be expected]</i>	5 54 72	25	2 55	breast	6 22
27	Su	6th Sun in Lent. - Palm	5 52 72	48	3 37	hart	7 30
28	Mo	[Sunday] <i>Fine</i>	5 50 73	12	4 12	hart	8 41
29	Tu	<i>weather.</i>	5 48 73	35	4 41	hart	9 30
30	We	Althes ent. Paris, 1814.	5 46 73	58	5 6	belly	10 10
31	Th	<i>Thaws.</i>	5 44 74	21	5 30	belly	10 46



For our Sabbaths and Churches, thy Spirit's abode,  
 Where the young and old swell the chorus to God;  
 For each holy transport that kindles us there,  
 We praise thee, we bless thee, the quickener of prayer.  
 For the promise of Spring, for thy Summer's proud state,  
 For the glories of harvest, for Autumn's rich weight;  
 For the wood-fires of winter, so gladdening and clear,  
 We praise thee, we bless thee, who rulest year.

MOON'S PHASES.

Full Moon, 1st, 5h 23m evening. | New Moon, 15th, 6h 24m evening.  
 Last Quarter, 8th, 11h 23m morn. | First Quarter, 23d, 10h 6m even.

D.	D.	CALENDAR, &c.	☺	SUN'S	○ R.	○	High
M.	W.		R. & S.	dec. N	& sets	Plac.	water
			h. m. h.	d. m.	h. m.		h. m.
1	Fri	Good Friday. <i>Fine</i>	5 43 7	4 45	Rises.	reins	11 22
2	Sat	Bat. Copenhagen, 1801	5 41 7	5 8	7 36	reins	11 59
3	SU	Easter Day. <i>and fair.</i>	5 39 7	5 31	8 55	secr.	Morn
4	Mo	St. Amb. Goldsmith d.	5 37 7	5 53	10 15	secr.	0 35
5	Tu	1774. <i>Warm</i>	5 35 7	6 16	11 35	thi.	1 16
6	We	Lyra rises, 8h 2m.	5 34 7	6 39	Morn	thi.	2 3
7	Th	☽ runs low.	5 32 7	7 1	0 49	knee	2 53
8	Fri	<i>and pleasant.</i>	5 30 7	7 24	1 52	knee	4 7
9	Sat	Low tides.	5 28 7	7 46	2 43	legs	5 36
10	SU	1st Sun after Easter.	5 27 7	8 9	3 23	legs	7 8
11	Mo	Canning born, 1770.	5 25 7	9 30	3 55	feet	8 13
12	Tu	<i>April showers.</i>	5 23 7	8 52	4 20	feet	9 10
13	We	Catholic Emancipation	5 21 7	9 14	4 42	feet	9 51
14	Th	assented, 1829.	5 20 7	9 35	5 2	head	10 27
15	Fri	Twilight ends, 9h 30m	5 18 7	9 57	Sets.	head	10 59
16	Sat	Shakspeare born, 1564.	5 16 7	10 13	7 42	neck	11 31
17	SU	2d Sun after Easter.	5 14 7	10 39	8 48	neck	ev. 2
18	Mo	Byron died, 1824.	5 13 7	11 0	9 54	arms	0 36
19	Tu	<i>Changeable.</i>	5 11 7	11 21	10 57	arms	1 11
20	We	☽ apogee.	5 9 7	11 42	11 56	arms	1 49
21	Th	<i>Chill winds.</i>	5 8 7	12 2	Morn	breast	2 33
22	Fri	Procyon sets, 1h 51m	5 6 7	12 22	0 49	breast	3 22
23	Sat	St. George.	5 5 7	12 42	1 33	hart	4 24
24	SU	3d Sun after Easter.	5 3 7	13 2	2 1	hart	5 36
25	Mo	Low tides. <i>Clear</i>	5 1 7	13 21	2 42	hart	6 54
26	Tu	<i>sunshine.</i>	5 0 7	13 41	3 3	belly	7 58
27	We		4 58 8	14 0	3 31	belly	8 53
28	Th	Sir W. Jones, d. 1794.	4 57 8	14 19	3 53	reins	9 39
29	Fri	<i>Fine</i>	4 55 8	14 37	4 14	reins	10 19
30	Sat	<i>and pleasant.</i>	4 54 8	14 56	4 37	secr.	10 58

Full M  
 Last Q  
 New M

D.	D.
M.	W.
1	SU
2	Mo
3	Tu
4	We
5	Th
6	Fri
7	Sat
8	SU
9	Mo
10	Tu
11	We
12	Th
13	Fri
14	Sat
15	SU
16	Mo
17	Tu
18	We
19	Th
20	Fri
21	Sat
22	SU
23	Mo
24	Tu
25	We
26	Th
27	Fri
28	Sat
29	SU
30	Mo
31	Tu

For the kind British hearts, ever joying to give,  
 For the friends of the poor, amid whom we live,  
 We praise thee, we bless thee, our Father, our God,  
 We praise thee, we bless thee, our Father, our God!

MOON'S PHASES.

Full Moon, 1st, 3h 19m morning. | First Quarter, 23d, 1h 16m evening.  
 Last Quarter, 7th, 6h 10m even. | Full Moon, 30th, 11h 20m morn.  
 New Moon, 15th, 9h 28m morn.

High water h. m.		D. M.	D. W.	CALENDAR, &c.	☉ R. & S. h. m. h.	SUN's dec. N d. m.	☽ R. & sets h. m.	☽ Plac.	High water h. m.
11 22		1	SU	4th Sun. after Easter.	4 52	8 15 14	Rises.	secr.	11 39
11 59		2	Mo	<i>Very fine</i>	4 51	8 15 32	9 13	thi.	Morn
Morn		3	Tu	High tides.	4 50	8 15 49	10 34	thi.	0 22
0 35		4	We	Moon runs low. <i>and</i>	4 48	8 16 7	11 44	knee	1 0
1 16		5	Th	Bonaparte died, 1821.	4 47	8 16 24	Morn	knee	1 58
2 3		6	Fri	<i>seasonable weather.</i>	4 46	8 16 41	0 41	legs	2 54
2 53		7	Sat	Cumberland d. 1811.	4 44	8 16 57	1 25	legs	3 58
4 7		8	SU	5th Sun. after Easter.	4 43	8 17 13	1 59	legs	5 15
5 36		9	Mo	Alioth south, 9h 35m.	4 42	8 17 30	2 25	feet	6 33
7 8		10	Tu	<i>Not so fine.</i>	4 40	8 17 45	2 43	feet	7 41
8 18		11	We	Pitt died, 1778.	4 39	8 18 1	3 8	head	8 37
9 10		12	Th	Asc. day or Holy Thu.	4 38	8 18 16	3 27	head	9 20
9 51		13	Fri	<i>Fine growing</i>	4 37	8 18 31	3 47	neck	9 57
10 27		14	Sat	Twilight ends, 9h 24m.	4 36	8 18 45	4 8	neck	10 32
10 59		15	SU	☉ eclipsed, visible.	4 35	8 18 59	Sets.	neck	11 7
11 31		16	Mo	Battle of Albuera, 1810	4 33	8 19 13	8 47	arms	11 40
ev. 2		17	Tu	<i>May weather.</i>	4 33	8 19 27	9 48	arms	ev. 15
0 36		18	We	☾ runs high.	4 31	8 19 40	10 43	breast	0 52
1 11		19	Th	<i>Heavy rains</i>	4 30	8 19 53	11 30	breast	1 30
1 49		20	Fri	<i>may be looked for.</i>	4 30	8 20 5	Morn	breast	2 10
2 33		21	Sat		4 29	8 20 17	0 10	hart	2 54
3 22		22	SU	Whit Sunday or Pen.	4 28	8 20 29	0 43	hart	3 46
4 24		23	Mo	Whit Monday. <i>tecost.</i>	4 27	8 20 41	1 10	belly	4 47
5 36		24	Tu	<i>More pleasant.</i>	4 26	8 20 52	1 34	belly	5 55
6 54		25	We	Low tides.	4 25	8 21 3	1 35	belly	7 18
7 58		26	Th	Battle Ostrolenka, '31.	4 24	8 21 13	2 16	reins	8 12
8 53		27	Fri	Alioth south, 8h 24m.	4 24	8 21 23	2 37	reins	9 6
9 39		28	Sat	King's h. d. kept.	4 23	8 21 33	3 1	secr.	9 13
10 19		29	SU	Trinity Sun. <i>Warm.</i>	4 22	8 21 42	3 29	secr.	10 41
10 58		30	Mo	Peace in Eu. 1814.	4 22	8 21 51	Rises.	thi.	11 29
		31	Tu	<i>Very pleasant.</i>	4 21	8 22 0	3 24	thi.	Morn



'Tis merry, 'tis merry, in Summer hour,  
 When the skies are all too bright;  
 To chase the fawn through the clustering bow'r  
 That stays his frolic flight;  
 Or with fearless breast to brave the stream,  
 Where health and sport are won:  
 Alas! that ever youth's fairy dream  
 Should glide as fleetly on!

MOON'S PHASES.

Last Quarter, 6th, 2h 21m morn. First Quarter, 22d, 1h 13m morn.  
 New Moon, 14th, 0h 58m morn. Full Moon, 28th, 6h 17m evening.

D. M.	D. W.	CALENDAR, &c.	☉ SUN'S		● R.		Plac.	High water	
			R. & S.	dec. N	& S.	h. m.		h. m.	h. m.
1	We	High tides. <i>Very warm</i>	4 21	8 22	8 10	29	knee	0 15	
2	Th		4 20	8 22	11 21	21	knee	1 3	
3	Fri	<i>Thunder and</i>	4 20	8 22	11 59	23	legs	1 51	
4	Sat	<i>rain.</i>	4 19	8 22	0 29	30	Morn legs	2 42	
5	SU	1st Sun. after Trinity.	4 19	8 22	0 29	37	feet	3 36	
6	Mo		4 19	8 22	0 53	43	feet	4 35	
7	Tu	Reform Bill rec'd Roy-	4 18	8 22	1 15	49	head	5 42	
8	We	al assent.	4 18	8 22	1 34	54	head	6 52	
9	Th	<i>Fine growing</i>	4 18	8 22	1 53	59	head	7 51	
10	Fri	War with Tripoli 1801	4 17	8 23	2 13	63	neck	8 43	
11	Sat	Spica sets, 1h 20m.	4 17	8 23	2 35	68	neck	9 28	
12	SU	2d Sun. after Trinity.	4 17	8 23	3 1	71	arms	10 7	
13	Mo	Virg. Mary died, A D 40	4 17	8 23	3 33	75	arms	10 44	
14	Tu	Bat. of Marengo, 1800.	4 17	8 23	3 58	78	Sets. arms	11 22	
15	We	<i>and dry weather.</i>	4 17	8 23	4 21	81	breast	11 58	
16	Th	Middle tides.	4 17	8 23	4 43	83	breast	ev. 35	
17	Fri	Mahomet died, 632.	4 17	8 23	5 6	85	hart.	1 11	
18	Sat	Bat. of Waterloo, 1815.	4 17	8 23	5 28	87	hart.	1 47	
19	SU	3d Sun. after Trinity.	4 17	8 23	6 0	89	hart.	2 26	
20	Mo	<i>Warm.</i>	4 17	8 23	6 22	91	belly	3 8	
21	Tu	Bat. of Vittoria, 1815.	4 18	8 23	6 44	93	Morn belly	3 56	
22	We	<i>Showers.</i>	4 18	8 23	7 6	95	reins	5 0	
23	Th	Low tides.	4 18	8 23	7 28	97	reins	6 11	
24	Fri	Nat. of St. John Bap.	4 18	8 23	7 50	99	secr.	7 27	
25	Sat		4 19	8 23	8 12	101	secr.	8 33	
26	SU	4th Sun. after Trinity.	4 19	8 23	8 34	103	thi.	9 36	
27	Mo	Rev. Dr. Dodd hung.	4 19	8 23	8 56	105	thi.	10 30	
28	Tu	☉ in Perihelion.	4 20	8 23	9 18	107	Rises. knee	11 20	
29	We	St. Peter. <i>Very dry.</i>	4 20	8 23	9 40	109	knee	Morn	
30	Th	High tides.	4 21	8 23	10 2	111	legs	0 8	

1 F  
 2 S  
 3 S  
 4 M  
 5 T  
 6 W  
 7 T  
 8 F  
 9 Sa  
 10 SU  
 11 M  
 12 Tu  
 13 W  
 14 Th  
 15 Fr  
 16 Sa  
 17 SU  
 18 M  
 19 Tu  
 20 W  
 21 Th  
 22 Fr  
 23 Sa  
 24 SU  
 25 M  
 26 Tu  
 27 W  
 28 Th  
 29 Fr  
 30 Sa  
 31 SU

Ye field flowers ! the gardens eclipse you, 'tis true,  
 Yet, wildlings of Nature, I doat upon you,  
 For ye waft me to summers of old,  
 When the earth teemed around me with faery delight,  
 And when daisies and buttercups gladden'd my sight,  
 Like treasures of silver and gold.

MOON'S PHASES.

Last Quarter, 5th, 0h 56m evening | First Quarter, 21st, 10h 26m morn.  
 New Moon, 13th, 4h 9m evening. | Full Moon, 28th, 1h 7m morning.

13m morn.  
m evening.

○	High water
Plac.	h. m.
nee	0 15
nee	1 3
egs	1 51
egs	2 42
et	3 36
et	4 35
ead	5 42
ead	6 52
ead	7 51
eck	8 43
eck	9 28
rms	10 7
rms	10 44
rms	11 22
rest	11 58
rest	ev. 35
art.	1 11
art.	1 47
art.	2 26
elly	3 8
elly	3 56
ins	5 0
ins	6 11
cr.	7 27
cr.	8 38
i.	9 36
i.	10 30
ee	11 20
ee	Morn
gs	0 8

D. M.	D. W.	CALENDAR, &c.	☉ R. & S.	SUN's	● R. & S.	○ Plac.	High water
			h. m. h.	d. m.	h. m.		h. m.
1	Fri	<i>Changeable.</i>	4 21 8	23 6	10 28	lega	0 52
2	Sat	☉ in apogee.	4 22 8	23 2	10 56	feet	1 36
3	SU	5th Sunday after Trin.	4 22 8	22 57	11 18	feet	2 17
4	Mo	U. S. Indepen. dec. '76	4 23 8	22 52	11 39	head	3 0
5	Tu	Fren. took Algiers, '30.	4 24 8	22 46	11 53	head	3 49
6	We	<i>Sultry,</i>	4 24 8	22 40	Morn	head	4 47
7	Th	Sheridan died, 1816.	4 25 8	22 34	0 18	neck	5 52
9	Fri	E. Burke died, 1797.	4 26 8	22 27	0 40	neck	7 3
9	Sat	<i>with showers.</i>	4 27 8	22 20	1 5	arms	8 5
10	SU	6th Sunday af Trinity.	4 27 8	22 12	1 34	arms	8 59
11	Mo	<i>Very fine.</i>	4 23 8	22 4	2 10	arms	9 46
12	Tu	Erasmus died, 1536.	4 29 8	21 56	2 54	breast	10 27
13	We	High tides. [gan.	4 30 8	21 47	Sets.	breast	11 5
14	Th	French rev. of 1789 be-	4 31 8	21 38	8 46	hart.	11 42
15	Fri	Day breaks, at 2h 14m	4 31 8	21 29	9 16	hart.	ev. 16
16	Sat	<i>Cloudy,</i>	4 32 8	21 19	9 42	hart.	0 50
17	SU	7th Sunday after Trin.	4 33 8	21 9	10 4	belly	1 23
18	Mo	<i>with rain.</i>	4 34 8	20 58	10 24	belly	1 57
19	Tu		4 35 8	20 47	10 44	reins	2 35
20	We	Margaret.	4 36 8	20 36	11 4	reins	3 19
21	Th	Burns died, 1796.	4 37 8	20 25	11 27	secr.	4 13
22	Fri	<i>Fine hay weather.</i>	4 38 8	20 13	11 53	secr.	5 27
23	Sat	Union of Eng. & Scot.	4 39 8	20 0	Morn	secr.	6 55
24	SU	8th S. af Trin. [1706.	4 40 8	19 48	0 27	thi.	8 19
25	Mo	Dog days begin.	4 41 8	19 35	1 11	thi.	9 28
26	Tu	St. Anne. <i>Frequent</i>	4 42 8	19 22	2 9	knee	10 23
27	We		4 43 8	19 8	3 20	knee	11 12
28	Th	Fomalhaut rises 10 37	4 44 8	18 54	Rises.	legs	11 55
29	Fri	Bat. of Talavera, 1809.	4 45 8	18 40	8 54	legs	Morn
30	Sat	<i>changes.</i>	4 47 8	18 25	9 19	feet	0 34
31	SU	9th Sun. after Trinity.	4 48 8	18 11	9 41	feet	1 11

I love you for lulling me back into dreams  
 Of the blue Highland mountains and echoing streams,  
 And of broken glades breathing their balm,  
 While the deer was seen glancing in sunshine remote,  
 And the deep mellow crush of the wood-pigeon's note  
 Made music that sweetened the calm.

MOON'S PHASES.

Last Quarter, 4th, 2h 32m morn. | First Quarter, 19th, 5h 36m even.  
 New Moon, 12th, 6h 33m morn. | Full Moon, 26th, 9h 1m morning.

D.	M.	D.	W.	CALENDAR, &c.	☉ R. & S.		☽ SUN'S		R. & S.		O. Plac.	High water		
					h.	m.	d.	m.	h.	m.		h.	m.	
1	Mo			Lammas. Battle of the Nile. <i>Fine</i>	4	49	8	17	56	10	1	head	1	47
2	Tu			Abd. of Chas. X. 1830.	4	50	8	17	40	10	22	head	2	26
3	We			Low tides. <i>growing weather.</i>	4	51	8	17	25	10	43	neck	3	7
4	Th			Transfiguration.	4	52	8	17	9	11	7	neck	3	55
5	Fri			10th Sun. after Trinity	4	53	8	16	52	11	35	neck	4	59
6	Sat			Geo Canning d. 1827.	4	54	8	16	36	Morn		arms	6	11
7	SU			<i>Refreshing showers.</i>	4	55	8	16	19	0	9	arms	7	27
8	Mo			<i>Rather cool.</i>	4	56	8	16	2	0	50	breast	8	33
9	Tu			Louis XVI. deth. 1792	4	57	8	15	45	1	39	breast	9	25
10	We			Q. Adelaide b. 1792.	4	58	9	15	27	2	36	breast	10	8
11	Th			11th Sunday af Trin.	5	59	7	15	9	3	39	hart	10	46
12	Fri			Day breaks, 3h 11m.	5	0	7	14	51	Sets.		hart	11	22
13	Sat			<i>Very warm.</i>	5	1	7	14	33	8	9	belly	11	55
14	SU			[Spithead, 1782.	5	2	7	14	14	8	30	belly	ev.	26
15	Mo			Royal George sunk off Bernard.	5	3	7	13	56	8	49	reins	0	58
16	Tu			<i>Close and sultry.</i>	5	5	7	13	37	9	9	reins	1	31
17	We			K. Wm IV. born, 1765.	5	7	7	13	18	9	30	reins	2	7
18	Th			Herschell died, 1822.	5	8	7	12	58	9	55	secr.	2	50
19	Fri			St. Bartholemew.	5	9	7	12	39	10	25	secr.	3	47
20	Sat			Battle of Dresden 1813	5	10	7	12	19	11	4	thi.	5	5
21	SU			Dr. A. Clarke d. 1832.	5	12	7	11	59	11	54	thi.	6	41
22	Mo			13th Sun. after Trinity	5	13	7	11	39	Morn		knee	8	12
23	Tu			St. John Baptist beh.	5	14	7	11	18	0	58	knee	9	21
24	We			<i>Thunder.</i>	5	15	7	10	58	2	13	legs	10	14
25	Th			Lyra south, 7h 53m	5	16	7	10	37	3	34	legs	10	56
26	Fri				5	17	7	10	16	Rises.		feet	11	36
27	Sat				5	19	7	9	55	7	42	feet	Morn	
28	SU				5	20	7	9	34	8	3	head	0	21
29	Mo				5	21	7	9	12	8	23	head	0	44
30	Tu				5	22	7	8	51	8	45	neck	1	17
31	We				5	23	7	8	29	9	7	neck	1	52

Ev'n now what affection the violet awakes;  
 What loved little islands, twice seen in their lakes,  
 Can the wild water-lily restore:  
 What landscapes I read in the primrose's looks,  
 And what pictures of pebbled and minnowy brooks  
 In the vetches that tangled their shore:

MOON'S PHASES.

Last Quarter, 2d, 9h 1m evening. | First Quarter, 17th, 11h 40m even.  
 New Moon, 10th, 8h 4m evening. | Full Moon, 24th, 7h 9m evening.

36m even.  
 a morning.

Plac.	High water h. m.
head	1 47
head	2 26
neck	3 7
neck	3 55
neck	4 59
arms	6 11
arms	7 27
breast	8 33
breast	9 25
breast	10 8
hart	10 46
hart	11 22
belly	11 55
belly	ev. 26
reins	0 58
reins	1 31
reins	2 7
secr.	2 50
secr.	3 47
hi.	5 5
hi.	6 41
knee	8 12
knee	9 21
legs	10 14
legs	10 56
feet	11 36
feet	Morn
head	0 21
head	0 44
neck	1 17
neck	1 52

D. M.	D. W.	CALENDAR, &c.	☺ R. & S. h. m h. d. m.	SUN'S dec. N & S. h. m. h. m.	☉ R. & S. h. m. h. m.	Plac.	High water h. m.
1	Th	Louis 14th died, 1715.	5 24 7	8 7	9 33	neck	2 31
2	Fri	London burnt, 1666.	5 25 7	7 46	10 5	arms	3 17
3	Sat	Cromwell died, 1658.	5 27 7	7 24	10 44	arms	4 13
4	SU	14th Sund. after Trin.	5 28 7	7 1	11 36	breast	5 27
5	Mo	Malta taken, 1800.	5 29 7	6 39	Morn	breast	6 49
6	Tu	<i>Dry and</i>	5 30 7	6 17	0 25	breast	8 0
7	We	Wm IV. & Q. Adelaide	5 31 7	5 54	1 26	hart.	8 58
8	Th	[crowned, 1831.	5 32 7	5 32	2 29	hart.	9 44
9	Fri	Flodden Field, 1619.	5 34 7	5 9	3 30	belly	10 22
10	Sat	<i>pleasant.</i>	5 35 7	4 46	SETS.	belly	10 56
11	SU	15th Sun. after Trin.	5 36 7	4 23	6 50	belly	11 29
12	Mo		5 37 7	4 0	7 15	reins	ev. 1
13	Tu	High tides.	5 38 7	3 37	7 35	reins	0 32
14	We	Lyra south, 6h 56m.	5 39 7	3 14	7 59	secr.	1 9
15	Th	<i>Changeable,</i>	5 40 7	2 51	8 27	secr.	1 48
16	Fri	<i>with showers.</i>	5 42 7	2 28	9 2	thi.	2 35
17	Sat	St. Lambert.	5 43 7	2 5	9 48	thi.	3 37
18	SU	16th Sun. after Trin.	5 44 7	1 41	10 45	knee	4 57
19	Mo	Low tides. <i>Fair.</i>	5 45 7	1 18	11 55	knee	6 26
20	Tu		5 46 7	0 55	Morn	legs	8 3
21	We	St. Matt. Sir W. Scott	5 47 7	0 31	1 12	legs	9 5
22	Th	[died, 1832.	5 49 7	0 8	2 32	feet	9 55
23	Fri	<i>Autumn begins.</i>	5 50 7	S. 16	3 51	feet	10 34
24	Sat		5 51 7	0 39	Rises	feet	11 11
25	SU	17th Sun. after Trin.	5 52 7	1 2	6 25	head	11 43
26	Mo	St. Cyprian.	5 53 7	1 26	6 46	head	Morn
27	Tu	<i>Clear and cool.</i>	5 55 7	1 49	7 8	neck	0 16
28	We		5 56 7	2 13	7 33	neck	0 49
29	Th	St. Michael.	5 57 7	2 36	8 3	arms	1 24
30	Fri	St. Jerome. <i>Settled.</i>	5 58 7	2 59	8 38	arms	2 2



Earth's cultureless buds, to my heart ye were dear,  
 Ere the fever of passion, or gnue of fear,  
 Had scathed my existence's bloom;  
 Once I welcome you more, in life's passionless stage,  
 With the visions of youth to revisit my age,  
 And I wish you to grow on my tomb.

MOON'S PHASES.

Last Quarter, 2d, 2h 3m evening.  
 New Moon, 10th, 8h 49m morn.

First Quarter, 17th, 5h 46m morn.  
 Full Moon, 24th, 8h 24m morning.

D. M.	D. W.	CALENDAR, &c.	R. & S. h. m. h.	Sun's dec. s d. m.	○ R & sets h. m.	○ Plac.	High water h. m.
1	Sat	Remigius.	5 59 6	3 32	9 22	arms	2 47
2	SU	18th Sun. after Trin.	6 1 6	3 46	10 15	breast	3 41
3	Mo	Low tides.	6 2 6	4 9	11 12	breast	4 48
4	Tu	<i>Cool breezes.</i>	6 3 6	4 32	morn.	hart.	6 3
5	We	[merica, 1793.	6 4 6	4 55	0 16	hart.	7 20
6	Th	Faith.—Peace with A.	6 5 6	5 19	1 23	hart.	8 23
7	Fri	Mark. <i>Variable.</i>	6 6 6	5 42	2 31	belly	9 12
8	Sat		6 7 6	6 5	3 40	belly	9 52
9	SU	19th Sun. after Trin.	6 8 6	6 27	4 50	reins	10 23
10	Mo	<i>Fine autumn</i>	6 9 6	6 50	Sets.	reins	11 2
11	Tu	Duncan's victory 1797.	6 10 6	7 13	6 1	secr.	11 37
12	We	<i>weather</i>	6 12 6	7 35	6 29	secr.	ev. 14
13	Th	Col. disc. Bahama 1492	6 13 6	7 58	7 2	thi.	0 54
14	Fri	Bull's eye rises, 7h 42m	6 14 6	8 20	7 44	thi.	1 40
15	Sat	Moon runs low.	6 15 6	8 43	8 38	knee	2 31
16	SU	20th Sun. after Trin.	6 16 6	9 5	9 45	knee	3 34
17	Mo	Ethel. <i>Clear and</i>	6 17 6	9 27	10 59	knee	4 53
18	Tu	St. Luke.	6 18 6	9 49	morn.	legs	6 21
19	We	Low tides.	6 19 6	10 10	0 17	legs	7 41
20	Th	<i>high winds.</i>	6 21 6	10 32	1 35	feet	8 49
21	Fri	Bat of Trafalgr, 1805.	6 22 6	10 53	2 50	feet	9 30
22	Sat	Alioth south, 10h 41m	6 23 6	11 15	4 3	head	10 8
23	SU	21st Sun. after Trin.	6 24 6	11 36	5 13	head	10 42
24	Mo	D eclipsed invisible.	6 26 6	11 57	rises.	neck	11 17
25	Tu	<i>Frosty nights.</i>	6 27 6	12 17	5 33	neck	11 59
26	We	Cholera appeared in G.	6 29 6	12 39	6 1	neck	morn.
27	Th	[B. 1851.	6 30 6	12 58	6 34	arms	0 26
28	Fri	St. Simon & St. Jude.	6 31 6	13 18	7 15	arms	1 1
29	Sat	<i>Pleasant.</i>	6 32 6	13 38	8 3	breast	1 40
30	SU	22d Sun. after Trinity	6 34 6	13 59	8 59	breast	2 26
31	Mo	Reformation beg. 1517	6 35 6	14 17	10 1	breast	3 11

'Tis merry, 'tis merry, in Autumn tide,  
 The leaser's toil to share;  
 Or from bending boughs the golden pride  
 Of the bounteous year to bear.  
 Yet, oh! be sure, that as fruit will fall,  
 And the ear give out its grain,  
 Life's harvest tide none can e'er recall  
 If its hour shall pass in vain!

MOON'S PHASES.

Last Quarter, 1st, 10h 0m morn.  
 New Moon, 8th, 8h 55m evening.

First Quarter, 15th, 1h 11m even.  
 Full Moon, 23d, 0h 51m morning.

46m morn.  
 m morning.

○ lac.  
 High water  
 h. m.

rms 2 47  
 rest 3 41  
 rest 4 48  
 art. 6 5  
 art. 7 20  
 art. 8 23  
 elly 9 12  
 elly 9 52  
 reins 10 23  
 reins 11 2  
 ecr. 11 37  
 ecr. ev. 14  
 hi. 0 54  
 hi. 1 40  
 nee 2 31  
 nee 3 34  
 nee 4 53  
 gs 6 21  
 gt 7 41  
 et 8 42  
 et 9 30  
 ead 10 8  
 ead 10 42  
 eck 11 17  
 eck 11 59  
 eck morn.  
 ms 6 23  
 ms 1 1  
 eat 1 40  
 eat 2 28  
 eat 3 11

D.	D. W.	CALENDAR, &c.	☉ SUN'S R. & S.	☽ R. & S.	○ Plac.	High water
D. M.	W.		h. m. h. m.	h. m. h. m.		h. m.
1	Tu	<i>Win. ty.</i>	6 39	6 14	37 11 5	hart. 4 4
2	We	All Souls.]	6 40	6 14	56 morn	hart. 5 13
3	Th	Low tides. <i>Clear</i>	6 42	6 15	14 0 12	belly 6 25
4	Fri	[1821.	6 43	6 15	39 1 20	belly 7 32
5	Sat	Princess Charlotte died	6 44	6 15	51 2 29	reins 8 30
6	SU	23d Sund. after Trin.	6 46	6 16	9 3 39	reins 9 16
7	Mo	<i>but cool.</i>	6 47	6 16	27 4 52	reins 9 57
8	Tu	Milton died, 1674.	6 43	6 16	44 Sets.	secr. 10 37
9	We		6 50	6 17	2 4 53	secr. 11 19
10	Th	Luther born, 1493.	6 51	6 17	19 5 38	thi. ev. 1
11	Fri	St. Martin.	6 53	6 17	35 6 30	thi. 0 48
12	Sat	Bat Sheriffmuir, 1715.	6 54	6 17	51 7 34	knee 1 36
13	SU	24th Sun. after Trinity.	6 55	6 18	7 8 48	knee 2 28
14	Mo	Warsaw taken, 1794.	6 57	6 18	23 10 6	legs 3 27
15	Tu	Twilight ends, 6h 14m	6 58	6 18	38 11 25	legs 4 34
16	We	<i>Snow or hail.</i>	6 59	6 18	53 morn:	feet 5 49
17	Th		7 1	5 19	8 0 40	feet 7 5
18	Fri	Low tides.	7 2	5 19	22 1 52	head 8 5
19	Sat	<i>Changeable.</i>	7 3	5 19	36 3 2	head 8 35
20	SU	25th Sund. after Trin.	7 5	5 19	50 4 11	neck 9 38
21	Mo		7 6	5 20	3 5 19	neck 10 17
22	Tu	<i>High winds.</i>	7 7	5 20	16 6 29	neck 10 52
23	We	St. Clement.	7 8	5 20	29 rises.	arms 11 29
24	Th	Moon runs high.	7 10	5 20	41 5 10	rms morn
25	Fri	St. Catherine.	7 11	5 20	52 5 56	breast 0 5
26	Sat	High tides. <i>Warm.</i>	7 12	5 21	4 6 49	breast 0 43
27	SU	Advent Sunday.	7 13	5 21	15 7 49	breast 1 20
28	Mo	<i>Looks like snow.</i>	7 14	5 21	25 8 52	hart. 1 59
29	Tu		7 16	5 21	35 9 57	hart. 2 41
30	We	St. Andrew.	7 17	5 21	45 11 3	belly 3 27



12th Month. DECEMBER. 1836.

'Tis merry, 'tis merry, at Christmas time,  
 When logs in the chimney blaze,  
 And the board is heaped with the Winter's prime,  
 The long loud laugh to raise.  
 Yet when friends are kindest, each feeling heart  
 The friendless will open to cheer,  
 And of Heaven's rich store give forth a part  
 To hallow the closing year.

MOON'S PHASES.

Last Quarter, 1st, 5h 38m morn. First Quarter, 14th, 11h 18m eve.  
 New Moon, 8th, 8h 21m morning. Last Quarter, 30th, 11h 14m eve.

D.	D. W.	CALENDAR, &c.	☉		☽		R. & S.	R. & S.	☾	High water		
			R.	S.	dec.	S.					h.	m.
1	Th	Emp. Alex. died, 1925.	7	18	5	21	55	morn	belly	4	18	
2	Fri	Low tides. <i>Hard</i>	7	19	5	22	3	0	10	belly	5	21
3	Sat	Rqv. in England, 1688.	7	20	5	22	12	1	17	reins	6	30
4	SU	2d Sunday in Advent.	7	21	5	22	20	2	27	reins	7	36
5	Mo	<i>frosts</i>	7	22	5	22	28	3	40	secr.	8	37
6	Tu		7	23	5	22	35	4	53	secr.	9	30
7	We	Lyra se. 10h 52m.	7	24	5	22	42	6	50	thi.	10	18
8	Th	Concep. B. V. Mary.	7	25	5	22	48	sets	thi.	11	7	
9	Fri	Moon perigee.	7	26	5	22	54	5	15	knee	11	54
10	Sat	<i>Mild changes.</i>	7	27	5	22	59	6	28	knee	ev.	41
11	SU	3d Sunday in Advent.	7	28	5	23	4	7	49	legs	1	30
12	Mo		7	29	5	23	8	9	10	legs	2	17
13	Tu	<i>Very cold.</i>	7	30	5	23	12	10	29	feet	3	6
14	We	Washington died 1799.	7	30	5	23	16	11	13	feet	3	59
15	Th	Twilight ends, 6h 7m.	7	31	6	23	19	morn	head	5	3	
16	Fri	Low tides. <i>Heavy</i>	7	32	5	23	22	0	53	head	6	11
17	Sat	Bolivar died, 1830.	7	33	5	23	24	2	3	head	7	20
18	SU	4th Sunday in Advent.	7	33	5	23	26	3	11	neck	8	20
19	Mo	<i>snow storms.</i>	7	34	5	23	27	4	19	neck	9	9
20	Tu		7	34	5	23	27	5	26	arms	9	53
21	We	<i>Gloomy weather.</i>	7	35	5	23	28	6	32	arms	10	33
22	Th	Regulus rises, 8h 58m.	7	35	5	23	27	rises	arms	11	13	
23	Fri	Emp. Alex. b. 1777.	7	36	5	23	27	4	22	breast	11	49
24	Sat	Ghent treaty sign. 1814	7	36	5	23	26	5	40	breast	morn.	
25	SU	Christmas Day.	7	37	5	23	24	6	42	hart.	0	25
26	Mo	St. Stephen.	7	37	5	23	22	7	43	hart.	1	0
27	Tu	St. John. <i>Rain or</i>	7	37	5	23	19	8	53	hart.	1	35
28	We	Innocents.	7	38	5	23	16	9	58	belly	2	9
29	Th	Ld. Stafford executed,	7	38	5	23	13	11	3	belly	2	47
30	Fri	James. [1690.	7	38	5	23	9	morn	reins	3	31	
31	Sat	Silvester. <i>snow.</i>	7	38	5	23	4	0	10	reins	4	22

1836.

# PROVINCE of NEW-BRUNSWICK.

HIS EXCELLENCY

Major-General Sir ARCHIBALD CAMPBELL, Bart., G. C. B.  
LIEUTENANT-GOVERNOR and COMMANDER-IN-CHIEF of the Province of NEW-BRUNSWICK, &c. &c. &c.

## EXECUTIVE COUNCIL.

Honorable Thomas Baillie, | Honorable George F. Street,  
" Frederick P. Robinson, | " John S. Saunders,  
" William F. Odell, |

## LEGISLATIVE COUNCIL.

The Honorable the Chief Justice, *President.*  
Lord Bishop of Nova-Scotia, | Honorable William H. Robinson,  
Honorable William Black, | " John S. Saunders,  
" George Shore, | " James Allanshaw,  
" Thomas Baillie, | " Amos E. Botsford,  
" Harry Peters, | " the Attorney General,  
" Frederick P. Robinson, | " George H. Hazen,  
" Richard Simonds, | " Thomas C. Lee,  
" Joseph Cunard, |

## OFFICERS OF THE LEGISLATIVE COUNCIL.

William Tyng Peters, Esquire, *Clerk.*  
Mr. John Gregory, *Clerk Assistant.*  
Isaac W. Jouett, Esq. *Sergeant at Arms & Usher of the Black Rod.*  
Reverend George Coster, A. M., *Chaplain.*

## PRINCIPAL OFFICERS OF GOVERNMENT.

Honorable Charles Jeffrey Peters, *Attorney General.*  
Honorable George Frederick Street, *Solicitor General.*  
Honorable John Simcoe Saunders, *Advocate General.*  
Honorable William Franklin Odell, *Secretary, Registrar and Clerk of the Executive Council.*  
Honorable Thomas Baillie, *Commissioner of Crown Lands and Surveyor General.*  
George Pidgeon Bliss, Esquire, *Receiver General.* *Die 20 Jan 1836*  
Honorable Frederick P. Robinson, *Surveyor and Auditor of the King's Casual Revenue.*  
Timothy R. Wetmore, Esq. *Collector of Rents on Coal Mines, &c.*  
Honorable George Shore, } *Commissioners of Accounts of*  
Honorable Frederick P. Robinson, } *the King's Casual Revenue.*  
Honorable John S. Saunders, } *Commissioners for managing and superintending*  
Hon. Thomas Baillie, } *the sale, levying, and collecting of His Majesty's*  
Hon. John S. Saunders, } *Quit Rents.*  
Hon. William F. Odell, *Secretary to ditto.*  
Hon. William F. Odell, } *Commissioners for the Management of*  
Hon. George F. Street, } *the Surplus of the Customs and Territorial*  
Hon. John S. Saunders, } *Revenues.*

13m eve.  
14m eve.  
High water  
h. m.  
4 18  
5 21  
6 30  
7 36  
8 37  
9 30  
10 18  
11 7  
11 54  
12 41  
1 30  
2 17  
3 6  
3 59  
5 3  
6 11  
7 20  
8 20  
9 9  
9 53  
10 33  
11 12  
11 49  
est morn.  
ft. 0 25  
ft. 1 0  
ft. 1 35  
ly 2 9  
ly 2 47  
ms 3 31  
ms 4 22

# NEW HOUSE OF ASSEMBLY.

**CHARLES SIMONDS, Esquire, Speaker.**

## County of York.

Lemuel A. Wilmot,  
John Allen,  
James Taylor,  
Jedediah Slason, } Esquires.

## County of Saint John.

John R. Partelow,  
Charles Simonds,  
John M. Wilmot,  
Geo. D. Robinson, } Esquires.

## County of Charlotte.

Thomas Wyr,  
George S. Hill,  
James Brown, jun.,  
Patrick O'Hach, } Esquires.

## County of Westmorland.

Philip Palmer,  
Edward B. Chandlet,  
William Crane,  
Daniel Hannington, } Esquires.

## County of Kent.

John W. Weldon, } Esquires.  
John P. Ferd, }

## County of Northumberland.

Alexander Rankin, } Esquires.  
John A. S. Street, }

## King's County.

William M'Leod, } Esquires.  
Samuel Freeze, }

## Queen's County.

Hugh Johnston, } Esquires.  
Thomas Gilbert, }

## County of Sunbury.

George Hayward, } Esquires.  
Thomas O. Miles, }

## County of Gloucester.

William Ead, } Esquires.  
Peter Stewart, }

## City of Saint John.

Lewis Burns, } Esquires.  
Isaac Woodward, }

## OFFICERS OF THE HOUSE OF ASSEMBLY.

Charles P. Watmore, Esquire, *Clerk.*  
Mr. Thomas S. Watmore, *Clerk Assistant.*  
Henry G. Clopper, Esquire, *Sergeant at Arms.*  
Reverend James Sommerville, L. L. D., *Chaplain.*

## COURT OF CHANCERY.

His Excellency the Lieutenant Governor, *Chancellor.*

The Chief Justice, and the Judges of the Supreme Court, *Assessors of the Court.*

Honorable William F. Odell, *Clerk of the Crown in Chancery.*

Neville Parker, *Esquire.*

Honorable George F. Street, } *Masters.*

Henry Swymer, *Esquire.*

Daniel Ludlow Robinson, *Esquire, Register.*

William M'Reath, *Esquire, Sergeant at Arms, attending the Court of Chancery.*

*Terms—The 2d Monday after each Term day of the Supreme Court.*

**COURT OF GOVERNOR AND COUNCIL,**  
*For hearing and determining Causes relating to Marriage  
 and Divorce.*

His Excellency the Lieutenant Governor, President.  
 Honorable William Botsford, Vice-President.  
 The Honorable His Majesty's Executive Council, Members.  
 Henry G. Clopper, Esquire, Clerk.

*Terms*—The first **Tuesdays** in February and July,

**SUPREME COURT OF JUDICATURE.**

Chief Justice—Honorable Ward Chipman, 29th Sept. 1834.  
 " William Botsford, 2d April, 1823.  
 Justices,— { " James Carter, October, 1834.  
 " Robert Parker, October, 1834.

Charles S. Putnam, Esquire, Clerk of the Crown.  
 Honorable George Shore, Clerk of the Pleas.  
 William Tyng Peters, Esquire, Clerk of the Circuits, and Clerk  
 of the Crown on the Circuits.

*(Terms)*—The first **Tuesdays** in February and May, and the second **Tues-**  
**days** in July and October.

**COURT OF VICE-ADMIRALTY.**

Neville Parker, Esquire, Judge and Commissary.  
 Honorable John Simcoe Saunders, Advocate General.  
 Robert F. Hazen, Esquire, Registrar and Scribe.  
 Thomas M. Hazen, Esquire, Marshal.

*Court for the Trial and Punishment of Piracy,  
 and Offences committed on the High Seas.*

*Judges*—The Chief Justice, and the Judges of the Supreme Court.  
*Registrar and Scribe*—William Tyng Peters, Esquire.  
*Marshal*—Edward W. Millar, Esquire.

*This Court, which is held under a Commission issuing out of the  
 High Court of Admiralty in England, sits at Fredericton whenever  
 there is any business before it.*

**COURT FOR THE PROBATE OF WILLS,  
 AND GRANTING ADMINISTRATIONS.**

Honorable William F. Odell, Register for the Province.

Honorable George F. Street, Surrogate, York County.



SURROGATES AND REGISTERS.

Henry Swymmer, Esquire, Surrogate, }  
 Charles Drury, Esquire, Deputy Register, } Saint John.  
 Edward B. Chandler, Esquire, Surrogate, }  
 James Stewart, Esquire, Deputy Register, } Westmorland.  
 Harris Hatch, Esquire, Surrogate, }  
 Colin Campbell, Esquire, Deputy Register, } Charlotte.  
 Henry Nase, Esquire, Surrogate and Deputy Register, King's County.  
 N. H. DeVeber, Esquire, Surrogate, }  
 Valentine H. Peters, Esquire, Deputy Register, } Queen's County.  
 George W. Cleary, Esquire, Surrogate, }  
 N. Hubbard, Esquire, Deputy Register, } Sunbury.  
 Thomas H. Peters, Esquire, Surrogate, }  
 John A. S. Street, Esquire, Deputy Register, } Northumberland.  
 William Chandler, Esquire, Surrogate, }  
 John W. Weldon, Esquire, Deputy Register, } Kent.  
 William End, Esquire, Surrogate and Deputy Register, Gloucester.  
 B. Cranwell Beardsley, Esquire, Surrogate, }  
 N. Merrill Hazen, Esquire, Deputy Register, } Carlisle.

The Surrogate Courts are held every third day (Sunday excepted) in their respective Counties, but Letters of Administration may be had, and Wills proved, &c. at any time, by application to the Surrogate of the County.

COUNSELLORS AND ATTORNIES,

PRACTISING IN THE PROVINCE.

**Frederickton**—Hon. Charles J. Peters, (*Attorney General*.) William Tyng Peters, Hon. John Simcoe Saunders, (*Advocate General*.) Hon. G. F. Street, (*Solicitor General*.) George B. Bliss, Daniel Ludlow Robinson, George J. Dibblee, Charles S. Putnam, George W. Cleary, Charles P. Wainute, George N. S. Berton, L. A. Wilmot, Charles Fisher, George F. H. Minchin, Daniel Hayes Smith, William H. Odell, and Stephen Miller, Esquires.

**Saint John**—Henry Swymmer, William B. Kinnear, Neville Parker, James Peters, junior, Francis A. Kinnear, Robert F. Hazen, LeBaron Hazen, William Wright, H. N. H. Lugin, John M. Robinson, Moses H. Perley, Robert L. Hazen, Richard Sands, junior, John Johnston, James William Boyd, Judah H. Hartt, Duncan Robertson, and Charles Johnson, Esquires.

**Saint Andrews**—Harris Hatch, Alfred L. Street, Francis E. Putnam, Samuel H. Whillock, James W. Chandler, Richard M. Andrews, William Jack, and George D. Street, Esquires.

**Miramichi**—Thomas H. Peters, John A. S. Street, William End, William Carman, junior, George Kerr, Charles A. Harding, George Wheeler, and James H. Peters, Esquires.

**Dorchester**—Edward B. Chandler, James Stewart, Thomas Smith Sayre, and Samuel Gay Morse, Esquires.

**Bend of Petticoadie**—William Wiley, Esquire.

**Non-residents practising in Dorchester**—James S. Morse, Alexander Stewart, and James Clarke Hall, Esquires.

**Saint Stephens**—George Stilman Hill, Peter Stubs, jun. and Alexander Campbell, Esquires.

**Saint George**—Samuel G. Andrews, and William Jack, Esquires.

**Gage Town**—Timothy Robert Wetmore, Esquire.

**Richibucto**—John W. Weldon, and William Chandler, Esquires.

**Kingston**—William Simpson, and Edward B. Smith, Esquires.

**Woodstock**—B. Crannall Beardsley, A. K. Smedes Wetmore, Nathaniel Merrill Hazen, Alexander N. Garden, and William H. Needham, Esquires.

**Gloucester**—William End, Andrew Barbarie, Richard Carman, Chipman Botsford, and Richard Marshall Clarke, Esquires.

## PUBLIC NOTARIES.

### *In the Province.*

Hon. William F. Odell.

Harris Hatch, Esq.

Thomas H. Peters, Esq.

John A. S. Street, Esq.

Neville Parker, Esq.

Henry Swymmer, Esq.

William End, Esq.

Alfred L. Street, Esq.

Sylvester C. Hewes, Esq.

George W. Cleary, Esq.

Charles S. Putnam, Esq.

A. K. Smedes Wetmore, Esq.

Daniel L. Robinson, Esq.

Francis A. Kinnear, Esq.

Robert F. Hazen, Esq.

LeBaron Hazen, Esq.

John W. Weldon, Esq.

William Wright, Esq.

William Carman, junior, Esq.

Francis E. Putnam, Esq.

Peter Stubs, junior, Esq.

Moses H. Perley, Esq.

Timothy R. Wetmore, Esq.

James Stewart, Esq.

John M. Robinson, Esq.

Andrew Barbarie, Esq.

George Kerr, Esq.

Robert H. Peters, Esq.

John Johnson, Esq.

James William Boyd, Esq.

Richard Sands, junior, Esq.

George Wheeler, Esq.

Richard Carman, Esq.

William Chandler, Esq.

Hugh Moore, Esq.

Charles A. Harding, Esq.

William Jack, Esq.

Alexander Campbell, Esq.

James H. Peters, Esq.

Samuel Hallott Whitlock, Esq.

Duncan Robertson, Esq.

George D. Street, Esq.

J. H. Hartt, Esq.

Chipman Botsford, Esq.

### *City of Saint John.*

Hon. Charles Jeffrey Peters,

William Tyng Peters, Esq.

William Boyd Kinnear, Esq.

James Peters, junior, Esq.

### *City & County of St. John.*

Horatio Nelson H. Lugin, Esq.

### *Charlotte County.*

William M. Leaa, Esq.

John Wilson, Esq.

Collin Campbell, Esq.

### *Campo Bello.*

Charles R. Hathoway, Esq.

### *West Isles.*

Cavalier H. Jouett, Esq.

21



# ROLL OF BARRISTERS & ATTORNIES IN NEW-BRUNSWICK.

NAMES.	Admitted At- tornies.	Sworn & enrol- led Barristers.
Charles Jeffrey Peters, . . .	- 16 July 1794	24 May 1828
B. Crannall Beardsley, . . .	- Oct 1796	17 July 1830
William Franklin Odell, . . .	- 18 July 1804	5 July 1806
Thomas Horsfield Peters, . . .	- 8 Oct 1806	17 Feb 1819
Harris Hatch, . . . . .	- 2 Feb 1803	17 Feb 1819
William Tyng Peters, . . . . .	- 17 Feb 1814	24 May 1823
Jas. Shannon Morse, (non-resid.)	- 19 Feb 1814	19 Feb 1814
John Simeoe Saunders, . . . . .	- 18 Feb 1817	18 Feb 1819
John Ambrose Sharman Street, . . .	- 22 Feb 1817	14 Oct 1819
George Frederick Street, . . . . .	- 15 July 1818	12 July 1820
Henry Swynmer, . . . . .	- 15 July 1818	21 May 1823
William Boyd Kinnear, . . . . .	- 18 May 1819	24 May 1823
<i>Dead</i> George Pidgeon Bly, . . . . .	- 13 July 1819	24 May 1823
Neville Parker, . . . . .	- 14 July 1819	15 Oct 1821
Alfred Lock Street, . . . . .	- 11 Oct 1820	24 May 1823
<i>Dead</i> Charles Samuel Putnam, . . . . .	- 11 Oct 1821	14 Oct 1823
Daniel Ludlow Robinson, . . . . .	- 11 Oct 1821	14 Oct 1823
Edward Barron Chandler, . . . . .	- 11 Oct 1821	14 Oct 1823
George Stilman Hill, . . . . .	- 11 Oct 1821	16 July 1830
James Peters, junior, . . . . .	- 12 Oct 1821	18 May 1824
Alexander Stewart, (non-resident)	- 20 Feb 1822	18 May 1824
George William Cleary, . . . . .	- 10 Oct 1822	12 Oct 1824
William End, . . . . .	- 20 Feb 1823	17 Feb 1824
Charles Peters Wetmore, . . . . .	- 11 July 1823	14 July 1825
Abraham Kierstead S. Wetmore, . . .	- 13 Oct 1823	19 Oct 1825
George Jarvis Dibbles, . . . . .	- 18 Oct 1823	19 Oct 1825
Francis Andrew Kinnear, . . . . .	- 18 Oct 1823	19 Oct 1825
William Wiley, . . . . .	- 17 July 1824	17 July 1826
<i>Dead</i> Robert Fraser Hazen, . . . . .	- 16 Oct 1824	20 Oct 1826
<i>Dead</i> Le Baron Hazen, . . . . .	- 16 Oct 1824	20 Oct 1826
John Wesley Weldon, . . . . .	- 21 May 1826	21 May 1827
<i>Dead</i> Francis Ebenezer Putnam, . . . . .	- 16 July 1825	16 July 1827
William Wright, . . . . .	- 16 July 1825	16 July 1827
William Carman, junior, . . . . .	- 15 Oct 1825	5 Feb 1828
Peter Stubs, junior, . . . . .	- 25 Feb 1826	10 July 1828
Horatio Nelson Hicks Logrin, . . . . .	- 25 Feb 1826	18 Oct 1828
William Simpson, . . . . .	- 20 May 1826	10 July 1828
James Stewart, . . . . .	- 24 Feb 1827	5 Feb 1829
John Morris Robinson, . . . . .	- 10 May 1828	10 May 1830
Moses Henry Perley, . . . . .	- 12 July 1828	16 July 1830
Timothy Robert Wetmore, . . . . .	- 14 July 1828	16 July 1830
Edward Beits Smith, . . . . .	- 18 Oct 1828	14 Oct 1830
Edward Barbarie, . . . . .	- 18 Oct 1828	5 Feb 1831
William Chandler, . . . . .	- 18 Oct 1828	5 Feb 1831
Samuel Hallott Whitlock, . . . . .	- 18 July 1829	16 July 1831
James Watson Chandler, . . . . .	- 16 Oct 1829	16 Oct 1829
George Kerr, . . . . .	- 17 Oct 1829	9 Feb 1829

*Stets*

*Dead*

Hen  
J. H  
Jam

**ROLL OF BARRISTERS AND ATTORNIES;**  
(CONTINUED.)

enrol-  
sters.

1828  
1830  
1806  
1819  
1819  
1823  
1814  
1819  
1819  
1820  
1823  
1823  
1823  
1821  
1823  
1823  
1823  
1823  
1830  
1824  
1824  
1824  
1825  
1825  
1825  
1826  
1826  
1826  
1827  
1827  
1827  
1828  
1828  
1828  
1829  
1830  
1830  
1830  
1831  
1831  
1829  
1829

*Struts*

*Dead*

NAMES.	Admitted Attornies.	Sworn & enrolled Barristers.
Robert Leonard Hazen,	17 Oct 1829	16 Oct 1831
George Frederick Street Berton,	6 Feb 1830	9 Feb 1832
Richard Sands, junior,	17 July 1830	11 Oct "
Lemuel Allen Wilmot,	17 July 1830	17 July "
Samuel George Andrews,	17 July 1830	17 July "
Richard Carman,	16 Oct 1830	17 Oct "
John Johnston,	5 Feb 1831	7 Feb 1833
Charles Fisher,	5 Feb 1831	10 Oct "
Charles Botsford,	7 May 1831	
James William Boyd,	16 July 1831	16 July 1833
Nathaniel Merrill Hazen,	16 July 1831	16 July "
Thomas Smith Sayre,	15 Oct 1831	6 Feb 1834
George Wheeler,	15 Oct 1831	15 Oct 1833
Charles Augustus Harding,	11 Feb 1832	11 Feb 1834
Richard Milton Andrews,	5 May "	15 July "
William Hazen Needham,	8 May "	8 May "
William Jack,	18 Oct "	9 Feb 1835
Alexander Campbell,	18 Oct "	16 Oct 1834
George Ferdinand H. Minchin,	18 Oct "	16 Oct "
Abraham Nelson Garden,	9 Feb 1833	16 July 1835
Judah Hammond Hartt,	11 May "	11 May "
James Horsfield Peters,	18 July "	
George Dixon Street,	12 Oct "	
John Clarke Hall, (non-resident,)		10 July 1834
Chipman Botsford,	18 Oct. 1834	
Samuel Gay Morse,	18 Oct. "	
Richard Marshall Clarke,	18 Oct. "	
Robert Barry Dickey (non-resid.)	7 Feb 1835	7 Feb 1835
Duncan Robertson,	7 Feb "	
Charles Johnston,	9 May "	
William Samuel Sands,	9 May "	
William Hunter Odell,	18 July "	
Stephen Miller,	18 July "	
Stephen H. Hitchings,	18 July "	
Newton Ward Wallop,		
Stephen <del>Thorne</del> Thorne,		
Thomas Burton Abbott,		
Christopher Milner,		
David Shank Kerr, (non-resident)		

**HIS MAJESTY'S CUSTOMS:**

**PORT OF SAINT JOHN.**

Henry Bowyer Smith, Esquire, Collector.

J. Phipps Hood, Esquire, Landing Surveyor.

James Walker, Esquire, Wailer and Searcher.

George Hamilton Smith, Esquire, *Writer and Searcher*.  
Charles Drury, junior, Esquire, *Admeasurer of Ships and Vessels*.  
Mr. John Longmaid, *Tide Surveyor*.

**SUB-COLLECTORS.**

James Sayre, Esq. *Dorchester*—Perry Dunmasesq, Esq. *Dalhousie*—  
David Swayne, Esq. *Richibucto*—Henry E. Dibble, Esquire, *Wood-*  
*stock*—T. M. De Blois, Esq. *Bathurst*—Under the Principal Officers  
of His Majesty's Customs at Saint John.

**WAREHOUSE DEPARTMENT.**

William Stringer, Esquire, Warehouse Keeper at Saint John.  
T. P. Marter, Esquire, Locker at ditto.

**PORT OF MIRAMICHI.**

John Wright, Esquire, *Collector*—Samuel Forsayeth, Esq. *Comp-*  
*troller*—George Henderson, Esquire, *Admeasurer of Vessels*—Under  
the Principal Officers of His Majesty's Customs at the Port of St. John.

**PORT OF SAINT ANDREWS.**

Alexander Grant, Esquire, *Collector*.  
C. V. Forster, Esquire, *Comptroller and Landing Surveyor*.  
W. F. Acheson, *Writer and Searcher*.

Wm. Ellman, Esq. 1st Clerk & Warehouse Keeper at St. Andrews.

**SUB-COLLECTORS.**

Robert Kerr, junr. Esquire, West William Frankland, Esq. Grand  
Isles and Campo Bello. Manan.  
T. Armstrong, Esq. St. Stephen. A. J. Wetmore, Esq. St. George.

**PROVINCIAL REVENUE.**

Honorable RICHARD SIMONDS, Province Treasurer.

**DEPUTY TREASURERS.**

H. G. Clopper, Esq. Fredericton.	John Miller, Esq. Bathurst.
B. Robinson, Esq. St. Andrews.	Bill Chapel, Esq. Bay Verte.
A. J. Wetmore, Esq. St. George.	William Wiley, Esq. Peticodiac.
C. H. Jouett, Esq. West Isles.	James Ketchum, Esq. Woodstock.
Robert Watron, Esq. St. Stephen.	C. Seymour, Esq. St. Martins.
T. H. Peters, Esq. Miramichi.	William Frankland, Esq. Grand Manan,
M. L. Backhouse, Esq. Sackville.	Gilbert Wall, Esq. near Cape Tor-
J. W. Weldon, Esq. Richibucto.	mentine, Westmorland.
Daniel Hannington, Esq. Shediac.	
D. Stewart, Esq. Restigouche.	

Benjamin C. Chaloner, Esquire, Gauger of Dutiable Articles and Sur-  
veyor at the Port of Saint John.

David W. Jack, Esquire, ditto ditto at Saint Andrews.  
 George Henderson, Esquire, ditto ditto at Miramichi.  
 Robert M'Intosh, Esquire, Tide Surveyor at Restigouche.  
 Angus M'Intosh, Esquire, ditto at Bathurst.  
 Benjamin Dawson, Esquire, at ditto.  
 William Payne, Provincial Tide Water at Fredericton.  
 John Abram, ditto ditto at Saint John.  
 Stephen Humbert, Esquire, Special ditto at ditto.  
 Edmund Walsh, } Tide Waiters in Charlotte County.  
 Charles Smith, }  
 Alexander Anderson, Tide Waiter at Bathurst.

*Collectors of Duties on Horses and Cattle.*

James Upham, Woodstock. | J. E. Nicholson, Wakefield, &c.  
 Benjamin Reed, Douglas. | \_\_\_\_\_, Fredericton, &c.

**UNIVERSITY OF KING'S COLLEGE—Fredericton.**

Patron—THE KING.

Chancellor—His Excellency the Lieutenant Governor of the Province;  
 or, in his absence, the President of the Province.

Visitor—The Right Reverend the Lord Bishop of the Diocese.

President—The Venerable the Archdeacon of the Province.

Vice President—(Resident and Acting Principal)—The Reverend Edwin Jacob, D. D.

Professors— } Reverend Edwin Jacob, D. D.  
 } Reverend James Sommerville, L. L. D.  
 } Reverend George M'Auley, D. D.

**COUNCIL :**

His Excellency the Chancellor, | The Chief Justice,  
 The President, | Judge Botsford,  
 The Vice President, | Speaker of the House of Assembly,  
 The Professors, | Secretary of the Province,

Registrar—The Honorable George Frederick Street.

*The Governor and Trustees of the Madras School  
 in New-Brunswick.*

The Lieutenant Governor or Commander in Chief for the time being.

The Lord Bishop of the Diocese. The Chief Justice.

The Members of His Majesty's Council, (not being Judges of the Supreme Court.)

The Speaker of the House of Assembly. The Judge of the Admiralty.

The Mayor and Recorder of Saint John.

The Ecclesiastical Commissary of the Province.

The Rector and Church Wardens of Trinity Church in Saint John.

Together with—The Honorable Edward J. Jarvis, and William Scovil, Esquire.

Robert F. Hazen, Esq. Treasurer.—J. W. Boyd, Esq. Secretary.

**PROVINCIAL VACCINE ESTABLISHMENT OF NEW-BRUNSWICK.**

**CENTRAL STATION—SAINT JOHN.**

His Excellency the Lieutenant Governor and His Majesty's Council,  
Patrons of the Institution.

Honorable William Black, Director of the Institution.

**COMMITTEE :**

Fredericton—The Reverend James Somerville, L. L. D., and the Hon  
William F. Odell.

Saint Andrews—The Reverend Jerome Alley, D. D.

**VACCINATING SURGEONS :**

Saint John—John Boyd, Esquire, M. D.

Fredericton—The Medical Officer in charge of the Troops.



**PROVINCIAL MARINE HOSPITAL,**

*For the Relief of Sick and Disabled Seamen.*

Commissioners—The Honorable William Black, Ralph M. Jarvis, Esq.  
William Scovil, John Ward, junior, and  
Thomas Barlow, Esquires.

Physician and Surgeon—John Boyd, Esquire, M. D.



**PROVINCIAL AGENTS FOR EMIGRANTS.**

Saint John—Alexander Wedderburn, Esquire.

Miramichi—Henry Cunard, Esquire.

Saint Andrews—Beverley Robinson, Esquire.



**NEW-BRUNSWICK AUXILIARY BIBLE SOCIETY.**

President—John M. Wilmot, Esquire.

Vice Presidents—Hon. Judge Parker, Hon. Charles J. Peters,  
John Ferguson, William B. Kinnear, and  
Neville Parker, Esquires.

Treasurer—Angus M'Kenzie, Esquire.

Secretary—Mr. James Paterson, Rector of the Grammar School.

Depository—Store of Mr. Leveret H. De Veber, Prince William-street,  
Saint John.

**BRANCH SOCIETIES.**

*Saint John Ladies' Bible As-  
sociation.*

President—Mrs. Neville Parker.

Treasurer—Mrs. Ferguson.

Secretary—Mrs. D. Scovil.

*Saint Andrews' Ladies' Bible  
Association.*

President—Mrs. D. W. Jack.

Treasurer—Mrs. Shepherd.

Secretary—Mrs. Putnam.

*Saint Stephen.*

President—G. Hill, Esquire.

V. President—T. Armstrong, Esq.

Treasurer—Aaron Upton, Esq.

Secretary—Mr. David A. Rose.

*Grand Lake.*

President—Mr. John Robertson.

Vice President—Mr. G. Clark.

Treasurer—Mr. David Palmer.

Secretary—Mr. John Palmer.



*Sussex Vale.*

President—George Morton, Esq.  
V. President—A. C. Evanson, Esq.  
Secretary—Mr. J. R. Leggett.

*Springfield.*

President—Mr. Vincent White.  
Vice-President—Rev. S. Bancroft.  
Treasurer—Capt. John Davis.  
Secretary—Mr. C. Hamilton.

*Washademoac.*

President—Elder Richard Wills.  
Treasurer—Mr. Isaac Worden.  
Secretary—Mr. William Day.

*Westmorland.*

President—William Crane, Esq.  
Treasurer—E. B. Chandler, Esq.  
Secretary—Mr. James Ross.

**BANK OF NEW-BRUNSWICK.—(IN SAINT JOHN.)**

*Capital, £50,000.*

Solomon Nichols, Esquire, President.

**DIRECTORS:**

Thomas Barlow,  
John Boyd,  
Robert W. Crookshank,  
L. H. De Veber,  
Hugh Johnston,  
Robert F. Hazen,

Esquires.

James Kirk,  
Nehemiah Merritt,  
Thomas Millidge,  
Neville Parker,  
John Robertson,  
William Scovil,

Zalmon Wheeler, Esquire, Cashier.

Neville Parker, Esquire, Solicitor.

James William Boyd, Esquire, Notary.

**COMMERCIAL BANK OF NEW-BRUNSWICK.**

(IN SAINT JOHN.)

INCORPORATED BY ROYAL CHARTER.

*Capital, £150,000.*

Henry Gilbert, Esquire, President.

**DIRECTORS:**

Daniel Ansley,  
John M. Wilmot,  
John Wishart,  
Benjamin Smith,  
Augustus W. Whipple,  
M. H. Perley,

Esquires.

Ralph M. Jarvis,  
William Leavitt,  
Charles Ward,  
John Kinnear,  
Charles Simonds,  
John Kerr,

Mr. Alexander Balloch, Cashier.

M. H. Perley, Esquire, Solicitor.

**CHARLOTTE COUNTY BANK—(In St. Andrews.)**

Harris Hatch, Esquire, President.

**DIRECTORS:**—Jas. Douglas, Thomas Wyer, John M'Lauchlan, Jas. Parkinson, John M'Alister, John M'Master, John Wilson, and James W. Street, Esquires.

Mr. George Millar, Cashier.



**CENTRAL BANK OF NEW-BRUNSWICK.**

(IN FREDERICTON.)

Capital, £10,000.

Henry G. Clopper, Esquire, President.

**DIRECTORS**

Oliver Smith,  
James Taylor,  
F. E. Beckwith,  
John Simpson,

} Esquires.

{ T. Pickard,  
W. I. Bedell,  
G. J. Dibblee,  
John Robinson,

Mr. Robert Gowan, Cashier,  
Charles Fisher, Esquire, Solicitor.

**NEW-BRUNSWICK**

**FIRE INSURANCE COMPANY.**

(IN SAINT JOHN.)

John M. Wilmot, Esquire, President.

**DIRECTORS :**

John Boyd, M. D.  
John Hammond,  
Gilbert T. Ray,  
Robert F. Hazen,  
Le Baron Hazen,  
Benjamin Smith,

} Esquires.

{ Ralph M. Jarvis,  
Daniel Ansley,  
William Jarvis,  
John Kinneer,  
Ambrose S. Perkins,

Robert F. Hazen, Esquire, Solicitor.  
Daniel Jordan, Esquire, Secretary.

**NEW-BRUNSWICK MINING COMPANY.**

(IN SAINT JOHN.)

N. Merritt, Esquire, President.

Hon Robert Parker,  
Hugh Johnston,  
Henry Gilbert,  
John Ward, junior,  
Robert F. Hazen,  
George D. Robinson,

} Esquires.

{ Stephen Wiggins,  
John M. Wilmot,  
E. DeW. Ratchford,  
James Kirk,  
William Leavitt,  
Robert W. Crookshank,

T. L. Nicholson, Esquire, Secretary.

**SAINT JOHN MILLS AND CANAL COMPANY.**

Isaac Woodward, Esquire, President.

**DIRECTORS :**

John Otis,  
Calvin Spaulding,

} Esquires.

{ Charles Vaughan,  
Isaac Gage,

Isaac Gage, Esquire, Treasurer.  
M. H. Perley, Esquire, Secretary.  
M. H. Perley, Esquire, Solicitor.

## SAINT JOHN BRIDGE COMPANY.

John Robertson, Esquire, President.

DIRECTORS:

Isaac Woodward,  
Ralph M. Jarvis,  
Hugh Mackay,  
John Walker,  
Edward L. Jarvis,  
Thomas Jones,

Esquires.

George D. Robinson,  
William Hammond,  
A. W. Whipple,  
Rev. F. Coater,  
P. Besnard,  
Thomas L. Nicholson,

Duncan Robertson, Esquire, Secretary.



## SAINT JOHN WATER COMPANY.

Lauchlan Donaldson, Esquire, President.

DIRECTORS:

John Robertson  
Isaac L. Bedell,  
Hugh Mackay,  
W. H. Street,  
John Ward, junior,  
James Kirk,

Esquires.

Thomas Batlow,  
Thomas Leavitt,  
R. W. Crookshank,  
Edward L. Jarvis,  
Robert F. Hazen,  
John Kerr,

Duncan Robertson, Esquire, Secretary.



## SAINT JOHN MECHANIC'S WHALE FISHING COMPANY.

Thomas Nisbet, Esquire, President.

DIRECTORS:

John Duncan,  
C. D. Everitt,  
William Lawton,

James Holman,  
George Waterbarry,  
Robert Ray,

James Holman, Secretary.



## NEW-BRUNSWICK AND NOVA-SCOTIA LAND COMPANY.

(INCORPORATED IN LONDON.)

CAPITAL—£200,000;—with power to increase to £400,000.

Governor—John Labouchere, Esquire.

Deputy Governor—Edward Blore, Esquire.

DIRECTORS:

Sir John Burke, Baronet,  
George H. Hooper,  
Ambrose Humphreys,  
Joseph Kay,  
John T. Maubart,

Esquires.

John Moxen,  
David Stewart,  
Lestock P. Wilson,  
John Wright,

Acting Director—John Bairbridge, Esquire.

*Auditors*— { Bartholemew Jaffrey, } Esquires.  
 { William Newton, }  
 { George Palmer, }

*Bankers*— { Messrs. Williams, Deacon, Labouchere & Co., Birchin  
 Lane; Wright & Co. Henrietta-street, Covent Garden.

*Solicitor*—Nathaniel Hooper, Esquire.

*Commissioner at Fredericton*—Edward Nicolas Kendall, Esq. R.N.

*Solicitor*—Charles S. Putnam, Esquire.

*Honorary Commissioner at Chatham, (Miramichi)*—Henry Cunard, Esquire.

*Resident Agent at the South West Branch*—William Epps Cormack, Esquire.

*Resident Agent at Saint John*—John V. Thurgar, Esquire.

*Colonial Treasurers*— { Hon. Jos. Cunard, Chatham, (Miramichi.)  
 { Hon. Samuel Cunard, Halifax, (N. S.)

*Company's Office*—No. 15, King's Arms Yard, London.

◀◀◀◀

## WEST OF SCOTLAND FIRE INSURANCE COMPANY.

*Head Office, 147, Buchanan street, Glasgow.*

*Patron*—The Right Honorable the Earl of Glasgow.

**EXTRAORDINARY DIRECTORS :**

Henry Monteith, Esquire, of Carstairs.  
 John Buchanan, Esquire, of Ardoch.  
 John C. Colquhoun, Esquire, of Killermont and Garseadden, M. P.  
 John McKirdy, Esquire, of Birkwood.  
 Patrick Playfair, Esquire, of Dalmarnock.  
 William Duan, Esquire of Duntocher.  
 John Greenshields, Esquire, of Kerse.  
 Michael Rowand, Esquire, Banker, Glasgow.  
 William Hosier, Esquire, of Newlands and Barrowfield.  
 Donald Cuthbertson, Esquire, Accountant, Glasgow.  
 Samuel Cooper, Esquire of Ballendalloch.  
 John Hunter, Esquire, Ardrossan.

*Manager*—James J. Duncan, Esquire, Glasgow.  
*Agent and Attorney for New-Brunswick and Nova-Scotia*—John Robertson, Esquire, Saint John, N. B.

◀◀◀◀

## PROTECTION INSURANCE COMPANY,

OF HARTFORD, CONNECTICUT.

William W. Ellsworth, Esquire, President,  
 Thomas C. Perkins, Esquire, Secretary.

*Agent in Saint John*—Mr. Angus M'Kenzie.

Capital  
 M  
 P  
 Agent  
 NEW-  
 J. I.  
 James  
 L. B.  
 David  
 A. God  
 Alex. C  
 Dudley  
 Joseph  
 Dudley  
 George  
 Benjar  
 George  
 Natha  
 Caleb  
 A. E.  
 L. B.  
 CLE  
 The R  
 Ma  
 Rev. B  
 Rev. Y  
 Rev. C  
 Rev. I  
 Rev. C

**ÆTNA INSURANCE COMPANY,**  
OF HARTFORD, CONNECTICUT.

Capital \$200,000, (all paid in,) with liberty to increase the same to Half a Million of Dollars.

Thomas K. Bruce, Esquire, President,  
James M. Goodwin, Esquire, Secretary.

Mr. A. Balloch, Agent for New-Brunswick.

**PELICAN LIFE INSURANCE COMPANY.**

Spring Gardens and Lombard-street, London.

Established in 1797.

Agent at Halifax, for Nova-Scotia and New-Brunswick—M. B. Almon, Esquire.

**NEW-YORK LIFE INSURANCE AND TRUST COMPANY.**

J. I. Starr, Esq. of Halifax, Agent for N. S. and New-Brunswick.

**SUPERVISORS OF GREAT ROADS,**

IN NEW-BRUNSWICK.

- James A. M'Lauchlan—Fredericton to the Canada Line.  
L. B. Rainsford—Fredericton to Saint John, by the Nerepis.  
David Crocker—from Swinis' Ferry to Newcastle.  
A. Goodfellow—from Fredericton to Donk's.  
Alex. Goodfellow—Chatham to Richibucto, and Newcastle to Foreins'.  
Dudley Perley—Richibucto to Chediac.  
Joseph Read—Foreins' to Richibucto.  
Dudley Perley—Chediac to the Bend of Peticodiac, and Dorchester to George Anderson—Carleton to Saint Andrews. [Chediac.  
Benjamin L. Peters—Saint John to the Hammond River.  
George H. Hazen—Hammond River to Westmorland.  
Nathaniel Hubbard—Short Ferry to the Finger Board.  
Caleb Wetmore—Head of Belisle to forks of the road at A. Beanigar's.  
A. E. Botsford—King's County Line to the Missequash.  
L. B. Rainsford—Fredericton to St. Andrews, by Hanwill Settlement.

**CLERGY OF THE ESTABLISHED CHURCH OF ENGLAND.**

The Right Rev. JOHN, Lord Bishop of Nova-Scotia, exercising by His Majesty's Letters Patent, Episcopal Jurisdiction over the Province.

Venerable George Coster, A. M., Archdeacon.

Rev. Benjamin G. Gray, D. D., Rector of Saint John.

Rev. William Gray, Assistant Missionary at Saint John.

Rev. Gilbert L. Wiggins, Minister of Grace Church, Portland.

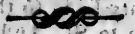
Rev. Frederick Coster, Rector of Carleton.

Rev. George Coster, M. A. Rector of Fredericton.

Rev. Abraham Wood, Rector of Waterborough.  
 Rev. Jerome Alley, D. D. Rector of Saint Andrews.  
 Rev. Skeffington Thompson, L. L. D. Rector of Saint Stephen.  
 Rev. James Somerville, L. L. D. Rector of Douglas.  
 Rev. Raper Milner, Rector of Mangerville.  
 Rev. Samuel D. L. Street, Rector of Woodstock.  
 Rev. Samuel R. Clarke, Rector of Gagetown.  
 Rev. Nelson Arnold, Minister at Sussex.  
 Rev. Elias Scovil, Rector of Kingaton.  
 Rev. W. E. Scovil, Assistant Missionary at ditto.  
 Rev. Christopher Milner, Rector of Sackville.  
 Rev. ———, Rector of Westfield.  
 Rev. Samuel Bacon, Rector of Miramichi.  
 Rev. Samuel Thompson, Rector of Saint George.  
 Rev. W. Walker, Rector of Hampton.  
 Rev. Alexander C. Somerville, Rector of Bathurst.  
 Rev. Charles Wiggins, Rector of Prince William.  
 Rev. George Townshend, officiating at Westmorland.  
 Rev. George S. Jarvis, Rector of Hampstead.  
 Rev. John Black, Rector of Shediac.  
 Rev. John Dunn, Rector of St. Paul's Church, Grand Manan.  
 Rev. George M<sup>c</sup>Cawley, occasional Visiting Missionary.

  
**CLERGY OF THE ESTABLISHED CHURCH OF SCOTLAND.**

Fredericton—Rev. John Birkmyre, A. M.  
 Saint John—Rev. Robert Wilson, A. M.  
 Saint Andrews—Rev. Alexander M<sup>c</sup>Lean.  
 Saint James—Rev. Peter M<sup>c</sup>Intyre.  
 Newcastle, (Miramichi)—Rev. James Souter, A. M.  
 Chatham, (Miramichi)—Rev. Robert Archibald.  
 Restigouche—Rev. James Steven.  
 Richibucto—Rev. James Hannay.  
 Tabasintac and Bay du Vin—Rev. Simeon Fraser.  
 Rev. David Syme, Itinerating Missionary for the Province.  
 Rev. Alexander Farquharson, Missionary at Cape Breton in connexion with the Presbytery of New-Brunswick.

  
*Roman Catholic Clergy of the Diocese*

**OF CHARLOTTE TOWN, PRINCE EDWARD ISLAND, AND NEW-BRUNSWICK.**

Very Rev. Anthony Gagnon, } Vicar Generals and Administrators  
 Very Rev. Bernard D. M<sup>c</sup>Donald, } of the Diocese—*sees vacante.*  
 Rev. James Duffhy, Saint John, (New-Brunswick.)  
 Rev. Richard Vereker, Coadjutor.  
 Rev. Michael M<sup>c</sup>Sweeney, Fredericton.  
 Rev. John Cummins, Saint Andrews.  
 Rev. Mr. Mercier, Madawaska.  
 Very Reverend Anthony Gagnon, Shediac, &c.

Rev. J.  
 Rev. J.  
 Rev. M.  
 Rev. M.  
 Rev. M.  
 Very R.  
 Rev. J.  
 Rev. S.  
 Rev. C.

Saint J.  
 Frederi  
 Sheffield  
 St. Step  
 Westmo  
 Peticod  
 Sussex  
 Annapo  
 Bridgev

Miram  
 Woodst  
 Grand M  
 Bathurst

In the

"BAP"

Frederi  
 Canning  
 Saint J.  
 Prince  
 mond

Norton-  
 Salisbur  
 Hillsbor  
 New C  
 1st Har  
 2d Har  
 St. Dav

PR

AN CON

CH

N

N



Rev. Joseph Paquet, Richibucto, &c.  
 Rev. Joseph Couture, Memramcook, &c.  
 Rev. Michael Egan, Miramichi.  
 Rev. Mr. Madran, Bathurst.  
 Rev. Mr. M'Harron, Carraquet.  
 Very Reverend Barnard D. M'Donald, Charlotte Town, (P. E. I.)  
 Rev. John M'Donald, East Point, (P. E. I.)  
 Rev. Silvester Piorier, Miscoush, ditto.  
 Rev. Charles M'Donnell, St. Andrews, ditto.

## WESLEYAN MISSIONARIES,

*In the New-Brunswick District.*

Rev. John B. Strong, Chairman.

Saint John—Rev. Enoch Wood, and Rev. Arthur M'Nutt.  
 Fredericton—Rev. George Miller, and Rev. George Johnson.  
 Sheffield and Gage-Town—Rev. Albert Desbrisay.  
 St. Stephen, St. Andrews, &c.—Rev. S. Busby, and Rev. R. Shepherd.  
 Westmorland—Rev. John B. Strong, and Rev. Richardson Douglas.  
 Peticodiac and Hopewell—Rev. Samuel Gell; Wesley Bouls, Assistant.  
 Sussex Vale—Rev. Michael Pickles.  
 Annapolis and Digby—Rev. William Smithson.  
 Bridgetown and Aylesford—Rev. William Temple; William M. Leggett, Assistant Missionary.  
 Miramichi—Rev. Richard Williams.  
 Woodstock and Wakefield—Rev. Henry Daniel.  
 Grand Manan—Rev. William Bannister.  
 Bathurst—Rev. Peter Sleep.

*In the Nova-Scotia District—*Re. A. W. M'Leod, Windsor.

## BAPTIST MINISTERS IN NEW-BRUNSWICK.

Fredericton—Rev. F. W. Miles.	Madamkiaway—Rev. T. Saunders.
Canning, Rev. Benjamin Coy.	Miramichi—Rev. James Tozer.
Saint John—Rev. J. D. Casewell.	Cardigan—Rev. William Harris.
Prince William—Rev. L. Hammond and Rev. Thos. Saunders.	St. Martins—Rev. John Marsters.
Norton—Rev. Samuel Bancroft.	Sussex Vale—Rev. Titus Stone.
Salisbury—Rev. Joseph Crandall.	Brighton—Rev. Gilbert Spurr.
Hillsborough—Rev. Wm. Sears.	St. Stephen—Rev. A. D. Thomson.
New Canaan—Rev. Chas. Lewis.	Grand Lake—Rev. M. Doyle.
1st Hampton—Rev. S. Bancroft.	2d Springfield—Rev. J. Blakeney.
2d Hampton—Rev. D. Crandall.	Greenwich—Rev. Jas. Blakeney.
St. David—Rev. Thomas Magee.	St. Patrick—Rev. A. D. Thompson.
	St. George—Rev. S. Robinson.

## PRESBYTERIAN CHURCH OF NOVA-SCOTIA,

IN CONNEXION WITH THE UNITED ASSOCIATE SYNOD, SCOTLAND.

Chatham—Rev. John M'Curdy.  
 New Mills and Bathurst—Rev. James Waddell.  
 New Carlisle, &c. (Bay Chaleur)—Rev. Anthony F. McCabe.

**MINISTERS LICENSED TO SOLEMNISE MARRIAGE,**

*Under the Provincial Act of Assembly.*

Reverend	Sampson Bushy,	Reverend	John M'Curdy,
„	Samuel Bancroft,	„	Archibald M'Callum,
„	Joseph Crandall,	„	Michael Pickles,
„	Albert Desbrisay,	„	Samuel Robinson,
„	Michael Doyle,	„	Richard Shepherd,
„	Henry Daniel,	„	John B. Strong,
„	Samuel Joll,	„	Gilbert Spurr,
„	George Johnson,	„	William Sears,
„	F. W. Miles,	„	James Stevens,
„	Thomas Magee,	„	A. D. Thomson,
„	John Masters,	„	Enoch Wood,
„	A. W. M'Leod,	„	Richard Williams.

**CENTRAL COMMITTEE, (at Saint John,)**

*For Managing the Fund for the promotion of Missionary and other objects, connected with the welfare of the Scottish Church in New-Brunswick—*

Daniel Leavitt, Robert Rankin, John Robertson, and Thomas Walker, Esquires.—Robert Rankin, Esquire, Treasurer.

**COUNTY OF YORK.**

John Allen, Peter Fraser, Thomas C. Lee, and John Robinson, Esquires, Justices of the Inferior Court of Common Pleas.

John Allen, Peter Fraser, Thomas C. Lee, John Robinson, Jacob Ellegood, Henry Smith, James A. MacLaughlan, Thomas Emerson, Thomas Jones, Jedediah Slason, George Minchin, James Harrison, William Davidson, Patrick Campbell, James Miles, Ross Currie, Edward Nicolas Kendall, Robert Power, (of the Quorum,) and Adam Allan, Esquires, Justices of the Peace.

Edward W. Miller, Esquire, High Sheriff.—Mr. William M'Beath, Deputy Sheriff.

Henry G. Clopper, Esquire, Keeper of the Rolls and Clerk of the Peace and Inferior Court of Common Pleas.

Henry G. Clopper, Esquire, Register of Deeds and Wills.

William Woodforde, Esquire, Coroner.

Mark Needham, Esquire, County Treasurer.

Hon. Charles J. Peters, Hon. G. F. Street, G. P. Bliss, Hon. John S. Saunders, D. L. Robinson, G. J. Dibble, C. S. Putnam, George W. Cleary, C. P. Wetmore, G. F. S. Berton, L. A. Whitmer, Chas. Fisher, G. F. H. Minchin, William H. Odell, and Stephen Miller, Esquires, Commissioners for taking Affidavits in the Supreme Court.

Peter Fraser and William Tyng Peters, Esquires, Commissioners for taking Bail in the Supreme Court.

James A. MacLaughlan, John Allen, Jacob Ellegood, John Robinson, and Jas. Harrison, Esquires, Commissioners for solemnizing Marriage.

Asa Coy, F. E. Beckwith, and Mark Needham, Licensed Auctioneers.

**FIREWARDS IN FREDERICTON.**

Honorable George Shore, Mark Needham, Esquire.  
Honorable Thomas Baillie, William Wilmot, Esquire,  
Jedediah Slason, Esquire, William Dell Hartt, Esquire,  
George Minchin, Esquire, John A. Beckwith, Esquire.

**FREDERICTON UNION FIRE CLUB.**

Benjamin Woolhaupter, Esquire, President.  
Asa Coy, Esquire, Vice-President.  
Mr. Thomas C. Everitt, Secretary and Treasurer.

**FREDERICTON LIBRARY.**

Honorable John S. Saunders, President.  
George J. Dibble, Esquire, Vice-President.  
Mr. Robert Gowan,  
William J. Bedell, Esq. } Committee.  
James Taylor, Esq. }  
Mr. Robert Gowan, Secretary and Treasurer.  
~~\_\_\_\_\_~~ Librarian.

Terms—£5 on admission, and 20s. annually.

**FREDERICTON SAVINGS' BANK.**

His Excellency the Lieutenant-Governor, Patron.

\_\_\_\_\_, President,  
Peter Fraser, Esquire, Vice-President,  
\_\_\_\_\_, Treasurer,  
Henry G. Clopper, Esquire, Secretary,  
Mr. John F. Taylor, Cashier and Register.

**FREDERICTON AUXILIARY BIBLE SOCIETY.**

\_\_\_\_\_, President,  
Treasurer—Peter Fisher, Esq. Secretary—James Taylor, jun. Esq.

**FREDERICTON SOCIETY OF SAINT ANDREW.**

John Simpson, Esquire, President,  
Mr. Robert Gowan, Vice-President,  
Mr. John F. Taylor, Treasurer,  
Mr. John Gregory, Secretary,  
Rev. James Somerville, L. L. D., Chaplain.

**FREDERICTON SOCIETY OF SAINT PATRICK.**

Honorable Thomas Baillie, President,  
George Minchin, Esquire, Vice-President,  
Mr. Joseph Beck, Treasurer,  
Mr. Matthew Braumen, Secretary,  
Mr. Stephen White, Assistant Secretary.

**FREDERICTON SOCIETY OF SAINT GEORGE.**

Honorable George Shore, President.  
J. E. Woolford, and  
Honorable G. F. Street, } Vice-Presidents.  
Venerable Archdeacon Coater, Chaplain.  
George F. S. Berton, Esquire, Treasurer and Secretary.

FLORAL AND HORTICULTURAL SOCIETY OF NEW-BRUNSWICK,  
(AT FREDERICTON.)

Mr. Woolforde, President,  
Mr. W. Wilmot, Mr. Fraser, and Mr. Street, Vice-Presidents.  
Mr. R. Gowan, Treasurer.  
Mr. Putnam, Corresponding Secretary.  
Mr. G. Lee, junior, Recording Secretary.

COUNCIL:

Mr. Watts,  
W. T. Peters,  
D. L. Robinson,  
C. Fisher,  
Kendall,  
Clopper,

Mr. S. Fleming,  
Dibble,  
Barton,  
C. Lee,  
Reverend Mr. Birkmyre,  
Mr. L. A. Wilmot.

COUNTY OF CHARLOTTE.

Hugh Mackay, Thomas Wyer, Hon. James Allanshaw, and Thomas Jones, Esquires,—Justices of the Court of Common Pleas.

Hugh Mackay, Thomas Wyer, Moses Vernon, Honorable James Allanshaw, Peter M'Callum, Thos. Armstrong, Wm. Frankland, Rev. Jerome Alley, John Wilson, Tristram Moore, Patrick Clinch, David Mowatt, Thomas Jones, Samuel Abbot, William Ker, George M. Porter, James White, James Rait, John Wilkinson, Wilford Fisher, Joshua Knight, Cavalier H. Jouett, James Douglass, William Garnett, Nehemiah Marks, John M'Lauchlan, (of the Quorum,) and James Frink, Esquires, Justices of the Peace.

Harris Hatch, Esquire, Keeper of the Rolls, and Clerk of the Peace and Inferior Court of Common Pleas.

Colin Campbell, Esquire, High Sheriff.

David Mowatt, Esq. Coroner. David W. Jack, County Treasurer.

Harris Hatch, Esquire, Register of Deeds and Wills.

The Justices of the Pleas, together with Charles R. Hatheway, Joseph N. Clark, Harris Hatch, Alfred L. Street, George S. Hill, F. E. Putnam, Samuel H. Whitlock, George Ker, Thomas Chandler, S. G. Andrews, R. M. Andrews, Alexander Campbell, Samuel Abbot, and Wilford Fisher, Esquires, Commissioners for taking Affidavits in the Supreme Court.

Hugh Mackay, Colin Campbell, Peter Stubbs, Thomas Wyer, Samuel Abbot, Joseph N. Clark, Charles R. Hatheway, Thomas Jones, and Wilford Fisher, Esquires, Commissioners for taking Bail in the Supreme Court.

Hugh Mackay, Tristram Moore, Hon. James Allanshaw, James Chaffey, Thomas Wyer, Peter M'Callum, and John Wilkinson, Esquires, Commissioners for Solemnizing Marriage.

Harris Hatch, Esquire, Issuer of Marriage Licenses.

J. H. Whitlock, William Garnett, Adam Jack, James Boyd, Samuel Abbot, Gilbert Ruggles, James Parkinson, and Robert Roberts, Licensed Auctioneers.

Committee

Direct

Commis

David  
quires, J  
David  
Hubbard  
thaniel H  
the Quo  
John I  
Georg  
Peace, a  
Nathan  
James  
ronere.  
Isaac  
T. V. W  
preme C  
Isaac  
ry T. P  
taking A  
David  
Esquires

Honor  
Esquires  
Valent  
Richard  
shay, Th  
phrey; (o  
the Peace  
Nathan

**CHARLOTTE COUNTY SAVING'S BANK.**

**Thomas Wyer, Esquire, President.**

**Mr. George Millar, Cashier.**

**Committee—H. Hatch, S. Frye, J. M'Master, Mr. George Millar, J. Parkinson, W. Ker, and J. M'Laughlan, Esquires.**

**PUBLIC GRAMMAR SCHOOL IN SAINT ANDREWS.**

**President—Reverend Dr. Alley.**

**Directors:—Colin Campbell, David W. Jack, Thomas Wyer, and J. Frye, Esquires.**

**Master—Reverend John Cassell.**

**MARINE HOSPITAL—SAINT ANDREWS.**

**Commissioners—Harris Hatch, Wm. Ker, and D. W. Jack, Esquires.**

**COUNTY OF SUNBURY.**

**David Burpe, Thomas O. Miles, and Theodore V. W. Clowes, Esquires, Justices of the Inferior Court of Common Pleas.**

**David Burpe, Thomas O. Miles, Theodore V. W. Clowes, Isaac Hubbard, Clapman Smith, Stephen Peabody, Charles F. Street, Nathaniel Hubbard, James Tilley, George Hayward, Charles Hazen, (of the Quorum,) and William Hoyt, Esquires, Justices of the Peace.**

**John Hazen, Esquire, High Sheriff.**

**George F. S. Berton, Esquire, Keeper of the Rolls, and Clerk of the Peace, and Inferior Court of Common Pleas.**

**Nathaniel Hubbard, Esquire, Register of Deeds and Wills.**

**James Hazen, George B. Covert, and Enoch Barker, Esquires, Coroners.**

**Isaac Hubbard, Elijah Miles, David Burpe, Henry T. Partelow, and T. V. W. Clowes, Esquires, Commissioners for taking Bail in the Supreme Court.**

**Isaac Hubbard, Elijah Miles, David Burpe, George W. Cleary, Henry T. Partelow, and T. V. W. Clowes, Esquires, Commissioners for taking Affidavits in the Supreme Court.**

**David Burpe, Thomas O. Miles, John Hazen, and Stephen Peabody, Esquires, Commissioners for Solemnizing Marriage.**

**QUEEN'S COUNTY.**

**Honorable Harry Peters, Valentine H. Peters, and Samuel Scovil, Esquires, Justices of the Inferior Court of Common Pleas.**

**Valentine H. Peters, Samuel Scovil, John Colwell, John Golding, Richard Yeamans, Abiather Camp, Stephen Golding, William Fosshay, Thomas Underhill, Thomas T. Hewlett, John Earle, John Humphrey, (of the Quorum;) and Charles Harrison, Esquires, Justices of the Peace.**

**Nathaniel Hubbard Doveber, Esquire, High Sheriff.**



T. R. Wetmore, Esquire, Keeper of the Rolls, and Clerk of the Peace and Inferior Court of Common Pleas.

Valentine H. Peters, Esquire, Register of Deeds and Wills.

Thomas Gilbert, John Earle, and Thomas T. Hewlett, Esquires, Coroners.

Timothy R. Wetmore, and Nathaniel Deveber, Esquires, Trustees of the Grammar School.

Valentine H. Peters, and Samuel Scovil, Esquires, Commissioners for taking Affidavits in the Supreme Court.

Samuel Scovil, Harry Peters, John Colwell, Stephen Golding, William Fochay, Thomas Underhill, Thomas T. Hewlett, John Earle, and John Humphreys, Esquires, Commissioners for solemnizing Marriage.

T. R. Wetmore, Esquire, Issuer of Marriage Licenses.

Nathaniel Hubbard, Esquire, Licensed Auctioneer.

---

## COUNTY OF GLOUCESTER.

---

Perry Dumaresq, Robert Ferguson, John Montgomery, Dugald Stewart, and Joseph Read, Esquires, Justices of the Inferior Court of Common Pleas.

Perry Dumaresq, Robert Ferguson, John Montgomery, Dugald Stewart, Joseph Read, John Miller, James Blackhall, Adam Ferguson, William Fleming, Benjamin Dawson, John Young, Harvey Adams, William Napier, Henry W. Baldwin, Charles Coughlan, P. J. N. Dumaresq, John Richey, John Doran, (of the Quorum,) and Robert Robinson, Esquires, Justices of the Peace.

William Carman, Esquire, High Sheriff.—Mr. Robert Short, Deputy Sheriff.

William End, Esquire, Keeper of the Rolls, and Clerk of the Peace and Inferior Court of Common Pleas.

William End, Esquire, Register of Deeds and Wills.

John F. Wheeler, Esquire, County Treasurer.

John F. Wheeler, Hugh Montgomery, and George Sevrin, Esquires, Coroners.

William End, Andrew Barbarie, Richard Carman, Chipman Botsford, Richard M. Clarke, Esquires, Commissioners for taking Affidavits in the Supreme Court.

Perry Dumaresq, Joseph Read, Benjamin Dawson, Dugald Stewart, Peter Stewart, and James Paul, Esquires, Commissioners for taking Bail and Affidavits in the Supreme Court.

Hugh Munro, Perry Dumaresq, Robert Ferguson, John Young, and James Blackhall, Esquires, Commissioners for solemnizing Marriage.

William End, Esquire, Issuer of Marriage Licenses.

William End, William Napier, and William Stevens, Esquires, Commissioners of the Grammar School.

Joseph Read, Henry W. Baldwin, and Francis Ferguson, Esquires, Commissioners of Sick and Disabled Seamen's Fund, Bathurst.

Thomas M. Deblois, William Napier, and Joseph Read, Esquires, Commissioners of Beacons and Buoys for the Parish of Bathurst.

John Montgomery, Dugald Stewart, and Adam Ferguson, Esquires, ditto for the Port of Dalhousie.

Henry W. Baldwin, and Donald M'Leod, Licensed Auctioneers.

## COUNTY OF WESTMORLAND.

Samuel Gay, Rufus Smith, John Keillor, William Crane, and Hon. Amos E. Botsford, Esquires, Justices of the Inferior Court of Common Pleas.

Samuel Gay, Rufus Smith, John Keillor, William Crane, Amos E. Botsford, James Easterbrooks, Edward Dixon, James Sayre, Philip Palmer, Christopher Milner, John Smith, Bill Chappell, Humphrey Gilbert, Marmaduke L. Backhouse, Harman R. Trueman, Lewis Trites, William Chapman, George Steeves, Peter M'Lellan, (*of the Quorum*), Robert Scott, Abel S. Gore, William Wilson, John Chapman, William C. Smith, Daniel Hannington, John Trenholm, George Oulton, Joseph Avard, junior, Amasa Wheldon, and George Pitfield, Esquires, Justices of the Peace.

William P. Sayre, Esquire, High Sheriff.

Edward B. Chandler, Esquire, Keeper of the Rolls, and Clerk of the Peace and Inferior Court of Common Pleas.

John Edgett, and Andrew Weldon, Esquires, Coroners.

Marmaduke L. Backhouse, Esquire, Register of Deeds and Wills.

Samuel Gay, Rufus Smith, John Keillor, William Crane, Hon. Amos E. Botsford, Edward B. Chandler, William Wiley, James Stewart, Thomas S. Sayre, and Abel S. Gore, Esquires, Commissioners for taking Affidavits to be read in the Supreme Court; and the Justices of the Common Pleas, together with Lewis Trites, and Abel S. Gore, Esquires, Commissioners for taking Bail in the same.

E. B. Chandler, Esquire, Issuer of Marriage Licenses.

Rufus Smith, John Keillor, William Crane, William Hannington, William Chapman, Bill Chappell, Lewis Trites, and Robert Scott, Esquires, Commissioners for solemnizing Marriage.

Thomas Trenholm, Andrew Weldon, junior, and George Pitfield, Esquires, Licensed Auctioneers.

## COUNTY OF NORTHUMBERLAND.

Alexander Davidson, John Fraser, William Abrams, Esquires, and Hon. Joseph Cunard, Justices of the Inferior Court of Common Pleas.

Alexander Davidson, John Fraser, William Abrams, Hon. Joseph Cunard, John Clark, John T. Williston, William Joplin, Alexander Goodfellow, John Wright, Christopher Clark, Dudley Perley, John Nesmith, Donald M'Kay, Robert Doak, John Campbell, James Gilmour, J. Donald, S. Henderson, (*of the Quorum*), and Thomas C. Allan, Esquires, Justices of the Peace.

Richard Samuel Clark, Esquire, High Sheriff.

Thomas H. Peters, Esquire, Keeper of the Rolls, and Clerk of the Peace and Inferior Court of Common Pleas.

J. Wright, and J. M. Johnston, Esquires, Coroners.

J. A. Street, Esquire, Register of Deeds and Wills.

William Loch, John Nesmith, Alexander Davidson, Hon. Joseph Cunard, Robert Doak, Christopher Clark, and John J. Donald, Esquires, Commissioners for taking Bail in the Supreme Court.

John Nesmith, Thomas H. Peters, J. A. Street, William End, William Carmo, junr. George Kerr, C. A. Harding, Hon. Joseph Cunard,

Robert Doak, Christopher Clark, and John J. Donald, Esquires, Commissioners for taking Affidavits in the Supreme Court.

William Abrams, Alexander Goodfellow, Donald M'Kay, Robert Doak, and John Campbell, Esquires, Commissioners for Solemnizing Marriage.

T. H. Peters, Esquire, Issuer of Marriage Licenses.

William Davidson, Richard Samuel Clark, Patrick Henderson, Jas. Wright, John Bell, James Davidson, Thomas C. Allan, John M. Johnston, Patrick Braunen, C. Clarke, Phineas Williston, and Henry C. D. Carman, Licensed Auctioneers.

---

## KING'S COUNTY.

Henry Nase, David B. Wetmore, George H. Hazen, Isaac Perry, and John Townshend Coffin, Esquires, Justices of the Inferior Court of Common Pleas.

Henry Nase, David B. Wetmore, George H. Hazen, Isaac Perry, John Townshend Coffin, Thomas Ketchum, Rufus Rulofson, John Smith, James Brittain, Gould Picket, Benjamin B. Crawford, Henry A. Scovil, John C. Vail, Allyn C. Evanson, William M'Leod, John Barbaric, Ebenezer Smith, Azor Hoyt, Isaac Haviland, John Humbert, (of the Quorum) and Samuel Foster, Esquires, Justices of the Peace.

Walter Bates, Esquire, High Sheriff.

Asa Davidson, Esquire, Deputy Sheriff.

Edward Betts Smith, Esquire, Keeper of the Rolls and Clerk of the Peace and Inferior Court of Common Pleas.

William Simpson, Esquire, Register of Deeds and Wills.

Henry Nase, David B. Wetmore, George N. Arnold, and William Frost, Esquires, Coroners.

Walter Bates, and Edward G. N. Scovil, Esquires, Trustees of the Grammar School.

John Coffin, Elias Scovil, D. B. Wetmore, Henry Nase, George H. Hazen, Isaac Perry, and John T. Coffin, Esquires, Commissioners for taking Bail in the Supreme Court.—John Coffin, Elias Scovil, William Simpson, and Edward B. Smith, Esquires, Commissioners for taking Affidavits in the same.

Henry Nase, David B. Wetmore, William M'Leod, Henry A. Scovil, John C. Vail, Isaac Perry, and James Brittain, Esquires, Commissioners for solemnizing Marriage.

E. B. Smith, Esquire, Issuer of Marriage Licenses.

Caleb Wetmore, Simon Baxter, John Sheck, William Frost, John Humbert, Joshua Gidney, Licensed Auctioneers.

---

## COUNTY OF KENT.

John Wheaton, Samuel M'Kean, and George Pagan, Esquires, Justices of the Inferior Court of Common Pleas.

John Wheaton, Samuel M'Kean, George Pagan, George Thompson, Thomas Ostle, John Jardine, John Bowser, William Hannington, (of the Quorum,) and Thomas Powell, Esquires, Justices of the Peace.

Thomas Lansdowne, Esquire, High-Sheriff.  
John Wesley Weldon, Esquire, Keeper of the Rolls, and Clerk of the Peace, and Inferior Court of Common Pleas.  
Sylvester C. Hewes, James Long, and George Pagan, Esquires, Coroners.  
John W. Weldon, and William Chandler, Esquires, Commissioners for taking Affidavits to be read in the Supreme Court.  
George Pagan, and John Wheaton, Esquires, Commissioners for taking Bail in the Supreme Court.  
John Wheaton, John Jardine, John Bowser, and William Hanning-ton, junior, Esquires, Commissioners for Solemnizing Marriage.  
J. W. Weldon, Esquire, Issuer of Marriage Licenses.  
Michael Samuel, and Ward M'Donald, Licensed Auctioneers.

---

## COUNTY OF CARLETON.

B. C. Beardsley, John Bedell, and Richard Ketchum, Esquires, Justices of the Inferior Court of Common Pleas.  
B. C. Beardsley, John Bedell, Richard Ketchum, James Upham, James A. MacLachlan, George Morehouse, Josiah Brown, John Diblee, Adam Sharpe, Arthur B. Walsh, Francis Rice, (of the Quorum,) and Leonard R. Coombes, Esquires, Justices of the Peace.  
John F. W. Winslow, Esquire, High Sheriff.  
A. K. Smedes Wetmore, Esquire, Keeper of the Rolls, and Clerk of the Peace and Inferior Court of Common Pleas.  
John Bedell, Esquire, Register of Deeds and Wills.  
John Bedell, junior, and Hilkiah Kearney, Esquires, Coroners.  
B. C. Beardsley, A. K. Smedes Wetmore, William H. Needham, and Alexander N. Garden, Esquires, Commissioners for taking Affidavits in the Supreme Court.  
Richard Ketchum, Esquire, Commissioner for taking Bail and Affidavits in the Supreme Court.  
Richard Ketchum, George Morehouse, Josiah Browne, and Arthur B. Walsh, Esquires, Commissioners for solemnizing Marriage.  
Richard English, and Jeremiah M. Couvell, Licensed Auctioneers.

---

## CITY AND COUNTY OF SAINT JOHN.

The Mayor and the Recorder, Justices of the Mayor's Court.  
Henry Porter, George A. Lockhart, Thomas Harding, Gregory Van Horne, William Olive, and George Bond, Esquires, Justices of the Peace and of the Quorum.  
John Ward, William Scovil, James Peters, Thomas Millidge, Ralph M. Jarvis, Charles Simonds, G. C. Carman, Zalmon Wheeler, John Jordan, Allan Otty, George Anderson, James Moran, Hugh Johnston, Henry Gilbert, Robert W. Crookshank, senior, Neph Disbrow, senior, Robert Ellis, Robert Payne, Archibald Menzies, Robert Brown, James Hendricks, Benjamin L. Peters, Nehemiah Merritt, Stephen Wiggins, Ezekiel Barlow, Robert Rankin, Charles Ward, John Robertson, and George D. Robinson, Esquires, Justices of the Peace.  
James White, Esquire, High Sheriff.

Mr. Andrew Garrison, Deputy Sheriff.  
James Peters, junior, Esquire, Clerk of the Peace, &c.  
James T. Hanford, Esquire, Coroner.  
John C. Waterbery, Esquire, County Treasurer.  
Charles Drury, Esquire, Register of Deeds and Wills.  
Henry Swymer, Esquire, Surrogate.

Honorable William Black, and Benjamin L. Peters, Esquire, Commissioners for taking Bail in the Supreme Court.

William B. Kinnear, Neville Parker, James Peters, junior, Henry Swymer, Francis A. Kinnear, Robert F. Hazen, Le Baron Hazen, William Wright, H. N. H. Lugin, John M. Robinson, M. H. Perley, Robert L. Hazen, Richard Sands, jr. John Johnston, James William Boyd, Judth H. Hartt, and Charles Johnston, Esquires, Commissioners for taking Affidavits in the Supreme Court.

Gehardus C. Carman, John Jordan, and James Moran, Esquires, Commissioners for Solemnizing Marriage.

Charles Drury, Esquire, Issuer of Marriage Licenses.

#### BOARD OF HEALTH.

William H. Street, (Chairman,) Benjamin Stanton, Daniel Ansley, Thomas Harding, Gregory Van Horne, George Bond, Thomas Barlow, John R. Partelow, (Secretary,) Henry Gilbert, Allan Otty, Robert Rankin, Robert Payne, William B. Kinnear, B. L. Peters, William Olive, Rev. Dr. Gray, Rev. Robert Wilson, Rev. James Dunphy, Charles Ward, Isaac Woodward, James Hendricks, M. H. Perley, Charles Simonds, Robert F. Hazen, Henry Porter, George A. Lockhart.

---

### SUPREME COURT OF JUDICATURE.

TERMS.\*—*Hilary Term*, 1st Tuesday in February; *Trinity Term*, 2d Tuesday in June; *Michaelmas Term*, 2d Tuesday in October.

NIHI PRIUS SITTINGS IN THE COUNTY OF YORK—3d Tuesday in February, 4th Tuesday in June, and 4th Tuesday in October.

#### CIRCUIT COURTS.

*City and County of Saint John*—2d Tuesday in January and 3d Tuesday in June.

*KING'S*—4th Tuesday in January.

*SUNBURY*—3d Tuesday in February.

*QUEEN'S*—4th Tuesday in February.

*CHARLOTTE*—1st Tuesday in August.

*KENT*—Last Tuesday in August.

*WESTMORLAND*—1st Tuesday in September.

*NORTHUMBERLAND*—2d Tuesday in September.

*GLOUCESTER*—Monday before the 1st Tuesday in September.

*CARLETON*—

\* Incorrectly printed at page 18.



*Terms of the Sittings of the Court of General Sessions and Inferior Court of Common Pleas.*

- SAINT JOHN**—3d Tuesday in March, and 1st Tuesday in June, September, and December.
- YORK**—2d Tuesday in January and June—Additional Terms of the Common Pleas—3d Tuesday in March, and 2d Tuesday in October.
- WESTMORLAND**—3d Tuesday in June, and 2d Tuesday in December. Additional Terms of the Common Pleas—3d Tuesday in November and September.
- CHARLOTTE**—2d Tuesday in April, and 3d Tuesday in Sept.—Additional Terms of the Common Pleas—2d Tuesday in July and Dec.
- KING'S COUNTY**—1st Tuesday in March and July—Additional Terms of the Common Pleas—1st Tuesday in May and November.
- QUEEN'S COUNTY**—4th Tuesday in January and June—Additional Terms of the Common Pleas—4th Tuesday in April and October.
- SUNBURY**—3d Tuesday in January and June—Additional Terms of the Common Pleas—4th Tuesday in March, and 3d Tuesday in Oct.
- NORTHUMBERLAND**—1st Tuesday in March and August—Additional Terms of the Common Pleas—1st Tuesday in June and November.
- KENT**—3d Tuesday in January and June—Additional Terms of the Common Pleas—1st Tuesday in April and September.
- GLOUCESTER**—2d Tuesday in January and last Tuesday in July.—Additional Terms of the Common Pleas—1st Tuesday in April, and last Tuesday in October.
- CARLETON**—1st Tuesday in January and June—Additional Terms of the Common Pleas—1st Tuesday in March and October.

---

**POST OFFICE DEPARTMENT.**

**JOHN HOWE, junior, Esquire, Deputy Postmaster General for Nova-Scotia and New-Brunswick.**

**POSTMASTERS IN NEW-BRUNSWICK.**

- Charles Drury, Esquire, Saint John.  
William B. Phair, Esquire, Fredericton.  
George F. Campbell, Esquire, Saint Andrews.  
T. Armstrong, Esquire, Saint Stephen.  
Gideon Knight, Esquire, Saint George.  
Thomas Keillor, Esquire, Dorchester.  
A. S. Gore, Esquire, Bend of Peticodiac.  
James Cale, Esquire, Miramichi.  
Asa Davidson, Esquire, Kingston.  
John C. Vail, Esquire, Sussex Vale.  
John W. Weldon, Esquire, Richibucto.  
T. M. De Blois, Esquire, Bathurst.  
Charles Seymour, Esquire, Quaco.

# CITY OF SAINT JOHN.

William H. Street, Esquire, Mayor.  
Robert F. Hazen, Esquire, Recorder.

**ALDERMEN.**

Henry Porter,  
George A. Lockhart,  
Thomas Harding,  
Gregory Van Horne,  
William Olive,  
George Bond,

Esquires.

**ASSISTANTS.**

Mr. John Knollin,  
Robert Ray,  
Ira Mosher,  
Ewen Cameron,  
Robert Salter,  
Joseph Beattie,

**WARDS.**

King's,  
Queen's,  
Duke's,  
Sidney,  
Guy's,  
Brook's.

John R. Partelow, Esquire, Treasurer or Chamberlain.  
James Peters, junior, Esquire, Common Clerk.  
James William Boyd, Esquire, Deputy Common Clerk.

Joshua Bunting, High Constable.—Edward Bennison, Lewis Fairweather, Benjamin Harrington, Levi Lockhart, and John Ketchum, Marshals.

Joshua Bunting, Robert W. Nowlan, Ebenezer Herrington, Benjamin Herrington, John Ketolum, Robert M'Elvey, Lewis Fairweather, Edward Bennison, Leonard Woodworth, William Nixon, Joseph Coram, William Aikins, Alexander Moody, William Munford, James Floyd, John M'Arthur, Levi Lockhart, John Bean, and Henry Armstrong, Constables.

Roland Bunting, William Aikins, James Floyd, and William Munford, Hog Reeves on the Eastern side of the Harbour.

William Thompson and Benjamin Sweet, Hog Reeves at Carleton.

Ezekiel Barlow, John Ward, William Leavitt, Thomas Rawleigh, Nehemiah Merritt, Isaac Woodward, George A. Nagel, Lewis Burns, Ambrose S. Perkins, and William D. Faalke, Port Wardens.

George Bragg, William Hughson, George A. Nagel, and Walter Draks, Assessors of Taxes and of Statute Labour.

James Keator, Thomas Barlow, and John Ward, junior, Assessors of Nightly Watch Tax.

Thomas Baldwin, Collector of Taxes.

William Miller, Collector of Taxes at Carleton.

Thomas Baldwin, Collector of Statute Labour.

William Miller, ditto ditto, at Carleton.

Robert James, Inspector of Cord Wood and Bark, in the Market Slip.

Ezekiel Jordan, Collector of Slippage & Wharfage at the Market Slip.

John Walker, Collector of Slippage and Wharfage at Union Street—S. Gerow, ditto at North Slip—William Andrews, ditto at Lower Cove.

Seth Seely and Alexander M'Kenzie, Measurers of Coals.

Seth Seely, Mesaurer of Grain and Salt.

Stephen Gerow, Weigh Master at the North Slip. Kenneth M'Kenzie, ditto at Union street.

Thomas Coram, Collector of Wharfage at the Breakwater.

Joseph Beatteay, collector of Anchorage.

William Andrews, Collector of Wharfage at the Lower Cove.

Thomas Robson, Harbour Master.

Benjamin Chaloner and George Waterberry, City Gaugers.

Joshua Bunting, Fence Viewers.

Robert C. Minnette, City Surveyor.

Messrs. John Kerr, Ratchford & Lugin, John V. Thurgar, J. & H. Kinnear, John Robertson, James T. Hanford, Thomas L. Nicholson, Charles B. Cox, and Shiels & O'Brien, Licensed Auctioneers.

John Boyd, M. D., and George J. Harding, M. D., Esquires, Visiting Physicians.

John Wightman, John Leavitt, John Reed, John S. Anthony, George Thomas, John Murray, John Woodley, Daniel Hatfield, Alex. Mills, Abraham Beatteay, John Leavitt, junior, William Seely, Edward Murray, William Leavitt, James Reed, John Spears, Price Thomas, John Mills, and Thomas Vaughan, Branch Pilots.

Alexander Reed, Keeper of the Partridge Island Light House.

George Lane, Keeper of the Beacon Light House.

Levi Lockhart, Looker after Nuisances.

Robert W. Nowlan, Pound Keeper—David W. Craft, and Joseph Coram, Pound Keepers at Carleton.

Samuel Jordan, Alexander McGrotty, Benjamin Gale, Thomas Trafton, Robert C. Frost, John G. Tobin, Jacob Snider, Joseph Fayerweather, John M. Campbell, John Sherrard, Robert L. Harris, David Whiting, John Jordan, Oliver Byrnan, Ewen Cameron, George Cassie, Lloyd Johnston, William H. A. Keans, Andrew Hamilton, James H. Fairweather, George L. Hatheway, and George A. Garrison, Surveyors of Lumber.

William Barlow, Charles Kay, James Bowen, John Vallely, Thomas Miles, John Ward, William Dunham, James Peacock, Robert Green, Thomas Leach, Inspectors of Lathwood, Staves, Hoop Poles, &c.

James Bowen, Culler of Dried Fish.

William Dunham, James Bowen, Charles Kay, William Barlow, Cornelius Nice, Samuel Strange, James Peacock, James F. Lilly, Henry N. Nice, Thomas Miles, James T. Britain, Robert Green, and John Christopher, Inspectors of Pickled Fish.

Charles Davies, John Berryman, Edward Lake, William Bookwood, and Thomas Majoribanks, Inspectors of Flour.

Fyler Dibblee, Chief Engineer of Fire Engines.

Fyler Dibblee, Superintendent of Carts.

George Matthew, Gilbert T. Ray, and Thomas Lockey, Overseers of the Poor. William Nisbet, Keeper of the Alms House.

Robert F. Hazen, Moses H. Perley, and George Bond, Trustees of Schools.

Julia O'Connor, James Johnston, and John Anning, Licensed Pawn Brokers.

Daniel Ansley, John Ward, junior, Thomas Harding, John R. Partlow, Gregory Van Horne, Robert Robertson, A. S. Perkins, George Harding, Thomas Barlow, James T. Hanford, George Bond, James F. Lilly, John Kinnear, Isaac Woodward, William Mullin, John V. Thurgar, and John Cunningham, Firewardens.

## CITY OF SAINT JOHN SAVING'S BANK.

His Excellency the Lieutenant-Governor, Patron.

Honorable Ward Chipman,  
Honorable William Black, } Vice-Presidents.  
Hugh Johnston, Esquire, }

The Bank of New-Brunswick, Treasurer.

Daniel Jordan, Esquire, Cashier and Register.

## CHAMBER OF COMMERCE.

E. DeW. Ratchford, Esquire, Chairman.

L. Donaldson, and John Robertson, Esq's, Deputy Chairmen.

R. Rankin,	} Esq's.	} William Walker,	
James Kirk,			William Mackay,
Isaac L. Bedell,			Hugh Mackay,

The above Gentlemen, together with the Members of the House of Assembly for the City and County (being the non-elective part) compose the Committee for the ensuing year.

Thomas Leavitt, Esquire, *Consul of the United States.*

Solomon Nichols, Esquire, *Agent for Lloyd's.*

Thomas Leavitt, Esquire, *Agent for the Marine Insurance Companies of New-York.*

## PUBLIC GRAMMAR SCHOOL IN THE CITY OF ST. JOHN.

President—The Reverend the Rector of Saint John.

### DIRECTORS:

The Mayor.	The Recorder,	Reverend I. W. D. Gray,
The Honorable Ward Chipman,		Neville Parker, Esquire,
The Honorable Robert Parker,		Reverend Robert Wilson, A. M.
The Honorable William Black,		Thomas Paddock, Esquire, M. D.

Treasurer and Clerk—William Wright, Esquire.

Principal—Mr. James Paterson.

Classical Usher—Mr. Henry.

English Teacher—Mr. William Ewing.

The Branches taught in this Seminary, are Latin, Greek, Mathematics, Geography, the Use of the Globes, Writing, Arithmetic, and Elocution. The pupils of the senior classes have, besides, daily exercises in Composition, to initiate them into the knowledge of English Grammar, and the correct and elegant use of their native tongue.

SAINT

Presid  
Super  
Direc

SAINT

Pre  
Vic

Tre  
Sec  
Ass  
Sta

Terms o  
R

The

Hon  
Nev  
W.  
Rob  
Mr.

Libr

Rob  
John  
Isaac  
Mr.

John  
John  
John  
Pete

Jo  
W  
M  
M

**SAINT JOHN CHURCH OF ENGLAND SUNDAY SCHOOL.**

Patron—His Excellency the Lieutenant Governor.

President—The Rector of Saint John.

Superintendent and Secretary—The Curate of Saint John.

Directors—The Church Wardens.



**SAINT JOHN DISTRICT COMMITTEE OF THE SOCIETY FOR PROMOTING CHRISTIAN KNOWLEDGE.**

President—Reverend Benjamin G. Gray, D. D.

Vice-Presidents—Honorable Chief Justice Chipman, Honorable William Black, and William Scovil, Esquire.

Treasurer—Zalmon Wheeler, Esquire.

Secretary—Reverend I. W. D. Gray.

Assistant Secretary—Mr. A. R. Truro.

Standing Committee—R. W. Crookshank, Esquire, and Mr. L. H. Deveber.

Terms of admission:—One Guinea donation, and one Guinea annually. Recommendation from a Member of the Society.

☞ The Depository of Books and Tracts is at Mr. Truro's Circulating Library, North side of the Market-Square.



**SAINT JOHN SOCIETY LIBRARY.**

Honorable Chief Justice Chipman, President.

Neville Parker, Esquire, Vice President.

W. H. Street, and T. Millidge, Esquires, Committee.

Robert F. Hazen, Esquire, Secretary and Treasurer.

Mr. Anthony R. Truro, Librarian.

☞ Library hours from 12 to 1 o'clock, every day.



**SAINT GEORGE'S SOCIETY.**

Robert F. Hazen, Esquire, President.

John V. Thurgar, Esquire, Vice-President.

Isaac L. Bedell, Esquire, Treasurer.

Mr. Anthony R. Truro, Secretary.



**SAINT ANDREWS' SOCIETY.**

John Boyd, Esquire, M. D. President.

John Robertson, Esquire, Vice-President.

John Wishart, Esquire, Treasurer.

Peter Duff, Esquire, Secretary.



**SAINT PATRICK'S SOCIETY.**

John Kinnear, Esquire, President.

William McCannon, Esquire, Vice-President.

William Hutchison, Esquire, Treasurer.

Mr. Samuel Thompson, Secretary.

Mr. John Hastings, Assistant ditto.



## ALBION SOCIETY.

Mr. William Scammell, President.  
Mr. Samuel Holman, Vice-President.  
Mr. Henry Buxton, Treasurer.  
Mr. George Thomas, Secretary.



## BRITISH AMERICAN SOCIETY.

John Ward, Esquire, President.  
Stephen Humbert, } Esquires, Vice-Presidents.  
George D. Robinson, }  
Mr. Ambrose, S. Perkins, Treasurer.  
Mr. Thomas S. Estey, Secretary.



## FRIENDLY SONS OF ERIN.

William Mullin, Esquire, President.  
Mr. Joseph M'Pherson, Vice-President.  
Mr. James Gilday, Treasurer.  
Mr. John Gallivan, Secretary.



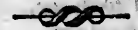
## TEMPERANCE SOCIETY.

President—The Reverend Benjamin G. Gray, D. D.  
Vice-President—Honorable Judge Parker,  
Treasurer—Angus M'Kenzie, Esquire.  
Secretary—Mr. George Blatch.



## FRIENDLY FIRE CLUB.

Robert W. Crookshank, Esquire, President.  
James Hendricks, Esquire, Vice-President.  
Thomas L. Nicholson, Esq. Secretary and Treasurer.



## UNION FIRE CLUB.

Daniel Leavitt, Esquire, President.  
Benjamin L. Peters, Esquire, Vice-President.  
John Wishart, Esquire, Treasurer.  
Mr. S. K. Foster, Secretary.

---

## PARISH OF PORTLAND.

William G. Cody, George Mathev, and James Gallagher, Commissioners of Highways.  
Robert Rankin, John C. Waterbery, and James Travis, Overseers of the Poor.  
Robert Rankin, James Cody, and Israel Merritt, Assessors of Taxes.  
Hugh Sharkey and John Johnston, Collectors of Taxes.

James Stephenson, junior, Robert Bowes, John Robinson, John Dalton, Charles Quigley, junior, James Burley, Hugh Ryan, John Johnston, Hugh Sharkey, James Clark, and Jas. Stevenson, jun. Constables.

Ephraim Sentill, Thomas M'Faddin, William Paterson, Thomas Bean, William Robertson, Thomas Garnett, William Bean, senior, Patrick Harrigan, Winthrop Robinson, Thomas Long, James S. Smith, Morris Whooten, Henry Graham, John Morrison, William Daley, Griffith Morrison, John Ryan, James M'Ninch, and Richard Daley, Fence Viewers.

James Burley, Michael Camphell, Edward Hughes, James Stevenson, Patrick Harrigan, Robert Bowes, Hugh Dunn, William Scott, and Richard Daley, Pound Keepers.

Francis Jordan, Samuel Reynolds, Jeremiah Gave, John W. Scott, W. H. A. Keans, David Roberts, Michael Fisher, John Morrison, Gilbert Jordan, junior, and Thomas Gillespie, Surveyors of Lumber.

John Robinson, James Stevenson, James Burley, James Stevenson, junior, Edward Hughes, Robert Bowes, John Broughfield, Edward Davis, William Moses, John Dalton, and Richard Ritchie, Hog Reeves.

John Jordan, Robert Payne, and Israel Merritt, Trustees of Schools.

Barnes Travis, Superintendent of Ferry Landing.

Hugh Sharkey, Town Clerk, and Clerk of the Market.

---

## PARISH OF LANCASTER.

---

James Olive, Calvin L. Hatheway, and George Vaughan, Commissioners of Highways.

William Tilton, John Vaughan, and Joseph Boggs, Overseers of the Poor.

Isaac Clarke, James Olive, and Calvin L. Hatheway, Assessors of Taxes. John Harding, Collector of Taxes.

Isaac Clarke, John Gillics, and Calvin L. Hatheway, Trustees of Schools.

John Dunham, John Kelly, John Harding, and Isaac Finmore, Constables.

William Tilton, John Vaughan, and Henry Lord, Fence Viewers.

John Dunham, Maurice Casey, and John Perry, Hog Reeves.

William Tilton and John Harding, Pound Keepers.

William Wilson, Town Clerk, and Clerk of the Market.

---

## PARISH OF SAINT MARTINS.

---

Stephen Mosher, Thomas Stevens, and James M'Lean, Commissioners of Highways.

Joseph Brown, Simon Vaughan, and Thomas Stevens, Overseers of the Poor.

Simon Vaughan and George Marr, Trustees of Schools.

George Marr, Thomas Stevens, and Allen M'Lean, Assessors of Taxes.

Daniel Brown and Andrew Newcombe, Collectors of Taxes.

George Marr, Surveyor of Lumber.

Daniel Brown, senior, George W. Marsters, and Andrew Newcombe,  
Constables.

Philip Black and Edward Brown, Fence Viewers.

Henry Brittain, Pound Keeper.

George Marsters, Town Clerk, and Clerk of the Market.

## ROADS.

*From St. John to Fredericton,  
by the Nerepis.*

	Miles.
Harding's, (Yorkshire tavern,) 4	4
Brundage's, 10	10
Mather's, (Douglas Arms,) 4	4
Purdy's, 12	12
Darby Gillan's, 10	10
W. Smith's 7	7
Morrison's, (Oromocto,) 7	7
Fredericton, 11	11
<b>Total,</b>	<b>63</b>

*On the Eastern side of the River.*

To Black's Farm, 7	7
Gondola Point, 9	9
Kingston, 4	4
Head of Bellisle, 14	14
Washademoac, 13	13
Jameg Ferry, 6	6
Tilley's, (Sheffield,) 13	13
Widow Perley's, 3	3
Fredericton, 12-56	12-56

*St. John to St. Andrews.*

To Byrne's, Lakesfield, 9	9
Tilton's, Musquash, 6½	6½
M'Loughlin's, 6	6
Gray's, 5	5
M'Gowan's, (half way,) 6½	6½
Watters' 3	3
Shaw's, (Magaguadavic,) 9	9
Burns' (Saint Patrick,) 10	10
Saint Andrews, 12-67	12-67

*St. John to Sussex Vale.*

To Fearerby's, 8	8
Bentley's, 6½	6½
Hampton Ferry, 10	10
Hayes', 5½	5½
Finger Board, Norton, 4½	4½
Mill Stream, Lyon's, 7	7
Sussex Vale, 6-47½	6-47½

*St. John to Martin's Head.*

	Miles.
To Coily's, 1	11
Bentley's, 9	9
Seymour's, 11	11
Vaughan's Creek, 1½	1½
Nelvin or Fuller's Beach, 4½	4½
Big Salmon River, 3	3
Tufts, [along shore,] 1½	1½
Little Salmon River, 4	4
Martin's Head, 4-48½	4-48½

*St. John to Amherst, N. S.*

St. John to Hennigar's, 9	9
Hennigar's to Wetmore's, 3	3
Wetmore's to Ketchum's, 4	4
Ketchum's to Hampton Ferry, 7	7
Hampton Ferry to Hays's, 5½	5½
Hays's to Buxter's, [Finger } Board,] 4½	4½
Buxter's to Roache's, 10	10
Roache's to Cogle's, 3	3

*To Sussex Vale, 46*

Cogle's to Walter's, [foot } of the Mountain, } 13	13
Walter's to Leek's, 5	5
Leek's to Holstead's, 7	7
Holstead's to Russell's, 10	10
Russell's to Lewis's, 15	15

*To the Bend of Peticodiac, 96*

Lewis's to Charter's [Mem- } ramcook,] } 15	15
Charter's to Weldon's, } [Dorchester,] } 8	8
Weldon's to Bass's, [Westcock] 9	9
Bass's to Well's, [Tantamar,] 8	8
Well's to Bent's, [Amberst,] 10	10

**Total, 146**

combe,

**Amherst to Halifax.**

	Miles.
To Hewsop's, River Philip,	20
Clark's, foot of the mountain,	15
Gourley's, [Onslow,]	20
Witter's & Blanchard's, Truro,	5
Corbet's, [Gay's River,]	26
Shuts's,	15½
Fultz's,	11
Halifax,	11½

**Total—124**

**Bend of Peticodiac to Richibucto.**

Lewis's to Smith's, [Shediac,]	15
Smith's to Lannan's,	1
Lannan's to Long's, Cocaigne,	8
Long's to Smith's, Buctouche,	10
Smith's to M'Dermott's, Big } Buciouche,	1
M'Dermott's to Harris's,	7
Harris's to Donnelly's,	8

**Total, 50**

**Richibucto to Miramichi.**

Donnelly's to Rankin's,	12
Rankin's to Dickens', Bay } du Vin,	10½
Dickens' to M'Beath's, } Black River,	11½
M'Beath's to Johnston's, } Coatham,	6

**Total, 40**

**Chatham to Bathurst, (Bay de Chaleur.)**

Chatham to Goodfellow's,	6
Goodfellow's to Corry's,	8½
Corry's to Forein's, [half } way house,]	15
Forein's to Dempster's,	10½
Dempster's to Court House,	8½

**Total, 48**

**Bathurst to Restigouche.**

Dewett's to Arsineans,	12
Arsinean's to Daley's,	12
Daley's to Harvey's, Nash's } Creek,	10½

Harvey's to M'Pherson's,	9½
M'Pherson's to Fleming's } Dalhousie,	10
Fleming's to Reids,	7½
Reid's to M'Neil's [Camp- } bellton,]	9

**70½**

**Fredericton to Miramichi.**

To Brown's,	11
Young's,	10
M'Leod's,	4
Boies's,	20
Hunter's,	14
De Cautline's,	10
Cochrane's,	14
Robinson's,	12
Parker's,	8

**Total, 105**

**Fredericton to Quebec.**

To Burgoyne's Ferry,	16
L. Heustia's,	7
M'Laughlan's,	18
Jones's,	14
Woodstock Ferry,	7
Harvey's,	8-65
Dingee's,	14
Gullop's,	9
Kearney's [river de Chute]	11
Everitt's,	13
Restook River,	3
Rynn's, [Great Falls,]	15-130
Coombe's,	12
Vital Thibadeau's,	15
Madawaska Chapel,	7
Hebert's,	3
Entrance of Madawaska } River,	1
Do. of Lake Temisquatu,	24
Do. of Portage,	15
River St. Lawrence,	36
Kamouraska,	15
Quebec,	90-218

**Total, 348**

**From Digby to Halifax.**

Digby to Annapolis,	10
Annapolis to Kentville,	58
Kentville to Windsor,	27
Windsor to Halifax,	45-149

## LIGHT HOUSES.

*Commissioners for Light Houses in the Bay of Fundy:*  
Robert W. Crookshank, Thomas Barlow, John Ward,  
junior, and Lauchlan Donaldson, Esquires.

*Commissioners for Partridge Island and the Beacon  
Light Houses*—John Ward, and L. Donaldson, Esquires.

*Cape Sable Seal Island Light.*—The first Light in approaching the Bay of Fundy, is on the South Point of the Seal Island. This Light is elevated about 80 feet above high water mark, and may be seen in approaching the Island from any point of the Compass. A very dangerous Rock, under water, but upon which the sea always breaks, called the *Blonde Rock*, lies about 2 miles S. S. W. by Compass, from the Light House. Between this rock and the Island, there are some dangers—the ground is rocky throughout, and large vessels, therefore, ought not to attempt passing between them.

*Brier Island Light.*—In advancing up the Bay, the next Light is situated on Brier Island, about half a mile N. E. from the N. W. point thereof, with an improved Lantern and Lamp. This Light will therefore be much more beneficial to the trade of the Bay than formerly.

*Annapolis Gut Light.*—The next Light on the coast of Nova-Scotia, is placed on the West side of the Gut of Annapolis—from Brier Island, North Eastward. The coast is very bold, and not indented; the Light is therefore chiefly intended as a guide into Annapolis Basin. The Lamps and Lantern were renewed this Spring, (1835,) and reflectors furnished, so that this Light is in high order.

NOTE.—The above three Lights are each single, fixed, and show WHITE lights.

*Gannet Rock Light.*—This Light bears from the Light on Brier Island, N. W.  $\frac{1}{2}$  W. 21 miles. It is intended to warn vessels of their approach to a very dangerous range of shoals and ledges, which extend from the Old Proprietor to the Seal Island off Machias, a distance of about 20 miles.

### *Bearings from the Gannet Rock Light House :*

- To the Old Proprietor, which dries at  $\frac{1}{2}$  ebb, (very dangerous) E. by N.  $\frac{1}{4}$  N. 7 miles.  
,, Black Rock, (always above water 25 feet,) off White Head, N. E.  $\frac{1}{4}$  E.  
,, South West Head of Grand Manan, N. W.  $\frac{1}{2}$  N.  
,, Northernmost of the Murr Ledges, (dry at two-thirds ebb,) N. W. by W.  $\frac{1}{4}$  W.  
,, Southernmost of ditto, called St. Mary's Ledge, (always out of water,) S. W. by W.  $\frac{1}{2}$  W.  
,, Machias Seal Island Lights, distant about 12 miles, W. by N.  $\frac{1}{4}$  N.

NOTE.—Between the northernmost and southernmost of the Murr Ledges, there is a range of dangerous rocks and shoals, many of them



always above water, and which extend westward from the Light House about 4 miles; from this range, farther westerly, about 8 miles, lies a dangerous breaker, called the Roaring Bull. This may be avoided by keeping three remarkable headlands, near the S. W. end of Grand Manan, open.—The red glass having been removed from the Lantern, there is now a flash light—WHITE—and three times in each minute.

**Head Harbour Light.**—Next in order, after passing Grand Manan, is Head Harbour Light. This is placed on the N. E. extremity of Campo Bello, and is a guide to vessels entering the main channel to West Isles, Moose Island, and the inner Bay of Passamaquoddy; it enables vessels also at all times to enter Head Harbour—it is a fixed WHITE Light.

**Point Le Preau Lights.**—Upon this projecting Head Land, two Lights have lately been placed, one above the other, and distant 18 feet. Both lights can be seen from every point of the Compass, where they may be useful. Both are fixed, and WHITE.

**Partridge Island Light.**—This Light, at the entrance of the River and Harbour of Saint John, having been established upwards of forty years, requires no particular notice, further than that it is a fixed white Light.

**Beacon Light.**—Within Partridge Island, and upon a spit or bar, which extends about half a mile S. S. E. of Sand Point, and which dries at two thirds ebb, stands the Beacon Tower. Upon this Tower a Light is established, which is eminently useful to the coasting trade of Saint John, and to all other vessels having pilots on board, as it enables them to enter the harbour at all hours of the night. A fixed WHITE light.

**Quaco Light.**—A revolving WHITE Light was this season placed on a small rock off Quaco Head, showing twice full and twice dark in a minute. This Light can be seen from any quarter where a vessel can approach.

The Commissioners of Lights having petitioned the Legislature during the last winter, praying them to use their influence in order that a new and full survey of the Bay of Fundy should be made; and the British Government having consented to do so, any new information in regard to the lights, which may arise from observations then to be made, will be duly communicated.

**West Quoddy Light.**—This is an American Light, and is placed on the West side of the entrance into the St. Croix by Lubec and Eastport; a new light house has lately been erected here, and the light much improved.

Two fixed white Lights, upon the Machias Seal Island, were put into operation in October, 1832—they are elevated about 45 feet above high water, and bear from each other E. S. E. and W. N. W. distant about 200 feet, by which they will be immediately distinguished from all other Lights upon the coast, (British or American,)—the following are the bearings from them, viz:—

- To the Southernmost Murr Ledge, (St. Mary's), E. S. E. exactly.
- " Gannet Rock Light, E. by S.  $\frac{1}{2}$  S. 18 miles.
- " Southern Head of Grand Manan, E. by N.  $\frac{1}{2}$  N.
- " Northern Head of Grand Manan, N. E.  $\frac{1}{2}$  E.
- " N. E. Rock, distant 2 miles, N. E. by N.
- " Little River Head, N. by W.
- " Libby Island Light House, (American), N. W. by W.

Vessels in standing in to the Northward; between these Lights and the Gannet Rock, should tack or haul off the moment they bring these lights in one, as they will then not be more than three-fourths of a mile from the Murr Ledges; if more than 5 miles to the E. of the lights.

CAPE BRETON.—A Light House was erected on Low Point, the Eastern point of the entrance of Sidney harbour, in October, 1832, with a fixed light.

A *White Beacon* has been erected on the East Head, leading into Louisbourg Harbour, upon the site of the old French Light House—which may be seen at a very considerable distance.

NEWFOUNDLAND.—A light is now exhibited from sunset to sunrise at Fort Amherst, on the South head of the entrance to St. John's.

### LIGHT HOUSES IN NOVA-SCOTIA.

[From Cunnabell's Nova-Scotia Almanack.]

NAME.	SITUATION.	PERSONS IN CHARGE.	DESCRIPTION.
Sambro,	Sambro Island, mouth of Halifax Harbour,	Goodwin,	1 fix'd light.
Roseway,	M'Nutt's Island, mouth of Shelburne Harbour,	A. H. Cockes,	2 lights, one above the other.
Brier Island,	Brier Island,	Southern,	1 fix'd light.
Digby,	Entrance of Annapolis Gut,	Bragg,	1 fix'd light.
Liverpool,	Cogan's Island, mouth of Liverpool Harbour,	Sellon,	1 revolving light.
Canse,	Island, Gut of Canse,	Simon Fraser,	2 lights one above other.
Seal Island,	Seal Island, near Barring-	Hitchen & Cro-	1 fix'd light
Halifax,	Meagher's Beach, Halifax,	well,	1 light.
Pictou,	Entrance Pictou harbour,	Balsan,	1 fix'd light
		David Lowden,	for 8 months in the year.
Cross Island,	Cross Island, near Lunenburg,	Not finished.	
Low Point,	Entrance Sidney Bay,	Robert M'Nab,	1 fix'd light.

NOTE.—It will be observed, that some of the Light Houses in the above table, are also noticed in the preceding one.

**STAFF OF THE ARMY,**  
**SERVING IN THE PROVINCE OF NEW-BRUNSWICK,**

**UNDER THE COMMAND OF**  
**Major-General Sir ARCHIBALD CAMPBELL, Baronet, G. C. B.**

**Captain J. Campbell, (38th Regiment), Aid-de-Camp.**  
**Town Major J. Gallagher, H. P. 98th Regiment.**

**GARRISONS.**

**Frederickton—Lieut. Col. Booth, K. H. (43d L. I.) Commandant.**  
**Saint John—Lieut. Col. Turner, K. H., I. F. O., Commandant.**  
**Saint Andrews—Lieutenant Pearson, (43d L. I.) Commandant.**

**CHAPLAINS.**

**Frederickton—Venerable Archdeacon Coster, M. A.**  
**Saint John—Reverend Benjamin G. Gray, D. D.**  
**Saint Andrews—Reverend Jerome Alley, D. D.**

**COMMISSARIAT DEPARTMENT.**

**William Robinson, Esquire, Assistant Commissary General.**  
**Geo. Swaney, Esquire, Deputy Assistant-Commissary General.**  
**Olive Smith, Esq. Deputy Assistant Commissary General.**

**ORDNANCE DEPARTMENT.**

**F. C. Frith, Esquire, Deputy Ordnance Store Keeper.**  
**Lieutenant S. Huyghue, 1st Clerk.**  
**Mr. Robert Pickthall, 2d Clerk.**  
**Mr. William Bond, Barrack Sergeant.**  
**Mr. G. Thomas, Armourer.**

**J. E. Woolford, Esquire, Barrack Master, Frederickton.**

**ROYAL ENGINEER DEPARTMENT.**

**Major Slade, Commanding.**  
**Mr. Lionel Anderson, Clerk.**  
**Mr. Henry Hennigar, Overseer of Works.**

**BOARD OF RESPECTIVE OFFICERS.**

**Major Slade, Royal Engineers.**  
**Captain Dalton.**  
**Deputy Store-Keeper Frith.**

**OFFICERS OF CORPS SERVING IN THE PROVINCE.**

**ROYAL ARTILLERY.**

**Captain Dalton, Commandant.**  
**Lieutenant Jones.**

### 43D LIGHT INFANTRY—AT FREDERICTON.

Lieutenant Colonel Booth, K. H. Commanding.

Captain Wright.	Ensign Hort.
Captain Tryon.	Ensign L. Cole.
The Hon. Captain Spencer.	Ensign Herries.
Lieutenant Thomas.	Paymaster, G. Hood.
Lieutenant Meade.	Surgeon, J. Miller.
Lieutenant and Adjutant Priestly.	Quarter Master, J. Rand.
Lieutenant the Hon. C. R. West.	

### AT SAINT JOHN.

Major Kepple, Commanding.

Captain Fraser.	Ensign Lord William Hill.
Captain Egerton.	Ensign Coote.
Captain Bell.	Ensign Skipwirth.
Lieutenant and Adjutant Saunders.	Assistant Surgeon Hamilton.
Lieutenant Levinge.	

### AT SAINT ANDREWS.

Lieutenant Pearson, Commanding.

Staff Assistant Surgeon Hartwell.

## THE NAVY.

The Right Honorable Sir **GEORGE COCKBURN**, G. C. B.,  
Vice Admiral of the Red, Commander in Chief on the West India  
and North American Stations.

Thomas Woodman, Esquire, Secretary.—Lieutenant **W. A. Willis**,  
Flag Lieutenant.

**PRESIDENT**, 52—*Flag Ship*.

Captain, James Scott.

**FORTE**, 44.

Captain, Watkin Owen Pell.

**BELVIDERA**, 42.

Captain, Charles B. Strong.

**RAINBOW**, 28.

Captain, Thomas Bennett.

**VESTAL**, 26.

Captain, William Jones.

**COMUS**, 18—*Sloop*.

Commander, Wm. P. Hamilton.

**FLY**, 18—*Sloop*.

Commander, Peter McQuhae.

**RACEHORSE**, 18—*Sloop*.

Commander, Sir Jas. E. Home.

**LARNE**, 18—*Sloop*.

Commander, William S. Smith.

**CRUIZER**, 16—*Brig*.

Commander, Jas. M'Cauleland.

**GANNET**, 16—*Brig*.

Commander, John B. Maxwell.

**DISPATCH**, 16—*Sloop*.

Commander, George Daniell.

**RACER**, 16—*Brig*.

Commander, James Hope.

**SERPENT**, 16—*Brig*.

Commander, Evan Nepean.

**WASP**, 16—*Sloop*.

Commander, J. S. Foreman.

**SCYLLA**, 16—*Sloop*.

Commander, E. J. Carpenter.

**SPITFIRE**, 6—*Steam Vessel*.

Lt. Commander, A. Kennedy.

**THUNDER**, 6—*Surv. vessel*.

Commander, Richard Owen.

**SKIPJACK**, 5—*Schooner*.

Lt. Commander, S. H. Usher.

**PICKLE**, 5—*Schooner*.

Lt. Commander—A. G. Bolton.

**MAGNIFICENT**, 4—*Receiving*

*Ship*. (Jamaica.)

**FURY**—*Steam Vessel*.

**ANTELOPE**—Bermuda.

## STAFF OF THE MILITIA IN NEW-BRUNSWICK.

### HIS EXCELLENCY

Major-General Sir ARCHIBALD CAMPBELL, Baronet, G. C. B.  
Commander-in-Chief, &c. &c.

Lieutenant Colonel C. B. Turner, K. H. } Inspecting Field Officers.  
Lieutenant Colonel Allen, }  
The Honorable Lieutenant-Colonel George Shore, Adjutant General.  
Major John Gallagher, Quarter Master General.  
L. A. Wilmot, Esquire, Judge Advocate General, 6th August, 1834.  
Lieutenant Colonel Charles Drury, Provincial Aid-de-Camp.  
The Honorable Major G. F. Street, Provincial Aid-de-Camp.

## THE ROYAL FAMILY OF GREAT BRITAIN.

**KING WILLIAM IV.** born August 1, 1765; married July 11, 1818, to **ADELAIDE AMELIA LOUISA TERESA CAROLINE**, sister of the reigning Duke of Saxe Meiningen, born August 13, 1792.

*Royal Princes and Princesses.*—Augusta Sophia, born Nov. 8, 1768; Elizabeth, born May 22, 1770—married April 7, 1818, to Frederick Joseph Louis, Landgrave of Hesse Homburg, who died April 2, 1829, in his sixty first year; Ernest Augustus, Duke of Cumberland, born June 5, 1771—married May 29, 1815, to Fredrica Sophia Caroline, daughter of the Duke of Mecklenberg Strelitz, and widow of Frederick William, Prince of Salm Braunfels, born March 2, 1778; *Issue*, George Frederick, born May 27, 1819; Augustus Frederick, Duke of Sussex, born January 27, 1773; Adolphus Frederick, Duke of Cambridge, born February 24, 1774—married May 7, 1818, to Augusta Wilhelmina Louisa, niece of the Landgrave of Hesse—born July 25, 1797; *Issue*, George William, March 26, 1819. Augusta Caroline, July 19, 1822; Mary, Duchess of Gloucester, born April 25, 1776; Sophia, born November 2, 1777.

*Present order of Succession to the Throne.*—Alexandrina Victoria, issue of the late Duke of Kent, born May 24, 1819.

**HIS MAJESTY'S MINISTERS.**—First Lord of the Treasury—Viscount Melbourne. Chancellor of the Exchequer—The Right Hon. T. Spring Rice. President of the Council—Marquis of Lansdowne. Secretaries of State,—Home Department, Lord John Russell; Foreign Affairs, Viscount Palmerston; the Colonies, Lord Glenelg. First Lord of the Admiralty—Earl of Minto. President of the India Board—Sir John Cam Hobhouse, Baronet. President of Board of Trade—Right Hon. Chas. Powlett Thompson. First Commissioner of Woods and Forests—Lord Duncannon. Secretary at War—Lord Howick. Joint Secretary of the Treasury—Francis Baring, Esquire. Attorney General—Sir John Campbell. Solicitor General—Robert Monsley Rolfe, Esquire. Judge Advocate General—Right Hon. Robert Cutler Ferguson. Paymaster General—Sir Henry Parnell. Postmaster General—Marquis Conyngham. Lord Lieutenant of Ireland—Earl of Mulgrave. Lord Chancellor of Ireland—Lord Plunkett. Secretary for Ireland—Lord Morpeth.



**POPULATION OF THE PROVINCE OF NEW-BRUNSWICK,  
IN THE YEAR 1834.**

Counties, Parishes, &c.	WHITES.				People of Colour.	Total of persons in each Parish, &c.	Total of persons in each County.
	Males.		Females.				
	Ab. 16	Un. 16	Ab. 16	Un. 16			
<b>YORK.</b>							
Parish of Fredericton, -	748	652	775	626	169	2970	
"  St. Mary, -	412	375	329	357	34	1507	
"  Douglas, -	542	503	446	530	106	2127	
"  Kingsclear, -	311	271	260	293	69	1204	
"  Queensbury, -	273	252	205	219	58	1007	
"  Prince William, -	184	166	142	145	50	687	
"  Southampton, -	107	110	86	103	0	406	
"  Dumfries, -	160	145	122	143	0	570	10,478
<b>CARLETON.</b>							
Parish of Northampton, -	133	127	105	113	1	479	
"  Woodstock, -	566	474	436	465	6	1947	
"  Kent, -	109	119	84	232	20	564	
"  Brighton, -	258	268	215	265	1	1007	
"  Perth, -	76	72	48	48	0	214	
"  Wicklów, -	160	159	119	153	0	591	
"  Wakefield, -	475	516	395	460	16	1862	
"  Andover, -	124	152	100	145	2	523	
"  Madawaska, -	533	630	491	618	4	2276	9,493
<b>SAINT JOHN.</b>							
City of Saint John, -	3265	2458	3588	2444	318	12,073	
Parish of Portland, -	1338	1151	1267	1050	221	5077	
District of Carleton, -	235	176	213	168	20	812	
Parish of Lan-ster, -	311	384	268	285	70	1315	
"  Saint Martins, -	370	374	307	340	0	1391	20,663
<b>KING'S.</b>							
Parish of Kingston, -	455	511	490	456	17	1929	
"  Sussex, -	838	795	727	746	37	3143	
"  Hampton, -	663	657	578	638	17	2553	
"  Norton, -	232	171	196	156	31	786	
"  Westfield, -	291	339	261	365	19	1275	
"  Springfield, -	382	388	365	376	40	1551	
"  Greenwich, -	253	242	236	217	10	958	12,195
<b>QUEEN'S.</b>							
Parish of Gagetown, -	256	257	249	221	21	1004	
"  Canning, -	276	245	236	293	2	1052	
"  Wickham, -	427	435	360	402	0	1624	
"  Waterborough, -	332	331	298	317	56	1334	
"  Brunswick, -	248	223	171	230	0	872	
"  Hampstead, -	336	327	300	337	18	1318	7,204
<b>SUNBURY.</b>							
Parish of Maugerville, -	134	134	128	116	2	514	
"  Sheffield, -	249	229	211	249	13	957	
"  Burton, -	422	395	340	363	3	1523	
"  Lincoln, -	292	195	180	174	3	844	3,833

## POPULATION OF THE PROVINCE—(CONTINUED.)

Total of per-sons in each County.	Total of per-sons in each Parish.	Total of per-sons in each County.	WHITES.				Total of per-sons in each Parish.	Total of per-sons in each County.
			Males.		Females.			
			Ab. 16	Un. 16	Ab. 16	Un. 16		
			Counties, Parishes, &c.					
			WESTMORLAND.					
			753	823	715	821	12	3124
2970			516	515	459	468	12	1970
1507			291	313	260	270	31	1165
2127			227	264	221	248	0	960
1204			150	157	117	154	0	578
1007			495	555	444	513	0	2007
687			317	270	251	275	4	1120
406			337	341	296	343	1	1318
570	10,478		155	157	146	155	4	617
479			356	298	316	370	6	1346
1947								14,205
564			NORTHUMBERLAND.					
1007			628	475	532	550	0	2185
214			738	512	582	520	3	2355
591			204	94	98	104	1	501
1862			426	297	258	306	0	1287
523			229	165	180	198	0	772
2276	9,493		131	125	88	120	0	464
073			272	213	185	195	0	865
5077			416	347	299	348	12	1422
812			370	352	267	350	0	1319
315								11,170
1391	20,663		KENT.					
929			734	717	702	616	6	2775
3143			314	294	220	211	0	1039
2553			304	307	265	295	0	1171
786			259	268	239	278	2	1046
275								
551								
958	12,195							
004								6,031
052			GLOUCESTER.					
624			888	285	274	277	5	1729
334			310	232	257	298	0	1097
872			421	453	372	453	0	1699
318	7,204		163	190	154	173	0	680
514			391	426	316	359	0	1492
957			563	379	347	335	2	1626
523								8,323
844	8,333		CHARLOTTE.					
			844	864	859	867	53	3487
			323	609	680	558	7	2677
			466	399	343	376	1	1575
			733	530	509	545	4	2321
			375	410	339	383	0	1507
			284	212	222	209	0	927
			187	197	167	191	0	742
			281	268	203	204	0	956
			280	291	279	257	3	1110
								550
								15,852

Total Population of the Province, -- 119,457

## PROVINCIAL DUTIES,

On the following Articles, imported or brought into the Province, either by sea, by inland navigation, or by land, from any part of the British Empire, or from any Foreign Port or place :

For every Gallon of Rum, Spirits, Gin, Hollands Geneva, Whisky, or Cordials, *One Shilling and Sixpence*. For every Gallon of Malasses, *One Penny*. For every Gallon of Shrub, Santa, or Lime Juice, *Six Pence*. For every Gallon of Brandy, *Two Shillings*. For every Gallon of Wine, viz. :—Hock, Conatantia, Malmsay or Tokay, Champagne, Burgundy, Hermitage, Clarat, called Lafitte, Latone, Margaux, or Hautbrion, *Two Shillings and Nine Pence*. For every Gallon of Madeira, Port, or Sherry, *Two Shillings*; and for all other kinds of Wine, *One Shilling and Six Pence* per Gallon. For every Hundred weight of Dried Fruits, *Five Shillings*. For every Pound of Coffee, and loaf or refined Sugar, *One Penny*. For every Hundred weight of Brown or Muscovado Sugar, on the quantity mentioned in the original invoice, allowing 25 per centum for tare and wastage, *Two Shillings and Six Pence*. For every Foreign Horse, *Five Pounds*. For every Foreign Ox, *One Pound*. For every Foreign Cow, or other Horned Cattle, *Three Pounds Ten Shillings*. For every Hundred weight of Foreign dead fresh Meats, of all kinds, *Six Shillings and Eight Pence*.

And upon the following manufactured articles, when not imported from the United Kingdom, upon every Hundred Pounds of the real value thereof, the rates and duties following—that is to say :—For Chairs, Clocks, Clock Cases, Clock Movements or Machinery, Watches, and every description of Household Furniture, Pictures, Mirrors and Looking Glasses, *Twenty Five Pounds*. For Soap and Candles, *Ten Pounds*. For Tobacco, *Five Pounds*.

And for all other Foreign articles, manufactured or not manufactured, not hereinbefore mentioned or described, when not imported from the United Kingdom, upon every Hundred Pounds of the real value thereof, *Ten Pounds*; excepting nevertheless, Liquors, Vinegar, Pitch, Tar, Turpentine, Rosin, Lumber of all descriptions, including Mahogany logs or boards, Grass Seeds, and all other Seeds and Plants, Hides, Tallow, Cotton Wool, Indigo, Tea, Dye Wood, Salt, Leaf Tobacco, Bees Wax, Felt, Lignum Vitae, Brisles, Horse Hair, Horns, Cordage, Canvas, Hemp, Iron, India Rubber, Books, Flour and Meal of all kinds, Wheat Barley, Rye, Oats, Buckwheat, Rice, Peas, Beans, Indian Corn, Bread, dried and salted Meats, and Mill Saws.

Upon all articles of the manufacture of the United Kingdom, imported into this Province, whether by sea, or inland carriage or navigation, for every Hundred Pounds of the real value thereof, the sum of *Two Pounds Ten Shillings*; excepting, nevertheless, Mineral and other Salt, Coals, Fishing Nets, Hooks, Lines and Twines, Steel; bolt, square, flat, pig and sheet Iron, Spikes and Sheathing Nails, bolt and sheet Copper, and Copper Spikes and Nails, bar and sheet Lead, Canvas, Coal Tar, Oakum, Cordage, Anchors, and all Tacklo or Apparel for Ships or Vessels, Steam and Mill Machinery of all kinds, Zinc, Beef, Pork and Bacon, Flour Meal of all kinds, Mathematical Instruments of all kinds, Sheathing Paper, Iron Block Bushes, Loaf or Refined Sugar, Printed Books and Maps.

Province,  
in any part of  
the Province:

Brandy, Whisky,  
Rum, or M  
Liquors, or Lime  
oil, *Shillings.*  
Malmsey, or  
Rhenish, called Lafitte,  
*Nine Pence.*  
Wine, *Shillings*; and  
Beer, *per Gallon.*  
Hops, *Shillings.* For  
Salt, *Penny.* For  
Sugar, *per quarter*  
centum for  
every *Four*  
*One Pound.*  
*Pounds Ten*  
fresh Meats,

not imported  
of the real  
value, say:—For  
Machinery,  
Clothes, Pictures,  
For Soap and

not manufac-  
tured, not imported  
of the real  
value, Vine-  
quors, Vine-  
oil, in-  
scriptions, in-  
other Seeds  
Dye Wood,  
Liquors, Horse  
rubbish, Books,  
Buckwheat,  
Meats, and

freedom, import-  
ation, or naviga-  
tion, the sum, of  
Mineral and  
Iron, Steel;  
Nails, Sheet  
Iron, and all Tacklo  
Machinery of all  
kinds, Mathe-  
matical Instru-  
ments, Block Bush-

