

GV

957

.H3B8











YALE *Versus*

Annual Football Game

NEW HAVEN

NOV. 19, 1898

Official Souvenir - Price 50¢

HARVARD

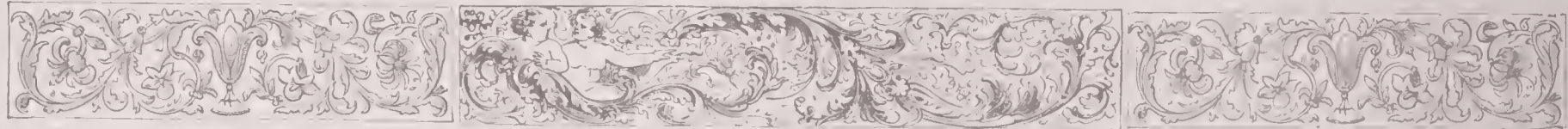




176

# The Official Souvenir Program

of the YALE-HARVARD FOOTBALL GAME



YALE FIELD, NEW HAVEN, CONN., NOV. 19, 1898

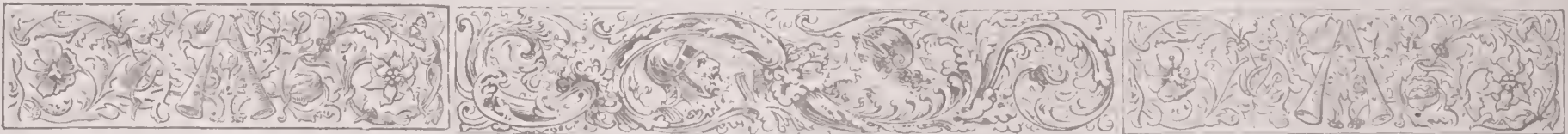
PUBLISHED UNDER THE AUSPICES OF THE

Yale University Foot Ball Assoc'n

JAMOT BROWN, PRESIDENT

Harvard University Football Assoc'n

F. R. NOURSE, PRESIDENT



ADDISON S. PRATT, YALE '96. EDITOR  
1008 CHAPEL STREET, NEW HAVEN, CONNECTICUT

THE PHOTOGRAPHS IN THIS BOOK WERE TAKEN BY PACH BROTHERS, 1024 CHAPEL STREET NEW HAVEN, CONNECTICUT

7430  
1898

18935

# INTRODUCTION

THE attempt has been made by the omission of other than football pictures to have the program this year more of a *football* souvenir than ever before. With this end in view, cuts of the Yale and Harvard teams and captains since 1890 have been made — complete with the exception of Cabot, Captain of the Harvard '97 team, and Rhodes, Captain of the Yale '90 team. Pictures of some of the prominent players and the different football fields have also been inserted, making, it is hoped, a very attractive and interesting football record. — THE EDITOR.



7430  
1898



VIEW FROM OLD NEW HAVEN, CONN.

View Looking off, Yale vs. Princeton, Nov. 20, 1897



FROM A WOOD ENGRAVING BY WILL BRADLEY

THIS BOOK WAS ARRANGED AND PRINTED BY  
**WILL BRADLEY** at  
**The University Press**  
CAMBRIDGE, MASSACHUSETTS, U. S. A.



THE UNIVERSITY PRESS  
& MR. WILL BRADLEY  
take pleasure in an-  
nouncing that the  
*complete plant, engra-  
vings, ornaments, etc.,*  
of THE WAYSIDE PRESS  
of *Springfield* (a print shop established by  
WILL BRADLEY for the printing of choice  
books and the higher classes of commer-  
cial work) have been added to the large  
and perfect equipment of THE UNIVERSITY  
PRESS at *Cambridge*. All of the work  
undertaken by MR. BRADLEY in the future  
will be produced under the *increased*  
and *improved facilities* thus afforded him.

# BROOKS BROTHERS

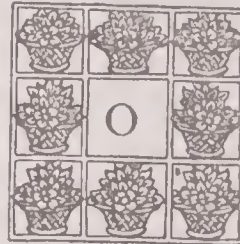
ESTABLISHED 1818

Broadway, cor. 22d Street, New York City



OUR regular customers, though familiar with the character and quality of our goods, may find some interest in noting a few special articles mentioned below. To those who have not dealt with us we would say a few words in regard to the general advantages we offer them. All garments sold are made and designed by us, and as the quantity in each lot is limited, exclusiveness of style and the best value is guaranteed at lower prices in many instances than are asked for garments made in large wholesale lots of inferior workmanship. Shapes are carefully revised every season to keep pace with changes of style, and the most particular care is given to the smallest detail of cut and manufacture. As we have no agents or travellers, and but one store, our goods cannot be procured elsewhere.

Overcoats — correct in cut, finish and every detail of manufacture. Ulsters and Storm Coats of stout materials, suitable for protection from cold or stormy weather, or of heavy or light weight fancy Scotch goods as a comfortable garment for travelling. Knickerbocker Suits and Golfing Outfits. Regulation Scarlet Coats with and without Club Collar and Devices, and a Special Golfing Cape combining lightness with most thorough protection. Breeches reinforced with buck for riding.



OUR Furnishing Department contains an exceptionally rich and handsome line of silks, representing the best foreign makers and selected in London for this season's use, including:

Scarfs and Ties in proper shapes, with some exclusive materials for same to order. Gloves — Reindeer, Cape and Kid, lined and unlined, for driving, street, dress and semi-dress wear; also

Shetlands, Angoras and Fancy Knit for evening and outing wear. Bath Gowns, Sheets and Mats, Turkish Towels, etc. Cardigans, Knit Vests and Sweaters appropriate in color, etc., for the different Golf Clubs throughout the country.

FALL AND WINTER, 1898 - 99

# UNION PACIFIC

## Railroad



THE OVERLAND LIMITED  
CALIFORNIA IN THREE DAYS  
LEAVES CHICAGO 6.30 P.M., DAILY, FOR PACIFIC COAST POINTS

THE COLORADO SPECIAL  
ONE NIGHT TO DENVER  
LEAVES CHICAGO 10 A.M., DAILY, ARRIVING DENVER 1.30 P.M.

THESE MAGNIFICENT TRAINS ARE EQUIPPED WITH THE FINEST  
PALACE SLEEPING CARS, NEWEST DINING CARS, BUFFET SMOK-  
ING AND LIBRARY CARS, STEAM HEATED, PINTSCH GAS LIGHT  
WILLARD MASSEY, New England Freight & Passenger Ag't, 5 State St  
Boston. R. TENBROECK, Gen'l Eastern Ag't, 287 Broadway, New York

E. DICKINSON, General Manager }  
S. A. HUTCHISON, Ass't Gen'l Pass'r Ag't } OMAHA, NEBRASKA  
E. L. LOMAX, Gen'l Pass'r & Ticket Agent }

# F. H. Prince & Co.

Corner  
STATE AND DEVONSHIRE  
STREETS



*Boston*

# CHARLES W. SPRAGUE

Merchant

# Tailor



*Studio  
Building*

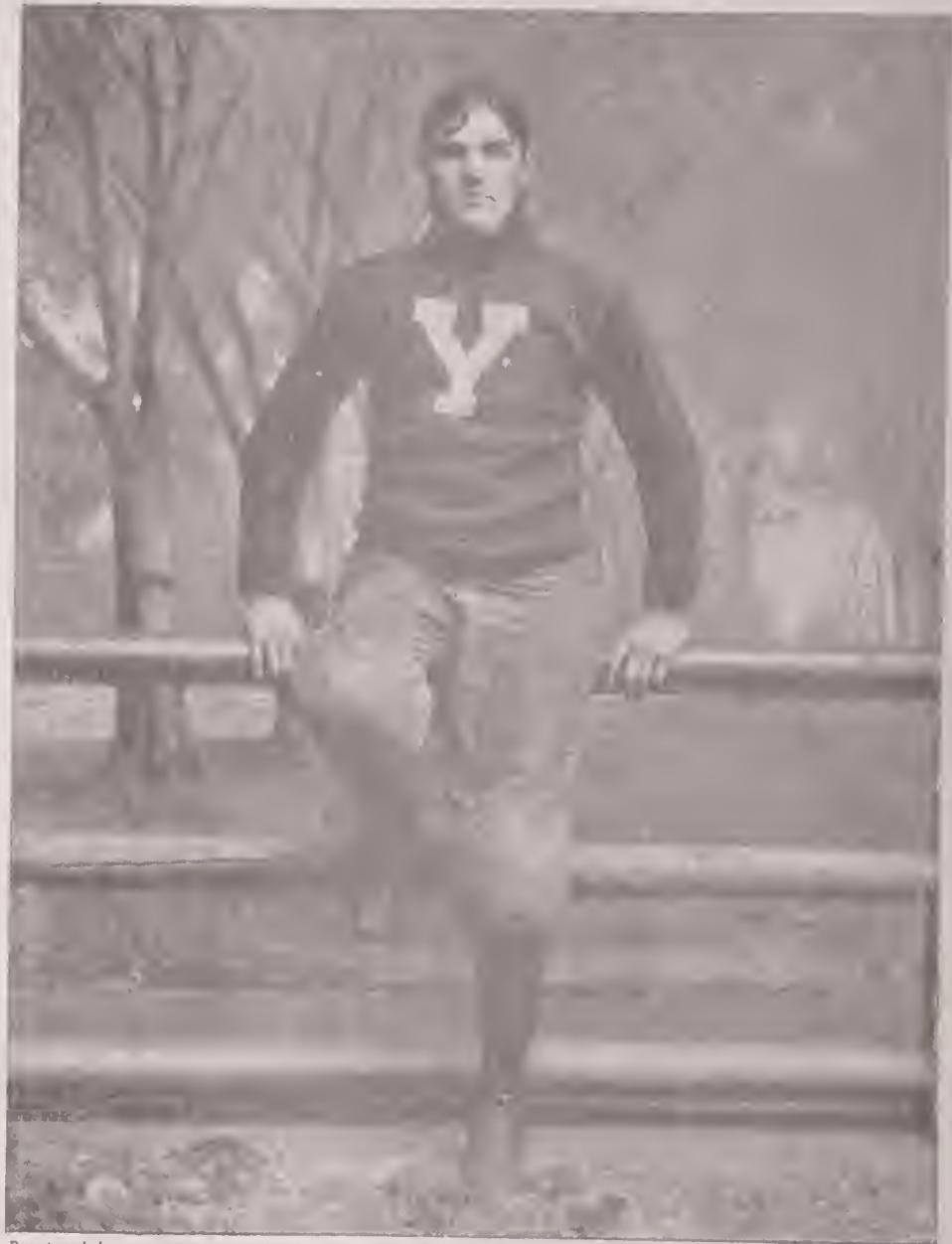
110 TREMONT STREET, BOSTON

# YOU MANS CELEBRATED HATS



LADIES' ROUND HATS &  
BONNETS, LIVERY HATS  
RIDING CLUB HATS  
UMBRELLAS & WALKING  
STICKS, ENGLISH HATS  
FROM THE BEST MAKERS  
LEATHER HAT CASES  
ENGLISH UMBRELLAS

1107 & 1109 BROADWAY  
MADISON SQUARE, WEST  
158 BROADWAY  
NEAR LIBERTY STREET



*Reprinted by permission of Yale Alumni Weekly*

BURR C. CHAMBERLIN, YALE, '97-5  
Captain of the '98 team  
Played centre in '96 and right tackle in '97 & '98



YALE '08 TEAM

Dashiell, f b	Grant, t	Slocovich, e	McBride, t b	Brown, l g	Marshall, r g	Stillman, l t	Eds, q b
Benjamin, h b	Durston, h b	Chamberlin (Capt.), c	Cutten, c	McConnell, c	Eudley, h b	Hubbs, t c	
Edly, c	de Saullés, q b	Townshend, h b	Sullivan, q b	Co., r c	Harvey, h b		





HARVARD '08 TEAM

	Bald, f g	Reid, f b	Mill, r t	
Burden, r g	Denub, f t		Jairay, c	Houghton, r t
Cochrane, f e			Hallowell, r e	Trane, M. Masters
Daly, q b	Warren, f b	Diblee (Capt.), r n b	Coach Forbes	



BENJAMIN H. DIBBLEE, HARVARD '99

Captain of the '98 team  
Played full back in '96, and half back in '97

CYRUS BREWER & CO.  
INSURANCE OFFICE

30 Kilby Street  
BOSTON

ARTHUR W. POPE

Tucker, Anthony, & Co.

53 STATE STREET  
BOSTON

BANKERS & BROKERS

# The Murray Hill Hotel

Park Ave., 40th to 41st St., NEW YORK

ONE BLOCK FROM GRAND CENTRAL STATION



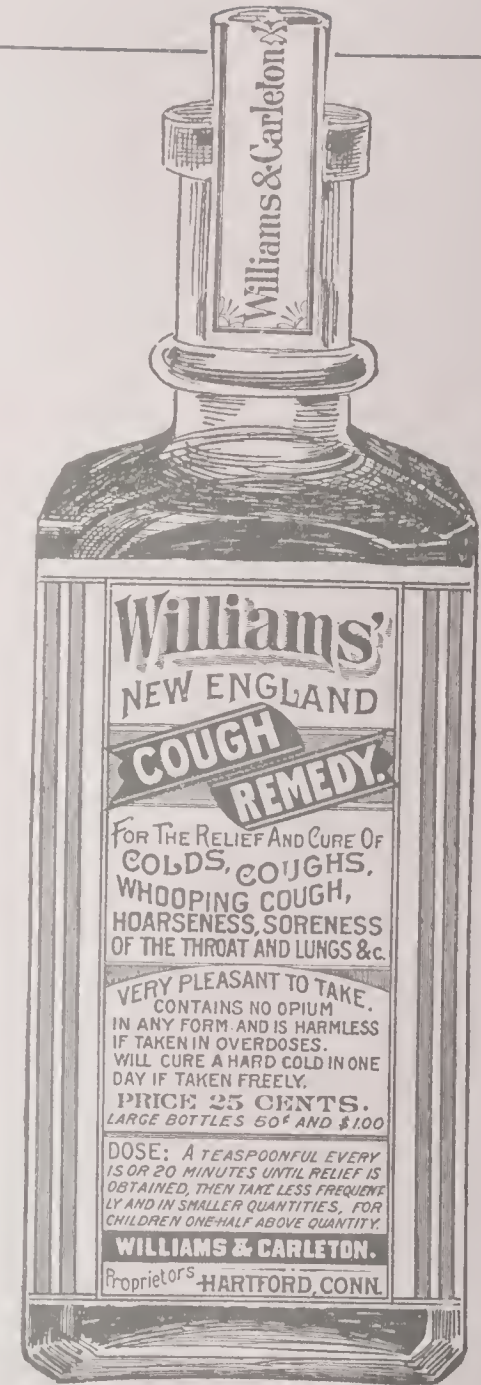
American and  
European Plans

B a g g a g e

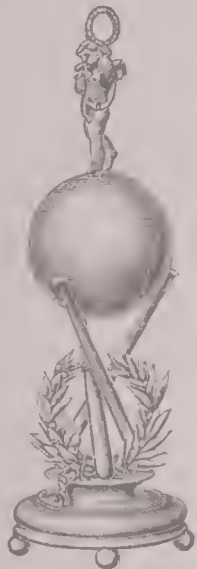
Transferred to and from the  
GRAND CENTRAL STATION  
FREE OF CHARGE

---

HEADQUARTERS YALE UNIVERSITY



# PRIZE CUPS & TROPHIES



What can be more  
suitable for a  
prize than a

## Cup or Trophy?

A new line just out in Sterling  
Silver and Plated Metal. Drop  
us a line and we will show  
them to you.

SIMPSON, HALL,  
MILLER & COMP'Y  
SILVERSMITHS  
WALLINGFORD  
CONNECTICUT

WE REFER BY PERMISSION TO THE  
**YALE** GYMNASTIC AND ATH-  
LETIC ASSOCIATIONS  
FOR WHOM WE FURNISH PRIZE CUPS

L. JONAS & CO  
THEATRE TICKET OFFICE



---

---

OUT OF TOWN PAPERS  
FROM ALL CITIES

BOOKS &  
STATIONERY

TELEPHONE CALL 4407 CORTLANDT

---

---

ASTOR HOUSE  
NEW YORK CITY

H. C. WARREN & CO.

*Bankers and Brokers*

108 Orange Street

NEW HAVEN, CONN.

Investment Securities

Letters of Credit and Foreign Exchange

## LIST OF PLAYERS - YALE TEAM

- CAPTAIN B. C. CHAMBERLIN, P. G., right tackle, prepared at Andover. He played in the same position on the '96 and '97 teams. Age, 21; height, 5 feet 9 inches; weight, 182 pounds.
- G. W. HUBBELL, JR., 1900, of Greenwich, Conn., left end, prepared at St. Paul's School. Age, 20; height, 6 feet; weight, 157 pounds.
- G. S. STILLMAN, 1901, of Brooklyn, left tackle, prepared at St. Paul's School. Age, 19; height, 6 feet 1 inch.
- F. G. BROWN, 1901, left guard, played in same position on '97 team. He prepared at Groton. Age, 19; height, 6 feet 3 inches.
- G. B. CUTTEN, '99, T. S. of Nova Scotia, centre, was substitute on the '97 team. Age, 24; height, 5 feet 9 inches; weight, 201 pounds.
- E. E. MARSHALL, 1900, right guard, prepared at Pennsylvania Charter. He was substitute on '97 team. Age, 21; height, 6 feet 3 inches.
- S. L. COY, 1901, of Lakeville, Conn., right end, played on his Freshman team. He prepared at Hotchkiss. Age, 19.
- C. A. DESAULLES, '99 S., quarter back, prepared at Lawrenceville, and played on his freshman and the '97 teams. Age, 22; height, 5 feet 9 inches; weight, 150 pounds.
- A. H. DURSON, '99 S., of Syracuse, left half back, played tackle on '96 team and substitute on '97 team. He prepared at Andover. Age, 21; height, 5 feet 11 inches.
- C. T. DUDLEY, 1900 S., of Washington, D. C., right half back, prepared at Lawrenceville. He played on the '97 team. Age, 20; weight, 150 pounds; height, 5 feet 10 inches.
- M. L. MCBRIDE, 1900, of Cleveland, full back, prepared at the University School at Cleveland. He played on his freshman and the '97 teams. Age, 20; height, 6 feet 2 inches; weight, 183 pounds.

### SUBSTITUTES

- E. E. McConnell, '99, L. S., c, prepared at Cheltenham; age, 21; weight, 197 lbs.; height, 5 ft. 8 in. At Yale since last September.
- F. W. Allen, 1900, t, prepared at Cheltenham; age, 21; weight, 180 lbs.; height, 6 ft. Sub. '97 team.
- C. P. Cook, 1901, S., t, prepared at Hotchkiss; age, 21; weight, 179 lbs.; height, 6 ft.
- D. R. Francis, 1900, t, prepared at St. Paul's; age, 20; weight, 180 lbs.; height, 6 ft. 1 in. Sub. on Freshman team.
- H. Richards, Jr., 1900, S., t, prepared at Lawrenceville; age, 21; weight, 165 lbs.; height, 5 ft. 10 in.
- C. E. Sullivan, 1900, q b, prepared at Uvy. Sch. Cleveland; age, 20; weight, 150 lbs.; height, 5 ft. 7 in. Capt. Fresh. team, Sub. '97 team.
- M. U. Ely, 1901, L. S., q b, prepared at Polytechnic; age, 21; weight, 135 lbs.; height, 5 ft. 7 in. Capt. '98 Fresh. team, Sub. '96, '97 teams.
- Keyes Winter, 1900, q b, prepared at St. Paul's; age, 20; weight, 145 lbs.; height, 5 ft. 8 in. Sub. Freshman team, Sub. '97 team.
- H. F. Benjamin, 1900, S., h b, prepared at St. Mark's; age, 21; weight, 158 lbs.; height, 5 ft. 11 in. '96 and '97 teams.
- A. F. Corwin, '99, S., h b, prepared at Norwich Academy; age, 21; weight, 154 lbs.; height, 5 ft. 7 in. '96 and '97 teams.
- R. Townshend, 1900, S., h b, prepared at Taft's; age, 20; weight, 150 lbs.; height, 5 ft. 8 in. '96 and '97 teams.
- A. B. Marvin, '99, f b, prepared by tutor; age, 22; weight, 158 lbs.; height, 5 ft. 11 in.; Sub. '97 team.
- J. H. Wear, 1901, f b, prepared at Smith Academy; age, 20; weight, 140 lbs.; height, 5 ft. 8 in. Capt. Freshman team.
- J. W. Burdick, 1902, f b, prepared at Andover; age, 19; weight, 145 lbs.; height, 5 ft. 6 inches.
- S. A. Gilmore, '99, f b, prepared at Kiskimetas; age, 20; weight, 170 lbs.; height, 5 ft. 10 in. Sub. Freshman team, Sub. '97 team.
- P. T. Dashiell, '99, S., f b, prepared at St. Paul's; age, 19; weight, 160 lbs.; height, 6 ft. 1 in.
- Chas. Dupee, 1901, f b, prepared by tutor; age, 20; weight, 157 lbs.; height, 5 ft. 10 in. Freshman team.
- W. P. Slocovich, 1900, L. S., e, prepared at Brooklyn Poly.; age, 22; weight, 170 lbs.; height, 5 ft. 9 in. Sub. Fresh. team, Sub. '96, '97 teams.
- L. M. Thomas, 1901, e, prepared at St. Paul's; age, 20; weight, 160 lbs.; height, 5 ft. 11 in.
- A. H. Sharpe, 1901, M. S., e, prepared at Hillhouse H. S.; age, 21; weight, 170 lbs.; height, 6 ft. 1 in.
- E. M. Eddy, '99, S., e, prepared at Lawrenceville; age, 21; weight, 150 lbs.; height, 5 ft. 10 in. Freshman team, Sub. '97 team.

# LIST OF PLAYERS—HARVARD TEAM

CAPTAIN B. DIBBLEE, '99, of Ross, California, left half back, prepared at Groton School. He played full back on his Freshman eleven, and was a substitute on the Varsity his sophomore year, and played his present position on Varsity last year. Age, 22; height, 5 feet 8½ inches.

F. D. COCHRANE, '99, of Boston, left end, played end on his Freshman team and substitute quarter back on the Varsity last year. He prepared at Groton. Age, 21; height, 5 feet 10 inches.

MALCOLM DONALD, '99, of Brookline, left tackle, prepared at Roxbury Latin School. He played tackle on the Varsity in his Freshman year, and right tackle last year. Age, 21; 5 feet 11½ inches.

W. A. BOAL, 1900, of Chicago, left guard, played guard on his Freshman team and substitute guard on Varsity last year. Age, 19; height 6 feet.

W. A. M. BURDEN, 1900, of New York, right guard, played guard on his Freshman team, and was substitute centre on Varsity last year. He prepared at Groton. Age, 21; height, 6 feet 2 inches.

F. L. BURNETT, of Cambridge, centre, played centre on his Freshman team last year.

F. MILLS, '99, of West Point, right tackle, prepared at St. Paul's School, where he captained the team. He was substitute right tackle on the eleven last year. Age, 20; height, 5 feet 8 inches.

N. TRAFFORD, Brooklyn, 1901, Captain '99, F. and T., Hopkinson.

F. L. RICHARDSON, '99, of Brooklyn, right end, prepared at Hopkinson. He played on his Freshman team.

J. W. HALLOWELL, 1901, of W. Medford, right end, was captain of his Freshman team.

C. DALY, 1901, of Boston, quarter back, played quarter back on his Freshman team last year.

L. WARREN, 1900, of Cambridge, right half back. He played full back on his Freshman eleven, and substitute on Varsity last year. Age, 19; height, 6 feet.

W. T. REID, 1901, of Belmont, California, full back, was full back on his Freshman team last year.



D. **Toy** & Company  
*Tailors*  
 10 HARVARD  
 CO-OPERATIVE



71 BEACON STREET  
 opposite Public Garden  
 BOSTON

ADAMS HOUSE  
 WASHINGTON STREET  
 BOSTON, MASS.



EUROPEAN PLAN  
 GEORGE G. HALL, *Proprietor*

F. W. WEINSCHENK  
 MEN'S OUTFITTER



Wright and  
 Ditson's Ath-  
 letic Goods,  
 Furnishing  
 Goods, The  
 latest Styles  
 in Shirtings,  
 Neckwear,  
 N é g l i g é  
 Shirts, etc.

SAME DOOR AS THURSTON'S  
 Harvard Square, Cambridge

"MORE THAN A MILLION IN USE."

**Reliability, Strength & Accuracy**

*Are Combined In*

**WINCHESTER**



Rifles

&

Repeating

Shot

Guns

ADAPTED TO ALL KINDS OF SHOOTING

WINCHESTER AMMUNITION  
 MADE FOR ALL KINDS OF GUNS. SOLD EVERYWHERE

FREE—Send name and address on a postal card for new 158 page catalogue

**Winchester Repeating Arms Co.**  
 NEW HAVEN, CONNECTICUT



Reprinted by permission of Yale Alumni Weekly

TACKLING THE DUMMY



5 Park Place, New York

Decorator

FOR THE  
YALE JUNIOR PROMS.  
FOR MANY YEARS

FLAGS AND BANNERS

# The OSBORN HALL PHARMACY

T. B. HULL, Proprietor 1008 Chapel Street



JUST LIKE HOME FOR  
THOSE YALE MEN WHO  
WANT THE BEST DRUGS AND  
THEIR PRESCRIPTIONS  
FILLED SKILFULLY WITH  
THE PUREST DRUGS

*Soda Water and Hot Drinks*

PALATE PLEASERS  
for those who appreciate the best



COX & LYON

SELL EVERYTHING IN

*Hardware*

WHOLESALE  
AND RETAIL



776 CHAPEL STREET  
NEW HAVEN  
CONNECTICUT

*Telephone Connections*

Burton  
Dickerman

WHOLESALE & RETAIL

ICE  
DEALER

No. 71 BROADWAY  
NEW HAVEN, CONN.

H. WHITE

*Importing Tailor*

PERFECT FIT AND  
WORKMANSHIP  
GUARANTEED

1134 CHAPEL ST.  
*Opposite University Club*  
NEW HAVEN, CONN.

SUITS MADE AT LOWEST  
PRICES  
GOLF PANTS MADE FROM  
*SIX DOLLARS UP*

W. F. GILBERT

K O A L

DELIVERED IN

*Bags*

*Office, 65 CHURCH ST.*  
*Opp. P. O., NEW HAVEN*  
CONNECTICUT



*Reprinted by permission of Yale Alumni Weekly*

THE WELL-DOWNED DUMMY

PHOTOGRAPHS Are sure to be Satisfactory  
FROM *The Filley Studio* 840 CHAPEL STREET  
NEW HAVEN, Conn.

FRANK A.  
CORBIN

Importing  
Tailor

1000 CHAPEL STREET  
NEW HAVEN, CONN.

WEINBERG

SUITS



FOR  
FALL AND WINTER  
\$20 \$25 and \$35

The Tailor

302 ELM STREET  
NEW HAVEN, CONN.

ESTABLISHED 1784

Old Hardware Store

[CHAFING DISHES]

[5 O'CLOCK TEA KETTLES]

[ANDIRONS]

[SKATES]

[CUTLERY]

The  
John E. Bassett & Co.  
754 Chapel Street 318-320 State Street  
NEW HAVEN, CONNECTICUT

BEST FLOUR IN THE WORLD



J.D. DEWELL & CO. NEW HAVEN,  
-MILL AGENTS- CONN.

# YALE SCORE CARD

## EXPLANATION

Score 5 points for each touch-down, 1 point for each goal kicked from touch-down, and 5 points for each goal kicked from the field. Score 2 points to the credit of the side not at fault for each safety.

TOUCH-DOWNS		GOALS	GOALS KICKED FROM FIELD	
Touch-downs	Made by	Goal by	Goals	Kicked by
1st	.....	.....	1st	.....
2d	.....	.....	2d	.....
3d	.....	.....	3d	.....
4th	.....	.....	SAFETIES	
5th	.....	.....	Safety	Made by
6th	.....	.....		
7th	.....	.....	1st	
			2d	
			3d	
TOTALS	{ Touch-downs .. Goals	Goals from field Safeties.....	} TOTAL POINTS	

# HARVARD SCORE CARD

## EXPLANATION

Score 5 points for each touch-down, 1 point for each goal kicked from touch-down, and 5 points for each goal kicked from the field. Score 2 points to the credit of the side not at fault for each safety.

TOUCH-DOWNS		GOALS	GOALS KICKED FROM FIELD	
Touch-downs	Made by	Goal by	Goals	Kicked by
1st	.....	.....	1st	.....
2d	.....	.....	2d	.....
3d	.....	.....	3d	.....
4th	.....	.....	SAFETIES	
5th	.....	.....	Safety	Made by
6th	.....	.....	1st	.....
7th	.....	.....	2d	.....
TOTALS	{ Touch-downs _____ Goals _____	{ Goals from field _____ Safeties _____	} TOTAL POINTS ...	
			3d	.....

K I D D E R, P E A B O D Y & C O.

113 DEVONSHIRE STREET

BOSTON

---

INVESTMENT SECURITIES      FOREIGN EXCHANGE

LETTERS OF CREDIT

# The New York, New Haven and Hartford Railroad Company's ALL RAIL & SOUND LINES Between NEW YORK & BOSTON

## Through Train Service from Either City

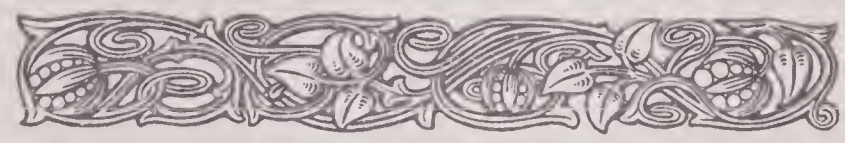
## Long Island Sound Routes

Bay State Limited (SHORE LINE)	Week Days Only Vestibuled FIVE Hour Train. SPECIAL TICKET REQUIRED. Buffet Parlor Cars only. Buffet Smoking Car	Leaves 10.00 a. m. Arrives at 3.00 p. m.
Day Express (SHORE LINE)	Week Days Only Vestibule Buffet Parlor Cars. Day Coaches	Leaves 10.03 a. m. Arrives at 4.30 p. m.
Air Line Limited (AIR LINE)	Week Days Only Buffet Parlor Cars, Buffet Smoking Car Day Coaches	Leaves 1.00 p. m. Arrives at 6.00 p. m.
Afternoon Express (SHORE LINE)	Week Days Only Vestibule Buffet Parlor Cars. Day Coaches	Leaves 1.02 p. m. Arrives at 7.00 p. m.
Shore Line Express (SHORE LINE)	Daily, Sundays Included Vestibule Parlor Cars. Day Coaches Vestibule Parlor Smoking Buffet Car Vestibule Dining Car between New London and Boston	Leaves 3.00 p. m. Arrives at 9.00 p. m.
Gilt Edge Express (SHORE LINE)	Daily, Sundays Included Vestibule Parlor Cars. Day Coaches Vestibule Parlor Smoking Buffet Car Vestibule Dining Car Between New London and Boston	Leaves 5.00 p. m. Arrives at 11.00 p. m.
1st Midnight Express (SHORE LINE)	Daily, Sundays Included Vestibule Stateroom and Sleeping Cars only Open for Occupation at 9.15 p. m.	Leaves 12.00 night Arrives at 6.28 a. m.
2d Midnight Express (SHORE LINE)	Daily, Sundays Included Day Coaches and Sleeping Cars Sleeping Cars open for occupation at 9.15 p. m.	Leaves 12.03 night Arrives at 6.58 a. m.

**FALL RIVER LINE** via Newport, R.I., and Fall River, Mass.  
Steamers leave New York from Pier 19, North River. Westbound, trains leave from Park Square Station, Boston, connecting with steamers at Fall River.

**STONINGTON LINE** via Stonington, Connecticut.  
Steamers leave New York from Pier 36, North River. Westbound, trains leave from Park Square Station, Boston, connecting with steamers at Stonington.

**NORWICH LINE** via New London, Connecticut.  
Steamers leave New York from Pier 36, North River. Westbound, trains leave from both Park Square and Kneeland Street Stations, Boston, connecting with steamers at New London.



**C. T. HEMPSTEAD**  
General Passenger Agent, Western District  
NEW HAVEN, CONN.

**O. H. TAYLOR**  
General Passenger Agent, Marine District  
NEW YORK CITY

**A. C. KENDALL**  
General Passenger Agent, Eastern District  
BOSTON, MASS.

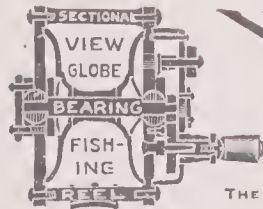
**GEO. L. CONNOR**  
Passenger Traffic Manager  
NEW HAVEN, CONN.

Trains leave from and arrive at Grand Central Station, New York, and Park Square Station, Boston

**W**E claim the highest grade of excellence in the manufacture of our Garments. Our customers advertise us better than pages of reading matter.

EDW. SOMERS  
Opposite  
Center Street P. O. Entrance

Importing Tailor



**HENDRYX**

Ask any of the Largest Jobbing Purchasers of Fishing Tackle for our Fishing Reels. They all buy them and keep a large line in stock and will fill your orders promptly. Annual Catalogues Mailed Free.

THE ANDREW B. HENDRYX CO., NEW HAVEN, CONN., U. S. A.



FIRST STREET LANDS, CAMBRIDGE

Frederic W. Daur  
413 Exchange Building  
Boston

LANDS, INVESTMENTS, WATER FRONTS



WILLIAM MACKIE, HARVARD '94

Played right guard in '91, '92 and '93, and left guard in '94

BERTRAM G. WATERS, HARVARD '94

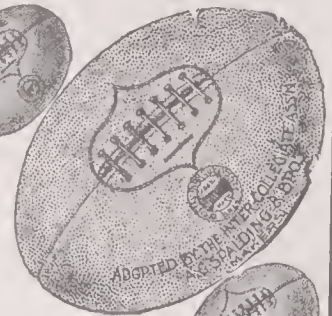
Played left tackle in '91, left guard in '92, half back in '93, and right tackle in '94



SOLDIERS' FIELD, CAMBRIDGE, MASS.

Taken during the Yale-Harvard game, November 13, 1897



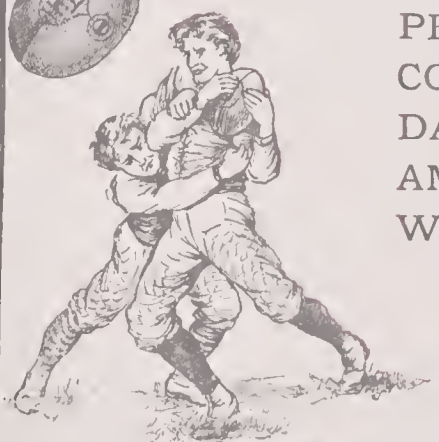


*Spalding's*  
**OFFICIAL**

INTER-COLLEGIATE **FOOTBALL**

*Is used exclusively by*

**YALE and  
HARVARD**



PRINCETON  
PENNSYLVANIA  
CORNELL  
DARTMOUTH  
AMHERST  
WILLIAMS

and all  
other  
leading  
Universities



**SPALDING'S**

**GOODS**

*ARE THE*  
**STANDARD**

*IN*  
**ATHLETIC**

**S P O R T**

**A. G. SPALDING & BROS.**  
*NEW YORK* *CHICAGO*

A N E W E N G L A N D P R O D U C T



# “ M. S. ” GINGER ALE

*A trial will demonstrate its superiority to all Imported or Domestic brands*

**T**HIS Ale, placed on the market early in 1898, is made at South Duxbury, Plymouth County, Massachusetts, with the celebrated MYLES STANDISH SPRING WATER. Guaranteed to be entirely free from all adulterants and impurities, the greatest care is used in compounding, to insure an article of the highest grade



## OUR OUT-OF-TOWN CLUB PATRONAGE INCLUDES

NEW YORK ATHLETIC CLUB, *New York and Travers Island Houses*  
AMERICAN YACHT CLUB, *Rye, N. Y.*  
ATLANTIC YACHT CLUB, *Seagate*  
LARCHMONT YACHT CLUB, *Larchmont, N. Y.*  
DOUGLASTON YACHT CLUB, *Bayside, L. I.*  
HUGUENOT YACHT CLUB, *New Rochelle, N. Y.*  
HUNTINGTON YACHT CLUB, *Huntington, L. I.*  
HEMPSTED HARBOUR CLUB, *Glen Cove, L. I.*  
HARLEM WHEELMEN, *New York*  
CENTURY WHEELMEN, *New York*  
OAKLAND GOLF CLUB, *Bayside, L. I.*  
DYKER MEADOW GOLF CLUB, *Fort Hamilton, L. I.*  
NEW BRUNSWICK GOLF CLUB, *New Brunswick, N. J.*  
ENGLEWOOD GOLF CLUB, *Englewood, N. J.*

SHELTER ISLAND GOLF CLUB, *Suffolk Co., N. Y.*  
RICHMOND COUNTY COUNTRY CLUB, *Dongan Hills, Staten Island*  
MIDWOOD CLUB, *Flatbush, Brooklyn*  
MARINE AND FIELD CLUB, *Bath Beach, L. I.*  
KNICKERBOCKER FIELD CLUB, *Flatbush, Brooklyn*  
SUBURBAN CLUB, *Elizabeth, N. J.*  
MATTANO CLUB, *Elizabeth, N. J.*  
TOWN AND COUNTRY CLUB, *Elizabeth, N. J.*  
LAKE HOPATCONG CLUB, *Lake Hopatcong, N. J.*  
FALL RIVER LINE  
PROVIDENCE LINE  
NEW HAVEN LINE  
HARTFORD LINE  
MONTAUK STEAMBOAT CO.

SOLD BY

ACKER, MERRALL, & CONDIT, NEW YORK  
JOHN GILBERT, JR. & CO., BOSTON

L. BOYER'S SONS, Proprietors  
90 Wall St., New York      169 Devonshire St., Boston



HAMPDEN PARK, SPRINGFIELD, MASS.  
The scene of the Yale-Harvard football games until 1895

TELEPHONE CONNECTION

Charles  
A. **Wilcox** & Co.

DEALERS IN  
POULTRY &  
WILD GAME

*Smoked Tongues  
Etc.*

BASEMENT NO. 11  
FANEUIL HALL MARKET  
BOSTON, MASS.



**Handsome Dan**

C. P. PHELPS & CO.  
MUNICIPAL AND CORPORATION  
**Bonds**

50 STATE STREET  
BOSTON, MASS.

**Otto's Club Café**  
*Sample & Lunch Room*  
146 PARK STREET

OTTO H. WALL, Prop.  
FORMERLY OF ORANGE AND  
CROWN STREETS

Celebrated *Toledo, Pilsner, & Wurtz-*  
*burger Beer.* OYSTERS. RAREBITS  
*"Yale Lemonade with a Record."*

*DANCING School*  
STUDENTS CONSIDERING  
THE SUBJECT OF DANC-  
ING SHOULD CONSULT

**C. FRANCIS  
MALONE**

Of 110 TEMPLE STREET

**"TRAEGERS"**

NEAREST RESTAURANT AND  
CAFÉ TO YALE CAMPUS

GEORGE T. SANDALLS, PROPRIETOR

*Boston & Albany*  
SPRINGFIELD LINE  
*To New Haven and New York*

SOLID THROUGH EXPRESS TRAINS  
*Leave BOSTON at*

9.00 a. m. (except Sunday),  
Morning Express 4.00 p. m. (Daily),  
The Limited  
12.00 noon (except Sunday),  
The Flyer 11.00 p. m. (Daily),  
Night Express

*The 12.00 noon Train makes the run to New York  
in five hours forty minutes. No extra charge.*

DRAWING-ROOM CARS  
ON ALL DAY TRAINS  
SLEEPING CARS  
ON ALL NIGHT TRAINS

FOR TIME-TABLES,  
BERTHS IN SLEEPING  
CARS, OR INFORMATION  
OF ANY KIND, CALL ON  
OR ADDRESS

A. S. HANSON

General Passenger Agent  
BOSTON, MASS.

J. L. WHITE

City Passenger Agent

356 WASHINGTON STREET



*Reprinted by permission of Yale Alumni Weekly*

JAMES O. RODGERS, YALE '98  
Captain of the '97 team  
Played tackle in '95, '96, & '97



YALE '97 TEAM

Yale o, Harvard o, at Cambridge, November 13, 1897

Yale 6, Princeton o, at New Haven, November 20, 1897

	Benjamin, r h b	Brown, r g	McBride, f b	Cadwalader, c	Corwin, l h b
Hazen, l e		Hall, r e	Rogers (Capt.), l t	Chamberlin, r	Chadwick, l g
			De Saulles, q b		Dudley, l h b

PARKER  
HOUSE

YOUNG'S  
HOTEL

HOTEL  
TOURNAINE

J. R.  
WHIPPLE  
& CO.

PROPRIETORS

EUROPEAN PLAN

NEW HAVEN COUNTY NATIONAL BANK

CAPITAL \$350,000

317 STATE STREET

SURPLUS \$225,000

DISCOUNT DAYS: MONDAYS AND THURSDAYS A.M.

PRESIDENT

EZEKIEL G. STODDARD

CASHIER

HORATIO G. REDFIELD

TELLER

JAMES TOLLES

DIRECTORS

HENRY D. WHITE

A. HEATON ROBINSON

EZEKIEL G. STODDARD

EDWARD E. BRADLEY

JOHN B. CARRINGTON

JAMES H. FOY

FREDERICK S. PORTER

BRUCE FENN

WM. R. TYLER

MORY'S

LOUIS  
LINDER

ESTABLISHED  
M DCCC XLVIII

S. H. MOORE  
FLORIST



OPPOSITE VANDERBILT HALL  
1054 CHAPEL STREET  
NEW HAVEN, CONN.

VIOLETS A SPECIALTY

**“The Real Strength”**

“Bloom of Youth” & “Peach Cheeks”

Produced by



Feigenspan's

Half &

Half

NEWARK, New Jersey

**BASS'S ALE**

EXCELLENT FOR

**ATHLETIC TRAINING**



*Café*

**Heublein**

*RESTAURANT À LA CARTE*

Fine Wines & Liquors from our

**Hartford House**

Piel Brothers' Beer  
Anheuser-Busch  
Imported Wuerzburger Beer  
& Bass's Ale on Draught

**LAUBER'S CIGAR STORE**

IMPORTED KEY WEST  
& DOMESTIC

**CIGARS**

A Full Line of Smokers' Supplies

860 CHAPEL STREET, NEW HAVEN, CONN.





HARVARD '97 TEAM

Yale o, Harvard o, at Cambridge, November 13, 1897

Fuller (Mgr.)	Lewis	Wheeler	Richardson	Graydon	Cabot (Capt.), l c	Boal	Swain, l t	Sawin	Parker, l h b	Cozzens
Cochrane	Burden	Mills, r t		Sullivan	Haughton, f b	Garrison, q b	N. Shaw, r g		Brown	Warren, l h b
Haskell, r g	Bouve, l g		Moulton, r e		Dibblee, r h b			Donald, r t	"Jack" Doucette, c	



WALTER CAMP, YALE '80

Yale's Veteran Athletic Adviser

## TYSON & BROTHER THEATRE TICKET OFFICES



### Windsor Hotel

FIFTH AVENUE  
46th and 47th STREETS

### Hotel Manhattan

42d STREET and  
MADISON AVENUE

*The* BEST SEATS AND BOXES FOR ALL  
THEATRES, OPERAS, CONCERTS, FOOT-  
BALL GAMES, ETC.

TELEPHONE CALLS: WINDSOR HOTEL, 181-38TH  
HOTEL MANHATTAN, 2285-38TH

Capital \$500,000

Surplus \$200,000

# FIRST NATIONAL BANK

OF NEW HAVEN, CONN.

NO. 42 CHURCH STREET

PIERCE N. WELCH, *Pres.*

FRED B. BUNNELL, *Cashier*

*Directors:*

PIERCE N. WILCH	HENRY F. ENGLISH	JOSEPH PORTER
T. ATTWATER BARNES	MORRIS F. TYLER	SAMUEL A. GALPIN
B. R. ENGLISH	MAX ADLER	THOMAS HOOKER

BANKERS FOR YALE FOOTBALL ASSOCIATION



INTERCOLLEGIATE BUREAU AND REGISTRY

## COTRELL & LEONARD

472-474-476-478 BROADWAY

ALBANY, N. Y.

**M**AKERS of the CAPS, GOWNS and HOODS to YALE, HARVARD, Princeton, Columbia, Univ. of Penn., Cornell, Brown, Williams, Amherst, Dartmouth, Lehigh, Univ. of Chicago, Univ. of Michigan, Wellesley, Radcliffe, Bryn Mawr, Mt. Holyoke, and a hundred others of the American Colleges and Universities. GOWNS for the PULPIT and the BENCH. Class contracts a specialty. Illustrated bulletin, etc., upon application.

C A P S  
G O W N S  
&  
H O O D S



*Reprinted by permission of Yale Alumni Week*

FRED. T. MURPHY, YALE '97

Captain of the '96 team

Played tackle in '93, '94, '95 & '96



*Reprinted by permission of Yale Alumni Weekly*

YALE '96 TEAM

Yale 6, Princeton 24, at Manhattan Field, Nov. 21, 1896

				McFarland, sub c			
		Chadwick, r g	Chauncey, sub h b	Drummond, sub g	Hall, sub e		
Van Every, r h b	Durston, r t	Hazen, sub e		Benjamin, r h b	Alport, sub t	Rodgers, l t	
Ely, sub q b	Murray, l g	Bass, l e	Murphy (Capt.), r t	Hinkey, f b	Fincke, q b	Chamberlin, c	
Mills, l h b	Conner, r e		Hine, l h b			Gerard, sub h b	



HARVARD '96 TEAM

F. Shaw, c	Houghton, f r t	N. Shaw, r g	Cabot, r e	Wheeler, l t	Jenny
Cozzens, r h	Livermore, l h	Moulton, r e	Brown,	Swain, l t	Beal, q
Lee, r t	Dunlop, r h	Wrightington (Capt.), r h		Doucette, c	Sullivan, r h
Bouvé, r g				Lewis, l e	Dibblee, l h

# NESTOR



**NESTOR**  
CIGARETTES

HAVE NO PEER  
AND ARE THE  
ONLY GENUINE  
CAIRO MADE CIGARETTES  
SOLD THROUGHOUT THE WORLD.



EDGAR N. WRIGHTINGTON, HARVARD '97

Captain of the '96 team

Played half back in '93, '94, '95 and '96



# CIGARETTES

P A C H B R O T H E R S

College  
Photographers

Branch of  
935 Broadway, New York

1024 CHAPEL STREET  
NEW HAVEN, CONNECTICUT

U N I O N T R U S T C O .

Capital . . . . . \$100,000.00  
Surplus & Undivided earnings 60,000.00

HENRY L. HOTCHKISS, PRESIDENT  
LOUIS H. BRISTOL, VICE-PRESIDENT  
E. S. BRISTOL, TREASURER

TRUSTEES

LOUIS H. BRISTOL            EUGENE S. BRISTOL  
HENRY L. HOTCHKISS        CHAS. H. TOWNSEND  
E. G. STODDARD

NEW HAVEN, CONNECTICUT



Reprinted by permission of Yale Alumni Week's

S. BRINCKERHOFF THORNE, YALE, '96

Captain of the '95 team  
Played half-back in '93, '94, & '95



*Reprinted by permission of Yale Alumni Weekly*

YALE '95 TEAM

Yale 20, Princeton 10, at Manhattan Field, Nov. 23, 1895

			H. P. Cross, c	Mills, sub h b			
Letton, sub f b	W. R. Cross, r g	Sheldon, sub g		McFarland, sub c	Rodgers, l t	Chadwick, l g	
Bass, l e	Benjamin, sub h b	Campbell, sub c	Murphy, r t	DeWitt, r h b	Thorne (Capt.), l h b	Hinkev, r e	Fincke, q b
Polk, sub h b	Hazen, sub e	Ely, sub q b	Chamberlin, sub t	Beck, sub g	Jerrems, f b		Hatch, sub e



# KOSTER & BIAL'S Music Hall

ALFRED E. AARONS, *General Manager*



*The HOME OF*  
FOREIGN VAUDEVILLE ARTISTS  
BURLESQUE  
BALLET

## FIFTH AVE. THEATRE

MR. EDWIN KNOWLES MANAGER

CARRIAGE PARTIES will be received at the 28th Street Entrance  
Commencing Monday Evening, November 21st  
DALY'S THEATRE SUCCESS

## The Runaway Girl

UNDER THE DIRECTION OF MR. AUGUSTIN DALY  
will be withdrawn from the stage of DALY'S THEATRE, and will be transferred to  
the stage of this theatre, where it will be presented with new features, new topical  
verses, and with all the favorites of the present cast with two or three interesting  
changes.

The 100th performance of THE RUNAWAY GIRL will take place on Mon-  
day Evening, Nov. 21st, this theatre, when a Souvenir Album of the principal  
characters will be presented to every one attending.

SPECIAL MATINEE THANKSGIVING DAY. Regular Matinees  
of THE RUNAWAY GIRL every Wednesday and Saturday at 2.

'Kah! 'Kah! 'Kah! Dip! Dip! Dip!

Dip no more — when you begin let your pen slide 'til you're  
done — you can't do it without a Waterman Ideal Fountain Pen

STUDENTS'  
AS WELL AS OTHERS FIND  
WATERMAN'S  
IDEAL

Fountain Pens

A NECESSARY CONVENIENCE



THEY ARE USED AND ENDORSED BY  
PEOPLE OF EDUCATION  
AS THE BEST WRITING INSTRUMENT OF TO-DAY



It is the popular pen at all the  
Universities, Schools and Colleges

ASK YOUR DEALER OR WRITE FOR CATALOGUE

L. E. WATERMAN COMPANY

LARGEST FOUNTAIN PEN MANUFACTURERS IN THE WORLD

157 BROADWAY, NEW YORK, N. Y.





BERT WATERS, HARVARD '94

Captain of the '93 team

Played left tackle in '91, left guard in '92, half back in '93 and right tackle in '94

# MARLIN REPEATERS

RIFLES



SHOT GUNS

*The* MARLIN FIRE  
ARMS COMPANY  
NEW HAVEN, CONN.



JAMES McD. MAGIE, Manager of the Athletic Team  
JAMOT BROWN, Manager of the Football Team  
WALTER CAMP, Treasurer of Financial Union  
FRED. H. BROOKE, Manager of the Baseball Team  
ORD PRESTON, Manager of the Crew

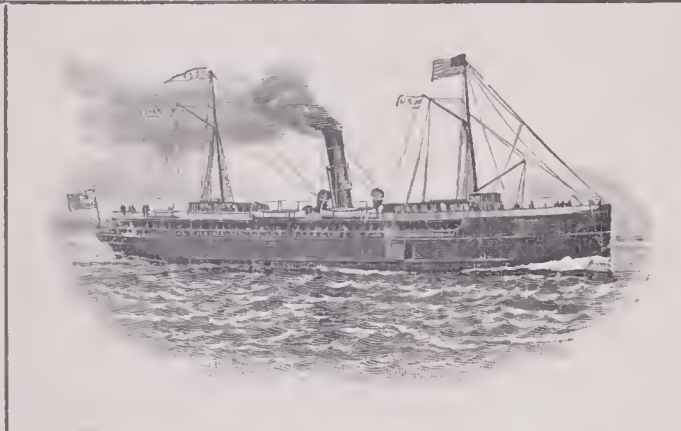
THE FAVORITE TOURIST ROUTE TO  
**NOVA SCOTIA**  
*is the* **YARMOUTH LINE**

**F A S T M A I L  
E X P R E S S S T E A M E R S**

SAIL AT 12 NOON EVERY MONDAY,  
TUESDAY, THURSDAY AND FRIDAY  
TUESDAY AND FRIDAY ONLY DURING THE WINTER

Arriving at Yarmouth early next morning and returning in the evening; close connection by train and boat for all points. Tickets sold and baggage checked through. Send for DESCRIPTIVE Folders giving full information

**H. F. HAMMOND, AGENT**



*The* **BEST** SUMMER  
ROUTE

*The* **BEST** WINTER  
ROUTE

**YARMOUTH STEAMSHIP CO., LTD.**

42 LEWIS WHARF, BOSTON, MASSACHUSETTS



HARVARD '95 TEAM

Harvard 4, Princeton 12

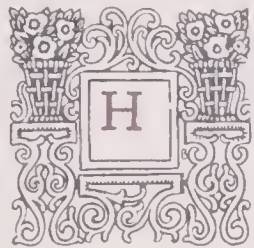
	Borden, qb	Hallowell, lt	Rice, lt	Cabot, le	Townsend, sub				
Wrightington, hb	Moulton, sub e	Hayes, hb	Hennen, sub	A. Brewer (Capt.), re	Stevenson, sub	Jaffray, sub c	G. Newell, re	Fennessy, sub	F. Shaw, c
			G. M. Sargent, sub		C. Brewer, hb		Beale, qb		
Weld, sub	Haughton, sub t			Donald, rt		Hamlin, sub			
	Gonterman, hb	Hoague, sub	Gierasch, sub		Doucette, c	Fairchild, fb	Wadsworth, sub	Knox, sub	



SHIRT MAKERS GOLF GOODS

# CHASE & COMPANY

NEW HAVEN HOUSE BLOCK



## ABERDASHERS

to those well dressed men who appreciate how essential niceties in dress are to proper and stylish appearance. Every care is taken to provide the latest styles in everything necessary to meet the wants of well dressed men who are accustomed to the best.



OF HAMILTON PLACE BOSTON.



FRANK A. HINKEY, YALE '95  
Captain of the '93 and '94 teams. Played end in '91, '92, '93 and '94

FRANK S. BUTTERWORTH, YALE '95  
Played full back in '92, '93 and '94



*Reprinted by permission of Yale Alumni Weekly*

### YALE '94 TEAM

Yale 12, Harvard 4, at Springfield, Nov. 24, 1894

Yale 24, Princeton 0, at Manhattan Field, Dec. 1, 1894

Jerrems, r h b	Murphy, r t	McCrea, l g	Greenway, sub e	Stillman, c	Armstrong, r h b
Chadwick, r t			Batterworth, f b	Thorne, l h b	Bas, l c
		L. Hinkey, r e		F. Hinkey (Capt.), l c	Hickok, r g
	Beard, l t	Adee, q b			Letton, f b





HARVARD '94 TEAM

Harvard 4, Yale 12, at Springfield, November 24, 1894

Whittemore, l h b	Cabot, l e	F. Shaw, c	Gonterman, r h b	Wrightington, l h b	Mills (Ass't Mgr.)
Hallowell, lt	Rogers (Mgt.)	Wheeler, lt			Waters, r t
			A. Brewer, r e	Emmons (Capt.), l e	Hayes, r h b
			C. Brewer, r h b		Wrenn, l b
Dunlop, h b					Fairchild, f b
					Doucette, c
					N. Shaw, r g



ROBERT W. EMMONS, HARVARD '95

Captain of the '94 team  
Played left end in '91, '92, '93 and '94

# P R E M I O C A M E R A S

---

---



---

FROM \$5.00 UPWARDS

---

The sum of fifteen years' experience, the  
brightest skill and perfect workmanship.  
More improvements than any other camera

---

*Catalogue Mailed Free*

---

ROCHESTER OPTICAL CO.  
ROCHESTER, NEW YORK

1851-1898

THE

# PHOENIX

## Mutual Life Insurance Co.

of HARTFORD, CONNECTICUT, issues an ENDOWMENT POLICY to either MEN or WOMEN, which (besides giving Five other options) Guarantees when the Insured is Fifty Years Old to pay \$1,500 IN CASH FOR EVERY \$1,000 OF INSURANCE IN FORCE

*Sample policies, rates, and other information will be given on application to the Home Office*

JONATHAN B. BUNCE, PRESIDENT  
JOHN M. HOLCOMBE, VICE-PRESIDENT  
CHARLES H. LAWRENCE, SECRETARY

A. B. TURNER & BRO.  
BANKERS AND BROKERS

*Street Railway  
Securities*

DEVONSHIRE BUILDING  
16 STATE STREET, BOSTON



YALE'S FAMOUS CENTRE TRIO

W. A. Hickok, Yale '95 S. Played right guard in '92, '93 and '94  
P. T. Sullman, Yale '95 S. Played centre in '92, '93 and '94  
J. A. McCrea, Yale '95 S. Played left guard in '92, '93 and '94



YALE '93 TEAM

Yale 6, Harvard 0, at Springfield, November 25, 1893

Yale 0, Princeton 6, at Manhattan Field, November 30, 1893

Greenway, l c	Murphy, l t	Hickok, r g	Stillman, c	McCrea, l g	Thorne, l h b	Armstrong, r h b
	Hart, l h b	Beard, r t	Hinkey (Capt.), l e			
	Adee, g b			Butterworth, f b		

**Black, Starr & Frost**

JEWELLERS &  
SILVERSMITHS



DESIGNERS AND  
MANUFACTURERS OF

**Prize Cups**  
CLASS RINGS  
PINS, ETC.

---

---

438 FIFTH AVENUE, CORNER  
THIRTY-NINTH STREET  
NEW YORK CITY

**The Chas. S. Elliott Company**

COLLEGE ENGRAVERS & PRINTERS

*S. W. Cor. Broad & Race Sts., Philadelphia*

 THE HALF-TONE ENGRAVINGS  
IN THIS BOOK WERE MADE BY US

Commencement Invitations  
*and* Class Day Programs



CLASS AND FRATERNITY STATIONERY \* FRATERNITY  
CARDS AND VISITING CARDS \* MENUS AND DANCE PRO-  
GRAMS \* BOOK PLATES \* CLASS PINS AND MEDALS \*

**Class Annuals and Artistic Printing**

PILLOW COVERS SIZE 24 x 24  
I N C H E S



*Don't fail to secure this latest design in Pillow Covers. To those who follow college athletics, or who are interested in the leading College game, they should not be without one. It represents the football against a sky-blue background as if just sent whirling through the air by one of the famous full backs. The flags and colors of the "Big Four" Colleges are perfectly reproduced. This is accomplished by our wonderful new Process of reproducing colors on texible fabrics, made on fine strong cloth, ready to put together. (They are not to be worked).*

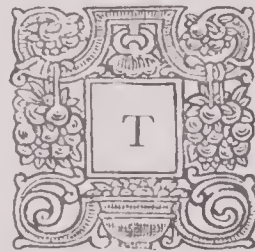
**SENT BY MAIL FOR 56 CENTS, OR TWO FOR \$1.00**

Many other beautiful Pillow Covers and Tapestry art panel designs and exquisite etchings on satin are shown in our New Fall Catalogue; it is itself a work of art. *Sent Free on receipt of a two-cent stamp for postage.*

**TEXTILE NOVELTY COMPANY**  
76 ELM STREET, NEW YORK

H Y G E I A  
H O T E L

OLD POINT COMFORT, VIRGINIA



THE HYGEIA, which has been headquarters for Yale men during the Easter tour of the Glee and Banjo Clubs, is one of the most comfortable and home-like hotels on the Atlantic coast. Among other numerous conveniences it has hot and cold, salt and fresh water baths on every floor, glass enclosed verandas, spacious, well-ventilated and delightfully situated bedrooms, elegant private suites, elevators, electric lights, open grates, steam heat, etc.; and is the only hotel at the Point having Turkish, Russian and electric baths, manicure parlors and massage operators

THE HYGEIA IS OPEN THROUGHOUT  
THE YEAR, AND DURING THE SEASONS  
PROVIDES ABUNDANT MUSICAL  
AND OTHER ATTRACTIONS

SEND FOR ILLUSTRATED CIRCULAR  
F. N. PIKE, PROPRIETOR  
A. C. PIKE, MANAGER



HARVARD '93 TEAM

Harvard 0, Yale 6, at Springfield, November 25, 1893

Stevenson, r c	Newell, r t	Lewis, c	Emmons, r e	Mackey, r g	Acton, l g	Manahan, l t
Gonterman, h b			Waters (Capt.), r h b	C. Brewer, r b		Gray, h b
	Wrightington, l h b	Lane (Mgr.)		Beal, q b	Dunlop, r h b	



BERNARD H. TRAFFORD, HARVARD '93  
 Captain of the '91 and '92 teams  
 Played full back in '90 and '91, and quarter back in '92

# PRIZE TROPHIES



Sterling Silver and Silver Plate

MADE AND  
 GUARANTEED BY



FURNISHED IN

LOVING

CUPS

PUNCH

BOWLS

CIGAR

JARS

ALE

MUGS

SHIELDS

ETC.

FROM OUR  
 REGULAR STOCK



EMBLEMICAL OF

YACHTING

BICYCLING

BASEBALL

FOOTBALL

GOLF

POLO

AND

ALL

ATHLETIC

EVENTS

DESIGNS FUR-  
 NISHED ON  
 APPLICATION

MERIDEN BRITANNIA CO.  
 MERIDEN, CONNECTICUT

NEW YORK { 208 FIFTH AVENUE } MADISON SQUARE  
 { 1130 BROADWAY }  
 CHICAGO SAN FRANCISCO HAMILTON, ONTARIO

Wares of our manufacture are sold by leading dealers everywhere



# Chesapeake and Ohio Railway



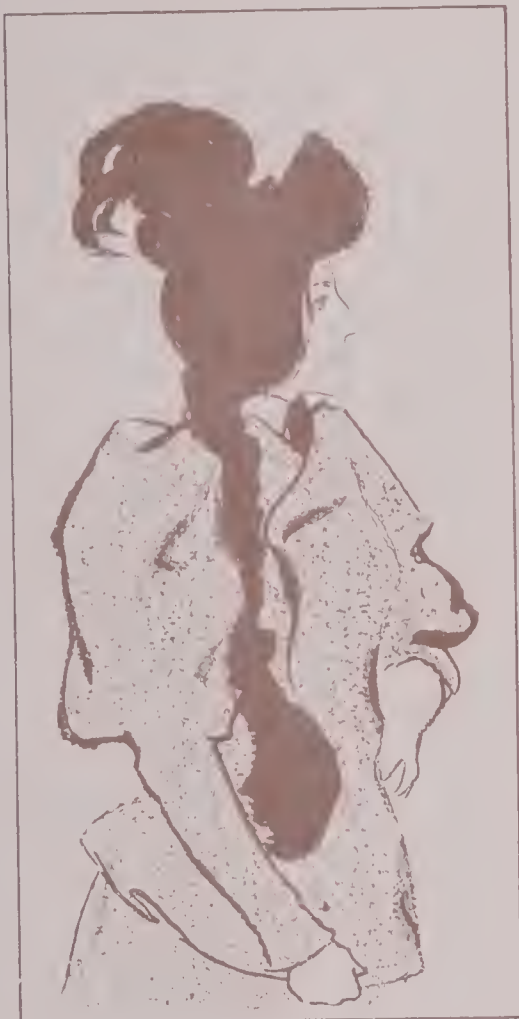
F. F. V. LIMITED PASSING THROUGH NEW RIVER CAÑONS

U. L. TRUITT, Gen. Eastern Pass. Agt., 362 Broadway, New York  
JNO. KURVY, Ticket Agent, 362 Broadway, New York  
H. W. FULLER, General Passenger Agent, Washington, D. C.



95 per cent  
O N T I M E  
Between New York  
Philadelphia, Baltimore  
Washington, Cincinnati  
Louisville, St. Louis  
and Chicago

DINING CARS, PULLMAN SLEEPERS  
OBSERVATION CARS, STRICTLY UP  
TO DATE, GRANDEST SCENERY IN  
AMERICA



ASK FOR

**SA-YO**

Mint Jujubes

A T H R O A T C O M F O R T

*5 Cent Packages*

Endorsed by the Public because of their Merit. Athletes and others find them more acceptable than chewing gum.

**WALLACE & CO.**

NEW YORK CITY

# Yale-Harvard Games

SINCE 1883

THE FOLLOWING IS THE RECORD OF THE YALE HARVARD FOOTBALL GAMES SINCE 1883:

## YALE - HARVARD

1883 — Yale, 23; Harvard, 2	1890 — Harvard, 12; Yale, 6
1884 — Yale, 52; Harvard, 0	1891 — Yale, 10; Harvard, 6
1886 — Yale, 29; Harvard, 4	1892 — Yale, 6; Harvard, 0
1887 — Yale, 17; Harvard, 8	1893 — Yale, 6; Harvard, 0
1890 — Harvard forfeited.	1894 — Yale, 12; Harvard, 4
1899 — Yale, 6; Harvard, 0	1897 — Yale, 0; Harvard, 0



It has been one of the eleven games played, and has scored 171 against Harvard's 34. Whether the chances to win are 9 to 2 or 161 to 34 in favor of Yale, is the question. The result of a football game is not more by or good than one can say how long a man will live, or whether he will accumulate property or die poor. It isn't safe to prophesy now to your wife or child, or to your old age, or to your old wife and children, or to your old age, or to your old wife and children, or to your old age. The only safe way is to insure yourself. The policies of the New York Life Insurance Company protect your family, your ease and your old age. In the policies allowed and benefits guaranteed they offer the "Best" of Everything in Life Insurance. Send your name, age and address for results to the nearest representative of the company.



## New York Life Ins. Co.

340 Broadway, New York

Wm. W. McCull, Jr., Agent



VINCE McCORMICK, YALE '93 S

Capt. of '92 team. Played full back in '91 and quarter back in '92

THOMAS L. McCLUNG, YALE '92

Capt. of '91 team. Played full back in '90 and '91



YALE '92 TEAM

Yale 6, Harvard 0, at Springfield, Nov. 19, 1892

Yale 12, Princeton 0, at Manhattan Field, Nov. 24, 1892

Butterworth, f b	Hickok, r g	Wallis, r t	McCrea, l g	Winter, l t	C. Bliss, r h b	Stillman, c
	Hinkev, l e		McCormick (Capt.), q b	L. Bliss, l h b		
	Greenway, r e					

A P E N T O U S E

THE JOHN FOLEY BANK  
FOUNTAIN PEN



J. R. JACKSON  
187 BROADWAY, NEW YORK

CROUCH AND  
FITZGERALD

Trunks  
Bags and  
Cases

NO. 161 BROADWAY, BETWEEN CORTLANDT  
AND LIBERTY STREETS. NO. 688 BROADWAY,  
BETWEEN FOURTH AND GREAT JONES  
STREETS. NO. 723 SIXTH AVENUE, BETWEEN  
FORTY-FIRST AND FORTY-SECOND STREETS

NEW YORK CITY



Perfection  
Self-Heating  
Curling Iron

CLEAN, SAFE,  
EVEN HEAT

FOR YOURSELF OR AS A HAND-  
SOME AND USEFUL PRESENT.  
PRICE ONE DOLLAR, WITH LINED  
CASE ONE DOLLAR TWENTY-FIVE  
CENTS. INDISPENSABLE AT HOME,  
ABROAD, AND WHILE TRAVELLING.

No Gas, lamp, or electricity required  
Standard Specialty Co.  
TIMES BUILDING, NEW YORK

CYRANO DE BERGERAC by *Edmond Rostand*

R. H. RUSSELL'S A NEW FALL  
CATALOGUE  
NEW BOOKS With Full-Page  
Illustrations by  
GIBSON,  
REMINGTON, WENZELL, NICHOLSON,  
ABBEY, KEMBEL. Mailed free on application to 3 West 29th St., New York

The Grand

ONLY VAUDEVILLE HOUSE  
WITH FULL ORCHESTRA  
SPECIAL TO-NIGHT

GEORGE FULLER GOLDEN  
DIXON, BOWERS AND DIXON  
THREE GARDNER BROTHERS  
SALMO, FLATOW AND DUNN  
CROWLEY AND FOWLEY  
HODGKINS AND LEITHS,  
MINNIE HARNISH  
BROTHERS SORBEY

Prices, 10, 20, & 30 cents Box Chairs, 50 cents



HATTERS AND  
MEN'S FURNISHERS

LAMBERT'S

Correct Styles at Low Prices

829 CHAPEL STREET  
NEW YORK, 41 CORTLANDT ST.

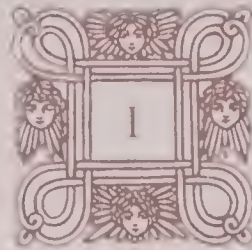
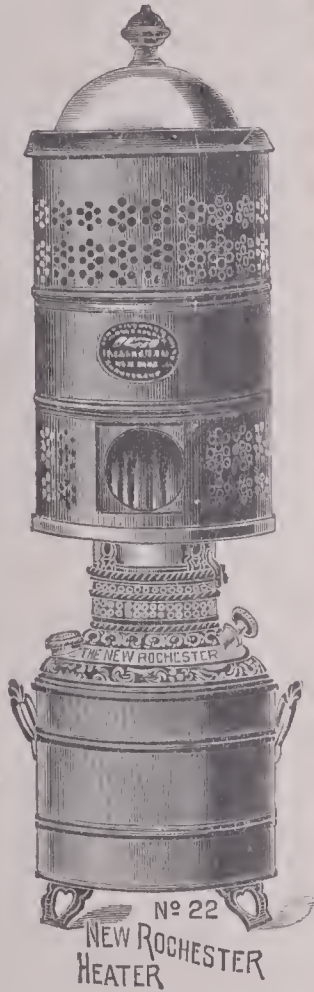
HUYLER'S  
CANDIES

AT

HAUFF BROS.

Cor. CHURCH & CHAPEL STS.

# The New Rochester Lamp



Is the standard for style as well as quality. Did a dealer ever try to substitute another lamp for the New Rochester without paying an unwilling tribute to the merits of the genuine, by claiming it to be "as good as," "like," or otherwise comparing it to the New Rochester, thus admitting it to be the standard of comparison among lamps? But do not be deceived by the wily salesman, who will claim it *is* the New Rochester. Every genuine lamp has the name stamped *in the metal*. Look for it.

THE production of light without heat has thus far been confined to laboratory experiments. Practically it is impossible. In the *New Rochester Heater* we have not tried to overcome this one defect of our lamps — we make the most of it. It is perhaps possible to get more heat from burning petroleum or kerosene, as some have claimed to do, but not without generating poisonous vapors, which in a portable stove cannot be let out through the chimney, but must of necessity be diffused in the atmosphere of the room where it is used, rendering the air unfit to be taken into the lungs. Our guarantee goes with the heater as well as the lamp. Glad to fill orders at retail where dealers will not or cannot supply our goods.



## THE ROCHESTER LAMP COMPANY

38 Park Place and 33 Barclay Street, NEW YORK CITY



HARVARD '92 TEAM

Harvard 0, Yale 6, at Springfield, November 19, 1892

C. Brewer, f b	Gray, l h b	Mackie, r g	Lake, r h b	Waters, l g	Emmons, l e	Hallowell, r e	
	M. Newell, r t	Upton, l t		B. Trafford (Capt), q b	Lewis, c		Shea, l t
			Moore (Mgr.)			Mason, l t	



MARSHALL NEWELL, HARVARD '94  
Played right tackle in '90, '91, '92 and '93  
FREDERICK G. LAKE, HARVARD '92  
Played half back in '90, '91 and '92



1 BOYLSTON STREET  
CORNER WASHINGTON

LOUDON &  
WILSON

Importing  
Tailors

*Boston*



# BALLANTINE'S



*Brewed in America*

XXX CANADA MALT

INDIA PALE AND OLD BURTON

## ALES

PORTER AND BROWN STOUT  
BOTTLED AT THE BREWERY

LAGER BEER

PALE EXTRA BEER

DARK EXPORT BEER



---

P. BALLANTINE AND SONS  
BREWERS ❁ ❁ NEWARK, NEW JERSEY



YALE '91 TEAM

Yale 10, Harvard 0, at Springfield, Nov. 21, 1891

Yale 19, Princeton 0, at Manhattan Field, Nov. 26, 1891

Sanford, c	Hartwell, r e	S. Morison, r g	Helfinger, l g	Winter, l t	Wallis, r t
	McCormick, l b	McClung (Capt.), r h b		L. Bliss, l h b	
Hinkey, l e			Barbour, q b		

# “WATCH THE ZENITH”

LIGHT, STRONG  
EASY-RUNNING



*Send for our Catalogue*



THESE bicycles are perfect in every detail, from the thread on the smallest screw to the frame itself

One rider rode over 4000 miles last season on a Zenith wheel without oiling, repairing, or paying any particular attention to the wheel, and there are hundreds of similar instances

Each wheel is made of the best of materials, is carefully put together by most skilled workmen, and is thoroughly tested before being shipped from our factory

ZENITH CYCLE COMPANY  
B I N G H A M T O N , N E W Y O R K

# *The* JOHN HANCOCK Mutual Life Insurance Company

S. H. RHODES  
President

*of BOSTON, MASS.*

ROLAND O. LAMB  
Secretary



ISSUES the clearest, simplest, most liberal and straightforward Policy Contracts offered to the Insuring Public. Its policies, being subject to the celebrated MASSACHUSETTS NON-FORFEITURE LAWS, become non-forfeitable after premiums for two full years have been paid, when, without any action on the part of the insured, PAID-UP AND CASH VALUES accrue. This feature is by operation of law, strictly automatic: hence it is not necessary to comply with some blind technical condition in order to prevent complete forfeiture, as is the case with many so-called "Non-forfeitable" Policies. THE CASH AND PAID-UP VALUES provided by law are endorsed on the face of every policy. THE HANCOCK POLICIES contain no restrictions whatsoever respecting residence or occupation, and are *incontestable* after being in force two full years, except for non-payment of premiums. On satisfactory assignment, liberal loans are made, upon the basis of the *Guaranteed Cash Values*, without discontinuing or in any way disturbing the insurance. The John Hancock being a purely Mutual Company in fact as well as in name, having no *Stockholders* to absorb dividends, all the Surplus belongs to the Policyholders; and the apportionment, in which each policy shares, is made by the Directors. The amounts thus apportioned may, at the option of the insured, reduce the cost or increase the insurance, or may be allowed to accumulate. You are invited to a careful scrutiny of our Plans and Policies, which for actual conservative *fairness, equity and desirability*, we claim are unexcelled. It should always be remembered that it is not a *Company* that is purchased, but a *contract*, hence the value of the policy is not marked solely by the size of the Company issuing it, but by the *conditions of the Policy* itself.

## FRANK K. KOHLER

GENERAL AGENT

8th Floor St. Paul Building,

220 Broadway, corner Ann Street

NEW YORK, N. Y.



HARVARD '91 TEAM

Harvard o, Yale 10, at Springfield, November 21, 1891

	Bangs, c	Dexter, l g	Mackie, r g	Waters, l t
M. Newell, r t	Lake, l h b	B. Trafford (Capt.), f b	Gage, q b	Emmons, l e
	Corbett, r h b	Moore (Mgr.)		F. Hollowell, r e

# C. B. Wilkinson

42 JOHN STREET, NEW YORK CITY

MAKER OF COLLEGE  
FRATERNITY  
BADGES



Medals, Trophies, Etc., suitable for  
Athletic Games & Sports of All Kinds

---

KEYS  
CLASS PINS  
FLAG PINS

CLASS RINGS  
BUTTONS  
CUPS

---

Correspondence solicited



DUDLEY DEAN, HARVARD '91

Quarter back on the '90 team

# THE GRAPHOPHONE

For Christmas and for All Seasons & A Most Acceptable Gift

THE GRAPHOPHONE IS THE MOST WONDERFUL PLEASURE MAKER EVER INVENTED



IT can be any kind of musical instrument you like, or be an orchestra or a full band. It will reproduce vocal solos, quartettes or choruses; and delight with its repetition of monologues, funny recitations or speeches. Only on talking machines manufactured under the Graphophone patents can one easily record and instantly reproduce the human voice or any sound. Other so-called talking machines reproduce only records of cut-and-dried subjects made in laboratories.

Graphophones are sold for \$10.00 and up

Write for Catalogue No. 111

## COLUMBIA PHONOGRAPH CO.

DEPARTMENT 111

143 and 145 Broadway

Retail Branch: 1155, 1157, 1159 Broadway

NEW YORK, N.Y.

CHICAGO

ST. LOUIS

PHILADELPHIA

BALTIMORE

BUFFALO

WASHINGTON

PARIS

SAN FRANCISCO



YALE '90 TEAM

Yale 6, Harvard 12, at Springfield, Nov. 22, 1890

Yale 32, Princeton 0, at Eastern Park, Brooklyn, Nov. 27, 1890

Crosby, r e	B. Morison, f b	Wallis, l t	Lewis, c	McClung, h b	Harvey, h b	Heffelfinger, l g	S. Morison, r g	Rhodes (Capt.), r t	Barbour, q b	Hartwell, l e	Williams, h b	I. Bliss, h b
-------------	-----------------	-------------	----------	--------------	-------------	-------------------	-----------------	---------------------	--------------	---------------	---------------	---------------



**CLYDE**

DELIGHTFUL EXCURSIONS TO  
**FLORIDA and the SOUTH**  
 AT MODERATE COST.

NEW YORK to JACKSONVILLE and Return . . . **\$43.30** First Cabin meals and berth included.

Send for illustrated literature.  
 Clyde S. S. Co., 5 Bowling Green, N. Y.

**LINE**

NEW YORK · CHARLESTON · FLORIDA ·

A. P. LANE, N. E. P. A.  
 201 WASHINGTON ST.  
 BOSTON, MASSACHUSETTS



THEODORE ROOSEVELT, HARVARD, '86 AND JOHN GREENWAY, YALE, '95, S.

Established 1852

*I. Kleiner & Son*  
 CO-OPERATIVE  
 TAILORS

785 CHAPEL ST.  
 NEW HAVEN, CONN.

YALE BOYS  
 SHOULD PATRONIZE

*Hasselbach*  
 796 Chapel St.

HEADQUARTERS FOR  
 ORIGINAL ALLEGRETTI

M O S E S  
 BUYS OLD CLOTHES  
 AND PAYS A GOOD  
 PRICE

THAT  
 SETTLES  
 IT

ALWAYS TO BE  
 FOUND ON THE  
 CAMPUS

# ARTISTIC HOME DECORATIONS

WE CAN SHOW YOU EFFECTS NEVER BEFORE THOUGHT OF, AND AT MODERATE PRICES, TOO. WHY HAVE YOUR HOUSE DECORATED AND PAINTED BY INFERIOR WORKMEN, WHEN YOU CAN HAVE IT DONE BY SKILLED WORKMEN—BY ARTISTS—FOR THE SAME PRICE? IF YOU INTEND DECORATING, IF ONLY ONE ROOM, CALL OR SEND TO SEE WHAT WE ARE DOING, AND FOR WHOM

**Tapestry Paintings** 2000 tapestry paintings to choose from. 38 artists employed, including gold medalists of the Paris Salon. Send 25 cents for compendium of 140 studies.

**Wall Papers** New styles, designed by gold medal artists. From 10 cents per roll up. Send 50 cents to prepay express on large sample book and drapery. A quantity of last year's paper \$1 and \$2 per roll; now 10c. and 25c. Will include drapery samples in package.

**Decorations** Color schemes—designs and estimates submitted free. Artists sent to all parts of the world to do every sort of decorating and painting. We are educating the country in color harmony. Relief, stained glass, wall paper, carpets, furniture, draperies, etc. Pupils taught.

**Decorative Advice** Upon receipt of \$1. Mr. Douthitt will answer any question on interior decorations—color harmony and harmony of form, harmony of wall coverings, carpets, curtains, tiles, furniture, gas fixtures, etc.

**Manual of Art Decorations** The art book of the century, 200 royal quarto pages, filled with full page colored illustrations of modern home interiors and tapestry studies. Price, \$2. If you want to be up in decoration, send \$2 for this book; worth \$50.

**School** Six 3-hour tapestry painting lessons, in studio, \$5. Complete written instructions by mail, \$1. Tapestry paintings rented; full size drawings, paints, brushes, etc., supplied. Nowhere, Paris not excepted, are such advantages offered pupils. New catalogue of 125 studies, 25 cents. Send \$1 for complete instructions in tapestry painting and compendium of 140 studies.

**Tapestry Materials** We manufacture tapestry materials superior to foreign goods and half the price. Book of samples, 10 cents. Send \$1.50 for 2 yards No. 6, 50-inch goods, just for a trial order; worth \$3. All kinds of draperies to match all sorts of Wall Papers, from 10 cents per yard up. THIS IS OUR GREAT SPECIALTY.

**Gobelin Printed Burlaps** Over 100 new styles for wall coverings, at 25 cents per yard, 35 inches wide, thus costing the same as wall paper at \$1 per roll. 240 kinds of Japanese lida leather papers, at \$2 per roll.

**Gobelin Art Drapery** Grecian, Russian, Venetian, Brazilian, Roman, Rococo, Dresden, Festoon, College Stripe, Marie Antoinette, Indian, Calcutta, Bombay, Delft, Soudan.

IN ORDER THAT WE MAY INTRODUCE THIS LINE OF NEW ART GOODS, WE WILL SEND ONE YARD EACH FIFTY DIFFERENT KINDS OF OUR MOST CHOICE PATTERNS FOR \$7.50



JOHN F. DOUTHITT, AMERICAN TAPESTRY DECORATIVE COMPANY  
286 FIFTH AVENUE, NEAR THIRTIETH STREET, NEW YORK CITY



HARVARD '90 TEAM

Harvard 12, Yale 6, at Springfield, Nov. 22, 1890

Hallowell, r e	Lee, h b	Cranston, c	Cumnock (Capt), l e	Finlay, l g	P. Trafford, r g	
	Newell, r t	B. Trafford, f b		Dean, q b	Alward, l t	Lake, h b
			Corbett, h b			
			Upton, l t			



ARTHUR W. CUMNOCK, HARVARD '91

Captain of the '90 team  
Played left end in '89 and '90

THE MARVEX.  
(Registered)

A  
Model  
Glove

Distinguished for the fineness of  
Skins, Satisfactory Fit and Artistic  
Finish

*SOLD ONLY BY*

**B. Altman & Co.**

NEW YORK

FOR NEXT SEASON BETTER DECIDE TO TAKE A TRIP THROUGH THE FAR FAMED

# Land of Evangeline in Nova Scotia

The land of beautiful scenery, unbounded hospitality, and historical romance. Unexcelled Pullman Train Facilities. Boston to Yarmouth UNDER FOURTEEN HOURS.

## VACATION?

Where are you going to spend your vacation? Magnificent Steamers. Delightful sea trip

*When going, don't fail  
to travel via the*



## DOMINION ATLANTIC RAILWAY LINE

Steamship "Prince Edward" leaves Long Wharf (foot of State Street), Boston, for Yarmouth direct, every Sunday and Wednesday at 4 P. M. Returning, leaves Yarmouth Tuesday and Friday P. M. Three elegant steamers "Prince George," "Prince Arthur" and "Prince Edward" will be in commission next season between Boston and Yarmouth, Nova Scotia. For all information as to rates, etc., also for beautifully-gotten-up guide book entitled "The Land of Evangeline, and Gateway Thither," also "Story Steamship Prince Edward," which will be mailed free, write to or call on

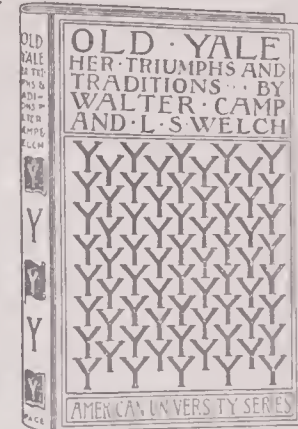
A. D. HEWAT, *General Passenger Agent, 126 Hollis Street, Halifax, Nova Scotia*

J. F. MASTERS, *New England Supt., 228 Washington Street, Boston, Mass.*

# The American University Series



THIS series will consist of a comprehensive yet popular account of each of America's greatest universities and colleges. Each book will contain an historical sketch and descriptive accounts of the academic, scientific, and professional schools, showing the growth and development of each, together with architectural descriptions of the important buildings, including libraries, dormitories, gymnasiums, etc. A feature will be made of student life now and in the past, and full accounts will be given of old college and class customs fast becoming extinct, famous deeds of famous graduates while in college and in after life, athletics and athletic



triumphs, together with tables and statistics showing what graduates have distinguished themselves in after life, and in what fields. In short, the series will consist of readable, popular books, which will interest the general as well as the college public. The editors of the books will be representative graduates of the several colleges, each thoroughly familiar with the spirit, aims, and accomplishments of his Alma Mater. The first volume, to be published in the fall, will be —

**OLD YALE: HER TRIUMPHS AND TRADITIONS**  
**BY WALTER CAMP AND LEWIS S. WELCH**  
*One volume, 12mo, illustrated. Two Dollars*

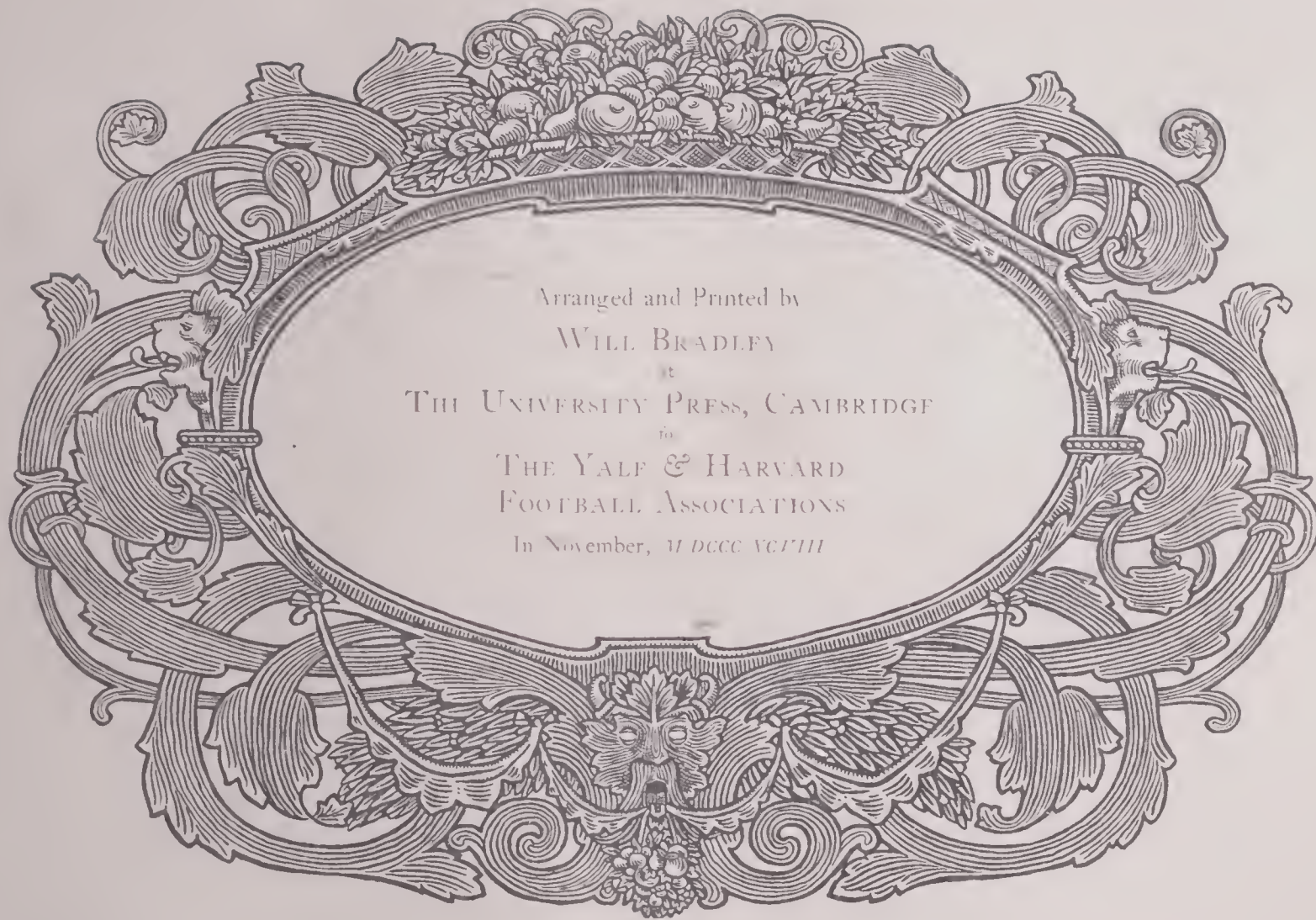
We also announce for later publication in the series: Fair Harvard, Princeton, Columbia, the University of Pennsylvania, Williams, Amherst, Dartmouth, Bowdoin, Brown University, the University of Michigan, Vassar, Smith, and Cornell, each uniform with Old Yale

*For sale by all book stores, or sent, prepaid, on receipt of price by the publishers*  
**L. C. PAGE AND COMPANY, BOSTON**



*Reprinted by permission of Yale Alumni Weekly*

THE TROPHY ROOM IN THE YALE GYMNASIUM



Arranged and Printed by

WILL BRADLEY

at

THE UNIVERSITY PRESS, CAMBRIDGE

for

THE YALE & HARVARD

FOOTBALL ASSOCIATIONS

In November, M DCCC XCVIII








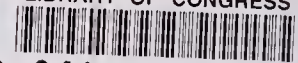






  
**MAR. 69**  
N. MANCHESTER,  
INDIANA

LIBRARY OF CONGRESS



0 041 113 799 5