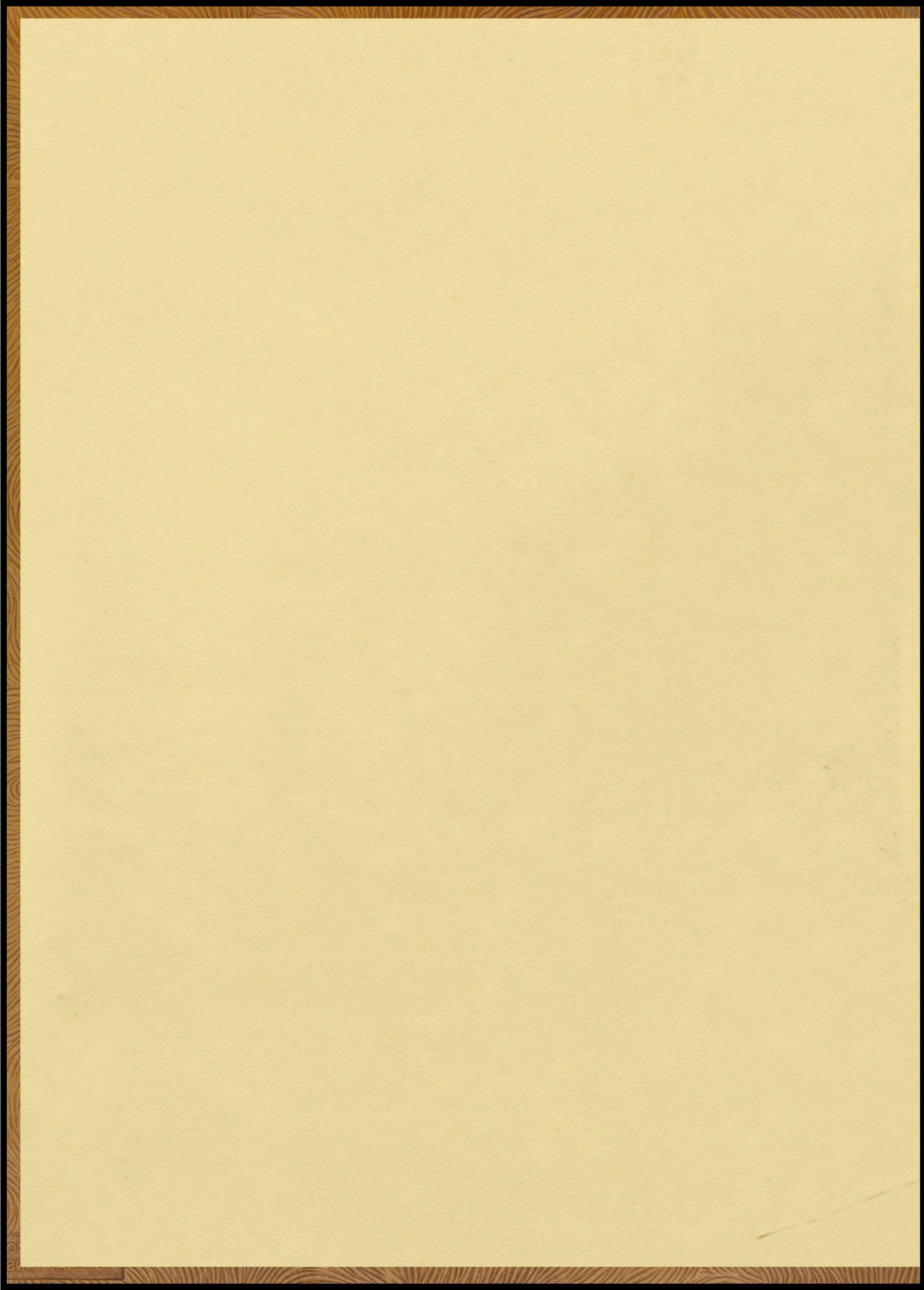
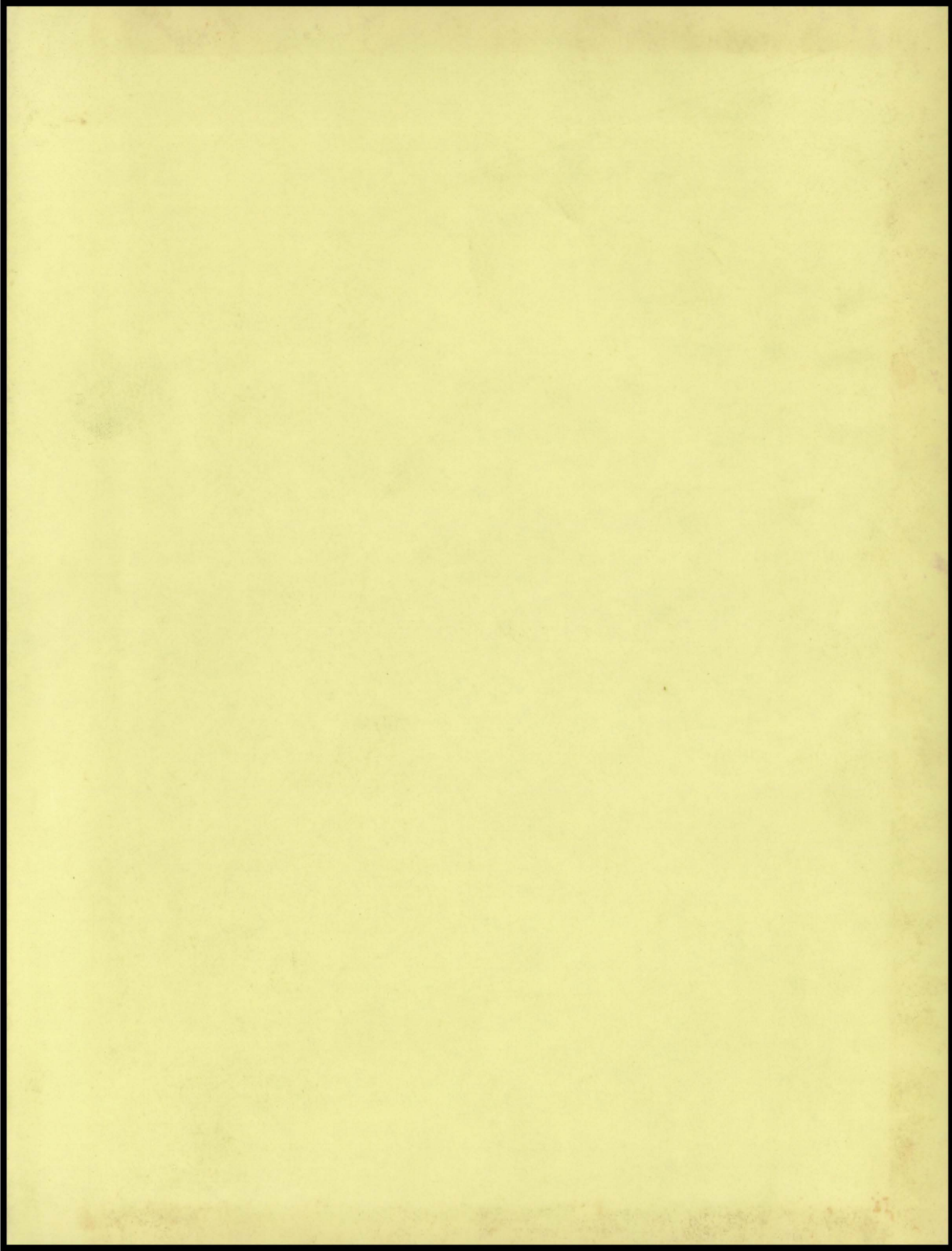
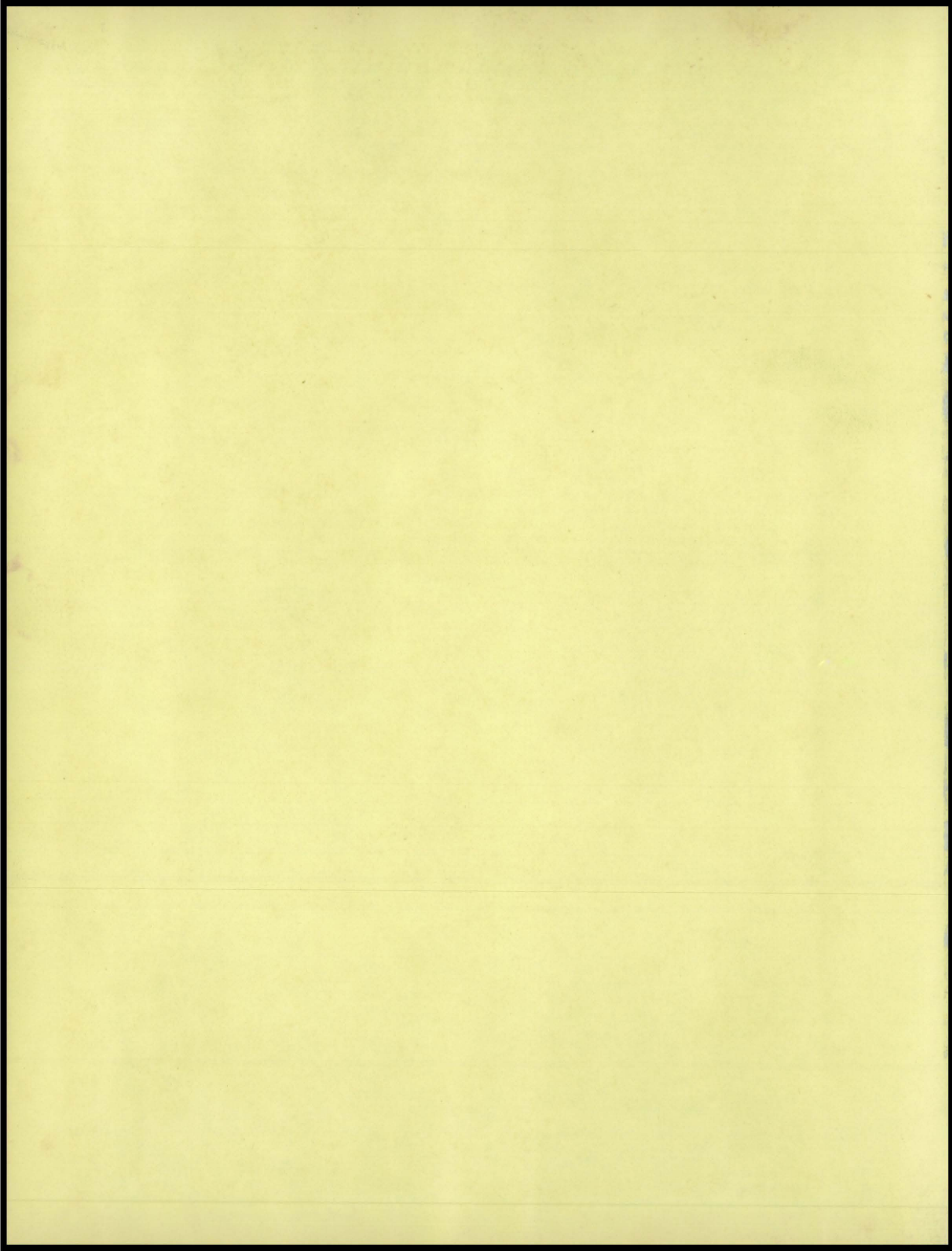


1956

WAGON TRAILS







WAGON TRAILS

1956



Mooreville High School
Mooreville, Indiana



FOREWORD

A cold morning in winter can be as memorable as a warm day in the spring when the school day may be started by a hurried run to the bus and a brisk walk to the campus itself. Through the years our studies are made more pleasant by the beautiful campus facilities we appreciate here on one of Indiana's most picturesque campuses.

Come along and join us as we enjoy a pleasant year, colored not only by our experiences, but by the ever-changing panorama of nature that surrounds us.

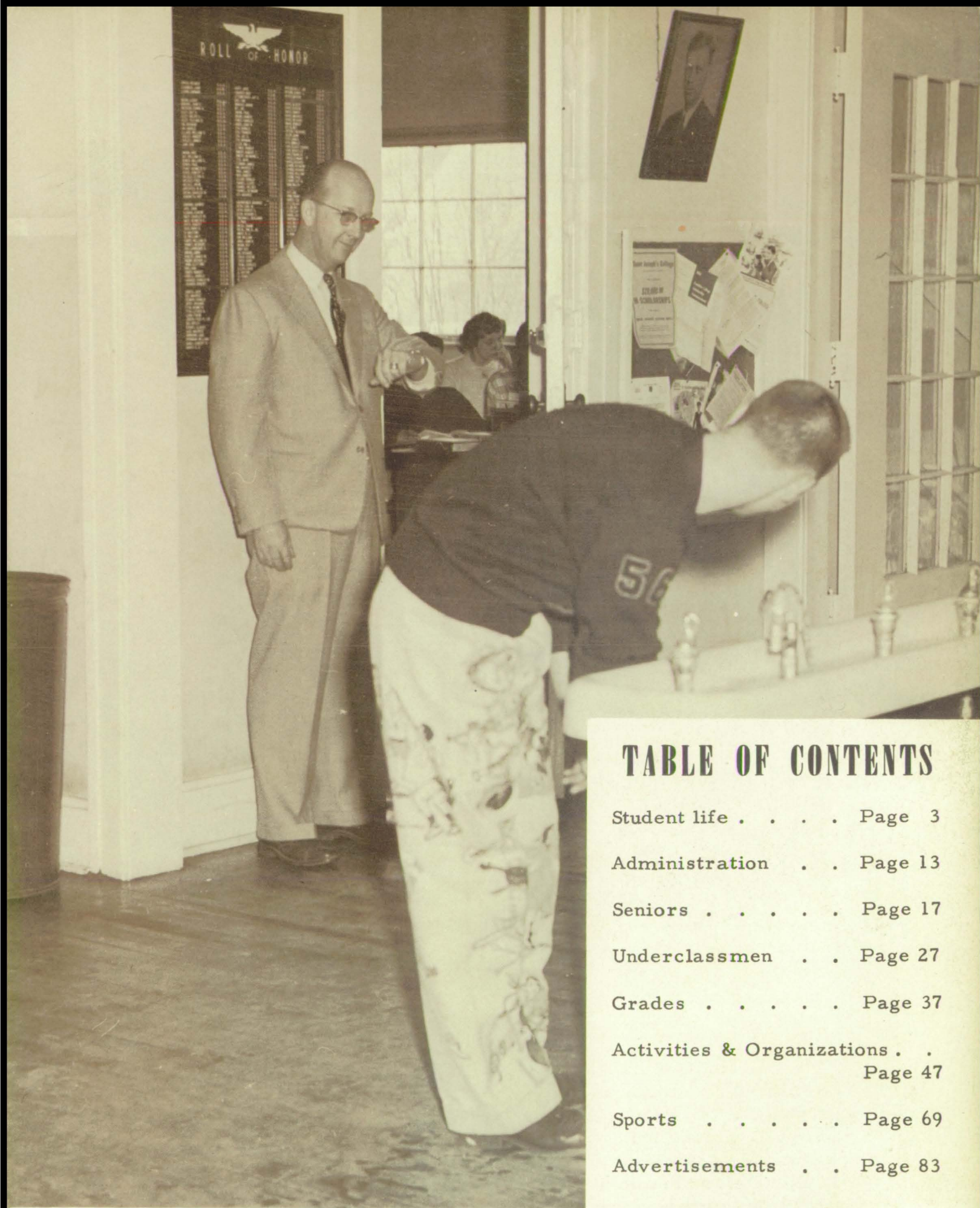


TABLE OF CONTENTS

Student life	Page 3
Administration	Page 13
Seniors	Page 17
Underclassmen	Page 27
Grades	Page 37
Activities & Organizations	Page 47
Sports	Page 69
Advertisements	Page 83

This isn't an unusual picture. Gary is always being timed and Mr. Sargent is most always doing the timing.



DEDICATION

At the time of this writing, the memory of Nora Wainscott is as fresh and as real to us as we are sure it will still be to those who knew and loved her when these lines are read. Just a few hours before the Wagon Trails '56 was sent out for printing, Nora was taken from us as quickly and as surely as only death can be. Our sorrow is for our own loss, for we who knew her know that she is where she will always be happy and free from harm. It is thus with a selfish, though human regret that we hold her memory dear.

Her ready smile, her steady dependability when a job must be done, her willingness to participate when any of her many talents were called for, and her friendliness were as deeply rooted as her religious convictions. Her lively personality and high moral character won Nora the admiration and respect to her memory that few of us can ever hope to boast.

To all her family and her loved ones, we of the Senior Class; both as a representative of the school and as her personal friends wish to extend our deep regret, and to express our mutual sorrow.



Roberta is kept busy selling school supplies to students like Judy, Ramona and Allen.



Many problems such as Bill's are taken to Mr. Richards' office daily.

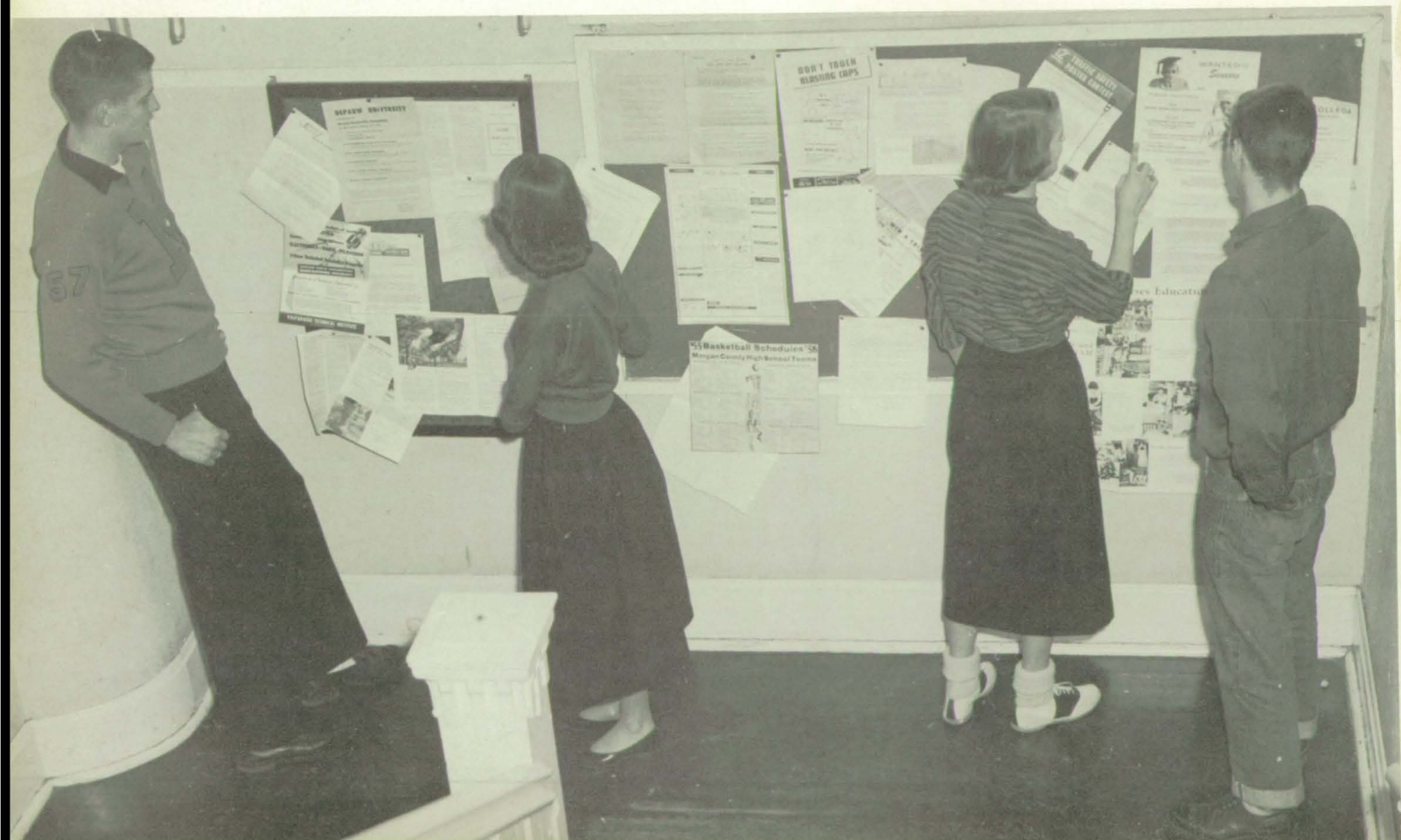


A library pass is often spent reading the funnies like Donna and Charles are doing.



While collecting books at the lockers friends often find time to stop and chat.

During the school day our bulletin board often carries articles of interest to students like Neal, Susanne, Linda, and Johnny.





These boys are busy working on their shop projects. A fine job will be done by these freshmen.

Charlotte, Lynn, and Martha are busy today working toward being better homemakers of tomorrow.





These are typical classroom scenes found in our school each day.



Lunch and back to work.



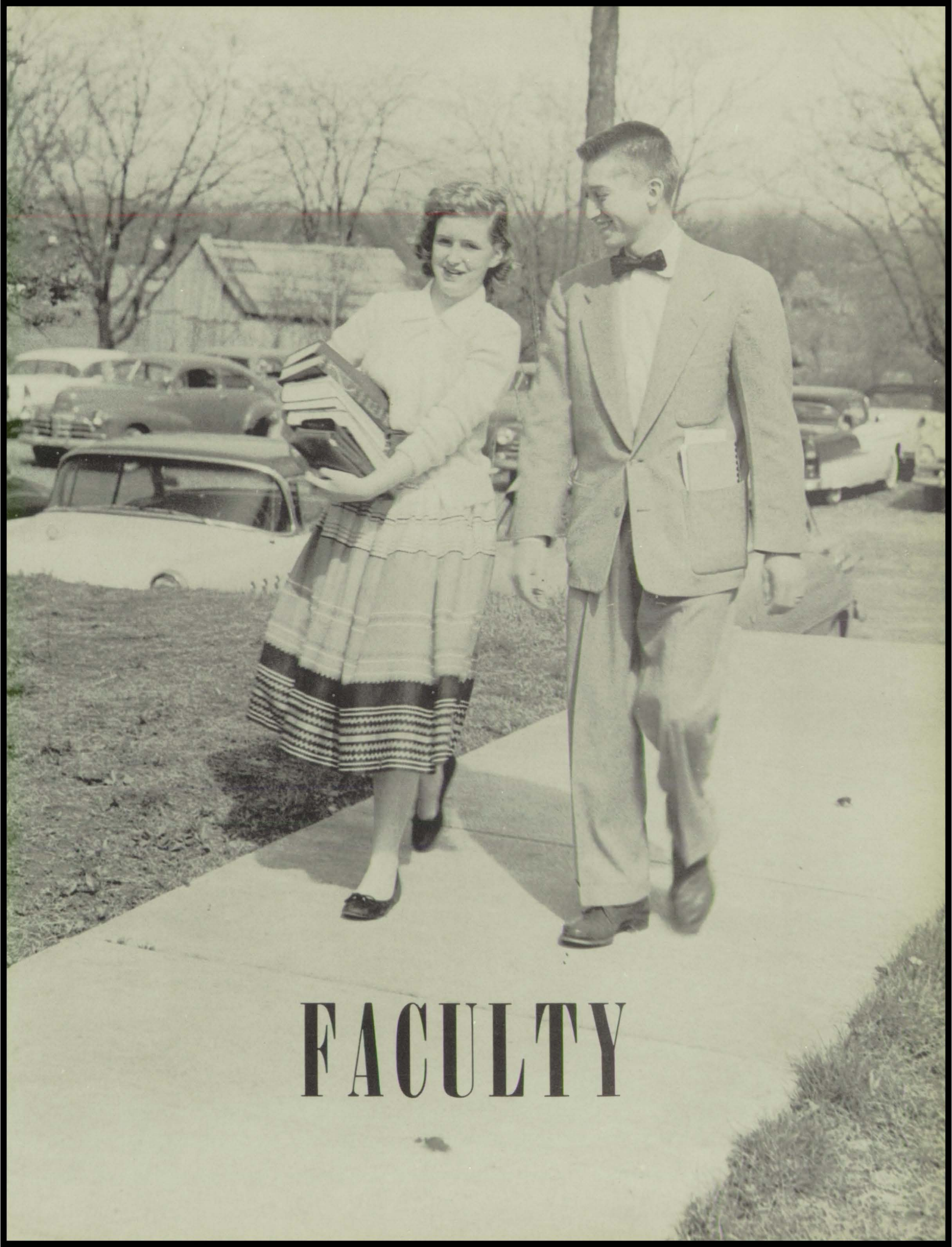
The Freshman-Senior "Bunny Hop" was held after initiation day in our gym.



Winter was made fun by many happy occasions such as this.

One of our many "moments to remember" was the Senior Christmas Dance.





FACULTY



ROBERTA SWINNEY, School Secretary

ADMINISTRATION



IMOGENE HARBIN,
School Nurse



SCHOOL BOARD: Clarence J. Welsch, Warren Hert, Claude Utterback, and Marcus Park.



WILBUR RICHARDS,
High School Principal



WARREN HERT,
Superintendent



LEWIS TRUAX,
Grade Principal



LOREE BARKDOLL
English



GEORGE BOYD
Industrial Arts,
General Math

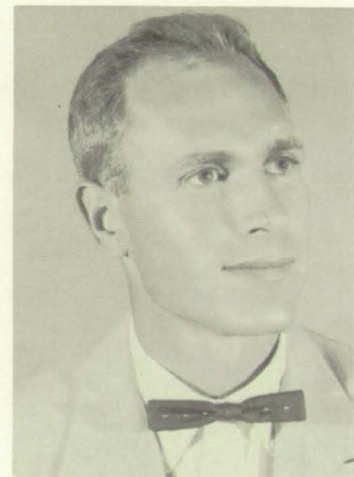


MARGARET CALLAHAN
Social Studies



JANET COWEN
Commerce

FACULTY



RUSSELL FORSYTH
Social Studies,
Physical Education,
Health



HAROLD HECKMAN
Agriculture



GRACE LIKE
Art, Junior High



JOHN MOORE
Coach, Biology



JEAN SARGENT
Junior High



KARL SARGENT
Band



GEORGE SHARP
Math, Physics,
Chemistry



JUNE SHUFFELBARGER
Home Economics



VEVA SPEAR
English, Library
Supervisor



RUTH SUTER
Dietitian, Home
Economics




LORNA WALKER
Music



LUCILLE WINDER
Latin, Junior High



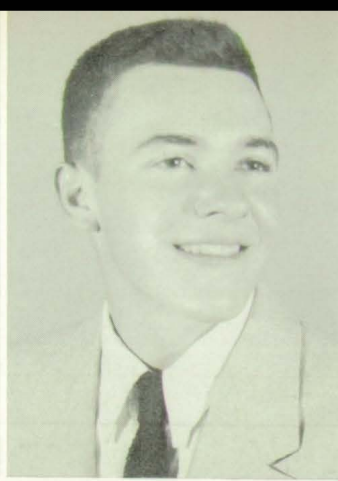
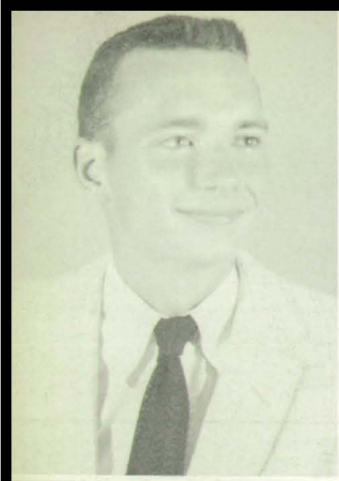
ANITA WILLIAMS
Physical Education
Health



ENTER TO GROW IN WISDOM

CLASS
OF
1912

SENIORS



JOHN AHLEFELD

Charlottesville 1, 2; F. F. A. 1, 2, 3, 4; 4-H 1, 2, 3, 4; Livestock Judging 1, 2, 3, 4; Dairy and Poultry Judging 1, 2; Chorus 2, 3, 4; Office 3; Paper Staff 3; Junior Class; Play Committee 3; Boys Glee Club 3, 4; Science Club 3; Baseball 1, 2; Track 1, 2; Basketball 1, 2, 3.

JOHN BALDWIN

Basketball 1, 2, 3, 4; Baseball 2; Track 1; Football 1; Lettermans Club 3, 4; Boys Glee Club 2, 3, 4; Chorus 2, 3, 4; Student Council 1, 2; 4-H 1, 2, 3; Judging Team 2, 3, 4; F. F. A. 1, 2, 3; Officer 3; Junior Class Play Committee 3; Land Judging 4.



CATHY BALDWIN

Chorus 1, 2, 3, 4; Glee Club 1, 2, 3, 4; Paper Staff 4; G. A. A. 1.

SARA JEAN BELL

G. A. A. 1, 2, 3; F. H. A. 3; Student Council 3; White Blouse Club 1, 2, 3; Chorus 2, 3; Girls Glee Club 2, 3; Annual Staff 4; Play Committee 3; Library 3, 4.

CLASS OF

LUCY BISHOP

Paper Staff 1, 4; White Blouse Club 4.

JAMES CASEY

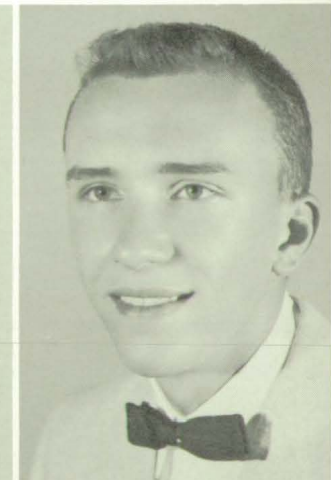
F. F. A. 1, 2, 3, 4; Lettermans Club 1, 2, 3, 4; Basketball Manager 1, 2, 3, 4; Track Manager 1; Honor Society 3, 4; Science Club 3, 4; 4-H 3, 4; Paper Staff 1, 2, 3, 4; Annual Staff 4; Class Play 3; Farm Judging 3.

JOHN CASEY

Class Officer 2; Paper Staff 3, 4; Co-Editor Annual 4; Class Play 3, 4; Band Ensemble 1, 2, 3, 4; Band 1, 2, 3, 4; Officer 3; Lettermans Club 2, 3, 4; Science Club 3, 4; Honor Society 3, 4; Officer 3; Baseball 2; Basketball 1, 2; Football 1, 2, 3, 4, Co-Captain 4; Sportsmanship Award 4.

NORMA CHASE

Girls Glee Club 1, 2, 3, 4; Madrigal's 4; F. H. A. 1, 2, 3; Officer 3; Chorus 1, 2, 3, 4; Officer 3; Play Cast 3; Director 4; Prom Committee 3; Annual Staff 4; Paper Staff 3, 4; Solo and Ensemble 2, 3, 4.



JUDY COLEMAN

Band 1, 2, 3, 4; Chorus 4; White Blouse Club 2; F. H. A. 3; Class Play 3; Vocal Ensemble 1, 2, 3, 4; Paper Staff 2; Band Ensemble 1, 2; Prom Committee 3; Latin Club 2, 3; Madrigal Singers 4; Annual Staff 4.

LINDA COMER

Band 1, 2, 3, 4; Chorus 4; Glee Club 4; Latin Club 2; Annual Committee 4; Prom Committee 3; Band Ensembles 2; Vocal Ensembles 1, 2.

MAX CONNELL

Basketball 1, 2, 3, 4; Track 3, 4; Football 4; Lettermans Club 3, 4; Student Council 2; Chorus 3, 4; Class Play Committee 3; Boys Glee Club 2, 3; Prom King 4.

JOHN DaVEE

F. F. A. 1, 2, 3, 4; Honor Society 3, 4; Livestock Judging Team 2, 3, 4; Paper Staff 4.



1956

JOHN DAVIS

Class Officer 2; Boy's State Alternate 3; Honor Society 3, 4; Officer 4; Student Manager 1; Play Committee 3, 4; Annual Committee 4; Paper Staff 4.

CAROLYN DEHONEY

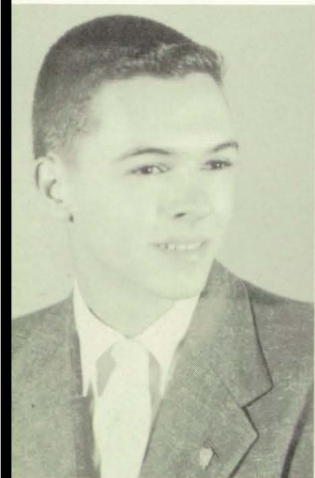
Play Cast 3; Prom-Committee 3; Paper Staff 2, 3; G. A. A. 1, 2, 3; F. H. A. 1, 2, 3, 4; Annual Staff 4; Chorus 1, 2; Girls Glee Club 1, 2.

GAY DUGGER

Cheerleader 1, 2, 3, 4; F. H. A. 1; G. A. A. 1, 2; Paper Staff 1, 4.

CAROLYN EINFELDT

G. A. A. 1, 2; F. H. A. 3; Band 1, 2, 3, 4; Play Cast 3; Annual Staff 4; Latin Club 2.



LARRY GERSHANOFF

KAY GIFFIN

G. A. A. 1, 2, 3, 4; Library 1, 2, 3, 4; Play Director 3; Play Cast 4;
Prom Committee 3; Annual Staff 4.



RALPH GOLDMAN

MARILYN GRIGGS

G. A. A. 2, 3, 4; Officer 3, 4; F. H. A. 2, 3, 4; 4-H 1, 2, 3;
Martinsville 1; Honor Society 3, 4; Officer 4; Play Committee 3;
Class Officer 3, 4; Office Help 4; Annual Staff 4; Paper Staff 3, 4;
Latin Club 2.

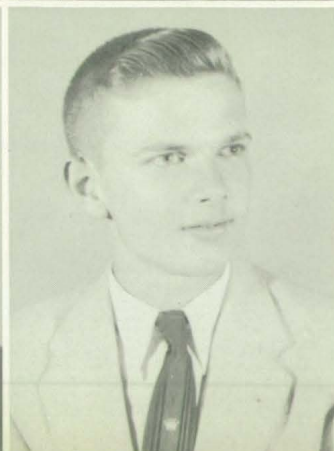
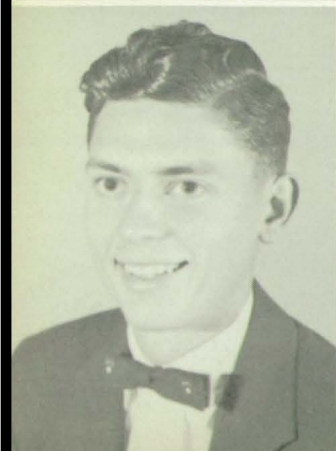


WAYNE GROSS

Honor Society 3; Science Club 3; Band 1, 2, 3, 4; Band Ensemble
2, 3, 4; Basketball 1, 2; Track 1; Play Committee 3.

MARGARET SUE GURLEY

Howe, Indpls. 3; Library 4; Paper Staff 4; Annual Staff 4; Prom
Committee 3; Track Queen 4.

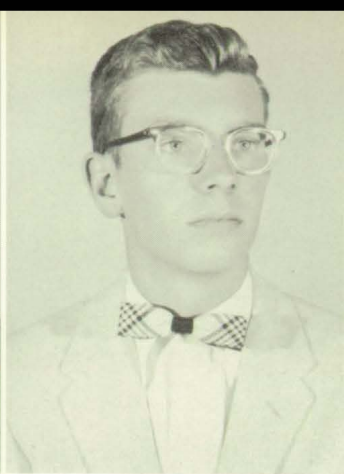


BILL HARRIS

Football 1, 2, 3, 4; Lettermans Club 3, 4; Annual Staff 4; Paper
Staff 3; Play Committee 3; Play Cast 4.

JACK HAYMAKER

Basketball 1, 2; Baseball 1, 2, 3, 4; Football 1, 2, 4; Track 1;
F. F. A. 1; Science Club 3.

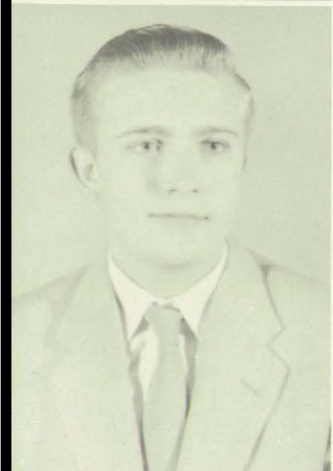


NANCY HUMPHRY

White Blouse Club 2; Girls Glee Club 1, 2; Honor Society 3, 4; Class Play 3; Director 4; Girls State Alternate 3; F. H. A. 3; G. A. A. 1, 2; Chorus 1, 2.

CHARLES JONES

Band 1, 2, 3, 4; Band Ensemble 1, 2; Football Manager 2; Baseball Manager 2; Baseball 1, 3, 4; Basketball 2; Lettermans Club 2, 3, 4; Annual Staff 4.



RONALD KAYS

4-H 1, 2, 3, 4; F. H. A. 1, 2, 3, 4; Band 1, 2, 3, 4; Officer 3, 4; Paper Staff 4; Prom Committee 3; Play Cast 3, 4; Annual Staff 4; Band Ensembles 1, 2, 3, 4; Dairy Judging 2, 3; Crop Judging 3.

KAREN KERKHOF

G. A. A. 1, 2, 3, 4; Latin Club 4; Boys 4-H 3, 4; Annual Staff 4; Prom Committee 3; Play Cast 3, 4; Office Help 3; White Blouse Club 2, 3, 4; Paper Staff 3.

CLARA LUGAR

G. A. A. 1, 2; White Blouse Club 2; Chorus 1, 2, 3, 4; Girls Glee Club 1, 2, 3, 4; Madrigal Singers 3, 4; Vocal Ensembles 1, 2, 3, 4; Honor Society 3, 4; Class Officer 3; Prom Committee 3; Class Play Committee 3; Annual Staff 4; Prom Queen 4.

GENE MYRICK

Baseball 2, 3, 4; Football 4; Lettermans Club 4; Annual Staff 4; Prom Committee 3.



LINDA O'HAIR

Paper Staff 3; Band 1, 2, 3, 4; White Blouse Club 2; Class Officer 3, 4; Prom Committee 3; Annual Staff 4; F. H. A. 3; Play Committee 3; Homecoming Queen 4.

MAX OVERPECK

Honor Society 3, 4; Science Club 3, 4; Paper Staff 3; Play Committee 3; Annual Staff 4.





MAX PARK

Lettermans Club 1, 2, 3, 4; Baseball Manager 1, 2, 3; Basketball Manager 1, 2, 3; Class Play 3; Committee 4; Annual Staff 4.

JO ELLA PERRY

F. H. A. 1; Class Officer 2; Chorus 3, 4; Girls Glee Club 3, 4; Annual Staff 4; Play Committee 3.



DIANE PYLE

HAROLD QUINN

SHARON RAIRDON

F. H. A. 3, 4; Officer 3, 4; G. A. A. 1, 2; Latin Club 4; Annual Staff 4; Play Cast 3, 4; Office Help 4; White Blouse Club 2; Drum Majorette 1, 2, 3, 4.

RUTH ROBINSON

Y-Teens 1; Honor Society 3, 4; Science Club 3, 4.



CAROLYN ROLLER

Glee Club 3, 4; Chorus 3, 4; Play Cast 3; Paper Staff 1; F. H. A. 1.



JO ETTA RUSSELL

G. A. A. 2, 3; Office Help 4; Paper Staff 3, 4; Annual Staff 4; Play Committee 3, 4; Prom Committee 3; Girls 4-H 1, 2, 3, 4; Boys 4-H 3, 4; Girls State Alternate 3.

PEGGY RUTLEDGE

Oklahoma 1, 2, 3; Peppers 1, 2; Basketball 1; Paper Staff 4.

NORMAN SHIELDS

Baseball 1, 3, 4; Track 1, 3, 4; Basketball 1, 2, 3, 4; Football 1, 2, 3, 4; Chorus 3, 4; Boys Glee Club 2, 3; Lettermans Club 2, 3, 4; Judging Teams 2, 3, 4; Play Committee 3; F. F. A. 1, 2, 3, 4.

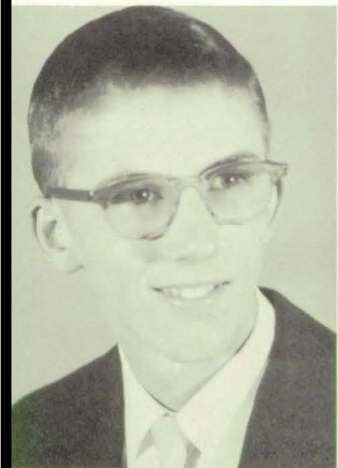
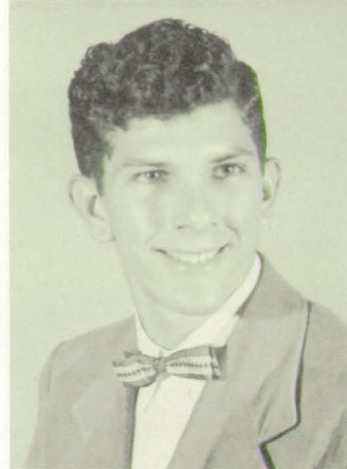


BILL SKAGGS

Class Officer 4; Honor Society 3, 4; Annual Staff 4.

CHARLES SMITH

Plainfield 3; Track 1, 2, 4; Play Committee 4.



DAVID STOUT

Band 1, 2, 3; Officer 3; Band Ensembles 1, 2, 3; Student Council 3, 4; Track 1; Class Play 3, 4; Paper Staff 3, 4; Prom Committee 3; Science Club 3; Annual Staff 4.

JANET SWISHER

G. A. A. 1; 4-H 1; Vocal Ensembles 1, 2, 3, 4; Madrigal Singers 4; Band 1, 2, 3, 4; Band Ensemble 2, 3; Honor Society 3, 4; Officer 3, 4; Class Officer 1, 2, 3, 4; Prom Committee 3; Play Committee 3; White Blouse Club 2; Office Help 4; Paper Staff 3, 4; Annual Staff 4; May Queen 4.



CAROL TAPSCOTT

Latin Club 3; Play Committee 3; Annual Staff 4; Paper Staff 4.

SHIRLEY TOMPKINS

Yell Leader 3; G. A. A. 1, 2; F. H. A. 2, 3; Science Club 3, 4; Band 1, 2, 3, 4; Chorus 1; Student Council 4; Office Help 4; Prom Committee 3; Annual Staff 4; Girls State 3.

LARRY TOLBERT

Football 1, 3, 4; Track 1, 4; F. F. A. 1; Lettermans Club 3, 4; Chorus 4; Boys Glee Club 4.

CHESTER UHLS

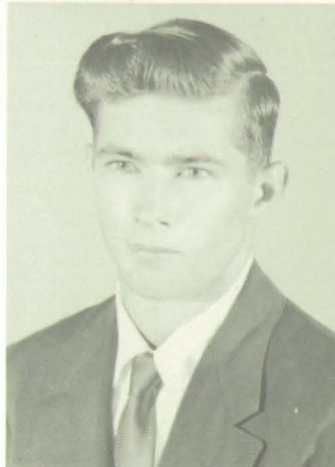


DONALD UHLS

Football 3, 4; Lettermans Club 3, 4.

MAX VAN HOOK

Basketball 1, 2, 3; Baseball 1; Football 3.



JUDY VIA

G. A. A. 1, 2; Yell Leader 1; 4-H 1, 2; Chorus 4; Band 1; Paper Staff 1; Annual Staff 4; Prom Committee 3; Play Cast 3, 4; Girls Glee Club 4.

NORA WAINSCOTT

Arkansas 1; G. A. A. 2, 3, 4; Officer 4; F. H. A. 2, 3, 4; Officer 3, 4; Honor Society 3, 4; Officer 4; Paper Staff 3, 4; Latin Club 4; Officer 4; Girls State 3; Girls 4-H 2; Citizenship Award 4; Play Cast 3, 4; Office Help 3, 4; Annual Staff 4; Class Officer 4.



JOE WETZEL

Class Officer 1, 2, 3; Track 1; Honor Society 3, 4; Officer 4; Paper Staff 2, 3; Editor 4; Play Committee 3; Annual Co-Editor 4; Science Club 3, 4; Prom Committee 3; Basketball 1.

RUTH WILLIS

Chorus 3, 4; Annual Staff 4; Girls Glee Club 3, 4; Play Committee 3.

GARY WILSHIRE

Basketball 1; Football 1, 2, 3, 4; Football Manager 1; Baseball 2, 3; Prom Committee 3; Play Committee 3; Honor Society 3; Lettermans Club 1, 2, 3, 4.

CONARD WRIGHTSMAN

Basketball 1, 2, 3, 4; Baseball 1, 2, 3; Track 1, 2, 3, 4; Lettermans Club 2, 3, 4; Play Committee 3; Livestock Judging 3, 4; Sportsmanship Award 4.



CLASS OFFICERS

President Bill Skaggs
Vice-President Janet Swisher
Secretary Linda O'Hair
Treasurer Marilyn Griggs
Historian Nora Wainscott
Student Council David Stout Shirley Tompkins

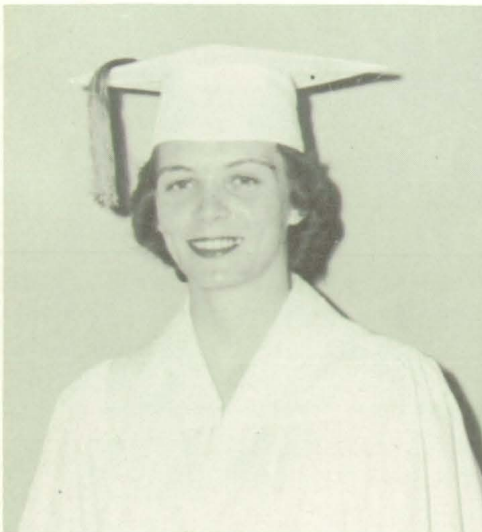
Class Sponsors . . . Margaret Callahan
George Sharp

Class Motto. . Fix your goal upon a star
and climb, climb, climb.

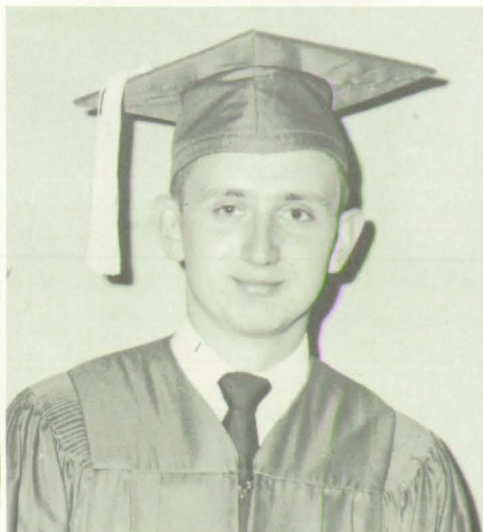
Class Flower . . American Beauty Rose

Class Colors . . . Maroon and Gray

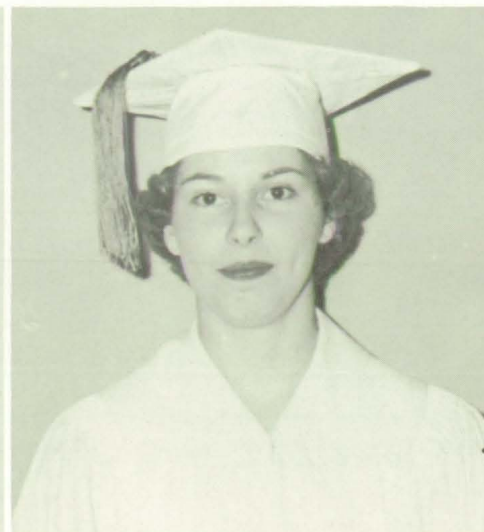
SENIOR AWARDS



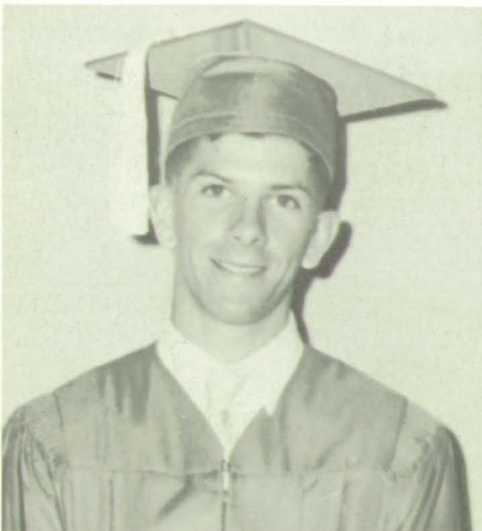
Clara Lugar
Valedictorian



Joe Wetzel, Salutatorian,
Honor Society Award



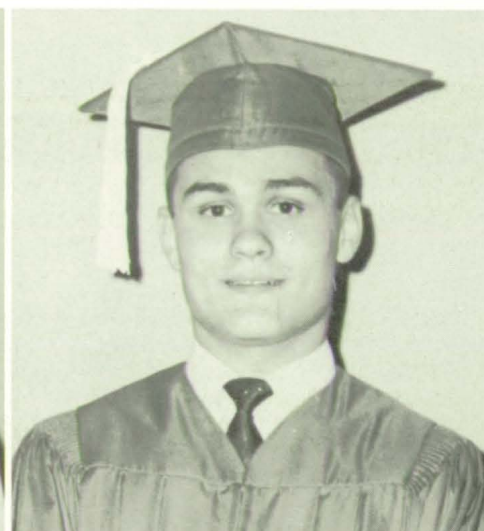
Marilyn Griggs
American Legion Award



Bill Skaggs
V. F. W. Award



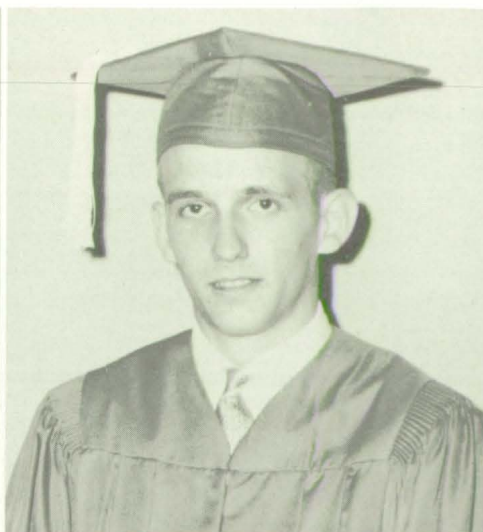
Nora Wainscott
D. A. R. Award



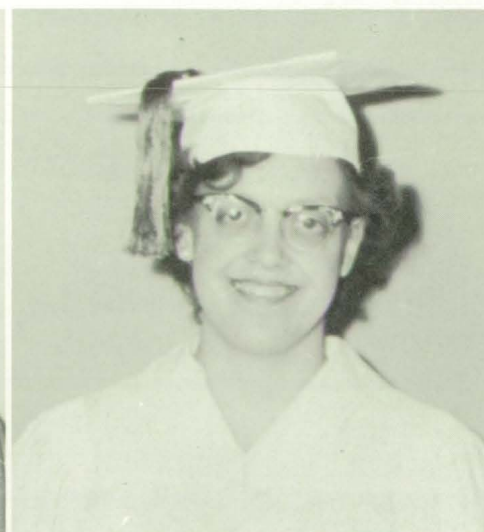
Jack Casey
Mathematics Award



Kay Giffin
V. F. W. Award

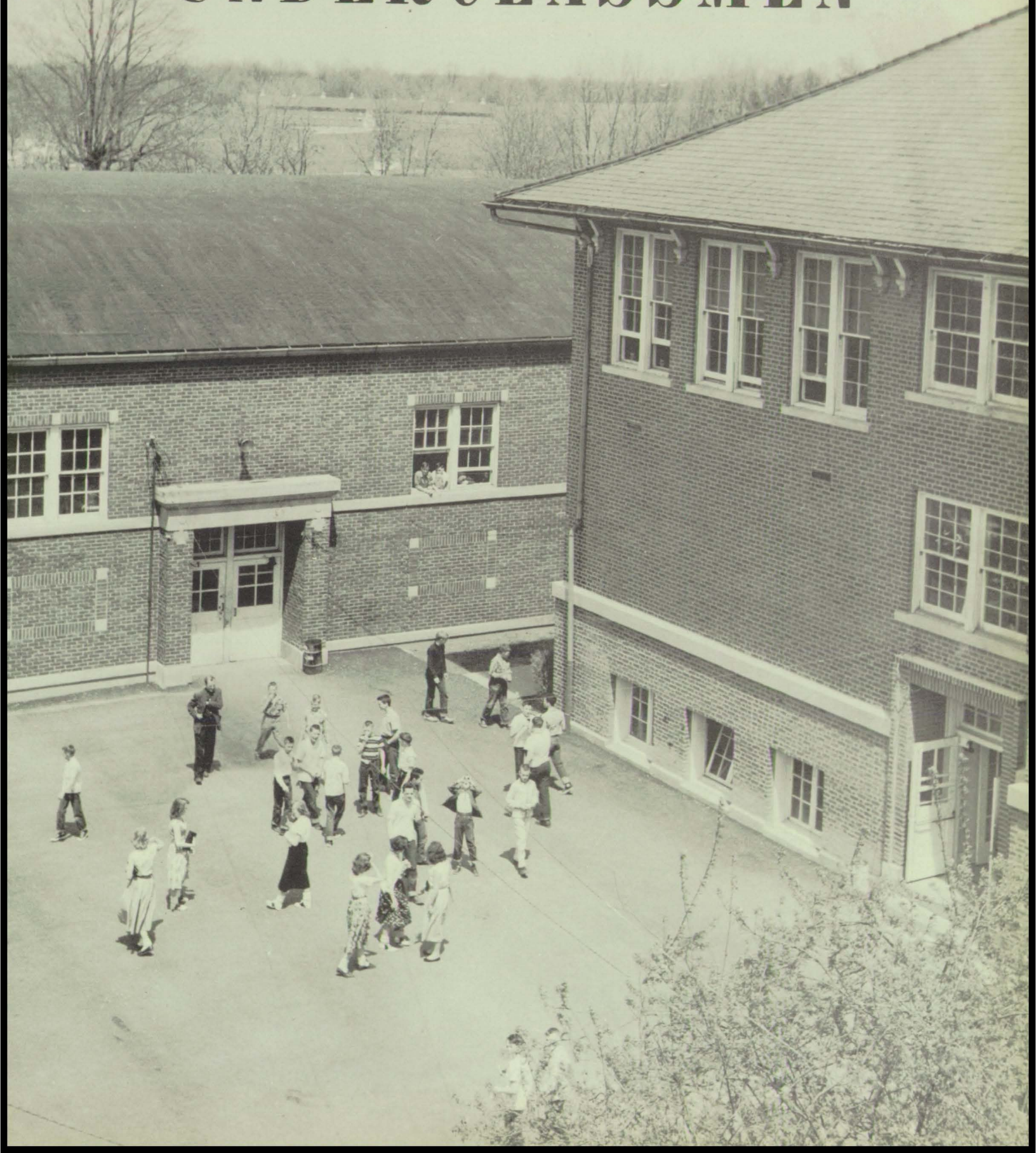


Max Overpeck
American Legion Award



Ruth Ann Robinson
Mothers Club Award

UNDERCLASSMEN



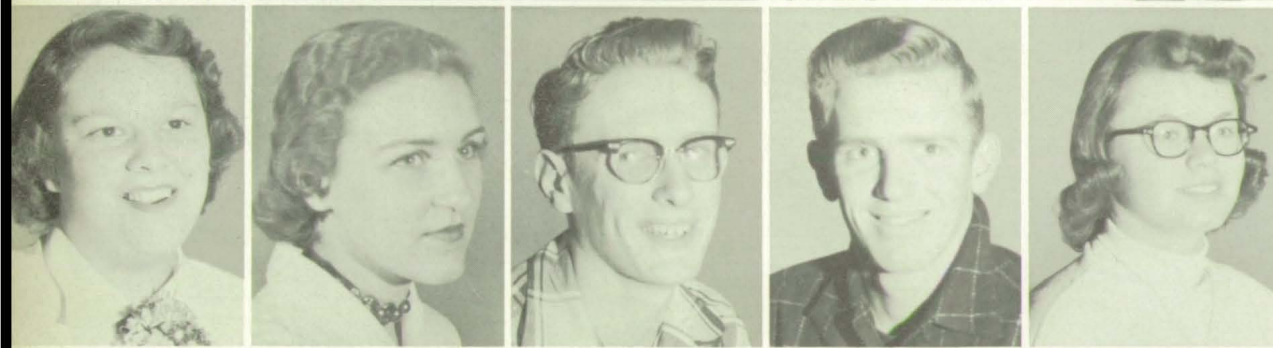
JUNIORS



George Adams
Sandra
Ahlefeld
Lynn Allison
Kent Almond
Anna Marie
Anders



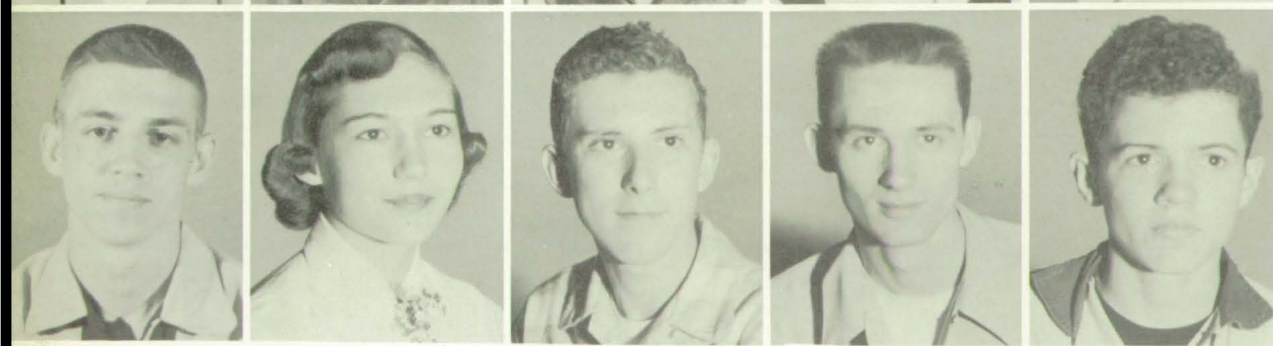
Edward Ayers
Janet Baldwin
Janice Baldwin
Robert Barger
Earna Barnes



Darlene Bayliff
Beth Beaver
Charles
Brewer
Neal Brown
Rosalie Coghill



Jot Comer
Norman
Connell
Harold Davis
Carolyn
Dickson
Christine
Earles

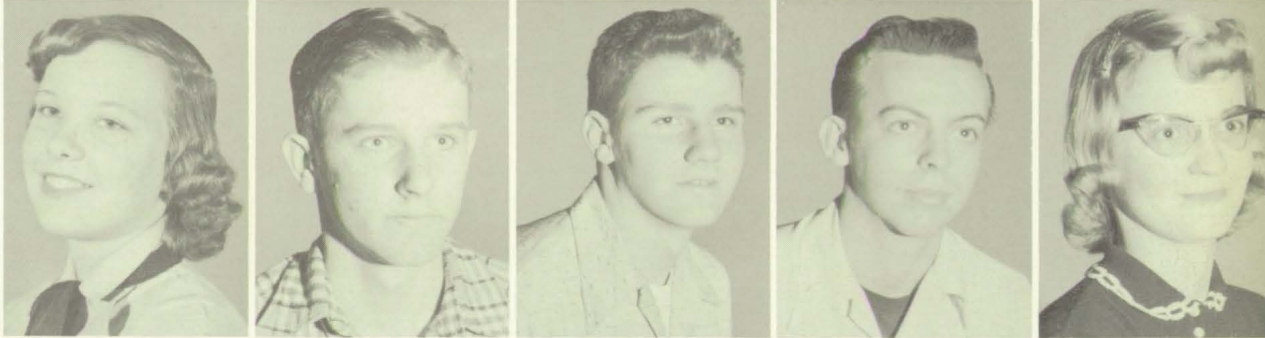


Terry Fishel
Roxanne
Forcum
Larry Gates
Kenny Gray
Philip Griffith

Richard Harris
Charlotte
Hazlett
Martha
Henderson
Earlene Harper
Darrell Holmes



Linda Johnson
Ronald Jones
Charles King
Larry Lee
Dixie Lopossa



Dennis
McGuire
Jack McHaffie
Ellen Marine
Bill Miller
Donna Neitzel



I'Nell Park
Lynda Richter
Dallas Rutledge
Ray Settle
Larry Stanfield



Joan Timmons
Hugh Tipton
Allen Tutewiler
Neal Ulrey
Georgia Vinson



SOPHOMORES

Mildred Allender
 Bill Altman
 Sue Baldwin
 Don Binkley

Carolyn Borders
 Wendell Boyd
 Donna Brown
 Billy Burton
 Donna Chitwood

Jerry Cooper
 Sharon Cooper
 Sue Zane Cox
 Ralph Crayton
 LaDonna Cullom

Kenneth Davis
 Jim DeLoach
 Marcia Enlow
 Kay Francis
 Janet Frazier

Brenda Gee
 Linda Giffin
 Erma Glidden
 Rose Mary Gregory
 Brenda Griffith

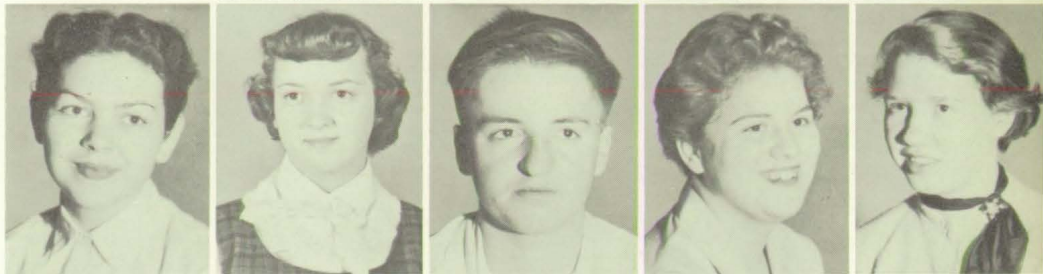
Joe Hacker
 Sandy Haskett
 Judy Haymaker
 Phyllis Heckman
 Judith Hatton

Denton Hiatt
 Emma Hornaday
 Larry Hornaday
 Mary Anne Humphrey
 Beverly Kays

Don Keltner
 Donna Kinnett
 Pat Kinnett
 Judi Lane



Lucreta Loveless
 Edith Merriman
 Jerry McClure
 Sharon Medsker
 Judy Myers



Wallace Napier
 Oliver Prescott
 Jim Quattrocchi
 Max Richardson
 Bill Rooker



Alyce Rose
 Pauline Rutledge
 Judy Skaggs
 Dollie Shortt
 Ida Shortt



Donna Smith
 Shirley Smitherman
 Patty Spoon
 Sandra Stainbrook
 Carol Stainbrook



Steve Strawder
 Bill Swinney
 Beverly Thompson
 Karen Tutewiler
 Ann Van Hoy



Raymond Ward
 Sue Western
 Larry Whalen
 Sue Wilson
 Sue Williams



FRESHMEN

Jessie Adams
 Floyd Allender
 Velve Barger
 Vickie Beaver

Judy Bell
 Conley Bishop
 Joyce Boyer
 Darlene Brock
 Nancy Brown

Yvonne Capps
 Marilyn Chilcote
 Richard Chowning
 Robert Clouse
 Jeanine Collier

Don Daily
 David Davis
 Gus Davis
 Richard Davis
 David Dayhuff

Mary Deibel
 Tom Downey
 Mary Ann Earles
 Pat Ely
 Ruthann Emlet

Judy Fankboner
 Gwen Ferguson
 Jerry Fishel
 John Gershanoff
 Jimmy Gibson

Dora Giffin
 Owen Glidden
 Richard Griggs
 James Gross



Jean Gunnell
 Donna Haggard
 Jim Harvey
 Curtis Hatton
 Judy Hensley



Flavia Huff
 Mike Hundley
 Lawerance Johnson
 Raymond Johnson
 Ruth Johnson



Bill Jones
 Nancy Jones
 Wilda Inabnitt
 Jim Kale
 Connie Keller



Ruth Key
 David Kidwell
 Linda Lugar
 Ronnie Lumpkin
 Wilma Mantooth



Norma Martin
 Jim McCarter
 Suzanne Medsker
 Janette Merriman
 Carolyn Moore





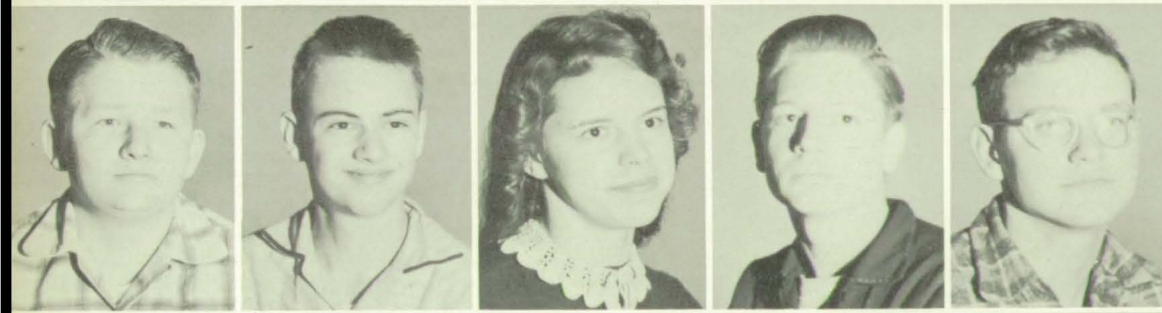
Roger Neal
 Naomi Neitzel
 Sharon O'Hair
 Hubert Perry
 Jack Perry



Sue Perry
 Dorothy Peterson
 Nancy Plummer
 David Pyle
 Judy Riggs



Rita Faye Russell
 Janice Sawyers
 Joan Shortt
 Robert Sisk
 Sylvia Smith



Lanny Smoot
 Robert Starks
 Ramona Steinbrook
 Robert Stepp
 Larry Stewart



Darlene Swinney
 Buddy Swisher
 Pam Timmons
 Patty Van Metre
 Norma Waltz



Thomas Weddle
 Dickie Western
 Susan White
 Gene Willis
 David Young



FRONT ROW: June Swinney, Carole Stamm, Margaret McNabney, Patty Wooldridge, Catherine Record, Carol Quattrocchi, Carol Selke, Judy Mynott, Sandy Roberson, Pearl Nott. SECOND ROW: Margaret Mays, Frank Lowrey, Raymond Lopossa, Ronald Allman, Walter Sweet, Eddie Rouse, Bobby Jackson, Sandra Cannon. THIRD ROW: Gerna Duncan, William Robinson, Larry McDaniels, Johnny Moore, Nick Wetzal, Ronnie Matney, Richard Short.

EIGHTH GRADE

FRONT ROW: Penny Lett, Nancy Lightle, Karen Sheperd, Jackie Littell, Ricky Lee, Bennie Arnold, Kenny Comer, Stanley Emerson, Ray Stanfield, Dennis Green, Wendy Jo Leonard. SECOND ROW: Jerry Thompson, Kay Collier, Sue Head, Nancy Hert, Paula Swisher, Sharon Keltner, Dorothy Atwood, Sandra Cannon, Julia Joyner, Pat Carson. THIRD ROW: Charles Allen, Jo Curtsinger, Mike Davidson, Steve Hilliker, Virgilene Kays, Frankie Featherston, Janie Boyd, Joan Elkin, Madelyn Chase, Philip Coleman, Bonnie Skinner.





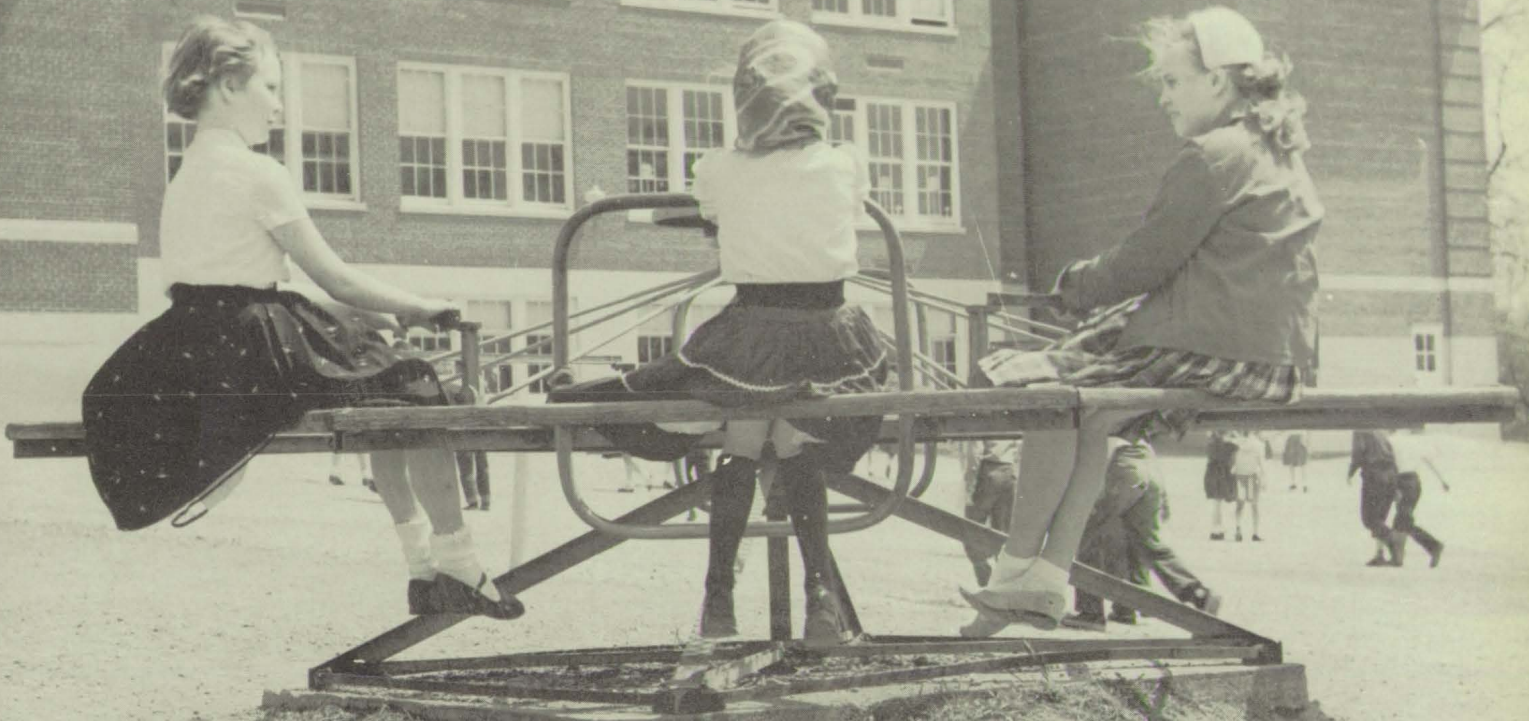
FRONT ROW: Richard Deibel, Terry Hornaday, David Barker, Joey Van Bokkelen, Don Adams, Ralph Daily, Charles Hamilton, Amy Hadley, Carlotta Keith, Christine Borders, Sue Haskett, Donna Hicks. SECOND ROW: Nancy Via, Reba Rooker, Maralee Gibbs, Jackie Forcum, Sandy Gunnell, Judy Goad, Carol Anders, Nina House, Charles Harvey, Bill Garrison, Nannie Cravens. THIRD ROW: Carol Borders, June Colee, Carolyn Hornaday, Karen Conner, Liane Hawkins, Sue Capito, Larry Woods, Kenneth Davis, Tommy Lapprad. FOURTH ROW: Carol Hendrickson, Sandra Davis, Jayne Boyd, Phillip Gibbs, Harry Gibson, Bert Haggard, Harold Estes. FIFTH ROW: Kay Allison, Suzanne Winder, Sharon Hamblen, Randy Hogue, Gary Butcher, Jimmy Tompkins, Ray Hartley.

SEVENTH GRADE

FRONT ROW: Michael Richardson, Martin Magenheimer, Jack Parks, Cheryl Daily, Sharon Leonard, Kay Record, Bruce Ratliff, David Richards, Jimmy Kricks, Doyle Robling, Richard Spoon. SECOND ROW: Larry Medsker, Coleen Sawyers, Judy Raeer, Donna Rutledge, Cindy McElwain, Billy Armstrong, Paul Ianglely, John Altman, Tommy Mendenhall. THIRD ROW: Diana Levin, Barbara Marin, Carolyn Kinnett, Gladys Napier, James Willians, Dorothy Smith, Larry Short, Ronnie Rairdon. FIFTH ROW: Robert Lundy, Bill Kale, Barbara Noble, Pamela Slater, Kenny Shrake, Charles Richey, Onis Brown.



GRADES





FRONT ROW: Leroy Stow, Mike Myers, Barbara Richards, Karen Marine, Sue Ann Moore, Mary Prescott, Susie Myers, Louise Swinney, Patty Martin, Kenny Miller, David Roembke. SECOND ROW: Billie Sue Rose, Debby Knapp, Alvin York, Stephen Stockwell, Tommy Sundline, Dicky Sawyers, Phyllis Wagner, Janice Napier, Nancy Mosier, Nancy Padgett. THIRD ROW: Rose Ann Park, Ruth Ann Troth, Jewell Wilson, Nancy Stratton, John White, Jerry Perry, Delmar Waltz, Mr. Bernard. FOURTH ROW: June Sims, Mary Warner, Peggy Payton, Joe Robinson, Bill McNabney, Jimmy Wiles.

SIXTH GRADE

FRONT ROW: Charles Fidler, Sandra Capps, Garry Kenworthy, Karen Miller, Charles Harvey, Judy Hagarty, Phillip Emerson, Constance Knight, Tobey Dolen, Kathy Humphrey, Nick Kerkhof. SECOND ROW: Ronald Courtney, Eddie Bossom, James Forrester, Kenneth Giffin, Richard Foster, Keith Chase, Thomas Hilliker, Billie Jean Giffin, Glenda Dotson, Karen Harris, Diane Adams. THIRD ROW: Sharon Dye, Maedean Cox, Jerry Hite, Joan Adams, Sue Breedlove, Richard Antrim, Fred Kenworthy, Mrs. Kellum. FOURTH ROW: Janet Jones, Jill Casey, Patricia Haggard.

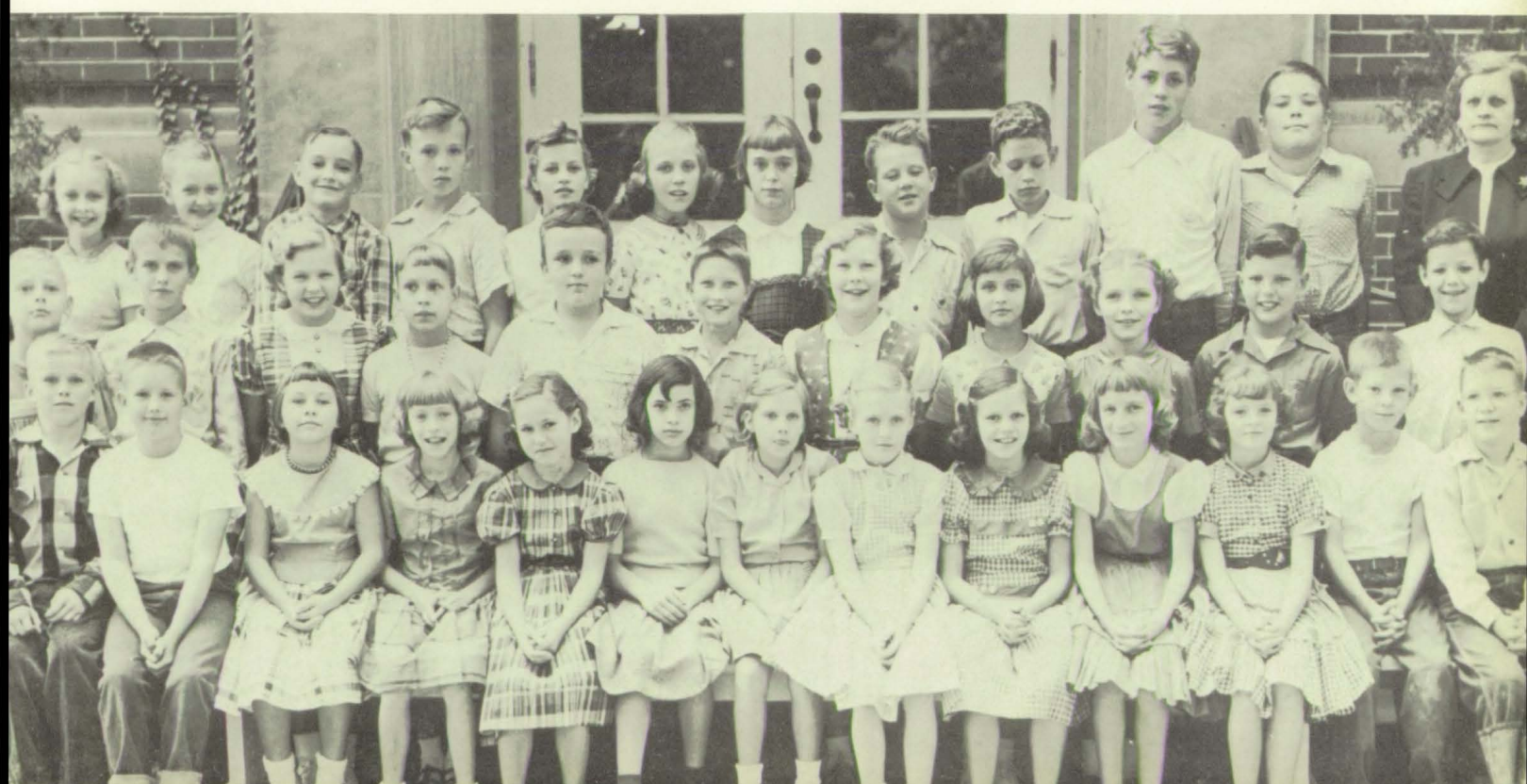




FRONT ROW: Charles Pottorff, George Napier, Bonita Lightle, Linda Scutten, Mary Ann Weddle, Mayanne Record, Norma Payton, Melinda Warriner, Diane Hillman, Nancy Richardson, Wandy Lowry, James Rodenbeck, John Mowery. SECOND ROW: Bill Van Metre, Donald Mosier, Wendy Van Winkle, Sherry Merideth, John Mendenhall, Tandy Huff, Mary Priller, Paula Wilkins, Edna Richardson, Stanley O'Hair, Roy Lee Skaggs. THIRD ROW: Carolyn Thompson, Chere Littell, James Quillen, Donald Wilcher, Wanda Lundy, Pamela Weakley, Carol Thompson, Leroy Selke, Tommy Storm, Cecil Lundy, Arthur Smith, Mrs. Truax

FIFTH GRADE

FRONT ROW: Billy Kennedy, Julia Hagee, Randall Caldwell, Lu Rhe Hawkins, Joe DeHoney, Mary Powell, Bill Harad, George Ann Fields, Dale Greenè, Marsha Featherston, Bill Beasley, Susan Jessup. SECOND ROW: Darla Anders, Stephen Edwards, Cassandra Brown, Ronald Helmick, Barbara Hensley, Terry Kenworthy, Pamela Joyner, Joe Clark, Louetta Chowning, Tommy Gibbs, Sharon Bellamy. THIRD ROW: Robert Booher, Beulah Goble, Sandra Altman, Karen Keck, Norman Cox, Macky Duncan, Donald Helmick, Oakley Brown, Martha Copeland. FOURTH ROW: Wayne Chilcote, Delbert Huth, Carl Cowen, Michael Free, John Joyner.

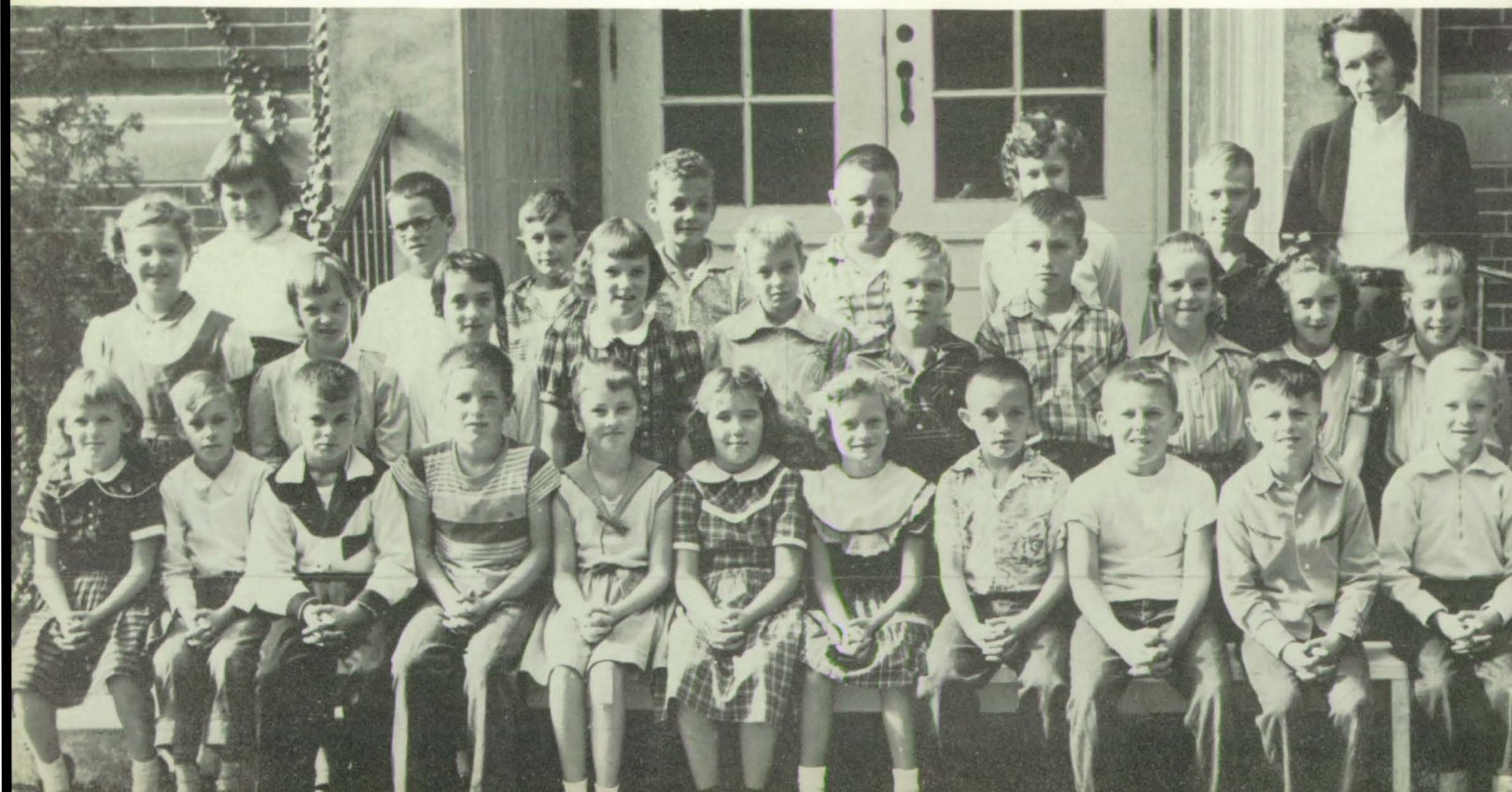




FRONT ROW: Albert Barnes, Ronald Foster, Duane Magenheimer, Lana Bailey, Martha Hayes, Ruby Cox, Linda Miller, James Fischer, Sharon Heckman, Ronald Blackburn, Kenneth Hicks, Janice Forrester. SECOND ROW: Larry Blaschke, Dan Hadley, Jay Coleman, Sara Gibbs, Ronald Harbin, Rita Kenworthy, Martha Casey, Barbara Criswell, Janel Monday, Georgia Gregory, Gloria Dotson. THIRD ROW: Richard Hagarty, Marc Keltner, Ronald Laprodd, Jack Duncan, Barbara Hook, Vicki Fields, Glenna Arnold, Jennie Lundy, Mrs. Haase.

FOURTH GRADE

FRONT ROW: Sally Pottorf, Jimmy Moore, Gerald Wagner, Barney Smith, Wendi Roberson, LaDonna Selke, Kay Rairden, Terry Rutledge, Richard Park, Pete Powell, Dennis Moore. SECOND ROW: Sheila Nelson, Brenda Wilson, Jessica Swinney, Sandra Swinney, Nancy Winder, Billy Knapp, Stevie Remster, Sue Stockwell, Sharon Hillman, Cheryl Stockwell. THIRD ROW: Pamela Sundling, Rick Van Bokkelen, Bill Roberson, Dennis Newby, John Wood, Peggy Truax, Stephen Tackitt, Mrs. Foster.

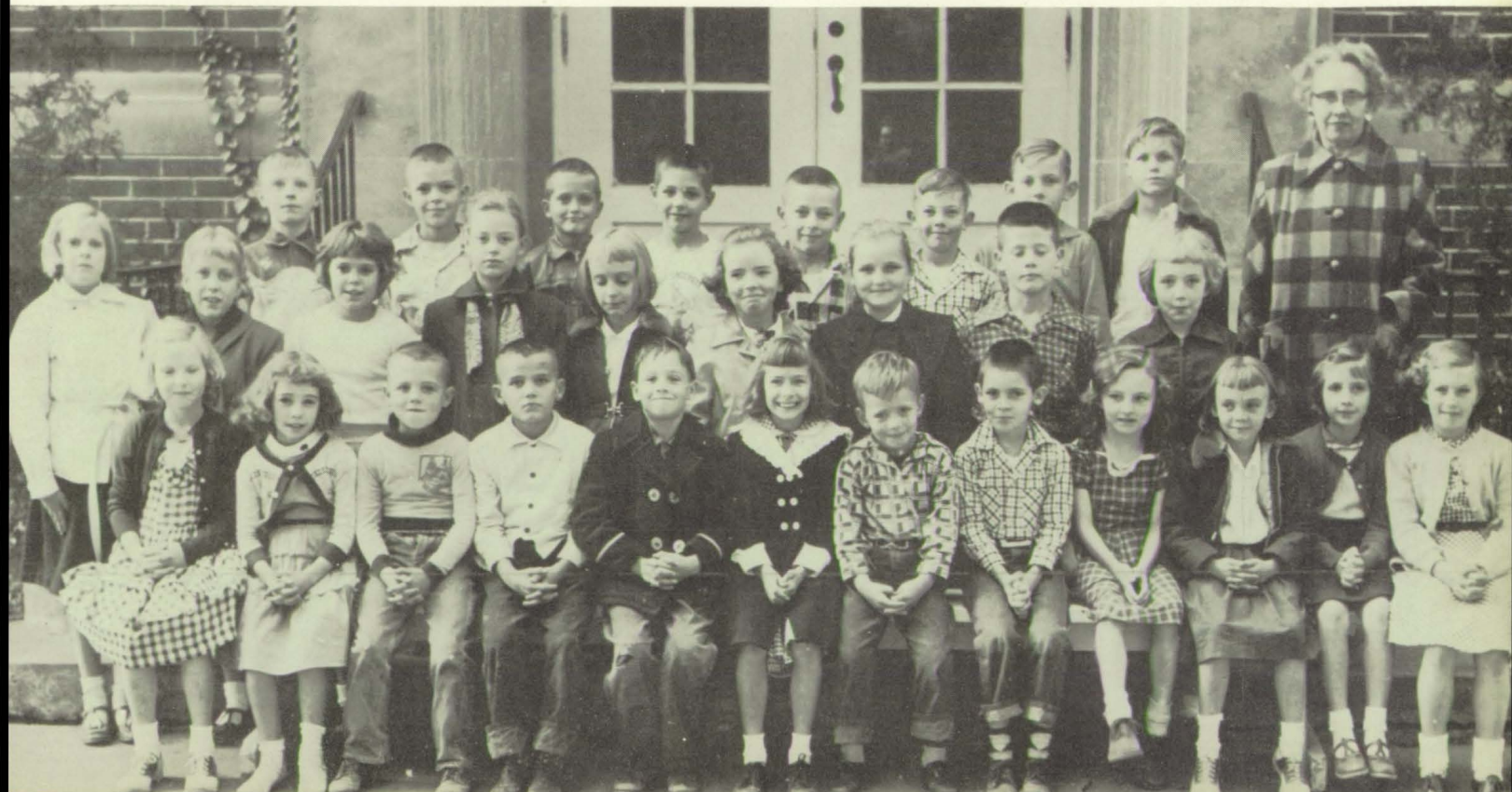




FRONT ROW: James Beasley, Margaret Bridges, William Arnold, Judith Fischer, Jerry Fisher, Gloria Brewer, Judith Asche, Sue Benge, Danny Dotson, John Haase, Ruby Forrester, Russel Cain. SECOND ROW: Brenda Boger, Sharon Capps, Ron Dee, Dalton, John Doughty, Larry Collee, Gail Adams, Richard Brown, Darlene Courtney, Beverly Boone, Mrs. York. THIRD ROW: Robert Edmondson, Loraine Dolen, Douglas Beasley, Douglas Howard, Edward Estelle, Harry Pierce.

THIRD GRADE

FRONT ROW: Linda Gregory, Barbara Gill, Norman Blume, Stephen Foster, Stephen Daily, Millicent Johnson, Larry King, Ronald Good, Peggy Hornaday, Kay Spoon, Donna Payton, Connie Fox. SECOND ROW: Cathy Johnson, Virginia House, Cynthia Hite, Nannie Hamilton, Faye Spoon, Sharon Hood, Donna Knight, Dickie Bill Jackson, Patricia Kays. THIRD ROW: Sammy Heckman, Danny Kays, Richard Bain, Chester Gibbs, Cecil Freeman, Richard Gunnell, Forrest Gray, John La Pradd, Mrs. Sellars.





FRONT ROW: Bill Lawrence, Diane Spoon, William Sawyers, Sharon Morrison, Roy Merrifield, Gloriaanna, McDaniel, Jerry Poe, Beverly Warriner, Larry Rushing, Sharon Druhat, John L. Mowery, Nancy Stephens, John Tompkins. SECOND ROW: Mike Miller, Linette Monday, Gary Lowery, Geraldine Hillman, Susan Wiles, Bobby Scaggs, Terry Powell, David Spangle, Sandra Rush, Jim Wilkins, Mrs. Watson. THIRD ROW: Patty Parks, Jeff Thomas, Mary Neill, E.J. Napier, Lynn Sargent, Janice McElyea, Mike Priller, Linda Merriman, Mary Wilcher. ABSENT: Marcus Robinson, Robert L. Phillips.

THIRD GRADE SECOND GRADE

FRONT ROW: Linda Reedy, Genera Harvey, Carolyn McElyea, Penny Rairdon, Bruce Richards, Lee Kinder, Denny Parr, Jay Dean Keith, Peggy Potts, Paul Howard, Lois Napier, Glenda Gray, Steve O'Dell. SECOND ROW: Tommy Mincy, Judy Mendenhall, Glenn Galbreath, Sharon Kendall, Mike Knapp, Suzanne Gunnell, Steven Miller, Phyllis Park, Gilbert Price, Dorothy Lowery, Jeffrey Rice. THIRD ROW: Susan Joyner, Earlene Newberry, Everett Lundy, Billy Scott, Rejeanna Lundy, David Newby, Danny Sellars, Mrs. Gee.

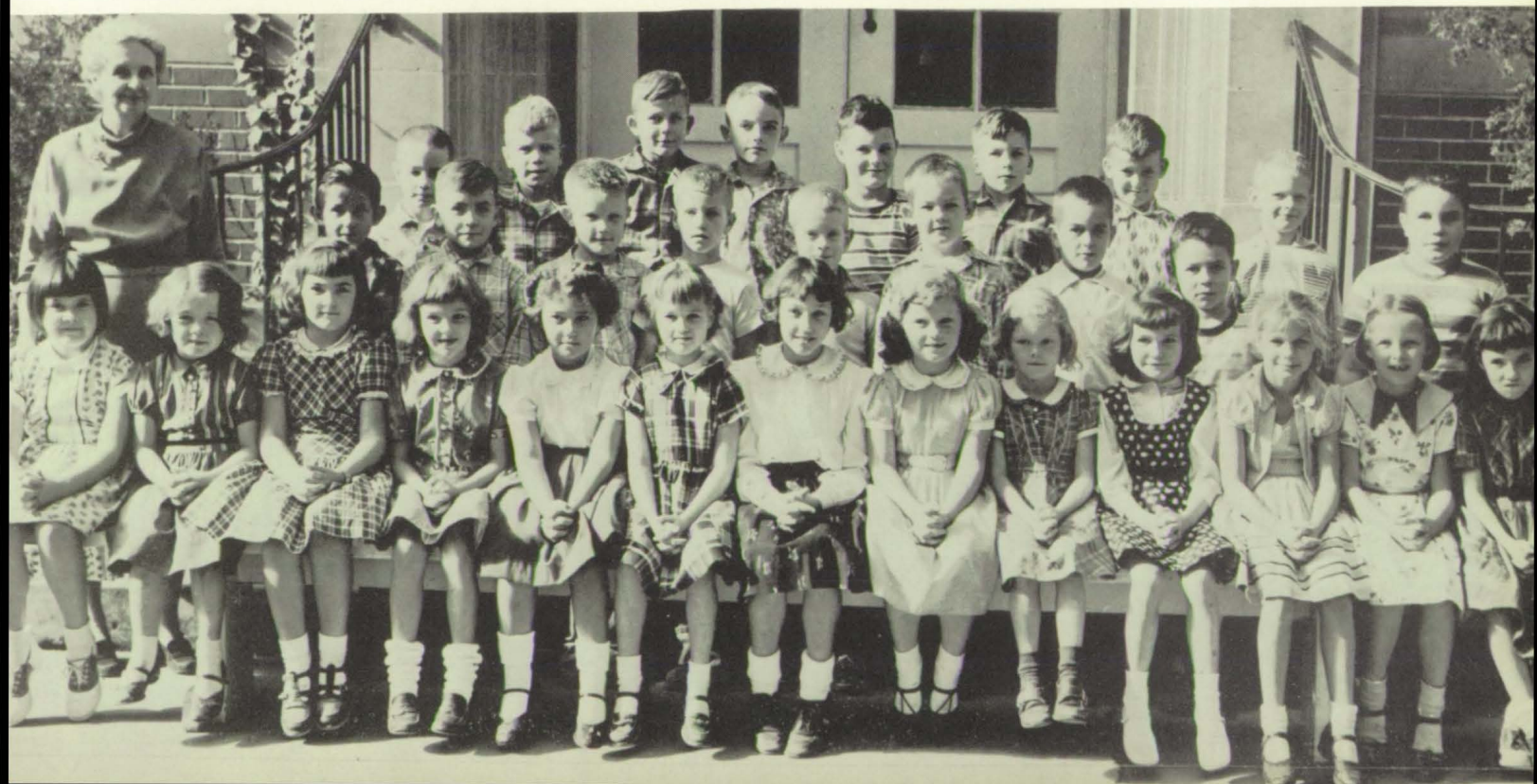




FRONT ROW: Jane Bridges, Jean Blume, Marilyn Eduards, Jill Flaucher, Pamela Bray, Cheryl Beasley, Patty Altman, Karen Bradford, Wanda Barnes, Janice Bryan, Shirley Booker, Nancy Clark, Flossie Catellier. SECOND ROW: John Brown, Louis Catellier, Bill Albertson, Chris Cline, Larry Forsyth, Ricky Carson, Dale Swinney, James Scott. THIRD ROW: Jeff Fields, Gill Frederick, Danny Shrake, Steven York, Ronnie Witherspoon, Larry Duncan, Richard Ferguson, Bill Bailey, Buddy Bingham.

SECOND GRADE

FRONT ROW: Beth Ann Weaver, Barbara Richardson, Donna Williams, Rita Schooler, Donna Stephen, Nancy Shrake, Annie Smith, Joleen McBurney, Margaret Zielska, Charlene Utterback, Paula Weddle. SECOND ROW: Stanley Walls, Michael Spoon, Mike Shrake, Danny Goble, Larry Sawyer, Roger Smith, Richard Sharp, Steven Williams, Danny Via, Guy Selka. THIRD ROW: Mrs. Frazier, Billy Clark, Kent Stamm, Stephen Saucerman, Phillip Thompson, Richard Sawyer, Ralph Withrow.

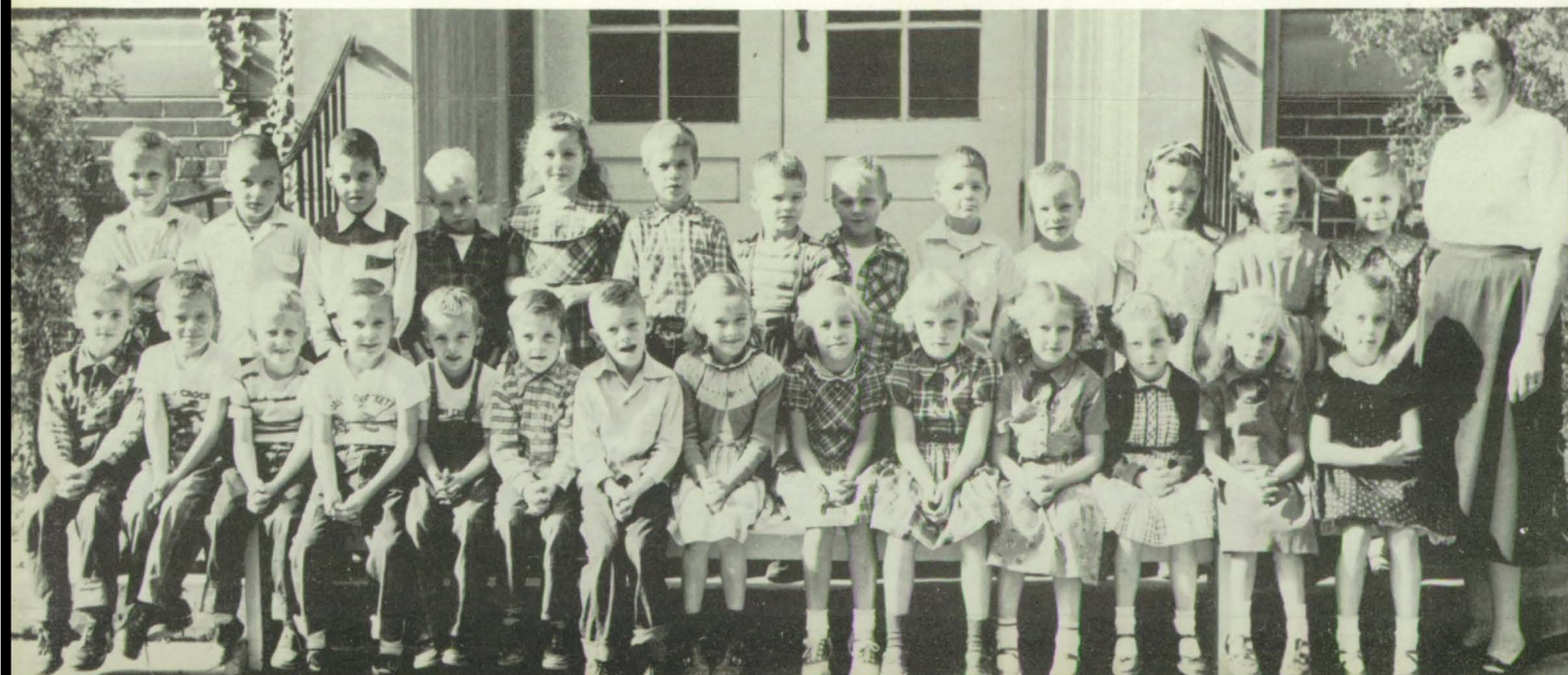




FRONT ROW: Kathy Palmer, Donna King, Jimmy Moon, Bruce Kirkendoll, Bob Pryor, Debofah Monday, Kathy Magenheimer, Vicky Nichalson, Pamla Kendall, Rebecca Myers, Roger Mynatt, Donald Levin, Richard Dotson.
 SECOND ROW: Marcia Rariden, Odell Lundy, Annette McElyea, Suzanne Poe, Charles Ratliffe, Lewis Meo, Martin Powell, Steven Lacy, Don Pauley, Patricia Roane, Viola McDaniel, Cheryl Owen, Sheila Payton, Mrs. Doughty.
 ABSENT: Joyce Moon, Sandra Carson, Billy Yokum, David Walden

FIRST GRADE

FRONT ROW: David McMillan, William Scaggs, John Roberson, Richard Shover, John Scotten, James Utterback, David Whitted, Marilyn Stanley, Christina Shepherd, Linda Smith, Shirley Renner, Cynthia Renner, Sandra Thomas, Patty Thompson, Mrs. Coffman. SECOND ROW: Courtney Rice, Daryl Swinney, Ronnie Waltz, Walter Pierce, Donna Spoon, Kenneth Simpson, William Scaggs, Jimmy Payton, Joseph Rodenbeck, David Riggan, Sharon Wratten, Martha Stephens, Darlene Rushing.





FRONT ROW: Yvonne Jackson, Brenda Harrison, Peggy Fox, Jerylin Barlow, James Robert Grounds, Roger Dotson, Steven Franklin, Vicki Bray, Cindy Cain, Cathy Lee Chenoweth, Marc Free. SECOND ROW: Linda Appleget, Anita Dobbins, Tommy Joe Gunnell, Gary Duncan, Judy Kay Hamilton, Richard Hogve, Dhea Rae Hawkins, Sharon Fox, Herschel Huff, Robert Nichelson, Michael Earles. THIRD ROW: Billy Hicks, Gary Allison, Cathy Herider, Lysandra Gregory, Anita Homaday, Mrs. McKamey.

FIRST GRADE AND KINDERGARTEN

This is part of our newly organized public kindergarten with Mrs. Jones as teacher.



1955-1956 CALENDAR

AUGUST

30 First day of school

SEPTEMBER

5 Labor Day--No school

28 Freshman Initiation

OCTOBER

7 Homecoming Football Game-Browns -
burg, Disk Jockey Dance

18 Honor Society Initiation

25 Variety Show by Chorus

27-28 Teacher's Association--No school

NOVEMBER

4 Junior Class Play

14 Charles King Assembly Program

24-27 Thanksgiving Vacation

DECEMBER

21 Christmas Program

23 Senior Christmas Dance

24 Christmas Vacation

31 Four-Way Tourney at Plainfield

JANUARY

2 End of Christmas Vacation

11-12 Semester Exams

FEBRUARY

22-25 Sectionals

28 Regional American Legion Oratorical
contest

MARCH

2 Lions' vs. Faculty basketball game

9 Senior Disk Jockey dance

23 District Choral Festival

APRIL

6 Band and Chorus Concert

13 Senior Class Play

21 W.P.A. Dance

30 Mother and Daughter Banquet

MAY

1 Art Exhibit

3 Mid-state track meet

4 Achievement Day

5 F.F.A. Dance

7 Science Club Party

8 Honor Society Picnic

10 Honor Day

11 Junior-Senior Prom

13 Baccalaureate

14 Athletic Department Circus

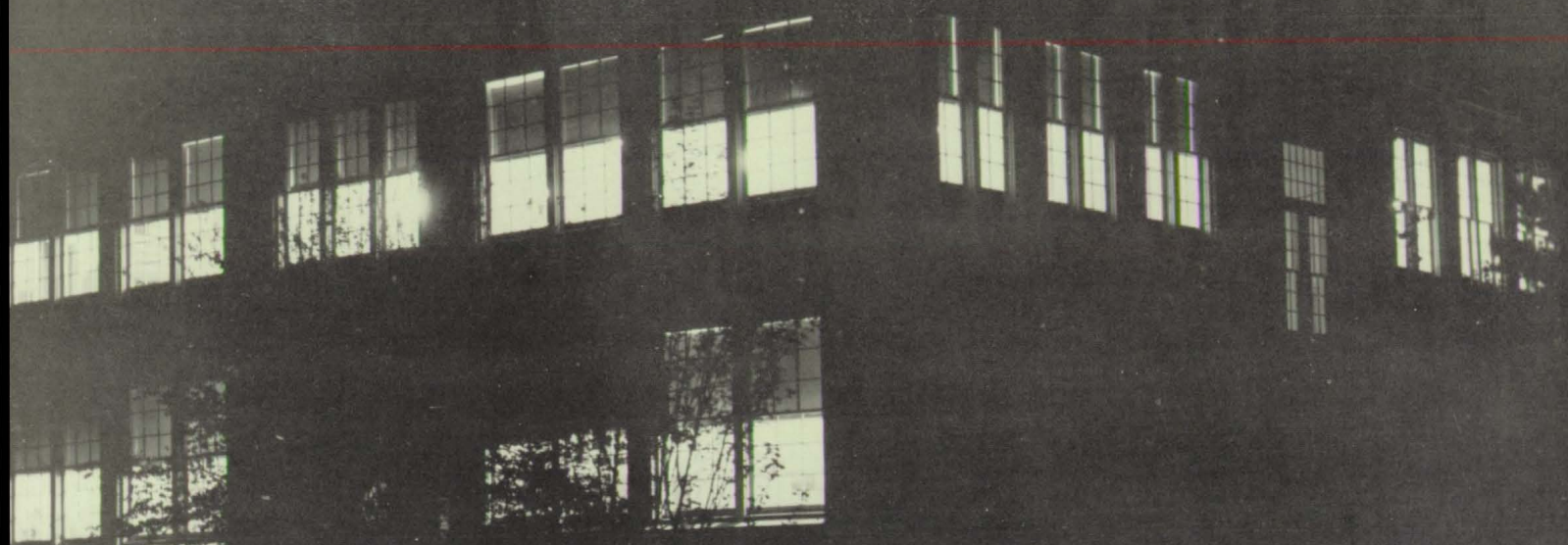
15 Senior trip to Turkey Run State Park

16 Final Exams

17 Commencement

18 Last Day of School





ACTIVITIES AND ORGANIZATIONS

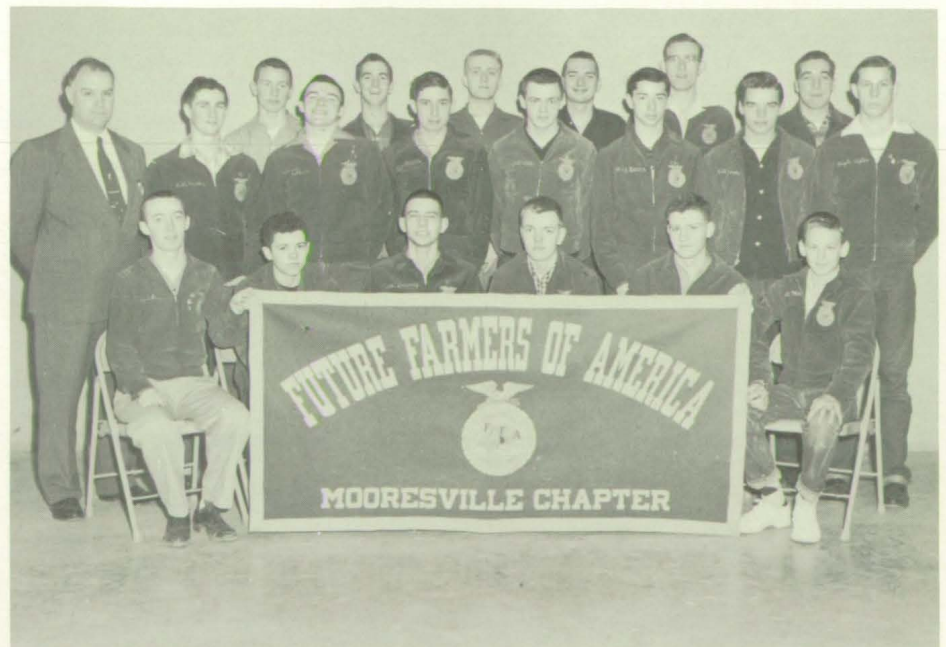


FRONT ROW, LEFT TO RIGHT: Karen Tutewiler, Marilyn Griggs, Mrs. Shuffelbarger, Sponsor; Nora Wainscott, Sharon Rairdon, Beth Beaver. SECOND ROW, LEFT TO RIGHT: Judi Lane, Linda Lugar, Erma Glidden, Beverly Thompson, Roxanne Forcum, Carolyn Dehoney, Charlotte Hazlett, Nancy Brown, Vickie Beaver. THIRD ROW, LEFT TO RIGHT: Phyllis Heckman, Mary Ann Humphrey, Lucreta Loveless, Sharon Medsker, Carolyn Dickson, Darlene Bayliff, Martha Henderson, Lynn Allison and Yvonne Capps.

FUTURE HOMEMAKERS OF AMERICA

FUTURE FARMERS OF AMERICA

THIRD ROW: Ralph Goldman, Ray Settle, Ronald Kays, John Ahlefeld, Allen Tuteweiler, Dallas Rutledge. SECOND ROW: Harold Heckman, Sponsor; Bill Miller, John Baldwin, Gus Davis, Norman Shields, David Davis, Bill Rooker, Hugh Tipton. FRONT ROW: John Da Vee, Phil Griffith, Tom Downey, Max Richardson, Charles King, Steve Strawder.



FOURTH ROW, LEFT TO RIGHT: Mrs. Shufflebarger, Gwen Ferguson, Mary Humphrey, Pam Slater, Sharon Keltner, Karen Tutewiler, Carolyn Dickson, Marilyn Griggs, Martha Henderson, Shirley Smitherman, Margaret McNabbney. THIRD ROW: Phillip Gibbs, Nina House, Kaye Record, Catherine Record, Karen Shephard, Kay Collier, Nancie Hert, Paula Swisher, Judy Hensley, and Wm. Robinson. SECOND ROW: Carlotta Keith, Amy Hadley, Lu Rhee Hawkins, Marcia Featherstone, Stephen Stockwell, Mary Warner, Tommy Gibbs, Louise Swinney, Julia Hagee. FRONT ROW: Sue Ellen Breedlove, Kathy Humphrey, Diane Adams, Mary Ann Priller, May Ann Record, Jean Wilkins, Karen Keek.



During the summer, girls, and boys too, who are interested in baking, clothing, food prep., and pres., and numerous other projects and who are ten years old may enroll in 4-H. The enrollment last year was over fifty. To instruct these young people in their projects we have a leader, Mrs. Shufflebarger, who helps plan the meetings and pushes each person to finish his or her project. Because of such large groups the club chooses Junior Leaders. These persons must be 16 years old and have been in 4-H for three years.

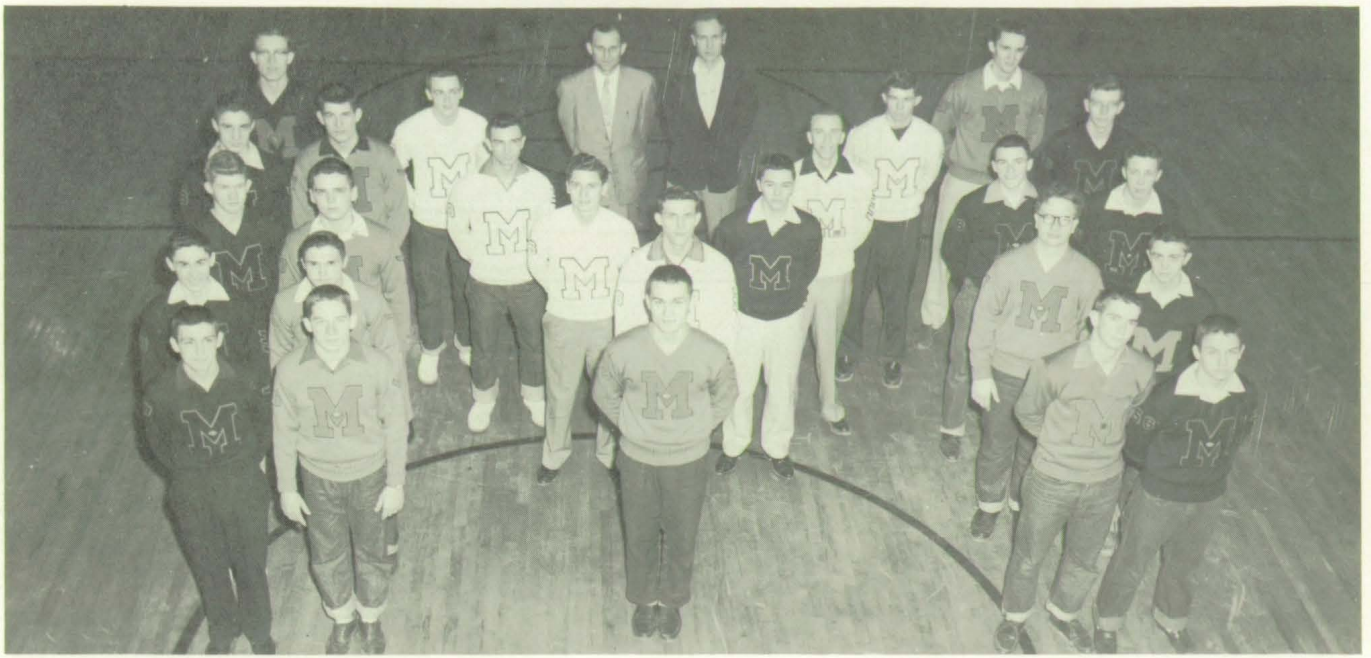
4 - H

The Boys' 4-H consists of boys who are interested in farm work. Mr. Heckman, the advisor of the group, has done an excellent job throughout the year in providing an interesting and educational program for every age group and farm interest.



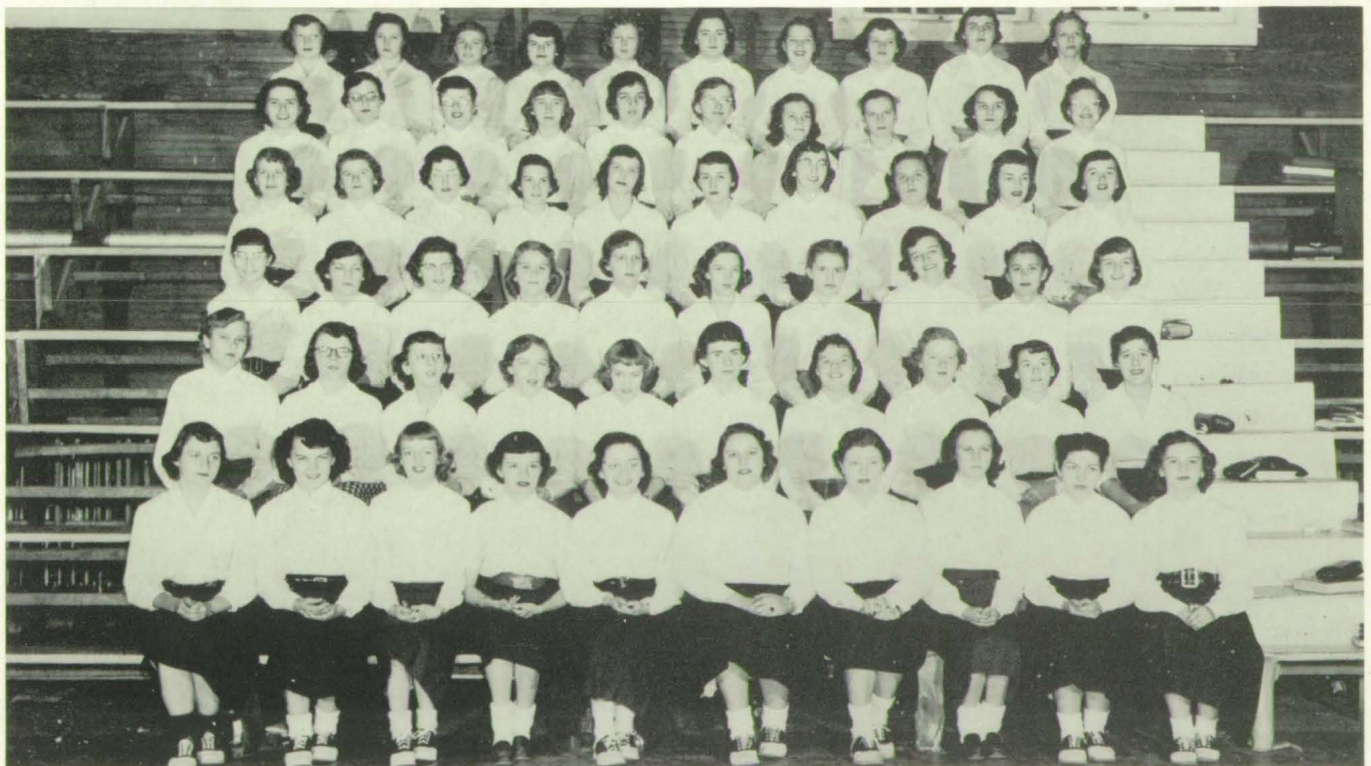
FRONT ROW: Neal Ulrey, Richard Prescott, Ronald Kays, Tom Weddle, William Robinson, David Davis, Raymond Ward, Jim DeLoach, John Ahlefeld. SECOND ROW: Nancy Via, Diane Adams, Ronald Helmick, Nick Kerkhof, Margeret MacNabbney, Phillip Coleman, Bill MacNabbney, Joey Van Bokkellen, Don Adams, Richard Lee, Donald Helmick, Judy Raper. THIRD ROW: Delmar Waltz, Norma Waltz, Max Richardson, Hugh Tipton, Dallas Rutledge, Neal Brown, Allan Tutewiler, Nick Wetzel, Frank Featherston, Jimmy Tompkins. FOURTH ROW: Harold Heckman, John Davee, Jim Casey, Bill Rooker, Phil Griffith, John Baldwin, Karen Kerkhof, Shirley Smitherman.

LETTERMAN'S CLUB



LEFT ROW, FRONT TO BACK: Terry Fishel, Max Connell, Jot Comer, Bill Altman, and Allen Tutewiler. M LEFT TO RIGHT: Kent Almond, Wendell Boyd, Bill Swinney, Neal Ulrey, Norman Shields, Larry Tolbert, Bill Harris, Conard Wrightsman, Jack Casey, John Davis, James Casey, Don Uhls, Kenny Gray, Johnny Baldwin, Dennis McGuire, and Ray Settle. RIGHT ROW, FRONT TO BACK: Gene Myrick, Richard Harris, Max Park, and Charles Jones.

FRONT ROW, LEFT TO RIGHT: Sandy Ahlefeld, E. Harper, E. Marine, L. Allison, K. Allison, D. Bayliff, L. Richter, E. Barnes, L. Loveless, and J. Haymaker. SECOND ROW, LEFT TO RIGHT: D. Neitzel, R. Coghil, J. Collier, D. Swinney, K. Shepard, M. Henderson, L. Bishop, B. Thompson, C. Earles, and K. Tutewiler. THIRD ROW, LEFT TO RIGHT: M. Deibel, V. Beaver, J. Boyd, P. Swisher, S. Keltner, D. Peterson, R. Steinbrook, P. Timmons, L. Lugar, and L. Giffin. FOURTH ROW, LEFT TO RIGHT: A. Rose, S. Smith, E. Glidden, Carolyn Borders, M. Enlow, A. Van Hoy, C. Dickson, V. Barger, J. Frazier, B. Gee. FIFTH ROW, LEFT TO RIGHT: G. Ferguson, L. Cullom, J. Sawyer, N. Hert, S. Head, K. Collier, J. Hensley, J. Boyer, D. Smith, and J. Lane. SIXTH ROW, LEFT TO RIGHT: S. Perry, D. Brock, M. Earles, J. Fankboner, W. Inabnitt, D. Haggard, P. Ely, J. Timmons, K. Kerkhof, and J. Russell.



WHITE BLOUSE CLUB

STUDENT COUNCIL



STANDING, LEFT TO RIGHT: Gary Butcher, Jack Perry, Nina House, Nick Wetzel, Donald Keltner, Kay Connell, David Stout, Mr. Richards-Sponsor, and Shirley Tompkins. SEATED, LEFT TO RIGHT: Edith Merriman, Judy Riggs, Dixie Lopossa, and Sue Head.

FRONT ROW, LEFT TO RIGHT: Terry Fishel, Bill Skaggs, Janet Swisher, Ruth Robinson, Charlotte Hazlett, Nora Wainscott, John Davis, Marilyn Griggs, and Sponsor-Mrs. Cowen. SECOND ROW, LEFT TO RIGHT: Sponsor-Mr. Truax, Robert Barger, Kay Connell, Clara Lugar, Carolyn Dickson, Joan Timmons, Sandra Ahlefeld, Nancy Humphrey, Martha Henderson, Lynn Allison, and Sponsor-Mr. Richards. THIRD ROW, LEFT TO RIGHT: Larry Gates, Max Overpeck, Jot Comer, Darrell Holmes, Harold Davis, Charles Brewer, Dennis McGuire, Jack Casey, Joe Wetzel, and David Stout.



NATIONAL HONOR SOCIETY

WAGON TRAILS STAFF

"That picture doesn't go there," came the disgruntled cry, "Oh yes it does," piped back the thundering voice of Mr. Sharp. Yes, that was a typical annual staff meeting, but it wasn't all bad, just the biggest part of it.

The hardworking annual staff with Co-Editors Joe Wetzel and Jack Casey have enjoyed the publishing of Campus life on M. H. S.

We are very grateful to Mr. Sharp for his patient guidance and hard work.

We of the annual staff hope in some small way, that this annual will give you a brief view of our school and its faculty.



AT LEFT, LEFT TO RIGHT: Nora Wainscott, Our Sponsor Mr. Sharp, Shirley Tompkins, and Linda O'Hair.

BELOW, LEFT TO RIGHT, FRONT ROW: Linda O'Hair, Joe Wetzel, Jack Casey, Nora Wainscott, Kay Giffin. SECOND ROW, LEFT TO RIGHT: David Stout, Judy Coleman, Jo Etta Russell, Nancy Humphrey, Norma Chase, Marilyn Griggs, and James Casey.



THE CAMPUS CRIER STAFF



The busy paper staff has published six school papers during the school year. The first two editions were edited with the burning of midnight oil but under the capable leadership of our editor, Joe Wetzel, we developed a successful system. The paper staff did a fine job of meeting deadlines and this was a great help.

We of the paper staff give a hearty thanks to our hard working sponsors Mrs. Cowen, Mrs. Sargent, and Miss Copeland.

ABOVE, LEFT TO RIGHT, FRONT ROW: Marilyn Griggs, Cathy Baldwin, Joe Wetzel, Ed Ayres, Jo Etta Russell, Carolyn Roller, and Don Adams. SECOND ROW, LEFT TO RIGHT: Joan Timmons, Nora Wainscott, Carolyn Dickson, Sue Gurley, Nancy Humphrey, Mary Ann Humphrey, Lucreta Loveless, Karen Tutewiler, Janet Swisher, Carolyn Dehoney, and Madeline Chase. THIRD ROW, LEFT TO RIGHT: Jack McHaffie, Kent Almond, Jot Comer, Charles Swisher, James Casey, Jack Casey, Ronnie Kays, John Davis, and David Stout.

AT RIGHT, LEFT TO RIGHT: Joe Wetzel, Marilyn Griggs, Ronnie Kays, Mrs. Copeland, Ed Ayres, Mrs. Cowen, and Mrs. Sargent.



SCIENCE AND PROGRESS



FRONT ROW, LEFT TO RIGHT: Kay Connell, Donna Neitzel, Shirley Tompkins, Ruth Anna Robinson, Robert Barger, and Sponsor Mr. Sharp. SECOND ROW, LEFT TO RIGHT: Richard Harris, Ronald Jones, Harold Davis, Jot Comer, Jack Casey, Wayne Gross, and David Stout. THIRD ROW, LEFT TO RIGHT: James Casey, Charles Brewer, Darrell Holmes, Neal Ulrey, Edward Ayres, Dennis McGuire, and Max Overpeck.

The Age of Science has struck the Mooresville High School Campus. The two year old science club has been busy all year with various projects and as the smoke clears from the laboratory table let us look in and see what they have been doing. The year has been saturated with films on Uranium, Projects of, "The Development of Pictures, a visit to Squires Studio Studios, a lecture by Mr. Todd, and Electrical Engineer, and a trip to the White River project." These are a few of the interesting activities of the Science Club.

The members are very proud of Ed Ayres who took third place in the Martinsville Science Fair.

The Latin Club was just organized this year. Any student who has taken or is taking first year latin is eligible for membership. The membership list contains twenty-three names, with Mrs. Winder as their Sponsor. Shortly after organizing and electing officers the members ordered club pins. Also in their program was a W. P. A. Dance and a Roman Banquet. Latin Club officers are as follows: President, Karen Tutewiler; Vice President, Donald Keltner; Secretary, Alyce Rose; Treasurer, Nora Wainscott; Reporter, Kent Almond.

LATIN CLUB

FRONT ROW, LEFT TO RIGHT: Alyce Rose, Erma Glidden, Judi Lane, La Donna Cullom, Carolyn Borders, Nora Wainscott, Linda Giffin. SECOND ROW, LEFT TO RIGHT: Mary Ann Humphrey, Judy Haymaker, Brenda Gee, Beverly Thompson, Lucreta Loveless, Karen Kerkhof, and Sharon Rairdon. THIRD ROW, LEFT TO RIGHT: Kent Almond, Sharon Cooper, Ann Van Hoy, Marcia Enlow, Sharon Medsker, Sponsor, Mrs. Winder, Karen Tutewiler, Carolyn Dickson, Georgia Vinson, and Donald Keltner.



OFFICE HELP

LEFT TO RIGHT:
Christine Earles, Joan Timmons, Jo Etta Russell, Sharon Rairdon, Shirley Tompkins, Nora Wain-scott, Karen Kerkhof, Marilyn Griggs, and Janet Swisher. Mr. Richards is sitting at his desk.



Many changes and additions have made the library a more convenient study room. The files have been increased to ten or fifteen cards per book to aid in using our library more, also to benefit from all the books. Many old books have been stored and new books have been ordered. Small bulletin board letters and other miscellaneous items have been purchased to add to the appearance of the library. The student body appreciates the time and work our librarian, Mrs. Spear, has contributed in improving this room.

The School Office has been a room of very busy people. Mr. Richards has done a very good job of keeping the office running at a very steady pace. Between the ordeal of writing excuses, passes, tardy blanks and report cards one can see that our principal has very little free time left.

Mr. Richards, we of the school salute you for the fine job you have done.



LIBRARY HELP

LEFT TO RIGHT: Donna Haggard, Darlene Bayliff, Georgia Vinson, Carolyn Dickson, Sara Bell, Roxanne Forcum, and Mrs. Spear.

CAFETERIA HELP



FRONT ROW, LEFT TO RIGHT:
Steve Cooper, Ruth Johnson, Judy Fankboner, Donna Haggard, Carole Quattrocchi, Catherine Record, Ruthann Emlett, Nora Wainscott, Sharon Rairdon, and Mrs. Greeson. SECOND ROW:
Mrs. Myrick, James Harvey, Larry Tolbert, Jack Haymaker, Sharon Cooper, Sue Baldwin, Mary Ann Humphrey, Carolyn Einfeldt, Gene Myrick, and Mrs. Burge.



CUSTODIANS

LEFT TO RIGHT:
Max Overpeck,
Larry Tolbert, and
George Sharp.

COOKS

LEFT TO RIGHT: Mrs. Myrick,
Mrs. Suter, Mrs. Burge, and Mrs.
Greeson.





SENIOR TRIO
 Judy Coleman, Clara Lugar, Janet Swisher



JUNIOR TRIO
 Anna M. Anders, Georgia Vinson, Beth Beaver



SOPHOMORE SEXTETTE
 LaDonna Cullom, Janet Frazier, Brenda Gee,
 Marcia Enlow, Ann Van Hoy, Linda Giffon.



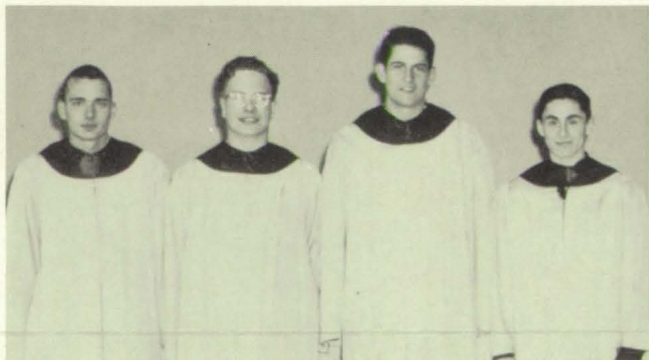
EIGHTH GRADE SEXTETTE
 Karen Shephard, Paula Swisher, Jackie Littell.
FRONT ROW: Sue Head, Sharon Keltner,
 Nancy Hert.



MADRIGALS
 John Ahlefeld, Dennis McGuire, Neal Ulrey,
 Max Connel. **FRONT ROW:** Judy Coleman,
 Clara Lugar, Janet Swisher. **ABSENT:** Norma
 Chase



FRESHMAN TRIPLE TRIO
 Sharon O'Hair, Pam Timmons, Judy Hensley, Sylvia
 Smith, **FRONT ROW:** Mary K. Diebel, Gwen Ferguson,
 Sue White, Ramona Steinbrook, Linda Lugar.



BOY'S QUARTETTE
 John Ahlefeld, Dennis McGuire, Neal Ulrey, Max
 Connell



EIGHTH GRADE OCTETTE
 John Moore, Larry Short, Frank Featherstone,
 Tommy Hiliker, Joe Curtsinger. **FRONT ROW:**
 Stanley Emerson, Kenny Comer, Ray Stanfield.



HIGH SCHOOL CHORUS

BACK ROW: Buddy Swisher, Jack Casey, John Ahlefeld, Jack Perry, Jot Comer, Neal Ulrey, Roger Neal, Dennis McGuire, Jo Ella Perry, Ruth Willis. THIRD ROW: Marcia Enlow, Darlene Bayliff, Joan Timmons, Raymond Johnson, Dick Western, Jim Gibson, Bill Jones, Ann Van Hoy, Georgia Vinson, Kathy Baldwin. SECOND ROW: Beth Beaver, Dorothy Peterson, Earlene Harper, Ramona Steinbrook, Clara Lugar, Lynne Allison, Linda Comer, LaDonna Cullom, Ellen Marine, Rosalie Coghill. FRONT ROW: Mrs. Walker-teacher, Judy Haymaker, Sylvia Smith, Patty VanMetre, Janet Frazier, Pat Ely, Brenda Gee, Anna M. Anders, Judy Coleman, Vicki Beaver, Carolyn Roller, Pam Timmons.

CHORUS GIVES MINSTREL SHOW



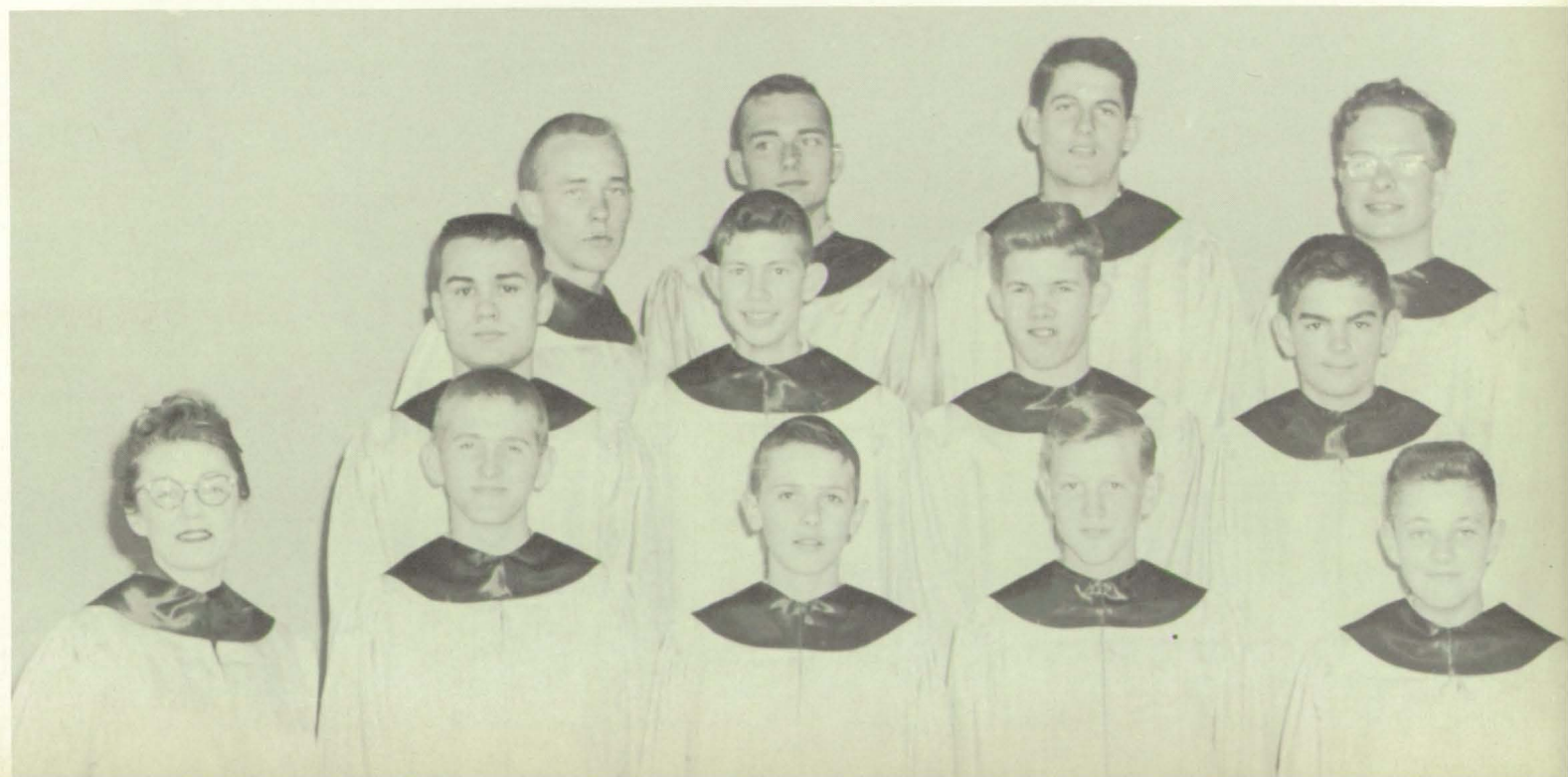


GIRLS' GLEE CLUB

TOP ROW: Beth Beaver, Marcia Enlow, Darlene Bayliff, Joan Timmons, Lynne Allison, Clara Lugar, Ann Van Hoy, Georgia Vinson, Kathy Baldwin, Vickie Beaver. MIDDLE ROW: Dorothy Peterson, Earlene Harper, Pat Ely, Ramona Steinbrook, Brenda Gee, Linda Comer, LaDonna Cullom, Pam Timmons, Ellen Marine, Rosalie Coghill. BOTTOM ROW: Mrs. Walker, Judy Haymaker, Sylvia Smith, Patty VanMetre, Janet Frazier, Anna M. Anders, Judy Coleman, Carolyn Roller, Jo Perry, Ruth Willis. ABSENT: Norma Chase.

BOYS' GLEE CLUB

TOP ROW, LEFT TO RIGHT: Jack Perry, John Ahlefeld, Neal Ulrey, Dennis McGuire. MIDDLE ROW, LEFT TO RIGHT: Jack Casey, Raymond Johnson, Jot Comer, Roger Neal. BOTTOM ROW, LEFT TO RIGHT: Mrs. Walker, Buddy Swisher, Dick Western, Jim Gibson, Bill Jones.



SOLOISTS

FRONT ROW: Stanley Emerson, Bill Jones, Steven Hilliker. SECOND ROW: Jerry Thompson, Philip Coleman, Franklin Featherston. BACK ROW: David Davis, Robert Sisk.



ENSEMBLE

FRONT ROW: Stanley Emerson, Richard Diebel, Kenny Comer, Sharon O'Hair. SECOND ROW: I'Neil Park, Phillip Coleman, Charlotte Hazlette, Gwen Ferguson, Jerry Thompson. THIRD ROW: Dennis McGuire, Frank Featherston, Buddy Swisher, Jack Casey. BACK ROW: Janet Swisher, Wayne Gross, Ronnie Kays, Larry Gates, Jot Comer.





FRONT ROW: Carl Cowen, Joey Van Bokkelen, Larry Wood, Jimmy Tompkins, Kenny Comer, Stanley Emerson, Richard Diebel, Joe Clark, Bill Harrod. SECOND ROW: Janet Swisher, Donald Adams, Tom Hiliker, Sharon Hamblin, Nancy Via, Sharon O'Hair, Frank Featherstone, Jackie Littell, I'Nell Park, Ronnie Kays, Philip Coleman, Mary K. Dieble, Susan White, Robert Sisk. THIRD ROW: Steve Hilliker, Reba Rooker, Phil Gibbs, Don Daily, Bill Jones, Nancy Hert, Judy Hensley, Buddy Swisher, Martha Henderson, Bonita Skinner, Susie Winder, Kent Almond. FOURTH ROW: Charles Jones, Paula Swisher, Kay Collier, Sharon Keltner, Phylis Heckman, Shirley Tompkins, Linda O'Hair, Jerry Thompson, Charlotte Hazlett, Dixie Lopossa, Linda Comer, Judy Coleman, Jack Casey. BACK ROW: Richard Griggs, David Davis, Mike Davidson, Neal Ulrey, Carolyn Dickson, Wayne Gross, Larry Gates, Gwen Ferguson, Dennis McGuire, Darrell Holmes, Jot Comer.

BAND

A TYPICAL PRACTICE SESSION-Lead by Mr. Karl Sargeant, Director.





"We Shook The Family Tree"

CHARACTERS

Hildegarde
 Carolyn Dickson
 Mr. Dolson
 Ed Ayres
 Mrs. Dolson
 Joan Timmons
 Sally
 Martha Henderson
 Bob
 Kent Almond
 Jimmy
 Jack McHaffie
 Paige
 Anna Anders
 Ellie-May
 Lynn Allison
 Jill
 Earna Barns
 Freddie Shermer .
 George Adams
 Mr. Shermer
 Denis McGuire
 Mrs. Shermer
 Darlene Bayliff



THE GHOST

HOUSE

CHARACTERS

- William Harrison .
- Ronnie Kays
- Gloria Wiloughby .
- Sharon Rairdon
- Henrietta Willoughby
- Nora Wainscott
- Ann Wiloughby . .
- Sue Gurley
- Andrew Barnes . .
- David Stout
- Patches
- Larry Tolbert
- "Mother Blake" . .
- Judy Via
- Oliver Mellon . . .
- Jack Casey
- Sandra Mellon . . .
- Karen Kerkhof
- Soleless Sam
- Don Uhls
- Rebecca West
- Kay Giffen
- Jean Roget, M. D..
- Bill Harris
- Ghosts
- John Davis
- Charles Smith
- Max Park





The entrance into a room filled with fresh smiles, flowers, happy couples, a band, a banquet, and this told everyone the Junior-Senior Prom was soon going to be a night to remember.



Laughter at the table can only mean the Prom is a success. The couples are happy and this tells the story.

JUNIOR AND

The reigning Queen and King!

Clara Lugar and Max Connell shared the highest honors at the Prom, as the Senior Queen and King, were crowned by the Junior Class. This will go down in their Memory Books.

The theme of the Prom "Moon Over Miami" was the perfect setting of the Prom, given by the Class of 1957 in honor of the graduating Class of 1956.



The music put the dancers in a light-hearted mood, at the Junior-Senior Prom.

On May 11, the Junior-Senior Prom was held at the I. U. Medical Center in Indianapolis.



The Senior Class President gave the speech that really meant the Prom was a success!



SENIOR PROM



The Prom is over and the memories still fresh in their minds, a couple pauses to live over, a few of the moments they found the most enjoyable!



FOOTBALL QUEEN, LINDA O'HAIR



TRACK QUEEN, SUE GURLEY

QUEENS

MAY DAY QUEEN, JANET SWISHER

PROM QUEEN, CLARA LUGAR

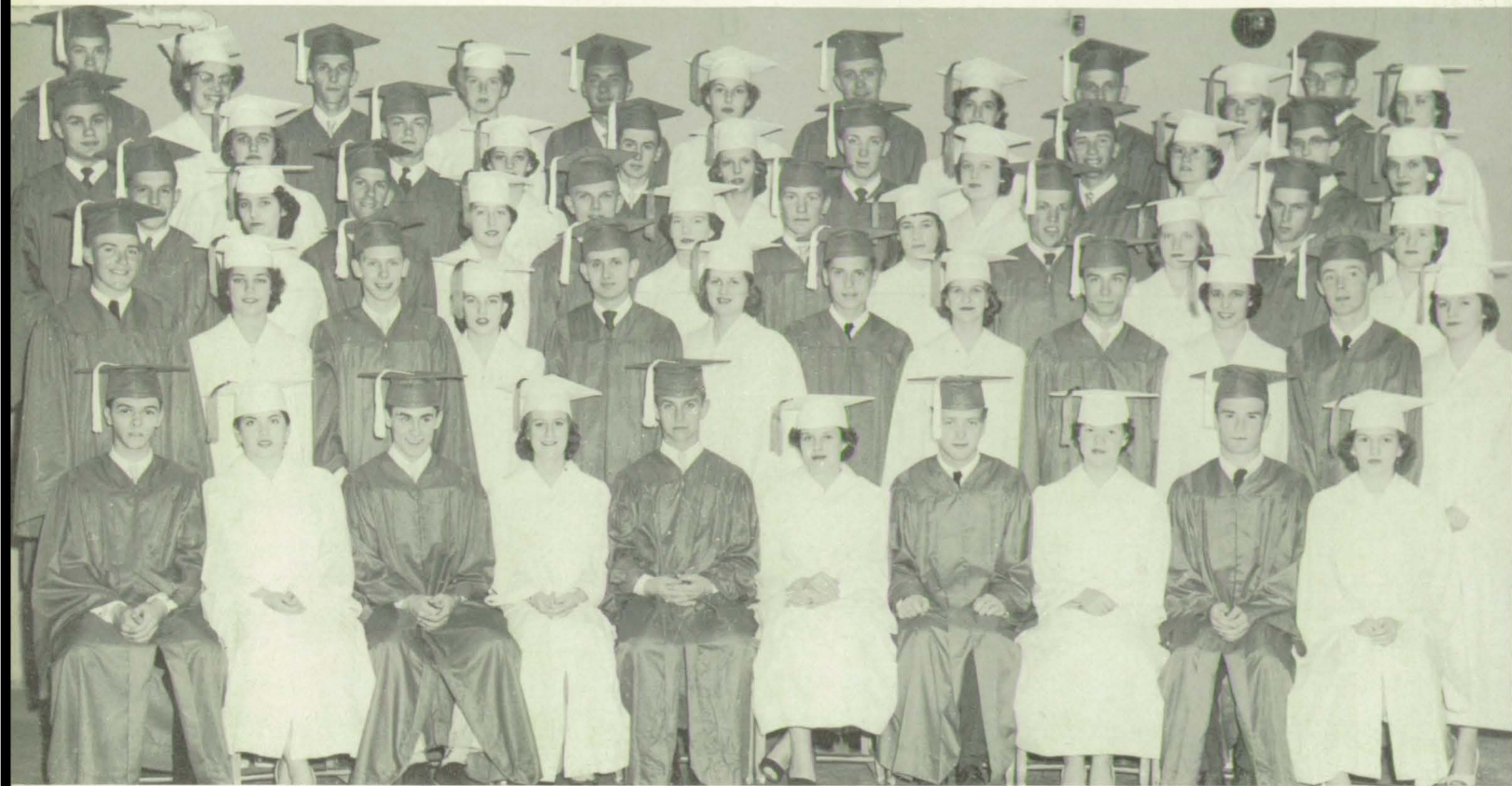




BACCALAUREATE

May 13th at the Christiana Church



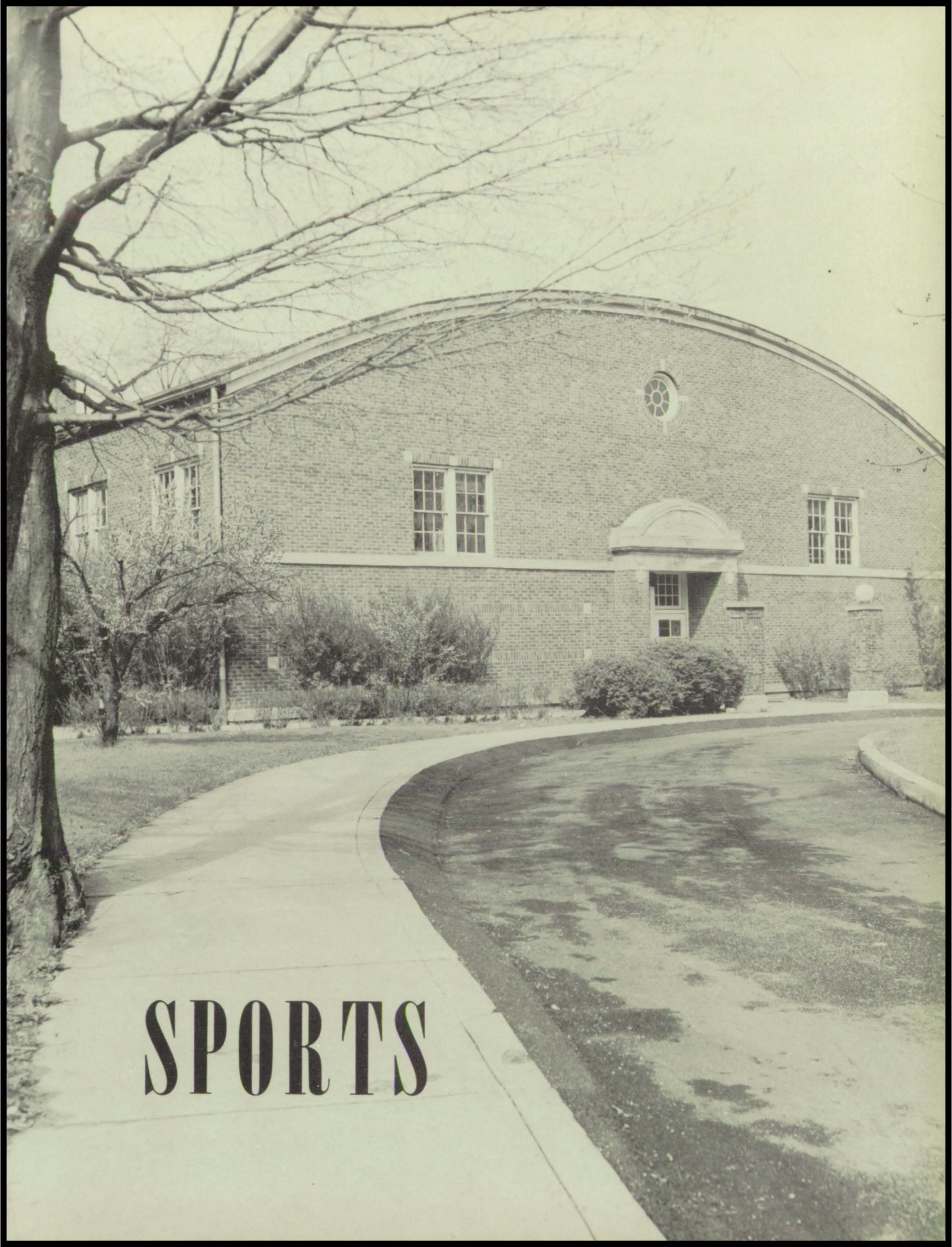


A night we will never forget when we received our long awaited diplomas.

COMMENCEMENT

The class of '56 after commencement





SPORTS



FOOTBALL TEAM

FIRST ROW: Manager M. Hundley, B. Swisher, D. Young, D. Donofrio, R. Griggs, D. Daily, B. Jones, J. Gross, T. Johnson. SECOND ROW: W. Boyd, D. Hyatt, R. Harris, L. Tolbert, J. Record, N. Ulrey, B. Swinney, J. Haymaker, G. THIRD ROW: Assistant Coach J. Moore, Coach R. Forsyth, M. Connell, T. Fishel, N. Sheilds, J. Casey, G. Alsup, K. R. Prescott, G. Wilshire, B. Harris, Principal W. Richards.



Stop

SCHEDULE

				M. H. S.	OPP.
Sept.	2	Bedford	H	0	9
	9	*Dec. Cent.	H	12	0
	16	*Danville	T	7	56
	23	University	T	0	14
	30	*Greenwood	T	0	12
Oct.	7	*Brownsburg	Hc	7	24
	14	*Plainfield	H	7	40
	19	Edinburg	T	19	13
	21	Martinsville	T	0	52

* CONFERENCE GAMES



Downey, R. Davis, Manager R. Myrick, D. Uhls, K. Almond, Frey, B. Altman, D. McGuire,

CONFERENCE STANDINGS

	W	L	T	Pct.	TP	OP
Brownsburg	4	0	2	.833	140	46
Danville	5	1	0	.833	191	59
Speedway	2	1	1	.625	86	77
Plainfield	3	2	1	.583	142	60
Mooresville	1	4	0	.200	33	132
Greenwood	1	4	0	.200	25	129
Decatur Central	1	5	0	.167	25	139



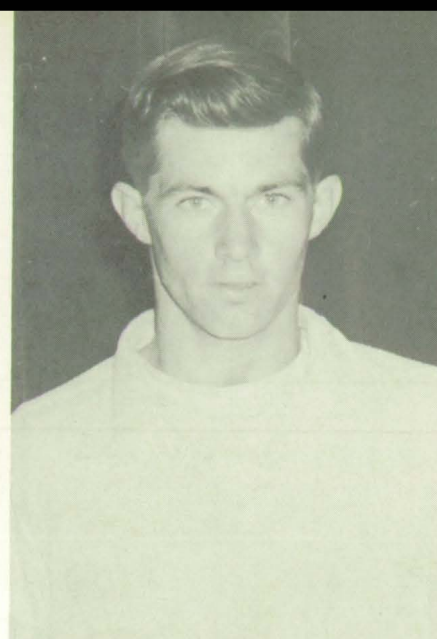
Touch Down



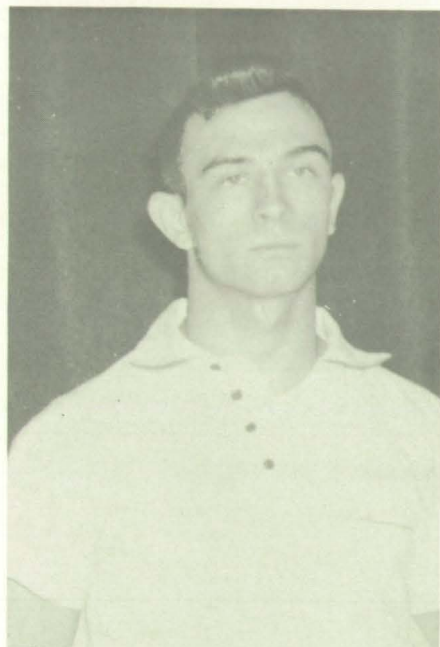
GENE MYRICK



NORMAN SHIELDS



DON UHLS



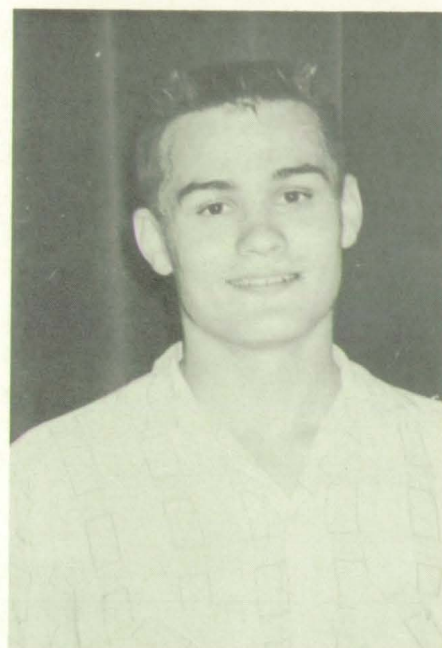
LARRY TOLBERT
MAX CONNELL

SENIORS

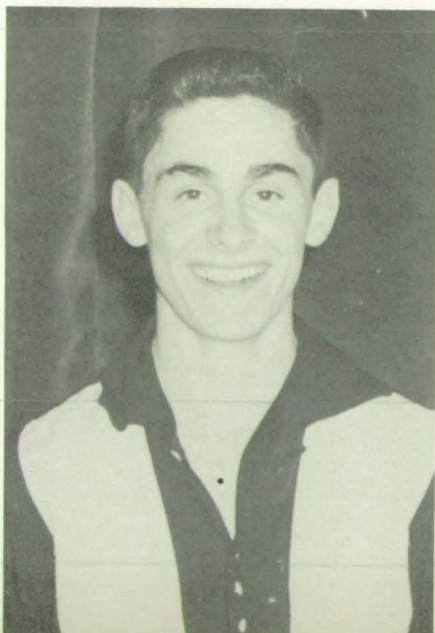
Co-Captains
JACK CASEY
LARRY TOLBERT

Trophy Winner
JACK CASEY

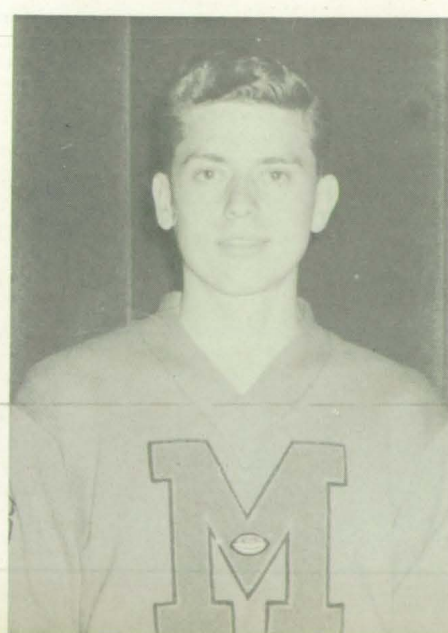
FOOTBALL



JACK CASEY
BILL HARRIS



GARY WILSHIRE





VARSITY BASKETBALL TEAM

FIRST ROW: Manager Max Park, Buck Wrightsman, Norman Shields, Max Connell, John Baldwin, John Ahlefeld, Manager Jim Casey. SECOND ROW: Coach John Moore, Ray Settles, George Adams, Neal Ulrey, Kenneth Grey, Bill Altman, Richard Prescott, Terry Fishel.

SCHEDULE FOR '55-'56

M. H. S.	59	Martinsville	68
M. H. S.	63	Edinburg	47
M. H. S.	77	*Brownsburg	63
M. H. S.	43	Monrovia	38
M. H. S.	56	*Decatur Central	47
M. H. S.	66	*Speedway	61
M. H. S.	75	Spencer	84
M. H. S.	69	Amo	65
M. H. S.	52	**Plainfield	69
M. H. S.	83	**Clayton	75
M. H. S.	67	*Greenwood	75
M. H. S.	53	Franklin Twp.	46
M. H. S.	54	00 University	52
M. H. S.	62	Clayton	57
M. H. S.	70	*Plainfield	62
M. H. S.	53	Center Grove	72
M. H. S.	80	Decatur Central	72
M. H. S.	67	Avon	66
M. H. S.	49	Sacred Heart	59
M. H. S.	63	*Danville	59

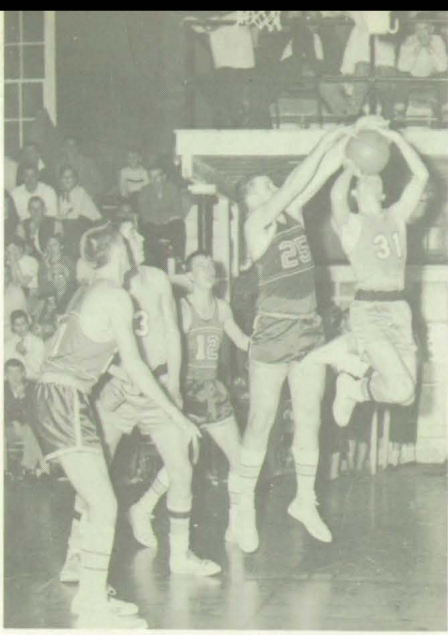
SECTIONAL GAMES

M. H. S.	79	Paragon	60
M. H. S.	79	Unionville	73
M. H. S.	77	Morgantown	98

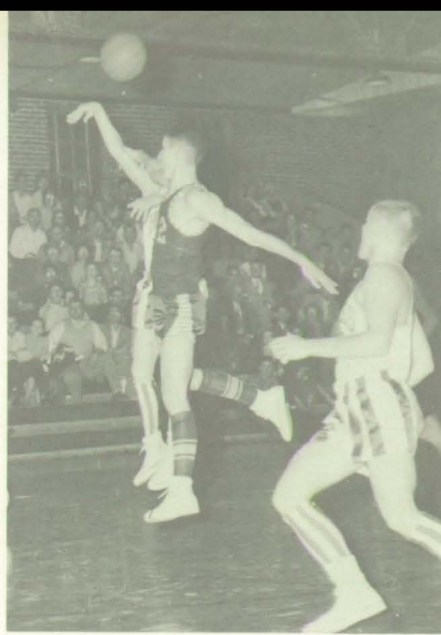
CONFERENCE STANDINGS

Mooresville	*W 5	L 1
Speedway	*W 5	L 1
Plainfield	W	L
Greenwood	W	L
Brownsburg	W	L
Danville	*W	L
Decatur Central	*W	L

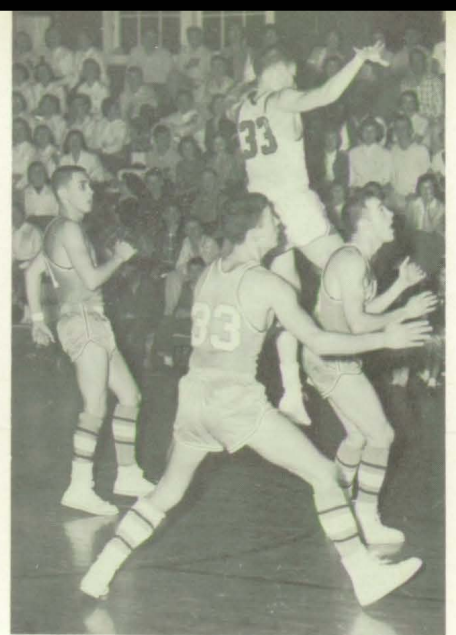
* Conference Games
 ** Holiday Tourney
 00 Double Overtime



Come back!, Baldwin



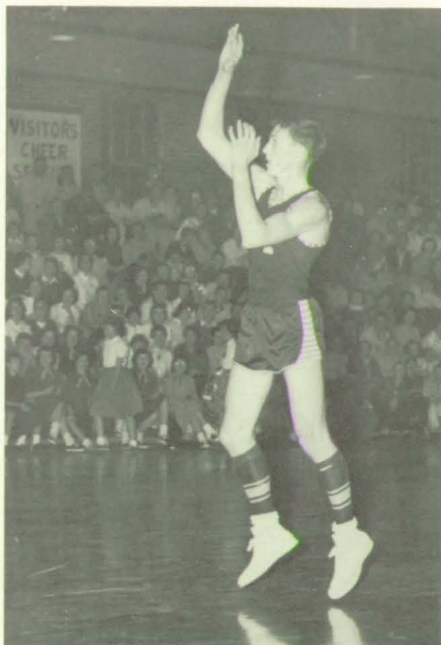
Watch the elbow, Bill



Johnny drops in!



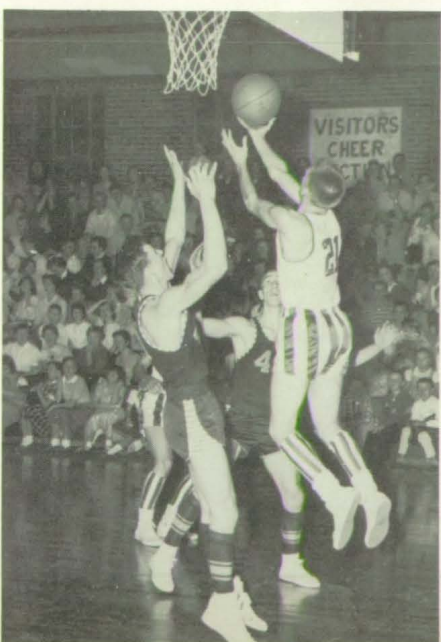
Let go _____
Higher, Buck, Higher!



Buck Wrightsman, Captain
Buck!! do something!



Watch Grey go!
Help him, George!





Wake up! Boski!



Mark up another one.



CHEERLEADERS

Judy Skaggs, Gay Duggar, Janet Baldwin, Janice Baldwin

Grab it, George!!



Lay up by Wrightsman





ROW TWO: Richard Bernard, Coach; James Casey, Manager; Larry Lee, Richard Prescott, Allen Tutweiler, Hugh Tipton, Max Richardson, Larry Hornaday, Max Park, Manager. ROW ONE: Jerry Fishel, Bud Swisher, Jim Harvey, Don Keltner, Bill Swinney, Kent Almond, Wendell Boyd, Terry Fishel, Richard Davis.

JUNIOR VARSITY

SCHEDULE

M. H. S.	35	Martinsville	36
M. H. S.	40	Edinburg	34
M. H. S.	29	Brownsburg	32
M. H. S.	47	Monrovia	39
M. H. S.	40	Decatur Central	26
M. H. S.	49	Speedway	38
M. H. S.	33	Spencer	32
M. H. S.	47	Amo	46
M. H. S.	30	Greenwood	25
M. H. S.	31	Franklin Twp.	23
M. H. S.	33	*Speedway	31
M. H. S.	29	*Plainfield	46
M. H. S.	48	University	29
M. H. S.	46	Clayton	39
M. H. S.	47	Plainfield	40
M. H. S.	32	Center Grove	36
M. H. S.	51	Decatur Central	40
M. H. S.	27	Avon	31
M. H. S.	38	Sacred Heart	34
M. H. S.	45	Danville	40

*Mid-State Second Team Tourney

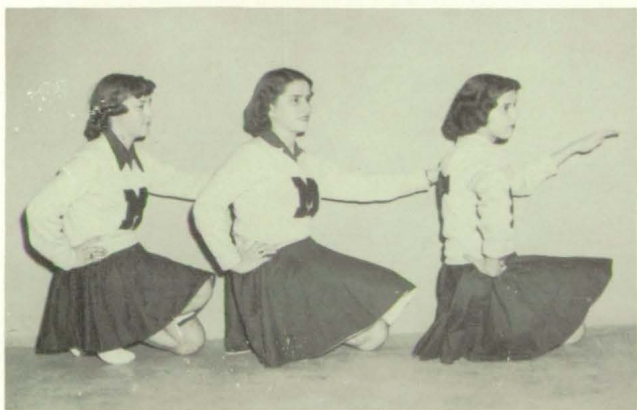


SECOND ROW: Russell Forsythe, Coach; Jim Harvey, Richard Griggs, Tom Downey, Jim Kale, Raymond Johnson, Richard Chowning. FIRST ROW: Mike Hundley, Manager; Richard Davis, Jerry Fisher, Bud Swisher, Bill Jones, Jim Gross, Don Daily, Manager.

FRESHMEN

CHEERLEADERS:

LEFT TO RIGHT: Vickie Beaver, Gwen Ferguson, Norma Waltz.



SCHEDULE

M. H. S.	42	Center Grove	25
M. H. S.	27	Martinsville	34
M. H. S.	32	Brownsburg	26
M. H. S.	19	Decatur Central	22
M. H. S.	37	Plainfield	33
M. H. S.	46	Plainfield	29
M. H. S.	60	Danville	48
M. H. S.	46	Speedway	23
M. H. S.	42	Decatur Central	39
*M. H. S.	28	Brownsburg	43
M. H. S.	58	Clayton	47

*Mid-State Conference
Freshman Tourney



THIRD ROW: Larry Wood, Jimmy Tompkins, Joe Curtsinger, Nick Wetzel, John Moore, Larry Short, Mike Parr, George Boyd, Coach. SECOND ROW: Steve Hilliker, John Altman, Gary Butcher, Charles Allan, Larry McDaniels, Bobby Jackson, Jerry Thompson, Mike Davidson, Richard Short. FIRST ROW: Don Adams, Paul Langley, Ralph Daily, Richard Dieble, Kenney Comer, David Richards, Billy Armstrong, Joey Van Bokkelen, Stanley Emerson, Manager.

JUNIOR HIGH

LEFT TO RIGHT: Sandy Roberson, Carolle Selke, Jackie Littell.



The raw material for years to come is represented here in the Junior High Basketball squad. We have high hopes for the future because of the talent and ability these boys have shown throughout the season.



THIRD ROW: Mike Hundley, Manager; Don Keltner, Bill Altman, Wendell Boyd, Bill Swinney, Conard Wrightsman, Bill Miller, Jack Haymaker. SECOND ROW: Gene Myrick, Jim Gross, Neal Ulrey, Bill Jones, Charles Jones, Richard Griggs, Jim Harvey, Terry Fishel, Richard Prescott. FIRST ROW: Max Park, Manager; Raymond Johnson, Tom Downey, Richard Davis, Jerry Fishel, Denton Hyatt, Russel Forsyth, Coach.

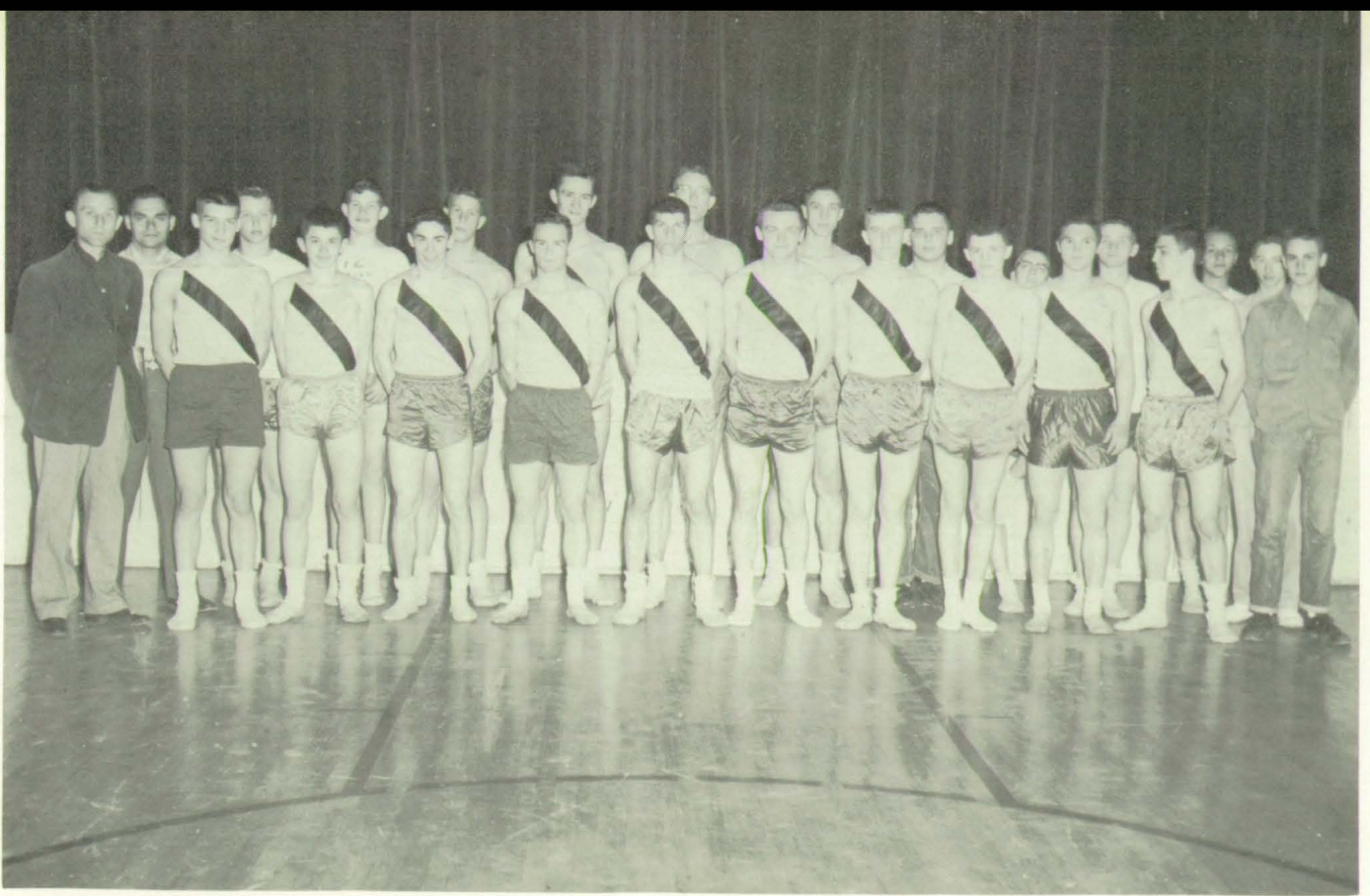
BASEBALL

SCHEDULE

M. H. S.	2	University	24
M. H. S.	10	Brownsburg	1
M. H. S.	8	Greenwood	1
M. H. S.	7	Center Grove	8
M. H. S.	5	Martinsville	23
M. H. S.	8	Danville	1
M. H. S.	1	Dec. Central	5
M. H. S.	0	Speedway	6
M. H. S.	0	Plainfield	1

CONFERENCE STANDINGS

	Won	Lost	Pct.
Plainfield	5	0	1.000
Decatur Central	4	1	.800
Speedway	3	1	.800
Mooresville	3	3	.500
Brownsburg	1	4	.200
Danville	1	5	.167
Greenwood	0	4	.000



ROW TWO: John Moore, Coach; Richard Bernard, Assistant Coach; Richard Griggs, Raymond Johnson, Hugh Tipton, Kenny Gray, Allen Tutewiler, Bill Altman, Bill Swinney, Jerry Fishel, Bud Swisher, Richard Davis, Kay Connell. ROW ONE: Jim Harvey, Jim Gross, Max Connell, Charles Smith, Bill Skaggs, Norman Shields, Ronald Jones, Phil Griffith, Wendell Boyd, Terry Fishel.

TRACK

SCHEDULE

M. H. S.	46	Speedway	63
M. H. S.	30 1/3	Danville	77 2/3
*M. H. S.	88	Greenwood	21
		Edinburg	24
M. H. S.	65	Plainfield	44
M. H. S.	83 1/2	Decatur Central	24 1/2
M. H. S.	57	University	52

*Three-way meet

MID-STATE CONFERENCE MEET

M. H. S. 24 5/6 - Danville 57 - Speedway 44 - Decatur Central 18 - Plainfield 17 1/3 - Brownsburg 10 5/6 - Greenwood 4

TRACK



Fishel's ready for the gun.



Wrightsman gets another ribbon for the Broad Jump.



Altman scores again!



Altman's really up in the air.



Buddy swishes over the hurdles.



FRONT ROW: Dorothy Peterson, Jeanette Merriman, Rita Russell, Judy Haymaker, Mary Dieble, Judy Bell, Jeanne Collier, Judy Hensley, Mary Ann Earles, Sue Perry, Darlene Swinney, Sylvia Smith, Carolyn Borders, Alyce Rose, Erma Glidden, Sharon Cooper, Gwen Ferguson, Judy Fankboner, Wilda Inabnitt, Judy Riggs.
 SECOND ROW: Donna Brown, Dolly Short, Sue Baldwin, Beverly Kays, Carolyn Dickson, Kay Giffin, Anita Williams, Marilyn Griggs, Earlene Harper, Ellen Marine, Karen Tutewiler, Donna Brown, Nora Wainscott, Sue Western.

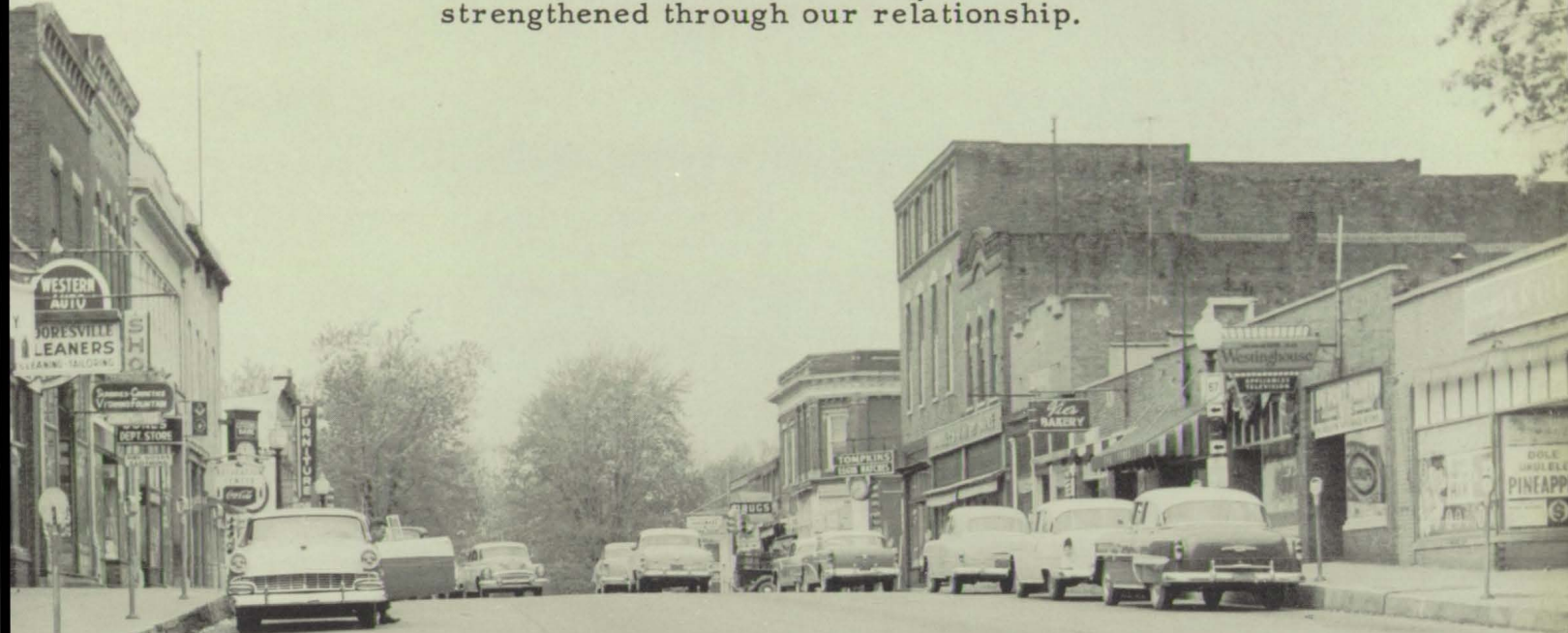
GIRLS' ATHLETIC ASSOCIATION

The girls are encouraged to participate in all phases of sports! Basketball, baseball, volleyball and tumbling are a few.



The staff of the 1956 edition of the "Wagon Trails" wish to extend their thanks and appreciation to the business establishments, which helped make our expanded year-book possible.

Dealing with each one has been a pleasure and we hope the contacts made between the students of our school and the citizens of the community have been strengthened through our relationship.



ADVERTISEMENTS

JOHNSON'S ORCHARDS



Packing House

East Washington

Mooreville

Phone 297

B. F. JONES DEPARTMENT STORE



11 E. Main

Dry Goods
Shoes
Notions
Mooreville

Phone 53

TOWN & COUNTRY SHOP

Mooreville, Indiana



SARA JAYNE'S BEAUTY SHOP

Sara Jayne Hogue
Mooreville, Indiana



VESTAL MOTOR CO., INC.

Mooreville, Indiana

"Let us take the risk"

GREGG INSURANCE CO.

Mooreville, Indiana



NEWCOMER LUMBER AND SUPPLY COMPANY, INC.

Congratulations Seniors

Phone 4

Mooreville, Indiana

GIBB'S

ACE

HARDWARE

East Main Street

Mooreville, Indiana

Phone 17

Congratulations to

Janet Swisher

Carolyn Dehoney

Carolyn Roller

Judy Coleman

Max Connell

Gene Myrick

John Davis

Ronnie Kays

Gay Dugger

and Senior Class of '56

YOUNG FRIENDS SUNDAY SCHOOL CLASS

Mooreville

Indiana

Good Luck Seniors!

MILLERS DRIVE-INN

Cafeteria Services

Complete Dinners Always

Southern Fried Chicken on Sunday



Compliments
of

BROWN'S
REXALL DRUG STORE

Phone 56
East Main Street
Mooreville, Indiana

Congratulations!
Compliments of

NELSON AND SON
HARDWARE

12 West Main Street
Mooreville, Indiana

Best Wishes
to the Class of '56!

MOOREVILLE
LINOLEUM CO.

33 East Main Street
Mooreville, Indiana
Phone 370
Mr. and Mrs. Eugene Wampler
Proprietors



DALE'S PURE OIL SERVICE

Mooreville Indiana

Phone: 158



Best Wishes

TOMPKINS JEWELRY AND GIFTS

East Main Street
Mooresville, Indiana
Phone 327

YOU CAN BE **SURE**...IF IT'S
Westinghouse



Compliments of

HUNDLEY'S APPLIANCE STORE RADIO AND TV SERVICE

and

HUNDLEY'S \$.05 TO \$1.00 STORE

Mooresville, Indiana



WILAIR FROZEN FOOD AND ICE CREAM

Home Delivery Service

3745 Farnsworth Ave.
Indianapolis

Phone: Mooresville 436-W



Good Luck Seniors

THOMPSON AUTO SUPPLY, INC.

11 West Main Street
Phone 250
Mooresville, Indiana

GOOD LUCK SENIORS



COLEMAN Real Estate
Insurance Mooresville, Indiana

Mooresville, Indiana
Plainfield, Indiana
Indianapolis, Indiana

Phone 151
93081
Melrose 33133



HAYES DRUG STORE

DEPENDABLE DRUGGIST

Prescription
West Main Street

Mooresville, Indiana

Druggist
Phone 88

Compliments
of
Helen & Aldrich Harvey

HARVEY FUNERAL HOME

Phone 19
Mooresville, Indiana

Compliments of
JACK AND JILL SHOP

Infant and Children's Wear
Corner of Main and Indiana
Mooresville Indiana

Best Wishes Seniors
HENSLEY COAL COMPANY

Pocahontas - Briquets
Stoker Coal
141 East South Street
Phone 66F20
Mooresville, Indiana



Best Wishes to the 1956 Seniors!

KELLY'S DRIVE-IN

Phone 96

Mooresville, Indiana

BEST WISHES SENIORS

McILWAIN MOTOR SALES

MARTINSVILLE, INDIANA

OLDSMOBILE - SALES AND SERVICE

ROSE ROOM BEAUTY SHOP

North Indiana Street

Mooresville, Indiana

COMPLIMENTS

MOORESVILLE FURNITURE STORE

9 West Main Phone 406

Mooresville, Indiana
Open Evenings till 8:00 P. M.

KELLY'S MARKET

FINE QUALITY FOODS

East Main Street
Mooresville, Indiana



CAPITOL OIL CO.



Fuel Oils and Gasoline
Phone
Indianapolis ME. 4-9802

PRICE BROS. FURNITURE

GOOD LUCK SENIORS!



"Quality Merchandise at Lower Prices
Phone 9-2181 Plainfield
1021 E. Main Street



CARL'S SERVICE OIL CO.

CARL BLACKBURN

Prop.

Mooreville

Indiana



Compliments of
SPANGLE MOTOR CO.

Mooreville, Indiana
Phone 173 and 273

Good Luck
SENIORS

**LABORATORY EQUIPMENT
CORP.**

Mooreville, Indiana
Phone 59

Compliments of

**PAUL HENDERSON
REGISTERED WATCHMAKER**

Mooreville, Indiana

OMER L. PARK

Representative
Mooreville Indiana
State Farm Insurance Companies
Bloomington, Illinois

Best Wishes For the Future
To the Senior Class of '56

CONNELL SHOE SHOP

Mooreville Indiana

Best Wishes

JONES HARDWARE

Phone 168 Mooreville, Indiana

MOORESVILLE PUBLIC SERVICE



Mooreville, Indiana

Phone 134

Congratulations Seniors!

**WESTERN AUTO
ASSOCIATE STORE**

HARLAND B. HADLEY
Phone 32

15 East Main Mooresville

Best Wishes

**AUTOMOTIVE ARMATURE
COMPANY**

Mooresville, Indiana

Compliments of

VIE'S BAKERY

14 East Main Street

Mooresville, Indiana

Compliments of

**MOORESVILLE FEDERAL
SAVINGS AND LOAN ASSOC.**

AND

**HADLEY AND COOK
AGENCY**

Mooresville, Indiana



Compliments
of the

WEST END GROCERY

Telephone 135 West High Street

Mooreville, Indiana

Best Wishes

Methodist High School S. S. Class

Linda Comer	Max Park
Carolyn Einfeldt	Sara Jean Bell
Shirley Tompkins	Kathy Baldwin
Clara Lugar	Bill Harris
Charles Jones	Jo Perry

Compliments of

RR-JJ FARM

Polled Hereford Farm

Russell, Jean, Judy, & Rick Lee
R.R. 4 Martinsville, Indiana

Best Wishes to the Class of 1956
Compliments
of

RIVER VALLEY FARM

Milking Shorthorns

A. J. Kerkhof and family
R.R. 4 Martinsville, Indiana

Compliments
of

CENTRAL PARKING GARAGE

39 Kentucky Avenue
Indianapolis, Indiana

Congratulations
from

DUGGER'S MARKET

"Fine quality foods"

State Road 67
Mooreville, Indiana



Congratulations to the Class of '56

MOORESVILLE FEED & SUPPLY CO.

PAUL AND LOUISE SWISHER

246 East Washington Street

Moorsville, Indiana

Compliments of



SMITHERMAN HATCHERIES

Mooreville

Indiana

Congratulations

to

the class '56

MOBILGAS

Bob Sparks, Agent



Mooreville

Indiana



CONGRATULATIONS SENIORS!

DELLEN BUICK COMPANY

Plainfield, Indiana

GOOD LUCK SENIORS!

ADLERS DEPARTMENT STORE

Mooresville Indiana

CITIZENS BANK

Mooresville, Indiana

Member of
Federal Deposit Insurance Corp.



PHOTOGRAPHY BY

**AUBREY'S
STUDIO**

MOORESVILLE, INDIANA

Myers
YEARBOOKS
in depth

PACEMAKERS
OF QUALITY

